

THE MANCHESTER ENTERPRISE

123rd YEAR VOLUME NUMBER FOURTEEN

USPS 327-460

THURSDAY, JANUARY 18, 1990

United Way Wrap-Up



Manchester United Way Chairman Al Currey is shown accepting two checks from Johnson Control execs. Kurt Deford (l), Acting General Manager of the Plastic Machinery Division, presents a check for \$6,146. Jim Krupinski (r), General Manager of the Plastic Container Division is shown donating a check for \$10,137. These checks represent the company contribution matching the contributions of their employees.

Open Letter to Manchester:

I would like to take this opportunity to thank each of you who supported our local United Way campaign last fall. With your help, we reached 103% of our goal, collecting \$54,560.07. This is a record for our local campaign.

A special thank you goes to Jim Weithoff, who again chaired a most successful campaign in our local industries. The employees at Manchester Tool & Die, and the Plastic Container Division of Johnson Controls were exceptionally supportive. Manchester Stamping and Johnson Controls matched employee contributions dollar for dollar. The campaign in local industries contributed 75% of our total. Thank you - without your support we couldn't cut it.

I would also like to thank the other division chairmen and women: Janice and David Little, Sula Horodeczny, Mark Van Bogelen, Judy Fahey, and Mary Ann Chapin; and their committee members. Congratulations for a job well done.

As you know, many local organizations and agencies benefit from your support. The United Way helps many larger state and national organizations, but its most profound effect is right here. Your contributions help make Manchester a better place to live and work. It has been my pleasure to help with this wonderful charity. Thanks to you it works - for all of us.

Sincerely,
Al Currey

Town Meeting Talks Recreational Challenge

by Deborah Havens

In the summer, it can be a problem. Kids hang out around the Hop-In gas station, or the closest party store. And if the Washtenaw County Sheriff Department came by to move them along, the big question is where do they go?

Sharon Township resident Gary Blades says he thinks they drive out to secluded country roads like the one that passes by his property. "I sure see a lot of beer cans out there in the morning," he says.

Blades is one township resident who wants to change that situa-

tion. So is Washtenaw County Sheriff Joe Yekulis. "We don't want to hassle the kids. We usually tell them to go to the local park to hang out. That's what parks are there for. But that's a problem after dark when the parks close down."

Blades and Yekulis are just two of the concerned citizens in the Manchester community who will be at the upcoming Town Meeting, January 27, from 8:30 a.m. to 12:30 p.m. to discuss the possible solutions.

The Town Meeting is sponsored by the Community Resource Center located in Manchester.

Continued on page 4

Chamber Directions

Janet LaBeau Shurtliff

Every community deserves a vibrant, active Chamber of Commerce.

The Manchester Area Chamber of Commerce has existed in many different forms throughout Manchester history.

On Wednesday, January 24, all members of the Chamber plus people from the community interested in Chamber activities are invited to the January General Membership meeting to discuss the "State of the Chamber."

This breakfast forum will be held at Frank's Restaurant downtown with breakfast beginning at 7:45 a.m. and the discussion to commence at 8:00 a.m.

This meeting will provide the opportunity for the current Chamber Board to present its plans and goals, and for the membership to give essential input to shape the future course of the Chamber.

Breakfast should be RSVP'd to Ann Pat Wolf at First of America, 428-8389, by Monday, January 22.

Village Council Report

Regular Meeting
January 15, 1990

- Appointed a special Budget Preparation Committee to draft the proposed budget for the 1990-91 fiscal year which begins March 1, for presentation at the February 5 Council meeting

- Reviewed the recommended 1990-91 projects, including road repaving, sidewalk repairs, a 3rd high-volume water well, Kirk Park improvements, sewer video inspection, and storm/sanitary sewer separation.

- Approved new fees for building, electrical, plumbing and mechanical inspections - new fees set in conjunction with Bridgewater, Freedom and Manchester Townships

- Requested the Budget Preparation Committee to make recommendations for 1990-91 salaries for office staff, Clerk and Zoning Inspector

- Adopted a resolution appointing the Clerk the person in charge of records required under Right-to-Know and MIOSHA programs

- Approved medical insurance for the Village Clerk

- Approved a new requisition/purchase order system corresponding with the new accounting system

- Requested that an ordinance amendment be drafted changing Trustee compensation to \$50 and president to \$250 per meeting

Why Should It Be So

Manchester Enterprise
January 27, 1876

"Four hundred tons of pig iron were landed at Messrs. Ramsey & Co.'s dock in this village last Monday. The bill for this commodity reached the modest sum of ten thousand dollars."—Seneca Falls (N.Y.) Reveille.

Within our recollection a middle aged man had a little shop at this same Seneca Falls where he would make up a wagon load of pumps, then travel about among the farmers and surrounding villages and peddle them out. The business grew into a large pump factory employing hundreds of hands, with a rival establishment employing as many more. The original establishment outgrew itself and divided into two. The one noticed above is the offshoot. Out of this small beginning have grown up establishments in that one village, manufacturing almost every conceivable thing, from the largest-sized steam fire engine to a yeast cake, and in their manufacture employing an aggregate of over 3,000 persons. Now why can not such things be repeated here in the West? Right here in Manchester, which has better railroad facilities than the place above named, though not as great a water power. But why not improve what there is? Why must Michigan send all her best timber, iron and wool, "away down East," to be manufactured into first-class carriages, iron implements and cloth, and then returned to us, with cost and profit of manufacture, and railroad freight both

ways, all to be paid by us, just because "that's the way we've always done?"

We know that a large portion of the iron mentioned above came from Michigan mines, and that in the celebrated Concord carriages brought and sold even under the very noses of Detroit manufacturers, was used Michigan lumber, selected "because it was better for certain purposes than any to be obtained elsewhere." Now, why is this?

"Labor is so much cheaper at the East, that we can't compete with them," say some. So said Eastern manufacturers, years ago, with regard to England's manufactories. "We must have a protective tariff." But before politicians had got this tariff fixed so it could be "all things to all men," the factories were running, the best English workmen were drawn into them by the magnet of better wages, and to-day the brand of "Sheffield," etc., once so common, is a curiosity.

Thanks to a kind Providence, capital don't own labor in this country. It cannot say "remain thou here; I will not let thee go." But then labor does not choose to go, especially skilled labor, where there is no capital to draw it, and such labor has been fooled so often at the West by fictitious wealth that it has become suspicious. Let bona fide capital put up its hives and labor will swarm into them, wherever located. We believe the day is coming when this State will be dotted with "manufacturing Manchesters." Who will "hasten the day?"

Truck Hits Tree



On Friday, January 12, Forest Francis Shoreng, a truck driver for Freeborne Industries of Troy was traveling north on M-52 when he apparently lost control of his truck on the slippery highway and careened off the road, up an

embankment and hit a tree.

He lost consciousness and was then assisted by the Chelsea EMT who were on the scene and later transferred him to Chelsea Community Hospital where he was treated and released.

Senior Citizens News

Would you like to live to be 90? You say, "Who wouldn't?" According to two of our local ladies, Fern Sutton and Sophia Johnson who had their 90th birthdays on January 10, it took a lot of living! Neither look their age and are a joy to know—congratulations!

Thursday, January 18: Meat loaf is on the menu with bingo to follow.

Saturday, January 20: The senior bus will begin pickup at 7:00 p.m. for the fun night card party at St. John's in Bridgewater. This is the first of the parties sponsored by the rural area churches and it sounds like fun. If you feel like a fun night out, call Erma Alber at 428-8707 and go along.

Tuesday, January 23: One of our nurses will be present at 11:00 a.m. to take your blood pressure. Then at noon lunch, Chinese Day food will be enjoyed. (This is good and good for you.) There will be a health talk at 12:30-topic and speaker to be announced at meals.

Wednesday, January 24: Woopie! Michigan Center has again opened their pool as of the first of the year (as I understand). We can exercise in the water and we plan for it to rejuvenate us. This exercise is called 'aquacize' and it is a workout to help all our arthritic (and otherwise) joints with an instructor who keeps you going. Call Erma or Howard Parr whose number is 428-9233 for further information. Erma will take reservations for the bus ride.

Thursday, January 25: Jan is

serving Polish sausage and I don't know what else, but it will be good. Bingo follows lunch. Come prepared to win or just enjoy the fellowship. At 6:00 p.m., the bus will begin pickup for the social evening at the Blacksmith Shop. The fun will begin at 7:00 p.m. Call Erma if you wish to go on the bus. Part of the fun will be a movie as announced by Helen Wahl. Come!

Looking ahead: On Saturday, February 24, Johann Strauss' "Der Fledermaus" will be presented at the Michigan Theater in Ann Arbor. If you would like to go along for this 2:00 p.m. matinee, call Erma for your seat on the bus.

Dial A Garden

The following is a monthly schedule of Dial-A-Garden, the system of pre-recorded daily gardening tips sponsored by the Washtenaw County Cooperative Extension Service. The system is in operation 24 hours a day, 7 days a week. Interested persons are invited to call 971-1129 at their convenience to listen to timely, up-to-date gardening information.

Thursday, January 18: How many vegies should you plant?
Friday, January 19: African violets
Monday, January 22: Growing ferns
Tuesday, January 23: Growing fruit trees
Wednesday, January 24: Dwarf fruit trees
Thursday, January 25: Jan is

American Legion Auxiliary

The American Legion Auxiliary met at the Legion Home on January 10, 1990 with 18 members present. We now have met our membership quota with 96 dues-paid members.

The secretary read the minutes of the December 13 meeting. It was noted that our District President, Kaye Richardson, and District Sgt. at Arms, Karen Griener, were guests at this meeting. Also, it was noted that a subscription for the National Legislative Bulletin has been obtained for use at the Ann Arbor V.A. Hospital, and the flower urns at Wurster Park have been filled by Helen Popkey. Area serve-men have been remembered with Christmas cards and gifts; also, area shut-ins have been remembered with either a card or plant.

New bingo schedules have been prepared by Marilyn LaRock, and distributed to bingo workers.

The Michigan Legislative Dinner, sponsored by the Department of Michigan, American Legion, will be held in Lansing on February 13, 1990. Our unit will sponsor a State senator, legislator, and also our unit president, Mary Poley, at this affair.


Our next meeting will be held on February 14, 1990, with Judy Hoef, Helen Popkey and Donna Burnison on the refreshment committee.

Federal Surplus Foods

Federal Surplus Foods will be distributed on Friday, January 19, from 9:00 a.m. until 11:00 a.m. Distribution will be at the Manchester United Methodist Church, 501 Ann Arbor Street.

PARR'S AUTO BODY
BODY WORK - PAINTING
FREE ESTIMATES
INSURANCE WORK
GLASS INSTALLATION
18481 W. Austin Road
Manchester, Michigan
Phone
313-428-9538

FEBRUARY 1990 is



WELLNESS

MONTH
in Washtenaw County
Watch for this logo
publicizing events in the six
dimensions of wellness

- PHYSICAL
- SOCIAL
- EMOTIONAL
- MENTAL
- SPIRITUAL
- OCCUPATIONAL

Well All Ways
747-8677

coordinated by
parish
partnerships
of Washtenaw County

THE MANCHESTER ENTERPRISE
150 East Main Street Phone 313-428-8173 Manchester, MI 48158
USPS No. 327-460

The Manchester Enterprise was established in 1867 and is published each Thursday at 150 East Main St., Manchester, Michigan, with second class postage paid at Manchester. Edward E. Steele, Publisher Lenore A. Steele, Editor
POSTMASTER: Send Form 3572 To: Manchester Enterprise, 150 East Main St., Manchester, Michigan 48158.
DEADLINES: All Display Advertising and Pictures (Black & White ONLY) Are Due By 5 p.m. Every Monday For Same Week Publication. All Classified Advertising and News Articles Are Due By 10 a.m. Every Tuesday For Same Week Publication.

Obituary

Albert G. Herman
5624 Sharon Hollow Road
Manchester

Age 95, died Monday, January 15, 1990 at the Chelsea Community Hospital. He was born February 11, 1894 in Holgate, Ohio the son of John and Rose (Dietrich) Herman. He was married to Emma Romelhardt on June 16, 1920. She preceded him in death on February 10, 1971. He was an army veteran of World War I, a member of the American Legion, V.F.W., D.A.V. and the North Sharon Baptist Church.

Mr. Herman is survived by one daughter, Gladys (Joseph) Geer of Grass Lake; one son, Vernon (Joan) Herman of Manchester; 9 grandchildren; 14 great-grandchildren; 1 brother, Andrew of Jackson. He was preceded in death by 2 sons, Earl in 1946 and Leland in 1953.

Funeral services will be held

Thursday, January 18, 1990 at the Jenter Funeral Home. Pastor William Winger will officiate. Burial will follow in Sharon Townhall Cemetery.


"I Can Cope"

"I Can Cope," a free eight week cancer education series for cancer patients, family members and friends, will run Tuesdays from 7-9 p.m. beginning January 23 in the Consumer Health Library, Reichert Health Building, Catherine McAuley Health Center in Ann Arbor.

"I Can Cope," is presented by health care professionals and a community representative who will answer questions about managing side effects of treatment, nutrition, what cancer is, exercise and treatment options among other topics. You may join the series at any time during the eight weeks.

For more information or to register, call 572-3519.

Pennington Is Working For You



Pennington LP GAS
Count on us to keep the heat on.

5155 W. Weston Rd./PO Box 37
Morenci, MI 49256
(517) 458-7107
Toll Free (800) 365-5399

13400 M-62/PO Box 490
Stockbridge, MI 49285
(517) 851-7577
Toll Free (800) 274-5599

PICK UP A BOX OF GIRL SCOUT COOKIES.
AMERICA'S FUTURE IS IN YOUR HANDS.



FROM YOUR FAVORITE GIRL SCOUT

OR PHONE
428-8909 428-8604 428-9466
428-8176 428-8831 428-7158
428-8908

Attention

To our subscribers who reside in the 48103 zip code area we apologize for any inconvenience you have experienced with late delivery of The Manchester Enterprise.

Every Wednesday morning the paper is deposited in the post office in Manchester for distribution to various locations. After that, we have no control over the expediting. Since the Enterprise is mailed under a 2nd class permit, delivery should only take a day or two longer than 1st class.

If you do not receive your paper on time please call the postmaster in Ann Arbor at 665-1100 or the postal inspector in Detroit at 1-226-8184.

We are very proud of our promptness over the past 19 years and we will strive to keep our fine record in the future.

4-H Host Families Needed

Host families will be needed this summer for seventy youth and six adults from Japan. The youth are from the LABO Party where they have been studying English and American culture for many years. They will live with Michigan 4-H families for about a month from July 20 to August 20. The youth range in age from 12 to 18.

This is the 17th year Michigan has offered this tremendous experience to 4-H youth. Those

hosting this summer will have an opportunity to visit Japan in 1991 and become a member of a Japanese family.

Applications must be submitted to the Cooperative Extension Service office by March 1. Matches will be made in April so that correspondence can begin prior to their arrival. For further information about this and other educational 4-H programs contact: Janet Nagele, 4-H Youth Agent at 971-0079.

CUSTOM CABINETS MADE IN MANCHESTER

Competitive Prices
Installation Available
Design Service

—OR—

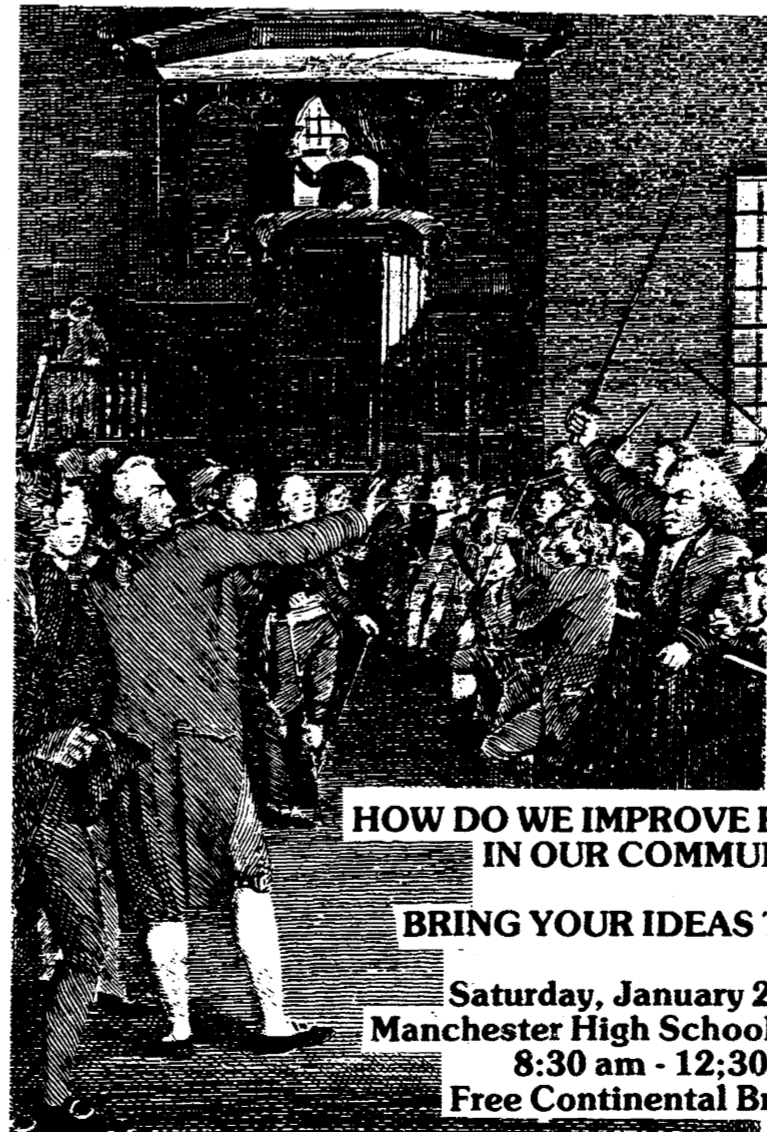
Let Us
Reface Your Old
Cabinets and Save \$\$



Dutch Country Kitchens

18352 W. Austin Road Phone 313-428-7292 Manchester

TOWNSHIP RESIDENTS OF SHARON, MANCHESTER, FREEDOM AND BRIDGEWATER TOWN MEETING!



Guest Speakers:

Mayor of Manchester
Mary Kalleward

Washtenaw County
Sheriff, Joe Yekulis

Manchester School
Superintendent
Ron Niedzwiecki

Special Performance
by Manchester area
School Students

HOW DO WE IMPROVE RECREATION
IN OUR COMMUNITY?

BRING YOUR IDEAS TO TOWN!

Saturday, January 27, 1990
Manchester High School Auditorium
8:30 am - 12:30 pm
Free Continental Breakfast

*EXTRA CREDIT for Manchester High School Government Class Students

Sponsored by the Community Resource Center. Look for the registration form in this newspaper. Or call Diane Schwab 428-7722.

Free Throw Championship

All boys and girls, ages 10 to 14, are invited to participate in the local level of competition for the 1990 Knights of Columbus International Free Throw Championship. The local competition will be held **January 21, 1990 at 1:00 p.m. at the Manchester Middle School gym.**

The International Free Throw Championship is sponsored annually by the Knights of Columbus with winners progressing through local district and state level competition. International champions are announced by the K of C International Headquarters based on scores from the state level competitions. All boys and girls 10 to 14 years old are eligible to participate and will compete with their own age divisions.

All contestants will receive a certificate for participation. There will also be 1st place, 2nd place and 3rd place awards given out. 1st place winners will advance to the district round of competition. Participants will be required to furnish proof of age and written parental consent. For entry form or additional information, contact: Manchester Middle School Office, Dan Burch 428-9693.

Birth Announcement

Born to Mr. and Mrs. Clarence Pelroy of Veneta, Oregon, a son, Steven Robert, 8 lbs. 6 oz. and 22 inches long. Steven has an older brother, Jacob, who is 4 years old. Maternal grandmother is Helen Popkey of Manchester. Paternal grandmother is Mary Ross of Albany, Oregon.

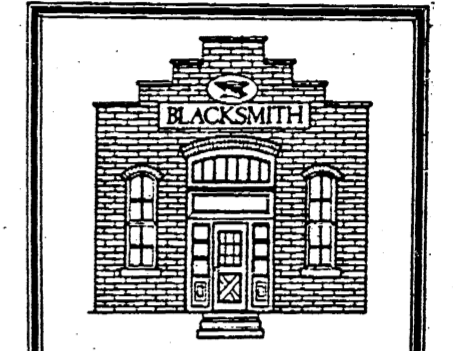
Get On The Bandwagon

Janet LaBeau Shurtliff

Remember how much fun it was to play in your high school band?

Whether clarinet or cornet, french horn or flute, trumpet or trombone, saxophone, bassoon, or percussion - band was a unique mixture of hard work, many laughs, and satisfying accomplishment. And it was music.

But now you're grown-up and very busy with everyday life.



MANCHESTER AREA HISTORICAL SOCIETY

The Manchester Area Historical Society met on Monday, January 15 at the Blacksmith Shop.

Sarah Ann Briggs, Executive Director of Domino's Center for Architecture and Design and Director of the Frank Lloyd Wright Museum, presented a program on the works of Frank Lloyd Wright. Ms. Briggs is very knowledgeable about his work and gave some interesting history surrounding the buildings and pieces shown in her slides. The slides illustrated examples of buildings, furniture and windows that he designed. The museum, located at Domino's Farms, is open to the public.

Refreshments were served by Elsie Robbins and Nancy Feldkamp.

The next meeting will be held on February 19. The public is welcome to attend.

You can still make room for the hard work, many laughs, satisfying accomplishment, and music of playing in a band.

The Manchester Community Band was formed a year and a half ago and is made up of friends and neighbors, young and old, from the Manchester area.

Some are very inexperienced on their instruments, perhaps haven't played in many years. Some are professional quality and could be in Johnny Carson's band.

The Band rehearses once a week, Thursdays, at 7:30 p.m., at the Manchester High School band room, near the north east entrance to the building. And it's great fun!

Don't let excuses get in your way. Most can be met. Haven't played in (too many) years? Neither had Norm, and he's our star tuba player now!

Can't find an instrument? They are around. Come to rehearsal, and we'll see if we can locate one for you!

Not good enough? Guess what - you get better the more you play! Another feature: it's a great parent-and-child activity. Several members of the Band are just such a combination: mom on clarinet, son on sax; another mom on trombone, son on baritone; a dad on percussion, son on cornet.

The Manchester Community Band is a fine, energetic, fun, and dedicated group of musicians who would welcome another friend or neighbor to the group.

For more information, call 428-7189 or 428-9812. Or come to a rehearsal on Thursday at the High School band room, even just to listen. Music makes life more fun!

CLASSIFIEDS
list your words
do the talking
in the

"Used Vehicles For Sale"

- 81 Dodge Mini Bus
 - 78 Ford 36 Pass. With Lift
 - 78 Ford 66 Pass.
 - 78 Chevy 66 Pass.
 - 78 Chevy Impala
 - 79 Dodge Van 12-Pass.
 - 80 Dodge Cargo Van
- Vehicles May Be Seen At:
Manchester Community Schools Transportation Garage
710 E. Main St.
Manchester, MI 48158

Sealed Bids Accepted until February 2, 1990, 3:30 p.m. at Manchester Community Schools, Attn: Transp. Dept. Bus Bids.



A Good Selection of New and Used Cars On Our Lot

We Feature "Riverside Conversion Vans"

TIRB CHEVROLET & GEO

Phone 313-428-8212 or 313-428-8492

131 ADRIAN STREET MANCHESTER, MICHIGAN

Monday, Wednesday 7:30 am-8 pm
Tuesday, Thursday, Friday 7:30 am-6 pm Saturday 7:30-12

Senate Chamber Restored



Senate Majority Leader John Engler (R-Mt. Pleasant) addresses the Senate and visitors Wednesday during special ceremonies to mark the opening of the newly restored chamber. Engler is at the refurbished rostrum.

The newly restored Michigan Senate chamber ceremoniously reopened as the first Constitutionally-mandated Senate session of the new year convened. Senate Majority Leader John Engler welcomed guests and sightseers to the first public viewing of the Capitol since restoration began last March.

"The newly restored Senate Chamber stands as testimony to the true spirit of Michigan's people - yesterday, today and tomorrow," said Engler. "This project has restored the Capitol to its original grace and splendor."

The reopening of the Senate Chamber concludes the first major phase in the restoration of the entire State Capitol, which is scheduled to be completed in 1992. The restoration is the first-ever project to restore the 111-year-old Capitol, which has fallen victim to the ravages of time and abuse.

The ceremony was held amid an emotionally-charged, festive atmosphere that clearly demonstrated the importance of this project to those who were involved. The public toured chambers and took photographs of the recently completed work. Several pictures detailing the restoration process were on display. And a special video on the project was shown continuously throughout the afternoon.

"There is an understanding that this building is important and that it's here to stay," said Frank. "Now that this building is being restored, everybody is becoming very enthusiastic."

Adding to the historical feeling of the day, an actor portraying Alonzo Sessions, the first lieutenant governor to address the Senate in the Capitol in 1879, gave an opening address after a century of "absence" from the chambers.

Town Meeting

Director Dianne Schwab says the issue is bigger than finding kids a place to hang out at night. She's concerned about people of all ages. "I just heard about a man who started a basketball team for men over 50 years of age. I think that's great! And we ought to have the same options in our community."

The Town Meeting gives township residents a chance to talk together about ways to improve recreational opportunities. Participants start the meeting with a free continental breakfast. The program will feature guest speakers on different issues of recreation, including Manchester School District Superintendent Ron Niedzwiecki, Washtenaw County Sheriff Joe Yekulis, and mayor of Manchester, Mary Kallewaard.

After the issues are outlined, the participants will break into small groups to "brainstorm" ideas about meeting recreational needs in the community. Later, they return to the large group to prioritize goals.

Manchester community students have worked to make posters for the event, and some will appear in short skits at the start of the program to dramatize their viewpoint on recreation in this area. Extra credit will be given to the Manchester High School government class students who attend.

Look for the Town Meeting registration form on page 9 of this paper.

Board of Education

Regular Meeting
January 15, 1990

Meeting was called to order by President, Pat Sahakian at 7:30 p.m. with a Pledge of Allegiance. Members Present: Sahakian, Gordon, Kluwe, Gaughan, VanBogelen, Turk, Gilbert

Minutes of December 18, Regular and Special meeting were approved as amended.

Correspondence was read and ordered filed. Treasurer's Report was approved as presented with a cash balance of \$539,336.53 as of 12/31/89.

Board approved the employment of James Krzyzaniak as a teacher for the balance of the 89-90 school year.

New Business: Coaches-This item tabled until the Special meeting on Wednesday, January 31, 1990.

Substitute Teachers: Board authorized the continued utilization of Michelle Spaulding for the balance of the 1989-90 school year.

Probationary Recommendations: Anne Warren, HS Social Studies Dept. teacher was placed on continuing second year probation.

The Board was given notification of the renewal clause of the Superintendent's contract.

The Board adopted the revised Board policy #5127, Graduation Requirements.

Mr. and Mrs. Michael C.

Gleason addressed the Board and donated a check in the amount of \$190 toward the band program.

Advocate's Report: Principals Henry, Schick and Morrison gave their reports. Henry on Klager's Discipline Policy, Schick on Middle School Mission Statement and Morrison introduced high school students, Hikah Weiss and Michelle Gilbert who presented S.A.D.D. Program. Mrs. Henry, Klager Elementary Principal, reported on the Elementary Substance Abuse Prevention Program entitled "Double Talk."

Superintendent Niedzwiecki presented a proposed three year plan on maintenance projects.

Two Special Meetings were set: (1) Thursday, January 25, 1990, 8 pm in the HS Library. Purpose - Student Hearing. (2) Special Meeting was set for Wednesday, January 31, 1990, 7:30 pm for the following purposes: (a) Bus bids, (b) Personnel items and (c) Procedures dealing with student awards and credits.

The Superintendent informed the Board of the Michigan Association of School Boards Mid-Winter Conference.

Mr. VanBogelen and Pat Sahakian volunteered to be members on the Communications Committee.

Meeting adjourned at 9:05 p.m. and a tour of the Middle and Nellie Ackerson building was made by Board members and residents.

PHONE 313-428-8955
Bradley W. Taylor, O.D.
Optometry
COMPREHENSIVE EYE EXAMS
CONTACT LENS - PEDIATRIC VISION
227 EAST MAIN STREET
P.O. BOX 355
MANCHESTER, MICHIGAN 48158

BACK DOOR PARTY STORE
500 Ann Arbor Street Phone 313-428-9287 Manchester, Michigan
BEER WINE KEG BEER
GROCERIES
MICHIGAN 1010
Instant and Daily Lottery Tickets
UNION 76 GAS Full Service and Self Serve
BEER SPECIAL
GOEBEL Case of 24 Plus Deposit \$5.59

The Real Estate Center
127 Herrick Park Dr., Tecumseh, MI (517) 423-8302
220 N. Main St., Adrian, MI (517) 264-5716
The center for progress
PRICE REDUCED! IMMEDIATE OCCUPANCY
3-4 bedroom home in the village of Manchester. 2 full baths, formal dining room and country kitchen. OWNER SAYS MAKE AN OFFER! \$68,500. Call BONNIE TIEDE 423-5981.
IN THE COUNTRY! and located near a lake is this lovely 3 bedroom ranch. This one won't last long at only \$76,900. Clinton schools. Call DAVID POUCHER 423-7517.
NICE COUNTRY HOME! Features include 4 bedrooms, 1 1/2 baths, living room, dining room and attached garage all on 5 acres. Also has horse barn and pole barn. Tecumseh schools. \$115,000. Call DAVID POUCHER 423-7517.

Chelsea Breather's Club
"Update on Respiratory Medications" will be the topic discussed by George Demaagd, Pharm.D., at the next meeting of the Chelsea Breather's Club. The group will meet on Saturday, January 20 at 11:00 a.m. in Dining Rooms A and B, Chelsea Community Hospital, 775 S. Main St., Chelsea, Michigan.
The Chelsea Breather's Club, co-sponsored by Chelsea Community Hospital and the American Lung Association of Michigan, is a social and educational program for persons with chronic lung disease.
There is no charge for the program and no need to pre-register.

SALT FOR SAFETY!
Is Your Lot Slick?
CALL US TO SALT
LITTLE WACK EXCAVATING
428-8025

STEEL
NEW & USED
STEEL AT BARGAIN PRICES
•Structural •Plate
•Re-Rod
•Pipe •Square Tubing
(Quantity Discounts)
Jackson Fibers Co.
(517) 784-9191
1417 S. Elm St.
1 block north of High St.
Jackson, Michigan

ICE FISHING SHANTIES
Have yours special-made today!
FOX TENT AND AWNING CO.
617 S. Ashley,
Ann Arbor • 665-9126

NOTICE OF PUBLIC HEARING for Special Land Use Request
The Freedom Township Planning Commission will hold a public hearing to consider the request by Total Petroleum, Inc. to establish a refined petroleum storage center on Ellsworth Road near Fletcher Rd. Four above ground storage tanks, control building and accessory structures are included in the special land use request.
The public hearing will be held at 8:00 p.m. Tuesday, January 23, 1990 at the Freedom Township Hall, 11508 Pleasant Lake Road.
Bob Miller, Secretary
Freedom Township Planning Commission

CHURCH DIRECTORY



EMANUEL UNITED CHURCH OF CHRIST - Rev. Paul Kuntzman, Senior Pastor, Rev. Nancy Doty, Associate Pastor; Sunday School, Adult Study, Early Worship 9:00 a.m.; Coffee Hour 10:00 a.m.; Worship 10:30 a.m.
MANCHESTER UNITED METHODIST CHURCH - Rev. Pegg Ainslie, Pastor; Worship 10:30, Coffee/Fellowship Time 11:30; Sunday School 9:10; Choir Rehearsal 11:45 a.m.
ST. MARY'S CATHOLIC CHURCH - Father Raymond Schlinkert; Monday thru Friday 8:30 a.m.; Saturday 5:00 p.m.; Sunday 8:30 a.m. and 10:30 a.m.
FAITH COMMUNITY CHURCH - Scott Engelman, Pastor; Roman Kuepky, Associate Pastor; 8400 Sharon Hollow Rd. off W. Austin; Worship Service 10:00 a.m.; Sunday School 11:15 a.m.; Sunday Evening Service 6:00 p.m.; Jr. and Sr. High Young People's Meeting 7:30 p.m.
VICTORY BAPTIST CHURCH - 423 South Macomb, 428-7506; Rev. R. Dean Cooper, Pastor; Sunday School 10:00 a.m.; Morning Worship 11:00 a.m.; Evening Public Bible Class 6:00 p.m.; Wednesday Praise & Prayer 7:00 p.m.
BETHEL UNITED CHURCH OF CHRIST - Rev. Roman A. Reineck, Pastor; Schneider and Bethel Church Roads; Church Service 10:00 a.m.; Sunday School 11:00 a.m.
SHARON UNITED METHODIST CHURCH - Rev. Erik Alsgaard, Pastor; Corner of M-52 and Pleasant Lake Roads; Church School 10:00 a.m.; Worship 11:00 a.m.; Bible Study 5:00 p.m.
ST. JOHN'S LUTHERAN CHURCH - Rev. Dennis A. Falk, Pastor; Austin Road, Bridgewater; Sunday School 9:15 a.m.; Worship 10:30.
NORTH SHARON BAPTIST CHURCH - Bill Winger, Pastor; Clifford W. J. Whitenburg, Assistant Pastor; Sylvan and Washburn Roads; Sunday School 10:00 a.m.; Morning Church 11:00 a.m.; Evening Church 7:00 p.m.; Wednesday Bible Study 7:00 p.m.; Youth Meetings 7:00 p.m.
IRON CREEK COMMUNITY CHURCH - English and Sharon Hollow Roads; Worship Service 10:00 a.m.; Sunday School 11:15 a.m.; Sunday Evening 7:00 p.m.; Wednesday Evening 7:00 p.m.
ZION LUTHERAN CHURCH - 3050 S. Fletcher Road; Ft. V. Mark A. Weirauch; Sunday School 9:00 a.m.; Worship Service with Holy Communion 10:15 a.m.
ST. THOMAS LUTHERAN CHURCH - 10001 W. Ellsworth Rd., (5 miles North and 6 1/2 East of Manchester), Rev. John Riske, Pastor; Sunday School 9:30 a.m.; Worship Service 10:45 a.m.
ST. JOHN'S UNITED CHURCH OF CHRIST - Rev. Ted Wimmier, Pastor; Rogers Corners, Waters and Fletcher Roads; Adult Bible Study Class 10:00; Worship and Sunday School 10:30 a.m.
CLINTON ASSEMBLY OF GOD - Rev. Richard Coury, Pastor; Chris Bouldrey, Youth Pastor; 13300 Clinton-Manchester Road, Clinton; Sunday School 9:30 a.m.; Worship 10:45 a.m.; Sunday Evening 6:30 p.m.; Wednesday Prayer, Bible Study, Youth 7:00 p.m.
CHURCH OF JESUS CHRIST OF LATTER DAY SAINTS (MORMONS) - Wayne L. Winzenz, Branch President; 1330 Freer Road, Chelsea; Sacramento 9:30 a.m.; Sunday School, Primary 10:50 a.m.; Priesthood, Relief Society, Aaronic Priesthood, Youth 11:40 a.m. For more information, call 475-1778.

Are Your Health Problems Yeast-Connected?
Tiredness, depression, headaches and poor memory: Just about everybody suffers from one of these conditions once in a while. But if you experience these symptoms frequently, you may have a yeast-connected problem.
"All sorts of health problems from premenstrual syndrome to psoriasis," says William G. Crook, M.D., "could be related to the common yeast, *Candida albicans*, and can be controlled by a change in diet."
If you are sick, Dr. Crook, co-author of *The Yeast Connection Cookbook*, suggests having a complete examination done by your physician. If afterward, however, your doctor says he "can't really find anything wrong" with you, you should take steps to revise your diet.
Apart from avoiding chemically treated foods, Dr. Crook suggests the following:
•Avoid foods you're allergic to for a month or two, then try them again. If there is no reaction, eat the food occasionally.
•Eat more vegetables.
•Bake, broil or steam vegetables.
•Eat lean meats and fish, but not every day.
•Eat eggs once or twice a week if you're not allergic to them.
•If you're not allergic to grain products, eat more oatmeal, oat bran, whole or shredded wheat, brown rice, rice cakes, barley and millet.
•Avoid sugar and foods that contain simple carbohydrates, including corn syrup, white flour, white rice and honey.

Allergies to common foods could be causing your health problems
"Use dairy products with caution—many people are allergic to them but don't know it."
•Avoid fruits for about three weeks, then begin eating them on a trial basis to see if they trigger a reaction.
•Drink bottled or filtered water.
•Expand and diversify your diet to avoid repetitive eating. The more frequently you eat a food, the more likely you are to develop an allergy to it.
According to Dr. Crook, those most at risk for yeast-connected health problems include people who have taken repeated or prolonged courses of antibiotic drugs, people sensitive to tobacco smoke, perfumes or fabric odors, and people who crave sugar.
Ask your local bookstore for *The Yeast Connection Cookbook* or order by phone by calling Professional Books, 1-800-372-7665.
If you think you suffer from the Yeast Connection, do not hope for a magical cure. The best and most long-lasting health is due not to miracle medicines but to a carefully planned diet, a healthy lifestyle and common sense.

BETHEL UNITED CHURCH OF CHRIST
Thursday, January 18: 10:30 am Bible Study, 7:15 Youth Choir Plus, 7 Future Planning Committee
Saturday, January 20: 8:30 am Confirmation Class, 7:30 Rhythmic Churches Fun Night St. Johns, 8 In-Betweeners at Reinecks
Sunday, January 21: 10 am Worship Service Blanket Sunday Offering, Rev. Kenneth Kuebler guest minister, 12:15 Pot Luck Dinner, 1:30 Annual Meeting, 9 am Teachers Meeting
Wednesday, January 24: 5:30 Childrens Choir, 7:30 Endowment Fund
EMANUEL UNITED CHURCH OF CHRIST
Thursday, January 18: 12 Noon Senior Meal, 3:20 Cherub Choir, 3:40 Childrens Choir, 7 pm All Church Committees
Sunday, January 21: 9 am Sunday School, 10-10:30 Brief Communion Worship, 10:30-Noon Annual Meeting, Noon-Catered luncheon, please call church to make reservations.
Monday, January 22: 6:30 pm Optimists and Brownies, 7 pm Scout Leaders
Tuesday, January 23: 12 Noon Senior Meal, 2 pm Shakespeare Club, 6:30 pm Girl Scouts
Wednesday, January 24: 6 pm Bell Choir, 7 pm Scouts, 7:30 Adult Choir, 8 pm AA, Al Anon
SHARON UNITED METHODIST CHURCH
Thursday, January 18: 7:30 pm Dorcas Fellowship will meet at the home of Mrs. Irene Kennedy
Sunday, January 21: 11 am Boys and Girls Fellowship
Wednesday, January 24: 7 pm Bible Study, 8:15 pm Chancel Choir practice
FAITH COMMUNITY CHURCH
Saturday, January 20: 5 pm Church Bowling League
Sunday, January 21: 10 am Morning Worship Service, Installation of Officers, Nursery Available, 11:20 am Sunday School for all ages, 6 pm Evening Fellowship Service, 7 pm Lifeline youth group meeting for grades 9-12
Monday, January 22: 6 pm Tecumseh Convalescent Ministry
Tuesday, January 23: 7 pm Ladies Bible Study at the church. Leader Karen Wagner, Topic "You Are What You Say", 9 pm Discipleship Class
Wednesday, January 24: 6:30 AWANA for grades k-dn-6, Jr Varsity for grades 7 & 8, 7 pm Prayer Hour & Bible Study at the parsonage
ST. JOHN'S
Thursday, January 18: 8 pm Men's Bible Study at Pastor Falks
Saturday, January 20: Euchre Night at St. John's
Sunday, January 21: 9:15 am Sunday School, 10:30 Worship, 11 1989 Annual Meeting, 7 pm Youth Group
Tuesday, January 23: 7 pm Bell Choir
Wednesday, January 24: 7 pm Jr Choir, 8:30 Sr Choir
ZION LUTHERAN CHURCH
Saturday, January 20: Catechism Class 9:30-11:30 am
Sunday, January 21: 9 am Sunday School, 10:15 Worship/Pastor Exchange
Monday, January 22: Stewards' Voice Deadline
Tuesday, January 23: 7:30 Shuffleboard, 7:15 Sr. Choir
Wednesday, January 24: 6:30 Joy-makers
BIRTH ANNOUNCEMENT
Jim and Wendy DuRussel of Ft. Wayne, Indiana, are pleased to announce the birth of their first child, Daniel James.
Daniel was born on December 26, 1989 and weighed 7 pounds 15 ounces.
Grandparents are Mr. and Mrs. Donald DuRussel of Manchester, Dr. and Mrs. Scott Smith of Tecumseh, Mr. and Mrs. Tom Hunt of Manchester and Bill George of Saline.
Buy, Rent Sell Thru The Classifieds

FOR MANCHESTER AGAIN!
(In '90--become Biblical Shiny)
Public Bible Class 6 pm Sundays
SUBJECT: Biblical Tongues Had Value
BEGINS: January 28
CLASSROOM: 419 S. Macomb
Victory Baptist

We invite you to come in and see the largest selection of invitations and announcements for your wedding. Many elegant styles, accessory items, and personalized stationery to reflect your personal taste.
The Manchester Enterprise
150 East Main Street
Manchester, Michigan
Phone 428-8173

Village Council Minutes

January 2, 1990

The regular meeting of the Manchester Village Council was called to order with the Pledge of Allegiance to the Flag by President Kallewaard at 7:00 p.m. Council members present: Kallewaard, Wallace, Reinhart, Kwolek, Becktel, Cooper, Marshall and Tucker.

The minutes of the December 18, 1989 regular meeting were approved as corrected on a motion by Becktel, support by Reinhart. Vote: Ayes-all.

APPROVAL OF AGENDA

Motion by Marshall, support by Kwolek to approve Agenda as amended. Vote: Ayes-all.

CORRESPONDENCE

None

PUBLIC PARTICIPATION

None

TREASURER'S REPORT

Motion by Marshall, support by Wallace to accept as submitted. Vote: Ayes-all. Discussion by Council on unbudgeted items. It was suggested by Reinhart to curtail spending for the next month unless necessary for operation of the Village.

ACCOUNTS PAYABLE

After some discussion, Council approved payment of Village payables for \$75,584.44 on a motion by Becktel, support by Marshall. Roll Call Vote: Ayes-all.

Council discussed status of claim against Asplundh Tree Co. Clerk to invoice for costs incurred to date.

SHERRIF'S REPORT

Kallewaard reported no response from Sheriff Department after meeting between Becktel, Kallewaard and Commander concerning contract. Kwolek questioned meeting with other villages and sharing various concerns regarding Sheriff contract.

DPW REPORT

Kwolek reported request to Municipal League for resolution on a Motor Carrier Act.

Gravel Pit Expansion: Need opinion from Sheriff Department, Village Engineer and DPW on street usage, after written document received from inquiring

party.

Vickers Damage to Morgan Street: Cannot fix until spring but should send letter to Vickers stating cost estimate to repair. Clerk to keep file. Kwolek also reported on final cost of street sweeper with repairs. Discussion on placing Ed Townsend in charge of preventive maintenance on this equipment.

Council approved purchase of 1978 Vac-All for leaf pickups, sweeping streets and cleaning catch basins in the amount of \$17,100 on a motion by Kwolek, support by Marshall. Roll Call Vote: Ayes-all. Clerk to investigate necessity of license plates and add to insurance policy. Maintenance on this equipment is to be done weekly with person in charge keeping schedule of it.

PARKS

Wallace reported on the nice job Brad Roberts is doing on the ice rink. Doug Parr to donate labor to put up light by rink. Parks would like to purchase light for \$150. Benches have been placed at rink instead of picnic tables and fencing was put around Gazebo after Christmas. Becktel mentioned complaints he has received from parents concerning hockey playing at rink. Council felt there was a need to control and limit time for hockey. Sign to be placed by rink to read "Hockey After 9 PM Only". Sheriff to enforce.

Wallace also reported on Parks Committee's concern about getting things done. They would like to hire someone to get the small jobs done. Council advised to go ahead and submit bills as work is done.

Grills and tables will be ordered in January.

Kallewaard asked for Council's approval of Diane DuRussel's appointment to Parks Commission for 3-year term. Diane fills vacancy left by Evelyn Panches' completion of term. Council expressed thanks to Evelyn for her participation. Motion by Becktel, support by Cooper to confirm appointment by mayor. Vote: Ayes-all.

CLERK'S REPORT

Tucker reported that phones are working, computer is back on line and water bills are running again.

Transfer Site Contract up for renewal. Reinhart reported on need to change wording on description of property, and need to place stakes, fence for burning site. Kallewaard to negotiate with Hansen.

OLD BUSINESS

Kallewaard reported update on Vickers and Pilot spills. Vickers has put in a separator system. Until June, will have inspections twice a month with sampling. Ron Mowers from Pilot sent letter on employee training that has taken place to prevent spills.

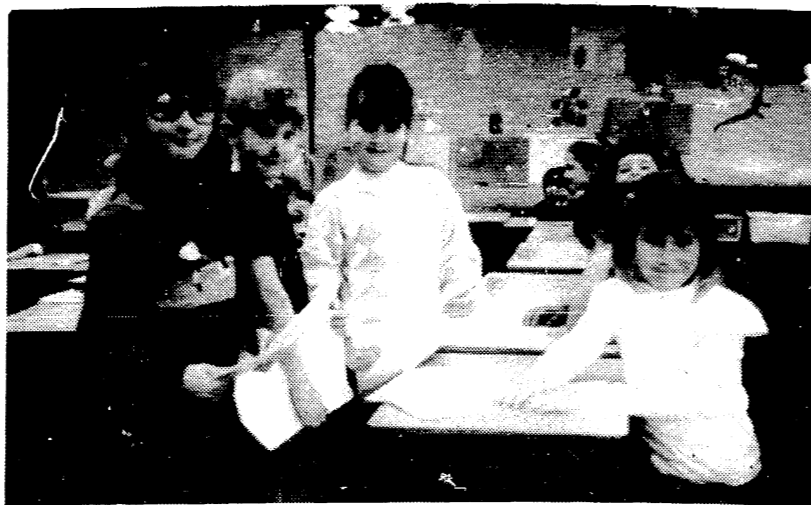
NEW BUSINESS

Reinhart reported decision should be made for budget purposes on repair of streets. Reinhart to contact Thompson-McCully Co. and set up meeting. Motion by Marshall, support by Kwolek to pay Payment #2 (final payment) to Union Construction in amount of \$10,534 on Stand-By Power System through bond issue. Roll Call Vote: Ayes-all.

ADJOURNMENT

Meeting adjourned at 9:10 p.m.

Karen Tucker, Village Clerk



Students at Klager Elementary School were involved in a variety of activities in observation of Dr. Martin Luther King, Jr. Day on January 15, 1990. Pictured are 1st graders Kathryn Horodecny, Steven Handley, Elizabeth Mester, Tristan Kladzyk from Mrs. Ediger's classroom. These students compiled a book on the events in Dr. Martin Luther King, Jr.'s life and the Civil Rights Movement.

Start your Valentine's Day decorating early with
White Holiday Twig Trees from
VILLAGE GIFTS
Traditional red and white ornaments and garland along with
Victorian florals, hearts, and cherub ornaments.

134 E. Main St. Mon.-Sat. 10-5, Sunday 12-5 428-9640

Don't get left out in the cold.



Get great rates with Great Lakes.

The Great Lakes 9-month CD is a great way to make your money work for you, without putting your money on ice for a year or more.

You get Great Lakes' usual great interest rate, so your money's working to earn a great return. You don't have to freeze your funds for long, either — you'll be able to roll it over again in just 9 months! And with Great Lakes, you know your investment is

FDIC insured, and safe and sound in one of the largest savings banks in the Midwest.

So come inside for your 9-month CD today! Visit any Great Lakes office. Or stay inside, and call Great Lakes toll-free, 1-800-544-4703. **GREAT LAKES BANCORP** 100 Years of Building Tomorrow

FOR MORE INFORMATION, CALL 800-342-5453 OR YOUR NEAREST GREAT LAKES OFFICE. 62 OFFICES STRONG IN MICHIGAN AND INDIANA.

Manchester: 111 E. Main St., 428-8379
Ann Arbor: Corporate Headquarters, One Great Lakes Plaza, 769-8300

Please join us for a special year-round program of festivities, including traveling historical displays and videos, our Centennial sweepstakes, and other gala activities, in celebration of our 100th anniversary. FDIC Insured

Wedding Bells Ring



Sara Lynn Samonek and Brian Keith Waldron were united in marriage December 15, 1989 at Emanuel United Church of Christ in Manchester. Rev. Nancy M. Doty and Pastor John Riske officiated at the ceremony.

The bride's parents are Mr. and Mrs. James Samonek of Manchester. The parents of the groom are Mr. and Mrs. Ronald Waldron of Ann Arbor.

The bride's maid of honor was Melissa Beasley of Manchester, and the groom's best man was Rick Kleinschmidt of Brooklyn, Michigan. Bridesmaids were

Cindy Lindemann of Saline, and Wendy Waldron, sister of the groom, of Ann Arbor. Groomsmen were Mike Waldron, brother of the groom, of Kalamazoo, and Steve Samonek, brother of the bride, of Manchester. Flower girls were Megan Eisenhauer of Manchester and Angela Sando of Jackson, both cousins of the bride.

The reception was held at the American Legion Hall in Manchester. The couple honeymooned in Florida and now reside at 8560 Fay Lake Road, Brooklyn, Michigan 49230.

Manchester Township Board Meeting

Synopsis

Meeting called to order on January 8, 1990 at 8:00 p.m. with the Pledge of Allegiance. All Board members present.

Accepted as submitted Library Board minutes 12-05-89 and approved as submitted Public Hearing meeting 12-11-89.

Amended regular minutes of 12-11-89.

List of bills paid since last meeting presented.

Treasurer reported \$17,170.96 in the General Fund.

Approved payment of General Fund bills for \$3,944.18.

Decision on roads with matching funds will be decided after annual meeting with Road Commission.

Ordered brine water to be applied the week of Memorial Day, in front of each establishment and at each intersection on all local certified roads.

No action taken regarding recycling for 1990.

Various communication presented.

Set fees at \$32.50 per inspection for all building and remodeling, effective March 1, 1990.

Accepted Supervisor's recommendation and set compensation for building, electrical, plumbing and mechanical inspectors to \$22.50 per inspection and .24 per mile.

1990 CENSUS is coming up and it is URGENT that the people are instructed to cooperate. Revenue sharing is based on per capita. Senior Citizens will benefit from the results of the census. "Snowbirds" who live in Michigan for more than six months of the year should tell the census that they live in Michigan even if they vote in another state, have another state's driver's license, or pay taxes in another state.

Approved junk yard license for Dyer's Auto Parts for 1990.

Mann will attend M.T.A. convention.

Cunninghams have assured the clerk that a new bond will be provided for the mobile home on Hogan Road.

Renewed the lease for Constable car from Lyle Moore for \$1 for 1990.

Constable's monthly report was submitted.

Meeting adjourned at 9:55 p.m. Submitted by

Wilma E. Lentz, Clerk
Approved by
Ronald E. Mann, Supervisor

Kirk Excavating

Sand—Gravel—Fill Dirt
Basements—Driveways

428-7938

Dave Kirk
14180 Schleweis Road
Manchester

Columbia Cabinetry

205 Irwin Street
Brooklyn, Michigan

Custom Cabinets
Kitchen Re-facing

Call anytime for appointment
517-592-2292 517-536-4425
Chris Parr

Help Stop Illegal Dumping

Substantial progress has been made in recent years to improve the quality of our environment and safeguard the public from exposure to hazardous materials. New federal, state and local laws and regulations have been enacted to control the use, storage and disposal of hazardous materials. While such controls have had positive impacts, they have also led to a significant increase in illegal dumping as some of the users of this material simply try to avoid the high cost of disposal.

Often these materials are simply deposited or dumped on county roads, drains, parkland or private property. Since there are no state or federal funding programs available for the collection and disposal of such illegally dumped materials, it becomes the responsibility of the public agency or individual private property owner where this material is dumped.

A recent example of this problem occurred in Washtenaw County when two 20-gallon barrels were illegally left on Hickman Road in Superior Township, north of Geddes Road. Although both the Michigan Department of Natural Resources and the Washtenaw County Health Department were notified of the problem, neither had any funds to pay for the disposal of this material. Since they were placed on a county road it thus became the Road Commission's responsibility. Since the identity of the material in the barrels was unknown, it first became necessary to have the material tested. Following a determination that the material was probably a form of parts cleaner, it was then disposed of in a licensed hazardous waste facility.

The total cost to the Road Commission for the testing and disposal of these two barrels was approximately \$2,500. Since State Gasoline Tax rates have remained constant since 1983, the use of road funds for disposal of these materials will result in less money being spent on maintenance and improvements of county roads.

In addition to tax dollars being expended to clean up these illegal acts, major health and safety problems could result if hazardous materials are released in the environment. Citizens can help by reporting any illegal dumping to the local police or the County Sheriff Department with the description of the vehicle and license plate number if possible. Efforts will be made to find the guilty parties and prosecute them fully under applicable laws. In the meantime the County Road Commission is continuing to cooperate with the County Drain Commission, Health Department, Environmental Services, Sheriff Department and Emergency Management to develop enforcement and response procedures for hazardous material emergency and clean up activities.

"Nobody really understands how hard it is to stop smoking."

We do.
And we can help you find a way. Call us.

1-800-4-CANCER
The Cancer Information Service

MEMO

Michigan Electrical & Maintenance Organization
Commercial - Residential - Health Care Centers
Lighting-Power-Preventive Maintenance-Inspections
Emergency Repairs - Bucket Truck Work
Work Scheduled: Sun.-Sat. 24 Hrs./day
Serving Michigan & Ohio
Service Representative CWEC Co.
24 Hr. 517-456-7535
Pager # 313-943-8838

MANCHESTER CHIROPRACTIC CLINIC

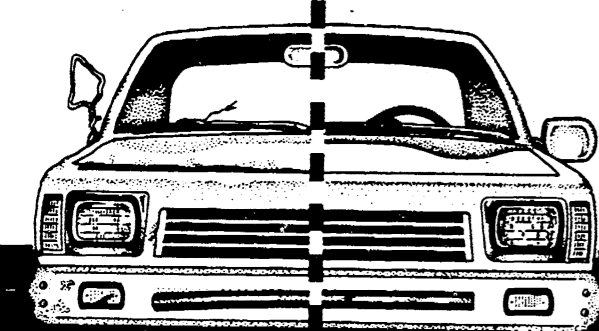
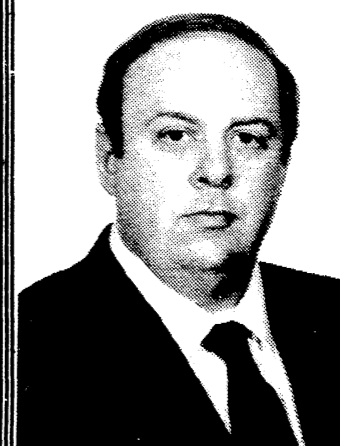
"TRY CHIROPRACTIC NATURALLY"

STAN GILBERT, D.C. 232 E. Main
313-428-7207 Manchester, Mich.

APPOINTMENT HOURS:
Monday, Wednesday, Friday 9 am-12 noon and 3 pm-7 pm
Tuesday, Thursday, Saturday By Appointment

Announcing

Stan Dude has joined the Real Estate One Family of Professional Realtors
Stan Served Manchester As A Police Officer, Now He Can Service Your Real Estate Needs. Call Him At 995-1616 or 429-4742



Get That Body Back In Shape

The professionals at Midwest Ford will get your car looking like new in no time!

- ★ Complete Collision Service
- ★ Fast, Dependable Service
- ★ FREE ESTIMATES

MIDWEST FORD
510 W. Main St. Manchester CALL COLLECT (313) 428-8343

Strikes N Spires

Jolly Keglers

Carol's Cut-N-Curl	81	38
Dutch Country Kitchens	76	50
Bollinger Sanitation	68	58
Comerica	64	62
Manchester Car Wash	58	68
Chelsea Lanes	53	66
Manchester Automotive	50	76
Robertson-Morrison	47	79
INDIVIDUAL GAME		
D. Vargo	205	
M. Scherdt	200	
K. Smith	198	
INDIVIDUAL SERIES		
J. Hafner	542	
C. LaRock	532	
S. Merriman	521	
HIGH TEAM GAME W/HDCP		
Carol's Cut-N-Curl	955	
Dutch Country Kitchens	927	
Chelsea Lanes	921	
HIGH TEAM SERIES W/HDCP		
Chelsea Lanes	2823	
Dutch Country Kitchens	2594	
Carol's Cut-N-Curl	2541	
500 SERIES OF THE WEEK		
S. Merriman	510	

Manchester Businessmen

Steele's Htg & Cooling	6	3
C & M Lawn Care	5	4
K & W Equipment	5	4
Knights of Columbus	5	4
Manchester Enterprise	4	5
Blues Brothers	2	7
HIGH GAME FOR WEEK		
Keith Kitchen	211	
Ray Steele	206	
Keith Kitchen	204	
Terry Steele	203	
Dave Slagenwhite	200	
HIGH SERIES FOR WEEK		
Keith Kitchen	543	
Dennis Helfrich	538	
Terry Steele	528	
Gary Palmiter	517	
Ray Steele	505	

Manchester Women

McMaster Ford-5	352.5	217.5
Floral Fantasy-9	317.5	252.5
Emerson & Wesch-1	303.5	266.5
Gentner Trucking-6	291.5	278.5
Weatherwax Drugs-7	289.5	280.5
Town Laundry-10	283.5	286.5
MidMichigan-4	274.0	296.0
Haarer's Mtg Pl-2	264.0	306.0
Mann Realtors-8	257.5	312.5
Ken's Service-3	216.5	353.5
HIGH SERIES		
Joanne Dew	520	
Mary Cook	506	
Joni Deem	506	
Kathy Hyatt	499	
HIGH GAME		
Joanne Dew	192	
Ella Brown	189	
Velera Slusher	183	
Mary Cook	181	

Manchester Town Club

Waynes Windshield	77 1/2	42 1/2
Cheers	77	42
Cooks	65	54
Norm Walz	62	57
Klinks Excavating	61	58
Wampler Construction	57	62
Shearcrazy	56	63
Jenters	52 1/2	66 1/2
Eighties Ladies	51 1/2	67 1/2
C & M Lawn Care	35 1/2	83 1/2
HIGH IND GAME		
Judy Walz	226	
Phyllis Baker	213	
Donna Dault	212	
HIGH IND SERIES		
Carrie McGraw	568	
Phyllis Baker	536	
Donna Dault	536	
Debbie Klink	527	
HIGH TEAM GAME ACT		
Cooks	817	
HIGH TEAM SERIES ACT		
Cheers	2326	
HIGH TEAM GAME HDCP		
Norm Walz	813	
HIGH TEAM SERIES HDCP		
Norm Walz	2283	

Klager P.T.O. Minutes

November 27, 1989

The meeting was called to order at 3:25 p.m. with eleven members present.

The minutes of the last meeting were read and approved.

The Treasurer's report was read and approved showing a balance of \$16,309.80.

Mike Doran, a representative from Merrill Lynch gave a brief explanation of their College Builder Program and how to plan for future college tuition.

New staff members, Sue Whitney, the teacher consultant, and Cheryl Call, the bilingual teacher were introduced.

T-shirt discussion was tabled until January.

The final figure for our profit on the fund raiser cannot be reported until all the money has been collected. At this date, we are still trying to collect several hundred dollars from students who have not turned in their money.

Collection procedures were discussed and will be carried out if necessary.

Mrs. Henry gave the dates for the Christmas programs and the Senior Citizen Dinner. Patsy Aiken made a motion to donate \$50 to the dinner. Margaret Goodrich seconded it. The motion carried.

The new playground equipment has been installed.

There will be a country theme for January Week entitled "Making Friends with Books", ending on Friday evening, January 19 with a "Country Hoedown" in the Middle School gym. Monica Brooks will chair the dance committee with Sonja Schultz and Patsy Aiken helping. Mrs. Henry will take care of publicity and decorations. Carol Palms donated the services of her band, the "Raisin Pickers."

Sharon Anderson made a motion to donate \$25 to Carol Palms and \$25 to the Athletic Boosters for the use of their popcorn machine. Patsy Aiken seconded it. Motion carried.

Sharon Anderson made a motion to donate \$200 to the Math Lab. Elsie O'Dell seconded it. Motion carried.

The meeting adjourned at 4:10 p.m.

Respectfully submitted,
Monica Brooks

Heart attack symptoms put you in a race against time.

Winners head for the emergency room as if their lives depended on it.

Dramatic new ways to save lives and stop permanent damage from heart attacks are available to you and your family in our emergency room. These treatments must be given in a hospital setting.

More importantly, the treatments must be given AS SOON AS POSSIBLE to be effective.

Even if you're not sure it's a heart attack, you should be seen by a doctor. We can help you with the race against time, but you have to get here first.

Call 911, call an ambulance, or, at the very least, call our emergency room.

Chelsea and Saline Community Hospitals provide state-of-the-art care for heart attacks. Through their link with the Cardiac Emergency Network, a coordinated life-saving support system sponsored by the Michigan Heart Institute and Catherine McAuley Health Center in Ann Arbor, Chelsea and Saline Community Hospitals can offer comprehensive cardiology services. The physicians of the Michigan Heart Institute are among the most experienced cardiologists and cardiovascular surgeons in Michigan. They are "on call" to our emergency rooms 365 days a year, 24 hours a day. Medical tests can be telecopied (FAXed) whenever the need arises for additional consultation.

All of this means that for the people of the Chelsea and Saline areas, the closest hospitals are now the best hospitals.

Know the symptoms of a heart attack.

- Pressure, tightness and aching in the chest.
- Nausea, sweateness or weakness that may come and go.
- Shortness of breath.
- Numbness or pain in the left arm or left side of the chest or neck.



Chelsea Community Hospital
775 South Main St.
Chelsea, MI 48118
(313)475-1311
Emergency: (313)475-3960



Saline Community Hospital
400 West Russell St.
Saline, MI 48176
(313)429-1500
Emergency: (313)429-1551

Chelsea and Saline Community Hospitals are members of the Cardiac Emergency Network. Sponsored by the Michigan Heart Institute and Catherine McAuley Health Center

Little Dutch Post First Victory



JV Basketball - Mike Riske

Photo by Jon

by Jon buted 30 points, 16 and 14 respectively.

Our JV squad rebounded from their Tuesday loss to Dexter with an impressive 67-59 win over Grass Lake. Mike Riske scored ten of his game-high 18 points in the third period of play. John Ward and Lance Fielder contributed

Buy, Rent, Sell Thru The Classifieds

TOP SHOP

Embroidery • T-Shirts
Signs • Hats • Sweatshirts
Transfers • Jackets • Uniforms
Monogramming • Air-Brush

President
Owner - DON SMITH
(313) 439-2550

Mon - Fri 10AM - 6 PM
Sat 10AM - 5 PM

13 E. Main
Milan, Michigan 48160

School Hot Lunch Menu

Thursday, January 18: Klager brown bag, High School & Middle no lunch

Friday, January 19: No lunch

Monday, January 22: Cheeseburger on Bun, Onion Rings, Dill Pickle Spear, Pineapple Tidbits, Milk

Tuesday, January 23: Savory Beef on Whipped Potatoes, Mixed Vegetables, Bread & Butter, Peach Half, Milk

Wednesday, January 24: Fish Sandwich, Tator Tots, Coleslaw, Jello, Fruit, Milk

Thursday, January 25: Boneless Rib-B-Q, Escalloped Potatoes, Buttered Carrots, Dinner Roll and Butter, Ice Juice, Fruit, Milk

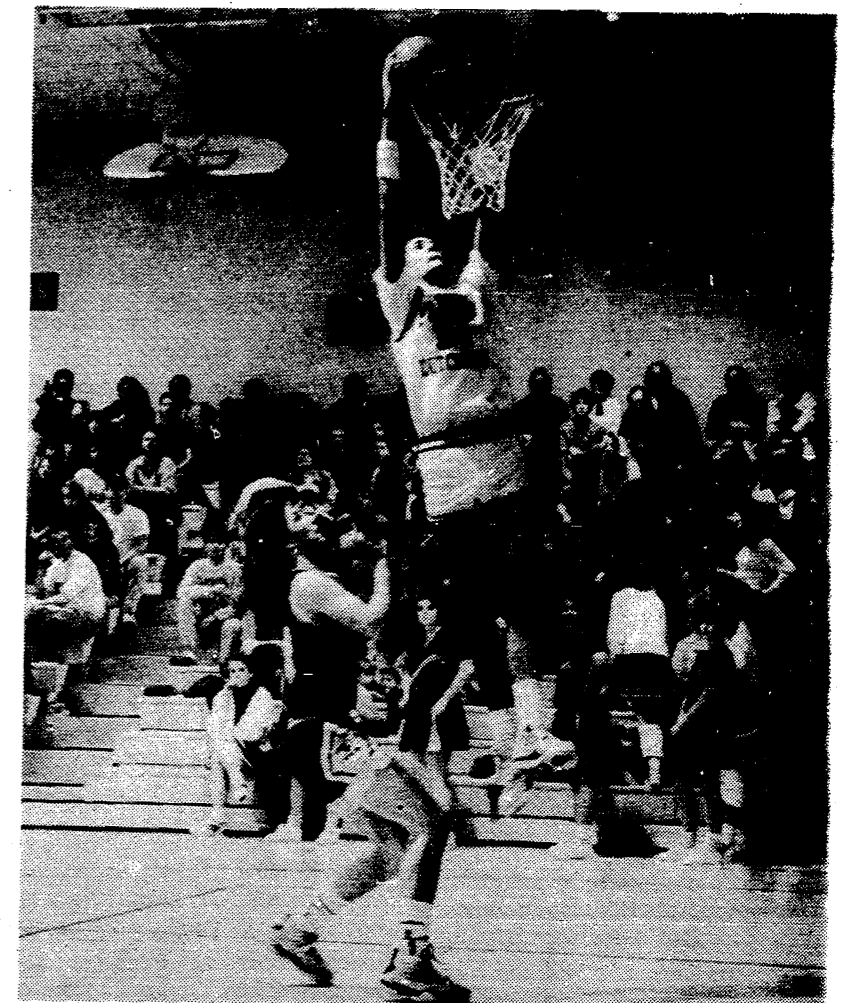
Friday, January 26: Fruit Punch, Taco's with Sauce/Lettuce Tomatoes/Cheese, Buttered Corn, Fresh Fruit, Milk

Shakespeare Reading Club

On January 9, 1990 the club met at Emanuel Church to listen to Annette Van Der Schalie give her report on the topic "Water". She reminded us that water is needed for people, plants and trees, animals and other creatures who live in water. We also need lots of rain and snow. Only three percent of water is fresh water, and ninety-five percent is salt water in the oceans. There are 1,000 toxics that effect how pure our drinking water is so all of us should be careful of how we dispose of our waste materials. She included some written words of her husband.

Our next meeting will be held on Tuesday, January 23 at 2:00 p.m. at the home of Jeanette Kirk. Her topic will be on the United Nations—Rights of Children. See you there.

Dutchmen Split



Varsity Basketball - Matt Knul dunks.

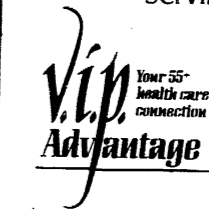
Photo by Jon

Friday we got back on track by downing Grass Lake 52-48. Stefan Knul was high scorer with 17 points, as brother Mat collected 16. Jesse Widmayer and Dave Mitchell tallied 9 and 8.

Our next two contests see us on the road against Vandercook Lake on Friday, then Sand Creek on Tuesday.

V.I.P. Van Takes You Where You Need To Go For Health Care

- Available for seniors • Round-trip transportation
- Serving all surrounding Cities and Townships
- Reliable service at a minimal fee



Advance reservations necessary.
Call 429-1511 or
1-800-622-5592
to schedule a ride.

TOWNSHIP RESIDENTS OF
SHARON, MANCHESTER, FREEDOM, AND BRIDGEWATER

TOWN MEETING!

HOW DO WE IMPROVE RECREATION OPPORTUNITIES IN OUR COMMUNITY?

BRING YOUR IDEAS TO TOWN!

Saturday, January 27, 1990
Manchester High School Auditorium
8:30 am - 12:30 pm
Free Continental Breakfast

PRE-REGISTER. RETURN FORM BELOW BY MONDAY, JANUARY 22, 1990

YES! I/We will be at the Manchester High School Auditorium from 8:30 am to 12:30 pm to discuss the recreational needs of our community.

Name(s) of Participants: _____ Occupation or Student * _____

Address _____ Phone _____

Mail to: Community Resource Center, P.O. Box 433, Manchester, MI 48158
By phone: Call Dianne Schwab, Community Resource Center 428-7722

* EXTRA CREDIT for Manchester High School Government Class Students

FUND RAISING

Manchester Sportsman Club
8501 Grossman Road
Friday 6:45 p.m.

Manchester American Legion
203 South Adrian Street
Saturday 7:00 p.m.

Todd Withrow Company

REMODELING
CABINETMAKING
ADDITIONS—WINDOWS
KITCHENS—BATHROOMS
ROOFING—SIDING
CUSTOM BUILT CABINETS
WALL UNITS—FURNITURE

TOP QUALITY MATERIAL
AND WORKMANSHIP

LICENSED AND INSURED

CALL ANYTIME
428-9420 or 428-7797

MINUTES COUNT

What makes a great Classified ad? RESULTS!

MICHIGAN PEAT SALES: Black dirt for sale, \$12 a yard delivered. Fast delivery. 428-9664 tfn

C & B PAINTING: Interior-Exterior. Free estimates. Contact Charles E. Benedict. Phone 428-7136 or 428-7416 tfn

LOST OR FOUND A PET? Call Humane Society, 662-5585 tfn

JERRY WHITAKER
EXCAVATING: Dozer, backhoe, dragline, and 10-yard truck. Drain fields, basements, driveways, sand and gravel. Call 475-7841 tfn

LITTLE WACK EXCAVATING: Licensed and insured. Basements, drainfields, digging, bulldozing, trenching, black dirt, sand, gravel. Snow removal and salting. Paul Wackenhut 313-428-8025 tfn

MERRIMAN INSULATION: Free estimates. Blown-in cellulose professionally installed. George Merriman, phone 517-592-5527 tfn

PIANO TUNING & REPAIR: Qualified technician. Ron Harris 475-7134 tfn

MANCHESTER ANTIQUE MALL: 35 Dealers. Open 7 days 10-5. 116 E. Main, 428-9857 tfn

FIELDER PAINTING: Interior and exterior. Free estimates. Senior Citizen discount. Phone 428-8506. tfn

AVAILABLE FOR WEDDING receptions, parties, meetings. Hall rental \$175, \$40 cleaning, catering available. For further information call 428-8393 or 428-7637 tfn

WALKOWE'S HOME IMPROVEMENT COMPANY: Phone 313-428-8468. Seamless aluminum gutters for low prices, and dependable service. tfn

DIVORCES \$175. With children \$225. Bankruptcy \$275. Pro-Per Law Center 930-6640 tfn

AUTO MECHANIC: Must be certified and experienced in all phases of repair, including A/C and driveability. Pays salary & commission. Mechanic should make over \$30,000 per year. Send name, address, phone number and years of experience with last place of employment or if still employed, to: P.O. Box 64, Manchester, MI 48158 tfn

ALBER AND HAMILTON EXCAVATING: Basements, drain fields, general backhoe work. Call Dennis 313-428-8637 or Brian 313-428-8638 tfn

HIM'S VCR SERVICE: Free pick up and delivery. One-day service. Cleanings only \$24.95. Repairs available. 428-7625 tfn

HAULING: Sand, gravel, etc. 428-9189 8am-6pm or 428-8203 tfn

VCR CLEANING AND REPAIR at Reel Video downtown Manchester. 428-9781 1/25

COUNTRY HOUSE FOR RENT: 3 bedrooms, laundry room, 1 bath, 2-car garage, Manchester schools. \$575 per month plus utilities. 365-3068 or 429-5875 1/18

FOR RENT: 1 bedroom apartment. 227 S. Washington. References. 428-9880 tfn

2-BEDROOM ground floor apartment for rent in Village of Manchester. References. 428-9380. tfn

REEL VIDEO: Movie, VCR and Nintendo rentals. 114 Adrian, Manchester. 428-9781 1/25

3-BEDROOM RANCH HOME in the Village for rent. Inground pool, fireplace. \$800 per month. 428-9150 tfn

LITTLE DUTCH CHILD CARE CENTER offers a Piaget based learning program. Small groups to staff ratios for children 2-7 years. Open M-F 7 am-6 pm. Contact the Program Director for enrollment information. 428-8988 2/1/p

USED VEHICLES FOR SALE: '81 Dodge minibus, '78 Ford 36-passenger with lift, '78 Ford 66-passenger, '78 Chevrolet 66-passenger, '78 Chev. Impala, '79 Dodge van 12-passenger, '80 Dodge van cargo. Vehicles may be seen at the Transportation Garage, 710 E. Main. Sealed bids accepted until February 2, 1990, 3:30 pm at Manchester Community Schools, 710 E. Main, Manchester, MI 48158. Attention: Transportation Department BusBids 1/25

OPEN SUNDAY 1-3
224 PLEASANT RIDGE
RANCH: Featuring 3 bedrooms, 2 1/2 baths, huge deck, finished basement with extra bedroom/study, full bath & large rec room. \$96,500. S Ann Arbor to Pleasant Ridge, between S Ann Arbor and Canterbury.

SUE RUSHLOW
429-4947 or 429-4034

OPEN SUNDAY
550 ROSEMONT

NICE STARTER HOME: With Saline schools, 3 bedroom, 1 bath, newer appliances, 2 parks nearby, walk to Jensen school, full partially finished basement. \$88,000. S Ann Arbor to Willis to Rosemont.

KAY ST. GERMAIN
429-4947 or 429-4754

OPEN SUNDAY 3:30-6:30
6195 SALINE-ANN ARBOR RD

NOT A DRIVE BY: Golf Course setting on 1.3 acres. 2 bedrooms, 3 1/2 baths, master suite with spa room, jacuzzi, decks, screened porch and sunken gardens. Between Textile & Weber. \$248,900.

SUE RUSHLOW
429-4947 or 429-4034

OPEN SUNDAY 4-6
3809 LODI MEADOW CT.

SPACIOUS: Lodi Township home on 1.5 landscaped acres. 4 bedrooms, 2 1/2 baths, Florida room, billiard room & security system. \$214,500. Saline-Ann Arbor Rd to W on Weber, take second right to Lodi Meadow.

KAY ST. GERMAIN
429-4947 or 429-4754

SPEAR & Associates, Inc. Realtors
BABYSITTER NEEDED: Monday through Friday 8 am-4:30 pm. for my 3-year old son. Please call 428-7640 p

WANTED: PEOPLE WILLING to donate time for no pay. Work available in a beautiful hospital gift shop. A great opportunity to learn the retail business or come back from retirement. Enrich yourself personally while making a contribution to your community. Proceeds from the Friends Gift Shop are donated to activities directly involved with patients and their families and the U of M hospitals. Please call the Volunteer Services Office 936-4327 1/18

FOR SALE: 1977 FORD VAN E-150. Runs good. Tires good. \$400 or best offer. 428-8677 evenings 1/18/p

FOR SALE: MINI BIKE with brand new 5hp Briggs & Stratton engine, \$200 or best offer.

ATARI 2600 with 22 games, with instructions, 3 new joy sticks, 2 new pappels, \$50

VARIFLEX SKATEBOARD Pool Fool Fishtail. Good condition. \$30 or best offer. Call 428-9884. Ryan Steele tfn

HATCH STAMPING CO.
570 Cleveland
Chelsea 48118

TIGER ASICS split sole wrestling shoes, size 7, worn one season. \$14. 428-8787 p

DRAFTS PERSON, JR.

PILOT METAL PRODUCTS, an established and growing metal manufacturer, is accepting applications for an entry level drafts person. Seeking individual with some training and experience in drafting, small dye detail, and light design. For immediate consideration, apply in person or forward your resume to:

PILOT INDUSTRIES PERSONNEL DEPT.
715 E. Duncan St.
Manchester, MI 48158

WE ARE TAKING BIDS from qualified subcontractors for 40 new homes in 1990, for: framing, drywall, insulation, roofing, and vinyl siding with soffits and fascia. Oak Tree, Inc., 313-429-0816. Ask for D.J. Frayer for quoting prints.

ANYONE INTERESTED in taking a beginner bridge class, please call Ginny. 428-8716

QUEEN SIZE SLEEPER SOFA: Great shape, \$35. 428-7494

CHICKEN AND BISCUIT Luncheon, Wednesday, January 24, St. Mary's Church Hall. Serving 11:00 am-1:00 pm p

HELP WANTED: Little Dutch Child Care Center is looking for a teaching assistant to work Tues-Wed-Thurs, 9 am-12:30. Must have previous experience working with children 2-7 years old. Contact the Program Director at 428-8988 1/25/p

FOR RENT: Large 1 bedroom apartment upstairs. Call 428-8163

Dept. of Human Resources
Chelsea Community Hospital
775 S. Main
Chelsea, MI 48118

A Smoke Free Facility
Equal Opportunity Employer

Classified advertising will be \$2.75 minimum charge for 20 words or less and 8¢ for each additional word. All classified ads are payable in advance, if not, a billing charge of \$1.00 will apply. Deadline for classified advertising will be 10 A.M. Tuesday for that week's publication. Cards of Thanks will be \$5.00 minimum charge for 50 words or less with a charge of 8¢ for each additional word.

RICKET'S RADIO & TV: Radio, TV, antenna and small appliance repair. 146 E. Main, Manchester, 428-9028 tfn

ANGORA GOATS: REWARD for information leading to arrest of person(s) responsible for theft of 3 goats in Manchester area. Please call 428-7348

APARTMENT FOR RENT: 2 bedrooms, 2 blocks from town. 428-7173. \$495 includes utilities. 1/25

LOST OR PICKED UP: Two young female beagles near Herman & Grossman Rds. REWARD! Phone 517-223-9107 or 428-8005

MOTHER OF 2 YEAR OLD will sit full time or part time in my non-smoking home. Loving care given to your infant or toddler. 428-8975. 1/25/p

SECRETARY TO ASSIST in our purchasing department. Must be familiar with all office machines, type 60 wpm. Duties include typing, filing and some phone. Apply in person.

SECRETARY: IN-PLANT position (blue jeans type.) Some typing required. Send resume.

DIE SETTER: Experience in progressive die setting. Excellent wage/benefit package. Apply in person.

THANKS TO ALL MY FAMILY and Manchester people for the cards and food received over the holiday season. Freida Ahrens

I would like to thank Dr. Yarrows and all the staff at Chelsea Hospital, my family, Pastor Cooper and all the people at Victory Baptist Church for the prayers, flowers, visits, cards, telephone calls, and to all my wonderful friends everywhere who were praying for me during my stay and since my return home from the hospital. A special thank you to my good friend, Ada. I love you all very much and I know my God hears and answers prayers. Gladys Fillyaw

Cards of Thanks

Garland's Pub
M-52—Austin Rd. Manchester
Open Seven Days
Mon. - Sat. 7:00 am-2:00 am
Sun. 12-12
Live Band Fri. & Sat.
Call for details - 313-428-9293

Russ Aiuto
Your TRANSPORTATION SPECIALIST AT
MIDWEST FORD, Inc.
510 West Main Street, Manchester, Mich.

• A, B, Z and X-Plans my specialty!
• Top dollar for trade-in!
• Expert, friendly service after the sale!
• Good previously owned vehicles for sale!

Call **RUSS AIUTO** for more INFORMATION **313-428-8343**

Can early cancer detection mean early cure? Ask us.

1-800-4-CANCER

Michigan Cancer Information Service

We'll tell you everything we know about cancer. Free.

The bright flowers of the prickly pear cactus bloom for only one day.

Money Management

A WILL CAN PROTECT YOUR ASSETS AND YOUR FAMILY

Death can strike anyone at any time - and if it strikes before you've written a will, the state may very well take control of your assets and decide the fate of your family. Your child could end up being raised by a family member you distrust, a spouse could be saddled with exorbitant fees and taxes, and if the surviving spouse remarries, somebody else - or somebody else's children - could eventually inherit your assets.

If you want to control what happens to your family, your home, and your assets after your death, the Michigan Association of CPAs advises you to stop procrastinating and write a will. For instance, a will enables you to name a guardian for your children. This may be the most crucial element in your will. When making this decision, ask yourself who would be able and willing to raise your children with values similar to yours if both you and your spouse died in an accident. Make sure that you also specify "successor guardians" in case the designated guardians cannot accept the responsibility.

The next critical decision you need to make is who should serve as the executor of your estate. As

overseer of your estate, he or she will face arduous and time-consuming tasks. Executors have to inventory all of your assets, collect all money owed you, liquidate assets, notify insurance companies and collect the proceeds, pay outstanding debts, arrange for your immediate family's living expenses, prepare and file all tax returns, and distribute your estate. If your executor has no financial expertise, you may want to select a second party, perhaps your CPA, to serve as co-executor with a family member.

Next, take an inventory of your assets and decide exactly how you want them distributed. Try to think in percentages rather than dollar amounts. Consider, too, the implications of each provision of your will as well as the circumstances and resources of each beneficiary. For example, do you want to divide your assets equally between your two daughters if one of them has five children and the other has none? Should a financially irresponsible son have full access to his inheritance as early as age 18 or should you use a trust to distribute his share of your estate in small amounts over his lifetime? Another question you need to ask is: how old and self-sufficient are your children? If they are succeeding financially,

you may want to leave a greater portion of your estate to your spouse.

In addition, you should consider incorporating a trust or other safeguards into your will to protect your children from the possible consequences of the remarriage of your spouse.

Besides insuring that your estate is distributed according to your wishes, a will can also reduce the financial burden placed on your heirs. For example, the administrator of your will is required to post a performance bond to protect your estate from fraud, embezzlement or negligence. Bond fee premiums cost about \$5 per \$1,000 of the estate's gross value and are payable annually until probate is completed - which ranges from a few months to several years. The bond is meant to protect your estate, but may be unnecessary if the executor is a trust friend or family member. If you wish, your will can waive this bond requirement in certain jurisdictions.

Tax claims on an estate can also be substantial. Since state laws vary, ask a CPA to review your state's laws on estate and inheritance taxes. Under the federal estate tax law, you do have a degree of protection. If the gross estate, plus the value of certain lifetime taxable gifts, is under \$600,000 filing a federal estate tax return is not required. However, if estate assets plus the value of certain lifetime taxable gifts exceed \$600,000 after deducting administrator's and executor's fees, funeral expenses and outstanding debts, the federal estate tax rate kicks in at 18 percent and goes as high as 55 percent for estates over \$5 million.

There is one major exception to this rule. Under the unlimited marital deduction, you can leave your entire estate to your spouse without incurring federal gift or estate tax - regardless of your estate's worth. But when the surviving spouse dies, tax will be charged against your combined estates, thus placing a potentially tremendous tax load on the second estate.

If your estate is substantially higher than \$600,000, you can

MARGIE'S UPHOLSTERY
6245 Brooklyn Road Jackson
Wide Selection Of Fabrics
Pick-Up/Delivery Available
517-536-4230

Farmers Day

The Fourth Lenawee County Farmers Day will be held Wednesday, January 24, at the St. Joseph's Hall, U.S. 12 and Egan Hwy., east of Cambridge Junction. Agribusiness displays and booths will be featured throughout the day and speakers on various ag-related subjects will be offering presentations at the times listed. Farmers Day is open to the public. There is no admission charge and lunch will be available in the building.

Keynote speaker for the Fourth Annual Lenawee County Farmers Day will be Dr. John Marten, Staff Economist for Farm Journal magazine.

Dr. Marten has been involved in retail fertilizer and as a corporate farm manager and has also taught farm management and farm marketing at Purdue University, spent two years as Chief Economist for Top Farmers of American and has served as Staff Economist for Farm Journal magazine since 1978.

Also speaking at this year's Farmers Day will be Mr. Paul Homan of AgRestore, Waterloo, Iowa discussing Low Input Agriculture - What is it? Mr. Dennis Conway of the Michigan DNR will conduct a question and answer session on P.A. 116. Mr. Richard Emmons, Director of the Lenawee County ASCS Office will highlight the current farm program and Mr. Thomas Van Wagner and Dr. Gordon Wuethrich will give a Water Quality Report on the Wolf Creek Project.

Annual Village Election

The annual village election will be held on Monday, March 12. At that time, the residents will be asked to vote for a president, clerk, treasurer, assessor and three trustees. All of the positions are for a two-year term.

Nominating petitions must be filed at the Village Office no later than 4:00 p.m. on January 22, 1990.

313-429-4885 COUPON 517-423-2148

Saline in the Saline Shopping Center

1ST OPTOMETRY eye care centers

Dr. Thomas Cunningham

DOES NOT APPLY TO OTHER DISCOUNT OFFERS OR PRIOR ORDERS

128 W. Chicago Blvd. Tecumseh

128 W. Chicago Blvd. Tecumseh

\$99 Daily Wear Soft Contact Lenses

\$10 OFF (with coupon)

Prescription Eyeglasses

the Charles Reinhart Co. Realtors

DEBORAH ENGLEBERT Realtor
Res. Phone: 313/475-8303

2452 East Stadium Blvd.
Ann Arbor, Michigan 48104
Phone 313/971-6070

Kleinschmidt True Value Hardware

19860 Sharon Valley Rd. Manchester, MI
Phone 313-428-8337

Monday-Friday 7 a.m.-6 p.m. Sunday 10 a.m.-4 p.m.
Saturday 8 a.m.-5 p.m.

Bathroom Vanities - NOW IN STOCK

Introductory Sale

33% OFF Reg. Price

Starting From \$59.99 (Includes Cabinet And Top)

Many Styles And Sizes To Choose From

HARDWARE VALUE OF THE MONTH

Reg. \$13.99

NOW 4.99 While Supplies Last

Screw-In Touch Dimmer provides 3-way lighting with just a touch!

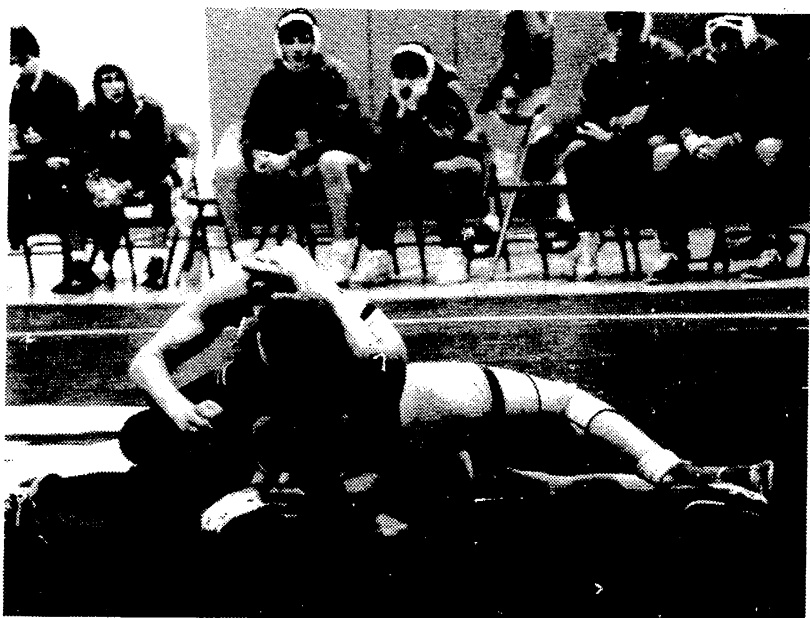
QUANTITIES LIMITED

Black Sheep Tavern

HOURS:
Sunday Noon - 10 p.m.
Weekdays 11:30 a.m. - 10 p.m.

117 E. Main St. Phone 428-7000 Manchester, Mich.

The Wrestling Report



Wrestling Action - Manchester Invitational Photo by Jon

After the Morenci Invitational, we were in good spirits. Knowing we had won their Invite and feeling good about it. Maybe too good!

On Thursday, January 11, we had Western and Michigan Center at home. M.C. was the first team we would face. The heat was on the Big Dutch and, because of legal reasons, we weren't wearing asbestos. Yea, these Cardinals were more like vultures as they keep tearing at our line up. Looking to chew on the weak. This 7-3 team intended to take us apart. An electronic clock would find a problem in finding the difference this night. The final score was 34-32, Dutch, but our heads were hung because we knew Center didn't realistically have business on the mat with us.

Next up was Western. These Panthers are competitive to say the least. After a 40-28 victory over them at the Jaws tournament, they were looking for rectification. No, these panthers

weren't clad in gold but they are solid and knew what they had come for. Simple! They were very aggressive and were not concerned with the past. We were forced to digest a 39-29 loss. No again, it wasn't a matter of giving a match away. It was a matter of allowing it to be taken. We weren't mentally ready. Period!

The date has gone by two. The team leaves at what seems to be the middle of the day, 7:30 a.m. Clinton, Michigan is our destina-

tion where the Dave Elliot Invitational will take place. In this tournament we will by no means be the big dogs. Class "C" and fourth ranked Constantine will be there as will 8th ranked Quincy and the 3rd ranked Class "D" Grass Lake Warriors. Not to mention one of the most under-ranked teams in the state—the Ida Bluestakes.

Going into this tournament, our intent was not to win it in particular. In general we went with the idea of getting the train back on track. We need to implement or at least regain our intensity. That seems to be a major ailment with the crew. The Nasty Cactus attitude just hasn't been there of late.

Medalists in the tournament were as follows: Jason Woods 2nd at 125 lbs; Darren Hock 2nd at 130 lbs; Isreal Clouse 3rd at 135 lbs; Chris Carson 4th at 112 lbs; and Duane Hopkins 4th at 145 lbs.

Although the team placing 6th, on paper didn't do well in this 11 team tournament, we are encouraged in knowing our intensity is in fact coming on. And that, my friend, was our short term goal. To take care of matters first at hand. The train is picking up steam and what happens down the road will be dictated by the future.

On Thursday, January 18, the Pirates of Napoleon will be in our gym to challenge the squad and on Saturday, the 20th, we go to the massive Napoleon Invitational where we will bang heads with almost everybody. With some luck and your support we will again roll on.

King's Daughters

The King's Daughters will meet at the Manchester United Methodist Church, Thursday, January 25, at 1:00 p.m.

Girl Staters Sought

Michigan's American Legion Auxiliary seeks contact with any Girls State Program attendees over the past fifty years for 50th anniversary ceremonies to be held at Central Michigan University, Mt. Pleasant, Sunday, June 10, 1990.

Attendees should mail information to: The American Legion Auxiliary, Department of Michigan, 212 N. Verlinden, Lansing, MI 48915, or phone (517) 371-4720. Michigan's Girls State Program has sponsored approximately 20,000 students to this participatory government experience over five decades.

It's Never Too Late to Start

Effective, Safe, Fun
Aerobics Classes

Babysitting available
weekday mornings

Still can't decide?

Try the first class free.

429-3795

The Body Shop

AEROBICS AND MORE

MIDWEST FORD

DOES IT AGAIN!!

We've Made Some Remarkable Purchases From Ford Motor Company — And We're Ready to Pass the Savings on to You!

STOP BY AND SEE US!

FULL SERVICE AND BODY SHOP

SPECIAL PURCHASE VEHICLES

REBATES UP TO \$1,500

1989 TAURUS



\$9,599

1989 MUSTANG



\$7,995

1989 ESCORT



\$6,995

1989 TEMPO



only \$7,995

HUGE SELECTION

FREE RAND-McNALLY ATLAS with any test drive

4.8% A.P.R. available

FULL TANK OF GAS with new vehicle purchase

MANY TO CHOOSE FROM - ALL HAVE AUTOMATICS, AIR, STEREOS, TILT, CRUISE AND MUCH, MUCH MORE. HURRY - ONLY WHILE THEY LAST.

LOOK AT THESE PRICES ON BRAND NEW CARS AND TRUCKS!

'90 F150 PICK-UP LXT Stock No. 3639, Pkg. 507, loaded Demo. WAS \$15,359. NOW ONLY \$12,995*	'89 F-250 4X2 Stock No. 2499, custom, automatic. WAS \$13,365. NOW \$10,695*	'89 F-350 CREW CAB DUALY XLT, 460 V-8, 5 speed, loaded. 2 to choose from. WAS \$20,751. NOW \$16,495*	'89 FESTIVA L PLUS Stock No. 3543, 4 speed, super economy. WAS \$6,747. NOW \$5,995*	HUGE SELECTION OF "F" SERIES TRUCKS - 4x4's & ALL HARD TO FIND TRUCKS! - WE'RE DEALIN!
'89 TAURUS LX 4 DOOR Stock No. 91872, pkg. 208, loaded, loaded, luxury. WAS \$18,763 NOW ONLY \$14,495*	'89 TAURUS GL 4 DOOR Stock No. 3642, pkg. 204, Beautiful car w/ aluminum wheels. WAS \$16,323 NOW ONLY \$12,495*	'89 AEROSTAR XLT HIGH ROOF CONVERSION Stock No. 2534, loaded, conversion van. Hurry on this one. WAS \$21,966. NOW \$17,995*	'90 CROWN VICTORIA LX Stock #3688, Demo, Pkg. 113, loaded. WAS \$20,405. NOW \$15,395*	'88 MUSTANG LX 2 DOOR Stock No. 2196, hatchback, loaded, air, automatic, and more. Brand new. WAS \$12,484. NOW ONLY \$8,795*
'89 F-350 SUPERCAB CONVERSION Stock No. 2605, captain's chairs, customized, sharp truck. WAS \$22,495. NOW \$17,995*	'89 F-350 CAB CHASSIS Stock No. 3551, 1 ton diesel, 5 speed, with fancy aluminum stake bed. WAS \$19,495. NOW \$17,995*	'89 AEROSTAR XL Stock No. 2490, air, cassette, 2 tone, specially priced. WAS \$18,627. NOW \$11,495*	'89 TEMPO GLS 2 DOOR Stock No. 2370, loaded, sporty, pkg. 229. WAS \$12,048. NOW \$9,495*	'89 THUNDERBIRD SUPER COUPE Stock No. 3570, a fantastic automobile. WAS \$22,642. NOW ONLY \$16,795*

*Includes applicable Ford rebates and destination charges, just add tax, title, and plate fees.

MIDWEST



510 W. MAIN STREET - MANCHESTER, MI

Mon. & Thurs., 9-8. Tues., Wed.-Fri. 9-6, Sat. 9-2

Call Us Collect - 313-428-8343 - Call Us Collect



K of C



FREE THROW CHAMPIONSHIP

Where?
Manchester Middle School

When?
January 21, 1990

Time?
1 p.m.

Age?
10 yrs to 14 yrs
Boys & Girls

Register?
Middle School office has registration forms or sign up the day of the event with parental approval.