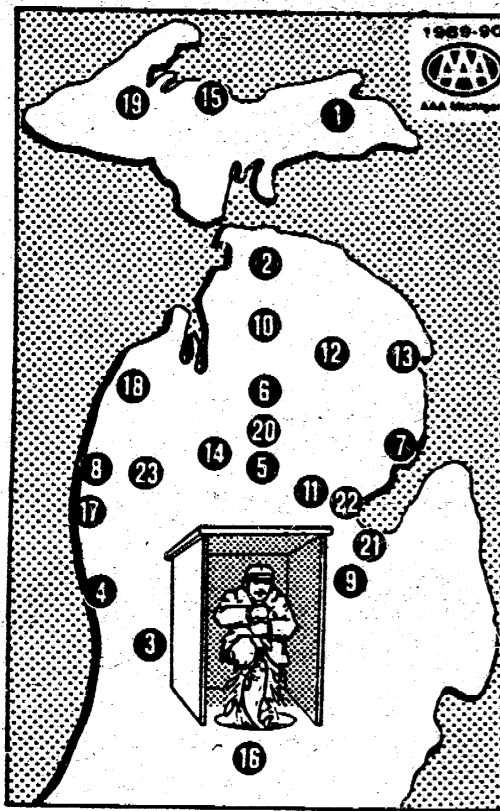


## Fishing festivals help break the ice



1. Ice Fishing Contest, Munuscong Bay, Pickford, (cash prizes), (906) 647-9131 — Dec. 26-March 15.
2. Ice Fishing Contest, Indian River, (trophies, prizes), (616) 238-9325 — Jan. 12-21.
3. Ice Fishing Derby, Bostwick Lake, Rockford, (trophies, food, refreshments), (616) 866-2000 — Jan. 13 (alternate date Jan. 20).
4. White River Steelheader's Perch Festival, Whitehall, (chili cook-off), (616) 893-4585—Jan. 20-21.
5. Tip-Up-Town, U.S.A. Winter Festival, Houghton Lake, (fireworks, grand parade, games, contests, prizes, ski chase), 800-292-9071 — Jan. 20-21, 27-28.
6. Ice Fishing Contest, Grayling, (ice sculptures, polar bear plunge), (517) 348-2921 — Jan. 26-Feb. 4.
7. Perchville U.S.A., Tawas City, (prizes, softball tournaments on ice, quad-cycle races, demolition derby, polar bear swim, ice sculptures, parade, concessions), 800-55-TAWAS — Feb. 2-4.
8. Ice Fishing Contest, Manistee, (prizes), (616) 723-7730 — Feb. 3.
9. Shiver on the River Walleye Contest, Saginaw, (cash prizes), (517) 790-0330 — Feb. 3-24.
10. Winterfest, Gaylord, (snowmobile safari and race, downhill tubing), 800-342-9567 — Feb. 8-11.
11. Ice Carnival, Gladwin, (ice skating, snow sculpturing, races), (517) 426-5451 — Feb. 9-11.
12. Floodwater Fest, Hillman, (snowmobile races, drag races, poker runs, sleigh rides), (517) 742-3739 — Feb. 10.
13. Winter Carnival, Long Lake County Park, Alpena, (international barrel jumping competition, figure skating, races, refreshments, prizes, ice scuba dive), (517) 354-4181 — Feb. 10.
14. Winter Festival, Lake City, (car races on ice), (616) 839-4969 — Feb. 10-11.
15. Big Bay Fishing Derby, Lake Independence, Big Bay, (906) 345-9826 or (906) 226-6591 — Feb. 10-11.
16. Tip-Up Festival, Quincy, (snowmobile races, polar bear swimming), (517) 639-7141 — Feb. 10-11.
17. Ice Fishing Contest, Pentwater, (savings bond prizes), (616) 869-4150—Feb. 10-18.
18. Winter Festival, Beulah, (fireworks, snow sculptures, softball, chili cook-off), (616) 882-5802 — Feb. 17.
19. Festival on Ice, Baraga, (prizes, food, refreshments, sky diving, music and snowmobile races), (906) 524-7444—Feb. 17-18.
20. Family Winterfest, Higgins Lake, (ice sculptures, cross country skiing, baseball games & sleigh rides on ice, refreshments), (517) 821-6972 — Feb. 17-18.
21. Bounty on the Bay Ice Fishing Contest, State Park, Bay City, (prizes, Frisbee golf), (517) 893-1222 — Feb. 17-18.
22. Bounty on the Bay Ice Fishing Contest, Pinconning, (carnival events), 800-44-PINNY — Feb. 17-18.
23. Super Tournament, Wellston Area on Big Manistee River, (trophies, prizes), (616) 848-4142 — March 3.

## Winter Summons Ice Fishing Enthusiasts

More than 10,000 inland lakes and 23 festivals will lure adventurous anglers outdoors this winter, AAA Michigan reports.

But winter enthusiasts should be aware that Michigan records an average of seven ice-related deaths annually, so precautions are advised when fishing, skating or walking on ice. Remember:

- Ice is strongest when it's hard and blue.
- Be extra cautious near gray, dark or porous spots.

• Ice deteriorates first around stream mouths, lake inlets and outlets, shorelines and docks.

• Continually test ice with a steel spud or heavy bar.

• Rescue gear — including a ladder and at least 50 feet of rope or hose — should be handy.

If you do fall through ice, turn on your back, kick and work your way out. Roll away in the direction that you walked in on until you can safely stand. Move quickly to shelter and warmth.

To get in a wintry mood, travelers may visit any of the 23 events listed on AAA Michigan's Ice Fishing Festival Guide. Fishing contests, parades, fireworks, snowmobile races, ice sculptures and "polar bear" plunges are among the highlights.

Winter fishing novices need a spud for testing ice thickness and making holes; a sled to haul equipment; skimmer to keep the hole clear; a pail; hook and line. A portable shelter and heater also are considered necessary by many experienced anglers.

Winter fishing novices need a spud for testing ice thickness and making holes; a sled to haul equipment; skimmer to keep the hole clear; a pail; hook and line. A portable shelter and heater also are considered necessary by many experienced anglers.

### Live Nativity Scene

The Manchester Emanuel United Church of Christ will present a live Nativity scene this year, December 21, 22, and 23 from 7:30 P.M. to 9 P.M. with live animals.

Members will portray the Three Wise Men, shepherds, angels, Joseph and Mary. A Christmas card with the Nativity scene will be given out to those who attend this blessed event.

Come join us in the spirit and joy of Christmas and the celebration of the birth of our Lord Jesus Christ.



I would like to let all my friends and customers know that I have located at this dealership to provide them with better service and satisfaction  
Ken Moull

**MIDWEST FORD**  
510 W. MAIN ST. MANCHESTER, MI.  
Mon. & Thurs. 9-8 Tues. Wed. Fri. 9-6 Sat. 9-2  
Call Us Collect: 313-428-8343

**Kleinschmidt Hardware**  
19860 Sharon Valley Rd. Manchester, MI  
Phone 313 428 8337  
Monday-Friday 7 a.m.-6 p.m. Sunday 10 a.m.-4 p.m.  
Saturday 8 a.m.-5 p.m.

**Christmas Clearance Sale**  
**ALL TOYS 50% OFF**  
Reg. Price  
GREAT LAST MINUTE BUYS!

**All Christmas Decorations 50% OFF**  
Reg. Price  
Includes Ornaments, Garland, Trees, Tree Stands, and Wrapping Paper  
Sale Prices Good Thru Sun. Dec. 24th Open Sun. Dec. 24th 10 AM to 4 PM

# THE MANCHESTER ENTERPRISE

123rd YEAR VOLUME NUMBER ELEVEN

USPS 327-460

THURSDAY, DECEMBER 28, 1989

## Old Landmark Gone

Manchester Enterprise January 24, 1902

### A Glimpse Of Early Days In Manchester

In passing the arbeiter block a few days ago, we noticed the sign - S.W. Lockwood - which had occupied a space there for many years. We were then reminded that one by one the old landmarks and familiar faces are fast becoming obliterated by the ever increasing march of time in this progressive 20th century.

It was early in the 50ies that Samuel W. Lockwood left his boyhood home in the old Long Island town of Danbury, in the state once famous for its bass-wood hams and wooden nutmegs, and struck out to try his fortune in the "wild and woolly" west.

The Hudson river, Erie canal and Lake Erie navigation companies and the lumbering stage coach furnished variety enough in the

way of travel but when our young Connecticut Yankee struck the growing city of Toledo, on the raging Maumee, he was surprised to find the great steam cars of the Palmyra and Jacksonburg railway conveying home-seekers west into Michigan. A road ran as far north as Clinton.

Arriving at the sprightly village of Manchester he found a comfortable tavern presided over by a one-armed landlord named Chauncey Wallbridge, with whom he found a home for a time.

Jacksonburg, as the "central city" was then called, had but one railroad, the "Michigan Central" but many stage routes centered there and one route passed through Manchester, and the event of the day was the arrival of the stage loaded with passengers.

There had been a great fire which came near sweeping the little settlement away. It started on Sunday morning in the mill where the roller mills now stand,

and sweeping across the street took every store, warehouse, etc. from the river to the hotel and soon left them in ashes. It was a great loss to the merchants but the plucky Michiganders went straight to work rebuilding, better than before and times were lively here and the subject of this sketch soon found plenty of work at good wages.

In those days everything was made by hand and furniture and coffins were his specialties. He was a fine cabinet maker and some of our citizens still have articles of furniture made by him that are highly prized for their beauty and workmanship.

He was a social, kind-hearted, fun-loving man and among his associates in those days, and until his death, was our townsman B.G. Lovejoy, also an eccentric genius Extra Freer, who died some years ago.

Among the places where Mr. Lockwood has his shop, we recall the old building on railroad street opposite M. Hendershott's, where he had Russ Bodine, a bluff but kind man, for a shopmate, also the building on the alley in the rear of Fred Widmayer's where the late W.S. Stowell worked with him. He also occupied a building on Jefferson street where Mrs. Miller's home now stands and moved from there to the rooms in the Goodyear block - afterwards called the arbeiter block.

Mr. Lockwood's first wife was Carrie Chipman with whom he lived many years and until her death. He afterwards married Mrs. Belle Graham-Gage who survives him. His home was always pleasant and young and old took great delight in visiting there. With his friends gathered 'round of winters evening he delighted in recounting incidents of early life in our fair village.

It is now nearly a year since he passed away but his memory will long linger with us and be cherished by his old and true friends.

The Kiwanis Club feels it is very important that the center continues to operate and grow. As a community service organization we want to challenge all other organizations within this community to offer support in what ever way to the Community Resource Center.



Janet LaBeau Shurtliff

number, Nicky bowed once, then again. And the delighted audience adjourned to the next room for cider and cookies.

The performance was truly charming. And it was heartwarming and even inspiring to watch and listen to the truly beautiful results of such concentration and preparation on the part of a child.

Congratulations, Nicky, for a wonderful performance.

## New Year's Day Fun Run

Attention all crazy Manchester runners and joggers! There will be a Fun Run held New Year's Day in Manchester. It will consist of a 2.5 and 6 mile loop that will start at the Snoopy Mailbox at Okey's house at 8:15 a.m. Casual dress please. No spits, no t-shirts, no times kept, no awards, and no entrance fee! Don't be afraid to come; only amateurs will be there! Cider, coffee, doughnuts, maybe lox and bagels after the run. Call Monty Okey at 428-9667 (329 Ann Arbor Hill) if you have questions. Hope to see you there!

## Kiwanis Presents Check



Manchester Kiwanis member Gerry Davis presented a check for \$250 to Dianne Schwab, director of the Community Resource Center. The Community Resource Center which has been in service for two years has been of great benefit to this community.

The Kiwanis Club feels it is very important that the center continues to operate and grow. As a community service organization we want to challenge all other organizations within this community to offer support in what ever way to the Community Resource Center.

drive sober  
drive safely  
into the new year



**V.I.P. Van Takes You Where You Need To Go For Health Care**  
• Available for seniors • Round-trip transportation  
• Serving all surrounding Cities and Townships  
• Reliable service at a minimal fee  
Advance reservations necessary.  
Call 429-1511 or 1-800-622-5592 to schedule a ride.  
SALINE COMMUNITY HOSPITAL

**Want Ads Get Results**  
**Todd Withrow Company**  
REMODELING  
CABINETMAKING  
ADDITIONS—WINDOWS  
KITCHENS—BATHROOMS  
ROOFING—SIDING  
CUSTOM BUILT CABINETS  
WALL UNITS—FURNITURE  
TOP QUALITY MATERIAL  
AND WORKMANSHIP  
LICENSED AND INSURED  
CALL ANYTIME  
428-9420 or 428-7797

**AIRLINE CAREERS**  
Ready for a job that really takes you out there? Just 12 weeks of the world's most exciting training program and you'll be on your way to a career in the sky. Find out how at our free seminar.  
**INTERNATIONAL AIR ACADEMY**  
Call  
**1-800-950-4359**  
2328 Midwest Drive, St. Louis, MO 63114

**Christmas Is For Pets**  
**ATLAS Has It**  
COMPLETE LINE OF PURINA DOG AND CAT FOOD  
Dog Treats  
Collars & Tie Outs  
Feed Dishes  
Health Aids  
Cedar Bedding  
Beds  
Kitty Litter  
Cat Cages  
also Feed For Small Animals & Birds  
**ATLAS of Manchester**  
18875 WEST AUSTIN RD. MANCHESTER, MICH.  
PHONE 313-428-7077  
Monday-Friday 9 am-6 pm Saturday 9 am-4 pm

### Manchester Boy Killed in Crash

A three-year-old Manchester boy was killed in a freak automobile crash on Jackson Rd. in Scio township early Monday evening.

According to Sgt. Harley Rider of the Washtenaw County Sheriff Department, Patricia Smith, 38, of Manchester, was driving west on Jackson Road, about one-quarter mile west of Baker Road at 6:18 when she swerved to avoid a stopped vehicle in the road. She lost control of her compact station wagon and skidded sideways into a row of mailboxes. A support from one of the mailboxes came into the rear window and struck Daniel Smith, who was secured in a child carrier. Patricia Smith was not hurt.

Daniel Smith was taken by Huron Valley Ambulance to University of Michigan Hospital, where he was pronounced dead at 7:16 p.m.

Police are trying to locate the owner of the vehicle that was stopped in the road. Anyone who witnessed the crash should call Rider at 994-8400.

### Park Opens For Winter Fun

With the generous cooperation of Mother Nature, Rolling Hills County Park (Washtenaw County) has opened for its winter season of family fun. Come brave the 750' long toboggan run (rental is required), bring your cross country skis (or rent ours), and/or sharpen your skates and come glide across our smooth-as-glass lighted ice rink.

The hours are 10:00 a.m.-9:00 p.m. until January 2; 2:00 p.m. to 9:00 p.m. thereafter. Weekend hours throughout the winter are 10:00 a.m.-9:00 p.m.

A 24-hour recorded message with current conditions and hours can be had by calling 313-484-3870. The park is located near Ypsilanti at 7660 Stony Creek Road between Merritt and Bemis Roads. The park can be accessed by both I-94 (Whittaker Road exit south) and US 23 (Willis Road exit east).

There is a nominal vehicle entrance fee.

For other information, call our Administrative offices 971-6337, Monday-Friday, 8:30 a.m.-5 p.m.

### Trail Walks At Botanical Gardens

Does the whirlwind of the holidays leave you feeling a bit out of sync and wishing for a slower pace in the New Year? Perhaps one of the best ways to relax would be to go out on a Sunday afternoon and explore the beauty of the fields and woods: Like on Sunday, January 7, 1990, at 2:00 p.m. at the Matthaei Botanical Gardens.

"But, the flowers are all gone. What is there to see?", you might ask.

Are the flowers really all gone? The winter wildflowers are among the treasures which may be discovered on the Sunday Trail Walk. The remnant pods and stalks of last autumn's flowers often have a flowerlike beauty of their own, which we may not see or enjoy until we look for them.

Docents will meet all interested persons in the lobby of the Conservatory. Participants are advised to dress for the weather with warm clothing and warm boots. The free tour begins promptly at 2:00 and will last at least 1 1/2 hours.

The Matthaei Botanical Gardens of the University of Michigan is located at 1800 N. Dixboro Road, Ann Arbor, 1/2 mile south of the Plymouth Road intersection.

THE MANCHESTER ENTERPRISE  
150 East Main Street Phone 313-428-8173 Manchester, MI 48158  
USPS No. 327-480

The Manchester Enterprise was established in 1867 and is published each Thursday at 150 East Main St., Manchester, Michigan, with second class postage paid at Manchester, Michigan.  
Edward E. Steele, Publisher Lenore A. Steele, Editor  
POSTMASTER: Send Form 3972 To: Manchester Enterprise, 150 East Main St., Manchester, Michigan 48158.  
DEADLINES: All Display Advertising and Pictures (Black & White ONLY) Are Due By 5 p.m. Every Monday For Same Week Publication. All Classified Advertising and News Articles Are Due By 10 a.m. Every Tuesday For Same Week Publication.

### DIAL —A— GARDEN

The following is a monthly schedule of Dial-A-Garden, the system of pre-recorded daily gardening tips sponsored by the Washtenaw County Cooperative Extension Service. The system is in operation 24 hours a day, 7 days a week. Interested persons are invited to call 971-1129 at their convenience to listen to timely, up-to-date gardening information.

Thursday, December 28: Salt Injuries on Plants

Friday, December 29: Gardening Resolutions

Monday, January 1: No New Tape, Holiday

Tuesday, January 2: Recycle Your Christmas Tree

Wednesday, January 3: Grow Succulents

### Certificates Awarded

The Public Health Division honored 18 preschool/daycare centers with Certificates of Merit for their outstanding efforts in immunization recording, including Little Dutch Child Care Center in Manchester for "Outstanding Achievement."

These Certificates of Merit show appreciation and recognize the contribution of the directors, parents, and volunteers for the efforts they make each year in seeing that every student has an up-to-date shot record. Each year on October 1, all daycare/preschool programs report on the immunization status of all the children in their program. The importance of immunizing children cannot be emphasized enough. They prevent serious illnesses such as measles, mumps, rubella, polio, diphtheria, whooping cough (pertussis), and tetanus.



## KICK BUTTS IN 1990.

You can do it. We can help. Call 1-800-4-CANCER.



## We're Breaking-in a New Year

We hope every day brings you success and happiness. Thanks for your patronage.

### TIRB Chevrolet & GEO



### A NEW YEAR Arrives

May the spirit of brotherhood and good will be yours.

### Schebor's Greenhouse



### RING IN THE NEW

We welcome another year and look forward to the opportunity it provides to serve the community.

### Larry Bechtel Farm Bureau

Buy with CONFIDENCE from



## Russ Aiuto


Your TRANSPORTATION SPECIALIST AT

### MIDWEST FORD, Inc.

510 West Main Street, Manchester, Mich.

- A, B, Z and X-Plans my specialty!
- Top dollar for trade-in!
- Expert, friendly service after the sale!
- Good previously owned vehicles for sale!

Call RUSS AIUTO for more INFORMATION 313-428-8343



## NEW YEAR GREETINGS

And best wishes to the great people we are privileged to know as friends and customers.

### SUTTON AGENCY INC.

### Chelsea Hospital Board Elections



John R. C. Wheeler, Ph.D.



Walter F. Hamilton, Jr.

Chelsea Community Hospital Board of Trustees elected its slate of officers for 1990. John R.C. Wheeler, Ph.D., was elected Chairman, Frank X. Colligan, M.D., elected Vice-Chairman,

Sally A. Stommen, D.D.S., elected Secretary, and John W. Merkel, re-elected Treasurer. Wheeler replaces Walter F. Hamilton, Jr. Hamilton has served as Chairman of the Board

for the past three and one-half years. He has served on the Board of Trustees for over ten years. Hamilton is Vice President of Edwards Brothers, Inc. in Ann Arbor. He will remain on Chelsea Community Hospital's Board to complete his term.

Newly elected to the Board is William C. Emhiser, President and Chief Operating Officer of Gelman Sciences, Inc., Ann Arbor. Appointed in 1968, Emhiser became the second president in the 30-year history of Gelman. He holds a B.S.E. in biomedical engineering from Duke University. Emhiser resides in Chelsea with his wife, Marysue, and their three daughters.

Leaving the Board is Cindy L. Bradbury. Bradbury has served two consecutive three-year terms and has been Board Secretary for the past two years. She has also served as Chair of the Community Relations Committee.

drive sober drive safely into the new year

### Children Sing Spirit of Christmas

Janet LaBeau Shurtliff

Have you ever wondered: "Where do my school tax monies go?"

"What is the true spirit of Christmas?"

"What's going on with kids today?"

The answers to all of these queries could have been found at the "Christmas Around the World" program presented by the Klager School students for the community at the High School gym the Tuesday before Christmas.

Directed by Kay Miller, the music teacher at Klager, and dedicated to the memory of Mrs. Groeb, the entire student body, well over 300 voices strong, opened the program with a thrilling chorus of "Joy to the World."

So many voices, so young and so sweet, transformed a noisy,

chatterbox gymnasium before the performance into an infant, sincere tribute to the season of love and brotherhood.

Each grade offered a recitation describing a Christmas or holiday custom in another country. Then the class and the entire school sang and danced the tunes of that country.

It is too bad everyone was not able to see such charming and touching performances as:

The little second graders in their "lederhosen" and aprons, dancing to accordion music of a German band, bowing and clapping and telling a tale with their movements.

Or the perfect composure of fourth grader Jayme Haskins belting out beautifully a tune called "God Bless Everyone" as if she were on the Broadway stage!

Also the fine poster artwork illustrating the third graders' songs about the "Friendly Beasts," a French holiday custom.

Or the lovely violin quartet consisting of Annie Hincley, Sarah Wojtas, Jacqueline Palms, and Nicky Pucius playing "O Come Little Children," echoing the group singing of that tune.

And the fourth graders on song flutes playing traditional Christmas carols.

There were Hanukkah songs and dances and pinatas. There were flags and a menorah. Kids dressed as Santas and as mothers rocking their babies.

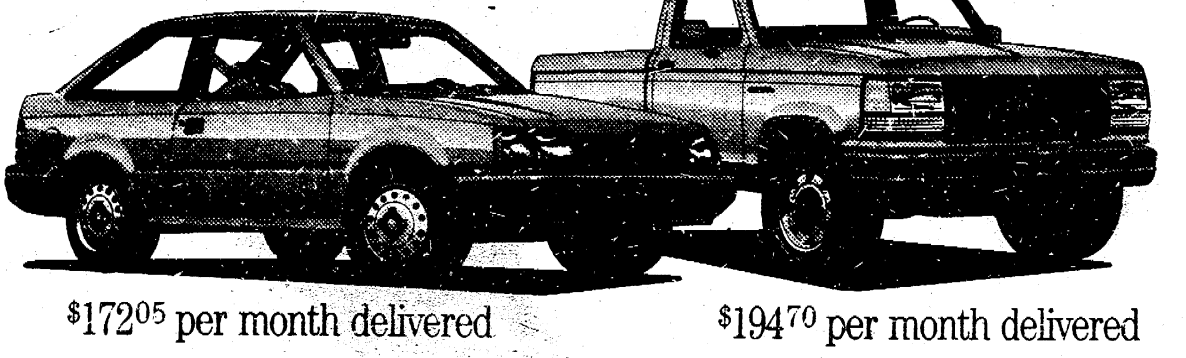
The performance was delightful!

(A special mention should be made regarding the musical accompaniment: how pleasant to hear the recorded background music strong, clear, and undistorted - even in a booming gymnasium! What a difference it makes. Thanks to Bill Farmer, sound-man extraordinaire!)

Mrs. Miller kept the pace of the show going, and it was so much fun to watch as she swayed and almost physically drew the poems and songs from the children, supporting each individual child and supporting the group effort simultaneously.

It was a heartwarming tribute to the holiday season. But then children and Christmas do belong together! And this was a particularly charming contribution to the Season.

# WE'RE GIVING SO MUCH THIS HOLIDAY SEASON, WE'RE GETTING NASTY LETTERS FROM SANTA'S ATTORNEY.



\$172.05 per month delivered

\$194.70 per month delivered

Take Advantage Of Holiday Values On Escort And Ranger From Your Ford Dealer And Ford Credit.

We know holiday giving is the job of the guy in the red suit, but we couldn't resist this one. Right now your Greater Michigan Ford Dealers and Ford Motor Company are giving cash back that you can keep or apply to your down payment. Qualified buyers can get a 1990 Ford Ranger "S Plus" 4x2 with power steering, deluxe wheel trim, interval wipers and all-season tires for just \$194.70 a month when you finance through Ford Credit.

Or, a 1990 Ford Escort Pony with front-wheel drive, rear defroster and electronic stereo for only \$172.05 a month. And that includes freight, tax, title, and license plate transfer. So hurry to your Greater Michigan Ford Dealer for these great values and Ford Credit financing. Once Santa sees these new Fords, we're sure he'll understand.



Greater Michigan Ford Dealers

Example of a typical finance transaction not necessarily for a particular transaction. Payment based on MSRP including freight, tax, title, and license plate transfer fee. 13.96 Annual Percentage Rate. Financing for 36 months with \$1,000 down payment on Escort and \$1,000 on Ranger. See participating dealer for qualification details. For cash back, must take retail delivery from dealer stock by February 5, 1990.

Let your words do the talking in the CLASSIFIEDS

### Chelsea Plumbing

Repair - Remodel  
New Construction

Gail Shears  
Licensed Master Plumber  
475-1037

### Columbia Cabinetry

205 Irwin Street  
Brooklyn, Michigan

Custom Cabinets  
Kitchen Re-facing

Call anytime for appointment  
517-592-2292 517-536-4425  
Chris Parr



# Happy Holidays

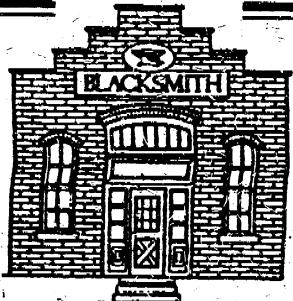


Fourth graders display "The Friendly Beasts" posters that were part of the "Around the World at Christmas" program.



Second grade carollers share the customs from Denmark at the recent Klagger holiday program.

Klagger students presented their annual musical to proud parents and friends on December 19, 1989. Students and staff wish everyone a very joyous holiday season.



The Manchester Area Historical Society wishes to thank all those who helped make the 1989 Christmas Eve Luminaria another beautiful event in our community. Special thanks to Chairman Forest Walz and his team for their efforts during the pre-Christmas season.

Sincerely,  
The Board of Directors

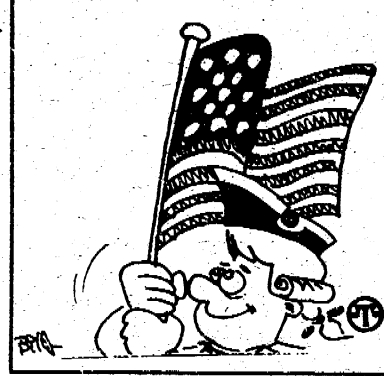


## In with the new!

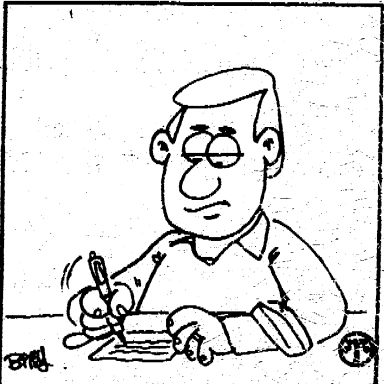
SINCERE WISHES FOR A HEALTH - FILLED NEW YEAR.

### G. E. Wacker Inc. Wacker General Store

## DID YOU KNOW? Financial Aid Meeting Wednesday, January 10



The U.S. flag of 1777 had no official arrangement for the stars. The most popular design was not the circle as many believe but alternate rows of three, two, three, two and three stars. Even back then, the flag served as a symbol of our nation's fundamental freedoms and liberties.



The 90th convention of Veterans of Foreign Wars of the United States is asking all Americans to raise their collective voice to help adopt legislation calling for a Constitutional Amendment to protect the flag of the United States from desecration and write to the U.S. Senate, Washington, D.C. 20510 and the U.S. House of Representatives, Washington, D.C. 20515.

**CLASSIFIEDS  
GET RESULTS!**

For parents of seniors or college students it is once again time to begin thinking about filling out financial aid forms for college or vocational or technical school. This can be a very complex and time consuming process. To help parents with these forms a workshop will be held in the high school study auditorium at 7:30 p.m. on Wednesday, January 10, 1990.

All aspects of the financial aid process will be explained including the few significant changes from last year. The financial aid forms will be given out as will other written information. There will also be discussion on guaranteed student loans and other types of loans. This meeting is open to both parents and students. In addition, the Michigan Department of Education has collaborated with the Michigan Students Financial Aid association on a series of awareness programs. WTVS Channel 56 in Detroit will broadcast a half hour program entitled "Student Financial Aid: What You Need to Know" at 5:30 p.m. on Tuesday, January 9, 1990.

**Best Wishes**  
We know we're on the right track when we say, "Happy holiday!"

**BACK DOOR PARTY STORE**  
500 Ann Arbor Street Phone 313-428-9287 Manchester, Michigan

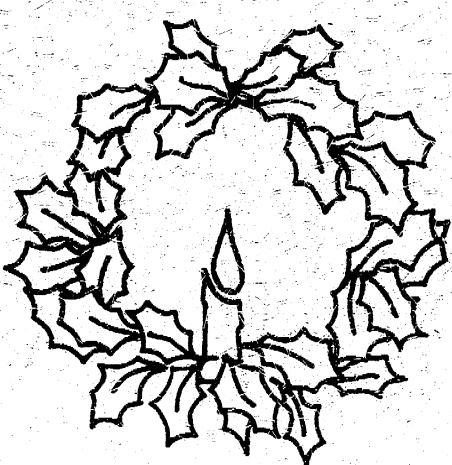
BEER  
WINE  
KEG BEER

GROCERIES

MICHIGAN

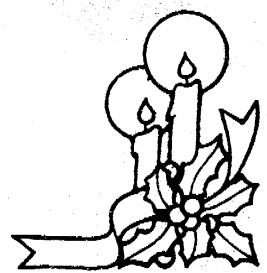
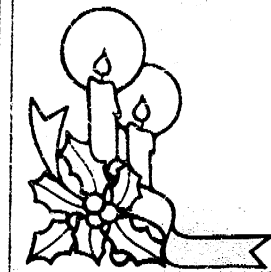
Instant and Daily Lottery Tickets

UNION 76 GAS Full Service and Self Serve



### Warmest wishes for the Holidays and the New Year to come.

**FIRST OF AMERICA**



## Village Council Minutes

December 18, 1989

The regular meeting of the Manchester Village Council was called to order with the Pledge of Allegiance to the Flag by President Kallewaard at 7:05 p.m. Council members present: Kallewaard, Wallace, Reinhart, Kwolek, Becktel, Cooper, Marshall and Tucker. Also present: Chris Hoover and Sgt. Yekulis. The minutes of the December 4, 1989 regular meeting were approved as corrected on a motion by Becktel, support by Marshall. Vote: Ayes-all.

### APPROVAL OF AGENDA

Motion by Marshall, support by Reinhart to approve Agenda as

amended. Vote: Ayes - all.

### CORRESPONDENCE

Various letters were presented by President Kallewaard and discussed.

### BID OPENING

Motion by Marshall, support by Becktel, to accept the bid from T & N Services for 6 weeks temporary work at \$11/hour effective 12/19/89 to 1/31/90. Roll Call Vote: Ayes - all.

### SHERIFF'S REPORT

Sgt. Yekulis presented to Council the Activities Report for November, 1989. Discussion held on gun registration fees. Total time out was questioned by



## Happy New Year

May your home be filled with cheer through this happy holiday and the days to come.

### Manchester Electric

## happy holiday

We hope this brand New Year is filled with happiness for each of you.

### Fillyaw's Marathon Service

Becktel and report was directed. Motion by Marshall, support by Kwolek to accept as corrected Sheriff's Report. Vote: Ayes-all. Sgt. Yekulis also reported on decibel reading around Manchester Plastics, additional work done at Village Hall by Koch & White and sign request for Clinton and Madison. Meeting set up for 11:00 a.m. Wednesday, 12/20 with representative from Washtenaw County Sheriff Department.

### DANGEROUS BUILDING ORDINANCE HEARING

Chris Hoover was present to address Council on status of violations. After some discussion it was decided to hold a re-inspection with building, electrical and fire inspectors and Mr. Hoover on Tuesday, 4:00 p.m. 12/19 before any decision on action is made by Council.

### SHERIFF DEPARTMENT CONTRACT

Council reviewed and discussed proposed contract with Washtenaw County Sheriff Department. No action taken. Kallewaard and Becktel to meet with County Sheriff representative on Wednesday to further discuss contract.

### PLANNING COMMISSION REPORT

Minutes of the last meeting were presented to Council. It was reported that meetings will be held concerning Master Plan for the Village and committee formed

for review of Village Sign Ordinance.

### DPW REPORT

Kwolek reported request made to use Hibbard for truck traffic. Discussion was held, no action taken. Clerk to request copy of Motor Carrier Act.

Kwolek also reported on McNamee Porter & Seeley recommendation of Great Lakes Agricultural Service as sludge hauler for Wastewater Treatment Plant. Also discussed quotes for maintenance building at Treatment Plant and fence for lift station.

Stand-by generator warranty effective 11/14/89, as reported by Kwolek. Decision to be made at next meeting on 1978 Sweepster.

Motion by Becktel, support by Marshall to approve purchase of 2 hand-held radios without remote speakers at \$440 each. Roll Call Vote: Ayes - all.

Kwolek also reported on John Weber being out ill. Nick Aiuto to fill in at Transfer Site.

### VILLAGE HALL MAINTENANCE

Nothing to report.

### PARKS COMMISSION REPORT

Wallace reported ice rink is being flooded. Requested sign for Gazebo reading "No Skates" and/or a fence around the Gazebo. There will be no fire barrel this year but they will have picnic tables.

### ORDINANCE COMMITTEE

Nothing to report.

### FINANCE COMMITTEE

Motion made by Reinhart, support by Cooper to accept budgets amendments. Roll Call Vote: Ayes-all.

### OLD BUSINESS

Kallewaard presented Council with updated information on

various concerns. Motion by Kwolek, support by Becktel to adopt Water and Sewer Rate Ordinance #179. Roll Call Vote: Ayes - all.

Motion by Becktel, support by Wallace to adopt User System to set rates. Votes: Ayes - all.

### NEW BUSINESS

Meeting was adjourned at 11:05 p.m. on a motion by Kwolek, support by Becktel.

Karen Tucker  
Village Clerk

## Strikes N Spares

### Manchester Town Club

Waynes Windshield	77 1/2	34 1/2
Cheers	77	35
Cooks	63	49
Norm Walz	57	55
Klinks Excavating	56	56
Shearcrazy	51	61
Jenters	50 1/2	61 1/2
Wampler Construction	50	62
Eighties Ladies	44 1/2	67 1/2
C & M Lawn Care	33 1/2	78 1/2

500'S	
Carrie McGraw	513
Marjorie Miller	511

HIGH IND GAME	
Judy Walz	226
Phyllis Baker	213
Donna Dault	212

HIGH IND SERIES	
Carrie McGraw	568
Phyllis Baker	536
Donna Dault	536
Debbie Klink	527

HIGH TEAM GAME ACT	
Cooks	817
HIGH TEAM SERIES ACT	
Cheers	2826

HIGH TEAM GAME HDPC	
Norm Walz	813
HIGH TEAM SERIES HDPC	
Norm Walz	2283

313-429-4885      COUPON      517-423-2148

Saline in the Saline Shopping Center

**1ST OPTOMETRY** eye care centers

Dr. Thomas Cunningham

DOES NOT APPLY TO OTHER DISCOUNT OFFERS OR PRIOR ORDERS

99

Daily Wear Soft Contact Lenses

Tecumseh 128 W. Chicago Blvd.

\$10

OFF (with coupon)

Prescription Eyeglasses

Best Wishes

May joy and peace abide with you through the year.

### The Flower Garden

## GREETINGS

New Year cheer in full measure to friends and patrons. Thank you for letting us serve all of you during the past.

### Dr. Allan Currey and Staff

### Linda K. Criss Stationed in Germany



Living in Germany is an unique experience for most Americans. The central location in Europe makes travel between countries easy and inexpensive. Rich cultures and languages change with the crossing of each border.

"We're located near the French, Belgian and Luxembourg borders, and Holland is just a few hours farther," said Criss. Spangdahlem is located in the heart of the Rheinland-Pfalz district of Germany, close to Germany's oldest city, Trier.

Surviving in Germany requires Americans to make some changes in their accustomed lifestyle. The differences in languages, money, shopping conveniences, and driving can be quite stressful.

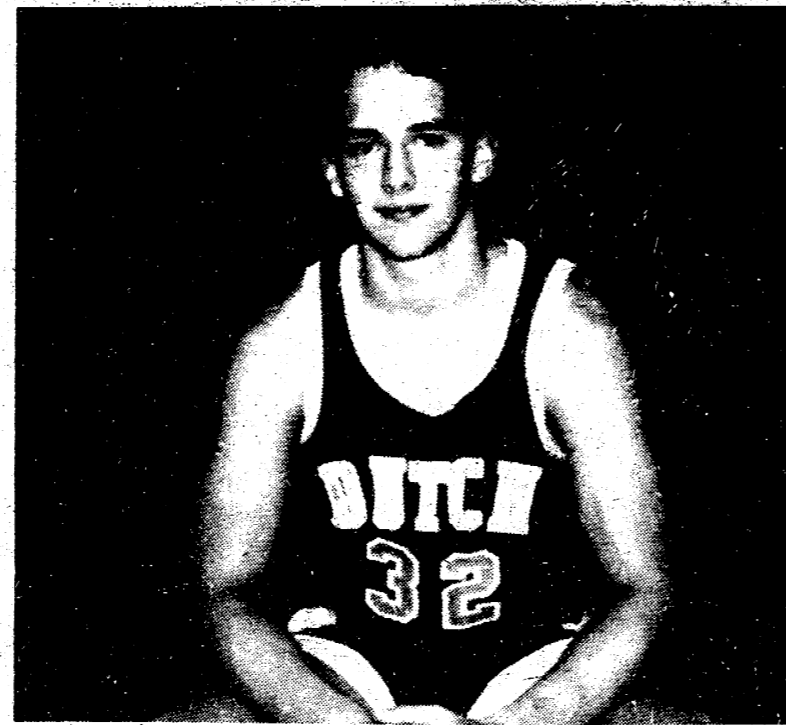
"I've had to adjust to the different language, driving on the Autobahn (German highway) at a much faster speed than back in the States, the German customs, and only one American television station. We also can't get midnight pizza or go to a 24-hour convenience store," she said.

"Germans are very traditional," Criss continues. "They are very involved with their families and towns. If you try to speak some German, they appreciate it and will help you learn more about them."

U.S. Air Force Airman Linda K. Criss, an inventory management specialist for the 52nd Supply Squadron, uses her computer to track warehouse items at Spangdahlem Air Base, West Germany.

Helping maintain calm in West Germany is U.S. Air Force Airman 1st Class Linda K. Criss, 21, daughter-in-law of Galen D. Criss and Patricia A. Ahrens of Manchester. She is an inventory management specialist for the 52nd Supply Squadron at Spangdahlem Air Base, home of the 52nd Tactical Fighter Wing.

### Varsity Basketball



Jesse Widmayer

Knul combined for 20 points, 10 each defensively. The Dutch towers grabbed 30 rebounds. Matt collected 16 as Stefan gathered in 14.

Our Dutchmen closed the 1980's with a cliff-hanging 65-61 victory over the Michigan Center Cardinals. What appeared to be a Dutch runaway (16-point lead) was whittled to a mere 3-point edge with 26 ticks left on the clock. Jesse Widmayer calmly sank a freebie, giving us a winning 4-point margin.

Offensively, Stefan Knul was nearly unstoppable as he scorched the nets for 27 points. Jay Gillow hit from 3-point range and darted inside to score 14. Jesse and Matt

Our next three games are all on home court. Tuesday, January 9, we host Dexter at 5:30. We then welcome league opponents Grass Lake on Friday, January 12, and Addison Tuesday, January 16. Both these contests begin at 6:00. Unfortunately, our JV's fell at the buzzer.

Hope all had a merry Christmas. We'll see you next year.

### Garland's Pub

M-52—Austin Rd. Manchester

Open Seven Days

Mon. - Sat. 7:00 am-2:00 am

Sun. 12-12

Live Band Fri. & Sat.

New Year's Eve Party

Call for details - 313-428-9293

### New Year Greetings



Sound the trumpet, ring the bells, gather loved ones, close and near, Our wish for all, this message tells: health, happiness, prosperity, good cheer.

### PINNACLE ENGINEERING

### Challenges Ahead For Michigan Producers

"The need for farmers to work together to deal with the growing multitude of factors that impact our livelihoods is greater now than at any time during the 28 years our cooperative has been operating," Michigan Agricultural Cooperative Marketing Association (MACMA) President Jack Laurie told producers attending the co-op's annual meeting at the Amway Grand Plaza on Nov. 28.

Laurie highlighted food safety concerns and potential labor shortages as key challenges facing producers during the next year and beyond.

"Food safety is one of the major issues with which we must deal as

it directly impacts the marketing of our commodities. Our apple division members have experienced the impact of the highly publicized Alar issue and know well what a sharp drop in demand will do to sales and, in turn, prices. We are going to see more attacks on the food safety system.

We have lost the use of EBDCs (fungicides) on several crops, and the Environmental Protection Agency may cancel the registrations for additional crops. Without these fungicides, we will have major problems growing what some regard as 'minor commodities' which, in reality, are major enterprises in many farm

operations," Laurie said.

"Food safety affects all farmers, not just the fruit growers who happened to be involved in the first battle of a war being waged by environmentalists whose objective is eliminating the use of chemicals in agriculture. It will take a major effort by our total organization to defend the overall safety of our food supply system. The task before us is bigger than any individual commodity group can handle. Farm Bureau, with members producing all commodities, must provide the leadership in working in the food safety arena.

"Many of our members grow labor intensive crops. I see our ability to produce and harvest crops by having a sufficient labor force in future years being challenged. A new farm workers' union is being organized in the state. We must learn by the experiences of growers in other parts of the country to deal with what will be a new approach in this state. We may need to consider an H2A program for Michigan to supplement the declining number of aliens due to the Immigration Reform Act," he

### Freedom Township

SYNOPSIS  
December 12, 1989

The meeting was called to order with all board members present.

Minutes and Treasurer's report were approved with \$25,873.94 in the General Fund and \$444.10 in the Liquor Fund.

Various communications were read and discussed. Uphaus reported that the sliding scale zoning ordinance for agricultural land was approved by the Planning Commission and has been sent on to the County Planning Commission for their review. Under old business, Paul Lemon will continue to be the township emergency contact person. Little reported attending a fact-gathering session on a proposed halfway house site in Washtenaw County. Building inspection fees and costs were discussed and Schaible will put together a resolution for consideration at the next meeting. Earl Horning was approved to the Zoning Board of Appeals with many thanks to Gary Mitchell who has fulfilled his term on that Board.

### Farm Values Increase

The Federal Reserve Bank of Chicago has reported that farmland values in Michigan during the past year increased by 4 percent. According to Michigan Farm Bureau economist Bob Craig, other states had somewhat stronger gains.

"We did have some problems, particularly a year ago in the fall harvest, with losses in dry bean production and some other crops, that tended to relate back into income for farmers and I think it kind of held back some of the gains that we otherwise might have seen."

New Business included a discussion of the application for Conditional Use submitted by Total Petroleum and the Wolverine Pipeline, and the county chapter M.T.A. meeting.

Bills #2643 through #2680 were approved for payment. \$60 was moved from General Fund to the Liquor Fund.

Meeting adjourned 9:30 p.m.

Submitted by Julie Schaible, Clerk  
Approved by Robert Little, Supervisor

### SALT FOR SAFETY!

Is Your Lot Slick?  
CALL US TO SALT

LITTLE WACK EXCAVATING  
428-8025

Buy, Rent  
Sell Thru  
The Classifieds



To one and all

Our heartfelt wishes for a year of joy and fulfillment.

R. D. Kleinschmidt Inc.



Good luck, good health always be with you in the days ahead.

Alber Orchard and Cider Mill



It wouldn't be a New Year without the joy of friends to share in the fun...and to all our many friends, we wish to say "Best Wishes."

Dan's Westside Automotive



Happy New Year

May you find renewed peace and contentment all year long.

Manchester Tool & Die

### MEMO

Michigan Electrical & Maintenance Organization  
Commercial - Residential - Health Care Centers  
Lighting-Power-Preventive Maintenance-Inspections  
Emergency Repairs - Bucket Truck Work  
Work Scheduled: Sun.-Sat. 24 Hrs./day  
Serving Michigan & Ohio  
Service Representative CWEC Co.  
24 Hr. 517-456-7535  
Pager # 313-943-6638



### HAPPY HOLIDAY

May each hour in the New Year ahead be happy and cheerful for all our friends and customers. Many thanks.

T & N SERVICES

### Wacker's General Store

Pepsi, Diet Pepsi  
Mountain Dew  
Pepsi Free  
Sugar Free Pepsi Free  
A & W Root Beer  
Vernors  
Sugar Free A & W  
Sugar Free Vernors  
Slice & Diet Slice

\$2.49

1/2 Liter 8 Pack plus deposit

2 Liter..... \$1.49 plus deposit

6 Pack Cans..... \$1.89 plus deposit

G. E. Wacker Inc.

Gasoline-Fuel Oil-Grease  
Motor Oil-Diesel Fuel  
9050 Chelsea-Manchester Road  
Manchester, Mich. 48158

Winter Hours:  
Monday-Thursday 7 am-8 pm  
Friday 7 am-9 pm  
Saturday 8 am-9 pm  
Sunday 9 am-8 pm

**ZERO** ... It's O.K. NOT to drink alcohol at a party.\*  
**ONE** ... One drink per hour sets the pace for moderate drinking, AND  
**THREE** ... Three drinks is the moderation maximum.

\* It's especially important not to drink alcohol if you are driving, under 21, pregnant or chemically dependent.



# Farm Bureau Delegates Adopt Policies

The 470 farmer delegates to the Michigan Farm Bureau annual meeting adopted policies for their organization on a number of current concerns, including the controversial nuclear, low-level radioactive waste disposal issue. After a lengthy, occasionally emotional, discussion on the proposed policy and many amendment motions, the delegate body adopted a position calling for protection of the state's prime farmland.

"Prime and unique farmland must be protected because of its value as a natural resource and its ability to produce food, feed, and fiber," they said. "We oppose the siting of a low-level radioactive waste on any prime farmland in Michigan. Further, the process of disposing of these wastes must at all times consider the protection of public health as the top

priority."

Property owners near and around the necessary waste sites should be compensated for the loss of value to their property by the disposal authority accountable for that site, they said.

The delegates also called on Congress to review the Low Level Radioactive Waste Act of 1980 and requested reduction of the number of sites the act requires "when possible."

The delegates also addressed the food safety issue, calling on federal and state regulatory agencies to improve consumer information programs and to respond in a "rapid and aggressive" manner to food safety concerns. Proper facilities and resources necessary to satisfy consumer demands should be ensured to these agencies, they said. The Farm Bureau organi-

zation, they stated, should take a leadership role in helping to coordinate the efforts of the agricultural industry and the entire food marketing system in informing and educating consumers.

Delegates said that the labeling of all fresh or processed farm products to list or describe any or all production practices is not "practical, feasible, or economical."

The issue of biotechnology also received considerable debate before delegates adopted a position supporting additional biotechnology efforts to provide safe products that "increase the marketability of our products, solve environmental concerns and improve our productivity at a lower cost." They supported research into new uses for farm commodities "as long as these technologies are safe and provide economical benefits to consumers." They also went on record favoring the "swift dissemination of accurate information to consumers concerning biotechnology products."

Included in the biotechnology policy resolution was conditional support for the use of bovine somatotrophin (BST), a growth hormone currently being tested on some dairy herds.

"We support the use of BST as a management tool for the dairy industry provided that the Federal Food and Drug Administration approves the safe use of BST with animals, and a program is developed through Michigan State University and Michigan Department of Agriculture to educate producers to effectively use BST as a management tool," they said.

The delegates opposed the labeling of milk and other dairy products from cows that are receiving BST because it is a naturally occurring protein that has been proven safe for human consumption by the FDA.

# Fund Established For Boysville Dormitory



A fund has been established to help replace St. Joseph Hall, a 48-bed dormitory on Boysville of Michigan's Clinton Campus. Contributions can be sent to the St. Joseph Hall Fund, care of Boysville of Michigan, Clinton, MI 49236.

A fund has been established to help replace St. Joseph Hall, a 48-bed dormitory on Boysville of Michigan's Clinton Campus. St. Joseph Hall was completely ravaged by an electrical fire that broke out in the attic area of the building shortly after 9:00 a.m. on Saturday, December 16.

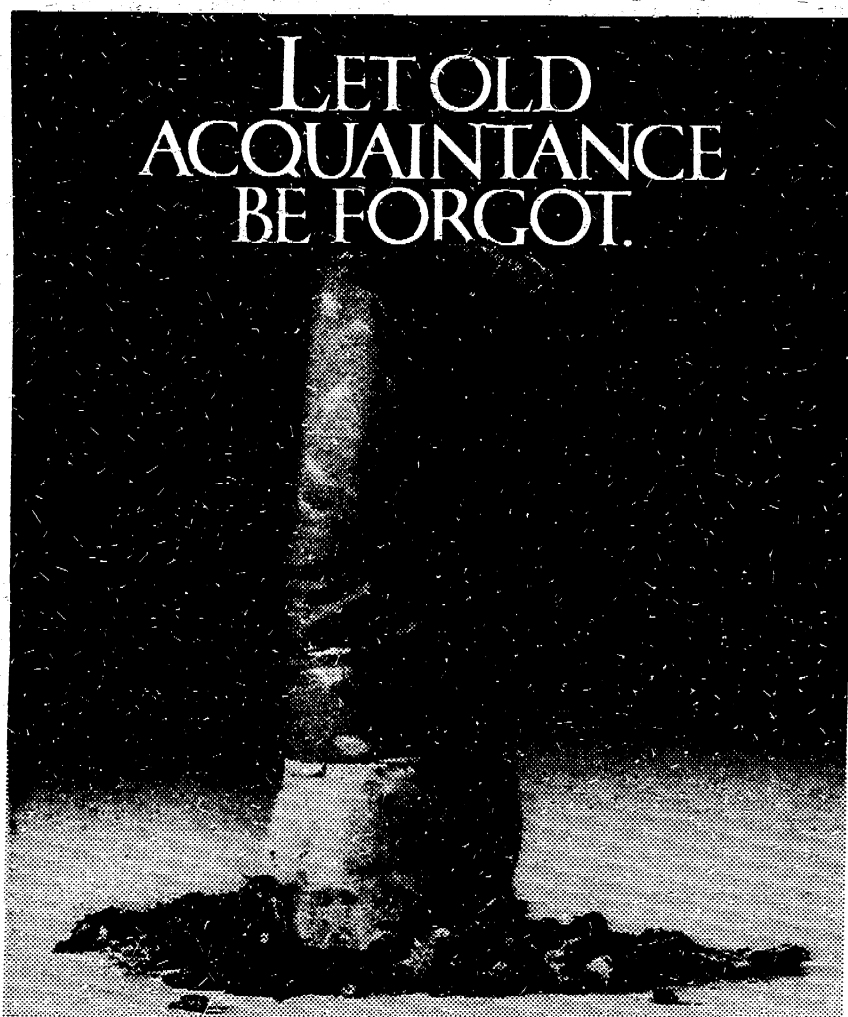
The 48 boys who lived in the dorm were eating breakfast in a dining hall in another building when the fire erupted and spread rapidly through the single-story structure. The fire, which destroyed nearly all of the wood and brick building, was doused by 1:00 p.m.

"Fortunately, no one was in the dorm at the time," said Brother Chester Freel, regional director of Boysville's Clinton Campus. "Some of the kids smelled smoke, and we called the fire department right away, but it burned fairly quickly. Thankfully, no one was injured."

The 48 students from St. Joseph Hall are being housed temporarily in Columbus Hall, another building on campus. According to Brother Freel, "the boys lost all their personal possessions, like pictures of their families, their clothes, and whatever else they have, like personal mementos and things like that. Some of them had parents who died, and they lost the only pictures they have ever had of them."

Boysville officials have set up a fund to raise moneys to build a new dormitory. Contributions can be sent to the St. Joseph Hall Fund, care of Boysville of Michigan, Clinton, Michigan 49236.

**Buy, Rent,  
Sell Thru  
The Classifieds**



**LET OLD  
ACQUAINTANCE  
BE FORGOT.**

For free help and support call 1-800-4-CANCER.

*Wishing you the happiest of holidays  
and good health throughout the new year.*

**DR. STANLEY E. GILBERT**  
232 E. Main St.  
P.O. Box 321  
Manchester, MI 48158

**Welcome To  
Manchester  
HOP-IN  
Food Store**

Store Manager Bernie Smith would like to invite you in for a FREE coffee.

**HOP-IN SPECIALS** From 12-27-89 Thru 1-9-90

**BUD 12 pack  
Cans**  
\$5.89  
Plus Tax and Deposit

**Large Coffee**  
A Small Price  
**59¢ Plus Tax**

**National Oil**  
10W30 & 10W40  
**99¢ qt. Plus Tax**

**Small  
Fountain Drink**  
**29¢ Plus Tax**

- Open 24 hrs.
- Accept All Major Credit Cards
- Beer/Wine
- Sunoco Gasoline
- Pop/Snacks
- Hot Coffee
- Lotto/Lottery
- Grocery needs
- Fountain Drinks