

# Strikes N Sparer

## Manchester Sportsman Club

Jolly Jeglers	Manchester Town Club
Carol's Cut-N-Curl 60	24 Cheers 60
Dutch Country Kitchens 52	32 Wayne's Windshield R 58 1/2
Chelsea Lanes 42	42 Norm Walz 52
Comerica 41	43 Cooks 47
Manchester Car Wash 40	44 Klinks Excavating 45
Bollinger Sanitation 38	46 Wampler Construction 42
Manchester Automotive 34	50 Shearcrazy 35
Robertson-Morrison 29	55 Jenters 29 1/2
INDIVIDUAL GAME	C & M Lawn Care 29
M. Scherdt 200	Eighties Ladies 22
K. Smith 198	HIGH IND GAME 213
M. Wilson 195	Phyllis Baker 212
INDIVIDUAL SERIES	Donna Dault 211
S. Merrimann 521	Sue Lobbestael 536
M. Freeman 516	HIGH IND SERIES 536
V. Wurster 510	Phyllis Baker 527
HIGH TEAM GAME W/HDCP	Donna Dault 526
Dutch Country Kitchens 927	Debbie Klink 817
Chelsea Lanes 921	HIGH TEAM SERIES ACT 2326
Carol's Cut-N-Curl 916	HIGH TEAM GAME ACT 813
HIGH TEAM SERIES W/HDCP	HIGH TEAM SERIES HDCP 2283
Chelsea Lanes 2823	Cooks 2326
Dutch Country Kitchens 2573	Cheers 2326
Carol's Cut-N-Curl 2541	HIGH TEAM GAME HDCP 813
	Norm Walz 2283

A reminder to all club members: The Christmas Party is Saturday, December 2, 1989 at 5:00 p.m. Dinner is at 6:00 p.m. sharp!

## Rogers Corners Farm Bureau

The Rogers Corners Farm Bureau Christmas Dinner will be held December 2 at 7:00 p.m. at the home of Luther and Barbara Schaible. There will be a \$2.00 gift exchange.

**With Marriott's weekend rates you can really go to town.**

**Marriott's Two For Breakfast Weekend™**  
**\$69\*** per night, not per person

Wouldn't it be wonderful to do something really different this weekend? At the Toledo Marriott Portside you can paint the town red and still stay in the black. Adjacent to Portside Festival Marketplace, we're convenient to the Museum of Art, Toledo Zoo and much more!

Marriott's Two For Breakfast Weekend includes deluxe river-view accommodations and two full breakfasts each morning of your stay. So get to town and give us a call.


**Redeem this ad and receive \$10 off our already low rate.**

Two for Breakfast offered 7 days a week. Subject to availability. Expires 12-30-89. \*Not including tax and gratuities.



**TOLEDO Marriott PORTSIDE**  
 Two SeaGate/Summit Street • Toledo, Ohio 43604 • (419) 241-1411

**IMPORTANT: Please learn American Red Cross Infant/Child CPR**

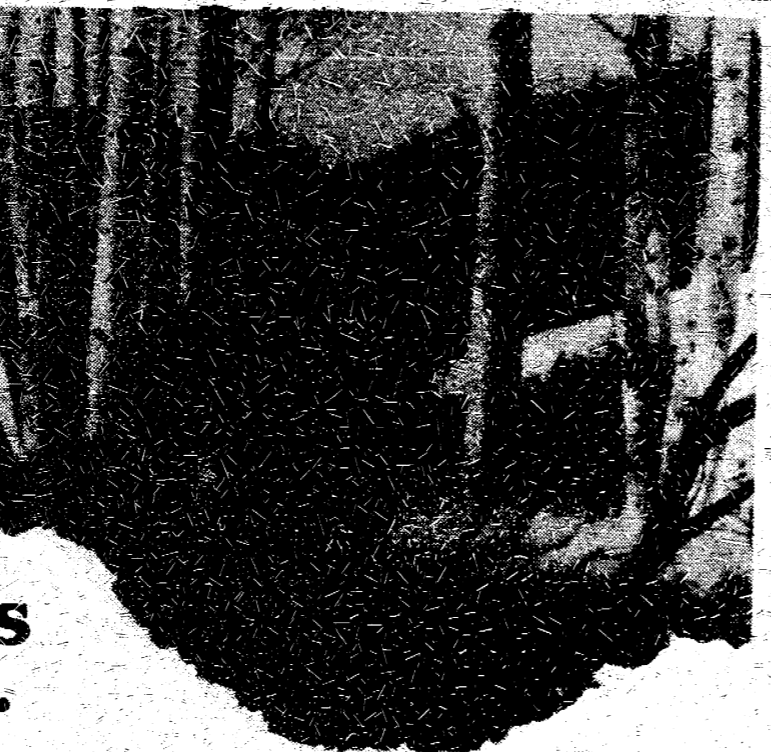


## Classifieds Really Work

Quality service at a special price! That's what you'll receive when you use the money-saving coupons shown below. Each coupon features a "Service Special" that your vehicle may require at this time.

- Of course, we offer more than just the listed specials. Everyday we provide our customers with the following:
    - Technicians that are professionally trained to service Ford-built vehicles
    - Sophisticated diagnostic equipment that can quickly identify the source of a problem
    - Specially designed tools that help our technicians complete your service work properly
    - Genuine Ford and Motorcraft replacement parts built to exacting specifications
- Have your vehicle serviced today and save money too!
- Prices on other makes may vary. Please present coupon at time of purchase.*

**One stands alone.**



**B & G**

Bertke-J. Mahrle 13	7
Tracy-Zimmer 12	8
L. Wacker-Feldkamp 12	8
Bisard-D. Bristle 11 1/2	8 1/2
T. Wacker-Litwin 10	10
M. Mahrle-Walkow 8	12
G. Wacker-P. Mahrle 7	13
J. Bristle-Steele 6 1/2	13 1/2
MENS HIGH GAME	
Glen Wiley 186	
Larry Wacker 181	
Bob Feldkamp 163	
MENS HIGH SERIES	
Glen Wiley 510	
Larry Wacker 444	
Bob Feldkamp 416	
WOMENS HIGH GAME	
Lauren Wacker 181	
Leann Canter 178	
Kathy Bisard 159	
WOMENS HIGH SERIES	
Leann Canter 447	
Peggy Kelley 417	
Lauren Wacker 404	
TEAM HIGH GAME W/HDCP	
T. Wacker-Litwin 887	
T. Wacker-Litwin 851	
Bertke-J. Mahrle 845	
TEAM HIGH SERIES W/HDCP	
T. Wacker-Litwin 2522	
Bertke-J. Mahrle 2491	
Bisard-D. Bristle 2366	

**Todd Withrow Company**

REMODELING  
 CABINETMAKING  
 ADDITIONS—WINDC VS  
 KITCHENS—BATHROOMS  
 ROOFING—SIDING  
 CUSTOM BUILT CABINETS  
 WALL UNITS—FURNITURE

TOP QUALITY MATERIAL  
 AND WORKMANSHIP

LICENSED AND INSURED

CALL ANYTIME  
 428-9420 or 428-7797

**ALUMINUM RECYCLING**

TOP PRICES PAID FOR  
**ALUMINUM SCRAP**  
 & ALL NON FERROUS METALS

**Jackson Fibers Co.**  
 (517) 784-9191  
 1417 So. Elm St.  
 1 blk. North of High St.  
 Jackson, Michigan

**MOTORCRAFT OIL and OIL FILTER SPECIAL**

Includes up to 5 quarts of Motorcraft oil, Motorcraft oil filter and installation. Probes and diesel-equipped vehicles higher.

Repair Order No. \_\_\_\_\_

**TOTAL SPECIAL PRICE—PARTS and LABOR**

**\$18.95**

ANY APPLICABLE TAXES EXTRA. VALID NOVEMBER-DECEMBER, 1989

**MOTORCRAFT ENGINE TUNE-UP SPECIAL**

Solid state tune-up includes installation of Motorcraft spark plugs; inspection of choke, throttle linkage, spark plug wires and distributor cap; adjustment of idle and timing. Aerostars, Econolines and Platinum Plugs higher.

**TOTAL SPECIAL PRICE—PARTS and LABOR**

4 Cylinder \$37.80 6 Cylinder \$42.60 8 Cylinder \$47.80

ANY APPLICABLE TAXES EXTRA. VALID NOVEMBER-DECEMBER, 1989

**FRONT END ALIGNMENT SPECIAL**

Check and adjust caster, camber and toe-in. Passenger cars only. (Vehicles equipped with MacPherson strut suspensions include toe-in adjustment only.)

**TOTAL SPECIAL PRICE AS DESCRIBED**

**\$19.95**

ANY APPLICABLE TAXES EXTRA. VALID NOVEMBER-DECEMBER, 1989

**WIPER BLADES and SOLVENT SPECIAL**

Includes parts and installation of two Motorcraft wiper blade refills and one 32 oz. can of Ford Ultra-Clear windshield washer solution concentrate. Excludes Merkurs and Scorpios.

**TOTAL SPECIAL PRICE AS DESCRIBED**

**\$10.95**

ANY APPLICABLE TAXES EXTRA. VALID NOVEMBER-DECEMBER, 1989

**MIDWEST FORD**

510 W. MAIN ST., MANCHESTER, MI.  
 Mon. & Thurs., 9-8 Tues., Wed.-Fri. 9-6 Sat. 9-2  
 Call Us Collect: 313-428-8343



Manchester Township Library  
 P.O. Box 540  
 Manchester, MI 43158

# THE MANCHESTER ENTERPRISE

MANCHESTER TOWNSHIP LIBRARY  
 DEC 7 1989  
 30¢ COPY

123rd YEAR VOLUME NUMBER EIGHT USPS 327-460 THURSDAY, DECEMBER 7, 1989

## Scherdt Receives Optimist Award

Manchester Optimists awarded the honor of Outstanding Student for the month of November to Rebecca Scherdt. She is the daughter of Bud and Carol

She was a Queen candidate in both 9th and 10th grade and has perfect attendance during 1989. Rebecca's sports activities include JV Basketball and Volleyball and Varsity Softball. Her athletic achievements include Basketball, "Miss Hustle", Volleyball Team Captain and "Outstanding Back Row", and Volleyball All Conference Honorable Mention. She has been a member of 4-H for four years, going to State two of those years and winning the Leadership Medal once. Rebecca has joined Students Against Drunk Driving last year and is currently on the Board. Thus far she is tied for 1st in the sophomore class. She plans to attend college and is leaving her career options open. Optimist Mary Kallewaard presented the award. Keep up the good work, Rebecca.



## Tree Of Lights

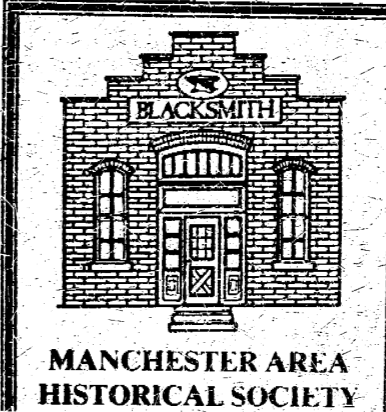
There is still time to give the gift of love this year, through the Manchester Interfaith Counseling Service's "Tree of Lights." For every donation of \$2 or more given to ICS, in memory of or in honor of a loved one, friend, or relative, a light will shine on our

continued on page 3



## Santa's Mailbox

When Santa Claus came to town on Sunday, November 26 he left a message for the children of the Manchester area. Santa's message was for the children who would like to send their Christmas list to him, the Community Resource Center, P.O. Box 433, Manchester, MI 48158 will receive mail for Santa. Letters should be mailed before December 18 for Santa to be able to send an answer and make sure his bag is filled with just the right presents for everyone.



## Luminaria Season

I look out the window and see the snow and it reminds me of Santa who is soon to show. I see people shopping for gifts in the store and it tells me it's time to do our Christmas Eve chores. For supplies, see you at the Blacksmith Shop on East Main Street, Thursday, Friday or Saturday, December 21, 22, 23, 3:00 p.m. to 7:00 p.m., or please call 428-8234 for an appointment. Late shoppers December 24 please call 428-8234 for supplies.

## Celebrates 100 Years



Mr. Otto Kulenkamp celebrated his 100th birthday December 6, 1989. He has been a farmer for 61 years on Bowen Road. A dinner was held in his honor Sunday, November 26, at the home of Eileen and David Pratt of Union. Present were his wife Margaret, sons Vern of Manchester, Ernie and Shirley of Evansville, Indiana, and Alwin and Caryn of Cambridge, Ontario. Also present were grandchildren Kristen and Scott Schaefer of Manchester, Stephanie and Lee Ueever of Sand Lake, Bobbie and Mike Robard of Evansville, Janet, Andrew and Patrick Kulenkamp of Cambridge; great-grandson Zachary Robard; and, nephew Lawrence and Ester Bloom of Brooklyn.

## Auto Broke The Bridge

Manchester Enterprise November 8, 1917  
**Car Not Much Injured But Driver's Arm Was Broken In The Big Crash**

Friday afternoon a reckless driver ran his car into the bridge at the electric light plant, breaking the iron arch and other parts of the structure so it had to be condemned. The car was injured and the man had an arm broken. Claude Shook of Lansing and 24 others driving Oldsmobiles passed through here bound for Toledo. Shook was last and the way he drove one would conclude he wanted to be first. Those who saw him speeding down City Road said that he was giving the sight cylinders a try-out. He undoubtedly saw that a 16-foot driveway was not wide enough for him, as he put on the brakes several rods before reaching the bridge. He said that the left rear hub struck

the frame of the bridge but it did not stop the car, as it struck again farther on and then whirled completely around striking the other side of the bridge, smashing one wheel and otherwise injuring the car. Shook had his hand cut and arm broken, besides being bruised somewhat. The car was towed to the garage and Dr. Kent reduced the fractured arm and Shook went to the Manchester Hotel where he remained until the next day when he returned to Lansing. Nothing was heard from the other drivers. The township will probably look to the auto company for damages to the bridge. The bridge was condemned and unless one wishes to take his own chances in crossing on it, he had better take the next road either north or south. That is a dangerous place, as the place is crooked and the bridge narrow. Only a few days before Arthur Jenter's car came within a narrow margin of going into the river. They have put a railing on the north side now as a protection.

## New Dialing Procedures

Some Michigan Bell customers in Manchester now must use new dialing procedures to make local or long distance calls requiring an operator. The telephone company resumed providing its own local and long distance operator service in August 1986 and is continuing to phase in the change across the state, according to Marcia Buhl, local Bell public relations director. These operator services were provided under contract by AT&T for Michigan Bell since the break-up of the Bell System in 1984. About 800 long distance operators who transferred from Michigan Bell to AT&T in 1984 have returned to Michigan Bell since late 1986. Buhl said the Michigan Bell operators handle calls such as collect, bill-to-third-number, person-to-person and requests for assistance on calls within the customer's local calling area. Customers who need operator assistance from a long distance company must dial "00" or contact the long distance company for instructions on how to place operator-assisted calls, she said. Buhl said customers in the 428 exchange will be affected.

## Senior Citizens News

Is this the winter that will be like the ones we remember from our childhood? Last Thursday and Friday were downright balmy compared to the weekend with the 16 degrees on Sunday morning. It froze our daughter's pond - is it really only the first part of December?

Let's come in out of the storms and enjoy Jan's chuck roast on Thursday, December 7, when the folks born in December will be treated to their free birthday meal, cake and candles. All who are 55 or more are invited. Come try it in this, your birthday month. Call in your dinner reservations to 428-8359 ahead, or to Jan at 428-7630 before 10:30 on meal days. Then come to the Center for bingo.

Seniors who have made reservations will leave for Flint and "Christmas at Whiting" presentation on Saturday, December 9. Monday, December 11: A shopping trip to Jackson is planned. The bus leaves at 9:30 and you may make reservations by calling Erma Alber at 428-8707.

Tuesday, December 12: A busy day for seniors starting with Annual Meeting at 9:30. Come with your ideas and questions. Council meeting follows with work on the January-February Trumpeter at 10:45. Take a break and enjoy Jan's classic barbecue ribs (which will be available without sauce, too) at 12 noon. Center activities will follow at 12:30. Between 7-8 pm, the nine Girl Scout Troops in the Manchester Cluster (Daisy, Brownies, Junior and Cadets) plan to carol to senior citizens. If you are interested in hearing these angelic voices at your home, turn on your porch lights!

Wednesday, December 13: The bus will begin pick up of seniors at 9:30 for a trip to Saline

Hospital and a talk by Neil Hirst on Parkinson's Disease. Following lecture and lunch, a Christmas party with refreshments, gifts and entertainment by the Saline Players will be held. Brief visitation to our local folks in the Convalescent Home will be possible. Call Erma to reserve your spot.

Thursday, December 14: Chicken Terriaki will be served at noon lunch with bingo to follow. Don't forget to get your name in to either Rubena (428-8655) or Erma (428-8707) for the Klager School party on Friday December 15 by December 12!

## DIAL -A- GARDEN

The following is a monthly schedule of Dial-A-Garden, the system of pre-recorded daily gardening tips sponsored by the Washtenaw County Cooperative Extension Service. The system is in operation 24 hours a day, 7 days a week. Interested persons are invited to call 971-1129 at their convenience to listen to timely, up-to-date gardening information.

Thursday, December 7: Choosing a Christmas Tree  
Friday, December 8: Keeping Your Christmas Tree Fresh  
Monday, December 11: Decorate with Backyard Greenery  
Tuesday, December 12: Buying a New Houseplant  
Wednesday, December 13: Firewood Colors

## Obituary

**Groeb, Theodora (Teddy)**  
4973 S. Maple Rd.  
Ann Arbor, MI

Age 53, died Sunday, December 3, 1989 at home due to cancer. She was born June 7, 1936 in DuQuoin, Illinois, the daughter of William H. and Agnes M. (Kern) Cousins. She had been a Saline area resident most of her life. On December 20, 1958 in Saline, Michigan, she married Robert H. Groeb and he survives.

Mrs. Groeb was a member of The First United Methodist Church of Saline and the Saline Area Players. She was a graduate of Saline High School and a graduate of Eastern Michigan University where she received both her Bachelor of Arts degree and her Master's of Art degree. She was employed by the Manchester Public School System for over 28 years as a first grade teacher.

Survivors in addition to her husband include: two sons, Robert K. Groeb and his wife Michele, Kevin W. Groeb and his wife Louise; and one daughter Rebecca Groeb, all of Ann Arbor. Other survivors include her mother Mrs. William H. (Agnes M.) Cousins of Saline. She was preceded in death by her father, William H. Cousins on December 13, 1984.

Funeral services will be held on Wednesday, December 6, 1989 at the Robison, Bahnmiller Funeral Home in Saline with the Rev. Lloyd Christler officiating. Burial took place in Oakwood Cemetery, Saline. Memorial contributions may be made to Arbor Hospice, 2010 Hogback Rd., Suite 4-A, Ann Arbor, MI 48105.

**THE MANCHESTER ENTERPRISE**  
150 East Main Street Phone 313-428-8173 Manchester, MI 48158  
USPS No. 327-460

The Manchester Enterprise was established in 1867 and is published each Thursday at 150 East Main St., Manchester, Michigan, with second class postage paid at Manchester, Michigan.  
Edward E. Steele, Publisher Lenore A. Steele, Editor  
POSTMASTER: Send Form 3972 To: Manchester Enterprise, 150 East Main St., Manchester, Michigan 48158.  
DEADLINES: All Display Advertising and Pictures (Black & White ONLY) Are Due By 5 p.m. Every Monday For Same Weeks Publication. All Classified Advertising and News Articles Are Due By 10 a.m. Every Tuesday For Same Week Publication.

## American Legion Auxiliary

Notice of the American Legion Auxiliary meeting and pot luck dinner at the Legion Hall, December 13, 1989 at 6:30 p.m. Bring a dish to pass and your own table service. Senior and Junior members are encouraged to attend this evening of fun. In lieu of a gift exchange, donations to the Manchester Family Service will be appreciated. Donation suggestions are: canned goods (meat, i.e. tuna, corned beef, etc.), paper goods (paper towels, toilet tissue, facial tissue), soap products, mittens, socks, and toys (mended and new, especially for boys) and dolls.

## School Hot Lunch Menu

Thursday, December 7: Boneless Rib-B-Q, Escalloped Potatoes, Buttered Carrots, Dinner Roll-Butter, Dessert, Milk  
Friday, December 8: Fruit Lunch, Tacos with Sauce/Lettuce Tomatoes/Cheese, Buttered Corn, Fresh Fruit, Milk  
Monday, December 11: Chicken Patty on Bun, Curly-Q French Fries, Dill Pickle Spears, Peach I-Iall, Milk  
Tuesday, December 12: Beef Ravioli, Buttered Green Beans, Bread & Butter, Sherbet, Milk  
Wednesday, December 13: Fish Sandwich, Potato Chips, Coleslaw, Crushed Pineapple, Milk

**SMALL CLASSIFIEDS FOR BIG RESULTS!**

## MEMO

**Michigan Electrical & Maintenance Organization**  
**Commercial - Residential - Health Care Centers**  
Lighting-Power-Preventive Maintenance-Inspections  
Emergency Repairs - Bucket Truck Work  
Work Scheduled: Sun.-Sat. 24 Hrs./day  
Serving Michigan & Ohio  
Service Representative CWEC Co.  
24 Hr. 517-456-7535  
Pager # 313-943-8838

## Directory Available

Knowing where to go with household recyclables has been made one step easier for Michigan residents, according to the Department of Natural Resources (DNR).

## Obituary

**Jack E. Stein**  
Manchester, MI

Age 54, died Sunday, December 3, 1989 at the Veterans Hospital in Ann Arbor. He was born December 23, 1934, the son of Henry and Lena (Yack) Stein. He was an Army veteran and a former employee of the Ford Motor Company and a salesman in the Ann Arbor area.

Mr. Stein is survived by 2 sons, Jack of Ypsilanti and Chris of Manchester; 2 daughters, Karen Sadat of Redford and Jennifer Stein of Brooklyn; 2 grandchildren; 3 brothers, Earl of Virginia Beach, Va., Henry of Clinton, and Richard of Manchester; also by Jeannette Stein and a special friend Sandy Hieber.

Cremation has taken place. A memorial service was held Wednesday, December 6, 1989 at St. Dominic's Catholic Church in Clinton. Donations may be made to the Diabetes Association. Arrangements were made by the Jenter Funeral Home.

In response to a growing number of requests about the location of various residential recycling centers in the state, the "Michigan Recycling Directory" has been developed by the DNR. The directory contains information on more than 200 drop-off sites for recyclable materials, as well as a listing of the 25-plus communities currently participating in curbside recycling programs. The directory includes the county location of the center or program, the operator's name, telephone number and drop-off site address, days and hours of drop-off collection, and what materials are accepted.

In an effort to make directory information as available and accessible as possible, single copies of the directory have already been sent to all DNR District offices, cooperative extension agencies, certified health departments, county solid waste planning agencies, and state legislators. Single copies of the directory will be provided at no charge by writing DNR's Waste Manage-

## Tree of Lights

community "Tree of Lights" throughout the holiday season.

Manchester ICS has been in the community for 2 years, and is committed to providing quality individual, marital or family counseling at half the cost of other counseling services, while at the same time respecting the belief systems of persons. Money raised through the "Tree of Lights" will help supplement counseling fees for people who cannot otherwise afford it.

In addition to the light on the tree, persons who choose to honor or memorialize will receive a handsome note in the mail telling them that you cared enough to remember them in this special way.

Our "Tree of Lights" will be lit on December 17 at 7:30 p.m. in the Gazebo across from Wurster Park in coordination with the annual Christmas Carol Sing. But if you wish to have a light on the tree in honor or in memory of that special someone, donation forms must be turned in by December 15, 1989. Donation forms are available at Pyramid Office Supply, Krauss Pharmacy, Great Lakes Bank, area churches and the CRC. For more information, call 428-7722.

## Klager's Giving Tree



Decorating this year's giving tree are: (left bottom to top) Brandon Smith, Tyler Powers, Nolon Ahrens, Denick Hanewald, Aaron Strauble. (right bottom to top) Jamie Von Broda, Brian Blossom.

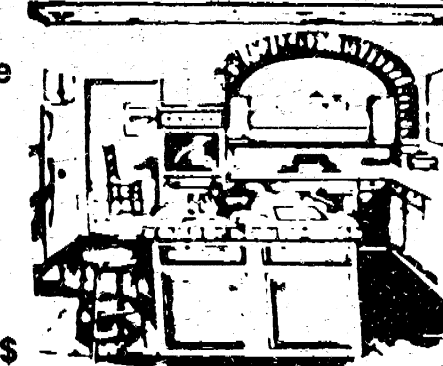
Klager's Giving Tree is ready for receiving canned goods. Every year students contribute canned goods and food items and place the donated items under the school tree. All items are distributed by the Manchester Family Resource to Manchester families during the holiday season.

## CUSTOM CABINETS MADE IN MANCHESTER

Competitive Prices  
Installation Available  
Design Service

—OR—

Let Us  
Reface Your Old  
Cabinets and Save \$\$



## Dutch Country Kitchens

18352 W. Austin Road Phone 313-428-7292 Manchester

**Our new CD is so unbelievable, we figured you might want to see the facts.**

*9-Month CDs*  
*Great Lakes 8.40%*  
*Comerica N/A\**  
*First of America 7.50%*

Great Lakes offers you an unbelievable 8.40% interest on a new high-yield 9-month CD. It requires only a \$100 minimum deposit - that's right, just \$100. And it's short-term, so you don't have to tie up your cash

**8.40%** forever. But don't wait! An offer this good won't last. Those are the facts. Figure it for yourself. Then call or stop by your nearest Great Lakes office. Offer ends soon.



\*9-month CD not available.

8.40% is simple interest. Rates subject to change. Substantial penalty for early withdrawal. Rates based on a 11/22/89 rate survey.

FDIC Insured

FOR MORE INFORMATION, CALL 800-342-5453 OR YOUR NEAREST GREAT LAKES OFFICE.  
62 OFFICES STRONG IN MICHIGAN AND INDIANA.

Manchester:  
111 E. Main St., 428-8379

Ann Arbor:  
Corporate Headquarters, One Great Lakes Plaza, 769-8300

HO-HO-HOME  
MOVIES, SLIDES, AND  
PHOTOS ON VIDEO!  
J. HENRY  
Video Production Services  
Manitou Beach, MI 48125  
P.O. Box 264 (517) 547-7233

**STEEL**  
NEW & USED  
STEEL AT  
BARGAIN PRICES  
•Structural •Plate  
•Re-Rod  
•Pipe •Square Tubing  
(Quantity Discounts)  
Jackson Fibers Co.  
(517) 784-9191  
1417 S. Elm St.  
1 block north of High St.  
Jackson, Michigan

**Todd Withrow Company**  
REMODELING  
CABINETMAKING  
ADDITIONS—WINDOWS  
KITCHENS—BATHROOMS  
ROOFING—SIDING  
CUSTOM BUILT CABINETS  
WALL UNITS—FURNITURE  
TOP QUALITY MATERIAL  
AND WORKMANSHIP  
LICENSED AND INSURED  
CALL ANYTIME  
428-9420 or 428-7797

**MANCHESTER MEN'S CLUB**  
**Christmas Tree Sale**  
LOCATED AT  
Tirb's Chevrolet Lot  
Monday-Friday 5 pm-8 pm  
Saturday 9 am-4 pm  
Sunday 11 am-4 pm  
Proceeds go back to the community

**Columbia Cabinetry**  
205 Irwin Street  
Brooklyn, Michigan  
Custom Cabinets  
Kitchen Re-facing  
Call anytime for appointment  
517-592-2292 517-536-4425  
Chris Parr

The Manchester Area  
**CHAMBER OF COMMERCE**  
wishes to express its  
**SUPPORT**  
of Manchester Stamping's request  
for rezoning and urges the  
Manchester Township Board  
to consider the request  
favorably.  
We also encourage citizens to  
become informed and  
to contact the  
Manchester Township Board  
to let their opinions be known.

**THE LAST GREAT DEALS OF THE DECADE**  
NOW THRU 01/04/90  
**CHEVROLET** **GEO**  
**HURRY! TIME'S RUNNING OUT!**  
**TIRB**  
**CHEVROLET & GEO**  
Phone 313-428-8212 or 313-428-8492  
131 ADRIAN STREET MANCHESTER, MICHIGAN  
Monday, Wednesday 7:30 am-8 pm  
Tuesday, Thursday, Friday 7:30 am-6 pm Saturday 7:30-12

# Middle School Honor Roll

The Nellie Ackerson Middle School Honor Roll for the marking period ending October 27, 1989 is as follows:

### "A" HONORS

8th Grade: Laura Alber, Eric Anderso, Sharon Bihlmeyer, Robert Davis, Matt Fielder, Tracy Gordon, Nathan Kloster, Zacy LaRue, Benji Lowery, Kurtis McDonald, Sarah Riske, Elizabeth Supers, Ben Walker, Greg Walter Tammy Young

7th Grade: Andrea Clark, Melissa Driessche, Charles DuRusel, Justin Ebersole, Sarah Feldkamp, Beth Hamilton, Andy Kalleward, Diana Kruse, Mary Lobbstaal, Karin Messing, Jenny Nosbisch, Linda Saunders, Karly Sweeton, Andy Winzenz

6th Grade: Erin Binder, Kevin Dettling, Connie Hamilton, Mark Harris, Darcy Hock, Dan Kwolek, Michael Mann, Erika Panches, Michael Ridenour, Jenny Sahakian, Andrew Schook, Jessica Smith, Joe Tobias

5th Grade: Sarah Ahrens, Dan Alber, Brandy Brink, Jessica Brooks, Stacey Burmeister, Lacey Curtis, Joanna Dettling, Renee Foster, Karen Goodell, Lin Harris, Michael Kessler, Suzanne Lowery, Jenny Messing, Aaron Millheim, Angelo Petrino, Jill Pfau, Ryan Roberts, Michelle Schaible, Steven Spurr, David Staten, David Sweeton, Lea Taddonio, Robert Taylor

### "B" HONORS

8th Grade: Shayne Ahrens, Jodi Armentrout, Kathleen Baran, Michael Barnard, Matt Bauer, Matt Blossom, Elizabeth Bragg, Erica Briggs, April Butterfield, Virginia Clark, Christeen

Colter, Jared Donnellon, Adam Arskine, Maggie Evislizer, Tom Fielder, Chris Fillyaw, Gordon Gilbert, Heather Green, Wendy Haussler, Tim Landini, Jason Leining, Gerald Loomis, Martha Marks, Edna Marshall, Matt McCutcheon, Jennifer Meyer, Dan O'Dell, Kevin Phelps, Kye Potter, Jodi Preston, Kristie Sannes, Bryan Schneider, Stacey Sloan, Katie Spiess, Jim Suggs, Patrick Tracy, Renee Wackenhut, Adrienne Wallace, Christine Walter, Tony Weir, Jennifer Williams, Brandon Woods, Brent Woods

7th Grade: Wayne Baker, Rob Blatchford, Geoff Brooks, Tim Brown, Amber Burkhardt, Jason Cousino, Michelle Davis, Henry Earhart, Amanda Erskine, Nicole Gero, Sharon Goodell, Jason Haken, Brent Hoeff, Heather Kester, Hillary Horodeczny, Amy Landini, Bryan Macomber, Doug Meeks, Troy Niehaus, Carrie Petrino, Robert Preis, Heather Panches, Mica Puscas, Jenny Rentfro, Tyra Salyer, Mark Schulte, Jeff Steele, Vida Shurtliff, Robyn Yeutter

6th Grade: Chris Beckington, Jason Beckington, Katrina Bihlmeyer, David Bordiné, Leah Bragg, Steven DeVries, Kathy Doyle, Bryan Duvall, Maggie Gisting, Arthur Gleason, Laura Griffin, Jesse Hakken, Amy Hlavka, Luke Hugel, Jamie Knousase, Brian Lantis, Chad LaRue, Marcus McNamara, Greg Mitchell, Jennifer Pfau, Kati Randall, Trevor Schleicher, Jeremy Spurr, Deborah Walter

5th Grade: Bob Arkebauer, Joelle Armentrout, Nicholas Baran, Ceara Brown, Landon Burkhardt, Andrea Busch, Sean Clifford, Edward Cruz, Jim Donnel-

lon, Heather DuRussel, Ryan Fielder, Joey Funk, Shelby Gardner, Brad Gere, Christopher Gilbert, Anna Green, Bob Hayden, Andrea Hughes, Micah Jefferson, Bradley Kemner, Rebecca Koffman, Jason Lantis, Deb Lobbstaal, Kim Luckhardt, Stacy Mann, Mark McCutcheon, Nicholas Meyer, Emily Miller, Jason Miner, Jayna Nickert, Jessica Noggie, Jessica Porter, Pam Preston, Stephen Riske, William Roberts, Jim Ross, Paul Schulte, Michelle Shuey, Elizabeth Steele, Scott Sullivan, Andrew Supers, Katie Tolen, Jeff Tyler, Jon Way, Nicholas Weidmayer, Kory Wenk, Elizabeth Wiggird

## "Skills For Adolescence"

Students at the Manchester Middle School are involved in a special program entitled "Skills for Adolescence." This course was developed by the Quest National Center, Lions Club International and a team of 57 leading experts on youth from throughout the United States.

The purpose of the class is to help students increase their self-confidence and motivation, along with practical skills to resist

negative peer pressure to use drugs and alcohol, solve problems and set goals.

As a key part of this program, parents are invited to attend a series of three, two-hour parent seminars. The purpose of these sessions is to provide parents with an opportunity to experience some of the educational activities and be introduced to many of the important life skills that their sons and daughters are learning in the course. It is an exciting basis for shared communication in the family.

The seminars are held in the "Quest" room #9 of the Middle School from 7:00 to 9:00 p.m.

December 13: Improving Self-confidence in Your Child  
January 25: Improving Com-

munication Skills  
March 8: Solving Family Conflicts with Love and Limits

The Middle School is now registering for the first seminar. If you are interested please fill out the form sent home with your child, or contact the Middle School office.

We look forward to seeing you.



**ALL THE BEST FOR YOU AND YOUR FARM.**

from your Farm Bureau Insurance Agent

Get all the protection you need—for your farm, yourself, and your family—from your Farm Bureau Insurance agent. Serving farmers is our specialty. That's why we are Michigan's largest farm insurer and the number one protector of Michigan farm families. Call today. Making your future a little more predictable.

**LARRY BECKTEL**  
135 E. Main St., Suite 204  
Manchester, MI 48158  
Phone 313-428-7331

PHONE 313-428-8955

**Bradley W. Taylor, O.D.**  
*Optometry*

COMPREHENSIVE EYE EXAMS  
CONTACT LENS - PEDIATRIC VISION

227 EAST MAIN STREET  
P.O. BOX 355 MANCHESTER, MICHIGAN 48158

**Stitching Post**

COUNTED CROSS STITCH • CRAFTS • ANTIQUES  
115 W. MICHIGAN AVE., CLINTON • 496-0061

**Going Out of Business Sale**

Cross Stitch Books & Accessories  
50% Off  
DMC Floss - 5 for \$1.00

Buy with CONFIDENCE from

**Russ Aiuto**

Your TRANSPORTATION SPECIALIST

AT  
**MIDWEST FORD, Inc.**

510 West Main Street, Manchester, Mich.

- A, B, Z and X-Plans my specialty!
- Top dollar for trade-in!
- Expert, friendly service after the sale!
- Good previously owned vehicles for sale!

Call **RUSS AIUTO** for more INFORMATION **313-428-8343**

**Christmas at ATLAS**

**GIFTS FOR YOUR PETS**

**GIFTS FOR THE BIRDS**

FEEDERS BY: **Heath Hyde Rubbermaid Andercraft K**

WILD BIRD SEED MIXES  
SUNFLOWER SEEDS  
SAFFLOWER SEED  
CRACKED & EAR CORN

SCRATCH FEED  
FINCH MIX  
THISTLE SEED  
MILLETT  
MILO  
SEED BELLS  
SUET CAKES & BALLS

**COMPLETE LINE OF HORSE FEED & SUPPLIES**

PEANUTS ROASTED — SALTED IN THE SHELL

**ATLAS of Manchester**

OPEN SATURDAYS TIL 4:30

28875 WEST AUSTIN RD. MANCHESTER, MICHIGAN  
PHONE 313-428-7077  
Monday-Friday 9 am-6 pm Saturday 9 am-4 pm

# CHURCH DIRECTORY

**EMANUEL UNITED CHURCH OF CHRIST** - Rev. Paul Kuntzman, Senior Pastor, Rev. Nancy Doty, Associate Pastor; Sunday School, Adult Study, Early Worship 9:00 a.m.; Coffee Hour 10:00 a.m.; Worship 10:30 a.m.

**MANCHESTER UNITED METHODIST CHURCH** - Rev. Pegg Ainslie, Pastor; Worship 10:30, Coffee/Fellowship Time 11:30; Sunday School 9:10; Choir Rehearsal 11:45 a.m.

**ST. MARY'S CATHOLIC CHURCH** - Father Raymond Schlinkert; Monday thru Friday 8:30 a.m.; Saturday 5:00 p.m.; Sunday 8:30 a.m. and 10:30 a.m.

**FAITH COMMUNITY CHURCH** - Scott Engelman, Pastor; Roman Kupecky, Associate Pastor; 8400 Sharon Hollow Rd. off W. Austin; Worship Service 10:00 a.m.; Sunday School 11:15 a.m.; Sunday Evening Service 6:00 p.m.; Jr. and Sr. High Young People's Meeting 7:30 p.m.

**VICTORY BAPTIST CHURCH** - 423 South Macomb, 428-7506; Rev. R. Dean Cooper, Pastor; Sunday School 10:00 a.m.; Morning Worship 11:00 a.m.; Evening Public Bible Class 6:00 p.m.; Wednesday Praise & Prayer 7:00 p.m.

**BETHEL UNITED CHURCH OF CHRIST** - Rev. Roman A. Reineck, Pastor; Schneider and Bethel Church Roads; Church Service 10:00 a.m.; Sunday School 11:00 a.m.

**SHARON UNITED METHODIST CHURCH** - Rev. Erik Alsgaard, Pastor; Corner of M-52 and Pleasant Lake Roads; Church School 10:00 a.m.; Worship 11:00 a.m.; Bible Study 5:00 p.m.

**ST. JOHN'S LUTHERAN CHURCH** - Rev. Dennis A. Falk, Pastor; Austin Road, Bridgewater; Sunday School 9:15 a.m.; Worship 10:30.

**NORTH SHARON BAPTIST CHURCH** - Bill Winger, Pastor; Clifford W. J. Whitenburg, Assistant Pastor; Sylvan and Washburn Roads; Sunday School 10:00 a.m.; Morning Church 11:00 a.m.; Evening Church 7:00 p.m.; Wednesday Bible Study 7:00 p.m.; Youth Meetings 7:00 p.m.

**IRON CREEK COMMUNITY CHURCH** - English and Sharon Hollow Roads; Worship Service 10:00 a.m.; Sunday School 11:15 a.m.; Sunday Evening 7:00 p.m.; Wednesday Evening 7:00 p.m.

**ZION LUTHERAN CHURCH** - 3050 S. Fletcher Road; Rev. Mark A. Weirauch; Sunday School 9:00 a.m.; Worship Service with Holy Communion 10:15 a.m.

**ST. THOMAS LUTHERAN CHURCH** - 10001 W. Ellsworth Rd., (5 miles North and 6 1/2 East of Manchester); Rev. John Riske, Pastor; Sunday School 9:30 a.m.; Worship Service 10:45 a.m.

**ST. JOHN'S UNITED CHURCH OF CHRIST** - Rev. Ted Wimmier, Pastor; Rogers Corners, Waters and Fletcher Roads; Adult Bible Study Class 10:00; Worship and Sunday School 10:30 a.m.

**CLINTON ASSEMBLY OF GOD** - Rev. Richard Coury, Pastor; Chris Bouldrey, Youth Pastor; 13300 Clinton-Manchester Road, Clinton; Sunday School 9:30 a.m.; Worship 10:45 a.m.; Sunday Evening 6:30 p.m.; Wednesday Prayer, Bible Study, Youth 7:00 p.m.

**CHURCH OF JESUS CHRIST OF LATTER DAY SAINTS (MORMONS)** - Wayne L. Winzenz, Branch President; 1330 Freer Road, Chelsea; Sacrament 9:30 a.m.; Sunday School, Primary 10:50 a.m.; Priesthood, Relief Society, Aaronic Priesthood, Youth 11:40 a.m. For more information, call 475-1778.

let your words do the talking in the **CLASSIFIEDS**

Are you worried about your child because...

- he doesn't seem to be developing as you think he should?
- she seems slow to roll over or sit?
- he doesn't seem to be crawling or walking as he should?
- she doesn't babble or talk like other children her age?
- he doesn't seem to hear your voice or other sounds?
- she doesn't imitate your sounds or actions (such as "pat-a-cake")?
- he doesn't show an interest in toys or people?
- she cries a lot "for no reason"?
- he is hyperactive or hard to control?

If something doesn't seem "quite right", call

Project Find  
994-8161

Washtenaw Intermediate School District  
or  
Linda Hiatt 475-9131  
Project Find helps parents find services and programs for eligible children any time from birth on.

THE MANCHESTER ENTERPRISE THURSDAY, DECEMBER 7, 1989 PAGE 5

**EMANUEL UNITED CHURCH OF CHRIST**

Thursday, December 7: 12 noon Senior Meal, 3:20 pm Cherub Choir, 3:40 Children's Choir  
Saturday, December 9: 6 pm Young adults meet at church for caroling returning to Pastor Doty's

Sunday, December 10: 9 & 10:30 am Special Christmas music by Bell and Adult Choirs, 10 & 11:30 am Coffee, 1 pm Grades 4, 5, 6 go to Saline Home for Christmas caroling  
Monday, December 11: 6:30 Optimists and Brownies, 7 pm Basket Class  
Tuesday, December 12: 12 noon Senior Meal, 6:30 pm Girl Scouts, 7:30 Scouts  
Wednesday, December 13: 6 pm Bell Choir, 7 pm Scouts, 7:30 Adult Choir, 8 AA, Al Anon  
Thursday, December 14: 7 pm All Church Committees

**FAITH COMMUNITY CHURCH**

Friday, December 8: 7:30 pm Annual Business Meeting and Election of Officers  
Saturday, December 9: 9:30 am Practice for the Christmas Musical, 5 pm Church Bowling League at Brooklyn Lanes  
Sunday, December 10: 10 am Morning Worship Service, Nur-

ery Available, 11:20 Sunday School for all ages, 6 pm Evening Fellowship Hour, 7 pm Lifeline Youth Group (grades 9-12)  
Monday, December 11: 6 pm Tecumseh Convalescent Ministry, 7:30 pm Deacon's Meeting  
Wednesday, December 13: 6:30 pm AWANA Kid's Clubs and Jr Varsity AWANA (grades 7 & 8), 7 pm Prayer Hour & Bible Study

**MANCHESTER UNITED METHODIST CHURCH**

Friday, December 8: 9:45 am Bible Study at church, 12 noon Advent Study/Luncheon-church Sunday, December 10: 9 am Worship, 9:40 Sunday School, 10:30 Worship, 3-5 pm Christmas Open House at Parsonage, 5:30 pm UMYF Christmas Party at Anderson's  
Monday, December 11: 5:45 & 7 pm Girl Scouts  
Wednesday, December 13: 3:30 & 6 pm Girl Scouts

**BETHEL UNITED CHURCH OF CHRIST**

Thursday, December 7: 7:15 pm Youth Choir Plus  
Saturday, December 9: 8:30 Confirmation Class Adult Fellowship go to Christmas at Whiting  
Sunday, December 10: 10 am Morning Worship Service, 12 noon Sr

YOUTH LUNCH-TRIM CHRISTMAS, 7 pm All Church Caroling, 11-11:30 am Living Gift-Market, 11:45 am Mission Sunday  
Wednesday, December 13: January 1990 Newsletter items please. 5:30 Children's Choir

**ZION LUTHERAN**

Thursday, December 7: 8am to 8pm Chelsea area Bloodmobile at St. Mary's School, 10am & 7 pm Psalm Class  
Saturday, December 9: 9-11:30 Catechism Class, 10 am S.S. Practice for program  
Sunday, December 10: 9 am Sunday School Practice for program, pre-gathering meeting, 10:15 am Worship/Debbie Regal presentation/door offering, Coffee hour after worship, WOZ pack shut-in boxes, 3 pm Chelsea Festival Lessons/Carols St. Mary's Church  
Tuesday, December 17: 7:15 Sr Choir, 7:30 Shuffleboard, 8 pm Property Committee  
Wednesday, December 13: 6:30 Joymakers, 7 pm Business Management, 8 pm Church Council

# GRADUATION STATIONERY

by Carlson Craft

- Announcements
- Name Cards
- Memory Books
- Jewelry
- Party Supplies

Prompt Service  
Ask to See Our Album

**GRADUATES**

150 East Main Street  
Manchester, Michigan  
428-8173

# Manchester Village Council

November 20, 1989

The regular meeting of the Manchester Village Council was called to order with the Pledge of Allegiance to the Flag by President Kallewaard at 7:05 p.m. Council members present: Kallewaard, Wallace, Reinhart, Kwolek, Becktel, Marshall and Tucker. Absent: Cooper. Also present: Joe Yekulis and Larry Wight of Layne-Northern.

The minutes of the November 16, 1989 meeting were presented and approved by Council as submitted on a motion by Becktel, support by Marshall. Vote: Ayes - all.

### APPROVAL OF AGENDA

Council approved the Agenda with two additions on a motion by Reinhart, support by Wallace. Vote: Ayes - all.

### CORRESPONDENCE

Various pieces of correspondence were distributed for Council's perusal. Clerk to request copies of House and Senate Bills pertaining to mobile home property tax.

Sgt. Yekulis to check with Liquor Control Commission on letter concerning Hop-In license.

Discussion was held on present Village Office phone system. On a motion by Marshall, support by Kwolek, Council approved \$290 purchase of computer cards from Radio Shack to switch from pulse to touch tone. Roll Call Vote: Ayes - all. Clerk to research traffic study by Michigan Bell and the possibility of truck line format for offices.

### PUBLIC PARTICIPATION

None

### BID OPENING

1974 Ford w/plov, \$2655 bid by Steve Parr.

1974 Ford \$511 by Alan Steffeld. No bids on Chevy. Motion by Becktel, support by Marshall to accept the bid from Steve Parr for \$2655 on 1974 Ford truck. Roll Call Vote: Ayes - all. Clerk to advertise Chevy again.

### REPORTS

Sheriff's Department: Sgt. Yekulis presented Council with Sheriff's Report for the month of October 1989.

Sgt. Yekulis asked to separate actual firearm complaints from registrations on future reports. Motion by Becktel, supported by Reinhart to accept Sheriff Department Report has submitted. Ayes - all.

Sgt. Yekulis reported there were no problems on Devil's Night or Halloween. He also reported on a meeting with President Kallewaard on decibel readings around Manchester Plastics. Deputies take readings day and afternoon shift and so far have found no readings on meter.

Sgt. Yekulis requested permission to purchase plastic to put over windows. Permission was granted.

### PLANNING COMMISSION

Kallewaard read recommendation from Planning Commission on Railroad right of way. Ordinance Committee to draft resolution so that Council can adopt policy at next meeting. Discussion was held on request from Baptist Church to put up a sign. Council recommends placement on signboard at Village limits. Kwolek stated understanding desire for sign but must deny their request if any non-public sector request to locate a sign on public property is approved, the Village, in the interest of equal treatment, could not deny requests from industry, business groups or associations. Kwolek to relate decision to Guy

Luthe, Zoning Inspector. DPW REPORT

Kwolek reported that Brad Lyons is going to investigate cost estimates for a cover for sledge tank #2. Wallace to look into price of a dozen pine trees as an alternative.

Kwolek reported that DPW will lose Bob Pendell for 6-8 weeks and stressed need for hiring temporary employee. Council suggested placing ad in paper for sealed bids for independent contractor.

### OLD BUSINESS

Layne-Northern Test Well. Mr. Larry Wight presented Council with quote of \$7120. Motion by Kwolek, support by Becktel to accept proposal from Layne-Northern. Roll Call Vote: Ayes-all. Mr. Wight to contact Health Dept. concerning site location inspection.

December 19. Students in grades one to four will share holiday songs and customs from countries around the world.

### VILLAGE HALL MAINTENANCE

Marshall reported windows had been repaired, and he is getting estimates on the heating system, should have answer at next meeting. Becktel raised question on contract with cleaning person, specifically the duties being performed at present. Clerk to research. Question was raised as to whether or not restroom at

Continued on next page

# Klager Holiday Program



Pictured making flags to represent several countries are fourth graders: (l-r) Randy Burkhardt, Lindsay Jacob, Nick Kozar, Mike Meranuck, Meghan Greenwald, Jill Weidmayer, Rebekah Butterfield, Lindsay Kloster, Ginger Peters.

This year's holiday program "Around the World at Christmas" will be presented at 7:00 p.m. in the high school gym on Tuesday.

**DANIEL R. WAMPLER**  
517-456-4305

- New Homes
- Additions
- Siding

- Garages
- Roofing
- Decks

# Ben Franklin Stamp Club Presentation



All fourth graders had the opportunity to hear a special presentation by a representative from the United States Post Office on the art of collecting stamps. Children learned how to start a collection, how to prepare the stamps, the history of stamps and some facts about unusual stamps. The presenter shared information about some of the stamps in his personal collection of 65,000 stamps. He told students about an unusual stamp that has a miniature record on it and plays the country's national anthem. Many students indicated a new interest in stamps and just may become future collectors.

# SANTA CLAUS IS COMING TO TOWN!



Visit Santa at

FIRST OF AMERICA BANK  
Manchester Office

December 9, 1989  
10 am to Noon

Kids of all ages can enjoy a fun-filled visit with Santa. Everyone receives a free photograph, too.

Come join us at First of America Bank for some holiday cheer. Merry Christmas, one and all.



Manchester Office 10903 Manchester-Chelsea Road 428-8389

# Village Council

Village Hall was public or not. Council discussed and determined on a motion by Reinhart, support by Marshall, that it was not a public restroom. Vote: Ayes - all. President Kallewaard reported more plaster falling in hallway upstairs.

### PARKS

Wallace reported tree for main street sidewalk in front of Post Office is ready to be picked up. Kwolek will ask Gary to make arrangements or to ask Jack Gould if he could pick it up. Additional decorations have been ordered for Christmas tree in front of Library and burned bushes have been replaced.

### ORDINANCE

Kwolek read proposed Ordinance #179 on fines for illegal discharge into sewers. President Kallewaard and Kwolek suggested Council research this proposed ordinance and send it to attorney and MDNR for their comments. Motion by Becktel, support by Wallace to have each Village employee sign off as acknowledgement of Resolution pertaining to use of safety equipment.

Clerk was asked to prepare and get signatures. Vote: Ayes - all. President Kallewaard reported on Sewer Rate Ordinance and Federal Formula the Village must conform to. Council held discussion on effects of using formula.

Kallewaard also reported on House Bill 5181 which would set up a statewide inspection of rental properties. Council suggested waiting to see if this bill is adopted before continuing with their investigation.

### FINANCE

Reinhart reported on closing major and local street accounts and leaving Municipal Account per Dick Kuntz's recommendation. Motion by Reinhart, support by Kwolek to close out Major and Local and keep in one account. Vote: Ayes - all.

Motion by Becktel, support by Marshall, to publish Sue Koebbe's summary of Audit Report with note from President Kallewaard explaining deficit no longer exists. Vote: Ayes - all.

Kallewaard presented report from Sue Koebbe on status of backlog on water bills. Council wondered if temporary help is

needed to enter data into computer. Kallewaard to talk with Sue.

Critical Bridge Fund to be deferred until Clerk has an opportunity to talk to Village Engineer concerning applications.

Reinhart questioned whether or not Village wants to get on program to have access road to Industrial Park black-topped. December 1st deadline.

### NEW BUSINESS

Kallewaard asked for adoption of resolution of intent to vacate alley. Motion by Marshall, support by Wallace to adopt. Vote: Ayes - all.

Motion by Reinhart, support by Kwolek to accept bid and schedule of Arbor West Tree Service in amount of \$10,000. Roll Call Vote: Ayes - all. Certificate of Insurance submitted.

Kallewaard reported on log being kept by Guy Little on zoning calls. Questioned possibility of payment per quarter being too low.

It was also reported that Lorenzo Steele has questioned what could be done to rectify mud problem on his property. Discussion followed. It was noted that sidewalk can't be put in until spring.

At 10:20 p.m. President Kallewaard made a motion to close for next portion of the meeting for the purpose of discussion of DPW contract negotiations, supported by Becktel. Roll call Vote: Ayes - all.

Meeting adjourned at 10:58 p.m. on motion by Becktel, support by Marshall.

Karen Tucker  
Village Clerk

**MARGIE'S UPHOLSTERY**

6245 Brooklyn Road  
Jackson

Wide Selection Of Fabrics

Pick-Up/Delivery Available

517-536-4230

**Chelsea Plumbing**

Repair - Remodel  
New Construction

Gail Shears  
Licensed Master Plumber  
475-1037

**BRIDES**

FOR ALL YOUR WEDDING NEEDS

WEDDING STATIONERY  
and  
ACCESSORIES  
by Carlson Craft

Invitations  
Announcements  
Enclosures, Napkins  
Reception Items  
Attendants Gifts

The Manchester Enterprise  
150 E. Main

Quality service at a special price! That's what you'll receive when you use the money-saving coupons shown below. Each coupon features a "Service Special" that your vehicle may require at this time.

Of course, we offer more than just the listed specials. Everyday we provide our customers with the following:

- Technicians that are professionally trained to service Ford-built vehicles
  - Sophisticated diagnostic equipment that can quickly identify the source of a problem
  - Specially designed tools that help our technicians complete your service work properly
  - Genuine Ford and Motorcraft replacement parts built to exacting specifications
- Have your vehicle serviced today and save money too!

Prices on other makes may vary.  
Please present coupon at time of purchase.

One stands alone.

**MOTORCRAFT OIL and OIL FILTER SPECIAL**

Includes up to 5 quarts of Motorcraft oil, Motorcraft oil filter and installation. Probes and diesel-equipped vehicles higher.

Repair Order No. \_\_\_\_\_

**TOTAL SPECIAL PRICE—PARTS and LABOR**

\$18.95

ANY APPLICABLE TAXES EXTRA. VALID NOVEMBER-DECEMBER, 1989

**MOTORCRAFT ENGINE TUNE-UP SPECIAL**

Solid state tune-up includes installation of Motorcraft spark plugs; inspection of choke, throttle linkage, spark plug wires and distributor cap; adjustment of idle and timing. Aerostars, Econolines and Platinum Plugs higher.

4 Cylinder  
**\$37.80**

6 Cylinder  
**\$42.60**

8 Cylinder  
**\$47.80**

**TOTAL SPECIAL PRICE—PARTS and LABOR**

ANY APPLICABLE TAXES EXTRA. VALID NOVEMBER-DECEMBER, 1989

**FRONT END ALIGNMENT SPECIAL**

Check and adjust caster, camber and toe-in. Passenger cars only. (Vehicles equipped with MacPherson strut suspensions include toe-in adjustment only.)

**TOTAL SPECIAL PRICE AS DESCRIBED**

\$19.95

ANY APPLICABLE TAXES EXTRA. VALID NOVEMBER-DECEMBER, 1989

**WIPER BLADES and SOLVENT SPECIAL**

Includes parts and installation of two Motorcraft wiper blade refills and one 32 oz. can of Ford Ultra-Clear windshield washer solution concentrate. Excludes Merkurs and Scorpios.

**TOTAL SPECIAL PRICE AS DESCRIBED**

\$10.95

ANY APPLICABLE TAXES EXTRA. VALID NOVEMBER-DECEMBER, 1989

MIDWEST FORD

510 W. MAIN ST., MANCHESTER, MI.

Mon. & Thurs., 9-8 Tues., Wed.-Fri. 9-6 Sat. 9-2

Call Us Collect: 313-428-8343



**Manchester Interfaith Counseling Service**

Tree of Lights

Your \$2 (or more) donation to ICS will help light up our Community Christmas Tree

Donation forms are available at area businesses, churches, and the CRC. For further information call 428-7722.

Keep That Pretty Smile!

Please Be Invited To Visit Our Relaxed and Modern Dental Center, Where You Can Expect Prompt and Courteous Attention To All Your Dental Needs.

FAMILY DENTISTRY

ADULTS AND CHILDREN ALWAYS WELCOME AS NEW PATIENTS

Evening and Saturday Appointments Available

Dental Insurance Welcome

Relaxing Gas Upon Request

Visa and Mastercard Accepted

Payment Programs Available

BRUCE A. BATES, DDS

500 Galloway Dr. Manchester, Mich.  
Phone 313-428-8277

# Should Manchester Stamping Be Rezoned To General Industrial?

## Let the FACTS speak for themselves:

- Manchester Stamping is located on what is termed "fragile land" which is highly sensitive to pollution. General Industrial zoning allows for excessive production of noise and pollution.
- rezoning Manchester Stamping is contrary to both the Township and County Long Range Land Use Plans.
- both Manchester and Washtenaw County Planning Commissions voted AGAINST rezoning.
- Manchester Stamping ignored Planning Commission conditions for rezoning to Limited Industrial in 1986.
- Manchester Stamping has not filled their promises to:

- brick current factory space to keep sound level low
- plant and maintain green belt buffer along property borders
- guarantee, in writing, price of the house adjacent to their property
- move to the Industrial Park with their next expansion

We must act freely to encourage responsible economic growth, not be pressured by manipulative company threats to close. Contact your township officials to voice your opposition to the rezoning of Manchester Stamping Corporation. Come to the public hearing on December 11.

Paid For By Concerned Citizens of Manchester Township

## Letters To The Editor

The decision of the Manchester Township Board on December 11th will not only affect Manchester Stamping and its employees but our entire community. Manchester Stamping is located on a water recharge filter system for this area and is highly susceptible to pollution. The Washtenaw County Planning Commission highlighted this fact in their report to the Manchester Township Board and expressed concern that Manchester Stamping has been allowed to expand eight times with no thought to the environmental sensitivity of this land.

I am very concerned about why Manchester Stamping needs to go to General Industrial zoning. I hope the Township Board considers ALL the facts and not just the number of jobs it provides. What about the future of our land and water?

Anthony and Agnes Rafalski

I was not aware until I moved into my home, of the consistent noise caused by the press machine, late operating hours, and the target set up for practice for Mr. Hamilton's employees. I spoke to Mr. Hamilton in the summer of 1988. He informed me there was no noise ordinance, he would operate as long as he chose, and several other things. This is a good neighbor? I chose not to pursue it. Since I was new in the neighborhood, I decided to wait.

The issue is now rezoning 28 acres to General Industrial. This issue I must pursue. General Industrial has few limitations on manufacturing and noise. How can the neighbors stand by and watch this happen. What if Mr. Hamilton chooses to sell out after this property is rezoned? What then? Can you change the zoning back? No! What are his plans? Who would buy property and build a home next to 28 acres of General Industrial?

The Manchester Township Planning Committee and the Washtenaw County Planning Committee voted against this rezoning after carefully analyzing the pros and cons. These people are in office to protect the citizens of communities such as ours.

The citizens of this community against the rezoning issue pay taxes also. We care for our neighbors. I chose to move away from the big city to live quietly in a small town—not next to a manufacturing facility under a General Zoning.

In closing, a General Industrial Zoning Ordinance area should be in a General Industrial area, not mixed with homes and recreational land. The Master Plan of Manchester did not intend this type of zoning in this area at issue.

Linda Coppock

We read the articles written by Janet LaBeau Shurtliff about Manchester Stamping in last Thursday's paper.

We feel that the Manchester Stamping Company has a right to become a larger company and we wish them success, but we feel the present location to expand is not suited.

The best location is in the Village Industrial Park where the zoning is already GI. If Mr. Hamilton only wants to add an assembly operation to his present company, which was stated to the Manchester Township Planning Committee, the Industrial Park would meet the needs.

The community support Manchester Stamping has provided the Village is to be commended; the support provided to their six neighbors is lacking. I wonder if the support provided to the Village is the same type of support that my employer is requested to provide for doing business in the City of Ann Arbor.

We were surprised by Mr. Hamilton's threat to move from

Manchester should his rezoning not be approved, when the Industrial Park exists.

We purchased our home directly east of the stamping plant in March, 1988. We knew the plant was zoned Light Industrial and had restrictions to follow, and the surrounding area was zoned recreational. We also were aware that there was no intentions whatsoever of rezoning to General Industrial or any other similar expansion.

John Coppock

Township Board again three years later?

Hopefully, with the facts on the table, our elected officials will stick together and beat Goliath at his own game.

Peter and Mary Jo Finney

## Attends Seminar

Constable Lyle L. Moore of Manchester Township, attended the annual conference and training seminar of the Michigan Constable and Court Officers Association December 1 through 3, 1989. The conference, held at the Kellogg Center on the campus of Michigan State University, featured a full day of training on Saturday, December 2. Community policing in the war on drugs; modern day drug identification, changing use and trends; police corruption related to the drug problem; drug testing and abuse in the workplace; an update on search and seizure laws; and options in process servicing highlighted the agenda. Speakers included Robert Trojanowicz, Director, MSU School of Criminal Justice, and Research Fellow at the Kennedy School of Government at Harvard University; Bonnie Bucqueroux, co-author with Trojanowicz of "Community Policing: A Contemporary Perspective"; retired State Police Lieutenant Joseph Young, currently a private investigator focusing on workplace drug use; and, Zoltan Ferency, noted attorney, MSU Professor, and political activist.

Remember Friends and Loved Ones this **CHRISTMAS**

Ship Your Packages:

**UPS** **BURLINGTON AIR EXPRESS**

GROUND • AIR

GIFT WRAPPING AVAILABLE For A Nominal Fee We Also Prepare Your Shipment.

**PACKAGE EXPRESS CENTER**  
**KRAUSS PHARMACY**

128 Main Street Phone 428-8393  
SHIP YOUR PACKAGES HERE

**1989 LUMINARIA CHRISTMAS EVE**

Get Supplies At Blacksmith Shop On East Main Street In Manchester

Thursday, December 21 - 3 p.m.-7 p.m.  
Friday, December 22 - 3 p.m.-7 p.m.  
Saturday, December 23 - 3 p.m.-7 p.m.  
Or By Appointment  
Even Late Shoppers on December 24  
Call 428-8234

**SAND, CANDLES, BAGS, INSTRUCTIONS**

**\$3.00 MINIMUM PER HOUSEHOLD**

**BACK DOOR PARTY STORE**  
500 Ann Arbor Street Phone 313-428-9287 Manchester, Michigan

BEER WINE KEG BEER

GROCERIES

Instant and Daily Lottery Tickets

UNION 76 GAS Full Service and Self Serve

BUDWEISER AND 24 Pack Cans Plus Deposit **\$10.95**  
BUD LIGHT

**A Christmas Bonus**

**\$25 GIFT CERTIFICATE FOR \$20**

Give the pleasure of a wonderful meal, unhurried shopping or a delightful Bed & Breakfast experience in Blissfield. Friends and family will relish gourmet dining in the **Hathaway House**, casual food and drinks at **Main Street Stable & Tavern**; shop to their heart's content at six adjacent **Main Street Shops**; stay a night or two at **H.D. Ellis Inn** across the street. Truly, a memorable experience. **MERRY CHRISTMAS!**

**\$25 GIFT CERTIFICATES FOR ONLY \$20**  
(Valid 12/25/89-6/30/90 Only)

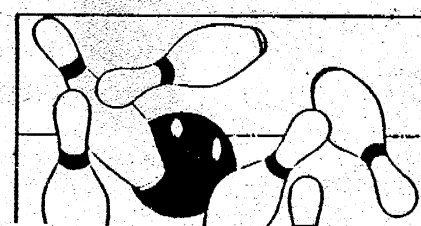
Also available: \$50 Gift Certificates for \$40, \$100 Gift Certificates for \$80. Please send me \$25 \$50 \$100 certificates.

Enclosed is my check for \$\_\_\_\_\_

THIS OFFER EXPIRES December 24, 1989

Name \_\_\_\_\_  
Address \_\_\_\_\_  
City \_\_\_\_\_ State \_\_\_\_\_ Zip \_\_\_\_\_  
Phone \_\_\_\_\_

Send to  
**Hathaway House**  
424 W. Adrian, Blissfield, MI 49228  
(517) 486-2141



# Strikes N Spares

Manchester Town Club		INDIVIDUAL SERIES	
Wayne's Windshield	65 1/2 25 1/2	S. Merriman	521
Cheers	65 26	M. Freeman	516
Norm Walz	57 34	V. Wurster	510
Cooks	49 42	HIGH TEAM GAME HDCP	
Klinks Excavating	47 44	Dutch Country Kitchens	927
Wampler Construction	42 49	Chelsea Lanes	921
Shearcrazy	37 54	Carol's Cut-N-Curl	916
Jenters	34 1/2 56 1/2	HIGH TEAM SERIES W/HDCP	
C&M Lawn Care	31 60	Chelsea Lanes	2823
Eighties Ladies	27 64	Dutch Country Kitchens	2573
		Carol's Cut-N-Curl	2541
		Manchester Businessmen	
Susie Klink	200	Steele's Htg & Cooling	24 15
J. (Tootie) Armentrout	203	C&M Lawn Care	22 17
500S		Knights of Columbus	21 18
Marcia Kennedy	509	Blues Brothers	19 20
HIGH IND GAME		Manchester Enterprise	17 22
Phyllis Baker	213	K & W Equipment	14 25
Donna Dault	212	TEAM SERIES	
Sue Lobbestael	211	K & W Equipment	2626
Phyllis Baker	536	Knights of Columbus	2530
Donna Dault	536	C & M Lawn Care	2528
Debbie Klink	527	IND SERIES	
Peggy Crump	526	Randy Uhr	641
HIGH TEAM GAME ACT		Dick Friday	615
Cooks	817	Keith Alber	609
HIGH TEAM SERIES ACT		TEAM GAME	
Cheers	2326	Manchester enterprise	942
HIGH TEAM GAME HDCP		K & W Equipment	941
Norm Walz	813	K of C	916
HIGH TEAM SERIES HDCP		IND GAME	
Norm Walz	2283	Randy Uhr	259
		Tom Golka	243
		Dick Friday	235
Jolly Keglers			
Carol's Cut-N-Curl	65 26	<b>Kirk Excavating</b>	
Dutch Kitchens	57 34	Sand—Gravel—Fill Dirt	
Manchester Car Wash	47 44	Basements—Driveways	
Chelsea Lanes	44 47	<b>428-7938</b>	
Comerica	43 48	Dave Kirk	
Bollinger	43 48	14180 Schieweis Road	
Manchester Automotive	36 55	Manchester	
Robertson-Morrison	29 62		
INDIVIDUAL GAME			
M. Scherdt	200		
K. Smith	98		
M. Wilson	195		

# Varsity Girls Basketball



Front Row (l-r): Jackie Ahrens, Katie Mareck, Michelle LaRue. Second Row (l-r): Jodi Parr, Stacey Wilde, Joanne Kemner, Nikki Eastman, Rhonda Evisizer. Third Row (l-r): Nikole Reinhart, Rebecca Scherdt, Jennifer Kunzelman, Coach Ann Warren.

**COME EXPERIENCE AN OLD FASHION COUNTRY CHRISTMAS AND THE CHARM OF MANCHESTER**

IN THE MILL  
201 EAST MAIN STREET  
MANCHESTER, MICHIGAN

*The Cobblestone Rose*  
Located in the Mill  
welcomes Christmas with  
Old Fashioned Charm & Romance.

Featuring Victorian Christmas wreaths, garland, bows & ornaments

20% off all Christmas cards & wrap

Open 7 days a week till 5 pm  
New Christmas Hours  
Open Thursday night till 8 for your convenience

**Ewe's & Moo's COUNTRY GIFTS**

**20% OFF ALL QUILTED PILLOWS**

NEW CHRISTMAS HOURS:  
Tuesday thru Sunday 12-5 pm  
Thursday till 8 pm  
Located In The Mill

Michelle Lobbestael, owner

*The 18th Century Shoppe*  
At The Mill, Manchester, Michigan, Thursday-Sunday 12-5

**Just Arrived** Christmas gifts for the gourmet in your family:

- ★ Effie Maries Rum Butter Cakes from San Francisco
- ★ American Spoon Preserves from Petoskey, Michigan
- ★ Bigelow Herbal Garden Teas
- ★ State of Michigan cookie cutters

We also have

- ★ Colonial Williamsburg Afghans
- ★ Herbal Calendars for 1990 by Emelie Tolley & Chris Mead
- ★ Handmade Samplers & teddy bears
- ★ Christmas ornaments from America, England, West Germany
- ★ Handcarved santas & teddy bears
- ★ Homemade potpourri & mulled cider mix
- ★ A selection of books & cards featuring

- ★ Mary Engelbreit
- ★ Barbara Milo Ohrbach
- ★ Mary Emmerling
- ★ Christmas music tapes featuring the celtic harp & hammered dulcimer
- ★ Nancy Thomas folk art
- ★ Gifts for the herb garden: beeskeps, garden markers, 20% off all sundials through December birdhouses

Merry Christmas & Thank You to all my customers  
Sandy Trolz

# Country Auction

Moving, we will sell the following at public auction at 12700 Sharon Hollow Rd., Manchester, MI  
Take Austin Rd. 4 miles West of town to Sharon Hollow Rd. then South 3 miles.

Sunday, December 10, 1989 at 12:00 noon

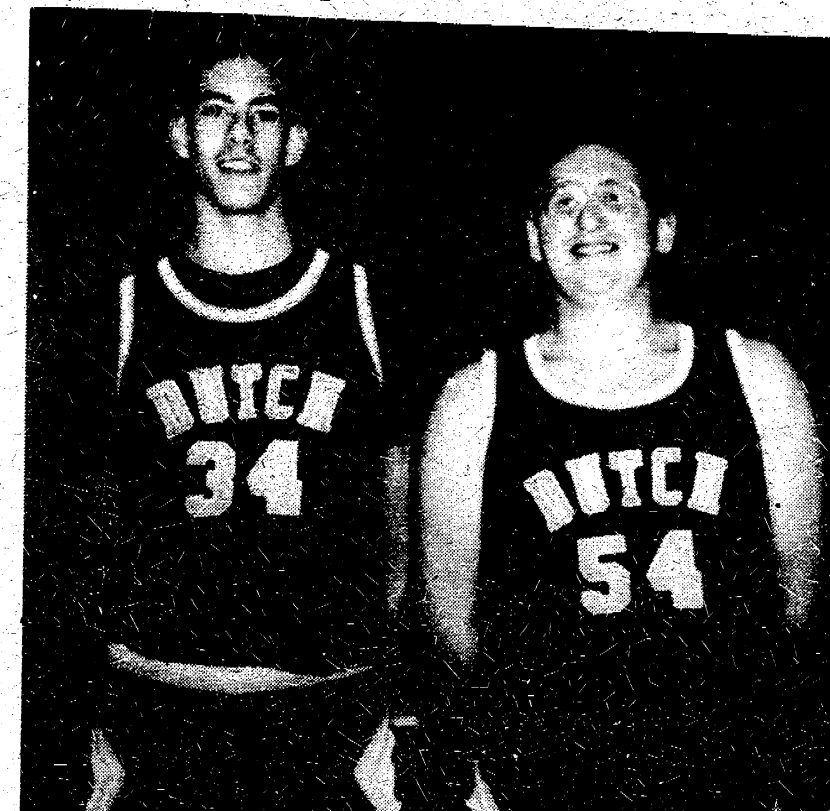
Craftsman 12 hp lawn tractor w/3 pt.-1 row cultivator, 1976 John Deere tractor-runs good-new rubber, Ford 9 N tractor-runs good, Massey Ferguson 50 tractor-not running, 3 pt. slip scoop, 3 pt. rear blade, 300 gallon overhead fuel tank, buzz saw, 3 pt. haul box, 3 pt. boom, 3 pt. 2 bottom plow, 3 pt. 1 row cultivator, tandem axle implement trailer, utility trailer, garden utility trailer, 8' aluminum truck cap, 14' aluminum semi V boat, 5hp Golden outboard motor, pile lumber, 1976 Ford truck-no motor, good parts, 300' aluminum underground cable, Yamaha EL 433B snowmobile, Suzuki GT 250 motorcycle-looks good, propane space heater, ace tanks, gauges, and torches, quantity copper pipe insulation, wood-metal lathe combination, building supplies, Homelite chainsaw, 2 Foley ice skate sharpening machines-model 395, hand tools, tractor hyd. front pump, fiberglass laundry tubs, garden tools, kerosene heater, water tank and heater, antique pine wardrobe, cast iron stove, wrought iron fencing, trash compactor, tressel table and benches, Early American china cabinet, 23" chest freezer, oak chest of drawers-painted, 2 oak chest of drawers, old trunk.

Owner - Richard Mendel

Braun & Helmer Auction Service

LLOYD R. BRAUN, CAI  
Ann Arbor (313) 665-9646  
JERRY L. HELMER, CAI  
Saline (313) 994-6309

# Varsity Basketball



Co-Captains  
Matt Knul and Dave Mitchell

Following a successful scrimmage against Whitmore Lake, we open our season hosting Adrian Madison on Friday. On Tuesday, we board a bus to visit Clinton. The outlook is very promising

**Poinsettias**  
Quality Grown All Colors  
**\$3.75 and up**

Christmas Cactus \$3.50 and up  
Norfolk Pine \$4.50 and up

**Schebors Greenhouse**  
14345 Logan Rd. Phone 428-8078 Manchester, Michigan  
Monday-Saturday 9 am-5 pm Sunday 10 am-4 pm

**Serving Friends & Neighbors**

24 Hour Wrecker Service

Lube, Oil Filter up to 5 qts Oil ..... **\$19.95**  
Foreign Cars Oil Filter Extra

WE NOW HAVE 2 NEW PREMIUM GASOLINES  
New Super-M 92 Octane the premium grade gasoline that can save you money while improving engine performance.  
New Extra-M 89 Octane the plus gasoline for those cars not requiring a premium grade.

FULL LINE OF MARATHON PRODUCTS

**FILLYAW'S MARATHON SERVICE**  
327 West Main St. Manchester, Mich. 428-8576  
An American Company Serving America..

# Village Council Report

December 4, 1989

Set a Council Hearing for December 18, 1989 on noncompliance with the Hearing Officer's order for repairs to a dangerous building at 117 E. Main St.

Decided to seek bids from several firms for engineering services related to reconstruction of the Furnace St. bridge

Approved purchase of 2-way radios for Village trucks used for snow plowing and street salting

Declined to authorize the new contract proposed by the Washtenaw County Sheriff's Department because some items important to the Village are either omitted or ambiguously stated.

# Village Planning Commission

Agenda

Regular Session, Tuesday, December 12, 1989, 7:30 p.m., Council Room, Village Hall

1. Roll Call
  2. Approval of Agenda
  3. Minutes from Previous Mtg.
  4. Reports from: Administration, Council, Commissioners, Written Communications, Petitions
  5. Regular Business
    - A. Site. Condominiums Comm. Way
    - B. Master Plan Work
    - 6. New Business
- NOTE: Public filing deadline is Friday at 4:00 p.m., 12 days prior to regular Tuesday session.
7. Adjournment

# Motor City Blue

Erik J. Alsgaard

The Manchester Township Library reading and discussion series, "Mysterious Michigan," ended its four-part run Thursday evening with another gifted author as guest lecturer. Loren Estleman, from Whitmore Lake, Michigan, and author of "Motor City Blue," delighted about 25 persons at the Blacksmith Shop.

Mr. Estleman began by telling the group the importance of reading. "I grew up reading everything I could get my hands on," he said. "And since the village I grew up in had no library, I had no one to guide me in my reading. I literally read whatever the Bookmobile brought around each Wednesday." As a result, Estleman recalled reading everything from the classics to comic books, and delighted in them all. And it was the wide variety of reading that led him into his first chosen field of work, journalism, which in turn led to full time work as a novelist in 1980.

One large question on everyone's mind on those rare occasions when an author is present to discuss their own work is, "How do you write?" Estleman talked at length about his writing regimen, but summed it up nicely by quoting from Luke Shore: "I write myself into a corner, then I write myself out."

But writing great fiction such as this requires more than luck. "Writing mystery is like walking a tightrope," he said. "Because of the lighthearted readers these days, the author must be careful in how much - or how little -

information you are giving the reader. You've got to keep the reader with the main character; throw in a red herring every now and then, too."

Estleman will be having the opportunity to practice what he preaches, he told the assembly because the very next day he would sit down at the manual typewriter and begin work on a new book.

The Manchester Township Library would like to thank every person who came to the discussion sessions and read the books. The reading and discussion series is sponsored in part by the Michigan Council for the Arts. Our next series is in the works, and we look forward to starting that in the spring.

# CLASSIFIEDS GET RESULTS!

# FUND RAISING

**Manchester Sportsman Club**  
8501 Grossman Road  
Friday 6:45 p.m.

**Manchester American Legion**  
203 South Adrian Street  
Saturday 7:00 p.m.

# Kleinschmidt Hardware

19860 Sharon Valley Rd. Manchester, MI  
Phone 313 428-8337  
Monday-Friday 7 a.m. - 6 p.m. Saturday 8 a.m. - 5 p.m. Sunday 10 a.m. - 4 p.m.

# 3-DAY SALE

Good Fri., Sat., Sun. Dec. 8, 9, & 10

Wells Lamont Yellow Chore Gloves  
SALE **99¢**  
Limit 6 Pair

40% Off Reg. Price  
SALE **\$5.99**  
100-Light String-To-String Light Set with 35 BONUS lights. Indoor/outdoor use. Clear, multi-color.  
Limit 4 With Coupon Expires 12-10-89

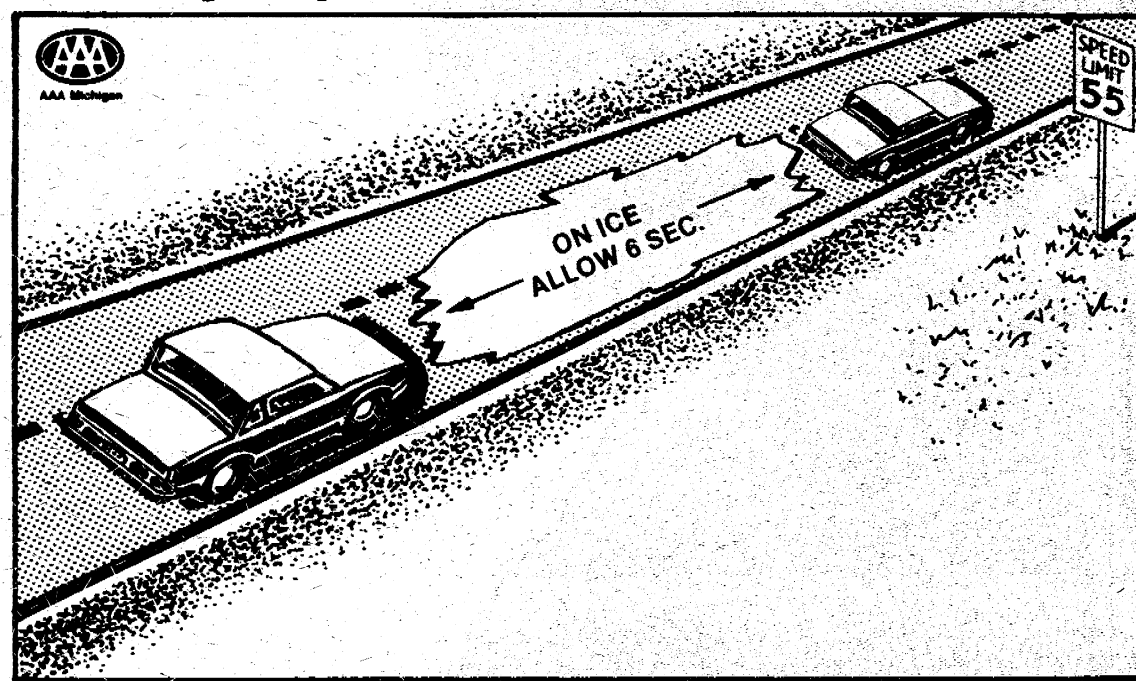
SALE **99¢**  
11 Oz. net wt. Spray Enamel for use on chairs, toys, tables, desks, more. Assorted colors.

MECHANIC  
Anti-Freeze  
SALE **\$6.44**  
Limit 6 Gallon Meets All Car Specifications

Furnace Filters  
SALE **69¢**  
Many Popular Sizes

12-2 Electrical Wire  
SALE **\$34.99**  
250' with Ground

### "Safety Gaps" can curb rear-end crashes



Rear-end crashes are one of the most common traffic mishaps and occur most frequently on wet or icy roads. AAA Michigan recommends a minimum 8-second safety gap between cars on slippery roads and 3-seconds on dry pavement. Safety gaps increase visibility and the space needed to avoid hitting the car ahead in an emergency. To ensure a safe stopping distance, pick a road mark, such as a sign, and begin counting the seconds (one-thousand-one, one-thousand-two) as soon as the car ahead passes the road mark. If the designated spot is reached before six seconds (three seconds on dry pavement), you're following too closely.

### Social Security Numbers Required For Dependents

According to the IRS, there are not many changes in the rules for filing this year's federal income tax returns. But there is one change that will affect many Michigan taxpayers, the IRS said today.

"Taxpayers who claim a dependent age 2 and over will be required to provide the dependent's social security number on their tax return," said IRS district director John Hummel. "Previously, the number was required for dependents age 5 and older," Hummel added. He said that on 1987 returns, the first year requiring social security numbers for dependents, 6 million fewer exemptions were claimed than in 1986.

To be issued a social security number, a dependent must have

proof of the following items: age, U.S. citizenship or legal alien status, and identity.

"A birth record from a public authority, hospital, or religious organization is generally sufficient for the first two items," said Hummel. "A school record or certain other documents can be used for proof of identity."

For more information, taxpayers may contact any Social Security Administration office for Form SS-5, Application for a Social Security Number Card, and for the free leaflet, "Applying for a Social Security Number."

Let your words do the talking. **CLASSIFIEDS**

NO-HO-HOME MOVIES, SLIDES, AND PHOTOS ON VIDEO!  
J. HENRY  
Video Production Services  
Marine Beach, MI 48220  
P.O. Box 204 (517) 547-7233

### Johnson Controls Enters Plastics Recycling

Johnson Controls, Inc., the nation's leading manufacturer of polyethylene terephthalate plastic (P.E.T.) containers, today announced it has begun construction of a plastics recycling facility in Southeastern Michigan. This action makes Johnson Controls the only U.S. plastic container manufacturer to enter the recycling business.

P.E.T. plastic is the material used for all plastic soft drink

containers it produces," said John Barth, Vice President of the Plastics Technology Group of Johnson Controls. "Plastics recycling is environmentally sound and it also makes good business sense."

Used bottles will be separated and cleaned at the new facility for use in various applications. Presently, plastic reclaimed from soft drink and other types of P.E.T. containers is used in such familiar applications as carpet fiber, fiberfill for jackets, and paint brushes.

Johnson Controls plans to use the recycled P.E.T. in non-food container and automotive applica-

tions. "The markets for recycled plastic are large and continue to grow at a rapid pace," said Louis Senunas, General Manager of Business Development and Recycling at the Plastics Technology Group.

"However, our ultimate goal is to close the loop by recycling soft drink bottles back into soft drink bottles. Johnson Controls has several development programs to achieve this closed loop recycling of P.E.T. plastic."

The new facility will utilize the latest and most advanced plastic reclamation technology available

which was developed by Reko, the recycling subsidiary of the large Dutch resin company, DSM. The facility will be launched during the second quarter of 1990 and begin full operations in the third quarter.

This Michigan based plastic recycling facility will provide a steady market for scrap plastic bottles not only in Michigan but throughout the Midwest, thereby enhancing recycling efforts. Development work will also be carried out here for improving plastic reclamation technology.

The decision to open a recycling plant is Johnson Controls latest move to support nationwide recycling efforts. In New Jersey and California, the company helped organize curbside and buy-back collection programs for all recyclable materials including plastics. In Washington State and Chicago, Johnson Controls developed and implemented P.E.T. plastic container collection programs. Johnson Controls is also actively involved in research programs and industry organizations seeking improvements in plastics recycling technology.

# Heart attack symptoms put you in a race against time.

### Winners head for the emergency room as if their lives depended on it.

Dramatic new ways to save lives and stop permanent damage from heart attacks are available to you and your family in our emergency room. These treatments must be given in a hospital setting.

More importantly, the treatments must be given AS SOON AS POSSIBLE to be effective.

Even if you're not sure it's a heart attack, you should be seen by a doctor. We can help you with the race against time, but you have to get here first.

Call 911, call an ambulance, or, at the very least, call our emergency room.

Chelsea and Saline Community Hospitals provide state-of-the-art care for heart attacks. Through their link with the Cardiac Emergency Network, a coordinated life-saving support system sponsored by the Michigan Heart Institute and Catherine McAuley Health Center in Ann Arbor, Chelsea and Saline Community Hospitals can offer comprehensive cardiology services. The physicians of the Michigan Heart Institute are among the most experienced cardiologists and cardiovascular surgeons in Michigan. They are "on call" to our emergency rooms 365 days a year, 24 hours a day. Medical tests can be telecopied (FAXed) whenever the need arises for additional consultation.

All of this means that for the people of the Chelsea and Saline areas, the closest hospitals are now the best hospitals.

### Know the symptoms of a heart attack.

- Pressure, tightness and aching in the chest.
- Nausea, sweatiness or weakness that may come and go.
- Shortness of breath.
- Numbness or pain in the left arm or left side of the chest or neck.

Chelsea Community Hospital  
775 South Main St.  
Chelsea, MI 48118  
(313)475-1311  
Emergency: (313)475-3960

Saline Community Hospital  
300 West Russell St.  
Saline, MI 48176  
(313)429-1500  
Emergency: (313)429-1551

Chelsea and Saline Community Hospitals are members of the Cardiac Emergency Network. Sponsored by the Michigan Heart Institute and Catherine McAuley Health Center

**PROJECT HANGUP**

HANG UP IF YOU SUSPECT A FRAUDULENT SOLICITATION

ASK QUESTIONS UNTIL YOU ARE SATISFIED

NO TO HIGH PRESSURE SALESPEOPLE

GET A WRITTEN EXPLANATION OF THE PROGRAM

UNSCRUPULOUS CALLERS TRY TO RUSH OR FORCE YOU INTO SAYING YES, SAY NO

POLICE ORGANIZATIONS WITH LEGITIMATE PROGRAMS WILL ANSWER YOUR QUESTIONS

IF YOU ARE UNCOMFORTABLE WITH A CALLER, REMEMBER, IT'S YOUR TIME, IT'S YOUR TELEPHONE.

**JUST HANG UP!**

A MESSAGE FROM THE MICHIGAN STATE POLICE THROUGH ASSOCIATION AND THE MICHIGAN STATE POLICE

CONTACT THE MICHIGAN STATE POLICE THROUGH ASSOCIATION AT (517) 484-4772

**WAYNE'S WINDSHIELD REPAIR MOBILE SERVICE**

WAYNE TERVO TIM ARNETT

**NOVUS**  
WINDSHIELD REPAIR

Expert Repair Of Cracked, Stone Damaged & Scratched Windshields **428-7028**

**RADON. THE HEALTH HAZARD IN YOUR HOME THAT HAS A SIMPLE SOLUTION.**

Call 1-800-SOS-RADON to get your Radon test information.

**EPA Ad Council**

313-429-4885 COUPON 517-423-2148

Saline in the Saline Shopping Center

**1ST OPTOMETRY**  
eye care centers

Dr. Thomas Cunningham

DOES NOT APPLY TO OTHER DISCOUNT OFFERS OR PRIOR ORDERS

Tecumseh 128 W. Chicago Blvd.

**\$10**

OFF (with coupon)

Prescription Eyeglasses

**PARR'S AUTO BODY**

BODY WORK - PAINTING  
FREE ESTIMATES  
INSURANCE WORK  
GLASS INSTALLATION

18481 W. Austin Road  
Manchester, Michigan

Phone **313-428-9538**

**With Marriott's weekend rates you can really go to town.**

**Marriott's Two For Breakfast Weekend™**

**\$69\*** per night, not per person

Wouldn't it be wonderful to do something really different this weekend? At the Toledo Marriott Portside you can paint the town red and still stay in the black. Adjacent to Portside Festival Marketplace, we're convenient to the Museum of Art, Toledo Zoo and much more!

Marriott's Two For Breakfast Weekend includes deluxe river view accommodations and two full breakfasts each morning of your stay. So get to town and give us a call.

Redeem this ad and receive **\$10 off our already low rate.**

Two for Breakfast offered 7 days a week. Subject to availability. Expires 12-30-89. \*Not including tax and gratuities

**TOLEDO Marriott PORTSIDE**  
Two SeaGate/Summit Street • Toledo, Ohio 43604 • (419) 241-1411

**WCC Comes to Your Community**

Washtenaw Community College is reaching out to your community... with classes and student services in local high schools, hospitals and Regional Centers. Check this list for the ctf-campus location nearest you.

**Western Washtenaw County (Call 313-475-5935)**

- Western Regional Center, 134 W. Middle, Downtown Chelsea (Early counseling/advising on Nov. 27 & 28, Dec. 1, 6 & 7; call for an appointment. Register on Dec. 12, 13, 14, 19 & 20 from 6 - 8 p.m.; Dec. 22 from 9 a.m. - 1 p.m.; advising available during registration.)
- Chelsea High School, East Washington St. (Register at Western Regional Center on dates and times listed above)
- Dexter High School, 2615 Baker Road (Register on Dec. 21 from 6 - 8 p.m.)
- Pleasant Lake Technical Center, 11700 Pleasant Lake Rd. (Register on Dec. 21 from 6 - 8 p.m.)

Watch your mailbox for your Outreach newsletter or call our Western Regional Office at 313-475-5935 for information on courses offered in your community.

**Washtenaw Community College**  
*We Bring College Home!*

**INSURANCE**

*Notes*

**Who Sets Insurance Rates?**

Generally speaking, insurance companies set rates based on the cost of paying claims, administrative expenses and, if they're lucky, a modest profit (over the past several years auto insurers have actually lost money in Michigan). All rates set by the company must be approved by the state insurance bureau... not so high as to be unfair or so low as to hurt the company's ability to pay your claim when it occurs.

**Sutton Agency, Inc.**  
146 E. Main St. Manchester, Mich.  
Phone 313-428-9737

**MINUTES COUNT**

**Can early cancer detection mean early cure? Ask us.**

**1-800-4-CANCER**

**Michigan Cancer Information Service**

We'll tell you everything we know about cancer. Free.

# What makes a great Classified ad? RESULTS!

**MICHIGAN PEAT SALES** - Black dirt for sale, \$12 a yard delivered. Fast delivery, 428-9664. tfn

**C & B PAINTING** - Interior-Exterior-free estimates. Contact Charles E. Benedict. Phone 428-7136 or 428-7416. tfn

**LOST OR FOUND A PET?** Call Humane Society, 662-5585. tfn

**JERRY WHITAKER EXCAVATING** - Dozer, backhoe, dragline and 10 yard truck. Drain fields, basements, driveways, sand and gravel. Call 475-7841 tfn

**LITTLE WACK EXCAVATING** - Licensed and Insured. Basements, drainfields, digging, bull-dozing, trenching, black dirt, sand, gravel. Paul Wackenhut, 313-428-8025. tfn

**MERRIMAN INSULATION** - Free Estimates, Blown-in cellulose, professionally installed. George Merriman, phone 517-592-5527. tfn

**CORKEY'S DELI** - Homemade Ice Cream & Waffle Cones - Sandwiches - Subs - Baskets - Burgers - Fries - Party Trays & Salads - Baked Goods of all kinds, phone ahead - 428-9216. tfn

**PIANO TUNING & REPAIR** - Qualified technician - Ron Harris, 475-7134. tfn

**MANCHESTER ANTIQUE MALL** - 85 Dealers. Open 7 days, 10-5, 116 E. Main 428-9357. tfn

**FIELDER PAINTING** - Interior and exterior. Free estimates. Senior Citizens discount. Phone 428-8506. tfn

**AVAILABLE FOR WEDDING** receptions, parties, meetings. Hall rental \$175, \$40 cleaning, catering available. For further information call 428-8393 or 428-7637. tfn

**WALKOWE'S HOME IMPROVEMENT COMPANY** - Phone 313-428-8468. Seamless aluminum gutters for low prices and dependable service. tfn

**DIVORCES \$175**. With children \$225. Bankruptcy \$275. Pro-Per Law Center 930-6640 tfn

**AUTO MECHANIC**: Must be certified and experienced in all phases of repair, including A/C and driveability. Pays salary & commission. Mechanic should make over \$30,000 per year. Send name, address, phone number and years of experience with last place of employment or if still employed to P.O. Box 64, Manchester, Mich. 48158 tfn

**ALBER AND HAMILTON EXCAVATING**: Basements, drainfields, general backhoe work. Call Dennis 313-428-8637 or Brian 313-428-8636 tfn

**TIM'S VCR SERVICE**: Free pick up and delivery. One-day service. Cleanings only \$24.95. Repairs available. 428-7625 tfn

**HAULING**: Sand, gravel, etc. 428-9189 8am-6pm or 428-8203 tfn

**STORAGE FOR RENT**: 8 x 16 heated \$50. 2-car garage \$100-in the Village. 428-7173 tfn

**FELDKAMP'S CHRISTMAS TREES** - Long and short needle, U-cut or we cut. Hours: Saturdays 9-5, Sundays 1-5 starting December 2. Other days by appointment. Reno & Nancy Feldkamp, 1 1/2 miles west of Wacker's Oil on Pleasant Lake Rd., then 1/2 mile north on Smythe Rd. 12/14

**CHAIN SAWS**: Pioneer-Partner, McCulloch. Prices start at \$125. Oregon chain & bars. Chain sharpening \$2.50. 428-8707. 639 W. Main, Manchester. 12/21/p

**FRESH CUT CHRISTMAS TREES** 639 West Main, Manchester, your choice \$15 12/21/p

**ROSE BOWL**: Apartment available, 1-bedroom, adults only, non-smokers. Seal Beach (SW LA). For further information, phone evenings 428-9005 tfn

### DIETARY AIDES

Part-time day and afternoon shifts available immediately for tray assembly and dishroom. Day shifts: 6:30 a.m.-2:30 p.m. Afternoon shifts: 3:45 p.m.-7:30 p.m. Apply in person to:

Chelsea United Methodist Retirement Home 805 W. Middle St. Chelsea, MI 12/28

**MANCHESTER APARTMENTS** in Manchester, MI are now taking applications for 1, 2 & 3 bedroom apartments. Rent starts at \$262 & includes heat and many extras. For more information or application, call Manchester Apartments at 428-9270 between 10 am and 2 pm. Equal Housing Opportunity 12/21

**CHILD CARE: LITTLE DUTCH CHILD CARE CENTER AND PRESCHOOL** has full and part time openings for children 2-7 years. 7am-6pm. 428-8988 12/21/p

### AFTERNOON LEAD COOK

Full time, 11 am to 7 pm. Cooking experience required, institutional cooking preferred. Apply to personnel:

Chelsea Methodist Home 805 W. Middle St. Chelsea

**HELP WANTED**: Experienced, dependable cleaning personnel wanted, men or women. Must have own car, flexible schedule, by very energetic and want permanent position. Send resume to BCI, P.O. Box 362, Manchester, MI 48158. 12/21

**ARTS & CRAFTS OPEN HOUSE** (Open to public) Presented by "Your Country Peddler", Dec. 9 & 10, 10 am to 4 pm. Great Christmas ideas! 10490 Noggles, Manchester, W. Sharon Hollow, south of Herwan. 12/7

**MARIT'S SALON**: 20% off winter clothing, 20% off L.A. Gear tennis shoes 12/21

**ENERGETIC MOTHER WILL babysit** in her home. Also available for Christmas break. 428-9013 12/21/p

**WAIT PERSON**: Part-time Friday and Saturday nights. Garland's Pub 428-9293 12/14/p

**26" SEARS SNOW THROWER** with chains. 4-cyl. 8-hp engine with light. Asking \$400. Call 668-1721 after 5 pm 12/14

**THE ANN ARBOR NEWS** is looking for someone to deliver our new advertiser once a week on Tuesday in Manchester. 450 copies involved. Pay is \$10/copy, paid monthly. Interested persons call Rick Misiak at 994-6751 12/14

**DEFIANT WOOD STOVE** for sale. \$500. 428-9302 p

**100 TREETOPS**, all hardwoods. Call 428-8541 after 5 p.m. p

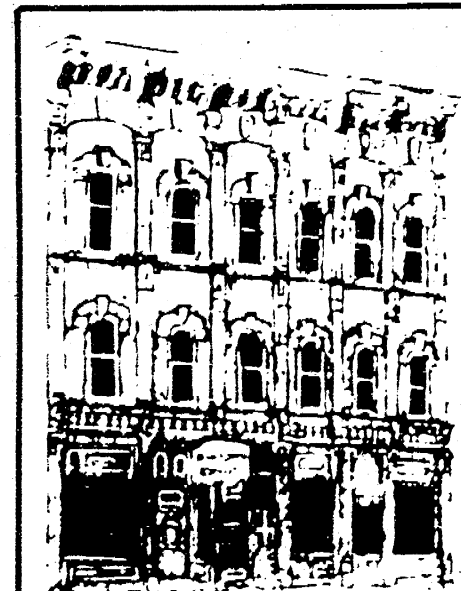
### PART TIME NURSING ASSISTANTS

Paid training. \$5.27 per hour. Next class starts December 11. Call now for appointment. 313-475-8633.

Chelsea Methodist Home 805 W. Middle St. Chelsea, MI

**RICKET'S RADIO & TV**: Radio, TV, antenna and small appliance repair. 146 E. Main, Manchester, 428-9028. Do you have a good TV but a lousy picture? Do you have an old radio or TV that needs help? Call or drop in - I can help you. tfn

**WANTED**: Snowmobile "snow caboose". Call 313-428-9768 p



## Black Sheep Tavern

HOURS:

Sunday Noon - 10 p.m.

Weekdays 11:30 a.m. - 10 p.m.

117 E. Main St. Phone 428-7000 Manchester, Mich.

Classified advertising will be \$2.50 minimum charge for 20 words or less and 5¢ for each additional word. All classified ads are payable in advance, if not a billing charge of 50¢ will apply. Deadline for classified advertising will be 10 A.M. Tuesday for that weeks publication. Cards of Thanks will remain at \$4.00 minimum charge for 50 words or less with a charge of 5¢ for each additional word.

**PERMANENT PART TIME SECRETARY** wanted. Must have computer knowledge, good phone skills and work well with the public. Must be willing to work some full time. Send resume to P.O. Box 278, Manchester, MI 48158

**OUTSTANDING LAKEFRONT HOME ON ALL SPORTS PLEASANT LAKE**: 3-bedroom, 2-bath ranch, plus a boathouse with kitchen, 1/2-bath and rec room! 3-car garage. Won't last long! \$159,000. Call Deborah Engelbert 971-6070, eves. 475-8303.

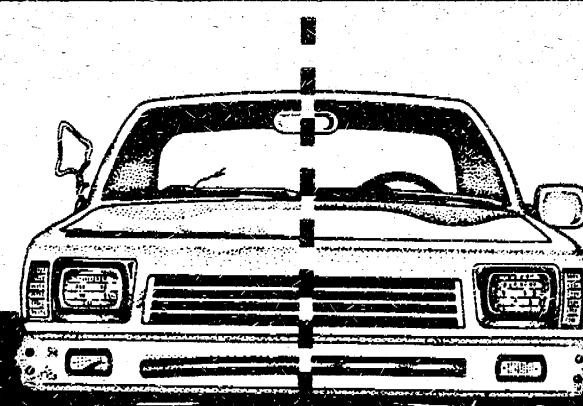
**FANTASTIC LAKEFRONT COLONIAL** on all sports lake. 35 minutes from Ann Arbor. 4 bedrooms, 2 1/2 baths, fireplace, beach house and more. Call for an appointment. \$169,000. Call Deborah Engelbert 971-6070, eves. 475-8303.

**PLEASE HELP** us to help Manchester Family Services this Christmas. Just bring your extra canned goods, new or good used toys to our store before December 14 for distribution to area families in need. Merry Christmas from your friends at Kleinschmidt Hardware.

**LOST CAT**: Hashley & Powers Dr., Sharon Twp. All Gray, gray nose, spayed female, name-Fluffy. Child's pet. 428-7853 p

**2-BEDROOM** ground floor apartment for rent in Village of Manchester. References. 428-9380. tfn

Sealed bids will be accepted by the Village of Manchester for an independent contractor to perform certain work, including:  
winter road maintenance  
fall leaf pickup  
reading water meters  
removal of holiday decorations  
pickups and deliveries  
physical labor during repair and maintenance work for a period of up to 8 weeks. Bids should be expressed in terms of hourly rate and should include description of qualifications of independent contractor. Contractor should be prepared to provide proof of insurance. The deadline for bids to be in to the Village Offices has been extended to 4 p.m., Monday, December 18, 1989.



## Get That Body Back In Shape

The professionals at Midwest Ford will get your car looking like new in no time!

- ★ Complete Collision Service
- ★ Fast, Dependable Service
- ★ FREE ESTIMATES

**MIDWEST FORD**  
510 W. Main St. Manchester CALL COLLECT (313) 428-8243

## Money Management

### THE RIGHT WAY TO WRITE OFF BUSINESS EXPENSES

Suppose you're a sales manager for a software development company. It's been a while since you spoke with Jack, one of your good customers, so you invite him to lunch as a way of keeping in touch. There's no specific business to discuss, but you want to be sure Jack keeps your company in mind. Enjoy your meal with Jack, but you may not be able to deduct it.

According to the Michigan Association of CPAs, you may deduct a business meal only if it was "directly related to" or "associated with" the active conduct of your trade or business. The primary test of this rule is whether you discussed business during, directly before, or directly after a meal. Once you satisfy these requirements, you may deduct up to 80 percent of the cost of the food, beverage, tax and tip provided that these expenses were not "lavish or extravagant under the circumstances."

Let's look at another scenario. Imagine your company has a new resources department could use. You arrange a lunch date with Jack to discuss the new program's capabilities. This time, you can write off 80 percent of the lunch. And the cost of the transportation to the restaurant may be fully deductible as well.

Remember, if your meal and entertainment expenses are not reimbursed by your company, they must be added to your other "miscellaneous itemized expenses" which are deductible only to the extent that they exceed 2 percent of adjusted gross income. The 80 percent rule must also be applied to "single sum expenditures." For example, if your hotel includes breakfast in your room charge, it is up to you to allocate a portion of the room charge for food. You would then be eligible to deduct 80 percent of the cost of breakfast and 100 percent of the cost of the room. The 80 percent limitation also applies when you dine out alone

on a business trip. When you are away from home on a business trip, some of the expenses that are deductible include hotel and lodging expenses, meal costs, baggage handling and business telephone calls.

In most cases, when you travel strictly on business, your write-offs are clear-cut. But when you mix business with pleasure, the picture gets blurred. Transportation to and from a destination is deductible only if the trip is primarily related to your business. But suppose you take a trip for personal reasons and, once at your destination, you take time out of your vacation to see a customer. If you entertain a customer and meet the normal requirements for a deduction, 80 percent of the cost of the meal is deductible; the cost of the transportation between your hotel and the location of the business meal is also deductible.

If the primary reason for your trip is business, but you extend your stay for personal rest and relaxation, the cost of the transportation to and from the venue is

still deductible. But you may only deduct lodging, meals and other related meal expenses for the business part of the trip. There are special rules for foreign travel, even where the travel is primarily for business. Essentially, if you are traveling for one week or less, or if less than 25 percent of the travel is non-business, the deduction should be allowable. Incidentally, you may not deduct the travel expenses of a spouse who accompanies you on a business trip unless you can prove that the spouse's presence served a bona fide business purpose.

The rules for deducting entertainment costs parallel those for business meals. If you take a client to a baseball game, you need not spend all nine innings trying to sell him your company's new training program. But some business must be discussed directly before, during or directly after the game for your expenses to qualify for a deduction. And when it comes to ticket prices - be they for a sporting event, concert or play - you may deduct 80 percent of the price printed on the ticket.

An exception to this rule is made for tickets to a charitable sporting event. Such tickets and related expenses are fully deductible providing that all of the net proceeds from the event go to the charitable organization. In addition, volunteers must be responsible for practically all of the labor involved. Food and beverage costs, as well as parking and seating, are fully deductible if they are part of the package.

Beginning in 1989, new rules govern the deduction for "skyboxes" - those private, luxury boxes from which executives can view athletic events. Starting this year, when you lease a skybox for

more than one event, your deduction is limited to 80 percent of the equivalent cost of regular box seat tickets for each seat in a skybox.

Whatever travel and entertainment expenses you incur, be sure to keep detailed records. For all business meal and entertainment expenses of \$25 or more, you must have a receipt or credit card charge statement. You must also retain proof of such items as the amount of the expense, the date on which the expense was incurred, the place in which the entertainment or event took place, the type of business discussed, the length of the business discussion, plus the names and addresses of those in attendance. You can simply write this information on the back of each receipt. A better method is to record every transaction and all related details in a business diary. Whichever method you choose, make sure your records are clear, accurate and timely. CPAs caution you not to underestimate the importance of this documentation. Without it, your deductions may be jeopardized.

### Classifieds Really Work

"Nobody really understands how hard it is to stop smoking."

We do. And we can help you find a way. Call us.

1-800-4-CANCER  
The Cancer Information Service

**the Charles Reinhart Co. Realtors**  
DEBORAH ENGLEBERT Realtor Res. Phone: 313/475-8303  
2452 East Stadium Blvd. Ann Arbor, Michigan 48104 Phone 313/971-6070

## NOTICE OF PUBLIC HEARING BRIDGEWATER TOWNSHIP PLANNING COMMISSION

A Public Hearing will be held on Monday, December 11, 1989 at the Bridgewater Township Hall, 10990 Clinton Road, at 7:30 p.m.

An Application for a Conditional Use Permit is to be considered:

On the property at 13073 Clinton Rd., Clinton, Michigan 49236 owned by Ronald and Mariann Markham, Sec. 32 & 33, 17-33-200-001, A-1, 85.27 acres.

It is proposed to use a strip of land 60' x 2300' south of existing house for their private use grass landing strip.

Request made by Ronald and Mariann Markham 13073 Clinton Rd. Clinton, MI 49236 Petitioners and Owners

Written comments may be sent to Gabriel Dull, Chairman, Bridgewater Township Planning Commission, 12650 Clinton Rd., Clinton, MI 49236 prior to the Hearing on Dec. 11th, 1989 at 7:30 p.m.

L. Fraumann, Secretary  
Bridgewater Township Planning Commission

# POINSETTIAS

Grown in our greenhouse

Quantity Discounts **\$2.50** and up

## EVERGREEN WREATHS, BLANKETS

### ROPING MADE FRESH DAILY

6 ft. BLANKETS WITH RED RUSCUS CONES & RIBBONS	\$30.00 & up
3 ft. BLANKETS	\$20.00 & up
Evergreen Cedar Roping 50 ft. coll.....	\$25.00

# WREATHS

WIDE VARIETY

2 ft. Untrimmed... \$6 <sup>00</sup>	2 ft. Trimmed... \$10 <sup>00</sup>
3 ft. Untrimmed... \$15 <sup>00</sup>	3 ft. Trimmed... \$20 <sup>00</sup>
4 ft. Untrimmed... \$25 <sup>00</sup>	4 ft. Trimmed... \$30 <sup>00</sup>

LARGE VARIETY OF SILK XMAS ARRANGEMENTS	FRESH XMAS GREENS & CANDLE ARRANGEMENTS
\$10.00 & up	\$12.50 & up

Open Monday-Saturday 8 am-5 pm  
Sunday Noon-5

## CHELSEA GREENHOUSE

PHONE 475-1353  
7010 LINGANE RD., CHELSEA

Charter Member F.T.D.  
Member Teleflora



## Critical Bridge Program

A major program to replace or repair 77 critically deficient bridges on the state's county roads, city streets and highways was announced by the Michigan Department of Transportation (MDOT). The bridges are in 35 counties.

The projects, funded for the 1990-91 fiscal year starting next October 1, will be paid for with funds from the Federal Highway Bridge Replacement and Rehabilitation Program and the Michigan Critical Bridge Program. The estimated cost is \$23 million.

"We're making progress with our Critical Bridge Program," said Dale VandenBerg, chief engineer of Local Services, "but we're a long way from meeting all the needs."

"There are currently 665 applications still on file from communities and counties all over the state, including 200 requests in 1989 alone," he said.

Of nearly 6,500 bridges on local roads in counties and cities, 42 percent are considered "structurally deficient" or "functionally obsolete."

The number of bridges to be improved has dropped slightly from last year. There are 83 bridges scheduled for repairs or replacement in fiscal 1989-90, and approximately 80 others approved

earlier which are in various stages of design and construction.

The 77 bridges to be improved beginning next fiscal year include one on the state highway system and the rest on county roads and city streets. They were recommended for replacement by a nine-member committee set up under the Michigan Critical Bridge Program.

The committee, representing MDOT, the 83 county road commissions and the municipal street agencies, establishes priority for bridge replacements. Their decisions are based on the condition of the bridge, its importance to the street or road network and the local agency's ability to finance its share of construction.

On all the bridges, federal funds pay 80 percent of the cost, the state pays 15 percent and the local agency 5 percent.

Each year the state allocates \$5 million for its critical bridge program. The program has approved funds for more than 900 bridges since it began in 1973. One of the bridges approved for the 1990-91 program is in Washtenaw County on Feldkamp Road over the Saline River.

### Want Ads Get Results

#### MANCHESTER CHIROPRACTIC CLINIC

"TRY CHIROPRACTIC NATURALLY"

STAN GILBERT, D.C. 232 E. Main  
313-428-7207 Manchester, Mich.

APPOINTMENT HOURS:

Monday, Wednesday, Friday 9 am-12 noon and 3 pm-7 pm  
Tuesday, Thursday, Saturday By Appointment

#### Garland's Pub

M-52—Austin Rd. Manchester

Open Seven Days

Mon. - Sat. 7:00 am-2:00 am

Sun. 12-12

Live Band Fri. & Sat.

New Year's Eve Party

Call for details - 313-428-9293

#### HOLIDAY PREPARATIONS KEEPING YOU BUSY?

COME TO

#### Haarer's Meeting Place

223 East Main-Manchester

Open Monday-Saturday 11 am-10 pm

DECEMBER DINNER SPECIALS TO LIGHTEN YOUR HOLIDAY LOAD!

All you can eat Spaghetti MONDAY \$2.95  
served with salad and bread sticks  
wine special

Mexican Fiesta TUESDAY \$5.95  
Your choice of nachos supreme, tacos or burritos  
Margarita special \$2.00

Delicious Prime Rib WEDNESDAY \$8.95  
Our Special Cut

Baked Swiss Steak THURSDAY \$6.95  
Two tender pieces with whipped potatoes and  
choide of soup or salad  
Friday and Saturday Specials change weekly

OPEN NEW YEARS EVE 5 pm-10pm  
SPECIAL DINNER ENTREES  
Featuring FILET & LOBSTER

RESERVATIONS SUGGESTED

## Pitch In For Pets

Don't miss a purr-fect opportunity to remember the animals at the Humane Society of Huron Valley this holiday season! Participate in the 13th annual Holiday Pet Food Round-Up sponsored by the Humane Society of Huron Valley. All donations of pet food will help to feed the thousands of animals received at the shelter each year.

Beginning December 1 and continuing through December 29, donation "corners" will be located at the front of participating grocery and pet stores throughout Washtenaw County. Shoppers are encouraged to purchase extra bags of dry pet food and deposit them in the corrals or bring donations directly out to the shelter at 3100 Cherry Hill Road in Ann Arbor.

In 1988, enough food was donated (approximately 5 1/4 tons) to supplement the shelter animals' food supply for nearly one year. However, the shelter does have a tendency to run short of certain items. Puppy and kitten food starts to run low around March, and the shelter is always in need of canned cat food. Special needs this holiday season, therefore, include dry food for both dogs and cats, puppy and kitten chow and canned cat food.

Why not spread some holiday cheer this season to many homeless dogs and cats? The next time you do your shopping, please remember to pitch in for the animals of Washtenaw County.

#### Sharon Mills Winery



#### CHAMPAGNE CELLAR & WINE TASTING

Saturdays & Sundays 12 until 5

Our CHAMPAGNE Now Available

5701 Sharon Hollow W. Austin Rd., North on Sharon Hollow

428-9160

Wacker's General Store

#### Check Our Everyday Low Beer Prices

G.E. Wacker Inc.  
Gasoline-Fuel Oil-Greases  
Motor Oil-Diesel Fuel  
9050 Chelsea-Manchester Rd.  
Manchester, Mich. 48158

WINTER HOURS  
Monday-Thursday 7 am-8 pm  
Friday 7 am-9 pm  
Saturday 8 am-9 pm  
Sunday 9 am-8 pm

## Enjoying Game Meat

The deer season is in full swing now and many people are enjoying the taste of venison. Venison is one of the prize game meats and, if prepared properly, is very tasty.

It makes a lean addition to the diet; a venison roast has only 13% of its calories from fat and a steak only 28% of its calories from fat.

Beef, by contrast has 25% fat calories from roast and 58% fat calories from steak. The fat in both cases is saturated fat.

The enjoyment of eating venison is dependent on how the deer was handled after slaughter and how it was prepared. Cooperative Extension Service has two publications, "Wie Game" and "Venison Upper Peninsula Style" which give information on the handling, storing and preparation of animals.

"Using and Storing Wild Game" (E-2135), a one-page free bulletin, tells how to deal with big and small game. "Venison Upper Peninsula Style" (E-657) is a 20-page booklet with much information for the hunter and many recipes. The cost is \$4.55. Call 971-0079 for copies.

### MIDWEST FORD FORD QUALITY PRE-OWNED CARS and TRUCKS

- 1989 AEROSTAR — 7 passenger, loaded, 2-tone gray. Hurry on this one ..... \$11,995
- 1987 CHEVY CONVERSION VAN — Loaded with all the goodies! Holiday ready! ..... \$11,495
- 1988 DODGE 1 TON PICKUP — 360 c.i., V-8, air, super! .. \$9,995
- 1987 OLDS CUTLASS CRUISER WAGON — Loaded, low mileage, luxury ..... \$9,499
- 1988 FORD THUNDERBIRDS Loaded, V-6; automatic, low miles, super value! ..... \$8,995
- 1985 FORD MUSTANG GT — T-tops, air, very low miles, super sporty ..... \$7,995
- 1986 AEROSTAR XLT — Mini van, loaded! ..... \$7,995
- 1986 F150 SUPERCAB 351 V-8 — Automatic, air, XLT, loaded ..... \$7,995
- 1987 F150 4x2 PICKUP — Air conditioning, stereo, cap, low miles ..... \$7,495
- 1985 FORD CROWN VICTORIA Loaded, only 23,000 miles. Hurry! ..... Only \$6,995
- 1984 JEEP CHEROKEE 4x4 — Loaded, hurry on this special .. \$5,695
- 1986 CHRYSLER LE BARON GTS — 4 door, loaded, 32,000 miles ..... \$5,495
- 1988 FORD TEMPO GL — 4 door, automatic, air ..... \$4,995
- 1983 LINCOLN CONTINENTAL V-8, loaded, luxury, excellent condition, high miles ..... \$4,995
- 1987 MAZDA B2000 SE5 PICKUP — Truck, super sharp, 12 month/12,000 mile warranty ..... \$4,995
- 1985 AMC EAGLE 4x4 — Automatic, air, ready for winter ..... \$3,695
- 1983 BUICK REGAL — Auto., air, SHARPI! ..... \$2,995
- 1979 FORD LTD — Automatic, air, good winter car ..... \$1,195
- 1974 F250 PICKUP — Rusty, but trusty, great wood hauler .. \$795

SPECIAL FORD FACTORY PURCHASE UNITS AVAILABLE!  
**MIDWEST FORD**  
510 W. MAIN ST., MANCHESTER, MI.  
Mon. & Thurs. 9-8 Tues. Wed.-Fri. 9-6 Sat. 9-2  
Call Us Collect: 313-428-8343

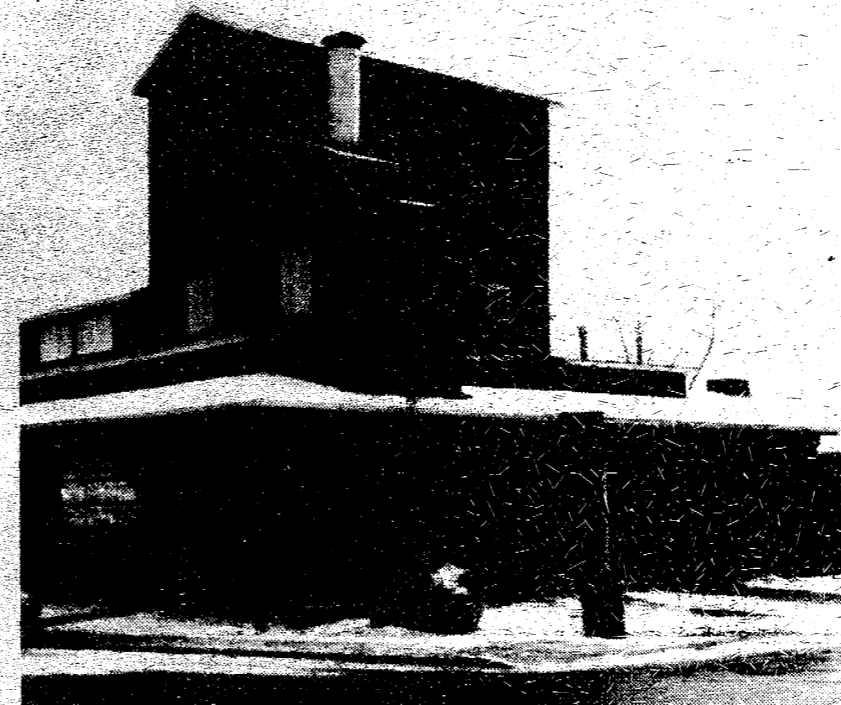
# THE MANCHESTER ENTERPRISE

123rd YEAR VOLUME NUMBER NINE

USPS 327-460

THURSDAY, DECEMBER 14, 1989

## Mill Listed As Historic Site



The Michigan Historical Commission has announced that the Manchester Grist Mill has been listed in the State Register of Historic Sites.

The Manchester Mill is a three-story, asymmetrical composition of wood frame gabled forms resting upon a concrete foundation. The structure features a large, central grain elevator constructed in 1954 which is surrounded by several additions with roofs of various heights and pitches. The additions contain random windows and vertical wood siding and were designed to house milling equipment and provide office space. The mill is situated along the River Raisin adjacent to a dam and a modern concrete bridge. The grain elevator has a galvanized steel shield. A one-story section with a basement was built in the rear of the mill in 1977.

The Manchester Mill has historical significance in that it stands on the site of the first grist mill in Manchester Village. The construction of the first mill in 1832 provided the catalyst for the growth of the community and defined the development of the local area.

Emanuel Case, an early Washtenaw County settler and Manchester's first Justice of the Peace, was contracted to build the first mill on the site in 1832. In 1839 the mill was owned by Stephen Fargo who eventually sold the property to Charles Noble and Austin Wing in 1842. It was destroyed by a fire in 1853 and rebuilt as the Farmer's Grist Mill. In 1896 the mill was purchased and expanded by Noah Holt and renamed the Southern

Washtenaw Mills. The structure was sold again in 1903 and became known as the Manchester Roller Mills.

A fire in 1924 completely destroyed the Manchester Roller Mills. It was rebuilt in 1926 by William J. Hoffer to produce animal feed instead of flour and in 1940 was purchased by E. G. Mann. In 1976 the Mann Mill was recognized by the Historical Society of Michigan as the "oldest operating business on the original site in the state of Michigan." This feed mill remained in operation until 1981 when it was sold and converted into an antique shop. The building is presently owned by Donald E. Limpert and is a multi-commercial use building.

The State Register was established by Act 10 of the Public Acts of 1955 to recognize historic sites in Michigan.

## Live Nativity Scene

The Manchester Emanuel United Church of Christ will present a live Nativity scene this year, December 21, 22, and 23 from 7:30 P.M. to 9 P.M. with live animals.

Members will portray the Three Wise Men, shepherds, angels, Joseph and Mary. A Christmas card with the Nativity scene will be given out to those who attend this blessed event.

Come join us in the spirit and joy of Christmas and the celebration of the birth of our Lord Jesus Christ.

## Sunday Drive In Three Counties

Manchester Enterprise July 29, 1926

Interesting and Prosperous Country to be Seen in Short Jaunt from Manchester

A drive to Dundee on Sunday was particularly pleasant because of the opportunity to view the grain and clover fields in sections of three counties. Most of the wheat and rye in Washtenaw and Lenawee has been harvested and several farmers have threshed their wheat. Oat harvest will soon be in full swing. Corn is doing remarkably well considering the extremely dry weather. The tallest corn we saw during the day's drive was just east of Britton. The first cutting of alfalfa was very good, the farmers report, but the second suffered from the effects of the drought. Pastures are showing effects of the drought less on the strong, low land in Monroe county. There seems to be considerable fruit, cherries and apples being noticeable everywhere.

We found that dairy farmers in the neighborhood of Dundee are selling off their Holsteins and purchasing cattle whose milk contains a greater amount of butter fat. Much attention is given to dairying in all three counties. Inquiry failed to give any enlightenment on corn borer activities, though we did not visit the section where the investigators located pests. We noticed several places where fires had run through fields, but saw none where grain had been burned, nor buildings, with the exception of Wilbur Hogan's barn in Bridge-water. Rain is evidently needed in every section. Where threshing had been done, farmers reported the yield much better than they had expected.

That section four miles east of Dundee where Henry Ford's railroad crosses M-50 was visited. They have a camp there and are excavating to have the paved road pass under the railroad. The railroad bridge is up and they are taking dirt from both sides of it. The ground there is quite low and workmen literally wallow in mud. A detour has been constructed and it is said that it will be left so that should water continue to fill the excavation, traffic will not be delayed.

The railroad is built as a short cut from Maybee to connect with his road in Ohio. All may not know that Ford does not own that

Continued on Page 9

Manchester Township Library PO  
202 W. Main St.  
Manchester, MI 48153

MANCHESTER TOWNSHIP LIBRARY

DEC 14 1989

30¢ COPY

## Stamping Rezoned

Janet LaBauer Shurtliff

Ron Mann said, "The majority wants Manchester Stamping there and able to do business. But the concern is if YOU'RE not there at some point in time."

The Manchester Township

Supervisor was addressing Wayne Hamilton, president of Manchester Stamping, during the regular Manchester Township Board meeting which went into session immediately following nearly two hours of public hearings on Manchester Stamping's request to rezone more than 29 acres as General Industrial.

Ron Mann was describing the sense he had gotten of the community's response to this request to rezone, especially the concern that if sometime Manchester Stamping were to leave, the General Industrial zoning would then be available to any incoming industry, even one which might be far less desirable.

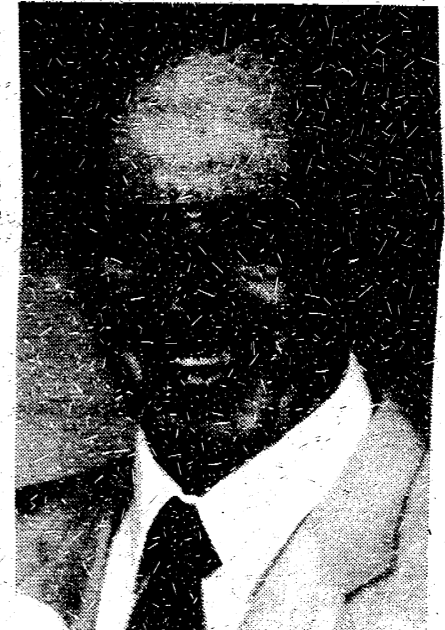
"Conditional Use" would allow you what you need and yet not rezone," Ron Mann continued. "Would you be interested in exploring that?"

And Wayne Hamilton answered, "We've made it clear what our zoning request is. We would like a decision tonight on that request."

Carl Macomber made the motion to "approve the rezoning as requested." Seconded by Lyle Widmayer. Roll call vote: Mann-yes; Lentz-no; Uphouse-no; Widmayer-yes; Macomber-yes.

Whereupon 21.01 acres of land currently zoned Recreation/Con- continued on page 3

## Farewell To A Good Friend



Rollie Grossman passed on early Tuesday morning. He will be dearly missed.

Rollie always had a warm smile and friendly hello for everyone.

"He was my good friend," and "He was a good pal," were heard again and again on Tuesday when people gathered and heard of his passing.

Rollie was one of the original founders of the Manchester Chicken Broil and chaired the Chicken Broil Committee for years and years.

He was co-owner with "Red" Huber of the Gulf Gas Station on the corner of Main and Clinton (where the Hop-In is now) from the early 1950's through the 70's.

After his retirement, he continued until recently to keep in touch with the community downtown by helping out in various ways at the Union Savings Bank, now Comerica.

He and his wife, Liz, were native Manchesterites who made it a point to meet and welcome new people as they moved to town.

Rollie was born in Manchester 75 years ago. His dear wife, Elizabeth, passed on less than a month ago.

They were greatly loved and will be greatly missed.

Complete obituary appears on page 2.

## Interest Acquired in Bottle Manufacturer

The Plastics Technology Group of Johnson Controls, Inc. has acquired a majority interest in Fainini F.A.I.N.S.P.A., the largest manufacturer of PET (polyethylene terephthalate) plastic bottles in Europe.

Terms of the cash transaction were not disclosed.

Fainini is headquartered in Italy and operates three bottle manufacturing plants in Ascoli, Loreto and Modena, Italy. Fainini's sales are concentrated in the high volume markets of PET soft drink and mineral water containers.

The acquisition of Fainini follows a European expansion plan Johnson Controls began in August of 1989 with the acquisition of Polypack, a Belgium manufacturer of PET bottles.

Johnson Controls is the largest supplier of PET bottles for soft drinks, other beverages and foods in the United States. The Plastics Technology Group is headquartered in Manchester, Michigan.