

# Money Management

## PROTECT YOUR FAMILY BY WRITING A WILL

Perhaps the only time you seriously think about writing a will is when you read about a car accident or a plane crash. The rest of the time, you develop excuses: "I have plenty of time" or "Only rich people need wills."

The excuses don't hold up. The sad fact is that death can strike anyone at any time - and if it strikes before you've written a will, the State may very well take control of your assets and decide the fate of your family. Your child could end up being raised by a family member you distrust, a spouse could be saddled with exorbitant fees and taxes and if the surviving spouse remarries, somebody else - or somebody else's children - could inherit your estate.

If you want to control what happens to your family, your home and your financial assets after your death, the Michigan Association of CPAs suggests that you stop procrastinating and write a will. A carefully prepared will, which most lawyers can draw-up after one meeting, can prevent the State from enforcing decisions about your estate that you would never have made.

For instance, a will enables you to name a guardian for your children. This may be the most crucial element in your will. When making this decision, ask yourself who would be able and willing to raise your children with values similar to yours if both you and your spouse die in an accident. Make sure you also specify "Successor Guardians" in case the designated guardians don't want to or can't accept the responsibility.

The next critical decision you need to make is who should serve as the executor of your estate. As overseer of your estate, he or she will face arduous and time-consuming tasks. Executors have to inventory all your assets, collect all money owed you, liquidate assets, notify insurance companies and collect the proceeds, pay outstanding debts, arrange for your immediate family's living expenses, prepare and file all tax returns, and distribute your estate. If your executor has no financial expertise, you may want to select a second party, perhaps your attorney, to serve as co-executor with a family member. (One drawback to this arrangement is that your estate must pay two commissions.)

### AUCTIONEERING SERVICE

- Farms • Real Estate
  - Livestock • Farm Machinery • Household Goods • Antiques • Coins
  - Automobile
- CHARITY FREE OF CHARGE  
LARRY SALTER  
313/428-7389

### MARGIE'S UPHOLSTERY

6245 Brooklyn Road  
Jackson  
Wide Selection Of Fabrics  
Pick-Up / Delivery Available  
517-536-4230

Next, take an inventory of your assets and decide exactly how you want them distributed. Try to think in percentages rather than dollar amounts. Consider, too, the implications of each provision of your will as well as the circumstances and resources of each beneficiary. For example, do you want to divide your assets equally between your two daughters if one of them has five children and the other none? Should a financially irresponsible son have full access to his inheritance as early as age 18, or should you use a trust to distribute his share of your estate in small amounts over a pre-set period of time? Another question you need to ask is: How old and self-sufficient are your children? If they are succeeding financially, you may want to leave a greater portion of your estate to your spouse.

In addition, you should consider incorporating a trust or other safeguards into your will to protect your children from the possible consequences of the future remarriage of a spouse. For example, Tom left all his assets to his wife Betty, assuming they would go to their two children when she died. A few years after Tom's death, however, Betty married a man who also had two children. In her will, Betty agreed to leave her assets to her new husband. When she died five years later, her wish was carried out and her second husband inherited her estate. Unfortunately, in his will, he leaves all of his assets to his own children. As a result, Tom's children will end

up losing their inheritance. If Tom had set aside his children's inheritance in a trust instead, this situation could have been averted.

Besides insuring that your estate is distributed according to your wishes, a will can also reduce the financial burden placed on your heirs. For example, the administrator of your will is required to post a performance bond to protect your estate from fraud, embezzlement or negligence. Bond fee premiums cost about \$5 per \$1,000 of the estate's gross value and are payable annually until probate is completed - which ranges from a few months to several years. The bond is meant to protect your estate, but may be unnecessary if the executor is a trusted friend or family member. If you wish, your will can waive this bond requirement.

Tax claims on an estate can also be substantial. Under the federal estate tax law, you do have a degree of protection. If the gross estate, including the value of all lifetime taxable gifts, is under \$600,000 filing a federal estate tax return is not required. However, if estate assets plus all lifetime taxable gifts exceed \$600,000 even after deducting administrator's and executor's fees, funeral expenses and outstanding debts, the federal estate tax rate kicks in at 37 percent and goes up as high as 55 percent for estates over the amount of \$600,000.

There is one major exception to this rule. Under the unlimited marital deduction, you can leave your entire estate to your spouse without incurring federal gift or estate tax - regardless of your

estate's worth. But when the surviving spouse dies, tax will be charged against your combined estates, thus placing a potentially tremendous tax load on the estate.

If your estate is substantially higher than \$600,000, you can minimize the tax burden on future heirs by dividing your estate between your spouse and a credit-shelter or bypass trust, which can provide your spouse and children income for life and enable you to take full advantage of the unified tax credit. Another option is to divide assets equally between you and your spouse prior to death. Or you can make tax-exempt gifts of up to \$10,000 (or \$20,000 with your spouse's consent) per year per person. You can even consider educational or nursing home bills as gifts if you pay the bills directly.

Once you draw up a will, CPAs urge you to keep it up to date. Revise a will after a marriage or

divorce, when you have a child or when tax laws change. An unsigned copy of your will, and a letter of instructions listing the location of your original will, should be stored in a fireproof container at home rather than in a safe deposit box - which may be sealed after an owner's death.

## Great Lakes Declares Dividend

Directors of Great Lakes Bancorp (NASDAQ-NMS: GLBC) today declared a dividend of 20 cents per share for the second quarter of 1989. The dividend will be paid July 14 to recordholders as of June 30, 1989.

It will be Great Lakes 18th consecutive dividend since the bank began paying dividends in April 1985.

## Eye Care

Cheryl Huey, M.D.  
Ophthalmologist • Eye Physician and Surgeon



### INTERESTING EYE FACTS

Humans are not the only living creatures having color vision. All primates such as chimpanzees and gorillas have excellent color vision, but other mammals have no color perception. Even many insects have color vision—the honeybee is attracted to ultraviolet colors given off by many flowers, colors not visible to the human eye.

Our eye has a blind spot, which corresponds to the point in the back of our eye where the optic nerve leaves the eye. The small blind spot is just to the side of the center of vision. When both eyes are open, however, each eye "covers" for the blind spot of the other eye.

About one million cataract operations were performed in the United States last year, making it one of the most common and safest of surgeries. Some animals, such as the cat, have excellent night vision. They have a reflecting layer, called the tapetum lucidum, behind the retina. What little light does enter the eye at night is bounced off this mirror-like layer and the animal's eye seems to "glow in the dark" when illuminated by the headlights of your car.

## Cheryl Huey, M.D.

Ann Arbor Eye Care  
Liberty Medical Complex  
3200 West Liberty  
Ann Arbor, MI 48103

(313)

662-2020

**WAMPLER  
DRW  
CONSTRUCTION CO.**

**DANIEL R. WAMPLER**  
517-456-4305

- New Homes
- Additions
- Siding

- Garages
- Roofing
- Decks

# Celebrate July 4th On The 3rd At Carr Park

**CIVIL WAR BAND**  
7:30 p.m.

**BRAD FREY & Boogie Men Band**  
After Fireworks



**DANCING**

**BEER TENT**

Sponsored By  
**Manchester Men's Club**  
**FIREWORKS DISPLAY**  
**MONDAY, JULY 3rd**

**LITTLE LEAGUE ALL STAR GAME**

**Donations Taken At Gate**

MANCHESTER TOWNSHIP LIBRARY  
Manchester, Mich. 48158

JUL 0 6 1989

Manchester Township Library PO  
202 W. Main St.  
Manchester, MI 48158

WILLOW

# THE MANCHESTER ENTERPRISE

30¢ COPY

122nd YEAR VOLUME NUMBER THIRTY-EIGHT

USPS 327-460

THURSDAY, JULY 6, 1989

## 1989 Community Fair Queen Candidates



Class of 1990  
(l-r) Amy Wagner, Kristine Walter, Alt., Jennifer Faulhaber, Stacey Wilde



Class of 1991  
(l-r) Jackie Ahrens, Rachel Rodriguez, Nicole Bigelow, Alt., Michelle LaRue



Class of 1992  
(l-r) Rebecca Scherd, Susan McGuire, April Barrett, Joanne Kemner, Alt.



Class of 1993  
(l-r) Sharon Fielder, Angie Eiss, Beth Hayden, Jenni Schnearle, Alt.

## Manchester Community Fair

The 45th Annual Manchester Community Fair will be held July 11-15, 1989. The theme for the fair is "Summertime Magic". Starting off the Fair is the parade at 6:30 p.m. on Tuesday, July 11, with the Parade Marshalls, Mr. and Mrs. Ted Stautz of Manchester. Follow the parade of floats, fire trucks, and decorated bikes to the fairgrounds located at the corner of Vernon and Wolverine in Manchester. As soon as the parade arrives on the fairgrounds, a Fair Queen will be picked from the twelve contestants who were chosen earlier in the year and judged during the day.

On Wednesday, July 12, there will be a teen dance with a disc jockey from D. & D. Enterprises of Chelsea at the entertainment pavilion at 7:00 p.m. until 10:00 p.m. The carnival, W.G. Wade Shows, Inc., offers a pay-one-price of \$6.00 to ride all day on Wednesday.

Thursday, July 13, Senior Citizens, 62 and older will be admitted free until 5:00 p.m. The afternoon starts off at 1:30 p.m. with kids 14 and under bringing their pets for the pet judging contest at 6:30 p.m. There will be contests for children 10 to 16 years of age. In the entertainment pavilion, there will be a talent show at 8:00 p.m. from auditions held in June.

Kids' Day is Friday. At 1:00 p.m. the carnival rides will be at a reduced rate of one ticket less than the regular number of tickets for each ride. At 5:00 p.m. there will be prizes given from W. G. Wade Show, Inc. and Manchester Community Fair. Returning for her sixth year, Tracey Lynne & The Mountain Express at 8:00 p.m. Ladies Day activities from 10:00 a.m. until noon on Saturday, July 15 with door prizes and refreshments. The horseshoe pitch is at 1:30 p.m. and a pedal pull for the children with registration at 2:30 p.m. and the pull at 3:00. Tracey Lynne returns at 8:30 p.m.

Pulling contests Wednesday, A.T.V. Pull at 7:00 p.m., Thursday, Compact Tractor Pull at 7:00 p.m., Friday, Antique Tractor Pull at 5:00 and the Pony Pull at 6:30 p.m. Saturday the large tractor elimination at 10:00 a.m. and the pull at 7:00 p.m.

The club lambs will be judged at 6:00 p.m. on Wednesday and the Optimist steers at 8:00 p.m. The Livestock Auction for both clubs will take place Thursday at 5:00 p.m. The Fair will have nightly drawings with prizes from area merchants each evening at 10:00 p.m.

SEE YOU AT THE FAIR!

## May Heat Home By Radio Waves

Manchester Enterprise  
December 1, 1927  
Plan of Tesla Revived in Tests is Now Announced to Electrical Society

Houses of the future may be heated and lighted by means of radio waves sent out from a central station in parallel beams and without costly transmission wire equipment now required, according to Dr. Phillips Thomas, research engineer of the Westinghouse Electric and Manufacturing Company at a meeting of the New York Electrical Society.

Describing the possibilities of "long distance" heating and lighting, Dr. Thomas said that waves similar to those used in radiocasting but of shorter wave length, when reflected from metal mirrors produced narrow beams like the beams from automobile headlights.

"We may visualize a parallel beam of radiation 10 centimeters or four inches across, along which is being sent 10 kilowatts of energy," he said. What sort of effects shall we find? Will this be a means of delivering energy for heat and light to individual houses? Tesla had a similar idea many years ago. Later improvements in the radio art make it interesting to consider such a possibility once more.

We may imagine each house furnished with a half-wave oscillator in line with a parallel beam from a sending station, so heat and light may be obtained very much as at present, by simply turning a switch, but without the costly transmission wire equipment now required.

A novel radio furnace in which chemical reactions usually possible in a vacuum were initiated by radio waves, was displayed by Dr. Harvey C. Rentschler, director of research of the Westinghouse Lamp Company.

A disc of metallic tungsten, among the most infusible of all metals, was heated white hot in an instant by the invisible rays. The furnace will also turn metals like gold and silver into gases so that their individual atoms can be weighed. Although these metallic atoms are so tiny that billions of them are necessary to make an ounce, the radio furnace permits them to be studied, and weighed with results of important value, Dr. Rentschler said.

The radio furnace is designed to concentrate large amounts of radio power within a small space, rather than to send it for long distances over projected beams. It

is particularly valuable for heating certain metals which cannot be prepared usefully in metallic form by ordinary methods because of the ease with which they take fire.

## Next Up: Good Times Music

- Janet LaBeau Shurtliff

Coming up next, July 6, at the Manchester Gazebo Thursday Evening Concert Series: the double bill of "Deborah Hinderer Rusinsky and Friends" and "Mosher and Reynolds."

This will be a varied evening of acoustic, upbeat music. There will be visible energy radiating from the stage.

"Deborah Hinderer Rusinsky and Friends" will present a repertoire which is every bit as varied as blues and folk music is capable of being - and this is varied indeed.

Ms. Rusinsky has performed at the Ark in Ann Arbor, at the Chelsea Concerts in the Park Series, and at the Southfield Folktown Concerts. She will be accompanied by "friends" Shiela Warner, Michelle Baldwin, Bill Warner, and perhaps others.

Dave Mosher and Gary Reynolds will complete this July 6th Gazebo Concert with their own equally unique style. These fellows (both from Manchester) play several instruments and will bring the evening to a high energy conclusion.

The concert begins at 7:00 p.m. at the Gazebo on West Main near Macomb. Bring a lawn chair or blanket; bring a picnic; bring the kids; bring a friend. A fun evening of old fashioned good times is ahead.

Regarding the "rain location": Emanuel Church has generously offered their Church Hall Auditorium as a rain location. Should it be too wet to enjoy the concert at the Gazebo, come over to Emanuel. The rain needn't ruin the evening.

Thursday, July 13, the Gazebo Concerts will take a break so all can enjoy the Manchester Community Fair. But Gazebo Concerts will resume on Thursday, July 20th - Chicken Broil night! More details on the July 20th concert will be forthcoming.



## Letter to the Editor

On Monday, June 26, 1989, the United States Supreme Court announced that it had decided, by a 5-4 vote, that the imposition of the death penalty upon 16 and 17 year olds does not violate the Eighth Amendment of the U.S. Constitution's ban on "cruel and unusual punishment."

As the chief executive officer of an institution which cares for over 600 children and their families, I wish to register my deep dismay at this decision. Based on my experience with troubled teenagers, some of whom have been previously involved in very serious criminal activities, I firmly believe that every single youth has the potential of turning his or her life around and becoming a responsible, contributing member of society. To condemn a teenager to death is to profess that for that person, there is no hope for redemption.

In all the world, only a handful of countries allow the execution of minors. In the United States, the majority of states do not allow it. This country has come to use 18 as the age of adulthood, as the time to gain the right to vote, the duty to serve on a jury and for readiness to assume the full responsibilities of citizenship.

People who are 16 and 17 years old do not generally have the

experience, wisdom and maturity to grasp the full meaning and consequences of their actions. A youth who becomes involved in a serious crime is often a deeply troubled, frightened and confused person. Of course society needs to be protected from criminals of all ages, but the protection of society does not necessitate the state-sanctioned killing of teenage criminals.

It is my fervent prayer that the people of the United States, public officials at all levels and all of our judges up to and including the U.S. Supreme Court will carefully re-think this issue in light of the moral and ethical traditions of this country. I am confident that such a re-thinking process will inevitably result in the reversal of the Court's truly unfortunate decision.

Sincerely,  
Brother Francis Boylan, CSC  
Executive Director  
Boysville of Michigan

## American Legion Auxiliary

Meeting and Potluck Picnic at the Legion Hall on July 12, 1989 at 6:30 p.m. Bring a dish to pass and your own table service. Meat, rolls and beverage will be provided.

## Manchester Township

ANNUAL MEETING  
June 24, 1989

Meeting opened with the pledge of allegiance at 12:30 p.m. Supervisor announced the meeting would be run by Robert's Rules of Order and the meeting was being taped.

Roll Call of Board members: All present. Also present were six elders.

Minutes of Annual Meeting of June 30, 1989 were accepted as read.

No petitions or old business. Rates were set for election workers and Board of Review members to \$5.00 per hour with time and a half over eight hours and chairman to receive an additional fifty cents per hour.

Financial statement accepted as presented.

Priorities for Fire Department for the upcoming year are 1,000 feet of 4" hose, 500 feet of 1 1/2" hose, 2 coats and two air packs.

Dutchmen Firefighter Association will provide an additional \$1,000-\$1,100 for needed items for 1989 truck.

Scully also pointed out that the Firefighter's Association provided the Township with a 1975 fire truck at no cost to the taxpayers. He stated there were many donations and volunteers on the project. He thanked the taxpayers for approving the purchase of the 1989 truck. He explained the future plans.

Susan Gleason gave an annual report of the Library which included the Library celebrating it's 150th year, the cancellation stamp used by the Manchester Post Office and the Historical Marker. She stressed that there are many volunteers.

Ann Fowler presented the financial statement for the Library.

Lyle Moore's annual report was read by the Supervisor. 1989-90 budgets presented and accepted.

Approved the treasurer to use the local bank/savings and loan that is most beneficial to the township.

Designated the second Monday of the month at 8:00 p.m. to hold the Manchester Township Board meetings. If date falls on a holiday, the meeting will be held on the following day.

Meeting adjourned at 1:30 p.m.

Submitted by Wilma E. Lentz, Clerk  
Approved by Ronald E. Mann, Supervisor

In the last 40 years, we've had some major advances in the fight against heart disease.

- The heart-lung machine to make open heart surgery a reality
- CPR
- drugs for high blood pressure
- anti-coagulants
- heart transplants
- balloon angioplasty
- coronary bypass
- drugs which can stop a heart attack in progress

For 40 years, we've been fighting for your life.



**THE MANCHESTER ENTERPRISE**  
150 East Main Street Phone 313-428-8173 Manchester, MI 48156  
USPS No. 327-460

The Manchester Enterprise was established in 1867 and is published each Thursday at 150 East Main St., Manchester, Michigan, with second class postage paid at Manchester, Michigan 48156.  
Edward E. Steele, Publisher  
Lenore A. Steele, Editor

POSTMASTER: Send Form 3972 To: Manchester Enterprise, 150 East Main St., Manchester, Michigan 48156.  
DEADLINES: All Display Advertising and Pictures (Black & White ONLY) Are Due By 5 p.m. Every Monday For Same Week Publication. All Classified Advertising and News Articles Are Due By 10 a.m. Every Tuesday For Same Week Publication.

## Senior Citizens News

Up and down go the windows! We think that now when the weather is cooler, we'll get so much done. Why is this always the time when we are busier outside our home domain than usual and when we have time to air bedding, etc. it is again raining? Forget the weather and let's just enjoy family and some of the kid's cute sayings. Rubena asked her great-grandson, Nicholas, "Don't you think it is time to go in the house? It will be dark soon." He answered, "No, the sun hasn't even landed yet!" And, on to bigger kids: Howard and Lenora Parr stated that they have a college professor in the family and we wish to congratulate all of them as their son begins at Miami of Ohio at Oxford. The good kids are all around us-let's pat them on the back, then encourage the few bad ones to do better.

Thursday, July 6: The senior men use the bus to go golfing. Beginning at 5:00 p.m., the Sharon United Methodist Ice Cream Social begins. Seniors who wish to go by senior bus, should call Erma Alber 428-8707 to make reservations on the bus.

Saturday, July 8: The bus leaves the Center at 9:00 a.m. for the Huckleberry Railroad trip near Flint. Call Erma to go along. Tuesday, July 11: Senior Citizens Council will meet at 9:30 a.m. Bring your ideas with you to this meeting. This is the way the Council knows what you want. The Manchester Community Fair officially begins at 6:30 p.m. with the parade. If you wish to ride in the parade on the senior bus, call Erma and she can tell you of meeting time. Come to the fair!

Thursday, July 13: Senior men will golf. Starting at 5:00 p.m., Bethel UCC folks will welcome you to their social. Seniors may enjoy the fair free until 5:00 p.m. today, so you may have a full day of fun by taking advantage of this.

Looking ahead: Friday, July 14-A bus trip to Grass Lake is planned for seniors to visit a llama farm. Bus departure from the Center begins at 10:00 a.m. Call Erma if you wish to go.

leaves the Center at 9:00 a.m. for the Huckleberry Railroad trip near Flint. Call Erma to go along.

Tuesday, July 11: Senior Citizens Council will meet at 9:30 a.m. Bring your ideas with you to this meeting. This is the way the Council knows what you want. The Manchester Community Fair officially begins at 6:30 p.m. with the parade. If you wish to ride in the parade on the senior bus, call Erma and she can tell you of meeting time. Come to the fair!

Thursday, July 13: Senior men will golf. Starting at 5:00 p.m., Bethel UCC folks will welcome you to their social. Seniors may enjoy the fair free until 5:00 p.m. today, so you may have a full day of fun by taking advantage of this.

Looking ahead: Friday, July 14-A bus trip to Grass Lake is planned for seniors to visit a llama farm. Bus departure from the Center begins at 10:00 a.m. Call Erma if you wish to go.

## Buy, Rent Sell Thru The Classifieds

Buy with CONFIDENCE from  
**Russ Aiuto**  
Your TRANSPORTATION SPECIALIST AT  
**MIDWEST FORD, Inc.**  
510 West Main Street, Manchester, Mich.

- A, B, Z and X-Plans my specialty!
- Top dollar for trade-in!
- Expert, friendly service after the sale!
- Good previously owned vehicles for sale!

Call RUSS AIUTO for more INFORMATION **313-428-8343**

**Manchester Gazebo Concerts**

Thursday Evenings at 7:00 p.m.  
at the Gazebo on West Main St.  
(RAIN LOCATION NEARBY)

July 6- Deborah Hinder Rusinsky & Friends. From turn-of-the-century ballads to blues, from goof-ball humor to folk songs. "Friends" include Sheila Warner, Michelle Baldwin, and Bill Farmer.

Mosher and Reynolds. Multi-talented and multi-instrumentalists. Professional musicians and Manchester residents sing and play with style and sass.

July 13- The Gazebo Concerts take a break this week to enjoy the Manchester Community Fair. See you at the Fair!

—Call (313) 428-7722 for Concert Updates—

## Road Rally Comes To Manchester

The Manchester Recreation Task Force has announced plans to sponsor "Rally Round Manchester" on July 29, 1989. It will be a Time/Speed/Distance road rally around a course about 50 miles in length and taking approximately 3 hours to run. The object of the rally is to follow the course at various assigned speeds while keeping as close to the correct elapsed time as possible. Trophies will be awarded for first, second and third place finishers.

To enter you need: 1. A driver and navigator; 2. A valid driver's license; 3. Any type of street-legal vehicle with current insurance and a working odometer; 4. A watch (or a stopwatch), a calculator, and a clipboard.

The rally will begin and end at Carr Park on Austin Road. Training will be available before the rally. Activities at the park are being planned for after the rally.

Watch for more details in the Enterprise soon or call the Community Resource Center at 428-7722 for more information.

## Red Cross Bloodmobile

Many volunteers of the American Legion Auxiliary, Emil Jacob Unit #117 are preparing for the Summer Bloodmobile which will be held at the American Legion Hall on Monday, July 17 from 12 noon to 6 p.m.

Other volunteers are our local church recruiters, asking members for blood donations. They are: Emanuel UCC-Olive Feldkamp; Manuehel United Methodist-Shirley Carpenter; Bethel UCC-Elaine Creech; St. Mary's Church-Jeanette Uphouse; North Sharon Bible Church-Mrs. J. Neil Lantis; Iron Creek & Victory Baptist-Jane Wellman; Sharon United Methodist-Marie Pratt.

Chairpersons of the day will be Mrs. Helen Hosmer and Mrs. Marilyn LaRock. They urge you to contact your church recruiter to sign a card that they will have available, for your time preference. The card will be returned to you as a reminder.

Drop boxes with registration cards will be placed at the three banks: Comerica, First of America and Great Lakes Bancorp; also at the Baker's Dozen and Manchester IGA Walco Food Store.

## "Best of the Class"



More than 180 award-winning graduating high school students have been honored by WXYZ/Channel 7, Elias Brothers, and First of America in the ninth annual "Best of the Class" public service campaign. These top students will be featured in a number of 60-second public service announcements which run on WXYZ throughout the summer.

## Toledo Belongs To Michigan?

Join the debate over the "Toledo Strip" on Saturday and Sunday, July 15 and 16, at Walker Tavern Historic Site at Cambridge Junction in Lenawee County's Irish Hills.

The weekend festival and military encampment allows visitors to relive Michigan's fiery entrance into the Union more than 150 years ago. Lighthearted debates between Ohioans and Michiganders will settle once and for all - until next year, anyway - who should possess the Toledo Strip.

The dispute over Michigan's southern boundary line delayed its admission to the Union for two years until 1837, when Michigan reluctantly ceded the Toledo Strip in return for the western part of the Upper Peninsula.

After the debates, visitors can cast their votes on how the Toledo War should have been settled. Other highlights of the weekend include a military encampment by Michigan and Toledo re-enactment troops, pioneer handicrafts, special dancers and 19th century

music. Saturday's events begin at 1:00 p.m. with a brief ceremony honoring volunteers who make Toledo War Days a reality, and a Michigan vs. Ohio Little League game of "rounders", the forerunner of baseball.

The Cobblestone Dancers Group from Ann Arbor will be performing from 1:00 to 5:00 p.m. on Sunday.

On both days visitors can view an authentic Indian tepee, film on pioneer life, and oxen demonstrations. Nearly two dozen craftsmen will be demonstrating their skills, which include basket-weaving, woodcarving, storytelling, cornhusk dollmaking, tin-smithing and tin punching, quilting, frontier portrait painting, rifle-building, surveying, blacksmithing, chair caning, knife making, lace making and rug hooking. Musical entertainment throughout the weekend includes a harmonica band from Rose City, a bagpiper and the Toledo Dulcimer Society. Refreshments will be available.

Walker Tavern was a major hub for pioneers traveling into Southern Michigan from 1832-1852. The structure fell into disrepair until restoration work by the departments of State and Natural Resources was begun in the 1970's. The Walker Tavern Historic Complex contains the original restored white frame salt-box inn and stagecoach barn (circa 1840's); a frontier-era barn and a visitors' center.

Walker Tavern is located in Cambridge State Park on Michigan Route 50, one-quarter mile before its intersection with U.S. Route 12. There is no admission charge to attend Toledo War Days or tour the Historic Complex, although the Department of Natural Resources charges a day rate for parking in the state park.

For additional information call the Michigan Historical Museum in Lansing at 517-373-3559. Or call Walker Tavern direct at 517-467-4414. The historic site is open seven days a week from 10:00 a.m. to 5:00 p.m.

## Attention: Class of '92

We are working on our fair float at McGee's (corner of E. Main and Hibbard) Wednesday-Friday 5-9, Saturday 11-3, Sunday 1-5, Monday 5-9, Tuesday 10-parade time.

Everyone needs to come and be prepared to work. Questions? Call Rebecca 428-8086.

## Buy, Rent Sell Thru The Classifieds

**PARR'S AUTO BODY**  
BODY WORK - PAINTING  
FREE ESTIMATES  
INSURANCE WORK  
GLASS INSTALLATION  
18481 W. Austin Road  
Manchester, Michigan  
Phone 313-428-9538

**COME TO THE FAIR**  
JULY 11-12-13 14 & 15  
**Manchester Community Fair Week Specials**

**USED CAR SPECIALS**

|   |   |  |
|---|---|--|
| 1984 CAVALIER WAGON — Auto, Air, Sharp-AM/FM. Was \$3495..... <b>NOW \$2,495</b>                          | 1985 AMC EAGLE WAGON — 4x4 Auto, Air, Ready for Anything. Was \$5,995..... <b>NOW \$4,495</b> | 1985 FORD LTD — 4 Door Sedan-Air Loaded-Super Nice. Was \$5,995..... <b>NOW \$4,295</b>                |
| 1986 FORD TEMPO 4 DOOR — Auto, Air, Good Miles. Was \$5,995..... <b>NOW \$4,995</b>                       | 1986 DODGE ARIES — 4 Door Auto, Air, Vinyl Roof. Was \$5,995..... <b>NOW \$4,995</b>          | 1987 CHEVROLET CELEBRITY — 4 Door-Loaded Air, Stereoc, Super Nice. Was \$7,995..... <b>NOW \$6,495</b> |
| 1988 FORD MUSTANG — LX Convertible V6 5 sp., Leather, 12,000 miles. Was \$12,995..... <b>NOW \$11,495</b> | 1988 FORD TEMPO — 4 Door, Auto, Air, Great Family Car. Was \$8295..... <b>NOW \$6,995</b>     | 1988 FORD ESCORT GT — Loaded, Sharp only 10,000 miles. Was \$8,995..... <b>NOW \$7,995</b>             |
| 1988 FORD CROWN VICTORIA — Loaded All The Options. Was \$12,995..... <b>NOW \$12,495</b>                  | 1988 FORD TAURUS — Wagon-Loaded, Super sharp. Was \$12,995..... <b>NOW \$11,695</b>           | 1988 LINCOLN TOWN CAR — Loaded Sharp Luxury Car. Was \$17,995..... <b>NOW \$16,695</b>                 |
| 1988 FORD THUNDERBIRDS — Loaded V6-3 to choose from \$9,995   | 1988 FORD TAURUS SEDAN — V6 Loaded A Few Left At This Fantastic Price \$8,995                 | 1989 FORD ESCORT LX — Sedans-Automatic Air, All Low Miles 3 Left at \$7,695                            |
| 1989 FORD TAURUS GL SEDANS — Automatic Air, 3 with Low Miles At \$10,995                                  | 1989 FORD THUNDERBIRD COUPE — White - Loaded-Loaded, Sharp \$11,995                           |  |

**USED TRUCKS SPECIALS**

|  |  |  |
|--|--|--|
| 1984 FORD F150 4x4 — 47,000 Miles Stick Shift-Red Sharp! <b>ONLY \$5,995</b>   | 1985 FORD F150 4x2 — Automatic, V-8, XLT, Lariat. Super nice. \$6,995  | 1985 FORD F150 4x4 — 59,000 miles, snow plow and cap. Think winter <b>ONLY \$6,995</b> |
| 1987 FORD F150 4x2 — 6 cyl, 5 speed Air, Fiberglass Topper <b>ONLY \$7,995</b> | 1987 FORD F350 — Crew Cab Diesel Automatic-Loaded <b>ONLY \$14,995</b> |  |

**MIDWEST FORD**  
510 W. Main Street — Manchester, MI  
Mon & Thurs 9-8:00  
Tues, Wed, & Fri 9-6, Sat 9-2  
Call Us Collect **313-428-8343**  
MIDWEST FORD MIDWEST FORD

**Get That Body Back In Shape**

The professionals at Midwest Ford will get your car looking like new in no time!

- ★ Complete Collision Service
- ★ Fast, Dependable Service
- ★ FREE ESTIMATES

**MIDWEST FORD**  
510 W. Main St. Manchester  
WILL CHALLICE (313) 428-8343



# Cook Skewered Sirloin Outdoors

Cooking outdoors can be a relaxing and enjoyable way to spend the end of a hectic work day. Especially when you prepare a convenient entree like Sirloin Ribbons and Pineapple Chunks. It's a quick, nutritious and satisfying dish that's quick and easy to prepare on an outdoor grill.

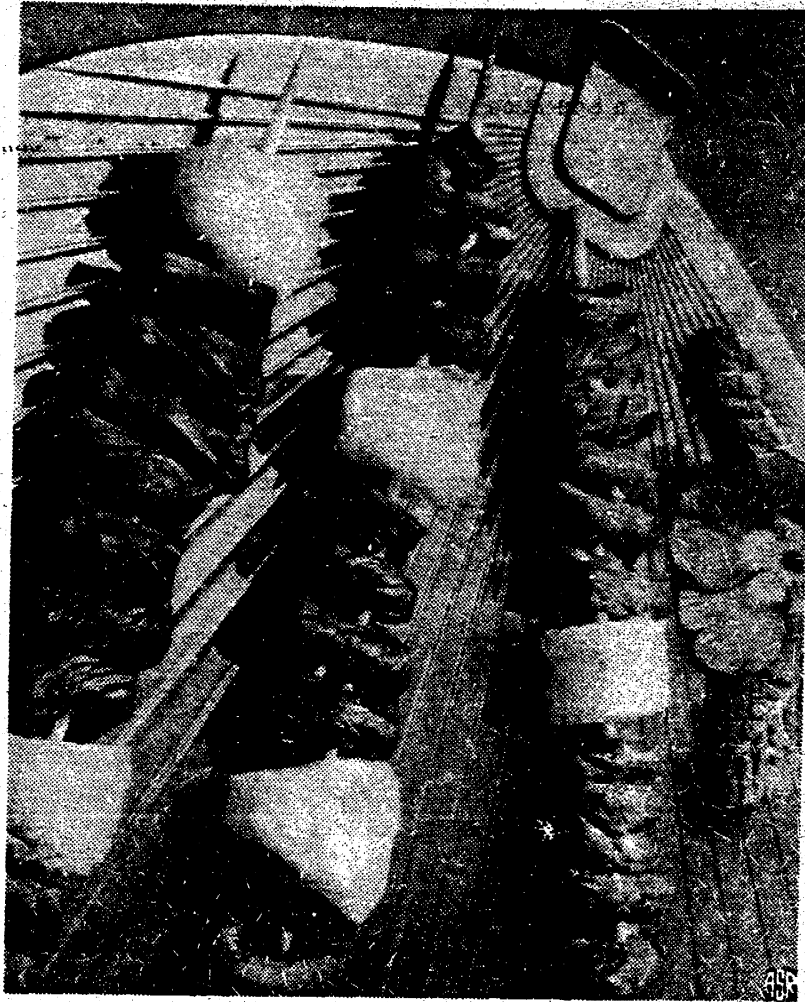
Sirloin steak is always a popular choice when cooking outdoors. But instead of serving it as a whole steak, try slicing it into 1/8 to 1/4-inch strips. Marinate to add flavor in the 20 minutes it takes to heat charcoal briquets. Then thread the beef strips, weaving them back and forth like a ribbon, on presoaked skewers. Alternate the strips with fresh or canned pineapple chunks.

Just add a tossed salad and a loaf of crusty bread for a convenient, low-calorie meal. A single serving is only 236 calories!

**Sirloin Ribbons and Pineapple Chunks**  
Preparation time: 10 minutes  
Marinating time: 20 to 30 minutes  
Cooking time: 4 minutes

- 1 1/4 to 1 1/2-pounds boneless beef sirloin steak, cut 1 inch thick
- 1/4 cup each soy sauce and water
- 3 tablespoons fresh lime juice
- 1 teaspoon sugar
- 3 cloves garlic, minced
- 24 cubes (1 x 1 inch) fresh pineapple\*

Partially freeze beef sirloin steak to firm; slice into strips 1/8 to 1/4 inch thick. Combine soy sauce, water, lime juice, sugar and garlic. Place beef strips in plastic bag or utility dish; add marinade, turning to coat. Close bag or cover dish and marinate 20 to 30 minutes, turning occasionally. Meanwhile soak eight 12-inch



Great tasting outdoor meals start with recipes like Sirloin Ribbons and Pineapple Chunks.

bamboo skewers in water 10 minutes. Pour off marinade. Alternately thread an equal amount of beef strips (weaving back and forth) and three pineapple cubes on each skewer. Place kabobs on grid over medium coals\*\* and grill 4 minutes, turning

once. 4 servings. 236 calories per serving. \*Canned pineapple chunks may be substituted for fresh pineapple. \*\*Test about 4 inches above coals for medium with 4-second hand count.

## FAMILY FISHING TRIPS

Nothing unites a family so much as planning a trip or a vacation. If it happens to be a fishing trip, all the better.



Part of the fun of a family fishing trip is choosing the campsite.

That feeling of unity usually begins with the family gathered over a map of the area you'll be fishing. Routes to the site are discussed. Choice of campsites and rivers is decided and each family member feels that he or she is part of the decision. The U.S. Geological Survey points out that a good map, which can be found at your nearest map dealer, will not only show distance and direction, it will describe the shape of the land and its natural and man-made features.

Here are some quick fishing tips you might want to jot down:

- When fly casting, always cast upstream.
- When fishing for bottom fish, such as catfish, use an odorless bait such as cheese, meat or bread dough.
- With a good map and a good fishing spot, your family should have a memorable vacation.

## Engagement Announced



Mr. and Mrs. Barry Grossman of Ann Arbor announce the engagement of their daughter, Susan Ellen to John Winfield Baughn, Jr., son of Mrs. Barbara Baughn of Ann Arbor.

Susan is a graduate of Dexter High School and is now attending Eastern Michigan University. John is a graduate of Huron High School and is also attending Eastern Michigan University.

The wedding will be August 19, 1989, at Webster United Church of Christ in Dexter.

Susan is the granddaughter of Mr. and Mrs. Rollie Grossman of Manchester.



Just one square inch of the sun's surface shines with the intensity of 300,000 candles.

### STRAWBERRIES

Berries are NOW at their peak!

Pick Your Own  
Irrigated straw lined rows  
50¢ pound  
in your own container  
Hours 8 AM to 7 PM

**Don Everett & Son Orchard**  
5750 Pennington Road  
Clinton, Michigan  
1-517-423-7262

### Buy, Rent, Sell Thru The Classifieds

**Todd Withrow Company**

REMODELING  
CABINETMAKING  
ADDITIONS—WINDOWS  
KITCHENS—BATHROOMS  
ROOFING—SIDING  
CUSTOM BUILT CABINETS  
WALL UNITS—FURNITURE

TOP QUALITY MATERIAL AND WORKMANSHIP

LICENSED AND INSURED

CALL ANY TIME  
428-9420 or 428-7797

### For the price of a pair of sneakers, you can be a pair of loafers.

Endless family fun is waiting for you at the **Toledo Marriott Portside**. We're located Riverfront in the heart of Toledo's downtown summer festivals, adjacent to the Portside Market Place and Shooter's cafe. So whether you're boating, fishing, shopping or feasting, get ready for a "sunsational" summer. Our "Two For Breakfast" weekend includes deluxe room accommodations, and two full breakfasts each morning of your stay.

**Redeem this ad, and receive \$10 off our already low \$69 per evening rate.**  
\*Offer expires September 20, 1989. Not valid holidays.

**TOLEDO Marriott**  
PORTSIDE  
Two SeaGate/Summit Street • Toledo, Ohio 43604 • (419) 241-1411

### CHEVROLET

## A Good Selection of New and Used Cars On Our Lot

We Feature "Riverside Conversion Vans"

# TIRB

## CHEVROLET & GEO

131 ADRIAN STREET MANCHESTER, MICHIGAN  
Phone 313-428-8212 or 313-428-8492  
Monday, Wednesday 7:30 am-8 pm  
Tuesday Thursday, Friday 7:30 am-6 pm Saturday 7:30-12

Chelsea Internal Medicine Consultants, P.C. is pleased to announce **Thomas K. O'Brien, MD** will be joining the practice beginning July 1, 1989.

Dr. O'Brien is board certified in Internal Medicine, the specialty care of adults, adolescents, and the elderly. He has completed an advanced year of training at Wayne State University as Chief Medical Resident this year.

Dr. O'Brien will work with Drs. Yarows and Gleespen in providing high quality medical care to the community stressing individualized, continuity of care with his patients. The addition of Dr. O'Brien will allow us to serve the community better with expanded evening hours (Monday through Thursday) and Saturday morning hours.

Steven A. Yarows, MD, FACP     Martin P. Gleespen, MD     Thomas K. O'Brien, MD

Chelsea Internal Medicine Consultants, PC  
Village Professional Center  
515 S. Main  
Chelsea, Michigan 48118

Appointments may be made by calling (313) 475-8677.

# CHURCH DIRECTORY

**EMANUEL UNITED CHURCH OF CHRIST** - Rev. Paul Kuntzman, Senior Pastor, Rev. Nancy Doty, Associate Pastor; Sunday School 9:00 a.m.; Morning Worship 9:30 a.m.; Coffee Hour and Fellowship Time 10:30 a.m.

**MANCHESTER UNITED METHODIST CHURCH** - Rev. Pegg Ainslie, Pastor; Worship 10:30, Coffee/Fellowship Time 11:30; Sunday School 9:10; Choir Rehearsal 11:45 a.m.

**ST. MARY'S CATHOLIC CHURCH** - Father Raymond Schlinkert; Monday thru Friday 8:30 a.m.; Saturday 5:00 p.m.; Sunday 8:30 a.m. and 10:30 a.m.

**FAITH COMMUNITY CHURCH** - Scott Engelman, Pastor; Roman Kupecky, Associate Pastor; 8400 Sharon Hollow Rd. off W. Austin; Worship Service 10:00 a.m.; Sunday School 11:15 a.m.; Sunday Evening Service 6:00 p.m.; Jr. and Sr. High Young People's Meeting 7:30 p.m.

**VICTORY BAPTIST CHURCH** - 423 South Macomb, 428-7506; Rev. R. Dean Cooper, Pastor; Sunday School 9:45 a.m.; Morning Worship 11:00 a.m.; Evening Worship 6:00 p.m.; Teen Talk 7:00 p.m.; Wednesday Prayer, Bible Study, Youth 7:00 p.m.

**BETHEL UNITED CHURCH OF CHRIST** - Rev. Roman A. Reineck, Pastor; Schneider and Bethel Church Roads; Church Service 10:00 a.m.; Sunday School 11:00 a.m.

**SHARON UNITED METHODIST CHURCH** - Rev. Erik Alsgaard, Pastor; Corner of M-52 and Pleasant Lake Roads; Church School 9:30 a.m.; Worship 10:30 a.m.

**ST. JOHN'S LUTHERAN CHURCH** - Rev. Dennis A. Falk, Pastor; Austin Road, Bridgewater; Sunday School 9:15 a.m.; Worship 10:30.

**NORTH SHARON BAPTIST CHURCH** - Bill Winingler, Pastor; Sylvan and Washburn Roads; Sunday School 10:00 a.m.; Morning Church 11:00 a.m.; Evening Church 7:00 p.m.; Wednesday Bible Study 7:00 p.m.; Youth Meetings 7:00 p.m.

**IRON CREEK COMMUNITY CHURCH** - English and Sharon Hollow Roads; Worship Service 10:00 a.m.; Sunday School 11:15 a.m.; Sunday Evening 7:00 p.m.; Wednesday Evening 7:00 p.m.

**ZION LUTHERAN CHURCH** - 3050 S. Fletcher Road; Rev. Mark A. Weirauch; Sunday School 9:00 a.m.; Worship Service with Holy Communion 10:15 a.m.

**ST. THOMAS LUTHERAN CHURCH** - 10001 W. Ellsworth Rd., (5 miles North and 6 1/2 East of Manchester), Rev. John Riske, Pastor; Summer schedule: Worship 9:30 a.m.; no Sunday School; Holy Communion First and Third Sundays.

**ST. JOHN'S UNITED CHURCH OF CHRIST** - Rev. Ted Wimmier, Pastor; Rogers Corners, Waters and Fletcher Roads; Adult Bible Study Class 10:00; Worship and Sunday School 10:30 a.m.

**CLINTON ASSEMBLY OF GOD** - Rev. Richard Coury, Pastor; Chris Bouldrey, Youth Pastor; 13300 Clinton-Manchester Road, Clinton; Sunday School 9:30 a.m.; Worship 10:45 a.m.; Sunday Evening 6:30 p.m.; Wednesday Prayer, Bible Study, Youth 7:00 p.m.

**CHURCH OF JESUS CHRIST OF LATTER DAY SAINTS (MORMONS)** - Wayne L. Winzenz, Branch President; 1330 Freer Road, Chelsea; Sacrament 9:30 a.m.; Sunday School, Primary 10:50 a.m.; Priesthood, Relief Society, Aaronic Priesthood, Youth 11:40 a.m. For more information, call 475-1778.

### MANCHESTER CHIROPRACTIC CLINIC

"TRY CHIROPRACTIC NATURALLY"

STAN GILBERT, D.C.     232 E Main  
313-428-7207     Manchester, Mich.

APPOINTMENT HOURS:  
Monday, Wednesday, Friday 9 am-12 noon and 3 pm-7 pm  
Tuesday, Thursday, Saturday By Appointment

### CUSTOM CABINETS MADE IN MANCHESTER

Competitive Prices  
Installation Available  
Design Service

—OR—  
Let Us Reface Your Old Cabinets and Save \$\$

**Dutch Country Kitchens**  
18352 W. Austin Road Phone 313-428-7292 Manchester

## A Lovely Evening

- Janet LaBeau Shurtliff

Thursday, July 6: 7:30 p.m. Board of Christian Education  
Sunday, July 9: 9 am Choir rehearsal, 9:30 Worship, 10:30 Coffee and Fellowship, 10:45 Adult Study  
Wednesday, July 12: 7 pm Memorial committee, 7:30 Church Council

**ST. THOMAS LUTHERAN CHURCH**  
Sunday, July 9: 9:30 am Worship Service

**BETHEL UNITED CHURCH OF CHRIST**  
Thursday, July 6: 5 pm Ice Cream Social at St. James  
Sunday, July 9: 10 am Worship Service Communion  
Tuesday, July 11: 7:30 pm Church Board at Dave Seegers  
Wednesday, July 12: 6:30 pm Ice Cream Social Set Up  
Thursday, July 13: 12:30 pm Ice Cream Social Set Up, 4:30 pm Social Begins

**ZION LUTHERAN CHURCH**  
Sunday, July 9: 9:15 Worship, 10:30 Lutheran Vespers  
Tuesday, July 11: Property Committee 8 pm  
Wednesday, July 12: 7 pm Business Management, 8 pm Church Council

**MANCHESTER UNITED METHODIST CHURCH**  
Sunday, July 9: 10:30 pm Worship-Rev. Pegg Ainslie

senbaum (vocals) and Hans Van Alstine (classical guitar)! An unexpected and pleasant addition to the evening was Manchester's Annette Wurster taking the role of MC for the evening. Wearing the crown and sash which represent her title of Miss Michigan American Coed Hostess 1989, Miss Wurster's gracious introduction and conclusion to the program provided a fitting context for the music. All in all, the evening was Different - yes. And very, very lovely, too.

Most of the program was performed by a woodwind ensemble (clarinet, oboe and bassoon) plus a harpsichord. Hans Van Alstine was featured soloist for a couple of classical guitar pieces. Some numbers also included a vocalist. The skill and talent of each of these performers was impressive. And their gentle sound had a cozy, warming influence on a cool evening. Whether it was your first choice of musical styles or not - it was beautiful without a doubt. And the Manchester community was given a very lovely gift by Bruce Cowan (clarinet), Nora Shanklin (bassoon), Heidi Cowan (keyboard), Deborah Hinderer Rusinsky (oboe), Stephanie Ro-

### ICE CREAM SOCIAL

SHARON UNITED METHODIST CHURCH  
CORNER OF M52 & PLEASANT LAKE RD., MANCHESTER  
Thursday, July 6 — 5 p.m.

CHICKEN BAR—B—QUE  
SLOPPY JOES  
HOT DOGS  
TOSS SALAD  
BAKED BEANS  
POTATO SALAD

ICE CREAM  
CAKES & PIES  
JELLO  
MILK & POP  
COFFEE  
ICED TEA  
FISH POND

TAKE-OUTS AVAILABLE AFTER 5:30  
EAT OUTSIDE OR IN AIR CONDITIONED BASEMENT

"Oh boy! A discount on my car insurance. Thanks, honey!"

Special discounts for safe drivers 45 and over are available from your Auto-Owners agent.

**Wacker's General Store**  
melody farms  
Quality Dairy Products "For Your Good Health"

MILK ICE CREAM  
LOW CHOLESTEROL ICE CREAM  
ASSORTED JUICES  
All Your Dairy Needs  
**G.E. Wacker Inc.**  
Gasoline-Fuel Oil-Greases  
Motor Oil-Diesel Fuel  
9050 Chelsea-Manchester Rd.  
Manchester, Mich. 48158

SUMMER HOURS  
Monday-Friday 7 am-9 pm  
Saturday 8 am-9 pm  
Sunday 9 am-9 pm

**Sutton Agency, Inc.**  
AGENTS:  
CONNIE WIDMAYER KATHRYN MARTIN SUSAN MANN  
Phone 428-9737  
136 East Main Street Manchester, Michigan  
Monday-Tuesday-Wednesday-Friday 9 a.m. to 4:30 p.m.  
Thursday 9 a.m. to 12 Noon

### Don't be a heartbreaker

Eat less saturated fat.

**American Heart Association**  
WE'RE FIGHTING FOR YOUR LIFE



**AMENDMENT TO THE FREEDOM TOWNSHIP ZONING ORDINANCE**

ORDINANCE NO. **6F**

AN ORDINANCE TO AMEND SECTION 2.02 - DEFINITIONS, ADD A NEW SUBSECTION 11.13, CONDOMINIUM SUBDIVISION APPROVAL, TO ARTICLE 11.0, SUPPLEMENTARY REGULATIONS OF THE FREEDOM TOWNSHIP ZONING ORDINANCE.

**THE TOWNSHIP OF FREEDOM ORDAINS:**

**1. Section 2.02 Definitions - Add the Following new definitions.**

**CONDOMINIUM ACT** - Act 59 of 1978, as amended.

**CONDOMINIUM DOCUMENTS** - The master deed, recorded pursuant to the Condominium Act, and any other instrument referred to in the master deed or bylaws which affects the rights and obligations of a co-owner in the condominium.

**CONDOMINIUM LOT** - The land in a condominium unit, together with the land in the adjacent and appurtenant limited common element, if there is such a limited common element.

**CONDOMINIUM SUBDIVISION PLAN** - The drawings and information prepared in accordance with Section 66 of the Condominium Act.

**CONDOMINIUM UNIT** - The portion of a condominium project designed and intended for separate ownership and use, as described in the master deed.

**CONTRACTING MASTER DEED** - The final amended master deed for a contractible or expandable condominium project, or a condominium project containing convertible land or convertible space, which final amended master deed fully describes the condominium project as completed.

**CONTRACTIBLE CONDOMINIUM** - A condominium project from which any portion of the submitted land or buildings may be withdrawn in accordance with this Ordinance and the Condominium Act.

**CONVERSION CONDOMINIUM** - A condominium project containing condominium units some or all of which were occupied before the filing of a notice of taking reservations under Section 71 of the Condominium Act.

**EXPANDABLE CONDOMINIUM** - A condominium project to which additional land may be added in accordance with this Ordinance and the Condominium Act.

**MASTER DEED** - The condominium document recording the condominium project to which are attached as exhibits and incorporated by reference the bylaws for the project and the condominium subdivision plan for the project, and all other information required by Section 8 of the Condominium Act.

**NOTICE OF PROPOSED ACTION** - The notice required by Section 71 of the Condominium Act, to be filed with Freedom Township and other agencies.

**SITE CONDOMINIUM** - A condominium development containing residential, commercial, office, industrial, or other structures or improvements for uses permitted in the zoning district in which located, in which each co-owner owns exclusive rights to a volume of space within which a structure or structures may be constructed herein defined as a condominium unit, as described in the master deed.

**2. Section 2.02 Definitions - Insert the following new definition of Planning Commission.**

**PLANNING COMMISSION** - The Planning Commission of Freedom as established under Act 168 of the Public Acts of 1959, as amended.

**3. Section 2.02 Definitions - Insert the following new definition of Township Board.**

**TOWNSHIP** - The Township of Freedom.

**4. Section 2.02 Definitions - Insert the following new definition of Township Board.**

**TOWNSHIP BOARD** - The Township Board of Freedom.

**2. Article 11.0 - Supplementary District Regulations - Add a new Section 11.13, as follows.**

**Section 11.13 Site Condominium Review**

**A. Approval Required** - Pursuant to authority conferred by Section 141 of the Condominium Act, preliminary and final site plans for all site condominiums shall be approved by the Planning Commission.

**B. General Requirements**

1. No permits for erosion control, building construction, grading, or installation of public water or sanitary sewerage facilities shall be issued for property in a site condominium development until a final site plan has been approved by the Township Planning Commission and is in effect. However, the Planning Commission may, at its discretion, and with appropriate conditions attached, authorize the Building Inspector to issue permits for grading and foundation work on the basis of the approved preliminary site plan. This requirement shall include contractible, conversion, and expandable condominiums.

2. If a building, structure, or use to be placed on a condominium lot requires site plan approval under Section 22.02, herein, a site plan for that building, structure, or use shall be approved in accordance with Article 54, herein, before a certificate of zoning compliance may be issued.

3. The Planning Commission shall have the authority to review and approve or deny preliminary and final site plans for site condominiums.

4. Preliminary and final site plans shall be submitted, reviewed, and approved or denied in accordance with Article 22, herein, provided however, that preliminary and final site plans shall not be combined for site condominiums. A dimensionally stable copy of the as-built drawings shall be submitted to the Township Clerk and a second dimensionally stable copy shall be recorded with the Washtenaw County Register of Deeds.

5. Each condominium unit shall be located within a zoning district that permits the proposed use.

6. For the purposes of this Ordinance, each condominium unit shall be considered equivalent to a single lot and shall comply with all regulations of the zoning district in which located. In the case of a site condominium containing single-family detached dwelling units, not more than one dwelling unit shall be located on a condominium lot, nor shall a dwelling unit be located on a condominium lot with any other principal structure or use except in a PUD district. Required yards shall be measured from the boundaries of a condominium lot. Lot coverage and floor area ratio shall be calculated using the land area of the condominium lot.

7. Each condominium unit shall be connected to the Township's water and sanitary sewer facilities where available, or shall have a well, septic tank, and drainfield approved by the County Health Department where Township water and sanitary sewer services are not available. The well, septic tank and drainfield serving a condominium unit shall be located within that unit, as described in the master deed, except in a Residential Cluster Development, in which case this requirement may be waived by the Township Board as a part of its approval of the Residential Cluster Development option.

8. Relocation of boundaries between adjoining condominium units, if permitted in the condominium documents, as provided in Section 48 of the Condominium Act, shall comply with all regulations of the zoning district in which located and shall be approved by the Zoning Inspector. These requirements shall be made a part of the bylaws and recorded as part of the master deed.

9. Each condominium lot that results from a subdivision of another condominium lot, if such subdivision is permitted by the condominium documents, as provided in Section 49 of the Condominium Act, shall comply with all regulations of the zoning district in which located, and shall be approved by the Zoning Inspector. These requirements shall be made a part of the condominium bylaws and recorded as part of the master deed.

10. All information required by this Ordinance shall be updated and furnished to the Zoning Inspector until applicable certificates of zoning compliance have been issued, as provided in Section 22.09, herein.

**C. Preliminary Site Plan Requirements**

1. A preliminary site plan shall be filed for approval at the time the notice of proposed action is filed with the Township.
2. The preliminary site plan shall include all land that the developer intends to include in the site condominium project.
3. The preliminary site plan shall include all information required in Section 22.03, herein, except that, in the case of a development that consists only of condominium lots and not buildings or other structures at the time of plan review, the location and dimensions of the condominium lots rather than individual buildings or other structures, and required yards shall be shown on the preliminary site plan.

**D. Final Site Plan Requirements**

1. A final site plan shall be filed for review for each phase of development shown on the approved preliminary site plan.
2. A final site plan for any phase of development shall not be filed for review by the Planning Commission unless a preliminary site plan has been approved by the Planning Commission and is in effect.
3. A final site plan shall include all information required by Section 66 of the Condominium Act, and the master deed and bylaws. The final site plan shall also include all information required in Section 54.04, herein, except in the case of a development that consists only of condominium lots rather than buildings or other structures at the time of plan review, the location and dimensions of condominium lots rather than individual buildings or other structures and required yards, shall be shown on the site plan.

**E. Revision of Condominium Subdivision Plan**

If the condominium subdivision plan is revised, the final site plan shall be revised accordingly and submitted for review and approval or denial by the Planning Commission before any building permit may be issued, where such permit is required.

**F. Amendment of Master Deed or Bylaws**

Any amendment to a master deed or bylaws that affects the approved preliminary or final site plan, or any conditions of approval of a preliminary or final site plan, shall be reviewed and approved by the Planning Commission before any building permit may be issued, where such permit is required. The Planning Commission may require its review of an amended site plan if, in its opinion, such changes in the master deed or bylaws require corresponding changes in the approved site plan.

**G. Relation to Subdivision Ordinance**

The provisions of Articles 4 and 5 of the Township's Subdivision Ordinance shall apply to site condominiums and are incorporated herein by reference. In applying the design and development standards of Article 4 and the improvement requirements of Article 5 of the Subdivision Ordinance, the standards and requirements that are intended to apply to lots in a subdivision shall apply instead to condominium lots. Nothing in this Section shall be construed as requiring a site condominium to obtain plat approval under the Subdivision Ordinance or the Subdivision Control Act.

**H. Development Agreement**

The Planning Commission may require, as a condition of approval, that the applicant enter into a development agreement with the Planning Commission and the Township, incorporating therein the terms and conditions of final site plan approval, and record the same in the office of the Register of Deeds for Washtenaw County.

I. Any application for a building permit for construction to be located in a general common element shall include written authorization for the application by the Condominium Association.

J. Monuments shall be set at all boundary corners and deflection points and at all road right of way intersection corners and deflection points. Lot irons shall be set at all condominium lot corners and deflection points of condominium lot lines.

The Township may grant a delay in the setting of required monuments or irons for a reasonable time, but not to exceed one year, on condition that the developer deposit with the Township Clerk cash, a certified check, or an irrevocable bank letter of credit running to the Township, whichever the developer selects, in an amount as determined from time to time by resolution of the Township Board. Such deposit shall be returned to the developer upon receipt of a certificate by a surveyor registered in the State of Michigan that the monuments and irons have been set as required, within the time specified. If the developer defaults, the Township Board shall promptly require a registered surveyor to set the monuments and irons in the ground as shown on the condominium site plans, at a cost not to exceed the amount of the security deposit.

K. Road rights of way shall be described separately from individual condominium lots, and shall be accurately delineated by bearings and distances on the condominium subdivision plan and the final site plan. The right of way shall be for roadway purposes and for the purposes of locating, installing, maintaining, and replacing of public utilities. The developer shall dedicate easements to the Township for all public water and sanitary sewer lines and appurtenances.

L. All improvements in a site condominium shall comply with the design specifications as adopted by the Township Board and any amendments thereto.

3. Section 22.02, Development And Uses Requiring Site Plan Review - Add the following New subsection.

**J. Any condominium development**

~~Section 4.~~ **Effective Date.** The within amendment shall be effective twenty (20) days after adoption and publication.

Adoption Date - June 13, 1989  
Publication Date - July 6, 1989

**PROVIDING PROFESSIONAL EYE CARE TO MANCHESTER AREA RESIDENTS**

**BRADLEY W. TAYLOR, O.D.**  
227 E. MAIN  
MANCHESTER, MI  
428-8955

COMPREHENSIVE EYE EXAMS-CONTACT LENSES- SAFETY GLASSES-QUALITY FRAMES AND SUN-GLASSES-"NO-LINE" BIFOCALS  
Participating Doctor With VSP, Medicare, Medicaid, BC/BS Vision, Metropolitan

**SPEAR & ASSOCIATES**  
REALTORS, INC

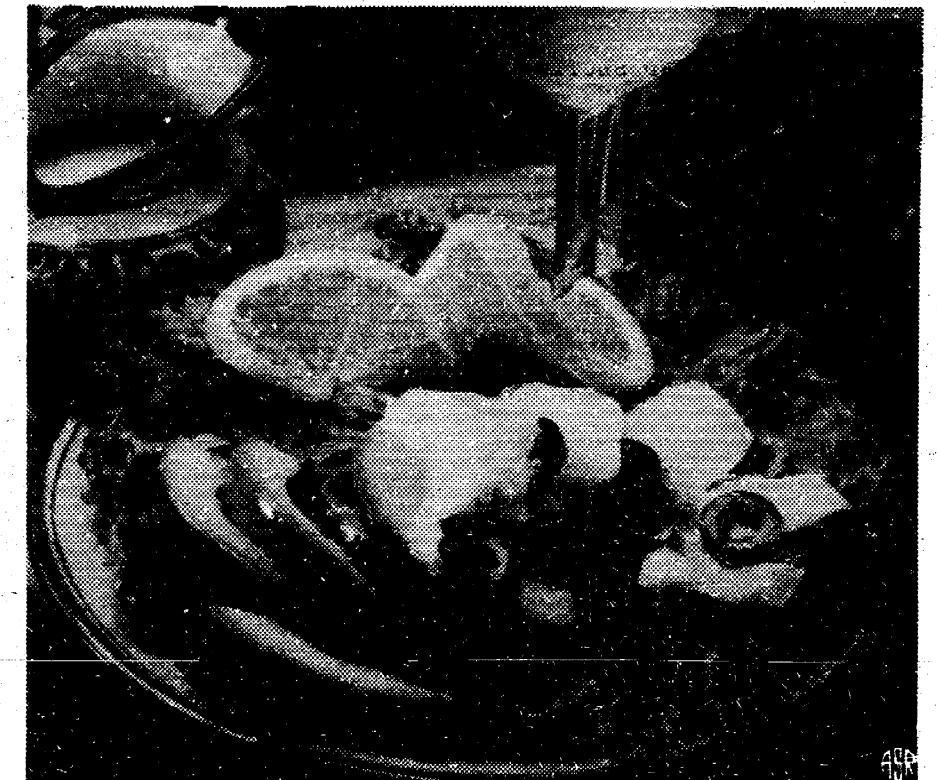
**John H. Vecchioni**  
(313) 475-9193 Residence: 428-7595

323 South Main St., P.O. Box 312, Chelsea, Michigan 48118

**Kirk Excavating**  
Sand—Gravel—Fill Dirt  
Basements—Driveways  
**428-7938**  
Dave Kirk  
14180 Scheweis Road  
Manchester

**MARGIE'S UPHOLSTERY**  
6245 Brooklyn Road  
Jackson  
Wide Selection Of Fabrics  
Pick-Up / Delivery Available  
**517-536-4230**

**Cool and Elegant Salad, Mediterranean-Style**



Throughout the Mediterranean regions of Spain, Italy and Greece, olives and juicy oranges abound. Fortunately, these foods are also abundant in California, a little closer to home. To create the relaxed, elegant flavor of Mediterranean dining with California ingredients, try this simple, colorful Chicken Olive Salad. The colors make a lovely, appetizing combination on the plate: soft green avocado slices and bright rounds of orange, accented with deep-hued California ripe olive slices. Plump, tender chicken breast tops the salad and makes it a whole meal. The chicken is steamed in this recipe for ultimate moist texture and pure flavor — all the better to soak up the innovative salad dressing. For maximum tenderness, be sure to keep an eye on the chicken as it steams and cook just until barely done — it takes only about 15 minutes.

**Mediterranean Chicken Olive Salad**

- |   |  |
|---|--|
| 1 tablespoon chopped onion              | 2 whole boned, skinned chicken breasts, (about 1-1/2 lb.), split |
| 1/4-inch sliced pared fresh ginger root | Lettuce  |
| 1/2 cup vegetable oil                   | 1/2 cup sliced California ripe olives                            |
| 2 tablespoons white wine vinegar        | 1 ripe avocado, peeled and sliced                                |
| 1/2 small orange, pared                 | Additional orange slices   |
| 1/4 teaspoon salt                       |  |
| 1/8 teaspoon white pepper               |  |

Place onion and ginger in electric blender or food processor; whir until finely chopped. Add oil, vinegar, orange, salt and pepper; whir to mix. Steam chicken breasts on steamer rack over boiling water in covered saucepan or skillet for 15 minutes or until done. Slice each breast crosswise into 1/4-inch sliced and place on lettuce-lined individual plates. Divide olives and avocado among the plates. Pour dressing over each serving. Garnish with additional orange slices. Makes 4 servings.

**Bethel United Church of Christ**  
**Ice Cream Social**  
**THURSDAY, JULY 13th**  
BEGINNING AT 4:30 PM  
BAZAAR - BABY DOLLS - FISH POND - DUCK POND COVERED WAGON RIDES  
GOOD HOME-COOKED FOOD  
Menu: Bar-B-Que, American Potato Salad, Potato Chips  
Hot Dogs, German Potato Salad, Cole Slaw, Beans,  
Coffee, Iced Tea, Pop  
"ICE CREAM AND ALL THE CAKE YOU CAN EAT"

**Black Sheep Tavern**  
HOURS:  
Sunday  
Noon - 10 p.m.  
Weekdays  
11:30 a.m. - 10 p.m.  
117 E. Main St. Phone 428-7000 Manchester, Mich.



## New Books at the Library

**FICTION**  
 Andrews, V. C., "Gates of Paradise"  
 Blake, Jennifer, "Love and Smoke"  
 Brown, Dale, "Day of the Cheetah"  
 Briskien, Jacqueline, "The Naked Heart"  
 DeBlasis, Celeste, "A Season of Swans"  
 Classics Room: Dumas, Alexandre, "The Man in the Iron Mask"  
 Hersey, John, "The Call"  
 Hylton, Sara, "My Sister Clare"  
 LeCarre, John, "The Russia House"  
 Piercy, Marge, "Summer People"  
 Toole, John Kennedy, "A Confederacy of Dunces"  
 Walker, Alice, "The Temple of My Familiar"  
**MYSTERY**  
 Clark, Mary Higgins, "While My Pretty One Sleeps"  
 Large Print: McDonald, Gregory, "Fletch and the Man Who"  
 Parker, Robert B., "Playmates"  
 Sanders, Lawrence, "Capital Crimes"  
 Vine, Barbara, "The House of Stairs"  
**OTHERS**  
 Baker, Russell, "The Good Times", 921  
 "Carpentry: Tools, Sheives, Walls, Doors", 694  
 Dickmeyer, Elisabeth Reuther, "Reuther: A Daughter Strikes", 921  
 Dobson, James C., "Dare to Discipline", 649  
 Dorin, Henry, "Chemistry: The Study of Matter", 540  
 Elkind, David, "The Hurried Child: Growing Up Too Fast Too Soon", 305.23  
 Gay, Peter, "Freud: A Life For Our Time", 150.196  
 Hedekin, Mary Spencer, "Mary C. Spencer of Michigan", 921  
 Hedgecoe, John, "John Hedgecoe's Complete Photography Course", 770.28  
 Heymann, C. David, "A Woman Named Jackie", 921  
 Little, Ruth, "Painting China For Pleasure and Profit", 738.15  
 Kung, Hans, "On Being a Christian", 239  
 Mead, Margaret, "A Way of Seeing", 309.173  
 "The New Joy of Photography", 770  
 Newfield, Jack, "City For Sale", 974.71  
 Peterson, Roger Tory, "Wildlife in Color", 674.97  
 Restak, Richard M., "The Mind", 152  
 Riley, Noel, "The Art", 739.28  
 Siegel, Bernie S., "Peace, Love & Healing: Bodymind Communication and the Path to Self-Healing-An Exploration", 615.5  
 Simonon, Georges, "Letter to My Mother", 921  
 Tuchman, Barbara Wertheim, "The First Salute", 973.35

## Enlists in Navy



Thomas Terry Tolen, a 1989 graduate of Manchester High School, has enlisted in the United States Navy and begun recruit training at Great Lakes, Illinois. Tom is the son of Jim and Anita Tolen of Manchester.

## Freedom Township

Proposed Synopsis  
 June 13, 1989

The meeting was called to order with all board members present. Also present were L.V. Kirk and Mr. and Mrs. Emory Garlick. Minutes and Treasurer's report were approved with \$57,813.15 in the General Fund and \$4.10 in the Liquor Fund.

Various communications were read and discussed. Mr. Garlick and Mr. Kirk discussed inspection issues including new training requirements, expenses and agricultural inspections with the Board. The county equalization assessing rates were studied. Under old business, liquor inspections were discussed. New business included passing a resolution to adopt the condominium ordinance as presented by the Planning Commission and a clarification of the annual meeting as a paid for meeting for the trustees.

Bills #2520 through #2540 were approved for payment. Meeting adjourned.

Submitted by  
 Julie Schaible, Clerk  
 Approved by  
 Robert Little, Supervisor

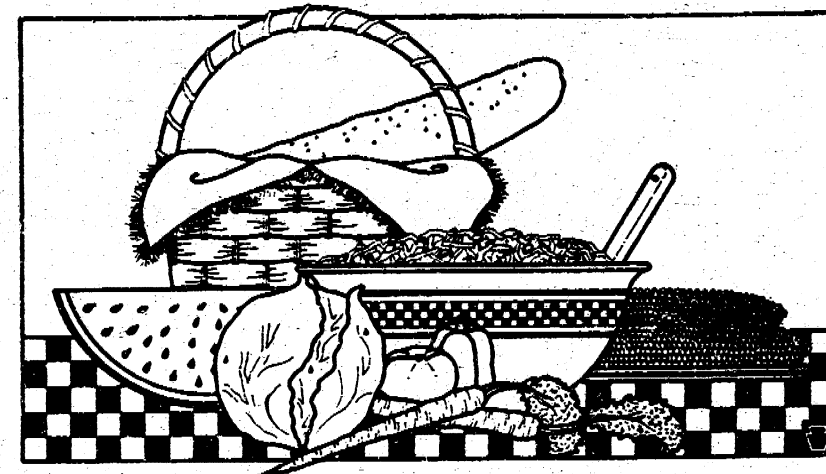
**AUCTIONEERING SERVICE**  
 • Farms • Real Estate  
 • Livestock • Farm Machinery • Household Goods • Antiques • Coins  
 • Automobile  
 CHARITY FREE OF CHARGE  
 LARRY SALYER  
 313/428-7389

**FUND RAISING**

**Manchester Sportsman Club**  
 8501 Grossman Road  
 Friday 6:45 p.m.

**Manchester American Legion**  
 203 South Adrian Street  
 Saturday 7:00 p.m.

## SUMMER RESCUES FOR "RECIPE RUT"



All cooks complain of it... getting in a Recipe Rut by using the same old tired recipes your family has had over and over again. Well, summertime is the perfect time to introduce some fresh new recipes—recipes that are ideal for the fast, light, easy meals of summer. And what could be easier than cool crisp garden salads like these.

**GREEN PEA & COTTAGE CHEESE SALAD**  
 Briefly cooked and quickly chilled, fresh peas make colorful and delicious salads. If fresh peas aren't available, substitute frozen ones.  
 6 to 8 green onions 4 oz. Marzetti slaw dressing  
 2 pounds peas, shelled, or 1 1/2 teaspoon salt  
 package (10 oz.) frozen peas 1/4 cup Marzetti slaw dressing  
 1 small green pepper, seeded 1/4 teaspoon pepper  
 and diced 1/4 teaspoon curry powder or 1/4 teaspoon dill weed  
 1 pint (2 cups) small curd cottage cheese 2 tablespoons finely chopped parsley  
 Slice white parts of green onions; set green tops aside. In a small pan over medium heat, cook peas and onion slices in boiling water to cover, just until tender (about 8 minutes for fresh peas, 5 minutes for frozen peas). Drain, rinse under cold water, and drain again.  
 Slice green onion tops and place in a bowl; stir in green pepper, cottage cheese, slaw dressing, salt, pepper, curry, parsley, and peas. Cover and refrigerate for about 3 hours. Transport in a cooler. Makes 4 to 6 servings.

**SOUR CREAM COLE SLAW**  
 1 small head cabbage 1 carrot - shredded  
 1/2 bell pepper, diced 1/2 cup Marzetti slaw dressing  
 4 small green onions, chopped 1/4 cup sour cream  
 Shred cabbage into bowl. Add green pepper, onion, and shredded carrot. Toss lightly with slaw dressing and sour cream. Add salt and pepper to taste. For 6 to enjoy.

## Scout Leaders Honored

The Manchester Cluster of Girl Scouts has received the Honor Cluster Award from the Huron Valley Girl Scout Council for its outstanding program in the 1988-89 year. This year the leaders of the two Junior Troops, four Brownie Troops and two Daisy Troops put forth extra effort to obtain leadership training, first aiders, troop campers and sponsors for the troops. All the troops participated in the Cluster caroling around the Village before Christmas and in the Cluster family potluck and song night held in March to celebrate Girl Scout Week. In addition to the weekly meetings, each troop had special activities, field trips, and camping trips appropriate to the age and interests of the girls in the troop. The Cluster had 117 girls and 41 registered adults this year.

The Honor Troop Award is given to individual troops for meeting 16 requirements for a well-balanced program that involves the girls in planning and carrying out their activities. Under the leadership of Sherry Barker and Marikay Kennedy, Troop 274, and Troop 650 (Honor Troop last year), under the leadership of Chris Brown and Jan Wiggird, received the Honor Troop Award.

The Challenge Honor Troop Award is the highest award a troop can receive. Besides all requirements for honor troop, the troop must do additional patch or badge work and community service projects, overnight camping, at least 50% of the troop must attend summer camp, and activities during the year must include ones from each of the five worlds of Girl Scouting: Troops receiving the Challenge Honor Troop Award were: Troop 706 under the leadership of Sally Abbott and Monaca Heinz; Troop 729 (Honor Troop last year), under the leadership of Debbie Branch and Mary Kallewaard; and Troop 596 (Challenge Honor Troop last year and Honor Troop the year before), under the leadership of Pat Sahakian, Julie Messing, and Marilyn Knouse.

In addition to the above leaders, Sue Staffed, Barb Eversole, Patty Swaney, Doris Taddonio, Ann Pat Wolf, Pam Goodard, Lois Hansen (Media Rep) and Lucile Bruner (Troop Services Director) received Honor Cluster Awards. Julie Messing received the Green Angel Award for her consistent, reliable assistance to the Manchester Cluster and for being a delegate from the Western Washtenaw Area Association to the Girl Scout Council for the last 3 years.

Astrida Panches received the Green Blood Award for helping the entire Cluster by organizing German Day, taking life saving certification so that swimming can be included in Cluster activities, and helping with special events in both daughters' troops.

Barb Eversole and Beth Coutts received pins for 10 years in Girl Scouts, Marilyn Knouse, Julie Messing, Jan Wiggird, and Ann Pat Wolf for 5 years, and Chris Brown, Becky Doyle, Mary Kallewaard and Astrida Panches for 3 years.

## School Finance Plans Confusing

"The two school finance plans on the November ballot will confuse voters and fail to solve the problems facing Michigan schools."

State Representative Margaret O'Connor (R-Lodi Township) sharply criticized plans to increase the sales tax by either one-half cent or two cents.

"The only choices we gave the public were bad choices," O'Connor said. "Both measures have serious flaws which have yet to be solved."

Rep. O'Connor said the Blanchard/Harden plan to increase the sales tax by one-half cent fails to address equity in education, lacks a defined distribution formula and offers no property tax relief for Michigan residents.

"One of the most glaring inadequacies of Blanchard/Harden is its lack of meaningful, lasting property tax relief. It is an insult to the voters of this state who are clamoring for a real reduction in property taxes. It fails to limit future school millage rates or property assessments."

The Oxender-Nye plan would raise the sales tax by two cents, but O'Connor said a 50-percent tax increase fails to guarantee an improvement in the state's educational system. O'Connor noted that while this proposal reduces millage rates it could encourage assessments to rise faster.

Re. O'Connor said she still supports an alternative plan to increase funding for schools without raising taxes. That proposal would have earmarked the anticipated surplus for fiscal year 1989-90 for the K-12 state aid budget.

"That legislation would have added \$287 million to Michigan's education budget immediately and without raising taxes," O'Connor said, "and if you have read 'The Pork Barrel Awards of the Week' appearing in the Saline Reporter, you will see that there is money for K-12 if the Legislature would set education as a high priority."

## Village Planning Commission

Special Meeting for Site Plan Review, June 6, 1989, Synopsis

**PRESENT**  
 Daverman, Gleason, Walton, Boone, Lowery, Palms. Also present: Ron Niedzwiecki and Jerry Bristle

**CALL TO ORDER**  
 The meeting was called to order at 7:10.

**SITE PLAN REVIEW**  
 The purpose of this meeting was to review the site plan for a proposed new storage building to be built on the Middle School Athletic Field. During the review, it was determined there was a need for a setback variance.

Mr. Niedzwiecki, presented a brief history of the subject. The discussion which followed included the rationale for the location of the building, why the special meeting was called, uses for the building, and a description of the building.

Daverman made a motion to recommend to Council that the Site Plan for the Middle School Athletic Field Storage Building be approved as drawn, contingent on ZBA approval, of a setback variance of 25 feet (if interpreted as a front setback, at 25 feet; if a side setback, 8 feet) to three feet. Boone seconded the motion. The motion passed on a voice vote.

**ADJOURNMENT**  
 The meeting adjourned at 7:44.

Susan Gleason  
 Secretary

## Manchester Township

BOARD SPECIAL MEETING  
 June 24, 1989

Proposed synopsis of Special Meeting by the Manchester Township Board on June 24, 1989 immediately following the Annual Meeting.

All Board members present and 4 visitors.

Reason for meeting: to adopt the 1989-90 budgets.

Adopted by unanimous roll call vote to adopt the 1989-90 budgets as accepted at the Annual Meeting on 6-24-89.

Meeting adjourned at 1:34 p.m.

Submitted by Wilma E. Lentz, Clerk

Approved by Ronald E. Mann, Supervisor

## DIAL -A- GARDEN

The following is a monthly schedule of Dial-A-Garden, the system of pre-recorded daily gardening tips sponsored by the Washtenaw County Cooperative Extension Service. The system is in operation 24 hours a day, 7 days a week. Interested persons are invited to call 971-1129 at their convenience to listen to timely, up-to-date gardening information.

Thursday, July 6: Extra nitrogen perks up vegetables  
 Friday, July 7: Slugs-ugh!  
 Monday, July 10: Cultural vegetable problems  
 Tuesday, July 11: Tomato problems  
 Wednesday, July 12: Beat the birds to garden fruit

**Walleye Dinner**  
 Friday July 14  
 6 p.m. to 10 p.m.  
**\$6.75**  
**AURA INN**  
 11275 Pleasant Lake Road

**Guess Who's Joining The "30" And Over The Hill Club**

## Notice of Public Hearing Sharon Township Zoning Board of Appeals

PLEASE TAKE NOTICE a public hearing will be held at 7:30 PM on Thursday, July 13, 1989 at the Sharon Township Hall, 18010 Pleasant Lake Road, to consider an application of Patrick Campbell for a variance from the Sharon Township Zoning Ordinance which would permit construction of a residence on a non-conforming lot size on a 5.37 acre section in the southwest corner of a parcel on the east side of Struthers Road in the Northeast 1/4 of Section 7, T3S, R3E, Sharon Township tax parcel 15-07-100-002.

Please direct written comments before July 14, 1989 to: Sharon Township Zoning Board of Appeals, Jan Imonti, Chairman, 17500 Sharon Valley Road, Manchester, MI 48158.

**Happy 1st Anniversary**  
 The 18<sup>th</sup> Century Shoppe  
 Country Antiques • American Folk Art • Herb Garden Accessories • Handmade Gifts  
 At The Mill, Manchester, Michigan 48158  
 Thursday - Sunday, 12 - 5 313-428-7759  
 Sandy Trolz - owner  
 Thank you Manchester; old friends, new friends, customers and family for your continued support.  
**10% off purchase with this ad**  
 Expires 7-30-89

**Sharon Township Planning Commission Public Hearing**  
 PLEASE TAKE NOTICE that the Sharon Township Planning Commission will hold a Public Hearing on Monday, July 17, 1989, 7:30 p.m. at the Sharon Township Hall, 18010 Pleasant Lake Road.

This special Land Use Application would allow Gwen Whitaker to put in an archery range, specifically a walk-through hunter's round and perhaps a target range for bow and arrow. (No guns).

The land for which the special Use Permit is requested is part of the SW 1/4 of SE 1/4 of section 11, T3S - R3E.

Please direct any written comments to Reno Feldkamp, Chairman, Sharon Township Planning Commission, 8701 Smyth Road, Manchester, Michigan 48158 on or before July 17, 1989.

Don Smith 428-7137  
**PAINT**  
**WORLD OF COLORS**  
 Interior & Exterior Painting  
 WALLPAPER • DRYWALL • TILING  
**10% Senior Citizens Discount**  
 Free Estimates Insured Residential Commercial Industrial

**FILLYAW'S MARATHON SERVICE**  
 327 West Main St. Manchester, Mich.  
 Phone 428-8576  
 24 Hour Wrecker Service  
 AAA

Lube, Oil Filter up to 5 qts Oil ..... \$19.95  
 Foreign Cars Oil Filter Extra

Check Test Air-Conditioner plus parts  
 Evacuate, Charge, Leak Test \$29.95

**GOODYEAR** Stop In and See Me For Your Best Tire Deal!

WE NOW HAVE 2 NEW PREMIUM GASOLINES  
 New Super-M 93 Octane the premium grade gasoline that can save you money while improving engine performance.  
 New Extra-M 89 Octane the plus gasoline for those cars not requiring a premium grade.  
**MARATHON**  
 FULL LINE OF MARATHON PRODUCTS

**Can early cancer detection mean early cure? Ask us.**  
**1-800-4-CANCER**  
**Michigan Cancer Information Service**  
 We'll tell you everything we know about cancer. Free.

**BACK DOOR PARTY STORE**  
 500 Ann Arbor Street Phone 313-428-8287 Manchester, Michigan  
 BEER WINE KEG BEER  
 MICHIGAN  
 Instant and Daily Lottery Tickets  
 UNION 76 GAS Full Service and Self Serve

**Keep That Pretty Smile!**  
 Please Be Invited To Visit Our Relaxed and Modern Dental Center, Where You Can Expect Prompt and Courteous Attention To All Your Dental Needs.  
**FAMILY DENTISTRY**  
 ADULTS AND CHILDREN ALWAYS WELCOME AS NEW PATIENTS  
 Evening and Saturday Appointments Available  
 Dental Insurance Welcome  
 Relaxing Gas Upon Request  
 Visa and Mastercard Accepted  
 Payment Programs Available  
**BRUCE A. BATES, DDS**  
 500 Galloway Dr. Manchester, Mich.  
 Phone 313-428-8277



# What makes a great Classified ad? RESULTS!

**MICHIGAN PEAT SALES** - Black dirt for sale, \$12 a yard delivered. Fast delivery, 428-9664. tfn

**C & B PAINTING** - Interior-Exterior-free estimates. Contact Charles E. Benedict. Phone 428-7136 or 428-7416. tfn

**LOST OR FOUND A PET?** Call Humane Society, 662-5585. tfn

**JERRY WHITAKER** - EXCAVATING - Dozer, backhoe, excavator and 10 yard truck. Drain fields, basements, driveways, sand and gravel. Call 475-7841 tfn

**LITTLE WACK EXCAVATING** - Licensed and Insured. Basements, drainfields, digging, bull-dozing, trenching, black dirt, sand, gravel. Paul Wackenhut, 313-428-8025. tfn

**MERRIMAN INSULATION** - Free Estimates. Blown-in cellulose, professionally installed. George Merriman, phone 517-592-5527. tfn

**CORKEY D'S DELI** - Homemade Ice Cream & Waffle Cones - Sandwiches - Subs - Baskets - Burgers - Fries - Party Trays & Salads - Baked Goods of all kinds, phone ahead 428-9216. tfn

**PIANO TUNING & REPAIR** - Qualified technician - Ron Harris, 475-7134. tfn

**ROOFING: BARNS - HOMES** - repairs of all types. 14 years experience. Licensed. Free estimates. Kirk Randall 517-522-5175 tfn

**VILLAGE HAIR FORUM** - 201 East Main, Old Mill 428-7684. tfn

**MANCHESTER ANTIQUE MALL** - 35 Dealers. Open 7 days, 10-5, 116 E. Main 428-9357. tfn

**FIELDER PAINTING** - Interior and exterior. Free estimates. Senior Citizens discount. Phone 428-8506. tfn

**AVAILABLE FOR WEDDING** receptions, parties, meetings. Hall rental \$175, \$40 cleaning, catering available. For further information call 428-8393 or 428-7637. tfn

**WALKOWE'S HOME IMPROVEMENT COMPANY** - Phone 313-428-8468. Seamless aluminum gutters for low prices and dependable service. tfn

**TANNING 10 VISITS \$20** - Village Hair Forum. 428-7684 tfn

**NURSE AIDES:** Experienced or inexperienced. Choice of shifts. Starting wage \$4.93 per hour. Paid training program. Next class starting soon. Apply in person at Chelsea Methodist Home, 805 W. Middle St., Chelsea. tfn

**YOU ARE WELCOME** to a non-denominational home Bible study, teaching the uncompromising Word of God, starting Thursday, July 6, then the 1st & 3rd Tuesday of each month. 419 E. Main, 7:00 p.m. Any questions call after 4:00 428-8962 tfn

**HOUSECLEANING COMPANY** looking for full and part-time help. Mon-Fri., no weekends. Starting wage \$5 per hour. Wisk Away Cleaning Service 761-1100 tfn

**JOHN'S PORTABLE POWER WASHING** specializing in outside house washing (including mobile homes) and eavestrough cleaning. Call for free estimate. 517-522-5367 tfn

**APARTMENT FOR RENT:** Large one bedroom available Aug. 1. \$875 includes heat. References. Security deposit required. One block from stores. 428-8723 tfn

**SMALL FURNISHED APARTMENT:** \$275 includes utilities. Available on or before Aug. 1. Security deposit. References required. 428-8723 tfn

**PARENTS: LITTLE DUTCH CHILD CARE CENTER** is accepting full and part-time children. Daily program includes art, stories, science and music for children ages 2-7 years. Contact the Program Director at 428-8988 for more information. 7/6/p

**ATTENTION: EXCELLENT INCOME** for home assembly work. Info call 504-646-1700 Dept. P5028 6/22 & 7/8/p

**FOR RENT: FURNISHED VACATION CABIN** in Lewiston, Mich., 10 miles from Garland Golf Course. Rent for week or weekend. For more information, call evenings 428-7393 or 428-7086/7/27

**ALBER & HAMILTON EXCAVATING:** Basements, drainfields, general backhoe work. Call D. Hamilton 313-428-9637 or 313-428-8636 tfn

**HELP WANTED:** Coaches - JV football, Varsity softball, Middle School Girls BB, Middle School track. Apply to Athletic Director, Manchester High School, 710 E. Main, 428-7333 7/6

**CLEANING:** Home, office and apartment. Laundry, grocery shopping, planting flowers. Call 428-8042 or 428-8854. Ask for Lisa. 7/6

**FARM HOUSE FOR RENT:** 2 bedroom, Clinton-Manchester area. \$500/month. 563-7633 7/6/p

**SALES CAREER:** Are you looking for a career with a dealer of the world's largest manufacturer of residential water conditioning equipment? If you are looking for a prestigious marketing career in sales or sale management in the Washtenaw area, send resume to: Ecowater Systems of Washtenaw, P.O. Box 2643, Ann Arbor, Mich. 48106 7/6

**COMING-Tecumseh's inside,** outside all around town Sidewalk Sales-July 21 & 22 7/13

**RESTAURANT OPENING:** Haarer's Meeting Place now hiring all positions - cooks, kitchen help, waitstaff, dishwashers, bartenders. Experience preferred. Apply in person 12-3 p.m. Monday through Friday. 223 E. Main St., Manchester P

**HELP WANTED:** Little Dutch Child Care Center is looking for a part-time child care assistant to start in August. Must have experience with children ages 2-7 years and be 18 or older. 428-8988. 7/27/p

**DISCOVERY TOYS:** Summer sale in progress. Come see what's new at the Manchester Fair and receive a free catalog with this ad, or call 428-8279 7/18/p

**DOG LOST:** Shepherd/Collie mix, brown & black, tan face, black nose, wearing white flea collar. Answers to Kodi. Ran away July 4 from Pleasant Lake area. If found, please call 428-9427.

**SUMMER PRESCHOOL:** Little Dutch Child Care Center is offering 3-week preschool classes from 10-noon. Monday and Wednesday for children 2-3 years. Tuesday and Thursday for children 4-5 years. Tuition for each 3-week session is \$35. For program information and registration stop by the Center June 28, 29 or 30th 3-4 p.m., or call 428-8988. Located at 500 Galloway next to Carr Park. First session starts Monday, July 10. 7/13/p

**UPSTAIRS APARTMENT** in Manchester. 428-7718 7/13

**MANCHESTER BI-LEVEL:** This 3-bedroom home sits on 1 acre. 3 full baths, first floor laundry, custom oak cabinets, finished lower level with wet bar, low utility bills. \$128,500. Joy Wilson 429-4947/439-2872 or Jean Bondie 429-4947/429-7036

**BEAUTIFUL BUILDING SITE:** Just outside the Village of Manchester in an area of newer homes. 2.45 acres perked. 20 minutes from Ann Arbor. Land contract available. \$15,500. John Vecchioni 475-9193 or 475-7595

**10.1 ACRES OF ROLLING LAND:** With natural building sites, only 20 minutes from Ann Arbor. Close to shopping. Great view - must see. \$29,800. Vickie B. Kern 475-9193 or 475-2403

**SPEAR & Associates, Inc. Realtors**

## Garage Sales

**BARN SALE:** Fri. & Sat., July 7 & 8. 5210 Sylvan, Manchester. 9-5 p.m. Furniture, refrigerator, books, clothes, and much more. p

**GARAGE SALE:** Sat. & Sun. July 8 & 9, 9-5. Children and adult clothing, toys, crib, furniture and much more. 810 S. Washington down deadend. p

**YARD SALE:** Household items, lamp bases, Danish modern chair, vanity & matching mirror, canning supplies, used clarinet. 9630 Kies Rd., Sat. 9-4

**MOVING SALE:** Lawn mowers, furniture, dishes, small appliances, bikes. Friday, Saturday, Sunday. 19230 Sharon Valley. 428-7055 p

**GARAGE SALE:** Thursday-Sunday, July 13-16. Kingsize waterbed, gas grill, microwave, baby crib & chair, toys and many more things. 9-5. 15651 Esudes Rd., off Pleasant Lake and Sharon Hollow 7/13

People believe if you hang a string of onions in your house, you will be healthy.

Classified advertising will be \$2.50 minimum charge for 20 words or less and 5¢ for each additional word. All classified ads are payable in advance, if not a billing charge of 50¢ will apply. Deadlines for classified advertising will be 10 A.M. Tuesday for that weeks publication. Cards of Thanks will remain at \$4.00 minimum charge for 50 words or less with a charge of 5¢ for each additional word.

**THE CONSIGNMENT CONNECTION:** Coming soon to Clinton, where buyers and sellers meet. Watch for it! 7/6

## In Memoriam

In loving memory of George VanSickle who passed away five years ago, July 5, 1984.

Should you go first and we remain, one thing we'd have you do, Walk slowly down that long, long road, for soon we'll follow you.

We want to know each step you take, so we may take the same, For some day down that lonely path, you'll hear us call your name.

Sadly missed by wife, Ruby, daughters, sons-in-laws and grandchildren

## Cards of Thanks

Our fiftieth wedding anniversary was made so memorable by our children, relatives and our friends. We extend our gratitude to you for the gifts, flowers, the beautiful cards with good wishes, the notes and photos of times we have shared plus the pleasure of your company at our open house.

A special thank you goes to our children, Marlene, Mary, Lyndon, Marilyn, and their families for the wonderful day they gave us - the luncheon at the town hall with the open house that followed. Thanks also to all who helped at the open house with preparation and serving.

Fifty years of marriage brings many memories but June twenty-first, 1989 will be a treasured day for the joy you gave us.

Willis & Lucile Uphaus

Sincere thanks to neighbors and friends for all the cards and flowers. To Rev. Reineck for his visits and prayers while at Saline Hospital. Many thanks for acts of kindness since my return home. May God bless you all. Ted Parker

**They're Here!**  
U-Pick  
**STRAWBERRIES**  
at  
**MORTON FARMS**

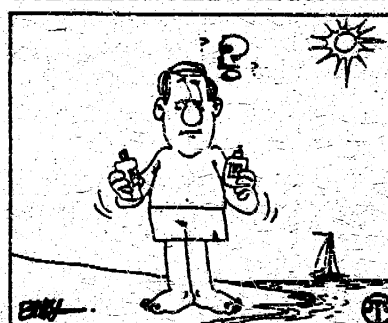
8 a.m. to 8 p.m.  
Located 1/2-mile east of Saline McDonald's on U.S.-12

For Picking Info. Call Our **STRAWBERRY HOTLINE** 313-429-9342

## Sun Savvy

Dr. Frank Ahin is an expert on the sun's effects on the skin. Here, he answers some frequently asked questions on sun care and protection in the sun.

**Q. If I use a tanning oil at the beach, am I getting less protection than I would with a lotion?**



**A.** The best way to judge the level of protection you're getting is by the SPF listed on the product. An SPF 4 offers the same protection in an oil as in a lotion. In the past, oils generally had low SPFs but now products such as Tropical Blend Protective Tanning Oils are available in SPFs of 8 and 15 for people who prefer oils but need greater protection.

**Q. What is a broad spectrum sunscreen?**

**A.** Broad spectrum refers to sunscreens that contain ingredients to absorb both ultraviolet A and B rays. Products labeled with an SPF do not necessarily provide UVA protection unless they are specifically formulated to do so. Read the label to find out.

**Q. Is there any quick and easy way to get a tan?**

**A.** The best way to get a tan is gradually, by beginning with higher SPF protection and progressing to lower SPFs once a base tan develops. When using a tan accelerator product to optimize your tan, try Copper-tone Tan Magnifier which still provides SPF protection against the sun's burning rays. Remember, even with a tan you can still get sun damage so continue to use a sunscreen when you're out-of-doors.



To get more juice from oranges, let the fruit soak in cold water for a while before squeezing.

## Waterloo Historical Society Hosts Civil War Encampment

Waterloo Historical Society will host a Civil War Encampment at their historical camp, 9998 Waterloo-Munith Road, 3 miles north of the Village of Waterloo. Visitors will be welcomed during regular museum hours, 1-4 p.m., on Saturday and Sunday, July 8 and 9. On those days, members of the 17th Michigan Regiment, Company E, will pause to rest at the farm overnight, much as soldiers did during Civil War days when marching from one place to another.

Roger Luckhardt, spokesman from Manchester, reports that everything in their camp is reproduced as authentically as possible, including uniforms, equipment, camp life and drill. Soldiers will be sleeping in tents and visitors can see exactly how they coped with dampness, mosquitoes, and other hardships in the 1860's. The company cook, a private, will demonstrate meal preparation over an open fire. The sergeant will conduct drills. Soldiers will shoot blanks from their rifles.

Besides this military company street, visitors will view a civilian camp. Luckhardt's wife, Sue, and their children accompany the group, as do the families of several soldiers. They will portray the civilians who followed soldiers from place to place.

Vivian May, president of the historical society is expecting about 25 soldiers and their families. Members of the contemporary Company E come from Dearborn, Livonia, Detroit, and Manchester. Historically, they were recruited in Ypsilanti at the Normal College (now Eastern Michigan University). Recruits saw action at South Mountain, MD, Antietam, Fredricksburg, and Vicksburg. It was at South Mountain that the regiment got its nickname, the Stonewall Regiment.

The historic farm, as well as Dewey School Museum, is a memorial to the pioneer farmers of Michigan and offers a taste of family living in the 19th century. Tours are available and admission is charged. The farm is open every afternoon, except Monday, from 1-4 p.m.; last tour at 3:30. Dewey School is open Sundays and the 4th of July, only. For information, call 313-769-2219 or 313-498-2191.

**Boat Insurance**  
In troubled waters, we're the friend you need

We'll protect your boat against damage, theft, and liability risks—in or out of the water. Complete an approved boating class and reduce your premium.

Quality boat protection... from Farm Bureau Mutual Insurance Company of Michigan. Call today.

Making your future a little more predictable.

**LARRY BECKTEL**  
135 E. Main St., Suite 204  
Manchester, MI 48158  
Phone 313-428-7331

**Our new CD is so unbelievable, we figured you might want to see the facts.**

9.00% Effective Annual Interest Rate

Great Lakes offers you an unbelievable 9.00% interest on a new high-yield 9-month CD. It requires only a \$100 minimum deposit - that's right, just \$100. And it's short-term, so you don't have to tie up your cash forever. But don't wait! An offer this good won't last. Those are the facts. Figure it for yourself. Then call or stop by your nearest Great Lakes office. Offer ends soon.

**GREAT LAKES BANCORP**  
A Federal Savings Bank

9.00% is simple interest. Rates based on a 6/28/89 rate survey.

9. Month CDs  
Great Lakes 9.00%  
Comerica N/A  
First of America 8.50%

FOR MORE INFORMATION, CALL 800-342-5453 OR YOUR NEAREST GREAT LAKES OFFICE. 63 OFFICES STRONG IN MICHIGAN AND INDIANA.

Manchester: 111 E. Main St., 428-8379  
Ann Arbor: Corporate Headquarters, One Great Lakes Plaza, 769-8300

## FAMILY HEALTH

**Preventing Osteoporosis**

Though everyone past the age of 35 experiences osteoporosis to some degree, postmenopausal women are particularly at risk (osteoporosis affects one in four women over the age of 60).

Osteoporosis is a condition in which the calcium level in the bones gradually decreases, causing them to become porous and fragile. Because bone disintegration is a painless process, it frequently progresses undetected.

"Until a woman falls and breaks a bone—frequently a wrist or a hip—you may not know it's a problem," reports Jane L. Murray, M.D., a board-certified family physician who is director of education for the American Academy of Family Physicians.

Doctors agree osteoporosis can be prevented. They recommend children and adolescents maintain a calcium-rich diet to help insure a dense calcium bone mass as they get older. Milk and dairy products, dark green leafy vegetables, salmon, sardines, oysters and tofu are excellent sources of calcium.



Ulysses S. Grant once received a speeding ticket for driving his horses too fast in Washington, D.C.



Wyoming was the first state to grant women the right to vote.

## Public Notice

STATE OF MICHIGAN  
PROBATE COURT  
COUNTY OF WASHTENAW

CLAIMS NOTICE  
Independent Probate  
FILE NO. 89-91041-IE

Estate of ALICE A. RUBLE, Deceased, Social security no. 364-12-9953.

TO ALL INTERESTED PERSONS: Your interest in the estate may be barred or affected by the following: The decedent, whose last known address was 1390 Dexter-Chelsea Road, Township of Lima, Chelsea, Michigan 48118 died February 26, 1989. An instrument dated 9/8/83 has been admitted as the will of the deceased.

Creditors of the deceased are notified that all claims against the estate will be forever barred unless presented to the independent personal representative, COLEEN STARR, 125 Western Ave., Lansing, MI 48197, RUSSELL MOORE, P.O. Box 251, Mason, MI 48854 or to both the independent personal representative and the Washtenaw County Probate Court, Ann Arbor, Michigan 48107, within 4 months of the date of publication of this notice. Notice is further given that the estate will be thereafter assigned and distributed to the persons entitled to it. KEUSCH AND FLINTOFF, P.C. Attorneys for the Estate By: Peter C. Flintoff (P-13531) 119 S. Main St., P.O. Box 187 Chelsea, MI 48118 313/475-8671

**Happy Birthday Marie**  
from  
**Lorenz & Helen**



# Money Management

## FINANCIAL TASKS FOR NEWLYWEDS

Don and Jane have been married three months, but they are already facing one of the most divisive conflicts in a marriage: money conflicts. Don adores extravagance. For his parents' anniversary, Don decided to make a dream come true by buying them tickets to Paris. Jane was furious. Not only did Don take the money from their joint account, but he also ignored the fact that she was already worried about how little money they had in their savings account.

Almost every couple faces some variation of this conflict during the first years of marriage. One reason is that most newlyweds are reluctant to discuss the downright unromantic topic of money management. But, according to the Michigan Association of CPAs, financial planning can help smooth the bumps that often trip up newlyweds. Here, then, are some financial tasks to help you start your marriage on the right foot.

### Talk Money

Fights over money often stem from differences in lifestyles, personal goals and even family histories. Someone who spent his childhood watching his parents scramble to pay the monthly rent is bound to react to money differently than someone whose parents were able to afford family excursions to Europe.

The road to a financially sound marriage begins when you sit down with your spouse and discuss your feelings about money. What does money mean to each of you? How comfortable are you dealing with money matters? How much money would make you feel financially secure? Don't just talk about how you feel about your finances as they exist today. Talk about your goals. Is saving for retirement important to you? Do you plan to buy a home?

Try not to judge your spouse's responses. Now is the time to listen and understand. Once you have a grasp of your differences and similarities concerning money issues, you will be far better equipped to deal with the nitty-gritty details of money management.

### Agree On Goals

The next step is to write down your goals. Be as specific as possible. For example, if you want to save for a down payment on a house, agree on the amount as well as a time frame. If you cannot settle on a single set of goals, don't force the issue. Instead, list your common goals as well as your individual priorities.

### To Merge Or Not To Merge

One of the most common questions newlyweds ask is whether or not they should merge their assets into a joint bank account. There is no "right" answer. While most couples do choose joint accounts, more and more are

opting for separate accounts, with each partner taking responsibility for particular expenses. For example, the husband may pay mortgage and utility bills while the wife takes care of all household expenses. Others choose to set up one joint account for their mutual living expenses, while keeping two other separate accounts for individual use, such as hobby expenses. However, if you do opt for a joint account, consider setting a limit on how much either one of you can withdraw without first consulting the other spouse. Such an agreement might have prevented Don and Jane's conflict over his parents' anniversary gift.

### Who Does The Paperwork?

Once you decide how to set up your accounts, decide who should handle the paperwork involved in managing money. Keep in mind that, for some, the task of balancing a checkbook is as appealing as a trip to a dentist. At the same time, some people actually enjoy reconciling bank statements and credit card bills. The most successful system is one in which spouses share the recordkeeping tasks according to their likes, abilities and schedules.

If one of you tends to be less financially responsible, don't automatically assume that he or she should be totally relieved of any responsibility for financial recordkeeping. Rather, try to work out a compromise. Perhaps, he or she could manage the smaller household bills, while the other handles the mortgage and utility bills.

### Create A Budget

After you agree on a way of handling your accounts, it's time to build a budget. List your monthly and yearly expenses, including such fixed costs as rent or mortgage payments, insurance

premiums, automobile and educational loans, utility bills and commuter expenses. Don't forget to add in the amount you hope to save each month. You should also include estimates of variable expenses, such as those for entertainment and travel. If both of you love to ski, by all means, budget for a few trips—even if that means trimming your expenses in another area. Remember, if your budget is too rigid, you probably won't stick to it.

Next, calculate your combined income, including any dividends or interest payments that you receive on a regular basis. If you cannot meet all your expenses, including your savings goal, it's time to look at your finances—and budget—more realistically.

### Insurance Your Future

Anticipating tragedy may be the last thing either of you want to do; nevertheless, you must take steps to protect yourselves from the potentially devastating effects of a spouse's death or disability. First, make sure that you have adequate life insurance. Ask yourself how much insurance you need, as well as how much

insurance you can afford. While whole life or universal policies enable you to accumulate savings, they cost considerably more than another type of policy—such as term insurance. Second, consider your other insurance needs, such as disability and homeowner's policies.

Third, write your wills. By doing so, you can be sure that your assets will be distributed exactly according to your wishes if one or both of you should die.

Marriage can do strange things to your tax liability, especially if both spouses work. Don't wait until next April to find out what impact your marital status will have on your 1989 taxes. A CPA can help you take steps now to minimize your tax bill. In addition, he or she will be able to answer any other questions you have regarding your financial plans.

## Want Ads Get Results

Buy With CONFIDENCE  
**PHIL SUTTON**  
Is Back From  
Florida



AT  
**MIDWEST FORD, Inc.**

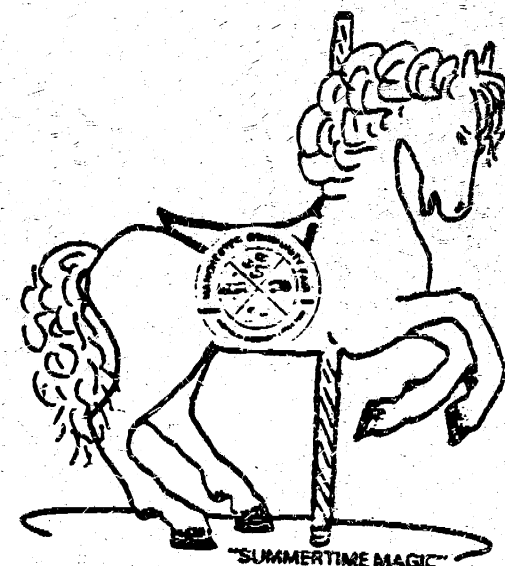
510 West Main Street, Manchester, Mich.

- A, B, and X-Plans my specialty!
- Top dollar for trade-in!
- Expert, friendly service after the sale!
- Good previously owned vehicles for sale!

Call PHIL SUTTON for more INFORMATION 313-428-8343

# 45th Annual Manchester Community Fair

JULY 11-15



TUESDAY, JULY 11th  
Fair Parade 6:30 p.m.  
WEDNESDAY, JULY 12th  
ATV Pull 7:00 p.m., Teen Dance 7:00 p.m., Lamb and Steer Judging 6:00 p.m.  
THURSDAY, JULY 13th  
Senior Citizens free until 5:00 p.m., Compact Tractor Pull 7:00 p.m., Local Talent Show 8:00 p.m., Steer and Lamb Auction 8:00 p.m.  
FRIDAY, JULY 14th  
Antique Tractor Pull 5:00 p.m., Pony Pull 6:30 p.m., Tracey Lynne & The Mountain Express 8:00 p.m.  
SATURDAY, JULY 15th  
Ladies Day Activities 10:00 a.m.—Noon, Horsehoe Pitch 1:30 p.m., Pedal Pull 3:00 p.m., Large Tractor Pull 7:00 p.m., Tracey Lynne & The Mountain Express 8:00 p.m.

CARNIVAL BY W. G. WADE SHOWS, INC.  
Admission \$2.50 Adults Children 12 and under Free

Located at the corner of Vernon and Wolverine Streets, two blocks east of M-52 in Manchester

# THE MANCHESTER ENTERPRISE

122nd YEAR VOLUME NUMBER THIRTY-NINE

USPS 327-460

THURSDAY, JULY 13, 1989

## 36th Annual Chicken Broil Thursday, July 20th



If it's summer in Manchester, the Chicken Broil must be right around the corner. Mark your calendars for Thursday, July 20th and plan to do no cooking that evening. Let the men of our town do it for you. Once again, the armies of the Chicken Broil will be out in force to cook up 14,000 or more chicken halves in the time-honored fashion. Radishes will roll, cabbage will transform itself into the famous secret slaw, and if all goes well, the skies will smile

down on one of the biggest suppers in America.

On that one day of the year, a stranger finding through Manchester can find out exactly what those signs at the Village limits mean, the ones that say "Home of the Famous Chicken Broil." The deputies directing traffic and the clouds of smoke rolling from the athletic field are not signs of a major fire, and the horses pulling wagonloads of commuters from the high school are not evidence of a time warp. This dinner, big enough to feed Paul Bunyan, is Manchester's main event, and it is still going strong after 35 years.

## Schools Receive Certificates Of Merit

Manchester High School and Manchester Ackerson Middle School were among 36 Washtenaw County Schools to receive Certificates of Merit for student immunization records compiled in the 1988-89 school year. The Certificates of Merit recognize the public and private school administrators, school nurses and clerical/support staff who insist on receiving up-to-date shot records from every student each school year. In 1988-89 the percentage of new school entrants with "complete" or "provisionally complete" immunization records was 94.0%. The county continues to retain good ratings due to school and Public Health Division staffs' hard work and perseverance.



## Manchester Road Rally

Manchester Recreation Task Force has organized a Rally 'Round Manchester on July 29th. It is a time/speed/distance rally around a course about 50 miles in length and will take approximately 3 hours to run. The object of the rally is to follow the course at various assigned speeds while keeping as close to the correct elapsed time as possible. Trophies will be awarded for first, second and third place winners.

The rally will begin and end at Carr Park. An instruction book will guide you through the rolling hills, winding curves and other paths you may not have imagined.

The rally is open to all ages and all types of vehicles. Each vehicle will need: (1) a driver and a navigator, (2) a valid driver's license, (3) a street-legal vehicle with current insurance and working odometer, (4) a watch or stopwatch, a calculator and a clipboard.

Entry fee is \$7.50 per car. Pre-registration must be done by July 26. Entry forms are available at Krauss Pharmacy, Pyramid Office Supply and Manchester Chiropractic Clinic.

Volunteers are needed to work at the check points, at Carr Park, and also to serve refreshments before and after the rally. Call the Community Resource Center for details, 428-7722.

## Auto Is Operated From Plane In Air

Manchester Enterprise  
November 5, 1925  
Test At McCook Field Show That Radio Control From Air Efficient.

When we are told that recently a miniature automobile was operated and guided on the ground from an airplane flying at an altitude of 2,000 feet, our credulity is taxed. Without full explanatory details, we would be inclined to scout the idea as impossible, or blame our informant as given to gross exaggeration.

Fortunately, however, an adequate explanation is to be had and official records of the United States Army Air Service vouch for the verity of this seemingly miraculous achievement. This radio car, so-called because it operates without any visible means of control, is equipped with radio apparatus for picking up the invisible waves from transmitting source, and these intercepted radio waves actuate the controls of this car in setting it in motion and gliding it along an appointed course.

Formerly, this radio-controlled car was operated by means of electro-magnetic waves sent from a ground station or from an automobile, equipped with a radio

transmitter, which followed the radio car at a distance of from a few feet to several hundred. For instance, when this mobile unit, without anyone aboard traversed the length of Pennsylvania Avenue in Washington, a radio-equipped automobile followed some distance behind it, thus causing the radio car to move forward, backward, turn, or blow a horn.

Recently, however, the first successful demonstration of controlling this radio car from an airplane was effected at McCook Field Dayton, Ohio, by the engineering division of the air service. The airplane was equipped with a standard SCR-134 radio outfit, which was used as the transmitting medium. The craft was flying at a height of 2,000 feet, and similar tests in the future will be attempts to control the radio car from greater altitudes. The airplane thus employed was the Boeing metal DH4B.

"This car is the only one known of its kind in which the operation is selective," says A.M. Jacobs, of the engineering division; "that is, it can be made to back, move forward, turn, blow a horn, etc., on the instant, at the will of the controller. It does not have to go through a cycle of set operations in turn. The development of remote control for war purposes is of too apparent advantage to need explanation, and the successful accomplishment of this test is but another step in the direction of such development."

Thus, automobiles, battleships, trains and other mobile units have been operated by radio. The word "operated" however, is used advisedly, because the invisible radio waves do not supply the motive power for operating automobile, battleship or train. Radio waves are the means for actuating certain controls on these mobile units and similarly by manipulating other controls the guidance of an automobile or a ship is effected. Even then when we consider that no person is aboard the radio-propelled unit, this is an achievement that is nothing less than remarkable. All of which testify to the pliability of the invisible waves and their increasing utility applications.

## Troop 596 Visits Kentucky



(l-r) Leah Bragg, Heather Kester, Erin Binder, Kevin Sahakian, Maggie Gisting, Heather Panches, Erika Panches and Jenny Sahakian at the Air Force Museum in Dayton, Ohio.

Fifteen Manchester Girl Scouts returned from a five-day camping trip to Kentucky on Friday, June 30. The scouts set up a base camp at Big Bone Lick State Park near Florence, Kentucky. Big Bone Lick is the site of an ancient salt deposit and mineral spring that attracted many prehistoric animals who fossilized remains can be seen today. The girls also enjoyed swimming at the park's pool. The troop visited the U.S. Air Force Museum in Dayton, Ohio, where they saw many kinds of planes. At the Kentucky Horse

## Surplus Foods

Federal Surplus Foods will be distributed on Friday, July 21, 1989 from the Manchester United Methodist Church, 501 Ann Arbor Street. Distribution will be from 9:30 a.m. - 11:30 a.m.

**WAYNE'S WINDSHIELD REPAIR MOBILE SERVICE**

WAYNE TERVO TIM ARNETT

**NOVUS** WINDSHIELD REPAIR

Expert Repair Of Cracked, Stone Damaged & Scratched Windshields 428-7028

**WAMPLER DRW CONSTRUCTION CO.**

DANIEL R. WAMPLER 517-456-4305

- New Homes
- Additions
- Siding
- Garages
- Roofing
- Decks

**Antenna Damaged by Recent Weather?**

See E & B for the finest in antenna systems, towers and rotors

Kay-Townes ICA-500 TV Antenna NOW ONLY \$139.95 Alliance U-110 Rotors ONLY \$54.95 TOWERS 30 ft. with base \$160 INSTALLATION AVAILABLE

**E & B Electronics**  
2512 Hunt Rd., Adrian (517) 263-1289