

A Day At The Lakes

Manchester Enterprise
July 15, 1886

About the most enjoyable thing for the business man to do these dull days is to seat oneself in Farrell & Brenner's best double carriage behind a spanking team and drive to the lakes. Accompanied by Mr. & Mrs. Henry Townsend, of Klinger's lake, ye editor and wife indulged in the luxury on Tuesday and we advise our readers to try it, feeling sure that they will be amply repaid for the expense.

A ride through the country at this season, when the farmer is just completing his harvest of golden grain, the barns bulging with the pressure of hay and wheat, the corn-fields green and the fruit laden trees stimulate one with the hope that with the marketing of this, business will revive.

Arriving at "Fair View" farm, the property of L.D. Watkins, we stopped beneath a shady walnut tree and uninvited inspected the mammoth hay and stock barn on the place. As has before been mentioned in the Enterprise, this barn is so arranged that a team drawing a load of hay is driven in at one end and ascending an elevated track to the centre and near the roof, the whole load is dumped into the capacious bays below. There is ample space in which to turn around and drive out the way they entered.

We jogged along at a leisurely

pace admiring the ever changing views of hill and dale, until the ringing of the farmers dinner bells warned us of the approach of the noon day hour. Hastening our speed we soon reached Wampler's lake house where mine hoste Moore made us feel at home, and the wants of the inner man was supplied.

The guests at the hotel and campers in the grove were having fine sport boating and fishing, and we learn that on Saturday, wind and weather permitting, there will be a sailboat race for a silk pennant, in which all the boats on the lake and some from neighboring lakes will take part. It will be quite an event as Wampler's lake is a good sailing course.

In the afternoon, we drove over to Sand lake, stopping at the Lake Park house where we found a large number of boarders and cottagers enjoying the beauties of this popular resort, among whom were U. S. Grant and family. The cottages thickly located along the bank of the lake remind one of the famous resorts of Northern Michigan. While strolling along the shore admiring the scenery and watching the sailboats as they flitted here and there before the fresh breeze and the myriad of row boats gliding in and out laden with merry people, we could but think that this was surely a haven of rest and those who are fortunate enough to be able to spend a season here is to be envied. We counted five large sail boats and several smaller ones,

most of which were built by S. Hulbut, who, by the way, is a pretty good sailor and understands the shifting winds encountered on the lake. We called at the "Swords Point" cottage, now owned by Mr. Curtis and also at the Clark cottage, at both of which we enjoyed a brief visit. Ground has been broken for two new cottages, just south of the Park house, by Messrs. Tiffany and Hayden of Tecumseh.

We reached the hotel just in time for supper and none to soon to escape being caught in a hail storm.

The departure of the stage for Adrian is one of the events of the day, and it is interesting to watch the people. Some are hurrying to get away, others are busy writing letters to send friends, children are crying, mothers calling, fathers scolding, young ladies laughing, and finally away dashes the stage and we are left standing upon the porch meditating upon the vagaries of life.

As the sun was setting in the west, its bright red light reflected across the bosom of the placid waters, we too took our departure homeward, the pleasure of the journey being much enhanced by the late storm.

Village Council Report

Regular Meeting
August 15, 1988

Heard in-process report of Special Committee studying truck access routes to Manchester Plastics (no action taken).

Appointed Hearing Officer for enforcement proceedings under the Dangerous Buildings Ordinance (two complaints are now being processed under this local law).

Accepted a \$2,000 grant for youth activities from the Washtenaw County Community Mental Health Services Board (activities will be sponsored by the Manchester Recreational Task Force).

Reaching The Top Is Not The Goal.

High blood pressure causes stroke. For more information, contact:



American Heart Association
of Michigan
WERE FIGHTING FOR YOUR LIFE

Vera L. Kluge, DVM

Dr. Vera's Veterinary Clinic Pet Supplies

Open Daily 9 AM-6 PM
Clinic Hours 4 PM-6 PM
or By Appointment

230 East Main Street
Manchester, MI 48158
Phone 313-428-8365

THE MANCHESTER ENTERPRISE

30¢ COPY

121st YEAR VOLUME NUMBER FORTY-FIVE

USPS 327-460

THURSDAY, AUGUST 25, 1988

Open House For Clarence Fielder



After eighteen years as serving as Manchester Township Supervisor, Clarence Fielder has turned in his resignation as Supervisor and Assessing Officer, and has turned the reins over to Ronald Mann who was appointed by the Board effective August 1, 1988.

Fielder took office November 20, 1970. During his tenure the new township hall and fire station were built being dedicated in 1979. New fire equipment, fire truck and rescue truck were purchased. The township zoning ordinance was adopted in 1973.

Mr. Fielder is presently President of the Manchester Tool and Die established in 1954 which he operates with his sons Ron and Pat. He was former co-owner of Manchester Stamping. He is a charter member of the Knights of Columbus serving as Grand Knight for two years at which

time the Knights of Columbus Hall and Post Office were built. He is now serving on the building committee. He is a charter member of Manchester Family Service as a Trustee and President of the National Tooling and Engineers Association serving four counties.

Other positions he has served have been Manchester Board of Education, nine years; Manchester Recreation, 25 years; United Fund, 25 years; Optimist Club, Past President. He is a member of St. Mary's Catholic Church where he served on the church board; and also acted as co-parade marshal for many years for the Manchester Community Fair.

On October 2, 1943, he was united in marriage to the former Margaret Feldkamp. They were blessed with ten children - four daughters, Mary Frances, Cecelia Niehaus of Manchester, Theresa of Chelsea; and Bernadette Coltre of Chelsea; six sons, Ron, Jim, Dick, Pat, Craig and Kurt all of Manchester.

Thirteen grandchildren have joined their family - Amy, Jill, Lance, Sharon, Sandy, Lauri, Matt, Tom, Ryan, Kevin Fielder and Troy and Nick Niehaus of Manchester and Michael Coltre of Chelsea.

An OPEN HOUSE will be held for Mr. Fielder on Sunday, August 28, 1988, at the Manchester Township Hall, 275 South Macomb Street, from 2:00 p.m. - 4:00 p.m.

Common Council

Manchester Enterprise
October 17, 1867

The common council of the Village of Manchester, met this evening, October 8th, 1867, at 7 o'clock, as per adjournment of last meeting.

Present - N. Granger, M. Goodyear, M. D. Case, Joseph Ottmar, Conrad Lehn, J. S. Reynolds, Wm. S. Brown, D. D. Fitzgerald and the Recorder.

The minutes of the last meeting were read and accepted. The committee on Ordinances presented the following By-Law, which, on motion of Wm. S. Brown was unanimously adopted, to wit:

An Amendment

to chapter 10, of by-laws and ordinances of the Village of Manchester, Washtenaw County, and State of Michigan. Be it ordained by the common council of the Village of Manchester, as follows:

Chapter 10. Section 5.

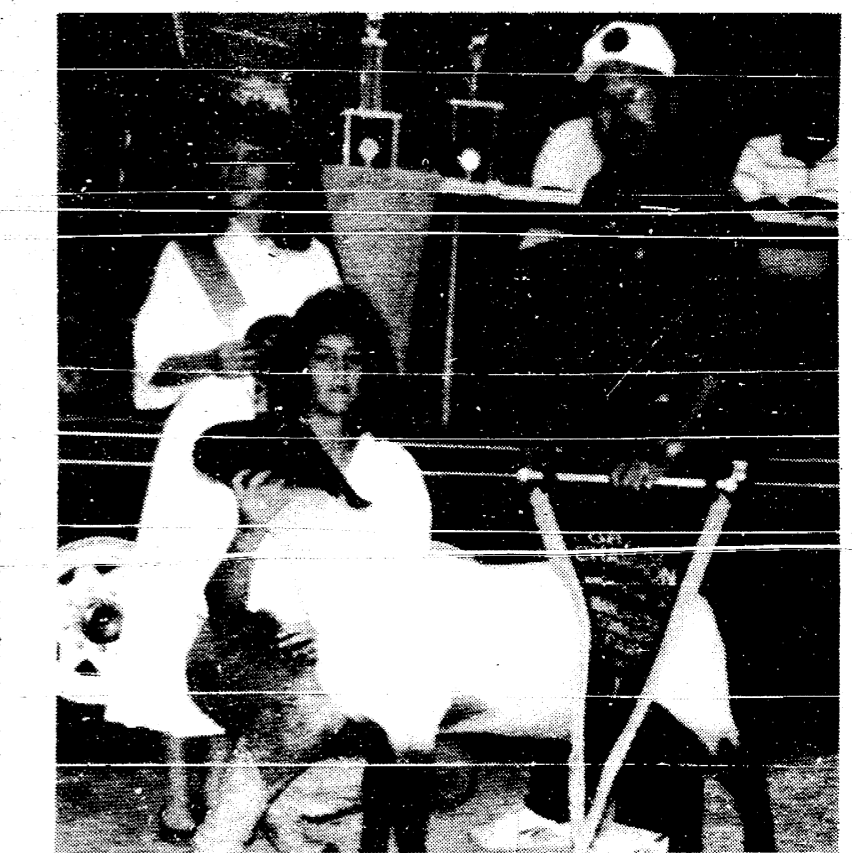
No person or persons shall permit on his, her or their premises within the boundaries of the village of Manchester of which he, she or they may be the occupant or occupants, agent or agents, having charge thereof, the exercise of any unwholesome or offensive trade, business or calling to occupy or suffer to be occupied any building or lot for the slaughtering of any animals, or for the dressing or cleaning or any animals killed elsewhere, or suffer or to permit any substance, material, or anything of an offensive or unwholesome nature to remain upon his, her or their premises until in any manner the said premises shall become offensive, hurtful, dangerous or unwholesome to the neighborhood or travelers; and it shall be the duty of the Marshall of said Village to whom complaint of said premises is made or to whose knowledge their condition shall in any manner become known, to give notice to said occupant or occupants, agent or agents, to abate any and every nuisance upon said premises, and to put said premises into a cleanly and wholesome condition within twenty-four hours after receipt of said notice. If any person shall refuse or neglect to comply with said notice, said person shall be punished by a fine not exceeding Fifty Dollars, or by not more than sixty days imprisonment in the county jail, or by both, in the discretion of the court; and each day after the expiration of the said twenty-four hours in which said person or persons shall neglect or refuse to comply with the exigencies of said notice, shall be deemed a separate and further violation of this section.

Grand Champion Steer



Amy Weidmayer was the owner of this year's Grand Champion Steer purchased by Manchester Stamping, represented by Wayne Hamilton.

Grand Champion Lamb



This year's Grand Champion Lamb was purchased by Koebbe Welding. Pictured from left to right are Fair Queen Kim Lee, Joanne Kemmer, owner of the Grand Champion, and Gale Koebbe.

Teacher Talks Enter Mediation

A State of Michigan labor mediator will be joining the ongoing negotiations between the Manchester Board of Education and the Washtenaw Livingstone Education Association (W.L.E.A.). The parties are scheduled

to meet with the mediator on August 26, 1988. While a number of issues have been settled, several major issues remain unresolved. The Board continues to seek Continued on Page 11

STEEL
NEW & USED
STEEL AT
BARGAIN PRICES

- Structural •Plate
- Re-Rod
- Pipe •Square Tubing

(Quantity Discounts)

Jackson Fibers Co.
(517) 784-9191

1417 S. Elm St.
1 block north of High St.
Jackson, Michigan

**Todd Withrow
Company**

REMODELING
CABINETMAKING
ADDITIONS—WINDOWS
KITCHENS—BATHROOMS
ROOFING—SIDING
CUSTOM BUILT CABINETS
WALL UNITS—FURNITURE

TOP QUALITY MATERIAL
AND WORKMANSHIP

LICENSED AND INSURED

CALL ANY TIME
428-9420 or 428-7797

Party Time

Your One-Stop Party Shop!

Make any occasion
special with Personalized
Party Supplies, Party
Tableware and Party
Decorations.

The
Manchester Enterprise

6.9%
ON 88, 88½ ESCORTS

ESCORT GL WAGON
Stock #2159, 5 Speed
\$7795*

ESCORT PONY
Stock # 2239, Auto., rear
def., radio
\$14900* per mo.

DEMO SALE **USED CARS**

*Maximum 48 months with 20% down, plus tax & title (includes rebate)

These Demos Have Gotta Go!

- '88 ESCORT AUTOMATIC -2-
- '88 TAURUS LX WGN. -1-
- '88 TAURUS GL SEDAN -4-
- '88 MUSTANG GT CONV. -1-
- '88 CROWN VICTORIA -2-
- '88 TURBO BIRD AUTO -1-
- '88 THUNDERBIRD SPORT -1-
- FULL SIZE BRONCO -1-

No Reasonable Offer Refused

**Free Extended Warranty
on All Our Demos**

Ford ESP Plus 3 Year, 36,000 miles,
Full Protection Program - \$495 Value!

Free 35 Pt. Safety Inspect.

OIL CHANGE & FILTER
On any Ford Car \$15.75
On any Ford Truck \$16.75
Excluding diesels

Bring this ad in or just mention that you saw it

MIDWEST FORD
510 W. Main Street — Manchester, MI
Mon & Tues 9-5:30 Wed 9-5:30 Thurs 9-5:30 Fri 9-5:30

Call Us Collect
313-428-8343

**1988
Manchester Fair Queen**

Kim Lee was selected by a panel of judges to reign as the 1988 Manchester Fair Queen. Kim is a senior at Manchester High School and is the daughter of Pam and Barry Lee.

**SCHOOL BEGINS
MONDAY, AUGUST 29th**

Obituary

Edward R. Kirk
413 Territorial
Manchester

Age 79, died Sunday, August 21, 1988, at St. Joseph Mercy Hospital. He was born November 13, 1908, in Manchester the son of Ambrose and Rose (Scully) Kirk. He was married to Dorothy Strack on October 3, 1934, she survives. He was a member of St. Mary's Catholic Church and a charter member of the Father Fischer Council of the Knights of Columbus. He had been an employee of the Union Savings Bank in Manchester (now Comerica Bank) for 47 years retiring as a vice-president in 1973. He was the Manchester Village Treasurer for 39 years retiring from that position in 1973. He was a member of the Moose Lodge in Ann Arbor and former member and Treasurer of the Manchester Optimist Club. At the time of his death he was Secretary-Treasurer of the St. Mary's Cemetery Association. In 1948 he became Manchester's first school bus driver.

In addition to his wife he is survived by three sons, Joseph and his wife Gretchen of Shafter, California, Gerald and his wife Madalyn of Brooklyn and John of Brooklyn; two daughters, Mrs. Judy Walz and her husband Edwin of Manchester and Patricia Kirk of Ann Arbor; 11 grandchildren; three sisters, Margaret Dietle of Manchester, Mary Diver of Manchester and Zita Bersuder of Bridgewater; several nieces and nephews. He was preceded in death by a brother William in 1957.

Mass of the Christian Burial will be held Wednesday, August 24, 1988, at 11:00 a.m. at St. Mary's Catholic Church. Rev.

erend Father Raymond Schlinkert will officiate. Burial will follow in St. Mary's Cemetery. The Rosary was recited on Tuesday.

Senior Citizens News

The fair is over and we were amazed that the grounds were uncluttered on Sunday afternoon—the clean-up crews must have been very busy, nice going! Manchester residents have a reputation for playing hard and working hard, and this once again proves it. Let's also bid farewell to that 100 degree heat we had on the 17th. Isn't it nice to sleep without fans running? Makes us feel like a human 'bean' once more.

Why not leave your hard work to come out on Thursday, today's senior sponsored public card party? The fun begins at 8 p.m. at Freedom Township Hall (at Pleasant Lake). There will be light refreshments served, too, to energize you after the battle of the jacks.

Thursday, September 1: A trip is planned to Ellis Sharp Park and the Cascades in Jackson to start the new month off right! The bus leaves the Center at 4 p.m. and to be on it, call Helen Knickerbocker (428-7239) to reserve your spot.

Guess who and what is coming? Senior meals return the day after you have all enjoyed Labor Day. Jan Barbour and her willing crew will begin cooking and serving long-awaited noon meals on September 6 on each Tuesday and Thursday for our enjoyment. If you are 55 or more, come to Emanuel United Church of Christ dining room for a delicious and nutritious meal at a minimal fee. Jan's first meal on the 6th is one of our favorites: baked fish, yummy. She does dish out good food.

We are in the process of editing and publishing the September-October Trumpeter. It should be 'put to bed' this week, so you may pick up your copy the week of the 29th at the Senior Center, 214 North Macomb Street. Copies will also be available at senior meals.

Don't forget that school begins next week and the little folks will need your attention while driving. Let's all be a little more careful during their exuberance in getting back to school.

Free Immunizations

The Washtenaw County Human Services Department is offering FREE immunizations during August and September at various clinic sites throughout the county for infants, children, students, and adults. Available vaccines will include diphtheria, pertussis, tetanus, measles, mumps, rubella, and polio. TB skin tests will be available at all clinics except on August 25. Participants are asked to bring immunization records. No appointment is necessary.

For more information contact the Public Health Division at 971-3393.

Sportsman Club Potluck Dinner

The summer potluck dinner will be held Sunday, August 28, 1988. Dinner will be at 1:00 p.m. sharp.

Rolls and drink will be furnished. Bring a dish to pass and your own table service. All members and their families please attend and bring a friend if you wish.

There will be a short business meeting after the dinner.

THE MANCHESTER ENTERPRISE
150 East Main Street Phone 313-428-8173 Manchester, MI 48158
USPS No. 327-460

The Manchester Enterprise was established in 1867 and is published each Thursday at 150 East Main St., MANCHESTER, Michigan, with second class postage paid at Manchester, Michigan. Edward E. Steele, Publisher. Lenore A. Steele, Editor.
POSTMASTER: Send Form 3872 To: Manchester Enterprise, 150 East Main St., Manchester, Michigan 48158.
DEADLINES: All Display Advertising and Pictures (Black & White ONLY) Are Due By 5 p.m. Every Monday For Same Week Publication. All Classified Advertising and News Articles Are Due By 10a.m. Every Tuesday For Same Week Publication.

Fall Tree Sale

The Board of Directors of the Washtenaw County Soil Conservation District has announced the District's Annual Fall Tree Seedling Sale.

The purpose of the tree sale is

First Of America Declares Dividend

The Board of Directors of First of America Bank Corporation today declared a quarterly dividend of \$.50 on its Common Stock, announced Daniel R. Smith, Chairman and Chief Executive Officer.

The new dividend, an increase of 11% from the previous \$.45 distribution, is payable on October 21, 1988, to shareholders of record as of September 23, 1988. Smith said that, "The \$.50 per share dividend was declared to reflect the income gains of the first half and the strength of our capital position." The previous dividend of \$.45 has been paid for four quarters since being raised from \$.40 effective October, 1987.

to offer landowners seedlings for conservation uses which include reforestation, soil erosion control, wildlife habitat, windbreaks, and aesthetic purposes.

Six species will be available: Austrian Pine, White Pine, Blue Spruce, Norway Spruce, White Spruce, and Douglas Fir. Also, available will be tree planting bars, a sturdy tool for planting seedlings. Orders with payment in full will be accepted until Friday, September 30, 1988. Trees can be pick-up on Wednesday, October 5 and Thursday, October 6, at the Soil Conservation District Office, between 8:00 a.m. and 4:30 p.m.

For more information and to obtain order forms, contact the Soil Conservation District Office, 6101 Jackson Road, Ann Arbor, 1/2 mile West of Zeeb Road, Telephone (313) 761-6721.

Buy, Rent Sell Thru The Classifieds

WAYNE'S WINDSHIELD REPAIR MOBILE SERVICE

WAYNE TERVO  TIM ARNETT

Expert Repair Of Cracked, Stone Damaged & Scratched Windshields 428-7028

Kirk Excavating
Sand—Gravel—Fill Dirt
Basements—Driveways


428-7938
Dave Kirk
14180 Schleweis Road
Manchester

PIONEER PRODUCTS
HUEHL ACRES

Introducing your new Pioneer sales representative

I'm your new Pioneer sales representative. You can expect outstanding service, both from the products I sell and in the way I do business.

I'll be looking forward to working with you.

 **PIONEER**
Huehl Acres
Chelsea, Mich.
313 428-9180



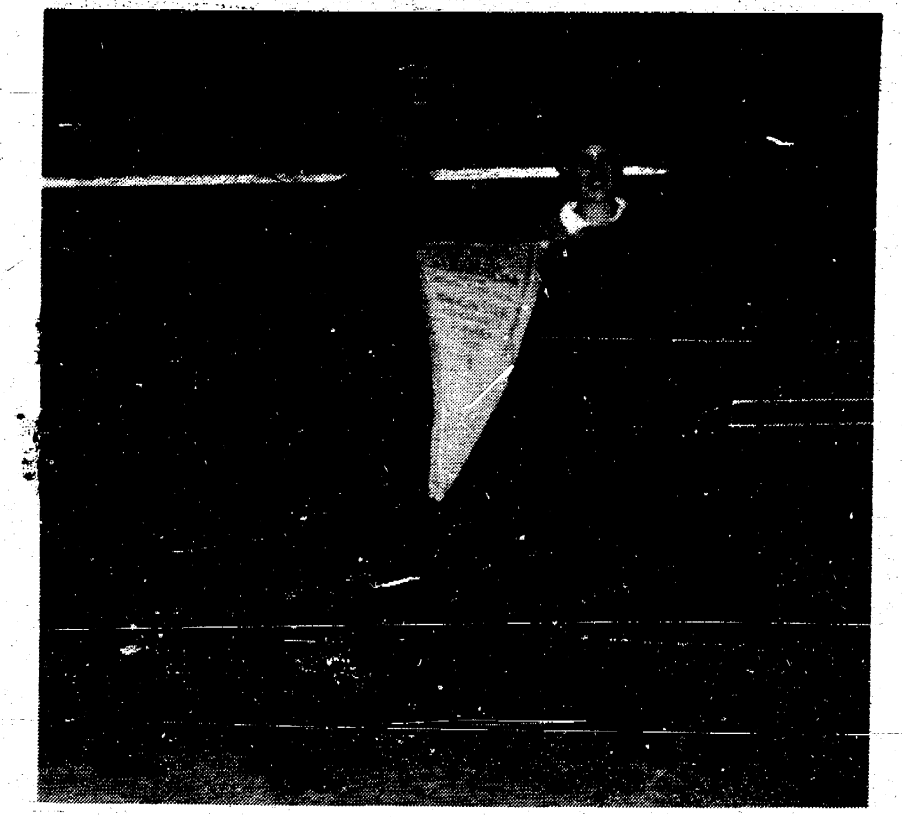
Life for eternity,
They promised in their vows.
To have and to hold, for rich, for poor.
From that single moment their love endured.
Endured and blossomed to withstand the world,
Their lives were now one, not separate, but combined.
They shared their thoughts, expressions and concerns,
And lots of happiness as the passing of time.
What would one say,
When presented with a romance that reappears
each new and lasting day?
Some would state that God is to thank,
Others quote "Luck is the secret key."
But that may all be ingredients for the successful
marriage of this couple,
Yet I believe that when two people are so much in love,
luck doesn't necessarily have to be on their side.
A stable base of TLC is all a 23 year old
relationship needs to survive.

Happy 23rd Anniversary MOM and DAD

Love Kim

1988 Optimist Club Steer Buyers

STEER CLUB MEMBER	PRICE PER LB.	BUYER
GRAND CHAMPION - Amy Wiedmayer	\$2.50	Manchester Stamping
RESERVE CHAMPION - Jennifer Kunzelman	\$2.00	Little Wack Excavating
Stephen Alber	\$1.25	Great Lakes Bank Corp.
Joanne Kemner	\$1.20	Johnson Controls
Mark Lavender	\$1.10	Dr. Monty Okey
Patrick Walz	\$1.05	Norm Walz
Amy Schnearle	\$1.10	Kirk Excavating
Bryan Strahle	\$1.20	Napoleon Livestock
Jenny Schnearle	\$1.20	Johnson Controls
Greg Weidmayer	\$1.20	Diuble Feeds
Lisa Lozier	\$1.10	Manchester Tool & Die
Tracy Day	\$1.10	Sutton Agency & Town Laundry
Jennifer Bailey	\$1.10	Downtown Businesses
Jodi Macomber	\$.90	Napoleon Feed Mill
	\$.10	Manchester Electric
Kevin Strahle	\$1.20	Napoleon Feed Mill
Billy Day	\$1.10	Johnson Controls
Kevin Duvall	\$1.10	Dr. Monty Okey
Brad Macomber	\$.90	Fahey Realty
	\$.10	Tom Lavender



Jennifer Kunzelman's Reserve Grand Champion Steer was purchased by Little Wack Excavating, represented by Paul Wachenhut.

Happy Birthday "WAMP" NELSON AND JUANITA

Vera L. Kluwe, DVM
Dr. Vera's Veterinary Clinic
Pet Supplies

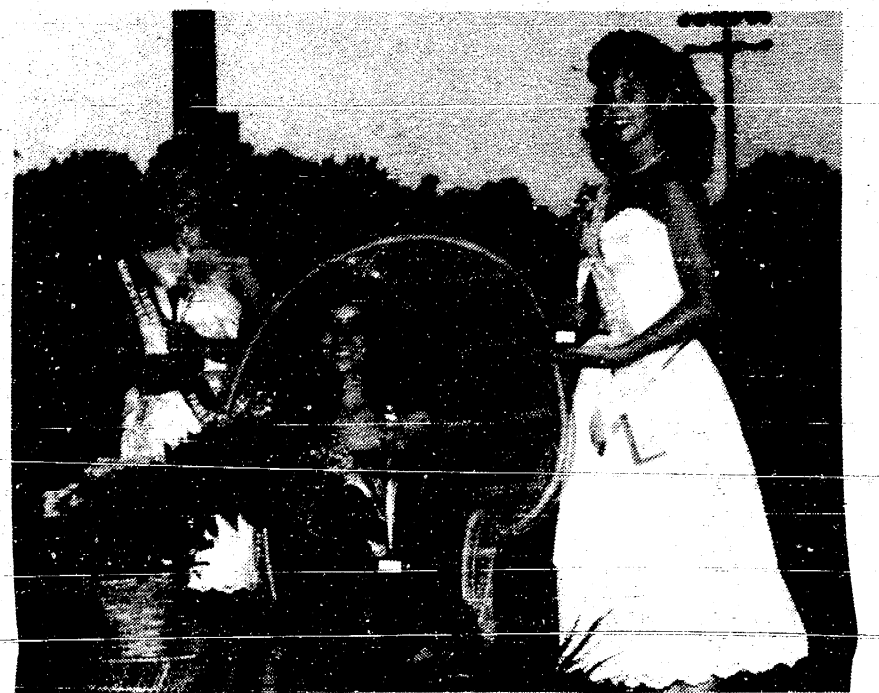
Open Daily 9 AM-6 PM
Clinic Hours 4 PM-6 PM
or By Appointment

230 East Main Street
Manchester, MI 48158
Phone 313-428-8365

School Hot Lunch Menu

Tuesday, August 30 - Steam-Umm Sandwich with Cheese, Tator Tots, Dill Pickles, Fruit Cocktail, Milk.
Wednesday, August 31 - Italian Spaghetti, Broccoli Spears, Warm French Bread with Butter, Pineapple Tidbits, Milk.
Thursday, September 1 - Chicken Nuggets, Hash Brown Patty, Vegetable Sticks, Butter-scotch Pudding, Milk.
Friday, September 2 - Cheese and Sausage Pizza, Tossed Salad with Dressing, Fresh Fruit, Chocolate Chip Cookie, Milk.

Only those who get into scraps with their eyes open can find the safe way out. —Logan Pearsall Smith



This year's winners in the Fair Queen Contest are (pictured from left to right): 2nd Runner-up Christa Spork, Fair Queen Kim Lee and 1st Runner-up Linda Milkey.

Buy with CONFIDENCE from

Russ Aiuto

Your TRANSPORTATION SPECIALIST AT

MIDWEST FORD, Inc.

510 West Main Street, Manchester, Mich.

- A, B, Z and X-Plans my specialty!
- Top dollar for trade-in!
- Expert, friendly service after the sale!
- Good previously owned vehicles for sale!


Call RUSS AIUTO for more INFORMATION 313-428-8343

PIONEER PRODUCTS
HUEHL ACRES

Introducing your new Pioneer sales representative

I'm your new Pioneer sales representative. You can expect outstanding service, both from the products I sell and in the way I do business.

I'll be looking forward to working with you.

 **PIONEER**
Huehl Acres
Chelsea, Mich.
313 428-9180

Black Sheep Tavern

Monday - Thursday
11:30 a.m. - 10:00 p.m.

Friday
11:30 a.m. - 11:00 p.m.

Sunday
12 Noon-9:00 p.m.


Saturday
Noon - 11:00 p.m.

117 E. Main Phone 313-428-7000 Manchester, MI

HERE'S A DEAL YOU CAN'T REFUSE

Completing your high school education could be the key to a better job and a better life. Now, how could you refuse a deal like that? Take advantage of this golden opportunity, contact

Chelsea-Manchester Community Education
475-9830 or 428-7804



428-9691 **MAGIK MAID** 428-9691
COMMERCIAL & RESIDENTIAL

- *Complete Home or Office Care
- *Upholstery & Carpet Cleaning
- *Set-up for Parties & Weddings
- *Windows, Seasonal Cleaning

*Personalized Service *Insured *Dependable, Honest

Now Accepting Clients In Manchester

CLINTON HOTEL SAUK TRAIL RESTAURANT
104 W. Michigan Ave., Clinton
468-4151

30 MINUTES FROM DOWNTOWN ANN ARBOR
ON U.S.-12 IN CLINTON, AT THE LIGHT

NEW SUMMER HOURS STARTING JULY 5

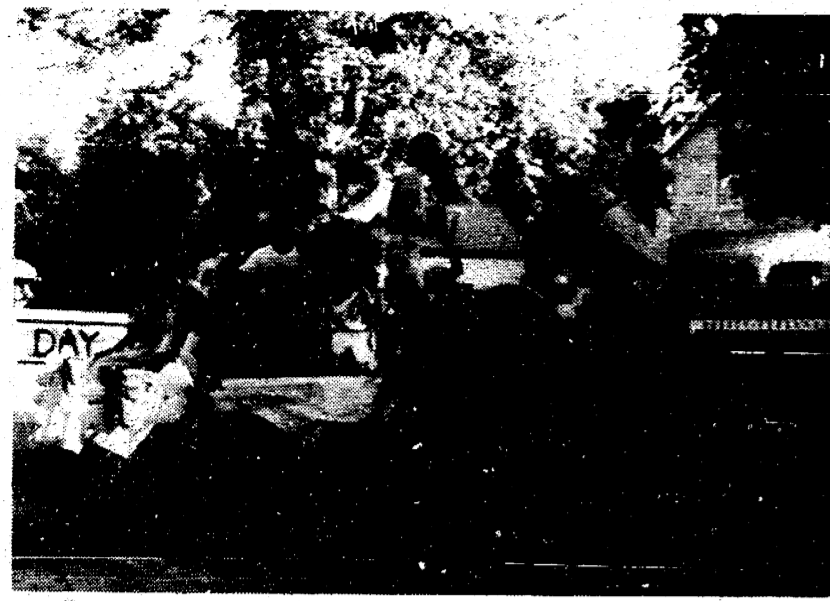
Tues.-Thurs. 11 a.m.-8:30 p.m., Fri. 11 a.m.-10 p.m.
Sat. 8 a.m.-10 p.m., Sun. 9 a.m.-8 p.m.
CLOSED MONDAY

BREAKFAST SERVED SATURDAY & SUNDAY ONLY
Sat. 8 a.m.-1 p.m., Sun. 9 a.m.-1 p.m.

LUNCH SERVED
Tues.-Sat. 11 a.m.-5 p.m.

FULL DINNER SERVED
Tues.-Thurs. 5-8:30 p.m., Fri. & Sat. 5-10 p.m.
Sunday 12-8 p.m.

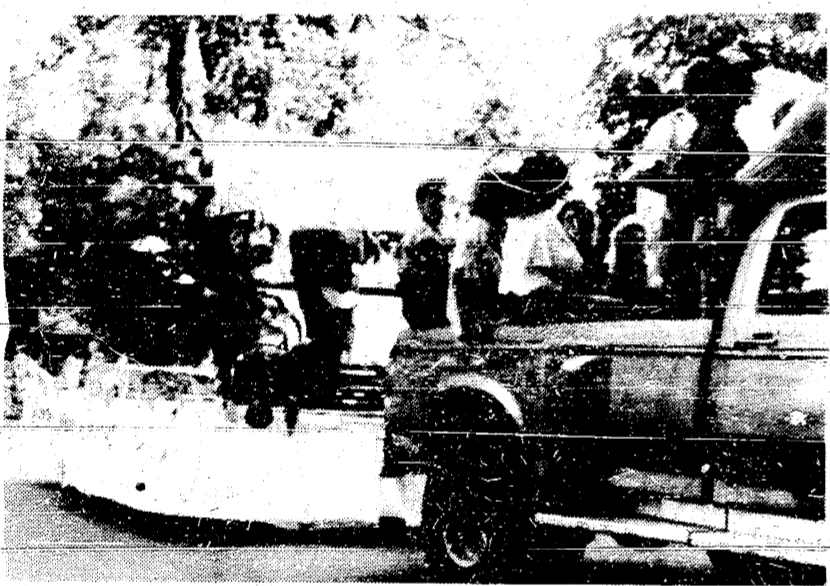
FREE SNACKS SERVED IN BAR ROOM
Tues.-Thurs. 4-7 p.m.
Reservations Accepted



Parade Float



Parade Float Class of 1992



Parade Float

Highlights of The Manchester Fair

All Fair Pictures by
Jon Hardenbergh



Show Pig "Ecstasy" kissing Queen Kim Lee.



Compact Tractor Pull



BACK DOOR PARTY STORE
500 Ann Arbor Street Phone 313-426-9287 Manchester, Michigan

BEER WINE
KEG BEER

GROCERIES

MICHIGAN LOTTO
Instant and Daily Lottery Tickets

UNION 76 GAS Full Service and Self Serve

R. C. and Diet Rite 8 PACK PLUS DEPOSIT **\$2.29**

**Notice of Public Hearing
Freedom Township
Zoning Board of Appeals**

Take notice that Freedom Township Zoning Board of Appeals will hold a meeting and public hearing on the application of Gerald L. Schiiler for a variance from the Township Zoning Ordinance to build handicapped garage extension to within approximately 3 feet of side boundary line on lot size 2.58 acre in SE corner of section 5, T3S, R4E.

Said hearing to be held on September 8, 1988, at 8:00 p.m. in Freedom Township Hall, 11508 Pleasant Lake Road.

Freedom Township
Zoning Board of Appeals

Get everything you've earned in life

Introducing the Charter Club for people 55 and over

If you're 55 or over and keep \$3,000 or more in Time Deposits with us, you're entitled to a free Great Lakes Bancorp Charter Club membership. You'll receive a whole package of special privileges including a membership card to identify you at teller windows as a valued customer. It will also operate 24-hour bank machines nationwide.

You'll get interest-bearing checking with no minimum balance. Free personalized checks. Free direct deposit of your social security check. Free photocopies of business papers. And a Priority Card for fast, personal, priority service.

If you keep more than \$25,000 with us, you'll also get free money orders and travelers' checks, no-fee overdraft protection, free bond coupon processing, a subscription to *Great Lakes Quarterly* magazine and discounts at most Bill Knapp's restaurants in Michigan.

Call 800-342-5453 for your free Charter Club brochure and application. You've earned it.

GREAT LAKES BANCORP
A Federal Savings Bank
Your Partner in Life.

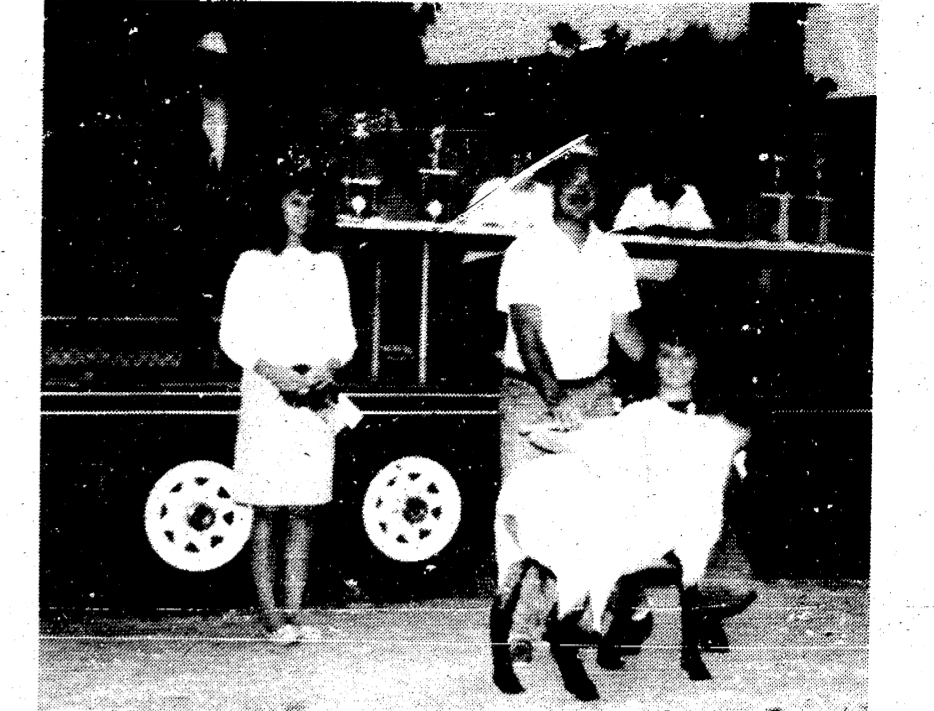
FOR MORE INFORMATION, CALL 800-342-5453 Manchester: 111 E. Main St. 428-8379
Ann Arbor: 401 E. Liberty St. (at Division) 769-8300 2400 Huron Pkwy. (at Platt) 973-7811
2701 Plymouth Rd. (at Nixon) 769-7818 125 Briarwood Circle (at the Mall) 769-7616
1909 Pauline Blvd. (at Stadium) 769-8386 Chelsea: 1135 S. Main (near Ann Arbor Rd.) 475-1341

*6:24 Center for convenient 24-hour banking. **Saturday drive-up service. 9 a.m. - noon. †Full service Saturday hours.

Equal Opportunity Lender

1988 Lamb Club Buyers

LAMB CLUB MEMBER	PRICE PER LB.	BUYER
GRAND CHAMPION - Joanne Kemner	\$4.00	Koebbe Welding
RESERVE CHAMPION - Jodi Macomber	\$3.25	First of America Bank
Jeff Kemner	\$2.00	Back Door Party Store
Michelle Stroock	\$2.00	G.E. Wacker
Jodi Macomber	\$2.00	Napoleon Feed
Brad Macomber	\$1.75	Dr. Monty Okey
Karen Haeussler	\$2.00	Manchester Stamping
Bryan Macomber	\$1.75	Norm Walz
Joanne Kemner	\$2.00	Manchester Stamping
Bryan Hoelt	\$2.00	R.D. Kleinschmidt
Daniel Bihlmeyer	\$1.75	K&W Equipment
Lisa Lozier	\$1.75	Napoleon Feed
Bryan Hoelt	\$1.75	Dr. Stan Gilbert
Jeff Kemner	\$1.75	Tirb Chevrolet
Kelly Lucas	\$2.00	A.H. Payeur
Valerie Haeussler	\$1.75	Johnson Controls
Bryan Macomber	\$2.00	Kleinschmidt True Value
Michelle Stroock	\$1.75	Manchester Car Wash
Valerie Haeussler	\$1.75	Great Lakes Carp. Corp.
Sharon Bihlmeyer	\$1.50	K&W Equipment
Jody Mitchell	\$1.50	Marti's Top Drawer
Anne Fahay	\$1.50	Jeff Royle & Tom Lavender
		Diuble Realty
		Fahey Realty
		Pioneer - Reno Feldkamp
		Dawna & Co. & The Flower Garden
		Kirk Excavating
		Fahey Realty
		The Flower Garden
		Tirb Chevrolet
		Little Wack Excavating
		Johnson Controls
		SK Sales
		Burke's Body Shop
		Larry Salyer
		Farm Bureau Insurance
		Larry Salyer
		Burke's Body Shop
		Arvin Weidmayer
Lisa Lozier	\$1.50	
Jody Mitchell	\$1.50	
Sharon Bihlmeyer	\$1.50	
Melissa Steele	\$1.50	
Anne Fahay	\$1.50	
Karen Haeussler	\$1.50	
Melissa Steele	\$1.50	
Kelly Lucas	\$1.50	
David Mitchell	\$1.50	
Daniel Bihlmeyer	\$1.50	
Adam Erskine	\$1.50	
David Mitchell	\$.25	
	\$1.25	
Amanda Erskine	\$1.50	
Amanda Erskine	\$1.25	
	\$.25	
Adam Erskine	\$1.50	



Linda Milkey, pictured at left, with Mark VanBogelen representing First of America Bank, buyer of the Reserve Grand Champion Lamb owned by Jodi Macomber.

Manchester Township Board

Proposed Minutes

A Special Meeting of the Manchester Township Board was held at the Township Hall on Monday, August 15, 1988 at 8:30 p.m. All Board members present.

Reason for meeting: possible approval to put local questions on the November 8, 1988, ballot for fire truck and roads.

Moved by Widmayer and supported by Macomber to place the proposal on the ballot for fire truck millage for .35 mills for ten years. After much discussion Widmayer withdrew the motion. Uphouse moved to table the decision of the local questions until Monday, August 22, 1988, in order to obtain more information, supported by Widmayer. Supervisor and Clerk to obtain information. Discussion of request from Stuart Thomas Chartrand was born to David and Marsha Chartrand on August 9, 1988. Stuart was welcomed home by sisters Alyssa 8, Arienne 6, and brother Ian, almost 4. Grandparents are Mrs. Erma Chartrand of Stambaugh, Michigan and Mr. and Mrs. Alton Horning of Manchester.

Constable Moore regarding adopting an ordinance for the Iron Creek Road area was held. It is the consensus of the Board that this is county property and it is their responsibility to control the area.

Moved by Lentz and supported by Uphouse to be adjourned at 10:05 p.m.

Wilma E. Lentz, Clerk

Birth Announced

Stuart Thomas Chartrand was born to David and Marsha Chartrand on August 9, 1988. Stuart was welcomed home by sisters Alyssa 8, Arienne 6, and brother Ian, almost 4. Grandparents are Mrs. Erma Chartrand of Stambaugh, Michigan and Mr. and Mrs. Alton Horning of Manchester.

THINK TIRES

Multi Mile
ROAD HAZARD COVERAGE
ON EVERY TIRE

Absolutely Free

COMPUTERIZED WHEEL BALANCING
\$4.00 Per Tire

EPIC
\$29.95
15580R13

MATRIX
\$34.95
15580R13

GRANDAM SE
\$39.95
16580R13

P155/80R13	29.95	P155/80R13	34.95	P165/80R13	39.95
P165/80R13	35.95	P165/80R13	44.50	P175/80R13	N/A
P175/80R13	39.95	P175/80R13	46.50	P185/80R13	48.95
P185/80R13	41.95	P185/80R13	47.50	P185/75R14	51.95
P185/75R14	43.95	P175/75R14	49.50	P195/75R14	52.95
P195/75R14	45.95	P185/75R14	50.50	P205/75R14	54.95
P205/75R14	47.95	P195/75R14	51.50	P215/75R14	57.95
P215/75R14	51.95	P205/75R14	53.50	P225/75R14	59.95
P205/75R15	50.95	P215/75R14	55.50	P235/75R14	63.50
P215/75R15	52.95	P225/75R14	57.50		
P225/75R15	53.95	P205/75R15	54.50		
		P215/75R15	56.50		
		P225/75R15	59.50		
		P235/75R15	63.50		

GOOD BETTER BEST

See DAN For Unbeatable Deals!!
Grand AM GT's Raised White Letter 70 Series
Aluminum and Chrome Wheels

DAN'S WESTSIDE AUTOMOTIVE
660 West Main Street Phone 428-9455 Manchester, Michigan

NOTICE

Due to Labor Day the regular meeting of the Manchester Village Council will be changed from Monday, September 5, to Tuesday, September 6.

Constance M. Schaffer
Village Clerk

(313) 428-4885 COUPON (517) 423-2148

Saline in the Saline Shopping Center

\$99 Daily Wear Soft Contact Lenses

1ST OPTOMETRY eye care centers

Dr. Thomas Cunningham

\$10 OFF with support Prescription Eyeglasses

DOES NOT APPLY TO OTHER DISCOUNT OFFERS OR PRIOR ORDERS

Manchester Community Schools

IS NOW ACCEPTING
REGISTRATIONS FOR
Developmental Kindergarten

For More Information Call
CAROLYN SUPERS
428-7804

Money Management

Tax Consequences of Scholarships and Fellowships

Tax reform has started pulling at the purse strings of those students lucky enough to receive a college scholarship or fellowship. Come next tax season, many of these students may find themselves unexpectedly owing substantial funds to the IRS. If you are a scholarship or fellowship recipient, the Michigan Association of CPAs advises you to find out whether or not you will have to report this year's payments as taxable income.

Your first task is figuring out whether or not your grant actually qualifies as a scholarship or fellowship. Sounds easy, doesn't it? Well, take a look at the definition in the IRS publication on scholarships and fellowships and think again. To simplify, a scholarship is basically any amount given to a student for the purpose of obtaining an education at a university or college, while a fellowship generally aids a person pursuing a specific study or research project.

Under tax law, however, not all scholarship and fellowship payments receive equal tax treatment. Depending on the date you received the grant, and on the type of services, if any, you perform for the grantor, you may have to include part or all of the money in your taxable income.

FUNDS GRANTED BEFORE AUGUST 17, 1986
If your scholarship and fellowship was awarded before August 17, 1986, count yourself lucky. The tax treatment remains basically the same as in the

past-including many provisions that may reduce your tax liability. If you are a candidate for a degree, you may exclude from your taxable income the basic scholarship or fellowship grant, including the value of room and board. In addition, you may exclude any grant funds specifically designated for travel, research, clerical help and equipment. But be warned, you must actually spend these amounts for the purpose of the grant and within (or shortly after) the term of the grant or else the funds may become taxable.

On the other hand, you generally must report as income any grant payments that you receive in exchange for past, present or future employment services, or for research that mainly benefits the grantor of the award. (An exception is made in certain cases where the services are required of all candidates for the degree.)

As far as the IRS is concerned, payments to medical interns or residents, certain social service agency interns and others in similar positions, are income and do not qualify as either scholarships or fellowships. The "payment for services" rule also applies to grants that require a student to work for outside employers. An example of this situation would be a university grant that requires a journalism student to work as a regular staff employee of a local newspaper.

WHAT IF YOU ARE NOT A CANDIDATE FOR A DEGREE?
If you are not a candidate for a degree, you may still be eligible for certain tax benefits if your

grant was made before August 17, 1986. Under these circumstances, you may exclude from your taxable income any amount received for such expenses as travel, research, clerical help or equipment.

In addition, you can exclude up to \$300 a month for each month in which you receive a scholarship or fellowship payment. You may claim the \$300-a-month exclusion for a period of 36 months, consecutive or not. But once you exceed the 36-month limit, you must include in your gross income all amounts you receive under the grant, including funds designated for qualified expenses.

To complicate matters somewhat, the \$300-a-month exclusion only applies if the grantor of the scholarship or fellowship is a tax-exempt, nonprofit organization operated exclusively for religious, charitable, scientific, literary or educational purposes, testing for public safety, prevention of cruelty to children or animals or fostering national or international amateur sports competition. Other acceptable grantors include any United

States agency, state or possession; a foreign government; or an organization created under the Mutual Education and Cultural Exchange Act of 1961.

FUNDS GRANTED AFTER AUGUST 16, 1986
Recipients of scholarships or fellowships granted after August 16, 1986, may find life a bit more taxing. The \$300-a-month exclusion for non-degree candidates, for instance, has been repealed.

Under the new rules, scholarships and grants are tax-free only if you are a candidate for a degree and you use the funds for tuition, matriculation fees, books, supplies and equipment.

You can no longer exclude from income any money received for such expenses as room, board and travel. Neither can you exclude the portion of a grant, including any tuition reduction, that represents payment for teaching, research or other services—even if teaching or research is required for the degree.

The new law also considers non-cash awards, such as a partial or total waiver of tuition in exchange for teaching, research or other services, as taxable income.

STAY TUNED FOR FURTHER DEVELOPMENTS
The new tax laws on scholar-

ships and fellowships are causing a good deal of confusion and controversy. Back in March, for example, the IRS suspended efforts to collect taxes on stipends earned by graduate students after an outcry in Congress against the agency's inconsistencies in handling the cases.

CPAs advise you to stay aware of any further developments regarding the tax liability of recipients of scholarships and fellowships.

FUND RAISING

Manchester Sportsman Club
8501 Grossman Road
Friday 6:45 p.m.

"Honor The Flag"
Manchester American Legion
203 South Adrian Street
Saturday 7:00 p.m.

AUGUST TRUCK SALE

- THIS WEEK'S USED CAR SPECIALS**
- 1985 CHEVY C-10 SILVERADO ... \$8995
 - 1983 MUSTANG GLX 5.0 CONV. \$7895
 - 1982 PONTIAC FIREBIRD SE T-tops \$5295
 - 1980 CHEVROLET CAPRICE One owner \$1995
 - 1986 OLDS 98 REGENCY 2 Dr., luxury \$2995
 - 1979 CHEVY SUBURBAN 350 dual, air \$2995

WE'VE GOT THE HARD TO FIND TRUCKS

- F-350 CREW CAB**
Diesel, auto., 4x4 One of a Kind
- F-250 SUPERCAB**
Diesel, auto., loaded
4 to choose from
- F-250 SUPERCAB**
460, auto., loaded 2 to choose from
- F-250 REG. CAB**
4x2, 351, 5 spd. 2 to choose from
- F-250 REG. CAB**
4x4, auto 3 to choose from
- F-150 REG. CAB**
4x2, 6 cyl., 5 spd.
2 to choose from
- RANGERS**
Good assortment
10 to choose from
- BRONCO**
302, auto., loaded
2 to choose from

MORE TRUCKS COMING DAILY!
BE THE FIRST TO GET 89's

6.9% ON ALL NEW ESCORTS

FREE Extended Ford Warranty on All Our Demos
Ford ESP Plus 3 Year/36,000 miles. Full Protection Program - \$495 Value.

MIDWEST FORD

510 W. Main Street, Manchester, MI

Call Us Collect: **313-428-8343**

MIDWEST FORD MIDWEST FORD

STEEL

NEW & USED STEEL AT BARGAIN PRICES

- Structural •Plate
- Re-Rod
- Pipe •Square Tubing (Quantity Discount)

Jackson Fibers Co.
(517) 784-9191

1417 S. Elm St.
1 block north of High St.
Jackson, Michigan

Todd Withrow Company

REMODELING
CABINET MAKING
ADDITIONS—WINDOWS
KITCHENS—BATHROOMS
ROOFING—SIDING
CUSTOM BUILT CABINETS
WALL UNITS—FURNITURE

TOP QUALITY MATERIAL
AND WORKMANSHIP

LICENSED AND INSURED

CALL ANY TIME
428-9420 or 428-7797

Party Time

Your One-Stop Party Shop!

Make any occasion special with Personalized Party Supplies, Party Tableware and Party Decorations.

The Manchester Enterprise

THE MANCHESTER ENTERPRISE

30¢ COPY

121st YEAR VOLUME NUMBER FORTY-SIX USPS 327-460 THURSDAY, SEPTEMBER 1, 1988

Death Of Newman Granger

Manchester Enterprise
July 19, 1888

We are called upon to-day to chronicle the death of one of our old pioneers, and for many years one of Manchester's prominent representative business men, Newman Granger, which occurred on Tuesday morning after a lingering illness, the past few weeks of which has been fraught with great suffering.

Mr. Granger was born in Lowville, Lewis county, N. Y., 73 years ago. His father was a brewer and the subject of this sketch often made the remark that he was "born and brought up in a brewery." About 50 years ago the Granger family moved to Michigan and first stopped with Amos Bullard, in Sharon, who was an uncle of Newman's. The site of the old brewery opposite the Universalist church was selected, and a brewery erected by the father and son, who continued brewing ale for several years, when Thomas Morgan was taken in as a partner. Business was good and the firm accumulated considerable real estate, etc., and on the death of his father and mother Newman and his sister, Mrs. A. Strickland, acquired their property. The old and well-known firm of Granger & Morgan having dissolved, Granger & Strickland assumed control and continued in successful business for many

years. Mr. Granger was a kind-hearted man, and not only liberally gave to all who were in need, but those in trouble, financially, found in him a friend indeed, and to that is attributed the loss of his once princely fortune, for he was at one time said to be worth \$40,000. We understand that he gave both to the M. E. and Universalist societies the land on which their edifices now stand beside munificent gifts in hard cash. He was foremost in the construction of the Jackson and Hillsdale branches of the L.S. & M.S. Ry Co., as well as in all movements which went to build up the village. He was supervisor of the township for many years and discharged his duties with credit to himself and honor to the township.

He was never married and for the past 20 years has lived among strangers, yet his manly qualities and kind disposition has secured for him friends who cared for him when his old age came creeping on and sickness overtook him and death knocked at his door.

DIED
GRANGER—In this village, on Tuesday, July 17, 1888, of kidney trouble and heart disease, Newman Granger, aged 73 years. The funeral was held at the Universalist church, yesterday afternoon, Rev. Patchin officiating. The remains were interred in Oak Grove cemetery.

Visitors From Japan



Liz and Rollie Grossman were hosts last week to two friends from Japan, Koji Yamamoto and his wife Takako. Koji visited Manchester several years ago as part of a group hosted by Emanuel Church and has corresponded with the Grossmans ever since. This year, the Yamamotos' daughter, Naomi, chose a trip to the United States as a special gift to mark her coming of age. So while Naomi visited in Ann Arbor with Liz and Rollie's

granddaughter Susan, Koji and Takako visited Manchester and the surrounding area. At the Village Hall, Village President Mary Kalleward welcomed Mr. and Mrs. Yamamoto and presented them with a souvenir copy of the "Old Manchester Village" book furnished by Great Lakes Bancorp. Koji, a middle school English teacher, said that the book would be an interesting and useful aid in his classroom.

Manchester Community Fair

Work has already started on the 1989 Manchester Community Fair. In January 1988 the Fair Board found out that the carnival that usually came to Manchester had disbanded because the owner had retired and sold some of the rides. By January most carnivals have their schedule all set. We checked into several carnivals, but found all were booked for the week we had chosen. The Fair Board did manage to find some smaller rides for the younger Fair goers. The Fair Board is now working to find a full carnival for the 1989 Fair.

The Manchester Community Fair Board would like to thank all the many people that worked and supported the Fair. There is no way to name all the helpers, in so many areas, that give of their time to make the Fair a success. The Manchester Community Fair is just that....what you the community can make it.

To help expenses this year, a 300 Club drawing was held. The winners were: on Tuesday, August 18th, \$50.00 Stan Gilbert, \$100.00 Jim Gray; on Wednesday, August 17th \$50.00 Irene Smith, \$100.00 Glenn Buss; on Thursday, August 18th \$50.00 Glen Hlavka, \$100.00 Jim Gray; on Friday, August 19th \$50.00 Charles Steele, \$100.00 Pete Graham; and on Saturday, August 20th \$100.00 J. Leopard, \$250.00 Wendy Johnson, and \$500.00 Jim Warner. Congratulations.

Energy Conservation Workshop

The Ecology Center will be hosting a free energy conservation workshop September 30, 1988 at Washtenaw Community College. Nonprofit organizations from Wayne, Oakland, Macomb, Livingston, Washtenaw, Monroe and St. Clair Counties are welcome.

The workshop will provide information on how to reduce energy expenses, obtain free technical services, and apply for matching grants totalling up to \$1,000. By reducing energy consumption—and overhead energy costs—more nonprofit funds can go where they're needed most—into services!

To register for the September 30th workshop, or for more information on Nonprofit Energy Works, call (313) 747-7904. This workshop is part of the Ecology Center's (NEW) Nonprofit Energy Works program, funded by a grant from the Community Foundation for Southeastern Michigan.

Key Issues Stall Teacher Contract Negotiations

By Becky Doyle

Although several important points have been resolved, two key issues have kept Manchester's teachers and the School Board from agreeing on a contract for the current school year, according to Superintendent Ron Niedzwicki and MEA president John McGuire.

Those issues are insurance coverage and wage increases for the teachers in the district. Negotiating teams met last Friday and ironed out some of the details, but according to McGuire, "Salary has hardly been discussed at all in the last two or three sessions."

At press time, another meeting was scheduled but had not yet been held, and both sides hoped to be able to come closer to an agreement. Salary increases proposed by the two groups are 5% apart; the School Board offering a 4% increase and the MEA asking for 9%.

"We are looking for fair and comparable wages with those districts around us," said McGuire, but conceded that most of the figures he had seen were under the 9% requested.

"The Board started at 2% - we're at 4% now," said Niedzwicki, noting that the teachers had not changed their figure during the negotiations.

The Board also has proposed a cap on insurance that will be paid by the school district.

"We are proposing a cap on insurance at the 1988 - 89 level. Any increases after that should be picked up by the teachers," said Niedzwicki.

"We have run into a logjam on insurance," admits McGuire. "We realize that the costs have gone up, but areas around us have comparable to better insurance and they aren't proposing this."

The current contract will run out on August 31. While both sides hope to have come to an

agreement by that time, alternatives have been discussed.

"The Board first offered an open-ended extension (of the present contract); the latest is a 30-day extension," said McGuire. "Our team has talked about that and decisions will be made on that if necessary."

The negotiating team for the teachers is composed of two teachers from each school (elementary, middle and high); MEA President and Dick Gray, a negotiator from the WLEA (Washtenaw - Livingston Education Association). The School Board position has been represented by Superintendent Niedzwicki and Bruce Bigham of the Michigan Association of School Boards.

The teams have been joined by a state labor mediator, who was present at last Friday's bargaining sessions.

"We are hopeful that things will close soon," said Superintendent Niedzwicki, adding that the Board would prefer a multi-year contract to a single year.

McGuire was also hopeful, saying that everyone was trying to keep an open mind and be willing to listen to alternatives in order to reach an agreement at the earliest possible date.

Girl Scout Round-Up

Tuesday, September 6th is the day!! All interested Manchester girls ages 5 or kindergarten age, and all girls in grades 1-3, bring your parents to Emanuel United Church of Christ at 7:00 p.m. on September 6th to sign up for a troop. Emanuel Church is at 824 West Main Street. Girls wear rubber-soled shoes (tennis shoes), so you can play games in the gym while Mom or Dad talks with the leaders.

Girl Scouting is exciting!! Girl
Continued on Page 3

Manchester Stamping Receives Q1 Award

Manchester Stamping Corporation, a manufacturer of small and medium-size stampings and multiple-piece assemblies, has received the prestigious Q1 Award from the Ford Motor Company, it was announced today by company President Wayne Hamilton.

The Q1 Award recognizes Manchester Stamping's outstanding performance in all areas of quality systems implementation. This is the fourth quality award which Manchester Stamping Corporation has received from a

major automotive manufacturer. The company also ranks highly in the General Motors "Targets for Excellence" program; is recognized by the Chrysler Corporation as a Preferred Supplier; and has been selected by Honda of America as one of only 12 suppliers in its product category, based on quality performance ratings of 100%.

"Manchester Stamping people, in every department, have really made a commitment to quality," Hamilton said, "and that's what has made it possible."