

Estate Development (313) 994-9055

ACTIVE OFFICES JACKSON RD. NEAR BAKER RD. — 5000 sq. ft. of office space available for immediate occupancy. \$10/sq. ft. plus utilities. Call 994-9055.

AVAILABLE all space. Don't make a major real estate decision without us! T. Allen Assoc. Inc. Commercial Real Estate Brokerage, Consulting & Management (313) 769-7200

HTON — Light industrial lease, finish to suit. 250 sq. ft. Call 1-227-5445

COMMERCIAL ZONED DINGS — for sale in Fashion Ave. between Center & Golfside. \$16,644 total building with 9,000 sq. ft. available for lease in 1988. Balance of office leased to variety of tenants. Contact S. Butts, Swishinsky Co., 643-0501.

DEXTER 40 sq. ft. commercial space for rent. 1200+ sq. ft. no. negotiable. 769-5454

18,000 FT. BLDG. 2 story, 2 years old. State Industrial Park. Lease rates \$8.25/ft. 600 ft. finish to suit. 10,000 sq. ft. open conditioned. Parking/60. REALTOR: 761-2632

YARD HOUSE — Available February, Prime corner lot. Great campus to 400 Maynard. 761-8220

SIDE PLAZA — The new retail center on Main Ave. in Saline has 8000 sq. ft. available advantage of the high rise and 90 parking spaces to serve your customer. Immediate occupancy. John Guthrie for Speare & Associates 012 or 668-8308.

ERA RATHF 784 E. MI Saline, 662.0 Lyon Rea & McIn Realty

PLUS SQ. FT. — In 3 area, \$1500 per mo 71-8548 between 8-5.

PRIME RETAIL LOCATION side, Ann Arbor, new on Rd. shopping center. Retail space. Call Falsetta, Falsetta's Realty 769-1400.

QUALITY RETAIL SPACE Campus Plaza. Units available from 800-4500 sq. ft. Plymouth Road. Call 00.

IL & OFFICE SPACE sq. ft. Main St. all part. Call Kent Whitman 00.

IL BUSINESS OR CON-TOR — Fenced yard, parking, available. Call 1. Ypsilanti. 482-0484.

Home Repairs and Improvements DON YOUR SEARCH Ed Enterprises can help you remodeling need you. Licensed. Call 761-9101

CALLS ANSWERED Shoads & Company Home Services

CONDO. SALINE-Maple Ridge Condos 1200 sq. ft., 2 bedroom, 2 bath, 2 car garage. Call for appl. 429-4200.

THE ARBORS TOWNHOMES Condominiums from low to \$100,000. Call Dave Dean 973-8027 home

WALDEN HILLS 3 bedroom, 1 bath, 2 car garage. Call 994-4400.

COMMERCIAL DIVISION at 994-4400 for information on these and other commercial properties.

BOCA Beach on 1/2 acre lot. Call 971-4000.

1000 sq. ft. commercial space for rent. 1200+ sq. ft. no. negotiable. 769-5454

18,000 FT. BLDG. 2 story, 2 years old. State Industrial Park. Lease rates \$8.25/ft. 600 ft. finish to suit. 10,000 sq. ft. open conditioned. Parking/60. REALTOR: 761-2632

YARD HOUSE — Available February, Prime corner lot. Great campus to 400 Maynard. 761-8220

SIDE PLAZA — The new retail center on Main Ave. in Saline has 8000 sq. ft. available advantage of the high rise and 90 parking spaces to serve your customer. Immediate occupancy. John Guthrie for Speare & Associates 012 or 668-8308.

ERA RATHF 784 E. MI Saline, 662.0 Lyon Rea & McIn Realty

PLUS SQ. FT. — In 3 area, \$1500 per mo 71-8548 between 8-5.

PRIME RETAIL LOCATION side, Ann Arbor, new on Rd. shopping center. Retail space. Call Falsetta, Falsetta's Realty 769-1400.

QUALITY RETAIL SPACE Campus Plaza. Units available from 800-4500 sq. ft. Plymouth Road. Call 00.

IL & OFFICE SPACE sq. ft. Main St. all part. Call Kent Whitman 00.

IL BUSINESS OR CON-TOR — Fenced yard, parking, available. Call 1. Ypsilanti. 482-0484.

Home Repairs and Improvements DON YOUR SEARCH Ed Enterprises can help you remodeling need you. Licensed. Call 761-9101

CALLS ANSWERED Shoads & Company Home Services

Home unique style. 2600 sq. ft., 4 bedrooms, 2 1/2 baths. Formal living room & dining room. Cook's kitchen opens to a bay window breakfast nook & family room with brick wall fireplace. Skylights, vaulted ceilings and large deck add to sense of light & space. Quality & value for \$186,182.

LOCH ALPINE RANCH Lovely 4 bedroom, 3 bath home with many special features including huge deck, intercom system, Jennair appliances, central air conditioning, private entrance. Close to Ann Arbor Country Club. \$139,900. Call Joanne Watkins or Doug Spaly at the Spaly Group, 749 7000 or 747-8223 or 994-0264.

FRISINGER PIERSON BEAUTIFULLY REMODELED — 3 bedroom Cape Cod on Portage Lake. Corner frontage, access. View sunsets, enjoy cozy fireplace & new oak cupboards in spacious kitchen. Immediate possession. \$74,900. Christine Marsh 475-9193; eves. 475-1899

BY OWNER — In Milan, 2 bedrooms, 2 baths, large lot \$43,000. Before 3pm or after 5pm. 313-439-1882.

CHELSEA SCHOOLS — Country ranch on 7 1/2 acres 1840 sq. ft., 3 large bedrooms 2 baths, 2 fireplaces, 2 1/2 car attached garage, 1000 sq. ft. walk-out basement, much more. \$115,000. 475-8187.

COUNTRY LIVING — Nest in an unusual setting. About 200 sq. ft. if you finish out the remaining 900. Handsomely done with deck, garage, other amenities. Access to Winans Lake, \$135,000. PLYMOUTH COLONY, 995-1911.

FENTON — 4 bedroom bi-level on channel to All Sport Lake. 2 garages. Selling at a special value. \$105,000. Call 313-750-9192.

GROUP 100 REALTORS Spacious 5 bedroom home or 2 acre wooded lot. This well cared for colonial features 1st floor laundry, large rooms, lake access & much more. \$160,000. Call Keith Pratt personally at 994-4700 or 769-0129.

INEXPENSIVE LIVING — with access to Patterson chain of lakes. Small, year round, 2 bedroom home. \$29,900. Hurry for this one! Lakes Realty, (313) 231-1600 or 662-2115.

INTERESTED — In Building? Quality Wooded Home near center of town. 1 1/2. Good value! Charles C. Lovgren Builders, 994-8127

LINCOLN SCHOOLS — 4 bedroom, 2 bath, tri-level/possible duplex. 434-4482.

MAKE YOUR DREAM HOME A REALITY — with this century old brick farmhouse. 4 bedrooms, 2 baths, large country kitchen, formal dining room, coxy den with parlor stove and hot tub room. Pole barn and old wood frame barn, all located on 6 acres. All for the unbelievable price of \$163,900. Call Glenn Brooke Realty, Ltd., 517-851-2548 for more information.

REMODELED YEAR ROUND BUNGALOW — Access to Whitmore Lake. Excellent sandy beach, 3 bedroom, 2 baths, balcony, living room with fireplace. \$58,000. Call NELSON REAL ESTATE, 449-4446; or 1-800-462-0309.

THREE BEDROOM Quad level, 2 1/2 baths, walking distance to Clinton Schools. Family room w/ fireplace opens to patio. Extra large lot. \$67,800. Call 517-456-7207.

784 VALLEY FORGE — Hamburg Twp. 3 bedrooms, 2 baths, needs work, 105' of Huron River frontage. \$50,000. NELSON REAL ESTATE, 449-4446; or 1-800-462-0309.

WANT TO BE ENVIED? — outdoor recreational fun all year round with 25 ft. frontage on Huron River chain, 3 bedroom, carpet. Call Lakes Realty, 231-1600 or 662-2115. Eves. 878-5128.

WHITMORE LAKE — 10 minutes to Ann Arbor. City sewer, 2 1/2 lots, 3 bedroom, garage & fence. \$62,000. 449-2502.

927 Mobile Homes AVAILABLE NOW — 1980 Victorian, 14x70, 2 bedroom, 1 bath. \$29,900. 665-6698.

BEAUTIFUL PATRIOT — Double-wide, 3 bedrooms, 2 full baths, over 1100 sq. ft. Stove, refrigerator, washer & dryer included. Complete at

COLDWELL BANKER

Walden Hills 3 bedroom, 1 bath, 2 car garage. Call 994-4400.

NEW LISTING OLD WEST SIDE CHARMER near Michigan Stadium. Classic 3 bedroom, 2 story with upgraded plumbing & electric. 2 car garage & full finished basement. Mack/Stauerson/Pioneer. Only \$89,300! Call Dave Dean 973-8027 home

THE MICHIGAN GROUP

HOMES — \$146,900 \$429-9346

4 bed family home 900

4 bed family home 900

4 bed family home 900

4 bed family home 900

4 bed family home 900

4 bed family home 900

4 bed family home 900

4 bed family home 900

4 bed family home 900

4 bed family home 900

4 bed family home 900

4 bed family home 900

4 bed family home 900

4 bed family home 900

ENJOY THE beauty, splendor of a Michigan Lake from hilltop setting of the grand home of Super Lake. Lute country kitchen completely remodeled in 1985. Lake access, Chelsea schools. \$45,000. 475-8481 or eves. 475-8474 or 475-2613.

FRISINGER PIERSON BEAUTIFULLY REMODELED — 3 bedroom Cape Cod on Portage Lake. Corner frontage, access. View sunsets, enjoy cozy fireplace & new oak cupboards in spacious kitchen. Immediate possession. \$74,900. Christine Marsh 475-9193; eves. 475-1899

BY OWNER — In Milan, 2 bedrooms, 2 baths, large lot \$43,000. Before 3pm or after 5pm. 313-439-1882.

CHELSEA SCHOOLS — Country ranch on 7 1/2 acres 1840 sq. ft., 3 large bedrooms 2 baths, 2 fireplaces, 2 1/2 car attached garage, 1000 sq. ft. walk-out basement, much more. \$115,000. 475-8187.

COUNTRY LIVING — Nest in an unusual setting. About 200 sq. ft. if you finish out the remaining 900. Handsomely done with deck, garage, other amenities. Access to Winans Lake, \$135,000. PLYMOUTH COLONY, 995-1911.

FENTON — 4 bedroom bi-level on channel to All Sport Lake. 2 garages. Selling at a special value. \$105,000. Call 313-750-9192.

GROUP 100 REALTORS Spacious 5 bedroom home or 2 acre wooded lot. This well cared for colonial features 1st floor laundry, large rooms, lake access & much more. \$160,000. Call Keith Pratt personally at 994-4700 or 769-0129.

INEXPENSIVE LIVING — with access to Patterson chain of lakes. Small, year round, 2 bedroom home. \$29,900. Hurry for this one! Lakes Realty, (313) 231-1600 or 662-2115.

INTERESTED — In Building? Quality Wooded Home near center of town. 1 1/2. Good value! Charles C. Lovgren Builders, 994-8127

LINCOLN SCHOOLS — 4 bedroom, 2 bath, tri-level/possible duplex. 434-4482.

MAKE YOUR DREAM HOME A REALITY — with this century old brick farmhouse. 4 bedrooms, 2 baths, large country kitchen, formal dining room, coxy den with parlor stove and hot tub room. Pole barn and old wood frame barn, all located on 6 acres. All for the unbelievable price of \$163,900. Call Glenn Brooke Realty, Ltd., 517-851-2548 for more information.

REMODELED YEAR ROUND BUNGALOW — Access to Whitmore Lake. Excellent sandy beach, 3 bedroom, 2 baths, balcony, living room with fireplace. \$58,000. Call NELSON REAL ESTATE, 449-4446; or 1-800-462-0309.

THREE BEDROOM Quad level, 2 1/2 baths, walking distance to Clinton Schools. Family room w/ fireplace opens to patio. Extra large lot. \$67,800. Call 517-456-7207.

784 VALLEY FORGE — Hamburg Twp. 3 bedrooms, 2 baths, needs work, 105' of Huron River frontage. \$50,000. NELSON REAL ESTATE, 449-4446; or 1-800-462-0309.

WANT TO BE ENVIED? — outdoor recreational fun all year round with 25 ft. frontage on Huron River chain, 3 bedroom, carpet. Call Lakes Realty, 231-1600 or 662-2115. Eves. 878-5128.

WHITMORE LAKE — 10 minutes to Ann Arbor. City sewer, 2 1/2 lots, 3 bedroom, garage & fence. \$62,000. 449-2502.

927 Mobile Homes AVAILABLE NOW — 1980 Victorian, 14x70, 2 bedroom, 1 bath. \$29,900. 665-6698.

BEAUTIFUL PATRIOT — Double-wide, 3 bedrooms, 2 full baths, over 1100 sq. ft. Stove, refrigerator, washer & dryer included. Complete at

BEAUTIFUL PATRIOT — Double-wide, 3 bedrooms, 2 full baths, over 1100 sq. ft. Stove, refrigerator, washer & dryer included. Complete at

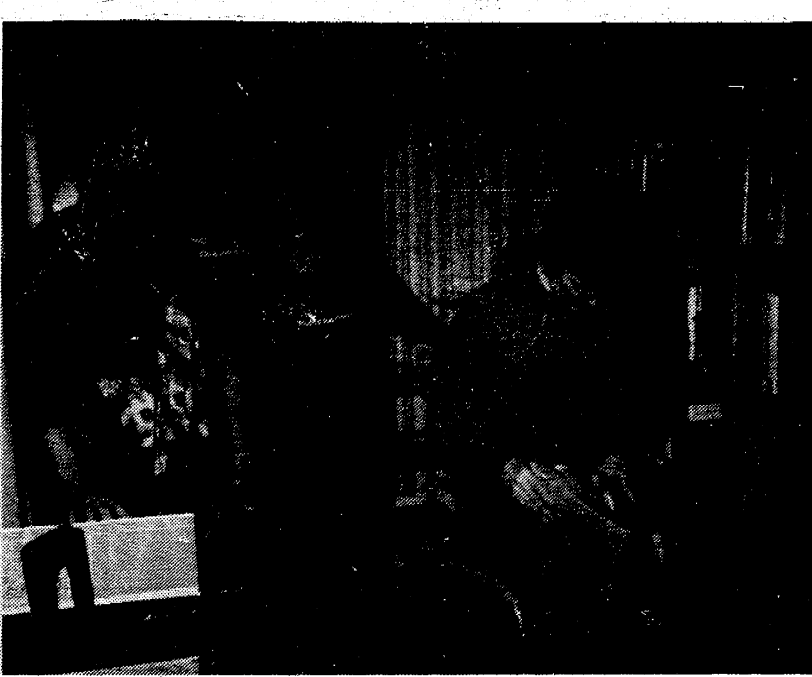
30¢ COPY

THE MANCHESTER ENTERPRISE

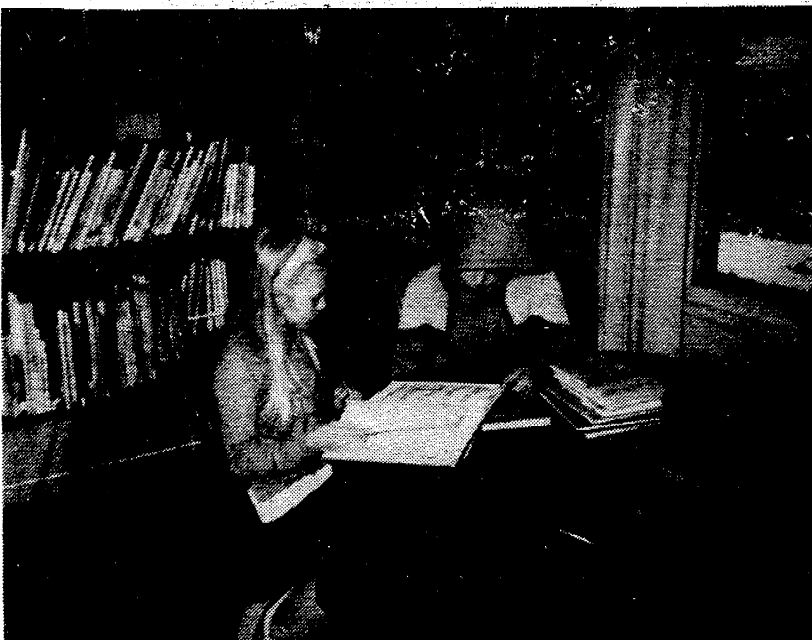
121ST YEAR VOLUME NUMBER SEVENTEEN

USPS 327-460 THURSDAY, FEBRUARY 11, 1988

### Library Open After Renovation



Dorothy Davies, Librarian Margaret Goodrich, and Board member Ann Fowler



Kathryn and Ted Lee Rice

Manchester residents are invited to visit the Manchester Township Library to view the new shelves in the non-fiction room (provided by Manchester Chicken Broil committee funds), walk on the new carpeting on the first floor and stairway, and see the improved arrangement of the first floor. The new children's room is particularly worth a visit and is enjoyed by both children and their parents. Thanks to the Herrick Foundation, local civic clubs and businesses and many individuals, the renovation will continue into 1988, the Library's 150th year of continuous service. The Library Board will determine how much additional improvement is possible as donations continue to be received for such work. Staff members and volunteers worked many hours during the two weeks the library was closed to prepare for and straighten up after the first phase of the year's project. Among the volunteers who gave time and muscle during the holiday closing were Monte Jackson, Bill Kwolek, Al Gleason, Jason Eyster, Dave Goodrich, Darian Davies, Seth Goodrich, Hannah Goodrich, Don Fowler, Karen and Rod Rodriguez.

### Post Office To Reduce Hours

Postmaster, Jacob Houck, of the Manchester Post Office said due to the federal budget reduction, it has been necessary to adjust the hours of operation at this facility. Effective February 13, 1988, new window hours are Monday thru Friday, 8:30 a.m. to 5:00 p.m.; closed Saturday. For your convenience, after lobby hours will remain in effect for access to post office boxes. Operating hours for acceptance and pickup of Express Mail, our premium overnight service, will remain the same. Your important overnight shipment may be taken to our service door as usual. Post office retail window hours will be reduced in the six-county southeastern Michigan area an average of four hours per week beginning February 13, in an effort to save \$2,557,000 in the U.S. Postal Service's Detroit Division. Offices with the 480, 482 and 483 zip codes will be closed on Saturday. In the 481 zip code area, the schedule will vary from office to office. The Chelsea office will be open Saturdays. The reduction is necessary, say postal officials, because of the recently adopted Omnibus Budget Reconciliation Act of 1987 requiring the USPS to reduce operational spending nationally by \$160 million this year and \$270 million the next year. Most of the offices have vending equipment in the lobbies to sell postage stamps, said General Manager/Postmaster, Continued On Page 3

### Hunters Welcome

Manchester Enterprise November 15, 1983 must be a "nigger in the fence" somewhere, so they decided to look farther. Many people have wondered at the unusual sign inviting hunters in when all other signs prohibited their coming, and it has become known in all the country round. But now comes the discovery of one that goes the above one better. It reads: Notice! Hunt all you d-- please. When the bell rings come to dinner. P.G. Pinney. The sign is nailed to a post on the highway three miles east of Chaldron, Nebraska. The National Sportsman does not relate how many hunters have accepted the hospitality. At any rate, it looks as though Manchester's sensational sign has competition in the hall of fame. Basketball Contest The Manchester Optimist Club will hold a Tri-Star Basketball skills contest at the Middle School on Saturday, February 20, at 1:30 p.m. The contest is composed of three basic skill tests aimed at evaluating a contestant's skill in passing, shooting and dribbling. Boys and girls will compete in six age groups, eight through thirteen, against youth of their own age. First, second and third place trophies will be awarded in each age group. All that is needed to compete is the desire and a pair of gym shoes. Entry blanks are available at the office of both the Middle School and Klager School. All entry blanks must be signed by the parent or guardian of the contestant.

### The National Honor Society



Friday, December 11, the National Honor Society took its first field trip of the year. We bussed to Greenfield Village exhibition. Upcoming events planned are blood drive, save a hear campaign and a spring dance.

# WHAT? MIDWEST FORD AGAIN?

## 84\* FORD ESCORT 88¢\*

Free Gas We Pay For Your Drive

WALDEN HILLS 3 bedroom, 1 bath, 2 car garage. Call 994-4400.

COMMERCIAL DIVISION at 994-4400 for information on these and other commercial properties.

BOCA Beach on 1/2 acre lot. Call 971-4000.

1000 sq. ft. commercial space for rent. 1200+ sq. ft. no. negotiable. 769-5454

18,000 FT. BLDG. 2 story, 2 years old. State Industrial Park. Lease rates \$8.25/ft. 600 ft. finish to suit. 10,000 sq. ft. open conditioned. Parking/60. REALTOR: 761-2632

YARD HOUSE — Available February, Prime corner lot. Great campus to 400 Maynard. 761-8220

SIDE PLAZA — The new retail center on Main Ave. in Saline has 8000 sq. ft. available advantage of the high rise and 90 parking spaces to serve your customer. Immediate occupancy. John Guthrie for Speare & Associates 012 or 668-8308.

ERA RATHF 784 E. MI Saline, 662.0 Lyon Rea & McIn Realty

PLUS SQ. FT. — In 3 area, \$1500 per mo 71-8548 between 8-5.

PRIME RETAIL LOCATION side, Ann Arbor, new on Rd. shopping center. Retail space. Call Falsetta, Falsetta's Realty 769-1400.

QUALITY RETAIL SPACE Campus Plaza. Units available from 800-4500 sq. ft. Plymouth Road. Call 00.

IL & OFFICE SPACE sq. ft. Main St. all part. Call Kent Whitman 00.

IL BUSINESS OR CON-TOR — Fenced yard, parking, available. Call 1. Ypsilanti. 482-0484.

Home Repairs and Improvements DON YOUR SEARCH Ed Enterprises can help you remodeling need you. Licensed. Call 761-9101

CALLS ANSWERED Shoads & Company Home Services

DENNIS STONE Licensed Builder-New Additions/Remodeling

FREE 100 GALLONS OF GASOLINE IF WE CAN'T BEAT YOUR BEST DEAL BY AT LEAST \$10000

★ CALL FOR DETAILS

# MIDWEST FORD

510 MAIN MANCHESTER, MI

CALL COLLECT (313) 428-8343

\*AXZ Plan. Buyer \$500.00 Only Taurus

Hours: 8 a.m.-8 p.m. Mon.-Fri. 8 a.m.-6 p.m. Sat. Service — 7 a.m.-5 p.m.

# Senior Citizens News

Punxsutawney Phil came out from hibernation, wasn't it supposed to be spring from now on? They may decide to eat him, if he tells stories like that, brrrr! Hang in there with your 'cabin fever' and come to Emanuel for exercise at 11, chicken pie with batter crust and bingo this Thursday.

**Saturday, February 13:** Chelsea Kiwanis Club presents travelog. Keith McColl-Australia. Call Helen Knickerbocker 428-7239 and leave with the seniors at 5:30 from the Center.

Happy Valentine's Day, give your sweetie a hug.

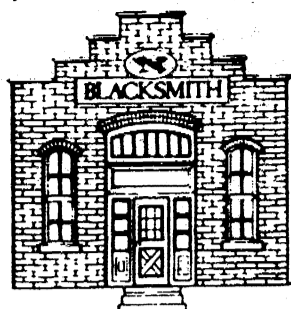
No shopping trip is scheduled for Monday, February 15. Tuesday, February 16: Father Raymond Schlinkert will give the monthly clergy presentation. Ham loaf is served at noon, followed by Center activity.

**Wednesday, February 17:** (change on calendar) Seniors will leave at 9:30 for a shopping trip to Adrian. One of the Adrian Convescent Homes will be visited this day, also. Chamber of Commerce meeting will begin at 12 Noon.

**Thursday, February 18:** Exercise begins at 11, with old fashion chuck roast on the menu, followed by bingo. Reservations for Tuesday and Thursday meals are to be made by calling Emanuel's office, 428-8359, the day before, or you may call the Kitchen, 428-7630, on the day of the meal no later than 10:00 a.m.

Looking ahead: There is a fun mystery trip planned at a cost of \$10.00, on Friday, February 26. Our bus will leave the Center at 9:00 a.m. to join Chelsea area seniors by Domino's bus (they are not going to Domino's). If you wish to go, your reservations must be in to Helen at 428-7239 by 3:00 p.m. on February 11 (Thursday). Come along on this and meet and greet old and new friends.

We invite you to come along for swimming class each Monday. The bus leaves at 10:15 a.m. Mondays that have trips scheduled, other arrangements by transport may be used. Call Helen to reserve your spot and come exercise with us - our bodies are being toned up and we're having fun while doing it.



The Manchester Area Historical Society will meet on Monday, February 15, at 7:30 p.m. in the Blacksmith Shop, 324 East Main Street. Following a short business meeting, the program will be presented by Sandy (Krzyszaniak) Trolz, who will speak on "18th Century Herbs". The public is invited to attend and hear this interesting presentation.

## Federal Foods Distribution

Federal surplus foods will be distributed to eligible low income families in the Manchester area Friday, February 19 at the United Methodist Church, 501 Ann Arbor Street (M-52), from 10 to 12 noon. For eligibility information call Manchester Family Service, 428-8882 or The Community Service Agency (CSA) in Ann Arbor at 994-1650.

## S.A.D.D.

S.A.D.D. members attended a "project graduation" seminar in Warren to gear up for spring. This is the time of year when a great number of traffic fatalities involving teen drivers occur. S.A.D.D. appreciates the community support and hopes it will continue.

**THE MANCHESTER ENTERPRISE**  
150 East Main Street Phone 313-428-8173 Manchester, MI 48158  
USPS No. 327-460

The Manchester Enterprise was established in 1867 and is published each Thursday at 150 East Main St., MANCHESTER, Michigan, with second class postage paid at Manchester. Edward E. Steele, Publisher Lenore A. Steele, Editor  
POSTMASTER: Send Form 3972 To: Manchester Enterprise, 150 East Main St., Manchester, Michigan 48158.  
DEADLINE: All Display Advertising and Pictures (Black & White ONLY) Are Due By 5 p.m. Every Monday For Same Weeks Publication. All Classified Advertising and News Articles Are Due By 10 a.m. Every Tuesday For Same Week Publication.

## Obituary

**Henry Stoddard Curtis**  
Manchester, MI

Age 78, passed away Friday, February 5, 1988, in Marathon, Florida. He was born February 7, 1910 to Henry Stoddard Curtis and Charlotte Scudder. He was married to Elizabeth Newton and together they had four children. In 1986 he married Gail Kellum, who survives.

Mr. Curtis was a clinical psychologist with the National Institute of Mental Health before retiring.

In addition to his wife, Gail, he is survived by 2 sons, Robert of Mechanicsburg, Pennsylvania and Thomas of Miami, Florida; also 2 daughters, Virginia (Bruce) Drake of Chicago, IL and Margaret (William) Wahl of Columbus, Ohio; 10 grandchildren and 2 sisters, Bessie Malory of Gaithersburg, Maryland and Elnora Bennett of Frazier Park, California.

There will be a Memorial Service for Mr. Curtis at 2:00 p.m. on Saturday, February 13, 1988, at Bethel United Church of Christ. Conducting the service will be Rev. Roman Reineck and Rev. Robert Wallace of The First Baptist Church of Ann Arbor.

## DIAL - A - GARDEN

The following is a monthly schedule of Dial-a-Garden, the system of prerecorded daily gardening tips sponsored by the Washtenaw County Cooperative Extension Service. The system is in Operation 24 hours a day, 7 days a week. Interested persons are invited to call 971-1122 at their convenience to listen to timely, up-to-date gardening information.

Thursday, February 11 - Keeping Florist's Flowers Fresh.  
Friday, February 12 - CLOSED FOR LINCOLN'S BIRTHDAY, NO NEW TAPE.

Monday, February 15 - CLOSED FOR WASHINGTON'S BIRTHDAY, NO NEW TAPE.  
Tuesday, February 16 - Carpenter Ants.

Wednesday, February 17 - Shopping for a Pest Control firm.

## Rogers Corner To Meet

The Rogers Corner Farm Bureau group will meet Friday, February 12th, at 8:00 p.m. at the home of Mr. and Mrs. Edwin Horning.

## Offers Hand Arthritis Program



Raymond Noellert, M.D.

If you have arthritis of the hands, you may not have to suffer any longer. Many people can greatly benefit from a variety of treatments. That is the subject of the next session of Saline Community Hospital's Physician's Community Health Lecture Series.

The program's featured speakers are Raymond Noellert, M.D., a board certified Orthopedic Surgeon, and Medical Director of the hospital's Hand Surgery and Rehabilitation Center, and Jane Combs, M.A.O.T., Director of Occupational Therapy for the hospital.

Arthritis can be painful, crippling and frustrating, especially when it attacks the hands. But forms of treatment exist that can offer a high level of recovery and relief. Through treatment ranging from simple therapy to total joint replacement, results can offer new hope.

This free program takes place Tuesday, February 16, 7:30 p.m. in the Blue Room of Saline Community Hospital, 400 West Russell Street, Saline. Following the presentation by Dr. Noellert and Ms. Combs, there will be a question and answer period. Refreshments will be served.

For more information, or to register, please call (313) 429-1505.

## No-Till Club Plans Meeting

The Washtenaw County No-Till Club will hold its first meeting of 1988 on Tuesday, February 16, 1988, 1:30 p.m., at the Tri-County Sportsman League, 8640 Moon Road, Saline, Michigan.

Ray Rawson, from Clare, Michigan and maker of Rawson no-till coulters, will be the featured speaker for the No-Till Club Meeting.

All farmers interested in no-till planting and equipment are invited to attend. There is no charge for attending and refreshments will be served.

## Post Office To Reduce Hours

Continued from page 1

John M. Horne. The lobbies will remain open on a regular basis. Special package pick-up and Express Mail acceptance will be provided through the service door whenever possible when retail windows are closed.

USPS will also eliminate collection from street drop boxes and mail processing of outgoing mail on Sunday. Mail that is normally collected on Sunday and cancelled is minimal, said Horne. The Postal Service will continue to process incoming mail for regular delivery on Monday.

In addition, because of the national holiday, Washington's Birthday February 15, all post offices will be closed next Monday and there will be no delivery. Mail processing and collections will be on a regular holiday basis.

## U of M Graduate

University of Michigan students who expect their degrees this winter attended the University's commencement ceremonies December 20, 1987.

Some 2,000 students on the Ann Arbor campus are degree candidates this winter.

Alicia A. Seegert of Manchester will be receiving a Bachelor of Science Physical Education.

## Free "Ask A CPA" Call-In Day

Saturday, February 27 is your chance to ask a Certified Public Accountant questions on your federal or state-taxes-without charge. The Michigan Association of Certified Public Accountants (MACPA) is sponsoring the free "Ask A CPA" Call-In Day as a public service during tax season.

## Manchester Village Council

AGENDA

February 15, 1988

- 1) Call Meeting to Order.
- 2) Pledge of Allegiance to the Flag.
- 3) Minutes of Previous Meeting.
- 4) Approval of the Agenda.
- 5) Correspondence.
- 6) Public Participation.
- 7) Public Hearing 7:15 p.m.
  - a. Conquering Faith Fellowship Church.
  - 8) Public Hearing 7:30 p.m.
    - a. Dangerous Building Ordinance.
    - b. Blight Ordinance.
    - 9) Treasurers Report.
    - 10) Accounts Payable.
    - 11) Reports.
      - a. Sheriffs Report.
      - b. DPW Report.
      - 12) Old Business.
        - a. Insurance Claim re: Gerry Mann.
        - 13) New Business.
          - a. Summer Recreation.

## Memorial Mass For Kathy Gotts

A memorial mass for Kathy Gotts, age 24, of Florida, will be held at 11:30 a.m. Sunday, February 14, 1988, at the Adrian College Chapel.

Kathy is the daughter of Bruce and Diana Gotts of Adrian, formerly of Manchester.

In addition to her parents, she is survived by a sister Kelly of Baltimore, Maryland and a brother Paul at home.

In lieu of flowers, memorial contributions may be sent to the Catholic Newman Center, Adrian College, 1334 W. Michigan Avenue, Adrian, Michigan 49221.

## School Hot Lunch Menu

Monday, February 15 - Patriots Holiday, NO SCHOOL.

Tuesday, February 16 - Cheeseburger on Bun, Hash Brown Patty, Dill Pickles, Crushed Pineapple, Milk.

Wednesday, February 17 - Fish Sandwich, Potato Chips, Vegetable Sticks, Fruit Cocktail, Milk.

Thursday, February 18 - Chili, Warm Pretzel, Buttered Corn, Peach Half, Milk.

Friday, February 19 - Cheese Pizza, Tossed Salad with Dressing, Fresh Fruit, Cookie, Milk.

**WAMPLER DRW CONSTRUCTION CO.**  
DANIEL R. WAMPLER  
5-7-456-4305

- New Homes
- Additions
- Siding
- Garages
- Roofing
- Decks

**SHARON VALLEY MINI-STORAGE**  
LOCATED NEAR CORNER OF M-52 BEHIND KLEINSCHMIDT TRUE VALUE HARDWARE  
19970 Sharon Valley Manchester, Mich.  
Call 428-9360

**Black Sheep Tavern**  
Winter Hours  
Monday - Thursday  
11:30 a.m. - 10:00 p.m.  
Friday  
11:30 a.m. - 11:00 p.m.  
Saturday  
Noon - 11:00 p.m.  
Sunday  
2:00 p.m. - 9:00 p.m.  
117 E. Main Phone 313-428-7000 Manchester, MI  
"A Restaurant With A Tradition of Quality"

**PARR'S AUTO BODY**  
BODY WORK - PAINTING  
FREE ESTIMATES  
INSURANCE WORK  
GLASS INSTALLATION  
18481 W. Austin Road  
Manchester, Michigan  
Phone 313-428-9538

**MANCHESTER CHIROPRACTIC CLINIC**  
"TRY CHIROPRACTIC NATURALLY"  
STAN GILBERT, D.C. 227 E Main St.  
313-428-7207 Manchester, Michigan  
APPOINTMENT HOURS  
Monday, Tuesday, Wednesday, Friday 8 am-12 and 3pm-7 pm.  
Thursday and Saturday 8 am-12 noon

**DAN'S WESTSIDE AUTOMOTIVE**  
660 West Main Street Phone 428-9455 Manchester, Michigan

**Are You "EXHAUSTED" From Driving A Noisy Car?**  
CHECK OUR EXHAUST SPECIALS ON MOST AMERICAN MADE CARS (Some Imports)

- \*81-84 Escort \$77.85
- \*81-82 Aries (4 cyl) \$62.45
- \*82-85 Celebrity (4cyl) \$81.95

\*Example: Price Includes Complete Exhaust From Catalytic Converter Back and Labor Excludes Sales Tax

**FRONT END ALIGNMENT \$24.95**  
We Have The Latest In Hunter 4 Wheel Alignment Equipment

**Mufflers For Most Cars \$27.95 Plus Labor**

**True Value HARDWARE STORES**  
**Presidents' Day Paint Values**  
Feb. 31st Thru Feb. 14th

<b>TRU-TEST SELECT</b> Latex Ceiling Paint 7.98 Gallon White Ceiling Latex won't crack or yellow. Fast-drying, easy to clean up.	<b>TRU-TEST SPECIAL</b> HIGH-BUILDING Flat Latex Wall Paint 5.00 Gallon Flat Latex Wall Paint is soft touch for interior walls and ceilings. Dries fast.	<b>TRU-TEST SPECIAL</b> Latex Redwood Stain 2.98 Gallon Latex Redwood Stain enhances texture of exterior wood, siding or shingles.
<b>TRU-TEST SPECIAL</b> EZ KARE Latex Flat Finish 9.98 Gallon EZ Kare Latex Flat Finish goes on smooth to leave a tough, beautiful low-sheen finish in any room.	<b>TRU-TEST SPECIAL</b> EZ KARE Latex Flat Enamel 12.98 Gallon EZ Kare Latex Flat Enamel is perfect for your kitchen, bathroom, woodwork, and it's scrubable!	<b>TRU-TEST SPECIAL</b> EZ KARE Semi-Gloss Enamel 12.98 Gallon
<b>TRU-TEST SPECIAL</b> EZ KARE Latex Flat Finish 1.00 2 1/2 Gallon Plaster Of Paris sets fast to a white finish. Great for hobby modeling.	<b>TRU-TEST SPECIAL</b> Paint Thinner 1.00 quart Paint Thinner is a premium grade formula for quick and easy brush cleaning.	<b>TRU-TEST SPECIAL</b> 4-Pc. Paint Brush Set 2.00 1 1/2", 1 3/4", & 2" brushes for most painting needs.
<b>TRU-TEST SPECIAL</b> Deep-Well 9-in. Roller Tray 1.00 Tray holds up to 3 qts. of paint. Resists rust.	<b>TRU-TEST SPECIAL</b> Acrylic Corner Protector 1.00 For preventing chips and dents. Easy to install. 60 in.	<b>TRU-TEST SPECIAL</b> 3-Oz. Contact Cement 1.00 Formulated for instant, permanent adhesions.
<b>TRU-TEST SPECIAL</b> Metal Mender 1.00 6.5 Oz. Metal Mender is a rust proof filler and restorer for steel and aluminum.	<b>TRU-TEST SPECIAL</b> Plastic Solder 1.00 Plastic Solder is a liquid solder in a handy syringe dispenser. 5 oz.	<b>TRU-TEST SPECIAL</b> 1-Oz. 5-Minute Epoxy 1.00 Epoxy gives you a strong bond on the glass, etc.

PAINT FACTORY-TO-YOU SAVINGS!  
Over 6,000 True Value Hardware Stores & Home Centers Own 3 Efficient Tru-Test Paint, Stain & Aerosol Factories; 75,000 Gallon Daily Capacity.

**Great Sale**  
February 13th and 14th  
Anything with a heart on it  
20% Off  
(Except balloons, clothes & Counter Cards)

**The Village Shoppe**  
134 East Main St. Phone 428-9640 Manchester, Mich.  
Monday-Saturday 10 am-5 pm Sunday 12 Noon-5 pm

**"Good Scout" Soon To Receive His "Big 40" Badge**

**If You See Him, Wish Him a Happy Valentine's Birthday!**

**Kleinschmidt True Value Hardware**  
19860 Sharon Valley Rd. Manchester, Mich.  
Phone 313-428-8337  
Monday-Saturday 8 am-6 pm Sunday 10 am-4 pm

## New "Classmates"



Mrs. Henry, principal at Klager, welcomes the new additions. David Luckhardt, Stacey Turner, Andrea Busch and Jarred Parr are anxiously waiting their turn to hold the baby guinea pig.

The boys and girls in Mrs. Van Raden and Mrs. Patten's room have two new "classmates". The teachers surprised the children with two baby guinea pigs. The children now have the responsibility of caring for and naming their pets. The children plan on recording the guinea pigs' growth on a graph, writing stories about the two, and providing a lot of TLC - Tender Loving Care.

## The Wrestling Report

By Dan Jordan

The team had a five day practice week between the Dexter Invitational and the conference meet. In a week like this we try to fine tune our technique and continue to condition at a lower level of intensity. At least the first couple of days. As the week goes by the level of intensity needs to increase.

We started out in that format but as the week grew to a close, I wasn't sure where we were at. Several team members had missed more than one practice due to injury or illness and that certainly wasn't a good sign. What took place at Jackson Northwest would tell the story.

We went into the conference tournament competition with a 500 conference record. No team looked to have a clear cut path to the conference title and I knew some would excel and others would fall. We did the latter.

Jason Woods placed 3rd at 98 and Dave Wizzard placed a solid 2nd in the tournament. Mark Fenelon saw his record fall to 28-4 in a finals match obviously officiated by a novice. We did have one Champion in the tournament. Chris Wiethoff put the hammer to his opponent in the finals by technical fall. For the Dutch, it's water over the damn, let's move forward.

February 10 we get a beginning to a new season. Throw the records out the window because this night to come will be the Individual Pre-districts. The following Saturday we wrestle in the districts for individual qualifiers and both will be held in Napoleon. February 17 we wrestle in the team district in, where else, Napoleon.

It must be said. For this team to do well in this competition, we must pin. There must be no question. Have we or have we not risen to meet the challenge. I don't want someone else to determine who the best man on the mat is on a whim. We control our own destiny. GHTD.

## Happy Valentine's Day!



Terri Becket and Matt Herman are delivering their Valentines to classmates. Klager School will have Valentine parties Thursday, February 11, beginning at 1:30.

## Manchester Lamb Club

The Manchester Lamb Club is announcing an organizational meeting for all students interested in participating in the Manchester Lamb Club for the 1988 Manchester Community Fair.

Club membership is open to any student entering the 6th grade to the 12th grade in the Manchester School district on September 1, 1988. The first meeting will be held on Tuesday, February 16, 1988 at 7:30 p.m. in the Manchester High School Library. At this first meeting, we will have a representative from a feed company and a local veterinarian on hand to present a program on how to raise and care for market lambs. We will also discuss the costs and potential profits available from raising a market lamb.

If you have any questions or if you are unable to attend the

organizational meeting, but wish to participate, please call one of the following advisors: Jerry Bristle 428-7113, John Bihlmeyer 1-429-7527, Lyle Wahl 428-9316.

## Breathers' Club To Meet

David Glover, R.R.T. will be the guest speaker at the February 20, 1988 meeting of the Chelsea Breather's Club to discuss the topic, "Emergency Care." In his presentation, he will discuss "Warning Signs", "When to call for help", "Who to call", and "What to do until help arrives".

The Breather's Club is an informative and social group for persons suffering from chronic lung disease. Family members and health professionals are encouraged to attend. There is no admission charge.

The Club meets from 11:00 a.m. to 1:00 p.m. at the Chelsea Community Hospital - Dining Room A, 775 South Main Street, Chelsea.

**Michigan Veterinary Clinic, P.C.**  
**VERA L. KLUWE, D.V.M.**  
 313-428-8365  
 Large and Small Animal Surgery and Medicine  
 18901 Sharon Valley Road  
 Appointments: 9 AM - 9 PM  
 Monday through Saturday  
 Manchester, Michigan 48158-0025

**SAVE \$1.00** on the **"More Digestible" Dog or Puppy Food!**

Give your dog or puppy the nutritional advantages of a more digestible food that has met the strict requirements of the AAFCO, the Association of American Feed Control Officials. Dogs and puppies love these special formulas. And so will you, when you see what quality nutrition, digestibility and palatability can do for your pet!

**See Your Dealer**

**SAVE \$1.00** ON YOUR NEXT PURCHASE of a 40 LB. BAG of EITHER Carnation® PROFESSIONAL FORMULA FOR DOGS or Carnation® PROFESSIONAL FORMULA FOR PUPPIES! Limit: One coupon per purchase.

5120 000004

**ATLAS of Manchester**  
 18875 WEST AUSTIN RD. MANCHESTER, MICH.  
 PHONE 313-428-7077  
 Monday-Friday 9 am-6 pm Saturday 8 am-4 pm

**Pets**

Burn treatment for pets depends on the burn's cause. There are four basic types; electrical, thermal, chemical and friction. If your pet has been accidentally burned, prompt veterinary treatment is vital. Presented in the interest of better pet care by:

**Vera L. Kluwe, DVM**  
 Michigan Veterinary Clinic  
 230 East Main Street  
 Manchester, MI 48158  
 Phone 313-428-8365

**Norm Walz & Son Construction**  
 Manchester, Michigan

**NEW HOMES REMODELING ADDITIONS GARAGES SIDING DECKS**

**Custom Built Cabinets**  
 428-7109

**FIRST OF AMERICA Bank** presents **"IRA and Investment Options at First of America Bank"**

Thursday, Feb. 18, 1988  
 7:30 p.m.

at the Emanuel United Church of Christ  
 324 West Main  
 Manchester

**Featured speakers:**  
 Mark VanBogelen, Manchester Branch Officer  
 Gary Morrison, Trust New Business Representative

A seminar designed to answer your questions about IRAs under the "new tax plan" and explain First of America Bank's investment options for you.

Open to the public. No reservations required. Please call our Manchester office to indicate your interest in attending.

We want to make banking easier for you.

**FIRST OF AMERICA Bank**  
 428-8389 Member FDIC

## STRIKES -N- SPARES

JOLLY KEGLERS

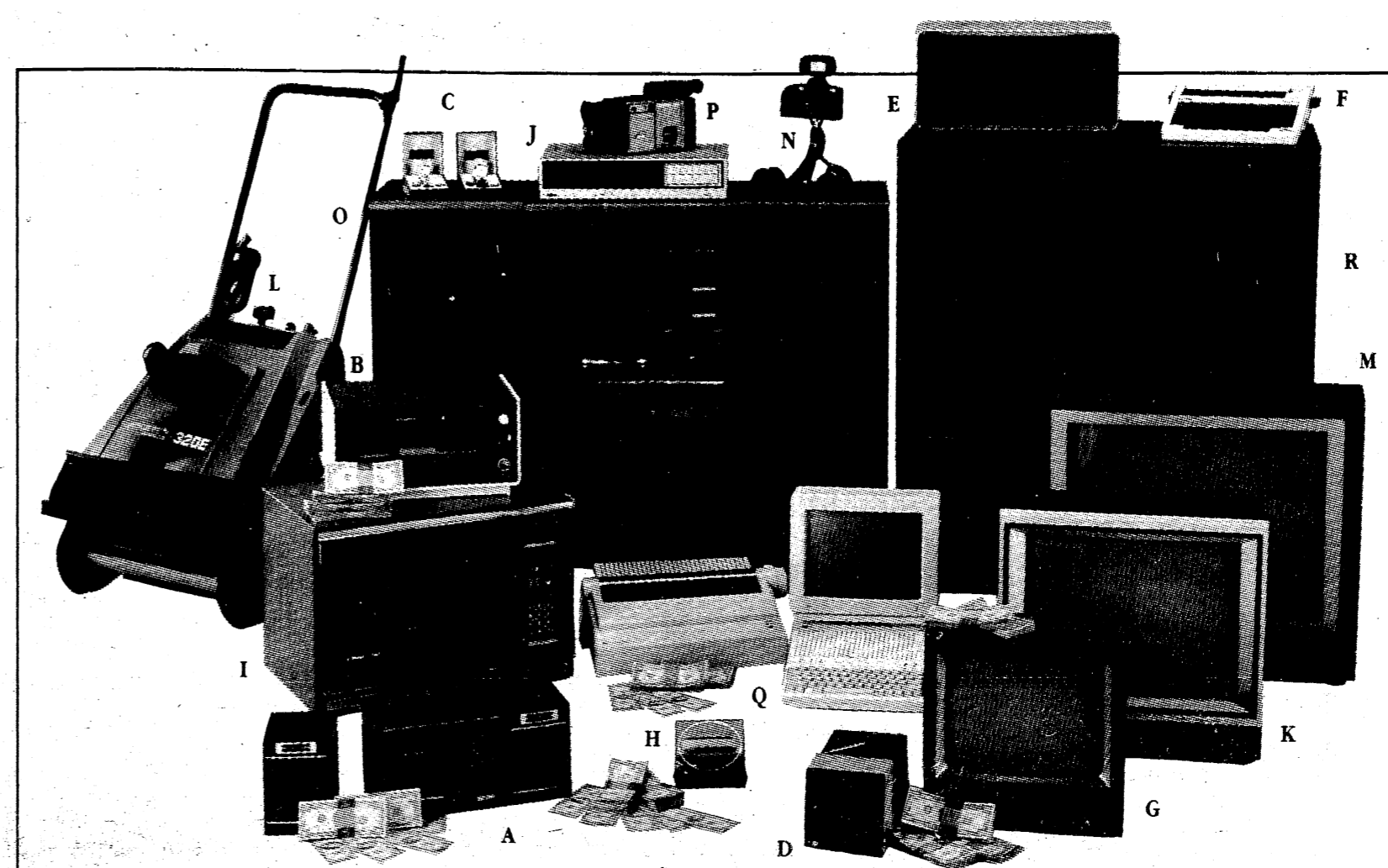
Dan's Westside Auto	100 61
Carol's Cut-N-Curl	90 71
Double A	88 73
Kleinschmidts	83 78
Manchester Car Wash	83 78
Gemini Family Hair Care	72 89
Comerica	66 95
Dutch County Kitchens	62 99
IND. GAME ACTUAL	
L. Steele	244
M. Freeman	243
K. Smith	230
IND. SERIES ACTUAL	
M. Freeman	564
K. Smith	550
S. Weber	541
HIGH TEAM GAME W/HDCP	
Double A	945
Gemini Family Hair Care	939
Dan's Westside Auto	922
HIGH TEAM SERIES W/ HDCP	
Carol's Cut-N-Curl	2582
Comerica & Gemini	2568
Double A	2519

**MANCHESTER BUSINESSMEN**

Manch. Enterprise	13 2
Knights of Columbus	11 4
D. J. Coval & Son	11 4
Manch. Stamping	8 7
Polly's	6 9
K&W Equipment	5 10
Steele's Htg & Clg	4 11
Auto Auto Parts	2 13
HIGH TEAM SERIES	
D. J. Coval & Son	3238
Knights of Columbus	3212
D. J. Coval & Son	3185
HIGH TEAM GAME	
D. J. Coval & Son	1148
D. J. Coval & Son	1126
Polly's	1119
HIGH IND. SERIES	
Dan Coval	659
Dan Coval	615
Jack Gould	600
HIGH IND. GAME	
Dan Coval	247
Dick Friday	245
Dan Coval	232

**B & G BOWLERS**

Poland-Rentz	26 10
Brown-D. Parr	23 13
Strock-Hassett	21 15
Mahrle-Tracy	18 18
Bisard-Paul	18 18
Trinkle-Nickerson	16 20
T. Wacker-K. Parr	16 20
Feldkamp-Bristle	15 21
Henry-Mast	14 22
L. Wacker-Nelson	13 23
MENS HIGH GAME	
Cliff Tracy	200
Rich Rentz	181
Darroll Trinkle	171
WOMENS HIGH GAME	
Corrina Romine	181
Ann Hassett	173
Wayne Bisard	167
Cindy Wacker	167
Carol Rentz	167
TEAM HIGH GAME W/HDCP	
Mahrle-Tracy	899
Poland-Rentz	857
Mahrle-Tracy	852
MENS HIGH SERIES	
Rich Rentz	493
Wayne Bisard	492
Darroll Trinkle	483
WOMENS HIGH SERIES	
Corrina Romine	459
Carol Rentz	452
Kim Henry	430
TEAM HIGH SERIES W/HDCP	
Mahrle-Tracy	2567
Bisard-Paul	2418
Poland-Rentz	2385



# More than money for your money

Earn great rates PLUS valuable merchandise when you choose CD Plus

You get more than money in return when you invest at Great Lakes Bancorp. You get CD Plus. High market rates plus valuable merchandise. Pick your gift here, then talk to your Great Lakes banker. Or call, toll free, 1-800-DIAL-453 to open your account or get more information. With CD Plus, you get more than money for your money.

**INVEST FOR:**

	10 YEARS	7 YEARS	5 YEARS	3 YEARS
Your Interest Rate Is:	<b>8.75%</b>	<b>8.60%</b>	<b>8.50%</b>	<b>8.00%</b>

**You'll Earn Interest Plus:**

A Sony AM/FM cassette-corder with detachable speakers	\$ 500	\$ 1,000	\$ 2,000	\$ 6,000
B Toastmaster under-cabinet toaster/oven/broiler	\$ 500	\$ 1,000	\$ 2,000	\$ 6,000
C Seiko quartz dress watch (men's or women's)	\$ 1,000	\$ 2,000	\$ 3,500	\$ 11,000
D Panasonic 5" AC/DC portable television with radio	\$ 1,000	\$ 2,000	\$ 3,500	\$ 11,000
E Litton deLuxe compact 500-watt microwave oven	\$ 1,500	\$ 3,000	\$ 5,000	\$ 16,000
F Canon Typestar 5 portable electronic typewriter with AC adapter	\$ 1,500	\$ 3,000	\$ 5,000	\$ 16,000
G G.E. 13" color television with remote control	\$ 2,000	\$ 4,000	\$ 7,000	\$ 22,000
H Sony compact disc player	\$ 2,000	\$ 4,000	\$ 7,000	\$ 22,000
I Magic Chef 1.2 cu. ft. microwave oven with turntable	\$ 2,500	\$ 5,000	\$ 9,000	\$ 28,000
J RCA 3-head programmable VCR with remote control	\$ 2,500	\$ 5,000	\$ 9,000	\$ 28,000
K RCA 20" ColorTrak television with remote control	\$ 3,000	\$ 5,500	\$ 10,000	\$ 32,000
L Homelite/Jacobsen 20" snow thrower with electric start	\$ 3,500	\$ 6,500	\$ 12,000	\$ 37,000
M RCA 26" ColorTrak stereo tv with remote control	\$ 4,000	\$ 7,500	\$ 15,000	\$ 45,000
N Minolta Maxxum 5000 camera kit with autofocus and motor drive	\$ 5,000	\$ 9,000	\$ 17,000	\$ 52,000
O Fisher 110-watt/channel audio component system with AM/FM receiver, dual cassette deck, CD player, turntable and speakers	\$ 6,000	\$ 10,500	\$ 20,000	\$ 62,000
P Zenith VHS-C mini-camcorder with battery pack	\$ 7,500	\$ 14,000	\$ 26,000	\$ 81,000
Q Apple IIc portable computer with 128KB memory and Imagewriter II printer	\$ 9,500	\$ 18,000	\$ 33,000	\$ 104,000
R RCA 40" big screen ColorTrak stereo tv with remote control	\$ 14,000	\$ 26,000	\$ 48,000	\$ 150,000

There is a substantial penalty for early withdrawal. This offer is not limited to one gift. You may substitute and combine from lower deposit levels. Rates are subject to change.

**FSLIC**

**GREAT LAKES BANCORP**  
 A Federal Savings Bank  
 Your Partner in Life.

111 E. Main St., Manchester, 428-8379  
 401 E. Liberty St., Ann Arbor\*, 769-8300  
 2400 Huron Pkwy., Ann Arbor\*, 973-7811  
 2701 Plymouth Rd., Ann Arbor\*\*, 769-7818  
 125 Briarwood Circle, Ann Arbor\*\*, 769-7616  
 1900 Pauline Blvd., Ann Arbor\*\*, 769-8386  
 1135 S. Main, Chelsea\*\*, 475-1341

\*Locations with GL-24 Centers for 24-hour banking convenience.  
 \*\*Saturday drive-up service, 9 a.m. - noon.

**MARGIE'S UPHOLSTERY**  
 6245 Brooklyn Road  
 Jackson  
 Wide Selection Of Fabrics  
 Pick-Up / Delivery Available  
 517-536-4230

# Special Music At Emanuel This Sunday

Pianists Marie Garlick and Avis Spike will perform at Emanuel United Church of Christ during the 10:30 a.m. worship service on February 14. They will play exciting and colorful pieces by Modest Petrovich Mussorgsky (1839-1881), Bela Bartok (1881-1953), and Aram Khachaturian (1898-1978).

Avis Spike will play three pieces from Mussorgsky's Pictures at an Exhibition: "Introduction-Promenade," "Il vecchio Castello" ("A Medieval Castle and Singing Troubadour") and "Limoges-Le marche" ("Women Quarreling in a French Marketplace"). Mussorgsky composed Pictures at an Exhibition for piano in 1874.

Bela Bartok's "The Bear" will be played by Marie Garlick and his "Evening in the Country" and "Dawn" will be performed by Avis Spike. "The Bear" is a boisterous, energetic rustic dance, while "Dawn" is a dreamy, almost mystical piece with constantly shifting tonalities. "Evening in the Country" reflects Bartok's deep love of Rumanian folk song as he weaves it into the pieces.

Prokofiev's "Taratella" will be played by Marie Garlick. The fiery and passionate Slavic spirit

is heard in this piece. Prokofiev's statements on aesthetic matters invariably emphasize his striving for simple melodic expression ("All my work is founded on melodies"). He couples intensely lyrical melodies with dissonance in "Taratella."

"The Horseman" and "A Folk Song" by Aram Khachaturian will be played by Marie Garlick.

Avis Spike graduated from Metamora, Michigan High School and was pianist at Pilgrim Congregational Church, Metamora for eight years. She graduated from Eastern Michigan University with a degree in Music Education, took graduate work at the University of Michigan and Eastern Michigan University, and taught in Pontiac Public Schools and East Ann Arbor Public Schools. She is married to Clark Spike, professor of Chemistry at Eastern Michigan University, and they lived in Ypsilanti until moving to Manchester ten years ago. She is co-director of Emanuel church's children's choirs, and sings in the adult choir. She is studying piano with Dr. Marjijn Thoene, director of music at Emanuel United Church of Christ.

Marie Garlick, a Manchester resident, received her under-

graduate degree in music education from Western Michigan University and has studied on the graduate level at both Western Michigan University and Eastern Michigan University. She taught elementary vocal music in the Lincoln Park, Charlotte, and Lansing public schools. Music has continued to be a major part of her life, and she has enjoyed singing in various choral groups including Emanuel's choir and the Ann Arbor Cantata Singers. She presently studies piano with Dr. Marjijn Thoene. Ms. Garlick has a special interest in Eastern European music. Her father was born and grew up in a small Russian village situated on the Volga River.

The piano music is presented to raise funds for a pipe organ at Emanuel United Church of Christ.

## Engagement Announced

Mr. and Mrs. Clifford Whitaker of Grass Lake, are proud to announce the betrothal of their daughter, Tanya Ann to Martin J. Weber Jr. of Pickney.

A late February wedding is planned.

## Todd Withrow Company

REMODELING  
CABINETMAKING  
ADDITIONS—WINDOWS  
KITCHENS—BATHROOMS  
ROOFING—SIDING  
CUSTOM BUILT CABINETS  
WALL UNITS—FURNITURE

TOP QUALITY MATERIAL  
AND WORKMANSHIP

LICENSED AND INSURED

CALL ANY TIME  
428-9420 or 428-7797

## FUND RAISING

Manchester Sportsman Club  
8501 Grossman Road  
Friday 6:45 p.m.

"Honor The Flag"  
Manchester American Legion  
203 South Adrian Street  
Saturday 7:00 p.m.

## Proposed Dollar Coin Could Save

A gold-colored dollar coin that could prove to be a viable substitute for the dollar bill may be coming close to reality.

Bills authorizing minting the coin are pending in both houses of Congress and some newspaper circulation executives are watching the development with interest. The coin might facilitate buying a Sunday edition from a newsrack. Congressional supporters say the U.S. could save an estimated \$117 million a year by circulating \$1 coins.

The Senate bill also calls for a study of withdrawing the paper dollar from circulation. In addition, it provides for a study on the advisability of phasing out the half dollar and the penny. Sales taxes would be computed by rounding out purchases to the nearest 5 cents.

The House bill is similar to the Senate version except it would

require withdrawing all \$1 bills from circulation 18 months after the dollar coin is circulated. No hearing dates have been scheduled.

## Manchester Area Chamber of Commerce

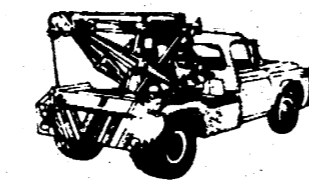
The Reverend Robert Macfarlane will describe the formation and purpose of the new Community Resource Center at the February meeting of the Manchester Area Chamber of Commerce. This new organization is now in operation at 122 West Main Street. The meeting will be in the dining hall of Emanuel United Church of Christ, Wednesday, February 17, 1988, at 12 noon. Lunch reservations can be made by calling 428-8389 (Ann Pat) or 428-7194 (Mary) by Monday, February 15, 1988. All interested persons are welcome to attend.

## Advertisement for Bid

Manchester Community Schools will be letting bids for renovation of the High School Industrial Education Shop. Specifications will be available at 9:00 a.m., Monday, February 15, 1988, at Cummins & Barnard, Inc., 2058 South State Street, Ann Arbor, Michigan and at Manchester Community Schools Administration Office, 710 E. Main Street, Manchester, Michigan 48158. Sealed Bids are to be returned and will be publicly opened on Friday, March 4, 1988, at 3:00 p.m. in the Manchester Community Schools Administration Office.

## FILLYAW' MARATHON SERVICE

327 West Main St. Manchester, Mich.  
Phone 428-8576



24 Hour  
Wrecker Service



## LUBE, OIL & FILTER SPECIAL

Up To 5 Quarts of Oil and Oil Filter

- ✓ Trans Fluid
- ✓ Differential Fluid
- ✓ Power Steering Fluid
- ✓ Brake Fluid
- ✓ Washer Fluid
- ✓ Anti Freeze
- ✓ Wiper Blades
- ✓ All Belts
- ✓ All Hoses
- ✓ Tires
- ✓ Check Headlights
- ✓ Brake Lights
- ✓ Horn
- ✓ Shocks
- ✓ Springs
- ✓ Muffler and Tailpipe
- ✓ Air Filter
- ✓ Front Suspension
- ✓ Lube Doors and Hood
- ✓ Lube Car or Pickup

All For \$19.95

ROTATE TIRES AND CHECK BRAKES \$7.95

Rotate Tires Balance All 4 Tires & Check Brakes \$19.95

**GOODYEAR** Stop In and See Me For Your Best Tire Deal!

WE NOW HAVE SUPER "M" LEAD FREE GASOLINE



FULL LINE OF MARATHON PRODUCTS

To the Editor, Friends and Neighbors of Manchester.

Since I have concluded my 90 day appointment as Intern Village Manager, I wish to share my opinions gathered while employed by the Village. Perhaps I can dispel some of the conflicting opinions and rumors now circulating.

We have a problem with at least two elected positions, Clerk and Treasurer. Apparently past unresearched actions, created either legal conflicts or misimpressions for these elected positions. Let us first take the position of Clerk. The Clerk has expressed to Council that her position was limited to 20 hours per week and her compensation is \$590 per month. Neither of these positions are correct.

The Attorney General for the State of Michigan and the Village Attorney have said the hours for the Clerk may not be limited by Council. Whatever hours it takes to do the job, that's it.

The compensation is either set by The Budget or by a Ordinance passed by Council. Currently the most recent budget sets the Clerk's compensation at \$7,000 per year.

If additional duties are required, beyond those set by Statute, then Council must determine the amount of compensation for the Clerk before the beginning of the Clerk's next term of office. The Elected Official may not be compensated by a hourly rate in addition to compensation for the elected office. According to Act 169 of 1976 entitled Political AGivities by Public Employees, the public employee must resign the Public Office or the Hourly paid Job. No, it's, and's or but's the person must resign one or the other. It's necessary to point out that since 1969, the major part of Clerk's job has been accomplished by Richard Kuntz, the accountant employed by the Village. I am of the opinion \$7,000 per year is more than adequate, for the Clerks office and the work now required.

Our problem with the Treasurers office is very serious indeed. About 1982 the office work load became very heavy. Sue Koebbe was required to carry additional duties as Secretary for the Village Administrator, issuing building permits, water and sewer billing and helping with accounting. Council employed Sue on an hourly basis as well as an Elected Official. This automatically placed Sue, unknown to her, in direct conflict with Act 169 of 1976, Political Activities by Public Employees. Sue when informed of this violation immediately offered to resign. The Village at this point in time can little afford to let that happen because of our financial dilemma. The attorney advised Council to resolve this problem as quickly as possible. It appears that an appointment for treasurer, with a very minimal wage, will have to be made by Council. Sue needs to be kept as a full time staff employee to assist Dick Kuntz and Mary Johnson in restoring financial records.

The possibility also exists that one Council member, Joe Marshall, might be in violation of Act 169 of 1976. The Village employs the Washtenaw County Sheriffs Department as its police agency. Joe as an employee of the Sheriff's Department is in apparent conflict with the spirit of the Law. Without doubt his vote on employment contracts and remuneration for services rendered should not be on record. As an officer sworn to uphold the law, any potential impropriety should be avoided. It is time for Council to become SQUEAKY CLEAN so that the next seated Council can act without reprimand. Let us not burden the new Council.

Several people have asked my opinion in how we have gotten into such a mess. It appears to me that in the past we have either not requested or have not received competent legal or management advice. Poor overall management would probably be my conclusion and opinion. Council must have the most complete, accurate and researched information that can be gathered. That information needs to be in writing, and documented. Legal opinions can be accumulated from the Michigan Municipal League, the Village Attorney or other governmental bodies who have gathered proper information.

The Village hired a manager, and gave that individual a contract without performance clauses, that in my opinion, left the Village in a very vulnerable position. It appears the VM decided Dick Kuntz, the accountant of some 19 years was incapable of doing his job. Dick, on recommendation of the VM was terminated. Council was promised an all encompassing accounting system for budgeting, monthly reporting, monthly comparison, year to date expenditures and year to date comparison. Three computers were acquired along with a fancy phone system. All of which were contracted for without Councils specific approval. A midnite madness sale as one person has related. These computers have insufficient capabilities, they are incompatible with each other and the printer must be carried to the Waste Water Treatment Plant each month to make reports. Each time the printer is removed from the office and is returned it does not work and must be "fiddled with". Those computers were later referred to by the seller as year end models that were obsolete when sold. Computer training was taken by staff and was unused for 6 months and consequently many of the acquired skills were not developed. The accounting after laying dormant for 6 months was rushed into the breach after Council demanded records and the State of Michigan reports were needed. Incorrect reports were submitted to the State and no financial data was available to Council. A great deal of time was spent on "FUTURING", 42 canned incomplete ordinances, career advancement, educational endeavors and other pursuits that left little time for day to day management. Necessary items, such as acquiring sewer easements, establishing fee schedules, developing a street repair program, preparing a budget and accumulating information so that Council might do their job, never seemed to be accomplished. When property was revalued for the Township, the (SEV), State Equalized Valuation, increased. The Heady Truth in Taxation Amendment had to be considered, unfortunately it wasn't and proper assessment of millage could not be adopted by Council. A bandaied proposal had to be developed. 1 mil was assessed for garbage pickup, about half of what was needed. Result, the General Fund automatically was \$24,000 short. Council later had to assess garbage pickup on water bills, to prevent further fund shortages. This could be converted to millage in July of any year the tax payer so desired without creating another deficit.

Preparing and overseeing a budget is the highest priority item Village Management and Officials must perform. Several things have escaped this process. Some well meaning individuals deemed it necessary that the Village should acquire property for an Industrial Park. This was an admirable venture that created a drain on the General Fund, when another method of funding went awry. A lawsuit was settled for \$45,000 plus interest, over a three year period of time. This lawsuit apparently arose from a

previous Council's decision to disallow building permits based on the supposition the Sewer capacity was being limited by DNR.

Two major line items in the budget for Contract Services and Professional Services were exceeded by 250% and 195%. Planning Commission direct and indirect costs exceeded their budget in excess of 600%. Budgets must be developed by law in Feb. of each year, preceding the beginning of the new fiscal year. This has not happened for the past two years. As a matter of fact the last budget prepared in time, on time, was produced by Dick Kuntz. It seems, that contrary to the previous VM's recommendation, we are very fortunate to have Dick back.

I am including with this letter a copy of my letter to Council's meeting of Feb. 1, 1988. I have tried to share with you, the readers, my opinions of some of your questions to me. Its going to take a couple of years to recover our financial strength but Council is on the right track.

Very Truly Yours  
Just My Opinion!! **Emory Garlick**

The Flower Garden  
"FLOWERS FOR ALL OCCASIONS"  
110 East Main St. Phone 428-7422 Manchester, Mich.

## A Valentine's gift that'll bowl her over.

Send the FTD® Crystal Bowl Bouquet. Call or visit us today.

## Registration Notice For Village Election MONDAY, MARCH 14, 1988

TO THE QUALIFIED ELECTORS OF THE VILLAGE OF MANCHESTER (PRECINCT NO. 1), COUNTY OF WASHTENAW, STATE OF MICHIGAN

Notice is hereby given that in conformity with the "Michigan Election Law," I, the undersigned Clerk, will upon any day, except Sunday and a legal holiday, the day of any regular or special election receive for registration the name of any legal voter in said Village not already registered who may APPLY TO ME PERSONALLY for such registration.

**NOTICE IS HEREBY GIVEN THAT I WILL BE AT MY OFFICE 120 SOUTH CLINTON STREET MANCHESTER, MICHIGAN TUESDAY, FEBRUARY 16, 1988**

From 8:00 o'clock a.m. until 4:00 o'clock p.m. the 30th day preceding said Election

As provided by Section 498, Act No. 116, Public Acts of 1954 as amended.

For the purpose of REVIEWING the REGISTRATION and REGISTERING such of the qualified electors in said VILLAGE as SHALL PROPERLY apply therefor.

The name of no person but an ACTUAL RESIDENT of the precinct at the time of registration, and entitled under the Constitution, if remaining such resident, to vote at the next election, shall be entered in the registration book.

Constance M. Schaffer, Village Clerk

We Offer A Full Line of U-M, MSU & U.S. Flags

617 S. ASHLEY ANN ARBOR • 665-9126

BACK DOOR PARTY STORE  
500 Ann Arbor Street Phone 313-428-9287 Manchester, Michigan

BEER WINE KEG BEER

Now At Back Door Party Store

Close At 9 p.m. Sundays February and March

Instant and Daily Lottery Tickets

UNION 76 GAS Full Service and Self Serve

## Lots of Wine Specials

**SAVE OPEN HOUSE SAVE**

Lunch & Refreshments — New & Used Equipment Specials

**DOOR PRIZES**

★ Company Personnel Available to Answer Questions ★

CASH SALES ONLY PARTS DISCOUNTS EXCLUDES SHIP DIRECT ITEMS

0-\$100—5% \$100-\$500—10% OVER \$500—15%

FEBRUARY 22 FEBRUARY 22

**K & W EQUIPMENT**

10940 M-52 MANCHESTER, MI 48158

TELEPHONE (313) 428-7666

### Birth Announcement

Robert and Lynda Poet of Plymouth, formerly of Manchester, are pleased to announce the birth of their daughter, Deborah Suzanne, on January 30, 1988. Deborah weighed 8 pounds, 12 ounces. Paternal grandparents are Stanley and Beverly Poet of Manchester and maternal grandparents are Guy and Pat Bunyea, Sr. of Plymouth.

#### FAITH COMMUNITY CHURCH

Wednesday, February 10 - 6:30 p.m. AWANA clubs for kids; 7:00 p.m. Prayer Hour and Bible Study; 8:00 p.m. Choir practice.

Saturday, February 13 - 7:00 a.m. Deacon's Prayer Breakfast; 5:00 p.m. Church Bowling at Brooklyn.

Sunday, February 14 - 10:00 a.m. Morning Worship Service - nursery available; 11:20 a.m. Sunday School for all ages; 6:00 p.m. Evening Worship Service; 7:00 p.m. LIFELINE meeting for young people.

Monday, February 15 - 6:00 p.m. Tecumseh Convalescent Ministry.

Tuesday, February 16 - 8:30 p.m. Discipleship Class.

#### ST. JOHN'S LUTHERAN

Wednesday, February 10 - 1:30 p.m. Ruth Circle; 7:30 p.m. Jr. Choir; 8:30 p.m. Sr. Choir.

Thursday, February 11 - 7:30 p.m. Mary Martha Circle.

Saturday, February 13 - 9:11-10 a.m. 7th Grade Catechism; 7:00 p.m. Rural Fun Night at Bethel.

Sunday, February 14 - 9:15 a.m. Sunday School; 10:30 Worship with Holy Communion; YOUTH GROUP BAKE SALE; 7:00 p.m. Youth Group; 8:00 p.m. Praying Elders.

Monday, February 15 - 8:00 p.m. Church Council.

Tuesday, February 16 - 7:00 p.m. Bell Choir.

Wednesday, February 17 - 9:00 a.m. MOPS; 7:00 p.m. Jr. Choir; 8:00 p.m. Midweek Lenten Service at St. Thomas; 9:00 p.m. Sr. Choir.

#### BETHEL UNITED CHURCH OF CHRIST

Wednesday, February 10 - 5:00 p.m. Children's Choir.

Thursday, February 11 - 7:30 p.m. Church Cabinet; 7:30 p.m. Youth Choir Plus.

Saturday, February 13 - 9:00 a.m. Confirmation Class; 7:00 p.m. Rural Churches - Family Night at Bethel.

Sunday, February 14 - 10:00 a.m. Worship Service - Communion; 11:15 a.m. Senior Choir; 11:45 a.m. Church School Mission; 12:15 p.m. Sr. Youth Lunch at Church; 1:00 p.m. Sr. Youth To Evangelical Home to Play Bingo.

Monday, February 15 - 6:00 p.m. Church School Mission; 12:15 p.m. Sr. Youth Lunch at Church; 1:00 p.m. Sr. Youth To Evangelical Home to Play Bingo.

Wednesday, February 17 - ASH WEDNESDAY; 5:00 p.m. Children's Choir; 6:15 p.m. Pot Luck Supper; 7:30 p.m. Lenten Service.

#### ZION EVANGELICAL LUTHERAN CHURCH

Wednesday, February 10 - 7:00 p.m. Business Management; 8:00 p.m. Church Council.

Saturday, February 13 - 7:00 p.m. Rural Fun Night at Bethel United Church of Christ with cards and refreshments.

Sunday, February 14 - 9:00 a.m. Sunday School for all ages, nursery available; Special "Family" Class for men; 10:15 a.m. Worship.

Tuesday, February 16 - 6:15 p.m. Joymakers; 7:15 p.m. Sr. Choir; 10:00 a.m. Sewing/Activity Day.

Wednesday, February 17 - 6:00 p.m. Lenten Supper; 7:30 p.m. Lenten Devotional.

#### SHARON UNITED METHODIST CHURCH

Wednesday, February 10 - 8:00 p.m. Council on Ministries.

Saturday, February 13 - 7:00 p.m. High-lighters Progressive Dinner.

Monday, February 15 - 7:30 p.m. Sharin' Women meet at the home of Mrs. Mark Schulze.

Wednesday, February 17 - 8:00 p.m. Community Ash Wednesday, Service.

#### ST. THOMAS LUTHERAN CHURCH

Wednesday, February 10 - 7:00 p.m. Sunday School Teachers Meeting; 8:00 p.m. Choir Practice.

Saturday, February 13 - 7:00 p.m. Family Night & Card Party at Bethel Church.

Sunday, February 14 - 9:30 a.m. Sunday School & Bible Class; 10:45 a.m. Worship Service; Voters' Meeting and Potluck Dinner after the Service.

Tuesday, February 16 - 7:00 p.m. Catechism; 8:00 p.m. Board of Elders.

Wednesday, February 17 - 8:00 p.m. Ash Wednesday Service at St. Thomas.

#### MANCHESTER UNITED METHODIST CHURCH

Thursday, February 11 - 8:00 p.m. Finance Committee Meeting at Church.

Friday, February 12 - 9:45 a.m. Bible Study at Pat Post's.

Sunday, February 14 - 10:00 a.m. Worship; 11:00 a.m. Coffee/Fellowship Time; 11:15 a.m. Sunday School and Adult Classes.

Wednesday, February 17 - 1:00 p.m. U.M.W.; 3:30 p.m. Girl Scouts; ASH WEDNESDAY COMMUNITY WORSHIP.

Thursday, February 18 - 3:30 p.m. Girl Scouts; 7:00 p.m. Trustees Meeting; 8:00 p.m. Administrative Council Meeting.

Friday, February 19 - 9:45 a.m. Bible Study at Pat Post's; 6:30 p.m. Gala Valentine Banquet.

#### EMANUEL UNITED CHURCH OF CHRIST

Thursday, February 11 - 12 noon Senior Meal; 3:15 p.m. Brownies; 3:20 p.m. Cherub Choir; 3:40 Children's Choir; 3:30 p.m. Girl Scouts; 6:00 p.m. Bell Choir; 7:30 p.m. Adult Choir; 7:30 p.m. Women of Emanuel Meeting.

Sunday, February 14 - 9:00 a.m. Sunday School, Confirmation, Sr. High Discussion, Adult Study; 10:30 a.m. Worship; 11:30 a.m. Coffee Hour & Fellowship Time.

Tuesday, February 16 - 12 noon Senior Meal; 6:30 p.m. Daisy

Scouts; 7:00 p.m. Scouts; 7:30 p.m. Narcotics Anonymous.

Wednesday, February 17 - 10:00 a.m. Weight Watchers; 3:30 p.m. Cub Scouts; 8:00 p.m. COMMUNITY ASH

WEDNESDAY SERVICE at Emanuel United Church of Christ.

Thursday, February 18 - 12 noon Senior Meal; 3:15 p.m. Brownies; 3:20 p.m. Cherub Choir; 3:40 p.m. Children's Choir; 3:30 p.m. Girl Scouts; 7:30 p.m. Memorial Committee.

Saturday, February 20 - 7:30 p.m. Young Adult Volleyball with Bethel Church in Gym.

## CHURCH DIRECTORY



EMANUEL UNITED CHURCH OF CHRIST — Rev. Robert B. Macfarlane, Pastor; Rev. Nancy Doty & Mr. Philip VanDop, assistants; Sunday School for all ages 9:00 a.m.; Morning Worship 10:30 a.m.; Fellowship 11:30 a.m.

MANCHESTER UNITED METHODIST CHURCH — Rev. Hayden Carruth, Pastor; Worship 10:00 a.m.; Coffee/Fellowship Time 11:00 a.m.; Sunday School and Adult Classes 11:15 a.m.

ST. MARY'S CATHOLIC CHURCH — Father Raymond Schlinkert; Monday thru Friday 8:30 a.m.; Saturday 5:00 p.m.; Sunday 8:30 a.m. and 10:30 a.m.

FAITH COMMUNITY CHURCH — Scott Engleman, Pastor; Roman Kupecky, Associate Pastor; 8400 Sharon Hollow Rd. off W. Austin; Worship Service 10:00 a.m.; Sunday School 11:15 a.m.; Sunday Evening Service 6:00 p.m.; Jr. and Sr. High Young People's Meeting 7:30 p.m.

VICTORY BAPTIST CHURCH — 423 South Macomb, 428-7506; Sunday School 9:45 a.m.; Morning Worship 11:00 a.m.; Evening Worship 6:00 p.m.; Teen Talk 7:00 p.m.; Wednesday Prayer, Bible Study, Youth 7:00 p.m.

BETHEL UNITED CHURCH OF CHRIST — Rev. Roman A. Reineck, Pastor; Schneider and Bethel Church Roads; Church Service 10:00 a.m.; Sunday School 11:00 a.m.

SHARON UNITED METHODIST CHURCH — Rev. Pete Jones, Pastor; Corner of M-52 and Pleasant Lake Roads; Church School 10:00 a.m.; Worship 11:00 a.m.

ST. JOHN'S LUTHERAN CHURCH — Rev. Dennis A. Falk, Pastor; Austin Road, Bridgewater; Sunday School 9:15 a.m.; Worship 10:30.

NORTH SHARON BIBLE CHURCH — Timothy E. Booth, Pastor; Sylvan and Washburn Roads; Sunday School 10:00 a.m.; Morning Church 11:00 a.m.; Evening Church 7:00 p.m.; Wednesday Bible Study 7:00 p.m.; Youth Meetings 7:00 p.m.

IRON CREEK COMMUNITY CHURCH — English and Sharon Hollow Roads; Worship Service 10:00 a.m.; Sunday School 11:15 a.m.; Sunday Evening 7:00 p.m.; Wednesday Evening 7:00 p.m.

ZION LUTHERAN CHURCH — 3050 S. Fletcher Road; Rev. Mark A. Weirauch; Sunday School 9:00 a.m.; Worship Service with Holy Communion 10:15 a.m.

ST. THOMAS LUTHERAN CHURCH — 10001 W. Ellsworth Rd., (5 miles North and 6 1/2 East of Manchester), Rev. John Riska, Pastor. September through May schedule: Sunday School & Bible Class 9:30 a.m.; Worship 10:45 a.m.; Holy Communion First and Third Sundays.

ST. JOHN'S UNITED CHURCH OF CHRIST — Rev. Ted Wimmier, Pastor; Rogers Corners, Waters and Fletcher Roads; Adult Bible Study Class 10:00; Worship and Sunday School 10:30 a.m.

CLINTON ASSEMBLY OF GOD — Rev. Richard Coury, Pastor; Chris Bouldrey, Youth Pastor; 13300 Clinton-Manchester Road, Clinton; Sunday School 9:30 a.m.; Worship 10:45 a.m.; Sunday Evening 6:30 p.m.; Wednesday Prayer, Bible Study, Youth 7:00 p.m.

CHURCH OF JESUS CHRIST OF LATTER DAY SAINTS (MORMONS) - Wayne L. Winenz, Branch President; 1330 Freer Road, Chelsea; Sacrament 9:30 a.m.; Sunday School, Primary 10:50 a.m.; Priesthood, Relief Society, Aaronic Priesthood, Youth 11:40 a.m. For more information, call 475-1778.

### Looking for Success?

So is everybody else. And most of us don't know what it is, let alone where to find it. Maybe that's because we're not looking in the right places. As United Methodists we've discovered that we learn what success really means when we look for it together, with God's help.



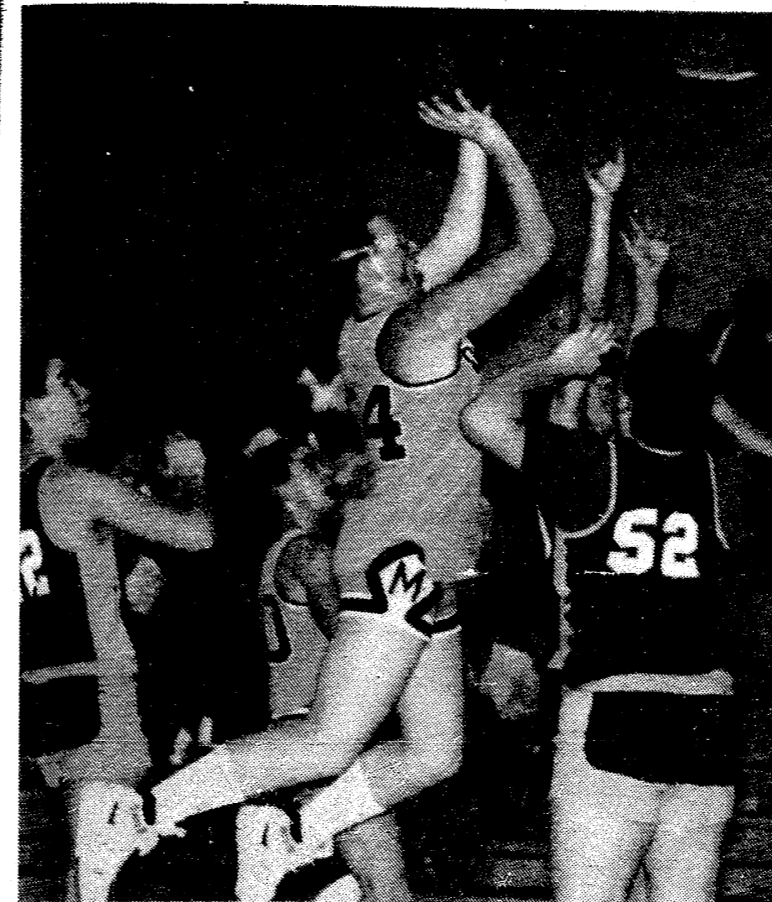
Catch the Spirit THE UNITED METHODIST CHURCH

### Manchester United Methodist Church

501 Ann Arbor Street  
428-8495  
Worship 10 am  
Fellowship and Sunday School 11:15 a.m.

"Come Find A Friend In A Fellowship of Love"

## Little Dutch Split



No. 54 David Mitchell Fires

By Jon until the last couple of minutes when we ran into foul trouble, allowing them to score at will. We bounced back admirably as we crushed Vandercook Lake 84-59.

Buy with CONFIDENCE from

## Russ Aiuto

Your TRANSPORTATION SPECIALIST AT

### MIDWEST FORD, Inc.

510 West Main Street, Manchester, Mich.

- A, B, Z and X-Plans my specialty!
- Top dollar for trade-in!
- Expert, friendly service after the sale!
- Good previously owned vehicles for sale!

Call RUSS AIUTO for more INFORMATION 313-428-8343

### How can low cost insurance guarantee all your valuables are covered?

No problem.

Auto-Owners Personal Articles Protection assures you that your valuable belongings are covered against financial loss. And, it's offered at a low cost, too.

So ask your "no problem" Auto-Owners agent how you can protect your valuable articles such as artwork and jewelry the same, safe way you protect your home. The "no problem" Auto-Owners way.

### Sutton Agency, Inc.

AGENTS: CONNIE WIDMAYER KATHRYN MARTIN SUSAN MANN  
Phone 428-9737

136 East Main Street  
Monday - Tuesday - Wednesday - Friday 9 - 12:30 & 1 - 4:30  
Thursday 9 a.m. - 12 Noon  
Manchester, Michigan

## Varsity Volleyball

by Jon

Our girls trekked to Trojan land to meet East Jackson Monday night. It took only a short time for us to win in two straight games; 15-11, 15-7. Jennifer Barnard led in three categories. She had 13 points, 15 for 16 serves, and 18 for 20 sets. Ami Bragg led in the spike department with 10.

We ran into the powerful Greenhills squad on Thursday night, coming up short in the match. Our girls hung tough despite losing the first game, 8-15. We bounced back to capture the second game 15-2, but fell in the decider 2-15. Rockie Weber led with 10 of 11 serves which gave her 8 points. Ami and Rockie totaled 20 hits and 4 kills, 10 and 2 each. Greenhills remains undefeated 22-0, as we hold steady at 13-4.

## Little Dutch Spikers Roar

By Jon

Monday night's contest at East Jackson saw us win the first game 15-2, but fall flat in the second stanza 1-15. Fortunately, we re-grouped to win the final game and set 15-11. Michelle LaRue and Jackie Ahrens were a big help with their solid serving.

On Thursday evening, we faced Greenhills on their turf. Jenny Binder served perfectly and played a key role in our win; 16-14 6-15, 15-11. We now stand with a 7 and 2 record this season. A small bit of trivia: if you include the last two seasons of 23 games, our girls have won 20 of them, not bad.

### Kirk Excavating

Sand—Gravel—Fill Dirt Basements—Driveways

428-7938  
Dave Kirk  
14180 Schleweis Road  
Manchester

### Wacker's General Store

BEER, WINE AND PACKAGE LIQUOR

G.E. Wacker Inc  
Gasoline-Fuel Oil-Greases Motor Oil-Diesel Fuel  
9050 Chelsea-Manchester Rd. Manchester, Mich. 48158

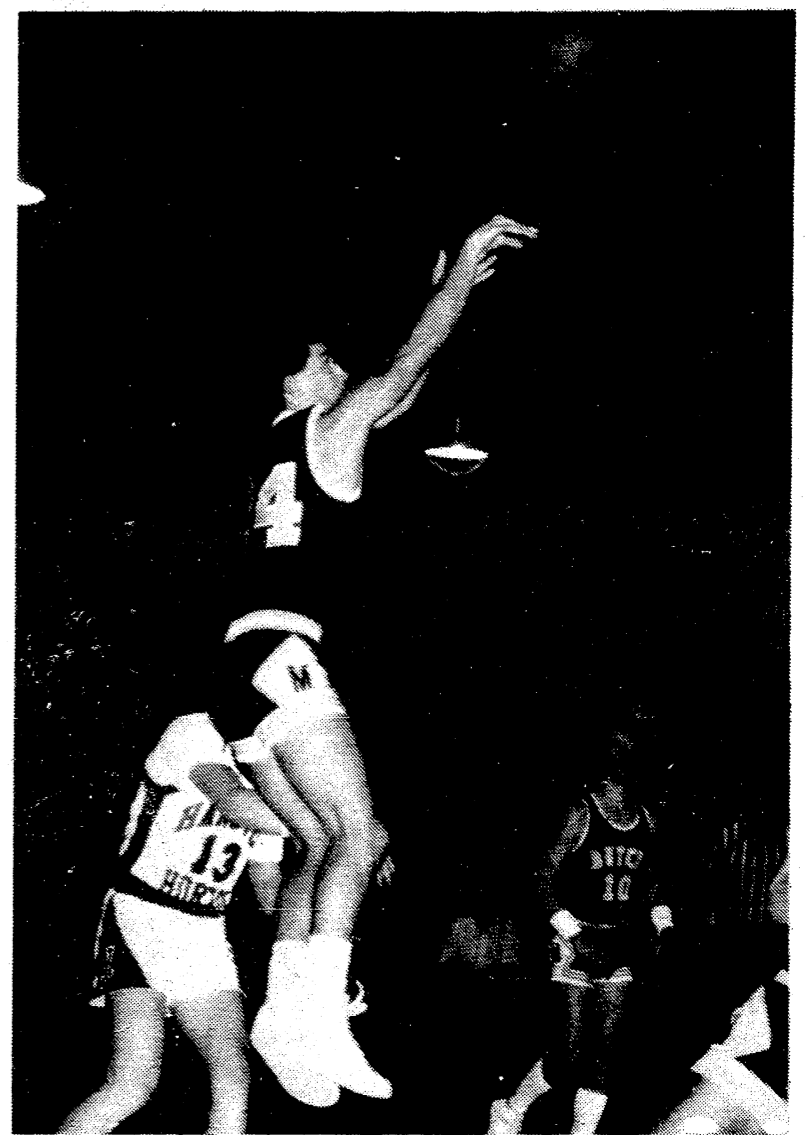
Winter Hours:  
Monday-Thursday 7 am-9 pm  
Friday 7 am-9 pm  
Saturday 8 am-9 pm  
Sunday 9 am-8 pm

### ALUMINUM RECYCLING

TOP PRICES PAID FOR ALUMINUM SCRAP & ALL NON FERROUS METALS

Jackson Fibers Co.  
(517) 784-9191  
1417 So. Elm St.  
1 blk. North of High St.  
Jackson, Michigan

## Sad Week For Varsity



Varsity Jason VanDeven Hits For 2 of His 12 Points.

By Jon Jayhawks of Vandercook Lake. After 8 minutes of play they led, 18-22. By halftime, we rallied to come a little closer, 32-34. The third period saw us take a 4-point advantage, 48-44. With only two minutes remaining, we held a 7 point lead when Vandy slapped on a defensive press. We came unglued by this pressure and allowed the Jayhawks to tie us at the end of regulation time. They controlled the momentum throughout the overtime period as they outscored us 0-7, to win 64-71. Tom Mann led all scorers with 21 points, and Jason Van Deven and Brian Barnard contributed 22, 12 and 10 respectively.

We went into the week alone in first place, and fell in back-to-back overtimes to end the week in third. Tuesday night saw us visit the Comets of Hanover-Horton. Despite a 29 point attack by Tom Mann, we lost in overtime 68-69. I've felt for many years that free throw shooting can make or break a game. In this contest, they made 26 of 38 freebies, as we sank 14 of 21 for a 12-point difference. This loss puts us in a 3-way tie with Hanover and Vandercook Lake for the league lead. Friday night we hosted the

(313) 428-8885 COUPON (517) 423-2148

Saline in the Saline Shopping Center

\$99 Daily Wear Soft Contact Lenses

1ST OPTOMETRY eye care centers

Dr. Thomas Cunningham

DOES NOT APPLY TO OTHER DISCOUNT OFFERS OR PRIOR ORDERS

\$10 OFF with coupon Prescription Eyeglasses

## CHEVROLET

### A GOOD SELECTION OF NEW and USED CARS ON OUR LOT

### TIRB CHEVROLET CO

131 ADRIAN STREET MANCHESTER, MICHIGAN  
PHONE 313-428-8212 OR 313-428-8492

MON 7:30-8	TUE 7:30-6	WED 7:30-8	THUR 7:30-6	FRI 7:30-6	SAT 7:30-12 Noon
------------	------------	------------	-------------	------------	------------------

### FISH 'N' FRY K of C FISH DINNER AND SALAD BAR

ALL YOU CAN EAT! \$5.25

Childrens Portions Available Senior Citizens \$5.00

Serving 5-8 P.M.

Friday, February 12 thru Friday, April 1, 1988

Shrimp Dinner 21 Pc. \$4.00

Milk and Coffee 25¢

Manchester K of C Hall

### REPAIR YOUR DAMAGED WINDSHIELD FOR A FRACTION OF REPLACEMENT COST.

Most windshield breaks are repairable, and the cost is far lower than windshield replacement. The patented, proven Novus method can restore and repair windshields both structurally and optically, leaving damaged areas almost invisible. But act now! If crack damage spreads too far, it may become necessary to replace the entire windshield.

We come to you... Mobile Service Anywhere in Washtenaw County. MOST INSURANCE COMPANIES WILL PAY 100% OF REPAIR COST.

### WAYNE'S WINDSHIELD REPAIR

— 428-7028 —

# your advertising dollars do better in the classifieds

**MANCHESTER ANTIQUE MALL** - 35 Dealers. Open 7 days, 10-5, 116 E. Main 428-9357. tfn

**FIELDER PAINTING** - Interior and exterior. Free estimates. Senior Citizens discount. Phone 428-8506. tfn

**PRIME COMMERCIAL SPACE** - For rent in the Manchester Mill. Contact D.E. Limpert. 517-456-4151. tfn

**MICHIGAN PEAT SALES** - Black dirt for sale, \$10 a yard delivered. Fast delivery, 428-9664. tfn

**C & B PAINTING** - Interior-exterior-free estimates. Contact Charles E. Benedict. Phone 428-7136 or 428-7416. tfn

**PIANO TUNING & REPAIR** - Qualified technician - Ron Harris, 475-7134. tfn

**LOST OR FOUND A PET?** - Call Humane Society, 662-5585. tfn

**JERRY WHITAKER EXCAVATING** - Dozer, backhoe, dragline and 10 yard truck. Drain fields, basements, driveways, sand and gravel. Call 475-7841. tfn

**LITTLE WACK EXCAVATING** - Licensed and Insured. Basements, drainfields, digging, bulldozing, trenching, black dirt, sand gravel. Paul Wackenhut, 313-428-8025. tfn

**COPY PAPER AVAILABLE** - We have copy paper in sizes 8 1/2 x 11, \$4.75 for 500 sheets; 8 7/8 x 14, \$5.75 for 500 sheets. The Manchester Enterprise. tfn

**OVER NIGHT** - Accomodations at the Clinton Hotel, 104 W. Michigan Ave. Dining and full service bar. 517-456-4151. tfn

**FOR RENT** - Office space on Main Street. Call 428-8173. tfn

**MERRIMAN INSULATION** - Free estimates. Blown-in cellulose, professionally installed. George Merriman, phone 517-592-5527. tfn

**HYPNOTHERAPY** - Smoking, weight, stress etc. Terri White RN MS Ann Arbor 994-4644. It works! tfn

**CORKEY D'S DELI** - Homemade Ice Cream & Waffle Cones - Sandwiches - Subs - Baskets - Burgers - Fries - Party Trays & Salads - Baked Goods of all kinds, phone ahead - 428-9216. tfn

**VILLAGE HAIR FORUM** - 201 East Main, Old Mill 428-7684. tfn

**EXPERIENCED HOUSE-keeper** Wanted, 30 hours/week, some babysitting, references required. 428-9150 tfn

**SIERRA ANALYTICAL AND CONSULTING SERVICE** has openings for Field Technicians. Positions are full time with over time. A scientific or related degree (can be in progress) is required. Also you must have reliable transportation. We are an EOE. Send resume to 7005 Jackson Road, Ann Arbor, 48103

**WANTED** - Standing Timber - saw logs or veneer. Buskirk Lumber Co. 517-661-7751. tfn

**WALKOWE'S HOME IMPROVEMENT COMPANY** - Phone 313-428-8468. Seamless aluminum gutters for low prices and dependable service. tfn

**MANCHESTER K OF C HALL** - Available for wedding receptions, parties, meetings. Hall rental \$165 includes cleaning; use of kitchen \$25. Catering available. For further information call 428-8393 or 428-8886. tfn

**CHELSEA GREENHOUSES** - 7010 Lingane Road, Chelsea, Michigan, 475-1353-54 or 475-9313. Flowers and plants for every occasion. We specialize in wedding flowers to fit your budget. We are as near as your phone and we welcome your business. tfn

**HORSES** - Buying and Selling draft horses, buggy horses, riding and saddle horses. Good selection of ponies, also western and English saddles. Larry Salyer, 428-7389 after 4:30 p.m. 4-14p

**VANDOP FAMILY LICENSED** Daycare has two openings for children 15 months and up. Will transport to pre-school Tuesday, Wednesday, Friday a.m. or p.m. We are located 1 block from the middle school for kindergarteners. Call 428-7704. 2-25

**MATURE PERSON** - For day shift - Sales person. Apply in person, Video Choice. tfn

**ACRYLIC NAILS AND HOT OIL** manicures at Marti's. 3-3

**COURT'S VILLAGE** Pharmacy in downtown Clinton will ship your packages by UPS. tfn

**FOR SALE BY OWNER** - 85 acres, Manchester; 75 tillable. Best offer over \$65,000 within one month's time. 428-7873. 2-25p

**HELP - GENERAL OFFICE** Assistant, part time, flexible hours. Phone etiquette, typing, filing. Lots of public contact and ability to learn. Send resume to Manchester Enterprise, File 1531, Manchester, MI 48158. 2-18

**HAY FOR SALE** - large round bales. 428-7152. 2-18p

**INVITING COUNTRY HOME** with attractive layout, features 3 bedroom 2-1/2 bath, family room with fireplace off kitchen, pleasant sitting room. Beautiful country setting on 10 acres, 30 x 40 pole barn with service, in area of fine homes. Manchester area. \$141,500, ask for Glen. Glen R. Macomber Real Estate Inc. 429-9449. 2-25

**COME JOIN US AT THE** Clinton Hotel for Friday Night sing-along 7:30 - ? 456-4151. 2-11

## FULL-TIME TELLER

Manchester Office

Willing to train if have previous cashier experience. Must present a professional appearance, have excellent verbal communication skills, and enjoy customer contact. Good Math skills required. We offer a competitive salary, professional work place and benefits. Please apply in person at personnel office.

**FIRST OF AMERICA BANK**  
ANN ARBOR  
101 S. Main Street  
An Equal Opportunity Employer M/F/H

**DISCOVERY TOYS WINTER** Sale - 125 South Clinton. Come see and save up to 60 percent, Saturday, February 20th from Noon - 4 p.m. (Bring this ad for a FREE catalog). 2-18p

**LICENSED CHILD-CARE** - parents looking for quality in a home child-care program? We offer music, art, stories and other planned activities. Meals and snacks provided. Reasonable rates and state aid available. 428-8279. 2-18p

**HOUSE FOR RENT** - 3 bedroom lake access, \$500 plus utilities. Security deposit required. Available immediately. Call 428-9648 2-18

**MICHIGAN ROAD ATLAS** just arrived - all new Michigan Road Atlas. Shows all roads in Michigan. Excellent for sportsmen, campers, and tourists. Give away as gifts. Back Door Party Store of Manchester, Inc. - \$12.95.

**KEITH'S BARBER SHOP** - 8-00: 5:00 daily 7:00 -12:00 Saturday, closed Monday. For appointment any other time 428-8584.

Classified advertising will be \$2.50 minimum charge for 20 words or less and 5¢ for each additional word. All classified ads are payable in advance, if not a billing charge of 50¢ will apply. Deadline for classified advertising will be 10 A.M. Tuesday for that weeks publication. Cards of Thanks will remain at \$4.00 minimum charge for 50 words or less with a charge of 5¢ for each additional word.

**LOTS OF TLC**, mother of one would like to care for your child in her home. 517-536-4425. 2-11

**PIANO INSTRUCTIONS** wanted in my home. 428-8212. 2-11p

**WOMAN TO WORK AT HER** own home to wash and iron dress shirts. Call Bud at 429-9050. 2-11

**MIKE, HAPPY VALENTINES DAY. WE LOVE YOU! KAY, MICHAEL, SARAH.** P

**SARAH AND MICHAEL, HAPPY VALENTINES DAY, LOVE AND HUGS. DAD, KAY, ANIMALS.** P

### Cards of Thanks

I would like to thank all the many friends, neighbors, and relatives who wished me a happy birthday at the recent open house hosted by my family. It was so nice visiting with friends I had not seen in so many years. Everyone who attended made this a very special day for me.

Thank you,  
Martha Feldkamp

The family of Paul J. Wahr want to express our heartfelt thanks to all of you kind people who helped us in anyway, by thoughts, words, or deeds, as we laid to rest our dear husband, father, and grandfather.

We especially want to thank Mike, Joann, Helen and Rev. Macfarlane. May God bless all of you.

Marjorie Wahr  
Ruth & Dale Crouch  
Paul Jr. & Darlene Wahr  
14 Grandchildren

A Valentine Thank You to all who remembered my birthday with cards, gifts, flowers as well as a birthday cake, ice cream and an evening of games and family fellowship.

Claire Reck

**Office Space For Rent On Main Street 428-8173**

**Party Time**  
Your One-Stop Party Shop!  
Make any occasion special with Personalized Party Supplies, Party Tableware and Party Decorations.  
The Manchester Enterprise

## Let's Talk About It

Reading and Discussion Programs in America's Libraries

### Library Series Celebrates 150th Anniversary

American family life has undergone great change since World War II. The traditional family of a mom, dad, and their children is no longer the standard. Area residents will have a unique opportunity to explore the contemporary family, with all its strengths and weaknesses, during a new reading and discussion series at the Manchester Township Library.

Part of the library's ongoing celebration of its 150th year of service begins Thursday, March 3, 7:30 p.m. The series, "The Way We Were, The Way We Are: Seasons in the Contemporary American Family" continues every two weeks through May 5.

Manchester is one of eight Michigan sites to offer this local program as part of a national project sponsored by the American Library Association and the Library of Michigan, funded by the National Endowment for the Humanities and the Michigan

### Council for the Humanities.

Participants will read books related to the contemporary American family. Each session a college instructor will make a 30 minute presentation about one of the books, relating it to the overall theme. Informal group discussion will follow.

The readings for the family series are among the best in contemporary American writing and present revealing glimpses into post-World War II American families. The first book is This House of Sky, Ivan Doig's autobiographical account of growing up the West. Doig's tale is a loving tribute to his father and grandmother who settled their differences to raise young Ivan after his mother dies.

Two classic plays follow, A Raisin in the Sun by Lorraine Hansberry and the Glass Menagerie by Tennessee Williams. The series continues with Ordinary People by Judith Guest, short stories by Gina Berriault, John Updike and John Cheever, and Joan Chase's During

the Reign of the Queen of Persia. This free series is open to the public. All selections are available at the library. For more information call project director Dorothy Davies at the library, 428-8045.

### MANCHESTER TOWN CLUB

Jack Schlaff AAA	91 49
Shearcrazy	84 56
Jenters	81 59
Norm Walz	79 61
Alley Drillers	78 62
Manchester Plastics	67 73
R&F Tree Service	64 76
DuRussels	63 77
Sportsman Bar	61 79
200'S	
Patrice Fahrner	200
Paula Scherdt	200
500'S	
Paula Scherdt	515
HIGH IND. GAME	
Paula Scherdt	233
Karen Amsdill	216
Celeste Powell	211
HIGH IND. SERIES	
Paula Scherdt	567
Celeste Powell	557
Candy Klapperich	535
HIGH TEAM GAME ACT.	
Alley Drillers	839
HIGH TEAM SERIES ACT.	
Alley Drillers	2372
HIGH TEAM GAME HDCP.	
DuRussels	845
HIGH TEAM SERIES HDCP.	
Norm Walz	2344

## Shakespeare Reading Club

The Club met at Emanuel Church on Tuesday, February 2nd. Lenora Parr, after much preparation, gave an excellent report on the life of author "Carl Sandburg". He was born in 1878 and died in 1967. His wife was a wonderful helpmate. She took care of all the house work and all other matters in their home, so he was free to write whenever he wanted to. We all enjoyed hearing about his life.

Our next meeting will be on Tuesday, February 16th. We are to meet at the Emanuel parking lot at 11:00 a.m. We will go to Adrian to have lunch and then go to the "Historical Society

Museum" for a guided tour. If you have any questions, please call Sally Marshall or Myrtie Roule, or if you are unable to go please let them know. Thank you.

## MARCH (In Like A Lamb... Out Like Lion???)



## Change of Meeting Notice

The Manchester Community Schools Board of Education Meeting Scheduled For Monday, February 15, 1988, Has Been Changed To Monday, February 22, 1988, Due To The Schools Mid-Winter Break.

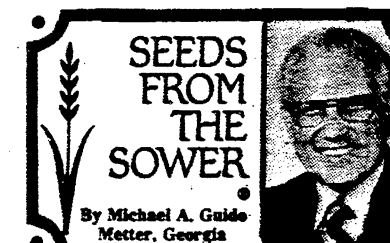
## Hutton

Thomas A. Gorney  
Financial Consultant  
313-428-8796  
517-263-8570

## BOILER

Repair - Replacement  
Hot Water - Steam - Oil  
Wood - Gas - Coal  
Mich. Boiler License  
Mich. Mechanical  
Contractor License  
Mich. Master  
Plumber License

GAIL SHEARS  
CHELSEA PLUMBING  
475-1037



A little girl sobbed, "Mother, Susie dropped her doll and broke it."

"Did you help her fix it?" she asked.

"No," said the girl. "But I helped her cry."

Our Lord began His public ministry at a wedding. When others were happy, He was happy with them.

But one day He stood by a grave and wept. When others were sad, He shared their sorrows with them.

Isn't it good to know that we have a God who cares!

There's never a trial that He isn't there, never a burden that He doesn't bear, never a sorrow that He doesn't share, moment by moment, you're under His care.

Aren't you glad God cares?

Prompt Service  
Ask to See Our Album

GRADUATES

