

# MIDWEST FORD



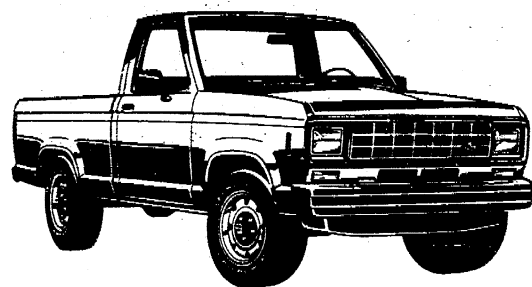
MANCHESTER, MICHIGAN

# 88 SELLABRATION

## REBATES — NO DOWN PAYMENT — REBATES

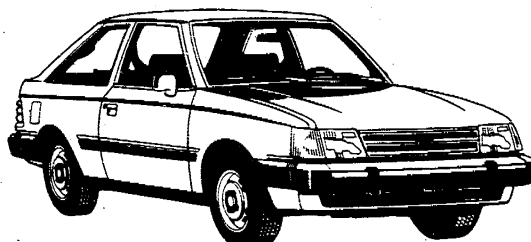
### Ranger

\$500.88



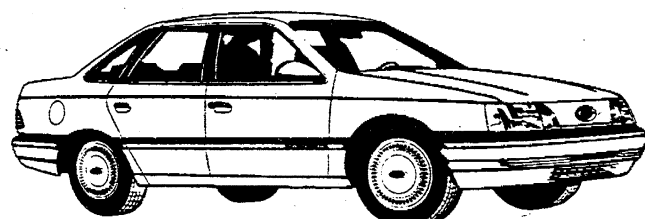
### ESCORT

\$400.88



### TAURUS

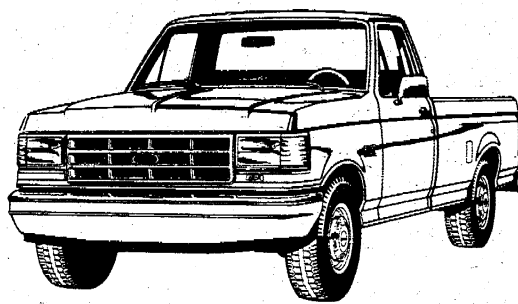
\$750.88



# 84★ FORD ESCORT 88¢★

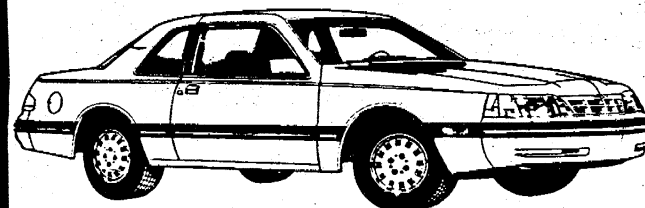
### F-150

Up To  
\$500



### Thunderbird

Up To  
\$1000



★Every Car Purchased Will Receive 1 Chance For Drawing To Purchase 84 Escort. Drawing Will Be Held At 5 P.M. March 5, 1988. You Must Be Present To Win.

**FREE!!**  
Free Lifetime  
Oil & Filter Change  
On Any New  
Car Purchased

24 Hour  
Wrecker  
Service

**FREE!!**  
Free 100 Gallons  
Of Gasoline If  
We Cannot Beat  
Your Best Deal

## WE REFUSE TO BE UNDERSOLD

# MIDWEST FORD

510 W. Main St, Manchester, Mich.

AC 313-428-8343 Collect



# THE MANCHESTER ENTERPRISE

30¢ COPY

121ST YEAR VOLUME NUMBER FIFTEEN

USPS 327-460

THURSDAY, JANUARY 28, 1988

## MFS Christmas Report

The 1987 Christmas Report for Manchester Family Service shows that 83 households were served this past year. Out of the 203 individuals helped, in this number 80 were children and 47 senior citizens.

The agency's Christmas Shop which was hosted by St. Mary's Church again this year was on December 17. Individuals and families meeting the low income standards set by the government were provided with their orders for food or clothing, picked up their boxes of groceries, a new gift for each child in their families, and federal surplus food for the month. Also they had a choice of clothing, household items, toys and footwear from the annual Christmas Shop which filled the church basement to overflowing. Over sixty families supplied the shop with its bountiful store and Boy Scouts in the area repaired toys to add to the collection.

The Manchester Schools collected approximately 1500 canned, packaged and paper items for the 83 grocery boxes. Klager Elementary surrounded their Christmas tree with their donation, 5th and 6th grades figured theirs on a monetary basis with \$236.85 worth of donations, 7th and 8th paid for admittance to the Christmas dance with the needed items and the High School Leadership Class delivered a pick-up load of groceries to the church for packing. Other items came from the Thanksgiving donations at Emanuel United Church of Christ and the American Legion Auxiliary Christmas Party. Mrs. Robert Pratt spent a good share of her

spare time in concocting tiny, cuddly animals and dolls to add to each grocery box that went to families with little children. Bags of candy and chocolate Santa's were also added.

The highlight of "The Shopping Mall" was the new TOY and DOLL SHOP which was the last stop for families with children. This corner of the room was a delightful display, overlooked by a spectacular dragon made by Mary Blossom, of dolls, bears, toys, games, watches, caps and mittens to name a few. The Twentieth Century Club, Xi Epsilon Iota sorority, Cub Scout Den #2, Lambda Nu sorority and the John Sahakian children and many more individuals filled this sumptuous shop.

Specific donations came again from Abtrex Industries of Inkster with direct payment to IGA for turkeys for the clients, and Chrysler Proving Ground Employees and Manchester Tool and Die picked up half of the agency's grocery bill with their gifts to the general fund. The orders for a dozen households in southwest Washtenaw County, outside the Manchester School District were financed by the Manchester Unit of the Salvation Army.

Four families were selected for assistance this year by special groups that felt the need of adding a personal touch to the spirit of the season. Judy Carlton donated the plentiful grocery order for one family through Food Orders from the IGA. Another was given a complete Christmas Holiday by the LDB Family

Continued On Page 3

## Interim Pastor Appointed

The Reverend Vernon (Pete) Jones has been appointed interim pastor at the Sharon United Methodist Church. Rev. Jones is a United Church of Christ minister living in Tipton. He will serve as interim pastor until June when the annual conference of the United Methodist Church meets and a regular pastor is appointed.

A welcome pot luck will be held Sunday, January 31, following the morning worship service.

Persons in the community wishing to reach Rev. Jones may contact him through the church secretary, Mrs. Lynn Voegeding.

## Celebrates 90th Birthday!

The family of Martha Feldkamp will be hosting an open house, celebrating her 90th birthday, Sunday, January 31, 1988 from 2 p.m. to 4 p.m. It will be held at the U.A.W. Local 437 Hall located at 218 South Main Street in Chelsea.

Martha has lived in this area her entire 90 years. She retired from Federal Screw Works in 1960 and is a member of St. Paul's United Church of Christ. Martha keeps busy with any number of needlecraft projects.

Relatives, neighbors, and friends are invited to stop by Sunday, January 31 and wish her a happy birthday.

## Special Olympics Winter Games

### WASHTENAW COUNTY SPECIAL OLYMPICS WINTER GAMES ANNOUNCED

Special Olympic athletes from throughout Washtenaw County are preparing to take part in local area Winter Games. The games will be held Friday, February 5, 1988 at Buhr Park in Ann Arbor.

Athletes will compete in cross country skiing, snow shoe and speed skating competition. Also scheduled are figure skating demonstrations and broomball matches.

Volunteers are needed to assist athletes and organizers as well as to add their enthusiasm to the event. Volunteers have the opportunity to serve as: starters, timekeepers, huggers, registrars, and general, all around helpers. No experience is necessary, just be prepared to have fun.

On-site registration for athletes and volunteers will begin at 8:30 a.m. on February 5th at Buhr Park. The opening ceremonies will begin at 9:30 a.m. Volunteers should call the Special Olympics office at 971-3250 to indicate their interest and receive further information.

## 71st Anniversary!!



Mr. and Mrs. Wallace Widmayer celebrated their 71st Wedding Anniversary on January 24.

The immediate family and Lena Riedel, Amanda's sister, attended the dinner marking the occasion.

Wallace and Amanda were married in Manchester in 1916 at the home of the brides parents. Their children include sons Lyle and Richard, both of Manchester, and the late Veal Widmayer. They have 10 grandchildren and 4 great-grandchildren.

## Student Of The Month



Renea Drouare pictured with her parents Roger and Sharon, and Optimist member Monty Okey.

Renea Drouare, a senior at Manchester High School, has been selected as Manchester Optimist Student of the Month for January. She is the daughter of Roger and Sharon Drouare of Easudes Road. Renea has been a member of the National Honor Society her past two years. She has been on the student council for 3 years and was secretary her junior year. She was a member of Students Against Drunk Drivers (SADD) her freshmen year. Renea has excelled in sports all

four years at Manchester High. She has lettered in Basketball, Volleyball and Softball all 4 years of high school. She has been captain of the Basketball and Volleyball teams her past 3 years at Manchester for a total of 5 years as team captain! Renea has been on the Honor Roll her freshman through senior years.

Our Student of the Month plans on attending college next fall but is undecided as to a major. We are all proud of Renea and her accomplishments and wish her the best in the future!

## "LEAP YEAR"

Manchester Enterprise  
January 23, 1988

Custom has assigned to every fourth year, a plan of significant importance in establishing it as a year of opportunity for gay ladies to become gallants, and has authorized them to speak for themselves in the all-important matters which interest those of a certain or uncertain age, more nearly than any other. Now is the appointed time for popping the question, and for doing all manner of things contrary to law and the usual custom of man and womankind.

The first day of January, it is probable all well-informed folds are aware began leap-year. During that year the ladies claim the privilege of "popping the question" to bashful swains, who, though they are trying to do it, always get a fit of what is called the buck ague about that interesting time. We don't speak from experience in the matter, for we have never "been there," but get our knowledge direct from those who have. This city, like all other towns of its size and pretensions, contains its share of ambitious and well to do youths, who are anxious to pay the board and buy the clothes for some nice young lady "as long as they both shall live," anxious to feed one of the adorable gender in order that she may sit at the head of his table, and sew his shirt buttons on, and it is to be expected that

## Annual Village Election

The annual Manchester Village Election will be held Monday, March 14, 1988. The following individuals are running as candidates for the various offices for a two year term:

Mary Kallewaard - Village President; Connie Schaffer - Clerk; Sue Koebbe - Treasurer; Del Ludwick - Assessor.

Running to fill three Trustee vacancies are: Joseph Marshall; William Kwolek; Wendell Reinhart and Rebecca Doyle.

## Free Tax Aid

Appointments to prepare senior citizens' Michigan tax rebate forms and home heating credits are now being accepted by the Washtenaw County on Aging. This free service is extended to property owners and renters who are 65 and over throughout Washtenaw County. It is offered in the home or at the Council on Aging office. Call 665-3625 for an appointment.

### Vet Science Workshop

Washtenaw County 4-H teen and adult volunteer leaders interested in veterinary science projects are invited to attend a workshop February 26-27, 1988 at Kettunen Center, the state's leadership training facility in Tustin.

The purposes of the workshop are to present new ideas, activities and approaches to 4-H veterinary science programs, to explore new ideas in depth and to provide a hands-on experience that can be used in local 4-H clubs.

Workshop options will include sessions on dissection, horse foot disorders, wildlife, goat or sheep health management, small animal health care and first aid, and cattle muscle and bone structures.

Workshop participants may choose three of the seven options. Reservations are due Monday, February 15, 1988.

For more information about the workshop or other 4-H activities, contact the Washtenaw County Cooperative Extension Service Office or the 4-H Office at 971-0079.

### Birth Announced

Joseph and Mary Tanner are pleased to announce the birth of their daughter, Ashley Elizabeth on January 17th, weighing 6 pounds 11 ounces.

Grandparents are Robert and Cecilia Chapin of Manchester and Larry L. Tanner of Parma and Rosalie Steffas of Jackson.

### Senior Citizens News

It's been a month since Christmas and only two more 'til spring begins. Where, or where does the time go? Isn't it nice to know some nice folks who have been together for 71 years? Congratulations, Wallace and Amanda Widmayer.

Come join us to welcome our new exercise lady, Julie Lovell, on Thursday, January 28 at 11:00 a.m. Stay for swiss steak and bingo which follows lunch.

Tuesday, February 1: Salmon loaf today (how many of us make it anymore?), we surely enjoy it out, so come. Activity at the Center will begin after lunch. If scheduled activities aren't your 'cup of tea', grab three friends from noon lunch and come for a rousing game of cards. Stop in and see what's cookin' at our Center.

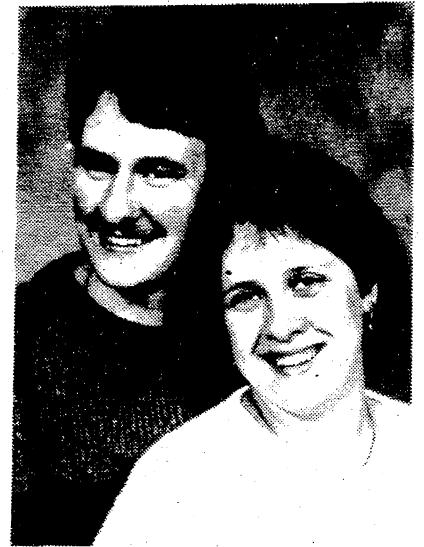
Thursday, February 4: Exercise at 11:00 a.m., warms us up on these cold days. At noon, our February Birthday Bash is scheduled. All area folks 55 and over who were born in February are invited and treated free to lunch of turkey and birthday cake and trimmings. Rubena may even take your picture for posterity! Please come and join us at this or any of our delicious and nutritious Tuesday and Thursday meals in Emanuel's dining room. Just be sure to call in your reservation to 428-8359 the day before, so Jan has an opportunity to get ready for all of us.

On February 1 - Monday - The bus leaves to transport seniors to Michigan Center for Aqua-cise. This water exercise class is free to all seniors over the age of 55.

Those who have participated are reporting having fun, even though it is cold outside. We will go each Monday, except the third one of each month, when it will be shopping trip time. Call Helen Knickerbocker, 428-7239, if you are interested.

Looking ahead: February 10 - Saline Hospital Program and Saline Home Visit; February 13: Travelog, Chelsea; and February 15: A shopping trip is planned. Call Helen for reservations.

### Engagement Announced



Mr. and Mrs. Phillip Bullard of Manchester are pleased to announce the engagement of their daughter Melissa Ann to Richard Bartlett, son of Mr. and Mrs. Walter C. Bartlett of Brooklyn.

Melissa is a 1987 graduate of Manchester High School.

Rich graduated from Columbia Central in Brooklyn in 1986.

A December 3, 1988 wedding is planned.

**THE MANCHESTER ENTERPRISE**  
150 East Main Street Phone 313-428-8173 Manchester, MI 48158  
USPS No. 327-460

The Manchester Enterprise was established in 1867 and is published each Thursday at 150 East Main St., Manchester, Michigan, with second class postage paid at Manchester, Michigan 48158.  
Edward E. Steele, Publisher Lenore A. Steele, Editor  
POSTMASTER: Send Form 3972 To: Manchester Enterprise, 150 East Main St., Manchester, Michigan 48158.  
DEADLINES: All Display Advertising and Pictures (Black & White ONLY) Are Due By 5 p.m. Every Monday For Same Week Publication. All Classified Advertising and News Articles Are Due By 10 a.m. Every Tuesday For Same Week Publication.

### DIAL -A- GARDEN

The following is a monthly schedule of Dial-a-Garden, the system of prerecorded daily gardening tips sponsored by the Washtenaw County Cooperative Extension Service. The system is in Operation 24 hours a day, 7 days a week. Interested persons are invited to call 971-1122 at their convenience to listen to timely, up-to-date gardening information.

Thursday, January 28 - Plum Varieties for Michigan.

Friday, January 29 - Strawberries for the Home Garden.

Monday, February 1 - Raspberry and Blackberry Varieties to Try.

Tuesday, February 2 - Winter Checklist.

Wednesday, February 3 - Home-made Maple Syrup.

French Bread with Butter, Lemon Pudding, Milk.

Wednesday, February 3 - BBQ on Bun, Hash Brown Patty, Vegetable Sticks, Pineapple Tidbits, Milk.

Thursday, February 4 - Baked Chicken, Whipped Potatoes with Gravy, Buttered Carrots, Bread & Butter, Fruit Cocktail, Milk.

Friday, February 5 - Juice, Taco's with Sauce/Lettuce/Tomatoes and Cheese, Buttered Corn, Fresh Fruit, Milk.

### CMU Announces Honor Students

Central Michigan University's fall semester honors list includes students for the Manchester area. In all, 1,096 CMU students were named to the honors list, and 128 earned straight A's. Enrollment at CMU is 17,070.

Honors students are chosen from the top 10 percent of each class. To qualify for honors students must complete 12 or more letter-graded hours of on-campus credit during the semester.

Included on this semester's honor list was, Sarah Platt, a senior, from Manchester.

### School Hot Lunch Menu

Monday, February 1 - Chicken Patty on Bun, French Fries, Dill Pickles, Peach Half, Milk.

Tuesday, February 2 - Italian Spaghetti, Broccoli Spears, Warm

### MFS Christmas Report

Continued from page 1

Organization which is active in the area. The combined Lilienthal families gave a Christmas Party for a large family as their expression of goodwill to all. And a fourth household received a special Christmas from a small Saline business that preferred to assist a Manchester family. Christmas trees were donated to others and the Milton Davises donated professionally frozen home grown meat from their freezer for clients to choose what they wished.

VOLUNTEERS are the key to the whole project. Two evenings and two days of work go into making this gigantic effort a success. Boy Scouts sorted and stacked the groceries in preparation for the boxing. Sparked by the board members, men, women and children from service groups, churches and the whole area were scheduled to work in shifts to fill the grocery boxes, set up the shop equipment, unpack the dozens of plastic bags of clothing, toys and household articles and put them on hangers and display tables. On Thursday, the day of the shop, others helped guide the clients through the maze from Federal foods to Christmas orders. Transportation was volunteered by a truck from the Manchester Tool and Die and Russell C. Smith (retired) whenever needed.

This annual activity is possible because of a host of Anonymous Donors and a spirit typically Manchester. Monetary gifts came from the following sources: Abtrex Industries, Inc., American Legion Auxiliary, Bethel United Church of Christ, Bethel Adult Fellowship, Bethel Women's Fellowship, Mr. and Mrs. Walter Budnick, Chrysler Proving

Grounds Employees, Cub Scout Den #2, Mrs. and Mrs. Victor Detting, Mrs. Margaret Dietle, Emanuel Women's Fellowship, Ms. Deloris Jean Greiner, Mr. and Mrs. Theodore Guenther, Huron Valley Night Hawks M/C, Inc., Mr. and Mrs. William Kwolek Mr. and Mrs. Robert Little, Manchester Tool and Die, Inc., Mr. and Mrs. James Meranuck Manchester Kings Daughters, Leslie Parr, Thomas Roberts Associates, Mrs. Vernon Rowland, James Sahakian, Mr. and Mrs. John Sahakian, Sharon United Methodist Church, Sharon United Methodist Church Women, United Way, Mrs. Walter Vogt, Xi Epsilon Iota sorority.

### Shakespeare Reading Club

The club met at the home of Hazel Walker on January 19th. Hazel's topic was "Queen Isabella of Spain", who was born in 1451 and died in 1504. During her reign she was helpful to women in many ways and concerned about their welfare. She was known as the "Spanish Joan of Arc", later. In order for Christopher Columbus to make his famous trip when he discovered America, she sold some of her jewels to finance his trip.

Our next meeting will be held in the lounge at Emanuel Church on Tuesday, February 2nd at 2:00 p.m. Lenora Parr's topic will be on "Carl Sandburg". Lenora read two of Carl Sandburg's poems called "The People, Yes People" and "The People Will Live On" at the January 19th meeting.

### Manchester Village Council

Agenda  
February 1, 1988

- 1) Call Meeting to Order.
- 2) Pledge of Allegiance to the Flag.
- 3) Minutes of the Previous Meeting.
- 4) Approval of the Agenda.
- 5) Correspondence.
- 6) Public Participation.
- 7) Reports
  - a. DPW Report.
  - b. Managers Report.
  - c. Old Business.
  - d. Paul Stauder Bond Report.
  - e. Legal Opinion Concerning Elected Officials.
  - f. Fee Schedule.
  - g. Act 51 Recommendations.
  - h. DPW Rate Charges -1988
- 8) New Business
  - a. Announcement of Candidates.
  - b. Budget Discussion.
  - c. Closed Session - Re: Employee Negotiations.

### Bridgewater Township Board

Synopsis  
January 18, 1988

All board members present. Parr opened the meeting at the township hall.

Minutes read, treasurers report given, and bills presented and paid.

Old Business, board discussed a Conditional Use Permit.

New Business, board approved Washtenaw County Road Commission to apply brine on roads again this year.

Saline School Tax agreement was discussed. Board reviewed expenses from

### Cookie Chairmen Announced

the past year. Planning Commission reported on Public Hearing February 8, 1988. Zoning Inspector gave a report. Next meeting February 15, 1988 at the township hall.

### Freedom Township Board

Proposed Synopsis  
January 12, 1988

Meeting was called to order at 7:30 p.m. with all board members present. Minutes/report approved as read.

Various communications were read. Approved application of one layer of brine on roads with option for second layer if needed. Report of new fire truck fund for the Village of Chelsea with cost to Freedom Township around \$3,000.

Received \$32.00 refund from insurance company for lowering coverage on garage.

Adopted Resolution honoring Jean Little for her many years of dedicated service on the Township Planning Commission.

Clerk presented wall hanging of 1895 map of Freedom Township received from Keusch & Flintoft, Township Attorneys. This map will be hung in the office at the Townhall for all interested residents to see.

All bills were approved for payment. Meeting adjourned at 9:15 p.m.

Submitted by, Mildred Guenther, Clerk Approved by, Eugene Mann, Supervisor

### Daisy Scout Activities

Daisies, our youngest Girl Scouts, met on December 12th with our oldest Girl Scout Troop in the area, Troop #777, which is composed entirely of ladies at the Chelsea United Methodist Retirement Home. The adult Girl Scouts really enjoyed our kindergarten Troop #706 as they sang songs and made Christmas ornaments. They love to have the young girls come to visit, and are making plans to come to Manchester sometime to visit us in return.

### Hope College News

Kathryn A. Miller, daughter of Mr. and Mrs. Robert J. Miller, is named to the Hope College Dean's List for the first semester of the 1987-88 school year. To be named to the Dean's List a student must have a minimum 3.5 grade point average on a 4.0 scale.

### DIANE S. WIEDMAYER

CERTIFIED PUBLIC ACCOUNTANT  
Accounting and Tax Services For Businesses, Farms and Individuals

12 YEARS OF TAX PREPARATION SERVICE

By Appointment/Evenings and Saturday  
Appointments Also Available

428-7398 or 428-8411

Comerica Bank Building Suite 202 Manchester, Mich.

### PARR'S AUTO BODY

BODY WORK - PAINTING  
FREE ESTIMATES  
INSURANCE WORK  
GLASS INSTALLATION

18481 W. Austin Road  
Manchester, Michigan

Phone  
313-428-9538

### MANCHESTER CHIROPRACTIC CLINIC

"TRY CHIROPRACTIC NATURALLY"

STAN GILBERT, D.C. 227 E Main St.  
313-428-7207 Manchester, Michigan

APPOINTMENT HOURS

Monday, Tuesday, Wednesday, Friday 8 am-12 and 3 pm-7 pm.  
Thursday and Saturday 8 am-12 noon

### DAN'S WESTSIDE AUTOMOTIVE

660 West Main Street Phone 428-9455 Manchester, Michigan

Our Snow Tires Have Arrived  
And With A Special Price

!!On Sale Now!!

RADIALS

15580 R 13	40.95
16580 R 13	44.95
17580 R 13	45.95
18580 R 13	46.95
18575 R 14	47.95
19575 R 14	48.95
20575 R 14	49.95
20575 R 15	50.95
21575 R 15	54.95
22575 R 15	56.95
23575 R 15	59.95
Extra Load	
23575 R 15	70.95

POLY BELTED

G-78-15	\$45.95
H-78-15	47.95
L-78-15	49.95



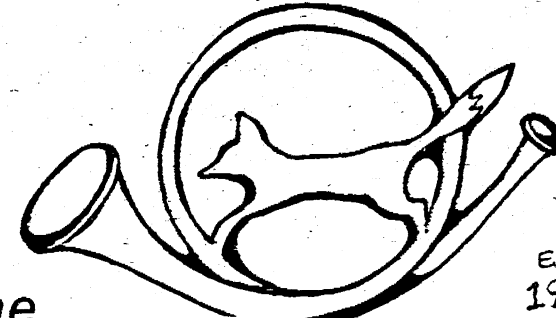
Winterize Special ..... \$29.90

Front End Alignments ..... \$24.95

We Have The Latest In Hunter 4 Wheel Alignment Equipment

### ANNOUNCING!!

Starting  
THURSDAY, JANUARY 14th



The Manchester Tavern EST. 1987

Will Be Serving

FOOD

- featuring DELICIOUS
- broiled ground rounds
- Reubens
- broiled rib-eye steak sandwiches
- nachos
- soups and chili

JOIN US!

NOW OPEN FOR LUNCH!!

★ Also At The Bottom of The Hill★

DIE BAUERNSTUBE

CABLE/PASS Large Screen Television

All-You-Can-Eat

POPCORN DINNER \$1.00

233 East Main St. Phone 428-9290

Robert G. Lawson, Proprietor

### Wacker's General Store



- PEPSI, DIET PEPSI
- MOUNTAIN DEW
- PEPSI FREE
- SUGAR FREE PEPSI FREE
- A & W ROOT BEER
- VERNORS
- SUGAR FREE A & W
- SUGAR FREE VERNORS
- SLICE & DIET SLICE

\$2.29  
1/2 LITER 6 PACK  
plus deposit

2 Liter ..... \$1.49  
plus deposit

6 Pack Cans ..... \$1.89  
plus deposit

G.E. Wacker Inc

Gasoline-Fuel Oil-Grease  
Motor Oil-Diesel Fuel  
9050 Chelsea-Manchester Road  
Manchester, Mich. 48158

Winter Hours:  
Monday-Thursday 7 am-8 pm  
Friday 7 am-9 pm  
Saturday 8 am-9 pm  
Sunday 9 am-8 pm

# Party Time

Your One-Stop Party Shop!

Make any occasion special with Personalized Party Supplies, Party Tableware and Party Decorations.

The Manchester Enterprise

# America's Ten Greatest Snow Storms

Snowstorms, in general, are not as destructive as other storms, but here are ten that really left a mark.

by Andrew E. Rothovius

1. By a strange fate, two of the greatest blizzards of all time in the United States occurred in the same year, 1888 - one on the Great Plains, the other along the North Atlantic seaboard. The first, on January 11-13, affected the entire sweep of the Plains from Montana to Minnesota and south to Texas. A rapid temperature fall to below zero, mountainous drifts, and cutting winds combined to kill tens of thousands of cattle and an estimated "few hundred" humans. A Nebraska schoolteacher, Maude Freeman, won fame by herding 13 of her small charges to safety through the storm, having tied them to her waist with leather thongs.

2. Two months later, on March 11-14, the Northeast was paralyzed by the worst winter storm ever known in that area, the legendary "Blizzard of '88". From western Maryland to central New England, communities were buried under 40 to 60 inches of snow, blown into enormous drifts by 50-mph winds at temperatures close to zero. Metropolitan New York became an arctic wasteland in which hardly a vehicle could move. Offshore shipping was roused by what seamen called "The Great White Hurricane." Deaths on land from exposure and other storm-related effects are variously estimated at from 100 to 400.

3. In the Colonial period of American history, the standout snowstorm was the long-remembered "Great Snow" of 1717. Actually a composite of four storms that hit New England over a nine-day span, February 27-March 7, the severest one on March 3-4 left 30 to 40 inches of snow in a band from New Haven,

Connecticut, to Portsmouth, New Hampshire. After the fourth storm snow depths averaged 60 inches on the level. On Fishers Island in Long Island Sound, 1,200 sheep were buried under a drift for 28 days; when finally uncovered, 100 of the animals were still alive.

4. The greatest snowstorm of the first half century of American national independence is generally considered to have been the Long Storm of November 17-21, 1798, affecting the Northeast from northern New Jersey well up into Maine. Gale winds on the fourth day severely drifted the snowfall, which averaged 35 inches to the north. At Keene, New Hampshire, there was sleighing for 18 consecutive weeks after this storm; and in Coos County, New Hampshire, for 23 weeks (into early May 1799).

5. In the first half of the 19th century, the blizzard of January 14-16, 1831, was remembered for a generation as the Great Snowstorm. Few storms have ever approached its areal extent; a blanket of white, ranging up to 35 inches in the heaviest band from central Pennsylvania to Cape Cod, was laid down from central Georgia to southern Ohio and east to southern New Hampshire. At most points the snow fell continuously for 40 hours or more.

6. Severe as it was, the 1831 storm was eclipsed in the judgment of most who experienced both by the Great Cold Storm of January 18-19, 1857, which raged from North Carolina to Maine and caused the greatest disruption of rail traffic since trains commenced running in the mid-1830s. The 1857 storm was characterized by intensely low temperatures, from slightly below zero to only the high single

numbers, causing intense suffering among the poor as gale-force winds drove cold air and fine needlelike snow into their often unheated homes. In southeastern Massachusetts several churches and other public buildings were blown down by the force of the wind and the ruins buried under huge drifts. Virginians still consider this the greatest snowstorm in their state's history.

7. The decade following the Blizzard of 1888 was marked by two more snowstorms of extraordinary proportions. The first, that of February 14-15, 1895, is still recalled as the Great Southern Snowstorm; it affected areas that rarely see substantial snow, and the snow depths it left in unprepared sections have never been equalled. Scores of ill-clad poor in thin-walled shacks are said to have perished. Six inches fell at Brownsville, Texas, at the mouth of the Rio Grande; 16 inches at Galveston and 22 at Houston; 24 in southwest Louisiana and 9 in New Orleans.

8. Four years later, on February 12-14, 1899, came the Great Eastern Blizzard, which also affected parts of the Deep South. Its snow blanket extended from coastal Georgia northward into central New Hampshire, with the brunt of the storm being experienced from northern Virginia to the Hudson Valley. In that area an average of 30 to 44 inches fell, severely drifted by winds of near-hurricane velocity. Washington, Philadelphia, Trenton, New York, and Boston were paralyzed for days.

There have been many large and crippling snowstorms in this century, and any choice among them is subject to dispute. Perhaps the least likely to be objected to as truly great would be the Armistice Day storm of 1940 in the Upper Midwest, and the Blizzard of 1978 in New



England. On November 11, 1940, a blizzard of historic severity swept across Iowa, Minnesota, Wisconsin, and Lake Michigan, with winds of hurricane force and temperatures as low as 21 below zero. At least 154 lives were lost, 69 of them on board ships that foundered in Lake Michigan; thousands of head of livestock still on range died of exposure in

Iowa; fruit orchards were destroyed; scores of towns were isolated by huge drifts for more than a week.

10. The Great New England Blizzard of February 6-7, 1978, hit with full severity only a relatively small area of eastern Massachusetts, but no metropolitan area with the exception of New York in 1888 has been as crippled as Boston was by this storm, which shut down the city for five days. The snowfall of 25 to 30 inches was driven by winds of hurricane force that also pushed some of the highest tides on record into coastal towns and ripped buildings apart, felled utility lines, and heaped up enormous drifts.

## Special 4-H Horse Program

A special program on Potomac Horse Fever is going to be presented by Dr. Harlan Bigbee, Director of Animal Health Technical Services, Schering Corporation. Potomac Horse Fever is a disease thought to be confined to the East Coast, recent cases have been reported in Michigan horses.

Discussion will center on the disease syndrome, factors, treatment, prevention and vaccine.

The program will be as follows: Tuesday, February 9, 1988, at the Farm Council Grounds (Ann Arbor-Saline Road) at 7:30 p.m.

The program is offered free of charge and is open to the public.

For further information contact the Washtenaw County Cooperative Extension Service or call the 4-H office at 971-0079.

**SHARON VALLEY MINI-STORAGE**  
 LOCATED NEAR CORNER OF M-52  
 BEHIND KLEINSCHMIDT TRUE VALUE HARDWARE  
 19970 Sharon Valley  
 Manchester, Mich.  
 Call 428-9360

## Wrestling Report

by Dan Jordan

The Dutch had a good week on the mat. We didn't win every time we competed but we wrestled well. Improvement is the name of the game.

January 19th came around and the Pirates of Napoleon rolled out the green carpet. Going in, we felt the weight of competing in Napoleon on our backs. Chris Wiethoff placed 5th and Mark Fenelon placed 2nd. The most impressive thing in my mind was the number of matches where we beat people who had beaten us earlier in the season. I can take a hint.

This Thursday the team will have its final home match. It will also be parents night. The Warriors of Grass Lake will be in our gym and looking to improve upon their class D ranking of 5th. We will have our work cut out for us but we are confident. On Saturday the bulk of the team will be going to a J.V. tournament in Napoleon with the varsity headed to the always tough Dexter Invitational. GHTD.

and toilets? What can I do if a colleague is bleeding because of a worksite accident?"

The "AIDS in the workplace" seminar, co-sponsored by the Washtenaw County Health Department's Work Well program and the Ann Arbor Chamber of Commerce, will help employers separate the myths from the facts about the transmission of the AIDS virus and deal with the legal and insurance aspects associated with the illness.

Employers who attend "AIDS in the Workplace: Facts Every Employer Should Consider" will be prepared to provide reliable information to calm employee fears, and to devise an AIDS policy for dealing with exposed or infected employees.

Speakers will include Cynthia Wrenmore, Coordinator of Communicable Diseases, Washtenaw County Health Department, and Ed Goldman, attorney for the University of Michigan Medical Center.

The seminar is tentatively scheduled for March 24, 1988, from 8:30 a.m. to 12:30 p.m.

For more information, please call Dr. Elizabeth Barkan at 971-4741.

## "Aids In The Workplace"

"Facts Every Employer Should Consider"

Sooner or later, AIDS will touch your company with fears, rumors or actual illness. Even now, people are asking, "Can I get AIDS at work? Is it safe to use the water fountains

## Winter Wonderland Dance



Emily Miller

Klager families gathered for an enjoyable evening Friday, January 22nd, thanks to the Klager PTO. The PTO sponsored the "Winter Wonderland Dance", complete with D.J., popcorn and cider. Both the young and the "older" danced, socialized with friends and neighbors and enjoyed the lovely winter decorations made by students.

The PTO sponsored this event to say thank you to parents, students and community for supporting the PTO fundraiser last fall.

let your words do the talking in the **CLASSIFIEDS**

Buy with CONFIDENCE from **Russ Aiuto**  
 Your TRANSPORTATION SPECIALIST AT **MIDWEST FORD, Inc.**  
 510 West Main Street, Manchester, Mich.  
 • A, B, Z and X-Plans my specialty!  
 • Top dollar for trade-in!  
 • Expert, friendly service after the sale!  
 • Good previously owned vehicles for sale!  
 Call RUSS AIUTO for more INFORMATION **313-428-8343**

(313) 429-4885 COUPON (517) 423-2148  
 Saline in the Saline Shopping Center  
**\$99** Daily Wear Soft Contact Lenses  
**\$10 OFF** with a valid Prescription  
 Dr. Thomas Cunningham  
 DOES NOT APPLY TO OTHER DISCOUNT OFFERS OR PRIOR ORDERS

**FISH 'N' FRY**  
**K of C FISH DINNER AND SALAD BAR**  
**ALL YOU CAN EAT! \$5.25**  
 Childrens Portions Available Senior Citizens \$5.00  
 Serving 5-8 P.M.  
 Friday, February 12 thru Friday, April 1, 1988  
**Shrimp Dinner 21 Pc. \$4.00**  
 Milk and Coffee 25¢  
**Manchester K of C Hall**

**FITNESS IS A GOOD FEELING: Personal Exercise and Weight Control**

Tip the scales in your favor with our personal exercise and weight control class.

We're Dimensions Fitness and Education Center, a part of Saline Community Hospital, and we offer a complete, medically sound plan to help you get fit. Our staff of trained fitness professionals can help you change your eating and exercise habits, and put you in charge of your weight and well-being. Not only for today, but for the future.

Our class starts Thursday, January 28, 7:30-9:00 p.m., and runs for 8 weeks. The fee is \$85. McAuley Health Plan reimburses 50%. Sign up by calling 429-1509.

**DIMENSIONS Fitness & Education Center**  
 400 Bemis, Saline, Michigan 48176  
 (313) 429-1509

**MIDWEST FORD** **FORD**  
 MANCHESTER, MICHIGAN

**24 Hour Wrecker Service**

**WE OFFER THE MOST MODERN DAMAGE FREE TOWING IN THE AREA**

**24 Hour Phone 428-8343**

**MIDWEST FORD** **FORD**

**Notice Of Public Hearing Manchester Village Planning Commission**

A Public Hearing will be held on Tuesday, February 9, 1988, beginning at 8:00 p.m., in the first-floor meeting room of the Village Hall, 120 S. Clinton St., concerning a petition by the Conquering Faith Fellowship, which asks that the following change be made in the Manchester Village Code:

To amend Chapter 51 (Zoning), Article 12 (C-2 General Commercial District), Section 5.133 (Conditional Uses) by adding a new conditional use: "Churches".

Anyone wishing to comment on the proposed amendment, but unable to attend the Public Hearing, should mail or personally deliver written comments to Secretary, Manchester Village Planning Commission, 120 S. Clinton St., Manchester, MI 48158. Written comments should be received no later than 4:00 p.m. on February 9, 1988. Written comments will be read aloud at the Public Hearing.

Mary Kallewaard Secretary

## WCC Foundation Names New Members

Five new members have been named to the Washtenaw Community College Foundation, a volunteer organization that handles all of the college's private fundraising activities.

The new members are Florence R. Crane, Lawrence A. Grace and Robert B. Kerschbaum of Ann Arbor; Matt Hennessee of Ypsilanti; and John J. Hinkley of Manchester.

Since its inception three years ago, the WCC Foundation has raised funds for scholarship programs and emergency student loans.

At its last meeting, officers were appointed: George Goodman, chair; Thomas Blasko and Henry Landau, vice chairs; Joe O'Neal, secretary and Lawrence Grace, treasurer.

## DNR News

Have you seen any wild turkeys during the months of January or February 1988? Each year, wildlife biologists try to locate and count every wild turkey in the State. This information is used to determine the population status and to better manage the wild turkey resource. A winter census is taken because the wild turkeys are more visible and tend to flock in large groups. Last year over 24,000 wild turkeys were reported to the Department of Natural Resources (DNR) wildlife biologists. A higher count is expected this year because of the excellent nesting season that produced many poults.

The information will be kept confidential. Contact Wildlife Division personnel at your nearest DNR office to report sightings of wild turkeys during January and February.

Foundation Board are: William Bott, James Bradley, Jean Campbell, Florence Crane, George Cress, Molly Dobson, Robert Forman, Matt Hennessee, John Hinkley, Howard Holmes, James Irwin, Ann Kettles, Robert Kerschbaum, Gunder Myran, Anthony Procassini, Norma Sarns and Harry Towsley. Catherine Arcure is the Board's executive director.

## 4-H Leadership Conference

Washtenaw County 4-H teen leaders, ages 14-19, and advisors will be able to exchange ideas on horse programs and events with 4-H'ers from across the state at two equine leadership conferences, February 19-20, 1988 and February 20-21, 1988 at Kettunen Center in Tustin.

Conference objectives are to present information on teaching methods and to provide subject matter that will help leaders become more effective.

Participants will attend six minisessions on 4-H and horse-related subjects. They'll share information they gain with other 4-H groups in Washtenaw County. Reservations are due February 8, 1988.

Both conferences are made possible by grants from Siawasse Farm, 9415 Prior Road, Durand, Michigan 48429 and Chemical Financial Corp., 333 East Main, Box 569, Midland, Michigan 48640-0569, through the Michigan 4-H Foundation.

For more information on the horse conferences or other 4-H activities, contact the Washtenaw County Cooperative Extension Service, or call the 4-H office at 971-0079.

## Winter Survival Nature Walks

For every adult or child who's ever wondered where animals and insects go in the winter or how plants survive the freezing temperatures, the University of Michigan Matthaei Botanical Gardens has the answers. On February 7, 1988 at 2:00 p.m., the Gardens will offer a free nature tour titled, "Plant and Animal Survival in Winter."

Docents (volunteer guides) will lead visitors along the four nature trails that help to make up the 250 acres of the Gardens.

Charts will help visitors identify animal tracks in the snow by their shapes and sizes.

Visitors will examine perennials that have gone dormant under a pile of leaves and snow, but are waiting to burst through with warmer weather. Examine the Box Elder with its wax coating which helps to seal and preserve its water. See Poplar Trees with their coat of resin around the buds to protect them from losing their moisture in the winter and also to prevent insects from eating the bud in the spring and fall.

Docents will meet participants of the 1-1/2 hour walk on the front steps of the Conservatory. The walk is the fourth in a series of monthly walks sponsored by the Gardens.

The Matthaei Botanical Gardens is located at 1800 North Dixboro Road, one mile south of the Plymouth Road intersection.

## Bailey Named To Who's Who

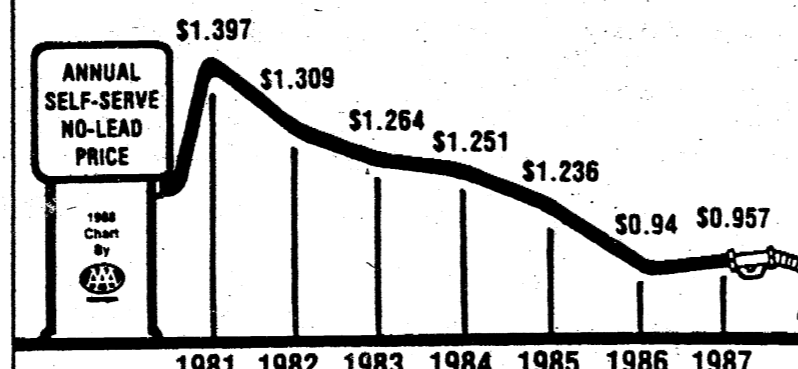


percent of the nation's high school students are included in Who's Who each year.

A senior honor student at Claiborne High School, she is currently secretary of her class of 250 students and was named Most Athletic Female. Kim's extracurricular activities include Football (Named MVP-All Star at Furman College Softball Camp last summer and named to the All District Softball team) and Basketball (named to Christmas All Tournament Team). She is also a member of FHA and the Tazewell Baptist Church. Kim is planning to go to college and study pharmacy.

Kim is the daughter of Lynn and Sue Bailey and granddaughter of Mary Bailey of Tazewell and Ralph and Eileen Hassett of Manchester, Michigan.

## 1987 Michigan no-lead price up first time in six years



For the first time in six years, the average annual price of self-serve no-lead gasoline in Michigan climbed in 1987. At 95.7 cents per gallon, the year's average price was 1.7 cents more than in 1986. AAA Michigan records show no-lead prices dropped steadily after peaking at an average \$1.397 in 1981. The 1987 figure is 44 cents below the 1981 average. No-lead accounts for an estimated 75 percent of gasoline sales in the state.

## Area Obituaries

**Paul J. Wahr**  
16834 Esaudes Road  
Grass Lake

Age 90, a life long Sharon Township farmer, died Saturday, January 23, 1988, at the Chelsea Community Hospital. He was born February 18, 1897, in Sharon Township the son of George and Minnie Rehffuss Wahr. He was married to Marjorie Hawkins on June 18, 1932, she survives.

He was a member of Emanuel United Church of Christ. In addition to his wife he is survived by, daughter and son-in-law Ruth and Dale Crouch of Grass Lake, son and daughter-in-law, Paul Jr. and Darlene Wahr of Petersburg, 14 grandchildren, 1 great-grandson, 2 sisters, Esther Feldkamp of Saline, Freida Ahrens of Saline, 2 brothers, Carl of Grass Lake and Lawrence of Bridgewater. He was preceded in death by his parents, 4 sisters and 4 brothers.

Funeral services were held Tuesday, January 26, 1988, at 1:00 p.m. at the Jenter Funeral Home. Rev. Robert B. Macfarlane officiated. Burial followed in Grass Lake East Cemetery.

**Gladys Hensley**  
1160 Rowena  
Grass Lake

Age 70, formerly of Manchester died Monday, January 25, 1988 at the Chelsea Community Hospital. She was born August 15, 1917 in Tennessee the daughter of William and Maggie (Yeakum) Ditty. She had been an employee of the Double A Products Company for many years retiring in 1978.

She is survived by 1 son, John Petty of Grass Lake; 9 grandchildren; 7 great-grandchildren; 1 brother, Fred Ditty of Middleboro, Kentucky; 1 sister, Edna Martin of St. Clair Shores; also several nieces and nephews. She was preceded in death by 2 sons, Dennis Sharpe in 1975 and Austin Sharpe in 1977. She was also preceded in death by 2 brothers and 1 sister.

Funeral services will be held Thursday, January 28, 1988 at 1:00 p.m. at the Jenter Funeral Home. Branch President of The Church of Jesus Christ of Latter Day Saints (Mormons), Wayne Winzenz, will officiate. Burial will follow in Oak Grove Cemetery.

## CHURCH DIRECTORY



**EMANUEL UNITED CHURCH OF CHRIST** — Rev. Robert B. Macfarlane, Pastor; Rev. Nancy Doty & Mr. Philip VanDop, assistants; Sunday School for all ages 9:00 a.m.; Morning Worship 10:30 a.m.; Fellowship 11:30 a.m.

**MANCHESTER UNITED METHODIST CHURCH** — Rev. Hayden Carruth, Pastor; Worship 10:00 a.m.; Coffee/Fellowship Time 11:00 a.m.; Sunday School and Adult Classes 11:15 a.m.

**ST. MARY'S CATHOLIC CHURCH** — Father Raymond Schlinkert; Monday thru Friday 8:30 a.m.; Saturday 5:00 p.m.; Sunday 8:30 a.m. and 10:30 a.m.

**FAITH COMMUNITY CHURCH** — Scott Engleman, Pastor; Roman Kuepky, Associate Pastor; 8400 Sharon Hollow Rd. off W. Austin; Worship Service 10:00 a.m.; Sunday School 11:15 a.m.; Sunday Evening Service 6:00 p.m.; Jr. and Sr. High Young People's Meeting 7:30 p.m.

**VICTORY BAPTIST CHURCH** — 423 South Macomb, 428-7506; Sunday School 9:45 a.m.; Morning Worship 11:00 a.m.; Evening Worship 6:00 p.m.; Teen Talk 7:00 p.m.; Wednesday Prayer, Bible Study, Youth 7:00 p.m.

**BETHEL UNITED CHURCH OF CHRIST** — Rev. Roman A. Reineck, Pastor; Schneider and Bethel Church Roads; Church Service 10:00 a.m.; Sunday School 11:00 a.m.

**SHARON UNITED METHODIST CHURCH** — Rev. Evans Bentley, Pastor; Corner of M-52 and Pleasant Lake Roads; Church School 10:00 a.m.; Worship 11:00 a.m.

**ST. JOHN'S LUTHERAN CHURCH** — Rev. Dennis A. Falk, Pastor; Austin Road, Bridgewater; Sunday School 9:15 a.m.; Worship 10:30.

**NORTH SHARON BIBLE CHURCH** — Timothy E. Booth, Pastor; Sylvan and Washburn Roads; Sunday School 10:00 a.m.; Morning Church 11:00 a.m.; Evening Church 7:00 p.m.; Wednesday Bible Study 7:00 p.m.; Youth Meetings 7:00 p.m.

**IRON CREEK COMMUNITY CHURCH** — English and Sharon Hollow Roads; Worship Service 10:00 a.m.; Sunday School 11:15 a.m.; Sunday Evening 7:00 p.m.; Wednesday Evening 7:00 p.m.

**ZION LUTHERAN CHURCH** — 3050 S. Fletcher Road; Rev. Mark A. Weirauch; Sunday School 9:00 a.m.; Worship Service with Holy Communion 10:15 a.m.

**ST. THOMAS LUTHERAN CHURCH** — 10001 W. Ellsworth Rd., (5 miles North and 6 1/2 East of Manchester), Rev. John Riske, Pastor. September through May schedule: Sunday School & Bible Class 9:30 a.m.; Worship 10:45 a.m.; Holy Communion First and Third Sundays.

**ST. JOHN'S UNITED CHURCH OF CHRIST** — Rev. Ted Wimmier, Pastor; Rogers Corners, Waters and Fletcher Roads; Adult Bible Study Class 10:00; Worship and Sunday School 10:30 a.m.

**CLINTON ASSEMBLY OF GOD** — Rev. Richard Coury, Pastor; Chris Bouldrey, Youth Pastor; 13300 Clinton-Manchester Road, Clinton; Sunday School 9:30 a.m.; Worship 10:45 a.m.; Sunday Evening 6:30 p.m.; Wednesday Prayer, Bible Study, Youth 7:00 p.m.

**CHURCH OF JESUS CHRIST OF LATTER DAY SAINTS (MORMONS)** — Wayne L. Winzenz, Branch President; 1330 Freer Road, Chelsea; Sacrament 9:30 a.m.; Sunday School, Primary 10:50 a.m.; Priesthood, Relief Society, Aaronic Priesthood, Youth 11:40 a.m. For more information, call 475-1778.

## Buy, Rent Sell Thru The Classifieds

### Todd Withrow Company

REMODELING  
CABINETMAKING  
ADDITIONS—WINDOWS  
KITCHENS—BATHROOMS  
ROOFING—SIDING  
CUSTOM BUILT CABINETS  
WALL UNITS—FURNITURE

TOP QUALITY MATERIAL  
AND WORKMANSHIP

LICENSED AND INSURED

CALL ANY TIME  
428-9420 or 428-7797

**428-7002 T & N 428-7002**  
Experienced Services Free Estimates

**TERI AIUTO 428-7002 NICK AIUTO**  
Fast Service Senior Citizens Reasonable Rates Discounts

**CLEANING** • Basements - Garages - Homes - Offices - Rentals - Car Clean-up - Set-up and Clean up for Parties - Window Washing - Eavestrough Cleaning - Yard Clean-up

**YARD CARE** • Mowing - Raking - Flower Planting - Tree and Bush Trimming - Weed Pulling - Snow Removal - Landscaping

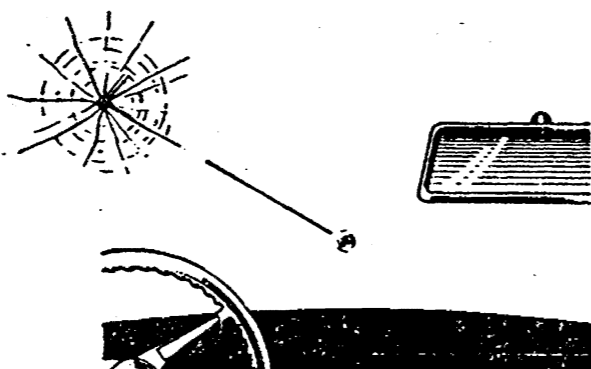
**GENERAL HAULING** • Furniture Moving - Appliance Moving and Removal - Firewood Hauling - Rubbish Removal

**CAR CARE** • Washing - Waxing - Buffing - Carpet Shampooing - Interior Cleaning

**MISC.** • Grocery Shopping - Errand Running - Painting - House Sitting

PLUS A WHOLE LOT MORE  
Call Today! 428-7002

## REPAIR YOUR DAMAGED WINDSHIELD FOR A FRACTION OF REPLACEMENT COST.



Most windshield breaks are repairable, and the cost is far lower than windshield replacement. The patented, proven Novus method can restore and repair windshields both structurally and optically, leaving damaged areas almost invisible. But act now! If crack damage spreads too far, it may become necessary to replace the entire windshield.

We come to you... Mobile Service Anywhere in Washtenaw County.  
MOST INSURANCE COMPANIES WILL PAY 100% OF REPAIR COST.

**WAYNE'S WINDSHIELD REPAIR**  
— 428-7028 —

## LONDON CARPET CARE

Carpet & Upholstery Steam Cleaning

Also On Request: Deodorizer!  
808 Carpet Protector!  
Mildew & Odor Eliminator!  
Free Estimates!

PHONE DAY OR EVENING  
7 DAYS 428-9618  
DAVE LONDON

## Notice of Public Hearing Bridgewater Township Planning Commission

During the Public Hearing commencing at 7:30 p.m. February 8, 1988, at the Bridgewater Town Hall, at 10990 Clinton-Manchester Road, the following application for a Conditional Use will be considered.

Bridgewater Craftsmen, Inc., at 9045 Austin Road, Bridgewater, Michigan, 48115, requests a Conditional Use Permit to operate a Wood Shop, under Section 4.03C Business District, of the September 12, 1981, Zoning Ordinance of Bridgewater Township, on 1.82 acres.

Written comments may be sent to Gerald Marion, Chairman, Bridgewater Township Planning Commission, 11680 Hoelzer Rd., Clinton, MI 49236, prior to the Hearing.  
L. Fraumann, Secretary

## EMANUEL UNITED CHURCH OF CHRIST

Thursday, January 28 - 7:30 p.m. Christian Ed. Committee, Parsonage.

Sunday, January 31 - 9:00 a.m. Sunday School, Confirmation, Adult Study; 10:30 a.m. Worship; 11:30 a.m. Coffee Hour and Fellowship Time; 7:00-9:00 p.m. Prospective New Members Meeting at Parsonage.

Tuesday, February 2 - 12 Noon Senior Meal; 2:00 p.m. Shakespeare Club, Lounge; 6:30 p.m. Daisy Scouts; 7:00 p.m. Scouts; 7:30 p.m. Narcotics Anonymous.

Wednesday, February 3 - 10:00 a.m. Weight Watchers; 3:30 p.m. Cub Scouts; 6:00 p.m. Bell Choir; 7:30 p.m. Adult Choir; 8:00 p.m. AA, Al Anon.

Thursday, February 4 - 12 Noon Senior Meal; 3:15 p.m. Brownies; 3:20 p.m. Cherub Choir; 3:40 p.m. Children's Choir; 3:30 p.m. Girl Scouts; 7:30 p.m. Church Council, Lounge.

## Conservation District Meeting

CONSERVATION DISTRICT ANNOUNCES 39TH ANNUAL MEETING

William Fishbeck, Chairman of the Washtenaw County Soil Conservation District announces the 39th District Annual Meeting to be held Tuesday, February 2, 1988, 8:00 p.m. at the Freedom Township Hall, 11508 Pleasant Lake Road, at Pleasant Lake.

Featured speaker for the meeting will be Bob Driscoll, agricultural radio personality and reporter for the Great Lakes Radio Network. Mr. Driscoll will talk about the current agricultural situation and his views on the future of farming in Michigan and

the United States. An election of one District Director will be conducted at the meeting. Candidates for the director position include: Alvin Ernst, Freedom Township and Jay Hopkins, Lyndon Township. The candidate receiving the highest number of votes will be elected to a three-year term. All occupiers of three or more acres of land within Washtenaw County are eligible to vote in the director election.

Other features of the Annual Meeting include award presentations, drawings for door prizes donated by area businesses and refreshments following the meeting. There is no charge for attending the meeting.

Questions about the District Annual Meeting should be directed to the Soil Conservation District Office, 6101 Jackson Road, Ann Arbor, telephone: (313) 761-6721.

## WORKING STUDENTS:

When you fill out your Form W-4, "Employee's Withholding Allowance Certificate," remember: If you can be claimed on your parent's or another person's tax return, you generally cannot be exempt from income tax withholding. To get it right, read the instructions that came with your Form W-4.



## Kirk Excavating

Sand—Gravel—Fill Dirt Basements—Driveways

428-7938

Dave Kirk  
14180 Schleweis Road  
Manchester

## FUND RAISING

Manchester Sportsman Club

8501 Grossman Road

Friday 6:45 p.m.

"Honor The Flag"

Manchester American Legion

203 South Adrian Street

Saturday 7:00 p.m.

## Wacker's General Store

Beer, Wine and Package Liquor

Budweiser, Bud Light

Miller, Miller Lite

Miller Draft

24 Pack

Strohs-30 Pack

\$9.99

Plus Deposit & Tax

G.E. Wacker Inc

Gasoline-Fuel Oil-Greases

Motor Oil-Diesel Fuel

9050 Chelsea-Manchester Rd.

Manchester, Mich. 48158

Winter Hours:

Monday-Thursday 7 am-8 pm

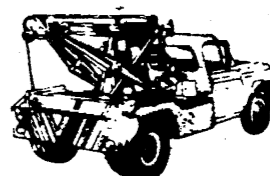
Friday 7 am-9 pm

Saturday 8 am-9 pm

Sunday 9 am-8 pm

## FILLYAW' MARATHON SERVICE

327 West Main St. Manchester, Mich.  
Phone 428-8576



24 Hour Wrecker Service



## LUBE, OIL & FILTER SPECIAL

Up To 5 Quarts of Oil and Oil Filter

- ✓ Trans Fluid
- ✓ Differential Fluid
- ✓ Power Steering Fluid
- ✓ Brake Fluid
- ✓ Washer Fluid
- ✓ Anti Freeze
- ✓ Wiper Blades
- ✓ All Belts
- ✓ All Hoses
- ✓ Tires
- ✓ Check Headlights
- ✓ Brake Lights
- ✓ Horn
- ✓ Shocks
- ✓ Springs
- ✓ Muffler and Tailpipe
- ✓ Air Filter
- ✓ Front Suspension
- ✓ Lube Doors and Hood
- ✓ Lube Car or Pickup

All For \$19.95

ROTATE TIRES AND CHECK BRAKES \$7.95

Rotate Tires Balance All 4 Tires & Check Brakes \$19.95

GOODYEAR Stop In and See Me For Your Best Tire Deal!

WE NOW HAVE SUPER "M" LEAD FREE GASOLINE

FULL LINE OF MARATHON PRODUCTS



## Dutch Dribblers Red Hot

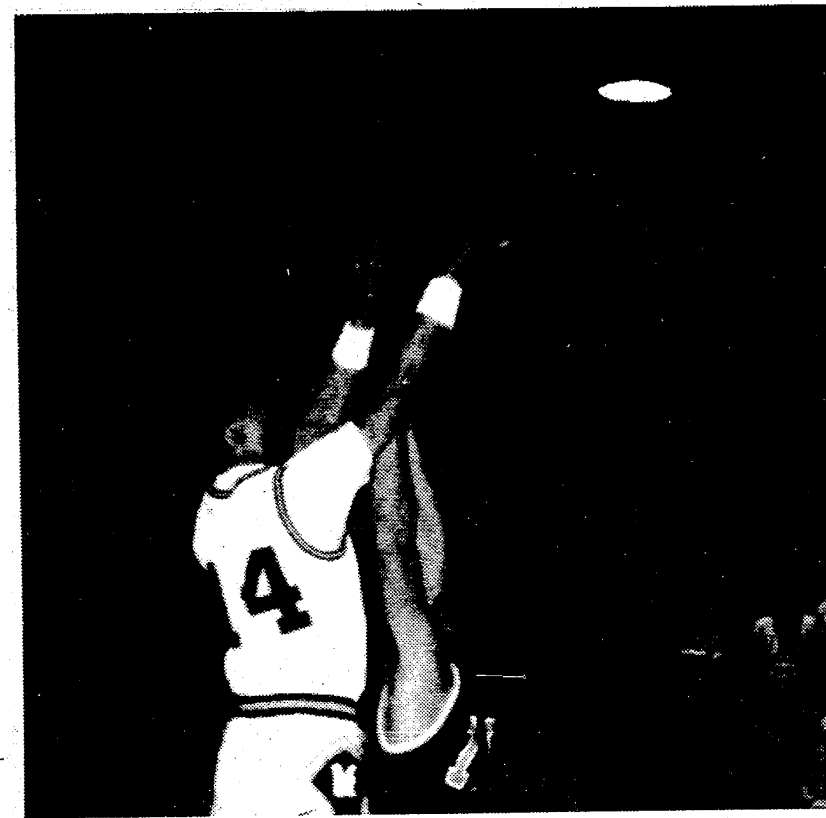
by Jon

The first contest of this week took place Tuesday as we hosted the Gryphons of Greenhills. They took command after 8 minutes of play, 21-16, but we came firing back to lead 41-40 at halftime. We controlled the final two stanzas to leave victorious, 78-73. Tom Mann led all scorers, popping for 23 points, while grabbing 19 rebounds. Brian Gebhardt and Tim McGinn had a big night, totaling 32 points, 16 each.

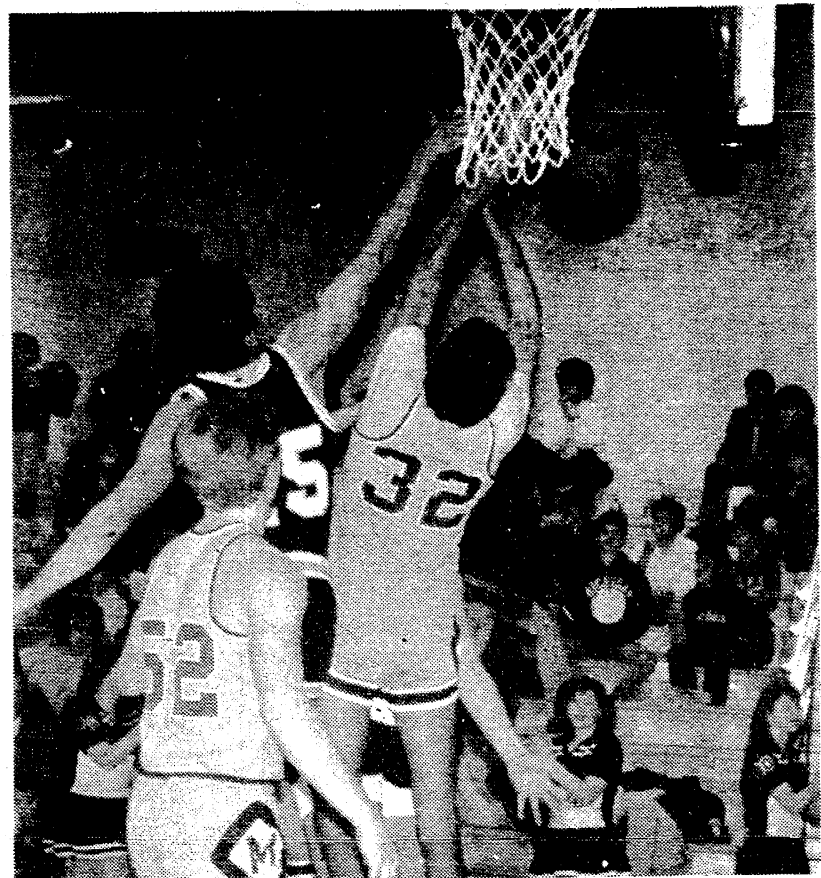
Our Little Dutch also topped Greenhills, 75-68.

Our next opponent was East Jackson. The Trojans were unable to stop Tom Mann as he smoked the nets for 30 points. Brian Gebhardt added 10 points as John Korican contributed 9. This left the score at the end of the game 59-56 in our favor. We now support an 8 and 2 overall record and stand 4 and 1 in league play.

Our Little Dutch bowed to East Jackson 75-71.



Varsity Basketball  
Brian Gebhardt pops. Brian's 2 game total was 26 points.



JV Basketball Action  
Matt Knul Shoots

## Lady Dutch Volleyball Update

by Jon

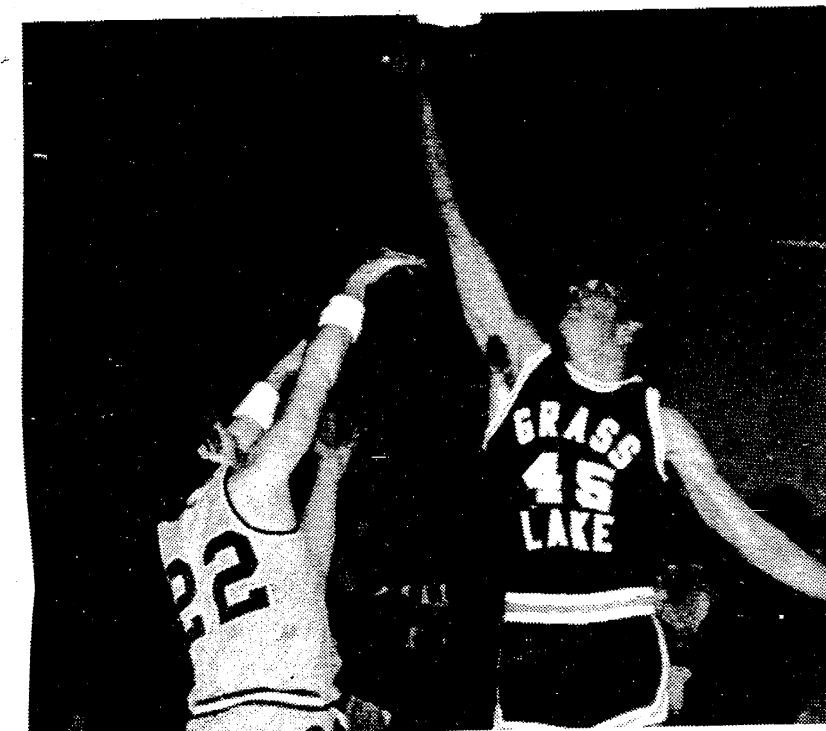
Our opponents on Monday evening were the Michigan Center Cardinals. This contest was literally no contest as our girls crushed Center in two straight games, 15-1, 15-6. Jennifer Barnard led with 9 service points and posted 17 sets. Renea Drouare and Rocky Weber each had 5 spikes to lead the team. At this point we hold an 11-1 overall record.

On Thursday, we bused to Hanover Horton to meet the

powerful Comets. Both squads were undefeated in league play going into this contest, and unfortunately the Comets concluded the evening still unbeaten. Hanover began in a flurry to dominate the first game 15-1. They again jumped out to a comfortable 12-7 advantage in the second game. Then we got hot.

Our Vanessa Salyer served 4 straight points, including one ace, which brought us the win, 15-13. We were unable to keep momentum on our side in a third game, as Hanover won, 15-8.

Our JV squad beat Center to stand 4 and 0 in league play, but on Thursday they fell to Hanover Horton.



JV Basketball Action  
Jay Gillow Fires

**NOW FEATURING**  
All Occasion and Birthday Cakes  
Daily

1/4 Sheet Cakes Only

**BAKER'S DOZEN**

118 East Main Street Manchester, Michigan  
Phone 428-8361

## Black Sheep Tavern

Winter Hours

Monday - Thursday  
11:30 a.m. - 10:00 p.m.

Friday  
11:30 a.m. - 11:00 p.m.

Saturday  
Noon - 11:00 p.m.

Sunday  
2:00 p.m. - 9:00 p.m.

"A Restaurant With A Tradition of Quality"

117 E. Main Phone 313-428-7000 Manchester, MI

## We Support Mary Kallewaard For Manchester Village President

Edward E. (Simon) Steele  
Bud DuRussel  
Neta Mills (Village Shoppe)  
Harry Krauss  
Joseph J. Marshall  
Deneine Schauble (Flower Garden)  
Sally Marshall (Ben Franklin)  
Evangeline Y. Ludwick  
Delbert D. Ludwick  
Wendell Reinhart  
Shirley Reinhart  
Robert W. Daverman, AIA  
Kathleen A. Daverman  
Dick Kuntz  
David L. Little  
Janice A. Little  
Robert Lowery  
William S. Kwolek  
Sandi Kwolek  
Eloise Kemner  
David P. Kemner  
Ted Tapping  
Evelyn M. Panches  
Kari Riley  
Mark Ball  
Victoria A. Curley  
Eileen Ball  
Leon Ball  
Sandy Winzenz  
Wayne L. Winzenz  
Susan Way

Terry Harris  
Larry Becktel  
John J. Hinkley  
Karen Hinkley  
JoAnn Okey  
Monty Okey  
Marsha Johnson Chartrand  
Tom Kallewaard  
Jim Curley  
Lynn Niehaus  
Connie Schaffer  
Jeff Schaffer  
Gwen Fisher  
Ann Fowler  
David Chartrand  
Diana Macfarlane  
Millard B. Uphaus  
Lillian R. Uphaus  
John Schaible  
Joan Schiller  
Russ Smith  
Sandy Smith  
Mary Ann Koebbe  
Gale Koebbe  
Tom Walton  
Mary Walton  
Dave Petsch  
Roseann Hawk  
Bill Kemner  
Joyce Stein  
Cliff Tracy

Sue Tracy  
Rolland Grossman  
Elizabeth Grossman  
Cindy Kemner  
Dorothy Hamilton  
Jim Davey  
Claire Reck  
Joyce Golightly  
Virginia Johnson  
Pat Sahakian  
Robert B. Macfarlane  
Martha Wenk  
Kathleen Gould  
Rebecca A. Doyle  
Jane Cooper  
Nic Cooper  
Carol Clark  
Sue Carpenter Koebbe  
Bruce Bates  
Ray Tirb  
Wanda Tirb  
Jim Datsko  
Lenore Steele  
Raymond Steele  
Linda Steele  
June Jenter  
Ann Marie Gordon  
Dawna Stockwell  
Tootie Armentrout  
Bob Armentrout  
Ann Scott

Paid For By "Kallewaard For Village President" Committee  
202 N. Macomb St., Manchester, Michigan

## Money Management

### Changes In The Tax Law - Rates, Filing Requirements, Personal Exemptions And The Standard Deduction

There certainly has been a lot of talk about the Tax Reform Act of 1986. Its proponents say it is simpler; others find it extremely complicated. Many taxpayers will pay less to the government; others will be faced with larger tax bills. Some have lauded the new bill's fairness; others can be found grumbling. But no one is arguing the fact that the impact of tax reform is being felt by all.

The tax bill President Reagan signed into law on October 22, 1986 runs nearly a thousand pages. While that may sound overwhelming, it's been estimated that "the average taxpayer is affected by about 200 pages.

Nonetheless, the Michigan Association of CPAs suggests that the best way to approach the new law is to familiarize yourself with the major provisions one step at a time. Four basic areas that will affect all taxpayers - rates, filing requirements, personal exemptions and the standard deduction - are examined here.

**TAX RATES REDUCED**  
The cornerstone of the Tax Reform Act of 1986 is the streamlined system of tax rates.

In 1986, there were 15 tax brackets ranging from 11 percent to 50 percent. The new system, which becomes fully effective in 1988, has two brackets. Congress is calling 1987 a transitional year, with a blending of the new and old tax rates. For 1987, there are five tax brackets - 11 percent, 15 percent, 28 percent, 35 percent and 38.5 percent.

Beginning in 1988, the two brackets will be 15 percent and 28 percent, with the 28 percent rate kicking in when income reaches \$29,750 for married couples and \$17,850 for singles. However, upper-income taxpayers will be faced with something the government calls a "phase-out surtax." Congress feels that once an individual's income reaches a certain level, this individual doesn't need the benefits of the 15-percent tax bracket on the first few thousand he or she earns. To remedy this, a five-percent surtax was introduced, in effect phasing out the 15-percent bracket for upper-income taxpayers.

**FILING REQUIREMENTS REVISED**  
Generally speaking, whether you must file a tax return depends primarily on four factors - your filing status, age, gross income and whether you are blind. Because the Tax Reform

Act raised the amount of income you may have before being required to file a tax return, fewer individuals will have to file returns for 1987.

If you are single and under 65, you must file a return if your gross income was at least \$4,440. If you're 65 or older, the figure is \$5,650.

If you're married and you and your spouse are filing a joint return, you must file if your income exceeds \$7,560 if both spouses are under 65; \$9,400 for one spouse 65 or older; and \$10,000 for both spouses 65 or older.

If you're married and filing a separate return, you must file if your gross income is at least \$1,900.

The filing requirements for heads of households and qualifying widows and widowers have risen as well.

Some people may have to file a tax return even if their gross income is less than outlined above. For instance, if you are self-employed and your net earnings are \$400 or more, you must file a return. You must also file a return regardless of your gross income if, during the year, you received advance payments of the earned income credit, or if you owe any other taxes. A taxpayer who qualifies for the earned income credit can only claim the credit by filing a tax return. And if you are not required to file a return but had federal income taxes withheld, you must file a return to receive a refund of the tax withheld.

An individual who can be claimed as a dependent on another person's tax return must file a return if his or her gross income exceeds the standard deduction or if he or she has any unearned income and gross income over \$500.

### PERSONAL EXEMPTIONS RISE

The Tax Reform Act almost doubles the worth of each personal exemption - that is the amount you subtract from your taxable income for yourself, your spouse and each of your dependents. For 1987, that amount is \$1,900 - up from \$1,080 in 1986 - a big plus, particularly for large families. This increase affects both itemizers and non-itemizers.

Just as the benefit of the 15-percent bracket is phased out for those with high income, so, too, is their personal exemption. Beginning in 1988, single taxpayers will start to lose the benefit of their personal exemption when their income exceeds \$89,560. For married people filing jointly, the figure is \$149,150.

Elderly and blind taxpayers who previously were allowed an extra personal exemption will no longer be entitled to one. Instead, Congress has agreed to increase the standard deduction for those taxpayers.

Another important change for 1987 concerns dependents. A person who is eligible to be claimed as a dependent on another taxpayer's return cannot take the exemption on his or her own return. So a child who is eligible to be claimed as a dependent on a parent's return, may not take a personal exemption on his or her own return.

### THE STANDARD DEDUCTION MAKES A COMEBACK

The Tax Reform Act brings back the standard deduction that you may remember from those days before the "zero tax bracket." For 1987, the standard deduction is \$2,540 for singles and \$3,760 for married couples. For those 65 or older or blind, the standard deduction ranges from \$3,000 for single filers to 15,000 for those married and filing jointly. And those who are 65 or older or blind get an additional deduction of \$600 for married filing jointly or separately and \$750 for a single or head-of-household taxpayer. As a result of the higher standard deduction, millions of taxpayers are likely to claim the standard deduction rather than itemize.

For a complete explanation of the new tax bill, request a copy of IRS Publication 920, "Explanation of the TRA of 1986 for Individuals." But because each person's tax situation is different, the Michigan Association of CPAs recommends that you consult with a tax expert on specific questions concerning your taxes.

## All News Articles And Classifieds Due By 10 A.M. Tuesday

**Treat Yourself!!!**  
Join Our Gourmet Coffee Club  
BUY 10 LBS. AND GET ONE FREE  
**The Village Shoppe**  
134 East Main St. Phone 428-9640 Manchester, Mich.  
Monday-Saturday 10 am-5 pm Sunday 12 Noon-5 pm

**True Value** HARDWARE STORES  
**BARGAIN OF THE MONTH**

**NORTHERN**  
**8.99** While Supplies Last  
Moist Heat Heating Pad relieves sore joints and muscles all over the body. And it can be set to a special moist heat that is more penetrating and soothing for little aches and pains. With 3 heat settings, sponge pad, washable cover for easy care. 1987  
QUANTITIES LIMITED

**Kleinschmidt True Value Hardware**  
19860 Sharon Valley Road Manchester, Michigan  
Phone 428-8337  
Monday-Saturday 8 am-6 pm Sunday 10 am-4 pm

**EF Hutton**  
Thomas A. Gorney  
Financial Consultant  
313-428-8796  
517-263-8570

**ALUMINUM RECYCLING**  
TOP PRICES PAID FOR ALUMINUM SCRAP & ALL NON FERROUS METALS  
**Jackson Fibers Co.**  
(517) 784-9191  
1417 So. Elm St.  
1 blk. North of High St.  
Jackson, Michigan

**Norm Walz & Son Construction**  
Manchester, Michigan  
NEW HOMES  
REMODELING  
ADDITIONS  
GARAGES  
SIDING  
DECKS  
Custom Built Cabinets  
428-7109

**BACK DOOR PARTY STORE**  
500 Ann Arbor Street Phone 313-428-9287 Manchester, Michigan  
Now At Back Door Party Store  
**MICHIGAN 1010**  
Instant and Daily Lottery Tickets  
UNION 76 GAS Full Service and Self Serve  
**Lots of Wine Specials**  
COORS AND COORS LIGHT 24 Pack Cans Plus Deposit **\$9.99**

**Michigan Veterinary Clinic, P.C.**  
**VERA L. KLUWE, D.V.M.**  
313-428-8365  
Large and Small Animal Surgery and Medicine 18901 Sharon Valley Road  
Appointments: 9 AM - 9 PM Monday through Saturday Manchester, Michigan 48158-0025

**CHEVROLET**  
A GOOD SELECTION OF NEW and USED CARS ON OUR LOT  
**TIRB CHEVROLET CO**  
131 ADRIAN STREET MANCHESTER, MICHIGAN  
PHONE 313-428-8212 OR 313-428-8492  
MON 7:30-8 TUE 7:30-6 WED 7:30-8 THUR 7:30-6 FRI 7:30-6 SAT 7:30-12 Noon

**your advertising dollars do better in**  
**the classifieds**

**MANCHESTER ANTIQUE MALL** - 35 Dealers. Open 7 days, 10-5, 116 E. Main 428-9357. tfn

**FIELDER PAINTING** - Interior and exterior. Free estimates. Senior Citizens discount. Phone 428-8506. tfn

**PRIME COMMERCIAL SPACE** - For rent in the Manchester Mill. Contact D.E. Limpert. Phone 517-456-4151. tfn

**MICHIGAN PEAT SALES** - Black dirt for sale, \$10 a yard delivered. Fast delivery, 428-9664. tfn

**C & B PAINTING** - Interior-exterior-free estimates. Contact Charles E. Benedict. Phone 428-7136 or 428-7416. tfn

**PIANO TUNING & REPAIR** - Qualified technician - Ron Harris, 475-7134. tfn

**LOST OR FOUND A PET?** - Call Humane Society, 662-5585. tfn

**JERRY WHITAKER EXCAVATING** - Dozer, backhoe, dragline and 10 yard truck. Drain fields, basements, driveways, sand and gravel. Call 475-7841. tfn

**LITTLE WACK EXCAVATING** - Licensed and Insured. Basements, drainfields, digging, bulldozing, trenching, black dirt, sand gravel. Paul Wackenhut, 313-428-8025. tfn

**COPY PAPER AVAILABLE** - We have copy paper in sizes 8 1/2 x 11, \$4.75 for 500 sheets. 8 1/2 x 14, \$5.75 for 500 sheets. The Manchester Enterprise. tfn

**OVER NIGHT** - Accomodations at the Clinton Hotel, 104 W. Michigan Ave. Dining and full service bar. 517-456-4151. tfn

**FOR RENT** - Office space on Main Street. Call 428-8173. tfn

**CORKEY D'S DELI** - Homemade Ice Cream & Waffle Cones - Sandwiches - Subs - Baskets - Burgers - Fries - Party Trays & Salads - Baked Goods of all kinds, phone ahead - 428-9216. tfn

**VILLAGE HAIR FORUM** - 201 East Main, Old Mill 428-7684. tfn

**SELF STORAGE** - Unit for rent in the village, 428-7173. tfn

**MERRIMAN INSULATION** - Free estimates. Blown-in cellulose, professionally installed. George Merriman, phone 517-592-5527. tfn

**HYPNOTHERAPY** - Smoking, weight, stress etc. Terri White RN MS Ann Arbor 994-4644. It works! tfn

**EXPERIENCED HOUSE-keeper** Wanted, 30 hours/week, some babysitting, references required. 428-9150 tfn

**EXPERIENCED MATURE** live-in babysitter wanted 24 hours/day - 8 days in March for 5 children, 9 months to 7 years. References required 428-9150. tfn

**WANTED** - Standing Timber - saw logs or veneer. Buskirk Lumber Co. 517-661-7751. tfn

**WALKOWE'S HOME IMPROVEMENT COMPANY** - Phone 313-428-8468. Seamless aluminum gutters for low prices and dependable service. tfn

**MANCHESTER K OF C HALL** - Available for wedding receptions, parties, meetings. Hall rental \$165 includes cleaning; use of kitchen \$25. Catering available. For further information call 428-8393 or 428-8886. tfn

**MATURE PERSON** - For day shift - Sales person. Apply in person, Video Choice. tfn

**CHELSEA GREENHOUSES** - 7010 Lingane Road, Chelsea, Michigan. 475-1353-54 or 475-9813. Flowers and plants for every occasion. We specialize in wedding flowers to fit your budget. We are as near as your phone and we welcome your business. tfn

**COURTS VILLAGE** Pharmacy in downtown Clinton will ship your packages by UPS. Also senior citizens discount on prescriptions, greeting cards and Russell Stovers candy. tfn

**HORSES** - Buying and Selling draft horses, buggy horses, riding and saddle horses. Good selection of ponies, also western and English saddles. Larry Salyer, 428-7389 after 4:30 p.m. 4-14p

**ACRYLIC NAILS AND HOT OIL** manieures at Marti's. 3-3

**WANTED TO RENT** - good grass and water for horse for summer. Call Larry Salyer, 428-7389. 2-4p

**1981 TOYOTA PICKUP 5 SPEED** long bed, diesel engine, rebuilt transmission and new brakes. Runs well, \$950, 428-7036. 2-4p

**WANTED WALNUT & OAK** timber. Call Frank Risner 616-642-6023 2-4

**3 BEDROOM TRI-LEVEL ON** nearly 4 acres, some wooded, barn with electricity and water, 1-1/2 miles to downtown. For more information please call Hank Peiter, Charles Reinhart Company, 665-0300 or 475-7942. 2-4p

**CHELSEA MCDONALDS** IS accepting applications for a hostess position; starting pay \$4.50. If interested contact Kim, 475-9620. 2-4

**ODDS AND ENDS** - Brass table lamps, \$58; 34 inch roll top desk, \$198; maple end tables, \$98; used Conover sofa, \$150; used green vinyl sofa, like new, \$98; used wing back sofa, green nylon, \$35; 9 foot x 10 foot Berber nylon remnant, \$39; 10 x 24 tight loop nylon tweed, \$59. Lodi Town & Country Furniture, 662-9372 1-28

**DO YOU LIKE WORKING WITH** children? Ages 15 months to 5 years. Lisenced group daycare has part-time position available Tuesday - Wednesday - Friday. Hours 8 a.m. - 5 p.m. Call 428-7704. 1-28p

**1986 FORD ESCORT**, 4 door, 5 speed, big fuel saving diesel. Cloth interior, AM-FM stereo. Nice clean car, original owner, must sell \$3900 or best offer. 313-429-0878. 1-28

**IMMEDIATE OPENING** available for an accounting clerk. Qualified applicant will have a minimum of 2 years of accounting/clerical experience. IBM 38 experience a plus. Submit your resume to: Johnson Controls, Inc., P. O. Box 129, Manchester, MI 48158, Attention: Salaried Personnel. 1-28

**MAINTENANCE MAN** wanted. Experience preferred. Knowledge in electrical, plumbing, carpentry, welding and boilers necessary. Apply to: Rusty LeFurge, Manchester Community Schools, 710 East Main, Manchester, MI 48158. Application deadline: February 1, 1988. 1-28

**FOR SALE: LAYING HENS** 475-7628 1-28

**SIERRA ANALYTICAL AND** Consulting Service has openings for Field Technicians. Positions are full time with over time. A scientific or related degree (can be in progress) is required. Also you must have reliable transportation. We are an EOE. Send resume to 7005 Jackson Road, Ann Arbor, 48103

**FOR SALE - 85 BRONCO II** loaded, extras, very clean. \$9500.00 or best offer. 428-9255 p

**FOR SALE - 1976 3/4 TON FORD** Pickup, 390 automatic with factory-made diamond-tread flat bed with gooseneck hook-up, good tires, stereo. \$1500. Call 517-536-4110 after 5. p

**IMMEDIATE PART-TIME** positions available with World-book-Childcraft. Contact Sarah McCutcheon at 517-431-2659 6-9 p.m.

**FOUND - WHITE MALE CAT** with black tail and markings near Horning and Watkins Road. 517-536-4058. p

**TEACHERS & SUBSTITUTES** - major publishing company has part and full-time positions open locally. Call Ann Welch 968-5049. 1-28

**CLASS OF 1973** - is planning it's 15 year reunion and needs help locating the following people: Bonnie Brown, Mike Gonyer, Bob Griffith, Doyle Keasal, Adrian Kniahnycky and Joni Livermore. Please call Liz Wallace at 428-7841 or write to me at P. O. Box 503, Manchester, MI 48158 p

**FOR RENT - ONE BEDROOM** apartment in downtown Manchester. Available around February 3rd. 428-7422 days or 428-7639 evenings. p

**RUNNER'S BARGIN: 1 NEW** pair women's size 8 "Nike Airmax", worn several times. \$55. Days 428-9146 p

**MARTI'S & TOP DRAWER** Apparel are having a "Pre Valentine Sale" January 28 & 29 with 20% to 70% savings on winter and new spring clothes. Choose a valentine for yourself or someone special. p

**Pets**

If your pet has a sensitive digestive tract, avoid giving him oily or greasy foods, as well as those with a high fiber content. Examination of the pet by your veterinarian will help determine whether a special diet is indicated. Presented in the interest of better pet care by:

**Vera L. Kluwe, DVM**  
 Michigan Veterinary Clinic  
 230 East Main Street  
 Manchester, Mich, 48158  
 Phone 313-428-8365

Classified advertising will be \$2.50 minimum charge for 20 words or less and 5¢ for each additional word. All classified ads are payable in advance, if not a billing charge of 50¢ will apply. Deadline for classified advertising will be 10 A.M. Tuesday for that weeks publication.  
 Cards of Thanks will remain at \$4.00 minimum charge for 50 words or less with a charge of 5¢ for each additional word.

**KEITH'S BARBER SHOP** - 8:00-5:00 daily 7:00-12:00 Saturday, closed Monday. For appointment any other time 428-8584.

**Cards of Thanks**

I would like to thank my sisters in Beta Sigma Phi, Manchester, for all the great help and support they gave on the Muscular Dystrophy dinner. It makes me PROUD to have such wonderful sisters!

I would also like to thank your fine families for their help.

Your sister, "The Boss"  
 Dawna

Lambda Nu and Xi Epsilon Iota sororities would like to thank the Manchester community for their support in making our first Muscular Dystrophy dinner a great success!

We'd also like to thank Ron and Jan Whittington; Keith, Judy, Gary, John and Larry Reed; Ann Hayden; Helen Nickerson; Emanuel Church; The Manchester Enterprise and the Manchester IGA.

Without your help, we wouldn't have been able to reach our goal. \$1,061 was raised by this project and given to the Muscular Dystrophy Association.

Thanks again to All!

**WE MOVED**  
 Feldkamp Tire is now located at:  
 Gross Equipment, 9685 West Michigan  
 (John Deere Dealer)  
 Saline, Michigan 48176

**GOOD YEAR** 769-7766  
 429-2594

**ATTENTION SENIORS!**

Come in and see our complete selection of graduation supplies

**Announcements  
 Name Cards  
 Party Invitations  
 Memory Books  
 Souvenir Announcement Covers  
 Graduation Jewelry  
 Party Supplies  
 (Napkins, Paper Plates & Cups)  
 Thank You Notes**

We're your one stop dealer

**The Manchester Enterprise**  
 150 East Main St.  
 Manchester, MI 48158

**Money For College And A Job**

For many students from low-income families on welfare, higher education seems like an unreachable dream. There have been few incentives to find a job, but those days are over.

A new program operating through state government will try to break the welfare cycle. It offers real rewards for students who finish high school and want to continue with college or who stick with a job once they have graduated from high school. What does this mean to you?

Money...as either a cash award or in the form of community college and university tuition. This plan encourages you to finish school and make the most of your talents, and go on to college if you want. It also offers cash if you simply graduate from high school, and stay in an unsubsidized job for at least two years.

Beginning with the June 1988 high school graduates, young people living under the federal poverty line or on welfare who graduate from high school before they are 20 years old will receive free tuition to your local Michigan community college.

After completing community college within two and a half years, students can get an additional \$2,000 from the state toward tuition at a four-year institution. Medicaid coverage will be provided to students who are AFDC recipients or former AFDC recipients who have no other health insurance.

This new program also offers a cash reward for finding a job and keeping it.

Students in families which have received AFDC three of the last

four years can receive a free \$1,000 payment from the state. The only catch: They must graduate from high school before turning 20, find an unsubsidized full-time job (at least 35 hours per week) within one year, and keep it for two years. Medicaid coverage will be provided to people who do not receive health insurance as part of their job benefits. For more information see your high school guidance counselor or community college counselor.

**STRIKES -N- SPARES**

**B&G BOWLING**

Poland-Rentz	23	9
Strock-Hasset	21	11
Brown-D. Parr	20	12
Trinkle-Nickerson	16	16
Mahrle-Tracy	14	18
Bisard-Paul	14	18
Feldkamp-Bristle	14	18
Henry-Mast	13	19
L. Wacker-Nelson	13	19
T. Wacker-K. Parr	12	20
MENS HIGH GAME		
Darroll Trinkle	180	
Bob Poland	175	
Dan Hasset	173	
MENS HIGH SERIES		
Darroll Trinkle	483	
Bob Poland	461	
Larry Wacker	458	
WOMENS HIGH GAME		
Carol Rentz	173	
Diana Parr	163	
Diana Parr	152	
WOMENS HIGH SERIES		
Diana Parr	447	
Carol Rentz	431	
Tina Swartout	402	
TEAM HIGH GAME W/HDCP		
L. Wacker-Nelson	813	
Poland-Rentz	797	
Strock-Hasset	796	
TEAM HIGH SERIES W/HDCP		
Bisard-Paul	2316	
Strock-Hasset	2309	
Feldkamp-Bristle	2300	

**Enter 1988 Beef Cook-Off**

Now you've got a choice of categories! The Michigan Beef Cook-Off's still the same, it's just getting better. You can still enter your favorite conventional beef recipe (using any cut) in the regular indoor contest; however, you can also enter the Regional Barbeque Category and the Regional Microwave Category.

You could be a winner in one of these categories and win a trip to the National Beef Cook-Off in Jackson, Mississippi. There's big prize money to be won! The National Beef Cook-Off top winner will receive \$15,000. Over \$30,000 in prizes will be awarded.

All entries must be postmarked no later than April 1, 1988. Nine finalists will compete in the Michigan Beef Cook-Off contest on May 7, 1988 at the Westwood Mall in Jackson. In addition to winning \$500, the state winner will win an expense paid trip for two to Jackson, Mississippi and represent Michigan in the National Beef Cook-Off.

Recipes in all three categories must contain a minimum of one pound of beef and not more than five pounds. Meat used must be exclusively beef and preparation and cooking time cannot exceed four hours.

Contestants must be 18 years old or older, with non-professional food status. Anyone who has owned one or more head of beef or dairy cattle (or who lives in a household where any person has owned cattle) is ineligible. For a complete set of rules plus an entry form, write to: Michigan Beef Cook-Off, 815 Coolidge, Suite 307, Lansing, Michigan, 48912.

**GUTTER DUSTERS**

Goodell & Preston	24.0	12.0
Steele & P. DuRussel	24.0	12.0
Ross & D. Roberts	22.0	14.0
B. Smith & R. Schaffer	21.0	15.0
Fleck & Hanewald	20.0	16.0
Jose & Stockwell	18.5	17.5
Sutton & J. Schaffer	17.5	18.5
Sannes & Bruestle	17.5	18.5
J. Roberts & Evisizer	16.0	20.0
M. Smith & Wallace	14.5	21.5
Kelley & D. DuRussel	13.5	22.5
M. Roberts & B. Roberts	7.5	28.5

**MANCHESTER WOMEN**

Emerson & Wesch	360.5	269.5
Floral Fntsy & Gifts	338.5	291.5
Dacel's Garage	329.5	300.5
Weatherwax Drugs	322.0	308.0
Manch. Town Ldry.	319.5	310.5
Tri Cnty Pty Store	314.5	315.5
Columbia P & H	308.5	321.5
Spear Realtors	304.5	325.5
Black Sheep Tvn	286.5	343.5
Bklyn Chiropractic	286.0	364.0

**SEE US FOR Graduation Announcements**  
 Graduates see our fine selection of graduation announcements and accessories!

**CUTTING THE CAKE IT MUST HAVE BEEN FATE THEY'RE STILL GOING STRONG IN EIGHTY-EIGHT**

**HAPPY 25th "Donna and Jim"**

**Super Shark Puzzle**

by Grant Skinner  
 Sheldon Shark has a headache. His shark tank home at the aquarium is in a jumble. Can you help him straighten out this mess?  
 All the names of the sharks listed at right can be found in the "tank" below. Draw a line through each shark name that you find. The same letter may be used in more than one word. Remember, the names can be read up, down, forward, backward, or diagonally.  
 The sharks' names use all but ten letters.  
 Starting at the top of the puzzle, write those unused letters on a piece of paper. They'll spell out a message to you from Sheldon. When you're done, you can look under the clam to check your answer.

ANGEL	MEGAMOUTH
BASKING	NURSE
BLUE	SANDBAR
BONITO	SAND TIGER
BULL	SEVENGILLS
DUSKY	SMOOTH DOGFISH
GREENLAND	SOUPFIN
HAMMERHEAD	SWELL
HORN	THRESHIER
LEMONG	WHALE
MAKO	WHITETIP

SEVENGILLS  
 WPITETIHWHO  
 ERDUSKYSASU  
 LAEULBLMDIP  
 LBULLMNRFF  
 EDVAUGAEMGI  
 MNENRLGERON  
 OAAHNIGEBDB  
 NSEETAHNAHO  
 SAEDMSOUSTN  
 DRNOEHKRKOI  
 GAURARASIOI  
 STHORNMENMO  
 HTWHALEKGS

**The Manchester Enterprise**

**The Manchester Enterprise**

**Notice of Public Hearing Township of Sharon Planning Commission**

Pursuant to Article 21 of the Sharon Township zoning ordinance a public hearing will be held on February 10, 1988, at 7:30 p.m. EDST in The Sharon Township Hall, 18010 Pleasant Lake Road, Manchester, Michigan. This hearing is to consider a request for a special use permit which would allow Bacon Acres, Inc., to operate a Piggerie or Feedlot at the following locations (1) 18321 Lehman Road, Manchester; a part of the N.W. 1/4 of Section 3, T3S, RBE, Sharon Township. See attached legal description. (2) 3260 Sharon Hollow Road, Manchester, the N.E. 1/4 of Section 17, T3S, R3E, Sharon Township.

The property is owned by Steve and Marlene Rose, 18321 Lehman Road, Manchester, Michigan.

Written comments may be directed on or before February 10, 1988, to: Sharon Township Planning Commission, Ed Hurst, Chairman, 17233 Grass Lake Road, Grass Lake, Michigan, 49240.

# MIDWEST FORD



MANCHESTER, MICHIGAN

## 88 SELLABRATION

REBATES — NO DOWN PAYMENT — REBATES

### Ranger

\$500.88



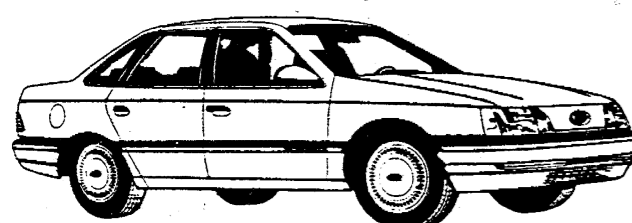
### ESCORT

\$400.88



### TAURUS

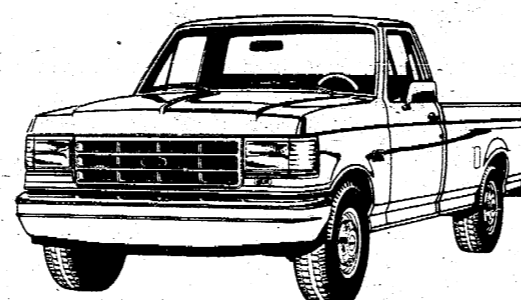
\$750.88



84★  
**FORD ESCORT**  
88¢★

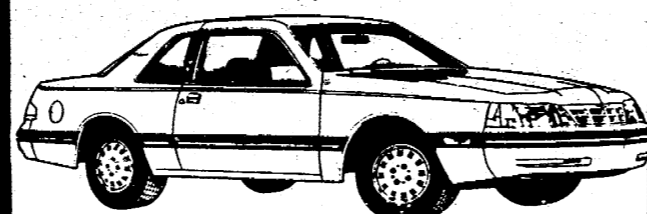
### F-150

Up To \$500



### Thunderbird

Up To \$1000



★Every Car Purchased Will Receive 1 Chance For Drawing To Purchase 84 Escort. Drawing Will Be Held At 5 P.M. March 5, 1988. You Must Be Present To Win.

**FREE!!**

Free Lifetime Oil & Filter Change On Any New Car Purchased

24 Hour Wrecker Service

**FREE!!**

Free 100 Gallons Of Gasoline If We Cannot Beat Your Best Deal

WE REFUSE TO BE UNDERSOLD

# MIDWEST FORD

510 W. Main St, Manchester, Mich.

AC 313-428-8343 Collect



# THE MANCHESTER ENTERPRISE

30¢ COPY

121ST YEAR VOLUME NUMBER SIXTEEN

USPS 327-460

THURSDAY, FEBRUARY 4, 1988

## Garlick Ends Term As Interim Manager

By Becky Doyle

Emory Garlick presented his last report as Interim Village Manager last Monday night. His report detailed to Council 15 points on which he had been working, some of which will now be followed up by Connie Schaffer, Village Clerk. The 16th and final point was a two word wish for the future of the Village and Council members - "Good Luck".

It looks as if they may need it. In a separate document, Garlick also discussed legal opinions regarding the separation of elected positions in the village from hourly staff positions. The office of Treasurer is currently a 10 hour per week position, and the Treasurer is also currently employed by the village for the

remaining 30 hours.

According to Garlick's report, this situation is not allowed under law, and steps will have to be taken to clear it up.

Council made no decision regarding the problem, but did discuss alternatives.

Garlick also submitted a report to Council rating the streets in Manchester according to state of disrepair and made several suggestions on how the Act 51 monies could be used to maintain them. His report was well received by Council and he was commended for the fine job that he had done.

There has been no action taken to replace Garlick at this time. However, Garlick has said he feels much of the office work could be handled by the Village Clerk, at least on a temporary basis.

## Manchester Family Service Annual Meeting

The annual meeting of Manchester Family Service is Monday, February 15, at the Manchester Township Hall on Macomb Street at 7:30 p.m. This is a public meeting open to all residents of Manchester School District at which the agency's activities for the past year are discussed.

Three of the nine board members are elected each year for a three year term each. This year there will be a fourth member to be elected for a one year term to fill a vacancy. The nominating committee is Mrs. Jean Sauter (428-8445) and Mrs. Jean Wheeler (428-8790). Please call either of them if interested in working on this service agency board or if you have someone to put in nomination. Nominees must give consent to serve when their names are placed in nomination.

Officers of the agency are elected at a meeting of the board following the annual meeting. Refreshments will be served.

## Postal Service Adjustments Announced

Detroit's Field Division General Manager/Postmaster John M. Horne announced that the retail operations of all post offices in the Detroit Division will close for a minimum of one half day each week beginning February 13.

Also, beginning February 14, Sunday collection from street collection boxes will be discontinued, except Express Mail collection boxes. Horne cited compliance with the recently adopted Omnibus Budget Reconciliation Act as the reason for the adjustments in service.

"The Act requires us to reduce operational spending nationally by \$160 million this year, and \$270 million next year," Horne said. "It requires that we accomplish this

in a way that will leave identifiable "audit trails" that the Government Accounting Office can see."

Horne explained that a third of the savings will come from adjustments in service. "However," he added, "we have structured our plans to provide maximum flexibility in achieving these savings."

To accommodate customers during the days lobbies are closed, Horne said that self-service postal centers will be available for use, as well as various contract stations located throughout the Division. The new hours of operation including the location of contract stations in the immediate area will be posted in each post office.

## Wolverine Council's Winter Event

In spite of the lack of snow, the Wolverine Council's Winter Event was held on January 23rd. The Cub Scouts learned about winter camping, ice fishing, and participated in outdoor activities. January also completed our Popcorn sales. The annual Popcorn sale is the major fundraiser for the Pack. Our Pack sold the most Popcorn of all Packs in our District and was the second highest in sales in the Council. Our top 5 Cub Scout salesmen were: Brad Gere, Joe Tobias, John Ross, Mark Branch and Bradley Kemner.

Pack 421, along with Cub Scouts nationwide, will celebrate Scout Anniversary Week February 7-13. This week commemorates the beginning of Scouting in the United States. In Manchester area stores the Cub Scouts are proudly displaying posters and crafts that they've made. The culmination of the Anniversary celebration is the annual Blue & Gold Banquet for all Cub Scouts and their families.

Awards presented at the January Pack meeting: WOLF BADGES: Mikey Meranuck, Justin Turk, Randy Burkhardt, Nicholas Kozar, Herb Mahoney, Bryon Kester and Landon Burkhardt. ARROW POINTS: Mikey Meranuck (1 gold), Nicholas Kozar (1 gold), Herb Mahoney (1 gold, 2 silver), Patrick Chapin (2 silver), Danny Alber (gold, 1 silver).

## Hooray for the 100th Day



Ginger Peters and Jayme Haskins in Mrs. Little's second grade, are grouping tens and ones to record the number of days in school.

Thursday, February 4, 1988 is a very special day for students at Klager - IT'S THE 100TH DAY OF SCHOOL! Several class-

## Salt Mine Under City of Detroit

Manchester Enterprise February 15, 1923

Many Men and Heavy Machinery Take 1,000 Tons Daily From 1,000 Feet Below Surface

Below the slushy, unromantic streets of west Detroit at a depth of 1,100 feet is a jeweled labyrinth of glistening caverns winding a distance of 20 miles.

This maze of crystal corridors wide as ordinary streets and 25 to 35 feet high spreads out from the foot of a shaft in more than three times as deep as the First National Bank building is high, says the Sunday News.

It will probably be news to many residents of Detroit to hear that the city has within its limits a mine with spacious chambers and vaulted passageways daily in large-scale operation. The product of this mine is salt.

This mine however produces only rock salt. Except for a simple crushing operation, the mineral is put on the market exactly as nature made it. The mine is located just beyond the Fort street bridge across the River Rouge. Some idea of the size of the mine can be obtained from an estimate given by Joe Payton, the mine foreman. He said if all the dug-out passages were placed end to end to form a continuous tunnel, its length would be more than 20 miles. Two gangs of men do nothing but lay track for the narrow-gauge electric railroad that hauls in the

salt from points where digging is in progress to the foot of the shaft.

Once in the mine, the visitor suffers no hardship nor inconvenience. The mine is absolutely dry and from its very nature clean. The corridors are 40 or more feet wide and four or five times as high as a man is tall. One could easily imagine he was walking on the streets of a great city at a late hour on a moonless night. No stooping or crawling is necessary. The view is not broken by unsightly timbers; as far as one can see are continuous white arches and domes.

The vein of salt being worked is 35 feet through. Holes are drilled into the face of the formation, dynamite is inserted and exploded. An electric "steam shovel" follows up the blasters, loading the large salt chunks into the cars of the dinky railroad. Gangs of miners also assist with picks and shovels to get out the daily production of 1,000 tons.

If you bored a well in any back yard in Detroit, you'd strike salt down about 900 or 1,000 feet. Most of the salt and chemical companies run pipes down to the deposit. In these water is pumped down to the salt stratum and the brine is then pumped out and evaporated, thus is made table salt.

The salt from the mine is allowed to remain in its original state and is only crushed. Stock

## Wildlife Recovery Presentation



Fourth graders examine the claws of a horned owl. Mr. Joe Rogers from Wildlife Recovery presented the assembly to all Klager students in grades 1 thru 4.

The Manchester PTO sponsored the Wildlife Recovery Presentation to Klager students Friday, January 29, 1988. Two classrooms joined together for each presentation. Mr. Joe Roberts brought with him a live vulture, a screech owl, a red-tailed hawk and a horned owl that had been injured and could not be returned to the wild. The Wildlife Recovery is a hospital for injured animals located in Mount Pleasant.