

# Money Management

## Can Two Live As Cheaply As One?

(Prepared by the Michigan Association of Certified Public Accountants.)

Probably not, says the Michigan Association of CPAs. But, chances are most newly-married couples really wouldn't know.

That's because they haven't devoted enough time to financial planning. Many young couples think that financial planning is something for the very rich and very old. But the truth of the matter, say CPAs, is that financial planning should be an integral part of every family's life right from the beginning.

In planning their financial future, there are some financial matters a couple should consider even before exchanging rings-like questions about the ownership of property brought into the marriage. If one partner enters the marriage with not much more than a sleeping bag and a guitar and the other has an investment portfolio worth \$300,000, a legally binding contract, often called a premarital agreement, can outline what each partner owns and what will become of the property in case of divorce or death.

As a married couple, your tax liability is one of the first matters you'll want to examine. If you're both working, CPAs say you can count on your marriage to put you into a higher tax bracket. And since the Tax Reform Act eliminated the so-called marriage penalty deduction, beginning in 1987, two-earner couples will no longer be able to deduct a portion of one spouse's income. In most cases, married couples pay less tax by filing jointly but, in certain circumstances, filing separately may reduce your total tax bill. A CPA can help determine which filing method will better suit your particular situation.

Setting up a budget forms the groundwork for your financial plan. But before undertaking this

task, it is important that both partners work together to formulate short-and long-term financial goals.

You need to know where you want to go before you can plan how to get there. So give careful thought and discussion to determining your objectives.

Although there are countless ways to set up a budget, the basics of every budget are the same. There are two sides - one for the money coming in and one for the money going out. But the most important thing to keep in mind is that, to be successful, a budget must reflect your lifestyle. If you both love to ski, by all means, budget for it, piling down expenses in some other area, if necessary. If your budget is too rigid, you probably won't stick to it.

These days, when most married couples have two incomes, the 'if and 'how' of merging two paychecks is another question you'll have to resolve. Some couples prefer to pool all their income together, using one source from which to pay bills, save money and draw spending cash.

Others prefer to maintain two separate accounts with each partner taking responsibility for certain expenses. Maybe he pays the mortgage and utility bills while she takes care of food, household expenses and charge payments. Still others like to set up a joint account for fixed expenses and separate accounts for other expenses and individual use.

Whatever way you decide is best, each spouse should maintain at least a small separate account as well as some form of credit in his or her own name. If you find that you and your partner have duplicate charge accounts or just too many, you may want to close some. But when doing so, be sure to structure your credit accounts so that each of you will have a credit history to fall back on in the event of a divorce or a spouse's death.

Although, in the past, you may not have given a lot of thought to insurance, marriage tends to get you thinking about the effects of loss, disability or death. You'll want to be sure you have adequate insurance - both on your lives and on your home or apartment.

You'll need to review the many types of life insurance that are available before determining what is best for your circumstances. "How much do we need?" and "How much can we afford?" are the two key questions you'll want to address. Cash value policies, like whole life or universal, allow you to build up savings but cost considerably more than term insurance which gives you the greatest amount of protection at the lowest cost. Consider, too, your need for disability insurance, which provides you with an income should you be unable to work because of sickness or injury. In making decisions on insurance, you have to balance your needs with your resources.

Homeowner's insurance and its equivalent for renters, protects your home and its contents. The amount of coverage you should have depends on the replacement cost of your home and your personal possessions. Like life insurance, your choice of homeowner's insurance will require you to study your particular situation and compare the policies available.

Overlapping employee benefits is an area many new couples overlook. If both partners work, there's a good chance that both employers provide health and other insurance benefits. By examining both policies carefully, you can determine whether it might be advantageous to merge some benefits. If both policies provide free or low cost coverage, it might be best to keep both since many plans allow for coordination of benefits. This

## AMA, Alcohol And Advertising

means that after you submit your claim to the primary plan, you can submit the claim, along with a record of how much the first plan paid, to the other plan and you'll be reimbursed for some or all of the remaining amount. But if the cost of health insurance to one partner is high and your medical expenses are generally low, you might save by dropping that coverage and covering both of you under the plan that costs the least.

To avoid duplicate coverage, many companies offer cafeteria style benefits which allow employees to pick and choose the benefits they need. For example, if your spouse's company provides health insurance for both of you at a reasonable cost, you might choose to sign up for a dental plan or additional life insurance with your company.

CPAs suggest that financial planning in the early years of your marriage can lay the groundwork for the financial planning process that will take you through your marriage on firm financial footing.

According to Greek historians, kissing began when menfolk wanted to know if their womenfolk had been sipping wine.

In their annual meeting on June 19, 1987, the Board of Trustees of the American Medical Association, Chicago, developed five recommendations concerning alcohol advertisements:

- \* More research should be conducted on the effects of alcohol advertisements on alcohol abuse.
- \* Alcoholic beverage producers and distributors should stop directing advertisement toward youth.
- \* Advertisers and broadcasters should eliminate television depictions of responsible alcohol use.

- \* Labels focusing on hazards of alcohol consumption and abuse should be placed on alcoholic beverage containers.
- \* The alcoholic beverage industry should label products as to ingredients, preservatives, and ethanol content by percent rather than proof.

"Report Q", E.M. Steindler at the Department of Substance Abuse, American Medical Association, 535 N. Dearborn St. Chicago, IL 60610. NPN Network News November 1986 Volume One, Number 5

# THE MANCHESTER ENTERPRISE

25¢ COPY

120TH YEAR VOLUME NUMBER 41

USPS NO. 327-460

THURSDAY, JULY 30, 1987

## Village Okays Sale Of \$500,000 Bond

\$200,000 Authorized for Industrial Park

At a regular Village Council meeting held on July 20, officials authorized sale of \$500,000 in general obligation bonds. Voters had approved the bonding proposition at a December 9, 1986, special election.

But did the voting public really understand the issues? Awash in a flow of pre-poll publicity, the \$500,000 bond issue that finally emerged read simply "Shall the Village of Manchester, Washtenaw County, Michigan, borrow the sum of not to exceed Five Hundred Thousand Dollars (\$500,000) and issue its bonds therefore in one or more series for the purpose of defraying the cost of improvements to the Village's water and sewer systems?"

Most of the mailings contained an explanation of only parts of the proposed expenditures, or listed all the expenses on both issues in one budget, and none were clearly defined with respect to which funds were spent on what "improvements."

Improvements to the Industrial Park (now a large field of brown grasses) would be to run water and sewer lines the length of the field. It is expected that the cost of this will be just under \$200,000, or about 40% of the proceeds from the bond sale. Questions have been raised as to whether the extension of sewer and water services to the far end of the Industrial Park could really be considered an "improvement" of the existing system. Also, minutes of the July 1, Special Meeting state that "Limpert offered a motion, supported by Harris, to sell enough bonds to run water and sewer out to the Industrial Park..." If the Council has changed its mind since this meeting, it is not recorded in the minutes of any subsequent meeting.

At the July 6, regular meeting, Council had approved additional expenditures of almost \$200,000 for the following improvements:

- |                                  |                              |
|----------------------------------|------------------------------|
| 1) Macomb Street Water & Sewer   | 34,500                       |
| 2) Water system valve purchase   | 22,000                       |
| 3) Water meter replacements      | 12,409                       |
| 4) Treatment plant filter rehab. | 43,292                       |
| 5) Tank painting                 | (est. at 20,000 6/86) 23,130 |
| 6) Ann Arbor Street sewer repl.  | (est. at 40,000 6/86) 44,000 |
| 7) Industrial Park design        | 18,000                       |

This represents a total of \$197,331, and at that time Council deleted a project for replacing mains on East Main, which had been estimated at \$100,000.

However, during the July 20, meeting, a new estimate from the engineering firm of McNamee, Porter and Seeley listed increases in the items as follows:

- |                                  |                    |
|----------------------------------|--------------------|
| 1) Macomb Street Water & Sewer   | 35,000             |
| 2) Water system valve purchase   | 22,000             |
| 3) Water meter replacements      | 12,409             |
| 4) Treatment plant filter rehab. | 44,000             |
| 5) Tank painting                 | (up 14,000) 34,000 |
| 6) Ann Arbor Street sewer repl.  | (up 20,000) 60,000 |

The increases bring the total, without the design of the Industrial Park, to \$209,000. In addition, the engineering firm listed contingencies, planning expenses, engineering services and legal and fiscal services totaling \$96,000 which brings the grand total to an even \$500,000 (including the \$195,000 estimate for the Industrial Park utilities). Is it a coincidence that this figure is exactly the amount that was asked for in last year's bond proposal?

The tower painting, which has increased by 70% since the estimate 12 months ago, is now in progress.

Council is searching for new engineers, but the questions that are raised by these maneuvers are whether the taxpayers - who have passed their bucks to the local government - are really aware of how the money is being spent; Why did the Village allow the water tank to be painted when the price was so much higher than the estimate? Will the Village officials allow the same thing to happen with the Ann Arbor Street sewer project?

At the present rate of 60-70% increase per year on estimates, improvements that were promised by 1988 could not possibly be completed without an additional bond issue or another millage increase. Will the voters condone that use of public funds?

## Sidewalk Sale-Art Fair Saturday, August 1st

Once again historic Manchester will close downtown Main Street for its 10th annual Street Fair on Saturday, August 1st, from 9:00 a.m. - 5:00 p.m. The merchants on Main will be having sidewalk sales along with many store bargains. Manchester Restaurants will be featuring food specials throughout the day.

## 100th Birthday August 6th



This is a Happy Birthday to Lizzie Tirb who will be 100 years old on August 6, 1987. She resides at 8001 E. Broadway, F.O.S. Box 608, Mesa, Arizona 85208, with her niece Ruth (Beuerle) Adams.

Lizzie's family came to the United States from Schalle, Westphalia, Germany, when she was 2 years old. She was the oldest of 9 children and has 2 sisters, Ida Finkbeiner of Ann Arbor and Olga Schaible of Stockbridge, who will be with her on her birthday. She had 2 sisters and 4 brothers who are now deceased.

Lizzie was a seamstress when she lived in Manchester. She would go to peoples' homes to sew clothes for them a week at a time or they would bring it to hers. She also did hem stitching. She still does alot of fancy work.

This is a "Special" Happy Birthday Wish for a very loved special lady.

## Fair Food Tent

The Food Tent at the Manchester Community Fair will once again be run by the Athletic Boosters. The proceeds from this year's Food Tent will go for further completion of the Athletic Complex.

Anyone wishing to help may call any of the following persons: Duane & Darlene Kuebler - 429-4239; Dawna Stockwell - 428-7821; Bill & Cindy Kemner - 428-8067 (10 a.m. - 1 p.m. shift); Sandy Smith - 428-7813 (1 p.m. - 4 p.m. shift); Carol Scherdt - 428-8086 (4 p.m. - 8 p.m. shift); Bob & Kathy Davis - 662-1367 (8 p.m. - 11 p.m. shift); Judy Mann - 428-8473 (5:30 a.m. - 10 a.m. shift); Betty Mann - 428-8090 (Pies); Debbie Alber - 428-8636 (German Dinner); Cindy Steele - 428-8909 (Swiss Steak Dinner); Bob Macfarlane - 428-7407 (Shredding Cabbage).

Any time you wish to donate will be appreciated. Last year the Food Tent was a big success because of the help and support from our Community.

## Village Residents Urged To Limit Water Use

Last week water pressure in the Village dropped to a non-existent level in some parts of town, while other areas experienced a noticeable drop. Many of the downtown businesses were without water Friday afternoon, as was Klager Elementary.

The low pressure is a result of the work currently being done on the water tower. The situation has been alleviated by the use of a temporary portable tower, which is on loan from Lane Northern in Lansing. The temporary tower was erected last Friday in response to the emergency situation.

In addition to the low pressure, residents are concerned about fire protection while the regular tower is inoperable.

Fire Chief Mike Scully responded to questions stating, "We can't get any water out of the hydrants, but we've got plenty of places we can draft water from the river. I'd say there are eight or ten places where we can still get water from the river."

Last Thursday, the water level dropped alarmingly in the River Raisin, and dropped further still on Friday until it reached its present low levels. Speculation is that the drop in water level is caused by irrigation upstream, or the dam at Sharon being raised, but no concrete reason for the sudden drop has been released. There is presently no way to govern the use of water upstream.

When asked what effect the low level of water might have on fire protection for the Village, Scully answered, "We don't think there is any real danger. I wouldn't say there isn't any concern, but there is no real danger." Scully believes

that the Fire Department could still handle most any fire without a problem, but admits that it might take a little longer to get the water to the fire. He also said he didn't believe the river could get much lower.

While repairs are being made to the water tower, residents in the Village have been asked to limit the non-essential use of water. Repairs are expected to be completed about August 1.

## Red Cross Bloodmobile

Thanks to 162 volunteer blood donors the Manchester Area Bloodmobile increased the needy blood supply by 147 pints. Only 9 people were deferred temporarily and 6 donors were turned away after being pre-screened. Thanks go to Mary Smith and Helen Hosmer, co-chairmen for the day for the fine scheduling and well chosen help. The American Legion Auxiliary was the host for the clinic.

It takes a lot of volunteers to run a Bloodmobile and assist the professional staff that comes from Southeastern Michigan Red Cross Blood Center. The volunteers were: Della Widmayer and Beth Clouse - Registration; TV Ludwick - Observer; Ruth Oates and Helen Rigg - Escorts; Polly Brokaw - Pre-Screener; Marge

Continued on page 5

## Crime And Abuse Workshop To Be Held

The Washtenaw County Sheriff's Department today announced they will stage a community wide workshop with the two main topics focusing on Crime Prevention and Child Abuse.

The program, for Manchester area residents, will be held August 17, at 7:30 p.m. at the United Methodist Church, 501 Ann Arbor Street, Manchester.

The Crime Prevention workshop will deal with the concepts of Neighborhood Watch, home security and property identification as well as personal safety, according to Det. Robert Randolph, Crime Prevention Specialist.

Detective Susan Andersen will address child abuse prevention and give tips on making your child safer. She will also explain the myths and facts of child abuse.

"So often individuals see things that appear strange to them or are suspicious of an incident or person, but don't bother to call the Sheriff's Department to investigate," says Sheriff Ronald J. Schebil.

(313) 429-4885 COUPON (517) 423-2148

Saline in the Saline Shopping Center

**1ST OPTOMETRY**

eye care centers  
Dr. Thomas Cunningham

DOES NOT APPLY TO OTHER DISCOUNT OFFERS OR PRIOR ORDERS

\$99 Daily Wear Soft Contact Lenses

\$10 OFF (with coupon) Prescription Eyeglasses

BLAKSMITH

A special thank you to everyone who helped make Heritage Day such a successful and memorable event.

Now we look forward to our Annual Collectibles Sale on Walton's Lawn, Saturday, August 1, 1987, 9:00 - 5:00.

Get your items ready and look for further details about this sale in next week's paper.

Officers and Board Members  
Manchester Area Historical Society

## ★ Household Auction ★

Saturday, July 25 at 1:00 p.m.

located at 5269 RENO ROAD, Pleasant Lake, MI

(Take M-52 north of Manchester 3 miles, then Pleasant Lake Road east 4 miles to Reno Road)

### Household Items

Pecan dining room set—includes table, hutch, and 5 chairs; base rocker, round wood table, bar stools, pool table, cue stick rack, pool cues, dart board, stereo with turntable, coffee tables, end tables, chairs, hassock, floor lamps, fireplace set, desks, dressers, tables, queen size bookcase, bed frame, 3 beds, wall hanging, electric fireplace, black & white TV, upright freezer, chest freezer, 2 refrigerators, bar refrigerator, utility table, stool, electric skillet, crock pot, miscellaneous glasses and dishes, Radio Shack answering machine, miscellaneous indoor plants and stands, remote control, many more miscellaneous items.

### Lawn and Garden Equipment

8 hp. Wheelhorse tractor, 36" mower with snow plow and chains, 2-wheel trailer, 5 hp. outboard motor, whiffle tree with pulleys, 13 pieces lawn furniture, 2 picnic tables, homemade barbecue, garden hose, porch bench.

### Antiques

2 side chairs, 2 beds, books, bottles, signs, fruit jars, chest of drawers, pictures.

### Motorcycles

'75 Honda 550, 4-cyl.; '72 cb 350 Honda; '71 350 Honda; Honda frame, parts for 350, 2-cyl. engines.

Many other items too numerous to mention.

TERMS: Cash or checks with proper I.D.  
Not responsible for accidents or items after sold.

AUCTIONEER'S NOTE: This is a good, clean sale with many quality items.

Jack and Patsy Evilsizer, Owners

Dave and Dan Bristle, Auctioneers  
BRISTLE'S AUCTION SERVICE • 517-467-4355



**Obituary**

**Blumenauer, Margie Ann**  
20486 Bethel Church Road  
Manchester, MI

Age 41, died Thursday, July 23, 1987, at her home following an extended illness. She was born February 26, 1946 in Tecumseh the daughter of Roland and Emma (Matt) Guenther. She was married to Mark Blumenauer on August 20, 1966. He survives.

She was a member of Zion Lutheran Church at Rogers Corner, and of the Farm Bureau. She had been an employee of Michigan Livestock.

In addition to her husband she is survived by 2 sons, Daniel and Michael both at home; 2 daughters, Mrs. David (Rebecca) Bohnett of Milan and Cheryl Blumenauer also at home; Mother and Step-father, Emma Guenther Bell and Howard Bell of Manchester, Brother and sister-in-law, Marvin and Maryann Guenther of Chelsea; Sister and brother-in-law; Jeannette and Don Schleede also of Chelsea; several aunts, uncles, nieces, nephews and cousins.

She was preceded in death by her father Roland and 2 sisters Marilyn Tallman and Joan Barth Trinkle.

Funeral services were held Sunday, July 26, 1987 at the Zion Lutheran Church. Rev. Alton Koengeter officiated, burial followed in the Zion Church Cemetery.

**Birth Announcements**

Manchester graduate, Harvey Stoll and his wife, Gail Girbach announce the arrival of David Girbach Stoll on July 11th at St. Joseph Hospital. He is presently at Holden Intensive Care Nursery, U of M. David was born at 4 pounds and 14 ounces and 16 inches long. His brothers, Nathan age 6 and Adam age 4, await his arrival at home in Whitmore Lake.

Grandparents are Mildred Stoll of Manchester and Rena Girbach of Saline.

\*\*\*\*\*  
Emily Ann Little was born on July 20th, at Bixby Hospital to Mr. and Mrs. Craig Little. Emily weighed 8 pounds and 15 ounces and measured 21 1/4 inches long. Emily has a 3 year old brother Adam to welcome her.

Proud grandparents are Herm and Mary Ann Covall and Dave and Janice Little.

\*\*\*\*\*  
Mr. and Mrs. Trenton Withrow of Manchester are proud to announce the birth of their daughter, Tara Lynn, on July 6, 1987. Tara weighed 6 pounds 12 1/2 ounces.

Maternal grandparents are Mr. and Mrs. Melvin Sroufe of Manchester and paternal grandparents are Mrs. JoAnne Withrow of Tecumseh and Mr. Arnold Withrow of Idaho.

**Dial-A-Garden**

The following is a monthly schedule of Dial-A-Garden, the system of pre-recorded daily gardening tips sponsored by the Washtenaw County Cooperative Extension Service. The system is in operation 24 hours per day, 7 days a week. Interested persons are invited to call 971-1122 at their convenience and receive timely, up-to-date gardening information.

Thursday, July 30 - Lawn Renovation.  
Friday, July 31 - Thatch in Lawns.  
Monday, August 3 - Perennial Grass Weeds in Lawns.  
Tuesday, August 4 - Grass Varieties.  
Wednesday, August 5 - Preparing Soil for a New Lawn.

**4-H Youth Show July 28-31**

"4-H, Look to the Future" is the theme of the 1987 Washtenaw County 4-H Youth Show scheduled for Tuesday, July 28 through Friday, July 31, 1987 at the Washtenaw Farm Council Grounds, 5550 Saline-Arbor Road, Saline, Michigan.

Gates open each day at 8:00 a.m. and close at 10:00 p.m. admission is free!

The public is invited to come and enjoy a variety of events, such as the annual Livestock Auction, the King & Queen Contest, Animal Decorator Contest, Horse Shows, Livestock Shows, Tractor Contest, a wide variety of exhibits and the food booth.

Cooperative Extension Service programs are open to all, regardless of race, color, creed, sex, handicap or national origin.

Don't miss this family-oriented, barrier free event. For more information, call or stop by the Washtenaw County Cooperative Extension Service, 4133 Washtenaw Avenue, Ann Arbor (County Service Center) or 973-9510. See you there!

**Lady Arbeiter Picnic**

The former Lady Arbeiter will have a potluck picnic at Carr Park on Monday, August 3, 1987, at noon. Husbands are also invited.

**The Manchester Enterprise**  
150 East Main Street Phone 428-8173 Manchester, MI 48158  
USPS 327-460

The Manchester Enterprise was established in 1867 and is published each Thursday at 150 East Main Street, Manchester, Michigan, with second class postage paid at Manchester, Edward E. Steele, Publisher Lenore A. Steele, Editor

POSTMASTER:  
Send Form 3972 to The Manchester Enterprise, 150 East Main Street, Manchester, Michigan 48158.

DEADLINES:  
All Display Advertising AND Pictures (Black and White Only) Are Due By 5:00 P.M. Every Monday For Same Week Publication.  
All Classified Advertising AND News Articles Are Due By 11:00 A.M. Every Tuesday For Same Week Publication.

**Senior Citizens**

My neighbor says he will be glad to see the 'back of July' and I'm glad for him and me to see 58° on the thermometer this a.m. Makes you feel like a human 'bean' again.

Activity at the Center is quiet at present but come on Fridays for bingo at 1:30.

Saturday, August 1 - Volunteers who plan to work at the Mill Run are asked to be at the Mill by 7:30 a.m.

Sunday, August 2 - Seniors will leave the Center at 2:00 p.m. for the Crosswell Theater presentation in Adrian.

Looking ahead: Saturday, August 8 - a trip to St. Johns for the Mint Festival is planned - leave at 9:00 a.m.

Thursday, August 13 - A Summer Theater and lunch is scheduled for noon at Schuler's Restaurant in Marshall. 'Some Enchanted Evening' will be presented. Call Helen

Knickerbocker for reservations and do it soon as they are going on our Senior bus.

Monday, August 17 - There will be a mystery shopping trip on this date. Give Helen a call about this 'never know where you may end up' trip.

Helen also reminds us of upcoming American Tour trips: Mackinac Island and Petoskey October 3-4; Covered Bridge Tour October 10; and Statue of Liberty Tour October 7-14. This includes historic Philadelphia/Lancaster and (Amish) Pocono Mountains plus tour of New York City. Overnights will be spent at Clarion, PA; Stroudsburg, PA; 3 in NYC; Lancaster and Breezewood, PA. Come along on this one. You cannot believe 'The Big Apple 'til you see it!'

MANCHESTER AREA SENIOR CITIZENS COUNCIL, INC. is in compliance with Title VI of Civil Rights Act and with Section 504 of the Social Rehabilitation Act of 1973.

**Letter Accuses Village Administrator**

Recent activities of the Village Administration and Village Council have raised questions in the minds of residents who are concerned about the methods - if not the legality - of some of the Council's maneuvers. Those concerns revolve around the development of utilities to the Industrial Park area.

After receiving a letter from Union Construction demanding the return of a \$12,000 donation toward the development of the Industrial Park, Council instructed Village Manager Dan Naimowicz at the July 1, special meeting to contact Allen Schaffer personally to "let him know Council's decision" and subsequently to send a letter as follow-up to the conversation. When asked what he told Schaffer, Naimowicz replied, "I told him we were going to go ahead with the project."

What prompted the letter from Union Construction? Did Union Construction expect to receive a contract as a result of their \$12,000 donation earlier this year? Why were no bids solicited for this almost \$200,000 job?

A copy of the letter was requested under the Freedom of Information Act. In it, Schaffer demanded a return of his \$12,000 with maximum allowable interest, claiming that Naimowicz had fraudulently solicited the funds since construction of water and sewer lines to the Park had not been started and his sources had revealed that the Village was looking for an independent developer to continue to develop the site without Village involvement.

Union Construction has been low bidder on many construction jobs within the Village.

At the regular Council meeting the following week, Naimowicz was authorized by Council to negotiate with Schaffer "To get the Industrial Park utilities put in as per contract."

Another special meeting was scheduled for 7:30 a.m. four days later - July 10 - listing one of its agenda items as "Authorize/award Union Construction to proceed with utilities to Industrial Park." The meeting was canceled July 9, and a notice posted on the door of the Village Hall by that evening.

Council met again on July 20, and in a last minute change of the agenda added to the Closed Session the discussion of a communication from the attorney concerning the issue of Union Construction and the Industrial Park utilities. Reversing the earlier decision to negotiate with Union Construction, the resulting motion made by Limpert and supported by Marshall, read "Any funds given to the Village on behalf of the Industrial Park that were not given as a gift (will) be returned forthwith."

Checks have already been sent to Mr. Hendley and Mr. Schaffer. Anyone else who donated money to the cause, however, will probably have to request that it be returned.

In addition, Council instructed that bids for the completion of water and sewer service for the Industrial Park be sought, adopted a Purchasing Policy which deals with bidding procedures and tabled a policy that dealt with conflict of interest.

However, it is not likely that any of that would have taken place had not some concerned citizens in the Village voiced disapproval of the way these issues were being handled.

**Manchester Village Council**

August 3, 1987

**AGENDA**

- 1) Call meeting to order
- 2) Pledge of Allegiance to Flag
- 3) Minutes of Prev. Meeting
- 4) Approval of the Agenda
- 5) Correspondence
- 6) Public Participation
- 7) Treasurer's Report
- 8) Accounts Payable
- 9) Sheriff's Report
- 10) Public Hearing - 7:30 Re: Recreation Exercise Jogging Trail; Comments from Planning Commission - Re: Task Force; Becky Doyle
- 11) DPW Report
- 12) Planning Commission
- 13) Manager's Report
- 14) Old Business
  - a. Village Council formally accepts the Gazebo
  - b. Council considers ZBA Ordinance Amendment
  - c. Council considers ZBA Appointments
  - d. Limpert Easement
  - e. 1986 Budget Amendment
- 15) New Business
  - a. Council considers Jogging/Exercise Trail
- 16) Executive Session RE: Negotiations regarding DPW
- 17) Adjourn

**Health Van Participates**



Chelsea Community Hospital's Health Screening Van is scheduled to participate in area festivals and fairs. The Health Screening Van attended the Grass Lake parade July 4th, and the Manchester Chicken Broil July 16th. Free blood pressure screenings and health information were offered at the Manchester Chicken Broil. The Van was at the Stockbridge Summerfest July 24th and July 25th and will be at the 4-H Show at the Saline Fairgrounds on July 30th offering a free blood pressure screening, health information and an opportunity to talk with health professionals.

**Dividends Declared**

Directors of Johnson Controls, Inc. today declared a regular quarterly cash dividend of \$0.265 per common share payable September 30, 1987, to shareholders of record September 30, 1987, to shareholders of record September 11, 1987. A cash dividend of \$1.0625 per share of Convertible Exchangeable Preferred Stock, Series C, having the same payment and record dates, was also declared.

Directors also announced the exchange effective September 30, 1987, of the Preferred Stock for 8.50% Convertible Subordinated Debentures due September 30, 2015.

**Get Dependents Social Security Numbers Now!**

A reminder from the Michigan Tax Information Council: When filing your 1986 federal tax return, you must supply the IRS with a social security number for your school age children or any other claimed dependents. If your dependents don't have social security numbers, you should get one for them now to avoid the expected year-end rush. For an application and more information on how to get a social security number, contact your local social security office.

**CHEVROLET**

**A GOOD SELECTION OF NEW and USED CARS ON OUR LOT**

**TIRB CHEVROLET CO**  
131 ADRIAN STREET MANCHESTER, MICHIGAN  
PHONE 313-428-8212 OR 313-428-8492

MON	TUE	WED	THUR	FRI	SAT
7:30-8	7:30-6	7:30-8	7:30-6	7:30-6	7:30-12 Noon

**FUND RAISING**

**Manchester Sportsman Club**  
8501 Grossman Road  
Friday 6:45 p.m.

**Manchester American Legion**  
203 South Adrian Street  
Saturday 7:00 p.m.

CLOSED AUGUST 1st AND AUGUST 29th

**STEEL**

**NEW & USED STEEL AT BARGAIN PRICES**

- Structural •Plate
- Re-Rod
- Pipe •Square Tubing

(Quantity Discounts)

**Jackson Fibers Co.**  
(517) 784-9191

1417 S. Elm St.  
1 block north of High St.  
Jackson, Michigan

**SIDING CONTRACTORS**

SEAMLESS ALUMINUM GUTTERS  
CARPENTRY • ROOFING • INSULATION

PRIME REPLACEMENT WINDOWS

FINANCING AVAILABLE

License #041738

**R.D. KLEINSCHMIDT INC.**

FREE ESTIMATES

**428-8836**

19860 Sharon Valley Rd • Manchester

**MARATHON** Certified Mechanic On Duty

**FILLYAW' MARATHON SERVICE**  
327 West Main St. Manchester, Mich.  
Phone 428-8576  
MONDAY—SATURDAY 7 AM-7 PM

**STOP IN & PICK-UP A MARATHON CREDIT CARD APPLICATION**

YOU CAN PURCHASE BATTERIES, TIRES SHOCKS, PARTS OR HAVE YOUR CAR TUNE-UP FOR THE SUMMER MONTHS BRAKE JOBS, FRONT END ALIGNMENT OR WHEEL BALANCED

ASK ABOUT OUR INTEREST-FREE EXTENDED PLAN FOR CERTAIN PURCHASES

**24 Hour Wrecker Service**

**Brake Special 59<sup>95</sup> AND UP**  
Front or Rear

**Now Is The Time For A Spring Tune-Up Call Today**

**Shocks 9<sup>95</sup> AND UP**

WE NOW HAVE SUPER "M" LEAD FREE GASOLINE

FULL LINE OF MARATHON PRODUCTS

**GOODYEAR**

STOP IN AND SEE ME FOR YOUR BEST TIRE DEAL

**How can you keep the family farm in the family?**

Your farm doesn't have to be sold after your death. Your Farm Bureau Life Insurance Company of Michigan agent will help you keep the farm intact and in the family. We're the statewide leaders in farm estate planning.

**LARRY BECKTEL**  
135 East Main St.  
Manchester, Mich.  
Phone 428-7331

Making your future a little more predictable.

**FARM BUREAU INSURANCE GROUP**

**Friendly Family Dentistry**  
**Bruce Bates, D.D.S.**

500 Galloway Drive Manchester, Michigan

CLEAN TEETH

SERVICE BY APPOINTMENT

PHONE 313-428-8277

Open Monday-Friday 9 am-5:30 pm  
Tuesday 12-9 pm Wednesday 12-8 pm  
SOME SATURDAY MORNING HOURS AVAILABLE

New Patients, Medicaid and Emergencies Always Welcome

VISA ACCEPTED  
MOST DENTAL INSURANCE PLANS ACCEPTED

*gentle dental care*

**HERRICK DIAGNOSTIC AND TREATMENT CENTER**  
415 E. Kilbuck, Tecumseh, Michigan  
(Formerly the Tecumseh Medical Bldg.)  
Offering Services In

- ★ GASTROENTEROLOGY  
Eugenius Ang, M.D.
- ★ NEUROLOGY  
Allan Clague, M.D.
- ★ PODIATRY (Foot Surgery)  
Don Schubert, D.P.M.
- ★ UROLOGY  
C.T. Lin, M.D.  
Ashwin Shah, M.D.
- ★ DERMATOLOGIST  
Jeffrey Messenger, M.D.
- ★ CARDIOLOGY  
Manhar Tegura, M.D.
- ★ OTORHINOLARYNGOLOGY  
Harry Richter, M.D.
- ★ OTORHINOLARYNGOLOGY  
Keo Poopat, M.D.

For Appointment Call  
423-7481 or 423-7482

- ★ ALLERGIST  
R.J. Guttridge, D.O. 423-4946
- ★ GYNECOLOGIST/OBSTETRICIAN  
William Long, D.O. 423-6667

*Wacker's General Store*

PEPSI, DIET PEPSI  
MOUNTAIN DEW  
PEPSI FREE

SUGAR FREE PEPSI FREE  
A & W ROOT BEER  
VERNORS  
SUGAR FREE A & W  
SUGAR FREE VERNORS  
SLICE & DIET SLICE

**\$2.29**  
1/2 LITER 8 PACK  
plus deposit

2 Liter .....\$1.49  
plus deposit

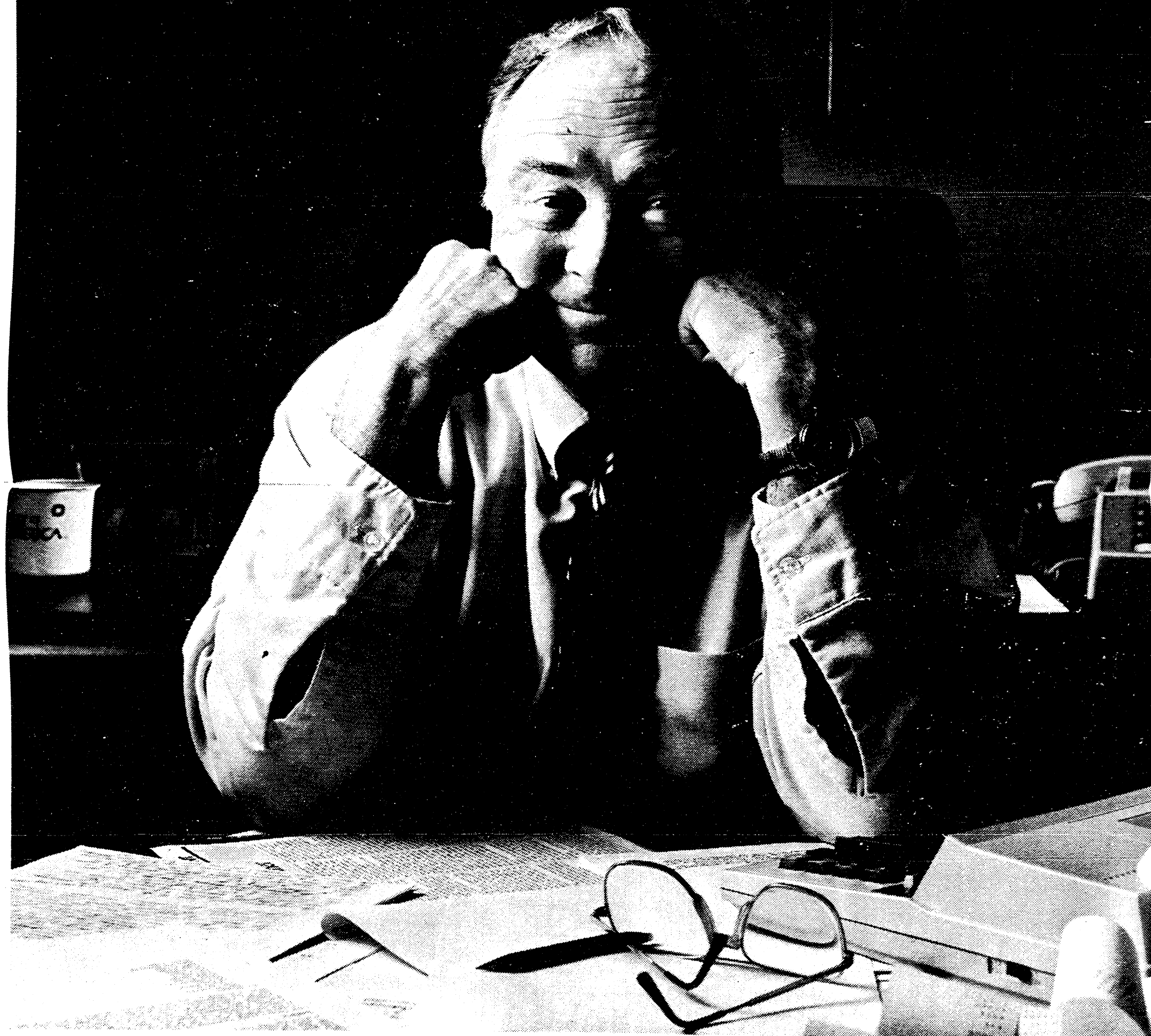
6 Pack Cans.....\$1.89  
plus deposit

*G.E. Wacker Inc*  
Gasoline-Fuel Oil-Grease  
Motor Oil-Diesel Fuel  
9050 Chelsea-Manchester Road  
Manchester, Mich. 48158

SUMMER HOURS:  
Monday-Friday 7 am-9 pm  
Saturday 8 am-9 pm  
Sunday 9 am-9 pm



# Guess The Age Of The Guy Who Designed Our New Account For People 55 And Older.



Introducing the Prime Time Account.

It's a special account for all the people out there who, against all odds, have survived raising kids. Endured who knows how many house payments. Lived through untold hours on the job.

And who are finally starting to enjoy the things they've worked so hard for. People 55 and older, in other words.



You see, Prime Time offers many of our banking services for free. Like free travelers checks. No service charge on a checking account. No annual fee on MasterCard® and Visa®. A free safe deposit box for one year. And lots more.

As well as money-saving options like discounts on travel, accommodations and entertainment.

So what do you have to do? Simply keep \$1,000 in a money market savings account. That's it.

Come in and ask us about the Prime Time Account. Not only is it our way of saying, "Congratulations!" It's proof positive that things get better with age.

**FIRST OF AMERICA**  
We're Community Banks First.

Members FDIC.



## PUTTS N PARS

Clark Lake Late League

Koebbe - White	200 1/2
Stetler - Nichols	199 1/2
Hough - Little	192 1/2
Blossom - Gould	183
Kastanis - Kastanis	183
Godfrey - Bildner	174 1/2
Tassie - King	170 1/2
Surmo - Steele	168
Richardson - Gails	167 1/2
Tirb - Steele	163 1/2
Hinkley - Lehr	162 1/2
Taylor - Short	154 1/2
Nugent - Smith	153 1/2
Russell - Milosh	152 1/2
Little - Wicks	147
Popkey - Dorr	139
Kensler - Scully	137 1/2
DeClaire - Beuerle	135 1/2

### MARGIE'S UPHOLSTERY

6245 Brooklyn Road  
Jackson

Wide Selection Of Fabrics

Pick-Up / Delivery Available

517-536-4230

### GRAND OPENING August 1st COUNTRY DAYS

"Home Decorating and Gifts"  
CURTAINS, WALLPAPER and ACCESSORIES

Come Join In The Celebration!

134 East Main Street Manchester, Michigan  
313-428-9449  
lower Level of The Village Shoppe



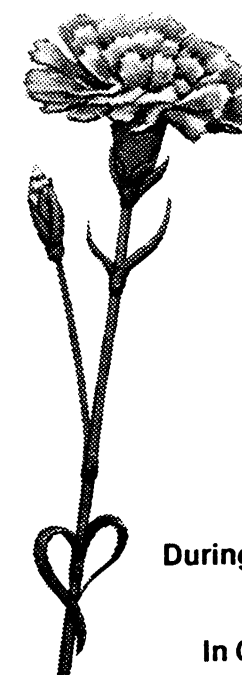
The Flower Garden

"FLOWERS FOR ALL OCCASIONS"

110 East Main St. Phone 428-7422 Manchester, Mich.

Sidewalk Sale August 1st

20% Off Storewide



Daisy Bouquets  
\$5.00

Carnations  
\$5.50 A Dozen

CASH AND CARRY

During the Month of August We Will Close At 1 pm On Wednesdays

In Case of An Emergency Call 428-8583

### Bloodmobile

Scully and Jeannine Uphaus - Pack-Table; Hattie Carson - Canteen; Kitchen Help included Edna Knauss, Tootie Armentrout and Vivian Middlemiss; Relief Help was Helen Popkey and Mary Blossom.

Others who were part of the team included shuttle bus drivers Del Ludwick, Bob Armentrout and Eddie Steele and the set-up help was Eddie Steele, Ted and Norma Stautz, Jeff and Connie Schaffer, Mary Smith and Helen Hosmer. Also many thanks to Claire Reck for her continuous help in coordinating these Red Cross Bloodmobiles.

The number of gallon donors increases with the years. Robert PUNCHES - 8 gallon pin...thats 64 pints Bob... Good for you!! Maynard Blossom and Mark Van Bogelen - 5 gallon pin; Arberta Fox, Marja Warner and Gary Stautz - 4 gallon pin; Theresa Baran and Donald Pitock - 3 gallon pin; Todd Teeple, Michael Frey, Grace Rogers, Terry Walter 2 gallon pin; and 6 new people earned 1 gallon donor emblems: they were Erika Frey, Joyce Armentrout, Paul Baumgartner, Robert Price, Walter Bartlett and Clayton Fritz. A big thank you to all these people and all the rest that continue to support the bloodmobiles.

Much appreciation to the American Legion Auxiliary for the orange juice and sandwiches and to Linda Head for her help.

The next Bloodmobile will be at the Emanuel United Church of Christ on October 12, 1987.

### 1988 Farm Program

Limited cross compliance will be in effect for the 1988 crops of wheat, feed grains (corn, sorghum, barley, oats), upland cotton and rice, Secretary of Agriculture Richard E. Lyng announced today.

To be eligible under the cross compliance provisions for price support loans, purchases or payments for these crops, the acreage planted for harvest on a farm may not exceed the crop acreage bases - for these commodities.

Other common program provisions applicable to the 1988 crops of wheat, feed grains, cotton and rice include:

-Offsetting compliance will not apply, meaning that eligibility for a program payment and a loan for a program commodity on a farm will not be affected by actions taken with respect to that commodity on another farm.

-Production of nonprogram crops will not be permitted under the 50/92 provision. To be eligible to receive payments on 92 percent of the permitted acreage, producers must plant at least 50 percent of the permitted acreage to the program crop and devote the remaining permitted acreage to a conserving use.

-Production of alternate crops on the designated Acreage Conservation Reserve will not be permitted. As required by law, grazing of ACR land will be permitted at the request of state Agricultural Stabilization and Conservation committees, except during any 5-consecutive-month period designed by these committees. Haying of ACR land will not be permitted except under emergency conditions.

-The authority for farmers to adjust any crop acreage base with a corresponding downward adjustment in other CAB's on the farm will not be permitted. However, adjustments in CAB's will be considered when producers need to change cropping practices to carry out conservation compliance requirements on highly erodible land.

-Generic commodity certificates will continue to be a part of the 1988 farm programs, if needed. The extent of their use will be determined as program payments are made.

Other common program provisions such as haying and grazing of 50/92 use land, advance payments, interest certificates, and the program enrollment period will be announced later, Lyng said.



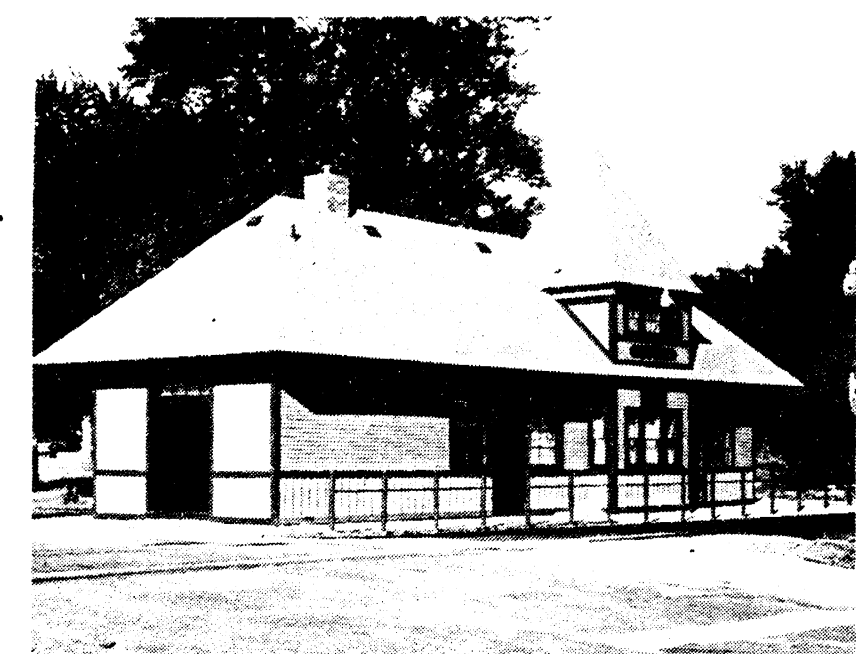
Martha Washington's silver service, it is said, was the source of the silver that went into the first U.S. coins.

Chelsea School District  
THE LEARNING CENTER  
SUMMER TUTORING

One To One Tutoring By Certified Teaching Staff

Call 475-9830 For Information

### State Marker To Honor Century-Old RR Station



The 100-year old Dexter railroad depot will be honored by the dedication of an official state historical marker at the station on Saturday, August 8, 1987, at 12:30 p.m. It has been announced by James O. Williams, Chief Executive Officer of the Huron Valley Railroad Historical Society, sponsors of the event. The


Dexter depot, completed in 1887, is one of two remaining wooden depots along the Detroit-Chicago main of the former Michigan Central RR, now a Conrail and Amtrak route. The marker also commemorates the state's first installation of track pans placed between the rails so that steam locomotives running at high speed could scoop up water, thus avoiding stops to replenish the supply for the boiler.

### More News About Your Fair

The Manchester Community Fair will have a representative at the Street Fair on August 1st. There will be pre-sale carnival ride tickets for sale at 50 cents each, one-half off regular price. You will also be able to purchase your 50-50 ticket. The winning ticket will receive 50% of the total amount sold. The drawing will be Saturday, August 29th at 10:00 p.m. at the Fair. You need not be present to win.

Manchester Community Fair shirts will be on sale Saturday and also throughout Fair week, as well as the 50-50 tickets.

When purchasing your ride or 50-50 tickets, you can also pick up the Fair Book to help you plan a fun-filled week at your Fair.



**Happy Fortieth Birthday**

**JIM BOB**

**BACK DOOR PARTY STORE**  
500 Al. Arbor Street Phone 313-428-9287 Manchester, Michigan

BEER  
WINE  
KEG BEER



Now At Back Door Party Store



Instant and Daily Lottery Tickets

UNION 76 GAS Full Service and Self Serve

**7 UP Products**  
6 Pack Cans  
**\$1.99** Plus Deposit

**Gobel Case**  
24 Bottles  
**\$5.99** Plus Deposit

See What's New



### Free Brochure On Conservation Trees

The National Arbor Day Foundation has published a Conservation Trees brochure which is available to the public free of charge.

The Conservation Trees brochure uses colorful photos and illustrations and easy-to-understand descriptions to help people plant and care for conservation trees.

The contents of the guide include:

- \* How to use shade trees and windbreaks to save energy in your home.

- \* How to attract songbirds to your yard.

- \* How to save trees during construction.

- \* How to save topsoil and help farm profits with shelterbelts.

- \* The right way to plant trees.

- \* The right way to prune trees.

"The National Arbor Day Foundation's Conservation Trees program encourages Americans to plant, manage, and preserve trees to conserve soil, energy, water, and wildlife," John Rosenow, the Foundation's executive director said.

"The Conservation Trees brochure is a central part of this educational project. It serves as a useful guide for people in all areas, whether they live in America's largest cities or in the country."

For your free brochure, send your name and address to: Conservation Trees, The National Arbor Day Foundation, Nebraska City, NE 68410.

### Safe Canning Of Food

Safe canning of food is no accident; the right equipment and methods are essential to prevent

food poisoning. Have you checked your pressure canner lately? Canners with a dial gauge should be checked yearly to make sure they are accurate. Cooperative Extension Service will check gauges, without charge, every Tuesday from 10:00 a.m. to 1:00 p.m. during July and August. Just bring in the top of your pressure canner to the County Service Center, 4133 Washtenaw, Washtenaw and Hogback Rds., Ann Arbor and go into the Cooperative Extension Service Building. For more information about home food preservation call 973-9510.

### Kings Brass In Concert

The King's Brass will be appearing in concert at Faith Community Church, 8400 Sharon Hollow Rd., Manchester, on Friday, July 31, at 7:30 p.m. The King's Brass - three trumpets, two trombones, one baritone, and a tuba - "the best in brass." Through their concerts of worship and praise, the King's Brass blends the favorite hymns of old with a love for the classics and the technology of the synthesizer. (This summer, their tenth anniversary, they will be touring from New York to Kansas City and from Dallas to Philadelphia).

### Arthritis Support Group

The Arthritis Support Group will NOT meet in August. The next meeting will be on September 14, 1987. Call Gina Frankhart (572-5735) or Mary Winkel (434-8432) for further information.

### MANCHESTER UNITED METHODIST CHURCH

Sunday, August 2, 9:30 a.m. Worship.

Wednesday, August 5 - 5:00 p.m. ANNUAL ICE CREAM SOCIAL.

### EMANUEL UNITED CHURCH OF CHRIST

Wednesday, July 29 - 8:00 p.m. AA, Al Anon.

Sunday, August 2 - 9:30 a.m. Worship, Phil VanDop brings the message, 10:30 a.m. Coffee Hour & Fellowship, 10:45 a.m. Adult Bible Study in Lounge.

Monday, August 3 - 6:00 p.m. Karate Class, Gym.

Tuesday, August 3 - 7:30 p.m. Narcotics Anonymous.

Wednesday, August 5 - 2:00 p.m. Women's Guild Meeting, 8:00 p.m. AA, Al Anon.

### FAITH COMMUNITY CHURCH

Wednesday, July 29 - 7:00 p.m. Bible Study and Prayer Meeting.

Thursday, July 30 - 6:00 p.m. Men's Softball Game at Methodist Church in Tecumseh.

Friday, July 31 - 7:30 p.m. KING'S BRASS CONCERT.

Saturday, August 1 - 4-7 p.m. Open House for Jon & Kristi Cymes to celebrate their recent marriage.

Sunday, August 2 - 10:00 a.m. Morning Worship Service, nursery available, 11:20 a.m. Sunday School for all ages, 2:00 p.m. Baby Shower for Joy Engleman at Hocks, 7:00 p.m. Evening Service, 8:00 p.m. LIFELINE youth group meeting.

Monday, August 3 - 6:00 p.m. Tecumseh Convalescent Ministry.

Tuesday, August 4 - 8:30 p.m. Discipleship Class, 7:30 p.m. Bible Study for Senior High Youth at Kupecky's.

ST. THOMAS LUTHERAN CHURCH

Friday, July 31 - Youth camping trip.

Saturday, August 1 - Youth Camping Trip.

Sunday, August 2 - 10:00 a.m. Worship, with Holy Communion; youth camping trip; Softball game at Concordia at 6:30 p.m., St. Thomas vs. St. Paul, Ann Arbor.

Wednesday, August 5 - 1:30 p.m. Ladies Aid.

CLINTON ASSEMBLY OF GOD - Rev. Richard Coury, Pastor; Chris Bouldrey, Youth Pastor; 13300 Clinton-Manchester Road, Clinton; Sunday School 9:30 a.m.; Sunday Morning Worship 10:45 a.m.; Sunday Evening 6:30 p.m.; Wednesday Prayer, Bible Study, Youth 7:00 p.m.

OUR SAVIOR LUTHERAN CHURCH - Rev. Franklin H. Giebel, Pastor; 1515 South Main, Chelsea; Every Sunday 9:00 a.m. Bible Classes for age 3 through adult; 10:30 a.m. Worship Service; Holy Communion 1st, 3rd and 5th Sundays.

CHURCH OF JESUS CHRIST OF LATTER DAY SAINTS (MORMONS) - Wayne L. Winzenz, Branch President; 13300 Freer Road, Chelsea; Sacrament 9:30 a.m.; Sunday School, Primary 10:50 a.m.; Priesthood, Relief Society, Aaronic Priesthood, Youth 11:40 a.m. For more information, call 475-1778.

ST. BARNABAS EPISCOPAL CHURCH - Rev. Fr. Jerrold F. Beaumont, O.S.P.; Eucharist - First, Third and Fifth Sundays 10:00 a.m.; Morning Prayer, Second and Fourth Sundays 10:00 a.m.; Eucharist - Second and Fourth Sundays 11:00 a.m.; Nursery available every Sunday. Family coffee hour follows all Sunday services.

ST. JOHN'S UNITED CHURCH OF CHRIST - Rev. Ted Wimmier, Pastor; Rogers Corners, Waters and Fletcher Roads; Adult Bible Study Class at 10:00; Worship and Sunday School 10:30 a.m.

ST. JOHN'S LUTHERAN CHURCH - Rev. Dennis A. Falk, Pastor; Austin Road, Bridgewater; Sunday School 9:15 a.m.; Worship 10:30.

NORTH SHARON BIBLE CHURCH - Timothy E. Booth, Pastor; Sylvan and Washburn Roads; Sunday School 10:00 a.m.; Morning Church 11:00 a.m.; Evening Church 7:00 p.m.; Wednesday Bible Study 7:00 p.m.; Youth Meetings 7:00 p.m.

IRON CREEK COMMUNITY CHURCH - Rev. Ray Robichaud, Pastor; English and Sharon Hollow Roads; Worship Service 10:00 a.m.; Sunday School 11:15 a.m.; Sunday Evening 7:00 p.m.; Wednesday Evening 7:00 p.m.

ZION LUTHERAN CHURCH - Rev. John R. Morris, Pastor; 3050 S. Fletcher Road; Sunday School 9:00 a.m.; Worship Service with Holy Communion 10:10 a.m.

ST. THOMAS LUTHERAN CHURCH - 10001 W. Ellsworth Rd., (5 miles North and 6 1/2 East of Manchester), Rev. John Riske, Pastor. Summer Schedule: Worship 10 a.m., June, July August; Sunday School and Bible Class - vacation; Holy Communion first and third Sundays.

ST. JOHN'S UNITED CHURCH OF CHRIST - Rev. Ted Wimmier, Pastor; Rogers Corners, Waters and Fletcher Roads; Adult Bible Study Class at 10:00; Worship and Sunday School 10:30 a.m.

CLINTON ASSEMBLY OF GOD - Rev. Richard Coury, Pastor; Chris Bouldrey, Youth Pastor; 13300 Clinton-Manchester Road, Clinton; Sunday School 9:30 a.m.; Sunday Morning Worship 10:45 a.m.; Sunday Evening 6:30 p.m.; Wednesday Prayer, Bible Study, Youth 7:00 p.m.

OUR SAVIOR LUTHERAN CHURCH - Rev. Franklin H. Giebel, Pastor; 1515 South Main, Chelsea; Every Sunday 9:00 a.m. Bible Classes for age 3 through adult; 10:30 a.m. Worship Service; Holy Communion 1st, 3rd and 5th Sundays.

CHURCH OF JESUS CHRIST OF LATTER DAY SAINTS (MORMONS) - Wayne L. Winzenz, Branch President; 13300 Freer Road, Chelsea; Sacrament 9:30 a.m.; Sunday School, Primary 10:50 a.m.; Priesthood, Relief Society, Aaronic Priesthood, Youth 11:40 a.m. For more information, call 475-1778.

ST. BARNABAS EPISCOPAL CHURCH - Rev. Fr. Jerrold F. Beaumont, O.S.P.; Eucharist - First, Third and Fifth Sundays 10:00 a.m.; Morning Prayer, Second and Fourth Sundays 10:00 a.m.; Eucharist - Second and Fourth Sundays 11:00 a.m.; Nursery available every Sunday. Family coffee hour follows all Sunday services.

ST. JOHN'S UNITED CHURCH OF CHRIST - Rev. Ted Wimmier, Pastor; Rogers Corners, Waters and Fletcher Roads; Adult Bible Study Class at 10:00; Worship and Sunday School 10:30 a.m.

CLINTON ASSEMBLY OF GOD - Rev. Richard Coury, Pastor; Chris Bouldrey, Youth Pastor; 13300 Clinton-Manchester Road, Clinton; Sunday School 9:30 a.m.; Sunday Morning Worship 10:45 a.m.; Sunday Evening 6:30 p.m.; Wednesday Prayer, Bible Study, Youth 7:00 p.m.

OUR SAVIOR LUTHERAN CHURCH - Rev. Franklin H. Giebel, Pastor; 1515 South Main, Chelsea; Every Sunday 9:00 a.m. Bible Classes for age 3 through adult; 10:30 a.m. Worship Service; Holy Communion 1st, 3rd and 5th Sundays.

CHURCH OF JESUS CHRIST OF LATTER DAY SAINTS (MORMONS) - Wayne L. Winzenz, Branch President; 13300 Freer Road, Chelsea; Sacrament 9:30 a.m.; Sunday School, Primary 10:50 a.m.; Priesthood, Relief Society, Aaronic Priesthood, Youth 11:40 a.m. For more information, call 475-1778.

ST. BARNABAS EPISCOPAL CHURCH - Rev. Fr. Jerrold F. Beaumont, O.S.P.; Eucharist - First, Third and Fifth Sundays 10:00 a.m.; Morning Prayer, Second and Fourth Sundays 10:00 a.m.; Eucharist - Second and Fourth Sundays 11:00 a.m.; Nursery available every Sunday. Family coffee hour follows all Sunday services.

ST. JOHN'S UNITED CHURCH OF CHRIST - Rev. Ted Wimmier, Pastor; Rogers Corners, Waters and Fletcher Roads; Adult Bible Study Class at 10:00; Worship and Sunday School 10:30 a.m.

CLINTON ASSEMBLY OF GOD - Rev. Richard Coury, Pastor; Chris Bouldrey, Youth Pastor; 13300 Clinton-Manchester Road, Clinton; Sunday School 9:30 a.m.; Sunday Morning Worship 10:45 a.m.; Sunday Evening 6:30 p.m.; Wednesday Prayer, Bible Study, Youth 7:00 p.m.

OUR SAVIOR LUTHERAN CHURCH - Rev. Franklin H. Giebel, Pastor; 1515 South Main, Chelsea; Every Sunday 9:00 a.m. Bible Classes for age 3 through adult; 10:30 a.m. Worship Service; Holy Communion 1st, 3rd and 5th Sundays.

CHURCH OF JESUS CHRIST OF LATTER DAY SAINTS (MORMONS) - Wayne L. Winzenz, Branch President; 13300 Freer Road, Chelsea; Sacrament 9:30 a.m.; Sunday School, Primary 10:50 a.m.; Priesthood, Relief Society, Aaronic Priesthood, Youth 11:40 a.m. For more information, call 475-1778.

ST. BARNABAS EPISCOPAL CHURCH - Rev. Fr. Jerrold F. Beaumont, O.S.P.; Eucharist - First, Third and Fifth Sundays 10:00 a.m.; Morning Prayer, Second and Fourth Sundays 10:00 a.m.; Eucharist - Second and Fourth Sundays 11:00 a.m.; Nursery available every Sunday. Family coffee hour follows all Sunday services.

ST. JOHN'S UNITED CHURCH OF CHRIST - Rev. Ted Wimmier, Pastor; Rogers Corners, Waters and Fletcher Roads; Adult Bible Study Class at 10:00; Worship and Sunday School 10:30 a.m.

CLINTON ASSEMBLY OF GOD - Rev. Richard Coury, Pastor; Chris Bouldrey, Youth Pastor; 13300 Clinton-Manchester Road, Clinton; Sunday School 9:30 a.m.; Sunday Morning Worship 10:45 a.m.; Sunday Evening 6:30 p.m.; Wednesday Prayer, Bible Study, Youth 7:00 p.m.

OUR SAVIOR LUTHERAN CHURCH - Rev. Franklin H. Giebel, Pastor; 1515 South Main, Chelsea; Every Sunday 9:00 a.m. Bible Classes for age 3 through adult; 10:30 a.m. Worship Service; Holy Communion 1st, 3rd and 5th Sundays.

CHURCH OF JESUS CHRIST OF LATTER DAY SAINTS (MORMONS) - Wayne L. Winzenz, Branch President; 13300 Freer Road, Chelsea; Sacrament 9:30 a.m.; Sunday School, Primary 10:50 a.m.; Priesthood, Relief Society, Aaronic Priesthood, Youth 11:40 a.m. For more information, call 475-1778.

ST. BARNABAS EPISCOPAL CHURCH - Rev. Fr. Jerrold F. Beaumont, O.S.P.; Eucharist - First, Third and Fifth Sundays 10:00 a.m.; Morning Prayer, Second and Fourth Sundays 10:00 a.m.; Eucharist - Second and Fourth Sundays 11:00 a.m.; Nursery available every Sunday. Family coffee hour follows all Sunday services.

## CHURCH DIRECTORY



EMANUEL UNITED CHURCH OF CHRIST - Rev. Robert B. Macfarlane, Pastor; Rev. Nancy Doty, Assistant; Sunday School 9:00 a.m.; Worship 10:30 a.m.; Fellowship 11:30 a.m.

MANCHESTER UNITED METHODIST CHURCH - Rev. Hayden Carruth, Pastor; Church School 9:15 a.m.; Worship 9:30 a.m.

ST. MARY'S CATHOLIC CHURCH - Father Raymond Schlinkert; Monday thru Friday 8:30 a.m.; Saturday 5:00 p.m.; Sunday 8:30 a.m. and 10:30 a.m.

FAITH COMMUNITY CHURCH - Scott Engleman, Pastor; Roman Kupecky, Associate Pastor; 8400 Sharon Hollow Rd. off W. Austin; Worship Service 10:00 a.m.; Sunday School 11:15 a.m.; Sunday evening service 6:00 p.m.; Jr. and Sr. High Young People's Meeting 7:30 p.m.

VICTORY BAPTIST CHURCH - 423 South Macomb, 428-7506; Sunday School 9:45 a.m.; Morning Worship 11:00 a.m.; Evening Worship 6:00 p.m.; Teen Talk 7:00 p.m.; Wednesday Prayer, Bible Study, Youth 7:00 p.m.

BETHEL UNITED CHURCH OF CHRIST - Rev. Roman A. Reineck, Pastor; Schneider and Bethel Church Roads; Church Service 10:00 a.m.; Sunday School 11:00 a.m.

SHARON CORNER METHODIST CHURCH - Rev. Evans Bentley, Pastor; Corner of M-52 and Pleasant Lake Roads; Church School 9:30 a.m.; Worship 10:30 a.m.

ST. JOHN'S LUTHERAN CHURCH - Rev. Dennis A. Falk, Pastor; Austin Road, Bridgewater; Sunday School 9:15 a.m.; Worship 10:30.

NORTH SHARON BIBLE CHURCH - Timothy E. Booth, Pastor; Sylvan and Washburn Roads; Sunday School 10:00 a.m.; Morning Church 11:00 a.m.; Evening Church 7:00 p.m.; Wednesday Bible Study 7:00 p.m.; Youth Meetings 7:00 p.m.

IRON CREEK COMMUNITY CHURCH - Rev. Ray Robichaud, Pastor; English and Sharon Hollow Roads; Worship Service 10:00 a.m.; Sunday School 11:15 a.m.; Sunday Evening 7:00 p.m.; Wednesday Evening 7:00 p.m.

ZION LUTHERAN CHURCH - Rev. John R. Morris, Pastor; 3050 S. Fletcher Road; Sunday School 9:00 a.m.; Worship Service with Holy Communion 10:10 a.m.

ST. THOMAS LUTHERAN CHURCH - 10001 W. Ellsworth Rd., (5 miles North and 6 1/2 East of Manchester), Rev. John Riske, Pastor. Summer Schedule: Worship 10 a.m., June, July August; Sunday School and Bible Class - vacation; Holy Communion first and third Sundays.

ST. JOHN'S UNITED CHURCH OF CHRIST - Rev. Ted Wimmier, Pastor; Rogers Corners, Waters and Fletcher Roads; Adult Bible Study Class at 10:00; Worship and Sunday School 10:30 a.m.

CLINTON ASSEMBLY OF GOD - Rev. Richard Coury, Pastor; Chris Bouldrey, Youth Pastor; 13300 Clinton-Manchester Road, Clinton; Sunday School 9:30 a.m.; Sunday Morning Worship 10:45 a.m.; Sunday Evening 6:30 p.m.; Wednesday Prayer, Bible Study, Youth 7:00 p.m.

OUR SAVIOR LUTHERAN CHURCH - Rev. Franklin H. Giebel, Pastor; 1515 South Main, Chelsea; Every Sunday 9:00 a.m. Bible Classes for age 3 through adult; 10:30 a.m. Worship Service; Holy Communion 1st, 3rd and 5th Sundays.

CHURCH OF JESUS CHRIST OF LATTER DAY SAINTS (MORMONS) - Wayne L. Winzenz, Branch President; 13300 Freer Road, Chelsea; Sacrament 9:30 a.m.; Sunday School, Primary 10:50 a.m.; Priesthood, Relief Society, Aaronic Priesthood, Youth 11:40 a.m. For more information, call 475-1778.

ST. BARNABAS EPISCOPAL CHURCH - Rev. Fr. Jerrold F. Beaumont, O.S.P.; Eucharist - First, Third and Fifth Sundays 10:00 a.m.; Morning Prayer, Second and Fourth Sundays 10:00 a.m.; Eucharist - Second and Fourth Sundays 11:00 a.m.; Nursery available every Sunday. Family coffee hour follows all Sunday services.

ST. JOHN'S UNITED CHURCH OF CHRIST - Rev. Ted Wimmier, Pastor; Rogers Corners, Waters and Fletcher Roads; Adult Bible Study Class at 10:00; Worship and Sunday School 10:30 a.m.

CLINTON ASSEMBLY OF GOD - Rev. Richard Coury, Pastor; Chris Bouldrey, Youth Pastor; 13300 Clinton-Manchester Road, Clinton; Sunday School 9:30 a.m.; Sunday Morning Worship 10:45 a.m.; Sunday Evening 6:30 p.m.; Wednesday Prayer, Bible Study, Youth 7:00 p.m.

OUR SAVIOR LUTHERAN CHURCH - Rev. Franklin H. Giebel, Pastor; 1515 South Main, Chelsea; Every Sunday 9:00 a.m. Bible Classes for age 3 through adult; 10:30 a.m. Worship Service; Holy Communion 1st, 3rd and 5th Sundays.

CHURCH OF JESUS CHRIST OF LATTER DAY SAINTS (MORMONS) - Wayne L. Winzenz, Branch President; 13300 Freer Road, Chelsea; Sacrament 9:30 a.m.; Sunday School, Primary 10:50 a.m.; Priesthood, Relief Society, Aaronic Priesthood, Youth 11:40 a.m. For more information, call 475-1778.

ST. BARNABAS EPISCOPAL CHURCH - Rev. Fr. Jerrold F. Beaumont, O.S.P.; Eucharist - First, Third and Fifth Sundays 10:00 a.m.; Morning Prayer, Second and Fourth Sundays 10:00 a.m.; Eucharist - Second and Fourth Sundays 11:00 a.m.; Nursery available every Sunday. Family coffee hour follows all Sunday services.

ST. JOHN'S UNITED CHURCH OF CHRIST - Rev. Ted Wimmier, Pastor; Rogers Corners, Waters and Fletcher Roads; Adult Bible Study Class at 10:00; Worship and Sunday School 10:30 a.m.

CLINTON ASSEMBLY OF GOD - Rev. Richard Coury, Pastor; Chris Bouldrey, Youth Pastor; 13300 Clinton-Manchester Road, Clinton; Sunday School 9:30 a.m.; Sunday Morning Worship 10:45 a.m.; Sunday Evening 6:30 p.m.; Wednesday Prayer, Bible Study, Youth 7:00 p.m.

OUR SAVIOR LUTHERAN CHURCH - Rev. Franklin H. Giebel, Pastor; 1515 South Main, Chelsea; Every Sunday 9:00 a.m. Bible Classes for age 3 through adult; 10:30 a.m. Worship Service; Holy Communion 1st, 3rd and 5th Sundays.

CHURCH OF JESUS CHRIST OF LATTER DAY SAINTS (MORMONS) - Wayne L. Winzenz, Branch President; 13300 Freer Road, Chelsea; Sacrament 9:30 a.m.; Sunday School, Primary 10:50 a.m.; Priesthood, Relief Society, Aaronic Priesthood, Youth 11:40 a.m. For more information, call 475-1778.

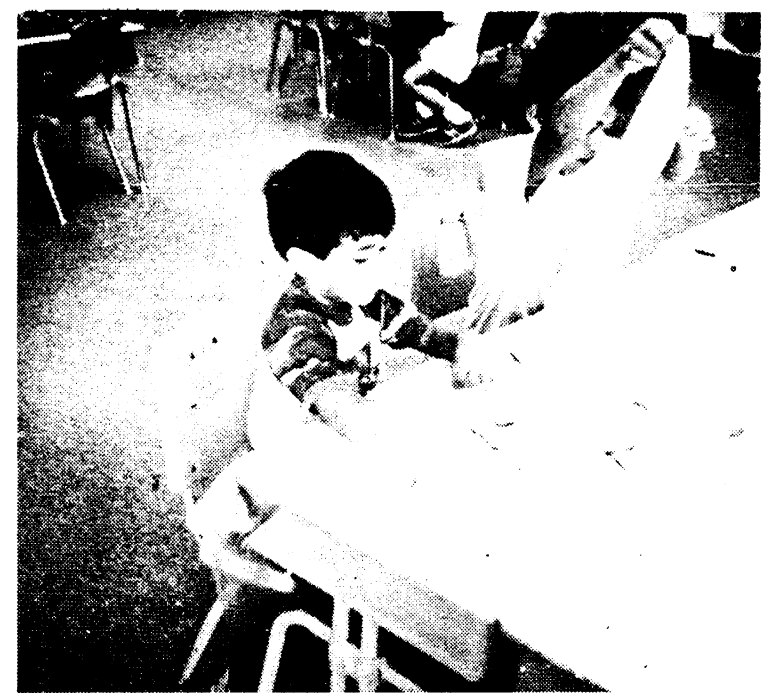
ST. BARNABAS EPISCOPAL CHURCH - Rev. Fr. Jerrold F. Beaumont, O.S.P.; Eucharist - First, Third and Fifth Sundays 10:00 a.m.; Morning Prayer, Second and Fourth Sundays 10:00 a.m.; Eucharist - Second and Fourth Sundays 11:00 a.m.; Nursery available every Sunday. Family coffee hour follows all Sunday services.

ST. JOHN'S UNITED CHURCH OF CHRIST - Rev. Ted Wimmier, Pastor; Rogers Corners, Waters and Fletcher Roads; Adult Bible Study Class at 10:00; Worship and Sunday School 10:30 a.m.

CLINTON ASSEMBLY OF GOD - Rev. Richard Coury, Pastor; Chris Bouldrey, Youth Pastor; 13300 Clinton-Manchester Road, Clinton; Sunday School 9:30 a.m.; Sunday Morning Worship 10:45 a.m.; Sunday Evening 6:30 p.m.; Wednesday Prayer, Bible Study, Youth 7:00 p.m.

OUR SAVIOR LUTHERAN CHURCH - Rev. Franklin H. Giebel, Pastor; 1515 South Main, Chelsea; Every Sunday 9:00 a.m. Bible Classes for age 3 through adult; 10:30 a.m. Worship Service; Holy Communion 1st, 3rd and 5th Sundays.

CHURCH OF JESUS CHRIST OF LATTER DAY SAINTS (MORMONS) - Wayne L. Winzenz, Branch President; 13300 Freer Road, Chelsea; Sacrament 9:30 a.m.; Sunday School, Primary 10:50 a.m.; Priesthood, Relief Society, Aaronic Priesthood, Youth 11:40 a.m. For more information, call 475-1778.



Children use their creative energy on a "milk soaked sheet".



Vessie Palomin shows his smallest bolt to his friends.

### Chalk Art

Have you ever drawn on a milk soaked piece of material with colored chalk? The 1st and 2nd graders in Mrs. Kay Miller's room experienced creating bright pictures on an old sheet. They discovered that the dried sheet is stiff, the chalk stays bright and doesn't rub off and most important, doesn't smell like sour milk!

### Trip To Prehistoric Forest

Children in the Summer Migrant School Program went to the Irish Hills' Prehistoric Forest and Jungle Rapids Water Slide. The train took them through the "Time Tunnel" back into the world of the dinosaurs. Children enjoyed seeing their favorite dinosaurs and hearing information about them from the guide. Older children 'beat the heat' on the Jungle Rapids Water Slide.

### Small, Smaller Smallest

The preschoolers in Mrs. Supers' Day Camp have been sorting, grouping and classifying objects. Nails, screws and bolts were lined up from the largest to the smallest. Footprint paintings were also lined up. Luiz Perez's footprint was small, Rachel Palomin's was smaller, but Maria Martinez's was the smallest of all. Their mural of red footprints is on display in the Ben Franklin Store.



"All aboard for the Prehistoric Forest".



Esmeralda Barrios and Rachel Palomin stand next to a favorite dinosaur, Stegasaurus.

**WAMPLER DRW CONSTRUCTION CO.**  
DANIEL R. WAMPLER  
517-456-4305

- NEW HOMES
- ADDITIONS
- SIDING
- GARAGES
- ROOFING
- DECKS

**Kirk Excavating**  
Sand—Gravel—Fill Dirt  
Basements—Driveways  
**428-7938**  
Dave Kirk  
14180 Schleweis Road  
Manchester

**2nd Anniversary Sale**  
AUGUST 1st & 2nd  
10 to 50% OFF  
**The Village Shoppe**  
134 East Main St. Phone 428-9640 Manchester  
Monday-Saturday 10 am-5 pm Sunday 12 noon-5 pm

**Vacation Bible School PLEASE COME!**  
JOIN US AT  
**SHARON UNITED METHODIST CHURCH**  
Monday-Friday, August 17-21  
7:30-8:30 p.m.  
THERE WILL BE STORIES, SONGS AND CRAFTS EVERYDAY FOR AGES 3 NEXT FALL FOR 7th GRADES

**MANCHESTER CHIROPRACTIC CLINIC**  
"TRY CHIROPRACTIC NATURALLY"  
STAN GILBERT, D.C. 227 E Main St.  
313-428-7207 Manchester, Michigan  
APPOINTMENT HOURS  
Monday, Tuesday, Wednesday, Friday 8 am-12 and 3 pm-7 pm.  
Thursday and Saturday 8 am-12 noon

**CHIRO-magic**  
MATTRESSES AND FOUNDATIONS  
\*CHIROPRACTIC ENDORSED  
\*GRAND RAPIDS MADE SINCE 1965  
\*FLUSH FILLWQUILT TOPS  
\*RESPONSIVE AND FIRM SURFACE MATTRESS STYLES  
\*5 YEAR GUARANTEE  
\*UP TO 25 YEAR WARRANTY.  
Open 9 am-5:30 pm Friday 9 am-8:30  
Phone 662-9372 STARTING FROM \$299\*\*  
Visa or Mastercard TWIN SIZE SET  
**LODI Town and Country FURNITURE**  
Ann Arbor-Saline Rd. at Travis Plaza

**Norm Walz & Son Construction**  
Manchester, Michigan  
NEW HOMES  
REMODELING  
ADDITIONS  
GARAGES  
SIDING  
DECKS  
Custom Built Cabinets  
428-7109

**Todd Withrow Company**  
REMODELING  
CABINETMAKING  
ADDITIONS—WINDOWS  
KITCHENS—BATHROOMS  
ROOFING—SIDING  
CUSTOM BUILT CABINETS  
WALL UNITS—FURNITURE  
TOP QUALITY MATERIAL AND WORKMANSHIP  
LICENSED AND INSURED  
CALL ANY TIME  
428-9420 or 428-7797

**HAPPY BIRTHDAY AUGUST 3, 1987**

**DAN'S WESTSIDE AUTOMOTIVE**  
660 West Main Street Phone 428-9455 Manchester, Michigan  
We have the latest in 4 wheel alignment equipment  
6 important facts about wheel alignment

- 1. Extend tire life**  
It's happened to almost everyone: buy a set of tires, and before long one or two tires are wearing out before the others. On today's cars, this applies to the rear tires as well as the front tires. The most common cause of unusual tire wear is improper alignment. Over the years, a properly aligned vehicle can save hundreds of dollars in tire wear.
- 2. Spot problems early**  
A suspension system inspection is an inherent part of the wheel alignment operation. This gives the mechanic a chance to spot worn parts that would affect vehicle alignment. It also gives him an opportunity to spot small problems before they become big, costly ones.
- 3. Ensure safe driving**  
A periodic four wheel alignment makes sure your car handles properly and, more importantly, provides an opportunity for inspecting the suspension system for defective parts. In some ways, the safe driving aspect may be the most important benefit of wheel alignment.
- 4. Stretch fuel mileage**  
Fuel mileage increases as rolling resistance decreases. Proper wheel alignment sets all four wheels parallel which, in turn, assures minimum rolling resistance. This plus proper tire inflation provide top efficiency for maximum mileage.
- 5. Improve handling**  
Does your car pull to one side, does the steering wheel vibrate, do you have to constantly move the steering wheel to keep your car traveling straight ahead? These and other handling problems can generally be corrected by four wheel alignment.
- 6. Get a better ride**  
Proper alignment helps the front and rear suspension systems do their job. With all the system components in proper relation, road shock is efficiently absorbed so the vehicle is more stable and you get a smoother ride.

**KRAUSS PHARMACY**  
12



## Soil Surveys Can Help You

The Washtenaw County Soil Survey available from the Soil Conservation Service is intended for many different users. It can help a homebuyer or developer determine soil-related hazards or limitations that affect homesites. It can help land use planners determine the suitability of areas for housing or onsite sewage disposal systems. It can help a farmer estimate the potential crop or forage production of his land. It can be used to determine the suitability and limitations of soils for pipelines, buildings, landfills, recreation areas, and many other uses.

### WHY SOIL DATA ARE NEEDED

Many people assume that soils are all more or less alike. They are unaware that great differences in soil properties can occur within even short distances.

Soils may be seasonally wet or subject to flooding. They may be shallow to bedrock. They may be too unstable to be used as a foundation for buildings or roads. Very clayey or wet soils are poorly suited to septic tank absorption fields. A high water table makes a soil poorly suited to basements or underground installations.

These soil properties and many others that affect land use are given in the soil survey. The soil survey describes the properties of soils in Washtenaw County and shows the locations of each kind of soil on detailed maps.

### BUYING LAND

The Washtenaw County soil survey can help in evaluating the suitability of a tract of land for the intended use before buying.

Where soil maps show that soil-related hazards may damage structures or installations, alternate sites that have favorable soil properties can be selected or structural designs can be changed to compensate for the hazards. Soil maps and descriptions of the soils also can help in planning development in accordance with soil capabilities and limitations.

### EVALUATING AREAS FOR HOUSES AND OTHER BUILDINGS

Soil properties are a major consideration for all building construction. The range of potential soil-related problems is

great. Swelling and shrinking of certain kinds of clayey soils may crack walls and foundations. Flooding or high water tables may flood basements or damage buildings and other installations. Soils that are too clayey or too wet are not suitable for septic tank absorption fields. These and other soil-related problems can be anticipated through the use of the soil survey.

### DETERMINING SOIL PROPERTIES THAT AFFECT CONSTRUCTION

Many soil properties affect the construction and maintenance of roads, pipelines, buildings, and other structures. Among the important soil properties described in the soil survey are:

Natural soil drainage, permeability, flood hazard, depth to water table, seasonal wetness, erodibility, acidity and alkalinity, slope, content of sand, silt, and clay, shrink-swell potential, corrosivity and soil structure.

The Washtenaw County soil survey can help in evaluating routes for roads and pipelines and in anticipating soil-related hazards for building construction. It can also help in locating sources of sand and gravel and determining the kind of material in areas where excavation is required.

### PLANNING LAND USE

The soil survey can help community planners determine the most appropriate areas for urban expansion. Soil surveys show areas that are subject to flooding and describe soil properties that affect septic tank absorption fields. The soil data can help planners in zoning flood plains, in determining the suitability of areas for various uses, and in applying the soil and water considerations of subdivision regulations and building codes to specific developing areas. Soil surveys can also help planners identify areas of prime agricultural land and areas that are best suited to use for recreation, wildlife, and open space.

### DISPOSING OF LIQUID AND SOLID WASTES

Soil properties affect the function of septic tank absorption fields, sewage lagoons, and land

fills. Soil surveys help in evaluating areas for such waste disposal systems. They also can help managers of feedlots, poultry processing plants, and similar enterprises in planning disposal of wastes into soils.

### MANAGING FARM, RANCH, OR WOODLAND

The soil survey can be used to determine the potential tree, crop or forage production of soils on woodland, farm, or ranch. The soil data help in planning management and conservation and can be used in appraising the productive capacity and the value of land for these purposes. In areas where forestry, farming, or ranching are an important part of the economy, soil surveys provide evaluations of soils for specific trees, crops, or range plants.

### LANDSCAPING

Soil properties are a major consideration in selecting and planting trees, shrubs, and grasses for beautification and erosion control. The Washtenaw County soil survey describes soil properties that affect the growth of such plants.

### SELECTING AREAS FOR MANMADE PONDS, RECREATION FACILITIES, AND WILDLIFE

Land suitable for developing wildlife habitat, hunting areas, fishponds, and other recreation facilities can be selected through

## Playground Being Painted

Come one come all, Saturday, August 15, 1987, P.T.O. will be hosting painting the playground equipment at Klager. We will be starting at 10:00 a.m. with hopes of painting all the equipment. The more people we have the quicker we can get done. Bring a brush and a friend to help. If you can make it please call Vicki Miller at 668-6921 so we know how many are coming. Mark your calendars and see you there.



**PARR'S AUTO BODY**  
BODY WORK - PAINTING  
FREE ESTIMATES  
INSURANCE WORK  
GLASS INSTALLATION  
18481 W. Austin Road  
Manchester, Michigan  
Phone  
313-428-9538

## Girls Basketball Players!

Anyone interested in playing J.V. Basketball this year, please contact coach Mark Ball at 428-8162 or his parents at 428-8987. Please leave your name and number. Practice starts Monday, August 10th.

# Manchester Area Chamber of Commerce Presents The Manchester Street Fair

**Saturday, August 1st**  
9 am - 5 pm  
Downtown Manchester

---

**ART FAIR**  
Manchester Mill Run  
Registration 7:30 a.m. - 428-8277

**K of C Pancake Breakfast**  
8:30 a.m. - 10:30 a.m.

**Sidewalk Sale — Flea Market**  
Heritage Crafters  
Historical Society Collectible Sale  
102 W. Main

**Blacksmith Shop Forge Demos**  
Restaurants - Food Specials  
Street Dance With Band

**Michigan Veterinary Clinic, P.C.**

**VERA L. KLUWE, D.V.M.**

☎ 313-428-8365

Large and Small Animal Surgery and Medicine  
18901 Sharon Valley Road

Appointments: 9 AM - 9 PM  
Monday through Saturday  
Manchester, Michigan 48158-0025

**CUSTOM CABINETS MADE IN MANCHESTER**

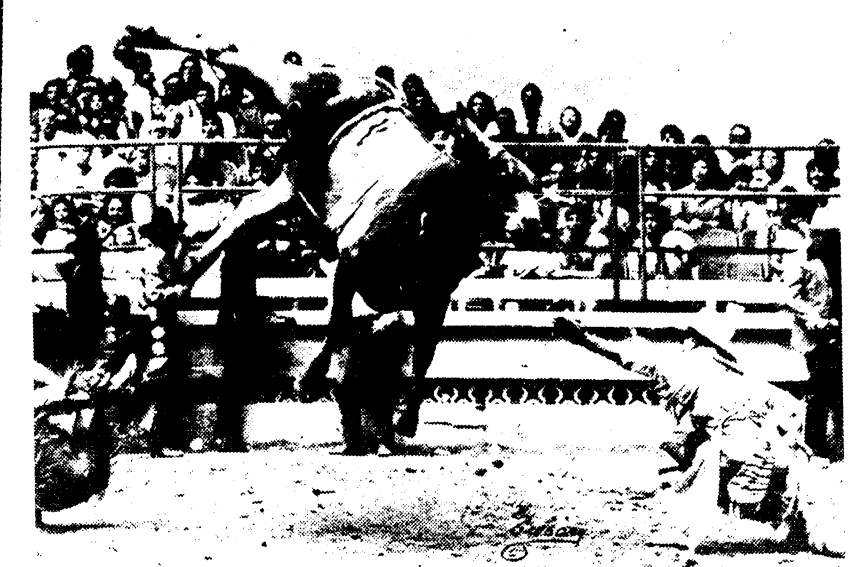
Competitive Prices  
Installation Available  
Design Service

—OR—

Let Us Reface Your Old Cabinets and Save \$\$

**Dutch Country Kitchens**

18352 W. Austin Road Phone 313-428-7292 Manchester



## 22nd Annual Saline Rodeo

America's most original old west sporting event returns to Saline August 7, 8, and 9, as the Saline Jaycees and Lafontaine Brothers Arbor Dodge presents the 22nd Annual Budweiser Championship Rodeo at the Washtenaw Farm Council Grounds in Saline!

Professional Rodeo is one of this country's last "pure" sporting events that literally pits man against beast. The three performance rodeo features professional cowboys and cowgirls in six competitions of skill and daring. Bareback bronc riding, saddlebronc riding, calf roping

steer wrestling, cowgirls barrel racing and the dangerous bull riding!

Sanctioned by the International Professional Rodeo Association some of America's best rodeo cowboys and cowgirls are expected to compete. In past years the Saline Rodeo has drawn World Champions and contenders alike for the top prize money and opportunity to compete on the outstanding livestock of the J Bar J Rodeo Company.

The rodeo starts Friday, August 7, at 8 p.m. and runs Saturday, August 8, at 8 p.m. and Sunday, August 9, at 3 p.m.

### Village Hair Forum

201 E Main Old Mill 428-7684

## SIDEWALK SPECIALS

Hair Cuts ..... \$6.00  
Ear piercing Includes Earrings \$6.00

## AWNINGS!

We repair, recover your old ones or custom make new ones. SEE US TODAY!

617 S Ashley • P.O. BOX 1164, ANN ARBOR • (313) 665-9126

## RODEO

AUG. 7-9

FRI 8 pm WCXI NIGHT  
SAT 8 pm WWW NIGHT  
SUN 3 pm DISCOUNT TIRE DAY

★ FREE DANCE: FRI & SAT NITE  
Presented by: LA FONTAINE BROS.  
ANN ARBOR DODGE

Tickets: Adults \$5-Advance \$6 At Gate Children (2-12) \$3

Outlets: Ann Arbor-Food & Drug Mart  
In Saline-Lodi Food Mart, Citizens Trust Bank  
and All Ticket World Locations

Washtenaw Farm Council Grounds  
Saline-Ann Arbor Rds. In Saline

## Kim Lee Attends Summer Institute

Kimberly Gayle Lee, daughter of Mr. and Mrs. Barry N. Lee of Manchester, is one of 102 high school students participating in the Michigan State Board of Education Summer Institute for the Arts and Sciences at Olivet College July 12 through July 25. Lee attends Manchester High School.

The Summer Institute provides two-week institutes for 525 talented and creative sophomores and juniors in Michigan high schools at five Michigan colleges and universities, including Olivet College, Michigan Technological University, Western Michigan University, Eastern Michigan University, and Grand Valley State College. The program provides students with instruction in the arts and sciences, plus in-depth exploratory activities. The Olivet program is entitled "Creative Expressions and Critical Issues in Contemporary America: A Study in Spontaneous Combustion."

Creative arts intensives will focus on improving acting skills; expression through jazz improvisation; and, experimenting with a variety of creative literary forms. The social science intensives will investigate racial tension and extremism in contemporary America; the psychological crisis of today's youth; survival in the nuclear age; and, the classroom crisis in contemporary secondary education.

Funding for the Olivet program is through the Calhoun Intermediate School District under the direction of the Michigan State Board of Education.

### Public Notice

STATE OF MICHIGAN  
IN THE CIRCUIT COURT FOR THE COUNTY OF WASHTENAW

CHARLOTTE PETERS, Plaintiff  
vs.  
ROBERT FRANKLIN, Defendant

CASE NO. 87-37394-DO  
Judge: William F. Ager, Jr.

WASHTENAW LEGAL CENTER, P.C.  
By: Andrew L. Fanta (P29540)  
Attorney for Plaintiff  
4930 Washtenaw Avenue  
Ann Arbor, MI 48104  
313-434-3800

ORDER TO ANSWER  
At a session of said Court held in the City of Ann Arbor, County of Washtenaw, State of Michigan on the 8th day of July, 1987, PRESENT: HONORABLE William F. Ager, Jr., Circuit Court Judge.

On the 8th of July, 1987, an action was filed by Charlotte Peters, Plaintiff, against Robert Franklin, Defendant, in this court for divorce. IT IS HEREBY ORDERED that the Defendant, Robert Franklin, shall answer to take such other action as may be permitted by law on or before the 20th day of August, 1987. Failure to comply with this order will result in a judgement by default against such Defendant for the relief demanded in the complaint filed in this court. Such answer or other action shall be filed in the above-entitled cause and a copy thereof sent to the Plaintiff's attorney.

William F. Ager, Jr.  
Circuit Court Judge

WASHTENAW LEGAL CENTER, P.C.  
By: Andrew L. Fanta (P29540)  
Attorney for Plaintiff

### Village Hair Forum

428-7684

**WILL BE CLOSED FROM AUGUST 2nd THRU AUGUST 10th FOR VACATION**

## Village Managers Report: Manchester Industrial Park

On June 21, 1984, the Village of Manchester made a commitment to acquire and develop a parcel of land for industry south of what is now Johnson Controls, and along M-52 at a cost of \$47,500. Supportive and committed were Mayor John Hinkley, assisted by Village Council. The township was asked for concurrence. With their approval, the land was annexed and with the assistance of Clarence fielder the Village moved forward.

A planning grant was applied for and received. At this point Mary Kallawaard followed through on many details.

Prior to and soon after this commitment, industries made their interest known. Eden Foods and Tecumseh Products were first to knock on our door. Later Associated Springs and the Sealed Power Corporation came forward. Without a doubt, and on record, each prospective client made us aware of how an absence of utilities made it an unattractive site. Chelsea, Dexter and most notably Saline have developed land that meets the needs of those clients. Properly placed parks, such as this one, can compare favorably with residential parcels. SEV's can be \$500,000 plus an acre on buildings with parking lots, equipment, etc. It is important to note that capital improvements, recreation programs and other community wishes can be acquired through added, but moderate development of this size.

Early on Mr. D.E. Limpert and Mr. Wayne Hamilton considered participation in the park development. Eventually the Village will turn the park over to an interested developer if available. Until that time comes, Council has chosen to fill the gap and take the initiative. The Village tried to match a pledge and pay off the towns commitment to the Park. Donations were sought. It is no longer possible to pursue this option. A misunderstanding has arisen with one of the donors. Council has decided to continue with the program as originally intended but without the participation of the donors.

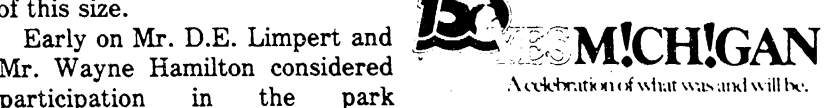
Currently we have:

- 1) Acquired the land.
- 2) Properly annexed and zoned.
- 3) Obtained permits from the DNR and the Department of Public Health.
- 4) Developed Construction plans.
- 5) Asked and received voter approval.
- 6) Put the project to bed.
- 7) Prepared a program for capital improvements.

Other improvements include:

- 1) Water tower refurbishing.
- 2) New water meters (complete)
- 3) Iron filter repair (2 times)
- 4) Water and sewer repair.
- 5) Street paving and sidewalk repair.

We have received a tentative budget for the treatment plant. No further word on the monies as of yet.



### CORKY D'S

112 Adrian St. Manchester, Mich

## Sidewalk Special

**99¢ HOT DOG and Small Coke**

11:30 am-1 pm

### SIDEWALK

Saturday August 1st

REDUCTIONS ON ALL SUMMER ITEMS

SPECIAL PURCHASE

CLEARANCE ITEMS

### SALE

ALL STOCK BEING REDUCED

Back To School Sale Items

CLEARANCE CORNER

BEN FRANKLIN

EAST MAIN STREET MANCHESTER, MICH.



# Your advertising dollars do better in the classifieds

All Classified Advertising Is Payable In Advance And Must Be Placed And Paid For Prior To 11 A.M. On Tuesday For Publication That Week. Classifieds Are \$2.00 For First 20 Words, 5c A Word Thereafter. Thank You's Are \$4.00 Minimum Up To 50 words, 5c A Word Thereafter. All Advertisers Should Check Their Ad The First Week. The Enterprise Cannot Accept Responsibility For Errors On Ads Received By Telephone But Will Make Them Appear Correctly. Refunds May Be Made Only When Erroneous Ad Is Cancelled After The First Week That It Appears.

**JERRY WHITAKER EXCAVATING** - Dozer, backhoe, dragline and 10 yard truck. Drain fields, basements, driveways, sand and gravel. Call 475-7841. tfn

**LITTLE WACK EXCAVATING** - Licensed and Insured. Basements, Drainfields, Digging, Bulldozing, Trenching, Black Dirt, Sand, Gravel. Paul Wackenhut. 313-428-8025. tfn

**FOR RENT** - 1200 sq. ft. building on Main Street. Phone 428-8173. tfn

**TECUMSEH'S NEWEST** Registered Briggs & Stratton, Tecumseh, MTD Warranty Dealer. Now stocking complete line of parts. Repairing all types small engines. Call J.R.'s Small Engine Service at 517-423-3836. 111 W. Logan St. M-F 8-6, Sat. 8-4. Also Ryder Trucks. tfn

**PRIME COMMERCIAL SPACE** For rent in the Manchester Mill. Contact D.E. Limpert. 517-456-4151. tfn

**MANCHESTER ANTIQUE MALL** - 35 Dealers. Open 7 days, 10-5, 116 E. Main. 428-9357. tfn

**CATTLE** - Angus-chi, cows and calves, all ages. 428-8701. tfn

**HELP WANTED** - At Corky D's Deli. Willing to train dependable adult who WANTS TO WORK. Must be clean, neat and able to work various hours. Call 428-9216 after 2:00. tfn

**FOR RENT** - Commercial building 1000 square feet, 112 Adrain Street, 428-9216. tfn

**COPY PAPER AVAILABLE** We have copy paper in sizes 8 1/2 x 11, \$4.75 for 500 sheets. 8 1/2 x 14, \$5.75 for 500 sheets. The Manchester Enterprise. tfn

**MICHIGAN PEAT SALES** - Black dirt for sale, \$10 a yard delivered. Fast delivery. 428-9664. tfn

**PROFESSIONAL COUPLE** - Seek house in country. Call Dick, 428-7808. 7-30

**KEITH'S BARBER SHOP** - 8:00 - 5:00 daily, 7:00 - 12:00 Saturday, closed Monday. For appointment any other time 428-8584. tfn

**FOR RENT** - Vacation Cabin in Lewiston, MI on private lake. Week-end and weekly rates. Call 428-7393 or 7086 eves. 8-13

**LANDSCAPING SERVICE** - Dozing and backhoe, driveways, backfilling etc. Phone 428-8868 eves. tfn

**HYPNOTHERAPY** - Smoking, weight, stress etc. Terri White RN MS Ann Arbor 994-4644. It works! tfn

**MANCHESTER K OF C HALL** - Available for wedding receptions, parties, meetings. Hall rental \$165 includes cleaning; use of kitchen \$25. Catering available. For further information call 428-8393 or 428-8886. tfn

**CORKEY D's DELI** - Homemade Ice Cream & Waffle Cones - Sandwiches - Subs - Baskets - Burgers - Fries - Party Trays & Salads - Baked Goods of all kinds. phone ahead - 428-9216. tfn

**VILLAGE HAIR FORUM** - 201 East Main, Old Mill. 428-7684. tfn

**PIANO TUNING & REPAIR** - Qualified technician - Ron Harris, 475-7134. tfn

**MERRIMAN INSULATION** - Free estimates. Blown-in cellulose, professionally installed. George Merriman, phone 517-592-5527. tfn

**CHELSEA GREENHOUSES** - 7010 Lingane Road, Chelsea, Michigan. 475-1353-54 or 475-9313. Flowers and plants for every occasion. We specialize in wedding flowers to fit your budget. We are as near as your phone and we welcome your business. tfn

**C & B PAINTING** - Interior-exterior-free estimates. Contact Charles E. Benedict. Phone 428-7136 or 428-7416. tfn

**FIELDER PAINTING** - Interior and exterior. Free estimates. Senior Citizens discount. Phone 428-8506. tfn

**OVERNIGHT** - Accomodations at the Clinton Hotel, 104 W. Michigan Ave. Dining and full service bar. 517-456-4151. tfn

**WANTED** - Standing Timber - saw logs or veneer. Buskirk Lumber Co. 517-661-7751. tfn

**WALKOW'S HOME IMPROVEMENT COMPANY** - Phone 313-428-8468. Seamless aluminum gutters for low prices and dependable service. tfn

**BLACK DIRT** - Or peat. 6 yards \$50 delivered. Phone 428-7784 and 428-9415. tfn

**APARTMENT FOR RENT** - 2 bedroom upstairs apartment. \$330. plus utilities. 428-7212. tfn

**SELF STORAGE** - Unit for rent in the village, 428-7173. tfn

**MACHINIST** - Growing company requires machinist with 3-5 years minimum experience. Must be familiar with all aspects of a machine shop. Send resume to: 120 Enterprise Dr., Ann Arbor, MI 48103. 8-13

**WORKING PARENTS** - Looking for quality licensed Day Care? Daily schedule, including meals and snacks, provided in a home environment. For children 18 months - 4 years. 428-8279. 8-6p

Is there a new home in your future, but you can't find the house you're looking for? We have built alot of homes within a 50 mile area. Let us build a new WICK HOME for you. Beauty, value, energy efficiency, newest features, fast completion - single or multi-family - your plans or ours. **CALLOWAY CONSTRUCTION**, 517-563-2930. tfn

**LAWN MOWING** - House-cleaning, garden rototilling, hauling, blacktop sealing, tree and bush trimming, sidewalk edging, and more. Free estimates, low rates, fast service. T&N Services, 428-7002. tfn

**BAKERS DOZEN** - Accepting applications for part-time early morning hours for bakery delivery. Apply within bakery. 7-30

**HELP WANTED** - Part-time tellers, must be available to work 18-25 hours per week. Previous teller or cashier experience required. Competitive salary. Apply between 1-4 p.m. Tuesday and Thursday, Human Resources Department, Comerica Bank-Jackson, 245 W. Michigan Ave. E.O.E.-M.F.H.V. 7-30

**FOR SALE** - House in Manchester, 3 bedrooms, 2 car garage on 7 acres with pond stocked with fish. Phone 428-7605. 7-30p

**85 FORD RANGER** - Pick-up, 5 speed, over driver, V8, Charcoal grey, low milage, \$4,900, 428-9252 after 5:30. 7-30p

**FOR SALE** - Solid Oak Church Pew, Oak 3-drawer dresser with mirror, Oak fireplace mantel, Oak Hi-boy chest of drawers; 15016 Wellwood Road, Corner of Wellwood and Watkins Road or 1/2 mile south of M-124. 517-592-5766. 7-30

**MAC DEE, INC.** - 13800 Luick Dr., Box 237, Chelsea, Michigan 48118. Set-up person - we have an opening for another set-up person in our machining department, where we machine precision plastic parts for the medical industry. Applicants should have experience in setting up mills and lathes, some familiarity with CNC Controls, and the ability to sharpen the form tools and flat bits that are involved. 7-30

**FOR SALE** - 1986 Fuji Espree bicycle. Less than 50 miles on it. Just like new. Original price \$275, asking \$150. 428-9681. 7-30p

**FULL AND PART-TIME** - Positions available for store clerks - retirees are welcome to apply. Kleinschmidts True Value Hardware. 428-8337. 7-30

**MACHINE OPERATORS** - Up to \$15/hr. Various machines, full-time permanent, local Ann Arbor/Ypsilanti area. J.O.B.S., 971-9500.

**PLUMBERS** - Licensed. Up to \$15/hr., full-time permanent, local area. J.O.B.S., 971-9500.

**ASSISTANT MANAGERS** - up to \$20,000/yr., full-time, good future, local Ann Arbor/Ypsilanti area. J.O.B.S., 971-9500.

**LAST ICE CREAM SOCIAL** - For this season in Manchester, Wednesday, August 5, from 5 p.m. on - at Manchester United Methodist Church, Ann Arbor Street.

**LITTLE CAESARS** of Saline - is now accepting applications for full-time management. Must be 20 years of age or older. Apply within or phone 313-429-4927. 8-6

**FARM HOME** for rent - Manchester schools, 3 bedrooms. 429-7527. 8-6p

**HELP WANTED** - Press Operators - Manchester Plastics, Inc. is accepting applications for entry-level press operators. Desire to work and willingness to learn necessary. Fill-out application at Manchester Plastics, Inc., 500 W. Madison St., Manchester, MI 48158 EOE

**FREE KITTENS** - to a good home. 6 weeks old, one siamese female, one calico female, one tiger male. 428-8695. p

**FARM BRED HUNTERS** - Free puppies to a good home. Shown by appointment, 428-7920.

**HELP WANTED** - Coaching positions available: Junior High Football Coach, Junior High Cheerleading Coach. Please contact: Al Streiter, Manchester High School, 710 E. Main St., Manchester, MI 48158.

**NEW & USED** - lawn and garden equipment - Simplicity, Ariens, Stihl, Jonsered, Lawn Boy & Green Machine, authorized dealer. Contractor and lawn tool rentals. Pick-up and delivery service available. Complete repair service. Village Lawn & Garden Center, 120 S. Main, Chelsea, MI 475-8313.

**FOR SALE** - '75 Mustang II, fair condition, 428-9296 after 5. p

**FOR SALE** - Metal bed, box spring and mattress - very good condition. E.H. Treat - Phone 428-8191. p

**16 FT. CAMPER TRAILER** - Sleeps 4 to 6, stove - gas, refrigerator - gas and electric lights. Good shape, \$500.00 or best offer. 428-7380. p

**GENERAL MAINTENANCE PERSON** - Landscaping, driving, must have own car. Apply in person Lamp Post Motel, E. Stadium near Washtenaw. 8-6

**HEARTY OUTDOOR MUMS** - \$3.50, 6 inch pot, 3 plants per pot, houseplants, hanging plants, Hibiscus. Schebor's Greenhouse, Mon-Sat. 9-5, 14345 Logan Rd., Phone 428-8078. 8-6

**CONSTRUCTION/HEAVY EQUIPMENT OPERATORS** - up to \$15/hr. Machines and types vary. Full-time permanent, local Ann Arbor/Ypsilanti area. Call J.O.B.S., 971-9500.

**Garage & Yard Sales**

**ANNUAL COLLECTIBLES SALE** - Manchester Area Historical Society, August 1, 1987, 9:00 - 5:00, Walton's lawn. For further information call Howard Parr - 428-9233 or Tom Walton - 428-7822.

**GIANT MOVING SALE** - Rain or shine, 10800 Noggles Rd., Saturday, August 1st. p

**Manchester United Methodist Church**  
**Ice Cream Social**  
**WEDNESDAY, AUGUST 5th**  
SERVING STARTS AT 5:00 P.M.  
BEEF BARBEQUE HOT CHICKEN SANDWICHES  
GERMAN POTATO SALAD COLE SLAW  
BAKED BEANS HOT DOGS  
ICE CREAM ICE CREAM FISH POND  
CAKES CAKES PIES

**GARAGE SALE** - 357 Schaffer Ct., Friday, July 31, 9-4, Saturday August 1st, 9-? Kids clothes sizes 7-12, toys, misc., some adult. p

**YARD SALE** - Thursday & Friday, July 30, 31st, 9-6, 12740 Burmeister Road. Women's & men's clothing, drapes, bed spreads, Avon, end tables & misc. Canceled if rain.

**YARD SALE** - Clothes, books, baby-walkers, furniture, appliances, riding toys, computer, '74 Mustang, file cabinet, photo enlarger, household items, and much more. July 31 - noon - 5 and August 1, 9-2. 125 S. Clinton (across from the Police Station). p

**GARAGE SALE** - Thursday, July 30, Friday, 31st, 8:30 to 4:30 at 11615 Pleasant Lake Road across from the Pleasant Lake School. 42" snow blade fits Wheelhorse tractor A.P.C., new AM/FM C.B. Radio, Rival ice crusher, handy pump, golf club set, dog house, something for everybody. p

**MOVING SALE** - 2700 S. M-52, Chelsea - Saturday, August 1st 8 a.m. to 3 p.m. only. 1984 Ford F250 pick up, diesel 1/2 ton, 32,000 mi, \$8,500; 1986 Bolens mower, diesel, 4' cut, 87 hrs. of drive-time, \$4,200; 10' radial-arm saw, 2 chain saws, snowblower, picnic table, double bed, misc. tools, floor jacks, men's shirts, women's summer and winter clothes; pants - jr. size 5/6 and 7; winter coats; some children's clothes; cameras; dishes; misc. glassware; plants and much, much more.

**FOR SALE** - '75 Mustang II, fair condition, 428-9296 after 5. p

**FOR SALE** - Metal bed, box spring and mattress - very good condition. E.H. Treat - Phone 428-8191. p

**FOR SALE** - Metal bed, box spring and mattress - very good condition. E.H. Treat - Phone 428-8191. p

**FOR SALE** - Sofa, excellent condition. 428-7681 p

**FOR SALE** - Sofa, excellent condition. 428-7681 p

**Cards Of Thanks**  
The family of Louise Merriman wishes to thank everyone for the many kindnesses shown them at the time of their mother's death.

We wish to extend our appreciation for the support, prayers and caring expressed by family, friends & neighbors as we mourn the passing of our husband, father, step-father, grandfather, great grandfather, step-grandfather, and step-great-grandfather.

A thank you to Dr. Hwang, Dr. Lim and Dr. Moyod and associates along with the doctors and nurses at Saline Hospital for their caring and kindness.

Also a thank you to Rev. Macfarlane and to Jenter Funeral Home for their help and assistance.

Your caring support and comfort will not be forgotten. The Family of Edwin P. Smith

# 150 YEARS YES MICHIGAN

A celebration of what was and will be.

Catch the wave of excitement as Michigan serves up a sizzling Sesquicentennial summer!

Highlights are the Michigan Water Festival and Parade of Sail, the Tour de Michigan and the Michigan Festival: A Celebration of Folk Life.

"Naturally we will look our best for the summer of 1987 since it will be one that Michiganians will remember forever as we celebrate our heritage and salute our future," said William A. Zehnder, chairperson of the Michigan Sesquicentennial Commission.

Nearly 150 local coordinating agencies have planned Sesquicentennial events ranging from the World's Largest Birthday in Warren to Big Fish Contests to Small Road Races. More than 800 events are being held this summer.

Not only is Michigan celebrating its birthday at home, but more than one million tourists visited Michigan on the Mall during the Smithsonian Festival of American Folklife in Washington, D.C.

Some 90 Michigan folklife artists representing the state's diverse ethnic population

participated at the event and a homecoming of those artists will help recreate a similar event at the Michigan Festival at Michigan State University in East Lansing, August 21-30.

The Michigan Festival not only will host the folklife artists but also will showcase more than 500 Michigan performers from various cultural backgrounds on 10 outdoor stages covering 60 acres on the MSU campus.

Already on tap for the 10 day festival are the Temptations, Magician Harry Blackstone, Sawyer Brown, the JC Heard Jazz Orchestra, Peter, Paul, and Mary, and hundreds of other top flight dancers and blues, jazz, and classical musicians.

"In its first year the Michigan Festival joins only a handful of comparable super festivals in the U.S.," Zehnder said.

What do the Red Witch, the Glass Slipper, the Windwalker and Gypsy Wind all have in common? They are among 130 Great Lakes Sailing vessels that will join Michigan's own tall ship, the Welcome, and other tall ships in a Parade of Sail, July 25, in Grand Traverse Bay in Traverse

**NOTICE**  
Manchester Sportsman Club will be letting bids for construction of a 1200 square foot addition to existing building. Specifications will be available Wednesday, July 22, 1987, at 508 East Main Street. All bids to include plumbing and heating and electrical. Bids to be returned by August 1, 1987. Bids will be opened at the Club Monday, August 10, 1987, at 7:00 p.m. Building Committee

**Manchester Township Planning Commission**  
**Notice Of Public Hearing**  
The Manchester Township Planning Commission will hold a public hearing at 8:00 p.m. EDT August 24, 1987, at the Manchester Township Hall, 275 South Macomb Street, Manchester, Michigan on a proposed Amendment to the Manchester Township Zoning Ordinance to change the zoning from AR-Agricultural-Residential District to GC-General-Commercial District of premises situated in the Northwest quarter of Section 10, Manchester Township, Washtenaw County, Michigan and more particularly described as:  
PARCEL I: Commencing at N 1/4 corner of Section 10, Thence S 0° 38' W 917.26 feet to POINT OF BEGINNING; thence S 0° 38' W 200 Feet; thence N 89° 21' 59" W 399.72 feet; thence S 5° 12' 5" W 434.61 feet; thence N 89° 54' 42" W 455.83 feet; thence N 14° 28' 8" E 620.47 feet; thence S 84° 38' 22" E 253.86 feet; thence S 89° 21' 59" E 390.94 feet to Point of Beginning. Being part of Northwest 1/4 Section 10, T4S, R3E, 7.63 acres.  
PARCEL II: Commencing at the intersection of the centerline of Austin and Grossman roads; thence South along the centerline of Grossman Road 233 feet for a Point of Beginning; thence West parallel with said Austin Road 533 feet; thence South parallel with the centerline of said Grossman Road 450 feet; thence East parallel with the centerline of said Austin Road 533 feet to the centerline of said Grossman Road; thence North along said Grossman Road 450 feet to the Point of Beginning, being a part of Section 10, T4S, R3E, EXCEPTING THEREFROM Commencing at the south 1/4 post of Section 10, thence north on the north-south 1/4 line 4242.52 feet for a place of beginning; thence westerly 539.71 feet; thence northerly 200 feet; thence easterly 539.71 feet to the place of beginning, containing approximately 2.33 acres. Subject to the rights of the public in the easterly 33 feet thereof.  
Manchester Township Planning Commission  
7-30, 8-20

City. "The Michigan Water Festival is a tremendous opportunity to showcase Michigan's water resources at home and abroad," Governor James J. Blanchard said.

"We have the longest fresh water coast in the nation and we are surrounded by 70 percent of North America's fresh water. Our state also has more than 11,000 inland lakes."

Each of the vessels are a sight to behold and many of them have their own claims to fame, including the Euintea and the Serenade.

The Water Festival is sponsored by Amway Corporation and encompasses a number of water-related activities including three International Festivals at Sault Ste. Marie, Port Huron and Detroit (August 14, 15, 16.)

Many of Michigan's highways and byways will be a flash of color as the Blue Care Tour De Michigan professional bicycle race cuts through Michigan cities August 21-30. Cities on the tour include Traverse City, Grand Haven, Lansing, Frankenmuth, Battle Creek, Troy, and two races in Detroit.

The arts in Michigan also are being showcased as the Michigan Artrian, the nation's only art museum on a train, tours Michigan cities during the summer. In honor of Michigan artists, the train features the unparalleled art collection of the Cranbrook Academy of Art.

In another Sesquicentennial first, Marquette, in Michigan's Upper Peninsula, will be the site of the Great Lakes State Games. The games, being held at the Great Lakes Sports Training Center at Northern Michigan University, begin Friday, July 31 and run through August 2.

Consisting of a multi-sport athletic competition, the games are for both serious athletes and

**NOTICE OF MORTGAGE FORECLOSURE SALE**

Default having been made in the conditions of a certain mortgage made by Louis D. Belcher and Myrna E. Belcher, husband and wife, of 1924 Peppermill, Ann Arbor, Michigan, as Mortgagee, to FIRST OF AMERICA BANK - ANN ARBOR, a Michigan banking corporation, of Ann Arbor, Michigan, as Mortgagee, dated March 17, 1986, and recorded in the Office of the Register of Deeds for Washtenaw County, Michigan, on March 19, 1986, in Liber 2037, Pages 592-595.

And the Mortgagee having elected under the terms of said mortgage to declare the entire principal and accrued interest thereon to be due, which election it does hereby exercise, pursuant to which there is claimed to be due, at the date of this notice, for principal and interest on said mortgage, the total sum of \$81,213.03 no suit or proceedings at law or in equity having been instituted to recover the debt secured by said mortgage or any part thereof.

NOW THEREFORE, pursuant to the power of sale in said mortgage, and the statute in such case made and provided, notice is hereby given, that on Thursday, August 20, 1987, at ten o'clock in the forenoon, local time, said mortgage will be foreclosed by a sale at public auction to the highest bidder at the North Main and Huron Street entrance to the Washtenaw County Courthouse in the City of Ann Arbor, Michigan (that being the building where the Circuit Court for the County of Washtenaw is held) of the premises described in said mortgage, or so much thereof as may be necessary to pay the amount then due on said mortgage, allowed by law, and also any sum paid by the undersigned to protect its interest prior to said sale, which said premises are described as:

Property situated in the City of Ann Arbor, Washtenaw County, Michigan, viz: Lot 4, Dover-Parkside Subdivision, City of Ann Arbor, Washtenaw County, Michigan, according to the plat thereof as recorded in Liber 15 of Plats, Pages 16 and 17, Washtenaw County Records.

together with the tenements, hereditaments and appurtenances thereto belonging, as in said mortgage provided.

The redemption period as determined under Section 27A.3240 of Michigan Statutes Annotated is six (6) months from the time of such sale.

Dated: July 17, 1987 FIRST OF AMERICA BANK - ANN ARBOR, Mortgagee

FOSTER, MEADE, MAGILL & RUMSEY Attorneys for Mortgagee 121 West Washington, Suite 400 Ann Arbor, Michigan 48104-1324

# Wolverine Skullduggery

Michigan's vast water resources will be explored with "Celebrate: Great Lakes" being held July 30 to August 1, at the Grand Haven Coast Guard Festival. At the Coast Guard Festival the Michigan Council for the Humanities is featuring musicians, dancers, storytellers, and skin divers, in Chautauqua style event as they showcase the historical, cultural and scientific influence of the Great Lakes.

"The best thing about the Sesquicentennial will be that it will leave not only memories, but a lasting legacy of new museums," said Secretary of State Richard Austin, the state's Chief Historian.

Under his leadership the new state museum, library and archives is being built in Lansing at the state capitol. "The \$44 million structure which will house the state's rich historical heritage will be a major tourist attraction in downtown Lansing," Austin said.

Also as part of the Sesquicentennial celebration, the Iron Ore Museum in the Upper Peninsula, the Michigan Civilian Conservation Corps Museum at Higgins Lake, the African American Museum in Detroit and the Women's Hall of Fame in Lansing have all opened recently and pay special tribute to different aspects of Michigan's history.

Special events on Sunday, July 26, include music and dancers from Michigan and Ohio, and the announcement of the vote results. The Complex is located a quarter mile north of the junction of US-12 and M-50 in the Irish Hills of Lenawee County.

There is no admission charge. For more information on the Sesquicentennial, call 517-482-1987.

**Notice of Public Hearing**  
Manchester Village Council will hear comments on a proposed recreation exercise trail in the Village of Manchester. The time is 7:30 p.m., August 3, 1987, the location is at the Manchester Village Hall, 120 South Clinton Street, Manchester, Michigan.

**Fees For Transfer Site**

- \$2.25 fee for up to 3 bags. (minimum \$0.75 per bag additional up to one full car load.)
- \$5.00 fee for up to one full car load (equivalent.)
- \$7.50 fee for trailer, pickup or van.
- \$15.00 fee for heaped up pickup or trailer.
- \$35.00 fee for stake truck.
- \$5.00 fee for burning wood, brush, etc.
- \$3.00 fee for each tire.
- \$1.00 fee for burning barrels empty (up to \$3.00 fee for full contents.)
- \$9.00 fee for each appliance, large furniture, mattress, etc.

**DAN NAIMOWICZ**  
Village Manager



# Money Management

## Recordkeeping 101

(Prepared by the Michigan Association of Certified Public Accountants.)

Suppose, for some reason, you needed to know how much you paid to have your kitchen remodeled. Are you the type of person who could walk to the right closet, open the box marked "1984" and pull the contract out of the envelope marked "Home Improvements?" Or would you find yourself first rummaging through the unmarked files in your desk, then checking in the box where you stuff paid bills, before finally remembering that you were using the contract as a bookmark in that murder mystery you never finished.

Keeping good records doesn't have to be time consuming and you don't have to save every check you ever wrote "just in case." The Michigan Association of CPAs says the key to efficient recordkeeping is knowing what to keep, where to keep it and for how long. The following is a summary of some of the important areas of recordkeeping.

**Family Personal Records** - Including birth certificates, marriage certificates, divorce papers and separation agreements, citizenship or naturalization papers, passports, social security cards and military service records. These items should be kept indefinitely.

**Insurance Policies** - Including life, disability, mortgage, automobile, homeowners or tenant insurance policies. It's a good idea to hold on to policies for a few years after they are cancelled in case you have to prove your coverage in the event a delayed claim is filed against you.

**Tax Records** - Not only the tax returns themselves, but supporting documents must also be retained. Under normal circumstances, the Internal Revenue Service can go back three years for auditing purposes. But the IRS has six years to

challenge a return if they have reason to believe that a taxpayer has failed to report more than 25 percent of the income stated on the return. CPAs advise you to keep for six years, all documents that support tax deductions or are related to your tax return, including cancelled checks.

**Investments and Bank Records** - Including stock and bond certificates, buy and sell orders, statements, cancelled checks and the like. Again, any of these items that support income, expenses or deductions on your income tax return should be retained for six years to be on the safe side. Other bank statements and cancelled checks should be kept for a year or until you're sure that you won't need them to prove that you've paid a bill.

**Records of Debts** - Including first and second mortgages, equity, personal and auto loan agreements. Keep a record of paid-off loans for a number of years as proof of payment.

**Property Record** - Including deeds, title papers and surveys. Property records should be kept indefinitely. You should keep a copy of the title of ownership for your car, boat or other property for six years after you sell it.

**Home Improvements** - Keep records, receipts or contracts for the cost of all home improvements. These costs increase your home's cost basis and can reduce the capital gains tax when you sell.

**Employee Benefits and Retirement Plans** - Booklets explaining medical coverage and other benefits and records on pension and profit-sharing plans should be kept as long as you have benefits due.

**Family Health Records** - Includes immunization information, dates and details of operations and hospitalizations. This information should be kept indefinitely and your children's records should be given to them when they are grown.

**Will** - You should have your

lawyer keep the original of your will, while you keep a copy at home. Clearly indicate on the copy where the original may be found. If you should make a new will, be sure the old one and all copies are destroyed.

By now you're probably wondering just where you're going to put all these papers. Papers that are very valuable or difficult to replace, such as birth and marriage certificates, property deeds and titles and stock and bond certificates belong in a safe deposit box.

A safe deposit box is, without question, the most secure place to keep important papers and small valuables. Most banks rent safe deposit boxes on an annual basis and if used to store income-producing property, such as bonds or stock certificates, the rental fees may provide you with a tax deduction. It's a good idea to make a list of the contents of your box and keep it at home along with copies of the documents in your box.

In many states, a safe deposit box is sealed upon the death of the owner. If this is the case, don't put your will or life insurance policy in your safe deposit box. To check on the law in your state, ask your banker or attorney.

If, for some reason, you cannot rent a safe deposit box, a fireproof strongbox is probably the next best thing. Be sure to purchase a box that is fire resistant.

The papers you keep at home can be divided between current records and inactive records. A filing cabinet, inexpensive cardboard file box or accordion file would work fine as a storage vehicle for current documents. This is the place you should keep recently paid bills, bank statements, insurance policies, credit card information and the like.

An inactive file can hold older papers, such as old insurance policies, back tax returns and cancelled bank books that are seldom referred to. You can label this box with its contents and store it away on a shelf somewhere.

CPAs advise that if you would like more information on record-keeping, the Consumer Information Center stocks a free pamphlet, **Keeping Family/Household Records**. For your copy, send to Consumer Information Center, Dept 199K, Pueblo, Colorado 81009.

# Competes At Notre Dame



Hillary Wiedmayer was one of 18 members of the Chelsea Baton Corps who competed at the 22nd Annual American Youth on Parade World/National Twirling Championships held at Notre Dame University, July 21-25, 1987. The contestants came from all across the U.S. and all had placed 3rd or higher in their respective states' twirling finals at AYO.P.

Various competitive divisions were held during the week including modeling, solo baton, flag baton twirling, dance twirl teams and collegiate half-time corps. Each competition was divided by contestant age & twirling class.

Hillary competed in modeling, solo baton, flag baton and fancy strut. Her placings were 18th in solo baton, 14th in flag baton and 12th in fancy strut against the nationwide competitors in her age/class. Hillary competed at the '87 championships as a 9 year old novice twirler.

## Unemployment Compensation Now Taxable

Due to a change in federal tax law, all unemployment compensation received after 1986 is fully includable as income.

The Tax Reform Act of 1986 repealed the former provision which allowed a limited exclusion from gross income for unemployment compensation received by individuals whose income did not exceed certain amounts.

Individuals who receive a substantial amount of unemployment compensation in 1987 may need to adjust their withholding allowances to make estimated tax payments. If they do not do this, they may not have enough income tax withheld to cover their tax for the year.

Contact the Internal Revenue Service at 1-800-242-1040 for additional information.

# THE MANCHESTER ENTERPRISE

25¢ COPY  
ENTERPRISE

120TH YEAR VOLUME NUMBER 42

USPS NO. 327-460

THURSDAY, AUGUST 6, 1987

## Manchester Community Fair, August 25th-29th



Short Crick Flatpickers

Performing at the Manchester Community Fair on Friday, August 28th will be the Short Crick Flatpickers. For the past 10 years this band has been in the forefront of the Bluegrass scene in the area around Wheeling, West Virginia. The band, consists of Tom White, on the guitar, Ed Mahonen on the banjo, John Angius on the mandolin and Jeff Strautmann on the bass. They have a unique, original sound which embodies the spirit of traditional bluegrass and new ideas necessary to a growing musical style.

The Short Crick Flatpickers have performed in a wide variety of settings, radio and television shows, recording advertising jingles, and county fairs and festivals. While appearing at the Michigan Association of Fairs and Exhibitions Convention in January, the band performed some of the songs that they have recorded.

Also, at the fair on Friday, starting at 1:00 p.m. will be kid's day, with rides a special price and games and surprises being planned. Several things happen at 5:00 p.m. in different areas on the fairgrounds: Kid's day will end with a drawing for approximately 35 prizes; the Antique Tractor Pull will begin; and a delicious fish dinner will be served by the Manchester Athletic Boosters at the Food Tent. Then starting at 5:30 p.m. will be the horseshoe pitching contest.

Lots of things to do on Friday for kids of all ages, come enjoy your fair.

The Manchester Community Fair Office will be open on Tuesday, Wednesday, and Thursday, August 11, 12 and 13

### Fair Office Hours

The Manchester Community Fair Office will be open on Tuesday, Wednesday, and Thursday, August 11, 12 and 13

## Militia

Manchester Enterprise  
July 22, 1989

It has been fully demonstrated during the late civil war, that a well organized and equipped militia is of the utmost importance, not to the General Government only, but to the State itself, being relied upon as the main national defense against foreign invasion and civil war, and to defend the State against hostile attacks on its borders, to maintain the enforcement of its laws, when necessary, and to guarantee peace and protect the lives and property of the people.

The State of Michigan, of all others of the union, should not be lulled into a state of security, as the idea of security was fully exploded during the progress of the rebellion, as a lesson has been taught by experience, and at a great cost, and it is necessary in the time of peace to prepare for war, and that this maxim should be adhered to at all times.

The national defense of the Republic, aside from the navy, consists of a small standing army and its militia.

The Militia, when well organized, equipped and disciplined, offers the most acceptable and safest guarantee for National defense and domestic peace. It does not invite a desire to assume the offensive, yet it is ever ready for the defensive. It creates no special military organization, nor does it engender distinction between citizen and soldier, nor antagonistic interests and aims between the people and the army, no false pride or selfish motive which seeks hostility only to obtain fame and military advancement. It merely guards alike the life and honor of the nation and the independence and liberty of the citizen, without exhausting or diminishing the industrial resources of the country.

It has been proposed and noticed to the Enterprise, that a militia company be organized in this village in accordance with an act of the Legislature of the State of Michigan, passed at its extra session of 1862. Already some action has been taken in this direction, meetings have been called and bills were posted last week calling a meeting on Friday evening last, for the purpose of establishing a uniform corps and electing officers.

We have called these meetings with a view of enlisting the interest of the business men of our community in this project, (the only one, I may say, that will not tap them), and we should be happy to feel and see that more interest was being taken by the citizens generally. Will they not come in at our next and future meetings, and at least express a willingness that said company should be organized in Manchester?

## Manchester Invited to Showing of "The Carrier"



Swan Productions is proud to present the first showing of "The Carrier" Sunday, August 16, 1987 at the Michigan Theater in Ann Arbor at 12:30 p.m. in the afternoon. This is a private showing for investors and the citizens of Manchester in our appreciation for all your support. There will be no admittance fee. However, we do require that all persons interested RSVP by August 12, 1987, to be put on a guest list. Please RSVP only for yourself and family members. Due to limited seating, only the first 1,000 reservations will be accepted. No additions will be made to the guest list after August 12, 1987 and only those people on the guest list will be admitted (no substitutions, please). Guest must bring

identification showing Manchester residency. Minors without identification will be allowed entrance only with a parent or their legal guardian that is a resident of Manchester. Though the Film has not received a rating as of this showing, we believe the film will most likely receive an "R" rating. Parental discretion is advised. Casual attire is suggested.

Swan Productions is very excited to offer this showing to all the citizens who helped us so much. We regret the strict entrance procedures, but a free first showing of the publicized "Carrier" will be difficult to manage and we want to insure the residents of Manchester will enjoy their afternoon. RSVP by calling Swan Productions at 769-2881.

## Margolis Named To WCC Board Of Trustees



Nancy N. Margolis has been selected to fill a vacancy on the governing board of Washtenaw Community College. Margolis is deputy director of the Washtenaw County Community Services Agency.

She will replace Dr. Susan M. Madley, who resigned her position on WCC's Board of Trustees in June. Madley, the former principal at Gabriel Richard High School, resigned her post to accept the principal's job at Gilmore Academy, a private Catholic High School near Cleveland, Ohio.

Margolis will complete the rest of Madley's term, which expires December 31, 1988. Margolis is scheduled to be officially sworn in at the September Board meeting.

As the agency's deputy director, Margolis supervises the Washtenaw County Head Start, Foster Grandparents, Senior Nutrition, Home Weatherization and Energy Assistance programs. She also creates public information and community education materials to build support for the agency's self-development and anti-poverty programs, in addition to directing new program development and managing several grant funds.

## Sizzling Summer Special

Tired of laying in the HOT Sun for hours Only to BURN? Try our Tanning Facilities at

Village Hair Forum  
10 Visits for \$20.00

Call 428-7684 For Your New Experience  
Offer Good Saturday, August 1st Only

## How can you protect rental dwellings like your own home?

No problem.

Auto-Owners unique Rental Property Program can provide you all-risk building coverage similar to your homeowners policy. And, provide it at very affordable rates.

Ask your independent Auto-Owners agent how the many options can be custom-fit for your rental dwelling protection. You'll find comprehensive Rental Dwelling Insurance is "no problem" with Auto-Owners.

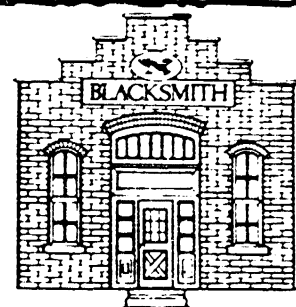


## Sutton Agency, Inc.

AGENTS: DONALD SUTTON, MARY KNAPP, CONNIE WIDMAYER, KATHRYN MARTIN, SUSAN MANN  
Phone 428-9737

136 East Main Street  
Monday, Tuesday, Wednesday, Friday 9-12:30 & 1-4:30  
Thursday 9 am-12 noon  
Manchester, Michigan

(313) 428-4885 COUPON (517) 423-2148  
Saline in the Saline Shopping Center  
\$99 Daily Wear Soft Contact Lenses  
Includes exam & care kit  
1ST OPTOMETRY  
eye care centers  
Dr. Thomas Cunningham  
DOES NOT APPLY TO OTHER DISCOUNT OFFERS OR PRIOR ORDERS  
\$10 OFF (with coupon) Prescription Eyeglasses



## Manchester Area Historical Society Annual Collectibles Sale

Saturday, August 1, 1987

9:00 am-5 pm WALTON'S LAWN

Bring Items To Waltons Thursday-Friday 3-7 pm

ITEMS ACCEPTED ON CONSIGNMENT

No Clothing Please!

For Further information of Assistance/Call Howard Parr, 428-9233 or Tom Walton, 428-7822

MICHIGAN SESQUICENTENNIAL 1837-1987  
Wacker's General Store  
Beer, Wine and Package Liquor - Budweiser, Bud Light Miller, Miller Lite Miller Draft 24 Pack Strohs - 30 Pack \$9.99 Plus Deposit & Tax  
G.E. Wacker Inc  
Gasoline-Fuel Oil-Grease Motor Oil-Diesel Fuel  
9050 Chelsea-Manchester Road Manchester, Mich. 48158  
SUMMER HOURS: Monday-Friday 7 am-9 pm Saturday 8 am-9 pm Sunday 9 am-9 pm