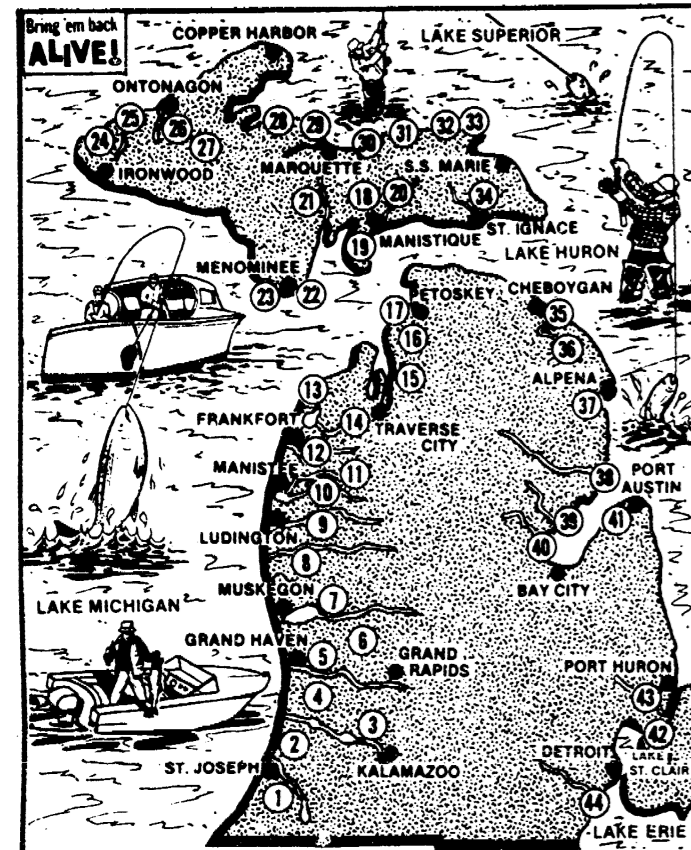


BEST STATE STEELHEAD STREAMS



RIVER	UPSTREAM LIMIT	RIVER	UPSTREAM LIMIT
LAKE MICHIGAN		LAKE SUPERIOR	
1—St. Joseph	All of Mainstream	24—Black	Rainbow Falls
2—Black	Bangor Dam	25—Presque Isle	Manabozo Falls
3—Kalamazoo	All of Mainstream	26—Ontonagon, M. Br.	Agate Falls
4—Rabbit	U.S. 131	27—Ontonagon, E. Br.	M-28
5—Grand	No limit	28—Huron	Big Eric's Bridge
6—Rogue	Reedford Dam	29—Chocoma	U.S. 41 Bridge
7—Muskegon	All of Mainstream	30—Little Garlic	Falls
8—White, N. Br.	Arthur Rd.	31—Anna	Railroad Bridge
9—Pere Marquette	M-37 Bridge	32—Sucker	Seney Rd.
10—Little Manistee	Johnson's Bridge	33—Two Hearted	Reed & Green Bridge
11—Big Manistee	U.S. 131	LAKE HURON	
12—Betsie	Kureck Rd.	34—Carp	Mud Lake Outlet
13—Platte	U.S. 31 Bridge	35—Cheboygan	Cheboygan Dam
14—Platte	Platte Lake	36—Oquococ	Barnhart Lake
15—Elk	Power Dam	37—Thunder Bay	Ninth St. Dam
16—Jordan	Grave's Crossing	38—Au Sable	Foote Dam
17—Boyer	P.H. Dam	39—Au Gres, E. Br.	M-55 Bridge
18—Bear	Mitchell Dam	40—Pelle	Devore Creek Dam
19—Black	Peter's Trk. Trail Bridge	41—Pinebog	
20—Manistee	Papamut Dam	LAKE ST. CLAIR	
21—White Fish	U.S.S. Rd. 2236	42—St. Clair	
22—Big Cedar	Veteran's Park Dam	43—Belle	
23—Menominee		LAKE ERIE	
		44—Huron	Flat Rock Dam

While heavy rains virtually washed out the fall steelhead season, spring runs should be bolstered by a strong return to parent streams by 3- and 4-year-old steelhead, reports AAA Michigan.

The first push of spring steelhead runs started in early February in many Southern Michigan streams but slowed later when temperatures dropped. Generally, steelhead runs peak when the water temperature reaches 45 to 60 degrees. Traditionally, best results are from late March to mid-April in Southern Michigan, from mid-April to early May in Central Michigan, mid-April to early May in Northern Lower Michigan and mid-April to mid-May in the Upper Peninsula.

The 1983 and 1984 steelhead plantings should be returning to the streams in good numbers this spring and weigh between 8 and 15 pounds. The 1985 plants, which now should weigh up to 5 pounds, will be entering the streams for the first time.

Most improved results are expected in Lake Huron tributaries from Au Gres to Rogers City and in Lake Michigan streams from Benton Harbor to Muskegon. Department of Natural Resources field officials said that runs in the rest of the 44 streams in AAA Michigan's 1987 Steelhead Guide should equal 1986.

In West Michigan, best runs are expected on the St. Joseph, Grand, Rogue, Muskegon, Little and Big Manistee, Betsie, Platte and Bear rivers. The East Branch of the Au Gres River, the Pinebog River in the Thumb and the Au Sable River and its feeder creeks should be the top steelhead streams in East Michigan.

The Huron River is the best bet for Southeast Michigan steelhead runs.

Streams in the U.P. expected to provide above average springs runs include the Big Cedar, Manistee and Whitefish rivers off Lake Michigan; Huron and Big Two Hearted rivers off Lake Superior; and the Carp River off Lake Huron.

When in the streams, steelhead do not like direct light so they usually are found near deep holes; behind or next to submerged objects, such as rocks, stumps or submerged logs; or in dark areas under stream banks. Spawning steelhead generally stay in the main flow of the river, in a moderate to fast current over a pebbled river bottom in around 4 feet of water.

Snowfall has been less than usual in the northern two-thirds of the state, and river levels there may be lower this spring. Where spring stream water is high and

muddy, anglers should use brightly colored lures, including weighted spinners; bright silver, gold and fluorescent colored blades; and heavy spoons. When steelhead are located, slowly drifted bait and flies often work best.

In the lower sections of tributaries, fresh steelhead and salmon spawn are favored baits. However, as the spawning fish move upstream and are not actively seeking food, fluorescent yarn can be added to the bait or artificial spawn may be used to attract the fish.

The minimum size for "keepers" remains the same as the last season. Steelhead must be at least 8 inches on Lower Peninsula streams and 7 inches in the U.P. The daily limit is five in any combination with salmon and other trout species.

The 1987-88 Michigan Fishing Guide contains the rules for specific waters and streams. Most are open year-round, but some open on April 1, or April 26. Because upstream limits sometimes change, anglers should check the guide. The guide is available free when a new fishing license is purchased or it can be obtained directly from the DNR or one of its field offices.

GRADUATION STATIONERY
by Carlson Craft

- Announcements
- Name Cards
- Memory Books
- Jewelry
- Party Supplies

Prompt Service
Ask to See Our Album
The
Manchester Enterprise
150 E. Main St.

ATTENTION—IRA
INDIVIDUAL RETIREMENT ACCOUNTS
CONTINUE TO PAY
8.75% INTEREST
INCLUDING ROLLOVERS
NO MINIMUM **NO LOAD**

START AS LOW AS A \$25.00 DEPOSIT
Minimum Guarantee 7.50% till January 15, 1988
Deposits of Monthly, Quarterly, Semi-Annual or Annual

SEE YOUR FARM BUREAU INSURANCE AGENT TODAY

135 East Main St., Suite 204
Manchester, Michigan
Phone 428-7331

Larry Becketl

HERRICK
DIAGNOSTIC AND TREATMENT CENTER
415 E. Kilbuck, Tecumseh, Michigan
(Formerly the Tecumseh Medical Bldg.)
Offering Services In

- ★ **GASTROENTEROLOGY**
Eugenius Ang, M.D.
- ★ **NEUROLOGY**
Allan Clague, M.D.
- ★ **PODIATRY (Foot Surgery)**
Don Schubert, D.P.M.
- ★ **UROLOGY**
C.T. Lin, M.D.
Ashwin Shah, M.D.
- ★ **DERMATOLOGIST**
Jeffrey Messenger, M.D.
- ★ **CARDIOLOGY**
Manhar Tegura, M.D.
- ★ **OTORHINOLARYNGOLOGY**
Harry Richter, M.D.
- ★ **OTORHINOLARYNGOLOGY**
Keo Poopat, M.D.

For Appointment Call
423-7481 or 423-7482

- ★ **ALLERGIST**
R.J. Guttridge, D.O. 423-4946
- ★ **GYNECOLOGIST/OBSTETRICIAN**
William Long, D.O. 423-6667

Wacker's General State
BEER, WINE AND PACKAGE LIQUOR
RC and Diet Rite
\$1.79
8 PACK PLUS DEPOSIT
G.E. Wacker Inc.
Gasoline-Fuel Oil-Grease
Motor Oil-Diesel Fuel
9050 Chelsea-Manchester Rd.
Manchester, Mich. 48158
Winter Hours:
Monday-Thursday 7 am-9 pm
Friday 7 am-9 pm
Saturday 8 am-9 pm
Sunday 9 am-8 pm

Michigan Veterinary Clinic, P.C.
VERA L. KLUWE, D.V.M.
313-428-8365
Large and Small Animal Surgery and Medicine
18901 Sharon Valley Road
Appointments: 9 AM - 9 PM
Monday through Saturday
Manchester, Michigan 48158-0025

5595 N. Dixboro Ann Arbor, Mich. 48105 313-665-3878
154 E. Main Street Manchester, Mich. 48158 313-428-8307

A & J Travel Service
Monday-Friday 9:30 am-5:30 pm Saturday 9:30 am-1:30 pm

NOW OPEN
Get The Most For Your Travel Money
24 HOUR SERVICE

SPECIAL AIR FARES—ROUND TRIP

ALANTIC CITY	\$59 ⁰⁰	LONDON	\$389 ⁰⁰
TAMPA	\$138 ⁰⁰	FRANKFURT	\$418 ⁰⁰
PHOENIX	\$198 ⁰⁰	MILAN	\$478 ⁰⁰
HAWAII	\$379 ⁰⁰		

HOTEL PACKAGES
8 Days - 7 Nights includes Air-Taxes-Transfers
LAS VEGAS from \$239 4 days-3 nights-air-taxes-transfers
ORLANDO from \$339 also includes car
LONDON from \$749

CRUISES — Includes Air Fare
CARIBBEAN CRUISE 7 ports, from \$994 1 week
MEXICAN CRUISE 3 ports from \$779 1 week

THE MANCHESTER ENTERPRISE

25¢ COPY

120TH YEAR VOLUME NUMBER 20 USPS NO. 327-460 THURSDAY, MARCH 5, 1987

A Great Water Power

Two Good Water Powers To Be United To Enlarge The Storage Capacity And Increase The Power

To Make Manchester A Busy Town

Manchester Enterprise March 8, 1906

Way back in the early days, soon after the white man discovered this beautiful and romantic section, at the lower end of the "Great Bend of the Raisin," which was a land mark when Michigan was in her early infancy, the pioneer prospectors conceived the project of digging a canal from the east bank of the upper pond in this village to the bend in the river below the "Premium Mills" in Solesville. Had this scheme been carried out—and we have never been able to learn why it was not—there would have been developed one of the best water powers in the state. About would have been a fall of about 35 feet and sufficient power would have been obtained to carry on a large amount of business in the way of manufacturing.

The cost of digging the canal in the early days would have been nominal. There was practically a natural water course part of the way. The land would have cost nothing and there would have been no high banks along the whole course to be washed away by floods or undermined by water animals.

We could never learn whether the projectors were afraid of spoiling the natural beauty of the scenery along the historic Raisin or whether the frogs and water-snakes, muskrats and beavers frightened them away. Perhaps the Wild Cat bank took wings about that time and caused the projectors to exclaim like Col. Sellers: "Another speculation busted." Whatever the cause, the water of the Raisin goes rushing on only impeded in its course for a time, waiting seemingly for a plunge over the three dams, then goes rippling merrily along sweeping the luxuriant meadows and undermining the forest trees as it rushes on through the woods down past the old Norris mill site.

The plans of the pioneer will never be carried out but let us hope that the genius and brains of the man of the 20th century may devise a way and procure the capital to carry out another plan, one that seems feasible and if brought to a finish may supply power only second to that dreamed of by the pioneer.

Our townsman, J. H. Kingsley, who owns the lower power, has devised a scheme to raise his dam six or seven feet. He has an option on the middle power, owned by N. Schmid, and also has flowage rights on some of the adjoining farmlands so by taking away the Schmid dam he will have one immense lake as a reservoir to supply water power for any amount of machinery.

This plan will involve an outlay of perhaps \$30,000 but he thinks that capitalists will be willing to loan money on a scheme that has large money earning possibilities in view.

Should he carry out his project he would have power for sale and he thinks that manufacturers would be glad to come here and use it. We have good railroad facilities, both roads being in close proximity, and we are only 50 miles from Detroit or Toledo, two of the best markets and lake port shipping points in the middle west, as it has been called, but now really is the very center, east and west.

Cascades Conference Academic Games Begin



The Business Team
Front Row - Cheryl Hartmann, Julie Craft, Jon Arney, Amy Broucek, Becky Mason. Back Row - Sara Samonek, Kris Miller, Mrs. Puroil.

Several academic teams have been practicing with their coaches for the annual "Cascades Conference Academic Games" and Shorthand teams. Manchester was represented by Amy Broucek, Becky Mason, Cheryl Hartmann, Sara Samonek in the typing area and Jon Arney, Julie Craft, Kris Miller and Sara Samonek made up the accounting team. Both business teams were coached by Mrs. Sheryl Puroil. Amy Broucek won Individual Honors by placing 5th overall in the Typing Competition; the typing team placed fourth. The rest of the Academic games were held on Friday, February 27, at Jackson Lumen Christi High School. Manchester sent teams and coaches in the following areas: Science, Social Studies, Mathematics and English.

The Business Academic Games

Quiz Bowl Team Competes At Alma



Quiz Bowl Team
Front Row - Sean Sholtis, Alice Swanberg, Jackie Miller, Dan Dezarov. Back Row - Coach Richard Parsons, Matt Royle, Craig Houck.

Manchester High School's Quiz Bowl Team competed in the 9th annual Alma College High School Quiz Bowl Competition in February. Manchester's first round opponent was Orchard Lake St. Mary who defeated us by the score of 150-55. In spite of losing the teams was reported to have had a lot of fun competing and practicing according to coach Richard Parson. As part of their practices, each year the Quiz Bowl Team challenges the faculty to a series of matches. This year for the first time a group of parents have challenged the team to another competition.

Members of the Manchester team included captain Alice Swanberg, Jackie Miller, Dan

I Can Cope

The Washtenaw County of the American Cancer Society will be offering two "I Can Cope" programs starting in March. "I Can Cope" is a series of free classes offering information and insights to patients, families and friends dealing with day to day issues of living with a chronic disease like cancer.

The first, a six week program, starts Thursday, March 12, 1987, from 1:30 p.m. to 3:30 p.m., at the Wilmot House, 1322 Wilmot St. in Ann Arbor.

The second, an eight week program co-sponsored by St. Joseph Mercy Hospital starts Tuesday, March 17th, 1987, from 7:30 to 9:30 p.m. at St. Joseph Mercy Hospital Patient Discharge Lounge.

Basketball Districts

The Manchester Varsity Basketball team will play Morenci on Tuesday, March 10, 1987 at 7:00 p.m.

The District Basketball Tournaments are being held in Hudson this year.

Hit or Miss

This told the tale. The cat had worried the donuts out of the box and on to the floor where the dog took over.

For some time we have been amazed by some of the TV commercials. For instance there is the one about the stupendous value of the genuine diamond ring obtainable for only \$19.95. "Just send check or credit card information at once and you will receive, in three to five weeks, a ring and as a bonus, a bracelet to match, made of "washed" gold and also a necklace of like construction.

The setting of the ring is said to be a genuine diamond and is guaranteed to be genuine gold in this manner as an advertising promotion and the buy of a lifetime. But you must furnish your own magnifying glass to be able to see the diamond. How many folks fall for this gimmick.

Continued On Page 11

Obituaries

Braun, Helen L.
800 E. Main Street
Manchester, MI

Age 66, died in her home, Wednesday, February 25, 1987, following a short illness. She was born February 8, 1921, in Jackson County, the daughter of Wesley and Ruth (Giles) Miller. Mrs. Braun had been a resident of Manchester for many years. On September 2, 1939, she married Duane Edward Braun in Indiana and he preceded her in death on September 24, 1977.

She was a member of Emanuel United Church, the Manchester Senior Citizens Ford Retirees and the Manchester Sportsmans Club. She was survived by her beloved mother-in-law Julia Braun of Manchester, 1 son Edward of Manchester, and 3 daughters Mrs. Lloyd (Janet) Avery of Ypsilanti, Mrs. James (Carol) Aldrich of Ann Arbor, Mrs. Jerry (Judy) Prince of Orlando, Florida, 4 brothers, Oran, Charles, Nelson, and Howard Miller, 5 grandchildren, several nieces and nephews. She was preceded in death by 1 brother Grant. Funeral services were held Saturday, February 28, 1987, at the Emanuel United Church of Christ with Rev. Robert B. Macfarlane officiating. Burial followed in Oak Grove Cemetery. Memorial contributions may be made to Hospice of Washtenaw.

Reiser, Clair A.
213 E. Michigan Ave.
Clinton, Michigan

Age 66, died Sunday, March 1, 1987, at St. Joseph Mercy Hospital, Ann Arbor after a long illness. He was born March 2, 1920, in Clinton, Michigan, Bridge-

water Township, the son of Oscar and Dora (Lankton) Reiser.

He married Donna Gardener of Jackson, Michigan September 1, 1948. She survives.

He worked for Ford Motor Company.

In addition to his wife he is survived by a son Philip and 2 grandsons, Cassidy and Brian; 3 sisters, Mrs. Charles (Laura) Gauss of Manchester, Mrs. Lucile Rogers of Clinton, Mrs. Laurene (Grace) Poley of Tecumseh and 1 brother Wilbur Reiser of Clinton.

He was preceded in death by a brother Marvin Reiser of Hazel Park, Michigan. May 12, 1985, and a infant son.

Funeral services were held March 4, 1987, at the Couture-Stark and Proctor Funeral Home in Clinton. Rev. Jack Lancaster officiated. Burial followed in Riverside Cemetery in Clinton.

Dunne, John P. Sr.
Phoenix, AZ

Age 81, died February 28, 1987 in Prescott, AZ.

He was a retired Assembled Supervisor from Ford Motor Co.

He is survived by his wife Ina May; 5 daughters, Betty Sloat, Delores Cook, Shirley Blalock, Darlene Elger, Nancy Forest; 7 sons, John Jr., Raymond, James, Pete, Chuck, Tom and Larry; 3 sisters, Emma, of Phoenix, AZ, Ann, of California, Helen, of IL; 47 grandchildren and 49 great grandchildren.

Three sons preceded him in death; Robert, Richard and Jack. Funeral services were March 4, 1987, in Phoenix, AZ. Burial followed at Holy Cross Cemetery, Phoenix, AZ.

A memorial Mass will be held on Sunday, March 8, at 8:30 a.m. at St. Mary's Church in Manchester.

New Books At Township Library

Apfel, Necia H. CALENDARS
Brent, Madeleine
GOLDEN URCHIN
Caney, Steven
STEVEN CANEY'S INVENTION BOOK

Chute, Patricia
CASTINE
Cooke, Courtney
THE BEST BABY SHOWER BOOK

Detz, Joan
YOU MEAN I HAVE TO STAND UP AND SAY SOMETHING
FREE STUFF FOR KIDS/1986-87 VERSION

Harris, Joel Chandler
JUMP THE ADVENTURES OF BRER RABBIT

Hart, Carol
NATURAL BASKETRY
King, Stephen
THE EYES OF THE DRAGON
L'engle, Madeleine
MANY WATERS
Lobel, Arnold
THE RANDOM HOUSE BOOK - OF MOTHER GOOSE

Lukes, Bonnie
HOW TO BE A REASONABLY THIN TEENAGE GIRL
Monaghan, Thomas S.
PIZZA TIGER

O'Marie, Carol Anne, Sr.
ADVENT OF DYING
Scott, Jack S.
A KNIFE BETWEEN THE RIBS
Sheldon, Sidney
WINDMILLS OF THE GODS
Silverberg, Robert
STAR OF GYPSIES
1987 STANDARD POSTAGE STAMP CATALOGUE
Wheeler, Richard S.
SAM HOOK

Teen Help Card

The Teen Help Card, a handy wallet-sized card which lists free or low-cost health services for teenagers, has just been revised. The card is a quick source of help or information for teens and is available to groups or individuals for the cost of postage. To order cards you may call the Washtenaw County Health Department at 973-1488.

KIRK EXCAVATING
Sand—Gravel—Fill Dirt
Basements—Driveways
428-7938
DAVE KIRK
14180 Schleweis Road
Manchester

Tax Preparer Service
WILL AGAIN BE AVAILABLE FOR INDIVIDUAL RETURNS BY:
HENDLEY & DATSKO, P.C.
428-8333

Norm Walz & Son Construction
Manchester, Michigan
NEW HOMES
REMODELING
ADDITIONS
GARAGES
SIDING
DECKS
Custom Built Cabinets
428-7109

The Manchester Enterprise
150 East Main Street Phone 428-8173 Manchester, MI 48158
USPS 327-480
The Manchester Enterprise was established in 1867 and is published each Thursday at 150 East Main Street, Manchester, Michigan, with second class postage paid at Manchester, Michigan.
Edward E. Steele, Publisher Lenore A. Steele, Editor
POSTMASTER: Send Form 3972 to The Manchester Enterprise, 150 East Main Street, Manchester, Michigan 48158.
DEADLINES: All Display Advertising AND Pictures (Black and White Only) Are Due By 5:00 P.M. Every Monday For Same Week Publication. All Classified Advertising And News Articles Are Due By 11:00 A.M. Every Tuesday For Same Week Publication.

1986 High School Graduates Mailed Information Survey

Manchester High School graduates of the class of 1986 will be mailed a survey during the first week of March. Information from recent graduates is vital to the evaluation process in the on-going effort to provide quality education. The information gained will provide the school district with an accurate picture of what graduates are doing, provide input of planning and improving educational programs and give schools a better understanding of students' needs.

Graduates will also be asked to write comments and/or suggestions to improve courses they took or services they received. This annual survey is conducted in cooperation with the Michigan Department of Education and provides information for planning more effective local and state educational programs.

Bob Miller, survey coordinator,

THAT EASTER BUNNY IS BACK AT THE THE VILLAGE SHOPPE
134 East Main St Manchester, Michigan
Monday-Saturday 10 am-5 pm Sunday 12 noon-5 pm

ANNUAL VILLAGE ELECTION
To The Qualified Electors:
NOTICE IS HEREBY GIVEN THAT AN ANNUAL ELECTION WILL BE HELD IN THE VILLAGE OF MANCHESTER County of Washtenaw State of Michigan AT Manchester Village Hall 120 South Clinton Street Manchester, Michigan Within Said Village On **MONDAY, MARCH 9, 1987** FOR THE PURPOSE OF VOTING FOR THE ELECTION OF THE FOLLOWING OFFICERS, VIZ, **3 TRUSTEES FOR 2 YEAR TERM** NOTICE RELATIVE TO OPENING AND CLOSING OF THE POLLS ELECTION LAW, ACT 116, P.A. 1954
SECTION 720 - On the day of any election, the polls shall be opened at 7 o'clock in the forenoon, and shall be continuously open until 8 o'clock in the afternoon and no longer. Every qualified elector present and in line at the polls at the hour prescribed for the closing thereof shall be allowed to vote.
THE POLLS of said election will be open at 7 o'clock a.m. and will remain open until 8 o'clock p.m. of said day of election.
2-26, 3-5 **CONSTANCE M. SCHAFFER, CLERK**

Manchester Village Council Proceedings

Approved Minutes February 16, 1987

The regular meeting of the Manchester Village Council was called to order by President Hinkley at 7:05 p.m. Present: Becketl, Harris, Limpert, Marshall, Reinhart, Naimowicz, Spork and Roberts. Absent: Tapping. Also present: Elenora DeLicia and William Kwolek. The minutes of the February 2, 1987, regular meeting were read and approved as corrected on a motion by Becketl, supported by Harris. Ayes-all.

APPROVAL OF AGENDA
The Agenda was amended to include 1. Election Inspectors for the March 9, 1987, Annual Election, as 11C under New Business. 2. Discuss agreement made with Limpert and Garnet Johnson, relative to the property transfer, as 12A under Old Business. 3. Closed session to discuss DiHydro pending litigation, as 12B under Old Business.

Motion by Reinhart, supported by Marshall, to approve Agenda as corrected. Ayes-all.

CORRESPONDENCE
A letter concerning Michigan Week '87 - Mayors' Exchange, was discussed. Limpert made a motion that Council does not participate in Mayors Exchange Day, supported by Harris. Roll Call Vote: Limpert-yes, Reinhart-yes, Harris-yes, Becketl-yes, Marshall-yes, Hinkley-no. Motion

approved. **PUBLIC PARTICIPATION**
There was no request to approach Council.

SHERIFFS REPORT
Sgt. Spork presented the Sheriff's report - on file.

Motion by Limpert, supported by Becketl, to accept the Sheriff's report. Ayes-all.

DPW REPORT
Roberts presented the DPW report - on file.

Limpert stated he would like the Village Manager to come up with an intelligent summary of the DPW work report.

Motion by Becketl, supported by Limpert, to accept the DPW report. Ayes-all.

Motion by Marshall, to authorize the DPW to purchase the 6th radio. Roll Call Vote: Ayes-all.

Council gave Roberts permission to sell the Police Jeep and take sealed bids.

PLANNING COMMISSION
Marshall presented the Preliminary and Final Site Plans for the property at 101 West Main Street for Council to review.

William Kwolek was present to ask Council to allocate funds to hire Mr. Hotelling, to revise the Master Plan and the Zoning Code.

Motion by Marshall, supported by Reinhart, to adjourn the regular session and to convene the Public Hearing at 8:15 p.m. Ayes-all.

PUBLIC HEARING - PRELIMINARY BUDGET - 1987

Naimowicz presented the proposed budget. Discussion followed.

Limpert moved to adjourn the Public Hearing on the Budget and convene the Public Hearing on Revenue Sharing, supported by Becketl. Ayes-all.

Naimowicz stated he wanted it to be part of the record that a Public Hearing was held in case Revenue Sharing Funds become available to the Village.

Becketl moved to adjourn the Revenue Sharing Public Hearing at 8:45 p.m. and reconvene the regular session, supported by Marshall. Ayes-all.

Motion by Becketl, supported by Reinhart, to adopt the Temporary Budget as presented with Naimowicz's recommendation for the next 90 to 120 days for a tight rein. Roll Call Vote: Limpert-no, Reinhart-yes, Becketl-yes, Harris-yes, Marshall-yes, Hinkley-yes. Motion approved.

Motion by Limpert, to publish a synopsis of the Minutes after they are approved and listing only action taken by Council for items that appeared before Council, also synopsis of Agenda and Planning Commission minutes, supported by Harris. Roll Call Vote: Ayes-all.

Council denied Diana Newman's (Village Attorney) request to use Flintoff as a consultant.

Motion by Becketl, to approve the following Election Inspectors for the March 9, 1987, Annual Election: Chairman - Diane

Schwab, Mary Boutell, Maxine Widmayer, Vera Schaible, Alternates Mary Blossom, supported by Harris. Ayes-all.

Discussion followed on Railroad Easement property transfer. Becketl said a letter should be sent to Lawyers Title Insurance Company and ask what happened to the file on the property, also set a time limit for their answer.

Motion by Reinhart, supported by Becketl, to go into closed session at 9:50 p.m. Ayes-all.

Council returned to regular session at 10:28 p.m.

Motion by Becketl, supported by Reinhart, to adjourn at 10:30 p.m.

Helen J. Kensler
Deputy Clerk

Senior Citizens News

Were you as surprized as I to read that March had come in like a lion? It was either raining harder with much more wind or I slept through it (that is a possibility, as we on M-52 turn off our minds to sirens, etc.). Anyhow, let's hope March goes out like this lambsy-lion.

This Thursday, March 5 - will begin with senior exercise. March 'Birthday Bash' which features a swiss steak dinner and birthday cake will be served at 12 noon at Emanuel's dining room for all those who were born this month and are 55 or more. Make your reservation (428-8359), come and enjoy the meal and bingo which follows.

Tuesday, March 10 - Council meeting is scheduled at 9:30 a.m., exercise at 11:00 a.m. and baked fish almondine is on the menu for

noon lunch (they are more than lunch and so filling and nutritious). At 12:30 p.m., there will be 'Knitting by Hazel'-who will also be teaching crocheting to those who are interested. Bring knitting needles and yarn for the knitting class. For the crocheting class, bring an I or J hook to work with yarn or a smaller one for the cotton. There is available yarn at the Center for those who do not have it on hand. If you have questions, call Hazel (428-9580).

Wednesday, March 11 - Chamber of Commerce Membership and Lunch meeting will begin at 12 noon.

Thursday, March 12 - Exercise at 11, soup and sandwich at 12 and bingo will be on the agenda.

Looking ahead: Seniors will leave at 9:00 a.m. on a shopping trip in Brooklyn and Tecumseh on Monday, March 16. Call in your reservation to go along to Rubena (428-8655).

Thanks again for bringing back those Bill Knapp's bonus points.

Meeting Notices

American Legion Auxiliary

American Legion Auxiliary will meet at the Legion Home on March 11, 1987, at 7:30 p.m.

Klager PTO Sponsors
A Parents Information Evening

Don't miss this opportunity to learn more about all of the many Special Services available to students at Klager and meet the Staff who provide the services.

Attend the Parents Information Evening on Monday, March 9th, from 7:00 to 9:00 p.m. at Klager.

NOTICE MANCHESTER TOWNSHIP BOARD OF REVIEW MEETING
Notice is Hereby Given to All Persons Liable to Assessment for Taxes in the Township of Manchester, County of Washtenaw, State of Michigan.
That the assessment roll of said Township as prepared by the assessing officer will be reviewed by the Board of Review at:
MANCHESTER TOWNSHIP HALL 275 SOUTH MACOMB STREET APPEALS AND CONFERENCES WITH TAXPAYERS
will be heard on **MONDAY, MARCH 9, 1987 9:00 a.m. to 12 Noon and 1:00 p.m. to 4:00 p.m. TUESDAY, MARCH 10, 1987 1:00 p.m. to 4:00 p.m. & 6:00 p.m. to 9:00 p.m.**
at which time the Board of Review will be in session. Upon request of any person who is assessed on said tax roll or his or her agent and upon sufficient cause being shown, said Board of Review will correct the assessment as to such property in such manner as will in their judgment make the valuation just and equal.
Such assessment tax roll as reviewed and approved by said Board of Review will be the assessment roll of said Township of Manchester for the year 1987.
The County Board of Commissioners of Washtenaw County has proposed the following starting ratios for Manchester Township for the year 1987:

Agriculture	51.66
Commercial	47.22
Industrial	50.31
Residential	46.31
Personal	50.00

Clarence L. Fielder, Supervisor
2-19, 2-26, 3-5

Think Spring BALLOON SALE
Fri. & Sat. March 6 & 7 **2 Days Only!**
Special Pre-Season Prices on All Our Lawn & Garden Products
Everybody Wins!
HERE'S HOW IT WORKS
Make your selection from our incredible array of merchandise. Before you pay, choose a balloon. Every balloon contains a discount slip enabling you to save an additional 10%, 15%, 20%, 25%, 30%, 40%, or 50%. Sorry, no layaways or special orders.
KLEINSCHMIDT True Value
19860 Sharon Valley Rd. • 428-8337 • Manchester, MI

QUALITY! OBVIOUSLY IT CAME FROM...
Open 9 am-5:30 pm Friday 9 am-8:30
Phone 662-9372
Visa or Mastercharge
LODI Town and Country FURNITURE
Ann Arbor-Saline Rd. at Travis Plaza

R DON'T MAKE POISONING EASY!
Kids are inquisitive, there is no getting away from the fact. Before you can bat an eyelash, they are into this or that. Most of the time it is harmless and great fun to watch them explore their newly found world.
Keep it fun by not making it easy for children to find their way into situations that can be harmful. Medicine cabinets are a good example. Keep medicines locked up if possible or at least high enough up so that children cannot reach them. And, we will be glad to help you properly dispose of any old medicines.
"A GREAT MANY PEOPLE ENTRUST US with their prescriptions, health needs and other pharmacy products. We consider this trust a privilege and a duty. May we be your personal family pharmacy?"
Phone 428-8393
Krauss Pharmacy
PRESCRIPTION CHEMISTS
128 East Main Street Manchester
• 3-3-87

EMANUEL UNITED CHURCH OF CHRIST

Wednesday, March 4 - 8:00 p.m. Community Ash Wednesday Worship, at Sharon United Methodist Church.

Thursday, March 5 - 12 noon Senior meal; 3:30 p.m. Brownies; 6:00 p.m. Bell Choir; 7:30 p.m. Adult Choir; 7:30 p.m. Church Council.

Friday, March 6 - 1:30 p.m. World Day of Prayer Program & Fellowship at Bethel United Church of Christ.

Sunday, March 8 - 9:00 a.m. Sunday School, Confirmation, Adult Lenten Bible study; 10:30 a.m. Worship, Children's choirs sing; 11:30 a.m. Coffee Hour and Fellowship time.

Monday, March 9 - 6:30 p.m. Optimists; 7:30 p.m. Women of Emanuel, Lounge; 8:00 p.m. Fair Board.

Tuesday, March 10 - 12 noon Senior meal; 7:00 p.m. Scouts.

Wednesday, March 11 - 7:30-7:45 a.m. Early Morning Lenten Prayer and Communion; 8:20 p.m. Cherub Choir; 8:40 p.m. Children's Choir; 8:15 p.m. Girl Scouts; 8:00 p.m. AA, Al Anon & Al-A-Teen.

Thursday, March 12 - 7:00 p.m. Memorial Committee.

ST. THOMAS LUTHERAN CHURCH

Saturday, March 7 - Youth Choir, 9:30 a.m.

Sunday, March 8 - 9:15 a.m. Coffee and Donuts; 9:30 a.m. Sunday School and bible class; 10:45 a.m. Worship, A. Al. Coffee hour following service.

Monday, March 9 - 7:30 p.m. Bible study.

Tuesday, March 10 - 7:00 p.m. Catechism; 8:00 p.m. Board of

Evangelism and missions. Wednesday, March 11 - 8:00 p.m. Lenten worship service at St. John's, Bridgewater. Thursday, March 12 - 8:00 p.m. Sunday School Teachers.

MANCHESTER UNITED METHODIST CHURCH

Wednesday, March 4 - 9:45 a.m. Bible study at Pat Post's; 8:00 p.m. ASH WEDNESDAY COMMUNITY WORSHIP AT Sharon United Methodist Church.

Thursday, March 5 - 3:30 p.m. Girl Scouts; 7:30 p.m. Missions Committee Meeting.

Friday, March 6 - 1:30 p.m. World Day of Prayer at Bethel United Church of Christ.

Saturday, March 7 - 8:00 a.m. Men's Breakfast at Frank's. Sunday, March 8 - 9:15 a.m. Sunday School; 10:30 a.m. Worship-UMCOR Collection Begins; 11:30 a.m. Choir rehearsal/Coffee Hour.

Tuesday, March 10 - 10:30 a.m. Lydia Circle at Church.

Wednesday, March 11 - 9:45 a.m. Bible Study at Pat Post's; 1:00 p.m. Membership/Outreach Committee.

Thursday, March 12 - 3:30 p.m. Girl Scouts; 7:00 p.m. Worship Committee Meeting; 8:00 p.m. Finance Committee Meeting.

SHARON UNITED METHODIST CHURCH

Wednesday, March 4 - 8:00 p.m. Community Ash Wednesday Service at Sharon Church.

Friday, March 6 - 1:30 p.m. Community World Day of Prayer Service at Bethel Church.

Saturday, March 7 - 7:00 p.m. Young Adult Progressive Dinner at homes of Mr. and Mrs. Douglas

Parr, Mr. and Mrs. Gerald Huehl, and Mr. and Mrs. Richard Clark. Sunday, March 8 - 11:00 a.m. Communion; 4:00 p.m. Confirmation Class. Wednesday, March 11 - 8:00 p.m. Lenten Service, Rev. Jack Lancaster of the Clinton United Methodist Church speaking through painting.

ZION LUTHERAN CHURCH

Wednesday, March 4 - 1:30 p.m. Lydia; 7:30 p.m. Worship; 8:30 p.m. informal H Communion.

Thursday, March 5 - 7:00 p.m. 8th YI.

Friday, March 6 - World Day of Prayer. Sunday, March 8 - 9:00 a.m. Study in Sunday School; 10:15 a.m. Worship (Special Coffee Hour for new members); New Parents Classes; 4:00 p.m. Bishop's Touchdown with Cong. Leaders - Ypsi.

Monday, March 9 - 8:00 a.m. Bishop and Clergy meet Emmanuel Luth. - Ypsi. Tuesday, March 10 - 4:00 p.m. Joymakers; 7:30 p.m. Shuffleboard; 8:45 p.m. Christian Education Committee.

Wednesday, March 11 - 7:30 p.m. Lenten Devotional; 8:30 p.m. Church Council.

FAITH COMMUNITY CHURCH

Wednesday, March 4 - 7:00 p.m. Prayer hour and bible study; 8:00 p.m. Choir practice.

Thursday, March 5 - 7:30 p.m. Faith Circle for all the ladies. "Ways to Manage your Home" with Kelly Haight as leader. Refreshments - Darla Hock.

Saturday, March 7 - 5:30 p.m. Rollerskating party and Winter Camp Slide show for the teens.

Sunday, March 8 - 10:00 a.m. Morning Worship Service, nursery available; 11:15 a.m. Sunday School for all ages; 6:00 p.m. Evening service. Continuing the series, "Eternity to Eternity"; 7:30 p.m. LIFELINE youth meeting at Kupecky's.

Monday, March 9 - 6:00 p.m. Tecumseh Convalescent Ministry.

Tuesday, March 10 - 9:30 a.m. Women's Bible Study.

CHURCH DIRECTORY



EMANUEL UNITED CHURCH OF CHRIST - Rev. Robert B. Macfarlane, Pastor; Rev. Nancy Doty, Assistant; Sunday School 9:00 a.m.; Worship 10:30 a.m.; Fellowship 11:30 a.m.

MANCHESTER UNITED METHODIST CHURCH - Rev. Hayden Carruth, Pastor; Church School 9:15 a.m.; Worship 10:30 a.m.

ST. MARY'S CATHOLIC CHURCH - Father Raymond Schlinkert; Monday thru Friday 8:30 a.m.; Saturday 5:00 p.m.; Sunday 8:30 a.m. and 10:30 a.m.

FAITH COMMUNITY CHURCH - Scott Engleman, Pastor; Roman Kupecky, Associate Pastor; 8400 Sharon Hollow Rd. off W. Austin; Worship Service 10:00 a.m.; Sunday School 11:15 a.m.; Sunday evening service 6:00 p.m.; Jr. and Sr. High Young People's Meeting 7:30 p.m.

VICTORY BAPTIST CHURCH - 423 South Macomb, 428-7508; Sunday School 9:45 a.m.; Morning Worship 11:00 a.m.; Evening Worship 6:00 p.m.; Teen Talk 7:00 p.m.; Wednesday Prayer, Bible Study, Youth 7:00 p.m.

BETHEL UNITED CHURCH OF CHRIST - Rev. Roman A. Reineck, Pastor; Schneider and Bethel Church Roads; Church Service 10:00 a.m.; Sunday School 11:00 a.m.

SHARON UNITED METHODIST CHURCH - Rev. Evans Bentley, Pastor; Corner of M-52 and Pleasant Lake Roads; Church School 10:00 a.m.; Worship 11:00 a.m.

ST. JOHN'S LUTHERAN CHURCH - Rev. Dennis A. Falk, Pastor; Austin Road, Bridgewater; Sunday School 9:15 a.m.; Worship 10:30.

NORTH SHARON COMMUNITY BIBLE CHURCH - Timothy E. Booth, Pastor; Sylvan and Washburn Roads; Sunday School 10:00 a.m.; Morning Church 11:00 a.m.; Youth Meetings 6:00 p.m.; Evening Church 7:00 p.m.; Wednesday Bible Study 7:00 p.m.

IRON CREEK COMMUNITY CHURCH - Rev. Ray Robichaud, Pastor; English and Sharon Hollow Roads; Worship Service 10:00 a.m.; Sunday School 11:15 a.m.; Sunday Evening 7:00 p.m.; Wednesday Evening 7:00 p.m.

ZION LUTHERAN CHURCH - Rev. John R. Morris, Pastor; 3050 S. Fletcher Road; Sunday School 9:00 a.m.; Worship Service with Holy Communion 10:10 a.m.

ST. THOMAS LUTHERAN CHURCH - 10001 W. Ellsworth Rd., Rev. John Riske, Pastor. Coffee & donuts, 9:15 a.m.; Sunday School & Bible class, 9:30 a.m.; Worship, 10:45 a.m.; Holy Communion first and third Sunday's.

ST. JOHN'S UNITED CHURCH OF CHRIST - Rev. Ted Wimmier, Pastor; Rogers Corners, Waters and Fletcher Roads; Adult Bible Study Class at 10:00; Worship and Sunday School 10:30 a.m.

CLINTON ASSEMBLY OF GOD - Rev. Richard Coury, Pastor; Chris Bouldrey, Youth Pastor; 13300 Clinton-Manchester Road, Clinton; Sunday School 9:30 a.m.; Sunday Morning Worship 10:45 a.m.; Sunday Evening 8:30 p.m.; Wednesday Prayer, Bible Study, Youth 7:00 p.m.

OUR SAVIOR LUTHERAN CHURCH - Rev. Franklin H. Giebel, Pastor; 1515 South Main, Chelsea; Every Sunday 9:00 a.m. Bible Classes for age 3 through adult; 10:30 a.m. Worship Service; Holy Communion 1st, 3rd and 5th Sundays.

CHURCH OF JESUS CHRIST OF LATTER DAY SAINTS (MORMONS) - Wayne L. Winzenz, Branch President; 1330 Freer Road, Chelsea; Sacrament 9:30 a.m.; Sunday School, Primary 10:50 a.m.; Priesthood, Relief Society, Aaronic Priesthood, Youth 11:40 a.m.. For more information, call 475-1778.

ST. BARNABAS EPISCOPAL CHURCH - Rev. Fr. Jerrold F. Beaumont, O.S.P.; Eucharist - First, Third and Fifth Sundays 10:00 a.m.; Morning Prayer, Second and Fourth Sundays 10:00 a.m.; Eucharist - Second and Fourth Sundays 11:00 a.m.; Nursery available every Sunday. Family coffee hour follows all Sunday services.

Girl Scouts To Celebrate Seventh-Fifth Anniversary

Girl Scouts of the U.S.A. will be 75 years old on Thursday, March 12th, and they are going to have a tremendous birthday party!! Manchester Girl Scouts will be saying their Girl Scout Promise at 4 p.m. on that day, then they will be having a balloon lift behind the Methodist Church. These will be special blue and white Girl Scout Anniversary balloons, with a name and address attached to each of them. If you find one, please contact the girl whose name and address is attached in a small plastic bag. We will see whose balloon goes the farthest. The girls are having a flag ceremony that afternoon, also each troop will be enjoying cupcakes and ice cream.

Science Fair On Exhibition

Stop over to the American Legion Hall on Thursday, March 12, and view this year's Middle School Science Fair. Projects completed by the fifth through eighth graders at Nellie Ackerson Middle School will be on display from 9-12:30, 1:30-5:30, and 6-7:30.

The University of Michigan School of Dentistry is now accepting Complete Denture Patients for the Spring Term. Anyone now wearing upper and lower dentures who wishes to be examined should call 763-3363. A fee of \$15.00 for an X-ray will be due at the time of examination. A complete set of dentures is \$200.00

BOARD OF REVIEW MEETING

Notice is hereby given to all persons liable to assessment for taxes in the Township of Freedom, County of Washtenaw, State of Michigan.

That the assessment roll of said Township as prepared by the assessing officer will be reviewed by the Board of Review at:

Freedom Township Hall
11508 Pleasant Lake Road
Appeals and Conference
With Taxpayers
will be heard on

MONDAY, MARCH 9, 1987
9:00 a.m. - 12 p.m. and 1:00 p.m. - 4:00 p.m.
and on
TUESDAY, MARCH 10, 1987
9:00 a.m. - 12 p.m. and 1:00 p.m. - 4:00 p.m.
Or Appropriate Letter

at which time the Board of Review will be in session. Upon request of any person who is assessed on said tax roll or of his or her agent and upon sufficient cause being shown, said Board of Review will correct the assessment as to such property in such manner as will in their judgment make the valuation just and equal.

Such assessment tax roll as reviewed and approved by said Board of Review will be the assessment roll of said Township of Freedom for the year 1987.

EUGENE MANN, SUPERVISOR

TENTATIVE RATIOS	
Agricultural	51.84
Residential	48.19
Industrial	56.05
Commercial	47.22
Personal	50.00

Apple Growers Seek Support

A group of Michigan apple growers flew to Washington, D.C. on February 4, to meet with their congressmen to seek support in resolving the country-of-origin labeling issue. The growers discussed the impact of imported juices on the domestic industry, why country-of-origin labeling is important, and the delay by the Customs Service in issuing regulations to require such labeling.

"Last year the domestic apple industry sought relief from a growing flood of imported apple juice by petitioning the International Trade Commission (ITC)," said Al Almy, director of public affairs for Michigan Farm Bureau. "When ITC rejected the injury claim, we shifted our attention to the U.S. Customs Service to seek a requirement that fruit juices made from imported concentrates be labeled to show the country-of-origin."

"The Customs Service agreed with the request last July but, to date, has not published final regulations to implement the labeling requirement. We have found that strong opposition by juice processors has led the Customs Service to consider generic label requirements rather than true Country-of-origin labeling which Farm Bureau believes consumers have a right to know," Almy said.

"We'll be asking our congressmen for assistance in assuring that the Customs Service implements new regulations on imported juices that comply with the U.S. country-of-origin requirements for other products," he said.

Consumers Council Has Two New Publications

The Michigan Consumers Council has recently published two new publications of interest to state consumers. They are: a brochure, entitled "Plugging Into Energy Saving Products," and a

Tips On Financial Planners

In the last two decades, financial planning has evolved into a multibillion dollar industry with thousands of advisers who plan and manage investors' finances. To help consumers select a reputable financial planner who meets their needs, the Better Business Bureau/Detroit and Eastern Michigan has recently released a new booklet, "Tips on Financial Planners."

"Consumers should not take the process of looking for a financial planner lightly," advises Thomas F. Ashcraft, Detroit BBB president. "The booklet gives advice on what to look for and what to avoid when selecting a financial planner, including a list of questions the consumer should ask. It also provides a special section on the 'red flags' of fraud and abuse."

"Tips on Financial Planners" is the latest addition to the Better Business Bureau Consumer Information Series which offers helpful tips on more than 80 topics of consumer interest. For a copy of the new booklet, send a stamped, self-addressed, business size envelope to 150 Michigan Avenue, Detroit, MI 48226.

Requests for "Plugging Into Energy Saving Products: A Guide For Consumers" and the "Statutory Will Tipsheet" may be obtained by writing the Michigan Consumers Council, 414 Hollister Building, Lansing 48933, or by calling the Council at 517-373-0947. The Michigan Consumers Council is a state legislative agency which provides consumer information, referral, and counseling services, and acts as an advocate on consumer issues before the Michigan legislature.

HERRICK DIAGNOSTIC AND TREATMENT CENTER
415 E. Kilbuck, Tecumseh, Michigan
(Formerly the Tecumseh Medical Bldg.)
Offering Services In

- ★ GASTROENTEROLOGY
Eugenius Ang, M.D.
- ★ NEUROLOGY
Allan Clague, M.D.
- ★ PODIATRY (Foot Surgery)
Don Schubert, D.P.M.
- ★ UROLOGY
C.T. Lin, M.D.
Ashwin Shah, M.D.
- ★ DERMATOLOGIST
Jeffrey Messenger, M.D.
- ★ CARDIOLOGY
Manhar Tegura, M.D.
- ★ OTORHINOLARYNGOLOGY
Harry Richter, M.D.
- ★ OTORHINOLARYNGOLOGY
Keo Poopat, M.D.

For Appointment Call
423-7481 or 423-7482

- ★ ALLERGIST
R.J. Guttridge, D.O. 423-4946
- ★ GYNECOLOGIST/OBSTETRICIAN
William Long, D.O. 423-6667

Wacker's General Store

The first United States college to admit coeds was Oberlin (Ohio) in 1833.

PEPSI, DIET PEPSI
MOUNTAIN DEW
PEPSI FREE
SUGAR FREE PEPSI FREE
A & W ROOT BEER
VERNORS
SUGAR FREE A & W
SUGAR FREE VERNORS
SLICE & DIET SLICE

\$2.19
½ LITER 8 PACK
plus deposit

2 Liter \$1.49
plus deposit

6 Pack Cans \$1.89
plus deposit

G.E. Wacker Inc
Gasoline-Fuel Oil-Grease
Motor Oil-Diesel Fuel
9050 Chelsea-Manchester Road
Manchester, Mich. 48158

Winter Hours:
Monday-Thursday 7 am-8 pm
Friday 7 am-9 pm
Saturday 8 am-9 pm
Sunday 9 am-8 pm

(313) 428-4885 COUPON (517) 423-2148

1ST OPTOMETRY

\$99 Daily Wear Soft Contact Lenses

\$10 OFF (with coupon) Prescription Eyeglasses

Dr. Thomas Cunningham

DOES NOT APPLY TO OTHER DISCOUNT OFFERS OR PRIOR ORDERS

WAMPLER DRW CONSTRUCTION CO.

DANIEL R. WAMPLER
517-456-4305

- NEW HOMES
- ADDITIONS
- SIDING
- GARAGES
- ROOFING
- DECKS

CHEVROLET

A GOOD SELECTION OF NEW and USED CARS ON OUR LOT

TIRB CHEVROLET CO
131 ADRIAN STREET MANCHESTER, MICHIGAN
PHONE 313-428-8212 OR 313-428-8492

MON	TUE	WED	THUR	FRI	SAT
7:30-8	7:30-6	7:30-8	7:30-6	7:30-6	7:30-12 Noon

Lenten Service at Sharon Church

The Sharon United Methodist Church has set up the following schedule for Lenten Services and invite any in the community to join in worship at these special services.

On Wednesday, March 11 - at 8:00 p.m. the Rev. Jack Lancaster of the Clinton United Methodist Church will be the guest speaker as he interprets the gospel through painting.

On Wednesday, March 18 - at 8:00 p.m. Dick Arnold will speak. Dick is involved in prison work at the present time.

Todd Withrow Company

REMODELING
CABINETMAKING
ADDITIONS—WINDOWS
KITCHENS—BATHROOMS
ROOFING—SIDING
CUSTOM BUILT CABINETS
WALL UNITS—FURNITURE

TOP QUALITY MATERIAL AND WORKMANSHIP

LICENSED AND INSURED

CALL ANY TIME
428-9420 or 428-7797

STIHL THE ONE. Put a Boss to Work for You!

\$299.95

Save now on the 024 Wood Boss from Stihl. Easy-to-handle, with an outstanding power-to-weight ratio. Stihl 024 Wood Boss is tough enough to meet the demanding standards of professional use, as well as jobs around the home. Quickstop™ Inertia Chain Brake standard.

K & W Equipment Inc.
Chelsea-Manchester Rd.
Manchester, Michigan

STIHL
NUMBER ONE WORLDWIDE

Board Briefs

Regular Meeting
February 23, 1987

The meeting was called to order at 8:00 p.m. with a Pledge of Allegiance.

Members Present: Broucek, Davis, Schaffer, Golding, Samonek, Kemner, Sahakian.

Also Present: Supt. Niedzwiecki; Principals - Schick, Morrison, Dir. of Std. Services-Streiter; Supv. Trans/Custod. LeFurge.

VISITOR INPUT
Mrs. Vicki Miller was present to inform the Board of the Klager PTO's plans for the kindergarden playground.

Several residents were present to discuss with the Board of Athletic policy on alcohol useage.

Motion was made by Kemner, supported by Samonek, to adjourn to Executive Session at 8:40 p.m. All-ayes.

Motion was made to have the regular meeting reconvened at 9:00 p.m. by Samonek, supported by Golding. All-ayes.

Upon reconvening to the Regular Board Meeting, Mr. Schaffer explained to the parents in attendance, the Board stood firmly behind the athlete policy as it was written.

Motion was made by Golding, supported by Samonek, to accept the minutes as presented.

Motion was made by Davis, supported by Sahakian, to accept the financial report with a cash balance as of January 31, 1987, of \$1,170,745.02.

Motion was made by Samonek,

supported by Golding, to pay the bills in the amount of \$1,288,623.97.

Mr. Bob Daverman, from the Architectual Firm of Fry and Associates was present to update the Board on the Re-roofing project.

Mr. Jeff Schaffer reported to the Board on the Methodist Church Paving project.

Trustee Sahakian reported to the Board concerning the meeting she attended at the WISD Board of Education meeting.

Competency Graduation requirements were discussed by the Superintendent and the Board. This item was on the agenda for discussion purposes only.

Superintendent's renewal clause was presented by the Superintendent. The contract should be reviewed by the Board before May 1, to determine the extension of the three-year contract.

Board of Education under discussion items, the Superintendent explained the 1986-87 fiscal year general fund budget. The original budget was adopted on June 23, 1986, for the 86-87 fiscal year as required by law.

Revenues and expenditures need to be amended as changes become known. After discussion Schaffer moved, supported by Samonek that the total revenues and unappropriated fund balance estimated to be available for appropriations in the general fund as follows: Total Revenues \$3,988,649; Fund Balance \$291,410; Total to Appropriate \$4,280,059.

Pat Sahakian moved to accept the request for a parental leave for the first semester of the 87-88 school year be approved for Sandee Sheets. Supported by Samonek.

The following coaches were approved for the spring of 86-87 school year: Varsity Baseball, Wes Gall; Jr. Varsity, Curt Fielder; Softball Varsity, Kathy Rose; Jr. Varsity, Larry Swanson, High School Track Girls, Rod DuRoss; Boys, Joe Keister.

The following Master Agreements were approved by the Board: Bus Drivers; Playground, Teacher & Library Aides and Mail Carrier; Food Service; and Middle School Principal. Administrative Secretary agreement was tabled.

Superintendent Niedzwiecki informed the Board the hot water heater in the high school needed replacement. Bids were received and the hot water heater was purchased from Gage Company - Jackson at a price of \$3,780 plus \$230 for a 5 year extended warranty.

Bus Bids were presented to the Board. The recommendation was made by the Superintendent to purchase one 48 passenger from Power City International of Jackson, and one 65 passenger bus from Power City International of Jackson. 48 Passenger chassis was purchased at \$18,569.56. Body from McFadden at a cost of \$15,517.--. The 65 passenger was also purchased from Power City - diesel - hyd. brakes at a cost of \$22,623.56. Body from McFadden at a cost of \$14,006.00.

There being no further business meeting adjourned at 11:10 p.m.

Children's Vision Is Subject To Change

Children go through many changes during their school years and so do their eyes, says the president of the Michigan Optometric Association.

"Unfortunately, school eye chart tests are not likely to pick up changes in a child's vision that might be interfering with his or her learning," said Dr. Paul K. Douglas in a Save Your Vision Week (March 1-7) message.

The eye chart test checks only how well a child can see at a distance, he explained. Yet there are many other vision problems that could affect a child's learning and enjoyment of recreational activities.

"Once a year, every school-age child should have a thorough eye examination covering vision perception as well as eye focusing abilities," Dr. Douglas said.

"Between examinations, parents and teachers should be alert for behavioral symptoms that may indicate a child is developing a vision problem. The stress of schoolwork can cause this to happen."

These symptoms include consistently sitting close to the television screen; poor sports performance even with practice; a drop in school performance; failure to work up to potential; avoidance of reading or other close work; excessive blinking or rubbing of eyes; difficulty remembering what is read; and difficulty following verbal instructions.

Symptoms that may occur while the child is reading include turn-

ing the head to use one eye only or closing or covering one eye; placing head close to book or desk; frowning or scowling; losing place or using finger or marker to guide eyes; saying words aloud or lip reading; omitting, repeating and miscalling words or confusing similar words; and persistent word reversals after the second grade.

Most children may exhibit some of these symptoms at one time or another but those who do so frequently or consistently may have a vision problem in need of immediate professional attention, Dr. Douglas said.

Juvenile Court Vacancy

The Washtenaw County Board of Commissioners is scheduled to consider applications for a vacancy on the Citizens Council to the Juvenile Court at the April 1, 1987, session of the Board at 7:00 p.m. in the Board Room, Administration Building.

One page resumes should be addressed to Carol Hampton, County Administrator's Office, P.O. Box 8645, Ann Arbor, Michigan 48107. Those resumes received by March 20, 1987, will be submitted to the Board of Commissioners for their consideration on April 1, 1987.

Manchester High School Band Boosters Minutes

February 25, 1987

The meeting was called to order by President Sallie Anderson on February 25, 1987, at 7:00 p.m. in the High School Band Room. The minutes of January 28, were read and corrected to say that the \$1700 was proposed request and the \$1000 was the same as budgeted for last year. This was also posted in the Enterprise. The minutes were accepted as corrected.

The following amounts are in our accounts as presented by Treasurer Jan Waldron:

Scholarship	\$107.70
Checking	460.03
Uniforms	1019.56
Savings	1837.78

The uniform Fund is money that is returned to students as deposits or to dry clean the uniforms. Jan explained that we have also been sent a check from Mr. and Mrs. Moore which is to be used to buy a tympani, and this money is temporarily in the checking account. The instrument is on order, and since it will be paid for right away, she did not include the amount actually in the account. Band Boosters are so pleased with this donation, that they unanimously voted to have a brass plate made with the Moore's names engraved to attach to the tympani as an expression of our appreciation.

Band Director Margaret Hurbis informed the group that a student teacher from Saline spent a great deal of time repairing, cleaning and tuning the older tympani, putting them back in order in

time for the District Festival.

OLD BUSINESS
The dance that the Band hosted was successful. The profit between this and the raffle was about \$350. We had an excellent response from downtown merchants who donated many gifts to the raffle, so we had a thank you ad placed in the Enterprise.

We have accepted by the Fair Board as operators of a food booth. Sallie Anderson and Nancy Houck attended their last meeting to get all the particulars that we need to know in advance.

Roseann Hawk has accepted the job of chairman. We feel that she will need a co-chairman. Sallie mentioned that we have to schedule a meeting with her, Duane Kuebler, and us to get specific information on insurance, etc. Ruth Haeussler is being asked to co-chair.

NEW BUSINESS
Dates were discussed since Margaret will be away for part of the summer. The tentative schedule for summer Band Camp is the week of August 10-14th.

The 5th and 6th grade sale fund raiser is coming very quickly in March and we still need a chairperson for this. We will probably do a Hence sale again.

Margaret Hurbis asked how much money was available in the Scholarship Fund for special summer Band Camps. Sallie said that the letters asking for donations are just going out now. They are down quite a bit due to several factors. We know for sure that we cannot send everyone who asks on half scholarships as

we have in the past since we don't have enough money. A discussion occurred on how to choose the students. Margaret mentioned that we could probably have a better Band Camp for less money, and for more students, by bringing experts here instead of having just a few attend Blue Lake. It was decided to look into this further.

Boosters looked through the Constitution to verify whether we are supposed to send the majorettes to camp every year, or if this is just an initial training. Margaret said that plans are underway to have two clinicians come here to train the majorettes. This will be much more personalized and cost less.

The question was brought up by Vicki Warner about Whether there was enough money to purchase new uniforms for the majorettes. The consensus was that there will be.

Margaret is still waiting for a meeting with the DeMoulin uniform man to order the new uniforms for next year as budgeted. He has cancelled two meetings and has been uncooperative so far.

A discussion of the trip that Boosters is planning occurred. Margaret would like to take a poll of the students to see if they would prefer two smaller trips rather than one large trip next year. We searched for a date within the next couple of months, but had a great deal of trouble finding an open spot. Margaret will check on some of the available dates. No decision was made.

Margaret informed us that the High School Solo/Ensembles all received 1 and 2 ratings. She is very pleased with the results, and will be getting out a press release about the students.

Margaret also announced that she has several exciting events planned for the band. She has arranged for two Eastern Directors, Director of Band, Max Plank, and Director of Orchestra, Russ Reed to come here to talk to and direct our Band. She has also arranged visits from the Director of the Saline Band, John Mason, and of Dearborn Edsel Ford, James Otto. Also in the works now is the possibility of playing a new composition by U.M. Doctoral student Jim Nissen for the Spring Concert.

Margaret showed the group a tie made by Jean Kuhl that she would like to make for the High School girls concert outfit. It was figured that it would cost us about \$.50 each and that they would look nice for the price. Margaret will ask Jean to make them, but to make them a little longer and a bright red. We hope to eventually have red bow ties for the boys also.

Sallie Anderson read from the Band Booster's Constitution the section on election of officers, pointing out that we are way off schedule. She would like to get back to the March meeting. Between now and then, we will have to contact the nominees.

Several in the group mentioned that they were having the pants of the new uniforms returned from the dry cleaners with mud stains still on them. Actually, they are not supposed to be cleaned except by Band Boosters, but they had to wear the uniforms on an exceptionally muddy day. Nancy Houck found a copy of how to have the uniforms cleaned in the past notes. Margaret will have copies made to send out to parents.

The meeting was adjourned at 9:00. The next meeting will be March 25, at 7:00 p.m.

Submitted by,
Nancy Houck, Secretary

MICHIGAN DISTRICT BASKETBALL TOURNAMENTS SCHEDULE

MARCH		MARCH (Continued)	
1-28	Winterlars, Center for the Arts, Lansing	28-29	Big Band Great Escape Weekend, Henry Ford Museum, Dearborn
6-7	College Hockey Playoffs, Joe Louis Arena, Detroit		APRIL
7	Irish Folk Festival, Calumet	4-5	Ann Arbor Spring Art Fair, U-M Track & Tennis Building, Ann Arbor
7-8	Bluebird Festival & Wildlife Art Show, Jackson Community College, Jackson	4-5	Spring Arts & Craft Show, Midland Civic Arena, Midland
7-8, 14-15, 21-22	Maple Syrup Festival, Cranbrook Institute of Science, Bloomfield Hills	4-5	Antique Show & Sale, Park Place Hotel, Traverse City
13-14	Junior League Antiques Market, Kellogg Center, Battle Creek	5	Maple Sugar Fest, Port Huron
14	Winter Sports Day, Yack Arena, Wyandotte	10-12	Ann Arbor Antiques Market, Ann Arbor Home & Garden Show, Midland
14-15	Irish Festival, Clare	10-May 3	Easter Flower Show, Belle Isle, Detroit
14-15	Maple Sugaring Weekend, Nature Center, Kalamazoo	19	Children's Easter Parade, Grand Haven
14-15	Antique Gun Show, County Fairgrounds, Kalamazoo	18-26	Porch Festival, Cassville
14-22	Builders' Home, Flower & Furniture Show, Cobo Hall, Detroit	24-26	Maple Syrup Festival, Shepherd
15	St. Patrick's Day Parade, Detroit	24-26	Italian Festival, Yack Arena, Wyandotte
15	St. Patrick's Day Parade, Bay City	24-26	Fine Foods Festival, Hart Plaza, Detroit
17	St. Patrick's Day Parade, Flint	24-26	Maple Syrup Festival, Vermontville
19-22	Sport & RV Show, Grand Rapids	24-May 3	National Trout Festival, Kalkaska
19-22	Camper & Travel Trailer Show, McMullan Place, Port Huron	25-26	Fishing Contest, Elberta
22	Maple Syrup Day, Chippewa Nature Center, Midland	26	Antique Show, Cook Energy Information Center, Bridgman
22	Sugaring and Shearing, Ella Sharp Museum, Jackson	26	Blessing of the Blossoms, St. Joseph High School Auditorium, St. Joseph
26-28	NCAA Ice Hockey Championship, Detroit	29-May 2	Festival of Spring, Detroit Institute of Arts, Detroit

1987 Chart By Michigan

District Basketball Tournaments Begin March 9 Thru 14 at Hudson



Sutton Agency, Inc.

136 East Main Street
Manchester
Phone 313-428-9737

AGENTS:

Donald K. Sutton
Connie Widmayer
Kathryn Martin
Mary Knapp
Susan Mann

Phone Answered 24 Hours

Monday-Tuesday-Wednesday-Friday 9-12:30 and 1-4:30 p.m.
Thursday 9 a.m.-12 Noon



BOARD OF REVIEW MEETING

Notice is hereby given to all persons liable to assessment for taxes in the Township of Bridgewater, County of Washtenaw, State of Michigan.

That the assessment roll of said Township as prepared by the assessing officer will be reviewed by the Board of Review at:

Bridgewater Township Hall
10990 Clinton Road

Appeals and Conference With Taxpayers

will be heard on

MONDAY, MARCH 9, 1987
9:00 a.m. - 12:00 p.m. and 1:00 p.m. - 4:00 p.m. and on

TUESDAY, MARCH 10, 1987
9:00 a.m. - 12:00 p.m. and 1:00 p.m. - 4:00 p.m.

Or Appropriate Letter

at which time the Board of Review will be in session. Upon request of any person who is assessed on said tax roll or of his or her agent and upon sufficient cause being shown, said Board of Review will correct the assessment as to such property in such manner as will in their judgment make the valuation just and equal.

Such assessment tax roll as reviewed and approved by said Board of Review will be the assessment roll of said Township of Bridgewater for the year 1987.

DOUGLAS PARR, SUPERVISOR

TENTATIVE RATIOS	
Agricultural	54.44
Residential	46.31
Commercial	49.55
Industrial	47.84
Personal	50.00

226, 35

CLINTON THEATRE

Show Times:
Friday 7:30 & 9
Saturday 2, 7:30 & 9
Sunday 2 & 7:30

All Seats \$2.00

Walt Disney's CLASSIC
Lady and the TRAMP
© 1955 The Walt Disney Company

R. D. KLEIN SCHMIDT Inc.

CUSTOM BUILDING

CUSTOM HOMES-ADDITIONS-GARAGES
COMPLETE REMODELING-POLE BARNS

Residential - Commerical

CALL
428-8836

10860 SHARON VALLEY RD MANCHESTER

Own a business? You'll appreciate the careful attention H&R Block can give your tax returns.

Our tax preparers have been carefully trained to understand income tax law related to business. At H&R Block, we want to make sure you pay the lowest legitimate tax.

H&R BLOCK
THE INCOME TAX PEOPLE

201 E. MAIN STREET
IN THE OD MILL
PHONE 428-7833

Monday-Friday 9 am-6 pm
Saturday 9 am-1 pm
Appointments available

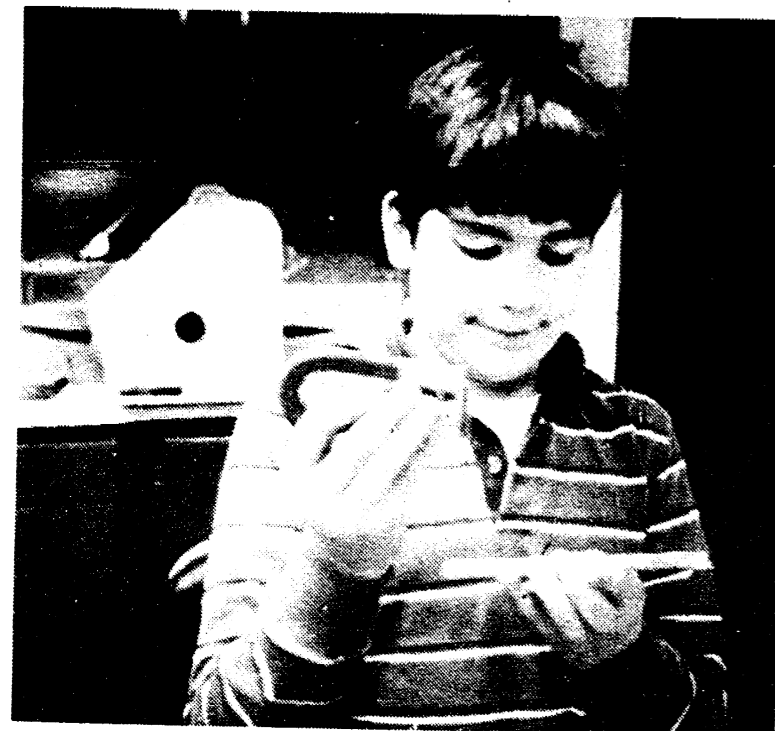
To Our Patients and Their Families From Drs. Johnson, Okey and Eccles Effective April 1, 1987

Dr. Virginia Johnson has accepted a position as Medical Director for the Women's Health Center at Chelsea Community Hospital. She and a team of health professionals will be available to provide care to patients with a variety of concerns regarding women's health. As a result she will limit her practice to one and one-half days per week in Manchester.

Dr. Monty Okey will base his practice at the Clinton office, 233 West Michigan Avenue, Clinton. He will offer appointment hours Monday, Wednesday and Friday 8:30 a.m.-5:00 p.m.; Tuesday and Thursday 8:30 a.m.-6:30 p.m. Twenty-four hour on call coverage is always available.

Dr. Evelyn Eccles will base her practice at the Manchester office, 122 West Main Street, Manchester, and expand to full time. She will offer appointment hours Monday through Friday, 9:00 a.m.-4:30 p.m. and Tuesday until 7:30 p.m. Twenty-four hour on call coverage is always available.

For more information, questions, or concerns contact:
313-428-8753



Experimenting with magnets will be the focus of Jason Campbell's Science Fair Project.



Steven DeVries looks over the Klager Solar System model. He plans to build his own model for the Science Fair.

Learning About Blindness



Mr. Doug Spade, radio announcer, explains his special "talking" calculator to Klager children. He was invited to speak at Klager by his sister-in-law, Speech teacher, Nancy Spade.

Science Fair Coming!

Klager students are busy looking at the world through the eyes of young scientists. They are preparing for the Second Annual Klager Science Fair to be held on March 26th and 27th.

"Trumpeter of The Swan"

Mrs. Savage's first grade class at Klager School is reading E. B. White's delightful book, *Trumpeter of the Swan*. The book is about a Trumpeter Swan who is born without a voice. Without a voice he cannot get a mate. His name is Louis. His father is very disturbed about this and breaks through a music store window in Billings, Montana and steals a real Trumpet. The rest of the book is about how Louis has different jobs to pay the store back for the trumpet. He chooses Serena and they are very happy.

The class has a large white wooden swan in the room made by Mr. Kyuda (Mrs. Shaw's father). Louis wears around his neck a blackboard slate, a trumpet, a life saving medal and a money bag. Louis works at a summer camp, blowing taps and revile, at a night club, on the Swan boat in the Public Garden in Boston.

The class is learning alot about swan. We know that a male swan is called a cob and a baby is called a cygnet.

We love the book, why don't you get it from the library and read it too!!

Doug has a very good memory! I like him!!!!

by Michelle Schaible

Doug Spade is blind. He is a very nice man. He is also used to being blind. So I don't think it would be so bad to be blind.

by Micah Jefferson

About Blind People

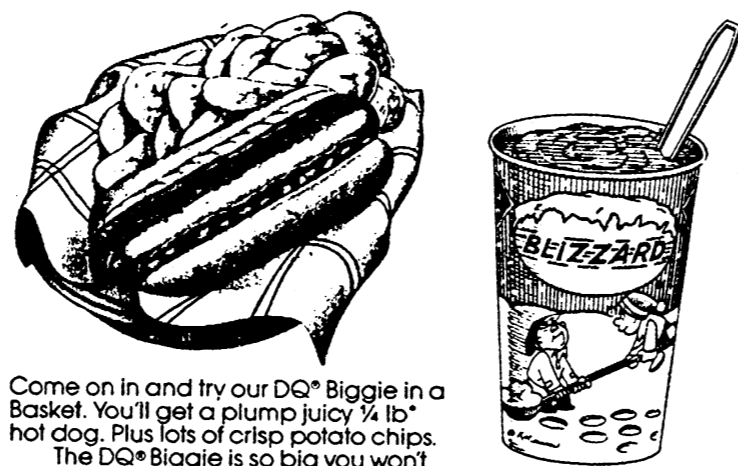
Doug works at the radio station. He has a leader dog named Eric. He is nice. He told us that the dog is up front. We got to feel what it is like to be blind. We ate our snacks with our blind folds on. The End.

by Emily Miller

Manchester Dairy Queen Opens Friday, March 6 Stop In and See Us

THE DQ[®] BIGGIE IN A BASKET

(with chips)



Come on in and try our DQ[®] Biggie in a Basket. You'll get a plump juicy 1/4 lb. hot dog. Plus lots of crisp potato chips.

The DQ[®] Biggie is so big you won't believe it. And you can top one off with all kinds of fixins including cheese and chili (for just a little bit extra), relish, catsup or mustard.

So stop by Dairy Queen[®]. Try the delicious DQ[®] Biggie in a Basket. And it's available only at participating Dairy Queen[®] Brazier[®] stores.

*Pre-cooked weight.

WE TREAT YOU RIGHT[®]

Dairy Queen[®] is proud to support our local children's hospitals through the Osmond Foundation's Children's Miracle Network. Telephone: © AM D.Q. Corp. 1987

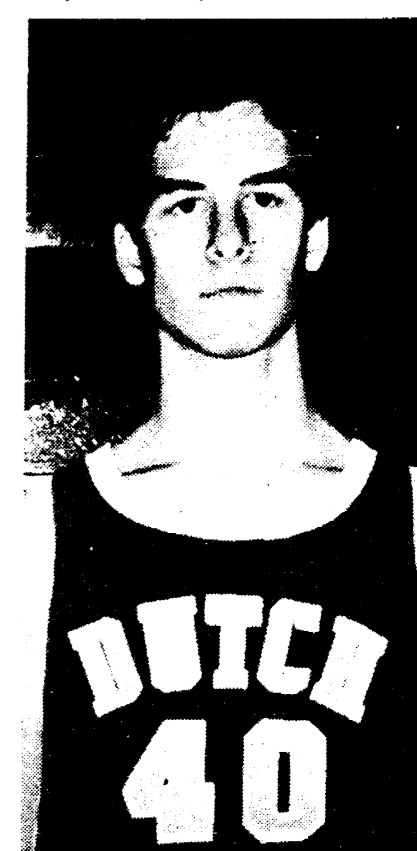


MANCHESTER HIGH SCHOOL PEP BAND



Back Row Left to Right - Director Margaret Hurbes, Amy Fielder, Rob Gillow, Ryan Weigel
Third Row Left to Right - Heidi Beasley, Dana Hock, Lynn Marshall, Melissa Miller, Dawn Wenk, Rachel Arney, Valerie Baran, Tammy Pieske, Chris Spaulding, Annette Schook, Tim Cox, Colin Anderson, Jamie Hall
Second Row Left to Right - Karen Haeussler, Alicia

Haeussler, Vickie Warner, Craig Houck, Alton Gehringer, Sarah Corwin, Connie Sweet, Tim McGinn, Rob White, Cheryl Blumenaur, Dave Hammang
Front Row Left to Right - Alice Swanberg, Heidi Haselschwerdt, Jean Kuhl, Melissa Hawk, Mary Dettling, Kerri Mann, Amy Major, Cara Cox



Tim Golding scored 15 points in Tuesday's game - his season's best.

Dutchmen Split

by joa

On Tuesday night we traveled to the home of the Clinton Redskins. It was a super night as both our varsity and JV left victorious.

In the first game of the evening our Little Dutch buried the Skins 54-34.

In the Varsity matchup we took a five point advantage after eight minutes of play. Several ball handling miscues by Clinton late in the second period allowed us to take a fifteen point lead into the locker room at half time. The Redskins tried to rally and actually trimmed the lead to eight and the final score was 77-69.

Tim Golding led the Dutch scoring hitting for fifteen. Darryl Kuebler and Tom Mann contributed thirteen each. Brad Uphouse and Bart Rickelmann totaled 20 points, 11 and 9 respectively.

With this win we now stand with eight wins and eight losses.

Friday saw us visit the league leading East Jackson Trojans. Unfortunately the host teams won.

Our JV squad could never get on track. As the final buzzer sounded the scoreboard read 72-51.

In the Varsity contest foul trouble spelled the demise of the Dutchmen. Although we out-shot them from the floor they made sixteen more freebies to win 59-52. In scoring Tom Mann again popped for thirteen points as Brad Uphouse canned eleven. Nick Miller and Bart Rickelmann added ten a piece.

Be with us for our final home stands as we play Hanover-Horton Thursday and Addison Friday night.

Notice of Public Hearing Sharon Township Zoning Board of Appeals

A public hearing will be held at 8:00 PM EST on Wednesday, March 18, 1987 at the Sharon Township Hall, 18010 Pleasant Lake Road, to consider an application for a variance from the Sharon Township Zoning Ordinance. This application from Philip Maly and Christine Maly seeks to allow building sites on three parcels of land that are 6.09, 9.39 and 9.39 acres in size instead of the 10 acre size specified by the Zoning ordinance. These parcels would be located on or adjoining 17950 Bethel Church Road, a parcel in the SE 1/4 of Section 28, (T3S, R3E) of Sharon Township.

Please direct written comments on or before March 17, 1987 to: Sharon Township Board of Appeals, Paul Kluwe, Chairman, P.O. Box 84 Manchester, MI 48158-0084.

Notice of Public Hearing Sharon Township Zoning Board of Appeals

A public hearing will be held at 7:30 PM EST on Wednesday, March 18, 1987 at the Sharon Township Hall 18010 Pleasant Lake Road to consider an application for variance from the Sharon Township Zoning Ordinance. This application from David A. Tamagne seeks to allow the temporary placement and use of a mobile home on the property located at 18500 Wingate Road, a parcel in the SW 1/4 of Section 15, (T3S,R3E) of Sharon Township.

Please direct written comments on or before March 17, 1987 to: Sharon Township Zoning Board of Appeals, Paul Kluwe, Chairman, P.O. Box 84, Manchester, MI 48158-0084.

let your words do the talking in the **CLASSIFIEDS**

LIFE — HEALTH

Pinched Nerves

Pain — headaches, backaches, shoulder pains, arm and chest pains, a multitude of assorted pains in all parts of the body — develops quickly when the spinal cord or one of it's nerves is pinched.

Pain may appear at the point where the nerve is pinched, or it may make it's appearance in that part of the body served by the pinched nerve.

A pinched nerve can lead to the development of disease conditions in the kidneys, bladder, liver, lungs, heart or other vital organs.

The Chiropractor is an expert in one of the most advancing natural healing arts known to man. Through his soothing, professional spinal adjustments, he restores the normal flow of powerful nerve energy through the spinal cord and other vital parts of the body to bring lasting, effective relief.

With proper nerve energy flow restored, nature heals from within, eliminating discomfort and banishing dis-ease. Chiropractic spells relief naturally.

MANCHESTER CHIROPRACTIC CLINIC

Stan Gilbert, D.C.

227 East Main Street Manchester, Michigan
Phone 313-428-7207

Mon-Tue-Wed-Fri 8 am-12 noon and 3 pm-7pm
Thurs and Sat 8 am-12 Noon

OPEN HOUSE Sunday 1 PM To 4 PM 10975 Sooten Rd., Manchester

Charming custom built ranch-1700 sq. ft. Full Basement, 1st floor laundry with dutch doors to new screend 8'x20 porch. 3-large bedrooms, 1 1/2 baths. Anderson insulated windows, NEW carpeting, NEW vinyl siding. 2-car attached garage with opener. 1 1/2 acres, Manchester schools. NOW AT \$92,500. Hostess Florence Cammet. Take Austin Road to Manchester, then M-52 South to Logan Road, 1/4 mile to corner of Sooten and Logan. Follow Earl Keim signs.

Black Sheep Tavern

109 East Main Street
Manchester, Michigan

Phone 428-7000

Monday-Thursday 11am - 10pm. Stop in and try our Luncheon Specials

Friday 11 a.m. - 11 p.m.
Monday: Stuffed Pork Chop
Wednesday: Chicken Biscuits & Gravy
Friday: Spaghetti with Meat Sauce & Soft Bread Sticks

Saturday Noon - 11 p.m.

Sunday Noon - 10 p.m.

Don't be a heartbreaker

Reduce or overweight.



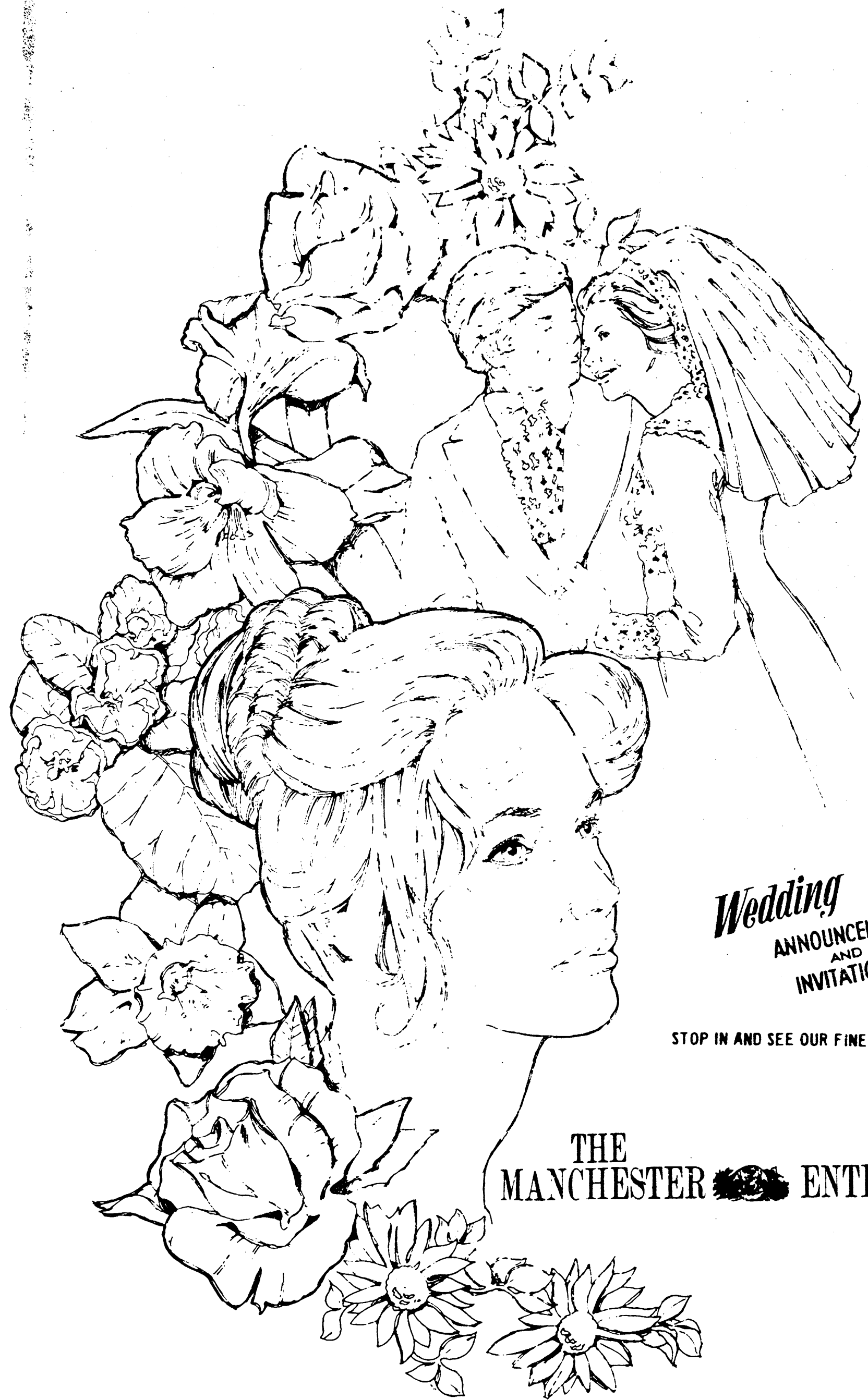
WE'RE FIGHTING FOR YOUR LIFE

Don't be a heartbreaker



WE'RE FIGHTING FOR YOUR LIFE

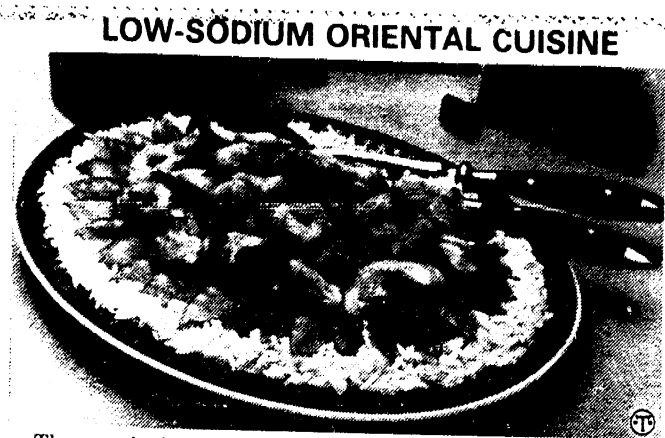
Wedding Bells and Beautiful Brides



Wedding
ANNOUNCEMENTS
AND
INVITATIONS...

STOP IN AND SEE OUR FINE SELECTION

THE MANCHESTER ENTERPRISE



The popularity of Oriental cuisine has prompted many American cooks to experiment with Eastern methods of food preparation. This easy-to-fix Stir Fry Chicken is a healthy addition to your diet because it's seasoned with NoSalt® salt alternative. NoSalt provides flavor without the addition of sodium, a plus since many people have been advised to reduce their sodium intake by their doctors. This dish also combines a hint of garlic, ginger, and the subtle taste of sweet sherry to create a unique, yet distinctively Oriental meal.

STIR FRY CHICKEN
1-1/4 pounds chicken breasts, boned, skinned and cut into strips
1 bunch scallions, cut in 1-inch pieces
1 egg white
1 teaspoon cornstarch
1 tablespoon sweet sherry
1 clove garlic, minced
1/2 to 3/4 teaspoon ground ginger
1/4 teaspoon NoSalt® salt alternative
Dash ground red pepper
2 tablespoons peanut oil

In non-metallic bowl, combine all ingredients except oil. Let stand 15 minutes. In wok or large skillet, heat oil on high until it ripples. Add chicken mixture all at once and stir fry over high heat until chicken is done, about 4 minutes. Garnish with pea pods, serve over rice. Makes 4 servings.
Sodium: 74 mg per serving (without rice)
Calories: 178 per serving (without rice)

Mark March 16 For Giving

Since 1951, the Red Cross Bloodmobile has come to Manchester, to collect blood for the needs of the 75 hospitals in the Southern Michigan Region. These hospitals use 950 pints of blood a day. In Washtenaw County there are 6 hospitals that use 180 pints of blood a day. The regular spring Bloodmobile for this area will be March 16, at the Knights of Columbus Hall. The time of the clinic is from 12 noon to 6 p.m.

The local churches have been contacting donors thru their regular recruiters while Mrs. Claire Reck has been contacting the industries in the Manchester area who assist the program by signing up their employee donors. The industries who take part in the clinic are Manchester Stamping, Manchester Plastics, Manchester Tool and Die, Pinnacle Engineering, Vickers (Double A Products) and Johnson Controls (Hoover Universal). St. Mary's Alter Society will host the clinic. There will be a nursery for children of donors and this also will be staffed by the women of St. Mary's. Appointment cards are now available at the three banks,

Comerica, First of America and Great Lakes Federal, as well as at the Manchester IGA and at Baker's Dozen. A sign with a file box and appointment cards beside it, make it easy to sign up. The best time to come without an appointment is in the middle of the afternoon. Donating blood is relatively painless and takes less than 45 minutes from registration to post donation snack of sandwiches (furnished by Alter Society) orange juice (furnished by the American Legion Auxiliary) and cider (furnished by Alber's Cider Mill and Orchard). Do you know what your blood type is? You can find out by donating. Blood groups are inherited. In our population the following percentages are found for ABO and RH blood groups:

- 38.4 will have group O positive blood.
- 7.7 will have group O negative blood.
- 32.3 will have group A positive blood.
- 6.5 will have group A negative blood.
- 9.4 will have group B positive blood.
- 1.7 will have group B negative blood.
- 3.2 will have group AB positive blood.
- 0.7 will have group AB negative blood.

(The actual percentages of blood types may vary from one region to the next. These figures reflect the average of seven Red Cross blood services regions).

The Knights of Columbus Hall is located at 106 E. Madison (next to the post office). Marja Warner will be the chairperson-of-the-day. Mark March 16, on your calendar and be ready to say "YES" to the recruiter who will be contacting you.



To accelerate the baking of a potato, first boil it for about ten minutes.

Hit or Miss

Tax time is nearly here and the average taxpayer is likely to well remember the phrase that nothing was sure but death and taxes. It is said that Ben Franklin first wrote this sentence in a letter in 1789.

At some times in our past death and taxes were almost the same. Art times the winner demanded that the vanquished pay an annual tribute and this was levied in most instances upon the brightest young men and women. This was supposed to enable the conquerors to assimilate them but it often ended up in slavery and death. Among primitive races it was a common practice to sacrifice to their firstborn if a male—surely a form of tax.

Later when Christianity for instance favored obedience to one god we transferred this taxation to priestly service as, for instance as Moses was commanded in the Book of Exodus. Later this custom was replaced by a ceremony of if not actually relinquishing the child, by a monetary gift to charity.

Amy Lowell, American "poet" wrote that was a pattern, a form of taxation this calls for the violent death of the best and the brightest—actually say many sages, surely a form of taxation.

Water levels above the ground across the Great Lakes have never been higher. Water levels across the Great Plains have never been lower. Not since the recorders started keeping such statistics. The optimist thinks a wise power will eventually channel funds to rechannel the water. Then the highest-lowest levels will then have a better balance.

A woman's place is in the home So says the modern man And she should get there As quickly as she can.

HOW TO BUILD HOME EQUITY 30% FASTER

PAY OFF YOUR HOME 8 YEARS SOONER AND SAVE \$31,121 WITH OUR BIWEEKLY MORTGAGE*

Loan Balance	\$45,409.24	\$38,170.12	\$-0-		
BIWEEKLY MORTGAGE					
	5 YEARS	10 YEARS	21.8 YEARS		
Loan Balance	\$47,986.50	\$44,814.39	\$28,034.87	\$19,540.56	\$-0-
MONTHLY MORTGAGE					
	5 YEARS	10 YEARS	21.8 YEARS	25 YEARS	30 YEARS

See how much faster you can pay off your home when you choose a Great Lakes Federal Biweekly Mortgage instead of a typical fixed-rate, 30-year mortgage.

Instead of conventional monthly payments, you'll make half-payments every other week. The smaller, more frequent payments and the one extra annual payment make a big difference in the cost and length of your loan.

Find out how you can pay off your home sooner and save \$31,121 in interest. Ask your Realtor or call 1-800-DIAL-GLF for complete details about the Biweekly Mortgage.

*NOTE: This example is based on a \$50,000 loan with 20% down and an interest rate of 9.125% (9.47% APR). Different loan amounts and interest rates will still result in significant, though different, savings. The Biweekly Mortgage is offered in conjunction with a Great Lakes Federal automatic payment checking account.

THE MANCHESTER ENTERPRISE
Now Has A New Copier Which Can Reduce Or Enlarge
Various Weights of Stock and Colors Available
150 East Main Street Manchester, Michigan Phone 313-428-8173

Tim's Lawn Care
313-428-7001
"The Lawn Ranger"

- LAWN SPRAYING FOR EVERYONES NEEDS
- 6 YEARS EXPERIENCE
- LICENSED—STATE OF MICHIGAN
- CERTIFIED—STATE OF MICHIGAN
- INSURED
- A COMPLETE BALANCED FERTILIZER PROGRAM FOR YOUR LAWN

A WELL FED LAWN IS A HAPPY LAWN

Call Now For A FREE Lawn Analysis and Estimate 313-428-7001

"The Lawn Ranger"

GREAT LAKES FEDERAL SAVINGS
Your Partner in Life.
111 E. Main St. Manchester 426-8373
401 E. Liberty St. Ann Arbor 769-8360
2400 Fulton Pkwy. Ann Arbor 973-7511
2707 Plymouth Rd. Ann Arbor 769-7818
126 Buchanan Circle Ann Arbor 769-7818
1800 Plaine Blvd. Ann Arbor 769-8386
*Locations with GLF 24 Center for 24-hour banking convenience.

**STRIKES
—N—
SPARES**

MANCHESTER BUSINESSMEN

K&W Farm Supply	17	7
Steele's Heating & Cooling	15	9
Manchester Stamping	13	11
Master Key Northern	12	12
Knights of Columbus	11	13
Double A Products	10	14
Aiuto Auto Parts	10	14
Ann Arbor Pool Builders	8	16
HIGH TEAM SERIES		
K&W	3141	
Steele's	3130	
Double A	3114	
K of C	3114	
HIGH INDIVIDUAL SERIES		
Don Wolf	601	
Jack Gould	590	
Rob Schaffer	589	
HIGH TEAM GAME		
K of C	1127	
Aiuto Auto	1119	
Steele's Heating	1111	
HIGH INDIVIDUAL GAME		
Stan Leonard	249	
Jack Gould	246	
R. Olberg	227	
D. Roberts	227	

MANCHESTER WOMEN

Dacel's Garage	409.0	341.0
Columbia P&H	406.5	343.5
Spear Realtors	396.0	354.0
Town Laundry	394.0	356.0
Weatherwax Drugs	390.5	359.5
Emerson & Wesch	383.5	366.5
Mass Confusion	365.5	384.5
Black Sheep Tavern	348.0	402.0
Brklyn Chiropractic	334.0	416.0
Tri County Party St.	323.0	427.0
HIGH GAME		
JoAnne Dew	214	
Madalyn Kirk	210	
Marge Edwards	205	
Nancy Althouse	205	
HIGH SERIES		
Joyce Golightly	562	
Marge Edwards	557	
Diane Brown	551	
Nancy Althouse	537	

JOLLY KEGLERS

Manchester Car Wash	111	71
DRW	102 1/2	79 1/2
Kleinschmidts	94 1/2	87 1/2
Carol's Cut-N-Curl	92	90
Dan's Westside Auto	86	97
Double A	84	98
Comerica	81	101
Dutch Country Kitchens	78	104
INDIVIDUAL GAME		
J. Juckno	234	
K. Smith	225	
J. Merriman	218	
INDIVIDUAL SERIES		
K. Smith	592	
J. Juckno	537	
M. Freeman	536	
HIGH TEAM GAME W/HDCP		
Manchester Car Wash	960	
Carol's Cut-N-Curl	912	
DRW	904	
HIGH TEAM SERIES W/HDCP		
Manchester Car Wash	2746	
Dutch Country Kitchens	2635	
Carol's Cut-N-Curl	2611	

GUTTER DUSTERS

Wallace - Fleck	32	20
Kelley - B. Smith	30	22
Evilsizer - Ross	29 1/2	22 1/2
J. Schaffer - B. Roberts	29	23
D. Steele - Goodell	27 1/2	24 1/2
Bruestle - R. Steele	27	25
R. Schaffer - Walter	24 1/2	27 1/2
DuRussel - D. Roberts	23 1/2	28 1/2
Jose - Sutton	23 1/2	28 1/2
Stockwell - M. Smith	23	29
Preston - J. Roberts	21 1/2	30 1/2
Frey - M. Roberts	21	31
TEAM HIGH SERIES		
Evilsizer - Ross	2705	
Stockwell - M. Smith	2632	
Kelley - Smith	2630	
MEN HIGH SERIES		
Rob Schaffer	613	
Mike Stockwell	574	
Tim Preston	556	
WOMEN HIGH SERIES		
Alisa Ross	557	
Faye Walter	548	
Faye Walter	542	
200s		
Alan Hanewald	202	
500s		
Dennis Sannes	512	
Gene Kemeter	549	
Dave Heiber	505	

TEAM HIGH GAME

Kelley - Smith	996
Schaffer - Roberts	943
Jose - Sutton	941
MEN HIGH GAME	
Rob Schaffer	232
Mike Stockwell	223
Pat Wallace	211
WOMEN HIGH GAME	
Faye Walter	242
Beth Smith	233
Faye Walter	215

MANCHESTER TOWN CLUB

Alleys Drillers	104	64
V&F Builders	97	71
R&F Tree Service	96	72
U DO IT Rentals	94	74
DuRussels	83	85
Manchester Plastics Inc.	80	88
Norm Walz	76	92
S-K Sales	75	93
M.I.S.C.	73	95
Jenters	62	106
200s		
Judy Catanese	200	
500s		
Carol Rentz	526	
Debbie Kennedy	515	
Joan Day	513	

HIGH INDIVIDUAL GAME

Carol Rentz	228
Candy Klapperich	225
Paula Scherdt	221

HIGH INDIVIDUAL SERIES

Candy Klapperich	591
Phyllis Baker	576
Joan Day	576
Paula Scherdt	569
HIGH TEAM GAME	
Alleys Drillers	894
HIGH TEAM SERIES	
Alleys Drillers	2467
HIGH TEAM GAME W/HDCP	
Manchester Plastics Inc.	908
HIGH TEAM SERIES W/HDCP	
V&F Builders	2447

Middle School Boosters

All people interested in the functions and activities going on now at the Middle School, please join us at our monthly meeting at the Middle School Library March 8th, at 7:30 p.m. Input, ideas and suggestions always welcome.

PTO Minutes

February 23, 1987

to be used for the R.A.N. program. Linda Ebersole seconded.

Mrs. Patty Dukes, Manchester Teacher Consultant was our guest speaker. Mrs. Dukes is a mother of three children and has a very impressive background of education and experience. Mrs. Dukes tests children for special services and she develops programs for each child's special needs. She is an asset to our school system and we are very fortunate to have her as part of our schools staff. Mrs. Dukes will be leading the Overview of the "Special Services Night" on Monday, March 9th.

R.A.N. program is underway. Wish lists, teachers requests for items needed in their classroom. After some discussion Sharon Anderson motioned PTO buy a special map of Michigan to be used in the classrooms at Klager. Margaret Goodrich seconded.

Sharon Anderson motioned PTO buy baseball bases for Klager, Mary Noshish seconded. Terri Scott motioned PTO buy sufficient number of red markers

Meeting adjourned at 9:50. Next PTO meeting is Monday, March 23, at 7:30.



If you've been casting about for what to call a whole heap of hawks, you might like to know the official term is a cast.

Jon's Photo and Record Shop
NOW LOCATED IN THE OLD MILL

Excellent Film Processing	Passport Photos Taken
Camera Accessories	Good Film Prices
Camera Repair	Camera Batteries
Copy Work Old Prints and Restoration	Darkroom Accessories

CALL JON FOR YOUR PHOTOGRAPHY NEEDS! 428-9509

DAN'S WESTSIDE AUTOMOTIVE
660 West Main Street Phone 428-9455 Manchester, Michigan

When The Snow Flies Will Your Car Be Winterized? \$25.95

Includes: Test Charging System, Check All Belts and Hoses, Check Radiator Cap, Pressure Test Cooling System, Flush and Refill With 2 Gallons Antifreeze*
*Additional Parts & Labor Extra

List	Sale Price
155/80 R13	51.35 4/155.00
165/80 R13	52.90 4/165.00
175/80 R13	54.30 4/175.00
185/80R13	55.20 4/185.00
185/75R14	55.40 4/185.00
195/75R14	57.05 4/195.00
205/75R14	60.20 4/205.00
215/75R14	65.10 4/215.00
225/75R14	68.65 4/225.00
205/75R15	62.40 4/205.00
215/75R15	66.05 4/215.00
225/75R15	69.45 4/225.00
235/75R15	72.15 4/235.00

Multi-Mile TIRES

15580R13	42.24
16580R13	45.23
17580R13	46.43
18580R13	48.78
18575R14	51.80
19575R14	52.98
20575R14	54.77
20575R15	59.52
22575R15	63.08
23575R15	66.06

215/75B15 47.21
225/75B15 50.03
235/75B15 52.40

All Season Radials Mud & Snow Bias Mud & Snow Radials
FREE High Speed Computer Balancing
New Valve Stems

We Accept Visa and MasterCard

NOTICE SHARON TOWNSHIP PROPERTY OWNERS
THE SHARON TOWNSHIP BOARD OF REVIEW
WILL MEET AT THE TOWNSHIP HALL 18010 PLEASANT LAKE ROAD
MONDAY, MARCH 9, 1987
From 1-5 p.m. and 6-9 p.m.
and
TUESDAY, MARCH 10, 1987
From 9-12 and 1-5 p.m.

FOR THE PURPOSE OF HEARING APPEALS, MAKING JUSTIFIED ADJUSTMENTS AND FOR CERTIFYING THE PROPERTY TAX ASSESSMENT ROLL.

THE 1987 RATIOS AND TENTATIVE EQUALIZATION FACTORS AS ESTABLISHED BY THE COUNTY EQUALIZATION DEPARTMENT AND PROPOSED BY THE COUNTY BOARD OF COMMISSIONERS ARE:

	RATIOS	FACTORS
AGRICULTURAL REAL PROPERTY	51.52	.9705
RESIDENTIAL REAL PROPERTY	48.90	1.0225
COMMERCIAL REAL PROPERTY	49.83	1.0035
INDUSTRIAL REAL PROPERTY	50.00	1.000
DEVELOPMENT REAL PROPERTY	49.36	1.013
PERSONAL PROPERTY	50.00	1.000

THE ASSESSMENT ROLL MAY ALSO BE INSPECTED AT MY HOME BY APPOINTMENT.
JOHN A. SAVAGE, SUPERVISOR

School Hot Lunch Menu

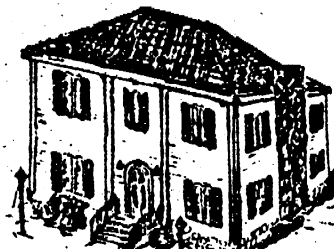
Monday, March 9 - Submarine Sandwich, Potato Chips, Dill Pickles, Peach Half and Milk.

Tuesday, March 10 - Beef Ravioli, Buttered Green Beans, Dinner Roll and Butter, Brownie and Milk.

Wednesday, March 11 - Chicken Fried Beef Patty on Bun, Tator Tots, Carrot and Celery Stixs, Pear Half and Milk.

Thursday, March 12 - Lemonade, Taco's with Sauce, Lettuce and Tomato and Cheese, Buttered Corn, Fruit Cocktail and Milk.

Friday, March 13 - Macaroni and Cheese, Broccoli Spears, Bread and Butter, Fresh Fruit and Milk.



February 2, 1987

The Manchester Township Library Board held their regular February meeting at the Library on February 2, 1987. They decided to have a Spring Book Sale. The sale will be held at the Township Library on Saturday, March 14, 1987. The hours for the sale will be from 9:00 a.m. to 12 noon. The Library Trustees will help conduct the sale.

Manchester Family Service

Manchester Family Service, Inc. will hold the agency annual meeting on Friday, March 6, at 7:30 at the Manchester Township Hall. This is an open meeting to the public with special invitation to friends of the organization who have participated in its activities this past year. Refreshments will be served.

Three of the nine board members are elected each year. Anyone interested in being on the ballot for this election may contact either member of the nominating committee - Mrs. Willis Uphaus (428-8403) or Mrs. Jean Wheeler (428-8790). There will be a board meeting following the annual meeting, for election of officers and planning.

Saline Breather's Begins Season

The Saline Breather's Club will begin the spring season with a general group discussion at their first meeting of the year Saturday, March 21. The group meets from 10:30 a.m. til 12 noon at the Saline Wellness Center, 200 N. Ann Arbor Street, Saline.

The Breather's Club is an educational and social club for patients with emphysema, asthma, chronic bronchitis, and other chronic lung diseases. There is no admission charge and family members are also invited to attend.

For any further information, please contact the American Lung Association of Michigan at 313-995-1030.

100th Anniversary World Day of Prayer

COME AND REJOICE! Celebrate the 100th Anniversary of the World Day of Prayer. On March 6, 1987, Bethel United Church of Christ will be hosting the World Day of Prayer. All area women are invited to attend. The World Day of Prayer is a worldwide movement of Christian women from 170 countries and regions who come together to observe a common day of prayer each year.

Salon of Culinary Arts

Washtenaw County 4-Hers will have an opportunity to attend the annual Salon of Culinary Arts to be held Sunday, March 22, 1987, at Michigan State University. The event provides 4-H members an opportunity to exhibit yeast or quick breads packages as gifts. During the culinary show, 4-Hers can also interact with professional chefs and restaurateurs and MSU Hotel, Restaurant and Institutional Management staff and students. A variety of culinary creations, exhibits and demonstrations will be available for viewing. The deadline for registration is March 9, 1987.

The show is open to the public from noon to 5:00 p.m., Sunday, March 22. Contact the Washtenaw County 4-H office at 973-9510 for more information.

FUND RAISING

Manchester Sportsman Club
8501 Grossman Road
Friday 6:45 p.m.

Manchester American Legion
203 South Adrian Street
Saturday 7:00 p.m.

laughs, and an original English translation. "The Maid Who Would Be Mistress" tells the story of a young woman brought up as a servant to an old bachelor. Her scheming to become mistress to the household, instead of maid, results in many hilarious situations.

Dial-A-Garden

The following is a monthly schedule of Dial-A-Garden, the system of pre-recorded daily gardening tips sponsored by the Washtenaw County Cooperative Extension Service. The system is in operation 24 hours per day, 7 days per week. Interested persons are invited to call 971-1122 at their convenience and receive timely, up-to-date gardening information.

Thursday, March 5 - Soils for houseplants.

Friday, March 6 - Containers for houseplants.

Monday, March 9 - Fertilizing houseplants.

Tuesday, March 10 - Vegetable garden planning.

Wednesday, March 11 - Growing leafy crops.

Free Opera For Adults

The Chelsea Community Hospital Breather's Club and the American Lung Association of Michigan are offering a free opera for adults with chronic lung disease.

Papagena Opera Company, an Ann Arbor performing arts group, will present the Pergolesi operetta, "The Maid Who Would Be Mistress," in the Main Dining Room of Chelsea Community Hospital, 775 S. Main, Chelsea, on Saturday, March 7, at 2 p.m. This presentation is a one-act, hour-long performance with full costume, beautiful singing, hearty

Breather's Club members are invited to bring their family or a guest to enjoy this exciting theatrical event and to thrill to unforgettable singing and music. For more information about the Breather's Club or the play, call 313-995-1030.

Y.F.U. Host Families Sought

Each year more and more families are discovering an exciting way of bringing an international dimension into their lives. They are opening their homes to a Youth for Understanding exchange student from another country. In August, high school students from Europe, South America and the Far East will begin a year long international adventure by attending high school and living with a family in the United States. Make an exchange student part of your family and discover this country together. For more information contact: Barbara T. Krick 313-663-6472.

MARGIE'S UPHOLSTERY
6245 Brooklyn Road Jackson
Wide Selection Of Fabrics
Pick-Up / Delivery Available
517-536-4230

Income Tax Preparation
Avoid The Rush Call Now
CALL 429-5994
IN SALINE
"This over 2-1/2 year"

H. L. BEACH Tax Service

Manchester American Legion
203 South Adrian Street
Saturday 7:00 p.m.

MARATHON Certified Mechanic On Duty

STOP IN & PICK-UP A MARATHON CREDIT CARD APPLICATION

YOU CAN PURCHASE BATTERIES, TIRES SHOCKS, PARTS OR HAVE YOUR CAR TUNE-UP FOR THE WINTER MONTHS. BRAKE JOBS, FRONT END ALIGNMENT OR WHEELS BALANCED. ASK ABOUT OUR INTEREST-FREE EXTENDED PLAN FOR CERTAIN PURCHASES.

24 Hour Wrecker Service

STOP IN AND SEE ME FOR YOUR BEST TIRE DEAL

GOODYEAR

WE NOW HAVE SUPER "M" LEAD FREE GASOLINE

FULL LINE OF MARATHON PRODUCTS

FILLYAW' MARATHON SERVICE
327 West Main St. Manchester, Mich. Phone 428-8576
MONDAY-SATURDAY 7 AM-7 PM

Brake Special 59.95 AND UP
Front or Rear

Lube-Oil-Filter 15.95 UP TO 5 QUARTS OF OIL

Shocks 9.95 AND UP

FARMERS Your insurance needs are our speciality

You take care of your farm, and we'll take care of your insurance needs. From protection for your farm and equipment, to cash-building life insurance plans for your family and retirement, helping Michigan farm families is what we do best. Call today.

Making your future a little more predictable.

FARM BUREAU INSURANCE GROUP

LARRY BECKTEL
136 East Main St. Manchester, Mich. Phone 428-7331

Dr. William M. Long
Diplomate of The American Osteopathic Board of Obstetrics and Gynecology

Announces The Opening of His Office

For The Practice of **OBSTETRICS & GYNECOLOGY GYNECOLOGICAL SURGERY INFERTILITY PROBLEMS**

AT **Herrick Diagnostic & Treatment Center**
415 E. Kilbuck Street
Tecumseh, Michigan 49286

Office Hours By Appointment Telephone 423-6667 or 423-MOMS

Deductions Tightened For Auto-Related Costs

When motorists file their 1986 returns, it will be the last time persons who use their cars only for personal transportation can claim all the interest paid on auto loans and credit cards and receive a sales tax credit on car purchases, reports AAA Michigan.

"The new tax laws have cut substantially the amount of deductible interest and have eliminated the sales tax on auto purchases, unless the car is used in business," stated Stan O'Connor, AAA Michigan Tax manager.

The standard mileage rate of 21 cents per mile and actual expense log for recovering motoring costs for business use are unchanged from 1986 to 1987.

"The interest deduction is being phased out through 1990 for cars bought for personal use," O'Connor said. "If a car is used in business, the business portion of the interest remain fully deductible."

For cars not used for business, only 65 percent of interest paid will be deductible in 1987, 40 percent in 1988, 20 percent in 1989 and 10 percent in 1990.

Beginning this year, consumers who pay for gasoline, motor oil or repair services with credit cards no longer can claim a 100 percent deduction for interest accrued on the unpaid balances of the cards. That is being phased out on the same schedule as vehicle loan interest.

"With the loss of the sales tax credit for a car purchase and

because interest deductions are being reduced, some motorists may find auto leasing an attractive alternative to ownership in 1987," O'Connor said.

Monthly lease payments usually are less than loan payments for the same car and smaller down payments generally are required for leasing than for buying, he added.

O'Connor cautioned, however, that unless the car is used partly for business, no part of the lease payments or tax on those payments are deductible.

There are two methods of recovering costs for a car used in business, standard mileage rate or actual expense.

The standard mileage rate, the simpler of the two, allows a deduction of 21 cents per mile for the first 15,000 business miles driven and 11 cents per business mile thereafter.

Vehicle owners using the actual expense method are required to keep records of gasoline, oil, repairs, insurance, motor club dues, tires and license plates expenditures and are allowed to deduct the business percentage of these costs.

"Motorists also can depreciate the cost of a car allocated to business use with the actual expense method," O'Connor said. Employee Business Expense Form 2106 should be consulted for the depreciation.

If a car is used for charitable, medical or moving purposes, the same deductions and rates apply for 1987 as in 1986. For charitable

High School, Chelsea, Michigan. The nights activities will start off with dinner being served at 7:00 p.m. in the gym. The program will take place in the auditorium.

"Michigan Outdoors" will be the title of the featured entertainment by John Hodge. John is a lean and lanky man of the north, intimately acquainted with the roads, trails and by ways of Michigan's woods and waters. He has captured some of "Nature's Nostalgia" in the life style of yesteryear. With his camera and color slides, he vividly illustrates the era of "prelude to plumbing". To tickle your funny bone or relive the past, Hodge's poetic portrayal and tongue-in-cheek philosophy are a sure digestive aid.

Tickets for the banquet are available from the following council members. Dave Gordon, Harold Haeussler, Nick Heller, Bill Nixon, Stan Post, Charles Koenn, Tim Bristol, Harold Trinklly, Dave Wolong, Bob Heller, Mark Blum-nauer or Reuben Lesser. You may also contact Bill Ames at the Cooperative Extension Service Office at 973-9510.

The 1987 Annual Washtenaw County Agriculture Banquet sponsored by the Washtenaw County Dairy Livestock Council and the Cooperative Extension Service will be held Thursday, March 19, 1987, at the Chelsea

Assistant Minority Whip

An area legislator has been selected to serve in an assistant leadership post within the House Republican caucus.

State Representative Margaret O'Connor (R-Ann Arbor), who is serving her third term in the Legislature, has been appointed Assistant Minority Whip by House Republican Leader Paul Hillegonds (R-Holland).

"This is an important position as we work to determine support for important pieces of legislation before the House," Hillegonds said. "I am confident Rep. O'Connor will do an excellent job in this leadership role."

O'Connor said she was pleased to be selected to fill this important position for the caucus.

"The job of assistant whip includes lining up votes on critical issues, head counting and determining the depth of support for any given issue," O'Connor concluded.

Sell Thru The Classifieds

Agricultural Banquet

The 1987 Annual Washtenaw County Agriculture Banquet sponsored by the Washtenaw County Dairy Livestock Council and the Cooperative Extension Service will be held Thursday, March 19, 1987, at the Chelsea

It's always been a good deal. Now it's a good deal better.



Get a heated cab or front-end loader

Belarus tractors have always been known for their amazingly low initial and operating costs, outstand fuel efficiency and rugged dependability.

"Now if you buy model 822, we'll throw in a heated cab you'll really appreciate in cold weather. Or choose model 505 or 525 and have a automatic leveling front-end loader installed FREE.

Belarus. A good deal just got better.

Hurry. Offer ends April 1, 1987

BELARUS TRACTOR SALE

Sale ends June 1, 1987 unless noted otherwise.

#	MODEL	HP	SALE PRICE	#	MODEL	HP	SALE PRICE
1.	7100	300 (4WD)	\$50,380.90	6.	611C	65 (2WD)	\$9,975.85
2.	7010	235 (4WD)	\$38,811.20	7.	*525	70(4WD)	*\$10,731.50
3.	1770	165 (4WD)	\$31,300.42	8.	*505	70(2WD)	\$9,461.50
4.	*822	85 (4WD)	\$12,700.00	9.	400AN	57 (2WD)	\$7,546.34
5.	800	85 (2WD)	\$10,883.90	10.	**250AS	30 (2WD)	\$4,508.50

**Ask about our price discount available on this model.

MILFORD MACHINERY SALES

P.O. Box 651
Milford, Michigan 48042
(313) 684-1439

Belarus

© 1986 Belarus Machinery, Inc.

CUSTOM CABINETS MADE IN MANCHESTER

Competitive Prices
Installation Available
Design Service

—OR—

Let Us
Reface Your Old
Cabinets and Save \$\$

Dutch Country Kitchens
18352 W. Austin Road Phone 313-428-7292 Manchester

K of C

FISH DINNER
AND
SALAD BAR

ALL YOU CAN EAT!

Fridays
February 27 Thru April 17, 1987
\$5.25

Drinks (Milk & Coffee) - 25¢
5 - 8 P.M.

Children's Portions Available
Senior Citizens - \$5.00

MANCHESTER
K of C HALL

THE MANCHESTER ENTERPRISE THURSDAY, MARCH 5, 1987 PAGE 15

CONDOS WANTED TO PURCHASE
BUYERS WANTED TO PURCHASE
TRAINING OPPORTUNITIES
SHARPS NEW USED UCTION
TUNING HELP WANTED REAL ESTATE
IS COLOS UNITS APARTMENTS
BUYERS WANTED TO PURCHASE

JAMES C. CONDOS APARTMENTS WARE NEW U... AUCTION R... MARKET... BUYERS WANTED
WANTED TO PURCHASE BUSINESS OPPORTUNITIES HELP WANTED REAL ESTATE CAREER TRAINING LOST AND FOUND
BUY TRADE RENT LEASE HOME CONDOS LOFTS APARTMENTS CAREER TRAINING AUTO MOTIVE SWAP
USED TION TEAM MARKET SWAP BUYERS WANTED WANTED TO PURCHASE BUSINESS OPPORTUNITIES LEASE
HELP WANTED REAL ESTATE CAREER TRAINING LOST AND FOUND SELL TRADE RENT LEASE AUTO MOTIVE
HOMES CONDOS LOFTS APARTMENTS SHARE NEW USED APARTMENTS IN FURNITURE MARKET SWAP BUYERS WANTED
WANTED TO PURCHASE BUSINESS OPPORTUNITIES HELP WANTED REAL ESTATE CAREER TRAINING LOST AND FOUND

All Classified Advertising is Payable in Advance and Must Be Placed and Paid For Prior to 11 A.M. On Tuesday For Publication That Week. Classifieds Are \$2.00 For First 20 Words, 5¢ A Word Thereafter. Thank You's Are \$4.00 Minimum Up To 50 Words, 5¢ A Word Thereafter. All Advertisers Should Check Their Ad The First Week. The Enterprise Cannot Accept Responsibility For Errors On Ads Received By Telephone But Will Make Them Appear Correctly. Refunds May Be Made Only When Erroneous Ad Is Cancelled After The First Week That It Appears.

A COMPANY THAT CARES - Thornton, Inc. and Thorton Dalitz, Inc. Realtors are looking for full-time, soon-to-be professionals interested in Real Estate sales. Our #1 goal is to make you successful. For a heart-to-heart talk on how we can be of service to you, please call our Residential Sales Managers for the following locations: Chelsea - Steve Easudes, 475-9193; Dexter - Gary Thornton, 475-9217; Ann Arbor - Judy Goodlock, 995-9215. tfn

CO-ED AEROBIC CLASS - Beginning March 9. Call now for more information 428-7017. 3-12

ANN ARBORS NEWLY RENOVATED - Sheraton University Inn is now hiring maids. Full and part-time positions available \$3.75 per hour, good benefits. Apply at 3200 Boardwalk, Ann Arbor. 3-12

SHAPE UP FOR SPRING - Lenawee County YMCA Tri Y Low Impact Aerobics; beginning March 9th, Monday-Wednesday 7:00 p.m. Manchester Middle School Cafeteria. For more information call instructor Cindy Hanewald after 5:00 p.m. 428-9113

WILL AND JEAN, WE SEND A WARM HELLO FROM MANCHESTER.

HAROLD, GLORIA, GEORGE AND LIZ, GREETINGS FROM MICHIGAN. HAVE A NICE DAY!

CLASSES - Our next classes are... 1. Weave a round reed Easter Basket with a band of color-March 22, 12:50-2:00. 2. Stencil an Easter Basket-March 28, 10:1-1:00. The Village Shoppe 428-9640. 3-12

ARE YOU INTERESTED IN CAR POOLING - For work from Manchester to either Chelsea, Ann Arbor, or Ypsilanti? If so, call Carl Monroe at 971-0400 during the day.

ATTENTION TAXPAYERS - Don't forget to attend the Board of Review, March 9 and 10. It's the next step before the State Tribunal. Let us stand together to lower our taxes.

FOR SALE - Pioneer stereo, speakers, receiver, turntable. 428-9389 after 5. 3-12p

FREE PUPPIES - Mother good watch dog. 428-7530. p

'77 NOVA - 6 cyl., auto. 20 M.P.G. good condition. 428-7146. p

CLEANING, HAULING - For all odd jobs you should be calling T&N Services. 428-7002.

NOW HIRING - People to do daytime general house cleaning in Manchester-Chelsea area. Full and Part-time positions available. Call 428-7002 eves. for appointment.

HOMEMAKERS - Are you looking for a job for 1-3 days a week? Positions are now available for daytime general house cleaning in Manchester-Chelsea area. Call 428-7002 eves. for appointment.

FOR SALE - '83 Ford LTD, 4 door, excellent condition. \$3100. 428-7853.

THE MUSIC CONSULTANTS - The Greatest Hits of all time presented with class by D.J. Jim Michaels 428-7786. 3-12p

TYPING - Fast High Quality, low cost 10 years experience. Business, Resume's, Charts, etc. Call Karen Carter at 428-8117. 3-12p

FARM LAND FOR RENT - On one-three year cash lease. 70 acres. Call 428-8333. 3-19

THINK SPRING - Martin houses and accessories in stock. Seed starters. Atlas of Manchester. 3-5

CROSS WITH CHRIS - June 19-July 3, personally escorted tour Germany, Switzerland, Austria. \$1914 Detroit includes: flight, 1st. class hotels, 2 meals daily. Free brochures also Britain, Ireland. Mrs. Press, 7369 Berne Rd., Pigeon, MI 48755. 517-453-2202 p

WANTED - Two double or twin strollers in good condition. Call Carolin's Corner at 428-8279. 3-19p

WANTED - Carolin's Corner licensed group day-care home seeking experienced child-care assistant. Must be a non-smoker and willing to work a part-time flexible schedule. 428-8279. 3-26p

HOUSE CLEANERS WANTED - Steady work-good pay. Partnership work. Experience preferred. Call 428-9691 Kathy's Independent Cleaning Service. Applications taken through March. p

SENIOR CITIZENS - For you free house cleaning on Mondays up to 8 hours. Call 428-9691 Local cleaning business or call Rubena Boelter. p

BABYSITTER - Will baby sit for your kids in my home for a reasonable price. Meal included, weekly or daily rates. If you need me, call Becky at 428-9214. Will babysit anytime day or night. p

THREE ROOM APARTMENT - For rent near Manchester. \$235 plus deposit, heat and electricity. Call 428-8267. p

FOR SALE - 1984 Chevy Celebrity Station Wagon, excellent condition 43,000 miles, forest green, front wheel drive V-6, Best offer. Call evenings 428-9380. tfn

LARGE ONE BEDROOM - ground floor apartment with washer and dryer in village. \$300 per month. 428-9150. tfn

HAY FOR SALE - First cutting 60 cents a bale. 428-9216. tfn

BEFORE YOU BUY OR BUILD - See a WICK HOME under construction in Manchester or Chelsea. You won't believe the quality and value. All price ranges, new floor plans, energy efficiency and fast completion. They are beautiful and affordable. Now is the time to start. Let us build a new home for you. Call for details, 517-563-2930. 4-16

PIANO TUNING & REPAIR - Qualified technician - Ron Harris, 475-7134. tfn

MERRIMAN INSULATION - Free estimates. Blown-in cellulose, professionally installed. George Merriman, phone 517-592-5527. tfn

INCOME TAX PREPARATION - H & R Block trained. By appointment. Call 313-475-8139 3-26p

HELP FIGHT CANCER - Earn money on phone at home. Call 971-4300. 3-26

EXPERIENCED COSMETOLOGIST - Part or full-time. Marti's Salon in Manchester. 423-7616 3-5

OFFICE SPACE FOR RENT - Chelsea Business district. Over 2,000 square feet available for immediate occupancy. Central heat and air conditioning. Call 475-8611 Monday-Friday's 8-5 p.m. 3-5p

ACREAGE FOR SALE - On Logan and Willow Roads in Bridgewater township. 10 acre parcels minimum. Call D.A. Renken & Associates, Realtors at 313-668-0303. 3-5p

BIRD SEED FOR SALE - Sunflower seeds in 25 and 50 pound bags. Phone 428-8903. Mark Blumenauer Farm. 3-12

FIELDER PAINTING - Interior and Exterior. Free estimates. Senior Citizens discount. Phone 428-8506. tfn

MANCHESTER K OF C HALL - Available for wedding receptions, parties, meetings. Hall rental \$165 includes cleaning; use of kitchen \$25. Catering available. For further information call 428-8393 or 428-8886. tfn

TAROT READINGS - Call Trina at 517-536-4342, Napoleon area. tfn

OVER NIGHT - accommodations at the Clinton Hotel, 104 W. Michigan Ave. Dining and full service bar. 517-456-4151. tfn

PARR'S AUTO BODY
BODY WORK - PAINTING
FREE ESTIMATES
INSURANCE WORK
GLASS INSTALLATION
18481 W. Austin Road
Manchester, Michigan
Phone
313-428-9538

MARGIE'S UPHOLSTERY
6245 Brooklyn Road
Jackson
Wide Selection Of Fabrics
Pick-Up / Delivery Available
517-536-4230

Manchester Antique Mall
116 EAST MAIN STREET MANCHESTER, MI 48158
313-428-9357

APPRAISAL DAY
SATURDAY, MARCH 14, 1987
SUNDAY, MARCH 15, 1987
BENEFIT FOR C. S. MOTTS CHILDRENS HOSPITAL
UNIVERSITY OF MICHIGAN HOSPITALS
Two Dollar Fee Charge For Each Item Appraised

Emanuel United Church of Christ
Sauerkraut Supper
Thursday, March 26th
SERVING 5 P.M. to 8 P.M.

TICKETS AVAILABLE AT:
The Flower Garden, Great Lakes Federal Savings

Reservations can be made by calling the church office at 428-8359

Take-out home delivery in the Village by calling 428-8359 between 9 am and 3 pm weekdays. Deadline 4 pm March 19th

Sauerkraut, Kniffles, Mashed Potatoes, Roast Pork, Hot Dogs, Polish Sausage, Blood Sausage, Applesauce Beverage and Home-Made Pie

ADULTS: \$5.00 SENIOR CITIZENS: \$4.50 UNDER 10: \$2.50 UNDER 3 FREE

Money Management

Is Single-Premium Life Insurance For You?

(Prepared by the Michigan Association of Certified Public Accountants.)

For many taxpayers, 1986 will be the last year that they can make a tax-deductible contribution to their IRA. But there are many other tax-favored savings plans to consider, suggests the Michigan Association of CPAs. One of them is single-premium life insurance plan.

Although it has its risks, this form of investment insurance offers taxpayers many of the same investment possibilities of an IRA. One distinct difference is that the benefits, when received by your beneficiaries, are tax-free.

As the name indicates, a single-premium life insurance policy is paid for by a one-time deposit of at least \$5,000 and no more than \$1 million. Although it is more than the maximum contribution allowed for an IRA, its safety and potential profitability make it a good investment for many people.

Under the terms of most single-premium policies, you cannot make more payments to the policy, but you can take out more than one policy. These policies are available in two forms: single-premium whole life and single-premium variable life.

The way a single-premium whole life policy works is, once you make a payment your money earns interest, usually at a higher level than a traditional savings account or a certificate of deposit (CD). The interest is guaranteed at the time of purchase for anywhere from one to five years, depending on the policy and it is adjusted annually thereafter to follow the prime rate. The company's fees and the cost of providing insurance are covered out of the earnings.

Single-premium variable life

STEEL
NEW & USED
STEEL AT BARGAIN PRICES
• Structural • Plate
• Re-Rod
• Pipe • Square Tubing
(Quantity Discounts)

Jackson Fibers Co.
(517) 784-9191
1417 S. Elm St.
1 block north of High St.
Jackson, Michigan

Wacker's General Store
BEER, WINE AND PACKAGE LIQUOR
Bud and Bud Light
\$9.99
24 Pack Cans
Plus Deposit & Tax
G.E. Wacker Inc.
Gasoline-Fuel Oil-Diesel
Motor Oil-Diesel Fuel
9050 Chelsea-Manchester Rd.
Manchester, Mich. 48158
Winter Hours:
Monday-Thursday 7 am-8 pm
Friday 7 am-9 pm
Saturday 8 am-9 pm
Sunday 9 am-8 pm

policies offer the same tax advantage but far more investment flexibility than single-premium whole life products. These products are variable both in the value of investment, changes with the market and the rate of return.

Who should consider a single-premium life insurance policy? Couples who want to save for their child's education might find this is a good investment opportunity. They can buy a policy and let it earn interest, tax-deferred, until their child is old enough to go to college. Then, the money needed for tuition is borrowed from the policy. Also, if one of the parents should pass away before the child is old enough to go to school, especially in the case of a family with one wage-earner, the money for college is still there.

Those taxpayers who are nearing retirement may want to consider a single-premium policy. They can invest the money, watch it grow for a few years and then start borrowing from it, tax free. When the policyholder passes away, the death benefit, less the outstanding loan, passes to the beneficiary.

There are stipulations to the policies that all interested taxpayers should be aware of. If, for some reason, you need to use the money invested in the premium, there are surrender charges for getting out of the policy. Within the first few years, the payments are typically high. Then, as the policy matures, they are usually phased out.

However, suppose the couple facing retirement needs all the principal in their account before the policyholder passed away.

They will have to pay taxes on any amount they borrow in excess of the cost of the policy, plus any other earnings that accumulated in the account.

Also, once the period of the guaranteed interest rate ends, it might not stay at the same relatively high level.

When looking at these policies, you will find them available from many different companies in many different forms. There are a few things interested taxpayers should consider before placing a large sum of money in an investment such as this.

What are the surrender charges? Find out how much they will be in each year of the policy.

How are the interest rates quoted? Are they gross rates (rates before the fees and mortality charges have been deducted) or are they net rates (rates with these charges already figured in)?

What is the death benefit? These policies are not primarily designed to provide benefits when the policyholder dies. Their popularity lies in the fact that they offer an investment opportunity. Still, it is important to know what the benefits are for your survivor.

An finally, what interest rate is charged on any amount borrowed from the principal? When borrowing the interest investors usually don't have to repay. But if they borrow from the principal (which is common), they have to pay it back. Know what the rate is before investing.

Once you are in a single-premium policy, it is expensive in many cases to close the policy. Make sure this is where you want to place your money before committing yourself to this investment. If you are confused or need to know more information about

investing, contact your CPA. He or she can help you decide the best investment strategy for your own personal goals.

Free Shade Trees For Spring

The National Arbor Day Foundation is giving ten free shade trees to people who join the nonprofit Foundation during March, 1987.

A Sugar Maple, Weeping Willow, Red Oak, Green Ash, Thornless Honeylocust, Pin Oak, Sycamore, Tuliptree, European Mountainash, and Red Maple tree will be given as part of the Foundation's campaign to encourage tree planting.

These trees were selected because they provide flowers, berries and nuts, in addition to shade and beauty, according to John Rosenow, the Foundation's executive director.

The Foundation will give the ten free trees to members contributing \$10 during March. The six-to-twelve inch trees will be shipped this spring between March 1 and May 31 when conditions are right for planting. They will be sent with enclosed planting instructions, and are guaranteed to grow or they will

be replaced free by the Foundation.

To become a member of the Foundation and to receive the free trees, a \$10 membership contribution should be sent to TEN SHADE TREES, National Arbor Day Foundation, 100 Arbor Avenue, Nebraska City, NE 68410, postmarked by March 31, 1987.

Recreation Task Force Meeting

Recreation Task Force Meeting reminder - Thursday, March 5th, 7 to 9 p.m., at the home of Bill and Dianne Schwab, 116 Beaufort.

GRADUATION STATIONERY

by Carlson Craft

- Announcements
- Name Cards
- Memory Books
- Jewelry
- Party Supplies

Prompt Service
Ask to See Our Album

The
Manchester Enterprise
150 E. Main St.

Michigan Veterinary Clinic, P.C.

VERA L. KLUWE, D.V.M.

313-428-8365

Large and Small Animal Surgery and Medicine
18901 Sharon Valley Road

Appointments: 9 AM - 9 PM
Monday through Saturday
Manchester, Michigan 48158-0025



YOU HAVE ENOUGH TO WORRY ABOUT

Regular breast examinations are important to your physical health and emotional well-being. But with the busy lives most women lead today, it's sometimes hard to find time to take care of yourself.

That's why the Women's Health Center at Chelsea Community Hospital schedules day and evening appointments for complete physical exams and breast

evaluations. You'll get relaxed office visits, time to ask all the questions you like, and advice from experienced professionals who care about you.

Don't put it off. Call the Women's Health Center and make an appointment for a breast evaluation today. You'll have one less thing to worry about.

Women's Health Center
Chelsea Community Hospital

775 South Main Street
Chelsea, MI 48118-4399

(313) 475-1311, Ext. 196

THE MANCHESTER ENTERPRISE

25¢ COPY

120TH YEAR VOLUME NUMBER 21

USPS NO. 327-460

THURSDAY, MARCH 12, 1987

Trucks Stuck Fast

Soldier Drivers Get Plenty Of Real, Practical Experience But No Exciting Thrills

Manchester Enterprise
March 20, 1919

A bunch of about 60 government trucks bound westward got stuck in the tough roads, near the Middlemiss farm, west of Bridgewater Station, Sunday afternoon and were forced to camp there for the night. The drivers made the best of the situation, improvising the bedrooms in granaries, stables and hay mows to say nothing of their own trucks. The next morning some came to town for supplies and showed the effects of their efforts to pull out of the quagmire. They looked like real doughboys just from the trenches after a rainy week. The Red Cross got busy and sent them eatables for dinner.

During Monday the soldiers found they were in the mud for keeps and tackle was sent from Detroit to help in the work of getting out. The men established a camp on the Blum farm where they could have cooking facilities and some shelter and have managed to get along by sleeping as best they could. They have come to markets and stores here each day for supplies and have been helped out by the Red Cross. Roy Blythe and Alvin Clark, who are still wearing the khaki, know how it feels to be a soldier in

trouble and have been right in the game to help out with the eats, etc. The Young Men's Club has generously given the boys the privilege of arranging sleeping quarters in their rooms and enjoying the baths and numbers have taken advantage of the offer. Someone said to one of the castaways, "Here's a pillow; don't you want a pillow for your cot?" "A pillow? What's a pillow?" was the reply.

Four trucks were extricated from the mud hole at the Seckinger hill some time last night and advanced as far as the turn in the road east of Wilbur Short's, where they were mired again. It is said several trucks belonging to the same group, which succeeded in getting as far as Norvell last Sunday have been reposing in the mud up that way ever since.

Auto-loads of men passed through from Chicago, going to Detroit after more trucks. They declare the roads so bad that the group of trucks now stuck in the mud in Bridgewater could not reach Chicago until the roads are better. It is the opinion of people here that the government should cease operations for awhile.

Three of the trucks reached town this afternoon and were parked on Ann Arbor street. Others will without doubt soon follow.

Optimist Oratorical Contest

Young people ages 15 and under are invited to compete for \$1,000 scholarship in Optimist International's Annual Oratorical Contest sponsored locally by the Manchester Optimist Club.

Contestants will prepare and deliver a four-to-five minute speech on the topic "Promise Yourself" before a panel of judges at the regular meeting of the Manchester Optimist Club on Monday, March 23rd. Their performance will be judged on the basis of organization of material, delivery and presentation, personal appearance and poise, and overall effectiveness.

The boy and girl winners of the local contest will go on to regional competition from which finalists for the Michigan District contest will be chosen. The boy and girl winners of the District finals on May 9th will each receive a \$1,000 scholarship.

Ted Tapping, Chairman of the Oratorical Contest Committee for the Manchester Club, said "The Optimist Oratorical Contest provides young people with an excellent opportunity to build their speaking skills and gain confidence in expressing their thoughts before a group of people."

Tapping added that entrants need not be accomplished speakers. The club is cooperation with the Manchester Community Schools offers entrants the option of excellent coaching assistance. To be eligible for the contest,

Continued On Page 14

Hit or Miss

by farley

We were sent the other day by a reader of this column, a list of questions said to have been submitted by the father of an eleven year old boy. These questions he claims have no answers but which he found to be most interesting. These questions were:

Why is it that an eleven year old boy who says that girls are "gross" receives a dozen phone calls a day from them?

If a kid can go to a gym four days a week and bench press 4,000 pounds, why does he get a pained expression when you ask him to carry in a 40 pound sack of softener salt?

Why is my gas tank usually empty?

Why are there spoon marks in the peanut butter?

How can a kid who can remember the words to every Beatle song ever written, including several that were never recorded, forget to turn off the light every night when he goes to bed?

How can a shower last 2 1/2 hours? And the soap is not even wet?

How can I convince a 14 year old that he will not be a social leper for the rest of his life if he wears socks to school on a day when the temperature is 20 degrees below frostbite?

Has anybody seen my new dress shirt?

Why is it that a 14 year old's hair is longer when he returns home from the barber's than when he went?

Where can I put the garbage

bag so that one of them can remember to take it out?

How can a kid who would "barf" his brains out if he had to eat one more bite of dinner be hungry again before the dishes are even washed?

How can a pair of \$60 tennis shoes wear out when the only place they were out is on the sidewalk?

Has anyone seen my new sweater?

How do my car radio buttons always wind up set to the loudest rock station in this whole area?

How is it that I seem to be the only one who seems to be able to understand what the dog is saying when she stands at the front door with tears in her eyes and her hind legs crossed?

Why can't homework be done with the stereo turned off?

How can a closet filled with enough shirts, blouses and dresses give the girls "nothing to wear"?

Why does a 14 year old have to take a shower before he goes outside to play football in the

Continued On Page 14

Red Cross Bloodmobile

Monday, March 16

Knights of Columbus Hall

12 Noon-6 P.M.

Student Of The Month



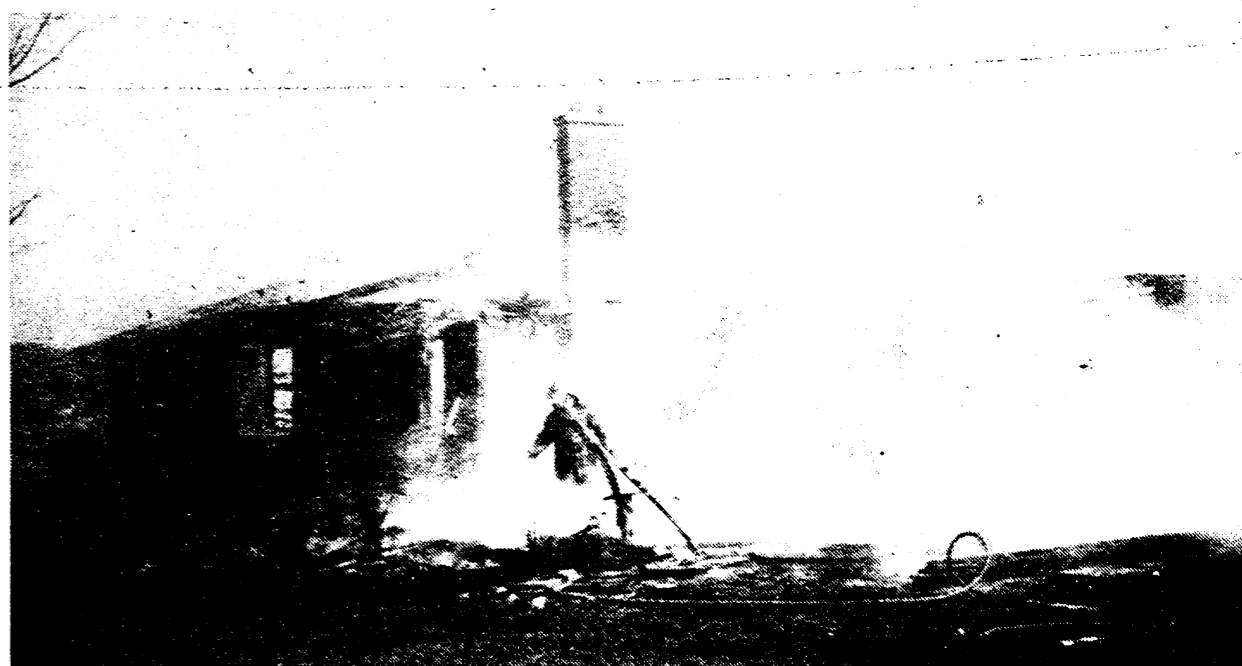
Linda Milkey has been honored as Manchester Optimist Student of the Month for February.

She is the daughter of Lois and Steve Milkey of Manchester and is a sophomore at Manchester High School. Linda has been active in Basketball and Track these past 2 years. Academically, she has had perfect attendance her 9th and 10th grades and has been on the Honor Roll in the last

2 years. She is active in the Leadership class and participated in the Substance Abuse Awareness Program for high school students. Linda is also active as a teacher at her Sunday school church school. Piano, swimming, and babysitting keep her busy outside of school!

Linda plans to attend college after graduation and is looking at a medically oriented profession.

Fire Destroys Sharon Township Home



The Manchester Township Fire Department, assisted by the Chelsea Fire Department, responded to a blaze that destroyed the Sylvan Road home of Rod and Judy Hoeft on Tuesday morning.

The Sand Lake Fire Department covered the fire hall during the emergency. The Hoeft family have lost everything. Anyone wishing to donate clothing, etc., should contact the Manchester Family Service at 428-8852.