

Mrs. Franklin Reck  
665 W. Main  
Manchester, MI 48159

PC

# THE MANCHESTER ENTERPRISE

25¢ COPY

119TH YEAR VOLUME NO. 50

USPS NO. 327-480

THURSDAY, OCTOBER 2, 1986

## Optimist Club Student of the Month



Pictured above is Sherri Leach with Optimist member Monty Okey and Mrs. Sue Leach.

Sherri Leach has been honored as Manchester Optimist Student of the Month for September, 1986. Sherri is a senior at Manchester High School. She has been on the honor roll at school for the past 3 years. She is a member of the National Honor Society her junior and senior years. Sherri has held the office of class secretary and vice-president her tenth, eleventh and twelfth years of school and she is co-editor of the Manchester High School yearbook this year.

She has been active on the Accounting Academic Games team and on the Prom Committee her junior year. Sherri placed third in the Manchester Optimist Essay Contest her sophomore year and placed second in the University of Michigan German Day her junior year. She is planning on attending college next year and is active in applying for schools presently. She lives on English Road with her parents Roger and Sue Leach.

## United Way Campaign Begins

The 1986 United Way Campaign will officially begin on October 1. This year's campaign will be conducted using a different approach. Rather than the familiar knock on the door from one of your neighbors who has volunteered to solicit donations,

you will receive a letter in the mail. About 600 letters were prepared for mailing, and you should be receiving yours this week.

This year's campaign has been organized with six divisions. The former Rural and Village Divisions have been combined to form the Residential Division, with Susan Mann and Mark VanBogelen serving as co-chairpersons. The Industrial Division is being chaired by Ron Fielder; the Schools Division, Ron Niedzwieki; the Business Division, Becky Doyle; the Outside Business Division, David Little; the Organizations Division, Janice Little.

## Transfer Site To Charge Disposal Fee - October 1st

Starting October 1, 1986, residents of Bridgewater, Freedom, Manchester, Sharon Townships and the Village of Manchester, will have to pay a fee for using the Manchester Transfer Site located on Parr Road.

All residents must have a Transfer Site Pass which can be obtained from their township clerk or supervisor.

The Transfer Site will be open on Thursdays from 12 Noon to 5 p.m. and on Saturdays from 8 a.m. to 5 p.m. No liquids of any kind will be accepted.

A list of the new fees is available at the Transfer Site or from your township clerk.

The 1986 campaign goal is \$40,000. The following is a list of Manchester United Way agencies and their allocations: Manchester Area Recreation - \$6,800; Manchester Family Service - \$750; American Red Cross - \$7,000; Manchester Senior Citizens (Meal Program) - \$3,200; Catholic Social Services - \$2,240; Cystic Fibrosis Foundation - \$1,000; Child and Family Service of Washtenaw County - \$2,500;

Continued on page 12

## Join Hands With Mission Reach Out!

The Manchester United Methodist Church will welcome six missionaries during the week of October 5-12. The program named "Mission Reach Out", attempts to demystify the area of international missions which the church may have found difficult to visualize or impersonal in the past. Mission Reach Out's aim is to personalize these remote places by having missionaries share their meaningful overseas experiences and to offer periods for questions and answers as well.

Because the Manchester UMC has been especially active in mission projects in Haiti, the church will host a number of speakers who have recently served in that country.

The program will begin Sunday, October 5, (8:17 - 9:00 a.m.), with a Father & Son (come as you are) "Sweatshirt Breakfast", featuring a light continental breakfast. Mr. Richard Stevens from South Lyon, who has served repeatedly as a lay missionary in Haiti, will speak.

We hope to be able to share in Mr. Stevens' puppets, which he has shown the children in Haiti, in his presentation to the Church School (9:15 - 10:15 a.m.).

Mr. Stevens will speak at the worship service which follows at 10:30 a.m.

Sunday evening (7 p.m.), will bring another missionary, the Rev. John Kershaw, who will

Continued on page 16

## Middle School Open House

All parents/guardians of fifth, sixth, seventh and eighth graders are cordially invited to attend an open house at the middle school on Monday, October 6, from 7:30 p.m. - 9:15 p.m.

Due to the lack of classroom space, the open house will be for parents/guardians only. It will begin with a general meeting for all parents at 7:30 p.m. in the lunchroom. Immediately after the meeting parents will be following their child's daily schedule of seven class periods. Classes will last approximately ten minutes with three minutes between classes. Teachers will be discussing the nature of their classes and their goals for the 1986-87 school year.

All middle school students will receive maps of the schools and a copy of their daily schedule prior to October 6, so that they can explain them to their parents.

This should help avoid any confusion Monday night. Parents should bring this information with them.

The Middle School staff is looking forward to meeting with you.

## Local Home Named To State Register of Historic Sites



The Michigan Historical Commission is pleased to announce that the Fountain-Bessac House of Manchester, has been listed in the State Register of Historic Sites.

It is the home of Mr. and Mrs. Thomas Walton and is located at 102 West Main Street.

The Fountain-Bessac House is a rectangular, two-story, hip-roofed, clapboard-sheathed Greek Revival/Italianate-style building, fronted by a first-story open porch with Ionic columns and a

square pier at each end, and crowned by a square bracketed cupola.

The second-story cast-iron features paired bracketing and dentils, and six-over-six-light windows flanked by shutters.

The Fountain-Bessac House has significance as one of the oldest houses in the village of Manchester. Jabez Fountain, a wealthy Manchester flour mill owner, hired William S. Carr to construct a one-story frame residence in 1842. Carr, a native New Yorker, had constructed the first store building in Manchester in 1837, and later served as a state representative and delegate to the State Constitutional Convention in 1850.

In 1850, Fountain sold his house to Dr. William H. Bessac, a New Yorker who moved from nearby Lima Center to Manchester in anticipation of the Michigan Central Railroad establishing a station. Bessac added the present second story and cupola to the house about 1853. The 1881 HISTORY OF WASHTENAW COUNTY identified the Bessac House as "one of the principal residences" in Manchester.

Rayner G. Haeussler, Bessac's grandson, inherited the house, and sold it to its present owners in 1943. The noted University of Michigan architect Emil Lorch (1870-1963) extensively restored the first story exterior of the former Fountain-Haeussler House between 1949 and 1952.

The State Register was established by Act 10 of the Public Acts of 1955 to recognize historic sites in Michigan. This designation also enables the purchase and display of an official state identification marker noting the name of the site and the year of its listing. Sites with unusual historical significance may, upon application to the commission, also be deemed eligible for an informational marker.

## Bloodmobile News

Donating blood to the Red Cross is a Manchester tradition and this Blood Bank comes at a critical point in the area's blood needs. The Bloodmobile date is October 13th at the Manchester United Methodist Church on Ann Arbor Street in Manchester. The time of the clinic is from 12 noon to 6 p.m.

The local churches have been contacting donors thru their regular recruiters while Mrs. Claire Reck has been contacting the industries in the Manchester area who assist the program by signing up their employee donors. The industries who take part in the clinic are Manchester Stamping, Manchester Plastics, Manchester Tool and Die, Pinnacle Engineering, Vickers (Double A Products) and Johnson Controls (Hoover Universal).

Mrs. Vada Ridge has been busy staffing the clinic and the United Methodist Women will furnish the canteen. There will be a nursery for children of donors and the Beta Sigma Phi Sorority is staffing this part of the clinic.

Manchester has been host to Bloodmobile for the last 35 years and during this time over 8000

Continued on page 5



### Optimist Tri-Star Football Contest

The Manchester Optimist Club will hold a Tri-Star Football Contest on October 4, at 1:00 on the new Football Field. The program tests the skills of contestants in three of the basic skills of the game - place-kicking, passing, and punting. Kids will compete in six age groups, 8 through 13, against youth only of their own age. All that is needed to compete is a pair of gym shoes. Football spikes and boots are not allowed.

There will be trophies awarded to the first three winners in each age group. Every contestant will also receive a memento scorecard and a Tri-Star Patch.

Entry blanks are available at the Middle School office and Klinger office or at the contest site on the day of the competition.

### School Hot Lunch Menu

Monday, October 6, Chicken Patty on Bun, French Fries, Dill Pickles, Chocolate Pudding, Milk.  
 Tuesday, October 7, Homemade Italian Spaghetti, Warm French Bread with Butter, Buttered Green Beans, Pear Half, Milk.  
 Wednesday, October 8, Submarine Sandwich, Potato Chips, Vegetable Sticks, Fruit Compote, Milk.  
 Thursday, October 9, Baked Chicken, Whipped Potato with Gravy, Buttered Sliced Carrots, Bread & Butter, Ice Juice, Milk.  
 Friday, October 10, Fruit Punch, Tacos with Sauce, Lettuce, Tomato and Cheese, Buttered Corn, Fresh Fruit, Milk.

### Volunteers Needed To Help Cancer Patients

The American Cancer Society needs volunteers to staff The Wilmot House, a short-term residence for U of M Medical Center radiation oncology cancer patients and their families. Duties could include answering

phones, making reservations for future guests, providing information about the area, and generally helping to make residents as comfortable as possible.

Training sessions for volunteers will begin as soon as enough volunteers are available for a group. The target date for opening The Wilmot House is November 1. Volunteers must be at least 18 years of age.

For more information, contact the American Cancer Society at 971-4300, or The Wilmot House at 761-1414.

### Letter To The Editor

I was surprised to see an ad in last week's paper criticizing Margaret O'Connor for voting for low interest loans to farmers. Obviously, her Democratic opponent has not read the bill nor talked to local farmers about it.

The program provided \$130 million in low interest loans over a two-year period. It will cost taxpayers \$5 million in interest differential. The loan, in fact, goes to the banker. It must be paid back in two years. If the banker loses money on the loan, the state does not guarantee coverage of the principal. If you were a banker, would you loan money to a "needy farmer" who couldn't guarantee he could pay the money back in two years?

In addition, the bill was passed so late in the session that it would not allow farmers who needed the money to plant crops in time.

Statistics show that the bill refinanced loans for farmers and did not help those with poor credit ratings. This is not an effective way to help the Ag community. I and several other farmers commend Margaret O'Connor for her "No" vote on the bill.

As president of the Farm Bureau, I urge voters to keep O'Connor in Lansing as our State Representative.

Sincerely,  
Harold Trinkle

### Birth Announced

Mr. and Mrs. John Spensley of Manchester are pleased to announce the birth of their first child, Patrick Benjamin, on September 13.

Patrick weighed 8 pounds, 15 1/2 ounces and is the grandson of Margaret Spensley of Manchester and Mr. and Mrs. Bernard Vanderkolk of Lafayette, Indiana.

### Cards of Thanks

The family of Jeanette Carpenter would like to thank everyone for the cards, flowers, visits, prayers and support during Jeanette's short illness and untimely death. A special thank you to Rev. Carruth and Ron Jenter and the wonderful ladies from the Manchester Methodist Church for the beautiful luncheon.

William (Dub) Carpenter  
 Nancy Arnett  
 Chalmer, Janice and Steve Flint  
 Harold, Heien and Gary Flint  
 Dave and Lori Flint

A big Thank You to all of our family for giving us such a nice 50th Anniversary party, and the beautiful gifts you gave to us. How wonderful to have such a great family. We love you all.

We would also like to thank all our relatives, friends and neighbors who attended our anniversary party. Also for all the cards and gifts we have received, and thanks for all the cards we received in the mail.

- Earl & Margaret Oltersdorf

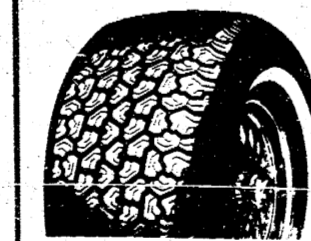
"You are the bows from which your children as living arrows are sent forth."  
Kahlil Gibran

### KIRK EXCAVATING

Sand—Gravel—Fill Dirt  
 Basements—Driveways  
 428-7938  
 DAVE KIRK  
 14180 Schleweis Road  
 Manchester

### DAN'S WESTSIDE AUTOMOTIVE

660 West Main Street Phone 428-9455 Manchester, Michigan



### Multi-Mile

	LIST	SALE PRICE
155/80 R13	10/32	51.35
165/80 R13	11/32	52.35
175/80 R13	11/32	54.30
185/80 R13	11/32	55.20
185/75 R14	11/32	55.40
195/75 R14	11/32	57.05
205/75 R14	11/32	60.20
215/75 R14	11/32	65.10
225/75 R14	11/32	68.65
205/75 R15	11/32	62.40
215/75 R15	11/32	66.05
225/75 R15	11/32	69.45
235/75 R15	12/32	72.15



We Accept Visa and MasterCard



### Fourth Grade Jeopardy



Quiz mistress Mrs. Karen Ellsworth looks suitably solemn as she poses a difficult question to Jeff Kemner to ponder. When time permits, this fourth grade class likes nothing better than to meet the Jeopardy Challenge. Questions in science, math and social studies really test the students recall and reasoning powers.

Money for your family... from Universal Life

From basic needs to a college education, Universal Life will provide the cash or income your family will need if you die. And the policy's cash value is always available to you for the times of your life when you need cash the most. Start building your cash value today with the high interest rates of Universal Life... from Farm Bureau Life Insurance Company of Michigan.

Making your future a little more predictable.

FARM BUREAU INSURANCE GROUP



LARRY BECKTEL  
 136 East Main St.  
 Manchester, Mich.  
 Phone 428-7331

you need cash the most. Start building your cash value today with the high interest rates of Universal Life... from Farm Bureau Life Insurance Company of Michigan.

### Money Management

[Prepared by the Michigan Association of Certified Public Accountants]

Some people think of bankruptcy as a deeply embarrassing situation. But for many, declaring bankruptcy may mean a fresh start, with protection from creditors or time to repay debts. If you think you are so in debt that personal bankruptcy may be your only course, the Michigan Association of CPAs says you should be aware of some general guidelines about the financial aspects of the bankruptcy laws and the ramifications of filing under those laws.

Last year, nearly 340,000 debtors sought refuge under Chapters 7 and 13 of the federal bankruptcy law. If you are considering relief through personal bankruptcy, first understand the consequences.

Filing for bankruptcy could help you get back on your feet, but don't expect to be granted credit right away. A declaration of bankruptcy is a serious matter and one that is reflected on your credit record for many years. During that time you will have to re-establish credit.

Doing so is difficult, but not impossible. If you may want to build up your savings and use that to secure a loan. Then, repay the loan promptly to start building a new credit history. But before you take out any loan, CPAs advise, make sure you will be able to repay it and that the money is put to good use.

Also, apply for a credit card at a local retailer. If you are issued

one, use it wisely. If you are like some people, it may have been the poor use of credit cards that got you into trouble in the first place.

Which chapter of the federal law should you file under? Chapter 7, the more drastic course, wipes out all debts except taxes, alimony and child support. Debts secured by property, such as a home or car, normally have to be paid or you may lose the property, according to CPAs.

However, an individual will usually be allowed to keep a certain amount of equity in a home, a car or professional equipment, for example.

Under Chapter 7, most of your assets will be sold by a court-appointed trustee to clear as much of your debt as possible. This course may be best when there is no income at all or when there is too little income left over to fund a repayment plan.

Under Chapter 13, you would be allowed to keep your property and personal belongings. You will also be able to consolidate nearly all debts, plus taxes and put forth a trustee-supervised plan for repayment over three to five years. The plan must include a budget showing how much of your money will go toward paying creditors.

Why do some people over-extend their credit? Uncontrolled spending, emergencies, poor investments, an unexpected layoff from work or an extended hospital stay could lead to bankruptcy. By establishing an emergency fund, or some other provision, families have a better chance at surviving the unexpected. Many consumers who have declared bankruptcy may not have had adequate financial information, an effective budget, nor a simple accounting

method that helped them keep track of their spending.

How do you know if your finances are in trouble? Warning signs will begin to appear when families have difficulty paying their bills on time. The prospect of bankruptcy appears when the family is in debt to the point where there is simply no way to meet obligations in the foreseeable future.

Once declared, bankruptcy holds most creditors at bay. Your home may be safe from foreclosure and your car normally cannot be repossessed during the time you are involved in bankruptcy proceedings. Declaring bankruptcy may give people relief from the severe mental strain that results from serious financial problems.

If your bills are sizeable and seem to be piling up faster than you can pay them, see your CPA for financial guidance. If you decide bankruptcy is your only choice, be aware that bankruptcy laws are complex. Make sure you clearly understand how bankruptcy will affect your financial future.

### Michigan's History

Langdon Hubbard, a lumber baron, founded Huron City, Michigan, in the mid 1850s.

Hubbard's wife died very young leaving a number of small children. Langdon's sister, Jeannette, came to help with the family, took one look at the wilderness in Huron City, and packed the kids up for Connecticut. Both Langdon and Jeannette agreed that Huron City was not the place for proper upbringing of children. But some 20 years later, all of his children came back to Huron City, and today the sixth generation of the Hubbard family resides in the area. The family still runs and owns the seven museum buildings of Pioneer Huron City.

The Museum-city includes one survivor include one daughter, Avis R. Spike and husband, Clark, of Manchester, one son, Mac Hallenbeck and wife Barbara, of Drayton Plains, five grandchildren, James and Susan Spike, Ann Duseau, Mary Cumming, and Ray M. Hallenbeck, two nephews and a niece. She was preceded in death by her husband, Ray, on February 17, 1943, and a sister, Mrs. Anna Kelley.

Funeral services were held at 2:00 p.m. on Thursday, October 2, at the Muir Funeral Home in Lapeer, Michigan. Burial followed at the Metamora Cemetery.

**DR. ALAN SNIDER**  
 ANNOUNCES THE OPENING OF HIS PRACTICE IN  
**ORTHOPEDICS**  
 P.C. SATTERTHWATE BUILDING  
 502 East Cummins Street  
 Tecumseh, Michigan  
 RIGHT BEHIND HERRICK HOSPITAL  
 517-423-7425

**Friendly Family Dentistry**  
**Bruce Bates, D.D.S.**  
 500 Galloway Drive Manchester, Michigan

CLEAN TEETH

SERVICE BY APPOINTMENT

PHONE 313-428-8277

Monday-Tuesday-Friday 9 a.m.-5 p.m.  
 Wednesday 12 noon-8 p.m.  
 (Some Other Evening and Saturday Morning Hours Available)

New Patients, Medicaid and Emergencies Always Welcome

VISA ACCEPTED  
 MOST DENTAL INSURANCE PLANS ACCEPTED

gentle dental care

**Todd Withrow Company**

REMODELING  
 CABINETMAKING  
 ADDITIONS—WINDOWS  
 KITCHENS—BATHROOMS  
 ROOFING—SIDING  
 CUSTOM BUILT CABINETS  
 WALL UNITS—FURNITURE

TOP QUALITY MATERIAL AND WORKMANSHIP

LICENSED AND INSURED

CALL ANY TIME  
 428-9420 or 428-7797

**Wacker's General Store**

Over 600 Kinds Of Domestic and Imported Wines

G.E. Wacker Inc.

Gasoline-Fuel Oil-Grease  
 Motor Oil-Diesel Fuel  
 9050 Chelsea-Manchester Rd.  
 Manchester, Mich. 48158

Summer Hours  
 Monday-Friday 7 am-9 pm  
 Saturday 8 am-9 pm  
 Sunday 9 am-9 pm

of Michigan's first golf courses and a U.S. Life Saving Station. The Life Saving Station houses famous tales of seamen who braved the Great Lakes storms in rescue attempts and life saving equipment from the turn of the century. The entire museum-city takes visitors back to the days of Michigan's 1850s to 1880s lumbering era.

### Auxiliary To Meet

The American Legion Auxiliary meeting will be held at the Legion Home on October 8, 1986, at 7:30 p.m.

### Obituaries

#### Gladys Hallenbeck

Gladys Hallenbeck, 94, formerly of Metamora, Michigan, died on September 30, 1986, at the Saline Evangelical Home in Saline, MI. She was born on December 30, 1891, in Metamora, Michigan, the daughter of Philo and Mary Isham. She graduated from Metamora High School and the County Normal at Croswell, Michigan. She taught in Lapeer County Schools until her marriage on June 27, 1917, to Ray C. Hallenbeck of Columbusville, Michigan. She served as Postmaster in Metamora from 1940 until her retirement in 1961. She was a member of the Pilgrim Congregational Church of Metamora, the Pilgrim Club, and the Ladies Cemetery Auxiliary of Metamora.

Survivors include one daughter, Avis R. Spike and husband, Clark, of Manchester, one son, Mac Hallenbeck and wife Barbara, of Drayton Plains, five grandchildren, James and Susan Spike, Ann Duseau, Mary Cumming, and Ray M. Hallenbeck, two nephews and a niece. She was preceded in death by her husband, Ray, on February 17, 1943, and a sister, Mrs. Anna Kelley.

Funeral services were held at 2:00 p.m. on Thursday, October 2, at the Muir Funeral Home in Lapeer, Michigan. Burial followed at the Metamora Cemetery.

#### Mildred L. Smith

Mildred L. Smith, formerly of Manchester, Age 79 years, died Sunday, September 28, 1986, at the W.A. Foote Memorial Hospital in Jackson. She was born March 5, 1907, in Freedom Township, the daughter of Carlos and Mary Buss Dorr. She was married to Clarence Smith on June 30, 1926. He preceded her in death on January 2, 1962. Mrs. Smith was a member of Trinity United Methodist Church in Jackson.

She is survived by 5 daughters, Mrs. Geraldine Latimer of Ann Arbor, Mrs. Arlene Berry of Jackson, Mrs. Patricia Miller of Saline, Mrs. Wayne (Marilyn) Hill of Jackson, Mrs. Peter (Dorothy) Miller of Jackson, 3 sons, Eugene of Chicago, IL, Donald and Jackie both of Manchester, 21 grandchildren, many great-grandchildren and great-great-grandchildren, and several nieces and nephews. She was preceded in death by one brother and one sister.

Funeral services were held Wednesday, October 1, 1986, at 1:30 p.m. at the Jenter Funeral Home. Rev. Evans Bentley officiated. Burial followed in East Cemetery, Grass Lake.

#### John W. Sawicki

John W. Sawicki, 10085 Austin Road, Saline, MI. Age 70 years, died Thursday, September 25, 1986, at his home, following an extended illness. He was born May 11, 1916, in Detroit the son of Dmytro and Anna Budzanowaka Sawicki. He married Julia Podwaicki on June 19, 1943. She survives. Mr. Sawicki had been a tool and die maker.

In addition to his wife, he is survived by 4 sons, Steven of Orchard Lake, John of Chelsea, Edward and Charles both of Saline, 2 daughters, Patricia Marasc of Canton and Judith Golden of Southfield, 7 grandchildren, 1 sister, Mary Ann Coltre of Chelsea, and 1 brother, Steven Sawicki of Brooklyn.

Mass of the Resurrection was held September 29, 1986, at St. Dominic Catholic Church in Clinton. Rev. Fr. Donald Rusch officiated. Interment followed in Riverside Cemetery.

**GREAT LAKES REPLACEMENT WINDOWS**  
 Insulated Maintenance Free

Available In White or Earthtone

Will Never Rot, Decay or Peel

Pick Resistant Security Lock

Both Sashes Lift Out

Free Estimates

**R.D. Kleinschmidt Co.**  
 19860 SHARON VALLEY ROAD MANCHESTER, MICHIGAN  
 PHONE 428-8836 or 428-9335

**CUSTOM CABINETS MADE IN MANCHESTER**

Competitive Prices  
 Installation Available  
 Design Service

—OR—

Let Us Reface Your Old Cabinets and Save \$\$

**Dutch Country Kitchens**  
 18352 W. Austin Road Phone 313-428-7292 Manchester

**QUALITY!**  
 OBVIOUSLY IT CAME FROM...

Open 9 am-5:30 pm Friday 9 am-8:30  
 Phone 662-9372  
 Visa or MasterCard

**LODI Town and Country FURNITURE**  
 Ann Arbor-Saline Rd. at Travis Plaza



MANCHESTER HIGH SCHOOL

# Manchester Sports Report



## FLYING DUTCHMEN

1986

### FALL SPORTS SCHEDULE

**VARSITY FOOTBALL**  
 Oct. 3 - Napoleon H  
 Oct. 10 - Vandercook Lake H  
 Oct. 17 - Grass Lake A  
 Oct. 24 - Michigan Center H  
 Oct. 31 Big 8 Playoff A  
 Game Time: 7:30  
 Head Coach: Jim Fielder  
 Asst. Coach: Wes Gall  
 Asst. Coach: Jim Stroat

**JV FOOTBALL**  
 Oct. 2 - Napoleon A  
 Oct. 9 - Vandercook Lake A  
 Oct. 16 - Grass Lake H  
 Oct. 23 - Michigan Center H  
 Game Time: 7:00  
 Head JV Coach: Dick Fielder  
 Asst. JV Coach: Curt Fielder

**VARSITY GOLF**  
 Oct. 1 - Morenci/Clinton A 4:30  
 Oct. 3 - Gabriel Richard H 4:00  
 Oct. 6 - Columbia A 4:00  
 Oct. 9 - Clinton A 4:00  
 Oct. 10/11 - Regionals  
 Coach: Dick Parson

**VARSITY/JV GIRLS BASKETBALL**  
 Oct. 2 - Napoleon A  
 Oct. 7 - East Jackson H  
 Oct. 9 - Michigan Center H  
 Oct. 14 - Hudson H  
 Oct. 16 - Hanover-Horton H  
 Oct. 23 - Vandercook Lake A  
 Oct. 28 - Grass Lake H  
 Oct. 30 - Napoleon H  
 Nov. 4 - East Jackson H  
 Nov. 6 - Michigan Center H  
 Nov. 11 - Clinton H  
 Nov. 13 - Whitmore Lake H  
 Nov. 18 - Chelsea H  
 Nov. 20/26 Districts A  
 Game Time: 5:30  
 Varsity Coach: Steve Smoyer  
 J.V. Coach: Mark Ball

## DUTCH TRIVIA



Do you remember this athlete and what position he played?

Answer in next week's paper.

## J.V. Football

Our Little Dutch continued their winning ways by crushing Hanover-Horton 31-12. We have won 4 out of 4 games this season.



Varsity football - Bart Rickleman motors for big yards

## Varsity Football

On Friday we trekked to Hanover-Horton in the midst of a downpour. I saw a first as at 6:02 of the first period the contest was postponed for 15 minutes because of lightning. When play resumed our defense went wild and our offense put 28 points on the board, on route to an easy victory. We now stand 2-2 overall, and 2-0 in the Cascades Conference. Senior Tri-Captain, Bart Rickleman, had a super night as he crossed the goal-line 3 times, kicked 2 extra points, and totaled 66 yards rushing.

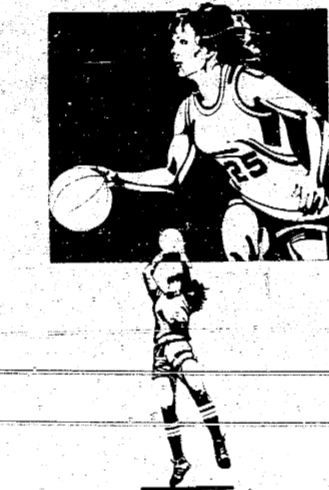
## Varsity Girls Basketball

On Tuesday, we hosted the Jayhawks from Vandercook Lake. It was a very satisfactory night as we edged them 33-30. This was our first win of the season. With time running out, and the score 29-30, Rocky Weber hit a bucket to put us ahead 31-30. Tracey Schuler then hit two freebies to ice the victory. Dawn Brady was the main offensive threat as she canned 14 points.

On Thursday night, we fell to Grass Lake. Tracey and Dawn each scored 8 points.



Varsity girls basketball - Dawn Brady scored 22 points last week



## J.V. Girls Basketball

Unfortunately we never got on track this week because we lost both Tuesday night and Thursday night. Better luck next week girls!



J.V. girls basketball - Nicole Reinhart - team scoring leader

## Girls Varsity Basketball Team



Top, left to right: Renee Drouars, Dawn Brady, Kim Lockridge, Sherry Rickleman, Vanessa Salyer, Coach Steve Smoyer

Bottom, left to right: Sara Corwin, Tracey Schuler, Rocky Weber, Sara Scully, Becky Blumenauer

## SOLID WASTE TRANSFER SITE ORDINANCE

AN ORDINANCE TO PROTECT THE HEALTH, SAFETY AND GENERAL WELFARE OF PERSONS AND PROPERTY WITHIN THE TOWNSHIP OF SHARON BY ESTABLISHING THE MANCHESTER SOLID WASTE TRANSFER SITE IN COOPERATION WITH THE VILLAGE OF MANCHESTER, THE TOWNSHIPS OF BRIDGEWATER, MANCHESTER AND THE TOWNSHIP OF FREEDOM; BY CONTROLLING AND REGULATING THE DEPOSIT OF SOLID WASTE WITHIN THE (Village or Township); TO PROVIDE PENALTIES FOR THE VIOLATION THEREOF; TO PROVIDE FOR THE ESTABLISHMENT OF FEE SCHEDULES FOR THE DEPOSIT OF SOLID WASTE; AND TO REPEAL ALL ORDINANCES OR PARTS OF ORDINANCES IN CONFLICT THEREWITH.

### THE TOWNSHIP OF SHARON ORDAINS:

**Title.**  
 This ordinance shall be known and may be cited as "The Solid Waste Transfer Site Ordinance of the Township of Sharon."

**Establishment of Solid Waste Transfer Site.**  
 Pursuant to 1951 P.A. 35 for the State of Michigan, being MCLA 124.1; MSA 5.4061, et seq., as amended, the (Supervisor or Village Manager) is authorized to negotiate agreements with other municipalities in the County of Washtenaw for the purpose of establishing and administering a Solid Waste Transfer Site, and from time to time to negotiate modifications of agreements or new agreements with the same or other municipalities within the county for those purposes.

Such agreements shall be of no force and effect until adopted by resolution by the legislative bodies of all of the agreeing municipalities.

**Definitions.**  
 (1) "Solid Waste Transfer Site" means the area and container established for that purpose by agreement of the legislative bodies of the agreeing municipalities.

(2) "Garbage" means rejected food wastes, including waste accumulation of animal, fruit or vegetable matter used or intended for food or that attend the preparation, use, cooking, dealing in or storing of meat, fish, fowl, fruits or vegetables, and all other putrescible wastes, excluding grass.

(3) "Rubbish" means empty cans or bottles, glass, wooden or paper boxes, crates, old metals or alloys, stone, ashes, brick, tires, grass, cloth and any other nonputrescible waste allowed by the rules established pursuant to this ordinance.

### Use Limited to Rubbish; Fee Required.

No person shall use the solid waste transfer site area for the dumping or depositing of garbage. Only rubbish, as defined in subsection (3) hereof may be so dumped or deposited, upon the payment of the fees prescribed by agreement of the agreeing municipalities. Hazardous materials, as defined in 1979 P.A. 64 for the State of Michigan, being MCLA 299.501; MSA 13.301(1) et seq., as amended, and defined by the Department of Natural Resources in its Hazardous Waste Management Rules, Section R299-0301 through R299-0317 inclusive.

### Fee Schedule; Rules and Regulations; State Law.

The agreeing municipalities, by resolution of their legislative bodies, or a joint board established for the purpose of managing the Solid Waste Transfer Site, may prescribe, adopt and from time to time modify a schedule of fees for the use of the solid waste transfer site and establish rules and regulations equal to or more stringent than those imposed by State Statute or by the State Health Commission. Nothing in this section shall be construed as less stringent than the rules and regulations of state law or the Commissioner.

### Compliance with Section and Signs Required.

Whoever uses the facilities of the solid waste transfer site shall abide by and conform with this ordinance, with all instructions and orders of the person authorized by the agreeing municipalities to supervise dumping operations at the solid waste transfer site and with all signs and notices posted at the solid waste transfer site by the person in charge or posted pursuant to the rules and regulations adopted.

### Removal of Articles.

No person shall remove an article or object which has been deposited or dumped and left at the solid waste transfer site without the permission of the person in charge.

### Penalty.

Any person, firm or corporation who violates any of the provisions of the within Ordinance shall be deemed guilty of a misdemeanor and shall be punished by a fine of not to exceed \$500.00 or imprisonment in the county jail for not to exceed 90 days, or both such fine and imprisonment as a court of competent jurisdiction may so determine. In addition to the foregoing, the enforcing officers of the Village of Manchester shall have the right and authority in their discretion to remove any material, rubbish or debris deposited in violation of the within ordinance at the expense of the owner or tenant of the premises or owner of the rubbish or debris as may be determined to be most appropriate by such Village officials. Such right of removal, however, shall not relieve a violator from penalties hereinbefore set forth.

### Saving Clause.

The provisions of this ordinance are hereby declared to be severable and if any clause, sentence, word, section or provision is declared void or unenforceable for any reason by any court of competent jurisdiction, it shall not affect any portion of the ordinance other than said part or portion thereof and the remainder of said ordinance shall remain in full force and effect.

### Effective Date.

This ordinance shall take effect on the 7th day of September, 1986. All ordinances or parts of ordinances in conflict herewith are hereby repealed.

Passed by unanimous vote of the Sharon Township Board on August 7, 1986. Signed: Duane Haselschwerdt Township Clerk

## Bloodmobile News

pints of blood have been collected for the Southeastern Michigan Regional Blood Center, where it is typed, classified and checked for virulent diseases before being brought back to the 6 area hospitals as needed.

As I write this Bloodmobile News, it has occurred to me that volunteers to work at the clinics are getting harder to find each time. If you have a few hours of free time, please call me and I will gladly add your name to the list of people willing to work on this worthy cause. Please call Jean Little, 428-8585.

Please mark October 13, on your calendar as time passes quickly. Please help the needs of the sick and injured of our community and become a quiet hero and give blood.

## Manchester Art Guild

Juror Barry Avedor, Professor of Art at Eastern Michigan University, selected works of over forty members of the Ann Arbor Women Painters for their 36th Annual Exhibit now at Rackham Galleries. Five of the group are also members of the Manchester Art Guild.

Nancy Feldkamp is exhibiting two of her watercolors, "Double Gambrel Roof" and "Sylvester

Weber's Barn". Alice Swainson's "Peaceful Pond" is another watercolor included in the show.

"A Day at the Pond", by Joyce Thompson-Syol is an acrylic painting chosen for the exhibition.

Art Guild president, Ardella Swanberg, had two watercolors, "The Fish" and "The Marsh", selected for display.

Finally, Madeleine Vallier's two watercolors, "Fluidity" and "September" are also part of the juried exhibition.

The Ann Arbor Women Painters' 36th Annual Exhibit is going on now until October 10, at the Rackham Galleries, Monday - Friday, 9-6 and Saturday 10-3.

## Public Notice

STATE OF MICHIGAN IN THE PROBATE COURT FOR THE COUNTY OF WASHTENAW

ESTATE OF Herman G. Schwab, Deceased File No. 85192

NOTICE TO ALL CREDITORS AND OTHER PERSONS HAVING OR WISHING TO MAKE A CLAIM AGAINST THE ABOVE-MENTIONED ESTATE. The Last Known Address of the Decedent was: 440 Russell Street, Saline, Michigan 48176. The Decedent Died on: September 12, 1986. The Social Security Number of Decedent was: 385-38-8628.

YOU ARE NOTIFIED THAT: Claims against the estate must be presented to the Independent Personal Representative within the time limits prescribed by law or such claims will be barred. Generally, a claim will be barred against the estate, the Independent Personal Representative, and the heirs and devisees of the Decedent, unless it is presented to the Independent Personal Representative within four (4) months after the date of publication of this notice, or within four (4) months after the claim becomes due, whichever is later.

The Will of Decedent dated September 24, 1965 has been admitted to Probate. The estate of the deceased will be assigned to those persons entitled thereto.

The name, address and telephone number of the Independent Personal Representative of the estate is: Paul B. Schwab, 123 Torrey Street, Manchester, MI 48158, Telephone: (313) 428-7481.

Dated: September 26, 1986 ROESCH and SCHABERG Attorneys for Estate 111 North Ann Arbor Street Saline, Michigan 48176 Telephone: (313) 429-2528



## Support Your Local Volunteer Fire Department

## Elementary Open House



Elementary parents, children and teachers gathered together on Thursday evening for Klager's annual Open House. Here, kindergarten parents oversee the refreshment table after the meeting.

## NOTICE

The regular meeting of the Manchester Township Board will be held at the Township Hall, 275 S. Macomb St. on TUESDAY, October 14, 1986, at 8:00 P.M. due to Columbus Day.

10-2-86  
10-9-86

Wilma E. Lentz  
Township Clerk

## ADVERTISEMENT FOR BIDS

MANCHESTER SCHOOL DISTRICT will be letting bids for roof repair on three buildings: Nellie Ackerson Elementary, Klager Elementary, and Manchester Middle School. Specifications will be available at 9 a.m. on Wednesday, October 8, at the administration office, 710 E. Main Street, Manchester, Michigan and also at the architect's office, Fry Associates, Inc., The Northern Brewery Office Building, 1327 Jones Drive, Suite 103C, Ann Arbor, Michigan 48105. Bids are to be returned to and will be opened at the administration office, 710 E. Main Street, Manchester, on Thursday, October 17, at 3 P.M.

## Ken Miller

RESIDENTIAL BUILDER  
 QUALITY WORKMANSHIP AT A REASONABLE RATE  
 SPECIALIZING IN SIDING-CUSTOM MADE TRIM ALUMINUM AND VINYL  
 FREE ESTIMATES  
 LICENSED & INSURED  
 PHONE 517-592-8904  
 Between Manchester and Brooklyn

PARR'S  
 AUTO BODY  
 BODY WORK - PAINTING  
 FREE ESTIMATES  
 INSURANCE WORK  
 GLASS INSTALLATION  
 18481 W. Austin Road  
 Manchester, Michigan  
 Phone  
 313-428-9538

## Norm Walz & Son Construction

Manchester, Michigan  
 NEW HOMES  
 REMODELING  
 ADDITIONS  
 GARAGES  
 SIDING  
 DECKS

Custom Built Cabinets  
 428-7109



**FAITH COMMUNITY CHURCH**

Wednesday, October 1, 7:00 p.m. Prayer Hour & Bible Study.  
 Thursday, October 2, 7:30 p.m. Faith Circle. Toy shower for the church nursery. Leader, Nila Hakeman; Refreshments - Karen W. & Kelly H.  
 Sunday, October 5, 10:00 a.m. Morning Worship Service, nursery available, 11:15 a.m. Sunday School for all ages, 5:00 p.m. Choir Practice, 6:00 p.m. Evening Service. The first film in Dr. James Dobson's series of Focus on the Family Films: "The Strong-Will'd Child". The public is invited.  
 Monday, October 6, Tecumseh Convalescent Ministry.

**IT'S A FACT!**

Doctors are no longer scratching their heads over what can be done about that age old problem—dandruff. Since most people suffer from it at one time or another, here's some good news that could help clear the air, or at least your shoulders.  
 How do you get dandruff? Is it contagious, or due to poor personal hygiene, or bad eating habits? The answer to all the above is no! But what does cause dandruff? Well, doctors aren't sure yet. Luckily for those who suffer from dandruff, however, doctors have learned how to control it.  
 Physicians and pharmacists most frequently recommend washing the hair once or twice a week with a product containing selenium sulfide, such as Selsun® Blue's new Extra Medicated Formula. Menthol, which is an extra ingredient in this shampoo helps to relieve the annoying itching that often accompanies severe cases of dandruff.

**EMANUEL UNITED CHURCH OF CHRIST**

Wednesday, October 1, 2:00 p.m. Women's Guild, 3:20 p.m. Cherub Choir, 3:40 p.m. Children's Choir, 8:00 p.m. AA, Al Anon & Al-A-Teen.  
 Thursday, October 2, 12 Noon Senior Meal, 6:00 p.m. Bell Choir, 7:30 p.m. Adult Choir.  
 Saturday, October 4, 8:30 a.m. - Noon Church Work Morning.  
 Sunday, October 5, 9:00 a.m. Sunday School, Bible Study, 10:30 a.m. World-Wide Communion Sunday - Neighbors-In-Need Offering, 11:30 a.m. Coffee Hour & Fellowship Time, 2:00 p.m. Shut-In Worship & Reunion Fellowship.  
 Tuesday, October 7, 12 Noon Senior Meal.  
 Wednesday, October 8, 3:20 p.m. Cherub Choir, 3:40 p.m. Children's Choir, 7:30 p.m. Women of Emanuel.

**MANCHESTER UNITED METHODIST CHURCH**

Wednesday, October 1, 9:45 a.m. Bible Study at Pat Posts, 1:00 p.m. Willo Circle at Church.  
 Thursday, October 2, 7:30 p.m. Missions Committee at M. Hanks'.  
 Sunday, October 5, 8:17 a.m. Father/Son Breakfast, 9:15 a.m. Sunday School, 10:30 a.m. Worship, 11:30 p.m. Choir Rehearsal/Coffee Hour, 7:00 p.m. UMYF.  
 Wednesday, October 8, 9:45 a.m. Bible Study at Pat Posts, 1:00 p.m. U.M.W. at Church, 8:00 p.m. Parsonage Committee at Church.  
 Thursday, October 9, 6:30 - 8:00 p.m. All Church Night - Potluck Meal.

**ZION LUTHERAN CHURCH**

Wednesday, October 1, 7:45 p.m. Women of Zion General Meeting - "Praying with Others" speaker and elections.  
 Saturday, October 4, YI "Circle the Wagons" ZION CAMPOUT - begins 4 p.m., cookout/camp OVERNIGHT.

**ST. THOMAS LUTHERAN CHURCH**

Sund. v. October 5, 9:15 a.m. Coffee & Donuts, 9:30 a.m. Sunday School and Bible Classes, 10:45 a.m. Worship with Holy Communion, 6:30 p.m. Congregationally family gathering (potluck meal, slide presentation on history of congregation & entertainment).  
 Monday, October 6, 7:30 p.m. Bible Study (Living with Others) at Stierles'.  
 Tuesday, October 7, 7:30 p.m. Council.  
 Wednesday, October 8, 1:30 p.m. Ladies Aid at Boelters'.

**CHURCH DIRECTORY**



**EMANUEL UNITED CHURCH OF CHRIST** - Rev. Robert B. MacFarlane, Pastor; Rev. Kenyon Edwards, Assistant; Sunday School 9:00 a.m.; Worship Service 10:30 a.m.

**MANCHESTER UNITED METHODIST CHURCH** - Rev. Hayden Carruth, Pastor; Church School 9:15 a.m.; Worship 10:30 a.m.

**ST. MARY'S CATHOLIC CHURCH** - Father Raymond Schlinkert; Monday thru Friday 8:30 a.m.; Saturday 5:00 p.m.; Sunday 8:30 a.m. and 10:30 a.m.

**FAITH COMMUNITY CHURCH** - Scott Engleman, Pastor; 8400 Sharon Hollow Road off West Austin; Worship Service 10:00 a.m.; Sunday School 11:15 a.m.; Sunday evening service 6:00 p.m.; Jr. and Sr. High Young People's Meeting 7:00 p.m.

**VICTORY BAPTIST CHURCH** - 423 South Macomb, 428-7506; Sunday School 9:45 a.m.; Morning Worship 11:00 a.m.; Evening Worship 6:00 p.m.; Teen Talk 7:00 p.m.; Wednesday Prayer, Bible Study, Youth 7:00 p.m.

**BETHEL UNITED CHURCH OF CHRIST** - Rev. Roman A. Reineck, Pastor; Schneider and Bethel Church Roads; Church Service 10:00 a.m.; Sunday School 11:00 a.m.

**SHARON UNITED METHODIST CHURCH** - Rev. Evans Bentley, Pastor; Corner of M-52 and Pleasant Lake Roads; Church School 10:00 a.m.; Worship 11:00 a.m.

**ST. JOHN'S LUTHERAN CHURCH** - Rev. Dennis A. Falk, Pastor; Austin Road, Bridgewater; Sunday School 9:15 a.m.; Worship 10:30 a.m.

**NORTH SHARON COMMUNITY BIBLE CHURCH** - Timothy E. Booth, Pastor; Sylvan and Washburn Roads; Sunday School 10:00 a.m.; Morning Church 11:00 a.m.; Youth Meetings 6:00 p.m.; Evening Church 7:00 p.m.; Wednesday Bible Study 7:00 p.m.

**IRON CREEK COMMUNITY CHURCH** - Rev. Ray Robichaud, Pastor; English and Sharon Hollow Roads; Worship Service 10:00 a.m.; Sunday School 11:15 a.m.; Sunday Evening 7:00 p.m.; Wednesday Evening 7:00 p.m.

**ZION LUTHERAN CHURCH** - Rev. John R. Morris, Pastor; 3050 S. Fletcher Road; Sunday School 9:00 a.m.; Worship Service with Holy Communion 10:10 a.m.

**ST. THOMAS LUTHERAN CHURCH** - 10001 W. Ellsworth Rd., Rev. John Riske, Pastor. Coffee & donuts, 9:15 a.m.; Sunday School & Bible class, 9:30 a.m.; Worship, 10:45 a.m.; Holy Communion first and third Sunday's.

**ST. JOHN'S UNITED CHURCH OF CHRIST** - Rev. Ted Wimmier, Pastor; Rogers Corners, Waters and Fletcher Roads; Adult Bible Study Class at 10:00; Worship and Sunday School 10:30 a.m.

**CLINTON ASSEMBLY OF GOD** - Rev. Richard Coury, Pastor; Chris Bouldrey, Youth Pastor; 13300 Clinton-Manchester Road, Clinton; Sunday School 9:30 a.m.; Sunday Morning Worship 10:45 a.m.; Sunday Evening 6:30 p.m.; Wednesday Prayer, Bible Study, Youth 7:00 p.m.

**OUR SAVIOR LUTHERAN CHURCH** - Rev. Franklin H. Giebel, Pastor; 1515 South Main, Chelsea; Every Sunday 9:00 a.m. Bible Classes for age 3 through adult; 10:30 a.m. Worship Service; Holy Communion 1st, 3rd and 5th Sundays.

**CHURCH OF JESUS CHRIST OF LATTER DAY SAINTS (MORMONS)** - Wayne L. Winzenz, Branch President; 1330 Freer Road, Chelsea; Sacrament 9:30 a.m.; Sunday School, Primary 10:40 a.m.; Priesthood, Relief Society, Aaronic Priesthood, Youth 11:40 a.m. For more information, call 475-1778.

**ST. BARNABAS EPISCOPAL CHURCH** - Rev. Fr. Jerrold F. Beaumont, O.S.P.; Eucharist - First, Third and Fifth Sundays 10:00 a.m.; Morning Prayer, Second and Fourth Sundays 10:00 a.m.; Eucharist - Second and Fourth Sundays 11:00 a.m.; Nursery available every Sunday. Family coffee hour follows all Sunday services.

**Fall Tours and Leaf Walks**

Leaf walks along the nature trails at the Matthaei Botanical Gardens are planned for the following times:  
 October 6-10 4-5:30 p.m.  
 October 11-12 10-11:30 a.m.  
 October 13-16 4-5:30 p.m.  
 The walks, led by docents (teaching volunteers at the Gardens), are designed to assist students and scout groups from the area with assigned leaf collection projects. Leaf identification and limited collecting will be emphasized. Participants should not expect to collect the full quota of leaves at the Gardens, nor will exotic specimen leaves be available.  
 On Saturday, October 11, from 1 p.m. - 4 p.m., those persons who wish to verify their identifications or who need help identifying leaves they have already collected may come to the auditorium at the Gardens. Displays of various leaves will be set up and docents will be available to help. No collecting leaf walks will occur at this time.

**Health For All**

**Childhood Throat Infection May Be Early Indicator of Asthma**  
 When young children come down with epiglottitis - a severe throat infection - it's likely that asthma will follow later in life. These findings were reported by Hollis R. Chaney, M.D., of the Children's Hospital of Pittsburgh and the University of Pittsburgh School of Medicine at the Annual Meeting of the American Lung Association and its medical section, the American Thoracic Society. Dr. Chaney announced that from her study, "We found that lung function abnormalities were significantly more common in epiglottitis survivors than in children of a similar age who did not have this disease."  
 According to Dr. Chaney, this information may help parents and physicians identify those children who are more likely to develop asthma.  
 Epiglottitis is a frightening, at official Sesquicentennial functions as well as being sent by Governor and Mrs. Blanchard as gifts to dignitaries throughout the nation. Instructions on how to create the design will be made available to all florists in Michigan so the public will also be able to enjoy the beauty of the arrangement.  
 The winning arrangement was picked by Merri Jo Bales, Executive Director of the Michigan Sesquicentennial Commission - from three finalists selected from over 20 entries at the Michigan State Florists' Association's annual fall convention held in Battle Creek, Mich. Mrs. Finn received a plaque from the Commission and \$100.00 from the Association.

There is no fee or reservation required for any of the above events. Attending the late afternoon walks is recommended to relieve crowding on weekends. Dress for the weather. The walks will be held rain or shine.  
 If your club, group or class is looking for something fun, interesting and educational to do this fall, consider group tours at the Gardens. The docents offer indoor and outdoor tours.  
 On a general trail tour one can become familiar with the various trees, shrubs, wildflowers, their uses, natural history and folklore. In addition, theme tours appropriate to the season may be requested, such as Plant Habitats; Plants Uses by Man; Fruits, Nuts, Seeds; Plant Travelers; Vines of the Flood Plains and Woods.  
 Tours last from 1 hour to 1 hour, 30 minutes. Walking shoes are needed and be prepared for the likelihood of wet trails.  
 The outdoor group tours are available Tuesdays through Fridays and some Saturdays from October through November. Tour reservations must be made at least three weeks in advance. There is no fee.  
 Hour long Conservatory tours will explore the tropical, warm temperature and desert houses. Exotic plants from around the world are housed in the Conservatory. In addition to a general tour, the following themes are possibilities: Pollination, Economic Plants, Plant Adaptation, Diversity of Plant Parts, Medicinal Plants, Succulents - Tropical and Desert.  
 Reservations at least three weeks in advance are required for Conservatory tours. Although there is no charge for the tour itself, a Conservatory admission fee applies.  
 Please phone the Gardens for reservations or further information. Telephone number (313) 763-7060.

**Sesquicentennial Floral Arrangement Selected**

A verticle, contemporary design in red, white, and blue was selected as the official floral arrangement for Michigan's 150th anniversary celebration.  
 The arrangement of red roses and miniature carnations, blue corn flowers, and white daisy chrysanthemums was created by Carol J. Finn of the Flower Box in Bay City, Michigan. The base of the arrangement is a clear bowl filled with blue stones and water to symbolize the lakes that surround Michigan. A sponge mushroom accents the arrangement and is a reminder of the importance of forests to the state.  
 The arrangement will be used

**Learn To Make A Round Shaker Cheese-Basket**  
 On October 4th 12:30-UNTIL  
 CALL 428-9640  
**The Village Shoppe**  
 134 East Main St. Manchester, Michigan  
 Phone 428-9640

**FUND RAISING**  
**Manchester Sportsman Club**  
 8501 Grossman Road  
 Friday 6:45 p.m.  
**Manchester American Legion**  
 203 South Adrian Street  
 Saturday 7:00 p.m.

**BACK DOOR PARTY STORE**  
 500 A. Labor Street Phone 313-428-9287 Manchester, Michigan

**Now At Back Door Party Store**  
**MICHIGAN 1010**  
 Instant and Daily Lottery Tickets  
**PEPSI \$2.19**  
 8 Pack 1/2 Liter  
 2 Liter \$1.59 PLUS DEPOSIT

**Video Rentals** **THIS WEEKS SPECIALS**  
 Free Membership **BUD** 6 PACK BOTTLES PLUS DEPOSIT **\$2.99**  
**\$2.00 Day** **\$11.50 Per Case**  
**\$3.00 2 Days** PLUS DEPOSIT

**Farm Bureau Pushes For PIK Assistance**

Michigan Farm Bureau is urging Congress and the U.S. Department of Agriculture to provide PIK assistance to farmers affected by flooding. According to Al Almy, director of public affairs for the state's largest farm organization, legislation authorizing the assistance is currently in conference committee.  
 "Separate bills have been passed by both the House and Senate authorizing PIK assistance to farmers affected by drought or floods," Almy said.  
 "H.J.R. 668 is now pending in a conference committee to work out differences between the specific versions enacted by the House and Senate. Hopefully, the House conferees, who have not yet been named, will agree to include the Senate language authorizing PIK assistance to farmers affected by floods," he said.  
 Farm Bureau has contacted the Senate conferees urging them to retain the PIK language, Almy said, and is also urging the U.S. Department of Agriculture to provide PIK assistance to farmers affected by the flooding.  
 "We think the USDA could provide such assistance without Congress having to enact separate legislation," he said.

often fatal, throat infection that appears without warning and is most commonly seen in children between three and seven years of age. The infection closes off the windpipe (trachea) and leaves the child gasping for breath. It may be fatal within hours unless radical emergency procedures are quickly followed. Epiglottitis is usually caused by the bacterium hemophilus influenzae, which is also the most frequent cause of bacterial meningitis in children under the age of three.  
 Dr. Chaney noted that a vaccine against hemophilus is now available for children between the ages of two and six, and recommends that parents request the vaccine from their child's physician.  
 "Our study strongly connects epiglottitis in early childhood with subsequent asthma," Dr. Chaney said. "We haven't yet determined whether it's a cause-and-effect relationship, or whether children with lung abnormalities are prone to both epiglottitis and asthma."  
 She suggested that parents and physicians of children who have had epiglottitis be alert for symptoms of asthma - such as wheezing, and excessive cough or mucus production - as these children grow up.  
 For further information on asthma and other lung ailments effecting children, contact the American Lung Association of Michigan at 408 Seymour Avenue, Lansing, Michigan 48933, or call toll free (800) 292-5979.

**Health For All**  
**Childhood Throat Infection May Be Early Indicator of Asthma**  
 When young children come down with epiglottitis - a severe throat infection - it's likely that asthma will follow later in life. These findings were reported by Hollis R. Chaney, M.D., of the Children's Hospital of Pittsburgh and the University of Pittsburgh School of Medicine at the Annual Meeting of the American Lung Association and its medical section, the American Thoracic Society. Dr. Chaney announced that from her study, "We found that lung function abnormalities were significantly more common in epiglottitis survivors than in children of a similar age who did not have this disease."  
 According to Dr. Chaney, this information may help parents and physicians identify those children who are more likely to develop asthma.  
 Epiglottitis is a frightening,



**1ST OPTOMETRY**  
 eye care centers  
 Dr. Thomas Cunningham  
 DOES NOT APPLY TO OTHER DISCOUNT OFFERS OR PRIOR OFFERS  
 (313) 428-4885 COUPON (617) 423-2148  
 \$99 Daily Wear Soft Contact Lenses  
 \$10 OFF (with coupon) Prescription Eyeglasses  
 Includes exam & care kit

**WAMPLER DRW CONSTRUCTION CO.**  
 DANIEL R. WAMPLER  
 517-456-4305  
 NEW HOMES • ADDITIONS • SIDING • GARAGES • ROOFING • DECKS

**Black Sheep Tavern**  
 Lunch Monday - Saturday 11:30 - 5:00 p.m.  
 Dinner Monday - Thursday 5:00 p.m. - 10:00 p.m.  
 Friday and Saturday 5:00 p.m. - 12:00 midnight  
 Sunday 12:00 Noon - 10:00 p.m.  
 "A Restaurant With A Tradition of Quality"  
**LUNCHEON SPECIALS**  
 MON: Stuffed Pork Chop  
 WED: Chicken in Gravy on Biscuits  
 FRI: Spag/etti w/Meat Sauce  
 117 E. Main Phone 313-428-7000 Manchester, MI

**CHEVROLET**  
**A GOOD SELECTION OF NEW and USED CARS ON OUR LOT**  
**TIRB CHEVROLET CO**  
 131 ADRIAN STREET MANCHESTER, MICHIGAN  
 PHONE 313-428-8212 OR 313-428-8492  
 MON 7:30-8 TUE 7:30-6 WED 7:30-6 THUR 7:30-6 FRI 7:30-6 SAT 7:30-12 Noon

**Wacker's General Store**  
**PEPSI, DIET PEPSI MOUNTAIN DEW PEPSI FREE SUGAR FREE PEPSI FREE A & W ROOT BEER VERNORS SUGAR FREE A & W SUGAR FREE VERNORS SLICE & DIET SLICE**  
**\$2.19**  
 1/2 LITER 8 PACK PLUS DEPOSIT  
**2 Liter.....\$1.49**  
 PLUS DEPOSIT  
 PHONE: 313-428-8366  
**G.E. Wacker Inc.**  
 Gasoline-Fuel Oil-Grease Motor Oil-Diesel Fuel  
 9050 Chelsea-Manchester Road  
 Manchester, Mich. 48158  
 Summer Hours  
 Monday - Friday 7 am-9pm  
 Saturday 8 am-9 pm  
 Sunday 9 am-9 pm

**Emanuel United Church of Christ**  
 324 West Main Street Manchester  
**Welcomes YOU each Sunday**  
 Church School (All Ages)..... 9:00 am  
 Morning Worship ..... 10:30 am  
 Fellowship Hour ..... 11:30 am  
**NURSERY/CHILD CARE DURING WORSHIP**  
**COMMUNION FIRST SUNDAY EACH MONTH**  
**JR. & SR. HIGH YOUTH MEET EACH MONTH**  
 REV. ROBERT B. MACFARLANE, Pastor  
 Church: 428-8359 Home: 428-7407

**WILBEE TRANSIT-MIX COMPANY, INC.**  
 2323 Brooklyn Rd. 517-782-9493  
 Michigan State Approved Plant  
 Monday-Friday 8 am-5 pm  
**READY MIX CONCRETE**  
 OUR M-52, CHELSEA OUTLET IS NOW OPEN  
 313-475-2250  
 If No Answer 517-782-9493







### Last Day To Register To Vote MONDAY OCTOBER 6, 1986

7:00 a.m. - 9:00 a.m. or by appointment

for

## GENERAL ELECTION TUESDAY NOVEMBER 4, 1986

To: Qualified Electors of Bridgewater Township

NOTICE: I will be at my office, 7:00 a.m. - 9 a.m. to register qualified electors and amend registration records.

IF YOU HAVE MOVED RECENTLY you must amend your registration record.

Election is being held to elect the following officers:

**GOVERNOR/LT. GOVERNOR  
SECRETARY OF STATE  
ATTORNEY GENERAL  
REPRESENTATIVE in CONGRESS  
STATE SENATOR  
STATE REPRESENTATIVE  
STATE BOARD of EDUCATION MEMBERS  
REGENTS of UNIVERSITY of MICHIGAN  
TRUSTEES of MICH. STATE UNIVERSITY  
GOVERNORS of WAYNE STATE UNIVERSITY  
COUNTY COMMISSIONER  
JUSTICES of SUPREME COURT  
JUDGES of the COURT of APPEALS  
JUDGE of the CIRCUIT COURT  
JUDGE of PROBATE  
JUDGE of the DISTRICT COURT  
COMMUNITY COLLEGE TRUSTEES  
MANCHESTER TWP. LIBRARY TRUSTEES**

and to vote on the following proposals:

**WASHTENAW COMMUNITY COLLEGE  
TAX LIMITATION INCREASE  
PROPOSITION NO. 1**

Shall the tax limitation on the total amount of ad valorem taxes which may be assessed against all property in Washtenaw Community College District, Michigan, for the operation of Washtenaw Community College be increased by 7/10 of one mill per dollar of State Equalized Valuation of all taxable property in the District to provide additional funds for general purposes including funds for repair and maintenance of College facilities, educational and other equipment and program and staff development purposes as designated by the Board of Trustees?

**WASHTENAW COMMUNITY COLLEGE  
BONDING PROPOSITION NO. 2**

Shall Washtenaw Community College, County of Washtenaw, State of Michigan, borrow the principal amount of not to exceed Thirteen Million Five Hundred Thousand Dollars (\$13,500,000) and issue its general obligation unlimited tax bonds therefor for the purpose of defraying part of the cost of erecting, furnishing and equipping a job training and campus events building, adding to the existing buildings for auto programs and computer and electronic education, improving, renovating and re-equipping existing college facilities and developing the sites thereof?

Also State Proposals: A, B, and C.

Published in compliance with Sec. 498 of Michigan Election Law and M.C.L.A. 211.203 (3) that being part of Michigan Property Tax Limitation Act.

Date: September 25, 1986  
October 2, 1986

Karen Weidmayer  
Township Clerk

### Public Notices

STATE OF MICHIGAN  
IN THE CIRCUIT COURT FOR THE  
COUNTY OF WASHTENAW

KAREN A. TROUT, Plaintiff, vs.  
DEWAYNE A. TROUT, Defendant

Case No. 86-35938-DM  
Judge: Henry T. Conlin

Washtenaw Legal Center, P.C.  
By: Andrew L. Fanta (P29540)  
Attorney for Plaintiff  
4930 Washtenaw Avenue  
Ann Arbor, MI 48104  
313-434-3800

ORDER TO ANSWER

At a session of said Court held in the City of Ann Arbor, County of Washtenaw, State of Michigan, on the 7th day of August, 1986.

PRESENT: HONORABLE Henry T. Conlin, Circuit Court Judge.

On the 1st day of August, 1986, an action was filed by Karen A. Trout, Plaintiff, against Dewayne A. Trout, Defendant, in this court for divorce.

IT IS HEREBY ORDERED that the Defendant, Dewayne A. Trout, shall answer to take such other action as may be permitted by law on or before the 4th day of September, 1986. Failure to comply with this order will result in a judgment by default against such Defendant for the relief demanded in the complaint filed in this court. Such answer or other action shall be filed in the above-entitled cause and a copy thereof sent to the Plaintiff's attorney.

Washtenaw Legal Center, P.C.  
By: Andrew L. Fanta (P29540)  
Attorney for Plaintiff 10-2

STATE OF MICHIGAN  
IN THE CIRCUIT COURT FOR  
THE COUNTY OF WASHTENAW

CHERYL A. HALL, Plaintiff, vs.  
LOUIS C. HALL, Defendant

Case No. 86-36113 DO  
Judge: William F. Ager, Jr.  
Washtenaw Legal Center, P.C.  
By: Andrew L. Fanta (P29540)  
Attorney for Plaintiff  
4930 Washtenaw Avenue  
Ann Arbor, MI 48104  
313-434-3800

ORDER TO ANSWER

At a session of said Court held in the City of Ann Arbor, County of Washtenaw, State of Michigan on the 10th day of September, 1986.

PRESENT: Honorable William F. Ager, Circuit Court Judge.

On the 9th day of September, 1986 an action was filed by Cheryl A. Hall, Plaintiff, against Louis C. Hall, Defendant, in this court for divorce.

IT IS HEREBY ORDERED that the Defendant, Louis C. Hall, shall answer to take such other action as may be permitted by law on or before the 16th day of October, 1986. Failure to comply with this order will result in a judgment by default against such Defendant for the relief demanded in the complaint filed in this court. Such answer or other action shall be filed in the above-entitled cause and a copy thereof sent to the Plaintiff's attorney.

Washtenaw Legal Center, P.C.  
By: Andrew L. Fanta (P29540)  
Attorney for Plaintiff 10-16

### Last Day To Register To Vote MONDAY OCTOBER 6, 1986

9:00 a.m. until 1:00 p.m.  
7:00 p.m. until 8:00 p.m.

for

## GENERAL ELECTION TUESDAY NOVEMBER 4, 1986

To: Qualified Electors of Manchester Township

NOTICE: I will be at my office, 275 S. Macomb Street, to register qualified electors and amend registration records.

IF YOU HAVE MOVED RECENTLY you must amend your registration record.

Election is being held to elect the following officers:

**GOVERNOR/LT. GOVERNOR  
SECRETARY OF STATE  
ATTORNEY GENERAL  
REPRESENTATIVE in CONGRESS  
STATE SENATOR  
STATE REPRESENTATIVE  
STATE BOARD of EDUCATION MEMBERS  
REGENTS of UNIVERSITY of MICHIGAN  
TRUSTEES of MICH. STATE UNIVERSITY  
GOVERNORS of WAYNE STATE UNIVERSITY  
COUNTY COMMISSIONER  
JUSTICES of SUPREME COURT  
JUDGES of the COURT of APPEALS  
JUDGE of the CIRCUIT COURT  
JUDGE of PROBATE  
JUDGE of the DISTRICT COURT  
COMMUNITY COLLEGE TRUSTEES  
MANCHESTER TWP. LIBRARY TRUSTEES**

and to vote on the following proposals:

**WASHTENAW COMMUNITY COLLEGE  
TAX LIMITATION INCREASE  
PROPOSITION NO. 1**

Shall the tax limitation on the total amount of ad valorem taxes which may be assessed against all property in Washtenaw Community College District, Michigan, for the operation of Washtenaw Community College be increased by 7/10 of one mill per dollar of State Equalized Valuation of all taxable property in the District to provide additional funds for general purposes including funds for repair and maintenance of College facilities, educational and other equipment and program and staff development purposes as designated by the Board of Trustees?

**WASHTENAW COMMUNITY COLLEGE  
BONDING PROPOSITION NO. 2**

Shall Washtenaw Community College, County of Washtenaw, State of Michigan, borrow the principal amount of not to exceed Thirteen Million Five Hundred Thousand Dollars (\$13,500,000) and issue its general obligation unlimited tax bonds therefor for the purpose of defraying part of the cost of erecting, furnishing and equipping a job training and campus events building, adding to the existing buildings for auto programs and computer and electronic education, improving, renovating and re-equipping existing college facilities and developing the sites thereof?

Also State Proposals: A, B, and C.

Published in compliance with Sec. 498 of Michigan Election Law and M.C.L.A. 211.203 (3) that being part of Michigan Property Tax Limitation Act.

Date: September 25, 1986  
October 2, 1986

Wilma E. Lentz  
Township Clerk

### Last Day To Register To Vote MONDAY OCTOBER 6, 1986

8 a.m. until 8 p.m.

for

## GENERAL ELECTION TUESDAY NOVEMBER 4, 1986

To: Qualified Electors of Sharon Township

NOTICE: I will be at my office, anytime by appointment and the day listed above, to register qualified electors and amend registration records.

IF YOU HAVE MOVED RECENTLY you must amend your registration record.

Election is being held to elect the following officers:

**GOVERNOR/LT. GOVERNOR  
SECRETARY OF STATE  
ATTORNEY GENERAL  
REPRESENTATIVE in CONGRESS  
STATE SENATOR  
STATE REPRESENTATIVE  
STATE BOARD of EDUCATION MEMBERS  
REGENTS of UNIVERSITY of MICHIGAN  
TRUSTEES of MICH. STATE UNIVERSITY  
GOVERNORS of WAYNE STATE UNIVERSITY  
COUNTY COMMISSIONER  
JUSTICES of SUPREME COURT  
JUDGES of the COURT of APPEALS  
JUDGE of the CIRCUIT COURT  
JUDGE of PROBATE  
JUDGE of the DISTRICT COURT  
COMMUNITY COLLEGE TRUSTEES  
MANCHESTER TWP. LIBRARY TRUSTEES**

and to vote on the following proposals:

**WASHTENAW COMMUNITY COLLEGE  
TAX LIMITATION INCREASE  
PROPOSITION NO. 1**

Shall the tax limitation on the total amount of ad valorem taxes which may be assessed against all property in Washtenaw Community College District, Michigan, for the operation of Washtenaw Community College be increased by 7/10 of one mill per dollar of State Equalized Valuation of all taxable property in the District to provide additional funds for general purposes including funds for repair and maintenance of College facilities, educational and other equipment and program and staff development purposes as designated by the Board of Trustees?

**WASHTENAW COMMUNITY COLLEGE  
BONDING PROPOSITION NO. 2**

Shall Washtenaw Community College, County of Washtenaw, State of Michigan, borrow the principal amount of not to exceed Thirteen Million Five Hundred Thousand Dollars (\$13,500,000) and issue its general obligation unlimited tax bonds therefor for the purpose of defraying part of the cost of erecting, furnishing and equipping a job training and campus events building, adding to the existing buildings for auto programs and computer and electronic education, improving, renovating and re-equipping existing college facilities and developing the sites thereof?

Also State Proposals: A, B, and C.

Published in compliance with Sec. 498 of Michigan Election Law and M.C.L.A. 211.203 (3) that being part of Michigan Property Tax Limitation Act.

Date: September 25, 1986  
October 2, 1986

Duane R. Haselschwerdt  
Township Clerk



**Automatic Dryer**

Q: Do clothes being placed in the dryer have to be sorted the same way as before laundering?

A: Yes. Whirlpool home economists recommend separating dark from light colors, color fast from non-color fast, lint givers from lint takers and heavy fabrics from light fabrics. Sorting in this manner will give you the best results when drying.



Q: When is the most appropriate time to add dryer fabric softener?

A: For best results, the home economists recommend placing fabric softener on the top of the load before starting the dryer. Softener should not be added once the dryer has started because the sudden heat may cause staining of some of the garments. If a stain does appear, wet the stain and rub it with liquid detergent or bar soap and then rewash.

Q: How can I reduce the amount of wrinkling that occurs in the dryer?

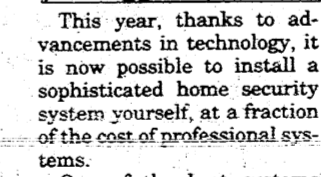
A: The home economists advise doing the following: use permanent cycle or high setting; remove clothes immediately when the tumbling stops; do not overload the dryer; and use a cold rinse and the slowest spin on your washer.

"Be nice to people on your way up because you may meet them on your way down."  
Fred Moore



**INTS FOR HOMEOWNERS**

Safe at home? Fact is that one in six American homes will be burglarized this year. With a break-in occurring every 15 seconds, it's no wonder that one million security-conscious homeowners installed some sort of burglar alarm in 1985.



This year, thanks to advancements in technology, it is now possible to install a sophisticated home security system yourself, at a fraction of the cost of professional system.

One of the best systems around, many safety experts agree, is the new Keepsafer electronic home security system from Schlage, a company with a 60 year reputation for high quality home security products. This wireless system, affordably priced under \$200, features a programmable control console and transmitter/sensor sets that screw-mount to entry points like doors and windows. It's easy for do-it-yourselfers to install—all you need is a simple screwdriver.

In addition to the basic Keepsafer system, Schlage offers a complete line of add-on accessories like smoke detector and medical emergency alarms, making this system one of the best values in home security protection available.

### Last Day To Register To Vote MONDAY OCTOBER 6, 1986

8 a.m. until 8 p.m.

for

## GENERAL ELECTION TUESDAY NOVEMBER 4, 1986

To: Qualified Electors of Freedom Township

NOTICE: I will be at my office, 7551 Schneider Road, to register qualified electors and amend registration records.

IF YOU HAVE MOVED RECENTLY you must amend your registration record.

Election is being held to elect the following officers:

**GOVERNOR/LT. GOVERNOR  
SECRETARY OF STATE  
ATTORNEY GENERAL  
REPRESENTATIVE in CONGRESS  
STATE SENATOR  
STATE REPRESENTATIVE  
STATE BOARD of EDUCATION MEMBERS  
REGENTS of UNIVERSITY of MICHIGAN  
TRUSTEES of MICH. STATE UNIVERSITY  
GOVERNORS of WAYNE STATE UNIVERSITY  
COUNTY COMMISSIONER  
JUSTICES of SUPREME COURT  
JUDGES of the COURT of APPEALS  
JUDGE of the CIRCUIT COURT  
JUDGE of PROBATE  
JUDGE of the DISTRICT COURT  
COMMUNITY COLLEGE TRUSTEES  
MANCHESTER TWP. LIBRARY TRUSTEES**

and to vote on the following proposals:

**WASHTENAW COMMUNITY COLLEGE  
TAX LIMITATION INCREASE  
PROPOSITION NO. 1**

Shall the tax limitation on the total amount of ad valorem taxes which may be assessed against all property in Washtenaw Community College District, Michigan, for the operation of Washtenaw Community College be increased by 7/10 of one mill per dollar of State Equalized Valuation of all taxable property in the District to provide additional funds for general purposes including funds for repair and maintenance of College facilities, educational and other equipment and program and staff development purposes as designated by the Board of Trustees?

**WASHTENAW COMMUNITY COLLEGE  
BONDING PROPOSITION NO. 2**

Shall Washtenaw Community College, County of Washtenaw, State of Michigan, borrow the principal amount of not to exceed Thirteen Million Five Hundred Thousand Dollars (\$13,500,000) and issue its general obligation unlimited tax bonds therefor for the purpose of defraying part of the cost of erecting, furnishing and equipping a job training and campus events building, adding to the existing buildings for auto programs and computer and electronic education, improving, renovating and re-equipping existing college facilities and developing the sites thereof?

Also State Proposals: A, B, and C.

Published in compliance with Sec. 498 of Michigan Election Law and M.C.L.A. 211.203 (3) that being part of Michigan Property Tax Limitation Act.

Date: September 25, 1986  
October 2, 1986

Mildred Guenther  
Township Clerk



### LINGUINI GOES COUNTRY



Be adventurous during Gourmet Adventures Month and let your creative energies loose in the kitchen. Now that the weather is cooler, you can enjoy spending time in the kitchen. Experimenting with new dishes can be fun. Try this Linguini with Country Style Sauce recipe, filled with the flavor of fresh vegetables and the authentic, homemade taste of Prego spaghetti sauce. To complete your meal serve a crusty Italian bread, a fresh tossed salad and a glass of red wine.

#### LINGUINI WITH COUNTRY STYLE SAUCE

- 2 tablespoons salad oil
  - 1 cup sliced fresh mushrooms
  - 1 cup sliced zucchini
  - 1/4 cup chopped onion
  - 1 medium clove garlic, minced
  - 1 jar (16 1/2 ounces) Prego Spaghetti Sauce (1 3/4 cups)
  - 1 cup cut-up cooked chicken
  - 1 teaspoon lemon juice
  - Hot cooked linguini
1. In 10-inch skillet over medium heat, in hot oil, cook mushrooms, zucchini and onion with garlic until vegetables are tender-crisp, stirring quickly and frequently (stir-frying).  
2. Stir in Prego sauce, chicken and lemon juice; heat through, stirring occasionally. Serve over hot cooked linguini. Makes 3 cups sauce or 4 servings.

### United Way Campaign Begins

Hospice of Washtenaw, Inc. - \$2,000; Huron Valley Child Guidance - \$500; Substance Abuse Awareness Committee - \$1,000; Huron Valley Girl Scout Council - \$2,500; The Salvation Army - \$3,500; Wolverine Council Boy Scouts - \$3,900; Manchester Cooperative Preschool - \$1,000; United Way of Michigan - \$2,725. These agencies provide valuable services to the citizens of Manchester and they need your support. When your letter arrives in the mail please respond with a generous contribution. If you do not receive a letter, you may mail a contribution to Manchester United Way, Box 275, Manchester, MI 48158. HARVEST THAT GOOD FEELING - GIVE.

### Homecoming '86

- |           |                      |
|-----------|----------------------|
| Monday    | Sweats Day           |
| Tuesday   | Hat & Sunglasses Day |
| Wednesday | Country Day          |
| Thursday  | Maroon & Gold Day    |
| Friday    | Dress Up Day         |

Football game at 7:30 vs. Vandercook Lake. Homecoming queen will be announced at half time. Homecoming dance following game until 12:00 at the High School. All Manchester alumni are welcome and cost is \$3.00 a person or \$5.00 a couple. There will be refreshments. MHS Leadership Class

### Sesquicentennial Birth

Kristina A. (Swainson) and Louis R. Way, formerly of Manchester, are the proud new parents of a baby boy, Andrew Louis, born on September 30, 1986, at 1:41 a.m. Andrew weighed 8 pounds 13 ounces and was 21 inches long. Andrew was born exactly 150 years after our great state of Michigan. Proud grandparents are Alice and John Swainson of Manchester and Richard and Gwen Way of California, formerly of Manchester. Parents and new baby will be home for Christmas.

### Village Council

- October 6, 1986
- AGENDA
- 1) Call meeting to order
  - 2) Pledge of Allegiance to Flag
  - 3) Minutes of the Prev. Meeting
  - 4) Approval of the Agenda
  - 5) Zoning Board of Appeals - Matt Donnellon
  - 6) Correspondence
  - 7) Public Participation
  - 8) Accounts Payable
  - 9) Sheriff's Report
  - 10) DPW Report
  - 11) Planning Commission
  - 12) Treasurer's Report
  - 13) Manager's Report
  - 14) New Business
    - a. Consideration for Older R1-B Lots within the Village Limits
    - b. Liquor License - (Walco Foods)
    - c. Paul DeShano - Parking Problem
  - 15) Old Business
    - a. Proposed Amendment to Zoning Ordinance
    - b. Proposed Code Amendment Regulation Fences
    - c. Application for Fence Erection
    - d. Notice of Noncompliance - Zoning Violations
    - e. Frank's Italian Restaurant (sign)
    - f. Garbage Pickup
    - g. Burning Ordinance
    - h. Resolution for Ballot Question
    - i. Resolution to Support House Bill 5021
  - 16) Adjourn

In the summer of 1871, Father Jacques Marquette, a 33 year-old French Jesuit, established an Indian Mission in what is now St. Ignace, Michigan. He devoted his life to preaching and evangelizing the Indians of the Great Lakes area. Four years later Father Marquette died near present day Ladington. As the French strengthened their presence in the area, commerce of brandy and prostitution flourished and the Jesuits' influence declined. In 1705, the Jesuits abandoned and burned their St. Ignace mission. Visitors can relive Mackinac County's history at the Father Marquette National Memorial and Museum at St. Ignace.

# Hit or Miss

by Farley

I suppose it had to be...but it seems too bad - our dogs are now in the unemployed list. When you note Fido lounging on theavenport or on the living room rug and think "What a lucky dog," you can't envy him a great deal. He's merely unemployed", says the owner of a dog obedience training center in Birmingham, Michigan. This startling fact has been noted in many of our daily newspapers with the other notable news items and it stirs us to end. There he lays bored to extinction with absolutely nothing to do except eat and sleep and perhaps take a short walk with his master, on the end of a leash. Mrs. Rossi owns an obedience training center and she says that she can tell that the canines are bored because they show distaste for their sheltered life by biting, barking, chewing and growling at the world and hey sometimes even make messes on the floor to show their disgust.

Mrs. Rossi's long days are filled with training dogs who have severe behavior problems which she claims are due to a human's lack of understanding as to how a canine quadruped thinks. She claims that these misfits are bored, just bored.

She further says that most American dogs are terribly bored. They have no purpose in life. They have nothing to do all day. They are chronically unemployed. They have no real jobs. Many of them have nothing to guard, they don't even get a chance to substitute for the doorbell. She goes on to say that about the only time that they can look forward to is when it is feeding time. She also says that the saying that you "can't teach an old dog new tricks" is very untrue. You certainly can and by so doing, you can give them "purpose" and inspire them to go to work. When the dog does his job, he should be offered a treat. He should be taught to answer many other commands and for so doing should be rewarded profusely. He should be loved and cuddled and be trained so that he can go many places with you. Make him a real companion. Dogs are very special animals and should go through life with you.

All of this is undeniably true, but as I gaze on a certain blond Cocker Spaniel sprawled out on a davenport sound asleep with evidently nary a care in the

world, I guess that the often used term "a dog's life" is terribly misused. I don't believe that this one referred to is to be pitied and I don't believe that she even possesses a flea to aggravate her.

It is reported that a farmer spent a vacation in Hawaii and when he returned home he was asked to describe what a hula dance was like. After a bit of reflection, he said that "the dancers put a crop of hay in the front field and another crop in the back field. Then, when the music begins, they rotate the crops."

Dreaming of her romance with her boyfriend, the daughter tells her mother "When I get married it will be for keeps."

"You're so right," snapped mother. "You are sure to keep house or to keep working."

The little river, the Missouri, flows into the bigger river, the Yellowstone, but they become the Missouri. Then the little river, the Mississippi flows into the bigger river, the Missouri, and they become the Mississippi.

### Super Sandwiches Score Big Win

A hot and hearty sandwich is the ticket to good food, served easily and casually, on those important football weekends. This year, serve these winners as you cheer your favorite team to victory!

- Mexican Muffin Divas**
- 2 cups chopped cooked chicken
  - 1 cup mushroom slices
  - 1/2 cup picante sauce
  - 1/4 cup mayonnaise
  - 2 Tbsp. green onion slices
  - 2 Tbsp. chopped green chilies
  - 3 English muffins, split, toasted
  - 1 cup chopped cooked broccoli
  - 6 slices pasteurized process cheese spread, cut in half diagonally
- Combine chicken, mushrooms, picante sauce, mayonnaise, onions and chilies; mix lightly. Top muffin halves with chicken mixture and broccoli. Place on ungreased cookie sheet. Bake at 350 degrees, 10 minutes. Top with process cheese spread; continue baking until process cheese spread begins to melt. Makes six sandwiches.

### Gourmet Mushroom Burgers

- 1 medium onion, coarsely chopped
  - 1 Tbsp. margarine or butter
  - 1 lb. ground beef
  - 1 Tsp. Worcestershire sauce
  - 1/4 cup water
  - 2 tsp. cornstarch
  - 1/4 tsp. instant beef bouillon
  - 4.5 oz. jar sliced mushrooms, undrained
  - 4 oz. (4 slices) pasteurized process Swiss cheese
  - 4 hamburger buns, split
- In large skillet, saute onion in margarine. Shape ground beef into eight thin patties. Spoon onions onto center of four patties. Sprinkle each with Worcestershire sauce. Cover each with remaining patties; press edges to seal. In same skillet, cook patties over medium-high heat, about 5 minutes or until browned well on one side. Carefully turn patties; reduce heat and cook 6 to 8 minutes or until done as desired. Meanwhile, in small saucepan combine water, cornstarch and bouillon. Add undrained mushrooms; heat until sauce is smooth and thick, stirring often. Top each hot burger with cheese slice. Place burgers in buns; spoon mushroom sauce over burgers. Serve hot. Makes four servings.

- Cheesy Vegetable Sandwich**
- 6 slices rye bread
  - Melted butter
  - Dijon-style prepared mustard
  - 18 slices (1 oz. each) Swiss cheese
  - 12 slices tomato
  - Salt and pepper
  - Dried basil, crushed or fresh basil, snipped
  - 1 package (10 oz.) frozen broccoli spears, cooked, drained & warm
- Preheat broiler. Toast bread slices on both sides. Brush with melted butter on one side. Place each slice on cookie sheet, buttered side up. Lightly spread mustard over butter. Place one slice Swiss cheese over mustard. Place two tomato slices on each slice of cheese. Sprinkle with salt, pepper and basil; top with another slice of cheese. Broil 5 to 6 inches from source of heat until cheese is melted. Place a few broccoli spears on each sandwich. Top with third slice of cheese. Broil sandwiches 5 to 6 inches from source of heat until cheese is melted and sandwich is hot and bubbly. Makes six sandwiches.

Grasshoppers have white blood.

## WE NEED COMMON SENSE, NOT NONSENSE!

LET'S LOOK AT MARGARET O'CONNOR'S RECORD:

ISSUE	O'Connor VOTE	House Vote (Yes-No)
Funding for K-12 Education	NO	86-1
State School Aid	NO	99-3
Fund Commerce Department for Jobs	NO	95-1
Fund State Police	NO	103-2
Provide Substance Abuse & Public Health Programs	NO	97-5
Increase Availability of Loans for Financially Strapped Farmers	NO	94-9
Help School Districts Remove Cancer Causing Asbestos from Buildings	NO	95-6
Provide Public Assistance for the Arts	NO	97-3
Create an Office to Help Small Businesses	NO	95-3
Make it a Felony to Carry a Bayonet	NO	94-6
Deter Auto Theft by Requiring Used Parts Dealers to Record Who They Bought From	NO	85-3
Require Hospitals to Offer Rape Examinations to Rape Victims	NO	93-2
Maintain Funding for Programs to Prevent Spouse Abuse	NO	92-3
Require Doctor to get Informed Consent of Patients before Performing Radical Mastectomies.	NO	84-3
Create a Radioactive Waste Advisory Commission	NO	93-6
Review Standards for Putting Hazardous Wastes into Landfills	NO	90-2
Inspect Haulers of Hazardous Wastes	NO	99-4
Create a Trust Fund to Monitor Landfills for PBB & PCB	NO	98-2
Allow One Free Fishing Day	NO	94-2

SAY YES ... for a change

WE NEED **DON SHELTON** AS OUR State Representative

POSITIVE, INDEPENDENT LEADERSHIP FOR OUR FUTURE

Paid for by the Elect Don Shelton Committee, C. Vaughan, Treas., 100 S. Ann Arbor St., Saline, Ann Arbor, MI. 48176

Have A Happy Birthday  
Twyla Sellers  
October 7th  
at  
North Salem, Indiana

### Catholic Social Services Provides Outreach Services

Catholic Social Services provides outreach services to older adults residing in Washtenaw County. Adults over 60 are helped to obtain food stamps, hot meals, transportation, housing, fuel assistance and other community services. An outreach worker makes home visits to older adults, who are often isolated and/or handicapped. If you are in need of information or

**STIHL THE ONE. Put a Boss to Work for You!**

\$299<sup>95</sup>

Save now on the 024 Wood Boss from Stihl. Easy-to-handle, with an outstanding power-to-weight ratio, Stihl 024 Wood Boss is tough enough to meet the demanding standards of professional use, as well as jobs around the home. Quickstop™ Inertia Chain Brake standard.

**K & W Equipment Inc.**  
Chelsea-Manchester Rd.  
Manchester, Michigan

**STIHL**  
NUMBER ONE WORLDWIDE

**PLANT NOW... FOR SPRINGTIME BEAUTY!**

- Paper Whites
- Indoor Narcissus
- Planters
- Potting Soils
- Tulips
- Daffodils
- Crocus
- Hyacinths
- Fall Fertilizer
- Grass Seed

**FALL IS FOR PLANTING**  
TREES • SHRUBS  
LAWNS • BULBS

**ATLAS of Manchester**  
18875 WEST AUSTIN ROAD MANCHESTER, MICH.  
PHONE 313-428-7077  
Hours: Monday-Friday 8-6 pm Saturday 8-4:30 pm

**KENT**  
THE GUARANTEED FEED

**JR. DORCAS 15TH ANNUAL Craft-A-Rama**

October 10th 10 am-8 pm  
October 11 10 am-5 pm

National Guard Armory  
Jackson, Michigan

**MARGIE'S UPHOLSTERY**  
6245 Brooklyn Road  
Jackson

Wide Selection Of Fabrics

Pick-Up / Delivery Available  
517-536-4230

This Phone Number Is In Working Order. Please Phone Persistently, Or Go Through The Operator.

**A is for ARTHRITIS**

A LECTURE ON ITS CAUSES & TREATMENT BY

**Dr. Alan Snider**  
Tecomseh Orthopaedic Surgeon

HERRICK MEMORIAL HOSPITAL  
Conference Room FREE Lecture

OCTOBER 15, 1986 at 7:30 p.m.

Cali Donna Kirby, R.N.  
Women' Health Coordinator

For Reservations  
517-423-6000 or 423-2141 ext. 355

**Watts Heating & Cooling**

24 HOUR SERVICE  
Walt Horodeczny

Comfort Air Furnaces  
A. O. Smith Water Heaters  
Water Softeners

Furnace Tuning And Cleaning

PHONE 428-8645

18824 Bethel Church Road  
Manchester, Michigan

**Dr. William M. Long**  
Diplomate of The American Osteopathic Board of Obstetrics and Gynecology

Announces The Opening of His Office

For The Practice of  
**OBSTETRICS & GYNECOLOGY**  
GYNECOLOGICAL SURGERY  
INFERTILITY PROBLEMS

AT  
Herrick Diagnostic & Treatment Center  
415 E. Kilbuck Street  
Tecomseh, Michigan 49286

Office Hours  
By Appointment

Telephone  
423-6667 or 423-MOMS



**STRIKES  
-N-  
SPARES**

MANCHESTER TOWN CLUB	
Alley Drillers	19 9
Manchester Plastics, Inc.	19 9
DuRussels	17 11
Jenters	17 11
7&F Builders	16 12
3&F Tree Service	14 14
3-K Sales	14 14
Norm Walls	10 18
J Do It Rentals	8 20
M.L.S.C.	6 22
Joan Day	201
300's	518
Jandy Klapperich	509
Ann Arbor Pool Builders	1068
Manchester Stamping	1057
Double A Products	1052
Joan Day	228
Ruth Days	198
Lee Eviltzer	198
HIGH INDIVIDUAL SERIES	
Joan Day	526
Candy Klapperich	518
Paula Scherdt	514
HIGH TEAM GAME ACTUAL	
Alley Drillers	786
HIGH TEAM SERIES ACTUAL	
Alley Drillers	2294
HIGH TEAM GAME W/HDCP	
Jenters	796
HIGH TEAM SERIES W/HDCP	
Jenters	2273
MANCHESTER WOMEN	
Weatherwax Drugs	74 46
Town Laundry	66 54
Black Sheep Tavern	62 58
Spear Reelers	62 58
Tri County Party Store	61 59
Brklyn. Chiropractic	58 61
Mass Confusion	58 62
Emerson & Wesch Const.	57 63
Columbia P&H	56.5 63.5
Daca's Garage	44.5 75.5
HIGH INDIVIDUAL GAME	
JoAnne Dew	222
Jackie Sutton	214
Joyce Golightly	204
Kathy Fusilier	201
HIGH INDIVIDUAL SERIES	
JoAnne Dew	587
Kathy Fusilier	525
Joyce Golightly	515
Kit Mosko	504
MANCHESTER BUSINESSMEN	
Manchester Car Wash	18 10
Carol's Cut-N-Curl	17 11
DRW	16 12
Dan's Westside Auto	14 14
Double A	14 14
Dutch Country Kitchens	13 15
Comerica	11 17
Kleinachmidts	9 19
HIGH INDIVIDUAL GAME	
J. Merriman	215
K. Richardson	192
J. Juckno	182
HIGH INDIVIDUAL SERIES	
J. Merriman	493
J. Joe	492
D. Hughes	483
HIGH TEAM GAME W/HDCP	
Manchester Car Wash	960
Double A	894
Dutch Country Kitchens	885
HIGH TEAM SERIES W/HDCP	
Manchester Car Wash	2616
Dutch Country Kitchens	2612
Carol's Cut-N-Curl	2547
GUTTER DUSTERS	
Jose & Sutton	6 1/2
Eviltzer & Ross	6 2
Stockwell & M. Smith	5 3
Preston & J. Roberts	4 1/2
D. Steele & Goodell	4 1/2
Kelley & B. Smith	4 4
Bruenstle & R. Steele	4 4
J. Schaffer & B. Roberts	4 4
Wallace & Fleck	3 5
DuRussel & D. Roberts	2 1/2
R. Schaffer & Walter	2 6
Frey & M. Roberts	2 6

JOLLY KEGLERS	
Manchester Car Wash	18 10
Carol's Cut-N-Curl	17 11
DRW	16 12
Dan's Westside Auto	14 14
Double A	14 14
Dutch Country Kitchens	13 15
Comerica	11 17
Kleinachmidts	9 19
HIGH INDIVIDUAL GAME	
J. Merriman	215
K. Richardson	192
J. Juckno	182
HIGH INDIVIDUAL SERIES	
J. Merriman	493
J. Joe	492
D. Hughes	483
HIGH TEAM GAME W/HDCP	
Manchester Car Wash	960
Double A	894
Dutch Country Kitchens	885
HIGH TEAM SERIES W/HDCP	
Manchester Car Wash	2616
Dutch Country Kitchens	2612
Carol's Cut-N-Curl	2547

Mary Kay Kennedy, Terri Scott, Linda Ebersole and Ralph Books. Our P.T.O. teacher representative this year is Mary Koebbe. Minutes from last meeting were read. Report there was an error in the Secretary's minutes on the Treasurer's balance. Let the records show the correct balance was \$971.16.

The Treasurer's report was approved with a balance of \$580.22. Sharon also mentioned that through her research she discovered the P.T.O. has a tax exemption permit.

Diane Hughes reported all is going well with the Tulip Bulb fundraiser. All students who sell \$100 or more and have their orders in by September 30, are eligible for a raffle.

There was some discussion on making a flower bed under the Klager sign. Ann Gordon, Pat Sahakian and Amy Cohn volunteered to make the flower bed and plant daffodils purchased from the P.T.O.'s fundraiser. Sharon Anderson and Pat Ahrens motioned to allocate \$20 for this project.

Our birthday pencils and stickers have arrived, but we are still waiting for cards to come.

Ann Gordon read the letter she has put together for classroom volunteers and those interested in the adopt-a-staff member.

Kathy Donnellon reported on the progress of the Playground committee. She expressed the biggest concerns at the time are adding pea gravel around the equipment and repairing the merry-go-round. Then the Middle School playground flooding was discussed. It was suggested an article be placed in the Enterprise soliciting help from experts in the community. Kathy Donnellon volunteered to write the letter.

**P.T.O. Minutes**  
September 22, 1986

Meeting was called to order by Vicki Miller. All officers were present.

The 1986-87 P.T.O. Counsel representatives are as follows: Sherry Barker, Mary Kay Kennedy, Terri Scott, Margaret Goodrich, Linda Steele, Shirley Hauseler, Linda Ebersole, Diane Hughes, Amy Cohn, Ralph Brooks, Kathleen Jefferson, Mary Noebisch, Kathy Donnellon.

Counsel representatives absent were: Sherry Barker,

**6th Annual Pumper Power Road Races**

The sixth annual Pumper Power Road Races, presented by Saline Community Hospital on October 5th, will once again fill the streets of Saline with runners, walkers and joggers of all ages.

Designed to promote family physical fitness, the day's program will include 10K (certified and sanctioned by TAC) and 5K races, plus a 1 mile fun run and walk for health. Official computerized times, T-shirts, ribbons, aid stations, refreshments, showers and a variety of other services will be available to participants. Proceeds from the race will support the Pumper Power Program for cardiac health at Saline Community Hospital.

The 1 mile Fun Run starts at 12:30 p.m., while the 10K and 5K races, and Walk for Health begin at 1:30 p.m. Race day registration is from 10:30 a.m. - 12:30 p.m. at the Saline Community Hospital Wellness Center at the corner of Ann Arbor-Saline Road and East McKay Street. Pre-registration is recommended by calling (313) 429-1831.

**Dial-A-Garden**

The following is a schedule of Dial-A-Garden, the system of pre-recorded daily gardening tips sponsored by the Washtenaw County Cooperative Extension Service. The system is in operation 24 hours per day, 7 days per week. Interested persons are invited to call 971-1122 at their convenience and receive timely, up-to-date gardening information.

Wednesday, October 1 - Why Do Leaves Turn Colors in the Autumn?

Thursday, October 2 - Rerooting Christmas Plants.

Friday, October 3 - Kitchen Pests.

Monday, October 6 - Landscape Plants with Brilliant Fall Colors

Tuesday, October 7 - Planting Raspberries

Wednesday, October 8 - Drying Gourds

**Asthma Program Discusses School**

A panel consisting of a principal, school nurse, and school psychologist will discuss "Balancing School and Asthma" at the October 8, meeting of the Family Asthma Program. Topics

**9th Annual Milan Fall Road Race**

The 9th Annual Milan Fall Road Race will be held on Sunday, October 26th at 1:00 p.m. in Wilson Park (147 Wabash St.) Milan, Michigan.

The 7.5 mile run was featured in the September 1986 issue of Michigan Runner Magazine, as one of the most popular.

Trophies will be awarded to the top three finishers in each age division.

Fees: \$7.00 for Pre-Registrants and \$9.00 Post Entry Fee until 12:30 p.m. on Race Day.

For more information, call Milan Parks and Recreation at 313-439-1549 or 439-1540.

**Health Department Issues Concern**

Sometimes advertising for various types of products seems "too good to be true". The Michigan Department of Public Health has reviewed a number of advertisements for septic tank additives and contacted the manufacturers to substantiate claims of improved tank operation and function. The manufacturers that responded could not provide reliable independent test data supporting advertising statements. In fact, submitted data tends to bear out our concerns.

The common opinion expressed by experts is that because of lack

**New Books At The Library**

Anthony, Piers  
SHADE OF THE TREE  
Barker, Clive  
THE INHUMAN CONDITION  
TALES OF TERROR  
Benford, Gregory  
HEART OF THE COMET  
Blake, Jennifer  
ROYAL PASSION  
Brown, Rita Mae  
HIGH HEARTS  
Carr, Philippa  
MIDSUMMER'S EVE  
Caunitz, William J.  
SUSPECTS  
Clancy, Tom  
RED STORM RISING  
Cronin, Edward W.  
GETTING STARTED IN  
BRIDWATCHING  
Edwards, Betty  
DRAWING ON THE ARTIST  
WITHIN  
Mitchell, John H.  
A FIELD GUIDE TO YOUR  
OWN BACK YARD  
Quinn, Sally  
REGRETS ONLY  
Rivers, Joan  
ENTER TALKING  
Rush, Helen  
30 QUICK-TO-KNIT SWEATERS  
FOR CHILDREN

of supporting evidence for additive products, septic tanks should be allowed to function naturally without adding compounds. Some compounds have potential for disturbing natural action, upsetting the tank and discharging solids into the absorption system. Your septic system will function naturally with the addition of normal household waste only. Bacteria are already present in the tank and will take care of 50-75% of organic materials placed into the tank without chemical or compound addition.

Non-digestible solids will accumulate in the tank and wash out into the drainfield if not removed by periodic pumping of the tank every 1 to 3 years. If suspended solids reach the drainfield, they can clog soil pores and prevent water from percolating through. Additive claiming to "clean the tank" and "eliminate the need for pumping" can dissolve these solids and suspend them. This will allow them to settle in the drainfield thus interfering with drainfield performance.

From an economic viewpoint, septic tank additives can cost more each year than the cost of a periodic septic tank pump out which ranges from \$50 to \$75. Remember, too, that a properly designed and maintained system will give years of service without use of additives.

The Michigan Department of Public Health suggests that you remember the following: Don't add anything but normal household wastewater to your septic system; don't add lye or a caustic material that could harm bacteria that break down sewage; avoid disposing of items that cannot readily decompose such as coffee grounds, bones, disposable diapers, plastics, etc.

Remember, too, that you can call the Washtenaw County Health Department at 488-2222 for information if your system is in need of repair or if you have questions concerning septic tank operation and maintenance.

**Michigan Veterinary Clinic, P.C.**  
**VERA L. KLUWE, D.V.M.**  
313-428-8365

Large and Small Animal Surgery and Medicine  
18901 Sharon Valley Road  
Appointments: 9 AM - 9 PM  
Monday through Saturday  
Manchester, Michigan 48158-0025

**HERRICK**

**DIAGNOSTIC AND TREATMENT CENTER**  
415 E. Kilbuck, Tecumseh, Michigan (Formerly the Tecumseh Medical Bldg.)  
Offering Services In

- ★ **GASTROENTEROLOGY**  
Eugenius Ang, M.D.
- ★ **NEUROLOGY**  
Allan Clague, M.D.
- ★ **PODIATRY (Foot Surgery)**  
Don Schubert, D.P.M.
- ★ **UROLOGY**  
C. T. Lin, M.D.  
Ashwin Shah, M.D.
- ★ **DERMATOLOGIST**  
Jeffrey Messenger, M.D.
- ★ **CARDIOLOGY**  
Manhar Tegura, M.D.
- ★ **OTORHINOLARYNGOLOGY**  
Harry Richter, M.D.
- ★ **OTORHINOLARYNGOLOGY**  
Keo Poopat, M.D.

For Appointment Call  
423-7481 or 423-7482

- ★ **ALLERGIST**  
R.J. Guttridge, D.O. 423-4946
- ★ **GYNECOLOGIST/OBSTETRICIAN**  
William Long, D.O. 423-5667

**A BETTER WAY TO KEEP TRASH IN ITS PLACE.**

MODERN DISPOSAL AND

**Rubbermaid**

INTRODUCE  
**The Mobile Toter System**

**IT'S EASY TO USE!** Keep your Mobile Toter in a convenient place for loading. Then on collection day, just roll it to your curb. Even loaded with a week's accumulation of trash, it rolls easily and there's no lifting.

**IT'S ATTRACTIVE!** The smartly shaped, subtly colored Mobile Toter replaces those unsightly 20-gallon trash cans. The tough shell and cover keeps stray animals from spilling your trash and never dents or rusts.

**LARGER VOLUME!** - 90 gallons.

**IT'S MORE SANITARY!** The Mobile Toter has a tight, latching lid that keeps trash and odors locked inside and animals locked out. It's easy to periodically hose out the Toter.

**IT'S ECONOMICAL!** Just dump the trash directly into the Mobile Toter. You'll save on expensive plastic trash bags — and won't have to buy or repair a trash can ever again.

**IT GETS YOU BETTER SERVICE!** Trash pick ups will be quieter because the Mobile Toter doesn't clank or bang. Collection people like it because they don't have to handle trash directly, risk cuts, or lift heavy cans either! And, incidentally, the Mobile Toter is great help in collecting leaves or in other yard work.

... AND, now you can have the convenient Mobile Toter collection system at your home.

Call  
**517-536-4412**

**MODERN DISPOSAL**

OR WRITE  
P. O. BOX 211  
NAPOLÉON, MICHIGAN 49261

CALL TODAY AND ORDER YOURS

**\$9.00 Month Includes Cart and Service**

**Red Wings!**  
**America's toughest work boots!**

**Heel Huggin' Pecos!**

Oil-tanned, water-repellent Irish Setter

STEEL SHANK FOR SUPPORT

COMFORT

**Red Wings**

**FOSTER'S CHELSEA**  
109 S. MAIN ST.  
313-475-1606  
OPEN MONDAY UNTIL 8 PM

**TODAY'S WOMAN.**  
OPTIONS AND COPING STRATEGIES  
OCTOBER 4, 1986

**Speaker: Della K. Cowing**  
Vice-President of  
Human Resource Development Associates

This day-long workshop will cover such topics as:

- Doing it all: coping with multiple demands!
- Start focusing on results rather than activities alone.
- Learn to set priorities and stick to it!

PLUS:

- Explore options and develop a plan for living.
- Learn about the resources that Chelsea Community Hospital and the Women's Health Center have for you!

Participants will enjoy continental breakfast and a luncheon as part of the day's activities. Free follow-up session Seminar Fee-\$30

To Register:  
475-1311 Ext. 196

Chelsea Community Hospital  
Women's Health Lecture Series

**ATTENTION!**  
**Manchester Band Parents**  
SIX SOUND REASONS WHY YOU SHOULD RENT A MUSICAL INSTRUMENT FROM KEYNOTE MUSIC, CHELSEA:

1. All name brand instruments
2. NO finance charges
3. Full coverage (fire, theft, damage)
4. Reduced initial rental period
5. Full option to return
6. We service Manchester schools

**KEYNOTE MUSIC**  
Call 475-3611 526 N. Main Street Chelsea, MI.

**ATTENTION!**  
**Manchester Band Parents**  
SIX SOUND REASONS WHY YOU SHOULD RENT A MUSICAL INSTRUMENT FROM KEYNOTE MUSIC, CHELSEA:

1. All name brand instruments
2. NO finance charges
3. Full coverage (fire, theft, damage)
4. Reduced initial rental period
5. Full option to return
6. We service Manchester schools

**KEYNOTE MUSIC**  
Call 475-3611 526 N. Main Street Chelsea, MI.



### Household Toxics Collection Day

The 3rd Annual Household Toxics Collection Day will be held October 4, 1986, from 10:00 a.m. until 4:00 p.m. at Schadford Field next to Ypsilanti High School. All residents of Washtenaw County are welcome to bring such chemicals as leftover pesticides, motor oils, brush cleaners, drain cleaner, wood preservatives, weed killers, paints, solvents and almost anything else thought to be toxic, just as long as the item can be identified. The Washtenaw County Health Department is sponsoring the Collection with coordination by the Toxic Waste Coalition consisting of the Ecology Center of Ann Arbor, the Department of Public Works, the Health Department and the Ypsilanti Recycling Center.

This free service provides residents of Washtenaw County with an opportunity to get rid of toxic chemicals that have collected in homes and garages in an ecologically sound fashion. Information on household toxics and alternatives will be available at the collection site.

Residents are encouraged to read labels of household products and use this opportunity to get rid of such chemicals as Chlordane, DDT, Lindane, Aldrin, Dieldrin, 2,4,5-T/Silvex, Endrin, DBCP, Strobane, Thallium Sulfate, Heptachlor, Kepone, Mirex, Safrole, Toxaphene, Sodium Cyanide and Strychnine all of which are extremely toxic and should not be used at home even if you follow the directions carefully.

When bringing materials to the collection, certain precautions should be taken: 1. Package the material in containers that do not leak to avoid reactions from incompatible chemicals; 2. Keep products away from passengers; 3. Have products labeled and in their original containers whenever possible; 4. Keep combustibles (e.g. aerosols) out of direct sunlight and away from heat sources.

For further information, or if you have a product and are not sure what it is, or how to handle

it, call the Washtenaw County Health Department at 994-2492.

### Mission Reach Out!

share his experiences in Liberia with the UMYF (youth group). The UMW will host the Rev. Gary Bekotske, executive secretary for special ministries at UMCOR (United Methodist Committee on Relief), at 1 p.m. on Wednesday, October 8.

The first All Church Nite of the new school year will be held Thursday, October 9, from 6:30-8:00 p.m. After the meal, we will look forward to seeing Haiti through the eyes of Harry & Ella Brakeman. Mr. and Mrs. Brakeman are lay missionaries, who have served numerous times in Haiti, including following the recent rebellion there.

To bring Mission Reach Out, but NOT international mission programs to a close, the church is honored to host Deborah Price, R.N., at the October 12, Sunday worship service beginning at 10:30 a.m. Ms. Price will be leaving soon to serve as a medical missionary in Africa. We look forward to these enlightening events and invite all interested persons to join us.

### "Coffee" Honoring Candidates

Mrs. Robert Little will serve as hostess at the "Coffee" Friday, October 3, honoring Republican Lieutenant Governor candidate Coleen Engler, and State Representative Margaret O'Connor. All area residents are invited to the coffee, which will be held from 2:00 to 4:00 p.m. at the Manchester Township Hall.

Mrs. Little will be assisted by Mrs. Lyle Widmayer, Mrs. Willard Mann and Mrs. Charles Fusilier.

Washtenaw County Republican Chairman Jane Talcott of Manchester stated that the committee is pleased to welcome the first Republican woman ever nominated for Lieutenant Governor of the State of Michigan.

### APPLE DAY



Bradley Kemner can't help a grin as he bites into an apple slice. Pam Preston looks on.

Apples were everywhere in Mrs. Groeb's first grade and Mrs. Little's second grade last week. Students studied about different kinds of apples, did apple math, and many other apple based activities. To highlight the end of this unit of study, each child brought an apple treat to share.

Apple pie, apple crisp, apple smilies, apples and cheese - there were more different kinds of apple snacks than anyone could imagine. The children will never again look at a beautiful red piece of fruit and think "that's just an apple."



Diana Roberts, Klager mom, helps her younger son Ted make an apple snack selection.

### P.T.O. Plea For Help!

The playground in the heart of our fair city is in dire need of help. The Manchester Elementary PTO is forming a task force to look into what improvements could be made to the Middle School Playground. The PTO is extending a plea to the community members for assistance. Excavation experts, landscape professionals, people with creative ideas, and concerned citizens with lots of elbow grease are desperately needed to volunteer some time to this project. Those who are interested in helping us enhance this playground in the middle of our village, please contact one of the schools and leave your name or contact Kathy Donnellon at 428-9122.



Melly Palomin, Marie Haessler and Mikey Meranuck share treats and chat with Eastern Michigan University student Mrs. Krystoletes.

### MANCHESTER TOWNSHIP PLANNING COMMISSION

#### NOTICE OF PUBLIC HEARING

TAKE NOTICE that Manchester Township Planning Commission will hold a public hearing on the application of Dean K. Anderson for a Conditional Use Permit to build a residence on premises presently zoned RC Recreation-Conservation District described as:

Beginning at Northwest corner of Section 22; thence S 89°1'0" E 688.47 feet; thence S 0°2'0" W 1330.92 feet; thence N 89°4'5" W 670.58 feet; thence N 0°7'30" E 1331.50 feet to Point of Beginning, being part of Northwest 1/4 Section 22, T4S, R3E, Manchester Township, Washtenaw County Michigan, containing 20.46 acres.

which premises are located on the south side of Mahrle Road 3/8 of a mile west of Grossman Road. Said hearing to be held on October 7, 1986 at 7:30 p.m., at the Manchester Township Hall at 275 South Macomb Street, Manchester, Michigan.

MANCHESTER TOWNSHIP PLANNING COMMISSION

**STEEL**  
NEW & USED  
STEEL AT  
BARGAIN PRICES

- Structural •Plate
- Re-Rod
- Pipe •Square Tubing
- (Quantity Discounts)

**Jackson Fibers Co.**  
(517) 784-9191  
1417 S. Elm St.  
1 block north of High St.  
Jackson, Michigan

**CLINTON THEATRE**  
Friday & Saturday  
7:30 and 9:40  
Sunday 7:30  
All Seats \$2.00

The  
**Karate Kid II**  
Part II

### spotlight on health

#### Heart Disease Prevention

Nearly one million Americans die of heart and blood vessel disease annually—almost as many die of cancer, accidents, pneumonia and influenza combined. Nearly five million people alive today

have a history of heart attack, angina pectoris (chest pain) or both. What can you do?

Increasingly, scientific evidence suggests eating more fish and fewer foods rich in cholesterol. Certain data pointed scientists toward Greenland's Eskimos.

Despite a diet as rich in animal fat as that of Americans, Eskimos have a low incidence of coronary heart disease. This is attributed to their seafood diet.



Scientists found the Eskimos' seafood diet helped reduce their risk of coronary heart disease.

Many fish living in deep, cold water—sardines, salmon, mackerel, herring—are richest in two omega-3 fatty acids—EPA and DHA. These fatty acids help reduce cholesterol buildup in arteries.

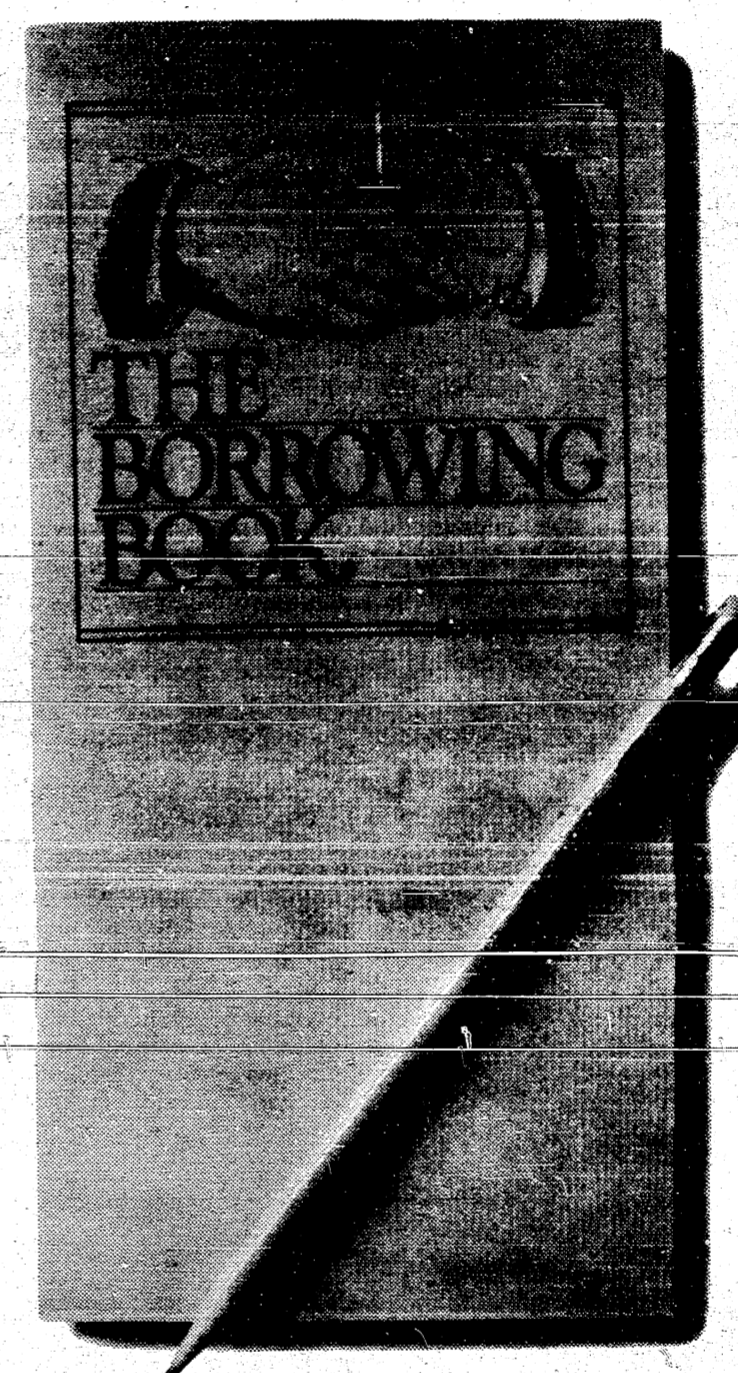
But for people who may not eat much fish, EPA and DHA also are available in a natural fish oil supplement, Promega.

Sold at pharmacies and food stores, Promega's soft, safety-sealed, gelatin capsule provides the richest natural

concentration of EPA and DHA.

Parke-Davis, a leader in heart health care, introduced Promega, which is intended to be part of a total dietary plan.

This dietary plan includes eating more fish, reducing fat and substituting polyunsaturated for saturated fat. You also should follow other sensible steps—regular exercise, no smoking and weight control.



# The Ultimate Truth In Lending.

To anyone who's never done it before, applying for a loan can be a bewildering experience.

All those questions, calculations and telephone calls make borrowing seem so confusing.

Actually, it's quite simple. Even logical. And to prove that point, First of America Bank is offering The Borrowing Book, a straightforward explanation

of how loan officers make up their minds.

In it you'll find the questions bankers ask when you apply for a loan. You'll read about the importance of debt-to-income ratios and credit reports.

And you'll learn about the wealth of loans available from First of America Bank. Everything from car and boat loans to private lines of credit and bank credit cards.

For personal loans and the whole story behind them, come to your nearby First of America Bank office and get The Borrowing Book free.

The plot isn't much, but it could have a very happy ending.

**FIRST OF AMERICA.**  
We're Community Banks First.

### FREEDOM TOWNSHIP PLANNING COMMISSION

The Freedom Township Planning Commission will hold a meeting on Monday, October 13, 1986 at 8:00 p.m. at the Freedom Township Hall.

Jean Little, Secretary  
Freedom Township  
Planning Commission

**Manchester K of C Hall**  
AVAILABLE FOR  
Wedding Receptions  
Parties-Meetings

Hall Rental \$165.00  
Includes Cleaning  
Use of Kitchen \$25.00  
Catering Available

For Further Information Call  
428-8393 or 428-8886



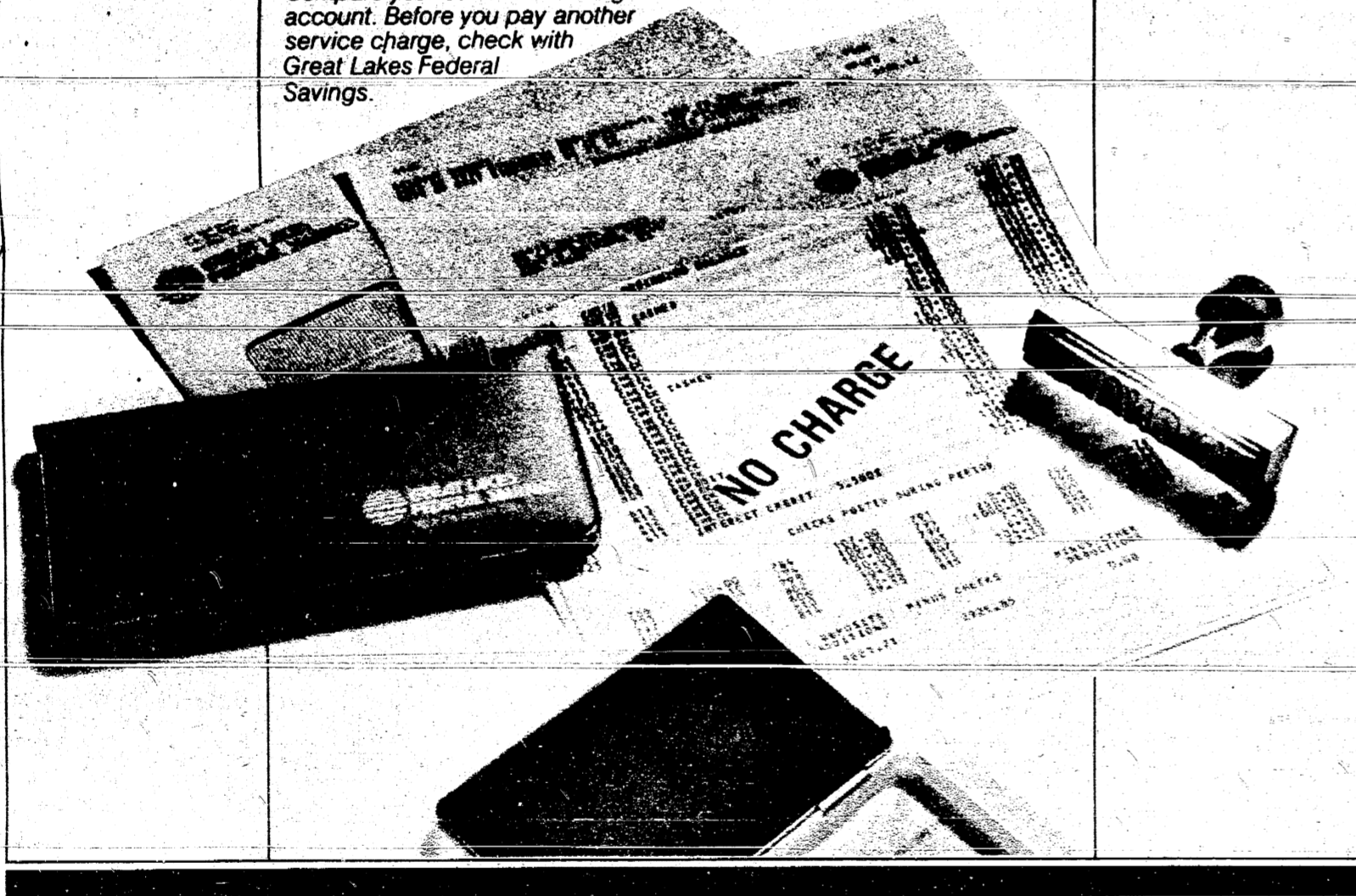
# 5 WAYS TO BEAT BANK SERVICE CHARGES:

It's easy to get no-service-charge checking when you bank with Great Lakes Federal Savings.

1. Have your paycheck automatically deposited into your Great Lakes checking account. No minimum balance is required.
2. Have your Great Lakes Federal mortgage payment automatically deducted from your account. No minimum balance is required.
3. Keep a total of \$10,000 in any combination of Great Lakes Federal CD, IRA or savings accounts.
4. Sign up for our senior citizen checking account when you're 60 or older. No minimum balance is required.
5. Or keep a minimum of \$250 in your Great Lakes check-keeping account.

Or you can avoid our service charge and have your checks returned when you keep \$500 or more in your account. Any way you play it, you'll earn at least 5 1/2% interest on every dollar.

Compare your current checking account with a Great Lakes Federal account. Before you pay another service charge, check with Great Lakes Federal Savings.



**GREAT LAKES FEDERAL SAVINGS**

Your Partner in Life.

- |  |   |
|--|---|
| 111 E. Main St., Manchester, 428-8379      | 205 W. Grand River, Brighton*, 229-5700 |
| 401 E. Liberty St., Ann Arbor*, 769-8300   | 1135 S. Main, Chelsea*, 475-1341        |
| 2400 Huron Pkwy., Ann Arbor*, 973-7811     | 8081 Main St., Dexter, 426-3913         |
| 2701 Plymouth Rd., Ann Arbor*, 769-7818    | 2650 E. Grand River, Howell, 548-1651   |
| 125 Briarwood Circle, Ann Arbor*, 769-7616 | 101 W. Michigan Ave., Saline*, 429-5483 |
| 1900 Pauline Blvd., Ann Arbor*, 769-8386   | 2170 Packard Rd., Ypsilanti*, 485-7510  |

\*Locations with GL-24 Centers for 24-hour banking convenience.

THE MANCHESTER ENTERPRISE THURSDAY, OCTOBER 2, 1986 PAGE 18

CONDOS WANTED TO PURCHASE  
BUYERS WANTED TO PURCHASE  
TRAINING OPPORTUNITIES  
SH NEW USED UCTION F  
TUNING HELP WANTED  
S COLOS UITS APARTMENTS  
BUYERS WANTED TO PURCHASE

CONDOS WANTED TO PURCHASE  
BUYERS WANTED TO PURCHASE  
TRAINING OPPORTUNITIES  
SH NEW USED UCTION F  
TUNING HELP WANTED  
S COLOS UITS APARTMENTS  
BUYERS WANTED TO PURCHASE

**PROFESSIONAL COUPLE** - looking for house in country to rent with studio or workshop. Call Dick or Rosanne 429-7808. 10-2

**WANTED** - Standing timber, saw logs and veneer. Buskirk Lumber Co., 517-661-7751. tfn

**FIELDER PAINTING** - Interior and Exterior. Free Estimates. Senior Citizens Discount. Phone 428-8506. tfn

**PIANO TUNING & REPAIR** - Qualified technician - Ron Harris. 475-7184. tfn

**MERRIMAN INSULATION** - Free Estimates. Blown in cellulose. Professionally installed. George Merriman. Phone 517-592-5527. tfn

**CHELSEA GREENHOUSES** - 7010 Lingane Road, Chelsea, Michigan. 475-1353-54 or 475-9813. Flowers and plants for every occasion. We specialize in wedding flowers to fit your budget. We are as near as your phone and we welcome your business. 10-9p

**C & B PAINTING** - Interior-Exterior-Free Estimates. Contact Charles E. Benedict. Phone 428-7186 or 428-7416. tfn

**WITH ALL THE RAIN LATELY** does the water wisk through your gutters like a rapid flowing stream? Or do you feel like you're living behind Niagara Falls because your gutters are so plugged that the water goes right over them? If so call T&N Services and get the water flowing again! 428-7002.

**BLACK DIRT** or Peat. 6 yards - \$50 delivered. Phone 428-7784. tfn

**LITTLE WACK EXCAVATING** - Licensed and Insured. Basements, Drainfields, Digging, Bulldozing, Trenching, Black Dirt, Sand, Gravel. Paul Wackenhut. 313-428-8026. tfn

**FOR SALE - BUILDING LOTS** - Riverbend Subdivision, Village of Manchester, on private lake. All utilities installed. Terms negotiable. Phone (313) 428-8496. tfn

**STILL CONTINUING TO SERVE YOU** - Walkow Home Improvement. Seamless Gutters, 5 Year Warranty, Free Estimates, Gutter Cleaning. 18353 Herman Road, Manchester, MI 48158 - Phone 313-428-8468. tfn

**SHARPENING SERVICE** - Ice skates, saw chains, hand saws, circular saws, knives, scissors, pinking shears, hair-animal and grass clippers, lawn mower blades, electric hedge clippers, drills, and most anything needing a sharp edge. Kleinschmidt True Value Hardware, 19860 Sharon Valley Road, Manchester. tfn

**WOLVERINE CHEM-DRY** - Quality carpet and upholstery cleaning. Serving Washtenaw county area. Call 428-7815 for your free estimate. tfn

**MANCHESTER ANTIQUE MALL** - 35 Dealers. Open 7 days, 10-5, 116 E. Main. 428-9357. tfn

**CORKEY D'S DELI** - Homemade Ice Cream & Waffle Cones - Sandwiches - Subs - Baskets - Burgers - Fries - Party Trays & Salads - Baked Goods of All Kinds. Phone ahead-428-9216. tfn

**VILLAGE HAIR FORUM** - 201 East Main, Old Mill. 428-7684. tfn

**GERMAN SHEPHERD** - 5 months old, female. Free to good home. 428-8203. tfn

**TF'S PAINTING** - Interior, exterior, free estimates. Quality work - insured. Phone 971-3326. 10-9

**WANTED TO RENT** - 3 bedroom home. Call (517) 531-5252 and ask for Jack or Jean. 10-16p

**2 BEDROOM HOME & Horse barn** on 5 acres. Manchester Schools. Reduced to \$44,000. Call 428-7225 10-9p

**DISTRICT MANAGERS** - Due to expansion, Michigan-based corporation is now seeking management level personnel. Excellent income potential. Marketing background helpful but not mandatory. If you are ready to join management team on the move, call for personal interview, 313-996-8400. 10-9

**1983 CHRYSLER LEBARON** - Excellent condition, black vinyl over black, air, cruise, loaded. \$6,000 or best offer. Call 475-9500 after 6 p.m. 10-9

**SUB BUSDRIVERS NEEDED** - immediately. Apply Manchester Community Schools, 710 E. Main, Manchester. See Rusty LeFurge. 10-9

**PRAYER TO THE HOLY SPIRIT** - Holy Spirit, you who made me see everything and showed me the way to reach my ideal. You who gave me the divine gift to forgive and forget the wrong that is done to me and you who are in all instances of my life with me. I, in the short dialogue, want to thank you for everything, and confirm once more that I never want to be separated from you no matter how great the material desire may be. I want to be with you and my loved ones in your perpetual glory. Amen. Thank you for your love towards me and my loved ones. (You must pray this prayer 3 consecutive days without asking your wish. After the 3rd day, your wish will be granted. Promise to publish this dialogue as soon as the wish is granted.)

**HONDA ATC 200** - good condition \$850 or best offer. Call 488-8344. p

**JERRY WHITAKER EXCAVATING** - Dozer, Backhoe, Dragline and 10 Yard Truck  
-  
-DRAIN FIELDS  
-BASEMENTS  
-DRIVEWAYS  
-SAND and GRAVEL  
CALL 428-7242

**ALBER'S ORCHARD & CIDER MILL** - Now open daily 9 a.m. to 6 p.m. Fresh cider, assorted apples and miscellaneous items. Double Red Delicious available starting September 13, of '86. 13011 Bethel Church Road, Manchester. 428-7756. tfn

**COUNTRY DAY CARE CENTER** - Now open. Preschool activities, licensed, certified staff. Full time, 6:30 - 6:30, Monday - Friday. Corner 11488 Pleasant Lake Road and Lima Center. Call 428-9487 or 428-7154. 10-30p

**WILDBEDDING** - New low price - 40 cents a pound. Closed Tuesdays. Becker - 13007 E. Michigan (Old US 12), Grass Lake. 517-522-8219. 9-25

**FOR SALE** - Wainscoting, about 20 feet. Call 428-9200. p

**ARTS & CRAFTS BAZAAR** - 2792 S. M-52, Chelsea, October 3 and 4, 10:00 a.m. - 5:00 p.m. Sponsored by Retirees Local 1284 UAW. p

**LOST** - Female black cocker spaniel. Vicinity of Sharon Hollow and Grass Lake Roads on 9/19. Child's pet. Reward. Call 428-8321 or 517-522-5467.

**WOMAN WANTED** for front counter help - 11 a.m. to 4:30 p.m. Monday thru Friday. \$4.00 per hour. Chelsea A&W. 475-2055.

**BLACKTOP DRIVEWAY** - sealcoating. Call T&N Services. 428-7002.

**WANTED** - Tractor, Allis Chalmers, WD or WD45. 428-9463. 10-2p

**KITCHEN APPLIANCES** - Table, 4 chairs \$50 and electric stove \$100. 428-7017. p

**PART-TIME BEAUTICIAN** - wanted in Manchester area. Must have experience and clientele. Call 475-9879 after 5 o'clock. p

**HALF PRICE!** Flashing arrow signs \$289! Lighted, non-arrow \$269! Nonlighted, \$229! Free letteral Few left. See locally. 1(800)423-0163, anytime. p

**1978 MERCURY ZEPHYR** - 6 cylinder, automatic, \$700. Call 428-7848. p

**YAMAHA ALTO SAXOPHONE** for sale. As new. \$450. 428-9106.

**FOR SALE** - Gilson Compact Tractor B&S 18 H.R.P., 42" mower deck, good condition. Also China Cabinet, good shape. Call 428-7887. Ask for Mike Schneider. p

**FOR SALE** - Apache pop-up camper, sleeps eight, 2 gas furnaces and gas stove. Ideal for deer hunting. Phone 428-8772.

**STORAGE AVAILABLE** in clean, dry, locked barn. Will have own key. Reasonable rates. 428-7405 evenings.

**GARAGE SALE** - Saturday October 4, Sunday, October 5, 10 a.m. - till dark. Ladies clothing sizes 8 to 12, shoes, school and office supplies, jewelry, books, stereo cart, lawnmower and lots of misc. items. 9750 Grossman, 1 1/4 miles south of Austin.

**HELP NEEDED** - by mail order company for seasonal business. Positions available immediately for phone order-takers and key punch/data entry operators. Send qualifications to: P.O. Box 490, Chelsea, MI 48118. 10-9

**CAROLIN'S CORNER** - Licensed Daycare Home offers meals, snacks and planned activities; supervised by experienced staff. Full and part-time spaces available. 18 months - 4 years. 428-8279. 10-30p

**RUSS' SMALL ENGINE REPAIR** - Tune-ups and overhauls. Pick up and delivery service available. 560 W. Main. 428-7441. 10-9

**WILL DO LIGHT HOUSEWORK** and baby sit in your home - 6:30 a.m. - 12:00 p.m. Phone 428-8136. p

**PART-TIME HELP** - Washing cars, sweeping floors, light mechanic work. Apply Wadwayer Ford, Manchester.

**INFORMED BIRTH CHILDBIRTH EDUCATION** - Classes teaching natural childbirth, relaxation and giving information for making decisions concerning childbirth options for home or hospital birth. Call Tammy Braunscheidel at (313) 428-5190. 10-2p

**FOR CLEANING, MOWING, hauling or anything else that you need done** - call T&N Services, 428-7002.

**FOR SALE** - 18' round Coleco swimming pool. Includes filter and liner, \$400. Antique upright wood piano, \$100. 428-7659.

**FOR SALE** - Used Armstrong flute. Excellent condition, only used three years. Call days, 428-0250; evenings 428-8163. \$175.

**A baby partridge is called a "cheeper"**

**Ints For Homeowners**

**How Well Do You Know What's In Your Home?**

It can be found in nearly every home in America—but you may never think about it being there. Still, a very versatile substance that's used to make many of the things in your home is most likely making life easier for you in countless ways, every single day.

An architect may have used it in the construction of your home. If you ski, jog or backpack, you probably use it during your outings. It's probably on some of your cookware and tools and it may be helping your carpet to last longer and resist staining.

What does a skier's parka have in common with a living room carpet and a non-stick frying pan? A white, sticky substance called a fluorocarbon resin—developed by Du Pont Company and marketed under the brand name Teflon.

Architects and engineers use glass fabric coated with Teflon as an architectural withstands the elements, meets modern building codes, is flame resistant and translucent.

In the kitchen, you'll find this versatile resin in the form of an anti-stick coating used on many cooking utensils, under the name of "Silverstone." It's also used to coat irons and many household tools.

**Carpets stay cleaner when they feature a special resin that resists dirt and soil.**

the rapid expansion of Teflon PTFE, it keeps out wind, rain and snow while allowing perspiration vapors to escape. People in the Army, Navy and Marines wear such fabrics, too.

This amazing substance is used for carpet protection, forming an invisible barrier under the fibers. This prevents dirt, dust and soil from clinging to the fiber making vacuuming easier. It's also used in upholstery to prevent spills from being absorbed into the fabric.

In the kitchen, you'll find this versatile resin in the form of an anti-stick coating used on many cooking utensils, under the name of "Silverstone." It's also used to coat irons and many household tools.

**CARPET INSTALLERS**

Year round full time work for experienced carpet installers. Must have transportation and tools. High earnings possible.

**(313) 353-0160**

Ask For John Burke

An Equal Opportunity Employer



# NEWS

Governor James J. Blanchard finalized his official request for a presidential disaster declaration covering the 22 Michigan counties he declared state disaster areas last week because of torrential rains and record flooding. The Governor met with Julius W. Becton, Jr., director of the Federal Emergency Management Agency (FEMA), to expedite the President's approval of the disaster declaration. The President declared a Major Presidential Disaster Thursday (9/18) evening, only hours after Gov. Blanchard's request was delivered to the White House. The Governor also said that 20 Disaster Application Centers will be opened to assist flood victims in the 22 counties covered by the federal disaster declaration. The 22 counties are: Bay, Clare, Clinton, Gladwin, Gratiot, Huron, Ionia, Isabella, Kent, Lake, Mason, Mecosta, Midland, Montcalm, Muskegon, Newaygo, Oceaana, Osceola, Ottawa, Saginaw, Sanilac and Tuscola.

Gov. Blanchard issued a statement following the announcement by Dow Chemical Co. and Consumers Power Company that the two companies had reached agreement, in principle, on a settlement involving the Midland power plant. The statement read, in part, as follows: "I view today's announcement as a positive step toward a practical resolution of the complex issues involving the Midland facility. I am hopeful that details can be worked out in the next several months to everyone's satisfaction. I expect the Michigan Public Service Commission will closely monitor these developments to ensure that the provisions of this agreement and the projected long-term costs of the power from the facility are justified and reasonable."

Gov. Blanchard proposed

creation of a new research excellence center to help develop the new types of working relationships between workers and managers necessary for Michigan's high-tech industrial future. Gov. Blanchard said establishment of an Institute of Labor-Management Innovation will be one of his first requests to the Michigan Strategic Fund next year. The institute will be a focal point for research that is already occurring in labor-management relations here. Successes include the White Pine Copper Mine, Steelcase, Herman Miller, Westinghouse, the Manistee Area Labor Management Committee, Chrysler's new Jefferson Avenue plant contract, Ford's Dearborn engine plant and General Motor's Bay City CPC plant.

Speaking to the Governor's Conference on Aging, Gov. Blanchard urged an end to mandatory retirement, saying that "the experience of older workers is too valuable to squander on account of an outmoded concept of aging." More than 550 professionals, paraprofessionals and senior advocates gathered for the three-day conference in Flint to discuss such topics as "The Future of Social Security and Medicare," "House Options in the Year 2000," "Women, Work and Age," and "Elder Abuse." "We must guarantee that as our society collectively ages, we don't foreclose the opportunity for aging Americans to remain vital, productive, contributing citizens," the Governor said. "It is imperative that we rethink and reshape our attitudes and policies regarding older workers."

In an effort led by Gov. Blanchard, 13 northeastern and midwestern governors have petitioned the U.S. Forest Service to keep open the region's Forest Fire Research Station located in

Michigan. The Forest Service has proposed shutting down the station and moving its employees from East Lansing to the Western U.S. In a letter to R. Max Peterson, chief of the U.S. Forest Service, the Governor said: "We find the work of the forest fire research unit located in East Lansing, Michigan, to be most important. It is important both to human life and property, and to our efforts to use forest resources more effectively for economic development and diversification."

A \$300,000 job training grant will help place 200 former employees of the Wolverine World Wide, Inc. shoe manufacturing plant at Ithaca in new jobs. Gov. Blanchard announced. The program, operated by Eight CAP, Inc., will provide on-the-job training, classroom training and job search assistance to the former Wolverine workers. Statistics released by the U.S. Department of Labor showed Eight CAP successfully placed 96 percent of its adult trainees and 90 percent of its youth trainees in jobs.

**APPOINTMENTS:**  
**Chronic Disease Advisory Committee:** Appointed were: Charles F. Whitten, M.D. of Detroit and Milton Siegel, D.D.S., M.S. of Flint, for terms expiring at the pleasure of the Governor. The appointments are subject to Senate confirmation.  
**State Board of Boiler Rules:** Reappointed was: Joseph P. Day of Saginaw, for a term expiring June 30, 1990.  
**Appointed were:** Charles Loftis of Livonia and Ian Wright of Brighton, for terms expiring June 30, 1990. The reappointment and appointments are subject to Senate confirmation.  
**Michigan Employment Relations Commission:** Appointed was: Anne T.

Patton of Detroit, for a term expiring June 30, 1988. Reappointed was: David S. Tammann of Oak Park, for a term expiring June 30, 1989. The appointment and reappointment are subject to Senate confirmation.

## "Walk Across Washtenaw"

Dale J. Apley, Jr., Republican Candidate for State Senate takes his campaign to the streets of Washtenaw County during the weekend of October 3-6, 1986. Apley and supporters will begin "Walk Across Washtenaw" on Friday, October 3, 1986, at 8:00 a.m. in Whitmore Lake. Their route spans over 75 miles throughout all parts of Washtenaw County, including Ann Arbor, Chelsea, Dexter, Manchester, Milan, Saline and Ypsilanti. Apley will walk from Whitmore Lake to Ann Arbor on Friday, October 3, 1986. On Saturday, October 4, 1986, the candidate will continue through Ypsilanti to Milan and Saline. Sunday will see Apley hiking to Manchester and Chelsea. The walk will conclude on Monday, October 6, 1986, with a route from Chelsea/Dexter to Ann Arbor.

A "Meet the Candidate" celebration will be held at the conclusion of the walk at 6:00 p.m. on October 6, 1986, at the

Michigan Union, University of Michigan.

Mr. Apley will appear in Manchester on Sunday, October 5, 1986, at 10:30 a.m. at the Emanuel United Church of Christ.

## NEWS OF PETS

Now is a high risk time for dogs to be attacked by parasites, particularly if they play out of doors or go vacationing to warm areas of the country with their owners.

Two nasty internal parasites—heartworm and hookworm—are a serious problem in all areas of North America, especially during the fall months.

Heartworms attack dogs by way of infective mosquitoes that bite the dog and pass larvae (worms) into the dog's skin. The larvae then penetrate blood vessels and move toward the dog's heart, causing heart disorders and even death.

Hookworms are transmitted when the dog ingests contaminated food or water, when infected larvae penetrate the dog's skin or when unborn or newborn pups are infected in the womb or through the mother's milk.

Prevention of heartworm and hookworm disease is available in a single tasty tablet through licensed veterinarians. The product, Filaribits Plus, provides excellent protection against heartworm and hookworm when given once a day to your dog.

**NEW WINTER HOURS**  
**THE VILLAGE TAP**  
 Monday and Tuesday 10 am to Midnite  
 Wednesday thru Saturday 10 am to 1 am  
 CALL A HEAD FOR TAKE-OUT FOOD  
 Phone 428-7032  
 Grill Open till 11 pm

## Last Day To Purchase At This Low APR Is October 8, 1986

**2.9%**  
 Annual Percentage Rate Financing

**OR UP TO \$1,000 CASH BACK**

**ON THE BEST-BUILT AMERICAN CARS and TRUCKS.**

SIX YEARS RUNNING. Have you driven a Ford... lately?





**WIDMAYER FORD**  
 510 WEST MAIN (313) 428-8343

### Take advantage of special low financing or cash back now.

Your participating Ford Dealer can arrange through Ford Credit for qualified buyers, special Annual Percentage Rate financing on select new Ford cars and light trucks. Or if you choose, you may get cash back directly from Ford with the purchase of an eligible vehicle. You may keep the cash or apply it to your transaction. You must take delivery from dealer stock by October 8, 1986. Limit one per qualified retail customer. See your dealer for complete details. Dealer contribution may affect customer savings.

VEHICLE	A.P.R.	CASH BACK ALTERNATIVE
ESCORT (Automatic)	2.9%	\$ 300
ESCORT (Manual) (Except GT)	2.9%	\$ 500
ESCORT EXP (Manual)	2.9%	\$ 500
ESCORT EXP (Automatic)	2.9%	\$ 300
TEMPO (5-Speed)	2.9%	\$ 600
TEMPO (Automatic)	2.9%	\$ 300
MUSTANG	2.9%	\$ 300
MUSTANG SVO	2.9%	\$1000
THUNDERBIRD	2.9%	\$ 600
THUNDERBIRD TURBO COUPE	2.9%	\$1000
RANGER (5-Speed)	2.9%	\$ 600
RANGER (Automatic)	2.9%	\$ 300
F-150/250 PICKUP (Manual)	2.9%	\$ 600
F-150/250 PICKUP (Automatic)	2.9%	\$ 300
F-350 PICKUP (Manual)	2.9%	\$ 600
BRONCO II (5-Speed)	2.9%	\$ 750
BRONCO II (Automatic)	2.9%	\$ 500

Other special low rates available. Rates higher as length of term increases.

**Sutton Agency, Inc.**  
 136 East Main Street Manchester  
 Phone 313-428-9737

**AGENTS:**  
 Donald K. Sutton  
 Connie Widmayer  
 Kathryn Martin  
 Mary Knapp

**Phone Answered 24 Hours**  
 Monday-Tuesday-Wednesday-Friday 9-12:30 and 1-4:30 p.m.  
 Thursday 9 a.m.-12 Noon

