

THE MANCHESTER ENTERPRISE

25¢ COPY

118TH YEAR VOLUME NO. 20

USPS NO. 327-480

THURSDAY, MARCH 6, 1986

Optimist Club Student Of The Month



Melissa Beasley was honored as January Optimist Student of the Month at their first meeting of 1986. Melissa is the daughter of Ken and Kathy Beasley of Bemis

Road. Melissa transferred to the Manchester Schools after her 9th grade at Saline Christian School. She has remained active in her 10th and 11th grades here at Manchester High School. Melissa has been in the Pep Club and Drama Club her junior year, been on the Honor Roll, in Volleyball and Softball her 10th and 11th grades, and has maintained a perfect attendance record this junior year.

She is a member of the Life group at her Saline Assembly of God Church and is an expert at the piano, having taken lessons since the 2nd grade.

Melissa is interested in nursing as a career and is considering Eastern Michigan University as a college. We are all proud as Optimists of Melissa's accomplishments.

Hit or Miss

by Farley

Sometimes twenty-five years does a great deal for many things either good or bad. Twenty-five years ago the then President Eisenhower was never acclaimed as a public speaker but at that time he warned "We must guard against the military-industrial complex and its unwarranted potential for the unwarranted rise of misplaced power." The syntax of his replies to the questions of White House news conferences provided material for the political humprists of that day.

Other threats that he warned against included "the termination of the nation's scholars by federal employment." He said that the "equal opposite danger that public policy could become the captive of a scientific-technological elite." In the light of developments over the past quarter century some of our political extremists now view the speech as prophetic.

This address we hope, planted the seeds of revisionism that led to the improvement of Eisenhower's standing in intellectual circles which then had no place to go but up. During and beyond the 1950's it seems to have become very condescending in a book titled "Presidential Power" by Richard Neustadt, that contrasted the styles of Eisenhower and Franklin Roosevelt which we were recently presented with. Neustadt wrote that during Eisenhower's first six years his power sense was blunt in the same degree that Roosevelt's was sharp. In the late 1950's, Eisenhower was accused of being surprised that his orders were not carried out as they were in the army.

Ernest Hughes, who was a speech writer for both Eisenhower election campaigns was another one who was unflattering about Eisenhower's ability and in 1963 he said that as an intellectual he bestowed in his games of golf and bridge "all the enthusiasm and perseverance that he withheld from books and ideas."

Murray Kempton, we are told, who was a prominent critic of Eisenhower while he was President, said in an article in Esquire in 1967, that he was "The President most superbly equipped for truly consequential decisions", we ever had, a mind neither rash nor hesitant, free from the slightest concern for how things might look; as calm as when he was demonstrating the wisdom of leaving a bad situation alone when he absolutely had to.

Most subsequent appraisals of Eisenhower's character and career have been in a similar vein. In 1963, a book *The Hidden Hand Presidency* by Fred Greenstein, argues that his seemingly passive subject was a behind-the-scenes activity with cunning to spare.

In a survey of historians and politicians and political scientists taken in 1982, Eisenhower was adjudged to be the ninth best American President. Just as the scholars did, the ordinary voters "Like Ike".

I don't know who all these self-sufficient historians and writers are but they have been smart in evaluating everyone but themselves but many of them remind us of the definition of an expert - "An office boy thirty miles from home."

Annual Village Election Monday March 10th

The Annual Manchester Village Election will be held Monday, March 10, 1986, at the Village office at 120 South Clinton Street. Polls will be open from 7 a.m. until 8 p.m. The following offices will be voted on: President - John Hinkley, incumbent; Clerk - Constance M. Schaffer; Treasurer - Sue A. Koebbe, incumbent and Diane S. Wiedmayer; Trustees: D.E. Lempert, Joseph J. Marsnau, David H. Petsch and Wendell O. Reinhart; Assessor - Delbert D. Ludwick.

Former Governor Swainson Donates Photographs

Former Michigan Governor John B. Swainson has donated nearly 100 photographs highlighting his political career to the State Archives.

Swainson is president of the Michigan Historical Commission and an honorary chairman and ex-officio member of the Michigan Sesquicentennial Commission.

The photos, covering more than 20 years in public office, were presented to Secretary of State, Richard H. Austin. The Department of State includes the Bureau of History and the State Archives.

Taken by James Yardley, the photos show Swainson with many famous Americans, including former presidents Harry S. Truman and John F. Kennedy, and Eleanor Roosevelt, widow of former president Franklin D. Roosevelt.

There are also many photos of Swainson on the campaign trail, in local union halls, at community gatherings and at social functions.

"These pictures show the elective process as we knew it in Michigan in the 1950's and 1960's," Swainson said. "Thus they are a part of history that isn't often seen in one collection at one site."

As a decorated veteran of World War II, Swainson began his political career as a state senator in 1954. Four years later he was elected lieutenant governor under G. Mennen Williams.

Swainson became the youngest Michigan governor in this century at age 35, when he was elected to succeed Williams in 1960.

Swainson was a circuit judge from 1964 to 1969 and a Michigan Supreme Court Justice from 1970 to 1975.

Photo archivist, John Curry, says the Swainson photos will be a part of the state's permanent photo collection, which now numbers more than 300,000 images of Michigan's history.

The Swainson photos can be seen by the public at the State Archives, 3405 N. Logan, in Lansing, weekdays from 8:00 a.m. to noon and from 1:00 to 5:00 p.m.

Red Cross Bloodmobile Monday, March 17th

Donating blood to the Red Cross is a Manchester tradition, dating back to 1951. The donors in the Manchester area have given over 8000 pints of blood for the Southeastern Michigan Regional Blood Center.

The Emanuel Church of Christ will host the blood bank on March 17; the hours are from 12 noon to 6 p.m. The women's groups at Emanuel will furnish the Canteen.

Registration in order to avoid bottlenecks at the blood bank are important but walk-ins are always welcome. If you feel you cannot register before hand please come in the middle of the afternoon to avoid a long wait; between 3 and 4 o'clock is a good time. However its preferred that you register.

Double A Products, Hoover-Universal, Manchester Plastics, Manchester Tool and Die, and Manchester Stamping as well as Pinnacle Engineering schedule their employees to help keep a constant flow of donors. Thirteen churches in the area schedule reservations through their recruiters and there are drop boxes with registration cards at the three area banks, Comerica, 1st of America and Great Lakes Federal. There are also boxes at the Bakers Dozen and another at the IGA, A&B Market.

In the Southern Michigan Region there are 75 hospitals which use 500 pints of blood a day. In Washtenaw County there are 6 hospitals that use 180 pints of blood a day.

Red Cross regional blood

services are financed by recovering expenses from the users of their services. The Red Cross charges hospitals a processing fee to cover the expenses of recruiting, collecting, testing, processing, and distributing blood and blood products. This fee is directly related to cost. Hospitals pass the charges on to the patient whose health insurance plan usually cover the expense. The blood itself is never charged for because it is a volunteer's free gift.

As always, blood is in great demand at all area hospitals, so please sign up today.

County Fee Hikes To Fund New Health Inspectors

Five new Washtenaw County Health Department inspection fees will be created and 11 old fees increased to hire two sanitarians for inspections required because of rising home sales and new restaurant openings. Environmental health engineer, Barry Johnson, said the changes will generate an additional \$50,000 in revenue this year. The increases were tentatively approved by county commissioners in a Ways and Means meeting Wednesday night. The largest single revenue raiser will be an increase from \$45 to \$100 for each inspection of septic fields and well water

Continued on page 10

Career Day At Klager

Career Day, held bi-annually at Klager, is a chance for students to learn first hand about different kinds of jobs and work. As they ask questions, students learn what skills are required and why adults chose different jobs. They can begin to think about themselves and their place in the future world of work.

Under the leadership of second grade teacher, Yvonne Henry,

staff and parents are planning a special day to introduce to students, adults holding a wide variety of jobs. Each child will be able to participate in three different presentations.

Anyone who would be willing to share information about their job with students at Klager is urged to contact Yvonne Henry at Klager School, phone number 428-8321.



Donating their time to plan Career Day are Janice Little, Teddy Groeb, Yvonne Henry and Carol Savage.



NOTE: Friday, March 7, Brown Bag Day, No Lunch Served.
 Monday, March 10, Steak Nuggets with sauce, Hash Brown Patty, Dill Pickles, Pear Half, Milk.

Tuesday, March 11, Chicken Chow Mein on Chow Mein Noodles, Buttered Green Beans, Bread & Butter, Jello, Fortune Cookie, Milk.

Wednesday, March 12, Cheeseburger on Bun, Potato Chips, Carrot & Celery Sticks, Fresh Fruit, Milk.

Thursday, March 13, Macaroni & Cheese, Ham Patty, Mixed Vegetables, Bagelette with Butter, Ice Juice, Milk.

Friday, March 14, Fish Sandwich, Oven Brown Potatoes, Coleslaw, Crushed Pineapple, Milk.

Senior Citizens News

Outside is a 'Christmas Card' snow scene again today, making us aware of the beauty of Michigan. Easter and spring are coming - hang in there!

On Thursday, March 6 - exercise at 11 a.m. will make you hungry for Ethel's chicken and homemade biscuits at noon. You may then sit and enjoy bingo. Men - no bridge until March 20.

Friday, March 7 - Leave Center at 10:30 a.m. for the American Tour Club Luncheon at Adrian College. Shut-in visits will begin at 1:00 p.m.

Monday, March 10 - You may choose: Walking Club or a shopping trip to Adrian, both at 9:00 a.m.

Tuesday, March 11 - 9:00 a.m. Council meeting, 12:00 noon, hash on the menu. Celeste Ingraham will present slide pictures of Denver beginning at 12:30 p.m. I wonder if maybe she rode the ski

lift to the mountain top, as at Berchtesgaden. Intriguing? Come and enjoy her surprises. I've not been there, have you?

Wednesday, March 12 - One group will leave at 9:00 a.m. for the Ice Capades in Detroit, another at 10:00 for the Saline Hospital Program. At 12 noon, Chamber of Commerce luncheon planned.

Thursday, March 13 - Back to moving muscles in the exercise class (the music is nice and the instructor pretty) at 11:00 a.m. Then sit down to baked ham and bingo starting at noon.

Looking ahead: You have until March 18, to register in the Center office for the March 24, Calligraphy class. You will need a calligraphy type felt pen which you may purchase at an art supply store to learn this very fascinating way to decorate announcements, invitations, etc. Let your imagination flow. Some of our 'artists' in our group may decorate Easter cards, while some will learn the basics for pure enjoyment of a new and challenging art form. Come join this class.

You are all urged to attend Manchester United Way's Annual Meeting on Wednesday, March 19, 7:30 p.m. at the Manchester Township Hall. Join Rubena there as she gives her report to the membership, along with the other agency representatives which make up our United Way.

The Manchester Area Senior Citizens Center, located at 214 North Macomb Street, welcomes you to drop in any weekday afternoon from 1-4:00 p.m. Hospitality abounds there whenever you have an afternoon free for a chat, cup of coffee or one of their many volunteer jobs to be done. They will welcome YOU.

Auxiliary Meeting
 The American Legion Auxiliary meeting will be at the Legion Home on March 12, 1986, at 7:30 p.m.

World Day of Prayer To Be Held at St. Mary's

On Friday, March 7th, the World Day of Prayer Celebration will be held at St. Mary's Catholic Church. The worship service will begin at 1:30 p.m. Following, there will be a time for fellowship and refreshments.

The women of St. Mary's invite all women in the Manchester area to attend this service on the day when women of faith around the world pray together for a world free from hunger and war.

Engagement Announced



Mr. and Mrs. Clare A. Knickerbocker of Manchester, are pleased to announce the engagement of their daughter, Sandra, to Martin Haas, son of Dr. and Mrs. Robert Haas of Sioux Falls, South Dakota. The bride to be is a graduate of Manchester High School and Eastern Michigan University. Her fiancé is a graduate of A&M Consolidated High and Texas A&M University. An August 9, 1986 wedding is planned.

The Manchester Enterprise
 150 EAST MAIN STREET
 Manchester, Michigan 48158
 USPS 327-460
 Phone 428-8173

The Manchester Enterprise was established in 1867 and is published each Thursday at 150 East Main Street, Manchester, Michigan, with second class postage paid at Manchester.

Edward E. Steele, Publisher
 Lenore A. Steele, Editor

POSTMASTER:
 Send Form 3972 to The Manchester Enterprise, 150 East Main Street, Manchester, Michigan 48158.

DEADLINES:
 All Display Advertising AND Pictures (Black and White Only) Are Due By 5:00 P.M. Every Monday For Same Week Publication.
 All Classified Advertising And News Articles Are Due By 11:00 A.M. Every Tuesday For Same Week Publication.

Bill Introduced To Charge License Plates Or Drivers License

State Senator Lana Pollack (D-Ann Arbor) today introduced a bill which would allow Michigan motorists the ability to say "charge it" when buying their license plates or renewing their driver license.

"With the widespread use of charge cards instead of cash, this legislation will make it more convenient for motorists to conduct business with Michigan," Pollack said. "I have introduced this legislation at the request of the Secretary of State and see it is a continuation of Mr. Austin's efforts to provide quality public service."

"I expect the use of credit cards to be as popular as the change in 1981 which allowed acceptance of personal checks," said Pollack.

SHERIFF WASHTEAW COUNTY EMERGENCY NUMBER 971-3911
 Non-Emergency 971-8400

STOP SMOKING
 IN 3 EASY STAGES

TRIED "GOING COLD TURKEY" AND FAILED?
 THEN LEARN HOW TO CHANGE YOUR ATTITUDES AND BEHAVIOUR, REINFORCE YOUR WILL POWER BY ATTENDING:

"SELF AWARENESS AND NON SMOKING"

WHERE: Emanuel Church of Christ Hall
 Manchester, MI 48158

WHEN: 7:15 P.M.
 March 11, 18, 25, 1986

FEE: \$100 Complete Course (Saving \$50)

REGISTER EARLY - Numbers Limited

CALL
CYMMER HYPNOSIS CENTER
 (313) 540-7791

Leave Message

MARGIE'S UPHOLSTERY
 6245 Brooklyn Road
 Jackson

Wide Selection Of Fabrics

Pick-Up / Delivery Available
 517-536-4230

This Phone Number Is In Working Order. Please Phone Persistently, Or Go Through The Operator.

PEPSI-COLA
 8 PACK 1/2 LITER PLUS DEPOSIT \$2.19
 2 LITERS PLUS DEPOSIT \$1.59
 2% MILK GALLON \$1.69

Lottery Tickets
 MICHIGAN LOTTO COMING SOON!
 CHECK OUR BEER PRICES!

Back Door Party Store
 500 ANN ARBOR STREET MANCHESTER, MICH.
 PHONE 428-9287

TIRB CHEVROLET CO.
 PHONE 428-8212 or 428-8492
 131 Adrian Street Manchester

CHEVROLET

INTERESTED IN LEASING A NEW CHEVROLET?
 Stop In or Call Us For Details

OM QUALITY SERVICE PARTS GM

AT H&R BLOCK, IF IT HAS TO DO WITH TAXES, WE CAN HELP.

• Federal • State • Local
 • Individual • Business • Farmers • 1040 • 1040A

Whatever your tax situation is, or whatever forms you have to file, we can help. You won't find more experienced preparers or higher quality service anywhere else.

Stop in and see us

H&R BLOCK
 THE INCOME TAX PEOPLE

201 East Main Street
 IN THE MILL 428-7833
 Monday thru Friday 9-6 Saturday 9-7

Council Proceedings

Approved Minutes
 February 19, 1986

The regular meeting of the Manchester Village Council, lacking a quorum was rescheduled from February 17, to February 19, 1986.

President Hinkley called the meeting to order at 7:00 p.m. Present: Becktel, Kallewaard, Koebbe, Zaborowski, Naimowicz.

Becktel moved to approve minutes as corrected, supported by Zaborowski. Motion approved.

Robert Norman and Russell Petty were present to request a permit to open a ten (10) Machine Arcade with a Pool Table, in the former Roller Jewelry Store. Hours would be 3:00 p.m. to 10:00 p.m. - weekdays, 8:00 a.m. to 10:00 p.m. - Saturdays, closed Sundays. Summer hours 8:00 a.m. to 10:00 p.m.

Kallewaard moved that the Village Zoning Inspector will make a decision on the Arcade, whether it is a permitted use. If he cannot make a decision, the matter will be referred to the Zoning Board of Appeals. Mr. Norman and Mr. Petty will have a finger print check with the Washtenaw Sheriff Department, Jackson Sheriff Department and State Police, supported by Becktel. Roll Call Vote: Ayes - all. Motion approved.

Naimowicz presented the Temporary Budget. Discussion followed.

Koebbe moved to approve budget changes for the 1985-1986 Fiscal year, supported by Kallewaard. Roll Call Vote: Ayes - all. Motion approved.

Zaborowski moved to approve the Temporary Budget, supported by Becktel. Roll Call Vote: Ayes - all. Motion approved.

After the Election, Council will look into the job description and wages of the Treasurer, Clerk and Office Staff.

Becktel moved to hire McNamee, Porter & Seeley to inspect the W. Main, Duncan and Furnace Street Bridges, under the Michigan Critical Bridge Program, at a cost of \$2500., supported by Zaborowski. Roll Call Vote: Ayes - all. Motion approved.

Council stated that an Ad should be placed in the Manchester Enterprise for "Bids" on mowing the Parks.

Kallewaard moved to approve a job description for the Village Zoning Inspector, supported by Koebbe. Roll Call Vote: Ayes - all. Motion approved.

Naimowicz said he would like to see a time frame put on each section (where applicable) of the Zoning Inspectors Job Description.

President Hinkley appointed Robert Lowery as Zoning Inspector of the Village.

Kallewaard moved to approve the appointment of Robert Lowery as Zoning Inspector and to retain Naimowicz as Deputy Zoning Inspector, supported by Koebbe. Roll Call Vote: Ayes - all. Motion approved.

Koebbe presented the Public Works Report. Report on file.

Discussion was held on making the Rest-rooms at Carr Park available to the Handicapped or renting Porta-Johns. Council will discuss further at a later date.

The Clerk read a letter of resignation from Kevin Deacons as a full time Police Officer with the Village of Manchester.

Kallewaard moved to accept the resignation of Kevin Deacons, supported by Zaborowski. Roll Call Vote: Ayes - all. Motion approved.

Becktel moved to adjourn, supported by Zaborowski. Meeting adjourned at 8:50 p.m.

Helen J. Kensler
 Village Clerk

Senior Health Education Programs
 Saline Community Hospital will host the sixth in a series of Senior Health Education programs entitled "Memory - 60 Plus" on Wednesday, March 12, 1986, from 11 a.m. to 1 p.m. in the hospital's Blue Room. Featured speakers will be author, Bea Woolley and Eddie Boyd, Pharm. D.

Free blood pressure checks will be offered by Saline Community Hospital nursing volunteers from 10:30 a.m. to 11 a.m.

Mrs. Bea Woolley, a retired teacher, is now a Volunteer Peer Counselor at Turner Geriatric Clinic. She has written two books dealing with memory, "Facts and Fiction About Memory" and her soon to be published book, "Memory: Use It Or Lose It". Mrs. Woolley will be talking about things that effect our memory and ways to maintain and/or improve our memory.

Eddie Boyd, Pharm. D is an associate Professor at the University of Michigan College of Pharmacy. He will be discussing drugs that may contribute to confusion and/or memory loss.

For further information regarding the program and for transportation assistance, please call Saline Community Hospital at 429-1508.

Annual Meeting Of Family Services, Inc.
 The public is invited to attend the Annual Meeting of the Manchester Family Service, Inc. to be held on Thursday, March 13, 1986, at the Manchester Township Hall at 7:30 p.m. Those people who have donated time and money are especially encouraged to attend as the annual report is available on request.

The nominating committee announces that three board positions will be elected at this meeting. Anyone desiring to submit a name for one of these three-year board positions are asked to call Mrs. Genevieve Lemon (428-8249) or Mr. Merrill Korth (668-4299 daytime, 428-7280 evenings.)

If you are interested in learning the goals and functions of Manchester Family Service, Inc., please attend this meeting. We will be pleased to answer your questions.

Matthaei Botanical Gardens
 On March 22 and 23 the Friends of the Matthaei Botanical Gardens will hold a "Grand Opening" of the Gardens new gift shop for the general public. A special preview party for all current and new members will be held on Friday, March 21, from 5:00 to 8:30 p.m.

The new gift shop will offer unique botanical and horticultural items for children and adults. The children's items include wooden puzzles, a peanut growing kit and coloring books. Among the items featured for adults are linen towels and aprons with herb designs, floral wrapping papers, cards and napkins, placemats and coasters with wildlife designs, china pomanders filled with potpourri, scented candles, dolls decorated with dried flower bouquets and pillows with floral designs. There is also a selection of ceramic containers and many unusual plants grown by the Friends Propagation Committee.

After March 23, the Gardens Gift Shop will be open from 11:00 a.m. to 3:00 p.m., Tuesday through Friday, and 10:00 a.m. to 4:00 p.m. on Saturday and Sunday.

GUTTERS & DOWNSPOUTS
 SEAMLESS ALUMINUM GUTTERS
 7 COLORS AVAILABLE
 Financing Available • License # 041738

R.D. KLEINSCHMIDT, INC.
 428-8836
 10000 SHARON VALLEY RD • MANCHESTER

Continue the programs that will help our Village grow

For Village President
JOHN J. HINKLEY

- Incumbent
- 4 years Village President
- 4 years Village Council
- Past Chairman, Village Planning Commission
- Member Economic Development Corporation Board

For Trustee
JOSEPH J. MARSHALL

- Member, Manchester Village Planning Commission
- Member, Board of Directors, Manchester Area Chamber of Commerce
- Local Business Owners - Manchester Antique Mall

For Trustee
DAVE PETSCH

- 5 years Village Council
- Charter Member Manchester Area Chamber of Commerce
- Charter Member Manchester Men's Club
- Past President, Manchester Jaycees

For Trustee
WENDELL REINHART

- 6 Years Village Council
- 4 years Village Assessor

For Assessor
DEL LUDWICK

- Incumbent
- 2 years Village Assessor

For Treasurer
SUE C. KOEBBE

- Incumbent
- 5 years Village Treasurer
- 25 years experience in bookkeeping

For Clerk
CONSTANCE M. SCHAFFER

- Graduate, Cleary College
- Formerly employed in Accounting Department, Washtenaw County Friend of the Court

VOTE MONDAY, MARCH 10TH • Village Hall

THANK YOU FOR YOUR SUPPORT

Paid for by the committees to elect John J. Hinkley, Dave Petsch, Wendell Reinhart, Joseph J. Marshall, Sue C. Koebbe, Constance M. Schaffer and Del Ludwick.

High School Library Needs Volunteers

As a result of the millage being defeated last October, the High School Library is forced to close during one lunch break. On the agenda of the defeated millage was the part-time library aide position. In the past, when there were adequate funds to support the position, the library aide worked two hours, covering the time allotted for the two lunch periods.

It is self-defeating to close the library during the school day — teachers and students cannot depend on the library being open during the lunch period in which they are able to use it. The library should be open to all the students during the entire school day, not just when staff requirements allow it. Looking ahead to the future when the High School will be evaluated by North Central, one of their requirements is the library to be open every hour of the school day.

The administration and the High School Librarian would like to keep the library open during both lunch periods. In order to achieve this, we are asking for parents to volunteer a little of their time. We hope to set up a schedule of parents who would volunteer 1 1/2 hours every two weeks to help in the library. If you are an interested parent who is willing to invest a little time in the High School, please contact, High School Librarian, Joan Thompson, at 428-7333.

North Sharon Bible Church To Feature Evangelist

North Sharon Bible Church will feature Evangelist Paul Cates in four days of special services beginning Sunday, March 9th. The meetings this day are scheduled for 10:00 a.m. and 11:00 a.m. as well as 7:00 p.m. on Sunday evening. The weeknight services will be Monday through Wednesday at 7:00 p.m.

Dr. Paul Cates, the speaker for

the meetings at North Sharon Bible Church, received his Ph. D. in 1972 from Loyola University in Chicago, Illinois, where he majored in ten different areas of study while working toward his doctoral degree.

North Sharon Bible Church is located at 17999 Washburne Road, Grass Lake, Michigan - 49240. Phone (313) 428-7222.

8 EASTER NOW!

Easter Through The Ages

The Easter egg first rolled onto American shores in 1728, when the Pennsylvania Dutch brought the happy custom of exchanging colored eggs to the New World. They also started the custom of the Easter egg tree—a large branch or small tree with the leaves removed and hung with brightly decorated eggs. In those days, coloring the eggs was hard work: housewives spent several days boiling onion skins, hickory bark, coffee and walnut hulls to create the right colors.



The man who made coloring Easter eggs easy was a druggist from Newark, New Jersey named William M. Townley. In 1890, he started what was to become known as PAAS.

Today, the company is the world's oldest and largest manufacturer of Easter Egg Color Kits, and families can choose from many safe and creative color kits that include transfer paper, wire dippers and wax crayons for writing names or making designs. Other company products include EggArrounds, Easterbuds (egg decorating transfers for use on colored eggs) and "Basket Stuffers," activity toys that include a 3-D Coloring Set, Peter and the Magic Egg Story Games, and Easy Magic Tricks.

Lenten Services At Sharon Church

The theme for the Lenten Midweek Services at the Sharon United Methodist Church is "How the Gospel Transforms Lives in Bible Times and Our Own." Services are Wednesdays at 8 p.m. Everyone is welcome to attend.

March 5th and March 19th, the Rev. Evans Bentley, pastor, will lead a special Bible study on "How the Gospel Transforms Lives in Bible Times and Our Own."

The March 12th service will be a community service at 7:30 p.m. at the Manchester United Methodist Church presented by the choir of the four churches.

On Thursday, March 27th a Maundy Thursday Communion Service will be held at the Sharon United Methodist Church.

March 5th and March 19th, the Rev. Evans Bentley, pastor, will lead a special Bible study on "How the Gospel Transforms Lives in Bible Times and Our Own."

The March 12th service will be a community service at 7:30 p.m. at the Manchester United Methodist Church presented by the choir of the four churches.

On Thursday, March 27th a Maundy Thursday Communion Service will be held at the Sharon United Methodist Church.

Citizens Asked How To Improve State Courts

A State commission has asked Michigan citizens for suggestions on how Michigan courts can be improved.

The Citizens' Commission to Improve Michigan Courts is asking organizations and individuals concerned with court operations to participate in the process by presenting their comments to the Commission.

The 27-member Commission was appointed by the Michigan Supreme Court in January to recommend how courts can

improve their services to people who use them. Wen-Chao Chen of Kalamazoo is Chairperson and State Supreme Court Justice Patricia J. Boyle is Supervising Justice.

"In announcing appointment of the Commission, Justice Boyle said the goal of the Commission is to develop a series of recommendations that will improve citizen confidence in the legal system by helping Michigan's 241 trial courts and the state's appellate courts provide justice in the fairest and most effective manner," Chen said.

Chen said the Commission hopes to make its final report and recommendations by Oct. 1, in the areas of criminal law, civil law and the court as an institution.

"The Commission welcomes the views of individuals on how courts can be responsive to the needs of the citizens of our state," he said.

Persons wishing to assist the blue-ribbon Commission should send their views to Citizens' Commission to Improve Michigan

Courts, P.O. Box 30052A, Lansing, MI 48909.

The Commission is looking at the concerns of citizens on such matters as victim's rights and special problems and needs of handicapped persons, senior citizens, children and non-English speaking persons.

Add a teaspoon of lemon juice per each quarter pound of butter when sauteing mushrooms. It will keep them firm and white and add a marvelous flavor.

KIRK EXCAVATING
Sand—Gravel—Fill Dirt
Basements—Driveways
428-7938
DAVE KIRK
14180 Schlewis Road
Manchester

STATE GOVERNMENT

Governor James Blanchard (D), The Capitol, Lansing, Michigan 48909, (517) 373-3400.

Sen. Lana Pollack (D), 18th Senatorial District, State Senate, Box 30036, Lansing, Michigan 48909, (517) 373-2406.

Rep. Gary Owen (D), 22nd House District, House of Representatives, State Capitol, Lansing, Michigan 48909, (517) 373-1771.

Rep. Perry Bullard (D), 53rd House District, House of Representatives, State Capitol, Lansing, Michigan 48909, (517) 373-2577.

Rep. Margaret O'Connor (R), 52nd House District, House of Representatives, State Capitol, Lansing, Michigan 48909, (517) 373-1792.

COUNTY BOARD OF COMMISSIONERS

District 1 - Ellis J. Pratt (R) 11663 Pleasant Lake Road, Manchester, 428-8562; business, 428-8388.

District 2 - Martin L. Straub (R), 13131 Island Lake Road, Chelsea, Michigan 48118, 475-9078.

District 3 - Roy Smith (R), 7768 Munger Road, Ypsilanti, Michigan, 434-9347.

District 4 - Dillard Roy Craiger (D), 1151 Wendell Ave., Ypsilanti, Michigan 48197, 483-2672.

District 5 - Mary Egnor (D), 702 Collegewood, Ypsilanti, Michigan 48197, 483-5003.

District 6 - Meri Lou Murray (D), 2871 Sorrento, Ann Arbor, Michigan 48104, 971-6828.

District 7 - Raymond G. Shoults (D), 459 Brookside Drive, Ann Arbor, Michigan 48105, 769-0409.

District 8 - Donald N. Duquette (D), 1510 Linwood, Ann Arbor, Michigan 48103, 663-0731.

District 9 - Catherine McClary (D), 1125 Michigan, Ann Arbor, Michigan 48104, 761-2061.

PUBLIC NOTICE
STATE OF MICHIGAN
PROBATE COURT
COUNTY OF WASHTENAW
PUBLICATION NOTICE
DECEASED ESTATE
FILE NO. 86-83933-SE

Estate of WINIFRED G. ULRICH, DECEASED. Social Security Number 374-30-1297.

TO ALL INTERESTED PERSONS: Your interest in the estate may be barred or affected by this hearing. TAKE NOTICE: On April 8, 1986 at 9:00 a.m., in the probate courtroom, Ann Arbor, Michigan, before Hon. Rodney E. Hutchinson Judge of Probate, a hearing was/will be held on the petition of FRANCIS VISEL requesting that FRANCIS VISEL be appointed personal representative of Estate of Winifred G. Ulrich who lived at 811 McKinley, Chelsea, Michigan and who died February 8, 1986; and requesting also that the will of the deceased dated July 13, 1962 and that the heirs-at-law of the deceased be determined. Creditors are notified that copies of all claims against the deceased must be presented, personally or by mail, to both the personal representative and to the court on or before May 28, 1986. Notice is further given that the estate will then be assigned to entitled persons appearing of record.

February 27, 1986
KEUSCH AND FLINTOFT, P.C.
Attorneys for the Estate
JOHN P. KEUSCH P-15927
119 South Main Street
P.O. Box 137
Chelsea, Michigan 48118
313-475-8671

FRANCIS VISEL
Personal Representative
19991 Bush Road
Chelsea, Michigan 48118



Looking for car insurance that rewards you for being over 45? No problem.

Are you 45 or older? Congratulations. Auto-Owners has a birthday present for you. Because chances are you're a better driver with a better driving record than those under 45.

In appreciation, Auto-Owners offers you a special discount on your car insurance premiums...and offers it earlier than most companies.

Auto-Owners thinks maturity should have its rewards. So see your "No Problem" Auto-Owners agent and find out how his service protection and discount can be no problem for you.

Sutton Agency, Inc.
DONALD SUTTON, Agent
CONNIE WIDMAYER, Agent
PHONE 313-428-7217
136 EAST MAIN STREET MANCHESTER, MICHIGAN
Monday-Tuesday-Wednesday-Friday 9-12:30 & 1-4:30
Thursday 9-12 Noon

Church Directory

SHARON UNITED METHODIST CHURCH - Rev. Evans Bentley, Pastor; Corner of M-52 and Pleasant Lake Road; Church School 10:00 a.m.; Worship 11:00 a.m.

CLINTON ASSEMBLY OF GOD - Rev. Richard Coury, Pastor; Chris Bouldrey, Youth Pastor; 13300 Clinton-Manchester Road, Clinton; Sunday School 9:30 a.m.; Sunday Morning Worship 10:45 a.m.; Sunday Evening 6:30 p.m.; Wednesday Prayer, Bible Study, Youth 7:00 p.m.

ST. JOHN'S LUTHERAN CHURCH - Rev. Dennis A. Falk, Pastor; Austin Road, Bridgewater; Sunday School 9:15 a.m.; Worship 10:30 a.m.

BETHEL UNITED CHURCH OF CHRIST - Rev. Roman A. Reinsch, Pastor; Schneider and Bethel Church Roads; Church Service 10:00 a.m.; Sunday School 11:00 a.m.

NORTH SHARON COMMUNITY BIBLE CHURCH - Timothy E. Booth, Pastor; Sylvan and Washburn Roads; Sunday School 10:00 a.m.; Morning Church 11:00 a.m.; Youth Meetings 8:00 p.m.; Evening Church 7:00 p.m.; Wednesday Bible Study 7:00 p.m.

BAHA'I FAITH - Study of Baha'i scripture and discussion on applying spiritual principles to daily living. Believers of all faiths welcome. 2nd and 4th Sundays every month, 2:30 p.m., at the home of Thomas and Nancy Rykwalder, 611 South Macomb. For more information or directions call 428-9454.

FAITH COMMUNITY CHURCH - Scott Engleman, Pastor, 8400 Sharon Hollow Road off West Austin; Worship Service 10:00 a.m.; Sunday School 11:15 a.m.; Sunday evening service 6:00 p.m.; Jr. and Sr. High Young Peoples' Meeting 7:00 p.m.

OUR SAVIOR LUTHERAN CHURCH - Rev. Franklin H. Giebel, Pastor; 1515 South Main, Chelsea; Every Sunday 9:00 a.m. Bible Classes for age 3 through adult; 10:30 a.m. Worship Service, Holy Communion 1st, 3rd and 5th Sundays.

IRON CREEK COMMUNITY CHURCH - Rev. Ray Robichaud, Pastor; English and Sharon Hollow Roads; Worship Service 10:00 a.m.; Sunday School 11:15 a.m.; Sunday Evening 7:00 p.m.; Wednesday Evening 7:00 p.m.

ZION LUTHERAN CHURCH - Rev. John R. Morris, Pastor; 3050 S. Fletcher Road; Sunday School 9:00 a.m.; Worship Service with Holy Communion 10:10 a.m.

ST. THOMAS LUTHERAN CHURCH - Rev. John Riecke, Pastor; 10001 Ellsworth Road; Sunday School 9:30 a.m.; Worship Service, 10:45 a.m.

ST. MARY'S CATHOLIC CHURCH - Father Raymond Schlinkert; Monday thru Friday 8:30 a.m.; Saturday 5:00 p.m.; Sunday 8:30 a.m. and 10:30 a.m.

CHURCH OF JESUS CHRIST OF LATTER DAY SAINTS (MORMONS) - Wayne L. Winzner, Branch President; 1330 Frazer Road, Chelsea; Sacrament 9:30 a.m.; Sunday School, Primary 10:50 a.m.; Priesthood, Relief Society, Aaronic Priesthood, Youth 11:40 a.m. For more information call 475-1778.

ST. BARNABAS EPISCOPAL CHURCH - Rev. Fr. Jerrold F. Beaumont, O.S.P., Eucharist - First, Third and Fifth Sundays 10:00 a.m.; Morning Prayer, Second and Fourth Sundays 10:00 a.m.; Eucharist - Second and Fourth Sundays 11:00 a.m.; Nursery available every Sunday. Family coffee hour follows all Sunday services.

EMANUEL UNITED CHURCH OF CHRIST - Rev. Robert B. Macfarlane, Pastor; Rev. Kenyon Edwards, Assistant; Sunday School 9:00 a.m.; Worship Service 10:30 a.m.

ST. JOHN'S UNITED CHURCH OF CHRIST - Rev. Ted Wimmier, Pastor; Rogers Corners, Waters and Fletcher Roads; Adult Bible Study Class at 10:00; Worship and Sunday School 10:30 a.m.

MANCHESTER UNITED METHODIST CHURCH - Rev. Hayden Carruth, Pastor; Church School 9:15 a.m.; Worship 10:30 a.m.

VICTORY BAPTIST CHURCH - 423 South Macomb, Barry Cantrell, Pastor, 428-7506; Sunday School 9:45 a.m.; Morning Worship 11:00 a.m.; Evening Worship 6:00 p.m.; Teen Talk 7:00 p.m.; Wednesday Prayer, Bible Study, Youth 7:00 p.m.

LITTLE CASSELL'S FOR BIG RESULTS!

Ken Miller
RESIDENTIAL BUILDER
QUALITY WORKMANSHIP AT A REASONABLE RATE
SPECIALIZING IN SIDING-CUSTOM MADE TRIM ALUMINUM AND VINYL
FREE ESTIMATES LICENSED & INSURED
PHONE 517-592-8904
Between Manchester and Brooklyn

Diane S. Wiedmayer
CERTIFIED PUBLIC ACCOUNTANT
Comerica Bank Building
134 E. Main Street Suite 202
Manchester, Michigan 48158
313-428-841/428-7398

Jon's Photo and Record Shop
NOW LOCATED IN THE OLD MILL

Excellent Film Processing	Passport Photos Taken
Camera Accessories	Good Film Prices
Camera Repair	Camera Batteries
Copy Work and Restoration	Darkroom Accessories

CALL JON FOR YOUR PHOTOGRAPHY NEEDS! 428-9509

ST. THOMAS LUTHERAN CHURCH
Wednesday, March 5, 8:00 p.m. Lenten Service.
Friday, March 7, 7:00 p.m. O.H.F.C. Weekend starts.
Saturday, March 8, All day - O.H.F.C. Youth singing, Bible Study, Witnessing, Canvassing, Nursing Home Visiting.
Sunday, March 9, 9:15 a.m. Coffee & Donuts, 9:30 a.m. Sunday School & Bible Class, 10:45 a.m. Worship, 7:00 p.m. Fellowship with refreshments, 7:30 p.m. Film, (See You Sunday.)
Tuesday, March 11, 6:30 p.m. Catechism Class, 7:30 p.m. Bible Study at Parsonage, (Served to Serve.)
Wednesday, March 12, 8:00 p.m. Lenten Worship at St. John's Bridgewater.

ZION LUTHERAN CHURCH
Wednesday, March 5, 1:30 Women of Zion, Lydia, 6 p.m. Lenten Supper, 7:30 LENT IV Worship.
Friday, March 7, 8 p.m. Family Fun & Fellowship; YI Retreat Begins 7 p.m. Friday thru 9 a.m. Saturday.
Saturday, March 8, NO 7th or 8th YI; Leadership Seminar Williston; 9:30 World Day/Prayer (1st. Method.); 1:30 Sr. Citizens.
Sunday, March 9, 9 a.m. Sunday School, 9 a.m. Pastor's Adult Inquiry, 10:15 a.m. Worship.
Tuesday, March 11, 8:30 a.m. Chelsea Ministerial, 4 p.m. Joymakers, 7:15 Sr. Choir, 7:30 Shuffleboard.
Wednesday, March 12, 6 p.m. Lenten Supper, 7:30 LENT V Worship.
Thursday, March 13, 7:30 S.S. Staff.

MANCHESTER UNITED METHODIST CHURCH
Wednesday, March 5, 9:45 a.m. Bible Study at Pat Post's, 1:00 p.m. Willo Circle at Nonnie Allan's, 7:00 p.m. Aerobics Exercise Class.
Thursday, March 6, 3:30 p.m. Girl Scouts, 6:30 p.m. "Celebrate Life" Rehearsal, 8:00 p.m. Missions Committee Meeting.
Friday, March 7, 1:30 p.m. World Day of Prayer at St. Mary's Church.
Saturday, March 8, 2:00 p.m. Confirmation Class Walking Trip to St. Mary's.
Sunday, March 9, 9:15 a.m. Church School, 10:30 a.m. Worship, 11:30 a.m. Choir Rehearsal/Coffee Hour, 12:00 Noon "Celebrate Life" Rehearsal.
Monday, March 10, 7:00 p.m. Aerobics Exercise Class.
Tuesday, March 11, 10:00 a.m. Lydia Circle at Church, 8:00 p.m. Joy Circle at Jan Cooper's.
Wednesday, March 12, 9:45 a.m. Bible Study at Pat Post's, 7:30 p.m. Community Choral Concert at Manchester UMC.
Thursday, March 13, 3:30 p.m. Girl Scouts, 6:30 p.m. "Celebrate Life" Rehearsal, 8:00 p.m. Finance Committee Meeting.

BETHEL UNITED CHURCH OF CHRIST
Wednesday, March 5, 1:30 Women's Fellowship, Chorus: 4:45 Children's, 6:30 Youth Choir, Senior after serv., 6:15 Pot Luck, 7:30 Lenten Serv.
Thursday, March 6, 10 a.m. Mini-Bible Study, 7:30 p.m. Mother's Group, Nancy Haessler.
Friday, March 7, 1:30 World Day of Prayer at St. Mary's in Manchester.
Saturday, March 8, 9 & 10 a.m.

EMANUEL UNITED CHURCH OF CHRIST
Thursday, March 6, 7:30 p.m. Church Council.
Friday, March 7, 1:30 p.m. World Day of Prayer Service and Fellowship at St. Mary's Church, for all women.
Sunday, March 9, 9:00 a.m. Sunday School, Confirmation, Adult Lenten Study, 10:30 a.m. Service of Worship, 11:30 a.m. Coffee Hour & Fellowship Time, 4:30 p.m. Confirmation Class at the Parsonage.
Monday, March 10, 6:30 p.m. Optimists, 8:00 p.m. Fair Board.
Tuesday, March 11, 12 Noon Senior Meal, 7:30 p.m. LaLeche League.
Wednesday, March 12, 7:30 a.m. Mid Week Lenten Prayer & Communion, 8:20 p.m. Cherub Choir, 8:40 p.m. Children's Choir, 5:30 p.m. Scouts, 6:00 p.m. Bell Choir, 7:00 p.m. Cub Scouts, 7:30 p.m. Community Lenten Choir Music at Manchester United Methodist Church.
Thursday, March 13, 11:00 a.m. Senior Exercise Program, 12 Noon Senior Meal, 3:30 p.m. Girl Scouts.

SHARON UNITED METHODIST CHURCH
Thursday, March 6, 8 p.m. Council on Ministries.
Friday, March 7, 1:30 p.m. World Day of Prayer at St. Mary's Catholic Church.
Sunday, March 9, 12:15 p.m. Soup and Sandwich Meal.
Wednesday, March 12, 7:30 p.m. Lenten Service presented by the choirs of 4 churches at Manchester United Methodist Church.
Thursday, March 13, 7:30 p.m. Sharin' Women meet at the home of Mrs. David Lowery.

Manchester K of C Hall
AVAILABLE FOR
Wedding Receptions-Parties-Meetings
Catering Available
Hall Rental \$165.00 Includes Cleaning
Use of Kitchen \$25.00
For Further Information Call
428-8393 or 428-8886

CUSTOM CABINETS MADE IN MANCHESTER
Competitive Prices
Installation Available
Design Service
—or—
Let us
Reface Your Old
Cabinets and Save \$\$
Dutch Country Kitchens
18352 W. Austin Road Phone 313-428-7292 Manchester

STEEL
NEW & USED
STEEL AT
BARGAIN PRICES
• STRUCTURALS • PLATE
• RE-ROD
• PIPE • SQUARE TUBING
Jackson Fibers Co.
(517) 784-9191
1417 So. Elm St.
1 block north of High St.
Jackson, Michigan

Waits Heating & Cooling
24 HOUR SERVICE
Walt Horodeczny
Comfort Air Furnaces
A.O. Smith Water Heaters
Water Softeners
Furnace Tuning And
Cleaning
PHONE 428-8645
18824 Bethel Church Road
Manchester, Michigan

EASTER CERAMIC OPEN HOUSE
MARCH 14 and 15 10 am till 5 pm
Many Little Items For Your
Easter Basket
28317 LOGAN ROAD
MANCHESTER, MICHIGAN
LOIS HECKERMAN BARBARA AHRENS

Dan's Westside Automotive
660 West Main Street Manchester, Mich.
Phone 428-9455

WE CAN BEAT YOUR EXHAUST ESTIMATE
"CHECK OUR PRICES"
DEAN Multi-Mile TIRE SAF-BILT TIRES
24 HOUR WRECKER SERVICE Call 428-9455

Steelhead Season Approaching

Strong Steelhead Season Expected in Michigan 3rd Straight Year

Spring steelhead stream action should be improved in Michigan for the third straight year due primarily to increased plantings and improved natural survival rates, reports AAA Michigan. The biggest improvements should be in West Michigan from the Indiana line to Traverse City and along the state's eastern shore from Flat Rock to Port Austin in the Thumb. Department of Natural Resources officials predict that steelhead results elsewhere should be as good as 1985.

The steelhead's natural productivity in Great Lakes tributaries is outstripping the Pacific Ocean's tributaries on the West Coast, long considered the nation's best for steelhead fishing. A possible problem this season, according to AAA Michigan, would be high water or flooding from the spring thaw which would make it difficult for the fish to find the bait and the anglers to wade in the streams.

Peak runs should start in late March and continue through mid-April in Southeast Michigan, from early April to early May in West Michigan, Mid-April to early May in East Michigan and mid-April to mid-May in the Upper Peninsula. Water temperature is a key factor in drawing steelhead into the streams and runs generally begin when water temperatures reach 50 to 60 degrees. In the spring, the best bait is spawn bags, but steelhead also hit wigglers, minnows, nightcrawlers and salmon eggs.

A steelhead's age, the severity

of preceding winters and the amount of time it spent in one of the Great Lakes or a stream are major factors in the weight of the fish. Because food is more readily available in the Great Lakes, those fish generally are bigger. Natural reproduction is impeded in times of bad weather.

Steelhead planted in 1984 should weigh between 2 1/2 and 5 pounds this spring. The 1983 plantings should range from 6 to 9 pounds and 1982 plantings should vary from 9 to 12 pounds. When planted, yearlings average 4 1/2 to 7 inches.

The 1984 plantings topped 1.2 million fish and included 250,000 fall fingerlings and 452,000 yearlings in Lake Michigan, 250,000 fall fingerlings and 190,000 yearlings in Lake Huron, 106,000 yearlings in Lake Superior and 42,000 yearlings in Lake Erie.

In 1985, the DNR began planting 7 to 8 inch yearlings which have a better survival chance than the 5 to 6 inch fish planted previously. Fish planted in 1985 generally will not return to streams until next year which could mean an even stronger season in 1987.

Steelhead can be found in shoals and stream mouths primarily near deep holes, in dark pockets under stream banks and under submerged logs or stumps or rock ledges.

The 1986 AAA Michigan Steelhead Guide lists 44 streams which traditionally have provided the state's best steelhead fishing. In West Michigan, steelhead runs should be strongest on the St. Joseph, Muskegon and Big and Little Manistee Rivers. Because of modifications to the fish ladder

in the Grand River at Grand Rapids, no steelhead are expected upstream this spring. Construction should be completed by summer and lead to better fish action upstream in succeeding steelhead seasons.

Best East Michigan catches should be taken from the East Branch of the Au Gres River and the Au Sable River. Stream action in the Thumb is generally from the banks and piers.

Trotting will work best for Southeast Michigan anglers on the St. Clair River while wading and bank fishing should be strong along the Huron River.

Top-rated U.P. streams include the Manistique and Big Cedar rivers off Lake Michigan; Huron, Sucker, Little Garlic and Two Hearted rivers off Lake Superior, and the Carp River off Lake Huron.

Rules for specific rivers and streams are included in the 1986-87 Michigan Fishing Guide. Some streams are open all year while others have opening dates of April 1 or April 28. Anglers should check the guide before venturing out in case upstream limits and other specifics have changed since last season. The guide is free when a new fishing license is purchased or can be obtained directly from the DNR or one of its field offices.

Village Planning Commission

Manchester Village Planning Commission Regular Meeting, Tuesday, March 11, 1986, 7:30 p.m. Council Room, Village Hall

Agenda may be seen in the main hall at the Village Offices.

Wacker's General Store



PEPSI, DIET PEPSI
PEPSI LIGHT
MOUNTAIN DEW
PEPSI FREE
SUGAR FREE PEPSI FREE
A & W ROOT BEER
VERNORS
SUGAR FREE A & W
SUGAR FREE VERNORS
SLICE & DIET SLICE

\$2.19
1/2 LITER 8 PACK
PLUS DEPOSIT
2 Liter..... \$1.49
PLUS DEPOSIT

Watch For
GRAND OPENING OF
Beer, Wine and
Packaged Liquor Dept.

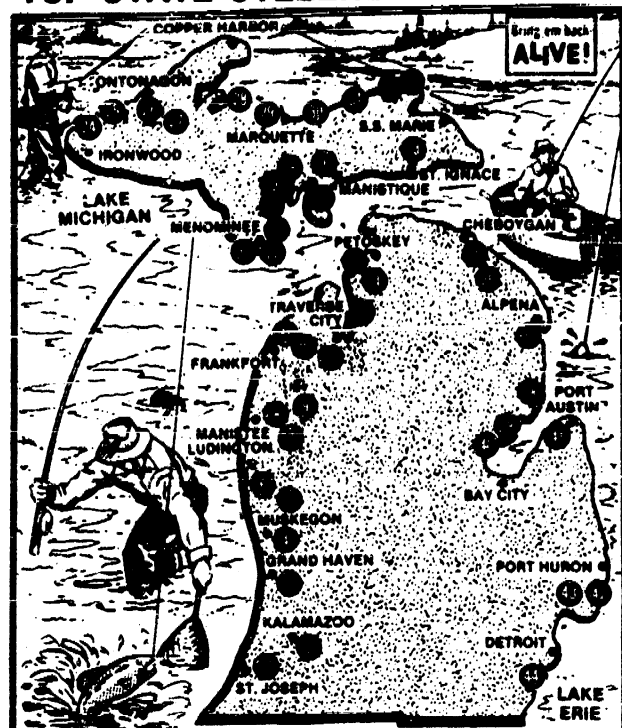
PHONE 313-428-8366
G.E. Wacker Inc.
Gasoline-Fuel Oil-Grease
Motor Oil-Diesel Fuel
9050 Chelsea-Manchester Road
Manchester, Mich. 48158
Winter Hours
Sunday 9 am-3 pm
Monday - Thursday 7 am-9 pm
Fri. 7 am-9 pm Sat. 8 am-9 pm

DOUGLAS PARR, SUPERVISOR

TENTATIVE RATIOS

Agricultural	55.33
Residential	48.58
Commercial	47.73
Industrial	49.03
Personal	50.00

TOP STATE STEELHEAD STREAMS



RIVER	UPSTREAM LIMIT	RIVER	UPSTREAM LIMIT
LAKE MICHIGAN		LAKE SUPERIOR	
1-St. Joseph	Buchanan Dam	24-Black	Rainbow Falls
2-Kalamazoo	Alagan Dam	25-Prequel Lake	Manabito Falls
3-Rubin River	U.S. 131	26-Ontonagon, M. Br.	Agate Falls
4-Grand	No limit	27-Ontonagon, E. Br.	M-28
5-Muskegon	All of Mainstream	28-Huron	Big Eric's Bridge
6-White, N. Br.	Arthur Rd	29-Chocoy	U.S. 41 Bridge
7-Pere Marquette	M-37 Bridge	30-Little Garlic	Falls
8-Little Manistee	Johnson's Bridge	31-Anna	Harwood bridge
9-Manistee	U.S. 131	32-Sucker	Sentry Rd
10-Belle	Kurtz Rd	33-Two Hearted	Red & Green Bridge
11-Platte	U.S. 31 Bridge	LAKE HURON	
12-Platte	U.S. 31 Bridge	34-Carp	Mud Lake Outlet
13-Elk	Power Dam	35-Cheboygan	Cheboygan Dam
14-Jordan	Grave's Crossing	36-Ontonagon	Barnhart Lake
15-Beyre River	P.H. Dam	37-Thunder Bay	Ninth St. Dam
16-Bear River	Mitchell Dam	38-Au Sable	Foodie Dam
17-Black	Peter's Tr. Trail Bridge	39-Au Gres, E. Br.	M-55 Bridge
18-Manistee	Papermill Dam	40-Rile	Devel Creek Dam
19-White Fish	U.S.F.S. No. 2236	41-Ponsegog	
20-Days	Fisher Dam	LAKE ST. CLAIR	
21-Bark	9 Road	42-St. Clair	
22-Big Cedar	Veteran's Park Dam	43-Belle River	
23-Manominee		LAKE ERIE	
		44-Huron	Flat Rock Dam

*Man-made barriers to spawning fish or those imposed by State Department of Natural Resources.

1986 Map By

BOARD OF REVIEW MEETING

Notice is hereby given to all persons liable to assessment for taxes in the Township of Bridgewater, County of Washtenaw, State of Michigan.

That the assessment roll of said Township as prepared by the assessing officer will be reviewed by the Board of Review at:

Bridgewater Township Hall
10990 Clinton Road

Appeals and Conference
With Taxpayers
will be heard on

MONDAY, MARCH 10, 1986

9:00 a.m. - 12:00 p.m. and 1:00 p.m. - 4:00 p.m.
and on

TUESDAY, MARCH 11, 1986

9:00 a.m. - 12 p.m. and 1:00 p.m. - 4:00 p.m.

at which time the Board of Review will be in session. Upon request of any person who is assessed on said tax roll or of his or her agent and upon sufficient cause being sworn, said Board of Review will correct the assessment as to such property in such manner as will in their judgment make the valuation just and equal.

Such assessment tax roll as reviewed and approved by said Board of Review will be the assessment roll of said Township of Bridgewater for the year 1986.

DOUGLAS PARR, SUPERVISOR

BOARD OF REVIEW MEETING

Notice is hereby given to all persons liable to assessment for taxes in the Township of Freedom, County of Washtenaw, State of Michigan.

That the assessment roll of said Township as prepared by the assessing officer will be reviewed by the Board of Review at:

Freedom Township Hall
11508 Pleasant Lake Road

Appeals and Conference
With Taxpayers
will be heard on

MONDAY, MARCH 10, 1986

9:00 a.m. - 12 p.m. and 1:00 p.m. - 4:00 p.m.
and on

TUESDAY, MARCH 11, 1986

9:00 a.m. - 12 p.m. and 1:00 p.m. - 4:00 p.m.

at which time the Board of Review will be in session. Upon request of any person who is assessed on said tax roll or of his or her agent and upon sufficient cause being sworn, said Board of Review will correct the assessment as to such property in such manner as will in their judgment make the valuation just and equal.

Such assessment tax roll as reviewed and approved by said Board of Review will be the assessment roll of said Township of Freedom for the year 1986.

EUGENE MANN, SUPERVISOR

TENTATIVE RATIOS

Agricultural	56.27
Residential	50.39
Industrial	51.69
Commercial	49.83
Personal	50.00

A & B IGA

STORE HOURS:
Mon.-Sat. 8-7
Closed Sunday



455 W. Main
MANCHESTER, MICH.



Advertised Prices Effective Now Thru Saturday

Meat Meat Meat Meat Meat Meat Meat



10 lb.
Sale



IGA TABLETTE - Save Up To 30¢ lb.
Ground Chuck .. \$13.90

IGA TABLETTE - Save Up To 30¢ lb.
Cod Wedges .. \$15.90

IGA TABLETTE - Save Up To 30¢ lb.
Fish Cakes .. \$8.90

IGA TABLETTE - Save Up To 30¢ lb.
Fish Sticks .. \$11.90

IGA TABLETTE - Save Up To 30¢ Pkg.
Hygrade Hot Dogs ... \$9.90

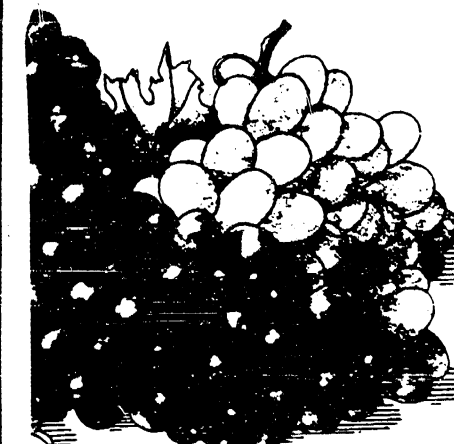
IGA TABLETTE - Save Up To 30¢ lb.
Pork Spareribs \$15.90

IGA TABLETTE - Save Up To 30¢ lb.
Chuck Steak ... \$15.90

IGA TABLETTE - Save Up To 30¢ lb.
Denver Steak ... \$16.90



Whole Strawberries or Blueberries
Big Valley Fruits
12 oz. Pkg.
89¢



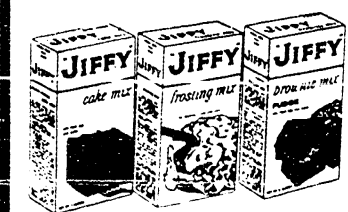
Imported Red - Save 40¢ lb.
Seedless Grapes

89¢ lb.



Marketed By Sunkist - Save \$2.00
California Navel
Seedless Oranges

\$2.99



Devil Food, White or Yellow Cake
White or Fudge Frosting or
Fudge Brownie
Jiffy Mixes
7.64 oz. Box
3/\$1

NEW TFO Prepared NEW

Fresh Deli Sandwiches

ASSORTED VARIETIES
"DELICIOUS FOR QUICK LUNCHES"

Dairy

Homogenized
FAMOUS Milk
Gallon Jug

\$1.79

Cheese W/Garden Vegetables,
Horseradish, Partwines, Butter,
5% fat or Sharp

Zehnder's Spreads

7.54 oz.
\$1.39

Philly Soft Light
Cream Cheese
8 oz. Pkg.

99¢

Bakery

Oven Fresh
Lumberjack Bread
24 oz. Loaf

69¢

Oven Fresh
Italian Bread
16 oz. Loaf

69¢

Oven Fresh Plain or Original - Dozen
Fried Cakes..... \$1.69

A & B ONLY

Present This Coupon And We Will Refund Double The Amount Of Manufacturers Coupons Of 35¢ Or Less, But No More Than The Price Of The Items. Free, Tobacco And Cigarette Coupons Are Not Included. Coupons Over 35¢ Will Be Redeemed At Face Value. Limit One Per Product.

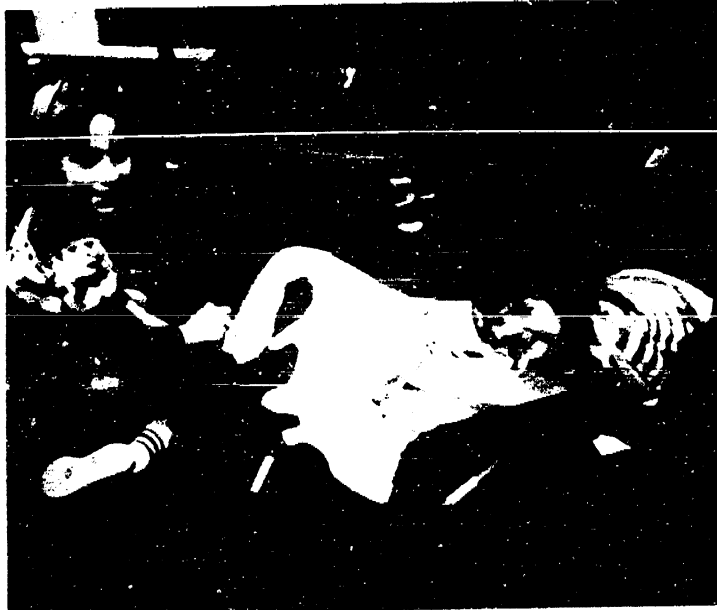
March 5th Thru March 8th Only

CLIP AND SAVE

CLIP AND SAVE

Klager School News

Studying Dinosaurs



Standing in front of the mountains they helped create are: Andrea Karpo, Danny O'Dell and Matt Boudier.

Miss Koebbe's second graders have been learning about our earth as it was long ago. We have learned how to classify dinosaurs and have learned that they were related to reptiles that are in our world today.

As part of a mural describing "In The Time of The Dinosaurs", students make large pictures of some of the dinosaurs. Ryan Novess and Marcus McNamara are shown making the Brontosaurus. Steven DeVries is working on the Stegosaurus. Michelle Helfrich and Greg Mitchell are making a Dimtridon.

We are also using a tape describing dinosaurs and will be writing our own stories about this prehistoric animal.

Thinking Big!

To put their study of mountains in perspective the fourth graders in Mrs. Lowery's class have drawn scale models of the world's largest mountains and put them up on the walls of the multi-purpose room.

We are studying about mountains in Social Studies. This is the reason we are making these mountains. Altogether we have made seven of them and their names are Mt. Everest, Mt. McKinley, Pikes Peak, Mt. Fuji, Mt. Matterhorn, Kilimanjaro, and Aconcagua. The ones you see in the picture are Mt. Everest, Kilimanjaro, and Matterhorn.

Classified Ads Get Results



Life Saving CPR Measure Introduced

Legislation requiring that public schools provide a course in life-saving cardiopulmonary resuscitation (CPR) has been introduced in the State House. Similar legislation has been introduced on several previous occasions, but has never met with success, due largely to budgetary constraints. But this year's bill has a new twist. It would require the courses only if private groups make the money or the necessary equipment available.

"We've tried on many occasions to mandate CPR in the public schools, but that simple approach has three problems," explained State representative Perry Bullard (D-Ann Arbor), sponsor of the measure. "First," he said, "many districts just don't have the money. Second, the so-called Headlee amendment would require the state to pay for the program, but the Headlee amendment encourages local waste by requiring the state to pay for whatever local governments decide to do to implement a state mandate."

"Third," Bullard concluded, "the Legislature just doesn't like to tell local school districts what to do, no matter how much sense it might make."

Bullard said he hopes this new

approach will "overcome resistance to state curriculum mandates and spending requirements because it only requires the program if local groups make the money or equipment available. If local groups can do this, then there is obviously a very strong base of support in the community," said the Ann Arbor lawmaker.

"This new approach was created by local constituents and my local Red Cross Chapter," Bullard said. He especially noted the efforts of Mr. Byron Hestevold of Ann Arbor.

"Mr. Hestevold got me going on this idea several years ago. He was also the person behind a state law that went into effect last year which requires restaurants to post information about the life-saving 'anti-choking' maneuver," Bullard said.

"Common-sense approaches to health emergencies, like CPR and the anti-choking maneuver, can save hundreds of lives each year in Michigan," Bullard stated.

"Other programs like this throughout the United States and other countries have been highly successful over the year," he said. CPR significantly increases the likelihood that a heart attack victim will make it to a hospital where sophisticated medical help is available. Persons who receive CPR have higher survival rates than those who do not. CPR also reduced the likelihood of brain damage and other secondary

effects of heart attacks.

Bullard said he believes that community groups including the Red Cross, the Heart Association, and volunteer organizations will respond favorably to the legislation. He believes that CPR could be established in many school districts as the result of the legislation.

Weed Control Improvements

Recent improvements in weed control technology are helping farmers stay ahead of quackgrass, woolly cupgrass and other difficult weeds, according to Roger Farrington, product manager for Stauffer Chemical Company.

"Over the last few years," he says, "we've witnessed several major herbicide improvements for quackgrass and woolly cupgrass. Farmers can now seize the initiative with these new herbicides rather than let weed problems govern their cropping programs, as was often the case before."

Quackgrass is an aggressive perennial grass that often appears earliest of any weeds in a farmer's corn field. The lanky grass has thin blue-green leaves and a smooth stem. The plant reaches a full height of between one-and-a-half and three feet.

Woolly cupgrass is similar in appearance to foxtail, with several distinct differences. The seedling has a coarser blade than foxtail, while the seed itself is tannish in color and irregularly-shaped, unlike round foxtail seed.

This annual grass is taller than quackgrass, shooting upward to three to five feet tall. It grows and develops a feather-shaped head loaded with seeds; dislodged seeds account for the weed's rapid proliferation. The name "woolly cupgrass" derives from the weed's fuzzy cup-like seed pod, which primarily grows on one side of the stem.

Unlike woolly cupgrass, quack-

grass reproduces both from seed and from slender, yellowish rhizomes which reside beneath the soil at depths of two to six inches. Along the length of the rhizomes are vegetative buds which spawn new above-ground stems; roots form only at the nodes of these underground stems. Quackgrass, like woolly cupgrass, spreads rapidly and serious infestations can develop in only a few seasons' time if left unchecked.

The current sway towards reduced tillage favors the spread of both weeds. Seeds aren't buried as deeply in the soil and quackgrass rhizomes aren't chopped up as much as they would be with a coordinated program of spring and fall tillage and regular cultivation.

In corn, the most effective control of these two weeds is Eradicane Extra, Farrington says. This new version of Eradicane herbicide contains an extender that promotes longer-lasting activity in the soil.

"This increased activity provides farmers with near season-long protection from both seedling and rhizome quackgrass, woolly cupgrass and other tough weeds," he adds. He recommends tank mixing Eradicane Extra with Bladex or atrazine for broad-spectrum control of grasses and broadleaf weeds. He notes that Eradicane Extra with atrazine is the preferred method for quackgrass control.

In soybeans, farmers can use a preplant treatment and follow with one of two new postemergence herbicides, Foast and Fusilade, later in the season. Farrington suggests cultivation as an additional mid-season weapon against weed escapes in corn and soybeans.

Unemployment Drops In All Michigan Areas

Unemployment rates for 11 of Michigan's 12 major labor market areas reached their lowest levels for the year during the fourth quarter of 1985, Richard Simmons, Jr., director of the Michigan Employment Security

Commission (MESCC), reported today.

Simmons explained that jobless rates in all 12 of the state's major labor markets were down in December from their levels at the end of the third quarter in September. He added that only the Upper Peninsula failed to set a new unemployment rate low for the year during the fourth quarter.

Michigan's declining unemployment during the fourth quarter set the pattern for the labor market areas. In September Michigan's jobless rate was 9.8 percent, but by the end of December, the rate had fallen to 7.6 percent. During the quarter, the number of unemployed workers statewide dropped by 96,000 to 329,000. At the same time, the number of workers with jobs rose by 108,000 to 4,028,000.

Simmons attributed the fourth quarter improvement in Michigan and in the major labor market areas to scattered seasonal job gains in manufacturing facilities and seasonal employment increases in the retail trade and service sectors. In addition, some areas reported large increases in local government jobs because of the start up of fall classes in area schools.

The Ann Arbor area reported a 4.0 percent unemployment rate in December, the lowest unemployment rate among the 12 major labor market areas. The Upper Peninsula had the highest rate in December at 12.6 percent.

The largest unemployment rate decline during the quarter occurred in Flint area. The jobless rate fell to 8.0 percent in December, a drop of more than four and a half percentage points from September's 12.7 percent. Simmons credited callbacks at local manufacturing plants along with job gains in retail trade and local education for the improvement in Flint's job picture.



The first aquarium for "masters of the deep" was Marineland, constructed in Florida in 1937.

STIHL'S THE ONE. STIHL quality!

Save now on STIHL quality!

THE PRO TREE-TACKLER

\$199⁹⁵ JUST SAVE \$20

STIHL

Cut through your work in less time, with less effort — with the Stihl® 011T Chain Saw. A tough, rugged saw engineered for professional tree-trimming operations.

Stihl's exclusive anti-vibration system, a high power-to-weight ratio, advanced cutting features, and a top-grip handle for exceptional balance make this saw a top choice of the pros. See the 011T today.

STIHL
NUMBER ONE WORLDWIDE

K & W EQUIPMENT INC.
Chelsea Manchester Road Manchester, Mich.
Phone 313-428-7886

COPIES MADE

8 1/2 X 11
10 ¢ each

8 1/2 X 14
15 ¢ each

11 X 17
20 ¢ each

Copies Printed On Both Sides - 5¢ extra

THE MANCHESTER ENTERPRISE
150 East Main Street

Wacker's General Store

We Now Have Beer, Wine and Package Liquor

WE HAVE BIRD SEED
25 and 50 LB. Bags

Striped Sunflower
Black Sunflower

Wild Bird With or Without Corn

G.E. Wacker Inc.

Gasoline-Fuel Oil-Grease
Motor Oil-Diesel Fuel
9050 Chelsea-Manchester Rd.
Manchester, Mich. 48153

Winter Hours
Sunday 9 am-8 pm
Monday-Thursday 7 am-8 pm
Fri. 7 am-9 pm Sat. 8 am-9 pm

KARATE TEACHES KIDS A LOT!

SPECIAL INTRODUCTORY COURSE \$10

AWARENESS SELF DISCIPLINE PHYSICAL FITNESS

... from the very young to ADULTS. KARATE study adds a new dimension and interest in your life. CALL NOW.

Mr. Keith R. Hafner

THE ACADEMY

220 S. Main 307 N. Maple 505 E. Michigan
Ann Arbor (Maple Village) Saline
994-0333 Ann Arbor, 761-5811 428-4480

NOTICE

MANCHESTER TOWNSHIP BOARD OF REVIEW MEETING

Notice is hereby given to all persons liable to assessment for taxes in the Township of Manchester, County of Washtenaw, State of Michigan.

That the assessment roll of said Township as prepared by the assessing officer will be reviewed by the Board of Review at:

MANCHESTER TOWNSHIP HALL
275 SOUTH MACOMB STREET

APPEALS AND CONFERENCES WITH TAXPAYERS

will be heard on

MONDAY, MARCH 10, 1986
9 a.m. to 12 Noon and 1 p.m. to 4:00 p.m.

TUESDAY, MARCH 11, 1986
1:00 p.m. to 4:00 p.m. and 6:00 p.m. to 9:00 p.m.

at which time the Board of Review will be in session. Upon request of any person who is assessed on said tax roll or his or her agent and upon sufficient cause being shown, said Board of Review will correct the assessment as to such property in such manner as will in their judgment make the valuation just and equal.

Such assessment tax roll as reviewed and approved by said Board of Review will be the assessment roll of said Township of Manchester for the year 1986.

The County Board of Commissioners of Washtenaw County has proposed the following starting ratios for Manchester Township for the year 1986:

Agriculture	56.72
Commercial	49.09
Industrial	49.15
Residential	50.11
Personal	50.00

2-20-86 / 2-27-86
3-6-86

Clarence L. Fielder
Supervisor

High interest, flexible protection. payments to suit you, and a non-smoker's discount...

UNIVERSAL LIFE

LARRY BECKTEL
135 East Main St. Manchester, Mich. Phone 428-7331

Making your future a little more predictable.

FARM BUREAU INSURANCE GROUP

NOTICE

SHARON TOWNSHIP PROPERTY OWNERS

THE SHARON TOWNSHIP

BOARD OF REVIEW

WILL MEET AT THE TOWNSHIP HALL
18010 PLEASANT LAKE ROAD

MONDAY, MARCH 10, 1986
From 9 am to 5 pm

and

Tuesday, March 11, 1986
From 9 am to 5 pm

FOR THE PURPOSE OF HEARING APPEALS, MAKING JUSTIFIED ADJUSTMENTS AND FOR CERTIFYING THE PROPERTY TAX ASSESSMENT ROLL.

THE 1986 RATIOS AND TENTATIVE EQUALIZATION FACTORS AS ESTABLISHED BY THE COUNTY EQUALIZATION DEPARTMENT AND PROPOSED BY THE COUNTY BOARD OF COMMISSIONERS ARE:

	RATIOS	FACTORS
AGRICULTURAL REAL PROPERTY	55.85	.8953
RESIDENTIAL REAL PROPERTY	51.35	.9737
COMMERCIAL REAL PROPERTY	49.64	1.0073
INDUSTRIAL REAL PROPERTY	50.00	1.0000
DEVELOPMENT REAL PROPERTY	53.24	.9392
PERSONAL PROPERTY	49.91	1.0018

THE ASSESSMENT ROLL MAY ALSO BE INSPECTED AT MY HOME BY APPOINTMENT.

2-26-86/3-5-86
JOHN A. SAVAGE, SUPERVISOR

SHERIFF

WASHTENAW COUNTY EMERGENCY NUMBER 971-3911

Non-Emergency 971-8400

True Value
HARDWARE STORES

True Value OF THE MONTH

Master MECHANIC

7-7 1/2 IN. CARBIDE-TIPPED CIRCULAR SAW BLADE

3.29 While Supplies Last

7-7 1/2-In. Carbide-Tipped Circular Saw Blade of hardened steel for fast cuts in soft/hard woods.

QUANTITIES LIMITED

KLEINSCHMIDT True Value Hardware

19860 Sharon Valley Manchester, Mi.
428-8337

SPRING HAS ARRIVED AT The Village Shoppe

134 E Main St. Manchester Michigan Phone 428-9640

Chocolate and Cloth Bunnies, Eggs and Chicks

Special Cards, Books and Jelly Bellies

Manchester K of C FISH FRY

And SALAD BAR

FRIDAYS FEBRUARY 7 thru MARCH 28

"ALL YOU CAN EAT"

Includes \$4.75 (milk or Coffee)

5 p.m.-8 p.m.

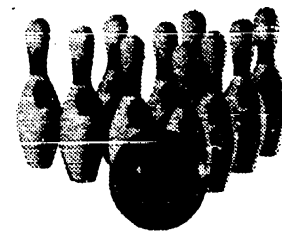
Manchester K of C Hall

Also: Childrens Portions Available SENIOR CITIZENS \$4.50

STRIKES -N- SPARES

MANCHESTER TOWN CLUB

R&F Tree Service	95	66
Manchester Plastics, Inc.	93	68
Jenters	91	70
V&F Builders	89	72
DuRussels	89	72
Alley Drillers	80	81
M.I.S.C.	72	89
Norm Walz	71	90
Manchester Enterprise	68	93
S-K Sales	57	104
200's		
Marcia Kennedy	204	
LewAnn Van Deven	213	
Ernie Seegert	213	
Polly Brokaw	203	
500's		
Marcia Kennedy	518	
Carol Rentz	516	
Polly Brokaw	518	
Wanita Nickerson	525	
Joan Day	532	
HIGH INDIVIDUAL GAME		
Joan Day	222	
Candy Klapperich	221	
Terri Scherdt	221	
Wanita Nickerson	219	
HIGH INDIVIDUAL SERIES		
Terri Scherdt	636	
Judy Duvall	582	
Joan Day	582	
HIGH TEAM GAME ACTUAL		
Alley Drillers	911	
HIGH TEAM SERIES ACTUAL		
Alley Drillers	2552	
HIGH TEAM GAME W/HDCP		
DuRussels	873	
HIGH TEAM SERIES W/HDCP		
R&F Tree Service	2536	



JOLLY KEGLERS

Dutch Country Kitchens	88	73
Carol's Cut-N-Curl	87	74
Car Wash	85	76
DRW	81	80
Double A	80	81
Kleinschmidts	78	83
Comerica	74	87
Dan's Westside Auto	71	90
HIGH INDIVIDUAL GAME		
J. Juckno	234	
C. Britten	232	
B. Padley	228	
HIGH INDIVIDUAL SERIES		
K. Smith	572	
L. Rose	559	
J. Juckno	551	
HIGH TEAM GAME W/HDCP		
DRW	958	
Comerica	957	
Carol's Cut-N-Curl	939	
HIGH TEAM SERIES W/HDCP		
Car Wash	2612	
Carol's Cut-N-Curl	2587	
Comerica	2584	



The first bowling tournament for women was held in St. Louis, Missouri in 1917.

County Fee Hikes

systems when rural houses are sold, to meet a requirement by lending institutions. Johnson said the number of these inspections increased from 88 in 1983 to 160 in 1984 to 392 last year. The five new fees will be: \$45 when a second visit is needed to complete a home mortgage inspection; \$50 for evaluating water and sewage provisions at proposed mobile home parks; \$50 to \$200 for evaluating construction plans at mobile home parks of various sizes; \$25 per visit when more than two inspections are needed to gain approval for construction work at a new food store or restaurant; \$25 for each re-inspection needed to check items at a food establishment after they fail two consecutive inspections. Several fees related to seasonal food-serving permits - such as those issued to some art fair vendors - are being reduced because time needed for inspections is minimal.

Manchester Youths Attend State Competition



The Michigan Optimist Tri-Star Basketball Contest was held on Saturday, February 22nd at Avondale High School. The six first place winners from Manchester were invited to attend. They were Jeff Kemner, age 8; Brandon Woods, age 10; Marcus Stockwell, age 11; Jeff Smith, age 12; Jesse Widmayer, age 13; and Tom Fielder, age 9. Manchester had two winners in the state competition; Jeff Kemner, age 8, first place and Marcus Stockwell, age 11, second place. Congratulations boys!!!

County Fee Hikes

systems when rural houses are sold, to meet a requirement by lending institutions. Johnson said the number of these inspections increased from 88 in 1983 to 160 in 1984 to 392 last year. The five new fees will be: \$45 when a second visit is needed to complete a home mortgage inspection; \$50 for evaluating water and sewage provisions at proposed mobile home parks; \$50 to \$200 for evaluating construction plans at mobile home parks of various sizes; \$25 per visit when more than two inspections are needed to gain approval for construction work at a new food store or restaurant; \$25 for each re-inspection needed to check items at a food establishment after they fail two consecutive inspections. Several fees related to seasonal food-serving permits - such as those issued to some art fair vendors - are being reduced because time needed for inspections is minimal.

Get Personal

Show you care with personalized stationery. The gift that's personalized is so much more appreciated. Choose from our selection of fine writing papers by Carlson Craft.

- Beautiful Papers
- Variety of Typestyles
- Economical Prices
- Fine Quality

MANCHESTER ENTERPRISE
150 East Main

CHELSEA COMMUNITY HOSPITAL RAFFLE

Tickets are \$1.00 each or six (6) for \$5.00

- The Raffle Will Be Held March 13th
- 1st Prize - A weekend for two (2) at the Grand Hotel on Mackinac Island.
 - 2nd Prize - Dinner for four (4) at Weber's.
 - 3rd Prize - A gift certificate for the Arbor Nook (gift shop at Chelsea Community Hospital).

Tickets are available in Manchester at The Village Shoppe.

ANNUAL VILLAGE ELECTION

To The Qualified Electors:

NOTICE IS HEREBY GIVEN THAT AN ANNUAL ELECTION WILL BE HELD IN THE

VILLAGE OF MANCHESTER
County of Washtenaw
State of Michigan

AT
Manchester Village Hall
120 South Clinton Street
Manchester, Michigan

Within Said Village On
MONDAY, MARCH 10, 1986

FOR THE PURPOSE OF VOTING FOR THE ELECTION OF THE FOLLOWING OFFICERS, VIZ,

- PRESIDENT FOR 2 YEAR TERM
- CLERK FOR 2 YEAR TERM
- TREASURER FOR 2 YEAR TERM
- ASSESSOR FOR 2 YEAR TERM
- 3 TRUSTEES FOR 2 YEAR TERM

NOTICE RELATIVE TO OPENING AND CLOSING OF THE POLLS ELECTION LAW, ACT 116, P.A. 1954

SECTION 720. On the day of any election, the polls shall be opened at 7 o'clock in the forenoon, and shall be continuously open until 8 o'clock in the afternoon and no longer. Every qualified elector present and in line at the polls at the hour prescribed for the closing thereof shall be allowed to vote.

THE POLLS of said election will be open 7 o'clock a.m. and will remain open until 8 o'clock of said day of election.

2-27/3-6

HELEN J. KENSLER, CLERK

INTS FOR HOMEOWNERS INSULATED GARAGE DOORS SAVE FUEL

Whether it's the winter chill or summer heat you want to avoid, insulation helps to keep your home at a regulated temperature. Similarly, a thermal efficient garage door can go a long way in saving you energy and money inside the home. Learning what's available may help keep your budget on target.

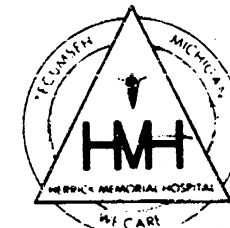
If, as in many houses, your garage is attached to your home, lots of hot or cold air, depending on the season, enters the garage and ultimately your home. This may drive up your energy bills.

Garage doors come in all sizes and designs. The heart of one insulated garage door is a firmly-bonded polyurethane core. The cavity between steel skins and the struts are filled with polyurethane to make it very strong, as compared to its weight. The door features a non-conductive thermal break between outside and inside

Many home owners might give a warm welcome to the energy efficiency of thermal garage doors.

steel skins, virtually stopping hot or cold outside air from entering the garage. A factory-installed bottom seal prevents air from seeping out at one of the most critical points.

One such door is designed to be among the most energy-efficient residential garage doors currently available. It's called the Thermowayne door. You can get a free brochure on it from Wayne-Dalton Information Center, P.O. Box 213, St. Joseph, MI 49085.



At Herrick Memorial Hospital — WE CARE —

That is why we designed our cardiology services to meet YOUR needs.

— WE OFFER —

- Intensive Coronary Care Services with Qualified Experienced R.N.'s
- Telemetry Monitoring
- Cardiac Rehabilitation in-patient/out-patient
- Graded Exercise Testing (Stress Test)
- Thallium and MUGA Scans
- 2D & 3D Echocardiography
- Pacemaker Services
- Streptokinase Drug Therapy

Large in Scope & Service. People Sized to Serve You

HERRICK MEMORIAL HOSPITAL
500 E. Pottawatamie St.
Tecumseh, Michigan 49286
423-2141

Board Seeks Land Nominations

The Michigan Natural Resources Trust Fund Board has begun its annual search for recreational lands to purchase with funds earmarked from the sale of oil, gas and mineral leases and royalties on gas and oil wells located on State-owned property.

"We are looking for land suitable for management by the State or local units of government that would provide additional recreation for Michigan citizens," says Rodney Stokes, Department of Natural Resources Executive Secretary to Natural Resources Trust Fund Board. "We're also interested in acquiring land to protect because of its environmental importance or scenic beauty."

Also, 1986 marks the first time the Board will be considering proposals for the development of public outdoor recreation facilities. Up to 25 percent of the available Trust Fund dollars can be used for development of outdoor recreation facilities.

Anyone can nominate lands for acquisition consideration. However, development proposals may only be nominated by units of government. Individuals or communities interested in nominating lands for acquisition and/or development purposes may obtain guidelines and necessary forms from the Recreation Services Division in the Department of Natural Resources. April 1, is the deadline for submitting nominations.

Acquisition and development of lands nominated this spring should begin during the fall of 1987. The Board will evaluate all public proposals and submit a recommended priority list to the Legislature next January.

Contact the Recreation Services Division, (517-373-1560) Department of Natural Resources, P.O. Box 30028, Lansing, Michigan, 48909, for further information.

Scratch Pads (Pink and Yellow)

15c - 20c
25c

THE
MANCHESTER ENTERPRISE
150 E. Main Street
Manchester, Michigan
428-8173

Cooking Corner

DINNER FOR TWO—QUICK, EASY AND ROMANTIC

Today's hectic lifestyles leave little time for "togetherness" and virtually no time to spend cozy, romantic evenings alone.

Special time together, while hard to arrange, doesn't have to be a thing of the past. With a little ingenuity and pre-planning, in less than an hour, you can transform an everyday meal into a romantic interlude.

Create a romantic mood by turning the lights down low and playing soft music. For an elegant atmosphere, set a table with your best china, silver and glassware, and be sure to use a cloth tablecloth and napkins.

For a warm, glowing effect, scatter candles throughout the dining area. Use scented candles to provide a memorable aroma. A beautiful dining environment wouldn't be complete without fresh flowers. Stretch an inexpensive bunch of carnations into several pretty bouquets by adding baby's breath and airy green ferns.

If you have children, tuck them into bed long before your special meal together begins or arrange to have them spend the night at a friend's.

So both of you remember the evening with fondness, serve an enticing dessert. Indulge in the sweet taste of Red Devil's Food Cake, made using Butter Flavor Crisco because this easy-to-blend shortening adds a delicious buttery taste without any of the cholesterol or sodium found in butter.

Combine Butter Flavor Crisco, sugar and vanilla in medium bowl. Add thickened mixture. Beat at highest speed of electric mixer about 5 minutes, or until smooth and creamy. Spread between layers, around sides and on top of cooled cakes. Fill and frost one 9-inch layer cake.

RED DEVIL'S FOOD CAKE

- 1/2 cup Butter Flavor Crisco
- 1 1/4 cups sugar
- 1 teaspoon vanilla
- 2 squares (1 ounce each) unsweetened baking chocolate, melted
- 1 cup buttermilk
- 1 teaspoon red food color

MANCHESTER CHIROPRACTIC CLINIC

"TRY CHIROPRACTIC NATURALLY"

227 EAST MAIN STREET
STAN GILBERT, D.C. P.O. BOX 321
313-428-7207 • MANCHESTER, MI 48158

Friendly Family Dentistry

Bruce Bates, D.D.S.

500 Galloway Drive Manchester, Michigan

SERVICE BY APPOINTMENT
PHONE 313-428-8277
CLEAN TEETH

Monday-Tuesday-Friday 9 a.m.-5 p.m.
Wednesday 12 noon-8 p.m.

(Some Other Evening and Saturday Morning Hours Available)

New Patients, Medicaid and Emergencies Always Welcome

VISA ACCEPTED
MOST DENTAL INSURANCE PLANS ACCEPTED

Black Sheep Tavern

Lunch
Monday-Saturday
11:30-5:00 p.m.

Dinner
Monday-Thursday
5:00 p.m.-10:00 p.m.
Friday and Saturday
5:00 p.m.-12:00 p.m.

"A Restaurant With A Tradition Of Quality"

117 East Main Manchester, Michigan
Phone 428-7000

NOTICE

MANCHESTER SENIOR CITIZENS INC.
ANNUAL MEETING
AND
ELECTION OF BOARD OF DIRECTORS

March 11, 1986 9:00 A.M.
Senior Citizens Building
214 N. Macomb St., Manchester

CANDIDATES FOR A TWO (2) YEAR TERM:

- Mr. Theodore Tapping
- Ms. Louise Breitenwischer
- Mr. Howard Parr
- Mr. John Swainson
- Ms. Ann Fowler

CANDIDATES FOR A ONE (1) YEAR TERM:

- Ms. Rubena Boeliter
- Ms. Helen Braun
- Ms. Arlena Walter
- Ms. Claire Reck
- Member-at-large Ms. Lillian Lesson

All Manchester Area Senior Citizens (55 years and older) are invited to attend.



Recipe for a traditional St. Patrick's Day celebration

Every year about this time a funny thing happens: People start wearing green hats, and shamrocks on their lapels. Their voices take on a melodious lilt, and they start telling stories to anyone who will listen. You might even spy some carrying shillelaghs.

The reason for this sudden outburst of green is quite simple: on St. Patrick's Day everyone wants to be Irish. Known for their kind heart, quick wit, literary abilities and wonderful gift of gab, the Irish people are the poets, dreamers and storytellers of the world. And in a sense, the American version of St. Patrick's Day is, more than anything else, a tribute to this indomitable Irish spirit.

For, the traditional St. Patrick's Day in Ireland is a very different holiday from what we experience in the United States. The mood is quite somber on St. Patrick's Day in Ireland. There are no parades and certainly no parties, for the Irish are a religious people and this day is viewed as a religious holiday.

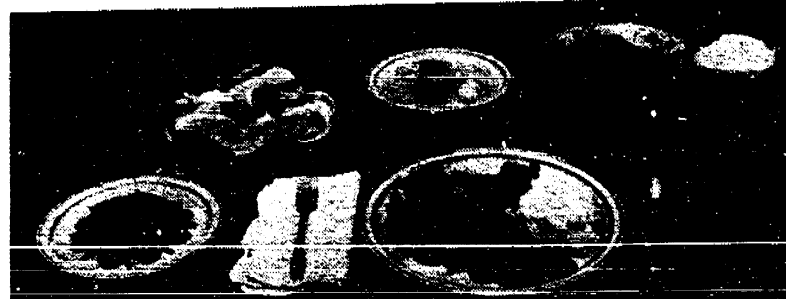
Stepped in tradition, the Irish are often said to be 50 years behind the rest of the world. Much of this claim can be attributed to its simple lifestyle, which, in many cases, includes farming. And, although Ireland has started to see some improvement in its economic situation with the influx of new industry, the people still remain very much a part of the old world.

And yet, these are the things we love about the Irish people: A simplicity of life that carries over to everything they do, a suspicion of things that have no past, deep and abiding loyalties, a quick tongue and a kind heart.

The food of Ireland is as traditional as its people. Recipes for Boiled Ham and Cabbage (never corned beef?) and Irish Stew have been passed down from generation to generation.

St. Patrick's Day is just not St. Patrick's Day without some traditional Irish fare, and the following recipes might be just the thing to inspire in you that unflagging Irish spirit.

The recipes for Baked Salmon and Irish



A TRADITIONAL ST. PATRICK'S DAY MEAL — Galway Bay Oysters, St. Patrick's Day Soup, Boiled Ham and Coleannon, Steamed Carrots Glazed with Honey, Whole-Grain Soda Bread and St. Patrick's Day Trifle — from *The Irish Heritage Cookbook* (Tribeca Communications, Inc.), by Mercedes McLoughlin and Marian McSpirt.

Stew were culled from *Traditional Irish Recipes* (Appletree Press Ltd.) by John Murphy.

BAKED SALMON

Ingredients:
 Parsley
 1/4 lb. butter
 1 whole salmon
 1/2 pt. cream
 Salt & pepper

Clean the salmon & rub with butter. Place in a dish, pour the cream & chopped parsley over it, then season lightly. Cover & bake in a moderate oven (allow ten minutes per lb.) baste a few times.

IRISH STEW

Ingredients:
 1 pt. water
 1 lb. onions
 2 lb. potatoes
 2 lb. breast of mutton
 or gigot chops
 Salt & pepper

Trim the meat & place in the bottom of a stewing pan, add some sliced potatoes and onion, season with salt and pepper, and add the water. Bring to the boil & simmer for about an hour. Add the remaining sliced potatoes & onions, cover & simmer for a further hour. When cooked, serve on a hot dish with the potatoes & onion surrounding the meat.

Mai Liston's Summer Pudding is taken from *The Country House Cookery Book* (St. Martin's Press) by Christian Hesketh, Elisabeth Luard and Laura Blond.

MAI LISTON'S SUMMER PUDDING

Serves 6
 2 lb loganberries and/or raspberries
 6 slices crustless white bread
 1/2 lb (1 cup) sugar

For sauce:
 1 lb blackcurrants
 1/2 lb (1 cup) sugar

Wash the berries thoroughly and put them in a saucepan, with the sugar but no water. Simmer for 15 minutes. Line a soufflé dish with the bread cut into fingers. When the berries are cold, force them through a sieve and pour the resulting purée over the fingers of bread. Put any remaining bread fingers over the top and press a weighted saucer or plate on the top as a lid. Leave in refrigerator overnight.

For the sauce, put the blackcurrants, sugar and 2 cups of water into a saucepan and simmer for 10 minutes. Allow to cool, and pour over the summer pudding when serving. This is delicious with whipped cream.

The recipes for Boiled Ham and Cabbage, and Grandmother MacNeely's Whole-Grain Soda Bread were reproduced from *The Irish Heritage Cookbook* (Tribeca Communications, Inc.) by Mercedes

McLoughlin and Marian McSpirt.

BOILED HAM AND CABBAGE

INGREDIENTS
 1/2 ham (about 6 lbs.)
 2 cups gingerale or cider
 1 1/2 quarts of water
 2 bay leaves
 4 whole cloves
 1 medium sliced onion
 1 medium cabbage

Place the ham in a large pot and cover with gingerale and water. Bring to a boil and then reduce heat. Simmer for 1 1/2 to 2 hours until tender.

Cut cabbage into 6 pieces. Twenty minutes before ham is cooked place cabbage wedges on top of ham. Cover with lid. Cook until cabbage is just tender (about 20 minutes).

Remove cabbage, drain and keep warm. Let ham cool in the stock for 20 minutes before serving.

To serve: Place sliced ham on a warm platter. Surround with cabbage wedges and boiled potatoes.

GRANDMOTHER MACNEELY'S WHOLE-GRAIN SODA BREAD

INGREDIENTS
 3 cups whole wheat flour
 1 cup all purpose flour
 1 1/2 teaspoons salt
 1 teaspoon baking soda
 1/4 teaspoon baking powder
 1 1/2-2 cups buttermilk

Preheat oven to 375°. Mix all the dry ingredients thoroughly. Make a well in the center and gradually mix in just enough buttermilk to make a soft but firm dough. Shape the dough into a ball. Knead on a floured surface for 2 to 3 minutes until dough is smooth. Form into a round loaf and with floured knife make a cross through the center of the bread. Place in a well-buttered cake tin or on a cookie sheet.

Bake in a preheated 375° oven for 35 to 40 minutes or until nicely browned. If bread sounds hollow when rapped on the bottom with knuckles, it is baked. Let cool before slicing.

'Pasta, The Versatile Dish'

What food comes in shapes that mimic seashells, stars, bows, worms and Shirley Temple curls? There are so many varieties of this food that you can dine with a different one every day of the year.

The answer, of course, is pasta, ancient history to the Italians, but newly re-discovered by Americans.

The Cooperative Extension Service will sponsor an educational program on Pasta, The Versatile Dish, on March 11, from 7:30-9:30 p.m. at the County Service Center, 4188 Washtenaw. Extension programs are open to all regardless of race, color, creed, sex, handicap or national origin. This program is part of the monthly series, Corner on the Kitchen.

Peter DiLoreni, restaurant consultant affiliated with Passano's and Bella Ciao Trattoria restaurants will demonstrate several varieties of easily prepared sauces that produce the classic dishes in the Italian cuisine.

Agriculture and Natural Resources Week March 17-22

Marion Prince, Extension Home Economist, will talk about the nutritional contribution of pasta, why it need not mean extra pounds, and how it fulfills with latest dietary recommendations for more complex carbohydrates.

Reservations are required: call 973-9510. A \$3.00 fee for food for tasting may be paid at the door.

Attention Golfers

The Centerview Men's Thursday Night Golf League will have a meeting March 13th at 7:00 p.m. at Centerview Golf Course.

Anyone interested in playing please call 517-456-4917 or 517-456-4411 or attend the meeting. We also need to hear from regular members who plan on playing again this year. New members are welcome.

Golfers Needed!

Any persons interested in golfing at Clark Lake's Thursday Night Late League, contact Russ Hough at 428-7255.

Top Beef Recipe Nets Meaty Prize

Both professional and amateur fruit and flower growers will find a myriad of enjoyable and educational programs, exhibits and workshops at Michigan State University's Agriculture and Natural Resources (ANR) Week, March 17-22. All Michigan State University Cooperative Extension Service Programs are open to all regardless of race, color, creed, sex, handicap or national origin.

The Michigan Nut Growers Association is one of the many organizations that will hold their annual meeting during ANR Week. It will also present several educational sessions and exhibits that non-members are welcome to attend. These include demonstrations of new plant propagation techniques and displays of the kinds and varieties of nuts and minor fruits that can be grown in Michigan.

Other horticultural programs during ANR Week include orchard insect and disease control, garden design, and herbaceous perennial and annual

flower selection. Workshops designed for the hobbyist include sessions on using herbs, identifying herbal plants and making pomanders, potpourris and sachets. ANR Week also includes activities related to crop production and marketing, health and recreation, livestock and more. Contact the county MSU Cooperative Extension Service for more details of ANR Week.

Disaster Welfare Inquiries Thru Red Cross

American Red Cross, Washtenaw County Chapter will facilitate welfare inquiries regarding relatives in the California flooded areas. Shelters, with a combined evacuee population of 5,704, are still open in the following California counties: Sonoma, Lake, Napa, Solano, Sacramento, Colusa, Sutter, San Joaquin.

Local officials report telephone communication within flood affected areas is being restored. Phone communication, however, is poor for the communities of Marysville, Linda and Olivehurst.

Disaster Welfare inquiries should be limited to immediate family members.

Does The Coming Of Spring Make You Happy or Sneeze?

Most people joyfully wait the coming of summer. However, for some people warm weather means floating pollens to irritate the eyes and make the nose run. Then, there are others who experience these irritations the year round.

What causes this reaction? Come to a special session to be held at the University of Michigan Family Practice Center at Chelsea to learn the answer to this and more importantly, what can be done to relieve the symptoms.

Dr. James McLean, Professor of Internal Medicine in the Division of Allergy, at the University of Michigan Hospital will present this information. The program will take place 7-8 p.m. and a question and answer period will follow the presentation.

The program will be held in the classroom at the Family Practice Center at Chelsea, 775 S. Main Street. Pre-registration is requested by calling 763-7120. A \$2.00 fee is payable at the door.

Making The Right Financial Decision Shouldn't Leave You In A State Of Confusion.



Planning a financial future can leave some people pretty befuddled.

That's where the professionals at First of America Bank can help. We offer lots of alternatives. We'll start by finding a checking and savings plan that's just right for you.

Maybe even tied to money market rates so your money will grow even faster.

And we'll answer any questions you might have

about other investment options. Like Certificates of Deposit and Individual Retirement Accounts.

So call or visit a First of America Customer Service Representative.

You'll find that with a little help from First of America Bank, personal financial planning really isn't complicated at all.

FIRST OF AMERICA

Member FDIC

The Manchester High School Players present
"The Matchmaker"

High School Auditorium
 March 14 & 15
 8:00 p.m.
 For information:
 428-7333

NOTICE OF PUBLIC HEARING MANCHESTER VILLAGE PLANNING COMMISSION

A Public Hearing will be held before the Manchester Village Planning Commission beginning at 8:00 p.m. on Tuesday, March 11, 1986, in the Council Room of the Village Hall, to hear comments on a proposed amendment to the Manchester Village Code, which would add to Article 27 (Amendment Procedure) additional required information to be submitted in a petition for rezoning, and additional criteria to be considered when evaluating a petition for rezoning. A copy of the proposed amendment is available for public inspection at the Village Hall during regular business hours. Anyone wishing to comment on the proposed amendment, but unable to attend the Public Hearing, may submit written comments, which will be read aloud at the Hearing. Written comments should be mailed or delivered to the Village Hall, 120 South Clinton Street, Manchester, Michigan 48158, attention Village Clerk Helen Kensler. Written comments must be received no later than 4:00 p.m. on Tuesday, March 11, 1986.

SHERIFF
 WASHTENAW COUNTY
 EMERGENCY NUMBER
971-3911
 Non-Emergency 971-8400

Parr's Auto Body
 BODY WORK - PAINTING
 FREE ESTIMATES
 INSURANCE WORK
 GLASS INSTALLATION

18481 W. Austin Road
 Manchester, Michigan
 Phone
313-428-9538

FUND RAISING

Manchester K of C Hall
 106 East Madison St.
Wednesday 7 P.M.

Manchester Sportsman Club
 8501 Grossman Road
Friday 7:00 P.M.

Manchester American Legion
 203 South Adrian St.
Saturday 7 P.M.

Clinton American Legion
 204 Jackson Street
Thursday 7-10:30

Carpeting Soon?

Shop at Lodi for a complete selection of carpeting. Saxony, loop and cut, level loops, tweed, solids, prints — carpeting for every room. Hundreds of samples from which to choose. We use Orvalon pad. Our installation is expertly performed and guaranteed. Ask about our bank financing.

LODI Tapes and FURNITURE

Ann Arbor-Saline Rd. at Travis Plaza
 Open Friday nights until 8:30 662-9372

Free parking at the door

ANNUAL TOWNSHIP MEETING

Notice is Hereby Given
 That The Next Annual Township Meeting of the Electors Of The

BRIDGEWATER TOWNSHIP
 County of Washtenaw
 State of Michigan
 Will Be Held At
Bridgewater Township Hall
 10990 Clinton Road
 Beginning at 1:00 O'Clock P.M.
Saturday, March 29, 1986

AT SUCH TIME IN ADDITION TO OTHER REGULAR BUSINESS AND IN ACCORDANCE WITH THE LAW, A BUDGET COVERING PROPOSED EXPENDITURES AND ESTIMATED REVENUES OF THE TOWNSHIP SHALL BE SUBMITTED FOR CONSIDERATION.

Also Hearing On Revenue Sharing Budget

Karen Weidmeyer, Township Clerk

MARCH 6 & 25

Classified Ads Get Results

Norm Walz & Son Construction
 Manchester, Michigan

NEW HOMES
 REMODELING
 ADDITIONS
 GARAGES
 SIDING
 DECKS

Custom Built
 Cabinets
 428-7109

Wedding Bells and Beautiful Brides



Wedding
ANNOUNCEMENTS
AND
INVITATIONS...

STOP IN AND SEE OUR FINE SELECTION

THE MANCHESTER ENTERPRISE

PLAY IT SMART... GET INTO THE CLASSIFIEDS

All Classified Advertising is Payable in Advance and Must Be Placed and Paid For Prior To 11 a.m. On Tuesday For Publication That Week.

Classifieds Are \$2.00 For First 20 Words, 5¢ A Word Thereafter. Thank You's Are \$4.00 Minimum Up To 50 Words, 5¢ A Word Thereafter.

FOR SALE BY OWNER - 2 acres, Manchester School. Call 428-7236. tfn

HONDA GENERATOR SALE - EM 500 was \$375, now \$239. We stock 500 thru 6500 watt generators. Napoleon Lawn and Leisure. 313-665-6811. tfn

MANCHESTER ANTIQUE MALL - 35 Dealers. Open 7 days, 10-5, 116 E. Main. 428-9357. tfn

VILLAGE HAIR FORUM - 201 East Main, Old Mill. 428-7684. tfn

C & B PAINTING - Interior-Exterior-Free Estimates. Contact Charles E. Benedict. Phone 428-7136 or 428-7416. tfn

MERRIMAN INSULATION - Free Estimates. Blown in cellulose. Professionally installed. George Merriman. Phone 517-592-5527. tfn

JERRY WHITAKER EXCAVATING - Hauling and ponds dug. Call 475-7841. tfn

PIANO TUNING & REPAIR - Qualified technician - Ron Harris. 475-7134. tfn

CHELSEA GREENHOUSES - 7010 Lingane Road, Chelsea, Michigan. 475-1353-54 or 475-9313. Flowers and plants for every occasion. We specialize in wedding flowers to fit your budget. We are as near as your phone and we welcome your business. tfn

SHARPENING SERVICE - Ice skates, saw chains, hand saws, circular saws, knives, scissors, pinking shears, hair-animal and grass clippers, lawn mower blades, electric hedge clippers, drills, and most anything needing a sharp edge. Kleinschmidt True Value Hardware, 19860 Sharon Valley Road, Manchester. tfn

LAWN SPRAYING - Free Estimates. Call Tim Spiess. 428-9497. tfn

COPY PAPER AVAILABLE - We have copy paper in sizes 8 1/2 x 11, \$4.75 for 500 sheets. 9 1/2 x 14, \$5.75 for 500 sheets. The Manchester Enterprise tfn

FIREWOOD - 4X8X17 - \$40 delivered. 517-536-8125. Oak, Cherry, Walnut. 3-20p

FIELDER PAINTING - Interior and Exterior. Free Estimates. Senior Citizens Discount. Phone 428-8506. tfn

UNDERCOVER WEAR - You've seen us on Lifestyles, now call me to learn about the Undercover Wear opportunity. Call Sue at 517-423-7252. 3-20

BETTER LATE THAN NEVER - Your furnace has worked hard most of this winter, but its not too late to clean it now. Make sure it will run efficiently the rest of this winter and be ready for next year. FREE filters through March. Call us for an appointment at Manchester Electric, 313-428-8243. 3-13

EAMES SMALL ANIMAL CLINIC - 18600 W. Austin Road. Phone (313) 428-7100. Office hours DAILY Mon-Sat 1:00-3:00 p.m. Evenings Mon., Wed., Fri. 7:00-8:00 p.m. Other times by appointment. tfn

LITTLE WACK EXCAVATING - Licensed and Insured. Basements, Drainfields, Digging, Bulldozing, Trenching, Black Dirt, Sand, Gravel. Paul Wackenhut, 313-428-8025. tfn

FOR SALE - BUILDING LOTS - Riverbend Subdivision, Village of Manchester, on private lake. All utilities installed. Terms negotiable. Phone (313) 428-8496. tfn

JON'S PHOTO AND RECORD SHOP - In the Old Mill. Tuesday thru Friday, 12-5; Saturday, 10-1 p.m. 428-9509. tfn

WANTED - Standing timber, saw logs and veneer. Buskirk Lumber Co., 517-661-7751. tfn

LARGE 2 BEDROOM apartment in quiet area close to downtown and church. Garden area, large yard. \$325, 428-7731, evenings. tfn

MOVING SALE - 3 piece full-sized Bedroom set, \$350; Jukebox with 2 pinball machines, \$650; 4 piece patio furniture, \$100; electric range, \$100; ping pong table and pool table, \$75; 7 piece dinette set, \$250. 428-8987. 3-20

10 ACRES AVAILABLE for lease. Reasonable. Call 397-1732 after 6 p.m. 3-20

FOR LEASING & Management of single family homes, duplexes and small multiple units call Bob Smith, 371-6100. The Charles Reinhart Company. 3-20

WANTED - Cropland for 3 year cash lease - phone 428-7265 or 428-9317. 3-6

SECURITY GUARDS WANTED - Manchester and Ann Arbor area. Must be neat appearing and have good communication skills. Call collect 313-371-5830. 3-6p

FREE DOGS TO GOOD HOMES - Born 11-14-85 - Like the outdoors - Mixed breed. Call evenings. 428-7756. 3-6

ALBER ORCHARD & CIDER MILL - Apples and cider. Open daily 9 to 5. Closed Sundays. 13011 Bethel Church Road, Manchester. 428-7758. tfn

APPLIANCE REPAIR - Washer - Dryer - Range - Refrigerator - Dishwashers. 517-592-3556, Daniel J. Appliances. tfn

PARENTS - Looking for quality State licensed Day Care with a structured program? Call Carolin's Corner at 428-8279. 4-24p

CROSS WITH CHRIS! June 20, Germany, Austria, Switzerland. July 5, England, Ireland, Scotland. July 21, Denmark, Sweden, Norway. August 4, France, Switzerland. Price: From \$1669 Detroit, includes flight, 2 meals daily, 1st class hotels. 517-453-2202. 7309 Berne Road, Pigeon, MI 48755.

1 & 2 BEDROOM Apartments for rent. D.E. Limpert Co. 428-7400. tfn

AD CONSTRUCTION - We do most building projects involving Residential Structures, Pole Barns, Remodeling. Call Dan Jordan in Clinton at 517-456-7817; 456-4842. 8-7p

LA LECHE LEAGUE - For Breastfeeding Information or assistance. Call 428-8831. 3-27p

FARM LAND FOR RENT on one-three year cash lease, 67 acres. Call 428-8333. 3-27

HIRING EARLY ELEMENTARY Teacher to serve as Director of Day Care Center, 30-40 hours week, country setting, Manchester area. Call Lynda, 428-9487. 3-13p

BABYSITTING IN MY HOME - Jennifer DuRussel, 12779 Schleweis, 428-7459. 3-13p

GET IN SHAPE Before Spring Break. Aerobic Class begins 2nd week of March. For more information call 428-7017. 3-13

DAY CARE CENTER OPENING May 1, 1986. Preschool - Kindergarten (2 1/2-6 yrs.). Year around, Mon-Fri, 6:30 - 6:30. Pleasant Lake Road and Lima Center road. Call Lynda, 428-9487. 3-13p

USED PIANO FOR SALE - \$35. 428-7317. P

SHAPE-UP - Aerobic Toning & Fitness Center, Maplewood Lanes, Saline. 2 year Anniversary Party, March 14th. Free Aerobic Class 7-8 p.m. Party to follow. Door prizes, drink specials and dancing. Everyone invited. For more information call 428-7266.

IRA MEANS FLY-R-A at Comerica Bank.

The only IRA that lets you enjoy a little of your retirement right now.

Deposit a total of \$2,000 and when you buy one American Airlines ticket, you get one more at a 75% DISCOUNT, and the third and fourth ticket at a 90% DISCOUNT!

For a deposit of \$1,000 to \$1,999 you get one FREE ticket when you buy two!

Come in and see us for full details...Comerica Bank, 135 Main Street, Manchester. tfn

FOR SEASONAL LAWN CARE call T&N Services. 428-7002.

FOR RENT - 81 acres cash crop. 517-522-8256.

RELIABLE SITTING NEEDED - 3-7 p.m. Monday thru Friday to care for 7 year old in wheelchair in my home. \$5.00 per hour. 428-9615 after 7.

IF YOUR CAR ISN'T becoming to you then it should be coming to us! Call T&N Services today and let us wash winter away. 428-7002.

TEMPLE BETH ISRAEL (Corner W. Michigan Ave. and West Ave., Jackson) - Rummage Sale: Tues., March 11, 10 to 9 p.m.; Wed., March 12, 10 to 4 p.m. Please do not block driveways on S. Grinnell.

CHEVY 1/2 TON PICKUP LINER - \$250.00, 428-7155. P

1975 CHEVY WAGON - 4 new tires, runs good. \$650.00. Dressed Rabbits, 428-8873. P

HALF PRICE! Flashing arrow signs \$289! Lighted, non-arrow \$269! Nonlighted \$219! Free Letters! Very few left. See locally. 1 (800) 423-0163, anytime. P

FOR SALE - 1978 Dodge Aspen Wagon, \$500. Call 428-8568. P

SOFA - \$150, 3 LIVING ROOM Chairs - \$75, \$40 & \$50; Doorwall Drapes - \$20; 24" Color TV - \$95; Lamp - \$10; Curio - \$100; and Hutch - \$155. 428-9208. P

SHAPE-UP - Aerobic Toning and Fitness - Trackersize (girls Track Team). This year Trackersize is open to the public. Classes will be Monday and Wednesday from 4 to 4:45 p.m. 1st class begins Monday, March 17th. Come and take a class at your convenience for just \$2 per class. For more information call Linda Woods, 428-7266.

Card of Thanks

Thanks so much to our family, relatives, friends and neighbors for their visits, flowers, get well cards and food brought in after returning home from the hospital. A special thank you to the wonderful staff at the Saline Hospital, Dr. Khan, Dr. Meyers and all the help there. Also Rev. Hayden Carruth & Rev. Hocking. May the Lord bless you all for your kindness. My husband, Earl, wants to thank you all for the get well cards and kindness shown after his operation.

Olga Iur

APPRAISAL DAY

Saturday, March 15
Sunday, March 16

Benefit For
Mott Children's Hospital!

two Dollar Fee
Per Item
Appraised

MANCHESTER ANTIQUE MALL
116 East Main Street
Manchester, Michigan

428-9357 Open 10am-5pm

WANTED SITE FOR NEW POST OFFICE MANCHESTER, MICHIGAN

U.S. Postal Service seeks a vacant site of 12' X 225' for construction of a new Post Office. The property should be within the Village limits of Manchester. Offerers should own or control the property submitted. Initial offerings may be accepted in letter form. Forms for submitting a formal offer to the Postal Service may be received by contacting the Postmaster, or by contacting the undersigned. All offerings must be received by March 29, 1986.

FOR FURTHER INFORMATION CONTACT:

Robert L. Borne
Real Estate Specialist
U.S. Postal Service
Michigan District Office
Southfield, MI 48075-9991
(313) 226-6332
(313) 356-1588



Bids Wanted

Bridgewater Township is now accepting bids for lawn maintenance for the Township property and two cemeteries for the 1986 season. Please submit in writing by March 31, 1986, a bid to:

Bridgewater Township Clerk
13360 E. Austin Road
Manchester, Michigan 48158

NOTICE

The Village of Manchester is now accepting "Bids" for the mowing of Village Parks, for the 1986 season. Council reserves the right to reject any or all bids.

U.S. Soybean Farmers Welcome Soviet Soybean Purchases

It is time for a thaw. Whitewater, Wis., soybean farmer John Hoffmann could be talking about his state's wintery weather, but he isn't. Hoffmann is talking about the Soviet Union. For the first time in more than a year, the Soviet Union is buying U.S. soybeans.

Recently, the U.S. Department of Agriculture announced Soviet purchases of U.S. soybeans totaling 1,077,800 metric tons, or just less than 40 million bushels.

Hoffmann, who serves as secretary of the American Soybean Association (ASA), was in the Soviet Union in December on a trade expansion mission for U.S. soybean farmers. Traveling with Hoffmann were ASA staff vice president Michael Phillips, and staff of the Soybean Association's Vienna office.

"These soybean purchases may mean a significant warming in U.S. Soviet agricultural relations," says Hoffmann. "But now the Soviets are looking for a stronger commitment from the United States. Trade has to be a two-way street."

The Soybean Association is already working to pave that street.

In meetings with Soviet officials, Hoffmann learned of Soviet concerns about access to high technology...and the Soviet desire to be treated as a respected, valued trading partner of the United States.

At stake for U.S. soybean farmers is a 300-million-bushel market. That's what the Soybean Association estimates the Soviet Union could need to adequately meet animal nutrition requirements.

"We are providing the Soviets with technical assistance and

information about soybean meal. We want them to chose U.S. soybeans," says Hoffmann. "We can offer technology to them that other soybean suppliers can't provide."

"The Soviets have decided to feed their people better. They have made a commitment to improve animal production efficiency and upgrade livestock feeds. The Soviets are going to purchase protein; the questions are how much of that protein will be soybean, and where will they buy."

During the meetings in Moscow groundwork was laid for a feed manufacturing short course this spring in the Soviet Union. And preliminary plans were made for joint cattle feeding trials which will feature local feed ingredients and soybeans. The Soviets also indicated interest in increasing use of vegetable oil products such as margarines and mayonnaises.

The Soybean Association's Phillips sees this expanding Soviet interest as a continuing chapter in a long-term effort to secure Soviet soybean markets.

"Since the lifting of the 1979 grain embargo, the Soybean Association has worked hard to recapture lost ground in the Soviet Union," says Phillips.

He cites soybean farmer participation in trade missions; the addition of staff to the Soybean Association's Vienna office which serves the Soviet Union; and efforts in the United States to foster policies which facilitate trade.

In particular, Phillips points to Soybean Association efforts to preserve contract sanctity and prevent future grain embargoes.

"When the United States uses food as a weapon, U.S. farmers lose," says Phillips. "The Soybean Association is working to insure that contract sanctity remains in law as a protective shield for farmers."

Anti-embargo contract sanctity, which President Reagan signed into law in January, 1983, says that while the President may still

declare a grain embargo, he cannot cancel shipment of private export contracts for 270 days after that declaration.

Soybean Association legislative efforts also include a proposal for a new trade category - Major Export Market (MEM) - for nations like the Soviet Union which are not eligible for Most Favored Nation status.

Phillips explains that MEM would allow a country preferred duty treatment for goods it sells in the United States, but would not provide the export credit eligibility that goes with Most Favored Nation status. MEM could easily apply to the Soviet Union.

Hoffmann says, "U.S. soybean farmers want to send a clear message to the Soviet Union. We are serious about being reliable suppliers. We are committed to preventing trade embargoes, preserving the sanctity of contracts, and reducing market barriers. The Soybean Association wants to build the United States' share of the Soviet soybean market instead of being its soybean supplier of last resort."

La Leche League

La Leche League was organized in 1956, for the purpose of informing interested women on the topics of breastfeeding and mothering. Meetings are held monthly and consist of informal discussions relating to four subjects: The Advantages of Breastfeeding to mother and baby; The Baby Arrives: The family and the breastfed baby; The Art of Breastfeeding and overcoming difficulties; and Nutrition and weaning. Our four month series deals with these topics one at a time and you may begin attending at any time during the series. The meetings rotate throughout the year.

Also available at League meetings are copies of books for sale and loan relating to various subjects of interest to nursing mothers: Pregnancy and childbirth, breastfeeding, nutrition, child development and discipline. Each book available reflects La Leche League's philosophy of Good Mothering Through Breastfeeding. At our meetings we hope you will find an atmosphere of acceptance and support for the unique experience you and your baby will enjoy

through breastfeeding. Leaders are available by phone 24 hours a day for assistance and information. Manchester leader is Marsha Chartrand, 428-8831.

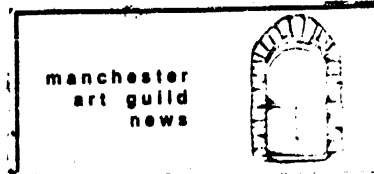
Our next meeting will be on The Art of Breastfeeding and Overcoming Difficulties and will be held at the Emanuel U.C.C., 324 W. Main, Manchester, at 7:30 p.m. on Tuesday, March 11. Nursing babies are always welcome at League meetings. If you need further advice or information, please call Marsha at the number listed above.

Jolly Farmerettes 4-H Club Report

Our last meeting was at Missy Steele's house. There was a demonstration by Denise Kuebler about how to take care of your nails. Everyone is getting ready for Spring Achievement on March 22. Modeling clinic is at Klager School at 1:00 on March 8.

Next meeting is on April 16, at 6:45 at Meghan Hakes's house.

Club Reporter
Meghan Hakes



March has arrived. Spring is around the corner.

Preparing for the quickened pace that arrives with better weather-field trips, outdoor painting sessions, art fair bustle, and information exchanges-the Manchester Art Guild will gather for this month's meeting at Frank's Italian Pizza and Sub Shop.

Dinner will be optional. Spirited exchange with others having an interest in the arts will be mandatory.

Join members and friends this Tuesday, March 11, at 7:30 p.m.

Clinton Theatre

DAN CHEVY AYKROYD CHASE

SPIES LIKE US

Friday and Saturday
7:30 & 9:30
SUNDAY 7:30
ALL SEATS \$2.00



Because of the moon's tidal drag, days are increasing irregularly at the average rate of about a millisecond per century. Some of course, seem to have increased by much more than that.

Michigan Veterinary Clinic

18901 SHARON VALLEY ROAD
MANCHESTER, MICHIGAN 48158

313-428-8365
LARGE AND SMALL ANIMAL
SURGERY AND MEDICINE

OFFICE OR HOME VISITS BY APPOINTMENT
9 AM-9 PM MONDAY THROUGH SATURDAY
VERA L. KLUWE, D.V.M.

ATTENTION
All Area Residents

The mowing season is approaching fast!
So call T & N Services today and schedule all of this season's yard work!!

428-7002

HOME IMPROVEMENT NEEDS?
We've Got 'Em All...!

Call Us For A
Free Estimate

Additions - Decks
Garages- Roofing
Siding - Pole Barns

428-8836

R. D. Kleinschmidt

19850 Sharon Valley Road
(Corner of M-52)
Manchester, Michigan 48158

FILLYAW'S MARATHON SERVICE
327 West Main Street Phone 428-8576 Manchester, Michigan
MONDAY-SATURDAY 7:30 am-7pm

DISC BRAKES
*Replace Brake Pads
*New Grease Seals
*Resurface Rotors
*Complete Brake Inspection
*Repack Wheel Bearings
*Road Test Car
Most U.S. Cars \$59.95
Front Brakes ONLY
Metallic Pads Extra

**STOP IN & PICK-UP
A MARATHON
CREDIT CARD
APPLICATION**

YOU CAN PURCHASE BATTERIES, TIRES
SHOCKS, PARTS OR HAVE YOUR CAR
TUNE-UP FOR THE WINTER MONTHS
BRAKE JOBS, FRONT END ALIGNMENT OR
WHEELS BALANCED
ASK ABOUT OUR INTEREST-FREE EXTENDED
PLAN FOR CERTAIN PURCHASES

**FRONT END
ALIGNMENT**
\$24.95 & up

**SPECIAL
OIL, LUBE
AND FILTER**
\$19.95
Up To 5 Qts. Oil

WE TURN BRAKE DRUMS
AND ROTORS

**ROTATE AND
BALANCE ALL
4 TIRES**
\$19.95

24 Hour
Wrecker Service

STOP IN AND SEE ME FOR YOUR
BEST TIRE DEAL

GOOD YEAR

WE NOW HAVE
SUPER "M" LEAD
FREE GASOLINE

FULL LINE OF
MARATHON PRODUCTS