

THE MANCHESTER ENTERPRISE

25¢ COPY

119TH YEAR VOLUME NO. 23

USPS NO. 327-480

THURSDAY, MARCH 27, 1968

Optimist Club Student of the Month



Jennifer Barnard is pictured above with her parents, Bonnie and Ed Barnard, and Optimist member Rev. Robert Macfarlane.

Jennifer Barnard has been honored as Optimist Student of the Month for March. She is the daughter of Ed & Bonnie Barnard of Manchester and is finishing her Sophomore year at Manchester High School.

Jennifer has been active in sports her past two years, participating on the Volleyball & Softball teams. She has been on the Honor Roll her Freshman and

Sophomore years.

Jennifer is a member of the youth group of St. Mary's Church and recently placed 3rd in the Optimist Club Essay Contest. She plans to attend college after graduating and is interested in the teaching profession. We are proud as Manchester Optimists of Jennifer's accomplishments and achievements.

American Red Cross Must Raise \$40 Million For Disaster Relief

Cost estimates for disaster victim relief following devastating floods in Northern California and other parts of the Northwest United States have increased to \$5,233,000. Eight shelters remain open to provide for the individuals and families still displaced by the storms.

Completed American Red Cross damage assessments show a total of 9,116 families affected by the disasters in California and Nevada. More than 1,500 families have already applied for immediate assistance from the organization. Service centers are operating in nine counties to handle the estimated 6,500 families that will apply for Red Cross assistance. Red Cross has assigned over 200 volunteer and paid staff to support the 21 chapters in the stricken areas. During the peak of the operation, over 21,000 evacuees were housed in 71 shelters. To date, the Red Cross has provided mass care assistance and services to 66,377

victims and emergency workers. Over 10,000 meals, three times a day, are still being served in two cities.

This latest estimate adds additional responsibility to the already strained disaster coffers of the American Red Cross.

"An unprecedented number of disasters have depleted the disaster budget to the breaking point, and the American people are being called upon to help their neighbors," emphasized Robert Vessay, Director of Disaster Services for the American Red Cross.

"We must raise \$40 million to meet the needs of the people who through this most distressing year have been left with terrible problems due to the disasters in their communities," he said.

"Over 5.6 million Americans have been affected by disasters in the past 12 months. To date, over \$18 million has been raised throughout the United States to

Continued on page 16



Manchester Community Good Friday Service will be held at Bethel United Church of Christ, corner of Bethel Church Road and Schneider Road, at 1:30 p.m. on Friday, March 28th.

Rev. Evans Bentley will preach the sermon and the Bethel Senior Choir will sing the anthem. Taking part in this service will be: Rev. Evans Bentley, Pastor of Sharon United Methodist Church; Rev. Hayden Carruth, Pastor of Manchester United Methodist Church; Rev. Robert Macfarlane, Pastor of Emanuel United Church of Christ; and Rev. Roman Reineck, Pastor of Bethel United Church of Christ.

You are invited to worship with your neighbors during this Holy Hour.

MANCHESTER AREA



CHAMBER OF COMMERCE

The March 12th meeting of the Manchester Area Chamber of Commerce was held at the K of C Hall. Forty-two members and guests were present. The following visitors were introduced: Barbara Reinhart by Mary Kallewaard, Gary and Kay Aitchison by Sue Hamilton, Lee Fidge by Judy Fahey, Ted Tapping by Dan Naimowicz and Shirley Reinhart by Wendell Reinhart.

All Chamber of Commerce members are urged to attend the April 9 general meeting which will be an overview of design and financing for Sewage Treatment Plant presented by engineer Glenn Burkhardt of McNamee, Porter and Seely. President Judy Fahey announced that more letters urging selection of a downtown site for the new post office are needed from the community to attach to the Council letter to Carl Pursell. Give the letters to Dan Naimowicz.

Jim Datsko distributed a newsletter from the Legislative Action Committee. Reports summarized in this newsletter are: Effects of the Gramm-Rudman-Hollings Bill on the not-for-profit sector as seen by the United Way; current environmental issues from the Michigan C of C; Michigan Travel Commission; update on taxation and regulatory matters of interest to Michigan job providers; and worker's compensation reform. See Jim if you would like a copy of his newsletter or would like to read the complete reports that The Chamber received. Joe Marshall reported that the Street Fair and

Continued on page 8

Hit or Miss

by Farley

We noticed the other day a news item stating that the Sheriff's National Association would hold their annual convention June 13-19 in Dallas and noted that Dick Germond of Lenawee County was this year's president. This is a distinct honor for this area for the membership of this group consists of the sheriff of every county or parish in these United States. This makes the group a large one.

The word sheriff has long intrigued us. We of course know that a sheriff is the head of a county's law enforcement body who is elected by the voters to head that department and who is responsible for the law enforcement body of his county but we have always wondered just how and what the word sheriff means and how it originated and so we dug about and came up with the following information:

To most of us the word "sheriff" brings up images of Gary Cooper and six shooters and shiny badges on manly chests. We picture Destry riding again toward a showdown or Cooper striding towards his destiny at high noon

and no public relations work could create such an aura of glamor but the truth is quite different.

The modern American Sheriff is quite different and may be found in an air conditioned office and not on horseback in pursuit of a bunch of dastardly cattle rustlers. We are told that his problems are about the same as those in the large cities. This is proven by the fact that the theme of this year's convention is "Sherriffs and American Youth" - a topic to bring attention to their involvement in the search for missing youths and other problems peculiar to their professions.

So we researched the word sheriff and found that way back in the days of the Roman Empire they had an official whose duties were to keep the citizens law abiding and to collect taxes. He was appointed by the emperor and had a great deal of power in his district.

When the Romans went to England and formed a governing body they appointed a similar official to perform his duties in his designated "shire" which corresponded to what are now our counties. He was called a "Reeve" and in the course of time the shire reeve was shortened to a "sheriff". When the folks from England came here and set up a government, they divided the various areas into counties in which one sheriff had the power to enforce the law, to keep peace and to collect taxes. He must have been so busy enforcing the laws that soon his tax job was delegated to a county treasurer.

Nowadays the sheriff needs to have a considerable amount of technical training and is usually a graduate of a college course in various legal procedures and various other factors involved in his duties. It seems to us that Washtenaw and Lenawee counties are in good hands.

We might add that in counties having any sizable cities in their areas these cities have their own police force leaving the law

Continued on page 16

Public Meeting To Be Held

The Washtenaw County Planning Commission will be holding a Public Meeting on April 2, at The Manchester Township Hall, 275 South Macomb Street, at 7:30 p.m.

Manchester village, Sharon, Manchester, Bridgewater and Freedom Township governmental officials and all citizens are invited to attend.

There will be a presentation by Don Pennington, on the new Land Use Plan for the entire Washtenaw County.

After the presentation, the meeting will be open for questions, comments and input from the audience. The commission would like to have input from the public on this new plan.

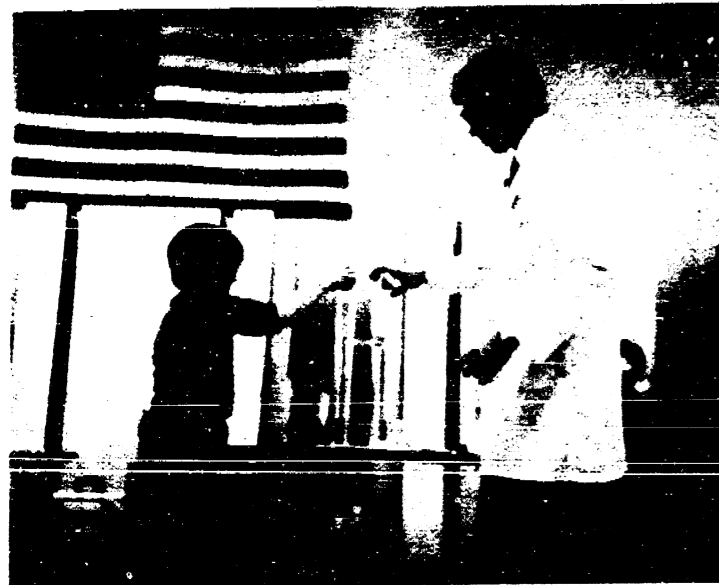
Annual Easter Egg Hunt

Attention Manchester area boys and girls aged preschool through 3rd grade. The Easter Bunny is busy getting all those eggs colored and hiding them in the park. You are all invited to attend the Annual Easter Egg Hunt. It will be held on Saturday, March 29, at Carr Park. Starting time is 1:00 - Rain or shine! Prizes will be awarded for finding specially marked eggs. This event is one of the many community projects sponsored by the Manchester Men's Club.



THE GLORY OF EASTER
EXPERIENCE IT IN CHURCH THIS YEAR!

Chemistry Assembly



Jonathon Beagan helps chemist Mark Spaulding with a pollution experiment. Students learned about solids, liquids and gases at a PTO sponsored assembly entitled "The Wonderful World of Chemistry."

A book set itself on fire, a fresh flower crumbled like a cracker and a cannon shot out a cork - all part of the many marvelous experiments that Chemist Mark Spaulding demonstrated at a recent Klager Assembly. The experiments were divided into three areas using solids, liquids and gases. Students learned how these forms are different from one another and observed them in a

Spring PJ Story Hour

The Manchester Township Library will offer story hour for 3 to 5 years olds on Wednesday nights from 7-7:30 beginning on April 2 and ending on June 4. For further information contact the library at 428-8045.

Spring Break!

Spring Vacation for Manchester Community School students begins Friday, March 28 and extends through April 4th. School will resume on April 7th.

Boosters To Hold Free Car Wash

The Middle School Boosters is having a free car wash to raise money for the Middle School. The car wash will be held Saturday, April 12th (rain date April 19th) from 8 a.m. to 7 p.m. at Emanuel Church parking lot. During the next few weeks the Middle School children will be coming around to ask you to sponsor them. A pledge of one or two cents per car washed would be appreciated. Thank you for your help.

Golfers Needed!

Any persons interested in golfing at Clark Lake's Thursday Night Late League, contact Russ Hough at 428-7255.

Michigan Math League Contest

Manchester Middle School students are taking part in the Michigan Math League contest for the fourth year. The testing date for seventh and eighth graders was February 11, while the fifth and sixth graders were tested on March 4. Each timed test consisted of forty multiple choice questions to be completed in thirty minutes.

Thirty-four eighth graders and thirty-one seventh graders took the test. The top seven eighth graders were Jamie Hall, Chad Randall, Cindy Schulte, Melissa Hawk, Ryan Burkhardt, Mike Mazurek, and Eric Creech. Top seventh graders were Andy Pagel, Julie Hamilton, Ryan Anderson, Eric Fillyaw, Benji Winzenz, Tony Punched, and Jesse Witmayer.

These scores have been submitted to the Michigan Mathematics League and will be compared with other scores from across the state. In May, we will receive results which give the top scores by state and by region. There will be a ranking of both individual scores and of team scores. A team score is obtained by adding the top five individual scores.

Twenty-nine sixth graders and twenty-two fifth graders were tested. The top sixth graders were Krista Sahakian, Jeffrey Hughes, Rebecca Schardt, Linda Devulder, Gabe Weiss, April Barrett, and Donna Spiess. Top fifth graders were Michelle Mann,

Ken Miller

RESIDENTIAL BUILDER
QUALITY WORKMANSHIP AT A REASONABLE RATE
SPECIALIZING IN SIDING-CUSTOM MADE TRIM ALUMINUM AND VINYL
FREE ESTIMATES
LICENSED & INSURED
PHONE 517-592-8904
Between Manchester and Brooklyn

MARGIE'S UPHOLSTERY

6245 Brooklyn Road
Jackson
Wide Selection Of Fabrics
Pick-Up / Delivery Available
517-536-4230
This Phone Number Is In Working Order. Please Phone Persistently. Or Go Through The Operator.

The Manchester Enterprise

150 EAST MAIN STREET
Manchester, Michigan 48158
USPS 327-460
Phone 428-8173

The Manchester Enterprise was established in 1887 and is published each Thursday at 150 East Main Street, Manchester, Michigan, with second class postage paid at Manchester.

Edward E. Steele, Publisher
Lenore A. Steele, Editor

POSTMASTER: Send Form 3972 to The Manchester Enterprise, 150 East Main Street, Manchester, Michigan 48158.

DEADLINES: All Display Advertising AND Pictures (Black and White Only) Are Due By 5:00 P.M. Every Monday For Same Week Publication. All Classified Advertising And News Articles Are Due By 11:00 A.M. Every Tuesday For Same Week Publication.

David Derby, Ty Turner, Rich Lutton, Greg McLennan and Mark Mann.

Fifth and sixth grade scores are judged in one contest. The top five scores from the two combined grades are submitted. We will receive the same kind of ranking, both individual and team, as in the seventh and eighth grade contests. This contest is coordinated by Nondus Buss as part of the Middle School gifted program.

Senior Citizens News

The calendar says spring has arrived. But those of us who aren't lucky enough to greet it in the South, will just brave March winds and April chills until the weather says spring is here.

Thursday, March 27 - Exercise begins at 11 a.m. Roast Pork and dressing for noon meal, Bingo at the Center at 12:30, no card party at night.

Friday, March 28, Saturday, March 29 and Easter Sunday, March 30, no planned activities. Wear your Easter bonnet and enjoy!

Monday, March 31 - Walking Club at 9:00.

Tuesday, April 1 - 10:00 Newsletter Staff. Come Join us, we need some fresh ideas! 12:00

Noon meal is stew and biscuits, 12:30 cards and crafts.

Wednesday, April 2 - 1:00 Planning for calendar for May and June. Any suggestions for trips or activities? Call the Center or drop in for this planning session.

Thursday, April 3 - 11:00 Exercise followed by Swiss steak dinner at 12:00, 12:30 Bingo and 7:00 Men's Bridge.

Sign up soon for the Mystery Trip on Friday, April 11, or the Monday, April 21, shopping trip to Jackson. Call the Center, 428-7181 or Helen Braun, 428-8966.

All Manchester area Seniors are invited to share in the low-cost meals on Tuesdays and Thursdays or to join in any of the activities. The Center is open 1:00-4:00 each weekday. Call for information or drop by. Keep the Bill Knapp Bonus Points coming in.



The skin on your body is sensitive to pain is that on your heel.

SHERIFF

WASHTENAW COUNTY
EMERGENCY NUMBER
971-3911
Non-Emergency 971-8400

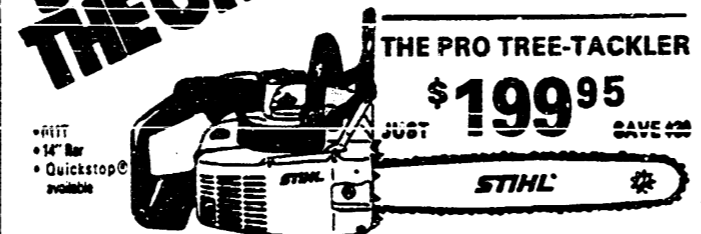
NOTICE

Manchester Village Residents

Parking 2:00 a.m. - 5:00 a.m. will be broken down into two separate seasons:

1. April 1st to October 1st - Vehicles will be ticketed on Thursday night through Saturday night on curb and gutter streets only.
2. October 1st through March 31st - vehicles left on the curb and gutter streets will be ticketed every night unless the owner has made contact with the police department.

STIHL THE ONE Save now on STIHL quality!



Cut through your work in less time, with less effort - with the Stihl® 011T Chain Saw. A touch, rugged saw engineered for professional tree-trimming operations.

STIHL
NUMBER ONE WORLDWIDE

K & W EQUIPMENT INC.
Chelsea Manchester Road Manchester, Mich.
Phone 313-428-7666

Young Authors Conference

Seven students from Manchester Middle School joined students from twenty-five Washtenaw County schools who met at Tappan Intermediate School in Ann Arbor on Saturday, March 8, for the sixth annual Washtenaw Young Authors Conference. This was co-sponsored by the Washtenaw Intermediate School District and the Washtenaw Reading Council.

Donna Spiess, Linda Devulder and April Barrett, sixth graders; Dennis Gehringer and Kelly Reeb, seventh graders and Jennifer Guernsey and Janet Sjostrom eighth graders were among the approximately 110 students who spent the morning sharing their writings in small discussion groups and listening to speakers in mini-sessions. Topics for workshops included: "Poetry Writing", "Writing Science Fiction", "Investigative Reporting", "How to Improve Your Writing", "Truth or Consequences in Fiction", and "The Art of Storytelling".

Steven Dunning, Professor of English and Education at the University of Michigan was the key note speaker with the topic "One Road There for the Taking". He also presented a session for the teachers who attended. Refreshments served during the morning were courtesy of the Ann Arbor News.

Marge Scully, sixth grade teacher, was Manchester's teacher representative this year. A parent, Joyce Spiess, also accompanied the students.

Nondus Buss, gifted coordinator, was the chairman of this year's conference and served on the Board of Directors of the Washtenaw Reading Council as a result. Manchester's participation in the Young Authors Conference was started in 1982 as a component of the Middle School gifted program.

Maternal grandparents are Norman and Olga Walz of Manchester and paternal grandparents are Howard and Irene Feeman of Hillsdale. Maternal great-grandmother is Daisy Walz of Manchester and paternal great-grandmother is Bertha Finkbeiner of Saline.

Seedlings still available include:

accompanying the students.

Austrian Pine, Red Pine, White Pine, Norway Spruce, Black Hills Spruce, Colorado Blue Spruce, Douglas Fir, White Ash, Red Oak, Black Walnut tree seedlings; Silky Dogwood shrub seedlings; Emerald Crownvetch seed, and tree planting bars.

Birth Announced

Dennis and Jeri (Walz) Feeman of Saline, announce the birth of a daughter, Jessica Lacy. Jessica was born on March 13, 1986 at Beyer Hospital in Ypsilanti. She weighed 8 pounds nine ounces and was 22 inches long.

Jessica has a sister Jennifer, 4 years old and a brother Dennis Jacob, 2 years old.

Maternal grandparents are Norman and Olga Walz of Manchester and paternal grandparents are Howard and Irene Feeman of Hillsdale. Maternal great-grandmother is Daisy Walz of Manchester and paternal great-grandmother is Bertha Finkbeiner of Saline.

Tree Seedling Sale Order Deadline Nears

The Washtenaw County Soil Conservation District reminds county residents that April 14, 1986, is the last day orders for trees and shrub seedlings will be accepted for the District's Annual Spring Tree Sale.

Seedlings still available include:

Also still available are Wildlife Packets suitable for wildlife food and cover. Packets have an assortment of 60 trees and shrubs which may include: White Pine, Red Pine, Blue Spruce, European Larch, Red Oak, Autumn Olive and White Flowering Dogwood. Packet contents may vary depending upon stock availability at time of packaging by the nursery.

All seedlings are offered on a first-come, first-serve basis, while quantities last. All planting stock will be available for pick-up on Saturday, April 26, 1986, at the Washtenaw County Road Commission Garage, on Zeeb Road, Ann Arbor.

For further information about the Tree Sale and to obtain an order form, contact the Soil Conservation District Office, 6101 Jackson Road, Ann Arbor, Michigan 48103. Telephone 313-761-6721.

Emanuel United Church of Christ welcomes all who would worship the Risen Christ on Easter Sunday morning, March 30, 1986. Two Services of Worship are offered, 8 a.m. and 10:30 a.m.

Easter At Emanuel Church

Emanuel United Church of Christ welcomes all who would worship the Risen Christ on Easter Sunday morning, March 30, 1986. Two Services of Worship are offered, 8 a.m. and 10:30 a.m.

Easter Worship Services begin with special prelude music starting at 7:45 a.m. and 10:15

a.m. Our guest trumpeter from the University of Michigan, Mr. Darin Kelly, and Organist, Dr. Marijim Thoenes, will play "Prayer of St. Gregory" by Alan Hovhanes, a contemporary American composer and "Sonata en sol majeur" by Jean-Baptiste Loeillet, a French Baroque composer.

The Emanuel Bell Choir will be heard at the early service at 8 a.m. They will be playing an introit entitled "Carillon for a Joyous Day" by Douglas E. Wagner. Several different bell ringing techniques will be heard in this piece, the most dramatic of which is the practice of "telling". The Bell Choir will also play an arrangement of the familiar hymn, "The Strife is O'er" and the traditional hymn, "Alleluia."

The Adult Choir of Emanuel Church will sing at the later 10:30 a.m. Service. They will be singing a 16th century anonymous motet, "This is the Day," based on the text for Easter Sunday, Psalm 118:24, and "Anthem for Easter" by William Billings. The Postlude at both services will be "Air for Trumpet and Organ" by G.P. Telemann.

Other Holy Week services include Maundy Thursday evening Worship at 7:30 p.m. with the Reception of New Members, Communion of the "Upper Room" and Service of Tenebrae. On Good Friday, the Manchester Community is invited to Bethel Church for 1:30 p.m. Services.

Most health insurance policies cover the cost of outpatient chemical dependency treatment, Kagan said.

Seed money for starting Intensive Outpatient Services was provided by a \$175,000 gift from General Motors. For more information, call 572-4308.

Outpatient Drug Treatment Available

Chemically dependent adults interested in receiving treatment for their addiction while continuing to live and work in the community can enroll in the Intensive Outpatient Services



In Copenhagen, Denmark, some brides rent wigs with tresses right feet long to wear for their weddings.

Manchester K of C FISHRY And SALAD BAR.

FRIDAYS FEBRUARY 7 thru MARCH 28

"ALL YOU CAN EAT"

\$4.75 Includes (milk or Coffee)

5 p.m.-8 p.m. Manchester K of C Hall

Also: Childrens Portions Available SENIOR CITIZENS \$4.50

Manchester Fitness Club

"SPRING SPECIAL"

BEGINS APRIL 15th

Tuesdays/Thursdays 6:15-7:15 Klager School

8 Weeks \$40.00

Spring "Shape-Up" Special Bring a new friend and attend two for the price of one

Registration will Be Done In Class

ATTENTION IRA

INDIVIDUAL RETIREMENT ACCOUNTS CONTINUE TO PAY

9.5% INTEREST

NO MINIMUM

NO TAX

NO LOAD

START AS LOW AS A \$25.00 DEPOSIT

Minimum Guarantee 9% Till January 15, 1987 Deposits of Monthly, Quarterly, Semi-Annual or Annual

SEE YOUR FARM BUREAU INSURANCE AGENT TODAY

Larry Becketl

135 East Main St., Suite 204
Manchester, Michigan
Phone 313-428-7331



FILLYAW'S MARATHON SERVICE

327 West Main Street Phone 428-8576 Manchester, Michigan

MONDAY-SATURDAY 7:30 am-7pm

STOP IN & PICK-UP A MARATHON CREDIT CARD APPLICATION

DISC BRAKES

*Replace Brake Pads
*New Grease Seals
*Resurface Rotors
*Complete Brake Inspection
*Repack Wheel Bearings
*Road Test Car

Most U.S. Cars \$59.95
Front Brakes ONLY
Metallic Pads Extra

ROTATE AND BALANCE ALL 4 TIRES \$19.95

STOP IN AND SEE ME FOR YOUR BEST TIRE DEAL

GOODYEAR

WE NOW HAVE SUPER "M" LEAD FREE GASOLINE

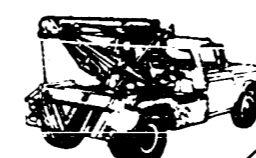
FULL LINE OF MARATHON PRODUCTS

CERTIFIED MECHANICS ON DUTY All Work Guaranteed

FRONT END ALIGNMENT \$24.95 & up

SHOCKS \$9.95 & up INSTALLATION EXTRA

WE TURN BRAKE DRUMS AND ROTORS



24 Hour Wrecker Service



Career Day Fascination



Julie Luckhardt watches in fascination as artist Nancy Feldkamp shares some of the techniques she uses to make her beautiful watercolor pictures.

Career Day was a very special occasion for Karger students. Over two dozen adults took their personal time to come to school and tell the children about their different jobs ranging from Baker to Veterinarian. It was a fascinating day as students learned about different careers, and the skills that each job requires.

Those speakers participating in Career Day were: Ralph Brooks - Engineer; Jane Finkbeiner - Banker; William Kwolek - Industrial Engineer (class); Vera Klwe - Veterinarian; Matt Donnellon - Insurance Agent; Kathleen Jefferson - Potter; Nancy Feldkamp - Artist; John Binder - Cable Technician; William Griffin - Postal Supervisor; Angie Knauss - Sheriff; Andy Oberdick - Photographer; Fleis O'Dell - Baker; Gary Acree - Salesman; Bonnie Greenwald - Potter/Artist; Dan Naimowitz and Ed Townsend - Village Management; Jay King - Computer Engineer; Deneine Schaible - Florist; Representatives from McDonald's Restaurant; Chris Spork - Sheriff's Canine Patrol; Karl Kleitsch - Traffic Engineer; Francis Barrigar - Plumber; Dr. Stanley Gilbert - Chiropractor; and Edgar Groom - Chimney Sweep.

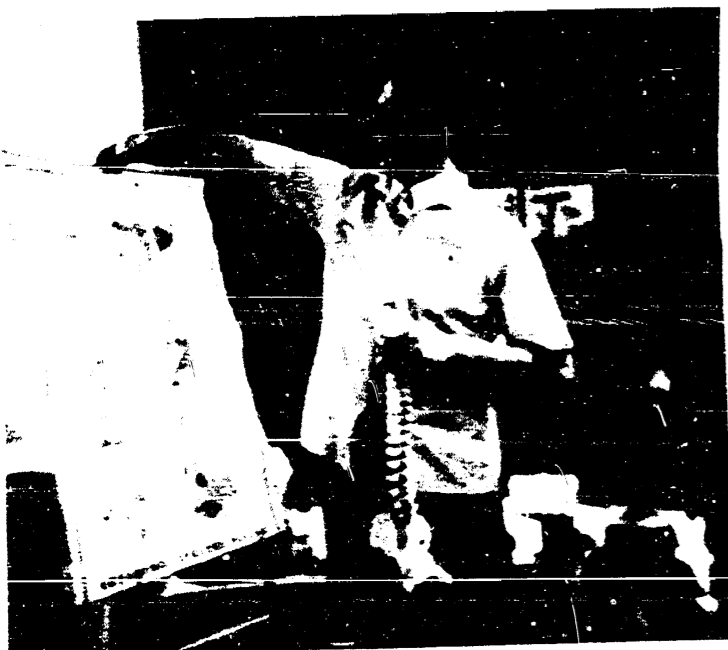
A coffee period after school was sponsored by the PTO to honor the speakers. Career Day was organized by teacher Yvonne Henry.



Florist Deneine Schaible discusses the qualities of different types of flowers commonly used, as she demonstrates how to build a flower arrangement.



Village manager Dan Naimowitz helps students locate various local sites on a giant aerial map.



Chiropractor Dr. Stanley Gilbert talked about the spine and its function in the human body. Students learned about the job of being a chiropractor.



Students learn about computer chips and printed circuits from computer engineer Jay B. King.

Gather family, friends together at Easter brunch

For Easter entertaining, a brunch is the perfect way to gather family and friends. Combining breakfast and lunch, a brunch can be casual or formal. Whether for two or 10 people, it can be easy entertaining.

Be creative in planning your brunch menu. To help you get started, here are some simply delicious suggestions from Stouffer Foods.

CREAMED CHICKEN, VIRGINIA STYLE

- 1 package Stouffer's Creamed Chicken
- 2 cornbread squares or corn muffins, cut in half
- 4 Tbsp. of deviled ham*

Heat Creamed Chicken following package instructions.

Cut cornbread squares or muffins in half. Spread bottom half with deviled ham, replace top half. Top with Creamed Chicken.

Serves two.
*Sliced ham may be substituted for deviled ham.

CREAMED BEEF WITH MELON

- 1 package Stouffer's Creamed Chipped Beef
- 1 cantaloupe or honeydew melon

Heat Creamed Chipped Beef following package instructions.

Remove cut melon into four wedges, remove seeds. Spoon hot Creamed Chipped Beef over melon.

WELSH WAFFLE

- 1 package Stouffer's Welsh Rarebit
- 4 cooked waffles
- 1 10 oz. package frozen broccoli, cooked
- 8 strips bacon, cooked

Heat Welsh Rarebit following package

instructions.
Place three broccoli spears on each waffle; top with two strips of bacon. Spoon Welsh Rarebit over each waffle. Serves four.

SPINACH QUICHE

- 1 package Stouffer's Spinach Souffle, defrosted
- 2 lightly beaten eggs
- 3 Tbsp. milk
- 2 Tbsp. chopped onion
- 1/2 cup sliced mushrooms, drained
- 1/4 cup cooked Italian sausage, crumbled
- 1/4 cup grated Swiss cheese
- 1 9-inch unbaked pie shell

Preheat oven to 400 degrees Fahrenheit. In a medium-sized bowl, combine Spinach Souffle, eggs, milk, onion, mushrooms, sausage and grated cheese. Pour mixture into pie shell. Bake for 25-30 minutes. Serves six.



Gary Acree spoke with enthusiasm about his job as a salesman. He also talked about the skills necessary to become a successful salesperson.

A & B IGA

STORE HOURS:
Mon.-Sat. 8-7
Closed Sunday



455 W. Main
MANCHESTER, MICH.



Advertised Prices Effective Now Thru Saturday

100% Pure
Treesweet Orange Juice
12 oz. Ctn.
89¢

Save 70¢
Deodorant Reg. or Unscented
9oz. Off Label
Sure Spray
9oz. Can
\$2.59

Save 50¢
Assorted Formulas
Aqua Net Shampoo or Conditioner
16 oz. Bottle
99¢

10 lb. Bag
Idaho Potatoes
\$1.29

Save 70¢
U.S. No. 1 Idaho
Idaho Potatoes
\$1.29

Health & Beauty aids
Famous Maker - 2 Pack
Pillow Cases
\$2.99

Deodorant Reg. or Unscented
9oz. Off Label. Save 50¢
Sure Solid
3oz. Pkg.
\$2.99

Assorted Flavors
Hawaiian Punch
16 oz. Can
87¢

100% Pure
Treesweet Orange Juice
12 oz. Ctn.
89¢

Design 9 Inch or Snack 7 Inch
FAME Plates
48 Ct. Pkg.
\$1.49

Assorted Varieties
Budget Gourmets
11-12 oz. Pkg.
\$1.49

Assorted Flavors
FAME Sugar
With 70% Sugar - 33 oz. Bag
79¢

Oven Fresh Golden Buttered
White Bread
12 oz. Loaf
89¢

Oven Fresh - 11 oz. Pkg.
Cinnamon Rolls
\$1.29

Easter Joy & Peace

Broccoli-Cauliflower-Carrots Cheese Sauce, Broccoli Squares, Broccoli-Cauliflower in Cheese Sauce
Green Giant Vegetables
10oz. Pkg.
99¢

Assorted Varieties
Budget Gourmets
11-12 oz. Pkg.
\$1.49

Blueberries, Sweet Cherry, Peaches or Mixed Fruit
Fruit Stop
4 Pack - 14 oz. Pkg.
\$1.29

Butter, Chocolate or Vanilla
Ready Crust
12 oz. Pkg.
89¢

Strawberry-Banana-Orange-Pineapple, Raspberry or Cherry
Chiquita Pops
6 Pack/16 oz. Pkg.
\$1.89

A & B ONLY
Present This Coupon And We Will Refund Double The Amount Of All Manufacturers Coupons Of 35¢ Or Less, But No More Than The Price Of The Items. Free, Tobacco And Cigarette Coupons Are Not Included. Coupons Over 35¢ Will Be Redeemed At Face Value. Limit One Per Product.
MARCH 26th thru MARCH 29th
CLIP AND SAVE

Sliced Turkey Gravy, Salisbury Steak, Gravy or Mostaccioli
Banquet Family Entrees
32 oz. Pkg.
\$1.79

Mac & Cheese
Banquet Family Entrees
32 oz. Pkg.
\$1.59

Beef Stew
Banquet Family Entree
32 oz. Pkg.
\$2.29

Beef Enchilada, Veal Parmesan or Chicken Dumplings
Banquet Family Entrees
32 oz. Pkg.
\$2.99

Strawberry-Banana-Orange-Pineapple, Raspberry or Cherry
Breyers Yogurt
12 oz. Ctn.
2/99¢

CLIP AND SAVE

STRIKES -N- SPARES



MANCHESTER TOWN CLUB

R&F Tree Service	107	75	Petsch's Lawn Service	31	50
DuRussels	106	76	HIGH TEAM SERIES		
Jenters	101	81	Wolverine General Contr.	3211	
Manchester Plastics, Inc.	101	81	Aiuto Auto Parts	3188	
V&F Builders	96	86	Manchester Stamping	3188	
Alley Drillers	89	83	HIGH TEAM GAME		
M.I.S.C.	88	94	Class of '78	1136	
Norm Walz	80	102	Manchester Stamping	1124	
Manchester Enterprise	78	104	B.J. Hi Lo	1121	
S-K Sales	64	118	HIGH INDIVIDUAL SERIES		
200's			DRW	958	
Carol Rentz	210		Comerica	957	
Joan Day	209		Dutch	943	
Phyllis Baker	211		HIGH TEAM SERIES W/HDCP		
500's			Car Wash	2612	
Carol Rentz	504		Comerica	2587	
Judy Duvall	509		Comerica	2584	
Debbie Alber	507				
Candy Klapperich	517				
Paula Scherdt	528				
Phyllis Baker	543				
Joan Day	545				

JOLLY KEGLERS

Dutch Country Kitchens	102	80
Car Wash	96	86
DRW	96	86
Carol's Cut-N-Curl	95	87
Kleinschmidt's	92	90
Double A	84	98
Dan's Westside Auto	82	100
Comerica	81	101
HIGH INDIVIDUAL GAME		
J. Juckno	234	
C. Britten	232	
B. Padley	228	
HIGH INDIVIDUAL SERIES		
K. Smith	572	
L. Rose	559	
J. Juckno	551	
HIGH TEAM GAME W/HDCP		
DRW	958	
Comerica	957	
Dutch	943	
HIGH TEAM SERIES W/HDCP		
Car Wash	2612	
Comerica	2587	
Comerica	2584	

One Bright Farming Note

With worldwide surpluses of most crops and livestock products, less exports of American farm products, and consequently lower prices for those raised in this country, any small bit of good news for farmers is big news. Watching the price of gasoline and diesel fuel dropping at the pumps has been very attractive to those of us who travel around some, but you can imagine the satisfaction farmers must be getting as they look forward to spring planting season. Not only do they use hundreds of gallons of diesel fuel, but their fertilizer and pesticides are produced from a petroleum base.

Money Management

[Prepared by the Michigan Association of Certified Public Accountants]

It's unwise to fill out an income tax form without first making sure it's the right one for you. The IRS mailed out about 88 million tax forms to Americans over the past couple of months and, quite naturally, a lot of people will file their returns by simply filling out the forms the IRS sends. But that's not always a good idea, according to the Michigan Association of CPAs. In fact, it could cost you some money. The IRS doesn't have a crystal ball to gaze into when determining which form to send a taxpayer. They simply send taxpayers the same forms filed last year. For someone whose financial situation changed over

Wheels for Life Bike-A-Thon To Be Held May 10th

Bike-A-Thon Chairman, Rita Burkhardt, today asked Manchester residents to join the St. Jude Children's Research Hospital "Wheels For Life" Bike-A-Thon slated for May 10, at the Manchester Fire Hall. Rita said this ride honors Jamie, a leukemia patient at St. Jude's. "With every turn of the wheel, riders become 'spokesmen' for all the kids with cancer, like Jamie, who want to know they aren't in this battle alone," Rita said. "People willing to give time to create more time to children crying for help stimulates a better event and raises more money for the hospital," continued Rita. "Riders are really needed. They make or break a Bike-A-Thon." Sponsors donating a sum for each mile completed are enlisted by riders. "The general plan is to have a good time while helping a wonderful group of children counting on our support," Rita said.

Contact Rita Burkhardt at 428-8083 for details on riding or sponsoring a rider, and if you would like to make a donation.

Wacker's General Store



- PEPSI, DIET PEPSI
- PEPSI LIGHT
- MOUNTAIN DEW
- PEPSI FREE
- SUGAR FREE PEPSI FREE
- A & W ROOT BEER
- VERNORS
- SUGAR FREE A & W
- SUGAR FREE VERNORS
- SLICE & DIET SLICE

\$2.19
1/2 LITER 8 PACK PLUS DEPOSIT

2 Liter.....\$1.49 PLUS DEPOSIT

PHONE 313-428-8366
G.E. Wacker Inc.
Gasoline-Fuel Oil-Grease
Motor Oil-Diesel Fuel
9050 Chelsea-Manchester Road
Manchester, Mich. 48158
Winter Hours
Sunday 9 am-8 pm
Monday-Thursday 7 am-8 pm
Fri. 7 am-9 pm Sat. 8 am-9 pm

Dan's Westside Automotive

660 West Main Street Manchester, Mich.
Phone 428-9455

WE CAN BEAT YOUR EXHAUST ESTIMATE "CHECK OUR PRICES"



24 Hour WRECKER SERVICE Call 428-9455

HEARD FROM IRS?

Do they want more money? Have your notice checked free by H&R Block in case there is an error. Don't pay any more tax than you should.

H&R BLOCK
THE INCOME TAX PEOPLE

201 East Main Street
IN THE MILL 428-7833
Monday thru Friday 9-6 Saturday 9-7

When Osmerus Mordax Run, Stampede Starts

Ask the average sportsman what an Osmerus Mordax is and you may get a blank stare. Tell him Osmerus Mordax is a smelt and he will run to his favorite dipping spot, according to AAA Michigan. Smelt dipping is extremely popular because it is easy to do and requires very little fishing knowledge or equipment. Smelt also are tasty treats. Sportsmen can expect a strong 1986 season, especially in Southwestern Michigan and in the far western Upper Peninsula. Department of Natural Resources officials predict generally strong runs again this year. Smelt runs should peak the last two weeks of April in most Lower Peninsula streams and in late April through early May in the U.P. Warmer weather could start the runs a week earlier while a cooler spring would mean later runs by one week.

East and Southeast Michigan smelt runs generally last 14 to 16 days while Lake Michigan tributaries, where activity is not as strong, have 18-day runs. Lake Superior tributary runs generally span 10 days while other U.P. streams are home to smelt runs for 12 to 15 days. An expected heavier snow runoff and considerably better hook-and-line smelt catches during the winter are positive indicators of strong runs in the U.P. Evidence of a larger smelt population is being found in streams from the Indiana line to Ottawa County in Southwest Michigan. The smelt season generally begins in Southeast Michigan on the St. Clair River system from Algonac to the Blue Water Bridge in Port Huron and then advances north. AAA Michigan's 1986 Smelt Guide lists 64 of the state's most

productive locations. The guide also includes two Ontario locations - Point Pelee National Park and the Wheatley area southwest of Detroit. From April 11-27, Point Pelee will extend its hours from 6 a.m. to 1:30 a.m. Smelt runs begin when the water temperature reaches 40 to 45 degrees. Most runs occur between 10 p.m. and 1 a.m. or on dark days. When the smelt are running, anglers of all ages can be found in or along their favorite streams. Dipping doesn't require as much knowledge as other fishing and basic equipment - besides a fishing license - is nets, buckets, waders and warm clothing. Smelt dippers may use hand nets up to one-half mile upstream from any river mouth from March 1 to May 31 south of M-72 and from April 10 to May 31 north of M-72. On some streams, large dip nets up to 9 feet square are

allowed by permit only. Other pertinent fishing rules may be found in the 1986-87 Michigan Fishing Guide, available free at all DNR field offices. Many beaches or stream banks are private property so sportsmen should secure permission from the property owner before starting. Most sportsmen measure their smelt success by the pound or bucket, and the small, silvery fish being simple to clean, smelt can be broiled, pan- or deep-fried.

Commitment To Conservation

In 1939 Hugh Bennett, founder of the Soil Conservation Service (now SCS), set forth his philosophy of how soil conservation should work: "In this democracy, national action to conserve soil must be generated by...millions of land users. If they are active and willing participants in such a movement, it will endure; otherwise it will fail." For 50 years the Soil Conservation Service has operated through local leadership provided by Soil Conservation Districts (SCD) and cooperation among many agencies, organizations and landowners - particularly the farmer.

The marketplace is the best place to determine the value of crops and the value of land. Our nation relies on the common sense of our farmers to do what is right. Often, all they need is some advice. This is where SCS comes in. The SCS technicians are experts in matters of soil and water conservation. We do not meddle in private land use decisions. What SCS does best is advise farmers on the installation of conservation practices when asked for assistance. The Soil Conservation Service urges farmers to use systems of conservation practices. These systems are designed to solve the entire problem, not just place a "band aid" on the most troublesome part of the problem. For example, a system may include conservation tillage to control sheet and rill erosion and a waterway to control gully erosion. Together they solve the problem, apart they only lessen the problem. Why not contact the Soil Conservation Service for planning assistance and start your commitment to soil and water conservation today! SCS personnel can be contacted by calling 761-6722 or stopping at the office located at 6101 Jackson Road, Ann Arbor.

From the beginning, it was clear that federal agencies could not mandate a cure for soil and water problems. Solutions had to come from landowners close to the problems. SCS does not impose conservation. The landowner must be willing to make the commitment to conservation.

Classified Ads Get Results

Make your best deal on a John Deere Tractor or Rider. Then take another \$25 to \$150 right off the top

Make your best deal on a John Deere rider or tractor today, then take another \$25 to \$150 off the selling price. Choose from 8- and 11-hp riders, 9- to 17-hp lawn tractors, and 10- to 20-hp lawn and garden tractors. We're dealing right now. See us before May 31 and save even more.

Deere Season is on!

NAPOLEON LAWN & LEISURE
LAWN AND GARDEN EQUIPMENT
12 Miles W of Manchester
6595 Brooklyn Rd.
Phone 685-6811 LOCAL CALL
Hours Monday-Friday 8-5:30 Saturday 8-1 pm

NOTICE TO AREA RESIDENTS CALL FIRE DEPARTMENT BEFORE BURNING

It is that time of the year when people are cleaning up their yards, burning brush, fence rows, etc. Please refrain from burning. If you have to burn, please call 428-8122 for permission.

Also, if you live in the townships outside the Village, please make sure your house number is well marked on the house. If your house sets way back off the road, have your number posted at the end of your driveway so it is visible from the road.

Chief Mike Scully
Manchester Township Fire Dept.

NOTICE

The Township of Bridgewater is accepting bids to renovate the township hall for handicapped accessibility. See supervisor Parr for specifications. 428-8243 days; 428-8776 evenings. Bids will be read April 21, 1986. We reserve the right to accept or reject all bids. 4-10

EASTER PLANTS

Lilies Bulb Plants
\$12.00 \$5.00 & up

Fresh Arrangements
\$12 & up

Corsages \$3.50 & up

STOP BY AND SEE LARGE SELECTION OF STUFFED ANIMALS

The Flower Garden
FLOWERS FOR ALL OCCASIONS

110 East Main St. Manchester
Phone 428-7422

WE CARRY **RUSS** BERRIE PRODUCTS

Top Smelt Dipping Spots in State

CANADA

ONTARIO--1. Pointe Pelee: 45 mi. S.E. of Detroit via Hwy. 33. Dip along both shorelines. Park hours are 8 a.m. to 1:30 a.m. in the smelt season. April 11-27. Ontario \$6.25 smelt license required for non-residents. 2. In Wheatley: At end of Camper's Cove Road. Dip along shoreline. Much of the land is private, permission to fish may be needed.

LOWER PENINSULA

ST. CLAIR COUNTY--3. St. Clair River: In Port Huron at foot of Blue Water Bridge, Sears Dock and Pine Grove Park; at St. Clair north of Pine River mouth; at Marine City and at Algonac south of M-29. Long-handled net needed in most areas because of deep water and strong current.

SANILAC COUNTY--4. Lexington Harbor: At Lexington. Dip from piers and along shoreline. 5. West Sanilac Harbor: At Port Sanilac. Dip from pier and along shoreline. 6. Bridgehampton River: At Forestier along M-25. Dip from mouth to hwy. 7. Cherry Creek: At Sanilac County Park 1 mi. N. of Forestier. Dip in park near creek mouth. 8. Elk Creek: At Sanilac State Park 2 mi. S. of Forestville along M-25. Dip from mouth to hwy. and along shoreline. 9. Mill Creek: At Forestville along M-25. Dip from mouth to hwy.

HURON COUNTY--10. Sucker Creek: 1.5 mi. N. of White Rock. Dip at mouth. 11. Elm Creek: 2.5 mi. N. of White Rock. Dip at mouth. 12. Ocka Creek: 1.5 mi. S. of Port Hope along M-25. Dip from mouth to hwy. 13. Willow Creek: At Huron City along M-25. Dip at M-25 bridge. Land near mouth is private, permission to dip required. 14. New River: 1.5 mi. N. of Huron City along M-25. Dip at hwy. bridge. Land near mouth is private, permission to fish there required. 15. Grindstone City Harbor: At Grindstone City. Dip along shore and from pier. 16. Pinnacog River: At Port Crescent State Park. Dip at river mouth.

ARENAC COUNTY--17. Au Gres River: At Au Gres along U.S. 23. Dip along shore near mouth. Long-handled nets needed off breakwall. 18. Schnitzelbank Creek: On S. side of Point Look-out north of Au Gres. Dip at mouth. 19. Lake Huron: Near Bear Track Inn, approx. 8 mi. N. of Au Gres. Dip along shoreline. 20. Angelo's Creek: Between Bessinger and Hammitt Beach roads. Dip at mouth. 21. White Stone Point: Dip along shore near water plant. 22. Whitney Drain: At "Singing Bridge" 8 mi. S. of Tawas City along U.S. 23. Dip in lake off mouth and in river. 23. Tawas River: At Tawas City along U.S. 23. Dip along shore, along breakwall just north of river mouth and at mouth. 24. Tawas City Park: At Tawas City. Use long-handled dip nets off dock for best results, or dip along shoreline. 25. Dead Au Sabie River: 2 mi. S. of Oscoda along U.S. 23. Dip at hwy. Land near mouth is private, permission to fish there may be needed. 26. Au Sabie River: At Oscoda. Dip on breakwall with long-handled nets and along shore of river for 1/2 mi. upstream.

ALCONA COUNTY--27. Hammett Harbor: At Harrisville. Dip in harbor. 28. Black River: In Black River, at Black River Rd. and Lakeshore Dr. 2 mi. E. of U.S. 23. Dip at mouth and along shoreline.

ALPENA COUNTY--29. Thunder Bay River: In Alpena. Dip at 1st Street Dam. Long-handled nets helpful as water is too deep to wade.

CHEBOYGAN COUNTY--30. Mill Creek: 4 mi. E. of Mackinac City along U.S. 23. Dip in creek mouth and along shore. 31. Cheboygan River: In Cheboygan, from dam downstream. 32. Green Creek: Ten miles E. of Cheboygan, from U.S. 23 to mouth. 33. Carp Lake River: At Cecil Bay Corners 5 mi. W. of Mackinac City along Wilderness Park Rd. Dip at hwy. and mouth. Land is public, good fishing access.

MUSKOGON COUNTY--34. Duck Lake Outlet: 5 mi. N. of Muskegon State Park along Scenic Dr. Dip from mouth to mouth, along shore and off the piers of Muskegon and White lakes.

OTTAWA COUNTY--35. Pigeon Lake outlet: At Port Sheldon. Dip along shoreline. Water in outlet proper is generally too deep for wading. Also dip off piers at Grand Haven and Holland.

VAN BUREN COUNTY--36. Dear Lick Creek: 3 mi. S. of South Haven at end of 13th Street off old U.S. 31 (Blue Star Highway). Dip at mouth and along shoreline. 37. Brandywine Creek: 5 mi. S. of South Haven off 29th Ave. and 77th St. Dip at mouth and along shore.

UPPER PENINSULA

GOGEBIC COUNTY--38. Montreal River: 17 mi. N.W. of Ironwood via U.S. 2 and County Rd 505. Dip at Legion Park along C.R. 505 or at river mouth.

ONTONAGON COUNTY--39. Union River: 2.5 mi. W. of Silver City along M-107. Dip from hwy. to mouth and along nearby shoreline.

HOUGHTON COUNTY--40. Schlotz Creek: At Oskan, on Portage Ship Canal. Dip from hwy. to mouth. 41. Swanton Creek: 1.5 mi. W. of Hancock on Portage Canal along M-203. Dip from hwy. to mouth. 42. Pike River: At Chassell along U.S. 41. Dip from hwy. to mouth.

KEWEEAW COUNTY--43. Fanny Hooe Creek: At Copper Harbor. Dip from outlet to mouth.

BARAGA COUNTY--44. Falls River: In L'Anse along U.S. 41. Dip at mouth. 45. Silver River: 10 mi. N.E. of L'Anse on Huron Bay. Dip from hwy. to mouth.

MARQUETTE COUNTY--46. Dead River: In Marquette south of Presque Isle Park. Dip to bridge.

CHIPPEWA COUNTY--47. Galloway Creek: 1 1/2 miles from mouth to M-123. 48. Roxbury Creek: Mouth to Lake Shore Dr. 49. Naomikong Creek: Mouth to Lake Shore Dr.

MACKINAC COUNTY--50. Nunns Creek: 10 mi. W. of Cedarville along M-134. Dip from hwy. to mouth only. 51. Carp River: 12 mi. N.E. of St. Ignace along Mackinac Trail. Dip at mouth. 52. Cut River: 2 mi. E. of Epoufette along U.S. 2. Walk down to river, dip at mouth. 53. Paquin Creek: 3 mi. W. of Epoufette along U.S. 2. Walk in, dip at mouth. 54. Black River: 6 mi. E. of Naubinway along U.S. 2. Dip from hwy. to mouth. 55. Millicoquin River: 1 mi. W. of Naubinway. Dip within hwy right-of-way. Use long-handled nets.

SCHOOLCRAFT COUNTY--56. Manistique River: At Manistique. Dip below old U.S. 2 in rapids. 57. South Town Creek: 1 1/2 miles west of Manistique to U.S. 2. 58. Marblehead Creek: 6 mi. E. of Manistique from the County Road bridge to the mouth.

DELTA COUNTY--59. Tacosch River: In Rapid River along U.S. 2. Dip from hwy. to mouth. 60. Days River: 2 mi. N. of Rippling along U.S. 2. Dip from hwy. to mouth. 61. Escanaba River: 3 mi. N. of Escanaba along U.S. 2. Dip from dam to mouth. 62. Escanaba River: 10 miles south of Escanaba at M-35. 63. Ford River: At Ford River along M-35. Dip from hwy. to mouth.

MENOMINEE COUNTY--64. Cedar River: At M-35. Dip near mouth of Elwood Creek near M-35 bridge. 65. Menominee River: At Menominee. Dip at Hattie St. bridge. 66. Deer Creek: 5 mi. N. of Cedar River.

Chamber of Commerce

Mill Run will be August 9th. The K of C main will not be available for the pancake breakfast. Another location is being sought. Joe needs volunteers to help with the Street Fair.

Dan Naimowicz spoke on the future of Manchester as created by the activity known as "Futuring". At the first session on "Creating a Preferred Future," the 18 attendees from the Manchester area jotted down impressions of Manchester today; listed two positive memories, events or traditions to hold on to; and listed lessons learned. The participants identified trends in the United States that affect Manchester (more women in the work force, people are living longer...). Lists of things in the community for which we are "proud" (Turn-of-the-Century image...) and things for which we are "sorry" (inadequate sewer system, limited retail goods available...), were made. At the second meeting, participants learned how to interview each other to determine special skills, areas of interest, and willingness to work on the futuring effort. The process of nominating people to cover all segments of the community was explained. The following categories have been identified: business, organization, church, government, cultural, school staff, student/groups, and seniors. Others can be added as identified. Participants at the session received nominating forms. Forms were given to the Village Council, Planning Commission, and Board of Directors of the Chamber of Commerce. Nomination forms were returned to Dan at the Village Office. Invitations will be extended to persons nominated to

attend a workshop on April 19. The morning session will be devoted to futuring brainstorming and the afternoon will be for committee work sessions. A book by Ron Lippitt, our consultant, is now available in paper-back form. TRYING TO BUILD A COLLABORATIVE COMMUNITY. Dan said that the post office will be grant funded through the federal budget. This puts the project outside local zoning regulations and will remove the building from the tax

base. The innovative treatment plant design is expected to receive a positive review on April 1, and probably will go in number 1 slot of small communities funding program. The next Board Meeting will be March 26, at The Mill at noon.

Spring Fun Run

A Fun Run with a choice of two courses is being sponsored by Washtenaw County Parks and

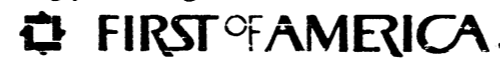
Recreation Commission on Saturday, April 12. The Annual Spring Fun Run offers a 5K (3.1 mile) course and a 10K (7.6 mile) course. Both races begin at the County Recreation Center and cover hilly terrain and meandering country roadways. The 1st, 2nd, and 3rd male and female finishers of each race will receive awards. The remaining 44 finishers of each race will receive medallions. All participants will receive t-shirts and refreshments. The registration fee is \$6 if postmarked on or before April 4, \$7 if after. Check-in and late registration is 8-8:45 a.m. on race day. Races start approximately 8:50. The Washtenaw County Recreation Center is located at 4133 Washtenaw Avenue in Ann Arbor, at the Corner of Washtenaw and Hogback in the County Service Center. Enter off Hogback.

An IRA For People Who Plan Their Finances By The Book.



There are a lot of Individual Retirement Accounts (IRA) to choose from today. At First of America Bank, we think everybody should have an IRA. So we created one that takes only \$250 to open. And that you can add to when your personal budget allows. It earns competitive rates. And while you're saving for your retirement years, you're also saving taxes every year you contribute to it. It even has a familiar name and look to it.

Passbook IRA. So each time you contribute to your IRA, your passbook shows you a running record of how it's doing. Just call or visit your local First of America bank office for information. And start an IRA that rewards you for balancing your budget.



Manchester Branch, 10903 Chelsea-Manchester Rd., Manchester 426-6369

Members FDIC

Middle School Hosts Talent Show



A special event took place last Thursday night at the Nellie Ackerson Middle School. Approximately 40 fifth, sixth, seventh and eighth graders participated in the first annual M.S. Talent Show. These young people displayed

their talents in a variety of acts including: dance routines, gymnastics, instrumentals, lip synch and comedy. Mistress of Ceremonies duties were handled by Hikah Weiss and Janet Sjoström. The show was coordinated by staff member

Terry Monkiewicz who supervised many hours of preparation for this special night. All of the participants are to be congratulated for providing the audience with such super entertainment!!!!

"Mr. Turkey - A Man For All Seasonings"

This series of stories spotlights the manifest products of Michigan's farms, forests and factories - the products proudly stamped "Made in Michigan." Watch for them when you shop, and "Buy Michigan-made!" This week's story: "Mr. Turkey, a man for all seasonings."

by Paula Blanchard

For years turkeys were regarded as the Rodney Dangerfield of the food chain: they didn't get no respect. In fact, the only time Benjamin Franklin ever got a laugh was when he suggested that the turkey replace the bald eagle as our national bird.

But now comes a Michigan company, Bil Mar Foods of Zeeland, and its product champion, a turkey with a title, to change all that. Meet Mr. Turkey, a man for all seasonings. Bil Mar, one of the nation's largest processors of *Eschscholus gallopava* (turkey's upscale, Latin Moniker), is coming on strong in the traditional meat market with a line of products that would make a Pilgrim (not to mention Ben Franklin) gasp in disbelief - high-technology turkey that looks (thanks to processing) and tastes (thanks to seasoning) a lot like our old red-meat favorites.

The 48-year-old company (the brothers Bill and Marvin DeWitt started it with 17 breeder birds) still markets the traditional turkey - the big, plump beauty you serve at Thanksgiving, as

well as all of the parts thereof. But now, about half of the six million Bil Mar birds sent to market each year are...well, their own mothers wouldn't recognize them in their new guises - turkey hot dogs, turkey salami, turkey ham, to name a tasteful few.

Mr. Turkey's uncanny ability to mimic other meats goes a long way to explain why Americans are turning to turkey as never before. Says Warren Waters, Bil Mar's director of retail marketing: "Consumers are saying, 'yes, this is turkey smoked sausage, but it doesn't taste like turkey - it tastes like sausage.'" What is more, he adds, health-conscious consumers (which should be all of us) are making poultry their meat-of-choice for its good taste, fewer calories and lower fat content - not to mention that it costs less than red meats.

In addition to everything else, Mr. Turkey is the comeback bird of the comeback state. A flash-fire all but destroyed Bil Mar's production facilities in 1984, but it didn't stop the company. Workers now are completing a new, twice-as-large processing complex that will enable the company to triple production in 1986. Mr. Turkey, like the legendary Phoenix, is rising fast from the ashes.

As a result, they keep making it - and we keep buying it - in Michigan!

Classified Ads Get Results

Scratch Pads

(Pink and Yellow)
15c - 20c
25c
THE
MANCHESTER ENTERPRISE
150 E. Main Street
Manchester, Michigan
428-8173

Diane S. Wiedmayer

CERTIFIED PUBLIC ACCOUNTANT
Comerica Bank Building
134 E. Main Street
Suite 202
Manchester, Michigan 48158
313-428-8411 / 428-7398

Wacker's General Store

We Now Have Beer, Wine and Package Liquor
SPECIAL THIS WEEK
Martini & Rossi Ast Spumante
\$9.99
750 ml

G.E. Wacker Inc.
Gasoline-Fuel Oil-Grease
Motor Oil-Diesel Fuel
3050 Chelsea-Manchester Rd.
Manchester, Mich. 48158
Winter Hours
Sunday 9 am-8 pm
Monday-Thursday 7 am-8 pm
Fri. 7 am-9 pm Sat. 8 am-9pm

DO YOUR EASTER SHOPPING AT
The Village Shoppe
134 E Main St. Manchester Michigan
Phone 428-9640
Baskets, Grass, Bunnies, Lambs, Chicks
Eggs, Books, Cards, Kilwin's Chocolates
and Jelly Bellies

Black Sheep Tavern
Lunch Monday-Saturday 11:30-5:00 p.m.
Dinner Monday-Thursday 5:00 p.m.-10:00 p.m. Friday and Saturday 5:00 p.m.-12:00 p.m.
"A Restaurant With A Tradition Of Quality"
117 East Main Manchester, Michigan
Phone 428-7000

KARATE TEACHES KIDS A LOT!
AWARENESS SELF DISCIPLINE PHYSICAL FITNESS
from the very young to ADULTS. KARATE study adds a new dimension and interest in your life. CALL NOW
SPECIAL INTRODUCTORY COURSE \$10
Mr. Keith R. Hafner
THE ACADEMY
220 S. Main Ann Arbor 994-0333
307 N. Maple (Maple Village) Ann Arbor, 761-5811
505 E. Michigan Saline 428-4480

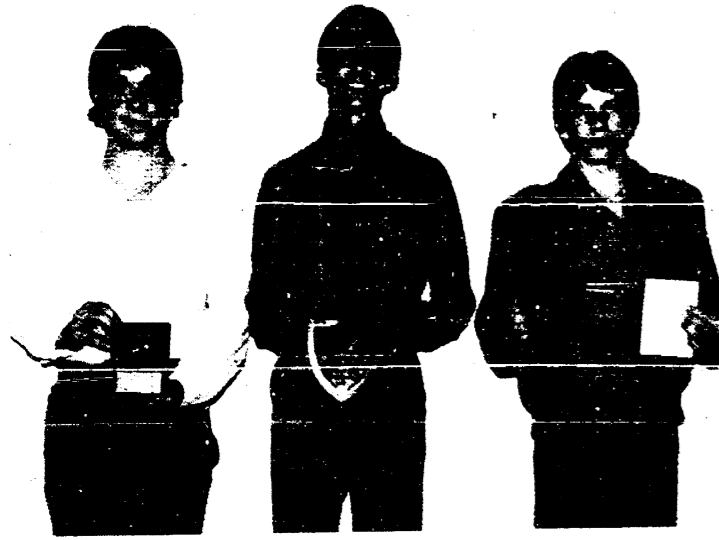
SHERIFF
WASHTENAW COUNTY
EMERGENCY NUMBER
971-3911
Non-Emergency 971-8400

Michigan Veterinary Clinic
18501 SHARON VALLEY ROAD
MANCHESTER, MICHIGAN 48158
313-428-8365
LARGE AND SMALL ANIMAL SURGERY AND MEDICINE
OFFICE OR HOME VISITS BY APPOINTMENT
9 AM-9 PM MONDAY THROUGH SATURDAY
VERA L. KLUWE, D.V.M.

Auto Insurance Is A Must for Drivers
Protect yourself and others with an automobile policy that will cover all liabilities. We can offer you complete protection at reasonable rates. Don't wait. Come in and get all the facts at no obligation.
WE'LL HANDLE ALL YOUR NEEDS
SUTTON AGENCY INC
DONALD SUTTON, Agent
136 EAST MAIN STREET
Monday-Tuesday-Wednesday-Friday 9-12:30 & 1-4:30
Thursday 9-12 Noon
CONNIE WIDMAYER, Agent
PHONE 313-428-7217
MANCHESTER, MICHIGAN

Winter Sports Award Night

by Jon



WRESTLING
Brian Howell, Rick Shear, B.J. Lee

Last Tuesday saw our young men and women receive public recognition for their efforts in Basketball, Cheerleading, Volleyball and Wrestling. Four individuals won All-Conference Academic Awards: Kevin Creech, Renee Yeutter, Rob Smith and Drew Hock.

First up to present awards was Mrs. Helen Nickerson, Cheerleading Advisor. She gave Varsity Most Spirited to Christine Hawk and JV Most Spirited to Annette Wurster.

Next was Ken Haight, JV Volleyball Coach, who awarded 3 trophies to Sara Samonek, Coach's Award; Jennifer Barnard, Best Setter; and Heidi Beasley, Most Improved.

Varsity Volleyball Coach, Kelly Haight, presented Renea Drouare Most Valuable Hitter and 1st Team Cascade Conference. Kim Bailey was Most Valuable Team Scorer and Treasa Rose was Best Setter. All three of these girls were selected by the Ann Arbor News for Honorable Mention on the All-Washtenaw County Team.

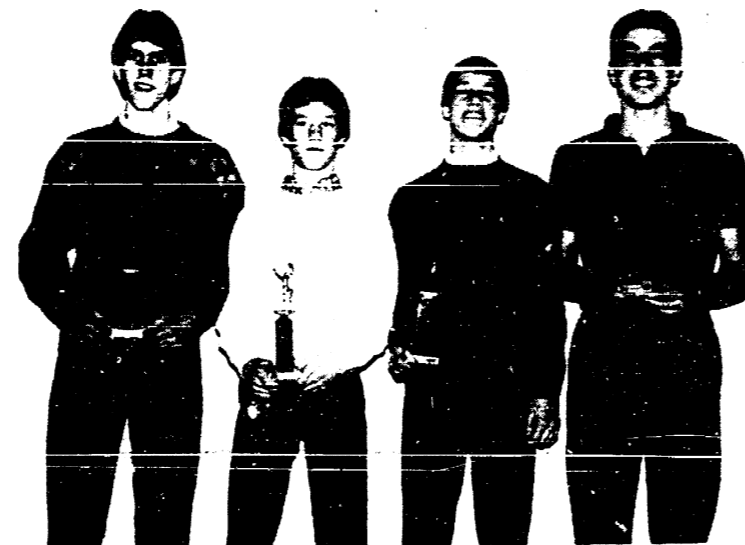
Curt Fielder, JV Basketball Coach, passed out 4 awards to Brad Uphaus, Most Valuable; Bryan Barnard, Most Improved; Brian Gebhardt, Mr. Hustle; and Tom Mann, Coach's Award.

Next, Varsity Basketball Coach, Walt Paszkiet, also presented 4 trophies to: Drew Hock, Most Improved; Bill Broucek, Defensive Player; Kevin Creech, Offensive Player and Mark Walz, Coach's Award.

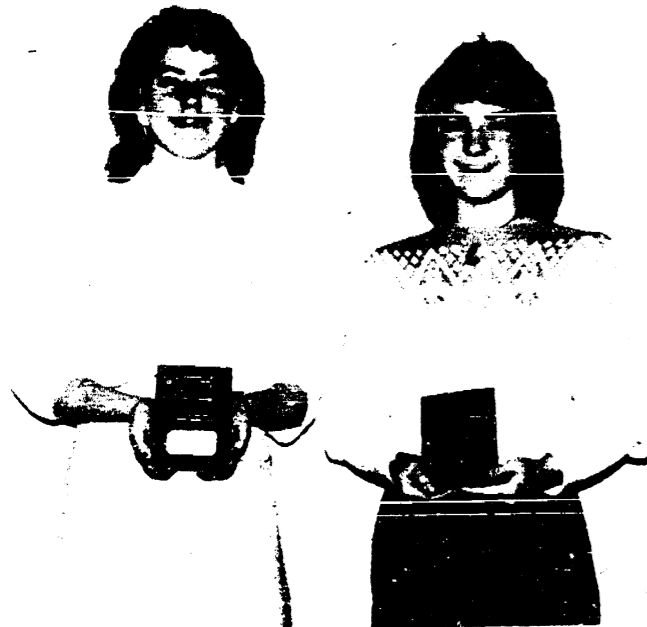
All Conference, John Curley and Kevin Creech, Honorable Mention.



Varsity Volleyball
Kim Bailey and Treasa Rose



JV Basketball
Brad Uphaus, Brian Barnard, Brian Gebhardt, Tom Mann



JV Basketball
Heidi Beasley and Jennifer Barnard



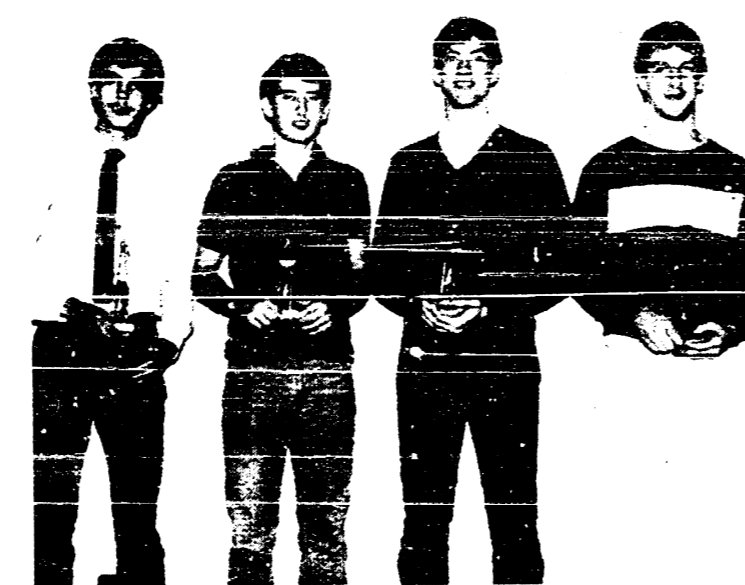
Front row, left to right: Co-captains Treasa Rose and Beth Evans.
Second row, left to right: Jodi Brokaw, Rocky Weber, Tracy Day.

Third row, left to right: Nicki Bragg, Kim Bailey, Renea Drouare, Renee Yeutter, Ami Bragg, Melissa Beasley.
Not pictured: Coach Kathy Haight.

Photo By JON



CHEERLEADERS
Christine Hawk and Annette Wurster



Varsity Basketball
Drew Hock, Bill Broucek, Kevin Creech, Mark Walz

Church Directory

SHARON UNITED METHODIST CHURCH - Rev. Evans Bentley, Pastor; Corner of M-52 and Pleasant Lake Roads; Church School 10:00 a.m.; Worship 11:00 a.m.

CLINTON ASSEMBLY OF GOD - Rev. Richard Coury, Pastor; Chris Bouldrey, Youth Pastor; 13300 Clinton-Manchester Road, Clinton; Sunday School 9:30 a.m.; Sunday Morning Worship 10:45 a.m.; Sunday Evening 6:30 p.m.; Wednesday Prayer, Bible Study, Youth 7:00 p.m.

ST. JOHN'S LUTHERAN CHURCH - Rev. Dennis A. Falk, Pastor; Austin Road, Bridgewater; Sunday School 9:15 a.m.; Worship 10:30 a.m.

BETHEL UNITED CHURCH OF CHRIST - Rev. Roman A. Reineck, Pastor; Schneider and Bethel Church Roads; Church Service 10:00 a.m.; Sunday School 11:00 a.m.

NORTH SHARON COMMUNITY BIBLE CHURCH - Timothy E. Booth, Pastor; Sylvan and Washburn Roads; Sunday School 10:00 a.m.; Morning Church 11:00 a.m.; Youth Meetings 6:00 p.m.; Evening Church 7:00 p.m.; Wednesday Bible Study 7:00 p.m.

SAHAI FAITH - Study of Bahai' scripture and discussion on applying spiritual principles to daily living. Believers of all faiths welcome. 2nd and 4th Sundays every month, 2:30 p.m. at the home of Thomas and Nancy Rykwalder, 611 South Macomb. For more information or directions call 426-9454.

FAITH COMMUNITY CHURCH - Scott Engleman, Pastor, 8400 Sharon Hollow Road off West Austin; Worship Service 10:00 a.m.; Sunday School 11:15 a.m.; Sunday evening service 6:00 p.m.; Jr. and Sr. High Young Peoples' Meeting 7:00 p.m.

OUR SAVIOR LUTHERAN CHURCH - Rev. Franklin H. Giebel, Pastor; 1515 South Main, Chelsea; Every Sunday 9:00 a.m. Bible Classes for age 3 through adult; 10:30 a.m. Worship Service, Holy Communion 1st, 3rd and 5th Sundays.

IRON CREEK COMMUNITY CHURCH - Rev. Ray Robichaud, Pastor; English and Sharon Hollow Roads; Worship Service 10:00 a.m.; Sunday School 11:15 a.m.; Sunday Evening 7:00 p.m.; Wednesday Evening 7:00 p.m.

ZION LUTHERAN CHURCH - Rev. John R. Morris, Pastor; 3050 S. Fletcher Road; Sunday School 9:00 a.m.; Worship Service with Holy Communion 10:10 a.m.

ST. THOMAS LUTHERAN CHURCH - Rev. John Riska, Pastor; 19001 Ellsworth Road; Sunday School 9:30 a.m.; Worship Service, 10:45 a.m.

ST. MARY'S CATHOLIC CHURCH - Father Raymond Schlinkert; Monday thru Friday 8:30 a.m.; Saturday 5:00 p.m.; Sunday 8:30 a.m. and 10:30 a.m.

CHURCH OF JESUS CHRIST OF LATTER DAY SAINTS (MORMONS) - Wayne L. Winzenz, Branch President; 1330 Freer Road, Chelsea; Sacrament 9:30 a.m.; Sunday School, Primary 10:50 a.m.; Priesthood, Relief Society, Aaronic Priesthood, Youth 11:40 a.m. For more information call 475-1778.

ST. BARNABAS EPISCOPAL CHURCH - Rev. Fr. Jerrold F. Beaumont, O.S.P., Eucharist - First, Third and Fifth Sundays 10:00 a.m.; Morning Prayer, Second and Fourth Sundays 10:00 a.m.; Eucharist - Second and Fourth Sundays 11:00 a.m.; Nursery available every Sunday. Family coffee hour follows all Sunday services.

EMANUEL UNITED CHURCH OF CHRIST - Rev. Robert B. Macfarlane, Pastor; Rev. Kenyon Edwards, Assistant; Sunday School 9:00 a.m.; Worship Service 10:30 a.m.

ST. JOHN'S UNITED CHURCH OF CHRIST - Rev. Ted Wimmier, Pastor; Rogers Corners, Waters and Fletcher Roads; Adult Bible Study Class at 10:00; Worship and Sunday School 10:30 a.m.

MANCHESTER UNITED METHODIST CHURCH - Rev. Hayden Carruth, Pastor; Church School 9:15 a.m.; Worship 10:30 a.m.

VICTORY BAPTIST CHURCH - 423 South Macomb, Barry Cantrell, Pastor, 428-7506; Sunday School 9:45 a.m.; Morning Worship 11:00 a.m.; Evening Worship 6:00 p.m.; Teen Talk 7:00 p.m.; Wednesday Prayer, Bible Study, Youth 7:00 p.m.

ZION LUTHERAN CHURCH
Thursday, March 27, 7:30 p.m. Special Tenebrae Service.
Friday, March 28, 1:30 p.m. Worship with Holy Communion.
Saturday, March 29, 9 a.m. Luther League meets to decorate FH, 1 p.m. Lydia Cir. decorates for Easter.
Sunday, March 30, 7 a.m. Sunrise Service, 8 a.m. Easter Breakfast, 9 a.m. Group Sunday School, 10:15 a.m. Festival Worship with Holy Communion.
Tuesday, April 1, No Choirs.
Wednesday, April 2, 7 p.m. Women of Zion General Meet at St. Louis School.

ST. THOMAS LUTHERAN CHURCH
Wednesday, March 26, 7:30 p.m. Board of Evangelism & Missions.
Thursday, March 27, 8 p.m. Maundy Thursday Worship with Holy Communion.
Friday, March 28, 1:30 p.m. Good Friday Worship Service.
Sunday, March 30, 7 a.m. Easter Sunrise Service with Holy Communion; Easter Breakfast following, 10 a.m. Late Service with Holy Communion.
Monday, March 31, 8 p.m. Sunday School Teachers Meeting.
Tuesday, April 1, 7 p.m. Catechism, 8 p.m. Church Council.

ST. JOHN'S LUTHERAN CHURCH
Wednesday, March 26, 7 Jr. Choir, 9 Sr. Choir.
Thursday, March 27, 8 p.m. Maundy Thursday Service with Holy Communion.
Friday, March 28, 8 p.m. Good Friday Service.
Saturday, March 29, NO Catechism.
Sunday, March 30, 6:30 a.m. Sunrise Service, 7:30 a.m. Easter Breakfast, 9:30 a.m. Sunday School, 10:30 Worship with Holy Communion.

SHARON UNITED METHODIST CHURCH
Thursday, March 27, 8 p.m. Maundy Thursday Communion Service.
Friday, March 28, 1:30 p.m. Good Friday Service at the Bethel United Church of Christ.
Saturday, March 29, 10-11:30 a.m. Easter Egg Hunt for children 5th grade and younger.
Sunday, March 30, 8:30 a.m. Easter Breakfast and Early Worship presented by the Sr. Y.P., 10:00 Church School, 11:00 Easter Worship.

BETHEL UNITED CHURCH OF CHRIST
Wednesday, March 26, 9:30 a.m. Lenten Breakfast at Bethel.
Thursday, March 27, 10:00 a.m. Mini-Bible Study, 7:30 Maundy Thursday Tenebrae.
Friday, March 28, 1:30 p.m. Community Good Friday Service at Bethel.
Saturday, March 29, 10:00 Egg Hunt, 10:30 Jr. Youth Egg dying and Lunch.
Sunday, March 30, 7:30 a.m. Early Service Youth, 8:30 a.m. Breakfast, 9:20 Children's Happening, 10:00 Worship - Communion.

EMANUEL UNITED CHURCH OF CHRIST
Wednesday, March 26, 9:30 a.m. Lenten Breakfast at Bethel Church.
Thursday, March 27, 11:00 a.m. Senior Exercise Program, 12 Noon Senior Meal, 3:30 p.m. Brownies, 7:30 p.m. Maundy Thursday Communion. New members received.
Friday, March 28, 1:30 p.m. Good Friday Community Worship at Bethel Church.
Saturday, March 29, 9-Noon Easter Egg & Candy Sale at Comerica Bank.
Sunday, March 30, 8:00 a.m. Early Easter Worship, 9:45 a.m. Easter Breakfast, 10:30 a.m. Easter Communion Worship.
Monday, March 31, Office closed.
Tuesday, April 1, 12 Noon Senior Meal.
Wednesday, April 2, 2:00 p.m. Women's Guild.

St. John's Church To Present Play
St. John's Lutheran Church, Bridgewater, Michigan, extends a very special invitation to ALL to come and be a part of "THE LAST SUPPER, A LIVING PORTRAIT." The play is a living dramatiza-

FAITH COMMUNITY CHURCH
Wednesday, March 26, 7:00 p.m. Prayer meeting and Bible study, 8:00 p.m. Choir Practice.
Thursday, March 27, 9:30 a.m. Ladies Bible Study, 7:30 p.m. Men's Bible Study.
Sunday, March 30, 10:00 a.m. Easter Sunday Worship Service, nursery available, 11:00 a.m. Sunday School for all ages, 6:00 p.m. Evening Service, 7:00 p.m. Youth Hour.
Monday, March 31, 6:00 p.m. Tecumseh Convalescent Ministry.

MANCHESTER UNITED METHODIST CHURCH
Wednesday, March 26, 9:30 a.m. Lenten Breakfast at Bethel Church, 7:00 p.m. Aerobics Exercise Class.
Thursday, March 27, 10:00 a.m. Membership/Outreach Committee Meeting, 3:30 p.m. Girl Scouts, 6:30 p.m. Maundy Thursday Simple Meal & Communion Worship.
Friday, March 28, 1:30 p.m. Community Good Friday Worship at Bethel Church.
Sunday, March 30, 8:00 a.m. Resurrection Worship, 9:00 a.m. Easter Breakfast, 9:30 a.m. Easter Egg Hunt, 10:30 a.m. Easter Worship - "Celebrate Life" Musical Drama.
Monday, March 31, 7:00 p.m. Aerobics Exercise Class.

The average 18-month-old little girl will be just about twice as tall and five times as heavy at the age of 18.



The first record of the use of spices dates from the age of the pyramids of Egypt—approximately 4,600 years ago—when onions and garlic were fed to 100,000 laborers.

ANNUAL TOWNSHIP MEETING

Notice Is Hereby Given That The Next Annual Township Meeting of the Electors Of The

BRIDGEWATER TOWNSHIP
County of Washtenaw
State of Michigan
Will Be Held At

Bridgewater Township Hall
10990 Clinton Road
Beginning at 1:00 O'Clock P.M.
Saturday, March 29, 1986

AT SUCH TIME IN ADDITION TO OTHER REGULAR BUSINESS AND IN ACCORDANCE WITH THE LAW, A BUDGET COVERING PROPOSED EXPENDITURES AND ESTIMATED REVENUES OF THE TOWNSHIP SHALL BE SUBMITTED FOR CONSIDERATION.

Also Hearing On Revenue Sharing Budget

Karen Weidmeyer, Township Clerk

MARCH 8 & 26

FUND RAISING

Manchester K of C Hall
106 East Madison St.
Wednesday 7 P.M.

Manchester Sportsman Club
8501 Grossman Road
Friday 6:45 P.M.

Manchester American Legion
203 South Adrian St.
Saturday 7 P.M.

Clinton American Legion
204 Jackson Street
Thursday 7-10:30

Schebor's Greenhouse
14345 LOGAN ROAD
PHONE 428-8078
MANCHESTER, MICH.
HOURS: 8:30-6:30

EASTER PLANTS

African Violet Easter Baskets
Easter Lilies, Red Hybrid Lilies
Hyacinths, Azaleas, Cinerarias
Hydrangeas, Mums
Hybrid Impatiens

EASTER LILY

T & N Services

428-7002 Experienced
TERI MAY Fast Service
CLEANING • Basements - Garages - Homes - Offices - Rentals - Car Clean-up - Set-up and Clean Up For Parties - Window Washing - Eavestrough Cleaning - Yard Clean-up
YARD CARE • Mowing - Raking - Flower Planting - Tree and Bush Trimming - Weed Pulling - Snow Removal - Landscaping
GENERAL HAULING • Furniture Moving - Appliance Moving and Removal - Firewood Hauling - Rubbish Removal
CAR CARE • Washing - Waxing - Buffing - Carpet Shampooing - Interior Cleaning
MISC. • Grocery Shopping - Errand Running - Painting - House Sitting

428-7002 Free Estimates
NICK AIUTO Reasonable Rates
Discounts

PLUS A WHOLE LOT MORE
CALL TODAY! 428-7002

Two Vacancies On Board of Education

At the annual school election on Monday, June 9, 1986, voters will elect two members to the Board of Education for regular terms of four years beginning July 1, 1986, and ending June 30, 1990.

Nominating petitions for these vacancies are available at the Superintendent's Office, 710 E. Main Street, Manchester, Michigan. The deadline for filing nominating petitions is Monday, April 7, 1986, at 4:00 p.m.

Please contact the Superintendent's Office, 428-7300, for any questions or further information.

Judges Needed For Science Fair

All students at Nellie Ackerson Middle School are currently working on their projects for the 4th annual science fair. These projects will be judged on Wednesday, April 16, and displayed on Thursday and Friday, April 17 and 18, during Middle School parent conferences.

Public Notice

STATE OF MICHIGAN
PROBATE COURT
COUNTY OF WASHTENAW
PUBLICATION NOTICE
DECEASED ESTATE
FILE NO. 86-34034-SE

Estate of IRENE E. CRIPPEN, DECEASED. Social Security Number 345-20-5444.

TO ALL INTERESTED PERSONS:
Your interest in the estate may be barred or affected by this hearing.

TAKE NOTICE: On April 8, 1986 at 9:00 A.M., in the probate courtroom, Ann Arbor, Michigan, before Hon. Loren W. Campbell Judge of Probate, a hearing will be held on the petition of DOLORES EDER requesting that she be appointed personal representative of IRENE E. CRIPPEN ESTATE who lived at 2351 Delaware, Ann Arbor, Michigan and who died March 1, 1986; and requesting also that the will of the deceased dated April 3, 1984 and that the heirs-at-law of the deceased be determined.

Creditors are notified that copies of all claims against the deceased must be presented, personally or by mail, to both the personal representative and to the court on or before May 27, 1986. Notice is further given that the estate will then be assigned to entitled persons appearing of record.

KEUSCH AND FLINTOFF, P.C. Attorneys for the Estate
By: JOHN P. KEUSCH P-15927
119 South Main Street P.O. Box 187
Chelsea, Michigan 48118
313-475-8671

DOLORES EDER
Personal Representative
2956 Horton Road
Jackson, Michigan 49203

Dated: March 14, 1986

Clinton Theatre
Friday and Saturday
7:30 and 9:45
SUNDAY 7:30
ALL SEATS \$2.00

CHUCK NORRIS
LEE MARVIN

THE DEER FORCE

CANNON

Judging of these projects is done by volunteers from the community. Anyone with some science background who would be interested in donating a couple hours of their time on the afternoon of April 16, is asked to contact Gifted Coordinator, Nondus Buss, at Nellie Ackerson Middle School, 428-7442. The science fair is one of the all school projects which is coordinated as part of the Middle School gifted program.

Hospital Offers Easter Sunday Brunch

Chelsea Community Hospital will celebrate Easter Sunday Brunch in a special way with patients in the Hospital that day and with the entire community.

Patients will be invited to bring a guest to enjoy Easter Sunday Brunch compliments of the Hospital. A spouse, friend or "special someone" may come and enjoy a delicious Brunch at the Hospital.

The Easter Sunday Brunch is also open to the public from 11:30 a.m. to 2:00 p.m. Brunch selections will include full breakfast menu, broiled beef tenderloin, carved to order and covered with Marchand De Vinne sauce, baked chicken with wild rice, asparagus spears with lemon butter, salad and dessert bars, plus fruit juices and other beverages. Brunch fees are \$6.00 for adults and \$3.00 for children. No advanced reservations are required.

This enjoyable Easter Sunday Brunch is served in the Hospital's beautiful main dining room walled by full length windows looking into the wooded landscape.

For more information about Easter Sunday Brunch call the Hospital at 475-1311, extension 361.

MANCHESTER CHIROPRACTIC CLINIC
"TRY CHIROPRACTIC NATURALLY"
227 EAST MAIN STREET
STAN GILBERT, D.C. P.O. BOX 321
313-428-7207 • MANCHESTER, MI 48158
APPOINTMENT HOURS
Mon-Wed-Fri 10-7 p.m. Tue-Thur 11-5 p.m.
Saturday 8-12 p.m.

EQUAL AMOUNTS OF
VHS AND BETA
OVER 4500 MOVIES
(5) GREAT LOCATIONS
★TAN★
TAN
Watch For Our Mini Putt Golf Opening in Pinckney
→ What a SUPER Combination!!!!
Video Choice, Inc. AND NOW Tanning Nooks
HAMBURG 313 231-9361 PINCKNEY 313 878-5107 CLINTON 517 456-7747
MANCHESTER 313 428-9333 CHELSEA 313 475-7279
*PER MOVIE PRICE FOR MEMBERS ON ANY TUESDAY **VCR (BETA FORMAT) INC. 2 REGULAR MOVIES ANY SUNDAY-THURSDAY NIGHTS

Crises On The Farm

Crises on the farm and its impact on other areas of society will be discussed by the head of an Iowa-based rural advocacy coalition in the fourth annual Kauper Lecture at the University of Michigan at 7:30 p.m., March 31.

The Rev. David Ostendorf, director of PRAIRIEFIRE, will examine "The Rural Crisis and the University," discussing the relationship between the farmers' plight and urban concerns such as housing, jobs and university research.

The lecture, which will be presented in the Pendeiton Room of the Michigan Union, is free and open to the public.

Responses will be given by James Crowfoot, dean of the School of Natural Resources; Norma Green of the Interfaith Council for Peace, and Bunyan Bryant, president of the local PRAIRIEFIRE chapter.

Ostendorf and his staff served as consultants for the film "Country," which will be shown free at 3 p.m. Monday in the Modern Languages Building, Auditorium 4, at the University of Michigan.

The Kauper Lecture is presented annually by the Lutheran Student Foundation in honor of Professor Paul G. Kauper, a longtime member of the University of Michigan Law School faculty and founding president of the Lutheran Student Foundation in 1938.

Senior Health Education

Saline Community Hospital will host the seventh in their series of Senior Health Education programs entitled "Communicating With Your Physician" on Wednesday, April 9, 1986, from 11 a.m. to 1 p.m. in

the hospital's Blue Room. Featured speakers will be William Rakowski, Ph. D and Reverend Reginald Hocking.

Free blood pressure checks will be offered by Saline Community Hospital nursing volunteers from 10:30 a.m. to 11:00 a.m.

Dr. Rakowski, an Assistant Professor of Health Gerontology for the Department of Community Health Program at the University of Michigan, will discuss how you can effectively communicate with your physician.

Reverend Hocking, Chaplain at Saline Community Hospital, will be discussing "Mechanic or Gardener", a book dealing with two different approaches of health care professionals.

For further information regarding the program and for transportation assistance, please call Saline Community Hospital at (313) 429-1583.

Breastfeeding Considered

"It's Never too Early to Think About Breastfeeding," a free program for prospective mothers and their families, will be offered at 7:30 p.m. Wednesday, April 2, in the St. Joseph Mercy Hospital Education Center Auditorium.

Program presenter Sue Klawitter and Barbara Martinez, both registered nurses working with mothers and infants at St. Joseph Mercy Hospital, said the program is designed to help

pregnant women and women who are thinking about becoming pregnant, decide whether breastfeeding is right for them. Klawitter and Martinez will discuss the advantages and considerations of breastfeeding and how breastfeeding can fit into your lifestyle.

Husbands, mothers, sisters and other relatives and friends of the prospective mother are invited to learn more about breastfeeding and how they can be supportive of the nursing mother.

To pre-register, call Catherine McAuley Health Center's Office of Health Promotion at 572-3675. The \$10 fee per mother-to-be covers the woman's family and friends.

St. Joseph Mercy Hospital is a unit of Catherine McAuley Health Center.

YMCA Offers Aerobics Class

The Lenawee County YMCA will offer an all new Aerobic Program for men and women. Fitness Fantasia will start April 7th, every Monday and Thursday evening at 7:00 p.m. at the Manchester High School.

The instructor is Sharon Davis from Clinton. She has been in the Y's fitness program for over six years and has been an instructor for two years. For more information call Sharon at 517-456-7170 after 4:00 p.m.

TIRB CHEVROLET CO.

PHONE 428-8212 or 428-8492
313 Adrian Street Manchester

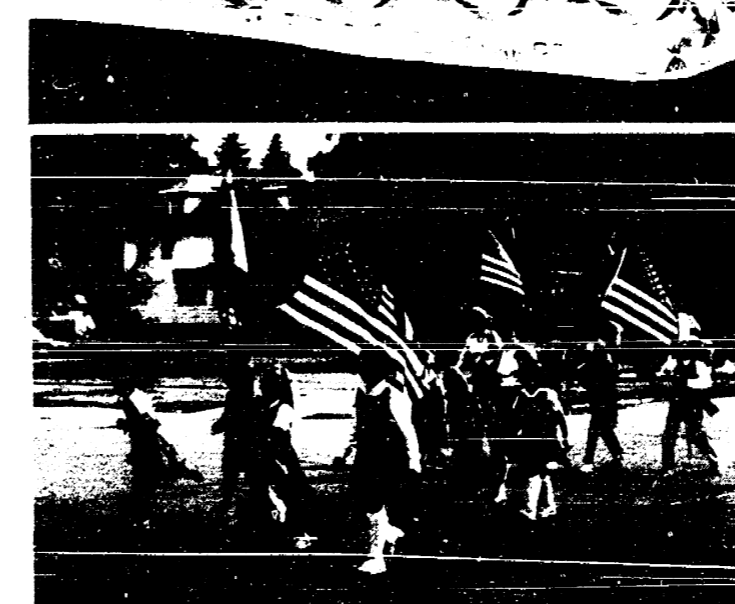


INTERESTED IN LEASING A NEW CHEVROLET?

Stop In or Call Us For Details



Manchester Girl Scout Activities



Can you spot your favorite Girl Scout in these pictures of activities above? These are pictures of the Memorial Day Parade, the float in the Fair parade, and a candlelight and flag ceremony.

In case you need help, here is a list of our current Girl Scouts (registered as of October 1, 1985): Troop #650 - Brandi Bradley, Leah Bragg, Renee Foster, Nicole Gero, Maggie Gistingier, Michelle Helfrich, Karen Messing, Erika Punched, Katie Randall, Jenny Sahakian, Wonder Smith, Lea Taddonio, Sarah Waters, Nancy Althouse, Leader and Pat Sahakian, Cookie Chairman and assistant.

Troop #596 - Jennifer Fleck, Nicole Heiss, Heather Kester, Jamie Knouse, Diane Kruse, Julie Luckhardt, Jennifer Messing, Heather Punched, Elizabeth Steele, Virginia Wisniewski, Roxanne Wisniewski, leader, Marilyn Knouse, Assistant leader and cookie chairman, and Julie Messing, Assistant leader.

Troop #274 - Joelle Armentrout, Brandy Brink, Joanna Dentling, Shelby Gardner, Jayna Nickert, Melissa Scott, Michelle Shuey, Kate Tolen, Elizabeth Wiggard, Karen Shuey, co-leader, Carol Nickert, co-leader, and Anita Tolen, cookie chairman.

Troop #343 - Kathleen Baran, Jackie Donnellon, Emily Gordon, Stephanie Hanselman, Julie Kruse, Amie Poley, Amy Pratt, Diane Randall, Tara Small, Melissa Steele, Teresa Scott and Kelly Donnellon, leaders, Cindy Randall, assistant leader, Teresa Baran, troop camper, Cindy Steele, cookie chairman, and Toni Gordon, first aider.



GIRL SCOUTS

MAKING FAMILY LIFE MORE FUN

Tips For A Happy, Safe Easter

One of the best ways to enjoy Easter is for the whole family to join in a 5,000 year old tradition of coloring eggs for the holiday. The nation's oldest and largest manufacturer of Easter egg color kits, PAAS, offers some hints to help make the task both safer and more enjoyable.



Following the package instructions can keep the fun and enjoyment in Easter egg coloring.

- When cooking the eggs, never use iron or aluminum pans. A chemical reaction between the metals and the egg will cause the colors not to adhere.

- Always empty contents of eggs from shells before decorating if you intend to keep your creations.

- To empty an egg, pierce a hole at each end of the egg. Blow out contents of egg.
- Keep any tools, such as scissors, out of the reach of children.

- Always follow directions on the PAAS' egg color kit for the safest, easiest and most fun Easter activity with your children. It can be a colorful experience.

True Value HARDWARE STORES
BARGAIN OF THE MONTH

True Value
Extra Large Trash/Yard Bags
FITS UP TO 45 GALLON RECEPTACLE
35 35 GAL. 45 GAL.
4.99 While Supplies Last
True Value 45-Gal. Trash/Yard Bags come in a handy 35-count roll. Use them indoors for cleaning around the home or outdoors in the yard. These strong, reliable bags are tough enough to handle grass trimmings, leaves, and more. Incl. twist ties.
QUANTITIES LIMITED

Kleinschmidt True Value Hardware
19860 Sharon Valley Rd. Manchester, Mich.
Phone 313-428-8337
Monday-Saturday 8 am-6 pm Sunday 10 am-4 pm

Money Management

the past year, however, automatically filing the same form filed last year could be a costly mistake.

An obvious example is in the case of Hal, who purchased a home during 1985. Last year, Hal filed the short form 1040A because he had no big deductions. With the interest payments on his new home, however, it's a whole new picture: itemizing on the long form 1040 will take some teeth out of the 1985 tax bite for Hal. The mortgage interest and real estate tax deductions, which cannot be deducted on the short form 1040A that Hal filed last year, can be deducted on Schedule A of the long form 1040 to lower his 1985 tax bill. Clearly, he would make a mistake to blindly file the same form he filed last year.

According to the CPAs, correctly choosing among the three federal income tax forms - the 1040EZ, the short form 1040A and the long form 1040 - is not that complicated. Here is the long and short on the forms to help you determine which is the right one for you.

The 1040EZ gets its name because it is the simplest of the forms. It can be used by single persons with no dependents and taxable incomes of less than \$50,000. But those who are 65 or older should not use this form because it does not allow you to claim the extra exemption for senior citizens. In fact, the only deduction you can claim on the EZ is for charitable contributions.

The EZ form has just 11 lines and the IRS claims that it takes minutes to fill it out. In spite of this, about 600,000 taxpayers last year hired preparers to fill out their EZs.

The 1040A, which is also known as the short form, can also be used only by those with taxable incomes of less than \$50,000. But

it allows those who do not itemize to claim certain deductions and credits that cannot be claimed on the EZ form.

Senior Citizens can claim the extra exemption for those age 65 and older. In addition, three important deductions can be claimed on the 1040A: IRA contributions, charitable donations and a deduction for working married couples. So if you don't itemize but want to deduct one of these three items, file the 1040A. Three tax credits that can sharply lower your tax bill are also available to someone filing the short form 1040A. The credits are for political contributions, child and dependent care expenses and low-income earners.

The 1040 is the long form. And it lives up to its name. Unlike the EZ and the short form, which are used to report only the most common deductions, credits and income sources, the long form is the required tax form in more than 35 different instances cited by the IRS. The chief reasons you must use the long form is your taxable income totals \$50,000 or more or if you want to itemize deductions. In addition, IRS rules outlined a myriad of other specific situations in which you are required to file with the 1040. These range from reporting the sale of a home to reporting taxable Social Security benefits. Basically, you know that you must file the 1040 if you want to claim adjustments, deductions or credits not available on the other two tax forms, or if you have a source of income that cannot be reported on the other forms.

If you have any questions about which form to file, you may want to contact the IRS or your local CPA.

CLASSIFIED ADS GET RESULTS

CUSTOM CABINETS MADE IN MANCHESTER



Competitive Prices
Installation Available
Design Service

—or—
Let us Reface Your Old Cabinets and Save \$\$

Dutch Country Kitchens

18352 W. Austin Road Phone 313-428-7292 Manchester

EASTER WEEK and every week
we feature quality & savings



CALL NOW
RESERVE YOUR EASTER

Honey-baked hams, our own hickory-smoked hams, polish hams, canned hams, pork crown roast, standing rib roast, oysters, shrimp and party trays.

Dave's Butcher Block

1845 West Michigan Avenue Clinton, Michigan

517-456-4348

Monday thru Saturday 9 am - 7 pm

Band Boosters

The meeting was called to order by President Sallie Anderson at 6:30 on February 26, 1986, in the High School Library. The minutes were read from the previous meeting of January 22, and one correction was noted: the amount of money required by the High Schoolers for the Chicago trip is \$20, to be changed from \$50. Treasurer Jan Waldron presented the following report on our account balances, and pointed out that they reflect the purchase of the uniforms and the scholarship to the girls who are attending the International Symphony: Scholarship - \$218.48; Uniform - \$1184.30; Savings - \$3755.80; Checking - \$4.54.

The amount that is in the Uniform account is the deposits we require from students on their uniforms. The Savings has had another \$500 deducted from it, to be given to Tammy Pieske, because she has since been invited to the Bavarian Symphony by Blue Lake.

Old Business: The shipping date for the new uniforms will be May 10 to June 10, so we will fit the students in August.

Amy Fielder has accepted the position of Drum Major, and has been measured for her uniform. We are still looking for Majorettes. We may ask the Home Ec. Department for advice/help for individually made Majorette outfits.

Sallie has turned in the requisition forms for busses for each of the field trips. A discussion ensued on the time needed for the trip, and we decided to leave school at 5:00, eat at McDonalds at 5:30, and this will hopefully allow us to be at the concert a half hour early to get settled. The concert begins at 8:00. We decided that we will pay for McDonalds, so that the students will see a return for their hard work in fund-raising. We will need about 9 or 10

chaperones. The plans for the 7th and 8th grade trip are the same as the 5th and 6th as far as timing goes. Their trip is scheduled for April 10. We are still checking on restaurants for this group, and will try for Pizza Hut in Saline. Notes will go home for each of the trips explaining the details and asking for parental permission.

The Educational Tours, Inc. plans for the High Schoolers trip to Chicago in April was distributed by Jan. We will leave Manchester High at 6:00 a.m. on April 26. We discussed a few details such as informing the students that they will bring one lunch and pay for only one meal. We need to inform the parents about the time difference in Chicago meaning that our arrival time back in Manchester will be affected by that. We depart Chicago at 4:30 p.m. Chicago time and lose one hour due to the time change. This also affects the amount of time that we will have for sleep once we return to the hotel after the theater. Because of this, we feel we need to set a curfew hour for students, since we need to start early the next morning.

After discussion, curfew was set for 12:30 Chicago time (p.m.). Jan was asked what we would be seeing at the theater on Saturday night, and she was not told by the Tours group yet.

New Business: We received a thank you note from Jim Schiel for inviting the High School Choir to join us on the Chicago trip.

We were delighted to learn that Tammy Pieske was recently invited by Blue Lake to join the Bavarian Blue Lake Camp which will tour West Germany as a symphony for two weeks this summer. It was decided that she would also be provided the \$500 scholarship by Band Boosters like the other students attending the International Symphony.

A letter is being prepared by Sallie concerning the towel sale we will hold for one week. This is our last sale of this year, and we will allow students to sell voluntarily, since it is the second sale for them. We are very pleased with the quality of these towels and would like to have this as a fund raiser next year.

We need to save at least \$330 out of our account to pay for summer camp for the Drum Major and Majorettes. Band Boosters always pays for this because our constitution requires that they attend camp.

Varsity Jackets and M letters have been ordered. We discussed

what each year awards are supposed to be since there is always confusion over this. The list is to be changed to: Freshmen - Band Jacket; Sophomore - Lyre patch and PEP Band patch; Junior - M letter at end of year and Varsity Jacket at beginning; Senior - Award at the discretion of the Band Director.

We were not satisfied with the plastic uniform bag sample sent to us by DeMoulin, so we will purchase them ourselves. We feel we should buy the nylon bag type so that they will last longer. Jan will watch for the sale at K-Mart again where they are offered at two for \$5.

We decided that we would not give out the Band sweaters until the night of the Spring Concert, and collect them after the concert.

We need to order at least 50 new Pep Band shirts, but we will delay ordering since we are unsure how far our money will stretch at this point. When it is time to order, we are not going to order any smalls, since so few are used.

With Sue Fielder's suggestion that we have some kind of party in the spring, to get the group together, not only for fun, but to allow the upcoming 8th graders to join in the group in a friendly way. Several possibilities were mentioned, including having the high schoolers personally invite them. One suggestion that we will discuss further is to have a party while practicing for the graduation ceremonies.

The meeting was adjourned at 8:30. The next meeting will be Wednesday, March 26, at 7:00 in the High School Library.

Respectfully submitted,
Nancy Houck, Secretary

Manchester Writer's Group Formed

The Manchester area has always spawned and supported endeavors relating to the fine arts, music, drama and civic promotion. The Historical Society, the Art Guild, the Chamber of Commerce and the Annual Chicken Broil Committee are examples.

Last summer a Writer's Group was formed by some residents who are honing their writing skills and wish to share their efforts with others of like interest.

Critical comments from the group help improve writing ability and inspire continued effort. Several literary forms are represented in the repertoire of the group including poetry, essay, short story and letters. Members write for varying purposes such as publication, recording personal memoirs, class requirements and simply for self expression.

The Manchester Writer's Group meets on alternate Wednesday evenings at the Blacksmith Shop. The next meeting will be April 2, 1986. More information may be obtained by calling Howard Parr, 428-9233 or Lois Jewell, 428-7609.

Christian Writers-Songwriters Seminar

Registrations are now being taken for the First Annual Michigan Christian Writers/Songwriters Seminar to be held Saturday, May 31, at the Grand Rapids First Church of the Nazarene, 3765 Kalamazoo Avenue, S.E., Grand Rapids, Michigan.

Registrants may choose from two workshops: "Basics of Christian Writing" taught by Donna Goodrich of Mesa, Arizona, and "The Song Cycle" (for gospel songwriters), taught by Dave Clark, songwriter and musician from Nashville, Tennessee.

The workshops will begin at 9:00 and end at 4:30 p.m. with registration beginning at 8:00. Cost, including meal, is \$38.00.

For more information or to register, write Donna Goodrich, 648 S. Pima St., Mesa, AZ 85202, or call (602) 844-1876. (After May 15th, contact Joanne Farrell, 3672 Dogwood Dr., R3, White Cloud, MI 49349, 616-689-5369.)

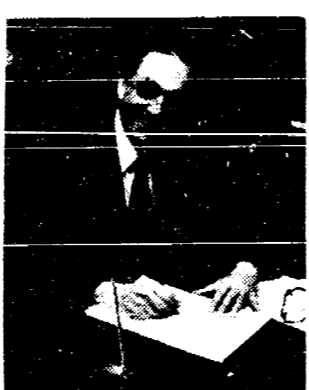
Scholarship Deadline

Junior and senior class high school students who are interested in applying for \$1,000 college scholarships should request applications by May 15, 1986, from Educational Communications Scholarship Foundation, 721 N. McKinley Road, Lake Forest, Illinois 60045.

To receive an application, students should send a note stating their name, address, city, state and zip code, approximate grade point average and year of graduation. Fifty award winners will be selected on the basis of academic performance, involvement in extracurricular activities and need for financial aid.

AUTO-PRO TIPS

By Mr. Oldsmobile



KEITH BAILEY

This column might read a bit scary but all I would like to do is get your attention on some thoughts that may not have occurred to you -

- 1) Look out when tires seem to bounce and/or thump. even on a smooth road. The cause is usually unbalanced wheels but it might be a tire bulge and could blow out. Check right away!! In either case, correct as soon as possible.
- 2) If the hood of your car pops up and blocks your vision. DON'T "SCREECH" your brakes and stop!! Just ease the car to the outside lane using the rear view mirror and the view from the side window for reference. applying brakes slowly - oh yes, and turn on your flashers - this is another good reason why you shouldn't "tail-gate"!
- 3) If your oil pressure light comes on be sure to stop right away. shut the engine off and check the oil!! If it's low add oil. If the lamp still stays on after re-start DON'T DRIVE!!

REMEMBER!! DRIVE DEFENSIVELY - WE NEED YOU!!

Underwood Pontiac-Olds-Buick, Clinton 456-4181

Keith Bailey

PLAY IT SMART... GET INTO THE CLASSIFIEDS

All Classified Advertising is Payable in Advance and Must Be Placed and Paid For Prior To 11 a.m. on Tuesday For Publication That Week.

Classifieds Are \$2.00 For First 20 Words, 5' A Word Thereafter. Thank You's Are \$4.00 Minimum Up To 50 Words, 5' A Word Thereafter.

YMCA PRESENTS Fitness Fantasia - Aerobics and Toning for women & men. Monday & Thursday evenings, 7:00 - 8:00 p.m. Beginning April 7th, Manchester High School. Sharon Davis - instructor. Call 517-456-7170 after 4:00 p.m. 4-3p

ALBER ORCHARD & CIDER MILL - Apples and cider. Open daily 9 to 5. Closed Sundays. 13011 Bethel Church Road, Manchester. 428-7758. tfn

IRA MEANS FLY-BA at Comerica Bank.

The only IRA that lets you enjoy a little of your retirement right now.

Deposit a total of \$2,000 and when you buy one American Airlines ticket, you get one more at a 75% DISCOUNT, and the third and fourth ticket at a 90% DISCOUNT!

For a deposit of \$1,000 to \$1,999 you get one FREE ticket when you buy two!

Come in and see us for full details...Comerica Bank, 135 Main Street, Manchester. tfn

WICK HOMES ARE TODAY'S best value in new home construction. Latest design, energy features, custom quality. Start Now. Call 517-563-2930. 5-1

CAROLIN'S CORNER - Licensed Group Day Care, will be offering new preschool and toddler developmental playgroups every 8 weeks. Choice of a 2 or 3 day, 3 hour structured schedule; which includes fine & large motor activities, music, art, snacks, stories and field trips. 428-8279. 4-10p

FOR SALE - 1981 Fairmont Mobile Home, 14' x 70'. 2 bedrooms, 2 baths, fireplace, new steel door, 2 utility sheds, and many more extras. Located 15 minutes from Ann Arbor on paved road in adult section of well maintained park on Pleasant Lake. For more information and showing, telephone 313-428-8531. p

HALF PRICE! Flashing arrow signs \$299! Lighted, non-arrow \$279! Nonlighted \$229! Free letters! Only few left. See locally. 1(800)423-0163, anytime. p

SUUURE WE CAN DO IT! For free estimates, low rates and fast service on anything that you need done, call T&N Services, 428-7002.

MICHIGAN CERTIFIED Soybean Seed. Hodgson 78; Corsoy 79; and Elgin. Brablec Farms, Britton, MI 49229. 517-451-4010, 517-423-3478. tfn

ROOFING - ALL TYPES - for free estimate, 23 years experience call 313-426-7623, Mei's Roofing, Inc. 4-10p

IT COULD BE FUN to spend your income tax return on things of comfort like central air-conditioning or a water softener. It could be smart to spend your income tax return on things of safety like a new breaker box or G.F.I. receptacles or a smoke alarm. It could be wise to spend your income tax return on things that will save you hundreds of dollars like high efficiency furnaces and water heaters. Call us for prices. Manchester Electric, 313-428-8243. MasterCard & Visa accepted. 4-10

FOR SALE - 71-acres with ponds - or 2-acre parcels. Road frontage. 1 1/2 miles south of Manchester, near M-52. Priced right. 313-428-7463 (after 5:00 p.m.) 4-27p

MANCHESTER ANTIQUE MALL - 35 Dealers. Open 7 days, 10-5, 116 E. Main. 428-9357. tfn

VILLAGE HAIR FORUM - 201 East Main, Old Mill. 428-7684. tfn

C & B PAINTING - Interior-Exterior-Free Estimates. Contact Charles E. Benedict. Phone 428-7136 or 428-7416. tfn

MERRIMAN INSULATION Free Estimates. Blown-in cellulose. Professionally installed. George Merriman. Phone 517-592-5527. tfn

JERRY WHITAKER EXCAVATING - Hauling and ponds dug. Call 475-7841. tfn

PLANO TUNING & REPAIR Qualified technician - Ron Harris. 475-7134. tfn

CHELSEA GREENHOUSES 7010 Lingane Road, Chelsea, Michigan. 475-1353-54 or 475-9313. Flowers and plants for every occasion. We specialize in wedding flowers to fit your budget. We are as near as your phone and we welcome your business. tfn

LARGE 2 BEDROOM apartment in quiet area close to downtown and church. Garden area, large yard. \$325, 428-7731, evenings. tfn

1 & 2 BEDROOM Apartments for rent. D.E. Limpert Co. 428-7400. tfn

SHARPENING SERVICE - Ice skates, saw chains, hand saws, circular saws, knives, scissors, pinkie shears, hair-animal and grass clippers, lawn mower blades, electric hedge clippers, drills, and most anything needing a sharp edge. Kleinschmidt True Value Hardware, 19860 Sharon Valley Road, Manchester. tfn

LAWN SPRAYING - Free Estimates. Call Tim Spiess, 428-9497. tfn

COPY PAPER AVAILABLE We have copy paper in sizes 8 1/2 x 11, \$4.75 for 500 sheets. 8 1/2 x 14, \$5.75 for 500 sheets. The Manchester Enterprise tfn

FOR SALE - Kenmore self-cleaning electric range and G.E. no-frost refrigerator. Excellent condition. \$200 each or best offer. 428-8178. 3-27

FIELDER PAINTING - Interior and Exterior. Free Estimates. Senior Citizens Discount. Phone 428-8506. tfn

WOMAN WANTED For front counter help - 11 a.m. to 3 p.m. \$4.35 per hour. A&W Chelsea. Call 475-2055 for appointment.

APARTMENT - 2 bedroom, 2 blocks from town. \$450, includes all utilities. 428-7173. tfn

APARTMENT HOUSE - For Sale Three 2 bedroom units - \$15,600 gross income. \$69,950. 428-7173. tfn

SECURITY GUARDS WANTED Manchester and Ann Arbor area. Must be neat appearing and have good communication skills. Call collect 517-371-5830. 4-24p

TOP PRICES PAID FOR ALUMINUM SCRAP & ALL NON FERROUS METALS

Jackson Fibers Co.
(517) 784-9191
1417 So. Elm St.
1 blk. North of High St.
Jackson, Michigan

EAMES SMALL ANIMAL CLINIC - 18600 W. Austin Road. Phone (313) 428-7100. Office hours DAILY Mon-Sat 1:00-3:00 p.m. Evenings Mon., Wed., Fri. 7:00-8:00 p.m. Other times by appointment. tfn

LITTLE WACK EXCAVATING Licensed and Insured. Basements, Drainfields, Digging, Bulldozing, Trenching, Black Dirt, Sand, Gravel. Paul Wackenhut, 313-428-8025. tfn

FOR SALE - BUILDING LOTS Xiverford Subdivision, Village of Manchester, on private lake. All utilities installed. Terms negotiable. Phone (313) 428-8498. tfn

APPLIANCE REPAIR - Washer - Dryer - Range - Refrigerator - Dishwashers. 517-592-3556, Daniel J. Appliances. tfn

JON'S PHOTO AND RECORD SHOP - In the Old Mill. Tuesday thru Friday, 12-5; Saturday, 10-11 p.m. 428-9509. tfn

WANTED - Standing timber, saw logs and veneer. Buskirk Lumber Co., 517-661-7751. tfn

AD CONSTRUCTION - We do most building projects involving Residential Structures, Pole Barns, Remodeling. Call Dan Jordan in Clinton at 517-456-7817; 456-4842. 8-7p

LA LECHE LEAGUE - For Breastfeeding Information or Assistance. Call 428-8831. 3-27p

DEAR GODMOTHER, Roses are red Violets are blue Who's turning 40 Aunt Susan, it's you! J.P. p

DEAR AUNT SUSAN, Happy Birthday to you 40 Hugs and Kisses And many more too!! Jodi, Pam, Amy Julie, Andrew, Aaron p

MANCHESTER COOPERATIVE PRESCHOOL - Fall enrollment beginning March 26. Classes for 3 and 4 year olds. Call Jane Cooper, 428-7257, after 9:00 a.m. Admitting students regardless of race, sex and national or ethnic origin. p

DOES SPRINGTIME MEAN alot of cleaning to you?? It does to us!! Call T&N Services today and schedule all of your springtime cleaning. 428-7002.

HOST A WICKER PLUS PARTY in April, receive free wicker, plus a special gift. No ordering, collecting or delivering. Call Diane Turner, 428-7316. 4-3p

HOST A WICKER PLUS PARTY in April, receive free wicker, plus a special gift. No ordering, collecting or delivering. Call Diane Turner, 428-7316. 4-3p

DEAR AUNT SUSAN, Happy Birthday to you 40 Hugs and Kisses And many more too!! Jodi, Pam, Amy Julie, Andrew, Aaron p

MANCHESTER COOPERATIVE PRESCHOOL - Fall enrollment beginning March 26. Classes for 3 and 4 year olds. Call Jane Cooper, 428-7257, after 9:00 a.m. Admitting students regardless of race, sex and national or ethnic origin. p

DOES SPRINGTIME MEAN alot of cleaning to you?? It does to us!! Call T&N Services today and schedule all of your springtime cleaning. 428-7002.

HOST A WICKER PLUS PARTY in April, receive free wicker, plus a special gift. No ordering, collecting or delivering. Call Diane Turner, 428-7316. 4-3p

DEAR AUNT SUSAN, Happy Birthday to you 40 Hugs and Kisses And many more too!! Jodi, Pam, Amy Julie, Andrew, Aaron p

MANCHESTER COOPERATIVE PRESCHOOL - Fall enrollment beginning March 26. Classes for 3 and 4 year olds. Call Jane Cooper, 428-7257, after 9:00 a.m. Admitting students regardless of race, sex and national or ethnic origin. p

DOES SPRINGTIME MEAN alot of cleaning to you?? It does to us!! Call T&N Services today and schedule all of your springtime cleaning. 428-7002.

HOST A WICKER PLUS PARTY in April, receive free wicker, plus a special gift. No ordering, collecting or delivering. Call Diane Turner, 428-7316. 4-3p

DEAR AUNT SUSAN, Happy Birthday to you 40 Hugs and Kisses And many more too!! Jodi, Pam, Amy Julie, Andrew, Aaron p

Parr's Auto Body
BODY WORK - PAINTING
FREE ESTIMATES
INSURANCE WORK
GLASS INSTALLATION

18481 W. Austin Road
Manchester, Michigan
Phone
313-428-9538

YMCA PRESENTS Fitness Fantasia
Aerobics and Toning For Women and Men
Monday-Thursday Evenings
7:00 - 8:00 P.M.

Beginning April 7th
Manchester High School
Sharon Davis - Instructor
Call After 4:00 P.M.
517-456-7170

THE BLIZZARD
IT'S UPSIDE DOWNRIGHT THICK

Mouth Watering Flavors
Heath, Butterfinger, Snickers
M&M's Whoppers

10% OFF ALL SIZES

Regular Price
1.29 Small
1.59 Medium
1.89 Large

Thursday, Friday, Saturday
MARCH 27, 28 & 29

Manchester Dairy Queen

213 East Main St. Manchester, Mich.

SPRING HAS ARRIVED AT MCDONALDS. Spring means we are taking applications for part-time employment. If you need a flexible schedule because of family responsibilities or just need to supplement your income - McDonalds will fit your bill. Day or late evening shifts available - Also a night maintenance position. Come talk to a manager today. 1535 S. Main, Chelsea. 428-3243. MasterCard & Visa Opportunity Employer. 4-10

EGG BASKET CLASS at the Village Shoppe, April 12th, 10-4, \$15. Annelissa Gray-Lion teacher. 428-9640. 4-10

FOR SALE - Very nice remodeled farm house. Outbuildings, pool. 5/70 acres optional. 2 1/2 miles from Manchester. Ambrose Lentz, 428-8244. 4-3p

1971 CHEVY IMPALA for sale. 428-9384 days or evenings. 4-3p

FARM LAND TO RENT, 25 acres Manchester area. 428-9553/581-9080. 4-3p

FARM LAND TO RENT on Noggles Road. 38.6 acres - was in corn and wheat in 1985. 428-7787. 4-3

SEASONAL GARAGE SALE - always open, wide variety. 15490 Henzie Road, corner of Henzie/Burlless, south of Bowens. 4-3p

HOST A WICKER PLUS PARTY in April, receive free wicker, plus a special gift. No ordering, collecting or delivering. Call Diane Turner, 428-7316. 4-3p

DEAR AUNT SUSAN, Happy Birthday to you 40 Hugs and Kisses And many more too!! Jodi, Pam, Amy Julie, Andrew, Aaron p

MANCHESTER COOPERATIVE PRESCHOOL - Fall enrollment beginning March 26. Classes for 3 and 4 year olds. Call Jane Cooper, 428-7257, after 9:00 a.m. Admitting students regardless of race, sex and national or ethnic origin. p

DOES SPRINGTIME MEAN alot of cleaning to you?? It does to us!! Call T&N Services today and schedule all of your springtime cleaning. 428-7002.

HOST A WICKER PLUS PARTY in April, receive free wicker, plus a special gift. No ordering, collecting or delivering. Call Diane Turner, 428-7316. 4-3p

DEAR AUNT SUSAN, Happy Birthday to you 40 Hugs and Kisses And many more too!! Jodi, Pam, Amy Julie, Andrew, Aaron p

MANCHESTER COOPERATIVE PRESCHOOL - Fall enrollment beginning March 26. Classes for 3 and 4 year olds. Call Jane Cooper, 428-7257, after 9:00 a.m. Admitting students regardless of race, sex and national or ethnic origin. p

DOES SPRINGTIME MEAN alot of cleaning to you?? It does to us!! Call T&N Services today and schedule all of your springtime cleaning. 428-7002.

HOST A WICKER PLUS PARTY in April, receive free wicker, plus a special gift. No ordering, collecting or delivering. Call Diane Turner, 428-7316. 4-3p

DEAR AUNT SUSAN, Happy Birthday to you 40 Hugs and Kisses And many more too!! Jodi, Pam, Amy Julie, Andrew, Aaron p

MANCHESTER COOPERATIVE PRESCHOOL - Fall enrollment beginning March 26. Classes for 3 and 4 year olds. Call Jane Cooper, 428-7257, after 9:00 a.m. Admitting students regardless of race, sex and national or ethnic origin. p

DOES SPRINGTIME MEAN alot of cleaning to you?? It does to us!! Call T&N Services today and schedule all of your springtime cleaning. 428-7002.

HOST A WICKER PLUS PARTY in April, receive free wicker, plus a special gift. No ordering, collecting or delivering. Call Diane Turner, 428-7316. 4-3p

ATTENTION SENIORS!

Come in and see our complete selection of graduation supplies

Announcements
Name Cards
Party Invitations
Memory Books
Souvenir Announcement Covers
Graduation Jewelry
Party Supplies
(Napkins, Paper Plates & Cups)
Thank You Notes

We're your one stop dealer

THE MANCHESTER ENTERPRISE
150 EAST MAIN STREET
MANCHESTER, MICHIGAN 48158
428-8173

Pursell Doubts Budget Will Be Passed On Time

U.S. Rep. Carl D. Pursell today said Congress most likely will be unable to approve a fiscal 1987 budget in time to avoid a Presidential sequestration order. "Our vote on the President's budget is just one of the chess plays by the Democrats...they weren't looking to approve his budget and haven't come up with an alternative of their own...we are going to end up with a Gramm-Rudman sequestering process again this year," Pursell said.

"It is an inability of Congress, in a timely fashion, to draft a federal budget. It's a Congressional breakdown, it's not the president's fault (that a budget won't be adopted on time) - it's our fault."

"I, myself, am frustrated by the process. We can't finish our work on time so everything gets put into a continuing resolution and it's a phony process," he said.

"It's due to a lack of discipline. Congress is not doing its job. We shouldn't be blaming the President, no matter who he is," Pursell stated.

American Red Cross Must Raise \$40 Million For Disaster Relief

help in the relief effort." All aid through the American Red Cross Disaster Services is an outright gift, and includes provisions for food, shelter, clothing and other basic necessities such as eyeglasses, dentures, medications and occupational supplies and equipment.

Anyone wishing to help meet the needs of disaster victims are

encouraged to send their contributions to the American Red Cross, Washtenaw County Chapter, 2729 Packard Road, Ann Arbor, MI 48104, earmarked "Emergency Disaster Relief Fund."

Hit or Miss

enforcement job to the sheriff in the balance of the county. And then too we have in Michigan the State Police to assist in maintaining our law abiding existence.

Bob Aubrey of Ottawa had been blind for eight years when one day he tripped over his dog and struck his head on the floor. His vision came back.

Ann Arbor Art Association

From April 4 to April 26, the Ann Arbor Art Association will host its seventh annual "Youth Juried Art Exhibition" open to all students in grades 9-12 currently enrolled in Washtenaw County Schools. The exhibition will be juried by Ed Lindberg and Chris Bocklage who have both been involved in art education at the high school level.

Three \$100.00 scholarship prizes will be awarded to graduating seniors intending to pursue a study of art at the college level. Seniors who would like to be considered for these awards should submit five pieces of equal consistency. Honorable mentions will be awarded to students in grades 9-11 for meritorious work. Students in these grades should submit no more than two pieces for jury.

To enter, work must be delivered to the Art Association (117 West Liberty in Ann Arbor) on Saturday, March 29 and Monday, March 31, 12-5 p.m. Two dimensional works other than oils must be matted on a

neutral matt, backed and wrapped in acetate or shrink wrap. ALL works must be ready to hang. Opening reception and awards announcement will be held Friday, April 4, from 5 to 7 p.m. Please join us! A jazz combo band from Community High School will play at the opening reception.

Saline Hospital Responds To Aids Crisis

"One problem is, there's AIDS and then there's AIDS phobia", commented Sandra Swift, head of Infection Control for Saline Community Hospital.

Swift is embarking on an education campaign designed to spread the facts and dispel the fallacies about the AIDS disease. Although, to date, there have been no active AIDS cases reported at Saline, says Swift, the public education effort falls right in line with Saline's mission to provide the local community with accurate information about all kinds of health topics. In the case of AIDS, notes Swift, education is crucial.

Saline Community Hospital has packaged a film, speaker program and hand-out material which will be available, upon requests to schools, community organizations, and other groups interested in learning more about the serious disease. Swift feels the more information people have, the less fearful they will be, plus if people know more about the disease, that may help limit its spread.

Despite advances in AIDS research, many communities remain unclear about how the disease is transmitted and that, says Swift, contributes to fears which can cause as much harm as the disease itself. "If we can dispel a lot of the fallacies, we can then educate people about the disease and reduce the hysteria."

At Saline, education begins with the hospital staff when Swift and Emergency Room head nurse, Steve Eaton, attended a Washtenaw County Forum on AIDS for community Decision-Makers. Participants, representing health care professionals from a broad spectrum of fields, learned about meeting concerns and how to best handle issues related to a community's response towards AIDS. Then Swift and Eaton distributed informational brochures to all Saline Community Hospital employees.

Saline does not test routinely for the AIDS virus. Such tests are performed only if clinical evidence warrants it and it is advised by a physician. So far, the hospital has implemented no new, extraordinary precautions to prevent the infection or spread of AIDS during routine tests and procedures. The hospital's routine infection control practices, explained Swift, offer adequate protection. "For instance, we handle blood transfusions, with the same precautions as we would for Hepatitis B, another disease which can be spread by contaminated needles. If we suspect any infectious condition, the person taking blood wears gloves. Needles are always disposed of after use, in accordance with strict regulatory guidelines."

Although it hasn't happened yet, Saline Community Hospital is prepared to care for AIDS victims upon admittance from a physician, Swift stated. She wants to be prepared not only for the physical but the emotional needs of the patient. "These people are often treated as lepers." That can be emotionally taxing.

"I think it's our job to educate the people so they won't become too hysterical," Eaton stressed. "That's why we developed the education program."

For information of the AIDS

education program, people can contact the hospital's Community Reactions Department at (313) 429-1508.

AIDS: CAUSE FOR CONCERN, NOT PANIC

The current AIDS epidemic is a cause for concern, not panic, says researcher, Dr. Leonard Rosenthal.



Dr. Rosenthal, project director of the National Foundation for Cancer Research (NFCR), says Acquired Immune Deficiency Syndrome is not communicable like a common cold or the flu.

"There is no evidence it is spread by casual contact, such as by children at school. It is mainly spread through intimate sexual contact."

The Washington, D.C. scientist is studying the role of a human herpes virus as a cofactor in the development of the AIDS infection.

The National Foundation for Cancer Research, or NFCR, of Bethesda, Md. funds basic research in order to find treatments for cancer and related diseases, such as AIDS.

HOME IMPROVEMENT NEEDS?
We've Got 'Em All...!

Call Us For A Free Estimate

**Additions - Decks
Garages - Roofing
Siding - Pole Barns**

428-8836

R. D. Kleinschmidt
19860 Sharon Valley Road
(Corner of M-52)
Manchester, Michigan 48158

Easter Egg & Candy Sale

Saturday, March 29th
9 to 12
Comerica Bank Lobby

Sponsored By: Women of Emanuel

Friendly Family Dentistry

Bruce Bates, D.D.S.

500 Galloway Drive Manchester, Michigan

SERVICE BY APPOINTMENT

PHONE 313-428-8277

CLEAN TEETH

Monday-Tuesday-Friday 9 a.m.-5 p.m.
Wednesday 12 noon-8 p.m.
(Some Other Evening and Saturday Morning Hours Available)

New Patients, Medicaid and Emergencies Always Welcome

VISA ACCEPTED
MOST DENTAL INSURANCE PLANS ACCEPTED

BACK DOOR PARTY STORE

500 Ann Arbor Street Phone 313-428-9287 Manchester, Michigan

BEER WINE KEG BEER

GROCERIES

Now At Back Door Party Store

Instant and Daily Lottery Tickets

50¢ OFF ON ALL WINE

750 & 1.5 liter

PARLOUR ICE CREAM

UNION 76 GAS Full Service and Self Serve

<p>COKE \$2.19</p> <p><small>8 Pac 1/2 Liter</small></p> <p>2 Liter 1.49 PLUS DEPOSIT</p>	<p>This Week's Special</p> <p>BUSCH and NATURAL LIGHT</p> <p>PER CASE \$6.99</p> <p><small>Plus Deposit</small></p> <p>Coming March 27th "COORS"</p> <p><small>MARCH 26 - APRIL 2</small></p>	<p>PEPSI! \$2.19</p> <p><small>8 Pack 1/2 Liter</small></p> <p>2 Liter 1.49 PLUS DEPOSIT</p>
---	---	--