

Jesse Walker  
553 Vernon  
Manchester, MI 48158

# THE MANCHESTER ENTERPRISE

20 Cents Per Copy

118TH YEAR VOLUME NO. 51

USPS NO. 327-460

THURSDAY, OCTOBER 10, 1985

## Manchester Community Schools To Hold Special Election October 28

The Manchester Board of Education met for a special meeting on Monday, September 30, 1985.

Superintendent Thompson advised the Board that a new law had been signed making it possible for the district to hold its special election on October 28 rather than November 12, as had originally been planned.

Vice President Earl Horning chaired the meeting and advised that the first portion would be devoted to questions and comments from the audience. Approximately fifty persons were present.

After numerous questions and discussion, Mr. Horning asked that the Board discuss the

election issues and arrive at a conclusion.

Several motions were made by Samonek, Davis and Broucek regarding the proposals to be placed before the voters on October 28.

Finally it was moved by Schaffer to place three millage issues on the ballot as follows: Proposal I: to be 2.2 mills for one year to provide for transportation services and savings.

Proposal II: to be 1.8 mills for one year to provide for the following: Instructional and administrative equipment, middle school counselor, elementary music, middle school athletics, one custodian, one maintenance person, library books, gifted and

talented education, and physical education.

Proposal III: to be .3 mills for one year to provide for driver education, one-half social worker, one custodian, one-quarter speech therapist and a library aide.

The Board scheduled a special meeting for October 7, 1985, to officially approve the legal resolutions.

## Hit or Miss

by Farley

We recently were told the tale of an interesting pair - a pair that you might say are somewhat squirrely.

One of them is known as Merle Pearl, his wife or girlfriend, I don't know which, or whether or not they are going steady - she comes by only occasionally, but I was told that they work only for peanuts. They began with bird seed and worked their way up to peanuts.

The teller of this tale says that they showed up one day and he, wanting them to feel at home, built them one. This wooden structure clings tightly to the window sill of his home.

The squirrels quickly made it their home - all because of the peanuts and corn and apples and other food given them daily by their neighbors.

If there's nothing on their patio, Merle will put his paws on the window and peek inside as if he

continued on page 8

## Manchester Stamping Sets United Way Pace



Ron Fielder, center, United Way Campaign Industrial Division Chairman, accepts checks from Larry Goodell, left, Campaign Captain and Wayne Hamilton, President of Manchester Stamping Corporation.

Manchester Stamping Corporation and its employees have set a challenging pace this year for United Way giving, by more than doubling their contributions from last year.

Larry Goodell, campaign captain for Manchester Stamping, explained that this was the first year that payroll deductions were made available to employees as a means of making a contribution. Larry believed that people would not miss a little bit from each paycheck and that employees would donate more that way than if they were asked for a cash contribution.

Larry talked to each employee about United Way and the

agencies it supports. Nearly everyone agreed that it is a cause worth supporting and that they could willingly part with at least 50 cents a week, the payroll deduction needed for a \$25 contribution. Larry further attributed employee's generosity to larger paychecks, since this has been a good year for Manchester Stamping and its employees.

Contributions from Manchester Stamping employees pay off doubly for United Way because the corporation matches the donations of its employees. Manchester United Way thanks Manchester Stamping and its employees for their superb effort to Continue The Drive In '85!

## Ward School - Library

Manchester Enterprise  
November 13, 1919

### Committee Reports On Matter Now Before Board Of Education Township And Village

Some months ago when the state board of education called attention to the unsuitable condition of the ward school in this village, with the suggestion that it would be cheaper and more satisfactory to rebuild than try to repair the old building, there was a movement made to build a combined ward school building and library. At the public

meeting held at the time at the ward school building, at which time the present structure was inspected, there was a unanimous sentiment in favor of the plan. It was suggested at that time that the building be located not on the site of the present structure, but on that part of the public square east of the building and well toward Washington street. The question of titles and abandonment of the present site arose, but no one knew exactly the status of affairs. President of the school board, Wm. J. Hoffer, then appointed A. J. Waters a committee of one to investigate. Mr. Waters no makes his report as follows:

"Your committee to whom was referred the investigation of the title of the lot upon which the ward schoolhouse stands and also that of the Public Square, begs leave to report that Lot 4, Block 5, upon which said schoolhouse stands, was dedicated to the public by John Gilbert on June 27th, 1835, by an instrument of conveyance in which are the following words of limitation - "as a site for a schoolhouse and no longer." The Village Plaza was dedicated to the village by the same John Gilbert as a "Public Square."

"Your committee further reports that by diligent inquiry he was able to determine that William H. Gilbert of Grand Rapids and Alice Gilbert of Ypsilanti are the sole surviving heirs at law of the said John Gilbert and after full explanation they have willingly and with pleasure executed and delivered a deed of said lot to District N. 2 of Manchester township, with limitation for a park or play-ground.

"Further it is the opinion of the committee that the village has ample authority to permit the use of a portion of said Public Square

continued on page 8

## Voter Registration At Manchester High School

In an effort to register voters, Manchester Schools have set up a special voter registration day.

The township clerks from Bridgewater, Freedom, Manchester and Sharon plan to be present in the High School Library from 9:00 to 10:00 a.m. on Tuesday, October 15, 1985. At that time, any resident of these townships can come to Manchester High School and register to vote.

In the past there was a 30 day delay from the time a voter registered until he/she was eligible to vote in an election. However, as a result of a law passed two weeks ago by the Michigan Legislature, the delay between registration and voting has been reduced to just 10 days.

Voters are also reminded that they do not have to own property in the school district in order to vote in the millage election. In addition, if it is inconvenient to register at the high school on Tuesday, October 15th, residents within the Manchester School District can register at their nearest Secretary of State Office.

## Volunteer Ticket Takers in 28th Year



The Manchester Optimist Club is in its 28th year as volunteer ticket takers at all home varsity football games. This volunteer effort of the Optimists has relieved the school system of spending any monies to hire the job done. Chairman of the committee that handles this project is L.V. "Chick" Kirk. "Chick" has been in charge of all the gate assignments, etc. about as long as the club has been manning the gates. Pictured above, from left to right, are Len Bruner, Rollie Grossman, Ron Mann, Ted Stautz, Bob Lowery, "Chick" Kirk, Ted Tapping, Dan Boutell and Larry Becketl.

### Manchester Village Planning Commission

Regular Meeting, Tuesday  
October 15, 1985, 7:30 p.m.  
Council Room, Village Hall

#### AGENDA

1. Call to Order
2. Approve Agenda
3. Minutes of the Regular Meeting of September 10, 1985
4. Applications:
  - Johnson Controls
  - Application for Site Plan Approval
  - City Road office location - addition
5. Old Business
  - Historic District Study Committee
  - Revised Sign Permit Application Form
  - Possible Revisions to Sign Ordinance
  - Other Old Business
6. New Business
7. Adjournment

## Education Leaders Focus On School Safety

School safety and improved discipline are critical issues to address as this school year begins, according to a series of articles from key national educators published in the Fall 1985 issues of SCHOOL SAFETY, the newsjournal of the National School Safety Center.

The newsjournal's cover and contents highlight "America's Year of School Safety & Student Attendance," an observance sponsored by the Center, state governors and students nationwide. The goal of the sponsors during the 1985-86 school year is to increase public awareness and involvement in campus crime and drug abuse prevention, improved discipline and increased attendance.

"Many schools have existing safety programs, but they need conscientious application and maintenance throughout the school year," says George Nicholson, the Center's director and chief counsel.

October 20-26 will be observed as the first "America's Safe Schools Week." A specially created "American Apple," which features a waving American flag shaped into the form of an apple to represent education, is displayed on various printed material to symbolize the two events.

Articles by Mary Futrell, president of the National Education Association; Albert Shanker, president of the American Federation of Teachers; and Ann Kahn, president of the National PTA, are featured in SCHOOL SAFETY. Each of these national education leaders validates the precept that clearly articulated and consistently administered discipline is vital to safe, productive learning climates.

Our schools are no longer "characterized as 'blackboard jungles,'" says NEA's Futrell. "Within our schools, climate is everything. Order, discipline and civility are the offspring of an effectively managed and intellectually alive classroom."

Although, for some, "school safety" and "discipline" elicit images of corporal punishment for misbehaving students, PTA President Ann Kahn disagrees. "On the contrary, the purpose of discipline should be to guide children toward acceptable behavior and to teach them to

### Substance Abuse Awareness Committee Meeting

The Manchester Substance Abuse Awareness Committee will meet at the High School Library on Thursday, October 17, at 3:30 p.m. High School staff and students are invited to attend this meeting.

### Rogers Corners Farm Bureau

The Rogers Corners Farm Bureau meeting will be held at 8:00 p.m. on Friday, October 11, at the home of Bill and Doris Kittendorf.

### Parr's Auto Body

BODY WORK - PAINTING  
FREE ESTIMATES  
INSURANCE WORK  
GLASS INSTALLATION

18481 W. Austin Road  
Manchester, Michigan  
Phone  
313-428-9538

### WANTED

Euchre Players

at the  
THE VILLAGE TAP

MONDAY NIGHTS  
8:00 P.M.

STARTING OCTOBER 7th



### NEW COKE

6 Pack Cans  
\$1.39  
Plus Deposit

G.E. Wacker Inc.

GASOLINE-FUEL OIL-GREASE  
MOTOR OIL-DIESEL FUEL  
9050 Chelsea-Manchester Road  
Manchester, Michigan 48158

SUMMER HOURS  
MON.-FRI. 7 am - 9 pm  
SATURDAY 8 am - 9 pm  
SUNDAY 9 am - 9 pm

### The Manchester Enterprise

150 EAST MAIN STREET  
Manchester, Michigan 48158  
USPS 327-480  
Phone 428-8173

The Manchester Enterprise was established in 1887 and is published each Thursday at 150 East Main Street, Manchester, Michigan, with second class postage paid at Manchester.

Edward E. Steele, Publisher  
Lenore A. Steele, Editor

POSTMASTER:  
Send Form 3972 to The Manchester Enterprise, 150 East Main Street, Manchester, Michigan 48158.

DEADLINES:  
All Display Advertising AND Pictures (Black and White Only) Are Due By 5:00 P.M. Every Monday For Same Week Publication.  
All Classified Advertising And News Articles Are Due By 11:00 A.M. Every Tuesday For Same Week Publication.

### Teacher To Speak At Conference

Mr. Richard Darga, teacher of the Austin Program at Klager School has been invited to present a workshop at the Michigan Association for Emotionally Disturbed Children annual meeting on Saturday, October 19, in Ann Arbor. Working with Ms. Nannette Patrice, Mr. Darga will offer a presentation entitled "Hasslebusters".

Participating in continuing educational activities is an important aspect of maintaining professional expertise. Manchester schools are proud to

have staff members who not only seek to sharpen their professional skills, but also are willing to share their expertise with other educators.

### Oakland University Awards Degrees

Six hundred Oakland University students received degrees at commencement exercises September 22. Graduates from the Manchester area included Pamela S. Knickerbocker, 319 Ann Arbor Street, receiving a B.S. in Physical Therapy.

### Notice Of A Public Hearing On Increasing Property Taxes

PLEASE TAKE NOTICE that on October 29, 1985, at eight o'clock p.m. at Manchester High School the Board of Education of Manchester Community Schools will hold a public hearing on the levying in 1985 of an additional proposed millage rate of 4.3 mills for operating purposes pursuant to Act 5, Public Acts of Michigan, 1982.

The Board of Education has the complete authority to establish that 33.3 mills be levied in 1985 from within its present authorized millage rate.

The Board of Education has the complete authority to establish that 37.6 mills be levied in 1985 if an election proposal of 4.3 mills receives a favorable vote.

The maximum additional proposed millage rate would increase revenues for operating purposes from ad valorem property tax levies in 1985 otherwise permitted by Act 5, Public Acts of Michigan, 1982, by twelve and 91/100 percent (12.91%).

The purpose of the hearing is to receive testimony and discuss the levy of an additional millage rate. Not less than seven (7) days following the public hearing, the Board of Education may approve all or any portion of the proposed additional millage rate.

This notice is given by order of the Board of Education.

Thomas G. Golding  
Secretary

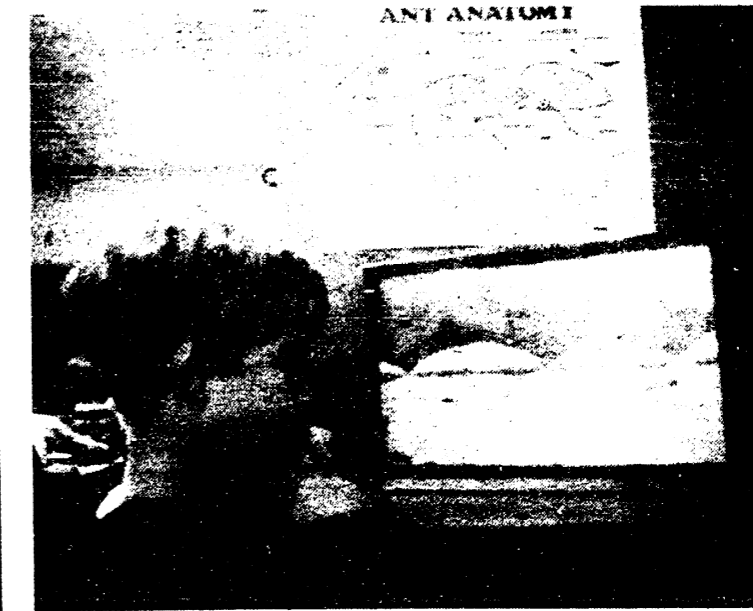
# Klager School News



### Estimation Is The Name Of The Game

Estimation is the name of the game. Jon Way holds a small watermelon while Matt Herman estimates the circumference. Matt cut a string to show what he felt was the distance around the middle of the watermelon. Then, together the boys checked their guess by wrapping the string around the watermelon. They

found that the string was too long. Then they graphed their experiment results by taping the string with other "too long" strings. More children estimated the circumference as greater than it really was. Repeated estimation and check activities help children develop a more accurate sense of measure.



### All About Ants

Third grader, Jeff Steele, finds his class' ant farm fascinating. Watching the tiny insects tunnel and build a whole world under the surface engrosses the interest of students in Mrs. Millie Granthams

class. Ant farms are among the new science equipment purchased last year by the Klager P.T.O. to enhance "Hands-on" science experiences for children.



### Goldfish Find New Home

Jason Cousino stands proudly in front of the class aquarium he helped to stock. Four new goldfish have found a home in Jason's room thanks to his donation.

### Schools Seek Foundation Funding To Assist Able Learners

Manchester Community Schools, participating as members of the Washtenaw County Gifted Consortium, will send representatives to the Richardson Study Project mini-conference to be held in Dearborn on October 10, 11 & 12. County schools are seeking private funding to initiate new programs for able learners.

The Richardson Study, an important four-year national study and evaluation of programs and promising practices for educating able learners, has recently been completed with the support of the Richardson Foundation from Texas.

The study was designed to discover 1) What programs for able learners exist. 2) Which programs are most effective and offer the best chance for adaptation to many environments. 3) What recommendations would assist all types of school in serving able learners.

Recommendations from the Richardson Study were examined by Washtenaw County School Districts, including Manchester and determined to be highly promising. Working through the Intermediate School District, a Richardson Study Project Steering Committee was formed. Serving as representatives of the Manchester Schools and its Gifted Education Committee were: Mrs. Nondus Buss, Mrs. Janice Little and Mrs. JoAnn Okey.

Four School Districts: Ann Arbor, Lincoln, Willow-Run and Manchester were selected to represent the entire County in a pilot study. They will present information about their schools and about the Richardson Study to Michigan Foundations and interested companies who have demonstrated a willingness to "invest" in education. Mrs. Nondus Buss, who chairs the Gifted Committee, will speak at the mini-conference presenting information about the district.

### NOTICE

Due to Columbus Day falling on the regular meeting date, the Manchester Township Board meeting for October will be Tuesday, October 15, 1985, at 8:00 p.m.

Manchester Township Board

## TODAY'S CHEVROLET

### Stop In and See

## The 1986 Chevrolet



Astro CS



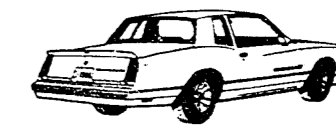
Chevette (CS) Hatchback Sedan



Camaro Berlinetta



Caprice 4-dr. Sedan



Monte Carlo SS Sport Coupe



Corvette

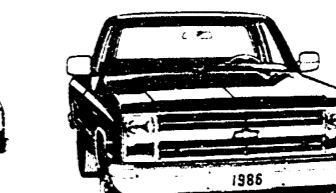


Celebrity Eurosport 4-dr. Station Wagon

### NOTHING WORKS LIKE A CHEVY TRUCK



S-10 Pickup



C-10 Scotsdale Fleetside

## TIRB CHEVROLET CO.

131 ADRIAN STREET MANCHESTER, MICHIGAN  
PHONE 428-8212 or 428-8492

### KIRK EXCAVATING

Sand—Gravel—Fill Dirt  
Basements—Driveways

428-7938

DAVE KIRK

14180 Schleweis Road  
Manchester



### Eckrich Smoky-Links

10 oz. Pkg All Varieties  
\$1.29 pkg

### Fresh Roll Pork Sausage

1 lb. \$1.89

### G.E. Wacker Inc.

Gasoline-Fuel Oil-Grease  
Motor Oil-Diesel Fuel  
3050 Chelsea-Manchester Rd.  
Manchester, Mich. 48158

SUMMER HOURS  
Monday-Friday 7 am-9 pm  
Saturday 8 am-9 pm  
Sunday 9 am-9 pm

## HARDWARE

### VALUE OF THE MONTH

EVEREADY.

While Supplies Last

## 4.99

Halogen Flashlight with batteries is 300% brighter than the bulb in a regular flashlight powered by regular carbon batteries. That means more light when you need it. And rugged, waterproof construction holds up to hard use in any weather. With 2 D batteries. 2751WB-E

QUANTITIES LIMITED

### KLEINSCHMIDT True Value Hardware

19860 Sharon Valley Road Manchester, Michigan  
Mon-Fri 8 am-6 pm Sat 8 am-5 pm Sunday 11 am-4 pm

**MANCHESTER UNITED METHODIST CHURCH**

Wednesday, October 9, 10:00 a.m. Bible Study.  
 Thursday, October 10, 8:00 p.m. Finance Committee Meeting.  
 Sunday, October 13, 9:15 a.m. Children's Choir Practice, 9:30 a.m. Church School, 10:30 a.m. Worship, 11:30 a.m. Coffee/Fellowship, 11:50 a.m. Choir Rehearsal, 6:30 p.m. MYF/Senior "Gapper Party".  
 Monday, October 14, 5:30 p.m. MYF Meet at Church for Roller Skating.  
 Wednesday, October 16, 10:00 a.m. Morning Bible Study, Noon UMW - Luncheon for Chelsea Residents.  
 Thursday, October 17, 7:00 p.m. Trustees Meeting, 8:00 p.m. Administrative Council Meeting.

**ST. JOHN'S LUTHERAN CHURCH**

Wednesday, October 9, 10 a.m. MOPS Comm., 1:30 Ruth Cr., 7:45 Jr. Choir, 8:30 Sr. Choir.  
 Thursday, October 10, 8 p.m. - Mary Martha Circle.  
 Saturday, October 12, 9-11 Catechism.  
 Sunday, October 13, 9:15 Sunday School, 10:30 a.m. Worship with Holy Communion, 7-9 p.m. Youth Group, 8 p.m. Praying Elders, 2-5 p.m. Huron River Fall Conf.  
 Monday, October 14, 7:30 ALCW Retreat Committee, 8 p.m. Church Council.  
 Wednesday, October 16, 9-11:30 MOPS, 7:45 Jr. Choir, 8:30 Sr. Choir.  
 Thursday, October 17, 8 p.m. Men's Bible Study at Neil Stierle's.

**BETHEL UNITED CHURCH OF CHRIST**

Thursday, October 10, 7:30 p.m. Board of Christian Education meets.  
 Sunday, October 13, 10:00 a.m. Worship Service - Harvest Festival Decoration by Confirmation Class, 11:00 a.m. Adult Membership Class at Parsonage.

12:15 p.m. All Congregation Pot Luck sponsored by In Betweeners, 1:15 p.m. All congregation Hay Ride.  
 Monday, October 14, 12:00 noon - 6:00 p.m. Manchester Bloodmobile at K of C Hall. Contact Susan Mann.  
 Wednesday, October 16, 11:30 a.m. Seniors of Bethel meet - Lunch - Program.

**ZION LUTHERAN CHURCH**

Wednesday, October 9, 8 p.m. Church Council.  
 Thursday, October 10, 7:30 p.m. Pastoral Min. Committee.  
 Saturday, October 12, YI & Joy-makers, 1 p.m. Lydia Circle decorate for harvest.  
 Sunday, October 13, 9 a.m. New Pastor's Class, 9 a.m. Study in Sunday School, 10:15 a.m. Worship - Festival of Harvest Home (bring canned goods & produce for Williston), 2-5 p.m. H.R. Conf. - Zion AA, 6:30 L.L. Sundae building fun.  
 Monday, October 14, Noon to 6 Red Cross Manchester.  
 Tuesday, October 15, 10 a.m. Activity Sewing Day, 7:15 Sr. Choir.  
 Thursday, October 17, 6 p.m. Zion Senior Citizens guests at St. Paul UCC (pot-luck).

**EMANUEL UNITED CHURCH OF CHRIST**

Thursday, October 10, 7:30 p.m. Church Council.  
 Sunday, October 13, 9:00 a.m. Sunday School & Confirmation Class, 10:30 a.m. Worship, 11:30 a.m. Coffee Hour & Fellowship Time.  
 Monday, October 14, 6:30 p.m. Optimists, 8:00 p.m. Fair Board.  
 Tuesday, October 15, 11:00 a.m. Senior Clergy presentation, 12 noon Senior Meal & Cards, 1:00 p.m. Young Mother's Support Group, 7:30 p.m. LaLeche League.  
 Wednesday, October 16, 3:20 p.m. Cherub Choir, 3:40 p.m.

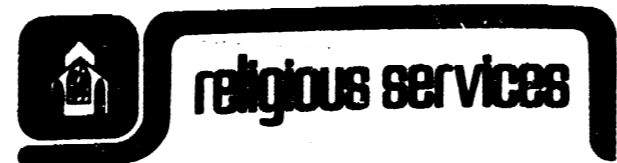
Children's Choir, 6:00 p.m. Bell Choir, 6:30 p.m. Yoga Class, 7:30 p.m. Adult Choir, 8:00 p.m. A.A. Al Anon & Al-A-Teen.  
 Thursday, October 17, 11:00 a.m. Senior Exercise Program, 12 noon Senior Meal & Program.

**SHARON UNITED METHODIST CHURCH**

Wednesday, October 9, 7 p.m. Bible Study, 8 p.m. Choir practice.  
 Thursday, October 10, 7:30 p.m. Share-n-Women will meet at the home of Mrs. Evans Bentley. Topic: Substance Abuse.  
 Friday, October 11, 2-6 p.m. Rummage Sale.  
 Saturday, October 12, 9 a.m. to 1 p.m. Rummage Sale.  
 Sunday, October 13, 11 a.m. Laity Sunday, 3 lay members will be bringing the message on "Living as Disciples in our Homes."  
 Wednesday, October 16, 7 p.m. Bible Study, 8 p.m. Choir practice.  
 Thursday, October 17, 7:30 p.m. Dorcas Fellowship, United Methodist Women.

**FAITH COMMUNITY CHURCH**

Wednesday, October 9, 7:00 p.m. Prayer Meeting and Bible Study, 8:00 p.m. Quarterly Business Meeting.  
 Thursday, October 10, 9:30 - Noon Women's Bible study, 7:30 p.m. Faith Circle for all the ladies of the church. Barbara Brown, leader.  
 Saturday, October 12, 5:00 p.m. Church Bowling League at Brooklyn, 6:30 p.m. Youth group meet at the church for bowling party followed by pizza.  
 Sunday, October 13, 10:00 a.m. Morning Worship, Nursery available, 11:15 a.m. Sunday School for all ages, 6:00 p.m. Evening service, 7:00 p.m. Youth hour.  
 Monday, October 14, 6:00 p.m. Tecumseh Convalescent Ministry.



**ST. BARNABAS EPISCOPAL CHURCH** - Rev. Fr. Jerrold F. Beaumont, O.S.P., Eucharist - First, Third and Fifth Sundays 10:00 a.m.; Morning Prayer, Second and Fourth Sundays 10:00 a.m.; Eucharist - Second and Fourth Sundays 11:00 a.m.; Nursery available every Sunday. Family coffee hour follows all Sunday services.

**EMANUEL UNITED CHURCH OF CHRIST** - Rev. Robert B. Macfarlane, Pastor; Rev. Kenneth Edwards, Assistant; Sunday School 9:00 a.m.; Worship Service 10:30 a.m.

**ST. JOHN'S UNITED CHURCH OF CHRIST** - Rev. Ted Wimmier, Pastor; Rogers Corners, Waters and Fletcher Roads; Adult Bible Study Class at 10:00; Worship and Sunday School 10:30 a.m.

**MANCHESTER UNITED METHODIST CHURCH** - Rev. Hayden Carruth, Pastor; Church School 9:15 a.m.; Worship 10:30 a.m.

**VICTORY BAPTIST CHURCH** - 423 South Macomb, Barry Cantrell, Pastor, 428-7508; Sunday School 9:45 a.m.; Morning Worship 11:00 a.m.; Evening Worship 6:00 p.m.; Teen Talk 7:00 p.m.; Wednesday Prayer, Bible Study, Youth 7 p.m.

**SHARON UNITED METHODIST CHURCH** - Rev. Evans Bentley, Pastor; Corner of M-52 and Pleasant Lake Roads; Church School 10:00 a.m.; Worship 11:00 a.m.

**CLINTON ASSEMBLY OF GOD** - Rev. Richard Coury, Pastor; Chris Bouldrey, Youth Pastor; 13300 Clinton-Manchester Road, Clinton; Sunday School 9:30 a.m.; Sunday Morning Worship 10:45 a.m.; Sunday Evening 6:30 p.m.; Wednesday Prayer, Bible Study, Youth 7 p.m.

**ST. JOHN'S LUTHERAN CHURCH** - Rev. Dennis A. Falk, Pastor; Austin Road, Bridgewater; Sunday School 9:15 a.m.; Worship 10:30 a.m.

**BETHEL UNITED CHURCH OF CHRIST** - Rev. Roman A. Reineck, Pastor; Schneider and Bethel Church Roads; Church Service 10:00 a.m.; Sunday School 11:00 a.m.

**NORTH SHARON COMMUNITY BIBLE CHURCH** - Timothy E. Booth, Pastor; Sylvan and Washburn Roads; Sunday School 10:00 a.m.; Morning Church 11:00 a.m.; Youth Meetings 6:00 p.m.; Evening Church 7:00 p.m.; Wednesday Bible Study 7:00 p.m.

**BAHA'I FAITH** - Study of Baha'i scripture and discussion on applying spiritual principles to daily living. Believers of all faiths welcome. 2nd and 4th Sundays every month, 2:30 p.m. at the home of Thomas and Nancy Rykwalder, 611 South Macomb. For more information or directions call 428-9454.

**FAITH COMMUNITY CHURCH** - Timothy Miles, Pastor, 8400 Sharon Hollow Road off West Austin; Worship Service 10:00 a.m.; Sunday School 11:15 a.m.; Sunday Evening Service 6:00 p.m.; Jr. and Sr. High Young Peoples' Meeting 7:00 p.m.

**OUR SAVIOR LUTHERAN CHURCH** - Rev. Franklin H. Giebel, Pastor; 1515 South Main, Chelsea; Every Sunday - 9:00 a.m. Bible Classes for age 3 through adult; 10:30 a.m. Worship Service, Holy Communion 1st, 3rd and 5th Sundays.

**IRON CREEK COMMUNITY CHURCH** - Rev. Bill Mason, Pastor; English and Sharon Hollow Roads; Worship Service 10:00 a.m.; Sunday School 11:15 a.m.; Sunday Evening 7:30 p.m.; Wednesday Evening 7:30 p.m.

**ZION LUTHERAN CHURCH** - Rev. John R. Morris, Pastor; 3050 S. Fletcher Road; Sunday School 9:00 a.m.; Worship Service with Holy Communion 10:10 a.m.

**ST. THOMAS LUTHERAN CHURCH** - Rev. John Riske, Pastor; 10001 Etsworth Road; Sunday School, 9:30 a.m.; Worship Service, 10:45 a.m.

**ST. MARY'S CATHOLIC CHURCH** - Father Raymond Schlinkert; Monday thru Friday 8:30 a.m.; Saturday 5:00 p.m.; Sunday 8:30 a.m. and 10:30 a.m.

**CHURCH OF JESUS CHRIST OF LATTER DAY SAINTS (MORMONS)** - Wayne L. Winzenz, Branch President; 1330 Freer Road, Chelsea; Sacramento 9:30 a.m.; Sunday School, Primary 10:50 a.m.; Priesthood, Relief Society, Aaronic Priesthood, Youth 11:40 a.m. For more information call 475-1778.

**Bridgewater Township Board**

September 16, 1985  
 The Bridgewater Township Board met September 16, 1985, at the township hall for their monthly meeting. All Board members present, also three electors.  
 The Clerk read the August board minutes. The Board approved.  
 The Treasurers report was given. Andy Poet made the motion seconded by Marvin Breitenwischer that voucher 1459 thru 1473 excluding voucher 1470, holding for more information on Washtenaw County Road Commission salt brine application, be approved. The Board passed. The financial report of March 31, 1985, for the township is completed. The public is welcome to inspect it by appointment with any of the township officers. The audit was done by Touche Ross and Co.

The ordinance books are printed and the folders are ordered. Books should be completed by October meeting. New transparent numbered board minute papers also were ordered for the folder type minute book.  
 Andy Poet made the motion supported by Marvin Breitenwischer that we amend the Treasurer's report to read 1459 thru 1477 voucher adding four more checks to pay the Planning Commission officers. Board approved.  
 Public Notice board is done. The Board decided to wait to have it installed until after the "Swan Production" is completed.  
 The Board agreed to direct the Washtenaw County Road Commission to apply a second application of salt brine to the roads.  
 The Board agreed to take sealed bids for the budgeted remodeling for the hall. Bids also will be taken for installing a new furnace. Bids will be published in

both Clinton and Manchester papers.  
 New Business:  
 Three PA116 Farmland agreements were considered for approval. 1) Marvin and Gertrude Breitenwischer for 121.69 acres. 2) James and Charlotte Vershum for 194 acres and 3) Gary and Karen Weidmayer for 32.66 acres. Andy Poet made the motion supported by Harold Bersuder to approve these agreements, Board approved.  
 Washtenaw County Chapter of M.T.A. will be having a meeting September 26, 1985. The District M.T.A. meeting will be October 1, 1985, at Webers.

The Board discussed the refuse transfer facilities for the area townships. Permits are being checked; area residents are to obtain permits.  
 The Board was notified that Clinton School District will be holding a "Special Election" election October 1, 1985.  
 The Clerk presented a donation from Mrs. Robert Service for the use of the hall. The Clerk announced the hall will be used September 25, 1985, for a Neighborhood Watch program with the Washtenaw County Sheriff's Department.  
 Harlin Fraumann was present and discussed his zoning inspection report. 1) Al Payne was given a permit for a new home on Allen Road. 2) E.G. Mann and Sons for building a storage unit. 3) April Smith new home on Ernst Road. 4) Ted Miller adding a new room and garage. Mr. Fraumann also gave a report on the ordinance meeting attended in August.  
 Supervisor Parr announced that Scott Nelson has applied for a building permit. The Board discussed various complaints about business signs and junk cars. The Board was in hopes residents observe the ordinances directed for these problems.  
 The Fire bills were reported by

the clerk, the Board approved to send out billings. The Board suggested that the Clerk mention to our insurance agent that we would like a personal report before the year ending.  
 Being no further business, Andy Poet made the motion supported by Harold Bersuder to adjourn. Board passed; meeting adjourned.

Bridgewater Township Clerk, Karen Weidmayer  
 Board minutes subject to approval.  
**Manchester Township Minutes**  
 Proposed Minutes  
 October 2, 1985

Special Meeting - Hearing to increase property tax of .06 for additional millage to be levied in 1985.  
 Meeting opened at 8:00 p.m. with the Pledge of Allegiance. All board members present, also Mr. and Mrs. Alfred Reid, Jr. and Robert Kellum.  
 Supervisor stated that .06 millage would generate \$3,728.24 in additional millage which the Township needs to operate.  
 Various questions were asked and answered by Supervisor.  
 Moved by Burch and supported by Macomber to be adjourned at 8:16 p.m. All yeas, carried.

Submitted by:  
 Wilma E. Lentz, Clerk  
 Approved by:  
 Clarence Fielder, Supervisor

Manchester Businessmen's League is in need of bowlers. If you would like to bowl, call Jack at 428-8050 or Dave at 428-7106. We need either full time bowlers or subs. We bowl Tuesday nights at Chelsea Lanes at 8:30 p.m.

**BOWLING NEWS**

**MANCHESTER BUSINESSMEN**  
 Double A Products 10 5  
 Petsch's Lawn Service 9 6  
 Manchester Stamping 8 1/2 6 1/2  
 Class of '78 8 7  
 Wolverine General Contract 8 7  
 Steele's Htg. & Plmb. 7 1/2 7 1/2  
 Knights of Columbus 7 8  
 K&W Farm Supply 6 9  
 E.J. Hi Lo 7 8  
 Aiuto Auto Parts 4 11  
**HIGH TEAM SERIES**  
 Double A Products 3138  
 Steele's Htg. & Plmb. 3137  
 Knights of Columbus 3113  
**HIGH INDIVIDUAL SERIES**  
 Curt Day 625  
 Rob Schaffer 604  
 Rob Schaffer 600  
 HIGH TEAM GAME  
 Knights of Columbus 1092  
 Knights of Columbus 1085  
 Class of '78 1079  
**HIGH INDIVIDUAL GAME**  
 Terry Walter 234  
 Curt Day 231  
 Curt Day 222

**JOLLY KEGLERS**  
 Carol's 21 14  
 Dutch 21 14  
 Dan's 20 15  
 Car Wash 18 17  
 DRW 18 17  
 Kleinschmidt's 18 17  
 Double A 14 21  
 Comeria 10 25  
**HIGH INDIVIDUAL GAME**  
 Kim Smith 206  
 Linda Steele 202  
 Carol Britten 20E  
**HIGH INDIVIDUAL SERIES**  
 Kim Smith 524  
 Linda Steele 515  
 Linda Steele 495  
**HIGH TEAM GAME W/HDCP**  
 Car Wash 909  
 Kleinschmidt's 882  
 Comeria 868  
**HIGH TEAM SERIES W/HDCP**  
 Car Wash 2523  
 Kleinschmidt's 2494  
 Double A 2451

**GUTTER DUSTERS**

P. DuRussel - G. Kemeter 6 2  
 B. Roberts - T. Preston 6 2  
 J. Roberts - D. Goodell 5 3  
 J. Schaffer - R. Sutton 5 3  
 R. Steele - R. Schaffer 5 3  
 P. Wallace - R. Kelley 5 3  
 L. Ross - J. Bruestle 4 4  
 D. Steele - T. Armentrout 3 5  
 M. Stockwell - S. Evislizer 3 5  
 D. Roberts - R. Frey 2 6  
 B. Smith - S. LaRock 2 6  
 M. Smith - D. Fleck 2 6  
**HIGH TEAM SERIES**  
 DuRussel - Kemeter 2626  
 Roberts - Preston 2589  
 Roberts - Goodell 2572  
**HIGH TEAM GAME**  
 Roberts - Preston 921  
 DuRussel - Kemeter 920  
 DuRussel - Kemeter 903  
**MEN'S HIGH SERIES**  
 Bob Smith 532

**Attention Bowlers!**

Manchester Businessmen's League is in need of bowlers. If you would like to bowl, call Jack at 428-8050 or Dave at 428-7106. We need either full time bowlers or subs. We bowl Tuesday nights at Chelsea Lanes at 8:30 p.m.

**MANCHESTER BUSINESSMEN**

Pat Wallace 680  
 Pat DuRussel 516  
 Mike Stockwell 514  
**MEN'S HIGH GAME**  
 Dave Roberts 213  
 Bob Smith 205  
 Tim Preston 204  
**WOMEN'S HIGH SERIES**  
 Sue DuRussel 486  
 Alisa Ross 456  
 Liz Wallace 456  
**WOMEN'S HIGH GAME**  
 Sue DuRussel 201  
 Joann Roberts 187  
 Liz Wallace 187

**MANCHESTER TOWN CLUB**  
 R&F Tree Service 24 11  
 Manchester Plastics, Inc. 23 12  
 Alley Drillers 21 14  
 Norm Walz 21 14  
 V&F Builders 20 15  
 Jenters 19 16  
 DuRussels 12 23  
 M.I.S.C. 12 23  
 Manchester Enterprise 12 23  
 S-K Sales 11 24  
 200's  
 Terr Scherdt 200  
 500's  
 Terr Scherdt 536  
 Ruth Days 505  
**HIGH INDIVIDUAL GAME**  
 Polly Brokaw 213  
 Carolyn Vogel 204  
 Judy Catanese 203  
**HIGH INDIVIDUAL SERIES**  
 Polly Brokaw 546  
 Terr Scherdt 538  
 Erika Frey 534  
**HIGH TEAM GAME ACTUAL**  
 Alley Drillers 806  
**HIGH TEAM SERIES ACTUAL**  
 Alley Drillers 2288  
**HIGH TEAM GAME W/HDCP**  
 DuRussels 793  
**HIGH TEAM SERIES W/HDCP**  
 Manchester Plastics, Inc. 2335

**MANCHESTER TOWN CLUB**

R&F Tree Service 24 11  
 Manchester Plastics, Inc. 23 12  
 Alley Drillers 21 14  
 Norm Walz 21 14  
 V&F Builders 20 15  
 Jenters 19 16  
 DuRussels 12 23  
 M.I.S.C. 12 23  
 Manchester Enterprise 12 23  
 S-K Sales 11 24  
 200's  
 Terr Scherdt 200  
 500's  
 Terr Scherdt 536  
 Ruth Days 505  
**HIGH INDIVIDUAL GAME**  
 Polly Brokaw 213  
 Carolyn Vogel 204  
 Judy Catanese 203  
**HIGH INDIVIDUAL SERIES**  
 Polly Brokaw 546  
 Terr Scherdt 538  
 Erika Frey 534  
**HIGH TEAM GAME ACTUAL**  
 Alley Drillers 806  
**HIGH TEAM SERIES ACTUAL**  
 Alley Drillers 2288  
**HIGH TEAM GAME W/HDCP**  
 DuRussels 793  
**HIGH TEAM SERIES W/HDCP**  
 Manchester Plastics, Inc. 2335

**MARGIE'S UPHOLSTERY**

6245 Brocklyn Road  
 Napoleon  
 Wide Selection Of Fabrics  
 Pick-Up/Delivery Available  
 517-536-4230

**Norm Walz & Son Construction**

Manchester, Michigan  
 NEW HOMES  
 REMODELING  
 ADDITIONS  
 GARAGES  
 SIDING  
 DECKS  
 Custom Built Cabinets  
 428-7109

**Walts Heating & Cooling**  
 24 HOUR SERVICE  
 Walt Horodeczny  
 Comfort Air Furnaces  
 A.O. Smith Water Heaters  
 Water Softeners  
 Furnace Tuning And  
 Cleaning  
 PHONE 428-8645  
 18824 Bethel Church Road  
 Manchester, Michigan

**RC COLA**  
 8 PACK  
 16 OZ. BOTTLE  
**\$1.49**  
 PLUS DEPOSIT  
 WE NOW HAVE  
 BEER & WINE  
 G.E. Wacker Inc.  
 Gasoline-Fuel Oil-Grease  
 Motor Oil-Diesel Fuel  
 9050 Chelsea-Manchester Rd.  
 Manchester, Mich. 48158  
 SUMMER HOURS  
 Monday-Friday 7 am-9 pm  
 Saturday 8 am-9 pm  
 Sunday 9 am-9 pm

**A New Hairstyle For Fall???**  
 Try the New Stylist at  
**KEITHS BARBERSHOP**  
**GARY REED**  
 GARY WILL BE WORKING MONDAY  
 ALL DAY AND TUESDAY AND THURSDAY  
 EVENINGS  
 Ann Arbor Styles At Manchester Prices  
 152 East Main St Call 428-8584 or 428-8561

See The Manchester Enterprise  
 For Rubber Stamps  
**CLASSIFIED ADS  
 PAY OFF!**

**COUNT ON US** TO MEET YOUR TOTAL FINANCIAL NEEDS!  
**FIRST OF AMERICA**  
 First of America Bank-Ann Arbor MANCHESTER OFFICE 10903 Manchester Chelsea Rd (313)428-8389  
 Member FDIC

- Money Market Checking and Saving Accounts
- Cash Management Accounts
- IRA and Keogh Retirement Plans
- Interest-On-Checking
- Commercial Loans
- Money Market Certificates
- Consumer and Mortgage Loans
- MasterCard/VISA
- Trust Services

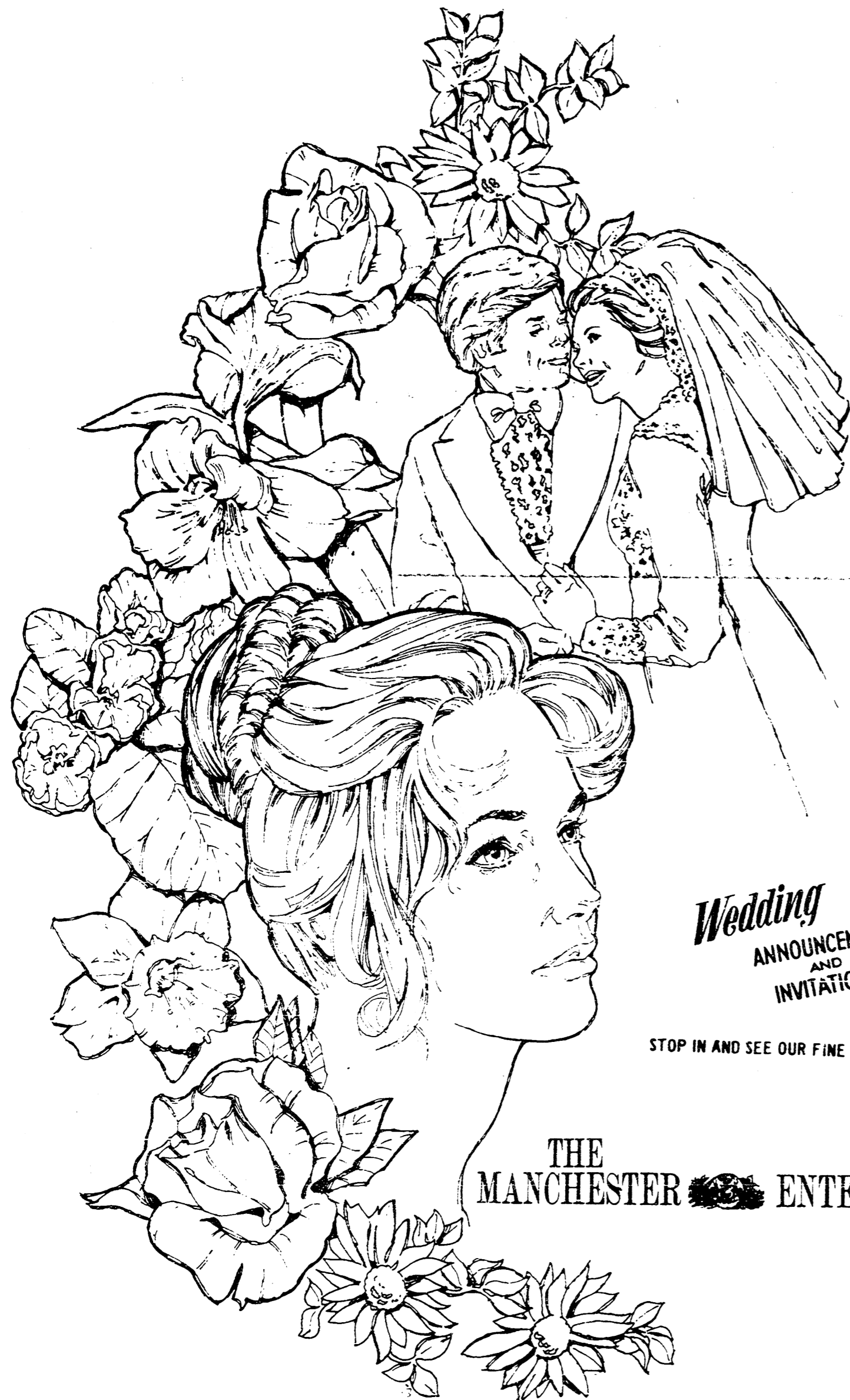
**Fall THE TIME TO PLANT**  
 Sale Starts September 20-October 20  
**Plants All Nursery Stock on Sale Now! Plants**

**TEXUS YEW SPRUCES SHADE TREES FRUIT TREES JUNIPERS**  
**LARGE SHADE TREES FOR SALE**  
**FLOWERING TREES BURNING BUSHES WILLOWS PRIVACY HEDGES MOUNTAIN ASH**

**Save** Lawn & Garden Products  
**DECORATIVE LANDSCAPE STONE BRICK FOR WALKS AND PATIOS LANDSCAPE EDGING**  
**Save** FERTILIZERS GRASS SEEDS VOLCANIC ROCKS

**Underwood Nursery Sales**  
 \*Stump Removal  
 \*Lawn Spraying For Weeds  
 \*Evergreen Trimming  
 ADRIAN, MICHIGAN, ON M-52 South of Manchester on M-52  
 Phone 517-263-1549 or 517-265-2481  
 OPEN MONDAY - SATURDAY 8:00 - 6:00 CERTIFIED LANDSCAPE DESIGNER & PESTICIDE APPLICATOR

# Wedding Bells and Beautiful Brides



*Wedding*  
ANNOUNCEMENTS  
AND  
INVITATIONS...

STOP IN AND SEE OUR FINE SELECTION

THE MANCHESTER ENTERPRISE

## \$MONEY MANAGERMENTS

**Will Your Tax Bill Rise Under The President's Tax Reform Proposal?**

(Prepared by the Michigan Association of Certified Public Accountants)

Tax reform is raising a lot of questions. Will I pay more in taxes if the President's tax reforms are enacted? Or will the new brackets in the proposal lower my tax bill? What's going to happen with my mortgage interest deduction? How will new IRA rules affect me?

Here is a worksheet to help you estimate how tax reform affects you. The Michigan Association of CPAs has put together this worksheet and instructive guide to help promote public awareness of tax reform issues.

To use the worksheet, you'll need your 1984 federal income tax return. You'll be able to fill in some of the blanks on the worksheet with entries directly from your Form 1040. Use this guide, which refers step-by-step to the worksheet, for instructions on specific provisions proposed by the President. The worksheet allows you to compare what you

actually paid in federal tax in 1984 with what you would have paid if the tax reform measures were in force, and it shows you which provisions in the reform proposal will affect your personal financial picture.

**INCOME:** The rules for figuring your taxable income will be changed in several ways under the President's proposal.

**Health Insurance:** If your employer pays for your health insurance, some of what's paid for the premium will be added to your income and taxed. Up to \$120 for a single and \$300 for a family can be added to your annual income if your employer pays for your health coverage.

**Dividends:** The dividend exclusion under the President's plan will be eliminated. You must include as income all dividends.

**Capital Gains:** The rules remain similar: Short-term gains of six months or less are fully taxable. Half of the gain on investments held more than six months is not taxed. As in 1984, net losses of more than \$3,000 must be carried over to succeeding years.

**ADJUSTMENTS TO INCOME:** A couple of adjustments to

income, which are actually tax deductions, will be lost and a couple of new ones will be added under the President's plan.

**IRAs:** Married couples with one working spouse would get a hefty tax break. Last year, a couple with one working spouse would contribute no more than \$2,250 to an IRA. The President's plan would boost that amount to \$4,000.

**Child care:** The credit for child care expenses would be replaced with a deduction under the President's plan. You would get a deduction of up to \$2,400 for the care of one child and \$4,800 for two or more children.

**ITEMIZED DEDUCTIONS:** Many itemized deductions will be lost if the President's proposals are adopted, and those that remain would be less valuable because tax brackets will be lowered. Someone currently in the 50 percent bracket gets a 50 cent tax savings for every deductible dollar. Under the proposed bracket schedule, it would be worth only 35 cents. In addition, specific deductions have been limited.

**Interest Deductions:** A \$5,000 cap will be placed on interest deductions. The interest cap is raised, however, by the amount you earn on investments. For example, the interest cap for someone with \$10,000 in income from bonds would rise to \$15,000 (\$5,000 plus the \$10,000 investment income). No cap would be placed on mortgage interest you deduct for a principal residence.

**Zero Bracket Amounts:** These, also referred to as standard deductions, will go up in value. The new standard deduction for single persons would be \$2,900 and it would be \$4,000 for

joint filers. If the total of your itemized deductions is greater than your standard deduction, it pays for you to itemize.

**TAX COMPUTATION:** This section highlights a couple of other important parts of the President's tax reform plan.

**Employee business deductions and miscellaneous deductions:** Taxpayers must add up reimbursed employee expenses and miscellaneous expenses. You'll get a tax break for any employee business expenses and miscellaneous deductions that exceed one percent of your adjusted gross income.

**Exemptions:** They will nearly double to \$2,000. You would generally claim one for

yourself, your spouse and for each dependent. Those 65 and older and the sightless would no longer receive an extra exemption, but they may be entitled to a new tax credit.

**New tax rates:** Finally, to get your estimated tax bill under the President's proposal, use the tax rate schedule provided below. It would replace the current 14 brackets with just three brackets.

The worksheets cannot provide for all the complexities involved in some returns or for the changes in the President's plan that are made in the final tax reform bill, but it gives most people a clear idea of how the President's reform plan will affect their tax bill if it becomes law.

### How Tax Reform Affects You

Use this worksheet to see how you would be affected by the President's tax reform plan. You'll need to enter your 1984 federal income tax return information onto the worksheet. The numbers on the right hand side tell you which line on your 1984 tax form must be inserted in the blanks. Compare what you actually paid in 1984 with what you would pay if the tax reform measures were in force. Use the accompanying story for instructions on specific provisions of the tax reform plan.

Income		Line on Form 1040	
1. Wages and salaries	7		
2. Employer-paid health insurance	8		
3. Interest income	9a		
4. Dividends	12, 19		
5. Business income or (loss) (See your Schedule C or F)	13, 14, 15		
6. Capital Gains	16, 17b, 21b		
7. Pensions, annuities, IRA withdrawals & Social Security benefits (use portion taxed in 1984 on line 21b - Form 1040)	18		
8. Rents, royalties, partnerships, estates, trusts	20		
9. Unemployment, workmen's compensation	11, 22		
10. Other income			
11. Total Income (add lines 1-10)			
<b>Adjustments to Income</b>			
12. Moving expenses, savings penalties and alimony paid	24, 28, 29		
13. IRA and Keogh contributions	26a, 27		
14. Child care			
15. Total Adjustments (add lines 12-14)			
16. Adjusted Gross Income (line 11 less line 15)			
<b>Itemized Deductions</b>			
<i>If you do not itemize, skip lines 17-23 and enter amount from line 16 on line 24.</i>			
17. Medical expenses (in excess of 5% of Adjusted Gross Income)	5		
18. Interest on your home mortgage	11a, b		
19. Other interest	12, 13		
20. Charitable contributions	18		
21. Total Itemized Deductions (add lines 17-20)			
22. Zero Bracket Amount			
23. Excess Itemized Deductions (line 21 less line 22)			
<b>Tax Computation</b>			
24. AGI (line 16) less Excess Itemized Deductions (line 23)			
25. Employee business expenses and misc. deductions	25, 23		
26. Exemptions			
27. Taxable Income (line 24 less lines 25 and 26)			
28. Tax (per tax schedule below)			(Compare to line 38)

Single		Joint	
Taxable Income	Rate on amount	Taxable Income	Rate on amount
\$2,900	\$0	\$4,000	\$0
\$18,000	\$2,285	\$29,000	\$3,750
\$27,000	\$8,285	\$70,000	\$14,000

Send A Balloon Bouquet To Your Boss On "BOSS DAY" October 13th OR Your Love On "SWEETEST DAY" October 19th

**The Village Shoppe**  
134 East Main Phone 428-9840 Manchester  
Monday-Saturday 10-5 Sunday 12-5

**M MARATHON**  
**FILLYAW'S MARATHON SERVICE**  
327 West Main Street Phone 428-8576 Manchester, Michigan  
MONDAY-SATURDAY 7:30 am-7pm

**STOP IN & PICK-UP A MARATHON CREDIT CARD APPLICATION**

**DISC BRAKES**  
\*Replace Brake Pads  
\*New Grease Seals  
\*Resurface Rotors  
\*Complete Brake Inspection  
\*Repack Wheel Bearings  
\*Road Test Car  
Most U.S. Cars \$59.95  
Front Brakes ONLY  
Metallic Pads Extra

**FRONT END ALIGNMENT \$24.95 & up**

**SPECIAL OIL, LUBE AND FILTER \$19.95**  
Up To 5 Qts. Oil

**ROTATE AND BALANCE ALL 4 TIRES \$19.95**

**24 Hour Wrecker Service**

**CERTIFIED MECHANICS ON DUTY All Work Guaranteed**

**YOU CAN PURCHASE BATTERIES, TIRES, SHOCKS, PARTS OR HAVE YOUR CAR TUNE-UP FOR THE SUMMER MONTHS. BRAKE JOBS, FRONT END ALIGNMENT OR WHEELS BALANCED. ASK ABOUT OUR INTEREST-FREE EXTENDED PLAN FOR CERTAIN PURCHASES.**

**WE TURN BRAKE DRUMS AND ROTORS**

**HAVE YOUR AIR CONDITIONER TUNED UP FOR THE SUMMER MONTHS**

Batteries	\$42.95 & up
Disc Brake Pads	\$9.95 & up
Mufflers	\$12.95 & up
Starters	\$29.95 & up
Aiternators	\$29.95 & up
Spocks	\$9.95 & up
Spark Plug Wires	\$12.95 & up

**You Can Use Your MARATHON CARD MASTER CARD OR VISA CARD To Charge Gas, Parts and Labc.**

STOP IN AND SEE ME FOR YOUR BEST TIRE DEAL

**GOODYEAR**

WE NOW HAVE SUPER "M" LEAD FREE GASOLINE

FULL LINE OF MARATHON PRODUCTS

**M MARATHON**

**KEN MILLER RESIDENTIAL BUILDER**  
QUALITY WORKMANSHIP AT A REASONABLE RATE

SPECIALIZING IN SIDING-CUSTOM MADE TRIM ALUMINUM AND VINYL

Free Estimates Phone 517-592-8904  
Licensed & Insured Between Manchester and Brooklyn

**428-7002 T & N Services 428-7002**  
Experienced Free Estimates

**FAST SERVICE 428-7002 REASONABLE RATES**

**CLEANING** • Basements - Garages - Homes - Offices - Rentals - Car Clean-up - Set-up and Clean Up For Parties - Window Washing - Eavestrough Cleaning - Yard Clean-up

**YARD CARE** • Mowing - Raking - Flower Planting - Tree and Bush Trimming - Weed Pulling - Snow Removal - Tree/Stump Removal

**GENERAL HAULING** • Furniture Moving - Appliance Moving and Removal - Firewood Hauling - Rubbish Removal

**CAR CARE** • Washing - Waxing - Buffing - Carpet Shampooing - Interior Cleaning

**MISC.** • Grocery Shopping - Errand Running - Painting

**PLUS A WHOLE LOT MORE CALL TODAY! 428-7002**

# Hit or Miss

was trying to get in. If there in no food there he lets you know. Oftentimes Merle seems to be greedy and once he tried to highjack a whole cornucob. It weighed him down as he tried to jump from the window sill to a nearby tree. He kept backing up and trying again and again but finally he dropped the cob and fell onto the tree.

One visitor who watched them says that he doesn't sit on the window sill but to watch the TV inside the window.

Merle's neighbors all seem to like him but they say that he is a slob, he hasn't been trained to clean off the patio says a watcher. At least he could do this much.

Another friend of ours, to continue the study of animal behavior, insists that we shouldn't underestimate the intelligence of a visiting racoon.

He says that he saw the racoon stealing bird seed from the bird feeder then arranged a device to thwart it. He fashioned a feeder from aluminum foil to make a pan that he suspended from a strong nylon thread about six feet from the ground. The racoon then could neither jump up to it or climb down into it.

Shortly thereafter, he noticed that there were many seeds on the ground and assumed that they had been knocked out of the pan by the birds while they were feeding. And then one day he saw the racoon sitting on the branch above the feeder jerking the pan up and down by the thread until the seeds spilled out. Then he climbed down and proceeded to consume his loot.

And then there is the tale that while strolling in the woods near his laboratory Thomas Edison came upon an injured bird. He carried it to his laboratory where an examination showed minor wing damage which prevented the bird from making its annual flight south.

He carried it to his laboratory where he cared for it until the

injury had healed then he thought it time to send the convalescent on its way but he didn't think the bird was quite ready for such a long flight. He had, however, no intention of denying the bird its long winter vacation so he put it in a cage and sent it to a southern city together with instructions that it be released upon its arrival.

And a few newspaper ads noted quite recently:

Westerville, Ohio Public Opinion: "Vanda Beauty Counselor. FREE consolation." Shreveport, LA. Times: Reporting reading test scores: "Females are 3.5 percentage points ahead of males." Nursery ad in Johnson, Tenn. Press-Chronicle: "Sale. 19% off all hanging baskets. One weed only." And then in the West Virginia Mountaineer: "The bride was gownned in white lace. The bridesmaids gowns were Funk. The whole color scheme of the decorations was punk."

A child will be more eager to learn the alphabet if you tell him its necessary if he wants to use the telephone book.

We are told that one kind of cockroach, the brown banded roach loves television. It doesn't watch it, it eats the insulation.

**Buy, Sell Or Rent In The Classifieds**

Shop At  
**BEN FRANKLIN**  
MANCHESTER, MICHIGAN  
OPEN 9 to 5:30  
Monday thru Saturday  
428-8980



At Herrick Memorial Hospital  
**WE CARE**

That is why we designed our cardiology services to meet YOUR needs.

**WE OFFER**

- Intensive Coronary Care Services with Qualified Experienced R.N.'s
- Telemetry Monitoring
- Cardiac Rehabilitation in-patient/out-patient
- Graded Exercise Testing (Stress Test)
- Thallium and MUGA Scans
- 2D & 3D Echocardiography
- Pacemaker Services
- Streptokinase Drug Therapy

Large in Scope & Service. People Sized to Serve You

**HERRICK MEMORIAL HOSPITAL**  
500 E. Pottawatamie St.  
Tecumseh, Michigan 49286  
423-2141

## Feast Or Famine

On Monday, September 30th, the Advanced Biology classes at the high school sampled some wild edible recipes. A wide variety of liquid refreshments were sampled. Sumac tea, strawberry tea, (hot and cold), golden rod tea, and last but not least chrysanthemum tea.

Wild grapejam spread on walnut bread seemed to be everyone's favorite. In the dessert category, chocolate covered roses appeared to be quite a hit.

Wild edibles to be tasted in the near future include walnut brittle, acorn pancakes, walnut pie, and crab apple pie.

During their four week study of botany and wild edible plants students learned basic botanical terms, took nature hikes to view the various plants studied, constructed herbarium sheets, learned a remedy for poison ivy and nettles, learned the best natural source for vitamin C is the rose hip (which was used during World War II to prevent scurvy) learned that sunflower oil was this continent's hair tonic and much more.

## Ward School - Library

for the erection of a schoolhouse and public library combined or otherwise.

"Therefore, your committee recommends that a ward schoolhouse and a public library combined be erected on the Public Square at the corner fronting on Jackson and Washington streets, and that your honorable board procure plans, specifications and estimates and there after call a special meeting to consider same."

## Letter To The Editor

On Sunday, October 6, 1985, Manchester Plastics held a carnival at Carr Park to raise money for our local United Way drive. The Board of directors of the U.W., as well as the local and state agencies which will benefit from this "fun" fund-raiser, owe our thanks to you all for the time and effort donated to our community. Brad Frey's Hindsight Band, the Men's Club, American Legion and the David Wing Carnival all took part. All proceeds, including those from a bake table and the sale of potatoes and onions, were for donation to the United Way drive.

It is exciting to see a new and unique approach to our yearly campaign! Thanks for your enthusiasm and town-spirit, and for the generosity you've shown to the members of our community who will benefit!

Diana Macfarlane  
Pres. Manchester United Way

## Trap Shoot Sunday, October 13

Sunday, October 13, 1985, at 1 p.m. the Manchester Sportsman Club will have a Trap Shoot. The Shoot is to be held at the Sportsman Club on Grossman Road, Manchester. The public is welcome.



## Support Your Local Volunteer Fire Department

**Rupp "Top Performance" Seeds**  
HIGH YIELDING SEED WHEAT

Frankenmuth, Caldwell, Hart, Titan .. \$5.95 bu  
Adena, New..... \$6.70 bu  
Magnlm, Limited..... \$7.70 50 lbs  
Hillsdale, New..... CALL

ALL TREATED  
DON'T FORGET TO ORDER EARLY!  
Ask About Our RYMAN SEED RYE

Corn Soy Beans Wheat Oats	JOHN MAHRLE Manchester 313-428-8667	Alfalfa Forages Sorghum Rye
------------------------------------	---	--------------------------------------



# PREVENT FIRE

## Fire Prevention Week October 6-12

There are two lifesaving steps you can take to avoid the tragedy of fire. First, you can learn to prevent fires by keeping areas around the home, farm and business uncluttered. Storing chemicals carefully. Keeping matches away from children. The second step is to know what to do in case you're caught in a fire. Plan fire drills. Install smoke detectors. Learn escape routes. Because careess fires can cost lives, knowing what to do can save lives. It's that simple ... and that smart.

Sponsored By:  
THE MANCHESTER TOWNSHIP FIRE DEPARTMENT  
and  
THE MANCHESTER ENTERPRISE

## Continued Support For Athletic Complex



The new Athletic Complex adjacent to Klager Elementary School is now a reality. The result of a great deal of hard work on the part of Manchester's Athletic Boosters and in particular a group of dedicated coaches have made this possible. Now is the time for some finishing seedlings four years ago. With the seedlings growing to a respectable height, now is the time to transplant them.

On Sunday, September 22, Linda and her father brought the seedlings up and planted them around the scoreboard at the new Athletic Complex. Each year, as these seedlings grow, they beautify the entire area.

We thank the Dawdy family for their generous donation!

## Dutch Dump Pirates

by jon

We jumped out early to a 10-0 lead. Napoleon scored in the 4th quarter, but we prevailed, with the final score being 10-6. This win moves our record to 3 and 2 over all. Since joining the Cascades Conference 3 seasons ago, we continue undefeated - 15 for 15.

The weather was not agreeable, as the wind and rain made the pigskin hard to handle. We collected our only touchdown at 1:14 in the 1st quarter. This came about as Scott Gross blocked the Pirate's punt, enabling Mark Walz to fall on the ball in the endzone for 6 points. Ken Gross ran for the successful 2 point conversion.

At 2:32 of the second quarter, Matt Mazurek tackled Napoleon's quarter-back in the endzone for a 2-point safety.

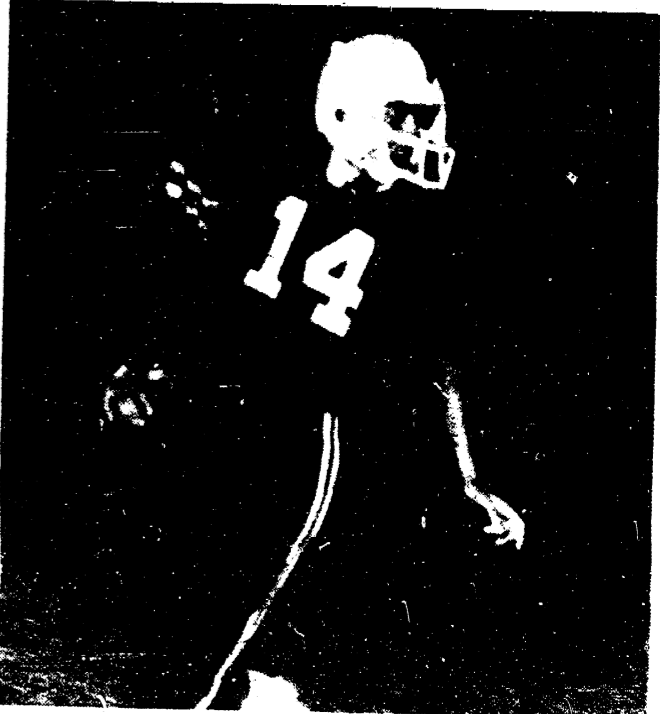
There was no scoring in the 3rd period, but late in the 4th the Pirates tallied on a 44 yard pass play. We were able to run out the clock, winning 10-6.

Be sure to be with us Friday as we visit Vandercook Lake.

The Little Dutch continued their winning ways as they downed Napoleon 22-16.



Jason Van Deven, #32, carries the ball during the Junior Varsity football game.



Junior Varsity Quarterback, Tom Mann, #14, hands off.

## Players Of The Week



Claude Crumb  
Offensive Player

Brian Darrow  
Defensive Player

## Girl's Basketball

by jon

Our Varsity girls held off a charging Napoleon squad to win, 52-49. Kim Bailey led our scoring, popping for 17 points, as Mary Cleland hit for 11.

Our JV team also stood victorious as the scoreboard read 30-22.

In the Middle School, our 8th grade girls defeated their opponents, but the 7th graders didn't fare as well.

**Dr. Manhar Tejura, MD**  
ANNOUNCES THE OPENING OF HIS OFFICE FOR  
**CARDIOLOGY**  
AT:  
Herrick Diagnostic & Treatment Center  
415 East Kilbuck  
Tecumseh, Michigan  
517-423-7481 or 423-7482

Jim Hartmann Dan Wampler  
313-475-9301 517-456-4305

**HARTMANN CARPENTRY**  
Licensed and Insured Residential Builder With 14 Years Experience

Pole Barns Additions  
Roofing Siding  
Decks Remodeling  
Rough Ins Finish Work

**Michigan Veterinary Clinic**  
18901 Sharon Valley Road  
Manchester, Michigan 48158  
313/428-8365

**LARGE AND SMALL ANIMAL SURGERY AND MEDICINE**  
OFFICE OR HOME VISITS BY APPOINTMENT  
9 AM - 9 PM MONDAY THROUGH SATURDAY  
VERA L. KLUWE, D.V.M.

**Toy House Catalog Sale**  
Monday and Tuesday

The Toy House in Jackson is holding its annual catalog sale Monday and Tuesday, October 14-15. Bring in any current mail order catalog and buy at the catalog price, saving shipping charges, too. Charge it on Visa or Master Charge. Sorry, no layaways or giftwrap on catalog purchases. Cabbage Patch Dolls and Transformers NOT included in this sale.

400 N. Mechanic  
Jackson, Michigan  
Call 787-4500 for details.

FOR SHOPPING FUN FOR THE ENTIRE FAMILY TRY THE TOY HOUSE FIRST

MICHIGAN'S FINEST TOY SELECTION

**VALUABLE COUPON**  
**COLOR FILM DEVELOPING AND PRINTING**  
12-15-24-36 EXPOSURE | 110, 126, 35MM OR DISC | C-41 FILM ONLY

**.50¢ OFF EACH ROLL WITH COUPON**

OFFER GOOD THRU OCTOBER 14th  
Coupon must accompany order  
One roll per coupon

BORDERLESS PRINTS

**KRAUSS PHARMACY**  
128 East Main Street  
Manchester, Michigan

Enjoy the Beauty of  
**Roses**  
We Have A Nice Selection

**Bud Vases \$5.00 & up**

**Flower & Candy Arrangements \$12.50 & up**

Remember Bosses Day  
October 13th

**Carnations \$9.00 Dozen**

The Flower Garden  
FLOWERS FOR ALL OCCASIONS  
110 East Main St., Manchester  
Phone 4228-7422

# Council Proceedings

Manchester Village Council  
September 16, 1985

The regular meeting of the Manchester Village Council was held September 16, 1985, at the Village Hall.

President Hinkley called the meeting to order at 7:05 p.m. Present: Becketl, Kallewaard, Koebbe, Niehaus, Tapping, Zaborowski, Steele, Wiedmayer.

Koebbe moved to approve minutes as corrected, supported by Niehaus. Motion approved.

Tapping said the Search Committee would like to recommend Daniel Naimowicz as Village Manager.

Tapping moved to appoint Daniel Naimowicz as Village Manager, to officially start October 14, 1985, supported by Koebbe. Roll Call Vote: Ayes - all. Motion approved.

Rick Collman, General Manager of Clear Cablevision Capital Cities Cable, Inc., owned by Capital Cities Communication informed Council that Clear Cablevision is for sale. Mr. Collman said that Capital Cities Communication has purchased American Broadcasting Company and due to a Federal Law, they cannot own two means of communications. He said because of a clause in The Village of Manchester's Franchise Agreement with Clear Cablevision they have an option to purchase the cable system when it is sold, and he would like some indication whether Manchester would be interested in purchasing the system.

Tapping moved that the Village of Manchester has no desire to purchase Clear Cablevision at this time, supported by Zaborowski. Roll Call Vote: Ayes - all. Motion approved.

President Hinkley read a letter from Samuel and Joan Beal

regarding the unsanitary and hazardous conditions at 111-117 E. Main Street. Letter on file. Hinkley said that Donald Steele, Dr. Glenn Lehr, Health Inspector; Michael Scully, Fire Chief; Emory Garlick, Building Inspector; would inspect the building and a letter would be sent to the owner. Donald Limpert requested that a copy of the letter also be sent to him as owner of record.

Brad Roberts discussed a residency problem with Council. Hinkley said to ask Mark Gistingier for his opinion on the problem.

Becketl stated there are some 43 inoperable water meters at this time and he would like them repaired or replaced. Dan Naimowicz asked Council to let him look into the matter. Council agreed and asked him to have a recommendation by the next meeting.

Becketl said he has picked out some Christmas decorations for the Downtown area; 16 poles - average cost \$300, per pole. Wiedmayer said the present decorations are unusable. Becketl suggested that maybe Organizations and Business Owners would donate towards the purchase of the Christmas decorations. Council agreed to ask for contributions.

Tapping moved to appoint Robert Lowery as Assistant Zoning Inspector, supported by Becketl. Roll Call Vote: Ayes - all. Motion approved.

Kallewaard said she would like to propose that The Village Planning Commission hold a Public Hearing on October 14, 1985, on revising the Ordinance to adopt the revisions to the Official Zoning Map. Council agreed with her proposal.

Niehaus presented the Monthly Police Report. Report on file.

Crossing Guards were discussed. Niehaus said he would advertise in the Manchester Enterprise for volunteer Crossing Guards. Steele said he would do a survey on areas, besides Klager Elementary and M-52 and Main.

Koebbe presented the D.P.W. report. Report on file.

Koebbe reported on a visit from M.I.O.S.H.A.

Becketl moved that the Village of Manchester send dump cards with the Summer Taxes and recommend that the Township Supervisors do the same, supported by Tapping. Roll Call Vote: Ayes - Tapping, Koebbe, Niehaus, Becketl, Kallewaard, Nays - Zaborowski. Motion approved.

Council agreed to pay \$4.50 per hour to a person hired to check dump cards.

Koebbe moved to approve Asplundh Tree Expert Company to trim and cut the Village trees this fall for a total of \$2800., supported by Niehaus. Roll Call vote: Ayes - all. Motion approved.

Sewer Main Definition postponed until the October 7th meeting.

Koebbe moved to approve Becketl along with Mark Gistingier to negotiate with Jim Hendley and his attorney regarding: Park Land Co. vs Village of Manchester, supported by Niehaus. Roll Call Vote: Ayes - all. Motion approved.

Koebbe moved not to appeal the verdict of Donald Smith's unemployment hearing, supported by Zaborowski. Roll Call Vote: Ayes - all. Motion approved.

Council tabled the proposed agreement with Thomas Ellis until the October 7th meeting and

referred it to Mark Gistingier.

The Clerk read a letter from Wendy Chapin in response to Cathy Davermans' comments. Letter on file.

A letter was read from the Senior Citizens inviting Council to the Senior Citizen Center Open House, September 22, 1985.

The Manchester Village Council wishes to thank Comerica, Great Lakes Federal and First of America for providing the Luncheon and Gifts for Mayor's Exchange Day, September 8th. Also a "Thank You" to the Historical Society and Fire Department for tours and the Senior Citizens for the use of their bus.

Becketl moved to adjourn, supported by Tapping. Meeting adjourned at 9:15 p.m.

Helen J. Kensler  
Village Clerk

The Senior Center, 214 Macomb Street, is open five days a week from 1 to 4 p.m. The phone number is 428-7181. Seniors are welcome to drop in, make it a meeting place for friends and give a helping hand when addressing labels or small chores need to be done. All morning meetings on the calendar are at the Emanuel United Church of Christ and afternoon meetings are at the Center unless otherwise indicated. Bus trips leave from the Center and bus pick-ups are arranged through Helen Braun, 428-8966.

Manchester Area Senior Citizens Council, Inc. is in compliance with Title VI of the Civil Rights Act and with Section 504 of the Social Rehabilitation Act of 1973.

## Manchester Masonic Lodge To Hold Awards Night

Monday evening, October 14th, at 8 p.m. Manchester Masonic Lodge will have their annual awards and old timers night. This is open to the public. We would like to have all our members and friends attend as we have a great program for you.

Honorable Ross Campbell, Roman Reineck, pastor of Bethel United Church of Christ. Noon, Egg and Ham Casserole, 12:30 p.m. Euchre and cards at the Center (bring your own special card group).

No reservations are necessary or any charges, just come and enjoy the evening. The lodge rooms are located on the third floor of the Comerica Bank building and the elevator will be open to the first floor.

# your advertising dollars do better in the classifieds

All Classified Advertising is Payable in Advance and Must Be Placed and Paid For Prior to 11 a.m. On Tuesday For Publication That Week.

Classifieds Are \$1.50 For First 20 Words, 5¢ A Word Thereafter. Thank You's Are \$3.00 Minimum Up To 50 Words, 5¢ A Word Thereafter.

1970 FIAT 124 Spider Convertible as is. Asking \$500, make an offer. 428-9150. tfn

MANCHESTER ANTIQUE MALL - 35 Dealers. Open 7 days, 10-5, 116 E. Main. 428-8857. tfn

COPY PAPER AVAILABLE - We have copy paper in sizes 8 1/2 x 11, \$4.75 for 500 sheets and 8 1/2 x 14, \$5.75 for 500 sheets. The Manchester Enterprise. tfn

FIELDER PAINTING - Interior & Exterior. Free Estimates. Senior Citizens Discount. Phone 428-8506. tfn

LITTLE WACK EXCAVATING Licensed & Insured. Basements, Drains, Digging, Bulldozing, Trenching, Black Dirt, Sand, Gravel. Paul Wackenhut. 313-428-8025. tfn

FOR SALE - BUILDING LOTS - Riverbend Subdivision, Village of Manchester, on private lake. All utilities installed. Terms negotiable. Phone (313) 428-8496. tfn

BLACK DIRT or peat. 6 yards - \$50 delivered. Phone 428-7784. tfn

VILLAGE HAIR FORUM, 261 East Main, Old Mill, 428-7684. tfn

C & B PAINTING - Interior-Exterior-Free Estimates. Contact Charles E. Benedict. Phone 428-7136 or 428-7416. tfn

MERRIMAN INSULATION - Free Estimates. Blown in cellulose. Merriman installed. George Merriman. Phone 517-592-5527. tfn

JERRY WHITAKER EXCAVATING - Hauling and ponds dug. Call 475-7841. tfn

PIANO TUNING & REPAIR - Qualified technician - Ron Harris. 475-7134. tfn

CHELSEA GREENHOUSES - 7010 Llangane Road, Chelsea, Michigan. 475-1353-54 or 475-9313. Flowers and plants for every occasion. We specialize in wedding flowers to fit your budget. We are as near as your phone and we welcome your business. tfn

SHARPENING SERVICE - Ice skates, saw chains, handsaws, circular saws, knives, scissors, pink shears, hair-animal and grass clippers, lawn mower blades, electric hedge clippers, drills, and most anything needing a sharp edge. Kleinschmidt True Value Hardware, 19860 Sharon Valley Road, Manchester. tfn

2 or 3 BEDROOM APARTMENT Woodburning stove, available September 1. \$350 per month. Also 2 bedroom ground floor apartment. \$275 per month. 428-9380. tfn

TUTORING - Experienced, certified teacher will tutor students with learning difficulties. References, 428-9461. tfn

AD CONSTRUCTION - We do most building projects involving Residential Structures, Pole Barns, Remodeling. Call Dan Jordan in Clinton at 517-456-7817; 456-4842. tfn

ALBER ORCHARD AND CIDER MILL - Sweet Cider, apples - many varieties, German pretzels. Open daily 9-6. 13011 Bethel Church Road, Manchester. 428-7758. tfn

POODLE GROOMING - \$10.00 per dog, 15 years experience. 428-8588. 10-24p

FALL HAS ARRIVED AT McDONALD'S - Fall means we say good-bye to much of our summer help. We want you to take their place. If you need a flexible schedule because of responsibilities of a family or school, a part-time job at McDonald's will fit your bill. Morning, afternoon, closing and maintenance shifts available. Come talk to a manager today. 1535 S. Main, Chelsea. An affirmative action - equal opportunity employer. 10-10

1980 CITATION HATCHBACK - V6, 4 speed, air, power steering and brakes, AM-FM stereo, 68,000 miles. \$1550. 428-8452. 10-10p

FOR SALE - Seasoned Firewood. Mixed Hardwood delivered. \$45 Face Cord. 428-9497. tfn

BUY A NEW JOHN DEERE Lawn and Garden Tractor. No payments till May 1, 1986. For details call Napoleon Lawn & Leisure. 665-6811. tfn

FOR SALE - New Idea One Row Corn Picker. Field Ready. 313-428-8817 10-31p

LICENSED CHILD DAY CARE 20 years experience. Ages 0-10. 6 a.m. to 6 p.m. 428-8760. 10-31p

CLEANLINESS IS just a phone call away. We clean everything - Basements, Garages, Homes, Offices, etc. Low rates, fast service, free estimates. Call T&N Services Today! 428-7002 p

ANYONE NEEDING a ride to the Detroit Marathon call 428-9667 or 428-8451. p

CHICKEN AND BISCUIT LUNCHEON - St. Mary's Church Hall, Wednesday, October 23, serving 11:00 to 1:00 p.m. 10-17p

GREAT FAMILY HOME on 10 acres. 3 bedrooms, 2 1/2 baths, insulated pole barn. West of Manchester on Herman Road. Call Ralph Adams. 663-7406. RE/MAX OF ANN ARBOR, REALTORS.

HELP WANTED - Part-time receptionist needed for Doctor's office. Experience preferred. Please send resume to Box 377, Clinton, MI 49236.

HELP WANTED - Part-time Nurse needed for Doctor's office. Experience preferred. Please send resume to Box 377, Clinton, Michigan 49236.

FOR SALE - Franklin Stove, \$100. 428-8066. p

HARVEST DINNER - St. Andrew's Catholic Church, Saline. Sunday, October 13, 1985, 12:30 - 4:00. p

50% OFF! Flashing arrow signs \$259!!! Lighted, non-arrow \$247. Unlighted \$199. (Free letters!) See locally. Limited quantity. Hurry! 1 (800) 428-0163, anytime.p

CHICKEN AND BISCUIT LUNCHEON - St. Mary's Church Hall, Wednesday, October 23, serving 11:00 to 1:00 p.m. 10-17p

WANT TO EARN EXTRA money for Christmas? Join World Gift Co. and work part-time at your own convenience. Sell beautiful exotic and affordable pieces of brass, glass & wood carvings from all over the world. Call 428-7112 for more information. p

COUNTRY LIVING on 7 acres, more available. 5 bedroom farmhouse, good condition, large kitchen, dining room, living room, 2 story barn, other out buildings. \$59,000. 428-8137.

CAROLIN'S CORNER - A quality licensed Day Care Home, has openings available for children ages 9 months to 5 years. Openings are also available for before and after school children; ages to 10 years. For more information, call 428-8279. 10-17p

ASR - 500 6-foot satellite dish. \$1,000. Financing available. For more information, call 313-582-7003. 10-17

Sell It Thru The Want Ads



PEPSI, DIET PEPSI PEPSI LIGHT MOUNTAIN DEW PEPSI FREE, SUGAR FREE PEPSI FREE

\$1.99

1/2 LITER 8 PACK PLUS DEPOSIT

LP GAS Bottles Filled

PHONE 313 428 8366

G.E. Wacker Inc. GASOLINE-FUEL OIL-GREASE MOTOR OIL-DIESEL FUEL 9050 Chelsea-Manchester Road Manchester, Michigan 48158

SUMMER HOURS MON-FRI 7 am - 9 pm SATURDAY 8 am - 9 pm SUNDAY 9 am - 9 pm

Garage Sale

GIGANTIC RUMMAGE SALE - Friday, October 11, 2-6 p.m. and Saturday, October 12, 9-1 p.m. at Sharon United Methodist Church, corner of M-52 and Pleasant Lake Road. Clothing, household items, etc. (If you have items left from your garage sale we will take them; call Anne Wright, 428-8416). 10-10

GARAGE SALE - October 11th and 12th. Riding mower, magic heat blower, storm door, car stereo and many more items. Grossman to English, right on English. 17903 English. p

YARD SALE - Friday, October 11th, 9 to 5, Saturday, October 12th, 9 to 2, 116 Beaufort St. (from downtown, first street off East Main). 20" bike, jeans & other clothes, backpacks, variety of other household items. p

Thank-you all Betty Benedict

I wish to thank neighbors, relatives and friends for everything that was done for me during the loss of my husband. Thank you all so much. Also, Rev. Carruth for his visits. Grace Stockwell

NOTICE

All artificial flowers and seasonal items must be removed from the Norvell Township Cemetery on Austin Road by Monday, October 14, 1985, or they will be discarded by cemetery personnel. Gloria Hubbell, Clerk

MANCHESTER GRAVEL

PICK-UP OR DELIVERED Processed Road Gravel Landscape Stone Drain Field Stone Pea Stone Fill Sand 11475 PARR ROAD MANCHESTER, MICH. 428-9460

Manchester American Legion

203 South Adrian St. Wednesday 7 P.M.

Manchester Sportsman Club

8501 Grossman Road Friday 7:00 P.M.

Manchester American Legion

203 South Adrian St. Saturday 7 P.M.

To The Residents Of The Village Of Manchester

It is the time of year again when the leaves are falling from the trees. I strongly urge the residents of Manchester not to burn their leaves. There is a health factor involved as well as the unattractiveness of smoke hanging over our village. There are several alternatives for disposal of leaves instead of burning. Manchester Township Fire Chief Michael Scully

**How can you keep the family farm in the family?**

Your farm doesn't have to be sold after your death. Your Farm Bureau Life Insurance Company of Michigan agent will help you keep the farm intact and in the family. We're the statewide leaders in farm estate planning.

**LARRY BECKETL**  
135 East Main St. Manchester, Mich. Phone 428-7331

Making your future a little more predictable. **FARM BUREAU INSURANCE GROUP**

**DR. PEPPER DR. PEPPER DIET AND SUNKIST 6 PACK CANS \$1.39 PLUS DEPOSIT**

Phone 313-428-6366

**G.E. Wacker Inc**

GASOLINE-FUEL OIL-GREASE MOTOR OIL-DIESEL FUEL 9050 Chelsea-Manchester Road Manchester, Michigan 48158

MONDAY-FRIDAY 7 AM-9 PM SATURDAY 8 AM-9 PM SUNDAY 9 AM-6 PM

**PEPSI \$2.29**

8 Pack 1/2 liter Plus Deposit

**MANCHESTER IGA**  
West Main St. Manchester

**Village Pizza**  
Manchester, Michigan

**2 For 1 Pizzas**

Order Pizza of Your Choice Get 2nd Pizza FREE With Coupon

**2 For 1**

PHONE 428-8361

**CLINTON THEATRE**  
Friday & Saturday 7:30 and 9:30 Sunday 7:30

All Seats \$2.00

There are some very good reasons to be afraid of the dark.

**FRIGHT NIGHT**

**GREAT LAKES REPLACEMENT WINDOWS**  
Insulated Maintenance Free

7/8 Insulated Glass Available In White or Earthtone

Superior Weather Stripping Eliminates Drafts and Heat Loss Will Never Rot, Decay or Peel

Rigid P.V.C. Construction Pick Resistant Security Lock

Never Needs Painting Both Sashes Lift Out

Qualifies For 15% Energy Tax Credit

Free Estimates

**R. D. Kleinschmidt Inc.**  
19860 Sharon Valley Rd. Manchester, Mich. Phone 313-428-8836

## Focus On School Safety

make wise and responsible decisions. Discipline helps children to learn to think in an orderly fashion and to understand the logical consequences of their actions," says Kahn.

Also cited in the newspaper's "global perspective on discipline" section are results of a recent Gallup Poll that indicate the American public continues to regard discipline as the MOST important problem facing the public schools. U.S. NEWS & WORLD REPORT'S recent education survey also indicates about 14 percent (or 5.8 million of the nation's approximately 42 million) students consider discipline as the "single most important action my school could take to improve my education."

Still another August 1985 poll by the National Association of Secondary School Principals reports as many as 16 percent (5,600) of their 35,000 members say discipline is the number one problem facing our schools. Another 19 percent (or about 6,650) of the principals rate attendance as the most significant problem.

"While public opinion polls, news articles, government officials, educators and law enforcers prompt some continued debate as to the significance and scope of school safety and discipline issues," says NSSC's Nicholson, "we are saying let's set aside our differences and agree there are some problems."

AFI's Shanker agrees, "There is no single panacea, and some of the most innovative solutions to the disruption of schooling come only when the many parties involved can talk, listen and approach the problems with an eye for each others' perspectives."

"We can also agree safe schools are necessary to insure the safety and well-being of all our children and the quality of their education," says Nicholson. "With these common interests, we can then join forces to help the future leaders of the country - the 42 million students - by officially observing and supporting 'America's Year of School Safety & Student Attendance' and 'America's Safe School Week.' The Center is also sponsoring

the National School Safety Leadership Symposium, October 28-29, in Jacksonville, Florida to bring together key education, law enforcement, legal, government and media representatives for a national forum on school safety. Attorney General Edwin Meese III and Secretary of Education William Bennett are scheduled to make presentations.

The National School Safety Center is federally funded by the U.S. Department of Justice, in partnership with the U.S. Department of Education and Pepperdine University (Malibu, California). The Center is headquartered in Sacramento, California.

## Army And Airforce Hometown News

Pvt. Michael R. McCoy, son of Randle McCoy and stepson of Carol McCoy of 9785 Clinton Road, Manchester, has completed basic training at Fort Jackson, S.C.

During the training, students received instruction in drill and ceremonies, weapons, map reading, tactics, military courtesy, military justice, first aid, and Army history and traditions.

He is a 1985 graduate of Manchester High School.

\*\*\*\*\*

Airman Jan S. Schnell, daughter of Ruth A. Gisel of 539 Norvell Lake, Brooklyn, and William W. Schnell of 22 Williams Court, Shelby, Ohio, has graduated from the U.S. Air Force freight traffic specialist course at Sheppard Air Force Base, Texas.

Graduates of the course were taught procedures for shipment of government property by military and commercial carriers. They also earned credits toward an associate degree through the Community College of the Air Force.

Schnell is scheduled to serve with the 82nd Supply Squadron at Williams Air Force Base, AZ.

She is a 1984 graduate of Napoleon High School, Michigan.

## How To Know When You Are Getting Older

Everything hurts and what doesn't hurt, doesn't work. The gleam in your eyes is from the sun hitting your bifocals. You feel like the night before, but you haven't been anywhere. Your little black book contains only names ending in M.D. Your children begin to look middle-aged. You finally reach the top of the ladder and find it leaning against the wrong wall. You join the health club but don't go. You decide to procrastinate but then never get around to it. Your mind makes contracts your body can't meet. A dripping faucet causes an uncontrollable bladder urge. You know all the answers, but nobody asks you the questions.

## Memory: 60 +

A group for anyone 60 years or older who would like to learn about aging and memory will be offered at Turner Geriatric Clinic for three weekly sessions beginning Friday, October 11 from 1:00 p.m. to 3:00 p.m. We will teach memory improvement techniques and discuss reversible causes of memory loss. Call 764-2556.

## Red Cross Bloodmobile

In Manchester  
Monday, October 14th  
Knights Of Columbus Hall  
12 noon to 6 p.m.

BE A LIFESAVER

U.S. POSTAL SERVICE  
STATEMENT OF OWNERSHIP  
MANAGEMENT AND CIRCULATION

1. Title of Publication: The Manchester Enterprise.  
2. Date of Filing: October 10, 1985.  
3. Frequency of Issue: Weekly.  
4. Location of Known Office of Publication (street, city, county, state, zip code) (Not printer): 150 East Main Street, Manchester, Michigan 48156.  
5. Location of the Headquarters of General Business Offices of the Publishers (Not printer): 356 Schaffter Court, Manchester, Michigan 48156.  
7. Owner: Edward and Lorraine Steele, 356 Schaffter Court, Manchester, Michigan 48156.  
8. Known Bondholders, Mortgagees, and other Security Holders: None.  
10. Extent and Nature of Circulation:  
Total No. Copies Printed 1750  
Paid Circulation 500  
Mail Subscriptions 175  
Total Paid Circulation 675  
Free Distribution None  
Total Distribution 675  
Office Use: left over, unaccounted, spoiled after printing 80  
Returns from News Agents 0  
Total 1750

11. I certify that the statements made by me above are correct and complete.  
Edward E. Steele

## LAST DAY OF REGISTRATION SCHOOL ELECTION

NOTICE OF LAST DAY OF REGISTRATION OF THE ELECTORS OF MANCHESTER COMMUNITY SCHOOLS WASHTENAW AND JACKSON COUNTIES, MICHIGAN

TO THE ELECTORS OF THE SCHOOL DISTRICT:

PLEASE TAKE NOTICE that the Board of Education of Manchester Community Schools, Washtenaw and Jackson Counties, Michigan, has called a special election to be held in the School District on

**Monday, October 28, 1985**

TAKE NOTICE that the following propositions will be submitted at the special election:

### I. TAX RATE LIMITATION INCREASE PROPOSITION FOR OPERATING PURPOSES

Shall the limitation on the amount of taxes which may be assessed against all property in Manchester Community Schools, Washtenaw and Jackson Counties, Michigan, be increased by 1.8 mills (\$1.80 on each \$1,000.00) on state equalized valuation for the year 1985, for the purpose of providing additional operating funds to be used for instructional, administrative, athletic programs and maintenance purposes?

### II. ADDITIONAL MILLAGE PROPOSITION

Shall the limitation on the amount of taxes which may be assessed against all property in Manchester Community Schools, Washtenaw and Jackson Counties, Michigan, be increased by 2.2 mills (\$2.20 on each \$1,000.00) on state equalized valuation for the year 1985, for the purpose of providing additional funds for operating purposes to be used, for transportation (this being a separate proposal in addition to the increase submitted in Propositions I and III at this same election)?

### III. ADDITIONAL MILLAGE PROPOSITION

Shall the limitation on the amount of taxes which may be assessed against all property in Manchester Community Schools, Washtenaw and Jackson Counties, Michigan, be increased by .3 mill (\$0.30 on each \$1,000) on state equalized valuation for the year 1985, for the purpose of providing additional operating funds to be used, in part, for drivers' education and additional instruction and maintenance support purposes (this being a separate proposal in addition to the increase submitted in Propositions I and II at this same election)?

THIS ELECTION IS HELD PURSUANT TO SECTION 36 OF ACT NO. 206 OF THE PUBLIC ACTS OF 1983, AS AMENDED, BEING SECTION 21.36 OF THE MICHIGAN COMPILED LAWS.

CONSEQUENTLY, THE LAST DAY ON WHICH PERSONS MAY REGISTER WITH THE APPROPRIATE CITY OR TOWNSHIP CLERKS IN ORDER TO BE ELIGIBLE TO VOTE AT THIS SPECIAL ELECTION CALLED TO BE HELD ON MONDAY, OCTOBER 28, 1985, IS FRIDAY, OCTOBER 18, 1985. PERSONS REGISTERING AFTER 5 O'CLOCK, P.M., ON FRIDAY, OCTOBER 18, 1985, ARE NOT ELIGIBLE TO VOTE AT THIS SPECIAL SCHOOL ELECTION.

Persons planning to register with the respective city or township clerks must ascertain the days and hours on which the clerk's offices are open for registration.

This Notice is given by order of the Board of Education of Manchester Community Schools, Washtenaw and Jackson Counties, Michigan.

Thomas G. Golding  
Secretary, Board of Education

## Dan's Westside Automotive

660 West Main Street Manchester  
Phone 428-9455



40 to 50% OFF ALL EXHAUST INSTALLED

### WINTERIZE NOW!!

Flush cooling system, add new antifreeze, check thermostat, check all belts & hoses, check battery, pressure test system  
**\$24.95**

**SNOW TIRES \$15.00**  
Mounted & High Speed Balanced

**24 Hour WRECKER SERVICE** Weekends and After 6 Call 428-7814