

# THE MANCHESTER ENTERPRISE

20 Cents Per Copy

118TH YEAR VOLUME NO. 33

USPS NO. 327-460

THURSDAY, JUNE 6, 1985

## School Superintendent Discusses Millage

Recently Superintendent Gene Thompson met with a group of community and school leaders to discuss issues surrounding the millage election scheduled for June 10. The discussion, in question and answer form, follows:

- Q: When did you say the election was scheduled?**  
**GT:** June 10 at the high school from 7:00 a.m. until 8:00 p.m.
- Q: What kind of turn out do you anticipate?**  
**GT:** That is hard to say, but based on recent elections I would guess around 1100-1200. We feel that something like 600-700 "yes" votes are needed to approve the issue.
- Q: Do you feel that the support is there?**  
**GT:** Well, the feedback to the Board is that the community generally approves of the way the schools have been managed for the past several years.....that this Board has done a good job.

continued on page 4

## School Board Candidates

Jeffrey K. Schaffer has lived in the village of Manchester all of his life. Jeff and his wife, Connie, live with their two children, Dawn, age 11, and William, age 10, at 425 Lafayette.

Jeff has been employed at Wolverine Pipeline Company as a Technician for 14 years. He served on the Village Council for 3 years and was Mayor of Manchester for 4 years (two terms). Jeff also attended Cleary College Business School for 3 1/2 years.

Jeff is running for School Board so he can become more involved in the community and education of his children. He hopes to see better communications between the community and school. He would like to see everyone work together for a better educational system.

Nancy Kay Bihlmeyer is a candidate for the two year position on School Board currently being held by Stephen Chapman. She has been a resident of Manchester School District for the past twelve years and has three children all enrolled in Manchester Schools.

She feels it is important that each child and every school be represented on the board, as well as a variety of diverse interests.

Nancy sincerely believes in Manchester Schools and our "kids" and will do all in her power to help Manchester continue on the path of leadership and education they are currently on.

Nancy's reason for running for school board is her desire to help Manchester schools continue on the current path of recovery.

"We are becoming known around the county for our great computer programs we offer and the extra efforts that are put forth at all levels to give our "kids" the most we can."

Besides being active in the schools, Nancy is also an active member of Washtenaw County Farm Bureau where she had held many leadership positions, Bethel U.C.C. and the Washtenaw County 4-H program.

Nancy also chaired Cheryl Hall's Consortium class "Computers and Accounting" held at Manchester High School.

Nancy is a graduate of Chelsea High School, attended Eastern Michigan University and received a degree in business and accounting.

Nancy has been a room mother and volunteer for the schools for the past five years. She has continued on page 3

## Governor Blanchard Announces Appointment

Governor James J. Blanchard has announced the appointment of the Honorable John B. Swainson of Manchester, Michigan, to the Michigan Historical Commission.

He will fulfill the unexpired term of the late Charles Hagler of Ypsilanti.

Swainson, Governor of Michigan from 1961 to 1963, is presently serving as president of the Manchester Area Historical Society, and is also Honorary Chairman of the Michigan Sesqui-centennial Commission. Michigan's 150th celebration will take place in 1987.

## Renee Yeutter To Attend Summer Institute



Renee Yeutter

The Michigan State Board of Education Summer Institutes for the Arts and Sciences are two-week residential programs for highly talented high school sophomores and juniors. The program evolved in 1982 out of the need to provide talented students a unique opportunity that could not be provided at the local level. Manchester High School is pleased to announce that Renee Yeutter, daughter of Mr. and Mrs. Robert Yeutter of 16779 Walker Road, Grass Lake, has been accepted to participate in one of these work shops.

This year there are five different institutes that are held at various universities throughout the state. These institutes will help students explore such diverse subjects as the biological sciences, geology, visual and performing arts, mathematics, social studies and computer programming. Renee will be attending the institute at Northern Michigan University from July 21 to August 3, where she will be studying mathematics. While there she will be taught by math professors from Northern Michigan University and will interact with some of the brightest high school students in the state.

## Senior Citizens Receive Grant

The Senior Citizens of Manchester and surrounding townships are very happy to announce the following good news. The long awaited state grant from the Office of Services to the Ageing was received recently.

We will now be able to renovate the old police station on North Macomb thanks to the generosity of Manchester Village. Many thanks also to the fine community support and to those who wrote letters to Lansing on our behalf.

Manchester Senior Council Inc. wants to thank Jan Nali who has been our director for the past two continued on page 16

## The Chicken Broil Taxi Service

Manchester is an old-fashioned town in a lot of ways, and one example of this old-fashionedness appears every year at the Manchester Chicken Broil. This year, as in every year since 1976, a horse-drawn taxi service will ferry people in leisurely style from the high school parking lot to the athletic field where 14,000 chicken halves will be roasting on the grills.

Wendell Reinhart, chairman of the committee that organizes this popular chicken broil feature, has assembled with the help of his co-chair, Ron Fielder, a squad of horses and drivers from Manchester and surrounding towns. In past years, the teams have hauled up to 500 people an hour in loads of 16-25 each depending on the wagons. Since this is a volunteer effort, each driver brings his own wagon, and each one is different from the others. The horses are trucked in early the day of the broil and are hitched up and ready to go by mid-afternoon. Sometime during the festivities, each driver will get a break just long enough to grab a chicken dinner for himself and give his horses a rest.

Reinhart and his committee have planned a few changes for this year. Some new drivers have

been recruited to help handle the demand, which has always been high among both young and old. Another change will take place at 7:00 p.m., when the horses must be retired after a hard afternoon's work. School busses, though not as charming, will take over and ferry diners leaving the broil after that hour back to their cars. The busses will also be available in case of bad weather.

Broil organizers are however hoping for a nice sunny summer day, and what could be better on such a day than a good Manchester chicken dinner and a carriage ride. The Chicken Broil takes place Thursday, July 18, starting at 4:00 p.m. and continues until dusk. Tickets are available at local businesses and from broil volunteers for \$4.00 before the day of the broil and \$4.50 at the gate.

## Operation Sandbox

Operation Sandbox, sponsored by the Manchester Men's Club, will be on June 15th. For information about filling your sandbox contact Keith's Barber Shop at 428-8584 or Dave Little at Great Lakes Savings, 428-8379. Don't forget the date for filling sandboxes is June 15th.

## Athletic Boosters Kick Off Industrial Drive



Mr. John Barth, Vice-President and General Manager of Hoover Universal Plastic Machinery Division, presents Mr. Jim Fielder, head football coach, with a \$5,000 check for the Athletic Boosters' drive to complete the Klager Complex.

The Athletic Boosters are happy to report substantial progress in the drive to raise funds for the completion of the complex at Klager school. The contribution from Hoover Universal starts our industrial drive and gives the Boosters a total of \$19,500 raised to date. The club has also received pledges from clubs and industry for an

additional \$37,000. This total places the Boosters at about 56% of their \$103,000 goal for project completion. The club would like to thank the community as a whole for all the positive support and guidance since the start of the drive in February. Anyone having any ideas or suggestions should contact Bill Kemmer, 428-8067 or Jim Fielder, 428-7150.

# Obituaries

Julia Easudes Laurence E. Paul

Age 98, died May 28, 1985 at the Venoy Continue Care Center, Wayne, Michigan. She was born in Lithuania, December 8, 1886. She and her late husband lived most of their lives in Sharon Township, Michigan. Surviving are her son Albert and his wife, Ellen, of Sharon Township and six grandchildren — Steven Easudes, Chelsea, Michigan; Thomas Easudes, Oil City, Penn.; Jeffrey Easudes, San Diego, Calif.; Ronald Easudes, Dee Anne Packer and Judy Easudes of Arizona; also several great grandchildren. She was preceded in death by her husband Tony in 1979 and her son Fred in 1968. There was immediate cremation with no services as requested.

Laurence E. Paul, 90, of Brooklyn died Sunday, May 26, 1985, at Cedar Knoll rest home. He was born September 8, 1894, the son of Gottlieb and Sarah (Reiser) Paul. His wife, the former Ruth Mahrie, died in February. Survivors include one daughter, Mrs. Lawrence (Evelyn) Glancy of Brooklyn; two grandsons and four great grandchildren; and two sisters, Marie Rollins of Roscommon and Gertrude Feldkamp of Ypsilanti. He was preceded in death by one sister. Mr. Paul was a member of the Iron Creek Church. Services were held Sunday, June 2, 1985, with the Rev. William Mason officiating. Burial followed in Norvell cemetery.

## new arrivals

Robert and Beth Padley are happy to announce the birth of their daughter, Heather Mary, born May 14th, weighing 8 pounds 3 1/2 ounces. They have two other daughters, Corina 2 1/2 and Annette 15 months. The maternal grandparents are Mr. and Mrs. Merriman and Bob and Carol Padley. The great grandparents are Merle and Annabelle Wright, Louise Merriman and Marjorie Gensler of Toledo.

John G. and Pamela Hughes of Chelsea are announcing the birth of a son, Philip John, on May 22, 1985. He weighed 6 pounds 15 1/2 ounces and was 21 inches long. Philip has two sisters, Andrea 5 and Emily 2 years old. Maternal grandparents are Mr. and Mrs. Nathan A. Alber of Manchester and paternal grandparents are Mr. and Mrs. Edmund Baranowski of Ypsilanti. Great grandparents are Mrs. Bob Sabin of Florida and Pashie Boggs of Kentucky.

### American Legion Auxiliary

Dave, Marti, Ryan and Alicia Novess are thrilled to announce the birth of Jenna Sue, born Friday, May 31, at 1:10 p.m., weighing 8 pounds, 8 ounces; 20 inches long. We were joyously attended to by best friend Sue Lindner, Charlotte Major and Dr. Okey. Couldn't have done it without them.

The American Legion Auxiliary meeting will be held at the Legion Home on June 12, 1985, at 7:30 p.m. Election of officers will take place.

### MANCHESTER AREA



### CHAMBER OF COMMERCE

The Manchester Area Chamber of Commerce will hold its monthly membership luncheon on Wednesday, June 12, 1985, at the K of C Hall on Madison Street. The meeting will begin at 12:00 noon and end promptly at 1:00 p.m. Lunch will be available.

The speaker for this month's luncheon will be our State Representative, Margaret O'Connor. The topic of her talk will be "Get Involved!" Members are asked to formulate three questions to ask Margaret and give them to Sue Hamilton or Judy Fabey. The Chamber's Legislative Action Committee will act as a panel to present the questions and concerns.

RSVP by Monday, June 10 to Jan (428-7811), Judy (428-9492) or Sue (428-8896).

The Board of Directors of the Chamber will continue to meet during the summer months. The dates selected are June 19, July 17 and August 7.

### Fast Pitch Softball At Manchester Athletic Field

June 7th, 8th, and 9th, 27 games will be played. Games begin Friday at 6:30 and 8 p.m., and Saturday at 10:00 a.m. until 7:00 p.m. Sunday games begin at 10:00 with the finals at 2:30, at which time a raffle will be held for 1st - \$100.00, 2nd - \$50.00, and 3rd - \$25.00. Tickets are \$1.00 and may be purchased at the games. All proceeds will go to Muscular Dystrophy.

"Men are never so good or so bad as their opinions." Sir James Mackintosh

### The Manchester Enterprise

150 EAST MAIN STREET  
Manchester, Michigan 48158  
USPS 327-460  
Phone 428-8173

The Manchester Enterprise was established in 1867 and is published each Thursday at 150 East Main Street, Manchester, Michigan, with second class postage paid at Manchester.

Edward E. Steele, Publisher  
Lenora A. Steele, Editor

POSTMASTER: Send Form 3972 to The Manchester Enterprise, 150 East Main Street, Manchester, Michigan 48158.

DEADLINES: All Display Advertising and Pictures (Black and White Only) Are Due By 5:00 P.M. Every Monday For Same Week Publication. All Classified Advertising And News Articles Are Due By 11:00 A.M. Every Tuesday For Same Week Publication.

### MANCHESTER VILLAGE PLANNING COMMISSION

Regular Meeting  
Tuesday, June 11, 1985  
7:30 p.m. Council Room  
Village Hall

### Art Show And Sale

The Chelsea Painters' Twelfth Annual Art Show and Sale will be held from 10 a.m. to 5 p.m., Saturday, June 8 and Sunday, June 9 at the Chelsea Medical Center.

Area artists will exhibit and sell watercolors, acrylics, oils, drawings, and collages with prices starting at \$10.00. A percentage of the proceeds will provide for the Palmer Medical Scholarship. The Chelsea Community Hospital Auxiliary will assist with refreshments and there will be music and entertainment on both days. The function will be held rain or shine and is open to the public.

### 300 Club Winner

Last week's 300 Club winner was Louis Ross with ticket number 801.

**PEPSI-COLA** 8 PAC 1/2 LITER PLUS DEPOSIT **\$1.99**

**2 LITER PEPSI PLUS DEPOSIT \$1.59**

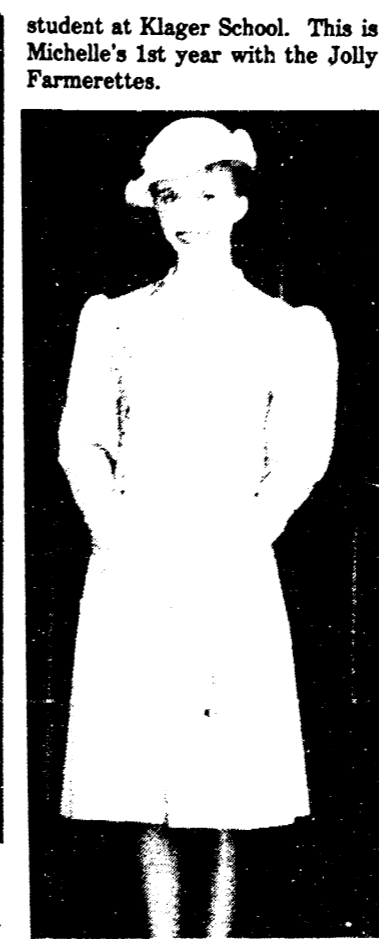
**Leaf Worms And Night Crawlers**  
KEG BEER IN STOCK CHECK OUR BEER PRICES!

**Back Door Party Store**  
500 ANN ARBOR STREET MANCHESTER, MICH.  
PHONE 428-9287

## Jolly Farmerettes Win Honors



Michelle Mann



Marie Ball



Sara Samonek

Michelle Mann won the 2nd Place Construction Award and was one of the Top Ten Models in the Beginner's Division with this cotton flowered skirt and vest creation. Michelle is the daughter of Mr. and Mrs. Ronald Mann of Austin Road and a 4th grade

student at Klager School. This is Michelle's 1st year with the Jolly Farmerettes.

Marie Ball won the 3rd Place Construction Award and was one of the Top Ten Models in the Junior Division with this soft mauve, tucked front Vogue

Sara Samonek won the 3rd Place Construction Award, and was one of the Top Ten Models in the Senior Division with this light lavender linen suit with matching flowered white blouse. Sara is the daughter of Mr. and Mrs. James Samonek of Lamb Road and a Freshman at Manchester High School. This is Sara's 4th year with the Jolly Farmerettes.



Kim Bailey

Division with this fully lined wool jacket-vest and pleated slacks ensemble. Kim is the daughter of Mr. and Mrs. Lynn Bailey of Austin Road and a Freshman at Manchester High School. This is Kim's 4th year with the Jolly Farmerettes.

The annual Washtenaw County 4-H Spring Achievement was held in April at the Saline High School. The Jolly Farmerettes had nine girls entered in the Sewing Competition. The competition is broken down by groups: Beginners (7-9 year olds), Young (9-12 year olds), Juniors (12-14 year olds) and Seniors (14-18 year olds). The girls are judged on the garments they made and are awarded a Blue, Red or White Ribbon. The 4-Hers who have done outstanding work on their projects are selected by the judge to be considered for a Purple Honor Ribbon.

All honor award candidates are judged in their garments and then change, returning the garment to the Honor judging room for final decisions. Out of the girls chosen for Purple Honors, three girls out of each category are selected for an Honor Certificate.

Next the girls model their garments at a Style Show for the public and are judged (by Modeling Judges) on their garments, plus their poise and grace. These judges pick ten top models in each category.

The Jolly Farmerettes did extremely well again this year. Blue Ribbon Winners - Kim Bailey, Jodi Parr, Jennifer Reese and Melissa Stee. Purple Honor Winners: Jennifer Bailey, Melanie Ball, Marie Ball - 3rd place in Junior Division, Michelle Mann - 2nd place Beginners Division and Sara Samonek - 3rd place in the Senior Division.

### School Board Candidates

co-chaired the Senior Citizen Turkey dinner for the past two years, organized the restoration of the Klager Playground and has headed several fund raisers for the school.

Top Ten Modeling Selections: Beginners - Michelle Mann; Junior Division - Marie Ball; and Senior Division - Sara Samonek and Kim Bailey, 1st Runner Up.

### Open House To Honor Teachers

Nancy's husband, John, is a 1960 graduate of Manchester High School and a life-long resident of Freedom Township where John and Nancy own and operate Greengo Dairy Farm. They both have been very active in the school district and currently share the position of President of Manchester Elementary P.T.O. for the second year.

An open house will be held to honor two former Manchester teachers, Marian Dammon and Donald Weed. Hosted by Lucile Williams at her home on Sunday, June 9, from 3 p.m. to 6 p.m.

MARKERS-MONUMENTS  
CEMETERY LETTERING  
BRONZE PLAQUES

"Since 1910"

COMPARE QUALITY AND PRICE  
WE WILL NOT BE UNDERSOLD

Office and Display  
**MAPLE CITY GRANITE CO.**  
502 E Chicago Blvd. [M-50] Tecumseh, Mich. 49286  
517-423-6530

## MANCHESTER COMMUNITY SCHOOLS BUDGET HEARING

The public hearing on the 1985-86 budget for the Manchester Community Schools will be held at the Manchester High School, 710 East Main Street, Manchester, Michigan on Monday, June 17, 1985, at 7:00 p.m.

**True Value** HARDWARE STORES

**TOOL VALUE OF THE MONTH**

White Supplies Last **8.99**

21-Pc. 1/4 & 3/8-in. Drive Socket Set incl. quick-release ratchet, sturdy metal box. 4821  
QUANTITIES LIMITED

**True Value** HARDWARE STORES

**HARDWARE VALUE OF THE MONTH**

White Supplies Last **4.49**

25-Ft. Trouble Light w/ grounded outlet, bulb guard and a hang-up hook. UL listed. 235705  
QUANTITIES LIMITED

**True Value** HARDWARE STORES

**BARGAIN OF THE MONTH**

White Supplies Last **8.88**

9-Pc. Starter Set w/ utility dish, cov'd casserole, measuring cup, pie plate, more. 1208  
QUANTITIES LIMITED

**Kleinschmidt True Value Hardware**  
19860 SHARON VALLEY ROAD MANCHESTER, MICHIGAN  
Monday-Friday 8 am-6 pm Saturday 8 am-5 pm Sunday 11 am-3 pm

**Burkhardt's Headquarters**  
8139 Ernst Road, Manchester Phone 428-9656  
Rachel Burkhardt, Owner

PHONE AHEAD FOR AN APPOINTMENT

**JUNE SPECIAL**

**\$20.00**  
Selected Perms

Today's Styles At Yesterdays Price

**TRUCKLOAD SALE**  
DON'T MISS IT!

JUNE 7 - JUNE 27

Supra II Steel Belted Radial	Spectrum Total Performance
P155/80R13 38.11	P155/80R13 41.64
P165/80R13 39.60	P165/80R13 43.25
P185/75R14 45.20	P175/80R13 45.38
P195/75R14 46.03	P185/75R14 49.35
P205/75R14 48.49	P185/80R13 46.29
P215/75R14 51.10	P195/75R14 50.26
P205/75R15 50.41	P205/75R14 52.95
P215/75R15 52.26	P215/75R14 55.80
P225/75R15 55.33	P205/75R15 54.80
P235/75R15 57.45	P215/75R15 58.36
	P225/75R15 60.14
	P235/75R15 64.39

**Golden Sonic Belted**

P165/80R13 30.49
P195/75R14 35.19
P205/75R14 36.36
P215/75R14 37.85
P215/75R15 39.31
P225/75R15 41.31
P235/75R15 44.44

All Sizes of Pick-Up Truck and 4WD Tires Available At Fantastic Prices  
\*Free Computer Spin Balancing and Mounting

**WACKER G.E. Wacker Inc.**  
GASOLINE • FUEL OIL • MOTOR OIL • DIESEL FUEL • GREASE  
9090 CHELSEA - MANCHESTER RD. MANCHESTER, MICHIGAN 48158  
PH. 428-8366

**MARGIE'S UPHOLSTERY**  
6245 Brooklyn Road  
Napoleon

Wide Selection Of Fabrics  
Pick-Up/Delivery Available

517-536-4230

**CLINTON THEATRE**  
Friday & Saturday - 7:30 and 9:30  
Sunday 7:30  
All Seats \$2.00

**Witness**  
Rated "R"

**JUST A REMINDER**  
**Manchester Kozy Kitchen**  
233 East Main Street Manchester, Mich.  
Open 7 Days A Week

**Free Family Happiness TV SCHEDULE**  
EACH WEEK  
Includes Satellite and Cable Listings

## Art Show & Sale

by Chelsea Painters  
Saturday-Sunday, June 8-9  
10 A.M.-5 P.M.  
AT CHELSEA MEDICAL CENTER  
"RAIN OR SHINE"  
Entertainment Refreshments  
Percentage of Sales Provides a Medical Scholarship

## School Superintendent Discusses Millage Issues

**Q: How did the Board arrive at a figure of 4.6 mills?**  
 GT: 4.6 mills will produce about \$425,000 of revenue. The current budget has a deficit of about \$200,000. The Board covered that deficit with "rainy day savings" with the thought (a year ago) that the economic picture would improve. The proposed 1985-86 budget carries the original \$200,000 deficit plus another \$200,000 but we no longer have any savings. The deficit plus a little for savings equals 4.6 mills.

**Q: Why the deficits?**  
 GT: Rising costs of doing business are part of it. A large part, though, came from the increased graduation requirements and educational opportunities.

**Q: What educational opportunities?**  
 GT: First, a study committee recommended to the Board that graduation requirements be increased from 20 to 25 credits. The cost for teachers, equipment, supplies, etc. were close to \$100,000. We have also increased non-athletic activities such as drama, journalism, German club and computer club.

**Q: Aren't teachers being laid off?**  
 GT: Our enrollment continues to decline, although at a slower rate. As part of our effort to control costs, three teachers have been laid off. The Board and I believe that is cost-effective management of the tax dollar.

**Q: Will new programs be added?**  
 GT: We have two new programs proposed for next year—an Agri-Business curriculum will enable our 9th and 10th grades to stay in the FFA, and a special education program at the elementary is required.

**Q: Haven't revenues increased?**  
 GT: Actually, the district property value has just gotten back to the 1962-83 level. The SEV had been dropping since that time. It will go up 2 percent next year.

**Q: What about state money?**  
 GT: Manchester is an out-of-formula district. The most we've received from the state in the last three years is about \$68,000. Our budget is \$3.5 million.

**Q: Are salaries and fringe benefits a problem?**  
 GT: This is a labor-intensive business which means that the major share of the budget is for personnel. An analysis shows that our payrolls are at or near the lowest levels in the region. We're doing everything we can to control fringe benefits costs. The teacher's association has worked with us in this matter—their efforts have produced a slight decrease in health insurance costs for the next year. Now that's a real improvement.

**Q: Did the energy retro-fit work?**  
 GT: The Board invested \$350,000 in the energy project. In the first season without the system being fully operable, we were able to avoid \$22,000 in energy costs. The system will pay for itself in less than ten years. We think it looks pretty good, too.

**Q: What do you think will happen if the millage is rejected?**  
 GT: I try not to think about it—but the decisions will be up to the Board. We will either need to cut close to \$400,000 from our programs or hold another election or a combination of the two. I couldn't begin to anticipate what the cuts might be—in the past those kind of cuts have touched everything—athletics, computers, teachers, custodial supplies, you name it.

**Q: What can supporters do?**  
 GT: VOTE! I'm most worried about apathy. If the people who think that the Board is on the right track don't vote, the millage will be defeated—that's a certainty!

## Quick And Easy Meals For The Working Cook

Any cook who has struggled home after an exhausting day knows what it's like to face making dinner. Getting a balanced meal on the table that is delicious and attractive is a real challenge.

Cooperative Extension Service is sponsoring an education program to show you how it can be done. Ann Scriber, researcher and tester for the Ann Arbor News food columns will lecture and demonstrate quick menu pleasers. She will show how to make Chicken Curry in 15 minutes, Cheese Souffle in 15 minutes and other main dishes in short order.

Quick and Easy Meals for the Working Cook is part of the Corner on the Kitchen monthly presentations held at the county service center in the Extension Activity Room. The program will be held June 11 at 7:30 p.m. Reservations are required: Call 973-9510. A \$2.00 fee is payable at the door.

## Buy, Sell Or Rent In The Classifieds

### MANCHESTER GRAVEL

PICK-UP OR DELIVERED  
 Processed Road Gravel  
 Landscape Stone  
 Drain Field Stone  
 Pea Stone Fill Sand  
 11475 PARR ROAD  
 MANCHESTER, MICH.  
 428-9460

# ANNUAL SCHOOL ELECTION

NOTICE OF ANNUAL ELECTION OF THE ELECTORS OF MANCHESTER COMMUNITY SCHOOLS WASHTENAW AND JACKSON COUNTIES, MICHIGAN TO BE HELD

JUNE 10, 1985

TO THE QUALIFIED ELECTORS OF SAID SCHOOL DISTRICT:

NOTICE IS HEREBY GIVEN that the annual election will be held in Manchester Community Schools, Counties of Washtenaw and Jackson, Michigan, on Monday, June 10, 1985.

THE POLLS WILL OPEN AT 7:00 O'CLOCK A.M. AND CLOSE AT 8:00 O'CLOCK P.M. EASTERN DAYLIGHT TIME.

At the Annual School Election, voters will elect one member to the Board of Education for a regular term of four years ending June 30, 1989. In addition, voters will elect one member to fill a vacancy for a two-year term expiring June 30, 1987.

THE FOLLOWING PERSONS HAVE BEEN NOMINATED TO FILL SUCH VACANCIES:

FOUR YEAR TERM	TWO YEAR TERM
Gary L. Davis	Nancy K. Bihlmeyer Jeffrey K. Schaffer

Take further notice that the following proposition will be submitted to vote of the qualified electors at the annual election:

### MILLAGE PROPOSITION

Shall the limitation on the amount of taxes which may be imposed on taxable property in Manchester Community Schools, Counties of Washtenaw and Jackson, Michigan, be increased by Four Dollars and 60 Cents per Thousand Dollars (4.6 mills) of the state equalized valuation on all taxable property in the school district for a period of one year, the year 1985, in order to provide additional funds for operating purposes to be used for educational programs?

All school electors who are registered with the city or township clerk of the city or township in which they reside are eligible to vote at this election.

I, Michael A. Stimpson, County Treasurer of Washtenaw County, Michigan, do hereby certify that, as of March 25, 1985, the total of all voted increases in excess of the constitutional fifteen mill tax rate limitation and the years such increase are effective are as follows affecting the taxable property of Manchester Community Schools located in Washtenaw County:

By Washtenaw County:	0.040674 0.25 0.25	1968-1985 1984 thru 1985 1984 and Future
By Manchester Township:	1.25 Mills 0.50 Mills	1984 thru 1995 1984 thru 1988
By Bridgewater Township:	NONE	
By Sharon Township:	NONE	
By Freedom Township:	NONE	
By the School District:	1.50 Mills 1.80 18.78	1984 to 1987 1984 and 1985 1984 and 1985

Michael A. Stimpson  
 Treasurer  
 Washtenaw County, Michigan

I Janet C. Rochefort, County Treasurer of Jackson County, Michigan, do hereby certify that, as of March 28, 1985, the total of all voted increases in excess of the constitutional fifteen mill tax rate limitation and the years such increases are effective are as follows affecting the taxable property of Manchester Community Schools located in Jackson County.

By Jackson County:	NONE	
By Norvell Township:	NONE	
By Grass Lake Township:	1.00 Mill	1984
By The School District:	18.78 Mills 1.80 Mills 1.50 Mills	1985 1985 1985-1987 inc.
By Jackson Community College:	2.20 Mills	1984 Unlimited
By Jackson County Intermediate School District Special Education:	4.00 Mills	1984 Unlimited
By Jackson County Intermediate School District Vocational Education:	2.50 Mills	1984 Unlimited
By Jackson County/Library Purposes only:	1.00 Mill	1984-1996 Inc.

Janet C. Rochefort  
 Treasurer  
 Jackson County, Michigan

This Notice is given by order of the Board of Education of Manchester Community Schools, Counties of Washtenaw and Jackson, Michigan.

Kent P. Talcott  
 Secretary, Board of Education

## Senior Citizens News And Meals

Don't forget the Senior Citizen Fundraising Garage and Bake Sale to be held on June 7 and 8, 1985, at Helen Braun's house, 800 East Main Street. Monies raised will be used to help support our senior center. Call Helen for further information at 428-8966.

Tuesday, June 11, 1985 - 10:00 Council meeting at the senior center. All seniors are encouraged to attend. 12:00 lunch is stew and biscuits. After lunch, all seniors who would like to be playing euchre.

Wednesday, June 12, 1985 - 12:00 noon, Chamber of Commerce luncheon. If you would like to go and represent the senior citizens, please call Rubena Boelter at 428-8855.

Thursday, June 13, 1985 - THIS IS THE LAST MEAL SERVED UNTIL SEPTEMBER. 12:00 lunch will be hash. Before lunch bring any pictures of senior citizen activities to share with all. After lunch, Jack Bruger from the Washtenaw County Sheriff Department and Chief William Zsenyuk from the Manchester Police Department will be talking about "Home Safety." It promises to be a very informative program. At 8:00 p.m., the Washtenaw County Council of Arts is providing us with 20 tickets to see "Come Back Little Sheebs" at the Black Sheep Theatre. Call Helen Braun very soon for a ticket. There are two tickets left.

Saturday, June 15, 1985 - At 11:00 we will be leaving for the Strawberry Festival at Pioneer High School in Ann Arbor and for lunch at the Ponderosa. Admission is free but refreshments are sold. The Strawberry Festival is sponsored by the Washtenaw County Senior Leaders.

We are so fortunate to have received a grant from Office of Services to the Aging in Lansing to renovate a building leased from the Village of Manchester. It is a dream come true for area seniors. As with all dreams comes a price. The price of this dream is the

upkeep and utilities for the senior center. I would encourage each and everyone of you to help keep this dream alive. Your participation is important as well as your dollars. Imagine a senior center for area seniors! It took a lot of work. But, we did it. Congratulations!

## 55th Wedding Anniversary Celebrated

Friday evening, May 24th, Mr. and Mrs. Leo Scully were hosted by their children at a dinner at Travis Pointe Country Club celebrating their 55th Wedding Anniversary.

## Area Balloonist Entered in Balloon Rally

Wisconsin Dells - Jeff VanAlstino of Manchester will pilot the balloon, "Trivial Pursuit", during the Great Wisconsin Dells Balloon Rally, set to sail June 1 and 2, celebrating its tenth year.


100 Balloonists will be competing - the most ever to fly the Dells Rally - for points to enter the national championship and for fun.

## Ypsilanti Assigned New Zip Code

The U.S. Postal Service has announced that Ypsilanti, Michigan, has been assigned a new zip code effective July 1 of this year.

The new zip code, 48198, will apply to the portion of the city northeast of the Huron River. The area southwest of the river will retain the existing zip code, 48197.

## Buy, Sell Or Rent In The Classifieds



## Strawberries

### Sharon Valley U-Pick

5750 PROSPECT HILL ROAD

Please Call For Picking Dates **40c lb.** Phone 313-428-8977

One Mile North of Sharon Valley Road Between Manchester and Napoleon Michigan  
 OPEN 7:00 A.M. CLOSED SUNDAYS

## Jon's Photo and Record Shop

NOW LOCATED IN THE OLD MILL

Excellent Film Processing	Passport Photos Taken
Camera Accessories	Good Film Prices
Camera Repair	Camera Batteries
Copy Work and Restoration	Darkroom Accessories

**CALL JON FOR YOUR PHOTOGRAPHY NEEDS! 428-9509**

# VOTE YES JUNE 10, 1985

## The Undersigned Support The Millage Proposal On The Manchester School Election Ballot

- |   |  |   |  |  |  |
|---|--|---|--|--|--|
| Claire A. Turk<br>Eileen A. Ball<br>Yvonne Henry<br>Helen Nickerson<br>Diane Horning<br>Duane W. Kuebler<br>Shirley Lowery<br>Ted Tapping<br>Ronald Hayden<br>Sandi Kwolek<br>Vicki Miller<br>Cat Meyer<br>Pat Sahakian<br>Rod Morrison<br>Pamela K. Lee<br>Jay Hopfensperger<br>Nancy P. Smyka<br>Joan L. Barry<br>Melinda Trout<br>Carol Kemeter<br>Wes Gall<br>William Bruceck<br>Denise Dresch<br>Catherine Stripp<br>Danna Carr<br>Kathleen Cornell<br>Guy Gilbert<br>Dorothy Davies<br>Linda K. Hartmann<br>Rob Hartmann<br>Robert B. Macfarlane<br>George J. Goods!! | Anne Marie Gordon<br>Charles D. Nosbisch<br>Harry Krauss<br>Rozann Adas<br>Wayne L. Winzenz<br>Bettie Fink<br>Robert L. Hamilton<br>Mattie C. Agin<br>Albert Gebhardt<br>Bonnie Barnard<br>Gerald R. Mann<br>Kathleen Gould<br>Jack Creech<br>Sandra Ward<br>Thomas Matson<br>Wm. Anthony White<br>Robert Gillow<br>Sandra Winzenz<br>William Kemner<br>Dawna Stockwell<br>Pat Hanselman<br>Carol A. Buss<br>Joyce Steele<br>Cathy Gero<br>Arthur Scherdt, Jr.<br>Karen Leach<br>Arlene Walter<br>Mike Scully<br>Catherine S. Herman<br>John Binder<br>Curt Fielder<br>Clarence L. Fielder | James F. Curley<br>Joyce A. Spiess<br>Timothy P. Preston<br>Joan Gaughan<br>George Agin<br>Jeanine Uphouse<br>Betty J. Mann<br>James B. Uphouse<br>John D. Gould<br>Elaine Creech<br>Vicki R. White<br>Elaine Cox<br>Janet Binder<br>Cynthia Kemner<br>Arie J. Knul<br>Nancy Bihlmeyer<br>Karen Ellsworth<br>Lois Burton<br>Monty Okey<br>Charles W. Cornell<br>David J. Ahrens<br>Lynn Keil<br>Laverne M. Leach<br>Max W. Walter<br>Keith Johnson<br>Robin Wellman<br>Bernadette S. Fielder<br>Mary Frances Fielder<br>Cecilia Niehaus<br>M. Jane Talcott<br>Van Talcott<br>Charlene Goode!! | Lynn Niehaus<br>Robert C. Bunney<br>James Samonek<br>Stephen N. Chapman<br>Nancy Peters<br>JoAnn Okey<br>Carol Savage<br>Mildred Grantham<br>Thomas G. Golding<br>Darlene Kuebler<br>Judith Miller<br>Margaret Tapping<br>Rolland Grossman<br>Billi Kwolek<br>Sharon Anderson<br>Holly Porter<br>Terry Gillow<br>Sonja M. Knul<br>Judith Duvail<br>Judy Mann<br>Linda McGee<br>Michael A. Spiess<br>Ada Barrett<br>Vicky Wurster<br>Linda Gorlitz<br>Suzanne R. Royle<br>Jim Kensler<br>Kathleen Dimond<br>Susan M. Fielder<br>Margaret Fielder<br>Craig M. Fielder<br>Kent P. Talcott | Elizabeth Wallace<br>Michael V. Stockwell<br>Ronald M. Adas<br>Lou Ann Preston<br>Richard Fink<br>Rosemary E. Hamilton<br>Delores Gebhardt<br>Diane Lockridge<br>Claudia Day<br>James Cox<br>Robert W. Rhees<br>Victoria Curley<br>Joan Matson<br>Larry Ward<br>Janet Waldron<br>Pat Ahrens<br>Terry Gillow<br>Sonja M. Knul<br>Judith Duvail<br>Judy Mann<br>Linda McGee<br>Michael A. Spiess<br>Ada Barrett<br>Vicky Wurster<br>Linda Gorlitz<br>Suzanne R. Royle<br>Jim Kensler<br>Kathleen Dimond<br>Susan M. Fielder<br>Margaret Fielder<br>Craig M. Fielder<br>Kent P. Talcott | Marcia A. Bunney<br>Eugene W. Thompson<br>Jeannine M. Chapman<br>Connie Saiyer<br>Linda Ebersole<br>Janice Little<br>Earl Horning<br>Marlene P. Golding<br>Sandy Smith<br>Phyllis Heinrich<br>John B. Swainson<br>Forest E. Walz<br>Anne Kornow<br>M. Kathleen Jefferson<br>Nancy Haeussler<br>Bill Bushaw<br>Annabelle Eversole<br>Leonard J. Hastings<br>Kathryn A. Schick<br>Rusty LeFurge<br>Maxine Frey<br>Gary Perford<br>M. F. Nosbisch<br>Diana B. Macfarlane<br>Diane Schwab<br>Ruth Goodell<br>Boots Puscas<br>David Alstrom<br>Carol Scherdt<br>James Kruse<br>Ronald O. Hawk<br>Patrick G. Wallace |
|---|--|---|--|--|--|

Keep PACE with EXCELLENCE Support Your Kids and Your School

Paid For By PACE (Positive Action In Community Education)  
 Linda K. Hartmann, Treasurer, 6701 M-52, Manchester, Michigan 48158

# Manchester Optimist Canoe And Boat Race



Ladies Canoe Open Partner: (left to right) Marilyn Kellum, Margaret Biacecki, Sybil Abdul Baki and Sarah Kolon.

The Manchester Optimist Club Canoe and Boat Race was held on the Raisin River May 19, 1985, at 1:00 p.m. with the following winners: Ladies Canoe Open Partner - 1st, 42'12" - Carol Serr, Ann Arbor and Marty Catarano, Bloomfield Hills; 2nd - 42'27" - Marilyn Kellum, Tipton; Margaret Biacecki, Manchester; 3rd - 45' 30" - Sybil Abdul-Baki, Manchester and Sarah Kolon, Livonia.

Open Canoe Choose Partner: 1st - 35'39" - Bill Fick, Blissfield and Keith Fick, Jr., Adrian; 2nd - 37'14" - Philip Krzyzaniak and Kevin Krzyzaniak, both of Manchester; 3rd - 37'23" - Ron Perry and Doug Spalding, both of Dundee.

Open Boat Choose Partner: 1st - 52'28" - Larry McGee and Mark Rutherford, both of Manchester; 2nd - 62'34" - Bruce Lindner and Dave Novess, both of Manchester; 3rd - 70'21" - Jeremy Crumb and Tom Cullen, both of Manchester.

Man and Woman Canoe: 1st - 41'41" - Wayne and Sue Ann Kirby, Manchester; 2nd - 42'20" - Teri May and Nicholas Aiuto, Manchester; 3rd - 44'00" - Steve and Linda Milkey, Manchester.

Father and Child Canoe: 1st - 40'07" - Tom and Shannon Waigle, Blissfield; 2nd - 44'14" - Ed and Patrick Walz, Manchester; 3rd - 44'50" - Anna and James Eder, Manitow Beach.

Trophies were presented and refreshments served at the K of C Hall following the race.

The committee would like to thank other Optimist members and anyone who assisted with our Canoe and Boat Race. We appreciate the help from the Village Police Department and Explorers with traffic control and radio communications, Krauss Pharmacy who handled all the entries, Village Department of Public Works with their equipment and Manchester Knights of Columbus for the donation of their hall.



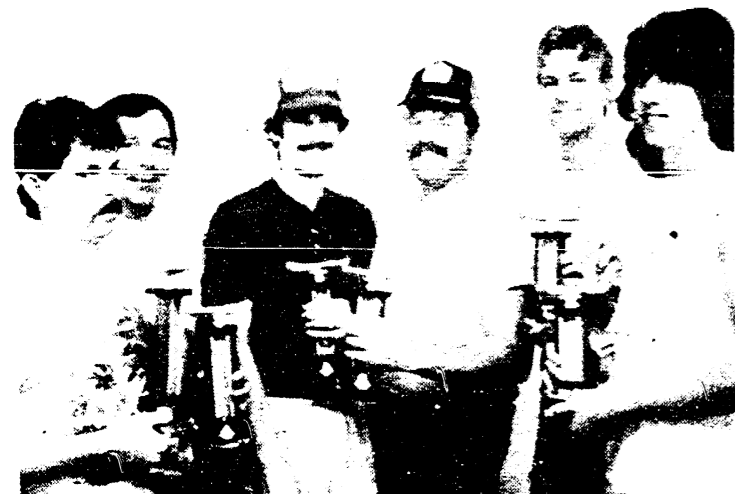
Man and Woman Canoe: (left to right) Wayne and Sue Ann Kirby, Teri May and Nicholas Aiuto, Steve and Linda Milkey.



Father and Child Canoe: (left to right) Tom and Shannon Waigle, Anna and James Eder, Ed and Patrick Walz.



Open Boat Choose Partner (left to right) Philip and Kevin Krzyzaniak, Bill and Keith Fick, Jr., Ron Perry and Doug Spalding.



Open Boat Choose Partner: (left to right) Mark Rutherford, Larry McGee, Bruce Linaner, Dave Novess, Jeremy Crumb and Tom Cullen.

**PEPSI**  
 \$1.99  
 8 Pack 1/2 liter Plus Deposit  
**MANCHESTER IGA**  
 West Main St. Manchester

**Congratulations**  
 to the  
**Class of '85**  
 CONGRATULATIONS TO THE GRADUATES OF THE CLASS OF 1985 OF MANCHESTER HIGH SCHOOL.  
 "BE ALL YOU CAN BE"  
 SSG DONALD L. HEATER  
 U.S. ARMY RECRUITER  
 ANN ARBOR, MICH.

**Village Pizza**  
 Manchester, Michigan  
**2 For 1 Pizzas**  
 Order Pizza of Your Choice  
 Get 2nd Pizza FREE With Coupon  
 INTRODUCING OUR EXTRA LARGE PIZZA Starting In June  
**2 For 1**  
 Coupon Expires June 30, 1985  
**PHONE 428-8361**

**KEN MILLER**  
 RESIDENTIAL BUILDER  
 QUALITY WORKMANSHIP AT A REASONABLE RATE  
 SPECIALIZING IN SIDING-CUSTOM MADE TRIM ALUMINUM AND VINYL  
 Free Estimates Phone  
 Licensed & Insured 517-592-8904  
 Between Manchester and Brooklyn

# 1935 Law Class Has 50th Reunion



James C. Hendley

A 50th class reunion is special - and even more so because the 1935 Law Class of the University of Michigan has not had a get-together since 1950. Planning for this event began in 1981 when Jim Hendley was elected Chairman at a get-together at the Dearborn Inn. At that time there were 119 living out of a class of 129; at the present time 88 are living, and 66 came to the reunion at Campus Inn on May 17, 18, and 19.

cocktail party (unheard of in 1935), and dinner on Friday night, and lunch Saturday noon, which was followed by a campus bus tour, a tour of the new underground law library, or free time to visit old campus haunts. It was a trip back in time since many had not returned to Ann Arbor town since their graduation. Fifty years brought many changes and they were accepted with both humor and sadness.

The highlight of the reunion was the Saturday night class dinner to which Dean Sandalow and his wife were invited as guests of honor. A three-piece combo played music of the '30's during the cocktail hour and dinner. Brief talks were made by Herb Milliken of Flint, class Vice President, and Dean Sandalow before presenting Emeritus pins and certificates. Dancing followed dinner, and singing of college songs. Dean Sandalow was impressed with their keen remembrance of these old favorites.

A letter to Hendley from Jonathan Lowe, Director of Law School Relations commented on

his efforts and hardwork. He said, - "it was unquestionably the most successful 50th class reunion I have ever seen."  
 After two days of togetherness many joined a Sunday brunch before heading home to the four corners of the United States. Jim Hendley was unanimously elected Vice-President, Secretary-Treasurer of the class and given the task of preparing for a 1990 reunion.

## Attention Expectant And New Mothers

"The Baby Arrives - The Family and the Breastfed Baby" will be the topic of the next La Leche League meeting on June 11, Tuesday evening at 7:30. The meeting will be held at the home of Linda Meyer, 8950 Sharon Hollow Road (one mile south of Austin Road). Any woman interested in breastfeeding is welcome to attend meetings. Our meetings consist of open discussion and mother-to-mother sharing of experiences to encourage "Good Mothering Through Breastfeeding". Nursing babies, are, of course, always welcome at League meetings.

For further information or for breastfeeding help at any time, please call one of our leaders: Marsha Chartrand, 428-8831; or Linda Meyer, 428-9475. They will be glad to talk to you.

**Manchester K of C Hall**  
 AVAILABLE FOR  
 Wedding Receptions-Parties-Meetings  
 Catering Available  
 Hall Rental \$165.00 Includes Cleaning  
 Use of Kitchen \$25.00  
 For Further Information Call  
 428-8393 or 428-8886

**NOTICE ANNUAL TOWNSHIP MEETING**  
 and  
 Public Hearing On Federal Revenue Sharing Funds  
 NOTICE IS HEREBY GIVEN, THAT THE NEXT ANNUAL TOWNSHIP MEETING OF THE ELECTORS OF THE TOWNSHIP OF SHARON  
 COUNTY OF WASHTENAW STATE OF MICHIGAN WILL BE HELD AT  
**SHARON TOWNSHIP HALL**  
 AT 1:00 O'CLOCK P.M. ON  
**SATURDAY, JUNE 15, 1985**  
 AT SUCH TIME IN ADDITION TO OTHER REGULAR BUSINESS AND IN ACCORDANCE WITH THE LAW, A BUDGET COVERING PROPOSED EXPENDITURES AND ESTIMATED REVENUES OF THE TOWNSHIP SHALL BE SUBMITTED FOR CONSIDERATION. A COPY OF THE BUDGET WILL BE OPEN FOR INSPECTION AT THE ANNUAL TOWNSHIP MEETING. THE PUBLIC HEARING WILL BE HELD TO OBLIGATE FEDERAL REVENUE SHARING FUNDS.  
 6-5/6-12-85 **DUANE HASELSCHWERDT** TOWNSHIP CLERK

**LAWN SPRAYING**  
 FREE EETIMATES  
 Certified & Insured  
 Call: **Tim Spiess**  
 "The Lawn Ranger"  
 313-428-9497

**PEPSI, DIET PEPSI PEPSI LIGHT MOUNTAIN DEW PEPSI FREE, SUGAR FREE PEPSI FREE**  
**\$1.79**  
 1/2 LITER 8 PACK PLUS DEPOSIT  
**LP GAS Bottles Filled**  
 PHONE 313-428-8366  
**G.E. Wacker Inc.**  
 GASOLINE-FUEL OIL-GREASE MOTOR OIL-DIESEL FUEL  
 9050 Chelsea-Manchester Road  
 Manchester, Michigan 48158  
 SUMMER HOURS  
 MON.-FRI. 7 am - 9 pm  
 SATURDAY 8 am - 9 pm  
 SUNDAY 9 am - 9 pm

# News for TEA LOVERS

## SPORTS TIME SIPPERS

Warm weather sports can energize you, keep you fit and provide hours of fun. They can also give you a big thirst that calls for something special. The next time you take a break between swings and serves, break away from the usual soft drinks and serve up refreshing Strawberry Smoothie or Crimson Tea Cooler.



1 cup ice cubes (about 6 to 8)

In 5-cup blender, combine all ingredients except ice cubes; process at high speed until blended. Add ice cubes, one at a time; process at high speed until blended. Garnish, if desired, with whole strawberries. Makes about 4 servings.

Lemon flavored iced tea mix with NutraSweet, plain yogurt and strawberries that mixes up creamy, rich and frothy in a blender. Crimson Tea Cooler is a colorful blend of iced tea, cranberry juice cocktail and fresh fruit that stirs up tall and cold in an ice-filled pitcher.

Lemon flavored iced tea mix with NutraSweet is a terrific refresher on its own, too. With just four calories per 8 ounce serving, the iced tea mix, sweetened with NutraSweet instead of sugar or saccharin, delivers that great taste you've come to expect. It will help keep you in shape to play your best game, whatever your favorite sport.

1/4 cup Lipton Lemon Flavored Iced Tea Mix Sweetened with NutraSweet

3 cups cranberry juice cocktail, chilled  
 1 cup water  
 1 medium orange, sliced  
 1 medium apple, cut into wedges  
 In large pitcher, combine all ingredients. Serve with ice. Garnish, if desired, with fresh mint leaves. Makes about 4 servings.

**STRAWBERRY SMOOTHIE**  
 1/3 cup Lipton Lemon Flavored Iced Tea Mix Sweetened with NutraSweet  
 1 pint (16 oz.) plain yogurt  
 1 cup sliced strawberries



Thicken soups and stews by adding onions and celery that have been put in the blender for a few seconds. This also adds flavor—and cuts out the added calories from adding flour or cornstarch.

**Dan's Westside Automotive**  
 660 West Main Street Manchester  
 Phone 428-9455  
 "SERVING A GREAT INDUSTRY SINCE 1909"  
**DEAN SAFT-BILT TIRES**  
 A PRODUCT OF COOPER TIRE & RUBBER COMPANY  
 Low Cost Steel Belted Radial Aggressive European Tread Design Galaxie Gt Radial/Steel  

155 SR 12	
155/80 R 13	41.80
165/80 R 13 (A-13)	42.90
175/80 R 13 (B-13)	
185/80 R 13 (C-13)	44.30
175/75 R 14 (C-14)	
185/75 R 14 (D-14)	47.30
185/75 R 14 (E-14)	48.40
205/75 R 14 (F-14)	49.80
215/75 R 14 (G-14)	52.90
225/75 R 14 (H-14)	
165 SR 15	
195/75 R 15 (E-15)	
205/75 R 15 (F-15)	49.85
215/75 R 15 (G-15)	53.40
225/75 R 15 (H-15)	56.60
235/75 R 15 (L-15)	61.90
235/75 R 15 XL 6 ply	
185/80 R 13 (C-13)	44.30

**24 Hour WRECKER SERVICE**  
 Weekends and After 6 Call 428-7814

# Klager School News



Charles DuRussel works on the cookie assembly line. His job was to roll the dough-balls used to make eyes on the cookies' smiling face.

## The Rainbow Bakery

The students in Mrs. Henry's second grade classroom undertook a project that called upon all the skills they have learned this year. They formed a corporation called "Rainbow Bakery" and decided upon a product - a smiling faced cookie. Their first hand experience with private enterprise included job

applications, interviews and assembly line experience. The cookies produced in their factory were sold to students and staff. When the sales total was counted and the start-up costs subtracted, the class was excited to find that they had made a profit! Then, they invested their earnings in new books for the school library.



Cookies fresh out of the oven are delivered by baker Ben Okey under the supervision of Mrs. Mary Cousino.



Hillary Wiedmayer displays the finished product - a cookie both she and fellow quality inspector, Tommy Leach, gave an A-OK rating. Tony Cereny looks on as cookies pass through the assembly line.

## Hansel And Gretel



Kye Potter, a member of the Hansel and Gretel ticket committee shows a sales brochure while other students count tickets into packages.

Klager students will be presenting their third musical, HANSEL AND GRETTEL on June 4th and 5th. Over ninety students will be on stage for the performances. Almost two hundred children signed up as crew or committee members, so this is really an All school play.

Among the play-related activities currently underway are: props, scenery, costumes, tickets, ushers, posters, baking, and the program factory.

Students are also involved in writing, art and drama projects based on the Hansel and Gretel theme. Some of their work will also be displayed on the performance evenings.

## Klager Science Day

Tadpoles to turtles, bubbles to microscopes, Klager's Science Day had something for everyone.



High school student, Cheri Verhines, monitors the projection microscope station.



Steven DeVreis, Tommy Leach and Ben Okey complete the electrical circuit to activate the buzzer board.



Mrs. Hankamp helps her kindergarten students do an experiment in mixing colors.

## New Books At Library

A new collection of large print books is now available at the library in addition to the following new books.

- Ariel, Joseph
- BIRTHRIGHT
- Bachman, Richard
- THINNER
- Bonesteel, Georgia
- MORE LAP QUILTING WITH GEORGIA BONESTEEL
- Bristol, Claude M.
- MAGIC OF BELIEVING
- Carpenter, Humphrey
- OXFORD COMPANION TO CHILDRENS LITERATURE
- Cookson, Catherine
- BANNAMAN LEGACY
- Deighton, Len
- MEXICO SET
- Flaxie, Richard
- NEW YORK TIMES GUIDE TO THE RETURN OF HALEY'S COMET
- Greene, Constance C.
- OTHER PLANS
- Halacy, Dan
- HOME ENERGY
- Herbert, Frank
- CHAPTERHOUSE DUNE
- Korda, Michael
- QUEENIE
- Krazier, Sherrill
- SAFE CHILD BOOK
- MacDonald, John D.
- LONELY SILVER RAIN
- Norton, Hollis
- HOW TO MAKE IT WHEN YOU'RE CASH POOR
- Paul, Barbara
- RENEWABLE VIRGIN
- Pronzini, Bill
- QUINCANNON
- Rogers, Rosemary
- WANTON
- Voight, Cynthia
- RUNNER

## Michigan Veterinary Clinic

18901 Sharon Valley Road  
Manchester, Michigan 48158

313/428-8365

### LARGE AND SMALL ANIMAL SURGERY AND MEDICINE

OFFICE OR HOME VISITS BY APPOINTMENT  
9 AM - 9 PM MONDAY THROUGH SATURDAY  
VERA L. KLUWE, D.V.M.

## ANTIQUE AUCTION

Located at the Emanuel United Church of Christ Annex, Manchester, Michigan, 2 Blocks West of Downtown on Main Street. Watch for Auction Signs.

THURSDAY, JUNE 6, 1985  
10:00 A.M.

AUCTION No. 2. Liquidating the Herb Jacobs Estate. Will be selling approximately 600 lots.

**FRUIT JARS:** Van Vliet, Gilberts, Lightning, Jumbo, A. Kline, Pet, The Rose, Hero, Gem, Crown, Dorling Imperial, Lockport, The Queen, Swayzee, Proctor, Princess, Whitney, Lyman, Foxton, Michigan Mason, Leatrice, American, Clipper, Wears, Many Masons.

**BOTTLES:** Amber Manchester, Liquor, Pigs, Glob Tops, Milk, Medicine, Beer, Amber Quarts, Many with Good Embossing.

**DECANTERS:** Musical, McGill, E. Brooks, Weller, Beams Choice Editions, Beam Collectors Editions, Carnival, etc.

**GLASS - CHINA:** Hens on Nest, Cresoline Lamp, Miniature Lamps, Kerosene Lamps, Hanging Parlor Lamp w/Ruby Shade & Brass Font, Many Lots of Salt Dips, Ink Wells, Toothpick Holders, Glass Shoes, Eye Cups, Cordials, Fenton Hobnail, Carnival Bottles, Bells, Shoes, Butter Pats.

**PRIMITIVES:** Shaft Sleigh Bells, Corn Grader, Augers, Gas Station Oil Bottles, Fence Stretcher, Ice Tongs, Adz, Several Boxes Old Wrenches, Candle Mold, Meat Grinder, Hog Catcher, Wagon Jack, Hog Hooks, Hog Scrapers, Cow Poke, Steelyards, Barrel Bung Auger, Shoe Last, Bag Cart, Lard Press, Old Vacuum Sweeper, Lard Squeezer, Solution Rack, Clothes Ringer, Wooden Butter Churn, Many Jugs and Crocks, Block Planes, Lanterns, Cast Iron Glue Pot, Insulators, Beer Cans, Tinware, Can Openers, Misc. Kitchen Utensils, Silverplate Napkin Rings, Metal Ship Book Ends, Toy Cast Iron Truck, Bells, Metal Figurines, and much more.

**TERMS:** Cash or Check with Proper I.D.

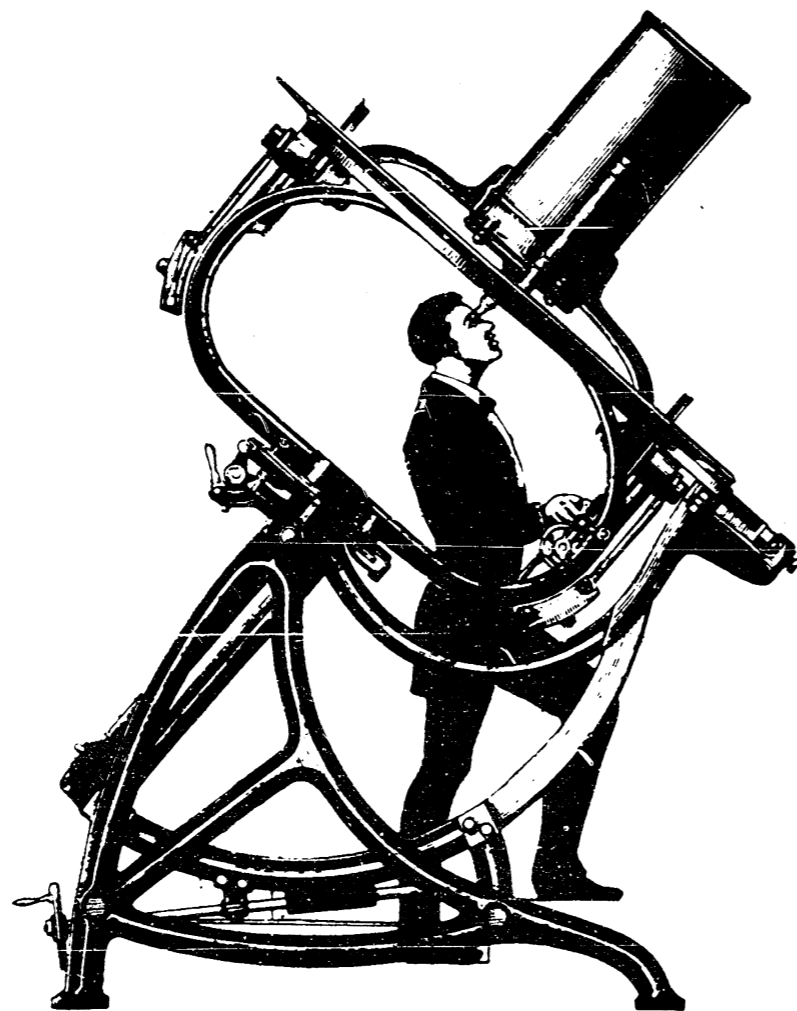
Not Responsible for Accidents or Items After Sold.  
Register for Buyers Number.  
L & W LUNCH WAGON

## HERBERT JACOBS ESTATE

Sale Manager and Auctioneer  
EVERETT R. MILLER

Rives Junction, MI 49277 - Phone 517-569-3465

"GOOD MANAGEMENT DOES NOT COST-IT PAYS"



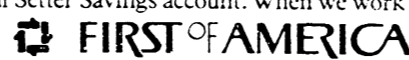
Our New Goal Setter Savings Lets You Set Your Sights A Little Higher.

If your goals seem light years away, you should look into our new Goal Setter Savings account.

Goal Setter Savings from First of America is a special way to save for a home, boat or college education.

You can open a Goal Setter Savings account with only \$250 and make deposits of \$50 or more, at any time. Each deposit is recorded in your Goal Setter Savings passbook. And you'll receive a statement each quarter so you can watch your savings grow. We offer a highly competitive variable rate of interest that's paid and compounded quarterly.

So ask about our new Goal Setter Savings account. When we work together, you can set your sights on the stars.



Member FDIC.

## ATLAS of Manchester Your Lawn and Garden Store

Field & Farm  
Dog Food



\$1.00  
OFF



POOL  
SUN for  
super pool protection

Sun Water Treatments  
Pool Accessories

Liquid Chlorine

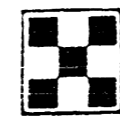
PEST CONTROL PRODUCTS  
BUG SPRAY  
OUTDOOR FOGGERS  
INDOOR FOGGERS

Treat your own lawn  
Save \$\$\$\$

Be your own expert  
with

GREENSWEEP™

SAVE 10%  
On Green Sweep Now



ATLAS  
Of Manchester

(Formerly Mann's Feed Mill)

18875 WEST AUSTIN ROAD MANCHESTER, MICHIGAN  
PHONE 428-7077

Hours: Monday-Friday 8-5 P.M. Saturday 8-4:30 P.M.



THE GUARANTEED FEED

## Norm Walz & Son Construction

Manchester, Michigan

NEW HOMES  
REMODELING  
ADDITIONS  
GARAGES  
SIDING  
DECKS

Custom Built  
Cabinets  
428-7109

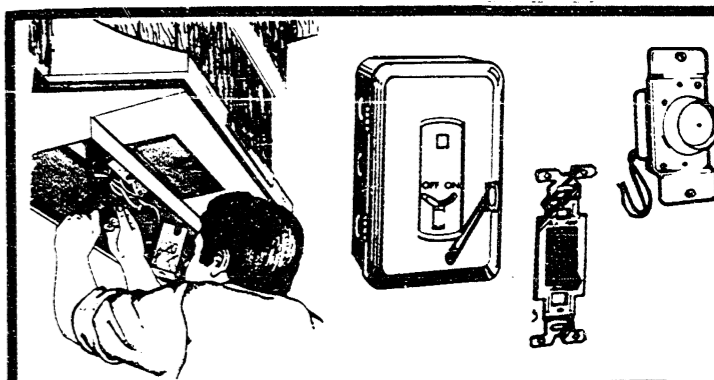
## Bridgewater General Store

IN BEAUTIFUL DOWNTOWN  
BRIDGEWATER  
8994 East Austin Road  
Phone 428-4020

Hours: Mon-Sat 7-9  
Sunday 8-8

Cold Beer & Wine  
Keg Beer Available

We Have Instant Lottery Tickets



## ELECTRICALLY

PROTECT YOURSELF FROM ELECTRICAL HAZARDS AND GIVE TO YOUR STUDENTS AT THE SAME TIME. MANY THOUSANDS OF INJURIES AND DEATHS RESULT YEARLY FROM DANGEROUS HOME WIRING. REPLACE YOUR OLD FUSE BOX WITH A NEW BREAKER PANEL, REPAIR OVERHEAD WIRING, INSTALL A G.F.I. RECEPTACLE OR A NEW SMOKE ALARM; AND WE WILL GIVE \$1.00 PER \$100.00 TO THE NEW ATHLETIC COMPLEX. AMOUNTS WILL BE POSTED.

MANCHESTER ELECTRIC  
112 Adrian Street  
Manchester, Michigan  
428-8243

# Wedding



# Stationery

Let us show you our beautiful collection of contemporary wedding stationery. You can select your complete paper trousseau from a wide variety of styles in every price range.

## THE MANCHESTER ENTERPRISE

EAST MAIN STREET

ESTABLISHED 1867

MANCHESTER, MICHIGAN 48158

## Middle School Speakers Bureau



Mrs. Perry, seventh grade teacher, and Mrs. Mae Hardenbergh.

On May 21, Mrs. Mae Hardenbergh treated our seventh grade to a slide presentation on England and Scotland. Mrs. Hardenbergh has been an avid traveler visiting places such as Russia, China, Yugoslavia, United Kingdom and many other foreign countries. Her family history stems from England which she expresses as one of her favorites. The slide presentation included old Scottish Castles, Buckingham Palace, St. Pauls Cathedral, William Shakespeare's house, Ann Hathway's house, Stonehendge and many other famous landmarks and buildings. We would like to thank Mrs. Hardenbergh for sharing her experiences with us.

## Meet Of Champions At Dexter High School

In the Twelfth Annual "Meet of Champions", Jodi Brokaw participated in the 100M Dash and 200M Dash. This meet includes all of Washtenaw County Schools, Classes A thru D and the top 8 runners compete to be this areas champion. Jodi ran against 6 class A runners and 1 class B runner in both the 100M Dash and 200M Dash, making her the only runner from a class C school to be represented in the sprints. Good Job Jodi!!

## Letter To The Editor

In the past five years I have seen the Manchester Community Schools upgraded in many ways. The most important change seems to be the better attitude of others, as well as ourselves, toward our school system. I was one of the "Flying Dutchmen" when the millage went down. That time, the outcome was a fall without a sports program; we lived through it.

The last issue of the Manchester Enterprise disturbed me greatly. If you notice those in favor of the millage, otherwise known as "The Undersigned", seem to be a select group. Most, if not close to all, were from town, a teacher, or part of the school board. Keep this in mind during the remainder of the letter. Not being in favor of the millage does not mean you are not in favor of the school system!!!! If you vote no on the millage it does not mean you were trying to get out of giving your fair share

either.

When the millage was first put into practice it was fair. During that decade, way back when, those with property valued at more money paid more. Those who owned more property usually had a larger farm to raise more money than a smaller farm. That was then...

When people left the farm to be employed elsewhere, the market in terms of what you got for crops seemed to follow - elsewhere.

A raise in the millage to a farmer is \$300 to \$1000 he did not have to spend. Yes, \$300 to \$1000.

To those "Undersigned": When someone tells you he voted no on election day, remember, he was not saying no to the school system, his child or your child's future. He was saying no to paying a combination of his fair share plus yours! A FARMER'S DAUGHTER Joanne Stierle

## Let's Vote

The Manchester Women's League is now holding a baby contest.

Canisters are at Comerica, Great Lakes Federal, and First of America Banks in Manchester until June 14. A dime counts as one vote.

The winners will be announced June 17. First place tyke wins a \$50 Savings Bond and second place tyke wins \$10 cash. Both will ride in the Manchester Fair Parade.

Proceeds go for community projects.

## Engagement Announced



Mr. and Mrs. Richard A. Bunnay of Manchester wish to announce the engagement of their daughter, Brenda to Gregory "Scott" Jennings of Rossville, Georgia, son of Rev. and Mrs. Everett L. Jennings of Sarasota, Florida, formerly of GrassLake, Michigan.

The bride elect is a 1984 graduate of North Sharon Christian School in Grass Lake.

Mr. Jennings is a 1981 graduate of Calvary Christian Academy in Lethers, Kentucky and is presently employed by Moore Detective Agency in Chattanooga, Tennessee.

Both Brenda and Scott attended Tennessee Temple University in Chattanooga, Tennessee.

The couple is planning a July 20th wedding at North Sharon Bible Church, Grass Lake, Michigan.

See The Manchester Enterprise For Rubber Stamps

High interest, flexible protection. payments to suit you, and a non-smoker's discount...

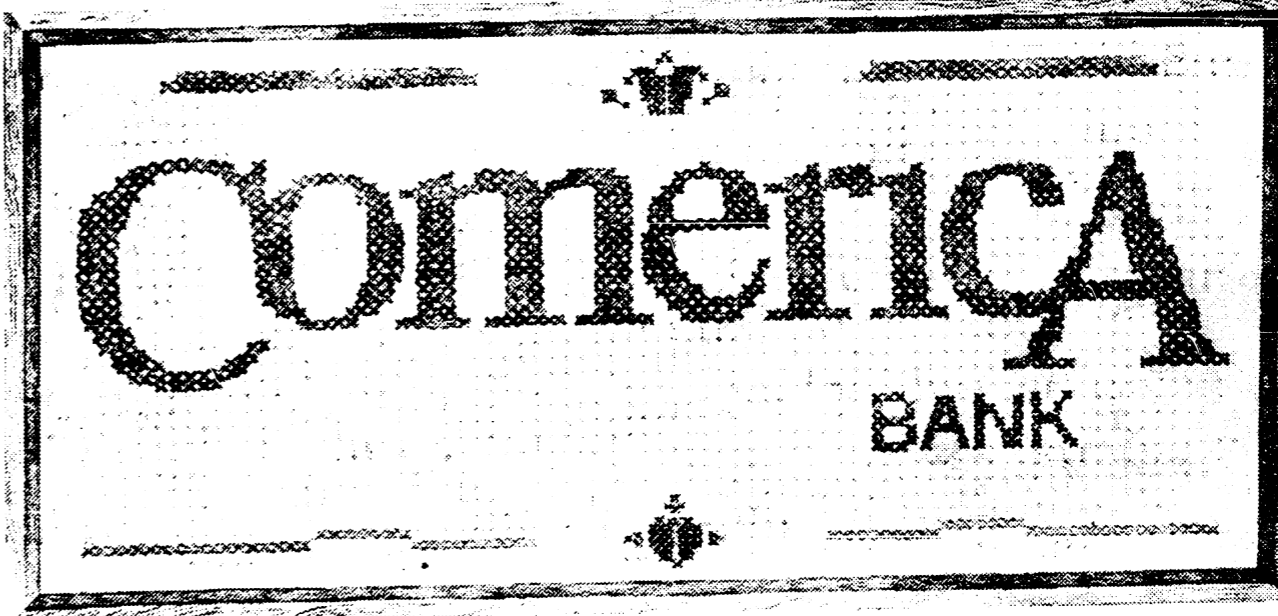
Universal Life from Farm Bureau Life Insurance Company of Michigan gives you low-cost life insurance protection—easily increased or decreased to meet changing needs—and pays a high rate of tax-deferred interest.

Now, add coverage for your family.

LARRY BECKTEL  
135 East Main St.  
Manchester, Mich.  
Phone 428-7331

Making your future a little more predictable.

FARM BUREAU INSURANCE GROUP



# WE'RE RIGHT AT HOME IN MANCHESTER

Comerica Bank is right at home on Main Street, bringing you all the benefits and services of a big-city bank, but with all the friendliness and personality of your neighbor.

Comerica means "clout." As part of the Comerica family of banks, we have widespread financial clout. That means you benefit from our connections throughout Michigan, the United States, even world-wide. And, of course, right here in Manchester.

Comerica means services. At Comerica Bank, you always get our friendly, personal attention and a full range of banking services including:  
• 24-hour banking with the Wonderbank®

- Comerica C.O.D. Account
  - Individual Retirement Account
  - Simple Interest Loans
  - Paycheck Deduction
- And more. We're leaders in banking, and we'll continue to be—right here in Manchester, where we're right at home.

## Comerica

BANK MEMBER FDIC

135 E. Main St. • Manchester

# Hit Or Miss

Please, please don't leave Medical Economics lying around where patients or other lay persons have access to it," urges an editorial in a recent issue of a biweekly magazine for physicians. "The magazine is written and edited strictly for doctors in office-based private practice and no one else" reports Joan Beck.

"We have nearly 10,000 non-doctor paid subscribers. But most of them are professionals who work with physicians on a regular basis — accountants, management consultants, lawyers, investment advisers, brokers, and the like. They know enough about the business of being a doctor in the '80s that they aren't going to be outraged or shocked by anything they read in Medical Economics."

"The cross section of patients coming through your office is another matter. The housewife wondering if she has enough cash with her to handle a \$40 payment-at-time-of-service office visit plus parking isn't apt to be one of medicine's biggest boosters if she learns while flipping through a copy of Medical Economics that the typical orthopedic or neurosurgeon grossed nearly a quarter of a million dollars last year."

What's so shocking in Medical Economics? Not much, really. There are tips about how to reduce risks when buying gold. Notes about bargains in \$150,000 two-bedroom condos near the lifts in Aspen, Colo.

There are also intriguing little glimpses into doctors' practices. For example, a recent article reports on what "a wonderfully interesting and rewarding specialty" otolaryngology (treatment of ear, nose, and throat ailments) is, with one in five otolaryngologists netting at least \$200,000 in 1983 and median practice earnings of \$125,120 after

expenses — an increase in net income of 74 percent in six years. Surely the average patient understands that medicine is big business, that doctors spent a lot of time and money on their education, deserve to make up for it, and need the kind of big-league financial advice well-paid executives get in business publications. Besides, if that housewife is worried about being short of cash, most doctors who require on-the-spot payment take credit cards.

Patients know, too, that doctors work hard and deserve time off. So they should understand why Medical Economics recently ran an article that began: "So you've been everywhere. You've watched Mauna Loa blow its stack, made the grand tour of Europe, cruised the Nile, and savored the Big Apple. What now?"

Medical Economics sought out top travel agents, consultants, and tour wholesalers across the country to ask what they consider the most special vacations extant for the well-traveled tourist. We insisted only that the trips be small, last between one and three weeks, and cost no more than \$12,000 a couple. . . .

Most patients worry about how taxes cut into their incomes. So they can be expected to understand why physicians need articles about how to shelter income by shifting assets to children via Clifford trusts and family corporations. "You could make your children co-owners in a related service you offer patients," Medical Economics suggests, using an audiology testing lab as one example.

What that housewife who isn't supposed to be reading Medical Economics probably doesn't understand are some other things about health-care costs, however. She might worry about why costs are still rising so much faster than the rate of inflation — 10.3 percent in 1983, with a compound

growth rate averaging 10.6 percent annually since 1950. She might even panic a bit if she read the recent projection (in Medical Economics) that total health spending would jump from \$322.4 billion in 1982 to \$1.88 trillion by 2000, with physicians' share doubling from \$61.8 billion in 1982 to \$133.6 billion in 1990 and \$336.4 billion by 2000.

She is more likely to be outraged by the acrid debate in Congress about whether the steep new increases in medicare costs should be handled by cutting care for the elderly or increasing the deficit or raising taxes. What might shock her would be to read the increasing number of predictions that some form of health-care rationing may soon be necessary — either by pricing some people out of care or by setting limits such as age on who may get certain treatments. And she might start asking her doctor what he was doing to help solve the problem.

The day that Calvin Coolidge left the White house to return to private life, he was escorted to the railway station by a throng of devoted well-wishers.

It was a scene made to order for heightened emotions — for the jump in the throat and the tear in

the eye. Silent Cal, poker-faced, took his seat in the train and waved to the crowd. But they wanted more, at this historic moment. They clamored for a speech.

Mrs. Coolidge urged her husband to say something to them. Reluctantly, the retiring President went out to the rear platform. The crowd became silent, waiting for the memorable words. Coolidge cleared his throat.

"Good-by" he said, and turning, he made his way back to his seat.

**Your best friend is choking, and all you can hear is your own heart pounding.**

Every second counts. Would you know what to do? Red Cross will teach you what you need to know about life-saving. Call us.

We'll help. Will you?



American Red Cross

## Manchester Men's Club To Hold Auction

The Manchester Men's Club will be holding an Auction on August 10th (during the summer Street Art fair), with all proceeds going towards the completion of the Athletic Complex at Klager School. They are looking for donations and also consignment items. For further information contact John Engelbert, Chairman, at 475-2695 or Cliff Tracy, Dave Bunn or Keith Reed.

**Buy, Sell Or Rent In The Classifieds**

## U of M Awards Ceremony

Outstanding students, faculty, alumni and individuals were recently honored at The University of Michigan School of Education's Awards Ceremony. JoAnn Okey, 329 Ann Arbor Hill, Manchester was awarded the Robert S. Fox Memorial Award. This award honors a humane teacher-administrator whose career encompasses a wide variety of educational competencies.

## Council Proceedings

MANCHESTER VILLAGE COUNCIL  
May 21, 1985

The regular meeting of the Manchester Village Council was held May 21, 1985, at the Village Hall.

President Pro-tem Kallewaard called the meeting to order at 7:00 p.m. Present: Becketl, Koebbe, Niehaus, Tapping, Zaborowski,

Zsenyuk, Wiedmayer. Absent: Hinkley. Niehaus moved to approve minutes as corrected, supported by Tapping. Motion approved. Kallewaard submitted Ordinance #123 on Accessory Buildings, to Council for their approval.

Becketl asked if the Village had an Ordinance on Satellite Dishes, or if it could be incorporated with

Ordinance #123. Zaborowski moved to table the Ordinance until the next regular Council Meeting June 3, 1985, supported by Niehaus. Motion approved. Zsenyuk presented Brad Roberts and Louis Leeson's evaluation. Koebbe presented the D.P.W. and Mechanics reports. Reports on file.

Discussion followed on the Street Sweeper. Becketl moved to purchase a Sweeper from Sweepster Jenkins Equipment Co., Inc. - \$6 monthly payments of \$434.32, for a total of \$15,635, supported by Zaborowski. Roll Call Vote: Ayes - all. Motion approved.

Zsenyuk said he would send a registered letter to Thomas Roberts, telling him to remove his vehicle, according to the agreement between the Village and Mr. Roberts. Zsenyuk said he would start interviewing applicants for the D.P.W. position.

Discussion followed on fees for Peddlers, Solicitors, Transients and Route Sales. Council requested a search on previous discussion and action taken in 1982, also check with the surrounding Villages on what their fees are.

Zsenyuk asked permission to contact Consumers Power Company to install a new street light on the corner of Auburn Street and Riverbend Drive. Council agreed.

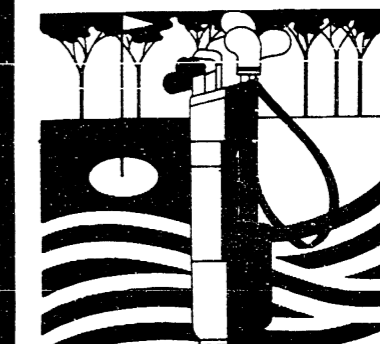
A Thank-you note to the D.P.W. for use of snow fence, was read from Robert Daverman.

Kallewaard said that the Nursery School thanks the Village for the use of a saw-horse.

Becketl moved to adjourn the meeting, supported by Tapping. Motion approved.

Meeting adjourned at 8:35 p.m.

Helen J. Kensler  
Village Clerk



MANCHESTER SUNDAY MIXED LEAGUE

Don and Mary Ann Fielder	25
Vic and Irene Wurster	24
Tim and Linda Adams	23 1/2
Gary and Marti Bondy	23
Dennis and Cathy Herman	22

Ralph and Eileen Hassett	21
Dorney and Marilyn Lamb	20 1/2
Joe and Bev Szczygielski	19 1/2
Jack and Joyce Goughly	19 1/2
Marlin and Peggy Wilson	19 1/2
Armond and Denise Dreesch	19
David and Sue Richardson	17
Keith and Judy Reed	16
Gl and Betty Griffin	13 1/2
Helen Popkey and Rod Hoelt	12 1/2
M. Patterson and J. Lesser	10
Gary and Angie Knauss	9 1/2
Simon and Lenore Steele	8 1/2
Dennis and Cindy Steele	7 1/2
Steve and Karen Wagner	7 1/2

\*Make-up

## CLARK LAKE MANCHESTER LATE LEAGUE

B. Allen & G. Milosh	99
B. Taylor & T. Short	94 1/2
B. Smith & L. Widmayer	92 1/2
R. Huber & B. Preston	86 1/2
C. Little & R. Hough	81 1/2
D. Popkey & S. Dorr	76
M. Blossom & S. Chapman	76
J. Hinkley & G. Lehr	75
K. Kensler & J. Spensley	64 1/2
J. Godfrey & R. Payne	62 1/2
D. Lamb & G. Koebbe	61
L. Declaire & G. Buerle	31

## Space History II

Historic film footage from space will be featured in "Space History II," the 148th presentation of the AstroFest film and lecture series at The University of Michigan. The free public program is set for 7:30 p.m. June 7 in Auditorium 3, Modern Languages Building.

Jim Loudon, AstroFest director and staff astronomer at the U-M Exhibit Museum, will show and comment on some of "The very finest films NASA has ever released." Included are films from Apollo 13, the lunar-landing mission that was aborted in April 1970, and the Apollo Soyuz U.S.-U.S.S.R. joint docking mission in 1975.

"Space History II" is understandable to those who missed the earlier program, "Space History I," but won't duplicate it, according to Loudon. AstorFest is sponsored by the U-M's Exhibit Museum and Department of Aerospace Engineering.

Jim Hartmann Dan Wampler  
313-475-9301 517-456-4305

### HARTMANN CARPENTRY

Licensed and Insured Residential Builder With 14 Years Experience

Pole Barns	Additions
Roofing	Siding
Decks	Remodeling
Rough Ins	Finish Work

**FILLYAW'S MARATHON SERVICE**  
327 West Main Street Phone 428-8576 Manchester, Michigan  
MONDAY-SATURDAY 7:30 am-7pm

**STOP IN & PICK-UP A MARATHON CREDIT CARD APPLICATION**

YOU CAN PURCHASE BATTERIES, TIRES, SHOCKS, PARTS OR HAVE YOUR CAR TUNE-UP FOR THE SUMMER MONTHS. BRAKE JOBS, FRONT END ALIGNMENT OR WHEELS BALANCED. ASK ABOUT OUR INTEREST-FREE EXTENDED PLAN FOR CERTAIN PURCHASES.

**FRONT END ALIGNMENT \$24.95 & up**

**SPECIAL OIL, LUBE AND FILTER \$19.95**  
Up To 5 Qts. Oil

**WE TURN BRAKE DRUMS AND ROTORS**

**DISC BRAKES**  
\*Replace Brake Pads  
\*New Grease Seats  
\*Resurface Rotors  
\*Complete Brake Inspection  
\*Repack Wheel Bearings  
\*Road Test Car

Most U.S. Cars \$59.95  
Front Brakes ONLY  
Metallic Pads Extra

**ROTATE AND BALANCE ALL 4 TIRES \$19.95**

**24 Hour Wrecker Service**

**CERTIFIED MECHANICS ON DUTY**  
All Work Guaranteed

**HAVE YOUR AIR CONDITIONER TUNED UP FOR THE SUMMER MONTHS**

**Discount Auto Parts 25-50% Off**

Air Filter	Ingition Parts
Oil Filter	Dist Caps-Coils
Transmission Filter	Rotor, Spark Plugs
Hose Clamps	Ingition Modules
Muffler Clamps	Resistor Switches
Battery Cables	

Batteries	\$42.95 & up
Disc Brake Pads	\$9.95 & up
Mufflers	\$12.95 & up
Starters	\$29.95 & up
Alternators	\$29.95 & up
Shocks	\$9.95 & up
Spark Plug Wires	\$12.95 & up

**Wheel Bearings**  
Wheel Seals  
Hoses  
Fan Belts

**You Can Use Your MARATHON CARD MASTER CARD OR VISA CARD To Charge Gas, Parts and Labor**

STOP IN AND SEE ME FOR YOUR BEST TIRE DEAL

**GOOD YEAR**

WE NOW HAVE SUPER "M" LEAD FREE GASOLINE

FULL LINE OF MARATHON PRODUCTS

**Carpeting Soon?**

Shop at Lodi for a complete selection of carpeting. Saxony, loop and cut, level loops, tweed, solids, prints — carpeting for every room. Hundreds of samples from which to choose. We use Omalon pad. Our installation is expertly performed and guaranteed.

Ask about our bank financing.

**LODI Town and Country FURNITURE**

Ann Arbor-Saline Rd. at Travis Plaza  
Open Friday nights until 8:30 662-9372  
Free parking at the door

**Black Sheep Tavern**

Lunch Monday-Saturday 11:30-5:00 p.m.

Dinner Monday-Thursday 5:00 p.m.-10:00 p.m.  
Friday and Saturday 5:00 p.m.-12:00 p.m.  
Sunday 12-10 P.M.

BE SURE YOU CATCH ALL YOUR FAVORITE BASEBALL GAMES ON OUR GIANT 10ft TELEVISION

117 East Main Manchester, Michigan  
Phone 428-7000

**THANK YOU MANCHESTER**

This has been a good year for the Manchester Community Schools. We have a lot of people to thank for it. We have tried hard to meet the responsibility you placed in us. We have tried to provide opportunities for kids, all kids. We increased graduation requirements. We continued the gifted and talented program. The outstanding elementary special education program continued to serve kids. The extra-curriculum program including drama, FFA, Athletics, German Club, Computer Club and Journalism has attracted more and more students. We are required to provide additional special education services. We would like to add an Agri-Business Program. We have done our best to contain energy costs while listening to your suggestions for a stronger academic program. Still, it is necessary for us to place a millage proposal on the ballot at the annual school election on June 10. The proposition asks for permission to levy an additional 4.6 mills for one year. We urge you to remember to vote June 10. We need your support in order to continue providing programs for Manchester kids. Thank you again, Manchester, for your support.

Earl Horning, President	428-8610
William Broucek, V. President	428-7438
Kent Talcott, Secretary	428-8990
Ronald Mann, Treasurer	428-8473
Thomas Golding, Trustee	428-7478
James Samonek, Trustee	428-8872
Stephen Chapman, Trustee	428-7123

**TIRB CHEVROLET CO.**

PHONE 428-8212 or 428-8492  
131 Adrian Street Manchester

**CHEVROLET**

**INTERESTED IN LEASING A NEW CHEVROLET?**

Stop In or Call Us For Details

GM QUALITY SERVICE PARTS

**McDermott**





# From Our Far Pacific Islands

Manchester Enterprise  
March 15, 1900

Corp. Hague, who lived with his Grandfather, L. Herman, writes entertainingly of his experiences in the 42d U.S. Vol. Inf. now in the Philippines.

San Juan Del Monte, P.I.  
Feb. 6, 1900

Editor Enterprise: - As I am a Manchester boy, a letter from me in the Philippines may be of interest to the readers of the Enterprise.

It was but a few short months ago that I left the dear old town of Manchester, thinking I would like to see the Philippine islands, so I joined the 42d regiment of volunteers, which was being recruited at Fort Niagara, N.Y. I arrived there Sept. 11th, and was surprised to find such a fine place. It was not long until the regiment was full and we proceeded to San Francisco, Cal., where we arrived Nov. 8th, and immediately took possession of our camp at Presidio.

A trip across the continent is one long to be remembered and I shall never forget the ride through the Rocky mountains; there was some of the finest scenery that I ever saw. I was sorry that I could not stop off when I wanted to, but we were not allowed to leave the train.

San Francisco is a very fine city and we had a splendid time while we were there, but on Nov. 30th, thanksgiving day, we got orders to pack up and get ready to march down to the transport. At

11 o'clock everything was ready and we started. I am sorry to say that instead of getting a nice thanksgiving dinner we got a four-mile march. It was a very hot day and we were all tired out when we reached the dock. We were immediately taken on board the transport Columbia and the remaining six companies got on board the Russian transport, Dana Vostock.

At 5 o'clock everything was ready and we pulled up anchor and slowly moved out. There was a very large crowd at the dock to bid us a last farewell and a wild cheer filled the ears of the spectators. It was a happy departure. As we pulled out further into the bay we passed within a few hundred yards of the battle-ship Iowa, and they fired a salute. It was not long until we passed through the Golden Gate and were on the briny deep, and everybody was on the deck to take a farewell look at God's country. I stayed on deck until the last sight of land faded away, and then retired for the night, but I did not rest very good for the boat was small and she rolled and pitched all night, but I soon got used to that and after eight days of tiresome riding we arrived in Honolulu bay, on the night of December 8th.

The next morning we were given shore leave so I proceeded to take a look at the town. It was but a short walk from the dock to the heart of the city. It is very much unlike the American cities, but is very neat and clean, in fact, it is one of the most beautiful cities I ever saw, with such beautiful streets and driveways. Since it has been under the

American government there has been a great improvement; new buildings being erected every day. There is a curious lot of people there; they are from every nation in the world. I did not have much time so could not get all over the city.

As we left Honolulu on the afternoon of December 11th, I dreaded to think of the ride, but of course it did me no good and we sailed on day after day until at last on the morning of December 31st, we arrived in Manila bay. As we sailed in we passed three of the ships that Dewey sank, but their masts were all that could be seen of them. As last we dropped anchor, and oh my, what a relief. Just a little way from where we were, the whole squadron was anchored; it consists of the Baltimore, Brooklyn, Oregon, Nashville and the torpedo destroyer Terror, which you have read so much about.

At last, on Jan. 2nd we got onto a small boat and sailed up the Pasig River to the dock, where we landed. It reminded me a great deal of Cuba. After the regiment was all ashore we started out and marched six miles, to Caloocan, which place is the scene of one of the greatest battles fought. The whole town is entrenched. I also saw the church that Dewey bombarded; it is a total wreck. On Jan. 27th we moved to San Juan Del Monte, where we are now stationed.

Our regiment is all split up, six of our companies are up in Santa Cruz, 125 miles from here, and have had two or three skirmishes. We have been very lucky so far, but do not know how long it will last. Our only danger is out post duty. We have to go out about one mile and a half from camp and there are only five of us on a post and we are half a mile apart. You have to keep a sharp lookout for bolo men or they will sneak up on you and throw their peculiar weapons at you. Well, this will be all that I will write this time, hoping that I will be fortunate enough to join my friends in a short time.

Yours respectfully,  
Corpl. Wm. F. Hague  
Co. K, 42d U.S. V.

## Swan Productions Completing Financing Of "The Carrier"

Swan Productions, the Ann Arbor based film production company that will be shooting their horror feature "The Carrier" this summer in Manchester, is now completing the financing for that project. Nathan White, president of Swan Productions and director of "The Carrier", says his company expects to break escrow by the end of June. This means that the capital needed to cover the film's budget will by then have been raised and that Swan will begin acquiring the equipment and hiring the talent and crew needed to shoot the film. No firm date has been set for the first day of shooting, but White anticipates the bulk of the scenes in Manchester will be shot in August. "We'll be sure to schedule around the Chicken Broil and the August fairs," he says, "and we'll notify townspeople when we have specific shoot dates."

## Kathryn Miller Named To Dean's List

Kathryn Miller, daughter of Mr. and Mrs. Robert Miller of 10955 Hieber Road, Manchester, is named to the Dean's List for the second semester of 1984-85 school year. To be named to the Dean's List a student must have a minimum 3.5 grade point average on a 4.0 scale.

Hope College is a four-year, coeducational, liberal arts college with an enrollment of 2,519 men and women and is affiliated with the Reformed Church in America.

## Grant Received

years. She has worked hard and has done a fine job for us. To all the others who have assisted in any way, we thank you also.

Norm Walz Construction will be in charge of the renovation. Manchester Electric has also been involved in some of the work.

When the Senior Center has been completed, we know it will be a great addition to the Manchester Village.

## Trout and Salmon Regulations

(Under authority of Act 165, P.A. 1929, and Act 230 P.A. 1925, as amended)

### STATEWIDE TROUT AND SALMON REGULATIONS

Under the authority of Section 3 of Act 230, P.A. 1925, and Act 165, P.A. 1929, as amended, being Sections 300.3 and 303.1, respectively, of the Michigan Compiled Laws, the Natural Resources Commission, at its May 17, 1985, meeting, rescinded its July 13, 1984, order, No. CFI 104.85, and ordered that for a period beginning June 1, 1985, through March 31, 1987, no person shall possess, take or attempt to take, any species of trout or salmon from any of the waters of this state except by hook and line during the open seasons prescribed, and within the minimum size limits and maximum possession limits indicated below.

Statewide open seasons on all trout streams and designated trout lakes shall be from the last Saturday in April through September 30 (longer on waters designated by the Director for extended fishing under Act 165) on all trout and salmon. Statewide open seasons on all other inland lakes and the Great Lakes shall be any time for all trout and salmon except on Lake Huron and its tributary streams and on Lake Michigan and its tributary streams the season on lake trout is from May 1 through August 15. Also, the following defined areas are established as refuge areas for lake trout rehabilitation and are closed to sport fishing for lake trout.

#### Lake Michigan (North)

All waters enclosed in an area commencing at a point 9 miles due west of 7-mile point, then westerly for 13 1/2 miles, then north 5 1/2 miles, then west for 9 miles, then north for 11 miles then west for 18 miles, then south for 38 1/2 miles, then east for 9 miles, then north for 5 1/2 miles, then east for 9 miles, then north for 5 1/2 miles, then east for 18 miles, then north for 5 1/2 miles, then east for 4 1/2 miles, then north for 5 1/2 miles to the point of beginning.

#### Lake Michigan (South)

All waters enclosed in an area commencing at a point 12 1/2 miles due west of the lake entrance of Duck Lake, Muskegon County (T11N, R18W, Sec. 24), then west to the state boundary, then southerly along the state boundary to a point due west of a point 1 1/2 miles south of Lake Macatawa Harbor entrance, then due east 14 miles, then north to point of origin.

#### Lake Huron

All waters enclosed in an area commencing from Pt. Anderson (T41N, R5E, Sec. 17) to a point 21 miles south, then easterly to the international boundary, then northerly along the international boundary to a point due east of the point of land south and east of Bass Cove on Drummond Island (T41N, R7E, Sec. 26) then due west to the intersection of Drummond Island (T41N, R7E, Sec. 26).

Size limits shall be 8 inches in Lower Peninsula streams, 7 inches on Upper Peninsula streams, and 10 inches on all lakes. The possession limit for trout and salmon shall be 5 fish singly or in combination but no more than 2 lake trout or splake from Lake Michigan and its tributary streams or 3 lake trout or splake from Lake Superior and Lake Huron and their tributary streams, except that an additional 5 brook or brown trout may be taken from streams from the last Saturday in April through September 30 only.

In addition to one day's possession limit of salmon and trout, a person may possess an additional two days' possession limit of processed salmon. For the purposes of this Commission Order, the term processed means:

- (a) Canned in a sealed container
- (b) Cured by smoking or drying
- (c) Frozen in a solid state

Any processed salmon or trout aboard a vessel on the water or at dockside shall be included in the daily possession limit.

**\$2.09** 1/2 liter  
8 pack bottles  
plus deposit

**2% Milk**  
**\$1.69 gal.**

**Back Door Party Store**  
500 Ann Arbor St., Manchester, Michigan  
Phone 428-9287

**"Your Cat May Eat It  
Right Out Of The  
Bag!"**

**DAD'S** **ATLAS**  
Over **50** Years **of**  
**Manchester**

18875 WEST AUSTIN ROAD MANCHESTER, MICHIGAN  
PHONE 427-7077

## KIRK EXCAVATING

Sand—Gravel—Fill Dirt  
Basements—Driveways

428-7938

DAVE KIRK

14180 Schlewies Road  
Manchester

## FUND RAISING

Manchester  
American Legion

203 South Adrian St.  
Wednesday 7 P.M.

Manchester  
Sportsman Club  
8501 Grossman Road  
Friday 7:00 P.M.

Manchester  
American Legion  
203 South Adrian St.  
Saturday 7 P.M.