

Mrs. Franklin Reek  
665 W. Main  
Manchester, MI 49158

PO

# THE MANCHESTER ENTERPRISE

20 Cents Per Copy

118TH YEAR VOLUME NO. 29

USPS NO. 327-460

THURSDAY, MAY 9, 1985

## Board Of Education Sets Millage Request At 4.6 Mills For One Year

At a recent meeting the Manchester Board of Education took action to adopt a ballot resolution to be placed before the voters at the annual election on June 10 asking for permission to levy 4.6 additional mills.

The timeline for the proposed millage is for one year. The intent of the millage is to maintain current academic programming with the addition of two curriculum programs. The first program which would be added to the Manchester instructional effort is an agri-business class at the high school for 9th and 10th graders. This program would enable the district to continue its FFA affiliation. The second program is in the area of Special Education at the elementary level. The program would provide instruction for autistic children. According to State of Michigan guidelines, only five students could be enrolled in the class.

Several Board members commented during the discussion

## Annual School Election June 10, 1985

At the Annual School Election on June 10, 1985, voters will elect one member to fill a regular four year term vacancy on the Board of Education. Gary L. Davis is the only candidate for this vacancy.

Also, at the Annual School Election on June 10, 1985, voters will elect one member to fill a two year term vacancy on the Board of Education. The candidates for this two year term vacancy are Nancy K. Bihlmeyer and Jeffrey K. Schaffer.

## High School Year End Calendar

Wed., May 1	Mid marking reports due
Thurs., May 2	Career Day, Washtenaw Community College
Fri., May 3	Student faculty Volleyball game, 7th hr.
Sat., May 11	Manchester Metrics
Wed., May 15	Spring Arts Festival!
Thurs., May 16	Film - Drinking and Driving
	Senior Banquet
Fri., May 17	Varsity Choir Spring Concert
Sat., May 18	Junior/Senior Prom
Tues., May 21	Awards Assembly
Thurs., May 23	Spring Band Concert
Fri., May 24	Last day for seniors
Mon., May 27	No School - Memorial Day
Tues., May 28	Sr. Final Exams, 4th, 5th, 6th, 7th hours
Wed., May 29	Sr. Final Exams, 1st, 2nd & 3rd hours
Thurs., May 30	Graduation practice
	Baccalaureate
Sun., June 2	Graduation
Wed., June 5	Final Exams - 7th hour
Thurs., June 6	Final Exams - 1st, 2nd & 3rd hours
Fri., June 7	Final Exams - 4th, 5th & 6th hours
	END OF SCHOOL

that it was their intent to maintain the excellent programming of the Manchester Schools if at all possible. The intent was to provide the voters with the chance to continue these programs.

Superintendent of Schools Gene Thompson commented, "Without this additional millage it simply would not be possible to continue to provide the program we have developed. The single most significant added cost in the past few years was the increase in high school graduation requirements from 20 to 25 credits. It was necessary to add additional staff as we increased expectations for our kids. In order to keep these programs going it will be necessary to have additional revenue."

Thompson also advised that additional information would be provided to community voters through district newsletters and other sources of information.

## Manchester Alumni Association To Hold 108th Reunion

The Manchester Alumni Association will hold its 108th Annual Reunion at the Manchester K of C Hall on June 8, 1985. Dinner will be served at 6:30. The cost is \$8.00 per person.

Entertainment will be the Jackson Chapter of Sweet Adelines.

Manchester is one of the very few schools that still has the annual alumni meeting. It can be lots of fun to reminisce with those you have not seen in a long time. Remember the "good old days" with former classmates, those upper classmen and the under classmen.

## Miss Poppy 1985



Jamie Lynn Knouase has been chosen Miss Poppy for 1985 by the American Legion Auxiliary Unit #117.

Her parents are Jeff and Marilyn Knouase and she has two younger brothers, Justin and Joshua.

Jamie is a first grader attending Luther Klager Elementary School. She enjoys bike riding, jumping rope and swimming.

Jamie joined The Junior Auxiliary in 1980 through her grandfather Russell Hosmer. She will be helping distribute Poppys on May 17th and 18th.

## High School Spring Arts Festival Wednesday May 15th

Manchester High School will hold its annual Spring Arts Festival Wednesday, May 15, 1985. The exhibition will be open from 6-9 p.m. in the high school gym.

Included for viewing will be this year's outstanding art works from the high school and middle school art classes, science fair projects, student-written computer programs, home economics projects, and woods and metals projects.

Entertainment will be provided by the high school band, the middle school solo and ensemble groups and the varsity choir.

The German Club will be selling baked goods to help finance their trip to Germany and the library will hold its 2nd annual book sale.

From the arts to entertainment, science to sewing, this year's Spring Arts Festival has something to show off for everyone.

## Traveling In Brazil Hazardous

Manchester Enterprise  
November 23, 1922

### But Few Railroads And Auto Highways Are Stiff Grades, Sharp Turns And Mud

Sam Cushman, son of Elmer Cushman, a former Manchester boy, now of Boston, Mass., is traveling salesman for an American company in South America. A letter to his father, describing one of his late trips to visit customers, gives one an idea of that faraway country. The Enterprise is privileged to make excerpts as follows:

Curetyba, Brazil, Oct. 28, 1922. I left Rio de Janeiro last week Thursday for Florianopolis and have been gone some ever since.

I wish you could have been along. You would have said it was real traveling. I reached Florianopolis on Sunday. On Monday I called on customers and sold some goods and was ready to move on Tuesday. I wanted to go to Blumenau and there are no railroads. There is however, an auto line running daily to Itayley on the coast, from which place a boat runs up the river to Blumenau. I took a ferry over to the mainland, for Florianopolis is on an island, and found there were three other passengers for the trip and the car was a Ford.

Well, we had our baggage strapped and roped on the outside and off we started. It had rained the day before and the roads being clay were very slippery. We kept going up and up into the mountains and all the time I was pretty scared. We had no tire chains and the road was all short curves and we skidded something awful. Sometimes it was only a foot from the outside wheel to a drop of several hundred feet. The country is beautiful and I would have enjoyed the trip if it had not been so dangerous.

Part of the trip was made on the seashore, after we had crossed the mountains. That was fine, on the hard sand with the waves coming up almost to the

car. We stopped for lunch at a tiny fishing village where we got a wonderful meal for about 20 cents, our money. The people all through this section are German and this was a regular German meal, with little cakes and all. They told us there that fish are so cheap we could get one weighing 50 or 60 pounds for 15 to 20 cents, as they have no packing plant there now.

Itayley is a little place and I wanted to see only one man, which took me only a few minutes. Then I found that if I waited for the boat to Blumenau I could not get there until the next night, so made arrangements with the auto driver. The road was fairly level and the trip took about two hours.

Blumenau and Joinville are German colonies; that is, a large

continued on page 11

## Chris Hawk Selected For Leadership Seminar

In the belief that America's greatest resource is its youth, Hugh O'Brian established the Hugh O'Brian Youth (HOBY) Foundation in 1958. Its purpose is to seek out, recognize, and reward leadership potential in high school sophomores. During the spring of each year, HOBY conducts Leadership Seminars in all 50 states, the District of Columbia, and Canada.

Chris Hawk, a sophomore at Manchester High School has been chosen to be Manchester's representative to this exclusive Leadership Seminar. Chris is the daughter of Mr. and Mrs. Ronald Hawk of 311 E. Duncan Street. This year Chris is the president of her class, captain of the junior varsity cheerleading squad, is on the advisory board for the new career resource center, and was in charge of this year's homecoming dance. In addition, Chris has been an honor roll student during her two years in high school.

The Michigan Leadership Seminar that Chris will be attending will be held the weekend of May 10-12 at Adrian College. The theme of the seminar is "America's Incentive System", and emphasis will be placed on group interaction. A group of distinguished leaders in business, science, education, government, and the professions will be there to help the students get a realistic picture of how the American incentive system works. During the course of the Seminar, one boy and one girl will be chosen to attend the International Leadership Seminar to be held in Los Angeles, California in August.

## 19th Annual Amateur Boat And Canoe Race

The annual Boat and Canoe Race will be held on the Raisin River in Manchester, Michigan, Sunday, May 19, 1985, at 1:00 p.m. There will be five various events that can be entered. Trophies will be awarded for each event. Rules and entries are available at Krauss Pharmacy in Manchester. Entries close on Saturday, May 18, 1985, at 5:00 p.m.

## Senior Citizens News And Meals

Manchester Area Senior Citizens will have another month of Tuesday and Thursday meals before the summer break—that is, until the beginning of the Ice Cream Social-Chicken Broil era! This coming week, the menu for Tuesday, the 14th, will center around Escalloped Potatoes and Ham. On Thursday, the 16th, Baked Ham will be featured.

To make or cancel reservations or get information about the meals, call Linda Hartmann at 428-8359.

Special thanks go to the Manchester High School National Honors Society for the splendid help with the Chore Day Project, April 27, for the older adults. They really filled the need.

Monday, May 13, Shopping trip to Hudson and Brooklyn, leaving the Emmanuel Parking lot at 9:15 a.m. sharp.

Tuesday, May 14, Bus leaves at 10:30 for Ann Arbor RSVP annual Recognition Dinner which is to be held at EMU Hoyt Conference Center. Reservations are necessary, see Jan. Those staying at home will have a Euchre Party following the lunch here.

Wednesday, May 15, Bus leaves at 7:00 a.m. for Lansing for the 11th Annual Senior Power Day. Tickets are available from Jan Nali. Two representatives for Seniors are requested to attend the monthly Chamber of Commerce lunch at 12:00 sharp. Make reservations with Jan soon.

Thursday, May 16, regular exercise class will be at 11:00 a.m., followed by the Ham Dinner. The guests for the day are those great people from the Salvation Army who are doing so much for Senior Citizens in the County. The program for the afternoon will be "Hypertension" by Julie Say from Chelsea Family Practice Center.

Monday, May 20, Only the van will be available for the shopping trip to Jackson so get your reservations in early. It is Mayor's Day in Manchester and the bus is loaned to the Village for transportation for the honored visitors. See Mayor's Day story

for information and ticket reservations. It is always a great party.

Trips—Call Helen Braun, 428-8906, for information, on Tuesday, Wednesday or Thursdays (unless she's at the Church for a program.) Manchester Area Senior Citizens Council, Inc. is in compliance with Title VI of the Civil Rights Act and with Section 504 of the Social Rehabilitation Act of 1973. The Program Developer is funded through AAA 1-B funding. All gifts to Manchester Area Senior Citizens Council, Inc. are tax deductible.

continued on page 3

### Obituary

**Joseph Lutchka**  
3427 Jacob Road  
Grass Lake, Michigan

Age 74, died suddenly, May 1, 1985, at his home. He was born November 25, 1910, in Westville, Illinois, to Anton and Agatha Scouth Lutchka. He married Josephine Blass in Detroit on June 6, 1936, she survives.

Mr. Lutchka lived in Grass Lake 12 years, moving there from South Lyons. He was employed at the Awrey Bakery as a salesman for 25 years, retiring in 1966. He was a member of 1st Church of God in Ann Arbor, Dearborn Blue Lodge #172 and Redford Commandery #55.

Other survivors include one son, David Lutchka of Grass Lake, one daughter, Martha Jo Miller of Marion, Indiana, one brother, 3 sisters, 6 grandchildren, several nieces and nephews.

Funeral services were held Friday, May 3, 1985, at Cole-Burghardt Funeral Chapel. Rev. Timothy Booth and Rev. Dave Burnett officiated. Burial was in East Grass Lake Cemetery. Memorial Contributions may be made to Church of God, North Sharon Bible Church or Knights Templar Eye Foundation, Inc.

### Spaghetti Feast

Be sure to mark your calendar for the Manchester United Methodist Church Junior Youth Fellowship Spaghetti Dinner on Saturday, May 11th, 6 p.m. We will be selling a limited number of tickets, so don't put off getting yours. The dinner will be served family style and offers spaghetti, salad, garlic bread, beverage and dessert. Cost of tickets: adults - \$4.00, children, 4 thru 10, - \$3.00, under 3 - free. You may reserve tickets by calling the church office, 428-8495; you may purchase tickets at Roller's Jewelry or from any of the Jr. MYF members.

This is the youth's big money making project for spring. By working hard, they will be able to fund, from their treasury, several activities, one of which is an opportunity to see the Christian Rock Group - "Petra". You will be seeing posters around town to remind you of the dinner.

The youth are quite excited about this project, so we really want it to be a great success. You can have one night free from kitchen chores, and an opportunity to socialize with other community members.

### The Manchester Enterprise

150 EAST MAIN STREET  
Manchester, Michigan 48156  
USPS 327-480  
Phone 428-8173

The Manchester Enterprise was established in 1957 and is published each Thursday at 150 East Main Street, Manchester, Michigan, with second class postage paid at Manchester.

Edward E. Steele, Publisher  
Lenore A. Steele, Editor

#### POSTMASTER:

Send Form 3972 to The Manchester Enterprise, 150 East Main Street, Manchester, Michigan 48156.

#### DEADLINES:

All Display Advertising AND Pictures (Black and White Only) Are Due By 5:00 P.M. Every Monday For Same Week Publication.  
All Classified Advertising And News Articles Are Due By 11:00 A.M. Every Tuesday For Same Week Publication.

### Manchester Township Board

Proposed Synopsis of Special Board Meeting of Manchester Township Board held at the Township Hall, April 30, 1985, at 9:00 p.m. with all Board members present. Reason for meeting: Interview firms for implementation of assessing cards.

Edward Janicki of Janicki & Associates was interviewed. His firm is small and has been in business since 1981. He has served as Township Supervisor and is a Level II assessor. He did Dexter Township and is familiar with Washtenaw County Equalization Dept.

Richard Hoffman of Appraisal Research Corp. stated his firm has been in business since 1952. They work in Ohio, Indiana and Michigan. They have certified assessors, Level I through IV working for them.

The Board will send each of the above the requested items and the firms will send us a firm bid. Meeting adjourned at 8:43 p.m.

Submitted by Wilma E. Lentz, Clerk and Approved by Clarence L. Fielder, Supervisor

### 300 Club Winner

The 300 Club winner was Amy Schearle with ticket #845 drawn by Jean Marrison.

## Ping-Pong Tournament At Middle School



Pictured are winners April Barrett, Jennifer Kunzelman, George Stripp and Andy Pagel.

Fifth and sixth grade students have recently competed in a single elimination ping-pong tournament directed by Mr. Boyce. All games were played during lunchtime with the exception of the final game in each division. As a special treat, all fifth and sixth grade students were allowed to watch the final

four games which were played last period on Friday, May 3. Sixth Grade winners were: Jennifer Kunzelman and Andy Pagel. Fifth Grade winners were: April Barrett and George Stripp. Virtually all students exhibited excellent sportsmanship.

### Senior Citizens Meals And News

The Advisory Board will be meeting during the day, May 16, call Robena Boelter, 428-9655, after the 13th for the time.

Don't forget that the Senior Club meets May 22, at Manchester United Methodist Church at 1:30. There is no pot luck - business, cards and refreshments. The Senior Club is now an official part of the Manchester Area Senior Citizens Council, Inc. and will continue to meet once a month as usual.

### Class of 1980

The Class of 1980 is planning their five year reunion and need help locating the following people: Debbie Miller, Ken Miller, Brenda Snay, Mike Mannor, Jim Adams, Kris Hazen, Patricia Klinge, Steve Sporzinski, Barb Cooper, Troy Simchek and Julie Navrock. If you have an address or phone number, it would be greatly appreciated if you would contact Julie Roberts at 994-2326 days or 1-517-423-7736 evenings.

Stay well with a balanced lifestyle. Saline Community Hospital's Classes will show you how. Register now.

1985 Spring Lifestyle Management Programs. Presented by the Education Department Saline Community Hospital Wellness Center. Corner Ann Arbor-Saline Roads & E. McKay Sts. Telephone 429-1509 to register:

#### Slimline Weight Control

A two month program combining weight control courses and optional exercise sessions for a more effective and permanent weight loss. Individual weight control planning sessions. Meeting held for eight consecutive Mondays, May 13 to July 3. Class fee, \$80.

#### 'Healthercise' Fitness

Seven week session. Stretching and exercise routines aimed to achieve weight reduction, flexibility, muscle toning and endurance. Choose from a modular schedule. Mondays and Wednesdays, 5:30 p.m. to 6:30 p.m.; Saturdays, 8:45 a.m. to 9:45 a.m. Meetings held May 14 to July 2. Class fee, \$2 per session.

#### Aerobics

Popular seven-week program. Warmup stretching and aerobic fitness exercises, aimed to achieve cardiovascular fitness, flexibility, muscle toning and injury prevention. Choose from a modular program schedule. Mondays and Wednesdays, 4:15 p.m. to 5:15 p.m. and 5:30 p.m. to 6:30 p.m.; Tuesdays and Thursdays from 9 a.m. to 10 a.m.; Saturdays 8:45 a.m. to 9:45 a.m. Meetings held May 13 to July 2. Class fee, \$2 per session.

#### Aerobics Made Simple

Seven-week program. Toned down version of aerobics for the beginner or mature student. Warmup stretching and aerobic fitness routines aimed at achieving cardiovascular fitness, flexibility, muscle toning and injury prevention. Choose from a modular schedule. Mondays and Wednesdays, 5:30 p.m. to 6:30 p.m.; Tuesdays and Thursdays, 10:15 a.m. to 11:15 a.m. Meetings held May 13 to July 2. Class fee, \$2 per session.

#### Adolescent Stress. Parents Can Help

One-session program. The class will provide parents with insight into the reasons for stressful behavior in teens and generate ideas for effectively assisting adolescents to cope. Casey Whitman, BSM, instructor, has led discussions with junior high and high school students on "Coping With Stress" and has conducted stress management workshops for adults. Class meets Tuesday, May 21, 7:45 p.m. to 9 p.m. Class fee, \$4 for single person, \$2 per accompanying spouse.

### Sell It Thru The Want Ads

**FILLYAW'S MARATHON SERVICE**  
327 West Main Street Phone 428-8576 Manchester, Michigan  
MONDAY-SATURDAY 7:30 am-7pm

CERTIFIED MECHANICS ON DUTY All Work Guaranteed

**STOP IN & PICK-UP A MARATHON CREDIT CARD APPLICATION**

YOU CAN PURCHASE BATTERIES, TIRES SCHOCKS, PARTS OR HAVE YOUR CAR TUNE-UP FOR THE SUMMER MONTHS BRAKE JOBS, FRONT END ALIGNMENT OR WHEELS BALANCED ASK ABOUT OUR INTEREST-FREE EXTENDED PLAN FOR CERTAIN PURCHASES

**DISC BRAKES**  
\*Replace Brake Pads  
\*New Grease Seals  
\*Resurface Rotors  
\*Complete Brake Inspection  
\*Repack Wheel Bearings  
\*Road Test Car  
Most U.S. Cars \$59.95  
Front Brakes ONLY  
Metallic Pads Extra

**FRONT END ALIGNMENT**  
\$24.95 & up

**SPECIAL OIL, LUBE AND FILTER**  
\$19.95  
Up To 5 Qts. Oil

**WE TURN BRAKE DRUMS AND ROTORS**

24 Hour Wrecker Service

**HAVE YOUR AIR CONDITIONER TUNED UP FOR THE SUMMER MONTHS**

**Discount Auto Parts 25-50% Off**

Air Filter	Wheel Bearings	Ingestion Parts
Oil Filter	Wheel Seals	Dist Caps-Coils
Transmission Filter	Hoses	Rotor, Spark Plugs
Hose Clamps	Fan Belts	Ingestion Modules
Muffler Clamps		Resistor Switches
Battery Cables		

Batteries	\$42.95 & up
Disc Brake Pads	\$9.95 & up
Mufflers	\$12.95 & up
Starters	\$29.95 & up
Alternators	\$29.95 & up
Shocks	\$9.95 & up
Spark Plug Wires	\$12.95 & up

**You Can Use Your MARATHON CARD MASTER CARD OR VISA CARD To Charge Gas, Parts and Labor**

STOP IN AND SEE ME FOR YOUR BEST TIRE DEAL

**GOODYEAR**

WE NOW HAVE SUPER "M" LEAD FREE GASOLINE

FULL LINE OF MARATHON PRODUCTS

### Save Your Grocery Receipts

Anyone who shops at Manchester IGA please save your grocery receipts for an indefinite period of time. IGA will give our Athletic Boosters \$1.00 for every \$100.00 spent. This money will be used to help with completion of our Athletic Complex. Put your receipts in the box at the front of the store. The receipts will be counted monthly and then the amount we receive will be posted on the wall.

Let's all work together to help raise money to get the Athletic Complex completed. This isn't just for a few kids - it will benefit kids for years to come and it will be something the whole community can be proud of.

### Manchester Village Planning Commission

Regular Meeting - Tuesday, May 14, 1985, 7:30 p.m. Council Room, Village Hall

#### AGENDA

1. Call to Order
2. Approve Agenda
3. Minutes of Regular Meeting of April 9, 1985; Minutes of Public Hearing of April 9, 1985
4. Applications Rural Housing Corporation Final Site Plan, Manchester Apartments
5. Old Business Sign Ordinance Revisions Special Committee Report - Turn-of-Century Theme Revised Zoning Map Other Old Business
6. New Business
7. Adjournment

## Great Vacations That Come On Cycles

If your vacations are getting more complicated every year, why not consider a vacation that's as easy as riding a bicycle? Eight bicycle tours through some of the most scenic parts of Michigan will be taking place this June and July as part of the larger "Freedom Classic," sponsored by Michigan's First of America Bank Corporation.

Bicycle Touring Network, a professional bicycle racing and touring organization, developed the tours for First of America to take advantage of the unique scenery sprinkled throughout the state of Michigan. Bank employees across the state will be helping along the tour route.

"We selected bicycle touring because we thought that traveling around the Great Lakes, across rolling farmlands, along backroads and through quaint country villages would provide an opportunity to experience some of the best Michigan has to offer," said William F. Smith, vice president and director of marketing for First of America.

The first leg of the tour begins on the morning of June 14th in Sault Ste. Marie and will travel southward, across the Mackinac Bridge, through Cheboygan and Petokey, along the west coast of the state. From Grand Haven, the tour travels inland to Grand Rapids, then to Kalamazoo, Grand Ledge, Lansing, Dexter, Ann Arbor, and through the metropolitan suburbs into downtown Detroit. From Detroit, the tour will loop through Pelee Point and Windsor, Ontario and end back in Detroit on July 7. The high points, though, may very well be the hospitality of the

small towns in between, and the shimmering beauty of the lakes and rivers along the way.

The tours are designed to accommodate all ages and levels of cycling abilities, from the beginner who has just given up training wheels to the advanced riders who participate in races. Each rider is encouraged to set a comfortable pace because, as Mr. Smith says, "it is supposed to be a vacation!"

Accommodations along the way are just as versatile: some of the tours have sleeping quarters in colleges and deluxe lodges, while others will include the creature comforts of deluxe hotels and even a masseuse. Supply vans travelling with each tour are always available to give the weary a lift.

Whether you would like to participate or just watch, you can get more information about the First of America Freedom Classic bicycle tours and races by calling the following toll-free numbers: (800) 222-0072 in the Great Lakes Region, and (800) 222-2082 in Michigan.

Playing cards were originally modeled after the currency of the Tang dynasty in ancient China.

Shop At **BEN FRANKLIN** MANCHESTER, MICHIGAN OPEN 9 to 5:30 Monday thru Saturday 428-9880

# ATTENTION SENIORS

Come in and see our complete selection of graduation supplies

- Announcements
- Name Cards
- Party Invitations
- Memory Books
- Souvenir Announcement Covers
- Graduation Jewelry
- Party Supplies (Napkins, Paper Plates & Cups)
- Thank You Notes

We're your one stop dealer

## Manchester Enterprise

150 EAST MAIN STREET  
MANCHESTER, MICHIGAN  
PHONE 428-8173

**The BLACK SHEEP THEATRE**  
MANCHESTER PRESENTS  
**THE ELEPHANT MAN**  
May 9-26  
Thurs.-Sat. 8:15  
Sun. Matinee 3:30  
Mother's Day Special Mothers Admitted Free

**PEPSI-COLA** 8 PAC 1/2 LITER PLUS DEPOSIT \$1.99  
2 LITER PEPSI PLUS DEPOSIT \$1.49  
Leaf Worms And Night Crawlers  
KEG BEER IN STOCK CHECK OUR BEER PRICES!  
**Back Door Party Store**  
500 ANN ARBOR STREET MANCHESTER, MICH. PHONE 428-9287

## 50th Wedding Anniversary



The family of Mr. and Mrs. Raymond Cousino invite all relatives and friends to an open house at the American Legion Hall in Clinton, Michigan, 204 Jackson Street, on Sunday, May 19, from 2-6 p.m. to honor their 50th Wedding Anniversary. A buffet luncheon will be served. Raymond and Gladys Atkin Cousino were married June 1, 1935, in St. Peter's Catholic Church, Ellettsville by Father Anthony Philbin. They were attended by Grace Sulier, sister of

Mrs. Cousino and Arthur Cousino, brother of Mr. Cousino. They have 4 daughters, Dolores Thompson of Tecumseh, Yvonne Gainsley of Deerfield, Joanne Schiel of Manchester, Rita Knauss of Clinton and one son, Francis of Manchester. Twin sons, Raymond and Richard are deceased. They also have 16 grandchildren and one great granddaughter. They ask that gifts be omitted.

### School Hot Lunch Menu

Monday, May 13, Beef Noodle Soup with crackers, Buchidos (Mexican Chili Dog) Dill Pickles, Pear Half, Milk.

Tuesday, May 14, Chicken Nuggets with sauce, Hash Brown Patty, Carrot & Celery Stix, Pineapple Tidbits, Milk.

Wednesday, May 15, Breaded Beef Patty on Bun, Potato Chips, Tossed Salad with dressing, Ice Juice, Milk.

Thursday, May 16, Crispy Fish Filet, French Fries, Coleslaw, Bread & Butter, Cake, Milk.

Friday, May 17, Fruit Punch, Taco's with sauce, Lettuce, Tomato and Cheese, Buttered Corn, Fresh Fruit, Milk.

### Engagement Announced

Mr. and Mrs. Joseph Ottomano of Chelsea are pleased to announce the engagement of their daughter, Diane, to Mike Schaible, son of Mr. and Mrs. Luther Schaible of Manchester. Diane is a 1978 graduate of Chelsea High School and a graduate of Ferris State College. She is employed at University Health Services. Mike is a 1981 graduate of Manchester High School and is engaged in farming. The couple is planning a December wedding.

OUR SERVICE DEPARTMENT WILL CLOSE  
FRIDAY, MAY 17, 1985, AT 12:00 NOON  
FOR BUILDING REPAIRS  
WE WILL RE-OPEN  
MONDAY, MAY 20, 1985 AT 7:30 A.M.

**Tirb Chevrolet Co.**  
MANCHESTER, MICHIGAN

### Manchester Township Planning Commission Notice Of Public Hearing

TAKE NOTICE that Manchester Township Planning Commission will hold a public hearing on the application of Timothy McConnell, for a Conditional Use Permit to build a residence on premises presently zoned RC Recreation-Conservation District described as:  
The West 1/4 of the Southeast 1/4 of the Northwest 1/4 Section 11, Town 4 South, Range 3 East, Township of Manchester, Washtenaw County, Michigan.  
on May 20, 1985, at 8:00 p.m., at the Manchester Township Hall at 275 South Macomb Street, Manchester, Michigan.

MANCHESTER TOWNSHIP  
PLANNING COMMISSION

### Mann Appointed Director Of Bank And Trust Division

Eugene W. Kuthy, commissioner of the Financial Institutions Bureau, Michigan Department of Commerce, has announced the appointment of Donald P. Mann as director of the Bureau's Bank and Trust Division. Mann will have primary responsibility for the supervision and regulation of the 250 state chartered banks operating in Michigan. He will be directing the division's 51 person staff consisting primarily of field examiners. Mann will report to Deputy Comm. Gary K. Mielock, office of regulation.

Mann joined the FIB in 1970. He has been a bank examiner, senior review examiner and, for the last five years, assistant director of the Bank and Trust Division. He is a business administration graduate of Ferris State College. He lives in Dimondale, Michigan, with his wife Roberta and two children.

Comm. Kuthy indicated that Mann has, during his 15 years with the bureau, made important contributions to numerous special projects relating to the examination functions such as the review and scheduling process; the divided and alternative exam programs with the Federal Deposit Insurance Corp. and the Federal Reserve System; and, most recently, the coordinated examination of all components of multibank holding companies.

### Attention Expectant And New Mothers

The Advantages of Breastfeeding will be the topic discussed at the upcoming La Leche League meeting on May 14, at 7:30 p.m. Our hostess for this series will be Linda Meyer, 8950 Sharon Hollow Road (one mile south of Austin Road). League meetings are open to all women interested in breastfeeding. You need not be a member to attend meetings. Nursing babies are always welcome at La Leche League meetings as well.

For questions or information about breastfeeding at any time, please call one of our leaders: Marsha Chartrand, 428-8831 or Linda Meyer, 428-9475.

### Public Notice

STATE OF MICHIGAN  
PROBATE COURT  
COUNTY OF WASHTENAW  
FILE NO. 85-82097

Estate of James L. Vida, Deceased: Social Security No. 955-01-1025

TAKE NOTICE: On May 30, 1985, at 10:30 a.m. in the probate courtroom, Ann Arbor, Michigan, before Hon. Rodney E. Hutchinson, Judge of Probate, a hearing will be held.

On the Petition of William Vida that administration of the estate be granted to William P. Zeanyuk, temporary personal representative, 19840 Queens Court, Manchester, MI 48156, or to some other suitable person, and that he be appointed personal representative.

And that the Probate Court determine that the deceased died intestate, and for a determination of heirs.

And for a determination that Emma A. Ferenczi is legally disabled, and that her daughter, G. Irene Unrau, is entitled to represent Emma A. Ferenczi's interest in this estate.

Notice is hereby given to George Vida, brother of the deceased, whose survival, address and whereabouts are presently unknown, that as a result of the hearing may be to bar or affect your interest in the estate.

### Births

Mr. and Mrs. Robert Lee Smith, Jr. of Manchester, are pleased to announce the birth of their son, Nathan Cole, on May 5, 1985. He weighed 7 pounds and 13 ounces.

Maternal grandparents are Mr. and Mrs. Lyle Widmayer and paternal grandparents are Mr. and Mrs. Robert Lee Smith, Sr. all of Manchester.

Bob and Jane Braem of Saginaw are pleased to announce the birth of their son David Robert, born March 25th and weighed 8 pounds and 15 ounces. Paternal grandparents are Mr. and Mrs. Robert Braem of Marquette, Michigan and maternal grandparents are Mr. and Mrs. Luther Schaible of Manchester.

### Sons Of The American Legion

Sons of the American Legion will meet Thursday, May 16, at 7:30 at the Legion house. Clouse boys will furnish refreshments.

### Bike-To-Work Day Slated For May 14

For the fourth consecutive year, the Michigan Department of Transportation (MDOT) is sponsoring Bike-to-Work Day. By proclamation of Gov. James J. Blanchard, it will be held Tuesday, May 14, during the May 12-18 observance of National Transportation Week.

People are encouraged to leave their cars at home and bike to work that day.

Purpose of the event is to bring attention to bicycling as an alternative way of commuting, and to encourage broad participation in bicycling as an economical and healthy mode of transportation.

Surveys show that approximately 700,000 Americans commute daily by bike.

The department recommends that anyone choosing to bike to work May 14 follow these suggestions:

- \*Check out your bike to be sure it is in sound condition for riding.
- \*Plan your route in advance.
- \*Take a test ride on it, if possible.
- \*Obey the rules of the road, and always ride to the right-with traffic, not against it.
- \*Secure your bike when you arrive at your place of work.

### Buy, Sell Or Rent In The Classifieds

**Are your gutters and downspouts ready to be replaced?**

Seamless aluminum guttering — 9 colors available

**Free estimates**

**R.D. Kleinschmidt, Inc.**  
19860 Sharon Valley Rd., PHONE 428-8836  
Manchester, Michigan Near Corner of M-52

## HOUSEHOLD AUCTION

Having sold our home, we will sell the following at public auction at 11030 Hieber Road, Manchester, Michigan  
Take Pleasant Lake Rd, to Schneider Road, then South to Hieber Rd, then West

**Saturday, May 11, 1985 at 11:00 a.m.**

Antique mirror, Remington typewriter, 4'x20" Brown marble, Humidifier, 16mm Movie camera, projector & screen, Cement life-size Deer buck, doe & 2 fawns, Round formica table & 4 swivel chairs, T.V. tables, Fireplace set, 25" Magnavox color T.V., Table lamps, West Bend slow cooker, Old fiatware, Card table, Electric frying pan, Stereo-radio combination, Porch glider, 4 old Kitchen chairs, Drop leaf table w/3 drawers, Picnic table, 3-Bar stools, Pots, Pans & misc. dishes, 30 cup Coffee maker, Channel Master T.V. rotor, Books.

Lapidary polisher, Polishing arbor, Grinding arbor, Diamond saw, Rocks, Lapidary supplies, Rock tumbler, Craftsman table saw, Torro Snow blower w/power handle, Garden tools, Garage door opener, Small display cases, 7hp Gambles riding lawn mower, Machinest tools, Mikes, Calipers, Squares, Dial indicators, In-side mikes, Combination squares, Angle blocks, 35 cal. Remington pump, Rifle, Winchester Model 12 - 12 gauge, Shot gun, Marlin 20 gauge shot gun, B.B. gun, Remington 22 rifle, Ammunition, 25hp Mercury Motor Remote Control.

**MANY MORE ITEMS NOT LISTED**  
— Owner —  
**Mr. & Mrs. P.W. Rayment**

**Braun & Helmer Auction Service**  
LLOYD R. BRAUN, CAI JERRY L. HELMER, CAI  
Ann Arbor 313/685-9648 Saline 313/994-6309

## Hit Or Miss

by farley

A reporter for the Toledo Blade who writes an interesting column now and then had one the other day titled "A Multigrained Play or a Rye Experience". This was a rather exciting title but when we explored the context of the column we found that it concerned only the purchase of a loaf of bread—very romantic don't you think? But anyway every now and then, I remember that mother would, just before mealtime, give us a couple of dimes and send us up to Trank's Bakery for a loaf of bread. Now this was not such a complicated procedure. Every night the Tranks would bake up a batch of bread for sale the next day and there were two kinds available—regular and potato, so we had no great problem to make a decision as to the kind we wanted. We also have fond memories of the fact that Mrs. Trank, now and then, would dive in and present us with a cinnamon roll or a cookie or two. This procedure paid off for I wouldn't think of going to any other source for bread than there.

But now in a column a Mr. Tanber tells of his problem in choosing between some 57 kinds of bread available at the modern super market. Making such a choice is indeed not easy. He reports as follows: "As I scanned the massive accumulation of loaves" he says, "a religious cult person came by and grabbed

something labeled "low sodium" bread.

"Is it good?" I asked. "Oh yes," he said. "The low sodium level energizes my brain cells to a point where I no longer care to pursue a materialistic life-style."

"Swell," I said. But I was interested in more basic information. "Does it make good toast?" I asked.

He turned on me and snarled: "You're just like the rest of them. We don't believe in altering the loaf beyond its original natural state."

I apologized and promised that if I ever bought a loaf of low sodium it would never see the inside of my Toastmaster.

Next came an athlete who plucked a package of natural wheat germ off the shelf.

"What's it like?" I inquired. "Nothing on the market is better for you," he beamed. "It's got 60 per cent more protein than white bread."

He was concerned about his health. I wished a loaf of hearty rye would fall on his big toe. The jogger then grabbed something called less bread. "This is what I make my sandwiches with to keep my weight down," he said. "What kind of sandwich?" I asked.

"I like salami, ham and cheese with onions, roast beef and lettuce along with potato chips and ice cream."

Apparently, bread knows few boundaries. A rabbi came and pulled down a bag of Arabic Pita

bread, and a few minutes later a man dressed like an Arab prince carried off a loaf of Jewish rye.

Then there was the short, balding man with a thick moustache who couldn't decide from among the Ayerische Brotzert, the Landbrot, the Herhafle Stolle and the Rottaler. "Try the Schiesler Brot," I offered.

"Das no gut," he snipped. He settled on a loaf of apple honey wheat.

A smartly dressed couple filled their cart with a variety of breads.

"We're Yuppies," the man confided, "so we need an assortment of breads for different occasions." He said they use the country oat for weekends at their cabin, natural health nut for when their fitness-conscious friends come over for brunch, raisin date bread when they have breakfast in bed, and Aunt Hattie's home-styled cracked wheat for when their parents are visiting.

His wife called over: "John, lets get some very thin multi-grain, too, to go with the quiche we're making for our Trivial Pursuit party."

"That's wonderful," John said. "And we'll get some honey wheat for our french toast and caviar."

Marvelous, I thought, and soon they'll be building an addition on their teakwood bread box. A middle-aged couple then approached. The woman picked out a loaf of Black Russian and plopped it into their cart. Her husband, who sported American flags on his lapels, grabbed the bread and hurled it into the produce department.

"No Commie bread in my house," he bellowed. "But honey," the wife objected,

"it's just a type of bread. It's made here."

The husband would have none of that. "It's a Communist plot; they're infiltrating our supermarkets."

The couple settled on some American Heritage vienna.

And there were others. A young woman who said she wanted to be an actress naturally went for the Hollywood Light (with a special formula). Then there was a guy with a huge belly and a scruffy beard who picked up a loaf of Bohemian.

Me? I ended up with a loaf of good old Wonder Bread. Then I went home and made a peanut butter and jelly sandwich. On Toast.

But whenever the subject of bread is discussed I still picture, in my mind's eye the good old days when mother, every once in a while when she had time, would dash off a batch of home-made bread and when it was done and the smell of newly baked bread permeated the kitchen, we would take a couple of generous slices, butter them generously and put between them a thick slice of tongue sausage or of souse or head cheese and while the bread was still warm, consume the result—after spreading the mess generously with mustard and horseradish and thereby in so doing, discover again just what bread, the staff of life, was meant for—there is no satisfactory substitute today; and it didn't come ready sliced either.

"Men tire themselves in pursuit of rest." Laurence Sterne

Old books, curiosities, stories from the '50's — all are included in this year's high school Book Sale. The sale will once again be part of the Spring Arts Festival to be held Wednesday, May 15th, from 6-9 p.m. in the high school gym. Come and browse through our old books — search for that curiosity or special title that will be your "find", or buy your old high school favorite. Books will be sorted on tables for easy browsing. Money earned by the sale will be used to continue updating the collection, giving our students both the research tools and recreational reading they have come to expect from the media center.

### Wheels For Life Bike-A-Thon May 11

Bike-a-thon chairman, Rita Burkhardt, said, "Join in the fun and ride bikes for St. Jude Children's Research Hospital." The date is set for 9 a.m. Saturday, May 11, with a rain date of May 18.

Rita says that it is a family affair, so everyone is welcome to get their sponsors and come and ride for St. Jude's children.

There will be refreshments plus a light lunch furnished by McDonald's of Chelsea.

Bring your sponsors sheet and your bikes.

Those getting their money in early after the ride will receive prizes of food donated by merchants. See you Saturday!

### High School Book Sale

Old books, curiosities, stories from the '50's — all are included in this year's high school Book Sale. The sale will once again be part of the Spring Arts Festival to be held Wednesday, May 15th, from 6-9 p.m. in the high school gym.

Come and browse through our old books — search for that curiosity or special title that will be your "find", or buy your old high school favorite. Books will be sorted on tables for easy browsing. Money earned by the sale will be used to continue updating the collection, giving our students both the research tools and recreational reading they have come to expect from the media center.

See The Manchester Enterprise For Rubber Stamps

## ATLAS of Manchester

### Is Blooming With May Flowers

**BEDDING PLANTS**  
Vegetable and flower plants—by the flat or box— all your favorite varieties.

**PERENNIAL BULBS AND GERANIUMS**

**Weasel**  
Half The Effort-Twice As Quick  
Use As A Hoe, A Cultivator, An Aerator, etc.

**34<sup>95</sup>**

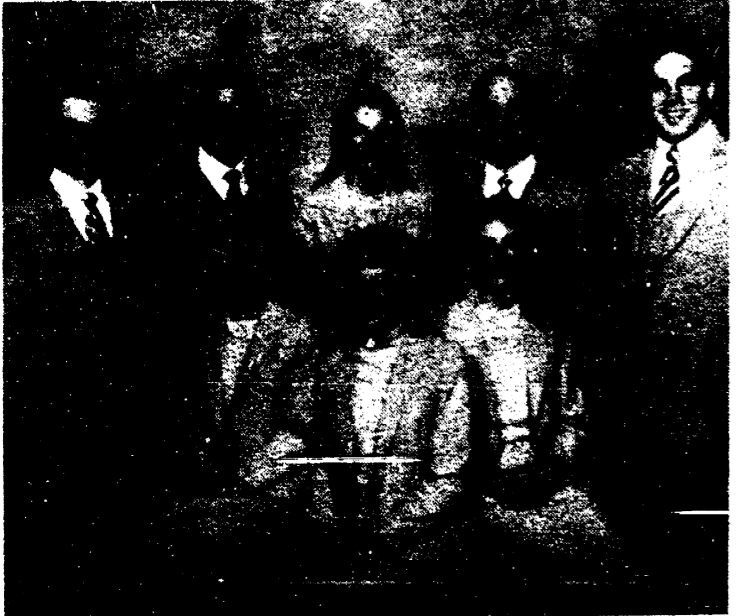
**SAVINGS COUPON**  
SAVE 30%  
ON ALL  
PACKAGED  
GARDEN SEEDS  
With This Coupon  
NO LIMIT  
1 Coupon Per Customer  
Expires 5/15/85

**8.99**  
50-Ft. Safety Red Nose is tire-cord reinforced with brass couplings, 3/4-in. ID 8504 (491184175)

**ATLAS Of Manchester**  
(Formerly Mann's Feed Mill)  
18875 WEST AUSTIN ROAD MANCHESTER, MICHIGAN  
PHONE 428-7077  
Hours: Monday-Friday 8-5 P.M. Saturday 8-4:30 P.M.

**KENT**  
THE GUARANTEED FEED

# The Messengers To Perform At North Sharon Bible Church



The Messengers, representing Maranatha Baptist Bible College, Watertown, Wisconsin, will present a program of instrumental and vocal sacred music at the North Sharon Bible Church, 17999 Washburn Road, Grass Lake, Michigan, on Friday, May 31, 1985, at 7:00 p.m. The public is cordially invited to attend the musical presentation. There is no admission charge, but a freewill offering will be received.

## 1984-85 Student Art Exhibition

In recognition of the importance of Art in the public schools, the Washtenaw-Livingston Education Association is sponsoring its 1984-85 Student Art Exhibition. Students (K-12) from Brighton, Dexter, Hartland, Howell, Lincoln, Manchester, Pinckney, Saline, Whitmore Lake, Willow Run and Ypsilanti will be displaying work they have produced in their school art programs. The Exhibition may be seen at the Dexter Area Museum, 3443 Inverness in Dexter and will be open May 11 and 12, and May 18 and 19 from 1-4 p.m. There will be a special evening viewing on May 13 from 7-9 p.m. Students from Manchester who will have work in this exhibition include: Lisa Wiley, Renea Drouare, Eric Carter, Tom Golding, Lisa Booth, Chris Creps, Terri Walker, Brendan Lenski, Cliff Tracy, Beth Evans, Sara

Samonek, Rebecca Darby and Brad Uphouse from the high school and Michelle Sannes, Sherry Rickelmann, Lynette Wright, Linda Hansen, Jeremy Lenski, Valeri Dunn, Angie Campbell and Jim Hakes.

## Where Does Your Food Dollar Go?

"The middleman is getting rich," say some. "It's this big supermarket," say others. "It must be the farmer," still others maintain. Statistics from the U.S. Department of Agriculture indicate that none of the above statements about where your food dollar goes are true. The dollar you spend at the store for food gets split up in so many different ways that you can't honestly say that anyone is getting rich off of it.

dollar, the group getting the largest portion is labor. They receive an average of 83 cents. These are the folks who process, haul, package, put on the store shelves, check you out at the cash register, and do all the things necessary to get your food from the farm to the table in the form that you want it. You certainly can't say that they are getting rich.

The farm share of the dollar is 27 cents. Keep in mind that this is a gross figure for the farmer. It certainly doesn't mean he is netting 27 cents for every dollar you pay at the store.

The next figure is the 8 cents that goes for packaging. These costs went up last year due to higher costs for paper-board shipping boxes and plastic materials.

Transportation and before-tax profits take a nickel each. Transportation was up 3% last year due to higher freight rates on the railroad. Truck rates were actually lower in 1984 because of lower fuel costs.

Rent and depreciation and fuels and electricity took 4 cents each; advertising 2.5 cents; interest 2 cents; repairs a penny, and other costs were 8.5 cents to make up the rest of the costs.

It's easy to look for a scapegoat for items that you purchase on a regular basis, but in the case of food, it's still a pretty good bargain, and you can see from this division of the dollar that nobody is gouging anybody.

## May is National High Blood Pressure Month

May is National High Blood Pressure Month. As part of the nationwide focus on high blood pressure, Chelsea Community Hospital is sponsoring FREE BLOOD PRESSURE SCREENING on the following dates at these locations: First of America Bank, 10903 Manchester-Chelsea Road, Manchester, on Wednesday, May 8, from 10 a.m. to 3 p.m.; Comerica Bank-Jackson, 135 E. Main, Manchester, on Friday, May 24, from 10 a.m. to 3 p.m.

## Anne Gordon Appointed To Parent Advisory Committee

At a recent meeting of the Manchester Board of Education appointed Mrs. Anne Gordon to the Washtenaw Intermediate School District Parent Advisory Committee. Mrs. Gordon has served on the committee previously and agreed to accept an additional assignment.

Mrs. Gordon is also active in the Klager PTO and has made significant volunteer contributions to the Manchester Community Schools.

Superintendent Gene Thompson commented, "School districts are very dependent upon and grateful for persons such as Mrs. Gordon. Our volunteers provide an invaluable service to kids. I was extremely pleased that Mrs. Gordon would accept an additional appointment to the Advisory Committee. She has done an excellent job of representing the school district."

## Safety Belt Law Signs Going Up

The first of 100 signs alerting motorists to Michigan's new safety belt law are going up at freeway rest areas and border points around the state. Michigan Department of

Transportation (MDOT) sign crews will place the three-by-four-foot signs at all 77 rest areas along the state's 1,788 miles of freeways in advance of the law's July 1 effective date.

Another two dozen signs will be erected at major highway entrances to the state, alerting visitors to Michigan's safety belt law.

The signs at the rest areas read: "Buckle Up...It's the Law!" and replace existing "Are You Putting Me On?" signs the transportation department placed there several years ago to encourage motorists to use their safety belts.

"We want to help save the lives of motorists and their passengers traveling on Michigan highways," said MDOT Director James P. Pitz. "We believe that if just 70 percent of front seat occupants buckle up regularly, between 200 and 300 lives would be saved annually in Michigan."

Michigan is the fifth state in the nation to enact safety belt use legislation. Seven states have adopted such legislation during the past 10 months.

The new law requires the driver and all front-seat passengers of motor vehicles to wear safety belts. Failure to comply can bring a fine of up to \$10 until January 1986, when the fine will increase to \$25.

## Sell It Thru The Want Ads

**Notice-Change Of Meeting Date**

Manchester Township Planning Commission will hold the May meeting at the Township Hall-275 S. Macomb Street- on Monday, May 20, 1985, at 8:00 p.m., due to Memorial Day falling on regular meeting date.

5-2,5-9,5-16-85 MANCHESTER TOWNSHIP PLANNING COMMISSION

**"DAD'S"** Now Available ATLAS of Manchester

18875 WEST AUSTIN ROAD MANCHESTER, MICHIGAN PHONE 428-7077

## Construction Resumes On Zilwaukee Bridge

Construction is starting up again on the Zilwaukee Bridge.

The weather is warm enough now for the contractor, S.J. Groves & Sons of Minneapolis, to begin erecting the high concrete segments that will carry I-75 Freeway over the Saginaw River at Zilwaukee.

State Transportation Director James Pitz said the construction schedule calls for completion of the northbound bridge this year. Work will begin next year on the southbound bridge. All the support piers are already in place.

Opening of the 1.5 mile-long bridge is slated for the fall of 1987.

All 52 support piers and 683 of the 1,592 reinforced concrete segments have been erected. More than 900 segments, weighing up to 180 tons apiece, remain to be placed, but nearly 500 of them have been cast in a plant built on the bridge site for that purpose.

Pitz noted that contract procedures require both the Michigan Department of Transportation (MDOT) and the Groves Company to have consulting engineers with extensive bridge-building experience on the site at all times during the construction. MDOT is

represented by Howard Needles, Tammen and Bergendoff of Kansas City, MO, and the contractor by T.Y. Lin International of San Francisco.

Some erection procedures have been altered to provide extra margins of safety.

The construction cost is pegged at \$118 million, less proceeds to be realized by the sale of the segment plant and the equipment purchased from the former contractor, Stevin Construction, Inc. of the Netherlands. They are conservatively estimated to be worth \$3.5 million.

The cost includes the \$36.9 million contract with S. J. Groves, \$74.8 million paid to Stevin and \$7 million paid to Walter Toebe Construction Co. of Wixom, MI.

The Toebe Company repaired damages caused by an overload, which resulted in failure of an expansion joint on the bridge deck and the tilting of a 300-foot-long deck section. The failure in August 1982 also pushed one of the bridge piers nine inches out of plumb and cracked the footing beneath it.

Federal funds are paying 90 percent of the cost of the bridge.

There are more than 50,000 earthquakes throughout the world every year.

## New MSU Extension Director Appointed To Washtenaw County

Morse L. Brown has been appointed the Michigan State University Cooperative Extension Service director in Washtenaw County, effective May 12, 1985, pending approval of the Provost of Michigan State University.

Brown obtained his bachelor's degree in agriculture education from Alcorn State University (Mississippi) in 1965.

At the time of his appointment, Brown was district conservationist for the U.S. Soil Conservation Service in Ann Arbor. From 1965 to 1982, he worked as district conservationist in Muskegon and Ogemaw counties, and prior to that, in New Hampshire.

In his new capacity, Brown will spend a percentage of his time carrying out administrative responsibilities as well as conducting Extension education programs in the areas of Natural Resources, Public Policy and Agriculture.

He will also maintain a working relationship with the Washtenaw County Board of Commissioners, the public and various organizations while obtaining financial support for the programs and activities of the Extension Service.

Brown will be responsible for the continuation and improvement of Extension educational programming in agriculture and marketing, natural resources and public policy, 4-H youth and home economics.

## Hospital Sponsors Workshop For Adult Children Of Alcoholics

Chelsea Community Hospital will offer in cooperation with the Michigan Alcohol Addiction Association a workshop entitled Treating Adult Children of Alcoholics. The presenter is Robert J. Ackerman, Ph.D. A workshop will be held on Monday, May 13, 1985, at Chelsea Community Hospital. The workshop will be for professionals in the field interested in this topic.

The workshop is part of the continuing program by the Chelsea Community Hospital Substance Abuse Department to meet the needs of the community. Substance Abuse services at the Hospital include inpatient, outpatient, and residential care. Individuals interested in learning more about the services offered by the Substance Abuse Department at Chelsea Community Hospital should call 475-1311, Ext. 215.

## Cooking Corner

**Betty Crocker's Festive Fruit Salad**

Twenty-four Hour Salad can be an around the clock favorite.

Prepare Old-fashioned Fruit Dressing. Combine fruits and marshmallows. Pour the dressing over the ingredients and toss. Cover and chill 12 to 24 hours. Serve in a salad bowl or in lettuce cups. If you like, garnish with orange sections and maraschino cherries. 8 to 10 servings.

- Old-fashioned Fruit Dressing**
- 2 eggs, beaten
  - 2 tablespoons sugar
  - 2 tablespoons vinegar
  - 2 tablespoons pineapple syrup (from the canned pineapple)
  - 1 tablespoon butter or margarine
  - Dash of salt
  - 1/4 cup chilled whipping cream
- Combine all ingredients except the whipping cream in a small saucepan. Heat just to boiling, stirring constantly. Remove from heat and cool. In a chilled bowl, beat the cream until stiff. Fold in the egg mixture.

**MANCHESTER AREA RESIDENTS**

The Land Fill has had a large amount of non-residents dumping at our Land Fill. Your tax dollars are paying for these non-residents trash. Manchester, Freedom, Sharon, Bridgewater Townships, and the Village are diligently checking for dump permits or proof of residency. You may be inconvenienced a bit, but please bare with us. Your patience will be appreciated. Note: Do not loan your permit to non-residents. If you do, you may have your permit revoked.

Manchester Village Freedom Township  
Manchester Township Sharon Township  
Bridgewater Township

**Jim's Car Clinic HAS MOVED TO 11523 Pleasant Lake Road**

**COMPLETE TIRE SERVICE**  
**MINOR AND MAJOR REPAIR**  
**FARM EQUIPMENT REPAIR**  
**Phone 428-7377**  
**24 Hour Towing Service 428-7377**

**Eckrich Franks**

**\$1.69 lb. Save 40c**

PHONE 313-428-8366

**G. E. Wacker Inc.**

GASOLINE-FUEL OIL-GREASE  
MOTOR OIL-DIESEL FUEL  
9050 Chelsea-Manchester Road  
Manchester, Michigan 48158

SUMMER HOURS  
MON. - FRI. 7 am - 9 pm  
SATURDAY 8 am - 9 pm  
SUNDAY 9 am - 9 pm

**Carpeting Soon?**

Shop at Lodi for a complete selection of carpeting. Savony, loop and cut, level loops, tweed, solids, prints—carpeting for every room. Hundreds of samples from which to choose. We use Omalon pad. Our installation is expertly performed and guaranteed. Ask about our bank financing.

**LODI Town and Country FURNITURE**

Ann Arbor-Saline Rd. at Travis Plaza  
Open Friday nights until 8:30 662-9372  
Free parking at the door

REMEMBER **Mother's Day May 12th**

Serve her breakfast in bed, give her a big kiss...charm her with a gift from COOPERS and save.

**ALL COORDINATES Sportswear Groups FOR MOM ARE 20% OFF**

Bring In This Ad and Receive An Additional 10% Off

**Coopers** OF BROOKLYN • ON THE BOULEVARD

**Get An Edge!**

We can be your biggest asset in business. Let us show you just what a new look to your professional printed matter can do. We're fast and efficient.

**THE MANCHESTER ENTERPRISE**

150 EAST MAIN STREET MANCHESTER  
PHONE 428-8173

**VideoGenics**

**VIDEO TAPING SERVICE FOR ALL OCCASSIONS**

BETA OR VHS  
Call: Karen Rodriguez  
428-9128

**FUND RAISING**

**Manchester American Legion**  
203 South Adrian St.  
Wednesday 7 P.M.

**Manchester Sportsman Club**  
8501 Grossman Road  
Friday 7:00 P.M.

**Manchester American Legion**  
203 South Adrian St.  
Saturday 7 P.M.

# Klager School News



Holly Seales and Jacques Barbour reflect the intense concentration of their initial instrumental music concert.

## Klager Arts Festival

Klager Elementary held its first Arts Festival on Thursday evening. Sculpture, mobiles, mosaics and paintings were among the outstanding art work on display in each classroom.

The fourth grade Klager flute students presented a brief, but spirited concert for parents to enjoy.

Students, their family and friends attended en masse to make this a highly successful evening!



Robby Blatchford and Nicole Weidmeyer hold their chicks carefully.

## Chick Day

Baby chicks and a warm spring day. What a treat. Mrs. Weidmeyer brought a boxful of baby chicks and tiny turkeys to share with the klager team room last week.



Mr. Roger Morrison leads Klager fourth grade flutists in their maiden concert held the night of Klager's first Arts Festival.

## Varsity Choir Spring Concert


FRIDAY, MAY 17, 1985

8:00 p.m.

\$1.50 Adults  
\$1.00 Students  
And Senior Citizens

HIGH SCHOOL AUDITORIUM

High interest, flexible protection, payments to suit you, and a non-smoker's discount . . .



LARRY BECKTEL  
135 East Main St.  
Manchester, Mich.  
Phone 428-7331

Universal Life from Farm Bureau Life Insurance Company of Michigan gives you low-cost life insurance protection—easily increased or decreased to meet changing needs—and pays a high rate of tax-deferred interest.

Now, add coverage for your family.

Making your future a little more predictable.

FARM BUREAU INSURANCE GROUP



Paul Schulte worked hard, but the wand Ronald gave him would never stand up straight!

## Klager Health Fair

The High School Leadership class, directed by Phyllis Heinrich, presented an excellent Health Fair at Klager, Friday. Students were able to visit the fair and participate in a wide range of health oriented activities. Among the centers were stations for measuring blood pressure, tracing a child's torso and locating the main body organs; heart, lungs, etc., practicing seat belt safety, height and weight graphing, introduction to the four basic food groups and showing emotions using fingerprint faces.

The instructive day concluded with an assembly on health and physical fitness led by Ronald McDonald.

Klager students and staff wish to thank the High School Leadership class for all their time and effort. We all learned a great deal.



"Head and shoulders, knees and toes" Mrs. Groeb and Ronald McDonald show how to exercise.



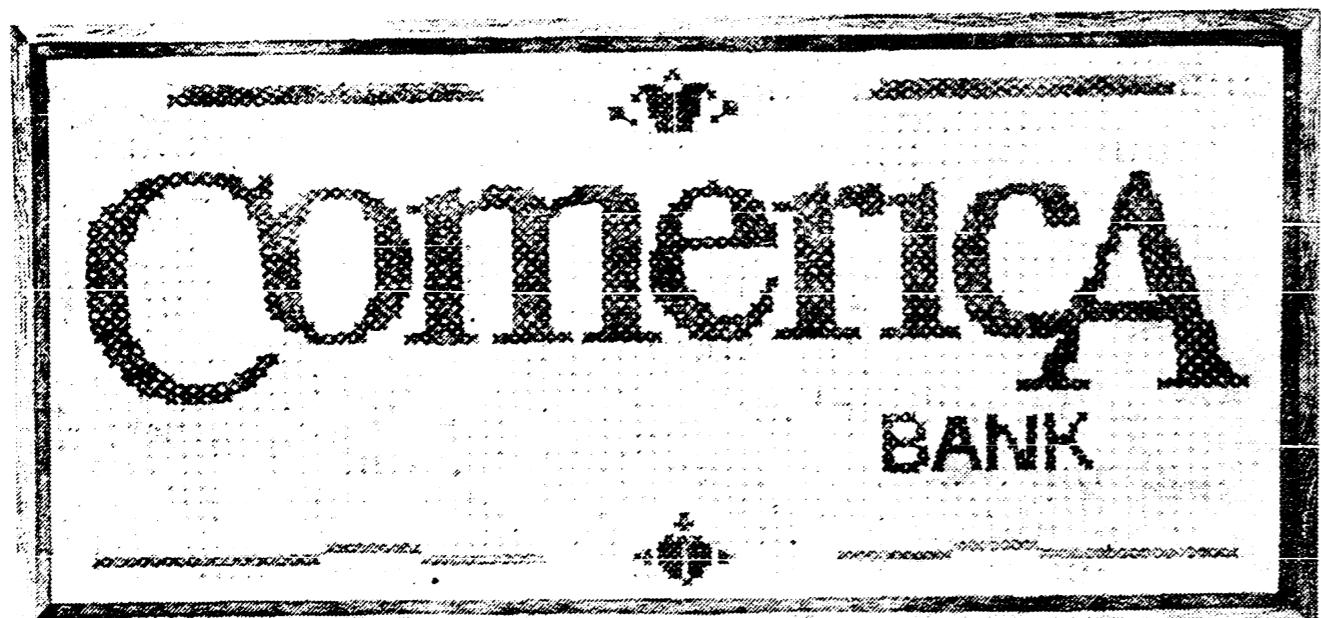
Karen Goodell, Jon Way and Ryan Roberts talk with Rob Gilow about the four basic food groups.



Joey Funk demonstrates the safe way to ride, with your seat belt buckled.



Chris Hawk enjoys Michelle Shuey's thumbprint people who show how it is to feel happy.



# WE'RE RIGHT AT HOME IN MANCHESTER

Comerica Bank is right at home on Main Street, bringing you all the benefits and services of a big-city bank, but with all the friendliness and personality of your neighbor.

### Comerica means "clout."

As part of the Comerica family of banks, we have widespread financial clout. That means you benefit from our connections throughout Michigan, the United States, even world-wide. And, of course, right here in Manchester.

### Comerica means services.

At Comerica Bank, you always get our friendly, personal attention and a full range of banking services including:

- 24-hour banking with the Wonderbank®

- Comerica C.O.D. Account
- Individual Retirement Account
- Simple Interest Loans
- Paycheck Deduction

And more. We're leaders in banking, and we'll continue to be—right here in Manchester, where we're right at home.



135 E. Main St. • Manchester

## How to Protect Your Biggest Investment



YOUR FARM IS YOUR LIVELIHOOD, YET ONE DISASTER COULD WIPE IT AWAY. COMPLETE FARM INSURANCE COVERAGE IS YOUR BEST PROTECTION. SAFEGUARD YOUR INVESTMENT BY SEEING US ABOUT OUR FARM POLICIES.

WE'LL HANDLE ALL YOUR NEEDS

**SUTTON AGENCY, INC**

DONALD SUTTON, Agent      PHONE 313-428-7217      HASTINGS MUTUAL INSURANCE

136 EAST MAIN STREET      MANCHESTER, MICHIGAN

Monday-Tuesday-Wednesday-Friday 9-12:30 & 1-4:30  
Thursday 9-12 Noon

Jim Hartmann Dan Wampler  
313-475-9301 517-456-4305

## HARTMANN CARPENTRY

Licensed and Insured Residential Builder With 14 Years Experience

Pole Barns Additions  
Roofing Siding  
Decks Remodeling  
Rough Ins Finish Work

## CLINTON THEATRE

Friday & Saturday  
7:30 and 9:20

Sunday 7:30

ALL SEATS \$2.00

The greatest adventure ever born!



Chelsea Community Hospital  
775 South Main Street  
Chelsea, Michigan 48118

## Mother's Day Brunch

May 12, 1985

11:00 a.m. - 1:30 p.m.

Adults - \$6.95

Children - \$3.50

Free Flowers for Mothers  
Balloons for Children

Plan now to bring your favorite Mothers to our beautiful, relaxing Brunch. A full breakfast menu plus a main course of roast beef, salad and desert bars, fresh fruit and your choice of beverages will be served.

### Open House

11:00 a.m. - 2:00 p.m.

Stroll the grounds, take a tour or view displays to help us celebrate National Hospital Week and Michigan Hospital Week.

For more information call: 475-1311 Ext. 390

### Dexter-Ann Arbor Run

On Saturday, May 25, 1985, over 4,000 runners from throughout the midwest and Canada will compete in the twelfth annual Dexter-Ann Arbor Run. The half-marathon (13.1 mile) will start in Dexter at 8:15 a.m. while the 10 k (6.2 mile) race will begin at 8:00 a.m. at Delhi Park. Both races will follow a scenic course along the Huron River and finish on Main Street in downtown Ann Arbor. Registration forms are available at running stores throughout the state, at First of America - Ann Arbor offices and by mail. Send a self-addressed stamped envelope to Dexter Ann Arbor Run, 312 Wilton, Ann Arbor, MI 48103. Race fees are \$9.00 with T-shirt and \$6.00 without for mail registration prior to May 16. In person registration will take place at The Ann Arbor Inn, 100 S. Fourth Ave. on May 17 and 18 at \$9 with T-shirt and \$6 without. Late registration is on May 24 with fees \$14 with T-shirt or \$11 without.



### Invitational Art Show Exhibits Member's Work

"John Muir Trail", a large watercolor by Ardelia Swanberg, was accepted by the Livonia Cultural League and the Livonia Art Commission into their "4th Purchase Award Invitational Art Show". The invitation followed the jurying of artist's slides of their work by experts in the art field. "John Muir Trail" is another of Swanberg's paintings in a series studying light and shadow in nature. This work carries the viewer down a trail lined with trees and the sunlight that passes between them. The "4th Livonia Purchase Award Invitational Art Show" is exhibited in the Livonia City Hall now through May 17. Meeting, May 9th. Members interested in a possible consignment opportunity

In a Travers City antique shop should attend a meeting at Jo Swanberg's home, 14108 E. Austin Road, this Thursday, May 9, at 7:30 p.m. Questions can be answered by calling her at 428-8798.

### State Launches Search For Outstanding Seniors

The Michigan Office of Services to the Aging (OSA), in cooperation with the Michigan State Fair, launched this week their annual Senior Citizen of the Year Awards Competition. The awards, one in the category of Service; the other for Leadership, will be presented at the Michigan State Fair on Senior Citizens Day, Monday, August 26, 1985. Applications have been distributed to senior organizations throughout the state. The deadline for submitting applications is Friday, July 26. The campaign, while not only a fun activity for these agencies to be involved with each year, "is something the seniors have come to look forward to," says OSA Director Olivia P. Maynard. "It's

a way of recognizing that older people are a vital and integral part of Michigan communities." Only organizations may submit an application. Copies of application forms can be obtained through the Office of Services to the Aging or regional Area Agencies on Aging. Anyone 60 or older is eligible as a candidate for the awards. For more information contact the Public Affairs Section, OSA, P.O. Box 30026, Lansing, Michigan 48909, or call (517) 373-0049.

### First Annual Michigan Great Lakes Wildlife Festival

Clare will be the site of the First Annual Michigan Great Lakes Wildlife Festival scheduled for Saturday and Sunday, May 25 and 26. The Festival, sponsored by Ducks Unlimited and the Stroh Brewery Company, will bring together Michigan's finest wildlife art and artists and will feature contests for the Michigan Ducks Unlimited Artist of the Year and Carver of the Year. A art show and sale will be held both days at the Town - Country Restaurant and an antique duck decoy display will be featured at the Doherty Motor Hotel on Saturday and Sunday, including a swap and sell. Entries for the Artist of the Year and Carver of the Year contests will be on display at the Doherty Saturday afternoon and at 6:30 p.m. Saturday evening, an awards banquet will be held announcing and honoring the contest winners. Dietmar Krumery will be the featured artist at the Festival. Among his awards are Ducks Unlimited Artist of the Year 1980, Michigan Duck Stamp Contest 1981, and the Michigan Ducks Unlimited Artist of the Year 1984. The public is invited to join in these events.



Thomas Edison's formal education consisted of three months' attendance at a Michigan public school.

### Traveling In Brazil Hazardous

number of Germans got certain concessions from the government and settled there. Blumenuau certainly looked German-like and is as different from other Brazilian towns as possible. It is the first place in Brazil where I have seen houses that were not plastered on the outside. The usual house in Rio and in all Brazil is made from a very rough brick and plastered. The bricks are much larger than the ones we use and much softer, and so rough they would not make a good surface. In Blumenuau the bricks were like ours and the houses are not plastered on the outside. The houses are built with a heavy wooden frame and between the timbers are bricked in. They are pretty and neat and have no walls around them. There is a very good German hotel there, too. The next day I called on my customer and got through at 11:00 a.m., then I got in an auto and started for Janagua. It was raining and I was afraid of the roads, but the man said he could make it. I thought the other trip in the rain was bad, but it was nothing compared to this. The mud was so deep that we got stuck—and no chains. Getting out of that, we continued going up and up and then down and then up again. The country was beautiful, but you could never get me to take that trip again. The road was never straight and is all curves on the edge of the mountain, and I was glad when the journey was over. I was lame and sore from being thrown about. We stopped for lunch at a little hotel at a crossroads where they had an old-fashioned grist mill. A great wheel about 20 feet across, ran by a little stream of water, turned a stone. The wheel was entirely of wood and was so unusual that I stopped and watched it for quite a while. We had a good meal at the hotel. Arriving at Joinville I found it similar to Blumenuau, but a little larger. It seemed queer to hear every one speaking German, and all German names. I left there by train for Curitiba, and it was a trip worth taking. The most beautiful country I have ever seen. It was through mountains for the first half of the distance. We kept going up and up and winding around. For two hours I watched the same peak as we circled around it. At one place I could look down and see the track we had passed over just below and across the valley it could be seen at two different levels. The grades were very steep and the curves something awful. All the mountains are covered with wonderful timber and there are little farms all through. Men were clearing off land that

seemed almost straight up and down. Later on we came to great cleared spaces, thousands of acres with no trees and wonderful soil, and there was never a farm. Why those people would take so much trouble to clear off little patches in the mountains when a few hours north of them was this wonderful farming country, is more than I know. It's probably because some rich cattleman owns the whole thing and won't sell. It was queer to see the track twist and turn through these cleared hills where there are no fences, and the telegraph line ran straight through and sometimes would be a mile from the railroad. There were some cattle in this section, but not very many. Arriving at Curitiba I found it the largest place in this section and it looks like a nice place, though I haven't been around much yet. I can take a train to Rio or go by boat, the latter being recommended. SAM.

### XI Epsilon Iota

Xi Epsilon Iota chapter, together with her sister chapter in Beta Sigma Phi, Lambda Nu, celebrated the fifty-fourth anniversary of the founding of our sorority on April 30, 1985. The ceremonies were held at Weber's in Ann Arbor. Part of the evening's program was the naming of our chapter's Woman of

### Washtenaw Walkers Club Begins Walks

The Washtenaw Walkers Club will begin their evening walks for the year on Monday, May 13 at 7:00 p.m. Walks are held on Monday and Wednesday evening from 7:00-8:00 p.m., marking the County Farm parking lot at Platt Road in Ann Arbor. The walking club is free of charge and open to the public. The morning walks are continuing on Tuesday on Thursday mornings from 10:00-11:00 a.m. also at County Farm Park. For more information call WCPARC at 973-2575 and talk to Jackie Perry.

### Scoliosis Association of Michigan

The next meeting of the Lenawee-Monroe Unit of the Scoliosis Association of Michigan will take place Thursday, May 9, at 7:30 p.m. at the Milton C. Porter Center, 2946 Sutton Road, Adrian. The Unit is a support group and information source for those who suffer from this spinal abnormality. During this final meeting of the season, plans for next year will be discussed, information on recent research will be shared, and tips on dressing attractively will be given. All are welcome. For more information, please call Renata Snyder at 517-423-3164, Dorothy Heinlen at 313-529-3038, or Marilyn Pinheiro at 419-385-9618.

### Golf Standings

CLARK LAKE MANCHESTER LATE LEAGUE	
K. Kensler-J. Spensley	2
J. Hinkley-G. Lehr	2
G. Milosh-B. Allen	2
C. Little-R. Hough	18 <sup>1</sup>
B. Taylor-T. Short	16 <sup>1</sup>
J. Godfrey-R. Payne	13 <sup>1</sup>
L. Widmayer-B. Smith	11 <sup>1</sup>
B. Preston-R. Huber	1
M. Blossom-S. Chapman	1
G. Beuerle-L. DeClair	1
S. Door-D. Popkey	make-u
D. Lamb-G. Koebbe	make-u
LOW HANDICAP 0-10	
B. Allen	3
LOW HANDICAP 11-20	
T. Short	3
D. Popkey	3
CLOSEST TO PIN	
B. Allen	#

# Standard Equipment On All New Car Loans.



Car loans are really something worth warming up to now at your First of America bank. We'll give you a free STARTER® brand Detroit Tiger Warm-up Jacket when you take out a new car loan (or any consumer loan for \$5,000 or more) from First of America. You'll find competitive rates at First of America, as well as a wide range of new car financing choices, from fixed and variable terms to Payment Saver. Apply now by calling our special First

of America loan line or drop into your nearby First of America bank. When we work together, this offer is even better than a tiger in your tank.

## Call 665-LOAN

To apply for a new car loan or find out our latest rates, call First of America. Offer available only at participating First of America banks.



Members FDIC.

**WE HAVE ROLLED BACK PRICES**

**VILLAGE PIZZA**

118 EAST MAIN ST. MANCHESTER, MICH.  
"MANCHESTERS BEST PIZZA EVER"

PHONE 428-8361

OPEN MONDAY THRU THURSDAY 5 PM-11 PM  
FRIDAY 5 PM-2AM SUNDAY 5 PM-11 PM  
LAST ORDER TAKEN 10:45 PM MONDAY-THURSDAY  
FRIDAY 1:45 AM SATURDAY 5 PM-12AM

**FAST TAKE-OUT SERVICE PHONE AHEAD**

**OUR PIZZA MENU** All prices include tax

SMALL 12"	MEDIUM 14"	LARGE 16"
Each Additional Item 65c	Each Additional Item 75c	Each Additional Item 85c
Pepperoni-Ham-Mushrooms-Onions-Green Pepper Ground Beef-Fresh Sausage-Pineapple-Olives		
Plain ..... \$3.90	Plain ..... \$4.75	Plain ..... \$5.50
1 Item ..... 4.55	1 Item ..... 5.50	1 Item ..... 6.35
2 Items ..... 5.20	2 Items ..... 6.25	2 Items ..... 7.20
3 Items ..... 5.85	3 Items ..... 7.00	3 Items ..... 8.05
4 Items ..... 6.50	4 Items ..... 7.75	4 Items ..... 8.90
5 Items ..... 7.15	5 Items ..... 8.50	5 Items ..... 9.75
6 Items ..... 7.80	6 Items ..... 9.25	6 Items ..... 10.60
7 Items ..... 8.45	7 Items ..... 10.00	7 Items ..... 11.45
8 Items ..... 9.10	8 Items ..... 10.75	8 Items ..... 12.30
9 Items ..... 9.75	9 Items ..... 11.50	9 Items ..... 13.15

Try A "Sicilian Pizza" Double Crust, Double Sauce, Double Cheese Plus Whatever Items You Wish

Try A "Hawaii Pizza" Ham, Pineapple, Sausage and Green Pepper

12" DELUXE PIZZA Ham-Pepperoni-Onion Green Pepper-Mushroom \$6.50 5 Items For The Price Of 4	14" DELUXE PIZZA Ham-Pepperoni-Onion Green Pepper-Mushroom \$7.75 5 Items For The Price Of 4	16" DELUXE PIZZA Ham-Pepperoni-Onion Green Pepper-Mushroom \$8.90 5 Items For The Price Of 4
--	--	--

**16 oz. PEPSI TO GO**

**SPECIAL RATES ON LARGE PARTY & BANQUET ORDERS**

**COUPON GOOD THRU MAY 1985 (1 coupon per order)**

45c OFF Any Small Pizza Sun. thru Thurs.	\$1.00 OFF Large Deluxe Sun. thru Thurs.	\$1.00 OFF Small Pizza with everything Sun. thru Thurs.
55c OFF Medium Pizza Sun. thru Thurs.	\$2.00 OFF Large Pizza with everything Sun. thru Thurs.	75c OFF Medium Deluxe Sun. thru Thurs.
65c OFF Large Pizza Sun. thru Thurs.	\$1.50 OFF Medium Pizza with everything Sun. thru Thurs.	50c OFF Small Deluxe Sun. thru Thurs.

**WE SELL ... WE SERVICE.**

*Cub Cadet*

**Outdoor Power Equipment**

- Garden Tractors
- Riding Mowers
- Self Propelled Mowers
- Walking Mowers
- Professional Rotary Mowers
- Rotary Tillers
- Edger/Trimmer
- Log Splitter
- Shredder/Bagger
- Convertible Vacuum/Blower
- Generators
- Snowthrowers

**PLUS ...**

- Attachments
- Parts
- Maintenance
- Helpful advice

**G.E. Wacker Inc.**

GASOLINE-FUEL OIL-GREASE MOTOR OIL-DIESEL FUEL  
9050 Chelsea-Manchester Road  
Manchester, Michigan 48154

**Bridgewater General Store**

IN BEAUTIFUL DOWNTOWN BRIDGEWATER  
894 East Austin Road  
Phone 429-4620

Hours: Mon-Sat 7-9  
Sunday 8-8

**Cold Beer & Wine Keg Beer Available**

We Have Instant Lottery Tickets

**Coke \$1.99**  
6 Pack Plus Deposit

**MOFFAT CONCRETE**

Specializing In Basements-Garage Patios-Driveways Porches-Sidewalks and Steps

CALL US FOR FREE ESTIMATE ON YOUR CONCRETE NEEDS

**313-498-2368**

**VALUABLE COUPON**

**COLOR FILM DEVELOPING AND PRINTING**

12-15-24-36 | 110, 126, 35MM | C-41 FILM ONLY  
EXPOSURE | OR DISC | ONLY

**50¢ OFF EACH ROLL WITH COUPON**

Offer Good Thru May 18, 1985 BORDERLESS PRINTS  
Coupon must accompany order One roll per coupon

COUPON OFFER INCLUDES **FREE** ALBUM PAGE OFFER Also COUPON TOWARD COLOR ENLARGEMENT

**KRAUSS PHARMACY**

128 East Main Street Manchester, Michigan

# SPRING SPORTS

## Girls Track

**Napoleon vs Manchester**

The Girls Track team had many fine performances against Napoleon but could not get enough first place points to overcome Napoleon's 83-45 victory over Manchester.

The meet had a lot of excitement with Jodi Brokaw and Beth Evans finishing 1st & 2nd in the 110 Hurdles (18.4 and 19.2). Mary Cleland and Beth Evans went 1&2 in the 300 Intermediate Hurdles with a fast 54.6 and 54.9. The 2 Mile was swept by Manchester with Tracey Schuler finishing in 13:20 and Angie Valliencourt and Kris Miller taking 2nd and 3rd. The Mile Relay was won by Manchester - consisting of Lisa Beck, Kim Dezarov, Tracey Schuler and Mary Cleland. The coaching staff would like to thank everyone that helped with timing and scoring and also the fine support given by some dedicated fans.

**Manchester vs Grass Lake**

Manchester's Girls Track team ran against a very fine Grass Lake team but lost 96/32. Even though the team took many of the second and third places, Grass Lake gained most of their points by taking many first places. The first place finishers for Manchester were Amy Broek in the 2 Mile Run; the 440 Relay team consisting of Jodi Brokaw, Heather Walkowe, Caria Neigebauer and Rita Talcott. The Mile Relay also won with Tracey Schuler, Rita Talcott, Lisa Beck and Mary Cleland.

## Baseball

The Manchester High School Varsity Baseball Team will be playing in a District qualifying round vs Morenci, at Morenci High School on Thursday, May 16, 1985. Game time is 4:30 p.m. The winner of this game advances to the Pre-District on Friday, May 24, 1985 vs Onsted at Onsted High School. Districts will be held at Blissfield on Saturday, June 1, 1985.

## Softball

The Manchester High School Varsity Softball Team will be playing in a District qualifying round vs Napoleon at Manchester on Monday, May 20, 1985. Game time is 4:30 p.m. The winner will play Addison in the Pre-District game on Friday, May 24, 1985, here in Manchester. Districts will be held at Michigan Center on Saturday, June 1, 1985.

## Girls Varsity Softball

On Monday, April 22nd, we welcomed league foe East Jackson. Rocky Weber supplied the only Dutch bat power as the Trojans left victorious 16-5. The Wednesday game was postponed but we made up this doubleheader on Friday. Our young squad just couldn't get on track and dropped both to Columbia Central, 13-5 and 12-3. On Monday past, the Napoleon Pirates came to town. We battled hard and came up with an excellent performance. Rocky, Kim Lockridge, Erin Davis and

Kim Bailey smashed two hits or more. In our 4th inning, we got homeruns from both Kims' and collected 8 runs. Unfortunately this wasn't enough as they answered with 6 runs to ice their 23-12 win.

Wednesday the league leading Cardinals came to town and left 13-3 victors. We were able to gather only two hits, so Michigan Center continues undefeated in the Cascade Conference.

Friday was a super day as we trekked to Hanover-Horton and just unleashed our bats. We smashed 18 hits enroute to a 21-6 victory. Kim Bailey was our winning pitcher as the hitters were-Erin, Renee Drouare, Rocky, Kim B., Sara Samonek and Tracy Day.

Our up-coming schedule shows us at East Jackson Wednesday, then in Clinton on Monday, May 13th.

## Boys Varsity Baseball

**Our fighting Dutchmen faced three Cascade foes and just mowed each one down to keep their win streak going. Saturday, we met 2 big schools in the Ann Arbor News Tournament and didn't fare to well. Saline and Novi won their contests although we do carry on playing Ypsilanti at Ypsi High field at 9 a.m. then we meet Whitmore Lake at noon. Depending on how we do, the News Tournament consolation round starts at 3 p.m. at Michigan's Ferry Field.**

The first big contest fell on Monday as Napoleon came to town with the Cascade undefeated

record and #1. We had Pat Ridenour take the mound and Pat was awesome. Mike Agin, Ken Gross and Rob Smith plastered the ball as we won 10-4.

On Wednesday, Mike was the hurler as we hosted Michigan Center. The Cardinals had defeated us in the opening game this year but it was not to be this time. Mike threw an excellent game as Brian Finkbeiner and Todd Rickelmann came up with the key hits. The final was 8-3 giving us a 6-2 league record.

Hanover-Horton was next and the results were super. We banged for 2 runs in the first and came right back with 4 in the second inning to cruise to the 7-4 win. Bruce Rheeas was the starter but Pat did enter and was the pitcher of record. Mike was our only 2 or more hitter although Brian, Rob and Pat each smashed important two baggers.

We now take to the road as we play East Jackson Wednesday then challenge Clinton on Monday.

## Michigan Extension Homemakers Week May 5 - May 11

Michigan Association of Extension Homemakers (MAEH) President, Claudia Brown of Eaton Rapids, announces that Gov. Blanchard has signed an Executive Declaration designating the week of May 5 through 11 as Michigan Extension Homemakers Week.

MAEH was organized in 1936 as an outgrowth of Farm Women's Institute. Affiliated with Michigan State University,

which was founded in 1855, as a Pioneer Land Grant College for Agriculture, Extension personnel were assigned for off campus teaching as early as 1908. The purpose of Agriculture Extension was to serve all the people with useful and practical information on Agriculture, Home Economics, and related subjects. Today Cooperative Extension Service is four fold in Michigan: Ag/Marketing, Family Living Education, Natural Resources/Public Policy, and 4-H.

Michigan Extension Homemakers benefit by the programs presented through Family Living Education Home Economists. This past year some of the lessons given were Medication Interactions/Osteoporosis, and New Food Trends. A Master Canner course in June and Small Home Business classes in May and September are also offered. Membership in MAEH today number 9,214 in 750 study clubs. In Washtenaw County we have 237 members and 15 study clubs, in Chelsea, Manchester, Saline, Milan, Ann Arbor, Dexter and South Lyons.

Washtenaw County will celebrate Extension Homemakers Week next Tuesday evening, May 7, at United Methodist Church, Saline, with a Spring Rally. Members will join together for dinner at 6:00 p.m. followed by the fine singing of the Madri-Guys of Chelsea High School. A display of Cultural Arts and Crafts made during the past year by members will be judged and ribbons awarded.

## Buy, Sell Or Rent In The Classifieds

# Council Proceedings

**MANCHESTER VILLAGE COUNCIL MINUTES APRIL 15, 1985**

The regular meeting of the Manchester Village Council was held April 15, 1985 at the Village Hall.

President Hinkley called the meeting to order at 7:04 p.m. Present: Becktel, Kallewaard, Koebbe, Niehaus, Tapping, Zaborowski, Smith.

Becktel moved to approve minutes as read, supported by Tapping. Motion approved.

Bart Bartels, Director of the Manchester Summer Recreation was present to discuss the summer activities. Their budget is approximately \$10,000, the Village donates \$2,000, the remainder is given by the United Fund. It was suggested that Mr. Bartels ask the four Townships for funds, he said he would contact the Townships.

Dave Patsch asked when the Parks would be opened. Don Smith said the Parks would be opened this weekend, April 20th.

Dave Patsch said he would like to submit a bid to the Village for lawn mowing or rolling, if they have need for his service. Hinkley told him to give the bid to Becktel or Zsenyuk.

Chuck Fiefield representing McNamee, Porter & Seeley, the Village Engineers, was present to go over the latest on the re-evaluation of the improvements to the sewer system and the wastewater treatment plant for the Village to come into compliance with the letter of stipulation that the Village signed with the D.N.R. last winter. Mr. Fiefield said a month ago Council asked their firm to re-examine Phase I of the project to determine if they could come up with more benefits to the Village as a whole as far as removing storm water and trying to eliminate basement flooding on

either side of the river.

Problem areas most crucial are two additional areas that could be added to Phase I of the Project. First area is on the East side - Beaufort to Vernon, Vernon to the river, pick up more catch basins on East side of river. Second area is on the West side of river - Madison, Macomb, Washington area, separation of the combined sewer at Madison and Washington Street taking that flow to the river and try and separate the combined sewer at West Main Street.

Cost of Phase I - 2.4 million dollars.

Koebbe moved to accept Phase I of the Municipal Compliance Plan, supported by Becktel. Roll Call Vote: Ayes - all. Motion approved.

Tapping moved to amend the 1984 Budget by changing General Fund Disbursement Total to \$411,900, Dental Prescription and Optical Disbursement Total to \$6,000, Revenue Sharing Disbursement Total to \$28,500, Major Street Disbursement Total to \$74,025, Local Street Disbursement Total to \$40,500, Sewer & Water Disbursement Total to \$163,950, Sewer & Water Replacement Disbursement Total to \$600, supported by Niehaus. Roll Call Vote: Ayes - all. Motion approved.

Becktel said the Village received bids on trees from: Smith Nursery & Landscaping; Underwood Nursery Sales; Gardenscape; Garden Scope.

Becktel moved to purchase 30 Crimson King Maples 1 1/4 - 1 1/2 BB from Smith Nursery and Landscaping for \$47,000 each, it was the lowest bid, supported by Niehaus. Roll Call Vote: Ayes - all. Motion approved.

Mary Kallewaard reported on the Public Hearing that was held by the Manchester Planning Commission on the proposed amendment to the Village Code,

regulating the size and placement of accessory storage buildings other than garages in Residential Districts.

Planning Commission recommends that Council adopt the proposed new ordinance with one change. Council will act on the new ordinance on May 6, 1985.

Niehaus presented the Police Report. Report on file.

Koebbe presented the D.P.W. and Mechanics reports. Reports on file. Koebbe stated he had two bids on a street sweeper. No decision at this time.

Tapping asked if there was a program to replace faded, broken or stolen street signs. Discussion followed, but no decision.

Council requested that a notice be put in the Manchester Enterprise that the Village is taking bids on sidewalk replacement.

Don Smith requested that Council designate a place that Village citizens can dump brush and leaves. No decision.

Becktel moved to go into closed session for discussion of Union Negotiations at 9:00 p.m. Roll Call Vote: Ayes - all. Motion approved.

Council meeting reconvened at 9:30 p.m.

Tapping moved to approve Closed Session Minutes for March 18, and April 1, 1985, supported by Kallewaard. Roll Call Vote: Ayes - all. Motion approved.

Council discussed Mayor Exchange Day. Manchester Council will go to Almont on May 20th and Manchester will host Almont at a later date.

Becktel moved to adjourn the meeting, supported by Zaborowski. Meeting adjourned at 9:53 p.m.

Helen J. Kensler Village Clerk

**MINUTES OF SPECIAL COUNCIL MEETING BUDGET WORK SESSION APRIL 29, 1985**

The Special Meeting of the Manchester Village Council was held April 29, 1985 at the Village Hall.

President Hinkley called the meeting to order at 7:10 p.m. Present: Becktel, Kallewaard, Niehaus, Tapping, Zaborowski, Zsenyuk, Wiedmayer, Sue Koebbe. Absent: Gale Koebbe. Council finalized the 1985-86 Budget.

President Hinkley adjourned the meeting at 11:20 p.m.

Helen J. Kensler Village Clerk

## Saline Community Hospital Big Wheel Race Saturday May 18th

The fourth annual Saline Community Hospital Big Wheel Race for Children will be held Saturday, May 18, near the hospital.

The course will begin at a point at the southeast end of the new Professional Office Building and proceed to a point located at the northwest end of the Building. A total of 48 children participated in last year's event and it is hoped that more than 50 participate this year.

The event is open to children from the ages of two to seven. A different division will be featured for each age group. Winners in each division will receive an ice cream sundae and a first place ribbon. All other participants will receive an ice cream cone. Registration forms will be available at the hospital switchboard. Participation in the race is free of charge. Participants must supply their own Big Wheels and safety equipment. Only Big Wheels may be used. No modified cycles can be accepted. Check-in time will be 9:30 a.m. and the race begins at 10 a.m.

C.E.D. offers a free support/self-help group for sufferers of anorexia nervosa, bulimia or compulsive overeating every Tuesday evening from 7:30 to 9:00 at the Human Growth Center, 2002 Hogback Road, Suite 13, Ann Arbor, MI. Individual peer counseling is also provided at the Center by appointment only. For more information on these services call the C.E.D. Hotline, 971-0606, any evening between 6 and 11.

## Hospital Auxiliary's Annual Volunteer Recognition Tea

Donations totaling 126,096.99 were made to Saline Community Hospital in the form of hospital equipment, scholarships and other donations by the Hospital Auxiliary during fiscal 1983-84, according to a report issued at the

annual Volunteer Recognition Tea.

The event was held by the Operating Committee of the hospital's Board of Directors in the Wellness Center.

Among items donated by the Auxiliary during the year were a florocare bed for the Intensive Coronary Care Unit, handrails for the hallways, a set of automatic doors, two recovery room stretchers, four scholarships, awards, and other items.

A total of 29 volunteers were presented with awards at the annual tea honoring Auxiliary volunteers and non-Auxiliary volunteers.

More than \$123,103.45 has been donated by the Auxiliary to the hospital over the past 26 years.

## Center For Eating Disorders

The Center for Eating Disorders (C.E.D.) Hotline operates seven days a week from 6:00 p.m. until 11:00 p.m. The Hotline is staffed by trained volunteers who offer supportive and crisis counseling, and referral and educational information. The Hotline is available to eating disorders sufferers and other concerned individuals. Call 971-0606.

C.E.D. offers a free support/self-help group for sufferers of anorexia nervosa, bulimia or compulsive overeating every Tuesday evening from 7:30 to 9:00 at the Human Growth Center, 2002 Hogback Road, Suite 13, Ann Arbor, MI. Individual peer counseling is also provided at the Center by appointment only. For more information on these services call the C.E.D. Hotline, 971-0606, any evening between 6 and 11.

## Michigan Veterinary Clinic

18901 Sharon Valley Road  
Manchester, Michigan 48158

313/428-8365

**LARGE AND SMALL ANIMAL SURGERY AND MEDICINE**

OFFICE OR HOME VISITS BY APPOINTMENT  
9 AM - 9 PM MONDAY THROUGH SATURDAY  
VERA L. KLUWE, D.V.M.

## Women's Night Out For the Health of It.

First in a series of programs designed to explore aspects of health care that are of special importance to women today.

Date: Tuesday, May 21

Time: Cocktails 6:30, Dinner 7:00

Location: Travis Pointe Country Club

Speaker: Verne Hoshal, Jr. M.D.

Topic: "Women and breast disease: the new alternatives"

Cost: \$15.50 for dinner and program

The program includes a question and answer period.

Deadline for reservations is Friday, May 17. Checks should be made out to Saline Community Hospital and mailed to 400 W. Russell, Saline, MI 48176. Attention: Wellness Center. For further information call 429-1508.

Presented by:



## KIRK EXCAVATING

Sand—Gravel—Fill Dirt  
Basements—Driveways

428-7938

DAVE KIRK

14180 Schlewies Road  
Manchester



PEPSI, DIET PEPSI  
PEPSI LIGHT  
MOUNTAIN DEW  
PEPSI FREE, SUGAR FREE  
PEPSI FREE

\$1.79

1/2 LITER 8 PACK  
PLUS DEPOSIT

**We Have FARM FRESH EGGS**

PHONE 313-428-8366

**G.E. Wacker Inc**

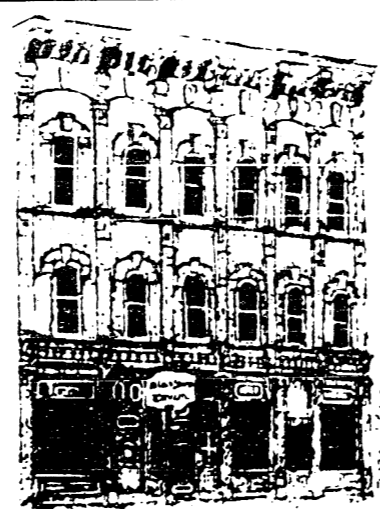
GASOLINE-FUEL OIL-GREASE  
MOTOR OIL-DIESEL FUEL  
8050 Chelsea-Manchester Road  
Manchester, Michigan 48158

SUMMER HOURS  
MON.-FRI. 7 am - 9 pm  
SATURDAY 8 am - 9 pm  
SUNDAY 9 am - 9 pm

## Baker's Dozen

**NOW OPEN SUNDAYS**  
OPEN 10A.M. to 5 P.M.

**VILLAGE PIZZA OPENS AT 5 P.M.**



## Black Sheep Tavern

Lunch  
Monday-Saturday  
11:30-5:00 p.m.

Dinner  
Monday-Thursday  
5:00 p.m.-10:00 p.m.  
Friday and Saturday  
5:00 p.m.-12:00 p.m.  
Sunday 12-10 P.M.

BE SURE YOU CATCH ALL YOUR FAVORITE BASEBALL GAMES ON OUR GIANT 10H TELEVISION

117 East Main

Phone 428-7000

## SEE YOU THERE!! SPAGHETTI DINNER

BY Manchester United Methodist Youth Fellowship  
Saturday, May 11 at 6:00 p.m. Family Style  
Limited Tickets Reservations  
Adult \$4.00, Children 4-10 \$3.00 428-8495 or 428-8539  
Children 3 & Under Free Tickets: Youth or Roller Jewelry

**For Mother's Day What Better Way To Say "I Love You" Than Flowers From**



The Flower Garden

FLOWERS FOR ALL OCCASIONS

110 East Main St. Phone 428-7422 Manchester, Mich.

**Parr's Auto Body**  
BODY WORK - PAINTING  
FREE ESTIMATES  
INSURANCE WORK  
GLASS INSTALLATION

18481 W. Austin Road  
Manchester, Michigan  
Phone  
313-428-9538

**MARGIE'S UPHOLSTERY**  
6245 Brooklyn Road  
Napoleon

Wide Selection Of Fabrics  
Pick-Up/Delivery Available

517-536-4230

## VILLAGE HAIR FORUM HAS ADDED A NEW HAIR STYLIST STOP IN AND MEET

**KIM WOLF**

ON FRIDAY 3 pm-7 pm & SATURDAY 8 am-12

"BRING A FRIEND SPECIAL"

1ST SERVICE AT REGULAR PRICE  
2ND AT 1/2 PRICE

For Month of May First Visit Only

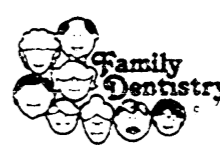
**Village Hair Forum**

Located in The Old Mill Phone 428-7684

## Friendly Family Dentistry

**Bruce Bates, D.D.S.**

500 Galloway Drive Manchester, Michigan



SERVICE BY APPOINTMENT

PHONE 313-428-8277



MONDAY-TUESDAY-FRIDAY  
9 A.M. - 5 P.M.

NEW PATIENTS WELCOME  
New Patients, Medicaid  
and Emergencies Always Welcome

VISA ACCEPTED  
MOST DENTAL INSURANCE PLANS ACCEPTED



**SHARON UNITED METHODIST CHURCH**

Thursday, May 9, 7:30 p.m. Sharin' Women meet at the church. Aerobics demonstration.  
 Saturday, May 11, 9:00-1:30 Church Women United Rummage Sale at Emanuel Church.  
 Sunday, May 12, 11:00 a.m. Mothers will be honored during the service.  
 Wednesday, May 15, 7 p.m. Bible Study, 8 p.m. Chancel Choir practice.  
 Thursday, May 16, 7:30 p.m. Dorcas Fellowship, United Methodist Women will meet at the home of Mrs. Douglas Kennedy. Devotions, film on Family Farm Concerns.

**ST. JOHN'S LUTHERAN CHURCH**

Thursday, May 9, 8 p.m. Mary Martha.  
 Saturday, May 11, 9-11 7th Grade Catechism.  
 Sunday, May 12, 9:15 a.m. Sunday School, 10:30 a.m. Worship with Holy Communion, 7 p.m. Youth Group, 8 p.m. Praying Elders.  
 Tuesday, May 14, 7 a.m. Women's Prayer Group.  
 Wednesday, May 15, 7:30 p.m. Jr., Y.P. Choir, 5 Yr. Bible Sty., 8:30 p.m. Sr. Choir.  
 Wednesday thru Saturday, May 15 - 18, Michigan District Convention.

**ZION LUTHERAN CHURCH**

Friday, May 10, 6:30 Mother/Daughter Banquet.  
 Saturday, May 11, 12:30 Senior Citizens Pot-luck with Zion AA as our guests.  
 Sunday, May 12, 9 a.m. Sunday School, 10:15 a.m. Worship.  
 Tuesday, May 14, 7:15 Sr. Choir.  
 May 15 - 18, Michigan District ALC & LCA Joint Convention at CMU Mt. Pleasant.

**FAITH COMMUNITY CHURCH**

Wednesday, May 8, 7:00 p.m. Prayer hour and Bible Study.  
 Saturday, May 11, 6:30 p.m. Mother-Daughter Banquet with Sherrie Carlson from Youth Haven as speaker and also bringing special music.  
 Sunday, May 12, 10:00 a.m. Morning worship with Doug Keasal from Peoria, Ill. as special speaker. Nursery provided, 11:15 a.m. Sunday School for all ages, 6:00 p.m. Evening service with Doug Keasal, 7:00 p.m. Youth Group.

**MANCHESTER UNITED METHODIST CHURCH**

Wednesday, May 8, 10:00 a.m. Bible Study, 1:00 p.m. Willo Circle at Jean Little's.  
 Thursday, May 9, 7:00 p.m. Worship Committee Meeting, 8:00 p.m. Finance Committee Meeting.  
 Saturday, May 11, Our monthly men's Christian Fellowship has been CANCELLED due to the Jr. MYF Spaghetti Dinner in the evening. 6:00 p.m. Jr. MYF Spaghetti Dinner.  
 Sunday, May 12, 9:15 a.m. Church School, 10:30 a.m. Worship: "The Means are the End", 11:30 a.m. Choir Rehearsal/Coffee Hour.  
 Tuesday, May 14, 6:30 p.m. Mother/Daughter Banquet.  
 Wednesday, May 15, 10:00 a.m. Bible Study, 7:30 p.m. U.M.W. Trustees Meeting, 8:00 p.m. Administrative Council Meeting.

**EMANUEL UNITED CHURCH OF CHRIST**

Thursday, May 9, 3:30 p.m. Brownies, 6:30 p.m. Mother/Daughter Banquet.  
 Saturday, May 11, 8:30-12:30 p.m. (please note change in time) CWU Rummage Sale, 6:00 p.m. Young Adults meet at Church for Car Scavenger Hunt.

**BETHEL UNITED CHURCH OF CHRIST**

Wednesday, May 8, 7:30 p.m. Men's Choir rehearsal-all men invited.  
 Thursday, May 9, 7:30 p.m. Board of Christian Education.  
 Sunday, May 12, 10:00 a.m. Worship Service-Festival of the Christian Home, 8:00 p.m. Senior Youth Initiation Banquet.  
 Wednesday, May 15, 11:30 a.m. Senior of Bethel meet.  
 Thursday, May 16, 8:30 a.m. Women's Church Cleaning Day. May 17-19 Michigan Conference of the UCC meets at Olivet College.

**Free Men's Breakfast**

**SATURDAY, MAY 11 8 A.M.**

**VICTORY BAPTIST CHURCH MENU:**

Pancakes, Eggs and Bacon

**MANCHESTER GRAVEL**

PICK-UP OR DELIVERY  
 Processes Road Gravel  
 Landscape Stone  
 Drain Field Stone  
 Pea Stone Fill Sand  
 11475 PARR ROAD  
 MANCHESTER, MICH.  
 428-9460

**Norm Walz & Son Construction**

Manchester, Michigan  
 NEW HOMES  
 REMODELING  
 ADDITIONS  
 GARAGES  
 SIDING  
 DECKS  
 Custom Built  
 Cabinets  
 428-7109

**LAWN SPRAYING**

FREE ESTIMATES  
 Certified & Insured  
 Call: **Tim Spiess**  
 "The Lawn Ranger"  
 313-428-9497

**religious services**

Sunday, May 12, 9:00 a.m. Sunday School, 10:30 a.m. Mother's Day Worship, 11:30 a.m. Coffee Hour & Fellowship time.  
 Monday, May 13, 6:30 p.m. Optimists, 8:00 p.m. Fair Board.  
 Tuesday, May 14, 12 Noon Senior Meal & Cards, 1:00 p.m. Young Mother's Support Group, 7:30 Aerobics.  
 Wednesday, May 15, 3:30 p.m. Girl Scouts, 5:30 p.m. Cub Scouts, 6:00 p.m. Bell Choir, 7:30 p.m. Senior Choir.  
 Thursday, May 16, 11:00 a.m. Senior Exercise Program, 12 Noon Senior Meal & Program, 3:30 p.m. Brownies, 6:30 p.m. Scouts, 7:30 p.m. Aerobics.

**ST. BARNABAS EPISCOPAL CHURCH** - Rev. Fr. Jerrold F. Beaumont, O.S.P. Eucharist - First, Third and Fifth Sundays 10:00 a.m.; Morning Prayer, Second and Fourth Sundays 10:00 a.m.; Eucharist - Second and Fourth Sundays 11:00 a.m.; Nursery available every Sunday. Family coffee hour follows all Sunday Services.

**EMANUEL UNITED CHURCH OF CHRIST** - Rev. Robert B. Macfarlane, Pastor; Rev. Kennyon Edwards, Assistant; Sunday School 9:00 a.m.; Worship Service 10:30 a.m.

**ST. JOHN'S UNITED CHURCH OF CHRIST** - Rogers Corners, Waters and Fletcher Roads; Adult Bible Study Class at 10:00; Worship and Sunday School 10:30 a.m.

**MANCHESTER UNITED METHODIST CHURCH** - Rev. Hayden Carruth, Pastor; Church School 9:15 a.m.; Worship 10:30 a.m.

**VICTORY BAPTIST CHURCH** - 423 South Macomb, Barry Cantrell, Pastor, 428-7508; Sunday School 9:45 a.m.; Morning Worship 11:00 a.m.; Evening Worship 6:00 p.m.; Teen Talk 7:00 p.m.; Wednesday Prayer, Bible Study, Youth 7 p.m.

**SHARON UNITED METHODIST CHURCH** - Rev. Evans Bentley, Pastor; Corner of M-52 and Pleasant Lake Roads; Church School 10:00 a.m.; Worship 11:00 a.m.

**CLINTON ASSEMBLY OF GOD** - Rev. Richard Court, Pastor; Chris Bouldrey, Youth Pastor; 13300 Clinton-Manchester Road, Clinton; Sunday School 9:30 a.m.; Sunday Morning Worship 10:45 a.m.; Sunday Evening 6:30 p.m.; Wednesday Prayer, Bible Study, Youth 7 p.m.

**ST. JOHN'S LUTHERAN CHURCH** - Rev. Dennis A. Falk, Pastor; Austin Road, Bridgewater; Sunday School 9:15 a.m.; Worship 10:30 a.m.

**BETHEL UNITED CHURCH OF CHRIST** - Rev. Roman A. Reineck, Pastor; Schneider and Bethel Church Roads; Church Service 10:00 a.m.; Sunday School 11:00 a.m.

**NORTH SHARON COMMUNITY BIBLE CHURCH** - Timothy E. Booth, Pastor; Sylvan and Washburn Roads; Sunday School 10:00 a.m.; Morning Church 11:00 a.m.; Youth Meetings 6:00 p.m.; Evening Church 7:00 p.m.; Wednesday Bible Study 7:00 p.m.

**BAHA'I FAITH** - Study of Baha'i scripture and discussion on applying spiritual principles to daily living. Believers of all faiths welcome. 2nd and 4th Sundays every month, 2:30 p.m. at the home of Thomas and Nancy Rykwalder, 611 South Macomb. For more information or directions call 428-9454.

**FAITH COMMUNITY CHURCH** - Timothy Miles, Pastor, 8400 Sharon Hollow Road off West Austin; Worship Service 10:30 a.m.; Sunday School 11:15 a.m.; Sunday Evening Service 8:00 p.m.; Jr. and Sr. High Young Peoples' Meeting 7:00 p.m.

**OUR SAVIOR LUTHERAN CHURCH** - Rev. Franklin H. Glebel, Pastor; 1515 South Main, Chelsea; Every Sunday - 9:00 a.m. Bible Classes for age 3 through adult; 10:30 a.m. Worship Service, Holy Communion 1st, 3rd and 5th Sundays.

**IRON CREEK COMMUNITY CHURCH** - Rev. Bill Mason, Pastor; English and Sharon Hollow Roads; Worship Service 10:00 a.m.; Sunday School 11:15 a.m.; Sunday Evening 7:30 p.m.; Wednesday Evening 7:30 p.m.

**ZION LUTHERAN CHURCH** - Rev. John R. Morris, Pastor; 3050 S. Fletcher Road; Sunday School 9:00 a.m.; Worship Service with Holy Communion 10:10 a.m.

**ST. THOMAS LUTHERAN CHURCH** - Rev. John Riske, Pastor; 10001 Ellsworth Road; Sunday School and Bible Class 9:30 a.m.; Worship Service 10:45 a.m.

**ST. MARY'S CATHOLIC CHURCH** - Father Raymond Schlinker; Monday thru Friday 8:30 a.m.; Saturday 5:00 p.m.; Sunday 8:30 a.m. and 10:30 a.m.

**CHURCH OF JESUS CHRIST OF LATTER DAY SAINTS (MORMONS)** - Wayne L. Winzenz, Branch President; Rebekah Hall, M-52, Chelsea; Sacrament 9:30 a.m.; Sunday School, Primary 10:30 a.m.; Priesthood, Relief Society, Aaronic Priesthood, Youth 11:40 a.m.

**COME AND WORSHIP WITH US**  
**Victory Baptist Church**  
 419 SOUTH MACOMB ST. MANCHESTER, MICHIGAN  
 Sunday School Morning Worship  
 Sunday, 9:45 a.m. Sunday, 11:00 a.m.  
 Prayer Meeting Evening Worship  
 Wednesday, 7:00 p.m. Sunday, 6:00 p.m.  
 Teaching the Fundamental Truth of Jesus Christ  
 Pastor Barry Cantrell 313-428-7506

**KEN MILLER RESIDENTIAL BUILDER**  
 QUALITY WORKMANSHIP AT A REASONABLE RATE  
 SPECIALIZING IN SIDING-CUSTOM MADE TRIM ALUMINUM AND VINYL  
 Free Estimates Phone  
 Licensed & Insured 517-592-8904  
 Between Manchester and Brooklyn

**PEPSI \$1.99**  
 8 Pack 1/2 liter Plus Deposit  
**MANCHESTER IGA**  
 West Main St. Manchester

**PEPSI**  
 NEW PEPSI LIGHT  
 PEPSI LIGHT  
 PEPSI LIGHT  
 PEPSI LIGHT

**your advertising dollars do better in the classifieds**

Classifieds Are \$1.50 For First 20 Words, 5c A Word Thereafter. Thank You's Are \$3.00 Minimum Up To 50 Words, 5c A Word Thereafter.

All Classified Advertising is Payable In Advance And Must Be Placed and Paid For Prior To 11 a.m. On Tuesday For Publication That Week.

**FIELDER PAINTING** - Interior & Exterior. Free Estimates. Senior Citizens Discount. Phone 428-8506. tfn

**KEITH'S BARBER SHOP** 152 E. Main Street. For appointment - 428-8584. tfn

**LITTLE WACK EXCAVATING** Licensed and Insured. Basements, Drainfields, Bulldozing, Digging, Tree Removal, Ditch Witch Trenching. Paul Wackenhut. Phone (313) 428-8025. tfn

**FOR SALE - BUILDING LOTS** - Riverbend Subdivision, Village of Manchester, on private lake. All utilities installed. Terms Negotiable. Phone (313) 428-8496. tfn

**BLACK DIRT** Peat. 6 yards - \$50 delivered. Phone 428-7784. tfn

**VILLAGE HAIR FORUM**, 201 East Main, Old Mill, 428-7684. tfn

**COPY PAPER AVAILABLE** - We have copy paper in sizes 8 1/2 x 11, \$4.75 for 500 sheets and 8 1/2 x 14, \$5.75 for 500 sheets. The Manchester Enterprise. tfn

**SEAMLESS GUTTER**, roofing and siding. Owner/Operator. Free Estimates. Walkover Home Improvement Company. Phone (313) 428-8468. tfn

**C & B PAINTING** - Interior-Exterior-Free Estimates. Contact Charles E. Benedict. Phone 428-7136 or 428-7416. tfn

**MERRIMAN INSULATION** Free Estimates. Blown in cellulose. Professionally installed. George Merriman. Phone 517-592-5527. tfn

**JERRY WHITAKER EXCAVATING** - Hauling and ponds dug. Call 475-7841. tfn

**PIANO TUNING & REPAIR** Qualified technician - Ron Harris. 475-7134. tfn

**CHELSEA GREENHOUSES** 7010 Lingane Road, Chelsea, Michigan. 475-1353-54 or 475-9313. Flowers and plants for every occasion. We specialize in wedding flowers to fit your budget. We are as near as your phone and we welcome your business. tfn

**SHARPENING SERVICE** - Ice skates, saw chains, hand saws, circular saws, knives, scissors, pink shears, hair-animal and grass clippers, lawn mower blades, electric hedge clippers, drills, and most anything needing a sharp edge. Kleinschmidt True Value Hardware, 19860 Sharon Valley Road, Manchester. tfn

**IN THE VILLAGE** of Manchester yet seems like country. Three bedroom home on beautiful one acre lot with many spruce trees, and view of the river. Recently sided and roofed with central air and new furnace. \$72,000. 428-7476. tfn

**MANCHESTER ANTIQUE MALL** - Open 7 days. 10 a.m. to 5 p.m. 116 E. Main. 428-9857. tfn

**OPENINGS AVAILABLE** - July 1st in my licensed Manchester Day Care Home. Any age children, reasonable rates, meals included. Please call Sandy Alber at 517-456-6072. tfn

**GRASS LAKE MINI-MALL & FLEA MARKET** now open. Friday, Saturday and Sunday 10 a.m. - 6 p.m. Bring this ad for free hotdogs for whole family. 3 blocks south of the light in Grass Lake. Phone 517-522-8810 for further information and directions. 5-31

**PASTURE WANTED TO RENT** for 4 or 5 broodmares. Call 428-7225 evenings. 5-9p

**GRANDMA B'S CLEANING SERVICE** - Residential and commercial, apartments and offices and windows. 1-429-2440. 5-31p

**CHICKEN AND BISCUIT LUNCHEON** - St. Mary's Church Hall, May 22nd. Serving 11:00 to 1:00. Family style, \$4.00. 5-16p

**BEDDING PLANTS**, seed potatoes, bulk vegetable and grass seed - All your garden needs are at Kleinschmidt True Value Hardware. 428-8337. 5-16

**OPEN SUNDAY 1-4**, 3 bedroom ranch with 2 car garage on 2 acres. Hostess Jane Carey, eve. 428-9208. Take Austin Road west to Grossman, south 1/4 mile to 8200 Grossman.

**FARM WORK WANTED** with animals. I am 28, female, responsible, flexible. 665-7953. p

**CHICKEN AND BISCUIT LUNCHEON**, St. Mary's Church Hall, May 22nd. Serving 11:00 to 1:00. Family style, \$4.00. 5-16p

**CARD PARTY** - 8:00 p.m., May 11, Masonic Temple, \$1.50 donation.

**CHILD CARE** in my home. Will pick up. Name your price. Call now for summer arrangements. 428-9623. p

**GARDEN SPACE** available in Manchester, 5 blocks from Main Street. Phone 475-3624.

**FREE TO GOOD HOME** - Adult male - neutered cat; Buff, excellent disposition. 428-7435 after 5 p.m. p

**ALFALFA HAY** for sale. Approximately 9 acres. Call 428-7409. p

**LOOKING FOR SOMEONE** to sell a beautiful line of brass ware and decor from around the world. Part-time work at full-time pay, no investment required. Call 517-269-6727 after 5 p.m. 5-23p

**MUST SELL 3 Pianos**. Contact Piano Manager, Music Company. 517-783-2785. 5-9p

**ELECTRONICS TECHNICIAN** - some video preferred, good basics a must. Interesting variety of work. Write Video, Box 449, Chelsea, Michigan 48118. 5-9p

**WANTED-DELIVERY PERSON** Early morning hours. Bakers Dozen. 5-9

**MOTHER'S DAY** is the perfect time to give her a gift that is uniquely hers. Complete color analysis and makeover will show her which colors of clothing and cosmetics are most flattering on her. It's a practical gift she'll use the rest of her life. \$35 includes book of fabric swatches. Call Nancy Rykwalder, trained consultant, at 428-9454. 5-9p

**COSMOTOLOGISTS** needed for fast growing shop in Saline, full or part-time. Experience desirable, commission basis. Fantastic Sam's, 429-1137. 5-9

**LOOKING FOR PERSON** handy with carpentry to do one dozen odd jobs around house. Bid individually or as group. Call Mike Gordon. 428-9349 evenings.

**BIG RUMMAGE SALE** - Some furniture, cabinets, porch glider, central air unit and much more. Cleaning out house and garage. Thursday and Friday, May 9 and 10. Rain or Shine 9-6, 18233 Pleasant Lake Road. p

**YARD SALE** - 20546 Logan Road. Friday-Saturday, May 10-11, 10 a.m. to 4 p.m. Books, puzzles, clothes of all sizes, odds & ends. p

**YARD SALE** - Friday, May 10, 10-2 at 317 Wolverine. Infants and toddler car seats, toys, childrens clothes, twin bed frames, luggage rack, small pieces of furniture, large rug, left-hand golf clubs, turntable and many more great buys. Rain or shine. p

**GARAGE SALE** - May 10th and 11th, 9:00 a.m. to 5:00 p.m. Adult and children clothes, toys, ceramic and other items. 20317 Logan Road, Manchester, Michigan, Lois Heckaman. p

**GARAGE SALE** - Clothes-infant, child, adult, toys, furniture, household items, bathroom sink, 1976 Olds S/W. 208 Clinton, Friday, 10-3. p

**Garage Sale** - May 10th and 11th, 9:00 a.m. to 5:00 p.m. Adult and children clothes, toys, ceramic and other items. 20317 Logan Road, Manchester, Michigan, Lois Heckaman. p

**Garage Sale** - Clothes-infant, child, adult, toys, furniture, household items, bathroom sink, 1976 Olds S/W. 208 Clinton, Friday, 10-3. p

**Garage Sale** - Clothes-infant, child, adult, toys, furniture, household items, bathroom sink, 1976 Olds S/W. 208 Clinton, Friday, 10-3. p

**Garage Sale** - Clothes-infant, child, adult, toys, furniture, household items, bathroom sink, 1976 Olds S/W. 208 Clinton, Friday, 10-3. p

**Garage Sale** - Clothes-infant, child, adult, toys, furniture, household items, bathroom sink, 1976 Olds S/W. 208 Clinton, Friday, 10-3. p

**Garage Sale** - Clothes-infant, child, adult, toys, furniture, household items, bathroom sink, 1976 Olds S/W. 208 Clinton, Friday, 10-3. p

**Garage Sale** - Clothes-infant, child, adult, toys, furniture, household items, bathroom sink, 1976 Olds S/W. 208 Clinton, Friday, 10-3. p

**Garage Sale** - Clothes-infant, child, adult, toys, furniture, household items, bathroom sink, 1976 Olds S/W. 208 Clinton, Friday, 10-3. p

**Garage Sale** - Clothes-infant, child, adult, toys, furniture, household items, bathroom sink, 1976 Olds S/W. 208 Clinton, Friday, 10-3. p

**MOVING SALE** - 9 a.m. to 5 p.m. May 8th & 9th, 11 a.m. to 5 p.m. May 10th, at the Parsonage of Faith Community Church, 8402 Sharon Hollow Road, 1/4 mile south of W. Austin. Infant and adult clothing, sports equipment, bar-bells, bookshelf, roll-away bed, shotgun, drop-leaf table, round kitchen table and chairs, desk, dresser, chairs, tools, chainsaw, canning jars, much more. Call 428-8906 for more information. p



**How to keep your child away from drugs.**

Arming them in a suit of steel might help. But once they leave your home, they're really on their own.  
 What can you do?  
 Learn to recognize the symptoms of drug abuse. Look for falling grades in school. And irrational behavior. But most importantly, keep your lines of communication open with your children.  
 Encourage them to tell

you if they get offers of drugs. Show them you understand about peer pressure and how tough it is to walk away. Teach your children to resist offers of drugs with a simple no.  
 For the booklet, "Parents: What You Can Do About Drug Abuse," write: Get Involved, P.O. Box 1706, Rockville, Maryland 20850.  
**Help your kids to just say no.**



A public service of this publication and the National Institute on Drug Abuse.  
 DRUG ABUSE PREVENTION CAMPAIGN  
 NEWSPAPER AD NO. DAP-85-911-2 COL.

**BEDDING PLANTS GARDEN PLANTS HANGING BASKETS ASSORTED POTTED FLOWERS**  
 Monday-Saturday 9 am-7 pm  
 Sunday 10 am-6 pm  
**Schebor's Greenhouse**  
 14345 LOGAN ROAD  
 MANCHESTER, MICHIGAN  
 PHONE 313-428-8078

**Dan's Westside Automotive**  
 660 West Main Street Manchester  
 Phone 428-9455

**Multi-Mile Tire Sale**  
**HIGH SPEED COMPUTER BALANCE AND ROTATE TIRES \$19.95**  
**Get That Air Conditioner Ready For Summer!!**  
 24 Hour WRECKER SERVICE  
 Weekends and After 6 Call 428-7814

**Norm Walz & Son Construction**  
 Manchester, Michigan  
 NEW HOMES  
 REMODELING  
 ADDITIONS  
 GARAGES  
 SIDING  
 DECKS  
 Custom Built  
 Cabinets  
 428-7109

**LAWN SPRAYING**  
 FREE ESTIMATES  
 Certified & Insured  
 Call: **Tim Spiess**  
 "The Lawn Ranger"  
 313-428-9497

**COME AND WORSHIP WITH US**  
**Victory Baptist Church**  
 419 SOUTH MACOMB ST. MANCHESTER, MICHIGAN  
 Sunday School Morning Worship  
 Sunday, 9:45 a.m. Sunday, 11:00 a.m.  
 Prayer Meeting Evening Worship  
 Wednesday, 7:00 p.m. Sunday, 6:00 p.m.  
 Teaching the Fundamental Truth of Jesus Christ  
 Pastor Barry Cantrell 313-428-7506

**KEN MILLER RESIDENTIAL BUILDER**  
 QUALITY WORKMANSHIP AT A REASONABLE RATE  
 SPECIALIZING IN SIDING-CUSTOM MADE TRIM ALUMINUM AND VINYL  
 Free Estimates Phone  
 Licensed & Insured 517-592-8904  
 Between Manchester and Brooklyn

**PEPSI \$1.99**  
 8 Pack 1/2 liter Plus Deposit  
**MANCHESTER IGA**  
 West Main St. Manchester

**Waits Heating & Cooling**  
 24 HOUR SERVICE  
 Wait Horodeczny  
 Comfort Air Furnaces  
 A.O. Smith Water Heaters  
 Water Softeners  
 Furnace Tuning And  
 Cleaning  
 PHONE 428-8645  
 18824 Bethel Church Road  
 Manchester, Michigan

**TIRB CHEVROLET CO.**  
 PHONE 428-8212 or 428-8492  
 131 Adrian Street Manchester  
**CHEVROLET**  
**INTERESTED IN LEASING A NEW CHEVROLET?**  
**Stop In or Call Us For Details**  
 ON QUALITY SERVICE PARTS  
 GM Goodwrench



# True Value®

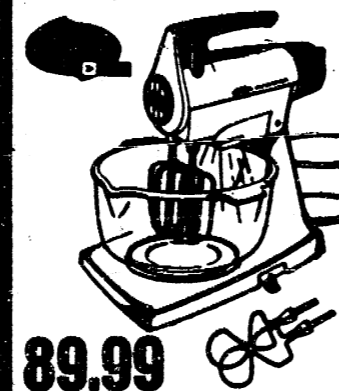
HARDWARE STORES

Your local independently owned True Value® Hardware Store has national chain-buying power.

## Special Gifts for Mom



Stop in and pick up your FREE copy of our Spring and Summer catalog



**89.99**  
**Mixmaster Mixer** features a powerful motor, 12-speed mix-finder dial, steel dough hooks, bowl-fit beaters, 2 glass bowls, more. 80118



**21.99**  
**14-Speed Blender** has 40-oz. glass container with built-in graduated markings, removable stainless blades for easy cleaning. 6324L



**99.99**  
**Dual-Burner Gas Grill** has easy Lite-A-Matic ignition, post-mounted dual controls, Stay-cool handles, 20-lb. gas tank. 9041T



**89¢** Your choice  
**13-inch Barbecue Mitt** in assorted colors is quilted for better insulation. Protects hands, allows easy movement. 8M13



**10.99**  
**Can Opener/Knife Sharpener** with power-pierce action, removable cutting assembly. Sharpens non-serrated blades. Compact. 782W



**10.99**  
**3-Speed Hand Mixer** features space-saving design, non-splash chrome-plated beaters, attached cord and ejector button. 974L



**19.99**  
**2-Slice Toaster** has adjustable slots for toast, pastries, bagels. Bakery switch and sensor provide perfect browning every time. 6710



**26.88**  
**4-Qt. Slow Cooker** tenderizes economy cuts of meat, wheat control. Pot can be used on stove, base as a griddle, lid as a dish. 84114



**39.99**  
**Cordless Iron** heats in base until ready to use. With burst-of-steam feature, SilverStone™ coating to glide over fabrics, more. 6008



**19.99**  
**Ultronic Brewer** with all new brewing system that makes up to 10 cups in just minutes. With automatic lighted switch. US-1



**16.99**  
**10-Cup Coffee Maker** has Dial-A-Brew™ II system for the perfect strength. With filters. 465156C  
 Replacement Carafe. 2P9 7.99



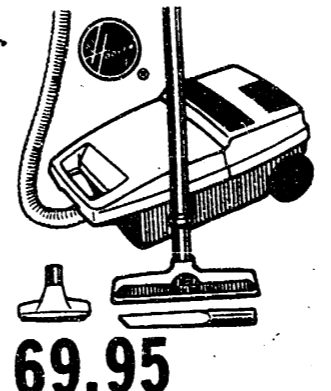
**14.99**  
**5-Pc. Casseroleset** incl. 1 1/2, 3-qt. saucepans, 1 glass and 2 plastic lids. Safe for conventional, microwave ovens. A123



**8.88**  
**3-Pc. Mixing Bowl Set** in assorted sizes for mixing, microwave cooking and serving your favorite dishes. With design. 307-100



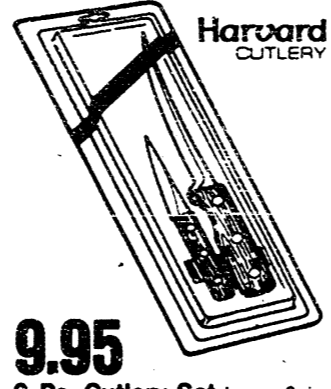
**8.99**  
**1250W Travel Turbo Dryer** with compact design for travel use. Dual-voltage switch, 2 heat/speed settings. With pouch. 5K207



**69.95**  
**Spirit™ Portable Canister Vacuum.** Low-profile cleaner has dual-edge cleaning, 3-position brush, crevice. 53203



**2.99**  
**4-Pk. Chivalry® 12 or 16-Oz. Glasses** with a rugged yet classic design that will let you serve drinks in style. 2488/6



**9.95**  
**2-Pc. Cutlery Set** has a 3-in. paring/boning knife and a 6-in. utility/slicing knife. Stain-free blades, solid walnut handles. 640



**32.99**  
**11-In. Electric Skillet** has non-stick Rockcote™ interior, porcelain exterior. Remove heat control to submerge unit for cleaning. 1440



**28.99**  
**Dustbuster™ Cordless Vacuum** picks up messes anywhere. Recharges continuously in storage/charger base. Lightweight. 9330



**16.99**  
**Playmate™ Ice Chest** holds eighteen 12-oz. cans. Plastic exterior, removable food tray to keep food fresh and dry. 1351

## Kleinschmidt True Value Hardware

19860 SHARON VALLEY ROAD MANCHESTER, MICHIGAN

Monday-Friday 8 am-6 pm Saturday 8 am-5 pm  
 Sunday 11 am-3 pm

PHONE 313-428-8337

