

THE MANCHESTER ENTERPRISE

20 Cents Per Copy

116TH YEAR VOLUME NO. 13

USPS NO. 327-460

THURSDAY, JANUARY 17, 1985

Ron Milkey Chosen As Jostens Semi-Finalist



The Jostens Foundation, Inc. each year sponsors a nationwide scholarship competition. Graduating high school seniors who demonstrate outstanding achievements in school and community activities are eligible to apply. Each year approximately 15,000 high school seniors apply. From this application process one thousand semi-finalists are selected. Manchester High School is proud to announce that Ron Milkey, son of Steve and Lois Milkey of 4754 Fletcher Road has been selected as one of the Jostens Scholarship semi-finalists. Ron is now eligible to continue in the competition. In April, the Jostens Foundation will award \$1,000 scholarships to the 200 finalists.

Ron has participated in numerous school-related activities as well as many activities outside of school. Recently, he was chosen as the DAR Outstanding Citizen of Manchester High School. After graduation, Ron plans to attend Michigan State University and major in business administration.

Board Of Education Modifies Athletic Eligibility Policy

At its regular meeting in December the Manchester Board of Education took action to modify its Athletic Eligibility Policy. Under the new proposal a student will be ineligible after one E on a report card unless the overall grade point average is at least 1.7. As weekly reports are examined, students will also be ineligible if an E appears unless, again, the overall grade point average is at least 1.7.

The penalty for the use of alcohol or other controlled substances has been set at three (3) weeks of ineligibility. The penalty for the use of tobacco shall be one (1) week of ineligibility.

Now Wants His Head

Manchester Enterprise
May 24, 1900

Way back in the early days of Manchester history—perhaps half a century ago, there drifted into the settlement a man somewhat past middle age. It was early in the fall and he took up his abode at the village tavern. He was evidently a talented man, a good talker and bitterly opposed to the extension of slavery.

His name was Parnell, but we don't know whether he was any relation to the great Irish leader or not. He gave several lectures on various subjects at the Presbyterian Church and the early settlers turned out in great numbers to hear him.

He was a dissipated man and died from the effects of strong drink. When told that he could not live long he requested that after death his head be severed from his body and sent to Dr.

Fowler, the great phrenologist at New York, and that his body should be buried with his feet to the south, in token of his enmity to the slave holders. These requests were complied with, we understand, and a little mound in the north west corner of the old burying ground, at the bend of the river, at the north end of Washington street, is often pointed out as the last resting place of the erratic stranger.

One of our citizens who is troubled with insomnia somewhat, informed the Enterprise that he often wanders over there to the old grave yard in the gray of the morning, before the glorious orb of day has gilded the clouds or the birds begun their songs of praise. He told us how once he sat down upon the little mound, and must have fallen asleep. Finally he heard a voice saying, "I want my head," and asking who made the demand, was told that it was Parnell. "Well," replied our friend, "I haven't got your head." "But you're a citizen of this place continued on page 7

Leslie Duncan Semi-Finalist For Finland Scholarship



Since 1952, two young people from Michigan have been chosen annually to spend the summer in Finland as recipients of the Finland-U.S. Senate Scholarship Program of Youth for Understanding. Under the program, funded by the Government of Finland, a specially selected high school junior is named by each U.S. Senator to live for two months with a Finnish host family on a host scholarship. Students, nominated by their high school, are judged for the scholarship solely on the basis of merit and not on political or other considerations. The exchange experience and the selection process are administered by Youth for Understanding, one of the largest teenage student exchange organizations in the United States.

Leslie Duncan, a junior at Manchester High School, has been chosen as one of 12 semifinalists from approximately 300 applicants. Leslie is the daughter of James and Marria Duncan of 400 East Main Street. The twelve continued on page 7

Board Of Education Sets 1984-85 Goals

In a recent special meeting the Manchester Board of Education through consensus discussion established short term goals for the school district.

Identified as high priority goals for the 1984-85 school year were the development of a 1985-86 budget by February 18, the development of a comprehensive marketing plan with special emphasis on non-parents and continued work on curriculum development. Identified as medium priority goals were the following: 1. Development of a proposal for capital improvement of buildings, including the completion of the athletic field complex. 2. A study of the need for additional counseling staff at all levels. 3. The development of a proposal for a comprehensive/cohesive computer education program. 4. Development of a proposal linking teacher evaluation, motivation, and merit

rewards.

At the meeting Superintendent of Schools Gene Thompson advised the Board that a study of enrollment projections had already been completed.

In addition, Thompson also indicated that work was well under progress for the development of an Agri-business program at Manchester High School. He emphasized that the program would not be identical to that used in the past, but would attempt to meet the needs of students interested in careers in Agri-Business.

High school accreditation has also progressed during the current year. A high priority for the Manchester Schools is the achievement of North Central Accreditation.

A copy of the Board of Education Goals may be obtained by calling the office at 423-7505.

Optimist Club Essay Winners



Pictured above left to right are Heidi Huber, Sherri Leach, third place winner; Jeff Mann, Tricia Horning, 1st place winner; and Christine Hawk.

Thirty two students from Manchester High School entered the local Optimist essay contest. Tricia Horning placed first, according to Jim Datsko, club president. Taking second place in the competition was Betsy Royle, with third place awarded to Sherri Leach. Mark Lenhart and Jeff Mann received Honorable Mention by contest chairman, Bob Hamilton.

The other twenty seven contestants, who also entered

essays on "Freedom, Our Most Precious Heritage", were: Mitzi Ahrens, Jill Alber, Jon Arney, Melissa Beasley, Nicole Bragg, Amy Broucek, Hope Broucek, Bob Bunney, Rachel Cartier, Julie Craft, Beth Fahey, Brad Finkbeiner, Bill Hansen, Cheryl Hartmann, Heidi Haselschwerdt, Christine Hawk, Heidi Huber, Brendan Lenski, Kerry Mann, Mark Meister, Ron Milkey, Heidi Minick, Heather Mottice, Chris Pagel, Lisa Ricksmann, Tracey

Schuler, Veronica White.

Tricia Horning's winning entry has been submitted to the Optimist District Competition in Huntington Woods for judging against winners throughout Michigan. The winner at the district competition will be awarded an expense paid trip to the Freedoms Foundation at Valley Forge for a four day seminar on freedom and patriotism, funded by the Optimist International Foundation.

Letter To The Editor

Dear Mr. Steele:

I just read the article in the Free Press concerning the old oak tree. The picture with the article shows all the strong branches reaching heavenward, as if asking for Divine help.

If the Washtenaw County Road Commission was truly concerned about public safety it seems to me that over the years they would have paved the road AWAY from the hazard not CLOSER to it each time the road needed improvement.

If that old tree has been successfully avoiding being hit by vehicles for over a century one can assume it would be an irresponsible driver not the tree that would be at fault if an accident happened.

Has anyone heard of the Department of Interior trying to dry up a river because a canoe might be tipped over in it? We assume canoeists would want to have control of their canoes. I wager a drunk driver will cause a casualty before the tree will.

The tree in the picture was so inviting and friendly looking I'm going to take the short ride west past the old tree and over to

Manchester Village Council Meeting

TENTATIVE AGENDA

January 21, 1985
7:00 P.M.

Pledge
Reading and Approval of Minutes
Citizen Participation:

- Rural Housing - Site Plan Approval.
- Burnham & Flower Insurance - John Oros.

Committee Reports:

- Budget
- Ordinance
- Parks
- Planning
- Police
- Public Works

Unfinished Business:
New Business:
Adjourn

Manchester for lunch and browse in the shops.

In our community we had a problem saving three ancient trees growing in a row. The powers-that-be wanted to cut down the "ancients" to run a fence along that line at the end of a park. Citizens stationed themselves at the trees until a decision was made to move the fence 25 feet and save the trees. This was out where nothing but insects, weeds and dogs used the park.

Perhaps only God can make a tree but foolish asses are created by mankind. To thank us those ancient trees are the first to reward the neighborhood with brilliant shades of red in the Fall.

Eleanor Lyon

American Legion Auxiliary

The American Legion Auxiliary met at the Legion Home on January 9, 1985, with 15 members present. To date, we have 80 dues paid members. Our quota is 92. Dues must be received by the Department of Michigan on or before January 31, 1985, or continuous membership is lost by the non-paying member.

Reports were given by Committee Chairmen. A new American flag and Unit flag have been purchased and will be used by the Auxiliary in parades, etc.

A subscription to the Legislative Bulletin was renewed to be sent to the Ann Arbor V.A. Hospital and the Manchester Township Library.

Our "adopted veteran", Homer Kappler, was remembered at Christmastime with a subscription to the Manchester Enterprise, lap robe and cigarettes.

Next months meeting will be February 13, 1985. Refreshment committee will be Alice Alexander, Helen Hosmer and Della Widmayer.

Sell It Thru
The Want Ads

AREA OBITUARIES

Kenneth N. Ferguson
344 S. Macomb Street
Manchester, Michigan

Age 79 years, died Sunday, January 6, 1985, in Tucson, Arizona, following an extended illness.

He was born October 2, 1905, in Manchester Township, the son of Norman and Belle Alvord Ferguson. He was married to Katherine Galloway on November 7, 1933. She survives.

He was a member of St. Mary's Catholic Church and a charter member of the Father Fischer Council of the K of C's.

In addition to his wife, he is survived by two sons and their wives, William and Sharon Ferguson of Rockford, Illinois, John and Anne Ferguson of Tucson, Arizona, one daughter and her husband, Margaret and Frank Hollins of Belle Mead, New Jersey, 11 grandchildren, two great-grandchildren, one sister, Mrs. Gertrude Gehrig of Lake Orion and several nieces and nephews. He was preceded in death by 3 sisters.

Funeral services were held on Friday, January 11, 1985, at 11:00 a.m. at St. Mary's Catholic Church. Rev. Fr. William F. Welch officiated. Burial followed in Oak Grove Cemetery. Rosary was recited at the Jenter Funeral Home.

Dmytro Horodeczny
11430 Pleasant Lake Road
Manchester, Michigan

Age 71 years, died Tuesday, January 15, 1985 at St. Joseph Mercy Hospital.

He was born November 9, 1913, in the Ukraine, the son of Michael and Anna Sannycky Horodeczny. He was married to Eva Sannycky on February 20, 1940. She survives.

Mr. Horodeczny was a life long farmer.

In addition to his wife, he is survived by two sons, Michael, at home, Walter and his wife Monica of Manchester, 5 grandchildren, a brother John of New Boston, and five sisters and one brother in the Ukraine.

Mass of the Resurrection will be held Thursday, January 17, 1985 at 10:00 a.m. at St. Mary's Catholic Church. Rev. Fr. Raymond R. Schlunkert will officiate. Burial will follow in St. Mary's Cemetery.

The Rosary will be recited at 8:30 p.m. Wednesday, at the Jenter Funeral Home, where the family will receive friends from 2 to 4 p.m. and 7 to 9 p.m. on Wednesday.

The Manchester Enterprise

150 EAST MAIN STREET
Manchester, Michigan 48158
USPS 327-480
Phone 428-2173

The Manchester Enterprise was established in 1887 and is published each Thursday at 150 East Main Street, Manchester, Michigan, with second class postage paid at Manchester.

Edward E. Steele, Publisher
Lenore A. Steele, Editor

POSTMASTER:

Send Form 3972 to The Manchester Enterprise, 150 East Main Street, Manchester, Michigan 48158.

DEADLINES:
All Display Advertising AND Pictures (Black and White Only) Are Due By 5:00 P.M. Every Monday For Same Week Publication.
All Classified Advertising And News Articles Are Due By 11:00 A.M. Every Tuesday For Same Week Publication.

The Wrestling Report

This past Thursday the Dutch traveled to the defending class D State Champs mat in Grass Lake. The team came up short of a 54-20 score. Individual winners were B.J. Lee at 105, Bud Ball at 119, Van Talcott at 126, Steve Vleck at 167 and wrestling J.V. Shawn Ion at 126. One highlight of the match was in seeing Van Talcott execute a very advanced open body throw. Many college wrestlers wouldn't even try this move, but Van made it work to perfection that night.

On Saturday the Dutch went to the Clinton Invitational. Constantine, the sixth ranked team in the state won the tournament followed by Clinton and Grass Lake. Manchester placed sixth and came home with

five medalists.
At 105, B.J. Lee came home with a silver medal. His only loss was in the finals against Kirt Hayes of Constantine who sports an 18-1 record and was voted tournament M.V.P.

Joey Deacons, wrestling at 119 pounds, came home with a bronze medal. He decided on two men and pinned another in the tournament.

At 126, Van Talcott, knocked off second seed, (the wrestler most coaches thought would place Second before the tournament started), Randy Berkeypile of Napoleon to prove the coaches wrong and advance to the finals. He was beaten in the finals by 1983 State Champ Ryan Kast of

WIDMAYER FORD
MANCHESTER MICHIGAN
510 WEST MAIN (313) 428-8343

Carpeting Soon!

Shop at Lodi for a complete selection of carpeting. Saxony, loop and cut, level loops, tweed, solids, prints - carpeting for every room. Hundreds of samples from which to choose. We use Omalon pad. Our installation is expertly performed and guaranteed.

Ask about our bank financing.

LODI Town and Country FURNITURE
Ann Arbor-Saline Rd. at Travis Plaza
Open Friday nights until 8:30 662-9372
Free parking at the door

DAVE'S BUTCHER BLOCK

PHONE 517-456-4348
ONE MILE WEST OF CLINTON ON US-12
Monday-Saturday 9 am-7 pm Sunday 10 am-5 pm

Natural Casing HOT DOGS \$2.09 lb.

DAVE'S HOMEMADE SUMMER SAUSAGE \$2.99 lb. SAVE 30c LB.

BEEF STEW MEAT \$1.79 lb.

MINI HAM \$2.09 lb. SAVE 50c LB. Average Weight 2 lbs. Per Ham Perfect For 2 People

WE ACCEPT FOOD STAMPS
WE NOW CARRY BONELESS AND SPIRAL SLICED HONEY BAKED HAMS



STRIKES -N- SPARES

B-G BOWLERS

Sue Lobbestael	522	Pine Grove Bait	253.5	256.5
Cindy Steele	515	Onsted Bldg. Center	250.0	260.0
Sue Walton	515	Dacels Garage	246.5	263.5
Linda Steele	505	Black Sheep Tavern	238.5	271.5
HIGH TEAM GAME W/HDCP		Town Laundry	189.0	321.0
Carol's	897	HIGH INDIVIDUAL SERIES		
Comerica	892	Sue Williams		576
Car Wash	824	Brenda Walz		533
HIGH TEAM SERIES W/HDCP		Shirley Roller		485
Comerica	2617	Cindy Donahue		484
Double A	2551	Hilda Arnold		483
Cheryl's	2534	Deb Luck		481
Mable Farmer		481		
Kathy Heeslecherwerdt		478		
HIGH INDIVIDUAL GAME				
Sue Williams		233		
Mable Farmer		204		
Brenda Walz		194		
Virginia Walby		191		
Della Widmayer		185		
Sue Williams		182		
Brenda Walz		180		
Deb Luck		180		

MANCHESTER BUSINESSMEN

Double A I	3	0
K&W Farm Supply	3	0
Gambles	2	1
Aiuto Auto Parts	2	1
Double A II	1 1/2	1 1/2
Steele's Htg. and Cool.	1 1/2	1 1/2
Knights of Columbus	1	2
Kirk Excavating	1	2
Aura Inn	0	3
Little Wack Excavating	0	3
HIGH TEAM SERIES		
Double A II	3181	
Double A I	3149	
Gambles	3134	
HIGH TEAM GAME		
Aiuto Auto Parts	1147	
Aura Inn	1115	
Double A II	1113	
HIGH INDIVIDUAL SERIES		
Dan Coval	652	
Steve Hathaway	640	
Leon Thacker	624	
HIGH INDIVIDUAL GAME		
Steve Hathaway	263	
Dan Coval	255	
Mike Woodruff	244	
Steve Hathaway	244	
HIGH GAME FOR THE WEEK		
Steve Hathaway	283	
Jerry Kuhl	244	
Dennis Sannes	205	
HIGH SERIES FOR THE WEEK		
Steve Hathaway	640	
Jerry Kuhl	576	
Dennis Sannes	562	
Curt Day	552	

MANCHESTER TOWN CLUB

Norm Walz	74	45
V&F Builders	69	50
R&F Tree Service	68	51
Alley Drillers	67	52
DuRussels	66	53
Jenters	59	60
Back Door Party Store	51	68
Manchester Plastics, Inc.	49	70
Pin Alley Gals	48	71
Manchester Enterprise	44	75
200's		
Lewann Van Deven	218	
500's		
Paula Scherd	521	
Joan Day	510	
Carol Rentz	512	
Terri Scherd (Sub)	523	
HIGH INDIVIDUAL GAME		
Joan Day	242	
Karen Spencer	234	
Lewann Van Deven	222	
HIGH INDIVIDUAL SERIES		
Joan Day	592	
Karen Spence	588	
Evie Seegert	572	
HIGH TEAM GAME ACTUAL		
V&F Builders	895	
HIGH TEAM SERIES ACTUAL		
Alley Drillers	2435	
HIGH TEAM GAME W/HDCP		
V&F Builders	861	
HIGH TEAM SERIES W/HDCP		
V&F Builders	2316	

Men's High Series		
Ron Mast	501	
Doug Harvey	458	
Dave Young	486	
Men's High Game		
Doug Harvey	199	
Byron Moore	189	
Ron Mast	188	
Women's High Series		
Betty Griffin	486	
Carol Rentz	442	
Karen Weidmayer	437	
Women's High Game		
Betty Griffin	176	
Sharmar Pfaus	175	
Betty Griffin	171	

JOLLY KEGLERS

Carol's Cut-N-Curl	72	47
Double A	67	52
Comerica	61	58
R.D. Kleinschmidt, Inc.	60	59
Chelsea Lanes	57	62
Car Wash	54	65
Dutch Country Kitchens	53	66
Cheryl's Boutique	52	67
200's		
Betty Benedict	223	
Kim Smith	206	
Bernie Fielder	204	
500's		
Betty Benedict	556	
Bernie Fielder	524	

MANCHESTER WOMEN

Tri County Oil	304.0	206.0
Brkin Chiropractic	278.5	231.5
Gills Gambles	271.5	238.5
Columbia F&H	262.5	247.5
Weatherwax Drug	256.0	254.0

Norm Walz & Son Construction
Manchester, Michigan
NEW HOMES
REMODELING
ADDITIONS
GARAGES
SIDING
DECKS
Custom Built Cabinets
428-7109

PEPSI-COLA
\$1.99 8 PAC 1/2 LITER PLUS DEPOSIT
2% Milk
\$1.69 Gal.
CHECK OUR BEER PRICES! KEG BEER IN STOCK
SPECIAL PRICES ON BEER NOW AND THRU THE HOLIDAYS
Back Door Party Store
500 ANN ARBOR STREET MANCHESTER, MICH.
PHONE 428-9287

Tri County Oil
278.5 231.5
271.5 238.5
262.5 247.5
256.0 254.0

MARKERS-MONUMENTS
CEMETERY LETTERING
BRONZE PLAQUES
"Since 1910"
COMPARE QUALITY AND PRICE
WE WILL NOT BE UNDERSOLD
Office and Display
MAPLE CITY GRANITE CO.
502 E Chicago Blvd. [M-50] Tecumseh, Mich. 49286
517-423-6530

Jim's Car Clinic
101 WEST MAIN MANCHESTER, MICHIGAN
PHONE 428-7377
Full Service Gas
"LOWEST FULL SERVICE GAS IN TOWN"
24 Hour Towing Service 428-7377

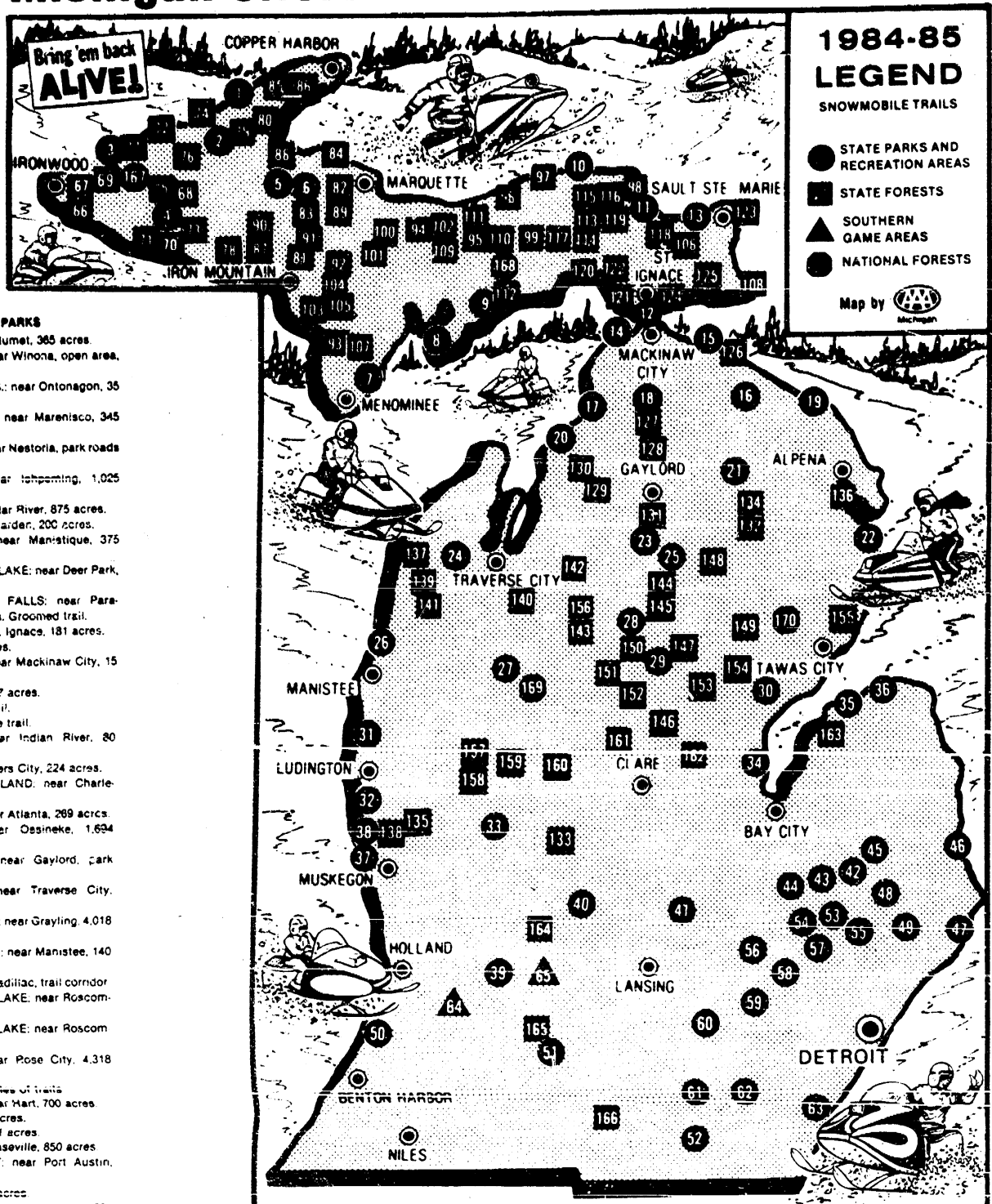
Buy, Sell Or Rent
In The Classifieds
VILLAGE HAIR FORUM
HAS MOVED
TO
THE OLD MILL
PHONE 428-7684

Dan's Westside Automotive
660 West Main Street Manchester
Phone 428-9455
TIRES CHANGED And REPAIRED
24 HOUR WRECKER SERVICE
Phone 428-9455
after 6 p.m. and Weekends
Call 428-7814
CHECK OUR BATTERY PRICES

Edern
117 E. MAIN STREET - MANCHESTER
Phone 428-7000
"Fine Dining in Historic Manchester"
SATURDAYS
Starting Saturday, January 19th
Loyse Hubman
"EASY LISTENING MUSIC"

BEEF PROCESSING 23lb.
INCLUDES CUTTING
DOUBLE WRAPPING AND FREEZING
Country Farm Meats
YPSILANTI 5569 Merritt Rd. (Between Stony Creek and Carpenter) 482-0502 OPEN 7 Days 9 AM-5:30 PM
ANN ARBOR Maple & Miller 1512 Maple Rd. 995-5885 Monday-Saturday 9 am-7 pm Sunday 10-5 pm

Michigan offers 170 trails for snowmobilers



- STATE PARKS**
- 1 MCLAIN: near Calumet, 365 acres
 - 2 TWIN LAKES: near Winona, open area, 165 acres
 - 3 PORCUPINE MTS.: near Ontonagon, 35 miles of trails
 - 4 LAKE GOGGEBIC: near Marquette, 345 acres
 - 5 CRAIG LAKE: near Nestora, park roads only
 - 6 VAN RIPPER: near Topshaming, 1,025 acres
 - 7 WELLS: near Cedar River, 875 acres
 - 8 FAYETTE: near Gaiden, 200 acres
 - 9 INDIAN LAKE: near Manistee, 375 acres
 - 10 MUSKALONGE LAKE: near Deer Park, 125 acres
 - 11 TAHOAJAMENON FALLS: near Paradise, 14,300 acres, Glimmer, 181 acres
 - 12 STRAITS: near St. Ignace, 181 acres
 - 13 BRIMLEY: 45 acres
 - 14 WILDERNESS: near Mackinac City, 15 miles of trails
 - 15 CHEBOYGAN: 917 acres
 - 16 ONAWAY: one trail
 - 17 PETOSKEY: 1-mile trail
 - 18 BUR' LAKE: near Indian River, 80 acres, one trail
 - 19 HOPKIN: near Rogers City, 224 acres
 - 20 FISHERMAN'S ISLAND: near Charlevoix, 2,278 acres
 - 21 CLEAR LAKE: near Atlanta, 289 acres
 - 22 OREGON: near Oshtemo, 1,694 acres
 - 23 OTSEGO LAKE: near Gaylord, park roads only
 - 24 INTERLUDICHEN: near Traverse City, trail corridor
 - 25 HARTWICK PINES: near Grayling, 4,018 acres
 - 26 ORCHARD BEACH: near Manistee, 140 acres
 - 27 MITCHELL: near Cadillac, trail corridor
 - 28 NORTH HIGGINS LAKE: near Roscommon, 368 acres
 - 29 SOUTH HIGGINS LAKE: near Roscommon, trail corridor
 - 30 RIFLE RIVER: near Rose City, 4,318 acres
 - 31 LUDINGTON: 7 miles of trails
 - 32 SILVER LAKE: near Hart, 700 acres
 - 33 NEWAYGO: 237 acres
 - 34 PINCKNEY: 201 acres
 - 35 SLEEPER: near Cassville, 150 acres
 - 36 PORT CRESCENT: near Port Austin, 548 acres
 - 37 MUSKOGON: 400 acres
 - 38 DUCK LAKE: near Muskegon, 561 acres
 - 39 YANKEE SPRINGS: near Middleville, 3,204 acres
 - 40 IGONIA: 2,700 acres
 - 41 SLEEPY HOLLOW: near Lansing, 2,600 acres
 - 42 ORTONVILLE: 3,896 acres
 - 43 HOLLY: near Pontiac, 1,870 acres
 - 44 SEVEN LAKES: near Holly, 3,375 acres
 - 45 METAMORA HADLEY: near Metamora, 630 acres
 - 46 LAKEPORT: near Port Huron, 200 acres
 - 47 ALGONQUIC: 750 acres
 - 48 BALD MOUNTAIN: near Pontiac, 2,800 acres
 - 49 ROCHESTER-UTICA: near Utica, 400 acres
 - 50 VAN BUREN: near South Haven, 250 acres
 - 51 FORT CUSTER: near Battle Creek, 1,337 acres
 - 52 LAKE HUDSON: near Hudson, 2,850 acres
 - 53 PONTIAC LAKE: near Pontiac, 3,500 acres
 - 54 HIGHLAND: near New Hudson, 3,600 acres
 - 55 DODGE PARK NO. 4: near Pontiac, 130 acres
 - 56 BRIMINGTON: 3,420 acres
 - 57 PROUD LAKE: near Midford, 2,200 acres
 - 58 ISLAND LAKE: near Brighton, 3,100 acres
 - 59 PINCKNEY: near Gregory, 5,500 acres
 - 60 WATERLOO: 11,000 acres
 - 61 CAMBRIDGE: near Cambridge Junction, 120 acres
 - 62 HAYES: near Clinton, 400 acres
 - 63 STEVEN HAYES: near Clinton, 400 acres

- 77 PORCUPINE MT., Porcupine Mts. St. Pl. Trail: 29 mi.
- 78 STATE LINE-WATERMEET-BRUCE CROSSINGS, at Bruce Crossing, Trail: 40 mi.
- 79 MISERY BAY, Manistee State Forest 2 1/2 mi. N. of Winona along M-26, Trail: 14 mi.
- 80 ALSTON-WINDYCA, Manistee State Forest, at Scott, Trail: 32 mi.
- 81 SILVER LAKE WEST BRANCH CAMP, 5 mi. N. of Channing on M-95, Trail: 19 mi.
- 82 NEGAUNEE, 2 mi. S. of Marquette on M-26 and at Negaunee, Trail: 48 mi.
- 83 NEGAUNEE-NICHIGANNE-REPUBLIC, at Negaunee, Michigan or Republic, Trail: 48 mi.
- 84 MARQUETTE-BIG BAY, 4 mi. NW of Marquette at Forestville, also at Big Bay, Trail: 37 mi.
- 85 NEWAYGO, Muskegon State Forest 1/2 mi. SE of Laurium, also in Copper Harbor, Trail: 50 mi.
- 86 LAURUM-LAKE LINDEN, Muskegon State Forest, in Laurium and Lake Linden, Trail: 5 mi.
- 87 CRYSTAL FALLS-BATES JCT., Iron Range State Forest 2 mi. NW of Crystal Falls on U.S. 141, Trail: 18 mi.
- 88 L'ANSE-AUSTON-SIDNAW, Ottawa National Forest, at L'Anse, Alton or Sidna, Trail: 51 mi.
- 89 PALMER, Michigan State Forest, 4 mi. NE of Palmer on M-35, Trail: 7 mi.
- 90 KESLO-CRYSTAL FALLS, Iron Range State Forest, at Kelan Jct, Trail: 6 mi.
- 91 SILVER LAKE-FLOODWOOD, Ford State Forest, 4 mi. N. of Channing on M-95, Trail: 40 mi.
- 92 CHARLEY LAKES, Ford River State Forest, 6 mi. NE of Ralph, Trail: 6 mi.
- 93 LORETTO-FELCH, Ford River State Forest, 1 1/2 mi. E. of Waukegan off US-2 or 9 1/2 mi. S. of Foster City, Trail: 25 mi.
- 94 ONTARIO-CHATHAM, 2 mi. E. of Chatham off M-94, Trail: 10 mi.
- 95 CHATHAM-SHINGLETON, at Shingleton, Trail: 28 mi.
- 96 SHINGLETON-GRAND MARAIS, at Shingleton and Grand Marais, Trail: 34 mi.
- 97 GRAND MARAIS-PINE STUMP JCT., at Grand Marais or Pine Stump Jct., Trail: 25 mi.
- 98 PINE STUMP JCT.-PARADISE, at Pine Stump Jct. or Paradise, Trail: 36 mi.
- 99 SENEY, at Seney, Trail: 45 mi.
- 100 LITTLE LAKE, Escanaba River State Forest, in Gwynn and Little Lake, Trail: 5 mi.
- 101 SAND PLAINS, Michigan State Forest, off M-35 at New Grandy, Trail: 21 mi.
- 102 CHATHAM BRANCH, Bay de Noc State Forest, 2 mi. E. of Chatham off M-94, Trail: 24 mi.
- 103 ATLANTIC-REDRIDGE, 1/2 mi. W. of Atlantic, Trail: 8 mi.
- 104 BERGLAND-PORCUPINE MT., 1 mi. N. of Bergland, Trail: 18 mi.
- 105 BILL NICHOLS, Muskegon State Forest, at Mass, Trail: 40 mi.

- 105 SKUNK CREEK, Sturgeon River State Forest, 2 1/2 mi. N. of Feich on Co. Rd. 531, Trail: 23 mi.
- 106 KINROSS-PICKFORD, at Kinross or Pickford, Trail: 15 mi.
- 107 LAKE ANTOINE, Sturgeon River State Forest, 2 mi. E. of Waukegan at Beaver Pines, Trail: 10 mi.
- 108 DRUMMOND ISLAND, on Drummond Island, Trail: 52 mi.
- 109 HOVE, Grand Sable State Forest, 1 mi. S. of Munising on Hwy. 13, Trail: 6 mi.
- 110 N. HIAWATHA, Grand Sable State Forest, 2 1/2 mi. N. of Marquette, Trail: 48 mi.
- 111 NINE, Grand Sable State Forest, 1 mi. N. of Shingleton on Co. Rd. H15, Trail: 40 mi.
- 112 HAYWIRE, Marquette River State Forest 5 mi. N. of Marquette on M-68, Trail: 21 mi.
- 113 GRAND MARAIS, Lake Superior State Forest, 2 mi. N. of Marquette on Co. Rd. 404, Trail: 17 mi.
- 114 PINE STUMP-TAHOAJAMENON FALLS, Lake Superior State Forest, 20 mi. N. of Newberry on Co. Rd. 407, Trail: 32 mi.
- 115 DOLLARVILLE DAM, Tahquamenon River State Forest, links Newberry with trails to Grand Marais and Tahquamenon Falls, Trail: 18 mi.
- 116 NEWBERRY-UPPER TAHOAJAMENON FALLS, Lake Superior and Tahquamenon State forests, Charcoal Grade, 1 mi. N. of Newberry, or Tahquamenon Falls State park, Trail: 25 mi.
- 117 MCMILLAN, Tahquamenon River State Forest, 3 mi. S. of Mackinac on Co. Rd. 423, Trail: 15 mi.
- 118 PARADISE-RACCO, Lake Superior and Munuscong State forests, at Paradise or Racco, Trail: 35 mi.
- 119 PARADISE-UPPER TAHOAJAMENON FALLS, Lake Superior State Forest, 1 mi. W. of Paradise on M-123, Trail: 14 mi.
- 120 PULPIT LAKE, Mackinac and Tahquamenon State forests, 2 mi. E. of Newberry on US-10 to M-26, 4 mi. S. of Newberry, Trail: 20 mi.
- 121 CARR RIVER, Mackinac State Forest, 3 mi. NE of Brown or North Rd. in SW of Trout Lake, Trail: 16 mi.
- 122 REXTON, Mackinac State Forest, at Rexton, Trail: 25 mi.
- 123 SOO-RACCO, Munuscong State Forest, at Rexton Park, 1 mi. E. of Sault Ste. Marie, Trail: 21 mi.
- 124 CASTLE ROCK, Mackinac State Forest, 1 mi. N. of St. Ignace off I-75, Trail: 18 mi.
- 125 CEDARVILLE, Munuscong State Forest, 1 1/2 mi. N. of Cadillac on M-129, Trail: 26 mi.
- 126 CHEBOYGAN-BLACK MOUNTAIN, Black Lake State Forest, 3 1/2 mi. E. of Cheboygan, Trail: 45 mi.
- 127 INDIAN RIVER, Hardwood State Forest, 2 1/2 mi. W. of Indian River on M-68, Trail: 21 mi.
- 128 WOLVERINE, Hardwood State Forest, 2 mi. W. of Wolverine on Peet Rd., Trail: 17 mi.

- 129 JORDAN VALLEY, 8 mi. S. of Boyne Falls on U.S. 131, Trail: 13 mi.
- 130 CHANDLER HILL, Jordan River State Forest, 5 mi. W. of Boyne Falls on Co. Rd. 608, 2 mi. N. on Sleehing Rd., 1/4 mi. W. on Chandler Rd., Trail: 34 mi.
- 131 NORTH BRANCH, Onondago State Forest, 7 1/2 mi. S. of Gaylord on Old US-27, 8 mi. E. on State Rd., Trail: 23 mi.
- 132 AVERY HILLS, Thunder Bay River State Forest, 4 1/2 mi. S. of Atlanta on Co. Rd. 487, 3 mi. W. on Avery Lake Rd., Trail: 14 mi.
- 133 LAKEVIEW-CHIPPEWA LAKE, at Lakeview, Trail: 49 mi.
- 134 BRUSH CREEK, Thunder Bay River State Forest, 2 mi. N. of Atlanta on M-33, 1/4 mi. E. on Voyer Rd., Trail: 30 mi.
- 135 OCEANA COUNTY, 1 1/2 mi. E. of Roubiny on McKinley Rd., Trail: 42 mi.
- 136 NEWAYGO LAKE, Alpena State Forest, S. of Alpena on Piper Rd., Trail: 25 mi.
- 137 PLATTE RIVER, Betula River State Forest, 8 1/2 mi. SE of Homer on M-11, Trail: 11 mi.
- 138 GULL LAKE, Augustus, Trail: 15 mi.
- 139 MUSKOGON COUNTY, at Muskegon County Wastewater Plant and N. of Montague on SR-21 near U.S. 31, Trail: 80 mi.
- 140 BOARDSMAN VALLEY, Fife Lake & Kalkaska State forests, start at Mayfield, Kalkaska, Walton Jct., Traverse City 250 or Fife Lake, Trail: 81 mi.
- 141 BEAR LAKE SPUR, Bettie River State Forest, at Thompsonville, Trail: 16 mi.
- 142 BLUE BEAR, Kalkaska State Forest, 11 mi. E. of Kalkaska on M-72, Trail: 45 mi.
- 143 MISS-KAL LINE, Muskegon State Forest, 1 1/2 mi. E. of Moonstown, 1 mi. NE, Trail: 26 mi.
- 144 GRAYLING-LOVELLS, Au Sable State Forest, 2 mi. N. of Grayling on Old US-27, Trail: 63 mi.
- 145 SKYLINE, Au Sable State Forest, 6 1/2 mi. S. of Grayling, 1 mi. E. Trail: 25 mi.
- 146 GLADWIN REFUGE, Tittabawassee River State Forest, 1 1/2 mi. N. of Meredith, Trail: 13 mi.
- 147 ROSCOMMON-ST. HELEN, Houghton Lake State Forest, 1 mi. SE of Roscommon on M-76, or in St. Helen 1/2 mi. E. of M-76 on Beaver Lake Rd., Trail: 25 mi.
- 148 ROLL TRI, Oscoda State Forest, 1/4 mi. E. of Lovells on Lovells Rd., Trail: 25 mi.
- 149 MUSKOGON LAKE, Oscoda State Forest, 5 mi. N. of Mio on M-33 to Co. Rd. 608, 4 1/2 mi. W., 1 mi. N., Trail: 25 mi.
- 150 NORTH HIGGINS LAKE, Au Sable State Forest, 1 mi. E. of N. Higgins Lake I-75 exit, Trail: 8 mi.
- 151 WEST HIGGINS LAKE, Houghton Lake and Au Sable State forests, 1/2 mi. W. of interchange U.S. 27 and Co. Rd. 104, Trail: 18 mi.
- 152 PRUDENVILLE, Houghton Lake State Forest, 2 mi. W. of Prudenville on M-56, 1/2 mi. N., Trail: 25 mi.

Filing Requirements for 1984 Tax Returns

The following chart, based on filing status, shows the minimum amount of gross income which must be received in 1984 before a return is required to be filed.

Single (under age 65)	\$3,300
Single (age 65 or over)	\$4,300
Married filing a joint return	\$5,400
Married filing a joint return (one spouse age 65 or over)	\$6,400
Married filing a joint return (both spouses age 65 or over)	\$7,400
Married filing a separate return	\$1,000
Surviving spouse (Qualifying widow(er) with dependent child)	\$4,400
Surviving spouse (age 65 or over)	\$5,400

In addition, you will have to file an income tax return if any of the following situations apply:

- You received tips from which social security tax was not withheld.
 - You were in business for yourself and had a net earning of \$400 or more from that business. This is called self-employment income.
 - You had unearned income of \$1,000 or more, such as dividends or interest, and can be claimed as a dependent by someone else. This is particularly important to students.
 - You received Advance Earned Income Credit payments.
 - You have alternative minimum tax.
 - You withdrew from your IRA.
- You must also file a return to obtain a refund of any income tax withheld, even if you do not meet any of the requirements specified above.

PAGE 4

THE MANCHESTER ENTERPRISE THURSDAY, JANUARY 17, 1985

PAGE 5

True Value

HARDWARE STORES

True Value Savings

Be sure to get your FREE copy of our Savings Days Circular

 <p>4.99 Gallon</p> <p>Flat Latex Wall Paint provides a high-hiding finish on all interior wall and ceiling surfaces. 7 decorator colors and white.</p>	 <p>9.99</p> <p>2-Step Folding Step Stool/Ladder lets you reach high places easily. Folds to 2 1/2 in. W/ non-slip foot tips, wide steps, more.</p>	 <p>29.95</p> <p>1,500W Fan-Forced Electric Heater features comfort angle to direct heat efficiently. With auto thermostat, more.</p>	 <p>88¢</p> <p>6-In. Slip-Joint Pliers made from drop-forged, heat-treated steel for extra strength. Designed for all-around household use.</p>
 <p>\$1</p> <p>6-Pk. Sponges are absorbent enough to handle all your household cleaning chores. Assorted sizes and colors.</p>	 <p>7.99</p> <p>Propane Torch Kit incl. disposable propane fuel cylinder, standard pencil-point tip for soldering pipes, metal work, more.</p>	 <p>39.99</p> <p>Mighty Mini Vacuum Cleaner features mobile and lightweight to clean carpets, stairs, car interiors, more. With attachments.</p>	 <p>88¢</p> <p>30-Ft. Rope Caulk Seal is easier to apply than caulking gun caulk. Stays flexible. For indoor/outdoor use all around your home.</p>
 <p>4.44</p> <p>Leather Gloves feature shirred wrists for a good fit, thumb shield for extra wear. Made of buck-lam split leather. Gunn cut.</p>	 <p>3 for 1.89</p> <p>Furnace Filters help keep your heating system running efficiently, reduce fuel bills. Catch dust, lint in 8 popular sizes, 1 in. thick.</p>	 <p>1.29</p> <p>Masking Tape for painting projects, more. Holds down plastic sheeting, protects glass from drips, etc. 2-in. x60-yd. roll.</p>	 <p>1.19</p> <p>4-Pk. Light Bulbs provide a soft, frosty glow for any room. Stock up now on 40, 60, 75 or 100W sizes for your lamps.</p>
 <p>1.00</p> <p>BEACON Mini Handi-Basket is 12x9x4 1/2 in. In assorted colors.</p>	 <p>1.29</p> <p>MASTER ELECTRICIAN Electrical Tape resists weather. 3/4 in. x 66 ft.</p>	 <p>99¢</p> <p>26-Gal. Trash Bags are tough 2-ply plastic with twist ties. 10-pk.</p>	 <p>88¢</p> <p>CONTICO 16-Oz. House-Hold Spray adjusts for mist or spray.</p>

Kleinschmidt True Value Hardware

15660 SHARON VALLEY ROAD MANCHESTER, MICHIGAN

Monday-Friday 8 am-6 pm Saturday 8 am-5 pm Sunday 11 am-3 pm

PHONE 313-428-4337

Turkey Hunting Application Deadline

Hunters are reminded the deadline to send in license application cards for the 1985 spring wild turkey hunting season is February 1, says the Department of Natural Resources (DNR).

The first turkey hunting period will begin April 22 (April 29 in the U.P.), the last hunting period will end June 3. Shooting hours will begin a half hour earlier in the Lower Peninsula, 5:30 - 4 p.m. In the U.P., the hours remain the same as last year, 5 a.m. - 3 p.m. Bag limits remain one banded turkey per hunter.

Application cards for resident and senior resident turkey licenses are on hand at all DNR license-issuing offices and most license dealers, and from DNR Information Services in Lansing (517-373-1220). Nonresident applications will be available only at DNR Information Services.

All applicants must pay a fee when sending in their application card, this fee is the cost of the turkey license. Hunters may apply individually or with one partner, and may select three specific areas to hunt, however, only one area will be assigned.

Successful applicants will receive their 1985 wild turkey hunting license in the mail by March 15. Unsuccessful applicants will be notified by mail at the same time. Their application fee will be refunded after March 22.

To hunt wild turkeys, a hunter must have a 1985 wild turkey hunting license, a 1985 small game stamp (unless hunting on your own land), and if hunting in the southern part of the lower peninsula, a public access stamp. Cost of the various licenses are as follows:

- Resident turkey license \$7.25
- Senior resident turkey license \$1.00
- Nonresident turkey license \$20.25
- resident small game stamp \$7.25
- senior hunting stamp \$4.00
- nonresident small game stamp \$35.25
- junior (age 12-16) small game stamp \$3.75
- zone 3 public access stamp \$1.10

Taxpayers Can Deduct for Charities Without Itemizing

Taxpayers who made charitable contributions during 1984 and do not itemize deductions will be able to deduct a portion of the contributions on their 1984 federal income tax returns, the Internal Revenue Service said.

For 1984, non-itemizing taxpayers can deduct 25 percent of the first \$300 (\$150 if married filing separately) of charitable contributions from their adjusted gross income up to a maximum deduction of \$75, (\$37.50 if married filing separately).

For 1985, the limit rises to 50 percent with no maximum, and for 1986, the charitable deduction increases to 100 percent with no maximum deduction. In all cases the deduction is limited, however, to 50 percent of the adjusted gross income of the taxpayer. After 1986 a taxpayer must itemize deductions to claim charitable contributions.

MARGIE'S UPHOLSTERY

6245 Brooklyn Road
Napoleon

Wide Selection Of Fabrics

Pick-Up/Delivery Available

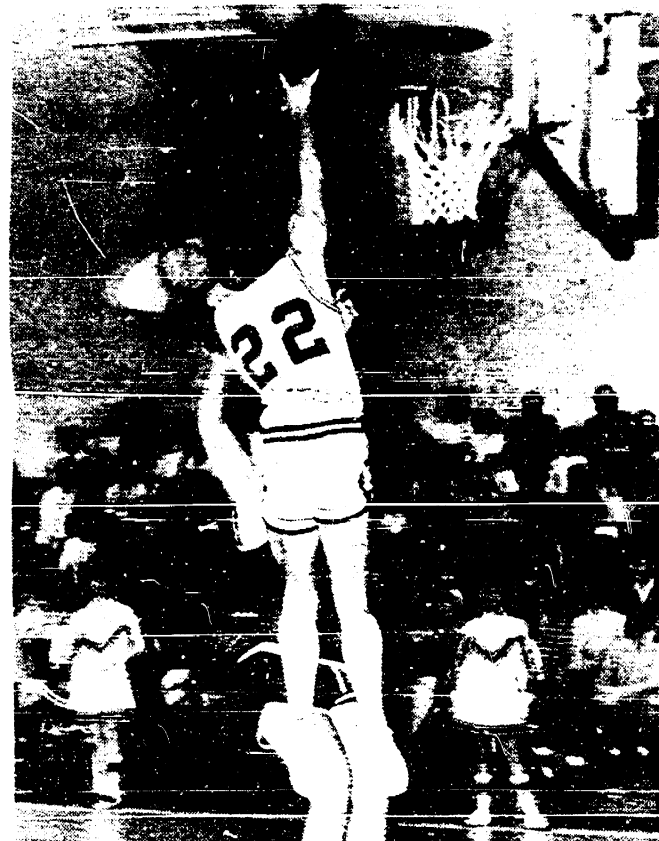
517-536-4230

Dutch Basketball

by Jon



Kevin Creech shoots in a crowd.



Bob Bunney pops for 2.

In my opinion we've had a lack of consistency—we have done superbly at times and gone stone cold at others. Some games free tosses fell then some they haven't. When we put it together we have the potential to beat some tough squads.

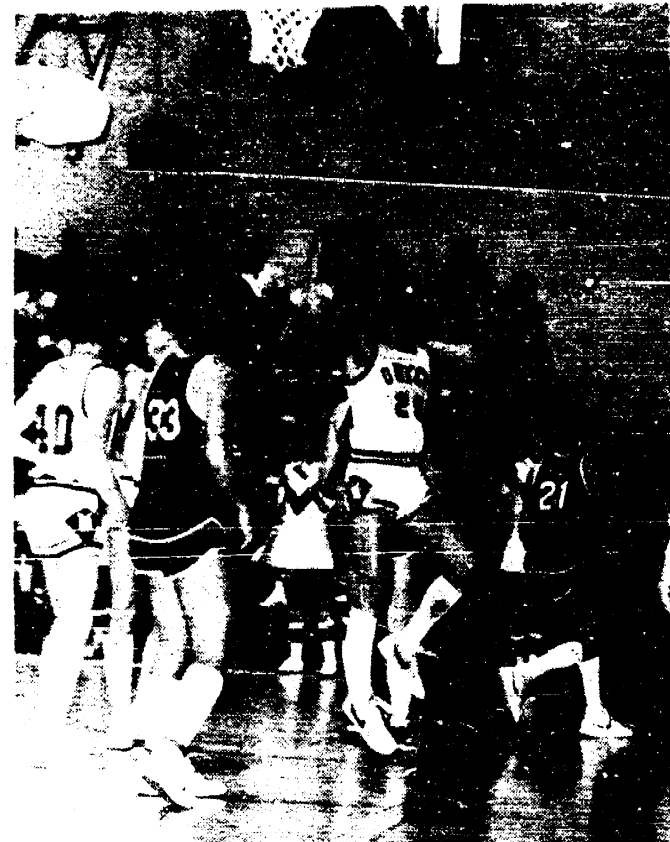
It's been some time since you've heard from me (before Christmas) so I'll fill you in on what's been happening so far this season.

After losing to Sand Creek, we bounced back to defeat Jackson Baptist. Our next stop was on the road at Ann Arbor Gabriel Richard. We were playing well and at 4:51 of the first period we sat atop 5-4. Unfortunately this is where the roof fell in, as we couldn't buy a point and they couldn't miss. We did enter the third period smoking to outscore them 16-6, but they collected themselves to pull away, 69-43. Pat Ridenour threw in 12 as Mike Agin was welcomed back following an early December broken foot by popping 10. 1984 closed on a bad note as we trekked to Hanover Horton and the Comets won 59-55 in overtime. Mike was high point man, hitting 19. Kevin Creech, a Junior center who is improving each game, cleaned the glass for 14 rebounds.

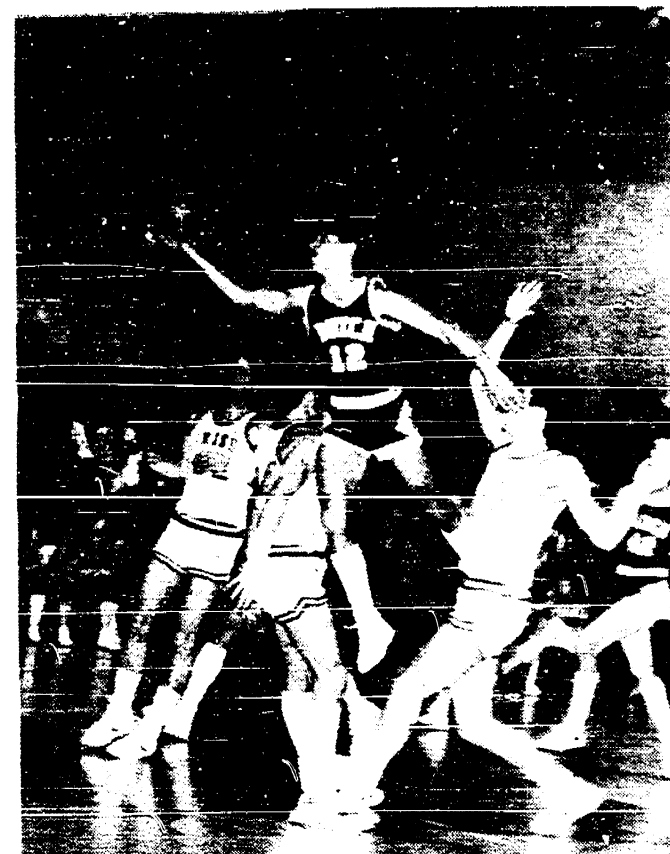
1985 has started poorly, as first we dropped a close one to Pinckney, 56-53. Friday saw us fall to Vandercook Lake 69-61. In the Pinckney contest we went cold at the worst time—with 3:01 left. Pat was high gunner with 14, as Kevin posted 11 and Tom Lockridge canned for 10. In the Vandie battle, we had them 15 to 10 after 8 minutes, but the Jayhawks rallied back by half going ahead 29-25. It went down to some 4 minutes left till they put us away. We fouled too much and two things happened—we lost 4 starters and they went to the free throw line 40 times making 25.

Unfortunately our Little Dutch lost all four games also.

On Friday, January 18, we bus to Napoleon, then on Tuesday the 22nd we host Clinton.



Pat Ridenour hits for 12 against Vandercook.



Mike Agin soars to score.

Now Wants His Head

aren't you?" "Yes." "Well, 50 years ago they cut off my head and now I want it back." "I don't know anything about that," our friend replied, "but say, if you have gotten along all this time without a head I don't see why you should be in such a hurry for it now." About this time our friend awoke.

The old burying ground is also the resting place of some of our earliest residents. A few marble slabs, and an occasional board once painted white, can be found in the tall grass or tangle of brush and vines. The grounds might be made a pleasant spot, but they have been abandoned.

If something is not done before long there may be a rattling among the dry bones over there and more of our citizens be disturbed by "Low from the grave a doleful sound."

The Enterprise has in years past urged upon the village that an effort be made to have all the bodies removed from these grounds to Oak Grove, or that friends of those buried there remove them to any place they see fit, and that the grounds be condemned and sold. In their present dilapidated condition they are a disgrace and not in accord with the tidy appearance of our village.

IRS Tax Aids Available At Local Library

The Internal Revenue Service has furnished the Manchester Township Library with a variety of Materials to help taxpayers prepare their federal income tax forms.

One useful aid is audio cassettes containing simple, line-by-line instructions for preparing federal Forms 1040EZ; 1040A and Schedule 1; 1040 and Schedules A,B and W.

The Manchester Township Library also has IRS Publication 1194, a four-volume set of the IRS' most requested publications and Publication 1192, which contains over 90 reproducible tax forms. In addition, Publication 910, the handy Taxpayer's Guide to IRS information, Assistance and Publications, is available at the library.

As an added service, several of the most needed forms and publications are available in braille and distributed through the Regional Libraries for Blind and Physically Handicapped. Manchester Township Library will be open Monday & Wednesday 12:00 p.m. to 9:00 p.m., Tuesday, Thursday, Friday from 12:00 p.m. to 5:00 p.m., and Saturday from 9:00 a.m. to 12:00 p.m.

Federal Surplus Distribution

Federal surplus, cheese, butter and dried milk, will be distributed in the Manchester area at the Manchester United Methodist Church, 501 Ann Arbor Street on Friday, January 25, between the hours of 10:00 and 12:00. Participants in the Manchester program must live in the Manchester School District, any part of Manchester Township or that part of Bridgewater Township that goes to the Clinton School District.

Anyone new to the Manchester program should bring two pieces of identification and proof of income, such as an A.D.C., Food Stamp, SSI or unemployment card or paycheck stubs if working. Eligibility is determined by the following income guidelines: family of one, \$6,474 maximum annual income; two, \$8,736; three, \$10,998 etc. Add \$2,262 for each family member beyond a family size of three.

Dutch Spikers Begin Season

The girls faced Columbia Central and although they played very hard and well, we lost in 3 sets, 12-15, 15-2 and 13-15. Renee Yeutter had 10 points as Betsy Royle posted 10 points. Lisa Rickelmann wacked 11 spikes and Jennifer England batted 12. Teresa Rose led the setters with 12.

Napoleon was next up and they came - took two sets - and left. We were very tough serving 30 for 31 but couldn't return their serve.

We host Hanover Horton Thursday then visit Vandercook Lake Monday.

Finland Scholarship Semi-Finalist

Semifinalists were selected on the basis of demonstrated leadership abilities, academic standing, demonstrated evidence of qualities essential for adjustment to another culture (e.g. flexibility, openmindedness, curiosity, sense of humor, etc.), and written and oral communication skills.

The next step in the scholarship competition is for Leslie and the other candidates to have personal interviews with the selection committee. This will take place at Eastern Michigan University the last week in January. The two finalists will be selected shortly after that and are then officially appointed by their respective U.S. Senators in the spring.

7th Grade Basketball

Adrian Madson 46, Manchester 21. The Dutch took a brief 21-10 lead early in the 2nd half, then failed to score again as they took their 2nd loss of the season. The Dutch played a good 1st half but just couldn't keep it up. Dave Mitchell led with 7 points, others who scored were Dave Beck 3, Eric Creech 3, Steve Andrews 2, George Werle 2, Jim Diedrich 2, Matt Knul and Marcus Bristle 1 each.

Napoleon 37, Manchester 20. Our 7th grade ran into a strong Napoleon squad. 19 points by Napoleon in the 2nd quarter was the difference as the Dutch matched the Pirates the rest of the game. Scoring for Manchester was Matt Knul with 4 points, Dave Beck, Steve

Andrews, Dave Mitchell 3 points each, Mike Mazurek, George Werle, Eric Creech, 2 points each, and Jamie Lail 1 point. Vandercook Lake 25, Manchester 15.

Again the Dutch led early but could not keep up the pace. Manchester led 8-0 after the 1st period and could only score 7 points the rest of the game. The Dutch were led by Tim Burkhardt with 6 points, John Golding 4 points, Jamie Hall 2 points, Jim Diedrich 2 points, and George Werle 1 point.

Manchester 35, East Jackson 17. The 7th Grade played by far its best game of the season as they made their record (2-4). The Dutch led after the 1st quarter 10-2 and at half they led by 20-6 score. Ten different players scored to show good team balance. Playing good floor games were Jamie Hall and Mike Mazurek. Scoring for the Dutch were Mike Mazurek 6 points, Dave Mitchell, Dave Beck, Jim Diedrich, Jamie Hall, Matt Knul, all scoring 4 points, John Golding, Eric Creech, Sean Lowery 2 points each, and George Werle had 3 points.

Parr's Auto Body

BODY WORK - PAINTING
FREE ESTIMATES
INSURANCE WORK
GLASS INSTALLATION

18481 W. Austin Rd
MANCHESTER, MICHIGAN

Phone
313-428-9538

See The Manchester Enterprise For Rubber Stamps



KOSMYNA
Chiropractic
Life Center P.C.

DR. THOMAS KOSMYNA

OFFICES HOURS:

Monday, Wednesday, Friday 8:30 to Noon, 2 to 7 P.M.

Tuesday: 8:30 to Noon and 3 to 5 P.M.

Thursday, Saturday: 8:30 to Noon

EMERGENCY PHONE 517-456-6080

OFFICE:
517-456-7411

301 West Michigan Avenue
P.O. Box "L"
Clinton, Michigan 49236

How to Protect Your Biggest Investment



YOUR FARM IS YOUR LIVELIHOOD. YET ONE DISASTER COULD WIPE IT AWAY. COMPLETE FARM INSURANCE COVERAGE IS YOUR BEST PROTECTION. SAFEGUARD YOUR INVESTMENT BY SEEING US ABOUT OUR FARM POLICIES.

WE'LL HANDLE ALL YOUR NEEDS

SUTTON AGENCY, INC. HASTINGS MUTUAL INSURANCE

DONALD SUTTON, Agent PHONE 313-428-7217
CONNIE WIDMAYER, Agent
136 EAST MAIN STREET MANCHESTER, MICHIGAN
Monday-Tuesday-Wednesday-Friday 9-12:30 & 1-4:30
Thursday 9-12 Noon

Family Dentistry
Bruce Bates, D.D.S.
(Formerly Office of Dr. Glenn Lehr)
500 Galloway Drive
Manchester, Michigan

MONDAY-TUESDAY-FRIDAY
9 A.M. - 5:30 P.M.

WEDNESDAY 12-8 P.M.
OTHER EVENING AND WEEKEND HOURS AVAILABLE

SERVICES BY APPOINTMENT
PHONE 313-428-8277

NEW PATIENTS WELCOME


VISA ACCEPTED

ALL DENTAL INSURANCE PLANS ACCEPTED

SENIOR CITIZEN
Tax Refund Forms
Prepared—\$4.85

You give us the information by phone. We prepare your form and mail it to you ready to sign and return [includes stamp and pre-addressed envelope].

H.L. Beach
Tax Service



CALL
429-5994 IN SALINE
8-10 A.M. 4-10 P.M.
"This Is Our 23rd Year"

Keith's Barber Shop
152 EAST MAIN STREET MANCHESTER, MICH
OPEN FOR WALK-INS

OPEN TUESDAY THRU FRIDAY 8 A.M. TO 5 P.M.
SATURDAY 8 A.M. UNTIL 12 NOON

OPEN WEDNESDAY EVENINGS BY APPOINTMENT ONLY

CALL 428-8584 or 428-8561

Be Wise...Customize



With New
Kitchen Counter
Tops

We can expertly install custom made or pre-formed counter tops to enhance your kitchen.

CLINTON COUNTER TOP

1849 W. Michigan Ave., Just west of Clinton on U.S. 12
517-456-7240 or 313-665-2557

Manchester Community Schools

Board Of Education
Regular Meeting
January 21, 1985
8:00 P.M.

AGENDA

- I Roll Call
- II Communications
- III Visitor Input
- IV Minutes of Previous Meetings:
 - A. December 17, 1984, Special 7 pm
 - B. December 17, 1984, Regular 8 pm
- V Financial Report
- VI Bills Payable
- VII Discussion Items
 - A. Leadership Class Presentation
 - B. Michigan Educational Assessment Program Test Results
 - C. Agri-Business Resolutions
 - D. February/April Board Meeting Dates
- VIII New Business
 - A. Personnel Items
 - B. 1985-86 Calendar
 - C. Extra-Curricular Sponsors/Activities
- IX Old Business

SAVE MONEY NOW!



"THE DRAIN AND SEWER CLEANING EXPERTS"
When A Straight Flush Beats A Full House Every Time!

PHONE 688-4925 or 475-9255
For A Limited Time Only We Will Clean EVERY

DRAIN LINE IN YOUR HOME, including:

<input type="checkbox"/> KITCHEN SINK	<input type="checkbox"/> TUB	<input type="checkbox"/> BATH SINKS
<input type="checkbox"/> LAUNDRY TUB	<input type="checkbox"/> SHOWER	<input type="checkbox"/> TOILETS

AND WE'LL CLEAN THE MAIN SEWER LINE

ONE BATH FOR ONLY \$75.00 2 BATHS \$95.00

ACT NOW!

TOWNSHIP OF MANCHESTER
ORDINANCE NO. 27

AMENDMENT TO MANCHESTER TOWNSHIP ZONING ORDINANCE NO. 9, "AN ORDINANCE TO AMEND AN ORDINANCE ENTITLED AN ORDINANCE ESTABLISHING ZONING DISTRICTS WITHIN MANCHESTER TOWNSHIP, WASHTENAW COUNTY, MICHIGAN."

The Township Board of Manchester Township, Washtenaw County, Michigan, Ordains:

Section 1. That Article II Section 2.02 Definitions is amended by deleting the definition of Family and substituting the following therefor:

FAMILY - a single individual doing his own cooking, and living upon the premises as a separate housekeeping unit, or a collective body of persons doing their own cooking and living together upon the premises as a separate housekeeping unit in a domestic relationship based upon birth, marriage or other domestic bond as distinguished from a group occupying a boarding house, lodging house, club, fraternity or hotel.

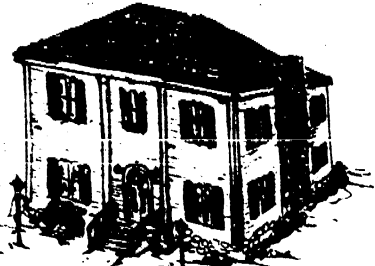
Section 2. This ordinance shall take effect thirty (30) days after its publication in the Manchester Enterprise.

Effective date February 16, 1985

Willma E. Lentz
Manchester Township Clerk

Manchester Township Library

202 WEST MAIN STREET
MANCHESTER, MICHIGAN 48153



ANNA'S ROCKING CHAIR, a novel by Elaine Watson, was recently presented to the Manchester Township Library by the author. The story is a detailed description of a young couple's life as farmers in

Shakespeare Reading Club

The Shakespeare Reading Club held its first meeting of 1985 on Tuesday, January 8, at the home of Alta (Mrs. Lowell) Parr with twelve members present. A motion to give a donation in memory of Dr. Lewis B. Kellum to the Manchester Township Library was carried unanimously. Topic for the program was "Lighthouses." Sally Anderson described several lighthouses of historical interest on the Great Lakes; Sally Marshall told about the five lighthouses on North Carolina's Outer Banks which she and her daughter had visited on a bicycle trip. At roll call members named lighthouses they had seen or read about.

Earlier, on December 11, the Club met at President Lenora Parr's home for their Christmas luncheon party. A delicious meal was prepared by Lenora, Charlotte Timmerman and Hazel Walker. Mabel Billings and Alta Parr arranged entertainment. Howard Parr played the organ for group carol singing. The traditional two-dollar gift exchange followed.

Michigan during the 1880's. The contrast between their cultures - she from an upper middle-class Wisconsin family and he an orphan who had struggled to support himself and his ill sister Anna - affects their life together. Their personal as well as financial problems are detailed.

Manchester residents will be interested to know that the author, Elaine Reno Watson, grew up in this area, graduated from Manchester High School in 1939, and is now an instructor in English at the Henry Ford Community College in Dearborn. In the letter accompanying the book she pointed out that the house described in it is still standing at the corner of Reno and Pleasant Lake Road, and that many of the ideas for the story come from childhood memories and tales and from the reprints of old news items presently appearing in the MANCHESTER ENTERPRISE.

Birth Announcement

Mr. and Mrs. William Shirey of Pinckney are proud to announce the birth of a daughter, Hannah Sue, born on January 10, 1985. Hannah weighed 7 pounds and 11 ounces. She has two sisters and one brother. Grandparents are George and Gerturde Grossman of Manchester and Mrs. Henry Shirey of Pinckney.

Council Proceedings

December 17, 1984

The regular meeting of the Manchester Village Council was held 12-17-84, at the Village Council Chambers. President Hinkley called the meeting to order at 7:00 p.m. Present: Harris, Kallewaard, Koebbe, Niehaus, Reinhart, Schaible, Zsenyuk, Smith.

President Hinkley read the minutes. Schaible moved to approve minutes as corrected, supported by Niehaus. Motion approved.

President Hinkley requested Zsenyuk to take the minutes because Clerk Kenler was absent.

Reinhart discussed Gillows acceptance of Village offer. Hinkley stated that Sue Gistingier would draw up the acceptance letter. Reinhart stated that the new ordinance books have arrived.

Kallewaard discussed possible locations for new Post Office.

Schaible presented the monthly Police Report. Report on file.

Discussion followed in regards to the alleged harassment of the citizens by the Police Department. Council requested that the following letter be included in the minutes:

December 5, 1984

Mrs. Joseph Rahn
134 E. Main Street
Manchester, Michigan

Dear Mrs. Rahn,

This correspondence is in regards to your allegation of Manchester Police Officers following you. The Officer in question was interviewed by me. He stated your license plate was encrusted with dirt and he merely wanted you to be aware that it was not

legible. He further stated to me that you thanked him and also requested he talk to Mr. Fillyaw regarding a sign that was causing an obstruction to traffic on Union Street. He thought that he treated you with all due respect. I'm sorry you feel you were treated improperly. I do hope if you have any future problems you would contact me in lieu of putting the police department on trial in the media.

Yours truly,

William Zsenyuk,
Chief of Police

Reinhart stated that Keith Reed had complained to him about the Police driving business out of town, because of stopping motorists. Reinhart said that Zsenyuk showed him all the alcohol related Police Reports and there were not any stops during business hours. The earliest stop was 6:45 p.m. The majority of alcohol related stops are between 11:00 p.m. and 2:00 a.m.

Schaible moved to adopt the Book of Rules and Regulations as policy for the Manchester Police Department, supported by Harris. Roll Call Vote: Ayes all. Motion approved.

Koebbe presented the D.P.W. and Mechanics reports. Reports on file.

Mrs. Albert Haller's water problem was discussed. Samples have been taken and will be evaluated at C.A.L. Lab in Ypsilanti.

Tornado Warning device should be in place within the next two weeks.

Koebbe moved to adopt the following Resolution:

RESOLVED, That it is hereby deemed advisable to authorize

Consumers Power Company to make changes in the street-lighting service as provided in the Standard Streetlighting Contract between the Company and The Village of Manchester dated February 16, 1979, in accordance with the Authorization for Change in Standard Streetlighting Contract dated as of December 17, 1984, heretofore submitted to and considered by this Council; and RESOLVED, Further, That the President and Village Clerk be and are authorized to execute such authorization for change on behalf of the Village. Supported by Reinhart. Roll Call Vote: Ayes-all. Resolution approved.

Council decided to put illuminare candles at the parks.

Niehaus moved to approve Christmas Bonuses for Village personnel. Full time - \$50.00; Part-time - \$25.00; Supervisors - \$75.00; Bill Zsenyuk - \$125.00; Sue Koebbe and Heien Kenler - \$50.00, supported by Harris. Roll Call Vote: Ayes-all. Motion approved.

Koebbe moved to adjourn the meeting, supported by Niehaus. Meeting adjourned at 8:28 p.m.

William Zsenyuk,
Acting Clerk

Shop At

BEN FRANKLIN

MANCHESTER, MICHIGAN
OPEN 9 to 5:30
Monday thru Saturday
428-8980

NINE DIFFERENT WAYS TO EARN MONEY MARKET RATES

MONEY MARKET ACCOUNTS

	\$1,000 minimum deposit	
Money Market Checking		%
Money Market Savings		%

CERTIFICATES OF DEPOSIT

	\$1,000 minimum deposit	\$10,000 minimum deposit
32-91 day	7.65 %	8.05 %
92-181 day	7.85 %	8.25 %
6-11 month	3.25 %	8.65 %
12-23 month	9.10 %	9.50 %
24-35 month	9.60 %	10.00 %
36-47 month	9.85 %	10.25 %
48-60 month	10.10 %	10.50 %

Substantial interest penalty is required for early withdrawal.

Rates effective January 15, 1985 thru January 21, 1985

FIRST OF AMERICA

MANCHESTER OFFICE -
10903 Manchester Chelsea Rd. 428-8389

Member FDIC

FAMILY SQUARE DANCE

SPONSORED BY KLAGER P.T.O.

FRIDAY, JANUARY 18th
7:30 P.M. To 10:30 P.M.

AT MANCHESTER HIGH SCHOOL

Featuring: "ECLIPSE"

All Ages Welcome

Refreshments

MANN'S FEED MILL

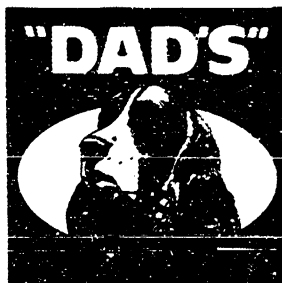
Featuring

DAD'S DOG FOOD

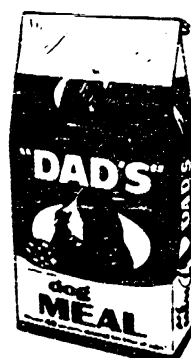
JOIN THE

DAD'S KENNEL

SAVINGS PLAN



BUY 10 BAGS AND CLIP COUPONS AND GET 11th BAG FREE



18875 WEST AUSTIN ROAD MANCHESTER, MICHIGAN
PHONE 428-7077

Manchester Family Service Holiday Report

Manchester Family Service, Inc., reports on the 1984 Christmas Project. There were 81 households served this year, totaling 237 people including 118 children and 82 Senior Citizens. Food and clothing orders were distributed at the annual "Christmas Shop" which was held December 16, at St. Mary's Church. The "Shop" is a free bazaar of new and used household items, clothing, toys and Christmas treasures (this year, even, a Cabbage Patch Doll) donated by townspeople.

Manchester Middle School Student Council conducted a canned and packaged food drive which netted approximately 900 items. Fortunately, Emanuel United Church of Christ, Manchester United Methodist Church and Sharon United Methodist Church also had food drives, so there was enough food to pack boxes for families with two or more individuals. The Klager School and a number of citizens delivered food too late for the "Shop" but it is shelved at

Emanuel Church as a much needed "Emergency Food Cupboard" ready for instant use by the agency and churches.

Three different industries supplemented the cost and supplies for the food portion of the project. Double A Products donated 36 turkeys which gave families of four, five and six members a whole turkey each and families of three members a half turkey each. Chrysler Proving Ground Employees donated one-third of the entire food cost which accounted for chickens for 38 families and complete grocery orders for 15 single Senior Citizen households. The Abtrax Industries of Inkster again donated one-fourth of the food cost for the area. Manchester has Mr. Harold Byars and Mr. Jim Graham to thank for this generous gift.

The Twentieth Century Club met the doll crisis by buying and dressing 7 dolls complete with outfits and adding 2 homemade Cabbage Patch dolls as well as a generous cash donation. The

Emissions Area Office staff at Chrysler Proving Grounds spearheaded the games and doll department by supplying over a dozen new games. They were assisted by gifts from the John and James Sahakian families. Carolyn Kovach, who deserves the "Secretary of the Year" title, donated a half dozen beauties to swell the supply to 9 dolls from that source. In all the "Specialty Shop" was a delightful place for clients to pick out the special gifts for each of their children according to their ages and interests.

Bethel Church Preschool Fellowship did a beautiful job of recycling the dolls that had been turned in to the agency during the summer. (A reminder - unwanted dolls delivered to the agency before November will receive tender loving care in time for Christmas 1985 - call 428-8852.) Toddlers were not forgotten, either, as Elsie O'Dell and Mrs. Robert Pratt came through with their specialties, tiny handmade teddy bears and dainty stuffed toys in assorted patterns which adorned the grocery boxes marked for families with tiny folks.

Then there was the Cabbage Patch Doll Raffle! Susan Lavendar had entered the "Win The Cabbage Patch Kids Sweepstakes" contest that was offered by WOMAN'S DAY magazine last summer. The result was one of the famous dolls, ticketed for a "Needy Child", delivered to Manchester Family Service the 7th of December. Susan and her specified agency, MFS, had won one of the 1000 dolls given away in the contest! All clients on the Christmas Project list who had daughters ages 8 through 14 were eligible to enter the raffle at the "Shop". When the name was drawn that afternoon, the winner was

Heather Swain, an 8 year old who lives in Southern Manchester Township and attends Clinton School. Christmas day "Marilyn Teresa" was formally adopted by Heather.

VOLUNTEERS make this free shop come to life. Dozens of men, women and teens work for three days, sorting and packing 1200 grocery items into 75 carefully marked boxes; unpacking, sorting and displaying thousands of pieces of clothing, toys, games, and household supplies in readiness for the opening day; staffing the various departments during the shopping hours, from handing frozen turkeys out of a panel truck in the cold, to helping clients find just the right new gift in the specialty shop. Then, its all over and the repacking begins so that left overs can be delivered to other agencies that need things for more people. This help comes from churches, Senior Citizens, Beta Sigma Phi sorority, Girl Scouts, schools and the necessary truck and man power from Manchester Tool and Die.

This once a year activity is possible also because of a host of anonymous donors and a wonderful Manchester community awareness for meeting the need. Monetary gifts came from: Abtrax Industries, Inc., American Legion Auxiliary, Bethel United Church of Christ, Bethel Adult Fellowship, Bethel Women's Fellowship, Mr. and Mrs. Walter Budnick, Chrysler Proving Ground Employees, Church Women United of Manchester, Betty Ellen Cummings, Emanuel Church Women's Fellowship, Mr. and Mrs. Clarence Fielder, Mrs. Gwen Fisher, Mrs. Mary Kallewaard, Mrs. Lillian F. Huber and Lee Huber, Haren Valley Night Hawks Motorcycle Club, Inc., Glen Lehr, Sr., Manchester Bus Drivers Association, Manchester Middle School Student Council, Manchester Tool and Die, Manchester United Methodist Women, Manchester

United Way, Mary Sue Moore, Dr. and Mrs. William Purfield, Thomas D. Roberts Associates, Mr. and Mrs. James Sahakian, Mr. and Mrs. John Sahakian, Sharon United Methodist Women, St. Mary's Catholic Church, Twentieth Century Club and Mrs. Walter Vogt.

The date for Manchester Family Service annual meeting will be announced later. The annual report for the agency will be available at that time. Thanks to everyone for another year of service to the community.

Wrestling Report

Morenci but came home with a silver medal.

Wrestling at 167, Steve Vleck won his first match pining Ken Hines of Milan in 1:19. His second of the day he lost to Larry Corbiel of Constantine, fourth in last years Junior Nationals, 24-11. Steve came back to win his next two matches and brought home a bronze medal.

Mat Mazurek wrestled at heavy weight and brought home a bronze medal. His loss was to 299 pound Shawn Scott of Grass Lake. Matt pinned Paul Pletter of Constantine and Andrew Russell of Clinton in the tournament.

The next time you can catch the Maroon and Gold will be at Vanderook Lake on the 17th of January. Match time 7:00 p.m. Tuesday the 22nd at Clinton, 8:00 and then Thursday the 24th, the Dutch will be at home to take on the defending Conference Champions of Napoleon, 7:00 p.m. meet time. Come give us a look, we'll be looking for you.

Jim Hartmann Dan Wampler
313-475-9301 617-458-4306

HARTMANN CARPENTRY

Licensed and Insured
Residential Builder With
14 Years Experience
Pole Barns Additions
Roofing Siding
Decks Remodeling
Rough Ins Finish Work

Waits Heating & Cooling

24 HOUR SERVICE
Walt Horodoczny
Comfort Air Furnaces
A.O. Smith Water Heaters
Water Softeners
Furnace Tuning And
Cleaning
PHONE 428-8645
18824 Bethel Church Road
Manchester, Michigan

FUND RAISING

Manchester American Legion
203 South Adrian St.
Wednesday 7 P.M.

Manchester Sportsman Club
8501 Grossman Road
Friday 7:00 P.M.

Manchester American Legion
203 South Adrian St.
Saturday 7 P.M.

EVERY FRIDAY 5-9 pm
Fresh Beer
Battered Cod, \$3.99
Cole Slaw, Cottage Fries and Roll
THE AURA INN
11275 PLEASANT LAKE ROAD MANCHESTER

DON'T GET CAUGHT AGAIN WITHOUT HEAT AND LIGHTS
Kerosene Heaters On Sale
GENERATORS NOW IN STOCK
2750 WATT
3000 WATT
3750 WATT
4000 WATT
5000 WATT
7500 WATT with P.T.O.
WACKER G.E. Wacker Inc.
*FUEL OIL • MOTOR OIL • DIESEL FUEL • GREASE • GASOLINE • PROPANE • TIRES
M-02 at Pleasant Lake Road • 428-8285
9060 Chelsea-Manchester Rd., Manchester, Michigan 48158

Computers on the Farm: Strategy for Survival

The Personal Computer as a New Tool for Improving Overall Farm Management

An Introductory Seminar for the Manager of a Farm Business

Wednesday, January 30, 1985
10 a.m. to 3 p.m.

Sponsored by COMPLETE COMPUTER CENTER

To be held at the FARM BUREAU COUNTY OFFICE
5095 Ann Arbor-Saline Road
Ann Arbor, Michigan
\$5.00 per Person (Includes lunch)

To Make a Reservation or Obtain Further Information
Call Dave Prohaska at COMPLETE COMPUTER CENTER:
994-6344

Hours: 10-7 Mon-Tues-Wed & Fri
10-8 Thurs, 10-5 Sat

One block from campus
Free on-site parking
Financing available

413 E. HURON • ANN ARBOR, MI 48104 • 313/994-6344

Complete Computer Center



Wedding

Stationery

Let us show you our beautiful collection of contemporary wedding stationery. You can select your complete paper trousseau from a wide variety of styles in every price range.

THE MANCHESTER ENTERPRISE
 EAST MAIN STREET ESTABLISHED 1867 MANCHESTER, MICHIGAN 48158

Hit Or Miss

by farley

We have been told that the population of the immediate area is steadily increasing during the past few years. They didn't mean the human population, rather the animal population, especially the number of squirrels and racoons and rabbits. And many of these inhabitants have adapted surprisingly to the ways of civilization.

One report is that one bird and squirrel lover who has a large yard has erected four bird feeding stations and equipped them with squirrel guards so the little red bellows can't steal the bird seed from the feeders. The donor was happy to see that these feeders were well patronized, and noted the large amount of sunflower husks that had accumulated on the ground below the feeders, and almost daily refilled the nearly empty feeders. But the other day he heard a slight noise on the roof of his house and, going to the window, saw that a squirrel had scampered to the roof of the house and tiptoed to the very edge of the roof. Then with a mighty leap flung himself onto the bird feeder and proceeded to

enjoy his breakfast. Finding his hunger appeased, he jumped onto a branch of a neighboring tree, scampered to the ground and disappeared down the street.

This same informant tells us there is an ever increasing number of squirrels in the area of the Community Center, and that he had noted there is a telephone cable which runs from the phone exchange building westward down Franklin Street to a point near the Atlas Mill, and that many times a day there can be seen several squirrels scampering back and forth on this cable. This action eliminates the hazardous conditions which crossing Tecumseh Road at ground level would involve. They don't have to stop for the light either, or watch their speedometer to see that they aren't violating the speed limits there.

Another informant on the subject of animal freeloaders told us the other day that he had placed a bird feeder in his yard and equipped it with squirrel guards. However, the other morning he looked out and saw a racoon waltzing up the tree from which the bird feeder was suspended, and saw the critter climb the tree, crawl out on the limb, believe it or not, jump up and down on that one vigorously

shaking the sunflower seeds to the ground. After a considerable quantity of them had littered the ground, the animal scampered down to the ground and proceeded to enjoy his lunch and then disappeared into the bushes.

A friend called the other day and, all excited, told us that he had read in an Ohio weekly newspaper how to win the weekly Lotto prize, the drawing for which as you all surely know, takes place each Saturday evening. He hadn't won anything yet, but he is surely going to invest his dollar this coming week without fail.

The system is really very simple and involves no great investment. One simply takes an old shoe box or a chunk of light weight cardboard and cuts out forty square pieces about an inch in diameter. Then you number them from one to forty (fifty in Ohio) and dump them into a fairly large empty grocery bag. Close the bag and vigorously shake it, holding it above your head. Then you reach into the bag and without peeking, draw forth six numbered cards. Jot down these numbers, and then of course you journey to the nearest point of purchase and buy a ticket. Only one ticket is sufficient. Then you return home and wait patiently for the results of the current drawing when you go forth to claim your prize.

Simple, isn't it; but our informant says that it is absolutely foolproof. Anyhow, you can find out if this is reliable information or not for the cost of only one dollar.

**Sell It Thru
The Want Ads**

VILLAGE COUNCIL MEETING NOTICE

The next regular Manchester Village Council meeting, January 21, 1985, will be held at the Manchester Township Hall, 275 Macomb Street at 7:00 P.M.

Helen J. Kensler, Clerk

Senior Citizens Meals And News

Saturday, January 17, Fun Night at Emanuel United Church of Christ hall. It is Hawaiian Luau night from 6 to 10 p.m. If you want bus service call Helen Braun, 428-8966. Bring a buffet dish to pass. (Hawaiian if you have one), your own table service and \$1.00 donation. Hawaiian dress is optional, but adds to the fun. Come for the evening.

Tuesday, January 22, 11:00 a.m. for Blood Pressure checkup. 12:00 Roast Beef dinner. Call to make or cancel reservations, 428-8359 or 428-7630. 12:30 Euchre.

Wednesday, January 23, 11:00 bus leaves for Sweden House lukeon and visit to Space Center. Make reservations early.

Thursday, January 24, 11:00 exercise program with Julie. 12:00 Scalloped Potatoes with Ham dinner. 12:30 "Relaxation" by Alice Rhodes.

Wednesday, January 30, 1:30 Monthly Club meeting at Emanuel Church hall. Cards and snack.

Monday, February 4, Make reservations now for the shopping trip to Adrian.

WARNING - There may be people impersonating IRS employees harassing area citizens. Beware of anyone coming to the door saying that he represents the IRS. Every IRS employee who makes contact with the public is required to carry distinctive identification and must show these credentials when conducting official business. Generally, taxpayers who owe money to the IRS will receive written notification before being contacted in person. Please report any such incidents to Chief Zsenyuk immediately by calling 428-8506.

Fair Board Announces 1985 Dates

The Manchester Community Fair Board has announced that the 1985 Fair will be held August 20-24 this year. The change this year is due to booking the carnival and trying not to conflict with other fairs and activities in the area.

The carnival this year will be New Motor State shows, which did not have a free date until August 20. There will be probably about 10 to 12 rides, the most that will fit in the designated area.

The Manchester Community Fair was represented by 12 people at the Michigan Association of Fairs and Exhibitions Convention last weekend. The M.A.F.E. celebrated its 100th anniversary at the convention.

The Fair Board is now busy working to plan entertainment, the Queen's contest, parade and concession stands.

The next meeting will be held February 11 at the Emanuel Church. Anyone interested in the Fair is always welcome to attend.

4-H Junior Crops Program Winners Announced

The 1984 4-H Junior Crops Program Winners have been selected for Washtenaw County. They each received a Cash Award, sponsored by Estech, Inc. for their work in planting, harvesting and marketing a commercial crop. They are listed below in order of award:

- 1st Place - \$100.00 - Gary Luckhardt, Saline, 2nd Place - \$75.00 - Jeff O'Mara, Saline, 3rd Place - \$50.00 - Scott Diuble, Ann Arbor, 4th Place - \$25.00 - Scott Post, Manchester.

This program encourages sound crop production practices and good record keeping skills.

The 1985 program will be starting soon. If you would like more information, please contact the Washtenaw County 4-H Program office at 973-9510.

KIRK EXCAVATING

Sand - Gravel - Fill Dirt Basements - Driveways

428-7938

DAVE KIRK

14180 Schleweis Road Manchester

CLINTON THEATRE

Friday & Saturday 7:30 and 9:30 pm

Sunday 7:30 pm

All Seats \$2.00

"FIRST BORN"

Rated "R"

AFTER THE STORM...

a note of thanks to our customers.

The New Year's Eve ice and snow-storm ripped across Michigan, the ice devastating trees and snapping power lines.

The storm knocked out electric power for about 275,000 customers of Consumers Power Company. That's more than 20% of our electric system.

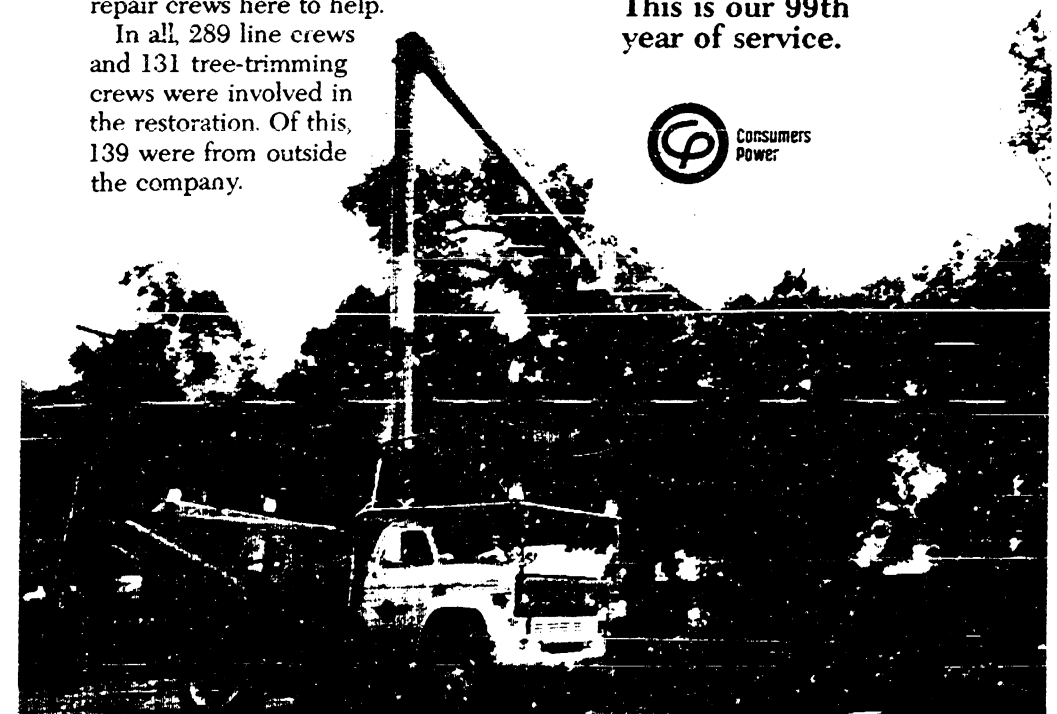
In the wake of the third major storm to hit our system within a year, company crewmen worked day and night repairing the damage and restoring service. And they couldn't do it alone. Utility companies from Ohio and Indiana sent repair crews here to help.

In all, 289 line crews and 131 tree-trimming crews were involved in the restoration. Of this, 139 were from outside the company.

Most people had their power restored within four days. Customers in many areas had to wait longer. But through it all, we at Consumers Power are grateful to you—our customers—for your patience and understanding.

We're proud of our people who have been trained to handle such emergency situations. It's because of them at times like this that we are able to provide you with the good, reliable electric service you've come to expect.

This is our 99th year of service.



School Hot Lunch Menu

Monday, January 21, Lemonade, Submarine Sandwich, Dill Pickles, Pear Half, Milk.
 Tuesday, January 22, Boneless Rib-B-Q, Escalloped Potatoes, Buttered Green Beans, Bagelette & Butter, Applesauce, Milk.
 Wednesday, January 23, Hamburger On Bun, Potato Chips, Vegetable Stixs, Granola Bar, Milk.
 Thursday, January 24, Lasagna, Broccoli Spears, Warm French Bread, W/Butter, Crushed Pineapple, Milk.
 Friday, January 25, Chicken Nuggets with sauce, French Fries, Coleslaw, Chocolate Chip Cookie, Milk.

Kings Daughters Meeting Notice

Kings Daughters will meet at the home of Shirley Reinhart at 12:30 p.m. on Thursday, January 24th. Please note new time.

Sons Of The American Legion

The Sons of the American Legion will meet Thursday, January 17th at 7:30 p.m. at the Legion House.

P.T.O. Minutes

The meeting was called to order on Monday, January 7, 1985, at 7:30 p.m. by President John Billmeyer. The secretary's minutes were approved as read by Mary Noshich. The treasurer's report showed a balance of \$3,383.30.
 Vicki Miller gave a report on the Family Square Dance which is to be held at the High School Study Auditorium on Friday, January 18, 1985, from 7:00 to 10:00 p.m. for all Klager Students and their families. Popcorn, cider, and coffee will be served at a charge of 10 cents each. This will be a fun evening for families to get to know each other and for the P.T.O. to thank the Klager Community for their support. Students will get the chance to use their newly acquired skills in square dancing and adults who have never square danced will also be given a chance to begin slowly with some easy dances and gradually work into more complicated ones. The dance will be western in theme. Western dress is encouraged but not mandatory.
 The P.T.O. will co-sponsor a special one hour folk concert by the group Gemini on Sunday

afternoon, February 10th from 2-3 p.m. with the Manchester Co-Op Nursery. Admission will be \$2.00 for adults and high school students and \$1.00 for those younger. The concert will take place in the study auditorium of the Manchester High School.
 The projection microscope, the books for Mrs. Scully's reading program, and the film strip kit on stranger awareness and child abuse have all arrived at school. The possibility of ordering a television, V.H.S. recorder and video tape camera was also discussed. Kathy Jefferson and Vicki Miller agreed to explore the matter.
 Yvonne Henry gave her report on what is happening at Klager this month. The third graders are planning to do a Cooper Lady Project in which the students will be bringing in pennies which will be sent to the Statue of Liberty Renovation Effort. The 3-4 team room is hoping to have a popcorn sale and donate the profits to the Ethiopian Famine Relief effort.
 There will be a book character parade on Friday, January 25th. Each student is asked to come to school with a simple costume of their favorite book character. Costumes will be brought to school and put on after lunch. Parents are asked to let the children do as much of the work in selecting and making their costumes as possible.
 In other matters the new release procedures for taking students out of school during school hours was discussed. It was suggested that perhaps parents be reminded of this new policy and allow a few minutes of extra time when coming to get

their children. The possibility of sponsoring a S.T.E.P. parenting course was also discussed.
 The March movie night was set for Friday, March 22, when the P.T.O. will show Walt Disney's "Alice in Wonderland."
 The meeting was adjourned until Monday, February 4th at 7:30 p.m. in the Klager gym. We will have a very short business meeting followed by an evening with Dr. Robert Meyers and Dr. LaMont Okey discussing what to do in Child Health Emergencies including loss of teeth, broken limbs and severe cuts. Where to go, and who to call will be discussed. The experts will be glad to answer questions from those in the audience. All parents are invited to attend.

Senior Citizens Advisory Board

Manchester Area Senior Citizens Council is happy to announce the affiliation of an Advisory Board. The members of the Board are from Manchester, Freedom, Sharon and Bridge-water Townships and are a much needed support group for the Senior Citizens organization. The first meeting of the Board will be Wednesday, January 23 at 7:00

p.m. at the Village Council Chambers, 120 S. Clinton Street. Members include: Wayne Hamilton, Ann Fowler, Eugene Mann, Louise Breitenwischer, John Swainson, Clarence Fielder and William Zsenyuk. Mrs. Robena Boelter, as president of the Council, is a permanent member of the Board and Ms. Jan Nali, as Program Developer for the Council, will be an advisory member.
 With the anticipation of having a Senior Center in the Old Police Headquarters on N. Macomb Street a number of weighty problems are confronting the Senior Council. Some of these are to secure funding for renovation and utilities for a Center, to advise the Council on how to attract newly retired people each year and to spread the membership through the adjoining Townships as a growth project as well as to secure finding a Program Developer when Ms. Nali's term expires next October 1.

Manchester Area Senior Citizens Council, Inc. is in compliance with Title VI of the Civil Rights Act and with Section 504 of the Social Rehabilitation Act of 1973. The Program Developer is funded through AAA 1-B funding.

Michigan Veterinary Clinic

18901 Sharon Valley Road
 Manchester, Michigan 48158
 313/428-8365

LARGE AND SMALL ANIMAL SURGERY AND MEDICINE

OFFICE OR HOME VISITS BY APPOINTMENT
 9 AM - 9 PM MONDAY THROUGH SATURDAY
 VERA L. KLUWE, D.V.M.

KEN MILLER RESIDENTIAL BUILDER

SPECIALIZING IN Siding-Custom Made Trim Aluminum and Vinyl

Free Estimates Phone
 Licensed & Insured 517-592-8904
 Between Manchester and Brooklyn

Klager School News



Chris Beckington and Maggie Gistinger love dinosaurs.

Dinosaurs! Dinosaurs!

Klager Elementary School has been invaded with Dinosaurs! These dinosaurs were discovered in Mrs. Savage's first grade and Mrs. Henry's second grade.

Square Dance

Children are busy making posters and decorations for the PTO Square Dance, January 18th, at 7:30 p.m. at the High School. Everyone is welcome and bring your camera!



Robyn Yeutter, Ryan Steele and Charles DuRussel read their latest letter.

2nd Graders Enjoy Pen Pals

Once a month students in Mrs. Henry's second grade write and receive letters from their pen pals in Mrs. Bea McGowan's second grade classroom at Forest Edge Elementary in Virginia. They have exchanged information, stickers and pictures of themselves. They have discovered the skills needed for letter writing and, as a bonus, have developed a new friendship.

Remembering Dr. Martin Luther King, Jr.

January 15, was Martin Luther King's birthday. Students at Klager learned about him through a new filmstrip purchased by the school library. They also had the opportunity to see pictures displayed of his birth home and memorial.

Coming Events At Klager

- January 17 - School AM only, school dismisses at 11:35 (AM Kindergarten meets as usual, no PM Kindergarten).
- January 18 - School AM only, school dismisses at 11:35 (PM kindergarten meets in the AM, no AM kindergarten). KLAGER ONLY!!! MIDDLE SCHOOL KINDERGARTEN MEETS AS USUAL.
- January 18 - PTO Square Dance 7:30 at the High School.
- January 23 - Report Cards.
- January 23 - 1-2 Team Math Night 7:00 p.m. at Klager.
- January 25 - Book Character Parade.
- February 4 - PTO Meeting 7:30 Child Emergencies - Speakers, Dr. Okey and Charlotte Majors.
- February 10 - Concert sponsored by PTO and Co-op Nursery, "Gemini" 2:00 p.m. High School.
- February 14 - Valentines Day Party.
- February 15 - School AM only, School dismissed at 11:35.
- February 18 - No School - Presidential Break.



Students in Mrs. Henry's room show off their mural.

Sam's Woodworking

HAND STRIPPING AND PROFESSIONAL REFINISHING OF ALL TYPES OF FURNITURE
 ONE PIECE OR A ROOM FULL
 SPECIALIZING IN ANTIQUE RESTORATION AND REFINISHING REFINISHING OF KITCHEN CABINETS FIRE DAMAGED FURNITURE FINISHING OF UNFINISHED FURNITURE INSURANCE WORK

FREE ESTIMATES—PICK-UP & DELIVERY AVAILABLE

517-467-2946

MAKE YOUR NEW YEAR RESOLUTION A REALITY
REMODEL YOUR KITCHEN



CALL: **SPECIAL: \$100 Worth of Hardware Free With Any Order By February 14**

Why Replace Just Reface

Using your existing cabinets and our hardwood DOORS AND DRAWERS fronts you can have a new kitchen at a fraction of the cost of replacing. Many styles to choose from.

CALL TO DAY FOR A FREE HOME QUOTATION

MATERIAL & WORKMANSHIP GUARANTEED **517-467-2946** FACTORY TRAINED INSTALLERS

The Great Kick-off



10% Interest on Checking

If your checking account doesn't have you kicking up your heels—maybe you're at the wrong bank.

Trade in that old checking account for one at Great Lakes Federal Savings and earn 10% interest.

It's true. If you maintain a balance of \$1000 or more in any Great Lakes Federal checking account, you'll earn 10% interest until April 15th.

And, to help make your switch to a Great Lakes Federal checking account even easier—we'll take care of all the paperwork and transfer your old checking account at that "other bank" to your new one at Great Lakes Federal. Plus, you'll get your first box of GLFS checks free.

So, c'mon! Make the switch to Great Lakes Federal Savings. What have you got to lose—but 10% interest!

10% interest offer applies to balances up to \$20,000.



STATEWIDE OFFICES INCLUDING:

ANN ARBOR: Downtown / 401 East Liberty Street / 734-2550 / Westside / 1000 Pennington Boulevard / 734-6380
 Northside / 2701 Plymouth Road / 769-7818 / Eastside / 2400 Huron Parkway / 973-7811 / Southside / 125 Blairwood Circle / 769-7616
 BRIGHTON / 205 West Grand River / 229-5700 / CHELSEA / 1135 South Main Street / 475-1341 / DEXTER / 8081 Main Street / 426-3913 / HOWELL / 2650 East Grand River / 548-1651
 MANCHESTER / 111 East Main Street / 428-8379 / SALINE / 101 West Michigan Avenue / 429-5483 / YPSILANTI / 2170 Packard Road / 485-7510

NEW!

NOW WITH 100% NUTRASWEET!® NO SACCHARIN!

AT G. E. WACKER INC. 9050 CHELSEA-MANCHESTER ROAD MANCHESTER, MICHIGAN 48158

SAVE 30¢

WHEN YOU BUY ONE MULTIPACK OR ONE 2-LITER BOTTLE OF DIET PEPSI, REG. \$1.99, DIET PEPSI FREE OR REFORMULATED PEPSI LIGHT **169** WITH COUPON PLUS DEPOSIT

SAVE 30¢

WHEN YOU BUY ONE MULTI-PACK OR ONE 2-LITER BOTTLE OF DIET PEPSI, DIET PEPSI FREE OR PEPSI LIGHT AT G. E. Wacker Inc.

NOW WITH 100% NUTRASWEET!® NO SACCHARIN

Cash value of 1/20 of 1¢. Offer void where prohibited or license required. One coupon per purchase. Offer limited to one coupon per family, group or organization. Any other use constitutes fraud. Customer must pay all deposit and sales tax involved. Pepsi, Pepsi-Cola, Diet Pepsi, Pepsi Light, Mountain Dew, Pepsi Free and Diet Pepsi Free are trademarks of PepsiCo, Inc. *NUTRASWEET AND THE NUTRASWEET SYMBOL ARE TRADEMARKS OF G. D. SEARLE & CO.

HURRY, COUPON EXPIRES FEB. 28, 1985

12000 702642

Spring Growth For Mid-Winter Blahs!

Laid low by the January doldrums? Still struggling with the same conflicts over time and energy that plagued you before you made your New Year's resolutions? Then join us at the Manchester United Methodist Church as we develop workable, personal answers to "The Caring Question".

This practical study, developed by the psychologist couple, Drs. Donald and Nancy Tubering, of Whole Person Associates, will guide you through the maze of decisions you make daily that affect your lifestyle, family experience, personal awareness and spiritual self. Written to help small groups and individuals balance the care they give others and the care they give themselves, "The Caring Question" affords a great opportunity for personal growth in a down-to-earth mode.

This study will include 8 sessions (Concluding March 20) and cost only \$4.00 (book price). Two time slots are available: Tuesdays, 9:45-11:15 a.m., beginning January 22nd, Wednesdays, 7:45-9:15 a.m., beginning January 23rd.

Although registrations will be accepted at the first session, advance registration will be greatly appreciated, and may be made by calling the church office (428-8495) or parsonage (428-8013).

IRON CREEK COMMUNITY CHURCH

Sunday, January 20, 10:00 a.m. Morning Service, Message: The Re-Christian Attitudes, Children's Church and Nursery provided, 11:15 a.m. Bible Hour, a class for every age, 7:30 p.m. Evening Service, The Will of God, Part 2.

Tuesday, January 22, 10:00 a.m. Ladies Spice of Life Fellowship, Bible Study, sewing circle, social time, and refreshments.

Wednesday, January 23, 7:00 p.m. Choir Practice, 7:30 p.m. Bible Study and Children's Bible Hour.

Saturday, January 26, 6:00 p.m. Teen Fellowship Meeting.

EMANUEL UNITED CHURCH OF CHRIST

Thursday, January 17, 12 Noon Senior Meal & Bingo, 3:20 p.m. Brownies, 6:15 p.m. Tae Kwon Do, 6:30 p.m. Scouts.

Saturday, January 19, 9:30 a.m. Confirmation Class, 6:00 p.m. Senior Citizens Luncheon.

Sunday, January 20, 9:00 a.m. Sunday School, Adult Christian Bible Study, Volunteers in Ministry, Lounge, 10:30 a.m. Rev. Edwards leads worship.

Monday, January 21, 7:00 p.m. Scouts.

Tuesday, January 22, 11:00 a.m. Senior Blood Pressures Taken, 12 Noon, Senior Meal & Cards.

Wednesday, January 23, 11:00 a.m. Seniors leave for Jackson, 3:20 p.m. Cherub Choir, 3:40 p.m. Children's Choir, 5:30 p.m. Cub Scouts, 6:00 p.m. Bell Choir, 7:30 p.m. Volleyball, Senior Choir, 8:00 p.m. AA, Al Anon, A-La-Teen.

BETHEL UNITED CHURCH OF CHRIST

Tuesday, January 17, 7:30 p.m. Bethel Long Range Planning Committee meets.

Saturday, January 19, 7:30 p.m. In Betweeners meet at Church.

Sunday, January 20, 10:00 a.m. Worship Service-Blanket Sunday, 12:15 p.m. All congregation Pot Luck Dinner, 1:30 p.m. Annual Congregational Meeting.

Tuesday, January 22, 7:30 p.m. Bible Study Prayer Time.

Wednesday, January 23, Items needed for February Newsletter.

Thursday, January 24, 7:30 p.m. Board of Christian Education.

FAITH COMMUNITY CHURCH

Wednesday, January 16, 7:00 p.m. Prayer Hour and Bible Study, 8:00 p.m. Quarterly Business Meeting, Choir practice following.

Sunday, January 20, 10:00 a.m. Morning Worship, Nursery available, 11:15 a.m. Sunday School, 6:00 p.m. Evening Service, 7:00 p.m. Youth Hour.

MANCHESTER UNITED METHODIST CHURCH

Wednesday, January 16, 10:00 a.m. Bible Study, 1:00 p.m. U.M.W.

Thursday, January 17, 7:00 p.m. Worship Committee Meeting, 8:00 p.m. Finance Committee Meeting.

Sunday, January 20, 9:15 a.m. Church School, 10:30 a.m. Worship: "If At First You Don't Succeed", 11:30 a.m. Choir Rehearsal/Coffee Hour.

Tuesday, January 22, 9:45-11:15 a.m. "The Caring Question" Study Group.

Wednesday, January 23, 10:00 a.m. Bible Study, 7:45-9:15 p.m. "The Caring Question" Study Group.

Thursday, January 24, 7:00 p.m. Trustees Meeting, 8:00 p.m. Administrative Council Meeting.

SHARON UNITED METHODIST CHURCH

Thursday, January 17, 7:30 p.m. Dorcas Fellowship, United Methodist Women will meet at the home of Mrs. Willis Uphaus.

Sunday, January 20, 11:00 a.m. Boys and Girls Fellowship, 12:30 p.m. Acolytes Get-together.

Wednesday, January 23, 8:00 p.m. Choir Rehearsal.

ST. JOHN'S LUTHERAN CHURCH

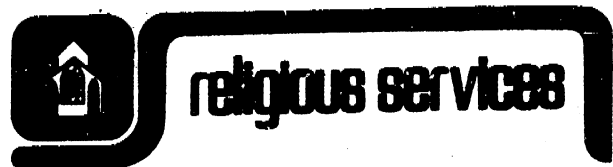
Thursday, January 17, 8:00 p.m. Men's Bible Study at Pastor Falks.

Saturday, January 19, 9-11 a.m. 7th Grade Catechism.

Sunday, January 20, 9:15 a.m. Sunday School, 10:30 a.m. Worship, 7:00 p.m. Youth Group, 8:00 p.m. Bd. Ch. Life & Ev.

Tuesday, January 22, 7:00 a.m. Women's Prayer Group, 12:30 p.m. Sewing Bee.

Wednesday, January 23, 7:30 p.m. YP Choir, 8:30 p.m. 5 yr. Bible Study, Sr. Choir.



ST. BARNABAS EPISCOPAL CHURCH - Rev. Fr. Jerrold F. Beaumont, O.S.P., Euchairist - First, Third and Fifth Sundays 10:00 a.m.; Morning Prayer, Second and Fourth Sundays 10:00 a.m.; Euchairist - Second and Fourth Sundays 11:30 a.m.; Nursery available every Sunday. Family coffee hour follows all Sunday services.

EMANUEL UNITED CHURCH OF CHRIST - Rev. Robert B. Macfarlane, Pastor; Rev. Kenyon Edwards, Assistant, Sunday School 9:00 a.m.; Worship Service 10:30 a.m.

ST. JOHN'S UNITED CHURCH OF CHRIST - Rogers Corners, Waters and Fletcher Roads; Adult Bible Study Class at 10:00; Worship and Sunday School 10:30 a.m.

MANCHESTER UNITED METHODIST CHURCH - Rev. Hayden Carruth, Pastor; Church School 9:15 a.m.; 10:30 a.m.

VICTORY BAPTIST CHURCH - 423 South Maccomb, Barry Cantrell, Pastor, 428-7506; Sunday School 9:45 a.m.; Morning Worship 11:00 a.m.; Evening Worship 6:00 p.m.; Teen Talk 7:00 p.m.; Wednesday Prayer, Bible Study, Youth 7 p.m.

SHARON UNITED METHODIST CHURCH - Rev. Evans Bentley, Pastor; Corner of M-52 and Pleasant Lake Roads; Church School 10:00 a.m.; Worship 11:00 a.m.

CLINTON ASSEMBLY OF GOD - Rev. Richard Coury, Pastor; Chris Bouldrey, Youth Pastor; 13300 Clinton-Manchester Road, Clinton; Sunday School 9:30 a.m.; Sunday Morning Worship 10:45 a.m.; Sunday Evening 6:30 p.m.; Wednesday Prayer, Bible Study, Youth 7 p.m.

ST. JOHN'S LUTHERAN CHURCH - Rev. Dennis A. Falk, Pastor; Austin Road, Bridgewater; Sunday School 9:15 a.m.; Worship 10:30 a.m.

BETHEL UNITED CHURCH OF CHRIST - Rev. Roman A. Reineck, Pastor; Schneider and Bethel Church Roads; Church Service 10:00 a.m.; Sunday School 11:00 a.m.

NORTH SHARON COMMUNITY BIBLE CHURCH - Timothy E. Booth, Pastor; Sylvan and Washburn Roads; Sunday School 10:00 a.m.; Morning Church 11:00 a.m.; Youth Meetings 8:00 p.m.; Evening Church 7:00 p.m.; Wednesday Bible Study 7:00 p.m.

BAHAM FAITH - Study of Baha'i scripture and discussion on applying spiritual principles to daily living. Believers of all faiths welcome. 2nd and 4th Sundays every month, 2:30 p.m. at the home of Thomas and Nancy Rykwalder, 611 South Maccomb. For more information or directions call 428-8454.

FAITH COMMUNITY CHURCH - Timothy Miles, Pastor, 8400 Sharon Hollow Road off West Austin; Worship Service 10:00 a.m.; Sunday School 11:15 a.m.; Sunday Evening Service 8:00 p.m.; Jr. and Sr. High Young Peoples' Meeting 7:00 p.m.

OUR SAVIOR LUTHERAN CHURCH - Rev. Franklin H. Giebel, Pastor; 1515 South Main, Chelsea; Every Sunday - 9:00 a.m. Bible Classes for age 3 through adult; 10:30 a.m. Worship Service, Holy Communion 1st, 3rd and 5th Sundays.

IRON CREEK COMMUNITY CHURCH - Rev. Bill Mason, Pastor; English and Sharon Hollow Roads; Worship Service 10:00 a.m.; Sunday School 11:15 a.m.; Sunday Evening 7:30 p.m.; Wednesday Evening 7:30 p.m.

ZION LUTHERAN CHURCH - Rev. John R. Morris, Pastor; 3050 S. Fletcher Road; Sunday School 9:00 a.m.; Worship Service with Holy Communion 10:10 a.m.

ST. THOMAS LUTHERAN CHURCH - Rev. John Riske, Vacancy Pastor; Ellsworth Road; Sunday School and Bible Class 9:30 a.m.; Worship Service 10:45 a.m.

ST. MARY'S CATHOLIC CHURCH - Father Raymond Schlinkert; Monday thru Friday 8:30 a.m.; Saturday 5:00 p.m.; Sunday 8:30 a.m. and 10:30 a.m.

CHURCH OF JESUS CHRIST OF LATTER DAY SAINTS (MORMONS) - Wayne L. Winzenz, Branch President; Rebekah Hall, M-52, Chelsea; Sacrament 9:30 a.m.; Sunday School, Primary 10:50 a.m.; Priesthood, Relief Society, Aaronic Priesthood, Youth 11:40 a.m.

GREAT PLACE TO BUY...SELL TRADE OR RENT

the Classifieds!

All Classified Advertising is Payable in Advance And Must Be Placed and Paid For Prior To 11 a.m. On Tuesday For Publication That Week.

Classifieds Are \$1.50 For First 20 Words, 5c A Word Thereafter. Thank You's Are \$3.00 Minimum Up To 50 Words, 5c A Word Thereafter.

LITTLE WACK EXCAVATING
Licensed & Insured
Basements - Drainfields
Bulldozing - Digging
Snow Removal - Tree Removal
Paul Wackenhut
Phone (313)428-8025 tfn

ALBER ORCHARD AND CIDER MILL
Sweet cider, apples, popcorn, maple syrup, honey and etc. Open daily 9-5. 13011 Bethel Church road. 313-428-7758. tfn

SHARON UNITED METHODIST CHURCH - Rev. Evans Bentley, Pastor; Corner of M-52 and Pleasant Lake Roads; Church School 10:00 a.m.; Worship 11:00 a.m.

CLINTON ASSEMBLY OF GOD - Rev. Richard Coury, Pastor; Chris Bouldrey, Youth Pastor; 13300 Clinton-Manchester Road, Clinton; Sunday School 9:30 a.m.; Sunday Morning Worship 10:45 a.m.; Sunday Evening 6:30 p.m.; Wednesday Prayer, Bible Study, Youth 7 p.m.

ST. JOHN'S LUTHERAN CHURCH - Rev. Dennis A. Falk, Pastor; Austin Road, Bridgewater; Sunday School 9:15 a.m.; Worship 10:30 a.m.

BETHEL UNITED CHURCH OF CHRIST - Rev. Roman A. Reineck, Pastor; Schneider and Bethel Church Roads; Church Service 10:00 a.m.; Sunday School 11:00 a.m.

NORTH SHARON COMMUNITY BIBLE CHURCH - Timothy E. Booth, Pastor; Sylvan and Washburn Roads; Sunday School 10:00 a.m.; Morning Church 11:00 a.m.; Youth Meetings 8:00 p.m.; Evening Church 7:00 p.m.; Wednesday Bible Study 7:00 p.m.

BAHAM FAITH - Study of Baha'i scripture and discussion on applying spiritual principles to daily living. Believers of all faiths welcome. 2nd and 4th Sundays every month, 2:30 p.m. at the home of Thomas and Nancy Rykwalder, 611 South Maccomb. For more information or directions call 428-8454.

FAITH COMMUNITY CHURCH - Timothy Miles, Pastor, 8400 Sharon Hollow Road off West Austin; Worship Service 10:00 a.m.; Sunday School 11:15 a.m.; Sunday Evening Service 8:00 p.m.; Jr. and Sr. High Young Peoples' Meeting 7:00 p.m.

OUR SAVIOR LUTHERAN CHURCH - Rev. Franklin H. Giebel, Pastor; 1515 South Main, Chelsea; Every Sunday - 9:00 a.m. Bible Classes for age 3 through adult; 10:30 a.m. Worship Service, Holy Communion 1st, 3rd and 5th Sundays.

IRON CREEK COMMUNITY CHURCH - Rev. Bill Mason, Pastor; English and Sharon Hollow Roads; Worship Service 10:00 a.m.; Sunday School 11:15 a.m.; Sunday Evening 7:30 p.m.; Wednesday Evening 7:30 p.m.

ZION LUTHERAN CHURCH - Rev. John R. Morris, Pastor; 3050 S. Fletcher Road; Sunday School 9:00 a.m.; Worship Service with Holy Communion 10:10 a.m.

ST. THOMAS LUTHERAN CHURCH - Rev. John Riske, Vacancy Pastor; Ellsworth Road; Sunday School and Bible Class 9:30 a.m.; Worship Service 10:45 a.m.

ST. MARY'S CATHOLIC CHURCH - Father Raymond Schlinkert; Monday thru Friday 8:30 a.m.; Saturday 5:00 p.m.; Sunday 8:30 a.m. and 10:30 a.m.

CHURCH OF JESUS CHRIST OF LATTER DAY SAINTS (MORMONS) - Wayne L. Winzenz, Branch President; Rebekah Hall, M-52, Chelsea; Sacrament 9:30 a.m.; Sunday School, Primary 10:50 a.m.; Priesthood, Relief Society, Aaronic Priesthood, Youth 11:40 a.m.

WINDOW & SCREEN REPAIR
Kleinschmidt True Value
Hardware. 428-8837. tfn

JERRY WHITAKER EXCAVATING
Hauling and ponds dug. Call 475-7841. tfn

BEEF AND HOG PROCESSING
16 cents per pound, slaughter and trucking available. Custom Meat Cutting, 3765 Flansburg Road, Jackson, MI 517-764-3811 tfn

FOR SALE - FIRE TRUCK, 1954
Ford F900, 650 gallon tanker, 15,000 miles, utility truck, full side compartments, 312 cu. engine. Holley 4BBEL carburetor, new motor replaced 1982, Darley Front Pump, 500 GPM, tires, very good, no rust, ladders, lights, siren, hard suction hose included. Sealed bids must be received by March 1, 1985. We reserve the right to reject any and all bids. Please call Wilma E. Lentz, Manchester Township Clerk, Manchester, Michigan at 313-428-7090 in the a.m. for an appointment to inspect the truck. 1-17

VILLAGE HAIR FORUM, 201
East Main, Old Mill, 428-7684 tfn

USED TIRES for sale. 428-7858 p

MOTHER WOULD LIKE to care for your child in my home. Manchester-Bridgewater area. Phone 428-7854. 1-31

MIXED SEASONED HARDWOOD - one face cord \$55 or two for \$100. 4x8x16-18. Delivered and stacked. Phone 429-7854. 1-31

CHILL BUSTERS - Keep that cold air out with our storm windows and doors. Call R.D. Kleinschmidt, Inc. today for free estimates. 428-8836. Visa/Mastercard welcome tfn

ART CLASSES - Oil painting, charcoal portrait, near you, starting January 15. Call Dorthea Stockbridge. 434-5014 persistently. 1-17

SENIOR CITIZEN HAWAIIAN FUN NITE at Emanuel Church Hall, Saturday, January 19th, 6-10. Bring dish for Buffet Supper and own table service. \$1.00 donation. 1-17p

APPRENTICESHIP OPPORTUNITY - Applications for the Ann Arbor Electrical Apprenticeship (Building Trades-Construction Electrician) will be available at the Ann Arbor Electrical Apprentice School, 3148 Packerd Road, Ann Arbor, MI. School entrance is from rear parking lot off Creek Street. Applications will be available weekdays from 1 p.m. to 3 p.m. beginning Monday Feb. 11, 1985, and ending Thursday Feb. 21, 1985.

Applicants must be residents of Washtenaw County, Jackson County, Unadilla, Putnam, Hamburg, or Green Oak Townships of Livingston County, or Onondaga, Leslie, Stockbridge, or Runkler Hill Townships of Ingham County. In addition, applicants must have been a resident for the twelve months prior to the date of application. Applicants from outside the above jurisdiction will NOT be accepted.

Applicants must be 18 years of age, a high school graduate, and passed one credit year of high school algebra or passed one semester of college algebra. Photocopies of high school and college transcripts are required.

Completed applications must be returned to the Apprentice School no later than Thursday March 7, 1985.

Late applications, incomplete applications, and applicants not meeting the above requirements will NOT be considered for apprenticeship.

AN EQUAL OPPORTUNITY APPRENTICESHIP PROGRAM.

FREE ESTIMATES. Blown in cellulose. Professionally installed. George Merriman. Phone 517-592-5527 tfn

CHAIN SAW SPECIALS - 2.1 cu. 14" bar Pioneer \$150.00 including tax. 3.4 cu. Poulan 16" new \$295.00, 3.4 cu. Poulan 16" demo \$250.00, Chain 72 DP 60 D. Links \$150.00. Chain Sharpened \$2.50 - \$3.00. New Partner 2.1 cu. to 4.0 cu. in stock. 1 HomeLite 14" new \$160.00. Ask For Demo. Earl Alber. 428-8707 tfn

WILL BABYSIT in my home in town. 428-9453. 1-24

BABYSITTER NEEDED for a few hours per week during the day in my home in the village. Ideal for college student or older person. Own transportation and references. 428-8171 1-17

WANTED: one bedroom apartment, ground floor if possible. 428-8839 before 3:00 p.m. 1-17

FOR RENT - two bedroom upstairs country apartment. 662-8978 tfn

FARM LAND FOR RENT on one-three year cash lease. 67 acres. Call 428-8833. 1-24

POSSIBLE RENT WITH Option to buy. You'll have a beautiful view from every window in this 3 bedroom, 2 1/2 bath home on 10 acres. 40x80 pole barn with office and electricity. Above ground pool. Manchester Schools. \$110,000. Call Jan Frey 971-6070, even. 426-4559. Charles Reinhart Company 1-17

INCOME TAX PREPARED - All types of returns, either in my office or at your home or office. Call for an appointment for a strictly private meeting with no waiting! Call 429-5994 in Saline. H.L. Beach Tax Service - This is our 23rd year. 4-10

MASONIC TEMPLE CARD Parties. 8:00 p.m. \$1.50 donation. January 19. 1-17

2 DAY FLORAL WORKSHOP for professional employment. January 29 thru 31st. 9 a.m. to 4 p.m. Floral Designs by Fay, 310 W. Main Street, Stockbridge. 517-851-7820. 1-24p

FOR SALE - Infant changing table \$15, scale \$5, swing \$5, Bobby Mac car seat with cover \$20. 428-9459. 1-17

FOR SALE - 21 cubic foot Revco chest freezer, 73 Rupp Snowmobile, set of glass fireplace doors and glass shower door. 428-8491 after 4 p.m. 1-17

76 OLDS STATION WAGON - runs well, little rust, PS/PB, Air, 72000 miles. Radiator, exhaust new; good tires. \$1700. Call 428-8831 days or evenings. p

ARE YOUR WINDOWS Whistling Winter's Familiar Song? Tune out the cold with our replacement or storm windows. Free estimates. R.D. Kleinschmidt, Inc. 428-8836. Visa/MC accepted. tfn

CROSS WITH CHRIS! Scandinavia by Land and Sea, June 22-July 6, \$1839. Romantic Europe, Germany, Austria, Switzerland, July 7-21 or July 17-31, \$1669. Great Britain, Ireland, Scotland, July 23-August 6, \$1769. Price includes all transportation from Detroit, 1st class hotels, 2 meals daily. Free brochure. Call 517-453-2202. Mrs. Chris Press, 7369 Berne Rd., Pigeon, Michigan 48755. TRY A CHRIS-CROSS! 1-17

ITS NEVER TOO LATE to insulate - We do blown in insulation and other improvements to ready your home for winter. Call R.D. Kleinschmidt, Inc. today for a free estimate. 428-8836. Use your Visa or MC. tfn

Card Of Thanks

We wish to thank friends and relatives for their cards, gifts and dinners for our 40th Wedding Anniversary.
George and Gertrude Grossman

We wish to thank our many friends and neighbors for the Christmas cookies, plants and cards. Especially the Sharon Dorcas Fellowship, Jolly Farmerettes 4H Club and the American Legion Auxiliary. It was all greatly appreciated. We thank you very much.
Roy and Florence Widmayer

We would like to express our heartfelt thanks to our many friends, neighbors, and relatives for their cards, calls, flowers, memorials, etc., during the loss of our dear mother and mother-in-law, Edith Holley. Also to Rev. Macfarlane for his many visits to the hospital and comforting words the day of the funeral. We will always miss her.
Ethel and Jack Belaire

We would like to say thank you to our friends and neighbors for their many acts of kindness during the loss of our daughter, Daneen LaRue. The food, cards, flowers, memorial gifts, and prayers were greatly appreciated and will never be forgotten. A special thanks to Alma Arnett and our other Christian brothers and sisters at Victory Baptist Church and especially to our Pastor and friend Barry Cantrell and his lovely wife, Denise, who were and are always there when we need them. We love and thank you.
Gene and Nadine Gorzelninski
Philippians 1:3

VILLAGE OF MANCHESTER FILING OF NOMINATION PETITIONS

TO THE QUALIFIED ELECTORS OF THE VILLAGE OF MANCHESTER, COUNTY OF WASHTENAW, STATE OF MICHIGAN:

NOTICE IS HEREBY GIVEN, that persons desiring to qualify for any elective office shall file a petition therefore with the Village Clerk signed by not less than twelve (12) registered voters of the Village not later than 4:00 p.m. on January 21, 1985, which is the seventh (7) Monday prior to the March 11, 1985, non-partisan Regular General Village Election. Official blank petitions in substantially the same form as required by State Law for State and County officers, except for reference to party, shall be prepared. All nomination petitions shall have entered thereon in ink the name of the person desiring to become a candidate for office in the Village, or the person in whose behalf the petition is to be circulated, and the name of the office for which he/she is a candidate. No person shall sign his/her name to a greater number of petitions for any one (1) office than there will be persons elected to said office.

THE VILLAGE CLERK SHALL ACCEPT PETITIONS, THEREBY NOMINATING CANDIDATES FOR THE FOLLOWING OFFICES, VIZ:

THREE (3) VILLAGE TRUSTEES TWO (2) YEAR TERMS

Official Blank Petitions May Be Obtained at the Village Offices, 120 S. Clinton Street.

VILLAGE OF MANCHESTER

HELEN KENSLER, CLERK 1/10/85

Our Individual Retirement Account offers a little more...

FB Annuity Company can guarantee you a generous monthly income you can't outlive, continuous tax savings, competitive interest rates, and the personal, dependable service of your local Farm Bureau Insurance agent.

Making your future a little more predictable.

FARM BUREAU INSURANCE GROUP

LARRY BECKTEL
135 East Main St.
Manchester, Mich.
Phone 428-7331

CAN WE DO? Plumbing Repair YOU BET?

WE HAVE TOOLS AND SUPPLIES FOR MAINTENANCE PLUMBING REPAIR

Manchester Electric
CALL 428-8243

FILLYAW'S MARATHON SERVICE
327 West Main Street Phone 428-8576 Manchester, Michigan

MONDAY-SATURDAY 7:30 am-7pm

STOP IN AND PICK-UP A MARATHON CREDIT CARD APPLICATION

YOU CAN PURCHASE BATTERIES, TIRES SHOES, PARTS OR HAVE YOUR CAR TUNE-UP FOR THE WINTER MONTHS BRAKE JOBS, FRONT END ALIGNMENT OR WHEELS BALANCED ASK ABOUT OUR INTEREST-FREE EXTENDED PAY PLAN FOR CERTAIN PURCHASES

WE NOW HAVE SUPER "M" LEAD FREE GAS FULL LINE OF MARATHON PRODUCTS

STOP IN AND SEE ME FOR YOUR BEST TIRE DEAL

GOODYEAR

24 Hour Wrecker Service

YOU CAN CHARGE GAS, TIRES BATTERIES AND AUTO REPAIRS ON YOUR MASTERCARD and VISA

HEAVY DUTY SHOCKS SAVE 50% \$9.95 EACH
Price Does Not Include Installation

DISC BRAKES \$59.95
*Replace Brake Pads
*New Grease Seals
*Resurface Rotors
*Complete Brake Inspection
*Repack Wheel Bearings
*Road Test Car

FRONT END ALIGNMENT \$24.95 & up

FREE GOODYEAR BLIMP with the Purchase of 2 New Goodyear Tires

ROTATE AND BALANCE ALL 4 TIRES \$19.95

METALLIC PADS \$15.00 Extra

Most U.S. Cars From States Only

Attention Comerica IRA holders: January IRA Bonus Days are back.

**Make your IRA deposit this month
and get a 1% bonus interest rate.**

Comerica has good news for anyone who has previously deposited at least \$500 into a Comerica IRA. Make a *new* IRA deposit of \$500 or more *this month* and you'll get an interest rate that's *1% higher* than our already high rates. And your deposit will earn this bonus interest rate until it matures in 18 months, 2 1/2, 3 1/2 or 5 years.

And even if you're not a current Comerica IRA depositor, you can still earn bonus interest rates. Deposits made by new IRA customers will still receive a bonus rate that's *3/4% higher* than our already high rates, as long as you act by the end of the month.

Comerica has the IRA option to fit your needs, so visit Comerica soon and take advantage of January IRA Bonus Days. For more information, call toll-free **1-800-292-1300**.

There's a reason....
Comerica
BANK

One percent bonus interest not applicable towards Comerica IRA funds removed and redeposited. Terms may vary at Comerica Banks outside Metro Detroit. Substantial penalty and tax liabilities are imposed for withdrawals from Individual Retirement Accounts prior to age 59-1/2, except in cases of death or disability. Withdrawals must begin by age 70-1/2. Member FDIC.