

THE MANCHESTER ENTERPRISE

20 Cents Per Copy

117TH YEAR VOLUME NO. 11

USPS 327-460

THURSDAY, JANUARY 5, 1984

Christmas Eve Bloodmobile

Red Cross volunteers in Manchester have had a busy Holiday season. It all began with a special "Christmas Eve Bloodmobile" on the morning of December 24th to collect 50 pints of blood for Mott's Children's Hospital; then, assisting the Justo Burgos family who suffered the complete loss of their home by fire also on the 24th and ending with a second Bloodmobile at Chrysler Proving Ground on January 3rd. Literally, the whole neighborhood has been involved in one way or another.

A complete report is not available this soon for the burn-out victims. Dozens of people have been helping by donating furniture, clothing, household equipment, trucking service and money to get the family re-established near their farm location. Questions about needs can be referred to the Manchester Family Service numbers - 428-8852 or 428-8976.

The "Christmas Eve Bloodmobile" collected the needed 51 pints of blood to meet the supply needed by Mott's for the Holiday week. Mrs. William Schwab was chairman-of-the-day and St. Mary's Catholic Church was host again this year. Prescreener was Mrs. Don Fowler; registrars, Mrs. LeRoy Knickerbocker and Brian Head; pack table, Amanda Schaible; escorts, John Wakefield and Mrs. Schwab; canteen Mrs. Franklin Reck and Linda Head and observer, Mrs. Ben Creason.

Gallon pins were given to Bessie Osborne for a 5 gallon donation (pin had to be mailed because the unit didn't carry this size!); 4 gallon pin to Bill Panches; 3 gallon pin to Shirley Roller; and 3 one gallon pins to each, Monty Okey, Karen Paul, and Michael Bersuder. Edward Richards gave his 122nd pint.

Mrs. Robert Little was chairman-of-the-day for the Proving Ground clinic assisted by registrars, Mrs. James Pratt, Mrs. Charles Knorpp and Mrs. LeRoy Knickerbocker; pack table, Mrs. Herman Boelter and Mrs. James Scott; escorts, Mr. and Mrs. Alfred Strang and Mrs. Duane Roller; canteen Mrs. Alfred Sannes and observer, Mrs. Evans Bentley.

PJ Storytime

PJ Storytime at the Manchester Township Library will begin again on January 11 at 7:30 p.m. Rosemary Hamilton will conduct the program for pre-school children. Parents are requested to stay with their children.

The Beautiful Snow

Reprint from the Manchester Enterprise, dated October 31, 1901

The snow, the beautiful snow, filling the sky and earth below; Over the housetops, over the street, over the heads of people you meet, Dancing, flirting, skimming along. Beautiful snow! it can do nothing wrong. Flying to kiss a fair lady's cheek; clinging to lips like a frolicsome freak; Beautiful snow, from the heavens above, pure as an angel, and fickle as love!

O! the snow, the beautiful snow! How the flakes gather and laugh as they go! Whirling about in its maddening fun, it plays in its glee with everyone. Chasing, laughing, hurrying by, it lights up the face and it sparkles the eye; And even the dogs with a bark and a bound, snap at the crystals that eddy around. The town is alive and its heart is aglow, to welcome the coming of beautiful snow.

How the wild crowd go swaying along, hailing each other with humor and song! How the gay sledges like meteors flash by—bright for a moment, then lost to the eye. Ringing, swinging, dashing they go over the crest of the beautiful snow; Snow so pure when it falls from the sky, to be trampled in mud by the crowd rushing by; To be trampled and tracked by the thousands of feet, till it blends with the horrible filth in the street.

Once I was pure as the snow—but I fell; fell, like the snowflakes, from heaven—to hell; Fell, to be trampled as the filth in the street; fell, to be scoffed, to be spit on and beat; Pleasing, cursing, dreading to die, selling my soul to whoever would buy, Dealing in shame for a morsel of bread, hating the living and fearing the dead. Merciful God! have I fallen so low? And yet, I was one like this beautiful snow!

Once I was fair as the beautiful snow, with an eye like its crystals, a heart like its glow; Once I was loved for my innocent grace—flattered and sought for the charm on my face. Father, mother, sisters all, God, and myself, I have lost by my fall. The veriest wretch that goes shivering by will take a wide sweep, lest I wander too nigh; For of all that is on or about me, I know there is nothing that's pure but the beautiful snow.

How strange it should be that this beautiful snow should fall on a sinner with nowhere to go! How strange it would be, when the night comes again, if the snow and the ice struck my desperate brain! Fainting, freezing, dying, alone, too wicked for prayer, too weak for my moan, To be heard in the crash of the crazy town, gone mad it its joy at the snow's coming down; To lie and to die in my terrible woe, with a bed and a shroud of the beautiful snow.

J.W. Watson 1852

Saline Hospital Receives Donation



William J. Lavery, Saline Community Hospital Administrator, gratefully accepts a check from Nancy Zahn, Saline Community Hospital Auxiliary President, representing an Auxiliary gift for the purchase of needed capital equipment. The Auxiliary's donation has been designated for a specialized stretcher for the Hospital's Surgery Recovery Room. Many special features of the new stretcher will be an asset in providing maximum patient comfort and safety.

HIT or MISS by farley

The thrill and excitement had died away and Christmas 1983 is past and gone and as far as I know everyone survived. The good little girls and boys received their heart's desire from Santa and were very happy.

This year there were four leaders on the wanted list of toys and dolls—the Cabbage Patch doll—which I still can't find attractive; the Care Bear; a teddy bear which comes in two sizes and six colors; the Big Foot; a toy truck which most boys wanted so much and the Glow Worm. We haven't decided what we think of this—you squeeze it and its head lights up. The stocks of all of these were exhausted long before Santa

loaded his sleigh but even those who didn't get one survived.

By the way, the other day we were talking with an acquaintance who recently retired after spending his working years as an engineer with one of the countries larger companies. He told us of several interesting and amusing stories about his experiences as he traveled about these United States at his work.

He told of the time he was sent by his company to Butte, Montana to complete a project underway there. Butte, as most of you know, is a town with a copper mine and a smelter. Arriving there he proceeded with his project and became friends with several of the miners and smelter workers.

One evening, at dinner at a restaurant, he noted a reference by a couple of his companions, to the Cabbage Patch, and his curiosity was aroused so he turned to one of them and said "What in the world is the Cabbage Patch?"

His companions turned to him and laughed and one of them said "My dear chap, the Cabbage Patch is a pet name for Butte's red light district."

Then he turned to me and smiled at the memories of that incident and asked if I supposed that was where all of the current dolls known by that name came from.

In the evolutionary chain the chimpanzee is about as close to man as any other animal and chimpanzees are promiscuous.

The average smoker who quits can be expected to gain only 3.7 pounds.

The word bride comes from an old German word meaning "to cook".

Board Meeting Date Changed

The Manchester Board of Education has advised that the date for the regular Board meeting in January has been changed from Monday, January 16 to Monday, January 23, 1984.

Superintendent of Schools Gene Thompson requested the change in order to enable him to attend a special invitational seminar with the State School Superintendent Phillip Runkel in Flint. Thompson, had previously been selected as a participant in Superintendent Runkel's project to study the process of downsizing school districts. The January meeting

Continued on page 3

PCA Salutes Albert Haller

PCA's new Vice President, Secretary and General Counsel is a softspoken gentleman who always has time for a friendly word, but something tells you to be grateful he is on our side, and not sitting across from you in a courtroom!

Al is a native of Michigan, growing up in Manchester where he worked in his father's meat market as a meat cutter and sausage-maker prior to completing college. He received his undergraduate degree in Business Administration at Michigan State University in East Lansing, graduating with honors in 1955. He then attended the University of Michigan Law School from which he received his Juris Doctor degree in 1959. While in law school, he was elected to Order of the Coif, an honorary scholastic fraternity, and was editor of the Michigan Law Review.

After graduation, Al was associated with the law firm of Fuller and Henry in Toledo, Ohio, and in 1964, joined PCA. In 1970 he was named Assistant Secretary, and effective June 1, 1983, assumed his current position. Al's new responsibilities encompass all legal work for PCA, including compliance and all laws and regulations. He maintains the Corporate minutes as well as all Corporate documents and contracts. He supervises and participates with outside counsel in all litigation affecting the Corporation. In addition, he coordinates with Tenneco on matters involving securities laws. Al is assisted by John Olsen and Lynn Taylor who are attorneys on his staff.

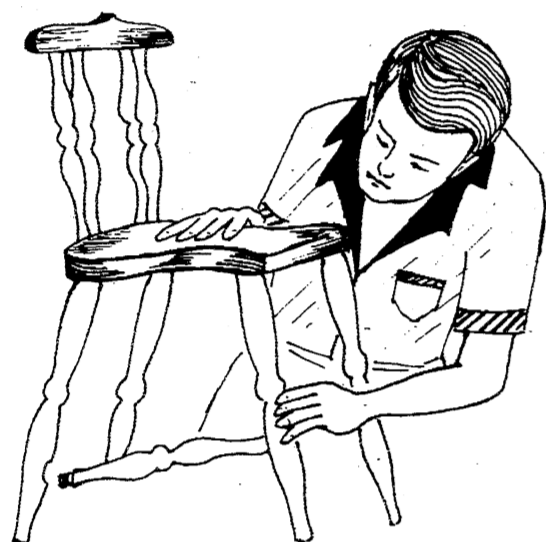
Al and his wife, Eileen, and four of their sons live in Evanston. Three of the boys are in high school and the fourth is a Junior at the University of Illinois, majoring in math and computer science. Their fifth son is a college graduate and is employed in the Chicago area.

How to Tell If Your Indoor 'Climate' Is Too Dry:

Checking for Symptoms of Inadequate Indoor Humidity



Static cling, above, and loose furniture joints, below, are just two signs of indoor air that is too dry. A humidifier raises relative humidity, making your indoor environment more comfortable, says the Air-Conditioning and Refrigeration Institute.



Relative humidity concerns all of us in the summer when the humidity index can mean the difference between a pleasant summer day and those hot, humid "dog days." But relative humidity is important for comfort in winter, too.

Humidity is expressed as a percentage: How much water there is in the air, in terms of how much the air could hold at that temperature. The higher the temperature, the more moisture air wants. If it doesn't get it any other way, it takes moisture from your house plants, home furnishings, in fact, from anything in your home that contains moisture.

In the winter, the cold air outside usually holds about 35 percent of its moisture capacity at that temperature. Inside, however, the air may feel unpleasantly dry because as your furnace heats it, its water-holding capacity rises but the actual quantity of moisture stays the same. In other words, the relative humidity has dropped.

Heating engineers estimate when it is 30 degrees and 35 percent relative humidity outside, heated air inside at 70 degrees may have a relative humidity as low as 7 percent. When you compare this to the Sahara Desert, where the relative humidity is about 25 percent, you can see why your home environment may feel uncomfortably dry.

Sore throats and dry nasal passages and skin are physical symptoms of too dry an environment. Also, static shock

and static cling are tip-offs that your indoor air may be too dry.

Experts agree the most effective way to restore moisture to your home or workplace is through the installation of a central humidifier. A humidifier is designed to add controlled levels of moisture to artificially heated air — to raise its relative humidity and to make the indoor environment more comfortable. Properly humidified air increases the "comfort level" — how warm you feel inside, even with a lower room temperature.

The ideal level for indoor relative humidity is between 30 and 50 percent. The appropriate level for your home will depend on how warm you keep your house and how well-insulated it is.

Condensation, or "sweating," on the inside of the windows indicates that indoor humidity may be too high. The "dew point," or the point at which water in the air will condense on a cold surface, is reached much more quickly on single-pane windows than on thermopane or insulated glass. Experts say when outdoor temperatures fall below zero degrees, inside humidity levels above 10 to 15 percent may cause window condensation — especially in homes with single-pane windows.

How can you tell if the air in your home is too dry? Here is a checklist of dry-air indicators from the Air-Conditioning and Refrigeration Institute (ARI), the association of climate control manufacturers:

- Your thermometer shows the temperature you want, but you still aren't warm. Dry air speeds the evaporation of sweat, and thus cools your body. Proper relative humidity levels will help you feel warm — at a lower temperature.

- You are troubled with static electricity building up on your hair, on your clothes, on doorknobs. Proper moisture levels will help minimize the build-up of static electricity. (If you own a home computer, static electricity can interfere with its operation.)

- Your nose is stuffy, your throat is dry and scratchy, especially when you wake up in the morning... and you don't have cold. Dry nasal passages can be irritating.

- Your plants need more watering or show signs of moisture deprivation. Parched air will absorb water from any available source... plants, your skin, even furniture and fabrics.

- Furniture creaks and groans even under normal loads; joints come loose; draperies and curtains feel dry and are wearing faster. Dry air can be destructive as well as uncomfortable. Inadequate humidity levels will affect natural materials like wool and cotton, paper, leather, wood, wicker, caning... any material that needs some moisture.

- House dust is more prevalent — this is often because of the more rapid breakdown of fibers caused by brittleness due to dryness.

\$60 Million Bond Issue Set For Bus, Rail Work

The State Transportation Commission has approved issuance of \$60 million in revenue bonds for public transportation projects.

It will be the state's third such bond issue for bus and rail improvements in six years.

Commission action authorized the Michigan Department of Transportation (MDOT) to issue Series 1984 bonds to fund projects ranging from purchase of transit buses to rail freight transportation improvements and preliminary engineering for transit systems in southeast Michigan.

The bond money is expected to generate more than \$150 million in federal matching funds.

Bond proceeds will provide:

- \$11.8 million to purchase transit buses and related equipment; construction, rehabilitation, improve and equip transit facilities and construct park-and-ride lots. The money will be used, when possible, to match federal grants.

- \$19.8 million to acquire and rehabilitate railroad freight trackage and right-of-way; construction and reconstruct

trackage and rail yard to serve industry and industrial sites.

- \$7.9 million, as the state's share, for preliminary engineering and final design of a light rail transit system in the area served by the Southwestern Michigan Transportation Authority.

- \$18.9 million, as part of the state's 20 percent share, for final engineering and construction of a central automated transit system (CATS), formerly known as the downtown people mover, in downtown Detroit. Ground was broken for construction Oct. 31 and construction is underway on the system, which is expected to transport more than 50,000 people daily along a 2.9 mile elevated route. The federal government is paying 80 percent of the cost of CATS. Completion is expected in 1986.

- \$963,000 to study the possibility of extending the Ann Arbor-Detroit commuter rail service from the Michigan Avenue station to the Joe Louis Arena in downtown Detroit.—\$2 million, as the state's share, to construct intermodal transportation centers.

- \$1.25 million to upgrade right-of-way for improved intercity passenger train service. These funds will be used, when possible, to match federal grants.

- \$19.8 million to acquire and rehabilitate railroad freight trackage and right-of-way; construction and reconstruct

Commission also must approve the bond issue.

The State Transportation Commission will be asked to approve the sale at its regular meeting Jan. 25. Earliest delivery of the cash will be Feb. 14. By the time the money is spent, the interest earnings, or the bonds proceeds, will amount to approximately \$4.7 million.

The sale of the bonds is another major step toward meeting the needs and helping the growth of public transportation in Michigan," said William C. Marshall of Lansing, Commission chairman. "Efficient public transportation is essential to the economic growth of the entire state."

The first issue of state bonds for public transportation projects was Series A in 1978 for \$106 million. The second issue, Series B, was in 1981 for \$50 million.

The bonds are paid off with state motor fuel, weight and sales tax revenues earmarked for public transportation.

Cloud Of Snow May Be 18-Ton Truck

Imagine driving into an 18-ton cloud of snow.

That's what happens when you rear-end one of the many snow removal trucks now working on

streets, roads and highways throughout the state.

The Michigan Department of Transportation (MDOT) warns drivers to be alert for slow-moving snow removal equipment at this time of year, particularly when visibility is poor.

During the 1982-83 winter, seven vehicles collided with MDOT snowplow trucks, a relatively snow-free season in the Lower Peninsula. This year, there have already been reports of six such accidents.

"That figure doesn't include the 62 county road commissions and 154 municipalities which work under contract with the department to keep state highways clear of snow and ice," said MDOT's chief of maintenance, Donald Orne.

"Although we've equipped all our trucks with flashing yellow strobe lights, sometimes they become nearly invisible in a cloud of snow," he said.

Orne said the average cost of repairs for a rear-end accident involving a snowplow vehicle is \$1,200 to \$1,500.

He noted that the department is working on ways to keep the taillights of the trucks clear of snow by installing heat sensors in them, but it continues to be a problem.

"If you cannot see the red

taillights in front of you, the main clue that there's a snowplow ahead is the strobe lights, which are mounted high on the trucks," Orne said.

"If you see a truck, keep a fair distance behind it, and always allow extra room when passing it because of the snowplow blade."

"And remember, our equipment operators are concerned every minute they're out there about the possibility of an accident. They need your cooperation in keeping the highways safer for all drivers."



BRIDES

FOR ALL YOUR WEDDING NEEDS

WEDDING STATIONERY and ACCESSORIES by Carlson Craft

Invitations Announcements Enclosures, Napkins Reception Items Attendants Gifts

The Manchester Enterprise 150 E. Main Street 428-8173

KOSMYNA CHIROPRACTIC CLINIC

301 WEST MICHIGAN AVE IN CLINTON, MICHIGAN

Monday, Wednesday and Friday 8:30 am-12 noon 2 pm-7pm
Tuesday 8:30 am-12 noon 3 pm-5 pm
Thursday and Saturday 8:30 am-12

Phone 517-456-7411

Kirk Excavating
Sand—Gravel—Fill Dirt
Basements—Driveways
Snow Removal

DAVE KIRK

14180 Schiewels Road
Manchester
Phone 428-7938

CLINTON THEATRE "The Big Chill"

Friday & Saturday 7:30 and 9:30
Sunday 7:30

ALL SEATS \$2.00

M MARATHON **FILLYAW'S MARATHON SERVICE**
327 West Main Street Phone 428-8576 Manchester, Michigan
MONDAY-SATURDAY 7:30 am-6:30 pm

CERTIFIED MECHANICS ON DUTY
All Work Guaranteed

YOU CAN PURCHASE AAA ROAD SERVICE HERE

DISC BRAKES
*Replace Brake Pads
*New Grease Seals
*Resurface Rotors
*Complete Brake Inspection
*Repack Wheel Bearings
*Road Test Car

Most U.S. Cars \$59.95
Front Brakes ONLY
METALLIC PADS \$15.00 Extra

ROTATE AND BALANCE ALL 4 TIRES
\$19.95

GOODYEAR ALL SEASON TIRES
Replace Those Worn Tires For Winter Driving

TUNE UP \$24.95 And Up

STOP IN AND PICK-UP A MARATHON CREDIT CARD APPLICATION

YOU CAN PURCHASE BATTERIES, TIRES SHOCKS, PARTS OR HAVE YOUR CAR TUNE-UP FOR THE WINTER MONTHS BRAKE JOBS, FRONT END ALIGNMENT OR WHEELS BALANCED

ASK ABOUT OUR INTEREST-FREE EXTENDED PAY PLAN FOR CERTAIN PURCHASES

M MARATHON

FULL LINE OF MARATHON PRODUCTS

We Have Pure White Kerosene Gas-Oil-Diesel Fuel

AAA STOP IN AND SEE ME FOR YOUR BEST TIRE DEAL

24 Hour Wrecker Service

K of C HALL

AVAILABLE FOR Wedding Receptions Parties Meetings

Catering Available

Hall Rental \$165.00 includes cleaning
Use of Kitchen \$25.00

For Further Information Call 428-8393 or 428-8886



CAL'S TOG SHOP

Storewide After Christmas Sale

20% - 50% OFF

- better dresses • jewelry
- handbags • neckwear and gloves
- moderate dresses • sportswear
- junior sportswear and dresses
- intimate apparel • coats

She who waited will find the best bargains of all

Closed Thursday — Sale Starts Friday, Jan. 6
All Sales Final

CAL'S TOG SHOP
DOWNTOWN TECUMSEH
Bank Americard, Master Charge or your Cal's Tog Shop Charge

Increase Puts Michigan At Top Of Gas Tax List

Michigan motorists will be the highest taxed in the nation when gasoline taxes increase 2 cents per gallon January 1, reports the Automobile Club of Michigan.

With the new tax, a gallon of gas priced at \$1.26 (based on Auto Club's statewide average for self-serve no-lead), will have 28.4 cents tax as part of the cost; 15 cents state gas tax, 4.4 cents sales tax and 9 cents federal gas tax.

Most of the \$65 million raised by the new tax increase will be used to repair and maintain the current road and highway system. Thirty-five percent of the money goes for work on state highways and the remainder for county roads, municipal streets and public transportation projects (bus, rail and subway).

Transportation officials say the tax increase will help them make headway on long-deferred highway improvements and enable Michigan to match federal aid totalling \$356 million this year.

"While there are four other states with higher flat rate taxes, Michigan's 4 percent sales tax puts it at the top of the levy list," said Arthur C. Gibson, Auto Club's Community Relations manager.

States with higher flat rate gas taxes but no sales tax on fuel are Minnesota, 17 cents; Washington, 16; West Virginia, 15.35; and Nebraska, 15.3.

The upcoming increase will be the third in a series of state and federal fuel tax hikes since Jan. 1, 1983. The Michigan Legislature approved two 2-cent-per-gallon increases as a part of \$600 million transportation package passed in December 1982.

Both state and federal tax hikes were prompted by escalating road repair costs and declining gas and weight tax revenues due to lighter, more fuel-efficient vehicles.

In addition to the gas tax hikes, the cost of registering a new car in Michigan increased last Oct. 1 when the state switched from fees based on vehicle weight to a tax based on price. License plate or tab fees for pre-1984 cars, non-commercial light trucks and vans still will be based on weight.

For example, a 1984 Ford LTD, four-door sedan, has a base price of \$8,605 and weighs 2,804 pounds. Under the old weight system, the plates would cost \$23. Under the new value system, the plates for the first year would cost \$43.

"Plates purchased for new cars, trucks and vans jumped at least \$4 and as much as \$200," said Gibson. "Transportation officials are hoping to raise an additional \$32 million this year from license fees."

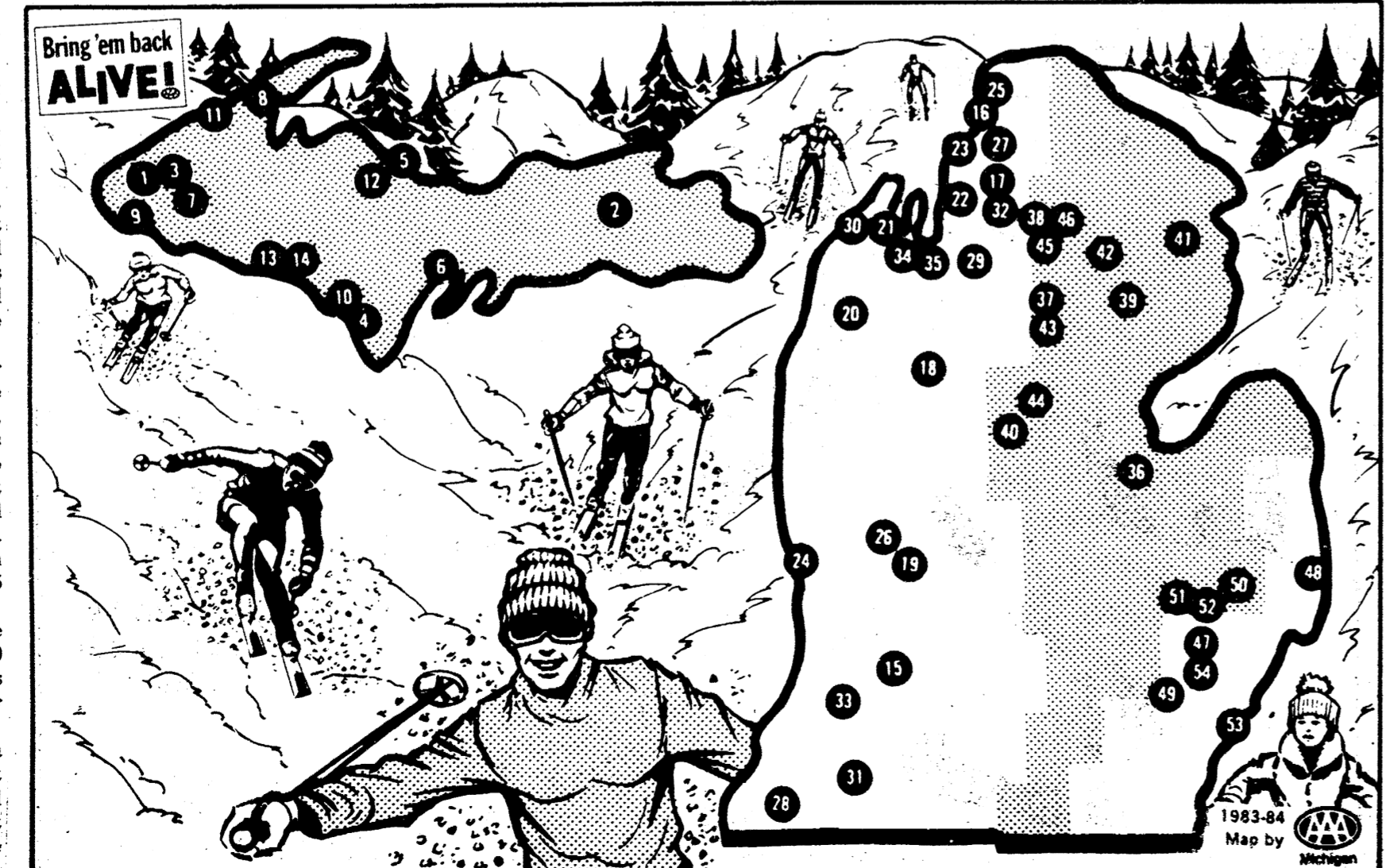
The tax schedule for a new car starts at \$30 for a vehicle whose base price (not including taxes, transportation costs or options) is \$6,000 or less. From \$6,000 to \$7,000, the tax will be \$33 and it goes up \$5 for each additional \$1,000 increase in base price. Vehicles which list for more than \$30,000 are taxed at a flat .5 percent of the base price.

As the car ages, the registration tax will decline by 10 percent annually for three years and then freeze at that rate for the life of the vehicle.

"Because the new method is a tax, and not a fee as the current charge is, buyers of new cars will for the first time be able to deduct it from their federal income taxes," said Gibson.

Guide to Downhill Skiing at 54 Public Areas

Table with columns: CODE (Facility Available, No Charge, Indoor Pool, Not Available, Hourly Rate), Day, Night, Open Weekdays, Open Weekends, Lifts, Runs, Lifts, Type and Number of Lifts, Package Rates, Overnights, Facilities Offered, and PHONE. Rows list 54 public areas across Michigan.



Put Yourself in the Marketplace, in the Classifieds

Classifieds Are \$1.50 For First 20 Words, 5c A Word Thereafter. Thank You's Are \$3.00 Minimum Up To 50 Words, 5c A Word Thereafter.

All Classified Advertising Is Payable In Advance And Must Be PLACED AND PAID For Prior To 11 A.M. On Tuesday For Publication That Week.

C & B PAINTING Interior-Exterior-Free Estimates. Contact: Charles E. Benedict. Phone 428-7136 or 428-7416. tfn

SHARPENING SERVICE Ice skates, saw chains, handsaws, circular saws, knives, scissors, pinkie shears, hair-animal and grass clippers, lawn mower blades, electric hedge clippers, drills, and most anything needing a sharp edge. Kleinschmidt True Value Hardware, 19860 Sharon Valley Road, Manchester. tfn

NEED A NEW FURNACE? We can help finance it! 428-9150. tfn

MERRIMAN INSULATION Free Estimate. Blown in Cellulose Professionally Installed. George Merriman. Phone 313-429-7962. 372 Hartman Lane, Saline, MI tfn

WINDOW & SCREEN REPAIR Kleinschmidt True Value Hardware. 428-8337. tfn

FIELDER PAINTING Interior & Exterior Free Estimates Senior Citizens Discount Phone 428-8506 tfn

LITTLE WACK EXCAVATING Licensed & Insured Basements - Drainfields Bulldozing - Digging Snow Removal - Tree Removal Paul Wackenhut Phone (313) 428-8025 tfn

ALBER ORCHARD & CIDER MILL Christmas Ideas, apples, sweet cider, jells, jams, maple syrup, honey, popcorn, candies, barrels, kegs, etc. Open daily 9 to 6, 13011 Bethel Church Road, Manchester 313-428-7758 tfn

TAE KWON DO (Korean Karate) Classes being offered at the Emanuel Church Hall, Tuesdays and Thursdays beginning January 17 at 6 p.m. Instructor, Jerry Koernke, 3rd degree black belt. Certified with American Tae Kwon Do Association. For information call 517-263-6661.

CHELSEA GREENHOUSES 7010 Lingane Road, Chelsea, Michigan. 475-1353-54 or 475-9813. Flowers and plants for every occasion. We specialize in wedding flowers to fit your budget. We are as near as your phone and we welcome your business. tfn

TUTORING - (Math, Algebra) Ted Tapping 428-8478. 1-12p

FOR SALE BUILDING LOTS RIVERBEND SUBDIVISION Village of Manchester, on private lake. All utilities installed. 20% down, 5 year land contract. (313) 428-8496. tfn

NEW AND USED TIRE SALE Tire repairs, spin balancing, rotation. Silkworth Tire, now owned and operated by Napoleon Lawn & Leisure. Local calls 665-6811. tfn

COPY PAPER AVAILABLE We now have copy paper in sizes 8 1/2 x 11 - \$4.75 for 500 sheets and 8 1/2 x 14 - \$5.75 for 500 sheets. The Manchester Enterprise. tfn

MANCHESTER LOCKER PLANT Phone 313-428-7600 Meat Processing Custom Slaughtering HOGS-BEEF-LAMBS RETAIL: Cuts-Sides-Quarters LOCKER RENTAL

INTERIOR PAINTING 26 years experience, references. Call Bill 428-8558 before 9 p.m. Call Mike 428-7013 before 10 p.m. tfn

COMMUNITY SPAY NEUTER CLINIC, low cost, appointments available. 6 months to 2 years. 971-8774 evenings. 2-23

SEAMLESS gutter, roofing and siding. Owner/Operator. Free Estimates. Walkowe Home Improvement Company. Phone (313) 428-8468. tfn

INSURANCE OVER COST clearance on insinkersater in stock until January 14. Manchester Electric 428-8243. 1-12

SMALL BREEDING FLOCK, 15 ewes, 1 reg. ram \$500. 428-7173. 1-12

VACUUM CLEANER CLINIC JANUARY 13 & 14 Bring your tired vacuum in and get it ready for a new year. Manchester Electric, 112 Adrian Street. 428-8243. 1-12

LOST DOG - black & white female, west of Bridgewater. Any information call 428-8086. p

PIANO TUNING AND REPAIR Qualified technician-Ron Harris. 475-7134. tfn

FOR SALE - A two horse bobsled in good condition. Been stored under cover for 20 years. Phone 665-2327. 1-5p

FOR RENT - Furnished efficiency apartment in Napoleon. \$46 per week or \$185 per month. Includes utilities, garbage, and cable T.V. Call Gary 517-536-8339 or Realty World Allied 517-592-6027. tfn

MILLPOND VILLAGE APARTMENTS Call D.E. Limpert 428-7400 tfn

HOUSE FOR RENT 3 or 4 bedrooms, 2 baths, 1st floor laundry, large country kitchen \$400. 428-9380. tfn

APARTMENT FOR RENT 2 bedroom, 2 blocks from downtown Manchester. \$285. 428-7173. tfn

2 BEDROOM APARTMENT In Village of Manchester. \$275. Call 428-9380. tfn

FOR RENT - 2 apartments, main road. Call 428-8270. 1-12p

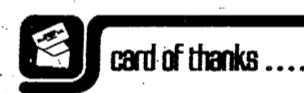
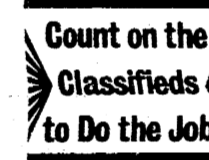
EFFICIENCY APARTMENT FOR RENT above Manchester Electric. \$150 a month. Apply in person at Manchester Electric 428-8243. 1-12

FARMHOUSE FOR RENT - 3 bedroom, carpeting, garage. Manchester area, \$300. 563-7633. tfn

FOR RENT - 2 or 3 bedroom duplex, washer/dryer, deep freezer, call 428-9150 between 6 & 9 p.m. tfn

OLDER 5 bedroom house, ADC welcome. Broker 428-8107, 428-9150. 1-5

FOR RENT - Heated workshop in the Village. 428-7173. tfn



We wish to express our deep appreciation for all the help given at the time of the loss of our sister. Special thanks to Reverend Robert Macfarlane, the Manchester Police Department, Mr. and Mrs. Alfed Strang and the Jenter Funeral Home.

The Family of Delia A. Place

Shop At

BEN FRANKLIN

MANCHESTER, MICHIGAN OPEN 9 to 5:30 Monday thru Saturday 428-8980

COPIES MADE

8 1/2 x 11 10c each

8 1/2 x 14 15c each

11 x 17 20c each

Copies Can Be Printed On Both Sides

THE MANCHESTER ENTERPRISE 150 E. Main Street

Jim Hartmann Dan Wampler 313-475-9301 517-456-4305

HARTMANN CARPENTRY

Licensed and Insured Residential Builder With 14 Years Experience Pole Bams Additions Roofing Siding Decks Remodeling Rough Ins Finish Work

Parr's Auto Body

BODY WORK PAINTING FREE ESTIMATES INSURANCE WORK GLASS INSTALLATION

19481 West Austin Road Manchester, Michigan Phone 313/428-9538

CLASSIFIED IT'S A SURE SHOT! Get on the ball... with our strategy! It's guaranteed to get you the most advertising results for your money! The rules are simple and your ultimate goal...from buying to selling...will be achieved without busting your budget. So play the Classifieds... you can't beat 'em! Just call one of our ad-visors to place your ad! Phone 428-8173

Special Tax Benefits For Older Americans

For the rapidly growing older segment of the nation's population, the tax laws offer a number of special tax benefits, according to the Internal Revenue Service.

For instance, anyone 65 or older is entitled to an extra exemption of \$1,000. This means an automatic additional reduction to income of \$1,000 for single persons, and \$2,000 for a married couple, both 65 or older, who file a joint return.

Do senior citizens have to file at all? In some cases, yes, since filing a tax return has nothing to do with age; it's *income* that decides that question.

Single persons 65 or over do not have to file a federal income tax return if their income was less than \$4,300. The limit for a married couple, filing a joint return, with only one spouse 65 or older, is \$6,400; \$7,400 if both spouses are 65 or over. For tax purposes, persons are considered to be 65 on the day before their 65th birthday. An important benefit to keep in mind is that Social Security payments are not taxable for 1983. The same holds true for Railroad Retirement benefits. Beginning in 1984, however, part of your Social Security payments may be taxable depending on your income.

Another special benefit is the *Credit for the Elderly*. The credit can in some cases, but not all, reduce taxes owed by as much as \$375 for single persons and \$562.50 for married couples who file a joint return. Although the credit generally applies to persons 65 or older, for 1983 it is available to those under 65, if they have a taxable pension from a public retirement system. Starting in 1984, individuals under 65 will be eligible for this credit only if they retire with total and permanent disability and have income from a public or private employer because of that disability.

Senior citizens who are thinking about selling their personal residence should consider the once-in-a-lifetime \$125,000 exclusion of the gain on the sale of their home. An awareness of the tax consequence is essential before selling a personal residence at any age, but doubly so for those age 55 or older to whom this benefit applies.

Taxpayers needing assistance with their returns can turn to Tax Counseling for the Elderly, an IRS program through which organizational volunteers provide free tax information and assistance to individuals age 60 and over.

You may obtain free publications by using the mail-order form in your tax package. Publication of special interest to older taxpayers include:

- 502 *Medical and Dental Expenses*
- 505 *Tax Withholding and Estimated Tax*
- 523 *Tax Information on Selling Your Home*
- 524 *Credit for the Elderly*
- 554 *Tax Benefits for Older Americans*
- 575 *Pension and Annuity Income*
- 910 *Taxpayer's Guide to IRS Information and Assistance*



George Custer was the youngest American man ever to make rank of General in the American army—he achieved that by age 23.

VARSITY CHEERLEADERS



First Row: Mary Stimpson. Second Row L-R: Paula Lavender, LouAnne Krzyzaniak, Michelle Ball, and Heather Walkowe. Third Row: Kristin Krauss.

JV CHEERLEADERS



First Row L-R: Lisa Hamilton and Tammy Steele. Second Row L-R: Audrea Hagerman, Chris Hunt, Chris Hawk and Kelly Baker. Third Row L-R: Debbie Burkhardt and Tracy Nickerson.

VARSITY VOLLEYBALL TEAM



First Row Carmen Hopkins, Sara Platt, Kim Stripp Second Row Coach Kathy Rose, Julie Gebhardt, Betsey Royle, Lisa Rickelmann and Jennifer England