

Manchester Township Library  
202 W. Main St.  
Manchester, MI 48153

# THE MANCHESTER ENTERPRISE

20 Cents Per Copy

116TH YEAR VOLUME NO. 38

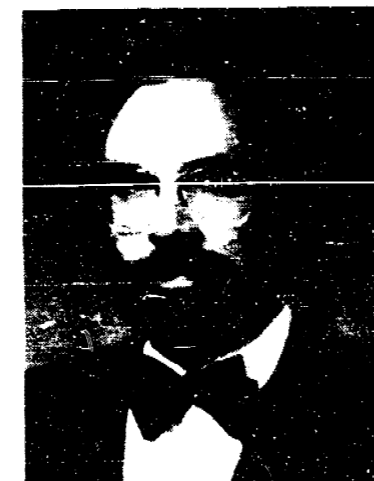
USPS 327-460

THURSDAY, JULY 7, 1983

## Here Comes The Band!! HIT or MISS by farley

It is never easy to get a band in Michigan during the summer. Unless there is a special planning for a specific event, such as the 4th of July, Labor Day, Memorial Day, etc., the high school bands are just not active during the summer months.

Manchester is indeed fortunate that the services of The Metropolitan Symphonic Band will be available for the 30th Annual Manchester Chicken Broil on July 21, 1983.



Martin Stella

Presently, the Metropolitan Symphonic Band is comprised of 65 select musicians from 33 cities throughout Southeastern Michigan and is governed by a 15-member Board of Directors. Martin Stella, Professor of Music at Macomb Community College since 1967, has directed the Metropolitan Band from its inception and has received many awards for its high standards.

Dr. Stella holds music degrees from the University of Michigan. He has conducted at the Conrad Hilton in Chicago, Hill Auditorium

in Ann Arbor, and Orchestra Hall and Hart Plaza in Detroit. He is in demand as a guest conductor and lecturer and is the author of several nationally published articles and the composer of a recent composition for flute and piano. He is a member of the College Band Directors National Association and the Michigan School Band and Orchestra Association.

The Metropolitan Symphonic Band, co-founded in 1976 by music educators Emil Moro and Martin Stella, has been acclaimed as one of America's outstanding concert bands.

"Fat Bob" Taylor sings with the Metropolitan Symphonic Band, and is no stranger to the Manchester Chicken Broil. The band will be in concert at the Athletic Field in Manchester from 4:00 p.m. to 5:30 p.m., when they will break until 6:30 p.m. in order to enjoy a chicken dinner served by the Manchester Chicken Broil. The band will again assemble at 6:30 p.m. and provide music for the arrival of Governor James J. Blanchard on the Athletic Field. Gov. Blanchard will give a short address at 7:00 p.m., would then leave and the music would continue until 8:00 p.m.

The Governor will be arriving from the dedication of the John F. Schneider Blacksmith Shop, and will be accompanied by former Governor John B. Swainson. They will arrive in a carriage provided and driven by Wendall Rinehart. The dedication of the restored Blacksmith Shop as a Community Activities Building will be at 6:00 p.m. at 326 S. Main Street (the site of the Blacksmith Shop) and the four surviving daughters of John F. Schneider will be present for the occasion.

A friend of mine stopped me the other day to say that he has a complaint about the newspapers of today. After he had voiced his complaint I told him that I resented his attitude—that for instance in this week's paper here a full and complete detailed account of what was going on hereabouts if he would take the time to look he would find this.

"That's not what I mean" he said. There ust to be in the paper each week what I guess you printers called fillers. The editors ust to when a story was an inch or so too short to fill a column, stick in to fill it, a "filler" as you ust to call them. All of these fillers were interesting to me—that's how I got so smart, reading the fillers.

"If that statement is true, and I have no reason to doubt it and if you want fillers you should have them and the first time that I want to fill this column but don't know with what I'll be glad to see that you get them in all sizes and in great variety and here they are:

That year of a man's life when he's most liable to exhibit symptoms of alcoholism, if ever, is at that age 24. Younger men show fewer signs. Older men learn to cover.

Every house has cracks in it. A rising wind whistles in those cracks. You can't hear it but your dog can. This explains why some dogs shake their ears, whimper or whine, or otherwise signal in a manner most mysterious to people the outset of a storm.

"Nickname started out as "eke name" which meant "added name."

Color of the symbolic Russian bear depends on where you live.

Continued on page 8

## Board of Education Schedules Special Election Date

At its regular meeting on June 20, 1983, the Manchester Board of Education took action to schedule a special school election for Wednesday, August 31.

The issues to be placed before the voters at that election will be the same as those which were on the ballot in June. Proposition I will ask whether or not 1.8 mills should be levied for a three (3)

### New Veterinarian Joins Staff

Jana A. Tuckerman, D.V.M. is joining Dr. Henry P. Eames and Dr. David C. Bucholtz, D.V.M. at the Eames Animal Clinic of Manchester in the practice of small and large animal veterinary medicine.

Dr. Tuckerman received her B.S. in Animal Husbandry in 1979 and her D.V.M. in Veterinary Medicine in 1983 from Michigan State University.

Dr. Tuckerman's home is Blissfield, Michigan where she was very active in 4-H for many years. She is a member of the American Veterinary Medical Association, American Association of Bovine Practitioners, and Equine Practitioners Associations, American and Michigan Horse Shows Associations, and the Michigan 4-H Horse Show Judges.

### American Legion Auxiliary Notice

The American Legion Auxiliary will hold a meeting and potluck picnic at the Legion Home on Wednesday, July 13, 1983 at 6:00 P.M.

year period to be used for educational operating purposes. Proposition II will ask whether or not 1.5 mills should be levied for a five (5) year period for maintenance and renovation purposes.

Noting that the school district needs had not changed, several board members commented on the need for these additional revenues.

When placed before the voters the two propositions were rejected by 15 votes and 68 votes respectively.

The Board of Education has indicated that required program reductions will be identified prior to the election in order to provide voters with additional information. In the event that the propositions are rejected program cuts will be necessary. The Board of Education has indicated that any programs which are not legally mandated could be reduced and/or eliminated.

### New Group Helps Young Cope With Death

A new support group has been organized in the Ann Arbor area to help young people cope with the death of a family member or friend. Called the Young People's Bereavement Support Group, it is open to persons 14 years or older. The group meets the third Sunday of each month at the Ann Arbor Y from 3:30 to 5:30 P.M. For more information, call Hospice of Washtenaw, 995-1995 or Compassionate Friends, 499-4300.



**The Manchester Enterprise**  
 150 EAST MAIN STREET  
 Manchester, Michigan 48156  
 USPS 327-480  
 Phone 428-8173

The Manchester Enterprise was established in 1887 and is published each Thursday at 150 East Main Street, Manchester, Michigan with second class postage paid at Manchester.

Edward E. Steele, Publisher  
 Lenore Steele, Editor

**Seeing Bridgewater**

This is a reprint from The Manchester Enterprise dated September 1, 1881

Last week Tuesday afternoon by invitation of our friend, Hon. J.J. Robison, we enjoyed a ride through Bridgewater.

Leaving town by the east road we drove leisurely through the once prosperous section of our village familiarly known as Soulesville. Passing the "Willow house" we notice that Jas. Weir, the path master, and a number of men and teams, are at work repairing the road which has always been deemed dangerous, on account of its close proximity to the railroad and by being overflowed by the river at certain seasons of the year. They can never make it safe, but they may improve it.

We will leave them to their labors and drive on passing the residence of D.J. VanDyyn, J. Short, H.C. Calhoun and Dwight Keyes, when we turn east and pass the large young orchard of pear, plum, peach, quince trees, etc., lately set out by Messrs. Keys and David Woodward, of Clinton. The trees are looking finely.

We pass the Lowery farm and a few moments drive brings us to the farm of Geo. Rawson, one of the stirring young farmers of the township. We found George feasting his eyes upon a flock of sheep he had recently purchased. He pulled the latch-string to his big gate and we drove in. We don't know how many acres of land he has, but from the number and size of his nicely painted farm

buildings should judge that he has enough to keep him comfortably busy, and a glance is sufficient to convince even one who knows but little about farming that he knows how to manage it.

Here we change horses. Not swap, but George insists upon our pursuing our journey with his conveyance, so with him for a companion the procession starts. Turning to the right we pass the farm of Mrs. James Stewart, also the Aulls farm, said to be one of the finest farms in the county. It is certainly a beautiful country, and must be very productive. A mile further we strike the road running east from the town hall, through the big marsh and we turn our horse in that direction. We pass the comfortable houses of M.S. Every, W.W. Hess, and Tom. VanGieson, all of whom have fine farms. Mr. Hess must be an excellent manager, for everything about looks neat and thrifty. He has lately purchased a tract of land on the edge of the big marsh, which he hopes to make as productive as the best farms on the plains, some day, and we doubt not he will if he only has time enough, for a portion of VanGieson's farm was once just like it and now it is one of the best.

This big marsh comprises a tract of some 2,000 acres. In 1871 it was mostly covered with high willows, but the fire got into it and burned, not only the willows, but the mucky soil to a depth of some two feet. We believe George Rawson was one of the first to plant corn on the marsh, and he was rewarded by a tremendous crop. This set the marsh land owners to work, and many acres were put under cultivation for buckwheat, potatoes, rye and corn, but it is found that the second crop of corn does not do as well as the first.

constantly cultivated weeds and nettles grow as high as one's head, and at this season of the year it looks like one huge flower bed, and gives one something of an idea of the prairies of the west. There is also any quantity of snakes, prominent among which is the massasauga; and sometime we may tell the readers of the Enterprise how our friend Esquire Palmer got one not in his

boot, but up his pants leg once. The muck is about two feet deep under which is a layer of gravel and then clay. In plowing and ditching they have found all kinds of timber natural to this section, as sound as if just cut. A stream of water rising at Columbia lake flows through the north part of the marsh; this has been enlarged and a county ditch has been dug through the south side, which has drained the land and increased its value.

A large amount of hay has been cut on the marsh, and the farmers had drawn hundreds of loads of dirt to make a passable road, but to no purpose. In 1876, after returning from the Centennial, Mr. Starr set to work with team and scraper and in an incredibly short time had about 80 rods of a good road made as can be found in most parts of the country. He scraped the muck to the center of the road, and went deep enough to get gravel for a covering. One would not believe it could be done, but now they have roads made in this way, running in both directions across the marsh, and farmers are able to draw as heavy loads as they choose.

But the sun is sinking in the west, and as it peeps from behind that strip of woods on the outskirts of the marsh yonder, it reminds us that our home is in that direction, and it will be dark ere we reach it.

Friend Robison has become convinced that such a road can be built through his big marsh farm in Freedom, and we hope to see it done. It was long after dark when we arrived home, but we had been in good company, learned something—we hope, and laid the foundation for future excursions of like character.

**Obituary**

John D. Bivins  
8430 Kaiser Road  
Bridgewater, Michigan

Age 69, died Tuesday, June 28, 1983 at the Saline Community Hospital. He had made his home with the Erwin Wild's of Bridgewater for more than 40 years. He was born December 31, 1913 in Manchester, the son of Daniel J. and Katherine M. Butler Bivins. Mr. Bivins was a member of the St. John's Lutheran Church of Bridgewater, a member of the Schwaben Verein, he was a Master Sergeant of the Army during WWII and was a member of the Manchester American Legion Post No. 117 and of the Jackson V.F.W. Post 423. Survivors include two brothers, David of Clinton, Glenn of Brooklyn; one sister, Mrs. John [Ruth] Rarick of Kendaanville, Indiana and many nieces and nephews. He was preceded in death by four brothers, Albert, James, Robert and Clarence; one sister, Dorothy. Funeral services were held at 2:00 p.m. Friday at the St. John's Lutheran Church of Bridgewater with the Rev. Dennis A. Falk officiating. Military services were conducted at St. John's Church Cemetery under the Auspices of the Manchester Legion Post No. 117.

**Engagement Announced**



Mr. and Mrs. Max L. Heckaman of Norvell, announce the engagement of their daughter, Robin Ann to Trent A. Hammond, son of Mr. and Mrs. Merle Hammond of Three Rivers. Miss Heckaman is a 1980 graduate of Napoleon High School. Mr. Hammond is a 1979 graduate of Vicksburg High School. Both are students of William Tyndale College located in Farmington Hills. A May 1984 wedding is being planned.

**Optimist Club Baseball Competition**



The Manchester Optimist Club held their Tri-Star Baseball competition on Saturday, June 25. About 40 children showed up for the competition that included throwing, hitting, and base running. The winners for the following age groups were: 9 year olds: Jeff Hughs, 1st; Karrick Rentfro, 2nd; Mark Mann, 3rd; 10 year olds: Jeff Gillow, 1st; Jay Gillow 2nd; Lance Fielder, 3rd; 11 year olds: Jesse Widmayer, 1st; Andy Fagel, 2nd; Steven Harvey, 3rd; 12 year olds: Bryan Barnard, 1st; Ron Rentfro, 2nd; Jim Hakes, 3rd; 13 years olds: Denny Steele, 1st; Jason Arndt, 2nd; Mike Brokaw, 3rd.

increase number of participants there will be separate competitions for the boys and the girls" said Elvin Johnson, committee chairperson. "I would also like to thank all of the parents who helped run the competition."

The highlight of the day was the raffle drawing at Carr Park at 9:30 p.m. just before the super fireworks display took place. The names of the ten \$25.00 winners were drawn from the official drum at the bandstand and announced over the band public address

**Manchester Area Historical Society**

The Manchester Area Historical Society open house at the Blacksmith Shop on July 3rd, was a popular place in spite of the sudden change in date (July 3rd instead of 4th), which caused no end of complications "publicitywise." A steady flow of guests continued from 1:00 to 5:00 with local, out-of-town and out-of-state visitors, many of whom promised to return on July 21 when the official Michigan Historical Marker is to be placed on the building.

In spite of the heat of the day and the glowing forge in the Shop, it was amazingly comfortable for the visitors who watched Tim Armentrout, Robert Mottice, and John Kosirnik red hot metal into usable hardware. Iced lemonade was served by Mr. and Mrs. Loring Ebersole to the guests as they toured the structure viewing the changes being made in the storage room and the renovations in the Shop.

The highlight of the day was the raffle drawing at Carr Park at 9:30 p.m. just before the super fireworks display took place. The names of the ten \$25.00 winners were drawn from the official drum at the bandstand and announced over the band public address

**Kliger Elementary Classes Announced**

Parents may obtain their child's class placement by viewing the classlists on the front door of the school anytime this summer. Many good items such as lunchboxes, Manchester jackets, hats, etc. are in the Lost and Found by the front door. Please stop at the school during the day to pick up those things.

A cat uses its whiskers to determine if a space is too small to squeeze through.

"A hero is no braver than an ordinary man, but he is braver five minutes longer." Ralph Waldo Emerson

**SAND and GRAVEL**  
 Pick-Up or We Delivery

Check Our New Low Prices On  
**TRANSIT MIXED CEMENT**

OPEN 6 DAYS 7 A.M. TO 3 P.M.  
 SATURDAY DELIVERY

**Chelsea Concrete**  
 313-475-3168  
 8991 CHELSEA-MANCHESTER RD. MANCHESTER, MICH.  
 [formerly Short Hills Gravel]

**Spear & Associates, Mann Realtors**

PLEASANT LAKE - 3 bedroom brick home on 1 1/2 acres, 2 car garage, pole barn large patio, beautiful yard, quality through out. \$79,500.

2 story home in village, treed lot, 1,800 sq. ft. and 2 car garage. Now with terms available only \$44,000.

Large quality home on Ann Arbor Hill, owned by same family since new. 4 bedrooms two baths, porches, and garage. \$74,500 terms available.

4 bedroom ranch home five acres, paved road, 20 x 40 barn, nice view and location. \$73,000.

We are a member of the Ann Arbor Board of Realtors, Multilist service. If we cannot find a home to fit your needs, it probably does not exist.

OFFICE HOURS  
 Monday thru Friday 9 am to 5 pm Saturday 9 am to 12 noon

JIM MANN 428-8074  
 EVENINGS AND WEEKENDS  
 ELLIS PRATT 428-8582

**ACCU-SERVE CARPET CLEANING**

Any 3 Rooms and a Hall \$45.95

1 ROOM & HALL	\$29.95
2 ROOMS & HALL	\$35.95
3 ROOMS & HALL	\$45.95
4 ROOMS & HALL	\$64.95
5 ROOMS & HALL	\$74.95

All Work Includes:  
 • Color Brightener • Sanitized deodorized • We move all furniture

100% Satisfaction Guaranteed or We Refund Your Money

SUMMER SPECIAL Furniture Cleaned at Reg. Price... 10% Discount given on carpet cleaning

Call: 769-0999

**WATKINS PRODUCTS**  
 INTERESTED IN BUYING?  
 CALL 313-488-7239

**Kirk Excavating**  
 Sand—Gravel—Fill Dirt  
 Basements—Driveways  
 DAVE KIRK  
 14180 Schleweis Road  
 Manchester  
 Phone 428-7938

**True Value HARDWARE STORES**  
**HARDWARE VALUE OF THE MONTH**

**EVEREADY**  
 2.99 While Supplies Last  
 Economy Lantern with Battery  
 Rugged polyethylene case, large handle up-front switch  
 5V battery 3109WB  
 Quantities Limited

**Kleinschmidt's**  
**True Value HARDWARE STORES**  
 19860 Sharon Valley Road  
 Manchester, Michigan  
 Phone 428-8337

**CLINTON THEATRE**  
 Friday & Saturday 7:30 and 9:30  
 Sunday 7:30  
 PG  
**The Outsiders**

**A&L PARTS, INC.**  
 These cost a lot less than repairing a dirty engine.

Quality AC Oil Filters in the most popular sizes:  
 PF 24 PF 40  
 PF 25 PF 47  
**\$3.25\***  
 \*limited time only

Run clean and go... with the names you know.

**A&L PARTS, INC.**  
 —SERVING SOUTHEAST MICHIGAN FOR 65 YEARS—  
 (Yes, We Call Retail!)

Open Saturdays, 8 to 12 Weekdays, 8 to 5  
 529 S. Main (just north of Madison) Ann Arbor 313/665-4411

**WORTH YOUR SALT.**

A Bruner water softener is a wise financial investment.

- Hard water builds mineral deposits that can increase fuel consumption in your water heater by as much as 33%!
- Soft water extends the life of all your plumbing fixtures and appliances.
- Soft water increases effectiveness and cleaning power of soaps and detergents.

So, put your salt in a Bruner Water Softener and put your savings in the bank.

200 Lbs. of Salt FREE With the Purchase of a Water Softener.

**MANCHESTER ELECTRIC INC.**  
 Phone 428-8243  
 112 Adrian Street Manchester

**bruner CORPORATION**  
 WATER CONDITIONING EQUIPMENT

**MAKE LAWN WORK A PUSH OVER**

Our 21" Hi-Vac push mower works hard so you can take it easy. For this is a SNAPPER. Its powerful patented Hi-Vac system sets up grass for a smooth and even cut. Its great versatility through special optional attachments gives you lawn care advantages all year long.

So when it comes to lawn work, take it easy. See your SNAPPER dealer today.

**SNAPPER**  
 Discover The Difference

**K & W Equipment Inc.**  
 11100 Chelsea-Manchester Rd.  
 Manchester, Michigan  
 Phone 428-7988



TELEPHONE NUMBERS

# Maintain your circle of friends for less.

**Circle Calling:** an optional calling plan from Michigan Bell that could save you money on your next phone bill. Your best friend lives less than 30 miles away, but it's a Long Distance call each time you phone. Maybe you call less often than you'd like just to save on your monthly phone bill.

There's another way: With the Circle Calling plan from Michigan Bell, you save 30% on Long Distance calls placed within a 30-mile radius of your calling center.

In addition, the low \$3.13\* monthly charge includes \$1.83 worth of discounted Long Distance calls.

The Circle Calling discount is in effect all the time except Monday through Friday mornings from 8 a.m. to noon and applies even when other regular Long

Distance discounts are in effect. So if you find that you place a significant number of Long Distance calls up to 30 miles away within Michigan, check into Circle Calling.

**Circle Calling is just one way Michigan Bell can help you trim the cost of your telephone bill.**

There are others.

**Budget Toll Dialing**, for instance. If you are a frequent Long Distance user, Budget Toll Dialing will give you a 30% discount on the already discounted Long Distance rates in effect when you place your calls within Michigan. Just dial direct from 10 p.m. to 8 a.m. Sunday evening through Friday morning and from 5 p.m. Friday till 5 p.m. Sunday.

For a monthly charge of just \$3.13\*

Budget Toll Dialing with its discounted Long Distance rates can quickly pay for itself.

So if you think that Circle Calling or Budget Toll Dialing could help save you money, call toll free 1 800 482-8060 for additional information. They could prove to be your best all-around calling values.

**Call 1 800 482-8060 today!**

\*Taxes and one-time service charge not included. Effective May 19, 1983, a temporary 4.99% surcharge will be applied.



Making your telephone service make more sense than ever.

## church services . . .

**EMANUEL UNITED CHURCH OF CHRIST**  
Rev. Robert Macfarlane, Pastor  
Worship Service 9:30 a.m.

**SHARON UNITED METHODIST**  
Rev. Evans Bentley, Pastor  
Corner M52 and Pleasant Lake Rd.  
Church School 10:00 a.m.  
Worship 11:00 a.m.

**ST. THOMAS LUTHERAN**  
Rev. Paul Puffer, Pastor  
Elsworth Road  
Summer Worship Service 10:00 a.m.

**ST. JOHN'S UNITED CHURCH OF CHRIST**  
Pastor Phyllis Pawson  
Rogers Corners, Waters and Fletcher Rds.  
Worship and Sunday School 10:30 a.m.

**BETHEL UNITED CHURCH OF CHRIST**  
Rev. Roman A. Reinick, Pastor  
Schneider and Bethel Church Rds.  
Church Service 10:00 a.m.  
Sunday School 11:00 a.m.

**MANCHESTER UNITED METHODIST**  
Rev. Thomas E. Hart, Pastor  
Worship 9:30 a.m.  
Church School for youth kindergarten thru 2nd grade during worship

**ST. MARY'S CATHOLIC CHURCH**  
Father Raymond Schlinkert  
Monday thru Friday 8:30 a.m.  
Saturday 5:00 p.m.  
Sunday 8:30 a.m. and 10:30 a.m.

**NORTH SHARON COMMUNITY BIBLE**  
Bill Enslin, Pastor  
Sylvan and Washburn Roads  
Sunday School 10:00 a.m.  
Morning Church 11:00 a.m.  
Youth Meetings 6:00 p.m.  
Evening Church 7:00 p.m.  
Wednesday Bible Study 7:00 p.m.

**FAITH COMMUNITY CHURCH**  
Timothy Miles, Pastor  
8400 Sharon Hollow Rd. off W. Austin  
Worship Service 10:00 a.m.  
Sunday School 11:15 a.m.  
Sunday Evening Service 6:00 p.m.  
Jr. & Sr. High Young People's Meeting 7:00 p.m.

**OUR SAVIOR LUTHERAN CHURCH**  
Rev. Franklin H. Giebel, Pastor  
1515 S. Main, Chelsea

**IRON CREEK COMMUNITY CHURCH**  
English and Sharon Hollow Rds.  
Worship Service 10:00 a.m.  
Sunday School 11:15 a.m.  
Evening Service 7:00 p.m.  
Wednesday Prayer Meeting 7:00 p.m.

**ZION LUTHERAN CHURCH**  
Rev. John R. Morris, Pastor  
3050 S. Fletcher Road

**ST. JOHN'S LUTHERAN CHURCH**  
Rev. Dennis A. Falk, Pastor  
Austin Road, Bridgewater  
Sunday School 9:15 a.m.  
Worship 10:30 a.m.

**VICTORY BAPTIST**  
Dr. Clare Glasgow, Pastor  
Sunday School 9:45 a.m.  
Morning Worship 11:00 a.m.  
Adult Doctrine Class, Teen Time and Jr. Astronauts at 5:30 p.m.  
Evening Worship 6:30 p.m.  
Wednesday Prayer Meeting 7:30 p.m.

**CLINTON ASSEMBLY OF GOD**  
Charles Sanders, Pastor  
12500 Allen Rd. (corner of Allen Rd. and Manchester-Clinton Rd.)  
Sunday School 9:45 a.m.  
Morning Worship 11:00 a.m.  
Evening Service 8:30 p.m.

**CHURCH OF JESUS CHRIST OF LATTER-DAY SAINTS (MORMONS)**  
Thomas E. Schulte, Branch President  
Rebekah Hall, M52, Chelsea  
Sacrament 9:30 a.m.  
Sunday School, Primary 10:50 a.m.  
Priesthood, Relief Society, Aaronic Priesthood, Youth 11:40 a.m.

**ST. BARNABAS EPISCOPAL CHURCH**  
Rev. Jerrold F. Beaumont, Vicar  
Old US 12-1/4 mile west of M52, Chelsea  
Church School-Children and Adults 9:30 a.m.  
Worship Service 10:30 a.m.

**BAHA'I FAITH**  
Study of Baha'i scripture and discussion on applying spiritual principles to daily living. Believers of all faiths welcome. 2nd and 4th Sundays every month, 2:30 p.m., at the home of Thomas and Nancy Rykwalder, 611 S. Macomb. For more information or directions call 428-8454.

**SHARON UNITED METHODIST CHURCH**  
Thursday, July 7, 8:00 p.m., Administrative Board.  
Sunday, July 10, 11:00 a.m., Boys and Girls Fellowship.

**EMANUEL UNITED CHURCH OF CHRIST**  
July 8 & 9, Class of '85 Trip Club Rummage Sale, Emanuel's Gym.  
Sunday, July 10, 9:30 a.m., Worship; 10:30 a.m., Parsonage "Open House" & Coffee Hour  
Monday, July 11, 6:45 p.m., Fitness Class  
Tuesday, July 12, 10:00 a.m., Senior Citizens Council. 1:00 p.m. Young Mother's Support Group.  
Wednesday, July 13, 6:45 p.m., Fitness Class. 8:00 p.m., AA, Al Anon & Al-A-Teen.

**BETHEL UNITED CHURCH OF CHRIST**  
Sunday, July 10, 10:00 a.m., Worship Service-Baptism of Rachel Kristi Jefferson.  
Wednesday, July 13, 6:30 p.m., Men Needed to set up for Ice Cream Social.  
Thursday, July 14, 10:00 a.m., Ice needed for POP. 1:00 p.m., Set up tables and chairs, etc. 5:00 p.m., Ice Cream Social.

**MANCHESTER UNITED METHODIST CHURCH**  
Sunday, July 10, 9:30 a.m. Worship: "When That Time Comes". 9:30 a.m., Church School during Worship for Youth Kindergarten thru 2nd grade.  
Tuesday, July 12, 7:30 p.m., Parsonage Committee Mtg.

**TRI-COUNTY Heating & Air Conditioning REFRIGERATOR AND BOILER SERVICE**  
COMMERCIAL AND COMMERCIAL  
LENNOX FURNACES  
CALL: 517-536-4742

**Waits Heating & Cooling**  
24 HOUR SERVICE  
Walt Horodeczny  
Comfort Air Furnaces  
A.O. Smith Water Heaters  
Water Softeners  
Furnace Tuning And Cleaning  
PHONE 428-8645  
18824 Bethel Church Road  
Manchester, Michigan

**FAHEY Realty**  
215 East Main St. Manchester, Phone 428-9298

**VACANT LAND**  
10 Acres, rolling land with some small trees. Good perk, priced to sell at \$13,500.  
5 Acres on paved road, South facing hill, wooded with pond. \$15,900.  
80 acres Manchester Township - Can be divided, rolling ground, with marsh and woods. Land contract possible. \$80,000.

**RESIDENTIAL**  
Manchester village home conveniently located for shopping. 3 bedrooms, 2 baths, library, and formal dining room. beautiful open stairway sets off living room.  
10 Acres - Sharon Township on paved road. Ideal for an active family. 3 bedrooms, 2 baths, family room plus extra work or play area. Beautifully landscaped in-ground pool. Extra large garage - workshop.  
Retirement home within village limits. Easy to maintain, 3 bedrooms 1 1/2 baths, 1 car garage convenient to churches and shopping. \$46,900.  
New Listing - 1 1/2 wooded acres, 3 bedroom ranch. Full finished basement. Over 1200 sq. ft. of living area. Easy to maintain and heat. \$59,000.  
New Listing on 2 acres - Quality built 2 bedroom. Ideal for retirement or as starter home. Hardwood floors, natural woodwork, new kitchen with large pantry. Freshly painted home is in move-in condition. \$49,900.

**True Value HARDWARE STORES**  
**BARGAIN OF THE MONTH**

**3.99** While Supplies Last  
High-Domed Covered Cake Pan  
Versatile 13x9-in. aluminum pan. Lid doubles as a cookie sheet. M-0980  
Quantities Limited

**Kleinschmidt's**  
**True Value HARDWARE STORES**  
19860 Sharon Valley Road  
Manchester, Michigan  
Phone 428-8337

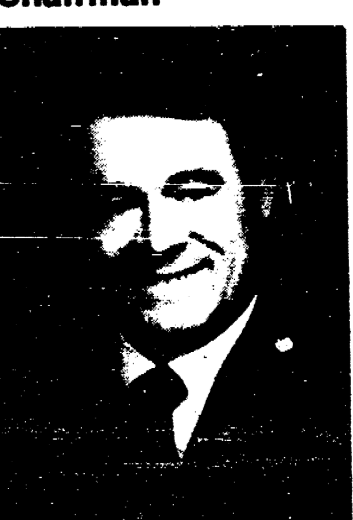
**ZION LUTHERAN CHURCH**  
Thursday, July 7, 8:00 p.m. Evangelism Committee  
Sunday, July 10, 8:30 a.m., Study/Fellowship hour. 9:30 a.m., Worship.  
Wednesday, July 13, 7:30 p.m., Church Council.

**Senior Citizens News**  
The first trip this week on Friday, July 8, is the Mystery Trip and at publication time there were still three seats available for it. Those going are reminded that they are to bring their own sack lunch. Call Helen Braun, 428-8966, for information and reservations for all trips.  
Next week the Senior Citizens Council meets at Emanuel United Church of Christ at 10:00. All members and interested participants are urged to attend and help plan the year's activities.  
On Thursday, July 14, the sixth annual Turner Picnic, "A Day in the Park," is scheduled. It would be wise to get your reservation in by the 11th as picnic lunch boxes are furnished by Community Service Agency's Senior Nutrition Program to those signed up.  
The ice cream social at Bethel United Church of Christ is also on Thursday evening, July 14 beginning at 5:00 o'clock.

There is one more place available for the theatre trip to "Shenandoah" at the Crosswell Theatre in Adrian on Sunday, July 17th.  
RSVP has scheduled a special three day tour to Berea and Lexington, Kentucky on August 24 through 26. The cost is \$175.00. For more information and reservations call Helen Braun who is handling Manchester clients.  
If it isn't on your calendar, the July Senior Club meeting at 12:30 on the 27th is a potluck at Emanuel United Church of Christ dining hall. The well-known Chelsea Kitchen Band will be guests of the Club and provide the afternoon entertainment.

Also elected officers are James F. Peggs, MD, Vice-Chairman; Thomas R. Niswonger, Treasurer; Arlene B. Howe, Secretary.  
Dr. Peggs is Director of the Family Practice Center in Chelsea and is a Professor of Family Medicine at the University of Michigan Medical School. Niswonger of Loch Alpine is co-owner and Vice-president of Bradley-Chesbrough-Niswonger, Inc., an insurance agency in Ann Arbor. Howe is Supervisor of Dexter Township and Staff Associate to the Director of University Medical Center in Ann Arbor.  
Grains of gold, platinum and gem stones are often mixed with certain shore and river sands.

### Chelsea Hospital Elects New Chairman



Arthur E. Dils has been elected Chairman of the Board of Trustees of Chelsea Community Hospital. Dils succeeds Robert H. Thornton, Jr. who has served as Chairman of the Board of Trustees since June 1981.

Dils, who lives in Chelsea, is owner and President of Typographic Insight, Ltd. in Ann Arbor. He is Secretary of the Chelsea Board of Education and a member of the Board of Directors of the Civic Foundation of Chelsea.

Also elected officers are James F. Peggs, MD, Vice-Chairman; Thomas R. Niswonger, Treasurer; Arlene B. Howe, Secretary.

Dr. Peggs is Director of the Family Practice Center in Chelsea and is a Professor of Family Medicine at the University of Michigan Medical School. Niswonger of Loch Alpine is co-owner and Vice-president of Bradley-Chesbrough-Niswonger, Inc., an insurance agency in Ann Arbor. Howe is Supervisor of Dexter Township and Staff Associate to the Director of University Medical Center in Ann Arbor.

Grains of gold, platinum and gem stones are often mixed with certain shore and river sands.

**R & F TREE SERVICE**  
Trimming or Removal  
Free Estimates  
Insured  
Evenings 428-9296

**TOTAL Manchester Service**  
101 WEST MAIN STREET MANCHESTER, MICH  
PHONE 428-7377

**DISC BRAKES**  
Lifetime Guaranteed  
Brake Pads  
Resurface Rotors  
Repack Wheel Bearings  
Complete Brake Inspection  
Add Brake Fluid if Needed  
Road Test Car  
**\$49.95**

**OIL, LUBE, FILTER AND CAR WASH**  
**\$21.50**

**Tires Changed and Repaired**  
**TIRE BALANCE . . . . . \$2.50 each**  
**TUNE UPS . . . . . \$24.95 & up**



**Hit or Miss**

Americans see it as a big brown bear but the Chinese see it as a white polar bear.

Most profitable of the national magazines is said to be Penthouse with 11 million dollars in revenues each month.

Latest statistics indicate that Nevada has the highest crime rate and West Virginia the lowest.

It is common for modern railroads to transport new cars, trucks and farm machinery, but the first such "piggyback" transport took place in 1885 when the Long Island Railroad Co. ran a train consisting of eight flat cars for carrying farmers' wagons, their horses and a coach for the teamsters from outer Long Island to Long Island City. A ferry then carried the wagons across the East River to New York City.

The only man to run for U.S. President from prison was Eugene Debs who was serving a sentence for sedition during World War I. He was nominated by the Socialist Party and received nearly one million votes or 3.5% of the total vote.

Former French Premier Pierre Laval was executed in 1945 for betraying his country to Nazi Germany during World War II. Machines to make popcorn were invented in 1885.

In ancient Arabia people who bathed regularly were tax exempt.

An estimated 50 million Americans are enrolled in retirement plans other than Social Security according to the American Council of Life Insurance. They include half of all full time workers in commerce and industry and three fourths of all government civilian personnel. It says these programs include profit sharing programs that

provide retirement income. Now this is only a beginning. This could go on and on, but I think that this is enough for one session, but if you want more with which to improve your education you have only to say so there are millions of 'em available. I hope this makes my critical friend happy for a time at least.

**Logo Contest For "Seal Of The Fair"**

The Manchester Community Fair is sponsoring a contest for a logo design to be used on all Fair correspondence, advertising and communications. The contest is open to all residents, of any age, in the Manchester Area. The prize awarded to the winning designer will be a lifetime season pass to the Manchester Fair.

- Rules for the contest are:
1. Entries must be in black ink on white 8 1/2 by 11" paper.
  2. Entries must incorporate in the design the words Manchester Community Fair and "Michigan's Biggest Little Fair".
  3. Name, address and phone number of the designer must be included with each entry on a separate piece of paper.
  4. Designs must not be folded.
  5. Entries must be submitted to the Manchester Community Fair, 226 Wager or 230 Wager St., Manchester, Michigan. They may be mailed or hand delivered to either address.
  6. Designs must be received on or before September 1, 1963.

There is no limit on how many designs one person may submit. Good luck to all contestants. See you at the Fair, August 9-13!

Some people say it is unlucky to enter a house or room with the left foot foremost.

**Letters to the editor ...**

Dear Editor:

Your water may be making your body weaker. Research has been compiled showing that sodium fluoride is harmful to the absorption of calcium in your body which can lead to brittle bones. Fluoride in any form cannot be considered an essential element of the human body. The water of Manchester has a natural count of calcium fluoride. Why do we the people have to be subjected to something un-natural? We already have the natural. It is your choice to defeat this POISON, tell your councilperson to preserve your water and get back to the natural way. The repeal of fluoridation is a vote for positive things.

Dr. Glenna N. Miller D.C.  
Resident of Manchester for a healthier and stronger you

**300 Club**

Winners for the last three drawings of the 300 Club were: #1 Winner Ervin Stahl, ticket #212 drawn by Joe Marshall; #2 Winner Edward Steele III, ticket #288 drawn by Mike Kern; and #3 \$500 winner Gerie Mestie, ticket #006 drawn by Jerry Ahrens.

**Gasoline Sales Tax Worries Farmers**

Legislation currently being promoted by the Michigan Department of Treasury which would mandate "prepayment" of most of the sales tax on gasoline by the first purchaser has the state's largest farm organization questioning the need and long-range impact of such a bill.

Michigan Farm Bureau's senior legislative counsel, Robert E. Smith, says the legislation could give the state interest free money and result in higher prices to farmers and other customers. He also raised the question: "Is this only the beginning? If prepayment can be mandated for gasoline sales taxes, it can also be mandated for other taxes."

The legislation calls for a wholesaler to "prepay" the gasoline sales tax to the refiner, who would prepay the tax to the state. The prepaid tax would be passed on to the retailer and consumer, Smith said. The prepayment would be claimed by the retailer on the monthly sales tax return. The prepayment rate would be 4% of the statewide average price of self-serve leaded gasoline. Presently, sales taxes are collected by the retailer and then sent directly to the state.

"The reason given for the legislation is that the Treasury Department claims that sales tax revenue is being lost because of illegal operations, fraud, bankruptcies, and falsified records," Smith said. "The claimed loss is \$2 million a year, but the total revenue from this source is \$150 million a year, so that's only about 1 1/4% loss, which is extremely low."

Smith said those who are exempt from gasoline sales tax because it is used for the production of a product, such as farmers, schools, governmental agencies, construction, etc., would be refunded. "This means that during the delay and paper work of refunds, the state would have interest free money," he said.

"The question is: is the 1 1/4% loss in revenue the real reason the Treasury Department wants prepayment? Or do they want that huge amount of money paid in advance, which would suddenly balance this year's budget and provide money for other things—regardless of the added costs to businesses?" Smith said.

**Bus Trip To Tiger Game**

A trip by chartered bus to the Detroit Tiger ballgame is planned for Saturday, July 9.

Any interested persons may contact Pat Fielder, 428-8506.

Price of the ticket is \$20.00 which includes the bus trip, game ticket and beer.

**Fast Drivers Threat To Highway Workers**



For your sake and theirs, please slow down in highway work zones.

That's the message everyone involved in highway work is trying to put across to motorists this summer as Michigan moves into the biggest highway improvement program in years.

They are concerned about the men and women whose jobs require them to be on the roadway while traffic roars by only a few feet away. They are also aware that most of the people injured and killed in construction zone accidents are occupants of the vehicles driving through them.

Last year, State Police reported 1,024 persons were injured and 12 killed in 3,231 construction zone accidents on Michigan's highways, roads, and streets.

Chances for accidents likely will increase this year.

More than ever before, construction crews will be working on existing highways rather than new ones—resurfacing pavements, replacing bridge decks and pavement joints, laying down new shoulders and making other improvements.

Maintenance crews are patching pavements, mowing

roadsides, repairing guardrails and performing other jobs required to keep roads and highways in good driving condition.

"Those are hazardous jobs, and we worry about motorists who drive too fast through work zones," said State Transportation Director James P. Pitz. "State law sets a 45-mile-an-hour speed limit through these areas, but the law is widely violated, especially on freeways."

"If people could spend just an hour working under traffic, I think they'd appreciate the danger and understand how workers feel about speeding motorists, even with the warning and protective devices we set up in the work zones," Pitz said.

The Michigan Department of Transportation (MDOT) expects to award about 600 contracts worth some \$380 million to roadbuilding firms during the current fiscal year ending September 30. That compares with 320 projects totaling less than \$150 million in the previous years.

A marine catfish can taste with any part of its body.

**Water Workouts Score High For Fun And Fitness**

Swimming is an excellent all around fitness exercise because it uses nearly all major muscle groups, improves heart and lung condition, increases flexibility and burns calories, reports the Automobile Club of Michigan.

"Swimming is a virtually injury-free activity since there isn't any stress on bones and joints," stated Walter Zeiler, Auto Club's Life manager. "It offers tremendous benefits for individuals with leg or back problems."

Joggers and cyclists often incorporate swimming—the nation's most popular participatory sport—into an overall fitness program because it builds upper body strength.

"It also is an excellent activity for overweight individuals," Zeiler said. "Water keeps the body buoyant and supports extra weight, making it possible for heavy persons to exercise longer and more easily."

While water supports the body, it also provides exercise resistance. Kicking and pulling the body through the water can burn enough calories to make swimming among the top weight-control activities.

"In addition, swimming is a superb warm weather sport as the cool water keeps body temperature low and minimizes heat stress," Zeiler added.

Individuals starting a fitness program should swim 25 yards, the length of a standard pool, then pull themselves out of the pool and walk back to the starting point. That gives the body a short workout, a brief rest period, and the pulling action strengthens the arms.

The Auto Club suggests beginners avoid unnecessary fatigue by learning proper breathing skills through swimming instruction. For variety and maintaining distance, swimmers may want to alternate strokes, such as using the crawl stroke one pool length, then swimming the backstroke.

Once practical swimming skills are learned and the body is accustomed to the exercise, individuals should strive for a distance of 800 to 1,000 yards of continuous swimming for 25 to 35 minutes three to five times a week.

Heart rate is the key to how

intensely an individual should exercise. Swimmers should subtract their age from 220, then multiply the resulting figure by .6 for the minimum and by .9 for the maximum rate the heart should work during the activity. For example, a 30-year-old individual should have an exercise heart rate between 114 and 171 beats per minute.

Determine the per minute heart rate by counting pulse beats at the side of the wrist or neck for 10 seconds and multiplying by six.

To avoid overexertion, persons over age 35 or those with medical problems should seek the guidance of a physician or other health professional.

Before and after swimming, spend five to 10 minutes doing simple stretching exercises, walking across the shallow end of the pool, or swimming slowly and easily.

While stomach cramping is not directly related to eating before swimming, avoiding food intake will prevent nausea. Drink fluids up to one-half hour before the exercise.

Swimmers should always stop exercising at the first sign of cramps or pain and, when tired, should never push to do "just one more" lap.



**FARMER'S SHARE SLIPS**

For several years now, statistics have shown that farmers get an average of 32 cents out of every dollar we spend in the supermarket or restaurant. That was bad enough when you consider what each individual farmer has invested. However, recent government data indicates that the 32 cents has now dropped to only 28 cents.

Where does the rest of the

dollar go? In a new brochure published by the American Farm Bureau, the figures show that labor gets 32 cents, and the remaining 40 cents goes to the providers of the various marketing services from packaging to profit.

A breakdown of this 40 cents would seem to indicate that nobody is getting rich as is sometimes alleged. The figures show that 8 cents goes for packaging, 5 cents for transportation; rent, depreciation and before-tax profits take 4.5 cents each; fuels and electricity take another 4 cents; 2 cents goes for advertising and interest, and repairs account for 1.5 cents.

The final 8.5 cents go for other costs including property taxes, insurance, accounting and professional services, promotion, bad debts, and many miscellaneous items.

If you're looking for a scapegoat to blame for food prices, you can't blame profits when that's only 4.5 cents before taxes. Labor gets the most by far, but who would blame the men and women who do all the work to get our food from the farm to the table? It's obvious that they aren't ripping anybody off.

The facts seem to be that we're requiring our food to be sold to us in as near ready to eat form as possible, and when we do that, we have to pay for it. It's just too bad that the farmers, with all the investment they have, don't get a larger slice of the pie.

**Local Resident Receives Degree**

Eastern Michigan University held its spring commencement exercises on April 30, 1963. Some 245 graduate students received master's and specialist's degrees. Of those students, Richard Fielder of Manchester, received his Master of Arts degree.

**CLASSIFIED**  
IT'S A SURE SHOT!

Get on the ball... with our strategy! It's guaranteed to get you the most advertising results for your money! The rules are simple and your ultimate goal... from buying to selling... will be achieved without busting your budget. So play the Classifieds... you can't beat 'em!

Just call one of our ad-visors to place your ad!

**Phone 428-8173**

**Black Sheep Tavern**  
117 EAST MAIN STREET MANCHESTER, MICHIGAN  
PHONE 428-7000

**OPEN SUNDAY AT NOON DURING SUMMER MONTHS**

**Week Days at 11:00 a.m.**

**Michigan Veterinary Clinic**  
18901 Sharon Valley Road  
Manchester, Michigan 48158  
313/428-8365

**LARGE AND SMALL ANIMAL SURGERY AND MEDICINE**

OFFICE OR HOME VISITS BY APPOINTMENT  
9 AM - 9 PM MONDAY THROUGH SATURDAY  
VERA L. KLUWE, D.V.M.

**\*FEATURING: Hand Crafted Amish Cabinets\***

**\*DISTINCTIVE Cabinetry\***

\*Jenn-Air Appliances \*Delta Faucets \*Elkay & Kohler Sinks

VISIT OUR SHOWROOM

**Dutch Country Kitchens**  
146 East Main Street Phone 428-7292 Manchester

**MARATHON FILLYAW'S MARATHON SERVICE**  
227 West Main Street Phone 428-8578 Manchester, Michigan  
Open Monday-Saturday 7:30-7 P.M. Sunday 9-5  
CERTIFIED MECHANICS ON DUTY All Work Guaranteed

<b>HEAVY DUTY SHOCKS</b> Price Does Not Include Installation EACH	<b>SAVE 50% \$9.95</b>
<b>DISC BRAKE SPECIAL</b> *Replace Brake Pads *New Grease Seals *Resurface Rotors *Complete Brake Inspection *Repack Wheel Bearings *Road Test Car Most U.S. Cars \$59.95 Front Brakes ONLY	<b>SENIOR CITIZENS DISCOUNT</b> 10% On Parts and Labor 5% Discount On Tires
<b>ROTATE AND BALANCE ALL 4 TIRES</b> \$19.95	<b>Oil, Lube and Filter</b> Up To 5 Quarts Of Oil \$19.95

**STOP IN AND PICK-UP A MARATHON CREDIT CARD APPLICATION**

YOU CAN PURCHASE BATTERIES, TIRES SHOCKS, PARTS OR HAVE YOUR CAR TUNE—UP FOR THE SUMMER MONTHS BRAKE JOBS, FRONT END ALIGNMENT OR WHEELS BALANCED

ASK ABOUT OUR INTEREST-FREE EXTENDED PAY PLAN FOR CERTAIN PURCHASES

**FULL LINE OF MARATHON PRODUCTS**  
We Have Pure White Kerosene

**Gas-Oil-Diesel Fuel**

STOP IN AND SEE ME FOR YOUR BEST TIRE DEAL

**24 Hour Wrecker Service**

**WIDMAYER FORD**  
MANCHESTER, MICHIGAN  
510 WEST MAIN (313) 428-8343

**THE DOWN UNDER IN THE BLACK SHEEP RESTAURANT**

**Gigantic Draught Beer Happy Hour Friday and Saturday**

4 PM-5 PM 20c  
5 PM-6 PM 40c  
6 PM-7 PM 60c  
7 PM-8 PM 80c  
After 8 PM Regular Price

**OPEN 8 P.M. SATURDAYS DURING SUMMER MONTHS**

**Featuring: SKY HIGH**

**Tom Huber Bartender**





**MANCHESTER MIXED LEAGUE AT CLARK LAKE**

Jack & Joyce Golithly	37
Dennis & Kathy Herman	34.5
Chuck Hough & Milda Koebbe	33.5
Simon & Lenore Steele	33
Bob & Jean Little	32
Larry & Ruth Snyder	30
Tim & Linda Adams	30
Joe & Bev Szczygielski	29.5
Bob & Helen Popkey	29.5
Don & Mary Ann Fielder*	29
Gilbert & Betty Griffen	29
Dorney & Marilyn Lamb	28.5
Marge & Kim Patterson	26
Gary & Marti Bondy	25.5
Ralph & Eileen Hasset*	23
Willie & Wilma Frey	20
Jack Pot Hole - Simon Steele	
#6 Closest to Pin - 3rd shot - Simon Steele	
9 Longest Putt - Lenore Steele	
Low W/Handicap - Larry & Ruth Snyder	

**Manchester Softball League Standings**

As of June 29	
Charamar Farms	103*
Back Door	94*
Merchants	84*
Eden Foods	86
Bakers Dozen	49*
Wacker Oil	013*

\*Games were rained out

**Dial-A-Garden**

The following is a schedule of Dial-A-Garden, the system of pre-recorded daily grading tips sponsored by the Washtenaw County Cooperative Extension Service. Interested persons are invited to call 971-1122 for up-to-date information.

- Thursday, July 7, Cherish Michigan Sweet & Sour Cherries.
- Friday, July 8, Daylilies and Real Lilies.
- Monday, July 11, Keeping Annuals Blooming.
- Tuesday, July 12, Hot Weather Lawn Care.
- Wednesday, July 13, Summer Care of New Shrubs.

Jim Hartmann Dan Wampier  
313-475-9301 517-456-4305

**HARTMANN CARPENTRY**

Licensed and Insured Residential Builder With 14 Years Experience

- |            |             |
|------------|-------------|
| Pole Barns | Additions   |
| Roofing    | Siding      |
| Decks      | Remodeling  |
| Rough Ins  | Finish Work |

**Parr's Auto Body**

BODY WORK PAINTING  
FREE ESTIMATES  
INSURANCE WORK  
GLASS INSTALLATION

18481 West Austin Road  
Manchester, Michigan

Phone 313/428-9538

# QUICK. COME UP WITH \$35,000.

That's how much four years of college could cost by 1990. And that's four years at a state school. (Now when will your child--or grandchild--start college?) You might already have a savings account for college, but it could fall short.

But Comerica's College Fund can make the cost of college a little easier to take. How? Comerica's College Fund helps you establish long-range goals --and a variety of ways to meet those goals. No one, in fact,

offers you a wider range of college savings plan investment opportunities than Comerica. What's more, Comerica's College Fund can offer substantial tax savings--so your child gets the most out of the money you save. More than if you put the money in a standard savings account or investment.

Comerica gives you many investment options. Start a Comerica College Fund with as little as \$500. Then

choose to invest your money in one of several ways. Choose our Money Market Account, CDs, stocks, bonds or one of our other high-yield investment options.

So before you have to "quick--come up with \$35,000," talk with your Comerica Personal Banker about establishing a Comerica College Fund. After all, you can never be too quick at investing in your child's mind.

**Comerica**

BANK  
Where the future lives

MEMBER FDIC

