

# THE MANCHESTER ENTERPRISE

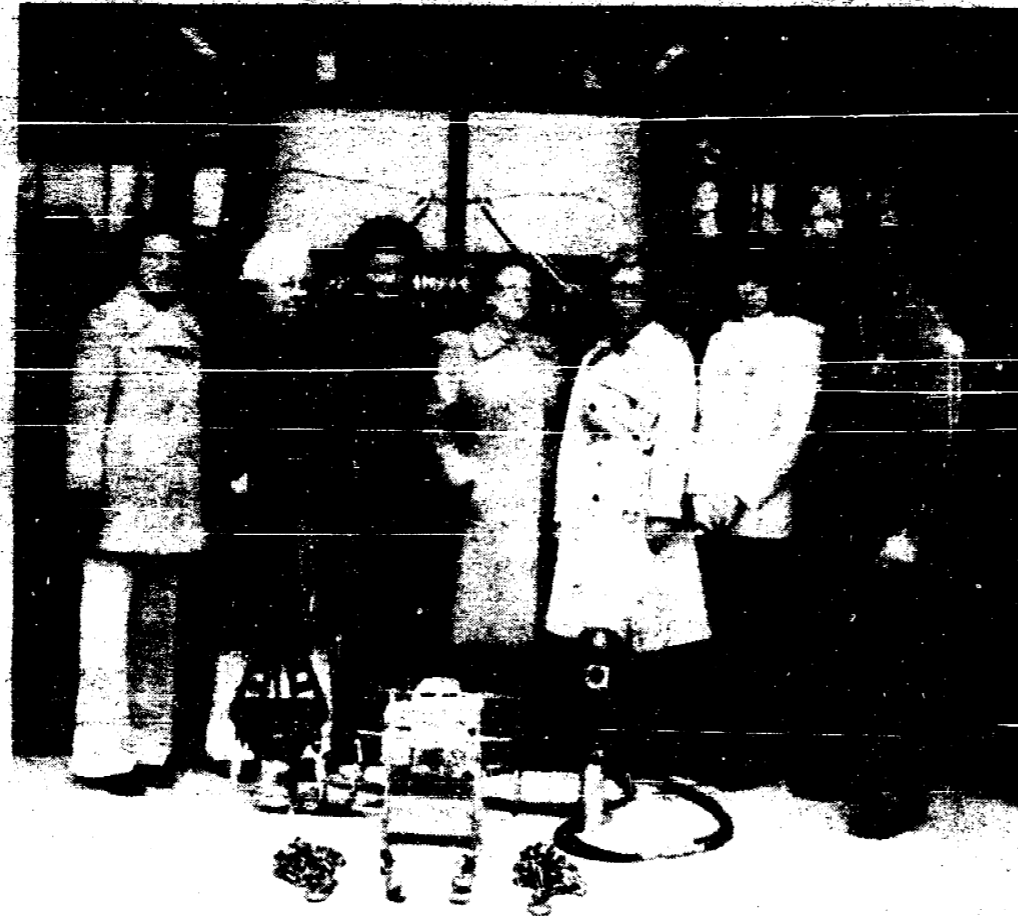
20 Cents Per Copy

116TH YEAR VOLUME NO. 23

USPS 327-480

THURSDAY, MARCH 24, 1983

## Fire Department Purchases Jaws



Pictured above with the new "Jaws" are: Olga Nickels, Helen Dyer, Jean Schmidt, Hazel Kappier, Shirley Flint, Elizabeth Blossom, and Douglas Flint

On Sunday, March 20, 1983 a ceremony was held to dedicate the newly purchased "Jaws" and to thank The Twentieth Century Club for their donation that started the fund and the family of Ray Flint for the final donation.

The Twentieth Century Club started the project, November 1980. The Club earned the money by "Marathon Bridge".

Jaws are rescue tools with

super strength. The jaws or spreader are used to open doors at a auto accident, pull apart or lift a vehicle. They also can be used at fires, farm or logging accidents. The cutters are used to cut door latches, locks or the roof off of a car. The original cost of Jaws is \$9,400, Manchester Fire Department paid \$7,700.

The Manchester Fire Department would also like to

thank Emanuel's Women Fellowship, the former Jaycee Auxiliary, Xi Ineson Letz, Lambda Nu and everyone that gave donations for the Jaws and also thanks to everyone who purchased tickets for the Manchester Firemen "300 Club" drawings.

Thank you all,  
The Manchester Township  
Fire Department

## PROSPECT HILL

This article is a reprint from the Manchester Enterprise, dated December 21, 1979.

On the county line road between Jackson and Washtenaw counties, where the townships of Norvell, Grass Lake and Sharon meet, is a locality known as Prospect Hill. We are eight miles from Manchester, the same from Grass Lake village, and four from the village of Norvell. Although being back in the country, the people are wide awake to their own interests, religiously, morally and intellectually. Our school house is situated on an eminence, hence the name Prospect Hill. Here we congregate semi-monthly to hear a religious discourse by our pastor, Rev. Mr. Whitely. We also hear a discourse every alternate Sunday by Rev. Mr. Ross, recently from near Syracuse, N.Y. Mr. Ross-whose post-office address is Norvell-is also delivering lectures on

temperance, which are extremely interesting. During the lecture he exhibits numerous paintings of the finest quality, showing families of wealth and happiness, who are gradually drawn lower and lower in poverty and degradation by the use of alcoholic drinks. Mr. Ross intends after the holidays, to take a tour through Jackson county, lecturing on his favorite theme, temperance. Those who wish an entertainment of the highest order, should not fail to hear his lecture, and see his paintings.

Our school is in a very flourishing condition. The school board have been quite fortunate in securing a first-class teacher, whose discipline can not be excelled.

## Annual Easter Egg Hunt

An Easter Egg Hunt, sponsored by the Manchester Mens Club will be held Saturday, April 2nd, at 1:00 p.m. SHARP for all area children between the ages of pre-school and 4th grade at Carr Park.

We urge all parents to bring the children approximately 30 minutes early in order to arrange them according to age before the hunt begins.

## Applications For 1983 Lamb Club

Attention! 1983 Lamb Club members. Applications for membership will be distributed in the Middle School and High School from March 28 thru March 31. If you wish to participate in the 1983 Lamb Club you must fill out an application and return it to your school by March 31.

## HIT or MISS BY FARLEY

The president of one of the major chains of food stores in a nearby large town reported recently that he received the following letter from five dissatisfied customers which caused him to ponder for a time before he came up with what he considered a comprehensive answer. It seems to us that our readers will be interested in the complaint and the manner in which it was resolved. The letter follows:

Dear President:

My name is Maynard and I am writing in behalf of myself and four friends whose names are Raymond and Frick and Frack and Goofy. We live near your east side store.

My problem is this: A nice gentleman in our neighborhood would purchase four or five bags of your mixed nuts each week and put them out for us to eat. Some of these nuts we put out to eat

right away and the rest we stored away for the winter months.

Now we find out that your stores only stock these nuts during the holiday season and they are now all gone. So our friend can not now purchase any more. In fact all that is left now are a few bags of the English walnuts, and when they are sold there will not be any more nuts until next Christmas time. We get tired of eating the same walnuts day after day. We liked the bags of mixed nuts with a variety such as Almonds, Acorns, Hazelnuts, Peanuts, etc., but due to your stores policy of only stocking these mixed nuts during the

Continued on page 3

## K Of C Tootsie Roll Sale

The Knights of Columbus Eighth Annual Tootsie Roll Fund Drive for the mentally retarded will be conducted March 25th, 26th, and 27th in both the Clinton and Manchester areas.

Under the program, which is carried out in most of the 250 K.C. councils in Michigan, people are asked to donate money to the mentally retarded and are given a tootsie roll candy in appreciation of the gift.

Eighty percent of the net income from the donations is retained by the local council for distribution to area groups and agencies. The rest is forwarded to the state council of the Knights of Columbus to meet expenses of the program and to make donations in behalf of all the 70,000 Knights in Michigan.

A principal beneficiary of state council funds is the Michigan Association for the Mentally Retarded Citizens. Our principal local beneficiaries are Milton C. Porter School \$467.75 and St. Louis School \$985.63 Donated in 1982. A donation to this worthy cause is tax deductible. All checks should be to: Fr. Edwin A. Fisher Council's Mental Retardation Fund - George Daubner Grand Knight. Checks should be returned by April 5, 1983.

Citizens will be able to recognize the Knights and their helpers during the drive because they will be dressed in colorful hats, carrying canisters and wearing bright yellow aprons emblazoned with "K of C" help the mentally retarded.

## MANCHESTER BLOODMOBILE

MONDAY, MARCH 28th

EMANUEL UNITED CHURCH OF CHRIST  
12 to 6 P.M.

Nursery Available For Young Children

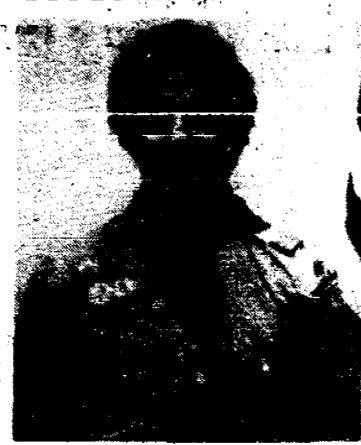
**The Manchester Enterprise**  
 150 EAST MAIN STREET  
 Manchester, Michigan 48150  
 USPS 327-480  
 Phone 428-8172

The Manchester Enterprise was established in 1967 and is published each Thursday at 150 East Main Street, Manchester, Michigan with second class postage paid at Manchester.

Edward E. Steele, Publisher  
 Lenore Steele, Editor

love by Don Wyrtsen and Phil and Lynne Brower.  
 Based upon the life of Bertha Allen, it portrays God's infinite love working thru an ordinary lady who loved her Lord, Jesus.  
 The Love Story will be presented on Good Friday Evening, April 1st at 7 p.m. and Easter Evening, April 3 at 7 p.m. Faith is located just South of Austin Road at 8400 Sharon Hollow Road, Manchester.

**Receives Eagle Scout Award**



Scott Allen Hunt, son of Mr. and Mrs. Bruce Hunt, 327 Schaffer Court, recently received Boy Scout's highest honor, his Eagle Scout Award. The ceremony, held at the Emanuel Church hall, was attended by members of the community, and many friends. Rev. Ron Iris, Scott's minister, officiated at the Eagle Court of Honor.  
 Scott's Eagle project, involved a safe driving contest, in which residents of the Manchester Community took part, to demonstrate their driving skills. The Boys and Leaders of Troop 426 congratulate you Scott, on a job very well done.

Thursday mornings at 11:00 in the dining room and a hobby program follows the noon meal.  
 For reservations for the meals call the church office, 428-8359.

**Family Service Annual Report**

A brief report from the March 17, Annual Meeting of Manchester Family Service, Inc., is a survey of the volunteer agency which has served all residents of the Manchester School District since 1965. Those services include limited emergency help from food, fuel, clothing, furniture and medical needs; transportation, referrals to professional agencies in the county for all special needs, and the Christmas Project in conjunction with the Department of Social Services and the Washtenaw County Health Department.

Emergency fuel assistance is handled for the Washtenaw County Community Service Agency in this area, saving trips to Ann Arbor for the elderly and handicapped who may be in need of assistance.

Transportation is usually available for anyone in the area in dire need of keeping medical, Social Service, Social Security and Legal Aid appointments. Twenty volunteer drivers, men and women, compose this free service and traveled 6,272 miles in 1982. Clothing and household items are offered to the low income families and clients of the Social Service Department three times a year—May, September and December.  
 Furniture exchange is accomplished by the agency's "Have" and "Need" lists. This system eliminates storage and

transportation on the part of the agency and often quickly pairs the needs of the donors and recipients.

Home burn-out victims are assisted with the aid of the American Red Cross and The Salvation Army.

The Federal Surplus Food projects are handled for residents of Manchester School District and all of Manchester Township for the Washtenaw County Community Service Agency. Announcements of distribution dates and places appear in The Manchester Enterprise previous to the Give-a-way along with the Federal guidelines for the distribution.

Letters for the House-by-the-Side-of-the-Road (the county free clothing shop in the Washtenaw County Service Center in Ann Arbor) are available to people who are on assistance and in need of clothing.

Aid in areas too numerous to mention is available to all residents even though the agency itself is not equipped to handle professional services. Over 110 families were served this past year.

The board for this local United Way organization is composed of nine members, three of whom are elected at the annual meeting each year. The board for 1983 is: Chairman, Mrs. Franklin (Claire) Reck, 428-5852; Vice-chairman, Mrs. William (Dianne) Schwab, 428-8976; Secretary, Mrs. John (Carolyn) Sauter; Treasurer, Mr. Merrill Korth; Trustees, Clarence Fielder, Mrs. Robert L. Hamilton, Mrs. Paul Lemon, Mr. Don Tassie, and Mrs. Willis Uphaus, Mrs. LuVern Armstrong is a charter and honorary member.

**Cheese Distribution Friday**

Federal Surplus Cheese did not arrive in time to be distributed with the butter last week. It was delivered to Manchester early this week and will be ready for distribution Friday, March 25 from the Manchester United Methodist Church, 501 Ann Arbor Street, from 10 to 12 A.M.  
 The amount requested for the area was cut 30 pounds and the directive for the distribution allows only 5 pounds per household instead of the usual variance for larger families.

Income guidelines for receiving the surplus foods from the Federal grants are:

Size of Family	Annual
1	\$5,850
2	7,775
3	9,700
4	11,625
5	13,550
6	15,475
7	17,400
8	19,325
9	21,250
10	23,175

Recipients will need identification and address verification. They must be residents of Manchester School District or Manchester Township or in the Clinton School District portion of Bridgewater Township.

**Manchester Township Board**

PROPOSED SYNOPSIS of Manchester Township regular Board meeting March 14, 1983 - 8:00 p.m. at Township Hall.

All Board members present and Fire Chief Kensler. Opened with pledge of allegiance.

Approved all minutes as submitted/read. Monies disbursed since last meeting presented. Treas. reported \$11903 in General Fund. 84.9% taxes have been collected with 15.1% delinquent.

Approved payment of General Fund bills for \$1846.02 and Federal Revenue Sharing bills of \$250.

February 1, 1983 mutual aid firerun will be a general expense items.

Application has been received from FARR III for P.A. #116 for 256.73 acres.

\$57.94 is cash on hand in petty cash.

Permission granted to purchase sign for Reynolds Cemetery.

Approved granted to send by certified mail, letter to Michael Lowery Re: Variance Decision of the Bd. of Appeals.

Meeting adjourned at 8:44 p.m. Submitted by Wilma E. Lentz, Clerk Approved by Clarence L. Fielder, Supervisor

**Parents Without Partners**

Parents Without Partners - 994-5030 - Support Group for Single Parents will meet Tuesday, March 29, 8:00 p.m. Call Sue C. at 483-7968 for directions.

**The Love Story**

Faith Community Church invites you to rejoice with us this Easter and join with us for The Love Story, - a parable of Calvary

**BAREFOOT IN THE PARK**

LAST WEEK  
 MARCH 24-26  
 8:15 P.M.  
 CALL 428-7000 AFTER 1 P.M.

Thursdays Are Manchester Night  
 Residents of Manchester and Their Guest Admitted For Half Price

Coming in April!  
 A THURBER CARNIVAL  
 April 7-9, 14-16, 21-23, 28-30

Saturday Is Little Bo Peep  
 Childrens Theater  
 This Saturday-Katie & Her Magic Cat  
 11 A.M. and 1 P.M.  
 \$2.00 EACH, ADULTS FREE WITH 3 OR MORE CHILDREN

The Black Sheep Theater  
 Main Street - Manchester, MI

**NORM WALZ Construction**  
 Manchester, Michigan

NEW HOMES  
 REMODELING  
 ADDITIONS  
 GARAGES  
 SIDING  
 DECKS

Custom Built  
 Cabinets  
 428-7109

**CHIM-CHIMNEY Chimney Sweeps Ltd.**

Certified by the National Chimney Sweep Guild  
 Member of the Michigan Chimney Sweep Guild

313.665-0999  
 313.429-9078

**'BAR OPEN'**  
 (Friday, Saturday & Sunday)

AT  
**Swanee's Twin Knolls**  
 1 Mile east and 3 miles north of Napoleon  
 Beer Wine Spirits (Except Sunday)

NOTE: Golf league officers: May we talk to you About your league in '83?

**THE DOWN UNDER IN THE BLACK SHEEP RESTAURANT**

LAST WEEKEND FOR:  
**BRAD FREY AND THE HINDSIGHT BAND**

Gigantic Draught Beer  
 Happy Hour  
 Friday & Saturday

4 PM-5 PM 20c  
 5 PM-6 PM 40c  
 6 PM-7 PM 60c  
 7 PM-8 PM 80c  
 After 8 PM Regular Price

Tom Huber & Bob Mann  
 Bartenders

**State Motorist Taxes To Jump 53%**

DATE	EXPLANATION	TAX INCREASE
Jan. 1, 1983	Michigan fuel tax increased 2 cents per gallon.	\$12.00
Jan. 1, 1983	Michigan weight tax (average 1982 license plate fee \$24.51) increased 15% for passenger vehicles.	3.72
April 1, 1983	Federal fuel tax increases 5 cents per gallon.	\$1.30
Oct. 1, 1983	Michigan weight tax for cars purchased before this date will increase with the growth of Michigan Personal Income, estimated at 9%. (New cars purchased beginning Oct. 1 will be taxed on value, not weight.)	2.57
Jan. 1, 1984	Michigan fuel tax increases 2 cents per gallon.	12.00
		\$61.40

Chart by \$61.40

A series of five gas and weight tax increases spread over a one-year period will add \$61.40 to the operating cost of a vehicle driven 12,000 miles per year at 20 miles per gallon, estimates the Automobile Club of Michigan. Prior to Jan. 1, 1983, the average motorist paid \$115.77 annually in highway taxes. Beginning Jan. 1, 1984, the same motorist will pay \$177.26, a 53 percent increase. In addition, the weight tax on passenger vehicles will increase another estimated 9 percent on Oct. 1, 1984. The 120 percent hike in the federal fuel tax (from 4 to 9 cents), effective April 1, is the largest percentage increase of all the taxes.

Michigan motorists, already the highest taxed in the nation, face a 5-cent per gallon fuel tax boost on April 1, reports the Automobile Club of Michigan.  
 The nickel increase, which is being imposed by the federal government, will raise the taxes

THE MANCHESTER ENTERPRISE THURSDAY, MARCH 24, 1983 PAGE 3

on an average-priced gallon (\$1.17 for self-serve no-load) of gasoline in Michigan to 26 cents, or 22 percent of the total cost. The total breaks down to 9 cents federal fuel tax, 4 cents Michigan sales tax and 13 cents Michigan fuel tax.

The April 1 increase, combined with a series of four state fuel and weight tax hikes over a one-year period (Jan. 1, 1983 to Jan. 1, 1984), will add \$61.49 a year in taxes for the owner of a 20-mile-per-gallon automobile driven 12,000 miles annually. That is a 53 percent increase over 1982 taxes.

"Michigan motorists will spend \$1.5 billion in various state and federal highway taxes this year," said Robert Cullen, Auto Club's Safety and Traffic Engineering manager.

Both state and federal tax hikes were prompted by escalating road repair costs and declining gas and weight tax revenues due to lighter, more fuel-efficient vehicles. Most of the new money will be used to repair and maintain the current highway system while a greater share of motorist dollars will be spent on public transportation (bus, rail and subway) projects.

One cent per gallon of the federal fuel hike, or an estimated \$1.1 billion per year nationally, is earmarked for mass transit. The Michigan Legislature recently enacted a measure which increased the diversion of fuel and weight taxes from 8.3 to 10 percent (\$66.3 million) for public transportation.

Michigan's public transportation budget, which is funded entirely by motorists, is expected to reach \$110 million this year. It includes \$4.2 million for small bus systems (Dial-A-Ride) and \$6.7 million for rail freight projects, including the 71-year-old Straits of Mackinac car ferry, the Chief Wawatam. Last year the coal-powered ship, which carries rail cars between peninsulas, cost Michigan taxpayers \$1.6 million despite sitting inactive for six months.

As a trade-off for higher use taxes on heavy trucks, Congress mandated that states allow longer, wider and heavier trucks on the federal highway system. Michigan will not be affected by the new weight limit (98,000 pounds) since the state already permits the heaviest trucks (164,000 pounds) in the nation. It will mean longer and wider trucks on Michigan highways.

"We have concerns about putting bigger trucks on our roadways," said Cullen. "Not only do they increase the wear-and-tear on the pavement, but they severely compromise the safety of motorists."

In addition to the upcoming federal fuel hike, Michigan's gas tax was increased 2 cents per gallon last Jan. 1 and will rise another 2 cents on Jan. 1, 1984. License plate fees, based on vehicle weight, were increased 15 percent on passenger cars Jan. 1, and will jump an estimated 9 percent beginning Oct. 1 and again on Oct. 1, 1984.

While the Michigan fuel tax increases affect truckers, they can receive a 6-cent-per-gallon rebate with the purchase of a special sticker (\$90 per year for state truckers, \$12 for out-of-state truckers. In addition, plate costs for commercial vehicles increased 30 percent this year, but the rate will be frozen until at least 1986.

The traditional vehicle weight tax on passenger cars will be phased out beginning Oct. 1, 1983. All new vehicles purchased in Michigan on or after that date will be taxed according to their value. For instance, a \$10,000 vehicle will be taxed at a .4 percent rate, or \$40. That fee will decrease 10 percent for each of the next three years and then will be frozen.

According to tax rates supplied by the Highway Users Federation, Indiana is second to Michigan in highway taxes at 24.6 cents per gallon, followed by California and West Virginia (both 24.5 cents). Texas has the lowest fuel taxes in the U.S. at 14 cents.

**Hit or Miss**

holiday season we won't be able to get any more until the next Christmas season.

If you would care to further discuss this matter with me, you can find me, on nice days, sitting in the sun on the telephone pole at the southwest corner of your parking lot.

Hoping that you can be of some help with our problem, we remain  
 Your truly,  
 Maynard, Raymond,  
 Frick, Frack and Goofy

After considerable cogitation the president composed the following answer:  
 Maynard, Raymond,  
 Frick, Frack and Goofy  
 (deliver to telephone pole at:) Fourth Street

Dear Messrs Squirrel:  
 That we were mildly surprised to receive a letter from such a distinguished group of area residents would be a gross understatement. We were in a bit of a quandary as how to properly process your request. Ultimately we had to hire another clerk and institute a new filing and review system under "Rodent Requests".

Nevertheless we were happy to hear from you. Your request is a tough nut to crack. We can appreciate that eating the same old shriveled walnuts eleven months of the year can be dull. You may wish to look into laying aside a large number of maple seeds each fall. I'm told they can do wonders to liven up a midwinter diet. However this is no help to you until next year. We would be remiss if we did not accommodate those people who are doubtless nuts about you. Please advise your humans that we will have prepackaged nuts available again. In the meantime you might like to try some of the roasted in-shell peanuts that we sell. Not only are they easier to cram open but the shells make excellent winter nest lining.

Sincerely,  
 Mr. President

**Spring savings from the people who care.**

Family Independent Pharmacy

**KODAK FILM**  
 126-24 or 135-24 \$2.55  
 110-24 or Disc 15 \$2.39

**SIGNAL MOUTHWASH**  
 24 oz. 40% Off Label \$1.89

**AIM TOOTH PASTE**  
 30% Off Label \$1.29

**NORTHERN BATH TISSUE**  
 4-Ply 6-Pack \$1.19

**JOHNSON'S DENTAL FLOSS**  
 50 Yards \$0.83

**DEPEND UNDERGARMENTS**  
 Regular 10's \$3.99  
 Extra Absorbent 10's \$4.49

**SEA BREEZE ANTISEPTIC FOR THE SKIN**  
 10 oz. \$2.49

**NATURE MADE VITAMIN E**  
 400 I.U. 100's \$2.69

**NATURE MADE VITAMIN C**  
 500 mg 100's \$1.59

**LIQUIPRIN**  
 1.16 oz. \$1.55

**MURINE OR MURINE PLUS EYE DROPS**  
 1/2 oz. \$1.29

**CONTROL APPETITE CONTROL FORMULA CAPSULES**  
 30's \$2.89

**DRACONCH & LORINE SENSITIVE EYES SALINE SOLUTION FOR SOFT LENSES**  
 2.44

**SCHICK DISPOSABLE RAZORS**  
 5's \$1.00

**NOXZEMA SKIN CREAM**  
 10 oz. \$2.29

**JOHNSON'S BABY OIL**  
 10 oz. \$2.44

**Clair's Spring Savings Special**

**HERBAL ESSENCE SHAMPOO** All Types 15 oz. \$1.55

**FINAL NET PUMP** All Types 8 oz. \$2.39

**LOVING CARE LOTION** All Shades \$2.58

**KRAUSS PHARMACY**  
 134 EAST MAIN STREET MANCHESTER, MICHIGAN  
 PHONE 428-3393

**Fahey Realty**

215 East Main St. Phone 428-9298 Manchester, MI.  
 Office Hours: 9-5 Mon. Thru Fri. Sat. 9-12 Noon

**New Listing**  
 Ideal retirement home. Located in Village close to churches and shopping. 3 bedroom ranch. 1 1/2 baths, 1 car garage, 1st floor laundry, air conditioned. \$48,900.

**New Listing**  
 Secluded wooded 10 acre parcel perfect for nature lovers. 4 bedroom ranch nicely decorated, 2 baths, 2 fireplaces, walkout basement.

\$42,900  
 Solid older home, 4 bedrooms 1st floor utility. Good location for schools and shopping. Over 1400 sq. ft., 2 car garage.

\$43,000  
 Recently remodeled 2 bedroom, 2 bath home on double village lot. New carpeting and decorating, garage and tool shed.

\$78,000  
 Farm - North of Water, 60 acres, 3-4 bedroom house, gas furnace, several outbuildings including 60 x 36 barn.

### Manchester Men Join The Navy

Two Manchester men have recently enlisted in the Navy's Delayed Entry Program, according to Navy Petty Officer Mary Wadsworth of the Navy Recruiting Station in Ann Arbor. Mark A. Patton, 19, of 817 Territorial, enlisted for four years with guaranteed training as a seaman seafair program.

Mark is a senior at Manchester High School. He will report for active duty on November 2, 1983, and will attend basic training at the Naval Training Center in Great Lakes, Illinois.

James H. Burch, 17, of 11433 Sheridan, enlisted for four years with guaranteed training as an Interior Communications Electrician.

Interior Communications Electricians install, maintain and repair the equipment needed for interior communications within ships and shore facilities.

James is a senior at Manchester High School and is on the wrestling team. He will report for active duty on February 7, 1984, and will attend basic training in San Diego, California.

Upon completion of basic training, he will attend the Navy's Class "a" school for Interior Communications Electrician in San Diego, California.

### Running Clinic

A beginning running clinic for women will be held at the Family Practice Center at Chelsea on Thursday, April 7. The clinic will cover all the basic information necessary to begin a running program with special emphasis on the needs and concerns of women in running.

Topics will include the why's of running, where, when and how to run. Clothing and shoes will be discussed along with how to avoid injuries.

The clinic is free of charge and

**Watts Heating & Cooling**

24 HOUR SERVICE  
Walt Horodoczny

Comfort Air Furnaces  
A.O. Smith Water Heaters  
Water Softeners

Furnace Tuning And  
Cleaning

PHONE 428-8645

18824 Bethel Church Road  
Manchester, Michigan

**Spear & Associates, Mann Realtors**

BUILDING SITES

2 1/2 Acres - Bridgewater Township, rolling land with possible pond site, 17 miles to Ann Arbor, Land Contract terms. \$11,500.

5 Acres - Sharon Township, perfect location for passive solar home. \$14,000.

5 Acres - Village of Manchester, river frontage and partially wooded, secluded yet close to shopping and schools, Land Contract terms. \$24,500.

**OFFICE HOURS**  
Monday thru Friday 9 am to 5 pm | Saturday 9 am to 12 noon  
**JIM MANN** EVENINGS AND **ELLIS PRATT**  
428-8074 WEEKENDS 428-8662

will be held at the Family Practice Center located at 774 S. Main Street. The clinic is sponsored by The University of Michigan Medical School's Department of Family Practice. Two sessions will be held; one from 2-4 p.m. and the other at 7-9 p.m.

The clinic will be taught by Peggy Alford, a long distance runner along with Dr. Jim Chenoweth, a physician at the Family Practice Center. Dr. Chenoweth is a marathon runner and served as the team physician for Chelsea High School this past year.

### Black Powder Turkey Shoot Results

A total of 51 shooters participated in the Black Powder Turkey Shoot at the Sportsman Club, Sunday, March 20th in nine different three shot contests. A perfect score was 30XXX. Two men shot 30XX - Bruce Clark and Dennis Heckman. Low target for the day was Bob Nickerson with 5.

Jerry Foley gave an exhibition on fire starting with flint and steel and Leo Hile shot a black powder cannon. The next shoot is May 1st. Come and watch the fun. \*The X part of the score means bulls-eye.

### Tree Seedling Sale Ends Near

The Board of Directors of the Washtenaw County Soil Conservation District reminds county residents that April 4, 1983 is the last day orders for tree & shrub seedlings will be accepted for the District's Annual Spring Tree Sale.

According to Chairman William Fishbeck, limited quantities of the following tree and shrub seedlings and ground cover seed are still available: Austrian Pine, White Pine, Norway Spruce, White Spruce, Colorado Blue Spruce, Douglas Fir, Black Walnut and Scotch Pine for Christmas tree plantings. Wildlife shrubs: Autumn Olive, Seed: Emerald Crownvetch Seed. There are also Wildlife Packets available which are suitable for wildlife food and cover. These packets offer an assortment of 50 tree and shrub seedlings, including: White Spruce, Red Pine, Mountain Ash, Sargeant Crab, and Autumn Olive.

All seedlings offered are available on a first-come first-serve basis, while quantities last. For further information and to obtain an order form, interested persons should contact the District Office, 6101 Jackson Road, Ann Arbor, 48103 (313) 761-6721.

### Obituaries

**Helena E. (Nellie) Loucks**  
Adrian, Michigan  
Age 87 years, formerly of Norvell died Monday, March 21, 1983 at Hillhaven Convalescent Center in Adrian following an extended illness.

She was born August 29, 1896 in Tecumseh, the daughter of William and Mary Ann Fielder. She was married to George Loucks on December 18, 1920. He preceded her in death on May 26, 1958.

Mrs. Loucks was a member of the Norvell Community Church and the Napoleon Chapter #328 Order of Eastern Stars.

She is survived by several nieces and nephews. She was preceded in death by 2 brothers and 2 sisters.

Funeral services will be held Thursday, March 24, 1983, 1:30 p.m. at the Jenter Funeral Home. Reverend Glen R. Evans officiating. Burial will follow in Norvell Township Cemetery, Jackson County.

**Oscar J. Eschelbach**  
Saline Evangelical Home

Age 86 years, a former Manchester area Merchant died Wednesday, March 16, 1983 following an extended illness.

He was born August 21, 1896 in Sharon Township, the son of Fred and Adeline Loeffler Eschelbach. He was married to Dorothy Trots on April 24, 1923. She preceded him in death on May 23, 1981.

Mr. Eschelbach together with Walter Trots had operated a meat market in Manchester for over 25 years. He had also worked as a meat cutter in Clinton.

He was a member of Emanuel United Church of Christ. He is survived by a daughter and son-in-law, Shirley and Ted Westphal of Northville; three granddaughters, Cindy Westphal of Northville, Colby Lytle of Ypsilanti and Cory Westphal of Northville; one great-grandson, Tommy Singer of Northville; several nieces and nephews; one sister, Mrs. Ella Kuhl of Saline and one brother, Julius Eschelbach of Saline.

Funeral services were held Friday, March 18, 1983, 1:30 p.m. at Emanuel Church. Rev. Robert Macfarlane officiated. Burial followed in Oak Grove Cemetery in Chelsea.

### Engagement Announced



Bill and Linda Ames of Manchester, are pleased to announce the engagement of their daughter, Vanessa Sue, to Philip John Albee, son of Hugh and Jackie Albee of Midland, Michigan. Vanessa will be graduating in April with a BBA from Western Michigan University. She has majors in Communication and Business Communication and a minor in General Business. Philip is also a student at WMU, and is majoring in jewelry. The couple will be married on October 15, 1983 in Midland.

The first full-time telephone operator was George Willard Coy, who began operating the District Telephone Co.'s exchange at New Haven, Conn. on Jan. 28, 1878.

### Replace Your Leaky Gutters Before Water Damages Your Home!

#### SEAMLESS ALUMINUM GUTTERS

NO JOINTS NO SEAMS!

NO LEAKS!

Custom Made To Fit Your Home or Business

IN WHITE AND 8 COLORS FREE ESTIMATES  
PHONE 428-8836

**R. D. Klauschmidt Co.**

19860 Sharon Valley Rd. Manchester, Michigan  
Near Corner of M-52



**MARATHON**

**FILLYAW'S MARATHON SERVICE**

327 West Main Street Phone 428-8576 Manchester, Michigan  
Open Monday-Saturday 7:30-7 P.M. Sunday 9-5  
CERTIFIED MECHANICS ON DUTY  
All Work Guaranteed

**HEAVY DUTY SHOCKS** SAVE 50% \$9.95 EACH  
Price Does Not Include Installation

<p style="text-align: center;"><b>MAJOR BRAND NATIONWIDE MAINTENANCE FREE BATTERIES</b></p> <p style="text-align: center;"><b>\$39.95</b> EXCHANGE</p> <p style="text-align: center;"><small>24 Month Guarantee</small></p> <p style="text-align: center;"><small>GROUP 22 TOP POST GROUP 24 TOP POST GROUP 74 SIDE POST</small></p> <p style="text-align: center;"><small>FREE EXHAUST INSPECTION WITH ALL JOBS</small></p>	<p style="text-align: center;"><b>SENIOR CITIZENS DISCOUNT</b></p> <p style="text-align: center;">10% On Parts and Labor</p> <p style="text-align: center;">5% Discount On Tires</p>
<p style="text-align: center;"><b>Disc Brake Special</b></p> <p style="text-align: center;"><small>LIMITED TIME ONLY</small></p> <p style="text-align: center;"><small>*REPLACE BRAKE PADS *NEW GREASE SEALS *RESURFACE ROTORS *COMPLETE BRAKE INSPECTION *REPACK WHEEL BEARINGS *ROAD TEST CAR</small></p> <p style="text-align: center;"><small>Best U.S. Case Front Brakes Only</small> <b>\$59.95</b></p>	<p style="text-align: center;"><b>REBUILT ALTERNATORS AND STARTERS</b></p> <p style="text-align: center;"><b>\$29.95 &amp; Up</b> EXCHANGE</p>

STOP IN AND PICK-UP A MARATHON CREDIT CARD APPLICATION

YOU CAN PURCHASE BATTERIES, TIRES SHOCKS, PARTS OR HAVE YOUR CAR TUNED-UP FOR THE WINTER MONTHS BRAKE JOBS, FRONT END ALIGNMENT OR WHEEL BALANCING  
ASK ABOUT OUR INTEREST-FREE EXTENDED PAY PLAN FOR CERTAIN PURCHASES

**MARATHON**

**FULL LINE OF MARATHON PRODUCTS**

We Have Pure White Kerosene

**Gas-Oil-Diesel Fuel**

STOP IN AND SEE ME FOR YOUR BEST TIRE DEAL

**AAA**

24 Hour Wrecker Service

### New Drunk Driving Laws Effective March 30th

Resident and visiting motorists in Michigan are reminded by the State Police that new toughened drunk driving laws become effective in the state at 12:01 a.m. Wednesday, March 30.

Among the provisions of the law are these: Will allow for preliminary roadside breath testing equipment that will, ostensibly, determine on the spot if a driver is drunk according to the law. Institutes the "per se" law; i.e. it is simply illegal to operate a motor vehicle after you've had too much to drink even if you don't appear to be under the influence. Blood alcohol content of .10% or greater indicating intoxication is the law. If the breath test shows BAC to have this reading, the "per se" law says you are in violation.

Mandatory loss of license if convicted of a drunk driving offense, including conviction on the lesser offense of "operating while impaired." (OWI)

Mandatory pre-sentence participation in a substance abuse screening and assessment program. Based upon the results of such screening and assessment, the court may also require the person charged to participate in an education and/or treatment program.

These statutes were passed in the 1982 Legislature and were signed into law for former Gov. William G. Milliken.

### Great Chili "Cook-Off"

The fourth annual "Great Chili Cook-Off" is now calling for cooks. Connoisseurs of the red hot saucy stuff can compete in Michigan's

largest Cook-Off on Saturday, April 30th at the Saline Farm Council Grounds.

Contestants from as far north as Gaylord and as far west as Kalamazoo have tried to grab the top prize...air fare for two to California and a slot in the \$40,000 International Chili Society World Championship Cook-Off held in late fall.

Sponsored by the National Kidney Foundation of Michigan, the "Great Chili Cook-Off" draws a crowd of over 8,000 people and offers a wide array of events during the day.

According to International Chili Society rules, "contestants won't be able to use beans or spaghetti in their recipes," explains Cook-Off Chairman John Kirkendall, an Ypsilanti attorney, "but it's okay to add almost anything else!"

Registration is open to any individual or group. Prizes will also be awarded for best showmanship and most unusual chili recipe. Contestants are encouraged to bring support teams to cheer them on.

The deadline for entering is April 1st at 5 p.m. Because of the increasing popularity of this event, a lottery drawing for cooks will determine who will be participating. Winners of the drawing will be notified by phone April 4th, so they can begin preparing for the Cook-Off.

Official rules and registration forms are available by calling the Kidney Foundation in Ann Arbor toll-free at 1-800-482-1455. If that line is busy, you can call (313) 971-2800.

Early birds can practice their recipes at any of the Foundation's Regional Cook-Offs to be held in Escanaba, Traverse City, Mt. Pleasant and Lansing, the weekend prior to the Cook-Off in Saline. Winners of these Cook-Offs are guaranteed a slot in the "Great Chili Cook-Off." For

more information on the Regional Cook-Offs, call the numbers listed. "The event isn't just for cooks," explains Kirkendall. "There will be plenty for the spectators to do."

"Families can visit with the cooks, taste chili, enjoy live entertainment and meet media celebrities."

Funds raised from the Cook-Off will be used by the Kidney Foundation in its statewide education, research, and patient service programs.

### Conservation Tillage Discussed At Workshop

"When you convert from conventional tillage to conservation tillage, you change the image of what a field should look like and how it should be worked," reports Bill Ames, Extension Agricultural Agent. "Living With The Chisel Plow" is a workshop sponsored by the Cooperative Extension Service that will explore how chisel plowing and other types of conservation tillage change the way farmers approach soil management, crop fertilization and weed and insect control. Held March 31, at the Saline Township Hall, 11660 Macon Rd., Saline, the meeting will last from 10 A.M. to 2:30 P.M.

Heading the program is Dr. Bus Robertson, Professor of Crops and Soils at Michigan State University. Dr. Robertson will cover soil and fertilizer management under conservation tillage systems. Additional experts from Michigan State University, the Soil Conservation Service and ASCS will discuss conservation tillage in terms of weed and insect control, equipment requirements, soil erosion control and USDA cost-share programs.

Conservation tillage is the term used for chisel plowing, disking and other types of tillage, which, unlike conventional moldboard plowing, do not totally invert the soil. It is called conservation tillage because residue from the previous crop is left on the field surface to provide soil erosion control. Conservation tillage also requires less fuel and labor than conventional tillage. "Many farmers shirk from conservation

Conservation tillage is the term used for chisel plowing, disking and other types of tillage, which, unlike conventional moldboard plowing, do not totally invert the soil. It is called conservation tillage because residue from the previous crop is left on the field surface to provide soil erosion control. Conservation tillage also requires less fuel and labor than conventional tillage. "Many farmers shirk from conservation

### Auctioneers

Jerry Jacob Cliff Tracy  
313-428-7975 313-428-7263  
Manchester, Michigan

CLIFF TRACY  
Member Of Michigan  
State Auctioneers  
Association

### CLINTON THEATRE

Friday & Sat.  
7:15 & 9:30 pm  
Sunday 7:30 pm  
ALL SEATS \$2.00

KISS ME  
GOODBYE

Dated March 17, 1983 RENA GIRBACH, Township Clerk

tillage because leaving crop residues on top of the soil gives fields an unattractive "trashy" appearance, observes Ron Struss, Extension Agricultural Agent, but when the soil, fuel and labor savings of conservation tillage are considered, that "trash" starts looking awfully good". The workshop is free and open to all interested. Contact the Washtenaw County Extension Office (313) 973-9510, for more information.

### Chairperson Named For Auction

Hans Maier, executive vice president of Great Lakes Federal Savings and Loan, Ann Arbor, has been named chairperson of the Catherine McAuley Health Center's Sixth Annual Auction.

WAAM Radio (AM 1600) will broadcast the event, April 16-17 from the Bechtel Power Corporation. This year, a live auction segment will be held Thursday, April 14 at the Ann Arbor Inn. A five dollar admission fee to this event will entitle participants to a raffle ticket for the opportunity to win a cruise trip.

"Approximately 60 items will be auctioned off during the live segment," says Maier. "People will be able to view these items before and during the live auction, which should make it an exciting evening."

Funds raised through the

auction will be used to purchase home units for Lifeline, a 24-hour personal emergency response program.

Implemented this past January in Washtenaw County by the Catherine McAuley Health Center, this system allows subscribers, such as the frail elderly or the physically impaired, to remain independent yet feel secure in care of an emergency.

Through a special telephone unit and call button, the subscriber can alert the Emergency Response Center, located in St. Joseph Mercy Hospital's Emergency Department. If the Response Center is unable to reach the subscriber, a staff member will call a "responder" (a person selected in advance by the subscriber to be called in case of an emergency) to check on the subscriber.

Upon arriving at the subscriber's home, the responder will signal the Response Center by resetting the Lifeline unit. The hospital staff member then will call the responder to see if help is needed.

"Currently, the program has 60 home units planned, but the need for more units is crucial," says Maier. "Through funds raised by this year's auction, we hope to assist the Lifeline program in meeting those community needs."

"If you would not be known to do anything, never do it." Emerson

**WIDMAYER FORD**

510 WEST MAIN (313) 428-8343

**INCOME TAX PREPARATION**

Most Returns While You Wait

For appointment CALL 429-5994 IN SALINE  
"This is our 20th year."

**H.L. Beach Tax Service**

**WATER TO BURN find energy in your own backyard.**

THE GEORGE HANCOCK HEATING SYSTEM SAVES MONEY

SUBSTANTIAL TAX SAVINGS!

**MANCHESTER ELECTRIC Inc**

112 Adrian Street Manchester, Michigan  
Phone 313-428-6243

4-H News

"Spring Into Achievement", and 4-Hers certainly did at the 1983 4-H Spring Achievement which was held recently at the Saline High School.

Members of the Sharon Valley 4-H Club did themselves proud as they exhibited projects in leathercraft, woodworking, personal appearance and conducted demonstrations.

Brian Ives of Grass Lake in his first year of leathercraft, received an "A" rating and an honor ribbon in the Apprentice Division. All three 4-Hers exhibiting in the Miscellaneous Division, Kelly Burke and Dawn Spiegelberg of Grass Lake and Scott Poet of Manchester were all awarded blue "A" rating ribbons. Honor ribbons went to Scott and Kelly. The "Best of Show" award was won by Kelly Burke. Kelly crafted a pair of black suede leather silver trimmed chaps which she also modeled in the style revue.

Woodcraft members made a variety of projects, ranging from a bird house to a garden cart to a video game/TV cabinet. In the Apprentice Division, Mike Dibble of Ann Arbor, Lance Lockhardt of Saline and Greg Weidmayer of Manchester, all received "A" rating ribbons. A "B" rating was awarded to Scott Poet of Manchester. Dan Blumensauer, Maryann Salyer and Tim Cox of Manchester, Shana Burke of Grass Lake and Scott Dibble of Ann Arbor, all received "A" ribbons in the Handyman Division. Receiving "B" rating ribbons were Doug and Jon Bristle of Manchester. Honor ribbons went to Dan Blumensauer, Maryann Salyer and Scott Dibble. Dan also received the Fingert award on his desk, his choice for a

4-H project. Patty Fuller of Belleville and Jeff Horsing of Manchester both received blue ratings and honor ribbons in the Craftsman Division. Both were given Fingert awards. A cradle was Patty's choice as a project and Jeff constructed a custom case for his compound bow and arrows.

Personal Appearance is always a challenging department as clothing members strive to complete their outfits before the deadline. Vickie Allen and Patty Fuller, both of Belleville, received a "B" and an "A" respectfully for the construction of their garments in the Junior Division. Shana Burke, a senior seamstress, received an "A" rating ribbon in construction. All of these girls modeled in the evening style show revue with Patty placing in the top ten Junior division.

With an end to their many talents, style revue narrators from the Sharon Valley 4-H Club included Rob Poet, Shana Burke, Scott Poet, who also led the flag pledges with Kelly Bristle, and a last minute addition of Patty Fuller to the ranks of the narrators. This was a first time experience for Shana, Scott and Patty. It takes a lot of concentration and reading skill to read the narration cards as the 4-Hers model their outfits. Just ask anyone who has been a narrator in the past. By the way, do you know that boys can and do sew and also model?

Demonstrations are always a test of knowledge, poise, confidence and acting ability. Vickie Allen, Shana Burke, Scott Poet and Dawn Spiegelberg might have had butterflies the size of elephants inside, but that did not deter them from appearing relaxed and cool outside. Attempting a demonstration for

the first time, Vickie Allen received a "B" rating. She demonstrated how to create an original design for a latch hook project. Shana, tempting our sweet tooth, showed how easy it is to make molded candy. An easy dessert was put together by Scott. A corn bread recipe that anyone could do was demonstrated by Dawn. All three earned "A" rating ribbons.

It rather boggles the minds of 4-H leaders, when, nearing the completion of any year's 4-H project, the member calmly looks his or her 4-H leader in the eye and says, "Know what I'm going to make next year?!"

Bob King in Tae Kwon Do



by Jon Hardenbergh

Some 3 months ago Bob King joined this Marshall Art Academy to aid in growing mentally and physically. He has progressed well as he entered the Winter Studio Tournament and came away with a 3rd in forms and a 2nd in sparring.

by Chairman Alber at 7:32 p.m. in the Council Room of the Village Hall. Members present: Walton, Smith, Krauss, Kwolek, Leeson, Grossman, Alber and Kallewaard. Absent: Aiuto. A quorum was present.

The agenda was adopted as submitted, by acclamation. Minutes of the regular meeting of January 11, 1983 were approved as read. Minutes of the Public Hearing of January 11, 1983 were approved with one correction.

Fred Barkley, Assistant Director of the Washtenaw County Metropolitan Planning Commission, presented a proposal for a revised description of the R-1B District (Single-Family Urban Residential), based on a minimum lot size of 8,500 square feet. The proposal is based on a study of the Village zoning ordinance and zoning map, plus an in-person study of the Village and measurement of a cross-section of residential lots. Barkley also summarized current issues of concern in planning and zoning.

The Commission discussed the six items in the zoning ordinance which it had previously been suggested to change, in connection with the general updating of the entire Village ordinance book. The following actions were taken after individual discussion on each proposed change:

Motion by Walton, seconded by Kallewaard, that Article 60, Section 60.01, be included in the proposed changes, providing that the Village Council shall serve as the Zoning Board of Appeals, as provided in the state law. Passed unanimously on a voice vote.

Motion by Kallewaard, seconded by Grossman, that Article 31, Section 31.03 be included in the proposed changes, providing for a new conditional use in the C-2 District allowing "multiple-housing and/or apartment dwelling second floor and above". Passed unanimously on a voice vote.

Motion by Kwolek, seconded by Smith, that the wording of the

definition of "Variance" in Article 2 be retained in its entirety. Passed unanimously on a voice vote.

Motion by Walton, seconded by Grossman, that no revision be made in Article 51, Section 51.01, to deal with "small cars" off-street parking. Passed unanimously on a voice vote.

Motion by Kallewaard, seconded by Smith, that Article 31, section 31.03 be included in the proposed changes, providing for a new conditional use in the C-2 District allowing hydroelectric power generation, facilities, with restrictions and standards as proposed in discussion with County Planning Commission staff. Passed unanimously on a voice vote.

Action on the revision of the R-1B District was postponed until exact wording is received from the County Planning Commission.

Kwolek reported on the Alternate Energy Sources Committee. Leeson reported on the Street Names Project, which is ready to be prepared for submission to Council.

Kallewaard explained the upcoming Planning and Zoning Commissioner Training Workshops sponsored by the Michigan Society of Planning Officials.

A motion was made by Leeson, seconded by Walton, that the Planning Commission commend member Kathleen Aiuto on her selection as one of 12 "Outstanding Young Women" in Washtenaw County. The motion was passed unanimously on a voice vote.

Chairman Alber noted that the Planning Commission would elect officers at its next regular meeting, March 15, 1983.

The meeting was adjourned at 9:28 p.m. on a motion by Grossman, seconded by Smith.

Mary Kallewaard Secretary

"It's never too late to mend." English Proverb

Village Planning Commission

February 15, 1983

The regular monthly meeting of the Manchester Village Planning Commission was called to order

Parr's Auto Body

BODY WORK PAINTING FREE ESTIMATES INSURANCE WORK GLASS INSTALLATION

18481 West Austin Road Manchester, Michigan

Phone 313/428-8538

Seniors

Graduates see our fine selection of graduation announcements and accessories!

TOP QUALITY ONE-WEEK PROCESSING ECONOMICAL PRICES

The Manchester Enterprise 150 E. Main Street 422-8173

MANN'S FEED MILL CHICK DAY

10 FREE HEAVY CHICKS With The Purchase of 50 lb. Bag CHICK STARTER

FIRST COME—FIRST SERVE ON FREE CHICKS Bring a Box for the Chicks 10 A.M. Till All Gone

THURSDAY, APRIL 28, 1983

Now Is The Time To Order Mixed Goslings Heavy Chicks Pheasants Poulters Ducklings

Also Available Feeders, Waterers, And All Poultry Supplies

MANN'S FEED MILL

Monday-Tuesday-Wednesday-Friday 9 am-5:30 pm Thursday 9-12 Saturday 9-2 18875 West Austin Road Manchester, Michigan Phone 422-7077



**GREEN THUMBERS! It's Spring!**  
**TIME TO GET GROWING**  
FOR ALL YOUR SEED and PLANTING NEEDS  
COMPLETE LINE OF GARDEN TOOLS  
FERTILIZERS—PEAT MOSS—FLATS  
**MANN'S FEED MILL**  
Monday-Tuesday-Wednesday-Friday 9 am-5:30 pm  
Thursday 9 am-12 Noon Saturday 9 am-2 pm  
18875 West Austin Road Manchester, Michigan  
Phone 313-428-7077

**EASTER PLANTS**  
CYMBIDIUM ORCHID CORSAGES  
Single...\$5.00 Double...\$7.50  
CARNATION CORSAGES  
Single...\$3.50 Double...\$6.00  
Bud Vases 3 Carnations \$5.00  
Spring Bouquets \$5.00 and up  
Easter Lillies \$10.50  
Spring Bulb Plants \$4.50 and up  
The Flower Garden FLOWERS FOR ALL OCCASIONS  
110 E. Main Street Manchester, Michigan 428-7422  
Member of Floriflex & AFS

**MANN'S FEED MILL CHICK DAY**  
10 FREE HEAVY CHICKS With The Purchase of 50 lb. Bag CHICK STARTER  
FIRST COME—FIRST SERVE ON FREE CHICKS Bring a Box for the Chicks 10 A.M. Till All Gone  
THURSDAY, APRIL 28, 1983  
Now Is The Time To Order Mixed Goslings Heavy Chicks Pheasants Poulters Ducklings  
Also Available Feeders, Waterers, And All Poultry Supplies  
**MANN'S FEED MILL**  
Monday-Tuesday-Wednesday-Friday 9 am-5:30 pm Thursday 9-12 Saturday 9-2 18875 West Austin Road Manchester, Michigan Phone 422-7077

church services...

EMANUEL UNITED CHURCH OF CHRIST  
Rev. Robert MacFarlane, Pastor  
Sunday School 9:00 a.m.  
Worship Service 10:30 a.m.

SHARON UNITED METHODIST  
Rev. Ronald L. Iris, Pastor  
Corner M52 and Pleasant Lake Rd.  
Church School 10:00 a.m.  
Worship 11:00 a.m.

ST. THOMAS LUTHERAN  
Rev. Paul Pufe, Pastor  
Elsworth Road  
Sunday School and Bible Class 9:30 a.m.  
Church School 10:45 a.m.

ST. JOHN'S UNITED CHURCH OF CHRIST  
Pastor Phyllis Pawson  
Rogers Corners, Waters and Fletcher Rds.  
Worship and Sunday School 10:30 a.m.

BETHEL UNITED CHURCH OF CHRIST  
Rev. Roman A. Reineck, Pastor  
Schneider and Bethel Church Rds.  
Church Service 10:00 a.m.  
Sunday School 11:00 a.m.

MANCHESTER UNITED METHODIST  
Rev. Thomas E. Hart, Pastor  
Church School 9:15 a.m.  
Worship at 10:30 a.m.  
Choir Practice and Coffee Hour at 11:30 a.m.

ST. MARY'S CATHOLIC CHURCH  
Father Raymond Schlinkert  
Monday thru Friday 8:30 a.m.  
Saturday 5:00 p.m.  
Sunday 8:30 a.m. and 10:30 a.m.

NORTH SHARON COMMUNITY BIBLE  
Bill Enslin, Pastor  
Sylvan and Washburn Roads  
Sunday School 10:00 a.m.  
Morning Church 11:00 a.m.  
Youth Meetings 6:00 p.m.  
Evening Church 7:00 p.m.  
Wednesday Bible Study 7:00 p.m.

FAITH COMMUNITY CHURCH  
Timothy Miles, Pastor  
8400 Sharon Hollow Road off West Austin Road  
Worship Service 10:00 a.m.  
Sunday School 11:15 a.m.  
Sunday Evening Service 8:00 p.m.  
Jr. & Sr. High Young People's Meeting 7:00 p.m.

OUR SAVIOR LUTHERAN CHURCH  
Rev. Franklin H. Giebel, Pastor  
1515 S. Main, Chelsea

IRON CREEK COMMUNITY CHURCH  
Rev. Paul Runyon, Pastor  
English and Sharon Hollow Rds.  
Worship Service 10:00 a.m.  
Sunday School 11:15 a.m.  
Evening Service 7:00 p.m.  
Wednesday Prayer Meeting 7:00 p.m.

ZION LUTHERAN CHURCH  
Rev. John R. Morris, Pastor  
3050 S. Fletcher Road

ST. JOHN'S LUTHERAN CHURCH  
Rev. Dennis A. Falk, Pastor  
Austin Road, Bridgewater  
Sunday School 9:15 a.m.  
Worship 10:30 a.m.

VICTORY BAPTIST  
Dr. Clara Gleason, Pastor  
Sunday School 9:45 a.m.  
Morning Worship 11:00 a.m.  
Adult Doctrine Class, Teen Time and Jr. Astronauts at 5:30 p.m.  
Evening Worship 6:30 p.m.  
Wednesday Prayer Meeting 7:30 p.m.

CLINTON ASSEMBLY OF GOD  
Charles Sanders, Pastor  
12500 Allen Rd. [corner of Allen Rd. and Manchester-Clinton Rd.]  
Sunday School 9:45 a.m.  
Morning Worship 11:00 a.m.  
Evening Service 6:30 p.m.

CHURCH OF JESUS CHRIST OF LATTER-DAY SAINTS (MORMONS)  
Thomas E. Schulte, Branch President  
Rabalah Hall, M52, Chelsea  
Sacrament 9:30 a.m.  
Sunday School, Primary 10:50 am  
Priesthood, Relief Society, Aaronic Priesthood  
Youth 11:40 a.m.

ST. BARNABAS EPISCOPAL CHURCH  
Rev. Jerrold F. Beaumont, Vicar  
Old US 12-1/4 mile west of M52  
Chelsea  
Church School-Children and Adults 9:30 a.m.  
Worship Service 10:30 a.m.

BABA'I AITH  
Study of Baha'i scripture and discussion on applying spiritual principles to daily living. Believers of all faiths welcome. 2nd and 4th Sundays every month, 2:30 p.m., at the home of Thomas and Nancy Rykwalder, 611 S. Macomb. For more information or directions call 426-9454.

EMANUEL UNITED CHURCH OF CHRIST

Thursday, March 24, 5-8 p.m. Sauerkraut Supper.  
Saturday, March 26, 6-8 p.m. Youth Fellowship Scavenger Hunt.  
Sunday, March 27, 10:30 a.m. Palm Sunday, Rite of Confirmation.

Monday, March 28, 12 Noon-6 p.m. Hoodmobile, Gym. 6:50 p.m. Optimists.  
Tuesday, March 29, 12 Noon-Senior Meal. 1:00 p.m. Young Mothers Support Group. 7:00 p.m. Boy Scouts.

Wednesday, March 30, 9:30 a.m. Women's Lenten Breakfast, Emanuel is Host. 6:30 p.m. Bell Choir rehearsal. 8:00 p.m. AA, Al Anon & A-A-Teen.

Thursday, March 31, 11:00 a.m. Senior Exercise Program. 12 Noon - Senior Meal. 3:40 p.m. Children's Choir rehearsal. 7:00 p.m. Maundy Thursday Altar Communion Worship. New Members received.

Friday, April 1, 1:30 p.m. Good Friday Community Worship, Manchester United Methodist Church.  
Saturday, April 2, 9-Noon, Easter Egg & Candy Sale, Comerica Bank.

ST. JOHN'S LUTHERAN CHURCH

Saturday, March 26, 7th Grade Catechism, 9-11.  
Sunday, March 27, Palm Sunday. Sunday School 9:15 a.m. Worship 10:30 a.m. State Hospital Visit 2 p.m. Men's Disciples 6:30 p.m. Praise Gathering 7:30 p.m.

Monday, March 28, Hoodmobile in Manchester, 12-6 p.m.  
Wednesday, March 30, Jr. Choir 7:30 p.m. Sr. Choir 8:45 p.m.

SHARON UNITED METHODIST CHURCH

Thursday, March 24, 7:15 p.m. Men and Boys Banquet; program, Daryl Hurst, magician.  
Sunday, March 27, 11:00 a.m. Reception of Members; 7:30 p.m. Jr. Youth Fellowship.

Wednesday, March 30, 9:30 a.m. Lenten Breakfast at Emanuel Church.  
Sunday, March 27, 10:00 a.m. Palm Sunday - Worship Service. 11:00 a.m. Fellowship Coffee Hour sponsored by Women's Fellowship.

Monday, March 28, Hoodmobile at Emanuel United Church of Christ 12 noon to 6 p.m.  
Wednesday, March 30, 9:30 a.m. Lenten Breakfast at Emanuel United Church of Christ, Manchester. Cantata Rehearsal Begins!

WEEKLY MEETINGS:  
Sunday: 11:00 a.m. Church School for all ages.  
Wednesday: 4:45 p.m. Childrens Choir. 6:30 p.m. Youth Choir Plus. 8:30 p.m. Senior Choir.  
Saturday: 9:00 a.m. 8th grade Confirmation Class. 10:30 a.m. 9th grade Confirmation Class.

FAITH COMMUNITY CHURCH  
Friday, March 25, 7 p.m. The Chorales will present an evening of fine music.  
Sunday, March 26, 10 a.m. Morning Worship. 11:15 a.m. Sunday School. 6:00 p.m. Evening Service. 7:00 p.m. Young People Meeting.  
Tuesday, March 29, Women's Bible Study 12:30.  
Wednesday, March 30, 7 p.m. Prayer Meeting and Bible Study. 8:00 p.m. Choir.

MANCHESTER UNITED METHODIST CHURCH

Wednesday, March 23, 1:30 p.m. Senior Citizens at Manchester United Methodist Church. 6:15 p.m. Potluck Dinner.  
Saturday, March 26, 9:00 a.m. Education - Committee Coloring Eggs.  
Sunday, March 27, 9:15 a.m. Church School. 9:30 a.m. Confirmation Class. 10:30 a.m. Worship: "King Comes? Kingdom Comes?" Confirmation class unites with our church fellowship. 11:30 a.m. Choir Rehearsal/Coffee Hour.

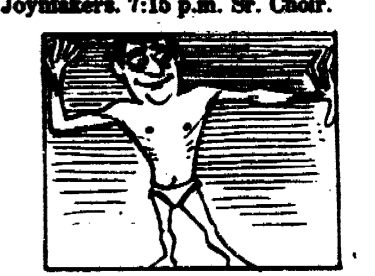
Monday, March 28, 12:00 Noon to 6 p.m. Hoodmobile at Emanuel Church.  
Wednesday, March 30, 9:30 a.m. Friendship Lenten Breakfast at Emanuel. 7:30 p.m. Joy Circle at Church.

SAINT JOHN'S LUTHERAN CHURCH  
Saturday, March 26, Youth Instruction Classes.  
Sunday, March 27, Palm Sunday. 9 a.m. Sunday School and Pastor's Adult Inquirer Class. 10:15 a.m. Worship with Youth Confirmation. Deadline for ordering Easter Lilies.  
Monday, March 28, Manchester Hoodmobile 12 - 6 p.m. Stewards' Voice Deadline.  
Tuesday, March 29, 4 p.m. Joymakers. 7:15 p.m. Sr. Choir.

WEDNESDAY, MARCH 30, 9:30 a.m. Friendship Lenten Breakfast at Emanuel. 7:30 p.m. Joy Circle at Church.

SAINT JOHN'S LUTHERAN CHURCH  
Saturday, March 26, 7th Grade Catechism, 9-11.  
Sunday, March 27, Palm Sunday. Sunday School 9:15 a.m. Worship 10:30 a.m. State Hospital Visit 2 p.m. Men's Disciples 6:30 p.m. Praise Gathering 7:30 p.m.

Monday, March 28, Hoodmobile in Manchester, 12-6 p.m.  
Wednesday, March 30, Jr. Choir 7:30 p.m. Sr. Choir 8:45 p.m.



The human body is built around a frame containing 206 bones. The whole works is linked together with 60,000 miles of blood vessels.

**Michigan Veterinary Clinic**  
18901 Sharon Valley Road  
Manchester, Michigan 48158  
313/428-8365  
LARGE AND SMALL ANIMAL SURGERY AND MEDICINE  
OFFICE OR HOME VISITS BY APPOINTMENT  
9 AM - 9 PM MONDAY THROUGH SATURDAY  
VERA L. KLUWE, D.V.M.

COKE	\$2.09 - 8-pack	PEPSI	\$1.99 - 8-pack
TAB	\$1.29 - 2 liters	MOUNTAIN	\$1.29 - 2 liters
SPRITE	\$1.89 - 6-cans	DEW	\$2.19 - 8-cans
MELLO		DIET PEPSI	\$3.29 - 12 cans
YELLO		PEPSI LIGHT	
7-UP	\$2.09 8-pack	PEPSI FREE	\$1.79 - 8-pack
LIKE	\$1.29 2 liters	SUGAR FREE	\$1.29 - 2 liter
CRUSH	\$1.89 6-cans		
FAYGO	\$1.89 8-pack	VERNORS	\$2.09 - 6-pack
DIET	\$1.19 - 2 liters	A & W	\$1.29 - 2 liters
REGULAR	\$1.59 - 8-cans	RC	\$1.89 - 8-cans
DIET	\$2.09 - 8-pack	SQUIRT	\$1.89 - 8-pack
SQUIRT	\$1.29 - 2 liters		\$1.29 - 2 liters
			\$1.89 - 6-cans
DR. PEPPER	.99 - 8-pack	SUGAR FREE	\$2.09-8 pack
	\$1.29 - 2 liter	DR. PEPPER	\$1.29 - 2 liter
	\$1.59 - 6-cans		\$1.89 - 6-cans
TONIC			
WATER	\$3.10 - 8-pack		
CLUB SODA	\$2.79 - 8-pack		
CANADA			
DRY	\$2.09 - 8-pack		

All Prices Plus Deposit  
Jobber PH. 428-8368  
**G.E. Wacker Inc.**  
Products Gasoline-Fuel Oil-Motor Oil-Diesel Fuel-Grease  
9050 Chelsea-Manchester Road Manchester, Michigan  
Mon-Thurs 7-8 Friday 7-9 Saturday 8-9 Sunday 9-8

**THE APPLE OF YOUR IRA IS AT COMERICA BANK.**

Do you still have questions about opening an Individual Retirement Account (IRA)? Now's the time to "ask an Apple" at Comerica Bank. We've set up Apple Computers at seven Comerica Bank locations. Our Apples answer all your IRA questions. They tell you about IRAs and how much you can save on taxes with an IRA. They can even tell you how much your IRA will be worth when you retire.

Comerica can help you buy the "Apple" of your eye without spending an arm and a leg. With a deposit of \$1,500 or more into a new or existing Comerica Bank IRA, you can save up to \$600 on an Apple 2E Personal Computer. With savings like that you can buy a lot of apples.

So come in and "ask an Apple" about an IRA at any of these Comerica Bank offices:  
Main Office • Westwood • Park Plaza  
Michigan Center • South Jackson • Brooklyn Village • Manchester

**Comerica**  
BANK MEMBER FDIC

Classifieds Are \$1.50 For First 20 Words, 5c A Word Thereafter. Thank You's Are \$3.00 Minimum Up To 50 Words.

All Classified Advertising is Payable in Advance. All Ads Must Be PLACED And PAID For Prior to 11 A.M. On Tuesday For Publication That Week.

MANCHESTER LOCKER PLANT Phone 313-428-7999 Meat Processing Custom Slaughtering HOGS-BEEF-LAMBS RETAIL: Cuts-Steaks-Quarters LOCKER RENTAL

CHELSEA GREENHOUSES 7010 Lingene Road, Chelsea, Michigan 475-1963-54 or 475-9313. Flowers and plants for every occasion. We specialize in wedding flowers to fit your budget. We are as near as your phone and we welcome your business. tfn

REBUILT Alternators and Starters \$29.95 and up. Exchange. Fillyaw's Marathon Service. 428-8576. tfn

FOR SALE - 400 bales of oat straw, 428-8114 after 5 p.m. 3-31p

FOR RENT in Manchester, attractive 1 bedroom apartment, much storage, garden, and garage. References. \$295 a month. 475-9624. tfn

ALBER ORCHARD & CIDER MILL - Apples, sweet cider, popcorn, maple syrup, honey, jelly and jam. Open 9 to 5 daily. 1801 Bethel Church Road, 428-7758 tfn

LITTLE WACK EXCAVATING Licensed & Insured Basements - Drainfields Bulldozing - Digging Snow Removal - Tree Removal Paul Wackenhut Phone (313) 428-9025 tfn

ALTERATIONS BY IRENE - Custom Tailoring, also Linings - Includes Leather and Fur. Phone 428-8538. tfn

HIGH SCHOOL GIRL will do part-time typing. Good typing skills and office skills. Call after 5:00 p.m. 428-8247. P

CARDS OF THANKS

We wish to thank our friends, neighbors and relatives for their many acts of kindness extended to us in the loss of our mother Helen Motluck. For the food, flowers, Masses, prayers and cards. A special thanks to Father Schlinkert, Doctors Johnson and Okey, St. Mary's Altar Society and the Knights of Columbus, and also the Jester Funeral Home. Elgin and Virginia Motluck and Walter and Geneva Motluck

SHARPENING SERVICE Ice skates, saw chains, hand saws circular saws, knives, scissors, pinkie shears, hair - animal and grass clippers, lawn mower blades, electric hedge clippers, drills, and most anything needing a sharp edge. Kleinschmidt's True Value Hardware, 19660 Sharon Valley Road, Manchester. tfn

C & B PAINTING - Interior, Exterior, Free Estimates. Contact Charles E. Benedict. Phone 428-7136 or 428-7416. tfn

FREE CAR WASH with lube, oil change and filter. Fillyaw's Marathon Service 428-8576. tfn

GARAGE SALE - Saturday, March 26 at 9:00, 212 Torrey Street. Building Material, Clothing and Misc. Norm Wab.

SENIOR CITIZEN Tax Refund Forms Prepared - \$4.95

MANCHESTER ENGINE has expanded its service to Napoleon: Lawn & Leisure. Complete Engine Machine Shop Service and Lawn Mower Repair. 313-665-8811 6595 Brooklyn Road, Napoleon. tfn

ALUMINUM EAVESTROUGH Seamless, white, black and brown, guaranteed, free estimates. Walkover Home Improvement Company. Phone (313) 428-9468. tfn

LOTS FOR SALE or will build to suit. Riverbend. 428-7109. 4-14

GENERAL EDUCATION DEVELOPMENT "G.E.D." The Washtenaw County Employment & Training Program is currently offering a G.E.D. Program for persons who do not have a high school diploma. Length of training will depend on the individuals needs. Average classroom time is ten (10) hours per week.

I want to thank so many thoughtful and kind people for food, gifts, plants, and many many beautiful cards and letters sent to me while in Chelsea Community Hospital, also in St. Joseph Hospital. Also for prayers and visits from Reverend MacFarlane while I was at Chelsea and St. Joseph Hospitals and since my return home. To my dear husband and our dear children for helping so faithfully during this crisis. To the many people who prayed for my recovery. It was all so deeply appreciated. Mrs. Howard (Emma) Bell

COPY PAPER AVAILABLE We now have copy paper in sizes 8 1/2 x 11 - \$4.75 for 500 sheets and 8 1/2 x 14 - \$5.75 for 500 sheets. The Manchester Enterprise tfn

PROCTOR TRUCKING Grain - Ear Corn - Flatbed Service. Call 428-7904 or 428-8583. tfn

FOR RENT

VERY LARGE 1 bedroom ground floor apartment, washer and dryer, basement and yard. \$300 month, 428-9150. tfn

The Manchester Athletic Booster Club would like to thank the members of the Raisin River Flyers Hockey Team for their time and effort donated to display their fine athletic ability in the game against the Washtenaw County Sheriff Department. It was a terrific hockey game and we all enjoyed watching it. We thank you for your generosity. The benefits will be used for a good cause. Sincerely, The Manchester Athletic Booster Club

GERALD AHRENS CONSTRUCTION Additions, Decks, Renovations Repair, Finish Work. Free Estimates. Phone 428-8807. tfn

WE'RE OPEN SUNDAYS from 11 a.m. to 3 p.m. Kleinschmidt True Value Hardware 428-8337 tfn

HOUSE FOR RENT - 4 bedroom, Pleasant Lake Road, 313-428-7573. tfn

FOR RENT - 2 bedroom 1st floor apartment with fireplace - modern kitchen and carpeted. 428-9380. tfn

APARTMENT FOR RENT - 2 bedroom, 2 blocks from downtown Manchester. \$285. 428-7173 tfn

BRIDON Baler Twine, competitively priced. Alber Orchard 313-428-7758. tfn

INCOME TAX PREPARED All types of returns, either in my office or at your home or office. Call for an appointment for a strictly private meeting with no waiting! Call 429-5994 in Saline. H.L. BEACH TAX SERVICE - This is our 21st year. 4-14

FOR RENT - 2 bedroom apartment in Village. Nice quiet 2nd floor. Deposit, reference. 428-7212 or 429-4335. tfn

FOR RENT - 5 room country home, garage, garden, workshop, prefer couple in forties or fifties. Tradesman - Handyman, no children, no pets, reasonable, occupancy March 1, 428-9621. tfn

NEED a new furnace? Call Mark 428-9150. tfn

CLINTON UPHOLSTERY 10% off all fabrics, senior citizens discount. All work guaranteed, 17 years experience. Free pick-up and delivery. 517-456-4860 3-31p

FOR RENT - small 1 bedroom house on large lot next to river. Call 616-964-5351 or 428-8126. 3-24

THINK SPRING: 2 bedroom apartment in Pleasant Lake \$250 month. 428-7993. 3-24

KUKINI TRAVEL AGENCY ANNOUNCES 1983 ESCORTED KUAKINI HAWAII TOURS Fall Tour: 7th Nov. - 18th Nov Three Island-Deluxe-Ten Nights 124 W. Chicago, Tecumseh Michigan. Phone: 517-423-6651 tfn

KNIGHTS OF COLUMBUS FISH FRY Every Friday through April 1. 5:00 p.m. to 8:00 p.m. K of C Hall. All you can eat \$4.00. Childrens portions available. Salad Bar. 3-31

NEW 11 shank chisel plow with 3 inch shovels \$1960 till March 31st. S-K Sales "Steve Kuebler", 18275 West Austin Road, 428-7182. 3-24

FOR RENT - 2 bedroom house on large lot next to river. Call 616-964-5351 or 428-8126. 3-24

WINDOW & SCREEN REPAIR Kleinschmidt True Value Hardware. 428-8337 tfn

COMMUNITY SPAY - NEUTER CLINIC. Low cost. Call 971-8774. 3-31

NEW PROM DRESS, pastel pink and white, size 7. Call 428-8247. P

FINAL DAY of Moving Sale, everything must go. Trash Compactor, Chandelier, Golf Clubs, Sofa, Chairs, Stove, Misc. Items. 16675 W. Austin, 428-8664.

WORK WANTED - I will do minor jobs by myself or assist you with any majors - available anytime - Ken, 428-7266. P

PIANO TUNING AND REPAIR Qualified technician, Ron Harris 475-7134. tfn

MICHIGAN CERTIFIED SEED - 3 varieties of soybean seed. Hodgson 78, Corsoy 79, and Nebsoy. \$6.75 per bushel. Brabiec Farms, Britton, Michigan 49229. 517-451-4010 or 423-5663. Price subject to change without notice. 3-31

HERE COMES THE "SUN" Get your lawn and garden equipment tuned up for spring clean up at Gerald R. Mann Service. We pick up and deliver. Call Gerry 428-7377. 3-31p

FOR RENT - 2 bedroom house on large lot next to river. Call 616-964-5351 or 428-8126. 3-24

DEAD STOCK REMOVAL We buy hides, skins, fat, bone and restaurant grease. Adrian Tankage Co. 517-265-6098. 9-22p

DETROIT FREE PRESS - early morning home delivery now available to all Village residents Call 428-8600 to start your subscription. 5-5p

FOR RENT - 2 bedroom apartment in Pleasant Lake \$250 month. 428-7993. 3-24

LOW RENT - Mobile Home to couple who can help with maintenance, no children, no pets. 426-8921. tfn

BLACK DIRT AND PEAT for sale, tested and proven excellent for lawns, gardens and flower beds, 6 yards delivered \$40.00. Phone 428-7784. tfn

VIRGIL CLARK CONSTRUCTION new construction, remodeling, pole barns, cement work, porches, decks, electrical, and plumbing. Free estimates. 475-2191, 428-7082 4-7p

FOR RENT - 2 bedroom house on large lot next to river. Call 616-964-5351 or 428-8126. 3-24

FOR RENT - 2 bedroom house on large lot next to river. Call 616-964-5351 or 428-8126. 3-24

FIELDER PAINTING - Interior & Exterior. Free Estimates. Senior Citizen Discount. Phone 428-8506. tfn

Jerry Whitaker EXCAVATING hauling, driveways, drainfields etc. 428-7592. 4-7

FOR RENT - 2 bedroom house on large lot next to river. Call 616-964-5351 or 428-8126. 3-24

FOR RENT - 2 bedroom house on large lot next to river. Call 616-964-5351 or 428-8126. 3-24

2 ACRES on Pleasant Lake Road for sale, can be built on, surveyed before 10 acres came into effect. 428-7573. 3-24

WANTED - lawns to take care of. Smith's complete lawn service, will be insured. Please call 428-7137. 3-24p

FOR RENT - 2 bedroom house on large lot next to river. Call 616-964-5351 or 428-8126. 3-24

FOR RENT - 2 bedroom house on large lot next to river. Call 616-964-5351 or 428-8126. 3-24

PUBLIC NOTICES

STATE OF MICHIGAN PROBATE COURT COUNTY OF WASHTENAW

MANCHESTER TOWNSHIP PLANNING COMMISSION NOTICE OF PUBLIC HEARING

PUBLICATION NOTICE DECEASED ESTATE FILE NO. 7796

Estate of OWEN L. SUTHERLAND, Deceased, S.S. No. 136-12-9676

NOTICE THAT Manchester Township Planning Commission will hold a public hearing on the application of Charles E. Staples for a conditional use permit to build a single-family residence on premises presently zoned RC Recreation-Conservation District described as:

A parcel of land in the NE 1/4 Section 10, T4S, R3E, Manchester Township, Washtenaw County, Michigan, described as BEGINNING at a point located N 00 degrees 28'00" E 330.0 feet along the N and S 1/4 line of said section from the center of section; thence continuing N 00 degrees 28'00" W 330.0 feet along said N and S 1/4 line of said section and the center line of Grossman Road; thence S 88 degrees 21'00" E 1328.81 feet; thence S 89 degrees 28'18" W 330.02 feet along the E line of the W 1/2 of the NE 1/4 of said section as aforementioned; thence N 88 degrees 21'00" W 1227.75 feet to the Point of Beginning being subject to the rights of the public over the W 1/2 33.9 feet thereof for Grossman Road.

Dated March 16, 1983 Terrance P. Conlin P-24853 3001 S. State, Suite 542 Ann Arbor, MI. 48104 Tel. 996-1266

on March 23, 1983 at 8:30 p.m., at the Manchester Township Hall, at 275 South Macomb Street, Manchester, Michigan.

MANCHESTER TOWNSHIP PLANNING COMMISSION

CLAIMS NOTICE INDEPENDENT PROBATE STATE OF MICHIGAN WASHTENAW COUNTY

FILE NO. 7796 Estate of JOSEPH JEFFREY LOZIER, Deceased

Choralaires To Sing At Faith

The Choralaires, a choir from The Grand Rapids School of the Bible and Music will sing at Faith Community Church, Friday, March 25 at 7 p.m. We invite all for an evening of fine music. The church is located just South of Austin Road, 8400 Sharon Hollow Road, Manchester.

John O'Bryant: 1982 Fair Evaluation

The Fair Board meeting Monday, March 14, was well-attended by Mr. John O'Bryant, Superintendent, Division of Fairs and Racing, Michigan Department of Agriculture. "You have an excellent Board set April 2 at 1:00 p.m. for annual township meeting. Moved by Post and supported by Berusder that Farm land agreements of Floyd and Florence Parr and Heckard and Lydia Krause be approved. Carried. There being no further business it was moved by Post and supported by Marvin that we adjourn. Carried. E. Lewis Blaisdell Clerk

Golfers Needed

Golfers are needed for the Tuesday night league at Wolf Lake - The Jogy Busters. Call 428-7416 - 428-8657.

Easter Flower Sale

The Manchester Mens Club will again sponsor an Easter Flower Sale. Flowers will be on sale at the area banks, Comerica, Ann Arbor Bank and Trust and Great Lakes Federal Savings beginning Thursday, March 31, 2:00-6:00, Friday, April 1, 3:00-6:00 and Saturday, April 2, 9:00 a.m. to 12:00 noon.

We would like to thank everyone for their continued support and hope to see you on these days. Mr. O'Bryant's enthusiasm is contagious. All those in attendance took home with them an increased determination to make our 1983 Fair the best one yet.

Women's Lenten Breakfast To Be March 30th

The Annual Women's Lenten Breakfast will be held on Wednesday, March 30, 1983, at 9:30 a.m. at Emanuel United Church of Christ. This Church Women United sponsored event will be hosted by Emanuel's Women's Fellowship and a cordial invitation is extended to all the women of the community. The guest speaker will be Mrs. Corlies Mick, with special music provided by Mrs. Joyce Meade. This should be a very inspiring program. Child Care will be provided at St. Mary's Church. Please make reservations for the Breakfast by calling Linda K. Hartman, 428-8369 or 475-2144, by Monday, March 28.

Bridgewater Township Board

March 21, 1983 The regular meeting of the Township Board was held at the townhall on the above date with all members present. Minutes of preceding meeting read and approved as read. Moved by Post and supported by Marvin that all bills be paid - Vouchers 1296 to 1305 Inc. Carried.

Donate Blood.

WVHep WVYuC A Public Service of This Newspaper & The Advertising Council

To All "ON TV" or "IT" Subscribers SAVE 70% ON INSTALLATION

If you are an "ON TV" or "IT" subscriber and would like to have Cable, Call Clear Cablevision Before April 15, 1983 to have your Cable installed for only \$6.00.

Clear Cablevision 428-8246

FREEDOM ELECTRIC 11207 Pleasant Lake Road Manchester, Mich. 48156 NEW CONSTRUCTION Commercial & Industrial GILBERT LUCKHARDT 428-8233

MANCHESTER Travel Fast Computerized Reservations! Issue airline/train Bus tickets! Cruises & yacht charters! Hotel/motel reservations! Value vacation packages! And much, much more! We Find The Best Deals! All major credit cards accepted! Ticket delivery available! Our services are free! Call 313-428-8395 or Stop By 154 E. Main Street Manchester, MI 48157

428-8173 puts you in the Classifieds

COPIES MADE 8 1/2 X 11 8 1/2 X 14 11 X 17 ALL COPIES CAN BE COPIED BOTH SIDES THE MANCHESTER ENTERPRISE 150 EAST MAIN STREET MANCHESTER, MICHIGAN

# Wedding Bells and Beautiful Brides



Every bride dreams of the perfect wedding... a day that she'll hold dear all through their lives together. Let us help with the plans for this happy day.

**Wedding**  
ANNOUNCEMENTS  
AND  
INVITATIONS...

The  
Manchester Enterprise

STOP IN AND SEE OUR FINE SELECTION

## Optimists To Hold Basketball Contest

The Manchester Optimist Club will hold a Tri-Star Basketball skills contest at the Middle School on March 26 at 9:30 a.m. The contest is composed of three basic skill tests aimed at evaluating a contestant's skill in passing, shooting and dribbling.

Boys and girls will compete in six age groups, eight through thirteen, against youth of their own age. All that is needed to compete is the desire and a pair of gym shoes.

There will be plaques awarded to the winners in each age group.

Contestants will also receive a memento scorecard and a patch for their jacket.

Entry blanks are available at the offices of the Middle School and Klager School or at the contest site on the day of competition. Each entry blank must be signed by a parent or guardian before a contestant may compete.

## School Hot Lunch Menu

Monday, March 28, Chicken Patty/Bun, Hash Brown Potato, Colelaw, Chilled Pineapple, and Milk.

Tuesday, March 29, Beef Goulash, Buttered Green Beans, Dinner Roll/Butter, Diced Pears, and Milk.

Wednesday, March 30, Cheese and Sausage Pizza, Lettuce Salad with Dressing, Fresh Fruit, Lemon Pudding, and Milk.

Thursday, March 31, Hot Turkey Sandwich, Buttered Sliced Carrots, Chilled Peach Half, and Milk.

Friday, April 1, NO SCHOOL MANCHESTER SPRING BREAK STARTS!!!!!!

## New Arrivals!

Tim and LouAnn Preston are happy to announce the birth of their daughter Amy Jo. She was born on March 12, 1983, 7:50 p.m. and weighed 8 pounds and was 20 inches long.

Amy has two very proud sisters Pamela 3 years old and Jodi 6 years.

Grandparents are Vernie and Josephine Watne of Manchester and Helen Helber of Clinton.

Chris and Susan Hoover of Grass Lake are announcing the birth of a daughter Kelly Jeanette. She was born March 19, 1983 at 4:14 a.m. and weighed 6 pounds 8 ounces and 20 inches in length.

Kelly has a sister Kathryn Marie, 21 months old.

Grandparents are Daniel Winey of Farmington and Neal and Jeanette Hoover of Ypsilanti.

## Board Of Health Meetings

During the coming year, the Washtenaw County Board of Health will hold several of its regular meetings at sites outside of Ann Arbor. The Board, seeking input from community members regarding health issues, is attempting to make the meetings more accessible to county residents.

The March 25th meeting of the Board will be held at the Boardroom of the Ypsilanti Township Civic Center, 7200 S. Huron River Drive, Ypsilanti at 9:00 a.m. to 12:00 noon. A presentation on "Solid Waste in Washtenaw County: 1) Health Department Involvement, 2) Overview of Waste Disposal in Washtenaw County, 3) Future of Solid Waste Program, and 4) Potential Ground Water

The next meeting will be held at the Legion Home on April 13, 1983, at 7:30 p.m. All members are invited to attend.

## Girl Scout Cookie Booth

The Girl Scout Cadette Troop 186 will have their Girl Scout Cookie Booth at Comerica Bank Jackson. It will be held Friday, March 25 from 11:00 a.m. to 5:00 p.m. and Saturday, March 26, 9:00 a.m. to 12:00 noon. We will have Carmel Delites, Peanut Butter Patties and Thin Mints.

Anyone who wants more cookies please stop into the bank. The cookies sell for \$1.75 a box. Thank you for supporting Girl Scouts.

**This Week's Special**

<b>LENTEN SPECIAL FISH SANDWICH</b> \$1.75	<b>VEGETARIAN SUB</b> Large \$2.20 Small \$1.25
---	---

Save Time Order Ahead 428-9322

**MANCHESTER DELI**  
106 Adrian Street Manchester, Michigan  
Monday-Tuesday-Wednesday 9:30 am-7 pm  
Thursday-Friday-Saturday 9:30 am-9 pm Sunday 1 pm-8 pm

**Good value is why millions keep coming back to H&R Block.**

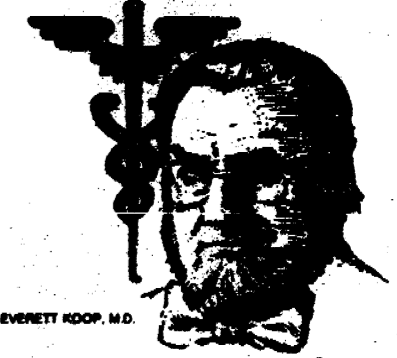
This year, there are more than 100 changes in the tax laws and forms. But at H&R Block, one thing hasn't changed... fair prices! Just ask, and we'll give you a free estimate of the cost for preparing your return. You get a complete interview. Plus we doublecheck your return for accuracy.

**H&R BLOCK**

The new tax laws. This year's number one reason to go to H&R Block.

**104 EAST MAIN**  
OPEN MONDAY THROUGH SATURDAY 9-5  
Phone 428-7833  
OPEN TODAY - APPOINTMENTS AVAILABLE

**Manchester Insurance Agency**  
122 WEST MAIN STREET  
Manchester, Michigan  
Phone 428-8215  
Home - Farm General Insurance



## from the Surgeon General

U.S. DEPARTMENT OF HEALTH AND HUMAN SERVICES • Public Health Service

Influence will be addressed by David Plueddemann, Assistant Public Health Engineer for the Environmental Division of the Washtenaw County Health Department. Time will be set aside for public discussion. The business portion of the meeting will follow. All interested area residents are invited to attend.

## American Legion Auxillary

The American Legion Auxillary met at the Legion Home on March 9, 1983, with 16 members present.

TV Ludwick gave a report on the activities and the need for donations for the Elewana School for the Deaf and Blind which is located in Nambyia, S.W. Africa. A donation has been sent to the school by the Auxillary.

Further donations were made to the Washtenaw County Convalescent Home; also, a donation for the support of one person to be sent to the Special Olympics in Mt. Pleasant, was made.

The Auxillary will furnish orange juice to be used at the Manchester Blood Bank to be held at the Emmanuel Church of Christ on Monday, March 28th.

A discussion was held regarding the need for repairs to the Legion Home. More information with regard to the cost should be available by the next meeting.

The next meeting will be held at the Legion Home on April 13, 1983, at 7:30 p.m. All members are invited to attend.

## Girl Scout Cookie Booth

The Girl Scout Cadette Troop 186 will have their Girl Scout Cookie Booth at Comerica Bank Jackson. It will be held Friday, March 25 from 11:00 a.m. to 5:00 p.m. and Saturday, March 26, 9:00 a.m. to 12:00 noon. We will have Carmel Delites, Peanut Butter Patties and Thin Mints.

Anyone who wants more cookies please stop into the bank. The cookies sell for \$1.75 a box. Thank you for supporting Girl Scouts.

**HARTMANN CARPENTRY**  
Licensed and insured Residential Builder With 14 Years Experience

Pole Barns Additions  
Roofing Siding  
Decks Remodeling  
Rough Ins Finish Work

**Kirk Excavating**  
Sand - Gravel - Fill Dirt  
Basements - Driveways  
Snow Removal

DAVE KIRK  
14180 Schlewels Road  
Manchester  
Phone 428-7938

**Manchester Insurance Agency**  
122 WEST MAIN STREET  
Manchester, Michigan  
Phone 428-8215  
Home - Farm General Insurance

## Nutrition in the Later Years

Diet is an important contributor to your good health. By making wise food choices, day after day, from childhood to old age, you can do much to improve your sense of well-being and your chances of staying healthy into the later years.

Making wise food choices means eating a variety of foods that provide an appropriate mix of carbohydrates, protein, fat, vitamins and minerals. It also means eating foods in the right amounts, so that you maintain your best weight. The twin goals of eating a well-balanced diet and staying at the proper weight are sometimes difficult for older people to attain.

Most people, for instance, need fewer calories, or less food energy, as they grow older. But older people generally need the same amounts of most vitamins and minerals as they did when they were young. This means that the elderly, if they are to maintain an adequate level of nutrition without gaining extra weight, should be especially careful to eat nutritious food, while cutting down on sweets, salty snacks, high-calorie drinks and alcohol.

Exercise helps to keep off extra pounds. A person who exercises regularly can eat more without gaining weight than a person who sits most of the day. Eating too little, on the other hand, can be harmful. People who don't eat enough may become sick more easily and recover from illnesses more slowly.

In addition, a diet that contains too few calories is likely to be lacking in necessary vitamins and minerals. Older people should discuss their eating habits with their doctors, es-

pecially if they have an illness, such as diabetes, that requires changes in what or how much they eat or if they are taking one or more medications for a prolonged period of time. Some medications can take away a person's appetite, and the doctor definitely will want to know when that problem occurs. Then, too, the interaction of some drugs with certain foods can change the effects of those medications. Other drugs can alter a person's nutritional needs.

A well-balanced diet includes fresh vegetables, especially dark green and deep yellow ones; fresh fruits, including citrus fruits; low-fat dairy products; lean meat, poultry, fish and/or beans; and whole-grain breads and cereals. These foods provide the nutrients and energy that a healthy body needs. Eating these foods also helps to reduce the amount of fat and salt in the diet. And that's important: too much fat may increase one's risk of heart disease, and excess salt is dangerous for people who have high blood pressure.

Calcium, a mineral found in dairy products and in dark green leafy vegetables, is important for maintaining strong bones and teeth. A lifelong diet that is rich in calcium may help to prevent the bone fractures that are common in the elderly.

Older people also should be careful to get enough vitamin D, which, along with calcium, helps to keep bones strong. Vitamin D is found in vitamin-fortified milk, liver, egg yolks and saltwater fish and is formed in the skin following exposure to sunlight.

**Schebor's Greenhouse**  
14345 LOGAN ROAD MANCHESTER, MICH.  
PHONE 428-8078 HOURS: 9-6 EVERY DAY

**EASTER PLANTS**

Yellow and Red Crown of Thorns  
Mums, Tulips, Hyacinths  
Easter Lilies, Azaleas  
African Violets, Cineraria and Daffodils

**WASHTENAW FARMERS OIL COMPANY**

CHECK WITH US BEFORE YOU BUY!

FUELS LUBRICANTS  
TIRES BATTERIES

971-7230 434-0660

# The last place you should look for an IRA.



## Because once you've seen ours, there's no need to search further.

Everyone—the banks, the savings and loans, the brokerage houses, the insurance companies—they're all shouting about IRAs. How they save taxes, build whopping retirement funds, and how you can open one any time up to April 15 and still claim a tax deduction for 1982.

But whose IRA is best?

Quite simply, ours is. And that's why we say Comerica Bank-Jackson is the last place you should look for an IRA.

### New! Self-Completing Life and Disability Insurance.

We're now offering Life and Disability Insurance on our Comerica Bank-Jackson IRA. So if you die before age 65, your estate will receive the same amount of money you'd have contributed if you lived to 65.

### Short time only! Earn up to 25% Bonus!

If you act now, we'll even pay you to make us "last"! Open an IRA at Comerica Bank-Jackson with \$1,000—and you'll earn a bonus rate of 15%. Open one with \$2,000, and you'll earn a bonus 25%. But don't wait—do it now to earn the most!

### New! More investment options.

A Comerica Bank-Jackson IRA offers more investment options than our competitors—another reason ours should be the last IRA you look at!

### New! "Add-to" Accounts.

Now you can add to your IRA investments—even, for example, during the term of a certificate. Add to your IRA on a regular basis, conveniently through paycheck deduction, and you can still earn Money Market rates.

### Go IRA shopping. Then come to Comerica Bank-Jackson.

Our IRA is best—we're confident you'll think so, too.

And you'll appreciate the friendly service—coupled with years of experience—you'll get from our Personal Bankers, who'll help you select the best IRA option for your money.

So go somewhere else—first. Then come to Comerica Bank-Jackson.

This is one time we're happy to settle for last place!

Substantial penalty required by law for withdrawal before maturity or distribution.

**Comerica**  
BANK-JACKSON