

manchester art guild news

Ten artists from the Manchester Art Guild have closed their two-week Christmas show which had been located next to The Black Sheep Theater. It was a fleeting but fine showing of talented individuals.

One of four local artists participating in the exhibit and sale, was Nancy Feldkamp. Her work has progressed in sensitivity and design. This was demonstrated beautifully in her display of watercolors and leaf prints. Even the strong contrast of pine trees on a snowy landscape was handled with spontaneity and a delicate flow of paint on paper.

Another local painter, Jo Swanberg, also has shown a great deal of growth in her media. Her watercolor and acrylic paintings make use of strong design and color elements. A difficult treatment of color was very successfully accomplished in bright greens and oranges, with one large, stunning acrylic of a bushel basket on its side, and overflowing with squash and gourds.

Margaret Goodrich displayed small quilted pictures in rustic barnwood frames. Hand-quilted, their diminutive size is not reflective of the quality and design contained within. Much of her work

involves landscapes in monochromatic color schemes. Some in this recent exhibit were "underwater landscapes with clever use of fish and seaweed in soft blues and greens. Bonnie Greenwald, a local potter, displayed a great variety of functional stoneware which showed skill in a medium difficult to master. The work exhibited in earthy blues and browns, sometimes made use of bold brushwork, and included mugs, bowls, wood vases, goblets, teapots, a casserole, and one large soup tureen which would do justice to any hearty stew or soup meal.

Although the exhibit has gone, each of these artists are active and certainly will be seen in future Art Guild presentations. Need some last-minute Christmas presents? Any one of these craftsmen would be happy to provide a unique gift.

Tax Planning

support items on their tax returns. IRS is not the only organization that expects us to keep good records to prove our points: department stores, insurance companies, stock brokers - even the grocery store - expect us to be able to prove. If you've done what is right, you have nothing to fear from the IRS.

QUICK CURRY DIP

- 1 cup mayonnaise
- 1/4 cup Carolina's Irish Cream Liqueur
- 1 tablespoon instant minced onion
- 2 teaspoons curry powder
- 1/2 teaspoon seasoned salt

In a bowl, combine mayonnaise, liqueur, onion, curry and salt. Chill until serving time. Serve dip with fried chicken or shrimp. Makes about 1 1/4 cups dip.

MANCHESTER TOWNSHIP LIBRARY
P. O.

THE MANCHESTER ENTERPRISE

20 Cents Per Copy

116TH YEAR VOLUME NO. 10 USPS 327-460 THURSDAY, DECEMBER 30, 1982

Check Your Stress Level

Stress is an everyday occurrence associated with every walk and stage of life. It is associated not only with the difficult times in life but with joyful happenings such as the holiday season as well. Learning to identify your own stress and ways to control it may eliminate health consequences.

Saline Community Hospital will be offering an 8-hour Stress Management Workshop which will aid the participant in not only identifying stress but in learning how to cope in various ways. The course outlines the effects of stress on the body and the ways in which good nutrition and exercise may be an aid in handling everyday stress. Participants will have the opportunity to take part in a relaxation training session and will be assisted in developing an individualized program for managing stress.

The dates on which the class will be held on January 4, 11, 18 and 25, 1983 from 7:30-9:30 p.m. each evening. The fee for the course is \$30. Registration is required and may be completed by calling Saline Community Hospital at 429-5435, ext. 331. Early registration is encouraged as class size is limited.

Lifeline Installed December 21 and 22

Lifeline, a personal emergency response system which helps elderly and disabled persons to maintain their independence, was installed in Chelsea on December 21 and 22.

The central response center was installed in the Chelsea Community Hospital Emergency Room. Three area residents will be the first participants in order to get the system operational.

Other participants will be added to the Lifeline System as they are identified. Lifeline is a project of the Chelsea Senior Citizens and is being made possible by a grant from the Civic Foundation of Chelsea.

Persons interested in Lifeline should contact Jackie Rogers at 475-9830.

Benefit Hockey Game

A Benefit Hockey Game for Hospice of Washtenaw will be held Friday, January 21, 1983, 7:30 p.m. at the Yost Arena in Ann Arbor.

Participating in the game will be Washtenaw County Police vs Wayne County Sheriff Association. There will be a donation of \$2.00.

Tickets are available at Great Lakes Federal and Comerica Bank, Manchester offices, and the Manchester Police Department.



Manchester Township Library
202 WEST MAIN STREET
MANCHESTER, MICHIGAN 48138

Hit or Miss

BY FARLEY

I can remember when a \$5 bill was "big money", and if you had more than one you were a big operator. But prices kept climbing and before long the five was replaced with a tenner or two, but for a time a stack of tens would take you through from one pay day to the next and you could go to the store and accumulate a great big sack of groceries for \$10.00. Then by the seventies, the tens were replaced by the twenties. When I went to the bank to cash a check the teller gave me my cash in nothing bigger than a twenty or two. I can remember having a \$50.00 bill a time or two and it made me feel that I was in the presence of big money.

Not long ago I cashed a check for \$200.00 and the cashier at the bank nonchalantly gave two \$100.00 bills and that weekend when I went out to shop, I carried one of them carefully rolled up in my pocket, reports Bob Swift in a recent column. He says he didn't want to expose it to the casual gaze. It seemed almost like illegal currency. But when they talked up my bill I had to dig down and fish it out. Hesitantly, he laid it on the counter, and glanced at the cashier. "I almost felt guilty," he said. "Sorry" I mumbled. "It's a hundred, I've got nothing smaller." She picked it up and placed it on top of a thick stack in the cash drawer and counted out my change.

"Have a nice day" she said. That hundred meant no more to her than a five.

The big spenders must have a hard time impressing folks nowadays with a mere \$100.00 bill. The Treasury Department says that in 1980, \$100.00 bills accounted for 41 percent of all currency in circulation. In 1976 it was 31 percent while in 1971 it was only 25 percent. I too am very fond of that green portrait of Ben Franklin, but only yesterday I stopped and stooped over to pick up from the sidewalk two Lincoln pennies.

Silent film star Ben Turpin began his movie career as a prop man for a producer who was operating on a shoestring.

On one occasion after the day's shooting, the producer saw Ben lifting a bouquet of flowers from the set and slip out the door. Angered by petty thievery he followed him.

He made his way to the cemetery nearby, stooped over one of the graves, took out the flowers and placed them on the grave. It was a touching scene, and moved by it, the producer felt ashamed for harboring his suspicions.

He waited for Turpin to leave the cemetery and then approached him. "Ben, that was a beautiful thing you just did, he said, choked with emotion. You have my permission to bring them here. It was a beautiful thing to do."

"I think so," said Turpin. "It's where I got them".

Continued on page 14

AUCTIONEERS

JERRY JACOB CLIFF TRACY
313-428-7975 313-428-7263
Manchester, Michigan

MEMBER OF
MICHIGAN STATE AUCTIONEERS
ASSOCIATION

Melcher Brothers

Decks-Pole Barns-Roofs
Windows-Floors-Doors-Siding
Remodeling of all Kinds

REASONABLE RATES
Free Estimates

CALL 517-456-4920
Ask for Steve or Dave

Kirk Excavating

SAND- GRAVEL-FILL DIRT
BASEMENTS-DRIVEWAYS
SNOW REMOVAL

DAVE KIRK
14180 Schlewiss Rd Manchester
Phone 428-7938

MANCHESTER INSURANCE AGENCY

122 WEST MAIN STREET
MANCHESTER, MICHIGAN
Phone 428-8215

MERRIMAN INSULATION

FREE ESTIMATE
BLOWN IN CELLULOSE
Professionally Installed

George Merriman
Phone 313-429-7962
372 Hartman Lane Saline, Mich

Happy holiday savings
10 DAY SALE STARTS TODAY

Family Independent Pharmacy

NORELCO BLOOD PRESSURE KIT
#HC1400 \$24.95 Value
\$17.99

CHAPSTICK LIP BALM Assorted Flavors
15 oz. 95¢ Value
2/90¢

ROTATRACT RAZOR
#HP1602 \$61.95 Value
\$41.47

MENNEHAWK COLOGNE 3.2 oz. \$6.00 Value
AFTER SHAVE 3.2 oz. \$4.95 Value
\$2.99

MENNEHAWK COLOGNE 3.2 oz. \$6.00 Value
AFTER SHAVE 3.2 oz. \$4.95 Value
\$2.99

DI-GEL ANTACID LIQUID 12 OZ. or TABLETS 90's Mint or Lemon-Orange
\$3.29 Value
\$1.98

TAMPAX TAMPONS
Original Regular, Slender Regular, Super or Super Plus 40's \$4.40 Value
\$3.09

SUPERIOR BRAND ECONOMY HUMIDIFIER #312 \$21.55 Value
\$13.39

ECONOMY VAPORIZER #1120 \$11.37 Value
\$6.39

METAMUCH POWDER Reg. or Orange 2.2 oz. \$1.70 Value
LESS HEAVY 1.1 oz. \$1.39 Value
YOUR GENTLEST OFFICE REMOVAL
\$6.65

RIGHT GUARD DEODORANT SPRAY 3 oz. or ROLL-ON 1.5 oz. Reg. or Unscented \$2.41 Value
\$1.44

Lette Good News! DISPOSABLE RAZORS 6 Pack \$2.38 Value
\$1.50

APPEDRINE MAXIMUM STRENGTH APPETITE CONTROL TABLETS 87¢ Value
\$2.00

SUDAFED DECONGESTANT TABLETS 30 mg. 45's \$4.41 Value
\$2.38

SUMMIT BATHROOM TISSUE By Procter and Gamble 4-Roll \$1.33 Value
85¢

CAMEO JUST DIP "Instant" Nail Polish Remover 4 oz. \$1.50 Value
93¢

BUFFERIN TABLETS 100's \$4.62 Value
\$2.79

EVEREADY 9-VOLT ENERGIZER TRANSISTOR BATTERY 2 Pack #522-BP2 \$4.95 Value
\$2.54

CAROUSEL CANDIES Fancy Hard 10 oz.
\$2.59

KRAUSS PHARMACY
128 EAST MAIN STREET MANCHESTER, MICHIGAN
PHONE 428-883

Many different aspects of being a parent are discussed in books at the library. How to get your children to do what you want them to do by Paul Wood, focuses on the hows and whys of problem behavior and how to establish a clear-cut parent-child relationship. A work sheet is included to help parents clearly see the course of action necessary to correct any difficulty. **Feeds for healthy kids** by Dr. Lendon Smith, questions and answers concerning specific health problems from infancy to puberty with suggestions on prevention, treatment and cure plus a section of healthful recipes. **Survival kit for parents of teenagers** by David Melton, proposes that parents have the right and the

wherewithal to direct their children's lives in positive ways and explores reasons behind flare-ups and confrontations between parents and teenagers. **Parenting the gifted** by Sheila Perino, a comprehensive handbook to help parents understand gifted and talented children and to consider establishing long-range programs for their benefit. **Hold them very close**, then let them go by Richard Robertiello, a reaction to permissive child-rearing popular in the post, the author shows parents how to rear their children to be able to make decisions and accept the real world. **Building self-esteem in children** by Patricia Berne, methods for adults to use in helping children feel confident, make choices, appreciate success or understand failure, build lasting friendships. **How to parent** by Dr. Fitzhugh Dodson, a classic in the field which tells parents what to do in the first five years of a child's life to prevent trouble or behavior problems in later years.

Six Seek Village Council Seat

Six candidates will be running in the Primary Election for a seat on the council. Running for three - two year terms are Clifford A. Tracy, Incumbent, Judy K. Steele, Mark A. Chapin, Tyrell N. Harris, Kathleen A. Aiuto and John A. Schaible. The primary election will be held on February 21, 1983, with all candidates being republicans.

Village Tree Pick-up

The Village of Manchester will be picking up Christmas trees on Wednesday, January 5th. Please have your trees by the curb.

Christmas Blood Mobile - 50 Pints



Christmas Eve morning at St. Mary's Church Hall, the Red Cross Blood Mobile set up a special blood clinic to collect 50 pints of blood for **Mott's Children's Hospital**. Pictured above from the left are: Ronald Punches, Robert Punches, William

Punches and Gerald Kirk. Mr. Kirk received his 5 gallon pin and Mr. Robert Punches received his 6 gallon pin. Mr. Punches and his sons have donated 102 pints of blood.

Happy New Year

Driving Drunk

President Reagan this year appointed a commission to study drunk driving and to encourage states to tighten drunk driving laws. The commission is doing what it can but voluntary groups such as MADD (Mothers Against Drunk Driving) and KID (Responsible Drivers) are doing even more.

In Florida, Alabama and many other states, tougher drunk-driving laws have been passed in recent months. They are overdue and could have saved lives if states had acted last year or even earlier.

The statistics today in this country are that an accident caused by drunk driving is estimated, and that of every two thousand drunk drivers, only about one of them is arrested.

A car thief gets, perhaps two years in jail. An intoxicated driver who kills an innocent child or two can often get off with several years of probation and a fine. While it's true that the drunk driver means it kill to one, and the thief means to steal a car, that distinction doesn't help the dead victims or their families.

Penalties must be made stiffer and are being made stiffer by more and more states as a deterrent to drunk driving. In the last decade, 254,000 Americans have lost their lives because of drunk driving. The annual fatality rate today is about 26,000. It is estimated that 75,000 are seriously injured each year, in addition, because of drunk driving.

Friday nights and Saturday nights are the most dangerous times, and more people at a young age die from drunk driving than from cancer. On those nights, one of ten drivers is often under the influence. Obviously, the nation can't tolerate this toll of tragedy and grief and financial loss.



The first Bank of the United States was chartered by Congress in 1791.



MAY THE TIMES AHEAD BE KIND TO YOU IN EVERY WAY.

SUTTON AGENCY INC.

Education is not complete if all that the student gets is a stained mind.

Politics being what it is you can expect government to be what it is.

The best way to get your share of the wealth of the country is to work hard for it.

People often seek excuses for their failures instead of trying to do something about them.

It's easy to voice an opinion before one knows much about the subject involved.

The folks who live or interest rarely worry about the troubles of the man who lives on a salary.

Those who think they're too smart to be governed by the laws of their land are over-estimating their smartness.

To think before you speak is a very good rule, if you think long enough and hard enough before speaking.



May joy and peace abide with you through the year.

FAHEY REALTY

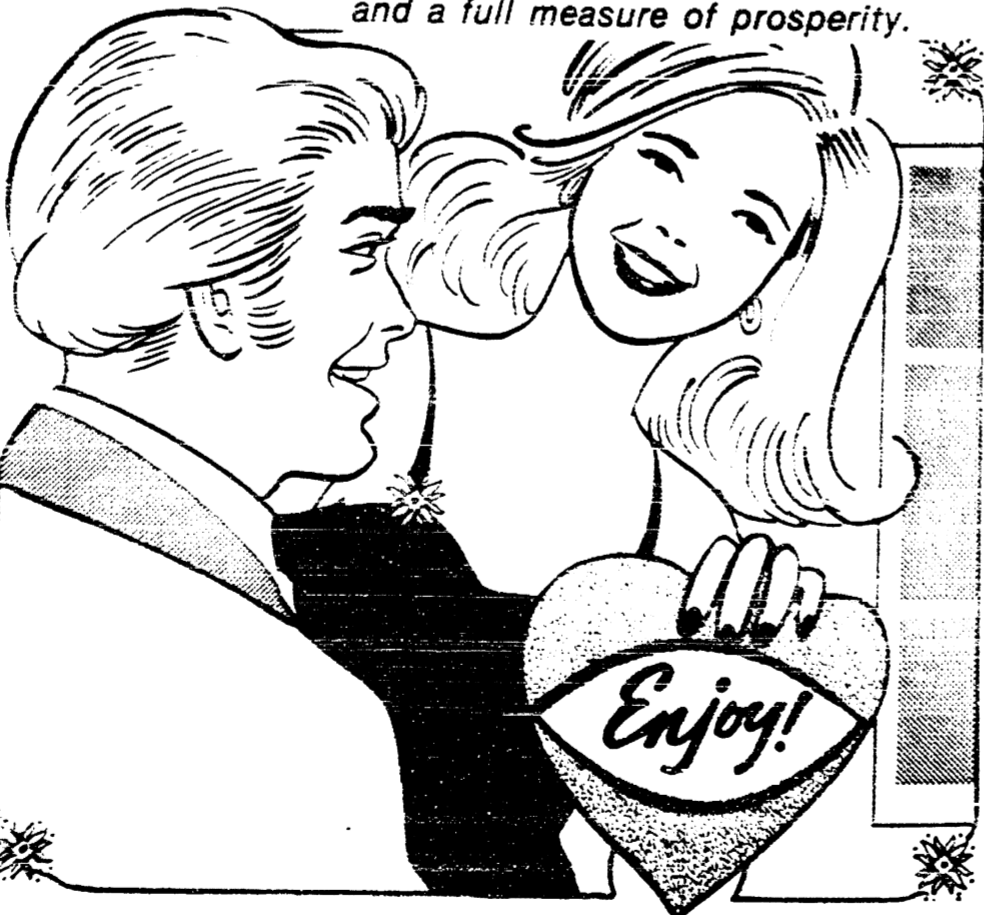


We hope you have a really great holiday and a most successful year.

R. D. Kleinschmidt Inc.

WE WISH YOU A TRULY *fantastic* NEW YEAR!

We wish you health, happiness and a full measure of prosperity.



PINNACLE ENGINEERING

Council Proceedings

Quality Laboratories Inc.	59.95
Keith Reed	20.00
Donald E. Mitchell - River Raisin Watershed Council	100.00
Ross Automotive	287.27
SLS Mechanics	202.20
Donald Smith	34.00
Patricia Smith	150.00
Russell Smith	10.00
Donald Steele	300.00
Snip & Anderson Company	108.55
Telford & Doolen, Inc.	128.94
Turb Chevrolet Co.	25.29
Clifford Tracy	40.00
TS & Service Co.	53.74
Union Construction Co.	3,240.04
Village of Manchester - Dental, Prescriptions, Optical	310.00
Village of Manchester - Petty Cash Fund	19.71
G. E. Wacker, Inc.	2,391.79
Tom Walton	10.00
Washtenaw Engineering	600.00
Water Pollution Control Federation	52.00
The Bankers Life - Well Fargo	145.72
Widmayer Ford Co.	1,781.24
	\$38,264.35
Gisting & Gisting	290.50
	\$38,554.85

Kallewaard said the zoning inspector measured the parking space at the "Old Mill".

Jim Hartmann 313-475-9301 Dan Wampler 517-456-4305

Hartmann Carpentry

Licensed and Insured Residential Builder With 14 Years Experience

Pole Barns	Additions
Roofing	Siding
Decks	Remodeling
Rough Ins	Finish Work

Fourteen spaces were inspected and four do not comply with the Village Ordinance. President Hinkley suggested that a sign, small cars only be posted in the four parking spaces. Council agreed.

Zeenyuk said he and Clarence Fielder attended The Economic Development Corp. Meeting at Washtenaw Community College. They are setting up seminars for Planning Commissions, Board of Appeals, Building Inspectors, etc., so that everything will be done the same throughout the County. They suggested that Communities be flexible in dealing with the business people already in the Communities.

A discussion followed on the purchasing of a Time Clock for the D.P.W. DuRussel moved to purchase a Time Clock, supported by Fetach. Roll call vote: DuRussel - yes, Fetach - yes, Koebe - no, Tracy - yes, Kallewaard - yes. Motion carried.

Hinkley asked Zeenyuk to get prices and information on Time Clocks.

Zeenyuk said that Terry Walkow's Ceta Program is finished as of December 10th. Ceta has another program that could extend Terry's working for another three months if the village would be willing to pay half of his wages. Council approved.

Council gave their approval for Zeenyuk to check prices on uniforms for D.P.W. employees.

Zeenyuk said there is a lecture on December 8th at Eastern University by The Corporate Council for the City of Troy, on Litigation against Communities and he would like to invite all Council Members to attend. Tracy said he would attend.

Fetach moved to buy 20 trees for Main Street from Smith's Nursery in Adrian, at a cost of \$1,200.00 plus \$300.00 for planting. Supported by Kallewaard, motion carried.

Fetach moved to adjourn the meeting, supported by DuRussel. Meeting adjourned at 8:40 P.M.

Helen J. Kanalar Village Clerk

Legislative Update

Mary Keith Ballantine 23rd District

No Pay Raises for State Officials - Salaries for top state officials, including legislators, have been frozen for 1983, according to the State Officers Compensation Commission. The Commission is appointed by the governor to determine his salary, as well as the salaries of the lieutenant governor, legislators and Supreme Court Justices.

Inauguration Day, January 1, 1983 - For the first time in nearly 40 years, Democrats will take control of both the Legislature and the Governor's office when Governor-elect James Blanchard is sworn in on the Capitol steps at noon on New Year's Day. A public reception will follow the ceremonies in the Capitol Rotunda, and that evening, two Inaugural Balls will be held; one in Lansing and one in Detroit.

Heat To Stay On Far Neady - An emergency rule submitted to Governor Milliken to help low-income natural gas customers in avoiding utility service shut-offs this winter has been approved by the Executive Office. To qualify, Michigan's most needy residents must participate in programs to better winterize their homes or take steps to reduce consumption in order to take advantage of the new emergency rule. The rule will be in effect through April 1, 1983 for Michigan Consolidated Gas Company and Consumers Power Company customers.

Grandparents' Bill Awaits Signature - Governor Milliken is expected to sign into law legislation approved by the Michigan House and Senate that expands the rights of grandparents to visit their grandchildren during child custody disputes. Current law does not guarantee the grandparents visitation rights to their grandchildren if the grandchildren have been adopted by a stepparent. The new law, if enacted, also stipulates that visitation would be permitted only if it was

in the best interests of the grandchildren.

Two Women On Supreme Court - On December 24, Michigan Supreme Court Chief Justice Mary Coleman will retire after nine years on the state's highest court. But between now and then, Michigan has two women justices, a first for a state supreme court. The other justice is Judge Dorothy Comstock Riley, who was appointed to fill the terms of the late Justice Blair Moody, Jr. who died on Thanksgiving Day. The Governor also appointed Lt. Gov. James Brickley to fill the seat being vacated by Justice Coleman.

Session Adjourns - After dealing with unemployment compensation reform and a comprehensive transportation package for Michigan, the 81st Michigan Legislature's 1982 Regular Session will adjourn "sine die," until mid-January when the newly-elected State Legislature convenes for the 82nd Michigan Legislature's 1983 Regular Session.

Girl Scout Troop 343

We have been doing many interesting things this year in scouting. We learned about safety rules at the police station, the history of the flag, made tree ornaments, learned how to glass etch and went camping and caroling.

Troop 343 would like to thank Mrs. Edna Knauss for telling us about the history of the flag and the police station for letting us come to the station. Our troop would also like to thank Officer Mabony for showing us around and telling us some safety rules. I'm sure everyone in troop 343 would like to thank Mrs. Diane Schwab for putting up with us and letting us camp at her house when our plans were changed.

Troop 343 Secretary Dawn Wenk

Get Money Fund Can Offer, Plus...

- Insured Safety • Check Writing Capability
- 60 Statewide Offices to Service Your Account • Same Day Withdrawals...
- No Wait... No Penalties • Your Dollars Help Your Community... Not New York.

HOW CASH FUND WORKS
With the Great Lakes Cash Fund you get money market rates, immediate accessibility to your funds, plus insured safety. And you can open a Cash Fund Account with just \$2500 at any Great Lakes Office.

With Cash Fund, you can make deposits or withdrawals anytime...no wait, no penalties. Each month you receive a statement reflecting the interest earned, account activity and your balance.

Interest is compounded monthly providing you an even higher rate of return—a feature uncommon to most Wall Street funds. Your Great Lakes Cash Fund features check writing capability and, unlike most Wall Street funds, requires no minimum amount for which your checks must be written.

GREATER SAFETY THAN A WALL STREET MONEY FUND
At Great Lakes Federal, your accounts are insured to at least \$100,000 with an agency of

the federal government. Different account ownership can provide additional insurance coverage. No Wall Street fund offers you this kind of protection.

BETTER ACCOUNT SERVICING
Sixty statewide offices make the handling of your financial business so convenient. No need to travel long distances to a brokerage office or to send burdensome paperwork to New York. Since your transactions are processed locally, deposits to your Great Lakes Cash Fund begin earning interest immediately.

CASH FUND DOLLARS
The money you invest in a Great Lakes Cash Fund stays in your community, and is used to help speed economic recovery in our state. If you want high interest, instant accessibility to your money and more security than a Wall Street fund can offer, come to GLFS.

THE NEW
CASH FUND

GREAT LAKES FEDERAL SAVINGS
60 Statewide Offices To Serve You - Member FBLC

Are You A Prime Target For Sudden Cardiac Death?

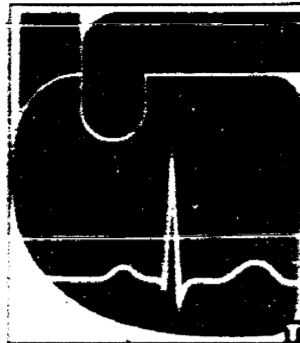
Do you smoke? Are you overweight, inactive, or under stress? Do you have heart disease? Or have you suffered a heart attack?

Take a good look at yourself. According to doctors, if any of these sound familiar, you could be more susceptible than others to sudden cardiac death.

While many factors that increase the risk of sudden cardiac death—age, gender, and genetic inheritance—are uncontrollable, many factors such as smoking, obesity, high blood pressure, inactivity, and stress can be controlled.

The most obvious place to begin is diet. Most people eat too much fat, salt, cholesterol, and sugar. Cutting down is an essential part of reducing risk.

Smoking is harmful and should be eliminated. Emotional stress also contributes to the potential for sudden cardiac death, because it increases blood pressure, heart and metabolic rate, and blood flow. This places extra demands on the circulatory system. Physicians have found ev-



idence that the presence of ventricular premature beats (electrical instability in the heart) represents increased risk for sudden cardiac death, particularly in patients with underlying heart disease. Among these patients, premature beats may indicate the future likelihood of more life-threatening arrhythmias and therapy is mandatory. The important thing is to see a doctor at least once a year for a complete medical check-up. He or she can assess your degree of vulnerability so that appropriate preventative measures can be taken.

DON'T NEGLECT FIBER

Fiber or roughage is very much in the news today. You know the importance of getting enough bulk each day. Fiber crashed into the headline news recently when leading physicians noted that in areas of the world where people ate much fiber, there was a marked reduction in digestive problems such as diverticulosis, hemorrhoids, varicose veins, irregularity. Suggestions were made about boosting fiber intake to help protect against such disorders. You know about the values of bran, wheat germ, and wholegrain foods for fiber. But did you know that naturally sweet California dried figs can be a great-tasting source of important fiber?

Figs and Fiber. If you enjoy just 3 1/2 ounces (about one-half cup) of dried figs each day, you'll receive 5.8 grams of fiber. Food specialists say you should have about 6 grams daily. So just add a tablespoon of bran and you have your required amount of digestive-helping fiber. And it tastes so good, too.

A Few Dried Figs a Day... just may help keep the doctors away. Other foods are processed and may have fiber stripped away. So turn to tasty dried figs as a great source of this "roughage" that helps protect against many illnesses ranging from digestive disorders to infectious bacteria. Plan to enjoy dried figs daily... and enjoy good health as a tasty bonus!

For free recipe and nutrition information, send long, self-addressed, stamped envelope to: California Dried Figs, Dept. W-1, P.O. Box 788, Fresno, CA 93712.



New Year Joy

Homeward bound, at season's end, we remember and are thankful for your friendship and good will.

Back Door Party Store

New Year Greetings

Join in the celebration as we ring in the new season with friends and loved ones. All our best wishes and thanks!



MANCHESTER INSURANCE AGENCY



From our House...



To your House... **HAPPY NEW YEAR**

And sincere wishes for health, happiness and good fortune in the days to come.

G. E. WACKER INC.



happy new year

We wish the very best of everything to our many friends and customers. Have a very good year!

Comerica
BANK-JACKSON

WE WILL CLOSE AT 1 P.M. FRIDAY, DECEMBER 24, 1982 AND FRIDAY, DECEMBER 31, 1982

NEWS OF HEALTH

Some Facts You May Not Know About Ulcers And Their Treatment

The major cause of duodenal ulcers is not stress. The best treatment is not a bland diet and large quantities of milk and cream.

Sound surprising? The fact is that such ideas continue to be popular despite their disproval by recent research.

No specific cause for duodenal ulcers is known but stress and diet aren't the major contributors. Experts do know that smoking and heavy doses of aspirin are linked to ulcers. Heredity is another factor.

The theory of small, frequent, bland meals has been disproved by research showing that patients on normal diets healed as well or faster. Frequent eating also stimulates acid secretion, leading eventually to an overall increase in gastric acidity. Milk tends to stimulate acid production in the stomach and is not recom-



mended in large quantities for ulcer patients.

Scientists don't know the reason as yet, but seasonal changes have been found to play a role in the incidence of duodenal ulcers. Research from around the world indicates an increased incidence during cold weather months.

Whether the weather is warm or cold, if you have chronic stomach pain, you should see a doctor.

This information comes from Smith Kline & French Laboratories, discoverers of the prescription drug "Tagamet".

Ice Cream

Old-time ice cream was made with real cream, perhaps fresh fruit and other natural ingredients and often churned. It didn't take the smart producer long to learn he could turn out an imitation which tasted good too, and spew it out of machines, almost endlessly.

Today, few of us eat anything like old-time ice cream. That's good for those who don't want the calories but some phony ice cream today isn't even made with low-fat milk.

Reading

In this age of television, with movies and automobiles and other pleasant diversions, one is often left insufficient time for reading. And yet this has been the making of most of the learned men and women of history.

Reading still is the only road to a complete education. You cannot educate yourself watching television or going to the movies.

One must take the time to read subjects which interest him to be informed.

One should also read unpleasant subjects to give intelligent opinion. After this, read about things which interest you.

ONE MINUTE SPORTS QUIZ

1. Who won the World Seniors Invitational Golf tournament?
2. Who was 1981 LPGA's Rookie of the Year?
3. Who won the Southern Open golf tournament?
4. Joe Torre manages what pro baseball team?
5. Tom Lasorda manages what pro baseball team?

Answers To Sport Quiz

1. Gene Littler.
2. Patty Sheehan.
3. Bobby Clampett.
4. Atlanta Braves.
5. L.A. Dodgers.

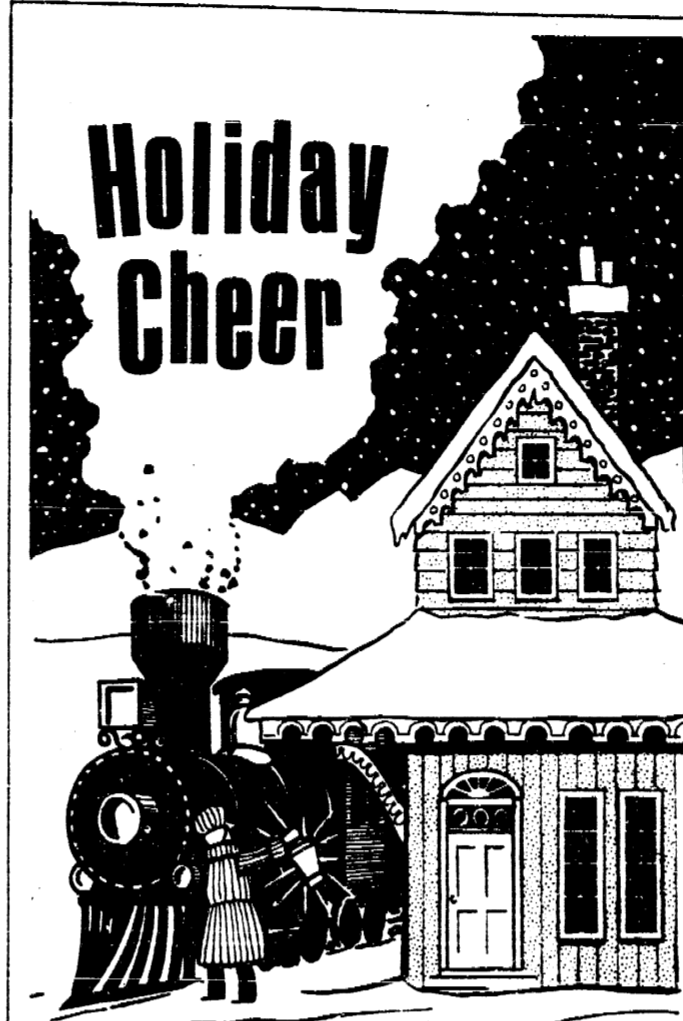


Joy...
In the true spirit of Christmas, we wish you abundant joy and peace.

Village Hair Forum

A lot of worry can be passed on other people. Facts are better than dreams, 'f pleasant.

Some people suspect their friends quicker than any one else and are ready, at all times, to accuse them of unkindness.



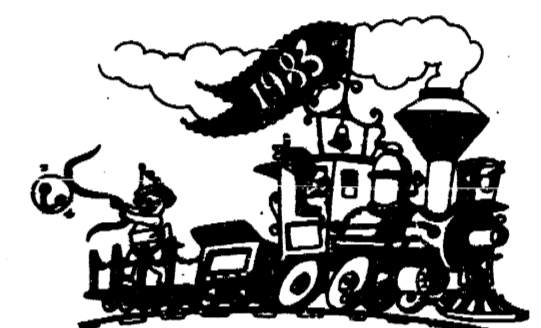
May the New Year bring continued peace and prosperity to the community, to our neighbors and friends.

Double A Products Co.
Manchester, Michigan
A Subsidiary of Brown & Sharpe Manufacturing Company



The good life that we have shared... the good friends who often come our way... These are the best of yesterday and the beautiful promise of tomorrow.

MANCHESTER ELECTRIC INC.



Seasons Best

1983 is comin' down the line! May it take you more happiness and success than ever before. We wish you all the best... along with our thanks!

Norm Walz Construction



NEW YEAR Greetings

At the start of a new season, we pause on memory lane to recall the good times, the good friends and to say, "We're thinking of you."

K & W EQUIPMENT INC.

Want to earn 8½%
and write as many checks
as you want?
Open

THE SUPER ACCOUNT

Open today. You'll earn at a super 8½% annual rate, and you'll have unlimited check-writing privileges.

Open the Super Account at Comerica Bank-Jackson with \$2,500 or more. Your money will earn at an 8½% annual rate through January 31, 1983. After that, your money will continue to earn at high Money Market rates. What's more, you'll be able to write as many checks on your money as you want.

You get the security of F.D.I.C. Insurance, too.

Unlimited check-writing and high, Money Market interest aren't the only super features of The Super Account. Your money is insured—for up to \$100,000 — by the F.D.I.C., too.

No early withdrawal penalties.

With the Comerica Bank-Jackson Super Account, write as many checks as you want with no early withdrawal penalties. Best of all, you can make deposits and withdrawals anytime, for any amount, at any Comerica Bank-Jackson neighborhood office or through BJ's® 10 convenient Wonderbank® locations.

The Super Account. It's another first from Comerica Bank-Jackson.

Sign up now, start earning interest at 8½%, and write as many checks as you want with The Super Account, only at Comerica Bank-Jackson. Get all the details, and open your account at any of our neighborhood offices.

Comerica

BANK-JACKSON

Member F.D.I.C.

Want to earn 10%
on your savings and
a 20% bonus
on interest earned?

Order
C.O.D.*
Super
Savings Account
*Cash on Demand

Order now. You'll earn a 10% annual rate and a bonus of 20% on interest earned through February 28, 1983.

Order C.O.D., Comerica Bank-Jackson's Cash on Demand Super Savings Account, with \$5,000 or more. Your money will earn at high Money Market interest rates. And if you order right now, your money will earn at a 10% annual interest rate. Plus a bonus of 20% on interest earned through February 28, 1983.

Make deposits and withdrawals, anytime.

You can make deposits and withdrawals as often as you wish at any time, even through BJ's® 10 convenient Wonderbank® locations.

Fully insured by F.D.I.C.

Not only do you get high Money Market interest rates on your C.O.D. Super Savings Account, your money is insured up to \$100,000 by the F.D.I.C.

The C.O.D. Super Savings Account. It's another first from Comerica Bank-Jackson.

Hurry. Order before December 31, 1982, to earn 10% annual interest and a bonus of 20% on interest earned through February 28, 1983. Get all the details and open your account at any of our neighborhood offices.

Eligibility for bonus applies to individuals only.

Comerica

BANK-JACKSON

Member F.D.I.C.

Buying A Wood Stove?

It's estimated that five million Americans now own wood stoves. The number is growing annually, as the cost of heating fuel steadily increases. And while in many cases burning wood has saved money for homeowners, a wood stove is not for everyone.

An adequate supply of wood—its availability—is one necessary condition. Its price is another. Today, it's estimated that if the home owner can buy wood at less than a hundred dollars a cord, wood heat is economical. But if one must pay—as some in cities must—\$150 and \$200 a cord, there probably isn't any saving.

And handling wood is a much more demanding job than using oil, electricity, or gas. A wood stove takes constant feeding and someone must haul the wood to it regularly. That would not be feasible for many elderly people, or for the infirm or for many females.

There are also dangers involved. Fires are more likely with wood stoves. A major danger is a buildup of creosote in flues and chimneys—which can ignite under very hot temperatures. So not only must ashes be taken out regularly, but chimneys and flues should be cleaned periodically—or chemicals used when burning wood to prevent buildup.

What many are doing is putting in a wood stove for supplementary or emergency heating. They use the wood stove only in the coldest months, or in cold spells. They have it available, also, when and if power is cut off, or if gas or oil supplies run out. Remember that with wood stoves utilizing fans, when the electricity goes out, the fan won't function, and that kind of wood stove will not heat properly in an emergency.

Since there are more than 400 wood stove manufacturers today, producers having sprung up fast in all parts of the country as many sensed a good thing in the wind, the buyer should learn something about the various locally-available models and question people who own them, before installing one. And when doing so, buy a fire extinguisher, a smoke detector and a metal ash bucket, as part of your program.

Food Costs

The Department of Agriculture offers some helpful advice for those who wish to keep food bills down.

First, eat out less. Despite the convenience and apparent cheapness of restaurant food, in most cases families can save considerable money eating at home. Second, avoid imported foods. They are high in price and are going higher. They must come quite a distance and are usually not as fresh as U.S.-produced food.

Buy when foods are at their seasonal low. Pork, for example, is always lower in fall. Chicken also is often cheaper in the fall.

Also in certain areas, tomatoes and certain greens can be grown in the Sunshine Belt and in other areas certain foods can be grown in green houses or inside the home.

The average student takes too long to learn too little.

Almost any efficiency expert can speed up another man's business.

You can go a long way if you are interested in other human beings.

Good manners are good form, even on the highways.

Most people are ready to spend someone else's money.

Every citizen complains about the taxes he has to pay.

Have you ever met anyone who had nothing to complain about?

There is great danger that what we consider important is unimportant.



"Should Auld Acquaintance be forgot"

Auld Lang Syne

... And a happy Year to our friends, old and new.

BLACK SHEEP TAVERN



To one and all

Our heartfelt wishes for a year of joy and fulfillment.

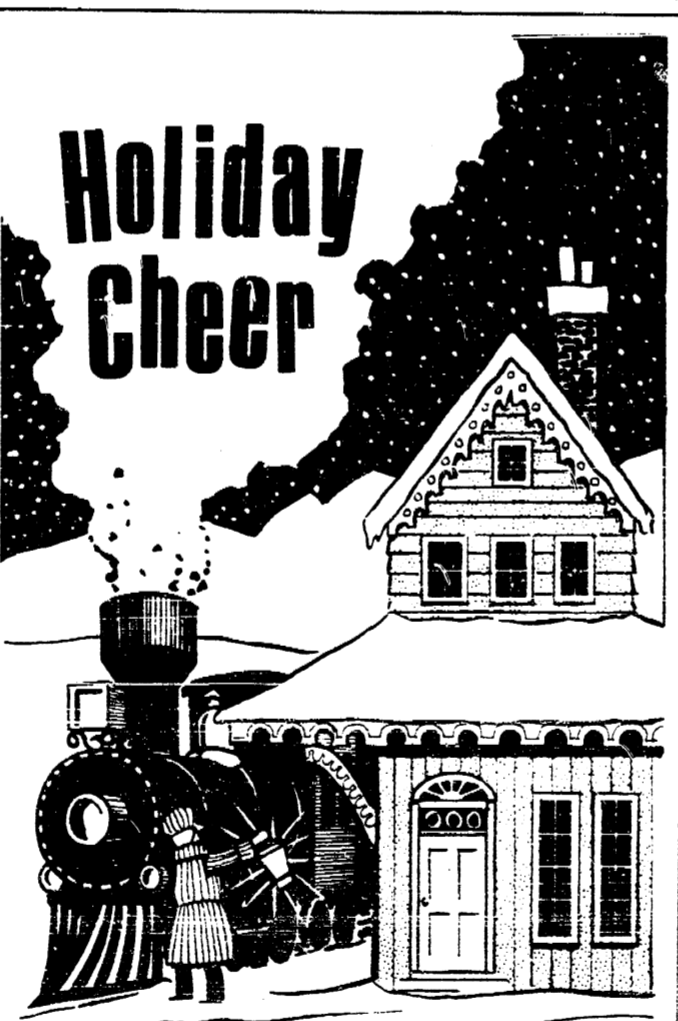
Ross Automotive



GREETINGS

As the New Year dawns, we think of friends and wish them well.

THE FLOWER GARDEN



Holiday Cheer

May the New Year bring continued peace and prosperity to the community, to our neighbors and friends.

MANCHESTER TOOL and DIE, INC.

QUICK QUIZ

Whether or not you liked math in school, just think of the many times these skills are used in everyday life. Balancing a checkbook, preparing budgets, shopping for a good value and calculating time are just a few examples.

To find out how well you use math to solve life's problems, test yourself with these questions taken from "Consumer and Career Mathematics," a high school textbook published by Scott, Foresman and Company. Answers follow the quiz—but don't peek!

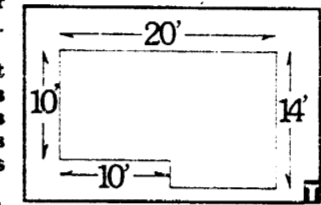
1. Your gross pay is \$150. Your deductions are \$20 for income tax, \$9 for FICA, and \$2 for insurance. What is your net pay after deductions? A. \$119; B. \$121; C. \$160; D. \$181.

2. Which is the lowest sale price? A. \$4.50 less 10% discount; B. \$5.00 less 20% discount; C. \$6.00 less 30% discount; D. \$7.00 less 40% discount.

3. Which is the lowest price per can? A. 4 for \$1; B. 3 for \$0.90; C. \$0.30 each; D. 5 for \$1.20.

4. Ann is paying for a stereo with 18 equal monthly payments. The stereo costs \$480. The finance charge is \$60. What is the total monthly payment? A. \$30; B. \$45; C. \$420; D. \$640.

5. Once a year Seiko pays \$260 for life insurance. How much should he budget each week for this insurance? A. \$5; B. \$10; C. \$22; D. \$26.



9. How much floor covering would you need to cover this floor? A. 140 sq. ft.; B. 200 sq. ft.; C. 240 sq. ft.; D. 280 sq. ft.

10. Your car was parked in the parking lot from 8:45 a.m. until 9:10 p.m. How long was the car parked? A. 25 minutes; B. 11 hours, 35 minutes; C. 12 hours, 25 minutes; D. Almost 24 hours.

ANSWERS: 1. A. 2. B. 3. D. 4. A. 5. B. 6. C. 7. C. 8. D. 9. C. 10. C.

Greetings To You In Many Languages

HAPPY NEW YEAR (English)

GLUECKLICHES NEU JAHR (German)

ONNELISTA UUTTA VUOTTA (Finnish)

GODT NYTT AR (Norwegian)

A GLICKLUCH NIE YUOR (Yiddish)

FELIZ ANO NUEVO (Spanish)

SZCZESLIWEGO NOWEGO ROKU (Polish)

BONNE eHEUREUSE ANNEE (French)

BUON CAPO D'ANNO (Italian)

T-not-SI a tu ala u rit (Eskimo)

GELUKKIG NIEUW JAAR (Dutch)

SHIN NEN O-ME DE TO (Japanese)

BLAIDHAN NUA FE MHAISE DHUIT (Irish Gaelic)

ANNU NOVUM FAUSTUM FELICEM (Latin)

GLEDLIL NYT AR (Icelandic)

GOON HO SINN SHEE (Chinese)

GLAEDELIGT NYT AAR (Danish)

STASTNY NOVY ROK (Czech)

WELSHYDDYD NEWYDD DDA (Welsh)

BLAIDHNA MHATH UR (Scottish Gaelic)

Smiley Face Pancakes



Have you ever had a pancake look right back at you and grin? Smiley Face Pancakes do! They're a novel way to brighten up a meal or perk up a children's party.

These cheery pancakes are also simplicity plus because they require only four basic ingredients: buttermilk complete pancake mix, cocoa, sugar and water. Since the pancake mix already contains flour, buttermilk, egg, shortening and leavening, it's convenient to use. And, there's less mess to clean up.

The eyes, nose and mouth on each gleeful face are actually small cocoa-flavored pancakes. Make them first, and simply pour buttermilk pancake batter over these mini pancakes when they're nearly set.

Kids really flip over these flapjacks. Served with maple flavored table syrup, Smiley Face Pancakes are as fun to eat as they are to make.

Smiley Face Pancakes
1 1/3 cups buttermilk complete pancake mix
2 teaspoons unsweetened cocoa
1 teaspoon sugar
1 cup water

Heat griddle over medium-high heat (375°F. electric griddle). Grease lightly. In small bowl, combine 1/3 cup pancake mix, cocoa and sugar; add 1/4 cup water, mixing until smooth. Using a teaspoon, drizzle batter onto hot prepared griddle to form eyes, nose and mouth. In medium bowl, combine remaining 1 cup pancake mix and remaining 3/4 cup water, mixing until batter is fairly smooth.

When smiley faces are nearly set, pour about 1/4 cup batter over each. Turn when pancakes begin to rise and edges look cooked. Turn only once. Serve with butter and maple flavored table syrup. Makes 7 to 8 pancakes.



Warm Wishes

Our very best wishes for a happy, prosperous New Year.

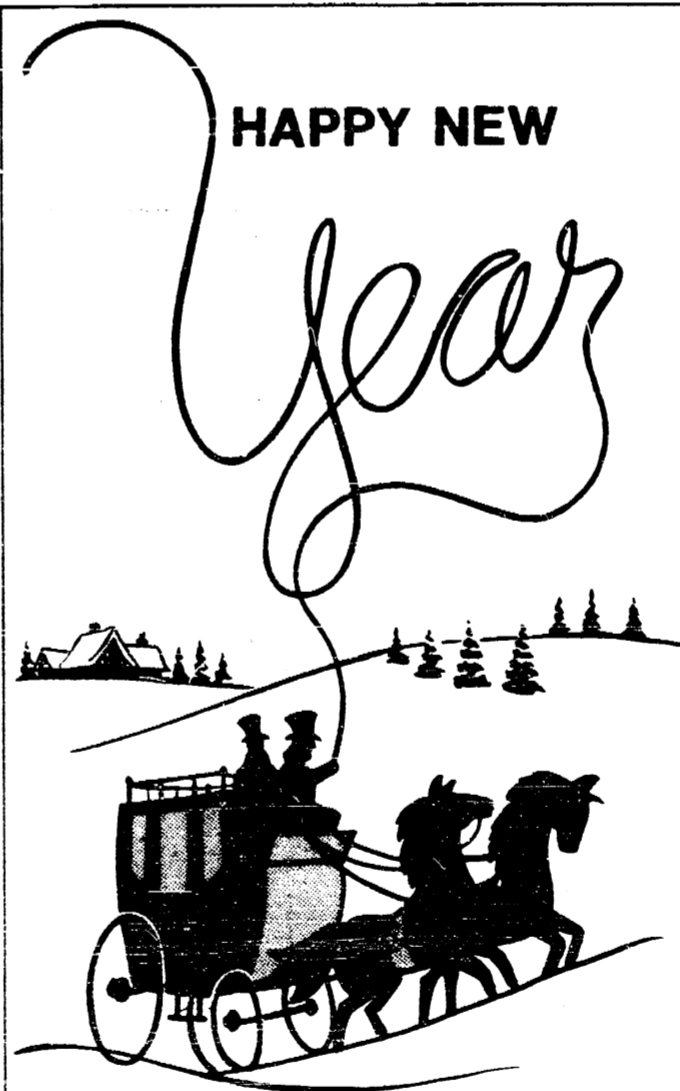
LARRY BECKTEL

Farm Bureau Insurance



It's an old-fashioned greeting that's never out of style. We appreciate your confidence and good will.

KEITH'S BARBER SHOP



HAPPY NEW

Year

And may the days ahead bring health, happiness and the wealth of great friendships.

MANCHESTER STAMPING CORP.



We wish all our friends a Happy Holiday. "Thanks" for your good will and continued patronage.

TIRB CHEVROLET CO.

HAPPY NEW YEAR

And to all our friends a special word of thanks for your patronage during the past year.

FILLYAW'S SERVICE

GREETINGS

As the New Year dawns, we think of friends and wish them well.

THE FLOWER GARDEN

Holiday Cheer

May the New Year bring continued peace and prosperity to the community, to our neighbors and friends.

MANCHESTER TOOL and DIE, INC.

HAPPY NEW Year

And may the days ahead bring health, happiness and the wealth of great friendships.

MANCHESTER STAMPING CORP.

Warm Wishes

Our very best wishes for a happy, prosperous New Year.

LARRY BECKTEL

Farm Bureau Insurance

HAPPY NEW YEAR

It's an old-fashioned greeting that's never out of style. We appreciate your confidence and good will.

KEITH'S BARBER SHOP

happy new year

We wish all our friends a Happy Holiday. "Thanks" for your good will and continued patronage.

TIRB CHEVROLET CO.

BOWLING

MANCHESTER TOWN CLUB

Norm Walz	72	40
DuRussels	68	44
R & F Tree Service	68	44
National Bank of Jackson	64	48
Jenters	57	55
Lyle Cundiff AAA	46	66
Manchester Deli	45	67
Village Hair Forum	38	74
V & F Builders	34	78
Manchester Enterprise		
200 GAME		
Tootie Armentrout	215	
T.V. Ludwick	201	
500 SERIES		
Joan Day	511	
Faye Walters	506	
HIGH INDIVIDUAL GAME		
Carol Rentz	245	
Candy Klapperich	236	
Joan Day	230	
HIGH INDIVIDUAL SERIES		
Candy Klapperich	657	
Carol Rentz	616	
Joan Day	575	
HIGH TEAM GAME		
Lyle Cundiff AAA	870	
Village Hair Forum w/h	870	
HIGH TEAM SERIES		
Lyle Cundiff AAA	2397	
Jenters Funeral Home w/h	2427	

MANCHESTER BUSINESSMEN

December 28, 1982		
Double A #2		70
K # W Farm Supply		35
Steele's Heating & Cooling		63
Little Wack Excavating		59
K of C		59
DuRussel Brothers		58
Double A Products		57
Back Door Party Store		57
Ross Automotive		53
The Dutchmen		51
Superior Land Developers		49.5
Kirk Excavating		48
National Bank of Jackson		47.5
R.D. Kleinschmidt		47
Waterloo Village Market		45
Bridgewater Tavern		43
Manchester Electric		41
HIGH TEAM SERIES		32
Kirk Excavating	3208	
Superior Land Developers	3193	
Ross Automotive	3191	
HIGH TEAM GAME		
Double A #2	1138	
Back Door Party Store	1137	
Steele's Heating & Cooling	1130	
HIGH INDIVIDUAL SERIES		
John Day	642	
Jay Scott	643	
Al Hanewald	620	
Keith Reed	620	
HIGH INDIVIDUAL GAME		
John Day	268	
Kevin Rock	267	
John Schauble	253	
HIGH GAME FOR WEEK		
Gale Steinaway	242	
Bill Alber	237	
Ralph Wurster	236	
HIGH SERIES FOR WEEK		
Dave Walton	592	
Larry Benedict	577	
Ralph Wurster	573	

MANCHESTER WOMEN'S

December 21, 1982		
Dace's Garage	304.5	175.5
Gill's Gambles	287	198
Bilmever Hardware	280	220
Weatherwax	252	228
Pine Grove Bait	252	228
Columbia Phumb. & Heat.	249.5	230.5
Town Laundry	225.5	254.5
Brandy's	85.5	294.5
Mowrys	186	296
Jimmy's Filling Station	199	251
HIGH INDIVIDUAL GAME		
Brenda Walz	219	
Millie Stockwell	206	
Ginny Kanka	206	
Marilyn Hannibal	204	
HIGH INDIVIDUAL SERIES		
Brenda Walz	570	
Barb McMichael	532	
Mable Farmer	525	
Sharon Welsh	519	

Splits: Kathy Kanka 4-10.
Ginny Kanka had her first 200 game and 500 series this season. 205 game and 508 series.

FREEDOM ELECTRIC
11207 Pleasant Lake Road
Manchester, Michigan 48158

NEW CONSTRUCTION
COMMERCIAL AND INDUSTRIAL
GILBERT LUCKHARDT
428-8233

Fahey Realty
215 East Main St. Phone 428-9296 Manchester, Michigan
OFFICE HOURS: 9-5 MONDAY THRU FRIDAY SATURDAY 9-12 NOON

REDUCED \$34,000 Starter home in village. 4 bedrooms attached 1 car garage. Land Contract possible.

REDUCED \$49,500 Four bedroom on three village lots. New roof and siding, gas heat. Bright enclosed porch fully heated for year-round use, first floor utility.

New Listing \$67,500 3 bedroom ranch, immaculate and easy to maintain. On 1 acre, paved road north of Manchester.

\$82,800 Cute 3 bedroom brick ranch on 2 acres. Home features extra insulation, large basement, woodburner, two car attached garage.

Surprise Open House



Mr. and Mrs. Bennie Boner of Wayne, formerly of Manchester, will be celebrating their 50th Wedding Anniversary, Friday, December 31 at 2:00 p.m. with a Surprise Open House.

The couple were married December 24, 1932 in Blakely, West Virginia.

The party is given by their ten children, to be held at the home of, son, Randall Boner, 2140 Milky Road, Saline. The children are: Barbara Coleman of Plymouth, Dale Boner of Wellington, Ohio, Frank Boner of Wayne, Boyd Boner of South Rockwood, Michigan, Carol Coleman of Jodie, West Virginia, Linda Parker of Manchester, Randall Boner of Saline, Beverly Gill of Gibraltar, Michigan, Jerry Boner of Manchester and Patsy Hagerman of Avon, Ohio.

They also have 27 grandchildren and 2 great grandchildren.

Bennie is a retired coal mine worker and his wife Ethel is a member of the Victory Baptist in Manchester.

Surveys size up heating bills Gas heat still cheapest

With the arrival of winter, many Michigan residents are keeping one wary eye on the weather and the other on their heating bills. Whether their good or bad news depends largely on which heating fuel they use, and who their fuel supplier is.

Natural gas heats more Michigan homes—about 70 percent—than any other fuel. It also is the cheapest of the conventional heating fuels.

For example, Consumers Power Company estimates that the total 1982 gas heating bill will be about \$570 for the typical size single-family home in its service area. Heating that same house with oil would cost about \$1,080, or 89 percent more. Using propane would cost about \$1,110, or 95 percent more. Unless insulation is greatly increased, an electric heating system would cost \$1,260, more than twice the cost of heating with natural gas.

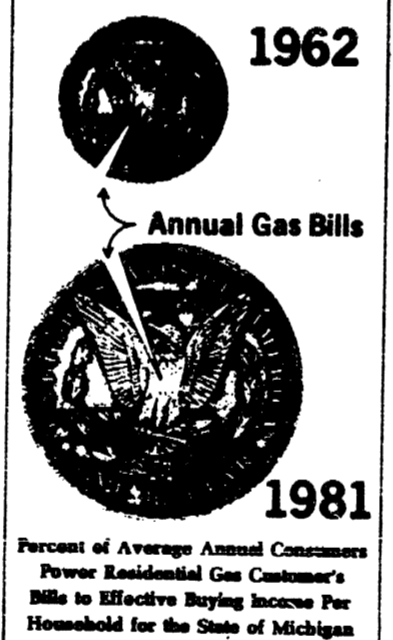
In Michigan, natural gas is provided by 10 utility companies. An October survey that compared rates from nine of the firms shows that at most consumption levels, Consumers Power's residential gas customers have the lowest heating bills in the state.

Most of Consumers Power's commercial and industrial customers are also paying less than they would for comparable gas volumes purchased from any of the other eight utilities, according to the survey.

The company's typical customer also is paying less to keep warm than he would in any of the country's 25 largest cities, according to a survey completed this month. The survey compares bills for 25 Mcf of natural gas.

Consumers Power's bill is about 11 percent cheaper than the cost in Memphis, the least expensive large city. It is 85

Effective Buying Dollars



percent cheaper than in New York City, the most costly of the nation's large cities for natural gas heat.

Even though it is still the cheapest conventional heating fuel, natural gas hasn't escaped the same inflationary push that has caught hold of most other products. Nonetheless, many natural gas users are paying smaller portions of their incomes to keep warm than they were 20 years ago.

In 1981, for example, Consumers Power says its average residential heating customer spent 2.06 percent of his or her household's effective buying income on natural gas. In 1962, that natural gas bill accounted for 2.73 percent of the household's income. Effective buying income is a family's total personal income minus federal, state and local taxes.

This advertisement is paid for by the shareholders of Consumers Power Company.

HAPPY NEW YEAR

Season's best to all the fine people of the community.

Manchester Deli

HAPPY NEW YEAR

Ring out the old, in the new, and sing of Auld Lang Syne.

Our very best to one and all.

Albers Orchard and Cider Mill

Cleaner Air

With the installation of a high efficiency air cleaner, you'll breathe air that is practically free of pollutants which cause discomfort. Even microscopic airborne particles are removed from the air circulating through your heating/cooling system.

Less Cleaning, Decorating

With a high efficiency air cleaner, there will be less dust in the air to settle on places you have to clean or dust. And you won't have to wash the walls or redecorate as often.

Reduced Pollen

People aggravated by pollen in the air will find considerable relief with a non-electronic air cleaner which removes 99 percent of a home's pollen and spores from the air circulated through the unit.

Table Grapes—Great For Snacking And Desserts

Fresh California table grapes with their refreshing flavor and crisp delicious taste are ideal for snacking, but they also complement other foods for easy yet different desserts. Mexican Cookies prepared with ready-to-use packaged flour tortillas and paired with fresh grape clusters is just such a dessert.

These delicious cookies with their cinnamon-sugar topping have a flavor that is reminiscent of crisp-baked pie crust topped in the same manner. They are best served slightly warm with chilled clusters of vividly colored red, green or blue/black table grapes.

For a more elaborate dessert, place seeded or seedless table grapes in individual dishes and top them with sour cream or yogurt and a sprinkling of brown sugar; then, pass the cookies.

MEXICAN COOKIES

12 (7 to 8-inch) flour tortillas
1/4 cup butter or margarine, softened
1/2 cup sugar
2 teaspoons ground cinnamon
1 square (1 oz.) semi-sweet chocolate, grated
Clusters of chilled green, red or blue/black California table grapes

Butter tortillas; place on ungreased baking sheets. Mix sugar and cinnamon; sprinkle on tortillas. Bake at 325°F, 15 minutes. Remove from oven and sprinkle with grated chocolate. Cool slightly (tortillas should be crisp). Serve with clusters of grapes. Makes 12 servings. Recipe may be halved.

Tip: Tortillas may be cut into quarters before baking for easier handling.

Ring in the New!

Let the New Year be welcome for the time it brings to strive, to do, to make new friends, and keep the old.

Best Wishes.

THE VILLAGE OF MANCHESTER

Happy NEW YEAR to you.

May you find success, good health and many friends through the days yet to come.

MANCHESTER LOCKER PLANT



RESPIRATORY DISEASES
Shakespeare's King Richard III spoke of the winters of our discontent. Here in Michigan we might refer to the winters of our respiratory distress.

Dinner To Be Held For Max Walter

A dinner for Max Walter, who was named "Manchester Mason of the Year" will be held January 14, 1983, at the Emanuel United Church of Christ, 324 W. Main St., 7:00 p.m.

Commissioners To Make Three Appointments

The Board of Commissioners on February 3, 1983, will make three appointments to the recently established Handicap Advisory Committee to advise the Board of Commissioners.

Ask The Governor

Question: My husband has purchased a snowmobile this year. We need to know whether it's legal for our 10 and 13 year old children to operate it?

Safety education classes are offered by volunteer instructors and by some local sheriff's departments. Your Department of Natural Resources district office will have a list of available classes.

Shakespeare Reading Club

The members and one guest of the Shakespeare Club met December 16th, at the lovely restored country home of Mr. and Mrs. Howard Parr.

Agriculture In Action

The tremendous outpouring of sharing in response to "Project AIM," the agricultural industry effort to help feed Michigan's hungry, proves how wrong those cynics are who claim that the spirit of Christmas is dead.

SOMEbody DOES CARE

The true spirit of Christmas burns brightly in the hearts of farmers, whose net incomes are the lowest they've been in years, but who eagerly donate their commodities, their time and what resources they have to help those in need.

Bridgewater Township Board Meeting

December 20, 1982
The regular meeting of the Township Board was held at the townhall on the above date with all members present, also two electors.

BINGO
Friday, December 31, 1982
NEW YEAR'S EVE
AND
Saturday, January 1, 1983
MANCHESTER AMERICAN LEGION

Hit or Miss

Here's a little ditty titled "The World's Greatest Menace" which it seems to me, should be read by everyone and remembered by them:

AGRICULTURE

In aeroplanes, in motor cars, or on the shops at sea,
At home or in some foreign land—it's all the same to me.

FOR RENT

APARTMENT FOR RENT - Manchester. Spacious 2 bedroom, washer/dryer, Hibbard Street 428-9570 or 428-8882. 12-30

Melcher Brothers
Decks-Pole Barns-Roofs
Windows-Floors-Doors-Siding
Remodeling of all Kinds
REASONABLE RATES
Free Estimates
CALL 517-456-4920
Ask for Steve or Dave

CHIM-CHIMENS
Chimney Sweeps Ltd.
Certified by the National Chimney Sweep Guild
Member of the Michigan Chimney Sweep Guild
Saline, Michigan 48176
313/665-0999
313/429-9078

AUCTIONEERS
JERRY JACOB CLIFF TRACY
313-428-7975 313-428-7263
Manchester, Michigan
MEMBER OF MICHIGAN STATE AUCTIONEERS ASSOCIATION

Put Yourself in the Marketplace, in the Classifieds

All Classified Advertising is Payable in Advance. All Ads Must Be PLACED AND PAID For Prior to 11 A.M. On Tuesday For Publication That Week.

MANCHESTER LOCKER PLANT
Phone 313-428-7800
Meat Processing-Custom Slaughtering
HOGS-BEEF-LAMBS
RETAIL: Cuts-Sides-Quarters
LOCKER RENTAL

WINDOW & SCREEN REPAIR
Kleinschmidt True Value Hardware
428-8337.

PIANO TUNING AND REPAIR. Qualified technician, Ron Harris 475-7134. tfn

DEAD STOCK REMOVAL
We buy hides, skins, fat, bone and restaurant grease. Adrian Tankage Co. 517-265-6098. 9-22-83p

FOR SALE - 2 oil tanks - 500 gal. and 1000 gal. 2 oil furnaces. 428-9078. tfn

CHELSEA GREENHOUSES, 7010 Lingane Road, Chelsea, Michigan 475-1353-54 or 475-9813. Flowers and plants for every occasion.

LITTLE WACK EXCAVATING
Licensed & Insured
Basements - Drainfields - Bulldozing
Digging - Snow Removal - Tree Removal.

C & B PAINTING - Interior, Exterior, Free Estimates. Contact Charles E. Benedict. Phone 428-1136 or 428-7416. tfn

ALUMINUM EAVESTROUGH
Seamless, white, black and brown, guaranteed, free estimates. Walkover Home Improvement Company. Phone (313) 428-8468. tfn

GERALD AHRENS CONSTRUCTION
Additions, Decks, Renovations, Repair, Finish Work. Free Estimates. Phone 428-8807. tfn

BURNER SERVICE - Make an appointment now to get your furnace ready for Winter. Manchester Electric 428-8243. tfn

FOR SALE - 58 Acres, all tillable, \$55,000. 761-1346 or 429-9459. tfn

WE'RE OPEN SUNDAYS from 11 a.m. to 3 p.m. Kleinschmidt True Value Hardware 428-8337. tfn

ROLLING 10 Acre Building Site \$15,000. 761-1346 or 429-9459. tfn

NEED a new furnace? 428-9150. tfn

EXPERIENCED SEAMSTRESS, reasonable rates, all phases of sewing and alterations. Call 428-9190. 12-30

YOUNG, responsible, employed, married couple with dog request house in the country. 422-0727. 1-13

FORD FIESTA 1980, excellent condition! \$3,700.00. 428-8395. 9.5 p.m. 663-8471 evenings. 12-30

HAVE YOUR MOWER BLADES sharpened and balanced, saw chain sharpened and depth gauges adjusted for better cutting.

THE MANCHESTER ENTERPRISE THURSDAY, DECEMBER 30, 1982 PAGE 15

Classifieds Are \$1.50 For First 20 Words, 5c A Word Thereafter. Thank You's Are \$3.00 Minimum Up To 50 Words.

PUBLIC NOTICE

STATE OF MICHIGAN IN THE CIRCUIT COURT FOR THE COUNTY OF WASHTENAW
CYNTHIA A. WINEKOFF, Plaintiff, vs JAMES L. WINEKOFF, Defendant

ORDER TO ANSWER

At a session of said Court held in the City of Ann Arbor, County of Washtenaw and State of Michigan on the 8th day of November, 1982.

IT IS HEREBY ORDERED that the defendant, JAMES L. WINEKOFF, shall answer or take such other action as may be permitted by law on or before February 4, 1983.

PUBLICATION AND NOTICE OF HEARING

STATE OF MICHIGAN PROBATE COURT COUNTY OF WASHTENAW
FILE NO. 77615
Estate of OLGA J. O'NEIL, DECEASED
Social Security No. 385-22-5125

TAKE NOTICE: On January 20, 1983 at 8:00 a.m., in the probate courtroom, Ann Arbor, Michigan, before Hon. ROBERT E. HUTCHINGS, Judge of Probate, a hearing will be held on the petition of Kenneth Niehaus for probate of a purported Will of the deceased dated April 8, 1982.

Notice is further given that the estate will be assigned to persons entitled thereto.

Many thanks to all Manchester residents who participated and worked as job captains on the Christmas Luminaria.

Also thank you once again to Ann Arbor Bank & Trust for their part to help light up Manchester, Christmas Eve.

Transfer Station Holiday Hours
THURSDAY, DECEMBER 23 12 P.M. - 5 P.M.

THURSDAY, DECEMBER 30 12 P.M. - 5 P.M.
MONDAY, JANUARY 3, 1983 8 A.M. - 5 P.M.

HENDLEY & DATSKO, P.C.
Ray C. Tirth
Joyce C. Kirkpatrick
Phone: (313) 428-8333 12-30

IGA A & B IGA

455 W. Main MANCHESTER

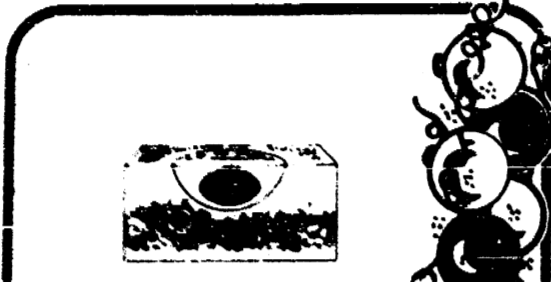
Monday thru Saturday
8 A.M. - 7 P.M.
CLOSED SUNDAY



IGA TABLETTE® - FULL CUT - BEEF

Round Steak

\$1.69



ASSORTED - WHITE
Scotties
Facial Tissues
69¢
200 ct. Box

ALL VARIETIES - 1 Roll Pkg.
Scott
Towels **69¢**
27 sq. Yds.
FAME
Sauerkraut ... **49¢**



FLORIDA

Sweet Tangelos

12/88¢



MELLO YELLO, TAB, DIET COKE,®

Sprite or Coca Cola

\$1.99

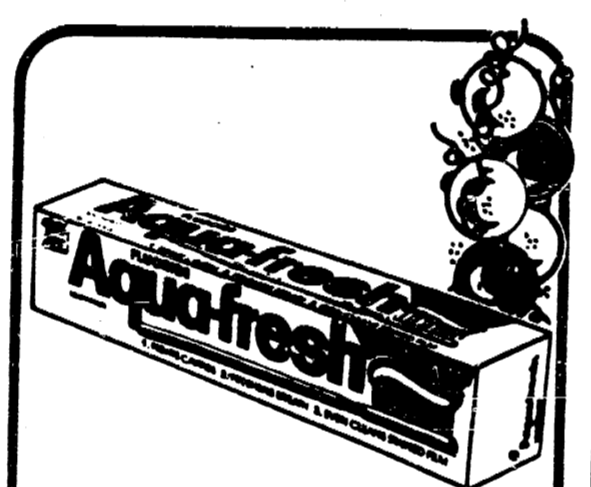
8 Pack/1/2 Ltr. Bks.
Plus Deposit

*Available in Certain Areas Only



BAR H-WATER ADDED-WHOLE
Boneless Hams
\$1.88

10 1/2 lb. Ham
Portions
\$1.98



20% OFF LABEL - SAVE 50%

Aqua Fresh Toothpaste

\$1.49

5.2 oz. Tube

Meat



KRAFT
Macaroni & Cheese
3/\$1

7 1/2 oz. Pkg.

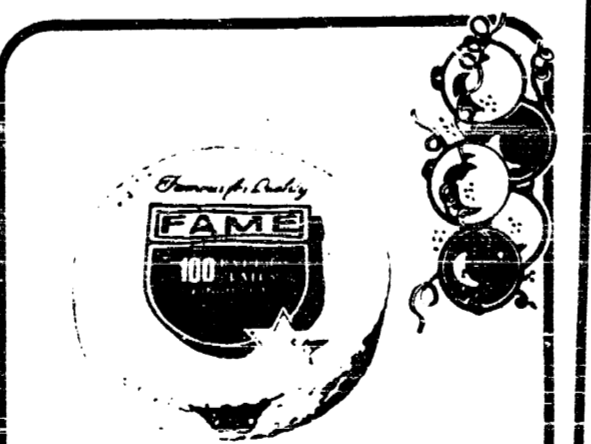
CHICKEN OF THE SEA - IN OIL OR WATER - 1 1/2 oz. Can
Light Chunk Tuna . 79¢

IGA TABLETTE® - BEEF
Porterhouse Steak **\$2.99**

IGA TABLETTE® - BEEF
Sirloin Steak **\$2.39**



IGA TABLETTE®
T-Bone Steak
\$2.89



FAME-8 Inch

White Paper Plates

99¢

100 ct. Pkg.