

IGA A & B IGA
455 W. Main MANCHESTER


Monday thru Saturday
 8 A.M. - 7 P.M.
 CLOSED SUNDAY



IGA TABLET BEEF • FULL CUT
Round Steak
\$1.78



FARMER PEET • BONELESS
Bonanza Hams
\$1.99



PINK OR WHITE
Florida Grapefruit
\$1.29
5 lb. Bag

REGULAR • UNBLEACHED • SELF RISING • 4 Lb. Bag
Gold Medal Flour **89¢**

SWEET • KOSHER DILLS • POLISH DILLS • 1.5 Lb. Jar
Vlasic Pickles **\$1.29**

ALL VARIETIES • BEEF • CHICKEN • 1.14 Oz. Can
Cycle Dog Food **3/\$1**



WAKE UP TO • 12 oz. Box
Post Toasties **79¢**

ALL FLAVORS • 4 oz. Pkg.
Jello Gelatin **59¢**

ALL FLAVORS
Hi-C Drinks
59¢
48 Oz. Can



WAKE UP TO • 12 oz. Box
Post Toasties **79¢**

ALL FLAVORS • 4 oz. Pkg.
Jello Gelatin **59¢**

ALL FLAVORS INCLUDING MIXERS
Faygo Pop
4/99¢
1 Liter 9.9¢ Plus Deposit



REG. • 4.2 Oz. Tube
Colgate Toothpaste
\$1.09



MELLO YELLO,
Tab, Sprite or Coca Cola
\$1.99
3 Pack 7/8 Liter 9.9¢ Plus Deposit



YELLOW
Golden Bananas
4 / \$1



IGA TABLET
Mixed Pork Chops
\$1.58

MANCHESTER TOWNSHIP LIBRARY
 P. O.

THE MANCHESTER ENTERPRISE

116TH YEAR VOLUME NO. 8 USPS 327-400 THURSDAY, DECEMBER 16, 1982 20 Cents Per Copy

HIT or MISS

BY FARLEY

I have, on the night table beside my bed, a small portable radio and sometimes when I cannot get to sleep—my conscience probably—I turn it on and proceed to scan the dial.

There's a vast amount of various kinds of entertainment and music. The other night as I idly spun the dial, I came across what sounded like the broadcast of an old radio show with two fellows engaged in a "blackout" which it turned out to be a re-broadcast of one of the shows from 1930's-40's which was so popular then.

I didn't get their names but they were presenting a joke that was one of the first of its kind that I can remember hearing. It went as follows:

One chap was evidently seated at the bedside of his partner Louie, and with a tear in his voice he proceeded as follows: "Louie, I'm so sorry to see you here in this condition. The doctor says that he's not too sure you will recover and if that is true, I want to confess a few sins that I have committed against you. First, do you know who stole the \$50,000 out of the safe and from our bank account? I'm sorry to say that it was me and I wish I could make it up to you in some way."

"That's okay," murmured Louie. "It doesn't matter now."

"Well that's a load off my mind, but do you know who it was that gave our secret formula to our competitors? I know you didn't but it was me. I hope you can forgive me. I don't know how I could do such a

dastardly deed."

"Of course I can and do forgive you," murmured Louie.

"Well then, just one more thing. Do you know who it was that was spending so much time at your house with your wife when you were away on those business trips? You don't know how ashamed I am to admit it, but it was me. I knew you never suspected me."

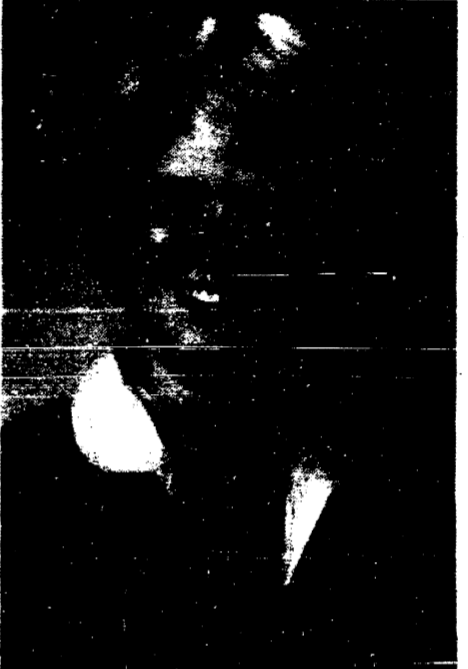
There was silence for a few minutes and then, with an effort Louie rolled over and looked at his partner who said "You think I didn't know do you. Well, I did. Who do you think bought the poison?"

I first heard this joke at the Avenue theater in Detroit one of the members of the Columbia Burlesque Wheel. They were members of a chain of such theaters and, like the vaudeville houses, changed their shows each week with different specialty acts and musical numbers by the chorus and the featured headliners, but one thing at the Avenue never changed. That was "Scurvy" the "top bananas" as they were known. He was a fixture there for years and years and had a following to be envied by any performer in any field.

Burlesque theaters were not, in those days, to be visited by the upper crust nor most ladies. Their jokes were vulgar and their chorus girls never called for much in the way of costumes—in quantity of course but a surprising number of folks visited these shows often. Another theater the Empire, flourished in Toledo and most every other city in the country with a 200,000 population or more supported one or more.

The United States is credited with having been the birthplace of three kinds

Melissa Bunney Named D.A.R. Good Citizen



Each year, the Sarah Caswell Angell Chapter of the National Society Daughters of the American Revolution ask schools in Washtenaw County to nominate a senior student as the recipient of the Good Citizen Award. This year, Manchester High Senior Melissa Bunney has been selected as Manchester's winner. Using the selection process recommended by the D.A.R., members of the Senior Class first nominate classmates for consideration. The faculty then votes on those who receive the most nominations.

Melissa is currently President of the Student Council. She served as president of her class during ninth and eleventh grades, has been a cheerleader four years, participated in softball two years and is a member of the German Club. She was inducted into the school's National Honor Society chapter last school year.

All of the County's D.A.R. Good Citizens will be honored at a reception at the University of Michigan's Clements Historical Library on Saturday, February 12, 1983.

Candle Pick-Up

The Luminaria Candle Kits may be picked up Tuesday, Wednesday, Thursday, December 14, 15, 16 and /or December 21, 22 and 23. Call Karen Hinkley for information 428-9115.

Old Fashioned Christmas Party Well Attended

You should have been there! A hundred guests attended the Old Fashioned Christmas Party that the Manchester Area Historical Society held at the remodeled Mann's Feed Mill banquet rooms at the invitation of Don Limpert, Monday night. Visitors came from as far as Bloomfield Hills, Ann Arbor and East Lansing to enjoy decorating the handsome Christmas tree from John Swainson's farm, singing favorite carols, eating Christmas cookies and just exchanging past Holiday stories.

Music filled the hall from the piano donated to the Society by William and Kathy Richardson in memory of their wife and mother, the late Dealoris Richardson whose civic activities are renowned in the area. The instrument, tuned for the occasion by Ronald Hastings of Chelsea, is a valuable asset to the collection of the Society. It will be properly identified for future reference.

The piano music played by Howard Parr was enhanced by the musical talents of Michael Gleason on his guitar. Later his bagpipes added variety to the musical evening. Mrs. Don (Ann) Fowler, chairman of the event and Mrs. Lewis (Gail) Kellum.

Continued on page 5

School Board Ratifies New Teacher Contract

The Manchester Board of Education, in an early Monday Morning meeting, approved the two year settlement negotiated by Superintendent Eugene Thompson and Michigan Association of School Boards representative Rita Thomas with the Manchester teachers who are affiliated with the Washtenaw-Livingston Education Association.

The new pact calls for salary improvements of 5.9% in the current year and an anticipated increase of 4 percent for the 1983-84 school year. The 1983-84 settlement is based upon the increase in state equalized valuation of the school district. The actual salary increase will be equal to 80 percent of the percentage increase in SEV or 4 percent whichever is higher.

Improvements at very minimal cost to the Board were made in the fringe benefit package. In addition to medical insurance, teachers will now also receive 60 percent dental coverage and limited vision insurance. Board of Education provided Term Life Insurance will also be included.

Superintendent Gene Thompson has indicated that the major contract language change now gives the Board of Education the right to reduce staff, if necessary, using experience and evaluations as criteria in addition to seniority. Thompson stated that as far as he was aware the right to use evaluations is a first for Boards of Education in Michigan. This means that the Board is no longer fully obligated to layoff only the least senior teachers as efforts are made to downsize the school district.

A two year contract had been a major goal of the Board of Education. With the ratification of the contract two more years of stability for the schools are assured.

Beyond The Manger

Beyond the Manger, a cantata by Derric Johnson and Larry Mayfield will be sung by the choir of Faith Community Church, Sunday evening, December 19, at 6 p.m.

We invite all to come to this Christmas Special. Nursery provided. The church is located at 8400 Sharon Hollow Road, Manchester, Michigan - just south of Austin Road.

8th GRADE ASSEMBLES 1,600 PIZZAS



On Saturday morning, December 11, a large number of eighth grade students and their parents assembled 1,000 pizzas in the Nellie Ackerson lunch room. The pizza sale was conducted to raise money for the Toronto Trip which will take place in May. Approximately one-fourth of the money

SANTA IS COMING TO TOWN



Boys and girls of Manchester, Santa will arrive Saturday, December 18th at 12 o'clock. He will be at the Emanuel Church Hall to eat lunch with you or just for pictures after he has lunch. The Optimists will provide candy and Alber Orchard's will provide apples during lunch. Lunch starts at 12 noon and the cost is \$1.50 per person. Pictures can be taken without purchase of a lunch ticket at 12:45 p.m. Bring your own camera for pictures.

Continued on page 13

The Manchester Enterprise
 180 EAST MAIN STREET
 Manchester, Michigan 48158
 USPS 327-480
 Phone 428-6173

The Manchester Enterprise was established in 1937 and is published each Thursday at 180 East Main Street, Manchester, Michigan with second class postage paid at Manchester.

Edward E. Steele, Publisher
 Lenore Steele, Editor

Letters To The Editor

To The Editor,
 I read with much interest the Hit or Miss column by Farley of December 9, 1982.

Having been born in Manchester I remember as a young boy growing up, many of the places mentioned and the locations of them. However I would like to add some of which I feel are important too.

The post office across from the bank and the telephone office upstairs. Also there was a jewelry store close to where the 5 & 10 is now.

How can anyone forget the medicine shows put on in the old Artleters hall on the 3rd floor in what is now the Black Sheep Repertory Theater.

The town also had a basketball team that played on the same floor, even with post in the middle to hold up the roof.

Mary Swift had a hat shop next to the bridge by the dam. There was also a candy store across from the mill next to the river.

Melcher Brothers
 Decks-Pole Barns-Roofs
 Windows-Floors-Doors-Siding
 Remodeling of all Kinds

REASONABLE RATES
 Free Estimates

CALL 517-458-4920

Ask for Steve or Dave

And on the corner under the bank was a public restroom.

Who can remember going to Faulhabers Cider Mill off Macomb Street in the fall for sweet cider and playing on the old cement walls off Adrian Street or skating on the ice under the railroad trestle in the center of town. Also watching the men cut blocks of ice from the river to store away for use in the summer?

Then there was train watching when they came to two different stations. We had many things to keep us busy without the aid of T.V. or Video games, and without having a car to drive around.

There was a creamery, a Screw Factory and a slaughter house on City Road, a Handle Factory in town, and plenty of corn cobs to give industrious boys a chance to earn a few nickies by bagging and selling them, and of course it kept the area under the mill empty.

Upstairs over Mary's Tavern was a club room for the businessmen of town. I was a mascot for this club and carried the name of "Lolly Pop" by such men as Bill Ormsler, Doyle Lehman and Morgan Kern and Dan Filber.

Bill Ormsler also had apple storage and weed on the corner of Duncan and Riverside and Higgins and Weinsider had their apple orchard and colony marsh out by the cemetery.

Perhaps I was fortunate in that my Dad ran the Manchester Dairy and I could go down and help by watching him bake bread, rolls, cakes, cookies and doughnuts and I could turn the doughnuts and then help put the frosting on them. Also I could sample a few while they were still hot.

Yes, I remember a great deal about Manchester. Even having some of the best friends ever. There was also Schneiders Black Smith Shop where we could go and watch while new shoes were being made and put on a horse. Of course there was Art Jenters Funeral Home too.

Last but not least I remember having the best teachers in Manchester, even though I didn't realize it at the time, but I feel my whole life has benefited from those dedicated teachers who taught for so long the Basic Reading Writing and Arithmetic in the old school building which was also located on City Road and don't forget the Manchester Enterprise was on Main Street. Yes, I do remember.

Albert C. Gaige
 Saline, Michigan

To the Editor,

Dear Johnny & Jim
 On November 30th, my father, while he was hunting, found this piece of paper tied to a balloon. The balloon was quite faded. Since I wasn't quite sure where Manchester was, I got out the state map and located your city.

You might be pleased to know that your balloon went as far as Eaton Rapids. My parents farm is 2 1/2 miles southeast of town and the balloon was found in one of the back fields.

I do hope that you inform me when you first see off your balloon or any other information about your balloon.

You may write me at this address:
 Lori Bator
 2405 Libbie Dr.
 Lansing, Michigan 48917

This letter was sent to the sons of Charles Schiel, Manchester, who released the balloons at the Fall Festival in Clinton on September 25, 1982.

Board Of Education President Pleased With New Contract

Manchester Board of Education President, Paul DuPresne, has expressed his pleasure with the new contract between the Manchester teachers and the Board.

DuPresne observed, "The entire negotiation process was carried out with trust and mutual respect on both sides of the table. Although bargaining was hard

and heated at times the rancor and bitterness seen in earlier years was notably missing. The efforts of all persons within the educational community to establish the Manchester Schools as a team effort were evident for the past several months. Congratulations should be extended to both the administration and the teachers."

"I feel that a settlement of 5.9 percent and 4 percent in the second year is fair," said DuPresne. "These are difficult economic times in our area and yet the Board wanted to recognize the excellent efforts of the teachers. This dilemma led to extensive discussion and debate among Board members. The result is a contract which the Board unanimously feels is fair for all concerned."

Band And Varsity Choir Christmas Concert

The High School Band and Varsity Choir along with a group of String Ensembles will present an Evening of Christmas Music for the whole families enjoyment. The concert will be December 18th in the High School Auditorium. The time is 7:30 p.m.

Please mark this date on your calendar and plan on sharing this special evening with all of us.

Refreshments will be served after the concert.

Jeans will fade less if they are washed inside out.

poinsettias

ALL COLORS AND PRICES

ALSO IN

Hanging Baskets and Pots

SCHEBOR'S GREENHOUSE

14345 LOGAN ROAD MANCHESTER, MICHIGAN
 PHONE 428-8078

FILLYAW'S MARATHON SERVICE
 327 West Main Street Phone 428-8576 Manchester, Michigan
 Open Monday-Saturday 7:30-7 P.M.

CERTIFIED MECHANICS ON DUTY All Work Guaranteed

HEAVY DUTY SHOCKS SAVE 50% **\$9.95** EACH
 Price Does Not include installation

MAJOR BRAND NATIONWIDE MAINTENANCE FREE BATTERIES \$39.95 EXCHANGE
 36 Month Guarantee
 GROUP 22 TOP POST
 GROUP 24 TOP POST
 GROUP 74 SIDE POST

SENIOR CITIZENS DISCOUNT 10% on parts and labor
 5% DISCOUNT ON TIRES

REBUILT ALTERNATORS AND STARTERS \$29.95 & UP Exchange

FREE EXHAUST INSPECTION WITH ALL JOBS

Disc Brake Special LIMITED TIME ONLY
 *REPLACE BRAKE PADS
 *NEW GREASE SEALS
 *RESURFACE ROTORS
 *COMPLETE BRAKE INSPECTION
 *REPACK WHEEL BEARINGS
 *ROAD TEST CAR
 Most U.S. Cars Front Brakes Only **\$59.95**

Holiday Candles
 Red or Bayberry Green
 2 for **39¢**

STOP IN AND PICK-UP A MARATHON CREDIT CARD APPLICATION

YOU CAN PURCHASE BATTERIES, TIRES SHOCKS, PARTS OR HAVE YOUR CAR TUNED-UP FOR THE SUMMER MONTHS BRAKE JOBS, FRONT END ALIGNMENT OR WHEEL BALANCING
 ASK ABOUT OUR INTEREST-FREE EXTENDED PAY PLAN FOR CERTAIN PURCHASES

FULL LINE OF MARATHON PRODUCTS
 We Have Pure White Kerosene
Gas-Oil-Diesel Fuel

STOP IN AND SEE ME FOR YOUR BEST TIRE DEAL

24 Hour Wrecker Service

church services...

EMANUEL UNITED CHURCH OF CHRIST
 Rev. Robert Macfarlane, Pastor
 Sunday School 9:00 a.m.
 Worship Service 10:30 a.m.

SHARON UNITED METHODIST
 Rev. Ronald L. Irie, Pastor
 Corner M52 and Pleasant Lake Rd.
 Church School 10:00 a.m.
 worship 11:00 a.m.

ST. THOMAS LUTHERAN
 Rev. Paul Puffe, Pastor
 Ellsworth Road
 Sunday School and Bible Class 9:30 a.m.
 Church Service 10:45 a.m.

ST. JOHN'S UNITED CHURCH OF CHRIST
 Mr. Roger Samonak, Lay Pastor
 Rogers Corners, Waters and Fletcher Rds.
 Worship and Sunday School 10:30 a.m.

BETHEL UNITED CHURCH OF CHRIST
 Rev. Roman A. Reinick, Pastor
 Schneider and Bethel Church Roads
 Church Service 10:00 a.m.
 Sunday School 11:00 a.m.

MANCHESTER UNITED METHODIST
 Rev. Thomas E. Hart, Pastor
 Church School 9:15 a.m.
 Worship at 10:30 a.m.
 Choir Practice and Coffee Hour at 11:30 a.m.

ST. MARY'S CATHOLIC CHURCH
 Father Raymond Schlinkert
 Monday thru Friday 8:30 a.m., Saturday 5:00 p.m.
 Sunday 8:30 a.m. and 10:30 a.m.

NORTH SHARON COMMUNITY BIBLE
 Bill Enslin, Pastor
 Sylvania and Washburn Roads
 Sunday School 10:00 a.m.
 Morning Church 11:00 a.m.
 Youth Meetings 6:00 p.m.
 Evening Church 7:00 p.m.
 Wednesday Bible Study 7:00 p.m.

FAITH COMMUNITY CHURCH
 Timothy Miles, Pastor
 8400 Sharon Hollow Rd. off W. Austin Rd.
 Worship Service 10:00 a.m.
 Sunday School 11:15 a.m.
 Sunday Evening Service 6:00 p.m.
 Jr. & Sr. High Young People's Meeting 7:00 p.m.

OUR SAVIOR LUTHERAN CHURCH
 Rev. Franklin H. Giebel, Pastor
 1515 S. Main, Chelsea
 Summer schedule through Labor Day
 Sunday Worship Service 9:00 a.m.

IRON CREEK COMMUNITY CHURCH
 Rev. Paul Runyon, Pastor
 English and Sharon Hollow Roads
 Worship Service 10:00 a.m.
 Sunday School 11:15 a.m.
 Evening Service 7:00 p.m.
 Wednesday Prayer Meeting 7:00 p.m.

ZION LUTHERAN CHURCH
 Rev. John H. Morris, Pastor
 3250 S. Fletcher Road
 JULY & AUGUST: Sunday School & Church BOTH at 9:30 A.M.

ST. JOHN'S LUTHERAN CHURCH
 Rev. Dennis A. Falk, Pastor
 Austin Road, Bridgewater
 Sunday School 9:15 a.m. Worship 10:30 a.m.

VICTORY BAPTIST
 Dr. Clare Gleason, Pastor
 Church School 9:45 a.m.
 Morning Worship 11:00 a.m.
 Adult Doctrine Class, Teen Time and Jr. Astronauts at 5:30 p.m.
 Evening Worship 6:30 p.m.
 Wednesday Prayer Meeting 7:30 p.m.

CLINTON ASSEMBLY OF GOD
 Charles Sanders, Pastor
 12500 Allen Rd., Clinton (corner of Allen Rd. and Manchester-Clinton Rd.)
 Sunday School 9:45 a.m.
 Morning Worship 11:00 a.m.
 Evening Service 6:30 p.m.

CHURCH OF JESUS CHRIST OF LATTER-DAY SAINTS (MORMONS)
 Thomas E. Schulte, Branch President
 Rebekah Hall, M52, Chelsea
 Sacrament 9:30 a.m.
 Sunday School, Primary 10:50 a.m.
 Priesthood, Relief Society, Aaronic Priesthood Youth 11:40 a.m.

ST. BARNABAS EPISCOPAL CHURCH
 Rev. Jerome F. Beaumont, "Vicar"
 Old US 12 1/2 mile west of M52, Chelsea
 9:30 a.m. Church School-Children and Adults
 10:30 a.m. Worship Service

BAHAI FAITH
 Study of Baha'i scripture and discussion on applying spiritual principles to daily living. Begins on the 1st of the month, 2nd and 4th Sundays every month, 8:30 p.m., at the home of Thomas and Nancy Rykwalder, 611 S. Macomb. For more information or directions call 428-9454.

MANCHESTER UNITED METHODIST CHURCH
 Wednesday, December 15, Noon, United Methodist Women meeting with lunch provided. Program will be presented by the Varsity Choir. After program the U.M.W. will pack the Christmas boxes.
 Thursday, December 16, 6 p.m. Caroling: Chili and hot chocolate served afterwards.
 Sunday, December 19, 9:15 a.m. Church School. 10:30 a.m. Worship "Rejoice!" 11:30 a.m. Choir Rehearsal/Coffee Hour.
 Monday, December 20, 7 p.m. on. Parsonage Open House.
 Tuesday, December 21, 2 p.m. on. Parsonage Open House. (Tom, Pauline and Andy invite you to stop by the parsonage. Along with punch and Christmas baking, the Open Houses provide an opportunity to share the season with members of the church and community.)
 Christmas Eve Worship at 11:00 p.m. Worship Service with Christmas carols and candlelighting.
SEARON UNITED METHODIST CHURCH
 Thursday, December 16, 6:30 p.m. Ladies Christmas Dinner.
 Saturday, December 18, 10:00 Practice for Church School program.
 Sunday, December 19, 11 a.m. Choir cantata, "An Old Fashioned Christmas" 8:00 p.m. Church School program.
 Wednesday, December 22, 7:30 p.m. Jr. and Sr. Y.F.'s and "alumna" will go caroling.
EMANUEL UNITED CHURCH OF CHRIST
 Wednesday, December 15, 6:45 p.m. Bell Choir rehearsal. 8:00 p.m. Alcoholics Anonymous & Ai Anon.
 Thursday, December 16, 12 Noon Senior Meal. 3:40 p.m. Children's Christmas Choir rehearsal. 7:30 p.m. Senior Choir rehearsal.
 Saturday, December 18, 9:15-11:30 a.m. Rehearsal for Sunday School Christmas Program. Noon-Lunch with Santa.
 Sunday, December 19, 10:30 a.m. Special Christmas Music by Emanuel's Choirs. 6:00 p.m. Sunday School Christmas Program, Gym.
 Tuesday, December 21, 12 Noon Senior Meal. 1:00 p.m. Young Mothers Support Group. 7-9 p.m. Live Nativity Scene.
 Wednesday, December 22, 7-9 p.m. Live Nativity Scene.
 Thursday, December 23, 7-9 p.m. Live Nativity Scene.
 Friday, December 24, 7 & 11 p.m. Christmas Eve Communion Worship with carols and candles.
FAITH COMMUNITY CHURCH
 Sunday, December 19, Morning Worship 10 a.m. Jr. Church and Nursery available. 11 a.m. Sunday School for all ages. 6 p.m. Christmas Cantata - Beyond the Manger.
 Wednesday, December 22, No Prayer Meeting or Bible Study.

THE MANCHESTER ENTERPRISE THURSDAY, DECEMBER 16, 1982

ZION LUTHERAN CHURCH
 Saturday, December 18, Youth Instruction classes at 9 a.m. Sunday School Program Practice 10:30 a.m.
 Sunday, December 19, 4th Sunday in Advent. Sunday School 9 a.m. Worship 10:15 a.m. featuring the Choral experience for Christmas "I Believe...He's the Son of God". (Congregation - Vote Meet) Sr. Choir Caroling begins 6 p.m. and party.
 Tuesday, December 21, Sr. Choir 7:15 p.m.

BETHEL UNITED CHURCH OF CHRIST
 Sunday, December 19, 10:00 a.m. Worship Service. 7:30 p.m. Church School Christmas Program. Fellowship Hour following.
 Wednesday, December 22, 6:30 p.m. Choirs and Orchestra Pot Luck Dinner.
ST. JOHN'S LUTHERAN CHURCH
 Thursday, December 16, Men's Bible Study 8 p.m. at Mike Yates.
 Saturday, December 18, 7th Grade Catechism, 9-11. Decorate tree 1 p.m.
 Sunday, December 19, Sunday School 9:15 a.m. Worship 10:30 a.m. State Hospital Visit 2 p.m. Caroling 7 p.m.
 Monday, December 20, Church Council 8 p.m.
 Wednesday, December 22, Jr. Choir 7:30 p.m. Sr. Choir 8:45 p.m.

NORTH SHARON BIBLE CHURCH
 Saturday, December 18 and Sunday, December 19 at 7:00 p.m. - a Christmas Cantata by John Peterson. DOWN FROM HIS GLORY.
 Christmas Sunday - December 19th. Candy gifts for all our boys and girls that day.

Sharon Church Plans Services
 Special programs at the Sharon United Methodist Church for the Christmas season include a cantata by the choir, a program presented by the children, and a candlelight worship service.
 This year since the choir cantata is entitled "An Old Fashioned Christmas" it was decided to use this theme in decorating the sanctuary. The church has been transformed into a Christmas card like picture with kerosene lamps in the windows, candles lining the aisles, hand-made ornaments, popcorn, and bows on the tree.
 The choir will present the cantata "An Old Fashioned Christmas" written by Don Wyrtsen on Sunday morning, December 19, at 11:00 a.m. under the direction of Mrs. Randall Bennett. There will be taped orchestra accompaniment. Sharon Church's candlelight Christmas eve service begins at 8:00. A welcome is extended to all who would like to worship through song, through the eyes of children, and in quiet meditation.

Fahey Realty

215 East Main St. Phone 428-9298 Manchester, Michigan
 OFFICE HOURS: 9-5 MONDAY THRU FRIDAY SATURDAY 9-12 NOON

REDUCED \$34,000 Starter home in village. 4 bedrooms attached 1 car garage. Land Contract possible.

REDUCED \$49,500 Four bedroom on three village lots. New roof and siding, gas heat. Bright enclosed porch fully heated for year-round use, first floor utility.

New Listing \$57,500 3 bedroom ranch, immaculate and easy to maintain. On 1 acre, paved road north of Manchester.

\$82,500 Cute 3 bedroom brick ranch on 2 acres. Home features extra insulation, large basement, woodburner, two car attached garage.

COKE? DIET COKE? TAB? FRESCA? MELLO YELLO? OR SPRITE?
 8-PACK 1/2 L. Refillable Bottles

Special \$1.99
 Plus Deposit

SAVE MORE! \$1.50 OFF ON TWO 8-PACKS USE STORE COUPON BELOW

SAVE \$1.50
 When you buy two (2) 8-Packs of 1/2 L. refillable bottles of

COKE? DIET COKE? TAB? FRESCA? MELLO YELLO? SPRITE? LIMIT 1 PER FAMILY.

OFFER EXPIRES DECEMBER 25, 1982

Jobber PH. 428-8366

G.E. Wacker Inc.
 Products: GASOLINE • FUEL OIL • MOTOR OIL • DIESEL FUEL • GREASE
 9050 CHELSEA - MANCHESTER RD. MANCHESTER, MICHIGAN 48158
 Monday-Thursday 7 a.m. to 8 p.m. Friday 7 a.m. to 9 p.m.
 Saturday 8 a.m. to 9 p.m. Sunday 9 a.m. to 8 p.m.

20% OFF ON ALL JEWELRY

JEWELRY - WATCHES

MOTHERS RINGS 10K and 14 K GOLD

HAVE YOUR DIAMOND RINGS CHECKED. YOU MAY NEED NEW PRONGS

DIAMONDS ARE TOO COSTLY TO REPLACE

NO CHARGE FOR CHECKING RINGS

Roller Jewelry Watch Repair Engraving

124 EAST MAIN ST. MANCHESTER, MICHIGAN

Manchester Library Engagement Logo Contest Announced

The Manchester Friends of the Library would like to announce that they will be holding a contest to decide on a new LOGO for the Library. The LOGO will be used on all Library letterheads and news releases. A LOGO is a graphic symbol that helps identify and advertise a particular institution. For instance, the LOGO for the Michigan State University is the set of two powder trees.

The contest is open to all Manchester children between the ages of nine and 14. The deadline for original LOGO drawings is January 2, 9 p.m. All entries should be delivered to the Manchester Library by that time. Contestants are encouraged to submit creative sketches or lettering that will help to visually identify the Library. The contest winner will be announced in the Manchester Enterprise in its January 12th issue.

All LOGO CONTEST entries should be sketched on a white sheet of paper that measures 8 1/2 by 11 inches (normal, standard paper). Please make all artwork black and white - COLOR SKETCHES WILL NOT BE ACCEPTED. (For reproduction purposes.) This is an excellent opportunity for a young artist to have his or her talent displayed and published for all to see. The WINNER of the LOGO CONTEST will receive a bundle of good books from the Manchester Library, so all you future Remingtons, sharpen your pencils and start sketching! (If you have any questions regarding the CONTEST, call Kathy Thornton between 9 and 7 p.m. daily, 426-7366.)



Mr. and Mrs. Edison Barker of Manchester are pleased to announce the engagement of their daughter Lisa Ann to John M. Adams, Jr. of Ypsilanti, the son of Marian Adams of Longwood, Florida and John Adams, Sr. of Ann Arbor.

Lisa is a 1981 graduate of Manchester High School. John is a 1980 graduate of Lake Bramley High School in Longwood, Florida, a student in pre-architecture at Eastern Michigan University and is employed by Hoover Universal in Manchester.

They will be married in February of 1983.

PUBLIC NOTICES

STATE OF MICHIGAN
IN THE CIRCUIT COURT FOR THE
COUNTY OF WASHTENAW
CYNTHIA A. WINEKOFF, Plaintiff, vs
JAMES L. WINEKOFF, Defendant
A.L. Fanta #29640, Attorney for Plaintiff
Case No. 82-30123-DM
Judge: Henry T. Conlin

ORDER TO ANSWER
At a session of said Court held in the City of Ann Arbor, County of Washtenaw and State of Michigan on the 8th day of November, 1982.
PRESENT: HONORABLE HENRY T. CONLIN, Circuit Court Judge

On November 4, 1982, an action was filed by CYNTHIA A. WINEKOFF, Plaintiff, against JAMES L. WINEKOFF, defendant, in this court for divorce.

IT IS HEREBY ORDERED that the defendant, JAMES L. WINEKOFF, shall answer or take such other action as may be permitted by law on or before February 4, 1983. Failure to comply with this order will result in a judgment by default against such defendant for the relief demanded in the complaint filed in this court. Such answer or other action shall be filed in the above entitled case and a copy thereof sent to the plaintiff's attorney.

Prepared by:
WASHTENAW LEGAL CENTER, P.C.
By: A.L. Fanta #29640
Attorney for Plaintiff
4547 Washtenaw Avenue
Ann Arbor, MI 48104
434-3800

All that certain piece or parcel of land situate in the Township of Bridgewater in the County of Washtenaw and State of Michigan, and described as follows, to-wit:

They were going to have a tornado drill at school the other day but it had to be called off because of bad weather.

NOTICE OF MORTGAGE SALE

MORTGAGE SALE—Default having been made in the terms and conditions of a certain mortgage made by RAY & WILCOX OF 9675 Austin Road, Edgewood, 48115, Washtenaw County, Michigan, Mortgagee, to UNION SAVINGS BANK OF MANCHESTER (now merged into THE NATIONAL BANK OF JACKSON) Mortgagee, dated the 14th day of April, 1981, and recorded in the Office of the Register of Deeds, for the County of Washtenaw and State of Michigan, on the 8th day of June, A.D. 1981, in Liber 1843 of Washtenaw County Records, on page 818, on which mortgage there is claimed to be due, at the date of this notice, for principal and interest, the sum of ONE HUNDRED SEVENTY-TWO THOUSAND FOUR HUNDRED FOUR AND 25/100 —(\$172,404.25)—DOLLARS.

And no suit or proceedings at law or in equity having been instituted to recover the debt secured by said mortgage or any part thereof, Now, therefore, by virtue of the power of sale contained in said mortgage and pursuant to the statute of the State of Michigan in such case made and provided, notice is hereby given that on Thursday, the 12th day of January, 1983 at 10:00 a.m. said mortgage will be foreclosed by a sale at public auction, to the highest bidder, at the front door of the Courthouse in the City of Ann Arbor, Washtenaw County, Michigan (that being the building where the Circuit Court for the County of Washtenaw is held) of the premises described in said mortgage, or so much thereof as may be necessary to pay the amount due, as aforesaid, on said mortgage, with interest thereon at 15% per cent (15%) per annum on the \$20,000 Note and 14 per cent (14%) per annum on the \$120,000 note and all legal costs, charges and expenses, including the attorney fees allowed by law, and also any sum or sums which may be paid by the undersigned necessary to protect his interest in the premises.

Said premises are described as follows:
Land in the Township of Bridgewater, Washtenaw County, Michigan described as:

Commencing at the center of Section 1; thence West 33 feet in the East and West 1/2 line for a place of beginning;
thence West 517.15 feet in the said East and West 1/2 line;
thence South 175 feet;
thence West 105 feet;
thence South 33 feet;
thence West 180 feet;
thence South 155 feet;
thence West 240 feet to a point which is 198 feet east of the west line of the East 1/2 of the Southwest 1/4;
thence South to a point in the south line of said Section 188 feet from the southwest corner of the East 1/2 of the Southwest 1/4 of the South 1/2 of said Section;
thence North 693 feet in the North and South 1/2 line;
thence West 33 feet;
thence North to a point which is 1045 feet south of the East and West 1/2 line;
thence West 183 feet;
thence North 887 feet;
thence East 188 feet;
thence North 358 feet to the place of beginning, being a part of the East 1/2 of the Southwest 1/4 of Section 1, Town 4 South, Range 4 East, Washtenaw County, Michigan.
Commencing at the center of Section 1, Town 4 South, Range 4 East, Bridgewater Township, Washtenaw County, Michigan;
thence North 87 degrees 04 minutes 40 seconds West 40.32 feet along the East and West 1/2 line of said Section to the point of beginning;
thence South 06 degrees 09 minutes 15 seconds West 358.00 feet;
thence North 87 degrees 04 minutes 40 seconds West 125.34 feet;
thence North 06 degrees 09 minutes 15 seconds East 226.41 feet;
thence North 88 degrees 34 minutes 55 seconds West 5.70 feet;
thence North 01 degree 25 minutes 05 seconds East 9.80 feet;
thence South 88 degrees 34 minutes 55 seconds East 17.00 feet;
thence North 06 degrees 09 minutes 15 seconds East 121.68 feet;
thence South 87 degrees 04 minutes 40 seconds East 114.88 feet along the East and West 1/2 line of said Section to the point of beginning. Being a part of the southwest 1/4 of Section 1, Town 4 South, Range 4 East, Bridgewater Township, Washtenaw County, Michigan.

Parcel II
1850, the West 1/2 of the West 1/4 of the Northeast 1/4 of the Northwest 1/4 of Section 12, Town 4 South, Range 4 East, Washtenaw County Records.

Parcel III
Commencing at the center of Section, thence West 88.0 feet in the East and West line; thence North 73 feet for a Place of Beginning; thence West 154.43 feet; thence North 138.72 feet; thence Easterly to a point which is 121.10 feet North of the Place of Beginning; thence South 121.10 feet to the Place of Beginning, being part of the East fractional 1/2 of the Northwest fractional 1/4, Section 1, Town 4 South, Range 4 East, containing 0.42 acres, subject to reservations, restrictions and easements of record.

The redemption period shall be six (6) months from the date of such sale.
Dated: November 29, 1982
THE NATIONAL BANK OF JACKSON
Mortgagee

HENDLEY & DATSGO, P.C.
By: JAMES R. DATSGO
Attorney for Mortgagee
P.O. Box 278
Manchester, MI 48158
Phone: (313) 428-8333

School Board Agenda

The Manchester Community Schools Board of Education will meet December 20, 1982 for their regular meeting. The agenda will be:

- I Roll Call
- II Communications
- III Visitor Input
- IV Minutes of Previous Meetings
- V Financial Report
- VI Bills Payable
- VII Discussion Items:
 - A. Pilot Project Budget (Okey)
 - B. Sale of School Buses
 - C. Vocational Education Report
 - D. High School English Course
 - E. Inventory Report
- VIII New Business:
 - A. Policies in 8000-9000 Series
- IX Old Business

Instrumental Music Program Continues To Grow

Under the direction of Ms. Lynette Wanlass the instrumental music program of the Manchester Community Schools continues to grow at an ever increasing rate. The enthusiasm of the Varsity Band was readily observable during the past football season. Band members performed with renewed enthusiasm and skill.

While the Varsity Band is the end product of the instrumental music program and is most readily seen by the community it is truly only the tip of the iceberg.

To view the success of Ms. Wanlass' efforts one must look at the fifth grade where eighty percent of the students have chosen to become involved in the instrumental music program. This extraordinarily high level of participation is expected to pay high dividends in the coming years.

A problem to be encountered as the band continues to grow is the availability of instruments. Persons who may have an instrument in their home which is no

longer in use are encouraged to consider donating it to the school system while using this donation as an income tax deduction. Should the person wish to retain ownership but be interested in loaning or trading an instrument please contact the building principal. The problem of large numbers of students interested in instrumental music is an enjoyable one which pleases all members of the Manchester educational community.

Old Fashioned

co-chairman distributed song sheets so words were audible during the singing of those so familiar everyone can hum.

Winner's of the evenings raffles were: Mrs. Gwen Fisher, the 50-50; Mrs. George Daubner, the Christmas tree skirt made and donated by Mrs. Lawrence Gonyer, and Mrs. Norman Fielder, the macramé owl from an anonymous donor.

The cookie table was filled for all to enjoy, then dozens were sold to eager tasters. Those that were left were taken to the St. Louis School for Exceptional Boys in Chelsea (who could enjoy them more?).

The only business of the evening presented by Loring Ebersole, treasurer, was that membership has now reached 150, an all-time high, and that donations, sales, etc., have more than half paid off the Building Fund. Anyone interested in becoming a member or donating to the Fund may contact Mr. Eversole, John Swanson or Mrs. Hazel Walker.

Merry Christmas to All.

Jim Hartmann 313-475-9301
Dan Wampler 517-456-4305

Hartmann Carpentry
Licensed and Insured
Residential Builder With
14 Years Experience

Pole Barns	Additions
Roofing	Siding
Decks	Remodeling
Rough Ins	Finish Work

Klager Students Decorate Bank's Tree



Comerica Bank Christmas Tree had its decoration done by two classes at the Klager Elementary School. Children representing their class are Matthew Fielder and Matthew Blossom from Betty Gregerson's first grade and Laurie Fielder from Mary Blossom's fourth grade class.

Birth Announcement

John and Debbie Baselle of 302 Union Street, Manchester are proud to announce the birth of a boy born November 30, 1982 at St. Joseph Mercy Hospital. Zachary John Baselle weighed 8 pounds 3 ounces and was 20 1/2 inches in length.

Maternal Grandparents are Edmund and Margaret Betts of Ypsilanti and paternal grandmother is Alice Jones of Hillsdale, Michigan.

AT LAST, A BANK GETS THE BEST OF THE MONEY MARKET FUNDS.

Frankly, we're impressed with the money funds. So much so that you'll find all their best features in our new, FDIC-insured money market account.

It's the newest Cash Investment Service from your First American Bank.

Right off, it's very rate competitive with any money market fund or account on the market. So you know you'll be earning money market rates.

It gives you immediate access to your funds in any amount. So it goes without saying, your money isn't locked up for any set period of time. And, of course, there are no fees or penalties for early withdrawal.

But we also wanted to improve on a good thing. That was easy, because there are some features only a bank like ours can offer.

The security of FDIC insurance, up to \$100,000 per depositor, and the convenience of dealing with people you know at a bank down the street.

We also added a \$2,500 minimum, the lowest the law allows. And we threw in a simple monthly statement that makes it easy to keep track of all your account activity.

Now, if you'd like to get the best of the money market funds along with the best a bank can offer, you know where to come.

**CALL FIRST.
1-800-222-1983**

For information on our new, insured money market account or any other financial service, drop by your nearby First American Bank or call our 24-hour, toll-free hotline. Member FDIC.



AL PARTS, INC
SINCE 1968

STUCK FOR A GOOD GIFT?

As Christmas approaches, it's the same old dilemma — what to get for Dad or Uncle Joe or Cousin Mark?

Reid Biggs, Auto Parts Counter Supervisor at A&L, says, "It shouldn't be that difficult. Tools are always a good present. Here at A&L we've got all sorts of hand and power tools that would do just fine. Socket sets in either U.S. or metric; or an impact wrench — how about a jack for the guy who really likes to work on his own car?"

"Then of course there's add-on equipment — things like tachometers or gauges or mirrors or even splash guards. Oil and a filter would be an unusual gift, but practical. So would anti-freeze or automatic transmission fluid.

"If someone is an old-car buff, some hard-to-find part would make a super present. And over at the Paint & Equipment store on Ashley Street there would be all kinds of polishes, cleaners, dressings, and waxes."

Reid is right. A&L could be your Christmas store. It's handy (on Main St.); open Saturday mornings (8 'til noon); is certainly a retail sales store; takes VISA and MasterCard; and now has TeleCheck (your personal check is welcome).

A&L PARTS, INC
SERVING SOUTHEAST MICHIGAN FOR 16 YEARS

		(Yes, We Sell Retail!)	
--	--	------------------------	--

Open Saturdays, 8 to 12; Weekdays, 8 to 5
529 South Main Ann Arbor 313/665-4411

**FREEDOM
ELECTRIC**

11207 Pleasant Lake Road
Manchester, Michigan 48158

NEW CONSTRUCTION
COMMERCIAL AND INDUSTRIAL
GILBERT LUCKHARDT
428-8233

CHIM-CHIMNEY
Chimney Sweeps
Ltd.

Certified by the National
Chimney Sweep Guild
Member of the Michigan
Chimney Sweep Guild

Belling, Michigan 48178
313/665-0999
313/429-9078

**Walts
Heating & Cooling**

24 HOUR SERVICE
Walt Horodaczny

COMFORT AIR FURNACES
A.O. SMITH WATER HEATERS
WATER SPLITTERS

FURNACES TUNING AND
CLEANING

PHONE 428-8645

18824 Bethel Church Rd.
Manchester, Mich.

Obituaries

Lucy A. Cash
Cedar Knoll Rest Home
Grass Lake, Michigan

Age 97 years, died Sunday, December 12, 1982 following an extended illness.

She was born March 7, 1885 in Jackson County, the daughter of George and Elizabeth Walduck Cash.

She was a member of St. Mary's Catholic Church and the Altar Society of the Church.

Survivors are one sister, Mrs. Mary Wallace of Manchester, also several nieces and nephews.

Mass of the Christian burial was held Tuesday, December 14, 1982, 10:00 a.m. at St. Mary's Catholic Church. Rev. Fr. Raymond Schlinkert officiated. Burial followed in St. Mary's Cemetery.

The Rosary was recited Monday 8:15 p.m. at the Jenter Funeral Home.

Ogla J. O'Neil
Saline Evangelical Home

Age 83 years, formerly of rural Grass Lake died Friday, December 10, 1982.

She was born June 1, 1899 in Freedom Township, the daughter of Herman and Caroline Kuhl Niehaus.

She was married to Harry O'Neil on March 14, 1934. He preceded her in death on December 1, 1983.

Mrs. O'Neil had been an employee of the Ford Motor Company for 24 years retiring in 1968. She was a life member of St. John's United Church of Christ in Freedom Township.

Survivors are a sister, Mrs. Elsie Huck of Quincy, Illinois; mother-in-law, Mrs. Clara Ross of Chelsea, Michigan, also several nieces and nephews.

Funeral services were held Monday, December 13, 1982, 1:00 p.m. at the Jenter Funeral Home. Roger Samonek officiated. Burial followed in Mt. Hope Cemetery in Freedom Township.



National Honor Society Inducts Newest Members



Back Row (l to r): Martha Moore, Karl Riley, Katie Miller, Missy Bunney, Laura Pierce, Carol Kidd and Vivien Townsend
Middle Row (l to r): Jim Krzyzaniak, Kraig Sauter, Todd Haselschwerdt, Scott Hunt, Rod Henry, Dave Malcolm, Mark Ball, Jay Wolfe
Front Row (l to r): Sarah Platt, Michelle Lamb, Colette Rickelmann, Chris Opal, Mary Stierle, Dawn England, Mr. Parson (Chapter Advisor).

Eleven Juniors and Seniors at Manchester High School were inducted into the School's National Honor Society Chapter on November 30 in an evening ceremony. Rev. Paul Runyon gave the invocation and benediction; Fred Munson was the guest speaker.

Members are selected by a faculty committee consisting of four teachers and the principal for meeting high standards of scholarship, leadership, service and character. Each of these characteristics are given equal weight by the selection committee.

Newly inducted members are Seniors Rod Henry, Jim Krzyzaniak, Michelle Lamb, and Dave Malcolm; Juniors Mark Ball, Todd Haselschwerdt, Katie Miller, Sarah Platt, Kraig Sauter, Mary Stierle and Jay Wolfe. Chapter officers for the current school year are President Chris Opal, Vice President Kraig Sauter, Secretary Dawn England and Treasurer Kari Riley.

The National Honor Society ranks as one of the oldest national organizations for high school students. Chapters exist in over three-fourths of the nation's high school and, since 1921, more than six million

students have been selected for membership. More than two million dollars in scholarships have been awarded to senior members since 1945 by the sponsoring organization, the National Association of Secondary School Principals.

AUCTIONEERS

JERRY JACOB 313-428-7975
CLIFF TRACY 313-428-7263
Manchester, Michigan

MEMBER OF
MICHIGAN STATE AUCTIONEERS
ASSOCIATION

Call Your IDS Representative

For



Financial Service

At IDS, Investors Diversified Services, we have a philosophy that recognizes your need for cash in the bank, insurance, investments with a fixed return, and equity based investments to provide a sound financial footing for you and your family. Your IDS Representative can show you a complete range of personal financial services including mutual funds, accumulation plans, fixed-return investment certificates, AND a line of insurance products through a wholly owned subsidiary, IDS LIFE INSURANCE CO.

Talk to your IDS Representative. It's your future.

Investors Diversified Services
Divisional Sales Office: 920 Long Blvd., Lansing (313) 694-3933

Contact with this Divisional Sales Office may be made through the local representative:

IDS IDEAS
TO HELP YOU MANAGE MONEY
Investors Diversified Services
IDS Life Insurance Company

Hit or Miss

of entertainment, Minstrel Shows, The Circus and Burlesque. The latter was the school for many up and coming comedians who later became top flight members of their professions. Among them were Red Skelton, Sid Silvers, Burns and Allen, and also many vocalists and dancers. Most of them were youngsters on their way up or the older performers who found Burlesque not so rigorous as the other forms of shows.

But be that as it may it seemed to fill a need for medium priced entertainment and I remember that, for instance it used to be quite the thing to go to Ann Arbor to a football game, then to Detroit for a dinner and then to top off the day to attend the Avenue. But rique as they were then, by today's standards they would be only commonplace scenes from today's soap

operas or the chorus of today's TV musical show. They were, some of them, quite daring for their day and their language perhaps not the purest English, but they seemed to fill a need for, as one reviewer said they were the "poor man's musical comedy," and I have my doubts that they corrupted anyone's morals anymore, if as much as today's movies and television programs. But today they have joined the vaudeville show and the minstrel show and about all that is left of them is fond memories of those "Good old days" and the fact that quite a number of their trusty jokes are still appearing now and then and that they are still being laughed at as loudly and heartily as ever, and the girls g-strings and pasties and "Scurry's costumes have been relegated to the museums.



Manchester Township Library

322 WEST MAIN STREET
MANCHESTER, MICHIGAN 48154

In addition to the library's own book collection, other books are available from the special interloan collection sent to the library on a revolving basis from the Washtenaw County Library. 45 new titles have just arrived. Among them are the following: Notre Dame Football by Dave London, a pictorial history from 1887 to 1980, Teaching Children to Draw by Marjorie Wilson, a guide for teachers and parents, The Fine Art of Cabinet Making

by James Krenov, many detailed photographs showing all aspects of cabinet making, International Calligraphy, 155 outstanding examples of calligraphic art from 21 nations, Wall Coverings by Smart, step-by-step directions to hang your own wallpaper, The History of Porcelain, descriptions of porcelain from many countries, including a section on forgeries and deceptions, The Nautilus Bodybuilding Book, by Ellington Darden, photographs of machines used to build various parts of the body and 21 basic rules every successful bodybuilder should know before training, American Women Artists by Rubenstein, Fruit Tart Cookbook by Asquith, The Complete Book of Traditional Folk Lute Knitting by McGregor, New Steps for Problem Pregnancies by Hales, and Callous Guide to Home Energy Savings by Vaughn.

Special Meeting For Board Of Education

The Manchester Board of Education will meet during the day on Saturday, December 18, in order to propose and discuss goals which will provide the direction for the school district for the next several years. Board members will bring to the meeting their personal five most important goals for the school district. Through the process of discussion consensus will be reached which will establish priorities for the district goals. These goals will then provide direction to the administration during the coming years.

In addition to the establishment of goals the Board will also discuss the renovation project which had been a major topic within the school district during the past two years. It has been noted that while the administration has been successful in eliminating many of the emergency maintenance problems the overall correction is still needed.

It is anticipated that at the end of the day on Saturday the Board will have a plan for meeting the needs of building renovation within the school district.

True Value
HARDWARE STORES®

SPECIALS FOR THE HOLIDAYS

<p>Blanket Special</p> <p>100% polyester, 4-in. nylon binding. Needleweave solid colors. Machine washable. 72x80 in.</p> <p style="text-align: center;">\$5.99</p>	<p>PERFECT FOR CHRISTMAS COOKIES, CAKES & CANDIES...</p> <p style="text-align: center;">Only 99c Each</p> <p>KEEP YOUR COOKIES FRESH LONGER!</p>	<p>KitchenAid</p> <p style="text-align: center;">184.99</p> <p>WITH FREE POURING SHIELD</p>	<p>Buttermatic Corn Popper</p> <p style="text-align: center;">13.99</p>	<p>Dustbuster Cordless Vacuum</p> <p style="text-align: center;">\$25.99</p>	<p>READY-LITE SMOKE ALARM AND LIGHT</p> <p style="text-align: center;">29.99</p>		
<p>Hot-Air Corn Popper</p> <p style="text-align: center;">\$17.99</p>	<p>Retractable Cord Travel Dryer</p> <p style="text-align: center;">19.99</p> <p>17.99</p> <p>Take handy 1200 watt dryer anywhere. Stores in purse, travel bag. 3 heat settings, folding handle. PROS</p>	<p>Chain-Drive Deer Opener</p> <p style="text-align: center;">119.99</p> <p>Ready for immediate installation. 1/4-HP chain-drive unit with planetary gear-drive system that eliminates belts and pulleys. GS295SR</p>	<p>Master MECHANIC</p> <p style="text-align: center;">10 Gal Wet/dry Vacuum</p> <p style="text-align: center;">\$62.99</p>			<p>Automatic Favorites For Energy-Savers</p> <p>Automatic Favorites For Energy-Savers The perfect solution to most heating problems is heat pumps. Heat pumps use less energy than any other type of heating system. They are also quiet and easy to install. Heat pumps are available in air conditioning, space heating, and combined heat and air conditioning systems. Call for more information. 1-800-368-2238</p>	

KLEINSCHMIDT HARDWARE

19870 Sharon Valley Rd. (Near Corner of M-52) PHONE 428-8337

SPECIAL CHRISTMAS HOURS
December 15, 16, 17, 18 8 am-8 pm Sunday 11 am-5 pm
December 21, 22, 23, 8 am-8 pm December 24 Christmas Eve 8 am-5 pm

BLACK SHEEP

138 East Main Manchester, Mich 48158

313-428-7000 517-788-2670

PRESENTS

Christmas Coast to Coast

By Lewis Olson

DECEMBER 10, 11, 12
DECEMBER 16, 17, 18, 19

THURSDAY-FRIDAY-SATURDAY
8:15 P.M.

SUNDAY 4:00 P.M.

Kirk Excavating

SAND—GRAVEL—FILL DIRT
BASEMENTS—DRIVEWAYS
SNOW REMOVAL

DAVE KIRK

14180 Schieweis Rd Manchester
Phone 428-7938

MANCHESTER INSURANCE AGENCY

122 WEST MAIN STREET
MANCHESTER, MICHIGAN
Phone 428-8215

Home-Farm & General Insurance

MERRIMAN INSULATION

FREE ESTIMATE

BLOWN IN CELLULOSE
Professionally Installed

George Merriman
Phone 313-429-7962
372 Hartman Lane Saline, Mich

**Want to earn 8½%
and write as many checks
as you want?
Open**

**THE
SUPER
ACCOUNT**

Open today. You'll earn at a super 8½% annual rate, and you'll have unlimited check-writing privileges.

Open the Super Account at Comerica Bank-Jackson with \$2,500 or more. Your money will earn at an 8½% annual rate through January 31, 1983. After that, your money will continue to earn at high Money Market rates. What's more, you'll be able to write as many checks on your money as you want.

You get the security of F.D.I.C. Insurance, too.

Unlimited check-writing and high, Money Market interest aren't the only super features of The Super Account. Your money is insured—for up to \$100,000 — by the F.D.I.C., too.

No early withdrawal penalties.

With the Comerica Bank-Jackson Super Account, write as many checks as you want with no early withdrawal penalties. Best of all, you can make deposits and withdrawals anytime, for any amount, at any Comerica Bank-Jackson neighborhood office or through BJ's® 10 convenient Wonderbank® locations.

The Super Account. It's another first from Comerica Bank-Jackson.

Sign up now, start earning interest at 8½%, and write as many checks as you want with The Super Account, only at Comerica Bank-Jackson. Get all the details, and open your account at any of our neighborhood offices.

Comerica
BANK-JACKSON

Member F.D.I.C.

**Want to earn 10%
on your savings and
a 20% bonus
on interest earned?**

**Order
C.O.D.*
Super
Savings Account
*Cash on Demand**

Order now. You'll earn a 10% annual rate and a bonus of 20% on interest earned through February 28, 1983.

Order C.O.D., Comerica Bank-Jackson's Cash on Demand Super Savings Account, with \$5,000 or more. Your money will earn at high Money Market interest rates. And if you order right now, your money will earn at a 10% annual interest rate. Plus a bonus of 20% on interest earned through February 28, 1983.

Make deposits and withdrawals, anytime.

You can make deposits and withdrawals as often as you wish at any time, even through BJ's® 10 convenient Wonderbank® locations.

Fully insured by F.D.I.C.

Not only do you get high Money Market interest rates on your C.O.D. Super Savings Account, your money is insured up to \$100,000 by the F.D.I.C.

The C.O.D. Super Savings Account. It's another first from Comerica Bank-Jackson.

Hurry. Order before December 31, 1982, to earn 10% annual interest and a bonus of 20% on interest earned through February 28, 1983. Get all the details and open your account at any of our neighborhood offices.

Eligibility for bonus applies to individuals only.

Comerica
BANK-JACKSON

Member F.D.I.C.

BOWLING

JOLLY KEGLERS

December 7, 1982	
Chelsea Lanes	60 38
B & H Mfg.	53 45
Dutch Country Kitchens	51 47
Cheryl's Boutique	50 48
Ross Automotive	50 48
Carol's Cut-N-Curl	43 56
Manchester Car Wash	43 56
Double A Products	42 56
HIGH INDIVIDUAL GAME	
K. Smith	222
C. Steele	212
D. Hanewald	212
C. Britten	203
HIGH INDIVIDUAL SERIES	
K. Smith	536
S. Walton	532
D. Gotts	528
HIGH TEAM GAME W/H	
Ross Automotive	939
Chelsea Lanes	902
B & H Mfg.	896
HIGH TEAM SERIES W/H	
Ross Automotive	2606
Chelsea Lanes	2550
B & H Mfg.	2549
HIGH ACTUAL GAME OF WEEK	
Kim Smith	206
HIGH ACTUAL SERIES OF WEEK	
Judy Catanese	474

MANCHESTER WOMENS

December 7, 1982	
Dacels Garage	299 161
Gills Gambles	259.5 160.5
Bilmeyer Hardware	224.5 196.5
Columbia Plumbing & Heating	221.5 198.5
Weatherwax Drugs	221 209
Pine Grove Bait	206 215
Town Laundry	189.5 222.5
Jimmy's Filling Station	187 228
Brandys Plowing	166.5 251.5

Mowry's HIGH GAME OF WEEK

Sue Williams	199
Sue Williams	194
Kathy Kanka	192
Jackie Sutton	188
HIGH SERIES OF WEEK	
Sue Williams	564
Sue Gudakunst	515
Barb McMichael	506
Pat McCall	494
Unusual Happenings: Doris Lee, Triplicate	
118-118-118. Splits - Ica Schaffer 2-7-10.	

MANCHESTER TOWN CLUB

December 7, 1982	
Norm Walz	62 36
DuRussels	60 38
National Bank of Jackson	59 39
Lyle Cundiff AAA	57 41
Jenters	55 43
R & F Tree Service	54 44
Manchester Deli	44 54
Village Hair Forum	38 60
Manchester Enterprise	32 66
V & F Builders	29 69
200 GAME	
Ruth Daves	209
Carol Rents	210 223
Joan Day	217
500 SERIES	
Ruth Daves	525
Carol Rents	528
Candy Klapperich	546
Joan Day	561
HIGH INDIVIDUAL GAME	
John Schabile	245
John Schabile	236
Bob Liebeck	226
Dan Coval	226
Chink Roller	657
Ron Weir	563
HIGH SERIES FOR WEEK	
John Schabile	574
Dan Coval	
Dennis Helfrich	

HIGH TEAM GAME

Lyle Cundiff AAA
Village Hair Forum w/h
HIGH TEAM SERIES
Lyle Cundiff AAA
Jenters Funeral Home w/h

MANCHESTER BUSINESSMEN

December 14, 1982	
Double A #2	69
Steele's Heating & Cooling	61
K # W Farm Supply	56
DuRussel Brothers	51
Little Wack Excavating	50
K of C	50
Double A Products	48
Back Door Party Store	48
The Dutchmen	46
Ross Automotive	46
Kirk Excavating	44
National Bank of Jackson	42
R.D. Kleinschmidt	40
Waterloo Village Market	40
Superior Land Developers	40
Bridgewater Tavern	36
Manchester Electric	31
Manchester Stamping	27

HIGH TEAM SERIES

Kirk Excavating	57 41
Superior Land Developers	55 43
Ross Automotive	54 44
HIGH TEAM GAME	
Double A #2	38 60
Back Door Party Store	32 66
Steele's Heating & Cooling	29 69

HIGH INDIVIDUAL SERIES

John Day	643
Jay Scott	642
Al Hanewald	620
Keith Reed	620
HIGH INDIVIDUAL GAME	
John Day	268
Kevin Rock	257
John Schabile	253
HIGH GAME FOR WEEK	
John Schabile	253
Bob Liebeck	234
Dan Coval	233
Chink Roller	222
Ron Weir	226
HIGH SERIES FOR WEEK	
John Schabile	610
Dan Coval	579
Dennis Helfrich	578

B-G BOWLERS

December 11, 1982	
Moore & Ptas	15 9
Perkins & R. Wilson	14 10
Eversole & Feidkamp	14 10
Popkey & Henry	13 11
Weldmayer & Young	11 13
Wurster & R. Roehm	10 14
D. Wilson & H. Roehm	10 14
Brokaw & D. Roehm	9 15
MEN'S HIGH SERIES	
Tom Eversole	529
Dave Roehm	514
Dave Young	511
MEN'S HIGH GAME	
Dave Roehm	213
Tom Eversole	211
Dave Young	201
WOMEN'S HIGH SERIES	
Lola Feldkamp	506
Bev Eversole	499
Polly Brokaw	463
WOMEN'S HIGH GAME	
Lola Feldkamp	181
Polly Brokaw	170
Bev Eversole	167
Jeanette Wilson	167

Alumni Holds Meeting

The Manchester High School Alumni Officers met December 4th to make plans for the 100th Manchester High School Alumni Reunion. The date set for the Reunion is June 11, 1983. Special reunions will be held for the classes of 1933, 1958, and 1973.

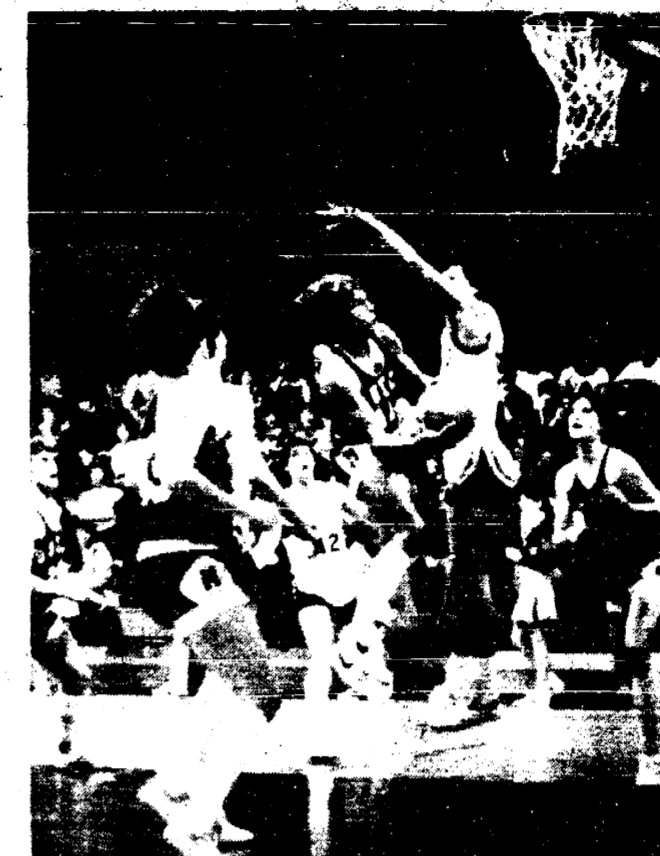
Officers of the Alumni Association planning the reunion are: President - Earl Ziegler '33; Vice President - Jack Creech '58; Recording Secretary - Vera Breitenwischer Kleinschmidt '38; Corresponding Secretary - Marion Breitenwischer Hanley '33; Treasurer - Elizabeth Hosmer Wallace '73; Trustee for 3 years - Louis Vogel '34; Trustee for 2 years - Joyce Bertke Scott '61; Trustee for 1 year - David Curtis '68; Nominating Committee - Mary Uphaus Lowery '57 and Dawn Steele Stockwell '73 and Directory Chairman - Lucile Stanley Williams.

Address changes of alumni should be given to the Address Chairman Marian Gloche-Voegding (428-9111).

DUTCHMEN OVERPOWERED



Pat Ridenour gets blocked here, but did total 14 points



Mike Agn in driving attack for the basket.

by Jon Hardenbergh

We sure haven't had an easy start this season as we opened against a tall Sand Creek center then Friday faced the Redwoods at Onsted. The Wildcats had height (several 6'4" and guards of 6'2") and depth to throw at us—and the fact that their 9th man scored 24 points explains why the final tally was 83-57.

We started great, hitting the first 2 buckets but the cats began to exert their board strength. By the conclusion of the period they had a good sized lead, 18-9. Onsted just continued rebounding and

rebounding to race into the locker room up 41-25.

The Dutch came out and popped and popped—I don't know the exact stats but it seemed we canned about 5 straight buckets and maybe 7 of our first 9. At this point the scoreboard read 45-35 and it seemed to throw a bit of a scare into the Wildcats. They called time to regroup and it was all Onsted from here on out.

I feel our squad is young and short but do have speed. With maturity and their speed they may surprise some teams.

Pat Ridenour was our high scorer

tonight as he netted for 14 while Jim Krzyzaniak and John Blumensaur teamed to total 24, 12 each.

Our Little Dutch also fell as Onsted has tall players there also.

How some of the other area teams we play did: Clinton remains unbeaten as they downed Dundee 43-39, Hudson blasts Addison 63-43 and Ida cruises Elsiefield 54-35.

Winter 1983 Community Education

The Winter 1983 Community Education brochure will be mailed to Manchester area residents around December 30. Registration will be from January 3 through January 14. Washtenaw Community College pre-registration will be held on Wednesday, January 5 from 7-8:00 p.m. in the High School library. Washtenaw Community College classes will start on Monday, January 10. Check your college catalog or Community Education brochure for exact times and starting days of classes.

Several new and popular classes have been added to the college schedule this winter. The enrichment section has been expanded to include aerobic dance classes four nights a week plus and after school session that meets twice a week. Please check starting dates for the aerobic classes. These classes start before the scheduled starting date of the week of January 24 when most of the Enrichment and high school completion classes begin. Look for the star next to class listings, this indicates classes that need only a few more new registrations to get started. The same policy for cancellation of classes will be the same as in past years. If school is closed during the day, classes will be cancelled at night and made up after the scheduled ending date. Plan now to join one of your Community Education classes with your friends and to make new friends this winter.



THE DOWN UNDER
IN THE
BLACK SHEEP RESTAURANT
THURSDAY-FRIDAY-SATURDAY
DRAUGHT BEER MIXED DRINKS
25c 4 P.M. - 8 P.M. 75c OFF
HAPPY HOUR
TOM HUBER BARTENDER
BRAD FREY & HINDSIGHT

FREE 1/2 TON OF SALT*
AND SAY "HEY COLLIGAN GALT!"
INVITES YOU TO SAVE WHILE YOU SAVE!
Fine, filtered soft water can save you money all around the house. Water heating costs are less, clothes wash whiter and wear longer. Soft water means the end to plumbing scale that can clog pipes, too.
*Half ton of salt free with purchase of Colligan water softener. Good until December 31, 1982.
COLLIGAN WATER CONDITIONING OF WASHTENAW COUNTY
2221 Jackson Road 662-9888

A Little STIHL Goes a Long Way.
The Stihl 009 is a small chain saw that's big enough on power and performance to take care of all your firewood needs. And since it's a Stihl, you know it will be around for a long time to come.
K & W EQUIPMENT INC.
11100 Chelsea-Manchester Rd. Manchester, Michigan
STIHL
THE WORLD'S LARGEST SELLING CHAIN SAW

*Featuring:
HAND CRAFTED AMISH CABINETS
*Distinctive CABINETRY By Fieldstone
*Jenn-Air Appliances *Delta Faucets *Elkay & Kohler Sinks
VISIT OUR SHOWROOM
DUTCH COUNTRY KITCHENS
146 East Main Street Phone 428-7292 Manchester

THE NEW
CASH FUND

Meet Money Fund Can Offer, Plus...
Insured Safety • Check Writing Capability
• 60 Statewide Offices to Service Your Account • Same Day Withdrawals...
No Wait... No Penalties • Your Dollars Help Your Community... Not New York.

HOW CASH FUND WORKS
With the Great Lakes Cash Fund you get money market rates, immediate accessibility to your funds, plus insured safety. And you can open a Cash Fund Account with just \$2500 at any Great Lakes Office.

With Cash Funds, you can make deposits or withdrawals anytime...no wait...no penalties. Each month you receive a statement reflecting the interest earned, account activity and your balance.

Interest is compounded monthly providing for you an even higher rate of return—a feature uncommon to most Wall Street funds. Your Great Lakes Cash Fund features check writing capability and, unlike most Wall Street funds, requires no minimum amount for which your checks must be written.

BETTER ACCOUNT SERVICING
Sixty statewide offices make the handling of your financial business so convenient. No need to travel long distances to a brokerage office or to send burdensome paperwork to New York. Since your transactions are processed locally, deposits to your Great Lakes Cash Fund begin earning interest immediately.

CASH FUND DOLLARS
The money you invest in a Great Lakes Cash Fund stays in your community, and is used to help speed economic recovery in our state. If you want high interest, instant accessibility to your money and more security than a Wall Street fund can offer, come to GLFS.

GREATER SAFETY THAN A WALL STREET MONEY FUND
At Great Lakes Federal, your accounts are insured to at least \$100,000 with an agency of the federal government. Different account ownerships can provide additional insurance coverage. No Wall Street fund offers you this kind of protection.

GREAT LAKES FEDERAL SAVINGS
60 Statewide Offices To Serve You - Member FSLIC

Klagger Students Celebrate Christmas Around The World



Mrs. Henry's class is having a Mexican Christmas. Greg McLennan, Eric Adams, Liana Seeger and Christeen Cotter display the pinatas and Mexican decorations called "God's Eyes" they are making. Their tree is covered with poinsettias.



Bryan Schneider and Patrick Herschelman show some signs of Christmas Around The World; The pinatas and tin tree decorations are from Mexico and wooden shoes from Holland

Many classrooms at Klagger have been learning about customs in other countries. Mrs. Henry's class has been studying Mexico and will have a MEXICAN CHRISTMAS PARTY.

Mrs. Blossom, Miss Kuyda and the 3-4 Team Room has been learning about different countries with the help of community speakers. Mrs. Linda Ebersole brought slides from Germany to tell about Christmas there. Mrs. Sonja Knul, who is from Holland, taught the children about Sinter Klass and "Black Peter" (who gets black going down chimneys) and secretly throws cookies to the children.

Mrs. Okey will talk about Denmark. Mrs. Kathy Martinez about Mexico and Mrs. Glen Lehr about Christmas in England.

In the 1st-2nd Grade team room they are writing about a different country each day. During their study of Germany they made graham cracker houses with the help of some moms. For Sweden Laura Alber was Saint Lucia and served graham crackers as is the custom for the oldest daughter in the household. Ms. Jeffries shared customs from Africa where "Kwanza" is celebrated on December 26. The students made African masks.

The students made tin ornaments for their tree and pinatas from Mexico. The star on their tree is from Poland. During the study of England the children made roiled "crackers" filled with presents to take home.

It has been an educational Christmas.

More Pictures On Page 13



Casey Salkaus and Julie Hamilton with their Christmas Around The World

WIDMAYER FORD
MANCHESTER, MICHIGAN
510 WEST MAIN (313) 428-8343

MANCHESTER ELECTRIC, INC.
CONTRACTING
ELECTRICAL - HEATING - COOLING
MAJOR APPLIANCE SALES AND SERVICE
NOW ACCEPTING MASTERCARD AND VISA ON ALL SALES AND SERVICE
112 Adrian Street Manchester, Michigan
Phone 428-8243

Colonial and Traditional
Furniture • Lamps • Bedding • Carpet
Quality and Prices
You'll Appreciate
LODI Town and Country FURNITURE
Ann Arbor-Saline Rd. at Pleasant Lake Rd.
662-9372

New Lower Price!
GET READY FOR WINTER WITH NEW TIRES!!!
Fast Courteous Service! • Low Prices!
• Quality Tire Repair Service •

HOURS — Mon., Tues., Wed.: 8 a.m. to 5 p.m.; Thurs. & Fri.: 8 a.m. to 6 p.m.; Sat.: 8 a.m. to 3 p.m.

FULL 4-PLY POLYESTER (BLACKWALL)

LOW COST — GOOD MILEAGE AS LOW AS	\$21.95	A78x13
(175) B - 78x13	\$24.95	
(195) E - 78x14	\$28.95	
(205) F - 78x14	\$29.95	
(215) G - 78x14	\$32.95	
(215) G - 78x15	\$32.95	
(225) H - 78x15 (White)	\$34.95	
(235) L - 78x15	\$37.95	

F.R.T. \$1.42 to \$2.78

ALL SEASON DUAL BELTED WHITEWALLS
SMOOTH RIDING — LONG WEARING — LOW PRICE
\$34.95
Size P-155/80R13

(A) P165/80R13	\$36.95
(E) P195/75R14	\$41.95
(F) P205/75R14	\$43.95
(G) P215/75R14	\$45.95
(H) P225/75R14	\$49.95
(F) P205/75R15	\$43.95
(G) P215/75R15	\$45.95
(H) P225/75R15	\$47.95
(L) P235/75R15	\$49.95

Plus F.R.T. of \$1.51 to \$2.80

This Tire Carries A FREE NATIONWIDE Limited Road Hazard Warranty ON ALL PASSENGER TIRES

SILKWORTH TIRE
LAWN & GARDEN EQUIPMENT
6595 Brooklyn Rd. (M-50)
NAPOLEON
5 Miles East of 127 Near Napoleon. Phone: 536-8632 147

Finalist In Math Competition



Mr. Symons, M.H.S. math teacher, and Rod Henry looking over report of Rod's first test in the Michigan Math Test.

Rod Henry, a Manchester High senior, finished in the top 6% of the Michigan students who participated in the twenty-sixth Annual Michigan Mathematics Prize Competition. As a result, he is one of 1200 students throughout the state who competed in the final examination on Wednesday, December 8.

This competition is sponsored by the

Pepsi, Diet Pepsi Mountain Dew Pepsi Light
\$1.99 1/2 LITER - 8 PACK
\$1.19 - 2 LITERS
\$2.19 CANS 8-PACK
\$3.29 CANS 12-PACK PLUS DEPOSIT

SCHWEPPE'S
GINGER ALE, TONIC WATER CLUB SODA
75c - 1 Liter
PLUS DEPOSIT

G.E. Wacker Inc.
GASOLINE • FUEL OIL • MOTOR OIL • DIESEL FUEL • GREASE
8000 CHELSEA - MANCHESTER RD. MANCHESTER, MICHIGAN 48110
Monday-Thursday 7 a.m. to 9 p.m. Friday 7 a.m. to 9 p.m. Saturday 8 a.m. to 9 p.m. Sunday 9 a.m. to 9 p.m.

NAPA BARGAIN BUYS
SHOP NOW AND SAVE ON THESE QUALITY ITEMS
QUANTITIES ARE LIMITED TO STORE STOCK

Set No. 94 — 4 pc. chisel set Nos. 2, 4, 5, 6 (3/8", 1/2", 5/8", 3/4") in plastic pouch	Set No. 291 — 4 pc. drill (ignition punch) set Nos. 202, 204, 206, 208	Set No. 394 — 6 pc. punch and chisel set Nos. 4, 5, 252, 253, 224, 235 in plastic pouch
SPECIAL \$13.50	SPECIAL \$18.95	SPECIAL \$15.75

When the name is NAPA, the standard is quality.
Ross Automotive
Hours: Monday thru Friday 8:00 AM-5:30 PM
Saturday 9:00 AM-2:30 PM
230 EAST MAIN STREET MANCHESTER, MICHIGAN
Phone 428-8320 or 428-8328

8th GRADE ASSEMBLES 1,600 PIZZAS



needed for the trip was raised with this sale. Judy Mann, Marilyn Minnick, Linda Hartmann, Sandy Carter, Polly Brokaw, Darlene Kuebler, Mary Coustino, and Ron Mann did a thorough job of organization and everything went smoothly. Another sale is being planned in March.



Alan Barnes and Julie Kruse help Miss Kuyda make bread for Christmas presents

GIVE A GIFT OF COMFORT

WORLD'S MOST COMFORTABLE OXFORD

Give a gift from our large selection of shoes and boots for work, sport and leisure. Available in many sizes and widths for the most comfortable fit.


GIFT CERTIFICATES TOO!

Red Wings
FOSTER'S MEN'S WEAR
109 SOUTH MAIN — CHELSEA, MICHIGAN

IGA A & B IGA MANCHESTER

455 W. Main

Monday thru Saturday 8 A.M. - 7 P.M. CLOSED SUNDAY



FAME Tomato Juice 69¢
48 oz. Can



FAME Lite Fruit 59¢
16 oz. Can

ALL VARIETIES
NEW FROM FAME!



By the Case... \$4.59
24 Bks. Plus Deposit

Faygo Pop 8/\$1.59
1/2 Tr. Bks. Plus Deposit

ALL REG. & DIET FLAVORS

Grocery


Coffee Creamer 79¢
Laundry Detergent \$1.49
FAME Dry Bleach 89¢

Real Mayonnaise \$1.49


FAME Noodles \$1.59
MEDIUM • WIDE • X-WIDE • 1 lb. Box

Grocery

Popcorn 99¢
Sunshine Toy Cookies 99¢
Hawaiian Red Punch \$1.29



Semi-Boneless Hams \$1.48
Water Added In Curing



Young Tom Turkeys 65¢
Meat

ROASTERS • SELF BASTING • 18 lbs. & Up




Zipper Skin Tangerines 10/99¢

FLORIDA



All Purpose Potatoes 79¢
16 lb. Bkg.



Young Ducks 89¢
Meat

CONCORD • GRADE A • 4-6 lb. Avg.
CACKLE BIRD • 5-7 lb. Avg.
Roasting Chicken 89¢



Grade A Turkey 75¢
Meat

FAME OR HONEST
SELF BASTING • 10 lbs. & Up

Put Yourself in the Marketplace, in the Classifieds

All Classified Advertising is Payable in Advance. All Ads Must Be PLACED AND PAID For Prior to 11 A.M. On Tuesday For Publication That Week.

Classifieds Are \$1.00 For First 20 Words, 50¢ A Word Thereafter. Thank You! Are \$3.00 Minimum Up To 50 Words.

MANCHESTER LOCKER PLANT
Phone 313-423-7500
Meat Processing-Custom Slaughtering
HOGS—BEEF—LAMBS
RETAIL: Cuts-Steaks-Quarters
LOCKER RENTAL

EXPERIENCED BABYSITTER would like to care for your children 423-7576. tfn

POLAR CHAIN SAWS, Sales - Service, Oregon saw chain & accessories. Phone 423-8707, 639 W. Main St. Earl Alber. 1-27

WINDOW & SCREEN REPAIR
Kleinschmidt True Value Hardware 423-8337. tfn

SNOW REMOVAL - 423-8707, 639 W. Main St. Earl Alber. 1-27

SEWING - Repairs, hems, zippers, alterations and new items made to your satisfaction. 423-9255. 12-23

PIANO TUNING AND REPAIR. Qualified technician, Ron Harris 475-7134. tfn

CHRISTMAS SHOP AT ALBER ORCHARD. Apples, cider, barrels and logs. Maple syrup, jelly, jams, honey, pop corn, cookies, sugary candy and dolls and ends. Open daily 9 to 5, 12011 Bethel Church Road 423-7735. 12-23

DEAD STOCK REMOVAL
We buy hides, skins, fat, bone and restaurant grease. Adrian Tankage Co. 517-265-6066. 9-22-82p

COUNTRY HOME on 1 1/4 acres on the Washtenaw-Jackson County line. Manchester schools. \$36,900.00 with easy terms. 4100 Prospect Hill Road. Call Realty World Allied 517-592-0027. 12-15

FOR SALE - 2 oil tanks - 500 gal. and 1000 gal. 2 oil furnaces. 423-5073. tfn

SHARON VALLEY ROAD - newer 3 bedroom ranch with basement and garage on over 1 acre. 5% down, 11% interest. Realty World Allied 517-592-0027. 12-16

CHELSEA GREENHOUSES, 7010 Lingua Road, Chelsea, Michigan 475-1853-54 or 475-0813. Flowers and plants for every occasion. We specialize in wedding flowers to fit your budget. We are as near as your phone and we welcome your business.

FOR RENT - 2 bedroom apartment \$270 a month plus utilities in Village, nice quiet second floor, deposit, references, 423-7212 or 423-4836. tfn

FOR RENT - 2 bedroom apartment, ground floor, 1 block from downtown 423/mon. discount for seniors. 423-9150. tfn

LITTLE WACK EXCAVATING
Licensed & Insured
Basements - Drainfields - Bulldozing - Digging - Snow Removal - Tree Removal. Paul Wackenhut. Phone (313) 423-8025. tfn

FOR RENT - 2 bedroom, 2 blocks from downtown Manchester \$295. 423-7173. tfn

FOR RENT - furnished efficiency apartment, one person, no pets, non smoker, utilities included, \$200 month. 517-451-2589. tfn

C & B PAINTING - Interior, Exterior, Free Estimates. Contact Charles E. Benedict. Phone 423-7136 or 423-7416. tfn

POSTER'S PORTABLE WELDING - any place any time. 423-7355. 1-6-83

ALUMINUM EAVESTROUGH
Seamless, white, black and brown, guaranteed, free estimates. Walkover Home Improvement Company. Phone (313) 423-6468. tfn

HAVE YOUR MOWER BLADES sharpened and balanced, saw chain sharpened and depth gauges adjusted for better cutting. Handsaws, circular saws, knives, scissors, pinkie shears, hair - animal - grass clippers and most anything needing a sharp edge. Kleinschmidt's True Value Hardware, 19880 Sharon Valley Road, Manchester. tfn

GERALD AHRENS CONSTRUCTION
Additions, Decks, Renovations, Repair, Finish Work, Free Estimates. Phone 423-8807. tfn

BARTMANN CARPENTRY
Licensed Builder serving Manchester with 14 years experience in Home Building, roofing, siding, decks, remodeling, garages and pole barns. Call Jim 313-475-9301 or Dan 517-456-4305. tfn

BURNER SERVICE - Make an appointment now to get your furnace ready for Winter. Manchester Electric 423-8243. tfn

FOR SALE - 3 bedroom home in Manchester, priced below Assessed value for quick sale \$56,500.00. Spear & Assoc. 423-8368.

FOR SALE - 2 - new 60 inch George White snowblowers \$995 each. S-K Sales 423-7182.

FOR SALE - 58 Acres, all tillable, \$55,000. 761-1346 or 423-9459. tfn

FOR SALE - New Home on 3 1/2 acres Qual-level, 2 baths, 12% financing, \$69,900, Spear & Assoc. 423-8368.

ROLLING 10 Acre Building Site \$15,000. 761-1346 or 423-9459. tfn

FOR SALE - 1 - new 87 inch George White snowblower \$1400. S-K SALES 423-7182.

NEED a new furnace? 423-9150. tfn

FOR SALE - Starter or retirement home in Village, \$48,000. Spear & Assoc. 423-8368.

EXPERIENCED SEAMSTRESS, reasonable rates, all phases of sewing and alterations. Call 423-9190. 12-30

FOR SALE - 2 - new 72 inch Dettson snowblowers, \$1295 each. S-K SALES 423-7182.

SHOPPERS - a T-shirt or jersey customised with iron-on name or message makes that one of a kind gift. Shirts by Trouble, 107 West Michigan Avenue, Clinton. Phone 517-456-9633. 12-23

SPEAR & ASSOC. Realtors are members of Ann Arbor Board of Realtors. Come into our office and look at our Multi-List book with over 2,000 listings in the Washtenaw County Area 423-8368. 122 W. Main Street.

KUKINI TRAVEL AGENCY ANNOUNCES 1983 ESCORTED KAUAI HAWAII TOURS
Winter Tour: 22nd Feb-4th March, Two Island-Deluxe-Nine Nights. Fall Tour: 7th Nov-18th November, Three Island-Deluxe-Ten Nights. 124 W. Chicago-Tecumseh, Michigan. Phone: 517-423-8651. tfn

HOUSES FOR SALE - good land contract terms, older 4 bedroom home on a large lot, recent gas furnace, aluminum siding, roof and insulation. Only \$37,500. Call Earl Keim Realty of Ann Arbor 662-2571. 12-23

PREMIUM CHRISTMAS TREES - roping, wreaths and bows. Open daily 10 a.m. Leverett's Country Market, 4092 Packard Road, Ann Arbor 971-0240 12-18p

BUY, RENT OR SELL THRU THE WANT ADS

CONTACT PAPER - Regular 89¢ yd. Special 15¢ ft. Cliff's Ace Hardware. Manchester 423-7322.

LARGE CASH REWARD for the name of the person who stole my Beagle on Haskley Road. Call 423-7224. 12-16

FOR RENT
APARTMENT FOR RENT - Manchester. Spacious 2 bedroom, washer/dryer, Hibbard Street 423-9570 or 423-8882. 12-30

HOUSE FOR RENT IN VILLAGE OF MANCHESTER. 3 or 4 bedrooms, two baths, large kitchen, first floor laundry. 423-9350. tfn

Cards Of Thanks
We want to thank all who donated toward our quilt. It was won by Teri Ernst of Pontiac, Michigan.
St. Thomas Lutheran Ladies Aid
To all who made our 60th Anniversary such a special occasion and for all the lovely cards, our heartfelt thank you.
Casale and Norman
We would like to thank all of our neighbors, friends, relatives and Zion Lutheran Church for their help after our home fire. Without everyone's help we could not of been back in the home in two weeks.
Special thanks to Pastor Morris and wife Karrol for their help with the clothing. Jerry, Barb, Kerry and Tom Huggst
I would like to thank our Pastor Rev. Robert Macchiano for his visits and prayers while in St. Joseph Hospital and since returning home. I also want to thank the Women's Guild, Sister Chisena, Fern Bureau and my many friends and relatives for their get well cards and prayers. A special thank you to Marilyn and Walter Sumner and Maxine Frey for being with me in the hospital and helping and caring for me since returning home.
Amanda L. Haester

FOR RENT - 2 bedroom apartment \$270 a month plus utilities in Village, nice quiet second floor, deposit, references, 423-7212 or 423-4836. tfn

FOR RENT - 2 bedroom apartment, ground floor, 1 block from downtown 423/mon. discount for seniors. 423-9150. tfn

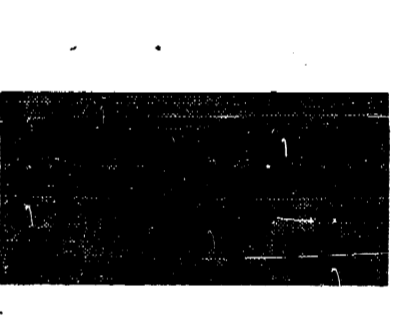
LARGE 3 bedroom duplex, washer/dryer, large yard, room for garden. \$399. 423-9150. tfn

CLINTON THEATRE
Friday & Saturday 7:30 & 9:30
Sunday 7:30
ALL SEATS \$2.00

APARTMENT FOR RENT - 2 bedrooms, 2 blocks from downtown Manchester \$295. 423-7173. tfn

FOR RENT - furnished efficiency apartment, one person, no pets, non smoker, utilities included, \$200 month. 517-451-2589. tfn

MARGIE'S UPHOLSTERY
6245 Brooklyn Rd., Napoleon
Wide Selection of Fabrics
Pick Up & Delivery Available
517-536-4230

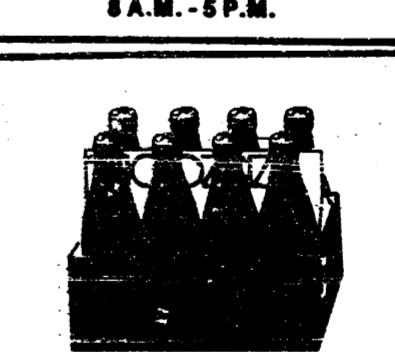


Manchester Travel
Fast Computerized Reservations!
Issue airline/train Bus tickets!
Cruises & yacht charters!
Hotel or motel reservations!
Value vacation packages!
And much, much more!
WE FIND THE BEST DEALS!
All major credit cards accepted!
Ticket delivery available!
Our services are free!
Call 313-428-8395 or
Stop by
134 E. Main Street
Manchester, MI 48138

Transfer Station Holiday Hours
THURSDAY, DECEMBER 23 12 P.M. - 5 P.M.
MONDAY, DECEMBER 27 8 A.M. - 5 P.M.
THURSDAY, DECEMBER 30 12 P.M. - 5 P.M.
MONDAY, JANUARY 3, 1983 8 A.M. - 5 P.M.



G.E. Wacker Inc.
GASOLINE • FUEL OIL • MOTOR OIL • DIESEL FUEL • GREASE
1000 DELTA MANCHESTER RD. MANCHESTER, MICHIGAN 48138
Monday-Thursday 7 a.m. to 6 p.m. Friday 7 a.m. to 5 p.m.
Saturday 8 a.m. to 9 p.m. Sunday 9 a.m. to 5 p.m.



7 UP, DIET 7 UP, LIKE CANADA DRY GINGER ALE ORANGE AND GRAPE CRUSH \$1.99-16 oz.-8 Pack \$1.29-2 Liter PLUS DEPOSIT



Manchester Travel
Fast Computerized Reservations!
Issue airline/train Bus tickets!
Cruises & yacht charters!
Hotel or motel reservations!
Value vacation packages!
And much, much more!
WE FIND THE BEST DEALS!
All major credit cards accepted!
Ticket delivery available!
Our services are free!
Call 313-428-8395 or
Stop by
134 E. Main Street
Manchester, MI 48138

Servicemen And Women Addresses

The American Legion Auxiliary of Manchester has compiled the following list of names and addresses of the Manchester area service women and men. Since it is the holiday season, cards and gifts will be sent, which is made possible by your support of the Poppy sales.

Pfc. Edward W. Achtenberg
371-78-5410
E. Co. 704 MT BN
Ft. Carson, Co., 80913

Pvt. Michael Ball
163rd MIBN Co. C
375484248
Bldg. 90042 Room #313
Ft. Hood, Texas, 78544

James Schenck
24D Warbler Ct.
St. Mary's, Georgia, 31558

AeAN Brad Bailey
375 484145
IM 3W/C890
USS Nimitz Cvn 68
FPO New York, New York 09642

Cpl. John Benedict
1614 Apt. B
Calle Los Bolos
San Clemente, California 92672

Lance Corp. Joseph Chapin
UmFAT 101ESMCAS
Yuma, Arizona 85384

Capt. Robert Chapin
Suite 4-L-150 Fed. Bldg.
24000 Avila Rd.
Laguna, Niguel, California 92677

M/Sgt. James Dennis
221 Hudson Circle
Niceville, Florida 32578

Louis Frey
P.O. Box 12
Carlsborg, Washington 98234

Staff Sgt. Paul Green
100 A Arrowhead Rd.
Ft. Benning, Ga. 31905

Corp. Wm. Hagerman
Co. A 5-68 Armor
APO New York, New York 09086

James Michael Hunt
601 ASOC
Box 115
APO New York, New York 09039

Capt. Deborah Knickerbocker
901 Hickory Hill
Fort Sam Houston
San Antonio, Texas 78219

LCPL Michael S. Lentz
HHS-28
MACG - 28 S-4
MCAS
Cherry Point, North Carolina 28533

Spec. Dan Little
2278 Old Ashland Road
Clarksville, Tenn. 37040

Pvt. Gerald D. Miller, Jr.
P.O. Box 10256
Company "B" 65 Engineer
Schofield Barrack, Hawaii 96857

Mark E. Neigebauer
P.S.C. 1571
K.I. Sawyer A.F.B. Michigan 49843

L.C.P.L. Jon Rowe
Mag 49 Det "A" F/L
N.A.S.
South Weymouth, Mass. 02190

Gerald W. Spencer
667857 AII
Oriskany St.
Mayport, Fla 32227

Jack Stein
369846113
D-TRV 2-9CAB
HAAF, Ga 31409

Michael Walsh
8314 Calle Calzada
San Diego, Ca. 92126

Richard Walter
823 McGuire
Whitman A.F.D.
Knob Knoster, Mo 65305

Pvt. Matthew Vassoff
381 82 2378
30024th Sig Co 72 Sig Bn
A.P.O. # N.Y. 09164

Jeffrey Sullivan
PSC No. 1
Box 21197
APO San Francisco, Ca. 96230

Cub Scout Pack 421

"Cub Scout Spirit" is our December theme. The Cubs did a fantastic job at the Muscular Dystrophy Pancake Supper

December 2. At the pack meeting December 9 the Cubs each brought a can of food to share with the area's needy. The Webeles Den plans to go Christmas caroling at an area nursing home.

At our pack meeting the flag ceremony was presented by Den 5. Den 2 received the "Cubby" award for the 2nd month in a row. Songs were sung and refreshments served as we observed the Christmas Season.

During the month Duncan Macfarlane earned his Bobcat Badge and John Donnellon his Wolf. Jeremy Galbraith earned a Wolf Gold Arrow Point. Steven Harvey earned his Bear Badge and Sean Lowery his Webeles Badge.

Daniel Watson (2), Matt Stautz (1), Micheal Sroufe (3), Joey Murphy (1), Tim Harvey (1), Chris Fosket (1), Ryan Burkhardt (1), Brian Ball (2), Sean Lowery (3) and Jeremy Harris (1) earned Webeles Activity Pins.

Our January Pack Meeting will be Thursday, January 13 at Klager School. Uniform inspections will be held.

Girl Scout Caroling

All Manchester Girl Scouts and their families are invited to go Christmas Caroling, Tuesday evening, December 21.

The group will meet at the Knights of Columbus Hall at 6:30 and return by 7:45. If girls are not accompanied by a parent please send a permission slip.

LAMBDA NU SORORITY

NEW YEAR'S EVE PARTY

DECEMBER 31, 1982
Knights of Columbus Hall

Live Music by "2nd TIME AROUND"

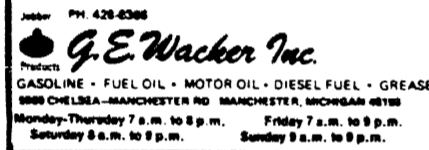
\$20.00 Couple
B.Y.O.B.

Proceeds To Convention Fund
PRE-SALE ONLY

Beer and Light
Lunch Furnished

Come See Us For Christmas

GRANDMA'S FRUIT CAKE
CHRISTMAS CANDY
STOCKING STUFFERS
CRAZY SAYING CAPS



GASOLINE • FUEL OIL • MOTOR OIL • DIESEL FUEL • GREASE

1000 CHELSEA - MANCHESTER RD. MANCHESTER, MICHIGAN 48906

Monday-Thursday 7 a.m. to 8 p.m. Friday 7 a.m. to 8 p.m. Saturday 8 a.m. to 8 p.m. Sunday 9 a.m. to 8 p.m.



ONLY 9 MORE SHOPPING DAYS 'TILL CHRISTMAS

1982		DECEMBER						1982	
SUNDAY	MONDAY	TUESDAY	WEDNESDAY	THURSDAY	FRIDAY	SATURDAY			
	12	13	14	15	16	17	18		
				Kleinschmidts Hardware Open 8 a.m. - 8 p.m.	Kleinschmidts Hardware Open 8 a.m. - 8 p.m.	Kleinschmidts Hardware Open 8 a.m. - 8 p.m.	Kleinschmidts Hardware Open 8 a.m. - 8 p.m.		
12 5 p.m.	9 a.m. 7 p.m.	9 a.m. 7 p.m.	9 a.m. 7 p.m.	9 a.m. 7 p.m.	9 a.m. 7 p.m.	9 a.m. 5 p.m.	25 CHRISTMAS		
26	27	28	29	30	31			NEW YEARS	

MANCHESTER MERCHANTS WILL BE OPEN NIGHTS BY HOURS INDICATED ON CALENDAR

BEN FRANKLIN OPEN 9 a.m. - 8 p.m.
KRAUSS PHARMACY
MANCHESTER ELECTRIC
CLIFF'S ACE HARDWARE
VILLAGE HAIR FORUM OPEN THURSDAY 9 a.m. - 7 p.m.

THE FLOWER GARDEN
GILL'S GAMBLE
KLEINSCHMIDTS TRUE VALUE HARDWARE OPEN 8 a.m. - 8 p.m.
THE ORNAMENTAL SHOPPE OPEN 8 a.m. - 8 p.m.
ROLLER JEWELRY

MANCHESTER TOWNSHIP LIBRARY
P. O.

THE MANCHESTER ENTERPRISE

20 Cents Per Copy

116TH YEAR VOLUME NO. 9

USPS 327-460

THURSDAY, DECEMBER 23, 1982

Students Donate Food



Students at Klager and the Middle School have donated food for the Manchester Community Services to help families have a Merry Christmas. Pictured are Chris Armstrong, Johnny Schlot and Jeno Okey with some of the things they brought.

HIT or MISS

It's hard to imagine the varied effects that our economic condition has had on various places and things and people one would not connect with such circumstances. For example we read not long ago of the plight of Turkey City, Pa., population 11. Now Turkey City has a post office which is a very peaceful place except shortly before Thanksgiving when several thousand cards and letters arrive to be postmarked there. This year with 20 cents postage, there were very few who cared enough to spend that amount on these letters, so the post office there is suffering from an economic letdown.

And just the other day we had a report from Rudolph, Ohio, saying that if Rudolph depended this year on the holiday mail receipts he wouldn't have enough to buy batteries for his celebrated red nose. Once the small settlement had to put in extra help to help stamp the Rudolph stamp on the thousands of cards and letters that arrived there. Visitors came long distances with trays and packages of mail but last year the total fell to some 200 and this year shows no signs of being any better - if anything, it will be less this year. Stamps

BY FARLEY

once 5 cents are now 20 cents and those who drove many miles to mail their cards gave up because of the cost of gasoline.

So, a once popular activity similar to the mailings from Santa Claus, Indiana, have faded into oblivion, says our reporter.

But a gal who works in the post office in Rudolph told a reporter that she saw nine deer in a field near there the other morning. Maybe one was Rudolph and the others were Dasher, Dancer and Comet, Cupid, Prancer and Vixen.

The trains no longer whistle through Rudolph and many other small towns and even it's school has become a part of a neighboring district-such is progress- perhaps.

Important Programs On TV Channels

Father Schlinkert announces six important telecasts of interest to parents. Father's program "With This Ring" features three well-informed guests within the next six Sundays.

This coming Sunday, December 26 and Sunday, January 2, Doctor David Logan of Ann Arbor will be featured. Dr. Logan is a distinguished Psychiatrist who devotes almost all of his practice to the prevention and cure of substance abuse. He offers to send parents, without charge, a questionnaire designed to discover possible substance abuse by their children.

On Sundays, January 9 and 16 the guest will be the founder of the Ann Arbor branch of "Families Anonymous". He will tell parents how, by mutual action, drug abuse can be prevented or treated.

Sundays, January 23 and 30 will bring an unusual guest. Plans are now complete for taping interviews at the White House with the President's adviser on Drugs, Dr. Carlton Turner. Dr. Turner, who came to the White House last year, heads the strong federal campaign to wipe out drug importation and to bolster grass-roots efforts at achieving a drug-free environment.

Manchester viewers will find "With This Ring" by tuning to Channel 2 at 8:45 Sunday morning or Channel 13 at 7:00. Two weeks later the same programs appear on Channel 10 at 7:15 a.m. and Channel 6, 12:45 Sunday night.

Winter 1983 Community Education

The Winter-1983 Community Education brochure will be mailed to Manchester area residents around December 30. Registration will be from January 3 through January 14. Washtenaw Community College pre-registration will be held on Wednesday, January 5 from 7-8:00 p.m. in the High School library. Washtenaw Community College classes will start on Monday, January 10. Check your college catalog or Community Education brochure for exact times and starting days of classes. Several new and popular classes have been added to the college schedule this winter. The enrichment section has been expanded to include Aerobic dance classes four nights a week plus and after school session that meets twice a week. Please check starting dates for the aerobic classes. These classes start before the scheduled starting date of the week of January 24 when most of the Enrichment and high school completion classes begin. Look for the star next to class listings, this indicates classes that need only a few more NEW registrations

to get started. The same policy for cancellation of classes will be the same as in past years. If school is closed during the day, classes will be cancelled at night and made up after the scheduled ending date. Plan now to join one of your Community Education classes with your friends and to make new friends this winter.

Building Renovation Discussed

In a special meeting on Saturday, December 17 the Manchester Board of Education met to review and discuss the status of all facilities and to examine plans for future renovations.

Superintendent Gene Thompson reviewed for the Board efforts which have been made to meet emergency problems in heating, roofing, and ventilation systems. He indicated that while immediate emergency problems had been met the facilities remained badly in need of major renovation and that new emergencies would emerge unless plans were developed in the maintenance area.

Luminaria Candles Still Available

Supplies for the Luminaria Candles are available for those who still want them. Please contact Karen Hinkley at 428-9115 if interested.

School District Goals Emerge

Through discussion and consensus the Board of Education has arrived at a set of goals to guide the school district for the next several years. Board members worked for over three hours in a special meeting on Saturday, December 17 in order to reach agreement on the goals.

Of chief concern to all Board members is the continued financial stability of the school district. It was felt that a multi-year millage should be a goal.

An education audit of the school district drew the interest of the board. The superintendent was directed to investigate firms which could provide the Board with an independent assessment of the district's curriculum, standards, and general quality for students and employees.

Continued efforts in the area of public relations were cited by the Board as being critical. This was especially true in regards to non-parent citizens of the school district.

Renovation and maintenance of the school buildings was included as a major goal. The Board devoted additional time to the discussion of meeting this goal.

The continuation of the Manchester Community Schools as an independent school district was noted as a fifth major goal. Concern was expressed regarding pressure from the State Department of Education regarding the elimination of small school districts through consolidation.

The final major goal was to continued to provide means for professional development of the entire staff.

