


IGA A & B IGA
455 W. Main MANCHESTER
 Monday thru Saturday
 8 A.M. - 7 P.M.
 CLOSED SUNDAY



CITRUS-TROPICAL
Sunny Delight Punch
88¢
84 oz. Jug



CAMPBELL'S
Tomato Soup
4/\$1
10 1/2 oz. Cans



ALL FLAVORS
Hawaiian Punch
59¢
48 oz. Can



FAME
Macaroni & Cheese
4/\$1
7 1/2 oz. Boxes



TABLETS
Sliced Bacon
\$1.39
1 lb. Pkg.



8-1/2 Liter Bottles
Pepsi Mt. Dew & Diet Pepsi
1.99 Plus Dep.
FAME SALTINES OR 11-10 oz. Box
Regency Crackers..... 59¢
24 oz. Jar
French's Mustard..... 69¢



ALL FLAVORS
Hawaiian Punch
59¢
11 oz. Cans



FLORIDA
Sweet & Juicy Tangerines
12/79¢



ALL LAYER VARIETIES
Betty Crocker Cake Mix
79¢
16.5 oz. Box

MANCHESTER TOWNSHIP LIBRARY
 P. O.

THE MANCHESTER ENTERPRISE

SEVENTH YEAR VOLUME NO. 7 USPS 327-460 THURSDAY, DECEMBER 9, 1982 20 Cents Per Copy

HIT or MISS
 BY FARLEY

While browsing through a stack of this and that which we had saved from the days when we published The Enterprise, we came across a brochure that was evidently published about 1940-42. It was widely circulated at that time and enumerated the town's good points and insisted that it was a good place in which to live and raise a family and that its location in the hills of southeastern Michigan gave it a great deal to offer and that its location adjacent to Briar Hills gave it many educational advantages. At this time the booklet received many compliments and had a wide circulation.

In the brochure were display ads from every Manchester merchant, and there are none of them left now. How many can you remember and where were they located?

Union Savings Bank; The People's Bank; Werthner Brothers - Men's clothing and wholesale gloves, etc.; Marx and Marx - Women's Wear and Carpets and Linoleum; Widmayer's Hardware; G.H. Breitenwischer - General Merchandise; C.H. Seckinger - Groceries; F.D. and R.C. Merithew - Real Estate and Auctioneer; Manchester Bakery; Dresselhouse and Davidter - Hardware and Farm Equipment; Walter Luckhardt - Groceries; C.F. Curtis - 5c to \$1.00 store; Carl Hetrick - Tavern; Hanewald's Market; LeRoy Heimerdinger - Garage; Carl M. Schaible - Ford Sales; Trolz and Eschelbach - Meats; Tossolo Knorpp - Real Estate and Insurance; H.J. Meyer - Allis Chalmers and Plymouth Sales; Manchester Theater; Carl Toburen - Service Station; R.B. Haessler - Drugs; A.A. Snowman - Drugs; "Butch" Hanewald - Meats; Burch's Service Station; Mary's Tavern; L.A. Hill - Feeds; A & P Store - Charles Eisenhauer; Lindbert's Chevrolet Sales; Koebbe Welding; Manchester Mill - H. Blaess; "Bub" Schill - Wholesale gasoline and oils; Art Wacker - Standard Oil and Herman Kuebler - Plumbing.

Another whole generation has taken over "Main Street" and while Manchester was always a good "Business" town the present generation has breathed new life into the town. The generation of the 40's and 50's were known as being a bit

Continued on page 11

Ted Lindsey To Speak On "Drugs And Athletics"

The Substance Abuse Awareness Committee warmly invites you to attend a presentation on "Drugs and Athletics". The featured speakers for this meeting will be Ted Lindsey, former player and coach of the Detroit Red Wings Hockey Association, and his associate Jeff Jay.

The meeting will be held on Thursday, December 9, at 7:30 p.m. at the old Manchester Feed Mill on Main Street.

Bill Scaletta, athletic director for Manchester Community Schools, will speak on local problems involving drugs.

Family Service Annual Food Drive

The spirit of Christmas has taken over Middle School and Klager Elementary as the annual drive for canned and packaged foods, paper goods and soaps gets into swing. These articles are to make up the boxes that are prepared by Manchester Family Service, Inc., for the forty to fifty needy families in the Manchester School District and Manchester Township. The boxes are distributed at the Christmas Shop which is held each year at St. Mary's Catholic Church by the Manchester United Way Agency, MFS.

Everyone is invited to participate in the collection. If you haven't a hard-working student relative or friend in the neighborhood and wish to donate to this worthy cause bring your donation to St. Mary's Church (Madison Street entrance ONLY) between 3:00 and 5:00 p.m. on Tuesday, December 14, ONLY. Since there are a lot of ONLYS in this suggestion, one may call Claire Reck, 428-8852, or Dianne Schwab, 428-8976, for information or assistance. Monetary donations should be made out and sent to Merrill Korth, treasurer, Manchester Family Service, 410 Adrian Street, Manchester.

If there are families in the area who have not been contacted by phone or letter by MFS in the past week, they or a representative should get in touch with the above phone numbers for assistance. Manchester Family Service receives the family names through the Department of Social Services.

Emanuel United Church of Christ Sanctuary Re-Dedication Sunday

On Sunday morning, December 12, 1982, at 10:30 a.m. Worship, the congregation of Emanuel United Church of Christ in Manchester, will hold the final event in their year-long celebrations and capital improvements.

Helping to do the Re-dedication honors will be special guest, Dr. John Rogers, who is the Minister and President of the Michigan Conference of the United Church of Christ. Because Emanuel Church celebrates its early founding days this

year, it is their intention to help the United Church of Christ with its national campaign to assist other areas where newly formed UCC Churches are being started. The first gift installment will therefore be presented to Dr. Rogers on behalf of Emanuel Church to the New Initiatives in Church Development program of the denomination.

Other events taking place on Sunday will be the guest performance of the Bethel United Church of Christ Orchestra, who will play Christmas prelude music, and the Reception of New Members into the Church Fellowship. The Christmas Tree will be up and decorated, along with the placing of memorial plaques.

One hundred years ago, over the spring, summer, and fall of the year 1882, the small German Christian community of faith in the Village of Manchester, worked very diligently, and with many volunteer hours, to construct the Sanctuary with local brick made from the brickyard of Mr. Frederick Schaible.

The Cornerstone having been placed at a ceremony on July 9, 1882 at 2 p.m., the Sanctuary was subsequently officially dedicated on Sunday morning, December 10, 1882. The Pastor was then The Reverend George Schoettle, who ministered in Manchester from 1885 through 1906. In those days the German Lutheran Church was called "DEUTSCHE EVANGELISCHE EMANUELS GEMEINDE."

Everyone is welcome to attend the 10:30 a.m. Worship, and to participate in the re-dedication, not only of a building on brick, but a House of Worship in which generations of Manchester folks have learned about the love of God which came to the world as the Babe of Bethlehem at Christmas, to save us from sin, and to inspire us to service in His name.



FREDERICK "Brickyard" SCHABLE and his brother Michael, both Emanuel Church members, owned and operated the manufacturing operation which supplied the brick for the Sanctuary, as it was built in 1882. (Photo is courtesy of Mrs. Adona Lehman Holmes, oldest living confirmed member of Emanuel Church.)

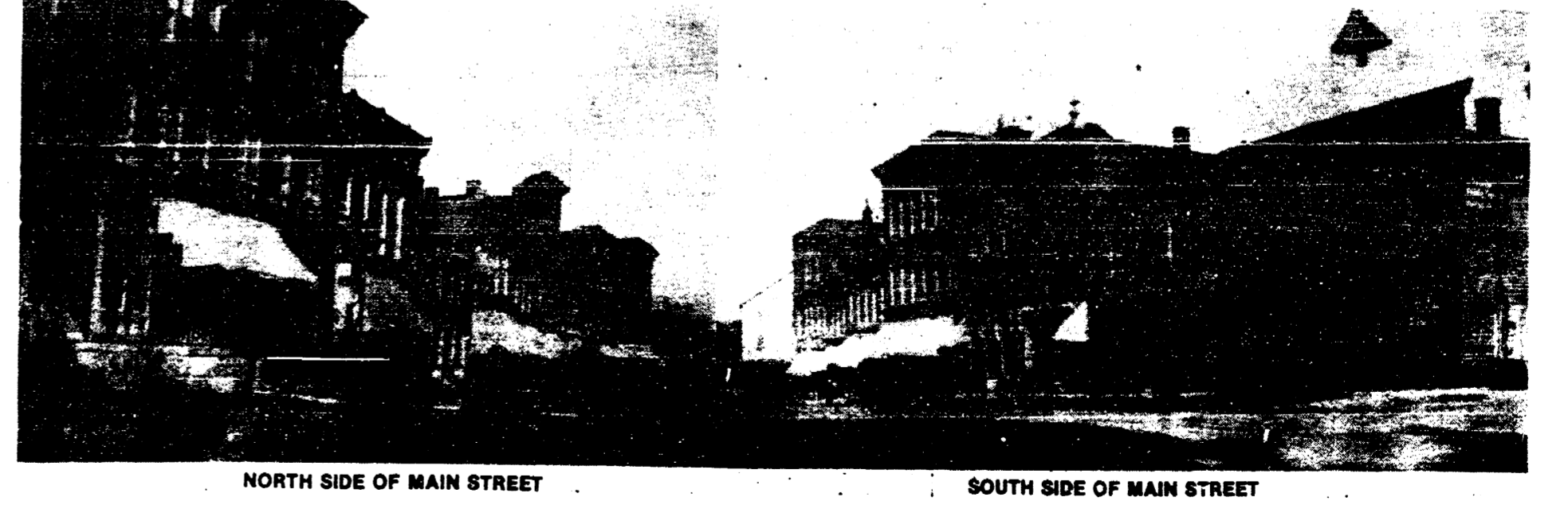
Library Elects New Officers

Newly elected trustees Ann Fowier and Ken Arney were welcomed to the library board. The following new officers were elected: President, Nancy Sippel; Vice-President, Olga Nickels; Treasurer, Ann Fowier and Secretary, Margaret Goodrich. Other board members are Doris Mahony and honorary member, Claire Reck.

Candle Pick-Up

The Luminaria Candle Kits may be picked up Tuesday, Wednesday, Thursday, December 14, 15, 16 and/or December 21, 22 and 23. Call Karen Hinkley for information 428-9115.

Main Street Manchester Early 1900's



NORTH SIDE OF MAIN STREET

SOUTH SIDE OF MAIN STREET

The Manchester Enterprise
 180 EAST MAIN STREET
 Manchester, Michigan 48110
 USPS 357-750
 Phone 428-8173

The Manchester Enterprise was established in 1957 and is published each Thursday at 150 East Main Street, Manchester, Michigan with second class postage paid at Manchester.

Edward S. Steele, Publisher
 Lenore Steele, Editor

Art Guild Christmas Exhibit

A special showing and sale of works by area artists and craftspersons is presented by the Manchester Art Guild during the next two weeks. Pottery, woodwork, paintings, quilting, printed cards, and more are included in the exhibit.

In Guild tradition, items reflect a great variety in type and price, whether it be a special painting to fall in love with, or a simple stoneware candle-holder. The most valuable gifts at any time of the year are ones made lovingly, and in the one-of-a-kind manner symbolic of this holiday season.

Local artists displaying work include Nancy Feldkamp and Jo Swenberg with watercolor paintings; quilted pictures by Margaret Goodrich; pottery by Bonnie Greenwald; and printed cards by Debbie Smith.

Obituary

Katherine Hinz
 1415 Columbia Ave.
 Lawton, Oklahoma

This quality Christmas exhibit is located in the Manchester Art Gallery at 135 E. Main Street, off the lobby of the Black Sheep Theater. Hours for the show coincide with theater performances of "Christmas Coast to Coast" December 10-19. The Gallery is open Thursday-Saturday from 7:00-8:00 p.m., Saturday from 10:00 a.m.-12:00 noon, and Sunday from 1:00-4:00 p.m. Additional hours will be posted.

Funeral services were held December 4, 1982, at 2 p.m. at Immanuel Bible Church in Chelsea with Pastor Ronald Little officiating.

Memorial contributions may be made to the Katherine Hinz Memorial Fund. Arrangements by Burghardt-Cole Chelsea Chapel.

Senior Citizens Meals And News

There will be no meal for Senior Citizens at Emanuel United Church of Christ on Tuesday, December 14, as Seniors are invited to attend a Christmas Program and Dinner at Klager Elementary School that day at 10:30 a.m. Reservations should be made.

5th-8th Grade Reading Program Expands Its Scope

Middle school reading teachers have combined forces to initiate a new addition to our reading program.

Instead of following our previous format which called for students to participate in the Scotts, Foresman Reading Program five days a week, it was decided to reserve Friday mornings for an elective reading program. The new program would allow our students to select a reading activity from the following list: Poetry - Mrs. Dalton, Mythology - Mrs. Korican, Folk Tales-Figurative Language - Miss Detting, Biography - Mr. Boyce, Junior Great Books - Mrs. Hanifi-Mrs. Young, Mind Benders-Deductive Thinking Skills - Mr. McGuire and Future Problem Solving - Mrs. Buss.

The student reports to the activity of his choice every Friday morning for the entire nine-week marking period. When the marking period is over, each student selects a new reading activity for the next nine weeks.

Class offerings do vary throughout the year so that students have a wider variety of activities from which to choose. Ask your child which group he/she has selected.

M.H.S. Psychology Class Has Speakers

Dr. Eugene Thompson, Superintendent, and Sheryl Hall, Psychology teacher, awarded P. LaMont Okey, M.D., and Charlotte Major, R.N., "People Pins" on Tuesday, November 23, for outstanding contribution to the Manchester School District. Attending the presentation were Principal James Kappler and the High School Psychology class.

Dr. Okey and Mrs. Major spent almost two weeks with the Psychology class in conjunction with the chapter they were studying on how mature and immature personalities approach love and marriage differently. As part of the homework, students were given a "responsibility project" by Dr. Okey. Each received an egg to "care" for on a twenty-four hour basis for one week. "Eggitting" is also used in the Child Development class and is an especially useful tool to emphasize the concept of responsible decision making, according to Mrs. Hall.

Buy-Rent-Sell Thru Classifieds

Walt's Heating & Cooling
 24 HOUR SERVICE
 Walt Horodoczny

**COMFORT AIR FURNACES
 A.O. SMITH WATER HEATERS
 WATER SOFTENERS**

**FURNACES TUNING AND
 CLEANING**

PHONE 428-8645

18824 Bethel Church Rd.
 Manchester, Mich.

church services ...

EMANUEL UNITED CHURCH OF CHRIST
 Rev. Robert Macfarlane, Pastor
 Sunday School 9:00 a.m.
 Worship Service 10:30 a.m.

SHARON UNITED METHODIST
 Rev. Ronald L. Ina, Pastor
 4814 and Pleasant Lake Rd.
 Church School 10:00 a.m.
 Worship 11:00 a.m.

ST. THOMAS LUTHERAN
 Rev. Paul Pulte, Pastor
 Ellsworth Road
 Sunday School and Bible Class 9:30 a.m.
 Church Service 10:45 a.m.

ST. JOHN'S UNITED CHURCH OF CHRIST
 Mr. Roger Samonick, Lay Pastor
 Rogers Corners, Waters and Fletcher Rds.
 Worship and Sunday School 10:30 a.m.

BETHEL UNITED CHURCH OF CHRIST
 Rev. Roman A. Reinick, Pastor
 Schneider and Bethel Church Roods
 Church Service 10:30 a.m.
 Sunday School 11:00 a.m.

MANCHESTER UNITED METHODIST
 Rev. Thomas E. Hart, Pastor
 Church School 9:15 a.m.
 Worship at 10:30 a.m.
 Choir Practice and Coffee Hour at 11:30 a.m.

ST. MARY'S CATHOLIC CHURCH
 Father Raymond Schinkert
 Monday thru Friday 8:30 a.m., Saturday 5:00 p.m.
 Sunday 8:30 a.m. and 10:30 a.m.

NORTH SHARON COMMUNITY BIBLE
 Bill Enslin, Pastor
 Sylvan and Washburn Roods
 Sunday School 10:00 a.m.
 Morning Church 11:00 a.m.
 Youth Meetings 6:00 p.m.
 Evening Church 7:00 p.m.
 Wednesday Bible Study 7:00 p.m.

FAITH COMMUNITY CHURCH
 Timothy Miles, Pastor
 8400 Sharon Hollow Rd. off W. Austin Rd.
 Worship Service 10:00 a.m.
 Sunday School 11:15 a.m.
 Sunday Evening Service 6:00 p.m.
 Jr. & Sr. High Young People's Meeting 7:00 p.m.

OUR SAVIOR LUTHERAN CHURCH
 Rev. Franklin M. Giebel, Pastor
 1515 S. Main, Chelsea
 Summer schedule through Labor Day:
 Sunday Worship Service 9:00 a.m.

IRON CREEK COMMUNITY CHURCH
 Rev. Paul Runyon, Pastor
 English and Sharon Hollow Roods
 Worship Service 10:00 a.m.
 Sunday School 11:15 a.m.
 Evening Service 7:30 p.m.
 Wednesday Prayer Meeting 7:30 p.m.

ZION LUTHERAN CHURCH
 Rev. John R. Morris, Pastor
 3050 S. Fletcher Road
 JULY & AUGUST: Sunday School & Church 8:00 a.m. to 9:30 a.m.

ST. JOHN'S LUTHERAN CHURCH
 Rev. Dennis A. Falk, Pastor
 Austin Road, Bridgewater
 Sunday School 9:15 a.m. Worship 10:30 a.m.

VICTORY BAPTIST
 Dr. Clare Gleason, Pastor
 Sunday School 9:45 a.m.
 Morning Worship 11:00 a.m.
 Sunday School 11:15 a.m.
 Teen Time and Jr. Astronauts at 5:30 p.m.
 Evening Worship 6:30 p.m.
 Wednesday Prayer Meeting 7:30 p.m.

CLINTON ASSEMBLY OF GOD
 Charles Sanders, Pastor
 12500 Allen Rd., Clinton (corner of Allen Rd. and Manchester-Clinton Rd.)
 Sunday School 9:45 a.m.
 Morning Worship 11:00 a.m.
 Evening Service 6:30 p.m.

CHURCH OF JESUS CHRIST OF LATTER-DAY SAINTS (MORMONS)
 Thomas E. Schutte, Branch President
 Rebekah Hall, MS2, Chelsea
 Sacrament 9:30 a.m.
 Sunday School, Primary 10:50 a.m.
 Priesthood, Relief Society, Aaronic Priesthood Youth 11:40 a.m.

ST. BARNABAS EPISCOPAL CHURCH
 Rev. Jerrold F. Beaumont, "Vicar"
 Old US 12-1/4 mile west of MS2, Chelsea
 9:30 a.m. Church School-Children and Adults
 10:30 a.m. Worship Service

BAMAT FAITH
 Study of Bahai scripture and discussion on applying spiritual principles to daily living. Believers of all faiths welcome. 2nd and 4th Sundays every month, 2:30 p.m., at the home of Thomas and Nancy Rykwalder, 611 S. Macomb. For more information or directions call 428-9454.

BETHEL UNITED CHURCH OF CHRIST

Saturday, December 11, 10:00 a.m. Pre School Fellowship Christmas Party. 6:30 p.m. Church Board Christmas Dinner at Gene Dramas.

Sunday, December 12, 10:00 a.m. Worship Service. 7:00 p.m. All congregation caroling. Refreshments after by In-Betweeners.

Wednesday, December 15, 11:30 a.m. Senior Citizens of Bethel Christmas Dinner.

WEEKLY MEETINGS:
 Sunday: 11:00 a.m. - 12:30 p.m. Church School classes and rehearsal for Christmas Program.
 Monday: 7:30 p.m. Bible Study-Prayer Time.
 Wednesday: 4:45 p.m. Childrens Choir. 7:00 p.m. Youth Choir Plus. 7:45 p.m. Senior Choir.
 Saturday: 9:00 a.m. Confirmation Class.

EMANUEL UNITED CHURCH OF CHRIST

Thursday, December 9, 11:00 a.m. Senior Exercise Program. 12 Noon Senior Meal. 3:40 p.m. Children's Christmas Choir. 6:30 p.m. Women's Fellowship. 7:30 p.m. Senior Choir rehearsal. Christmas Potluck.

Friday, December 10, 7:00 p.m. Decorate Sanctuary Christmas Tree, prepare candles for Christmas Eve and caroling boxes.

Saturday, December 11, 9:00 a.m. Set-Up Live Nativity Scene.

Sunday, December 12, 10:30 a.m. Anniversary Celebration Worship, Reception of New Members. Rev. John Rogers is our guest. 5:00 p.m. Christmas Caroling to Shut-Ins, for the whole family.

Monday, December 13, 9:30 a.m. Seniors leave for shopping trip to Briarwood. 6:30 p.m. Optimists.

Tuesday, December 14, 10:30 a.m. Seniors invited to Klager Christmas Program and Dinner, make reservations with Millard Uphaus. 1:00 p.m. Young Mothers Support Group.

Wednesday, December 15, 6:45 p.m. Bell Choir rehearsal. 8:00 p.m. Alcoholics Anonymous and Al Anon.

FAITH COMMUNITY CHURCH

Thursday, December 9, Trustee Board Meeting 7:30 p.m.

Friday, December 10, 6:30 p.m. Potluck and Annual Meeting.

Saturday, December 11, 6:30 p.m. Christmas Party at Mr. Steaks.

Sunday, December 12, Morning Worship 10 a.m. Sunday School 11:00 a.m. (final practice for program) 6 p.m. Sunday School Program, Christmas Around the World.

Wednesday, December 15, Prayer Meeting and Bible Study 7 p.m. Choir Practice 8 p.m.

Thursday, December 16, Charity Circle Christmas Dinner 1:00 p.m.

ZION LUTHERAN CHURCH

Thursday, December 9, Decorate Church 9 a.m.

Saturday, December 11, Youth Instruction Classes 9 and 10:30 a.m.

Sunday, December 12, 3rd Sunday in Advent. Sunday School (program practice) 9 a.m. Worship 10:15 a.m. Festival of Lessons/Carols 3 p.m. at Zion Lutheran, sponsored by Chelsea Ministerial Fellowship)

Tuesday, December 14, 8:00 a.m. Chelsea Ministers' (Methodist Church) 4 p.m. Joymakers Caroling at Chelsea Hospital and Party at Para.

Wednesday, December 15, WOZ Ypsilanti State Hospital Christmas Party 1:15 p.m.

ST. JOHN'S LUTHERAN CHURCH

Thursday, December 9, Mary Martha Circle Christmas Party 6:30 p.m. at Gertl Klager's.

Saturday, December 11, 7th Grade Catechism. 9:11.

Sunday, December 12, Sunday School 9:15 a.m. Worship with Holy Communion, 10:30 a.m. Sunday School Christmas Eve Program Practice, 2 p.m.

Wednesday, December 15, Jr. Choir 7 p.m. Midweek Advent Service 8 p.m. at St. John's. Sr. Choir 9 p.m.

MANCHESTER UNITED METHODIST CHURCH

Wednesday, December 8, 12:30 p.m. Wildo Circle meet at Church to go to Lunch.

Thursday, December 9, 12:30 p.m. King's Daughters.

Saturday, December 11, 9:30 a.m. Cub Scouts. 5:30 p.m. Christmas Tree Trimming and Decorating Church.

Sunday, December 12, 9:15 a.m. Church School. U.M.Y.F. Meeting during Church School. 10:30 a.m. Worship: "And the Peace of God". 11:30 a.m. Choir Rehearsal/Coffee Hour.

Monday, December 13, 10:00 a.m. Monday Morning Bible Study. 3:30 p.m. Brownies. 6:00 p.m. Preparation for Klager Senior Dinner. 8:00 p.m. Historical Society "Old-Fashioned Christmas" at the old mill.

Tuesday, December 14, 8:30 a.m. Preparation for Klager Senior Dinner. 10:15 a.m. Klager Senior Citizen Dinner at Klager, hosted by 3rd and 4th graders-program before dinner.

Wednesday, December 15, Noon, U.M.W. - The Manchester Varsity Choir will perform and Good Cheer Boxes will be packed.

AUCTIONEERS

JERRY JACOB **CLIFF TRACY**
 313-428-7975 313-428-7263
 Manchester, Michigan

MEMBER OF
 MICHIGAN STATE AUCTIONEERS
 ASSOCIATION

Melcher Brothers
 Decks-Pole Barns-Roofs
 Windows-Floors-Doors-Siding
 Remodeling of all Kinds

REASONABLE RATES
 Free Estimates

CALL 517-456-4920

Ask for Steve or Dave

If waiting up for a kid to come home does nothing else it gives one an understanding of eternity.

MARATHON

FILLYAW'S MARATHON SERVICE

327 West Main Street Phone 428-8576 Manchester, Michigan
 Open Monday-Saturday 7:30-7 P.M.
 CERTIFIED MECHANICS ON DUTY All Work Guaranteed

STOP IN AND PICK-UP A MARATHON CREDIT CARD APPLICATION

YOU CAN PURCHASE BATTERIES, TIRES SHOCKS, PARTS OR HAVE YOUR CAR TUNED-UP FOR THE SUMMER MONTHS BRAKE JOBS, FRONT END ALIGNMENT OR WHEEL BALANCING ASK ABOUT OUR INTEREST-FREE EXTENDED PAY PLAN FOR CERTAIN PURCHASES

FULL LINE OF MARATHON PRODUCTS
 We Have Pure White Kerosene
Gas-Oil-Diesel Fuel

STOP IN AND SEE ME FOR YOUR BEST TIRE DEAL

24 Hour Wrecker Service

HEAVY DUTY SHOCKS **SAVE 50%** **\$9.95**
 Price Does Not Include Installation EACH

MAJOR BRAND NATIONWIDE MAINTENANCE FREE **BATTERIES** **\$39.95** EXCHANGE
 36 Month Guarantee
 GROUP 22 TOP POST
 GROUP 24 TOP POST
 GROUP 74 SIDE POST

FREE EXHAUST INSPECTION WITH ALL JOBS

Disc Brake Special
 LIMITED TIME ONLY
 *REPLACE BRAKE PADS
 *NEW GREASE SEALS
 *RESURFACE ROTORS
 *COMPLETE BRAKE INSPECTION
 *REPAK WHEEL BEARINGS
 *ROAD TEST CAR

Most U.S. Cars Front Brakes Only **\$59.95**

SENIOR CITIZENS DISCOUNT 10% on parts and labor 5% DISCOUNT ON TIRES

REBUILT ALTERNATORS AND STARTERS \$29.95 & UP Exchange

Holiday Candles
 Red or Bayberry Green

2 TOP 39¢

WIDMAYER FORD
 MANCHESTER, MICHIGAN
 510 WEST MAIN (313) 428-8343

R & F TREE SERVICE
 Trimming and Removal
 Free Estimates Insured
 428-9296 after 3 p.m.

20% OFF ON ALL JEWELRY

JEWELRY - WATCHES

MOTHERS RINGS 10K and 14 K GOLD

HAVE YOUR DIAMOND RINGS CHECKED. YOU MAY NEED NEW PRONGS

DIAMONDS ARE TOO COSTLY TO REPLACE

NO CHARGE FOR CHECKING RINGS

Roller Jewelry Watch Repair Engraving

124 EAST MAIN ST. MANCHESTER, MICHIGAN

SHOP THRU THE WANT ADS

This Week's Special

SPECIAL STARTS WEDNESDAY

Beer Salami \$2.79

Fish Sandwich \$1.65
W/Cheese \$1.85

Order Your Party Trays Early For The Holiday Season

SERVING PARLOUR ICE CREAM FISH, SHRIMP & CHICKEN DINNERS OR BUCKET

Save Time Order Ahead

Phone 428-9322

MANCHESTER DELI
 108 ADRIAN STREET MANCHESTER, MICHIGAN

MONDAY - TUESDAY - WEDNESDAY 9:30 AM-7 PM
 THURSDAY - FRIDAY - SATURDAY 9:30 AM-9:00 PM
 SUNDAY 1 PM-8 PM

Optimist Steer Club Night



Guest Speakers for Optimist Steer Club Night were: Sally Kidd and Loren Willson.

One hundred and ten people gathered on the night of November 22, 1982, to honor the young people who were being inducted into the 1983 Optimist Steer Club. A fine meal was prepared under the direction of Debbie Alber and Dawna Stockwell and the Emanuel Church Women's Fellowship.

Steer Club Committeemen John Savage and Ron Mann introduced the evening program, mentioning that over the years 778 steers have been sold for \$430,000. Manchester people and its businesses certainly give fine support to its youth!

Speakers for the evening were Miss Sally Kidd and Miss Loren Willson. They have both been extremely involved with the Steer Club over the past several years, and spoke from their experience to help the young and newer members learn

helpful tips about keeping their steer healthy, happy, heavy, and home! They were fine presentations.

The Manchester Optimist Club that evening also had some short business, first of which was to welcome as a new Optimist, Mr. Robert Little of East Road in Manchester. A visitation was made by seven members of the Jackson Optimist Club, led by Immediate Past Governor Mr. Wilfred "Knobby" Walsh, and Lt. Governor of Zone 18, Mr. Gene James. Both spoke briefly and were warmly welcomed.

A Community reminder is made to the people of Manchester, that the annual Lunch with Santa Claus sponsored jointly by the Optimists and the Men's Club will be Saturday, December 13 at noon at Emanuel Church.

PUBLIC NOTICES

**STATE OF MICHIGAN
IN THE CIRCUIT COURT FOR THE
COUNTY OF WASHTENAW**
CYNTHIA A. WINEKOFF, Plaintiff, vs.
JAMES L. WINEKOFF, Defendant
A.L. Fanta (P29540), Attorney for Plaintiff
Case No. 82-30103-DM
Judge: Henry T. Conlin
ORDER TO ANSWER
As a session of said Court held in the City of Ann Arbor, County of Washtenaw and State of Michigan on the 8th day of November, 1982.
**PRESENT: HONORABLE HENRY T. CONLIN,
Circuit Court Judge**

On November 4, 1982, an action was filed by CYNTHIA A. WINEKOFF, Plaintiff, against JAMES L. WINEKOFF, defendant, in this court for divorce.

IT IS HEREBY ORDERED that the defendant, JAMES L. WINEKOFF, shall answer or take such other action as may be permitted by law on or before February 4, 1983. Failure to comply with this order will result in a judgment by default against such defendant for the relief demanded in the complaint filed in this court. Such answer or other action shall be filed in the above entitled cause and a copy thereof sent to the plaintiff's attorney.

**Prepared by:
WASHTENAW LEGAL CENTER, P.C.
By: A.L. Fanta (P29540)
Attorney for Plaintiff
4647 Washtenaw Avenue
Ann Arbor, MI 48104
434-3900** 12-30

NOTICE OF MORTGAGE SALE

MORTGAGE SALE—Default having been made in the terms and conditions of a certain Mortgage made by RAY A. MULLICE of 8675 Austin Road, Bridgewater, 48115, Washtenaw County, Michigan, Mortgagee, to UNION SAVINGS BANK OF MANCHESTER (now merged into THE NATIONAL BANK OF JACKSON) Mortgagee, dated the 1st day of April, 1981, and recorded in the office of the Register of Deeds, for the County of Washtenaw and State of Michigan, on the 3rd day of June, A.D. 1981, in Liber 1803 of Washtenaw County Records, on page 816, of which mortgage there is claimed to be due, at the date of this notice, for principal and interest, the sum of ONE HUNDRED SEVENTY-TWO THOUSAND FOUR HUNDRED FOUR AND 25/100 (\$172,404.25)—DOLLARS.

And no suit or proceedings at law or in equity having been instituted to recover the debt secured by said mortgage, any part thereof. Now, therefore, by virtue of the power of sale contained in said mortgage, and pursuant to the statute of the State of Michigan in such case made and provided, notice is hereby given that on Thursday, the 13th day of January, 1983 at 10:00 A.M. said mortgage will be foreclosed by a sale at public auction, to the highest bidder, at the front door of the Courtthouse in the City of Ann Arbor, Washtenaw County, Michigan (that being the building where the Circuit Court for the County of Washtenaw is held), of the premises described in said mortgage, or so much thereof as may be necessary to pay the amount due, as aforesaid, on said mortgage, with interest thereon at 15 1/2% per cent (15 1/2% per annum on the \$30,000 note and all legal costs, charges and expenses, including the attorney fees allowed by law, and also any sum or sums which may be paid by the undersigned necessary to protect its interest in the premises.

Said premises are described as follows: All that certain piece or parcel of land situated in the Township of Bridgewater in the County of Washtenaw and State of Michigan, and described as follows, to-wit:

Land in the Township of Bridgewater, Washtenaw County, Michigan described as:

Beginning at the center of Section 1, T4th S, R4th E, 1/4 line in the East and West 1/4 line for a place of beginning;

thence South 175 feet;

thence West 106 feet;

thence South 33 feet;

thence West 180 feet;

thence South 155 feet;

thence West 240 feet to a point which is 198 feet east of the west line of the East 1/4 of the Southeast 1/4 of the Southwest 1/4 of the Section 198 feet east of the southwest corner of the East 1/4 of the Southwest 1/4;

thence east in the said south line to the South post of said Section;

thence North 883 feet in the North and South 1/4 line;

thence West 33 feet;

thence North to a point which is 1045 feet south of the East and West 1/4 line;

thence North 687 feet;

thence East 168 feet;

thence North 356 feet to the place of beginning; being a part of the East 1/4 of the Southwest 1/4 of Section 1, T4th S, R4th E, 1/4 line in the East and West 1/4 line for a place of beginning;

thence North 87 degrees 04 minutes 40 seconds West 40.32 feet along the East and West 1/4 line of said Section to the point of beginning;

thence South 06 degrees 09 minutes 15 seconds West 358.00 feet;

thence North 87 degrees 04 minutes 40 seconds West 122.34 feet;

thence North 06 degrees 09 minutes 15 seconds East 226.41 feet;

thence North 88 degrees 34 minutes 55 seconds West 5.70 feet;

thence North 01 degree 25 minutes 05 seconds East 3.50 feet;

thence South 88 degrees 34 minutes 55 seconds East 17.00 feet;

thence North 06 degrees 09 minutes 15 seconds East 121.86 feet;

thence South 87 degrees 04 minutes 40 seconds East 114.86 feet along the East and West 1/4 line of said Section to the point of beginning; being a part of the southwest 1/4 of Section 1, T4th S, R4th E, 1/4 line in the East and West 1/4 line for a place of beginning, containing 0.42 acres; subject to reservations, restrictions and easements of record.

The redemption period shall be six (6) months from the date of such sale.

Dated: November 29, 1982
**THE NATIONAL BANK OF JACKSON
Mortgagee**

Parcel II
ALSO, the West 1/2 of the West 1/4 of the Northeast 1/4 of the Northwest 1/4 of Section 12, T4th S, R4th E, 1/4 line in the East and West 1/4 line for a place of beginning.

Parcel III
Commencing at the center of Section, thence West 86.0 feet in the East and West line; thence North 73 feet for a Place of Beginning; thence West 154.43 feet; thence North 136.72 feet; thence East 121.10 feet to a point which is 121.10 feet North of the Place of Beginning; thence South 121.10 feet to the Place of Beginning, being part of the East fractional 1/2 of the Northwest fractional 1/4, Section 1, T4th S, R4th E, 1/4 line in the East and West 1/4 line for a place of beginning, containing 0.42 acres; subject to reservations, restrictions and easements of record.

The redemption period shall be six (6) months from the date of such sale.
Dated: November 29, 1982

**HENDLEY & DATSKO, P.C.
By: JAMES R. DATSKO
Attorney for Mortgagee
P.O. Box 278
Manchester, MI 48158
Phone: (313) 428-8333** 12-30



HEALTH PROMOTION RECOMMENDATIONS

Last July a number of decision-makers from government, the private sector, and the health care field came together at MSU to examine some of the state's health concerns. They looked at concerns in which attitudes and behavior play a significant role.

This conference on health promotion and disease prevention was called by Governor William Milliken. Its purpose was to identify some policies that might be helpful in using health promotion principles to influence change in harmful behavior patterns.

Now I'd like to share with you some of the recommendations submitted by the conference leadership. There were recommendations relating to alcohol and other drugs, environmental control, nutrition, smoking, and accident prevention, to name a few.

Concerning drugs, it was the opinion of the conference that the greatest need for attention existed in three age groups - pre-schoolers, those 12 to 24 years of age, and people 55 and older. Early beginnings were labeled most important. It was suggested that educational efforts be directed at pre-schoolers concerning the appropriate and inappropriate uses of alcohol and other drugs. The concern with the middle group was mostly for women who, it was felt, must be made increasingly aware of the effects of the use of alcohol and other drugs on pregnant and nursing women and their fetuses and infants. For those 55 and older, the conference saw a need for improved and expanded education of health professionals in the identification and treatment of the older alcoholic.

On environmental control, it was recommended that the State have in place by 1987 an environmental health management system that will assure

adequate testing and control of hazardous and potentially hazardous substances which are manufactured, processed, used, transported, or disposed of in Michigan. It also was determined there is a need for increased public awareness of hazards in the workplace, at home, and in the community.

The conference recommended that nutritional education in schools be stepped up and broadened so that good nutritional behavior patterns can be formulated at an early age. The conference also endorsed the earlier recommendations of the Governor's Citizens Panel on Smoking and Health, and gave its unqualified support to legislative efforts to create a mandatory seat belt law and strengthen drunk driving laws.

It is hoped that these and other recommendations of the conference can form the basis for an eventual statewide action plan for health promotion and disease prevention.

Legislative Update

Mary Keith Ballantine 23rd District

Transportation Tax - A transportation tax package now before the Legislature needs to be passed, according to Gov. Milliken, or Michigan could lose \$134 million in federal highway money. In order to qualify for federal matching highway dollars, Michigan is considering a 2¢/gal. tax increase as well as increases in passenger and commercial vehicle registration fees.

Child Restraint Update - The Michigan State Police have called the new child restraint law, which went into effect April 1 and requires all children under the age of 4 to be properly secured when riding in automobiles, a success. Estimates indicate that nearly 80% of all Michigan children are being protected by safety seats or seat belts. The new law has also led to an increase in seat belt usage by adults.

Michigan Calendars Available - The 1983 "Taste of Michigan" calendars are now available through the Michigan Department of Agriculture's Marketing Division, P.O. Box 30017, Lansing.

Michigan 48009 and are \$3.00 each. The 8 1/4" by 11 hanging memo-style calendars feature nearly 50 agricultural products, as well as 16 tear-out recipe cards, so users can prepare their own All-Michigan meals.

Legislative Immunity - Since Michigan voters overwhelmingly approved Proposal A, the Michigan Law Revision Commission is preparing to reform the current statutes that give legislators virtual immunity from civil arrest and process while the Legislature is in session. The Commission, established in 1965 to review and recommend needed revision in state laws, consists of four prominent Michigan attorneys and five ex-officio members, including the chairmen of both the House and Senate Judiciary Committees and the ranking minority member of those committees, and the director of the Legislative Service Bureau.

Michigan Film Wins Award - A traffic safety film produced by the Michigan Office of Highway Safety Planning has received highest honors by the National Committee on Films for Safety. The 14-minute film, entitled "Prescription for Safety" depicts the hazard of motor vehicle transportation for small children. Copies of the film are available, without charge, on videotape only. Any interested parties may call (517) 373-8011, the Office of Highway Safety Planning.

Paper Recycling Means Jobs - The Michigan Department of Natural Resources estimated that for every 10,000 tons of paper that are recycled annually, 42 new jobs are created. The DNR also reports that while expanding the demand for recycled paper products, solid waste is reduced, and energy, natural resources and landfill spaces are conserved.

Nominating Petitions Available

Nominating Petitions for the Office of Trustee (3) - 2 year term, are now available from the Village Clerk at the Village Hall - 120 S. Clinton Street, Manchester, Michigan between the hours of 9:30 A.M. to 1:30 P.M. Monday thru Thursday.

Deadline for filing Nominating Petitions is December 21, 1982, 4 P.M.
**Helen J. Kensler
Village Clerk**

Free Tax Guide For The Farmer

A free publication, designed to explain how tax laws apply to farming, is available by writing the Internal Revenue Service, the IRS said.

IRS Publication 225, "Farmer's Tax Guide," contains 20 chapters covering such topics as farm income, farm business expenses, tax credits, certain farming tax shelters, and soil and water conservation

DRESS-A-DOLL CONTEST WINNERS!



Winners from left to right: Western Regional Second Place, Terry Robinson; Western Regional First Place, Dolores Most; Corporate Grand Prize, Mary Jane Stone; Eastern Regional First Place, Mary Alice Krzyzanski; Eastern Regional Second Place, Karen Haddall.

Shown above are the five corporate and regional top award winning dolls entered in this year's Dress-A-Doll Contest. Dolls are on display through December 22nd at all Great Lakes Federal Savings offices.

The officers and staff of Great Lakes Federal Savings join with seven hundred little girls who will receive the dolls to thank you and wish you a Happy Holiday!



poinsettias
ALL COLORS AND PRICES
ALSO IN
Hanging Baskets and Pots
SCHEBOR'S GREENHOUSE
14345 LOGAN ROAD MANCHESTER, MICHIGAN
PHONE 428-8078

FREE 1/2 TON OF SALT
AND SAY "HEY COLLIGAN GAI!"
INVITES YOU TO SAVE WHILE YOU SAVE!
Fine, filtered soft water can save you money all around the house. Water heating costs are less, clothes wash whiter and wear longer. Soft water means the end to plumbing scale that can clog pipes, too.

CULLIGAN WATER CONDITIONING OF WASHTENAW COUNTY
2321 Jackson Road 682-8986

FREEDOM ELECTRIC
11207 Pleasant Lake Road
Manchester, Michigan 48158
NEW CONSTRUCTION
COMMERCIAL AND INDUSTRIAL
GILBERT LUCKHARDT
428-8233

CLINTON THEATRE
Friday & Saturday
7:30 & 9:30
Sunday 7:30
ALL SEATS \$2.00

"Hey Bud, Let's Party"
"LAST TIMES AT INDEPENDENT ROCK"

Manchester Art Guild
SPECIAL SHOWING AND SALE
BY AREA ARTISTS AND CRAFTSPEOPLE
MANCHESTER ART GALLERY
DECEMBER 10 to 19
138 East Main Street
Off the Black Sheep Theatre Lobby
POTTERY, WOODWORK, PAINTINGS, QUILTING
PRINTED CARDS AND MORE
Thursday-Saturday 7 am-8:15 pm
Saturday 10 am-12 noon
Sunday 1 pm-4 pm



COPING...

Color It Christmas

Red apples and green limes. Rosy red jars of jams and jellies with colorful labels. Sugar cookies sprinkled with red sugar and arranged on a green plate. Christmas colors -- food gifts almost too pretty to eat!

Color -- that's the secret. In this most colorful of our seasons. Even the most delicious of foods often need a dash of color to make it more appetizing.

And creativity, that's another secret. Who says a food gift has to be traditional? Take those red apples and green limes, for instance. They're Christmas colors and they're good to eat, and they're just what somebody on your Christmas list might especially like. And maybe that's the secret of giving foods for this holiday. Color, creativity -- and caring. Match your food gift to the one who receives it. And then add a little something of yourself, too.

Coping -- set out to choose some food gifts to fill out a drooping Christmas list, who perk up the giver along with the lucky recipient. Here are a few of our ideas:

- Brown and crusty homemade french bread and jars of spread -- red raspberry jam, purple grape jelly, orange marmalade. This might go in a small baking pan. Add some bits of green boughs from the Christmas tree to the top of the spread, trim off, and a red Christmas ornament, preferably one you've made. Great gift for the non-baker or a bachelor friend. Cost: \$10

- Yellow cheese and brown salami. Arrange these on a wooden cutting board, add a slicing knife, cover all with plastic wrap and fasten on a hand-lettered gift tag tied with red ribbon. Add some brown pine cones in the bow arrangement just right for someone who likes to entertain. Cost: \$15

- Green peppers and avocados, a tray of white mushrooms, two or three red tomatoes, a small jar of blue cheese. Here's just the gift for the salad lover or dieter. But remember to keep the time between your refrigerator and their's short. Arrange it all in a clear plastic salad bowl. Attach some light green tissue paper which you've cut out to look like lettuce leaves. Tuck in a couple of bottles of special dressing and salad. Cost: \$10

- Cookies -- all colors. Store bought, if you like, but homemade if you can. Let the kids help or a mixture. Most grocery stores have a marvelous selection during the holiday season. Arrange them all on a pretty plate. This could be a special one out of your own cupboard, or picked up at a china store as an odd one on the sale table. Cover all with plastic wrap and top with a red poinsettia. "From our family to yours" kind of gift. Cost: \$5 to \$10

- Pink grapefruit, oranges, yellow lemons and green limes. This time line a large wooden bowl with silver paper cut in

shreds, tuck in a silver grater, a jar or two of grated lemon and/or orange rind and top with a silver ribbon. For someone who likes elegant things or as a centerpiece (maybe yours). Cost: \$12

- Brown chocolate and white crockery. Begin with a small white footed dish and fill it with chocolate stars. Set it in the center of a plain white plate and surround it with a package of baking chocolate, one of chocolate chips and one of Mexican chocolate (so good for hot "cocoa") and a package of mint chocolate coffee and four white mugs. Add a red ribbon. Definitely for someone who doesn't count calories. Cost: \$15

- Tea for two. For the newlyweds on your list. A small tea tray set with two colorful cups, some bright packages of specialty teas and a package of tea cookies. Some cinnamon sticks for stirring and a yellow ribbon tied around a silver tea ball. It's also a romantic treat for the friends whose children are grown and are now a "couple" again. Cost: \$10

- Here are a few additional ideas you may want to add to the food gift you've already planned: A green envelope full of coupons tucked in for color. A magazine subscription the same way. A clove-studded orange pomander, ready for hanging. Candy canes. Candles. A bit of birch bark, if you're so lucky as to have some. Flowers, dried or fresh or silk.

- A pineapple as a centerpiece. Squash for yellow, kiwi fruit for brown, eggplant for dark purple. Now that's really non-traditional! But if you know someone who likes those things, why not give them? Isn't that what Christmas is, special gifts for special people?

Put your gift in a plastic pant, a straw hat, a planter, a box, a bag, in short, anything that will hold what you have to give. Make a bed of burkwood of shredded paper (Sunday funnies are colorful), crumpled foil, popcorn.

Your grocery store is full of other ideas. Take along your gift list and allow yourself some extra time on your next grocery trip and you'll find you've solved several of your gift problems with "one-stop shopping" and a lot less hassle than usual.

Our suggestions have been mainly something to eat and something to keep, colorful and not always what you'd buy already prepared. Best of all, they're easy and fun to make. Hopefully, your gift will include something of yourself.

But then, you're probably already way ahead of us.

Happy holidays from Coping and your local MFDA grocer.

The "Coping..." column is made available as a public service of Michigan Food Dealers Association, Lansing.



There's no one else like you!

Let your WEDDING STATIONERY be as individual as you are. Choose from our wide selection of contemporary Carlson Craft wedding stationery.

INVITATIONS ANNOUNCEMENTS THANK YOU NOTES

NAPKINS BRIDAL BOOKS ACCESSORIES

THE MANCHESTER ENTERPRISE
150 EAST MAIN STREET MANCHESTER, MICHIGAN
PHONE 428-6173

What's Cooking In Michigan

by Margaret G. McCall
Michigan Department of Agriculture

This is going to be a sweet column, combining fresh creamery butter, eggs and sugar, all good things growing in Michigan.

The Michigan Department of Agriculture reports that dairies in our state produced almost 37 million pounds of butter last year, our hens provided 1.54 billion eggs, and our farmers harvested more than two million tons of sugar beets. Take a little of each product, put them together, and you have butter cream, that most delectable filling and frosting.

Reading one of Julia Child's cookbooks convinced me that anyone can make a cooked French butter cream. You need a little time and patience, but the smooth, creamy results are worth the extra effort. Best of all, you can freeze the finished product, thaw, beat in a little more soft butter and it's ready to use when you need it. It can be flavored with chocolate, vanilla, rum or any liqueur you choose. If you're like me, once you've mastered the recipe, you'll seldom use any other frosting.

Combine in small saucepan 2/3rds cup sugar and 3 tablespoons water. Bring to boil over high heat, then cover for a minute to dissolve any sugar crystals clinging to sides of pan. Uncover, boil to softball stage, 238 degrees on candy thermometer.

Meanwhile, in top of double boiler beat 1 large egg and 3 egg yolks just until well mixed. When syrup reaches softball stage, slowly dribble over the eggs while beating with electric mixer.

Set double boiler over barely simmering water and beat slowly with wire whisk (about 20 minutes) until mixture has thickened enough to form a ribbon when lifted and dripped off wires of whip. (Instead of using a wire whisk, I use a portable electric mixer and it seems to work as well with much less effort.) Remove from heat and beat until cool. Then beat in 2 sticks of softened butter, 2 tablespoons at a time. Add 1 teaspoon vanilla and 3 to 4 ounces of melted, cooled chocolate, if you like. Continue beating for spreading consistency.

For those of you who haven't time or patience, here's an easy butter cream from one of the pastry chefs at Marshall Field's in Chicago, who demonstrated filling and decorating small cakes with this recipe.

Get out the electric mixer and start with

1/2 pound butter. Beat about 10 minutes, until very creamy. Add 1/2 pound of margarine and continue beating another 5 minutes. Add, all at once, 1/2 pound of sifted confectioners' sugar. Continue beating while you add 1/2 cup half-and-half.

For chocolate butter cream, beat in 4 to 6 ounces of melted and cooled semi-sweet chocolate. Add 1 teaspoon vanilla and 1 tablespoon of any other flavoring you desire. This can be covered tightly and stored in the refrigerator for up to a week. Just bring to room temperature before using.

National Drunk And Drugged Driving Awareness Week

President Reagan has signed into law a resolution establishing the week of December 12-18, 1982, as "National Drunk and Drugged Driving Awareness Week".

Mothers Against Drunk Drivers (MADD) announces a national candlelight vigil to be held across the country and in Canada, on Sunday, December 12, 1982. Please put a light (not a real candle, for safety reasons) in your window to show your concern for this national problem.

In recognition of "Drunk and Drugged Driving Awareness Week", the Washtenaw County chapter of MADD is also asking MADD members and other concerned citizens to drive with their car headlights on during daylight hours throughout the week to bring attention to the issue of drunk driving and its consequences. "This will be the culmination of our efforts in 1982 and the start of the holidays ahead campaign," said Candy Lightner, president and founder of MADD. "MADD is dedicating the activities of this national awareness week to the victims of drunk drivers".

MADD's National Headquarters will be sending a letter to major corporations to alert them to the dangers of combining alcohol and driving and to request that corporations provide free taxi service to their employees after holiday office parties.



Rinse tea stains from china by soaking overnight in a solution of denture cleaner.

Wilton Candy Maker Products Are Here!

Discover Candy Making At Home the Easy Way with Wilton!

- Quality molds, tools, flavors and colors.
- Creamy Wilton Candy Melts are easy to use and come in a variety of appealing colors. Delicious and convenient, they make candy making fun!
- Idea/instruction books show and tell you how.
- Candy Kits available with the tools you need.
- Makes an extra special gift.

See all the Wilton Candy Maker products at our display.

Ben Franklin
108 EAST MAIN STREET MANCHESTER, MICHIGAN
PHONE 428-8880

Let your WEDDING STATIONERY be as individual as you are. Choose from our wide selection of contemporary Carlson Craft wedding stationery.

INVITATIONS ANNOUNCEMENTS THANK YOU NOTES

NAPKINS BRIDAL BOOKS ACCESSORIES

THE MANCHESTER ENTERPRISE
150 EAST MAIN STREET MANCHESTER, MICHIGAN
PHONE 428-6173

new ARRIVALS

Mr. and Mrs. Harvey Stoll of Whitmore Lake are pleased to announce the birth of a son born November 29, 1982. Adam Girbach Stoll weighed 6 pounds 13 ounces and was 19 1/2 inches long.

Grandmothers are Mildred Stoll and Rena Girbach, both of Pleasant Lake Rd. Manchester.

Mr. and Mrs. Keith A. Campbell are proud to announce the birth of their daughter Catherine Jane born November 18, 1982 at 5:30 a.m. She weighed 7 pounds 3 1/2 ounces and 19 1/2 inches long. Catherine has two other sisters, Sara and Rachel. Grandparents are Mr. and Mrs. Milton Campbell of Dexter and Mr. and Mrs. Gary M. Brokaw from Manchester.

Great grandparents are Mr. and Mrs. Elyr Campbell of Peoria, Illinois, Mrs. Iva Knight of Peoria, Illinois, Mrs. Kenneth H. Brokaw of Saline and Mrs. Wm. J. Kirk from Manchester.

Bernard and Jean Davis of Manchester are very proud to announce the birth of their latest grandson on December 6, 1982. Michael Carens Davis weighed 9 pounds 5 ounces and was 22 1/4 inches in length. Parents are Mick and Maryann Davis of Manitowish Beach. He has a half sister Kristen Samsel, 12 years old and a half brother Steve Samsel, 10 years old. Other grandparents are Vincent and Mary Jane Carens of Manitowish Beach and Lake Placid, Florida.

Mr. and Mrs. Michael P. Powers are proud to announce the birth of their son Tyler P. born December 1, 1982 at 9:28 p.m. He weighed 7 pounds 1 1/2 ounces and 20 inches long. Grandparents include Mr. and Mrs. Ishmeal Powers and Mr. and Mrs. Gary M. Brokaw, all of Manchester. Great grandparents are Mrs. Kenneth H. Brokaw from Saline and Mrs. Wm. J. Kirk from Manchester.

Born to Joseph and Claire Turk of Manchester, a son, Kevin Joseph on November 27, 1982. He weighed 7 pounds 14 1/2 ounces and 19 1/4 inches long. Kevin has a brother Justin 2 1/2 years old. Grandparents include Mr. and Mrs. Joseph Turk of Rocky River, Ohio and Mr. and Mrs. Robert Reese of Harrow Ontario, Canada.

United Way Leaders Honored

United Way leaders from 110 United Ways in Michigan will be honored at the 1982 United Way of Michigan's Campaign Achievement Celebration to be held on December 9th at the Kellogg Center on the campus of Michigan State University in East Lansing.

Confronted with the most difficult economic climate in recent years, United Way volunteers have succeeded in raising this year \$86,203,837 representing 96.28% of the statewide campaign goal. The final campaign report will be disseminated at the achievement celebration. Twenty-five state and national human care service agencies are recipients of monies allocated by local United Ways through the United Way of Michigan.

Dr. Glenn C. Lehr, Jr. of Manchester is the 1982 Campaign Chairperson of the Manchester United Way.

'Tis' the season for savings

10 DAY SALE STARTS TODAY

REACH PLUS TOOTHBRUSHES
Medium or Soft \$1.15 5/\$5.35

REACH TOOTHBRUSHES
Youth or Child \$1.41 Value 99¢ 5/\$4.69

ROTATRACT RAZOR
#HP1602 \$61.95 Value \$41.47

AMITY SECRETARIAT LEATHER SECRETARY BILLFOLD
\$27.50 Value \$12.99

TRI-FOLD LEATHER BILLFOLD
\$15.00 Value \$6.66

Norelco Chic STYLER/DRYER
1200 Watt #CS038 21.95 Value

OUR LOW PRICE... \$16.07
LESS MFR. REBATE... \$3.00
YOUR LOW COST AFTER REBATE... \$13.07

AGREAT GIFT! OLD SPICE AFTER SHAVE
6-3/8 oz. \$3.40 Value

AMITY LEATHER BILLFOLD
\$15.00 Value \$6.66

CONTINENTAL DISC CAMERA
#201 \$47.00 Value \$28.00

POCKET CAMERA
Model #502 \$39.95 Value \$22.88

Riopan LOW SODIUM SUSPENSION
12 oz. \$3.99 Value \$1.98

Riopan Plus LOW SODIUM ANTICID SUSPENSION
12 oz. \$3.95 Value \$2.09

AMITY LEATHER BILLFOLD
\$15.00 Value \$6.66

GIFTIQUE POTPOURRI GARDEN HOME FRAGRANCE
\$3.29

Suave NEW! ASTRINGENT SHAMPOO OR CONDITIONER
Regular or Extra Body 16 oz. \$2.13 Value \$1.25

TAMPAX TAMPONS
Original Regular, Slender Regular, Super or Super Plus 40's \$4.40 Value \$3.09

CHAPSTICK LIP BALM Assorted Flavors
.15 oz. 95¢ Value 2/90¢

NATURE MADE SUPER SCHEDULE
Regular or Extra Body 16 oz. \$3.78 Value \$1.98

ST. JOSEPH'S ANTISEPTIC
\$3.49

LISTERINE ANTISEPTIC
\$2.98

PEZ CHRISTMAS CANDY
\$4.99

BAUSCH & LOMB STERILE SALINE SOLUTION
12 oz. \$4.16 Value \$2.55

KLEENEX HUGGIES
48's \$12.54 Value \$8.40

KLEENEX SOFTIQUE
NEW! Facial Tissue White or Assorted 175's \$1.30 Value 76¢

JOHNSON'S BABY OIL
\$4.07 Value \$2.55

SINUTAB EXTRA-STRENGTH
Tablets or Capsules 24's \$4.14 to \$4.63 Value \$2.27

KRAUSS PHARMACY
128 EAST MAIN STREET MANCHESTER, MICHIGAN
PHONE 428-883

NORM WALZ CONSTRUCTION

Remodeling and Room Additions
Garages - Porches
CUSTOM BUILT CABINETS

CUSTOM BUILT HOME ON YOUR IMPROVED LOT CAN SAVE YOU \$\$\$\$\$

Phone 428-7109

Kirk Excavating

SAND - GRAVEL - FILL DIRT
BASEMENTS - DRIVEWAYS

DAVE KIRK

14180 Schleweis Rd Manchester
Phone 428-7938

MANCHESTER INSURANCE AGENCY

122 WEST MAIN STREET
MANCHESTER, MICHIGAN
Phone 428-8215

Home-Farm & General Insurance

MERRIMAN INSULATION

FREE ESTIMATE

BLOWN IN CELLULOSE
Professionally Installed

George Merriman
Phone 313-428-7962
372 Hartman Lane Saline, Mich

Order C.O.D. Super Savings Account * Cash on Demand

**Order before
Tuesday, December 14,
and take advantage of
Comerica Bank-Jackson's
Bonus Offer!**

The C.O.D. Super Savings Account. It stands for "Cash on Demand," and it means you can earn high, Money Market interest rates—starting December 14—on as little as \$5,000. Best of all, you can make withdrawals anytime in any amount without penalty. Even through BJ® the Wonderbanker's® 24-hour bank locations.

**Order now,
and earn an additional
25% Bonus interest credits
on your deposit.**

Even though our C.O.D. Super Savings Account won't be officially available until Tuesday, December 14, you can take advantage of our 25% Bonus offer by opening your account now. We'll hold your money, deposit it to your new C.O.D. Super Savings Account on December 14, and you'll receive bonus credits for each day it's on deposit before December 14. So order your C.O.D. Super Savings Account now, because the sooner you order, the more you earn!

To open your C.O.D. Super Savings Account and find out more information about our Bonus offer, just call or visit any Comerica Bank-Jackson neighborhood office. But hurry. Our Bonus offer ends Monday, December 13.

Eligibility for bonus credits applies to individuals only, with a maximum deposit of \$25,000.

Comerica

BANK-JACKSON

BOWLING

MANCHESTER WOMEN'S		D. Gotta		HIGH TEAM GAME W/H	
November 11, 1982					
Dacel's Garage	248 142	Ross Automotive	999	Chelsea Lanes	902
Gill's Gambles	244 146	B & H Mfg.	898	HIGH TEAM SERIES W/H	
Weatherwax Drugs	213 187	Ross Automotive	2805	Chelsea Lanes	2550
Billmeyer Hardware	210 180	B & H Mfg.	2549	HIGH ACTUAL GAME OF WEEK	
Columbia Plumbing & Heating	199.5 190.5	K. Smith	222	HIGH ACTUAL SERIES OF WEEK	
Pine Grove Bait	179 211	B. Benedict	513	MANCHESTER TOWN CLUB	
Jimmy's Filling Station	179 211	K. Smith	624		
Town Laundry	178.5 201.5	Norm Waiz	55 36		
Brandy's Filling Station	146.5 243.5	National Bank of Jackson	55 36		
Mowry's	142.5 247.5	DuRussels	55 36		
HIGH INDIVIDUAL GAME		R & F Tree Service	51 40		
Ica Schaffer	218	Lyle Cundiff AAA	50 41		
Diane Baker	203	Jenters	50 41		
Brenda Walz	203	Manchester Deli	44 47		
Dee Sharpe	199	Village Hair Forum	36 56		
HIGH INDIVIDUAL SERIES		Manchester Enterprise	32 59		
Kathy Kanka	559	V & F Builders	29 62		
Shirley Roller	529	200 GAME			
Millie Stockwell	516	Jan Howell	203		
J. Golightly	512	Judy Duval	201		
Splits: Dee Sharpe 5-7, Bridgett Weaver 5-7.		Candy Klapperich	232		
JOLLY KEGLERS BOWLING LEAGUE		500 SERIES			
December 7, 1982		Jan Howell	543		
Chelsea Lanes	53 38	Carol Rentz	536		
Ross Automotive	50 41	Judy Duval	524		
B & H Mfg.	48 43	Paula Scherdt	530		
Cheryl's Boutique	48 43	Candy Klapperich	562		
Dutch Country Kitchens	46 45	HIGH INDIVIDUAL GAME			
Manchester Car Wash	41 50	Carol Rentz	245		
Double A Products	40 51	Candy Klapperich	236		
Carol's Cut-N-Curl	38 53	Marilyn Clark	226		
HIGH INDIVIDUAL GAME		HIGH INDIVIDUAL SERIES			
K. Smith	222	Candy Klapperich	657		
C. Steele	212	Joan Day	574		
D. Hanewald	212	Carol Rentz	571		
C. Britten	203				
HIGH INDIVIDUAL SERIES					
K. Smith	536				
S. Walton	532				

the earliest possible date.
I HEREBY CERTIFY that the foregoing is a true and exact copy of a resolution adopted by the Manchester Village Council, at a regular meeting held November 22, 1982.

Council Proceedings

November 22, 1982
The regular meeting of the Manchester Village Council was called to order by President Hinkley at 7:00 p.m. Present: Koebbe, Reed, Tracy, Petach, Kallewaard, Zsenyuk. Absent: DuRussel.
Koebbe moved to approve minutes as corrected. Supported by Petach, motion carried.
Petach reported Carr Park is closed and Kirk Park has been graded.
Koebbe presented the Public Works report. Report on file.
A discussion followed on the surface water problem at Mrs. Croech's residence on Vernon Street. Koebbe said Zsenyuk should contact Charles Fifield of McNames, Porter & Sealey and ask for his suggestion on this problem.
Smith asked if the D.P.W. could purchase CB radios for the Village trucks. Hinkley said to get some prices and report back to Council next meeting.
A discussion followed on Bill Walkow's Arcade. Kallewaard said he has to get a Conditional Use Permit and an application for a license before he can operate the Arcade.
Zsenyuk was directed to check on the depth of the parking spaces at the "Old Mill".
Koebbe moved to approve the following resolution, supported by Tracy. Motion approved.
WHEREAS, a final Facilities Plan was prepared for the Village of Manchester and approved by the U.S. Environmental Protection Agency on December 1, 1981; and
WHEREAS, the Village of Manchester wishes to apply for a grant from the U.S. Environmental Protection Agency for the design and construction of the wastewater treatment works.
BE IT RESOLVED, that the Village of Manchester designates the Village Manager as the authorized representative for the project.
BE IT FURTHER RESOLVED, that this municipality pledges to actively support the financing of its fair local share of the costs required to implement this plan at

Weatherization For Needy

Families that meet the Federal income guidelines for poverty level may still receive help with weatherization problems. Call a Weatherization Coordinator at 994-2570. Renters must have a landlord approval form filled out before the work can be done on a residence.
Income guidelines are: Family of 1, \$6850; Family of 2, \$7775; Family of 3, \$9700; Family of 4, \$11625; Family of 5, \$13550; Family of 6, \$15475 and \$1925 for each additional family member.

"Drivers Wanted"

The Manchester Optimist Club is sponsoring a driving competition. All drivers (16 and up) are invited to participate. Cars and pickups only please. No entry fee required. The competition will be held Saturday, December 11 at 1:00 p.m. in the Emanuel Church Parking Lot. Prizes will be given to the best drivers. This competition has been set up to promote good driving skills for Manchester Youth.

ARTIFICIAL CHRISTMAS CENTERPIECE
10% OFF

POINSETTIAS
\$5 — \$10 — \$15

Decorated Grave Blankets

The Flower Garden	4 ft.	\$17.50
	6 ft.	\$22.50
	Super 6 ft	\$25.00

110 E. MAIN STREET
MANCHESTER, MICHIGAN
PHONE 428-7422

MEMBER FLORAFAX AND AFS

A Little STIHL® Goes a Long Way.



The Stihl 009 is a small chain saw that's big enough on power and performance to take care of all your firewood needs. And since it's a Stihl, you know it will be around for a long time to come.

K & W EQUIPMENT INC.
11100 Chelsea-Manchester Rd. Manchester, Michigan

STIHL
THE WORLD'S LARGEST SELLING CHAIN SAW

BLACK SHEEP

138 East Main
Manchester, Mich
48158

313-428-7000
517-788-2870

PRESENTS


Christmas Coast to Coast

By Lewis Olson

DECEMBER 10, 11, 12
DECEMBER 16, 17, 18, 19

THURSDAY-FRIDAY-SATURDAY
8:15 P.M.

SUNDAY 4:00 P.M.





As we prepare for the Christmas holiday season, one of the traditions that most people look forward to is the selection and decorating of a Christmas tree for their homes. Christmas is always a fun-filled time for persons of all ages.

Some Interesting Historical Dates
1830's - Christmas tree in Boston area.
1832 - Christmas tree in Milton, Mass.

Church Women United Name New Director
The Executive Council of Church Women United meeting at Stony Point, NY has named Dr. Doris Anne Younger as their new General Director.

LAMBDA NU SORORITY
NEW YEAR'S EVE PARTY
DECEMBER 31, 1982
Knights of Columbus Hall

Christmas Trees
ALL TREES \$15.00
NEXT TO THE GIFT SHOP AT THE OLD MILL
5 p.m. to 9 p.m. WEEK NIGHTS
9 A.M. TO 5 P.M. SATURDAYS
11 a.m. to 7 p.m. SUNDAYS

Manchester Men's Club
When the name is NAPA, the standard is quality.
Ross Automotive
Hours: Monday thru Friday 8:00 AM-5:30 PM
Saturday 9:00 AM-2:30 PM
230 EAST MAIN STREET MANCHESTER, MICHIGAN

inexpensive store-bought decorations. The most beautiful ornament on the German tree in America was undoubtedly the Nuernberg Angel which was placed at the top.

The first Nuernberg Angels to appear on American Christmas trees stood tall and straight with stern faces and outstretched arms; sometimes they held a wreath in each hand. Later ones were outfitted in sumptuous pleated foil gowns and had painted china heads and pert expressions.

Several of these Nuernberg Angels purchased at the "Christ Kindles Market" in Nuernberg will be on display at our December 13th meeting to be held at 7:30 p.m. at Don Limpert's restored Manchester Mill on Main Street.

Some Interesting Historical Dates
1830's - Christmas tree in Boston area.
1832 - Christmas tree in Milton, Mass.
1833 - Custom of a decorated tree spreading westward - St. Clair County, Ill.

Church Women United Name New Director
The Executive Council of Church Women United meeting at Stony Point, NY has named Dr. Doris Anne Younger as their new General Director.

LAMBDA NU SORORITY
NEW YEAR'S EVE PARTY
DECEMBER 31, 1982
Knights of Columbus Hall

December 13 at the historic Manchester Feed Mill. John Swanson, president of the Society, is bringing a Christmas tree in from the farm and everyone is invited to bring old-time, homemade, decorations to make and hang on it during the evening.

A graduate of Yale Divinity School and the New York Theological Seminary, Ms. Younger has been active ecumenically in shaping the role of women within the church. She has been actively involved for several years on the planning committee for the Executive Staff Conference, an annual event for church women executives.

Old Fashioned Christmas Party
Come to the Old Fashioned Christmas Party, circa 1882, that the Manchester Area Historical Society is having Monday,

Old Fashioned Christmas Party
Come to the Old Fashioned Christmas Party, circa 1882, that the Manchester Area Historical Society is having Monday,

MANCHESTER ELECTRIC, INC.
CONTRACTING
ELECTRICAL - HEATING - COOLING
MAJOR APPLIANCE SALES AND SERVICE
NOW ACCEPTING MASTERCARD AND VISA
ON ALL SALES AND SERVICE
112 Adams Street Manchester, Michigan
Phone 428-8243

Farmowners coverages expanded
14 ways... all at no extra cost to you
LARRY BECKTEL
135 East Main St. Suite 204
Manchester, Michigan
Phone 428-7331
FARM BUREAU INSURANCE GROUP

NAPA BARGAIN BUYS
7.99 26.51 Supp. Pictail Tool Box
3.99 "Quick-Fix" Tool kit
When the name is NAPA, the standard is quality.
Ross Automotive
Hours: Monday thru Friday 8:00 AM-5:30 PM
Saturday 9:00 AM-2:30 PM
230 EAST MAIN STREET MANCHESTER, MICHIGAN
Phone 428-8320 or 428-8328

December 13 at the historic Manchester Feed Mill. John Swanson, president of the Society, is bringing a Christmas tree in from the farm and everyone is invited to bring old-time, homemade, decorations to make and hang on it during the evening.

There will be a display of poinsettias from the Flower Garden which may be purchased or ordered for a later date to help raise money for the building fund.

There will be a sing-a-long and music by bagpipe and guitar. (Anyone play the mouth organ or spoons in the area-bring them along!) None of this is rehearsed, but it should be fun.

Christmas Around The World
Faith Community Church Sunday School classes will share carols and customs from several countries in their presentation of Christmas Around the World, a cantata for children's voices by Joe Parks.

Good Cooking In Manchester

Christmas in Manchester gives our town's bakers an excuse to exercise their skills to their heart's content. It is just as true that you can never have enough cookies on hand this time of year as that Santa will find out if you have been naughty or nice.

What follows is my favorite version of the springerle recipe, which has as many variations as most classic cookie recipes. It comes from Rombeure and Becker's Joy of Cooking, and is delectably modest in its ingredients.

SPRINGERLES
4 eggs
2 cups sugar
3-3/4 cups flour
1/2 tsp. baking powder
1 Tbsp. anise seed
Beat the eggs with an electric mixer until light-colored and foamy.

Hit or Miss
conservative but they all took good care of their trading area and their successors have also done a good job to provide the things that our citizens need and at the same time have made the town a very progressive one.

Card Of Thanks
I would like to thank the Manchester Police Department, particularly Chief Zeenyuk and Sergeant Steele, who transported my daughter and friend to the hospital, and to two men (names unknown) who stopped and assisted my daughter, Amy Day, when she hit a bump in the sidewalk causing her to tip over in her wheelchair.

THE DOWN UNDER
IN THE
BLACK SHEEP RESTAURANT
THURSDAY-FRIDAY-SATURDAY
DRAUGHT BEER 25c MIXED DRINKS 75c OFF
HAPPY HOUR 4 P.M. - 8 P.M.
TOM HUBER BARTENDER
BRAD FREY & HINDSIGHT

Hartmann Carpentry
Licensed and Insured
Residential Builder With 14 Years Experience
Pole Barns Roofing Decks Rough Ins
Additions Siding Remodeling Finish Work
Florence Day

CHRISTMAS - HARDWARE & GIFT SALE
\$16.99 LIBBY SPIRITS AND ALE SET
\$9.99 40 PIECE SOCKET SET
\$7.15 - 120 WATT OUTDOOR FLOODLIGHT BULB
\$26.99 Sunbeam POWER 1200
\$11.85 S & B 4" TREE STAND
\$19.99 CAPTAIN'S KEROSENE LAMP
\$52.99 MR. COFFEE AUTOMATIC WITH "COFFEE SAVER" BREWING
\$195.99 KOEHRING KEROSENE HEATER
\$36.99
\$129.99
KLEINSCHMIDT HARDWARE
18670 Sharon Valley Rd. (Near Corner of M-52)
MONDAY THRU FRIDAY 8 AM-6 PM SATURDAY 8 AM-5 PM SUNDAY 11 AM-3 PM
ACROSS FROM ANN ARBOR BANK AND TRUST

CHRISTMAS

AT THE CORNER

THE ORNAMENTAL SHOPPE

Monday-Friday 7 a.m. to 8 p.m.
Sat. 8 to 5 Sun. 9 to 5
HOURS 'TIL CHRISTMAS

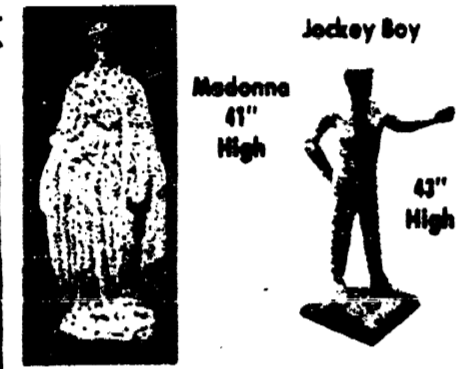
1000 Chelsea — Manchester Road
M-52 at Pleasant Lake Road
Manchester, Michigan
OSBORGE & LOIS WACKER, Prop.

Decorative
**CANDLES
and
CHRISTMAS
ORNAMENTS**



**CANDLE MAKING
SUPPLIES**
Wicking, Scent, Color, Wax
Plastic, Metal, Flexible Molds

Decorative
**KEROSENE
LAMPS
GLASS
YARD
BALLS**
3 colors to
choose from



Jockey Boy

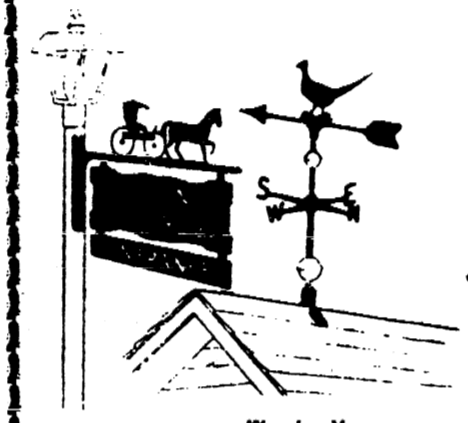
Madonna
41" High



MUSIC BOXES

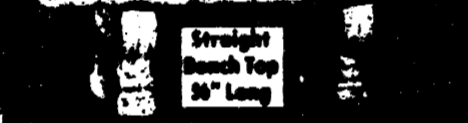


Playing your favorite
Christmas tunes!
YOUR CHOICE
\$12-\$14-\$16
Regular \$18 to \$24



Weather Vanes
Lamp Post & Mail Box Signs
by
OLD CENTURY FORGE

CEMENT LAWN ORNAMENTS
Bird Baths, Planters, Antennae
and many, many more



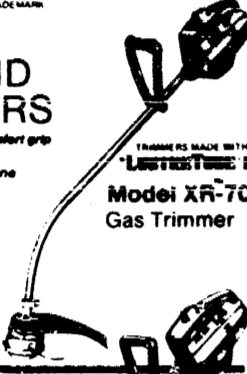
Straight
Branch Top
36" Long

WEED EATER

15% AND UP NOW
TO CHRISTMAS

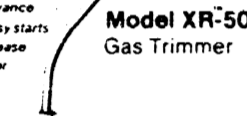
AMERICA'S
NO. 1 BRAND
OF TRIMMERS

• Cuts a wide 18 inch path with constant rpm
• Powerful, 26.2 cc. 2 cycle engine
• Convenient Tap-N-Go™ line advance
• Solid state ignition for quick, easy starts
• Handles the toughest weeds with ease
• Converts to Power Eder, Power Snow Shovel and Power Hoe
• 90-day limited warranty



Model XR-7C
Gas Trimmer

• Cuts 17 inch path
• Compact lightweight design delivers superior performance
• Powerful, 26.2 cc. 2 cycle engine
• Convenient Tap-N-Go™ line advance
• Solid state ignition for quick, easy starts
• Handles the toughest weeds with ease
• Converts to Power Eder, Power Snow Shovel and Power Hoe
• 90-day limited warranty



Model XR-50
Gas Trimmer

• Powered by a tough 2 cycle, 22.7 cc. engine
• Features direct drive and Tap-N-Go™ line advance
• Our lowest priced gasoline trimmer
• 90-day limited warranty



Model XR-30
Gas Trimmer

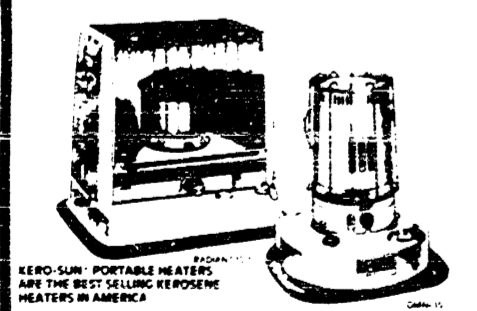
SPECIAL PURCHASE SALE



Poulan Log Splitters

PRICED BELOW 1981 DEALER COSTS!
3 POINT HITCH \$500
8 TON \$700
15 TON \$950
Quantity Limited to Inventory on Hand
Check our Poulan Chain Saw prices!

NUMBER ONE UNDER THE SUN



KERCO SUN PORTABLE HEATERS
ARE THE BEST SELLING KEROSENE HEATERS IN AMERICA.
Kerco Sun heaters are the new generation of portable heaters in America, and are the most efficient, safe, and reliable heaters available today.
A key reason for this success is Kerco Sun's advanced technology. Kerco Sun portable heaters are 99% fuel efficient, and cost only pennies per hour to run.
There is a Kerco Sun heater for nearly every kind of home.

Business use: As an easy-to-operate, smokeless and odorless heater, Kerco Sun heaters are ideal for use in restaurants, bars, and other commercial establishments. They are also perfect for use in homes, offices, and schools.
See what makes Kerco Sun the best-selling portable kerosene heater in America. Come in today and start your Kerco Sun heater. You'll see how Kerco Sun heaters save you money while they keep you warm.

20% OFF ALL MODELS
FREE! Call for more details.

WHILE SUPPLY LASTS Grandma's Fruit Cake 2 & 3 lb. Box And Christmas Chocolates

**Pepsi, Diet Pepsi
Mountain Dew
Pepsi Light**
\$1.99 1/2 LITER - 8 PACK
\$1.19 - 2 LITERS
\$2.19 CANS 8-PACK
\$3.29 CANS 12-PACK
PLUS DEPOSIT

**Coke, Sprite, Tab
Fresca, Mello Yello
Sugar Free Sprite**
\$1.99 1/2 LITERS - 8 PACK
\$1.19 - 2 LITERS
\$1.89 CANS 6-PACK
PLUS DEPOSIT

7-UP
DIET 7-UP, ORANGE CRUSH
GRAPE CRUSH, CANADA DRY, LIKE
\$2.09 - 16 OZ 8-PACK
\$1.29 - 2 LITERS
\$1.89 CANS 6-PACK
PLUS DEPOSIT

VERNORS
ONE CAL VERNORS
A & W ROOT BEER & SUGAR FREE
RC & DIET RITE
DECAFFEINATED
SUGAR FREE RC 100
\$2.09 1/2 LITER - 8 PACK
\$1.29-2 LITERS
\$1.89 - 6 PACK CANS
PLUS DEPOSIT

SQUIRT
DIET SQUIRT
\$1.89 - 8 PACK
\$1.29 - 2 LITERS
\$1.89 CANS 6 PACK
PLUS DEPOSIT

DR. PEPPER
99c - 6 PACK BOTTLES
\$1.89 - 6 PACK CANS
SUGAR FREE DR. PEPPER
\$1.89 1/2 LITERS - 8 PACK
\$1.89 - 6 PACK CANS
PLUS DEPOSIT

FAYGO
REGULAR & DIET FLAVORS
\$1.89 1/2 LITERS - 8 PACK
\$1.19 - 2 LITERS
\$1.89 CANS 8 PACK
PLUS DEPOSIT

Crazy Saying Caps \$4.50

Jobber PH. 428-8366

G. E. Wacker Inc.

Products
GASOLINE • FUEL OIL • MOTOR OIL • DIESEL FUEL • GREASE
9050 CHELSEA-MANCHESTER RD. MANCHESTER, MICHIGAN 48158
Monday-Thursday 7 a.m. to 8 p.m. Friday 7 a.m. to 9 p.m.
Saturday 8 a.m. to 9 p.m. Sunday 9 a.m. to 8 p.m.

15% OFF NOW TO CHRISTMAS

Poulan CHRISTMAS SPECIAL

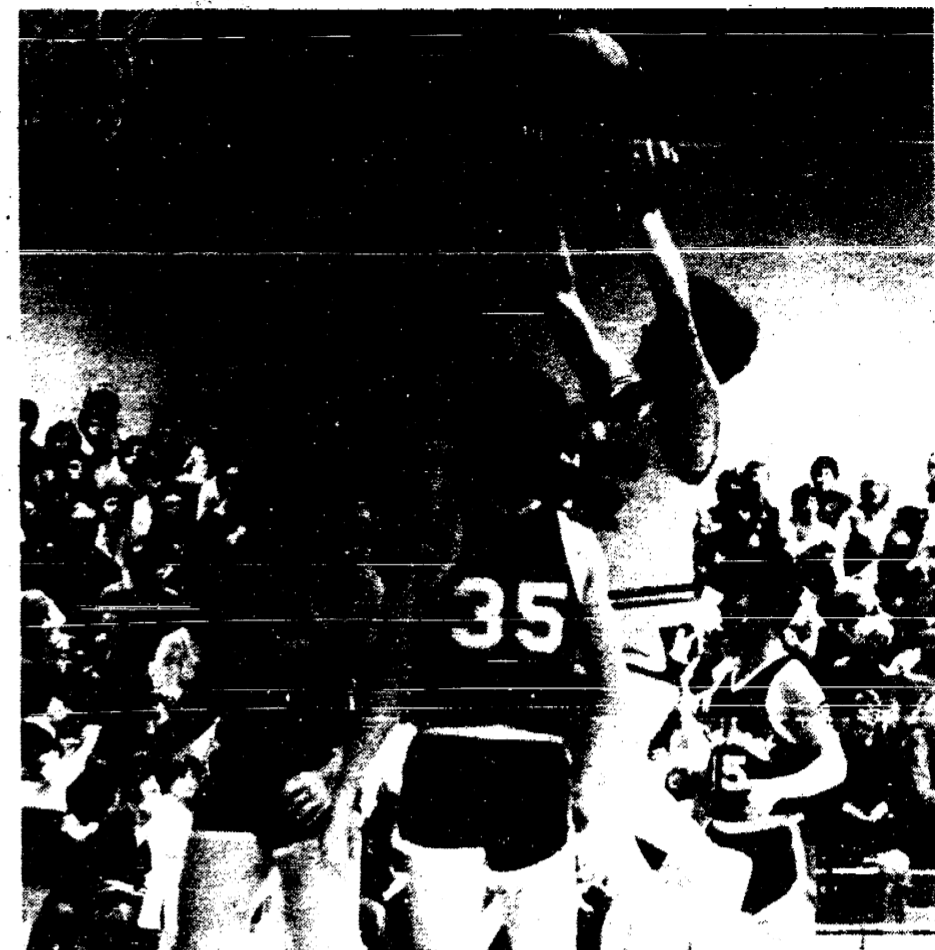
Buy one of these Poulan chain saws with a 16" bar and get an extra \$23* chain absolutely FREE!



MAKE SANTA HAPPY THIS CHRISTMAS!



John Blumenaer goes up for two



Dave Malcolm aims for two

by Jon Hardenbergh
On Friday night we opened our basketball campaign by hosting the Aggies from Sand Creek and unfortunately they left with the victory.
In the first period we seemed not to be intimidated by the Aggies' 6'5" center and with Dave Malcolm hitting and Mike Agin working the fast break we held the 18-12 edge. Sand Creek crept closer and closer and finally overtook with some 2 minutes left till halftime. As it turned out they held the lead thru out and left 66-57 winners.

Mike was our high scorer as he popped for 13 as Dave followed right behind hitting for 12. Jim Krzyzaniak and John Blumenaer canned for 22 points, 11 each.
Friday we open our league season as we trek to Onsted. The following Tuesday sees our little Dutch also came up short to Sand Creek.

1982-83 BASKETBALL SCHEDULE

Fri. Dec. 3	Sand Creek-H
Fri. Dec. 10	Onsted-A
Tues. Dec. 14	Napoleon-A
Fri. Jan. 7	Addison-H
Tues. Jan. 11	Dundee-A
Fri. Jan. 14	Blissfield-H
Tues. Jan. 18	Jackson Baptist-A
Fri. Jan. 21	Clinton-H
Tues. Jan. 25	Britton-A
Fri. Jan. 28	Hudson-A
Tues. Feb. 1	Onsted-H
Fri. Feb. 4 *	Jackson Baptist-H
Tues. Feb. 8	Napoleon-H
Fri. Feb. 11	Addison-A
Fri. Feb. 18	Blissfield-A
Tues. Feb. 22	Dundee-H
Fri. Feb. 25	Clinton-A
Tues. Mar. 1	Britton-H
Fri. Mar. 4	Hudson-H
Week of March 7	Districts
J.V. games start at 6:00 p.m. Varsity at approximately 7:30 p.m.	
* Parents Night	

CORRECTION

The co-captains listed under the picture of the Manchester Basketball Team in last week's Enterprise was incorrect. It should be Jim Krzyzaniak and Mark Ball as co-captains.

FARM Auction

SATURDAY, DECEMBER 11, 1982
STARTING AT 11:00 A.M.

I WILL SELL THE FOLLOWING AT AUCTION LOCATED 3 MILES EAST OF MANCHESTER, MICHIGAN ON AUSTIN ROAD TO EISMAN ROAD THEN NORTH OR LEFT 1 MILE TO BEMIS ROAD TURN WEST OR LEFT TO THE 3RD PLACE ON THE LEFT SIDE OF ROAD AT 13535 BEMIS ROAD.

FARM MACHINERY

NEW HOLLAND MODEL 469 HAYBINE; NEW HOLLAND 5 BAR PARALL-ROLLO-BAR HAY RAKE W/FRONT TIRE ON DRAW BAR LIKE NEW USED ON LESS THAN 25 ACRES!! MASSEY MODEL 12 BALER W/LIKE NEW MODEL 22 BALE KICKER GOOD; 3 BALE WAGONS; NEW IDEA 44 FOOT DOUBLE CHAIN ELEVATOR; LIKE NEW 8 HP GAS ENGINE; OLIVER MODEL 565 6 x 16 SEMI MOUNTED PLOW; JOHN DEERE AW-WHEEL DISC 12 FOOT ; 200 BU. GRAVITY BOX W/10 TON RUNNING GEAR; IHC-3 POINT 12 FOOT FIELD CULTIVATOR; JOHN DEERE MODEL 494 - 4 ROW PLANTER W/LIQUID FERTILIZER AND INSECTICIDE BOXES; 300 GALLON MOUNTED PLOY SPRAYER TANKS W/CENTRIFUGAL PUMP GOOD; JOHN DEERE 16 FOOT WHEEL DRAG; 250 GALLON FRONT MOUNTED ANHYDROUS APP. PLOW DOWN KIT W/REGULATOR; 12 FOOT BRILLAN PACKER; 6 ROW SPRAY BOOM; 8 FOOT TUBULAR STEEL SLIDE IN PICKUP STOCK RACK GOOD; 18 - 4 x 38 DUALS; 16 - 9 x 34 DUALS; 2 - 300 GALLON FUEL TANKS; IHC REAR WTS; IHC FRONT SUITCASE WTS. FULL SET W/BRACKET; CYCLINDERS; IHC HEAT HOUSER; 12 VOLT AM RADIO. THERE WILL BE VERY LITTLE MISCELLANEOUS SO PLEASE BE ON TIME!!

TRUCK

1971 FORD F-600 GRAIN TRUCK W/GOOD 16 FOOT GRAIN RACK, GOOD RUBBER, 2 SPEED AXLE. COME SEE!!!

TERMS: CASH OR NEGOTIABLE CHECK WITH PROPER I.D. NOTHING TO BE REMOVED UNTILL SETTLED FOR

NOT RESPONSIBLE FOR ACCIDENTS OR THEFT

STATEMENTS MADE SALE DAY TAKE PRECEDENCE OVER WRITTEN MATTER

MR. B. KNASIAK - OWNER

AUCTIONEERS
Ralph Tillotson Cal Gritzmaker
Phone 517-263-1804

GIFT SUGGESTION:



PUT A PAIR OF IRISH SETTER SPORT BOOTS UNDER THE TREE FOR YOUR FAVORITE SPORTSMAN.

AVAILABLE IN MOST SIZES AND WIDTHS.

GIFT CERTIFICATES TOO!



FOSTER'S MEN'S WEAR
109 SOUTH MAIN - CHELSEA, MICHIGAN

IGA A & B IGA
455 W. Main MANCHESTER


Monday thru Saturday
 8 A.M. - 7 P.M.
 CLOSED SUNDAY



IGA TABLET BEEF • FULL CUT
Round Steak
\$1.78



FARMER PEET • BONELESS
Bonanza Hams
\$1.99



PINK OR WHITE
Florida Grapefruit
\$1.29
5 lb. Bag

REGULAR • UNBLEACHED • SELF RISING • 4.5 LB. BAG
Gold Medal Flour **89¢**

SWEET • KOSHER DILLS • POUNDED DILLS • 1.19 LB. JAR
Vlasic Pickles **\$1.29**

ALL VARIETIES • BEEF • CHICKEN • 1.14 OZ. CANS
Cycle Dog Food **3/\$1**



WAKE UP TO • 12 OZ. BOTTLE
Post Toasties **79¢**

ALL FLAVORS • 4 OZ. Pkg.
Jello Gelatin **59¢**

ALL FLAVORS
Hi-C Drinks
59¢
48 OZ. CAN

WAKE UP TO • 12 OZ. BOTTLE
Post Toasties **79¢**

ALL FLAVORS • 4 OZ. Pkg.
Jello Gelatin **59¢**

ALL FLAVORS INCLUDING MIXERS
Faygo Pop
4/99¢
1 Liter Btl. Plus Deposit



REG. • 4.5 OZ. TUBE • 11% OFF LABEL • SAVE 20¢
Colgate Toothpaste
\$1.09
4.5 OZ. TUBE



MELLO YELLO,
Tab, Sprite or Coca Cola
\$1.99
3 Pack 7 1/2 Liter Btl. Plus Deposit



YELLOW
Golden Bananas
4 / \$1



IGA TABLET
Mixed Pork Chops
\$1.58

MANCHESTER TOWNSHIP LIBRARY
 P. O.

THE MANCHESTER ENTERPRISE

116TH YEAR VOLUME NO. 8 USPS 327-400 THURSDAY, DECEMBER 16, 1982

20 Cents Per Copy

HIT or MISS

BY FARLEY

I have, on the night table beside my bed, a small portable radio and sometimes when I cannot get to sleep—my conscience probably—I turn it on and proceed to scan the dial.

There's a vast amount of various kinds of entertainment and music. The other night as I idly spun the dial, I came across what sounded like the broadcast of an old radio show with two fellows engaged in a "blackout" which it turned out to be a re-broadcast of one of the shows from 1930's-40's which was so popular then.

I didn't get their names but they were presenting a joke that was one of the first of its kind that I can remember hearing. It went as follows:

One chap was evidently seated at the bedside of his partner Louie, and with a tear in his voice he proceeded as follows: "Louie, I'm so sorry to see you here in this condition. The doctor says that he's not too sure you will recover and if that is true, I want to confess a few sins that I have committed against you. First, do you know who stole the \$50,000 out of the safe and from our bank account? I'm sorry to say that it was me and I wish I could make it up to you in some way."

"That's okay," murmured Louie. "It doesn't matter now."

"Well that's a load off my mind, but do you know who it was that gave our secret formula to our competitors? I know you didn't but it was me. I hope you can forgive me. I don't know how I could do such a

dastardly deed."

"Of course I can and do forgive you," murmured Louie.

"Well then, just one more thing. Do you know who it was that was spending so much time at your house with your wife when you were away on those business trips? You don't know how ashamed I am to admit it, but it was me. I knew you never suspected me."

There was silence for a few minutes and then, with an effort Louie rolled over and looked at his partner who said "You think I didn't know do you. Well, I did. Who do you think bought the poison?"

I first heard this joke at the Avenue theater in Detroit one of the members of the Columbia Burlesque Wheel. They were members of a chain of such theaters and, like the vaudeville houses, changed their shows each week with different specialty acts and musical numbers by the chorus and the featured headliners, but one thing at the Avenue never changed. That was "Scurvy" the "top bananas" as they were known. He was a fixture there for years and years and had a following to be envied by any performer in any field.

Burlesque theaters were not, in those days, to be visited by the upper crust nor most ladies. Their jokes were vulgar and their chorus girls never called for much in the way of costumes—in quantity of course but a surprising number of folks visited these shows often. Another theater the Empire, flourished in Toledo and most every other city in the country with a 200,000 population or more supported one or more.

The United States is credited with having been the birthplace of three kinds

Continued on Page 7

School Board Ratifies New Teacher Contract

The Manchester Board of Education, in an early Monday Morning meeting, approved the two year settlement negotiated by Superintendent Eugene Thompson and Michigan Association of School Boards representative Rita Thomas with the Manchester teachers who are affiliated with the Washtenaw-Livingston Education Association.

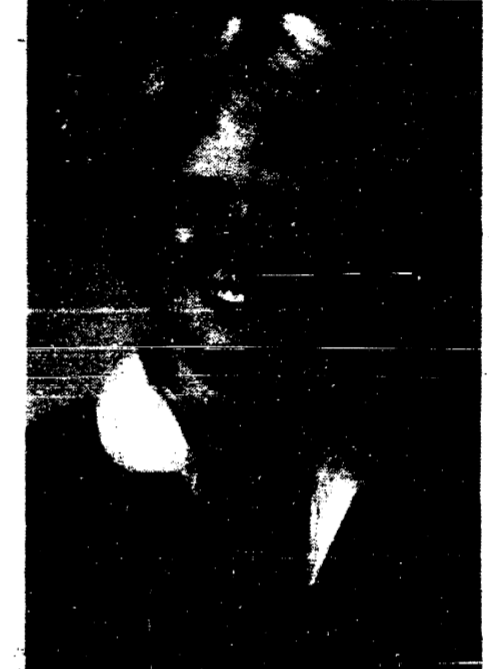
The new pact calls for salary improvements of 5.9% in the current year and an anticipated increase of 4 percent for the 1983-84 school year. The 1983-84 settlement is based upon the increase in state equalized valuation of the school district. The actual salary increase will be equal to 80 percent of the percentage increase in SEV or 4 percent whichever is higher.

Improvements at very minimal cost to the Board were made in the fringe benefit package. In addition to medical insurance, teachers will now also receive 60 percent dental coverage and limited vision insurance. Board of Education provided Term Life Insurance will also be included.

Superintendent Gene Thompson has indicated that the major contract language change now gives the Board of Education the right to reduce staff, if necessary, using experience and evaluations as criteria in addition to seniority. Thompson stated that as far as he was aware the right to use evaluations is a first for Boards of Education in Michigan. This means that the Board is no longer fully obligated to layoff only the least senior teachers as efforts are made to downsize the school district.

A two year contract had been a major goal of the Board of Education. With the ratification of the contract two more years of stability for the schools are assured.

Melissa Bunney Named D.A.R. Good Citizen



Each year, the Sarah Caswell Angell Chapter of the National Society Daughters of the American Revolution ask schools in Washtenaw County to nominate a senior student as the recipient of the Good Citizen Award. This year, Manchester High Senior Melissa Bunney has been selected as Manchester's winner. Using the selection process recommended by the D.A.R., members of the Senior Class first nominate classmates for consideration. The faculty then votes on those who receive the most nominations.

Melissa is currently President of the Student Council. She served as president of her class during ninth and eleventh grades, has been a cheerleader four years, participated in softball two years and is a member of the German Club. She was inducted into the school's National Honor Society chapter last school year.

All of the County's D.A.R. Good Citizens will be honored at a reception at the University of Michigan's Clements Historical Library on Saturday, February 12, 1983.

Candle Pick-Up

The Luminaria Candle Kits may be picked up Tuesday, Wednesday, Thursday, December 14, 15, 16 and /or December 21, 22 and 23. Call Karen Hinkley for information 428-9115.

Old Fashioned Christmas Party Well Attended

You should have been there! A hundred guests attended the Old Fashioned Christmas Party that the Manchester Area Historical Society held at the remodeled Mann's Feed Mill banquet rooms at the invitation of Don Limpert, Monday night. Visitors came from as far as Bloomfield Hills, Ann Arbor and East Lansing to enjoy decorating the handsome Christmas tree from John Swainson's farm, singing favorite carols, eating Christmas cookies and just exchanging past Holiday stories.

Music filled the hall from the piano donated to the Society by William and Kathy Richardson in memory of their wife and mother, the late Dealoris Richardson whose civic activities are renowned in the area. The instrument, tuned for the occasion by Ronald Hastings of Chelsea, is a valuable asset to the collection of the Society. It will be properly identified for future reference.

The piano music played by Howard Parr was enhanced by the musical talents of Michael Gleason on his guitar. Later his bagpipes added variety to the musical evening. Mrs. Don (Ann) Fowler, chairman of the event and Mrs. Lewis (Gail) Kellum.

Continued on page 5

SANTA IS COMING TO TOWN



Boys and girls of Manchester, Santa will arrive Saturday, December 18th at 12 o'clock. He will be at the Emanuel Church Hall to eat lunch with you or just for pictures after he has lunch. The Optimists will provide candy and Alber Orchard's will provide apples during lunch.

Lunch starts at 12 noon and the cost is \$1.50 per person. Pictures can be taken without purchase of a lunch ticket at 12:45 p.m. Bring your own camera for pictures.

8th GRADE ASSEMBLES 1,600 PIZZAS



On Saturday morning, December 11, a large number of eighth grade students and their parents assembled 1,000 pizzas in the Nellie Ackerson lunch room. The pizza sale was conducted to raise money for the Toronto Trip which will take place in May. Approximately one-fourth of the money

Continued on page 13