

### Community Education

Manchester Community Education in cooperation with Saline Community Hospital will sponsor a CPR (cardiopulmonary resuscitation) course at Manchester High School on Monday, October 18 and Wednesday, October 20. Both sessions are from 6:30 to 10:30 p.m. CPR is a combination of artificial respiration and artificial circulation which should be used when a cardiac arrest or certain other emergencies occur. Students will learn proper procedures for dealing with emergencies and helping to save a person's life. Both sessions are required. There is a \$2.00 charge to attend this course. If you have not registered and wish to do so, please call the Community Education Office at 428-7804 prior to the class starting date. Final enrollment will determine the number of instructors and student handbooks needed. Don't put it off, this is an excellent opportunity to learn this life saving skill.

The next six week sessions of Fitness Fantasia (aerobic dance) will start on Monday, October 25 at 6:30 to 7:30 p.m. and 8:00 to 9:00 p.m. in the high school study auditorium. Fitness Fantasia is a fun, exciting way to achieve total fitness. Participants will decrease body fat, increase muscle tone, have more stamina and have greater ease of movement from increased flexibility and agility. Fitness Fantasia is never boring. Each course offers you a new set of completely choreographed exercise routines set to a variety of music. All exercises have been carefully selected to offer you a total fitness program.

The class meets twice weekly on Mondays and Wednesdays for six weeks at the times indicated. The cost is \$25. The instructor is Cindy Benedict, a Certified Instructor for the YMCA. Registration and fees will be done at the first night of class on October 25 for either session.

#### ROY SMITH for SENATE

paid for by Roy Smith for Senate  
7768 Munger Rd., Ypsilanti, MI 48197

#### MARGIE'S UPHOLSTERY

6245 Brooklyn Rd., Napoleon  
Wide Selection of Fabrics  
Pick Up & Delivery Available

517-536-4230

#### NORM WALZ CONSTRUCTION

Remodeling and Room Additions  
Garages—Porches  
CUSTOM BUILT CABINETS

CUSTOM BUILT HOME ON YOUR IMPROVED LOT CAN SAVE YOU \$\$\$\$\$\$



Phone 428-7109

#### Branham's Welding

Arc-Gas-Cutting-Brazing-Buildup  
Welding  
Custom and Production Welding  
Heavy Equipment Repair  
Portable Unit

PHONE 517-596-2995  
313-475-7639

24 Hour Service

### 4-H Youth To Receive Scholarship

Kim Bristle, daughter of Karen and Steve Bristle of Manchester and Leonard McCalla, Jr., son of Jan and Leonard McCalla of Chelsea, will be recipients of the 1982 4-H Don Johnson Memorial Scholarship. Both 4-H members were selected on the basis of their involvement and leadership in the 4-H program. Kim is presently a Sophomore at Michigan State University and studying food systems management. Kim was a 4-H member for 9 years. Her project areas

were clothing, dairy, modeling, dance, demonstrations, foods, crafts, home design, softball, dairy cattle judging and involvement in the Teen Leader's Association.

Leonard is presently a Freshman attending Central Michigan University and majoring in Agricultural Engineering. Leonard's involvement with 4-H included woodworking, softball, swine, poultry and vegetable gardening. Leonard was also involved with teen activities.

Leonard and Kim will receive their award at the Annual 4-H Recognition Ceremony to be held October 18, 1982 at W.I.S.D./High Point Center.

### Cooperatively Speaking

The Cooperatively Speaking Manchester Food Co-op will hold its monthly ordering/business meeting Thursday, October 21, at 7:00 P.M. The meeting will be held in the American Legion House on the corner of Adrian and Duncan Streets.

Current members are reminded to turn their monthly orders in to Ave Veneklasen no later than Monday, October 18. Anyone interested in joining our food cooperative should contact Paul or Jonelle Dankert at 428-9487 for more information.

**Family Independent Pharmacy**

## Convenience, value quality and Christmas gifts too..

SALE PRICES  
EFFECTIVE THRU  
OCT. 31, 1982

<p><b>L'OREAL Premiere Perm</b> NORMAL, HARD TO WAVE ON FOR COLOR TREATED HAIR (\$1.50 MAIL IN REFUND) Value \$4.51 <b>\$2.54</b></p>	<p><b>L'OREAL PREFERENCE</b> CREME-IN HAIR COLOR All Shades \$5.30 Value <b>\$3.29</b></p>	<p><b>PLAYTEX DEODORANT TAMPONS 28 CT.</b> Reg. or Super \$4.03 Value Super Plus \$4.54 Value <b>\$2.68 \$2.86</b></p>	
<p><b>3-DAY ROLL-ON</b> ANTI-PERSPIRANT 2 Pack, 2.5 oz. \$5.82 Value <b>\$1.99</b> Buy 1 Get 1 Free</p>	<p><b>Topol</b> Regular or Super Flouide 3 oz. \$4.00 Value <b>\$2.55</b></p>	<p><b>COLGATE INSTANT SHAVE</b> 11 oz. All Types \$1.72 Value <b>\$1.03</b></p>	
<p><b>DOXIDAN LAXATIVE</b> with stool softener Capsules 30's \$4.43 Value <b>\$2.69</b></p>	<p><b>AMITY NYLON TRAVEL KIT</b> \$14.00 Value <b>\$7.49</b></p>	<p><b>HENDERSON CAMP SLUMBER SLEEPING BAGS</b> 3 Designs <b>\$18.99</b></p>	
<p><b>DELSEY BATHROOM TISSUE</b> White or Print 4-Roll Pack <b>\$1.09</b></p>	<p><b>GILLETTE BODY &amp; CURL CURLING IRON</b> OR DELUXE HEAT COLD WRAP OUR PRICE \$12.99 MFR. REBATE -\$3.00 Your Final Cost... <b>\$9.99</b></p>	<p><b>CONTACT 12 HOUR COLD CAPSULES</b> 10's \$3.55 Value <b>\$2.05</b></p>	
<p><b>HI-DRI JUMBO ROLL PAPER TOWELS</b> <b>53¢</b></p>	<p><b>ARVIN FAN FORCED RADIANT ELECTRIC HEATER</b> \$31.95 Value <b>\$21.49</b></p>	<p><b>ASCRIPTIN TABLETS</b> 100's \$3.75 Value <b>\$2.09</b></p>	
<p><b>VASELINE BRAND PETROLEUM JELLY</b> 3 1/4 oz. \$1.82 Value <b>98¢</b></p>	<p><b>CLEO CHRISTMAS GIFT WRAP</b> Multi Log Roll #250-272 \$4.80 Value <b>\$2.99</b></p>	<p><b>CONTROL APPETITE CONTROL FORMULA CAPSULES</b> 20's \$4.49 Value <b>\$2.79</b></p>	
<p><b>MYOFLEX ANALGESIC CREME</b> 4 oz. \$5.03 Value <b>\$2.59</b></p>	<p><b>CHRISTMAS CARDS</b> #702-212 \$1.19</p> <p><b>ASSORTED 25 Ct. 95¢ Value HOLIDAY BOWS</b> #504-011 <b>55¢</b></p>	<p><b>SINUTAB 30's</b> or SINUTAB II New Maximum Strength Capsules or Tablets 24's \$4.14 Value <b>\$2.29</b></p>	
<p><b>KRAUSS PHARMACY</b> 128 EAST MAIN STREET MANCHESTER, MICHIGAN PHONE 428-883</p>			<p><b>NORWICH ASPIRIN</b> 5 GR. 250's <b>\$1.22</b></p>

20 Cents Per Copy

# THE MANCHESTER ENTERPRISE

115TH YEAR VOLUME NO. 52

USPS 327-460

THURSDAY, OCTOBER 21, 1982

## Chrysler Employees Support United Way



Left to right, standing: David McAllister, Robert Schantz, Mike Weiss, Bill Mitchell, Gary Packard, Rick Ruppel, Clarence Fielder. Seated are: Marv Updike, Charlie Burgess

Over the years, Chrysler Corporation and their employees have been staunch supporters of the United Way in communities where the corporation has factories and facilities. Chrysler Proving Grounds on M52 is no exception. Here the annual campaign is in full swing spearheaded by Plant Manager, Bob Ludwig, Personnel Manager, William P. Mitchell, President UAW Local 1284, David H. McAllister and members of the Community Services Committee. Their goal is 100% employee participation and the encouraging of contributors to give their fair share. The corporation also contributes generously to United Way programs.

At the Proving Grounds the company payroll deduction plan permits employees to designate their contributions to United Way organizations in the communities where they reside.

Bill Mitchell said "Chrysler employees are deeply concerned about the economy and the affect it is having on our nation and organizations like the United Way. It is my hope that people will continue to recognize the needs of this worthwhile cause and continue to support United Way agencies through their contributions."

The union's Community Services Committee members Charlie Burgess, Marv Updike, Gary Packard, Rick Ruppel, Robert Schantz and Mike Weiss are actively campaigning for the United Way.

"I have personally campaigned for the United Way," Dave McAllister, Union President, said. "The United Way represents people helping people and caring for one another. Through the various agencies affiliated with the United Way the means are supplied for people who care to reach out and touch those in need no matter what the need may be."

Chrysler Proving Grounds is operated by the company's Engineering Office for the prime purpose of evaluating the all-around safety, performance and endurance of Chrysler cars and trucks.

Most of the work is concerned with future models.

Surrounded by 11 miles of fencing, the Proving Grounds is a vast 4,000 acre plot of rolling terrain including some of the roughest and smoothest roads in the world. Every year, 24 hours a day, test vehicles cover more than 15 million miles-a distance equivalent to about 4500 trips from coast to coast across the United States.

Currently 577 men and women, who reside in seven surrounding communities including 40 some from the Manchester area, are employed at the Proving Grounds. 347 are represented by UAW Local 1284. The payroll exceeds over one million dollars a month.

Clarence Fielder, President of Manchester United Way and Chairman of the Industry Division for this year's campaign says all industries in our area fully support the United Way and encourage employee participation.

Campaign Chairman, Dr. Glenn C. Lehr, Jr. announced that as of last Saturday contributions and pledges total \$7,590.00 or 25% of this year's \$30,358.00 goal.

REACH IN-THAT WE MAY REACH OUT



### NOTICE! Deadline Change

Due to the increasing volume of news, we have made a change in our deadline. ALL display advertising AND pictures must be received by 5:00 PM Monday. ALL news articles AND classifieds must be received by 11:00 AM Tuesday for same week publication.

The Staff Of  
The Manchester Enterprise

## Girls And Boys State Candidates

The Manchester Optimist Club Girls State, and Boys State candidates were honored Monday evening, Melissa Bunney, daughter of Mr. and Mrs. William Bunney, attended Girls State at Central Michigan University, in Mt. Pleasant, with 500 girls. Scott Hunt, son of Mr. and Mrs. Bruce Hunt, traveled to Michigan State University, in Lansing, with 1100 others in June.

Ms Bunney's interest is Law, and she told about the long convention, and discussions on the ERA. With interest in computers, Mr. Hunt was involved with The Boys State newspaper, and told the Club, politics is for politicians.

Both enjoyed the educational, political and social atmosphere that surrounded them during their week long event.

## Dorothy Mae Retires Her Scissors

by Lucy Feldkamp

One of Manchester's favorite business women, Dorothy Moore, has given up cutting and curling in favor of bowling and golf. On October 1, Dorothy Mae's Beauty

Shop was passed down to younger hands, and Dorothy is now a woman of leisure after spending 43 years taking care of the female heads of this community.

Born and raised in Manchester, Dorothy learned her trade at Riggs Beauty College in Hillsdale. She had already been doing hair for several years. Dorothy says she was 12 years old when she first finger-waved her mother's hair, and since that moment she knew what she wanted to do for a living. After beauty school, Dorothy worked briefly at a shop in Dundee, whose owner, Josephine Doty, encouraged her to start her own place. At the ripe age of 19, Dorothy opened shop at the corner of Main and Riverside across from today's Village Tap.

The house had been a doctor's office and Dorothy rented it in 1939 for \$18 a month. She needed a grand total of \$1000 to start her business and charged 65 cents for a shampoo and set and \$2 to \$10 for a permanent wave. Some of her first customers were still coming to her when Dorothy sold her business to its new owner Marti Bondy. Over the years, Dorothy Mae's moved to several different locations and Dorothy worked with 35 or 36 different beauticians.

Asked if she would do the same thing over again, Dorothy replied with a firm yes. "I loved doing hair and I loved being in business," she says. She credits husband

Continued on page 8

## Klager Searches For Grandpersons



Mrs. Rubena Bolter, Mrs. Virginia Schwab, Mrs. Milda Koebbe, Mrs. Helen Braun visited the First-Second Team Room to talk about what their school days were like.

What is a Grandperson? A grandperson may or may not be a grandparent themselves. A grandperson is generally sixty years of age or older. A grandperson is someone who is willing to share love, rich experiences from the past and/or skills with children. A grandperson spends at least one hour a week listening to a child sharing a book or teaching a skill to a small group of children.

This should be a rich experience for both children and grandpersons alike.

The program has not yet begun so this is an excellent time to join up. Interested persons may contact Miss Mary Koebbe or Dr. Janice Hammond at Klager 428-8321.

A new program at Klager Elementary will hope to bring older persons and children together. All older people in the community are invited to participate. (We can always use "younger" people as classroom helpers in other programs too. The rationale for the grandpersons program are first that many young people



**The Manchester Enterprise**  
 150 EAST MAIN STREET  
 Manchester, Michigan 48158  
 USPS 327-000  
 Phone 428-8173

The Manchester Enterprise was established in 1967 and is published each Thursday at 150 East Main Street, Manchester, Michigan with second class postage paid at Manchester.

Edward E. Steele, Publisher  
 Lenore Steele, Editor

**Letters To The Editor**

Mr. Editor:

This is to inform you and your readers of the up-coming regular meeting of the Manchester Band Boosters. This meeting is being held Tuesday, October 26 at 7:00 p.m. in the High School Band Room.

All parents of band students and any other adults interested in the band program in Manchester are invited to attend this meeting.

Just as the Athletic Boosters lend financial support to the sports programs in Manchester so does the Band Boosters lend financial support to the band program. Without an active Booster Club, the band would go without. Not only does the band program need your support, the band director deserves your support. Please think about it. I hope to see you there.

Thanking you for your consideration,  
 Jan Howell, President  
 Manchester Band Boosters  
 To the People of Manchester:

As a nurse working in a near-by hospital, I was very interested in a film shown here recently entitled, "The Last Epidemic." This film was sponsored by a group called, "Physicians for Social Responsibility." In the film, these medical people stressed the following:

Nuclear war—even limited—would result in death, injury and disease on a scale never before seen in the history of mankind.

Medical disaster planning for nuclear

**AUCTIONEERS**

JERRY JACOB      CLIFF TRACY  
 313-428-7975      313-428-7263  
 Manchester, Michigan

MEMBER OF  
 MICHIGAN STATE AUCTIONEERS  
 ASSOCIATION

war is meaningless. There is no possible medical response.

There is no effective civil defense. The blast, thermal and radiation effects would kill even those in shelters and fall-out would reach those evacuated.

Recovery from nuclear war would be impossible. The economic, ecological and social fabric on which human life depends would be destroyed in much of the world. It stressed there could be no winner in a nuclear war. World-wide fallout would contaminate much of the globe for generations and atmospheric effects would severely damage all living things.

An all-out nuclear war could be over in one hour with a warning up to 30 minutes before hand.

This issue can seem very depressing, but I feel there is hope offered in both the President's recent START proposal for weapons reductions and the proposal E on the November Ballot in Michigan which calls for a bilateral and verifiable nuclear weapons freeze.

The most often question asked of me is, "Won't this allow the Russians to run all over us?" The U.S. Department of Defense in its 1982 fiscal report said, "The United States and the Soviet Union are roughly equal in strategic nuclear power." So it is a good time for a freeze, being nearly equal in strength is the source of our present state of deterrence. The agreement would be verifiable in the same way as past treaties have been and which the proposed START treaty would be.

My purpose for writing this letter is to urge you to get as much information as you can on proposal E. Your decision could affect the lives of generations to come.

Sincerely,  
 Lilli Miller  
 Manchester

**Historical Society News**

Manchester Area Historical Society meeting Monday night opened with a surprise announcement for lighting on the front of the building. Eventually, an original early 20th century light fixture from Manchester Main Street will shed its glow over the familiar doorway. Tim Armentrout has "discovered" the precious

**Spear & Associates, Mann, Realtors**

122 WEST MAIN      PHONE 428-8388 DAILY      MANCHESTER

Spacious Farm House on 5 acres, more land available, 32 x 54 barn, woodburning stove, one mile south of Manchester, 11% Land Contract terms. \$52,000.

Horse Farm on 10 acres, more land available, 70 yr old home - 90% restored, 36 x 60 barn, Manchester Area. \$89,500.

Reasonable Priced Village Home, with 3 bedrooms, good starter or retirement home, woodburning stove, on 1 1/2 acre. \$33,500.

30 Acres with 4 bedroom home, price also includes a one bedroom home perfect for rental or in-law use. Ypsilanti/Milan Area. \$127,000.

**OFFICE HOURS**

Monday thru Friday 9 a.m. to 5 p.m. Saturday 9 a.m. to 12 noon

OFFICE PHONE 428-8388

EVENINGS AND WEEKENDS

JIM MANN  
 428-8074

DENISE WALTER  
 428-8735

ELLIS PRATT  
 428-8562

antique and is restoring it for its intended use.

A continuing Bake Sale is planned for each Saturday during the Toy Exhibit, October 23rd through November 13th, to aid the Building Fund. Baked items, well covered with "Saran" and bearing the name of the baker, should reach the Shop by 9:45 on Saturdays in time for the 10:00 opening. - everything from apple pie to pretzels by Parr!

The program centered around the "Toys Past & Present" exhibit. A first hand viewing of the articles by the many members and friends present was enhanced by individual stories of some of the historical items as told by Mrs. Florence Parr, intake chairman of the show. The exhibit will be open until November 14, Thursday, Friday and Sunday from 1 to 4 and Saturday 10 to 12, 1 to 4 and 6 to 8.

An interesting survey of the development of children's literature in the 1800's was given by Mrs. Lewis Kellum. To demonstrate her critique, Omer Robbins read excerpts from an 1820 "Mother's Magazine" pointing up the influence of the church during that era; Don Fowler recited nostalgic verse from "Nonsense Poems" of the last quarter of the century, and Mrs. Reno Feldkamp delighted the members with a reading from "The Peterkin Papers".

The next meeting of the Society will be November 14, the day following the closing of the Show. The drawing for the twin dolls (on display at the Shop) will be made at that time.

Don't miss a workshop given by Nancy Feldkamp at the Old Blacksmith Shop this Saturday, October 23 at 1:30 p.m. For the price of a donation, try your hand at making a cornhusk doll. They make lovely gifts and Christmas tree ornaments; and the materials are in abundance at this time of the year!

**ROY SMITH  
 for SENATE**  
 paid for by Roy Smith for Senate  
 7768 Munger Rd., Ypsilanti, MI 48197


**FARM TESTED — FARM TOUGH**



Need easy starting?  
 Simple maintenance?  
 Rugged durability? A saw to handle the toughest jobs in the field, woodlot and farmyard? You've got it with Stihl® Farm Boss™. Now available with Stihl's anti-vibration system for easier operation, and Quickstop® Chain Brake.

**K & W EQUIPMENT INC.**  
 11100 Chelsea-Manchester Rd.      Manchester, Mich.  
 Phone 313-428-7666

**STIHL®**  
 THE WORLD'S LARGEST SELLING CHAIN SAW



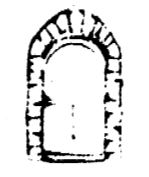
Oil, air and fuel filters  
 spark plugs  
 anti-freeze  
 Carburetor tune up

**Ross Automotive**

230 EAST MAIN STREET      MANCHESTER, MICHIGAN  
 PHONE 428-8320 or 428-8228

MONDAY-FRIDAY 8 am-5 pm      SATURDAY 8 am-2:30

manchester art guild news



**WHAT'S UP**

The Manchester Art Guild is busy itself with the fall (hopefully not too soon winter) activity of nominating interested persons for the Board of Trustees.

As these elections mark the near end of another year, it marks also a year of changes for the Guild. Energies for gallery exhibitions have waned due to the immense effort involved in producing quality shows. Although fewer of these will be presented, the group remains vital; a contributor to the community and a stimuli for those interested in the arts. Everyone is invited to attend our meetings!

A general meeting will be held this Monday, October 25, at 7:30 p.m. in the High School Art Room (108). Those interested, are invited to bring work for a "positive critique". Only supportive, confidence-building criticism will be allowed here! Non-artists and craftspeople are needed for input as well.

In addition, a report will be given on the nominations, elections held, and the "Toys, Past and Present" exhibition now in progress (co-sponsored by the Manchester Historical Society) will be reported upon.

**Plans Underway For Middle School Science Fair**



Science Fair Committee: left to right, Richard Fielder, Roger Boyce, Wes Gail, John McGuire, and Nondus Buss.

A volunteer committee comprised of teacher representatives from each of the science areas at the middle school and our gifted/talented program coordinator has met several times to discuss implementing a Science Fair at the middle school.

To date the committee has decided that student participation should be on a voluntary basis and that March 24-25 should be the target dates for the fair. It was felt that these dates would allow for maximum participation by parents since they are the same days parent/teacher conferences will be held during second semester.

Future updates on the progress of the committee will be published so that interested parties may stay informed.



Some say that looking at sphires strengthens the eyes.

**School Lunch Menu**

Thursday, October 21, Macaroni & Cheese, Sausage Links, Green Peas/Carrots, Dinner Roll/Butter, Chilled Pineapple and Milk.

Friday, October 22, Cheese & Sausage Pizza, Carrot & Celery Stix, Fresh Fruit, Chocolate Pudding and Milk.

Monday, October 25, Beef Burrito with Chili, Tator Tots, Diced Carrots, Cinnamon Applesauce and Milk.

Tuesday, October 26, Baked Chicken Dressing/Gravy, Mixed Vegetables, Bread/Butter, Molded Fruit Salad and Milk.

Wednesday, October 27, Vegetable Soup with Crackers, Deli-Turkey Sandwich, Dill Pickle Spears, Chilled Appriots and Milk.

Thursday, October 28, Tuna & Noodles, Tossed Salad with Dressing, Dinner Roll/Butter, Fresh Fruit and Milk.

Friday, October 29, Happy Halloween - Zesty Apple Juice, Steak-Umm Sandwich with Cheese, Buttered Green Beans, Sugar Doughnut and Milk.

**Election Notice**

TO THE QUALIFIED ELECTORS OF THE TOWNSHIP OF MANCHESTER  
 NOTICE IS HEREBY GIVEN THAT A GENERAL ELECTION WILL BE HELD IN THE TOWNSHIP OF MANCHESTER ON  
**TUESDAY, NOVEMBER 2, 1982**  
 from 7 a.m. to 8 p.m.

for the purpose of electing candidates for the following offices:  
 Governor and Lieutenant Governor  
 Secretary of State  
 Attorney General  
 U.S. Senator  
 Representative in Congress  
 State Senator  
 Representative in State Legislature  
 Members of the State Board of Education  
 Members of the Board of Regents of University of Michigan  
 Members of the Board of Trustees of Michigan State University  
 Members of the Board of Governors of Wayne State University  
 Justices of the Supreme Court  
 Judges of the Court of Appeals  
 Judges of the Circuit Court  
 Judge of the Probate Court  
 Judge of the District Court  
 County Commissioners  
 Washtenaw Community College Trustees  
 City or Township offices, if any

and to vote on the following proposals:

- PROPOSAL A**  
 Proposal to allow the legislature to pass laws to reform their existing constitutional exemption from civil arrest and process during legislative sessions.
  - PROPOSAL B**  
 Proposal to create by constitution a Michigan Dept. of State Police, provide for its personnel, prescribe its duties and require minimum staffing.
  - PROPOSAL C**  
 Proposal to prevent a lender from using a "due-on-sale" clause to foreclose a mortgage or land contract when the property is sold, unless security is impaired.
  - PROPOSAL D**  
 Proposal to require hearings on all utility rate increases, abolish rate adjustment clauses and establish procedures in rate hearings.
  - PROPOSAL E**  
 Proposal expressing the people's desire for a mutual nuclear weapons freeze with the Soviet Union and requiring state officials to convey that desire to the President of the United States and other federal officials.
  - PROPOSAL G**  
 Proposal for an elected Public Service Commission.
- PROPOSITION: WASHTENAW COMMUNITY COLLEGE**  
 Washtenaw Community College Millage Renewal Proposition  
 (Include each local proposal as it will appear on the ballot)  
 Polling place location:  
 275 S. Macomb St., Manchester, Michigan
- As provided for in MCLA 168.653 as amended by P.A. 2 of 1982  
 10-18-82      10-28-82      WILMA E. LENTZ, CLERK

**Election Notice**

TO THE QUALIFIED ELECTORS OF THE TOWNSHIP OF BRIDGEWATER  
 NOTICE IS HEREBY GIVEN THAT A GENERAL ELECTION WILL BE HELD IN THE TOWNSHIP OF BRIDGEWATER ON  
**TUESDAY, NOVEMBER 2, 1982**  
 from 7 a.m. to 8 p.m.

for the purpose of electing candidates for the following offices:  
 Governor and Lieutenant Governor  
 Secretary of State  
 Attorney General  
 U.S. Senator  
 Representative in Congress  
 State Senator  
 Representative in State Legislature  
 Members of the State Board of Education  
 Members of the Board of Regents of University of Michigan  
 Members of the Board of Trustees of Michigan State University  
 Members of the Board of Governors of Wayne State University  
 Justices of the Supreme Court  
 Judges of the Court of Appeals  
 Judges of the Circuit Court  
 Judge of the Probate Court  
 Judge of the District Court  
 County Commissioners  
 Washtenaw Community College Trustees  
 City or Township offices, if any

and to vote on the following proposals:

- PROPOSAL A**  
 Proposal to allow the legislature to pass laws to reform their existing constitutional exemption from civil arrest and process during legislative sessions.
  - PROPOSAL B**  
 Proposal to create by constitution a Michigan Dept. of State Police, provide for its personnel, prescribe its duties and require minimum staffing.
  - PROPOSAL C**  
 Proposal to prevent a lender from using a "due-on-sale" clause to foreclose a mortgage or land contract when the property is sold, unless security is impaired.
  - PROPOSAL D**  
 Proposal to require hearings on all utility rate increases, abolish rate adjustment clauses and establish procedures in rate hearings.
  - PROPOSAL E**  
 Proposal expressing the people's desire for a mutual nuclear weapons freeze with the Soviet Union and requiring state officials to convey that desire to the President of the United States and other federal officials.
  - PROPOSAL G**  
 Proposal for an elected Public Service Commission.
- PROPOSITION: WASHTENAW COMMUNITY COLLEGE**  
 Washtenaw Community College Millage Renewal Proposition  
 (Include each local proposal as it will appear on the ballot)  
 Polling place location:  
 Bridgewater Townhall, Clinton-Manchester Road
- As provided for in MCLA 168.653 as amended by P.A. of 1982  
 10-18-82      E. LEWIS BLAISDELL, CLERK

### Power Pump Run Slated For October 23

Saline spirit will figure prominently once again during the Second Annual Pumper Power Race sponsored by Saline Community Hospital on Saturday, October 23, 1982.

Course certification is now pending. Numerous serious runners are expected to participate. Those runners short on endurance but long on heart will receive extra sideline support from the Saline High School Pep Band, Varsity cheerleaders, Saline High School Cross Country team, and a female version of King Kong. Beth Vogel, Miss Saline and the Saline High School Homecoming Queen, will ride in the Pace Car for the event. Entrants completing the 10-kilometer race will also receive a potassium-rich banana, courtesy of J and C Family Foods of Saline from Chiquita Banana, Inc.

The extras, devised by race co-chairmen Mary Ann and Marvin Fogle, are only part of the benefits to be derived by entering either the 10-km run or the 5-km "Walk for Health". Aside from the traditional trophies and ribbons for top finishers, entrants also will be promoting a greater awareness of cardiovascular health, the focus of Saline Community Hospital's Pumper Power program. Pumper Power is aimed at reconditioning persons with heart disease and assists in the development of cardiovascular fitness through exercise, education and group support.

The race, scheduled for 10:30 a.m. on Saturday, October 23, will start near the intersection of E. Michigan Avenue and N. Maple Street in Saline. Walkers will toe the starting line at 10:45 a.m., and will follow a course along Bemis Road.

Advance registration is \$3 with a Pumper Power T-shirt an additional \$4. Race day registration will take place from 8:30 - 10:00 a.m. with a \$4 entry fee charged.

Entry forms are available at Saline Community Hospital, offices of The Citizens Bank of Saline, The Saline Reporter and area sporting goods stores. For further details, please contact Race Director Jim Harns, weekdays, at 429-5435, ext. 270.

### C.P.R. Instructors Class Available

A C.P.R. Instructors class has been scheduled for those already C.P.R. certified who would like to learn to teach others this life-saving skill. The Instructors class will be held at Saline Community Hospital on Tuesday, October 26, Wednesday, October 27 and Tuesday, November 3, 1982 from 6:30 to 10:30 p.m. Attendance at all three sessions is

**MARGIE'S UPHOLSTERY**  
6245 Brooklyn Rd., Napoleon  
Wide Selection of Fabrics  
Pick Up & Delivery Available  
517-536-4230

**Artists & Accents**  
a multi-dimensional art fair  
Saturday, October 23  
10 a.m. - 5 p.m.  
Abbot School  
Northwest Ann Arbor  
near: Maple & Miller

**It's Soup Time Again!**  
Nellie Ackerson Middle School students are collecting Campbell Soup labels again. We need 25 labels from any Campbell's Chunky Soups and 25 blue-green "Swanson" triangles before October 29, 1982. These will earn us bonus coupons to add to the labels saved when we redeem them for audio-visual and library equipment.

Labels from ALL Campbell Soups and Campbell Beans, Campbell Tomato Juice, V-8 juices, Franco-American products, and Swanson canned products count, as well as the "Swanson" triangle from Swanson frozen products. In addition, Prego Spaghetti Sauce and Recipe brand dog food have been added this year.  
Please help us get lots of new equipment. Save labels from any of these products!

**MANCHESTER ENGINE Has Not Gone Out Of Business, As Some People Have Claimed. We Have Moved To Napoleon And Our New Name Is Napoleon Lawn & Leisure. We Still Offer Complete Engine Machine Shop Service And Lawn Mower Repair. Pick Up And Delivery Service Available. Phone 517-536-4256.**

Tim John John Kemner John Hinderer



**10% OFF all John Deere Snow Removal Equipment.**

**JOHN DEERE 320 SNOW BLOWER**  
LIST PRICE \$329.00  
LESS \$33.00  
**SALE \$299.00**

**JOHN DEERE 826 SNOW BLOWER**  
LIST PRICE \$1069.00  
LESS \$106.00  
**SALE \$963.00**

Tractor Mounted Blowers & Blades To Fit All John Deere Tractors from 1968 to 1982

**20% OFF JOHN DEERE MODEL 55V CHAIN SAW**  
3.04 cu. in. with 16" bar  
LIST PRICE \$360.00  
LESS \$72.00  
**SALE \$288.00**

**ALL NEW JOHN DEERE CHAIN SAWS CARRY A ONE YEAR LIMITED WARRANTY WE SERVICE ALL MAKES!**

**NAPOLEON LAWN & LEISURE**  
JOHN DEERE LAWN & GARDEN EQUIPMENT - SNOWMOBILES

1 Mile West Of Napoleon On M-50  
PHONE 536-4256  
HOURS: 8:00-5:00 Monday thru Friday; 8:00-3:00 Saturday.

## COUNCIL PROCEEDINGS

October 4, 1982

The regular meeting of the Manchester Village Council was called to order by President Pro-tem Mary Kalleward at 7:04 P.M. Present: DuRussel, Koebbe, Reed, Tracy, Zsenyuk, Smith. Absent: Hinkley, Petsch.

Moved by DuRussel, supported by Reed to approve the September 20, 1982 minutes as read. Motion carried.

Tracy said he would pursue revising the release form for citizens riding with the Manchester Police.

Tracy moved to limit the riding with the Manchester Police to the Auxiliary Police, Explorers, Council Persons, persons designated by the Courts or at the discretion of the Village Manager, Police Sergeant or Council Persons, supported by Reed. Roll Call vote: DuRussel yes, Koebbe yes, Tracy yes, Reed yes. Motion passed.

Koebbe presented the Public Works report. Report on file.

DuRussel said that the Department of Public Works should have two ceiling fans in the garage.

Tracy moved to buy two ceiling fans, supported by DuRussel. Motion carried.

Reed moved to pay the Village Payables of \$105,296.75, supported by Tracy. Motion carried.

Michigan Taxes \$1,405.16  
A & B Grocery, Inc. 82.42  
Ace Hardware 121.62  
Aiuto, Kathleen 10.00

Alber, Paul 12.50  
Ashland Municipal Supplies 222.37  
The Bankers Life 1,512.11  
Barrett-Gooding 650.00  
Ben Franklin 2.07  
Blue Cross and Blue Shield 2,017.66  
Bridgewater Lumber Company 362.28  
Burnham & Flower Agency, Inc. 292.00  
Consumers Power Company 1,742.38  
Cunningham-Gooding 69,087.44  
Curtis Industries 112.71  
Doubleday Bros. & Co. 96.29  
DuRussel, Howard 40.00  
Emmons Service, Inc. 6,615.00  
Ernst, Hilda 100.00  
Fillyaw's Service 47.29  
Fisher Scientific Company 106.20  
Gambles 239.49  
Gisting & Gisting 778.59  
Grossman, Rolland 10.00  
G.T. Welding 105.00  
Hach 281.68  
Hansen, James 247.50  
Hinkley, John 60.00  
Jack Doherty Supplies, Inc. 150.00  
Jon's Photo Shop 13.83  
K & W Equipment, Inc. 5.49  
Kalleward, Mary 40.00  
Kensler, Helen 416.67  
Kirk, L.V. 122.52  
Kleinschmidt Hardware 470.92  
Knauss, Clarin 166.98  
Koch, Elaine 15.00  
Koebbe, Gale 40.00  
Koebbe Welding 455.40  
Klump Bros. 5,455.35  
Kuntz, R.A. 485.85  
Krauss Pharmacy 23.85  
La Chance, Brenda 50.00  
Layne-Northern Company 245.45  
Leeson, Laurin 10.00  
Leeson, Louis 15.98  
Lenawee Tire & Supply Co. 40.01  
Manchester Electric Inc. 1.40  
Manchester Engine 43.00  
The Manchester Enterprise 82.25  
Manchester Tool & Die, Inc. 20.00  
Municipal Supply Co. 111.35  
Michigan Bell 413.92  
Michigan Hydrant & Valve Co. 288.00  
Motorola Inc. 251.92  
Municipal Finance Officers Assoc. 37.00  
National Bank & Trust 52.25  
Revenue Sharing Bulletin 42.00  
Pace, LTD 245.72  
David Petsch 40.00  
Quality Laboratories, Inc. 313.20

Keith Reed 40.00  
Brad Roberts 26.60  
Ross Automotive 210.96  
Ross Automotive 789.36  
John Schaible Masonry 3,487.50  
Share Corporation 126.23  
Donald Smith 55.00  
Patricia Smith 150.00  
Sweepest - Jenkins Equipment Co. 349.50  
Russel A. Smith 10.00  
Edward Townsend 16.95  
Clifford Tracy 40.00  
Typewriter Sales and Service 143.83  
Dental, Prescription & Optical Fund 310.00  
Village of Manchester-Petty Cash 92.09  
G.E. Wacker 2,106.04  
Wallace & Tiernan - Pennwalt 480.00  
Tom Walton 10.00  
Bankers Life 152.83  
William Zsenyuk - prescriptions 41.00  
William Zsenyuk - Zoning inspection 125.00  
University of Michigan 50.00  
Total \$105,296.75

Zsenyuk said he and Clarence Fielder attended an Economic Development Meeting in Ann Arbor and it was suggested that all the Communities formulate their own Industrial Park Committee, so that there can be an interchange of information. The recommended committee for Manchester is: Clarence Fielder, Gene Smith, Paul DuFresne, John Hinkley, Mary Kalleward and William Zsenyuk. Tracy moved to accept the afore mentioned persons as the Manchester Industrial Park Committee. Supported by DuRussel, motion carried.

Robert Adler representing Southern Michigan Railroad Society, made a presentation on restoration of the Railroad. He requested that one Council person join their Society as a Board member. Kalleward suggested Zsenyuk represent the Manchester Council.

Tracy moved to table the matter of the Railroad until more information and funding are available. Supported by Reed. Motion carried.

Tracy reported on Clear Cablevision and he said Susan Gistingier would have more

Continued on page 8

**DIAL -A- GARDEN**

The following is a schedule of Dial-A-Garden, the system of pre-recorded daily gardening tips sponsored by the Washtenaw County Cooperative Extension Service. The system is in operation 24 hours per day, 7 days per week. Interested persons are to call 971-1122 at their convenience and receive timely, up-to-date gardening information.

Thursday, October 21, Can & Freeze Michigan Apples.

Friday, October 22, Bringing in Your Firewood.

Monday, October 25, Why Consider a Winter Garden.

Tuesday, October 26, Plants for the Winter Garden.

Wednesday, October 27, Outdoor Structures That Are Attractive in the Winter.

Thursday, October 28, What Wine Can Do For You.

Friday, October 29, The Winter Garden at Night.

**Congressman Carl Pursell**

**He Voted To Cut Your Taxes**

VOTE CONGRESSMAN PURSELL

Paid by Pursell-Congress Committee

**MARATHON**

**FILLYAW'S MARATHON SERVICE**  
327 West Main Street Phone 428-8576 Manchester, Michigan  
Open Monday-Saturday 7:30-7 P.M.

**STOP IN AND PICK-UP A MARATHON CREDIT CARD APPLICATION**

MARATHON OFFERS UP TO 6 MONTHS TO PAY WITHOUT ANY FINANCE CHARGE YOU CAN PURCHASE BATTERIES, TIRES SHOCKS, PARTS OR HAVE YOUR CAR TUNED-UP FOR THE SUMMER MONTHS BRAKE JOBS, FRONT END ALIGNMENT OR WHEEL BALANCING

**DISC BRAKE SPECIAL**  
Limited Time Only

\*REPLACE BRAKE PADS  
\*NEW GREASE SEALS  
\*RESURFACE ROTORS  
\*COMPLETE BRAKE INSPECTION  
\*REPACK WHEEL BEARINGS  
\*ROAD TEST CAR

Most U.S. Cars Front Brakes Only  
**\$59.95**

**COMPUTERIZED BALANCE AND ROTATE TIRES**  
All 4 Wheels  
**\$18.00**

FREE EXHAUST INSPECTION WITH ALL JOBS

**We Have White KEROSENE**

**HEAVY DUTY SHOCKS** SAVE 50% **\$9.95**  
Price Does Not Include Installation Each

**24 Hour Wrecker Service**

**STOP IN AND SEE ME FOR YOUR BEST TIRE DEAL**

**ROY SMITH for SENATE**  
paid for by Roy Smith for Senate  
7768 Munger Rd., Ypsilanti, MI 48197



Manchester Community Schools Annual Financial Statement

YEAR ENDING JUNE 30, 1982  
COMBINED BALANCE SHEET - ALL FUND  
TYPES AND ACCOUNT GROUPS  
June 30, 1982 and 1981

Table showing Assets and Liabilities and Fund Balances for Manchester Community Schools. Assets include Cash, Investments, and Receivables. Liabilities include Accounts payable and Long-term debt. Fund Balances are categorized as Restricted, Designated, and Undesignated.

COMBINING STATEMENT OF EXPENDITURES AND OTHER  
FINANCING USES - GENERAL FUND (Concluded)  
Year Ended June 30, 1982

Table showing a breakdown of expenditures by department: Supporting services, Instructional staff support services, Administration, Maintenance services, Transportation services, Employee benefits, Food services, Athletics, Capital outlay, and Other financing uses.

COMBINED STATEMENT OF REVENUES, EXPENDITURES  
AND CHANGES IN FUND BALANCES  
ALL GOVERNMENTAL FUND TYPES AND  
EXPENDABLE TRUST FUNDS  
Year Ended June 30, 1982 and 1981

Table showing Revenues (Local, State, Federal, Other) and Expenditures (Education, Capital outlay, Debt service, Other) for Manchester Community Schools. It also shows Fund Balances at the beginning and end of the year.

MANCHESTER COMMUNITY SCHOOLS

Table providing physical plant statistics: VALUE OF BUILDINGS & EQUIPMENT (\$6,607,186), Number of Buildings (5), Number of Classrooms (68), Fulltime Resident Students (1132), Fulltime Non-Resident Students (0), Fulltime Equated Students (1132), Fulltime Classroom Teachers (52), Fulltime Certificated Employees (55), and Ratio of Pupils to Certificated Employees (17.4).

COMBINING STATEMENT OF EXPENDITURES AND OTHER  
FINANCING USES - GENERAL FUND  
Year Ended June 30, 1982

Table showing Instructional program expenditures categorized by level: Elementary school, Middle school, High school, Driver education, Special education, Compensatory education, Vocational education, Gifted and talented, Adult education, and Employee benefits.

COMBINED STATEMENT OF REVENUES, EXPENDITURES AND  
CHANGES IN FUND BALANCES - BUDGET AND ACTUAL  
GENERAL AND DEBT RETIREMENT FUNDS  
Year Ended June 30, 1982

Table comparing Budget and Actual figures for General Fund and Debt Retirement Funds. It details Revenue, Expenditures, and the resulting Fund Balances at the beginning and end of the year.

See Notes to Financial Statements.

**Hospice Open House**

Hospice of Washtenaw will host an Open House on Friday, October 23, 1982 from 4 p.m. to 6 p.m. at 2530 South Main, in Ann Arbor. A United Way member agency, Hospice of Washtenaw assists terminally ill patients and their families in Washtenaw County. Volunteers work as advocates for patients and families, providing a variety of support services. Hospice of Washtenaw has been serving the residents of Washtenaw County for almost two years. The Open House will feature volunteer recognition and an agency status report. Those interested in learning about the services of Hospice of Washtenaw are urged to attend.

**Community Education**

The next six week sessions of Fitness Fantasia (aerobic dance) will start on Monday, October 25 at 6:30 to 7:30 p.m. and 8:00 to 9:00 p.m. in the high school

study auditorium. Fitness Fantasia is a fun, exciting way to achieve total fitness. Participants will decrease body fat, increase muscle tone, have more stamina and have greater ease of movement from increased flexibility and agility. Fitness Fantasia is never boring. Each course offers you a new set of completely choreographed exercise routines set to a variety of music. All exercises have been carefully selected to offer you a total fitness program.

The class meets twice weekly on Mondays and Wednesdays for six weeks at the times indicated. The cost is \$25. The instructor is Cindy Benedict, a Certified Instructor for the YMCA. Registration and fees will be done at the first night of class on October 25 for either session.

**ROY SMITH for SENATE**  
paid for by Roy Smith for Senate  
7755 Munger Rd., Ypsilanti, MI 48197

**Council Proceedings**

information for Council at the next regular meeting.

Koebbe moved that on request for a special Council or Planning Commission Meeting, the party requesting said meeting shall pay for all costs incurred. Supported by Tracy, motion carried.

A discussion was held on whether the Planning Commission should hold a Public Hearing to rezone the "Old Mill" property from Industrial to C-2.

Tracy moved to adjourn the meeting, supported by Koebbe. Motion carried. Meeting adjourned at 8:53 P.M.

Helen J. Kensler  
Village Clerk

**School Band Fruit Sale**

Once again the Manchester High School Band is selling fruit. The proceeds from the fruit will go towards new band uniforms. The sales are running now until Friday, October 29.

If you are interested in purchasing fruit or if you have any questions, please call the High School office at 428-7333 or 428-8274.

**Dorothy Mae**

Byron with enabling her to keep the shop going while their son, Dennis, was growing up by helping with the errands and chores of raising a family. When Byron retires from his Tecumseh Products position sometime in the next few years, the couple plans to do some traveling.

Other than that, and improving her golf and bowling, Dorothy has not yet had time to decide where to spend her energy. Her only hobby until now has been her work. If she applies her successful business techniques of diligence and enjoyment, she should have a pleasant retirement.

**New Alanon Meeting**

Starting November 3, 1982, Alanon will meet at the Council Room, 120 South Clinton Street, Manchester at 8:15 p.m.

**Election Notice**

TO THE QUALIFIED ELECTORS OF THE TOWNSHIP OF FREEDOM

NOTICE IS HEREBY GIVEN THAT A GENERAL ELECTION

WILL BE HELD IN THE TOWNSHIP OF FREEDOM ON

**TUESDAY, NOVEMBER 2, 1982**

from 7 a.m. to 8 p.m.

for the purpose of electing candidates for the following offices:

**Governor and Lieutenant Governor**

**Secretary of State**

**Attorney General**

**U.S. Senator**

**Representative in Congress**

**State Senator**

**Representative in State Legislature**

**Members of the State Board of Education**

**Members of the Board of Regents of University of Michigan**

**Members of the Board of Trustees of Michigan State University**

**Members of the Board of Governors of Wayne State University**

**Justices of the Supreme Court**

**Judges of the Court of Appeals**

**Judges of the Circuit Court**

**Judge of the Probate Court**

**Judge of the District Court**

**County Commissioners**

**Washtenaw Community College Trustees**

**City or Township offices, if any**

and to vote on the following proposals:

**PROPOSAL A**

Proposal to allow the legislature to pass laws to reform their existing constitutional exemption from civil arrest and process during legislative sessions.

**PROPOSAL B**

Proposal to create by constitution a Michigan Dept. of State Police, provide for its personnel, prescribe its duties and require minimum staffing.

**PROPOSAL C**

Proposal to prevent a lender from using a "due-on-sale" clause to foreclose a mortgage or land contract when the property is sold, unless security is impaired.

**PROPOSAL D**

Proposal to require hearings on all utility rate increases, abolish rate adjustment clauses and establish procedures in rate hearings.

**PROPOSAL E**

Proposal expressing the people's desire for a mutual nuclear weapons freeze with the Soviet Union and requiring state officials to convey that desire to the President of the United States and other federal officials.

**PROPOSAL G**

Proposal for an elected Public Service Commission.

**PROPOSITION: WASHTENAW COMMUNITY COLLEGE**  
Washtenaw Community College Millage Renewal Proposition

(include each local proposal as it will appear on the ballot)

polling place location:

Freedom Township Hall, 11508 Pleasant Lake Road

As provided for in MCLA 168.653 as amended by P.A. 2 of 1982

10-18-82

RENA GIRBACH, CLERK

**Election Notice**

TO THE QUALIFIED ELECTORS OF THE

NOTICE IS HEREBY GIVEN THAT A GENERAL ELECTION

WILL BE HELD IN THE TOWNSHIP OF SHARON ON

**TUESDAY, NOVEMBER 2, 1982**

from 7 a.m. to 8 p.m.

for the purpose of electing candidates for the following offices:

**Governor and Lieutenant Governor**

**Secretary of State**

**Attorney General**

**U.S. Senator**

**Representative in Congress**

**State Senator**

**Representative in State Legislature**

**Members of the State Board of Education**

**Members of the Board of Regents of University of Michigan**

**Members of the Board of Trustees of Michigan State University**

**Members of the Board of Governors of Wayne State University**

**Justices of the Supreme Court**

**Judges of the Court of Appeals**

**Judges of the Circuit Court**

**Judge of the Probate Court**

**Judge of the District Court**

**County Commissioners**

**Washtenaw Community College Trustees**

**City or Township offices, if any**

and to vote on the following proposals:

**PROPOSAL A**

Proposal to allow the legislature to pass laws to reform their existing constitutional exemption from civil arrest and process during legislative sessions.

**PROPOSAL B**

Proposal to create by constitution a Michigan Dept. of State Police, provide for its personnel, prescribe its duties and require minimum staffing.

**PROPOSAL C**

Proposal to prevent a lender from using a "due-on-sale" clause to foreclose a mortgage or land contract when the property is sold, unless security is impaired.

**PROPOSAL D**

Proposal to require hearings on all utility rate increases, abolish rate adjustment clauses and establish procedures in rate hearings.

**PROPOSAL E**

Proposal expressing the people's desire for a mutual nuclear weapons freeze with the Soviet Union and requiring state officials to convey that desire to the President of the United States and other federal officials.

**PROPOSAL G**

Proposal for an elected Public Service Commission.

**PROPOSITION: WASHTENAW COMMUNITY COLLEGE**  
Washtenaw Community College Millage Renewal Proposition

(include each local proposal as it will appear on the ballot)

polling place location:

Sharon Township Hall, corner of Pleasant Lake and Sylvan Roads

As provided for in MCLA 168.653 as amended by P.A. 2 of 1982

10-18-82

DUANE R. HASELSCHWERDT, CLERK

**church services ...**

**EMANUEL UNITED CHURCH OF CHRIST**  
Rev. Robert Macfarlane, Pastor  
Sunday School 9:00 a.m.  
Worship Service 10:30 a.m.

**SHARON UNITED METHODIST**  
Rev. Ronald L. Ings, Pastor  
Corner M52 and Pleasant Lake Rd.  
Church School 10:00 a.m.  
Worship 11:00 a.m.

**ST. THOMAS LUTHERAN**  
Rev. Paul Puffe, Pastor  
Ellsworth Road  
Sunday School 9:30 a.m.  
Church Service 10:45 a.m.

**ST. JOHN'S UNITED CHURCH OF CHRIST**  
Mr. Roger Samonek, Lay Pastor  
Rogers Corners, Waters and Fletcher Rds.  
Worship and Sunday School 10:30 a.m.

**BETHEL UNITED CHURCH OF CHRIST**  
Rev. Roman A. Reinick, Pastor  
Schneider and Bethel Church Roads  
Church Service 10:00 a.m.  
Sunday School 11:00 a.m.

**MANCHESTER UNITED METHODIST**  
Rev. Thomas E. Hart, Pastor  
Church School 9:15 a.m.  
Worship at 10:30 a.m.  
Choir Practice and Coffee Hour at 11:30 a.m.

**ST. MARY'S CATHOLIC CHURCH**  
Father Raymond Schlinkert  
Monday thru Friday 8:30 a.m., Saturday 5:00 p.m.  
Sunday 8:30 a.m. and 10:30 a.m.

**NORTH SHARON COMMUNITY BIBLE**  
Bill Ensten, Pastor  
Sylvan and Washburn Roads  
Sunday School 10:00 a.m.  
Morning Church 11:30 a.m.  
Youth Meetings 6:00 p.m.  
Evening Church 7:00 p.m.  
Wednesday Bible Study 7:00 p.m.

**FAITH COMMUNITY CHURCH**  
Timothy Miles, Pastor  
8400 Sharon Hollow Rd. off W. Austin Rd.  
Worship Service 10:00 a.m.  
Sunday School 11:15 a.m.  
Sunday Evening Service 6:00 p.m.  
Jr. & Sr. High Young People's Meeting 7:00 p.m.

**OUR SAVIOR LUTHERAN CHURCH**  
Rev. Franklin H. Giebel, Pastor  
1515 S. Main, Chelsea  
Summer schedule through Labor Day  
Sunday Worship Service 9:00 a.m.

**IRON CREEK COMMUNITY CHURCH**  
Rev. Paul Runyon, Pastor  
English and Sharon Hollow Roads  
Worship Service 10:00 a.m.  
Sunday School 11:15 a.m.  
Evening Service 7:30 p.m.  
Wednesday Prayer Meeting 7:30 p.m.

**ZION LUTHERAN CHURCH**  
Rev. John R. Morris, Pastor  
3050 S. Fletcher Road  
JULY & AUGUST: Sunday School & Church B.O.T.H. at 9:30 a.m.

**ST. JOHN'S LUTHERAN CHURCH**  
Rev. Dennis A. Falk, Pastor  
Austin Road, Bridgewater  
Sunday School 9:15 a.m. Worship 10:30 a.m.

**VICTORY BAPTIST**  
Dr. Clare Gleason, Pastor  
Sunday School 9:45 a.m.  
Morning Worship 11:00 a.m.  
Adult Doctrine Class, Teen Time and Jr. Astronauts at 5:30 p.m.  
Evening Worship 6:30 p.m.  
Wednesday Prayer Meeting 7:30 p.m.

**CLINTON ASSEMBLY OF GOD**  
Charles Sanders, Pastor  
12500 Allen Rd., Clinton (corner of Allen Rd. and Manchester-Clinton Rd.)  
Sunday School 9:45 a.m.  
Morning Worship 11:00 a.m.  
Evening Service 6:30 p.m.

**CHURCH OF JESUS CHRIST OF LATTER-DAY SAINTS (MORMONS)**  
Thomas E. Schulte, Branch President  
Rebekah Hall, M52, Chelsea  
Sacrament 9:30 a.m.  
Sunday School, Primary 10:50 a.m.  
Priesthood, Relief Society, Aaronic Priesthood Youth 11:40 a.m.

**ST. BARNABAS EPISCOPAL CHURCH**  
Rev. Jerrold F. Beaumont, "Vicar"  
Old US 12-1/2 mile west of M52, Chelsea  
9:30 a.m. Church School-Children and Adults  
10:30 a.m. Worship Service

**BAHA'I FAITH**  
Study of Baha'i scripture and discussion on applying spiritual principles to daily living. Believers of all faiths welcome, 2nd and 4th Sundays every month, 2:30 p.m., at the home of Thomas and Nancy Rykwalder, 611 S. Macomb. For more information or directions call 428-9456.

**FOR 14TH DISTRICT JUDGE**



**HAMILTON THE RIGHT CHOICE FOR JUDGE**

Thomas Shea is presently the 14th District Judge in Ypsilanti, with a duty to fairly administer justice. Judge Bronson, attorney for the Michigan Court of Appeals, wrote this about Thomas Shea, then assistant prosecutor: "The assistant prosecutor and his trial tactics are not stranger to this court..."

The history reveals the assistant prosecutor's failure to heed our prior admonitions, and we do not condone his continued use of improper argument and bendable conduct. HIS CONDUCT IS INCONSISTENT WITH BOTH THE LETTER AND SPIRIT OF DISCIPLINARY RULE 1-102 OF THE CODE OF PROFESSIONAL RESPONSIBILITY AND CANONS, WHICH IN PERTINENT PART PROVIDES:

(A) A LAWYER SHALL NOT:

(a) ENGAGE IN CONDUCT THAT IS PREJUDICIAL TO THE ADMINISTRATION OF JUSTICE."

PEOPLE v JONES MICH APP

Help restore fairness to the 14th District Court. If you elect Walter Hamilton he will.

**WALTER K. HAMILTON FOR 14th DISTRICT JUDGE**

Paid for by the Hamilton for Judge Committee  
33 S. Huron St., Ypsilanti, Michigan. R. Wm. Egnor, Treasurer

59.6% of Primary Voters agreed we need a new Judge for 14th District Court.

"In the City of Ypsilanti, where Shea presides, the incumbent had a poor showing behind Hamilton. . . . Shea's uphill battle on his home turf may be an indication that Ypsilanti voters are believing what Hamilton has been saying throughout the campaign: Shea does not treat Ypsilantians with 'respect and dignity' in formal and informal Court proceedings."

The Ann Arbor News  
August 11, 1982

**MANCHESTER UNITED METHODIST CHURCH**

Wednesday, October 20, 12:00 Noon, U.M.W. Luncheon for Chelsea Home Residents.

Thursday, October 21, 2:00 p.m. U.M.W. Happy Cart at Chelsea Home. 7:00 p.m. Policy Committee Meeting. 7:00 p.m. Administrative Board Meeting.

Friday, October 22, 1:00 to 9:00 p.m. Reverend Hart at Workshop at St. Joseph's Hospital in Ann Arbor.

Saturday, October 23, 1:00 to 4:00 p.m. Chelsea Home Annual Bazaar. 6:00 p.m. U.M.W.F. meet at Church for Hayride.

Sunday, October 24, 9:15 a.m. Church School. 10:30 a.m. Worship: "Joseph's Son?" 11:30 a.m. Choir Rehearsal/Coffee Hour. 6:00 p.m. Pastor Parish Committee Members meet at church to carpool to Milan U.M.C. Workshop.

Monday, October 25, 10:00 a.m. Monday Morning Bible Study. 7:30 p.m. Membership/Evangelism Committee Meeting.

Tuesday, October 26, 9:30 a.m. Lydia Circle Meeting. Wednesday, October 27, 12:30 p.m. Senior Citizens at St. Mary's.

**SHARON UNITED METHODIST CHURCH**

Wednesday, October 20, 7 p.m. Finance Committee. 8 p.m. Chancel Choir. Wednesday, October 27, 8 p.m. Chancel Choir.

Thursday, October 28, 7:30 p.m. Dorcas Fellowship will meet at the home of Mrs. Mildred Huehl.

**BETHEL UNITED CHURCH OF CHRIST**

Thursday, October 21, 9:30 a.m. Fall Association Meeting of the Women's Fellowship at Bethel. 7:30 p.m. Church School teachers meeting.

Sunday, October 24, 10:00 a.m. Worship Service-Childrens Sermon. Today the Christian Enlistment home meetings begin. 7:00 p.m. Senior Youth Fellowship hayride.

**WEEKLY MEETINGS:** Sunday: 11:00 a.m. Church School classes meet. Drama Group meets. Monday: 7:30 p.m. Bible Study-Prayer Group meets.

Wednesday: 4:45 p.m. Childrens Choir. 7:00 p.m. Youth Choir Plus. 7:45 p.m. Senior Choir.

Saturday, 9:00 a.m. 8th grade Confirmation Class.

**ST. JOHN'S UNITED CHURCH OF CHRIST**

Rogers Corners St. John's United Church of Christ will host Mr. Monte Long of Jackson, Michigan on Sunday, October 24, 1982. Mr. Long is Director of Music for a Jackson Area Church. He teaches voice at his own studio in Jackson and also teaches voice at Spring Arbor College. Mr.

Long has directed several productions for the Clark Lake Players, the Jackson Players and is currently starring in the production of "Starting Here, Starting Now" at the Jackson Community College.

Mr. Long will be presenting a fifteen minute mini concert during the 10:30 a.m. worship service at St. John's on Sunday, October 24. St. John's United Church of Christ is located at 12376 Water Road, Chelsea. Everyone is invited and welcome to attend.

There will be a coffee hour following the service at which time you may meet and greet Mr. Monte Long and also get acquainted with St. John's new Lay Pastor, Mr. Roger Samonek.

**ZION LUTHERAN CHURCH**

Saturday, October 23, Youth Instruction Classes 9 and 10:30 a.m. Luther League Hayride 7 p.m.

Sunday, October 24, 9 a.m. Sunday School. 10:15 a.m. Worship. 12:30 p.m. Family Fellowship Potluck.

Tuesday, October 26, 4 p.m. Joymakers. 7:15 p.m. Sr. Choir. 7:30 p.m. Shuttleboard.

Wednesday, October 27, 7:30 p.m. Evangelism.

**ST. JOHN'S LUTHERAN CHURCH**

Thursday, October 21, Women's Disciples. Men's Bible Study 8 p.m. at Clyde Krugers.

Saturday, October 23, 7th Grade Catechism, 9-11.

Sunday, October 24, Harvest Festival/ALCW Thankoffering. Ingathering. Sunday School 9:15 a.m. Worship/Quarterly Meeting 10:30 a.m.

Tuesday, October 26, Men's Disciples. Sewing Bee 10 a.m.

Wednesday, October 27, Men's Disciples. Jr. Choir 7:30 p.m. Midweek Dev. Sr. Choir 8:45 p.m.

**EMANUEL UNITED CHURCH OF CHRIST**

Wednesday, October 20, 7:00 p.m. Women's Fellowship. 8:00 p.m. Alcoholics Anonymous.

Thursday, October 21, 11:00 a.m. Senior Exercise Program. 12 Noon Senior Meal. 7:30 p.m. Senior Choir rehearsal.

Saturday, October 23, 9 a.m. - Noon, Fall Workday, men, women and youth needed. Sunday, October 24, 5:30 - 8 p.m. Youth Hayride at Hartmann's, call Debbie Wenk for reservations.

Monday, October 25, 9:30 a.m. Seniors leave for Westland Shopping Trip, call Helen Braun for reservations. 6:30 p.m. Optimists. 7:15 p.m. Christian Ed. Meeting.

Tuesday, October 26, 12 Noon Senior Meal. 1:00 p.m. Young Mother's Support Group. 7:00 p.m. Aerobic Dance. 7:00 p.m. Boy Scouts.



**SERVING PARLOUR ICE CREAM**



**THIS WEEK'S SPECIAL**

Specials Start Wednesday  
**FRESH KEILBASA**  
\$3.30 lb.

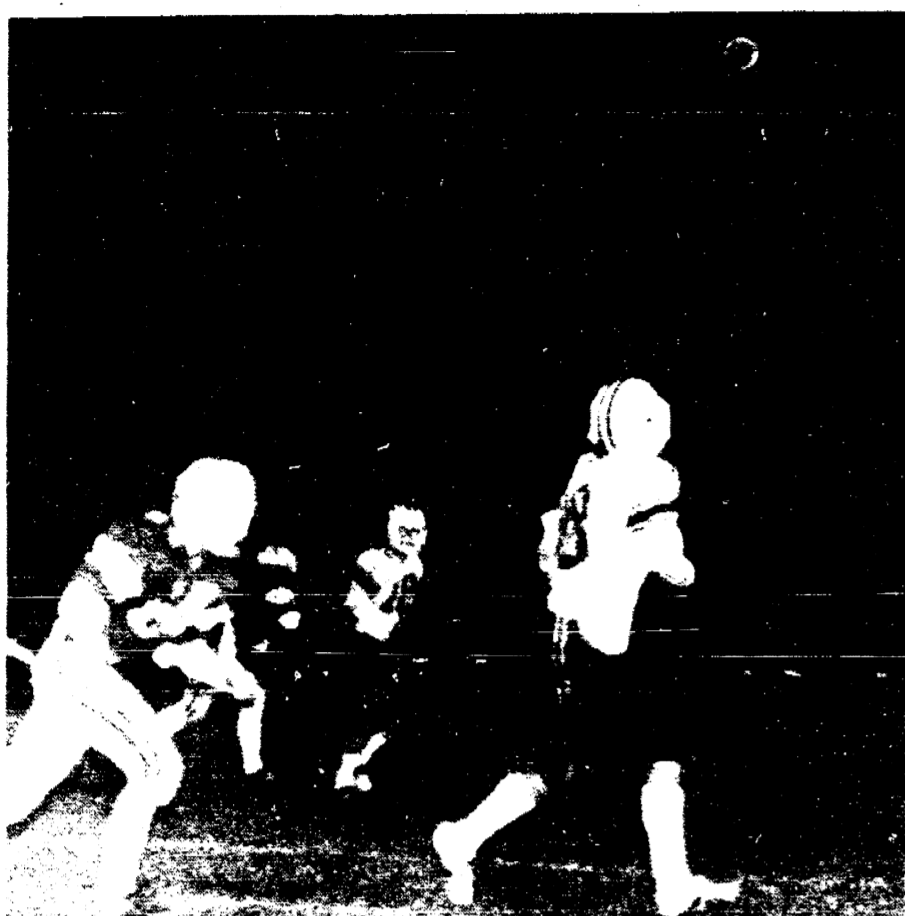
**GERMAN BOLOGNA**  
\$2.79 lb.

**FISH, SHRIMP & CHICKEN**  
DINNERS OR BUCKET

Save Time Order Ahead



# Dutch Fall To Blissfield 24-0



Dave Malcolm receives a pass for a good gain

by Jon Hardenbergh  
There were several contributing factors that came into play Friday. Probably the biggest was Murphy's Law—What Can Go Wrong Will Go Wrong. Yes, indeed things went bad and the Royals captured the 24-0 win.  
We received the opening kick and proceeded to move well down the field. On a 4th and 2 in Royal territory we made one and three quarters yards, therefore

turning the control over. On Blissfields drive this also occurred but they made the first by an inch. Soon they did have to punt and we fumbled the catch. The Royals wasted little time going these 27 yards in five plays to lead 7-0. A while later they were moving slowly until they ran over their left guard for more than 60 yards and this set up their field goal just before the half, 10-0.  
Blissfield received to start the second



#50 Steve Murlilo prepares to block for punt returner #86 Mike Agin

half and proceeded to fumble on their first play. I thought here we go but it was not to be. Murphy kept popping up as we faked a punt successfully but a penalty brought it back. We then did punt but the ball sailed over our kickers head so he raced back—picked it up—and threw it. No one was near except a Royal who grabbed it and motored into the end zone. On the ensuing play tempers flared, flags flew and we lost a man. This period seemed to last forever as the yellow handkerchiefs were prominent. In the final period we tossed for a good gain and somehow a Royal snatched it and this set up their last score. I'm sure the zebras have sore stomachs as they bent to retrieve their flags all night.  
Friday is our last home game of the season as we meet Dundee.

**"GOOD NEWS FOR EVERYONE... 'ANNIE' IS HERE!"**  
—GENE SHALT, NBC-TV

**CLINTON THEATRE**

Friday & Saturday  
7:30 and 9:45  
Sunday 7:30

**Annie**

ALL SEATS \$2.00

**RE-ELECT JUDGE SHEA**

Judicial experience is essential to the proper working of our District Court and Judge Shea has it... He has earned your vote.

John Keusch, Attorney

Paid for by Committee to Re-elect Judge Shea, Sherman Harrington, Treasurer, Suite 400, Ypsilanti Savings Bank, Ypsilanti, Michigan

**Congressman Carl Pursell**

Leadership For Manchester

VOTE CONGRESSMAN PURSELL

Paid by Pursell-Congress Committee

**Colonial and Traditional**

Furniture • Lamps • Bedding • Carpet

Quality and Prices You'll Appreciate

**LODI Furniture and FURNITURE**

Ann Arbor-Saline Rd. at Pleasant Lake Rd.  
662-9372

**HOME IMPROVEMENT TIME . . .**

Count on us for help!

**ALUMINUM SIDING**  
Never paint your home again with maintenance free Also Premium 30 aluminum siding. Many colors to choose from. The ultimate in beauty & protection.

**SEAMLESS ALUMINUM GUTTERING**  
No joints! No seams! No leaks! Custom made to fit your home or business in white and seven colors.

**INSULATION**  
Reduce your fuel costs with Cellulose insulation. Cooler in the summer, warmer in the winter, reduces noise, increases home value and fire resistant.

**ROOFING**  
We specialize in home and barn re-roofing. Many styles and colors to choose from. Also hot tar and shingle repair work. Remember, your roof is one of the most important parts of your home.

Free no obligation estimates  
Fully insured & guaranteed work

428-8836 **R.D. Kleinschmidt, Inc.** 428-9335

• SHUTTERS • DO-IT-YOURSELF KITS • YEAR ROUND SERVICE • STORM DOORS • STORM WINDOWS • REPLACEMENT WINDOWS

19880 Sharon Valley Road (near M-52) Manchester

## Township Board Minutes

**PROPOSED SYNOPSIS** of Manchester Township Bd. regular meeting held at the Township Hall on Tuesday, October 12, 1982. Meeting opened with pledge to the flag at 8:10 p.m. with all Bd. members present.

Approved minutes of Bd., Library, and Pl. Comm.

Treas. reported \$10958 in General and Federal Revenue Sharing Funds. List of monies disbursed since last meeting presented.

Approved payment of General Fund bills of \$3026.37 and Federal Revenue Sharing bills for \$3000.00.

Supervisor informed Bd. on status of James Kemeter.

Report of petty cash made.

Approved 12 election inspectors.

Permission granted to Fire Dept. to host visiting Fire Departments at Armistice Day parade on November 7, 1982.

Annual Financial Report from our auditors distributed. Approval tabled.

Adopted Ordinance #23, as recommended by Township Planning Comm. by roll call vote.

Notice from Mi. Dept. of Social Services Re: Kinship Homes, Inc. 10800 Noggles Rd. that their application has been withdrawn. Meeting of CHPC-SEM presented.

Clerk to send letter to insurance company regarding sidewalk destroyed by

Tri-County.  
Reduction on payments from State of Mi. noted.

Letter from Sheriff Minick Re: services from Wash. Co. Sheriff for month of August presented.

Letter from Doris Mahony, Pres. of Library Bd. Re: repairs on library read.

Notice of meeting of Determination from the Wash. Co. Drain Comm. in Drainage District #23 known as Half Moon Lake announced.

Numerous applications for P.A. #116 has been received.

Soil Conservation has approved the two applications of Concheta Schill. She has called the clerk and stated verbally that she is going to withdraw her applications. Tabled until November meeting.

Bd. approved applications of P.A. #116 for Edwin and Judy Walz for 152.5 acres; James, Walter, and Carol Samonek for 80.5 acres; James and Carol Samonek for 104.92 acres; James and Carol Samonek for 55.47 acres; James and Carol Samonek for 116.6 acres pending approval of Wash. Co. Planning Comm. and Wash. Co. Soil Conservation District so that they be effective this year.

Supervisor reported on various items of interest.

Meeting adjourned at 9:25 p.m.  
Submitted by Wilma E. Lentz, Clerk and approved by Clarence L. Fielder, Supervisor

## Students Complete MEAP Tests

Students in the 4th, 7th, and 10th grades in the Manchester Community Schools recently completed a testing program designed by the Michigan Department of Education.

The Michigan Educational Assessment Program (MEAP) is designed to assess student understanding of very specific skills within reading and math.

These skills or objectives are described as minimal expectations for students at the beginning of these grade levels. The tests are basically designed to give teachers information regarding the skill levels of each of their students.

The results of these tests along with those from the California Achievement Tests which are administered in the spring also enable the administration of the district to draw accurate conclusions regarding the success of these programs. It is anticipated that the test results will be returned to the school district within the next month. At that time all reports will be released for public information.

## Senior Citizens Meals And News

The menu for Senior Citizens Meals on Tuesday, October 26 will be: Baked Chicken, Mashed Potatoes, Vegetable, Fruit, Roll and Butter, Dessert, Coffee, Tea and Milk. Exercises preceded the meal at 11:00 a.m.

On Thursday, October 28, they are serving: Boiled Dinner, Fruit, Roll and Butter, Dessert, Coffee, Tea and Milk.

On Wednesday, October 27, the senior citizens of the Manchester area are invited to a potluck dinner at 12:30 at St. Mary's Church. There will be a speaker and discussion of Prescription Drugs. Do come and meet the senior members of the community, enjoy a delicious meal and join in the discussion.

There will be a shopping trip in the Van on Monday, October 25 to Westland. Call Charlotte Timmerman 428-8190 or Helen Braun 428-8966 for reservation and details.

## Parent-Teacher Conferences Set

All parents should be aware that the Manchester Community Schools have scheduled parent-teacher conferences for Thursday, November 4th and Friday, November 5th.

Conferences will be held in all grades from 1:00 P.M. on Thursday, November 4th, until 9:30 p.m. that evening. On Friday, November 5th, conferences are scheduled from 9:00 in the morning until 4:00 in the afternoon. The parents will be notified by the individual schools regarding appointment times.

These conferences are designed as a time for parents and teachers to review current student progress and to chart goals and objectives for the remainder of

## Bloodmobile News

Thank you Manchester donors for adding 178 pints of blood to help replenish the supply at the Red Cross Southeastern Michigan Blood Center. Only 12 were deferred out of the 190 who offered to restore and/or save lives at nearby hospitals.

The need has been so critical the past few months that many of our area's regular donors have been called to give at Ann Arbor Bloodmobiles and were thus unable to participate this week because of the 58 days needed between donations.

A detailed resume of the clinic will be available for next week's paper.

**ROY SMITH for SENATE**

paid for by Roy Smith for Senate  
7788 Munger Rd., Ypsilanti, MI 48197

**Fahey Realty**

215 East Main St. Phone 428-9298 Manchester, Michigan  
OFFICE HOURS 9-5 MONDAY THRU FRIDAY SATURDAY 9-12 NOON

- \$39,000 Maintenance free two bedroom. Nicely remodeled, in excellent condition. Double lot with two car garage, extra space for workshop.
- \$52,000 Four bedroom on three village lots. New roof and siding, gas heat. Bright enclosed porch fully heated for year-round use, first floor utility.
- \$62,500 Cute 3 bedroom brick ranch on 2 acres. Home features extra insulation, large basement, woodburner, two car attached garage.
- \$62,500 Ideal family home on lovely village lot. Large master bedroom suite. Spacious home includes first floor study-playroom and utility.
- \$87,000 Quality Brick Ranch on 10 rolling acres with more land available 3 bedrooms, full finished basement with woodburner. Home is fully carpeted and in immaculate condition.

**Office Suite**

1200 SQ. FT. FOR LEASE. AVAILABLE NOVEMBER 1.

VERY MODERN, NEARLY NEW ONE LEVEL OFFICE SUITE. WELL LIGHTED FLEXIBLE PLAN. FULLY CARPETED WITH PRIVATE FACILITIES, PRIVATE ENTRANCE AND AIR CONDITIONING WITH PAVED PRIVATE OFFICE AND CUSTOMER-CLIENT PARKING AT FRONT DOOR.

UNION CONSTRUCTION CO.  
505 TERRITORIAL ST.  
MANCHESTER, MICH. 48158  
PHONE 313-428-8496

**Grand Opening**

**Marti's Beauty Salon**

Owner MARTHA BONDY

OPEN HOUSE OCTOBER 21, 22, 23

COME IN FOR COFFEE AND DONUTS  
BE SURE TO REGISTER FOR FREE DRAWING

**\$5.00 OFF Any Permanent \$25.00 and up**  
With Coupon Good Thru October 29

**EXTRA SPECIAL \$4.00 HAIRCUTS**  
DURING OPEN HOUSE  
With Coupon By Appointment Please

**Drawing For Free Permanent**  
231 EAST MAIN STREET MANCHESTER, MICHIGAN  
PHONE 428-7816

**TAX-SAVINGS AFTER ALL.**

Say you've earned the maximum in tax-free interest on your maturing All-Savers certificate, but you'd like to continue saving big on taxes. Consider opening an Individual Retirement Account at your nearest First

We have lots of great investment options for your All-Savers dollars. See us for the details.

American Bank. And start earning money market rates and tax-deferred income for the rest of your working days.

**ANN ARBOR BANK AND TRUST**  
A FIRST AMERICAN BANK

Substantial Interest Penalty for Early Withdrawal. Member FDIC.

# BOWLING

## JOLLY KEGLERS BOWLING LEAGUE MANCHESTER BUSINESSMEN

October 12, 1982	October 19, 1982
Chelsea Lanes	28 14 Double A #2
Cheryl's Boutique	24 18 Steele's Heating & Cooling
Double A Products	24 18 Double A Products
B & H Mfg.	22 20 Back Door Party Store
Carol's Cut-N-Curl	21 21 K & W Farm Supply
Ross Automotive	19 23 The Dutchmen
Manchester Car Wash	17 25 Kirk Excavating
Dutch Country Kitchens	13 29 Little Wack Excavating
HIGH INDIVIDUAL GAME	Ross Automotive
C. Britten	203 Waterloo Village Market
K. Smith	201 Superior Land Developers
D. Gotts	199 K of C
HIGH INDIVIDUAL SERIES	DuRussel Brothers
K. Smith	536 National Bank of Jackson
S. Walton	532 R.D. Kleinschmidt
K. Richardson	516 Bridgewater Tavern
HIGH TEAM GAME W/H	Manchester Electric
Chelsea Lanes	902 Manchester Stamping
Carol's Cut-N-Curl	890 HIGH TEAM SERIES
Ross Automotive	885 Superior Land Developers
HIGH TEAM SERIES W/H	Ross Automotive
Ross Automotive	2564 Ross Automotive
Chelsea Lanes	2550 HIGH TEAM GAME
B & H Mfg.	2549 Back Door Party Store
HIGH ACTUAL GAME OF WEEK	Kirk Excavating
K. Richardson	195 Superior Land Developers
HIGH ACTUAL SERIES OF WEEK	Al Hanewald
K. Richardson	516 Keith Reed
	619 Bob Kuhl
	618 HIGH INDIVIDUAL GAME
	245 Jack Gould
	242 Denny Reinhart
	238 Keith Reed
	245 HIGH GAME OF WEEK
	235 Jack Gould
	235 Dave Walton
	225 Ray Wurster
	222 John Day
	616 HIGH SERIES FOR WEEK
	590 John Day
	590 Dave Walton

"Total abstinence is easier than perfect moderation."  
St. Augustine

**ROY SMITH  
for SENATE**  
paid for by Roy Smith for Senate  
7758 Munger Rd., Ypsilanti, MI 48197

FOR 14TH DISTRICT JUDGE



**HAMILTON**  
**THE RIGHT CHOICE FOR JUDGE**

The present Judge has the lightest case load in the District and yet he has so much trouble with the docket that trials in his Court sometimes last until midnight. The result is wasted money, inconvenience to parties, witnesses and jurors and hasty or unjust verdicts. When he was an assistant prosecutor, he was specifically named by the Michigan Court of Appeals for professional misconduct requiring expensive retrial of criminal defendants. As Judge, he has demonstrated his bias against minorities and women - including women lawyers. He even refers to mature female attorneys as "girls" in open Court.

Walter Hamilton received 41% more votes than the present Judge during the primary in the City of Ypsilanti where the Court sits. Walter Hamilton combines 12 years of successful private practice with experience in public service as Ypsilanti City Prosecutor and Assistant City Attorney. Walter Hamilton is endorsed by the Washtenaw and Michigan Trial Lawyers as well as most civic leaders, including the present and former mayors of Ypsilanti and Saline and present and former supervisors of Ypsilanti, Ann Arbor, Pittsfield and Superior Townships.

WALTER K. HAMILTON WILL BE THE KIND OF JUDGE WE NEED.

VOTE FOR WALTER K. HAMILTON NOVEMBER 2nd

**WALTER K. HAMILTON**  
FOR 14th DISTRICT JUDGE

Paid for by the Hamilton for Judge Committee  
33 S. Huron St., Ypsilanti, Michigan, R. Wm. Egnor, Treasurer

## MANCHESTER TOWN CLUB

DuRussels	30 12
National Bank of Jackson	28 14
R & F Tree Service	25 17
Lyle Cundiff AAA	23 19
Jenters	23 19
Norm Walz	20 22
Manchester Deli	20 22
V & F Builders	15 27
Village Hair Forum	13 29
Manchester Enterprise	526
500 GAME	524
Polly Brokaw	410
Ruth Dayss	506
Candy Klapperich	537
Paula Scherd	518
HIGH INDIVIDUAL GAME	226
Marilyn Clark	225
Faye Walters	224
Candy Klapperich	580
HIGH INDIVIDUAL SERIES	552
Candy Klapperich	538
Joan Day	845
Faye Walters	870
HIGH TEAM GAME	
Lyle Cundiff AAA	
Village Hair Forum w/h	
HIGH TEAM SERIES	
Lyle Cundiff AAA	2397
Village Hair Forum w/h	2305

## B-G BOWLERS

October 16, 1982	
Moore & Pfau	6 2
Eversole & Feldkamp	5 3
Popkey & Henry	5 3
R. Roehm & Wurster	4 4
H. Roehm & D. Wilson	3 5
Weidmayer & Young	3 5
Perkins & R. Wilson	3 5
Brokaw & D. Roehm	3 5
HIGH MEN'S SERIES	
Tom Eversole	526
Bob Popkey	524
Fritz Wurster	410
HIGH WOMEN'S SERIES	
Joann Finkbeiner	514
Sharon Roehm	473
Polly Brokaw	447
MEN'S HIGH GAME	
Bob Popkey	214
Gary Brokaw	183
Tom Eversole	180
WOMEN'S HIGH GAME	
Joann Finkbeiner	210
Sharon Roehm	168
Polly Brokaw	164

## Iron Kettle Spinners And Weavers Guild

The Iron Kettle Spinners and Weavers Guild will meet on October 27, 1982 at 6:30 p.m. at Manchester High School, Room 103. Annalisa Gary-Lion will give a basket making workshop for members only. Please bring anawl and \$5.00 registration fee.

## Kings Daughters

The Manchester Circle of the Kings Daughters will meet at the Manchester United Methodist Church at 1 o'clock on Thursday, October 28. Daisy Walz and Agnes Kent will be co-hostesses.

**NORM WALZ CONSTRUCTION**  
Remodeling and Room Additions  
Garages - Porches  
CUSTOM BUILT CABINETS

CUSTOM BUILT HOME ON YOUR IMPROVED LOT CAN SAVE YOU \$\$\$\$\$\$

Phone 428-7109

**CHIM-CHIMNEY**  
Chimney Sweeps Ltd.

Certified by the National Chimney Sweep Guild  
Member of the Michigan Chimney Sweep Guild

Saline, Michigan 48178  
313/665-0999  
313/429-9078

**MARGARET O'CONNOR**  
REPUBLICAN FOR STATE REPRESENTATIVE  
52nd DISTRICT  
November 2 Election

Endorsed by the Political Action Committee of the Michigan Townships Association.

### GOALS:

- (1) No New Taxes
- (2) Reduction of State Income Tax and Single Business Tax
  - a. reduction of state bureaucracy.
  - b. limit welfare benefits to the average of surrounding states.
  - c. overhaul Workmen's Compensation program.
  - d. overhaul Unemployment Compensation program.
- (3) Return to part-time Legislature.

### EXPERIENCE

- 6 years as Washtenaw County Commissioner, District 3
- 8 years on Lodi Township Board
- 2 years as secretary of Lodi Township Planning Commission
- 2 years on Washtenaw County Planning Commission
- 20 years employment as a registered nurse

### EDUCATION

- R.N., Creighton University, Omaha, Nebraska
  - B.S., Nursing Education, Creighton University
  - B.S., Political Science, Public Administration, Eastern Michigan University
  - Certified Registered Nurse Anesthetist, Western Reserve, Cleveland, Ohio
- Married to Dr. Gerald O'Connor for the past 29 years.

Paid for by the Committee to Elect Margaret O'Connor, 4300 Ann Arbor-Saline Road, Ann Arbor, MI 48103

# THE MANCHESTER ENTERPRISE

## HIT or MISS

BY FARLEY

## Students View "Toys Past And Present"



Mrs. Florence Parr made arrangements for the school children to visit the exhibit.

Klager Elementary students had the first opportunity to view the Manchester Historical Society's collection of toys. Each class walked down to the Old Blacksmith Shop from the school. The children enjoyed taking a historical field trip in their own community.



Kelly Reeb and Patricia Marshall enjoyed the antique carriage.

Autumn is, I believe, my favorite season. It's only competitor is the first few balmy days of spring, but there is no substitute for the clear crisp days of fall when the leaves are still on the trees but painted in all their colors. Even after they fall to the ground it's still fun to plough through them—perhaps not to rake them—but to smell the pungent aroma when they burn. Now the allergists point out that burning leaves are hazardous to your health in no small amounts.

"Caution: Burning leaves may be hazardous to your health."

"This traditional fall activity is especially hazardous to the health of those persons suffering from pulmonary diseases, according to an allergist and specialist in internal medicine."

"According to allergist Dr. James Maher, people who have allergies, asthmas, emphysema, and chronic bronchitis experience the most harmful effects from leaf burning."

"Persons that suffer from these ailments are probably 20 times as sensitive to airborne pollutants than the rest of us," Maher said.

"Dr. John Gans, an internal medicine specialist, said leaf burning presents the lungs with an increased load of ash, or particulate matter."

"In addition to the smoke, carbon, and soot, particles of mold are also released into the air when leaves burn," Maher said. "Leaves get moldy, especially when they're left in a pile."

"And for those sufferers just finishing the raked season, Maher said fall is not a welcomed time of year, because of leaf burning."

"People who don't suffer from pulmonary ailments can usually remove the ash, or small particles, from their systems either by swallowing or coughing it up," Gans said.

"But the lungs of people with pulmonary diseases can't remove this particulate matter as well," he continued.

As a result, this matter can build up in the lungs and cause irritation of the lung lining. It can also decrease the amount of

oxygen transported across this lining. Gans said this decrease can make a person become "hypoxic."

"When this happens," he said, "they're not getting enough oxygen into their blood, which can precipitate acute respiratory failure."

"Many times, these people must be hospitalized," Gans said.

High concentrations of particulate matter, however, can even cause the healthiest lungs to become irritated.

The results - coughing and hacking. Theoretically, Gans said asthma attacks can be triggered by the high concentrations of particulate matter in the air during leaf burning.

"But this usually doesn't happen," he said, "because the particles become diluted in the open air."

"It'd be different if someone smoked a cigarette. The particles of ash would be much more concentrated."

Leaf burning is a major pollutant in our atmosphere in the fall, Maher said. "You can't escape the stuff. It comes through the windows and doors."

"But when an atmospheric condition called "air inversion" occurs, this is when pulmonary problems really start."

"We usually have a few of these days every fall," he said.

"Air Inversion" happens when the air is very still and damp. Warm air on the bottom becomes trapped when a blanket of cooler air moves in on top. This keeps all the regular pollution of car exhaust, plus the soot, carbon, smoke and mold from burning leaves down in the atmosphere where we breathe it all in."

There was a time when the guy with long hair was rebelling not against society but against the high price of haircuts.

It isn't hard to borrow money if you can prove that you don't need it.

# COPIES MADE

8 1/2 X 11 - 8 1/2 X 14

11 X 17

ALL COPIES CAN BE COPIED

ON BOTH SIDES

The  
**Manchester Enterprise**

PHONE 428-8173

## BAKER'S DOZEN

SOUP AND SANDWICH

New Menu Starting  
Wednesday, October 6th 11 am

BEEF BBQ PASTRAMI  
TUNA SALAD SANDWICH  
STACK HAM BEEF FRENCH DIP

SPECIAL:  
TUNA SALAD SANDWICH & SOUP  
\$2.25

Phone Orders 428-8361



### Village Planning Commission

September 14, 1982  
The Regular Meeting of the Manchester Village Planning Commission was called to order at 7:30 p.m. by Chairman Alber. Present: Walton, Grossman, Leeson, Smith, Aiuto. Absent: Krauss, Kwolek and Kallewaard. A quorum was present.  
Minutes of the Regular Meeting of August 10 were read and approved. A correction was made on the date of the agenda. Incorrect date of September 23rd was changed to meeting date of September 14th.

There was a brief discussion on the sign application submitted by Hoover Universal. A motion was made by Walton that the Planning Commission approve the application for the sign permit for a single-face lawn sign under the provisions found in Section 53.04-B No. 3 and lighting of the sign under Section 53.01, and in addition that the sign be placed at least 18 feet in from the curb in order to allow for the standard Village right-of-way, should sidewalks be installed at some future date along that portion of City Road. Seconded by Leeson. The motion was passed on a unanimous voice vote.

Grossman gave a briefing on the August 18th meeting.  
The meeting was adjourned at 8:17 p.m. on a motion by Leeson, seconded by Smith. Kathleen Aiuto Acting Secretary

September 20, 1982  
The Special Meeting of the Manchester Village Planning Commission was called to order at 6:04 p.m. by Vice-Chairman Smith. Present: Smith, Kallewaard, Grossman, Leeson, Krauss and Kwolek. Absent: Walton, Aiuto and Alber. A quorum was present.  
The combined preliminary and final site plan for an addition of 120 feet by 50 feet to the Manchester Plastics, Inc. building at the corner of Madison and Elton Streets was submitted by Emery Jonas. It was

noted that all setbacks and lot coverage are in conformance with the requirements of the I-2 (General Industrial) District.

Mr. Jonas described two other elements of the project: clearing a road from the parking lot to the back of the building to give access for Fire Department trucks, and re-routing a portion of a drainage ditch.

A motion was made by Grossman, seconded by Krauss, that the Planning Commission recommend Village Council approval of the site plan as presented, with inclusion of the new road for fire emergency use. The motion was passed unanimously on a voice vote.

The meeting was adjourned at 6:17 p.m. on a motion by Kallewaard, seconded by Kwolek.

Mary Kallewaard, Secretary

### Obituaries

**John B. Fahey**  
15554 Fahey Road  
Manchester

Age 85 years, died Tuesday, October 12, 1982 at the Herrick Nursing Home in Tecumseh, following an extended illness.

He was born September 19, 1897 in Manchester Township, the son of Michael and Sarah Egan Fahey.

Mr. Fahey had been a Manchester Township farmer and also had been a real estate broker.

He was a member of the St. Mary's Catholic Church.

Survivors include: brother and sister-in-law, James and Mae Fahey of Manchester; one nephew, Richard Fahey of Manchester; two nieces, Miss Ethel Fahey of Manchester and Mrs. Kathryn Humphries of Plymouth.

Mass of the Christian burial was held Friday, October 15, 1982, 10:00 a.m. at St. Mary's Church. Rev. Fr. R.R. Schlinkert officiated. Burial followed in St. Mary's Cemetery.

The Rosary was recited Thursday, October 14, 8:00 p.m. at the Jenter Funeral Home.

**Lydia V. Luckhardt**  
Saline, Michigan

Formerly of Freedom Township

Age 93 years, died Tuesday, October 12, 1982, at the Evangelical Home in Saline.

She was born November 22, 1888, the daughter of Frederick and Veronica Finkbeiner Hartmann.

On March 2, 1916, she married Walter H. Luckhardt, in Saline Township, who preceded her in death on August 8, 1960.

Mrs. Luckhardt was a member of the Bethel United Church of Christ, Freedom Township and the Womens Fellowship.

Survivors include: three sons, Robert of Manchester, Gilbert of Freedom Township, and Andrew of Saline; three daughters, Mrs. Nelson (Viola) Kreuze of Battle Creek, Mrs. Lynford (Arlean) Rentschler of Saline, and Mrs. Raymond (Irene) Jacob, Jr. of Manchester; seventeen grandchildren; sixteen great grandchildren; one sister, Clara Bredernitz of South Lyon.

She was preceded in death by four sisters and three brothers.

Funeral services were held Friday, October 15th, at 1:30 p.m. from the Bethel United Church of Christ with the Rev. Roman Reineck officiating. Burial was made in Bethel Church Cemetery.

Memorial contributions may be made to the Evangelical Home or the Bethel United Church of Christ.

Directed by Bahnmiller Funeral Home, Saline.

### Men's Club Meeting


The Manchester Men's Club will hold their next meeting October 21 at Baur Manor for a frog leg dinner. Members will be contacted.

### 4-H Standardbred Project

Congratulations! Lisa M. Buono has been selected to participate in the 1982-83 Michigan 4-H Standardbred Production Project. This project is the first of its kind in the country, and is jointly sponsored by the Michigan Harness Horseman's Association, the Michigan Standardbred Breeder's Association, and the Michigan Cooperative Extension Service.

A total of 36 applications were submitted from a fine group of young men and women from various counties throughout Michigan. The committee selected twenty 4-H members to participate and Lisa was the only member selected from Washtenaw county. She attended an introductory meeting with her father on Wednesday, September 29th at the office of the Michigan Harness Horseman's Association located in Okemos.

She will receive the weaning on October 16th to raise and take care of for one year. Lisa has been a 4-H member for the past six years and belong to the Flying Equestrians 4-H Club. She is the daughter of Bob and Pat Buono.



**MANCHESTER ELECTRIC, INC.**  
CONTRACTING

ELECTRICAL - HEATING - COOLING  
MAJOR APPLIANCE SALES AND SERVICE  
NOW ACCEPTING MASTERCARD AND VISA  
ON ALL SALES AND SERVICE

112 Adrian Street Manchester, Michigan  
Phone 428-8243

# Effective.

## LANA POLLACK

SERVED AS A TEACHER and MICHIGAN'S SCHOOL BOARDS SUPPORT HER.  
Lana Pollack is endorsed by the Michigan Association of School Boards

SERVED ON THE ANN ARBOR SCHOOL BOARD and THE TEACHERS SUPPORT HER.  
Lana Pollack is endorsed by the Michigan Education Association

**LANA POLLACK WORKS WITH ALL SIDES TO ACCOMPLISH WHAT MUST BE DONE**

OUR SCHOOLS TODAY BUILD THE ECONOMY OF TOMORROW. MICHIGAN NEEDS LEGISLATORS NOW WHO UNDERSTAND HOW OUR SCHOOLS HAVE BEEN AND SHOULD BE FINANCED, WHY OUR SCHOOLS SOMETIMES FAIL AND HOW THEY CAN SUCCEED, WE NEED A STATE SENATOR WHO KNOWS WHAT NEEDS TO BE DONE AND WHAT IT TAKES TO GET THERE.

**HELP PUT IN PLACE THE NEW PEOPLE AND POLICIES THAT WILL BEGIN MICHIGAN'S RECOVERY**

LANA  
**POLLACK**  
A Democrat for the State Senate

Paid for by the Lana Pollack for State Senate Committee, 543 N. Main, Ann Arbor, MI 48104

### Carry On

by Carla Kary Iris

Time management is an idea whose time has come. There are time management books and articles for "working 9 to 5" employees in the business world and time management guidelines especially for teachers and administrators. There are time management principles for making the most of our personal time and leisure hours that can apply to everyone, whatever their work.

Perhaps most of all, time management is stressed as particularly valuable for self-employed people - lawyers, ministers, doctors, independent sales persons - and the list goes on. This category includes people who work in their own homes raising children and doing other important life-sustaining work.

In fact, no matter what position of employment you may hold or what walk of life you may have chosen for yourself, chances are you are not immune from the encroachment of the timely concept of managing your minutes intelligently and intentionally.

Now, I've seen time management principles work beautifully in the lives of people who fit into all categories of professional and artistic endeavors. A close associate of mine maintains that time management is the tool he uses to prevent his professional life from bleeding precious time away from his personal and recreational activities. I believe him.

Yet, despite my admiration for good time managers, I've had little and spasmodic success with this discipline. Even though I can see benefits of good planning - such as not allowing a routine, boring task to take more time than it deserves; and making sure that I do get the things done that are necessary and desirable - I tend to lean toward the side of keeping my options open. To put it even more strongly, I suspect I have a constitutional incompatibility with time management. Maybe it's an allergy.

I've finally found an approach to time management that I can live with. It's called "creative procrastination." Dr. Frieda Porat coined the term and used it for the title of her book on effective time management. In fact, her whole approach seems to come from the opposite direction. She begins with the assumption that the work you do will be done more effectively and enjoyably if you have systematically allotted time for the leisure activities that you most enjoy.

This sounds good, yet I'm automatically suspicious. I can immediately envision the

list of acceptable activities: regular exercise, a simple, nutritious diet, and mandatory sessions of listening to the opera on your local PBS radio station. I readily admit that exercise and good food do improve health and a sense of well-being, but I dislike the idea that my precious free hours are going to be spent entirely on those pursuits and others equally good for me.

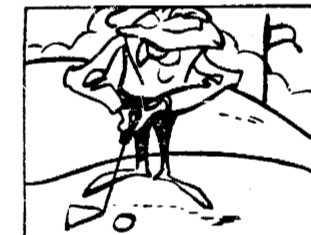
Fortunately, I'm saved after all. The saving grace is that we should also, according to Frieda Porat, allot plenty of time for thinking, daydreaming, or watching flames leap in the fireplace while sipping a cup of tea. Or putting in the garden or the garage. Or anything else that relaxes you and gives your mind a chance to rejuvenate itself. (I was being facetious about listening to opera, but listening to music is a proven stress reducer, whether your preference is classical piano, jazz, or Frank Sinatra's crooning.)

The good news is that I should find my own level of creative procrastination and practice the amount that's good for me. That may mean an hour or so chatting with friends over a cup of coffee, a motorcycle ride in the country, or lunch in a restaurant - perhaps all on a regular basis. These activities, which may seem like luxuries, may actually enable me to function more effectively as a human being, in work and in my personal relationships. Best of all, knowing myself and not comparing my needs to those of others around me frees me to take the time I need for rest and relaxation.

Maybe time management isn't so bad after all!

### Name Submitted For Scholarship

Siena Heights has submitted the name of Robert King to the Committee of Selection for an Oxford Rhodes Scholarship. Bob is very honored to represent Siena Heights in this prestigious award. Bob is the son of Mr. and Mrs. Charles King of Manchester.



North Carolina, often called "Golf State USA," has some 330 golf courses.

## CONGRESSMAN CARL PURSELL Leadership

### FOR THE 2ND DISTRICT

THE MANCHESTER AREA HAS BEEN ADDED TO THE 2ND CONGRESSIONAL DISTRICT. THE DISTRICT BOUNDARIES HAVE CHANGED, BUT THE LEADERSHIP OF CONGRESSMAN CARL PURSELL REMAINS. CARL HAS REPRESENTED THE 2ND DISTRICT FOR 6 YEARS. HE'S A MEMBER OF THE INFLUENTIAL APPROPRIATIONS COMMITTEE AND A FIRST-RATE LEGISLATOR. EQUALLY IMPORTANT, CARL IS A LEADER WHO IS KNOWN FOR EXCEPTIONAL SERVICE TO THE PEOPLE HE REPRESENTS. UNLIKE MOST CONGRESSMEN, CARL HAS KEPT HIS HOME AND FAMILY IN THE DISTRICT, NOT WASHINGTON, D.C. HE RETURNS HOME EVERY WEEK FOR DIRECT MEETINGS WITH HIS CONSTITUENTS. HE HAS NEVER LOST TOUCH WITH THE PEOPLE. HE NEVER WILL.

### FOR AGRICULTURE

CARL HAS EARNED THE ENDORSEMENT OF THE FARM BUREAU, BASED ON HIS VOTING RECORD ON FARM ISSUES AND HIS CONCERN FOR FARMERS' PROBLEMS.

### FOR ECONOMIC DEVELOPMENT

A LOT OF PEOPLE TALK ABOUT ECONOMIC DEVELOPMENT. CONGRESSMAN PURSELL WORKS AT IT. HE WAS A LEADER IN GETTING MORE DEFENSE SUPPLY CONTRACTS FOR HIGH UNEMPLOYMENT AREAS. HE WAS A LEADER FOR A NEW REHABILITATION TAX CREDIT TO ENCOURAGE BUSINESSES TO STAY AND EXPAND IN MICHIGAN. HE'S WORKING ON MODERNIZATION OF THE ST. LAWRENCE SEAWAY, TO OPEN NEW MARKETS FOR OUR AGRICULTURAL AND INDUSTRIAL PRODUCERS.

### FOR LOWER TAXES

CONGRESSMAN PURSELL VOTED TO LOWER YOUR TAXES. HIS VOTE HELPED CUT YOUR PERSONAL TAX 5% LAST YEAR, ANOTHER 10% THIS YEAR, WITH ANOTHER 10% CUT COMING NEXT YEAR.



LEADERSHIP FOR WASHTENAW...  
AND THE 2ND DISTRICT  
**CONGRESSMAN CARL PURSELL:**

REPUBLICAN

## Blown-In Insulation IN ECONOMY

- Cooler in Summer
- Warmer in Winter
- Reduces Noise
- Increases Home Value
- Fire Retardant



### Cellulose Insulation Sale

Bag Cover 24 Square feet 5.1 inches R-19

**\$3.99 22 lb. bag**

FREE 1 DAY BLOWER USE WITH 20 MINIMUM PURCHASE

BLOWER RENTAL \$10.00 PER DAY

**R. D. Klein Schmidt Co.**

19860 SHARON VALLEY ROAD MANCHESTER, MICHIGAN  
PHONE 428-8836 or 428-9335



# Put Yourself in the Marketplace, in the Classifieds

All Classified Advertising is Payable in Advance. All Ads Must Be PLACED AND PAID For Prior To 11 A.M. On Tuesday For Publication That Week.

**WINDOW & SCREEN REPAIR**  
Kleinschmidt True Value Hardware  
428-8337.

**BURNER SERVICE** - Make an appointment now to get your furnace ready for winter. Manchester Electric 428-8243. tfn

**HEATING BILLS TO HIGH???** Cut costs with a Comfort Glow Kerosene Heater - available at Mann's Feed Mill 428-7077. 10-29

**FIELDER PAINTING**  
Interior and exterior. free estimates (313) 428-8506. 10-28p

**WE'RE OPEN SUNDAYS** from 11 a.m. to 3 p.m. Kleinschmidt True Value Hardware 428-8337. tfn

**KUKINI TRAVEL MOVED TO LARGER OFFICE SPACE.** increased staff and computers. 124 W. Chicago Blvd., Tecumseh. Phone: 517-423-6651. tfn

**ALUMINUM EAVESTROUGH**  
Seamless, white, black and brown. guaranteed. free estimates. Walkow Home Improvement Company. Phone (313) 428-8468. tfn

**HAVE** your mower blades sharpened and balanced, saw chain sharpened and depth gauges adjusted for better cutting. Handsaws, circular saws, knives, scissors, pinkie shears, hair - animal - grass clippers and most anything needing a sharp edge. Kleinschmidt's True Value Hardware, 19860 Sharon Valley Road, Manchester. tfn

**GERALD AHRENS CONSTRUCTION**  
Additions, Decks, Renovations, Repair, Finish Work. Free Estimates. Phone 428-8807. tfn

**LITTLE WACK EXCAVATING**  
Licensed & Insured  
Basements - Drainfields - Bulldozing - Digging - Snow Removal - Tree Removal. Paul Wackenhut. Phone (313) 428-8025. tfn

**FOR SALE** - 2 oil tanks - 500 gal. and 1000 gal. 2 oil furnaces. 428-8076. tfn

**USED** Hot Point Refrigerator for sale. Call after 5 p.m. 429-4513.

**FOR SALE** - Firewood, seasoned hardwood, cut and split \$40 a face cord. 428-9257. p

**MOVING SALE** - Refrigerator, Electric Range, Washer-Dryer, Compactor, Dinetette Set, Antique Heavy Wood Dining Room Set, with Sideboard and China Closet, Office Table Desk, Portable Bar, Swing Set, Couch set, Sewing Machine, 16 h.p. Farm King Tractor with mower and snow blade, 1975 Buick Apollo, 3 inch Gas Water Pump, Manchester 313-428-9214.

**TWO FAMILY GARAGE SALE** - Saturday, October 23, 9 to 6 at 9424 Kies Road off of East Austin Road, Manchester. Tires, Honda Motorcycle, Clothing - children and adults, Sewing Machine, and miscellaneous items.

**YARD SALE** - A Little Bit Of Everything, Friday and Saturday, October 22 and 23, 9 - 5, 621 Spring. p

**LOVELY 1 BEDROOM APARTMENT** available November 1. Call Sam Beal 428-7082. 10-28

**2 BEDROOM APARTMENT FOR RENT** - Very nice, immediate occupancy \$280 per month. 428-9150. tfn

**VERY LARGE DUPLEX** - Appliances, Washer/Dryer, Well Insulated. \$325 per month. 428-9150. tfn

**CHELSEA GREENHOUSES.** 7010 Lingane Road, Chelsea, Michigan 475-1353-54 or 475-9313. Flowers and plants for every occasion. We specialize in wedding flowers to fit your budget. We are as near as your phone and we welcome your business. tfn

**HARTMANN CARPENTRY**  
Licensed Builder serving Manchester with 14 years experience in Home Building, roofing, siding, decks, remodeling, garages and pole barns. Call Jim 313-475-9301 or Dan 517-456-4305. tfn

**FREE** installation on the 2 energy conservation water heaters displayed at the Fair. Manchester Electric 428-8243. tfn

**MANCHESTER LOCKER PLANT**  
Phone 313-428-7600  
Meat Processing-Custom Slaughtering  
RETAIL: Cuts-Sides-Quarters  
LOCKER RENTAL

**COMMUNITY SPAY-NEUTER CLINIC.**  
Call 971-8774 for appointment. 10-28

**CLINTON FARMERS MARKET** will continue each Saturday during October in the Village Parking Lot from 10 a.m. to 3:30 p.m. For information call 456-7029. 10-28

**WELDING** - Portable Welder, Gas Arc and Cutting, anywhere, anytime. 428-7358 or 428-9131. 10-28p

**LIGHTNING RODS**  
"If it is out of reach, call Beach". Beach Contracting, Saline 429-5994.

**SURPLUS JEEPS, CARS AND TRUCKS AVAILABLE.** Many sell for under \$200. Call 312-742-1143, ext. 1395 for information on how to purchase.

**DEAD STOCK REMOVAL**  
We buy hides, skins, fat, bone and restaurant grease. Adrian Tankage Co. 517-265-6098. 9-22-83p

**1971 CHAMPION MOBILE HOME FOR SALE** 12 X 65 ft. 2 bedroom, central air, stove, refrigerator, washer and dryer. Asking \$5,000. Call 428-7718 after 4:00. tfn

**HOUSECLEANING HELP WANTED** - Experienced person for 1 day a week. References required. 428-9150. tfn

**PROFESSIONAL GROUP** needs mature, energetic individuals to join our fast-growing consumer products supply business. To apply/inquire, call 428-7136. evenings. 11-4p

**FIREWOOD** - seasoned or unseasoned, 4x8x16, \$40 picked up, \$45 delivered. 428-8434. 10-28

**WANTED TO BUY** - Tractor 30 to 50 h.p. range, category 1, 3 point hitch. 428-7158. 10-28

**GOOD LAND CONTRACT TERMS** - 4 bedrooms, dining room, range-oven and refrigerator included, well insulated, a super buy at \$37,500. Call Earl Keim Realty of Ann Arbor 662-2571. 10-28

**COMPLETE AUTO CLEANING.** Interior, Exterior, Wash and Wax. \$25.00. Bridgewater General Store. p

**FREE STANDING FRANKLIN FIRE-PLACE** \$125 or best offer. 428-7275 evenings. p

**WANTED:** To share a ride to Washtenaw Community College. Classes 8:00 A.M. Monday, Wednesday, Friday; 9:00 A.M. Thursday. Call 428-8116 Ask for Jodi. 10-28

**RISE SHARING** to Ann Arbor, 8 to 5. Call Andy Supers 428-9461.

**GOOD USED CLOTHING** - ladies clothing, size 10 to 12, hardly used. 428-7485.

Classifieds Are \$1.50 For First 20 Words, 5c A Word Thereafter. Thank You's Are \$3.00 Minimum Up To 50 Words.

**USED WHISKEY BARRELS** - available at Mann's Feed Mill 428-7077. 10-29

**COAL FOR SALE** - 10C LB. Schebor's Greenhouse, 14345 Logan Road, Manchester 428-8078. tfn

**HOUSE FOR RENT IN VILLAGE OF MANCHESTER.** 3 or 4 bedrooms, two baths, large kitchen, first floor laundry. 428-9380. tfn

**ALBER ORCHARD & CIDER MILL.** 13011 Bethel Church Road. Now Open. 9 to 6 daily. Sweet cider, apples, barrels, kegs, popcorn, etc. 428-7758. tfn

**C & B PAINTING** - Interior, Exterior. Free Estimates. Contact Charles E. Benedict. Phone 428-7136 or 428-7416. tfn

**BLACK DIRT AND PEAT** for sale, tested and proven excellent for lawns, gardens and flower beds. 6 yards delivered \$40.00. Phone 428-7784. tfn

**FALL BULBS ARE IN** - Tulips, Hyacinths, Crocus, Daffodils - available at Mann's Feed Mill 428-7077. 10-29

**PRICED TO SELL** - Wood hauling specials, 1954 Chevrolet Stake with hoist, 1963 Pickup. Call 428-7822. 10-21p

**ANN ARBOR CITY LOT FOR SALE OR TRADE** for something of value near \$8,000. Call Lew or Char Major 428-8451. 10-21

**HALLOWEEN DANCE** - Saturday, October 30, K of C Hall, Manchester, 9 to 1 a.m. BYOB. Midnight luncheon. Costumes are not required. \$8 per couple. Pre-recorded music by Euphoric Sound. 10-21

**FOR SALE** - Boys bike 27 inch, 10 speed with tire pump and book carrier \$100.00, 2 rolls barb wire, 4 point 11 gauge \$20.00 roll. Call 428-8585. p

**1976 PACER**, white with blue trim, Florida car, no rust. 428-7485.

**5 ADORABLE PUPPIES** - 3 black, 2 beige, free to anyone who want them. 428-9334. p

**BABYSITTER WANTED** - Occasional Evenings. References Required. Call days 428-8016. p

**BAKE SALE** - Saturday morning at Old Blacksmith Shop, 324 E. Main. Open ten to twelve and one to four. p

**FOR SALE** - Kenmore electric dryer, 4 years old, \$100. 428-7485.

## Cards Of Thanks

The family of Cynthia Brown would like to express their thanks and appreciation to the many relatives, friends, and neighbors for the kindness and help during our daughter's illness and death.

The cards, flowers, visits, and food were deeply appreciated.

A special thank you to Rev. Macfarlane for his prayers, to the Jenters for their help, and to Lavon Hudkins for her extra help, and to the ladies who served after the funeral.

Mr. and Mrs. Robert Kensler  
Jamey Brown

I would like to thank all our family and friends for the visits and cards during my stay at the hospital and since my return home.

A special thanks to Mrs. Forner and Mrs. Feuerbacher for being so thoughtful. Thank you again.  
Robert Service

Thanks to one and all for the many kindnesses shown to me on the occasion of my 90th birthday.

Sincerely,  
Lelah Huber

Many thanks to Alber's Orchard for the generous donation of cider and apples to the Veteran's Hospital party held on October 9th.  
American Legion Auxiliary

To The Parents, Relatives, Friends and Members of the Manchester Equestrian Team:

We would like to thank you for all the help and support you've given us throughout this fall season of competition in the Michigan Interscholastic Horsemen's Association. We would especially like to thank you for assisting us in hosting the last meet. The meet would not have went so smoothly and been such a success without your help. We could not have done it without you.

We would like to thank the following members of the Equestrian Team for their fine performances this season and for giving us the opportunity to coach such an exceptional team - Jennifer England, Dawn England, Kathy York, Mary Cleland, Vonda Lucas, Sue Shear, Anna Heath, and Lauren Willson. We are very proud to have coached and been associated with such a sensational group of athletes!

Sandee Sheats and Jackie Rodosalawicz

**FACT:**  
When you choose Michigan maple syrup—you're no sap. It takes about 40 gallons of sap to make one of syrup. Our maple trees produced 85,000 gallons of syrup last year, valued at \$1,279,000.

**growing in Michigan**

In China, at one time, there were 3,000 rules of conduct to be learned and obeyed.

## Legal Notices

**NOTICE OF PUBLIC HEARING**  
There will be a Public Hearing before the Manchester Village Planning Commission on Tuesday, November 9, 1982, at 8:00 p.m., in the Council Room of the Village Hall, 120 South Clinton, to hear comments on the proposed rezoning of the former lead mill property at 201 East Main Street (parcel bounded by Main Street, Adrian Street and the River Raisin) from I-1 (Limited Industrial) to C-2 (General Commercial District). If you wish to have your comments represented at the hearing, but cannot attend in person, you may send written comments to Secretary, Village Planning Commission, P.O. Box 51, Manchester, MI 48158; or leave written comments at the Village Offices, 120 South Clinton Street. Written comments must be received by 4:00 p.m. on Tuesday, November 9, 1982.

Mary Kallewaard, Secretary  
Manchester Village Planning Commission

**PUBLICATION AND NOTICE OF HEARING**  
STATE OF MICHIGAN PROBATE COURT  
COUNTY OF WASHTENAW  
FILE NO. 77220  
In the matter of CYNTHIA L. BROWN, DECEASED  
Social Security Number 385-50-2887

**TAKE NOTICE:** On October 28, 1982 at nine A.M., in the probate courtroom, Ann Arbor, Michigan, before Hon. RODNEY E. HUTCHINSON Judge of Probate, a hearing will be held on the petition of ROBERT J. KENSLER for probate of a purported will of the deceased dated September 21, 1982, and for granting of administration to ROBERT J. KENSLER, or some other suitable person and to determine the heirs of said deceased.

Creditors of the deceased are notified that all claims against the estate must be presented said ROBERT J. KENSLER, at 806 East Duncan Street, Manchester, Michigan 48158, and a copy filed with the Court on or before February 15, 1983.

Notice is further given that the estate will be assigned to persons entitled thereto.

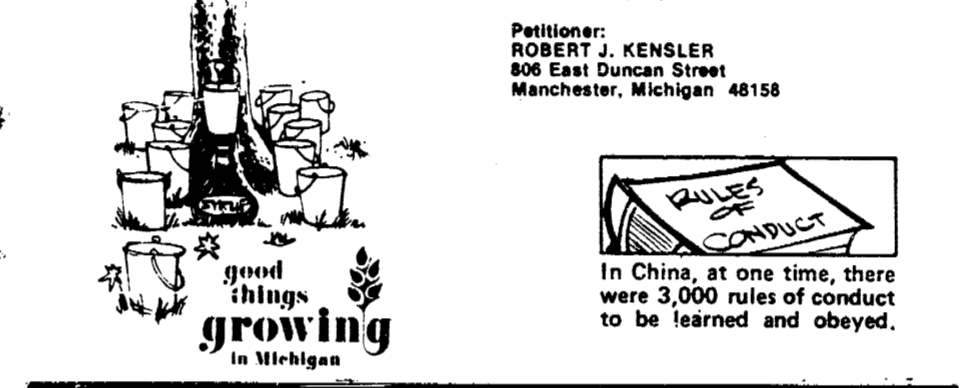
**KEUSCH AND FLINTOFT**  
Attorneys for the Estate  
October 13, 1982  
BY: PETER C. FLINTOFT P-13551  
121 South Main Street, P.O. Box 187  
Chelsea, Michigan 48118  
PHONE: 313/475-8571

**PETITIONER:**  
ROBERT J. KENSLER  
806 East Duncan Street,  
Manchester, Michigan 48158

**FACT:**  
When you choose Michigan maple syrup—you're no sap. It takes about 40 gallons of sap to make one of syrup. Our maple trees produced 85,000 gallons of syrup last year, valued at \$1,279,000.

**growing in Michigan**

In China, at one time, there were 3,000 rules of conduct to be learned and obeyed.



**\*Featuring: HAND CRAFTED AMISH CABINETS**

**\*Distinctive CABINETRY By Fieldstone**

\*Jenn-Air Appliances \*Delta Faucets \*Elkay & Kohler Sinks

VISIT OUR SHOWROOM

**DUTCH COUNTRY KITCHENS**  
146 East Main Street Phone 428-7292 Manchester

<b>PEPSI, DIET PEPSI</b> MOUNTAIN DEW, PEPSI LIGHT \$1.99 1/2 LITER - 8 PACK \$1.19 - 2 LITERS \$2.19 CANS 8-PACK \$3.29 CANS 12-PACK PLUS DEPOSIT	<b>DECAFFEINATED COLA'S</b> DECAFFEINATED RC - SUGAR FREE RC 100 \$1.79 1/2 LITERS - 8 PACK \$1.29 2 LITERS \$1.69 CANS 6-PACK PLUS DEPOSIT LIKE \$2.09 16 OZ. 6-PACK \$1.29 2 LITERS PLUS DEPOSIT
<b>DR. PEPPER</b> 99c 6 PACK BOTTLES \$1.89 6 PACK CANS SUGAR FREE DR. PEPPER \$1.89 1/2 LITERS - 8 PACK \$1.89 6 PACK CANS PLUS DEPOSIT	<b>VERNORS, ONE CAL VERNORS</b> A & W ROOT BEER & SUGAR FREE \$2.09 1/2 LITER-8 PACK \$1.29 2 LITERS \$1.89 6 PACK CANS PLUS DEPOSIT
<b>COKE, SPRITE, FRESCA, TAB</b> MELLO YELLO SUGAR FREE SPRITE \$1.99 1/2 LITERS - 8 PACK \$1.19 2 LITERS \$1.89 CANS 6 PACK PLUS DEPOSIT	<b>7 UP, DIET 7 UP, ORANGE CRUSH</b> GRAPE CRUSH, CANADA DRY \$2.09 - 16 OZ. 6-PACK \$1.29 2 LITERS \$1.89 CANS 6 PACK PLUS DEPOSIT
<b>SQUIRT, DIET SQUIRT</b> \$1.89 6 PACK \$1.29 2 LITERS \$1.89 CANS 6 PACK PLUS DEPOSIT	<b>FAYGO</b> REGULAR & DIET FLAVORS \$1.89 1/2 LITERS - 8 PACK \$1.19 2 LITERS \$1.89 CANS 8 PACK PLUS DEPOSIT

Jobber PH. 428-8366

**G.E. Wacker Inc.**  
Products:  
GASOLINE • FUEL OIL • MOTOR OIL • DIESEL FUEL • GREASE  
9050 CHELSEA—MANCHESTER RD. MANCHESTER, MICHIGAN 48155  
OPEN MONDAY—FRIDAY 7 a.m.—9 p.m.  
SATURDAY 8 a.m.—9 p.m. SUNDAY 9 a.m.—9 p.m.

## Klager Island Feast



Diane Vedder, Jackie Ahrens, Lisa Lozier, Robin Fleck, Kelly VanDeven, Katena Armstrong and Dennis Gerenger.

The Third-Fourth Team Room held their Island Feast this week after a study of the Pacific Islands. A colorful variety of fruits and vegetables made up an exotic salad bar. The students sampled a wide variety of fish such as squid, octopus, cooked and raw tuna, smoked salmon, oysters, alaskan crab, shrimp and smelt.

The class wishes to thank all of the parents who helped them by bringing food and setting up the dinner.

## Trick Or Treat Set For October 30

On Saturday, October 30th, Manchester will observe Halloween. Trick or Treating will begin at 5:00 and end at 7:00. Costume judging will follow at the Emanuel Church Hall at 7:15 p.m. Prizes will be awarded to the various categories of costumes. Refreshments of cider and donuts will be served.

The Manchester Police Department are sponsors of this event.

**Waits Heating & Cooling**  
24 HOUR SERVICE  
Walt Horodaseany

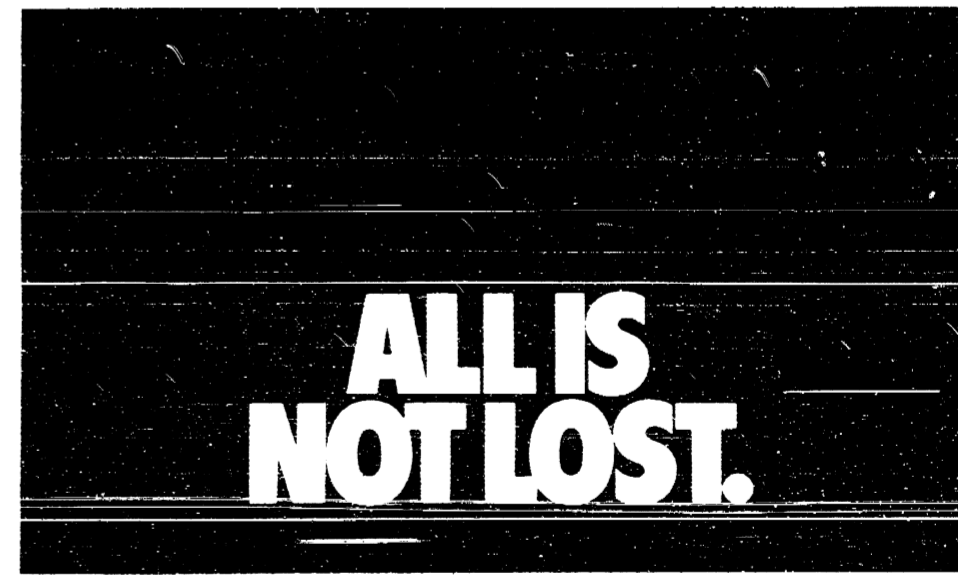
COMFORT AIR FURNACES  
A.O. SMITH WATER HEATERS  
WATER SOFTENERS

FURNACES TUNING AND CLEANING

PHONE 428-8645

18824 Bethel Church Rd.  
Manchester, Mich.

**ROY SMITH for SENATE**  
paid for by Roy Smith for Senate  
7768 Munger Rd., Ypsilanti, MI 48197



It's hard to match the after-tax interest rate of your maturing All-Savers certificate, but now there's something that can do it in just seven days. It's our new Weekly Cash Account. With a minimum deposit of \$20,000, this

We have lots of great investment options for your All-Savers dollars. See us for the details.

certificate earns high money market rates and matures in just one week. We'll show you how it works.

**ANN ARBOR BANK AND TRUST**  
A FIRST AMERICAN BANK

Member FDIC





# Michigan Hunters Offered Helpful Maps, Books

LANSING—Michigan hunters getting ready for the small- and big-game seasons are reminded by the Michigan United Conservation Clubs (MUCC) to include accurate, up-to-date maps as part of their hunting equipment.

Topographic maps prepared by the United States Geological Survey are an invaluable aid to hunters, according to MUCC, the state's largest map dealer. These maps show the locations of trails, campsites, river and stream crossings, springs, and many other features of interest to sportsmen and women. They can help hunters plan trips into game areas and are especially important in helping hunters avoid becoming lost.

MUCC stocks a complete array of topo maps covering every part of the state in extensive detail. All of the maps are described in MUCC's "Map Index," which can be used for ordering individual maps. Copies of the "Map Index" are available free to anyone sending a No. 10 (business size) self-addressed envelope with 40 cents postage affixed to MUCC, Box 30235, Lansing, Mich. 48909.

MUCC also offers hunters two other helpful publications. One is "Hunter's Heritage: A History of Hunting in Michigan," written by Dr. Eugene T. Petersen, a leading Michigan historian. "Hunter's Heritage" traces the history of that pursuit in Michigan from before the arrival of the white man to the present. The book contains dozens of drawings and early photographs. It is available for \$4.86 per copy, including tax, handling, and shipping, from MUCC at the above address.

To further enhance the hunter's enjoyment of the outdoors, MUCC has published an unusual book of recipes titled "Wildlife Chef." The most comprehensive Michigan wild foods cookbook

ever published, "Wildlife Chef" contains nearly 400 game and fish recipes, including the favorite recipes of outdoor enthusiasts throughout the country. Copies of "Wildlife Chef" are available from MUCC for \$5.15 apiece.

All proceeds from the sales of maps and books are used by MUCC, a nonprofit organization, for statewide conservation programs.

Here is a sampling of recipes from "Wildlife Chef."

**Baked Pheasant and Rice**  
Serves 6-8  
one 10-oz. can condensed cream of mushroom soup  
1/2 cup milk  
1/4 cup long grain rice, uncooked  
one 4-oz. can mushrooms, undrained  
one 1 1/2-oz. envelope dehydrated onion soup mix  
2 pheasants, in serving pieces  
Blend mushroom soup and milk. Combine this with rice, mushrooms, and juice and onion soup. Mix and pour into 13x9x2" baking dish. Arrange pheasant on top. Brush with melted butter, sprinkle with paprika, and bake uncovered in oven preheated to 325 degrees for 1 1/2 hours.

**Burgundy Venison Steak Tips**  
Serves 6-8  
2 lbs. venison steak, cut in small cubes  
3 tablespoons oil  
2 tablespoons dry onion soup mix (more if you want)  
3 beef bouillon cubes  
2 cups water  
1 cup burgundy wine  
1 cup fresh mushrooms or 4 oz. canned  
Brown meat in hot oil. Add remaining ingredients and simmer for about 1 hour. Add mushrooms the last 5 minutes. Serve over fluffy rice.

# American Legion Auxilliary

Regular meeting of the American Legion Auxilliary was held on October 13 at the Legion Home. President Helen Hosmer opened the meeting.

Membership quota for the year 1983 will be 87. Treasurer Baker urged members to get dues paid before November 30.

Eight members entertained at Bingo and refreshments for patients at the Ann Arbor VA Hospital on Saturday, October 9. Cider and apples were donated by Alber's Orchard and the Auxilliary wishes to thank them.

Vivian Middlemiss will purchase heavy plastic hospital bed mattress covers for our supply of beds which are part of our hospital loan closet for loan to the area folks. Funds were voted to be allocated to Manchester United Way and for orange juice for Blood Bank at the October 18 Bank. A check will be sent for payment of reserving space for our candidate at next summer's Girl's State.

President Hosmer presented a Past President's pin and a gift to Vivian Middlemiss, outgoing President of our

Unit, in appreciation of her dedication to our Unit over the past year.

Beth Clouse reported the help of Marsha Chartrand with the Junior Auxilliary for the coming year. Junior tams are missing; if anyone knows the whereabouts of these, please call President Hosmer or Beth.

Ruth Oates gave the Good Cheer report. She will continue as Chairman. Door prize of \$6 was awarded to Arlene Walter. Refreshment Committee for November will be Helen Popkey, Helen Rigg and Denise Dresch.

Chaplain Knauss gave the closing prayer which was written for the National President.

Committee of Mary Smith, Della Widmayer and Alice Alexander decorated the tables with Halloween streamers loaded with candy corn, grapes, leaves, and jack-o'-lanterns. Cider, halloween cookies and doughnuts pleased our palates.

T.V. Ludwick  
Secretary Pro-Tem



The Manchester Township Library has separate book classifications for different age groups. The books classified as Youth and marked with "Y" are located in several sections of the stacks. In the back northwest room are located the fiction on the west walls and the biographies mixed in with the other biographies. The fiction shelves contain some classics which are also shelved in a separate area in that room. Classics such as those by Dumas and Twain can be found in either section. There are paperbacks on a metal rack, both fiction and non-fiction. The newest Youth books are located on the round table in a bookrack in that same room. Some of the

more popular fiction writers are L'Engle (Science Fiction Series), Judy Blume (Modern fiction about young adults), Rosamond du Jarden (teen-age romances), L.M. Montgomery (Anne of Green Gables, Anne of Avalon) and Maud Hart Lovelace (The Betsy-Tacy stories). Non-fiction for Youth readers are scattered throughout the adult (or regular) stacks, marked with the "Y" and in the Junior sections. When Youth (generally classified as 7th-10th graders) are working on research papers they have access to all books and publications in the library, but the ones with the special "Y" marking are more likely to be written for them.



Ready your truck for responsive, dependable performance  
**PREVENTIVE MAINTENANCE plus ENGINE TUNE-UP**  
Unexpected problems have a way of showing up. But if your truck's preventive maintenance schedule is followed, chances are you'll breeze through rough weather without down time or costly delays. Come in and let our GM truck service technicians ready your truck for dependable performance. We'll replace spark plugs, check ignition electrical, carburetion systems thoroughly, and get your truck in shape for dependable performance and good economy.  
Let's Get it Together. Buckle Up.



"KEEP THAT GREAT GM FEELING WITH GENUINE GM PARTS."

**TIRB CHEVROLET CO.**  
131 ADRIAN STREET MANCHESTER, MICHIGAN  
PHONE 428-8212

# THE DOWN UNDER In the Black Sheep Restaurant

Will Feature

**JOHN ANTHONY and LEGEND**

THE MONTH OF OCTOBER ON THURSDAY, FRIDAY AND SATURDAYS 9 P.M. TO 1:30 A.M.

Tom Huber Bartender



DONALD SUTTON, Agent CONNIE WIDMAYER, Agent

COMPLETE INSURANCE SERVICE

Farm Specialist  
Auto Home Owners Fire  
Commerical Life Motorcycles  
Recreational Vehicles

For All Your Insurance Needs

Call 313-428-7217

PHONE ANSWERED 24 HOURS

136 EAST MAIN STREET MANCHESTER, MICHIGAN

# Shakespeare Reading Club

On Tuesday, October 12th, the members of the Shakespeare Reading Club assembled in the parking lot of the Emanuel United Church of Christ at seven-thirty in the morning. Five cars, each appropriately named for one of Shakespeare's plays i.e. "Othello," "King Lear," "Richard II" were required to accommodate twenty-five women for the drive to Ohio to the Toledo Museum of Art and its exhibition titled "El Greco of Toledo". The show will remain there until November 21st and then move on to the Dallas Museum of Fine Arts. Previously, it had been in Washington, D.C. and will not be shown in any other cities.

When he was born in Crete in the year 1541 he was named Domenikos Theotokopoulos. In Crete he learned the Byzantine style of icon painting and when he moved on to Venice, he studied the technique and art of the great Renaissance masters such as Michelangelo. The world today knows this man as El Greco. (the Greek) Afterward, he took up residence in Toledo, Spain in 1577 and died there thirty seven years later.

Under the patronage of the present king of Spain, Juan Carlos and the co-operation of the government of the United States, the largest number of the works of El

Greco ever assembled, more than sixty paintings, are available for viewing, a truly great privilege and pleasure, since it will surely not happen again in our lifetime. The works of art were drawn from private collections, such as that of Niarchos, the Greek shipping magnate, from museums the world over, and from churches and cathedrals in Spain, where El Greco's art is permanently installed. These same paintings were ignored for four hundred years and El Greco judged a painter of modest talent until recent years when art experts reconsidered his work and acclaimed him a master of his rank.

Luncheon followed the exhibit and then a delightful ride back to Manchester on a beautiful, sunny Fall afternoon, on a road lined with trees, showing off their varied and colorful autumn hues.

# Tuesday Night Singles

Feeling like dancing? Travel on down to the American Legion Hall, Main Street, Ann Arbor, and join the Tuesday Nite Singles on October 26th. Dance from 8:30-11:30 to the music of Don Wilson. Fun time by all.

For more information call 482-5478.

# ALL-SAVERS ALL-TERNATIVES.

Good news. In the year since you purchased your original All-Savers certificate, your First American Bank has come up with some exceptional new certificates. With terms ranging from just 91 days to a full

We have lots of great investment options for your All-Savers dollars. See us for the details.

42 months. And interest rates that rate with the very best of them. Let's talk.



Manchester High School Band  
Annual Citrus Fruit Sale

Juicy Sweet ORANGES	Ruby Red GRAPEFRUIT
SMALL BOX 40 to 50 count \$7.30	SMALL BOX 18 to 24 count \$7.05
LARGE BOX 80 to 100 count \$13.60	LARGE BOX 36 to 48 count \$12.60

Texas Ruby Red Grapefruit and Juicy Sweet Oranges  
 \* Tree Ripened - Orchard Fresh to you  
 \* U. S. Govt. Inspected - Highest Quality  
 \* Picked, Packed, Shipped in the same day  
 SALE NOW IN PROGRESS RUNNING THROUGH OCTOBER 29th. FOR INFORMATION OR TO PLACE AN ORDER CALL THE HIGH SCHOOL OFFICE AT 428-7333 or 428-8274.

# Legal Notice

TOWNSHIP OF MANCHESTER ORDINANCE NO. 23

AN ORDINANCE TO ESTABLISH AND REQUIRE MINIMUM DRIVEWAY STANDARDS AS TO PROVIDE ACCESS TO BUILDINGS BY FIRE EQUIPMENT, AMBULANCE OR OTHER LIFE SAVING EQUIPMENT, POLICE VEHICLES AND OTHER EMERGENCY EQUIPMENT.

The Township of Manchester, Washtenaw County, Michigan Ordinance:

1. It shall be unlawful for any person, firm or corporation to construct or relocate any buildings more than 80 feet from a public street or an access easement as permitted under Section 18.08-b of Manchester Township Zoning Ordinance Number 9 as amended by Manchester Township Ordinance Number 15 without first providing a driveway for access thereto by motor vehicles as hereinafter set forth.

2. Prior to inspection of foundation footings as required under the Michigan Building Code as adopted pursuant to Act 230 Public Acts of Michigan, 1972 and Ordinance 21 of Manchester Township and rules adopted pursuant thereto the driveway required under Section 1 hereof shall be constructed or installed to meet the following standards:

a. The entrance to the driveway shall be designated during construction or relocation of any building by two (2) white inch and one-quarter (1/4) wooden stakes driven into the ground not less than fifteen (15) feet or more than thirty (30) feet apart three (3) feet above ground level and located at or near the public road or access easement line so as to be clearly visible therefrom.

b. The driveway shall be not less than fifteen (15) feet in width and shall have a vertical clearance of not less than twelve (12) feet and shall terminate not more than fifty (50) feet from the building or buildings served by the driveway.

c. The driveway shall be installed or reconstructed so as to be well drained and free from standing surface water.

d. The driveway shall have a natural gravel or equivalent material base of not less than six (6) inches deep or constructed with gravel or equivalent material to provide a base not less than six (6) inches deep and shall be of sufficient depth to support vehicles of not less than fifteen (15) tons gross weight.

e. If the driveway shall be 200 feet or more in length an open space shall be provided at its terminus at the building site as to permit motor vehicles not less than thirty (30) feet in length to turn round and exit.

3. After construction or installation of a driveway as required hereunder it shall be unlawful for any person, firm or corporation in possession of the premises served by such driveway to permit the same to be obstructed as to provide motor vehicle access over a width of not less than fifteen (15) feet with a vertical clearance of not less than twelve (12) feet.

4. Prior to inspection of foundation footings under said Act 230, Ordinance 21 and rules adopted pursuant thereto, the Manchester Township Zoning Inspector at the request of a person, firm or corporation requesting said inspection shall examine the driveway to determine if it has been constructed or installed to meet the requirements of this ordinance and upon so determining shall issue to such person, firm or corporation a compliance certificate to be signed by said inspector.

5. Any person, firm or corporation violating any of the provisions in this ordinance shall upon conviction thereof be fined in an amount not exceeding \$100.00 or imprisoned in the Washtenaw County Jail for a period not to exceed thirty (30) days or both.

6. This ordinance shall take effect thirty (30) days after its publication in the Manchester Enterprise.

EFFECTIVE DATE November 20, 1982  
Wilma E. Lentz  
Manchester Township Clerk

**FREEDOM ELECTRIC**  
11207 Pleasant Lake Road  
Manchester, Michigan 48158  
NEW CONSTRUCTION  
COMMERCIAL AND INDUSTRIAL  
GILBERT LUCKHARDT  
428-8233

**Branham's Welding**  
Arc-Gas-Cutting-Brazing-Buildup  
Welding  
Custom and Production Welding  
Heavy Equipment Repair  
Portable Unit  
PHONE 517-596-2995  
313-475-7639  
24 Hour Service



# Wedding Bells and Beautiful Brides



*Wedding*  
ANNOUNCEMENTS  
AND  
INVITATIONS...

STOP IN AND SEE OUR FINE SELECTION

THE  
MANCHESTER  ENTERPRISE

MANCHESTER TOWNSHIP LIBRARY  
P. O.

20 Cents Per Copy

# THE MANCHESTER ENTERPRISE

116TH YEAR VOLUME NO. 1

USPS 327-460

THURSDAY, OCTOBER 23, 1982

## Manchester Senior Places Third In Senate Youth Competition



Students apply at the local high school level first. A high school winner is chosen who then advances to the regional competition. Each regional winner advances to the State competition where two winners are selected from every state. Students must fill out a lengthy application which includes a listing of special honors received, community leadership experiences, school leadership experiences, extracurricular school activities, jobs held, interactions with other cultural, racial, or ethnic groups, and a statement of the person's goals and aspirations. In addition, there must be recommendations from the principal and a sponsoring teacher.

Melissa was chosen as Manchester High School's winner and advanced to the regional competition held at the Washtenaw Intermediate School District. In an extremely strong competition, Melissa placed third out of thirteen contestants. The winner of the competition was Landa Kyser of Ann Arbor Pioneer. According to Marjorie Mastie, the program's regional director, "The competition was very close. All who competed were exceptional students and the judges who had to choose one winner had a difficult assignment and deliberated many hours before finally making a decision. Melissa was a delight to meet and get to know. She is an outstanding person and a credit to her school and community." For her work in the competition Melissa will receive a special certificate and a letter of commendation from the Hearst Foundation.

Melissa Bunney, daughter of William and Dolores Bunney, of 19025 Sanborn Road, recently has competed in the United States Senate Youth Scholarship Program. This is a program sponsored by the William Randolph Hearst Foundation in which high school juniors and seniors who held elective offices in high school can compete for \$2,000 scholarships and an all expense paid week long trip to Washington D.C. to learn more about the Federal government and, in particular, the United States Senate. Selection of the winners is based solely on outstanding ability and demonstrated qualities of leadership.

## Historical Society Receives Donation



Pictured above from left to right are: Howard Parr, past president of Manchester Area Historical Society, Ronald Mann and Eugene Bentschneider, co-chairmen of the Manchester Chicken Broil, presenting \$7,000 check to John Swainson, president of the Society with John Hinkley, Manchester Mayor looking on.

Manchester Chicken Broil for 1982 has provided the Manchester Area Historical Society a tremendous boost in its effort to finance the buying of the Old Blacksmith Shop. On Saturday, a check for \$7,000 was presented to John Swainson, president of the Society by Eugene Bentschneider and Ronald Mann, co-chairmen of the Broil. This generous gift from the nationally famous community project. The Manchester Chicken Broil, is greatly appreciated and gives the Society a feeling of confidence.

The Building Committee hastens to add, however, that twice as much money needs to be raised by early 1983. A direct mail appeal is going out this week to Manchesterites near and far in an effort to reach this goal.

Preservation of the one remaining relic of Manchester's early days is a worthwhile civic adventure. Saving a real piece of property that can be used for education, demonstration and exhibits will be a focal point for all ages for generations.

Along with the impressive gift from the Broil, the Society is holding Bake Sales at the Shop every Saturday during the current free exhibit "Toys Past and Present" co-sponsored by The Manchester Art Guild and Historical Society. Members and friends of the Society are urged to bring their donations for the sale by 9:30 a.m. on Saturdays through November 13th. Be sure baked articles are completely covered with transparent wrapping and marked with makers name (and the price for which you wish them sold would be a help.)

There are now wooden toys for sale at the Shop, handcrafted by Mr. Wyzman of Jackson. Corn husk dolls from the class and demonstration given by Nancy Feldkamp on the 23rd may also be purchased. Pottery by Bonnie Greenwald is available too. A pair of soft handmade dolls donated and made by Dolores Bunney will be raffled off on November 14 at the regular meeting of the Historical Society. Tickets are \$1.00 for the two.

## Local Banks Support United Way



National Bank of Jackson employees from left to right are: Bernie Fielder, Norma Filyaw, Mary Kay Bailey, Pam Wolcott, Edna Difenderfer, Liz Blossom, Gerry Davis and Jack Zaborowski

Manchester's three financial institutions, The National Bank of Jackson, Great Lakes Federal Savings and Ann Arbor Bank and Trust Co., and their employees fully support the United Way through their contributions and many employees are active volunteers.

National Bank of Jackson, which is changing its name to Comerica on November 15, sponsored the annual Kick-Off dinner meeting for all volunteer campaign workers as a plus contribution.

Jack Zaborowski, Assistant Vice President and manager of the Manchester office announced that 100% of his staff have contributed to this year's fund raising campaign and the bank is also giving a

Continued on page 7

## Parent-Teacher Conferences Set

All parents should be aware that the Manchester Community Schools have scheduled parent-teacher conferences for Thursday, November 4th and Friday, November 5th.

Conferences will be held in all grades from 1:00 P.M. on Thursday, November 4th, until 9:30 p.m. that evening. On Friday, November 5th, conferences are scheduled from 9:00 in the morning until 4:00 in the afternoon. The parents will be notified by the individual schools regarding appointment times.

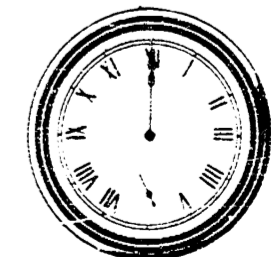
These conferences are designed as a time for parents and teachers to review current student progress and to chart goals and objectives for the remainder of the school year. Parents are encouraged to inquire regarding specific objectives for their children and ways in which they may provide help at home.

Educators are well aware that the best students are those with parents who take a close interest in their work and attempt to work closely with the schools in designing educational programs.

## Trick Or Treat Set For October 30

On Saturday, October 30th, Manchester will observe Halloween. Trick or Treating will begin at 5:00 and end at 7:00. Costume judging will follow at the Emanuel Church Hall at 7:15 p.m. Prizes will be awarded to the various categories of costumes. Refreshments of cider and donuts will be served.

The Manchester Police Department are sponsors of this event.



Don't Forget!  
Turn Your Clocks  
Back Saturday Night