

Summerfun Guidebook

The new Summerfun guidebook, produced by the Travel and Tourist Association of Southeast Michigan, is packed with information on close-to-home travel adventures.

Available within the next few weeks, the 72-page, four-color travel guide features most, if not all, of the major attractions in the 11 counties of Wayne, Oakland, Macomb, Monroe, Washtenaw, Lenawee, Livingston, Jackson, Hillsdale, St. Clair and Sanilac.

Summerfun provides helpful tips on where to camp, relax, fish, golf, sightsee, shop, swim, explore, canoe and enjoy fine dining in Southeast Michigan.

There also are sections on select nature tours, guided cultural tours and special hotel weekend package plans, for individuals, couples and families at accommodations in the 11-county region.

Included in this year's Summerfun, which took nearly six months to produce, is a special write-up on the upcoming Grand Prix Formula One race in Detroit—the first such race in the Midwest.

Travelers and tourists also will find listings of numerous festivals and special events, including the Detroit ethnic festivals, Jackson County Fair, Port Huron-Mackinac sailboat race and the Ann Arbor Art Fair.

The colorful guidebook, with a county-by-county breakdown, contains fascinating

facts on many historical attractions and communities in Southeast Michigan—providing an opportunity to learn while you relax on a close-to-home vacation this summer.

"This year, we are printing 100,000 copies of Summerfun—a record number—to accommodate the current tendency for people to enjoy their vacations closer to home," said Association President Sidney L. Baker.

To compliment the Summerfun travel guide, the Association maintains Traveline, a 24-hour recording that lists information on sports, festivals, theatrical performances, concerts and other noteworthy events, Baker mentioned. Traveline can be reached by dialing (313) 585-7233.

Free copies of Summerfun can be obtained at Michigan and Ohio travel rack outlets, AAA offices, state travel information centers and other visitor information centers.

A copy of Summerfun also can be obtained by sending \$1, to cover handling costs, to the Travel and Tourist Association of Southeast Michigan, P.O. Box 1590, Troy, MI 48066-1590.

Washtenaw Senior Olympic Festival

The Washtenaw Senior Olympic Festival will be held Sunday, June 13, from 1 to 5 p.m. at the UM Central Campus Recreation Building and the adjacent Palmer Field. Registration for the Olympics has been

extended to the following deadlines: June 7 Golf, bicycling, Swimming; June 9, Bowling, Bridge, Tennis; June 11 Euchre; June 13 Track and Field.

Participation is open to all men and women 55 or older.

Participants and Spectators are welcome to join in on the following: New Games with parachutes, Balls and Chuckles; One Mile walk event for fun and health of it; Horseshoes for the good and not so good; 3 wheeled bicycles to ride; Frisbee target throwing; Dancing to toe-tapping music; Yoga demonstration to learn and participate in; Aquatic games to cool off (bring suit and towel); Silver Squares performance; Ann Arbor Fencing Club demonstration; Bicycle pursuit demonstration; Tennis tournament finals; Chairs for resting will be furnished and snacks will be sold; Awards presentation for Senior Olympic Events will round out the Festival.

The festival is organized by the Ann Arbor Recreation Department, UM Dept. of Physical Education, Washtenaw Parks and Recreation Commission, Washtenaw County Council on Aging. Many Community Volunteers, and supported by generous local businesses.

For further information call 994-2575.

District Softball Tournament-June 5

The Michigan High School Athletic Association District Tournament will be held this Saturday, June 5, at the softball field at the athletic field. The first game

will be played at 10:00 a.m. Vandercook Lake playing Onsted. At Manchester will take on Michigan Central. The winners will play in the finals at 6 p.m. Admission will be \$1.50 for all.

Fourth Graders Have Orientation

All Klager fourth graders visited the Middle School fifth grade classes last week. Each fourth grader paired up with a fifth grade student to ask questions and have a tour of their new school. The fifth grade teachers also talked with the fourth graders. Hopefully the program will help our fourth graders be more at ease in making the transition next fall.

Day Camp

The Manchester Day Camp sponsored by the Huron Valley Girl Scout Council this year.

The reason for cancellation is registrations to this date.

MHS Elects Officers

At the first meeting of the Student Council, Melissa Bunney, elected Council President, Scott Hus, elected Vice President and Laura was elected Secretary-Treasurer.

The Council will hold one additional meeting before the end of the school year.

MANCHESTER TOWNSHIP LIBRARY

MANCHESTER TOWNSHIP LIBRARY P. O.

THE MANCHESTER ENTERPRISE

115TH YEAR VOLUME NO. 33

USPS 327-460

THURSDAY, JUNE 10, 1982

20 Cents Per Copy

2 Vie For School Board



While the people of Manchester may differ on some things, I believe we share one concern, and that is for quality education for our young people. This is one critical area where we must pull together. Using the talents and energies available we can accomplish much.

I would like to see a greater involvement on the part of the community in school affairs. As we become more involved we have a better perspective of the real needs. The maintaining of mutual respect and trust between the community and the Board of Education is essential to meet those needs.

If we have that mutual respect and trust, and each of us sees the need, we can proceed on a united front. There is very little that a united people cannot accomplish. As a member of the board, I would strive for a good working relationship with the community. I would encourage participation by all who are concerned about the education of our kids.

I have four children in this school system and I want the best for them, as well as for yours.

Kari Agin State Champion



Bangor High School was the scene on Saturday, June 5th, for the Class "C" State Track Championships. Kari Agin came home with a first place and a third place.

The race will start and end at Manchester High School. Check in time is 8:00 a.m., both races will begin at 8:30 a.m. There will be a 7 mile race and a 2 mile fun run. Trophies will be awarded for first place in each division of the 7 mile race. Medals will be awarded for 2nd and 3rd place in each division of the 7 mile race. Specific information and applications are available at the above sponsor's place of business, as well as Jim Brink 1-517-456-7807 or Tom Fitzgerald 428-7417.

JoAnn King Okey is a candidate seeking a one year term on the Manchester Community School Board in the upcoming election. A resident of Manchester, the mother of three children has been an active volunteer and served on several committees in the district. Her community involvement includes service as a Board Member of the Friends of the Manchester Library, Girl Scout Leader, member of the Friends of the Black Sheep Theatre and instructor for the Community Education Program.

Mrs. Okey has earned a Bachelor of Arts in Journalism and a Master of Arts in Educational Systems Management. Her professional experience includes ten years as a classroom teacher in addition to holding a position as an elementary principal and working as an educational consultant. This year she served on a Michigan State Department of Education Grant Review team and was a speaker at the National Council of Teachers of Mathematics conference in Toronto.

"I believe my background as taxpayer, parent, teacher and administrator offers a unique blend of qualifications which could diversify and strengthen the School Board in its policy setting and decision making processes."

"We, as a community, need to work together to establish priorities and set specific goals to improve our schools and to provide the highest quality education within our means," said Mrs. Okey.

JoAnn, her husband Mont and their children; Jenny, Jon and Ben recently returned to their native Michigan.

Manchester Mill Run

On Saturday, July 10, 1982, the second annual Manchester Mill Run will be held. This race is being sponsored by Bakers Dozen, Charamar Farm, Drs. Johnson, Okey and Lehr, Great Lakes Federal Savings, and Krauss Pharmacy.

The race will start and end at Manchester High School. Check in time is 8:00 a.m., both races will begin at 8:30 a.m. There will be a 7 mile race and a 2 mile fun run. Trophies will be awarded for first place in each division of the 7 mile race. Medals will be awarded for 2nd and 3rd place in each division of the 7 mile race. Specific information and applications are available at the above sponsor's place of business, as well as Jim Brink 1-517-456-7807 or Tom Fitzgerald 428-7417.

Annual School Election June 14th School Board Seeks Bond Proposal

On June 14 the Manchester Community Schools will hold their Annual School Election. At that time the voters will elect on new School Board Members, a Bonding Proposition and a request for a millage increase for Special Education for the Washtenaw Intermediate School District.

There will be elected two members to the Board of Education for full terms of four years and one member for an unexpired term of one year. The candidates are: Four year terms; Earl Horning and Kent P. Talcott, One year term; Thomas G. Golding and JoAnn King Okey.

The Bonding Proposition: Shall Manchester Community Schools, Washtenaw and Jackson Counties.

Optimist Tri-Star Baseball Contest

The Manchester Optimist will be holding their Annual Tri-Star Baseball Contest this Saturday, June 12, 1982 at the High School Baseball Field behind Klager School at 2:00 p.m. Contestants ages 8 thru 13 will compete only against others of the same age. Entry blanks are in the schools at the office or there will be blanks at the field on Saturday. Parents must sign for contestant to compete.

We welcome parents to come out and watch the contestants participate.

Board Of Education Agenda

The Manchester Community Schools Board of Education will meet for their regular meeting on June 21, 1982 at 8:00 p.m. at the high school. The agenda will be:

- I Roll Call
- II Communications
- III Visitor Input
- IV Minutes of Previous Meeting
- (A) Regular meeting May 17, 1982
- V Financial Report
- VI Bills Payable
- VII Discussion Items
- VIII Old Business
- (A) 1982-83 Budget
- IX New Business:
 - (A) Nellie Ackerson Boiler Bids
 - (B) Personnel Items
 - (C) Board Member Commendation
 - (D) Organizational Meeting Date

Michigan, borrow the sum of not to exceed One Million Four Hundred Thousand Dollars (\$1,400,000) and issue its general obligation unlimited tax bonds therefor, for the purpose of erecting, furnishing and equipping an addition or additions to, remodeling and partially re-equipping existing school facilities and developing and improving sites?

Please take further notice that the bonds of the school district, if approved by a majority vote of the electors at this election, will be general obligation unlimited tax bonds payable from general ad valorem taxes, said bonds to mature over a period of approximately twenty (20) years.

Washtenaw Intermediate School District Special Education Millage Increase Question:

Shall the one and one-half (1 1/2) mill limitation on the annual property tax previously approved by the electors of the Washtenaw Intermediate School District, State of Michigan, for the education of handicapped persons be increased by one-half (1/2) mill?

REMEMBER TO VOTE JUNE 14

Substance Abuse Meeting Planned

Approximately 80 persons attended the second substance abuse meeting which consisted of presentations on drug paraphernalia by Detroit Police Sergeant Edward Gulowski and Patrolmen Robert Feld and Charles Albright. Ron Harrison and Dr. David Logan spoke on signs and symptoms of drug abuse. Positive comments were received from the participants.

The third Substance Abuse Meeting for Adults will be Wednesday, June 23 at 8:00 P.M. at the Middle School. Young people who have been involved with drugs will speak about their experiences. Several of the young people are from Dawn Farm, which is a drug rehabilitation center near Ypsilanti. A panel discussion will take place with Ron Harrison as moderator.

This will be the last scheduled meeting until September. For further information contact Brian Schuck at 428-7442 or Bill Zsenyuk at 428-7877.

Outstanding Citizen of the Month



Lisa Wolf, the twelfth grade daughter of Mr. and Mrs. Norris Lee Crismore of 11551 Pleasant Shore Drive, and Kenneth Wolf of Chicago, is the Optimist Club Outstanding Citizen for May. She plans to begin study toward a degree in business administration at Eastern Michigan University in the fall. Lisa has served as secretary of her class, been a Student Council representative for two years, a Fair Queen Candidate, and was Homecoming Queen in the fall of 1980. She was an active member of the '82 Trip Club, serving both on the Student Committee and as Treasurer of the Club. She is a member of the Emanuel United Church of Christ's youth group.

Lisa's hobbies include swimming, water and snow skiing, canoeing and sailing, and bike riding. She also enjoys making latch-hook rugs.

Give your earnings a lift.

If your bank investments aren't getting off the ground, stop in at Ann Arbor Bank.

We can help you set up an investment plan that keeps your money on solid ground, while your earnings take off.

Compare our rates with those of other banks. Then give yourself—and your earnings—a lift. And see your Ann Arbor Banker today.

ANN ARBOR BANK AND TRUST

A FIRST AMERICAN BANK

30-48 Month Certificates
Current Rate 13.05%
Effective June 1 thru June 7
\$500 minimum deposit
Substantial interest penalty for early withdrawal

New 91-Day Certificate
Current Rate 11.270%
June 1 thru June 7
\$7,500 minimum deposit
Substantial interest penalty for early withdrawal

26-Week Money Market Certificate
Current Rate 12.172%
June 1 thru June 7
\$10,000 minimum deposit
Federal regulations prohibit compounding of interest and require substantial interest penalty for early withdrawal.

I.R.A.
Current Fixed Rate 13.30%
Effective June 1 thru June 7
30-Month minimum term
\$500 minimum deposit

Current Variable Rate 12.172%
Effective June 1 thru June 30
18-Month minimum term
\$100 minimum deposit
Substantial interest penalty for early withdrawal

Retail Repurchase Agreements
Current Rate 11.75%
63-89 day terms
June 1 thru June 7
\$5,000 minimum - \$99,999 maximum
21-62 day terms also available.
Ask us for current rates.
A repurchase agreement is not a deposit and is not insured by FDIC.

Jim Hartmann 313-475-9301	Dan Wampler 517-456-4305
Hartmann Carpentry	
Licensed and Insured Residential Builder With 14 Years Experience	
Pole Barns Roofing Decks Rough Ins	Additions Siding Remodeling Finish Work

AUCTIONEERS

JERRY JACOB 313-428-7975	CLIFF TRACY 313-428-7263
Manchester, Michigan	
MEMBER OF MICHIGAN STATE AUCTIONEERS ASSOCIATION	

Kirk Excavating

SAND—GRAVEL—FILL DIRT
BASEMENTS—DRIVEWAYS

DAVE KIRK

14180 Schleweis Rd Manchester
Phone 428-7938

MANCHESTER INSURANCE AGENCY

122 WEST MAIN STREET
MANCHESTER, MICHIGAN
Phone 428-8215

Home-Farm & General Insurance

MERRIMAN INSULATION

FREE ESTIMATE

BLOWN IN CELLULOSE
Professionally Installed

George Merriman
Phone 313-429-7962

372 Hartman Lane Saline, Mich

The Manchester Enterprise
150 EAST MAIN STREET
Manchester, Michigan 48158
USPS 327-460

Phone 428-8173

The Manchester Enterprise was established in 1887 and is published each Thursday at 150 East Main Street, Manchester, Michigan with second class postage paid at Manchester.



Edward E. Steele, Publisher

Lenore Steele, Editor

she will seek a third term.

Under the redistricting plan adopted Friday, Ballantine is now in the 50th District which is confined exclusively to Jackson County. It includes the city of Jackson and the townships of Cornord, Parma, Pulasaki, Spring Arbor, Springport and Summit.

Her present district, the 23rd, includes parts of three counties, reaching east to Ann Arbor and including the Stockbridge area in Ingham County.

"I'm enthused about the new district plan," she said. "It presents an opportunity to represent a more compact and homogeneous area, and I expect to be in closer touch with the people of the district."

"These are tough times and there are many hard choices to be made. Priorities must be set so we can adopt a balanced budget for next year," she said.

"It is obvious with our limited resources that we can't do everything we're doing," she said. "Some programs are going to have to be cut entirely. Merely cutting back is no longer an adequate answer."

Ballantine said she supports programs that help people help themselves and this will continue to be a goal.

She said she will also continue to search for ways to make government more responsive to the needs of the people and to cut bureaucratic red tape.

Resching the people has been one of Representative Ballantine's major goals in her political career. She has followed the "Town Hall" meeting approach for communicating with constituents, updating them on Lansing issues and listening to their concerns and problems.

Tuesday Singles

For an enjoyable evening with happy people, join the Tuesday Night Singles at the American Legion Hall, South Main Street, Ann Arbor, on June 15th. Dance from 8:30-11:30 P.M. to the music of Frank Venice Band. Come and meet some new friends. Ballroom dancing. Dance lessons 7:30 to 8:30 p.m. before the regular dance. For more information call 482-5478.

Mary Keith Ballantine Seeks Third Term

State Representative Mary Keith Ballantine (R-Jackson) has announced that

Manchester Township Board Meeting

May 26, 1982

The first hearing for the Proposed Use of Federal Revenue Sharing Funds for 1982-83 was held at the Township Hall on May 26, 1982 at 7:30 p.m. All Board members present. Also present was Ray Gonyer, representative for the Sr. Citizens of Manchester. Anticipated revenues for 1982-83 are \$11946.

Mr. Gonyer requested at least \$1000 for the Sr. Citizens this year. He informed the Bd. of many of the projects of the Sr. group.

Moved by Burch and supported by Widmayer to adjourn meeting of Federal Revenue Sharing hearing at 8:50 p.m.

Wilma E. Lentz, Clerk

Posted 5-19-82

All members notified by mail.

Special meeting of Manchester Township Bd. began at 8:50 p.m. immediately following F.R.S. Hearing. All Bd. members were present.

1. Budget workshop.
2. Final determinations for purchases for fire hall and township offices.

Moved by Widmayer and supported by Macomber to purchase the following from the Fire Station Fund:

1. K & W Equipment - weed whip (brush cutter) (to also be used by the cemetery custodian) \$309.00.

2. Jackson Office Supply - legal file cabinet with hanging frames. \$201.64.

3. Manchester Electric - alarm system: \$759.00.

4. Michigan Bell - hook-up fees of alarm system \$115.51.

5. Superior Asphalt Curb, Inc. - installation of curbing. \$1596.00.

6. A & L Buskirk Corp. - partial overhead insulation \$458.06.

Total \$3,979.23 and to also have A.L. Buskirk complete overhead insulation for an additional \$996.42 to come from Special Housing Fund.

Roll call vote: Macomber, yea; Widmayer, yea; Fielder, yea; Burch, yea; Lentz, yea. Nays, none. Carried.

Upcoming budget was discussed.

Moved by Burch and supported by Widmayer to be adjourned at 8:28 p.m. All yea, carried.

Wilma E. Lentz, Clerk

Posted 5-19-82

All members notified by mail.

Washtenaw County Meet Of Champs

This meet was sponsored by the Ann Arbor News and was held June 1, at Saline High School. Kari Agin was our only girls representative. Kari was voted by coaches as the "Girls Outstanding Performer" for the meet. Kari won both hurdle events and set meet records in each, and finished 2nd in the 200 m dash. Her time of 14.9 in the 100 m hurdles was a meet record and the time 28.5 in the 200 m hurdles was a meet and school record.

VIRGINIA JOHNSON, M.D. WILL BE ABSENT FROM HER PRACTICE FOR THE MONTHS OF JUNE, JULY AND AUGUST. DR. OKEY WILL CONTINUE TO SEE PATIENTS AT THE OFFICE IN MANCHESTER AND CLINTON AND WILL BE ASSISTED BY ONE ADDITIONAL PHYSICIAN EACH MONTH.

FOR FUTHER DETAILS, PLEASE CONTACT THE OFFICE AT 428-8381

**THIS SUMMER
WHY SETTLE FOR RE-RUNS
WHEN YOU CAN HAVE
FIRST RUNS**

**FREE INSTALLATION AVAILABLE
FOR LIMITED TIME ONLY
CALL 428-8246**

Cable Service Limited To Manchester Village Limits Only



Clear Cablevision
A Service of Capital Cities Cable
811 West Michigan Avenue Saline, Michigan 48176
P.O. Box 236 428-8246

Board Of Education Minutes

May 17, 1982

The meeting was called to order by President William Broucek at 8:05 P.M.

Members Present: DuFresne, Horning, Talcott, Broucek, and Bunney.

Members Absent: Little and Mann. (Both arrived at 8:10 P.M.)

Communications: Dr. Thompson indicated that a letter had been received from the Michigan Association of School Boards inviting the Board to nominate a member for the primary election to the MASH Executive Board.

Minutes of Previous Meetings: It was moved by Bunney to approve the minutes of the regular meeting of April 19, 1982 as presented. Supported by DuFresne. All yea.

It was moved by Horning to approve the minutes of the special meeting of April 26, 1982 as presented. Supported by Bunney. All yea.

Financial Report: It was moved by Talcott to approve the financial report showing a balance of \$476,835.02 as of April 30, 1982. Supported by DuFresne. All yea.

Bills Payable: It was moved by DuFresne to approve bills payable in the amount of \$1,290,702.34. Supported by Horning. All yea.

Discussion Items: (A) Cascades Athletic Conference: William Saletta, Athletic Director presented a proposal to the Board recommending a transfer from the Lenawee County Athletic Association to the Cascades Athletic Conference in Jackson County. He noted that the proposal had the support of all coaches and had been reviewed with the Athletic Boosters. It was also noted that a

reduction in transportation costs of up to one-third could be realized with this transfer. After discussion by the Board it could be realized with this transfer. After discussion by the Board it was moved by Talcott to approve the superintendent's recommendation to transfer the school district from the Lenawee County Athletic Association to the Cascades Athletic Conference. Supported by Little. All yea.

(B) Gifted and Talented Program Presentation: Mrs. Nonudus Buss, Gifted and Talented Coordinator, and Mr. Brian Schick, Middle School Principal, presented the progress of the gifted and talented program to date. It was noted that the program had essentially only been in operation for the second semester of the current school year and was serving approximately 35 students. Several Board members indicated their approval of the program and expressed a desire to see the program continued through the next school year.

(C) Textbook and Curriculum Recommendations: The work of the school district curriculum council was presented by its chairperson, Mr. James Kappler, High School Principal. Mr. Kappler noted that the council which is made up of parent, teacher, administrative, and student representatives had been at work throughout the entire school year on this project. This is the second year of work by the council. Two more years of work will be required to complete the entire task of reviewing the total K-12 curriculum.

Proposed textbooks were placed on display for Board member review before being recommended. After discussion and review it was moved by DuFresne to approve the textbook recommendations as presented. With the notation that the full list of textbooks is to appear in the board minutes. Supported by Horning. All yea. These textbooks are as follows:

SPELLING: Third-Eighth Grade, Scott, Foreman and Company, 1981 Edition.
LANGUAGE ARTS: Third-Fourth Grade, MacMillan English, 1982 Edition, Fifth-Eighth Grade, The Economy Company Language Program 1981 Edition.

ADVANCED COMPOSITION: Messages and Meanings, Level 5, Harper & Row, 1976 Edition.

COLLEGE ENGLISH: The Ox-Bow Incident, A Farewell to Arms, The Crucible, Native Son, Catcher in the Rye, The Stranger, Oedipus Rex, 1984, Dandelion Wine, Erave New World, Go Tell It On The Mountain.

ENGLISH LITERATURE: Adventures in English Literature (Heritage Edition) Harcourt, Brace and Jovanovich 1980 Edition. A Tale of Two Cities, Hounds of the Baskervilles, Lord of the Flies, Pygmalion.

ENGLISH 9, Adventures in Reading, Harcourt, Brace, Jovanovich, 1980 Edition, Basic Language - Messages and Meanings, Level III Harper & Row, 1976 Edition, Scholastic Composition, Scholastic Books, 1980 Edition.

ENGLISH 10: Adventures in American Literature, Harcourt, Brace, 1980 Edition, Basic Language - Messages & Meanings, Harper & Row, 1976 Edition.

SHAKESPEARE: MacBeth, Hamlet, Othello, Midsummer Night's Dream, The Tempest, Henry IV, Part 1, Richard II, Measure for Measure.

OCCUPATIONAL ENGLISH: Michigan Survival, Holt Reinhart, 1979 Edition Basic Languages, Messages and Meanings, Harper & Row, 1976.

SCIENCE: First-Fourth Grade, Ginn and Company, 1980 Edition. Fifth Grade, Understanding Your Environment, Silver Burdett, 1981 Edition. Sixth Grade: Science Through Discover, Ginn and Company 1980 Edition. Seventh-Eighth Grade: Exploring Earth and Space, Laidlaw Brothers, 1980 Edition.

ADVANCED BIOLOGY: Anatomy and Physiology, Prentice-Hall, Inc. 1976.
BIOLOGY I: Biology, Macmillan Publishing, 1981 Edition.

PHYSICS: Modern Physics, Holt, Reinhart and Winston, 1979 Edition.
HEALTH I: Health by Silver Burdett, 1981 Edition.

HEALTH II: Standard First Aid and Personal Safety, The American Red Cross, 1979 Edition. Coping With Death and Dying, Scott-Foresman, 1980 Edition.

BASIC COMPUTER PROGRAMMING: Continued on page 7

Pet OWNER'S Manual, McGraw-Hill, 1980 Edition. Step by Step Lessons 1-10 by Klitzner and Victor, Program Design, 1978, Sixty Challenging Problems with Basic Solutions, Hayden Publishing.

New Business: Teacher of the Year: Dr. Thompson discussed the procedure for selection of Teacher Of The Year for the Manchester Community Schools. This process had been nomination by building principals with final selection by the superintendent for recommendation to the Board. Dr. Thompson recommended that a recognition of the teacher of the year be accompanied by a \$100.00 award to be used for curriculum materials. He invited Mr. Brian Schick to read his nomination, of which Mr. William Symons is teacher of the year. It was moved by DuFresne to recognize Mr. William Symons as Teacher Of The Year for the Manchester Community Schools and to award him \$100.00 to be used for his program.

Supported by Talcott. All Ayes. Following the Board action Mr. Symons was presented with a plaque by Mr. William Broucek recognizing his achievement.

H.S. Student Council Constitution: Dr. Thompson advised the Board that the High School Student Council had been working the entire year developing a constitution for their organization and wished to present it to the Board for approval. He recommended that it be approved. Mr. Scott Hunt, President of the Student Council was present to respond to Board questions. Following discussion it was moved by Talcott to approve the High School Student Council Constitution as presented. Supported by Horning. All yea.

Personnel Items: Upon the recommendation of the Superintendent it was moved by DuFresne to approve a teaching contract for Ms. Joy Oosterhouse for the remainder of the 1981-82 school year. Supported by Mann. All yea.

Old Business: Dr. Thompson advised the Board that it would be necessary to add three items to the agenda.

It was moved by DuFresne to add the following items to the Board Agenda. 1. Bus Bids. 2. 1981-82 Budget Amendments. 3. Authorization for Capital Improvements. Supported by Little. All yea.

Bus Bids: After discussion it was moved by Little to award the bid to the Tecumseh Equipment Company for 2 school bus

CLINTON THEATRE
Friday & Saturday 7:30 and 9:30
Sunday 7:30
All Seats \$2.00

DEATHTRAP
"A stylish, sneaky, cat-and-mouse movie!"
-Janet Maclin, THE NEW YORK TIMES
PG

FILLYAW'S MARATHON SERVICE
327 West Main Street Phone 428-8576 Manchester, Michigan
Open Monday-Saturday 7:30-7 P.M.

STOP IN AND PICK-UP A MARATHON CREDIT CARD APPLICATION

MARATHON OFFERS UP TO 6 MONTHS TO PAY WITHOUT ANY FINANCE CHARGE
YOU CAN PURCHASE BATTERIES, TIRES, SHOCKS, PARTS OR HAVE YOUR CAR TUNED-UP FOR THE SUMMER MONTHS
BRAKE JOBS, FRONT END ALIGNMENT OR WHEEL BALANCING

MARATHON

FULL LINE OF MARATHON PRODUCTS

Gas-Oil-Diesel Fuel

STOP IN AND SEE ME FOR YOUR BEST TIRE DEAL

24 Hour Wrecker Service

Sur. The Diagnostic Message

Have Your Engine Tuned Up By A Computer

DISC BRAKES Limited Time Only

*REPLACE BRAKE PADS
*NEW GREASE SEALS
*RESURFACE ROTORS
*COMPLETE BRAKE INSPECTION
*REPACK WHEEL BEARINGS
*ROAD TEST CAR

Most U.S. Cars Front Brakes Only **\$49.95**

Selling KINSHIP FARM MILK

AIR-CONDITION TUNE-UP \$15.00 Labor Plus Parts

HEAVY DUTY SHOCKS SAVE 50% Price Does Not Include Installation **\$9.95** Each

News Of Good Things Growing

By Margaret G. McCall
June is Dairy month, and Michigan's 395,000 cows on 9,500 dairy farms are all ready to help you celebrate. Our state ranks sixth in milk production nationally, according to officials of the Michigan Department of Agriculture, marketing almost five billion pounds of milk valued at \$658 million.

So you can see there's plenty of nourishing milk, cream, cottage cheese and ice cream available for all nine million residents of the state where good things are growing. Incidentally, milk is the largest single source of farm income in Michigan, accounting for about one-fourth of all farm cash receipts. All fluid milk for bottling in Michigan must meet strict Grade A standards, and ours was the first state in the nation to adopt those federal standards. Dairy inspectors from MDA routinely check milk supplies from cow to consumer to insure sanitation and wholesomeness.

The versatility of dairy products makes them suitable for people of all ages and most conditions. If you're counting calories, count on cottage cheese. If not, dig into a fantastic assortment of ice cream delights.

For a refreshing summer cooler, prepare your favorite eggnog with low-fat milk instead of cream. Serve a bowl of chilled sour cream alongside a bowl of confectioners' sugar and invite guests to dunk fresh strawberries. Surround individual servings of cottage cheese with a colorful assortment of fresh crunchy vegetables. Another time, use a variety of fresh fruits with your cottage cheese.

Use sour cream, yogurt, cream and cottage cheeses for dips and salad dressings, as a topping for fresh steamed vegetables, in casseroles and desserts.

Old Fashioned Barn Dance

Come One! Come All! to the Annual Old Fashioned Barn Dance on June 19th from 9

p.m. to 2 a.m. at the Charles Trinkle Farm, located at 9631 Trinkle Road, Dexter. Come in old fashioned or regular dress and enjoy round and square dancing to the music of the Luke Schaible Band. Food and set-ups will be sold on the grounds. All proceeds will go to the Special Olympics. Tickets may be purchased at the Bethel Church Road, Manchester, Michigan. To all of you who have attended the dance in the past, we certainly hope to see you again this year—and to those who have never attended—please come and enjoy all the fun for a very worthwhile cause.

Boysville Festival

This year's Boysville Festival '82', to be held on June 26-27, will, for the first time, feature a large Flea Market. The spacious grounds of the Boysville Campus, will make a perfect setting for this event.

Local residents of Lenawee County, and surrounding areas, will be the "Flea Marketeers." The bargains will be plentiful, and the selection of reusable and interesting items will be great.

There are still plenty of spaces available at this time, to anyone wishing to participate. A reasonable fee will be charged for space rental, with proceeds going directly to Boysville. You may call the Boysville office any time during business hours for full information. (517) 423-7451. Boysville is located south of Clinton Village on Mason Road.

Fathers Day At North Sharon

On Sunday, June 20, North Sharon Bible Church, 17999 Washburne, Grass Lake, will be hosting a special Fathers Day Event. Sunday School will begin at 10:00 a.m. with Worship Service following at 11:00 a.m. This special event will be FATHERS DAY - 1982, to honor all our dads! We will have a gift for every dad who is present plus special gifts for the dad who is the oldest, came the farthest, is the newest, has most children in church, has most grandchildren in church. Plus a gift for every boy and girl who bring Dad

and also a MY POP IS TOPS CONTEST - an opportunity for boys and girls to tell why they think their pop is the tops.

Local Serviceman Graduates

Airman Mark E. Neigebauer, son of Charles and Shirley Neigebauer of 19621 Bethel Church Road, Manchester, Michigan, has graduated from the U.S. Air Force course for aeromedical specialists at Brooks Air Force Base, Texas.

Graduates of the course are trained in aerospace physiology, emergency treatment procedures and medicine necessary for the care of airborne personnel. They also earn credits toward an associate degree in applied science through the Community College of the Air Force.

Neigebauer will now serve at K.I. Sawyer Air Force Base, Michigan. He is a 1981 graduate of Manchester High School.

Saturday C.P.R. Class Scheduled

A special one-day C.P.R. class has been scheduled at Saline Community Hospital for Saturday, June 19, 1982. The class will be held from 8 a.m. to 4:30 p.m. at the Hospital.

C.P.R. stands for Cardio-Pulmonary Resuscitation which is an emergency first aid procedure which provides artificial breathing and circulation until professional medical attention may be obtained. Classes are taught by Red Cross certified instructors. The class fee is \$2.00 with the purchase of a manual optional.

Class size is limited and registration is required. To sign up for the class or to obtain further information regarding other classes, please contact the Hospital at 429-5435, ext. 331.

You Gotta Have "Hearts"

Jacki Sorenson's Aerobic Dancing will offer 3 to 6 week courses throughout the summer, beginning July 6, 1982 in Manchester. Jacki's summer theme is "Hearts".

"Aerobic Dancing is a terrific way to shape up your heart as well as to trim your figure," says Jacki Sorenson, the Originator of Aerobic Dancing. It is a complete physical fitness program that combines the fun of dancing with benefits of exercise.

Each 45-60 minute class features a series of Flexibility, Situp and Warmup routines, 6-10 minute Aerobic Dances, and a Cool-down dance to slow the activity level and heart rate.

Classes taught by certified instructors are offered in one location in Manchester. For more information, call 761-6377.

Tuna Recalled

A canned tuna recall - of 1.5 million cases packaged at Bumble Bee Seafoods' Honolulu plant - was announced Saturday in Washington by the Food and Drug Administration. Small holes were found in the cans-holes might permit bacteria to enter. Although no illnesses have been reported, bacteria entering the cans could cause botulism, Greene said. The recalled cans under the Bumble Bee label come in seven sizes: 3 3/4 ounces, 3 1/2 ounces, 6 ounces, 6 1/2 ounces, 7 ounces, 12 1/2 ounces and 13 ounces; under the Mid-Pacific label in a 6-ounce size; under the Coral label in 3 1/2-ounce and 12 1/2-ounce sizes and under the Cloverleaf label in a 6-ounce size. The lids cans carry the numbers 21 and 22 on the top of two lines. The 21 or 22 is followed by two or three other numbers on the same line.

Our Individual Retirement Account Offers a little more...

FB Annuity Company can guarantee you a generous monthly income you can't outlive, continuous tax savings, competitive interest rates, and the personal, dependable service of your local Farm Bureau Insurance agent.

I'm working to make your future a little more predictable.



LARRY BECKTEL
135 EAST Main St. Suite 204
Manchester, Michigan
Phone 428-7331

EVERYDAY LOW POP PRICES

We Have Cubed Ice 8 lb. Bag \$1.00

DR. PEPPER 99c 6 PACK PLUS DEPOSIT	FAYGO REGULAR & DIET FLAVORS \$1.89 1/2 LITERS - 8 PACK \$1.19 2 LITERS
--	--

SUGAR FREE DR. PEPPER \$1.89 1/2 LITERS - 8 PACK PLUS DEPOSIT	\$1.89 CANS 8 PACK PLUS DEPOSIT
---	------------------------------------

VERNORS, ONE CAL VERNORS & W ROOT BEER & SUGAR FREE \$2.09 1/2 LITER-8PACK	SQUIRT, DIET SQUIRT \$1.89 8 PACK \$1.29 2 LITERS \$1.89 CANS 6 pack PLUS DEPOSIT
--	---

PEPSI, DIET PEPSI MOUNTAIN DEW, PEPSI LIGHT \$1.89 1/2 LITERS - 8 PACK \$1.19 2 LITERS	COKE, SPRITE, FRESCA, TAB MELLO YELLO, SUGAR FREE SPRITE \$1.89 1/2 LITERS - 8 PACK \$1.19 2 LITERS PLUS DEPOSIT
---	---

\$2.19 CANS 8 PACK
\$3.29 CANS 12 PACK
PLUS DEPOSIT

WE HAVE HOT COFFEE, SANDWICHES, MILK, ICE CREAM
GROCERY ITEMS, CANDY, KITES, SNACKS, ETC.
Jobber: PH. 428-8366

G.E. Wacker Inc.
Products

GASOLINE • FUEL OIL • MOTOR OIL • DIESEL FUEL • GREASE
9050 CHELSEA - MANCHESTER RD. MANCHESTER, MICHIGAN 48156

OPEN MONDAY - FRIDAY 7 a.m. - 9 p.m.
SATURDAY 8 a.m. - 9 p.m. SUNDAY 9 a.m. - 9 p.m.

PLEASE VOTE "YES" June 14th

THE UNDERSIGNED RESIDENTS OF THE MANCHESTER SCHOOL DISTRICT SUPPORT THE SCHOOL BONDING PROPOSAL:

- | | |
|----------------------|---------------------|
| DICK KRZYZANIAK | KAREN VEDDER |
| RICHARD A. KUNTZ | COLLEEN BURCH |
| BETTY BUDNIK | RONOLD O. HAWK |
| DOLORES BUNNEY | JACK CREECH |
| EILEEN A. BALL | JOE MOORE |
| CYNTHIA A. SEALES | JAMES W. DUNCAN |
| CLARENCE FIELDER | ROSEANNE M. HAWK |
| JAMES COX | JAN BROUCEK |
| DAN J. BOUTELL | MARLENE GOLDING |
| ELAINE CREECH | ROBERT L. HAMILTON |
| ALICE A. LANCE | GLENN LEHR, D.D.S. |
| DIANA MACFARLANE | EDWARD L. BARNARD |
| LEON G. BALL | RUTH KUEBLER |
| RICHARD FIELDER | SHARON DROUARE |
| BRIAN BROUCEK | CAROLYN SAUTER |
| JOE KEMETER | ROGER L. LANCE |
| GERALD R. MANN | KRISTIE BROUCEK |
| TOM GOLDING | DIANE HORNING |
| MARIA LEHR | BETTY J. MANN |
| ROBERT B. MACFARLANE | NANCY KAY BIHLMEYER |
| JANICE LITTLE | ROBERT VEDDER |
| BONNIE K. BARNARD | RONALD S. HAYDEN |
| VICTORIA CURLEY | SHIRLEY LOWERY |
| LYNN HEATH | GERRIE EGGLESTON |

Paid for by PACE
11433 Sheridan Rd., Manchester

MANCHESTER AREA CHURCH DIRECTORY

- EMANUEL UNITED CHURCH OF CHRIST**
Rev. Robert MacFarlane, Pastor
Sunday School 9 a.m.
Worship 10:30 a.m.
- SHARON UNITED METHODIST**
Rev. Ronald L. Iris, Pastor
Corner M52 and Pleasant Lake Rd.
Sunday School 10 a.m. Worship 11 a.m.
- ST. THOMAS LUTHERAN**
Rev. Paul Puffe, Pastor
Elisworth Road
9:30 a.m. Sunday School and Bible Class
10:45 a.m. Worship Service
- ST. JOHN'S UNITED CHURCH OF CHRIST**
Rev. Gary Kwiatek, Pastor
Rogers Corners, Waters and Fletcher Rds.
Worship and Sunday School 10:30 a.m.
- BETHEL UNITED CHURCH OF CHRIST**
Rev. Roman A. Reinick, Pastor
Schneider and Bethel Church Roads
Church Service 10:00 a.m.
Sunday School 11:00 a.m.
- MANCHESTER UNITED METHODIST**
Rev. Thomas E. Hart, Pastor
Church School 9:15 a.m.
Worship 10:30 a.m.
Coffee Hour 11:30 a.m.
- ST. MARY'S CATHOLIC CHURCH**
Father Raymond Schlinkert
Monday thru Friday 8:30 a.m., Saturday 5:00 p.m.
Sunday 8:30 a.m. and 10:30 a.m.
- NORTH SHARON COMMUNITY BIBLE**
Sylvan and Washburn Roads
Sunday School 10:00 a.m.
Worship Service 11:00 a.m. (Nursery available)
- FAITH COMMUNITY CHURCH**
Timothy Miles, Pastor
8400 Sharon Hollow Rd. off W. Austin Rd.
Worship Service 10:00 a.m.
Sunday School 11:15 a.m.
Sunday Evening Service 6:00 p.m.
Jr. & Sr. High Young People's Meeting 7:00 p.m.
- OUR SAVIOR LUTHERAN CHURCH**
Rev. Franklin M. Giebel, Pastor
1515 S. Main, Chelsea
Sunday School and Bible Class 9:00 a.m.
Sunday Worship Service 10:30 a.m.
- IRON CREEK COMMUNITY CHURCH**
Rev. Paul Runyon, Pastor
English and Sharon Hollow Roads
Worship Service 10:00 a.m.
Sunday School 11:15 a.m.
Evening Service 7:30 p.m.
Wednesday Prayer Meeting 7:30 p.m.
- ZION LUTHERAN CHURCH**
Rev. John R. Morris, Pastor
3050 S. Fletcher Road
Sunday School 9:00 a.m.
Family Worship 10:15 a.m.
- ST. JOHN'S LUTHERAN CHURCH**
Rev. Dennis A. Falk, Pastor
Austin Road, Bridgewater
Sunday School 9:15 a.m. Worship 10:30 a.m.
- VICTORY BAPTIST**
Dr. Clare Gleason, Pastor
Sunday School 9:45 a.m.
Morning Worship 11:00 a.m.
Adult Doctrine Class, Teen Time and Jr. Astronauts at 5:30 p.m.
Evening Worship 6:30 p.m.
Wednesday Prayer Meeting 7:30 p.m.
- CLINTON ASSEMBLY OF GOD**
Charles Sanders, Pastor
12500 Allen Rd., Clinton (corner of Allen Rd. and Manchester-Canton Rd.)
Sunday School 9:45 a.m.
Morning Worship 11:00 a.m.
Evening Service 6:30 p.m.
- CHURCH OF JESUS CHRIST OF LATTER-DAY SAINTS (MORMONS)**
Thomas E. Schulte, Branch President
Rebekah Hall, M52, Chelsea
Sacrament 9:30 a.m.
Sunday School, Primary 10:50 a.m.
Priesthood Relief Society, Aaronic Priesthood Youth 11:40 a.m.
- ST. BARNABAS EPISCOPAL CHURCH**
Rev. Jerrold C. Beaumont, "Vicar"
Old US 12 1/4 mile west of M52, Chelsea
9:30 a.m. Church School-Children and Adults
10:30 a.m. Worship Service
BANAI FAITH
Study of Bahai scripture and discussion on applying spiritual principles to daily living. Believers of all faiths welcome. 2nd and 4th Sundays every month at the home of Thomas and Nancy Rykwalder, 611 S. Macomb. For more information or directions call 428-9454.

SEABOARD UNITED METHODIST ZION LUTHERAN CHURCH

Monday, June 7, 7:00 p.m., Bible Study.
Tuesday, June 8, 8:00 p.m., Trustee Board
Wednesday, June 9, 8:00 p.m., Council on Ministries.
Thursday, June 10, 8:00 p.m., Young women meet at home of Sharon Voegeding.
Sunday, June 13, 11:00 a.m., Boys & Girls Fellowship.

Saturday, June 12, Senior Citizen Picnic 12:30.
Sunday, June 13, 9 a.m. Sunday School and Adult Inquirer class. 10:15 a.m. Worship with Installation of VBS Staff.
Monday thru Friday, June 14 - 18, Vacation Bible School.
Tuesday, June 15, Joymaker Party.
Wednesday, June 16, Noon Family Picnic.

BETHEL UNITED CHURCH OF CHRIST

Wednesday, June 9, 7:30 p.m., Vacation Bible School teachers planning meeting.
Sunday, June 13, 10:30 a.m., Childrens Day worship service. 12:00 Noon, Childrens Day pot luck picnic dinner. Fun to follow!
Monday, June 14, 6:30 p.m., Senior Youth & Adults off to Worlds Fair.
Wednesday, June 16, 11:30 a.m., Senior Citizens meet.
Thursday, June 17, Evening, Group returns from fair.

EMANUEL UNITED CHURCH OF CHRIST

Wednesday, June 9, 11:30 a.m., Leave for Christian Women's lunch, Webers., 6:30 p.m., Teacher recognition dinner., 8:00 p.m., Alcoholics Anonymous.
Thursday, June 10, 12 Noon, Senior Meal (Last meal until September), 7:00 p.m., Aerobic Dance
Sunday, June 13, 9:30 a.m., Service of Worship., 10:30 a.m. Church Council meeting., 3:00 p.m., Rev. MacFarlane conducts worship at Hillside Terrace, Ann Arbor.
Monday, June 14, 6:30 p.m., Optimists.
Tuesday, June 15, 7:00 p.m., Aerobic Dance.
Wednesday, June 16, 7:30 p.m., Nursery School Board., 8:00 p.m., Alcoholics Anonymous.

300 Club Winner

The 6th winner of The Manchester Fire Fighter Association 300 Club is Bruce Wylis, Brooklyn, Michigan. The winning ticket #074 was drawn by Lavon Hudkins.

Two Named To Adrian Dean's List

Two hundred five Adrian College students were named to the Dean's List for the 1981-82 spring semester. To achieve the honor, a student must maintain a 3.50 grade point average (4.00=A) on the basis of at least 12 credit hours. Of those who earned the distinction are Manchester residents Carl Townsend, a junior, and Lori Voegeding, a freshman.

Fahey Realty
215 East Main St. Phone 428-9298 Manchester, Michigan
OFFICE HOURS 9-5 MONDAY THRU FRIDAY SATURDAY 9-12 NOON

New Listing - Charm and character reflected in this three bedroom home. Large living room, 1st floor study, spacious kitchen on lovely corner lot in the village.

Reduced \$54,900 - 3 bedroom ranch on 10 acres. Walk-out basement adds extra living area. Creek runs through property.

New Listing - The house everyone asks about "older farmhouse, needs work" on 10 acres. Paved road North of Manchester. Two barns, tool shed. \$48,000.

VACANT LAND
Various parcels ranging from 1 to 50 acres. Beautiful rolling land to suit every building need. Call for details.

**M.F. Combine 2 Hds • Pickup
Ford Diesel 6000 • Sprayer**

Farm Auction

"I decided to quit farming therefore will auction the following:"

LOCATION: 18130 Burtless Road, from Clinton, Mich. take US-12 west 2 miles, north on M-52 3 miles, west on Bowns Rd. 2 1/2 miles (end of the road) south on Henzie 1/4 mile, west on Burtless 1 1/4 miles. Watch for signs.

WEDNESDAY JUNE 16 * 4 P.M.

Portable Alcohol Still 6-9 gal. P/hr. plus extra mash vats 9 bu. cap. (NICE make your own fuel!!!); 72 Ford 3/4 T pk-up 4 spd. positraction dual wheel; M-F 410 Combine w/14' grain hd. & 422 Corn Hd. Ford 6000 Diesel 500 hrs since complete o.h. Roll Bar; Duais, Block hir., radio, extra Hyd. Cap; Farmair-H w/Loader Blade & 3 pt. Hitch; Ford 12' wheel Disc; J.D. 145 4-16" trip bttm. plow Semi Mount; Campbell 300 gal. Sprayer 8 Row w/herbicide & nitrogen valve & pump; M-F #3 Hay baler; JD 495 4 4 Row Corn planter ext. seed boxes, dbl. herbicide boxes, dbl. disc opener; IH 17 hole gr. drill w/seedcr; JD-37 trailer mower w/conditioner attach; Case 1 Row Corn picker; 3 pt. Buzz Saw; 36' David Bradley elev. w/3 hp eng & Hyd Lift; Post hole Digger 12" auger; Dual wheel 14' trailer w/5' sides; JD Hay Crimper - 225 Bu. Bradford Gravity Wagon 8 T-Running gear w/fertilizer spreader attach. Float Tires; 2 alum. grain aerators w/elect mtrs; AC 7' Mower-WD; 3 pt-Hitch Log splitter; 35 gal Cen-pe-co diesel super Lube Oil 30W; Hyd Lines & Cylinders; 10 lbs. Lorox - 5 gals Lasso; Dunham 8' Goi Cultipack; JD 4 sec Drag; Co-op 4 bar hay rake; JD Hay Rake (for parts); 6' off-set disc (made w/steel); AC 3-14" Btm plow converted to 3 pt.; 13" x 28" tires; older Hay Wagon; endless 20' belt; Oak Planking 3" x 10" x 12' & assorted L 6 x 6 x 20 treated pole; Sears home milk pasturizer; 50 chick incubator; M-F #15 Manure Spreader; DB 12" hammer mill; Horse Tack including driving harness & medicinal supplies; 1972 175 Honda w/only 442 actual miles!!! 24' swimming pool & access. (no liner).

ANTIQUES: Chair, platform scale; horse sleigh.

HOUSEHOLD: 1/2 Wheel Western Furniture, couch, love seat & chair; electric range dbl. oven; Refrigerator w/top freezer door, ice maker & water cooler in door; Washer & Dryer (avacado).

MANY, MANY MORE ITEMS!!!

Auctioneers Note: Jerry Galley is a good tool & die maker mechanic and has kept his major equipment in good shape. Don't miss this sale!!!

Terms: Cash or check. Not responsible for accidents or merchandise after it is sold.

Owner Jerry Galley
Halchishak Auction Service
313-428-7867

MEMBER OF THE NATIONAL & MICHIGAN AUCTIONEERS ASSOC.

JOHN SEZ:
We Have A Special on The New Do-It-Yourself Muffler of \$23.95 Easy To Install With Mounting Parts Included Quality Construction and Sound Certified

Ross Automotive
230 EAST MAIN STREET MANCHESTER, MICHIGAN
PHONE 428-8320 or 428-8328
MONDAY-FRIDAY 8 am-5 pm SATURDAY 8 am-2:30

Wedding Bells and Beautiful Brides



Wedding
ANNOUNCEMENTS
AND
INVITATIONS...

STOP IN AND SEE OUR FINE SELECTION

THE MANCHESTER ENTERPRISE

Board Of Education Minutes

chassis in the amount of \$31,074. Supported by DuFresne. All yeas.
It was moved by Little to award the bid for 2 school bus bodies to the McFadden Company in the total amount of \$17,828. Supported by DuFresne. All yeas.
1981-82 Budget Amendments: Following discussion it was moved by DuFresne and supported by Little to adopt the following amendment to general appropriation. All yeas.

AMENDMENT TO GENERAL APPROPRIATION
Resolution for Adoption by the Board of Education of Manchester Community Schools

BE IT FURTHER RESOLVED, that the total revenues and unappropriated fund balance estimated to be available for appropriations in the general fund of the Manchester Community Schools for a fiscal year 1981-82 is amended as follows to include unanticipated revenues and expenditures and categorical transfers:

Revenue	
Local	\$2,627,768
Intermediate	0
State	46,224
Federal	53,752
Incoming Transfers and Other	
Transactions	35,150
Total Revenue	\$2,762,894
Fund Balance, July 1, 1981	\$217,866
Less Appropriated Fund Bal.	\$50,341

Fund Balance Available to Appropriate **\$167,555**

BE IT FURTHER RESOLVED, that \$2,833,278 of the total available to appropriate in the general fund is hereby appropriated in the amounts and for the purposes set forth below.

Expenditures:

Instruction:	
Basic Programs	\$1,072,320
Added Needs	85,126
Adult and Continuing	2,180
Unclassified	0
Instruction-Employee Benefits	153,175
Support Services:	
Pupil	161,608
Instructional Staff	44,655
General Administration	112,877
School Administration	126,585
Business	765,882
Central	9,729
Other	0
Support Services-Employee	
Benefits	99,179
Community Services	0
Capital Outlay	46,968
Outgoing Transfers and Other	
Transactions	153,294
Total appropriated	\$2,833,278

This resolution shall take immediate effect. All other provisions of the original general fund appropriation resolution adopted by the board on June 15, 1981 shall remain in effect.

Authorization for Capital Improvement Expenditures. Dr. Thompson advised that it appeared that it may be possible to do

additional capital improvements to the facilities as revenue and expenditure data for the current school year became more specific. He recommended that the Superintendent together with the Treasurer and Board President be authorized to take action as these data became available since it might not be possible to have time for the full bid process within the current fiscal year. It was moved by DuFresne to authorize the Superintendent together with the Treasurer and Board President to approve additional school district capital improvements for roof repair. Supported by Horning. All yeas.

It was moved by Little to adjourn the meeting at 9:50 P.M. Supported by Horning. All yeas.

Respectfully Submitted,
Paul DuFresne, Secretary
Board of Education

Spur Of The Moment, Inc.

The June Spur of the Moment, Inc. show is now history, and was well attended, even though there were many attending graduations. The day was warm and perfect for the show. Our judge this month as last month was Beth Herring, from Belleville, and her ringmaster was Lynn Elliott, also from Belleville. They both did a very good job of judging.

PONY HALTER: sponsored by Eames Animal Clinic, Manchester. 1st Shadow shown by Cindy Johnson. 2nd Satchmo Queen handled by Tara Oesterling. 3rd Minute Man's Sentinel worked by Kristen Houck. 4th Goldie and Lisa Sheats.

PONY PLEASURE: sponsored by Dick and Lorry Alexander, Manchester. 1st Kristen Houck on Minute Man's Sentinel. 2nd Tara Oesterling with Satchmo Queen. 3rd Amy Gillen riding Sam. 4th Robyn Gillen on Misty.

PONY EQUITATION: sponsored by Janet Rayne, Clinton. 1st Minute Man's Sentinel and Kristen Houck. 2nd Satchmo Queen and Tara Oesterling. 3rd Shadow with Cindy Johnson riding. 4th Amy Gillen and Sam.

YOUTH HALTER: sponsored by Wayne Buckner Meat processing, Brooklyn. 1st Tonto shown by Sue Shears. 2nd Miss Ida Monte handled by Kim Oesterling. 3rd Benky shown by Tina Carlson.

YOUTH PLEASURE: sponsored by Lynn Elliott, Belleville. 1st Sue Shears riding Tonto. 2nd Kim Oesterling on Miss Ida Monte. 3rd Kanda Fletcher riding

Lucia Blue. 4th Tina Carlson and Benky.

ADULT HALTER: sponsored by Peggy Friday and Sons, Brooklyn. 1st Leslie Buckner with Phellah. 2nd Jean Davis showing Braun Sugar. 3rd Jeannie Bunn and Viking. 4th Gail Sheats showing Elkins Bindiator.

ADULT PLEASURE: sponsored by Bar G Saddlery, Gault Village, Ypsilanti. 1st Leslie Buckner and Phellah. 2nd Gail Sheats and Elkins Bindiator. 3rd Jean Davis on Braun Sugar. 4th Lewis Wright and Beauty.

ADULT EQUITATION: sponsored by Atlas Feed and Grain, Clinton. 1st Phellah and Leslie Buckner. 2nd Braun Sugar and Jean Davis. 3rd Elkins Bindiator and Gail Sheats. 4th Viking, and Joannia Bunn.

SPECIAL CLASS - BARBACK EQUITATION: sponsored by Jean and Bernard Davis, of Shifty Acres, Manchester. 1st Leslie Buckner and Phellah. 2nd Sue Shears and Tonto. 3rd Kristen Houck and Minute Man's Sentinel. 4th Julie Agar and Bar. Special Class in the July 11 show will be Costume Class.

WALK TROT Class is for novice riders up to 14 years of age. 1st Kevin Hades riding Twinkles. 2nd Kristen Samsel in her first show riding Braun Sugar owned by Jean Davis.

The Speed Events are five different events and the high point at the end of the show is given to the winner of the most points.

PONY SPEED: sponsored by Kosmyna Chiropractic Life Center, Clinton. High point trophy went to Sam, ridden by Amy Gillen. 19 points.

YOUTH SPEED: sponsored by Annie White and Shirley Guenther. High point trophy won by Bar and Julie Agar.

ADULT SPEED: sponsored by David Little, of The Clothes Line, Manchester. High Point trophy won by Phellah, and Leslie Buckner 14 points.

Special Meeting

The Village of Manchester will hold a Special Council Meeting, Tuesday June 14, 1982 at 7:00 P.M. in the Village Council Chamber, 120 South Clinton Street, Manchester, Michigan.

Manchester Travel

154 E. Main, Manchester, MI

Whitewater Rafting

Fly Round-Trip To Denver
for \$255.00

Rafting Trips Range From
From \$25.00-\$175.00
1/2 Day to 3 Days

Contact us for information on numerous other rafting,
horsepacking, backpacking, mountaineering and other
adventure experiences!

Phone 428-8395
Monday-Friday 9-5 Saturday 10-1

Die Bauernstube

SERVING GERMAN-AMERICAN CUISINE
IN A MOST AUTHENTIC ATMOSPHERE

223 EAST MAIN ST. MANCHESTER, MICH.
PHONE 313-428-8698

NOON WEDNESDAYS SALAD BAR \$2.95	Bar-B-Que Spare Ribs ALL DAY THURSDAYS Lunch \$3.30 Dinner \$5.95	Friday Night FISH FRY ALL YOU CAN EAT \$4.95
--	---	--

BOTTOM OF THE HILL
Happy Hour Every Day-3:30-5

GO FOR THE CASE DIFFERENCE.

You'll be glad you did.

Case Quality available only at Quality Case Dealers.

K & W EQUIPMENT INC.
11100 Chelsea-Manchester Rd. Manchester, Mich.
Phone 313-428-7666

This man will make your banking better.



Meet BJ[®] the Wonderbanker.
You'll wonder how you ever banked without him.



How will this man make your banking better? By introducing you to Manchester's first—and only—24-hour banking service. You see, he's the "brains" behind the service. And you'll find him at our downtown Manchester NBJ office.

If you're already an NBJ customer, BJ thinks you'll like banking anytime you want. And if you're not an NBJ customer, he thinks his 24-hour banking service (and other goodies you'll read about below) gives you more reason than ever to bank at NBJ!

Better banking 24-hours a day.

No more hurrying off to the bank before the office or drive-in closes. Use BJ the Wonderbanker to do 90% of your banking, anytime. Make deposits to or withdrawals from your checking or savings accounts. Over 39 different transactions in all. And you can use BJ at nine other Wonderbanks in the greater Jackson area.

See how BJ makes your banking better—and take home a FREE GIFT!

Take a free demonstration of BJ the Wonderbanker anytime during regular office hours—Mondays through Thursdays, 9-4; Fridays, 9-5; Saturdays, 9-noon. See how he'll make your banking better. And take home a free gift! If you're one of the first 300 people to meet BJ, you'll get a ticket to Manchester's Famous Chicken Broil. If you miss out on the tickets, you'll get a free BJ the Wonderbanker frisbee or t-shirt while supplies last!

Make your banking better, and we'll add \$5 to your account.

Just apply for a PIN, and we'll add \$5 to your NBJ account. "What's a PIN?" you ask? PIN stands for Personal Identification Number. And used along with your NBJ WonderCard, NBJ VISA/Credit Card, NBJ VISA/Debit Card or MasterCard[®], it lets you use BJ the Wonderbanker. It tells BJ you're the owner of the card, and it prevents others from using your card if it's ever lost or stolen. You have to have a PIN to use BJ, and we'll add \$5 to your account when you apply for it!

Better checking without writing checks.

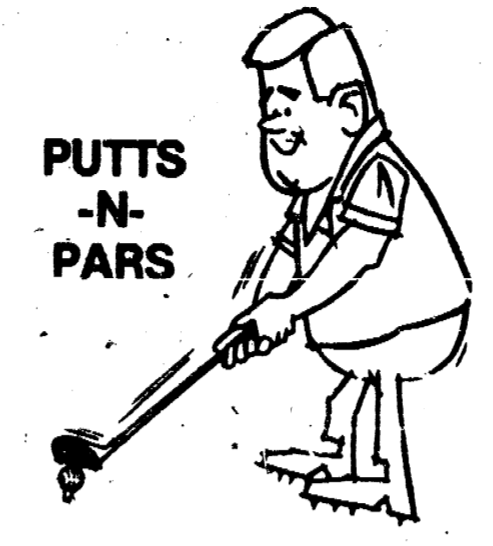
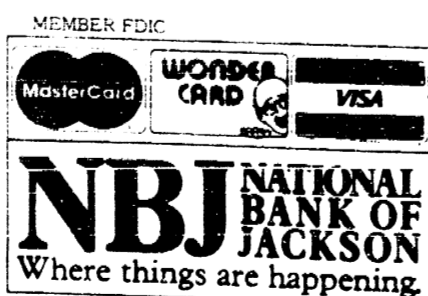
It looks like a regular VISA Card. But it's the new NBJ VISA/Debit Card. Use it to make purchases anywhere VISA cards are accepted, and the purchase amount is deducted from your checking account. You can even use your NBJ VISA/Debit Card to get cash from VISA-member banks. Apply for yours today!



Better VISA Credit the NBJ Way.

You can use your NBJ VISA/Credit Card at BJ the Wonderbanker, too. Make payments on your account, or get cash advances up to \$100. Remember, NBJ was the area's first bank to offer credit cards, and we've processed credit card transactions for years. So if you don't have an NBJ VISA/Credit Card, apply for one when you take your BJ the Wonderbanker demonstration.

See your NBJ Personal Banker at the Downtown Manchester office on Main Street through June 30. And see why BJ the Wonderbanker wants to make your banking better.



MANCHESTER BOGEY BUSTERS

- P. Fielder - D. Benedict
- L. Benedict - D. Conners
- B. Riley - S. Brown
- E. Benedict - D. Stockwell
- B. Little - D. Little
- E. Steele - C. Steele
- Low Net, J. Riley, 32 and D. Benedict 32.
- Closest to Pin #3, D. Benedict, #6, J. Riley

CENTERVIEW FRIDAY NITE MIXED LEAGUE

- May 28th Standings
- Dave & Becky Shadley 14
- Lynn & Sue Bailey 13
- Bruce & Sue Winder 12 1/2
- Carter & Mary Kay 12
- Norm & Ginny Fielder 12
- Tim & Linda Adams 11 1/2
- Bill & Ann Cox 11
- Jack & Patsy Evisizer 11
- Ron & Jan Whittington 9 1/2
- Bob & Helen Nickerson 9 1/2
- Jo & Irene Perkins 9
- Steve & Karen Wagner 8 1/2
- Armond & Denise Dresch 6
- Fritz & Cindy Wurster 6
- Byron & Dorothy Moore 6
- Tom & Bev Eversole 5 1/2

NEW CLARK LAKE 88

- June 8, 1982
- J. Wallace-P. Wallace 126
- D. Southwell-D. Sayers 121.5
- J. Reed-R. Steiner 120
- B. Bunney-D. Fetash 118
- G. Bihlmeyer-B. Steiner 112.5
- R. Schaffer-K. Robert 111
- J. Roberts-A. Hannewald 108
- C. Day-W. Frey 106
- D. Wolf-F. Jennings 104
- G. Kemeter-M. Stockwell 100.5
- R. Wurster-R. Weir 100
- *B. Bentschneider-B. Fielder 95.5
- B. Achtenberg-B. Padley 94.5
- B. Rhoads-G. Chavey 80.5
- R. Schook-K. Hurst 80
- *L. Goodell-J. Schaffar 69
- *Denotes Make-up.
- Closest to pin #2, W. Frey.
- Most birdies (1) - D. Southwell, J. Roberts, D. Sayers, and B. Steiner.

CLARK LAKE MANCHESTER LATE GOLF LEAGUE

- D. Stockwell-B. Popkey 122
- R. Hough-C. Little 108.5
- T. Short-B. Miller 107.5
- B. Taylor-B. Neef 105.0
- D. Herman-G. Knauss 104.5
- B. Russell-B. Taylor 101.5
- G. Hamilton-D. Walton 101.0
- B. Steele-G. Milosh 96.0
- J. Gill-J. Scully 92.0
- D. Lamb-G. Koebbe 86.5
- J. Gould-J. Uphouse 86.0
- M. Blossom-S. Chapman 84.0
- G. Lehr-J. Hinkley 83.0
- L. Widmayer-D. Fielder 82.5
- M. Walter-D. Herman 76.0
- P. DuRasael-J. Ross 74.0
- S. Dorr-D. Popkey 61.0
- B. Preston-G. Dorr 58.5
- Most One Putt's, Russ Hough, 6.
- Low Net 0-10, Dennis Herman, 31.
- Low Net 11-20, John Day, 31.

CENTERVIEW THURSDAY NIGHT MENS LEAGUE

- June 3rd Standings
- Ray-Cox 106.5
- Flint-Hlavka 104.5
- Eversole-Trois 103.5
- Wurster-Stautz 100.5
- Smith-Beach 101.5
- McGeo-Rutherford 99
- Benedict-Benedict 98
- Randall-Jose 98
- Mann-Mitchell 89.5
- Balley-B. Nickerson 83.5
- Daubner-Gotta 81.5
- Evisizer-Finkbetner 81
- Bradley-Perkins 80
- Roller-Fielder 77
- Koebbe-Waters 74
- Rankin-Fields 78
- Pittock-Warren 68.5
- P. Nickerson-Preston 63.5
- Low Actual: D. Roller 40
- Low Net: Pittock 31
- High Actual: T. Eversole 62
- Closest to pin #15: C. Ray, #17: B. Nickerson
- Chip In On #17: E. Benedict.

MANCHESTER SUNDAY MIXED LEAGUE

- Willie-Wilma Frey 26
- Bob-Helen Popkey 22.5
- Gary-Polly Brokaw 23
- Lyle-Maxine Widmayer 19
- Don-Mary Ann Fielder 18.5
- Tim Sannes-Kathy Gotta 18.5
- Jack-Joyce Goughly 18
- Larry-Ruth Snyder 17.5
- Gary-Marti Bondy 17
- Dick-Bettie Pink 16.5
- Keith-Judy Reed 16.5
- Joe-Bev Sczygielaki 16.5
- Dennis-Cathy Herman 16
- Chuck Hough-Milda Koebbe 15.5

Dorsey-Marilyn Lamb 12
Bob-Jean Little 10
Jackpot Hole - Judy Reed.
Closest to pin, 3rd shot - Larry Snyder.
Most pars, Bob-Helen Popkey w/7.
High Putts, Gary-Marti Bondy w/21.

Mens Club Meeting

There will be an important Men's Club meeting on fireworks held at Carr Park on Tuesday, June 15th. The meeting starts at 6:00 p.m. Bring your own steak and a guest.

Girls Track Results

Manchester girls finished 4th at the L.C.A.A. League Meet held at Addison. Addison won the meet and the overall Track championship.
The Lady Dutchmen were led by Kari Agin who scored 40 of Manchester's 52 points. Kari set or tied L.C.A.A. league marks in 3 of her 4 wins. Her 100 m dash [12.80] tied her old record; 100 m hurdles [15.0]; 200 m hurdles [29.0] was a L.C.A.A. record; 200 m dash [25.5] was a L.C.A.A. and a school record. Kari was the first person in L.C.A.A. girls history to win four individual events at the League meet.
Senior Kay Eversole, finished her fine career by scoring points in four events. Kay had a 3rd in the shot put (29-6) a personal best; a 6th in the 400 m [1:08.0]; Kay ran in the 800 m relay (6th place) and the 1600 relay (8th place).
*Senior Charolette Rickhman scored in two events as she finished her career. Charolette had 6th in the discus, and a 4th in the shot out (29-10), a personal best.
Two relay teams scored for the Dutch. They were the 800 relay (6th place). Team of: Missy Walkow, Natsie Walkow, Chris Weirich and Kay Eversole. The 1600 relay (5th place) team of Kay Eversole, Natsie Walkow, Beth Fahy and Chris Weirich.

GARDEN VIEW GREENHOUSE
5505 M-52
7 Miles North of Manchester On M-52
PHONE 475-2791
ONIONS SEED POTATOES
FLOWERING AND BEDDING PLANTS
OF ALL KINDS

Jim Hartmann 313-475-9301 Dan Wampler 517-456-4305
Hartmann Carpentry
Licensed and Insured
Residential Builder With
14 Years Experience
Pole Barns Additions
Roofing Siding
Decks Remodeling
Rough Ins Finish Work

ESTATE ANTIQUE AUCTION
Antiques-Furniture-Lawn Tractor

TO SETTLE THE ESTATE OF ED GALLOWAY
WE WILL SELL THE FOLLOWING
AT PUBLIC AUCTION AT
527 TERRITORIAL STREET, MANCHESTER, MICHIGAN
TAKE WEST MAIN TO TERRITORIAL

WEDNESDAY, JUNE 16 4:30 p.m.

ROSE COUCH, COLOR T.V., PLANT STAND, TWO FOOT STOOLS, WINE COLORED CHAIR, HUMIDIFIER, TWO LAMPS, PLATFORM ROCKER, MAHOGANY DESK, SQUARE OAK TABLE WITH ENCLOSED LEAF, SIX DRESSED BACK MAPLE CHAIRS WITH CANE SEATS, OAK BUFFET, KEROSENE HEATER, WALNUT HALL MIRROR, MAPLE SPINDLE BED, OAK SEWING ROCKER, PIANO BENCH, MOVIE SCREEN, WHITE LAMP, ANTIQUE OAK BED, FIGURINES, ELECTROLUX SWEEPER, SUIT CASE, IRONING BOARD, OAK PLATFORM ROCKER, OAK ROCKER CUTCHER AND BOWL, OAK LAMP TABLE, NICKLE LAMP, SPINDLE BACK ROCKER, TWO OAK SPINDLE BACK ROCKERS, ROCKER, TREDLE SEWING MACHINE, POST CARD COLLECTION, PIE CRUST PLANT STAND, IRON DOUBLE BED, TWO FLOOR LAMPS, PLANT STAND WITH TURNED LEGS, PICTURE FRAMES, ASH DRESSER WITH BEVEL MIRROR, OAK ROCKER, CANE BOTTOM CHAIR, GOLF CLUBS, ASH COMMODO, BARRELL.

KITCHEN STOVE, APARTMENT SIZE REFRIGERATOR, MISCELLANEOUS DISHES, COPPER BOILER, GAS STOVE, BLUE PORCELIN WASHER, OAK DROP LEAF TABLE, TWO CANE BOTTOM CHAIRS, OAK CHEST OF DRAWERS, LETTER RACK, HOOSIER PORCELIN TOP KITCHEN CABINET.

FORD 1977 LTD LANDAU [21,800 Miles] 4-DOOR, AIR CONDITIONING [No Rust, Excellent Condition], 1980 ARIENS YTT138 RIDING LAWN MOWER [Excellent Condition], GAMBELS ROTARY MOWER, GARDEN HOSE, HAND CULTIVATOR, GARDEN TOOLS.

MANY MORE ITEMS NOT LISTED!!

Owner: Ed Galloway Estate

Bran & Helmer Auction Service
LLOY R. BRAUN, ANN ARBOR 313-665-9646
JERRY L. HELMER, SALINE 313-994-6309

HOME IMPROVEMENT TIME . . .
. . . Count on us for help!

ALUMINUM SIDING
Never paint your home again with maintenance free Aliso Premium 30 aluminum siding. Many colors to choose from. The ultimate in beauty & protection.

SEAMLESS ALUMINUM GUTTERING
No joints. No seams. No leaks! Custom made to fit your home or business in white and seven colors.

INSULATION
Reduce your fuel costs with Celulose insulation. Cooler in the summer, warmer in the winter, reduces noise, increases home value and fire resistant.

ROOFING
We specialize in home and barn re-roofing. Many styles and colors to choose from. Also hot tar and shingle repair work. Remember...your roof is one of the most important parts of your home!

Free no obligation estimates
Fully insured & guaranteed work

428-8836 **R.D. Kleinschmidt, Inc.** 428-9335

• SHUTTERS • DO-IT-YOURSELF KITS • YEAR ROUND SERVICE
19800 Sharon Valley Road (near M-52) Manchester
• STORM DOORS • STORM WINDOWS • REPLACEMENT WINDOWS

Manchester Recreation 1982

JUNIOR PLAYGROUND - Monday through Friday from 1:00-3:00 p.m. beginning June 14th. Any youngster who will be at least 5 years old by December 1, 1982 and on up to any child entering the 4th grade in the fall is eligible to attend. No fee is charged. Headquarters for Junior Playground will be room 113 in the Nellie Ackerson Building. Outdoor activities will be held on the playgrounds between the Middle School Buildings. This program focuses on arts and crafts, indoor and outdoor games, along with picnics, and field trips.

ROLLER SKATING - Every Wednesday, beginning June 16th, we will be going roller skating at the Adrian Skating Center. Buses will leave from the Middle School at 12:30 and return at approximately 3:30. The cost is \$2.00 per person which includes transportation, skate rental, and admission.

SWIMMING - There will be a two week course offered for the Pre-beginner and Beginner levels. Contact Bart Bartels for details. Every Monday, beginning June 14th, we will be going swimming at the spacious Bohn Pool in Adrian. This is an L-shaped olympic sized pool with high and low diving boards, slides, basketball hoops, etc. There are 6 lifeguards on duty at all times. Locker room facilities are provided. The cost is 65c and transportation is provided. You must be at least 7 years old or accompanied by adult. No cut-offs are allowed and hair that touches your shoulder requires a bathing cap. Adult price is \$1.25. There must be at least 20 interested swimmers in order for us to go each Monday. Bus leaves at 12:00 noon and returns at approximately 3:15 p.m.

TIGER GAME - Set aside Saturday, July 24th, for our annual trip to Tiger Stadium. We'll see the Texas Rangers come to town. All children 14 and under, retirees, and ladies get in for the price of \$2.25. Everyone else pays \$4.50. You must

sign up at the Junior Playground Headquarters during the weeks of July 5-July 16th. You pay when you sign up. The tickets will be picked up ahead of time and the buses will leave from the Middle School at noon on the 24th. Game time is 2:15 p.m.

LITTLE LEAGUE - Every Monday and Wednesday starting June 2nd, at Kirk and Carr Parks. We have 7 teams participating. Game time is 6:00 p.m.

T-BALL - Every Tuesday and Thursday, starting June 3rd, at Kirk and Carr Parks. We have 7 teams participating and game time is 6:00 & 7:30 p.m.

SOFTBALL - Every Tuesday and Thursday, starting June 3rd, at Kirk and Carr Parks. We have 6 teams participating and game time is 6:00 & 7:30 p.m.

PEEWEE T-BALL - This is a new program for 5-7 year olds. We have 5 teams which will play on Saturday morning at 10:00 a.m.

PONY LEAGUE BASEBALL - We have two teams competing in a league comprised of area teams. Age group is 13-14 year olds.

JUNIOR LEAGUE SOFTBALL - We have one team which competes in a league in Tecumseh. Age group is 12-15 years old.

MICKEY MANTLE BASEBALL - We have one team competing in a league comprised of area teams. Age group is 15-16 year olds.

Recreation Director-Bart Bartels
Secretary-Treasurer-Ruth Rutherford
Sr. Playground Supervisor-Kristin Schick
Assistant Supervisor-Sue Fielder
Assistant Supervisor-Curt Fielder
Assistant Supervisor-Brenda Rose
Transportation Coordinator-Evie Seegert
Manchester Recreation would like to recognize and thank the Manchester United Way and the Manchester Village Council for their generous support. Without their help, there would not be a program.

MHS Juniors Score High On A.C.T.

Each April, most college-bound Juniors take the American College Test (ACT) in preparation for their admittance to college of their choice. The results of this test are sent to colleges which use them, along with students' grades to determine acceptance or rejection of a student applicant. These test scores are also sent to the State of Michigan Scholarship program where students with high scores can be rewarded with competitive scholarships to be used at any college or university in Michigan.

Thirty-two of Manchester High's Juniors took the test this year and overall scores were above the national average. There are four sections to the test: English, math, social studies and natural science. A composite score is also given (the average of the four test scores.) Scores received by the group of Juniors were: English 18.5 (national average 17.4); math 19.3 (national average 18.7); social studies 17.8 (national average 16.8) and natural science 23.2 (national average 20.7).

Varsity Team To Play In Regionals

The Manchester High School Baseball Team under the direction of Wes Gall will compete in the Michigan High School Athletic Association Regional Tournament on Saturday, June 12 at Bronson High School. Manchester will play Battle Creek Springfield at 10:00 a.m. The winner will advance to the finals at 2:30 p.m. to play the winner of the Buchanan and Kalamazoo Hackett game.

Bronson is located on U.S. 12, west of Coldwater. Direction to the field will be available at the high school.

Athletic Physical Examinations

Athletic Physicals will be given on Tuesday, June 15, 1982 for all students in grades 7 through 12 for the 1982-83 school year. They will be done free of charge by Dr. Johnson and Dr. Okey.

The following schedule will be used:
1:00 p.m. to 2:00 p.m. Middle School Students with last names A to L.
2:00 p.m. to 3:00 p.m. Middle School Students with last names M to Z.
3:00 p.m. to 4:00 p.m. High School Students with last names A to L.
4:00 p.m. to 5:00 p.m. High School Students with last names M to Z.
All students should bring with them a

Michigan High School Athletic Association Physical Card. These cards are available in the Middle School and High School Offices. Students should report to the doctors for physicals at the times above. Please make sure your parent or a guardian signs the physical card before you report. All students should use the back entrance to Dr. Johnson and Dr. Okey's offices. (With the ramp) Physical Exams are required for all athletes who wish to participate in any sport during the 1982-83 school year. If you have any questions, please call Bill Sealata at 428-7333.

It's reported that one day instead of serving the usual hot meal at the school cafeteria they handed out peanut butter and jelly sandwiches in a nearby school. After lunch, a satisfied first grader marching out the door commended the cafeteria manager saying "Finally you gave us a home cooked meal."



JUNE 4th-27th



Thurs-Fri-Sat
8:15 p.m.
Sun 4:00 p.m.
MAIN STREET,
MANCHESTER
(313)428-9280

Spear & Associates, Mann Realtors

122 WEST MAIN PHONE 428-8388 DAILY MANCHESTER

- 11 percent financing available on the following homes.
- 3 bedroom brick & cedar ranch on 2 acres priced below market at \$69,900.00.
- Two story on 4 1/2 acres partially wooded at \$65,900.00.
- 3 bedroom ranch with walk-out on 10 acres with barn \$86,500.00.
- 3 bedroom ranch on 5 acres with barn \$73,000.00.
- 3 bedroom brick ranch on 7 1/2 acres fantastic landscaping. \$91,500.00.

All of the above homes have excellent terms, and are quality well built homes at reasonable prices. Stop in and see us about your real estate needs.

OFFICE HOURS

Monday thru Friday 9 a.m. to 5 p.m. Saturday 9 a.m. to 12 noon

OFFICE PHONE 428-8388

EVENINGS AND WEEKENDS

JIM MANN
428-8074

DENISE WALTER
428-7663

ELLIS PRATT
428-8562



FETAL ALCOHOL SYNDROME

You've heard the old expression, "a little learning is a dangerous thing." I'd like to paraphrase that to say, "even a little of something may be too much," and direct it to the women who use alcohol and have just learned they are pregnant. The question is often raised concerning what may be a safe level of alcohol consumption during pregnancy. To this I

must say, "We really don't know." There is some evidence suggesting that even a moderate amount of alcohol - one-half to one ounce per day - may be harmful. Based on this, the U.S. Surgeon General has recommended that women not drink alcohol during pregnancy.

A discussion of this subject almost any place or time will elicit conflicting opinions. It does appear to me, however, that the best and safest advice I can offer to women is quite simply not to imbibe at all.

Some sources point out that alcohol is the third leading cause of birth defects including mental retardation, in this country. Speaking of mental retardation, there can be no argument that maternal alcoholism is the only cause of this problem in children that is easily PREVENTABLE by personal behavior. Just don't drink.

It appears that alcohol does most of its damage while the child is in the embryonic state, from the third to the eighth week of pregnancy. That's when critical body organs are developing. However, there is some evidence, too, that damage can be done during the fetal period - from three months to term.

Some of the children born to alcoholic mothers suffer what is termed "Fetal Alcohol Syndrome" (FAS). Such babies can have a smaller than normal head circumference, and their birth weight and length can be under average. Children with the syndrome problem don't catch up during

Jim Hartmann 313-475-9301 Dan Wampler 517-458-4305

Hartmann Carpentry

Licensed and Insured Residential Builder With 14 Years Experience

Pole Barns Roofing Decks Rough Ins Pole Barns Additions Siding Remodeling Finish Work

ANNUAL SCHOOL ELECTION

NOTICE OF ANNUAL ELECTION OF THE ELECTORS OF MANCHESTER COMMUNITY SCHOOLS WASHTENAW AND JACKSON COUNTIES, MICHIGAN TO BE HELD JUNE 14, 1982

TO THE ELECTORS OF THE SCHOOL DISTRICT:

Please Take Notice that the Annual Election of the School District will be held on Monday, June 14, 1982, in the Manchester High School Building, in the Village of Manchester, Michigan.

THE POLLS OF ELECTION WILL BE OPEN AT 7:00 O'CLOCK, A.M., AND CLOSE AT 8:00 O'CLOCK, P.M.

At the Annual School Election there will be elected two (2) members to the Board of Education of the district for full terms of four (4) years ending in 1986, and one (1) member to the Board of Education of the district for an unexpired term of one (1) year ending in 1983.

THE FOLLOWING PERSONS HAVE BEEN NOMINATED TO FILL SUCH VACANCIES:

FOUR YEAR TERMS	ONE YEAR TERM
Earl Homing Kent P. Talcott	Thomas G. Golding JoAnn King Okey

TAKE FURTHER NOTICE THAT the following proposition will be submitted to the vote of the electors at the Annual School Election:

BONDING PROPOSITION

Shall Manchester Community Schools, Washtenaw and Jackson Counties, Michigan, borrow the sum of not to exceed One Million Four Hundred Thousand Dollars (\$1,400,000) and issue its general obligation unlimited tax bonds therefor, for the purpose of erecting, furnishing and equipping an addition or additions to, remodeling and partially re-equipping existing school facilities and developing and improving sites?

PLEASE TAKE FURTHER NOTICE THAT THE BONDS OF THE SCHOOL DISTRICT, IF APPROVED BY A MAJORITY VOTE OF THE ELECTORS AT THIS ELECTION, WILL BE GENERAL OBLIGATION UNLIMITED TAX BONDS PAYABLE FROM GENERAL AD VALOREM TAXES, SAID BONDS TO MATURE OVER A PERIOD OF APPROXIMATELY TWENTY (20) YEARS.

All school electors who are registered with the city or township clerk of the city or township in which they reside are eligible to vote at this election.

I, Michael A. Stimpson, Treasurer of Washtenaw County, Michigan hereby certify that, as of March 1, 1982, the records of this Office indicate that the total of all voted increases over and above the tax limitation established by the Constitution of Michigan, in any local units of government affecting the taxable property located in Manchester Community Schools, Washtenaw and Jackson Counties, Michigan, is as follows:

the first year of life, and sometimes they never do. Such children may have certain facial deformities. Brain damage and hyperactivity are also occasionally reported among FAS children. Because of the problems that could arise for the pregnant woman who drinks, my advice is to stop drinking any and all alcoholic beverages the minute you discover you're pregnant. Play it safe, because the effects, if they occur, are permanent.

Commuter Rail Service Reduced

Amtrak's state-supported "Michigan Executive" commuter rail service to Detroit from Jackson, Chelsea, Ann Arbor, Ypsilanti and Dearborn, will be reduced beginning June 14, the Michigan Department of Transportation (MDOT) announced.

Transportation revenue shortfalls will eliminate all but the Ann Arbor-Detroit route segment, 50 percent of the annual train miles now being operated.

State subsidy will be reduced approximately 30 percent while the most heavily used segment of the route is retained.

Despite the service reduction, MDOT officials estimate that annual ridership should remain nearly constant at

approximately 55,000 to 60,000 passengers a year.

Costs to the state for the reduced service level should drop from approximately \$300,000 to approximately \$200,000 annually.

Elsewhere in Michigan, Amtrak will continue to operate the state-supported Blue Water Limited linking Port Huron, Flint, Lansing/East Lansing, Battle Creek, Kalamazoo and Chicago, as well as three daily trains between Detroit and Chicago with stops at Ann Arbor, Jackson, Battle Creek, Kalamazoo and Niles.

Amtrak also offers overnight rail passenger services linking Michigan with New York City and Boston.

NORM WALZ CONSTRUCTION

Remodeling and Room Additions
Garages—Porches
CUSTOM BUILT CABINETS

CUSTOM BUILT HOME ON
YOUR IMPROVED LOT CAN
SAVE YOU \$\$\$

Phone 428-7109

By Washtenaw County:	0.040674 0.25 0.25	1988 - 1982 1982 thru 1985 1982 & Future
By Manchester Township:	1.25 Mills .50 MHI	1982 thru 1995 1982 thru 1988
By Bridgewater Township:	NONE	
By Sharon Township:	NONE	
By Freedom Township:	NONE	
By the School District:	17.78 Mills, 1982 only 1 MHI, 1982 only	

Michael Stimpson
Treasurer
Washtenaw County, Michigan

I, Janet C. Rochefort, Treasurer of Jackson County, Michigan, hereby certify that, as of March 3, 1982, the records of this Office indicate that the total of all voted increases over and above the tax limitation established by the Constitution of Michigan, in any local units of government affecting the taxable property located in Manchester Community Schools, Washtenaw and Jackson Counties, Michigan, is as follows:

By Jackson County:	None	
By Norwell Township:	None	
By Grass Lake Township:	1 Mill	1981
By the School District:	17.78 Mills, 1982 only 1 Mill, 1982 only	
By Jackson Community College:	2.37 Mills	1981 Unlimited
By Jackson County Intermediate School District Special Education:	4 Mills	1981 Unlimited
By Jackson County Intermediate School District Vocational Education:	1.70 Mills	1981 Unlimited
By Jackson District Library:	1 Mill	1981-1986 Imp.

Janet C. Rochefort
Treasurer
Jackson County, Michigan

NOTICE IS HEREBY GIVEN THAT the following proposition will be voted upon by the registered school electors of this school district at the annual school election to be held on Monday, June 14, 1982, which proposition was set forth in a resolution adopted by the Intermediate School Board of Washtenaw Intermediate School District, Michigan, on February 23, 1982, to wit:

WASHTENAW INTERMEDIATE SCHOOL DISTRICT SPECIAL EDUCATION MILLAGE INCREASE QUESTION

Shall the one and one-half (1 1/2) mill limitation on the annual property tax previously approved by the electors of the Washtenaw Intermediate School District, State of Michigan, for the education of handicapped persons be increased by one-half (1/2) mill?

This Notice is given by order of the Board of Education.

Paul DuFresne
Secretary, Board of Education

BENEFIT

For The
GEORGE MACOMBER FAMILY
PIG ROAST & COUNTRY JAMBORE

SUNDAY, JUNE 13th

STARTING AT 2 P.M.

LET'S HELP REBUILD HIS FARM AFTER IT WAS DESTROYED
BY FIRE ON MAY 16, 1982

ADVANCE TICKET DONATION \$4.00 each
AT THE DOOR DONATION \$5.00 each

PALOMINO INN

20400 AUSTIN ROAD MANCHESTER, MICHIGAN
PHONE 428-8930

TIDY CAR

\$10 OFF
WITH COUPON

"WE MAKE OLDER CARS LOOK NEW ———
KEEP NEW CARS NEW"

Reserv-A-Shine New-Matizing Quaker State Rustproofing Complete Interior Shampoo Upholstery Gard "2"

CHELSEA—ANN ARBOR—YPSILANTI
5601 WEST MICHIGAN
3863 SOUTH M-52 Between US 23 Exit 34
and Carpenter Road

475-2952 434-3041

PICK UP AND DELIVERY AVAILABLE

Pat TOMKIN'S ELEGANT AUTO Or

MHS Graduates Receive Honors

At the Graduation ceremony held Sunday, June 6, the following members of the Class of 1982 received honors as follows:

- PAM BROWN - State of Michigan Competitive Scholarship Program Certificate.
- COLLEEN BURCH - Knights of Columbus Scholarship.
- JENNIFER FELDKAMP - State of Michigan Competitive Scholarship Program Certificate, Luther Klager Scholarship, Manchester Community Scholarship, Pioneer Hybrid Scholarship and Kalamazoo College Honor Scholarship.
- KELLY GOTTS - State of Michigan Competitive Scholarship Program Certificate.
- JEFF HAWK - State of Michigan Competitive Scholarship Program Certificate.
- JODI HUBER - State of Michigan Competitive Scholarship Program Certificate.
- PETE JOHNSON - Mr. Dutchman 1982.
- SANDRA KNICKERBOCKER - State of Michigan Competitive Scholarship Program Certificate, Eastern Michigan University Certificate For Recognition Of Excellence.
- WENDY LAVENDER - State of Michigan Competitive Scholarship Program Certificate.
- SHERRI ROWE - State of Michigan Competitive Scholarship Program Certificate, University of Michigan Regents Alumni Scholarship, Eastern Michigan University Regents Scholarship Award and Nellie Ackerson Scholarship.
- MICHAEL VITALE - State of Michigan Competitive Scholarship Program Certificate.
- CAROL SCHAIBLE - Michigan Business Schools Association/Davenport College Of Business Scholarship.

TIM SEEGERT - Washtenaw Community College Scholarship.
 ELIZABETH VLCEK - Miss Dutchman 1982 and Manchester Community Scholarship.
 CAROL WIDMAYER - State of Michigan Competitive Scholarship Program Certificate.

In addition, Charlotte Rickelmann was named alternate for the Manchester Community Scholarship. The Community Scholarship was funded by contributions from the Manchester High School Student Council, the American Legion Auxiliary, the Manchester Teachers Association, the Twentieth Century Club, the Manchester Band Boosters, Xi Epsilon Sorority, Lambda Nu Sorority, the Manchester Mens Club, the Emanuel Church's Womens Fellowship, and the Manchester Athletic Boosters. The Athletic Boosters' contribution was made as a memorial to Charlene Alexander and Ed Galloway.

Bible School At Faith Community

Faith Community Church will hold its Daily Vacation Bible School June 21-25 from 7-9 p.m.
 Christian Education Students from the Grand Rapids School of the Bible and Music will use puppets and other media for the major portion of each evening's program. Young people from preschool to 9th grade are welcome.
 The church is located on Sharon Hollow Road, west of Manchester and just South of Austin Road. We hope you can come!

First Holy Communion At St. Mary's



Twenty boys and girls received their First Holy Communion at St. Mary's on Sunday, May 23 at a special Mass offered by Rev. Fr. Raymond Schlinkert.

Pictured are: Row 1 - Jimmie Buono, Jennifer Reichert, Robin Fleck, Melanie Ball, John Schiel. Row 2 - Lance Fielder, Kim Davis, Suzanne Gero, Linda Devulter, Laurie McGee, Damian Potter. Row 3 - Stephen Haeussler, Tim Becktel, Patrick Waiz, Valerie Haeussler, Anne Fahay, Krista Sahakian. Row 4 - Mrs. Fielder, Shaun Cooper, Fr. Schlinkert, Susie McGuire, Gas Strip.
 Eddie Hamilton, also a member of the class, was absent when the picture was taken. Mrs. Clarence Fielder instructed the class.

THE MANCHESTER ENTERPRISE



Eric Duncan and Joe Achtenberg

Photos by Jon Hardenbergh



Kari Agin

Spring Sports Winding Down

by Jon Hardenbergh
 All but our Varsity Boys Baseball squad have concluded their seasons. We hosted the districts and in the first contest Brad Stetler mowed the Napoleon Pirates down as we won 2-0. In the other game Clinton got by Hudson 15-5 to meet us in the finals. We got solid pitching from Randy Day and clutch hitting from Jim Krzyzanski. Bill Scully, Pat Bidenour, Pete Johnson and Gary Reed. This all added up to a 4 to 1 championship score and sent us to Bronson on Saturday for the Regionals.
 Unfortunately our girls weren't lucky as they lost in the first round Saturday to end it.

In the area high school track honor roll we have 2 outstanding individuals. One is Don Hagerman as he is in the top 10 in 3 categories—shot put, discus and 100 yd. dash. Secondly we have Kari Agin—she is 8th in the 220 dash but when the hurdles appear—look out. In the 220 hurdles Kari is in 2nd place (29.7 sec.) as Laura Spaid of Ann Arbor Huron holds down first place with a 29.2 showing. In the 110 hurdles Kari Agin now holds 1 second edge over Laura Spaid as track seasons end. Kari did make the State Class C Meet - more about that next week.

Don Hagerman

Catholic Europe

Belgium Germany Austria
 Italy Vatican City
 Switzerland France
Two Glorious Weeks You'll Never Forget!
 under the spiritual direction of
Father Raymond R. SCHLINKERT
 Veteran International Traveler
 Host, National Television Program
 "With This Ring" Pastor
 St. Mary Parish, Manchester



\$1799 from/to Detroit Sept. 14th

SABENA

BEIGIAN WORLD AIRLINES
 Brussels Paris Lucerne
 Florence Rome Vatican City
 Venice Innsbruck Heidelberg
 Oberammergau Cologne

PAPAL AUDIENCE
 Send this coupon today for your day-by-day itinerary brochure

Rev. Raymond R. Schlinkert (phone 428-428-8811)
 St. Mary Rectory
 210 W. Main Street
 Manchester, Michigan 48158

Dear Father
 Please send your brochure to
 Name _____
 Address _____
 City _____ Zip _____

30-48 Month Certificates
 Current Rate 13.15%
 Effective June 8 thru June 14
\$500 minimum deposit
 Substantial interest penalty for early withdrawal

New 91-Day Certificate
 Current Rate 12.074%
 June 8 thru June 14
\$7,500 minimum deposit
 Substantial interest penalty for early withdrawal

I.R.A.
 Current Fixed Rate 13.40%
 Effective June 8 thru June 14
30-Month minimum term
 \$500 minimum deposit

26-Week Money Market Certificate
 Current Rate 12.367%
 June 8 thru June 14
\$10,000 minimum deposit
 Federal regulations prohibit compounding of interest and require substantial interest penalty for early withdrawal.

Give your earnings a lift.

Retail Repurchase Agreements
 Current Rate 11.75%
 63-89 day terms
 June 8 thru June 14
\$5,000 minimum - \$99,999 maximum
 21-62 day terms also available.
 Ask us for current rates.
 A repurchase agreement is not a deposit and is not insured by F.D.I.C.

ANN ARBOR BANK AND TRUST
A FIRST AMERICAN BANK

MARGIE'S UPHOLSTERY

6245 Brooklyn Rd., Napoleon

Wide Selection of Fabrics
 Pick Up & Delivery Available
517-536-4230

Chelsea Plumbing

New Construction
 Remodel
 Repair
 Electrical Pipe Thawing
 Water Heater Replacement
 Boiler Repair & Replacement
475-1037

TOOL VALUE OF THE MONTH

4.99

6-Pc. Screwdriver Set with Storage Rack

A practical Father's Day gift! 6 forged screwdrivers, including 2 Phillips type—a big help for Dad. Includes a free rack. TTR

HARDWARE VALUE OF THE MONTH

7.99

80-FL. Nylon Substructural Garden Hoe

Full nylon reinforcement for strength and durability. Easy cooling, even under extreme temperatures. 58-in. inside diameter. T669-5C

QUANTITIES LIMITED

BARGAIN OF THE MONTH

9.99

12-qt. COOLER CHEST & 1/2 GAL. JUG

Both pieces are molded of polyethylene. The chest holds up to 18 12-oz. cans, and the wide-mouth jug is insulated to keep beverages hot or cold. 036-011

KLEINSCHMIDT HARDWARE

MONDAY THRU FRIDAY 8 AM-6 PM SATURDAY 8 AM-5 PM SUNDAY 11 AM-3 PM

ACROSS FROM ANN ARBOR BANK AND TRUST

19870 Sharon Valley Rd. (Near Corner of M-52) PHONE 428-8337

Kinship Farm Dairy
 Registered Brown Swiss

GRADE A HOMOGENIZED PASTEURIZED MILK

THE KINSHIP FARM DAIRY IS PLEASED TO ANNOUNCE THAT OUR MILK IS NOW AVAILABLE TO YOU AT WHOLESALE PRICES. PURCHASES MAY BE MADE AT THE FARM PLANT LOCATED AT 17500 SHARON VALLEY ROAD.

Whole White Milk
\$1.45/gallon

Chocolate Milk
\$1.65/gallon

WE WILL SOON BE MAKING AVAILABLE LOW-FAT MILK AND OTHER DAIRY PRODUCTS AS WELL AS FRESH BAKED BREADS AND COOKIES.

PHONE 428-9301
HOURS: 8 A.M. TO 7 P.M. MONDAY-FRIDAY 8 A.M. TO NOON SATURDAY

OUTDOOR SPRING SING AT KLAGER



REFRESHMENTS WERE SERVED BY THE PTO



MR. MARRISON DIRECTING THE SINGING

The evening of May 24 Klager students performed outside as their families watched from picnic blankets on the hill. The children sang "Free to Be You and Me", "Parents are People", and "Let There Be Peace on Earth". The music was directed by Roger Marrison and Lynette

Wanlass. George Werle, Brookanne Currence, Chris Carson and Michelle Larue entertained with violin music led by Joyce Meade. Refreshments were served by the parents. Many remarked on what an enjoyable novel event it was.



FAMILIES SAT ON THE HILL



MRS. JOYCE MEADE LED HER VIOLIN STUDENTS



KLAGER STUDENTS SINGING "PARENTS ARE PEOPLE" TO THEIR PARENTS



REFRESHMENT TIME WAS FUN



To The Taxpayers of the Manchester School District:

As you know, the bond issue is on the election ballot Monday, June 14. Many people feel the students do not care or even know about this issue. But we do know and we do care.

We feel that the present bond issue should be passed. Much of the work covered by the bond issue is necessary, such as roofing and heating. If this work is not done now, repairs will have to be made frequently and soon the cost of repairs may even reach the cost of such items as found in the bond issue.

Many of you may think since you do not have children in school, you should not vote on this issue. Just think a minute. You may have friends who have children in school and perhaps in the future you will have children or grandchildren going to school here in Manchester.

We need a nice school - one we can respect. Maybe we would all take better care of it if it was in better shape. We remember many people saying they voted "no" on the last vote because they thought we should be proud of our school, not just of our athletic teams. Now is our chance to be proud. It is not just up to us - we need your support. Vote yes for the bond issue on June 14.

Sincerely,
Manchester High School
1982-83 Student Council
Melissa Bunney, President

I write this only that slot of you seem to look forward to my negation "so called". It is my sincere wish that those of you whom do not see fit to vote because "my one vote" means very little would consider the feelings you would have if you were deprived of the privilege of voting. There are millions of people the world over that would rejoice if given a chance to try at least to change their life style at the ballot box. Let us all get out and vote on June 14th and try to change things, there is a great deal of so called B.....g when tax bills are mailed to them and the money isn't there to pay these bills.

I only have one statement to make concerning upcoming tax bills. The State tax tribunal has made the order that Washtenaw County is underassessed to the rate of 7% on the average county wide. Please take this into consideration when you go to polls on the 14th of June. But for the future of our country, exercise your write to vote, you will feel better if you do.

Sincerely,
Herbert G. Jacob

To the Editor:

I do not agree with the position that some churches, schools and community organizations are advocating in regards to nuclear weapons. As a result, American people are being presented with a parade of demands for a nuclear freeze. The most common of these calls for an American-Soviet agreement to stop all production, deployment and testing of nuclear weapons. Others, unbelievably seek to have America take such a momentous step alone-no matter what the Soviet Union does.

America's ability to defend itself should be second to none. War is not inevitable as

Big Day At Nursery School

The children at Manchester Day Care Center were thrilled with a visit from two police officers last week. Each class especially enjoyed the flashing lights and siren on Sgt. Steele's squad car, and the search light and police radio were fascinating. The children made paper badges and pretended to be police officers as they discussed with Paul DuFresne, one of the nursery school fathers, the importance of wearing seat belts in cars and good safety habits around streets and parking lots.

A very exciting year came to a close with a family picnic for each class planned at Carr Park. One of the highlights of the day was a visit to Dr. Lehr's dental office, where everyone received a new toothbrush and sugarless gum. Thank you very much Dr. Lehr.

Sincerely,
Mrs. Louise Rickert
20477 Scio Church Rd.
Chelsea, Michigan 48118

To enroll for fall, call 428-7407.

Meeting Notice

The officers of the Manchester Alumni Association will meet June 12, 1982 at 7:30 p.m. at the Emanuel Church.

Obituary

Mrs. Jeannette Gilmore
9225 Palmer Ed.
Brooklyn

Age 59 years, formerly of Manchester, died Tuesday, June 8, 1982 at her home following an extended illness.

She was born February 25, 1923 in Jackson, the daughter of Clarence and Pearl Bostedor Trolk.

She was married to Richard Gilmore on February 13, 1965. He survives. Mrs. Gilmore had operated a restaurant and tavern in Manchester for 14 years.

In addition to her husband she is survived by, two daughter, Constance Petsch and Candace Dermeyer, both of Manchester; two granddaughters; one grandson; three step-sons, James R. of Tecumseh, Douglas H. of Hudson, Edwin A. of Clinton; two step-daughters, Margaret Parr of Manchester, Elaine Wright of St. Helens, Michigan and eight step-grandchildren.

Funeral services will be held Thursday, June 10, 1982, 1:30 p.m. at the Jenter Funeral Home. Rev. Thomas Hart will officiate. Burial will follow in West Cemetery, Grass Lake.

HIT OR MISS by farley

We have a large envelope stashed away near the typewriter and when we run across anything that we think is interesting or informative I chuck it in the envelope and stow it away. Now the envelope is nearly full and so may we share with you this week what seems to us to be the cream of the crop:

A small town is a place where the newspaper comes out once a week for the benefit of the people who couldn't get to the barber shop.

The old time problem of the collar button rolling under the dresser is duplicated nowadays by a quarter rolling under the vending machine.

More on page 20

PROCTOR TRUCKING

Call for information on rates



HAY-GRAIN-EAR CORN
GENERAL HAULING

We don't want all the business, we just want yours!

Jeff Proctor, Owner
3399 Sharon Hollow Rd.
Manchester, Michigan

313-428-9492

Pre-season air conditioning sale

Act before hot weather starts and you save money on installation, you don't have to wait in a hot, muggy house for the air conditioning to be installed, and you get the full benefit of a Rheem® Central Air Conditioning system all summer long.

Call Today For A Free Estimate.



SAVING ENERGY TODAY

MANCHESTER ELECTRIC INC.

112 Adrian Street
Manchester, Michigan
Phone 428-6243

GREENBRIAR GOLF COURSE

WAMPLERS LAKE RD. & WELLWOOD RD.
BROOKLYN, MICHIGAN - PHONE: 592-6952
(1/2 mile N. of Hayes State Park)



Now Having Twilight Rates

After 7 p.m.

\$2.50

Bring a four-some
One Plays FREE with this ad!

Golf Lessons: \$7 Per Half-Hour

A Series of 6 Lessons: \$35.

For more information call Dennis Hotrum, Pro Manager

BAKER'S DOZEN

COMING SOON

SOUP

AND

SANDWICHES

NOTICE OF PUBLIC HEARING VILLAGE OF MANCHESTER

Please take notice that a public hearing will be conducted before the Manchester Village Council relative to the adoption of a FLOOD PLAIN CONTROL ORDINANCE. The hearing will be held on June 14, 1982 at 8:15 P.M. at the Manchester Village Hall, 120 S. Clinton St.

The purpose of the ordinance is to prevent and minimize floods and flood damage within the Village by controlling the erection of structures and other obstructions within the flood plain.

The proposed ordinance is as follows:

Helen Kensler Village Clerk

FLOOD DAMAGE PREVENTION ORDINANCE NO. 115

AN ORDINANCE TO ADOPT REGULATIONS DESIGNED TO PROMOTE THE PUBLIC HEALTH, SAFETY AND GENERAL WELFARE, AND TO MINIMIZE FLOOD DAMAGE.

THE VILLAGE OF MANCHESTER ORDAINS:

ARTICLE 1. STATUTORY AUTHORIZATION, FINDINGS OF FACT, PURPOSE, AND OBJECTIVES.

SECTION A. STATUTORY AUTHORIZATION

This Ordinance is adopted to secure the public health, welfare, and safety under the combined authority of Act No. 3 of the Public Acts of 1895, as amended, Act 167 of the Public Acts of 1909...

SECTION B. FINDINGS OF FACT

The flood hazard areas of the Village of Manchester are subject to periodic inundation which could result in potential loss of life, property, health and safety hazards, disruption of commerce and governmental services...

SECTION C. STATEMENT OF PURPOSE

It is the purpose of this Ordinance to promote the public health, safety and general welfare and to minimize public and private losses due to flood conditions in specific areas by provisions designed to:

SECTION D. OBJECTIVES

The objectives of this Ordinance are: 1. to protect human life and health; 2. to minimize expenditure of public money for costly flood control projects; 3. to minimize the need for rescue and relief efforts associated with flooding...

ARTICLE 2. DEFINITIONS

Unless specifically defined below, words or phrases used in this Ordinance shall be interpreted so as to give them the meaning they have in common usage and to give this Ordinance its most reasonable application. 'APPLICANT' is the owner, agent or legal representative of property for which and by whom an application for Village of Manchester Development permit is made.

'START OF CONSTRUCTION' means the first placement of permanent construction of a structure on a decision to the circuit court or court of like jurisdiction, as provided by the State of Michigan public law.

ARTICLE 3. CONSTRUCTION OF LANGUAGE

The following rules of construction apply to the text of this Ordinance. A. The particular shall control the general. B. In case of any difference of meaning and implication between the text of this Ordinance and any caption, preamble or illustration, the text shall control.

ARTICLE 4. GENERAL PROVISIONS

SECTION A. LANDS TO WHICH THIS ORDINANCE APPLIES This Ordinance shall apply to all areas of special flood hazard within the jurisdiction of the Village of Manchester, Michigan.

SECTION B. BASIS FOR ESTABLISHING THE AREAS OF SPECIAL FLOOD HAZARD

The areas of special flood hazard identified by the Federal Insurance Administration through a scientific and engineering report entitled 'The Flood Insurance Study for the Village of Manchester', dated December 1980, with accompanying Flood Insurance Rate Maps and Flood Boundary and Floodway Maps and any revision thereto are hereby adopted by reference and declared to be a part of this Ordinance.

SECTION C. ESTABLISHMENT OF DEVELOPMENT PERMIT

A development permit shall be required in conformance with the provisions of this Ordinance. Application for such permit shall be on forms furnished by the Building Inspector. The applicant shall supply all information of the form.

SECTION D. COMPLIANCE

No structure or land shall hereafter be located, extended, converted, or structurally altered without full compliance with the terms of this Ordinance and other applicable regulations.

SECTION E. ABROGATION AND GREATER RESTRICTIONS

This Ordinance is not intended to repeal, abrogate, or impair any existing easements, covenants, or deed restrictions. However, where this Ordinance and any other conflict or overlap, whichever imposes the more stringent restrictions shall prevail.

SECTION F. INTERPRETATION

In the interpretation and application of this Ordinance all provisions shall be: 1) considered as minimum requirements; 2) liberally construed in favor of the governing body; and 3) deemed neither to limit nor repeal any other powers granted under state statutes.

SECTION G. WARNING AND DISCLAIMER OF LIABILITY

The degree of flood protection required by this Ordinance is considered reasonable for regulatory purposes and is based on scientific and engineering considerations. Larger floods can and will occur on rare occasions. Flood heights may be increased by man-made or natural causes. This Ordinance does not imply that land outside of special flood hazard areas is free from flooding or flood damages.

ARTICLE 5. ADMINISTRATION

SECTION A. DESIGNATION OF BUILDING INSPECTOR

The Building Inspector is hereby appointed to administer and implement the provisions of this Ordinance.

SECTION B. DUTIES AND RESPONSIBILITIES OF THE BUILDING INSPECTOR

Duties of the Building Inspector shall include, but not be limited to: 1) Review all development permits to assure that the permit requirements of this Ordinance have been satisfied; 2) Advise permittee that additional federal or state permits may be required, and if specific federal or state permits are required, the applicant shall obtain such permits before construction begins...

SECTION C. PERMIT PROCEDURES

1) Application for a Development Permit shall be made to the Building Inspector on forms furnished by him and may include, but not be limited to, the following plans in duplicate drawn to scale showing the location, layout, dimensions and elevations of the area in question: existing or proposed structures, fill information is required; 2) Elevation in relation to mean sea level of the lowest floor (including basement) of all structures. Flood-proofed; 3) Provide a certificate from a registered professional engineer or architect that the non-residential structure meets the flood-proofing criteria in Article 6, Section B(2); 4) Description of the extent to which any watercourse will be altered or relocated as a result of the proposed development.

3) Any person aggrieved by the decision of the Board of Appeals or any taxpayer may appeal such a decision to the circuit court or court of like jurisdiction, as provided by the State of Michigan public law. 4) Variance may be issued for the reconstruction, rehabilitation or restoration of structures listed on (g) Check for hazardous buoyant or polluting material prohibited by the Ordinance.

SECTION D. VARIANCE PROCEDURES

1) The Zoning Board of Appeals as established by the Village of Manchester shall hear and decide appeals and requests for variances from the requirements of this Ordinance. 2) The Board of Appeals shall hear and decide appeals when it is alleged there is an error in any requirement, decision, or determination made by the Building Inspector in the enforcement of administration of this Ordinance.

A. EVALUATION CRITERION:

1) The danger that materials may be swept onto other lands to the injury of others; 2) The danger to life and property due to flooding or erosion damage; 3) The susceptibility of the proposed facility and its contents to the flood damage and the effect of such damage on the individual owner; 4) The importance of the services provided by the proposed facility to the community; 5) The necessity to the facility of a variance from the Ordinance; 6) The availability of alternative locations, not subject to flooding or erosion damage, for the proposed use; 7) The compatibility of the proposed use with existing and anticipated development; 8) The relationship of the proposed use to the comprehensive plan and flood plain management program for that area; 9) The safety of access to the property in times of flood for ordinary and emergency vehicles; 10) The expected height, velocity, duration, rate of rise and sediment transport of the flood waters and the effects of wave action, if applicable, expected at the site; and 11) The costs of providing governmental services during and after flood conditions including maintenance and repair of public utilities and facilities such as sewer, gas, electrical, and water systems, and streets and bridges.

B. STIPULATIONS ON CRITERION:

Generally, variances may be issued for new construction and substantial improvements to be erected on a lot of one-half acre or less in size contiguous to and surrounded by lots with existing structures constructed below the base flood level, providing items 1-11 have been fully considered. As the lot size increases beyond the one-half-acre, the technical justification required for issuing the variance increases. 2) Upon consideration of the factors listed above and the purposes of this Ordinance, the Board of Appeals may attach such conditions to the granting of variances as it deems necessary to further the purposes of this Ordinance.

ARTICLE 6. PROVISIONS FOR FLOOD HAZARD REDUCTION

SECTION A. GENERAL STANDARDS

In all areas of special flood hazard the following provisions are required: 1) All new construction and substantial improvements shall be anchored to prevent flotation collapse or lateral movement of the structure. 2) All new construction and substantial improvements shall be constructed with materials and utility equipment resistant to flood damage. 3) All new construction and substantial improvements shall be constructed by methods and practices that minimize flood damage.

B. SPECIFIC STANDARDS

In all areas of special flood hazard where base flood elevation data has been provided as set forth in Article 4, Section B, or Article 5, Section B(1), the following provisions are required: 1) RESIDENTIAL CONSTRUCTION - New construction or substantial improvement of any residential structure shall have the lowest floor, including basement, elevated to or above base flood elevation. 2) NON-RESIDENTIAL CONSTRUCTION - New construction or substantial improvement of any commercial industrial or other non-residential structure shall either have the lowest floor, including basement, elevated to the level of the base flood elevation or, together with attendant utility and sanitary facilities, be flood-proofed so that below the base flood level the structure is water tight with walls substantially impermeable to the passage of water and with structural components having the capability of resisting hydrostatic and hydrodynamic loads and effects of buoyancy. A registered professional engineer or architect shall certify that the standards of this subsection are satisfied. Such certification shall be provided to the official as set forth in Article 5, Section C(3).

SECTION C. STANDARDS FOR SUBDIVISION PROPOSALS

1) All subdivision proposals shall be consistent with the need to minimize flood damage. 2) All subdivision proposals shall have public utilities and facilities such as sewer, gas, electrical and water systems located and constructed to minimize flood damage. 3) All subdivision proposals shall have adequate drainage provided to reduce exposure to flood hazards.

ARTICLE 7. SEVERABILITY

Should any section or provision of this Ordinance be declared invalid or unconstitutional by any court of competent jurisdiction such declarations shall not affect the validity of the Ordinance as a whole or any part thereof which is not specifically declared to be invalid or unconstitutional.

ARTICLE 8. PENALTIES

Any person found guilty of violating any section of this chapter shall be punished by a fine of not more than five hundred dollars or by imprisonment for not more than ninety days or both in the discretion of the court.

ARTICLE 9. EFFECTIVE DATE

This Ordinance shall become effective upon publication.

CERTIFICATE Helen Kensler, Clerk of the Village of Manchester, Washtenaw County, Michigan, hereby certify that the foregoing Village of Manchester Ordinance No. 115, consisting of 21 pages, was duly approved and adopted by the Council of the Village of Manchester assembled in a regular meeting of said Council held June 14, 1982, after said Ordinance had previously been introduced at a regular meeting held May 24, 1982, and published in the form in which introduced in accordance with Act 167 of 1909, as amended.

Published: June 10, 1982

HELEN KENSLER, Clerk Village of Manchester

COPING...

If Coping had its way, sirloin steak would be cheaper than chicken, German chocolate cake would be non-fattening and nutritionists would require that we eat cat pizza and tacos daily.

But back to reality, where sirloin steak will never be cheaper than chicken, where most of us couldn't afford to binge on German chocolate cake anyway and where daily pizza and tacos would keep us up nights.

Somewhere in between the nonsense extravagances and the abstinences, though, lies a profitable way to shop for food and a tasty way to prepare it.

That's where Molly Graber comes in. Molly is the chief nutritionist for the Michigan Department of Public Health and the mover behind a statewide nutrition campaign.

Through news releases and public service announcements, and county offices of the MSU Extension Service, health departments, Urban League, social services departments and other agencies, she is getting out the word on wise food-buying.

This isn't your run-of-the-mill, old-fashioned list of "do's and don'ts," but an extremely valuable compilation of suggestions.

"The whole point is awareness and education," Molly told Coping, and for a reason we all understand only too well. "It's an ever-increasing challenge to get the most value for our food dollar."

Fortunately for our sakes, Molly isn't alone in her venture. She's getting a lot of help right where she and we most need it - right in the grocery store.

For example, one of her high priority items is unit pricing, and many stores now give the unit price of foods right there on the shelf. That's a lifesaver for those of us who don't have a calculator or the math skills to figure it out ourselves.

Making good use of unit pricing can be as simple as figuring that a 10-ounce box of cereal for 80 cents comes to eight cents per ounce.

But you and I both know it's not always that easy. Just look at canned goods, which can come in 8.5, 15 or 46 ounce sizes. Likewise for other products.

She advises shoppers to consider meat alternatives, too, like dried beans and peas, eggs, peanut butter and tuna, which are high in protein but lower in cost.

Some other ideas: Day-old bread is just as wholesome as fresh, and it costs less. Substitute white sugar for half the brown sugar in your recipes. The brown sugar can be three times as costly and it has the same number of calories as white sugar.

There's more, so much more that we can't possibly give them all to you here, but this should give you a good idea of how you can change your shopping habits to get more for your money.

So, the next time you sit down to make up a shopping list, take a moment to call your Cooperative Extension Service or county or state health department to get your own list of tips.

Just tell them Molly sent you.

As the saying is: "Coping is made available as a public service of Michigan Food Dealers Association, Lansing."

Let's say you are comparing two boxes of cereal. The 10-ounce box costs 79 cents and the 20-ounce box costs \$1.29. Divide 10 into 79, you get .079 (or 7.9 cents) per ounce and dividing 20 into \$1.29 gives you .0645 (or 6.45 cents) per ounce. The larger box, at 6.45 cents per ounce, is the better bargain.

As how easy it is! Another tip is to look at cost per serving. That, too, can be simple, especially if you do a little homework ahead of time.

When you make up your shopping list, just jot down a reminder that, for example, there are four servings per pound in ground beef, three servings per pound in chicken, five to six servings per pound in fresh snap beans and fresh broccoli and three servings per pound in frozen snap beans and frozen broccoli.

Let's use meat as an example here. You're looking at ground beef for \$1.59 a pound and chicken for \$1.99 a pound. Divide four into \$1.59 and you get 39 cents, then divide three into \$1.99 and you come up with 64 cents. The ground beef is less per serving. That bears out one thing Molly told us: "The lowest cost meat per pound is not always the best buy. You must also consider how many people it will serve."

Here are some basics you could keep in mind for meat-buying: Four servings per pound are in meats with little bone, like meat, beef, round steak, lean steak, fish fillets and the center cut of ham. Three servings per pound are in items with a medium amount of bone, fat and gristle, like pork chops, spareribs, shank, T-bone steaks, chicken wings and backs and shorts. In chatting with Molly about other helpful hints, she told Coping that grocers are really going out of their way to help us.

Unit pricing is one of their biggest ways, but they also post nutrition information in different departments, alert shoppers to specials and make scales available in the produce sections so we can weigh our goods for pricing before we get to the check-out line.

And, in general, Molly says, grocers are encouraging shoppers to use calculators and to ask questions. Molly's pocket of information also gives cost per serving for fruits and vegetables as well as recommended daily servings of each. She advises shoppers to consider meat alternatives, too, like dried beans and peas, eggs, peanut butter and tuna, which are high in protein but lower in cost.

Put Yourself in the Marketplace, in the Classifieds

All Classified Advertising is Payable in Advance. All Ads Must Be PLACED And PAID For Prior To 12 NOON On Tuesday For Publication That Week.

LAWN MOWER & SMALL ENGINE
Repair service. Pickup and deliver service available. Manchester Engine. Located in rear of Ross Automotive. Call 428-7965. tfn

TAILORING BY IRENE

Specializing in mens and womens custom tailoring and alterations, also leather and fur. 13910 Sheridan Road, Manchester. 428-8538. tfn

CHELSEA GREENHOUSES. 7010 Lingane Road, Chelsea, Michigan 475-1353-54 or 475-9313. Flowers and plants for every occasion. We specialize in wedding flowers to fit your budget. We are as near as your phone and we welcome your business. tfn

LIMITED SPACE LEFT on Kuakini's Escorted Tour to Hawaii. Departure September 14. Kukini Travel, 109 E. Chicago, Tecumseh 517-423-6651. tfn

TWO BEDROOM APARTMENT FOR RENT in the country. 662-8978. tfn

DOES your driveway or parking lot need attention? Call Robison Farms, Saline. 1-429-2755. Gravel, limestone. Also top soil, sand, black dirt and peat moss. 6-10

ERKE SHARPENING

Has pick-up service at Bridgewater Lumber and Gambles Store in Manchester. Can sharpen almost anything. 6-10p

HOME LAWN SERVICE - Vacation mowing and summer mowing, seasonal contract or by the hour, home or commercial lawns, reasonable rates. 428-8000. 6-10

WANTED - custom work, any kind. 2 self propelled combines. Have truck will run. Maynard Kidd. 428-7712 evenings. 6-24p

WILL DO BABYSITTING in my home. W. Nickerson 428-7016. 6-10

SMALL 1 bedroom home for rent. Large lot on river within Village limits. Call me between 6 and 7 in the evening. 16-984-5351. 6-10

FOR SALE - 1972, 2S foot Jaco fifth-wheel, sleeps six adults. Call 517-456-4684. 6-10p

FOR SALE - 1978 Dodge Aspen, excellent condition. Call Larry 428-9301, 7 a.m. - 4 p.m. or 428-9637 after 5 p.m. 6-10p

IF YOU'RE READY to spend a LITTLE money, we can save you a LOT of money. See us for energy saving ideas at Manchester Electric 428-8243 days, 428-8776 nights tfn

PART TIME - FULL TIME

excellent earnings, selling Kodak film. Phone Jackson 517-784-3178. tfn

MANCHESTER ENGINE

Complete Machine Service on all types of engines, headwork, drums, rotors, engine rebuilding, etc. 428-7985. tfn

BLACK DIRT AND PEAT for sale, tested and proven excellent for lawns, gardens and flower beds, 6 yards delivered \$40.00. Phone 428-7784. tfn

WANTED - Standing Hay, Cash Paid In Advance. 517-764-0700. tfn

HARTMANN CARPENTRY

Licensed Builder serving Manchester with 14 years experience in Home Building, roofing, siding, decks, remodeling, garages and pole barns. Call Jim 313-475-9901 or Dan 517-456-4305. tfn

FIELDER PAINTING - Interior and Exterior, Free Estimates. (313) 428-8506. 6-10p

MOTHER OF TWO would like to babysit for your children in her home. Call 428-7378. tfn

GARAGE SALE - clothes, old pictures, dishes, lawn mower, 10,000 BTU gas furnace, baby clothes, Avon jewelry and bottles, drapes and house paint. May 27th - ON. 15550 Herman Rd., Manchester, 10 to 5. 6-17p

C & B PAINTING - Interior, Exterior, Free Estimates. Contact Charles E. Benedict. Phone 428-7196 or 428-7416. tfn

BEEF TO SELL BY SIDE

Custom slaughtering. Lockers to rent. Phone 428-7600. Manchester Locker Plant. tfn

BUYING standing hardwood timber of all kinds. Phone days 517-678-9099, evenings 313-498-2561. tfn

TWO BEDROOM APARTMENT for rent in Manchester. Features modern kitchen with appliances and fireplace. Call 428-9380 tfn

ALUMINUM EAVESTROUGH

Seamless, white, black and brown, guaranteed, free estimates. Walkowe Home Improvement Company. Phone (313) 428-8468. tfn

LITTLE WACK EXCAVATING

Licensed & Insured
Basements - Drainfields - Bulldozing - Digging - Snow Removal - Tree Removal. Paul Wackenhut, Phone (313) 428-8025. tfn

PIANO TUNING AND REPAIR - qualified technician. Ron Harris 475-7134. tfn

GERALD AHRENS CONSTRUCTION
Additions, Decks, Renovations, Repair, Finish Work, Free Estimates. Phone 428-9807. tfn

SHARPENING SERVICE

Don't get caught with a dull mower blade this year, have it sharpened and balanced, your lawn will thank you. Bring in your hand saws, circular saws, saw chains, knives, scissors, pinking shears, hair clippers, etc. to Kleinschmidt's True Value Hardware, 19860 Sharon Valley Road, Manchester. You'll be glad you did. tfn

EQUIPMENT FOR RENT - 3 point hitch, scoop and landscape rake. 428-7383 after 4 p.m. 6-17p

ANTENNAS - TOWERS

"If it is out of reach, call Beach". Beach Contracting, Saline 429-5994. tfn

HOUSE FOR RENT - in the Manchester area. 2 bedroom farmhouse, \$300 a month, 563-7633. tfn

FOR RENT - one bedroom apartment, second floor, stove, refrigerator and utilities included. 428-8204. tfn

WANTED - STANDING HAY - Call 475-2771. 7-15

FOR RENT - Vacation Cabin on private lake in Lewiston, Michigan. Rent for the weekend or the full week. Please call evenings 428-7393 or 428-7086. 6-24

TUTORING - Certified teacher will tutor children with learning difficulties. Experienced, references. 428-9461. 6-24

GARAGE SALE - Thursday, June 17th, Friday, June 18th from 9 a.m. to 5 p.m., Saturday, June 19th, 9 a.m. to 12 noon at 139 Adrian Street. The odds and ends of household furnishings. 6-17p

FOR SALE - '81 Cougar 4 cyl, 4 sp., air, sunroof, stereo cassette, great mileage, like new, many other options, \$6,800. 428-9308. 6-17

FOR SALE - Historical home in Tecumseh, completely remodeled, beautifully decorated, 1 1/2 stories, 3 bedroom w/attached garage on spacious corner lot. \$39,900. 517-428-4177. 6-17

Classifieds Are \$1.50 For First 20 Words, 5c A Word Thereafter. Thank You's Are \$3 Minimum Up To 50 Words.

YOUTH JOBS

In the 1982
Washtenaw County
Summer Youth's Employment Program
July 1 - August 12

Qualifications:
14-21 years of age

Washtenaw County Resident living outside of Ann Arbor city limits.

CETA eligible

Programs:
Opportunities for work experience, vocational exploration and career exploration/training programs including sales, cable TV, word processing, and general clerical.

For further information call: 994-0707

Washtenaw County Employment and

Training Program

Equal Opportunity Employer 6-17

APARTMENT FOR RENT - 2 bedrooms - heat, water and trash pickup, reasonable, call 428-8379 days. 6-17

FOR SALE - Desirable home, full basement, excellent gardens, double garage. Available now. To see phone 428-8118 or 475-3624. 6-17

FOR SALE IN TECUMSEH - 2 story house by owner, terms or possible land contract. 2 or 3 bedrooms, new gas furnace and water heater, all new kitchen, bath, and carpet, garage. \$30,500. 517-423-4177. 6-17

GARAGE SALE - June 11, 12, 13: 9 to 5. Gas clothes dryer, refrigerator, chairs, TV's, motors, glassware, and lots more. 17800 Pleasant Lake Rd., west of M-52. p

SALE - complete household, everything must go. 326 Ann Arbor Street. Wednesday, Thursday and Friday (9th - 11th) at 9:00 a.m. till 5:00 a.m. p

BIG YARD SALE - June 11, 12, 13. Many items including fuel oil furnace and tank, clothes - men and womens, miscellaneous sporting goods and many household items. 7590 Lamb Rd., Manchester. p

GARAGE SALE - MULTI FAMILY. 7551 Schneider, 2 miles west of Bridgewater, north off of Austin. June 17 and 18, 9 a.m. to 8 p.m. Furniture, teenage and adult clothing, books, games, houseware items, plants and much more.

BIG GARAGE SALE, whole household of items to sell including furniture. Friday, Saturday and Sunday, June 11, 12 and 13. 9 a.m. to 7 p.m., 550 Grant, Chelsea.

HOME FOR RENT - 3 bedroom. Irish Hills area, lakefront. \$325 a month. 313-428-8056.

FOR SALE - Old meat block. 1 room air conditioner. 1952 John Deere A tractor. 428-7721. p

FOR SALE - 1975 Chrysler Newport custom 4 dr., auto, air, full power, 400 cu. in., good rubber, 83000 mi. Call 428-8030 after 6:00.

OFFICE HELP - experienced on typewriter and calculator. Monday only. Michigan Livestock. 428-8352.

FOR SALE - 1974 Mustang II Fastback V-6 auto, good rubber. Call 428-8030 after 6:00.

BIG YARD SALE - Saturday, June 12; 9 to 2; bounty of Pleasant Lake treasures from 10 families. Articles A to Z. Don't miss this one. 11437 Pleasant Lake Road. (Vogel's)

Congratulations to the Class of '82!

I was pleased to see so many of you recognized at Academic Awards night, and proud of all of you at Baccalaureate. I wasn't in town to hand out diplomas, although that is the most pleasant task a Board member ever has. I was in Harbor Springs with my family attending the graduation of my nephew.

It has been a real pleasure to get to know some of you this past year; I feel that the future is in good hands.

Kent P. Talcott

Card Of Thanks

I would like to thank my family for all their help in moving The Flower Garden to its new location. Without your help it never would have gotten done. I would also like to thank Sam and Joan Beal for their basket of Joy and Harry Krauss for his refreshments. Thanks again everyone.

Deneine Schaible

LEGAL NOTICES

STATE OF MICHIGAN
IN THE CIRCUIT COURT FOR THE COUNTY OF WASHTENAW

WILMOT F. HALL, Plaintiff, vs.
SHARON K. HALL, Defendant
Case No. 82-29338-DO

ORDER TO ANSWER

At a session of said court held in the City of Ann Arbor, County of Washtenaw, State of Michigan on May 14, 1982, PRESENT, HONORABLE HENRY T. CONLIN, Circuit Court Judge.
On May 13, 1982, an action was filed by WILMOT F. HALL, plaintiff, against SHARON K. HALL, defendant, in this court for divorce.
IT IS HEREBY ORDERED that the defendant, SHARON K. HALL, shall answer or take such other action as may be permitted by law on or before August 13, 1982. Failure to comply with this order will result in a judgment by default against such defendant for the relief demanded in the complaint filed in this court.

Prepared by:
WASHTENAW LEGAL CENTER, P.C.
Attorneys for Plaintiff
By: A.L. Fanta (P29540)
4637 Washtenaw
Ann Arbor, MI 48104
434-3800 6-17

NOTICE OF PUBLIC HEARING

VILLAGE OF MANCHESTER

PLEASE TAKE NOTICE that the Village of Manchester will hold a Public Hearing on the proposed Tax Levies for an increase on revenues for operating purposes. Village of Manchester Hall, June 14, 1982, 8:15 P.M.

Helen J. Kensler
Village Clerk

Spring "Car & Yard" Tuneup Time

LaROCK and SON

Auto & Small Engine Repair
BOB & JACQUES, Owners
15151 Sharon Valley Rd.
Manchester, Michigan
PHONE 313-428-8849

AUCTIONEERS

JERRY JACOB CLIFF TRACY
313-428-7975 313-428-7263
Manchester, Michigan

MEMBER OF
MICHIGAN STATE AUCTIONEERS
ASSOCIATION

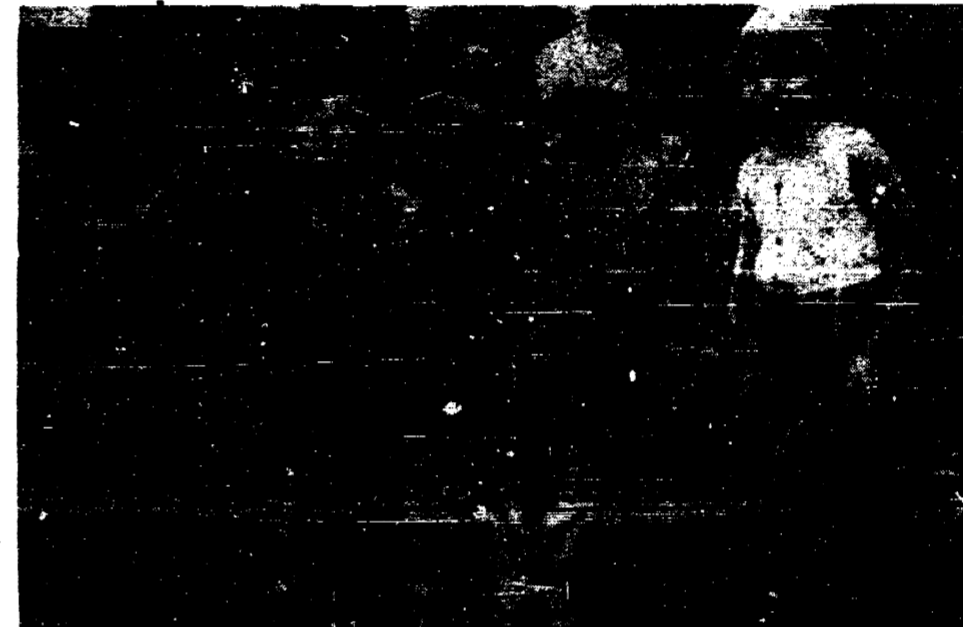
FIRST GRADERS PRESENT PLAY



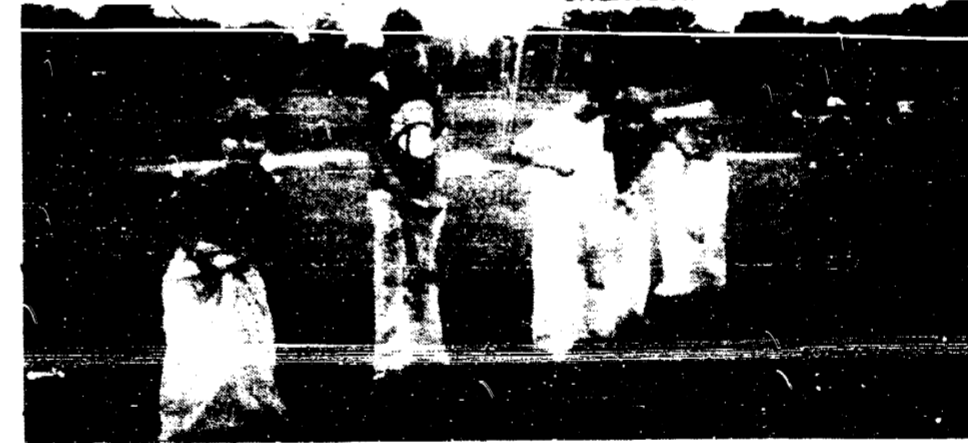
Mrs. Savage's First Graders delighted their families with a performance of *The Elephant's Child* the evening of June 4. The children sang loud and strong, the costumes made by the parents were cute and Mrs. Savage was an excellent narrator. Klager school substitute teacher, Lorraine Stevens played the piano.



KLAGER KIDS HAVE FIELD DAY



THREE LEGGED RACE
THE DAY WAS DIRECTED BY PHYSICAL EDUCATION TEACHER SANDIE SHEATS AND ASSISTED BY HIGH SCHOOL STUDENTS.



SACK RACE



PARACHUTE ACTIVITY

SAVE \$30 ON Installation

CON

NO CABLE NEEDED

TELEVISION SPORTS

MOVIES UN CUT. UNEDITED NO COMMERICALS

PLUS CONCERTS AND ENTERTAINMENT SPECIALS

LIVE BOXING TIGER BASEBALL U of M & MSU SPORTS

Call Now Ann Arbor 995-9188

Severe summer storms What if the power goes off?

Spring and summer — the time of year when gentle breezes can turn to severe storms which threaten safety and cause power outages. These tips from Consumers Power can help you cope with the season's thunderstorms, hail and damaging winds.

A few minutes of preparation now may help you deal with a power outage later. Here are some suggestions:

- Post the Consumers Power Customer Services office number and your account number near your telephone. Your account number helps pinpoint your location.
- Have candles, a flashlight with extra bulbs and batteries, and a portable, battery-powered radio in the house.
- If a severe storm is approaching and you have an electric water pump, fill containers or your bathtub to assure yourself of a water supply.
- Keep telephone numbers of local fire and law enforcement agencies at hand for use if a life-threatening situation exists.

Here's what to do if an outage does occur:

- Look outside for obvious causes such as fallen wires or trees. If wires are down, don't approach them. Check to see if your neighbor's service has been interrupted.
- Check your fuse box. If the problem is just in your home, it may be a blown fuse or tripped circuit.
- When you report the problem to Consumers Power,

be as prompt and factual as possible. If you can't reach the Company immediately, keep trying.

To cope with an extended outage:

- Keep your refrigerator door closed as long as possible. Foods inside can stay fresh for 12-24 hours. In a lengthy outage, you may wish to use dry ice to keep your foods cold.
- Use extreme caution and provide proper ventilation if you are cooking with an alternate fuel, especially indoors.
- If you have a sump pump, be prepared to take action to minimize the effects of possible flooding.
- In extreme cases you may consider buying or renting a portable electric generator.

If the storm causes flood conditions:

- If you smell gas or see bubbles rising from an appliance, call Consumers Power immediately.
- Be cautious in entering an area where the electricity may not be disconnected. Do not enter a flooded area if the water has reached the level of wall outlets switches and motors.
- If the electricity is off, shut off the gas valve at each affected appliance and disconnect the electric source before water has reached burners, controls, air intake, wiring or motors.
- Motors which have been submerged will need drying out before use. Any electric motor service organization and some appliance dealers can dry out motors.

If you're considering buying or renting a home generator contact Consumers Power's Energy Management Services Department for answers and questions.

- Home generators must be connected to your wiring and other electrical equipment in accordance with the National Electric Code. A qualified electrician should do the job. Exhaust should be piped to the outside.
- A double pole, double throw transfer switch is required to keep the generator separated from Consumers Power Company lines at all times.
- Anyone who might operate the generator should be trained to operate it properly.

Whenever a severe storm interrupts electrical service, Consumers Power must determine which areas are most affected by the outage and how serious the situation is. A system of priorities is established to restore power.

- Repair crews attempt to first restore facilities which can return power to the most customers.
- Variations in circuit arrangements make it possible for two customers on the same street to have their power restored at different times.
- If the service mast on your home has been damaged, Consumers Power advises customers to contact a qualified electrician to make repairs. Company repair crews can only restore service if the mast is undamaged.

Therapy Equipment Demonstrated




Pictured are: Cyndy Bruhnsen, OTR, Betty Ormsby (seated) Reva Robison and Bernie Ormsby.

Receiving a first-hand demonstration from Cyndy Bruhnsen, O.T.R., of some of the equipment used in Saline Community Hospital's Occupational Therapy Department which has been provided through donations from the Hospital Auxiliary are Auxiliary members Betty Ormsby (seated), Reva Robison and Bernie Ormsby. The Occupational Therapy Kitchen area in the Hospital was designed to teach patients not only the use of adaptive and specialized equipment but also to demonstrate ways in which a normal kitchen arrangement can be easily

modified for stroke, heart and arthritis patients. Much of the equipment purchased will be multi-functional, such as a wok and fondue equipment which are also used in demonstrating to Alcoholic Recovery Patients new ideas for socialization activities without the use of alcohol.

Saline Community Hospital's Auxiliary has also announced the election of new officers. Serving the Auxiliary as President will be Nancy Zahn, Vice-President Reva Robison, Recording Secretary Cecelia Deaton, Corresponding Secretary Doreen Steeb and Treasurer Ela Finkbeiner.



KNOWLEDGE

Now, that's as important in the parts business as anywhere else. So we make sure our staff keeps up-to-date. In 1981, for instance, we sent at least 50 A&L people to service training, product seminars, management seminars, paint and parts workshops, and other types of schooling. We're serious about the parts business. Try us!

A&L PARTS, INC

For 64 years, one of Michigan's largest full-line distributors of original equipment manufacturers (O.E.M.) parts

529 South Main Ann Arbor 313/665-4411

HIT OR MISS

A bee can haul a burden 300 times its own weight. This is the equivalent of a human being pulling a 30 ton truck.

If your morning glory closes its flower during the daylight, expect rain.

Fashion authorities claim that yellow clothing makes a woman appear slightly larger but green costumes make them look smaller.

I wonder if anybody remembers the name of the man who created the world's most popular secular symbol—the \$ sign. Oliver Pollock of New Orleans was the man—a New Orleans businessman on April 1, 1778.

The only way to keep your health is to eat what you don't want, drink what you don't like, and do what you'd rather not.—Mark Twain.

STONES

If you have a problem with stones in your fields and would like to rid yourself of the back-breaking job of picking them up — also saving yourself the high cost of repairs and downtime . . .

Call this telephone number: **517-456-4984**. I have a mechanical stone picker that you can rent or I can do custom work for you.

MAPLE HILL FARM
Elmen L. Kopka
15448 VanTuyke Rd.
Manchester, MI 48138

LAWN SPRAYING

FERTILIZING & WEED CONTROL
FREE ESTIMATES

CALL TIM
AFTER 5 P.M.
OR ON WEEK-ENDS

PHONE 428-9497

Kirk Excavating

SAND—GRAVEL—FILL DIRT
BASEMENTS—DRIVEWAYS

DAVE KIRK

14180 Schlewels Rd Manchester
Phone 428-7938

MANCHESTER INSURANCE AGENCY

122 WEST MAIN STREET
MANCHESTER, MICHIGAN
Phone 428-8215

Home-Farm & General Insurance

MERRIMAN INSULATION

FREE ESTIMATE

BLOWN IN CELLULOSE
Professionally Installed

George Merriman
Phone 313-429-7962
372 Hartman Lane Saline, Mich

This Week's Special

SPECIAL STARTS WEDNESDAY

SMALL SUNDAE	\$1.25
PEPPER LOAF	\$2.79
CHICKEN SNACK all dark meat	\$1.75

SERVING
PARLOUR ICE CREAM
FISH, CHICKEN and SHIRMP
DINNERS OR BUCKET

Save Time Order Ahead
Phone 428-9322

MANCHESTER DELI

108 ADRIAN STREET MANCHESTER, MICHIGAN

Open Monday-Saturday 9:30-7 P.M.
Sunday 1 P.M.-6 P.M.

THE MANCHESTER ENTERPRISE

115TH YEAR VOLUME NO. 34 USPS 327-460 THURSDAY, JUNE 17, 1982

Manchester Area Historical Society

Monday, June 21st, at 7:30 is the regular meeting of the Manchester Area Historical Society at the Old Blacksmith Shop, 324 East Main Street. Another work session and fun is on the agenda.

President Howard and Mrs. Parr will report on the Policies and Procedures for Building Museum Collection. They attended a meeting of the Michigan Museum Association at Bel Air, Michigan last week to get some pointers on the local problems in beginning a collection.

Plans for the staffing requirements at the 4th of July Raffle and the Chicken Broil activities will be discussed. If you haven't your raffle tickets yet contact most any member of the Society.

Manchester Junior To Attend U of M



Paul Voytas, son of Mr. and Mrs. Joseph Voytas of 17723 Pleasant Lake Road has been accepted into the Young Scholars Program at the University of Michigan next year. This program allows academically exceptional students to attend the U of M on a full time basis before their high school class graduates. Generally, the program accepts approximately 1 to 4 students per year. In order to qualify, Paul had to take the ACT and SAT tests this past winter and score high on both. In addition, Paul had to meet with U of M officials and directors of the program for personal interviews.

At present, Paul has just completed his junior year at Manchester High School. The past two years he has been put on an accelerated program allowing him to take a number of classes a year earlier than normally allowed, to help prepare him for college this fall. Paul has excelled in all of his classes and also has participated in extra curricular activities, including varsity choir and National Honor Society. At the University of Michigan, Paul intends to major in physics. In addition to being accepted into the Young Scholars Program, Paul also has been awarded the very prestigious University of Michigan Regents Alumni Scholarship.

Attention! Fair Exhibitors

Anyone interested in exhibiting in the Merchants' tent for the 1982 Manchester Fair should please contact Kathy Richardson or Carol Britten at 428-8474 or 428-8589. Fair dates this year are August 17-22.

To Celebrate 50th Anniversary 4th of July Parade Picnic & Fireworks



Paul J. and Marjorie B. Wahr, 16634 Easudes Rd., Grass Lake, will celebrate their Golden Wedding Anniversary at an Open House given by their family at the home of their daughter at 8250 Wolf Lake Rd., Grass Lake, on Sunday, June 20, 1982, from 2-5 p.m.

Married in the parsonage of the Haven Methodist Church on Michigan Ave. in Jackson on June 18, 1932, they were attended by her brother, George Hawkins and her future sister-in-law, Ruth Brady both of whom are now deceased. Paul and Marjorie have spent their entire married life on the farm just north of Sharon Hollow where they still reside.

Parents of two children, Ruth (Mrs. Dale) Crouch of Grass Lake, and Paul Jr., of Petersburg, Michigan, they are also the grandparents of 14.

Paul has lived his entire life in Sharon Township having also been born and raised there. He was a farmer all his life until his retirement several years ago. Marjorie who graduated from Jackson High School in Jackson, attended the old Ypsilanti Normal College in Ypsilanti before teaching in Berkley and Jackson. After her

marriage and family she returned to the school which had become Eastern Michigan University to obtain her B.S. Degree in elementary education and taught for many years in the fifth grade at Manchester Public Schools before retiring.

They are members of the United Church of Christ in Manchester and Marjorie is also active in the church Guild, Senior Citizens, and is a member of the Manchester chapter O.E.S.

Manchester Voters Reject Bond Issue

The results of the Manchester Community Schools annual election held on Monday, June 14 are as follows: 1061 ballots were cast. For 1 year term, 1 board member - JoAnn King Okey 638 votes, Thomas Goiding 328 votes. For 4 year term, 2 board members: Kent Talcott 634 votes, Earl Horning 605 votes. Bond Issue: 492 yes, 526 no. Washtenaw Intermediate School Special Education: 386 yes, 655 no.

Outstanding Citizen of the Month



Donald Hagerman, a member of Manchester High's Class of 1962, has been named the Outstanding Citizen for June by the Manchester Optimist Club.

The son of Mr. and Mrs. Robert Hagerman, 17851 English Road, Don has been a member of the track team four years. He was voted Most Improved member of the team in 1980 and Most Improved and Most Valuable in 1981. He was a member of the '82 Trip Club. While in ninth grade, Don was a member of the Boy Scouts.

His hobbies include hunting, snowmobiling and golf. Don plans to begin his studies toward a degree in engineering next fall at Michigan State University.

Cathy Walkowe Participates In YFU Program

Cathy Walkowe, the daughter of Mr. and Mrs. William Walkowe of 18025 Herman Road in Manchester has been accepted by the Youth For Understanding (YFU) program to participate in their summer exchange program. She has also received a scholarship from YFU to help finance the trip.

Youth For Understanding is an international organization that arranges programs for American students to live and study in foreign countries either for a summer two month program or an entire year program.

Germany is the country Cathy has chosen to visit. While not totally fluent in German, Cathy has taken a year of German this past year which will help her greatly this summer. She will be leaving from Detroit Metropolitan Airport on June 22 and flying to Hamburg, Germany. She will be returning here on August 18.

