

Manchester Area Historical Society

A very successful "Flea Market" was reported by the Committee of the Manchester Area Historical Society. Special "Thank you's" are offered to the many persons in the community who contributed articles as well as the interested buyers.

Equestrian 4-H Club Does Well

The Flying Equestrian 4-H Club results at the County Show are as follows: Dawn England qualified for the finals in fitting and showing. Lisa Buono, Jenny England and Sue Shear qualified for the finals in Western Equitation. Lisa Buono was Grand Champion in Junior Western Equitation and will represent our county at the State 4-H show in Lansing. Sue Shear also won second place in pole bending and second in barrel racing, third in fitting and showing and fourth in Western Pleasure. Kathy York won first place in speed and action, fourth place in pole bending and sixth place in the flag race. Lauren Willson won fifth place in fitting and showing, fourth in pole bending and fifth in speed and action. Mary Cleland won sixth in Western Pleasure.

Steam Canners Not Recommended

Several brands of steam canners have appeared on the market and are being promoted as substitutes for water-bath canners. They consist of three pieces—a shallow pan which is filled with about two quarts of water, a perforated rack on which the jars stand, and a large dome cover. During processing, steam wafts around the jars.

HIT OR MISS

obvious. The signs of spoilage include loss of seal, bulging lids, gassiness, mold, and off odor.

School Calendar 81-82

- January 4, School Resumes.
January 22, Records/Inservice Day - No School.
A. Teachers K-4 Inservice. B. Teachers 5-12 Records.
March 18, Parent-Teacher Conferences - No School.
A. Teachers K-12 1:00-5:00; 6:30-9:30*
March 19, Parent-Teacher Conferences - No School.
A. Teachers K-4 Conferences 9:00-12:00; 1:00-4:00. B. Teachers 5-12 Inservice, 9:00-12:00; 1:00-4:00.
April 2, Spring Break (Begins End of Day).
April 12, School Resumes.
May 31, Memorial Day - No School.
June 10, Last Student Day.
June 11, Teachers until 12:00.

School Events Calendar Is Back

A school events calendar has been absent in Manchester for a number of years now. 1981-82 marks the return of the calendar. The Manchester Education Association has designed a school events calendar to remind you of all those important school related events - athletic activities, conferences, concerts, vacation, board meetings...

Appointed Principal At Klager School



Dr. Janice Hammond, Principal at Klager Elementary

Hit or Miss By Farley

A good friend of ours tells us that he used to be troubled with insomnia but now he offers a great many cures for this condition which are among the many that he has been offered by his intimates. Among them are the following: Mashed potatoes and some gravy with a few marjoram, accompanied by a steak or a generous chunk of prime roast rib.

1981 Fair Queen

Laura Pierce was chosen Queen of the 1981 Manchester Community Fair, Laura is a junior at Manchester High School, The daughter of Mr and Mrs. Edward Pierce of Manchester.

School Board Cancels Fall Sports Program

The Manchester Board of Education has canceled all athletic programs for the 1981-82 school year, the result of voter rejection of a special millage request last week.

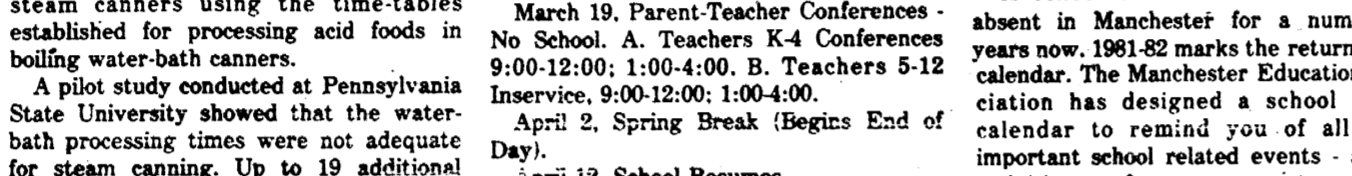
Community Education Registration August 31

The Fall Semester Community Education brochures will be mailed out on Friday, August 28. Registration will be held from Monday, August 31 thru Friday, September 11. Most classes will start the week of September 21. The exceptions are Washtenaw Community College classes which will tentatively start the week of Monday, September 7.

FINANCE RATE ROLLBACK

13.8% ANNUAL PERCENTAGE RATE WHEN YOU BUY AND TAKE DELIVERY ON ANY NEW CHEVROLET CAR DURING AUGUST, 1981.

NOW IS THE TIME TO BUY



What a great time to buy a new Chevy at TIRB CHEVROLET CO.

131 ADRIAN STREET MANCHESTER, MICHIGAN



THE MANCHESTER ENTERPRISE

114TH YEAR VOLUME NO. 43 USPS 327-460 THURSDAY, AUGUST 20, 1981

20c A COPY



Dr. Janice Hammond, Principal at Klager Elementary

Dr. Eugene W. Thompson, Superintendent of the Manchester Community Schools has announced the appointment of Dr. Janice M. Hammond as Principal of the Klager Elementary School.

Dr. Hammond has been the recipient of numerous academic honors and awards. These include the Hinsdale Scholar Award from the University of Michigan, the W.C. Olson Award from the U-M School of Education, the Pi Lambda Theta Honor Society award from the Faculty of the University of Michigan, and Cum Laude Honors from Northern Michigan University.

Since 1978 Dr. Hammond has been employed by the Wayne County Intermediate School District in the Staff Development Department. During this period she has also been a guest lecturer at Eastern Michigan University and the University of Michigan.

A widely published author, Dr. Hammond has written for such noted journals as The Personnel & Guidance Journal, the Michigan Reading Journal, The American Educator and the Elementary School Journal.

Hit or Miss By Farley

A good friend of ours tells us that he used to be troubled with insomnia but now he offers a great many cures for this condition which are among the many that he has been offered by his intimates. Among them are the following: Mashed potatoes and some gravy with a few marjoram, accompanied by a steak or a generous chunk of prime roast rib.

Much of the news, Monday night football, most reruns, and I am safe in the arms of Morpheus anytime after 11:00 p.m. The chap who gave out this information went on to state however, that mere catnaps in front of the TV sometimes create a problem.

So you see, going to sleep is easy. But quite a few of us have a habit of waking at 4:00 a.m. and ones mind begins to function in high gear.

But I stoutly said to myself "I'm breathing through my toes". All at once I thought of my thigh bone. That was how the air got from my leg to my chest, and then through my grimy little mind there permeated the verse.

And so I chanted to myself that doggerel until daylight. Didn't get any sleep though, but it kept me occupied and I failed to wonder if that slight twinge in my left knee was the beginning of a careless bout with arthritis or if the seemingly numbness in the cord on the right side of my neck indicated brain damage where I whacked myself on an open cupboard door.

At a recent arbitration session involving the school in a nearby town, the arbitrator went through all the ground rules to make program."

Continued on page 12

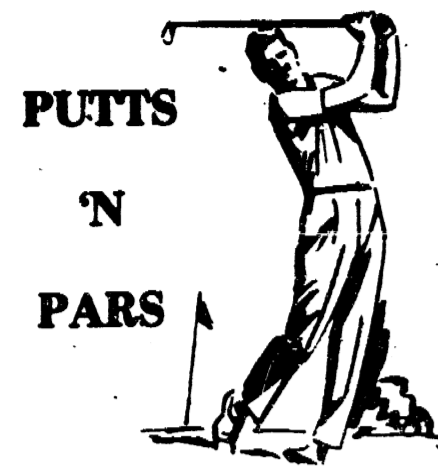
MANCHESTER TOWNSHIP LIBRARY P. O.

MERKEL'S 57th ANNUAL STOREWIDE SUMMER SALE

FURNITURE CARPETING ACCESSORIES EVERYTHING ON SALE SAVE 10% to 50%

NOW AT YOUR COMPLETE HOME FURNISHINGS DEPARTMENT STORE Merkel's

MAIN STREET IN CHELSEA PHONE 477-8821 or 1-800-482-3650 OPEN DAILY 9 to 5:30 Monday and Thursday 11 to 5:30 p.m.



MANCHESTER BOGEY BUSTERS

Table listing names and scores for Manchester Bogey Busters.

NEW CLARK LAKE 36

Table listing names and scores for New Clark Lake 36.

CLARK LAKE-MANCHESTER LATE GOLF LEAGUE

Table listing names and scores for Clark Lake-Manchester Late Golf League.

CENTERVIEW FRIDAY MIXED LEAGUE

Table listing names and scores for Centerview Friday Mixed League.

CLARK LAKE 18 HOLLERS

Table listing names and scores for Clark Lake 18 Hollers.

MANCHESTER MIXED LEAGUE

Table listing names and scores for Manchester Mixed League.

Softball Tournament

Text describing the Softball Tournament details.

Manchester Village Planning Commission

Article reporting on the Manchester Village Planning Commission meeting.

Continuation of the article regarding the Manchester Village Planning Commission.

Continuation of the article regarding the Manchester Village Planning Commission.

Advertisement for Dutch Country Kitchens, featuring hand-crafted amish cabinets.

Advertisement for Dairy Queen Hot Fudge Brownie Delight, priced at 99¢.

Advertisement for Village Taxes Due, including a list of names and signatures.

Advertisement for Spear & Associates, Realtors, listing various properties for sale.

Large advertisement for Chelsea Community Fair, August 25-29, featuring various activities and events.

Waterloo Farm Museum



The First Michigan Artillery Regiment from the Hart-Scottville area will set up camp on the grounds of the Waterloo Farm Museum August 22 and 23. Encamped in tents, the regiment, in full uniform, will fire their cannons and muskets over the marsh at the museum, located at 9998 Waterloo-Munith Road. The scene will be reminiscent of Civil War encampments.

Nineteenth-century agriculture and farm life are the themes of the Waterloo Area Farm Museum's restored farmhouse and outbuildings. Also known as the Realy Homestead, the brick part of the house was constructed in the mid-1850s and was enlarged in 1885 with clapboard additions. The woodwork of the three porches and the bay window is characteristically Victorian while the use of fieldstone patches against brick is an unusual decorative feature. The clapboard portion of the farmhouse contains a kitchen, hired hands' quarters, and a woodshed. Other

rooms in the house include the parlor, sitting room, dining room, pantry, weaving room, and bedrooms. All are furnished with period artifacts.

Among the outbuildings on the farm are a restored Perkins windmill, the original milk house and ice house, and a repair shop. A bake house, reconstructed upon its original foundations, features a brick oven which is used during the Harvest Festival held each fall.

The farm remained in the Realy family until 1962 when its buildings were turned over to the Waterloo Area Historical Society. Today it is listed on the National Register of Historic Places. The Farm Museum is open 1 p.m. to 4 p.m. Tuesday through Sunday from Memorial Day to Labor Day, and from noon to 5 p.m. on the second Sunday in October.

Regular guided tours will be given until August 31 from 1-4 p.m. Tuesday through Sunday.

School Calendar 81-82

August 27, Teacher's Orientation.
 August 31, Classes Begin (1/2 day).
 September 7, Labor Day - No School.
 November 5, Parent-Teacher Conferences - No School. A. Teachers K-4 Conference Prep 9:00 - 12:00. B. Teachers 5-8 Conferences 9:00 - 12:00. C. Teachers 9-12 In-service 9:00 - 12:00. D. Teachers K-12 Conferences 1:00-5:00; 6:30-9:30*
 November 6, Parent-Teacher Conferences - No School. A. Teachers K-12 9:00-12:00; 1:00-4:00.
 November 26-27, Thanksgiving - No School.
 December 18, Christmas Break - (Begins End of Day).
 January 4, School Resumes.
 January 22, Records/Inservice Day - No School. A. Teachers K-4 Inservice. B. Teachers 5-12 Records.
 March 18, Parent-Teacher Conferences - No School. A. Teachers K-12 1:00-5:00; 6:30-9:30*
 March 19, Parent-Teacher Conferences - No School. A. Teachers K-4 Conferences 9:00-12:00; 1:00-4:00. B. Teachers 5-12 Inservice, 9:00-12:00; 1:00-4:00.
 April 2, Spring Break (Begins End of Day).
 April 12, School Resumes.
 May 31, Memorial Day - No School.
 June 10, Last Student Day.
 June 11, Teachers until 12:00.
 This calendar provides for 180 days of

instruction and 187 teacher work days. *Extra conference periods equivalent to teaching time to be provided with a substitute for Kindergarten Teachers.

HIT OR MISS

certain they were satisfactory and said it might be a long meeting, then said that the "johns were down the hall to the left." Whereupon one of the women present queried with considerable dignity "And where will be find the janes?"

An outdoor lounge chair might also be known as a yawn chair.

Saw the Stryker, Ohio band the other day. Band members practice twice a week at 7:00 a.m. during the summer. They rehearse constantly for parades in neighboring communities. What's more, the band members, all 93 of them all bought their own uniforms.

One chap says he is amused by anthropologists who travel twice around the world to investigate a "bizarre" culture when all he has to do is to look out his dining room or living room window.

The handwriting on the wall is twice as ominous in a society that doesn't bother to read.

Most fishermen try to worm their way into a fish's confidence.



MANCHESTER ELECTRIC, INC.
 CONTRACTING
 ELECTRICAL - HEATING - COOLING
 MAJOR APPLIANCE SALES AND SERVICE
 112 ADRIAN STREET MANCHESTER
 PHONE 428-8243

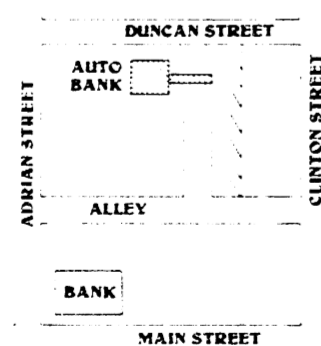
NO POPCORN?

WHAT KIND OF DRIVE-IN IS THAT?

The drive-in at our office right here in downtown Manchester doesn't sell popcorn. It opens at 8 a.m. and the entire show only lasts about two minutes. And our drive-in proudly offers the same double feature

every week, all year long, quick and easy banking. We wouldn't dream of closing for the season. In fact, we're open every day except Sunday.

So, stop by and take advantage of our double feature: quick and easy banking at National Bank of Jackson in downtown Manchester. Free admission, naturally.



DRIVE-IN HOURS

NBJ

8am - 5pm THURSDAY
 8am - 7pm FRIDAY
 8am - 1pm SATURDAY

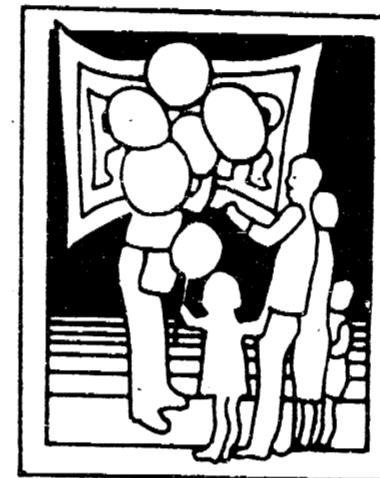
NBJ NATIONAL BANK OF JACKSON

Member Federal Reserve Insurance Corporation National Service System

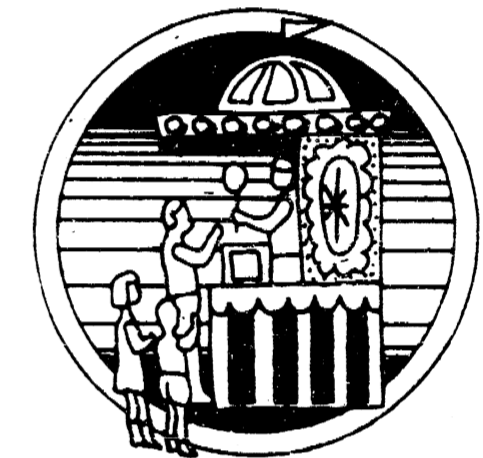
Where things are happening.



37th ANNUAL MANCHESTER COMMUNITY FAIR



AUGUST 18 THRU 22



KIDDIE DAY FRIDAY 12-5 REDUCED RIDES

Rides NEW MOTOR STATE

Fair Program

WEDNESDAY, AUGUST 19, 1981

Watermelon Eating Contest
 Children 10 years and under
 1:30 p.m.
 Egg Toss
 Teams 11-16 years old
 2:00 p.m.
 Dinner - Food Tent
 Lamb Judging
 Mule Pull
 Tecumseh Dance Workshop "Jazz Dancers"
 Steer Judging
 Zarifa Middle Eastern Dancers
 5:00 p.m.
 6:00 p.m.
 6:30 p.m.
 7:30 p.m.
 8:00 p.m.
 8:30 p.m.

FRIDAY, AUGUST 21, 1981

Pet Judging
 Reduced Price on Rides
 Drawing for Prizes
 10:30 a.m.
 noon-5:00 p.m.
 Weigh-in Antique Tractors
 Clark Family Players (children's show)
 1:00-5:00 p.m.
 2:30 p.m.
 Antique Tractor Pull
 Dinner - Food Tent
 5:00 p.m.
 5:00 p.m.
 6:00 p.m.
 Micro-Mini Tractor Pull
 Clark Family Players (adult show)
 6:00 p.m.
 7:30 p.m.
 8:00 p.m.
 Don Clay & The North Country
 8:30 p.m.
 8:30 p.m.
 Grass Band

THURSDAY, AUGUST 20, 1981

Senior Citizens Admitted Free
 Kid's Field Day -
 Sponsored by the Jaycees
 Horseshoe Pitching Contest
 David Godell, Chairman
 1:00 p.m.
 5:00 p.m.
 Compact Tractor Pull Weigh-in
 4:00-6:30 p.m.
 Dinner - Food Tent
 5:00 p.m.
 Compact Tractor Pull
 7:00 p.m.
 Bethlehem "Bell Ringers"
 7:30 p.m.
 Steer and Lamb Auction
 8:00 p.m.
 "Wasthenaw County Friends of the
 Cord" - Barber Shop Chorus
 8:30 p.m.

SATURDAY, AUGUST 22, 1981

Weigh-in Large Tractors
 Tractor Eliminations
 Dinner - Food Tent
 Iron Kettle Spinners Guild Demonstration
 Tractor Finals
 Hawaiian & Tahitian Dancers -
 Robert Lee Studios
 "Sky High" - Rock & Country Band
 Remove Entries
 7:00 a.m.
 9:00 a.m.
 noon
 2:30 p.m.
 7:00 p.m.
 7:30 p.m.
 8:30 p.m.
 9:30 p.m.

Manchester Village Planning Commission

section of the Village Zoning Ordinance at a Special Meeting to be held before July 31. He also requested that the Village Attorney furnish to the Commission a copy of the Michigan Supreme Court ruling affecting the Village's present mobile home section.

The meeting was adjourned at 9:40 p.m.
Mary Kallewaard,
Acting Secretary

Special Meeting - July 21, 1981

A Special Meeting of the Manchester Village Planning Commission was called to order at 7:34 p.m. by Chairman Hinkley. Members present: Hinkley, Kallewaard, Alber, Grossman, Leeson, Tracy, Walton, Smith. Member absent: Krauss. A quorum was present.

Tom Gallagher and Jack Zaborowski of National Bank of Jackson were present to submit the bank's application to place a 26" x 27" sign on the bank's drive-up facility, and to replace the Union Savings Bank name with the NBJ name on the 26" x 27" portions of the bank's exterior clock.

Gallagher and Zaborowski stated that the sign on the drive-up facility would be a wall-mounted sign, fixed on the north elevation between the door and the north-west corner of the building. It would display an oval "NBJ" logo in green and the words "National Bank of Jackson" in black on a white background. It would very likely be a non-illuminated sign; but if lighted, the source and placement of illumination would be in accordance with the Village Sign Regulations. They further stated that sign panels identical to the one on the drive-up facility would be placed in the exterior clock. They agreed that the bank will not modify the frame of the clock, nor alter any elements of the clock other than the panels formerly containing the Union Savings Bank name. They noted that the clock presently contains interior lighting and that this would be continued.

It was moved by Walton, and seconded by Leeson, that the Planning Commission recommend to Village Council that approval be given to the application of National Bank of Jackson to place a 26" x 27" wall-mounted sign on the bank's drive-up facility, and to replace the 26" x

27" panels of the bank's exterior clock with new panels displaying the National Bank of Jackson name, as described in these minutes. The motion was passed on a roll-call vote, with members voting as follows: Alber, yes; Grossman, abstain; Kallewaard, yes; Leeson, yes; Smith, yes; Tracy, yes; Walton, yes.

Members next considered the recommended revision of Article 25 of the Village Zoning Ordinance, relating to the placement of mobile homes within the Village. Kallewaard noted that the Planning Commission now has on file the full opinion of the Michigan Supreme Court in the case of Robinson Township v Knoll, which created the necessity of adopting a new mobile home ordinance.

Tracy requested that copies of the National Mobile Home Construction and Safety Standards Act of 1974, which may be referred to in the new mobile home ordinance, be obtained for the Planning Commission and the Building Inspector.

Members reviewed and discussed a proposed mobile home ordinance recommended by the Washtenaw County Metropolitan Planning Commission, and also a proposed mobile home ordinance recommended by the Michigan Mobile Home Commission. After discussion, it was moved by Smith, and seconded by Walton, to request the Village Attorney to prepare a new Article 25 of the Village Zoning Ordinance to be recommended for adoption by Village Council; the Article to include the items contained in the County's

proposed ordinance, plus one paragraph, relating to motor homes and similar vehicles, contained in the Mobile Home Commission's proposed ordinance. The motion was passed unanimously on a voice vote.

Leeson stated that he wished to submit his resignation as Secretary of the Village Planning Commission, due to the recommendations of his doctor. His resignation was accepted with regret by Chairman Hinkley. It was moved by Tracy, and seconded by Grossman, that Mary Kallewaard be appointed Secretary. The motion was unanimously approved on a voice vote. It was moved by Tracy, and seconded by Smith, that Laurin Leeson be appointed Archivist of the Village Planning Commission. The motion was unanimously approved on a voice vote.

The meeting was adjourned at 9 p.m.
Mary Kallewaard,
Secretary

La Leche Meeting

The La Leche group will meet August 26, 7:30 p.m. at Hostess: Sally Pobjewski's, 18101 Sharon Valley Rd., Manchester. Phone: 428-8032.

The subject for the evening will be "Nutrition and Weaning."

Pregnant women, nursing mothers and babies are welcome. For further information call Grace Rogers 428-7805 or Linda Meyer 423-7203.

Sportsman Club Picnic

The Manchester Sportsman Club annual picnic will be held Sunday, August 23 at 12:30 at the club grounds. Meat, rolls and beverage will be furnished. Bring a dish to pass.

Watch the paper for opening of trap shoot and bow and arrow practice.

Dial-A-Garden

The following is a weekly schedule of Dial-A-Garden, the system of pre-recorded daily gardening tips sponsored by the Washtenaw County Cooperative Extension Service. The system is in operation 24 hours per day, 7 days per week. Interested persons are invited to call 971-1122 at their convenience and receive timely, up-to-date gardening information.

Thursday, August 20, Freezing Blueberries.

Friday, August 21, Dividing Perennials. Monday, August 24, Autumn Lawn Weed Control.

Tuesday, August 25, De-thatch Lawns Now.

Wednesday, August 26, Buying Lawn Seed.

Thursday, August 27, Freezing Peaches. Friday, August 28, Caring for Newly-Seeded Lawns.

Monday, August 31, End of Houseplant Vacation Time.

THE MANCHESTER ENTERPRISE

114TH YEAR VOLUME NO. 44

USPS 327-460

THURSDAY, AUGUST 27, 1981

20¢ A COPY

Manchester Schools Food Policy

The Manchester Community School District has announced its policy for Free Meals & Milk and Reduced Price Meals for the 1981-82 school year. Children from families whose income is at or below the level shown on the scales printed below are eligible for free or reduced meals or milk.

Family Size	Scale For Free Meals and Milk	Scale For Reduced Price Meals
1	\$ 5,600	\$ 7,970
2	\$ 7,400	\$10,530
3	\$ 9,190	\$13,080
4	\$10,990	\$15,630
5	\$12,780	\$18,190
6	\$14,570	\$20,740
7	\$16,370	\$23,290
8	\$18,160	\$25,840

Each Additional Member \$ 1,780 \$2,550

Application forms will be sent home to all parents on August 31, 1981. Additional copies of the application forms will be available at the principal's office in each school. The information provided on the application is extremely confidential and will be used only for the purpose of determining eligibility. Applications may be submitted at any time during the year.

Anniversary Open House

Mr. and Mrs. Guy Little of 316 S. Macomb, Manchester will be celebrating their 25th Wedding Anniversary on August 30th, 1981. Guy and Anneliese were married on September 1st, 1956 at St. Mary's Catholic Church in Manchester. An anniversary open house is planned by their daughter and two sons, starting at 4 p.m., at the couples home. All friends are invited to attend. Please omit gifts!

HIT or MISS By Farley

We wandered into the midst of a discussion about schools and teachers the other night which is a very pertinent subject this time of year. The general consensus of opinion was that local schools had, on the average, a very good crop of instructors particularly in the lower grades. This statement led to an animated discussion about how important to the future of our youngsters these instructors were.

Teaching the younger grades is generally considered to be a kind of apprenticeship or probationary period when it should be regarded as quite the opposite—the most challenging, difficult and important of teaching assignments, calling for the highest degree of emotional cooperation.

What is needed obviously, is the greatest degree of teaching skill and experience in the formative years of any pupil—not for the bright pupil who probably don't need it nor for the dull one who may be beyond comprehension but just for the average child who starts school with enthusiasm and a lot of curiosity but, in a few years turns out to be limp, listless and leaden eyed.

I can remember every detail, my

Grand Champion Steer and Lamb



Mark Walz and his Grand Champion Steer, 2nd Place Junior Showmanship.

The Steer Club Sale at the Manchester Community Fair was very successful again this year. The total weight was 748 pounds with total sales of \$1,705.85, average price per pound \$2.28.

The following is a list of Steer Club members, weight per pound and buyers. Mark Walz-2nd Place Jr. Showmanship, \$1.70 lb., Double A Products Co. Deborah Alber, \$1.20 lb., Hoover Universal. Jon Bristle - Best Daily Gain (2.59), .90 lb., Manchester Stamping. Bobbi Schearle - 2nd Place, Sr. Showmanship, \$1.05 lb., Bouillon Sales. Brenda Sodd, \$1.05 lb., Michigan Livestock Exchange.

Fat Lamb Club

The results of the 1981 Manchester Jaycee Fat Lamb Sale which was held at the Manchester Community Fair is as follows. The list includes club member, price per pound and buyer.

Ron Milkey, \$4.50 lb., National Bank of Jackson. Kathy McLennan, \$1.90 lb., Koebbe Welding. Mike McLennan, \$1.85 lb., Manchester Stamping.

In teaching anything—piano, swimming, a foreign language—we need better teachers—

Continued on page 14



Ron Milkey with Grand Champion Lamb purchased by National Bank of Jackson at \$4.50 a pound.

Michelle Kidd, .90 lb., Double A Products Co. Jeff Kunzelman - 3rd Place Sr. Showmanship, \$1.15 lb., Manchester Stamping. Continued on page 4

Something Old, Something New

"Nothing ever stays the same". Certainly that familiar phrase applies to the current exhibition at the Manchester Art Gallery. The "Membership Show" presented by the Manchester Art Guild, began last May and is to be held over until September 20. What has changed, is just about everything. Items have been sold and new works of art and crafts have been received and displayed. Membership has grown and so has the exciting blend of painting, batik, photography, prints, weaving, and pottery. In addition, Street Fair visitors will recognize the selection of elegant hand-carved wooden birds and intricate leaf pictures by two of its exhibitors.

Whether or not you've visited the "Membership Show" earlier, a trip to the Manchester Art Gallery, located adjacent to the lobby of the Black Sheep Theater at 138 E. Main Street, will be found as stimulating and time well spent. Exhibit hours now until September 20 will be, Thursday and Friday: 7:30-9:30 p.m., Saturday: 10:00 a.m.-12:00 noon and 7:30-9:30 p.m., and Sunday: 3:30-5:15 p.m..

River Clean-up

The Manchester Men's Club will need 20 volunteers to assist with the River Clean-up on Sunday, August 30 at 10:00 a.m. All volunteers will meet at the American Legion Building. The Legion will provide refreshments for the workers.

Thank You Red Cross Volunteers

Twenty-six volunteers, all members of Safety Services recognized by the American Red Cross, worked a total of sixty hours during the Manchester Community Fair at the Red Cross First Aid Trailer. Nineteen minor injuries were treated. The safety record for the Fair was not marred by any serious accidents making it an excellent year.

Those we have to thank for this service to the community are the morning workers: Paul Lemon who opened the trailer and Art Lamarand and Al Taylor from the Irish Hills Fire Department who worked the Saturday morning Tractor Eliminations.

The afternoons were scheduled for Mrs. Ben Creason, Mrs. Joseph Voytas, Mrs. Alvin Kappler, Mrs. James Pratt, Mrs. L. Dean Sodd, Miss Dianne Sodd, Mrs. Floyd Parr, Mrs. John Ball, Mrs. James Fielder, Mrs. Aaron Nathan and Mrs. Robert Davenport.

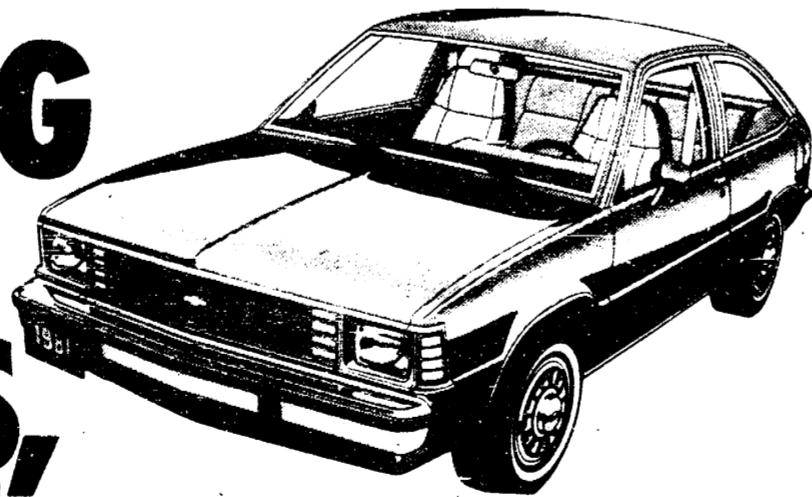
The evenings were covered by Mrs. James England, Mr. and Mrs. Stanley Parr, Mrs. Duane Beuerle, Mrs. Ben Creason, Mrs. Edward Pierce, Mr. and Mrs. John Ulrich, Mrs. Nancy Ceroniski, Mrs. Robert Burkhardt, Mrs. Mary Krzyzaniak, Alfred Sannes and Dave Jose.

Reduced finance rates, now...

13.8%

ANNUAL PERCENTAGE RATE WHEN YOU BUY AND TAKE DELIVERY ON ANY NEW CHEVROLET CAR DURING AUGUST, 1981.

RED TAG SALE PRICES, TOO!



You save two ways now at
TIRB CHEVROLET CO.

131 ADRIAN STREET MANCHESTER, MICHIGAN



CLIP AND SAVE FOR FUTURE REFERENCE DUE TO COMPANY POLICY WE WILL NOT BE ADVERTISING ANYMORE

VACUUM CLEANERS
ELECTROLUX
Electrolux Sales and Service

CALL

JAMES COX

MANCHESTER

428-8444 or 428-9696

Borrow smart.

Full prepayment privileges with no penalty.



FEDERAL LAND BANK ASSOCIATION OF ANN ARBOR 3645 JACKSON ROAD ANN ARBOR, MICHIGAN 48106 PHONE 313-769-2411