





# ATTEND THE CHURCH OF YOUR CHOICE

## EMANUEL UNITED CHURCH OF CHRIST

Rev. Robert MacFarlane, Pastor  
Sunday School 9:15 a.m. Church 10:30 a.m.  
Plan to worship God regularly.

## SHARON UNITED METHODIST

Rev. Ronald L. Figgins, Pastor  
Corner Pleasant Lake Road M-52  
Sunday School 10:00 a.m., Worship Service 11:00 a.m.

## ST. THOMAS LUTHERAN

Rev. Paul Puffe, Pastor  
Ellsworth Road  
Adult Bible Study and Sunday School 9:30, Worship 10:45.

## ST. JOHN'S UNITED CHURCH OF CHRIST

Carl Asher, Pastor  
Rogers Corners, Waters and Fletcher Rds.  
Sunday School 9:30 a.m., Church Services 10:30 a.m.

## BETHEL UNITED CHURCH OF CHRIST

Rev. Roman A. Reineck, Pastor  
Schneider and Bethel Church Roads  
Church Service 10:00 a.m., Sunday School 11:00 a.m.

## MANCHESTER UNITED METHODIST

Rev. Thomas E. Hart, Pastor  
Sunday School 9:15, Worship 10:30 a.m.

## ST. MARY'S CATHOLIC CHURCH

Father Raymond Schlinkert  
West Main Street  
Monday thru Friday 8:30 a.m., Saturday 5:00 p.m., Sunday 8:30 and 10:30 a.m.

## NORTH SHARON COMMUNITY BIBLE

Bill Enslin-Pastor  
Sylvan and Washburn Road  
Sunday School 10:00 a.m., Worship Service 11:00 a.m. (Nursery will be available)

## FAITH COMMUNITY CHURCH

Timothy Miles, Pastor  
8400 Sharon Hollow Rd. off W. Austin Rd.  
Worship Service 10:00 a.m. Sunday School 11:15 a.m. Sunday Evening Service 6:00 p.m. Junior & Senior High Young People's Meeting 7:00 p.m. Wednesday evening, Prayer Meeting and Bible Study 7:00 p.m. Senior Choir Practice 8:00 p.m.

## IRON CREEK CHURCH

Rev. Ralph Janofski, Pastor  
Worship Service 10:00 a.m. Sunday School 11:15 a.m. Youth Service 6:30 p.m. Evening Service 7:30 p.m. Wednesday Evening: Junior Choir 6:30 p.m., Bible Study and Prayer Meeting 7:30 p.m., Senior Choir 8:30 p.m.

## ZION LUTHERAN CHURCH

Rev. John R. Morris, Pastor  
3050 S. Fletcher Road  
Sunday School 9:00 a.m. Family Worship 10:15 a.m.

## ST. JOHN'S LUTHERAN CHURCH

Rev. Dennis A. Falk, Pastor  
Austin Road, Bridgewater, Michigan  
Sunday School 9:15 a.m. Worship 10:30 a.m.

## VICTORY BAPTIST

Dr. Clare Gleason, Pastor  
423 S. Macomb Street, Phone 428-7262  
Sunday School 9:45 a.m. Morning Worship 11:00 a.m. Evening Worship 6:00 p.m. Youth Meeting 7:00 p.m. Wednesday: Prayer Meeting 7:00 p.m.

## CLINTON ASSEMBLY OF GOD

Charles Sanders, Pastor  
12500 Allen Rd., Clinton, Mi. corner of Allen Rd. and Manchester-Clinton Rd.  
Sunday School 9:45 a.m. Morning Worship 11:00 a.m. Evening Service 6:30 p.m. Wed. evening Bible Study and C.A.'s, 7:00 p.m.

## CHURCH OF JESUS CHRIST OF LATTER-DAY SAINTS (MORMONS)

Thomas E. Schulte, Branch President  
United Methodist Church, 117 S. Ann Arbor, Saline.  
Sacrament 1:30 p.m.; Sunday School, Primary 2:50; Priesthood, Relief Society, Aaronic Priesthood Youth 3:40.

## ST. BARNABAS EPISCOPAL CHURCH

Rev. Jerrold F. Beaumont, "Vicar"  
Old US 12, 1/4 mile west of M-52, Chelsea.  
10:00 a.m. Holy Eucharist and Morning Prayer.

## EMANUEL UNITED CHURCH OF CHRIST

Thursday, February 5, 12 noon, Senior Meal. 1:00 p.m. Senior Art Program. 3:30 p.m. Junior Choir. 7:00 p.m. Aerobic Dance. 7:30 p.m. Senior Choir.

Sunday, February 8, 10:30 a.m. Boy Scouts will be honored at worship.  
Monday, February 9, 6:30 p.m. Optimists.

Tuesday, February 10, 12 noon, Senior Meal. 7:00 p.m. Boy Scouts. 7:00 p.m. Aerobic Dance.

Wednesday, February 11, 3:30 p.m. Confirmation. 7:30 p.m. Women's Fellowship. speaker from Spaulding for Children.

## MANCHESTER UNITED METHODIST CHURCH

Wednesday, February 4, 1:30 p.m. Wilko Circle at Jean Little's home. 3:30 p.m. Youth Club at Church - Hoffer Hall. 7:30 p.m. Joy Circle at Mary Gardner's home.

Saturday, February 7, 8:00 a.m. Men's Breakfast at Church - for all men.

Sunday, February 8, 9:15 a.m. Church School with classes for all ages. 10:30 a.m. Worship Service Sermon: "Translucent or Transparent". 11:30 a.m. Choir Rehearsal and Coffee Hour. 3:00 p.m. Sled and Skate Party with families asked to bring their own hot dogs and buns - rest of food furnished.

Monday, February 9, 9:30 a.m. Bible Study in Fireside Room.

Tuesday, February 10, 7:30 p.m. Finance Committee Meeting at Terry Harris's home.

Wednesday, February 11, 3:30 p.m. Youth Club at Church - Hoffer Hall.

## BETHEL UNITED CHURCH OF CHRIST

Sunday, February 8, 10:00 a.m. Service of Worship. 2:00 p.m. In-Betweeners Winter outing with Family.

Wednesday, February 11, ARA MUSICA Recording at Church.

## WEEKLY MEETINGS:

Sunday: 11:00 a.m. Church School classes for all ages.  
Wednesday: 4:45 p.m. Youth Choir rehearsal. 7:45 p.m. Senior Choir rehearsal.

## VACUUM CLEANERS ELECTROLUX

Electrolux Sales and Service  
CALL  
JAMES COX  
MANCHESTER  
428-8444 or 428-8696

## INCOME TAX PREPARATION

We Make House Calls

H.L. Beach  
Tax Service



For Appointment CALL  
429-5994 IN SALINE  
"This is our 19th year."

## ST. JOHN'S UNITED CHURCH OF CHRIST

The St. John's United Church of Christ, Waters Rd., Chelsea, Michigan will have a guest minister for the next three weeks. Taking over the Sunday duties temporarily will be Rev. Gary Keviatek of Ann Arbor.

Rev. Keviatek is presently an assistant pastor with Bethlehem United Church of Christ in Ann Arbor.

There will be a short meeting of the fellowship of St. John's following the worship service on February 22nd. This meeting is important for all as the matter of a new pastor will be discussed.

## Senior Citizens Meals

The menu for Tuesday, February 10 is: Beef & Noodles, Vegetable, Fruit, Roll and Butter, Dessert, Coffee, Tea and Milk.

On Thursday, February 12, they are serving: Roast Port and Dressing, Vegetable, Fruit, Roll and Butter, Dessert, Coffee, Tea and Milk.

The time has been changed for the Senior Citizens Council meeting to Tuesdays at 9:30 instead of Wednesday. Then the Exercise Program is at 11 that day and the group plays cards after the noon meal. The Transportation Committee meets on Thursdays at 10 a.m.

## ST. JOHN'S LUTHERAN CHURCH

Saturday, February 7, Catechism, 9-11. Sunday, February 8, Sunday School 9:15. Worship with Holy Communion 10:30 a.m. Youth Group 7 p.m. Parent Group 7:30 p.m.

Wednesday, February 11, Esther Circle 9:30 a.m. Ruth Circle 1:30 p.m. Jr. Choir 7:30 p.m. Midweek Dev. 7:30 p.m. Sr. Choir 8:45 p.m.



HAPPY VALENTINE'S DAY  
Aunt Margaret and Uncle Earl  
CARD PARTY  
SATURDAY  
February 7th  
8 P.M.  
Manchester Masonic Temple  
PUBLIC INVITED



**Skinless Hot Dogs \$1.59 lb.**  
Phone 428-9322  
**MANCHESTER DELI**  
OPEN MONDAY THRU SATURDAY 9:30 TO 5  
108 ADRIAN STREET MANCHESTER, MICHIGAN

**Spear & Associates, Mann, Realtors**  
122 WEST MAIN PHONE 428-6388 DAILY MANCHESTER

Just Listed - Older farm house on 33 acres, 4 bedrooms, 1/2 bath, 34 x 54 barn & garage, Manchester Area, terms available. \$65,000.

10 Acre Farm - 80 yr. old home, with 4 bedrooms, barn & out-buildings, 15 miles to Ann Arbor, more land available. \$85,000.

120 Acre Farm - With 24 x 48 barn & outbuildings, 5 bedroom home, fireplace, inground pool, plus cabin in the woods, Manchester Schools. \$179,500.

Fantastic View - From this 3 bedroom bi-level, with family room, attached 2 1/2 car garage, 30 x 40 pole barn, Manchester Schools. \$79,500.

60 Yr. Old Village Home - With 3 bedrooms, 1 bath, 66 x 225 lot, garage, excellent location. \$53,300.

Restored Farm House - In the Manchester Area, insulated thru-out, new kitchen & electricity, 4 bedrooms, 1 3/4 bath, 36 x 60 barn & out-buildings, on 10 acres, more land available. \$99,500.

Village Home - In excellent condition, 2 bedrooms, 1 1/2 bath, walk-out basement with family room & wood burning stove, carport & garage. \$53,000.

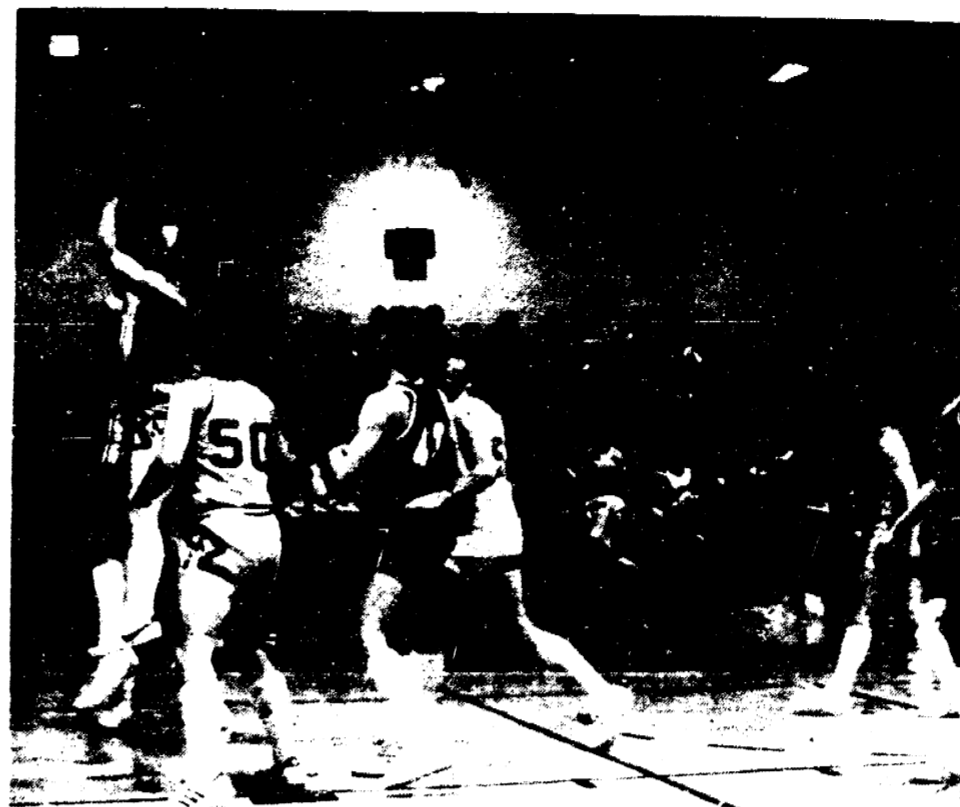
Close to Ann Arbor - Tri-level on 2 acres, 3 bedrooms, 2 baths, sunken living room, garage & workshop, Manchester Schools. \$79,900.

Building Sites  
2.15 Acres - Rolling building site with tremendous view, Manchester Township. \$9,800.  
5 Acres - Village of Manchester, river frontage with partial woods. \$24,500.

OFFICE HOURS  
Monday thru Friday 9 a.m. to 5 p.m. Saturday 9 a.m. to 12 noon

JIM MANN 428-8074  
OFFICE PHONE 428-8388  
EVENINGS AND WEEKENDS  
ELLIS PRATT 428-8562

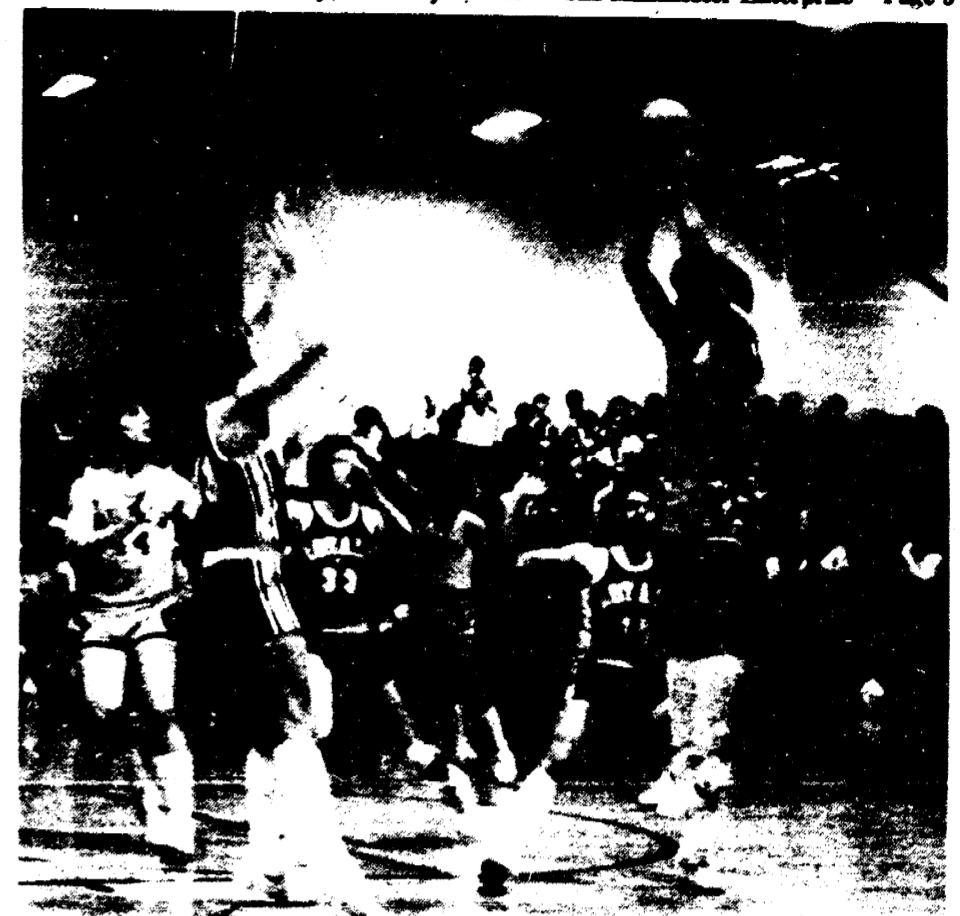
# Dutch Win In Double Overtime



Varsity Action - Nick Krzyzaniak shoots - had 20 points.

by Jon Hardenbergh  
"We needed this one" Coach Bartels told me after the game. "It gets us back to .500" - 6-6 overall and 4-4 in the league. It really is due us to capture this nail biter as we've witnessed 2 prior contests go to our opponents on the final buzzer

shot. Nick Krzyzaniak led our scorers by banging home 20 while guard T.J. Thomas rattled the hoop for 19 points. Tom Malcolm hit in double figures with 10 but it was his free tosses that sent Blissfield home losers. Tom hit 8 of 9 in the game and 6 of 7 on the 2 extra periods.



Varsity Action - T.J. Thomas hits for 19 points. Photos by Jon

To start this battle we jumped to a quick 4-0 edge but they soon over-took us and assumed the narrow 12-10 lead after 8 minutes. The scoring remained even in the second period (12-12) so the Royals entered halftime up by a pair, 24-22.

The Blissfield lead was promptly erased as we came out smokin' and sat up 42-39 going into the final period. We continued to play smart both offensively and defensively to around the 4 minute mark being ahead 8. We did the right thing in slowing down with a lead and played the special 4 corner offense well. They had to foul being behind and here is where we

failed to execute. We missed 3 one and ones and they came down gunning to tie with seconds. They did have the chance to win but turned the leather over with 3 ticks left. Nick inbounded it to T.J. who rifled it to Paul Sroufe who in turn shot a 25 footer that failed to drop-so into a 3 minute overtime we go knotted at 52.

I soon got concerned as the Royals went up 4 with just under a minute left and I really worried as we missed our ensuing shot - but wait - Tom went high for the rebound and I heard a whistle. Yes, Tom was fouled and the Blissfield player voiced

**Licensed Day Care Home**  
2 Year Old And Up  
Pre-School Education  
Structured Activities  
Breakfast, Lunch & Snacks  
Provided.  
Reasonable Rates  
Call 428-9356

**WILLIAMSON HEATING & COOLING SYSTEMS**  
John Steele, Jr.  
INSTALLATION  
AND REPAIR  
Phone 428-8692


**Win Someone's Heart on February 14.**



Send Flowers on Valentine's Day.  
Teleflora's Sweetheart Bouquet. An elegant arrangement, set in a lovely red tin with a delicate, art nouveau heart necklace as a special gift. It's very reasonably priced. So come by or call to order one soon.  
Teleflora's Sweetheart Bouquet. It's a beautiful way to make love blossom.

**The Flower Cellar**  
154 E. MAIN MANCHESTER 428-7422

**TIRE SALE** While They Last!




**POLYGLAS RADIALS (Bloms)**  
FR 78-14 \$38.88 FREE MOUNTING  
GR 78-14 Includes F.E.T.

**4-Ply Polyester Whitewalls**  
E 78-14 \$32.88  
F 78-14 \$33.88 FREE MOUNTING  
G 78-14 \$34.88  
H 78-14 \$34.88 Prices include F.E.T.

**FACTORY TEST TIRES**  
Like New!  
**POLYESTER and RADIALS AT BIG SAVINGS!**

Ask about our **FREE Road Hazard Guarantee** on steel-belted Radials by Multi-Mile.

**BRODERICK TIRE**  
889 S. MAIN  
CHELSEA  
Ph. 475-1261  
Open 8 a.m. to 5 p.m. daily



### Health Care Meeting

The public is invited to a meeting of the Washtenaw County Comprehensive Health Planning Council (WC-CHPC), February 11, 1981, 7:30 p.m. at the Briarwood Mall Community Room.

The meeting will address health care priorities the community is most concerned with. Everyone who attends can express concerns about health issues in their community.

The five year Health Systems Plan (HSP) of the Comprehensive Health Planning Council of Southeastern Michigan (CHPC-SEM) will be the topic of discussion.

Members of the Agency's Plan Development and Coordination Division will be there to assist and encourage community participation and input into the discussion.

The Washtenaw County Council is the County's Subarea Advisory Council to the Comprehensive Health Planning Council of Southeastern Michigan (CHPC-SEM).

CHPC-SEM is the federally funded health systems agency for the seven counties of Southeastern Michigan - Livingston, Macomb, Monroe, Oakland, St. Clair, Washtenaw and Wayne - and the City of Detroit.

"Nothing under the sun is ever accidental." G. E. Lessing

**Jim Hartmann** 475-9301  
**Rich Kennedy** 475-1643

**Hartmann Carpentry**

Licensed & Insured Residential Builder with 12 years experience

Pole Barns	Additions
Roofing	Siding
Decks	Remodeling
Rough Ins	Finish Work

### Agricultural Agent Appointed

Ronald G. Struss has been appointed Extension agricultural agent in Washtenaw County, effective Feb. 9 pending approval of the Michigan State University Board of Trustees.

Struss will occupy a temporary position supported by the U.S. Department of Agriculture Rural Clean Water Program. He will be working on Extension educational programs that relate to the Saline Valley Rural Clean Water Project, which is designed to help curb water pollution in Washtenaw and Monroe counties.

He will be responsible for developing and conducting programs to increase awareness of and participation in the project, and for coordinating these efforts with USDA agencies and project participants.

Struss received his bachelor's degree in agronomy from Iowa State University in 1975 and his master's degree in agronomy from the University of Nebraska in 1977. He was a research technician at ISU and a research assistant at the U of N before joining the USDA Soil Conservation Service in 1978.

Struss will be based at the MSU Cooperative Extension Service office in the County Services Center in Ann Arbor.

### SHOP THE WANT ADS

**MANCHESTER INSURANCE AGENCY**

122 WEST MAIN STREET  
MANCHESTER, MICHIGAN  
**Phone 428-8215**

Home-Farm & General Insurance

### Manchester Township Board

These are the PROPOSED synopsis of the minutes of a Special Meeting held by the Manchester Township Board at the Township Hall on Monday, January 28, 1981 at 4:00 p.m. Bd. members Burch, Fielder, Lentz and Macomber were present. Absent: Widmayer. Also present were Sportsman Club members Wilma Frey; Lauren Huber, Cliff Tracy and son.

Reason for meeting: Make decisions on property in regards to septic tank being over the line on Sportsman Club property.

Mr. Huber read a letter from their attorney, James Hendley, to the owner of the property.

At one time the owner applied for a variance but it was tabled due to the fact that a land exchange was almost a certainty.

Supervisor requested permission and it was granted to be on the agenda at the Sportsman Club meeting on January 29, 1981 at 8:30 p.m. along with the Township Attorney, Enter Bud Taylor 4:18 p.m.

Discussion ensued. It was decided by the Township Bd., by roll call vote, to hire our attorney and get this matter resolved.

Meeting adjourned 4:24 p.m.  
Submitted by Wilma E. Lentz, Clerk and approved by Clarence L. Fielder, Supervisor

Posted: January 21, 1981  
All members notified by mail.

### Tree Seedlings Offered

The Washtenaw County Soil Conservation District is offering their annual tree, shrub and ground cover program for Spring 1981. Orders will be taken until April 6 with seedling distribution scheduled for late April.

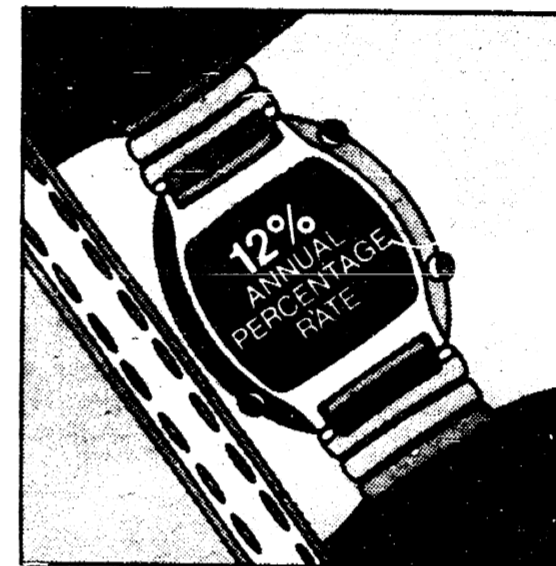
Planting stock available for Spring 1980 includes: White Pine, Red Pine, Scotch Pine, Jack Pine, Austrian Pine, White Spruce, Norway Spruce, Colorado Blue Spruce, Tulip Tree, Black Walnut, Autumn Olive, Honeysuckle, Silky Dogwood, Siberian Crab, Black Walnut Seed and Emerald Crownvetch Seed. Also available will be two types of Wildlife Packets for those wishing an assortment of trees and shrubs. Each packet contains 250 seedlings.

According to William Fishbeck, Chairman of the Washtenaw County Soil Conservation District, the main purpose of the District's tree program is to assist landowners in obtaining trees and shrubs at a nominal cost for reforestation, windbreaks, wildlife habitat improvement, Christmas trees and erosion control.

Order blanks containing information on the species available, site preferences and prices can be obtained by contacting the District office in Ann Arbor. For more information on the District's tree program, or to obtain an order blank for Spring-1981, contact the Washtenaw County Soil Conservation District office at 6101 Jackson Road, Ann Arbor, Michigan 48103. Telephone (313) 761-6721.

AT YOUR FORD DEALERS...

# TIME IS RUNNING OUT.



You only have 3 days left to get 12% Annual Percentage Rate financing thru Ford Credit on new 1981 Ford Granadas, Mustangs and Thunderbirds.



Concerned about car financing in today's tight money market? Relax. No problem. Your participating Ford Dealer can offer qualified buyers convenient "one-stop" financing through Ford Motor Credit Company. Ford Credit has the financing available at a 12% Annual Percentage Rate on new '81 Ford Granadas, Mustangs and Thunderbirds. But remember, to take advantage of this rate you must take delivery by Saturday, February 7, 1981.

Example of a typical transaction, not necessarily for a particular vehicle.  
Cash Price: \$12,000. Total Down Payment: \$700. Amount Financed: \$6,500.  
ANNUAL PERCENTAGE RATE: 12%. FINANCE CHARGE: \$1,715.68. Deferred Payment Price: \$8,915.68. Payment Schedule: 48 monthly payments of \$171.16.



SEE YOUR PARTICIPATING FORD DEALER

**WIDMAYER FORD CO.**  
510 WEST MAIN STREET MANCHESTER, MICHIGAN

**RAISIN RIVER CONTEMPORARY** - Approximately 300 ft. of frontage on the river, in the village of Manchester. A delightful home with 4 bedrooms, study, 2 patio decks, 2 fireplaces, 2 1/2 baths and 2 gas furnaces. A magnificent view from every window. 3.2 acres of picturesque beauty. \$139,500 with excellent land contract terms. Eves.: Fran Cross, 668-6553 or Fred Eibler, 662-2232 or Marian Zwinck 449-2111. Days 665-8663.

**EXQUISITE COUNTRY ESTATE - 79 ACRES** - Are you that special person, who wants this special property? This home has beauty where it shows, and quality where it counts! A showplace home in every sense of the word, from its gorgeous setting among the trees, to its fantastic, spacious kitchen with the Amish, handcrafted cabinets and walnut paneled ceiling. Wooden beams set the tone for Early American decor and antique furniture. Central air, 2 barns and beautiful, rolling land with over 50 tillable acres. Excellent land contract terms. \$295,000 and worth every dollar! Eves: Fran Cross, 668-6553 or Bob Van Cise, 994-5705 or Eva Eibler 662-2232. Days 665-8663.

**EIBLER and ASSOCIATES, Inc.**  
2155 Jackson, Ann Arbor  
665-8663

**Back Door Party Store**

500 Ann Arbor Street, Manchester  
Phone 428-9333

**GROCERIES - PACKAGED MEATS  
BEER - WINE - POP  
HOT SANDWICHES - MILK**

Monday - Saturday 7 AM to 9:30 PM  
Sunday 8 AM to 9:30 PM

**We Have Pure WHITE KEROSENE For Kero-Sun Heaters**

**Wacker Kerosene**

**KERO-SUN**  
PORTABLE HEATER

PH. 428-8366  
**G. E. Wacker Inc.**

GASOLINE • FUEL OIL • MOTOR OIL • DIESEL FUEL • GREASE  
9060 CHELSEA - MANCHESTER RD. MANCHESTER, MICHIGAN 48158

**VALENTINE SPECIAL**

10% Discount  
On Any  
PERMANENT WAVE

WITH COUPON  
GOOD FEBRUARY 10 to 14

Make Your Appointment Now!

Jean Marti  
Vicki or Cindy

Phone 428-7616  
**Dorothy Mae Beauty Shop**

231 EAST MAIN ST. PHONE 428-7616 MANCHESTER

### News Of Good Things Growing

by Margaret G. McCall  
Michigan Department of Agriculture

It's National Cherry month, and aren't we lucky to be living in the state which includes the Cherry Capitol of the World. In Traverse City, of course, people like to remind their visitors that Michigan grows more than 75 percent of all the nation's red tart cherries.

Cherries are among the good things growing in Michigan, and last year we produced 158 million pounds of red tart cherries, 58 million pounds of sweet cherries, according to the Michigan Department of Agriculture.

February is National Cherry month because of George Washington's legendary youthful encounter with the cherry tree. But Michigan's versatile cherries are delicious to eat and delightful to see any time.

If you've limited your use of red tart cherries to pies, let me suggest another dessert, deceptively simple to prepare and truly elegant. I'm almost embarrassed when guests ask for this recipe, because it's so easy, and they think I've spent hours creating a masterpiece.

This is a Black Forest torte, but it's more impressive if you use the German name, Schwarzwälder Kirschtorte.

Bake your favorite dark chocolate cake in two layers. After they've cooled, carefully slice them in half, so you have four layers. Sprinkle each with about a tablespoon of kirsch, a cherry-flavored liqueur. (That's the real secret, because it moistens the cake layers.)

Spread canned cherry pie filling

between the layers, top with the fourth layer, then frost top and sides with sweetened whipped cream flavored with kirsch. Decorate the top with shaved chocolate and a circle of bright maraschino cherries with stems. Refrigerate until ready to serve.

If you prefer, you can use well-drained black sweet cherries between the layers, and spread a thin layer of whipped cream over the sweet cherries for your filling.

### Lung Disease Symptoms

Chronic lung disease killed more than 800 people in Michigan between January and June of 1980, according to John C. Howell, Ph.D. president of the American Lung Association of Michigan (ALAM).

The sad part is that many of those deaths may have been preventable.

Preventing and controlling lung disease is the goal of the ALAM whose Christmas Seal Campaign continues through March 31 of '81.

The Christmas Seal Campaign, headed by Bob Hope nationally, provides funds to counter chronic bronchitis, emphysema, the health effects of cigarette smoking, asthma, tuberculosis, other lung diseases and air pollution. Contributions also fund research and medical training in lung diseases.

Chronic lung disease, which includes such illnesses as emphysema, chronic bronchitis, asthma, tuberculosis and pleurisy, is among the 10 leading killer diseases in the nation.

Howell said that according to the ALAM, people with serious chronic lung disease almost always start out with mild symptoms.

So what are the symptoms to watch for? They include: Chronic cough, Shortness of breath, Phlegm, Chest congestion, Wheezing, Breathing difficulty, Frequent chest colds.

Chronic cough or shortness of breath are not normal at any age, says the lung association. If you have been coughing for more than a month, (don't exclude the so-called "cigarette cough"), you need to see a doctor. Chronic cough is the symptom of something wrong with the breathing system.

Cough medicine will only hide the cough, while the underlying illness can be getting worse.

Shortness of breath, the other most common symptom, sometimes comes on so gradually you may not be aware that it is

happening. Normal shortness of breath after exercise or heavy exertion disappears after a few minutes' rest. If shortness of breath persists after a rest, it may be a sign of something wrong whether you're old or young, out of condition or have a usually sedentary lifestyle.

Any unusual shortness of breath may be serious. If you do have any of these symptoms, your lung association urges you to get a medical check-up to find out what is causing them.

If you would like further information about lung diseases, their symptoms, prevention and treatment, the American Lung Association of Michigan can help. Call (517) 484-4541.

## REGISTRATION NOTICE

### FOR VILLAGE ELECTION

**Monday, March 9, 1981**

TO THE QUALIFIED ELECTORS OF THE VILLAGE OF MANCHESTER  
(PRECINCT NO. 1 AND 2) COUNTY OF WASHTENAW, STATE OF MICHIGAN

Notice is hereby given that in conformity with the "Michigan Election Law", I, the undersigned Clerk, will upon any day, except Sunday and a legal holiday, the day of any regular or special election or primary election, receive for registration the name of any legal voter in said Township, City or Village not already registered who may APPLY TO ME PERSONALLY for such registration.

NOTICE IS HEREBY GIVEN THAT I WILL BE AT MY OFFICE

**Monday, February 9, 1981**

FROM 8 O'CLOCK A.M. UNTIL 8 O'CLOCK P.M.  
THE 30TH DAY PRECEDING SAID ELECTION  
As provided by Section 496, Act No. 116, Public Acts of 1954 As Amended.

**128 Riverside Dr., Manchester, Mich.**

For the purpose of REVIEWING the REGISTRATION and REGISTERING each of the qualified electors in said TOWNSHIP, CITY or VILLAGE as SHALL PROPERLY apply therefor.

The name of no person but an ACTUAL RESIDENT of the precinct at the time of registration, and entitled under the Constitution, if remaining such resident, to vote at the next election, shall be entered in the registration book.

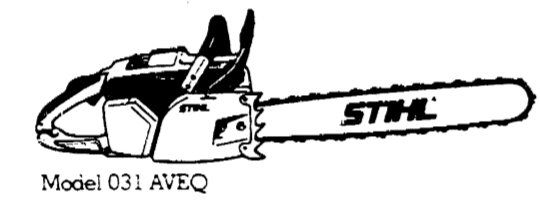
**ELECTOR UNABLE TO MAKE PERSONAL APPLICATION, PROCEDURE**  
SEC. 504. Any elector who is unable to make personal application for registration because of physical disability or absence from the Township, City or Village in which his legal residence is located, may be registered prior to the close of registration before any election or primary election by securing from the Clerk of the Township, City or Village in which is located his legal residence, duplicate registration cards and executing in duplicate the registration affidavit before a notary public or other officer legally authorized to administer oaths and returning such registration cards to the Clerk of the Township, City or Village before the close of office hours on the last day of registration prior to any election or primary election. The notary public or other officer administering the oath shall sign his name on the line for the signature of the registration officer and designate his title.

**UNREGISTERED PERSONS NOT ENTITLED TO VOTE**  
SEC. 491. The inspectors of election at any election or primary election in this State, or in any District, County, Township, City or Village thereof, shall not receive the vote of any person whose name is not registered in the registration book of the Township, Ward or Precinct in which he offers to vote. [As provided under Act 116, P.A. 1954.]

**TRANSFER OF REGISTRATION, APPLICATION, TIME**  
SEC. 506. A registered elector may upon change of residence within the Township, City or Village cause his registration to be transferred to his new address by sending to the Clerk a signed request, stating his present address, the date he moved thereto, and the address from which he was last registered, or by applying in person for a transfer. The Clerk shall strike through the last address, ward and precinct number and record the new address, ward and precinct number on the original and duplicate registration cards, and shall place the original registration card in proper precinct file. Transfers shall not be made after the 30th day next preceding a regular or special election or primary election, unless the 30th day shall fall on a Saturday, Sunday or legal holiday in which event registration transfers shall be accepted during the following day.

**TRANSFER OF REGISTRATION ON ELECTION DAY**  
SEC. 507. Any registered elector who has removed from one election precinct of a Township, City or Village to another election precinct of the same Township, City or Village and had not recorded such removal with the local Clerk shall execute a transfer of registration request, listing the new residence address thereon over his signature, with the election board in the precinct in which he is registered at the next ensuing primary or election. The inspector of election in charge of the registration records shall compare the signature thereon with the signature upon the registration records and, if the signatures correspond, then the inspector shall certify such fact by affixing his initials upon said request. The applicant for transfer, after having signed an application to vote as provided in Section 523 of this act, shall then be permitted to vote in such precinct for that primary or election only. The application for transfer shall be filed with the Township, City or Village Clerk who shall transfer such voter's registration in accordance with the application. When the name of any street in a Township, City or Village has been changed, it shall be the duty of the Township, City or Village Clerk to make the change to show the proper name of street in the registration records, and it shall not be necessary for the elector to change his registration with respect thereto in order to be eligible to vote.

DEALORIS E. RICHARDSON, VILLAGE CLERK



Model 031 AVEQ  
**IF YOU'RE LOOKING FOR THE FINEST CHAIN SAW IN THE WORLD, WE'VE GOT EXACTLY THE RIGHT NUMBER. THE STIHL® 031 AVEQ.**

- Quickstop®—chain braking system.
- Maintenance-free electronic ignition
- Anti-vibration system to take the shakes out
- Guide bar length from 14" to 20"
- Fully automatic, adjustable bar and chain oiling system
- Comfortable rubber-covered handle bar
- Stihl's specially designed long-life cylinder
- Oilmatic® chain with oil injection feature
- Front and rear hand guards

**STIHL® K & W EQUIPMENT INC.**  
The World's Largest Selling Chain Saw. 11100 Chelsea-Manchester Rd. Manchester, Michigan

**DRIVE-UP WINDOW HOURS**  
Our Manchester Office Drive-Up Windows will be open until 6 p.m. Monday thru Friday Saturday 9 a.m. until noon

**LOBBY HOURS:**  
Monday thru Thursday 9 a.m. to 4 p.m.  
Friday 9 a.m. to 6 p.m.  
Saturday 9 a.m. to noon



## COUNCIL PROCEEDINGS

January 19, 1981

Council met in regular session with the meeting called to order by President Schaffer at 7:00 P.M. Present were: DuRussel, Reed, Minick, Petsch, Hinkley, Steele, Smith, Koebe.

Enter Don Limpert at 7:10 P.M.

Minutes of the January 5, 1981 meeting were read, corrected and approved in a motion by Petsch, supported by DuRussel. All yeas, motion carried.

Public Motion activities as reported by Koebe included: Repaired water hydrant at Wurster Park; Flushed hydrants and filters; Worked on Ice Rink; Worked in Village Hall basement getting ready for furnace man; Removed snow and sanded intersections; Removed trash and cleaned out landfill; Water meters were read; Worked at treatment plant; Worked on broken water main at Madison and Elton St.; Christmas trees were picked up; Split wood for Ice Rink; Replaced window at landfill; Replaced broken water meters; Worked on thawing water service line; Discussion was made on the crew doing good work on the water main break on Madison and Elton St. on the 11th of Jan. Skating pond has been used and is being kept up by the village crew.

Council report of Water & Sewer Dept. was reviewed.

Schaffer led a discussion about the house on Madison and Washington St. Water has been turned off and froze. Water is now being used from the office complex, with an agreement from Mary Knapp and the individual. When warm weather comes the water will be dug up and replaced with new pipe. Then the water bill and sewer charge will be made to the house as usual.

Koebe said he would like to see the Department of Public Works invest in a small truck with dump box. This is in the future but will come out of the budget. This truck would be used for small jobs, like cleaning catch basins, parking lots and etc. When needed it will be discussed with village manager as to funds available.

Minick and Sgt. Steele was asked about the parking on streets between 2 and 5 A.M. DuRussel asked about some vehicles being towed, and the next night not being towed. Reed made the motion a policy be enforced that all vehicles on any street with curbs in the village be ticketed and towed if snow removal or street sweeper is required. This is to be for 12 months of the year, because the Street sweeper needs to have the cars gone to sweep the streets during the summer months. Seconded by DuRussel, motion carried.

Minick received a letter from Mr. Norman MacLeod of 520 W. Main St. in regard to a situation arising between Dr. Hwang and his property line. A fence was installed by Dr. Hwang in the parking area, but debris, snow, water runoff and etc. is coming on Mr. MacLeod's property. His bushes are being destroyed because of weight being put on the fence. Dr. Hwang made an agreement about this, so Schaffer appointed Hinkley, as zoning member and councilman DuRussel to investigate the situation.

A complaint was received about people pushing snow from their property across the streets on to other persons property. Sgt. Steele was told the police were to investigate on this being done.

Minick was asked about Cable Television. There is nothing to report at this time.

Reed reported that on January 7th he cashed in \$125,000.00 CD and put \$25,000.00 plus interest in the general fund and re-invested \$100,000.00 in CD's. In the near future \$100,000.00 CD will be

Thursday, February 5, 1981 The Manchester Enterprise Page 9

### THE NATIONAL BANK OF JACKSON

#### UNION SAVINGS BANK OF MANCHESTER

#### NOTICE OF PROPOSED BANK MERGER

Notice is hereby given that application has been made to the Comptroller of the Currency, Washington, D.C. 20219 for his consent to a Merger of The National Bank of Jackson, Jackson, Michigan, and Union Savings Bank of Manchester, Manchester, Michigan.

The application was accepted for filing January 12, 1981.

It is contemplated that all offices of the above-named banks will continue to be operated with the exception of the Bridgewater Office of the Union Savings Bank of Manchester, which is located at 9066 Austin Road, Manchester, Michigan.

This notice is published pursuant to section 18(e) of the Federal Deposit Insurance Act and Part 5 of the Regulations of The Comptroller of the Currency (12 CFR 5).

January 15, 1981  
THE NATIONAL BANK OF JACKSON  
245 West Michigan Avenue  
Jackson, Michigan

UNION SAVINGS BANK OF MANCHESTER  
135 East Main Street  
Manchester, Michigan  
1-22, 1-29, 2-5, 2-12, 2-19

"Characters must be kept bright as well as clean."  
Lord Chesterfield

---

### Overeaters Anonymous

There will be an Overeaters Anonymous meeting Wednesday at 6:30 p.m. at the Emanuel United Church of Christ. The group meets every Wednesday.

---

### MARGIE'S UPHOLSTERY

6245 Brooklyn Rd., Napoleon

Wide Selection Of Fabrics  
Pick Up & Delivery Available

**517-536-4230**

## The Bottom of The Hill

223 E. MAIN ST. MANCHESTER, MICH.

**Breakfast**

MONDAY-FRIDAY 6AM - 11AM  
SAT & SUN 8AM - 11AM

SENIOR CITIZENS BREAKFAST  
1/2 OFF BETWEEN 8AM & 10AM  
MONDAY THRU FRIDAY

**HAPPY HOUR**

**EVERY DAY**

**Starting at 4 P.M.**

## Die Bauernstube

SERVING GERMAN-AMERICAN CUISINE  
IN A MOST AUTHENTIC GERMAN ATMOSPHERE

223 EAST MAIN STREET MANCHESTER, MICHIGAN **313-428-8698**

**DON'T WAIT FOR SPRING TO BUY NEW TIRES!**

We have all Season Tires In Stock

**STOP IN AND SEE ME FOR YOUR BEST TIRE DEAL**

**FRONT-END ALIGNMENT**

**24 HOUR SERVICE**

**FILLYAW'S SERVICE**  
PHONE 428-8576 327 WEST MAIN

NO-CHARGE NO-CHARGE NO-CHARGE NO-CHARGE NO-CHARGE NO-CHARGE NO-CHARGE NO-CHARGE NO-CHARGE

The Citizens Bank of Saline

## Savers 500 NO-CHARGE personal checking

The Citizens Bank of Saline

Member FDIC

Phone 429-5461

just carry a minimum balance of \$500 in any CBS savings account.

If eligible you must apply in person.

NO-CHARGE NO-CHARGE NO-CHARGE NO-CHARGE NO-CHARGE NO-CHARGE NO-CHARGE NO-CHARGE NO-CHARGE

**STRIKES  
SPARES**



**JOLLY KEGLERS**

January 27, 1981

Carol's Cut-N-Curl	82	58
Dutch Country Kitchens	80.5	59.5
B & H Mfg.	79	61
Manchester Car Wash	72	68
Double A Products	70.5	69.5
Cheryl's Boutique	64	76
Alexander & Company	63	77
Chelsea Lanes	49	91
HIGH INDIVIDUAL GAME		
J. Cyers	224	
A. Roberts	222	
B. Schook	214	
HIGH INDIVIDUAL SERIES		
B. Schook	570	
E. Weir	581	
L. Wallace	580	
HIGH TEAM GAME W/H		
Carol's Cut-N-Curl	962	
Cheryl's Boutique	958	
Manchester Car Wash	945	
HIGH TEAM SERIES W/H		
Double A Products	2659	
B & H Mfg.	2656	
Cheryl's Boutique	2630	
HIGH ACTUAL GAME OF WEEK		
N. Wier	202	
L. Wallace	505	series
D. Gotts	500	series
E. Seegert	507	series-substitute

**MANCHESTER WOMENS**

January 27, 1981

Gambles	403.5	256.5
Gloria Jean's Beauty Salon	378.5	281.5
Balls Party Store	359.5	300.5
Billmeyer Hardware	353.5	306.5

**Kirk Excavating**

**SNOW REMOVAL**

SAND - GRAVEL - FILL DIRT  
BASEMENTS - DRIVEWAYS

DAVE KIRK

11180 Schleweis Rd. Manchester  
Phone 428-7938

**Gerry Wayne Studios**

**STAINED GLASS**

Member of Manchester Art Guild  
517-456-7235 313-428-7200

122 WEST MAIN STREET  
MANCHESTER, MICHIGAN

**CHIM-CHIMENEY**  
CHIMNEY-SWEEPS

**Alternate Energy**

**Headquarters**

204 West Michigan Ave.  
Saline, Michigan  
Call Collect 428-9078

Store Hours: Tues, Thurs, Sat 8 to  
5. Mon. Wed. Fri. out sweeping.

**ALBER ORCHARD  
and CIDER MILL**

13011 BETHEL CHURCH ROAD  
MANCHESTER

HOURS: 9 TO 6 DAILY  
APPLES, CIDER, BARRELS  
and KEGS, HONEY  
MAPLE SYRUP, POP CORN  
428-7758

Koebbe Welding	339.5	320.5
Mowry's	307.5	362.5
Bauernstube	305.5	354.5
Columbia P & H	350	340
Country Workshop	292.5	387.5
Jimmys Filling Station	240	420
HIGH TEAM GAME		
Balls	1085	
Bauernstube	1070	
Gambles	1064	
HIGH TEAM SERIES		
Balls	3079	
Bauernstube	3063	
Gambles	3046	
HIGH INDIVIDUAL GAME		
D. Sharpe	245	
B. McMichael	237	
P. Dora	235	
L. Hickman	235	
HIGH INDIVIDUAL SERIES		
D. Sharpe	698	
M. Stockwell	583	
D. Shepherd	574	

**Volunteers Needed  
For Mother's March**

Local volunteers are still urgently needed for the 1981 Mother's March on Birth Defects, according to area March of Dimes representatives.

"Every single marcher makes a difference," said Judge Kenneth Bronson, Publicity Co-Chairman. "Birth Defects are a matter of concern to everyone and we welcome the help of everyone...men and women, young and old...in calling on their neighbors for this important cause."

The 31st annual Mother's March is scheduled for March 1 - 8, 1981. Volunteers will visit approximately 20 homes in their neighborhood to ask for contributions to the March of Dimes which sponsors a program of research, education and treatment to combat birth defects.

Bronson urged those interested in becoming volunteer marchers to call the Washtenaw - Livingston Chapter of the March of Dimes Birth Defects Foundation at 761-6331 for further information.

**"What's That  
You Say?"**

"The Effects of Aging Upon Our Senses" is the next program to be offered to area citizens over the age of 65 by the Turner Geriatric Clinic on Wednesday, February 11, 1981. Normal aging changes in hearing, smell, touch and taste will be addressed and practical means of coping with these will be presented.

Sheila Benrum, Speech Pathologist, Saline Community Hospital will speak on the subject of Problems of Hearing - "What's That You Say?". "Making Sense of the Senses as We Grow Older" will be discussed by Walter Jerzy, Occupational Therapist, Saline Community Hospital. There will be a question and answer period following each presentation.

Lunch tickets may be purchased at the registration desk before 11:00 a.m. For transportation call Saline Area Senior Council Inc., 429-9274. In Manchester call Otto Timmerman, 428-8190.

**SHOP THE  
WANT ADS**

**The Citizens Bank of Saline Introduces...**

**Interest  
Checking NOW**

Available at all three offices in Saline,  
Lodi and Augusta Township!

**What is Citizens  
Interest  
Checking?**

It's basically an entirely new checking account plan that offers the highest allowable interest rate—5 1/4%—by any federal or state financial institution. The Citizens Bank of Saline will also pay this interest on the daily average balance that's kept in the account each month. And it will be paid and compounded monthly based on the individual account cycle dates.

Recent federal regulations now permit banks for the first time to pay interest on checking accounts deposits to those eligible to open such an account. Eligibles include individuals, sole proprietorships, certain non-profit organizations and governmental units.

**Important points  
to consider  
about Citizens  
Interest  
Checking**

- First, keep in mind that many savings institutions and banks are offering variations of our plan so—when you choose—consider all of these points:
- Citizens will pay interest on each dollar in a Citizens Interest Checking Account even when it falls below our required minimums.
- Interest will be paid and compounded monthly by Citizens. Others may pay quarterly.
- No charges will be made by Citizens for checks drawn against your account. Others may charge for each check paid, plus a monthly fee.
- Citizens will provide a monthly statement and will return all items posted to your account. Some financial institutions may not return cancelled checks and deposit tickets.
- Citizens will pay interest on deposits from the day of deposit regardless of whether it's made by check or cash. Others may not pay interest until the day your deposited checks clear.
- The Citizens Bank of Saline has set up its account charges as follows:

Minimum Balance Required	Service Charges
\$1,500 and over	No Charge
\$1,000 to \$1,499.99	\$3.00 per month
\$500.00 to \$999.99	\$5.00 per month
\$0 to \$499.99	\$7.00 per month

■ An important point to keep in mind is that Citizens Interest plan is not for everyone. If experience shows that you would not be able to consistently maintain the balances shown above, it would be much better for you to maintain your current Citizens Checking Account with a \$300 minimum balance requirement. Or, keep just \$250 in any Citizens Bank of Saline savings account and qualify for total no-charge checking—regardless of what your personal checking account balance falls to.

**For further  
information**

Simply contact any office of the Citizens Bank of Saline.

**The Citizens Bank  
of Saline**

Member Federal Deposit Insurance Corporation  
Main Office — 100 West Michigan Ave., Saline — Phone 428-5461  
Lodi Township — 4877 Saline-Ann Arbor Road — Phone 994-1340  
Augusta Township — 5300 E. Willis & Stony Creek Roads — Phone 483-5821

**Dutch Win In Overtime**



J.V. Action - Dave Dettling drives.

his anger so got the technical. This may well have been the turning point—Tom swished both but missed the technical. Instead of Royal possession and a 2 point pad the technical gave us the sphere. This enabled us to work it around, with T.J. driving in a 15 footer from the right side for the equalizer. With the scoreboard reading 58-58 it entered another overtime and in this one we just burned net. It was goodnight Blissfield as we added 11 to their 3 ending this war at 69-61.

Paul also played well canning 5 buckets and sank 4 of 7 freebies to total 14.

In the J.V. game we fought tough and well for 3 periods but fell flat in the fourth to lose 66-36.

Around the L.C.A.A. Friday, Onsted blasted Clinton; Addison downed Morenci and we knocked over Blissfield.

Up-coming Sports — In roundball we host Clinton on Friday then trek to Hudson Tuesday, February 10. Our girls volleyball squad welcome Hudson Thursday, February 5 for our parents night then visit Blissfield Monday, February 9 for a special 4 p.m. match. Our grapplers travel to Addison Thursday.



J.V. Action - Mark Ball.

Photos by Jon

**THE NAPA SIGN. COUNT ON IT.**

Count your savings. Count your many additional maintenance-free miles. Count increased safety for you and your family. Count your blessings, because this sign is the ultimate symbol of expert vehicle care. That's because it is the symbol of NAPA. NAPA is over 50 years old, and in that half century NAPA parts and NAPA people have earned a reputation for quality products, professional service, fast delivery and fair prices. Today that sign stands for over 110,000 top quality parts, many better than original equipment.

So, whenever you need professional, dependable service, look for the blue and gold NAPA sign. You can count on it.



**Ross Automotive**

230 EAST MAIN MANCHESTER PHONE 428-8320 or 428-8328

**Quality parts,  
Professional service**

**NORM WALZ  
CONSTRUCTION**  
Remodeling and Room Additions  
Garages—Porches  
CUSTOM BUILT CABINETS  
CUSTOM BUILT HOME ON  
YOUR IMPROVED LOT CAN  
SAVE YOU \$\$\$\$\$\$

Phone 428-7109

**ARE YOU SURE YOU'RE  
"PUNCHING THROUGH  
LOUD AND CLEAR"?**

The typical CB'er can get an average of three miles further to "punch through loud and clear" with a check and adjustment of his CB and antenna system for peak performance.

**MANCHESTER  
CB SERVICE**  
Phone 428-9073 FCC LICENSED

**WE HAVE A COMPLETE LINE OF  
Wild Bird Feeders  
Wild Bird Feeds**

**BIRD FEEDERS BY**  
Heath - Andercraft Woods  
Halifax - K-Products

**13 DIFFERENT FEEDS**  
Niger Seed(thistle) - Millet - Milo  
Sunflower - Wheat - Buckwheat  
**PLUS 6 DIFFERENT MIXES**

**Mann's Feed Mill**  
PHONE 428-7077  
210 EAST MAIN STREET MANCHESTER, MICHIGAN

**H&R BLOCK  
TAX TEST**  
Question No. 18

**H&R Block  
will accompany you  
to an IRS audit.**

True  False

It's TRUE. When H&R Block prepares your return, it's someone who knows all about income taxes and has carefully reviewed your return prior to the audit interview. It's someone who will go with you at no additional cost, not as a legal representative, but to answer all questions about how your taxes were prepared.

**WE'LL MAKE THE TAX LAWS WORK FOR YOU**

**H&R BLOCK®**  
THE INCOME TAX PEOPLE  
**104 E. Main**  
Open Mon. 9-9, Tues. Wed. Thurs. Sat. 9-5 Phone 428-7833  
OPEN TODAY - APPOINTMENTS AVAILABLE

# WANT ADS

All classified advertising is payable in advance. All ads must be PLACED and PAID for prior to 11 AM on Tuesday for publication that week. Effective February 1, 1981, Classifieds \$1.50 for first 20 words, 5c a word thereafter. Thank you's \$3 minimum up to 50 words.

**BUILDING SITE** - 2 acres 4 miles north of Manchester. Phone 313-428-7573. tfn

**FOSTER-DAVIES FURNITURE**  
308 E. Main, Manchester, 428-7803. Serta, Perfect Sleeper, Mattresses and Foundations. We appreciate your business. tfn

**SNOW REMOVAL** - snow blower, reasonable rates. Dave Bunn 428-7473. tfn

**WOULD** like to do babysitting in my home. Day shift - Monday thru Friday. Have 3 and 6 year olds for playmates. 428-9384. 2-5

**KNAPP'S TV.** 409 N. Main, Brooklyn, Mich. 517-592-2680. We sell RCA, Zenith and GE. Also Sanyo T.V.'s and stereos. We service most makes and models and back them up with a 90 day guarantee. Monday - Friday 8:30 - 5:30. Saturday 8:30 - 12:30. 2-26

**HAY AND STRAW FOR SALE**  
3,000 bales wheat straw, 2,000 bales oat straw, 1,000 bales clover hay, 500 bales 2nd cutting alfalfa. You pick up or we deliver. Charles Robison, Saline, Mich., 313-429-2755 Monday through Friday after 5 p.m. Anytime weekends. 2-12

**2.8 ACRES FOR SALE** - Manchester. Sandborn Rd., wooden health permit okay. Land contract available. Call 426-4836 after 5 p.m. 2-5

**I BUY BATTERIES**  
Can pick up. 146 Park St., Adrian, Michigan. 517-265-4141 call collect. tfn

**4 BEDROOM HOUSE FOR RENT.** Pleasant Lake Rd. 313-428-7573. tfn

**BEEF TO SELL BY SIDE**  
Custom slaughtering. Lockers to rent. Phone 428-7600. Manchester Locker Plant. tfn

**NEED A NEW FURNACE** - Call 428-9150, free estimates, featuring Lennox and Janitrol. tfn

**FOR RENT** - Ground floor, 2 bedroom 2 blocks to Manchester, \$275 per month, 428-7173. tfn

**WANTED** - Crop land to rent for 1981 season. Cash paid in advance. Phone 517-764-0700. tfn

**FIREWOOD FOR SALE** - 2 yr. seasoned oak 4' x 8' x 18" Face Cord, \$40.00 delivered, \$35.00 U-Pick-Up. 428-8434. tfn

**JOB OPPORTUNITY**  
Applications for the Electrical Apprenticeship will be available at the Vocational Education Office, Room 111, Eberwhite School, 800 Soule Blvd., Ann Arbor, MI on weekdays from 10:00 a.m. to noon and 1:00 p.m. to 4:00 p.m., beginning January 5, 1981.

Applicants must be residents of Washtenaw or Jackson County or Unadilla, Putnam, Hamburg, or Green Oak Township of Livingston County or Onondaga, Leslie, Stockbridge, or Bunker Hill Township of Ingham County. In addition, applicants must have been a resident of the above geographical area for the twelve months prior to the date of application. Applicants from outside the above geographical area will NOT be accepted.

At the time of application, applicants must be 18 years of age, have completed high school, and have passed one credit year of high school algebra or the equivalent.

Completed applications must be returned to the Vocational Education Office no later than February 13, 1981. Late applications, incomplete applications, and applicants not meeting the above requirements will NOT be considered for apprenticeship. An Equal Opportunity Apprenticeship Program. 2-5

**CLINTON THEATRE**  
Friday & Saturday  
7:30 & 9:30  
Sunday 7:30

**THE FINAL COUNTDOWN**  
United Artists

**OFFICE SPACE FOR RENT** - Newly redecorated. Sutton Agency Building, call 428-7217. tfn

**C & B PAINTING** - Interior, exterior. Free estimates. 428-7416 or 428-7136.

**INSTRUCTION** - Certified teacher will tutor all areas and subjects. Experienced, references. Call 428-9461. 2-26p

**DISCOUNT FIREWOOD** - Call anytime 665-7564. 3-26

**WATKINS** Till February 19. Great sale on vitamins, dessert mixes and more. Your free catalog is only a phone call away. 428-9393. 2-19

**2 BEDROOM APARTMENT FOR RENT**, private entrance on quiet street, close to churches and shopping. \$275 a month. 428-7731. tfn

**FLY FOR 1/4 PRICE** Have twice the fun by sharing expenses. 517-456-7716. 2-12

**2 BEDROOM lakefront apartment**, no pets. \$285. 428-7993. 2-12

**1976 GMC JIMMY**, 35,000 miles, radial tires, air, excellent condition, \$2800. 428-7995. 2-12

**FOR SALE**, 1968 Chrysler Newport, 1974 Mercury Monterey. 428-7726. 2-12p

**FOR SALE** - Registered Australian Shepherd, female, 3 years old, good with livestock and children, call 428 7726. 2-12p

**FOR SALE BY OWNER** remodeled 2 story house in Tecumseh, 3 bedroom, 2 baths, possible terms, mid \$40's. 428-4177. 2-12

**LAI D OFF AUTO WORKER** seeks odd or part-time jobs. Call 428-7426. p

**FREE girls ice skates**, sizes 3, 4, 8 and 9. 428-7731.

**FOR SALE** - 19 cubic ft. upright freezer. 428-7479. p

**BABYSITTING** - Mothers need a day out? Leave the kids with me! Call 428-7426, days. p

**FOR SALE** - 1976 Steury Pop-up Camper, 1972 Ford F-100 Pickup, and Philco Refrigerator. 428-8027. p

**DOG LOST** - Black & Tan German Shepherd, 8 month old female, reward. Answers to Abby. Call 428-7966 or 428-9280.

**BABYSITTER** - Responsible 13 year old girl looking for job after school and weekends. 428-7854. p

**PLEASE** come to our free demonstration on Machine Appliquing at The Fabric Patch at 114 Adrian St. on Saturday, February 7, 1981.

**FOR SALE** - 1 year old tan-white male guinea pig in 10 gallon aquarium. \$10. 428-7854. p

**SALE**  
30% off all Yarns, Yarn Books and Yarn Notions at the Fabric Patch, 114 Adrian St., Manchester, Michigan 48158.

## CARD OF THANKS

It has been five years that our brother was taken so suddenly from us. Time does not heal all wounds, still missed more than words can say.

The Family of Pete Kensler

Thank you to all our friends, relatives and neighbors for the flowers, donations and food, also to Ron and June Jenter, Rev. Robert Macfarlane, the visit of Rev. Tom Hart, and the use of the Union Hall for the funeral.

Your kindness will never be forgotten.

The family of  
Darsie Carpenter  
Doug Carpenter  
Nora Ray  
Irene Perkins  
Maxine Tyshka

I wish to thank my family, friends and neighbors for their calls, cards, and flowers while in the hospital and since returning home.

Special thanks to Mary Blossom, Mary Ann Barker and Helen Dyer.  
Shirley Flint

Our sincere thanks to our relatives, friends and neighbors and all those who assisted in so many thoughtful ways during the illness and death of our dear one.

Special thanks to Father Raymond Schlinkert, Knights of Columbus and the Jenter Funeral Home.

Mrs. Allen "Spike" Benedict  
John and Brenda  
Mr. and Mrs. Phillip Nickerson and family

**COPIES MADE**

**WHILE YOU WAIT**

**THE MANCHESTER ENTERPRISE**

**PHONE 428-8173**

# THE MANCHESTER ENTERPRISE

114TH YEAR VOLUME NO. 16 USPS 327-460 THURSDAY, FEBRUARY 12, 1981

## "HIT OR MISS" by farley

Their biggest enemy many teachers say is not present in the classroom and is not the parent of any child. It is the television set in the student's house.

Like the teachers many physicians say that children who are heavy television viewers are the worse students - aggressive, easily distracted and lacking in imagination and in reading ability. The heavy viewers are the ones who can't sit still and who can't listen to a story without squirming and interrupting but if a film is shown they will sit and stare at it motionless.

Experts testify that television violence makes children more willing to hurt people and to be more aggressive in their play. All of the bumping, zapping, chasing, squashing, shooting and punching have an effect.

For several generations the daily use of print and radio caused the person seeing and listening to it to conjure up pictures because these media left the pictorial part of the image incomplete, but the viewer

had made up his own pictures. Television, however, delivers a picture to the viewer who don't have to participate in any picture-making activity.

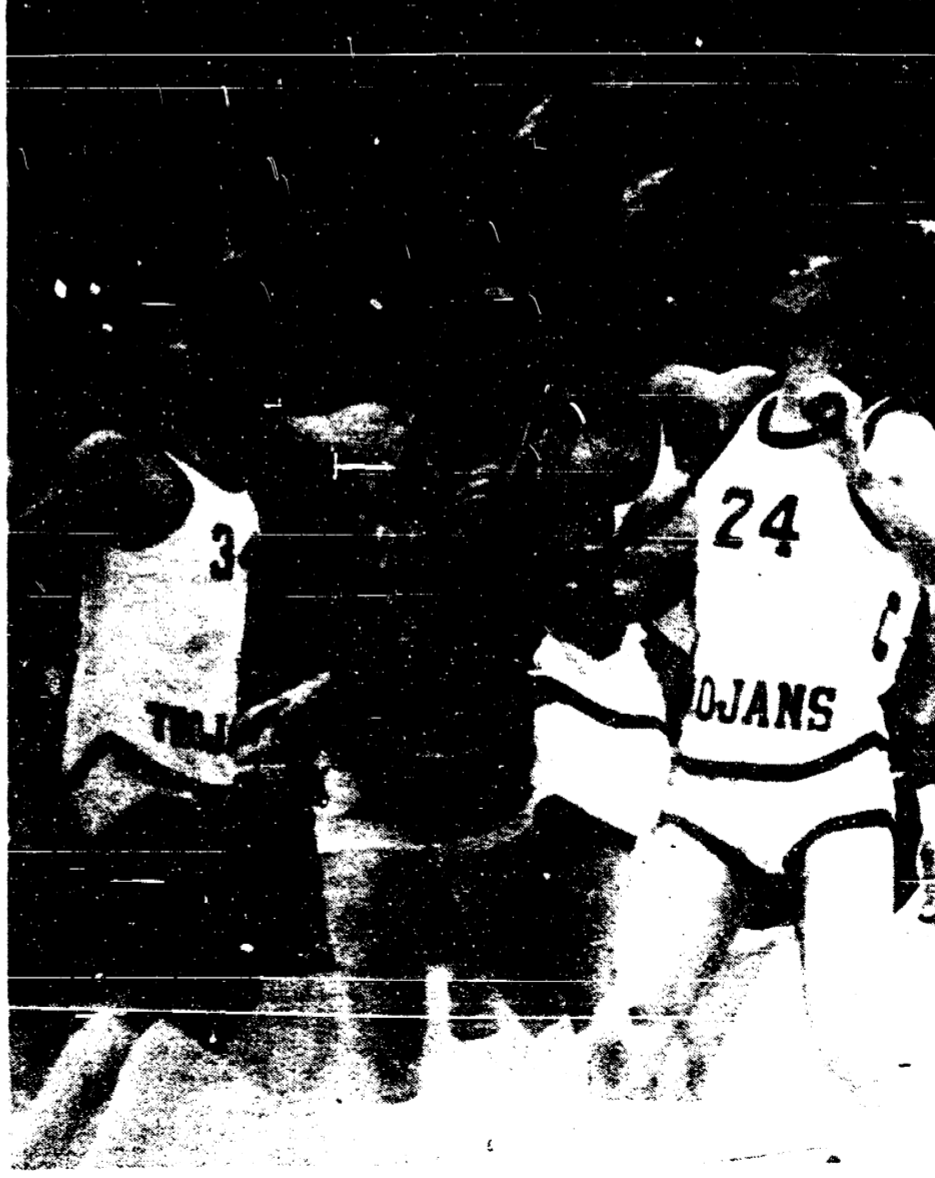
According to Dorothy Coban, professor of early childhood development, "Children whose lives are a kaleidoscope of changing figures and inconsistent developments, or children whose environment is heavily dominated by the frantic speed and pace of television, are children very likely to be distracted. For them focusing and paying attention are a strain."

Television however has shown the children the moon and the floor of the sea and on "Sesame Street" they have seen people of many backgrounds playing together and cooperating.

But nowadays schools must deal with the effects of heavy and habitual television viewing by children whose preschool experiences are higher than ever before and whose skills have evidently shifted as a result.

Continued on page 10

## Dutch Notch Fifth Straight Win



Yes, Nick, it went in. He hit 17 on Tuesday and again on Friday. Photo by Jon

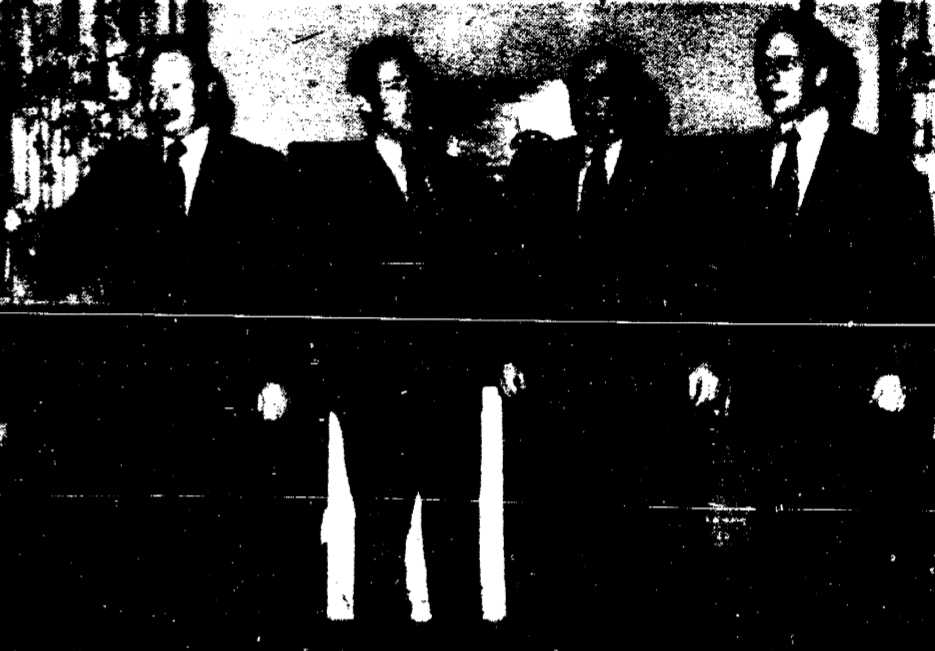
by Jon Hardenbergh

This past week has been successful for both the Varsity and J.V. squads as they both posted all victories. On Tuesday, we trekked to Whitmore Lake and our Little Dutch came away up 47-39. The varsity wanted to avenge an earlier 1 point loss, end the Trojan 6 game win streak and keep our victory streak going. It was a tightly fought opening period with Whitmore Lake taking a slim advantage 8-7. The Trojans burned the net thru-out the next 8 minutes to take the lead to the locker room, 24-18. It was all Dutch in the 2nd half as we pulled within 1 point after 3 and knotted the score

Continued on page 5

MANCHESTER TOWNSHIP LIBRARY  
P. O.

## FOR-TUNE TELLERS STILL SINGING STRONG



The For-tune Tellers, Charles Knorr-Bass, Thomas Cushman-Baritone, Leon Shaw-Lead and Samuel Cushman-Tenor have passed their 30th year as members of the Society For The Preservation and Encouragement of Barber Shop Quartets Singing in America. The Society was founded in 1938 and is the largest organized all male singing society in the world.

## Library Fund Drive

The cost of giving is going down! Your contribution to the Manchester Township Library may cost you only a fraction of the donation amount, thanks to Michigan income tax laws which allow 50% of your gift or \$100., whichever is less, to be a credit against your State income tax. Add this credit to the amount you may save on your Federal income tax, and your gift to the Library might cost you one-third or even less of its face amount. For example:

If your Michigan taxable income is:

\$10,000	\$20,000	\$30,000
Your State tax would be:		
460	920	1,380
If your gift to the Library was:		
\$100	\$150	\$200
You could subtract from your State income tax payment:		
-50	-75	-100
You could also take a Federal income tax deduction and save, on a Joint Return, approximately:		
-18	-36	-64
So your gift to the Library would cost you ONLY:		
\$52	\$39	\$36

These are only illustrations. The exact amounts would vary depending on your filing status, income, deductions claimed, forms used, etc. In some instances your savings might be less; in others you could save nearly 100% of your gift!

What better, and cheaper, way for us to keep our tax dollars at home, in our own community, working for our own Library? And what better reasons to give, now - and as much as you can - so that our Library can continue to serve our needs?

By Spring, the Manchester Township Library Board of Trustees hopes to raise \$3000. Your check, made out to the Manchester Township Library and mailed or brought to the Library at 202 W. Main Street, is urgently needed to meet this goal. Remember: a generous donation to the Library may actually cost YOU very little.

## Agenda

- The Manchester Community Schools Board of Education will meet February 16, 1981 at 8:00 P.M. The agenda will be:
- I Roll Call
  - II Communications
  - III Visitor Input
  - IV Minutes of Previous Meetings
    - A. January 19, 1981 Regular Meeting
    - B. Special Meeting February 2, 1981
  - V. Financial Report
  - VI Bills Payable
  - VII Discussion Items:
    - A. Principals' Report of Teacher Evaluation Process.
    - B. Millage Election Date
    - C. March Special Meeting Schedule
    - D. Finance Committee Report
    - E. Superintendent's Report
  - VIII Old Business:
    - A. Grievance Committee
  - IX New Business:
    - A. Appointment of Architectural Firm