

WANT ADS

All classified advertising is payable in advance. All ads must be PLACED and PAID for prior to 11 AM on Tuesday for publication that week.

2 FAMILY HOUSE FOR SALE - 1 bedroom apartment up, 3 bedroom down with garage and yard and swimming pool. 428-8364 or 428-9122. tfn

HARTMANN CARPENTRY - Now serving Manchester area as a Licensed Builder. 12 years experience in Home Building with experience in roofing, siding, decks, remodeling, garages and pole barns. Call 475-9301 or 475-1643. tfn

CHELSEA GREENHOUSES, 7010 Lin-gane Road, Chelsea, Michigan 475-1853-54 or 475-9313. Flowers and plants for every occasion. We specialize in wedding flowers to fit your budget. We are as near as your phone and we welcome your business. tfn

BUILDING SITE - 2 acres 4 miles north of Manchester. Phone 313-428-7573. tfn

FURNACE PARTS & SERVICE - supply of motors, filters and burner parts in stock. Manchester Electric 428-8243 or 428-8331. tfn

OFFICE SPACE FOR RENT - Newly redecorated, Sutton Agency Building, call 428-7217. tfn

C & B PAINTING - Interior, exterior. Free estimates. 428-7416 or 428-7136.

LITTLE WACK EXCAVATING - Licensed & Insured
Basements - Drainfield - Bulldozing - Digging - Snow Removal - Tree Removal. Paul Wackenhut, phone (313) 428-8025. tfn

FIREWOOD - seasoned hardwoods and cherry. Delivered and stacked \$40.00 a cord. 428-8506. 1-8

BOTTLENECK PUPPIES for Christmas \$350. Champion Pedigree, also stud service 428-9214. 12-18p

THE CALICO CAT BOOK AND GIFT SHOPPE, 110 East Main Street, Manchester, Michigan. 1-313-428-7453. Hours - Monday through Thursday 10:00 a.m. to 5:30 p.m. Friday and Saturday 10:00 a.m. to 7:00 p.m. (please take note of our extended hours on Friday and Saturday). A 10% deposit and monthly payment will hold your lay-away until Christmas. Our "WISH AND WANT" Book is available for you to record those items you would like to receive from Santa. Visa and Master Charge Welcome. 12-25

WANTED - Crop land to rent for 1981 season. Cash paid in advance. Phone 517-764-0700. tfn

MANCHESTER - Executive 8 bedroom ranch, 2 acres. \$64,900. More acreage available. Realty World of Greater Jackson 517-782-8236, 568-2540. 12-11

ODDS & ENDS Business Service

KATHLEEN A. AIUTO
104 East Main St.
Manchester
Phone 428-9202

Jim Haruama 475-9301 Rich Kennedy 475-1643

Hartmann Carpentry

Licensed & Insured Residential Builder with 12 years experience
Free Bids Additions Siding Remodeling Decks Remodeling Rough Ins Finish Work

BEEF TO SELL BY SIDE
Custom slaughtering. Lockers to rent. Phone 428-7600. Manchester Locker Plant. tfn

NEED A NEW FURNACE - Call 428-9150, free estimates, featuring Lennox and Janitrol. tfn

2 BEDROOM APARTMENT, many appliances, \$280.00 without utilities. 428-8364 or 428-9122. tfn

LAND CONTRACTS PURCHASED - Any Size - Any Property Type, Courteous and Reliable Service. Call Dan Duncanson, Ann Arbor Real Estate Co. (313) 668-8696. tfn

GERALD ABRENS CONSTRUCTION
Additions, Decks, Renovations, Repair, Finish Work. Free Estimates. Phone 428-8807. tfn

ALUMINUM EAVESTROUGH - Seamless, white, black and brown, guaranteed, free estimates. Walkover Home Improvement Company, phone 313-428-8468. tfn

BOULO ELECTRIC - Licensed and Insured Contractor. Call Clinton 517-456-4796. tfn

FIREWOOD FOR SALE - 2 yr. seasoned oak 4' x 8' x 18" Face Cord, \$40.00 delivered, \$35.00 a-pick-up. 428-8434. 12-18

FOR RENT - Ground floor, 2 bedroom 2 blocks to Manchester, \$275 per month, 428-7173. tfn

MODERN 2 bedroom apartment, washer, dryer and patio, \$300 month, 428-9855 or 665-5900. tfn

COME look at our model home, compare our prices, and see if you qualify for a lower interest loan (as low as 4%). **CALLOWAY CONSTRUCTION**, 5201 Brooklyn Road, Jackson. (517) 764-4400. tfn

WILLIAMSON HEATING & COOLING SYSTEMS

John Steele, Jr.
INSTALLATION AND REPAIR
Phone 428-8692

NORM WALZ CONSTRUCTION

Remodeling and Room Additions
Garages - Porches
CUSTOM BUILT CABINETS
CUSTOM BUILT HOME ON YOUR IMPROVED LOT CAN SAVE YOU \$\$\$\$\$\$
Phone 428-7109

ALBER ORCHARD and CIDER MILL

13011 BETHEL CHURCH ROAD MANCHESTER
HOURS: 9 TO 6 DAILY
APPLES, CIDER, BARRELS and KEGS, HONEY
MAPLE SYRUP, POP CORN
428-7758

FIREWOOD - Call 428-8175 after 5 p.m. 1-1p

GERMAN LESSONS at your home by native German, 10 years teaching experience. Call (517)456-7716 evenings. 12-25p

GARAGE SALE - Household items, tools, antiques. Fri., Sat., Sun. 8 - 5 p.m., 12520 Bemis Rd. 428-7668. 12-11p

FOR SALE - '72 Ford, good transportation, 428-7155. 12-11p

4 BEDROOM HOUSE for rent, Pleasant Lake Rd. 313-428-7573. 12-11

RED, '79 DODGE OMNI, 4 dr, 4 speed, 38 mpg Hwy. \$3950.00, call 428-9122.

FOR RENT - 1 bedroom apartment, ground floor, \$190 month, 428-9380 after 5 p.m.

FOR SALE: Geese, live or dressed, call 428-8607. p

NEED a Santa Suit for a Christmas party? The Manchester Jaycee Auxiliary can help you out. We have a very nice suit that we will rent for a reasonable price. If you are interested, please call Evelyn Panches at 428-8072 after 6:00 p.m.

NEED HELP caring for your home? I will do chores according to your needs and/or cook meals. Let's discuss a plan that will suit you. Designed for the elderly in mind. 428-9302.

FOUND - orange tiger cat, newtired male missing front right paw, very friendly. Call 428-9454. p

MANCHESTER INSURANCE AGENCY

122 WEST MAIN STREET
MANCHESTER, MICHIGAN
Phone 428-8215
Home-Farm & General Insurance

CHIMNEY SWEEPS

Alternate Energy Headquarters
204 West Michigan Ave.
Saline, Michigan
Call Collect 429-9078
Store Hours: Tues, Thurs, Sat 8 to 5 Mon, Wed, Fri. out sweeping.
428-8288

NEW DRIVE-UP WINDOWS HOURS Effective December 15, 1980

Our Manchester Office Drive-Up Windows will be open until 6 p.m. Monday thru Friday and Saturday 9 a.m. until noon.
Lobby hours are 9 a.m. to 4 p.m. Monday thru Thursday, 9 a.m. to 6 p.m. on Friday and 9 a.m. to noon on Saturday

Ann Arbor Bank and Trust

CARD OF THANKS

I would like to thank Tom Walton and his crew for all the excavation that has been done on Kirk Park. We will be completing the park in the spring of 1981 with new ball diamonds and etc.

Dave Petsch
Head of Park & Recreation

I would like to thank my family and my friends for the food, flowers and taking care of my family while I was in the hospital and at home.

A special thank you to Bob Macfarlane and the Legion Auxiliary.
Thank you all again.
Dawna Stockwell and Family

The Family of Stella Brown express our thanks to all our friends who helped us during our bereavement.
The Family of Stella Brown

I would like to take this opportunity to thank the United Way Board Members, Division Chairpersons, Captains, Solicitors, and the many others for the time and effort that you devoted to this year's United Way Campaign.

In light of the current economic conditions, I was extremely pleased that through your outstanding efforts, we were able to achieve our goal for the 21st consecutive year.

A special thanks to all who contributed to this drive, because without your generosity our goal would not have been met. I continue to be impressed with this community's record of participation, not only with United Way but also with your support of the Athletic Boosters Fund Drive and the many other fundraising drives undertaken by the various groups in this community.

Through your willingness to share, the many agencies of the United Way can provide hope for those in need. This year's slogan "Sharing Means Hope" can continue to be the community's goal for this holiday season and throughout the coming year.

James W. England
Campaign Chairman

We would like to thank Dave Kirk and Don Smith for supplying equipment in putting up Christmas Decorations on Main Street. Also thanks to Larry Egeier for the use of his truck to pick up the Christmas trees.

We would like to invite the community people to stop in and check out our Christmas trees at I.G.A. Hours will be posted when trees can be bought. This is one time that everyone can help in supporting our Jaycees, the money goes back into the community.

Thank you
Happy Holiday
President, Larry Benedict & Jaycees

THE MANCHESTER ENTERPRISE

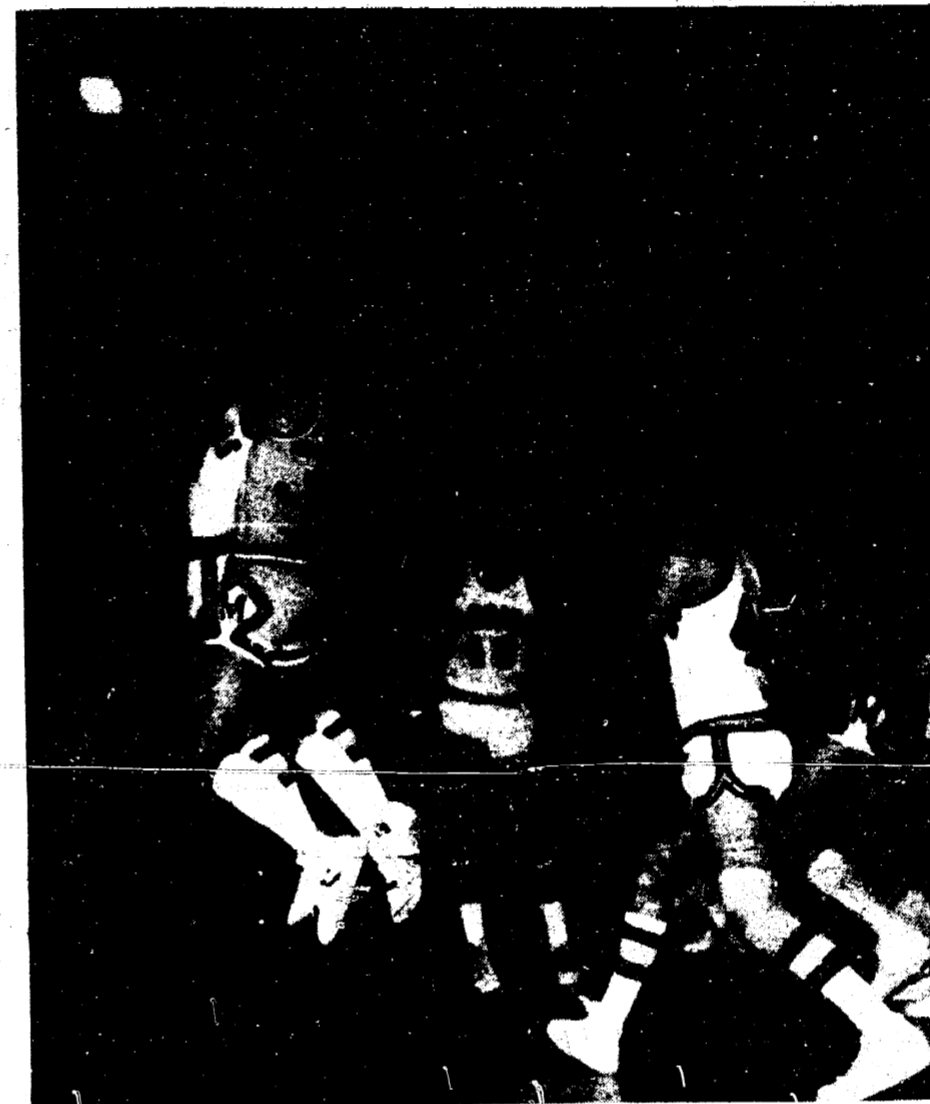
114TH YEAR VOLUME NO. 7

USPS 327-460

THURSDAY, DECEMBER 11, 1980

20¢ A COPY

Dutch Thrash Grass Lake



Varsity action - T.J. pops for 2 of his game high of 14. Photo by Jon

by Jon Hardenbergh
I spoke with our coach, Bart Bartels the other day and asked him the usual question, how's the team look this year? He didn't really want to say at first but then mentioned we should be .500. Then the follow-up was, who looks tough? Bart felt defending league champ Onsted, with Hudson looking good. My feeling is we look good this season with many experienced players, and if Friday's contest was an indication, look out L.C.A.A., here come the Flying Dutchmen.
The first period was a slow period with only 17 total points showing on the scoreboard with 10 of these points belonging to the Warriors. We hit them hard in the second stanza and that broke Grass Lake. We rallied for 19 points while defensively we held them to a mere 5. This gave us control at halftime, 26-15.
The remaining 16 minutes saw our zone allow them 20 points as we dumped in 25 points. On the night, we collected 17

"HIT OR MISS" by farley

As I have said before, there are several powerful radio stations in the country who cater almost exclusively to the truck drivers of the nation and there are a great many of them who keep themselves entertained, awake and alert on their trips with their radios.

The stations dedicated to these fellows feature country music which most of these drivers seem to prefer, plus detailed weather reports for all of the nation, which these fellows need badly. And lately there seems to be a resurgence of "monologue" or skit records which were very popular in the mid-twenties.

Among the most popular were the Three Black Crows whose records were best sellers and who brought untold happiness to their listeners who thoroughly enjoyed their basic humor. Among their most popular was the tale of the three cats. It seems that one of them had three cats at his house and so he cut three rather small holes in the bottom of his front door and when asked why, he seriously replied, "When I say cat, I mean scat." Not at all funny as I write it but very much so when they told it, with the proper timing.

And then a bit later there was Amos and Andy whose fame became internationally famous, but we couldn't have them now. We would be accused of poking sarcasm at the colored race. But that we didn't do, we merely enjoyed the bumbling antics of the pair and I can't remember that their color had one bit to do with their talent. Perhaps the fact that they were white and did their visual shows in black face had something to do with it, but I, and every youngster that I can remember laughed at and with them even more than Lum and Abner who were so popular then. As you remember they were as white as white could be but their bumbling adventures with their "jot 'em down store" were amusing in the same

Continued on page 22

Board of Education Agenda

The Manchester Community Schools Board of Education Regular Meeting will meet December 15, 1980 at 8:00 p.m. at the High School. The agenda will be:

- I Roll Call
- II Communications
- III Visitor Input
- IV Minutes of Previous Meetings
 - A. November 17, 1980
 - B. December 1, 1980
 - C. December 6, 1980
- V Financial Report
- VI Bills Payable
- VII Discussion Items
 - A. Review of Audit Bids (Possible Action)
 - B. Finance Committee Report
 - C. Budget Review
 - D. Review of High School Class Sizes (J. Kappler)
 - E. Graduation Policy (5127) Revision (J. Kappler)
 - F. Graduation Ceremony Procedures (J. Kappler)
 - G. Middle School Boiler Conversion Report
- VIII Old Business
- IX New Business

Christmas Is "Good" News And "Hard" News

by Rev. Robert B. Macfarlane
Pastor of Emmanuel United Church

A planetary visitor would be hard put to explain what he saw if his spaceship set down during the Christmas season. "What's it all about, Albie?" Confusion may well reign for the visitor, as to the meaning of such hustle and bustle.

But when we ask ourselves the question, "What is it all about?" we may often be as confused as our man from Mars. For we receive a variety of signals which indicate a real tension between the secular and the religious aspects of the season.

We're pulled in a variety of directions, with shopping, cooking and family preparations on one hand; a breadwinner's feeling guilty about not providing enough income to buy all the things he'd like to give his family; divorced or widowed people who haven't a partner to share the season with; Church's preachers who sometimes make us feel embarrassed if we can't always experience the "true meaning" of Christmas; loneliness and isolation are heightened for many, as we see others about us who seem to be together and close.

Is there no escape from these difficult feelings and tattered emotions? The "Good" news of the birth of Jesus Christ almost becomes a trite and easy non-answer to the "hard" news of guilt and anxiety and frustration that holiday times often present.

But we are told by the writer of Hebrews that "Faith is the substance of things hoped for, the evidence of things not seen." The hopes and fears of all the years can indeed be met on that Holy Night in Bethlehem, with a faith in God which allows us to see what is unseen, and to know what is unthinkable—that the Presence of God is with us, now and forever. And we have been given this "Good" news of the birth of a Savior, precisely so that we can survive all the "hard" news around us.

May the strength and beauty of faith, and the gift of the Son of God, bless each of us this Christmas and always.

Carr Nominates Local Student To Air Force Academy

Congressman Bob Carr announced the nomination of William Parker, who resides at 15501 Fahy Road, Manchester, to the U.S. Air Force Academy at Colorado Springs, Colorado.
The Air Force Academy will make the final selections from among nominees from Carr's Sixth Congressional District.
"As a high school student I competed for nominations like this, so I have a high appreciation for the efforts William has made," said Carr. "William is well-qualified to represent his community in this way and I congratulate him on his achievement."

ONLY 13 MORE SHOPPING DAYS TILL CHRISTMAS

Secretary of States Office To Remain Open

The Chelsea branch of the Michigan Secretary of State's office, that had been notified of its termination effective Friday, December 19, was given some good news Thursday night, December 4. The office will remain open on an indefinite basis.
Word was received during the protest meeting held at the Ann Arbor Trust Co. branch. More than 50 local and township officials and residents were present to voice their dissatisfaction and anger over the planned budget-cutting measure.
At the meeting, organized by William Bott, manager of the Ann Arbor Trust branch office, Assistant Secretary of State, Dennis Neuner reported that the office would remain open.
After examining criteria used in the initial closure attempt, it was determined that the Chelsea branch operated efficiently and was utilized by a large number of village, township and other area residents.

The Manchester Enterprise
 150 EAST MAIN STREET
 Manchester, Michigan 48158
 USPS 327-460

Phone 428-5173

The Manchester Enterprise was established in 1867 and is published each Thursday at 150 East Main Street, Manchester, Michigan with second class postage paid at Manchester.

Edward E. Steele, Publisher
 Lenore Steele, Editor

News Of Good Things Growing

With only a few shopping days until Christmas and some special people left on your list who seem to have everything, now's the time to rediscover all the good things growing in Michigan. An imaginative food gift is an excellent way to say, "I'm thinking of you!"

In our state there are more than 50 major commodities from which to choose. Agriculture is the second largest industry, generating more than \$12 billion for Michigan's economy last year, according to the Michigan Department of Agriculture.

Some helpful suggestions to get the thinking process going are to fill decorative canisters with some Michigan dry goods such as popcorn, dry beans and sugar; wrap a set of four soup mugs to compliment an array of canned or home-made Michigan soups such as oyster, cream of potato, vegetable, or onion.

For a busy host or hostess on your list, a party pack of fine Michigan wines, a tray of cheeses and crackers, or a useful wicker basket of Michigan fruit may be appropriate.

Having a Party?
PARTY TRAYS
 "Made To Order"
 3 DAY ORDER TIME PLEASE

This Week's Special
BOLOGNA
GERMAN
BOLOGNA
 \$2.00 lb.

Phone 428-9322

MANCHESTER DELI
 108 ADRIAN STREET MANCHESTER, MICHIGAN
 MONDAY - WEDNESDAY 9:30 AM - 6:00 PM
 TUESDAY & SATURDAY 9:30 AM - 5:00 PM
 FRIDAY 9:30 AM - 7:00 PM

FALL TIRE SPECIALS

SNOW TIRES
 Check Our Prices

STOP IN AND SEE ME FOR YOUR BEST TIRE DEAL

FRONT-END ALIGNMENT

FILLYAW'S SERVICE
 PHONE 428-8576 327 WEST MAIN

24 HOUR SERVICE

The Manchester Enterprise

For a close friend or relative, stock an ice chest (very useful during summer months, too) with a variety of Michigan cold cuts, meats, poultry, cheeses or dairy products. An attractive bow can be added to the chest just before delivery and perishables will not spoil.

If mailing gifts poses a problem, a variety of Michigan jams, jellies, preserves and apple butter can be easily packed for shipment.

Natural food enthusiasts will enjoy gifts of Michigan's sweet trio - maple syrup, honey and sugar.

Of course, holiday giving need not end with your Christmas list. Invite friends and relatives to an all-Michigan dinner. Or, serve a holiday brunch of cheese fondues, breads and ham or beef tidbits.

Engineer Scholarship Available

If you are in the upper one-fourth of your class and are interested in engineering, there could be a \$1,000 scholarship awaiting you through the Michigan Society of Professional Engineers or its national affiliate. Thirty-five Michigan seniors will receive scholarships for university work through the Michigan Society of Professional Engineers. One hundred and three scholarships are also available through its national affiliate the National Society of Professional Engineers. Contact your high school counselor for details. Applications must be received by December 15, 1980....a message from the Ann Arbor Chapter of the Michigan Society of Professional Engineers.

Correction

*Correction in the Manchester Community Schools December Newsletter #3. The December 16 Christmas Program is scheduled to be presented in the High School Gym, not the Klager Gym as indicated in the newsletter.

Community Schools Calendar

Thursday, December 11, Middle School Christmas Concert 7:30 p.m. Middle School Gym.

Friday, December 12, JV and Varsity Basketball, away, Elisfield, 6:00 p.m. Wrestling, Moranci, Home, 8:00 p.m.

Monday, December 15, School Board Meeting, 8:00 p.m., High School.

Tuesday, December 16, Klager Christmas Concert 7:30 p.m. at High School Gym. Varsity and JV Basketball, Clinton, Away 6:00 p.m. Wrestling, Away, 7:00 p.m. Gabriel Richard.

Wednesday, December 17, Cub Scout Meeting, Klager School, 7:00 p.m.

Manchester Lunch Menu

Monday, December 15, Macaroni & Cheese, Cinnamon Toast, Peas, Fruit Cup, Milk.

Tuesday, December 16, Hot Dog in a Bun, Baked Beans, Veg. Sticks, Jolly Jello, Milk.

Wednesday, December 17, Pizza, Lettuce Salad, Pears, Christmas Cookie, Milk.

Thursday, December 18, Taco, Cheese & Lettuce, Tomatoes, Corn, Apple, Milk.

Friday, December 19, Turkey & Gravy, Mashed Potato, School Roll, Sweet Potato, Candy Cane Cake, Milk.

Roger's Corner Farm Bureau

There will be a Christmas Party for the Rogers Corner Farm Bureau on Friday, December 12. The party will be held at the Freedom Town Hall with a potluck dinner at 7 o'clock.

Shakespeare Reading Club

The Shakespeare Reading Club met on Tuesday, December 2, 1980 in the lounge at Emmanuel Church.

Mrs. Malcolm Billings presented a very interesting paper on Islam.

This club year we have been reading one of Shakespeare's sonnets at each meeting. Mrs. Leslie Chavey read sonnet #50 at this meeting. We also have been reading minutes from the first club year, 1897. Mrs. Norman Bucholtz read from March 1897. The members of that date were concerned about the Cuban Crisis.

We will meet on Friday, December 19, 1980 at 12 noon at the home of Mrs. Aaron Nathan for the annual Christmas party.

Senior Citizens Meals

The menu for December 16, Tuesday, will be Creamed Chicken and Escarots, Vegetables, Fruit, Dessert, Coffee, Tea and Milk.

On Thursday, December 18, they are serving Chop Suey, Fruit, Dessert, Coffee, Tea and Milk.

Christmas week, there will be only the one meal on December 23. The menu on that Tuesday will be Meat Loaf, Potatoes, Vegetables, Fruit, Rolls and Butter, Dessert, Coffee, Tea and Milk. There will be no Senior Citizens Meals served until January 6, 1981.

Raffle Notice

The Girl's Volleyball Raffle Drawing for the side of Beef, Ham and Turkey, originally set for December 12, has been changed to December 19. The drawing will take place at half-time of the Varsity Basketball Game on that date.

MANCHESTER ELECTRIC, INC.
 CONTRACTING
 ELECTRICAL - HEATING - COOLING
 MAJOR APPLIANCE SALES AND SERVICE

112 ADRIAN STREET MANCHESTER
 PHONE 428-8243

One Stop Shop

Christmas Gifts & Decorations
 Fresh, Dried, and Silk Flowers
 Custom Orders
 Plants

EXTENDED CHRISTMAS HOURS
 FRIDAY, DECEMBER 19 10-8
 MONDAY, DECEMBER 22 10-8
 TUESDAY, DECEMBER 23 10-8
 WEDNESDAY, DECEMBER 24 9-1

JUST IN TIME FOR CHRISTMAS
 INTRODUCING A NEW CUSTOMER SERVICE
 WORLDWIDE WIRE SERVICE THROUGH Teleflora

The Flower Cellar
 154 E. MAIN MANCHESTER 428-7422

NOW FROM UNION SAVINGS BANK:

INTEREST ON CHECKING

Beginning December 31, 1980, Union Savings Bank will offer checking accounts that earn interest. These new accounts, called "NOW" accounts (which means "Negotiable Order of Withdrawal"), will pay 5-1/4% interest on the account balance, compounded continuously.

How much does the Union Savings NOW cost? Choose from these options:


MONTHLY BALANCE	MONTHLY SERVICE CHARGE	EXCESS USAGE FEE*
\$1,200 or more	None	None
Less than \$1,200	\$6	15¢*

*This excess usage fee is a per item charge on all transactions (checks, debit memos, payments, etc.) exceeding 30.

According to federal regulations, other financial institutions—even savings and loans—can offer NOW accounts, beginning December 31, 1980. But only banks have offered checking accounts before. So only banks know how to handle the paperwork—and how to service checking accounts correctly. And, of course, Union Savings is a bank.

See your Union Savings Banker today for your Interest-Earning checking account—and start earning 5-1/4% on all your money, beginning December 31, 1980.

UNION SAVINGS BANK
 Member FDIC



Main Office:
 135 East Main Street, Manchester, Michigan, 428-8334

Pleasant Lake Office:
 11488 Pleasant Lake Road, 428-7121

Bridgewater Office:
 9066 Austin Road, 428-8060 or 429-2090

Any senior citizen will get a Union Savings Bank NOW account with no monthly service charge—regardless of the balance in the account.

GIFTS

For Every Christmas Stocking

KRAUSS PHARMACY

124 Main St. Manchester
Phone 428-8393




**3 TIER CANDY/
CAKE STAND**
Clearing Chrome Plate
\$5.55



**HEN ON NEST
SERVER**
Min. glass. Charming covered server
measures 20" x 17"
\$1.99



**BRITE STAR
GARLAND**
Frogy gold or silver 40" garlands
by Brite Star. Grace and colour in
the house, on the tree
Flame resistant
\$2.99



**SELECTED GIFT
CHEESE WEDGES**
A variety of tantalizing cheese wedges in a
plastic gift box. By Brite Star. Flame
resistant.
\$5.99



**CALFAX AM/FM
PORTABLE RADIO**
Dynamic speaker, great sound, built-in AM
and FM. Includes FM antenna, speaker and
earphone. 100% guaranteed. 70000" high
resistance.
\$14.99



**16-OZ. DELUXE
MIXED NUTS**
By Kating Inc. 100% natural nuts. 50%
cashew and 50% pecan. Easy to eat
and delicious.
\$5.99



**PERSONALIZED
PLUSH STOCKING**
By Holiday Products
Print-A-Name Hang-Up
\$1.69




**CHRISTMAS
WREATH**
Great guests with a wreath by General
Form. Cheerfully adorned 18" Christ-
mas wreath in green, frosted or frothy.
A great gift idea too.
\$4.99



**IMPORTED DAINTEE
ENGLISH CANDLES**
Decorative scented candles in fine scented
hard, colorful and English. A
delightful gift by Holiday Products.
\$2.69



**GIFT SETS OF 4 CHEESES-
IN-A-SKILLET**
Charming wooden skillet holds 4 fine assort-
ment of party cheeses. A gift you may
want to keep for yourself. By Gift Foods.
\$3.99



**SYLVANIA SUPER 10
FLIPFLASH**
The most popular of all the flash
cameras.
\$1.59



**EASTMAN KODAK
COLORBURST CAMERA**
A gift certain to delight anyone on your list. A
snap to operate, with automatic features to
help assure great results.
\$29.95



**SYLVANIA
FLASH BAR**
The Best Christmas for Present \$1.99.
One Size and Fits All.
\$1.99



**DYNSOUND
TAPE CAROUSEL**
With 8 tracks and cassette ready, stacked
and stored. Ready to use in your car.
and a great party gift.
\$9.99



**OLD FASHIONED
SOAPS**
By Dabney. Lavender, lemon, rosewater
and glycerine. Stravinsky almond, herbal
or cocoa butter. 3 1/2 x 2 1/2.
\$1.19



**"TIFFANY" LAMP
BUBBLE BATH**
By Lander Co. Inc. 15" x 15" x 15" in
tealight bath foam.
\$1.59



**"THE FRESH SET"
WINDMERE
CURLING IRON**
Professional style automatic control.
\$4.99




**VIDAL SASSOON
HAIR CARE SET**
8 oz. shampoo, 4 oz. Protein Hair Re-
moisturizer, 1.68. Protein Treatment pack-
ets. 8 oz. Fructine hair plastic hair brush.
\$9.99



**JONTUE
SPRAY
COLOGNE
BY
REVLON**
The longest scent of Jontue in a con-
venient 2.4 oz. purse size spray bottle.
\$7.49



**50-SQ. FT. OF
GIFT WRAP**
50 sq. ft. of gift wrap by Tuttle Press.
Seven 30x20" sheets in brightly
colored traditional designs.
\$1.29




**POLAROID ONE-STEP
CAMERA**
The world's simplest camera. Press only one
button. Never needs batteries. America's best
selling camera.
\$29.88



**3-WAY
MAKE-UP MIRROR**
By Dabney. Distinguished. Three-way
view. 10" x 10" x 10". 100% guaranteed.
A gift you may want to keep for yourself.
\$3.99



**CHRISTMAS
TREE**
Fast and Easy to fly. Real tree by General
Form. 100% guaranteed. 100% guaranteed.
A gift you may want to keep for yourself.
\$29.99



**35 MIDGET
LITES BY NOMA**
Flashing or non-flashing. 35 midget
lites. 100% guaranteed. 100% guaranteed.
A gift you may want to keep for yourself.
\$2.99



**THE "BOSS"
GLOBETROTTER**
Features 8 tracks. Dual volume control. Com-
pact disc drive has 1200 watts of dynamic
power. Full up mode.
\$12.99



**WINDMERE HOT
CURLING BRUSH**
Automatically cuts, curls, straightens, also
brushes and sets. Heat resistant. 100%
guaranteed. 100% guaranteed. A gift you
may want to keep for yourself.
\$7.99



**LOVABLE
STUFFED ANIMALS**
Your choice of four. Available play-
mates.
\$5.99



**30 KEY TABLE MODEL WALNUT
TOY PIANO**
Well-crafted toy piano encourages
children's own musical ability. Walnut
finish. 9 1/2" x 18 1/2" x 9 1/2". Colored key
chart, coded song book included.
\$19.99



**WRITE 'N' SHINE
FLUORESCENT
DRAWING CENTER**
Design wheels, roller, stencils,
special pencil. Erases instantly.
\$9.99



**SOOPER LOOPS
ROLLER COASTER**
Zippy excitement and fun. Battery
not included.
\$8.99



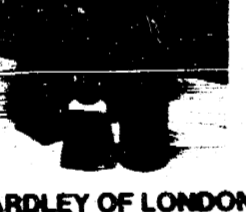
**EATON'S
THE WRITE MATCH™**
Choice of handsome styles, each with
its own matching 100% guaranteed.
\$4.99



**WINDMERE
TOOTH PUFF PLUS™**
At home dental care
cleaning system.
\$9.99



**MON TRIOMPHE
GIFT SET**
2-oz. each after shave and matching
cologne.
\$4.99



**YARDLEY OF LONDON
LEATHER FOR MEN**
Robust, masculine scent. Gift set
includes 2-oz. after shave and 2 1/2-oz.
cologne.
\$2.79



**TRUCKS BY
DUNCAN TOYS**
Sturdy trucks for sale. 1 set of 2 trucks and
1 set of 4 trucks. 100% guaranteed. 100%
guaranteed. A gift you may want to keep
for yourself.
\$9.99



**RADIO CONTROLLED
SNOOPY
FIRE ENGINE**
Forward, backward and in circles with
"radio" control. 100% guaranteed. 100%
guaranteed. A gift you may want to keep
for yourself.
\$19.99



**BETTY BUBBLES
DOLL**
Cute little plastic doll contains bubble
bath for fun in the tub.
\$1.19



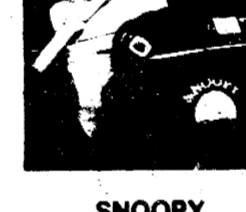
**CRAYOLA HOME
ART STUDIO**
Standing or table-top. 100% guaranteed.
Includes crayons, markers, paper, and
more. 100% guaranteed. A gift you may
want to keep for yourself.
\$19.99




**CRAYOLA
DRAWING DESK**
Tabletop desk has chalkboard drawing
board, storage area, crayons, chalk, crayon
sharpener and more.
\$8.99



**SNAP 'N PLAY
DOLL HOUSE**
Four-room house with doll and 8
accessories.
\$4.49



**SNOOPY
SHOULDER BAG**
Great for school, for play, for
shopping, for family trips.
\$7.99



**CHRISTMAS
CANDLES**
By Robert Alan Candles Co. The
warmth and glow of Christmas in
traditional scented tapers. 12" long
in white. Boxes of 12 candles.
\$1.99



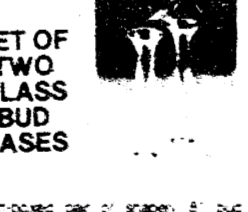
**25 STICK ON
BOWS**
By Wm. Wright Co. 3 1/2" diameter.
assorted colors.
66c



**3 PIECE
CHIP & DIP SET**
3" glass chip and dip bowl. 4 1/2"
bowl. Dishwasher safe.
\$6.99



**24-PC. "CASINO"
BARWARE**
100% guaranteed. 100% guaranteed. A
gift you may want to keep for yourself.
\$13.99



**SET OF TWO
GLASS
BUD VASES**
Set of two. 100% guaranteed. 100%
guaranteed. A gift you may want to keep
for yourself.
\$6.99



**4-PC. SILVER
PLATED COASTER-
ASHTRAYS**
100% guaranteed. 100% guaranteed. A
gift you may want to keep for yourself.
\$6.99



**CALFAX AM/FM
DIGITAL CLOCK RADIO**
Bright and clearly legible readout
compact. 12" x 10" x 6 1/2". 100%
guaranteed.
\$24.99



**STARFIRE
SPOTLIGHT**
By Hollywood Accessories. Sealed beam
spotlight for use with 10" cord that
plugs into wall. 100% guaranteed.
Caravan and 100% guaranteed.
\$7.99



**CREDIT CARD
CALCULATOR**
Executive Traveler. 100% guaranteed.
Vertical mode. Add, subtract, multiply,
divide, plus %, retain memory, clear
memory keys. Goldtone finish in gift box.
Battery is included.
\$9.99




**CHAPS
AFTER SHAVE**
A 3.4-oz. bottle of brisk, manly Chaps.
A Ralph Lauren designed fragrance.
\$7.49



**DELUXE
TRAVEL KIT**
Roomy, fitted kit in scuff-resistant
leather-look vinyl. Washable lining &
rigged zipper.
\$5.99



**PUMPOT
2 QUART**
Keeps liquids hot or cool for hours.
Cordless fast flow spout. Pump-top.
Swivel base.
\$8.99



**METAL
LUGGAGE
CART**
Make life easier
yourself or some-
one you care
about. Light,
durable.
\$7.99



**KEYAKI WOOD
SALT & PEPPER
MILL SET**
Set of two. 100% guaranteed. 100%
guaranteed. A gift you may want to keep
for yourself.
\$4.99



**BETTY "G"
MINI-FRYER**
Cooking for 2. 100% guaranteed. 100%
guaranteed. A gift you may want to keep
for yourself.
\$6.99



**12
PIECE
KITCHEN
TOOL
SET**
By Green's Station.
Hand made in a ceramic kitchen.
\$9.99



**WEST BEND INSTANT
HOT POT™**
American-made. Heat and serves 2 to 4.
Cord in coffee. 100% guaranteed.
\$12.99




**WEST BEND
STAINLESS STEEL
NESTING BOWLS**
2 1/2, 3 1/2, 4 1/2, 5 1/2, 6 1/2, 7 1/2, 8 1/2, 9 1/2, 10 1/2, 11 1/2, 12 1/2, 13 1/2, 14 1/2, 15 1/2, 16 1/2, 17 1/2, 18 1/2, 19 1/2, 20 1/2, 21 1/2, 22 1/2, 23 1/2, 24 1/2, 25 1/2, 26 1/2, 27 1/2, 28 1/2, 29 1/2, 30 1/2, 31 1/2, 32 1/2, 33 1/2, 34 1/2, 35 1/2, 36 1/2, 37 1/2, 38 1/2, 39 1/2, 40 1/2, 41 1/2, 42 1/2, 43 1/2, 44 1/2, 45 1/2, 46 1/2, 47 1/2, 48 1/2, 49 1/2, 50 1/2, 51 1/2, 52 1/2, 53 1/2, 54 1/2, 55 1/2, 56 1/2, 57 1/2, 58 1/2, 59 1/2, 60 1/2, 61 1/2, 62 1/2, 63 1/2, 64 1/2, 65 1/2, 66 1/2, 67 1/2, 68 1/2, 69 1/2, 70 1/2, 71 1/2, 72 1/2, 73 1/2, 74 1/2, 75 1/2, 76 1/2, 77 1/2, 78 1/2, 79 1/2, 80 1/2, 81 1/2, 82 1/2, 83 1/2, 84 1/2, 85 1/2, 86 1/2, 87 1/2, 88 1/2, 89 1/2, 90 1/2, 91 1/2, 92 1/2, 93 1/2, 94 1/2, 95 1/2, 96 1/2, 97 1/2, 98 1/2, 99 1/2, 100 1/2.
\$9.99



**7-PIECE WOOD
CORK CENTERED
COASTER**
Choice of six lovely designs.
\$3.99



**QUIC-PIC 15 DRAWER
STORAGE CABINET**
See through drawers for thread, nails,
nippers, saws, files and more. 100%
guaranteed.
\$5.99




**MARBLE/GLASS
PEDESTAL TABLE**
Great for plants, for coffee table for display.
Solid brass. Regard bases 18" height. 15"
diameter.
\$19.95



**16-PC. DINNERWARE
FOR FOUR**
By Lexington United. Four each
dinner plates, pedestal mugs,
cereal soup bowls, bread butter
plates. Warm Golden Almond in
durable, high impact Melamine™.
\$10.99



**MIRRORED
PERFUME TRAYS**
By Mason. Gold mirrored trays with 20
lanyard-secured bases.
\$9.99



**CHARLIE
BY REVLON**
Daphne and Sophie. Charlie in a 1.75 oz.
spray Cologne gift set.
\$7.49

Page 8 Thursday, December 11, 1980

The Manchester Enterprise

STRIKES

SPARES

JOLLY KEGLERS

as of 12-2-80

Manchester Car Wash	58	40
B & H Mfg.	55	43
Dutch Country Kitchens	54.5	43.5
Carol's Cut-N-Curl	53	45
Double A Products	49.5	48.5
Cheryl's Boutique	49	49
Alexander & Company	46	52
Cheless Lanes	27	71
HIGH INDIVIDUAL GAME		
D. Gotts	211	
C. Steele	209	
S. Burgoyne	205	
HIGH INDIVIDUAL SERIES		
B. Schook	552	
A. Roberts	551	
S. Walton	527	
HIGH TEAM GAME W/H		
Carol's Cut-N-Curl	962	
Cheryl's Boutique	958	
Manchester Car Wash	945	
HIGH TEAM SERIES W/H		
Double A Products	2659	
B & H Mfg.	2656	
Cheryl's Boutique	2690	
HIGH ACTUAL GAME OF WEEK		
A. Roberts	197	551 series
L. Wallace		512 series

MANCHESTER WOMENS

as of 12-2-80

Gambles	253	167
Billmeyer Hardware	257.5	182.5
Balls Party Store	220.5	199.5
Gloria Jeans Beauty Salon	218	202
Columbia P & H	218	202
Bauernstube	206	214
Mowry's	200.5	219.5
Koebbe Welding	198	222
Country Workshop	187	233
Jimmys Filling Station	161.5	258.5
HIGH TEAM GAME		
Balls	1065	
Bauernstube	1070	
Glorias	1082	
HIGH TEAM SERIES		
Balls	3079	
Bauernstube	3063	
Gambles	3046	

B-G'S BOWLING LEAGUE

as of 11-29-80

Pagel-Widmayer	16	8
Moore-Wagner	15	9
Ray-Roehm	14.5	9.5
Eversole-Roehm	14	10
Evilizer-Popkey	13	11
Wurster-Young	12	12
Bradley-Wurster	10.5	13.5
Milich-Olszewski	10	14
Finkbeiner-Gilbert	8	16
Perkins-Wilson	7	17
HIGH GAME FOR MEN		
Bob Popkey	210	
Steve Wagner	199	
Dave Roehm	188	
HIGH GAME FOR WOMEN		
Joann Finkbeiner	192	
Irene Wurster	179	
Cindy Wurster	177	
HIGH SERIES FOR MEN		
Steve Wagner	568	
George Wagner	528	
Bob Popkey	527	
HIGH SERIES FOR WOMEN		
Joann Finkbeiner	510	
Denise Dresch	460	
Irene Wurster	440	

MANCHESTER TOWN CLUB

DuRussells	66	25
C & J Drivesaway	57	34
Jenters	51	40
Norm Walz	49	42
Manchester Tool & Die	39	52
Village Hair Forum	38	53
Black Sheep	32	59
Union Savings	32	59
HIGH INDIVIDUAL GAME		
Judy Duvall	224	
Irene Wurster	222	
Linda Corwin	212	
HIGH INDIVIDUAL SERIES		
Phyllis Baker	545	
Irene Wurster	541	
Evie Seegert	537	
HIGH TEAM GAME		
Tool & Die	831	
Jenters w/h	855	

HIGH TEAM SERIES

Tool & Die	2813
Jenters w/h	2413
500's	535
Joan Day	508
Mary Korican	

DIAL -A- GARDEN



The following is a weekly schedule of Dial-A-Garden, the system of pre-recorded daily gardening tips sponsored by the Washtenaw County Cooperative Extension Service. The system is in operation 24 hours per day, 7 days per week.

Interested persons are invited to call 971-1122 at their convenience and receive timely, up-to-date gardening information.

Monday, December 15, Christmas Cactus.

Tuesday, December 16, Something for the Kids: Homemade Christmas Cards.

Wednesday, December 17, Jerusalem Cherry.

Thursday, December 18, Quick Meals for Busy Days.

Friday, December 19, The Poinsettia.

Overeaters Anonymous

There will be an Overeaters Anonymous meeting Wednesday at 6:30 p.m. at the Emanuel United Church of Christ. The group meets every Wednesday.

SHOP THE WANT ADS

NEW YEARS EVE PARTY

BUFFET and DRINKS

MANCHESTER AMERICAN LEGION HALL

WEDNESDAY, DECEMBER 31, 1980

\$30.00 Per Couple

MUSIC BY "THE JUDGE & JURY"

DOORS OPEN 9:00 P.M. TIL 4:00 A.M.

TICKETS ON SALE AT THE UNION SAVINGS BANK

Special Day For Kids At The Manchester Art Gallery

It's "kids only" in the Manchester Art Gallery, located upstairs at 188 E. Main Street, Manchester. Yes, on Saturday, December 13, from 10:00 a.m. - 4:00 p.m., lots of Santa's helpers will be on hand to aid children in choosing and wrapping surprise presents for family and friends. Candies, pottery, wooden toys, dolls, ornaments, gingerbread cookies, and lots more will be available. Little people with pint-sized budgets need not worry; some items have been made and priced especially for this day.

Now a tradition, "Children's Day" has been one of the Manchester Art Guild's busiest times during its annual Christmas exhibit. Other activities are planned for the day, including stories and refreshments.

During this special holiday season, let your children experience the gift of giving with a trip to the Manchester Art Gallery for fine handcrafted presents, which will be surprises for the important people in their lives.

Grownups are welcome to come any other Tuesday from 1:00-3:00 p.m., Friday from 6:00-8:00 p.m., or Saturday from 10:00 a.m.-4:00 p.m. Last minute shopping on December 22 and 23 will be from 10:00 a.m.-4:00 p.m.

DRESS-A-DOLL Contest Winners

Winners left to right: Eastern Regional First Prize, Mary Alice Krzyzanski; Eastern Regional Second Prize, Geyce Desrosiers; Corporate Grand Prize, Martha Barwood; Western Regional Second Prize, Sandra Vincent; Western Regional First Prize, Lynda Haskins.

Shown above are the five corporate and regional top award winning dolls entered in this year's Dress-A-Doll Contest. Twenty-five doll entries won first place awards. Twenty-five doll entries won second place awards, and 90 dolls received honorable mention awards. Dolls are on display through December 23rd at all Great Lakes Federal Savings offices. This year Great Lakes provided approximately seven hundred dolls which were dressed. The officers and staff of Great Lakes Federal Savings join with seven hundred little girls, who will receive the dolls, to thank you and wish you all a Happy Holiday!

GREAT LAKES FEDERAL SAVINGS
Offices in: Ann Arbor, Battle Creek, Albion, Bellevue, Brighton, Chelsea, Coldwater, Dexter, Hastings, Howell, Jackson, Lansing, Marshall, Okemos, Richland, Saline, Ypsilanti • Member FSLIC

THE BLACK SHEEP REPERTORY THEATRE

presents

THE GIFT OF THE MAGI

'a unique, musical version of the O'Henry classic'

Dec. 18 - 21 and 26 - 28
 Curtain 8:15 p.m.
 Sundays 4:00 p.m.

138 E. Main Manchester

TICKET INFORMATION
 Adults \$6.00 Senior Citizens & Students \$3.00 Children (12 & under) \$2.00
 Phone Reservations 428-7366 After Dec 15: 428-9280

FREE CHECKING FOR YOUNGSTERS 60 YEARS OR OVER

GREAT INTEREST CHECK

Works like a checking account ... earns like a savings account ... puts extra dollars in your pocket every month!

It's that simple. Your Great Interest Check account earns 5 1/4% per year, daily interest. Even the amount of the checks you write keeps earning interest until the day it is deducted from your account. With continuous compounding, your dollars will actually provide an annual yield of 5.47%. Interest is paid monthly.

FREE ... You can sign up for your Great Interest Check account now with a minimum deposit* of \$100 and start using it December 31st. For making an early deposit, you will receive a bonus of 200 personalized checks. That's an eight to ten month supply.

FREE ... By maintaining a \$1000 minimum balance in your account you will be free of monthly service charges. You will receive a statement each month so that you will know exactly what your balance is and how much interest you have earned. And you will receive 5 1/4% per year daily interest, continuously compounded whether you maintain a minimum balance or not.

FREE ... Sign up early and receive an elegant all metal velvet finish pen. It feels and writes as luxuriously as its appearance leads you to expect. Federal regulations limit one gift per account.

*Your money will earn 5 1/4% until December 31, 1980, when your account will be automatically converted to a Great Interest Check account.

"Now they come out with a deal like this. Where were they when I needed them!"

GREAT LAKES FEDERAL SAVINGS

Offices in: Ann Arbor, Battle Creek, Albion, Bellevue, Brighton, Chelsea, Coldwater, Dexter, Hastings, Howell, Jackson, Lansing, Marshall, Okemos, Richland, Saline, Ypsilanti • Member FSLIC

Middle School Honor Roll

Marking Period ending November 7, 1980
Effort Recognition

8TH GRADE

Gary Anderson, Michelle Ball, Becky Blumenauer, Kelly Bristle, Hope Broucek, Joel Bruestle, Bob Bunney, Michelle Cartier, Jennifer England, Beth Fahey, Mickie Gehringer, Bill Hansen, Carmen Hopkins, Jeff Horning, Lou Krzyzaniak, Mark Lenhart, Tom Lockridge, Kathy McLennan, Mike Meister, Ron Milkey, Heidi Mottice, Merri Opal, Tony Pegg, Karla Raab, Bruce Rhee, Lisa Rickelmann, Pat Ridenour, Michelle Romine, Betsy Royle, Michelle Schook, Kim Shadley, Melinda Shadley, Sue Shear, Lisa Sloat, Matt Sporzynski, Kim Stripp, Cliff Tracy, Karen Tuveson, Brenda Vedder, Trisha Wahl and Kathy York.

7TH GRADE

Marie Anderson, Pam Chavey, Heather Creech, Kevin Creech, Kim Deszarov, Leslie Duncan, Kenny Gross, Andrea Hagerman, Julie Howell, Lisa Knickerbocker, Lynda Kosinski, Robert Ljovashin, Bruce Paul, Shawn Ross, Rob Smith, Jennifer Tucker, Marty Walkow, Stacey Walkow, Mark Walz, Debbie Wenk and Renee Yeuter.

6TH GRADE

Mitzi Ahrens, Jill Alber, Troy Barrett, Debbie Burkhardt, Julie Craft, Kim Currence, Brad Finkbeiner, Heidi Haselschwerdt, Chris Hawk, Jeff Hasel, Michelle Kuhl, Eric Shadley, Kevin Weidmayer, Veronica White, Kevin Wolf, Jon Arney, Lisa Booth, Mark Briggs, Rachel Cartier, Cheryl Hartmann, Tricia Horning, Kerry Mann, Tracy Nickerson, Jason Petty, Ginny Stripp, James Townsend, Lisa Tuveson, Andrea Weid, Rhonda Young, Amy Broucek, Tim Golding, Heidi Huber, DeAnn Lamb, Sherri Leach, Jeff Mann, Becky Mason, Heidi Minick, Heather Mottice, Krissy Post, Bart Rickelmann, Jessica Roberts, Loretta Schroen, Heather Seabury.

5TH GRADE

Deanna Gilbert, Michael Ross, Sara Samonek, Melissa Babcock, Kim Bailey, Dawn Brady, Tammy Buss, Kim Carpenter, Daniel Deszarov, Renee Drouare, Kristin Miller, Matthew Royle, Craig Scully, Michael Stidham, Jennifer Barnard, Lori Spencer, Kristin Vedder, Dave Adams, Lisa Cousino, Erin Davis, Tom Heath, Kim Lockridge, Jacqueline Miller, Sara Scully, Alice Swanberg, Kris Wagner and Raquel Weber.

Grades 7 & 8 - Four or more ratings of "G" in academic subjects. An "I" or "P" disqualifies a student.

Grades 5 & 6 - Three or more ratings of "G". An "I" or "P" disqualifies a student.

Academic Recognition
"A" Honors

8TH GRADE

Merri Opal and Betsy Royle.

7TH GRADE

Kevin Creech, Kim Deszarov, Lisa Knickerbocker, Lynda Kosinski, Bruce Paul, Shawn Ross and Rob Smith.

6TH GRADE

Mitzi Ahrens, Jill Alber, Heidi Haselschwerdt, Chris Hawk, Michelle Kuhl, Kevin Weidmayer, Jon Arney, Cheryl Hartmann, Tricia Horning, Andrea Weid, Jeff Mann and Heather Seabury.

5TH GRADE

Troy Barrett, Nicki Bragg, Debbie Burk-

5TH GRADE

Deanna Gilbert, Dawn Brady, Daniel Deszarov, Jennifer Barnard, Jeremy Crumb, Lori Spencer, Kristin Vedder and Jacqueline Miller.

"B" Honors

8TH GRADE

Arthur Anderson, Gary Anderson, Michelle Ball, Becky Blumenauer, Wendy Briggs, Kelly Bristle, Hope Broucek, Bob Bunney, Jennifer England, Beth Fahey, Bill Hansen, Lou Krzyzaniak, Robert Lobbestael, John Lochey, Tom Lockridge, Kathy McLennan, Ron Milkey, Heidi Mottice, Joel Norgaard, Tony Pegg, David Pierce, Karla Raab, Bruce Rhee, Lisa Rickelmann, Todd Rickelmann, Pat Ridenour, Michelle Romine, Michelle Schook, Melinda Shadley, Sue Shear, Lisa Sloat, Matt Sporzynski, Kim Stripp, Stephanie Struble, Van Talcott, Cliff Tracy, Karen Tuveson, Trisha Wahl and Kathy York.

7TH GRADE

Marie Anderson, Pam Chavey, Heather Creech, Claude Crumb, Leslie Duncan, Kenny Gross, Andrea Hagerman, Drew Hock, Julie Howell, Kris Hunt, Charlie Kripas, Robert Ljovashin, Rita Talcott, Jennifer Tucker, Cheri Verhines, Brian Waldron, Mark Walz, Debbie Wenk, Renee Yeuter and Karen York.

6TH GRADE

Troy Barrett, Nicki Bragg, Debbie Burk-

hardt, Julie Craft, Brad Finkbeiner, Jeff Knasiak, Eric Shadley, Veronica White, Amy Broucek, Tim Golding, Heidi Huber, DeAnn Lamb, Sherri Leach, Becky Mason, Heidi Minick, Heather Mottice, Chris Pangel, Jessica Roberts, Loretta Schroen, Lisa Booth, Cheryl Bross, Rachel Cartier, John Cousino, Lori Dettling, Tom Golding, Kerry Mann, Tracy Nickerson, Lisa Tuveson and Rhonda Young.

5TH GRADE
Tracy Becktel, Dan Blumenauer, Ami Bragg, Carrie Deis, Amy Fielder, Scott Gross, Danya Hock, Gerry Johnson, Toni Kasapis, Heidi Keezer, Chris LaMarre, Jennifer Murillo, Tammy Piekes, Michael Ross, Sara Samonek, Karl Schook, Deany Steele, Melissa Babcock, Kim Bailey, Tamatha Buss, Kim Carpenter, Kristin Miller, Matthew Royle, Craig Scully, Carrie Alber, Bud Ball, Jacqueline Davis, Tracy Day, Brian Gebhardt, Mark Harvey, Dawn Leach, Nicholas Miller, Linda Pierce, Dave Adams, Terry Beck, Lisa Cousino, Kim Lockridge, Sara Scully, Alice Swanberg, Kris Wagner and Raquel Weber.

Grades 7 & 8 - "A" Honors - 23 & 24 points. "B" Honors-18 thru 22 points.

Grades 5 & 6 - "A" Honors-15 & 16 points. "B" Honors-12 thru 14 points.

An "I" or "E" in any subject disqualifies student from "Academic Recognition".

Christmas

GIFTS FOR THE MEN ONLY

29 Pc.

DRILL SET

Reg. \$24.95

NOW \$14.95

CIRCULAR SAW BLADES

BUY ONE AT RETAIL GET ONE OF EQUAL VALUE

FREE

MAPLE

MITRE BOX

\$1.90

ALL:

*SQUARES

*VISES

*LEVELS

*LEATHER TOOL POUCHES

\$5.00 OFF

CHOPPER I Splitting Axe

Split Twice The Logs In Half The Time!

Reg. \$38.95

NOW \$31.88

BUY ONE GET ONE FREE

Muovisia rakennussarjoja Fiere Modellset i Plast

塑膠模型玩具箱

Pilastik çocuk oyuncakları modeli

Κατασκευαστικά Πλαστικών Μοντέλων

Модели за Пластичне Играчке

طقم فادج بلاستيك

צרכת הדגמה מפלסטיק

Κατασκευαστικά Πλαστικών Μοντέλων

PLASTIC MODEL KITS

CLIFF'S

ACE HARDWARE

OPEN 7 DAYS



MANCHESTER, MICH. 48158

Gerry Wayne Studios
STAINED GLASS
Member of Manchester Art Guild
517-456-7235 313-428-7200
122 WEST MAIN STREET
MANCHESTER, MICHIGAN

WILLIAMSON
HEATING & COOLING SYSTEMS
John Steele, Jr.
INSTALLATION
AND REPAIR
Phone 428-8692

CLINTON THEATRE
Friday & Saturday
7:30 & 9:30
Sunday 7:30

Now-you will be there when we...
RAISE THE TITANIC

School Board Minutes

SPECIAL MEETING

November 1, 1980

The meeting was called to order by the President, William Broucek at 7:35 P.M. Members present: Horning, Cole, Broucek, Mann, Bunney, Little. Members absent: DuFresne.

Since the purpose of the meeting was to continue work on district policies the members of the Board agreed to terminate the meeting at 10:00 P.M.

After discussion it was moved by Little to adopt policies dealing with formulation of educational policy, role of Superintendent of Schools, qualifications of Superintendent of Schools, tenure of Superintendent of Schools, selection of Superintendent, duties of Superintendent, Board Superintendent relations, and role of Principals as these policies were amended during three official readings. Supported by Mann. All yeas.

Further readings were carried out on additional policies dealing with the administration of the schools and business procedures. No official action was taken regarding these additional readings.

It was moved by Little to adjourn the meeting at 10:05 P.M. Supported by Mann. All yeas.

Respectfully submitted,
Eugene W. Thompson,
Acting Secretary

REGULAR MEETING

November 17, 1980

The meeting was called to order by the President, William Broucek at 8:06 P.M., Monday, November 17, 1980.

ROLL CALL Present: William Broucek, William Bunney, Paul DuFresne, David Earl Horning, Ronald Mann, Susan Cole. Absent: Earl Little.

COMMUNICATIONS: Mr. DuFresne, Secretary of the Board, read the letter from the Michigan Association of School Boards, praising the school district of their exceptionally good, almost nonexistent loss exposure experienced in the SEG Self-Insurers Workers' Disability Compensation Policy during the year 1979.

Mr. DuFresne also reminded the Board of the NSBA 1981 convention and exposition April 11-14.

MINUTES OF THE PREVIOUS MEETINGS:

October 20, 1980. Regular Board of Education Meeting. Moved by Little to accept the minutes as presented. Supported by Bunney. Vote: All yeas. Motion carried.

November 3, 1980. Special meeting. Moved by Little, Supported by Mann to accept the minutes as presented. Vote: all yeas. Motion carried.

FINANCIAL REPORT: Presented to the Board by Mrs. Maxine Frey, balance September 30, 1980 - \$207,163.31. October receipts, \$525,156.27. October disbursements \$279,544.22. Balance 10-31-80. Moved by Little, Supported by Bunney to accept the financial report as presented. Vote: All yeas. Motion carried.

BILLS PAYABLE: Presented by Mrs. Frey to the Board as follows: October Prepaid Checks: \$231,876.44. November checks: \$51,852.69. Total \$283,529.03. Moved by DuFresne to approve the bills payable as presented. Supported by Little. Motion carried.

DISCUSSION ITEMS:
A. **Appointment of Professional Council.** Dr. Thompson explained that Article XIV of the master agreement with the WLEA

calls for the appointment of 4 representatives (3 administrators and 1 Board member). Dr. Thompson recommended the representatives be himself, Jim Kappier and Brian Schick. The Board appointed Susan Cole. Moved by Little, supported by DuFresne to appoint Dr. Thompson, Mr. Kappier, Mr. Schick and Mrs. Cole to the professional council for the current school year. Vote: All yeas. Motion carried.

B. Administrative Objective Plans: After discussion of the M.B.O.'s, it was moved by Little, Supported by Mann, to accept the MBO's as presented. Vote: All yeas. Motion carried.

C. Michigan Education Assessment Program Report: Dr. Thompson reviewed the 1980-81 Michigan Educational Assessment program with the Board.

D. Agenda for Board Retreat: Mr. Broucek outlined the proposed agenda for the retreat. The three items to be discussed are (1) Process for evaluation of the Superintendent, (2) Evaluation of the Superintendent, and (3) Buildings and equipment - Process for improvement.

E. Finance Committee Report: Mr. Little reported to the Board the results of the finance committee meeting. Mr. Broucek requested that the list of internal accounts the CPA's referred to in their report be reviewed at the next meeting.

G. Middle School Computer Program Presentation: Mr. Bill Symons presented the Board with a demonstration of the micro-computer program from the Middle School. His helpers in presenting the demonstration were Arthur Anderson and Matthew Sporzynski of the 8th grade at Middle School.

F. Curriculum Committee Organization: Following an outline of the concept by Dr. Thompson, Jim Kappier presented his proposal for a district-wide curriculum council. The council will be made up of administrators, teachers, parents, a student representative, and a Board representative. The duties of the council will be to review and coordinate all curriculum development proposals before they are submitted to the Superintendent and ultimately to the Board.

After discussion, DuFresne moved to establish the curriculum council for the Manchester Schools as presented by the administration. Supported by Cole. Vote: All yeas. Motion carried. The appointment to the curriculum committee was tabled until the December 16 meeting.

Motion made to adjourn the meeting by Mr. Mann, supported by Mr. Bunney. Vote: All yeas. Motion carried. Meeting adjourned at 10:22 P.M.

OLD BUSINESS:

A. Secretarial Compensation Package: Dr. Thompson presented to the Board a revised compensation package for school district secretaries. Moved by DuFresne to approve the compensation package for school district secretaries. Supported by Little. Vote: All yeas. Motion carried.

NEW BUSINESS:

A. Grievance Committee Report: Mr. Bunney reported on grievance concerning personal leave. It was proposed by the MEA and agreed upon by the committee and recommended to the Board that this particular grievance and any upcoming grievances of this nature be held in abeyance pending the ruling of the arbitration hearing now pending. The ruling on the hearing will not be due until late December. This intent is to avoid the cost of additional arbitration hearings if possible. It was moved by Bunney to accept the WLEA/MEA proposal to hold all grievances dealing with personal business days in indefinite abeyance. Supported by Mann. Vote: All yeas. Motion carried.

B. Custodial/Maintenance Agreement: Dr. Thompson presented to the Board the agreement between the Custodial/Maintenance Personnel and the Manchester Community Schools for the 1980-82 school year. It was moved by Little, supported by DuFresne, to approve the agreement with the Custodial/Maintenance Personnel as presented. Vote: All yeas. Motion carried.

Respectfully submitted,
Paul DuFresne, Secretary
Board of Education

Singles 25 And Up

For an enjoyable evening with happy people, join the Tuesday Nite Singles at the American Legion Hall, Main Street, Ann Arbor, on December 16. Dance from 8:30 to 11:30 p.m. to the music of Frank Venice. Come and meet some new friends. Ballroom dancing. For more information call 482-5478.

Holiday Shopping Suggestions from THE Calico Cat BOOK AND GIFT SHOPPE

- CRYSTAL FROM AMERICA AND EUROPE
- BALDWIN BRASS
- ROYAL HOLLAND PEWTER
- LEATHER GOODS FROM PRINCE GARDNER
- FENTON ART GLASS
- CANDLES AND ACCESSORIES FROM COLONIAL CANDLE AND CAROLINA SOAP AND CANDLE COMPANY
- JEWELRY REPRESENTED BY TRIFARI AND WINARD
- FRASER STAINLESS STEEL
- 1980 PLATE AND FIGURINES FROM BING AND GRONDAHL
- 1980 PLATE, BELL, AND ANNIVERSARY PLATE FROM HUMMEL
- BOXED CHRISTMAS CARDS AND WRAP FROM AMERICAN GREETING AND AMERICAN ARTISTS GROUP
- IMPORTED CHRISTMAS DECORATIONS FROM EUROPE

BROWSE THROUGH OUR BOOK DEPARTMENT FOR THE BEST IN CHILDREN'S LITERATURE, BOOKS, AND BIBLES FOR THE ENTIRE FAMILY

A 10% DEPOSIT AND MONTHLY PAYMENT WILL HOLD YOUR LAY-AWAY UNTIL CHRISTMAS

OUR "WISH AND WANT" BOOK IS AVAILABLE FOR YOU TO RECORD THOSE ITEMS YOU WOULD LIKE TO RECEIVE FROM SANTA

MONDAY THROUGH THURSDAY 10:00 A.M. TO 5:30 P.M.
FRIDAY AND SATURDAY 10:00 A.M. TO 7:00 P.M.
(WE HAVE EXTENDED OUR HOURS ON FRIDAYS AND SATURDAYS)

VISA AND MASTER CHARGE WELCOME
110 EAST MAIN STREET
428-7453

STIHL
Model 031 AVEQ

IF YOU'RE LOOKING FOR THE FINEST CHAIN SAW IN THE WORLD, WE'VE GOT EXACTLY THE RIGHT NUMBER. THE STIHL® 031 AVEQ.

Quickstop® —chain braking system
Maintenance-free electronic ignition
Anti-vibration system to take the shakes out
Guide bar length from 14" to 20"
Fully automatic, adjustable bar and chain oiling system
Comfortable rubber-covered handle bar
Stihl's specially designed long-life cylinder
Oilmatic® chain with oil injection feature
Front and rear hand guards

K & W EQUIPMENT INC.
11100 Chelsea-Manchester Ed.
Manchester, Michigan

Santa's GIFT GUIDE

Order Mothers Ring or Pin Now for Christmas

10 K and 14 K GOLD
10 K \$84.00 and Up
INCLUDING STONES

Gold Pierced Ear Rings
Solid State Quartz and Timex Watches
Watch Repair Engraving

Roller Jewelry

124 EAST MAIN ST. MANCHESTER, MICHIGAN

WANT ADS

All classified advertising is payable in advance. All ads must be PLACED and PAID for prior to 11 AM on Tuesday for publication that week.

2 FAMILY HOUSE FOR SALE - 1 bedroom apartment up, 3 bedroom down with garage and yard and swimming pool. 428-8364 or 428-9122. tfn

HARTMANN CARPENTRY - Now serving Manchester area as a Licensed Builder. 12 years experience in Home Building with experience in roofing, siding, decks, remodeling, garages and pole barns. Call 475-8301 or 475-1643. tfn

CHELSEA GREENHOUSES, 7010 Lingane Road, Chelsea, Michigan 475-1353-54 or 475-9818. Flowers and plants for every occasion. We specialize in wedding flowers to fit your budget. We are as near as your phone and we welcome your business. tfn

BUILDING SITE - 2 acres 4 miles north of Manchester. Phone 313-428-7573. tfn

FURNACE PARTS & SERVICE - supply of motors, filters and burner parts in stock. Manchester Electric 428-8243 or 428-8331. tfn

OFFICE SPACE FOR RENT - Newly redecorated. Sutton Agency Building, call 428-7217. tfn

C & B PAINTING - Interior, exterior. Free estimates. 428-7416 or 428-7136.

LITTLE WACK EXCAVATING Licensed & Insured

Basements - Drainfield - Bulldozing - Digging - Snow Removal - Tree Removal. Paul Wackenhut, phone (313) 428-9025. tfn

FIREWOOD - seasoned hardwoods and cherry. Delivered and stacked \$40.00 a cord. 428-8506. 1-8

ROTTWEILER PUPPIES for Christmas \$350. Champion Pedigree, also stud service 428-9214. 12-18p

THE CALICO CAT BOOK AND GIFT SHOPPE, 110 East Main Street, Manchester, Michigan. 1-313-428-7453. Hours - Monday through Thursday 10:00 a.m. to 5:30 p.m. Friday and Saturday 10:00 a.m. to 7:00 p.m. please take note of our extended hours on Friday and Saturday. A 10% deposit and monthly payment will hold your lay-away until Christmas. Our "WISH AND WANT" Book is available for you to record those items you would like to receive from Santa. Visa and Master Charge Welcome. 12-25

WANTED - Crop land to rent for 1981 season. Cash paid in advance. Phone 517-764-0700. tfn

MANCHESTER - Executive 3 bedroom ranch, 2 acres. \$64,900. More acreage available. Realty World of Greater Jackson 517-780-8296. 569-2340. 12-11

CHIM-CHIMENEY CHIMNEY SWEEPERS

Alternate Energy Headquarters

284 West Michigan Ave. Saline, Michigan Call Collect 428-9075

Store Hours: Tues, Thurs, Sat 5 to 8. Mon, Wed, Fri. out sweeping.

Jim Hartmann 475-9301 Rich Kennedy 475-1643

Hartmann Carpentry

Licensed & Insured Residential Builder with 12 years experience

Pole Barns Additions
Roofing Siding
Decks Remodeling
Rough Ins Finish Work

BEEF TO SELL BY SIDE Custom slaughtering. Lockers to rent. Phone 428-7600. Manchester Locker Plant. tfn

NEED A NEW FURNACE - Call 428-9150, free estimates, featuring Lennox and Janitrol. tfn

LAND CONTRACTS PURCHASED - Any Size. Any Property Type. Courteous and Reliable Service. Call Dan Demoss, Ann Arbor Real Estate Co. (313) 668-8585. tfn

GERALD ABRENS CONSTRUCTION Additions, Decks, Renovations, Repair, Finish Work. Free Estimates. Phone 428-8907. tfn

ALUMINUM EAVESTROUGH - Seamless, white, black and brown, guaranteed, free estimates. Walkow Home Improvement Company, phone 313-428-8468. tfn

BOULO ELECTRIC - Licensed and Insured Contractor. Call Clinton 517-456-4796. tfn

FIREWOOD FOR SALE - 2 yr. seasoned oak 4' x 2' x 16" Face Cord, \$40.00 delivered. \$35.00 w-pick-up. 428-8434. 12-18

FOR RENT - Ground floor, 2 bedroom 2 blocks to Manchester. \$275 per month. 428-7173. tfn

MODERN 2 bedroom apartment, washer, dryer and patio, \$300 month. 428-9355 or 665-5900. tfn

COME look at our model home, compare our prices, and see if you qualify for a lower interest loan (as low as 4%).

CALLOWAY CONSTRUCTION, 5201 Brooklyn Road, Jackson. (517) 764-4400. tfn

AVAILABLE FOR CHRISTMAS, 2 bedroom or 1 bedroom apartment. Call 428-9122 or 428-8364. tfn

2 BEDROOM UNFURNISHED APARTMENT for rent on Pleasant Lake. Available January 1. no pets. \$285 plus utilities. 428-7930. 12-18

CHRISTMAS CANDY SALE
The Manchester Jaycee Auxiliary is having a Candy Sale at the Union Savings Bank in Manchester. The sale is Saturday, December 13th from 9:00 a.m. till 12:00 noon. Assorted candies and a variety of painted novelty suckers.

HOUSE FOR RENT - Manchester area. 3 bedroom, fireplace, fantastic view, \$350 month. 1-595-8289. p

ARE YOU SURE YOU'RE PUNCHING THROUGH LOUD AND CLEAR??

The typical CB'er can get an average of three miles further to "punch through loud and clear" with a check and adjustment of his CB and antenna system for peak performance.

MANCHESTER CB SERVICE
Phone 428-9073 FCC LICENSED

ALBER ORCHARD and CIDER MILL

13911 BETHEL CHURCH ROAD MANCHESTER

HOURS: 9 TO 6 DAILY
APPLES, CIDER, BARRELS and KEGS, HONEY
MAPLE STRIP, POP CORN
428-7758

FIREWOOD - Call 428-8175 after 5 p.m. 1-1p

GERMAN LESSONS at your home by native German, 10 years teaching experience. Call (517)456-7716 evenings. 12-25p

GARAGE SALE - Household items, tools, antiques. Fri., Sat., Sun. 8 - 5 p.m., 13530 Bemis Rd. 428-7868. 12-11p

FOR SALE - 72 Ford, good transportation. 428-7156. 12-11p

4 BEDROOM HOUSE for rent, Pleasant Lake Rd. 313-428-7573. 12-11

RED, '79 DODGE OMNI, 4 dr, 4 speed, 38 mpg Hwy. \$3950.00, call 428-9122.

FOR RENT - 1 bedroom apartment, ground floor, \$190 month. 428-9380 after 5 p.m.

FOR SALE: Geese, live or dressed, call 428-9607. p

NEED A Santa Suit for a Christmas party? The Manchester Jaycee Auxiliary can help you out. We have a very nice suit that we will rent for a reasonable price. If you are interested, please call Evelyn Panches at 428-9072 after 6:00 p.m.

NEED HELP caring for your home? I will do chores according to your needs and/or cook meals. Let's discuss a plan that will suit you. Designed for the elderly in mind. 428-8902.

FOUND - orange tiger cat, neutered male missing front right paw, very friendly. Call 428-9454. p

I BUY BATTERIES
Can pick up. 146 Park St., Adrian, Michigan. 517-265-4141 call collect. tfn

SNOW REMOVAL - snow blower, reasonable rates. Dave Bunn 428-7473. 1-8p

WATKINS PRODUCTS - quality spices, extracts and toiletries. Call 428-9393. 1-8

SLEEPING ROOM IN CLINTON (517) 456-4780. 12-25p

WILL DO BABYSITTING in my home, days. Call 428-7426. 12-18p

LAND CONTRACT - MANCHESTER
new 3 bedroom, 2 bath, 2 1/2 car, deck, 1 acre, picturesque view with hills and woods. \$66,900. 428-9134. 12-18p

3 BEDROOM APARTMENT in the Village, reasonable rent, 428-9150 between 6 and 9 p.m. 12-18

BABYSITTING in my home, Bridgewater. 429-7323.

KATCH-KEE HOW MANY MORE DAYS???? P

CHUMPS - BETTER LUCK NEXT TIME, 4 OUT OF 4 IS NOT BAD. THE CHAMPS P

FOUND-orange tiger cat, neutered male missing front right paw, very friendly. Call 428-9454. p

CROSSING GUARD NEEDED for Klager Elementary School. Please contact John McGuire 428-8321.

CARD OF THANKS

I wish to thank all those who remembered me with cards and visits while in the hospital and since returning home.

Special thanks to Rev. Macfarlane, also our appreciation for the many things done for us by our family who are always with us in time of need.

Ruth Ahrens

We wish to express a special thanks to relatives and friends, Mr. Jenter and Rev. Macfarlane for all their many kindnesses during the time of our loss.

The Family of James Palmer

Dear Friends,
Our family cannot express our thanks to you for the concern and love you have shown in our loss of Red. He loved Manchester and the people here for many years. When he took sick in September he was so pleased by the favors and prayers shown to him. Our thanks to all of you who have and are making it easier to bear our loss.

To Pastor Bob Macfarlane for his love and spiritual thoughts he and Red shared for each other. You have loved and helped us during this time, and we will need you to lean on in the future. Pallbearers of the American Legion whom Red was so proud to be a member of. Ronnie and June, who returned home to be with us. The Fellowship of the Emanuel Church and persons who furnished food after the service. The Village Council, Public Works and Police Department for their kindness extended through Red's illness and death. Memorials, which will be used for needed items for the church. Neighbors and friends for all things you have done.

May God bless you all.

Gerry Huber
Marilyn and Dave Minick
Terry and Marilyn Huber
Glady and Howard Folkier
Grandchildren

A big thanks to all who helped with and attended our dance on November 22. Special thanks to the K of C for the hall; Luke Schaible for his time; and Bill Martin for his hand and pool table. We appreciate your support. The High School Wrestling Team and their parents

-NEW DRIVE-UP WINDOWS HOURS- Effective December 15, 1980

Our Manchester Office Drive-Up Windows will be open until 6 p.m. Monday thru Friday and Saturday 9 a.m. until noon.

Lobby hours are 9 a.m. to 4 p.m. Monday thru Thursday, 9 a.m. to 6 p.m. on Friday and 9 a.m. to noon on Saturday

Ann Arbor Bank and Trust

THE MANCHESTER ENTERPRISE

LETTERS TO SANTA

Christmas is almost here. So it's time for all you boys and girls to write your letters to Santa. You have until December 15 to write and let me know what you want for Christmas. My special mailboxes are located at the Post Office, Pleasant Lake School, and Klager School. Be sure to have Mom or Dad check for the correct spelling of your name and address.

Be good boys and girls and watch for my letter soon.
I'll be seeing you on Christmas eve.
Merry Christmas to all!
Love,
Santa, North Pole

New Financial Aid Meeting Set

On Tuesday, December 2 the college financial aid meeting was held as scheduled. However, due to the inclement weather that day many families were unable to attend. A survey was taken in the senior government classes, with the results showing a strong interest in another meeting. This will be held on Wednesday, January 7, 1981 in the high school library at 7:30 p.m.

The workshop will cover the same information as the original one. Financial aid forms will be passed out and explained. College or vocational school seniors and their parents are encouraged to attend. If you have any questions regarding the financial aid process, call Mr. Parson at the High School.

Successful Tri-Church Bazaar

The Tri-Church Bazaar, on December 6, was another very successful venture of the three churches, Emanuel, St. Marys and Methodist.

Many area women seemed to enjoy browsing, buying and visiting together. Continuing over a delicious lunch, also a joint effort of the three churches. The Bazaar concluded with the drawing for the raffle items.

Winners were:
Emanuel Women's Fellowship - Song Birds Quilt won by Helene Kemner. Cross-Stitch framed picture. Amanda Schaible. Baby Quilt wall hanging, Dorothy Mann.

St. Mary's Altar Society - Hooked Rug won by Denise Dresch. Doll with Travel Case, Brenda Rice. Paddington Bear, Sharon Kloinschmidt.

United Methodist Women - Raggedy Ann and Andy Dolls, Cindy Steele. Afghan, Ada Koon. Wreath, S. Barth.

Food-For-The-Needy

The Scavenger Hunt for "food-for-the-needy" will be conducted by the Middle School Student Council for the next five days. Mr. Brian Schick is in charge of the project which involves grades K through 8 in the three schools in the district. Be ready for the children in your area with your donation of packaged or canned foods, paper goods or soaps that you have been planning to give to the customary one day drive each Holiday Season. The final day for collection is Tuesday, December 16.

For the past fourteen years Manchester Family Service, Inc. has been instrumental in directing the community's desire to help the less fortunate. Many groups have already contributed financially to the project this year. The families and individuals in the Manchester School District and southern Manchester Township whose names are given to the local agency by the Department of Social Services, The Salvation Army, Washtenaw County Health Department and Social Security will be notified by letter where and when to pick up their Christmas food box and other gifts which are available.

Obituary

Jack W. Kellogg
1658 Hubbard Rd.
North Madison, Ohio

Age 84 years, formerly of Manchester, died Friday, November 5, 1980 at the Richmond Hills General Hospital.

He was born July 24, 1896 in Cheyenne, Wyoming, the son of Paul and Pauline Kellogg.

He was married to Kathleen McShurley on January 8, 1951. She survives.

Also survived by three daughters, Mrs. Gary (Ethel) Dresch of Midland, Mrs. Gerald (Betty) Ahrens of Manchester, Miss Carol Kellogg of Manchester; two sons, Pvt. Robert Kellogg of Ft. Clellan, Alabama, Jack Kutter of California; three step-sons, Mike Brown and Wayne Brown of Columbus, Ohio, Stan McShurley of West Jefferson, Ohio and nine grandchildren.

Funeral services were held Monday, December 8, 1980 at 1:30 p.m. at the Jenter Funeral Home. Rev. Thomas Hart officiated. Burial followed in Oak Grove Cemetery.

Come See Our
POINSETTIA DISPLAY
or Phone your Order Early
For Christmas

POINSETTIAS all Colors \$1.75 up
also Christmas Cactus
Phone 428-8078

SCHEBOR GREENHOUSES
14345 LOGAN ROAD MANCHESTER, MICHIGAN

THE ORNAMENTAL SHOPPE
9050 Chelsea-Manchester Rd. Manchester, Michigan

CANDLES
PILLAR, TAPER, HAND CARVED
CANDLES OF ALL KINDS

CEMENT LAWN ORNAMENTS
BIRD BATHS, PLANTERS, ANIMALS ETC.
MAIN COLOR CASTIN

CHRISTMAS ORNAMENTS

CANDLE MAKING SUPPLIES
WICKING SCENT COLOR
WAX
PLASTIC METALS FLEXIBLE MOLDS
LESSONS

**WEATHER VANES
MAIL BOX & LAMP POST SIGNS
BY OLD CENTURY FORGE**

The TAYLORS
394 E. LAKE ST.

George and Lois Wacker, Prop.

MON. FRI. 8 P.M. TO 5 P.M.
SATURDAY 9 a.m. TO 5 P.M.
SUNDAY 2 P.M. TO 5 P.M. TILL CHRISTMAS

CAST IRON WARE & KEROSENE LAMPS

WANT ADS

All classified advertising is payable in advance. All ads must be PLACED and PAID for prior to 11 AM on Tuesday for publication that week.

2 FAMILY HOUSE FOR SALE - 1 bedroom apartment up, 3 bedroom down with garage and yard and swimming pool. 428-8364 or 428-9122. tfn

HARTMANN CARPENTRY - Now serving Manchester area as a Licensed Builder. 12 years experience in Home Building with experience in roofing, siding, decks, remodeling, garages and pole barns. Call 475-8301 or 475-1643. tfn

CHELSEA GREENHOUSES, 7010 Lingane Road, Chelsea, Michigan 475-1353-54 or 475-9818. Flowers and plants for every occasion. We specialize in wedding flowers to fit your budget. We are as near as your phone and we welcome your business. tfn

BUILDING SITE - 2 acres 4 miles north of Manchester. Phone 313-428-7573. tfn

FURNACE PARTS & SERVICE - supply of motors, filters and burner parts in stock. Manchester Electric 428-8243 or 428-8331. tfn

OFFICE SPACE FOR RENT - Newly redecorated. Sutton Agency Building, call 428-7217. tfn

C & B PAINTING - Interior, exterior. Free estimates. 428-7416 or 428-7136.

LITTLE WACK EXCAVATING Licensed & Insured
Basements - Drainfield - Bulldozing - Digging - Snow Removal - Tree Removal. Paul Wackenhut, phone (313) 428-9025. tfn

FIREWOOD - seasoned hardwoods and cherry. Delivered and stacked \$40.00 a cord. 428-8506. 1-8

ROTTWEILER PUPPIES for Christmas \$350. Champion Pedigree, also stud service 428-9214. 12-18p

THE CALICO CAT BOOK AND GIFT SHOPPE, 110 East Main Street, Manchester, Michigan. 1-313-428-7453. Hours - Monday through Thursday 10:00 a.m. to 5:30 p.m. Friday and Saturday 10:00 a.m. to 7:00 p.m. please take note of our extended hours on Friday and Saturday. A 10% deposit and monthly payment will hold your lay-away until Christmas. Our "WISH AND WANT" Book is available for you to record those items you would like to receive from Santa. Visa and Master Charge Welcome. 12-25

WANTED - Crop land to rent for 1981 season. Cash paid in advance. Phone 517-764-0700. tfn

MANCHESTER - Executive 3 bedroom ranch, 2 acres. \$64,900. More acreage available. Realty World of Greater Jackson 517-780-8296. 569-2340. 12-11

CHIM-CHIMENEY CHIMNEY SWEEPERS
Alternate Energy Headquarters
284 West Michigan Ave.
Saline, Michigan
Call Collect 428-9075
Store Hours: Tues, Thurs, Sat 5 to 8. Mon, Wed, Fri. out sweeping.

Jim Hartmann 475-9301 Rich Kennedy 475-1643
Hartmann Carpentry
Licensed & Insured Residential Builder with 12 years experience
Pole Barns Additions
Roofing Siding
Decks Remodeling
Rough Ins Finish Work

BEEF TO SELL BY SIDE
Custom slaughtering. Lockers to rent. Phone 428-7600. Manchester Locker Plant. tfn

NEED A NEW FURNACE - Call 428-9150, free estimates, featuring Lennox and Janitrol. tfn

LAND CONTRACTS PURCHASED - Any Size. Any Property Type. Courteous and Reliable Service. Call Dan Demoss, Ann Arbor Real Estate Co. (313) 668-8585. tfn

GERALD ABRENS CONSTRUCTION
Additions, Decks, Renovations, Repair, Finish Work. Free Estimates. Phone 428-8907. tfn

ALUMINUM EAVESTROUGH - Seamless, white, black and brown, guaranteed, free estimates. Walkover Home Improvement Company, phone 313-428-8468. tfn

BOULO ELECTRIC - Licensed and Insured Contractor. Call Clinton 517-456-4796. tfn

FIREWOOD FOR SALE - 2 yr. seasoned oak 4' x 2' x 16" Face Cord, \$40.00 delivered. \$35.00 w-pick-up. 428-8434. 12-18

FOR RENT - Ground floor, 2 bedroom 2 blocks to Manchester. \$275 per month. 428-7173. tfn

MODERN 2 bedroom apartment, washer, dryer and patio, \$300 month. 428-9355 or 665-5900. tfn

COME look at our model home, compare our prices, and see if you qualify for a lower interest loan (as low as 4%). **CALLOWAY CONSTRUCTION**, 5201 Brooklyn Road, Jackson. (517) 764-4400. tfn

AVAILABLE FOR CHRISTMAS, 2 bedroom or 1 bedroom apartment. Call 428-9122 or 428-8364. tfn

2 BEDROOM UNFURNISHED APARTMENT for rent on Pleasant Lake. Available January 1. no pets. \$285 plus utilities. 428-7930. 12-18

CHRISTMAS CANDY SALE
The Manchester Jaycee Auxiliary is having a Candy Sale at the Union Savings Bank in Manchester. The sale is Saturday, December 13th from 9:00 a.m. till 12:00 noon. Assorted candies and a variety of painted novelty suckers.

HOUSE FOR RENT - Manchester area. 3 bedroom, fireplace, fantastic view, \$350 month. 1-595-8289. p

ARE YOU SURE YOU'RE PUNCHING THROUGH LOUD AND CLEAR??
The typical CB'er can get an average of three miles further to "punch through loud and clear" with a check and adjustment of his CB and antenna system for peak performance.
MANCHESTER CB SERVICE
Phone 428-9073 FCC LICENSED

ALBER ORCHARD and CIDER MILL
13911 BETHEL CHURCH ROAD MANCHESTER
HOURS: 9 TO 6 DAILY
APPLES, CIDER, BARRELS and KEGS, HONEY MAPLE STRIP, POP CORN
428-7758

FIREWOOD - Call 428-8175 after 5 p.m. 1-1p

GERMAN LESSONS at your home by native German, 10 years teaching experience. Call (517) 456-7716 evenings. 12-25p

GARAGE SALE - Household items, tools, antiques. Fri., Sat., Sun. 8 - 5 p.m., 13530 Bemis Rd. 428-7868. 12-11p

FOR SALE - 72 Ford, good transportation. 428-7156. 12-11p

4 BEDROOM HOUSE for rent, Pleasant Lake Rd. 313-428-7573. 12-11

RED, '79 DODGE OMNI, 4 dr, 4 speed, 38 mpg Hwy. \$3960.00, call 428-9122.

FOR RENT - 1 bedroom apartment, ground floor, \$190 month. 428-9380 after 5 p.m.

FOR SALE: Geese, live or dressed, call 428-9607. p

NEED a Santa Suit for a Christmas party? The Manchester Jaycee Auxiliary can help you out. We have a very nice suit that we will rent for a reasonable price. If you are interested, please call Evelyn Panches at 428-9072 after 6:00 p.m.

NEED HELP caring for your home? I will do chores according to your needs and/or cook meals. Let's discuss a plan that will suit you. Designed for the elderly in mind. 428-8902.

FOUND - orange tiger cat, neutered male missing front right paw, very friendly. Call 428-9454. p

I BUY BATTERIES
Can pick up. 146 Park St., Adrian, Michigan. 517-265-4141 call collect. tfn

SNOW REMOVAL - snow blower, reasonable rates. Dave Bunn 428-7473. 1-8p

WATKINS PRODUCTS - quality spices, extracts and toiletries. Call 428-9393. 1-8

SLEEPING ROOM IN CLINTON (517) 456-4780. 12-25p

WILL DO BABYSITTING in my home, days. Call 428-7426. 12-18p

LAND CONTRACT - MANCHESTER
new 3 bedroom, 2 bath, 2 1/2 car, deck, 1 acre, picturesque view with hills and woods. \$66,900. 428-9134. 12-18p

3 BEDROOM APARTMENT in the Village, reasonable rent, 428-9150 between 6 and 9 p.m. 12-18

BABYSITTING in my home, Bridgewater. 428-7323.

KATCH-KEE HOW MANY MORE DAYS???? P

WILL DO BABYSITTING in my home, days. Call 428-7426. 12-18p

LAND CONTRACT - MANCHESTER
new 3 bedroom, 2 bath, 2 1/2 car, deck, 1 acre, picturesque view with hills and woods. \$66,900. 428-9134. 12-18p

3 BEDROOM APARTMENT in the Village, reasonable rent, 428-9150 between 6 and 9 p.m. 12-18

BABYSITTING in my home, Bridgewater. 428-7323.

KATCH-KEE HOW MANY MORE DAYS???? P

WILL DO BABYSITTING in my home, days. Call 428-7426. 12-18p

LAND CONTRACT - MANCHESTER
new 3 bedroom, 2 bath, 2 1/2 car, deck, 1 acre, picturesque view with hills and woods. \$66,900. 428-9134. 12-18p

3 BEDROOM APARTMENT in the Village, reasonable rent, 428-9150 between 6 and 9 p.m. 12-18

BABYSITTING in my home, Bridgewater. 428-7323.

KATCH-KEE HOW MANY MORE DAYS???? P

CHUMPS - BETTER LUCK NEXT TIME, 4 OUT OF 4 IS NOT BAD. THE CHAMPS P

FOUND - orange tiger cat, neutered male missing front right paw, very friendly. Call 428-9454. p

CROSSING GUARD NEEDED for Klager Elementary School. Please contact John McGuire 428-8321.

FOR SALE - 72 Ford, good transportation. 428-7156. 12-11p

4 BEDROOM HOUSE for rent, Pleasant Lake Rd. 313-428-7573. 12-11

RED, '79 DODGE OMNI, 4 dr, 4 speed, 38 mpg Hwy. \$3960.00, call 428-9122.

FOR RENT - 1 bedroom apartment, ground floor, \$190 month. 428-9380 after 5 p.m.

FOR SALE: Geese, live or dressed, call 428-9607. p

NEED a Santa Suit for a Christmas party? The Manchester Jaycee Auxiliary can help you out. We have a very nice suit that we will rent for a reasonable price. If you are interested, please call Evelyn Panches at 428-9072 after 6:00 p.m.

NEED HELP caring for your home? I will do chores according to your needs and/or cook meals. Let's discuss a plan that will suit you. Designed for the elderly in mind. 428-8902.

FOUND - orange tiger cat, neutered male missing front right paw, very friendly. Call 428-9454. p

I BUY BATTERIES
Can pick up. 146 Park St., Adrian, Michigan. 517-265-4141 call collect. tfn

SNOW REMOVAL - snow blower, reasonable rates. Dave Bunn 428-7473. 1-8p

WATKINS PRODUCTS - quality spices, extracts and toiletries. Call 428-9393. 1-8

SLEEPING ROOM IN CLINTON (517) 456-4780. 12-25p

WILL DO BABYSITTING in my home, days. Call 428-7426. 12-18p

LAND CONTRACT - MANCHESTER
new 3 bedroom, 2 bath, 2 1/2 car, deck, 1 acre, picturesque view with hills and woods. \$66,900. 428-9134. 12-18p

3 BEDROOM APARTMENT in the Village, reasonable rent, 428-9150 between 6 and 9 p.m. 12-18

BABYSITTING in my home, Bridgewater. 428-7323.

KATCH-KEE HOW MANY MORE DAYS???? P

WILL DO BABYSITTING in my home, days. Call 428-7426. 12-18p

LAND CONTRACT - MANCHESTER
new 3 bedroom, 2 bath, 2 1/2 car, deck, 1 acre, picturesque view with hills and woods. \$66,900. 428-9134. 12-18p

3 BEDROOM APARTMENT in the Village, reasonable rent, 428-9150 between 6 and 9 p.m. 12-18

BABYSITTING in my home, Bridgewater. 428-7323.

KATCH-KEE HOW MANY MORE DAYS???? P

WILL DO BABYSITTING in my home, days. Call 428-7426. 12-18p

LAND CONTRACT - MANCHESTER
new 3 bedroom, 2 bath, 2 1/2 car, deck, 1 acre, picturesque view with hills and woods. \$66,900. 428-9134. 12-18p

3 BEDROOM APARTMENT in the Village, reasonable rent, 428-9150 between 6 and 9 p.m. 12-18

BABYSITTING in my home, Bridgewater. 428-7323.

KATCH-KEE HOW MANY MORE DAYS???? P

THE MANCHESTER ENTERPRISE

LETTERS TO SANTA

Christmas is almost here. So it's time for all you boys and girls to write your letters to Santa. You have until December 15 to write and let me know what you want for Christmas. My special mailboxes are located at the Post Office, Pleasant Lake School, and Klager School. Be sure to have Mom or Dad check for the correct spelling of your name and address.

Be good boys and girls and watch for my letter soon.
I'll be seeing you on Christmas eve.
Merry Christmas to all!

Love,
Santa, North Pole

New Financial Aid Meeting Set

On Tuesday, December 2 the college financial aid meeting was held as scheduled. However, due to the inclement weather that day many families were unable to attend. A survey was taken in the senior government classes, with the results showing a strong interest in another meeting. This will be held on Wednesday, January 7, 1981 in the high school library at 7:30 p.m.

The workshop will cover the same information as the original one. Financial aid forms will be passed out and explained. College or vocational school seniors and their parents are encouraged to attend. If you have any questions regarding the financial aid process, call Mr. Parson at the High School.

Successful Tri-Church Bazaar

The Tri-Church Bazaar, on December 6, was another very successful venture of the three churches, Emanuel, St. Marys and Methodist.

Many area women seemed to enjoy browsing, buying and visiting together. Continuing over a delicious lunch, also a joint effort of the three churches. The Bazaar concluded with the drawing for the raffle items.

Winners were:
Emanuel Women's Fellowship - Song Birds Quilt won by Helene Kemner. Cross-Stitch framed picture, Amanda Schaible. Baby Quilt wall hanging, Dorothy Mann.

St. Mary's Altar Society - Hooked Rug won by Denise Dresch. Doll with Travel Case, Brenda Rice. Paddington Bear, Sharon Kloinschmidt.

United Methodist Women - Raggedy Ann and Andy Dolls, Cindy Steele. Afghan, Ada Koon. Wreath, S. Barth.

There is a possibility that there are neighbors who are in great need who would not come to the agency's attention from the usual sources. Names of such families may be referred to Mrs. Reck, 428-8852 by concerned individuals, groups or the persons themselves. If unable to contact the above number, call the vice-chairman, Mrs. William Schwab, 428-8976, by the 16th if possible.

Funeral services were held Monday, December 8, 1980 at 1:30 p.m. at the Jenter Funeral Home. Rev. Thomas Hart officiated. Burial followed in Oak Grove Cemetery.

Funeral services were held Monday, December 8, 1980 at 1:30 p.m. at the Jenter Funeral Home. Rev. Thomas Hart officiated. Burial followed in Oak Grove Cemetery.

Funeral services were held Monday, December 8, 1980 at 1:30 p.m. at the Jenter Funeral Home. Rev. Thomas Hart officiated. Burial followed in Oak Grove Cemetery.

Funeral services were held Monday, December 8, 1980 at 1:30 p.m. at the Jenter Funeral Home. Rev. Thomas Hart officiated. Burial followed in Oak Grove Cemetery.

Funeral services were held Monday, December 8, 1980 at 1:30 p.m. at the Jenter Funeral Home. Rev. Thomas Hart officiated. Burial followed in Oak Grove Cemetery.

Funeral services were held Monday, December 8, 1980 at 1:30 p.m. at the Jenter Funeral Home. Rev. Thomas Hart officiated. Burial followed in Oak Grove Cemetery.

Funeral services were held Monday, December 8, 1980 at 1:30 p.m. at the Jenter Funeral Home. Rev. Thomas Hart officiated. Burial followed in Oak Grove Cemetery.

Funeral services were held Monday, December 8, 1980 at 1:30 p.m. at the Jenter Funeral Home. Rev. Thomas Hart officiated. Burial followed in Oak Grove Cemetery.

Come See Our
POINSETTIA DISPLAY
or Phone your Order Early
For Christmas
POINSETTIAS all Colors \$1.75 up
also Christmas Cactus
Phone 428-8078
SCHEBOR GREENHOUSES
14345 LOGAN ROAD MANCHESTER, MICHIGAN

THE ORNAMENTAL SHOPPE
9050 Chelsea-Manchester Rd. Manchester, Michigan

CANDLES
PILLAR, TAPER, HAND CARVED
CANDLES OF ALL KINDS

CEMENT LAWN ORNAMENTS
BIRD BATHS, PLANTERS, ANIMALS ETC.
MAIN COLOR CASTIN

CHRISTMAS ORNAMENTS

CANDLE MAKING SUPPLIES
WICKING SCENT COLOR
WAX
PLASTIC METALS FLEXIBLE MOLDS
LESSONS

**WEATHER VANES
MAIL BOX & LAMP POST SIGNS
BY OLD CENTURY FORGE**

The TAYLORS
394 E. LAKE ST.

CAST IRON WARE & KEROSENE LAMPS

MON. FRI. 8 P.M. TO 5 P.M.
SATURDAY 9 a.m. TO 5 P.M.
SUNDAY 2 P.M. TO 5 P.M. TILL CHRISTMAS

George and Lois Wacker, Prop.

**-NEW DRIVE-UP WINDOWS HOURS-
Effective December 15, 1980**

**Our Manchester Office Drive-Up
Windows will be open until 6 p.m.
Monday thru Friday and Saturday
9 a.m. until noon.**

**Lobby hours are 9 a.m. to 4 p.m. Monday
thru Thursday, 9 a.m. to 6 p.m. on
Friday and 9 a.m. to noon on Saturday**

**Ann Arbor Bank
and Trust**

5 1/4% Interest on Checking

At

18 Locations

Plus

13 Ready Tellers

Only at Ann Arbor Bank.

Thinking about a new Interest-on-Checking-Account? Remember this: Only Ann Arbor Bank offers you so many different places to make transactions on your Interest-on-Checking-Account.

Ann Arbor Bank has 18 offices plus 13 Ready Tellers — our 24-hour/7-day automatic tellers.

With an Interest-on-Checking-Account,

INTEREST-ON CHECKING

you'll earn 5 1/4 percent annual interest on all your deposits. And if you keep a minimum balance of \$1000, there's no service charge. Plus, you'll have the convenience of one account for all your deposits.

Sign up for Interest-on-Checking today. And starting January 1, you'll be earning interest on all your deposits. Ann Arbor Bank and Trust — The Experienced Checking Account Specialists.

Ann Arbor Bank and Trust
Member FDIC First American Bank Corporation

Surprising Salads with a Taste of the Exotic

Eating should always be an adventure; and salads are certainly no exception! Some of the lesser known delicacies of the vegetable and fruit families add a great gourmet change of taste, texture and appearance to familiar salads. So, dare to be different. Try some of these non-traditional suggestions — from the Kraft Kitchens — in your salad recipes. You'll be pleasantly surprised!

JICAMA is a brownish root which resembles turnips. When peeled it has a crisp texture and mild flavor similar to water chestnuts. It is available from November through June.

SNOW PEAS (or sugar peas) are flat, broad pea pods with delicate flavor and crisp texture. Used in many popular Oriental dishes, they are available all year, fresh or frozen.

WATER CHESTNUTS have creamy white, crisp flesh and a chestnut-brown skin. Often used raw, they have a unique ability to remain crunchy after cooking. Water chestnuts come fresh or canned.

KIWI FRUIT is oval-shaped with fuzzy brown skin. The meat is a beautiful lime green with tiny, edible black seeds. Flavor is a cross between strawberries, bananas and watermelon. It is available June through March.

MANGO is an elongated fruit with green, yellow or red-tinged skin, depending on the variety. To use in salads, score the skin, peel and slice or chunk the fruit. Available May through August.

PAPAYA is a pear-shaped fruit with smooth green to yellow skin, golden meat and shiny black seeds. Flavor is a cross between peach and cantaloupe. It is available May through June and October through December.

Holiday Cookies For Kids To Bake



The holidays are a good time to round up the family for a baking party. One delicious recipe that even junior cooks will enjoy preparing is Eggnog Cookies. These quick, easy-to-prepare cookies feature convenient oatmeal cookie mix and commercially prepared eggnog. Just mix, drop onto cookie sheet and bake. No sifting or creaming necessary! Once these golden brown cookies are cooled, the eggnog icing is prepared with only two ingredients! Eggnog Cookies are perfect for serving holiday guests or giving as a gift.

Eggnog Cookies

One 18-oz. pkg. oatmeal cookie mix
1/2 teaspoon rum extract
1/3 cup commercially prepared eggnog

Icing:
1 cup confectioners sugar
4 to 6 teaspoons commercially prepared eggnog

Heat oven to 375°F. For cookies, combine all ingredients; mix with spoon or fork about 2 minutes to form stiff dough. Drop by rounded teaspoonfuls onto lightly greased cookie sheet. Bake at 375°F. for 10 to 12 minutes. Cool 1 minute on cookie sheet; remove to wire cooling rack. Cool completely.

For icing, combine all ingredients; mix well. Drizzle over cooled cookies. Store cookies in tightly covered container at room temperature. Makes about 3 dozen cookies.



ESTATE PLANNING

FOR YOUR ESTATE FROM FARM BUREAU LIFE
You can make your estate work effectively for you now, and for your heirs later with Estate Protector life insurance. Begin your estate planning now.

FARM BUREAU INSURANCE GROUP

LARRY BECKTEL
135 E. Main St. Suite 204
Manchester, Michigan
Phone 428-7331

CAL'S TOG SHOP

Vanity Fair Shevelva® robes

with "free monogram"

All Monogramming Deadline For Christmas - Dec. 15

"Free Monogram"
Collectors Item: Robert Scott Shetland Sweaters with Free Monogram

CAL'S TOG SHOP
DOWNTOWN TECUMSEH

BankAmericard-Master Charge or your Cal's Tog Shop Charge



It's the year of the sweater - the year of the monogram. And Cal's combines the two into one great fashion accessory! Robert Scott's 100% Shetland wool sweater with crew neck, sizes S-M-L. In navy, red, Claret, grey, blue or yellow. Please allow 2 1/2 weeks delivery on monogram.

\$30

Free Monogram Deadline is December 15th

MANCHESTER INSURANCE AGENCY
122 WEST MAIN STREET
MANCHESTER, MICHIGAN
Phone 428-8215
Home-Farm & General Insurance

KERO-SUN the gift for times like these.

As seen on T.V.



Radiant 36°
Reg. 229.95

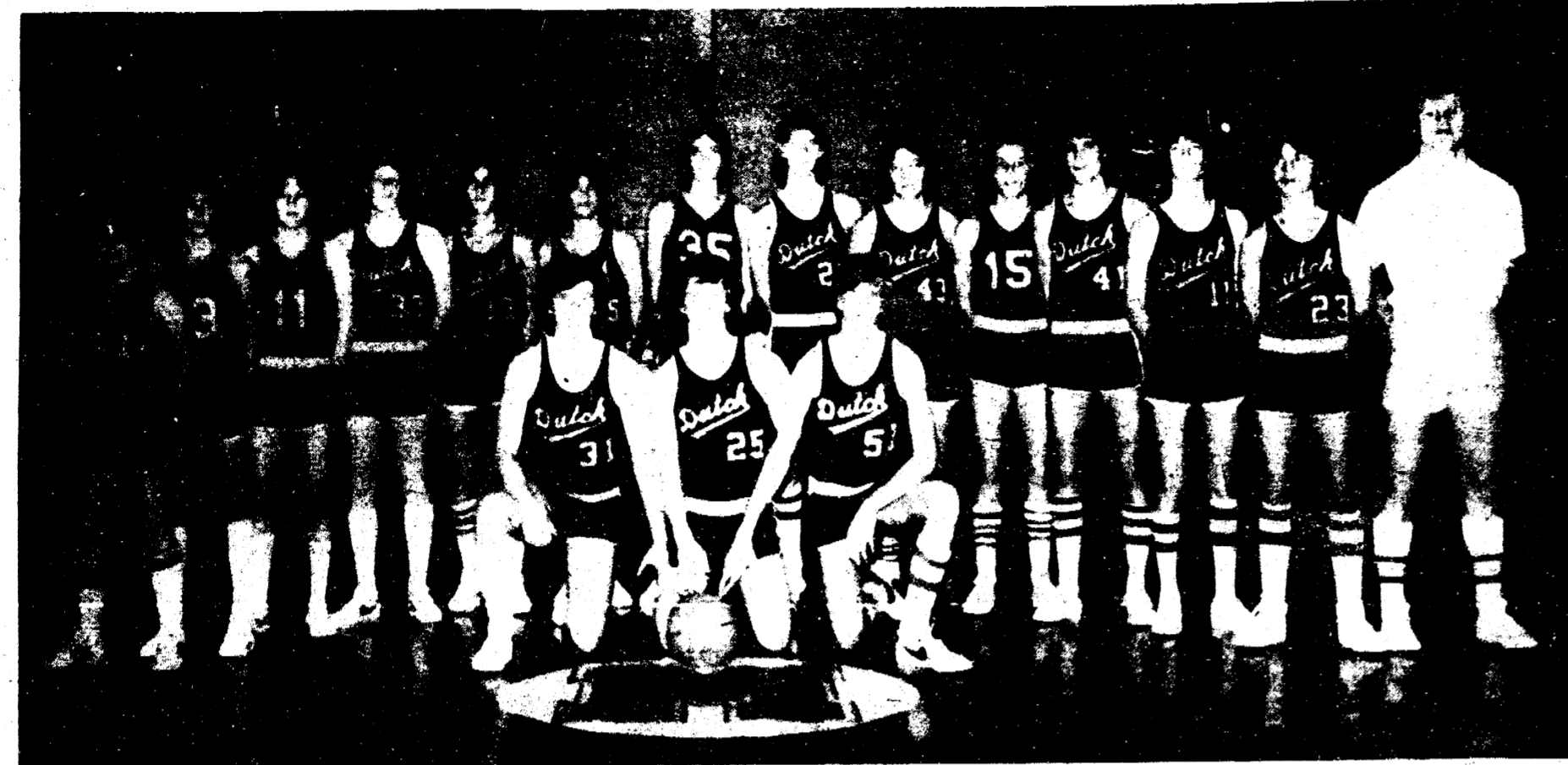
NOW \$199.95

Expires 12/24/80

With a Kero-Sun Portable Heater, leave your thermostat turned low and save money in the months ahead. Operates 26 hours on 1.3 gals kerosene. Rated at 9,600 BTUs. Offers sleek designer styling and a removable fuel canister for extra easy filling — a great convenience. Makes a heartwarming money-saving gift for family and friends. See a demonstration today.

G.E. Wacker, Inc.
9050 CHELSEA-MANCHESTER RD.
MANCHESTER, MICHIGAN 48158
PH 428-9366

1980-81 JV BASKETBALL TEAM



Top Row Left to Right - Richard Bortko, Shawn Dreech, Bill Huber, Steve Barker, Ron Melcher, Dave Detting, John Blumensaat, Tom Bejma, Dirk

Gornitz, Mark Ball, Craig Sester, Jim Stengel, Jerry Post, Curt Fielder, Coach. Front Row, Captains - Dave Malcolm, Jim Krzyzaniak, Bill Sealy.

Guy's Bridgewater Tavern
MIXED DRINKS
FINE SANDWICHES
429-4529
8452 Boettner Rd
Bridgewater
GUY GILBERT
OWNER

Say "MERRY CHRISTMAS"
With Flowers From
Chelsea Greenhouse
OPEN DAILY MONDAY THRU SATURDAY 8 AM - 5 PM
SUNDAY NOON TO 5 PM
7010 LINGANE RD., CHELSEA
PHONE 475-1353 & 54 or 475-9313
MEMBER OF FTD AND TELEFLORA
DELIVERY IN THE CHELSEA, DEXTER
AND MANCHESTER AREAS
POINSETTIAS
GROWN IN OUR GREENHOUSE
RED-PINK-WHITE
priced from **\$4.99 up**
WIDE VARIETY OF CUT FLOWERS & OTHER
BLOOMING PLANTS FOR HOLIDAY DECORATIONS
Evergreen Wreaths and Blankets
BLANKETS
WITH RED RUSCUS, RIBBON & YOUR
CHOICE OF CONES
\$18.00 - \$25.00
WREATHS
2 FT UNTRIMMED \$3.50 2 FT TRIMMED \$7.00
3 FT TRIMMED \$15.00 4 FT TRIMMED \$18.00
HOLLY CANDLE ARRANGEMENTS-FRESH & ARTIFICIAL
CHRISTMAS NOVELTIES DOOR SWAGS
PLANTERS TERRARIUMS CORSAGES
EVERGREEN ROPING CEDAR 3/4 FOOT
"SERVING THE COMMUNITY SINCE 1901"
WE DO ALL PHASES OF WEDDING FLOWERS TO FIT ANY BUDGET

DO YOU HAVE ENOUGH MONEY
that you can afford to
waste your precious fuel?

OPTIMA
135 cuts
HEAT LOSS
Savings will
pay for the
windows

Old worn out window
leaks air and wastes
astounding amounts
of heating fuel!

More than
one-and-a-
half inches of
insulated air
space dramatically reduces the heat
wasted through single glazed
windows...saves the air conditioning
you're paying so dearly to get...and
with the option of insulation glass in
the interior sashes, heating and
cooling fuel losses are reduced even
more.

INSTALLATION IS QUICK.
EASY. ECONOMICAL

Optima 135 is a unique custom fit
window specifically designed to eco-
nomically replace old, worn-out win-
dows. Because it's custom-fit, there's no
need for alterations to the wall or
window opening...inside or out. It's
engineered for quick, easy installation,
from inside the house. Saves the expense
of erecting and removing scaffolding.
There's no fuss or mess to clean up after.

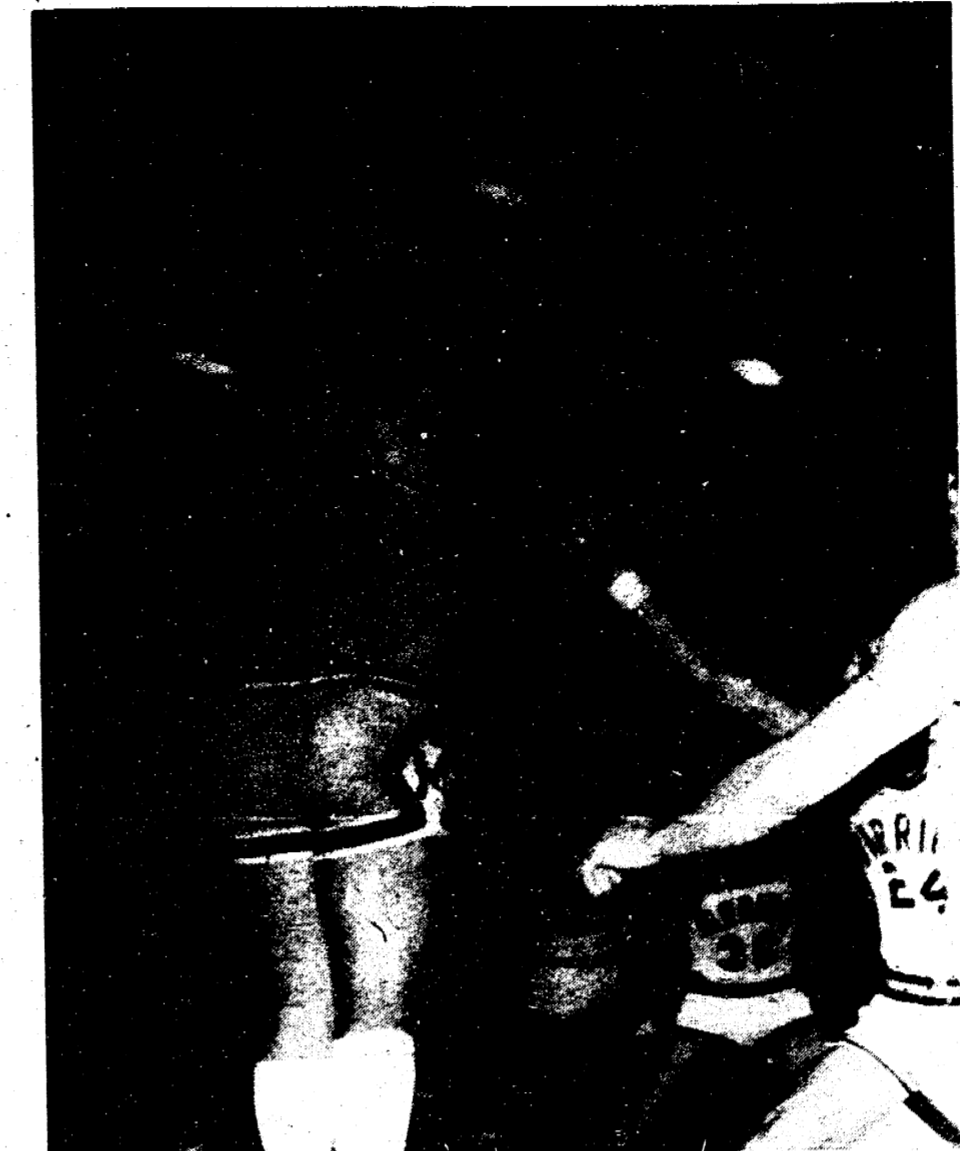
THE BEST INVESTMENT
you'll ever make...

Ten Minutes Later
old movable sash has
been removed, and the
custom made to fit
NUPRIME Window is
ready to install.

Twenty Minutes Later
the NUPRIME
Window is in place, and
heating bills are already
dropping.

CALL NOW AND SAVE

R.D. Kleinschmidt Inc.
19860 SHARON VALLEY RD
MANCHESTER, MICHIGAN
(NEAR CORNER OF M-52)
428-8836 428-9335



Varsity action - Nick shoots, tallied 13 points. Photo by Jon



The state with the fewest people is Wyoming with 406,000.



J.V. action - Jim's style got him 12 points. Photo by Jon

"You never know what is enough unless you know what is more than enough."
William Blake

COUPON

\$2.00 DOLLARS OFF
Every Haircut
In Style With
This Coupon

GOOD THRU HOLIDAYS
OPEN TUESDAY, THURSDAY
AND SATURDAY

Village Hair Forum
428-7684

COUPON

FAHEY REALTY
OFFICE 215 EAST MAIN PHONE 428-9298
OFFICE HOURS 9-5 MONDAY-FRIDAY SATURDAY 9-12 NOON

Case Road, Brooklyn - New 3 bedroom ranch, natural gas heat city sewer and water. Fully carpeted, full basement. Stove and refrigerator included. Low 50's. Call Joe Roberts. Eves. 517-592-8263.

3 bedroom 2 bath contemporary ranch in village. Living room with built-ins and fireplace, fully carpeted. Full basement and garage. Eves. Judy Reed 428-8561.

New home on 2 1/2 acres in the country. Park-like setting for 3 bedroom 2 bath home. Balcony overlooks living-dining area, large family room. This home is nicely decorated & fully carpeted. 2 car detached garage and storage building. Eves. Judy Reed 428-8561.

60 Acre Farm 4 bedroom house, barn outbuildings all in excellent condition. Beautiful rolling land 3 miles West of Manchester. Jim Walkow. 428-8120.

13 Acres Sharon Township - 3 bedroom home. Enclosed porch, full basement w/breezeway to 2 car garage. 22 x 34 two story barn. Land contract terms.

Price Reduced - \$39,900. Cute starter home in the country. 2 bedroom bath & 1/2 Franklin stove, fully carpeted, garage on 1/2 acre. Melody Popkey 428-7967.

Older village home on double lot. 2 bedroom, 2 bath, gas furnace. Mid 40's. Don Limpert 428-7400.

3 bedroom family home with convenient village location. Large walk-in closets in every bedroom plus cedar closet. Formal dining room, natural woodwork throughout.

Building Sites
1 Acre on paved road, Land contract terms, 5% down, 10% interest \$11,000.00.

27 Acres 1250 ft. frontage. Can be split, possible pond site. Land Contract Terms.

26 Acres overlooking Iron Lake. Can be split, Land Contract Terms. Melody Popkey 428-7967.

Sharon Township, 100 Acres, Ideal homesite, rolling land with some woods. Can be divided.

Don Limpert 428-7400
Judy Fahey 517-456-4927
James I. Fahey 428-7979
Dick Fahey 517-456-4927

Joe Roberts 517-592-8263
Melody Popkey 428-7967
Jim Walkow 428-8120
John Fahey 428-8748

Why You'll Probably Never Use
Our Guarantee On
Norwalk Upholstered Furniture.

Although we guarantee all parts of our Norwalk upholstered furniture (including the fabric), there are three main reasons why you'll probably never need to use that guarantee. First, the frame components are the finest kiln-dried southern hardwoods to stay solid and square for years. Second, every Norwalk fabric is performance-tested to assure long-lasting, easy-care good looks. Finally, Norwalk with more than 75 years manufacturing experience puts it all together right in the most modern furniture factories in the industry. Come in and see for yourself what the Long Association of Norwalk Furniture Co. and Foster-Davies can mean for you.

FOSTER-DAVIES
"The Store With The Extra Touch - Since 1883"

MANCHESTER 428-7903
138 E. MAIN ST.

GRASS LAKE 522-4181
201 E. MICHIGAN AVE.

A WOOD STOVE WARNING



The pot-bellied wood stove is making a comeback in Michigan. There are many of us who recall gathering around one, feeling the warmth, watching the cherry-red glow of heated metal, entranced by the dancing flames within.

Those were simpler days, with simpler problems.

Our modern generation seems all too willing, at times, to return to those days of yesteryear. In a day and age where people must think of nuclear proliferation, a burdensome tax structure or the all-encompassing energy problems and the need for alternate energy sources -- well, wood stoves can be very attractive.

The growing number of people using wood stoves these days may point up a simple truth, however. Those days had their problems, too, and frankly, wood stoves were one of them.

Wood stoves were either too hot or too cold with very little in-between adjustment. Your front side roasted and your back side froze. You had to keep them stoked and make sure a live coal didn't land on the wood floor or rug. They had to be kept clean, and that meant hauling ashes and keeping flues soot-free. They were a lot of work.

We've had a few generations to get accustomed to the convenience of automatic thermostats and fuels that didn't have to be chopped, hauled, and require the constant human attention and care required by those old-fashioned methods. We also have new ways to build housing, with air-tight construction, different building materials and building codes designed for a modern way of life, and modern fuels.

We may have forgotten that wood stoves are fire hazards.

The Michigan State Firemen's Association tells us that 18 died in home fires during last year's heating season in Michigan -- fires caused simply by the im-

proper installation or use of wood stoves. That compares to seven, in 1978 from the same causes and none in 1977. So far this season, and it's just begun really, four people have already died in wood stove fires.

The firemen are concerned, and rightly so, that folks today may not remember, or even know, some of the basic rules of fire safety that must be observed in using wood stoves. Certainly those grim statistics make an impressive point.

Installing and using a wood stove shouldn't be a snap decision, nor one made just to keep abreast of fashionable trends. It requires concern and care, and some serious safety considerations. Choose one wisely, install and use it properly and give it all the attention it needs.

If you do all that, it will be one less care to burden your mind as you sit back, feel the warmth, watch the cherry-red glow and try to see those "carefree" days of yesteryear within the dancing flames of your wood stove.

SHOP THE WANT ADS

NORM WALZ CONSTRUCTION
Remodeling and Room Additions
Garages—Porches
CUSTOM BUILT CABINETS
CUSTOM BUILT HOME ON YOUR IMPROVED LOT CAN SAVE YOU \$\$\$\$\$\$

Phone 428-7109

Married

Cathy Schlosser Chris Suchy



A fall wedding was held the seventh day of October, 1980 uniting Cathy Schlosser and Chris Suchy in marriage at St. Mary's Church in Manchester. The bride is the daughter of Mr. and Mrs. Anton Schlosser of Manchester, and parents of the groom are Mr. and Mrs. Ronald Suchy of Garden City.

Attendants at the wedding were; Jayma Ahrens, maid of honor; Cindy Schlosser, sister-in-law of the bride, Gayle Bradley and Sandy Duty as bridesmaids. They wore wine colored floor length dresses and carried bouquets of pink carnations with wine roses.

Michael Suchy, brother of the groom, was best man; brothers of the bride, Anton and Michael Schlosser were ushers and the groomsman was Mark Pratt. They wore silver gray tuxedos with wine trimmed shirts.

The flower girl was three year old Kelly VanWagoner and the ring bearer was four year old Scott Sykes. Kelly wore a pink

floor length dress trimmed with wine ribbons. Scott wore a silver gray tuxedo, with wine trimmed shirt.

The bride wore a flowing gown of silk organza trimmed with chantilly lace and waist length veil. Her bouquet was of white roses accented with wine roses. The groom wore a silver gray tuxedo with white ruffles.

Immediately following the wedding a reception was held at Weber's in Ann Arbor.

The couple honeymooned in Florida.

Cancer is not contagious and cannot be transmitted from person to person. When cancer strikes, understanding, openness and communication are needed within a family and among close friends. When you have questions about cancer, call the Public Response Program at the Michigan Cancer Foundation, A Torch Drive Agency. Call toll-free 1-800-462-9191.

MANCHESTER KNIGHT OF COLUMBUS New Year's Eve Party

Music By LOUIS PRANGE

Lunch and Favors Furnished \$20 Couple

TICKETS AVAILABLE AT ANN ARBOR BANK & TRUST, FABRIC PATCH OR CALL 428-8976

35-LIGHT MINI SET
SAFETY FUSED

UL APPROVED

35 Light Mini Set

Tiny lights in assorted bright colors that flash merrily. Indoor/outdoor use. UL approved.

Replacement bulbs available.

Our Low Price **3.97** set

Strawberry Shortcake Gift Wraps

Coordinate your gift-wrapping with Strawberry Shortcake Gift Wraps, Bows and Cards. Choose 4 rolls 30x20-in. Gift Wrap Jumbo Pack 60x15-in., Box of 20 Cards, Bag of 18 Assorted Bows!

Bow Bag Only **99c** each

Jumbo Paper Only **\$1.99** each



Solid Milk Chocolate Novelties

For the holidays, creamy chocolate treats wrapped in Christmas foil. 6-oz. bags. 130

97c each

A Small Deposit Will Hold Your Lay-a-way Till Christmas

Lady Pennepell Vellux Blankets

Curl up in this warm nylon blanket in super rich colors. Machine washable for easy care.

Twin/Full Size **16.88** each



Discover BEN FRANKLIN We bring variety to life!

106 E. Main St. Manchester, Mich. 48158

Deluxe 4 Roll Packs
Traditional, Soft Touch, Golden Luxury... 36-in. wide Total 120-sq. ft. per pack.

Reg. \$4.49 **3.99** pkg.

ITEM OF THE MONTH

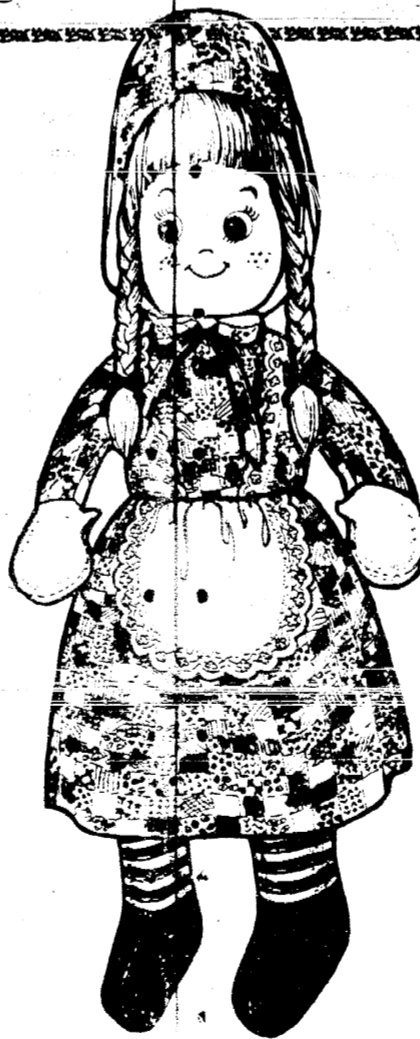
The Warmer



15.88 each

Reg. \$19.97

The perfect gift for everyone on your list! The soft comforter you wear... with 100% polyester fill and 40-inch zipper. Colors, too. 33x69-inch size.



29-Inch Rag Doll

Soft to cuddle Rag Doll with pretty apron and bonnet!

4.97 each

Toñka Mighty Dump Truck
It's the mighty all-steel dump truck with glassed-in cab! Hand operated dump box.

Reg. \$16.99 **12.99** each

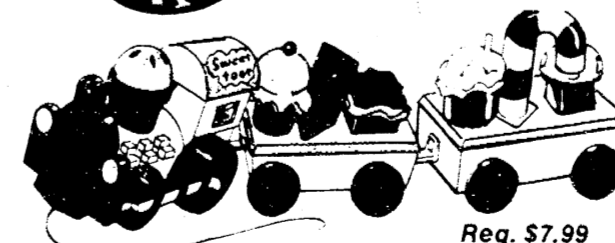
It's big... nearly 22-inches long!



Ribbons and Bows

A package never looks complete without a bow or ribbon. 18, 19, 31, 32

97c pkg.



Sweet Toot Pull Toy

Just pull the train and candy goes up and down, bell rings! For 2 to 6 yr. olds.

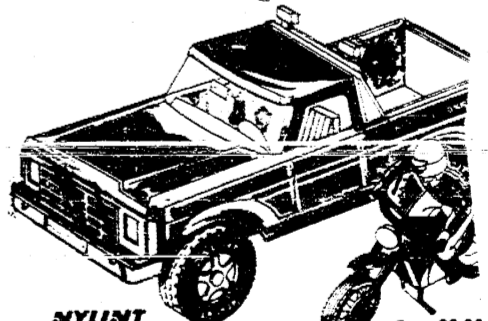
Reg. \$7.99 Our Low Price **5.88** each



Little Professor Calculator

Reg. \$14.97 Our Low Price

12.97 each



NYLINT Motor-Cross Set

Enjoy dirt bike racing, then try this die-cast bike with removable figure. Bronco has bike mount and sports roll bar.

Reg. \$8.95 Our Low Price **7.99** set



SCHRAFF'S Thin Mints

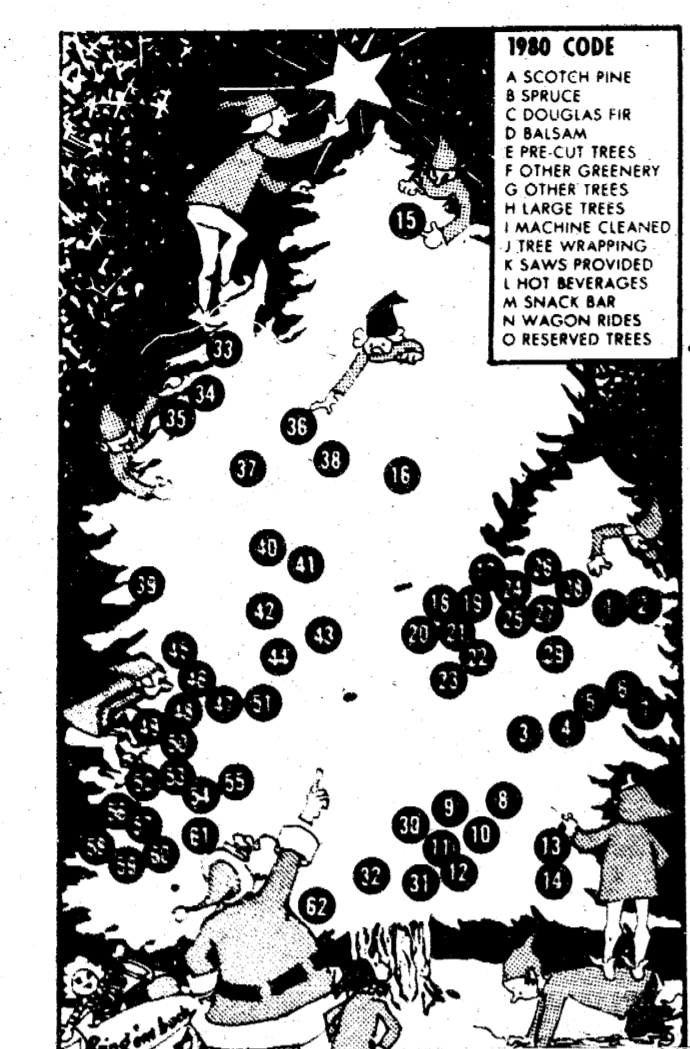
Show your appreciation to those you should remember in a nice little way with refreshing Schraff's Thin Mints. 6-oz. box.

Last-Minute Gift Priced **77c** each

CHOOSE AND CUT YOUR CHRISTMAS TREE AT THESE 62 STATE FARMS

SOUTHEAST MICHIGAN

1. KRAUSE 2950 Appleton Rd. Appleton, MI. (517) 632-9925. 20,000 trees. \$1.50. Open daily 9 a.m. to 5 p.m. (ABCEFGHIJKL)
2. WESTERN East Franchise Rd. Appleton, MI. (517) 633-9923. 2,000 trees. Open daily 9 a.m. to 5 p.m. (ABDFJKL)
3. ALL RISE FARM 5041 Casey Rd. Ortonville, MI. (313) 796-2185. 4,000 trees. Sun. 10 a.m. to 2 p.m. (BHL)
4. CENTENNIAL PINES 2775 Becker Rd. Emmet, MI. (313) 384-6622. 5,000 trees. \$1.25. Open daily after Dec. 1. 10 a.m. to 5 p.m. (ABGHK)
5. RUBY TREE FARM 6567 Hwy. 104, City, MI. Ruby, MI. (313) 324-2662. 20,000 trees. Open Wed. - Sun. 10 a.m. to 6 p.m. (ABCEJKLMN)
6. PAMPINED PINES 4248 Raboussin Rd. Ruby, MI. (313) 324-2662. 20,000 trees. 11 trees. Open daily 10 a.m. to 5 p.m. (ABCEJKLMN)
7. TOLLANDER 1166 Bryce Rd. Port Huron, MI. (810) 282-1166. 30,000 trees. \$8.00. Open daily 10 a.m. to 5 p.m. (ABCEJKLMN)
8. FROSTY PINES Hancock Rd. Marford, MI. (313) 887-9561. Open Sat. Sun. 10 a.m. to 5 p.m. (ABCEJKLMN)
9. ALL PINE West Davie Rd. Howell, MI. (517) 548-8038. 10,000 trees. \$6.50. Open Sat. Sun. 9 a.m. to 5 p.m. (ABCEJKLMN)
10. WENZELS 8475 Barlow Rd. Brighton, MI. 1,000 trees. \$10. Open Sat. Sun. 9 a.m. to 5 p.m. (ADJKLMN)
11. AREND 42 West 184 at East 156. Chelsea, MI. (313) 475-7384. 60,000 trees. Open Sat. Sun. 9 a.m. to 5 p.m. (ABCEJKLMN)
12. PODORS 15650 Kenard Rd. Grass Lake, MI. (517) 524-4982. 1,000 trees. \$2.75. 2,000 trees. Open Dec. 6. 7. 9 a.m. to 5 p.m. (ABCEJKLMN)
13. BOUGHANS 15861 Marquette Rd. Beechville, MI. (313) 699-5062. 3,000 trees. Open daily, daylight-dark. (ABEFGK)
14. MATTHEWS 13416 Lulu Rd. Mt. Pleasant, MI. (313) 628-2822. 35,000 trees. \$2.50. Open Mon. - Sat. 9 a.m. to 5 p.m. Sun. 10 a.m. to 5 p.m. (ABCEJKLMN)



- 1980 CODE**
- A SCOTCH PINE
 - B SPRUCE
 - C DOUGLAS FIR
 - D BALSAM
 - E PRE-CUT TREES
 - F OTHER TREES
 - G OTHER TREES
 - H LARGE TREES
 - I MACHINE CLEANED
 - J TREE WRAPPING
 - K SAWS PROVIDED
 - L HOT BEVERAGES
 - M SWACK BAR
 - N WAGON RIDES
 - O RESERVED TREES

EAST MICHIGAN

15. GOUNE 8041 Graham Rd. Chesapeake, MI. (616) 628-2822. 35,000 trees. \$2.50 per foot. Open daily 8 a.m. to 5 p.m. (ABCEJKLMN)
16. WILBY Road Rd. Farwell, MI. (517) 588-4532. \$1.50 per foot. Open Sat. Sun. 9 a.m. to 5 p.m. (ABCEJKLMN)
17. KULON 15221 Wornor Rd. Saginaw, MI. (517) 781-1852. 3,000 trees. \$4.87. Open Dec. 6. 7. 9 a.m. to 5 p.m. (ABCEJKLMN)
18. ASHUS-RISE 2402 S. Graham Rd. Saginaw, MI. 1,500 trees. \$9. Open Sat. Sun. 9 a.m. to 5 p.m. (ABCEJKLMN)

WEST MICHIGAN

19. CHAMBERLAIN'S WOLF CREEK 5106 S. Grand Rd. St. Charles, MI. (517) 665-9712. 30,000 trees. \$6.50. Open daily 9 a.m. to 5 p.m. (ABCEJKLMN)
20. QUAKES 1121 Fenwick St. Charles, MI. (517) 665-6751. 3,000 trees. Open Mon. - Thurs. 8 a.m. to 5 p.m. (ABCEJKLMN)
21. SWAN CREEK 12875 Lakeland Rd. St. Charles, MI. (517) 642-5867. 30,000 trees. \$10.50. Open Tues. - Thurs. 9 a.m. to 5 p.m. (ABCEJKLMN)
22. EVERGREEN FARM 10267 McKinley Rd. Montrose, MI. (313) 639-7888. 12,000 trees. \$12.50. Open Mon. - Fri. 9 a.m. to 5 p.m. Sat. Sun. 9 a.m. to 5 p.m. (ABCEJKLMN)
23. ASPIN 12196 Mier Rd. Lennon, MI. (313) 621-1781. 24,000 trees. \$10.82. Open Mon. - Fri. noon to 5 p.m. Sat. Sun. 10 a.m. to 5 p.m. (ABCEJKLMN)
24. PENNYWICK 3225 West Sanac Rd. Mt. Pleasant, MI. (517) 823-3306. 2,500 trees. \$4.00. Open Mon. - Thurs. 9 a.m. to 5 p.m. Sat. Sun. 9 a.m. to 5 p.m. (ABCEJKLMN)
25. SMITH'S 7242 E. Mt. Morris Rd. Otsego, MI. (313) 659-6767. 6,000 trees. \$10. Open Mon. - Sat. 10 a.m. to 6 p.m. (ABCEJKLMN)

WEST MICHIGAN

26. ED-MAR M-24, Maxville, MI. (517) 642-5309. 3,000 trees. \$4.50. Open daily 9 a.m. to 5 p.m. (ABCEJKLMN)
27. SPENCER'S 2370 Goodwin Rd. Otter Lake, MI. (517) 795-2208. 800 trees. \$6.00. Open daily 8 a.m. to 9 p.m. (BCEJKLMN)
28. DOG PATCH 5226 Snow Dr. Clifton, MI. (517) 781-7265. 20,000 trees. \$5.00. Open daily 10 a.m. to 5 p.m. (ABCEJKLMN)
29. COULTERS 4914 Curtis Rd. Lum, MI. (313) 724-8671. 400 trees. \$10. (ABCEJKLMN)
30. CHRISTMAS TREE LANE 4311 Fishville Rd. Grass Lake, MI. (517) 522-8821. 2,000 trees. \$8.50. Open daily 9 a.m. to 5 p.m. (ABCEJKLMN)
31. AREND at 4423 S. Main-M-56. Brookton, MI. (517) 592-2006. 80,000 trees. Open daily 10 a.m. to 5 p.m. (ABCEJKLMN)

WEST MICHIGAN

32. SPRUCE ACRES, North Lake Wilson Rd. bet Taylor & Bear Rds. Hedges, MI. 300 trees. \$7. Open weekends in Dec. 10 a.m. to 4 p.m. (ABHJK)
33. PINE RIDGE East Rd. Homer, MI. (516) 325-3557. 50,000 trees. \$3.55. Open daily 8 a.m. to 6 p.m. (ABCEJKLMN)
34. THORNHILL, King Rd. Thompsonville, MI. (616) 882-4161. 400 trees. Open daily 10 a.m. to 5 p.m. (ABHJK)
35. HULKONEN BROS., E. Nine Mile Rd. Keweenaw, MI. (616) 362-3507. 8,000 trees. \$4.50. Open daily 9 a.m. to 6 p.m. (ABCEJKLMN)

This season, cut-it-yourselfers may select from more than 600,000 evergreens and more than a dozen varieties at farms listed on Auto Club's 1980 guide. Prices start at \$3 for Scotch pines to \$30 for blue spruce and \$25 for Douglas fir. Eight farms sell trees by the foot, varying from \$1.25 to \$3, depending on variety.

Sizes can range from foot-tall, transplantable potted trees perfect for children's rooms, to shaped, room-size Austrian, French and Japanese pines and the white pine, Michigan's state tree. (A few have flocked trees, sprayed with a snowy coating.)

"Forty-six farms also offer pines up to 30 feet tall for churches and commercial buildings," Ratke added.

At many farms, children can see, feed or pet everything from ducks and hogs to horses, and enjoy tree treats like popcorn balls and hot cider. Some farms even feature visits by Santa Claus.

"Christmas shoppers can buy hand-made crafts or Early American style toys at Christmas Tree Lane near Grass Lake, Mathek Evergreens near Ida and Evergreen Farm at Montrose," Ratke added.

Arend tree farms near Chelsea and Brooklyn give each family a potted blue spruce seedling. Duddles Farm near Reed City sells its own maple syrup and Swan Creek Farm near St. Charles hands out free tree preservative. It also offers pre-paid, or reserved trees, a service found at 22 other farms.

Nearly half the farms will wrap branches with twine for easy transport while some will mechanically clean trees of dead needles and other debris. If planning a trip to a choose-and-cut farm this season, Auto Club suggests these tips: • Bring a hand saw. Most farms lend saws but they could be in use, especially on weekends. Axes are banned. • When choosing, remember that most pines and Douglas firs hold needles, and spruces and balsams shed quickly if not cared for properly. • After deciding on a tree, saw the trunk close to the ground. • Although most farms have twine to tie trees to cars, bring rope just in case. Tie the tree's base at the front of the car. • Store trees in a bucket of water in a cool area. Before placing in a stand, diagonally cut an inch or two off the base to help the tree absorb water. Fill the stand with water daily. • Avoid placing trees near heating ducts or open flames. • Before decorating, always check tree lights for bare wires and make sure electrical outlets won't be overloaded.

"Hearing the excited voices of children among rows of evergreens as they search for that perfect tree is enough to get anyone into a holiday mood," stated Auto Club Touring Manager Joseph Ratke.

Spear & Associates, Mann, Realtors
122 WEST MAIN PHONE 428-6388 DAILY MANCHESTER

10 Acre Farm - 80 yr. old home, with 4 bedrooms, barn & outbuildings, Manchester Schools, more land available. \$85,000.

Restored Farm House - In the Manchester Area, with 4 bedrooms, 1 3/4 bath, new kitchen & electricity, hardwood floors, insulated thru-out, 36 x 60 barn & outbuildings, on 10 acres, 10 more available. \$99,500.

Just Like New - Two bedroom home in the Village of Manchester, just remodeled, 1 1/2 bath, family room & woodburner in basement, 1 1/2 car garage & carport. \$53,000.

Three Bedroom Ranch - Only 14 miles to Ann Arbor, 1 1/2 bath, rec room, 24 x 36 garage with heated workshop, on 3 1/2 acres, Manchester Schools. \$64,900.

5 Acres Plus - Three bedroom bi-level, 1 1/2 bath, family room, attached 2 1/2 car garage, 30 x 40 pole barn, 2 miles north of Manchester. \$79,500.

Convenient to Ann Arbor - Tri-level on 2 acres, 3 bedrooms, 2 baths, sunken living room, wood stove connected to oil furnace, garage & workshop, Manchester Schools.

Building Sites
66 x 182 Lot - In the Village of Manchester, with sewer & water. \$9,200.

2 Acre Building Sites - Rolling land with trees, prices starting at \$9,800.

OFFICE HOURS
Monday thru Friday 9 a.m. to 5 p.m. Saturday 9 a.m. to 12 noon

OFFICE PHONE 428-8388
JIM MANN 428-8074 EVENINGS AND WEEKENDS ELLIS PRATT 428-8562

WE HAVE A COMPLETE LINE OF Wild Bird Feeders Wild Bird Feeds

BIRD FEEDERS BY Heath - Andercraft Woods Halifax - K-Products

13 DIFFERENT FEEDS
Niger Seed(thistle) - Millet - Milo Sunflower - Wheat - Buckwheat PLUS 6 DIFFERENT MIXES

Mann's Feed Mill
210 EAST MAIN STREET PHONE 428-7077 MANCHESTER, MICHIGAN

Government To Purchase 1981 Cars
Senator Riegle, U.S. Senator

The Federal government would be authorized to make a special \$119 million purchase of 1981 model-year automobiles and trucks as a result of an appeal by Michigan Senator Donald Riegle to the Senate Appropriations Committee. Riegle was successful in convincing Committee members to retain the auto-purchase plan in the Continuing Appropriations Resolution for the General Services Administration.

Senator Riegle said it was critical that the massive government purchase be authorized for the auto industry's 1981 "model run", as domestic auto plants are now at or near all-time lows in production capacity. Senator Riegle said: "This \$119 million purchase of American cars and trucks will help smooth-out the valley the industry finds itself in. Under normal procedures, the purchase might not take place until the Fall of 1981 or the 1982 "model run". But the domestic industry and its workers need this help right now."

Riegle said government purchase contracts would be awarded sometime in the Spring of 1981, following passage of the GSA Continuing Resolution, and the usual government bidding process. According to

Back Door Party Store
500 Ann Arbor Street, Manchester Phone 428-6332

PICNIC SUPPLIES BEER - WINE - POP
Monday - Saturday 7 AM to 9:30 PM
Sunday 8 AM to 9:30 PM

DUE TO THE INCREASING DEMAND FOR TIRES AND TIRE REPAIR BRODERICK'S TOWER SHELL HAS EXPANDED THEIR SERVICE GARAGE TO:

BRODERICK TIRE
889 S. Main, Chelsea (Next to the Dairy Queen) PHONE 475-1261

Featuring:
★ MICHELIN
★ B. F. GOODRICH
★ KELLY-SPRINGFIELD
All at Affordable Prices!

ALSO: BRAKES - SHOCKS - MUFFLERS - LUBRICATION

DECEMBER SPECIAL FREE MOUNTING & BALANCING With Purchase of Every New Tire

STOP IN AND SEE CHELSEA'S ONLY TIRE STORE
OPEN: Monday thru Saturday, 8 a.m. to 5 p.m.

Thursday, December 11, 1980 The Manchester Enterprise Page 21

Poster Winner To Be Clown For A Day

Budding elementary school artists in 13 Southeast Michigan counties will soon have the chance to realize the dream of all children - and most adults - being a clown in a real circus performance.

Through letters now being sent to schools and teachers, children are invited to develop posters for entry in an art contest sponsored by Moslem Temple as a prelude to its 1981 Shrine Circus.

"Our next circus, set for the State Fair Coliseum from March 20 through April 5, promises to be bigger and better than ever," said Tom Draper, circus chairman. "We think this also will be true of the annual poster art contest."

"While the entry deadline is not until January 30, we want to give students plenty of time to learn about the contest and work on their posters. The work can be done as part of a class project or as an individual entry. If our mailing misses any public or parochial elementary school throughout the area served by Moslem Temple, students should still feel free to enter the contest, which also is open to pre-schoolers."

Draper said first, second and third place winners will be selected in five categories. These include pre-school and kindergarten, first and second, third and fourth, fifth and sixth, and seventh and eighth grades. Prizes will include gift certificates from leading department stores plus circus tickets.

"But the best part is that all winners will be invited to be a clown during one of our matinee performances," he added. "They'll participate right along with our troupe of Shrine Clowns who will put them in makeup and costume and coach them on stunts they can join in."

"This added prize to our contest was first offered in the 1980 circus. It got such rave reviews from the kids as well as their parents and teachers, we decided to provide the same opportunity this year."

To enter the contest, children can pick anything they like about a circus as their subject. Posters may be in color, but can be done with paints, crayons or colored pencils. Lettering can be used, but is not required. The entry must be no smaller than 8 1/2 by 11 inches and no larger than 18 inches square.

To aid impartial judgement and notification of winners, the back of each poster must have printed on it the child's name, home address and phone number, school attended, grade and teacher's name.

Entries, postmarked no later than January 30, 1981, should be sent to Shrine Circus Poster Contest, 434 Temple, Detroit, Michigan 48201.

"Pictures of the winners and their entries also will be included in our regular souvenir circus program," Draper said. "We regret that we can't return entries, but we try to display as many as possible during the 17-day run of the circus so they can be enjoyed by all our audiences."

"We often hear that children get almost as much fun working on a poster as they do from attending the circus, so none are really losers. Each entry is really a contribution to the work of Moslem Temple in aiding treatment of crippled or burned children from Southeast Michigan at Shriner Hospitals."

SHOP THE WANT ADS

CHRISTMAS

OUR NAPA TOY TRUCKS ARE HERE AS ADVERTISED ON TV

TRACTOR TRAILERS \$14.95
PICKUPS \$6.95
MINI VANS \$1.10

Ross Automotive
230 EAST MAIN MANCHESTER PHONE 428-6320 or 428-3328

Gifts FROM The Fabric Patch

GIFT CERTIFICATES SHEARS SEWING BOOKS THIMBLE (FROM AROUND THE WORLD) JIFFY KITS And FRAMES FROM SUNSET OR MAKE A ROBE FROM OUR VELOURS OR A NIGHTGOWN FROM OUR FLANNELS.

114 ADRIAN ST. MANCHESTER, MICH. 428-9313

Consumer Protection News

Farmers who have been certified to use restricted use pesticides for more than two years are being advised by the Michigan Department of Agriculture they will have to renew their certification credentials next year.

Dean M. Pridgeon, MDA director, said renewal notices and information manuals are scheduled to be mailed directly to growers approximately 90 to 120 days prior to expiration of their present certificates. Certificates expire at three year intervals on the person's birthday.

"All growers must bring their renewal notices with them to one of 18 examination sites and complete a written exam to renew their certification to use pesticides which are restricted," said Dean Lovitt, Plant Industry division chief.

Even though commercial pesticide applicator firms are licensed annually, such firms must also have a valid restricted pesticide use certificate. These expire every three years, so many will expire in 1981, Lovitt said.

"Exams will be graded while applicants wait. A \$10 fee is assessed after the exam is passed. A temporary certificate which is valid for 90 days, will be issued until a certification card is processed and mailed," Lovitt said.

Amendments to Regulation No. 633, Restricted Use Pesticides, of the Michigan Pesticide Control act became effective April 10, 1978, restricting 51 chemicals in various formulations. A restricted product may be sold only by licensed dealers and only to persons who have qualified through the certification process for using this type of pesticide product, Lovitt said.

Persons requiring additional information concerning certification for restricted pesticide use should contact the department's Plant Industry division in Lansing, (517) 373-1087, or any of MDA's regional offices in Benton Harbor, Traverse City, Frankenmuth, Escanaba, and Detroit.

Biological Farming Conference

The Natures Way Farm, Ltd. trust is pleased to announce the Second Annual Great Lakes Biological Farming Conference to be held at Central Michigan University on January 8th & 7th, 1981. The featured speaker will be Dr. Philip Callahan, U.S.D.A. researcher and professor of Entomology at the University of Florida. His work on insect antenna has opened the door to ending the pesticide era which has brought us such memorable experiences as the DDT fiasco, Love Canal, and worldwide health and contamination problems. Dr. Callahan has identified insect antenna as being intra-frequency receivers of energy from plant tissue and other earth surfaces. The frequency of plant energy emissions can be altered by fertilization practices as presented at the conference. This enables insect attack to be reduced and allows control of harmful insects with non-toxic techniques. Electromagnetic emissions by machines could also be used to draw harmful insects away from crops.

Last year over 150 farmers attended and there is an expected attendance of 300 this year. Natures Way Farm, Ltd. trust is presenting these conferences because of the lack of current information available to modern farmers from the standard sources concerning soil fertility and its relationship to plant, animal and human health. For further information, contact: Natures Way Farm, Ltd., 8401 Bollinger Rd., N.E., Vestaburg, Michigan 48891. Phone: 517-268-5541 or toll free 1-800-292-9245.



For maximum food value serve fruit juices unstrained to retain the minerals and vitamins in the pulp.

Hit Or Miss

Way that those of Amos and Andy were and I don't remember that color had a bit to do with it all.

But enough of that. Those skit records seem to have staged a comeback and while the narrators are different the jokes are the same I am sure, but they are still funny. The other night I heard the one about the small town barber and I'm sure I first heard it at least 55 years ago. It goes something like this:

A stranger walked in to this small town barber shop and asked the barber "How many are waiting?"

The tonsorial artist looked around and said "Only two".

The stranger replied "I haven't time to wait, I'll be back tomorrow."

Came tomorrow and the stranger again asked the same question.

Again the barber looked about and said "Sorry but there's three waiting. The chap again said that he didn't have time to wait but that he would be back tomorrow."

This same process was repeated a couple more days and finally the barber became so curious that he asked a friend of his who was waiting in the shop for his turn if he would follow the stranger and find out what he was doing in town. His friend readily agreed to do so and so he

took off to follow the chap. After a half hour or so, back he came and walked in and sat down in the shop.

"Well demanded the barber, did you find out where he went and what he's doing in town?"

"Yes" replied the friend. "Well, where did he go" was the next question.

The investigator hesitated for a few moments and then replied "Up to your house."

And so that is a sample of cultured entertainment that evidently helps to keep our sometimes lonely truckers awake and happy on their sometimes lonely trips through the night on their way to their various destination, and that's surely enough in this vein for now.

Walts Heating & Cooling

24 HOUR SERVICE
Walt Horodoceny
COMFORT AIR FURNACES
WATER HEATERS
PHONE 428-8645
18824 Bethel Church Rd.
Manchester, Mich.

INSULATION SALE

\$4.46/bag, Cellulose

\$10.00/day Blower Rental

R.D. KLEINSCHMIDT INC.
19860 Sharon Valley Rd.
428-8836



This Week In Lansing

Coffee Break

Mary Keith Ballantine

BLUES REFORM - After more than two months of negotiation, the Legislature approved a major reform of the Blues/Blue Shield and sent it to the Governor for his signature. The bill is the major change for the Blues in 41 years, and is aimed at making the giant health insurer more cost conscious and consumer-oriented.

GASOHOL BOCST - The State Senate gave final approval without debate and by unanimous vote to legislation encouraging the use of gasohol through a tax break. The measure, which lowers the 11 cent a gallon state tax on gasohol to 6 cents a gallon through 1982, increases it to 11 cents in 1983, 9 cents in 1984 and to the

full 11 cents in 1985, has been sent to the Governor for his signature. Gasohol is a mixture of 90 percent gasoline and 10 percent alcohol and is promoted as an alternative fuel.

MURDER BILL - In an effort to resolve the legal flaws that led the Supreme Court to abolish the state's "felony-murder" rule, the House Judiciary Committee rushed through an amendment aimed at making those who kill while committing a serious crime once again automatically guilty of first degree murder. But even the sponsors of the measure admit it will be difficult to get it through both houses and signed by the Governor before the end of the session this month.

SUBSIDY DEFEATED - The controversial \$800,000 subsidy for the Pontiac Silverdome was defeated in the House for the first time since construction of the facility began nine years ago.

DRILLING OKAYED - In the House, a bill permitting limited oil drilling under strict environmental controls in the

Michigan River Country State Forest was easily approved, virtually ending the 12-year dispute between environmentalists and oil companies. The compromise plan, adopted on an 89-11 vote, is essentially the same as a proposal adopted by the state Natural Resources Commission and authorizes new oil and gas exploration in the lower third of the forest where an estimated 77 billion barrels of oil lay. The state could receive as much as \$700 million in royalties when the drilling, predicted to begin after the first of the year, is completed.

The bill, which also calls for environmental groups to withdraw their law suits which are designed to block exploration in the 96,000 acre forest, will be returned to the Senate for final action. This new plan has Governor Milliken's support.

If the bill is signed into law, it will be submitted to the Ingham County Circuit Court where the lawsuits are pending as a consent agreement to end the litigation.

Danger Of Winter Ice

Michigan residents and visitors were given a seasonal reminder today by State Police Director, Col. Gerald L. Hough, about the potential danger to persons who venture onto thin ice on outdoor water areas in early winter.

Hough said Michigan water accident statistics in the past have shown that non-boating accidents each year include some deaths caused by falls through ice.

Because winter ice sometimes may look stronger than it is, Hough advised outdoor enthusiasts that ice thickness should be tested for safety where any doubt exists. Be wary of areas where moving water under ice may keep the ice surface dangerously thin, he added, pointing out that these unsafe spots generally would be on rivers or streams or over spring areas of ponds.

In view of upcoming school vacations as well as at other winter times, Hough urged parents to be especially vigilant in warning children about outdoor ice dangers, suggesting supervision be provided in play areas as necessary.

To safely bear the weight of individuals or small groups of persons, outdoor ice on lakes, rivers, ponds, etc., should be from two to four inches thick. For heavier weights, such as snowmobiles, thickness

should range from five inches and up for protection purposes.

Hough stressed that there should be provisions made for emergency rescue as part of any activity involving ice-covered water areas outdoors.

County Health Clinic Scheduled

The Washtenaw County Health Department announces that, due to budget reductions, there will be several clinics eliminated as of January 1, 1981. Immunization, Well Child and Venereal Disease clinics will be affected and schedules will be as follows:

1st Saturday of the Month 9 a.m. - 11 a.m. Immunization Clinic - Ypsilanti, 555 Townner. No appointment necessary.

2nd Saturday of the Month 9 a.m. - 11 a.m. Well Child Clinic - Ann Arbor, 4101 Washtenaw (Service Center) For appointment call 994-2790.

3rd Saturday of the Month 9 a.m. - 11 a.m. Immunization Clinic - Ann Arbor, 2350 West Stadium. No appointment necessary.

4th Saturday of the Month 9 a.m. - 11 a.m. Well Child Clinic - Ypsilanti, 555 Townner. For appointment call 482-9710.

Every Monday and Thursday 6:30 p.m. - 9 p.m. Note: Wednesday clinics have been eliminated. For appointment call 485-2101 or walk in (University of Michigan Health Service clinic schedules are unchanged).

Anyone with questions regarding the clinics is asked to call the Health Education Office at 973-1488.

Addresses Of Servicemen And Women

Pvt. 2nd Class Thomas G. Smith
368-66-7481
HHC 6th Spt. Bn.
APO New York 09358
Germany

SHOP THE WANT ADS

GIFT GUIDE



For The Man

"Just What I Had In Mind"

- DRESS SHIRTS
- SWEATERS
- POLAR BOOTS
- TIES
- HANDKERCHIEFS
- FLANNEL SHIRTS
- FLANNEL PAJAMAS

MENS & WOMENS
WINTER COATS & JACKETS

15% OFF

The Clothes Line

134 EAST MAIN STREET
MANCHESTER, MICHIGAN 48158
PHONE 313-428-7775

GIFT GUIDE

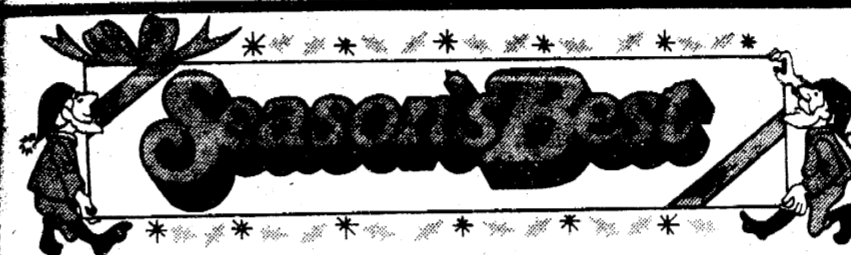
For The Woman

"How Did You Know"

- SWEATERS
- SLACKS
- BLOUSES
- LINGERIE
- GLOVES
- SPORTS WEAR
- DRESSES
- FLANNEL PAJAMAS

GIFT CERTIFICATES

10% OFF



- Cherry Chews
- Pecan Sandies
- Fruit Drops
- Springerles
- Chocolate Macaroons
- Date Macaroons
- Pfeffernuss
- Butter Stars
- Date Chews
- Lebkuchen
- Christmas Cut-outs
- Christmas Bread

NOW TAKING ORDERS FOR DELIVERY ON
DECEMBER 24 DELIVERY OF

Christmas Stollen, Pies & Dinner Rolls

Phone 428-8361

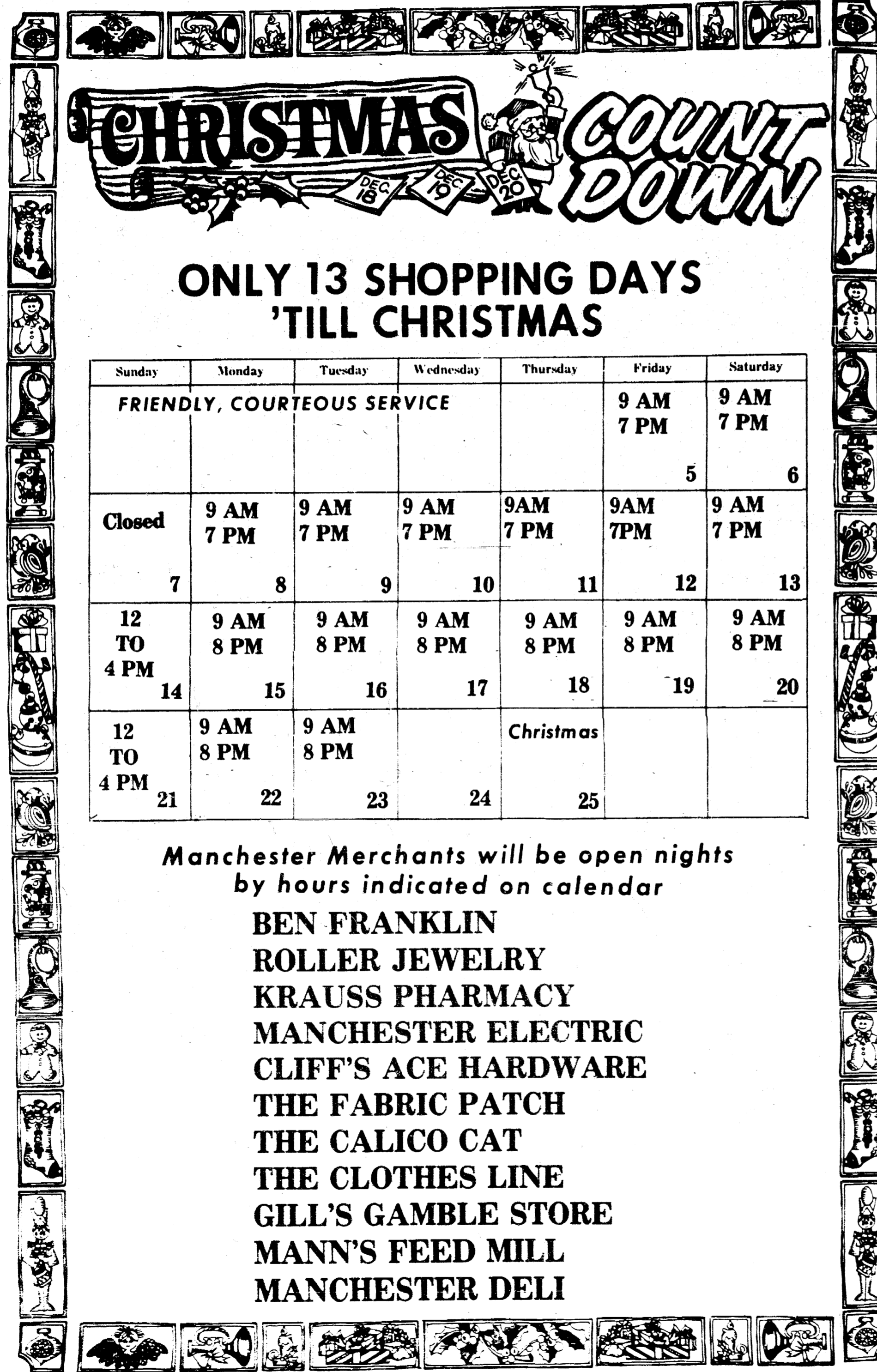
BAKER'S DOZEN

118 E. Main St. Manchester

Feature for Feature... THERMO PRIDE quality outweighs them all.

- INSULATED-INTERLOCKING FURNITURE STEEL CASING**
Painted inside and outside for an attractive appearance over a long life span.
- METAL RETAINERS**
Hold refractory in place and protect from damage by chipping while firing furnace.
- LARGE ACCESS DOORS**
Logs up to 10" in diameter can be fed into fire box.
- REFRACTORY**
For even distribution of heat to heat exchanger.
- CAST IRON GRATES WITH SHAKER CRANK**
For durability and easy removal of ashes.
- ELEVATED SOLID BASE PAN**
Prevents moisture from forming under furnace.
- COPPER COATED HEAVY 10-GAUGE HEAT EXCHANGER**
Resists corrosion for longer furnace life.
- BACK VIEW OF W.C FURNACE**
- ASH and SOOT are standard by-products of wood coal combustion. To allow easy service, ash-out doors are built into the secondary heat exchanger.**
- SECONDARY HEAT EXCHANGER**
Extracts more heat from hot gases before they pass into chimney.
- AIR FILTERING SYSTEM**
Permanent filter for cleanliness and ease of filter cleaning.
- QUALITY SPLIT PHASE BLOWER MOTOR**
For efficiency, lower cost and longer life.
- OVER SIZED FULL WIDTH BELT DRIVE BLOWER**
For quieter operation and increased comfort.

THIS IS A COMPLETE FURNACE NOT JUST ANOTHER ADD ON
112 ADRIAN STREET MANCHESTER, MICHIGAN
PHONE 428-8243



CHRISTMAS COUNTDOWN

ONLY 13 SHOPPING DAYS 'TILL CHRISTMAS

Sunday	Monday	Tuesday	Wednesday	Thursday	Friday	Saturday	
FRIENDLY, COURTEOUS SERVICE						9 AM 7 PM	9 AM 7 PM
Closed	9 AM 7 PM	9 AM 7 PM	9 AM 7 PM	9 AM 7 PM	9 AM 7 PM	9 AM 7 PM	
7	8	9	10	11	12	13	
12 TO 4 PM	9 AM 8 PM	9 AM 8 PM	9 AM 8 PM	9 AM 8 PM	9 AM 8 PM	9 AM 8 PM	
14	15	16	17	18	19	20	
12 TO 4 PM	9 AM 8 PM	9 AM 8 PM		Christmas			
21	22	23	24	25			

Manchester Merchants will be open nights by hours indicated on calendar

- BEN FRANKLIN
- ROLLER JEWELRY
- KRAUSS PHARMACY
- MANCHESTER ELECTRIC
- CLIFF'S ACE HARDWARE
- THE FABRIC PATCH
- THE CALICO CAT
- THE CLOTHES LINE
- GILL'S GAMBLE STORE
- MANN'S FEED MILL
- MANCHESTER DELI

THE MANCHESTER ENTERPRISE

Thursday, December 18, 1980 The Manchester Enterprise

HIT OR MISS

Powerful special interests are losing their grip on the public employee unions and they seem to be losing their grip on the state's Democratic leaders who have been presented with a mandate by the budget slashing minded voters. This was proven when the voter initiated proposition 2 1/2 was swept into being by a 3-2 ratio. It limits real estate taxes to 2.5 percent of the market value of all assessed property. Proposition 13 in California set up a 1 percent limit.

California, however, was in a far different situation than Massachusetts. It had nearly \$6 billion in a state surplus to make up for some of the loss in property taxes, but the Bay State's treasury was empty.

Proposition 2 1/2 does not take effect until next July but budget slashing is already well underway. Like the famous tea party rebels, mayors and the selectmen in the Boston area have refused to dish out any more taxes with which to keep buses, subways and trains running during this month. And so a "funding crisis" seems to be well underway between the unions and the Democratic state government.

Among the members of the local governments and the state legislature three avenues of challenge to proposition 2 1/2 seem to be emerging: One is to go along with the budget and service cuts and hope for a voter backlash and a return to social liberalism; or to minimize the social impact from special interests who are mad about the reduced spending in areas such as schools, patronage, environmental protection, union jobs, patronage and environmental services, and third, to circumvent the revolt by increasing taxes in other areas in order to keep spending at the present levels.

Already they are talking about increasing the present state's 5 percent limited sales tax. The state's sales tax yield is now 45th in total revenue out of 47 states with such levies.

All the other states where propositions like proposition 13 failed, including Michigan are watching all this closely.

It is estimated that the state's residents will save \$490.3 million in real estate taxes and motor vehicle excise taxes during the first year for example.

There in Massachusetts like in Michigan, the older communities like Boston or Detroit stand to suffer most from such a

plan. It is estimated that Boston will lose 60 to 75 percent of its current revenue.

The Massachusetts governor has appointed a task force to come up with recommendations and I'll bet he'll need their help a great deal.

And now, in a vastly different vein, did you hear about the chap who met a friend on the street the other day and paused to speak to him and to ask how he was, that he didn't look so very pert.

Whereupon the friend replied that he was okay, that he had just come from attending the funeral of a good friend, whereupon the friend said that he would miss the deceased a great deal.

Sympathetically the first chap said that the recently deceased had been seriously ill for quite some time, and he was getting up in years and so perhaps he was better off now than before.

The chap agreed to all this but remarked that that was not why he looked sad. "As I stood there in the funeral home looking down at him" he continued, "I wondered. You know that he has for many years been a confirmed atheist, and no one could convert him. So as I saw him lying there in the coffin I just couldn't help but feel so sorry for him. There he lay, all dressed up and no place to go."

Men In Service

Private William M. Hagerman, son of Mr. and Mrs. Robert J. Hagerman of 17861 English Road, Manchester, Mich., has graduated as an Armor Crewman at the U.S. Army Armor School, Fort Knox, Ky.

The training was conducted under the One Station Unit Training (OSUT) program, which combines basic combat training and advanced individual training into one 13-week period.

During the course, students received training in the duties of a tank crewman, including firing the tank's armament and small weapons. Instruction is also given in field radio operations, map reading, and tank maintenance and repair.

Consumer Power Reducing Pay Stations

Citing inadequate rates coupled with the poor state of the Michigan economy, Consumers Power Company has announced the closing of 26 company-operated customer contact offices and the discontinuance of over 80 percent of its bill payment locations.

Payment location stations to be closed on December 20th include the State Saving Bank of Clinton, Union Savings Bank in Manchester and Weatherwac, Inc. in Brooklyn.

Overall, there are 11 payment locations in Lenawee County scheduled for closing. The company "suggests that customers, whenever possible, pay by mail."

***Featuring: HAND CRAFTED AMISH CABINETS**

***Distinctive "GOLDEN OAK CABINETS" By Continental**

*Jenn-Air Appliances *Delta Faucets *Elkay & Kohler Sinks

VISIT OUR SHOWROOM

DUTCH COUNTRY KITCHENS
146 East Main Street Phone 428-7292 Manchester

SUTTON AGENCY
Don Sutton-Connie Widmayer, Agents

Complete "INSURANCE SPECIALISTS"

- * FARM SPECIALISTS
- * AUTO
- * FIRE
- * LIFE
- * RECREATIONAL VEHICLES
- * HOME OWNERS
- * COMMERCIAL
- * MOTORCYCLES

For All Your Insurance Needs
Call [313] 428-7217

136 E. Main St Manchester

It's A Girl

Born to Mr. and Mrs. Patrick DuRussel, a girl, Lisa Marie on November 15, 1980. She weighed 6 pounds 10 ounces.

Paternal grandparents are Mr. and Mrs. Donald DuRussel of Manchester and maternal grandmother is Eleanor Otlewski of Dexter.



An alternate energy system under development includes a heating unit powered primarily by the energy created when water freezes.

START YOUR NEW YEAR'S EVE WITH A SPECIAL WIN SCHULER'S WELCOME.

For your special Schuler dinner or our popular buffet, call us now for reservations!

Schuler's
So many different ways to make you welcome!

3600 Plymouth Road (Marriott Inn)
Ann Arbor 769-9400