

WANT ADS

All classified advertising is payable in advance. All ads must be PLACED and PAID for prior to 11 AM on Tuesday for publication that week.

GAS CONVERSIONS - Burners or Complete Furnace. Manchester Electric 428-8243 or 428-8331. tfn

FOR RENT - Commercial Space, 154 E. Main. (517) 431-2580. tfn

OFFICE SPACE TO RENT
New Office Space, 1200 sq. ft. in single building, ground floor, private entrance, paved private parking at door. Separate heat and air cond. Security & fire alarm. Will finish to tenant specifications. Union Construction Co., 505 Territorial St., Manchester, Mich. 48158. Phone 313-428-8228. tfn

2 FAMILY HOUSE FOR SALE - 1 bedroom apartment up, 3 bedroom down with garage and yard and swimming pool. 428-8364 or 428-9122. tfn

HARTMANN CARPENTRY - Now serving Manchester area as a Licensed Builder. 12 years experience in Home Building with experience in roofing, siding, decks, remodeling, garages and pole barns. Call 475-9901 or 475-1643. tfn

CHELSEA GREENHOUSES, 7010 Lingane Road, Chelsea, Michigan 475-1353-54 or 475-9313. Flowers and plants for every occasion. We specialize in wedding flowers to fit your budget. We are as near as your phone and we welcome your business. tfn

BEEF TO SELL BY SIDE
Custom slaughtering. Lockers to rent. Phone 428-7600. Manchester Locker Plant. tfn

LITTLE WACK EXCAVATING
Licensed & Insured
Basements - Drainfield - Bulldozing
Digging - Snow Removal - Tree Removal.
Paul Wackenhut, phone (313) 428-8025. tfn

NEED A NEW FURNACE - Call 428-9150, free estimates, featuring Lennox and Janitrol. tfn

1 AND 2 BEDROOM APARTMENTS for rent in town. Call 428-9380. tfn

FOR SALE - COMMERCIAL 2 story brick; 2000 square foot; offices down, 2 bedroom apartment up, 428-8364 or 428-9122. tfn

OFFICE SPACE FOR RENT - Newly redecorated. Sutton Agency Building, call 428-7217.

2 BEDROOM APARTMENT, many appliances, \$250.00 without utilities. 428-8364 or 428-9122. tfn

CAMPING TRAILER - 1968 Wheel \$250.00 or best offer. 428-8364 or 428-9122. tfn

C & B PAINTING - Interior, exterior. Free estimates. 428-7416 or 428-7136. 12-27p

STREET SALE - West Territorial, Saturday, July 26, beginning at 9 til 6. Rain Date August 2. p

FREEZER, 1974 Sears upright 19.5 cubic foot, runs well, best offer. 428-8974.

FOR SALE - Tent camper trailer 200.00. Chain Saw \$75.00. 428-9125. p

BASEMENT BARN SALE - at the Henney - 402 Ann Arbor St. Saturday, July 26, 9 to 5. p

YARD SALE: Thursday and Friday, July 24 & 25, 9 to 5. Boys clothing, household, lots of misc. 18885 W. Austin - J. Mann. p

BEAGLE - 1 1/2 years old, male, free to a good home. Good with children 428-7956.

LAND CONTRACTS PURCHASED - Any Size - Any Property Type, Courteous and Reliable Service. Call Dan Duncanson, Ann Arbor Real Estate Co. (313) 668-8595.

GERALD AHRENS CONSTRUCTION
Additions, Decks, Renovations, Repair, Finish Work, Free Estimates. Phone 428-8807. tfn

ALUMINUM EAVESTROUGH - Seamless, white, black and brown, guaranteed, free estimates. Walkover Home Improvement Company, phone 313-428-8468. tfn

ROULO ELECTRIC - Licensed and Insured Contractor. Call Clinton 517-456-4796. tfn

CHELSEA BUILDING MAINTENANCE COMPANY
7215 Jackson Road
Ann Arbor, Michigan
Phone 668-0585

Plumbing contractors, industrial, commercial, residential new and repair work, A.O. Smith Water Heaters, Bruner Water O. Conditioning dealer. Beginning February 1 servicing the Chelsea, Manchester and surrounding areas. Bill Colvin and Henri vander Aard.

WANTED - used full size bicycles and parts. Will pay cash. Student Bike Shop, 607 S. Forest, Ann Arbor. tfn

TOP SOIL, Black dirt, fill dirt, sand and gravel for sale 428-7784. tfn

CHIM-CHIMNEY CHIMNEY SWEEPS
Saline, call collect 313-429-9078. 10% Senior Citizens discount. Homeowner cleaning kits and flu caps available. tfn

TAILORING BY IRENE
Specializing in mens and womens custom tailoring and alterations, also leather and fur. 13910 Sheridan Road, Manchester. 428-8538. tfn

Visit Our
WICK MODEL HOME OPEN HOUSE
at 5201 Brooklyn Rd. (M-50) Jackson.
Monday thru Thursday, 1-5
Saturday & Sunday, 2-5
Anytime by Appointment
Callaway Construction
517-764-4400 or 563-2930

A.A. AND AL'ANON: Wednesday, 8:00 P.M., Emanuel Church. For more information call 428-7693. tfn

WANTED - Commercial Space suitable for stained glass studio. Gerry Wayne Studios. 317-456-4971. 8-14p

GRAVEL Sand-stone, Top Soil, Black Dirt, Trucking, Loaderwork. Phone 313-428-8623. 8-14p

NEW HOME, hill top view, 1 acre, 2 car, 3 bedroom, 2 baths, deck. \$75,000. 428-9134. 8-7p

OFFICE SPACE FOR RENT, Contact D.E. Limpert Co., Exchange Place Bldg. or phone 428-7400. 7-31

FREE to a good home, Kirsch Hound dog, friendly, good with children. 428-8619, 14107 E. Austin Rd. p

FOR SALE - Model 72, 1964 Massey Ferguson self propelled combine - ten foot table and two row corn head, good condition. Call 313-428-8337. 7-31p

FREE Brittany/Irish Setter, 2 years old, gentle. Moving, must find home. 428-7083. p

BLOCK SALE - July 26, 9 to 4 p.m. Start at 116 South Macomb. p

HELP your Historical Society by donating collectibles for sale - see Enterprise story or call 428-8024.

FOR SALE - new 225 amp Miller Thunderbolt welders with complete accessory kit. Reg \$179.95 Sale Price \$149.95. Koebbe Welding 428-8236 7-31

SEE a movie tonight, UHF & Beta Video Cassettes. Video Store, 353 N. Maple, Maple Village Shopping Center 665-8913. 7-31

FIELDER PAINTING - Interior, Exterior, Free Estimates. Call 428-8506. 8-28p

MONTCORENCY CHERRIES, 10955 Hieber Road, Manchester (at Pleasant Lake) 428-8222. 7-24p

FOR SALE, 73 CL Honda 350, 5000 miles, like new, electric start, \$550. 428-9351. 7-24

COAL FOR SALE - Delivered price \$72.00 a ton, 5 1/2 ton or more. El Baker Ky. Coal. Call 428-8078. 8-7

WANTED - bar bell set or extra weights. Call Doug Wilson 428-9418. 7-24p

GUITAR, violin, viola, cello, private lessons. Mrs. Meade 428-8694. 7-31

FOR SALE BY OWNER, Older Home in Manchester. Near stores and churches. Aluminum siding, attached 2 1/2 car garage. Land Contract Possible. Low 30's, call 428-7537.

LAWN SALE - 9 FAMILY July 25 - July 29, 10 a.m. - 7:30 p.m. Many collectibles and new dishes, pots, pans, old books, paperbacks, new 35 milimeter flash attachment, childrens - adult clothing, 2 new dining light fixtures, Merrilat wooden cabinet, awnings, windows, sink, gas furnace, Christmas decorations, new and old toys, large car top carrier, pair of mag wheel rims, new T.V. antenna, and lots of misc. 12428 Matthews Hwy., Clinton, Michigan 1st house South of US 12.

GARAGE SALE - July 25 & 26, 9 til 2, 213 N. Macomb. p

WOULD like to buy a small, used, air conditioner, in good condition and reasonable. Call 428-9265 after 5:30. 7-31

LOST CAT - Schlewis Rd. (old Speedway area) Black & White Tabby. "Trina", 434-1017 (Jeryl Marx) Reward. p

FOR SALE: John Deere tractor, 435 diesel, \$2,960.00; Sand Tamper for concrete work, \$275.00; Tar Roller for parks, \$100.00; Toro riding lawn mower, 8 HP, \$275.00. 428-9169. 7-31

YARD SALE - 5 FAMILIES Thursday, Friday, Saturday, July 24, 25, 26, 9 to 5. Car, cassette, bedspreads, dishes, games, clothing, furnace vac, laundry tub, much more. 800 E. Main St. Helen Braun p

Card of Thanks

A special Thank You to Mrs. Robert Chapin (also to the Gilberts and Mrs. Carpenter) for making our French guests feel welcome.
The McGarry's

NEW HOME FOR SALE

11% Guaranteed Rate on 1st 5 years of 25 year mortgage to Qualified Buyers

Trades Will Be Considered

Lovely New 2 storey 3 bedroom family home with 2 1/2 baths, formal dining room, large family room with brick fireplace, 2 car finished garage, full basement on nice lot in new exclusive restricted neighborhood of fine homes with paved streets - City water and sewer.

This home is constructed with the finest quality materials. Fully insulated with cost efficient natural gas heat and hot water. Maintenance free exterior, fully carpeted and professionally decorated. Ready for immediate occupancy.

For Sale by Builder-Developer
Union Construction Co.
Manchester, Michigan
Pleasant Mid 80's

Phone 428-8496 for appointment to inspect this fine home - located at 321 Riverbend Drive, Manchester, [West on Auburn Street off M52 [Ann Arbor Street] to Lafayette Street, right to Riverbend].

BUSINESS STATIONERY

That Gets You The Business

Richly Thermographed!
Yet Costs So Little!

You'll like the look of success that low-cost Coronet Thermographed Stationery gives your company. Feel the raised print! So elegant it says you are not only a successful company, but also says you have good taste!

Business cards and stationery at very moderate cost. Ask us for layout samples.

Manchester Enterprise
150 East Main Street

THE MANCHESTER ENTERPRISE

115TH YEAR VOLUME NO. 40

USPS 327-460

20¢ A COPY

THURSDAY, JULY 24, 1980

Engagement Announcements



Mr. and Mrs. Richard D. Kensler and Mrs. Myrtle Roberts of Manchester are proud to announce the engagement of their children Ann Marie and Mark Steven. Ann is employed at the Union Savings Bank of Manchester, and Mark is employed at Chrysler Proving Grounds. A September wedding is being planned.



Mr. and Mrs. Anton Schlosser of Manchester announce the engagement of their daughter Catherine Sue to Christopher Suchy, son of Mr. and Mrs. Ronald Suchy of Garden City.

Catherine is a 1976 graduate of Manchester High School, a 1978 graduate of Washtenaw Community College and is employed by the Washtenaw County Register of Deeds' Office. Christopher is a 1976 graduate of Garden City West High School and is employed at the Hydro-Matics Plant in Ypsilanti.

The couple are planning an October 17th wedding.

Early American Crafts

During the Historic Walk co-sponsored by Manchester Historical Society and M.A.S.T. on August 9, children will demonstrate Early American Crafts on "The Green" in front of the library in historic costume. Some of the crafts demonstrated will be: cross stitch, needlepoint, broom making, pressed flowers, wood chopping, muzzle loading and bread dough flowers.

A preparation workshop will be held at Emanuel Church on August 4th. Children are needed to participate. People are also needed to help teach children with learning the crafts. Anyone who is interested in helping please call Marley Pagel at 428-7781 or Joyce Anderson at 428-8154.

HISTORIC WALK

A Historic Walk is scheduled in Manchester on Saturday, August 9 by the Manchester Area Historical Society and Manchester Association for Talented Students, from 11:00 a.m. to 4 p.m. The nineteenth century flavor of this village whose roots go back to 1826 when Major John Gilbert of the U.S. Army was granted 400 acres of land along the Raisin River, has been preserved in buildings and atmosphere. Unfortunately, some buildings have been razed and others altered beyond recognition as so-called progress took its toll. However, in general, the village exudes a feeling of antiquity which is obvious to the most casual visitor.

The Society wishes visitors to know why they are attracted to the village and The Walk of six or seven blocks with a ticket-brochure will give them this information. Hostesses at each "open" structure will elaborate on the history for those who wish to know. The Society is also conducting a Collectible Sale on the Park in front of the Library as a fund raising event for the new building fund.

The Historic Walk begins at the Thomas Walton home at 102 W. Main where refreshments are served and ticket-brochures are sold at a nineteenth century lawn party setting. A tour of the first level of this handsome Greek Revival, ca. 1842, house is on the schedule. There are thumbnail sketches of the Van Dyne - Watkins house at 112 W. Main, the Old Methodist Church at 122 W. Main, The Park and the Manchester Township Library. The latter is the oldest Township Library in the State, dating from 1838. A tour of the present structure holds a score of surprises.

Next two historic churches offer their special features with the story of their history. St. Mary's Catholic Church, the Cobblestone structure, was built in 1911 from field stones gathered by parishioner from their farms. Emanuel United Church of Christ, when built in 1882 as the German Church, boasted the most beautiful steeple of any church in the County. Ramps, both front and rear, give easy access to the facilities at the Emanuel Church for the handicapped.

Returning on W. Main to Washington Street the Cash-Armstrong House survived condemnation to become a restored show piece. The square brick structure across the street known as the Fargo House was built in 1835, and now houses two apartments. Neither home is open to visitors at this time.

A block to the south on Washington Street is the Waters House, lovingly called "The Castle" for it was in fact, inspired by a castle on the Rhine when Mr. A.J. Waters visited England, France and Germany in 1902. At the present time, it is owned by a grandson, Arthur Cathey, and is divided into apartments making it closed to visitors.

Across the street is the Blosser House, Vernacular ca. 1832, where Matt D. Blosser, the famed editor-owner of the Manchester Enterprise for 67 years lived out his entire 97 years. It is a delight to be able to visit the lower level of this historic home.

A block and a half away, the Old Town Hall at 210 S. Clinton Street tells a story all its own - from fire hall for 93 years to its present remodeling for village offices.

The block of business district was originally called Exchange Place, while the west end of the street was Jackson Road and the east end was Jefferson Road. It was therefore appropriate that the

beautifully built 1880 structure at 104 E. Main Street be named Exchange Place when Don E. Limpert rehabilitated the building. The hosts or hostesses at this stop will try to answer questions about the whole business district history, a chore which is still being researched for posterity.

The hub of Manchester has always been the Mill which is the last stop on the Walk at 201 E. Main. Mann's Feed Mill, owned by Ron and Judy Mann, has the honor of being the oldest operating business on its original site in the State of Michigan, was built in 1832. It is worth the whole trip to see the Mill from grinding stones to viewing balcony.

The ticket-brochures are priced at \$3.00 per individual and the hours for the Walk as stated are from 11:00 a.m. to 4 p.m. on August 9 the day of Manchester's Third Annual Street Fair which is sponsored by the Manchester Art Guild and the Village Association.

36th Annual Manchester Fair

36th Annual Manchester Community Fair, "Michigan's Biggest Little Fair" August 12-13-14-15-16, Manchester, Michigan, along with some very appropriate pictures, is the cover of the new Fair Booklet.

On the inside of the cover we see that Alice Rossettie is responsible for the photography in the booklet.

By now the Fair Board hopes that all the people who received their booklets by mail will have taken time to look them over. Many of the businesses in town, Pleasant Lake, and surrounding communities provide a spot for the fair booklets also. If you do not have one yet you can pick one up the next time you are in the area.

As we take a quick glance thru the book we find many attractive ads that were solicited by, Mary Cousino, treasurer of the board. The booklet would be impossible without the support of many people who purchase a spot for advertising in it.

On page 5, you will find a list of the board members. You may contact anyone of them for information about the Fair. Page 6 thru 20, lists rules, regulations and requirements necessary for people to participate in various areas of the Manchester Community Fair.

After you read rules and regulations, let's check out the premium list beginning on page 21. This would be a good time to point out the Divisions where we could use more exhibits. The first is Dept. 5, Grains and Seeds. Farmers, we believe the competition could be a little tougher. How about checking your grain bins for 1/2 peck of your best grain or soy beans. Those quality seeds would also have a place in our exhibit tent. Dept. 6 could use more fresh fruit, however for some of them the fair time is too early.

Many gardeners in the community provide Garden Produce for our exhibit, however, some chasses have very few entries, such as cauliflower, broccoli, egg plant, lima beans, brussel sprouts and okra. Don't forget to check the entries out for largest and heaviest. If you check last years harvest you might find some different kinds of nuts.

One of the best exhibits at the Fair is Dept. 7, Poultry and Waterfowl. Francis Cousino does a fine job organizing those

New Physician In Manchester



Dr. Virginia Johnson, a Family Practice Physician, has opened an office at 500 Galloway Drive and is now accepting appointments.

Dr. Johnson, in conjunction with the Chelsea Community Hospital and University of Michigan Family Service, will have 24 hour emergency care available through the Chelsea facility.

Dr. Johnson explains that a Family Practice Physician focuses on the entire family, from grandparents through the infant, and emphasizes communication between the physician and family members. She will see patients on an out-patient basis and in hospital care such as heart attacks, pneumonia, etc. If a specialist is required she will refer the patient to the proper doctor and follow-up the patients care program.

Virginia, a native of Detroit, is the daughter of Mac Locker and the late Mrs. Locker and has three brothers. While still in high school she decided on medicine as a profession, attending the University of Michigan undergrad school and Michigan State University College of Human Medicine. She completed her Family Practice residency at St. John Hospital in Detroit this June and passed her state boards in July.

Dr. Johnson and her husband, who is a chemist with Parke Davis in Ann Arbor, have purchased a home and are now residing in Manchester.

Their hobbies include travel, camping and hiking. Virginia enjoys sewing, knitting and crocheting while her husband does woodworking and mechanics.

HIT OR MISS by farley

At last the truth is out. Left-handers make better architects and designers than their right handed counterparts reports a study at Mount Union, Ohio College.

An assistant professor of psychology at the college says that when it comes to special relationships, left-handers are more creative.

The professor says that in most left-handers and right-handers are basically similar but there are some differences. Left-handers are less specialized in brain function he says and so have an advantage in several areas. He also says that left-handers are more creative.

They were able to expand and devise new ideas. The right-handers assumed that the same possibilities were closed and could not be expanded at all and that the lefties would excel as architects. de-

Continued on page 4

Continued on page 11

The Manchester Enterprise

150 EAST MAIN STREET
Manchester, Michigan 48150
USPS 327-480

Phone 428-8173

The Manchester Enterprise was established in 1967 and is published each Thursday at 150 East Main Street, Manchester, Michigan with second class postage paid at Manchester.

Edward E. Steele, Publisher

Lesere Steele, Editor



4-H Mainstreaming Agent Named For County

Charleen M. Berels of Ann Arbor, has been appointed Extension 4-H Youth Agent in charge of the Washtenaw county 4-H handicapper mainstreaming project, effective July 1, pending approval of the Michigan State University Board of Trustees.

The Washtenaw County 4-H Youth Program is one of 21 county programs to receive a special grant from the W.K. Kellogg and Charles Stewart Mott foundations through the Michigan 4-H Foundation to conduct a 4-H handicapper mainstreaming project.

Ms. Berels will be responsible for planning, organizing, implementing and evaluating 4-H handicapper mainstreaming programs in Washtenaw county.

"Though handicappers have been involved in 4-H programs on a limited basis

over the past few years, the grant will enable us to more effectively integrate local handicapped residents in 4-H programs," says Ms. Berels.

According to Ms. Berels, county efforts made possible by the grant will help increase understanding between handicappers and "temporarily-able-bodied" (TAB) persons and help them work together more effectively.

Ms. Berels will also be responsible for identifying, recruiting, training and assisting volunteer leaders in an effort to strengthen county 4-H youth programs involving handicappers.

"Being handicapped means that you just learn to live with your unique mental or physical characteristics and use special tools to help you accomplish a task. It doesn't mean you have limited potential or are less of a person," she explains.

"I feel the program will be mutually beneficial," Ms. Berels adds. "Handicappers and TAB's will learn to appreciate their similarities and differences and, as a result, will develop a better understanding of one another."

Ms. Berels received her bachelor's degree in psychology from Eastern Michigan University in 1975. Since then, she has been employed with the Washtenaw County Co-operative Extension Service as a Family Living Education program assistant, the Michigan Department of Education at the Bureau of Rehabilitation as an employment service specialist and, most recently, with the Washtenaw county CETA program as an occupational counselor.

Single's Group Picnic

Sunday, August 3rd, annual Tuesday and Saturday Night Dance Group's Picnic, Potluck & Dance. This is from 2 p.m. to 7 p.m., dinner at 3 and dance 4 to 7 p.m. at the American Legion at Dexter, Michigan. Bring your family and friends. Enjoy the fine food and dance to the music of Joe Wash's Band. For more information call 482-5478/769-3525.

Blueberry Time At Waterloo Area

Wild foods may not be your cup of tea, but right now is the time to harvest the most enjoyable of all wild foods. Blueberries are yours for the picking in the Waterloo Recreation Area. Growing four to eight feet tall, Highbush Blueberry is found in the acidic soil of Waterloo's bog areas.

Remnants of the ice age, bogs were once lakes. Time has covered the bog lake with a carpet of sphagnum moss and started to fill the lake with wetland shrubs, including the blueberry.

Walking on the bog mat is like walking on a giant wet sponge. The stems and leaves of the sphagnum moss are hollow and soak up the water, holding it until you put your foot down, squeezing the water out of the plant.

Be sure to wear shoes or boots that you will not mind getting wet. To make picking more enjoyable also wear long pants, a hat, and insect repellent.

Several small containers work well. The weight of the blueberries in one large container often mashes those berries in the bottom.

Within the bog you may notice the insect eating pitcher plants, orchids, tamarack trees and other plants unique to bogs. Be on the look-out for Poison Sumac. It is similar in appearance to the Smooth Sumac that is found in dry fields. Red upright berry clusters and toothed leaves identify the non-poisonous sumacs while clusters of greenish white berries hanging below the leaflets with smooth edges tell us to stay away. Touching any part of the poison sumac can cause an allergic rash on the skin.

Where berries are plentiful, a novice should be able to pick a couple of gallon pails full in one afternoon. If blueberries

are picked on a dry day, and packed unwashed in fruit jars, they will keep in the refrigerator for a month or more. Blueberries may also be preserved by drying, canning, or freezing them.

For a map of several blueberry picking areas stop at the Waterloo Nature Center located on Bush Rd. To reach the center take I-94 to exit 156, Kalmbach Rd., and follow the park signs.

There are many delicious ways to serve blueberries. Here's a recipe for a coffee cake that is sure to make your mouth water.

BLUEBERRY BUCKLE

2 cups flour
2 cups blueberries
1/4 cup sugar
2 1/2 tans. baking powder
1/4 tans. salt
1/4 cup shortening
1/4 cup milk
1 egg

Pre-heat oven to 375 degrees. Grease a 8x8x2 inch pan. Combine all ingredients. Beat vigorously 1/2 minute. Spread in pan. Sprinkle topping over batter. Bake 45-50 minutes. Serve warm.

Topping:

Mix 1/2 cup sugar, 1/3 cup flour, 1/2 tans. cinnamon, and 1/4 cup soft butter. Sprinkle over batter.

Good luck and good eating!

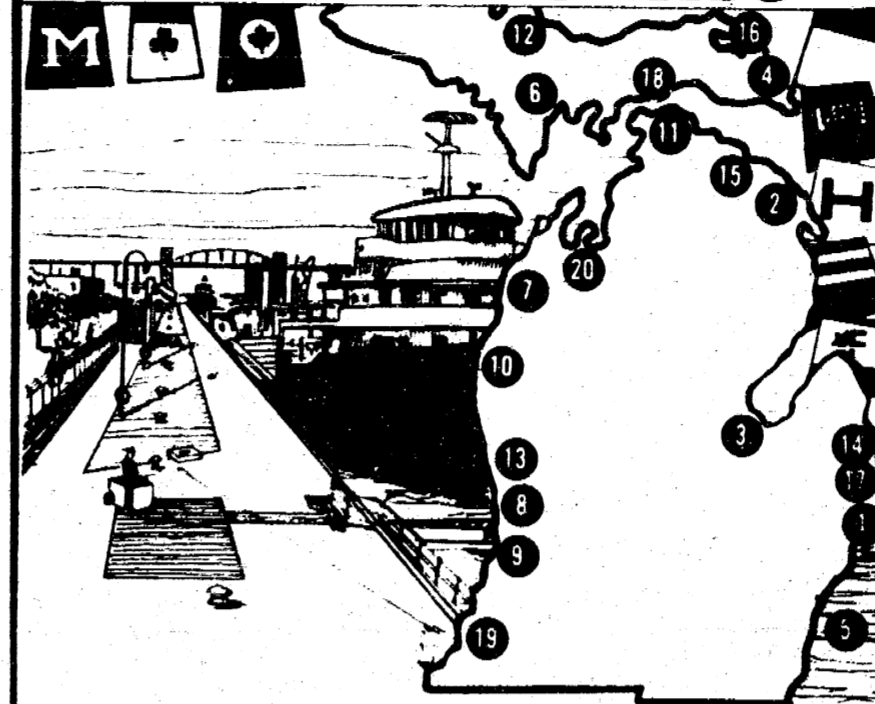
LaLeche Meeting

The LaLeche Meeting will be held at 7:30 p.m. on August 13, 1980 with hostess: Sandy Winzenz, 424 E. Main St. Phone: 428-7125. The subject is: Nutrition and Weaning.

Arbeiter Picnic

The Arbeiter Picnic will be held at Carr Park On Monday, August 4, at 12:00. Be sure and be with us.

Your Guide to SHIP WATCHING



- 1 Algonac—Algonac State Park.
- 2 Alpena—small boat harbor.
- 3 Bay City—Wenonah Park or Bay City State Park.
- 4 Detroit—waterfront.
- 5 Detroit—Belle Isle.
- 6 Escanaba—Sand Point.
- 7 Frankfort/Elberta—Betsie Lake.
- 8 Grand Haven—Grand Haven State Park.
- 9 Holland—Kallens Park near Lake Macatawa.
- 10 Ludington—Sterns Park public beach.
- 11 Mackinac City—several city-owned waterfront parks.
- 12 Marquette—Presque Isle Park.
- 13 Muskegon—Pere Marquette City Park and Muskegon State Park.
- 14 Port Huron—Blue Water Bridge pedestrian walkway.
- 15 Rogers City—Calcite Harbor.
- 16 Sault Ste. Marie—Soo Locks.
- 17 St. Clair—restaurants along M-29.
- 18 St. Ignace—Straits State Park.
- 19 St. Joseph—Margaret Upton Memorial Park on St. Joseph River.
- 20 Traverse City—Elmwood Park.

10 20 30 40 50 55
drive 55
IRVING TANK CO. ELEVENTH IN A SERIES OF 15 Map by

You can reach Michigan's beautiful vacation destinations on a tankful of gas by driving the life-saving, fuel-saving 55.

Michigan, steeped in maritime tradition, is a ship watcher's mecca with thousands of huge freighters and ocean-going ships plying the state's busy waterways each year, reports Automobile Club of Michigan.

Ship-watching vantage points are varied as the cargo aboard the vessels. They include restaurants, state parks, scenic bluffs overlooking Lake Michigan, an island, an international bridge and a 21-story observation tower.

It's little wonder why the Detroit River claims title to the world's busiest waterway, with more than 25 million tons of freight passing annually. Detroit's Belle Isle provides excellent views of huge Great Lakes freighters and foreign ships.

The 29-mile stretch along M-29 from Algonac to south of Port Huron offers some of the best ship watching in Michigan. Algonac's state and city parks front on the St. Clair River which connects the upper and lower Great Lakes.

Algonac State Park, two miles north of Algonac, is extremely close to the passing vessels since the river is only one-half mile wide at that point.

Many restaurants in the St. Clair area offer a pleasant river view. Two popular eateries—the Voyageur and St. Clair Inn—are connected by the world's longest fresh-water boardwalk spanning seven blocks. North of town is Chuck Nuer's River Crab, another fine waterfront restaurant.

The Blue Water Bridge connecting Port Huron and Sarnia, Ont., is open to pedestrians and provides a good spot for ship watching. Also offering a panoramic view are the North Scenic Turnout at the foot of the bridge; Pine Grove Park, on M-25 three blocks north of the business district, and the fuggetter restaurant atop the Peoples Bank Building.

Grain is a main export from Bay City to Canadian ports via the Saginaw River, and Wenonah Park and Bay City State

Park are good vantage points. The mineral-rich northeast section of the Lower Peninsula lays claim to two "world's largest" titles. The Cement Division of National Gypsum Co. (formerly the Huron Portland Cement Co.) of Alpena is the world's largest cement plant while 35 miles north in Rogers City and the world's largest limestone quarry.

National Gypsum operates its own fleet of freighters and visitors can see them from Alpena's small boat harbor.

One-hour plant tours are conducted every Friday at 1 p.m. Interested persons should call ahead (517-354-4171).

At Rogers City's Calcite quarry and harbor, operated by United States Steel, tourists can see limestone mined from Quarry View (off B.R. U.S. 25) and loaded onto a vessel from Harbor View, or tour the pilothouse of the retired steamer Calcite.

Mackinaw City and St. Ignace both provide excellent views of ships passing through the Straits of Mackinac. Mackinaw City boasts six municipal waterfront parks while St. Ignace has Straits State Park just northeast of the Mackinac Bridge.

Another fine ship-watching spot is the waterfront in De Tour Village, east of St. Ignace. Many ships take on limestone across from the village is Port Frummond at the western tip of Drummond Island. Other ships pass through De Tour Passage on their way to or from the Soo Locks.

The famous locks at Sault Ste. Marie route big freighters around the 22-foot fall of the St. Mary's River which connects Lakes Huron and Superior. Even though two of the four locks are closed this summer due to reduced traffic, they are still the world's busiest.

There is a viewing stand close to the two open locks, and several blocks away

Continued on page 4

Re-elect Ballantine
For Michigan State House, 23rd District

Mary Keith Ballantine is

- working hard to keep people working.
- trying to ease the tax burden and cut government spending.
- voting to take action on welfare reform.
- making government more open and responsive in our own backyard.

WE NEED TO KEEP MARY KEITH BALLANTINE AS OUR REPRESENTATIVE IN THE STATE HOUSE

Vote Republican Primary **Aug. 5**

"EXCELLENT PICKING"

U-Pick Raspberries

90¢ quart

RED AND BRANDYWINE
BRANDYWINE MICHIGAN'S LARGEST RASPBERRY

3 MILES WEST OF NAPOLEON ON M-50
LEFT 1/2 MILE ON WHEATON ROAD

PHONE 517-536-4092 OPEN 7 AM TO 5 PM

MAKIELSKI BERRY FARM

ZAP FLYING INSECTS INSTANTLY!

The new Fi-Shock 2500 attracts flying insects from up to about 70 feet and kills them on contact. Ideal for average sized backyard and patio areas. Great for apartments, houseboats and recreational vehicles.

Proven Fi-Shock quality at this low price make this the best value on the market.

only \$59⁹⁵

Mann's Feed Mill
210 EAST MAIN STREET MANCHESTER, MICHIGAN

The Money Market. Count your investment before it hatches.

8.526% 8.832%
Effective 7/31/80 Through 8/6/80

Ann Arbor Bank and Trust

FAHEY REALTY

OFFICE 215 EAST MAIN PHONE 428-9298
OFFICE HOURS 9-5 MONDAY-FRIDAY SATURDAY 9-12 NOON

NEW LISTING - Saline - Lovely 3 bedroom brick ranch, 1 1/2 baths, beautiful finished basement, central air. Nicely landscaped lot.

Spacious 4-5 bedroom home in Manchester. First floor utility room, two car garage. 1900 sq. ft. of living space on large corner lot. Call Jim Walkrowe 428-8120.

3 bedroom, 1 1/2 bath, within walking distance of stores. Natural woodwork, plenty of storage space plus finished basement.

Starter or retirement home. Maintenance free, with newly remodeled interior. Convenient to business district.

Gladwin County Retreat - Furnished cabin, within 1 1/2 miles of 3 lakes and state forest. \$12,000.00. Call Melody Popkey 428-7967.

Investment Opportunity - 2 unit income with excellent village location. Call Don Limpert for appointment 428-7400.

Building Sites

1 Acre on paved road. Land contract terms. 5% down 10% interest. \$11,000.00.

2 Acre parcel. Queens Drive just North of Manchester.

Commercial Lot in Napoleon. One acre on paved road. 145' frontage. L/C terms.

27 Acres - 1250 ft. frontage. Can be split. Possible pond site. Land Contract terms.

Manchester Township 140 Acres - Surveyed into 10 acre parcels. Hilly, live stream, partially wooded. Call Don Limpert. 428-7400.

Sharon Township 100 Acres - Ideal homestead, rolling land with some woods. Can be divided.

Don Limpert	428-7400	Joe Roberts	517-592-8263
Judy Fahey	517-456-4927	Melody Popkey	428-7967
James I. Fahey	428-7979	Jim Walkrowe	428-8120
Dick Fahey	517-456-4927	John Fahey	428-8748

You'll like the 1980 Malibu's room, looks and size.

Malibu Classic Sport Coupe

Malibu Classic Sedan

The new Malibu is designed for today's driving needs. Malibu's exterior features crisp, contemporary styling. Its trim lines are just right for maneuvering in city traffic. Inside, Malibu features a stylish new interior with room for 6 passengers and a spacious trunk. The standard 3.8 Liter V6 engine offers impressive fuel economy. All this plus a generous serving of standard features adds up to solid Chevy value. Chevrolets are equipped with GM-built engines produced by various divisions. Ask a salesperson for details on this and on Chevrolet's new three-year limited warranty against perforation (rust-through) due to corrosion.

Visit our showroom today and take a demonstration drive in a 1980 Chevrolet.

TIRB CHEVROLET CO.

131 ADRIAN STREET MANCHESTER

Your Guide to SHIP WATCHING

There's the 21-story Tower of History. The 45-second ride to the top is \$1.95 for adults, 75 cents for youth.

Other U.P. ship-watching spots include Marquette's Frogsie Isle Park and Sand Point near Escanaba.

Major shipping points along the Lake Michigan shoreline include Traverse City, Muskegon, Holland, Grand Haven and St. Joseph.

Elmwood Park in Traverse City is near the landing docks, but for more authentic surroundings, try Petrusan Township Park, three miles west of Northport, or Pt. St Ignace near Frankfort.

Prime locations in Muskegon include Pure Marquette Park or Muskegon State Park. In Holland, there's Kellens Park near Lake Macatawa, at Grand Haven, it's Grand Haven State Park and in St. Joseph, there's Margaret Upton Memorial Park on the St. Joseph River.

Although in financial trouble, Lake Michigan's "Love Boats" still run from Ludington and Frankfort-Elliots to three Wisconsin ports. The car ferries, which depart Frankfort-Elliots twice and Ludington three daily, are subsidized by the State of Michigan.

While freight is their main business, the ferries still transport passengers with or without automobiles. Restaurants, a cocktail lounge and a dining room are available.

Persons can watch the auto-passenger ferries load or unload from Starns Park public beach in Ludington or from the Elliotts side of Betsie Lake near Frankfort.

36th Annual Fair

Beginning on Page 20, Department 8 and 9, list all the classes for the Home-Cooking, baking, canning and sewing. Division 5 - candies in a reorganized section. Candy-makers, let's have a bigger display this year.

Special care is taken for all the entries in Needlecraft to keep them clean by covering them with plastic. Many, many people do fine work.

Most all departments have a division for children 9 and under. Let's see how much we can increase the exhibits of these talented young folks.

Dept. 14 lists crafts and hobbies for all ages. Included is a section for creative writing, Poetry, short stories and cartoons as the main categories.

Pages 47 and 48 lists all the categories for art, painting, photography and fine arts. These exhibits are placed in classrooms in the Middle School. There was room for many more exhibits last year especially Division 7, Antiques. Check your cupboards, closets, and attics for these all interesting things of the past.

The back cover of the book provides the program for the Fair. There is one change.

Friday afternoon's program says that there will be a drawing for Savings Bonds. This drawing has been changed. The drawing will be for recreational equipment for the kids.

The Fair office will be open beginning August 1 from 10 to 12 in the morning, and 7 to 9 in the evening. The phone number there is 428-7482.

Garden Spot

Question: For the last two years my Stanley prune plants seem to rot very quickly when they near maturity. They seem to have brown, sticky secretion all over them and are very soft. Is there a way to prevent this?

Answer: The symptoms you describe are characteristic of brown rot, a fungus disease which affects all stone fruits (plums, cherries, peaches, nectarines). Although you describe the fruit stage of fungus development, you should be aware that it also attacks blossoms, leaves and new twigs, often severely weakening the tree.

When the fungus moves into woody tissue, small cankers are formed. As they expand, cankers may girdle the branch or twig, causing the terminal growth to wither and die.

Fruit decay is worst on mature fruit, although immature fruit may develop the disease under wet, humid conditions.

Brown rot can be controlled with a combination of sanitation and spraying. Pick up and destroy all rotted fruit. Prune out all blighted twigs, dipping the pruning tool in a weak chlorine bleach solution after every cut to avoid spreading the fungus on the blades.

Regular application of wettable sulfur or the fungicide Benlate (Daconyl) will prevent brown rot infection. Timing of the spray is based on flower development.

The pitfall is the most susceptible part of the flower. The first spring spray should be applied when the pitfall tips (stigmas) extend above the flower, even on unopened flowers. Sprays may be needed every four to five days during warm, wet weather. During dry periods, applications of fungicide at 10-day intervals will be adequate.

Book-A-Thon Bingo

The Manchester Township Library's Book-a-thon Bingo is soon to be ending. We already have many patrons who have read the entire bingo sheet and will receive the special surprise for reading achievement. Come in and update your Bingo sheet so you will be eligible for one of the three levels of reading achievement. The first level is an invitation to the closing party, the second is a certificate for reading achievement and the third is an exciting donation from a local business.

It's A Boy!

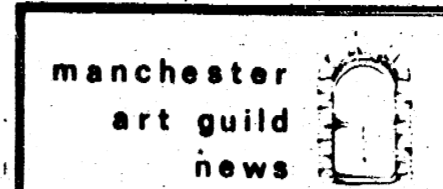
Mr. and Mrs. Robert Burkhardt are proud to announce the birth of a son, Randy Jacob Burkhardt, born July 4. He weighed 8 pounds 8 ounces and 20 1/4 inches long. Randy has two brothers, Ryan 8 years and Rodney 5 years.

Grandparents are Mr. and Mrs. Herbert Jacob of Grass Lake and Mr. and Mrs. Lorenz Burkhardt of Clinton.

Athletic Physicals To Be Given

Physical examinations for all high school and middle school students will be given on Tuesday, July 29 and Tuesday, August 5, 1980 at 10:00 a.m. each day. Dr. Hwang will be giving the physicals free of charge. Exams on Tuesday, July 29 will be at the high school and exams on Tuesday, August 5 will be at the middle school.

All students who anticipate on going out for any athletic team, as well as cheer-leading, should attend one of these dates.



HERITAGE-HARVEST SHOW

Pull out the knitting needles, the crochet hooks, the canning kettles, and the carving knives! Gather your prize pumpkins, gourds, and sunflowers! September and October are the end of the harvest season and the Manchester Art

Historical Society Sale

Bring collectibles to Old Methodist Church on Fridays or Saturdays from ten to one by August eighth for the sale. Call 428-7822 or 428-8024 for pick-up.

Men In Service

Technical Sergeant Richard W. Walter, son of Mr. and Mrs. Max W. Walter of 19687 Boetger Road, Manchester, Mich., recently participated in Global Shield 80, a Strategic Air Command (SAC) exercise at K.I. Sawyer Air Force Base, Michigan.

The exercise was designed to test the ability of SAC forces to react to emergency wartime conditions.

In addition to providing aircrews with realistic training, Global Shield 80 provided training experience for support personnel, including ground and missile crews.

National Secretaries Association

The Huron Valley Chapter of the National Secretaries Association (International) met at the home of Joyce Scott (President Elect) July 24, at 6 o'clock for their annual picnic. Three members from the "Sally Covell/Dancers", Brenda Schook and Susan Reiner of Tecumseh and Karen Boelter of Clinton, provided the entertainment for the evening. Members and guests were present from Westland, Ypsilanti, Ann Arbor, South Lyon, Whitmore Lake and Manchester.

This Chapter holds its monthly dinner meetings at Webers on the 2nd Thursday of each month.

GENERAL PRIMARY ELECTION

NOTICE IS HEREBY GIVEN, That a General Primary Election will be held in the

Township Of Manchester
(Precincts 1 and 2)
COUNTY OF WASHTENAW
STATE OF MICHIGAN
WITHIN SAID TOWNSHIP ON
TUESDAY, AUGUST 5, 1980

At The Place or Places of Holding the Election In Said Townships As Indicated Below, Viz:
MANCHESTER TOWNSHIP HALL
275 S. Macomb St. Manchester, Mich.

FOR THE PURPOSE OF PLACING IN NOMINATION BY ALL POLITICAL PARTIES PARTICIPATING THEREIN, CANDIDATES FOR THE FOLLOWING OFFICES, VIZ:

CONGRESSIONAL Representative in Congress
LEGISLATIVE Representative
COUNTY Prosecuting Attorney, Sheriff, County Clerk, County Treasurer, Register of Deeds, Drain Commissioner, Surveyor, County Commissioner and such other Officers as are Nominated at that time.
TOWNSHIP Supervisor, Clerk, Treasurer, 2 Trustees 2 Constables 2 Library Board Trustees and 1 Library Board Trustee to fill vacancy and such other Officers as are Nominated at that time.

And For The Purpose Of Placing In Nomination, Candidates Participating In A Non-Partisan Primary Election For The Following Offices, Viz:
CIRCUIT COURT JUDGE, PROBATE COURT JUDGE, DISTRICT COURT JUDGE.

And For The Purpose Of Electing:
DELEGATES TO THE COUNTY CONVENTION OF THE DEMOCRATIC PARTY.

Also appearing on the Partisan Primary Ballot will be a separate row or column containing the names of those minor parties meeting the requirement to have the party name appear on the Primary Ballot. These parties appear on the ballot for the purpose of attempting to qualify for a position on the General Election Ballot.

ALSO ANY ADDITIONAL AMENDMENTS OR PROPOSITIONS THAT MAY BE SUBMITTED

THE POLLS of said election will be open at 7 o'clock a.m. and will remain open until 8 o'clock p.m. of said day of election.

Wilma E. Lentz, Township Clerk

U-PICK GREEN BEANS
\$5 Per Bushel
MAKIELSKI TURF FARM
6550 WHEATON ROAD NAPOLEON, MICHIGAN
HOURS 8 AM TO 8 PM
ALSO AVAILABLE SWEET CORN
MELONS COMING SOON
517-536-4728

Manchester United Methodist Church
501 ANN ARBOR STREET
Ice Cream Social
Wednesday, August 6
SERVING STARTS AT 5 P.M.
BAR-B-QUES AND HOT CHICKEN SANDWICHES
AMERICAN & GERMAN POTATO SALAD · COLE SALW · BAKED BEANS
PIES · CAKES · ICE CREAM · COFFEE · MILK

VACUUM CLEANERS
ELECTROLUX
Electrolux Sales and Service
CALL
JAMES COX
MANCHESTER
428-6444 or 428-9696

Luxaire
TOTAL YEAR COMFORT
Call For Free Estimate
On Add On Heat Pump
Save YOUR Heating Dollars
and Air Condition You
Home With Same
Installation
MANCHESTER ELECTRIC
428-8243 or 428-8331

Right now, we need a fighting chance.

JIM DUNNE

for Congress.

Paid for and authorized by the Jim Dunne for Congress Committee

EVENING COUNTRY AUCTION
ANTIQUES - HOUSEHOLD - TRACTOR
MOVING TO ALASKA WE WILL SELL THE FOLLOWING AT PUBLIC AUCTION AT 8000 SMYTHE RD., MANCHESTER, MICHIGAN. TAKE M-52 TO PLEASANT LAKE RD. THEN WEST TO SMYTHE RD. THEN NORTH 1 1/2 MILES.
Wednesday, August 6 5 pm

ANTIQUE OAK DRESSER W/OVAL BEVEL MIRROR, ANTIQUE YARN WINDER, ANTIQUE PINE TABLE, ANTIQUE MILLERS TABLE W/2 DRAWERS, SET OF SERVICE FOR 12 BLUE DANUBE CHINA W/SERVING PIECES, SILVER PLATE PLATTERS, SERVING DISHES, SALT & PEPPERS, CANDLE STICKS, SET OF MEADOWBROOK STONEWARE, TREADLE SEWING MACHINE W/BROTHERS FANCY STITCH PINE STORAGE CABINET, OAK BUFFET, HEAVY PINE COUCH, TABLE LAMPS, MAPLE TABLE, FEWTER PLATES (NOT OLD), OAK TRENDLE BED, OAK CANE BOTTOM CHAIR, ANTIQUE LIBRARY TABLE, DEPRESSION GLASS CANDLESTICKS, METAL STORAGE CABINET SAFE, DULCIMER INSTRUMENT, 800 WATT INTERTHERM HOT WATER ELECTRIC HEATER, BOOKS, CHILDREN'S BOOKS, MISC. DISHES, FINE GUN RACK, OAK WHEEL CHAIR, 6000 B.T.U. AIR CONDITIONER, 2 MILK CANS, 12-2 lbs. HONEY JARS, HETRICK 4 MAN TENT, FREEZER, STAINED GLASS, PHOTO EQUIPMENT, RECORDING TAPES, ELECTRIC SWEEPER, SET OF MORGAN STONE GLASS.

ALUMINUM EXTENSION LADDER, YARDMAN 10HP RIDING TRACTOR WHEEL WGTs, CHAINS, SNOW BLADE, JOHN DEERE 2010 GAS TRACTOR W/JOHN DEERE LOADER, HYDRAULIC BUCKET WIDE FRONT, 3 FT SCRAPER, INTERNATIONAL 3 PT 3 BOTTOM PLOW, JOHN DEERE PULL TYPE DISC, 4 SECTION DRAG, WAGON W/FLAT RACK, 3 BOTTOM ALLIS CHALMERS PULL TYPE PLOW, PIG CREEP FEEDER, CHICKEN FEEDERS, CORN SHELLER, SEEDER, GARDEN TOOLS, 200 GALLON OIL TANK, BLITZER ELECTRIC FENCE CHARGER, 10 COW STATIONS, PILE OF FIREWOOD.

1976 F250 FORD SUPER CAB V-8 CAMPER SPECIAL, NICE, 1974 AMC MATADOR 2 DOOR, V-8, RUNS GOOD.

MANY MORE ITEMS NOT LISTED!

Owner LEONARD VERRELLI
Braun & Helmer Auction Services
Lloyd R. Braun, Ann Arbor, 965-9646 Jerry L. Helmer, Saline, 994-6300
INSPECTION DAY OF SALE/TERMS: CASH OR CHECK

ATTEND THE CHURCH OF YOUR CHOICE

EMANUEL UNITED CHURCH OF CHRIST

Rev. Robert Macfarlane, Pastor
Church Worship 9:30 a.m.
Plan to worship God regularly.
SEABORN UNITED METHODIST
Rev. Ronald L. Higgins, Pastor
Corner Pleasant Lake Road M-52
Sunday School 10:00 a.m., Worship Service 11:00 a.m.

ST. THOMAS LUTHERAN

Rev. Paul Puffe, Pastor
Ellsworth Road
Worship Service 10 a.m. No Sunday School.

ST. JOHN'S UNITED CHURCH OF CHRIST

Carl Asher, Pastor
Rogers Corners, Waters and Fletcher Rds.
Sunday School 9:30 a.m., Church Services 10:30 a.m.

BETHEL UNITED CHURCH OF CHRIST

Rev. Roman A. Reineck, Pastor
Schneider and Bethel Church Roads
Church Service 10:00 a.m., Sunday School 11:00 a.m.

MANCHESTER UNITED METHODIST

Rev. David Spieker, Pastor
Worship and S.S. (K-6th): 9:30 A.M.
ST. MARY'S CATHOLIC CHURCH
Father Raymond Schlabart
West Main Street

MONDAY thru Friday 8:30 a.m., Saturday 5:00 p.m., Sunday 8:30 and 10:30 a.m.

NORTH SEABORN COMMUNITY BIBLE

Tom Battersfield, Interim Pastor
Sylvan and Washburn Road
Sunday School 10:00 a.m., Worship Service 11:00 a.m. (Nursery will be available)
Junior Church Classes 11:00 a.m. Youth Meeting Senior High 6:00 p.m. Youth Choir 6:00 p.m. Evening Worship Services 7:00 p.m. (Nursery available) Wednesday Bible Study and Prayer Meeting (Nursery available) 7:00 p.m.

FAITH COMMUNITY CHURCH

Timothy Miles, Pastor
8400 Sharon Hollow Rd. off W. Austin Rd.
Worship Service 10:00 a.m. Sunday School 11:15 a.m. Sunday Evening Service 6:00 p.m. Junior & Senior High Young People's Meeting 7:00 p.m. Wednesday evening, Prayer Meeting and Bible Study 7:00 p.m. Senior Choir Practice 8:00 p.m.

IRON CREEK CHURCH

Rev. Ralph Janofski, Pastor
Worship Service 10:00 a.m. Sunday School 11:15 a.m. Youth Service 6:30 p.m. Evening Service 7:30 p.m. Wednesday Evening: Junior Choir 6:30 p.m., Bible Study and Prayer Meeting 7:30 p.m., Senior Choir 8:30 p.m.

ZION LUTHERAN CHURCH

Rev. John R. Morris, Pastor
3050 S. Fletcher Road
Sunday School 9:00 a.m. Family Worship 10:15 a.m.

ST. JOHN'S LUTHERAN CHURCH

Rev. Dennis A. Falk, Pastor
Austin Road, Bridgewater, Michigan
Sunday School 9:15 a.m. Worship 10:30 a.m.

VICTORY BAPTIST

Dr. Clare Gleason, Pastor
428 S. Macomb Street, Phone 428-7262
Sunday School 9:45 a.m. Morning Worship 11:00 a.m. Evening Worship 6:00 p.m. Youth Meeting 7:00 p.m. Wednesday: Prayer Meeting 7:00 p.m.

ST. BARNABAS EPISCOPAL CHURCH

Rev. Jerrold F. Beaumont, "Vicar"
Old US 12, 1/4 mile west of M-52, Chelsea.
10:00 a.m. Holy Eucharist and Morning Prayer.

CLINTON ASSEMBLY OF GOD

Charles Sanders, Pastor
12500 Allen Rd., Clinton, MI. (corner of Allen Rd. and Manchester-Clinton Rd.)
Sunday School 9:45 a.m.; Morning Worship 11:00 a.m.; Evening Service 6:30 p.m.; Wed. evening Bible Study and C.A.'s, 7:00 p.m.

CHURCH OF JESUS CHRIST OF LATTER-DAY SAINTS (MORMONS)

Jerry L. Larson, Branch Pres.
Rebekah Hall, M22, Chelsea.
Priesthood, Relief Society, Apy, Primary
9:30 a.m., Sunday School 9:55 a.m. Sacrament 10:20 a.m.

FAITH COMMUNITY CHURCH

Saturday evening, August 2nd, at 5:30 p.m., the Faith Circle will have their annual picnic at the Tom Carlton home. Bring a dish to pass and own beverage. The meat will be furnished. In case of rain the potluck will be held at the church.

Sunday, August 3rd, during the 10:00 a.m. service, new members will be received into fellowship. Missionary Time observed during 11:00 a.m. Sunday School hour.

EMANUEL UNITED CHURCH OF CHRIST

Thursday, July 31, 10 a.m. Occupational Therapy. 7:00 p.m. Aerobic Dance Class.

Sunday, August 3, First Sunday Communion.

Tuesday, August 5, 10 a.m. Occupational Therapy. 7:00 p.m. Boy Scouts.

Wednesday, August 6, 10 a.m. Occupational Therapy. 8:00 p.m. Alcoholics Anonymous. 8:00 p.m. AI Anon.

IRON CREEK CHURCH

The "Melody Makers", a family of seven, will be at the Iron Creek Community Church Sunday, August 3 at 10 a.m. The Metzger family sing and use puppetry to minister to both young and old.

The Sunday School picnic will be at Wolf Lake Saturday, August 2nd from 11 a.m. till 4 p.m. Games and activities for all ages will be planned and potluck dinner at 1 p.m.

BETHEL UNITED CHURCH OF CHRIST

Sunday, August 3, 10:00 a.m. Worship Service - Communion.

August 4th - 6th, Sr. Youth Canoe Camping Trip.

MANCHESTER UNITED METHODIST CHURCH

The Manchester United Methodist Church will hold its Annual Ice Cream Social on Wednesday, August 6th. Serving begins at 5 p.m. Everyone is welcome!

The Pastor-Parish Committee of the Manchester United Methodist Church will meet at 7:30 p.m. on Thursday, August 7th at the church. All members are urged to attend.

The Importance of Good Personal Protection

The human body can take much wear and tear in stride. But it cannot cope with the physical punishment that can be dealt by mishaps with today's powerful machinery and chemicals.

"Because we have natural physiological limitations, we need to sometimes 'armor' to help us safely cope with the synthetic, mechanical environments where so many of us function much of the time in pursuit of a livelihood," says Howard J. Doss, Michigan State University Cooperative Extension Service safety specialist.

The armour consists of personal protective equipment (PPE) which has been used for years with marked success in many nonfarm industries. It has prevented or reduced the severity of injury or illness in countless work mishaps or exposures to harmful agents.

The following listing may be helpful in formulating a safety program that should be practiced throughout the year.

-Protect your head with a hard hat when performing construction work, trimming trees, repairing machinery and doing other jobs that have a high head injury risk.

-Protect your vision with safety eyewear, goggles, safety glasses, face shields, when applying pesticides and ammonia fertilizer, working in heavy dust or in the shop, etc.

-Protect your hearing with acoustic ear muffs or inserts when working with noisy equipment, blasting, etc.

-Protect your lungs with the correct respiratory equipment when working in dusty or moldy conditions, with chemicals, while working in bins and silos and in manure storage units.

-Protect your hands with job-matched gloves and barrier creams.

-Protect your feet with safety shoes on all farm jobs.

-Protect your skin with impervious garments when using toxic or irritating chemicals.

SHOP THE WANT ADS

CONSOLIDATION REPORT OF CONDITIONS OF UNION SAVINGS BANK OF MANCHESTER

And Foreign and Domestic Subsidiaries. At the close of business June 30, 1980 a state banking institution organized and operating under the banking laws of this State and a member of the Federal Reserve System. Published in accordance with a call made by the State Banking Authorities and by the Federal Reserve Bank of this District.

		Dollar Amounts in Thousands			
		DP	NE	THM	
Assets	1. Cash and due from depository institutions (From Schedule C, item 6)	11	12	3	987
	2. U.S. Treasury securities	12	12		590
	3. Obligations of other U.S. Government agencies and corporations	13	13	1	000
	4. Obligations of States and political subdivisions in the United States (From Schedule B, item 2, Column E)	14	14	1	377
	5. All other securities	15	15		89
	6. Federal funds sold and securities purchased under agreements to resell	16	16		700
	7. a. Loans, Total (excluding unearned income) (From Schedule A, item 10)	21	13	159	
	b. Less: Allowance for possible loan losses	22		159	
	c. Loans, Net	23		13	000
	8. Lease financing receivables	24			918
	9. Bank premises, furniture and fixtures, and other assets representing bank premises	25			19
	10. Real estate owned other than bank premises	26			252
11. All other assets (From Schedule G, item 3)	27			21	
12. TOTAL ASSETS (sum of items 1 thru 11)	28			9	
13. Demand deposits of individuals, partnerships, and corporations (From Schedule F, item 1, Column A)	34	14	4	355	
14. Time and savings deposits of individuals, partnerships, and corporations (From Schedule F, item 1, Columns B & C)	35			29	
15. Deposits of United States Government (From Schedule F, item 2, Columns A & B & C)	36			1	
16. Deposits of States and political subdivisions in the United States (From Schedule F, item 3, Columns A & B & C)	41			290	
17. All other deposits (From Schedule F, item 4, Columns A & B & C)	42			290	
18. Certified and officers' checks (From Schedule F, item 5, Column A)	43			20	
19. Total Deposits (sum of items 13 thru 18)	44			4	
a. Total demand deposits (From Schedule F, item 6, Column A)	45			15	
b. Total time and savings deposits (From Schedule F, item 6, Columns B & C)	46			None	
20. Federal funds purchased and securities sold under agreements to repurchase	47			None	
21. Interest-bearing demand notes (note balances) issued to the U.S. Treasury and other liabilities for borrowed money	51			None	
22. Mortgage indebtedness and liability for capitalized leases	52			None	
23. All other liabilities (From Schedule H, item 3)	53			188	
24. TOTAL LIABILITIES (excluding subordinated notes and debentures) (sum of items 19 thru 23)	54			20	
25. Subordinated notes and debentures	55			None	
26. Preferred stock a. No shares outstanding	56			None	
b. No shares authorized	57			29948	
27. Common Stock a. No shares authorized	58			29948	
b. No shares outstanding	59			599	
28. Surplus	60			717	
29. Undivided profits and reserve for contingencies and other capital reserves	61			383	
30. TOTAL EQUITY CAPITAL (sum of items 26 thru 29)	62			1	
31. TOTAL LIABILITIES AND EQUITY CAPITAL (sum of items 24, 25 and 30)	63			21	
32. MEMORANDA	64			1	
1. Amounts outstanding as of report date:					
a. Standby letters of credit, total					
b. Time certificates of deposit in denominations of \$100,000 or more					
c. Other time deposits in amounts of \$100,000 or more					
2. Average for 30 calendar days (or calendar month) ending with report date:					
a. Total deposits (corresponds to item 19 above)					

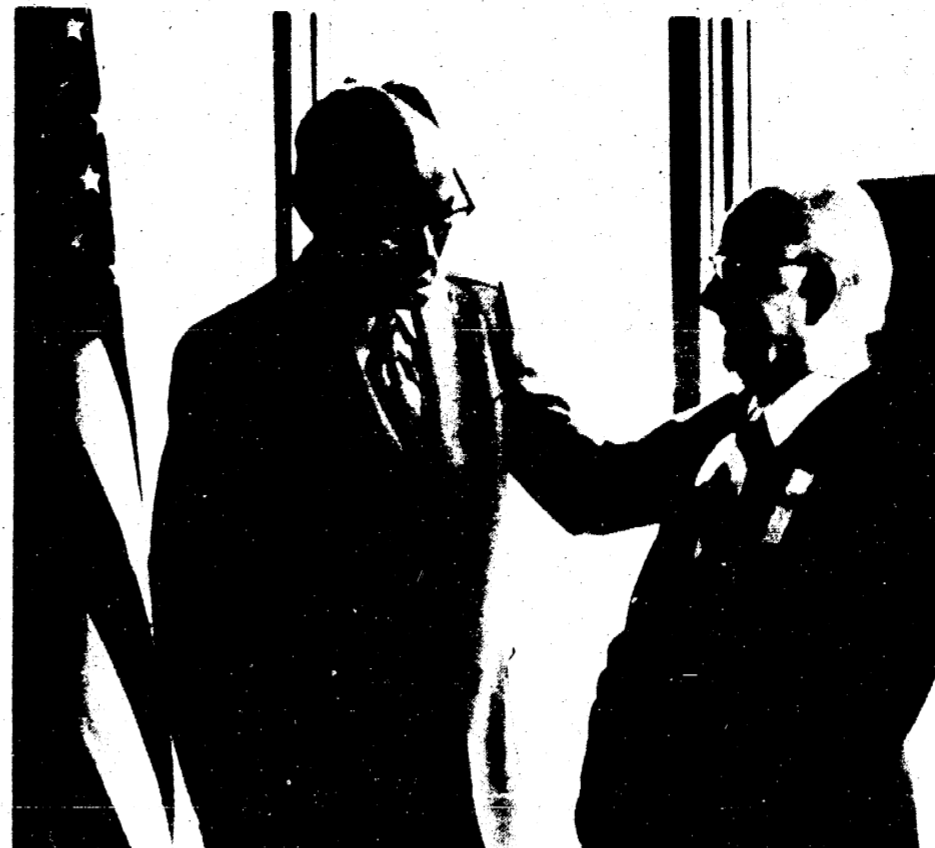
I, Ronald J. Walker, Cashier, of the above-named bank do hereby declare that this report of condition has been prepared in accordance with the instructions issued by the Board of Governors of the Federal Reserve System and the State Banking Authority and is true to the best of my knowledge and belief.

Ronald J. Walker

We, the undersigned directors, attest the correctness of this report of condition and declare that it has been examined by us and to the best of our knowledge and belief has been prepared in accordance with the instructions issued by the Board of Governors of the Federal Reserve System and the State Banking Authority and is true and correct.

W. Ward Mann, Director
Stanston G. Reesch, Director
Ray C. Kirk, Director

State of Michigan County of Washtenaw ss: Sworn to and subscribed before me this 28th day of July, 1980
Diana J. Gotta 5/9/83, Notary Public



Two property tax cutters from opposite ends of the country and different political parties met in Detroit this week to discuss campaign strategy.

Bob Tisch (left) of the pending Tisch Tax Cut Amendment in Michigan swapped stories with Paul Gann of California who co-authored the Jarvis-Gann Proposition

13 Amendment in California in 1978.

The Tisch Tax Cut Amendment will cut property taxes to half the value of all property as of 1978, require the State to match reduced tax dollars appropriated to schools, cities, townships, counties, etc. and require 60% voter approval for any statewide tax increase.

Hartmann Carpentry
Licensed & Insured Residential Builder with 12 years experience
Pole Barns Roofing Decks Rough Ins
Additions Siding Remodeling Finish Work

Kirk Excavating
SAND - GRAVEL - FILL DIRT BASEMENTS - DRIVEWAYS
DAVE KIRK
14180 Schleweis Rd. Manchester Phone 428-7936

HARDWOODS
KILN DRIED, 12 SPECIES, FURNITURE QUALITY, FIREPLACE MANTLES, FLOORING, PANELING, MILLSHOP
Bridgewater Hardwood
9055 AUSTIN ROAD PHONE 428-1005 BRIDGEWATER, MICH.

ALUMINUM SIDING SEAMLESS GUTTERS - ROOFING
*Storm Windows *Blown-In Insulation
*Storm Doors *Hand and Power Tools
*Fascia and Soffit Systems *Shutters
*Prime Replacement Windows *Trim Coils
*Also Anaconda & Reynolds Aluminum
R. D. Kleinschmidt Inc.
19860 SHARON VALLEY RD. MANCHESTER, MICHIGAN (NEAR CORNER OF M-52) OR CALL 428-8836 428-9335

TISCH TAX CUT AMENDMENT ORGANIZES FOR WIN IN NOVEMBER

Expressing confidence that he is leading a tax revolt that consists of the majority of Michigan's nine million citizens who are "mad as hell and not going to take it anymore", Robert Tisch, this week began developing an education campaign to direct voter support for the Tisch Tax Cut Amendment on the November 4 ballot.

"If we can raise just 10c to put against every dollar from the special interest war chest of the Michigan Education Association (teachers' union), we'll be able to cut property taxes in November," Tisch said following a strategy meeting in Detroit with Paul Gann, co-author of the successful Jarvis-Gann Proposition 13 Tax Cut Amendment in California.

"The truth is that property taxpayers will vote themselves a 50% cut in taxes based on 1978 property values if they vote for the Tax Cut Amendment," Tisch said. "The teachers' union and the politicians in Lansing - including Governor Milk-in-em - will deluge the airwaves with slick ads crying 'disaster if the Tisch Tax Cut is voted into the Michigan Constitution,'" Tisch said. "We'll see the kind of ads that the teachers' union and the state capitol politicians ran in Michigan and California in 1978...a 50% tax cut will isolate the elderly, riot the poor, slash the state police force and starve the children on ADC."

"We want to be able to point out that a 50% property tax cut is desperately needed in Michigan and will result in cutting less than 14% of the fat out of the state budget and bureaucracy," Tisch said.

Tisch, 60, is the Drain Commissioner of Shiawassee County. He resides in rural Langsburg where he and his wife have raised four children. Tisch works from a basement office in the Corunna County Court house, halfway between Flint and Lansing.

Continued on Page 9

Spear & Associates, Mann, Realtors
122 WEST MAIN PHONE 428-8388 DAILY MANCHESTER

JUST LISTED - Unique home in the Manchester Area, on 5 acres with small lake, 4 bedrooms, 3 baths, walkout basement with rec room, needs some decorating & inside finishing work, 40 x 40 pole barn, 10% Land Contract terms available. \$112,000.

10 ACRE FARM - With 110 acres more available, 4 bedroom home, 36 x 80 barn & outbuildings, 15 miles to Ann Arbor, Manchester Schools. \$85,000.

THREE BEDROOM RANCH - In excellent condition, Manchester Area, 1 1/2 bath, central air-conditioning, family room with fireplace, full basement, attached 2 car garage, on one acre, 16 x 20 deck, owner anxious to sell. Mid \$70's.

MANCHESTER VILLAGE HOME - Close to churches & grocery store, 3 bedrooms, 1 1/2 bath, 66 x 198 lot, garden area & barn, Land Contract terms available. \$52,000.

NEED GROWING ROOM? This spacious bi-level has 5 bedrooms, 2 1/2 baths, walk-in pantry, beautiful fieldstone fireplace in family room, 28 x 40 pole barn, on 2 acres, completely fenced, Manchester Schools, terms available. \$118,000.

SPACIOUS CONTEMPORARY RANCH - 3,000 sq. ft., 9% Land Contract terms available, Raisin River runs along property, 4 bedrooms, 4 1/2 baths, formal dining room, many built-in cabinets, fireplace, family room, 2 1/2 car garage, east of Manchester, on 2.9 acres. \$120,000.

NEW LISTING - 2.88 Acres in Manchester Township, rolling building site with well & drainfield already in. \$16,500.

1.22 ACRE - Perfect building site near Raisin River, 5 miles west of Manchester. \$10,900.

NEW LISTING - 78 x 145 Canal Lot, on Little Wolf Lake, 3 1/2 acres, Napoleon Schools, terms available. \$7,500.

90 x 75 LAKE LOT - On Sweeney Lake, 8 miles so of Jackson/Washtenaw County line. \$12,900.

OFFICE HOURS
Monday thru Friday 9 a.m. to 5 p.m. Saturday 9 a.m. to 12 noon
OFFICE PHONE 428-8388
EVENINGS AND WEEKENDS
JIM MANN 428-8074 ELLIS PRATT 428-8562

**PUTTS
'N
PARS**



**MANCHESTER MEN'S LEAGUE
CENTREVIEW**

V. Wurster-Brown	220.5
Nickerson-Bailey	218.5
Carpenter-Riley	218.5
Roller-Fielder	209.5
Eversole-Ray	192.5
Fields-Rankin	187.5
Benedict-Bakeman	182
Bradley-Lobbestael	182
Shuey-Perkins	178.5
Goodman-Lee	175
F. Wurster-Moore	172
Stautz-Guernsey	170.5
Smith-Beach	160
McGee-Rutherford	157.5
Daubner-Gotts	136.5
Steele-Steele III	102
Low Net: 0-9 Nickerson 34.	
Low Net 10-20 Beach 34	
Closest to pin #15 Connors	
Closest to pin #17 Carpenter	
Best Poker Hand Gotts 5-6's.	
Most Pars Eversole 5	

**CLARK LAKE-MANCHESTER LATE
LEAGUE**

Lamb-Koebbe	190
Steele-Milosh *	171
Blossom-Chapman	188
R. Walters-J. Walters	186
Gould-Uphaus	184
Widmayer-Fielder	181.5
Scully-Gill	173
Hamilton-Walton	165
Popkey-Stockwell	164.5
Marrison-McGuire *	152.5
Knauss-Herman	159
Hughes-Hinkley	157
Adams-Ross	147.5
Daniels-Hall	145
Day-Roark	141.5
Little-Hough	141
Taylor-Neef	140.5
Herman-Walter	135
Low w/h 11-20 Net 30 Blossom.	
Low w/h 0-10 Net 33 Lamb.	
Most Bogies, Jim Walters.	
Closest to pin #5, Dennis Herman.	
* Pending Make-up	

NEW CLARK LAKE 36

D. Southwell-D. Sayers	153
G. Brokaw-D. Roberts	152
B. Bunney-D. Petch	171
J. Wright-T. Short	187.5
C. Day-W. Frey	168
D. Steele-G. Stripp	159
J. Schaffer-L. Goodell *	159
J. Wallace-T. Blossom	158.5

**CLINTON
THEATRE**

Friday & Saturday
7:30 & 9:30
Sunday 7:30

Bands make it rock...
Roadies make it roll!

PG United Artists
Recorded in DOLBY
STEREO BY SPREAD

FRIDAY MIXED GOLF LEAGUE

Eversole	36.5
Perkins	36
Wagner	35.5
Shadley	32.5
Nickerson	32
Ray	31.5
Finkbeiner	31.5
Moore	31
Kuebler	31
Bailey	30.5
Niethammer	29.5
V. Wurster	29
F. Wurster	28.5
Fielder	28
Gilbert	28
Evilizer	26
F. Wurster	26
Dresch	25.5
Whittington	25.5
Mann	25
Rusha	20.5



**SUMMER
SHOE
SALE
20% OFF**



**Hush Puppies
activates
your sportswear**

It's not a jogging shoe... it just feels like one. However, many of the same support and comfort features that make performance shoes great are inside. Lightweight traction soles and supple leathers team up for the season's best sportswear wardrobe. The price is a winner too.



The Clothes Line
134 EAST MAIN STREET
MANCHESTER, MICHIGAN 48158
PHONE 313-428-7775

Finishes In 1st Place

The Little League - Girls Softball Angels Team finished in first place with a 9 and 3 team record. Awards and statistics for each girl are:

Amy Broucek, Golden Glove Award, 32 ab, 17 r, 24 h, 4 eb, 11 rbi, .750 ave. 6 flys caught.
Lori Dettling, Highest Batting % Award, 17 ab, 12 r, 13 h, 2 eb, 10 rbi, 1 hr, .784 ave. 1 fly caught.
Amy Broucek, Most RBI Award, 28 ab, 10 r, 17 h, 5 eb, 17 rbi, .607 ave. 4 flys caught.
Alicia Haussler, Coaches Award, 26 ab, 3 r, 6 h, 1 rbi, 230 ave.
Toni Kasapis, Most Determined Award, 30 ab, 9 r, 17 h, 1 eb, 13 rbi, .566 ave. 1 fly caught.
Michelle Kuhl, Best Hitter Award, 32 ab, 16 r, 23 h, 1 eb, 15 rbi, 1 hr, .718 ave. 1 fly caught.
Laura Meister, Sportsmanship Award, 23 ab, 7 r, 12 h, 5 rbi, .521 ave.
Kristin Miller, Defensive Outfielder Award, 29 ab, 6 r, 16 h, 1 eb, 9 rbi, .551 ave.
Lisa Rufalski, Rookie of Year Award, 30 ab, 9 r, 20 h, 2 eb, 9 rbi, .666 ave. 1 fly caught.
Wendy Rhees, Most Aggressive Award, 27 ab, 4 r, 11 h, 6 rbi, .407 ave.
Sherry Rickelmann, Most Improved Award, 29 ab, 9 r, 17 h, 4 eb, 8 rbi, .586 ave.
Loretta Schroen, Most Valuable Award, 36 ab, 17 r, 27 h, 4 eb, 10 rbi, .750 ave. 10 flys caught.

Cheerleaders Attend Spirit Conference

The Manchester Middle School 7th and 8th grade cheerleaders attended the Eastern Michigan University Spirit Conference recently under the supervision of Manchester teacher Miss Dettling.

The 7th and 8th grade cheerleaders participated in the four day Spirit Conference. The 7th grade collected achievement awards of three red ribbons, the eight grade collected two red and a white ribbon achievement awards.

The seventh grade cheerleaders are: Rebecca Darby, Rita Talcott, Leslie Duncan, Lynda Kasinski, Theresa Brown and Chris Getty. From the eighth grade they are Kathy McLennan, Lisa Buono, Lisa Sloat, Julie Brady, Missie Hamilton, Kelly Bristle and Paula Lavender.

**SHOP THE
WANT ADS**

Tisch

The simple facts.

"To help us win, we have begun building a campaign strategy that utilizes our petition gathering volunteers, enlists the support of non-partisan representative groups like the Michigan State Grange and the Michigan Association of Realtors and the professional involvement of McMaster Associates Public Relations. The Troy-based public relations firm was instrumental in two 1978 constitutional amendments in Michigan: the Headlee Tax Limitation Amendment and the Deposit of Public Funds Amendment and is the most professionally honored public relations firm in Michigan. We expect they will help us outsmart the opposition since we know in advance that the taxpayers can't outspend the tax spenders in a ballot issue campaign."

On July 7, the Tisch Coalition for a Tax Cut in Michigan filed 420,571 petitions, 46% more than the required 286,000, to assure the Tax Cut Amendment a place on the November 4 ballot.

"There's only one tax cut on the ballot," Tisch said when filing. "The Governor's amendment is a tax increase and so is the teachers'."

Overeaters Anonymous

The Overeaters Anonymous will meet Monday, August 4. Newcomers 6:30 p.m., regular meeting at 7 p.m. at the Emanuel United Church of Christ.

Notice - Manchester Township Residents

For absentee ballots for the August 5, 1980 General Primary election, contact Wilma E. Lentz, Clerk at the Township Office - 275 S. Macomb (phone 428-7090) or by calling 428-8244 when the office is closed.

Storm Damage

dry ice to reduce the food spoilage problem; and (6) public information releases were made to advise citizens on how to cope with the power outages and other effects of the storms.

General Economic Impact

At the present time, the financial forecast for state government is bleak. The economy of the state is now in a recession. Current state budget estimates for fiscal year 1980 has revealed a deficit of \$120 million. State Government already has established severe program cutbacks based on earlier estimates. As the economy further deteriorates, more budget cutbacks will be necessitated. Unemployment in the state is 14.0% which is an increase of over 50% of a year ago. This is nearly double the national average of 7.79%. As the automobile industry continues to slump the state's unemployment will go even higher.

The unemployment rate in all of the counties affected is over the national average and seven out of the ten counties have rates exceeding 12%. Specifically, Wayne and Berrien Counties which were among the two hardest hit by the disaster

had unemployment rates of 15.7% and 13.3%, respectively. It is reported that the City of Benton Harbor in Berrien County, also hard hit, has an unemployment rate of 36%. In addition, the state welfare rolls now top 13% of the state's population due to the combination of recession and inflation.

The proposed federal budget cutbacks to the state will worsen the existing financial crisis. In addition, state government has a Disaster Contingency Fund, but this fund has been recently depleted to provide local reimbursement for a previous disaster. The state has no other funding programs available for this purpose.

Specific Extend and Nature of Federal Aid Needed

I find that the necessary response to alleviate the existing situation at this time is beyond the capabilities of the state and affected local governments. Accordingly, federal assistance is requested to be made available in the ten county disaster-affected areas as follows:

(1) Contributions to state and local governments for emergency debris clearance costs, in accordance with P.L. 93-288, Section 306 (a)(4), for the reduction of the immediate threats to life, property, and public health and safety presented by fallen trees and branches and those broken or hanging.

(2) Low Interest Disaster Recovery and Economic Injury Loans by the Small Business Administration for damage to homes, businesses, and farms.

(3) Low interest loans as provided by the U.S. Department of Agriculture.

The request to the Small Business

Administration and the Department of Agriculture will be submitted directly to those agencies under separate cover.

In summary, the local units of government in the disaster-affected areas and their citizens have been greatly affected by these severe thunder and windstorms. The effects of the storms will be felt for some time to come. It has taken several days to recover from the power outage and it will take several weeks before fallen trees and branches can be removed and trees cleared of branches dangerously hanging with attendant threats to public safety. In addition, local government budgets will be overburdened to pay for the debris clearance costs and utility costs will rise resulting from affected public utilities increasing rates to absorb the large damage costs. These factors will have negative effects on the economy of the areas affected by this disaster.

Favorable consideration of this request would be great assistance to the citizens of the affected area and the State of Michigan.

Legal Notice

**NOTICE OF PUBLIC HEARING
SHARON TOWNSHIP PLANNING
COMMISSION**

PLEASE TAKE NOTICE that the Sharon Township Planning Commission will hold a Public Hearing on proposed amendments to the Sharon Township Zoning Ordinance on Wednesday, August 6, 1980, at 7:30 P.M. at the Sharon Township Hall, 18010 Pleasant Lake Road. The proposed amendments would:

1. Amend the Sharon Township Zoning Ordinance to Create a Light Industrial District in the Township; and
2. Amend the Township Zoning Map to create a Light Industrial District in which the following described real property would be located, thus changing the zoning on this parcel from A-1, Agricultural, to the new Light Industrial District:

12.1 acres described as being immediately North of the Southern most 10.01 acres of the N 2/3 of E1/2 of the NE 1/4, Sec. 35, T3S, R3E, Sharon Township, Washtenaw County, Michigan. Said parcel is located on the West side of M-52, South of Bethel Church Road.

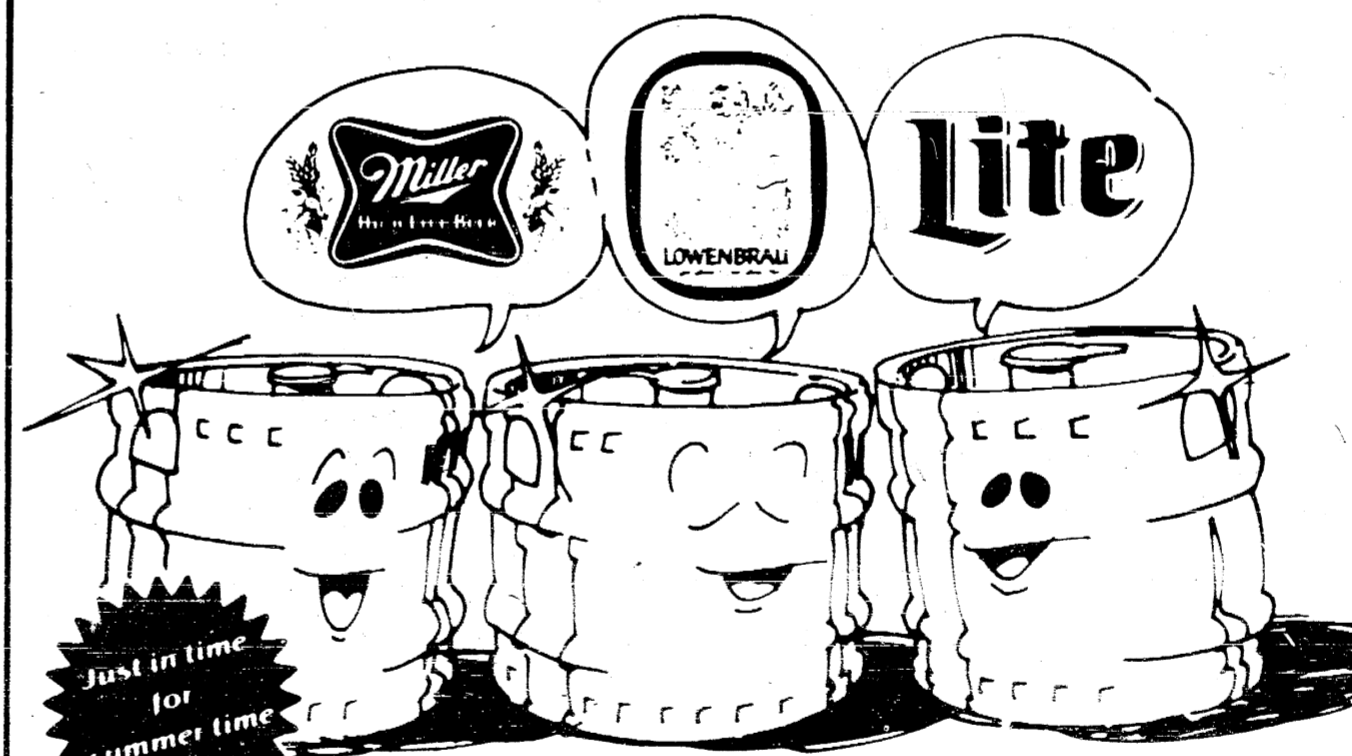
The tentative text of the proposed Amendment and a map of the premises proposed to be rezoned is available for examination through the Township Clerk, Duane R. Haselschwerdt, 8310 Chelsea-Manchester Road, Manchester, Michigan, by calling for appointment at 428-7733.

**SHARON TOWNSHIP PLANNING
COMMISSION**

WILLIAMSON
HEATING & COOLING SYSTEMS
John Steele, Jr.
INSTALLATION
AND REPAIR
Phone 428-8692

**MANCHESTER
CARPET CLEANERS**
"DEEP STEAM
EXTRACTION"
VERY REASONABLE RATES
FREE ESTIMATES
SPECIAL RATES
TO CHURCHES
RESIDENTIAL - COMMERCIAL
DON STEELE
PHONE 428-7319

**A new face
for three familiar names**



NEW QUARTER BARREL SIZE!

Serves over 100 12 oz. glasses. Perfect for small groups (or makes a great weekend for two!). Quick, easy tap.

ASK YOUR RETAILER for the new Quarter Barrel size now available at many of your favorite party stores.

Distributed by O & W Inc., Ann Arbor, Michigan

Storm Damage

Gov. William G. Milliken reported Friday that the thunderstorms which struck 10 Michigan counties on July 15, 16 and 20 caused damage to public and private facilities estimated at \$177.3 million.

Milliken sent President Carter a letter documenting his earlier request for a Presidential Emergency Declaration for Michigan.

Milliken said that the counties of Allegan, Berrien, Calhoun, Cass, Jackson, Ottawa, St. Joseph, Van Buren, Washtenaw and Wayne suffered public damage of \$17.1 million, private damage of \$130.2 million and agricultural damage of \$30 million.

The text of his letter follows:
Dear Mr. President:

On July 23, 1980, I respectfully request you to declare that an "emergency" exists in the State of Michigan under the provisions of the Disaster Relief Act of 1974, Public Law 93-288, Section 301 (a), as federal assistance is necessary to supplement state and local efforts to

recover from a series of thunderstorms with unusually high winds that struck the state recently. This follow-up letter provides the damage assessment data and other information which was not available at the time the initial letter was forwarded.

Severity and Magnitude of the Disaster
As mentioned in my earlier letter, the series of storms struck initially on July 15, 1980, then again on July 16, and a third time on July 20. These storms were unusually severe as they were accompanied by winds exceeding 70 miles per hour. In some instances, winds were measured at over 100 miles per hour. The storms downed numerous power lines, trees, and tree limbs and resulted in damage to homes, businesses, and other property. Power outages still prevail today in some areas and trees and limbs continue to be a threat to the health and safety of the public. Brush piles and fallen trees present a continual public safety threat. Local governments have expended considerable overtime for work crews and contracted with private contractors for assistance

throughout the damage area.

The specific disaster-affected area includes the following ten counties: Allegan, Berrien, Calhoun, Cass, Jackson, Ottawa, St. Joseph, VanBuren, Washtenaw, and Wayne.

During the incident period of this disaster, total damage was reported at \$177.3 million. This includes public damage of \$17.1 million, private damage of \$130.2 million, and agricultural damage of \$30 million. Of the \$130.2 million private damage, privately owned public utilities suffered approximately \$3.8 million damage.

State and Local Efforts

In response to this disaster, and in accordance with state statute, I proclaimed a state of disaster on July 21, 1980. Under this proclamation, I directed utilization of applicable state resources as provided by the Michigan Emergency Preparedness Plan as follows: (1) the Department of State Police provided the District Emergency Services Coordinators to advise and assist local governments in recovery operations and damage assessment; (2) the Emergency Services Division, Department of State Police assigned personnel to compile damage assessment information; (3) a special task force was established to conduct an aerial survey of the damage area and to provide contacts with affected local government officials and the news media; (4) the Governor's Press Section provided releases to the news media for advising the general

public on the status of the emergency and protective actions taken; (5) the Department of Agriculture provided food inspection staff to provide advice on handling food supplies where refrigeration was lost due to electrical failure and to monitor potential hazardous foods; and (6) the Department of Transportation provided manpower and special equipment to assist local governments clear debris.

Since primary response was provided by affected local governments, they reported the following actions in recovering from this disaster: (1) the various local emergency services coordinators for the political subdivisions affected established emergency operating centers and organized and coordinated disaster relief forces; (2) local police departments provided traffic control, notification of persons in affected areas, and liaison to other levels of government; (3) local public works departments cleared fallen trees and branches from roadways and parks, provided barricades around danger areas, provided temporary control devices where traffic lights were inoperative, assisted public utilities cope with fallen power lines, and provided emergency power to disabled sewer lift stations and water supply systems; (4) local fire departments provided light and heavy rescue services, emergency medical services, and liaison to other government agencies on fire and safety related matters; (5) local government obtained and distributed supplies of

Continued on page 9

Car Care Specialists

**Automotive
AIR CONDITIONING
Service**

**COMPLETE LINE OF TIRES
IN STOCK
STOP IN AND SEE ME
FOR YOUR BEST TIRE
DEAL**

**FRONT-END
ALIGNMENT**



**24 HOUR
SERVICE**

FILLYAW'S SERVICE

PHONE 428-8576 327 WEST MAIN

BUSINESS STATIONERY

That Gets You The Business

Rightly Thermographed!
Yet Costs So Little!

You'll like the look of success that low-cost Coronet Thermographed Stationery gives your company. Feel the raised print! So elegant it says you are not only a successful company, but also says you have good taste!

Business cards and stationery at very moderate cost. Ask us for layout samples.

**Manchester Enterprise
150 East Main Street**

VIRGINIA JOHNSON, M.D.

**Announces the Opening of Her
Practice In
FAMILY MEDICINE
On July 28 At
500 Galloway Drive
Manchester, Michigan**

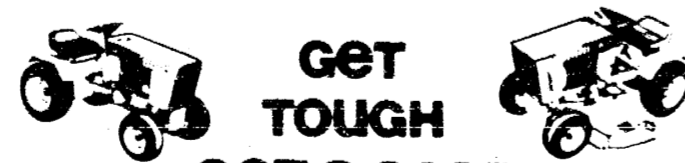
**Hours By
Appointment**

**Phone
428-8381**

WE'VE GOT A CASE FOR YOUR PLACE



Whether you have a city lot or a few acres to take care of, there's a tough Case Lawn and Garden Tractor that's tailor-made. Choose from a riding mower, lawn tractors, garden tractors, loader tractors and even a loader/backhoe. From 2 hp thru 18 hp. ... Plus all the attachments you'll need to handle the tough jobs at your place.



**GET
TOUGH
GET A CASE**

K & W EQUIPMENT INC.

11100 Chelsea-Manchester Rd. Manchester, Michigan
428-7666



Pankowski For Drain Commissioner



Chester J. Pankowski will be in the Democratic Primary August 5th for Drain Commissioner. The Drain Commissioner is primarily responsible for designated county drains and inland lakes with established legal lake levels. Chester has a Master Degree in Geography and has worked for the past three Drain Commissioners as Director of Lake Management and currently as Senior Drain Inspector. A Sierra Club member Chester has worked on several local issues including Riverside

Place, Barton Pond, Liberty Knolls, and the Natural River Program for the Huron River.

During the 1980's usage of vacant land will be an important issue in every community in Washtenaw County. Some lands should receive a higher priority for planned development due to location, current usage, and topography. However, there are lands that must be set aside for future generations to enjoy. That is to say, there should not be blind opposition to development but opposition to blind development. Unfortunately, the Headlee amendment has compounded the development/open space issue because it encourages new development which increases the tax base. The challenge of the 1980's is the identification of lands that must remain as open space and citizen participation in planning to eliminate negative environmental impacts.

As Drain Commissioner Chester J. Pankowski has said he would work with citizen groups for the preservation of creeks. Stimulate environmental concern by providing information on creekshed ecology and management. Help protect natural habitat areas from destruction. Insist that environmentally sound techniques be employed using appropriate technology when drainage work is necessary. Promote ecological flood control methods by insisting flood plain corridors be designated and restrictions enforced. Maintain an effective drain maintenance program. Identify all of the retention ponds in Washtenaw County and

establish a maintenance program for them. Help improve our human environment by promoting linear creekbank nature parks.

HIT OR MISS

signers of all kinds and as printers.

In his experiments 30 students were divided into test groups and given the Harris test for handedness and the Torrance Test for Creative Thinking. Lefties scored higher on creativity, elaboration and originality.

Originality he says is the ability to produce new ideas. I've done this but when younger was soundly spanked for trying to do so.

Elaboration is the ability to produce new ideas. I've also tried this but I can't remember any of them that worked.

"This pilot study" says the professor, "lays the groundwork for further experiments in the area of right-handedness versus left-handedness, but there may be more than just the creative advantages which our study indicates."

Now I don't quite understand all this but it sounds good and as one who is chronically left-handed I believe it makes us all kind of a superior being and I'm glad someone has finally recognized that fact.

And then there is the story about the chap who went to his doctor for his annual check-up, was ushered into the inner sanctum and removed his shirt and undershorts, climbed onto the examination table. Then in came the doctor with his pad, pen, stethoscope, etc., and proceeded to conduct the examination when the

nurse came to the door and said "Doctor, can you come to the phone for a moment, you are urgently wanted."

"OK", replied Doc and left the room. The examinee sat on the examining table for several minutes and then his curiosity got the best of him. He slid off the table and tiptoed over to the table where the doctor had left his pad and notations.

On it he saw his name, address, and a couple of lines below a notation "S O B".

He looked at this for a couple of moments and the longer he looked the madder he became, so he went back to the table and started to put on his shirt and was buttoning it when back in came the doctor.

"What in the world are you doing he asked his patient. "Getting out of here", was the reply. "I thought that you were a friend of mine. You have been my doctor for years, and also, I thought my friend. You might think I am one of those but you didn't have to write it down if you did think so, did you?"

"Write what down?" queried the doctor. "That there" said the patient pointing to the three letters on the pad."

Whereupon the doctor proceeded to laugh hysterically. When he could control himself, chuckled again and said "You darned old fool that S. O. B. merely means Short of Breath".

Sometimes is just gossip that has become respectable with age.

A wise doctor is one who can diagnose the ailment of a patient who doesn't smoke, or drink and who isn't overweight.

It now costs more for a pair of overalls than it used to for a suit.

**Guy's Bridgewater
Tavern**
MIXED DRINKS
FINE SANDWICHES
429-4529
8452 Boettner Rd
Bridgewater
GUY GILBERT
OWNER

**THE BLACK SHEEP REPERTORY
THEATRE**
ANGEL STREET
July 24 - August 24
(313) 428-9280
138 E. Main Street
Manchester, Michigan

**NORM WALZ
CONSTRUCTION**
Remodeling and Room Additions
Garages-Porches
CUSTOM BUILT CABINETS
CUSTOM BUILT HOME ON
YOUR IMPROVED LOT CAN
SAVE YOU \$\$\$\$\$\$
Phone 428-7109

**ARE YOU SURE YOU'RE
"PUNCHING THROUGH
LOUD AND CLEAR"?**
The typical CB'er can get an average of three miles further to "punch through loud and clear" with a check and adjustment of his CB and antenna system for peak performance.
**MANCHESTER
CB SERVICE**
Phone 428-8073 FCC LICENSED

Black Sheep Tavern
117 EAST MAIN ST. MANCHESTER, MICH.
PHONE: 428-7000

Plug into a sound investment. A 30-Month C.D.

Get a guaranteed high return on your investment with a 30-Month Certificate of Deposit. Minimum deposit, \$100. Interest continuously compounded.

**Ann Arbor Bank
and Trust**

Per Annum **9.250%** Effective Annual Yield **9.832%**
Effective 7/24/80 Through 8/6/80

Lee J. Doser, Jr. Seeks Legislative Post



Lee J. Doser, Jr., 12020 Island Lake Rd., Dexter, has announced his candidacy for the office of 23rd District State Representative. He will oppose Rep. Mary Keith Ballantine in the Republican primary August 5.

Doser is presently executive director of Michigan Paralyzed Veterans of America, Inc. He attended Washtenaw Community College and the University of Michigan and served in the US Army for two years during the Vietnam War.

He is a board member of three non-profit corporations, and past vice-president, past-legislative officer and past-editor of the Michigan Paralyzed Veterans of America.

Doser was nominated for the Michigan Veteran of the Year award in 1980. He is a recipient of the 1979 House and Senate Vietnam Veteran Recognition Award and several Dexter Jaycee awards.

He is married and has one son. In his statement, Doser accuses the present 23rd District leadership of only reacting to crises and following the leads of others instead of "acting as a leader in our rapidly changing society."

He cites the Headlee Tax Cut Amend-

ment and Workers Compensation as two issues that are "left over from two years ago (and) still remain issues today."

Among his campaign pledges, Doser promises to uphold the rights of unborn children and feels that abortion is "morally wrong." He also pledges to lend support to nuclear power, saying that "if Michigan is to maintain a dynamic economy and its industrial superiority, it must be ready and able to meet future energy demands."

EMU Regents Scholar Awards Announced

Eastern Michigan University's Financial Aid Office has announced the recipients of the 1980-81 EMU Regents Scholar Awards.

This prestigious award recognizes academic excellence through requirement of a minimum 3.75 grade point average. High school students receiving this award must have an ACT composite test score of 24 or SAT combined score of 1050.

The award pays either \$1,200 or \$400 per year, depending on whether the student uses it to pay residence hall or tuition charges.

The award is renewable for up to eight semesters with a grade point average of 3.5.

Paul Staneco, son of Mr. and Mrs. Frank Staneco of 4775 Jacob Road, received a \$1,200 Regents Scholar Award. A 1980 graduate of Manchester High School, he was salutatorian of his class.

Saline Hospital To Host Conference

Saline Community Hospital will be the site for the first State Organizing Conference for families involved with Traumatic Head Injuries. Any person who has suffered a closed head injury, family, or professional involved in this area are welcome to attend. The meeting will be Saturday, August 2 from 9:00 a.m. - 12:30 p.m. Child care will be provided. For further information please call Marilyn Koster or Walt Jeryc at (313) 429-5435, ext. 357.

Michigan's New 'Essential' Insurance Law

Michigan has a new ESSENTIAL INSURANCE ACT. It was approved by the State Legislature and Governor Milliken late in 1979. Most parts of the law take effect January 1, 1981. What will it do? It will make it easier for certain people to get auto and home insurance. Also, it will lower premium rates for some people. To make these changes possible, most Michigan residents will pay more.

QUESTION: HOW WILL THIS LAW MAKE IT EASIER TO GET CAR AND HOME INSURANCE?

Under this new law, regular insurance companies will be required to provide auto and home policies for many people who were previously insured through "high-risk pools."

Today, a small percent of Michigan's insured drivers have to get coverage through the MICHIGAN AUTO INSURANCE PLACEMENT FACILITY (MAIPF) because of factors such as their driving record. And, some persons do not have their homes insured with a regular insurance company. They buy coverage from the MICHIGAN BASIC PROPERTY INSURANCE ASSOCIATION (MBPIA). The MAIPF and MBPIA are often called "high-risk pools." The people insured through these "pools" generally pay higher rates.

QUESTION: WILL THERE STILL BE 'HIGH-RISK POOLS'?

Yes. Motorists with unusually poor driving records, for example, and some home-owners will still have to get coverage through the "pool."

However, the ESSENTIAL INSURANCE LAW will LIMIT the amount these people pay for car and home insurance—regardless of how many collective accidents or other losses they have.

QUESTION: IF THE 'POOLS' LOSE MONEY, WHO PAYS FOR IT?

You do. It is paid by all people who buy coverage for their cars and home. When a "pool" pays out more money than it takes in, this financial loss is charged to regular insurance companies. This cost is then included in the price you pay for YOUR coverage.

In recent years, the Michigan "high-risk pools" have had large financial losses—MILLIONS of dollars. During the past six years, for example, Michigan Basic Property Insurance Association had net financial losses of more than \$36,000,000. Because of the ESSENTIAL INSURANCE ACT, "pool" losses are expected to increase in the future.

QUESTION: WILL THIS LAW REDUCE INSURANCE COSTS?

No. It will only shift costs. Some people will pay less. Most will pay more. Premium rates cannot be reduced OVERALL unless claim costs are lowered. The law will NOT lower claim costs.

QUESTION: HOW WILL THIS LAW SHIFT INSURANCE COSTS?

Insurance companies base rates on numerous factors which predict losses and claim costs. If drivers in group A are likely to have claims which cost more than those of group B—group A drivers pay more for their coverage. This new law changes the use of such factors. For example, sex and marital status will no longer be used to set auto rates. And, rate differences based on where a motorist or homeowner lives (rural, suburban, urban), will be arbitrarily limited.

QUESTION: WHO WILL BENEFIT FROM THIS 'COST SHIFT'?

For auto insurance, young single males and people who live in the largest metropolitan areas. For home insurance, people living in the largest metropolitan areas.

QUESTION: WHO WILL PAY MORE?

Most Michigan drivers will pay more for their auto insurance. Young single females and young married couples will probably get the biggest increases.

Residents of most rural and suburban areas will pay higher rates for auto AND home insurance.

QUESTION: DOES THIS LAW AFFECT NO-FAULT COLLISION INSURANCE?

Yes, the LIMITED and BROAD types of collision insurance have been changed to cover more accidents. Before, if you had LIMITED coverage, it paid for damage to your vehicle only if you were totally free from fault. Now, it will pay if you were 50 percent at fault or less. BROAD coverage pays for damage to your vehicle regardless of who caused the accident. Before, however, it paid your deductible amount (\$50, \$100, etc.), only if you were totally free from fault. Now, your deductible is paid if you were 50 percent at fault or less. This part of the law took effect March 1, 1980.

Of course, this change will raise claim costs and premium rates for collision coverage.

QUESTION: WILL THIS LAW ALLOW ME TO SUE THE 'OTHER GUY' FOR COLLISION DAMAGE?

Yes, you can recover up to \$400 if the vehicle damage is not covered by insurance. Beginning July 1, 1980, you can sue the other driver—if you were no more than 50 percent at fault in an accident. If you were partially responsible for the accident, however, any court award in your favor would be reduced accordingly. These lawsuits will be handled in Small Claims Courts by the individual motorists involved.

QUESTION: WHAT ELSE WILL THIS LAW DO?

Policyholders will receive more detailed information about underwriting and rating procedures—plus auto collision coverages. The law also sets up a formal grievance procedure for those persons who want to challenge an action by their insurance company.

This information is provided as a public service by the following area insurance agencies. We want to help you understand the new law—and let you know what to expect.

- SUTTON AGENCY, INC.**
136 EAST MAIN ST. MANCHESTER, MICHIGAN
PHONE 428-7217
- LARRY BECKTEL**
FARM BUREAU INSURANCE
135 EAST MAIN ST. SUITE 204 MANCHESTER, MICHIGAN
PHONE 428-7331
- MANCHESTER INSURANCE AGENCY**
122 WEST MAIN ST. MANCHESTER, MICHIGAN
PHONE 428-8215

GENERAL PRIMARY ELECTION

NOTICE IS HEREBY GIVEN, That a General Primary Election will be held in the

Townships of
Bridgewater, Freedom
And Sharon

COUNTY OF WASHTENAW
STATE OF MICHIGAN

WITHIN SAID TOWNSHIPS ON

TUESDAY, AUGUST 5, 1980

At The Place or Places of Holding the Election In Said Townships As Indicated Below, Viz:

- BRIDGEWATER TOWNSHIP HALL**
10990 Clinton Road
- FREEDOM TOWNSHIP HALL**
11508 Pleasant Lake Road
- SHARON TOWNSHIP HALL**
Pleasant Lake and Sylvan Road

FOR THE PURPOSE OF PLACING IN NOMINATION BY ALL POLITICAL PARTIES PARTICIPATING THEREIN, CANDIDATES FOR THE FOLLOWING OFFICES, VIZ:

- CONGRESSIONAL** Representative in Congress
- LEGISLATIVE** Representative
- COUNTY** Prosecuting Attorney, Sheriff, County Clerk, County Treasurer, Register of Deeds, Drain Commissioner, Surveyor, County Commissioner and such other Officers as are Nominated at that time.
- TOWNSHIP** Supervisor, Clerk, Treasurer, 2 Trustees 2 Constables and such other Officers as are Nominated at that time.

And For The Purpose Of Placing In Nomination, Candidates Participating In A Non-Partisan Primary Election For The Following Offices, Viz:

- CIRCUIT COURT JUDGE, PROBATE COURT JUDGE, DISTRICT COURT JUDGE.

And For The Purpose Of Electing: DELEGATES TO THE COUNTY CONVENTION OF THE DEMOCRATIC PARTY.

Also appearing on the Partisan Primary Ballot will be a separate row or column containing the names of those minor parties meeting the requirement to have the party name appear on the Primary Ballot. These parties appear on the ballot for the purpose of attempting to qualify for a position on the General Election Ballot.

ALSO ANY ADDITIONAL AMENDMENTS OR PROPOSITIONS THAT MAY BE SUBMITTED

THE POLLS of said election will be open at 7 o'clock a.m. and will remain open until 8 o'clock p.m. of said day of election.

- Rena Girbach, Freedom Township Clerk
- E. Lewis Blaisdell, Bridgewater Township Clerk
- Duane R. Haselschwerdt, Sharon Township Clerk



MAIN DISH SALAD GIVES MENU A LIFT!

Good news! Salads aren't just for side dishes anymore. Now, these adaptable menu favorites are teaming up with a variety of popular protein sources to serve as simple—and simply delicious—main dishes. That's really good news for the summer eating scene ahead and so is Alpine Potato Salad, a fabulous salad idea for the Kraft Kitchens featured in Kraft's new cookbook, "Salads—From Beginning to Endive."

Like a breath of fresh mountain air, Alpine Potato Salad is decidedly different from its traditional creamy counterpart and a real breeze to prepare. It's a complete meal all by itself, featuring the hearty goodness of ham, Swiss cheese, red cabbage, celery, green onion, plus thrifty-good potatoes that are a market bargain this time of year. You don't even have to peel them! This robust combination of distinct tastes, textures and colors is beautifully blended with Kraft Italian dressing mixed with Kraft prepared mustard. All you need to round out the menu are slices of crisp pumpernickel or rye bread and icy cold steins of beer or soft drinks.

ALPINE POTATO SALAD

- 1 1/2 qts. quartered cooked new potatoes
- 2 cups shredded red cabbage
- 2 cups ham strips
- 1 cup celery slices
- 1/4 cup green onion slices
- 1/4 cup Kraft Italian dressing
- 1 tablespoon Kraft pure prepared mustard
- 8 ozs. Kraft natural Swiss cheese, cut into strips

Combine potatoes, cabbage, meat, celery and onion. Add combined dressing and mustard; mix lightly. Chill. Add cheese just before serving; mix lightly. 8 to 10 servings

Back Door Party Store

500 Ann Arbor Street, Manchester
Phone 428-9333

PICNIC SUPPLIES
BEER - WINE - POP

Monday - Saturday 7 AM to 10:30 PM
Sunday 8 AM to 10:30 PM

DOSER

for STATE REPRESENTATIVE, 23rd District — REPUBLICAN —

"The only thing a government 'owes' its constituency is the opportunity to achieve every goal within an individual's own limitations."

- YES NO
- ERA
- Abortion
- Nuclear Power
- TISCH Amendment
- Siljander Amendment

Paid for by the Committee to Elect Lee Doser, 12020 Island Lake Road, Dexter, Michigan

DOSER

for STATE REPRESENTATIVE, 23rd District — REPUBLICAN —

The only thing a government 'owes' its constituency is the opportunity to achieve every goal within an individual's own limitations."

- YES NO
- ERA
- Abortion
- Nuclear Power
- TISCH Amendment
- Siljander Amendment

COME IN TO A

NAPA STORE TODAY



Ross Automotive

230 EAST MAIN MANCHESTER
PHONE 428-6330 OR 428-6325



An Unusual Salad with Golden Good Taste

BEER TENT AND STREET DANCE SATURDAY, AUGUST 2

BEER TENT OPEN 10 A.M. TIL 2 A.M.

POLISH SAUSAGE LUNCHEON

STREET DANCE STARTS 9 P.M. TIL 1 A.M. AND MUSIC BY RON JORDAN "THE NIGHT MOVES"

LOCATION: DOWNTOWN CLINTON, 1 BLOCK WEST OF STOP LIGHT

FREE ADMISSION

SPONSORED BY: FALL FESTIVAL '80 FOR SPECIAL EVENTS AND CLINTON JAYCEES

DO AWAY WITH DUST AND MUD BITUMINOUS SURFACE

Asphalt and Stone Mixed on Your Site LESS THAN HALF THE COST OF CONVENTIONAL ASPHALT



CALL FOR FREE ESTIMATE

941-4390

PRE-QUALIFIED MICHIGAN STATE HIGHWAY DEPT. Member Michigan Road Builders Assoc.

You don't have to be a Californian to appreciate their health-minded lifestyle, interest in the new and unusual and love of fresh, naturally good foods. And you certainly don't have to hail from the Golden Gate state to appreciate Fresno Fruit Salad. This sunny salad cooler, from Kraft's new cookbook "Salads—From Beginning to Endive," combines an extraordinary new dressing blend with an equally unique assortment of succulent fruits and vegetables. The result is a delicious, different salad that will trademark you as a cook who knows how to please.

Fresno Fruit Salad's sunny good taste comes from Mother Nature's bounty—lush spinach leaves, crisp alfalfa sprouts, juicy grape halves, pear wedges and peach slices. But the crowning touch is yours to claim! The salad is topped with a golden gourmet dressing you make yourself from Kraft French dressing, honey and a spicy pinch of coriander. Poured over the fresh salad fixings, this delicate dressing blend creates a super salad sensation that's the perfect, pleasing addition to any meal, anywhere.

FRESNO FRUIT SALAD

- | | |
|--------------------------------------|-------------------------|
| 1 8-oz. bottle Kraft French dressing | 1 cup pear slices |
| 1/4 cup honey | 1 cup peach slices |
| 1 teaspoon ground coriander | 1 cup grape halves |
| 1 1/2 qt. torn spinach | 1/4 cup alfalfa sprouts |

Combine dressing, honey and coriander; mix well. Combine spinach, alfalfa and sprouts; toss lightly. Serve with dressing. 6 to 8 servings
Helpful Hint: To prevent the fruit from discoloring, dip pieces in citrus juice before tossing into salad.

Official Notice of Sale \$365,000.00

MANCHESTER COMMUNITY SCHOOLS COUNTIES OF WASHTENAW AND JACKSON STATE OF MICHIGAN

TAX ANTICIPATION NOTES (General Obligation Limited Tax)

SEALED BIDS for the purchase of tax anticipation notes of Manchester Community Schools, Counties of Washtenaw and Jackson, Michigan of the par value of \$365,000.00 will be received by the undersigned at 710 E. Main Street, Manchester, Michigan until eight o'clock P.M. Eastern Daylight Savings Time on the 18th day of August, 1980 at which time and place they will be publicly opened and read.

NOTE DETAILS; INTEREST RATE; PAYING AGENT; AND DENOMINATIONS: The notes will be dated August 21, 1980 will mature April 1, 1981 and will bear interest at a rate or rates not exceeding 8% per annum. Each principal and interest will be payable at a bank or trust company located in the State of Michigan to be designated by the original purchaser of the notes which paying agent qualifies as such under the Statutes of the State of Michigan or of the Federal Government, subject to the approval of School District. Denominations and term of notes to be at the option of the purchaser. Accrued interest to date of delivery of such notes must be paid by the purchaser at the time of delivery.

AWARD OF NOTES: For the purpose of awarding the notes the interest cost of each bid will be computed on a 360 day year basis by determining, at the rate or rates specified therein, the total dollar value of all interest on the notes from August 21, 1980 to their maturity and deducting therefrom any premium. The notes will be awarded to the bidder whose bid on the above computation produces the lowest dollar interest cost to the municipality. No proposal for the purchase of less than all of the notes or at a price less than their par value will be considered.

SECURITY: The loan is in anticipation of the operating portion of the School Tax for the fiscal year July 1, 1980 to June 30, 1981 which tax is due and payable December 1, 1980. The School District is required to establish a special fund to be used solely to pay the principal and interest on the notes when due, and to set aside in said fund an amount sufficient to repay the principal and interest on the notes when due. A portion of each dollar of taxes remaining to be collected for the fiscal year beginning July 1, 1980 shall be set aside in an amount not less than 125% of the percentage that the principal amount of the notes bears to the amount of taxes to be levied and to be collected for operating expenses, anticipated delinquency in collections being taken into account, until the amount so set aside is sufficient for payment of the notes.

In addition, the notes will be a General Obligation of the school district and if tax collections are insufficient to pay the notes when due, the school district has pledged to use any and all other resources available for payment of said notes. The school district does not have the power to levy taxes for the payment of the notes in excess of its constitutional and statutory tax rate limit.

ADDITIONAL BORROWING: It is anticipated that the School District will need to borrow additional money after October 20, 1980, to meet current operating and payroll expenses during the remainder of the fiscal year 1980/81. This subsequent borrowing will be secured by a lien of equal standing with the notes of this issue.

GOOD FAITH: A certified or cashier's check in the amount of 2% of the par value of the notes, drawn upon an incorporated bank or trust company and payable to the order of the Treasurer must accompany each bid as a guarantee of good faith on the part of the bidder to be forfeited as liquidated damages if such bid be accepted and the bidder fails to take up and pay for the notes. Checks of unsuccessful bidders will be promptly returned.

LEGAL OPINION; DELIVERY OF NOTES: Bids shall be conditioned upon the unqualified opinion of the purchaser's attorney approving the legality of the notes, to be secured at the purchaser's expense. The purchaser shall furnish notes ready for execution at his expense. Notes will be delivered at a place to be agreed upon with the purchaser.

THE RIGHT IS RESERVED TO REJECT ANY OR ALL BIDS. ENVELOPES containing the bids should be plainly marked "Proposal for Notes."

APPROVED: July 22, 1980 STATE OF MICHIGAN MUNICIPAL FINANCE COMMISSION

AGRICULTURE IN ACTION

MICHIGAN FARM BUREAU

THE NATIONAL ECONOMY

Even more than most people, farmers must make wise decisions about such things as supply, costs, prices, and the outlook for inflation, and recently a group of them met to analyze the national economic outlook for the critical months ahead.

Dr. Robert Genetski, co-author of the popular book, "Winning with Money," was invited to share his views with the farmers. Genetski is vice president and economist for the Harris Bank of Chicago.

He described himself as "cautiously optimistic," explaining by saying that his optimism "rests with a prediction that voters and policymakers can learn from prior mistakes."

These mistakes of recent years, he said, have included volatile monetary policies, huge tax burdens, and massive government intervention in private business affairs. All of these, Genetski said, have combined to make "the financial system vulnerable to collapse."

He scored the poor productivity of the U.S. economy, dropping as it has been at a two percent rate this year, and said this has meant painful adjustments to lower living standards for most of us.

The Harris Bank economist said this

financial bind in which we find ourselves has led to a political search for scapegoats and for legislation to punish them. Among the scapegoats he cited were OPEC, domestic oil companies, unions, consumers, foreign steel and foreign automobiles.

The hope for a strong national economic future, he concluded, rests with the prediction that voters will choose politicians who see government as the problem—not as the solution.

National Farm Safety Week

What will this year's crop be worth to you? A finger, hand, arm, leg, maybe even your life?

That may seem like a ridiculous question, but stop and think about it. How many of the folks in your area have been involved in a farm accident in recent years? Incidents of people being crushed by tractors, dismembered in silo unloaders, or wrapped around power take-off shafts, are not, fortunately, numerous in Washtenaw County, but they have occurred.

It would be unfair to brand farming as being an exceedingly dangerous occupation, but we associated with the business must admit that it has its hazard areas. Any time you mix a man, a machine, pressure and the chance to make a profit, you're going to have the possibility of an accident. The question is, what are you

going to give up—some of the machine, part of the man, or a piece of the profits?

This is one of the toughest years in the last decade for many of our farmers, and I'm concerned that the enormous pressures being felt are going to cause some to be careless, especially when harvest time arrives. I guess that is one reason why I think National Farm Safety Week is going to be especially important this year. If all of the material that is going to be read and listened to has a single message, it is "do it the safest way—that is, being careful!"

The first thing I'd like you to do is admit that you're human and that while the machine out in the shed can go many hours without a rest, you cannot. Despite the advances in machinery design, harvesting is still hard work. The hours are long and you must pay full attention to the job.

If you are tired, drowsy, not feeling well, or are rendered less alert from medications or alcohol, you are more apt to err or fail to respond to hazards that could result in a mishap.

Take periodic work breaks with refreshments, a practice more important during hot weather or when you are expending considerable amounts of energy. The brief time spent resting will step up your efficiency and reduce fatigue.

Stop if you feel sleepy. Dozing at the wheel is a significant cause of accidents in the field as well as on the highway. Dismount and walk around. Have some coffee or other non-alcoholic beverage. If you are simply too tired to continue, let another person drive. Most people of normal health can work long hours. But there is a limit. Know when it is time to quit. Many accidents happen when operators decide to go "one more round."

This year's emphasis during National Farm Safety Week is using personal protective equipment when you need it for certain jobs. Part of your personal protective equipment is using good judgement—knowing your limits, using protective gear and working smart by taking that rest break, etc.

Get help for the tough jobs. Avoid back strains and respect your physical limits.

tions. If you have a temporary illness or a chronic health problem, consult your doctor concerning your fitness to operate powerful machinery and what restrictions you should observe.

Have a first aid kit on board. Take care of small wounds promptly to reduce risk of infection. A CB radio is a good safety aid to let you call for help in case of trouble, illness or accident.

Keep in mind that there will be other years ahead in which good farm management will help turn a profit, and safety is as important in farm management as cash flow. Being safety-minded is not being sissy. It's being profit-minded.

DIAL -A- GARDEN



The following is a weekly schedule of Dial-A-Garden, the system of pre-recorded daily gardening tips sponsored by the Washtenaw County Cooperative Extension Service. The system is in operation 24 hours per day, 7 days per week.

Interested persons are invited to call 971-1122 for information.

Thursday, July 31, Blossom End Rot of Tomatoes.

Friday, August 1, Repairing Tree Damage.

Monday, August 4, Sidewalk & Driveway Weed Control.

Tuesday, August 5, Check Lawn for Sod Webworm.

Wednesday, August 6, Home Canning Tips.

Notice

There will be no Recreational Swimming, Thursday, July 31st.

CHELSEA WOODSHED



EATERY

113 S. Main, Chelsea, Michigan
Just 15 minutes from Ann Arbor
Call 475-1922

WE ACCEPT
VISA AMERICAN EXPRESS MASTERCARD

Join us for Lunch

We feature a spectacular Soup-Salad-Sandwich bar, in addition to our full luncheon menu

or for Dinner !!

Seafood is our specialty...with sensational choices, including New York strip steak, (at sensible prices). Add to this a selection from our wine list - and enjoy!

Monday-Thursday 11-10
Friday & Saturday 11-11
Closed Sundays

MANCHESTER ELECTRIC, INC.

CONTRACTING

ELECTRICAL - HEATING - COOLING

MAJOR APPLIANCE SALES AND SERVICE

112 ADRIAN STREET MANCHESTER
PHONE 428-8243



Remember When Bathing Beauties Wore Bathing Caps?

Then Ann Arbor Bank may have something free for you... It's SIXTY GRAND - Ann Arbor Bank's exclusive package of banking services for individuals 60 years of age or older.

Here's what SIXTY GRAND can make banking better and easier for you:

- Free Checking** - No minimum balance or savings account is required; no charge for standard printed checks, and no service charges.
- Direct Deposit of Checks** - For your safety and convenience, regularly received checks - Social Security, TIAA, pension, dividend - can be mailed directly to Ann Arbor Bank. Then we deposit the checks into your account.
- Police-Approved Identification Program** - An optional program that speeds the recovery of lost purses, wallets, keys and other valuables. Contact any Ann Arbor Bank office for complete details.
- Free Financial Advisory Services** - Our professionals are ready to serve the special financial needs of retirees and those near retirement.
- No-Fee Traveler's Checks** - our newest SIXTY GRAND service - Buying traveler's checks at Ann Arbor Bank means paying only for the checks... there's no service charge.

Join SIXTY GRAND now at any of our 17 convenient branch offices. And find out how Ann Arbor Bank can help make sixty simply grand for you.

Ann Arbor Bank and Trust

WANT ADS

All classified advertising is payable in advance. All ads must be PLACED and PAID for prior to 11 AM on Tuesday for publication that week.

GAS CONVERSIONS - Burners or Complete Furnace. Manchester Electric 428-8243 or 428-8331. tfn

FOR RENT - Commercial Space, 154 E. Main. (517) 431-2580. tfn

OFFICE SPACE TO RENT
New Office Space. 1200 sq. ft. in single building, ground floor, private entrance, paved private parking at door. Separate heat and air cond. Security & fire alarm. Will finish to tenant specifications. Union Construction Co., 505 Territorial St., Manchester, Mich. 48138. Phone 313-428-8228. tfn

2 FAMILY HOUSE FOR SALE - 1 bedroom apartment up, 3 bedroom down with garage and yard and swimming pool. 428-8364 or 428-9122. tfn

HARTMANN CARPENTRY - Now serving Manchester area as a Licensed Builder. 12 years experience in Home Building with experience in roofing, siding, decks, remodeling, garages and pole barns. Call 475-9301 or 475-1643. tfn

CHELSEA GREENHOUSES, 7010 Lingane Road, Chelsea, Michigan 475-1253-54 or 475-9313. Flowers and plants for every occasion. We specialize in wedding flowers to fit your budget. We are as near as your phone and we welcome your business. tfn

BEEF TO SELL BY SIDE
Custom slaughtering. Lockers to rent. Phone 428-7600. Manchester Locker Plant. tfn

LITTLE WACK EXCAVATING
Licensed & Insured
Basements - Drainfield - Bulldozing Digging - Snow Removal - Tree Removal. Paul Wackenhut, phone (313) 428-8025. tfn

NEED A NEW FURNACE - Call 428-9150, free estimates, featuring Lennox and Janitrol. tfn

1 AND 2 BEDROOM APARTMENTS for rent in town. Call 428-9380. tfn

FOR SALE - COMMERCIAL 2 story brick; 2000 square foot; offices down, 2 bedroom apartment up, 428-8364 or 428-9122. tfn

OFFICE SPACE FOR RENT - Newly redecorated. Sutton Agency Building, call 428-7217.

2 BEDROOM APARTMENT, many appliances, \$290.00 without utilities. 428-8364 or 428-9122. tfn

CAMPING TRAILER - 1968 Wheel \$250.00 or best offer. 428-8364 or 428-9122. tfn

C & B PAINTING - Interior, exterior. Free estimates. 428-7416 or 428-7136. 12-27p

FOR SALE - Model 72, 1964 Massey Ferguson self propelled combine - ten foot table and two row corn head, good condition. Call 313-428-8337. 7-31p

MALE ST. BERNARD, free to good home. Call after 6 p.m. 428-9308. p

3 FAMILY YARD SALE - Friday and Saturday, August 1 and 2, baby items, household items and more. 215 Division St. p

BABYSITTER WANTED for 2 children, ages 3 and 5. Prefer older woman in her home. Tuesday, Wednesday and Thursday, 3 hours daily. Phone 428-7821.

\$2.00 CAR WASH, Saturday, August 2 from 1:30 to 4:30 at the Union Savings Bank Drive in Window. Sponsored by Sharon United Methodist Jr. Y.F.

LAND CONTRACTS PURCHASED - Any Size - Any Property Type, Courteous and Reliable Service. Call Dan Duncanson, Ann Arbor Real Estate Co. (313) 668-8695.

GERALD AHRENS CONSTRUCTION, Additions, Decks, Renovations, Repair, Finish Work. Free Estimates. Phone 428-8807. tfn

ALUMINUM EAVESTROUGH Seamless, white, black and brown, guaranteed, free estimates. Walkowe Home Improvement Company, phone 313-428-8468. tfn

BOULO ELECTRIC - Licensed and Insured Contractor. Call Clinton 517-456-4796. tfn

CHELSEA BUILDING MAINTENANCE COMPANY
7215 Jackson Road
Ann Arbor, Michigan
Phone 668-0565

Plumbing contractors, industrial, commercial, residential new and repair work, A.O. Smith Water Heaters, Bruner Water Conditioning dealer. Beginning February 1 servicing the Chelsea, Manchester and surrounding areas. Bill Colvin and Henri vander Waard.

WANTED - used full size bicycles and parts. Will pay cash. Student Bike Shop, 607 S. Forest, Ann Arbor. tfn

TOP SOIL, Black dirt, fill dirt, sand and gravel for sale 428-7784. tfn

CHIM-CHIMNEY CHIMNEY SWEEPS Saline, call collect 313-429-9078. 10% Senior Citizens discount. Homeowner cleaning kits and flu caps available. tfn

TAILORING BY IRENE
Specializing in mens and womens custom tailoring and alterations, also leather and fur. 13910 Sheridan Road, Manchester. 428-8538. tfn

Visit Our
WICK MODEL HOME OPEN HOUSE
at 5201 Brooklyn Rd. (M-50) Jackson.
Monday thru Thursday, 1-5
Saturday & Sunday, 2-5
Anytime by Appointment
Callaway Construction
517-764-4400 or 563-2930

ALBER ORCHARD CIDER MILL
Harvest apples. Call before coming. 428-7758. tfn

WILL do babysitting in my home. Meals and snacks provided. 428-9384. tfn

LOOKING for women to bowl on Thursday nights at Chelsea Lanes this fall. If interested please call 428-7068. tfn

FOR RENT - Efficiency apartment, furnished, non-smoker, no pets, air-conditioner, \$250.00 including utilities. (517) 431-2580. tfn

WE will give you a thick 4 x 6 area rug if we can't beat your best price on Merrill cabinets, Serta mattresses, or name brand carpet and wall paper. Ceiling fans \$69.95. Close-out single boxes floor tile \$3.00 a box with this ad. Thick commercial carpet in stock \$7.00 a yard. Cooper G7815 test tires, white walls, \$25, black walls \$22.50. Wilson golf club closeout \$5 each. Plush washable bathroom carpet \$6.99, 13 solid colors. Factory Carpet Warehouse (formerly Hartung's) 1 mile south of Clinton Stoplight, open 9 to 6 except Sunday.

SHARON ROADSIDE MARKET - now open under new owners. Fresh sweet corn, other fruits and vegetables in season. 5925 Chelsea-Manchester Road. Phone 475-3161. 8-21

A.A. AND AL'ANON: Wednesday, 8:00 P.M., Emanuel Church. For more information call 428-7693. tfn

FOR SALE - new 225 amp Miller Thunderbolt welders with complete accessory kit. Reg \$179.95 Sale Price \$149.95
Koebbe Welding 428-8236 7-31

SEE a movie tonight. UHF & Beta Video Cassettes. Video Store, 353 N. Maple, Maple Village Shopping Center 665-8913. 7-31

FIELDER PAINTING - Interior, Exterior. Free Estimates. Call 428-8506. 8-28p

FOR SALE: John Deere tractor, 435 diesel, \$2,960.00; Sand Tamper for concrete work, \$275.00; Tar Roller for parks, \$100.00; Toro riding lawn mower, 8 HP, \$275.00. 428-9169. 7-31

COAL FOR SALE - Delivered price \$72.00 a ton, 5 1/4 ton or more. El Baker Ky. Coal, Call 428-8078. 8-7

WE just bought a truck load of carpet from Georges. Save 1/2 on area rugs, grass carpet \$2.99, rubber backed carpet \$3.99, all wall paper in stock 50% off, book orders 20% off, Kirsh woven woods 40% off during August. Factory Carpet Warehouse (formerly Hartung's) 1 mile south of Clinton Stoplight, open 9 to 6 except Sunday.

LOST DOG - female, white with brown, English Setter. Please call 428-8086. 8-14

COUNTRY HOME, 5 bedrooms in Manchester area, \$400 per month 428-8641. 8-7p

FOR SALE - 3 ton coal, must be moved, make offer. 428-8794. 8-7p

FOR SALE: Forty acres deer hunting land, stream, large cabin. Bob Wideman, Broker, 200 W. Cedar, Box 33, Gladwin, Michigan, 48624. 8-7

GUITAR, violin, viola, cello, private lessons. Mrs. Meade 428-8694. 7-31

WANTED - Commercial Space suitable for stained glass studio. Gerry Wayne Studios. 517-456-4971. 8-14p

GRAVEL - Sand-stone, Top Soil, Black Dirt, Trucking, Loaderwork. Phone 313-428-8623. 8-14p

NEW HOME, hill top view, 1 acre, 2 car, 3 bedroom, 2 baths, deck. \$75,000. 428-9134. 8-7p

LAWN TRACTOR, Bolens 770 Husky, 32 inch mower blade, 36 inch snow blade, chains, 428-8141.

INVITATION TO BID
Separate BIDS for the construction of the Chelsea Community Hospital Residential Care Facility, a wood frame building of approximately 5,000 finished sq. ft., per drawing dated July 21, 1980, will be received by Stephen P. Janick, A.I.A., Architect, at the private dining room of Chelsea Community Hospital, 775 S. Main St., Chelsea, Michigan 48118, until 2 p.m. Eastern Daylight Savings Time August 12, 1980, and then at set place publicly opened and read aloud.

The Contract Documents may be examined at the following locations: Chelsea Community Hospital, Office of the Director of Physical Plant; office of the Architect, 440 S. Main, Ann Arbor, Michigan 48104 (313-994-1333); The Builders Exchange, Detroit, Michigan; Dodge Plan Room, Detroit, Michigan; Ann Arbor Plan Room, Ann Arbor, Michigan.

Copies of the Contract Document may be obtained at the office of the Architect upon payment of \$50 for each single set of plans and specifications after 3 p.m. July 24, 1980. Any bidder returning the Contract Documents within one week of the bid date will be refunded his payment, and any non-bidder upon so returning the Contract Documents will be refunded 2/3 of his payment.

100% Labor and Performance Bond will be required of the successful bidder at the time of contract execution, but is not required for the bidding process.

The Owner has received bids and will award a contract for the foundation work and will also accept separate bids at the above time, place and date for the architectural trades, mechanical trades, and electrical trades. 8-7

THE FABRIC PATCH has further reduced a group of spring and summer fabrics. Latch Hook kits will remain on sale through August 8, 114 Adrian Street, 9:30 to 7:30 Monday, 9:30 to 5:30 Tuesday through Friday, Saturday 9:30 to 2.

FOR SALE - Antiques, quality pieces - 6 matched walnut caned bottom chairs \$475; walnut Victorian settee with burl walnut trim \$450; oak curved brass China cabinet \$460; round oak table \$390; small oak potty \$65; a good electric hot water heater \$50; 2 pair cafe doors \$30. Call 428-7476. p

OFFICE SPACE FOR RENT, Contact D.E. Limpert Co., Exchange Place Bldg. or phone 428-7400. 7-31

MANCHESTER INSURANCE AGENCY
122 WEST MAIN STREET
MANCHESTER, MICHIGAN
Phone 428-8215
Home-Farm & General Insurance

YOUNG ELECTRIC
Residential & Agricultural Wiring
Phone 313-662-9916
SERVING: Bridgewater Pleasant Lake & Manchester
DAVE YOUNG 9071 Waters Rd.
Master Electrician Ann Arbor, Mich

ROOFING - SIDING
SEAMLESS GUTTER
Experienced Crews
Free Estimates
Walkowe Home Improvement Co.
Phone 313-428-8468
WM WALKOWE
President

MANCHESTER TOWNSHIP LIBRARY
Manchester, Mich. 48158

THE MANCHESTER ENTERPRISE

115TH YEAR VOLUME NO. 42

USPS 327-400

THURSDAY, AUGUST 14, 1980

20¢ A COPY

1980 Manchester Fair Queen



LAUREE FITZGERALD, A SENIOR AT MANCHESTER HIGH SCHOOL IS THE MANCHESTER 1980 COMMUNITY FAIR QUEEN. SHE IS THE DAUGHTER OF MR. AND MRS. JOSEPH FITZGERALD.

HIT OR MISS by farley

The other day we were in Ann Arbor and happened to be down by the railroad station when the new fangled ultra modern train recently put into service between Detroit and Chicago came panting thru. It was bright and shining and its diesel engines purred contentedly as it took on its passengers but it was a far cry from the trains that we grew up with. It still seems to us that the old steam trains had a lot more personality and romanticism connected with them than these so efficient modern day means of transportation.

Perhaps the fact that my father worked for the railroad had something to do with it and that I was born a block and a half from the "Junction" shops in Jackson had an effect on my romance with trains, but I find that I am not alone in the world. There are a lot of train buffs that still persist in idolizing the steam train as a hobby.

The crack passenger trains of my boyhood had individual personalities and the Twilight Limited, the Twentieth Century and the others all were distinct personalities and we who lived in close proximity to them and knew them by their appearance and their whistles. There was a certain thrill in watching one of them glide panting into the station and we always enjoyed watching their passengers and conductors and the "tinkers" who checked the coaches for hot boxes and wheel and axle faults as these trains waited in the station, and when they started away with hissing jets of steam and snorts of their whistles they, to me at least, seemed like the getaway to another world - to the many far away places.

In those days there were, of course, no automobiles to speak of, and no improved roads and so trains were the only feasible way of travel. They were the gateway to the great big outside world, and in those days our horizons were far narrower than

Continued on page 8

Collectible Sale Tremendous!

The Collectible Sale for Manchester Area Historical Society building fund was tremendous! Thanks to everyone who donated to the fabulous variety of collectibles; to the committee for endless hours of sorting, marking and displaying the articles; to Robert Lawson for the use of the Old Methodist Church; to the organizer, Howard Parr, for the beautiful music that accompanied the sale and above all to the weatherman whose cooperation was a major factor in the success of the day.

A full report of the sale will be available at the next meeting of the Society in September according to the chairman of the committee, Mrs. Howard Parr.

Notice

The Manchester Town Club Bowling League will hold a meeting on Monday, August 18 at 7:30 p.m. in the lower level of the Dauernstube.

All members and interested people are invited to attend.

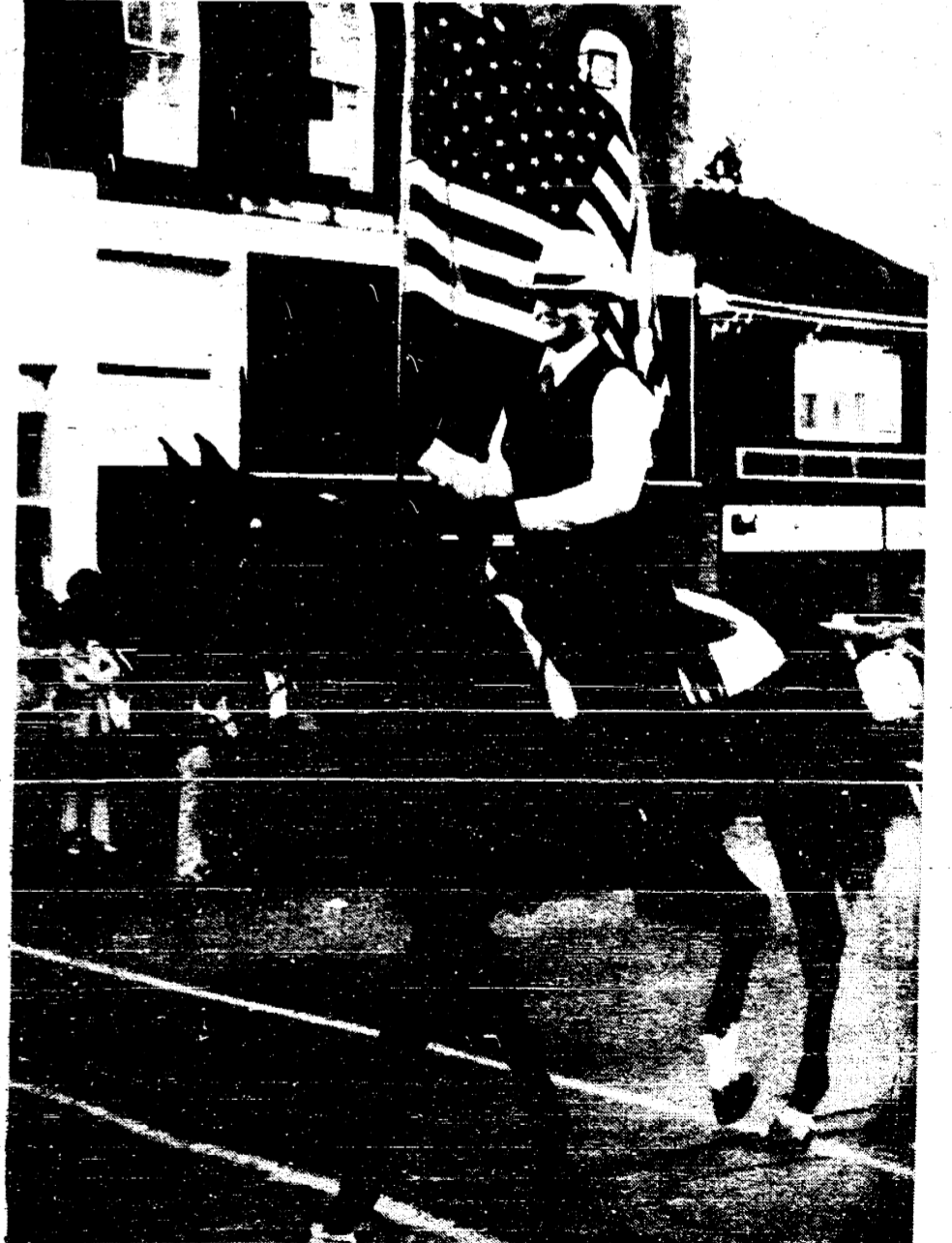
Historic Walk A Success

Manchester's Historic Walk was enjoyed by enthusiastic visitors from Valencia, Spain to Arizona. Even nearby neighbors were amazed at the history of the little village they'd never bothered to visit before.

In other words, the event planned for August 9 by the Manchester Area Historical Society and Manchester Association for Talented Students was a great success. Special thanks go to the owners of the homes, the churches and the businesses visited on the tour which was so impressively described in the brochure printed by The Manchester Enterprise; to Don Limpert for the original markers for each stop on the walk, to more than fifty men and women who devoted hours of their time to all the details involved and to MATS for the colorful demonstrations and exhibits of Early American Crafts.

Mary and Ann Walton were co-chairmen of the committee assisted by Jeannette Kirk, Marley Pagel and Joyce Anderson.

4-H YOUTH SHOW



Heading for the 1980 State 4-H Horse Show, Judi Poet of Manchester, will be one of seventeen representatives from Washtenaw County's 4-H Horse and Pony Project area. Judi is the 1980 Western Equitation Champion of the 4-H Youth Show.

Hot weather always brings the thought of fairs and fun. Four H members from the Sharon Valley 4-H Club participated in the 1980 4-H Youth Show which is held every year at the Farm Council Grounds (Rural Activities Center) on Saline-Ann

Arbor Road. From Manchester, Betty Boyd won a third place ribbon with an "A" rating in her Fitting and Showing class for Western horses. Betty and her horse also won a

Continued on page 15