

WANT ADS

MEAT TO SELL BY SIDE
Custom slaughtering. Lockers to rent. Phone 428-7800. Manchester Locker Plant. tfn

LITTLE WACK EXCAVATING
Licensed & Insured
Basements - Drainfield - Bulldozing
Digging - Snow Removal - Tree Removal.
Paul Wackenhut, phone (313) 428-9025. tfn

CALL Elaine Rice, Realtor, for successful buying and selling, homes and farms. 10 years of honest and competent brokerage in Real Estate. By appointment. 996-4400 or 428-7272. Associated/De Loof & Associates Realtors. tfn

MICHIGAN Certified Seed, Mariner seed oats, 4 varieties soy bean seed, Brabec Farms, Britton, Mich. (517) 451-4010 or 423-5663. tfn

WANTED - used full size bicycles and parts. Will pay cash. Student Bike Shop, 607 S. Forest, Ann Arbor. tfn

NEED A NEW FURNACE - Call 428-9150, free estimates, featuring Lennox and Janitrol. tfn

SCHERER'S GREENHOUSE has a new shipment of mums and mini-cyclamen, all colors. Also a variety of other plants. 14345 Logan Rd. 428-8078. Open 7 days a week. tfn

LAND CONTRACTS PURCHASED - Any Size - Any Property Type, Courteous and Reliable Service. Call Dan Duncanson, Ann Arbor Real Estate Co. (313) 668-8596.

GERALD ABERNS CONSTRUCTION
Additions, Decks, Renovations, Repair, Finish Work, Free Estimates. Phone 428-8807. tfn

ALUMINUM EAVESTROUGH - Seamless, white, black and brown, guaranteed, free estimates. Walkover Home Improvement Company, phone 313-428-8468. tfn

BOULO ELECTRIC - Licensed and Insured Contractor. Call Clinton 317-456-4796. tfn

KNEPPER'S TV SERVICE
Service All Makes
RCA-ZENITH-GE
Phone 428-7640 - 665-2137

CHELSEA BUILDING MAINTENANCE COMPANY
7215 Jackson Road
Ann Arbor, Michigan
Phone 668-0585

Plumbing contractors, industrial, commercial, residential new and repair work. A.O. Smith Water Heaters, Bruner Water Conditioning dealer. Beginning February 1 servicing the Chelsea, Manchester and surrounding areas. Bill Colvin and Henri vander Waard.

FIELDER PAINTING
Experience, Interior, Exterior.
Free Estimates - Call 428-8506
5-2p

ROTTWEILER PUPPIES available May 17, A.K.C. for show, family, security, OPA parents, sire: Champion, Ro-Jo's Baron Von Michelberg, Huff's Rottweilers, Manchester, 428-9214. 5-2p

HORSESHOEING AND TRIMMING
JERRY BARTH 517-536-4961
5-2p

GARDEN SEEDS are in at Mann's Feed Mill. 3-27

C & B PAINTING - Interior, exterior. Free estimates. 428-7416 or 428-7136. 12-27p

WILL rake, mow or roll your lawn. Call Russ at 428-9346 or 428-7441. 5-1p

AUTO REPAIRS in Manchester, reasonably priced, 428-9255. 5-1

Visit Our
WICK MODEL HOME OPEN HOUSE
at 5201 Brooklyn Rd. (M-50) Jackson.
Monday thru Thursday, 1-5
Saturday & Sunday, 2-5
Anytime by Appointment
Calloway Construction
517-764-4400 or 563-2930

CHELSEA GREENHOUSES, 7010 Lingane Road, Chelsea, Michigan 475-1353-54 or 475-9313. Flowers and plants for every occasion. We specialize in wedding flowers to fit your budget. We are as near as your phone and we welcome your business. tfn

GAS CONVERSIONS - Burners or Complete Furnace. Manchester Electric 428-8243 or 428-8331. tfn

FOR RENT - Commercial Space, 154 E. Main. (517) 431-2580. tfn

OFFICE SPACE TO RENT
New Office Space, 1200 sq. ft. in single building, ground floor, private entrance, paved private parking at door. Separate heat and air cond. Security & fire alarm. Will finish to tenant specifications. Union Construction Co., 505 Territorial St., Manchester, Mich. 48158. Phone 313-428-8226. tfn

CHIM-CHIMNEY CHIMNEY SWEEPS
call collect 313-429-9078. 10% Senior Citizens discount. Homeowner cleaning kits and flu caps available. tfn

STANDING HAY WANTED - Cash paid in advance 517-764-0700 Monday thru Friday 8 a.m. to 5 p.m. or write P.O. Box 249, Jackson, Michigan 49204. tfn

2 BEDROOM APARTMENT, many appliances, in business district. 428-8364 or 428-9122. tfn

TAILORING BY IRENE - Specializing in Mens Tailoring and Alterations. Also Leather and Fur. Mon. thru Thurs. 10 a.m. - 4 p.m. Evenings: Mon. thru Fri. 7 p.m. - 8:30 p.m. 13910 Sheridan Rd., Manchester, Mich. Phone 428-8538.

FOR SALE - New Idea hay conditioner, good condition \$400.00, phone 428-8490. tfn

BLACK DIRT FOR SALE, tested and proven excellent for gardens and lawns, 6 yards delivered \$40. 428-7784. tfn

FOR SALE, 71 Feet Spider 850, needs work. Call Rick 428-8107. p

LOST, St. Bernard/Beagle, brown and white female, red collar. Last seen on Herman Rd. 592-2961 - Reward.

HORSESHOEING & TRIMMING
Bob Buono 428-7293
5-22p

WITH summer approaching contract now for seasonal mowing of your lawn. 428-8346 or 428-7441. 5-15p

MOTHER'S DAY GIFT SUGGESTIONS
From The Calico Cat Book and Gift Shoppe: Green Plants, Hanging Baskets, Wind Chimes, Jewelry From Trifari and Winard, Holly Hobby Limited Edition Mother's Day Figurines, Fenton Art Glass, Bing and Groendahl Figurines, Norman Rockwell Figurines.

BOOK SUGGESTIONS
The Helper by Catherine Marshall, Aunt Erma's Cope Book by Erma Bombeck, Betty Crocker Cookbook, Better Homes and Gardens-Complete Book of Gardening, The Country Diary of An Edwardian Lady, 110 East Main St. Manchester, Hours: Monday through Saturday 10-5:30. 313-428-7452. 5-8

WILL babysit in my home, Pleasant Lake area. 428-7280. 5-6p

NURSE AIDES
Full and Part time positions available on all shifts. Experienced preferred. We are a quality extended care facility offering flexible scheduling, competitive wages and attendance bonuses.
Evangelical Home
440 W. Russell
Saline, Mich.
5-1

CORN LAND WANTED - Cash Rent, 4 acres and up. Country side Farms. 517-522-5174, Grass Lake, Michigan. 5-8p

RIDING LESSONS at your place or mine. Specialty dressage, and hunt seat. 2 years on Meredith Manor staff. 475-7394. 5-8

VILLAGE APARTMENTS - now taking applications for 2 bedroom apartments, air conditioning, wall to wall carpeting, full bath, kitchen with range, refrigerator and garbage disposal, private patios or balcony, laundry facilities, for information phone 475-9253. 5-8

WANTED - babysitting in my home or yours, day or night. Please call 428-9265. 5-8p

1 OWNER CAR - needs nothing! 74 Plymouth Satellite, automatic transmission, power steering, power brakes, air, AM/FM stereo tape. 428-8717. 5-8

ARE YOU BUGGED by biting flies, mosquitoes etc? Keep them away with Amway's insect repellent. This stuff works. For free trial call 423-7911 7-9 a.m. or 8:30-9 p.m. p

FOR SALE - 8 1/2' Wheel Disk. Almost new blades. Reasonable. 428-8739 evenings. p

OPEN 12 TO 2 SATURDAY, MAY 3
at 225 Grove - \$57,500; 15680 Herman - \$115,000; 124 Clinton \$39,900. Call Elaine Rice evenings 428-7272. DeLoof Realtors Assoc. 996-4400.

FOR SALE - Simplicity 8 HP Riding Mower W/Grass Catcher. Very Good Condition. \$435.00. 428-8433. p

THE FABRIC PATCH has some gift suggestions for Mother's Day. We have shears, quilt frames, crewel, needlepoint, and latch hook kits. We also have gift certificates made out for whatever amount you desire. 114 Adrian St. Manchester, Michigan. Hours: 9:30 to 8:00 Monday; 9:30 to 5:30 Tuesday through Friday; 9:30 to 4:30 Saturday.

GARAGE SALE - May 2nd, 3rd, 4th, 9:00 a.m. - ? 8932 Manchester-Chelsea Rd. (M-52) p

COMPLETE line of Gates v-belts and pulleys for lawn mowers, garden tractors, roto-tillers, also for other equipment. Koebbe Welding, Manchester, 428-8236. 5-2p

WOLVERINE Overhead Door Co.
Commercial-Residential-Installation
WE REPAIR ANY DOOR
"OVERHEAD" GARAGE DOOR OPENERS
2203 Fox Rd. Phone
Jackson, MI 49201 522-4240

ARE YOU SURE YOU'RE "PUNCHING THROUGH LOUD AND CLEAR"?
The typical CB'er can get an average of three miles further to "punch through loud and clear" with a check and adjustment of his CB and antenna system for peak performance.
MANCHESTER CB SERVICE
Phone 428-9073 FCC LICENSED

FOR SALE - John Deere 24T Baler, excellent condition, \$1500. 428-8614. 5-8

1977 NOVA - 6 cyl. 3-speed stick, P.S., rustproofed, AM-FM stereo cassette. 428-7752. p

MICHIGAN grown spruce and pine trees. Potted or dig your own, priced from \$5 to \$20. Open Saturday and Sunday, 9 a.m. to 7 p.m.; Monday - Thursday - Friday 11 a.m. to 6 p.m. Phone 517-522-8321 week-ends and evenings. Christmas Tree Lane, 4311 Fishville Road, Grass Lake.

BUS DRIVERS: Substitutes and Regular Bus Drivers are needed immediately. Please contact John McGuire at the Manchester Community Schools, 710 East Main St., Manchester or call 428-7300.

CUSTODIAN: Please contact John McGuire at the Manchester Community Schools, 710 East Main Street, Manchester, Michigan or call 428-7300.

MAINTENANCE: Please contact John McGuire at the Manchester Community Schools, 710 East Main Street, Michigan, Michigan or call 428-7300. Experience in building maintenance helpful.

Legal Notice

NOTICE OF SPECIAL MEETING OF SHAREHOLDERS
Notice is hereby given that, pursuant to the call of its Board of Directors, a Special Meeting of Shareholders of Union Savings Bank of Manchester will be held at 3:00 P.M., local time, on Tuesday, May 6, 1980, at its Main Office, 135 East Main Street, Manchester, Michigan, Michigan 48158, for the purpose of:

1. Considering, approving, ratifying and adopting a Consolidation Agreement providing for the consolidation of Union Savings Bank of Manchester with and into The Citizens Bank of Saline, Saline, Michigan, upon the terms and conditions set forth in said Consolidation Agreement, subject to the approval of the Commissioner of the Michigan Financial Institutions Bureau and the Federal Deposit Insurance Corporation;

2. Voting upon any other matters incidental to the proposed consolidation of Union Savings Bank of Manchester with and into The Citizens Bank of Saline as may properly come before such Special Meeting of Shareholders, or any adjournment or adjournments thereof.

A copy of the Consolidation Agreement, executed by a majority of the Directors of the two Banks, is attached as an Exhibit to the Joint Proxy Statement that is to be delivered to each shareholder in connection with such Special Meeting of Shareholders, and is on file at the Main Office of Union Savings Bank of Manchester and may be inspected during business hours. BY ORDER OF THE BOARD OF DIRECTORS

Stanton G. Roesch, Chairman of the Board, Union Savings Bank of Manchester
Dated: April 1, 1980

Luxaire
TOTAL YEAR COMFORT
Call For Free Estimate
On Add On Heat Pump
Save YOUR Heating Dollars
and Air Condition Your Home With Same Installation
MANCHESTER ELECTRIC
428-8243 or 428-8331

THE MANCHESTER ENTERPRISE

115TH YEAR VOLUME NO. 28

USPS 327-460

THURSDAY, MAY 8, 1980

HIT OR MISS by farley

Gasohol is big in the news nowadays, and as usual with all things new and at least somewhat different there are many objections to its use and practicability, and we have "experts" who are positive that it is the answer to at least a large part of our energy problems and those who are sure that it takes more energy to produce it than it will generate.

This action by the "experts" is nothing new. I'm sure that you remember that it was not practical for Henry Ford to produce an economical automobile that was affordable by the average man, but he, without even being an engineer, didn't realize that he couldn't do it and so he just went ahead and did it. In the process of so doing he developed the assembly line of producing automobiles which has proven to be the basis of economical production ever since.

And then too, the Wright Brothers, it was said, could never produce an airplane that would fly. It was proven, on paper, that such a machine was impractical but the Wrights evidently weren't experts and so made one that was successful even though it was deemed impossible.

And then I'm sure that you remember the classic example related about Knudsen of General Motors who, when that company was developing a diesel locomotive, went before a group of engineers who said a practical locomotive of the type that they were trying to produce, couldn't be made, and he proceeded to place before the group the data listing the body weight and the bulk of a bumble bee as related to its wing span area and proved definitely that one could not in any manner, fly-it was impossible. And then Mr. Knudsen is said to have smiled and said "Don't tell the bumble bee, let him keep on flying."

Our history is full of accomplishments made by folks that were so uninformed that they didn't know they couldn't do certain things and they just went ahead and lo and behold, they did 'em.

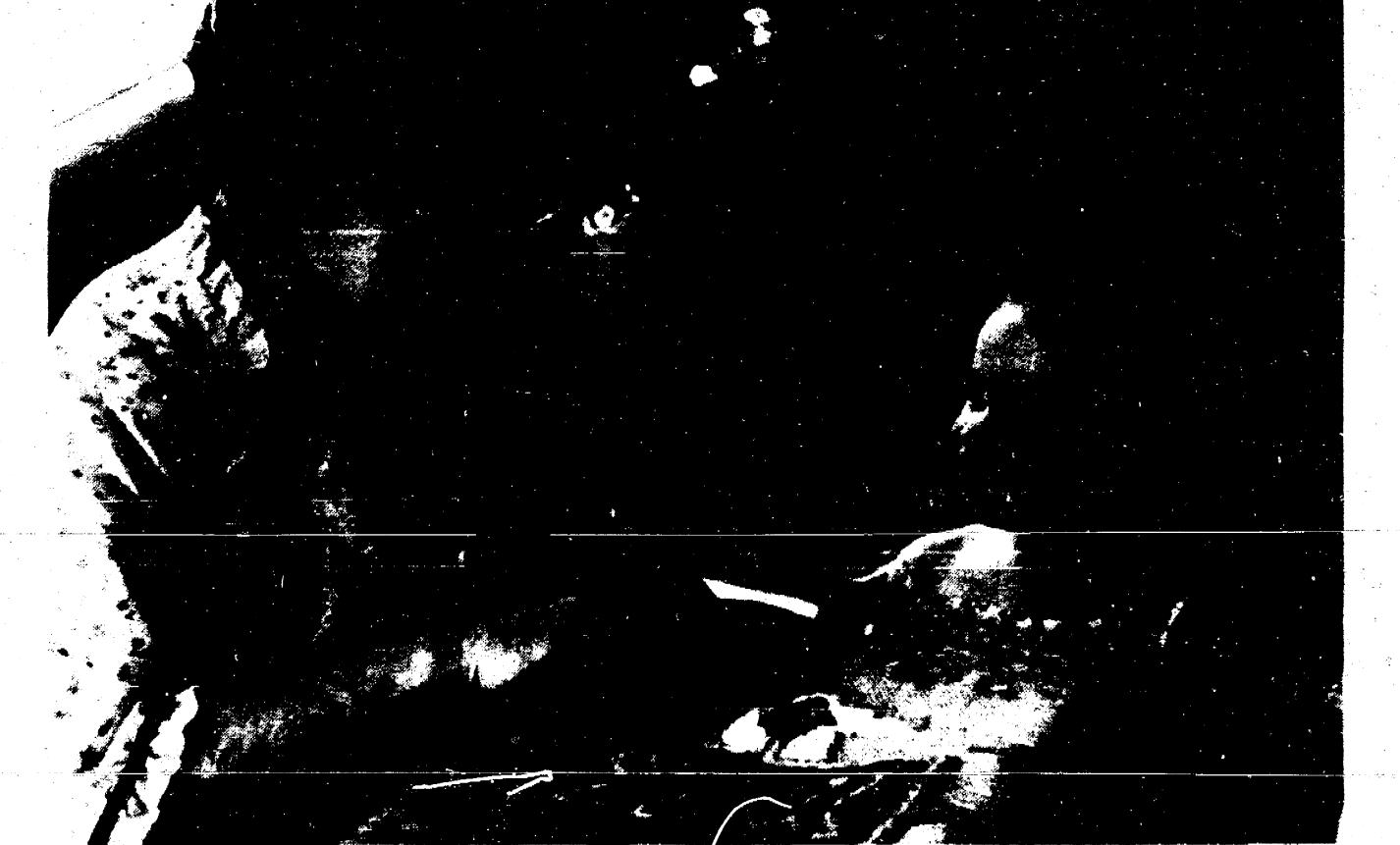
Let's hope this is true with gasohol. Some studies have shown that gasohol is impractical because it takes more energy to make it from corn than is gained from the resulting fuel. But this conclusion fails to take into consideration that improvements in the manner of manufacture probably will be made nor that other sources than corn are available for its production. Other agricultural products such as spoiled grain, citrus wastes and cheese whey, it has been proven can also be used.

The Federal Department of Energy says that great improvements in the production of gasohol are not far away. But Worldwatch Institute concludes that use of grain for ethanol would drive world prices upward causing malnutrition among the poor, while gasohol proponents claim that its production does not change the protein content of corn and that it may be fed to livestock.

The use of alcohol as automotive fuel is nothing new. In the 1930's millions of cars ran on gasoline and alcohol blends and racing cars burned methyl alcohol or methanol but it took the 1970's energy crisis to rediscover alcohol as an automobile fuel. So let's quit worrying so much about whether it really saves energy. The energy that it produces is right here in our back yard where we can control it, and make us at least self sufficient. Let's make use of what we use to call "Yankee Ingenuity" to help to once

Continued on page 4

Early American Rug Hooking Show



Anna Waterman of Tecumseh demonstrates the fine art of Rug Hooking as a young scholar, Angie-Tanner of Chelsea, looks on.

Mayor Exchange Day May 19th

Manchester will exchange with Quincy this year! Mayor Earl Foster, his wife, Allene, Councilman Gene Brand and wife Shirley will spend the day touring the village offices, the library, the new fire hall, Michigan Livestock Exchange, Hoover Universal Inc., and Double A Products. They will be entertained at a cocktail party at the Knights of Columbus Hall from 6:00 until 7:00. Dinner will be at 7:00. Tickets for the dinner and cocktails are \$7.00. They can be purchased at the Gamble's store.

Poppy Day May 16 & 17

The American Legion Auxiliary veteran-made memorial Poppy will be offered to the public on May 16 and 17th. Members of Emil Jacob Post #117 and volunteers will be distributing the bright red crepe paper Poppies in memory of the nation's war dead - while assisting the needy veteran and his family.

The American Legion Auxiliary adopted the Poppy as a memorial flower at its National Convention at Cleveland in September, 1920. This was followed through with the adoption of the Poppy as the American Legion Auxiliary's memorial flower.

Throughout the year, disabled and hospitalized veterans make Poppies in hospitals and special convalescent workshops maintained by the Auxiliary. Assembling Poppies provides both financial and psychological therapy.

Contributions made on Poppy Day are used by the local Unit to aid needy veterans and their families in the community and veterans in hospitals throughout the state. All proceeds are channeled directly into rehabilitation and children and youth welfare work.

MANCHESTER TOWNSHIP LIBRARY
P. O.

20¢ A COPY

USPS 327-460

THURSDAY, MAY 8, 1980

Notice

Due to Mayor's Exchange Day the Manchester Village Council Meeting will be held Wednesday, May 14, 1980 at 7:00 P.M.

present a spectrum of creative dyeing. This session is to meet on Saturday, May 24 at 10:00 a.m.

This exhibition, which runs through May 24, features a beautiful custom hooked, solid oak foot stool to be raffled on the last day. Tickets are available at \$1.00 each from guild members and at the gallery. The Manchester Art Guild Gallery is located at 138 E. Main Street. Hours for the exhibition are: Thursday 7:30 - 9:00 p.m., Friday and Saturday 9:00 a.m. - 1:00 p.m. and 7:30 - 9:00 p.m. and Sunday 3:00 - 6:00 p.m.

Two Resign From Board Of Education

At a special school board meeting held on May 5 the board president Corliss Mick and board member James Curley both tendered their resignations. Following are their statements.

I find myself increasingly at odds with the practices, procedures, and views of the present administration and will not be a part of what in my opinion is an attempt to manipulate and possibly deceive the people who voted me their representative.

As I find myself unable to implement any change in these practices, procedures, and views; I am resigning as President of the Board of Education of Manchester Community Schools and as a member of the Board both effective immediately.

Corliss L. Mick

I have lost faith and trust in the administration and could not accept the budget as presented to the public. I feel that it is in the best interest of the board that I resign.

Other personal reasons are to spend more time with my family and my business.

James Curley

The Manchester Enterprise

150 EAST MAIN STREET
Manchester, Michigan 48158
USPS 327-480

Phone 428-8173

The Manchester Enterprise was established in 1967 and is published each Thursday at 150 East Main Street, Manchester, Michigan with second class postage paid at Manchester.

Edward E. Steele, Publisher

Lenore Steele, Editor



Obituary

Eugene C. Schuman
10311 Noggies Rd.
Manchester

Age 56 years, died suddenly Saturday, May 3, 1980 at the Chelsea Community Hospital.

He was born May 8, 1923 in Wayne, the son of Edward and Ella Zink Schuman. He was married to Shirley Borico on August 15, 1942. She survives.

Mr. Schuman was a Veteran of the Army Air Corp during World War II. He was a carpenter, employed at the University of Michigan, member of Carpenter's Local # 512, National Rifle Assoc. and American Legion Post in Luzerne.

In addition to his wife he is survived by, one daughter, Karen Schuman of Phoenix, Arizona; mother, Mrs. Ella Schuman of Manchester; brother, Earl of Pinckney;

sister, Mrs. Evelyn Chebowski of Phoenix, Arizona and several nieces and nephews. He was preceded in death by his father and an infant brother, Walter.

Funeral services were held Tuesday, May 6, 1980, 1:30 p.m. at the Jenter Funeral Home, Rev. Robert Macfarlane officiated. Burial followed in Sharon Townhall Cemetery.

Earl (Tude) Van Sickle
9725 Willow Rd.
Clinton

Age 49 years died Sunday, May 4, 1980 as a result of injuries received in a motorcycle accident.

He was born June 3, 1930 in North Salem, Indiana, the son of John and Goldie Vandergriff Van Sickle.

He was married to Barbara Wals on October 1, 1949. She survives.

Mr. Van Sickle was a truck driver for the Yellow Freight System and a member of Teamster Local #299.

In addition to his wife he is survived by, three sons, Douglas of Clinton, Rodney and Jeff at home; three daughters, Mrs. Howard (Beverly) Girbach of Houston, Texas, Miss Nancy Van Sickle of Ypsilanti; Mrs. James (Kathy) Handy of Tecumseh; grandson, Timothy Handy; three brothers, Marvin of Thorntown, Indiana, George of Manchester, Robert of Indianapolis; two sisters, Mrs. Lela Haines of Indianapolis, Mrs. Hazel Wilson of North Salem, Indiana.

He was preceded in death by one sister. Funeral services will be held Thursday, May 8, 1980, 1:30 p.m. at the Jenter Funeral Home, Rev. Neil J. McShane officiating. Burial will follow in Norvell Township Cemetery.

Wilbur M. Hinderer
430 East St.
Chelsea, Michigan

Age 82 years, passed away Friday, May 2, 1980 at the Evangelical Home in Saline.

He was born December 17, 1897 in Lima Center, Michigan, the son of Jacob and Caroline (Landwehr) Hinderer. He was married to Matilda Haarer on September 1, 1925, she preceded him in death on October 20, 1976.

Mr. Hinderer was a member of St. Pauls United Church of Christ in Chelsea and a World War I Veteran, a member of American Legion Post. He was the former co-owner/operator with his brother Otto of the Hinderer Brothers Market in Chelsea until 1959.

He is survived by two daughters, Mrs. Fred (Marcelline) Benson of Medina, New York, Mrs. James (Donna) Linderman of Westland; one brother, Otto Hinderer of Chelsea; one sister, Mrs. Arthur (Anna) Schairer of Dexter; seven grandchildren and several nieces and nephews.

He was preceded in death by four sisters, Clara Grau, Cora Laror, Martha Wienmann, and Lydia Bohnet.

Funeral services were held Monday, May 5, 1980, 1:00 p.m. at the Burghardt Cole Chelsea Funeral Chapel, Dr. William C. Donald officiated. Burial followed in Oak Grove Cemetery in Chelsea.

Memorial contributions may be made to the Chelsea St. Pauls United Church of Christ or the American Cancer Society.

Attention Academic Supporters

The May 14th meeting of the Academic Boosters' Club will consider and prioritize questions to be presented to School Board candidates on June 3rd.

We want to be the sup-hose of the academic program here. Please help fiber us together with your interest and your input into selecting candidates who will listen and attend to our needs and who can laugh when our stockings sag a little.

The May 14th meeting will be held at 7:30 p.m. in the Manchester School Library.

Degree Candidates

University of Michigan students who expect their degrees this spring attended the University's commencement ceremonies May 3.

More than 5,700 students on the Ann Arbor campus are degree candidates this spring.

James Baker, 320 Territorial St., Manchester will be expecting his Master of Science degree. He attends the college of Rackham.

Donald F. McHenry, ambassador to the United Nations, was the main commencement speaker.

ARE YOU SURE YOU'RE "PUNCHING THROUGH LOUD AND CLEAR"?

The typical CB'er can get an average of three miles further to "punch through loud and clear" with a check and adjustment of his CB and antenna system for peak performance.

MANCHESTER CB SERVICE
Phone 428-8073 FCC LICENSED

DOROTHY MAE BEAUTY SHOP
231 E. MAIN MANCHESTER
ALL BEAUTY SERVICES
4 EXPERIENCED OPERATORS TO SERVE YOU
MEN'S HAIRCUTTING AND STYLING
Phone 428-7616
Tues. - Sat. 8:30 a.m. - 5:30 p.m.
Wed. Evenings By Appointment

COME IN TO A NAPA STORE TODAY

Ross Automotive
230 EAST MAIN MANCHESTER
PHONE 428-8320 OR 428-8323

Announcing Community Workshop On Public Transit In Washtenaw County

ALTERNATIVE PUBLIC TRANSIT MANAGEMENT, FINANCING AND SERVICE OPTIONS WILL BE DISCUSSED AT THE FOLLOWING LOCATIONS:

May 13 7:30 P.M. Saline High School/Cafe.
May 14 2:30 P.M. Washtenaw Community College - LASB #1
May 14 7:30 P.M. Chelsea High School/Cafe.
May 15 8:00 P.M. Cleary College Lobby

A summary of transit options is available upon request.

FOR FURTHER INFORMATION CONTACT:
Ann Arbor-Ypsilanti Urban Area Transportation Study, 111 W. Kingsley,
Ann Arbor, Michigan 48107

SKIRTS SLACKS and BIBS

CHINO and PAINTER PANTS
all sizes
In Blue, Yellow, Red and Green Chios

BUY ONE PAIR GET 30% OFF ON SECOND PAIR

The Clothes Line
134 EAST MAIN STREET
MANCHESTER, MICHIGAN 48158
PHONE 313-428-7775



SATURDAY, MAY 10, 1980
Sportman Club Dance 9 p.m. - 1:30 a.m. Luke Schaible Band.
O.E.S. Card Party 8 p.m. Masonic Hall.
MONDAY, MAY 12, 1980
Optimist Club 6:30 p.m. Emanuel Church.
Bridgewater Twp. Planning Commission 8 p.m.
TUESDAY, MAY 13, 1980
P.T.O. Learning Materials Workshop 9:10-9:30 a.m. Klager School.
Pleasant Lake P.T.O. Potluck Dinner & Meeting 6:30 p.m.
20th Century Club 8 p.m.
WEDNESDAY, MAY 14, 1980
Living with Cancer 7:30 - 9 p.m. 1st Congregational Church, 608 E. Williams, Ann Arbor 48106-8857.
Legion Auxiliary 7:30 p.m.
Manchester Village Assoc. 7:30 p.m. Bauernstube. Guest speaker Sandy Tanis and Carol Blain. Topic: Manchester Art Guild.
SUNDAY, MAY 18, 1980
Annual Boat and Canoe Race 1 p.m.
TUESDAY, MAY 20, 1980
P.T.O. Learning Materials Workshop 9:10-9:30 a.m. Klager School.
XI Epsilon Iota 7:30 p.m.

Manchester Teachers Work To Heighten Skills

All teachers in the Manchester Community Schools will attend a full day in-service workshop on Friday, May 9, 1980. All classes will be cancelled for the day as teachers spend time in classrooms studying new ideas and techniques. The program has been organized by the district Professional Council which is chaired by Dr. Eugene Thompson, Superintendent. All expenses will be funded by a grant from the Michigan State Department of Education.

The morning session will be devoted to the study of teacher stress. Teachers will study the manner in which stress effects them in their daily lives and in how they work with children. Emphasis will be placed on learning methods of managing the stresses which are a part of the teaching profession.

During the afternoon session teachers will choose between workshops dealing with the teaching of reading, teacher effectiveness, discipline techniques, or working with handicapped children in the classroom.

Parenting Skills Discussion Groups

It's definitely Springtime and school will be out soon, but perhaps you'd like to meet with other parents to trade ideas toward raising responsible children in a more enjoyable manner.

The STEP Handbook (Steps Toward Effective Parenting) will again be used as a base for our discussions; our verbal exchanges will contribute heavily to our gain in understanding and using certain methods.

Tentative dates for our meetings are May 21 and 28, June 4, 11, and 18. A \$5.00 charge will cover the cost of your Parent Handbook and great coffee. Call to register and to pick up your Handbook before the first meeting. Barbara Lund 428-7442.

American Legion Auxiliary

The regular meeting of the American Legion Auxiliary was held at the Legion Home on April 9, 1980.

David Sweet from the Kinship Homes was present, and gave us a very inspiring talk on the work that is being done for the handicapped people that are living in the Homes. Everyone in the community should learn of all that is being done for these adults.

Pamphlets are being ordered on "Reys Syndrome", and will be placed in the schools and various other places so that the symptoms may be readily recognized. The Legion and Auxiliary are together, purchasing a flag for the new Fire Hall. Poppy Day will be held on Friday, May 16.

Della Widmayer will be Good Cheer for the coming month. Our next meeting will be May 14, at 7:30 p.m. Serving on refreshment committee will be Bea Clark, Cindy Wurster and Augusta Vogt.

Refugee Aid Project Underway

The community project to sponsor a refugee family for immigration into the United States, and settlement in Manchester, has taken its first steps under the sponsorship of the Manchester Church Women United.

At a meeting held April 29, representatives from St. Mary's, Emanuel, Bethel, Sharon Methodist and Manchester United Methodist Churches agreed that so many individuals from these churches had volunteered their help with the project, that it appeared to have a fairly broad base of community support.

Mary Kirk will be coordinator of the project and she and her committee anticipate that Manchester's Indonesian refugee family will arrive here sometime in July.

Employment has already been guaranteed for one family member, as has housing for a limited period of time.

Members of the five churches listed above have received requests for donations, both for household goods and for money to tide the family over until regular paychecks can start contributing to their support.

Anyone wishing to make a tax-deductible cash donation should make out a check payable to "Manchester Church Women United" and designated "for refugee resettlement project". Cash donations should be deposited at the Main Office of the Union Savings Bank.

Ann Arbor Saturday Night Singles Club

The Ann Arbor Saturday Night Singles Club Dance for single adults 25 years and over will be held at the Ann Arbor "Y", 360 S. Fifth Avenue, on Saturday, May 10, 9:00 p.m. to 12:00 midnight.

Come and meet the friendly singles. Refreshments will be served.

ALCOHOLICS ANONYMOUS

WEDNESDAYS
8 P.M.

EMANUEL CHURCH
PHONE 428-7693

CORN LAND WANTED

CASH RENT
40 Acres and Up

COUNTRYSIDE FARMS
PHONE 517-522-5174
Grass Lake, Michigan

Open Saturday Till 2 P.M. FLOWER BULBS

PLANTING TIME

Open Saturday Till 2 P.M. LAWN SEEDS

DAHLIAS
GLADS
LILIES
PEONY
CLEMATIS
LILY-OF-THE-VALLEY
BEGONIAS

WELCOME TO OUR GARDEN SEED CENTER

We Also Have A Good Supply Of
LAWN SEED

KY31 FESCUE, CREEPING RED FESCUE, BER-MUDA, PERENNIAL RYE GRASS, ANNUAL RYE-GRASS, MANHATTAN RYE GRASS

SOLD IN BULK OR PACKAGE

TOOLS
GARDEN SEEDERS
GARDEN CULTIVATOR
FERTILIZER SPREADERS
RAKES
SHOVELS
HOES
HAND TOOLS
SPRAYERS
DUSTERS
CORN PLANTERS
POTATO PLANTERS
SPRINKLING CANS

CHEMICALS
ORTHO
CIBY-GEY
PARSONS
INSECTICIDES
FUNGICIDES
WEED-KILLER

FERTILIZERS
ORTHO
WONDER-GRO
AGRICO
MURICLE-GRO
PEAT-MOSS
PLANTING MIX
POTTING SOIL
DRIED COW MANURE

GARDEN
ASPARAGUS
RHUBARB
ONION SETS
SEED POTATOES
BULK SEEDS
PACKAGED SEEDS
HERBS
RASPBERRIES
STRAWBERRIES
GRAPES

MANN'S FEED MILL
210 E. MAIN STREET PHONE 428-7077 MANCHESTER, MICHIGAN

ATTEND THE CHURCH OF YOUR CHOICE

EMANUEL UNITED CHURCH OF CHRIST

Rev. Robert Macfarlane, Pastor
Sunday School 9:15 a.m. Church 10:30 a.m.
Plan to worship God regularly.

SEABON UNITED METHODIST

Rev. Wayne Ferrigan, Pastor
Corner Pleasant Lake Road M-52
Sunday School 10:00 a.m. Worship Service 11:00 a.m.

ST. THOMAS LUTHERAN

Rev. Paul Puffer, Pastor
Ellsworth Road
Sunday School and Bible Class 9:30 a.m.
Worship Service 10:45 a.m.

ST. JOHN'S UNITED CHURCH OF CHRIST

Carl Asher, Pastor
Rogers Corners, Waters and Fletcher Rds.
Sunday School 9:30 a.m., Church Services 10:30 a.m.

BETHEL UNITED CHURCH OF CHRIST

Rev. Roman A. Reineck, Pastor
Schneider and Bethel Church Roads
Church Service 10:00 a.m., Sunday School 11:00 a.m.

MANCHESTER UNITED METHODIST

Rev. Maurice D. Sharai, Pastor
Sunday School 9:15, Worship 10:30 a.m.
ST. MARY'S CATHOLIC CHURCH

Father Raymond Schlinkert

West Main Street
Monday thru Friday 8:30 a.m., Saturday 5:00 p.m., Sunday 8:30 and 10:30 a.m.

NORTH SEABON COMMUNITY BIBLE

Rev. Ronald C. Purkey, Pastor
Sylvan and Washburn Road
Sunday School 10:00 a.m., Worship Service 11:00 a.m. (Nursery will be available)

Junior Church Classes 11:00 a.m. Youth Meeting Senior High 6:00 p.m. Youth Choir 6:00 p.m. Evening Worship Services 7:00 p.m. (Nursery available) Wednesday Bible Study and Prayer Meeting (Nursery available) 7:00 p.m. To your door Bus Transportation available 428-7222.

FAITH COMMUNITY CHURCH

Timothy Miles, Pastor
8400 Sharon Hollow Rd. off W. Austin Rd.
Worship Service 10:00 a.m. Sunday School 11:15 a.m. Sunday Evening Service 6:00 p.m. Junior & Senior High Young People's Meeting 7:00 p.m. Wednesday evening, Prayer Meeting and Bible Study 7:00 p.m. Senior Choir Practice 8:00 p.m.

IBON CREEK CHURCH

Rev. Ralph Janofski, Pastor
Worship Service 10:00 a.m. Sunday School 11:15 a.m. Youth Service 6:30 p.m. Evening Service 7:30 p.m. Wednesday Evening, Junior Choir 8:30 p.m., Bible Study and Prayer Meeting 7:30 p.m., Senior Choir 8:30 p.m.

ZION LUTHERAN CHURCH

Rev. John R. Morris, Pastor
3050 S. Fletcher Road
Sunday School 9:00 a.m. Family Worship 10:15 a.m.

ST. JOHN'S LUTHERAN CHURCH

Rev. Dennis A. Falk, Pastor
Austin Road, Bridgewater, Michigan
Sunday School 9:15 a.m. Worship 10:30 a.m.

VICTORY BAPTIST

Dr. Clare Gleason, Pastor
423 S. Macomb Street, Phone 428-7262
Sunday School 9:45 a.m. Morning Worship 11:00 a.m. Evening Worship 6:00 p.m. Youth Meeting 7:00 p.m. Wednesday: Prayer Meeting 7:00 p.m.

ST. BARNABAS EPISCOPAL CHURCH

Rev. Jerrold F. Beaumont, "Vicar"
Old US 12, 1/4 mile west of M-52, Chelsea.
10:00 a.m. Holy Eucharist and Morning Prayer.

CLINTON ASSEMBLY OF GOD

Charles Sanders, Pastor
12500 Allen Rd., Clinton, Mi. (corner of Allen Rd. and Manchester-Clinton Rd.)
Sunday School 9:45 a.m.; Morning Worship 11:00 a.m.; Evening Service 6:30 p.m.; Wed. evening Bible Study and C.A.'s, 7:00 p.m.

ST. JOHN'S LUTHERAN CHURCH

Thursday, May 8, Mary Martha Circle, 8 p.m.
Saturday, May 10, No Catechism. Young Adult Study, 7:30 p.m.

Sunday, May 11, Mother's Day, Sunday School, 9:15 a.m. Worship with Holy Communion, 10:30 a.m. Youth Group, 7 p.m.

Wednesday, May 14, Esther Circle, Ruth Circle 2 p.m. Jr. Choir 7:30 p.m. Midweek Dev. Sr. Choir 8:45 p.m.

EMANUEL UNITED CHURCH OF CHRIST

Thursday, May 8, 12 noon, Sr. Meal 3:30 p.m. Junior Choir, 7:30 p.m. Senior Choir.

Saturday, May 10, 9:00 a.m. Vacation Bible School meeting at Emanuel, 7:30 p.m. Young Adults at Wait & Donna Brags.

Sunday, May 11, Mother's Day, 2nd Special Offering will be received, special puppet children's story.

Monday, May 12, 6:30 p.m. Optimist Dinner, 7:30 p.m. Aerobic Dance Class. Reservation deadline for Mother-Daughter Banquet on Thursday, May 15.

Tuesday, May 13, 9:30 a.m. Morning Discussion Group, 12 noon, Sr. Meal.

Wednesday, May 14, 7:30 p.m. Church Council, 7:30 p.m. Aerobic Dance Class, 8:00 p.m. Alcoholics Anonymous.

Thursday, May 15, 12 Noon, Sr. Meal, 6:30 p.m. Mother-Daughter Banquet.

BETHEL UNITED CHURCH OF CHRIST

Thursday, May 8, 9:00 a.m. Church Cleaning, 8:00 p.m. Church Cabinet meeting.

Sunday, May 11, 10:00 a.m. Worship Service & Festival of the Christian Home (Mothers Day), 6:00 p.m. Senior Youth Initiation Banquet. (Pot Luck).

Tuesday, May 13, 7:30 p.m. Vacation Bible School Teachers and Helpers.

Wednesday, May 14, 9:00 a.m. Church cleaning day, 11:00 a.m. Pre-School Fellowship Pot Luck Picnic, 11:30 a.m. Senior Citizens of Bethel, 7:45 p.m. Senior Choir rehearsal.

MANCHESTER UNITED METHODIST CHURCH

Wednesday, May 7, 7:30 P.M. Joy Circle at Marty Tubaug's home.

Saturday, May 10, 9:00 a.m. Vacation Bible School Teachers meet at Emanuel United Church of Christ, 10 a.m. Confirmation Class.

Sunday, May 11, Mother's Day - Confirmation Sunday.

Tuesday, May 13, 7:30 p.m. Finance Committee meeting.

ZION LUTHERAN CHURCH

Thursday, May 8, Altar Guild 9 a.m. Friday, May 9, Mother/Son Banquet 6:30 p.m.

Saturday, May 10, Senior Citizens 10:00 p.m.

Sunday, May 11, Sunday School 9 a.m. Pastor's Inquirer Class 9 a.m. Worship 10:15 a.m.

Tuesday, May 13, 4 p.m. Joy Makers.

Wednesday, May 14, Church Council 7:30 p.m.

BETHEL UNITED CHURCH OF CHRIST

Thursday, May 8, 9:00 a.m. Church Cleaning, 8:00 p.m. Church Cabinet meeting.

Sunday, May 11, 10:00 a.m. Worship Service & Festival of the Christian Home (Mothers Day), 6:00 p.m. Senior Youth Initiation Banquet. (Pot Luck).

Tuesday, May 13, 7:30 p.m. Vacation Bible School Teachers and Helpers.

Wednesday, May 14, 9:00 a.m. Church cleaning day, 11:00 a.m. Pre-School Fellowship Pot Luck Picnic, 11:30 a.m. Senior Citizens of Bethel, 7:45 p.m. Senior Choir rehearsal.

MANCHESTER UNITED METHODIST CHURCH

Wednesday, May 7, 7:30 P.M. Joy Circle at Marty Tubaug's home.

Saturday, May 10, 9:00 a.m. Vacation Bible School Teachers meet at Emanuel United Church of Christ, 10 a.m. Confirmation Class.

Sunday, May 11, Mother's Day - Confirmation Sunday.

Tuesday, May 13, 7:30 p.m. Finance Committee meeting.

ZION LUTHERAN CHURCH

Thursday, May 8, Altar Guild 9 a.m. Friday, May 9, Mother/Son Banquet 6:30 p.m.

Saturday, May 10, Senior Citizens 10:00 p.m.

Sunday, May 11, Sunday School 9 a.m. Pastor's Inquirer Class 9 a.m. Worship 10:15 a.m.

Tuesday, May 13, 4 p.m. Joy Makers.

Wednesday, May 14, Church Council 7:30 p.m.

Thursday, May 15, The Charity Circle will meet at 10:30 a.m. Winnie Gage will have devotions and Leah Keasal will serve dessert.

FAITH COMMUNITY CHURCH

Thursday evening, May 8, The Faith Circle will meet at 7:30 p.m. Nila Blake-man will have Devotions, and LeeAnn Reese will be serving refreshments.

Saturday evening, May 10, After-glo will meet at the Clifford Riethmiller's at 6 p.m.

Sunday, May 11, Mother's Day. During the 10:00 a.m. worship hour there will be infant dedication and also communion.

Wednesday, May 14, Ladies Bible Study at 9:30 a.m.

Thursday, May 15, The Charity Circle will meet at 10:30 a.m. Winnie Gage will have devotions and Leah Keasal will serve dessert.

MANCHESTER UNITED METHODIST CHURCH

Wednesday, May 7, 7:30 P.M. Joy Circle at Marty Tubaug's home.

Saturday, May 10, 9:00 a.m. Vacation Bible School Teachers meet at Emanuel United Church of Christ, 10 a.m. Confirmation Class.

Sunday, May 11, Mother's Day - Confirmation Sunday.

Tuesday, May 13, 7:30 p.m. Finance Committee meeting.

ZION LUTHERAN CHURCH

Thursday, May 8, Altar Guild 9 a.m. Friday, May 9, Mother/Son Banquet 6:30 p.m.

Saturday, May 10, Senior Citizens 10:00 p.m.

Sunday, May 11, Sunday School 9 a.m. Pastor's Inquirer Class 9 a.m. Worship 10:15 a.m.

Tuesday, May 13, 4 p.m. Joy Makers.

Wednesday, May 14, Church Council 7:30 p.m.

FAITH COMMUNITY CHURCH

Thursday evening, May 8, The Faith Circle will meet at 7:30 p.m. Nila Blake-man will have Devotions, and LeeAnn Reese will be serving refreshments.

Saturday evening, May 10, After-glo will meet at the Clifford Riethmiller's at 6 p.m.

Sunday, May 11, Mother's Day. During the 10:00 a.m. worship hour there will be infant dedication and also communion.

Wednesday, May 14, Ladies Bible Study at 9:30 a.m.

Thursday, May 15, The Charity Circle will meet at 10:30 a.m. Winnie Gage will have devotions and Leah Keasal will serve dessert.

HIT OR MISS

again make us leaders in the progress of our world. Let's get off our haunches and as we have said before, and been chastised for it, quit "baying at the moon". And do you remember that not long ago someone said that an expert was merely an office boy a hundred miles from home?

Manchester Area Historical Society

"Oral History" Tapes was the Program at the Manchester Area Historical Society meeting April 28 at the Emanuel Church Hall.

Mrs. Aaron Nathan had supervised the making of these tapes and the first one played was by the late Clayton Parr and LeRoy Marx. Mr. Parr told of his childhood and his school days. He described his days as Township Supervisor and working at the County Court House. Mr. Marx enjoyed his reminiscing of his hobby, pitching for the Manchester Town Baseball team and made his game come alive for everyone present.

Another "History" was taped at the Nathan Farm by Mabel Merriman Knopp and her niece Betty Frye Thomas. Both were born at this farm and spent their childhood years there.

The Nathans purchased this farm from the Merriman Family several years ago. It had been a Stage Coach Stop in pioneer days. They related amusing and interesting bits of history concerning that era and how the property was made into a Homestead.

These tapes are priceless. More families should become interested in Recording events of their early History.

Roeper School Open House

A Roeper Fest and Open House will be held at the Bloomfield Hills Roeper City and Country School for gifted students on Sunday, May 18, 11-4 p.m. You may meet faculty, visit classrooms, and tour the 12 acre campus. Students will give dance, musical, and theatrical performances in addition to square dancing and carnival games. Admission is free. For more information, please call Ruthan Brodsky (313) 642-1500.

Help

To anyone interested in our softball diamond on the Athletic Field. It is being rebuilt and we do need some individual help. Please contact Ron Mann, at the Mill, or Ted Stautz.

La Leche Meeting

There will be a LaLeche Meeting on Wednesday, May 14, 7:30 p.m. at the home of Sandy Winzenz, hostess, 424 E. Main, 428-7125. The topic will be: The Advantages Of Breast Feeding To Mother And Baby.



Join us for Lunch

We feature a spectacular Soup-Salad-Sandwich bar, in addition to our full luncheon menu

or for Dinner !!

Seafood is our specialty...with sensational choices, including New York strip steak, (at sensible prices). Add to this a selection from our wine list - and enjoy!

Monday-Thursday 11-10
Friday & Saturday 11-11
Closed Sundays

WE ACCEPT 

113 S. Main, Chelsea, Michigan
(Just 15 minutes from Ann Arbor)
Call 475-1922

Spur Of The Moment Saddle Club

What a lovely, perfect, day we had for the first show of the Spur of the Moment, this Spring. We missed a lot of the old standbys, that have left this part of the country, and gained some new ones.

Our judge, this May show was Jim Sexton, and as always, he did a nice job. The results were:

Pony Halter sponsored by Dr. H.P. Eames Animal Clinic in Manchester. 1st. Paula Reel showing Sand Creek Sunshine. 2nd. Tim Long showing Delight. 3rd. Jill Long handling Flip.

Pony Pleasure sponsored by Kosmyna Chiropractic Life Center, Clinton. 1st. Tim Long riding Delight. 2nd. Paula Reel on Sand Creek Sunshine. 3rd. Jill Long showing Flip.

Pony Equitation (no sponsor) 1st. Tim Long with Delight. 2nd. Paula Reel and Sand Creek Sunshine. 3rd. Jill Long with Flip.

18 and under (horses) Halter. 1st. Tim Long handling Mahria. 2nd. Karen Hawk and Copper Dust. 3rd. Scott Neff showing Scat Cutter. 4th. Leslie Buckner with Phellah.

18 and under, Equitation sponsored (monthly) by Wayne Buckner, Brooklyn, and year end by Bob LaVasseur, Farrier, Chelsea. 1st. Copper Dust with Karen Hawk, owner and rider. 2nd. Llano, Rick Alberts owner and rider. 3rd. Phellah, Leslie Buckner owner and rider and 4th. Scat Cutter, with Scott Neff owner and rider.

Adult Halter, no sponsor. 1st. Braun Sugar, owned and handled by Jean Davis. 2nd. Bourbon Proof, owned and shown by Janet Rayne.

Adult Pleasure: 1st. Janet Rayne, and Bourbon Proof. 2nd. Rita Drouare on D.R.'s Chief Sundance. 3rd. Jean Davis on Braun Sugar.

Pleasant Lake School PTO Family Potluck

A Family Potluck Dinner sponsored by the Pleasant Lake PTO, will be held Tuesday, May 13, beginning at 6:30 P.M., in the multi-purpose room of the school.

Following the dinner, a brief business meeting will be held. The PTO Board of Directors for 1980-81 will be elected and a change in the by-laws will be discussed.

After the business meeting, there will be a style show by the 4-H, and presentations by the Brownies, Junior Scouts, and Cub Scouts.

Adult Pleasure: 1st. Janet Rayne, and Bourbon Proof. 2nd. Rita Drouare on D.R.'s Chief Sundance. 3rd. Jean Davis on Braun Sugar.

Adult Pleasure: 1st. Janet Rayne, and Bourbon Proof. 2nd. Rita Drouare on D.R.'s Chief Sundance. 3rd. Jean Davis on Braun Sugar.

Hartmann Carpentry

Free Estimates
Pole Barns Remodeling
Roofing Rough Finish

Jim Hartmann 475-9301
Rich Kennedy 475-1643

CHelsea PLUMBING AND HEATING

Reasonable Rates
Gail Shears, Licensed Journeyman
Garland DeYoe, Licensed Master
475-1037

Reasonable Rates

Gail Shears, Licensed Journeyman

Garland DeYoe, Licensed Master

475-1037

NORM WALZ CONSTRUCTION
Remodeling and Room Additions
Garages—Porches
CUSTOM BUILT CABINETS
CUSTOM BUILT HOME ON YOUR IMPROVED LOT CAN SAVE YOU \$\$\$\$\$\$



Phone 428-7109

HARDWOODS

KILN DRIED, 12 SPECIES, FURNITURE
QUALITY, FIREPLACE MANTLES,
FLOORING, PANELING, MILLSHOP

Bridgewater Hardwood

9065 AUSTIN ROAD PHONE 429-1005 BRIDGEWATER, MICH.

8

We have the green light to pay you more interest... 1/4% more than Banks pay!

NEW 30 month money market certificate

- Rate is compounded continuously.
- Certificates are automatically renewed at maturity at the then current rate.
- Certificates are also available for IRA and KEOGH Retirement Accounts.

Federal regulations require substantial penalty for early withdrawal from certificate accounts. The rate at purchase continues for the full term of the certificate.



GREAT LAKES FEDERAL SAVINGS

Offices in: Ann Arbor, Battle Creek, Albion, Bellevue, Brighton, Chelsea, Coldwater, Dexter, Hastings, Howell, Jackson, Manchester, Marshall, Okemos, Richland, Seline, Ypsilanti
Member FSLIC

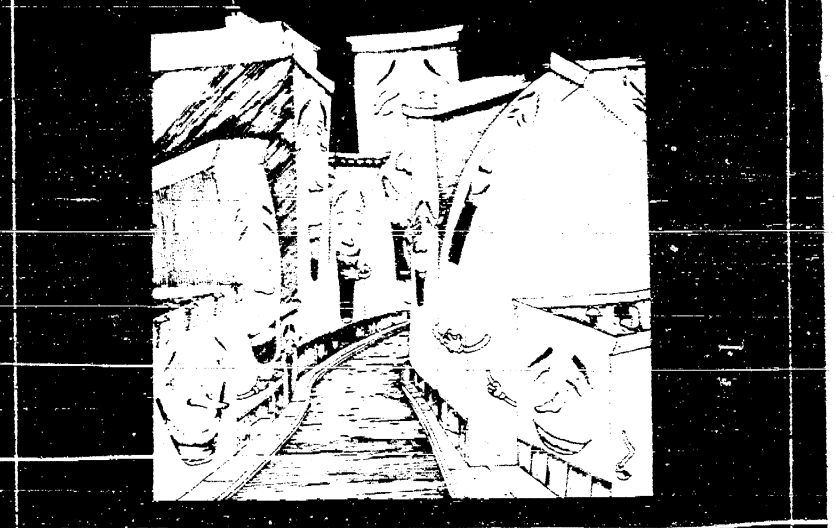
BETTER LAWN & GARDEN CARE BEGINS WITH WONDER GRO FROM MANN'S FEED MILL



Mann's Feed Mill

PHONE 423-7077
210 EAST MAIN STREET MANCHESTER, MICHIGAN

SECOND CITY



SATURDAY, MAY 17, 8:00 pm
MICHIGAN THEATRE, Ann Arbor

TICKETS \$10 & \$20.00
RESERVATIONS: 475-1922
BOX OFFICE: 475-1922

FLEMING

Observations

Every so often there are happenings in our fair village which require comment. One such happening occurred recently when our Council through the traffic department decided to erect "STOP" signs on corners where some had been before. The question has to be raised as to why these signs.

Being a graduate of Michigan Traffic Centers we are fully aware of the fact that traffic signs are erected for the main purpose to direct traffic in a proper orderly way, to avoid accidents and most of all to allow traffic to move in an orderly manner. Never should signs be erected for any other reason. It is obvious, therefore, to conduct a decent study prior to the erection of signs to establish if they are needed due to heavy traffic, the exact number of vehicles per hour versus as to the over increasing yearly traffic load, the number of cars which try per hour to enter the general street, and the total number of accidents which occur at any intersection on a yearly basis, and finally the total dollar value of such accidents. It is obvious that the largest number of vehicles passing a given point at a moderate rate, which is being manufactured by other vehicles in the most traffic system that can be had. Making vehicles stop for no reason and then conducting to move as a waste of time, gas, energy, and money. All of which is at a premium at the present time even with high interest rates coming slowly down.

We have to applaud the village traffic department for making the main intersection at Main, Ann Arbor Hill, and Riverside Drive a four way stop. This has been badly needed. Cars coming from the south on Riverside were hard put to see cars approaching on W. Main and hardly as hard put by without hearing the squeal of tires and another close call. This now has been eliminated. On the other hand one of the most stupid signs that we have is where E. Main meets Hibbard Road. It is absolutely impossible for any driver going west on E. Main to see anyone approaching on the north side of

Hibbard. There are trees, shrubs, fence posts and what not blocking all views. It is without question the most dangerous STOP sign in the city. All drivers have to go through the sign to find out if anything is coming down Hibbard.

If the traffic department feels that a sign is needed, and again let us caution, we do not believe that a study was ever made to determine the amount of traffic at this intersection, why was the sign not put on Hibbard. The sign could be placed for enough south to allow drivers to see what was transpiring east on Main Street. Add to this the fact that E. Main carries traffic regulated for 25 MPH where traffic on Hibbard moves at a far higher rate, up to 40 or 50 MPH. So let's slow down the fast traffic instead of endangering the slow traffic.

Now as to our main complaint. Two "STOP" signs on E. Main for both east and west traffic at Wabersaw. Why? Just to keep someone happy. Main Street is not a narrow street. It is wide enough for two cars to pass each other even with a car parked on each side of the street. Traffic on Wabersaw is quite low and E. Main is not a heavily traveled street. It is a well known fact that between three and four o'clock there are frequently seven, eight, or even nine cars stopped at the Main-Ann Arbor intersection. This is because the school and Double A let out at this time and both school personnel and Double A workers are on their way home. So are we now going to have two jolt ups on East Main with cars stopping for STOP signs. Ridiculous. This is not keeping

traffic moving. This is piling it up. Soon we will have to park on the north side of Main and crowd over cars to get to the bank. A city the size of Manchester should have a traffic system with at least one main artery to allow cars to travel without restriction to get in and out of town. In larger cities they use a system of one way streets to accomplish this feat. Manchester is too small for that. One artery for east and west traffic and one for north and south traffic is all that is needed. We don't see any silly signs on Riverside Drive for that is M-52 governed by the State and permission has to be granted by them. So we challenge our traffic department in the Council to reconsider their decision and set us have a through street for east and west traffic the same as we have for north and south, and get rid of those two silly "STOP" signs at Wabersaw.

Special Thanks

A Special Thanks from the Manchester Athletic Boosters for these late donations we have received for Spring Sports: Anita Jacob, William Boyd, James Duacan, Earl Hornung, Victor Grossman, Charles Silkworth, Bruce Gotta, Barney Watson and Jerry Waters.

Auditions For "The King And I"

The Friends of the Chelsea Players remind everyone interested in participating in the July 17, 18, & 19 production of The King and I, that auditions will be held at the Chelsea High School Auditorium, Wednesday and Thursday, May 14 and 15, from 7:30 - 10 p.m. Call backs will be held on Saturday, May 17, from 1-3 p.m.

A cast of 60 men, women and children is needed. Actors, singers, dancers, and those who can combine these talents, will be cast.

In addition to performers, people are needed to direct and assist in every area of this theatrical production. Crews for lighting, make-up, costuming, tutoring, advertising, tickets, and set construction will be formed.

Rehearsals will begin the week of June 1. For further information, phone Alyce Riemschneider at 475-1056.

Agricultural Program Remains At MHS

In a reversal of his earlier recommendation Superintendent Eugene Thompson, at a special Board meeting, recommended that the vocational Agricultural program remain at the High School for one more year.

Thompson stated that the most convincing arguments to continue the program came from FAA leader Len Dayas. "Len came to me with sound arguments, a rationale of the FAA program, and facts to support his position. I was impressed," said Thompson.

Added costs to the district will be approximately Ten Thousand dollars for 1980-81 to maintain the program. These funds will be transferred from a teaching position which has to have been created in the Middle-School Library. In addition an exploratory agricultural program will be added at the Middle School.

"I believe", stated Thompson, "that this action demonstrates the willingness of the Board and the Administration to listen carefully to the community during public hearings. My belief at the time I made the original recommendation was that I had all of the facts. This was a complex issue. Obviously, there was much for me to learn. I'm grateful for the young men and women of the FFA. With leaders such as these the future of our community will be in good hands."

Second City

Question: What do all of these people have in common? ...Dan Ackroyd, Alan Arkin, John Belushi, Valerie Harper, Linda Lavin, Elaine May, Ann Mearns, Gilda Radner, Joan Rivers, David Steinberg, or Gilda!

Answer: They are all past cast members of SECOND CITY!

On Saturday, May 17th, 1980, Fleming and Associates is pleased to announce a performance by THE NATIONAL TOURING COMPANY OF SECOND CITY - presented in Ann Arbor's historic movie palace: The Michigan Theatre. Curtain time is 8:00 p.m.

SECOND CITY is a name that was derived some 20 years ago when a group of fledgling comedians decided to form a workshop for themselves in Chicago, which has the dubious distinction of being the "second city" (only to New York City that is) of major importance in the U.S. Whatever. The inspired group of players took residence on North Wells, in Chicago's North Side. Through various changes and many advancements in status, SECOND CITY has become an entire organization. Aside from the Touring Company that performs all across the country, there is a resident company at the Chicago club and in Toronto, Canada, and the television show, SECOND CITY TV Network, which is filmed in Toronto.

The SECOND CITY has established a recognizable style for itself across the country, and is highly regarded by stage and TV producers and directors as a training ground for new talent. In a

similar way SECOND CITY'S regular theatre audiences have come to depend upon it for a special brand of entertainment. So, don't miss out on the action May 17th. Who knows, you might be missing seeing the next Belushi, Ackroyd, or Gilda!

Tickets for SECOND CITY are available in Ann Arbor at Schoolkids Records (523 E. Liberty), Warehouse Records (2137 W. Stadium Blvd.), and Tix/info (Mich. Theatre Box Office); in Ypsilanti at Warehouse Records (616 Cross St.); in the Lansing area at both Warehouse Records (220 MAC Ave. & 1646 S. Cedar); and in the Detroit area at all CTC outlets.

office, 428-8369. Calls should reach her by no later than 10 a.m. the day of the meal and sooner if possible.

The Senior Citizens Council will meet at 8:30 Wednesday morning, May 14, at the Emanuel United Church of Christ. This is a very important meeting and the representatives from all churches and interested groups should attend.

"Stepping Into Springtime"

The Saline Community Hospital Auxiliary presents "Stepping Into Springtime" Fashions-Tea at Travis Pointe Country Club on May 14, 1980, at 1:30 p.m. Donations \$3.25. Call for tickets: Wilma Niethammer, 429-7011 or Evie Hawley, 429-9569, also available at the Saline Community Hospital Auxiliary Gift Shop 429-5435 ext. 390.

Manchester Village Association

The monthly meeting of the Manchester Village Association will be held Wednesday, May 14, 1980, 7:30 p.m., sharp at the lower level of the Bauernstube Restaurant.

The agenda for the evening will be:

1. Guest Speakers Sandy Tanis and Carol Blain. Topic: Manchester Art Guild and its role in our community.
2. Business meeting to discuss the future of the Manchester Village Association.

MVA Cooperation through Communication.

Everyone is welcome to attend and participate.

Library Gets New Copy Machine

On April 15th a Savin 7550 copy machine was installed at the Manchester Township Library and is now available for public use during library hours.

The Savin makes 15 copies per minute, standard or legal sized, using either regular paper available at the library, or your own letterhead, colored or special paper.

It also produces two-sided copy, makes transparencies (for overhead projectors), is excellent for use with books, and does a fine job with photographs and other half-tone material.

Rated "plus-1" in reliability and print quality, this is one of the only small machines made in the USA. The Library is charging 10c per copy (25c per transparency) and has made over 300 copies in 3 weeks. Come in and enjoy the benefits of this fine new addition to our Library.

Senior Citizens Meals

The menu for Senior Citizens Meals on Tuesday, May 13, will be: Roast Beef, Mashed Potatoes, Vegetable, Bread & Butter, Dessert, Coffee, Tea and Milk.

Thursday, May 15, they are serving: Baked Chicken, Potatoes, Vegetable, Bread & Butter, Dessert, Coffee, Tea and Milk.

Reservations should be made for meals in advance by calling Linda Hartman at the Emanuel United Church of Christ

Manchester!

Ann Arbor Bank has a bright idea to help you save money.



Ann Arbor Bank would like to light your way to a sound savings program. So, for a limited time, we're offering a hand-crafted oil-burning lamp to anyone who opens a new or adds to an existing savings account or time deposit account at our Manchester branch office.

This ceramic-based lamp is yours for only \$10.00 with a deposit of up to \$500; for only \$7.50 with a deposit of \$500 to \$4,999; for only \$5.00 with a deposit of \$5,000 to \$9,999. And when you deposit \$10,000 or more, the lamp is yours absolutely free.

To get your oil-burning lamp, stop by our Manchester branch office at 10903 Manchester-Chelsea Road, Manchester, 428-8389.

Open a savings account at Ann Arbor Bank. And take advantage of our bright idea.

Ann Arbor Bank and Trust

MOTHER'S DAY SPECIAL
Saturday & Sunday

TREAT MOM TO A Hot Fudge Brownie Delight only 99¢

Have some treats to take a happy hour of wrapping "Dairy Queen" and hot fudge, wrapped, topped with your delicious chocolate sauce. \$1.99 per box.

Sprinkle Delights!

Dairy Queen

LET'S ALL GO TO DAIRY QUEEN!

Manchester Dairy Queen

5 U.S. Pat. Off. A-1-0-0-0-0-0-0
Copyright 1978 Am. D-Q Corp.

"SPECIALIZING IN BARN RE-ROOFING"

R. D. KLEINSCHMIDT, INC.

HOT TAR - SHINGLES - REPAIRS

For A FREE Estimate Phone 428-8836
Manchester, Michigan 48158

KNIGHTS OF COLUMBUS
Manchester, Michigan

ANNUAL ROAST BEEF DINNER

K of CHALL

Next To The Manchester Post Office

ON MOTHER'S DAY

2ND SUNDAY OF MAY

Serving 12 Noon to 3:00 p.m.

FAMILY STYLE

Children: \$2.25 Adults: \$4.50
Pre-school Free

VACUUM CLEANERS
ELECTROLUX
Electrolux Sales and Service
CALL
JAMES COX
MANCHESTER
428-8434 or 428-8686

MANCHESTER INSURANCE AGENCY

122 WEST MAIN STREET
MANCHESTER, MICHIGAN
Phone 428-8215
Home-Farm & General Insurance

Remember Mother's Day

SUNDAY, MAY 11th

Floral Designs With A Touch of Class

Delivery Available

The Flower Cellar

138 E. Main Manchester 428-7422

Little-Eggleston Wedding



St. Mary's Catholic Church in Chelsea. David Little, Beverly Marie Eggleston and Matthew by the Reverend Father David Dupuis.

Parents of the bride and groom are Mr. and Mrs. William C. Eggleston and Mr. and Mrs. Robert C. Little, all of Manchester.

Honor attendants were Brenda Eggleston, sister of the bride, and Tom Little, brother of the groom.

Bridesmaids included Patti Wilson of Huntington, West Virginia, Kay Sullivan of Dearborn, Susan Little of Ann Arbor and Cathy Niehaus of Grass Lake.

Seating the guests were Greg Eggleston, brother of the bride, Daniel Sullivan of Dearborn, John Sullivan of Garden City and Ken Whese of Garden City while Shawn McTaggart of Canton served as ring bearer.

A reception followed at the Chrysler U.A.W. Hall in Chelsea.

After a honeymoon at Grand Cayman Island, the newlyweds will reside in Saline.

Boyscouts To Hold Rummage Sale

Boyscout troop 426 are planning a rummage sale during the Memorial Day weekend. If you have anything you wish to donate to the scouts for their sale, call to us and we will pick up, also any leftover yard sale items. Please call Margaret Sannes 428-7672 or Nancy Weinhardt 428-7155. We need used uniforms. Please!

Chisanbop Finger Math Demonstrated

A demonstration of a new and controversial math instruction called CHISANBOP, scheduled for this Saturday, May 10, at the High School Library, is postponed until later this month. When specific arrangements are made final, additional ads will be placed in the Enterprise.

CHISANBOP is a children's version of a Korean system of finger tapping mathematics being taught experimentally nationwide. It shows kindergartners how to add or subtract 3 digit numbers and instructs elementary school children to easily compute addition problems 12 digits wide and 12 columns down. It includes multiplication and division as well.

Upon completion of a course on this method given by its originator Mr. Hang Yung Pai, Mr. Rick Wiggard will share information on the new technique in one Saturday morning session at the High School Library. The session is sponsored by the Manchester Association for Talented Students. Again, notification of the specific date will be made in the Enterprise.

Children, youth, and adults alike are invited to see, in Mr. Pai's words, "why and how mathematics comes together." Further information is available from Mr. Wiggard at 428-7140.



1. Who are the Animal Weather Forecasters? Your pets! Yes, dogs and cats have a long-standing reputation for being able to tell what the weather will be. For example, there's an old New England saying that goes, "When a dog barks, it's rain; when a cat purrs, it's sun."

2. Ever wonder what happens to bees during the winter? They survive the cold weather by congregating in large clusters. The bees in the center do a dance. And after warming up, they change places with the wallflowers on the outside of the crowd.

It's an exhausting job. Humans have it easier. According to the CertainTeed Home Institute, by simply adding the proper amount of fiber glass insulation to our attics, we can retain our home heating much longer and the only dance we need do is one for joy, when we see our lowered fuel bills. (Savings vary. Find out why in the seller's fact sheet on R-values. Higher R-values mean greater insulating power.)

3. What living creature has the most dramatic instinct for forecasting the weather? It's the leech! If you put a leech in the bottom of a glass jar, the leech will remain quiet during calm weather. However, 24 hours before a storm, the leech will know it and will start a climb upwards!

PRESIDENTIAL PRIMARY ELECTION

TO THE QUALIFIED ELECTOR:
TOWNSHIP OF FREEDOM
COUNTY OF WASHTENAW
STATE OF MICHIGAN

TUESDAY, MAY 20, 1980

AT THE PLACE OR PLACES OF HOLDING THE ELECTION AS INDICATED BELOW, VIZ:

FREEDOM TOWNSHIP HALL
11508 Pleasant Lake Road

FOR THE PURPOSE OF VOTING FOR CANDIDATES FOR THE OFFICE OF:
PRESIDENT OF THE UNITED STATES

AND FOR THE PURPOSE OF ELECTING THE FOLLOWING:

DELEGATES TO THE COUNTY CONVENTION
OF THE REPUBLICAN PARTY

ALSO ANY ADDITIONAL AMENDMENTS OR PROPOSITIONS THAT MAY BE SUBMITTED

Notice Relative to Opening and Closing of the Polls
ELECTION LAW, ACT 114, P. A. 1984

SECTION 720. On the day of any election the polls shall be opened at 7 o'clock in the forenoon, and shall be continuously open until 8 o'clock in the afternoon and no longer. Every qualified elector present and in line at the polls at the hour prescribed for the closing thereof shall be allowed to vote.

The Polls for the said Election will be open from 7 o'clock A.M., and remain open until 8 o'clock P.M., of the same Election day.
RENA GIBBACH, Treasurer

PRESIDENTIAL PRIMARY ELECTION

TO THE QUALIFIED ELECTOR:
TOWNSHIP OF BRIDGEWATER
COUNTY OF WASHTENAW
STATE OF MICHIGAN

TUESDAY, MAY 20, 1980

AT THE PLACE OR PLACES OF HOLDING THE ELECTION AS INDICATED BELOW, VIZ:

BRIDGEWATER TOWNSHIP HALL
10990 Clinton Road

FOR THE PURPOSE OF VOTING FOR CANDIDATES FOR THE OFFICE OF:
PRESIDENT OF THE UNITED STATES

AND FOR THE PURPOSE OF ELECTING THE FOLLOWING:

DELEGATES TO THE COUNTY CONVENTION
OF THE REPUBLICAN PARTY

ALSO ANY ADDITIONAL AMENDMENTS OR PROPOSITIONS THAT MAY BE SUBMITTED

Notice Relative to Opening and Closing of the Polls
ELECTION LAW, ACT 114, P. A. 1984

SECTION 720. On the day of any election the polls shall be opened at 7 o'clock in the forenoon, and shall be continuously open until 8 o'clock in the afternoon and no longer. Every qualified elector present and in line at the polls at the hour prescribed for the closing thereof shall be allowed to vote.

The Polls for the said Election will be open from 7 o'clock A.M., and remain open until 8 o'clock P.M., of the same Election day.
E. LEWIS BLANDHILL, Treasurer

Free Health Clinics At Saline Hospital

"We're America's Health Team" is what Saline Community Hospital and 6,000 other hospitals across the country will be saying to their patients, staffs, and communities during National Hospital Week, May 11-17, 1980.

"Our 1980 National Hospital Week theme compares the hospital to a well trained and coordinated sports team," said William J. Lavery, Saline Community Hospital Administrator. "We think of the hospital staff as a team where each member contributes his or her own special abilities to achieving the hospital's goal which is, of course, the highest possible quality of care for our patients. And, in a more general sense, the entire hospital functions as a leading member of the community health team working to build a healthier way of life for everyone."

Building a healthy community takes teamwork. Saline Community Hospital urges you to do your part. Stay "informed" about health care services that are available to you. Use community health resources wisely, and above all, take good care of yourself. A healthy community depends on healthy citizens.

Saline Community Hospital cares about you and your health. Care about your health and attend the free health screening clinics offered by Saline Community Hospital during National Hospital Week, May 12-17, 1980.

May 12 - Free blood pressure screening, 24 hours per day in the Emergency Department at Saline Community Hospital. (This service is available every day throughout the year.)

*10:00 a.m. - 1:00 p.m. - Blood pressure screening-Union Savings Bank in Manchester.

*3:00 p.m. - 6:00 p.m. - Blood tests for anemia, cholesterol, and blood sugar at Saline Community Hospital.

May 13
*6:00 p.m. - 8:30 p.m. - Hearing Clinic in Suite 1 of the Meister Medical Building (connected to Saline Community Hospital).

*7:00 p.m. - 9:00 p.m. - Diabetic Seminar (for diabetics and their families)

May 14
*6:30 a.m. - 10:30 a.m. - Blood tests (fasting) for anemia, cholesterol, and blood sugar in the Blue Room at Saline Community Hospital.

* 10:00 a.m. - 1:00 p.m. - Blood pressure screening at the National Bank and Trust of Milan.

* 7:00 p.m. - 9:00 p.m. - Diabetic Seminar in the Blue Room at Saline Community Hospital.

May 15
*10:00 a.m. - 1:00 p.m. - Blood pressure screening at Manufacturers Bank of Saline and Citizens Bank of Saline.

May 16
*8:00 a.m. - 12:00 Noon - Blood tests (anemia, cholesterol, blood sugar) in the Blue Room at Saline Community Hospital.

*9:00 a.m. - 3:00 p.m. - Hearing clinic in Suite 1 of the Meister Medical Building (connected to Saline Community Hospital).

For further information contact John Ivanoff at the Saline Hospital at 429-5435, extension 336.

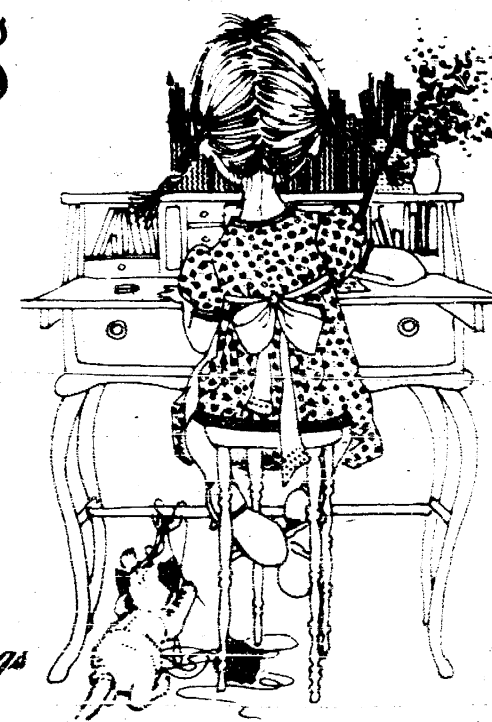
SHOP THE WANT ADS

YOUNG ELECTRIC
Residential & Agricultural Wiring
Phone 313-663-9916
SERVING: Bridgewater
Pleasant Lake & Manchester
DAVE YOUNG 9071 Waters Rd.
Master Electrician Ann Arbor, Mich

ODDS & ENDS Business Service
KATHLEEN A. AIUTO
104 East Main St.
Manchester
Phone 428-9202

MOTHER'S DAY CARDS

GREETING CARDS and GIFTS



American Greetings
THE FRESH IDEA COMPANY

THE Calico Cat
PHONE 428-7453
VISA AND MASTER CHARGE WELCOME
BOOK AND GIFT SHOPPE

110 EAST MAIN STREET

MANCHESTER, MICHIGAN

Special Events At Chelsea Hospital

"We're America's Health Team" is what Chelsea Community Hospital and 6,000 other hospitals across the country will be saying to their patients, staff, and communities during National Hospital Week, May 11-17, 1980.

"Our 1980 National Hospital Week theme compares the hospital to a well-trained and coordinated sports team," said Willard Johnson, Hospital Administrator. "We think of the hospital staff as a team where each member contributes his or her own special abilities to achieving the hospital's goal which is, of course, the highest possible quality of care for our patients. And, in a more general sense, the entire hospital functions as a leading member of the community health team working to build a healthier way of life for everyone."

Chelsea Community Hospital is celebrating National Hospital Week with several events open to the community. They are:

"How to Lose 10 Pounds Sensibly" - Wednesday, May 14, 7:00 p.m., Hospital Dining Room. Julie N. Say, Community Nutritionist, will explain how a combination of balanced diet, physical exercise, and behavior modification can result in a weight loss of 1-2 pounds a week. Free.

Blood Pressure Clinics - Blood pressure

will be taken free of charge and information about hypertension will be available at the following locations:
Chelsea - Friday, May 16, 9:00 a.m. to 3:00 p.m., Chelsea State Bank, 305 S. Main Street.

Munith - Monday, May 12, 12:30 p.m. to 1:30 p.m. Methodist Church, Main & 7th Streets.

Pinckney - Wednesday, May 14, 1:30 p.m. to 2:30 p.m. Senior Citizen Center, Masonic Temple.

"Alcohol and Your Body" - Thursday, May 15, 7:15 p.m., Hospital Dining Room. Dr. J. Hardee Bethea, former Brighton Hospital director, will discuss alcohol and how it affects the body. Free.

"Give Your Pre-Schooler a Head Start" - Saturday, May 17, 10:30 a.m. to 3:00 p.m. Chelsea Community Hospital Child Care Center, St. Paul's Church, 14600 Old U.S. 12. Health, hearing, speech, and developmental screening for children ages 2 1/2-5 years. Follow-up reports and recommendations of the screening will be mailed to parents. Nutritional, general health, and parenting information will be available. Free.

Student Health Career Seminar - Wednesday, May 14, Mark Taylor, Director of Personnel, and Barbara Steele, RN, will discuss health career opportunities with students in the Chelsea Middle and High Schools health classes.

Chesterville by Dutchman



PUTTS

'N PARS

CLARK LAKE IS HOLEY'S

W CLARK LAKE 35

WOLF F. JENNINGS

STRIKES

SPARES

MIXED-UP BEL MARKERS

FINAL STANDINGS

B. ROBERTS-M. STOCKWELL

D. DINDALE-J. ROBERTS

J. STETLER-J. VITALE

W. KUEBLER-P. WALLACE

WOLF F. JENNINGS

ACHTENBERG-B. PADLEY

SAILEY-J. ROBERTS

WALLACE-P. WALLACE

SUNNEY-D. PETSCH

BROKAW-D. ROBERTS

FRIGHT-T. SHORT

SCHAFFER-D. SANNE

SCHAIBLE J. AHRENS

HOLLY-V. EVERSOLE

RAY-W. FREY

SCHAFFER L. GOODALL

KEESE-G. STRIPP

ACHTENBERG-B. PADLEY

FULL-T. LUNDSBERRY

CONLEY-R. MELENDY

SOUTHWELL-D. SAYERS

WOLF F. JENNINGS

ACHTENBERG-B. PADLEY

SAILEY-J. ROBERTS

WALLACE-P. WALLACE

SUNNEY-D. PETSCH

BROKAW-D. ROBERTS

FRIGHT-T. SHORT



*B. Rhees-G. Chavey
* Designated make-up
Low w/h 0-10 - J. Wallace (8 tied).
Low w/h 11-20 - G. Brokaw (14 tied).
Closest to pin #11 - T. Short.
Most Bogies - J. Wright (8).

CLARK LAKE IS HOLEY'S

Gilbert-Ahrens 37.5
Reed-Beckel 36.5
Donnellon-Barnard 34
Turb-Fink 33.5
Barry-Thornton 32.5
Kouba-DuRussel 27.5
Jenter-Smith 26.5
Steele-Mann 26
Routel-Burkhardt 23.5
Gisting-Connin 22.5

Closest to pin #7-Gilbert.
Closest to pin, 3rd shot, #17 - Kouba.
Best Poker Hand - Donnellon.

WOLF F. JENNINGS 23.5 6.5
Achtenberg-B. Padley 20.5 9.5
Bailey-J. Roberts 17.5 12.5
Wallace-P. Wallace 17 13
Sunney-D. Petsch 16.5 13.5
Brokaw-D. Roberts 16.5 13.5
Fright-T. Short 16 14
Schaffer-D. Sannes 15 15
Schaible J. Ahrens 15 15
Holly-V. Eversole 14 16
Ray-W. Frey 13.5 16.5
Schaffer L. Goodall 13.5 16.5
Keese-G. Stripp 13 17
Achtenberg-B. Padley 12.5 17.5
Full-T. Lundsberry 9.5 20.5
Conley-R. Melendy 6.5 23.5
Southwell-D. Sayers

B. Roberts-M. Stockwell 44 28
D. Dinsdale-J. Roberts 42 30
J. Stetler-J. Vitale 38.5 29.5
W. Kuebler-P. Wallace 36 32

E. Bernard-S. Beal 35 33
B. Bunney-J. Schaible 34 34
D. Guenther-B. Merriman 34 34
B. DuRussel-L. Steele 29 39
N. Jose-D. Kuebler 27 41
A. Clark-R. Whittington 25 43
HIGH TEAM SERIES 2668
N. Jose-D. Kuebler
HIGH TEAM GAME 961
D. Dinsdale-J. Roberts
HIGH MENS SERIES 590
J. Schaible
HIGH MENS GAME 243
J. Roberts
HIGH WOMENS SERIES 584
J. Clark
HIGH WOMENS GAME 236
J. Clark

Candidates Night

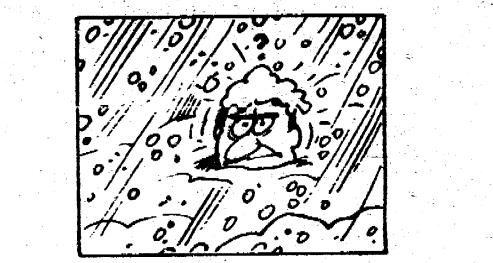
School Board Candidates Night will be held Tuesday, June 3, 1980, at 8 p.m. in the Manchester High School Study Auditorium. There are five school board candidates for the two four-year vacancies on the board - William Broucek, Susan Cole, Lavern Lesch, David Little, and Harold Walkow. They will be present to discuss educational issues pertinent to the communities school system.

Please mark your calendar now to attend this important meeting.

Those organizations sponsoring Candidates Night are Academic Boosters, Athletic Boosters, Band Boosters, Manchester Association for Talented Students and Parent Teacher Organizations of Klager and Pleasant Lake Schools.

Dial-A-Garden

The schedule for the coming week for Dial-A-Garden, sponsored by the Co-operative Extension Service of Washtenaw County is as follows:
Thursday, May 8, If You Don't Want Fruit.
Friday, May 9, Care of Mother's Day Plants.
Monday, May 12, Choosing a Flowering Tree or Shrub.
Tuesday, May 13, Tips for Purchasing Transplants.
Wednesday, May 14, Enjoy Asparagus in a Variety of Ways.
Dial-A-Garden number: 971-1122.



With the proper clothing, a man can stand the extreme cold as low as 50 degrees below zero Fahrenheit.

COMPLETE LINE OF TIRES IN STOCK
STOP IN AND SEE ME FOR YOUR BEST TIRE DEAL

24 HOUR SERVICE

FRONT-END ALIGNMENT

TIRES ELECTRONICALLY BALANCED FOR A NEW CAR RIDE

Open Sunday - 9 am-5 pm

FILLYAW'S SERVICE
PHONE 428-8576 327 WEST MAIN

Die Bauernstube of Manchester

Has a special treat for Mother's Day
Your choice of Dessert Free with every dinner including an assortment of German tortes

For reservations and information call **313-428-8698**

233 EAST MAIN STREET
MANCHESTER, MICHIGAN

PRESIDENTIAL PRIMARY ELECTION

TO THE QUALIFIED ELECTORS:
TOWNSHIP OF SHARON
COUNTY OF WASHTENAW
STATE OF MICHIGAN
ON
TUESDAY, MAY 20, 1980

AT THE PLACE OR PLACES OF HOLDING THE ELECTION AS INDICATED BELOW, VIZ:
SHARON TOWNSHIP HALL
Pleasant Lake and Sylvan Road

FOR THE PURPOSE OF VOTING FOR CANDIDATES FOR THE OFFICE OF:
PRESIDENT OF THE UNITED STATES
AND FOR THE PURPOSE OF ELECTING THE FOLLOWING:
DELEGATES TO THE COUNTY CONVENTION OF THE REPUBLICAN PARTY

Notice Relative to Opening and Closing of the Polls

ELECTION LAW, ACT 116, P. A. 1954
SECTION 720. On the day of any election the polls shall be opened at 7 o'clock in the forenoon, and shall be continuously open until 8 o'clock in the afternoon and no longer. Every qualified elector present and in line at the polls at the hour prescribed for the closing thereof shall be allowed to vote.

The Polls for the said Election will be open from 7 o'clock A.M., and remain open until 8 o'clock P.M., of the same Election day.
DUANE HASELSCHWERDT, Treasurer

PRESIDENTIAL PRIMARY ELECTION

TO THE QUALIFIED ELECTORS:
TOWNSHIP OF MANCHESTER
[Precincts 1 and 2]
COUNTY OF WASHTENAW
STATE OF MICHIGAN
ON
TUESDAY, MAY 20, 1980

AT THE PLACE OR PLACES OF HOLDING THE ELECTION AS INDICATED BELOW, VIZ:
MANCHESTER TOWNSHIP HALL
275 S. Macomb St. Manchester, Mich.
Note Change of Polling Place

FOR THE PURPOSE OF VOTING FOR CANDIDATES FOR THE OFFICE OF:
PRESIDENT OF THE UNITED STATES
AND FOR THE PURPOSE OF ELECTING THE FOLLOWING:
DELEGATES TO THE COUNTY CONVENTION OF THE REPUBLICAN PARTY

Notice Relative to Opening and Closing of the Polls

ELECTION LAW, ACT 116, P. A. 1954
SECTION 720. On the day of any election the polls shall be opened at 7 o'clock in the forenoon, and shall be continuously open until 8 o'clock in the afternoon and no longer. Every qualified elector present and in line at the polls at the hour prescribed for the closing thereof shall be allowed to vote.

The Polls for the said Election will be open from 7 o'clock A.M., and remain open until 8 o'clock P.M., of the same Election day.
WILMA E. LENTZ, Treasurer

Spear & Associates, Mann, Realtors

122 WEST MAIN PHONE 428-4388 DAILY MANCHESTER

New Listings

40 Acre Farm - With older 3 bedroom home, only 17 miles to Ann Arbor, 10 acres wooded, 70 x 46 barn & garage, creek runs through property, Manchester Schools. \$96,000.

Two Family Home - In the Village of Manchester, 2 bedroom apartment upstairs & 3 bedroom apartment downstairs, huge lot 132 x 294, excellent condition. \$68,500.

Attractive Ranch Home - In Saline, on 1 1/2 acres, 3 bedrooms, 2 1/2 baths, family room, fireplace, attached 2 car garage, 10 x 22 deck, immediate possession. \$82,000.

Manchester Village Home - Land Contract Terms available, 3 bedrooms, 1 1/2 bath, 66 x 198 lot, garden area, barn, close to churches & grocery store. \$52,000.

Possible Assumption - On this three bedroom ranch, 1 1/2 bath, rec room in basement, 24 x 36 garage with heated workshop, aluminum sided exterior, 14 miles to Ann Arbor, Manchester Schools. \$68,000.

Land Contract Terms - Available on this three bedroom ranch, excellent condition, 1 1/2 bath, family room with fireplace, central air conditioning, full basement, brick & aluminum exterior, Manchester Schools, on 1 acre. \$75,000.

64 Acre Farm - One mile south of Manchester, older farm home, 4 bedrooms, 2,026 sq. ft., rolling farm land or possible building sites, 32 x 45 barn. \$96,500.

Perfect Family Home - In the Manchester Area, on 6 acres, 4-5 bedrooms, 2 baths, country kitchen, lots of kitchen cabinets & closet space, inground pool, fireplace in living room, 36 x 54 barn & shed. \$105,000.

Country Living - In this spacious bi-level home, 5 bedrooms, 2 1/2 baths, family room with beautiful fieldstone fireplace, walk-in pantry off kitchen, 28 x 40 pole barn used for garage & shop, on 2 acres, terms available. \$118,000.

Building Sites

1.22 Acre - Nice building site near Raisin River, scenic area, Manchester Township. \$10,900.

2 1/2 Acres - Trees on back of property, 17 miles to Ann Arbor, Bridgewater Township, terms available. \$12,000.

75 Acres - Land Contract terms available, property has been surveyed into seven building sites, some woods, Manchester Township. \$85,000.

OFFICE HOURS
Monday thru Friday 9 a.m. to 5 p.m. Saturday 9 a.m. to 12 noon

OFFICE PHONE 428-8388

JIM MANN 428-8074 **ELLIS PRATT 428-8562**

Scouts from Yesterday



Richard Brown thought he was too young to have a heart attack. He wasn't.

Lower your risks of having a heart attack! Check with your doctor about a regular exercise program for you. And for other ways to lower your risks contact the Michigan Heart Association.

We're fighting for your life

Michigan Heart Association

An American Heart Association Affiliate - A United Way Agency

ROOFING - SIDING

SEAMLESS GUTTER

Experienced Crews

Free Estimates

Walkow Home Improvement Co.
Phone 313-428-8468

Luxaire

TOTAL YEAR COMFORT

Call For Free Estimate
On Add On Heat Pump

Save YOUR Heating Dollars and Air Condition You Home With Same Installation

MANCHESTER ELECTRIC

428-8243 or 428-8331

CLINTON THEATRE

Friday & Saturday
7:30 & 9:35
Sunday 7:30

REDFORD FONDA ELECTRIC

THE ELECTRIC HORSEMAN

PG

GERANIUMS

SPECIAL! SPECIAL! SPECIAL!

\$1.39 ea. 4" \$12.00 doz.
3" 59¢ ea.

POTTED PLANTS

Caladiums \$1.99 ea.
Fuchias \$1.39 ea.
Combination Plants \$5.95 and up

Hanging Baskets
Cemetery Urns

Wide selection to choose from

FLOWERING PLANTS

\$5.49 Flat

- DWARF DAHLIAS
- SNAPDRAGONS
- PETUNIAS
- ZINNIAS
- ASTERS
- POPPIES
- MARGOLD
- MOSS ROSE
- IMPATIENCE
- BEGONIAS
- FANSGES
- ALYSSUM
- COLEUS
- LOBELIA
- SALVIA
- STATICE
- FERNWEILE
- CELOSIA

VEGETABLE PLANTS

\$5.49 Flat

- CELERY
- TOMATOE (most popular varieties)
- PEPPERS
- CABBAGE
- BRUSSEL SPROUTS
- HEAD LETTUCE
- BIB LETTUCE
- BROCCOLI
- SWEET ONIONS
- EGG PLANT
- CAULIFLOWER
- RED CABBAGE

Asparagus Plants 25¢
Potted Tomatoes 3 for \$1
Cucumbers-Muskmelons
Yellow and Butternut Squash
Zucchini, Acorn 3 for \$1
Sweet Potatoes MID-MAY 75¢ doz.

OPEN MON. thru FRI. 8 a.m. to 7 p.m.
OPEN SATURDAY 8-5; SUNDAY 12 NOON TO 5 P.M.

All Items Grown in Our Greenhouses.

CHELSEA GREENHOUSE

Serving the Community Since 1901

CHARTER MEMBER FTD - WE TELEGRAPH FLOWERS ANYWHERE

7010 LINGANE ROAD, CHELSEA PHONE 475-1353, 475-1354, 475-9313

Cards of Thanks

The officers of the Athletic Boosters would like to say Thank You to Shirley Krzyzaniak, Jan Broucek, Liz Malcom and their committees who did a great job on the All Sports Banquet. Also to Bill Scaletta.

The Manchester Athletic Boosters would like to say a special 'Thanks' to Dave Jose, who gave of himself and his time in painting the building at the track.

I want to thank my neighbors, relatives and friends for the cards, fruit and visits while I was in the hospital and since my return home.

A special thank you to the Dorcas Fellowship and River Raisin Farm Bureau for their gifts, to my family for their kindness in many ways. Also special thanks to Rev. Ferrigan for his visits and prayers. All was greatly appreciated.

Roy Widmayer

I wish to thank all my friends who sent me cards and gifts while in the hospital and since returning home.

Special thanks to Dr. Purfield for getting me back to normal and Rev. Robert Macfarlane for his visits and Linda for all she has done.

Mildred Briggs

I received a check for a million bucks From Earl Alber with lots of luck, When I went to cash it at the bank. His account couldn't cover it, and my heart sank

An Anonymous Friend

"FRIENDSHIP"

When the silver cord is fraying And the voice must soon be still, Loving ties are tensed to breaking, Bowing to the Father's will- When the curtained doors have welcomed Life's beginning, not its end, And we grope in tearful silence, It is then we need a friend.

The Family of Troy Ahrens would like to Thank our relation, friends, neighbors and the Class of '79, for Sharing our Sorrow in the loss of our Loved One.

Your kindness was deeply appreciated and will always be remembered.

A Special Thank You to Rev. Robert Macfarlane, Joyce Merriman, Frank Randall and Ron Jenter.

Bob, Marion
Tim, Tina
Terry & Tracy
Pam Strong

Guy's Bridgewater Tavern

MIXED DRINKS
FINE SANDWICHES

429-4529

8452 Boettner Rd
Bridgewater

GUY GILBERT
OWNER

FAHEY REALTY

OFFICE 215 EAST MAIN PHONE 428-9298

OFFICE HOURS 9-5 MONDAY-FRIDAY SATURDAY 9-12 NOON

Attractive two story 3 bedroom home. Excellent Main Street location. Nicely decorated w/natural woodwork, handy walk-in closets and finished basement.

Recently remodeled older home in the village. 2 bedrooms down, first floor laundry. Central location close to shopping. An ideal starter or retirement home. \$46,900.

4 bedroom nicely modernized older home, on a large corner double lot. Paved street in the Village of Manchester. Shown by appointment only. Call Don Limpert 428-7400.

2 Family income property. Recently modernized. Conveniently located within the village. For information or appointment call Don Limpert. 428-7400.

42 Acres - Spotless 3 bedroom ranch. Large country kitchen, full basement, 6 stall pole barn, 1/2 mile track. Secluded country setting. Additional 23 acres available. Call Melody Popkey 428-7967.

Building Sites

New Listing - Sharon Township - 11 plus acres. Beautiful building site. High rolling land with some woods.

Commercial Lot in Napoleon, one acre on paved road, excellent location. Call Joe Roberts, eve. 428-8141.

3 lots on paved road in the Village of Brooklyn. City sewer, water and natural gas. For information call Joe Roberts 428-8141.

20 Acres. Rolling building site with view of Iron Lake. Land contract terms available. \$36,400.00. Call Melody Popkey 428-7967.

10 Acre parcel - Beautiful rolling land. 200' road frontage. Call Don Limpert 428-7400.

2 Acre parcel 200' frontage. This parcel adjoins the 10 acre parcel listed above. Call Don Limpert.

Sharon Township 100 acres can be divided. Ideal hunting, rolling land with some woods. Call Don Limpert 428-7400.

1 Acre building site on paved road. Rolling setting with a lovely view.

Manchester Township - 140 acres. Surveyed in 10 acre parcels. Hilly, live stream, partially wooded. Call Don Limpert 428-7400.

Don Limpert 428-7400	Joe Roberts 428-9284
Judy Fahey 517-458-4927	Melody Popkey 428-7967
James I. Fahey 428-7979	Jim Walkow 428-8120
Dick Fahey 517-456-4927	John Fahey 428-8748

Thursday, May 8, 1980 The Manchester Enterprise Page 13

TRAINS CAN'T STOP, YOU CAN is the message from Paul Hicks of Battle Creek, locomotive engineer for the Grand Trunk Railroad. He's the spokesman for the newly launched campaign, "Operation Lifesaver," aimed at reducing the number of car-train accidents in Michigan. They kill an average of 30 persons a year in the state, injure some 500 others. The 27 railroads operating in Michigan are joining the effort to remind motorists to observe all crossing signs and signals, noting that a freight train traveling 60 miles an hour and hauling 100 cars requires a full mile to come to a stop.

Mom's Special Day!

GIVE MOM
A GIFT CERTIFICATE
\$25 Value
for \$20

The Clothes Line

134 EAST MAIN STREET
MANCHESTER, MICHIGAN 48158
PHONE 313-428-7775

Get your lawn and garden in shape with **John Deere equipment**

Pick your horsepower... pick your price!

Four power sizes in the 200 Series to choose from: 10-hp 210, 13-hp 212, 14-hp 214, and 16-hp 216. All have 4-speed transaxle and variable speed drive that lets you change speeds without clutching. Color-coded controls. Triple-safety starting. Sturdy footrests. Engines are fully enclosed for quieter ride.

25% OFF ATTACHMENTS

• Roto Tiller • Dump Cart
• Snow Thrower • Mower Deck • Blade

ASK ABOUT JOHN DEERES FINANCING PLAN

SILKWORTH
LAWN & GARDEN EQUIPMENT
TIRES • SNOWMOBILES

6595 Brooklyn Rd. (M-50)

3 Miles East Of 127 Near Napoleon Phone 526-8832

AGRICULTURE IN ACTION

MICHIGAN FARM BUREAU
LIVESTOCK

FOOD FADDISTS VS. FOOD PRODUCERS. LOSERS: CONSUMERS

Unless their favorite team is in the loser's column, it isn't often that reports on the sports page raise the ire of farmers. But a paragraph in the depths of a recent report on the Boston Marathon made them question (again) how those involved in the production of food and fibre will ever be able to continue hurdling the constant roadblocks set up by a seemingly endless line of social do-gooders.

The paragraph read: "The traditional bowl of beef stew no longer was served to finishers. After 83 years, on the advice of nutritionists, the stew was replaced by yogurt and energy-rebuilding fruit and grain bars for weary runners at the Presidential Building finish line."

We don't know who those nutritionists were whose advice the Boston Athletic Association Marathon officials decided to follow, or on what facts they "sold" their advice. A nutrient comparison, compiled by the National Live Stock and Meat Board, show that a runner would get more of the nutrients he needs after a long run from a dish of stew than he would get from a dish of yogurt and a granola bar.

Most beef producers would certainly not object to the addition of the health foods—but a complete substitution "on the advice of nutritionists" was like a public slap in the face. If there was one thing they did not need, it was a select group

using the news media to raise consumers' concerns about the nutritive value of their product. They are among the farmers hardest hit by the current economic crunch, coming on the heels of several years of disappointing prices that have left some of them hanging on by the skin of their teeth.

The ending of this 83-year-old tradition is just another example of how food faddists have led consumers to believe that good health is jeopardized with every mouthful of eggs, bacon, butter, beef or any one of several foods maligned by their unfounded claims.

If the trend continues, the Boston Marathon officials will have a hard time coming up with ANY food to reward their weary runners—or themselves, for that matter.

"Phoney" Physician Still Active

Despite considerable publicity one year ago, a crank phone caller, claiming to be a physician at the Washtenaw County Health Department has continued to harass area citizens. The caller attempts to make his victims believe that their spouse has been treated for V.D., and often asks questions of a personal nature. Occasionally the caller tries to persuade people to act upon the information he has provided.

The Washtenaw County Health Department encourages anyone receiving such a call to recognize that they are dealing with an elaborate obscene phone call, and to hang up immediately. Obscene calls may be reported to the Michigan Bell Telephone Company.

Mother's Day FLOWER SALE
UNION SAVINGS BANK
Friday-Saturday
May 9 & 10

SPONSORED BY
MANCHESTER JAYCEES

JACKSON'S PAINTING CO.
BARN-HOUSES-BASEMENTS
WAREHOUSES
SATISFACTION GUARANTEED
FREE ESTIMATES
PHONE 517-552-2266

Kirk Excavating
SAND-GRAVEL-FILL DIRT
BASEMENTS-DRIVEWAYS
DAVE KIRK
14180 Schleweis Rd. Manchester
Phone 428-7936

WOLVERINE BUILDERS
POLE BUILDINGS
POST FRAME BUILDINGS
ROOFING & REMODELING
Call Anytime-Free Estimates
14 Years Experience
Honest Construction
2893 Fox Rd. Phone
Jackson, Mi 49201 522-4240

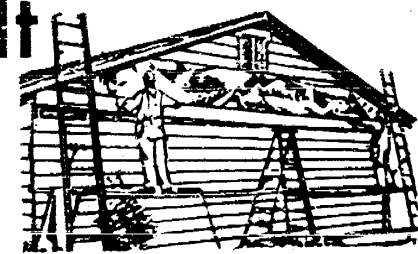
ALUMINUM SIDING

Save \$\$ by Doing-it-yourself

- * Storm Windows
- * Free Instruction Booklet
- * Storm Doors
- * Seamless Aluminum Gutter
- * Fascia and Soffit Systems
- * Shutters
- * Replacement Windows
- * Trim Coils
- * Also Anaconda & Reynolds Aluminum

R. D. Kleinschmidt Inc. INSTALLATION AVAILABLE

19860 SHARON VALLEY RD.
MANCHESTER, MICHIGAN
(NEAR CORNER OF M-52) OR CALL 428-9936 428-9335



Scout Recruiting Night

Attention, all boys who have completed fifth grade or 10 1/2 - 11 years old, who wish to join boyscouts. There will be a Scout Recruiting program Tuesday, May 13, at the Methodist Church at 7:30 p.m. Bring your parents and join in on the fun. There will be a campfire and refreshments.

For further information call Alfred Sannes 428-7672.

Nominations For CHPC

The Comprehensive Health Planning Council of Southeastern Michigan has requested nominations from the Board of Commissioners for two additional County representatives on CHPC. The Washtenaw County Board of Commissioners will, on May 21, 1980, consider resumes for nominations to the CHPC for three-year terms commencing November 1, 1980.

One-page resumes should be addressed to Robert R. Gamble, Acting County Administrator, Room 116, County Building, P.O. Box 8645, Ann Arbor, Michigan 48107. Those resumes received by May 12, 1980 will be submitted to the Board of Commissioners for their consideration on May 21, 1980.

Historical Marker Ceremonies

All former employees of the "old" Clinton Woolen Mill have been mailed special invitations to historical marker ceremonies, tour of the building, craft demonstrations, displays of Mill memorabilia and refreshments, open to the public on Saturday, May 17 from 1-4 in the afternoon.

Marker ceremonies at the site of the old Mill, now owned by Dearborn Steel Tubing, will be at 1 p.m. followed with sheep shearing, carding, dyeing, spinning and weaving of the wool, tours of the building and refreshments. Displays will include Mill memorabilia, pictures, newspaper clippings and items from cloth made at the Mill.

The event is co-sponsored by The Historical Society of Clinton and Dearborn Steel Tubing.

Named To Dean's List

Rebecca S. Opal, 11670 Bemis, Manchester was among the one hundred forty-eight students named to the 1979-80 first semester Dean's List at Spring Arbor College, Spring Arbor, Michigan. The Dean's List is based on a 4.00 point system, and a 3.50 grade point average or above is required for this scholastic honor.

The Manchester Varsity Choir

PROUDLY PRESENTS ITS
15th Annual Spring Concert

FRIDAY, MAY 16
8:00 PM

HIGH SCHOOL STUDY AUDITORIUM

TICKETS AVAILABLE FROM CHOIR MEMBERS

Adults: \$1.50 Student: \$1.00

FINAL WEEK

CALL ABOUT MOTHER'S DAY SPECIAL RATE



FLYING SCUD
OR A FOUR-LEGGED FORTUNE

April 11 - May 11

(313) 428-9280
138 E. Main Street
Manchester, Michigan

Monday 8:15 pm
Tuesday 8:15 pm
Saturday 8:15 pm
Sunday 4:00 pm

Public Transit Survey & Workshops

The soaring costs of owning and operating an automobile have and will continue to change people's travel behavior. As the price of gasoline continues to climb, more drivers are looking toward alternative means of transportation such as car pools, van pools, bicycling and public transit. The use of public transit, in particular, has dramatically increased in the past year and additional and improved transit service has been demanded throughout the County.

In Washtenaw County, a similar situation exists. Ridership on the Ann Arbor Transportation Authority (AATA) increased by over one-third between November, 1979, to March, 1980, from 149,000 to 200,000 monthly riders. During peak hours, some routes have standing room only. Similarly, the out-County dial-a-ride service for elderly and handicapped cannot meet demands and must limit rides to high priority medical and work trips.

Concurrent with the increased need and demand for public transportation, there has been an increase in concern over taxation and public spending. Because public transit is heavily subsidized and will continue to be so in the foreseeable future, transit systems need to be carefully designed to provide the highest level of service possible at the financing levels acceptable to the public.

Several months ago the Ann Arbor-Ypsilanti Urban Area Transportation Study Committee (UATS), in conjunction with the Washtenaw County Board of Commissioners, initiated a study designed to determine the transit needs of Washtenaw County residents and to prepare alternative plans to meet these needs. The study will include a survey of County residents as well as separate surveys of current transit users, elderly and hand-

icapped residents, and special transportation service operators. The study will identify the range of service, management and financing options, and prepare alternative plans for providing transit service outside the City of Ann Arbor. The results of the study will allow UATS, the Ann Arbor Transportation Authority, the Washtenaw County Board of Commissioners, and local units of government to have a basis for refining or expanding current transit service. A major part of this study is to get direct input from County residents through telephone surveys and community workshops.

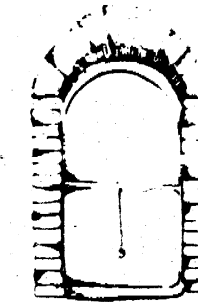
Approximately 2,600 County residents will be contacted between May 9 and May 23, 1980, and surveyed as to their travel behavior and attitudes toward transit service. To supplement the surveys, four workshops will be held throughout the County to describe and discuss transit alternatives available for Washtenaw County. These meetings will be held the week of May 12th as follows: May 13, 1980, 7:30 P.M. Saline High School/Cafeteria. May 14, 1980, 2:30 P.M. Washtenaw Community College LASB Lecture Room #1.

May 14, 1980, 7:30 P.M. Chelsea High School/Cafeteria. May 15, 1980, 8:00 P.M. Cleary College Lobby.

Washtenaw County residents or transit riders are invited to attend any or all of these workshops. All of the above locations are accessible to the handicapped.

A summary report of transit management, financing and service options is available upon request. For further information, contact the Ann Arbor-Ypsilanti Urban Area Transportation Study Committee, 111 W. Kingsley, Ann Arbor, Michigan, 48108. Telephone 994-3127.

manchester art guild news



GALLERY

Experience the charm and variety of rug hooking this month at the gallery.

FREE

Rug hooking to knitting—the use of natural dyes can enhance the value of any such work. Join others interested in learning this age-old craft Saturday, May 10 from 10:00 a.m. to 3:00 p.m. in the gallery. This workshop is presented free of charge (a double value in these inflationary times).

BACK TO SCHOOL

What encouragement to be invited back so soon! Following a creative clay workshop in the second grade taught by president Sandy Winzenz, the Manchester

Art Guild was given the opportunity to return for a school-wide "Hobby Day" at Klager Elementary School on April 29. Student hands were busy sampling a variety of crafts from spinning to basket weaving. It proved to be a rewarding day for all involved. With the success of these two ventures, the guild is hoping a grant will be available from The Michigan Council for the Arts for a regular program of education in the Manchester schools next year.

Singles 25 And Up

Come alone or come with a friend. Be our guest at the Tuesday Night Singles at the American Legion Hall, South Main Street, Ann Arbor on May 13th. Dance from 8:30 - 11:30 P.M. to the music The Merrimen Band. Good time by all.

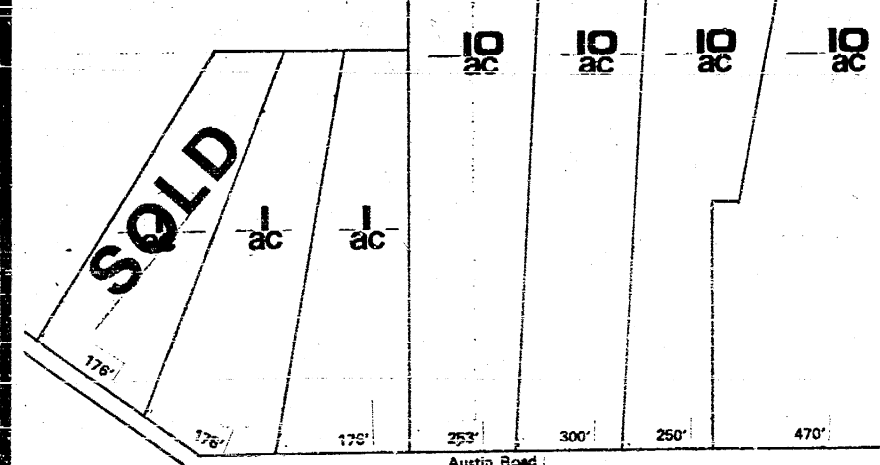
Evening Land Auction

2-1 Acre + Building Sites
4-10 Acre Building Sites
Live Stream Paved Road

WE WILL SELL THE FOLLOWING DESCRIBED REAL ESTATE AT PUBLIC AUCTION AT 13776 EAST AUSTIN RD., MANCHESTER, MICHIGAN. LOCATED 3 MILES EAST OF MANCHESTER OR 10 MILES WEST OF SALINE

THURSDAY, MAY 15, 1980 6 P.M.

- BEAUTIFUL BUILDING SITE
- PAVED ROAD
- LIVE STREAM
- EXCELLENT VIEW
- GOOD PRODUCTIVE LAND



NOT MANY PARCELS AROUND THAT HAVE GOOD PERK, PAVED ROAD AND EXCELLENT SOIL FOR GARDENING IN A RURAL SETTING. RAISE YOUR FAMILY IN THE COUNTRY YET CLOSE TO ANN ARBOR AND SALINE IN THE MANCHESTER SCHOOL DISTRICT.

TERMS: \$2,500.00 DEPOSIT DUE SALE DAY. BALANCE IN FULL DUE WITHIN 45 DAYS FROM SALE DATE OR POSSIBLE LAND CONTRACT AT 1% UPON APPROVAL OF SELLER. TITLE INSURANCE, SURVEY AND WARRANTY DEED FURNISHED BY SELLER.

PRE-SALE INSPECTION: BY APPOINTMENT WITH AUCTIONEERS OR CALL ANYTIME FOR MORE INFORMATION.

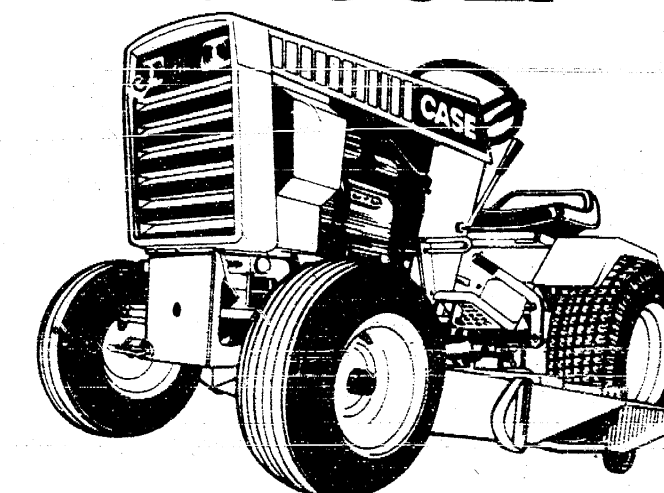
Owners: LODI CONSTRUCTION INC.

Braun & Helmer Auction Service

LLOYD B. BRAUN, ANN ARBOR, 665-9646
JERRY L. HELMER, SALINE, 994-6309

INSPECTION DAY OF SALE/TERMS: CASH OR CHECK
NOTHING REMOVED UNTIL SETTLED FOR
NOT RESPONSIBLE FOR ACCIDENTS
LUNCH ON GROUNDS

BE GOOD TO YOURSELF



GET A CASE

Give yourself a break. Try out a Case garden tractor with exclusive hydraulic drive. One lever controls direction and speed. Once you try it, you'll be hooked. Another lever lets you raise or lower attachments hydraulically.

Exclusive Case hydraulic drive has no troublesome belts, pulleys, shafts or chains in the drive train. With Case's Snap-Fast attachment system you can quickly switch from mowing to grading or snow-blowing. Take a demonstration drive on a tough Case...or call for a free copy of "Outstanding Yards & Gardens Planning Guide."

K & W EQUIPMENT INC.
11100 Chelsea-Manchester Rd. Manchester, Michigan



428-7666

WANT ADS

BEEF TO SELL BY SIDE
Custom slaughtering. Lockers to rent. Phone 428-7600. Manchester Locker Plant. tfn

LITTLE WACK EXCAVATING
Licensed & Insured
Basements - Drainfield - Bulldozing
Digging - Snow Removal - Tree Removal.
Paul Wackenhut, phone (313) 428-8025. tfn

MICHIGAN Certified Seed, Mariner seed
cots, 4 varieties soy bean seed, Erablec
Farms, Britton, Mich. (517) 451-4010 or
428-5663. tfn

WANTED - used full size bicycles and
parts. Will pay cash. Student Bike Shop,
607 S. Forest, Ann Arbor. tfn

NEED A NEW FURNACE - Call 428-
9150, free estimates, featuring Lennox and
Janitrol. tfn

SCHROEDER'S GREENHOUSE has a new
shipment of mums and mini-cyclamen, all
colors. Also a variety of other plants.
14345 Logan Rd. 428-9078. Open 7 days a
week. tfn

LAND CONTRACTS PURCHASED - Any
Size - Any Property Type, Courteous and
Reliable Service. Call Dan Duncanson,
Ann Arbor Real Estate Co. (313) 668-8595.

GERALD AHRENS CONSTRUCTION
Additions, Decks, Renovations, Repair.
Finish Work, Free Estimates. Phone 428-
8907. tfn

ALUMINUM EAVESTROUGH - Seamless,
white, black and brown, guaranteed, free
estimates. Walkover Home Improvement
Company, phone 313-428-8468. tfn

BOULO ELECTRIC - Licensed and Insured
Contractor. Call Clinton 517-456-4796. tfn

KNEPPER'S TV SERVICE
Service All Makes
RCA-ZENITH-GE
Phone 428-7640 - 665-2137

CHELSEA BUILDING MAINTENANCE
COMPANY
7215 Jackson Road
Ann Arbor, Michigan
Phone 968-0585

Plumbing contractors, industrial, commer-
cial, residential new and repair work, A.O.
Smith Water Heaters, Bruner Water
Conditioning dealer. Beginning February 1
servicing the Chelsea, Manchester and
surrounding areas. Bill Colvin and Henri
vander Waard.

FIELDER PAINTING
Experience, Interior, Exterior.
Free Estimates - Call 428-8506
6-5p

ROTTWEILER PUPPIES available May
17, A.K.C. for show, family, security, OFA
parents, sire: Champion, Ro-Jo's Baron
Von Michelsberg, Huff's Rottweilers,
Manchester, 428-9214. 5-29

HORSESHOEING AND TRIMMING
JERRY BARTH 517-536-4951
5-22

C & B PAINTING - Interior, exterior.
Free estimates. 428-7410 or 428-7136.
12-27p

WANTED - babysitting in my home or
yours, day or night. Please call 428-9265.
5-9p

1 OWNER CAR - needs nothing! '74
Plymouth Satellite, automatic transmis-
sion, power steering, power brakes, air,
AM/FM stereo tape. 428-8717. 5-8

**SHOP THE
WANT ADS**

Visit Our
WICK MODEL HOME OPEN HOUSE
at 5201 Brooklyn Rd. (M-50) Jackson.
Monday thru Thursday, 1-5
Saturday & Sunday, 2-5
Anytime by Appointment
Callaway Construction
517-764-4400 or 563-2980

CHELSEA GREENHOUSES, 7010 Lin-
gane Road, Chelsea, Michigan 475-1353-54
or 475-9813. Flowers and plants for every
occasion. We specialize in wedding flowers
to fit your budget. We are as near as your
phone and we welcome your business. tfn

GAS CONVERSIONS - Burners or Com-
plete Furnace. Manchester Electric 428-
8243 or 428-8831. tfn

FOR RENT - Commercial Space, 154 E.
Main. (517) 431-2680. tfn

OFFICE SPACE TO RENT
New Office Space, 1200 sq. ft. in single
building, ground floor, private entrance,
paved private parking at door. Separate
heat and air cond. Security & fire alarm.
Will finish to tenant specifications. Union
Construction Co., 505 Territorial St.,
Manchester, Mich. 48158. Phone 313-428-
8228. tfn

CHIM-CHIMNEY CHIMNEY SWEEPS
call collect 313-429-9078. 10% Senior Cit-
izens discount. Homeowner cleaning kits
and flu caps available. tfn

STANDING HAY WANTED - Cash paid
in advance 517-764-0700 Monday thru
Friday 8 a.m. to 5 p.m. or write P.O. Box
249, Jackson, Michigan 49204. tfn

TAILORING BY IRENE - Specializing in
Mens Tailoring and Alterations. Also
Leather and Fur. Mon. thru Thurs. 10
a.m. - 4 p.m. Evenings: Mon. thru Fri. 7
p.m. - 8:30 p.m. 18910 Sberidan Rd.,
Manchester, Mich. Phone 428-8538.

FOR SALE - New Idea hay conditioner,
good condition \$400.00, phone 428-8490.
tfn

BAFALSKI AND SON CONSTRUCTION
septic tank, field beds, test holes and
trenching. Phone 428-7248, 18030 W.
Austin Rd., Manchester, Michigan. tfn

ELAINE RICE says "VETERANS TIME
TO BUY IS NOW!". Quality with little
down if your income will support pay-
ments or buy with another vet - even if
you think you've used your loan earlier."
Call 965-4400 or 428-7272. De Loof &
Associates Realtors. tfn

FOR SALE - 10 foot pick-up camper,
sleeps 6, excellent condition, would like to
sell badly, very reasonable. Call 428-8586.
tfn

HARTMANN CARPENTRY - Rough
work, Pole Barns, remodeling, finishing,
roofing, siding, free estimates. Call 475-
9301 or 475-1643. tfn

MICHIGAN Certified Seed, 3 varieties soy
bean seed. Erablec Farms, Britton, Mich.
(517) 451-4010 or 428-5663. tfn

BLACK DIET FOR SALE, tested and
proven excellent for gardens and lawns, 6
yards delivered \$40. 428-7784. tfn

CORN LAND WANTED - Cash Rent, 4
acres and up. Country side Farms. 517-
522-5174, Grass Lake, Michigan. 5-8p

RIDING LESSONS at your place or mine.
Specialty dressage, and hunt seat. 2 years
on Meredith Manor staff. 475-7394. 5-8

VILLAGE APARTMENTS - now taking
applications for 2 bedroom apartments, air
conditioning, wall to wall carpeting, full
bath, kitchen with range, refrigerator and
garbage disposal, private patios or
balcony, laundry facilities, for information
phone 475-9253. 5-8

MOTHER'S DAY GIFT SUGGESTIONS
From The Calico Cat Book and Gift
Shops: Green Plants, Hanging Baskets,
Wind Chimes, Jewelry From Trifari and
Winnard, Holly Hobby Limited Edition
Mother's Day Figurines, Fenton Art
Glass, Ring and Green Dahl Figurines,
Norman Rockwell Figurines.

BOOK SUGGESTIONS
The Helper by Catherine Marshall, Aunt
Erma's Cope Book by Erma Bombeck,
Betty Crocker Cookbook, Better Homes
and Gardens-Complete Book of Gardening,
The Country Diary of An Edwardian
Lady, 110 East Main St. Manchester,
Hours: Monday through Saturday 10-5:30,
313-428-7453. 5-8

WILL babysit in my home, Pleasant Lake
area. 428-7280. 5-8p

COMPLETE line of Gates v-belts and
pulleys for lawn mowers, garden tractors,
roto-tillers, also for other equipment.
Kosbe Welding, Manchester, 428-8236.
5-29

HORSESHOEING & TRIMMING
Bob Buono 428-7293

WITH summer approaching contract now
for seasonal mowing of your lawn. 428-
9346 or 428-7441. 5-15p

FOR HIGHER YIELD, better standability
and faster dry down, **PLANT PIONEER**
BRAND SEED CORN. See or call Reno
Feldkamp, 428-8571, Floyd Parr, 428-8658.
5-29p

FOR RENT - 1 two bedroom apartment,
1 - three bedroom apartment. \$300.00.
428-9150. 5-15p

GENERAL MAINTENANCE - electrical
and car maintenance. Call between 9-3,
428-8555. 5-15p

HIRING - 7 openings for new local factory
merchandising and service center. No
experience necessary, company will train
over 1200 hours a month to start plus
other benefits. Call 475-2515 10 to 3 p.m.
Wed., Thurs., Friday only.

DANCE - Manchester Sportsman Club,
Saturday, May 10, 9 p.m. to 1:30 a.m.
Luke Schaible Band, \$10 couple. B.Y.O.B.

REWARD - Lost male Brittainy on April
23. Family pet. Last seen near Lemm and
Schleweis Rds. 456-4998. p

SCHROEDER'S GREENHOUSES, open all
year. 14345 Logan Rd. 428-9078. A good
variety of plants to choose from. Mother's
Day Mums, flowering baskets and hanging
baskets.

OPERATION SAND BOX - Saturday,
May 31. Sponsored by the Manchester
Jaycees. Call Mann's Mill 428-7077.

FOR SALE - G.E. Dryer Never used.
Kenmore Heavy Duty Washer, used 3
months. \$125.00 Each. Frost Free Re-
frigerator, needs part. \$50.00. 428-8101.
p

WILLIAMSON
HEATING & COOLING SYSTEMS
John Steele jr
INSTALLATION
AND REPAIR
PHONE 428-8692

WOLVERINE
Overhead Door Co.
Commercial-Residential-Installation
WE REPAIR ANY DOOR
"OVERHEAD"
GARAGE DOOR OPENERS
2893 Fox Rd. Phone
Jackson, MI 47901. 522-4240

GARAGE SALE - May 9 and 10. 9 to 5.
19096 Bethel Church Rd. p

LOST - Brittainy spaniel dog (female) tan
and brown. \$25.00 reward. Call 461-1651.
p

FOR SALE - A 1970 Dodge Challenger.
AM/FM cassette stereo. Runs great. 61-
000 miles. \$300.00. 1 mens 27" Schwinn 10
speed bicycle, almost new. \$125.00. 1 pair
of Jensen 4 x 10 Triaxial speakers. Never
used. \$50.00. Tony Warren. 428-7303. p

FOR SALE - John Deere 24T Baler,
excellent condition, \$1500. 428-8614. 5-8

WILL DO BABYSITTING IN MY HOME.
428-9384.

GET your Mother's Day flowers Friday
and Saturday, May 9 and 10 at the Union
Savings Bank. Sponsored by the Man-
chester Jaycees.

PROM FLOWERS - SAVE 10%
Students, we are again offering you a
discount on prom flowers. Order by
Saturday, May 19th and save 10%. Come
in and see our selection of corsages,
nosegays, and boutonnières. Choose your
exact colors. Select silks, and have a
memory to treasure.
Phone Early 428-7422
THE FLOWER CELLAR
138 E. Main

CARRIERS NEEDED for the Ann Arbor
News. Please call Pete Blanshard 971-
1925. p

Legal Notice
NOTICE OF PUBLIC HEARING
SHARON TOWNSHIP PLANNING
COMMISSION

TAKE NOTICE that a Public Hearing
will be held on Tuesday, June 3, 1980 at
7:30 P.M. at the Sharon Township Hall,
18010 Pleasant Lake Road, on proposed
Amendments to the following Articles of
the Sharon Township Zoning Ordinance
No. 2:

ARTICLE XXI - CONDITIONAL USES,
and
ARTICLE XXIV: Delete both Articles
and substitute proposed new text for both
Articles.

A copy of the proposed new text for
both Articles is available for examination
through the Township Clerk, Duane R.
Haselschwerdt, 8310 Chelsea-Manchester
Road, Manchester, Michigan, from 8:00
A.M. to 12:00 Noon, Monday thru Friday,
or call him at 428-7733 to make an
appointment.

SHARON TOWNSHIP PLANNING
COMMISSION

ACT NOW
Part time job selling Fisher Price
and other name brand toys. No
delivering. No collection.

TOPS IN TOYS
CALL BETTY AMBROSE
592-5569
Weekdays after 5 p.m.,
weekends anytime

MANCHESTER
CARPET CLEANERS
"DEEP STEAM
EXTRACTION"
VERY REASONABLE RATES
FREE ESTIMATES
SPECIAL RATES
TO CHURCHES
RESIDENTIAL - COMMERCIAL
DON STEELE
PHONE 428-7319

THE MANCHESTER ENTERPRISE

115TH YEAR VOLUME NO. 29 USPS 327-460 THURSDAY, MAY 15, 1980

"Bud Guest Day"



Mayor Jeffrey K. Schaffer and Edgar A. "Bud" Guest

The Manchester Optimist Club "Ladies
Night" dinner held last week at Weber's
Inn in Ann Arbor featured Edgar A.
"Bud" Guest.

For 36 years Bud Guest was heard
throughout the Midwest over WJR. His
program "On the Sunnyside of the
Street", one of the most popular in the
area, brightened the mornings of untold
thousands of listeners.

Bud is as active as ever, generating
laughter and good will among banquet
audiences across our country and Canada.
He did just that for the one hundred
Optimists and guests on this occasion.

Village Mayor Jeffrey K. Schaffer pre-
sented the following proclamation to Bud,

They're Engaged



Mary Ellen Simmons and Charles
Glidden announce their engagement. Mary
is the daughter of Mrs. J. Simmons and
the late Amelto Simmons of Manchester.
Charles is the son of Mrs. Maria Glidden
and the late Norman Glidden of Dover,
N.H.

Mary is a graduate of Manchester High
School, received her B.S. from Grand
Valley State College, and is employed by
Wayne County Council for Retarded Cit-
izens in Richmond, Ind. Charles attended
Dover High School, Dover, N.H., and is
employed by the Brotherhood of Allied
Trades and Painters in Richmond.
A July 12, 1980 wedding is planned.

HIT OR MISS by farley

A recent issue of the Michigan Journal-
ist, the newspaper published by the
journalism students at the U of M
recently published a very comprehensive
article, or group of articles about a major
industry in these United States that has
escaped notice, except in a very casual
way, by most of us-an industry that is
greater than either our steel or textile
production for a year. This is the pack-
aging industry.

We mentioned in a column of rem-
iniscences some time ago that in days
gone by when we shopped at the grocery
the cheeses, for example rested beneath a
large glass bell. Two or three kinds nested
there accompanied by a large cheese knife
and when you purchased some, the
counterweighted bell was raised and when
you indicated how much you wanted the
clerk cut a piece, picked it up with a piece
of waxed paper and weighed it on the
scales to see just how much you should
pay for it. These clerks became very
skillful in cutting off the indicated amount.

Then he would wrap it in a piece of
so-called butcher's wrapping paper and
place it on the counter with your other
items. When you ordered a pound of
cookies which were displayed in a rack of
tins which held ten to fifteen pounds of
each, the clerk would grab a brown paper
sack in one hand and a handful of cookies
in the other, placing what he thought was
the right amount in the sack while he took
a handful in his other hand and going to
the scales, either added or subtracted a
sufficient number to fill your request. He
then twisted shut the top of the sack and
it joined your other items on the counter.
But not so nowadays.

The cookies are displayed sealed in
beautifully printed plastic wrapped pack-
ages and that's the way you buy 'em.
Many of them are packed in odd number

Continued on page 11

United Way Board Plans For The Year

The Manchester United Way Board of
Directors met Tuesday, May 6, at 7:30
p.m.

President John Sauter called the meet-
ing to order. The minutes of the previous
meeting were approved, and the treasur-
er's report was read and filed.

Mary Munson and Marie Garlick, Man-
chester's representatives to the United
Way of Michigan Budget Conference,
reported on the activities of the two day
sessions which were held at East Lansing
in April. At the conference all of the
agencies which share in the U.W.M.
budget are reviewed for consideration for
the coming year's drive. There are pre-
sently 24 agencies that will share in the fall
campaign. Mrs. Munson served on Panel
3, which reviewed Kidney Foundation of
Michigan and Hemophilia Foundation, and
Mrs. Garlick served on Panel 1, which
reviewed Michigan Heart Association and
children's Leukemia Foundation.

Clarence Fielder reported that the
Manchester Area Recreation has added
Girl's Slow Pitch to its summer program.

President Sauter appointed the follow-
ing committees: Budget - Chairman Alice
Swainson, Louis Vogel, Clarence Fielder,
Robert Ross and Paul DuFresne; Non-
existing - Chairman Mary Munson and
Robert Ross; Publicity - Chairman Louis
Vogel and Marie Garlick; Kick-off Dinner
- Chairman Marie Garlick, Mary Munson,
Mary Blossom, and Alice Swainson; Sup-
plies - Chairman Mary Krzyzanski and
Mary Blossom; Manchester Recreation
Representative - Clarence Fielder; Red
Cross Representative - Robert Ross; Fair
Booth - Chairman Paul DuFresne, Evgene
Ludwick, and John Sauter; United
Way of Michigan representative - Mary
Munson and Marie Garlick; 1980 Cam-
paign Chairman - James England.

The Budget Committee will hold its first
meeting Tuesday, June 10, and will re-
view all agency budget requests for 1981.

OPTIMIST OUTSTANDING STUDENT



Optimist member Loring Ebercole, Mike with parents Mr. and Mrs. Luther Schaible.

Michael Schaible, son of Mr. and Mrs.
Luther Schaible, 4665 Fletcher Road, has
been named the April recipient of the
Outstanding Citizen Award presented by
the Optimist Club.

A junior, Mike has been a cross country
team member three years and also on the
track team three years. He was inducted
into the Manchester High School National
Honor Society chapter last fall and is an

active member of the youth group of St.
John's Lutheran Church in Bridgewater.
Mike is interested in participating in the
Farm Bureau Citizenship Seminar which
will be held in mid-June this year. While
his future plans are not definite, Mike is
considering attending college after grad-
uation to study in the areas of mechanics
and farming.