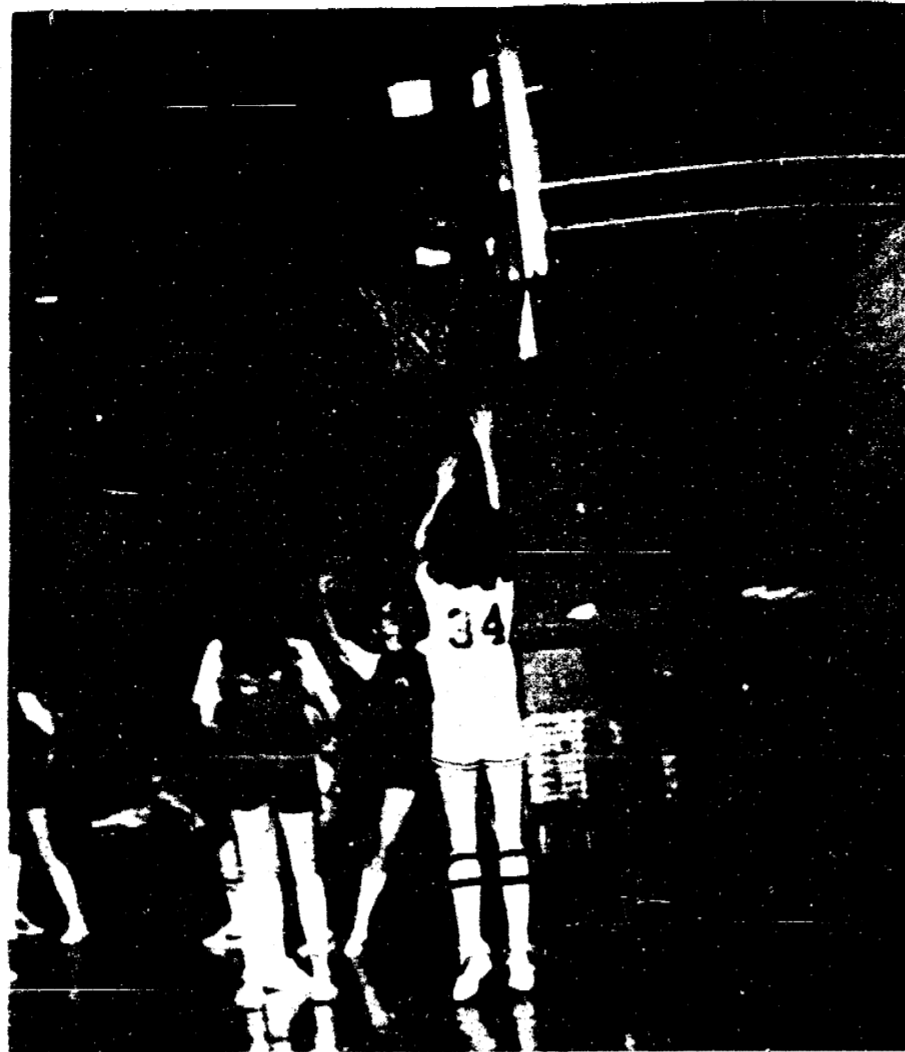




Carol Rose #14 Varsity - Coaches Award. Photo by Jon



Jackie Drouare - Coaches Award.



Suzie Alvord #34 Varsity - Most Valuable. Photo by Jan

more exciting-win-lose wise-having a 13-3 record. Unfortunately 2 of their 3 losses came to the same school, therefore we took 2nd in the L.C.A.A. Karri Agin was the squads leading scorer by popping for 119 points. Jenny Feidkamp received the Most Improved Award as she edged out Most Valuable Beth Vick in steals. Jenny snatched 60 while Beth grabbed 58. The girl to get the Coaches Award led in rebounds with 36-Jackie Drouare.

Other sports goings on last week was the season opener against Blissfield for our wrestlers. It was a disaster as we won only 3 matches thru Todd Green, Jack Stein and Jeff Hawk. The final score including forfeits was 57 to 15. On Saturday, our grapplers competed in a tournament in which they took 10th place with Jack and Todd grabbing first for us.

Remember-the basketball squad treks to Clinton on Friday.

Spear & Associates, Mann, Realtors

122 WEST MAIN PHONE 428-6888 DAILY MANCHESTER

New Listings

75 Yr. Old Farm Home, on 17 acres, 3 bedrooms, family room, fireplace, 36 x 54 barn, Manchester Schools. Land Contract terms available. \$89,500.

34 Acre Farm with Home, older farm house, 4 bedrooms, 2,026 sq. ft., 1 mile south of Manchester, 1.76 ac. road frontage, rolling farm land or nice building sites. \$95,500.

Perfect Starter or Retirement Home - Remodeled inside & out, aluminum sided exterior, 2 bedrooms, 2 1/2 x 24 garage, Village of Manchester. \$48,500.

Three Bedroom Ranch - in the Village of Manchester, all appliances included, walkout basement, attached garage, lot size 36 x 172. Land Contract terms available. \$92,887.

Preserve Assumption - On 1 1/2 3 bedroom farm house, in the country on 4 acres, partially remodeled, small woods on property. Manchester Schools. \$43,500.

Preserve Two Family - in the Village of Manchester, 3 - 4 bedrooms, beautiful workman. Land Contract possible. \$54,000.

Energy Efficient Ranch - in the country on 3 acres, 3 bedrooms, fireplace in living room, attached 2 car garage, Manchester Schools. \$89,500.

Price Reduced - On this 75 yr. old farm house, 3-4 bedrooms, 24 x 46 barn, tile and granite area, on 4 1/2 acres, owner anxious to sell. Manchester Schools. \$63,500.

WILSONS STES - On 1 1/2 Acres - Beautiful rolling building sites, Manchester and other zoning at \$12,000.

OFFICE HOURS

Mon. - Fri. 9:00 a.m. to 5:00 p.m. Sat. 9 a.m. to 12 noon

OFFICE PHONE 428-6888

EVENINGS AND WEEKENDS

JIM MANN 428-6874
BILL PRATT 428-6882

MANCHESTER ELECTRIC, INC.
CONTRACTING
ELECTRICAL - HEATING - COOLING
MAJOR APPLIANCE SALES AND SERVICE
100 MADRAN STREET MANCHESTER
PHONE 428-62-63

DA-EL'S
PRESENTS
MEN'S NIGHT
FRIDAY DECEMBER 14th
TILL 8PM
Holiday Tops - Dresses - Skirts
Sweaters - Robes - Sleepwear
and More
IN SPECIAL SIZES - M AND UP
DE-AL'S
FASHIONS DOWNTOWN CLINTON

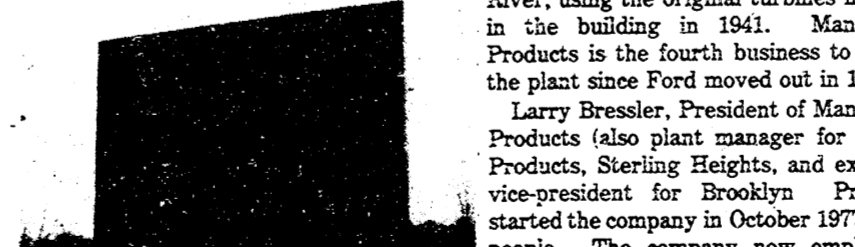
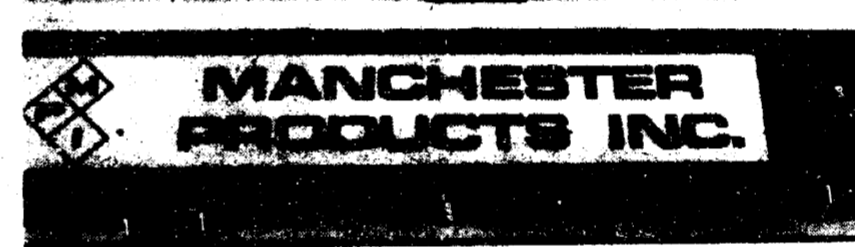
THE MANCHESTER ENTERPRISE

115TH YEAR VOLUME NUMBER 8 USPS 327-460 THURSDAY, DECEMBER 20, 1979

MANCHESTER TOWNSHIP LIBRARY
P. O.

20¢ A COPY

Manchester Industry Adapts To Change



By Sandra Volentine
Part II
The new meets the old at Manchester Products, Inc. Located in the old Ford Plant, 912 City Road, the company generates its own electricity from the Raisin River, using the original turbines installed in the building in 1941. Manchester Products is the fourth business to occupy the plant since Ford moved out in 1960.
Larry Bressler, President of Manchester Products (also plant manager for Chevas Products, Sterling Heights, and executive vice-president for Brooklyn Products) started the company in October 1977 with 4 people. The company now employs 17 people, and has at times employed nearly 30. Manchester Products manufactures door pulls for Fisher Body and Ford Motor Company, wax applicator pads for Dupont's Rain Dance wax, and a vinyl protector for door pulls for Chevas Products. Subcontract work for Chevas Products constitutes the largest part of Manchester Products
Continued on page 20

In Retrospect

This is the season when thoughts of Santa Claus are uppermost in our minds and in the hearts of our children, and there's no age limit for these "youngsters" either.

The other day we came across a copy of Psychology Today for December in which was a detailed discussion of "Santa Today and Yesterday", which dissects the attitudes of the children of 1896 and 1977, and compares attitudes and beliefs and asks if the Santa Claus legend is obsolete.

We are very glad to report that it is not, definitely so. There are a few minor differences in the present attitude of children towards the Santa legend but in their hearts Santa and his reindeer, his elves, his sleigh and all the trimmings remain the same as they did 80 years ago.

Research shows that the children in the 1-6 group are the prime believers in Santa but I don't think that is quite true. For example I too believe in Santa Claus, as firmly as the chap who answered Virginia's question asked so many years ago "is there a Santa?"

Of course when you get to be our age you appreciate what a job it is to collect and distribute all the things that be must during that night so that all the good little girls and boys can have their gifts on Christmas morning so we pitch in and help the ageless old fellow, but we do this all in the spirit of one of Santa's helpers.

In this article in Psychology Today the tale was told that a survey which had been made in Lincoln, Nebraska in 1896 was discovered and so the staff of the magazine went back there and did another survey to see if the Santa Claus legend had become obsolete as had been reported in some areas.

We are glad to report that it definitely has not. There are minor differences in the attitudes of children towards the legend but nothing basic. The results were surprisingly alike. We haven't strayed very far from our convictions as we grew up. We have indoctrinated our children with the same basic ideals.

Any minor infractions are probably due to their warped environment, our false sense of values and the stupidity of some of their elders. False images have been dangled in front of some of the children but a bit of research shows that those who have been "brung up" in the right environment with the proper assistance from their parents, are a bit better than those of 80 years ago. The youngsters of today have a wider horizon of awareness of their surroundings than had those of the previous generation.

We are a much more mobile people than we were 80 years ago and our children get out into the big wide world a lot more than the previous generation and Television, for instance, in spite of its shortcomings does have programs which widen their horizon. Sometimes we seem to have failed to teach our children the things that we should, but isn't this failure perhaps due to our material, our methods and our manner of presentation? Are our schools, our churches and our other influences and activities the things that need updating?

We're gonna have to take time to be parents and help to fit our children for life
Continued on page 5

Early Deadline

Due to the Christmas Holiday, the deadline is Saturday noon, December 22, for classifieds, display ads and news articles for next week's issue, Thursday, December 27.

Engagements Announced

Mrs. Alton Lutz of Manchester is pleased to announce the engagement of her daughter, Lana Lee to David Berry, son of Mr. and Mrs. Von Berry of Ann Arbor.

Lana graduated from Manchester High School and attends Eastern Michigan University. Her fiance is an Ann Arbor High School graduate and is employed by Parke-Davis in Ann Arbor as a chemist. A June 29, 1980 wedding is planned.

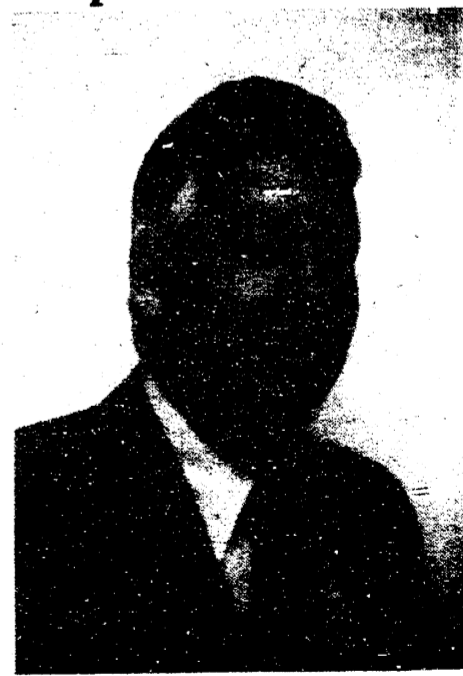


Mr. and Mrs. Lyle Widmayer announce the engagement of their daughter, Beth Ann, to Robert Smith Jr., son of Mr. and Mrs. Robert Smith, Sr. of 11484 Hiber Road.

Both are graduates of Manchester High School. Beth is attending Eastern Michigan University and Robert is employed at Genovese's Inc.

A late Fall wedding is being planned.

Elected to Board of Governors at Chelsea Hospital



Mr. Charles R. Spensley, 19600 Sharon Valley Road, Manchester, has been elected to the Board of Governors of Chelsea Community Hospital.


Mr. Spensley has varied business interests, in real estate, farming and raising horses.

Re-elected to the Board were Mr. James Daniels, of Chelsea; Rebecca Lindemer of Stockbridge, and David Hoemer of Dexter. Mr. Daniels is Chairman of the Board of Governors.

The Manchester Enterprise
 150 EAST MAIN STREET
 Manchester, Michigan 48158
 USPS 327-690
 Phone 428-3173

The Manchester Enterprise was established in 1887 and is published each Thursday at 150 East Main Street, Manchester, Michigan with second class postage paid at Manchester.

Edward E. Steele, Publisher
 Lorenz Steele, Editor



Obituaries

William D. Minor
 316 West Michigan Ave.
 Clinton, Michigan

Age 60 years, died Friday, December 14, 1979 at the Saline Community Hospital following an extended illness.

He was born March 7, 1919 in Bridgewater Township, the son of Merle and Sarah Lammig Minor.

He was married to Bessie Johnson on March 17, 1939. She survives.

He had been an employee of the Michigan Gas Storage, Freedom Township Pumping Station for 29 years.

He was a member of the Emmanuel United Church of Christ in Manchester and the Masonic Lodge.

In addition to his wife, he is survived by two sons, Peter and Leonard of Manchester; two daughters, Mrs. Roy (Connie) Pratt of Manchester and Miss Sandy Minor at home; six grandchildren; one brother, Albert of Clinton; and two sisters, Mrs. Marie Taylor of Florida and Mrs. Ann Lou Young of Orono.

He was preceded in death by one sister. Funeral services were held on Monday at the Emmanuel Church with Rev. Robert Macfarlane officiating. Burial followed in Riverside Cemetery in Clinton. Memorial

contributions may be made to Emanuel Church.

Mrs. Alwin (Ella) Buehrle
 10475 Manchester-Chelsea Road,
 Manchester, Michigan

Age 70 years died Saturday, December 15, 1979 at the Saline Evangelical Home following a brief illness.

She was born March 1, 1909 in Freedom Township, the daughter of Fred and Rose Weiss Roller.

She was married to Alwin Buehrle on April 25, 1928.

April 25, 1928. He survives.

She was a member of St. Mary's Catholic Church, Altar Society, Shakespeare Club, Rows Corner Extension and Senior Citizens.

In addition to her husband she is survived by one son and daughter-in-law, Duane and Elizabeth Buehrle of Manchester; three grandsons, Mark, Gary, and Eric of Manchester; and several nieces and nephews. She was preceded in death by a brother, Harold in 1938.

Mass of the Christian Burial was held on Tuesday at St. Mary's Church. Rev. Fr. R.R. Schlinkert will officiate. Burial followed in St. Mary's Cemetery.

7th Annual Cross-Country Ski Program

Registration is now open for the Washtenaw County Parks and Recreation Commission's 7th Annual Cross-Country Ski Program. Beginning January 8 the program will be offered every Tuesday and Wednesday evening through January and February, snow permitting.

This popular program has provided hundreds of Washtenaw County residents the opportunity to try cross-country skiing for a nominal fee. As in the past, this year's program consists of a 1 1/2 hour instruction session and equipment which is provided at the site for \$3.00 per skier.

Fuller Recreation Area in Ann Arbor and West Middle School in Ypsilanti are the instruction sites for this year's program. The instruction clinics are offered at 6:30 and 8:30 p.m. each evening. Interested skiers register for ONE evening, and designate either early or late session. The program is designed for those who

are beginning or intermediate skiers. Because the clinic groups are small, each skier receives special attention and instruction. Those skiers with their own equipment can also participate in the program.

Advance registration is required. Forms can be picked up at the County Recreation Center, 4133 Washtenaw, Ann Arbor; Ann Arbor Public Library, 343 S. Fifth Ave., Ypsilanti Public Library, Michigan Ave., Ypsilanti, and Saline Community School Office, 7190 Maple Road. Clinics fill quickly so interested skiers are urged to register early. Any questions can be answered by calling the WCPARC office at 973-2595.

Manchester Township Board Meeting

These are the PROPOSED SYNOPSIS of the minutes of the Manchester Township Board held at the Village Hall on Monday, December 10, 1979 at 8:00 p.m. Board members present were: Burch, Fielder, Lentz, Macomber and Widmayer. Absent: none.

Minutes of the last regular meeting corrected and approved as corrected. Minutes of Planning Comm. meeting October 10, 1979 approved as submitted.

Widmayer reported papers for fire department are working out well. Bills paid since last month presented and put on file.

\$4455.33 in General Fund by report from Tress. Burch.
 General Fund bills totaling \$4700.51

presented. Approved payment of all but \$861.53 to Wash. Co. Rd. Comm. at this time.

Approved payment of \$117.17 to Lyle Moore to reimbursement for seminar from Liquor and Law Fund.

Approved transfer of \$51,335 on December 26, 1979 from Fire Station bonding money to Fire Station Checking to pay Wacker-Tuthill \$48,870 and Hobbs & Black, Assoc. \$2465.

F.R.S. bill from Washtenaw Co. Rd. Comm. for Wolfe Rd. project held over.

F.R.S. bill from Washtenaw Co. Rd. Comm. for Wolfe Rd. project held over. Manchester Community Schools will participate in the voter registration program.

Letter from Douglas Schaffer, Vice President of Union Construction was read. Enclosed was a gift of \$500 for the use of the fire department in thanks for outstanding services rendered at the time of a fire at Union Construction. Approved the transfer of check to the Dutchmen Firefighter Association to be used for equipment for the new hall.

Mechanical Code tabled to later date. Meeting with adjoining townships concerning inspection fees, etc. to be held soon. Discussion in regard to Census Committee was held.

Meeting adjourned at 9:26 p.m. Submitted by Wilma E. Lentz, Clerk and approved by Clarence L. Fielder, Supervisor

An Individual Retirement Account is one way to buy happiness.



If you haven't a pension plan where you work or should you be self-employed, you are probably eligible for an Individual Retirement Account (IRA). Spouses now are usually eligible, too.

With an IRA you are able to set aside a certain sum at good interest return. Plus, the amount you

deposit is tax sheltered. You can actually deduct this sum from your total earnings before you figure income tax.

Your future is all important. Stop in for details on an IRA.

Live for today and tomorrow.



MEMBER F.D.I.C. MANCHESTER BRIDGEWATER PLEASANT LAKE



EVER-POPULAR... Outside decorations become more colorful, more elaborate with each Christmas. Many homeowners use life-size cutouts to depict Christmas scenes and characters. Santa, of course, is a favorite, but no more so than the manger scene. Decorating outside the home is fun, but it is fun, and something in which the family works together.



Holla there! Just want to wish all you friends and patrons a very great year.

R. D. KLEINSCHMIDT INC.



With sincere greetings of the season, we wish you a most happy holiday.

DUTCH COUNTRY KITCHENS

Three Kings' Day Party Occasion

On Driekonigendag, or Three Kings' Day, bands of children in grotesque costumes go around from farm to farm. They sing nonsense verses about the Kings and receive gifts of coins and cakes.

Three Kings' Day is a party occasion in Belgium. There is always a cake of the Kings. This is no ordinary party cake. As in Portugal, it contains a dried bean and the child who discovers it in his portion receives royal honors for the day.

The King chooses a Queen or, if a girl finds the bean, she names a King. The royal pair receives gold paper crowns and robes that are often pieced together from purple, orange, or scarlet scraps.

The young King and Queen rule the party. Whatever they do the court imitates. Whenever the royal pair laughs, for example, the courtiers shout "The King laughs! The Queen laughs!" and burst out laughing. When the two sneeze, everyone sneezes; when they dance, everyone dances.



NOW, LET'S SEE... For parents, Christmas morning can mean working together to read instructions and put together toys of all shapes and sizes that come in many little pieces in a very pretty box.

Unusual Tradition Once In Sweden

The Swedish Christmas is warm and cozy, filled with tantalizing odors of all kinds of special cakes, cookies, and a potent, hot special brew called "glogg". Its customs carry echoes of the Vikings, when the long winter was a dark and frightening time, and it seemed as if the sun might leave the earth to endless darkness and snow. The elf-like Tomten, who brings gifts to Swedish children, harks from the dark past. The word "Yule," or Jul, may come from an old word Hjul, meaning "wheel," for at this season, the wheel of the old year turns over to the new.

Baraques of Paris Offer Yule Items

A feature of Paris at Christmastime are the baraques. These are small stalls or booths erected along the boulevards—at which all kinds of knickknacks are sold. They sell sweets, toys, and all the latest novelties. It is quite like a fair, and the booths remain open till after New Year's Day. There are street vendors, and the barrows that sell holly and mistletoe. In France one sees mistletoe in perfection, for it is the country of mistletoe and everyone buys it. A branch hung above the doorway at this season is said to bring luck to a house during the entire year.

Merry Christmas

To our many friends and neighbors, the very best of everything.



GUY'S BRIDGEWATER TAVERN



Christ is born at Bethlehem. Let us rejoice, And welcome again the season of Christmas.

Keith's Barbershop



GREETINGS

And best wishes for a fun-filled holiday season.



Manchester Electric Inc.



As the angels sang that first Christmas, let joy and peace abound this season.

Widmayer Ford Co.

GIFT IDEAS For The DO-IT YOURSELFERS

BLACK & DECKER TOOLS

Flourescent Drop Cords

Timing Lights



Voltage Testers

and Many More Items

ALSO SNO-VAN, SAND-VANS & CHEVY BLAZERS FOR THE LITTLE ONES ON YOUR LIST

Ross Automotive

220 EAST MAIN MANCHESTER PHONE 428-5320 OR 425-5325

Christmas Candles

Every year Christmas glows with the light from candles. The custom of using candles dates to the time of the early Christians when this symbol of enlightenment set in the way of legendary wanderers on Christmas Eve. The light brought the custom of placing candles in windows to this country. During the time of religious persecution, families kept a light burning in their windows

all night on Christmas Eve hoping that a present would come to their home to say a Christmas

message. Advent candles play an important part in many homes at Christmas. In a short ceremony families light a candle and let it burn for a time every night during Advent.

Many use candles for decoration because of their warm, heavy and waxy quality. Candles used singly, in twos or in groups make equally attractive arrangements.



Fillyaws Service



May the true spirit of Christmas be with you this holiday.

THE Calico Cat BOOK AND GIFT SHOPPE

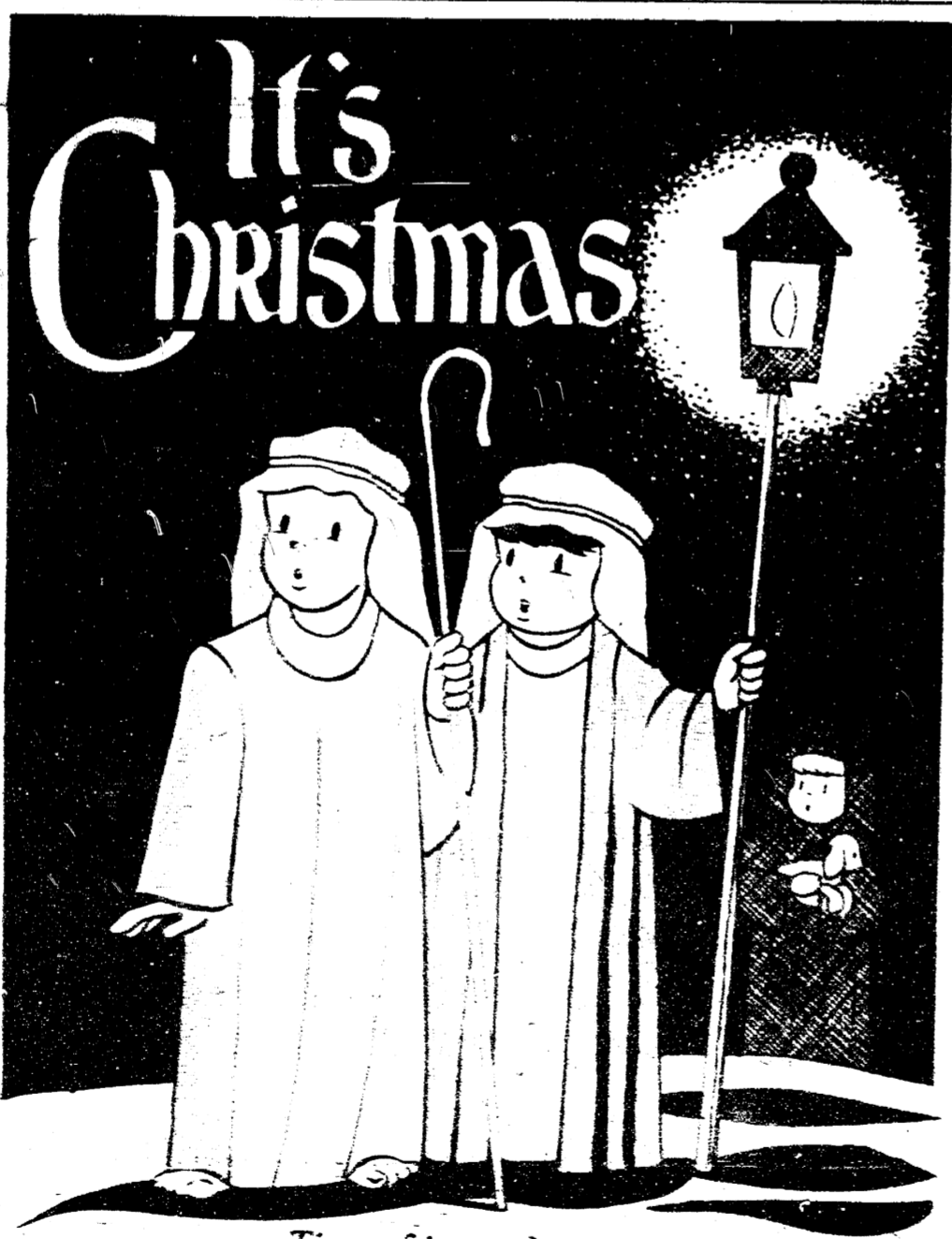
Elderly Drummer is German Custom

A very old German custom is to have an elderly man, with a drum attached to his back and rattling on his stomach, lead a procession around the house after the Christmas dinner. The drum major marches and each step to frighten away any winter and to prevent them from returning the following year. Finally the group goes to the children's room, which is opened with great ceremony. In the center of the room stands a large Christmas tree illuminated with candles and laden with gifts for the boys and girls. A huge Jesus head or Jack-o-lantern is placed in the center of the tree, lighted with candles so that flame and smoke come from its mouth, nose, eyes and ears. Then the children make for the tree and soon wrap it of the gifts. The older members of the family also exchange gifts and join in the boisterous play with the children.

DON'T FORGET:
Be sure to leave some Christmas cookies and a glass of milk for Santa - and don't forget the puppy dog!
It's traditional, too, to give out an extra helping of food on Christmas Day. They like presents - like nuts or rubber bands, taped up loosely in strings, and left open to inspect.



Spear & Associates MANN REALTORS



Time of joy and peace. Christ is born in Bethlehem. Very special holiday wishes to friends and neighbors.

DURUSSELS' POTATO FARM, INC.

"HOME OF THE SPUDS"

Township Library News

During his life time, Clayton Parr was an active supporter of the library. We thank those who have given memorials to the library in his name.

Many people rediscovered the pleasures and usefulness of the library during the recent teachers strike. Book circulation took a big leap in this period. We are proud of our collection and encourage all to use the facility frequently. Two of the town's most avid readers and, therefore, most active patronesses are Mrs. Mary Wallace and Mrs. Goldie Lamb. Good for you, ladies!

New Books are: Tunnel by Hal Friedman; The Deadly Frost, by Terence Moon; The Glow, by Brooks Stanwood; The Spring of the Tiger, by Victoria Holt; The Wave, by Chris Hyde; I Should Have Seen It Coming When the Rabbit Died, by Teresa Bloomingdale; The Murder of Rudolf Hess, by W. Hugh Thomas; The Hunting Shack, by Gunnard Landers; Enemies, by Richard Harris; Zebra, by Clark Howard.

In Retrospect

in the most complicated but most rewarding world we have ever known, but also let's let them be children as long as they can; let's not destroy Santa Claus, the tooth fairy, the Easter Bunny nor any of the other fantasies of childhood... for childhood doesn't last very long for anyone, does it?

And so to the clatter of Santa's reindeer on the roof and the tinkle of his sleighbells may you hear his gruff voice shout...
MERRY CHRISTMAS TO ALL YOU YOUNGSTERS....
FROM ONE TO EIGHTY-ONE (or older)

LUMINARIA

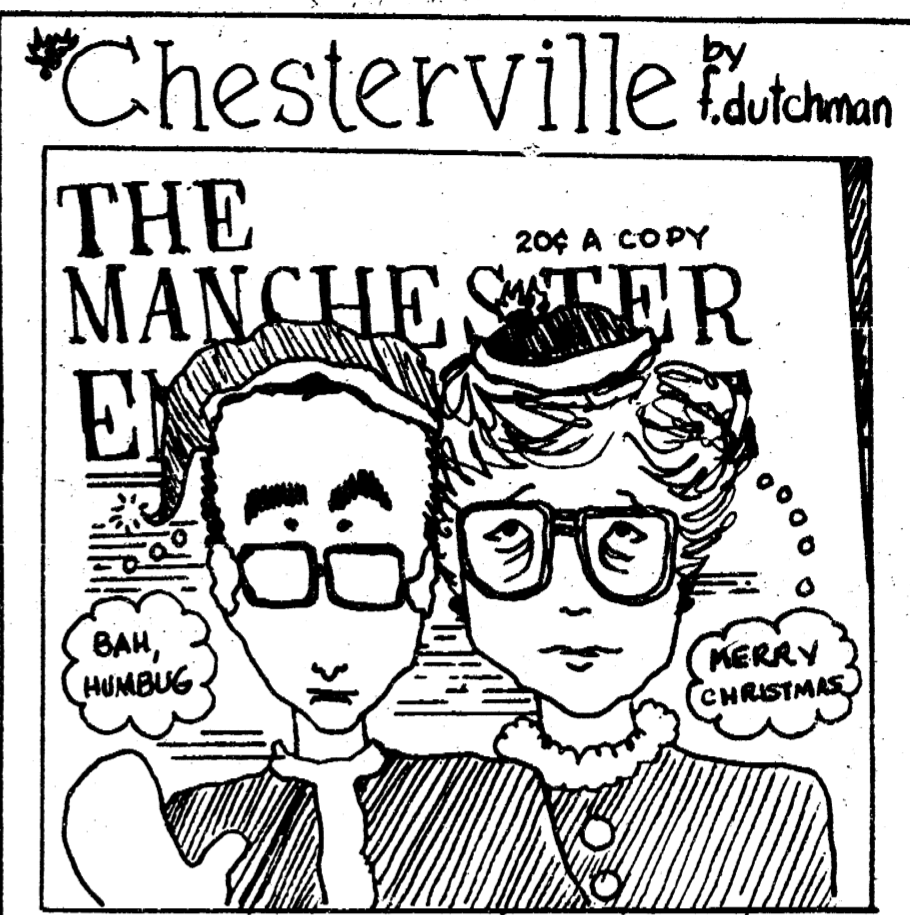
We have extras! Anyone who wants to order just one, or two, or three etc. Kits to light up their house on Christmas Eve is welcome to do so! Cost is \$2.00 per house. Please call 428-9115 before 3:30 p.m. or after 7:00 p.m. Hurry, time is running out!!



The great Duomo Cathedral of Milan, begun in 1386, contains the world's largest stained glass windows.

Birth Announcement

Born to Bill and Kathy Hyatt of Brooklyn, a daughter, Andrea Elaine, on December 6, 1979, weighing 6 pounds and 11 1/2 ounces. Andrea has two sisters, Catrina and Sandi. Grandparents are Ruth and Leonard Days of Manchester and Maxine Hyatt of Reading, Michigan.



TRAVELING SMILES

BLACK SHEEP REPERTORY THEATRE 428-9267
2 and 7:30 p.m. December 19-22 11 a.m. and 2 p.m.
on Wednesday and Thursday on Friday and Saturday

FRED JOHNSON, SANTA CLAUS

See what happens to this Santa and find out again for yourself, whatever your age, that Christmas is truly a magic time of the year.

Warm holiday wishes

From Your Friends at
UNION SAVINGS BANK

Member FDIC

FAHEY REALTY

OFFICE 215 EAST MAIN PHONE 428-9298
OFFICE HOURS 9-5 MONDAY-FRIDAY SATURDAY 9-12 NOON

Horse farm - 42 acres with additional 23 acres available. 1/2 mile track, 6 stall 32 x 50 pole barn. Lovely cedar 3 bedroom ranch. Secluded setting with beautiful views of Manchester countryside. Call Melody Popkey 428-7967.

Chelsea Lanewood Subdivision - 3 bedroom brick ranch, 1 1/2 baths, 16 x 24 paneled family room. Close to elementary school on corner lot.

60 acre farm. 5 bedroom farm house. 45 x 72 pole barn, chicken coop, tool shed. Many fruit trees. Call Jim Walkowe 428-8120.

Attractive 3 bedroom brick home in the village. Large living room with fireplace, first floor bedroom or study, dining room, full basement with second fireplace.

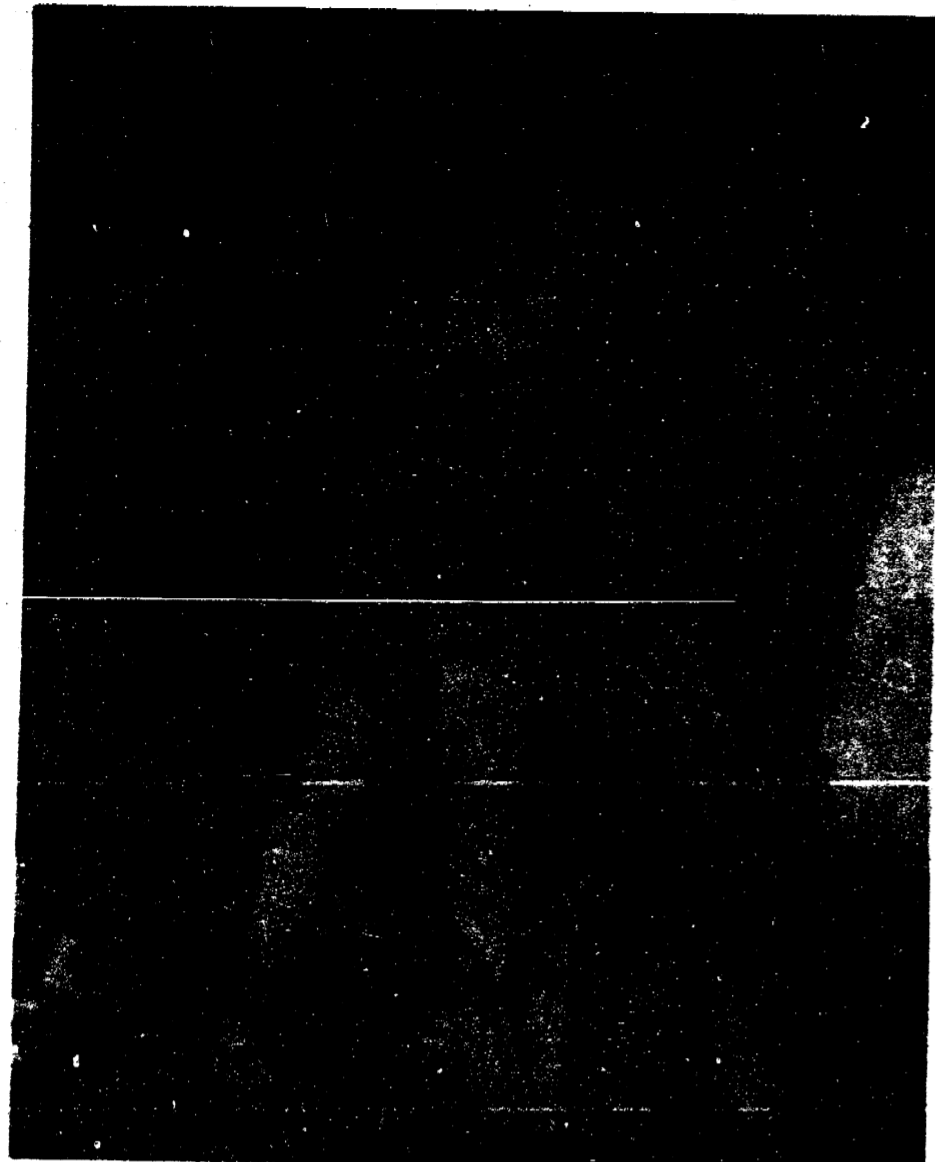
BEAUTIFUL BUILDING SITES
New Listing 10 acre parcel. Beautiful rolling land. 200' road frontage. Call Don Limpert for appointment. 428-7400.
New Listing 2 acre parcel. 200' road frontage. This parcel adjoins the 10 acre parcel listed above. Call Don Limpert.

6 Acres - Lovely parcel with good elevation, some woods, will perk. Land contract possible.

1 acre building site on paved road. Rolling setting with lovely view.

100 acres scenic rural home site in Sharon Township. This property is very hilly - ideal for the person who wants to build a home in one of the most beautiful locations in Washtenaw County.

Don Limpert	428-7400	Melody Popkey	428-7967
Judy Fahey	517-456-4927	Jim Walkowe	428-8120
James R. Fahey	428-7979	Ted Curley	428-8556
Nick Fahey	517-456-4927	John Fahey	428-8748



Jeff Ginger came 2 of his 11 points Tuesday. Photo by Jon



Tom Malcolm totaled 27 points last week. Photo by Jon

HOLIDAY BANKING HOURS

To provide additional holiday time for our employees, all offices and drive-ins will CLOSE on MONDAY, DECEMBER 24 at 2 PM and will be CLOSED on CHRISTMAS DAY, TUESDAY DECEMBER 25.

NORMAL BANKING HOURS will be observed on NEW YEAR'S EVE, DECEMBER 31. All offices and drive-ins will be CLOSED NEW YEAR'S DAY JANUARY 1, 1980.

Happy holidays and best wishes for 1980.

Ann Arbor Bank and Trust

Manchester Banking Center
10903 Manchester-Chelsea Road/M-52
Manchester, Michigan Phone: 428-8389

Shamrock Junction

General Store and Ice Cream Depot
Open Year Around

Now Taking Special Orders
For BASKETS & TRAYS
For Christmas & New Years

YOUR CHOICE OF CHEESES, SMOKED MEATS AND/OR WINES

\$12 & up

GET YOUR ORDER IN EARLY. CALL 517-456-4469
THE PERFECT GIFT FOR THE HARD-TO-BUY-FOR PEOPLE
ON YOUR GIFT LIST

BOAT & CAR RENTAL SPACE NOW AVAILABLE
SEASONAL RATES. CALL 517-456-4469

ON US-12, 1 1/4 MILES WEST OF CLINTON, MICHIGAN
OPEN 8 AM - 9 PM MON. thru SAT. 9 AM - 9 PM SUN.

Varsity Nipped Twice While JV's Split

By Jon





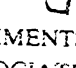
Good to be back at my typewriter pounding out basketball news. Now don't get me wrong, I like football (and I'm sure I'll never forget this past football season or players) and all other sports but I do enjoy basketball just a little more. There are several reasons - one, I managed the squad back when I was in school and secondly I like sitting in warmth to see a game.

The big and little Dutch opened their

season facing league opponents on Tuesday and Friday. Blissfield rolled into town for the first and our JV's sent them home losers 47-46. In the Varsity battle (both Blissfield and Manchester had been picked to fight for #1 in the L.C.A.A.) A royal hit on both tosses from the charity stripe with 2 seconds remaining to leave victorious. I you add the margin of win for Clinton in the Friday contest you come up with 10. Six for JV and 4 for Varsity.

It's the little Dutch - who start the roundball moving so I'll begin with them. Upon entering the gym Tuesday I glanced at the scoreboard and felt like leaving for

FREE! 5-State Major Highway Map

-  MICHIGAN
-  OHIO
-  INDIANA
-  ILLINOIS
-  WISCONSIN

—COMPLIMENTS OF THE MICHIGAN TRUCKING ASSOCIATION WHO WISH YOU AN ENJOYABLE TRIP OVER THE HIGHWAYS IN MICHIGAN AND OUR NEIGHBORING STATES.

Please send me _____ free MTA

5-State Highway Maps

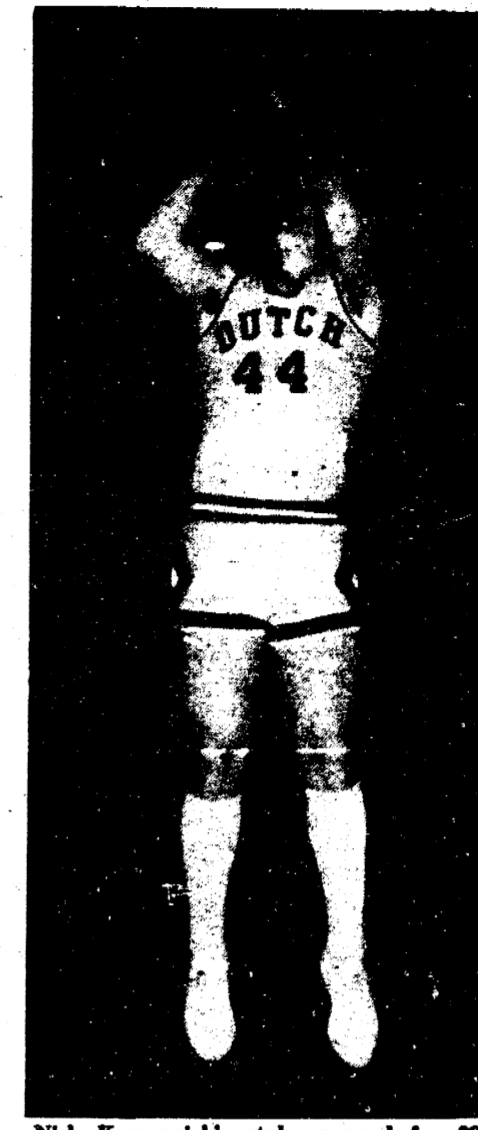
NAME _____

CITY _____

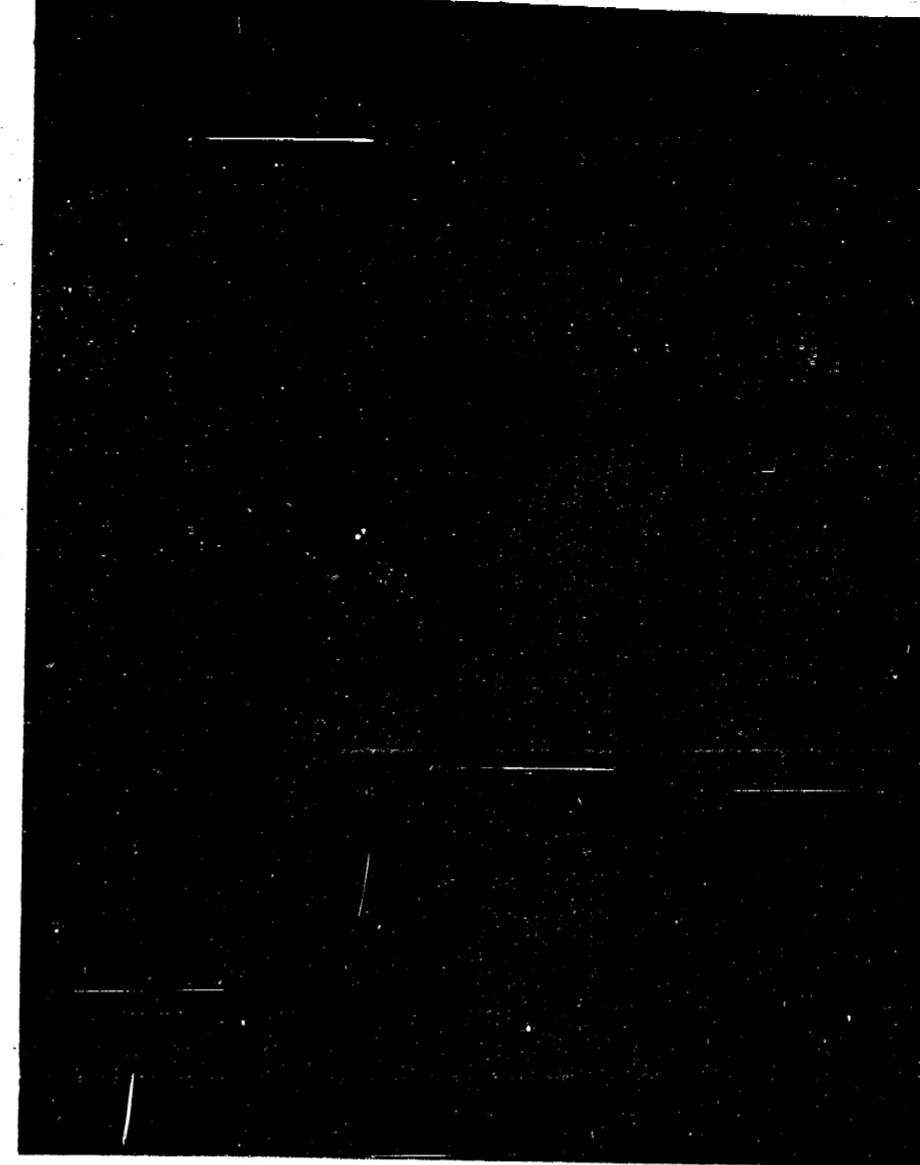
STREET ADDRESS _____
(Please no Post Office Box)

ZIP _____

Mail to:
Michigan Trucking Assn. Suite 325
501 S. Capitol Avenue
Lansing, Michigan 48933



Nick Krzyzaniak's style, popped for 36 points last week. Photo by Jon



Denny Heilrich squirrels thru 3 Redskins. Photo by Jon

Bliss -sat up 14-6. But we got hot and at halftime we held the advantage. The game went back and forth but at the buzzer we stood atop 47-46. Scoring was fairly even between 4 players with Paul Sroufe canning 13 with Pete Johnsons 10. Next came Kelly Boyd popping for 9 with Jim DuRussel contributing 8.

I was surprised to hear that we were picked with the Royals to take the league mainly because many feel you need height.

Our tallest is 6 feet 2 inches while they have a front line of 6'5", 6'3" and 6'3". Well, Coach Bartels prepared our Dutch well on how to saw trees and it almost worked. The opening period looked like the JV game with the Royals jumping to a 21-8 advantage. We, like the JV's got steamed and started putting leather in our hoop to the tune of 31 points to their 12 so we entered the lockers up 39-33. Blissfield took the lead after three periods 42-41, and the race

held the lead thru 1 period 12-10 and with both squads adding 13 in the second, we entered the intermission up 23-23. Clinton captured the advantage after three, 40-37 and as time ran down we fouled hoping they'd miss their free tosses so we could tally with buckets. This didn't work as they hit their free ones when needed so we fell 58-54. Again Nick led the Dutch with 14, as Tom helped with 12.

By press time we'll have faced Hudson and the next Varsity game will be at Adrian Madison on December 28th.

Dutch Grapplers Pin Clinton

By Jon

Excitement roared thru Dutch territory as we became aware of the wrestlers victory. Why? You may ask is this such a big deal - its our first conference win in 3 years. Coach Kessel normally awards a wrestler of the week but in this tight win, 37-31, he has awarded this honor to the entire team. Be at the school Thursday to witness our fighters facing Gabriel Richard.

In a quick run-down here's what happened Thursday in Clinton: We started off with 6 points going to our Richard Foss (98 lbs.) for a forfeit; next Clinton got part of it back at 105 lbs. (4 pts.) by a 11-0 decision over Greg Bondy; the skins took the lead by being awarded a forfeit (6 points) at 112 lbs.; we jumped to almost total control by winning our next 4 weights - Tim Seegert at 119 lbs. pinned his man in 1:20 while Jim Adams at 126 lbs. got 6 pts. for a forfeit, our Todd Green at 132 lbs. decisioned his opponent 9 - 3 as Dan Burch drove his partner's shoulders to the mat in 1 minute flat at 138 lbs.; Now, Clinton came storming back as they took the next 4 matches - at 145 lbs. they pinned Jim Burch and at 155 lbs. they pinned Jay Bertke, at 167 Clinton, got 6 points for a forfeit and 185 lbs. they decisioned Scott Lawson 13-6. The score was 31 for the skins while we followed with 28. At 198 lbs. Jack Stein decisioned Clinton 10-1 to knot the score with one wrestler left - Jeff Hawk at hwt. and he went for the kill and pinned the Redskin in 1:25 for the 6 points which gave us victory.

Attention Former Athletes

The Athletic Boosters are interested in getting together a program with former athletes of Manchester High School.

Any former athlete or interested persons who would be willing to give information on past athletes, events or history pertaining to any sports event please contact Pat Fitzgerald at 323-7417.

One Stop Shop



Christmas Gifts & Decorations
Fresh, Dried, and Silk Flowers
Custom Orders
Plants

This Week's
Cash & Carry Special:

Freshly Greened
Arrangement
Accented With A
Christmas Candle

\$11.99

Delivery Available
Extended Xmas Hours

The Flower Cellar

138 E. Main Manchester 428-7422

Die Bauernstube of Manchester

NOW TAKING
RESERVATIONS
FOR
NEW YEARS EVE

For reservations and
information call
313-428-8698

233 EAST MAIN STREET
MANCHESTER, MICHIGAN

LETTERS TO THE EDITOR



Letter to Congressman
Dave Stockman of the Fourth District

Dear Sir:

I have just read your 2,500 word article which recently appeared in the Washington Post headed "Let Chrysler Go Bankrupt". I don't know whether you wrote it as a journalist or as an automotive expert but I must heartily disagree with you even though I am perhaps neither of the above. I do however, admire you for the research you have evidently done in preparation for this article but I do want to point out to him that when he votes on this proposition he should be voting not so much as he feels but as the majority of his district wants him to, for this land of ours, at least when I went to school, was known as the land where the government was "of the people, by the people and for the people."

I remember that back in the days when the nation was very much wrought up about ridding us the evils of the "demon rum", and Congress was about to vote on the Volstead Act, we ran across the then Congressman from this district, Earl C. Michener of Adrian who for many years, served this area faithfully and well, and we remember of his being many times asked what he personally thought about the proposition and how he was going to vote on it and Earl, himself a teetotaler, answered that he was going to vote the way that the majority of the people in the district that he represented felt that he should.

Rep. Stockman should, of course, follow this example and this will be no easy task, for conditions in one end of his far flung district are much different in one end than in the other. What happens to Chrysler will have a profound effect on this area and all of southeastern Michigan but it probably will not affect the fruit and berry growers of VanBuren and Berrian Counties, but it will affect all of the midwest when they have to care for the jobless created by Chrysler's demise.

So Mr. Stockman I don't envy your job of

making a decision but I hope it will be a wise one. I know full well how the folks hereabouts feel and if it matters how I feel, I think that we might better give Chrysler a chance to recover at a cost no greater than the food stamps and welfare payments the government will have to provide otherwise, or better to do this than to vote for foreign aid funds for a nation which in many cases, has shown their appreciation by turning against it at the earliest possible opportunity. Please put yourself in the shoes of the people in this area before you make a final decision.
H.H.F.

Athletic Boosters

The regular meeting of the Athletic Boosters was opened at 8:10 p.m. by President Wellwood.

Minutes of the November meeting were read and approved on a motion by Pat Fitzgerald. Seconded by Helen Kensler.

OLD BUSINESS:

Bill Scaletta gave a report on the Fall Sports Recognition saying that he thought it went very well. He also said that the coaches were very pleased with it.

President Wellwood asked for a thank you to be sent to Albers Orchard for donating the cider for the Recognition.

President Wellwood stated that the Fall Sports Dinner for the middle school had been changed to Thursday, December 13, 1979 at 6:00 p.m. at the middle school. Co-chairman for the event are Mrs. Rhees and Mrs. Bross.

NEW BUSINESS:

President Wellwood said that he had been asked if the boosters would donate some pizza for the girls basketball team. A motion was made by Kathy Hagerman to do so. Seconded by Helen Kensler.

President Wellwood asked if the Booster equipment had been moved up to the storage room and if workers for the concession stand for basketball had been contacted. Being as no one was present who could answer he said he would contact Joyce Sroufe about it.

Bill Scaletta reported that the League Wrestling Meet, being hosted by Manchester again this year, would be held on Saturday, February 9, 1980.

Bill also reported that the tentative date for the Winter Sports Recognition is Sunday, March 9, 1980.

President Wellwood reported that a

request had been received to run funds for a community organized project through the Athletic Boosters. President Wellwood denied request. A discussion followed. A motion was made by Kathy Hagerman that no funding be processed through the Athletic Boosters, unless initiated by the Athletic Boosters, without a presentation being made first at a regular meeting of the Athletic Boosters. Seconded by Helen Kensler.

President Wellwood asked Bill Scaletta if he wanted to contact a speaker for the All Sports Banquet or did he want the Athletic Boosters to do it. Bill said he would be glad to do the contacting but he would also appreciate any suggestions anyone might have for a speaker. The date for the Spring All Sports Banquet has been set for Sunday, May 4, 1980.

Being no further business the meeting was adjourned at 8:50 p.m. on a motion by President Wellwood.

The next regular meeting will be held on Wednesday, January 2, 1980 at 8:00 p.m. at the high school.

Respectfully submitted,

Kathy Hagerman, Secretary

Christmas Dinner At Chelsea Hospital

Christmas will once again be a very special day at Chelsea Community Hospital. Each patient hospitalized over Christmas Day may invite one relative or friend to have the special Christmas dinner of prime rib of beef. It will be served at the Noon Hour, courtesy of the Hospital. Patients and guests will be encouraged to utilize the Hospital's comfortable home-like dining room.

Student Council Dance

The '79-'80 Student Council of Manchester High School would like to extend a cordial invitation to the people of Manchester to enjoy with us a fun-filled night of dancing and refreshments on Friday, December 21, after the Middle School/High School Christmas Concert at the High School Auditorium.

The Roamers (formerly Wackenhut's Band of Manchester) will play music to set all dancing feet a-tapping from 9:30 p.m. to 1:00 a.m. Admission is \$2.00 per person, but people under 4 1/2 feet high will be admitted free! If you bring refreshments (such as cookies, brownies, nuts, etc.) you will also get in free! Profits will be donated to a Community Care Project to be decided upon later by the Student Council.

This school is an integral part of the community. It is time to more forcefully support each other so that we can all be the best we can be. Heaven knows we all need each other's support. The problems with, within, and without our schools are very real but NOT insurmountable if we can keep working hard and talking softly with each other.

And a party surely never hurts that I can tell.

Hope to see you on the 21st. If you have any questions concerning this get-together, please call one of the following student council members: Debbie Blossom, Theresa Ames, Mike Ball, Kathy Kensler, Bill Hagerman, Julie Moore, Laurie Fitzgerald, Susan Moessner, Vicki Lehr, Kathy Mahony, Beth Vicek, Colleen Zschunke, Melissa Bunney, Tammie Honer, Scott Hunt, Natalie Walkow.

The Black Sheep Repertory Theatre

Charles Dickens

A Christmas Carol

November 30 - December 23,
Friday and Saturday 8:15, Sunday 4:00

December 26-30, Wednesday-Saturday 8:15
Wednesday and Saturday Matinees 2:00
Sunday 4:00

Call Now For Reservations: 428-9280



GIFT CERTIFICATE

The Clothes Line

134 East Main Street
MANCHESTER, MICHIGAN 48158

TO YOUR FAVORITE PERSON

FROM THEIR FAVORITE PERSON

AMOUNT \$ _____

Spear & Associates, Mann, Realtors

122 WEST MAIN PHONE 428-8388 DAILY MANCHESTER

Price Reduced - On this 75 year old farm house, 3 - 4 bedrooms, 32 x 45 barn, tile tile, and pasture area, on 4 1/2 acres, owner anxious to sell, Manchester Schools. \$69,500.

Perfect Starter or Retirement Home - Remodeled inside and out, aluminum sided exterior, 2 bedrooms, 27 x 24 garage, Village of Manchester. \$48,500.

Three Bedroom Ranch - In the Village of Manchester, all appliances included, walkout basement, attached garage, lot size 99 x 172, Land Contract terms available. Mid \$60's.

Possible Assumption - On this 3 bedroom farm house, in the country on 4 acres, partially remodeled, small woods on property, Manchester Schools. \$43,500.

Possible Two Family - In the Village of Manchester, 3 - 4 bedrooms, beautiful woodwork, Land Contract possible. \$54,000.

Energy Efficient Ranch - In the country on 2 acres, 3 bedrooms, fireplace in living room, attached 2 car garage, Manchester Schools. \$69,500.

64 Acre Farm - With older farm house, 4 bedrooms, 2,026 sq. ft., one mile south of Manchester, 1,740 road frontage, rolling farm land or building sites. \$96,500.

75 Year Old Farm House - On 17 acres, 3 bedrooms, family room fireplace, 36 x 54 barn, Manchester Schools, Land Contract terms available. \$89,500.

OFFICE HOURS

Mon. thru Fri. 9 a.m. to 5 p.m. Sat. 9 a.m. to 12 noon

OFFICE PHONE 428-8388

EVENINGS AND WEEKENDS:

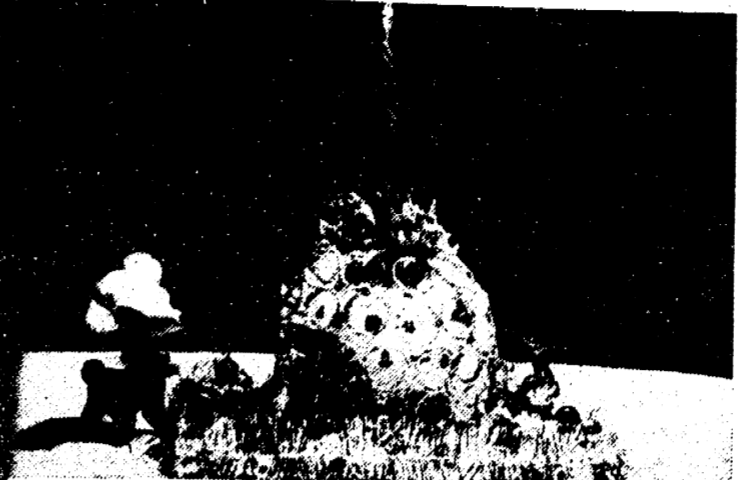
JIM MANN
428-8074

ELLIS PRATT
428-8562

Frosty Is Part Of Happy Christmas

The clownish snowman of song and story — who led the youngsters such a merry chase — conjures up pictures of applied checked children with mittened hands and colorful scarves, building an icy figure on the front lawn. Cast-off clothing, coal for eyes, a carrot for a nose, and a broom tucked jauntily underarm complete the masterpiece.

Legend has it that a snowman has a life of his own after nightfall, and comes to the aid of woe-ful youngsters when needed. One unhappy young boy, finding two lumps of coal in his stocking, tipped out the door and stuck them in his snowman's face. Miraculously, the figure came to life and smilingly invited him to a broomstick ride. Over hill and dale they flew, enjoying the sights and sounds of Christmas Eve merrymaking. The boy returned home enchanted with his trip. A dream? Perhaps — Snowmen, like parents, think no child should be unhappy at Christmas.



MAKE YOUR OWN... There's fun and satisfaction in making your own Christmas decorations. You can do your thing with a variety of materials — styrofoam, tinsel, colored balls, small animal figures. Top your work of art with a bright candle for that very special touch.



Joy to All

There's no better time than now to express our "thanks" to valued friends and patrons.

Manchester Insurance Agency



We wish you joy, peace and a full measure of the Christmas spirit.

Bridgewater Lumber Co.



NOEL



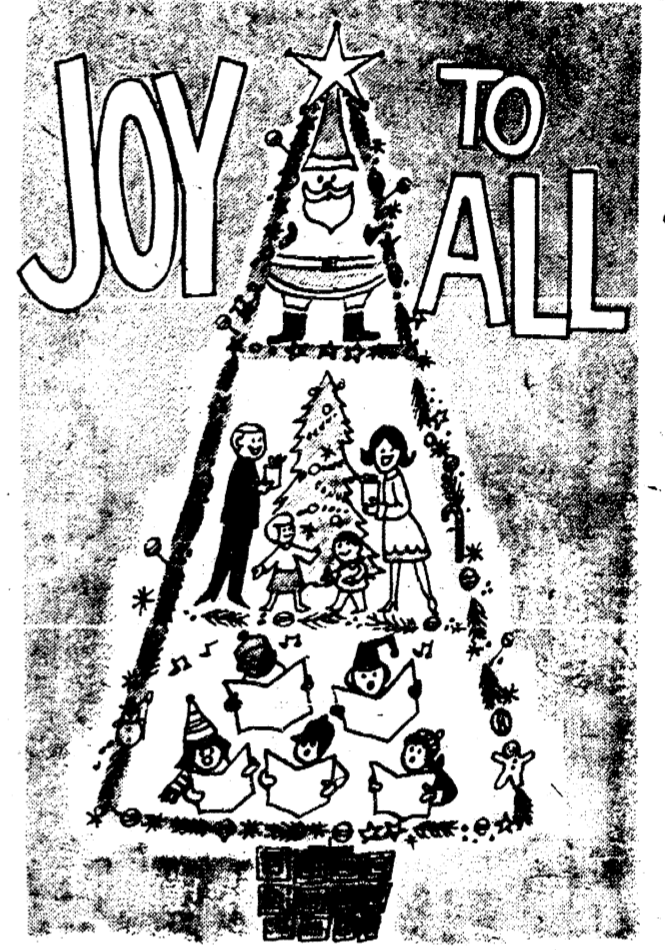
May all the many great blessings of Christmas come your way.

Krauss Pharmacy

Chocolate-Filled Snowballs

- 1/2 pound soft margarine
- 1/2 cup sugar
- 1 teaspoon vanilla
- 2 cups sifted flour
- 1 cup finely chopped pecans or walnuts
- 1 (8-ounce) package chocolate kisses

Confectioner's sugar
Beat butter, sugar and vanilla until light and fluffy. Add sifted flour and nuts; blend well. Chill dough. Remove foil from kisses. Shape dough around kisses, using about 1 tablespoon dough for each; roll to make ball. Be sure to cover kiss completely. Place on ungreased cookie sheet and bake in 375-degree oven for about 12 minutes or until set but not brown. Cool slightly. Remove carefully to wire racks. While still warm, sprinkle tops with confectioner's sugar; cool, store in tightly covered container. Roll in sugar again, if desired, before serving. Makes about 40 cookies.



And to all an abundant share of health and lasting happiness.
MANCHESTER OPTIMIST CLUB
"FRIEND OF YOUTH"



During this most special season of the year, we most appreciate the warmth and good will of neighbors and friends.

VILLAGE HAIR FORUM
Hair Care With a Touch of Class!
SANDRA AND BRENDA

Let's Analyze Santa Claus

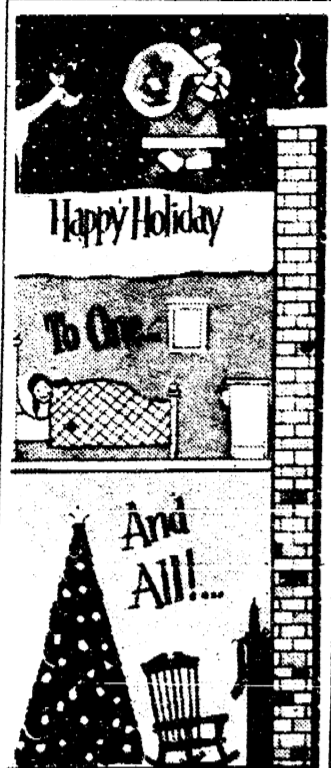
Every year about this time somebody starts analyzing Santa Claus. The concept of Santa has been criticized as a jolly fat man. He

is said to set a bad example because overweight people are not happy, or at least not as healthy as skinny ones. Now comes a professor of anthropology who points out a curious contradiction in the Santa Claus legend. He says we live in a society that is based on the

mass production of goods by highly specialized machines. The goods are purchased with money and the desire for the goods is promoted by massive advertising. Once a year, the professor says, we insist that the toys distributed to children emanate from the Santa Claus workshop in the North Pole. We tell children that their toys are delivered by reindeer sled and through their chimney, and that their gifts were not bought by Mother and Father but by a mythical gentleman of extraordinary outward appearance.

Equalizer
The professor states that adults use Santa Claus as an equalizer in a world that is really based on interpersonal competition and in which goods and power are won by the more successful from the less successful. At Christmastime, family financial priorities are rearranged so that "Santa Claus" can give an electric train to a poor child who in the real world would have to be content with much less.

POMANDER BALLS
Old-fashioned pomander balls never lose their appeal, and keep their sweet scent for months. To make them, stud oranges completely with whole cloves, then crisscross velvet ribbon around each, adding a loop for hanging — first on the tree, then in the closet.

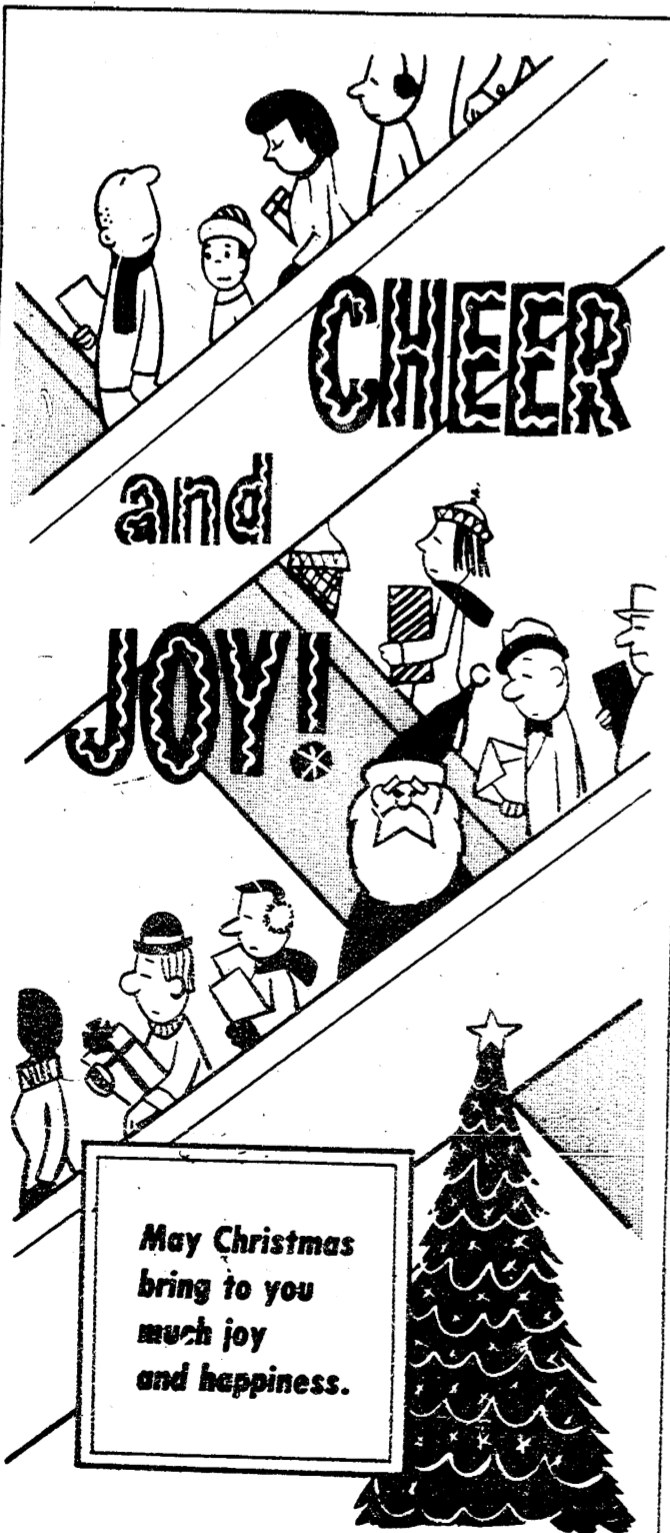


LARRY BECKTEL

Farm Bureau Insurance



JOHN STEELE



May Christmas bring to you much joy and happiness.

Manchester Plastics



For on this night, Christ is born. Let the world rejoice.

Manchester Car Wash



Merry Christmas

Joy to the world—and to all our friends, a full share of Christmas peace and happiness.

Manchester IGA

Community Education

Now that Winter is here plan now to join one or more of your Community Education programs. The Winter class schedule of all Community Education classes and activities will be mailed on Thursday, December 27. Registration will be from Tuesday, January 2 thru Friday, January 11. Don't miss out—register early as some classes fill up quickly. Washtenaw Community College classes start the week of Monday, January 14. Most of the other programs start the week of Monday, January 21. The two major exceptions are Fitness Fantasy and Aerobic Dance which both start on Monday, January 7.

Please note - two classes which were just developed and did not get included in the brochures are afternoon classes. "Art for Adults" on Monday from 3:30 - 5:00 in the High School Art room will include watercolors, oils and acrylic painting. However, students can work on their preference if they wish. On Fridays from 3:30 to 5:00 "Antiques" will be offered. This class will consist of the instructor and students bringing articles to class for discussion. There will also be trips to homes to see some very unique pieces. Both classes start the week of Monday, January 21 and last for eight weeks. The fee is \$15 for each one. You may register by stopping in the Community Education Office located in the

High School or by calling 428-7804. Plan now to be a friend and join your many friends and neighbors who enroll in your Community Education activities.

Community Night At M.H.S.

Friday evening will be Community Night at Manchester High School. An Art Exhibit will be open at 8:30 p.m. in the Library. The combined Middle School and High School Christmas Concerts will be played and sung at 7:30 p.m. Performers will be the 5th and 6th grade Choruses; the Middle School Chorus Band and Orchestra; the 6th grade Strings and Band; the High School Band and Chorus; and the Variety Choir. The one-hour program will climax with a community Carol Sing. Admission to the Art Exhibit and Concert is complimentary. The Art Exhibit will be open following the Concert.

The Student Council is sponsoring a Community Dance at 9:00 p.m., with the proceeds going toward a Community Project. Come and enjoy the evening at your school!

SHOP THE WANT ADS



To get your event listed in the Manchester Village Association's Community Calendar or to receive assistance in scheduling an event that does not conflict with other community events call 428-9202 or come into Odds and Ends Business Service at 104 E. Main.

FRIDAY, DECEMBER 21, 1979
Community Dance and Get-together, 9:30 p.m. to 1:00 a.m. High School Auditorium. Dance band and refreshments.

MONDAY, DECEMBER 24, 1979
Christmas Eve

TUESDAY, DECEMBER 25, 1979
Christmas Day

THURSDAY, DECEMBER 27, 1979
Sportsman Club Meeting 8:00 p.m.

MONDAY, DECEMBER 31, 1979
New Year's Eve

TUESDAY, JANUARY 1, 1980
New Years Day

WEDNESDAY, JANUARY 2, 1980
Village Planning Commission 7:30 p.m.

MONDAY, JANUARY 7, 1980
Lambda Nu 7:30 p.m.

TUESDAY, JANUARY 8, 1980
Village Council 7:00 p.m. Village Hall

TUESDAY, JANUARY 8, 1980
20th Century Club 8:00 p.m.
XI Epsilon Iota 7:30 p.m.

WEDNESDAY, JANUARY 9, 1980
Legion Auxiliary 7:30 p.m.
Manchester Village Association 7:30 p.m.

The time to relax is when you don't have the time.

MANCHESTER ELECTRIC, INC.
CONTRACTING
ELECTRICAL - HEATING - COOLING
MAJOR APPLIANCE SALES AND SERVICE

112 ADRIAN STREET MANCHESTER
PHONE 428-8243

**BAKER, DURST, MARR & NELSON
LAW OFFICE**

158 W. Michigan Ave.
Clinton, Michigan

Office Hours:
Mon.-Fri. 8:30-5:30
Sat. 9:00-11:30
Evenings by Appointment
Phone 517-456-7330

Gary R. Baldwin - Resident Attorney
General Practitioner
Lenawee and Washtenaw County

The Perfect Christmas Gift

**Russell Stover
CANDIES**

ASSORTED CHOCOLATES
Always a Christmas Favorite...creams, nuts, fruits, caramels, nougats, toffeescotch, crunches and chewy centers, dipped in the finest dark and milk chocolate
1 lb. \$3.75 2 lb. \$7.35 3 lb. \$10.95
5 lb. \$17.95 8 oz. \$1.95

THE GIFT BOX
...an exquisite gift package filled with a variety of chocolates and butter buns...creams, nuts, crisp and chewy centers.
1 1/2 lbs. \$5.50

KRAUSS PHARMACY
128 EAST MAIN ST. PHONE 428-6393 MANCHESTER, MICH.

There's nothing easy about it.

Being a good soldier has never been easy. And today's Army asks only the best of you. After some very rugged training, you'll find out how tough you really are. You may have to run miles in full battle dress. You may find yourself helping to crew a 750-HP, 57-ton tank. It's hot and it's hard. Or you may find yourself jumping out of airplanes. Scared at first. Then loving it. Whatever the challenge, it won't be easy. You'll find out fast whether you can handle it. You may even learn nothing's impossible.

Call Amy Opportunities
668-2085
Dave Stanhope

JOIN THE PEOPLE WHO'VE JOINED THE ARMY

WANT ADS

All classified advertising is payable in advance. All ads must be PLACED and PAID for prior to 11 AM on Tuesday for publication that week.

ALL CASH NOW - For lead contracts any size, any property, anywhere in Michigan. Call Don Johnson, Ann Arbor Real Estate Co. 965-2555. *th*

MAKE IT MY PROBLEM by calling 428-4142 after 5 p.m. for general maintenance and repairs, reliable, references available. *th*

WANTED to buy or lease commercial building in Manchester. Call 522-5566, days or 428-9445 evenings. *th*

CALL Elaine Rose, Realtor, for successful buying and selling, homes and farms, 10 years of honest and competent brokerage in Real Estate. By appointment, 995-4400 or 428-7272. Associated De Loaf & Associates Realtors. *th*

TRUCK CAMPER 12' - Newer model, shower and bath, stainless sink and range with oven, cabinets in cabover, screens and screens, vinyl floor, plus wall to wall carpet, 3 closets, 2 gas lights, big refrigerator, interior TV and CB antennas, ducted heavy-duty furnace, sleeps 5, sliding window, ladder, rail. Best used camper for sale in Jackson. 517-754-4400 or 563-2990 or see at 5271 Brooklyn Rd. *th*

RAFALSKI AND SON CONSTRUCTION septic tank, field beds, test holes and trenching. Phone 428-7245, 18090 W. Austin Rd., Manchester, Michigan. *th*

BEEF TO SELL BY SIDE: Custom slaughtering, lockers to rent. Phone 428-7600, Manchester Locker Plant. *th*

LITTLE WACK EXCAVATING Licensed & Insured Basements - Drainfield - Building - Digging - Snow Removal - Tree Removal. Paul Wackstein, Phone 313-426-9225. *th*

CHELSEA GREENHOUSES 7010 Lorraine Road, Chelsea, Michigan 475-1363 - 54 or 475-9312. Flowers and plants for every occasion. We specialize in wedding flowers to fit your budget. We are as near as your phone and we welcome your business. *th*

TO SELL OR BUY - Homes, Farms, Properties, etc. call Charley Coffey, 517-425-2204 associate with Century 21, William M. Powell 517-422-3546 Tecumseh, Mich. *th*

SNOW REMOVAL Parking Lots, Driveways, Etc. Phone 422-2696 anytime. *th*

SNOW IS COMING - snow shovels, brooms, ice melt, rock salt. MANN'S FEED MILL *th*

WATKINS DEALER serving Manchester, Clinton and Bridgewater area. Phone 517-459-4355. *th*

APARTMENT FOR RENT - large 1st floor, 2 bedrooms, available immediately. 4275 a month. Phone 428-7761. 11-20p

DON'T drag the kids Christmas shopping, Drop them at my Licensed Day Care Home - openings available for full time or part time. Call Vicki White 428-7927. 11-20p

TIRE REPAIR PERSON Need a person with 3 years experience in tire repair and other tire related duties. Apply with references at the personnel office 8 a.m. - 4:30 p.m. Mon. through Fri. Washtenaw County Road Commission, 555 N. Zeeb Road, Ann Arbor, Michigan. An equal opportunity employer. 11-20

TOP off your Christmas Day with a delicious turkey dinner. Now taking orders for our farm fresh turkeys. 428-9100. 11-20

FIREWOOD FOR SALE: 2 yr. seasoned hardwood, delivered and stacked 4' x 8' x 8" \$40.00. Call 428-8434. 1-3p

ALUMINUM EAVESTROUGE - Seamless, white, black and brown, guaranteed. Free estimates. Walker Home Improvement Company, phone 313-428-8468. *th*

BOULO ELECTRIC - Licensed and Insured Contractor. Call Clinton 517-456-4796. *th*

FOR SALE - Ales Chalmers HD6 Cozer loader, very good condition. \$5000. 428-9025. *th*

KNIPPERS TV SERVICE Service All Makes RCA-ZENITH-GE Phone 428-7641-7653-2137 *th*

Wick Our WICK MODEL HOME OPEN HOUSE at 5201 Brooklyn Rd., M-50 SE Jackson Tuesday-Friday 1-6, Saturday & Sunday 2-5 Callaway Construction 517-764-4400 or 563-2990 *th*

WANTED - Cropland to rent for coming season. Cash rent paid in advance. Phone 517-764-0700 weekdays between 8 a.m. - 5 p.m. or write P.O. Box 249, Jackson, MI 49204. *th*

CHRISTMAS TREES - Cut your own pines \$5 to \$15. Field beds, test holes and trenching. Free estimates. Oak firewood \$30 face cord. Open 10-11:30 - 1st 10 to 5 daily. **PODOR'S TREE** - Take Austin Road west, Sharon Hollow north, Sharon Valley west, Prospect Hill north to farm. 12-20

CALICO CAT BOOK & GIFT SHOPPE WILL BE OPEN FRIDAY AND SATURDAY EVENINGS TIL 8 P.M.

HARTUNG'S Factory Carpet Warehouse just bought a truckload of carpet from Georgia. Lots of remnants in almost any size at big savings. Rubberback high-low carpet from \$3.99 to \$6.99/sq. yard. Bedroom carpet-plush washable nylon in eight vibrant colors, do-it-yourself only \$34.75 for a 5' x 5' bathroom. Fringed oval rug made of thick, plush carpet in a multitude of rich colors. 6' x 9', regularly \$72, now \$36. 5' x 8' regularly \$42, now \$21. 4' x 9', regularly \$20, now \$10. Smaller sizes are also in off. Oriental style rugs, only 14 left. 9' x 12', regularly \$229.95, now \$178. 6' x 9', regularly \$139.95, now \$96. 4' x 6', regularly \$79.95, now \$58. Knitting yarn 54 cents/3 oz. skein, or \$2.86/lb. Macramé cord, 5 cents/yard. Nylon carpet yarn, \$2.76/lb. All at Hartung's Factory Carpet Warehouse, 11523 Clinton-Tecumseh Road, 456-4280. Hours: Wed., Thurs., Sat., 10-5, Fri., 10-8. 1-3

THE CALICO CAT BOOK AND GIFT SHOPPE 110 East Main Street, Manchester, Michigan 48158. Hours: Monday through Saturday 10:00 a.m. to 5:30 p.m. Phone 1-919-426-7453. We invite you to visit us to view the newest in Fall and Holiday book and gift selections. A 10% deposit and monthly payment will hold your purchases until Christmas. For your convenience we have a WISH AND WANT BOOK in which you may register the items you would like to receive.

TREATED brand new railroad tires - Cedar fence posts. Mann's Feed Mill

FOR RENT Apartment, 4 miles north of Manchester, 7807 Sylvan Road, phone 428-7573.

APARTMENT FOR RENT - 2 bedroom, Hieber St., Manchester, 428-9255 after 4:00, if no answer call 428-4774.

FOR SALE - Alfalfa hay, large bales. 1st cutting 65 cents; 2nd cutting 90 cents. Will deliver. 428-8244. 1-3p

WOOD BURNERS - free standing or forced air. Free west delivery on customer order confirmation. See us at Manchester Electric 428-8243 - 428-8331. *th*

REGISTERED BEAGLE - Pups, 12 weeks old, male and female \$50.00 a piece, phone 428-7315 after 5 p.m. *th*

FOR SALE - Bedroom set, 4 drawers chest with large mirror, 3 drawer chest, 2 drawer night stand. Full or queen size bed with adjustable bed frame. 428-7361.

FOR SALE - Live Christmas Trees, ready to plant after Christmas. 14430 E. Austin Road, Manchester. *th*

CONSOLE HOME HUMIDIFIER - good condition. \$20. call 428-7612. *th*

SNOW PLOWING - Driveways, call 428-7313. 2-28

FIREWOOD - Seasoned Hardwood, \$45 per face cord. Delivered. 428-7558. 12-27 p.

FREE PUPPIES - Half English Setter, Half ? Will hold for Xmas. 428-9066. 12-27p.

Card Of Thanks

I would like to thank my family, neighbors and friends for the cards, gifts, calls and prayers while I was in the hospital and home. To husband, Bill, daughter Bev, and sister-in-law, Shirley a special thanks for all your tender loving care. *Gerrie Eggleston*

I wish to thank my relatives and friends for their cards and gifts while I was at the hospital and since my return home. A thank you to Rev. McFarlane for his visits at the hospital and at home. I also want to thank all of you who remembered me on my 90th Birthday with cards and gifts. Thanks so much. *Otto Kolenkamp*

I would like to thank relatives and friends for the visits, cards and gifts I received since my operation. *Ted Stautz*

GENERAL ROOFING FOREMAN

Sherriff - Goslin Co. needs one good man to take charge of application. Must know complete shingle - reroofing trade. Piece work plus bonus, this is not a job it is a position. This position will be in the \$18,000 to \$20,000 range for a top quality person. Blue Cross and life insurance available plus company profit sharing. Have references available, if you qualify call 1-426-4879 for an appointment between 9 and 12 noon, Monday thru Thursday.

SHOP THE

WANT ADS

Kirk Excavating
SAND - GRAVEL - FILL DIET BASEMENTS - DRIVEWAYS SNOW REMOVAL
DAVE KIRK
14180 Schleweis Rd. Manchester
Phone 428-7936

IN DOUBT? GIVE A CAL' TOG SHOP GIFT CERTIFICATE DOWNTOWN TECUMSEH

ARE YOU SURE YOU'RE "PUNCHING THROUGH LOUD AND CLEAR"?
The typical CB'er can get an average of three miles further to "punch through loud and clear" with a check and adjustment of his CB and antenna system for peak performance.
MANCHESTER CB SERVICE
Phone 428-5073 FCC LICENSED

CHRISTMAS SHOP AT ALBER'S CIDER MILL
SWEET CIDER
APPLES HONEY
POPCORN MAPLE SYRUP
JELLS & JAMS
COOKBOOKS
Open Daily 9 am to 6 pm.
13011 Bechel Church Road
Phone 428-7758

NEW YEARS EVE PARTY
BUFFET and DRINKS
MANCHESTER AMERICAN LEGION HALL
MONDAY, DECEMBER 31, 1979
Music from 10-3 am
By THE KROSSWINDS
\$40.00 PER COUPLE
Tickets available ONLY at Union Savings Bank
Door Opens At 9 PM Door Prizes

COUNCIL PROCEEDINGS

December 8, 1979
Council met in regular session with the meeting called to order by President Schaffer at 7:00 p.m. Present were: DuRussel, Hinkley, Koebbe, Minick, Petsch, Reed, Daniels and Zsenyuk. Minutes of the November 19, 1979 meeting were read and approved as corrected in a motion by Koebbe, supported by Hinkley. All yeas, carried.
Public Works Activities as reported by Koebbe included: A culvert was installed on S. Macomb St.; took a water meter over to D.E. Limpert's so his plumber could cut into his line; On file is a copy of the water bills as owed by the Scott Apts.; On file is a copy of the letter sent to the company in charge of making the new Village Limits signs; Made a hydrant repair at the corner of Union and Main Streets; Work was started on Bernice Shadley's sewer. Hope to have it finished by next week; The streets were salted once; A new battery was purchased for the road grader at a cost of \$200.00; A new tire was put on the dump truck; Work was done at the cemetery; Streets were pathe twice; Picked up tree limbs that had been blown down; Finished repairing the loader.
Chief Zsenyuk presented the Police Report for the month of November: Car 3, 378 miles; car 4, 161 miles; car 5, 140 miles; car 6, 5591 miles, total 6270 miles driven. Car 3, 54 gallons; car 4, 23 gallons; car 5, 20 gallons; car 6, 638 gallons; total 735 gallons. Car 5, 1 quart oil, total 1 quart oil.
Police Runs: 77; Warnings, 104; People Inv., 203; Vehicle Inv., 155; Complaints Rec., 46; Complaints Inv., 46; Assist./dept. 2; A. & B. 1; Animal comp. 2; Alarm (unfounded) 3; C.C.W. 1; Civil Dispute 1; Citizen assist 1; Contrib. to minor 1; D.U.I.L. 6; Disord. person 2; Fire (assist) 1; Hazard op./vehicle 2; Hit & Run accident 1; Lane. fr./auto 4; M.D.O.P. 7; Open Door 1; Shiners (deer) 1; Susp. incident 4; Trespassing 2; V.C.S.A. 1; U.D.A.A. 1; Warrant arrest 1; total 46.
Accidents 14 and Parking 7.
Traffic Violations 39: Speeding 12, No Op's o/per. 2, D.U.I.L. 6, Handicap Pk. 2, Wrong way st. 1, Fail to yield 1, Disobeyed sign 4, Exp. op's 3, Left of center 1, Unsafe start 1, Careless driv. 1, Impropr. reg. 1, Open intox. M. Veh. 1 and Minor in poss. 2, total 38. Contrib. to minor 1, total 39.
Arrests 8: D.U.I.L. 6, Warrant arrest 1, M.D.P. disorderly 1, total 8.
Minick presented a letter concerning Senior Citizen Housing Complex as proposed by the Emanuel Church Study Committee. The proposal included: Site location, need, operation and proposed units. Minick asked if Council felt there was a need for such a complex and if Council objected to proceeding with project. No objections were voiced.
Mr. Cecil Arnold was present to question water billing.

CHRISTMAS STORE HOURS
Daily 9:30-8 Sat 9:30-5:30
Sun 12-5 Christmas Eve 9:30-5
CAL'S TOG SHOP
Downtown Tecumseh

SUGGESTIONS FROM OUR GIFT SHOPPE

- Baldwin Brass Hardware
- Three Mountaineers
- Porcelain Plates and Figurines from Bing and Grondahl
- Candles and Rings from Carolina Soap and Candle and Colonial Candle
- Prince Gardner Leather Goods for men and women
- Imported crystal items, pyramids, and Christmas decorations from Europe
- Fenton Art Glass
- Fraser Stainless Steel
- Norman Rockwell Figurines and Plates in limited editions

***Our Jewelry Department Offers:**
a wide variety of choices from Winard and Trifari

***Our Book Department Offers:**
a wide selection of current and backlist titles in soft cover and hardback for children, teens, and adults. We invite you to browse through our newly expanded Christmas room.

Visit Our Children's Department For:

- Stuffed animals from Dakin, Eden, and Steiff
- Games
- Puzzles
- Corgi Cars

***Our Card Shoppe Offers:**
a wide selection of boxed Christmas Cards, Wrappings, and Party Goods from Red Farm Studio, American Artists, Gordon Fraser, and Marcel Shurman.

STORE HOURS FOR THE CHRISTMAS SEASON
10:00 a.m. to 5:30 p.m. Monday through Thursday
10:00 a.m. to 8:00 p.m. on Fridays
9:30 a.m. to 8:00 p.m. on Saturdays

THE Calico Cat
PHONE 428-7453
VISA AND MASTER CHARGE WELCOME
BOOK AND GIFT SHOPPE
110 EAST MAIN STREET MANCHESTER, MICHIGAN

Thursday, December 28, 1979 The Manchester Enterprise Page 13

Reed and Daniels have made a study of Ordinance No. 99 and recommended the following changes in Section 10: The rates to be charged for water and sewer service furnished by the system shall be those presently in effect in the Village until June 30, 1977 as established by Ordinance No. 76 as amended by Ordinance No. 99 of the Village, and commencing January 1, 1980 shall be as follows:
WATER CHARGES
A. Consumption charge for first 8,000 gallons or part thereof \$15.00 per quarter (3 months), and thereafter at the rate of \$0.40 per thousand gallon.
B. Minimum charge \$15.00 per quarter.
C. Premises without a meter shall be charged \$15.00 per quarter while connected to the system with the shut-off valve turned on.
SEWER CHARGES
A. A quarterly sewage disposal charge of 100% of the water charges, for the same premises for the same period of time, shall be made against all connected premises.
B. Minimum charge \$15.00 per quarter.
C. Premises without a water meter on premises not connected to the water system shall be charged \$15.00 per quarter while connected to the sewage disposal system.
Moved by Reed, supported by Koebbe to amend Village Ordinance No. 99 Section 10, with recommended changes. All yeas, carried.
The Village Print Out for the month of November was reviewed by President Schaffer.
Moved by Reed, supported by Koebbe to pay Village Payables as listed, including Michigan Bell Telephone Co. All yeas, carried.
Petsch reported the Village Attorney had sent certified letters to village residents who were in arrears on their water bills.
President Schaffer reported certified letters had been sent by Attorney Gistingier to those who were in arrears on their personal property taxes.
Hinkley reported the Manchester Village Planning Commission meeting would be held December 6, 1979 at 7:30 p.m. Discussion to be held on Central Business District.
Moved by Minick, supported by DuRussel that Attorney Mark Gistingier be authorized to begin suit against David Jay Allison relative to the damage to the Duncan Street bridge. All yeas, carried.
President Schaffer reported Attorney Gistingier is checking the contract of Clear Cable Vision. Minick reported he would check into another Company for Cable Television that could have more services available.
A certified and recorded copy of Judgment on entitled cause, Park Land Co. vs Village of Manchester was presented and copy is on file.
Council meeting declared adjourned at 9:25 p.m.
Deborah E. Richardson
Village Clerk

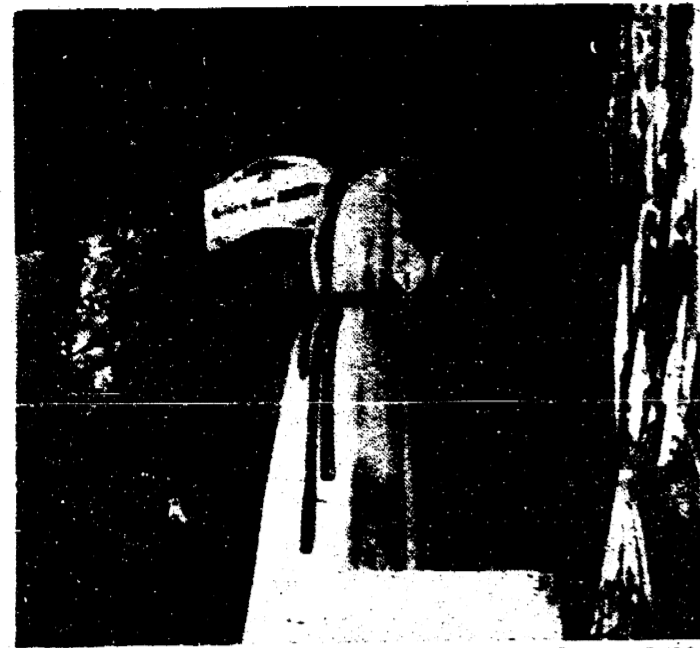
CASH DISBURSEMENTS	
State of Michigan	\$1,073.10
A & L Parts, Inc.	\$200.94
Cliff's Ace Hardware	\$91.80
Ashland Municipal	\$63.02
Automotive Service	\$39.65
The Bankers Life	\$1,589.53
Badger Meter, Inc.	\$125.46
Blue Cross and Blue Shield	\$1,140.00
Sue Bond	\$5.00
Callaghan & Company	\$36.00
Investment Division	\$5,075.00
Consumers Power Co.	\$2,176.74
Cunningham-Gooding	\$149.50
Bruce Daniels	\$5.00
Village of Manchester	\$144.00
Dillingham-White	\$579.00
Howard DuRussel	\$20.00
Emmons Service, Inc.	\$900.00
Equalization	\$144.20
Mrs. Hilda Ernst	\$100.00
Fillyaw's Service	\$151.14
Gallup-Silkworth	\$658.35
Gambles	\$106.27
Gistingier & Gistingier	\$296.50
Rolland Grossman	\$5.00
Gulf Oil Corporation	\$2,182.00
John Hinkley	\$27.50
Chiau-Seng Hwang	\$40.00
K & W Equipment	\$20.00
Gale Koebbe	\$20.00

Continued on page 17

Say "MERRY CHRISTMAS" With Flowers From Chelsea Greenhouse
7010 LINGAND ROAD CHELSEA
PHONE 475-1353 & 54 or 475-9313
MEMBER OF FTD AND TELEFLORA
DELIVERY IN THE CHELSEA, DEXTER AND MANCHESTER AREAS

POINSETTIAS
Grown In Our Greenhouse
RED - PINK - WHITE
priced from \$4.99 up

WIDE VARIETY OF CUT FLOWERS & OTHER BLOOMING PLANTS FOR HOLIDAY DECORATIONS
Evergreen Wreaths & Blankets
BLANKETS
WITH RED RUSCUS, RIBBON & YOUR CHOICE OF CONES
\$18.00 - \$25.00
WREATHS
2 ft UNTRIMMED \$350 2 ft TRIMMED \$700
3 ft TRIMMED \$1350 4 ft TRIMMED \$1600
*HOLLY *CANDLE ARRANGEMENTS Fresh & Artificial
*CHRISTMAS NOVELTIES *DOOR SWAGS
*PLANTERS *TERRARIUMS *CORSGAS
EVERGREEN ROPING CEDAR 75¢ yard
"Serving the community since 1901"
We do all phases of Wedding Flowers to fit any budget



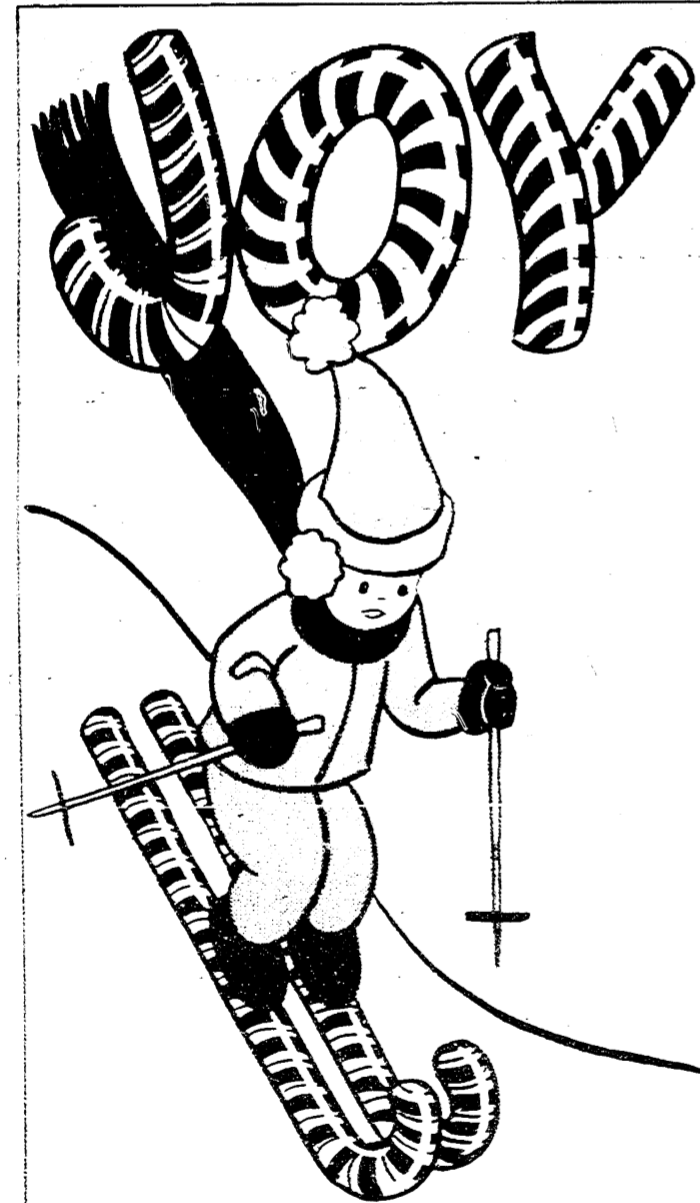
FOR HICK ... Christmas is not just for children, and this fact is well reflected in store windows of the community. At this time of the year, store-front displays capture more than passing attention of the man intently searching for a special gift for his very special person.

PEACE ON EARTH!

May you and your loved ones have a safe and joyous Holiday Season, a healthy and prosperous New Year!
Like a good neighbor, State Farm is there.

MATT DONNELLON

STATE FARM INSURANCE COMPANIES
Home Offices: Bloomington, Illinois



And peace be with you, Have a Merry, Merry Christmas.

Double A Products Co.
Manchester, Michigan

A Subsidiary of Brown & Sharpe Manufacturing Company



MEANINGFUL ... Of all the holidays, Christmas is universal. The spirit of the season may be reflected in many simple and meaningful ways. Greenery, mistletoe, bells and haws on this wreath spell "Christmas" to passersby.

Energy-Saving Lights Decorative

This is a good year to use "luminaria." Use a heavy Kraft-paper grocery bag, fold edge under neatly two or three times. Fill the bottom of the sack with sand, to about 5 or 6 inches. Insert in the sand a plumbers candle (available at hardware stores). Line a walkway, driveway or any decorative system you like. They are windproof and beautiful. Though paper bags are in short supply along with numerous other things, if you are careful with them, they can be used many times before they are discarded.

We can have a bright Christmas without too much electricity.



From all of us, to all of you, warm greetings of the season.

The Clothes Line



We wish our friends and patrons the blessings of a warm and happy holiday.

Jenter Funeral Home

Middle School Honor Roll

Effort Recognition, 8th Grade: Mark Ball, Betty Boyd, Gina Bragg, Janice Coval, Julie Beghardt, Todd Haselschwerdt, Erin Lentz, Katie Miller, Sarah Platt, Kraig Sauter, Brenda Solt, Kristin Stein, Mary Stierle, Mary Stinson, Michelle Walkowe, and Jay Wilde.

Seventh grade: Gary Anderson, Michelle Ball, Becky Blumenauer, Julie Brady, Hope Broucek, Bob Bunney, Jennifer England, Beth Fahey, Jennifer Haeussler, Billy Hansen, Lou Krzyzaniak, Mark Lenhart, Robert Lobbstaal, John Lochey, Ron Milkey, Merri Opal, Tony Pegg, Karla Raab, Bruce Rhees, Lisa Rickelmann, Patrick Ridenour, Michelle Schook, Matthew Sporzynski, Van Talcott, Cliff Tracy, Brenda Vedder, Kathy York, Lisa Yuhasz, Mike McCoy, and Karen Tuveson.

Sixth Grade: Bill Broucek, John Curley,

Kim Dezarov, Leslie Duncan, Khris Hunt, Jon Arney, Jodi Brodaw, Rachel Cartier, Rita Talcott, Jennifer Tucker, Marty Walkowe, Debbie Wenk, Pam Chavez, Andrea Hagerman, Rick Kleinschmidt, Barry Lee, Bruce Paul Stacey Walkowe, Renee Yeutter, Karen York, Mary Cleland, Rebecca Darby, Angie Derby, Charlie Kripas, Carla Neigebauer, Terry Steele, Andrea Vassoff, Cheri Verhines, Drew Hock, Kimberly Lungenfelder, Michelle Aiber, Marie Anderson, Bryan Buss, Heather Creech, Kevin Creech, Lisa Knickerbocker, Sara Laraway, Angie Leach, Eric Mann, Mike McLennan, Kevin Milkey, Connie Mulcare, Brian Waldron and Tonya Whitaker.

Fifth Grade: Nicki Bragg, Kim Currence, Robert Gillow, DeAnn Lamb, Jeff Mann, Heidi Minick, Loretta Schroen, Jennifer Seeger, Lisa Tuveson, Rhonda Young, Jill Alber, Kenny Dazy, Tim Golding, Berke Hamilton, Cheryl Hartmann, Paula Henderson, A.J. Johnson, Michelle Kuhl, Scott Lingenfelder, Peter Lobbstaal, Kristi Post, Jessica Roberts, Eric Shadley, James

Townsend, David Weidmayer, Lisa Wiley, Jon Arney, Jodi Brodaw, Rachel Cartier, Julie Craft, Tom Bolding, Heidi Haselschwerdt, Chris Hawk, Tricia Horning, Heidi Huber, Rebecca Mason, Chris Pagel, Andrea Weid, Kevin Weidmayer, Mitzi Ahrens, Mark Briggs, Cheryl Bross, Amy Broucek, Brad Finkbeiner, Sherri Leach, Sean Hieber and Lauren Yuhasz.

ACADEMIC RECOGNITION "A" HONORS

Eighth Grade: Todd Haselschwerdt, Katie Miller and Jay Wilde.

Sixth Grade: Leslie Duncan, Rob Smith, Debbie Wenk, Pam Chavez, Andrea Hagerman, Bruce Paul, Renee Yeutter, Charlie Kripas, Cheri Verhines, Kimberly Lingenfelder, Marie Anderson, Heather Creech, Kevin Creech, Lisa Knickerbocker and Brian Waldron.

Fifth Grade: DeAnn Lamb, Jeff Mann, Heidi Minick, Lisa Tuveson, Cheryl Hartmann, Michelle Kuhl, Scott Lingenfelder, David Weidmayer, Julie Craft, Heidi Haselschwerdt, Tricia Horning, Chris Pagel, Andrea Weid, Kevin Weidmayer, Mitzi Ahrens, Brad Finkbeiner, Sherri Leach and Lauren Yuhasz.

"B" HONORS

Eighth Grade: Mark Ball, Betty Boyd, Gina Bragg, Janice Coval, Robert Curley, Michael Duvall, Aaron Grantham, Gary Hoover, Shely Kleinschmidt, Caryl Kulenkamp, Erin Lentz, Tracy May, Ron Melcher, Becky Paul, Sarah Platt, Kraig Sauter, Kristin Stein, Jim Stengel, Mary Stierle, Cathy Walkowe, Michelle Walkowe and Jeff Waters.

Seventh Grade: Gary Anderson, Michelle Ball, Becky Blumenauer, Wendy Briggs, Hope Broucek, Joel Bruestle, Bob Bunney, Jennifer England, Beth Fahey, Billy Hansen, Anna Heath, Jeff Horning, Lou Krzyzaniak, Mark Lenhart, Robert Lobbstaal, John Lochey, Kathy McLennan, Ron Milkey, Kevin Miller, Merri Opal, Tony Pegg, Karla Raab, Bruce Rhees, Lisa Rickelmann, Patrick Ridenour, Melinda Shadley, Sue Shear, Matthew Sporzynski, Van Talcott, Cliff Tracy, Karen Tuveson.

Trisha Wahl, Lisa Yuhasz and Todd Rickelmann.

Sixth Grade: John Curley, Kim Dezarov, Lynda Kosinski, Rita Talcott, Jennifer Tucker, Marty Walkowe, Chris Getty, Julie Howell, Rick Kleinschmidt, Barry Lee, Michael Swanberg, Stacey Walkowe, Karen York, Ronald Kuebler, Mary Cleland, Rebecca Darby, Kenny Gross, Carla Neigebauer, Bryan Buss, Greg Criss, Dan Lobbstaal, Eric Mann, Mike McLennan, and Kevin Milkey.

Fifth Grade: Nicki Bragg, Kim Currence, Paul Duvall, Robert Gillow, Loretta Schroen, Jennifer Seeger, Rhonda Young, Kevin Wolf, Jill Alber, Kenny Dazy, Tim Golding, Berke Hamilton, Paula Henderson, A.J. Johnson, Peter Lobbstaal, Kristi Post, Jessica Roberts, Eric Shadley, Jon Arney, Larry Bash, Jodi Brokaw, Rachel Cartier, Richard Derby, Renee Foss, Tom Golding, Chris Hawk, Heidi Huber, Rebecca Mason, Danny Platt, Mark Briggs, Cheryl Bross, Amy Broucek, Lori Detting, Lisa Hamilton, Kerry Mann, Heather Mottice, Derek Whitaker, Scott Whiting and Sean Heiber.

EMU Graduate

Eastern Michigan University conferred degrees upon 1,067 students at its Winter Commencement graduation exercises held in Bowen Field House on the EMU campus on Sunday, December 16.

Some 737 seniors were candidates for bachelor's degrees and approximately 330 graduate students were eligible to receive advanced degrees.

Barbara A. Donohue of Manchester was among the Cum Laude graduates.

SHOP THE WANT ADS

IN DOUBT? GIVE A CAL'S TOG SHOP GIFT CERTIFICATE

DOWNTOWN TECUMSEH

YOUNG ELECTRIC
Residential & Agricultural Wiring
Phone 313-662-9916
SERVING: Bridgewater Pleasant Lake & Manchester
DAVE YOUNG 9071 Waters Rd. Master Electrician Ann Arbor, Mich

CHELSEA PLUMBING AND HEATING
Reasonable Rates
Gail Shears, Licensed Journeyman
Garland DeYoe, Licensed Master
475-1037

Jim Hartmann 475-9301 Rich Kennedy 475-1643
Hartmann Carpentry
Free Estimates

Roofing Pole Barns Remodeling Rough Finish

NOW OPEN MANCHESTER DELI

108 ADRIAN ST. MANCHESTER

Holiday Hours:
10-8 Daily Sunday 12-5

MERRY Christmas TO OUR CUSTOMERS & FRIENDS

5-PIECE Wood Group SOLID COLORS Sofa Chair Party Table 2 End Tables \$699	Gun Cabinets Holds 8 Guns \$199 & Up	Curio Cabinets \$149 & Up
WOOD PLANK Bunk Beds Mattress not included \$299	Chest of Drawers 3 Drawer ... \$46⁰⁰ 4 Drawer ... \$56⁰⁰ 5 Drawer ... \$66⁰⁰	Wall Units For: * Stereo * Desk * Books \$169 & Up
Hide-a-beds Twin ... \$239 Full ... \$269 Queen ... \$319	Rain Lamps \$65 & Up	JERRY'S Furniture Sales 7555 Napoleon Road, Jackson, Mich. OPEN MONDAY thru SATURDAY: 9 a. to 6 p.m. CLOSED ON SUNDAY ph. 764-1631



ALL SET... Christmas traditions for many of us begin with the observance of the true meaning of this great holiday. Then, the exchange of gifts, the preparation and serving of traditional dishes—and the welcome opportunity to display our finest dinnerware for family and guests.

MERRY CHRISTMAS

All good things be yours in great abundance. Best of everything to our dear friends and customers.

THE TOWN LAUNDRY
CLOSED CHRISTMAS DAY

JOYOUS TIDINGS

And the angles said unto them,
Fear not for, behold I bring
you good tidings of great joy,
which shall be to all people.

St. Luke 2:10

The rich blessings of Christmas
be yours this greatest of holidays.

Tirb Chevrolet Co.



Begin with an empty box; take yourself off to a stationery store, variety store, grocery and notions counter. Fill the box with a collection of small items useful to the recipient: extra sewing supplies; clips and stamps and twine and staples for a desk; food treats; fancy hairsetting paraphernalia; assorted eye shadow; and how about paperbacks on a favorite subject.

Another idea for people who treasure something old but are noncollectors would be to find a small inlaid or carved old wood box. A box just the right size to hold cigarettes. An opaline or other covered glass dish to hold candies or nuts or an unusual porcelain dish that now could be used as an ashtray. Collectors are bound to appreciate an addition to their specialty, but it should be authenticated. A reputable dealer who has been in business for some length of time is the easiest and safest to shop with.

A CUSTOM IN ITALY
For centuries a custom in Italy was that of the shepherds coming down from the mountains on Christmas Eve to play pastoral melodies on their bagpipes, in honor of the Holy Child. Their music was more symbolic of the season than of any other group.



Holy Night

For on this night a child is born and the angels sing. Joy be with you this Christmas.

K & W Equipment Inc.



Season's Greetings

in friendship and in good health,
may the days ahead bring to you
and yours a world of peace and
abundant happiness.

VILLAGE OF MANCHESTER

Council Proceedings

Krauss Pharmacy	\$11.71	Village of Manchester	\$43.42
R. A. Kuntz	\$325.00	Keith Reed	\$20.00
Laurin Leeson	\$500	Dealoris Richardson	\$300.00
Lenawee Tire & Supply	\$128.96	Jeffrey Schaffer	\$30.00
3M B.P.S.I. NPS190	\$51.15	Mary M. Smith	\$125.00
The Manchester Enterprise	\$100.95	Russel Smith	\$5.00
Michigan Bell	\$221.99	Karen Stautz	\$15.00
Michigan Hydrant	\$649.50	Tirb Chevrolet Co.	\$43.01
David Minick	\$20.00	Clifford Tracy	\$5.00
Municipal & Bank	\$48.97	Wells Fargo Trust	\$151.80
Municipal Forms	\$16.21	G.E. Wacker Inc.	\$149.05
Municipal Supply	\$31.20	Water Pollution Co.	\$42.00
National Bank	\$204.00	Whittaker & Gooding	\$40.42
Office Supply House	\$19.04	Young Electric	\$125.00
David Petsch	\$20.00		\$19,994.08

"Christmas In Mother Goose Land"



Mrs. Groeb's and Mrs. Little's class presented the play "Christmas in Mother Goose Land" to their parents on Monday afternoon.

Washtenaw Community College

Committed to helping you...
Reach career, life goals...
Through quality education.

WINTER REGISTRATION Schedule

Monday, December 10
Winter Registration Begins
December 10, 18, 1979;
January 2, 10, 1980
Evening Registration
Week of January 14, 1980
Winter Classes Begin

Phone Registration

Part time students may register by telephone from Monday, December 10, 1979 through Friday, January 4, 1980. Operators are on duty from 9:30 a.m. until 4:00 p.m. Please call 973-3641. Those registering for industrial classes should call 973-3533.

When you register by phone, please have your classes selected before calling. Have the correct course number, section number, days and hour. Also, be prepared to supply your Social Security number.

Billing for tuition and fees will be sent to you and your registration will be considered complete when payment is received by the College.

General Information

Fees: \$15.00 per credit hour for in-district residents. In-district senior citizens are invited to participate at no charge. Non-credit courses, varying in length from one session to those of fifteen weeks are offered. Tuition for these is determined by the subject content and length of the course. MasterCard and Visa accepted.

Financial Aid: An extensive financial aid program is available through the College for those students carrying at least 6 hours credit and meeting other eligibility requirements. Questions? Call 973-3525.

Residency: An in-district resident is any student who is a resident of the Washtenaw Community College District.

Counseling: Counselors are available to all students wishing assistance in planning their program of study. Please call 973-3464. Veterans in need of counseling services can get help by calling 973-3479.

Adult Resources Center: The Center is a continuing service center for any adult who has recently returned to school and for people in the surrounding area who are thinking of enrolling. It is designed to assist people who are examining career options, looking for new directions in their lives or improving professional and personal skills. Questions? Please call the Center at 973-3528.

Child Care: The College has provided on the campus a day care center for children of students while students are attending class or participating in associated activities. Rates and other information available by calling 973-3538.

Word Processing Career

Culinary Arts Preparation

Drafting Skills Improved

Dental Assistant's Training

Data Processing Work

An Affirmative Action
Equal Opportunity Institution

WASHTENAW COMMUNITY COLLEGE
1965

WASHTENAW COMMUNITY COLLEGE
4800 East Huron River Drive (313) 973-3300

Seasonal Value

COUPON

\$3 off any game, toy, giftware item, appliance with retail cost of \$9.99 or more

Cliff's Ace Hardware

103 E. MAIN 428-7322 MANCHESTER, MICHIGAN

STOCKING STUFFERS

Santa Super Special

2 KEYBOARD-13 PEDAL
EASY PLAY ORGAN
INCLUDES: BENCH MUSIC
8 FREE LESSONS

\$888.00

Gifts Under \$10

RECORDER
MUSIC STAND
GUITAR STRAP
GUITAR STRINGS
PITCH PIPE

***Santa Specials**

ELECTRIC GUITAR and AMP.
REG. \$157.00 **\$119.95**

CB-BANJO and CASE **\$124.50**

ACCOUSTIC GUITAR
Great for Beginning **\$72.50**

Gifts Under \$20

TAMBOURINE
WOOD RECORDER
UKELELE
BONGOS
GUITAR STAND [deluxe]

KEYBOARD WORLD

BIDWELL EXCHANGE
TECUMSEH

HOURS: MONDAY-FRIDAY
HOURS: MONDAY-FRIDAY 10-7
SATURDAY 10-5 SUNDAY 1-5

Phone 517-423-5110

ATTEND THE CHURCH OF YOUR CHOICE

EMANUEL UNITED CHURCH OF CHRIST

Rev. Robert Macfarlane, Pastor
 Sunday School 9:15 a.m. Church 10:30 a.m.
 Plan to worship God regularly.
SEABORN UNITED METHODIST
 Rev. Wayne Ferrigan, Pastor
 Corner Pleasant Lake Road M-52
 Sunday School 10:00 a.m., Worship Service 11:00 a.m.

ST. THOMAS LUTHERAN

Rev. Paul Puffe, Pastor
 Ellsworth Road
 Sunday School and Bible Class 9:30 a.m.
 Worship Service 10:45 a.m.

ST. JOHN'S UNITED CHURCH OF CHRIST

Carl Asher, Pastor
 Rogers Corners, Waters and Fletcher Rds.
 Sunday School 9:30 a.m., Church Services 10:30 a.m.

BETHEL UNITED CHURCH OF CHRIST

Rev. Roman A. Reineck, Pastor
 Schneider and Bethel Church Roads
 Church Service 10:00 a.m., Sunday School 11:00 a.m.

MANCHESTER UNITED METHODIST

Rev. Maurice D. Sharai, Pastor
 Sunday School 9:15, Worship 10:30 a.m.

ST. MARY'S CATHOLIC CHURCH

Father Raymond Schlinkert
 West Main Street
 Monday thru Friday 8:30 a.m., Saturday 5:00 p.m., Sunday 8:30 and 10:30 a.m.

NORTH SEABORN COMMUNITY BIBLE

Rev. Ronald C. Purkey, Pastor
 Sylvan and Washburn Road
 Sunday School 10:00 a.m., Worship Service 11:00 a.m. (Nursery will be available)
 Junior Church Classes 11:00 a.m. Youth Meeting Senior High 6:00 p.m. Youth Choir 6:00 p.m. Evening Worship Services 7:00 p.m. (Nursery available) Wednesday Bible Study and Prayer Meeting (Nursery available) 7:00 p.m. to your door Bus Transportation available 428-7222.

FAITH COMMUNITY CHURCH

Timothy Miles, Pastor
 8400 Sharon Hollow Rd. off W. Austin Rd.
 Worship Service 10:00 a.m. Sunday School 11:15 a.m. Sunday Evening Service 6:00 p.m. Junior & Senior High Young People's Meeting 7:00 p.m. Wednesday evening, Prayer Meeting and Bible Study 7:00 p.m. Senior Choir Practice 8:00 p.m.

IRON CREEK CHURCH

Rev. Ralph Janofski, Pastor
 Worship Service 10:00 a.m. Sunday School 11:15 a.m. Youth Service 6:30 p.m. Evening Service 7:30 p.m. Wednesday Evening, Junior Choir 6:30 p.m., Bible Study and Prayer Meeting 7:30 p.m., Senior Choir 8:30 p.m.

ZION LUTHERAN CHURCH

Rev. John R. Morris, Pastor
 3650 S. Fletcher Road
 Sunday School 9:00 a.m. Family Worship 10:15 a.m.

ST. JOHN'S LUTHERAN CHURCH

Rev. Dennis A. Falk, Pastor
 Austin Road, Bridgewater, Michigan
 Sunday School 9:15 a.m. Worship 10:30 a.m.

VICTORY BAPTIST

Rev. Ronald Nelson, Pastor
 423 S. Macomb Street, Phone 428-7262
 Sunday School 10:00 a.m. Morning Worship 11:00 a.m. Evening Worship 6:00 p.m. Youth Meeting 7:00 p.m. Monday Visitation 7:00 p.m. Wednesday: Prayer Meeting 7:00 p.m.

ST. BARNABAS EPISCOPAL CHURCH

Rev. Jerrold F. Beaumont, "Vicar"
 Old US 12, 1/4 mile west of M-52, Chelsea.
 10:00 a.m. Holy Eucharist and Morning Prayer.

ST. JOHN'S LUTHERAN

Thursday, December 20, Rural Ministers, 8:30 a.m. Bethel Church, 7:30 Sr. Choir.
 Sunday, December 23, Worship 10:15 a.m. (SS rehearsal after church).
 Monday, December 24, 7:30 SS Family Service. 11 p.m. Candlelight with Holy Communion.
 Tuesday, December 25, Worship 9:30 a.m.

ST. JOHN'S LUTHERAN

Thursday, December 20, Men's Bible Study, 8 p.m. at N. Stierle's.
 Saturday, December 22, Catechism, 9-11, Young Adult Study, 7:30 p.m.
 Sunday, December 23, SS Christmas Practice, 2 p.m. State Hospital 2 p.m. Christmas Caroling, 7 p.m.
 Monday, December 24, Sunday School Christmas Eve Program, 7:30 p.m. Candlelight Service 11:30 p.m.
 Wednesday, December 26, Jr. Choir, 7:30. Midweek Dev. Sr. Choir, 8:45 p.m.

EMANUEL UNITED

Thursday, December 20, No Senior Meal. 3:30 p.m. Junior Choir, 7:30 p.m. Senior Choir.

December 22, 23 and 24, Live Nativity Scene 7-9 p.m.

Monday, December 24, 11:00 p.m. Candlelight Service.

Tuesday, December 25, Christmas Day 10 a.m. Altar Communion Service.

Wednesday, December 26, 7-10 p.m. Post-High Young People at the Parsonage.

SEABORN UNITED METHODIST

Saturday, December 22, 7 p.m. Jr. and Sr. Y.F.'s and Sharon's Angels will go caroling.

Monday, December 24, 8 p.m. Christmas Eve Candlelight service.

BETHEL UNITED

Sunday, December 23, 2:00 p.m. Senior Youth meet.

Monday, December 24, 7:30 p.m. Christmas Eve Carol Candlelight Service.

FAITH COMMUNITY

Sunday, December 23 at 6 p.m. the choir will present the cantata "An old Fashioned Christmas" along with a playlet. This is a beautiful Cantata with a Christmas story in song by the 25 member choir and 2 narrators.
 Monday, December 24, On Visitation at 5:30 p.m. to the Herrick Nursing Home which the church has been sponsoring over three years, there will be Christmas music and singing and gifts will be taken for each resident.

IRON CREEK CHURCH

Sunday, December 23, 7:30 p.m. An old-fashioned family style Christmas supper followed by a Carol Sing by Candlelight. The children will have their part part in recitations and song and Pastor Janofski will give the Christmas message. All are welcome. The meal is pot-luck with table service, rolls and beverage provided.
 Sunday, December 30, 7:30 p.m. a repeat showing of the tape and slide presentation of "Christmas and You". This was given on Christmas in '75 and is the entire scene of Christmas activities in homes and families of our L.C.C. community. The Bible account of the Birth of Christ is given in narration combined with scripture and song.

MANCHESTER UNITED METHODIST

Friday, December 21, 6:30 p.m., Christmas caroling for shut-ins followed by a chili supper.
 Sunday, December 23, 10:30 a.m., morning worship.
 Monday, December 24, 11 p.m., Christmas Eve Candlelight Service.
 Tuesday, December 25, Christmas Happy Holidays.

Live Nativity Scene At Emanuel

Emanuel United Church of Christ, Manchester, Michigan will again present its annual Live Nativity Scene. The Scene will be presented from 7-9 p.m. on the evenings of December 22, 23, and 24. There will be a brief presentation of the Scene following the 11:00 p.m. Candlelight Worship Service on Christmas Eve. Live animals are featured and the characters in the Scene change every 15 minutes.
 Emanuel Church is located at 324 W. Main in Manchester. Please feel free to stop by any of these evenings to see a live presentation of the Nativity.

Holiday GIFT GUIDE

Dresses Skirts and Pants Suits-Blouses
Sweaters - Jewellery - Lingerie - Purses
Snow Suits For Children

WATKINS SHOP
 Downtown Tecumseh

VISA OR MASTER CHARGE

"I am a lawyer, self employed. My KEOGH retirement plan at Great Lakes Federal will provide \$225,899 when I retire in 15 years."



If you deposited \$7,500 each year to a KEOGH PLAN earning 8% annual interest, compounded monthly, you would have:

No. of Years	Taxable Account	KEOGH Account
5	\$ 21,191	\$ 47,947
10	47,108	119,404
15	78,804	225,899
20	117,569	384,611
25	184,877	621,145
30	222,957	973,658

*Taxable account assumes 50% bracket, \$3,750 deposit, 4% interest.

Federal regulations require a substantial interest penalty for early withdrawal. The name and profession of the person in this ad is fictitious and solely an example of the benefits of a retirement account at Great Lakes Federal Savings.

Because Ms. Carver wanted to keep as much of her income as possible, while planning for her retirement years, she opened a KEOGH tax deferred retirement account. She found that she could contribute 15% of her income, up to a maximum of \$7,500 each year and deduct this amount from her taxable income. She will have accumulated \$225,899 in her KEOGH account when she retires in 15 years. Because she qualifies for the maximum contribution, she will have reduced her taxable income each year by \$7,500. In an account or investment that was being reduced by taxes, she would only have \$78,804.

If you are self-employed you too can deposit up to 15% of your income, maximum \$7,500 in a tax deferred KEOGH retirement account. This amount can be deducted from your current taxable income and you do not pay taxes on it until you start making withdrawals after age 59½ at which time you will probably be in a lower tax bracket.

Your KEOGH account can earn the high interest rate of 8% per annum. Interest is compounded monthly and paid quarterly for an effective annual rate of 8.30%. At this rate your money doubles in approximately 8 years and 8 months. Minimum term 36 months.

GREAT LAKES FEDERAL SAVINGS

Offices in: Ann Arbor, Battle Creek, Albion, Bellevue, Brighton, Chelsea, Coldwater, Dexter, Hastings, Jackson, Manchester, Marshall, Okemos, Richland, Saline, Ypsilanti • Member FSLIC

MANCHESTER INSURANCE AGENCY

122 WEST MAIN STREET
 MANCHESTER, MICHIGAN
 Phone 428-8215
 Home-Farm & General Insurance

STRIKES SPARES

B-G'S BOWLING LEAGUE

Standings as of 12/8/79.

Gilbert - F. Wurster	13	7
Moore - V. Wurster	11	9
Popkey - Wilson	11	9
Roehm - Widmayer	10	10
Finkbeiner - Ray	8	12
Adams - Eversole	7	13
HIGH GAME WOMEN		
Joann Finkbeiner 182		
Sharon Roehm 175		
HIGH SERIES WOMEN		
Joann Finkbeiner 501		
Sharon Roehm 457		
HIGH GAME MEN		
Tom Eversole 191		
Fritz Wurster 190		
HIGH SERIES MEN		
Bob Popkey 524		
Mike Bruff 475		

JOLLY KEGGLERS

Carol's Cut-n-Curl	64	41
Dutch Country Kitchens	64	41
B & H Mfg.	59	46
Manchester Car Wash	52	53
Cheryl's Boutique	51	54
Double A Products	48	57
Alexander & Company	44	61
Chelsea Lanes	38	67
HIGH TEAM SERIES W/H		
Cheryl's Boutique	2672	
Alexander & Company 2667		
Double A Products 2633		
HIGH TEAM GAME W/H		
Cheryl's Boutique 948		
Alexander & Company 928		
Chelsea Lanes 928		
HIGH INDIVIDUAL SERIES		
C. Britten 546		
E. Weir 530		
P. Schmidt 528		
HIGH INDIVIDUAL GAME		
F. Schmidt & S. Walton 209		
E. Weir & C. Alexander 201		
Fritz Wurster 198		
HIGH ACTUAL GAME OF WEEK		
S. Walton 209 - 509 series		
C. Alexander 201		

MIXED UP BEL MARKERS

D. Dinadale - J. Roberts	18	10
D. Guenther-B. Merriman	17.5	10.5
B. Roberts-M. Stockwell	16.5	11.5
J. Stetler-J. Vitale	15.5	12.5
N. Jose-D. Kuebler	14	14
E. Bernard-S. Beal	13.5	14.5
B. Bunney-J. Schuble	12	16
B. DuRussel-L. Steele	11	17
W. Kuebler-P. Wallace	11	17
A. Clark-R. Whittington	11	17
HIGH TEAM SERIES		
N. Jose - D. Kuebler 2491		
HIGH TEAM GAME		
D. Dinadale-J. Roberts 858		
HIGH WOMENS GAME & SERIES		
J. Clark 196 - 514		
HIGH MENS GAME & SERIES		
J. Roberts 217 - 546		

MANCHESTER WOMEN

J. Copy Products	245.5	174.5
Bauernstube	245.5	174.5
Billmeyer	216	204
Koebbes	211	209
Col P & H	210	210
Gambles	207.5	212.5
Balls	206.5	214.5

Chapin	190.5	229.5
Mowry	189.5	231.5
Country Workshop	179	241
HIGH GAME		
Kay Campbell 213		
M. Montgomery 202		
D. Shepherd 196		
HIGH SERIES		
M. Montgomery 563		
Beth Carr 532		
S. Johnson 530		
Ginny Kanka - 5-10 split and 4-5 split		

MANCHESTER TOWN CLUB

Manchester Tool & Die Inc.	74	81
Norm Wals Construction	68.5	41.5
McDonalds Restaurant	58.5	46.5
C & J Driveway	58	47
DuRussel Brothers	56	49
Jenter Funeral Home	50	56
Chic-Tress Beauty Salon	50	56
Stage Coach Stop	41	64
Widmayer Ford	40	65
Union Savings Bank	34	71

HIGH INDIVIDUAL GAME

Joan Day 232		
Marilyn Preston 225		
Irene Wurster 210		
HIGH INDIVIDUAL SERIES		
Marilyn Preston 601		
Joan Day 572		
Irene Wurster 572		
Mary Korican 587		
HIGH TEAM GAME		
Actual C & J 862		
W/H Jenters 832		
HIGH TEAM SERIES		
Actual Tool & Die 2306		
W/H McDonalds 2353		
200 GAMES		
Irene Wurster 210		
Helen Benedict 207		
Judy Wals 207		
500SERIES		
Irene Wurster 564		
Gladys Dettling 510		
Helen Benedict 508		
Judy Wals 504		
Split Conversion:		
Tootie Armentrout 5-7		

THE CHRISTMAS STORE

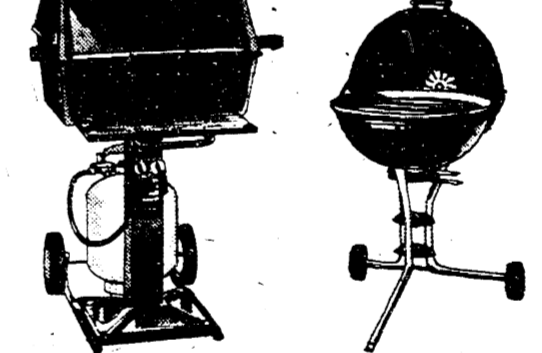
Stop in for FREE GIFT - Pen Light or Night Light. Now thru Dec. 24, 1979





John Deere Toys

From pedal-driven riding tractors to put-together kits, John Deere Action Toys are designed to make kids happy. They keep parents happy, too, with their long-lasting durability. They're authentic scale models of the real machines, with many moving parts to make playtime more fun.



Barbecue Grills

Make cook-outs more fun with a John Deere Barbecue Grill. Choose gas, charcoal, or electric models. All grills feature quality construction for easy cooking and long service life. Gas grills can easily be converted to burn LP-gas. We have grill accessories, too.



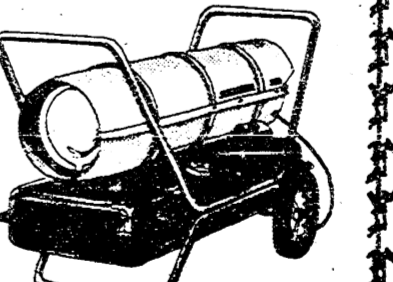
Sweaters, Slacks, Caps

New colors and styles for 1980. Seven sweater styles for adults. Coordinating green, yellow or silver slacks for women. Turtle-neck shirts in yellow, green or white. Variety of stocking caps.



Helmets

Full-face or regular styles. White, Black or silver with accent striping. Black with antlers, flames and John Deere slogan. Children's helmet in yellow, regular style only.



Space Heaters

Get a portable John Deere Space Heater and put warmth where you need it. Three sizes... from 50,000 to 150,000 Btu. All burn kerosene, No. 1 or No. 2 fuel oil.

GROSS FARM EQUIPMENT

9685 W. Michigan Ave. Saline Ph. 429-2517


MANCHESTER CARPET CLEANERS

"DEEP STEAM EXTRACTION"
 VERY REASONABLE RATES
 FREE ESTIMATES
 SPECIAL RATES TO CHURCHES
 RESIDENTIAL - COMMERCIAL
 DON STEELE
 PHONE 428-7319

SENIOR CITIZEN Tax Refund Forms Prepared—\$4.85

You give us the information by phone. We prepare your form and mail it to you ready to sign and return (includes stamp and pre addressed envelope).

H.L. Beach Tax Service



CALL 429-5994 IN SALINE 8-10 A.M. 4-10 P.M.

Manchester Industry

assembly machines to produce car door latches, machines to build transmissions, to trim the excess plastic from Nerf footballs, to mill engine manifolds, to cut out the decorative trim for an auto dash, and to trim and cut holes in Cadillac hubcaps. Repairing a ferris wheel to meet government safety specifications was still another company project.

Mr. Bressler would like to expand Manchester Products, possibly putting between 50-75 people to work at the plant, with a long range program of adding building space. The company is now bidding for six different jobs, and two months ago hired a local sales representative firm, Beal and Company, to promote more business.

Because of declining auto sales, and the resultant loss of business to small parts manufacturers, like Manchester Products, the company is trying to diversify, possibly in the medical field. Bressler would like to stay with foam products, which is his area of expertise, but would acquire the personnel with the necessary expertise to move into any feasible area. He sees the company as being best suited to small-type assembly work and has looked at, for example, lining sample cases with foam, on a small volume, a production requiring specialized hand operations.

Manchester Tool and Die, Inc. celebrated its 25th anniversary this year. Started in May 1954 with two people, Clarence Fielder and Eugene Bentschneider, the company now employs 22 and has an annual sales volume of around \$1 million. The company is still at its original location on 110 Division Street. Fielder and Bentschneider now have another partner, Ted Stautz.

Started strictly with work on dies and fixtures, Manchester Tool and Die now designs and builds dies, fixtures, automated machinery and special equipment, such as size checking gauges. (A die is similar to a mold, and makes a part; a fixture is something that clamps or holds another part or piece of equipment.) Their work is not for any one particular company, although they do a large volume of work for Manchester Stamping, and is 70% automotive. Manufacturing equipment that makes refrigerators and lawn mowers is another high volume area for Tool and Die.

Among the variety of equipment the company manufactures are the dies and

assembly machines to produce car door latches, machines to build transmissions, to trim the excess plastic from Nerf footballs, to mill engine manifolds, to cut out the decorative trim for an auto dash, and to trim and cut holes in Cadillac hubcaps. Repairing a ferris wheel to meet government safety specifications was still another company project.

Tool and Die just finished an addition for office space. The company also recently added three people to its staff, including an engineer. There are no immediate plans for further expansion.

Even with declining auto sales, and even though it is 70% automotive, Manchester Tool & Die's business stays about the same. According to Fielder, the auto industry constantly needs to tool and retool, and they need to do this whether they sell 100,000 or 1,000,000 cars. Also the auto industry is going to plastic and aluminum, both lighter than steel, to reduce gasoline consumption. This means more retooling.

Started in Saline 15 years ago, the Hoover Universal, Inc., Blowmolding Machinery Division moved to Manchester in 1974 to occupy a new plant on M-52. The Blowmolding Machinery Division is one of 23 divisions of Hoover Universal (known until 1977 as Hoover Ball & Bearing, which had its start in Ann Arbor in 1913). Doug White, Media Director at the corporate office in Saline, said that it is one of the fastest growing of Hoover's Divisions.

The Blowmolding Machinery Division manufactures the machines that make plastic bottles, typewriter cases, gas tanks for Dodge trucks and 55 gallon drums. Three hundred twelve people are employed at the plant. Robert Lucke started as the new general manager this fall.

The basic product of the plant, blowmolding machinery, is a large scale machinery system, as large or larger than a car, and the machines produced are primarily for dairies to make one-gallon plastic milk containers. Over 90% of the dairies that make their own containers use machinery from the Manchester division. Annual sales are in the millions of dollars.

Hoover Universal has plans to expand the Manchester plant. "Blowmolding is a process that has a lot of potential, one that we have great hopes for," said White. Hoover is looking for business to double in the next five years. White was not sure how much building expansion or increased employment that would mean, but definitely there will be some of both.

Plastic beverage bottles are no longer endangered by the ecology movement and bottle-deposit laws. White said that the 2-liter plastic beverage bottle is being recycled using a process developed by Dupont that separates the two types of plastic that make up the top and bottom of the bottle. The plastic is ground up and used for scrap plastics, not for another food purpose.

Manchester industry is growing. Double A, Manchester Stamping and Manchester Tool and Die have all either added new employees or new building space or both in the last year. Hoover Universal and Manchester Products both are looking for increased business, employment and building space.

Another possibility for industrial growth here, with increased employment and a

larger industrial tax base, is for Manchester to attract new industry. Clarence Fielder, township supervisor, said that one industry that would employ 80-100 people here, has contacted him this year about building sites, and is still considering a Manchester location. (Companies making preliminary inquiries do not, Fielder said, reveal their identities.)

What a company looks at in a location it is considering are the labor market, how much skilled and semi-skilled labor they can draw from, suitable building sites for a plant and for employee housing, and tax assessment rates (they want to pay their fair share but not the full load of the community). The labor market here is good, says Fielder, with all kinds of skills in the area — machinists, electricians, plumbers, tool and die makers. Wages for labor are high here and that enables Manchester industry to draw labor from other areas too. While much of this labor pool is already employed by General Motors, Chrysler and Ford, an industry could lure employees away from those companies at this time by giving them jobs closer to home. Taxes are also

Continued on page 24

POINSETTIAS \$2.25 and up
all colors
Other plants also available
Schebor's Greenhouse
14345 Logan Rd. Manchester
428-8078
OPEN 7 DAYS A WEEK

Shop Kempfs in Saline
For Your Last Minute Christmas Shopping

Open till 8-30 pm
DOWNTOWN SALINE

Hempfs Men's and Boys Wear
109 E. Michigan Ave

Hempfs Ladies Apparel
109 W. Michigan Ave.

Where Quality and Service Meet!



If you have a question about your phone service, your phone book has answers.



Michigan Bell... people who enjoy serving people.

Everyone who uses the telephone has his own personal telephone needs, problems and questions. And we've tried to provide some of the answers in the opening pages of your telephone directory. We call them the Customer Guide Pages, and they cover a wide variety of phone facts, such as explanations of the different residence services available, and how to save money when calling. There's a list of nationwide area codes, information on phone services for disabled people, advice on what to do about annoyance calls, how to make a complaint, suggestions on credit card and international calling and a whole lot more. So, if you have a question about your phone service, we hope you'll find some of the answers... in the front of your telephone directory.

NEW YEAR'S EVE PARTY
KNIGHTS OF COLUMBUS
DECEMBER 31, 1979
Reservations Limited Call
Bill Schwab 428-8976
Bruce Gotta 428-9240
Music By "Louis Prange Band"
LUNCH, FAVORS FURNISHED
\$20.00 per couple
BYOB

WILLIAMSON
HEATING & COOLING SYSTEMS
John Steele jr
INSTALLATION
AND REPAIR
PHONE 428-8692

Odds & Ends
BUSINESS SERVICE
KATHLEEN A. AUTO
104 East Main St.
Manchester
PHONE 428-9202

VACUUM CLEANERS
ELECTROLUX
Electrolux Sales and Service
CALL
JAMES COX
MANCHESTER
428-8444 or 428-8686

The Season of Christmas

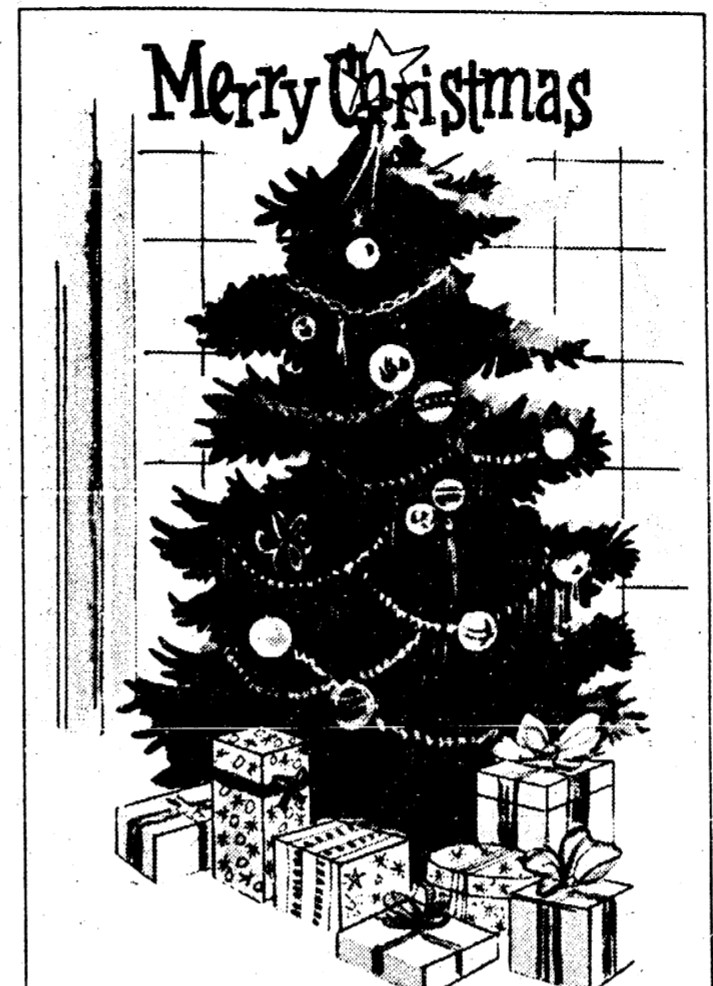
Christmas is more than just a day, more than a season. Christmas touches all the senses of man. If one is alive, there can be no way to ignore the Christmas.

The world becomes a wonderland of sights, sounds, aromas; sensitivities of heart and mind become alive and vibrant. The eye delights, visions of wonderlands, playful children, happy people. The sounds of music comes welcome to the ear. The magic grasp of memory reaches out to pluck the beautiful moments of yesteryear.

And, finally, deep within the soul stirs an awareness of some constant significance, bridging time and space... bringing a common spirit into the hearts of all mankind... transcending the worldly cares of the moment to a mood of universal love and peace.

It is Christmas. Christ's birthday. One Great Life gives a new light to the world. Joy — and peace on earth to men of good will.

Test A Tree
The base of the stump should be wet and sticky with sap. Bend the needles gently; they should not break. Tap the stump end sharply on the ground a few times; the needles should not drop off. To keep the tree fresh at home, make a new diagonal cut in the stump end and be sure water in the tree stand stays above this cut. Adding a preservative to the water will increase the keeping time of a cut Christmas tree.



During this especially glad time of Christmas - We extend our best wishes to you and yours.
Manchester Locker Plant



Spirit of Christmas
Let us rejoice as this great holiday brings pause to the affairs of the world and peace to all men of good will.

SUTTON AGENCY

Snapdragon Is Christmas Game

"Snapdragon" is associated with Scandinavian fire rites and initiation rituals, and was played on Christmas Eve. A quantity of raisins was placed in a large shallow bowl with brandy poured over then lighted. The players tried to grab a raisin by plunging their fingers into the flames — at the same time the Song of The Snapdragon was sung: Here he comes with flaming bowl.

Don't he mean to take his toll
Snap! Snap! Dragon.
Take care you don't take too much
Be not greedy in your clutch
Snap! Snap! Dragon.
With his blue and lapping tongue
Many of you will be stung.
Snap! Snap! Dragon.
For he snaps at all that comes
Snatching at his feast of plums
Snap! Snap! Dragon.
But Old Christmas makes him come
Though he looks so feeble: fat
fun!
Snap! Snap! Dragon.
Don't be fear him, but be bold —
Out he goes his flames are cold
Snap! Snap! Dragon.



MERRY CHRISTMAS
To friends and customers, old and new, warm "thanks" and best holiday wishes.

Ross Automotive



GERALD R. MANN



Let us rejoice for Christ is born in Bethlehem.
Merry Christmas, one and all.
Black Sheep Tavern



It is the star of Hope, shining brightly for all to see. Rejoice! Welcome Christmas in your heart.
Manns Feed Mill

THANK YOU MANCHESTER ..

for making our
grand opening celebration
such a success

Congratulations to the daily
and grand prize winners

Winners of the daily drawing for the
Black Sheep Sheep Repertory Theatre were

ADULTS
JOHNNY BOCHSTETLER
BRENT JOHNSON
PAT NORTRUP
GEORGE DAUBNER
LINDA WEIDMAYER
EMERY C. JONAS
MICHAEL HELFRICH
ROSE M. ALBERTSON
PAT PACZKOWSKI
PHYLLIS MERANUCK
WANDA KING
LEWANN VAN DEVEN
ALBERT E. SCHIEL
EDNA STONEBURNER

CHILDREN
DUANE HASELSCHWERDT
BARBARA J. PLOOF
JULIE POST
JOAN HELFRICH
KATHY HAKES
PATRICK FERRIGAN
CYNTHIA KEMNER
TED HARRIS
KAREN L. TOBIAS
VICTOR P. GROSSMAN
ROBERT W. PAGEL
WILLIAM S. KWOLEK
MIKE PERIAT
RHODA OLNEY

1st Prize — Snow Blower
BERNICE M. SHADLEY

2nd Prize — Power Snow Shovel
JEAN V. WHEELER

3rd — Prize \$25 Check
Good at Manchester Merchants

MRS. AMANDA TRAUB
ROBERT P. ADKINS

LESLIE CHAVEY
BRADLEY BROWN

Thanks again and best wishes for
the holiday season
We look forward to serving you in 1980.

AB Ann Arbor Bank
and Trust

Manchester Banking Center
10903 Manchester-Chelsea Road/M-52
Manchester, Michigan Phone: 428-8389

SYMBOLS OF SPIRIT
The three gifts of the Magi... the innocent expectancy of a little girl... the delicacy of a winter snowflake... the lift of a church spire... the sparkle of a Christmas tree. These symbols of the spirit of Christmas, familiar to all of us, capture the spirit of Christmas in America.

"THE CAMEL"
In Syria it is said that the youngest camel of the Wise Men was so tired when they reached the Manger that he fell down. In sympathy, the infant Christ blessed him. Syrian children believe that this animal brings their gifts on Epiphany. They call him "the Camel of Jesus."



We wish to one and all
the many joys of Christmas.

MANCHESTER
STAMPING CORP.



The everlasting beauty of Christmas sparks the spirit of mankind. It is with thanks that we wish you a beautiful season.

Verhines Auto Salvage

Holiday Gift Boxes Named

Boxing Day has nothing to do with boxers or fisticuffs of any kind.

Boxing day began in England about the time Scrooge was giving Bob Cratchit such a bad time. During the days of Queen Victoria, it was the custom of the upper classes to visit their inferiors — servants and the like — on the day after Christmas, bringing them gifts in holiday gift boxes.

It didn't seem to matter if the gifts were ones they had received themselves the day before and decided they didn't want. The servants knew their place — and they gratefully accepted their patrons' presents and the boxes in which they were packaged.

The custom of distributing gift boxes on the day after Christmas is what led to the day being named "Boxing Day."

—YOU NEED—
A 20th century Christmas need not vary much from the 19th century, all you need is Christmas spirit!

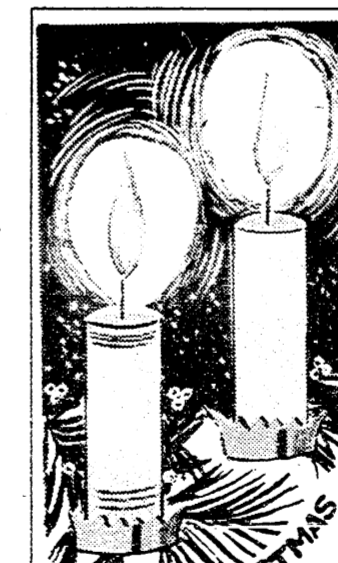
Gather the family or friends to string popcorn and cranberries for the tree. Put the young folks to work, each will do his share of scrubbing, polishing, cooking, shopping — you hope.



Merry Christmas

God bless you and yours at Christmastime and always.

FAHEY REALTY



MERRY CHRISTMAS

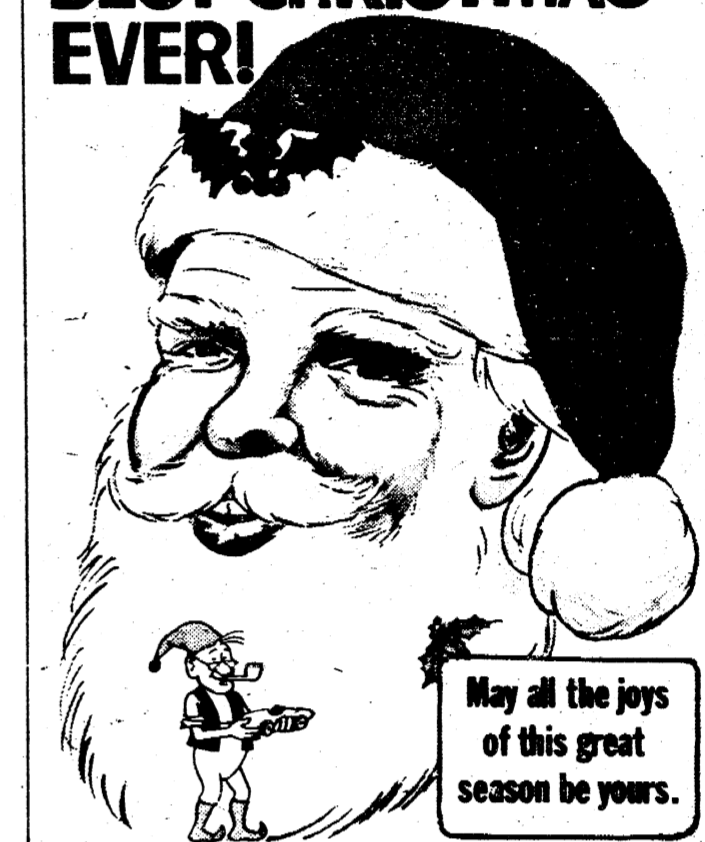
Our spirits soar and seek to wish you all that will bring happiness and joy.

ROLLER JEWELRY

MISLETOE
The traditional time for the French to exchange gifts as we Americans give on Christmas is New Year's Day. It is also the season when everybody calls on his friends and relatives. Also, it is at New Year's that the old Druid custom is observed of hanging a large clump of mistletoe above a doorway so that people may exchange kisses when they walk under it.

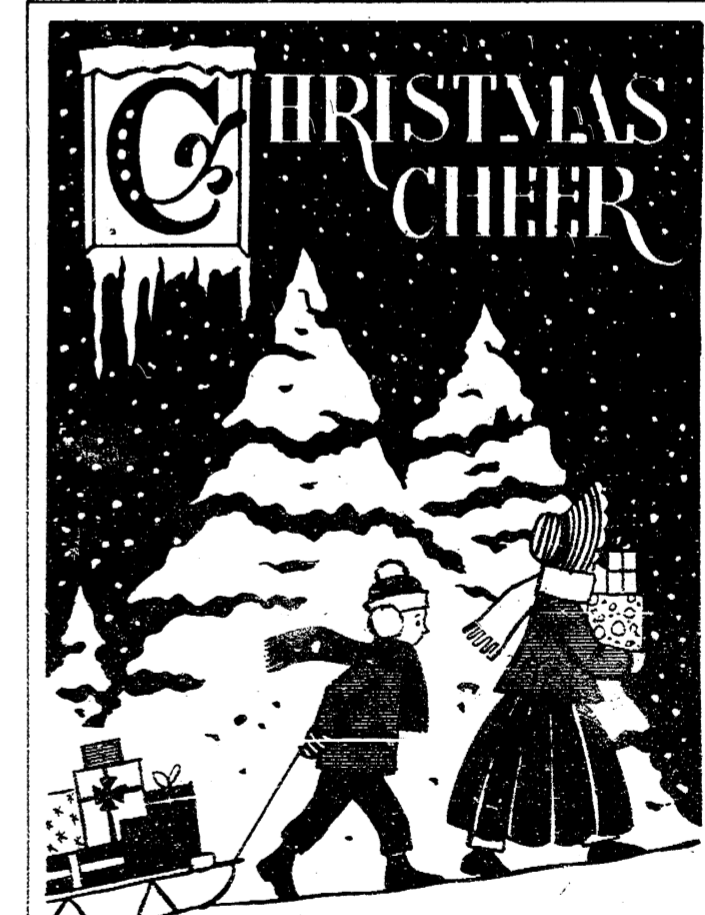
GIVE A COOKBOOK
Give a cook book for Christmas — lots of people do. It's a nice way to give a gift to match a person's interests, whether it be history, health, natural foods, or wine. With the interest in good cooking steadily increasing, a cookbook just couldn't miss.

WISHING YOU THE BEST CHRISTMAS EVER!



May all the joys of this great season be yours.

PINNACLE
ENGINEERING CO.



An Old-Fashioned Greeting to Wish You A Happy Holiday.

MICHIGAN
LIVESTOCK
EXCHANGE

Player Profile



DENNIS HELFRICH

Dennis is the son of Mr. and Mrs. Dennis P. Helfrich, 7679 Manchester-Chelsea Road. He is a 5 foot 10 inch senior point guard. This is his second year of Varsity basketball. He has been voted Co-captain of this year's team. "Dennis is an excellent point guard, he possesses good outside shooting, smooth ball handling and remains poised under pressure. It's nice to have his experience and leadership in the court."

remarks Coach Bartels. Dennis has scored 16 points in the first two ball games and he is shooting 67% at the freethrow line.

Manchester Industry

avorable to industry. Suitable building sites depend on sewer and water services. According to Gale Koebbe, Chairman of the Village Council Public Works Committee, Manchester has enough home building sites serviced with sewer and water, such as River Bend Acres subdivision and Schaffer subdivision to handle housing for employees of a new plant. Whether or not the water and sewer system could handle a new industrial plant would depend on the needs of the plant. Manchester's services probably could not handle a plant with an extremely high volume of water needs, or one that needs special treatment for its water. When Hoover Universal Blowmolding moved to Manchester, they had to build a special treatment facility for their effluent, which Manchester could not provide. Koebbe said, however, that Manchester services could handle the majority of plants that would employ around 80-100 people.

A new sewer improvement program is in the works, to be 75% federally and 50% state funded. The Environmental Protection Agency (EPA) and the Michigan Department of Natural Resources (DNR) have mandated the system. EPA and DNR have not yet given Manchester the necessary funds to pursue the project which, being 80% federally and state funded, is not affordable for Manchester alone. Koebbe said he did not know when the funds would

be available. He said that for the last 4 or 5 years the village has been told the money would be granted in 1 - 1 1/2 years, but probably EPA and DNR keep finding communities with greater sewage and pollution problems than Manchester has, and these get funded first.

Fielder said that other areas companies look into are schools, churches, banking facilities and recreation. These are important to factories because they want to get their people involved in the community. The services the area can provide all make Manchester ideally located for a small industry of 25 - 100 employees.

Manchester is not doing anything active to attract industry, but Fielder said that when he hears of any company making

inquiries he checks into it. He further said, "Manchester's relationship with industry is terrific. We have jobs for people here. The balance of industry is very good. We have good industry here because we were selective. We draw labor from other areas because the industry is balanced. Now we're ready for another factory of 80 - 100, or even 200 people."

Correction

In last week's article on Manchester Industry it was incorrectly stated that Ted Stautz was retired, and correctly stated that he is no longer affiliated with Manchester Stamping. We regret the error.



Join us for Lunch

We feature a spectacular Soup-Salad-Sandwich bar, in addition to our full luncheon menu

or for Dinner !!

Seafood is our specialty...with sensational choices, including New York strip steak, (at sensible prices). Add to this a selection from our wine list - and enjoy!

113 S. Main, Chelsea, Michigan
(Just 15 minutes from Ann Arbor)
Call 475-1922

WE ACCEPT 

Monday-Thursday 11-10
Friday & Saturday 11-11
Closed Sundays

HARDWOODS

KILN DRIED, 12 SPECIES, FURNITURE
QUALITY, FIREPLACE MANTLES,
FLOORING, PANELING, MILLSHOP

Bridgewater Hardwood

9665 AUSTIN ROAD PHONE 425-1065 BRIDGEWATER, MICH.



CAL'S GALS ARE MAKING A LIST AND CHECKING IT TWICE MAKING SURE EVERYTHING IS ESPECIALLY NICE!!!

GIFT SUGGESTIONS

- *DRESSES
- *SUITS
- *COATS
- *JEWELRY
- *SLEEP-WEAR
- *SKI JACKETS
- *SLACKS
- *SPORTSWEAR
- *RAIN-WEAR
- *GLOVES



COME AND SEE
CAL'S GALS AND LET
DEBBIE, SHARON, BRITT, BARR,
HELEN, AND MICHELLE MAKE YOUR
CHRISTMAS SHOPPING A REAL PLEASURE
WITH FAMOUS MAKER GIFTS.

CAL'S TOG SHOP

DOWNTOWN TELUSSEN

WHY A CULLIGAN® WATER SOFTENER WILL NEVER BE AN ORPHAN!

Because we will be here to take care of it if it needs care. You can trust our service... we've been in business for 30 years... you can depend on us.

A Culligan product is an extra-value because we service what we sell!

JUST CALL


Culligan®

662-5665
2321 JACKSON AVE
ANN ARBOR, MICH.



THE MANCHESTER

115TH YEAR VOLUME NO. 9



ENTERPRISE

USPS 327-460

MANCHESTER TOWNSHIP LIBRARY
P. O.

20¢ A COPY

THURSDAY, DECEMBER 27, 1979

Open House To Mark Golden Wedding Anniversary



Gordon C. and Helene Williams Bowers of Manchester were married by the Rev. W.H. Perkins, pastor of the Hudson M.E. Church on January 1, 1930. They will be honored with an open house on New Years Day from 2 to 4 p.m. at the Victory Baptist Church, 419 South Macomb St., Manchester.

Community Education

Now that Winter is here plan now to join one or more of your Community Education programs. The Winter class schedule of all Community Education classes and activities will be mailed on Thursday, December 27. Registration will be from Tuesday, January 2 thru Friday, January 11. Don't miss out - register early as some classes fill up quickly. Washtenaw Community College classes start the week of Monday, January 14. Most of the other programs start the week of Monday, January 21. The two major exceptions are Fitness Fantasia and Aerobic Dance which both start on Monday, January 7.

Please note - two classes which were just developed and did not get included in the brochures are afternoon classes. "Art for Adults" on Monday from 3:30 - 5:00 in the High School Art room will include water-colors, oils and acrylic painting. However, students can work on their preference if they wish. On Fridays from 3:30 to 5:00 "Antiques" will be offered. This class will consist of the instructor and students bringing articles to class for discussion. There will also be trips to homes to see some very unique pieces. Both classes start the week of Monday, January 21 and last for eight weeks. The fee is \$15 for each one. You may register by stopping in the Community Education Office located in the High School or by calling 428-7804. Plan now to being a friend and join your many friends and neighbors who enroll in your Community Education activities.

Early Deadline

Due to the New Years Holiday, the deadline is Saturday noon, December 29, for classified, display ads and news articles for next week's issue, Thursday, January 3.

Board Ratifies Teacher Contract

By Sandra Volentine

Manchester's Board of Education ratified a contract with Manchester teachers at its regular meeting, Monday, December 17, 1979. The contract, an agreement worked out with the Washtenaw-Livingston Education Association, Manchester Unit, was ratified by the teachers on November 26, 1979. The vote was unanimous, with the full board present and voting: William Bunney, James Curley, Paul DuFresne, Earl Horning, George Macomber, Corliss Mick and Jim Walkow.

A three-year agreement, the contract grants salary increases of 8%, 8 1/2% and 9%, all plus increments, in the 1st, 2nd and 3rd years of the contract, respectively; improves the medical coverage by one level, to Super-Med 1 in the first year of the contract; and limits the amount of optional insurance a teacher may get if he or she elects not to take medical insurance. The amount is limited to the single subscriber rate, or \$48 the 1st year, and \$50 and \$52 the 2nd and 3rd years of the contract, respectively.

Extracurricular activity pay was increased. Class size language stayed the same as in the old contract, as did pay for overload, with the contingency that overload pay will not be made if the district is financially unable to pay it.

Among other action at the Board meeting, Lauren Huber, a Manchester resident, complained about the lack of a math-physics teacher in the high school this late in the school year. Superintendent Eugene Thompson said that a decision was made to hire a math teacher only, because someone qualified to teach both math and physics could not be found. Matt Law Willey will begin teaching math in the high school after the Christmas holiday. Thompson is working on offering physics in the evening through the Community Education Program, if an arrangement can be made to get an instructor from Washtenaw Community College. Lisa Huber, a high school student, asked what arrangements would be made for students who are scheduled for physics classes during the day? Would they have a study hall instead? Thompson said that because of the length of the time without a teacher, the math hour would probably be extended into the physics hour for those scheduled for physics.

Thompson reported that there was an applicant for the position of crossing guard at Pleasant Lake, who will start after the Christmas holiday, at an annual cost of \$728. Horning requested that a count of students actually using the crossing be kept, to see if there is a continuing need for a guard there. The board also voted authorization for the district to borrow \$200,000 in February 1980. Thompson asked for this because he predicts that the district's financial condition in February will be risky. Whether or not the loan will actually be necessary will depend on how soon tax money becomes available. The authorized loan will depend on how soon tax money becomes available. The authorized loan will be advertised for bidding at public sale, with interest not to exceed 10%. Should the loan not be necessary, then the transaction will be cancelled.

Tuition for out-of-district students will be increased next school year to the maximum allowed by the state, \$1458, and tuition must be paid in advance of the school year. The district was involved in a legal action involving a tuition student whose parents had failed to pay her tuition, which led to

this decision. Curley was concerned that there be some kind of control to identify tuition students before a problem starts regarding payment. Ms. Mick said she expected raising the tuition would effectively eliminate tuition students, and any resultant problems. She also said that in the future the tuition will be more equitable to the cost of services provided by the district. That, she said, will penalize some, particularly those seniors whose parents have moved out of the district, and who wish to finish out their senior year at Manchester High School.

The school district will appeal a decision awarding \$250 to Steve Halchishak, a middle school teacher. Halchishak filed a small claims action, charging he lost \$250 paid to an auctioneer seminar, when the school denied him leave to attend the seminar for which he had paid in advance. Halchishak contended that former superintendent Robert Masten had verbally agreed to grant him the leave. At the time of the actual request, John Maguire, Assistant to the Superintendent, denied the leave, following school policy to not grant such leave unless it was to attend a job-related seminar. Thompson said that although the district could probably win an appeal, it would be cheaper to pay the claim. The board voted unanimously to file an appeal, backing DuFresne's rationale that if the decision is not appealed, the schools will face continued small claims actions. Bunney asked that Thompson get a ballpark dollar figure on the cost of an appeal.

Thompson also reported on the Michigan Education Assessment Program (MEAP) data. MEAP was administered this fall in Manchester schools to 316 4th, 7th and 10th graders, and measures minimal skills in reading and math. The highest category of achievement on the test is to achieve at least 75% of the test objectives (matching words with definitions is an example of an elementary reading objective; determining meaning from context of a passage is a middle school reading objective; solving linear equations is a high school math objective).

At Pleasant Lake Elementary School, 90.5% of the students achieved the highest category in reading, 100% achieved it in math; at Klager Elementary, 77.6% achieved the highest category in reading; 89.4% achieved it in math; at the Middle School, 86.5% achieved the highest category in reading; 62.3% achieved it in math. At the High School, 66.3% achieved the highest category in reading; 49.0% achieved it in math. The Superintendent said these scores are stable or improving in all areas, and only the mathematics scores in the High School are indicative of being in especially high need of attention. While the MEAP test is fairly new and so the validity of its results may be questioned, Thompson said he was pleased with the results. He would like to see all kids in the highest category. Towards that end, individuals with problems can be identified, and test results are sent to all parents.

Local Student Performs In CMU Recital

Cindy Vella, a Central Michigan University junior from Manchester performed in a student recital during the fall semester. Cindy played the viola and piano in the performance.

Continued on page 15