

SHORTCUT TO SHORTCAKE!



Singles, couples, especially those who like to entertain a crowd of friends—here's a made-to-order Strawberry Short-Cut Cake that eliminates baking traditional short-cakes. It's appealing from the aspect of keeping two staple frozen foods inventoried, ready to go into action when you bring home fresh strawberries this season. Topped with sliced fresh strawberries and a dollop of Birds Eye Cool Whip non-dairy whipped topping, this "berry delicious" dessert can be prepared easily for one or several shortcake enthusiasts.

STRAWBERRY SHORT-CUT CAKE

1/4 cup honey
2 tablespoons butter or margarine
1/4 cup sliced almonds
6 slices thawed frozen pound cake
1 pint strawberries, sliced and sweetened
1 cup (about) thawed frozen whipped topping

Heat honey and butter in small saucepan over low heat until bubbly, stirring constantly. Stir in almonds and spread on cake slices. Place on baking sheet and toast in preheated broiler until lightly browned. Cool. Spoon strawberries over cake slices and top with whipped topping. Makes 6 servings.

MANCHESTER ELECTRIC, INC.
CONTRACTING
ELECTRICAL - HEATING - COOLING
MAJOR APPLIANCE SALES AND SERVICE

112 ADRIAN STREET MANCHESTER
PHONE 428-8243

ESTATE AUCTION

ANTIQUES - PLAYER PIANO
ANTIQUE FURNITURE - OAK UNUSAL ITEMS

We will sell the following at Public Auction at 317 E. Michigan Ave., Saline, Michigan. Located 3 Blocks East of Downtown.

Monday, June 24 12 noon

Player Piano, Piano Roll, Oak Bookcase Secretary w/Bow Front, Oak Treadle Sewing Machine, Walnut Queen Anne Round Dining Table w/6 Matching Chairs, Loveseat - Matching Side Chairs and 4 Straight Chairs, Walnut China Cabinet & Buffet, Picture Frames, Large Wooden Floor Lamp, Oak Fern Stand, Reverse Painted Glass Shade Table Lamp (Old & Beautiful), Oil Painting In Nice Frame, Large Oak Rocker, Large Bevel Mirror w/Gold Leaf Frame, Old Floor Model Radio, Fine Old Oak 8' Hall Mirror & Coat Rack, Walnut Wardrobe, Solid Cherry Chest Of Drawers, High Oak Double Bed, Oak Commode w/Towel Bar, Queen Davenport & Matching Chair, 15 Fine Old Prints - Oils w/Frames, Oak Library Table, Pianola Harp - Good Shape, Large Rare Old Oak Wardrobe [Excellent Condition], Oak Plant Stand, 2 Wood Coat Racks, Ash Dresser, Set Of 4 Oak Cane Chairs, Sewing Table, Antique Rocking Horse.

Oak Dresser, Deer Head, B & W TV, Humidifier, Over Stuffed Rocker, Oak Parlor Table, Walnut 2 Drawer Drop Leaf Stand, Candle Stand, Easel, Ash Commode, Walnut Bed w/Dresser & Chest, Ash Dresser w/Bevel mirror, Tin Box, Oak Commode w/Towel Bar, 4 Feather Ticks, Crocks & Jugs, Hump Back Trunk, Antique Doll Carriage, Old Dolls, Gaskets, 2 Lap Robes, Quilting Frames, Drop Leaf Kitchen Table, Old Ash Kitchen Cupboard, Iron Bed, Oak Hooster Cabinet w/Flour Bin, 4 Pressed Back Oak Chairs, Pie Safe, Fruit Safe, Old Wine Press, Wicker Rocker, Large Vase, Wine Barrels, Wood Box, Wooden Drying Rack, Hand Corn Sheller, Wicker Rocker, Walnut Dresser, Jig Saw, Gas Stove, RCA Radio, 2 Old Floor Lamps, Wood or Coal Stove, Painting Couch, Portland Cutter, 40' Extension Ladder.

Corn Sheller, Grindstone, Buggy Seat, Walking Plow, 1 Horse Cultivator, Hand Tools, Cross Cut Saw, Crates, Ice Tongs, Log Tongs, Grain Cradle, Old Weather Vane, Platform Scales, 2 Man Chain Saw, McCollough Chain Saw, Chopping Block, Buck Saw.

NOTE: THREE GENERATIONS IN THIS HOUSE - BE SURE TO ATTEND THIS FINE SALE AS THERE ARE MANY HARD TO FIND & UNUSUAL ITEMS.

owner **Herbert & Duane Westphal**

Lloyd R. Braun, Ann Arbor, 665-9646 Jerry L. Helmer, Saline, 994-6309
INSPECTION DAY OF SALE/TERMS: CASH OR CHECK
NOTHING REMOVED UNTIL SETTLED FOR
NOT RESPONSIBLE FOR ACCIDENTS LUNCH ON GROUNDS

Frozen Raspberries Sparkle Atop Elegant Ice Cream Dessert

Fragile, feather-light meringue shells cradle vanilla ice cream and glistening red raspberries in this exquisite dessert. Frozen raspberries are a luxurious food, having a memorable taste and color.

To "give ice cream the raspberries" in this lovely dessert, simply place scoops of vanilla ice cream in meringue shells and freeze. If meringue shells are unavailable, sponge cups may be substituted. The sauce is a quickly prepared blend of raspberries and lemon juice thickened with cornstarch. At serving time, spoon the sauce over ice cream and serve at once.

Frozen raspberries can be enjoyed any time of year in sauces, salads or spooned over waffles as a tempting breakfast treat.

Raspberry-Sauced Ice Cream Meringues

4 individual meringue shells
4 large scoops vanilla ice cream
1 package (10 oz.) frozen raspberries
1 tablespoon cornstarch
1 tablespoon lemon juice

Fill meringue shells with scoops of ice cream. Freeze. Thaw and drain raspberries, reserving syrup. Combine 1 tablespoon of the reserved syrup with lemon juice and cornstarch; stir until blended. Stir in remaining syrup. Cook over medium heat, stirring constantly, until thickened and clear. Stir in raspberries. Chill. At serving time, spoon about 1/4 cup of the raspberry sauce over ice cream in meringue shells. Serve immediately. Makes 4 servings.

Note: Packaged sponge cups may be substituted for meringue shells, if desired.



24 HOUR SERVICE

PHONE 428-8576

HAVE THAT
SPRING TUNE-UP
NOW!

YES

WE HAVE POP IN CANS

12 PAC \$2.75
PLUS DEPOSIT

1/2 litre CASE \$5.25
PLUS DEPOSIT

AIR CONDITION
SERVICE

TIRES
ELECTRONICALLY
BALANCED
FOR A NEW CAR RIDE

FILLYAW'S SERVICE

327 WEST MAIN

AUCTION

Saturday, June 30 10 am

LOCATED 100 MAIN STREET IN MANCHESTER, MICHIGAN

1952 FORD 2 DOOR SEDAN, 61,000 MILES, AUTO. 1900 ANTIQUE INTERNATIONAL PENDULUM CLOCK W/TIME PRINTER. 1873 D.O. PAIGES COMBINATION SAFE. CASH REGISTER. GLASS SHOW CASE. DESK. FILE CABINETS. FILE BOXES. ADDING MACHINES. CHECK WRITER. PENNY GUM MACHINE. LARGE SANTA. REFRIGERATOR. POP MACHINE. DUO THERM OIL SPACE HEATER.

CAR WASH AND
SHOP EQUIPMENT

AUTOMATIC CAR WASH, COMPLETE. 6 VOLT BATTERY CHARGER. GRINDER. SPARK PLUG CLEANER. WHEEL BALANCER. WHEEL BEARING GREASE AND PACKER. AIR JACK. HYD. JACK. COMMERCIAL VACUUM. EXHAUST HOSE. FUEL OIL TANKS. ELECTRIC GAS PUMP. 55 GAL. DRUMS. OIL CANS. FUNNELS. WHEELS. TIRES. GLASS. OLD GAS CANS. LOG CHAIN. TRUCK CHAINS. STEP LADDER. PORTABLE AIR TANKS. 2 WHEEL CART. PAINT STANDS. WRENCHES CREEPER. MANY FILLING STATION ITEMS NOT MENTIONED.

Rollie & Liz Grossman owners

TERMS: CASH NOT RESPONSIBLE FOR ACCIDENTS

DALE HESELSCHWERDT, AUCTIONEER PHONE 517-536-4201

THE MANCHESTER ENTERPRISE

117TH YEAR VOLUME NO. 26

USPS 227-400

THURSDAY, JUNE 21, 1979

20¢ A COPY

In Retrospect

We have been reminded that we have omitted at least one chapter in Manchester's history and while recalling this period we find that there is a narrow line between fact and fancy in the tales that are told of this period. There was a time in the early 1920's when many tales are told about the happening of that time and the events that took place here.

Those were the days of "local option", a term now long defunct but which meant that each town or county or other political area fould decide for themselves whether booze (beer or whiskey or both) could be sold in a particular area, and Clinton, and I believe Lenawee County, were "dry" while Manchester and Washtenaw County was "wet". We have been told that the WCTU was a thriving group in Clinton, Blissfield, Tecumseh and other Lenawee areas, but the demon rum and considerable quantities of beer were dispensed in Manchester from the eight saloons that we are told were in business here at that time. Then too, there was a busy and prosperous brewery out south of town on what was then, and is now to many people "Brewery Road", rather than Schleweis Road.

Of course at that time automobiles were not too common but the railroad from Jackson to Toledo boasted at least two trains in each direction each day and they were very well patronized, especially on weekends. A considerable portion of the parched males from Clinton, Tecumseh and other nearby points converged on Manchester to shake their thirsts and good fellowship was rampant hereabouts.

There are many tales of the problems which beset the visitors to our town during this period. We recall one about a Clinton citizen who, after filling needs to the "fullest extent", packed a suitcase which he had thoughtfully brought with him, with various liquid refreshments to tide him over until his next visit. However he dallied at one of the saloons until he heard the whistle of the approaching homebound train and then made a mad dash to the depot, arriving just as the train was pulling out. He managed to run fast enough to catch the last car of the train and tossing the suitcase aboard he stumbled up the steps of the car. The suitcase landed on the car platform not too gently and as it did so the tinkle of breaking glass was heard, and the suitcase began to leak.

It was reported that the spectators assisted the owner of the suitcase to mourn his loss and some said that the platform was drenched with a mixture—50% tears and 50% drinks.

We have been told tales of visitors who came here on business of one kind or another, missed the train for home and became (almost) the object of search parties before they could be rounded up and placed aboard a southbound train.

Then came prohibition, the saloons closed and the brewery did likewise and soon became a ghost of its former self but still may be seen there remnants of the building and the storage cave in which the brew was stored awaiting delivery. One informant tells us that all you had to do in those days was to step to the phone and place your order and soon there would be delivered to your home whatever amount of beer you wished at about two bucks a case, and they even picked up your empties and returned them to the brewery at no additional cost.

We have also been told that at this time on the land just west of the former Vesico Market there was located a thriving hop farm where hops were cultivated and grown to be used by the local brewery and by other area breweries.

We noted a tale in the Toledo Blade the other day that, while it has nothing to do with Retrospect, I think is worth recording

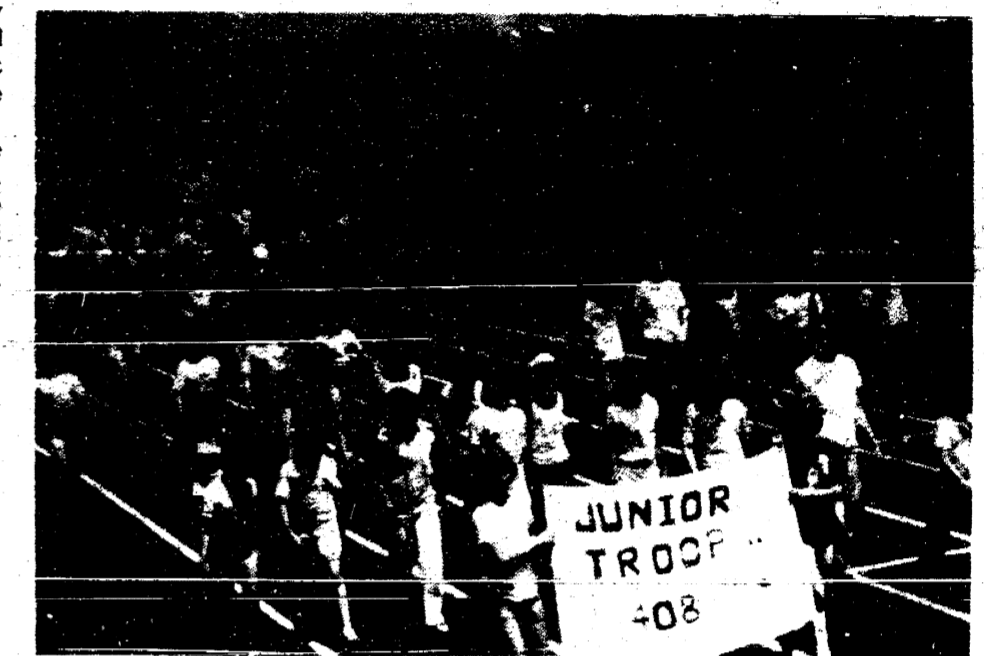
here. It seems that the other day a chap was being hassled by his wife to take her to visit her mother for the day, but he hadn't any great fondness for this lady and protested that he had many other things to do that day and couldn't possibly have time to take her there.

But as the forenoon wore on his wife clearly showed her displeasure and by lunch time it was very evident. At that time she served him with only a rather ragged sandwich and a rather cold cup of coffee. By then he was sure that he was on the losing side and so he went to her and said "Okay dear. I give up. Get ready and I'll take you to see your mother", which she promptly did.

As they were riding down the road a short ways from town she glanced over at a nearby field and saw grazing contentedly there, two jackasses. Turning to him she unsmilingly said "See George, over there, there's a couple of your relatives."

Glancing at the two George said nothing for several minutes as they drove along but soon he glanced at his wife out of the corner of his eye and very soberly replied "Yes, dear, and on my wife's side too".

GIRL SCOUT GAMES



Girl Scouts in Manchester were among the 2,000 girls participating in the recently held Girl Scout Games at Eastern Michigan University's stadium.

Events that day included softball throws, running and standing jumps, a tumble dash for the Brownies and a mile race for the Seniors.

Noon-time festivities featured George Goodman, mayor of the host city, Ypsilanti, who greeted the girls and volunteers. Following the parade of girls in troop formation, Huron Valley Girl Scout Council President, Pat Levos, read a message from Mrs. William Milliken encouraging the girls to develop their bodies as well as their minds so that they will be able to meet the challenges in the world today.

Barb Boelter of Beleville, Chairman for this first-time event, said "Because things went so nicely and the girls had such fun, we are hoping to plan a similar kind of event for next year."

Huron Valley Girl Scout Council, a United Way agency, serves nearly 12,000 girls in Washtenaw and surrounding counties.

Summer Recreation Activities

JUNIOR PLAYGROUND—Every morning from 9:30 a.m. to 11:30 a.m. at the Nellie Ackerson building, room 113. Any child who will be 5 years old by December 1, 1979 and up to any child entering the 4th grade in the fall may attend. There is no charge. This program focuses on arts and crafts as well as indoor and outdoor games. Each Friday there is a picnic at Carr Park, so the children should meet at the park at 9:30 a.m. There will be no junior playground on Wednesday, July 4th.

ROLLER SKATING—Every Thursday we go roller skating at the newly remodeled Adrian Skateadium. The cost is 75c per skates for skate rental. The recreation department picks up all other costs including skate rink rental and transportation. 2 buses will leave from the tennis courts at 12:30 and return to Manchester at approximately 3:30 p.m. Skating is from 1-3:00 p.m.

SWIM CLASS—There is still room to sign-up for swimming classes which begin July 9th. There are 3 levels of instruction, pre-beginner, beginner, and advanced beginner. Classes run everyday, Monday thru Friday for two weeks. Cost is \$5.00 per student, due when you sign up. A bus leaves from the tennis courts at 9:00 a.m. and returns to Manchester at approximately 11:15 a.m. You may sign up at Junior playground or by contacting Bart Bartels.

Continued on page 6

Keeps "Pace With Youth"



Local McDonald's participants at the "Big Event" are: back row-Dennis Pieper, Manager; Kathy Schlosser, Sister; Cindy Smith, Crew Person. Middle Row-Janet Beard-Person and Mrs. Roger Morrison, Parent.

more, Crew Person: Kathy Roof, Crew Person. Front Row-Leah Morrison, Crew Person and Mrs. Roger Morrison, Parent.

Schools; and Exploring Financial Aid. Participating employees pay \$2.00 per packet—fill out an inventory analysis and send it to a designated computer center, and within two weeks receive a printout tailored to the individual's needs. For example, an employee may receive information describing the nature of the job, the skills required, general pay scales, and employment prospects over the next several years.

According to PACE Program Director Patricia Novick, "McDonald's is one of the

Continued on page 11

EARLY DEADLINE

THERE WILL BE AN EARLY DEADLINE FOR ALL ADVERTISEMENTS AND NEWS ARTICLES FOR NEXT WEEK'S PAPER. DEADLINE FOR DISPLAY ADS IS FRIDAY, JUNE 29, CLASSIFIEDS AND NEWS ARTICLES MONDAY, JULY 2, 10 A.M.

The Manchester Enterprise

150 EAST MAIN STREET
Manchester, Michigan 48158
USPS 327-460

Phone 428-8173

The Manchester Enterprise was established in 1967 and is published each Thursday at 150 East Main Street, Manchester, Michigan with second class postage paid at Manchester.

Edward E. Steele, Publisher

Lenore Steele, Editor



Workshops & Classes Offered by Art Guild

The Manchester Art Guild is offering one class and two workshops during the month of July. A Drawing/Field Study Class is being offered, and will be taught by Karen Hinkley and Susan Heys. This six week course will be held in a different outdoor location each week with barns, houses, and scenery as subject matter. Instruction will include individual and group discussions about composition and use of space. The classes will be held on Thursdays from 11:00 a.m. to 1:00 p.m., with the first class being held on Thursday, July 12. The tuition for this course is \$15 for Manchester Art Guild members and \$20 for non-members.

A basket weaving workshop will be held on Saturday, July 14 from 10:30 a.m. to 2:30 p.m. The methods used in making reed and splint baskets will be covered in this

workshop, with each participant making their own wood splint basket. The workshop fee is \$6 for Art Guild members and \$7.50 for non-members.

A three hour workshop in children's bread dough sculpture will also be held on Saturday, July 14. Children will participate in making the dough and forming it into a sculpture of wall plaque. The workshop will be from 1:00 to 3:00 p.m. and the fees are \$4 for members, and \$5 for non-members.

To register for the class or workshops, please call 428-7730 days, or 428-7238 for evenings. Information regarding the location of these classes will be given at the time of registration.

Quilt Show and Tell

Do you, or someone you know, have an old quilt you would like to show off, or know more about? Bring your quilts to the Manchester Methodist Church on Tuesday, July 10 and join the Manchester Art Guild in a Quilt Show and Tell. Sarah Deasy, quilt enthusiast, will be there from 1-3 p.m. to answer any questions you might have concerning the pattern used in your quilt, types of fabrics used, probable age of your quilt, etc.

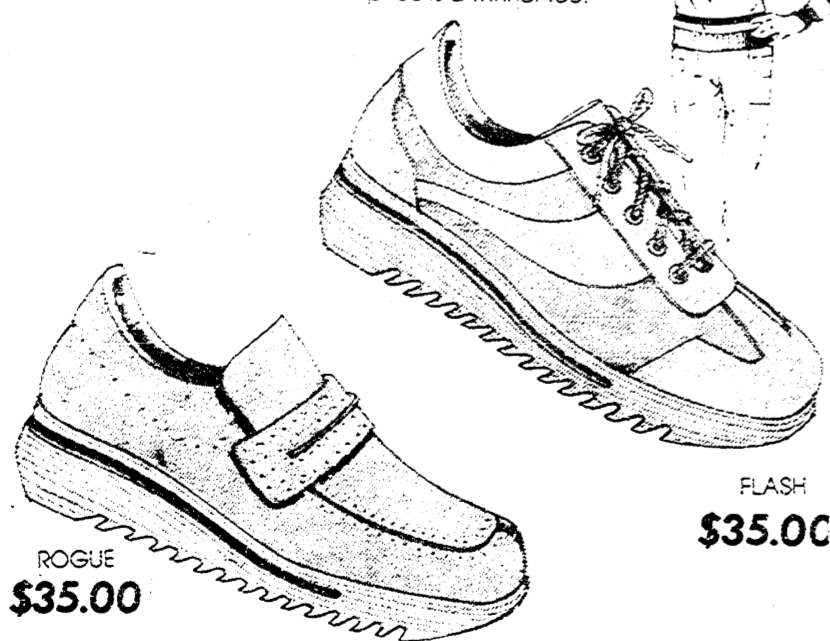
Do you already know all about your quilt? Then bring it anyway! The Manchester Art Guild is planning a "Quilts 1850-1979" exhibit in September and may want to use your quilt. The Art Guild would like to have as many "local" quilts as possible in this exhibit, so come and show us what you've got! There will be refreshments, expert "help" in identifying your quilt, and a lot of lively conversations about quilting in general. Join us! For more information concerning the Quilt Show and Tell, please feel free to phone 428-7927.

Shop The Want Ads



Hush Puppies[®] activates your sportswear

It's not a jogging shoe...it just feels like one. However, many of the same support and comfort features that make performance shoes great are inside. Lightweight traction soles and supple leathers team up for the season's best sportswear wardrobe. The price is a winner too.



ROGUE \$35.00

FLASH \$35.00

The Clothes Line

134 EAST MAIN STREET
MANCHESTER, MICHIGAN 48158
PHONE 313-428-7775

"Operation Care"

Michigan State Police traffic patrols, again taking part in "Operation CARE", will focus attention during the 30-hour July 4th holiday period on high risk road areas and the normally heavy travel hours in afternoon and evening. Col. Gerald L. Hough, department director, has reported.

In pursuing "Operation CARE" objectives, the trooper patrols will concentrate on speed law enforcement and hazardous violation surveillance which would include drinking drivers, improper passing and lane usage, and following too closely. "CARE" stands for "combined accident reduction effort", a traffic safety program in which Michigan and other states take part during holiday periods with federal fund assistance.

State Police traffic officers point out that this will be the first 30-hour July 4th holiday since 1973 and that there already is some indication that the midweek observance will not generate a large volume of motorist travel. This is attributed to the shorter holiday period and to some public concerns about the availability and cost of motor vehicle fuels.

Hough urged all motorists to observe the 55-mile-an-hour national speed limit, pointing out that to some degree it lessens the risk of serious accident and also contributes to motor fuel conservation.

Because of possibilities of accidents in water activities, the State Police director

also urged holiday celebrants to observe safety precautions in all water sports, such as boating, swimming, fishing, diving, etc.

The director noted that State Police records show that traffic accidents during previous 30-hour July 4th holiday periods in Michigan claimed 13 lives in 1973, nine in 1962 and 12 each in 1956 and 1961. Last year the July 4th period was 102 hours long and traffic accidents during that time claimed 23 lives.

Grain Reserve Corn - Release Level Announced

On June 20th, the Washtenaw County ASCS office was advised that the Release Level had been reached for corn under the Grain Reserve Program. The Release Level requires the average National Market price to be 125% of the National Corn Rate (\$2.00). All producers were notified of their opportunity to market their reserve corn during the release period which extends until July 31, 1979 without any penalties.

Producers in Washtenaw County have over 350,000 bushels of corn stored under the three year program.

Sharon United Methodist Church MANCHESTER, MICHIGAN ICE CREAM SOCIAL TUESDAY, JULY 3 SERVING STARTS AT 5 PM

- SLOPPY JOES
- POTATO SALAD
- CHICKEN BARBECUE
- BAKED BEANS
- HOT DOGS
- COLE SLAW
- CAKE & ICE CREAM
- FISH POND & SPIN IT
- HOMEMADE PIES

The Quality of Service Spear & Associates, Mann, Realtors

122 WEST MAIN PHONE 428-8388 DAILY MANCHESTER

JUST LISTED - Four bedroom home, 2 baths, 16 X 30 rec. room, 2 1/2 car garage, located in the Village of Manchester. \$44,900.

LAKEFRONT A-FRAME - On north side of Pleasant Lake, on 2 1/2 acres with many trees & shrubs, 2-3 bedrooms, fireplace in living room, 2 car garage, Manchester Schools. Please call for more information.

BRAND NEW HOME - Located in Riverbend Estates, two story colonial, 3 bedrooms, 2 1/2 baths, fireplace in family room, attached 2 car garage. Mid \$80's.

VILLAGE OF NORVELL - Three bedroom home in nice condition, breezeway, attached 2 1/2 car garage, 8 miles west of Manchester. \$45,000.

BUILDING SITES

1 to 10 ACRE PARCELS - Beautiful rolling building sites, some parcels are wooded & have lake access. These parcels are located in Manchester, Norvell, & Grass Lake Area's. Prices starting at \$7,500.

30 ACRES - Sharon Township, rolling land completely fenced. Can be sold as 10, 20, or 30 acres. 10 acres - \$19,500.

OFFICE HOURS

Mon. thru Fri. 9 a.m. to 5 p.m. Sat. 9 a.m. to 12 noon

OFFICE PHONE 428-8388

EVENINGS AND WEEKENDS:

JIM MANN ELLIS PRATT
428-8074 428-8562

Card Of Thanks

We wish to extend our heartfelt thanks to our relatives, friends and neighbors, for the many acts of kindness and sympathy, during our recent bereavement in the loss of our father, grandfather, and great grandfather.

Special thanks to Rev. Robert Macfarlane, and Jenter Funeral Home. The family of Herman A. Hanewald

We would like to thank everyone for the thoughtfulness extended to us at the loss of our father, David R. Kempf. Michelle and Michael Kempf

Are You A Senior Citizen Wishing To Find Part-Time work?

There has recently been established a local branch of an organization known as SKILLS UNLIMITED. In order to be of service to Senior Citizens, Skills Unlimited is attempting to learn if there are Manchester Senior Citizens who wish to have part-time work.

If you are interested please call: Emanuel Church 428-8369, Tuesday or Thursday between 9:00 and 12:00. If no answer please call: 428-7461 or 428-7613.

Guy's Bridgewater Tavern

MIXED DRINKS
FINE SANDWICHES
429-4529

8452 Boettner Rd
Bridgewater

Guy Gilbert
Owner

Relax, make this a summer to truly enjoy.

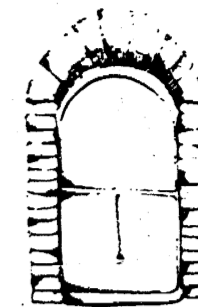
Pay your bills by check.

THE ANSWER IS Yes

MEMBER F.D.I.C. MANCHESTER / BRIDGEWATER / PLEASANT LAKE

Bills?...relax, pay your bills with a BanClub Checking Account. Enjoy this summer with never a minimum balance worry, \$10,000 in accidental death insurance, motel and rent-a-car membership discounts, the ability to cash a personal check throughout the country, travelers checks without issue charge and more with BanClub...all for a small monthly membership charge. You even enjoy discounts at many theme parks across the country.

manchester art guild news



JULY EXHIBIT

We will be accepting work for the July exhibit on Monday, July 2, from 4:00 to 7:00 P.M. Anyone wishing to submit work should bring it to the Gallery during those hours.

GENERAL MEETING

Our next general meeting will be on Monday, July 2 at the Gallery. The meeting will begin at 7:30 with a short business meeting, followed by refreshments and a short demonstration. This meeting has been designated as "Bring a Friend Night". The public is cordially invited to attend, and don't forget to bring a friend!

GALLERY HOURS

Gallery hours during July are Wednesday, Thursday, Friday and Saturday, 7:30 - 9:30 P.M., and Sunday 3:00 - 6:00 P.M. Groups and individuals wishing to visit the Gallery during daytime hours should phone 428-7927 for an appointment.

JULY CLASSES

Be sure and keep an eye out for the July Classes. They are interesting and exciting for children and adults. For more information please call 428-7730 days, or 428-7238 evenings. Classes will be listed in the paper.

QUILT SHOW AND TELL

Don't forget about the Quilt Show and Tell on Tuesday, July 10. Sarah Deasy, Quilt enthusiast will be at the Methodist Church from 1:00 to 3:00 P.M. to tell you anything you want to know about those old quilts you may have, but don't know much about. For more information, please feel free to phone 428-7927.

Singles 25 And Up

If you enjoy dancing to good music, come and join the Tuesday Nite Singles at the American Legion Hall, Main Street, Ann Arbor, on July 3. Dance from Nine to Midnight to the music of Joe Wash. Refreshments are served.

GET A NEW SLANT ON COMFORT during our



Luxaire PRE-SEASON AIR CONDITIONING SALE

Whole house cooling makes more sense than ever. Our slant front Luxaire models are super efficient and look as good as they cool. Complete installations now priced lower than ever during our pre-season sale, so don't wait until it's too hot and too late.

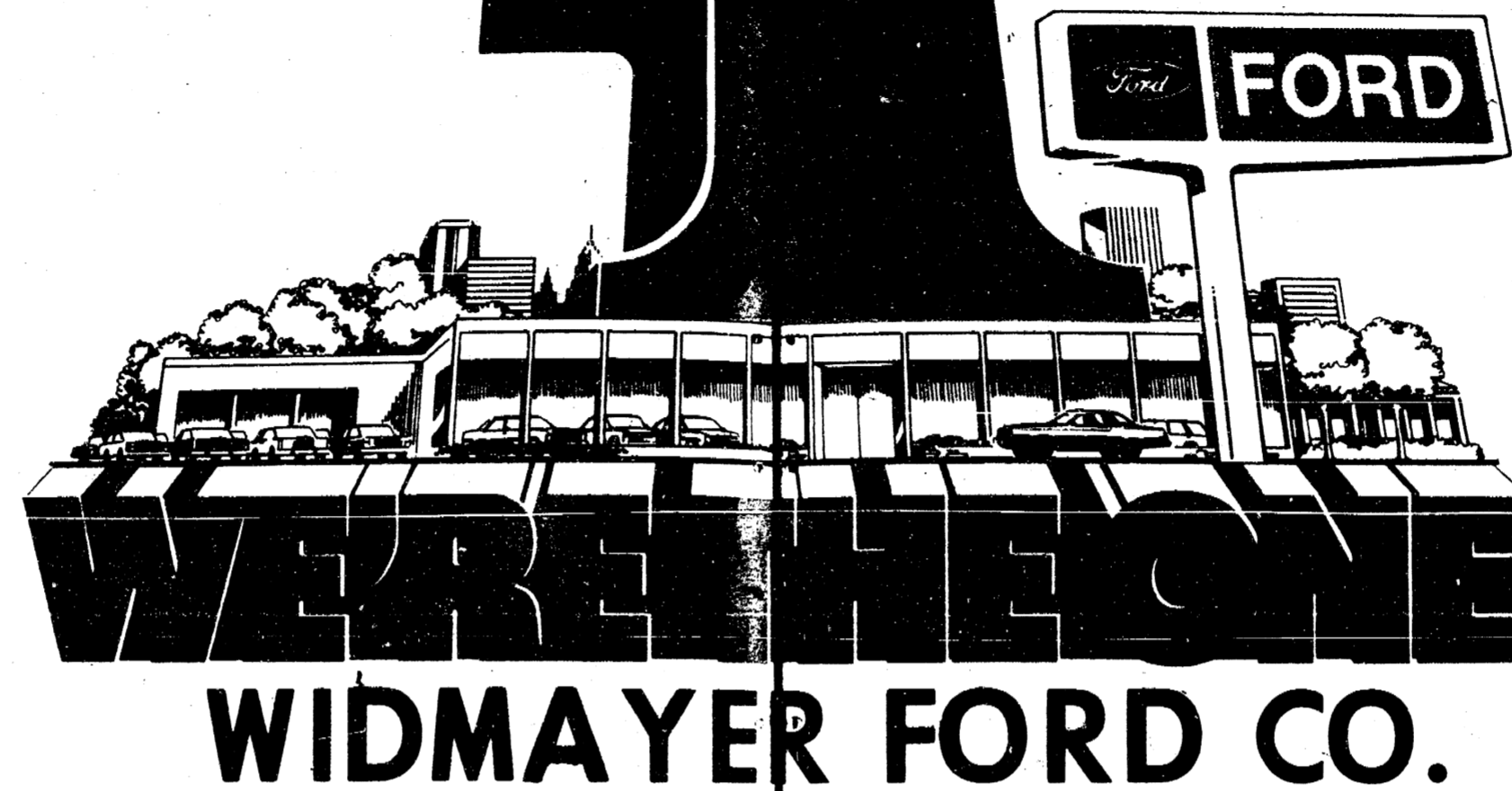
CALL US for a no-cost quotation.

FREE FURNACE CLEANING AND TUNE-UP IF ORDERED BEFORE MAY 20

Manchester Electric Inc.

112 Adrian Street
Manchester, Mich

THE #1 TRUCK STOP



GREAT PRICES!

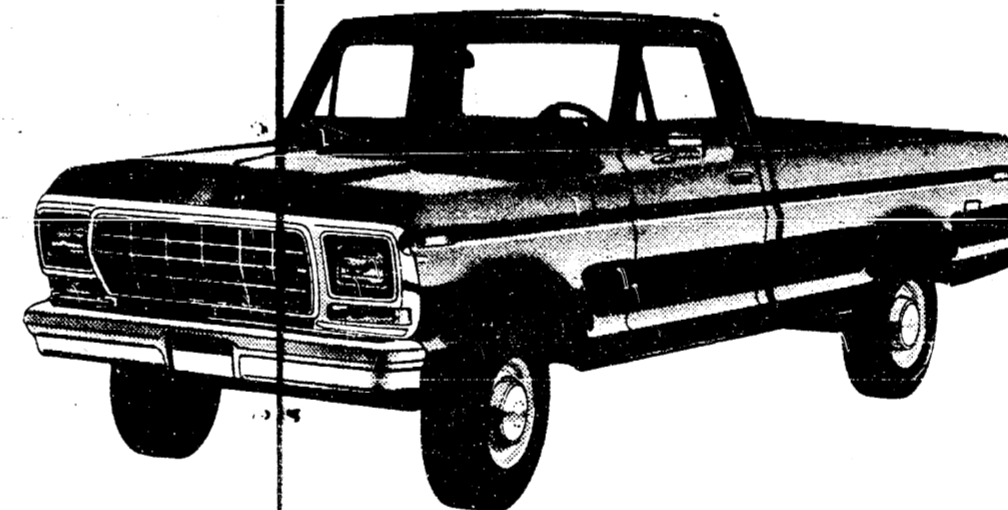
No wonder we sell more pickups and vans than anybody. (Based on R. L. Polk & Co. registrations). We've got the trucks people want at prices that are low. Come get a great deal today.

BEST MILEAGE! *

Tough Ford Trucks and Vans are engineered for solid performance and great mileage. Our F-100 has the highest pickup gas mileage in America! 18 EPA est. MPG*. It's mileage like this that has made Ford America's top-selling pickup line.

SUPER SELECTION!

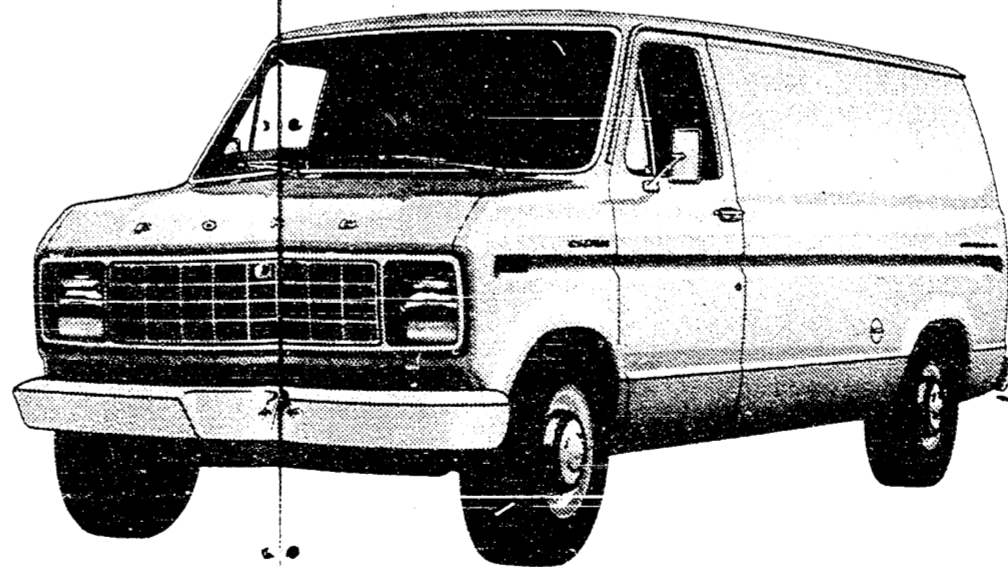
We have the biggest stocks of Ford pickups and vans of the year. The best selection for you. So take your pick and make your deal. You could drive one home.



F-100 PICKUP

This is the manufacturer's suggested retail price excluding title, taxes and destination charges. That's before you make your deal.

\$4756



E-100 VAN

This is the manufacturer's suggested retail price excluding title, taxes and destination charges. That's before you make your deal.

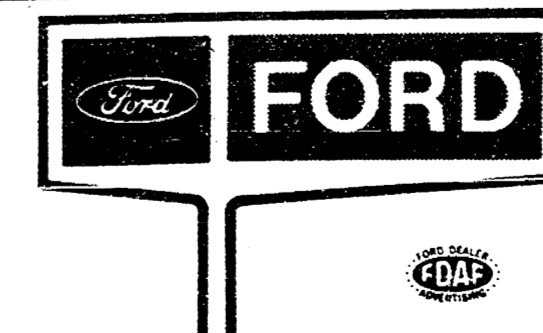
\$5112

*EPA est. with six-cylinder engine and optional 4-speed manual overdrive transmission. Best EPA estimate of any full-size pickup excluding diesels and car-trucks. Compare this estimate to the estimated MPG of other trucks. Your mileage may differ depending on speed, distance and weather.

WIDMAYER FORD CO.

510 WEST MAIN STREET

MANCHESTER, MICHIGAN



Putts And Pars

CLARK LAKE 18 HOLER'S

| | |
|--------------------|-------|
| Hamilton-Reed | 297 |
| Kouba-DuRussel | 245.5 |
| Becktel-Spensley | 243.5 |
| Gisting-Kallewaard | 241 |
| Detting-Donnellon | 234 |
| Jenter-Smith | 234 |
| Turb-Fink | 234 |
| Turb-Fink | 233.5 |
| Steele-Mann | 221.5 |
| Burkhardt-Walter | 210 |
| Steele-Conlin | 198 |

Closest to pin #7, Lorenzo.
Closest to pin #11, Hamilton.
Team winning most points, Becktel-Spensley.

MANCHESTER LATE GOLF LEAGUE

| | |
|-----------------------|-------|
| Steele-Milosh | 113.5 |
| Seward-Rooney | 110.5 |
| R. Walters-J. Walters | 108.5 |
| Popkey-Stockwell | 97.5 |
| Lamb-Koebbe | 97.5 |
| Simmons-Scully | 97 |
| Hamilton-Walton | 96.5 |
| Marrison-McGuire | 93 |
| Hinkley-Gallas | 91 |
| Gould-Uphaus | 90.5 |
| Mattoff-Hughes | 86.5 |
| Taylor-Nief | 86.5 |
| Blossom-Chapman | 83.5 |
| Bill Taylor-Russell | 83.5 |
| Knauss-Herman | 83 |
| Widmayer-Fielder | 81.5 |
| Daniels-Manwaring | 79 |
| Day-Roark | 77 |
| Curley-Steele | 68 |
| Perkins-Moull | 67 |

| | |
|--|-------|
| Long Drive #7, Russell. | |
| Closest to pin #3, Fielder | |
| Low w/h 0-10 - 22 net, Mattoff. | |
| Low w/h 11-20 - 30 net, J. Scully, E. Steele and Bud Taylor. | |
| MANCHESTER BOGEY BUSTERS | |
| M. Blossom-A. Dresch | 154.5 |
| L. Benedict-J. Riley | 149 |
| C. Fielder-D. Nickels | 145 |
| B. Riley-D. Carpenter | 144.5 |
| B. Little-R. Huber | 141 |
| D. Benedict-P. Fielder | 140.5 |
| E. Benedict-D. Blakeman | 125 |
| R. Little-D. Little | 122.5 |
| J. Kemner-G. Dorr | 121 |
| B. Daniels-D. Manwaring | 108 |
| Low gross, D. Nickels | |
| Low net, B. Little | |
| High Gross, M. Daniels | |
| Closest to pin #3, L. Becktel | |
| Closest to pin #6, C. Fielder | |

Summer Recreation

RECREATIONAL SWIMMING
Every Monday and Wednesday (except July 4th) we will be going swimming at the beautiful Bohn Pool in Adrian. This is an extremely large pool featuring 2 diving boards, 2 slides, basketball goals, clean lockerrooms, with clothing checks and showers. There are 6 lifeguards on duty at all times. Cost is 50c for anyone 17 years or under, and \$1.00 for anyone over 17. There must be at least 20 interested in going or we will have to cancel.

Annual "One Helluva Ride" Saturday, July 14th



An expected 700 bicyclists from all over the country will be riding through Hell (Michigan), Saturday, July 14 as participants in the Third Annual "One Helluva Ride". Sponsored by the Ann Arbor Bicycle Touring Society, the ride will give bicyclists a choice of three routes - 50 km, 100 km and

100 miles.

Each loop of the ride travels through Hell, Michigan which is located just 20 miles east of Eden and 400 miles south of Paradise. A seven color patch will be awarded to those who complete the ride.

This year's ride has several unique features, including a child care center, sleeping bag space for campers and a chicken dinner put on by the Future Farmers and Future Homemakers of America in Dexter.

Rain or shine the ride starts at Wylie Middle School in Dexter, Mich. at 7 a.m. Paul Malboeuf, Chelsea, is coordinator for the ride. "The routes have been selected for the low traffic density and the beautiful scenery," said Malboeuf.

A mobile bicycle repair van will be touring the routes to take care of minor bike repairs. Sag wagons will also be touring the routes. ARROW, a ham radio relay league, will have several vehicles at key points along the routes to keep track of riders and to provide communications in the event of an emergency.

Riders can register early on Friday night from 7 p.m. to 9 p.m. at Wylie Middle School in Dexter, or Saturday morning at 6:30 a.m. The registration fee for the ride is \$4.00 before July 1. After that date, the fee will be \$5.00. Dinner is \$3.75 for advance registrants only. Sleeping bag space is \$1.25. Child care is \$5.00/hour (no children in diapers). For further information and an application blank, send a business size, self-addressed, stamped envelope to Phil

Howrey, AABTS, 1921 Norway, Ann Arbor, Mich. 48104.

AABTS also sponsors several rides each week, including a Saturday morning breakfast ride which meets at the AMTRAK parking lot, Ann Arbor at 8 a.m. Riders who would like to get in shape for "One Helluva Ride" are encouraged to join club members before the special event July 14.

Cancer Benefit Softball Tournament

The Backdoor Party Store is holding a Softball Tournament for the benefit of Cancer Society. All B, C, and D teams are welcome. State Rosters only. The tournament will be held July 13, 14 and 15 and the fee is \$65.

Call and leave name and no. at 428-9833 and you will be contacted later.

VACUUM CLEANERS
ELECTROLUX
Electrolux Sales and Service
CALL
JAMES COX
MANCHESTER
428-8444 or 428-8686

EFFECTIVE JULY 2

GREAT LAKES FEDERAL SAVINGS INTRODUCES HIGHER INTEREST FOR SMALLER ACCOUNTS

Until now government regulations required savers to maintain big balances to get the top interest offered by certificates of deposit. Starting Monday, July 2nd small savings balances can earn the high interest formerly available only to large accounts. Passbook holders increase their earnings, too.

4 YEAR ACCOUNT PEGGED TO TREASURY RATES

Now even accounts of \$100 can earn high interest pegged to U.S. Treasury rates. Our new 4-year certificate pays you 1% under the yield of selected U.S. securities in effect at the time of issue. Rates are announced monthly by the Treasury Department.

5 1/2% PASSBOOK SAVINGS

Interest on Great Lakes Federal Savings' passbook savings accounts has been increased

by 1/4%—to 5 1/2%. Effective annual yield is 5.614%. Add or withdraw whenever you choose without penalties of any kind. Have liquidity, plus more interest for funds you want available for emergencies and opportunities.

NOW \$100—MINIMUM CD'S

The minimum on all certificates of deposit (other than the Money Market Certificate) has been reduced to \$100. Depending on how long you choose to leave your savings with us, even a deposit of \$100 can earn annual interest rates up to 8%.

Federal regulations still require an interest penalty for early withdrawal from certificate accounts.



GREAT LAKES FEDERAL SAVINGS

Offices in: Ann Arbor, Battle Creek, Albion, Bellevue, Brighton, Chelsea, Coldwater, Dexter, Hastings, Jackson, Manchester, Marshall, Okemos, Richland, Saline, Ypsilanti
Member FSLIC

Hush Puppies
fit comfortably everywhere

Here's a perfect match to your busy day. From morning to night, this sandal meets whatever you're doing with soft, flexible comfort. Good looks never felt so good. Even the price is comfortable.

\$22.50

BEL AIR

The Clothes Line
134 EAST MAIN STREET
MANCHESTER, MICHIGAN 48158
PHONE 313-428-7775

MANCHESTER ELECTRIC, INC.
CONTRACTING
ELECTRICAL - HEATING - COOLING
MAJOR APPLIANCE SALES AND SERVICE
112 ADRIAN STREET MANCHESTER
PHONE 428-8243

Manchester Township Library

Manchester, Michigan 48158

YEARLY STATEMENT
April 1, 1978 - June 30, 1979

RECEIPTS:

| | |
|-----------------------------------|--------------|
| Cash on hand April 1, 1978 | \$ 1,429.23 |
| Manchester Township | \$ 13,750.00 |
| Washtenaw County Penal Fines | 2,816.22 |
| State Aid * | 2,470.22 |
| Village Of Manchester | 1,200.00 |
| Sharon Township * | 1,953.00 |
| Freedom Township * | 970.00 |
| Bridgewater Township | 280.00 |
| Fine Money | 563.72 |
| Memorials | 100.00 |
| Gifts | 201.91 |
| State Check | 17.25 |
| Personal Book Receipts | 5.25 |
| Huron Valley Library System Grant | 360.50 |
| Refund for Lost Books | 20.58 |
| | \$ 24,311.35 |
| | 24,311.35 |
| | \$ 25,740.58 |

DISBURSEMENTS:

| | |
|--|--------------|
| Salary - Librarians, Extra Help, Social Security | \$ 13,719.59 |
| Building & Maintenance | 2,426.44 |
| Books | 5,426.02 |
| Personal Book Expenditures | 5.95 |
| Equipment & Supplies | 1,397.95 |
| General Fund | 182.75 |
| | \$ 23,158.70 |
| Cash on Hand June 1, 1979 | 23,158.70 |
| | \$ 2,581.88 |

* Two annual payments

Lois D. Kuntz
Treasurer

WANT ADS

BEEF TO SELL BY SIDE: Custom slaughtering. Lockers to rent. Phone 428-7600. Manchester Locker Plant tfn

ALUMINUM EAVESTROUGH - Seamless, white, black and brown, guaranteed, free estimates. Walkow Home Improvement Company, phone 313-428-8468. tfn

BLACK DIRT FOR SALE: Tested and proven excellent for gardens and lawns. 6 yards delivered \$35. 428-7784. tfn

HORSE SHOING AND TRIMMING. Bob Beaubien. 517-467-2991. tfn

TO SELL OR BUY - Homes, Farms, Properties, etc. call Charley Coffey, (517) 423-2924 associate with Century 21, William M. Powell (517) 423-3546 Tecumseh, Mich.

SCHEBOR'S GREENHOUSES, open all year - 14345 Logan Road. 428-8078. A good variety of plants. tfn

RAFALSKI AND SON CONSTRUCTION septic tank, field beds, test holes and trenching. Phone 428-7248, 18030 W. Austin Rd., Manchester, Michigan. tfn

ROULO ELECTRIC - Licensed and Insured Contractor. Call Clinton 517-456-4796. tfn

POOL chemicals, pool underwater repair kits. Cliff's Ace Hardware, Manchester, Michigan. Phone 428-7322. tfn

CHELSEA GREENHOUSES 7010 Lingane Road, Chelsea, Michigan 475-1353 - 54 or 475-9813. Flowers and plants for every occasion. We specialize in wedding flowers to fit your budget. We are as near as your phone and we welcome your business. tfn

Visit Our **WICK MODEL HOME OPEN HOUSE** at 5201 Brooklyn Rd. (M-50 SE) Jackson. Tuesday-Friday 1-6, Saturday & Sunday 2-5 Calloway Construction 517-764-4400 or 563-2330 tfn

JERRY BARTH - Horseshoeing and Trimming. 517-536-4456. 9-20p

LITTLE WACK EXCAVATING Licensed & Insured Basements - Drainfield - Bulldozing - Digging - Snow Removal - Tree Removal. Paul Wackenhut, Phone (313) 428-8025. 9-16

HOUSE PAINTING - Experienced, reasonable rate, free estimate. Curt Fielder 428-8506. 7-19p

FOR SALE - 250 gallon oil tank, reasonable. 1-561-0702 or 662-0945 evenings. 7-19

RN Position open immediately, full time, 3 to 11:30 p.m., competitive salary, air conditioned-modern, extended care facility, offering quality care.

LPN Temporary position, vacation relief, July and August. Evangelical Home 440 W. Russell Saline, Michigan Phone 429-9401 7-11

I WILL babysit in my home. Would like used playpen. Please call 428-9265. 7-5p

1977 Dodge Diplomat Medallion, fully loaded. \$4000.00. 428-7824. 7-5

FOR SALE - 1972 Pontiac Grand Prix, Model J-455, p/s, p/b, air. \$1950.00, 475-2716 after 5. 7-5

ORGANIST - Emanuel United Church of Christ, Manchester, is now accepting applications for the position of part-time organist/choir director. Must have experience. For information call 313-428-8359.

CALL Elaine Rice, Realtor, for successful buying and selling, homes and farms. 10 years of honest and competent brokerage in Real Estate. By appointment, 665-8663 or 428-7272. Associated/Eibler & Assoc. Inc. tfn

LAND CONTRACTS PURCHASED - any amount, anywhere in Michigan, we also make Real Estate Loans. Call Dan Duncan, Ann Arbor Real Estate Company. 668-8595. tfn

D'AGOSTINO'S FLORIST AND GREENHOUSE CALL 429-1103 FOR ORDERS. tfn

WANTED to buy or lease, commercial building in Manchester. Call 662-6906 days or 428-8049 evenings. tfn

CUSTOM Brick and Block Fire Places, Barbecues, Brick Veneer. No job too small. 517-467-7673. tfn

MAKE IT MY PROBLEM by calling 428-9143 after 6 p.m. for general maintenance and repairs, reliable, references available. tfn

TRUCK CAMPER 12', like-new condition, shower and bath, stainless sink and range with oven, cabinets in cabover, storms and screens, vinyl floor plus wall to wall carpet, 3 closets, 2 gas lights, big refrigerator, intercom, TV and CB antennas, ducted heavy-duty furnace, sleeps 6, sliding window, ladder, rail. Best used camper for sale in Jackson. 517-764-4400 or 563-2930 or see at 5201 Brooklyn Rd. tfn

I BUY BATTERIES - 517-265-4141. 6-28

EXCITING EMPLOYMENT OPPORTUNITY Barfield Manufacturing Company is searching for qualified and experienced cold header and chucker machine operators. Openings available on 2nd & 3rd shift. Excellent wages, paid Blue Cross, paid vacation, paid holiday. Call us at 483-5070 between 9 and 4:30 p.m. Barfield Manufacturing Company, 800 Lowell, Ypsilanti 48197. Equal Opportunity Employer. 7-19

DIE LEADERS DIE MAKERS New air condition facility. Twelve man die shop located in Saline is seeking several qualified people to grow with a growing company. Highest wages including fringes and profit sharing. Overtime is optional. Apply at Crescive Die & Tool, 905 Woodland Drive, Saline, Michigan 48176. 6-28

CEMENT WORK Patios - Porches - Driveways - Call 428-7270. 6-28

ATTENTION! Inactive Nurses with Current Michigan Licensure. Tired of staying at home? Interested in earning money to help out with rising expenses? Dust off your cap and prepare to re-enter the exciting world of nursing.

HERRICK MEMORIAL HOSPITAL is offering a 160 hour "Refresher Course" in Medical - Surgical Nursing, August 6 through August 31. This Refresher Course is designed to prepare you for clinical medical-surgical nursing. Both classroom and clinical experience will be provided to meet individual learning needs. For registration information, contact Kathy L. Bailey, RN Herick Memorial Hospital, Tecumseh, Michigan 49286. 517-423-2141. Tuition Assistance Available 7-5

HAY EQUIPMENT FOR SALE. New Holland 273 super sweep baler w/thrasher. 428-8855 after 6 p.m. 6-28

FOR RENT - 2 cottages at Houghton Lake, boats included \$150.00 per week each. 428-7427. 6-28

FOR SALE - 17 acres Timothy and Clover, mixed. 428-7996. 7-5p

LIGHT CUSTODIAL WORK in friendly relaxed environment. Flexible schedule of 10 hours per week at \$4 an hour. Retired gentleman preferred. University Reform Church, Ann Arbor. 662-3153 weekdays. 7-6

YARD SALE - Saturday, June 30, 9:00 - 4:00. Lots of old stuff. 519 Ann Arbor St. p

FREE KITTENS & CATS, all colors, 6 weeks old. 428-7005.

4 FAMILY GARAGE SALE July 6-7, 9:00 - 5:00 p.m., 5250 Sylvan Rd., 428-7811. Misc. household goods, clothing, toys and much more. p

REMINDER ANNUAL TOWNSHIP MEETING OF THE ELECTORS OF MANCHESTER TOWNSHIP WILL BE HELD AT THE VILLAGE HALL AT 120 S. CLINTON STREET ON SATURDAY, JUNE 30, 1979 AT 1:00 P.M.

WILMA E. LENTZ, CLERK

4 FAMILY PORCH SALE on Saturday, June 30 from 10 to 5. Antiques, convertible top for Blazer, clothes, leaded glass, propane space heater, rug, misc. 503 City Rd. p

FOUND: Ladies watch, Bethel Church Rd. Owner may have by identifying and paying for this ad. Call 428-8396. p

CARPET REMNANTS up to 70% off. Hartung Carpet, 11353 Tecumseh-Clinton Rd., Clinton. Closed Sundays & Thursdays. 6-28

3 FAMILY RUMMAGE SALE, 107 S. Union St., June 29 - 30, 9 a.m. - 6 p.m. p

LOST! Grey Tiger Cat, name: Serena. Missing June 20 in the area of W. Main St. If seen please phone 428-7681, under any circumstances. Annette Alexander. p

FOR SALE - Utility trailer, 4 X 8 metal bottom, radial tires, new wiring. \$145.00. 428-9214.

YARD SALE, Friday and Saturday, June 29 and 30. Unusual items. 7590 Lamb Rd. Austin West to Lamb Rd. p

YARD SALE 610 City Rd., July 6, 7, 8, 10 to 7. Clothes, Books, Household items, Lots of miscellaneous. 7-5p

FREE PUPPIES, part Irish Setter and Brittany Spaniel. 428-7214. 7-5p

LARGE BARN SALE, Friday and Saturday, 9 to 5, 133 Clinton St.

STORE-WIDE - SUMMER CLEARANCE SALE Selected Fenton Art Glass Pieces and large selection of discontinued gift items. 25% off. All sales final. No lay-aways, no returns. The Calico Cat Book and Gift Shoppe 110 East Main Street Manchester, Michigan 48186 Monday through Saturday 10:00 a.m. to 5:30 p.m. Phone: 1-313-428-7453.

UTILITY TRAILER FOR SALE, 15 inch wheels, 4 ft. by 8 ft. bed. \$250.00. 428-7488. 7-5

THE HENNERLY - antiques now open at 402 Ann Arbor St. Telephone 428-8466. 6-28p at 1:00 P.M.

DELIVERY: The Ann Arbor News has three routes available in Manchester. Each route earns about \$75.00 per month and would take about one hour a day to deliver. These routes earn an excellent profit for a young person or a good second income for an adult. If you are interested in learning more, please call Steve Gerlach at 994-6744. 6-28

FOR SALE - Tandem bike, excellent condition. 428-5173 days, 428-8510 evenings.

DEPENDABLE CARPENTER looking for work. Experienced in dry wall, small additions, remodeling and wood-working. Call Luckhardt Bros. at 668-8598 or 429-5558. 8-16

CHELSEA PLUMBING AND HEATING
Reasonable Rates
Gail Shears, Licensed Journeyman
Garland DeVoe, Licensed Master
475-1037

Drum Corps Championship To Be Held At EMU July 12

Approximately 25 drum corps from throughout the United States and Canada will converge on Eastern Michigan University's Rynearson Stadium Thursday, July 12, for the 1979 Drum Corps International Northern Regional Championship. The competition, which has been held in Ypsilanti for three consecutive years, features national competitive corps that travel each summer in competition for the coveted world championship trophy awarded by Drum Corps International to the top corps in world competition held annually in Denver, Colo.

Included in the list of entries for this year's competition are corps from the Canadian provinces of Quebec and Ontario and such states as Illinois, Massachusetts, Michigan, New Jersey, Ohio, Pennsylvania,

Wisconsin and Wyoming. The Phantom Regiment of Rockford, Ill., winners of the DCI Northern Regional Championship in 1977 and 1978, will compete against a field of other top notch corps in hopes of winning the title for a third consecutive year. The corps boasts a full contingent of 128 marching members and finished second at the DCI International Championships in Denver last year. The 1979 Phantom Regiment repertoire includes "Finale," Symphony No. 3 in C Minor by Camille Saint-Saens; "Malambo," Ballet Estancia by Alberto Ginastera; "March of the Dwarfs," a drum solo; "In the Hall of the Mountain King" by Edvard Grieg and "Elsa's Procession to the Cathedral" from Die Meistersinger by Richard Wagner.

Preliminary competition for the DCI Northern Regional Championship is open to the public and will begin at 9 a.m. Tickets for the preliminary competition at \$4 each are available at Rynearson Stadium and the Ypsilanti Chamber of Commerce Office, 11 North Adams Street in Ypsilanti. The top

ten competing corps will be showcased in the final competition to be held at 7:30 p.m. Tickets for the finals are \$4 and \$6 and are available at the Ypsilanti Chamber of Commerce. For further information on tickets, call the Chamber of Commerce at (313) 482-4920.

Dial-A-Garden 

Dial-A-Garden, the system of pre-recording daily gardening tips, is sponsored by the Washtenaw County Cooperative Extension Service. The system is in operation 24 hours per day, 7 days per week. Interested persons are invited to call: 971-1122 at their convenience and receive timely, up-to-date gardening information.


June 29 through July 5 Gardening Topics Are:
Friday, June 29-Leaf Blights on Vegetables.
Monday, July 2-Tree of the Week - Pin Oak.
Tuesday, July 3-Hot Weather - Ideal for Aphids.
Wednesday, July 4-Continued as Previous Day.
Thursday, July 5-Conserve Water on Your Lawn.

YES WE HAVE POP IN CANS
12 PAC \$2.75 PLUS DEPOSIT
1/2 litre CASE \$5.25 PLUS DEPOSIT
AIR CONDITION SERVICE

HAVE THAT SPRING TUNE-UP NOW!

TIRES ELECTRONICALLY BALANCED FOR A NEW CAR RIDE

FILLYAW'S SERVICE
327 WEST MAIN



FREEDOM ELECTRIC
11207 Pleasant Lake Road
Manchester, Michigan
NEW CONSTRUCTION
COMMERCIAL INDUSTRIAL
GILBERT LUCKHARDT
428-8233

Saline Open Tennis Tournament

The Saline Community School's Summer Recreation program is sponsoring a non-sanctioned Adult Tennis Tournament starting Friday, July 13 and ending Sunday, July 22. Anyone, male or female, 18 years of age or older is encouraged to register. The following categories are being offered: Men's Singles and Doubles, Women's Singles and Doubles, and Mixed Doubles.

The cost of the tournament is \$3.00 per person/per event, and the player(s) must provide a new can of balls for every match with the winner(s) taking the unused can. Stop by the Saline Community School office for information or to enter. All registration and fees must be received by Friday, July 6. Fees are non-refundable. The Community School office is located next to the high school office off of Maple Rd. (Phone #: 429-4981 Ext. 242) Make checks payable to Saline Area Schools. You will be notified of your FIRST playing time by phone.

ENTRY FORM

Name.....
Age.....
City.....
Phone # (work & home).....
Singles..... Doubles.....
Mixed Doubles.....
Doubles Partner(s).....
Phone #'s.....

SHOP THE WANT ADS

MANCHESTER INSURANCE AGENCY
122 West Main Street
Manchester, Michigan
Phone 428-8215
Home-Farm & General Insurance

CLINTON THEATRE
Friday & Saturday 7:30 & 9:30
Sunday 7:30

watch out for... **CHOMP**

Caution home protection system.


BUSINESS STATIONERY
That Gets You The Business

Richly Thermographed! Yet Costs So Little!

You'll like the look of success that low-cost Coronet Thermographed Stationery gives your company. Feel the raised print! So elegant it says you are not only a successful company, but also says you have good taste!

Business cards and stationery at very moderate cost. Ask us for layout samples.

Manchester Enterprise
150 East Main Street



Wednesday Nights at Mingles...

Disco with Dick

And dance down memory lane.


Dust off your penny loafers and dig out your charm bracelets. Mingles is rolling up the rug and rolling back the calendar with its own version of American Bandstand revisited.

Every Wednesday night, Mingles will play your favorite tunes from the bygone, beloved era of the big boop, the beep, and the twist. We'll set your toes tapping with Chubby Checker, Little Richard, and Brenda Lee. We'll spice up the evening with the Beach Boys and the Righteous Brothers. We'll throw in some early Elvis and vintage Viton. And for occasional contrast, we'll bring you up to date with a disco doornbeat.

For old-fashioned fun and no-holds-barred nostalgia, it's "Disco with Dick." Every Wednesday night, only at Mingles. (Bobby socks optional.)

MINOLES THE DISCO
An Eye-ful. Not an Earful.

At the Holiday Inn West, Jackson Road, 1/2 Mile West of Maple
Ann Arbor 313/665-4444



Chelsea Babe Ruth League

STANDINGS

| | |
|---------------|-----|
| Athletics (C) | 3-1 |
| Dodgers (D) | 3-1 |
| Orioles (C) | 3-1 |
| Pirates (C) | 3-1 |
| Reds (D) | 2-2 |
| Yankees (D) | 1-2 |
| Royals (C) | 1-3 |
| Astros (M) | 0-2 |
| Giants (C) | 0-3 |

The Chelsea Babe Ruth League is off to a good start with two weeks of play completed. The league this year consists of nine teams with five from Chelsea, three from Dexter and one from Manchester. Each week nine games are played. After two weeks there is a four-way tie for first place with another team close on the heels

of the leaders. One of the more interesting games was a twelve inning affair in which the Athletics outlasted the Royals. Toby Boyd collected five hits including one triple and two doubles. Bob Trevino was very effective in relief and picked up the win in the twelfth inning. Steve Grau pitched well for the maximum of ten innings. Eric Krueger had four hits for the Athletics while Scott Dault had three hits and Gur Gross and Dave Gipson each had two hits. The Yankees have received good hitting from Kurt Brushaber and Randy Raiford but overall need a little more steam to break into the winning column regularly. The Dodgers are thick in the race with very strong overall hitting and less effective defensive play. For the Pirates Jeff Beaver has gone ten for twelve since beginning the season. The Orioles have Dave Wojcik hitting well in addition to his good pitching. Mike Bareis has pitched well for the Orioles and completed a full seven inning game while striking out eleven.

"SPECIALIZING IN BARN RE-ROOFING"
SERVICE ROOFING COMPANY
 HOT TAR - SHINGLES - REPAIRS
 For a Free Estimate Phone 428-7104
 Manchester, Michigan 48158

Cliff's Ace Hardware
 103 East Main
 Manchester
 Phone 428-7322
OPEN 7 DAYS
 PPG Paint * ReadyMix Concrete * Toys
 Wallpaper * Rental Equipment
 Plumbing * Electric Supplies * Hardware
 Furnace Supplies * Glass Cutting *
 Pipe Cutting and Threading
 Storm and Screen Repairs

ROOFING
SIDING
SEAMLESS ALUMINUM GUTTERS
 Aluminum fascia & soffit system
 Storm windows & doors
 Shutters
 Insulation
 "Complete Job or Material Only for Do-It-Yourselfers"
R. D. Kleinschmidt Inc.
 19860 Sharon Valley Road 428-8836 Manchester

LEGAL NOTICE

FREEDOM TOWNSHIP PLANNING COMMISSION

The Freedom Township Planning Commission will hold a special meeting on July 9th, 1979, at 8:30 P.M. at the Freedom Town Hall.

Purpose of the meeting will be to consider a request for special land use.

Parcels of land to be considered: N2/3 of NE 1/4 EXC S 600' of N 1350' of E 726' SEC 26 PSE R4E (96.67 AC) S 1/3 of NE 1/4 SEC 26 PSE R4E (53.33 AC)

Above parcels are zoned agricultural. Special land use request is for gravel extraction. Name of applicant is the Holloway Sand and Gravel Co., Inc. of Wixom, Michigan.

Written comments concerning the above application may be given to the undersigned at 14355 Bethel Church Road, Manchester, Michigan 48158, prior to the special meeting.

A public hearing may be requested by any property owner or the occupant of any structure within 300 feet of the boundaries of the above mentioned property.
 Lynn Voegeding, Secretary

LEGAL NOTICE

NOTICE OF HEARING

BRIDGEWATER TOWNSHIP PLANNING COMMISSION

The Bridgewater Township Planning Commission will hold a public hearing on proposed amendments to the Bridgewater Township Zoning Ordinance on July 23, 1979 at 8:00 p.m., EDST at the Bridgewater Township Hall at the corner of Braun and Clinton-Manchester Roads, Bridgewater Township, Washtenaw County, Michigan.

The proposed amendments would add Excavation Contractor as a conditional use under Section 9.01 of said ordinance; increase required dwelling area in A-1 Agricultural District under Section 5.05 of said ordinance to 1000 square feet for two (2) story dwellings; increase lot area requirements in A-1 Agricultural District under Section 5.02 of said ordinance to 250 feet with lot area requirements requiring the depth to be equal to width; and in section 5.03 thereof increase required yards to 75 feet for front yards, 30 feet for side yards, 50 feet for rear yards.
 BRIDGEWATER TOWNSHIP PLANNING COMMISSION

June 27 and July 28, 2979

ASK ABOUT NAPA'S MACHINE SHOP SERVICE.
Ross Automotive
 PHONE 428-8320 or 428-8328
 230 EAST MAIN MANCHESTER
NEW HOURS STARTING JULY 1st
 8 am-5:30 pm Monday-Friday
 8 am-2:30 Saturdays

FAHEY REALTY
 OFFICE 215 EAST MAIN PHONE 428-9298
 Manchester Township - 160 acres remaining with a live stream, rolling hills, and frontage on four roads. Has been divided into 10 acre parcels. Call Don Limpert for appointment.
 Income Property - Commercial building on Main Street. Fully rented. Serious inquiries only. Call Don Limpert.
 Within Village Limits - Approximately 3 acres, zoned single family residential. 720' frontage with water, gas, & sewer nearby. Call Don Limpert.
 Within Village Limits - Large single parcel on corner of Duncan & Hubbard Street. 150' x 300' with all utilities. Zoned single family residential. Cash or terms. Call Don Limpert.
 Morgan Street - 130' x 181' vacant **SOLD** des utilities. Cash or terms. Call Don Limpert.
 100 acres - Scenic rural home site in Sharon Township. This property is very hilly - ideal for the person who wants to build a home in one of the most beautiful locations in Washtenaw County. Shown by appointment.
NEW LISTING
 7600 sq. ft. commercial building and two single family homes adjoining. Being offered for sale as one parcel. For information call Don Limpert.
 Quality built three bedroom brick ranch on 10 acres. Full finished walkout basement with fireplace. Fully air conditioned. Hilltop view yet close to the Village of Manchester. \$127,900.00.
 Let us help you find a home, income property, or land to develop.
 Don Limpert 104 E. Main 428-7400
 Judy Fahey 28 Sycamore, Chelsea 475-2636
 Dick Fahey 28 Sycamore, Chelsea 475-2036
 James I. Fahey 112 S. Washington 428-7979
 Melody Popkey 12740 Sharon Hollow R.d. 428-7967
 Jim Walkow 18353 Herman Rd. 428-8120
 Ted Curley 725 City Rd. 428-8526
 John Fahey 15554 Fahey Rd. 428-8748

MEISTER-SILER NUPTIALS

A beautiful wedding at the Martha Mary Chapel, Greenfield Village united in marriage Ms. Kathleen Ann Meister of Plymouth, and Kenny Siler of Manchester, Sunday, June 24, 1979 at 7:00 P.M.

The guests were seated by Mark and Michael Meister, twin sons of the bride, while the soloist, Ms. Laura Kott sang, "If We Only Have Love", "Evergreen", "You Light Up My Life", and "I Love You So."

The bride was preceded to the altar by Ms. Judy Heath, maid of honor, and Laura Meister, the bride's daughter, as flower girl. Mark and Michael accompanied their mother to the altar, and gave her in marriage. David Siler was best man for his father.

After the ceremony, performed by Dr. Otis A. Smith of Birmingham, the bride and groom left the church for Dearborn Inn in a horse drawn carriage driven by Frank Leonard of Dearborn and Manchester. The guests followed for the wedding dinner at the Inn.

The new Mr. and Mrs. Siler are honeymooning in Montreal, Quebec, and on their return will reside on the Siler farm at 13175 Pleasant Lake Road.

McDonald's

largest employers of teen-agers in the world, and this program is part of its corporate responsibility effort. PACE focuses on a whole range of career and opportunities that most of us don't think about."

In Michigan, the PACE program carries the support of the Michigan Personnel and Guidance Association. Lt. Governor James Brickley along with State School Board

Member Silvernia Kanoyton, and Dr. George Grisdale, president of Michigan Personnel and Guidance Association will address the 2,000 delegates and lend their support to the effort.

"The program was tested last year in the Washington, D.C., area. It was a success not only among teen workers but also for the many women over age 35 who have returned to the labor market and found their first jobs with the fast-food chain", Novick added. For further information write to McDonald's PACE program, McDonald's Corporation, McDonald's Plaza, Oak Brook, Illinois 60521.

'Birthday' Registration Plan Unveiled

A program which will eventually revolutionize Michigan's method of issuing license plates will get underway this Fall, but the long, last minute lines will endure for one "last hurrah" in 1980.

Secretary of State Richard H. Austin said that after the 1980 phase-in year, the state's new "birthday" registration program "will smooth out and vehicle owners will be paying for 12 month registrations."

Why change the "birthday" license system?

The answer, according to Austin, is that the reason is better service to the public in making the job of obtaining plates easier. The system is designed to eliminate the long lines which have plagued Michigan motorists for years and have been a source of inconvenience and annoyance.

"This is not the only benefit," Austin noted. "It will help the Michigan Department of Transportation."

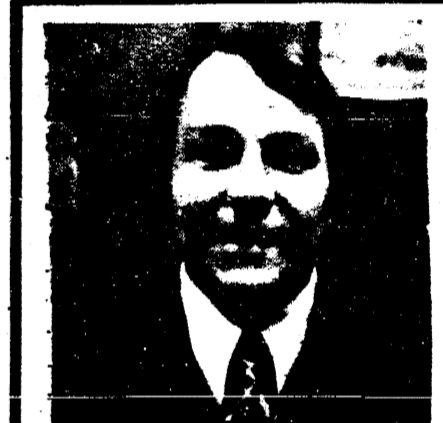
Continued on page 13



Secretary of State Richard H. Austin explains "Staggered" or year-round vehicle registration by birthday to Governor William G. Milliken. After March 1980, most license plates will expire on the vehicle owner's birthday. The Governor's birthday is in March, so Austin shows the Governor how his 1980 plates will look.

GERALD AHRENS CONSTRUCTION
 ADDITIONS - DECKS
 RENOVATIONS - REPAIR
 FREE ESTIMATES
 PHONE 428-8807

ARE YOU SURE YOU'RE "PUNCHING THROUGH LOUD AND CLEAR"?
 The typical CB'er can get an average of three miles further to "punch through loud and clear" with a check and adjustment of his CB and antenna system for peak performance.
MANCHESTER CB SERVICE
 Phone 428-8073 FCC LICENSED



Frankly, I wanted to write about this in order not to embarrass the people involved.

We had a house fire in the area some time back. It was a lulu of a fire, too.

The homeowners are still trying to sort out, in their minds, what was lost.

With insurance money you can always buy a sofa or a new kitchen table but what about the things that can never be replaced?

The treasures that a family collects over the years, the mementos of those who have gone on before... even records and insurance policies are difficult to replace.

There is an answer. The couple I am writing about didn't think of it, however. The answer is a safe deposit box.

For a few cents a week you can have your cherished items safe and sound in our vault.

Oh, how I wish I had stressed the merits of a safe deposit box to the family that had the fire.

Richard J. Wolf

UNION SAVINGS BANK
 Telephone 428-8334

MR. SCRUB
 cleans cars
BETTER for LESS

wax-wash \$1.50
We Have a Fine Line of Gulf Tires All Sizes

THE JOLLY DUTCHMEN
 Phone 428-8960
GROSSMAN-HUBER SERVICE
 100 EAST MAIN ST

Play **MICHIGAME**
 Thousands of \$5 and \$50 winners every week
 50¢

 Over 45 Super Players every month win from \$2,000-\$70,000 each
 Twenty Jackpot winners each month share thousands of dollars in prizes
Still only 50¢

Your Church

EMANUEL UNITED CHURCH OF CHRIST

Rev. Robert MacFarlane, Pastor
Worship Service 9:30 a.m.
Plan to worship God regularly.
SHARON UNITED METHODIST
Rev. Wayne Ferrigan, Pastor
Corner Pleasant Lake Road-M-52
Sunday School 10:00 a.m., Worship Service 11:00 a.m.

ST. THOMAS LUTHERAN

Rev. Paul Puffe, Pastor
Ellsworth Road
No Sunday School (Summer) Worship Service 10:00 a.m.

ST. JOHN'S UNITED CHURCH OF CHRIST

Carl Asher, Pastor
Rogers Corners, Waters and Fletcher Rds.
Sunday School 9:30 a.m. Church Services 10:30 a.m.

BETHEL UNITED CHURCH OF CHRIST

Rev. Roman A. Reineck, Pastor
Schneider and Bethel Church Roads
Church Service 10:00 a.m. Sunday School 11:00 a.m.

MANCHESTER UNITED METHODIST

Rev. Maurice D. Sharai, Pastor
Sunday School 9:30 a.m. Worship 9:30 a.m.
ST. MARY'S CATHOLIC CHURCH
Father Raymond Schlinkert
West Main Street

MANCHESTER UNITED METHODIST

Monday thru Friday 8:30 a.m., Saturday 5:00 p.m. Sunday 8:30 and 10:30 a.m.

NORTH SHARON COMMUNITY BIBLE

Rev. Ronald C. Purkey, Pastor
Sylvan and Washburn Road
Sunday School 10:00 a.m. Worship Service 11:00 a.m. (Nursery will be available)
Junior Church Classes 11:00 a.m. Youth Meeting Senior High 6:00 p.m. Youth Choir 6:00 p.m., Evening Worship Services 7:00 p.m. (Nursery available), Wednesday Bible Study and Prayer Meeting (Nursery available) 7:00 p.m. To your door Bus Transportation available 428-7222.

FAITH COMMUNITY CHURCH

Timothy Miles, Pastor
8400 Sharon Hollow Rd. off W. Austin Rd.
Worship Service 10:00 a.m., Sunday School 11:00 a.m., Sunday Young People 6:00 p.m., Sunday Evening Service 7:00 p.m. Wednesday evening 6:30 p.m., Junior Choir Practice, Prayer Meeting and Bible Study 7:00 p.m. Junior Prayer Meeting 7:30 p.m., Senior Choir Practice 8:00 p.m.

IRON CREEK CHURCH

Rev. Ralph Janofski, Pastor
Worship Service 10:00 a.m., Sunday School 11:15 a.m. Youth Service 6:30 p.m. Evening Service 7:30 p.m. Wednesday Evening: Junior Choir 6:30 p.m., Bible Study and Prayer Meeting 7:30 p.m., Senior Choir 8:30 p.m.

ZION LUTHERAN CHURCH

Rev. John R. Morris, Pastor
3050 S. Fletcher Road
Sunday School 9:00 a.m., Family Worship 10:15 a.m.

ST. JOHN'S LUTHERAN CHURCH

Rev. Dennis A. Falk, Pastor
Austin Road, Bridgewater, Michigan
Sunday School 9:15, Worship 10:30 a.m.

VICTORY BAPTIST

Ronald Nelson, Pastor
423 S. Macomb Street, Phone 428-7262
Sunday School 10:00 a.m., Morning Worship 11:00 a.m., Evening Worship 6:00 p.m., Youth Meeting 7:00 p.m. Monday Visitation 7:00 p.m. Wednesday: Prayer Meeting 7:00 p.m.

ST. BARNABAS EPISCOPAL CHURCH

Rev. Jerrold F. Beaumont, "Vicar"
Old U.S. 12 1/4 mile west of M-52, Chelsea.
10:00 a.m. Holy Eucharist and Morning Prayer.

WILLIAMSON
HEATING & COOLING SYSTEMS
John Steele jr
INSTALLATION & REPAIR
Phone 428-8692

MANCHESTER UNITED METHODIST

Sunday, July 1, 9:30 a.m. Holy Communion and Baptismal Service.
Tuesday, July 3, 7:30 p.m. Adult Study Class.

SHARON UNITED METHODIST

Thursday, June 28, 7:30 p.m. Pastor-Parish Relations Committee. 8:00 p.m. Administrative Board.
Tuesday, July 3, beginning at 5:00 p.m. Ice Cream Social.

ZION LUTHERAN CHURCH

Friday, June 29, Janis Rose Organ Recital - Hill Auditorium, 7:30 P.M.

BETHEL UNITED CHURCH OF CHRIST

Sunday, July 1, 10:00 a.m. Service of Worship-Communion.

EMANUEL UNITED CHURCH OF CHRIST

Sunday, July 1, First Sunday Communion at 9:30 a.m. Worship.

FAITH COMMUNITY CHURCH

Sunday, July 1st, Morning Worship at 10:00 a.m. Honoring Missionaries during 11:00 a.m. Sunday School hour.
Monday evening, July 2nd, Visitation to Herrick Nursing Home at 5:30 p.m. Trustee Board Meeting at 7:30 p.m.
Tuesday evening, July 3rd, Faith Circle will meet at the church at 7:30 p.m.
Wednesday evening, July 4th, Meeting of the Board of Deacons at 6:30 p.m. 7:00 p.m. Prayer Hour and Bible Study. 8:00 p.m. Senior Choir.

CATHOLICS CONTRIBUTE OVER ONE MILLION

Local Catholic churches in Washtenaw County pledged \$161,236 as the Diocese of Lansing's annual drive for financial support reached \$1,025,000. This was the highest total ever pledged by the 213,000 Catholics in the ten-county Diocese.

The annual financial effort, called the Diocesan Service Appeal provides money to fund some 30 projects, offices and programs of the Diocese. These include educational, social service and ministry to students attending public universities.
"Catholics know that the money is spent

prudently and in important causes," said a spokesman. "There is no question either that the frequent appearances by Bishop Kenneth J. Povish in all of the 92 parishes of the Diocese has had impact." Bishop Povish is Bishop of the ten-county Diocese. Last year Catholics pledged \$970,000, which until this year was the largest amount realized.

Locally the totals are: St. Francis of Assisi, Ann Arbor \$33,283; St. Mary Student Chapel, Ann Arbor \$2,693; St. Patrick, Ann Arbor \$8,019; St. Thomas the Apostle, Ann Arbor \$33,231; St. Mary, Chelsea \$13,846; St. Joseph, Dexter \$4,889; St. Mary, Manchester \$4,610; Immaculate Conception, Milan \$5,906; St. Andrew, Saline \$6,353; St. Alexis, Ypsilanti \$5,855; St. John the Baptist, Ypsilanti \$24,044; St. Joseph, Whitaker \$4,207; St. Ursula, Ypsilanti \$6,986; Holy Trinity Student Chapel, Ypsilanti \$5,523.

The Diocese of Lansing includes the counties of Ingham, Lenawee, Washtenaw, Livingston, Eaton, Clinton, Genesee, Shiawassee, Jackson and Hillsdale.

Lloyd Electric
OWNER - VERN LLOYD
RESIDENTIAL COMMERCIAL INDUSTRIAL
Ph. 1-313-439-7859
14478 Milan Oakville Rd.
Milan, Michigan 48160

JOHN L. KORSIRNIK, BLACKSMITH
CUSTOMER WROUGHT IRON -
DRIVEWAY GATES - WOOD STOVES -
SIGN BRACKETS - MAIL BOX STANDS -
FIREPLACE TOOLS - ANTIQUE IRON RESTORATION -
CALL 517-456-7583
2348 US12 CLINTON, MICHIGAN
4 MILE WEST OF 52 SATURDAYS

free travelers checks & money orders with \$1,000 in savings

Great Lakes Federal Savings has eliminated charges for money orders and for First National City Travelers Checks for all customers who have \$1000 in savings. Sound like a winner? Take advantage of it! Available at all of our 22 offices.

GREAT LAKES FEDERAL SAVINGS
Offices in: Ann Arbor, Battle Creek, Albion, Bellevue, Brighton, Chelsea, Coldwater, Dexter, Hastings, Jackson, Manchester, Marshall, Okemos, Richland, Saline, Ypsilanti
Member FSLIC

CROSSWORD
VACATION RHYMES MICHIGAN PARKS
Fourth of 15 by Automobile Club of Michigan

ACROSS

1. Lake Huron's View Is This Park's Claim So Is the Bay That Shares Its Name
2. Initiate of a Boys' Group That Likes To Live Out Parks For Lengthy Hikes
3. This National Park Is So Remote You Only Go by Plane or Boat (2 words)
4. This Park Gives Nature Lovers Thrills Right There in the Irish Hills
5. The Huron-Clinton Park's Great Plan Gives Us Lakes Made by _____
6. Holland, Muskegon and Ludington Score High. This Sound on Lake Michigan's Shore
7. Instead of Mr. Hoop, Whose Land Bosses Acres of Lake Huron Bend
8. Clear, Higent, Island, Twin Have a Common Thing Within
9. In Oakland County This Park Is Grand With the State's Largest Man-Made Strand
10. Fishing, Boating and Camping Park This Park Tops on the Cedar's Bank
11. Visitors Here Can Take Ease Amid the State's White Pine Trees
12. Taquamenon State Park Attracts With These Lovely Cataracts
13. Visitors Here Are On to Fond Of the Hardy Dams' Pond
14. Near Monroe This Park So Cherry Hugs the Shoreline of Lake Erie
15. Park Your Car and Motor Bike To See Our State Parks Try a _____
16. Don't Let Its Name Cause Your Mistake It's Not in Heaven, but on Mullett Lake
17. Named for the Water and the City This Huron Park Is Awfully Pretty
18. This National Lakeshore Is the Best Named for a Bear Who Is at Rest
19. Another Sleeper in the Thumb It's Not in Heaven, but on Mullett Lake
20. The Sound of Music Fills the Breeze Among the State Park's Lakes and Trees
21. This Park's Fine Lakes and Scenic Camps Make One Think of World Series Champs
22. Near Battle Creek These Scenic Green Trees Once Heard a Thousand Rattles
23. Its Sandy Beach Is Truly Scenic It's One of Michigan's Best Attended (2 words)
24. Newaygo County's Truly Proud Of Scenic Beauty at White
25. One of the Nearest in the U.P. You'll Find It Near Monmouth
26. Located on Lake Charlevoix This Park's a Summer's Joy
27. This Park's Claim to Fame We'd Guess Is Its Rugged Wilderness (nickname)

ANSWERS

"GAS WATCHERS" TIP
A Gas Watcher plans ahead on household errands. Fuel consumption can be cut 10 to 30 percent by combining short trips.
DRIVING PAPER ADV.

MICHIGAN PARKS OFFER EVERYTHING UNDER THE PINES

A glimpse at the north when lumber was king, peeks at moose and wolves on a Lake Michigan.

Superior island, and classical music amid the pines await visitors to Michigan's network of state and national recreation lands, according to Automobile Club of Michigan.

STORE-WIDE SUMMER CLEARANCE SALE
Selected Fenton Art Glass Pieces and Large Selection of Discontinued Gift Items
25% OFF
OPEN MONDAY THRU SATURDAY
10 A.M. TO 5:30 P.M.

THE Calico Cat
BOOK AND GIFT SHOPPE
VISA AND MASTER CHARGE WELCOME
110 East Main Street Phone 428-7453 Manchester, Michigan

Thursday, June 23, 1979 The Manchester Enterprise Page 15

From primitive Upper Peninsula campsites to modern urban-area parks, Michigan offers something for everyone this summer.

A replica of a 19th Century northern Michigan logging camp and a giant collection of artifacts including a "big wheel" once used to skid logs out of the forest draw history buffs to the Lower Peninsula's Hartwick Pines State Park near Grayling. The park also contains the last stand of virgin white and red pine in Lower Michigan, saved from the axe by a lumberman's wife.

A chance to see herds of moose and predaceous wolves draws thousands of visitors annually to Isle Royale. It is the only island national park in the contiguous 48 states and is located 73 miles north of Houghton in Lake Superior.

Campers and hikers frequently see deer, coyote, fox and even black bear in the 58,000-acre Porcupine Mountains State Park near Ontonagon, and in the 19,000-acre state park containing the picturesque Upper and Lower Tahquamenon Falls.

While visitors are unlikely to see anything wilder than ground and tree squirrels at Interlochen State Park south of Traverse City, they might encounter the strains of "Peter and the Wolf," "The Firebird," or "Swan Lake" at the adjacent National Music Camp.

At other state lands, the accent is on picnics, swimming and fun in some of Michigan's 10,000 inland lakes.

The 600-foot sandy shoreline at Pontiac Lake Recreation Area near Pontiac is billed as the state's largest man-made inland lake beach.

Other expansive inland beaches include Aloha State Park's 3,900-foot shore on Mullett Lake near Cheboygan; the milelong sand and grass shoreline at Higgins Lake State Park near Rosecommon; the 500- and 200-foot beaches of Island Lake Recreation Area near Brighton, and the 1,400-foot beach on Lake Charlevoix in Young State Park near Boyne City.

Detroit-area bathers and picnickers gather at the Huron-Clinton Metropark beaches at Metropolitan Beach on Lake St. Clair near Mount Clemens, Stony Creek Metropark near Utica, and at Kensington Metropark near Milford.

Formerly an Army post, Fort Custer Recreation Area near Battle Creek offers 2,962 acres of rolling woodlands and fields for day hikers.

For sun-drenched Great Lakes sand, check out crescent-shaped Tawas Point State Park on Tawas Bay and Bay City State Park on Saginaw Bay in Lake Huron, or Sterling State Park on Lake Erie's Brest Bay.

Fine examples of "Huron dunes" await visitors to Rogers City's P.H. Hoelt and Caseville's Albert E. Sleeper State parks along Lake Huron while miles of squeaky "sugar sand" delight beachcombers at Holland, Grand Haven, Ludington and Muskegon state parks on Lake Michigan.

Examples of Lake Michigan's sandy bluffs include the world's largest shifting sand dunes, reached via hiking trails or auto at the 61,000-acre Sleeping Bear Dunes National Lakeshore near Glen Haven. Others are at Warren Dunes State Park south of St. Joseph.

State recreation lands have provided anglers access to some of this state's best fishing lakes, with many near major cities.

Yankee Springs Recreation Area between Grand Rapids and Kalamazoo offers 10 lakes for fishing while Hayes State Park southeast of Jackson has fishing on two lakes set among the verdant Irish Hills.

Barely a dozen miles from each other, Newaygo State Park on the Muskegon River's Hardy Dam pond is a hotspot for walleyes and northern pike, while White Cloud State Park is only three miles from the White River, a top steelhead trout stream.

Big game anglers after salmon can launch boats at many parks bordering the Great Lakes, including J.W. Wells State Park, near the Cedar River in the Upper Peninsula's Menominee County.

The sites listed are just samples of the unique offerings of Michigan's federal and state lands. This year, an estimated 24 million persons will visit them to relax among the trees.

From the CASE 8 hp to the CASE 16 hp TOUGH!

K & W Equipment Inc.
11100 Chelsea-Manchester Rd. Manchester, Michigan
Phone 428-7666

News Of Good Things Growing

Summertime is salad time and with the abundance of good things growing in Michigan, your favorite salad can be an adventure.

Whether your taste is for lettuce for a tossed salad or as an edible bed for a gelatin mold, Michigan grows the ninth largest lettuce crop in the nation, according to the Michigan Department of Agriculture. Our state's farmers produced 27.3 million pounds in 1978, worth more than \$3.7 million.

About 4,000 acres of cabbage are harvested in Michigan for making cole slaw, or a New England boiled dinner on a cool summer evening. Cabbage is one of the oldest and most versatile vegetables known to man. Our state grew 70.8 million pounds in 1978.

If one of your favorite summer fixings is potato salad, Michigan produces about one billion pounds of high quality, finely-textured potatoes annually.

The bright orange of carrots and the tart taste of green peppers, which begin appearing at Michigan markets in July, are tasty and colorful additions to salads as are red, juicy Michigan tomatoes, low in calories and high in nutrition. And the

tangy zest of Michigan onion is a highlight to many recipes. Our onion crop is the state's largest volume fresh market vegetable crop and the sixth largest onion crop in the nation.

About nine million pounds of commercial mushrooms are grown annually inside buildings where carefully controlled temperature, humidity, and darkness provide a product that is great in salads and casseroles, with meat, fish and fowl.

Michigan is first in the nation in growing pickling cucumbers and ranks ninth in cucumber yields for fresh market. Nearly 100 varieties of pickles are processed by the largest pickle packer in the U.S., which is located here.

For light fruit salads on hot summer nights, Michigan's summer crops include apples, peaches, blueberries, cherries, strawberries, nectarines, cantaloupe and pears. Lake Michigan, with its tempering affect on climate, helps our state produce large quantities each year. Ten of our state's fruit crops rank sixth or higher in total yield among the states, according to MDA.

For a free listing of 'pick-your-own' farms and roadside markets where these fresh salad makings are available, write the Michigan Department of Agriculture, for "Country Carousel," P.O. Box 30017, Lansing, Michigan 48909.



FOOD-AND FUEL-FOR THOUGHT!

The family was all loaded up in the big station wagon, the boat dragging along behind, and they pulled into a gasoline station. The driver looks at the pump price, does some quick mental calculation on what this particular stop's going to cost him, and announces to his family that "if this gas thing keeps up, we're going to have to cut down on food!"

There's really no humor in this. It's real. Americans are probably willing to sacrifice just about anything for the mobility that driving cars affords. As a matter of fact, you just might be spending more operating your automobile than you spend on food.

Each year, the Callup Pollsters ask people this question: "On the average, how much does your family spend on food each week, including milk?" This year—polling some three hundred communities across the U.S.—they came up with an average weekly expenditure of \$53 per family, or a yearly total on food of \$2,756.

Now the American Automobile Assoc-

iation's figures tell us that it'll cost you \$3,170 this year to operate an intermediate-size car. These figures take variable and fixed costs into account and are based on driving the car 15,000 miles. The variables include gasoline and oil. The fixed costs include insurance, license, depreciation, finance charges, and the like.

So, the cost of operating the family (intermediate-size) car, \$3,170. The cost of food for the family for a year, \$2,756. The winner by \$414, the car.

Crops Must Be Reported By July 2

All Washtenaw County farmers are reminded it is necessary to report planted crops by July 2, 1979. Over 960 farms are signed up in the 1979 Wheat & Feed Grain-Set Aside Program. It is a requirement that these producers report the planted crops for eligibility of program benefits.

All participating farms will be spot checked this summer by airplane. Slides will be reviewed in the County Office for Accuracy of reporting.

Also, all other non-participating farmers should report crops for history purposes for future programs.

ANNUAL FINANCIAL REPORT OF THE TOWNSHIP OF SHARON

| GENERAL FUND RECEIPTS 1978-1979 | | SHARON TOWNSHIP ASSETS | |
|---|-------------|--|-------------|
| Current Tax Collection | \$15,394.59 | General Fund | \$19,329.26 |
| Collection Fees | \$5,877.62 | Certificates of Deposit | \$7,989.00 |
| Dog License Fees | \$21.80 | Cemetery Trust Fund | \$950.00 |
| Excess Of Roll | \$339.22 | Total Township Assets June 15, 1979 | \$27,279.26 |
| Interest Tax Savings Account | \$2,259.00 | | |
| Transfer Permits | \$999.00 | TRUST AND AGENCY FUND | |
| Building Permits | \$3,394.00 | Balance March 21, 1978 | \$929.13 |
| Federal Revenue Sharing | \$4,982.00 | Received From General Fund | \$3,910.28 |
| State Revenue Sharing | \$25,384.55 | Paid L.R.S. | \$2,015.55 |
| Sale Cemetery Lots | \$789.00 | Paid State Income Tax | \$2,396.98 |
| Interest Cemetery Trust Fund | \$46.53 | Paid Social Security | \$437.00 |
| Interest C.D.S. | \$489.96 | Balance June 15, 1979 | - |
| Interest General Fund | \$241.68 | CEMETERY TRUST FUND | |
| Town Hall Rent | \$56.00 | Balance March 21, 1978 CD | \$750.00 |
| Resolving Fees | \$280.00 | Received Mike Wolfe Estate | \$200.00 |
| Miscellaneous | \$102.27 | Received Interest CD | \$66.53 |
| Cemetery Trust, Mike Wolfe | \$280.00 | To General Fund | \$66.53 |
| Delinquent Taxes Received | \$1,495.23 | Balance June 15, 1979 | \$950.00 |
| Rebate Community College Election | \$255.30 | FEDERAL REVENUE SHARING FUND | |
| Zoning Appeal Fee | \$150.00 | Balance March 21, 1978 | \$725.70 |
| | \$63,063.97 | Received | \$4,662.00 |
| | | Libraries | \$1,896.20 |
| | | Fire Protection | \$3,501.50 |
| | | Balance June 15, 1979 | - |
| DISBURSEMENTS 1978-1979 | | ANTICIPATED 79 AND 80 REVENUE SHARING | |
| Supervisor Salary | \$6,500.00 | Balance June 15, 1979 | - |
| Clerk Salary | \$4,000.00 | Anticipated 1979-80 Revenue | \$3,700.00 |
| Treasurer Salary | \$4,000.00 | Fire Protection | \$3,700.00 |
| Zoning Inspector Salary | \$1,000.00 | | |
| Trustee Salary | \$900.00 | Certificates of Deposit March 21, 1978 | \$7,000.00 |
| Board Of Review (2 years) | \$600.00 | Interest Received | \$450.96 |
| Appeal Board Meetings | \$195.00 | Transferred to General Fund | \$486.96 |
| Planning Commission Meetings | \$393.00 | Balance June 15, 1979 | \$7,000.00 |
| Fire Protection | \$7,163.68 | | |
| Landfill | \$2,061.83 | | |
| Cemetery Care | \$1,518.00 | | |
| Legal Fees | \$1,763.06 | | |
| Insurance and Bonds | \$3,471.87 | | |
| Assoc. Fees | \$601.87 | | |
| Travel and Conventions | \$306.25 | | |
| Printing and Supplies | \$757.50 | | |
| Transferred To Cemetery Trust Fund | \$200.00 | | |
| Tax Roll Printing | \$506.25 | | |
| Libraries, Manchester And Chelsea (2 years) | \$1,586.82 | | |
| Town Hall Fuel and Utilities | \$1,808.20 | | |
| Town Hall Maintenance | \$1,721.50 | | |
| Township Share Social Security | \$974.11 | | |
| Police Protection | \$6,645.00 | | |
| Washtenaw County Road, Chloride | \$3,733.82 | | |
| Washtenaw County Road, Matching Bethel Church Rd. | \$4,000.00 | | |
| Emil Jacob Post American Legion Flags | \$20.00 | | |
| Election Board | \$587.50 | | |
| Election Expenses | \$140.00 | | |
| Town Hall Custodian (2 years) | \$600.00 | | |
| Miscellaneous | \$24.42 | | |
| Accounting | \$595.00 | | |
| Mileage and Office Expenses | \$396.64 | | |
| | \$59,271.43 | | |
| Balance March 21, 1978 | \$15,516.72 | | |
| Received 1978-1979 | \$63,063.97 | | |
| Receipts And Beginning Balance | \$78,600.69 | | |
| Expenses 1978-1979 | \$59,271.43 | | |
| Balance June 15, 1979 | 19,329.26 | | |

PLEASE TAKE INTO ACCOUNT THAT THE ABOVE REPORT IS BASED ON A 15 MONTH FISCAL YEAR, NOT THE USUAL 12 MONTH FISCAL YEAR.

| IN ACCOUNT WITH 1978 TAX COLLECTIONS | | | | EXCESS OF ROLL |
|--------------------------------------|------------------------------|-----------|----------------|----------------|
| County | \$98,061.96 | 12,196.77 | 85,758.58 | 106.61 |
| Community College | \$41,681.15 | 5,184.23 | 36,495.45 | 1.47 |
| W.C. I.S.D. | 27,675.32 | 3,525.31 | 24,149.00 | 1.01 |
| J.C.I.S.D. | 1,928.61 | - | 1,928.61 | - |
| Manchester Public Schools | 379,409.72 | 48,071.97 | 330,714.95 | 622.90 |
| Chelsea Area Schools | 78,868.74 | 10,330.26 | 68,442.75 | 95.73 |
| Grass Lake Schools | 8,476.85 | - | 8,476.85 | - |
| Napoleon Public Schools | 2,009.74 | - | 2,009.74 | - |
| Township | 17,581.31 | 2,186.72 | 15,394.59 | - |
| Fees | - | - | 5,737.47 | - |
| | 655,683.40 | 81,495.26 | 579,107.99 | 827.62 |
| | | | To Township | |
| Dogs Licenses | 134 Sold And Paid Co. 539.00 | - | Dog Fees 21.00 | |
| | | | To Township | |

Respectfully Submitted,
HERBERT G. JACOB
SHARON TOWNSHIP TREASURER

THE MANCHESTER ENTERPRISE

20¢ A COPY

112TH YEAR VOLUME NO. 36 USPS 327-460 THURSDAY, JULY 5, 1979

HAPPY BIRTHDAY TO U.S.-AMERICANS

Traditionally, Americans have long been classified as "joiners", a label many citizens are proud of. Voluntarism is a typical USA characteristic that has helped shape the image of U.S. citizens in many countries. Americans are frequently pictured as friendly, outgoing and self-reliant.

Such a flattering concept probably dates back to the Revolutionary War era when our fledgling nation was struggling to survive. Self-reliance was then an essential quality. These facts take on renewed significance as the nation prepares to celebrate the 203rd birthday of the United States of America. The American Historic and Cultural Society, Inc., has vigorously promoted patriotic community programs through the preceding 21 days extending to Flag Day. The 21-day Honor America concept is a parallel to the 21-gun salute to honor a head of state.

This period was officially created by a joint resolution of the Congress and signed into law by the President in June 1975. Members of Congress, governors and mayors have actively joined in supporting this campaign and have called on their constituents to participate.

A Census Bureau survey in recent years produced the estimate that 37 million people in the United States above the age of 13 years are engaged in volunteer work in the spirit of helping others. Such a figure reflects a wholesome, generous attitude that has helped this nation become the leader of the world's democracies.

This total denotes a substantial bloc of Americans that by its example invites others to enter the field of voluntarism. To a casual observer it might seem that so many willing hands could dispose of the bulk of the country's social problems. Unfortunately, emergencies of assorted types, adversities and personal hardships continue to multiply.

Other circumstances call for different approaches. In Oregon, a 100,000-acre site formerly used as a rocket-test range was turned over to farming by an aerospace company. The land lies in an arid region and the belief prevailed that "Nothing will grow here." But new methods of cultivation have produced rewarding crops and helped to revive the area economically.

In another corner of the country, Robert Sanchez, 29, worked with two scientists of the University of New Mexico to develop a program to produce nuclear drugs. This breakthrough enables hospitals to use the drugs as tracing agents for locating tumors.

Such undertakings contribute to the health and wealth of the nation. But these events are large and complex and beyond the scope of the average American.

But much can be accomplished at the local level to Honor America. You and your neighbors can arrange for appropriate patriotic decorations; centering around the American flag. Remind your club, your union or other organization to lend impetus to such observances, possibly of a financial nature.

Remember John Adams' note to his wife Abigail: "... this great anniversary festival ought to be commemorated as the day of deliverance, by solemn acts of devotion to God Almighty ..."

Plan a parade, whip up a picnic, promote a sports contest, schedule a band concert, put on a pageant, touch off a fireworks display, honoring America in an appropriate manner.

One point, at any rate is clear: no manner of organizational gadgetry can make a great society. It takes people to make a society great—righteous, justice-loving, idealistic, freedom-loving people.

Join us in giving America a Happy Birthday this Fourth of July.

Liz and Rollie Day Picnic - July 8

Next Sunday, July 8, a few friends of Liz and Rollie Grossman are meeting at Carr Park to honor them.

They have been in business in Manchester for over forty years and have been active in community services.

Anyone who would like to come to honor Liz and Rollie is welcome. Please bring a dish to pass, your own meat, beverage and tableservice. The time is from 4 to 6 P.M.

We are looking forward to seeing a lot of Liz and Rollie's friends and to having a good time.

Manchester Fair August 14 Thru 18

In past years the Manchester Community Fair Board has announced that the Community Fair opens on the 3rd Tuesday of August. Not so 1979. Fair dates this year are August 14th thru 18th.

Board Members are busy making final plans for the 35th Annual Fair. It is hoped that all previous exhibitors of the Fair as well as many new people are planning to bring arts, crafts, hobbies, flowers, baked goods, canned foods, sewing and agricultural products to the Fair.

The Middle School will be used again this year for exhibits such as antiques, fine arts and photography. However, classrooms will be used for exhibits to free up the Civic Auditorium for some entertainment during the evening of the Fair.

In the near future the Fair books will be coming thru the mail with rules, regulations, program information and Premium Lists. The books will also be available in some of the stores.

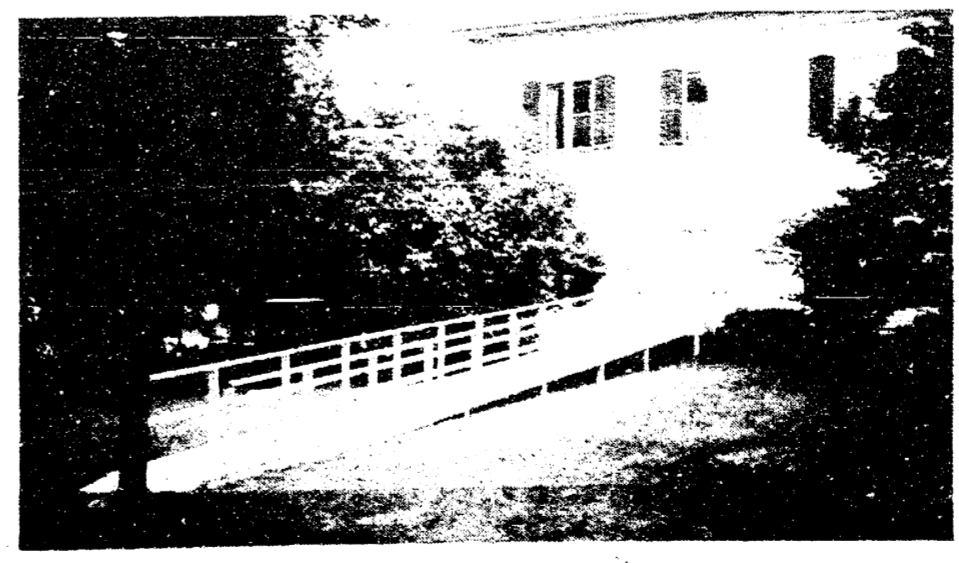
In previous years several women have entered the Fair with exhibits for the Homemaker Award. The Junior Homemaker Award is open to all girls 17 years and younger. We hope many women are planning to exhibit their fine quality items

In the light of recent developments this the land down on the main four corners of town was occupied by a business that made a large profit, those who operated it paid a rather large "rent" for the use of the land occupied by their business. To equalize this amount an acreage of farm land of considerable size would be taxed on its ability to produce a profit, or at much less per acre.

Continued on Page 8

Continued on page 11

Handicapped Ramp Installed



The Manchester Jaycee Auxiliary is happy to announce their donation of a ramp for the handicapped to the Manchester Township Library. The ramp is located at the rear entrance to the library on Madison Street.

The money spent on the ramp was earned from various community projects such as the Christmas and Easter candy sales. The Jayceettes are always looking for new ways to help Manchester continue to be a growing community.

SPONSORED BY THE MANCHESTER JAYCEES

4th of July

PARADE
STARTS 3 P.M. AT ATHLETIC FIELD

PICNIC
AT CARR PARK

GAMES PRIZES
FIREWORKS
AT DUSK AT CARR PARK