

WANT ADS

KNIFE TO SKILL BY SIDE: Custom slaughtering. Lockers to rent. Phone 428-7000, Manchester Locker Plant. 11-2

ROOFING, SIDING, GUTTERS, STORM WINDOWS & DOORS. For a free estimate call 428-7194, Service Roofing Company, Manchester, Michigan. 11-2

CHELSEA GREENHOUSES, 7816 Llaguno Road, Chelsea, Michigan 475-1353 - 54 or 475-5313. Flowers and plants for every occasion. We specialize in wedding flowers to fit your budget. We are as near as your phone and we welcome your business. 11-2

CALL Elaine Rice, Realtor, for successful buying and selling, homes and farms. 10 years of honest and competent brokerage in Real Estate. By appointment, 695-8993 or 428-7372, Associated/Ebner & Assoc. Inc.

ASHLEY WOOD STOVE, available now Hackney Hardware, Dexter, Michigan. 428-4060. 11-2

LIGHT House Cleaning in your home \$5.00 hour. Call 517-456-7250. 11-16p

ATTRACTIVE sales position - good personality and appearance - opportunity for advancement. Flexible hours. For interview appointment, call B. Huff, 728-2339. 11-2p

ATTENTION BEST SALES REPRESENTATIVES—All American Food is looking for 5 Sales Representatives to take food orders in the home. No experience necessary as we will train. Better than average income. Call our Ann Arbor Office Area Code 313-663-3633 or our Alhlon Office Area Code 517-423-4337 for an interview. 11-2

BE SMART! Have your antiques appraised for an insurance rider and other reasons. 20 years experience. Mary Middlebrook 517-592-6031. 11-23

YOU'RE IN LUCK...20 acres of splendid colored woods with some snowing oak, black walnut, and hickory trees, plus 1000 acre spruce, charming older home, large barn. Call Florence Conant 1-423-7159 or ask for Florence 663-2571 East Kalam Realty. 11-23

WANTED: part-time secretary, State Farm Insurance, no experience necessary. 428-8264. 2

PART-TIME secretary apply at Postcard Engineering, 517 City Rd., Manchester.

WILLIAMSON
HEATING & COOLING SYSTEMS
John Steele jr
INSTALLATION
& REPAIR
Phone 428-8692

ALBER ORCHARD AND CIDER MILL NOW OPEN
Sweet Cider - Apples
Barrels - Kegs
Open daily 9 a.m. to 5 p.m.
13411 Beech Church Road
Phone 428-7758

LAND CONTRACTS PURCHASED - any amount, anywhere in Michigan, we also handle Real Estate Loans. Call Don Duncanson, Ann Arbor Real Estate Company, 948-4336. 11-2

ALUMINUM BVESTROUGH - Seamless, white, black and brown, guaranteed, free estimates. Walkover Home Improvement Company, phone 313-428-9468. 11-2

PAT'S CRAFT STUDIO - downtown Tecumseh, area headquarters for macramé, tape painting, miniature, artists supplies and much more. Monday thru Saturday, 10 to 5:30. Classes available. 517-423-7447.

GENERAL CARPENTRY-Work - Phone 7 to 10 p.m., 313-423-8882. 11-2

ROULO ELECTRIC—Licensed and Insured Contractor. Call Clinton 517-456-8794. 11-2

FALL BULBS—Now is the time to plant tulips, daffodils, crocuses, hyacinths and amaryllis. Manns Feed Mill. 11-30

TO whom it may concern, The world has gotten around Manchester, that I the Mother of Charles "Chuck" Evans King of Manchester had died. This is not true. I am very much alive and living at 5049 N. Adrian Hwy., Adrian, Michigan. Ethel Kellogg. 11-2p

We invite you to browse through our country store for good books for the entire family. New and unusual gift items and imported Christmas decorations are now on display. 10% down and a monthly payment will hold your holiday purchases. The Calico Cat Book and Gift Shoppe, 110 East Main Street, Manchester, Mich. 48158.

PLANT WORKERS, the following plant positions are open for plant workers in the manufacturing of printed circuit boards.

Placer 2nd shift, starting pay \$3.95 per hr. IV-C Drill Operator 2nd shift, starting pay \$4.54 per hr.

General Labor 1st shift, starting pay \$3.51 per hr.

General Labor 2nd shift, starting pay \$3.66 per hr.

Mechanical ability, knowledge of blueprints helpful. The above positions include blue cross/lines shield, sickness and accident and term insurance, vacation and holiday pay. Please apply in person at Ann Arbor Chevrolet, 628 W. Washington, Ann Arbor. Equal opportunity employer m/f

FREE WALNUTS, 428-8723 after 7:00 p.m.

Horse Shoeing and Trimming
BOB BEAUBIEN
Phone (517) 467-2991
11540 STEPHENSON RD.
ONSTED, MICH.

ARE YOU SURE YOU'RE "PUNCHING THROUGH LOUD AND CLEAR"?
The typical CB'er can get an average of three miles farther to "punch through" and "clear" with a direct and adjustment of the CB and antenna system for peak performance.
MANCHESTER CB SERVICE
Phone 428-8673 FCC LICENSED

ALTERATIONS done in my home. Call 428-7054 after 6 p.m. Specializing in mens tailoring. 11-2

PART-TIME office help wanted. Call Monday thru Friday 8:00 a.m. to 5:00 p.m. 428-8282. 11-2

HELP WANTED - daytime wait-person Apply Black Sheep Tavern, Manchester. 11-2

WANTED—All time help on hog farm. Phone 475-7326.

CARPET SALE OF THE YEAR! Hartung's Carpet in stock autumn sale is now in progress. Huge savings on all floor coverings in stock. Hartung's Carpets - 11353 Tecumseh-Clinton Rd., Clinton.

FOR SALE-1973 Dodge truck D-106, V-8 automatic. Excellent condition. 517-423-3486.

FOR SALE-electric range 30 in. good condition, best offer 428-7854. p

LIKE OUT FROM UNDER THOSE HIGH TAXES? Purchaser desired modern 2 or 3 bedroom home on Pleasant Lake or Columbia Lake in Bridgewater Township or lot suitable for building. Contact Jim Datsko days 428-5338, evenings 973-2815.

FOR SALE—Franklin Wood Stove, pipes included, \$95 or best offer. 428-5909.

THE annual financial statement of the Township of Manchester, as demanded by the Federal Bureau of the Census, is and will be available at the Manchester Township office as of October 25, 1978.

MILAN CHILDREN'S NURSERY "It's a small World Christmas" Craft Auction and Children's Bazaar, Saturday, December 2, Auction starts 1:00 p.m. 25 Ann Street, Milan.

1966 Ford Pick Up, good condition. New rebuilt 6 cyl. engine. Must Sell \$450.00. 428-7369. p

JOTUL #118 WOODSTOVE used 2 months only. Holds fire up to 10 hours. 428-7369.

MOTHER who will do babysitting in my home. 428-7054.

GET READY NOW!



MR. SCRUB
cleans cars
BETTER for LESS

wax-wash
\$1.50

We Have a Fine Line of Gulf Tires All Sizes

Gulf

THE JOLLY DUTCHMEN

Phone 428-8960

GROSSMAN-HUBER SERVICE
100 EAST MAIN ST

FOR SALE, excellent condition wood and coal burning range, 428-8173 days or 428-8510 after 6 p.m.

SOUND '71 PONTIAC, loaded. Days 428-8379, nights 428-8153. p

FOR SALE, '72 Buick Riviera, 2 dr, hard top, full power, air. Runs great, sharp. \$1595 or best offer. 428-7475. p

FOR RENT—Manchester-Clinton area, 3 bedroom home \$285, family only 1-568-7653. p

3 FAMILY GARAGE SALE, Saturday, November 4, 9-5. Antiques, bunkbeds, household misc., etc. 225 Grove St. off Adrian St. JoAnne Stevens.

EXPERIENCED MAINTENANCE PERSON to repair light equipment. Must be able to trouble-shoot 110, 220, 440 volt electrical systems, and weld. Repairing LP and electric lift-truck A plus. Submit qualifications and expected wage to HST Industries, 303 W. Michigan, Clinton, Michigan 49236. Attention: Personnel Dept.

FOR SALE—Gas Space Heater, Temco model no. CR-20-1-Big O, nearly new. \$175. Gas Space Heater-Ziegler, small \$125. Gas Space Heater-Thompson, small \$50. Clarence Fielder 428-8506.

HARTUNG'S CARPET WINTER STORE HOURS starting November 4, Wed, Thurs, Fri and Sat. 10 A.M. to 5 P.M. Fri, evening till 8 p.m. Closed Sun, Mon, and Tues. 11-15

FOR SALE—'73 1/2 ton pick up \$7,000 incl. some rust \$6800.00. Apartment size washer & dryer, like new \$250.00. 2 recliners \$25.00 each. 1 couch \$35.00. Call 428-7854 after 6 p.m. 11-9p

APPLICATIONS being taken for injection mold press operators. Apply in person at Manchester Plastics, Inc., 500 W. Madison St., Manchester. An equal opportunity employer.

FOR SALE, '77 Chevy Custom Van fully loaded, 12000 miles, must see 428-7821.

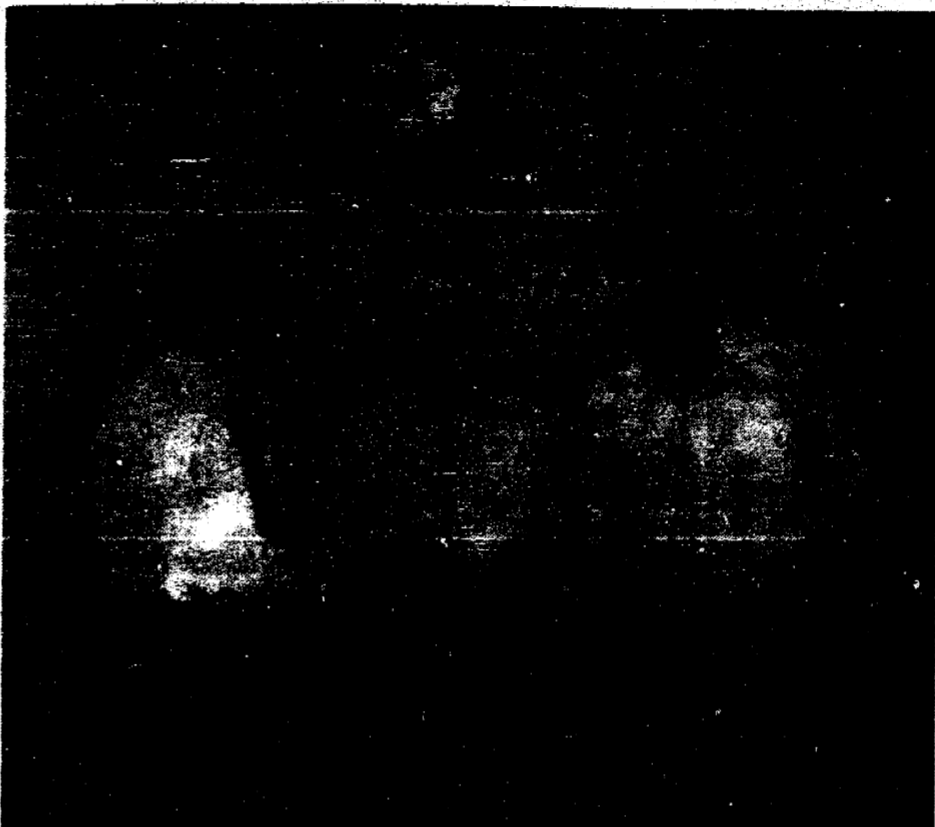
THE MANCHESTER ENTERPRISE

112TH YEAR VOLUME NO. 2

20¢ A COPY

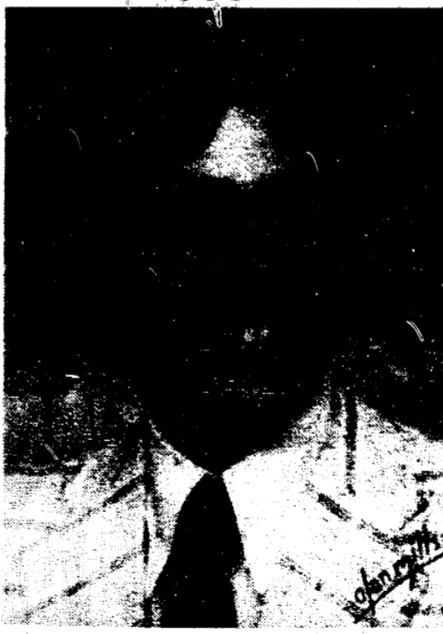
THURSDAY, NOVEMBER 9, 1978

CHRYSLER PROVING GROUNDS AGAIN OVER GOAL FOR U.F.



Pictured L to R: Robert Pavlinski, Personnel Director; Clarence Fielder, United Fund President; and David McAllister, Union President.

Rev. MacFarlane Appointed Pastor of Emanuel-UCC



The Emanuel United Church of Christ has confirmed the appointment of a new pastor, the Rev. Robert B. MacFarlane from Dalton, Mass.

Rev. MacFarlane has two sons, Andrew age 1 and Duncan age 4. He is married to the former Diana Bishop, who is educated as an elementary school teacher, but who is not teaching while their children are small.

Rev. MacFarlane has a BA degree in Philosophy & Religion from Boston University and a Master of Divinity from Andover Newton Theological School. His most recent position has been that of Associate Pastor of the First Congregational Church (U.C.C.) of Dalton, Mass., which has over 1200 members. Rev. MacFarlane is a camper, hiker, piano player, Scotsman (who has been to Scotland) photographer, guitar player, trackman (1:58.7 1/2 mile) and in his own words "dreamer, hope of all things".

Rev. MacFarlane and his family are looking forward to coming to Manchester, and he plans to assume his duties here early December 1978.

GOLDEN WEDDING ANNIVERSARY



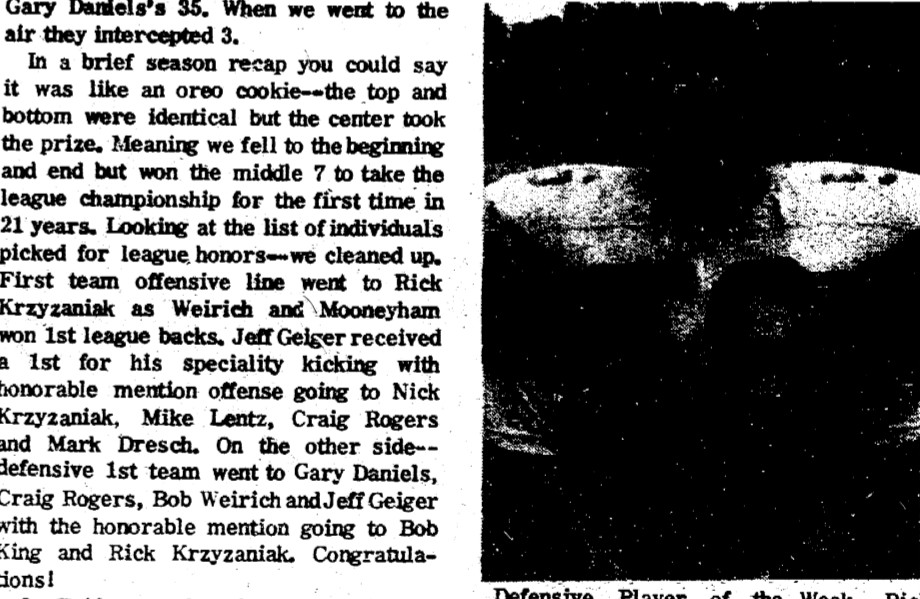
Mr. and Mrs. Norma Kothe of Kothe Road, Manchester, will be honored at a golden anniversary open house Sunday, Stockbridge Drops Dutch

By Jon Hardenbergh

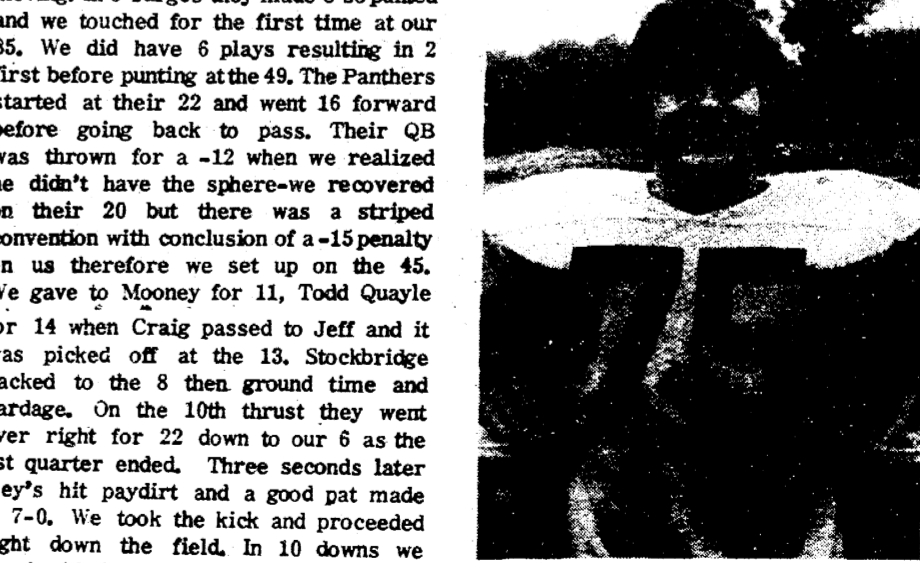
Manchester's inability to capitalize on the Panther mistakes and their 2 long TD drives spelled defeat Friday. We did not post more first downs 12-8 but they shut-off our main weapon—the running attack. Our 3 backs were stalled to Bob Weirich's 25, John Mooneyham's 15 and Gary Daniels's 35. When we went to the air they intercepted 3.

In a brief season recap you could say it was like an oreo cookie—the top and bottom were identical but the center took the prize. Meaning we fell to the beginning and end but won the middle 7 to take the league championship for the first time in 21 years. Looking at the list of individuals picked for league honors—we cleaned up. First team offensive line went to Rick Krzyzaniak as Weirich and Mooneyham won 1st league backs. Jeff Geiger received a 1st for his speciality kicking with honorable mention offense going to Nick Krzyzaniak, Mike Lentz, Craig Rogers and Mark Dresch. On the other side—defensive 1st team went to Gary Daniels, Craig Rogers, Bob Weirich and Jeff Geiger with the honorable mention going to Bob King and Rick Krzyzaniak. Congratulations!

On Friday, we bused up to Stockbridge and we booted to them to get the clock moving. In 3 surges they made 8 so punted and we touched for the first time at our 35. We did have 6 plays resulting in 2 first before punting at the 49. The Panthers started at their 22 and went 16 forward before going back to pass. Their QB was thrown for a -12 when we realized he didn't have the sphere—we recovered on their 20 but there was a striped convention with conclusion of a -15 penalty on us therefore we set up on the 45. We gave to Mooney for 11, Todd Quayle for 14 when Craig passed to Jeff and it was picked off at the 13. Stockbridge backed to the 8 then ground time and yardage. On the 10th thrust they went over right for 22 down to our 6 as the 1st quarter ended. Three seconds later they's hit paydirt and a good pat made it 7-0. We took the kick and proceeded right down the field. In 10 downs we stood with it fourth and 2 at the 23 when they brick-walled us to take possession. After gaining nothing in 3 attempts they again went right to motor 38 yards before stopping. Four plays put them on our 20



Defensive Player of the Week, Rick Krzyzaniak.



Offensive Player of the Week, Mike Lentz.

and their back went off right into our end zone. Following a successful pat it Continued on page 11

The Manchester Enterprise

150 EAST MAIN STREET
Manchester, Michigan 48158
Phone 428-8173

The Manchester Enterprise was established in 1867 and is published each Thursday at 150 East Main Street, Manchester, Michigan with second class postage paid at Manchester.

Edward E. Steele, Publisher
Lenore Steele, Editor



AREA OBITUARIES

William Clark Rhoades
10200 Grossman Rd.
Manchester

Age 47 years, died Friday, November 3 at St. Joseph Mercy Hospital. He was born July 31, 1931 in Ann Arbor the son of Floyd and Luella Guenther Rhoades.

He was married to Janice Jenkins on May 21, 1958. She survives. He had been an employee of the Chrysler Proving Ground for the past 15 years. Mr. Rhoades was a member of the Manchester United Methodist Church, the Manchester Sportsman Club and was a veteran of the U.S. Marine Corp.

In addition to his wife he is survived by one daughter, Miss Tamara Kay

Rhoades, student at U of M; one son, Craig William at home; Mother, Mrs. Luella Rhoades of Clinton; three brothers, Charles of Clinton, Eldon of Ottawa Lake and James of Britton; one sister, Mrs. Wilhelmine Clark of Clinton and several nieces and nephews.

Funeral services were held Monday 1:30 p.m. at United Methodist Church. Rev. Maurice Sharal officiated. Burial followed in Norvell Cemetery.

SHAKESPEARE CLUB

The Shakespeare Reading Club met at the home of Mrs. Marvin Kirk on Tuesday, October 31, with 18 members present. Mrs. Verna Sinclair and Mrs. Lenore Parr were received as new members of the group.

Mrs. Frances Nathan gave a reading from Shakespeare's Macbeth, Act IV Scene I.

Mrs. Jeanette Kirk gave a very interesting account of the life of Captain James Cook who was born in Yorkshire England. This year is the 200th anniversary of Capt. Cook's landing on our shores.

The proposals for the upcoming State election were discussed.

Current events were given. The next meeting of the Club will be held on Tuesday, November 14 at the home of Earl Dasher at 2 P.M.

PETRONELLA

The acclaimed Travelling Sables-children theatre will perform the story Petronella November 18 at 11:00 and 2:00 p.m. in the Black Sheep Repertory Theatre. Petronella is the story of a beautiful princess that rescues the prince from a magical wizard.

Tickets and information are available by calling (313) 428-9280 or 428-9287.

AN O'HENRY HOLIDAY

The Black Sheep Repertory Theatre Company opens a special family entertainment, An O'Henry Holiday November 9 through 12. The show is a staging of some of O'Henry's best short stories. It was put together by Black Sheep Company member Stan Gill. Gill previously assembled the successful show An Evening With Cole Porter.

Tickets and information are available by calling (313) 428-9280 or 428-9287. The Black Sheep Repertory Theatre is located off M-52 in southwestern Washtenaw County.

Connie Huber in Concert

Connie Huber, folk singer, song writer as well as member of the Black Sheep Repertory Theatre group, will perform at Washtenaw Community College in a free concert for the public Tuesday, November 14 at noon.

Huber appears as part of a continuing special series at the College which includes a performance by LaVar Burton, star of the television production of "Roots," later in the school year.

Huber, a former member of several folk staging groups, has toured the country on her own and since the fall of 1977 has been a member of the Black Sheep Repertory Theatre Company in Manchester. "Manchester has become my home base and afforded me an opportunity to tour as well as compose and perform at the theatre," she explains.

Her appearance at Washtenaw Community College will include her performance of many of her own songs as well as works of contemporary influences such as Joan Mitchell, David Buskin and Jackson

Brown.

The performance, free and open to the public, will be given in the second floor lounge of the College's Student Center Building at 4800 East Huron River Drive.

8th grade girls finish undefeated

The Manchester eighth grade girls finished their basketball season last week by defeating Clinton (49-14) and Dundee (39-18). This completed their second undefeated season with a record of 10-0. Alicia Seegert led the scoring in both games with 18 and 14 points respectively with Karl Agia helping out with 12 and 13 points.

Also scoring in the Clinton game were Natalie Walkow 6 points, Tina Brokaw 5, Tammie Honer, Mary Ridenour, Carol Kemper and Teresa Kniabnycky each with 2 points.

To finish the scoring in the Dundee game Natalie Walkow scored 4 while Tina Brokaw, Teresa Kniabnycky, Collette Rickelman, and Mary Ridenour each put in one basket.

These games with the others made it possible to score 48.2 points per game while allowing only 17.6 for the year.

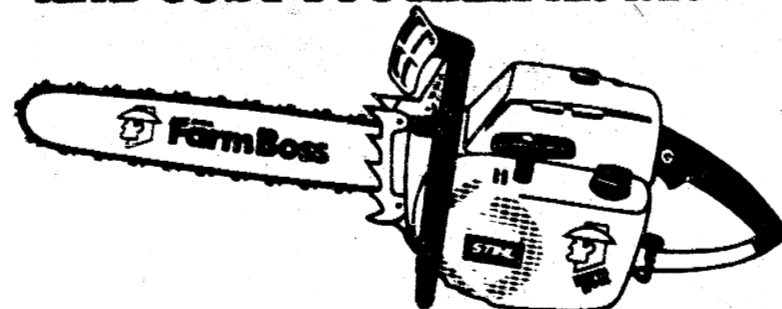
Horse Shoeing and Trimming

BOB BEAUBIEN
Phone (313) 467-2991
11540 STEPHENSON RD.
ONSTED, MICH.

LEAF PICK-UP

MONDAY, NOVEMBER 13
MANCHESTER VILLAGE WILL
PICK-UP LEAVES THAT ARE
BAGGED AND PLACED
AT THE CURB

THE FARM BOSS IS DESIGNED TO LAST YOU TWICE AS LONG AND COST YOU HALF AS MUCH.



Part for part, the Farm Boss has been designed to last at least twice as long as any other popular saw in its class. And by lasting twice as long, you'll save about twice as much to make the Farm Boss the only farm saw on the market that's more than a deal. It's a Stihl!

K & W EQUIPMENT INC.

11100 Chelsea-Manchester Rd. Manchester, Mich.



Phone 428-7666

The world's largest selling chainsaw.

KLAGER BOOK FAIR

The annual Book Fair is coming to Klager School this year on November 15 and 16. So parents, come and see us and think about doing your Christmas shopping. This is one way we have to stock our Library with new books every year, which we really appreciate.

We will be open from 9:00 A.M. to 2:30 P.M. and 6:00 P.M. to 8:30 P.M. on Wednesday, November 15 and from 9:00 A.M. to 2:30 P.M. on Thursday, November 16. Books will once again be furnished by the Calico Cat.

Hope to see you than!

Singles 25 And Up

Come alone or come with a friend. Be our guest at the Tuesday Nite Singles at the American Legion Hall, Main Street, Ann Arbor, on November 14th. Dance from Nine to Midnight to the music of The Merrimen. Good time by all.

VETERANS DAY POT-LUCK

All area veterans and family are invited to a potluck dinner Saturday, November 11, 1978 at the new Legion building. Please bring table service and a dish to pass. Meat, rolls, coffee-furnished. Dinner at 6:30 p.m.

Singing Festival

The Annual Junior Choir Festival, sponsored by the Ann Arbor Chapter of the American Guild of Organists, will take place this year at St. Andrew's Episcopal Church, 306 N. Division St., Ann Arbor. The Festival Service is to begin at 4:00 P.M. on Sunday, November 12th. Junior Choirs from seven churches in Ann Arbor, Chelsea, Dexter, and Monroe are participating.

Directing the massed choir of well over 100 chorists will be Dr. Donald Williams, Organist & Choirmaster at Zion Lutheran Church, Ann Arbor. Organist for the Service will be Mr. Thomas Strode,

Organist & Choirmaster at St. Andrew's Episcopal Church. Instrumentalists will include Ms. Cathy Leach, trumpet, and Ms. Sally Williams, flute. Anthems will be sung by the combined choirs include works by W.H. Parry, Mozart, and traditional Carols and Hymns.

The public is cordially invited to attend without charge.

'An Old Fashioned Christmas'

The Manchester Art Gallery will be having "An Old Fashioned Christmas" with the opening celebration on Friday, November 24th from 10-4 p.m.

A unique collection of fine art, ornaments, and gift items will be on display with Christmas music by the Manchester Junior Symphony. Refreshments will include mulled cider, homemade cookies and pretzels. Show ends December 23rd.

The location of the Manchester Art Gallery is 138 E. Main St., Manchester with the following hours: Thursday and Friday 7-10 p.m.; Saturdays 10-4 p.m. and 7-10 p.m.; Sunday 1-6 p.m. by appt. call 428-7927.

BINGO

AMERICAN LEGION POST #117
203 ADRIAN STREET
WEDNESDAYS 7 PM



It is again time to consider opening a Christmas Club account.

A Christmas Club, for those who aren't familiar with the program, is where you place a little each week for fifty weeks in a special account. At the end of fifty weeks we send you a check for everything you have placed in the account.

Your check comes early enough to permit you to plan Holiday shopping expenses without a problem.

Many of our customers maintain a Christmas Club for Holiday expenses and another Club to meet winter taxes. Many of our customers, too, have more than one Christmas Club, opting for a Club for every family member.

Whatever program you select, whatever size Club or Clubs you choose, we're happy to accommodate you.

While many banks are discontinuing Christmas Clubs as too much bother and too expensive to process, we see Christmas Clubs as one more service we like to offer.

Handwritten signature



PRE-HOLIDAY SAVINGS

<p>Norelco Adjustable Rotary Razor #HP 1131 \$57.95 Value F.I.P. Price \$38⁹⁵</p>	<p>Norelco Gotcha Gun 1000 Watt Compact Dryer #HB 1707 \$23.95 Value F.I.P. Price \$12⁴⁹</p>	
<p>"New" Clairol Condition II After Shampoo Treatment Balanced, Extra Body & Extra Protection 16 oz. \$2.59 Value F.I.P. Price \$1²⁹</p>	<p>Monoject Disposable Insulin Syringe & Needle 30 pack 1cc U40, U80, U100, \$6.00 Value 1/2cc U100 \$6.00 Value F.I.P. Price \$3⁵⁹</p>	
<p>Ascriptin Tablets 100's \$2.21 Value F.I.P. Price \$1¹⁹</p>	<p>Icy Hot Analgesic Balm 3.5 oz. \$3.00 Value F.I.P. Price \$1⁹⁸</p>	<p>Metamucil Powder 14 oz. \$4.83 Value F.I.P. Price \$2⁹⁸</p>
<p>Norelco Ladybug Shaver #HP 2127 \$26.40 Value F.I.P. Price \$18³⁹</p>	<p>Oil Of Olay Beauty Lotion 4 oz. \$4.75 Value F.I.P. Price \$2⁷⁵</p>	<p>Tickle Roll-On Deodorant All Scents 2 oz. \$2.29 Value F.I.P. Price \$1⁴⁵</p>
<p>Triaminic Expectorant 4 oz. \$2.67 Value F.I.P. Price \$1⁴⁸</p>	<p>Triaminic Syrup 4 oz. \$2.14 Value F.I.P. Price \$1³³</p>	<p>Tylenol Acetaminophen Tablets 100's \$2.95 Value F.I.P. Price \$1⁵⁵</p>
<p>Hall's Mento-Lyptus Cough Tablets All Flavors Bags of 30 79c Value F.I.P. Price 57^c</p>	<p>Norelco Curly Q Curling Wand w/Mist #HB 1600 \$14.95 Value F.I.P. Price \$10⁹⁵</p>	
<p>Norelco Nail Dazzler Cordless Manicure Machine #HB 9400 \$14.95 Value F.I.P. Price \$10⁶⁹</p>	<p>Wondra Skin Conditioning Lotion Regular Or Unscented 6 oz. \$1.45 Value F.I.P. Price 85^c</p>	

KRAUSS PHARMACY

PHONE 428-8393 MANCHESTER, MICHIGAN

ALBER EXCAVATING & TRUCKING

DRIVEWAYS—DRAIN FIELDS—DRY WELLS
SEPTIC TANK INSTALLATION—BASEMENTS DUG
GRADING—GRAIN HAULING
TOPSOIL—SAND—GRAVEL
LICENSED CONTRACTOR
PHONE (313) 428-8628
7601 HASHLEY Rd. MANCHESTER.

Spear & Associates, Mann, Realtors

122 West Main Phone 428-8388 Daily Manchester

NEW LISTING - Pallet Factory located 2 1/2 miles SW of Manchester, 12,000 sq. ft., includes all equipment in building for making pallets, on 2 1/2 acres. For more information please call.

IMMEDIATE POSSESSION - 10 0 bedroom home, located in the Village of Manchester, kitchen has walk-in pantry, built-in china cabinet in dining room, many more features. \$49,500.

THREE BEDROOM RANCH - On 10 acres, beautiful setting, 2 baths, 40 X 54 pole barn, Mid-\$60's.

10, 20, & 30 ACRE BUILDING SITES - Rolling land and scattered trees, prices starting at \$19,500.

OFFICE HOURS
Mon. thru Fri. 9 a.m. to 5 p.m. Sat. 9 a.m. to 12 noon
OFFICE PHONE 428-8388
Evenings and Weekends:
Jim Mann 428-8074 Ellis Pratt 428-8562

Council Proceedings

October 16, 1978

Council met in regular session with the meeting called to order by President Schaffer at 7:00 P.M. Present: Althouse, Daniels, Duncan, Fitzgerald, Koebbe, Zsenyuk. Minutes of the October 2, 1978 meeting were approved as corrected in a motion by Duncan, supported by Althouse. All yeas, motion carried.

Schaffer offered the name of John Hinkley for appointment to the vacancy of Councilman, effective October 16, 1978. Moved by Koebbe, supported by Althouse to approve the Appointment of John Hinkley as Councilman. All yeas, motion carried. Mr. Hinkley was then sworn in. Hinkley was appointed to the Parks and Recreation Committee.

Fitzgerald and Richard Kuntz reviewed the 1978 Budget. It was moved by Fitzgerald and supported by Duncan to authorize Richard Kuntz to transfer monies to proper accounts. All yeas, motion carried. Water Bill accounts were

discussed and it was decided delinquent bills be added to tax roll.

Mr. Ron Dillingham of Dillingham and White Insurance Agency was present to present insurance coverage for the Village. He presented a special Multi-Peril Policy covering Village of Manchester, a Standard Boiler and Machinery Policy and Umbrella Policy for a total of \$8,631.00. It was moved by Koebbe supported by Duncan to accept the bid of Dillingham and White for Insurance Coverage and cancel the False Arrest Policy now in force with opportunity to bid on Fleet Policy which expires in Feb. 1979. All yeas, motion carried.

Bids were opened by Schaffer for the hauling of the Village Transfer Station. Bids were from Emmons Service, Inc. which proposed 3 pulls per week at a price of \$75.00 per pull. Lenawee Disposal Service Co. proposed: the village to furnish two 43-Cubic yard containers which Lenawee Disposal Service will pull as needed for the sum of \$110.00 per load. Price included all manpower and disposal fees. It was moved by Fitzgerald, supported by Duncan to leave decision to Public Works Dept. All yeas, motion carried.

Koebbe questioned why transfer sites were in arrears. Township Supervisors will be contacted.

Public Works activities as reported by Koebbe included: Stamp Program has been completed and thanks to DuRussell Bros.

who gave village top soil to fill the holes. Order for 250 feet of cable is on order. Repaired drain for Mr. Lannom in back of Ben Franklin store. Crew mowed parks. Graves were dug at the cemeteries. Repaired sewer on Torrey Street. Installation of some outside water meters. Helped repair one water meter. Worked on equipment on wet and rainy days. Mr. Don Limpert is going to install a 2" water service to new building on Washington St. using P.V.C. from curb stop to building.

Chief Zsenyuk reported he had met with Consumers Power pertaining to a new pole in the Northside Parking Lot which would hold two lights with increased wattage. No cost for pole. Annual cost \$140.20 Hinkley and Zsenyuk to meet with merchants to discuss the plan. He also reported Consumers Power had recommended 3 lights for the Riverbend Estates at annual cost of \$210.60. Ornamental Poles \$100.00 or Wooden Poles at no cost. It was decided the wooden poles be put in. After meeting with Merchants, Consumers Power Co. to be notified by letter. Chief Zsenyuk had contacted Mrs. McConklin of M.E.S.C. on Temporary Employees rights to benefits and reported the Temporary Employees must sign a waiver of Benefits which was approved by M.E.S.C.

Moved by Althouse, supported by Hinkley to sign agreement for Police Protection Crossing Guards with Manchester Public Schools. All yeas, motion carried.

Duncan reported the Planning Commission had met on Oct. 3, 1978. Principal

Agenda was postponed, due to non-appearance of interested parties. There were discussions of various items. No final actions were taken.

Meeting adjourned at 10:00 P.M. Dealoris E. Richardson, Clerk

MANCHESTER VILLAGE PLANNING COMMISSION

October 3, 1978

The regular meeting of the Manchester Village Planning Commission was held at the Village Hall, with members present: Broucek, Leeson, Duncan, Daniels, Tracy, and Krauss.

The meeting was called to order at 7:30 P.M. by Chairman Broucek. Minutes of the last meeting were read, and on the motion by Daniels, seconded by Tracy, were unanimously approved.

Principal agenda item was postponed due to the non-appearance of interested parties.

There was discussion of various items pertaining to recent activities, and probable upcoming proposals. No final actions were taken.

The meeting was declared adjourned, at 8:20 p.m.

Laurin F. Leeson, Secretary

FREEDOM ELECTRIC
11207 Pleasant Lake Road
Manchester, Michigan
NEW CONSTRUCTION
COMMERCIAL INDUSTRIAL
GILBERT LUCKHARDT
428-8233

Odds & Ends BUSINESS SERVICE
KATHLEEN A. AIUTO
104 East Main St.
Manchester
PHONE 428-9202

Guy's Bridgewater Tavern
MIXED DRINKS
FINE SANDWICHES
429-4529
8452 Boettner Rd
Bridgewater
Guy Gilbert
Owner

TOY HOUSE CATALOG SALE
BRING ANY CURRENT MAIL ORDER CATALOG AND IF WE STOCK IDENTICAL TOY ITEMS, YOU BUY AT THE CATALOG PRICE. YOU SAVE POSTAGE AND FREIGHT AND ARE CERTAIN OF GETTING THE ITEMS YOU WANT. FREE PARKING. VISA AND MASTER CHARGE ACCEPTED. SALE RUNS WEDNESDAY AND THURSDAY, NOVEMBER 15-16, FROM 9:30 TO 5:30 AND FRIDAY, NOVEMBER 17 FROM 9:30 TO 9 P.M. LOCATED 400 N. MECHANIC, DOWNTOWN JACKSON. CALL (517) 787-4500 FOR FURTHER INFORMATION.

The Black Sheep Repertory Theatre
UPCOMING CONCERTS
Don McLean
Nov. 12
Shows 8:00 & 10:30 p.m.
The Dillards
Nov. 13, 14
Shows 7:00 & 9:30 p.m.
Doc Watson
Nov. 19
Shows 7:00 & 9:30 p.m.
FOR TICKETS
Call 428-9287

No longer Need You Have Idle Money!

Now...Automatic transfer of funds from your interest bearing savings to your checking account as needed.

When your checks are presented to us for payment, by prior arrangement, we can transfer monies from interest bearing savings to your checking account.

Effective Nov. 1, 1978

There is no need to lose a moment's worth of interest on the funds you have on deposit with this bank because we won't transfer funds until checks you have written are presented to us for payment.

UNION SAVINGS BANK
MEMBER F.I.C. MANCHESTER BRIDGEWATER PLEASANT LAKE

STRIKES 'N SPARES

MANCHESTER TOWN CLUB

TEAM	WON	LOST
Manchester Tool & Die	51	12
Norm Walz Construction	40	23
DuRussel Brothers	37	26
C & J Driveaway	37	26
Jenter Funeral Home	32	31
McDonalds Restaurant	30	33
Widmayer Ford	29	34
Union Savings Bank	24	39
Manchester Plastics	21	42
Chic-Tress Beauty Salon	14	49
HIGH TEAM SERIES		
Tool & Die	2395	
Jenters w/h	2279	
HIGH TEAM GAME		
Tool & Die	847	
DuRussels w/h	825	
HIGH INDIVIDUAL SERIES		
L. Corwin	583	
J. Day	562	
P. Brokaw	558	
HIGH INDIVIDUAL GAME		
L. Corwin	228	
M. Korican	221	
F. Brokaw	215	
500 SERIES		
Joan Day	562	
Irene Wurster	514	
200 GAMES		
Joan Day	211	
Irene Wurster	209	

JOLLY KEGLERS BOWLING LEAGUE

TEAM	WON	LOST
Alexander & Company	40	23
Black Sheep Tavern	40	23
Dutch Country Kitchens	36	27



TEAM	WON	LOST
Double A Products	34	29
Cheryl's Boutique	33	30
Carol's Cut-n-Curl	31	32
Krauss Pharmacy	22	41
Grossman-Huber	16	47
HIGH TEAM SERIES W/H		
Alexander & Company	2605	
Krauss Pharmacy	2594	
Carol's Cut-n-Curl	2589	
HIGH TEAM GAME W/H		
Dutch Country Kitchens	943	
Alexander & Company	931	
Cheryl's Boutique	917	
HIGH INDIVIDUAL GAME (ACTUAL)		
S. Walton	211	
J. Withrow	199	
P. Schmidt	197	
HIGH INDIVIDUAL SERIES (ACTUAL)		
L. Steele	538	
S. Walton	530	
P. Schmidt	511	
HIGH ACTUAL GAME OF WEEK		
N. Weir	189	
JUNIOR HOUSE GIRLS	11-2-78	
TEAM	WON	LOST
Wolverine Lounge	26.5	13.5
Cliff's Ace HA		
Cliff's Ace Hardware	26	14
Coolman Parking	23	17
W.C. Klep	21	19
Manchester Car Wash	20.5	19.5
Kozy Kitchen	20	16
Backdoor Party Store	18	22
Chelsea Lanes	16	26
K & W Equipment	15	25
Drake's	13	23
HIGH INDIVIDUAL SERIES		
P. Elliott	530	

MANCHESTER BUSINESS MENS

TEAM	WON	LOST
Grossman Huber Gulf	16	8
Manchester Tool & Die	15	9
DuRussel Brothers	15	9
K & W Farm Equipment	14	10
Double A Products	14	10
Smith Pallet	13.5	10.5
Wolverine Pipeline	13	11
Widmayer Ford	13	11
Alber Excavating	12	12
The Village Tap	12	12
Bridgewater Tavern	12	12
Superior Land Devel.	12	12
Alber Orchard	10	14
Gambles Store	10	14
Krauss Pharmacy	10	14
Manchester Electric	9	15
Doug's Party Store	9	15
Turb Chevrolet	6.5	17.5
HIGH TEAM SERIES		
K & W Farm Equipment	3156	
Alber Orchard	3131	
Widmayer Ford	3118	
HIGH TEAM GAME		
Alber Orchard	1174	
K & W Farm Equipment	1111	
DuRussel Bros.	1103	
Manchester Tool & Die	1103	
HIGH INDIVIDUAL SERIES		
Dave Walton	619	
Chuck Steele	614	
Gordie Beemar	603	

B & M BOWLING 11-4-78

HIGH INDIVIDUAL GAME	264
Richard Hlavka	264
Dave Walton	246
Dutch Grossman	232

MANCHESTER INSURANCE AGENCY
122 West Main Street
Manchester, Michigan
Phone 428-8215
Home-Farm & General Insurance

EARN 8 30% Effective Annual Rate

8 00% Per Annum

1978 TAX BREAK

ON IRA & KEOGH TAX DEFERRED RETIREMENT PLANS

Our IRA and KEOGH tax deferred retirement plans now earn the highest savings interest allowed by law...8.00% per annum. Minimum term is just 36 months. You can open an IRA or KEOGH account with as little as \$1 and make deposits throughout the

year of \$50, \$100 or whatever. Total deposits for the year, of course, are limited to 15% of earned income, or a maximum of \$1500 with IRA and \$7500 with KEOGH.

Existing IRA and KEOGH accounts automatically receive the new higher interest rate. Interest is paid quarterly and compounded monthly for an effective annual rate of 8.30%. At this rate your money doubles in approximately 8 years and 8 months.

Your accounts are insured with an agency of the federal government and federal regulations require a substantial interest penalty for early withdrawals.

Send for FREE literature
Please send free brochure on tax deferred retirement plan.
Name _____
Street _____
City _____ Zip _____
GREAT LAKES FEDERAL SAVINGS
401 E. Liberty, Ann Arbor, MI 48108
769-8300



GREAT LAKES FEDERAL SAVINGS

Offices in Ann Arbor, Battle Creek, Albion, Bellevue, Brighton, Chelsea, Coldwater, Dexter, Hastings, Manchester, Marshall, Richland, Saline, Ypsilanti • Member FSLIC

Organized in 1890

Your Church

EMANUEL UNITED CHURCH OF CHRIST
 Russel Hoover, Interim Pastor
 Sunday School 9:15, Church 10:30 a.m.
 Plan to worship God regularly.
SHARON UNITED METHODIST
 Corner Pleasant Lake Road - M-52.
 Rev. Wayne Ferrigan, Pastor
 Sunday School 10:00 a.m., Worship Service 11:00 a.m.

ST. THOMAS LUTHERAN
 Rev. Jerome Dykstra, Pastor
 Ellsworth Road
 Sunday School 9:30 a.m., Worship Service 10:45 a.m.

ST. JOHN'S UNITED CHURCH OF CHRIST
 Carl Asher, Pastor
 Rogers Carver, Waters and Fletcher Bldg.
 Sunday School 9:30 a.m., Church Services 10:30 a.m.

BETHEL UNITED CHURCH OF CHRIST
 Rev. Roman A. Reineck, Pastor
 Schneider and Bethel Church Roads
 Church Service 10:00 a.m., Sunday School 11:00 a.m.

MANCHESTER UNITED METHODIST
 Rev. Maurice D. Sharaf, Pastor
 Sunday School 9:15 a.m., Worship 10:30 a.m.
ST. MARY'S CATHOLIC CHURCH
 Father Raymond Schlinkert
 West Main Street
 Monday thru Friday 8:30 a.m., Saturday 8:00 p.m.

NORTH SHARON COMMUNITY BIBLE
 Pastor: Rev. Donald C. Purkey
 Sylvan and Washburn Road
 Sunday School 10:00 a.m., Worship Service 11:00 a.m. (Nursery will be available)
 Junior Church Classes 11:00 a.m., Youth Meeting Senior High 6:00 p.m., Youth Choir 6:00 p.m., Evening Worship Services 7:00 p.m. (Nursery available), Wednesday Bible Study and Prayer Meeting (Nursery available) 7:00 p.m. To your door Bus Transportation available 428-7222.

FAITH COMMUNITY CHURCH
 Timothy Miles, Pastor
 8400 Sharon Hollow Rd. off W. Austin Rd.
 Worship service 10:00 a.m., Sunday School 11:00 a.m., Sunday Youth People 6:00 p.m., Sunday Evening Service 7:00 p.m., Wednesday evening 6:30 p.m., Junior Choir Practice, Prayer Meeting and Bible Study 7:00 p.m., Junior Prayer Meeting 7:30 p.m., Senior Choir Practice 8:00 p.m.

IRON CREEK CHURCH
 Rev. Ralph Jamofski, Pastor
 Worship service 10:00 a.m., Sunday School 11:15 a.m., Youth service 6:50 p.m., Evening Service 7:30 p.m., Wednesday Evening: Junior Choir 6:50 p.m., Bible Study and Prayer Meeting 7:30 p.m., Senior Choir 8:50 p.m.

ZION LUTHERAN CHURCH
 Rev. John R. Morris, Pastor
 3050 S. Fletcher Road
 Sunday School 9:00 a.m., Family Worship 10:15 a.m.

ST. JOHN'S LUTHERAN CHURCH
 Austin Road, Bridgewater, Michigan
 Rev. Dennis A. Falk, Pastor
 Sunday School, 9:15, worship 10:30 a.m.

MANCHESTER BAPTIST CHURCH
 Ronald Nelson, Pastor
 425 S. Macomb Street, Phone 428-7262
 Sunday School 10:00 a.m., Morning worship 11:00 a.m., Evening worship 6:00 p.m., Youth Meeting 7:00 p.m., Monday Visitation 7:00 p.m., Wednesday-Prayer Meeting 7:00 p.m.

ST. BARNABAS EPISCOPAL CHURCH
 Rev. Jerrold F. Beaumont, "Vicar"
 Old U.S. 12 - 1.4 mile west of M52 - Chelsea, 10:00 a.m. Holy Eucharist and Morning Prayer.

EMANUEL UNITED CHURCH OF CHRIST
 Thursday, November 9, 3:00 p.m. Confirmation, 7:30 p.m. Senior Choir, 7:30 p.m. Women's Fellowship.
 Sunday, November 12, The Family Thank Offering will be received at the 10:30 service. This is also Harvest Home Sunday, please bring your gifts of processed foods and/or money for the needy, 6:00 p.m. Senior Youth hayride at the home of Brian and Debbie Alber.
 Tuesday, November 14, 12 noon - Senior Meal.
 Wednesday, November 15, 3:00 p.m. Confirmation, 4:15 p.m. Junior Choir.

FAITH COMMUNITY CHURCH
 Sunday, November 12th, Holy Communion during 10:00 a.m. Worship hour. Harvest Dinner and Fellowship Time after Sunday School. Bring table service and dishes to pass. Rolls and beverage will be furnished.
 Wednesday evening, November 15th, Prayer Hour and Bible Study at 7:00 p.m. Senior Choir at 8:00 p.m.
 Thursday, November 16th, Charity Circle at 11:00 a.m. Sue Lambarth and Nicole McGarry, hostesses.

BETHEL UNITED CHURCH OF CHRIST
 Sunday, November 12, 10:00 a.m. Christian Enlistment Worship Service, 11:00 a.m. All members meet with Christian Enlistment Counselors, 1:30 p.m. In-

MANCHESTER UNITED METHODIST
 Thursday, November 9, 7 p.m. Council on Ministries, 8 p.m. Administrative Board.
 Saturday, November 11, 10 a.m. Confirmation Class.
 Sunday, November 12, 11:30 Choir rehearsal, 7 p.m. Youth Meeting.
 Wednesday, November 15, 7 p.m. UMW Meeting. Program will be Hand Dipped Chocolate by Sandy and Robert Motchie. Bring a gift.

IRON CREEK COMMUNITY CHURCH
 Special services continue through Sunday evening, November 12th with the Gospel team, "Joyce, Arelene and Lois". The team make use of many musical instruments, chalk art, puppetry, object lessons and gospel magic in their presentation of sound Bible truths. There is something for every age so why not bring your

ST. JOHN'S LUTHERAN CHURCH
 Friday, November 10, E.O. Committee at A. Wild's, 8 p.m.
 Sunday, November 12, Blanket Sunday, Sunday School, 9:15 a.m. Worship with Holy Communion, 10:30 a.m. Youth Group, 7 p.m.
 Monday, November 13, pack boxes for LWR, 9 a.m.
 Tuesday, November 14, 3-D.
 Wednesday, November 15, Jr. Choir, 7:30. MIDWEEK DEV. Sr. Choir, 8:45.

ST. JOHN'S LUTHERAN CHURCH
 Friday, November 10, E.O. Committee at A. Wild's, 8 p.m.
 Sunday, November 12, Blanket Sunday, Sunday School, 9:15 a.m. Worship with Holy Communion, 10:30 a.m. Youth Group, 7 p.m.
 Monday, November 13, pack boxes for LWR, 9 a.m.
 Tuesday, November 14, 3-D.
 Wednesday, November 15, Jr. Choir, 7:30. MIDWEEK DEV. Sr. Choir, 8:45.

ST. JOHN'S LUTHERAN CHURCH
 Friday, November 10, E.O. Committee at A. Wild's, 8 p.m.
 Sunday, November 12, Blanket Sunday, Sunday School, 9:15 a.m. Worship with Holy Communion, 10:30 a.m. Youth Group, 7 p.m.
 Monday, November 13, pack boxes for LWR, 9 a.m.
 Tuesday, November 14, 3-D.
 Wednesday, November 15, Jr. Choir, 7:30. MIDWEEK DEV. Sr. Choir, 8:45.

ST. JOHN'S LUTHERAN CHURCH
 Friday, November 10, E.O. Committee at A. Wild's, 8 p.m.
 Sunday, November 12, Blanket Sunday, Sunday School, 9:15 a.m. Worship with Holy Communion, 10:30 a.m. Youth Group, 7 p.m.
 Monday, November 13, pack boxes for LWR, 9 a.m.
 Tuesday, November 14, 3-D.
 Wednesday, November 15, Jr. Choir, 7:30. MIDWEEK DEV. Sr. Choir, 8:45.

EMANUEL UNITED CHURCH OF CHRIST

Thursday, November 9, 3:00 p.m. Confirmation, 7:30 p.m. Senior Choir, 7:30 p.m. Women's Fellowship.

Sunday, November 12, The Family Thank Offering will be received at the 10:30 service. This is also Harvest Home Sunday, please bring your gifts of processed foods and/or money for the needy, 6:00 p.m. Senior Youth hayride at the home of Brian and Debbie Alber.

Tuesday, November 14, 12 noon - Senior Meal.
 Wednesday, November 15, 3:00 p.m. Confirmation, 4:15 p.m. Junior Choir.

FAITH COMMUNITY CHURCH

Sunday, November 12th, Holy Communion during 10:00 a.m. Worship hour. Harvest Dinner and Fellowship Time after Sunday School. Bring table service and dishes to pass. Rolls and beverage will be furnished.

Wednesday evening, November 15th, Prayer Hour and Bible Study at 7:00 p.m. Senior Choir at 8:00 p.m.
 Thursday, November 16th, Charity Circle at 11:00 a.m. Sue Lambarth and Nicole McGarry, hostesses.

BETHEL UNITED CHURCH OF CHRIST

Sunday, November 12, 10:00 a.m. Christian Enlistment Worship Service, 11:00 a.m. All members meet with Christian Enlistment Counselors, 1:30 p.m. In-

MANCHESTER UNITED METHODIST

Thursday, November 9, 7 p.m. Council on Ministries, 8 p.m. Administrative Board.
 Saturday, November 11, 10 a.m. Confirmation Class.
 Sunday, November 12, 11:30 Choir rehearsal, 7 p.m. Youth Meeting.
 Wednesday, November 15, 7 p.m. UMW Meeting. Program will be Hand Dipped Chocolate by Sandy and Robert Motchie. Bring a gift.

IRON CREEK COMMUNITY CHURCH

Special services continue through Sunday evening, November 12th with the Gospel team, "Joyce, Arelene and Lois". The team make use of many musical instruments, chalk art, puppetry, object lessons and gospel magic in their presentation of sound Bible truths. There is something for every age so why not bring your

ST. JOHN'S LUTHERAN CHURCH

Friday, November 10, E.O. Committee at A. Wild's, 8 p.m.
 Sunday, November 12, Blanket Sunday, Sunday School, 9:15 a.m. Worship with Holy Communion, 10:30 a.m. Youth Group, 7 p.m.
 Monday, November 13, pack boxes for LWR, 9 a.m.
 Tuesday, November 14, 3-D.
 Wednesday, November 15, Jr. Choir, 7:30. MIDWEEK DEV. Sr. Choir, 8:45.

ST. JOHN'S LUTHERAN CHURCH

Friday, November 10, E.O. Committee at A. Wild's, 8 p.m.
 Sunday, November 12, Blanket Sunday, Sunday School, 9:15 a.m. Worship with Holy Communion, 10:30 a.m. Youth Group, 7 p.m.
 Monday, November 13, pack boxes for LWR, 9 a.m.
 Tuesday, November 14, 3-D.
 Wednesday, November 15, Jr. Choir, 7:30. MIDWEEK DEV. Sr. Choir, 8:45.

ST. JOHN'S LUTHERAN CHURCH

Friday, November 10, E.O. Committee at A. Wild's, 8 p.m.
 Sunday, November 12, Blanket Sunday, Sunday School, 9:15 a.m. Worship with Holy Communion, 10:30 a.m. Youth Group, 7 p.m.
 Monday, November 13, pack boxes for LWR, 9 a.m.
 Tuesday, November 14, 3-D.
 Wednesday, November 15, Jr. Choir, 7:30. MIDWEEK DEV. Sr. Choir, 8:45.

ST. JOHN'S LUTHERAN CHURCH

Friday, November 10, E.O. Committee at A. Wild's, 8 p.m.
 Sunday, November 12, Blanket Sunday, Sunday School, 9:15 a.m. Worship with Holy Communion, 10:30 a.m. Youth Group, 7 p.m.
 Monday, November 13, pack boxes for LWR, 9 a.m.
 Tuesday, November 14, 3-D.
 Wednesday, November 15, Jr. Choir, 7:30. MIDWEEK DEV. Sr. Choir, 8:45.

ST. JOHN'S LUTHERAN CHURCH

Friday, November 10, E.O. Committee at A. Wild's, 8 p.m.
 Sunday, November 12, Blanket Sunday, Sunday School, 9:15 a.m. Worship with Holy Communion, 10:30 a.m. Youth Group, 7 p.m.
 Monday, November 13, pack boxes for LWR, 9 a.m.
 Tuesday, November 14, 3-D.
 Wednesday, November 15, Jr. Choir, 7:30. MIDWEEK DEV. Sr. Choir, 8:45.

ST. JOHN'S LUTHERAN CHURCH

Friday, November 10, E.O. Committee at A. Wild's, 8 p.m.
 Sunday, November 12, Blanket Sunday, Sunday School, 9:15 a.m. Worship with Holy Communion, 10:30 a.m. Youth Group, 7 p.m.
 Monday, November 13, pack boxes for LWR, 9 a.m.
 Tuesday, November 14, 3-D.
 Wednesday, November 15, Jr. Choir, 7:30. MIDWEEK DEV. Sr. Choir, 8:45.

ST. JOHN'S LUTHERAN CHURCH

Friday, November 10, E.O. Committee at A. Wild's, 8 p.m.
 Sunday, November 12, Blanket Sunday, Sunday School, 9:15 a.m. Worship with Holy Communion, 10:30 a.m. Youth Group, 7 p.m.
 Monday, November 13, pack boxes for LWR, 9 a.m.
 Tuesday, November 14, 3-D.
 Wednesday, November 15, Jr. Choir, 7:30. MIDWEEK DEV. Sr. Choir, 8:45.

ST. JOHN'S LUTHERAN CHURCH

Friday, November 10, E.O. Committee at A. Wild's, 8 p.m.
 Sunday, November 12, Blanket Sunday, Sunday School, 9:15 a.m. Worship with Holy Communion, 10:30 a.m. Youth Group, 7 p.m.
 Monday, November 13, pack boxes for LWR, 9 a.m.
 Tuesday, November 14, 3-D.
 Wednesday, November 15, Jr. Choir, 7:30. MIDWEEK DEV. Sr. Choir, 8:45.

ST. JOHN'S LUTHERAN CHURCH

Betweeners Bowling at Bel Mark Lanes, 3:00 p.m. Senior Youth Fellowship invited to St. James U.C.C.
 Wednesday, November 15, 11:30 a.m. Senior Citizens of Bethel meet-soup and sandwiches.

ZION LUTHERAN CHURCH

Thursday, November 9, Huron River Conf. ALCW Officers workshop 9 a.m.-2:30 p.m. at St. John, Dundas.
 Saturday, November 11, YI 9 a.m.-8th grade, 10:30 a.m.-7th grade, 1 p.m. Sr. Citizens with Methodist Home residents as guests.
 Sunday, November 12, Sunday School 9 a.m. Pastor's Adult Inquirers' 9 a.m. Worship 10:15 a.m. (Blanket Sunday) Vote on Worship book. LL 5 p.m.
 Monday, November 13, Clergy-Spouse retreat at Lansing.
 Tuesday, November 14, Jr. Choir 4 p.m. Shuffleboard 7:30 p.m.
 Wednesday, November 15, Zion ALCW Ex. Bd. 7:30 p.m. HR Conf. Ex. Bd. 7:30.

MANCHESTER UNITED METHODIST

Thursday, November 9, 7 p.m. Council on Ministries, 8 p.m. Administrative Board.
 Saturday, November 11, 10 a.m. Confirmation Class.
 Sunday, November 12, 11:30 Choir rehearsal, 7 p.m. Youth Meeting.
 Wednesday, November 15, 7 p.m. UMW Meeting. Program will be Hand Dipped Chocolate by Sandy and Robert Motchie. Bring a gift.

IRON CREEK COMMUNITY CHURCH

Special services continue through Sunday evening, November 12th with the Gospel team, "Joyce, Arelene and Lois". The team make use of many musical instruments, chalk art, puppetry, object lessons and gospel magic in their presentation of sound Bible truths. There is something for every age so why not bring your

ST. JOHN'S LUTHERAN CHURCH

Friday, November 10, E.O. Committee at A. Wild's, 8 p.m.
 Sunday, November 12, Blanket Sunday, Sunday School, 9:15 a.m. Worship with Holy Communion, 10:30 a.m. Youth Group, 7 p.m.
 Monday, November 13, pack boxes for LWR, 9 a.m.
 Tuesday, November 14, 3-D.
 Wednesday, November 15, Jr. Choir, 7:30. MIDWEEK DEV. Sr. Choir, 8:45.

ST. JOHN'S LUTHERAN CHURCH

Friday, November 10, E.O. Committee at A. Wild's, 8 p.m.
 Sunday, November 12, Blanket Sunday, Sunday School, 9:15 a.m. Worship with Holy Communion, 10:30 a.m. Youth Group, 7 p.m.
 Monday, November 13, pack boxes for LWR, 9 a.m.
 Tuesday, November 14, 3-D.
 Wednesday, November 15, Jr. Choir, 7:30. MIDWEEK DEV. Sr. Choir, 8:45.

ST. JOHN'S LUTHERAN CHURCH

Friday, November 10, E.O. Committee at A. Wild's, 8 p.m.
 Sunday, November 12, Blanket Sunday, Sunday School, 9:15 a.m. Worship with Holy Communion, 10:30 a.m. Youth Group, 7 p.m.
 Monday, November 13, pack boxes for LWR, 9 a.m.
 Tuesday, November 14, 3-D.
 Wednesday, November 15, Jr. Choir, 7:30. MIDWEEK DEV. Sr. Choir, 8:45.

ST. JOHN'S LUTHERAN CHURCH

Friday, November 10, E.O. Committee at A. Wild's, 8 p.m.
 Sunday, November 12, Blanket Sunday, Sunday School, 9:15 a.m. Worship with Holy Communion, 10:30 a.m. Youth Group, 7 p.m.
 Monday, November 13, pack boxes for LWR, 9 a.m.
 Tuesday, November 14, 3-D.
 Wednesday, November 15, Jr. Choir, 7:30. MIDWEEK DEV. Sr. Choir, 8:45.

ST. JOHN'S LUTHERAN CHURCH

Friday, November 10, E.O. Committee at A. Wild's, 8 p.m.
 Sunday, November 12, Blanket Sunday, Sunday School, 9:15 a.m. Worship with Holy Communion, 10:30 a.m. Youth Group, 7 p.m.
 Monday, November 13, pack boxes for LWR, 9 a.m.
 Tuesday, November 14, 3-D.
 Wednesday, November 15, Jr. Choir, 7:30. MIDWEEK DEV. Sr. Choir, 8:45.

ST. JOHN'S LUTHERAN CHURCH

Friday, November 10, E.O. Committee at A. Wild's, 8 p.m.
 Sunday, November 12, Blanket Sunday, Sunday School, 9:15 a.m. Worship with Holy Communion, 10:30 a.m. Youth Group, 7 p.m.
 Monday, November 13, pack boxes for LWR, 9 a.m.
 Tuesday, November 14, 3-D.
 Wednesday, November 15, Jr. Choir, 7:30. MIDWEEK DEV. Sr. Choir, 8:45.

ST. JOHN'S LUTHERAN CHURCH

Friday, November 10, E.O. Committee at A. Wild's, 8 p.m.
 Sunday, November 12, Blanket Sunday, Sunday School, 9:15 a.m. Worship with Holy Communion, 10:30 a.m. Youth Group, 7 p.m.
 Monday, November 13, pack boxes for LWR, 9 a.m.
 Tuesday, November 14, 3-D.
 Wednesday, November 15, Jr. Choir, 7:30. MIDWEEK DEV. Sr. Choir, 8:45.

ST. JOHN'S LUTHERAN CHURCH

Friday, November 10, E.O. Committee at A. Wild's, 8 p.m.
 Sunday, November 12, Blanket Sunday, Sunday School, 9:15 a.m. Worship with Holy Communion, 10:30 a.m. Youth Group, 7 p.m.
 Monday, November 13, pack boxes for LWR, 9 a.m.
 Tuesday, November 14, 3-D.
 Wednesday, November 15, Jr. Choir, 7:30. MIDWEEK DEV. Sr. Choir, 8:45.

ST. JOHN'S LUTHERAN CHURCH

Friday, November 10, E.O. Committee at A. Wild's, 8 p.m.
 Sunday, November 12, Blanket Sunday, Sunday School, 9:15 a.m. Worship with Holy Communion, 10:30 a.m. Youth Group, 7 p.m.
 Monday, November 13, pack boxes for LWR, 9 a.m.
 Tuesday, November 14, 3-D.
 Wednesday, November 15, Jr. Choir, 7:30. MIDWEEK DEV. Sr. Choir, 8:45.

ST. JOHN'S LUTHERAN CHURCH

Friday, November 10, E.O. Committee at A. Wild's, 8 p.m.
 Sunday, November 12, Blanket Sunday, Sunday School, 9:15 a.m. Worship with Holy Communion, 10:30 a.m. Youth Group, 7 p.m.
 Monday, November 13, pack boxes for LWR, 9 a.m.
 Tuesday, November 14, 3-D.
 Wednesday, November 15, Jr. Choir, 7:30. MIDWEEK DEV. Sr. Choir, 8:45.

ST. JOHN'S LUTHERAN CHURCH

Friday, November 10, E.O. Committee at A. Wild's, 8 p.m.
 Sunday, November 12, Blanket Sunday, Sunday School, 9:15 a.m. Worship with Holy Communion, 10:30 a.m. Youth Group, 7 p.m.
 Monday, November 13, pack boxes for LWR, 9 a.m.
 Tuesday, November 14, 3-D.
 Wednesday, November 15, Jr. Choir, 7:30. MIDWEEK DEV. Sr. Choir, 8:45.

ST. JOHN'S LUTHERAN CHURCH

family and friends for the remaining nights of this special revival time. Evening service is at 7:30 and Sunday worship hour is 10 a.m. We welcome YOU.

ST. JOHN'S LUTHERAN CHURCH

Friday, November 10, E.O. Committee at A. Wild's, 8 p.m.
 Sunday, November 12, Blanket Sunday, Sunday School, 9:15 a.m. Worship with Holy Communion, 10:30 a.m. Youth Group, 7 p.m.
 Monday, November 13, pack boxes for LWR, 9 a.m.
 Tuesday, November 14, 3-D.
 Wednesday, November 15, Jr. Choir, 7:30. MIDWEEK DEV. Sr. Choir, 8:45.

ST. JOHN'S LUTHERAN CHURCH

Friday, November 10, E.O. Committee at A. Wild's, 8 p.m.
 Sunday, November 12, Blanket Sunday, Sunday School, 9:15 a.m. Worship with Holy Communion, 10:30 a.m. Youth Group, 7 p.m.
 Monday, November 13, pack boxes for LWR, 9 a.m.
 Tuesday, November 14, 3-D.
 Wednesday, November 15, Jr. Choir, 7:30. MIDWEEK DEV. Sr. Choir, 8:45.

ST. JOHN'S LUTHERAN CHURCH

Friday, November 10, E.O. Committee at A. Wild's, 8 p.m.
 Sunday, November 12, Blanket Sunday, Sunday School, 9:15 a.m. Worship with Holy Communion, 10:30 a.m. Youth Group, 7 p.m.
 Monday, November 13, pack boxes for LWR, 9 a.m.
 Tuesday, November 14, 3-D.
 Wednesday, November 15, Jr. Choir, 7:30. MIDWEEK DEV. Sr. Choir, 8:45.

ST. JOHN'S LUTHERAN CHURCH

Friday, November 10, E.O. Committee at A. Wild's, 8 p.m.
 Sunday, November 12, Blanket Sunday, Sunday School, 9:15 a.m. Worship with Holy Communion, 10:30 a.m. Youth Group, 7 p.m.
 Monday, November 13, pack boxes for LWR, 9 a.m.
 Tuesday, November 14, 3-D.
 Wednesday, November 15, Jr. Choir, 7:30. MIDWEEK DEV. Sr. Choir, 8:45.

ST. JOHN'S LUTHERAN CHURCH

Friday, November 10, E.O. Committee at A. Wild's, 8 p.m.
 Sunday, November 12, Blanket Sunday, Sunday School, 9:15 a.m. Worship with Holy Communion, 10:30 a.m. Youth Group, 7 p.m.
 Monday, November 13, pack boxes for LWR, 9 a.m.
 Tuesday, November 14, 3-D.
 Wednesday, November 15, Jr. Choir, 7:30. MIDWEEK DEV. Sr. Choir, 8:45.

ST. JOHN'S LUTHERAN CHURCH

Friday, November 10, E.O. Committee at A. Wild's, 8 p.m.
 Sunday, November 12, Blanket Sunday, Sunday School, 9:15 a.m. Worship with Holy Communion, 10:30 a.m. Youth Group, 7 p.m.
 Monday, November 13, pack boxes for LWR, 9 a.m.
 Tuesday, November 14, 3-D.
 Wednesday, November 15, Jr. Choir, 7:30. MIDWEEK DEV. Sr. Choir, 8:45.

ST. JOHN'S LUTHERAN CHURCH

Friday, November 10, E.O. Committee at A. Wild's, 8 p.m.
 Sunday, November 12, Blanket Sunday, Sunday School, 9:15 a.m. Worship with Holy Communion, 10:30 a.m. Youth Group, 7 p.m.
 Monday, November 13, pack boxes for LWR, 9 a.m.
 Tuesday, November 14, 3-D.
 Wednesday, November 15, Jr. Choir, 7:30. MIDWEEK DEV. Sr. Choir, 8:45.

ST. JOHN'S LUTHERAN CHURCH

Friday, November 10, E.O. Committee at A. Wild's, 8 p.m.
 Sunday, November 12, Blanket Sunday, Sunday School, 9:15 a.m. Worship with Holy Communion, 10:30 a.m. Youth Group, 7 p.m.
 Monday, November 13, pack boxes for LWR, 9 a.m.
 Tuesday, November 14, 3-D.
 Wednesday, November 15, Jr. Choir, 7:30. MIDWEEK DEV. Sr. Choir, 8:45.

ST. JOHN'S LUTHERAN CHURCH

Friday, November 10, E.O. Committee at A. Wild's, 8 p.m.
 Sunday, November 12, Blanket Sunday, Sunday School, 9:15 a.m. Worship with Holy Communion, 10:30 a.m. Youth Group, 7 p.m.
 Monday, November 13, pack boxes for LWR, 9 a.m.
 Tuesday, November 14, 3-D.
 Wednesday, November 15, Jr. Choir, 7:30. MIDWEEK DEV. Sr. Choir, 8:45.

ST. JOHN'S LUTHERAN CHURCH

Friday, November 10, E.O. Committee at A. Wild's, 8 p.m.
 Sunday, November 12, Blanket Sunday, Sunday School, 9:15 a.m. Worship with Holy Communion, 10:30 a.m. Youth Group, 7 p.m.
 Monday, November 13, pack boxes for LWR, 9 a.m.
 Tuesday, November 14, 3-D.
 Wednesday, November 15, Jr. Choir, 7:30. MIDWEEK DEV. Sr. Choir, 8:45.

ST. JOHN'S LUTHERAN CHURCH

Friday, November 10, E.O. Committee at A. Wild's, 8 p.m.
 Sunday, November 12, Blanket Sunday, Sunday School, 9:15 a.m. Worship with Holy Communion, 10:30 a.m. Youth Group, 7 p.m.
 Monday, November 13, pack boxes for LWR, 9 a.m.
 Tuesday, November 14, 3-D.
 Wednesday, November 15, Jr. Choir, 7:30. MIDWEEK DEV. Sr. Choir, 8:45.

ST. JOHN'S LUTHERAN CHURCH

Friday, November 10, E.O. Committee at A. Wild's, 8 p.m.
 Sunday, November 12, Blanket Sunday, Sunday School, 9:15 a.m. Worship with Holy Communion, 10:30 a.m. Youth Group, 7 p.m.
 Monday, November 13, pack boxes for LWR, 9 a.m.
 Tuesday, November 14, 3-D.
 Wednesday, November 15, Jr. Choir, 7:



Signing the November 15 kickoff for license plates in Automobile Club of Michigan employee Elaine Perotti. Elaine presides the opening for both passenger car and commercial license plate sales at Department of State and 57 Auto Club offices in Michigan. Since recently approved legislation raising license plate fees delayed their printing, Department of State prepared forms will not be mailed until approximately one week prior to the start of sales. The black-and-white license plates may be ordered by mail until March 31.

GIRLS BASKETBALL

By Jon Hartsburg
On Tuesday past, the Dutch returned into Clinton's hall with the Redwings bringing in the last period lead, 35-4. They kept putting the ball in the hoop as they went up 17 at half, 37-20. We did manage to show 3 points off so the score was 34-32 in the end. Emma Clark topped Dutch girls in popping for 12 in three quarters. Eglantine and Maria Taurainen scored 28, 9 each. Helping with a combined 10 were Allan Clark and Carol. There were 3 assists.

On Thursday, non-leaguer Danden came to town and left on the start and 24-66-48 scores. The first Dutch pulled out for partial points and it was Danden. Danden, Allen led by dumping in 24 while Carol hit for 14. Maria and Emma were finished with 10 points.

The Dutch also their 2-4 league record against Clinton last November 3 at 1960. They took to Boston November 24 for a 1 of each game.

SHOP THE
WANT ADS

CHRISTMAS TOOL AUCTION

FRIDAY, NOVEMBER 10, 1978
6:30 PM AT

MANCHESTER SPORTSMAN CLUB
1 Mile West of Manchester to Goswami Rd.
Three south 1/2 mile on Goswami Rd.

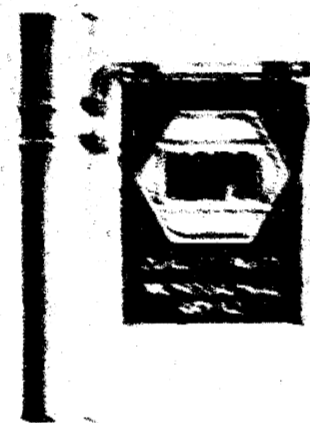
DRILL PRESSES, BENCH GRINDER,
FLOOR JACK, TOOL CHEST, AIR TOOLS,
COMPRESSOR, CHARGER,
SOCKET SETS, VISE, WRENCH SETS,
HAND TOOLS

OVER 150 DIFFERENT ITEMS
- DOOR PRIZE -

6:30 PM
Auctioneer: BOB REDMAN
525-688-3386

THE NAPA SIGN COUNT ON IT

Check the quality of the signs that you see in your neighborhood. They are the signs that NAPA has made for you. They are the signs that NAPA has made for you. They are the signs that NAPA has made for you.



Ross Automotive

Automotive Accessories and Equipment

Quality parts.
Professional service

FAHEY REALTY

Real estate listings and contact information for Fahey Realty.

BUSINESS STATIONERY



Business Stationery products and services.

Judge O'Brien to be honored

Francis L. O'Brien, Presiding Probate Judge of Washtenaw County who will retire from office at the end of this year after 40 years of public service, will be honored at a banquet Saturday, November 11, 6:30 p.m. at the Michigan League in Ann Arbor. Supreme Court Justice Mary Coleman, formerly probate judge of Calhoun County, will deliver the keynote address and Washtenaw County Circuit Judge Henry T. Ahlin will act as master of ceremonies. The retirement banquet theme will feature the Center for Occupational and Personalized Education, the local program youth which Judge O'Brien established. In 1971, Judge O'Brien asked the citizens of Washtenaw County for support in a program to remodel the county's former juvenile detention home into a residential facility for "high risk" delinquent fees. The citizens responded to this project and raised approximately \$40,000 donations which served as match for a federal grant. Originally known as the National Residential Center, the project evolved into a comprehensive program youth which involves two major

divisions. Remedial education, skill training, and recreational programs have been developed and are operated through the non-profit corporation, Center for Occupational and Personalized Education. Its companion is the O'Brien Center for Youth Development, which provides intensive day time supervision and treatment to youth who are chronic runaways or school truants, as well as emergency, temporary housing. Together the two program divisions serve approximately 200 youth annually.

Judge Francis L. O'Brien received his A.B. degree from Eastern Michigan University in 1930 and served in the teaching profession in the secondary schools for six years before entering the University of Michigan Law School from which he received his J.D. degree in 1938. He entered the private practice of law in the city of Ann Arbor in 1939. While practicing law he was elected to serve on the Board of Supervisors for Washtenaw County for two terms before entering the military service in 1942.

He served in the United States Army from 1942 to 1945 in England, France and Germany. He was assigned to the Criminal Investigation Division of the Office Provost Marshall General of the United States. Upon discharge from the service he returned to the city of Ann

Arbor to engage in the private practice of law.

In 1946, he served as Chief Assistant Prosecuting Attorney for Washtenaw County. In 1949 he was appointed by the Ann Arbor City Council to fill the unexpired term for Municipal Judge, and was elected to this office for three consecutive terms without opposition.

During his service as Municipal Judge he became actively interested in the problems of alcoholism and worked actively both to improve his knowledge of alcoholism as a social problem and to develop services for alcoholics. In 1958 he was appointed to the Michigan State Board of Alcoholism by Governor G. Mennen Williams, and reappointed by Governor John B. Swainson. He served in this capacity until December of 1964. He was active in the founding of the Washtenaw County Committee on Alcoholism and was largely responsible for the establishment of the Washtenaw County Alcohol Clinic.

In 1966, he was elected Probate Judge of Washtenaw County and as presiding judge chose to preside over the Juvenile Division. During his two terms as Presiding Probate and Juvenile Judge, he significantly influenced the development of rehabilitative services to children and youth in the state as well as within Washtenaw County. He spearheaded the establishment of local group homes as an alternative to institutional placement of delinquent youth.

In 1973, Judge O'Brien gave his support to the proposal that funding be provided on a state-wide basis for remedial programs such as provided by the COPE and O'Brien Centers. In a series of hearings held in Lansing during 1973 and 1974, educators, juvenile judges, professional corrections personnel, students, and parents from all regions of the state testified to the high correlation between academic deficits and juvenile delinquency. Based on this testimony the legislature enacted Section 48 of the School Aid Act, which provides the financial

support for alternative education programs for youth identified as needing academic and social rehabilitative support.

The enactment of Section 48 provided the impetus for the creation of the state-wide voluntary association, Michigan Association for Education. At its annual spring meeting in 1978, MAEO presented Judge O'Brien with its first distinguished service award "for his leadership in a state-wide movement to improve educational opportunities for needful youth." Within the past two years, Judge O'Brien has lent his support to the establishment of the Washtenaw County Coordinating Council for Children at Risk, a non-profit corporation committed to promoting better coordination of services to children and families. In 1977, Judge O'Brien co-sponsored with the Council the "Children at Risk Study", a research project which traces families in the juvenile court neglect caseloads to document the degree of contact such families have with other courts as well as social agencies. The findings from this study, in turn, have provided documentation for the Coordinating Council's current project, which is to develop a comprehensive plan for children's services in Washtenaw County.

Throughout his career, Judge O'Brien has stressed the necessity for voluntary, community based services to strengthen individuals and families in contact with the courts. His achievements in this regard have permanently enriched the lives of the people of Michigan.

Judge O'Brien is a member of the Michigan State Bar Association, the Washtenaw County Bar Association, the National Council of Juvenile Judges, and the National Association of Probate Judges. Judge and Mrs. O'Brien reside at 216 South Revena, Ann Arbor, Michigan, and are the parents of two sons, Thomas and Michael.

The banquet is open to the public at \$25.00 per plate. To make reservations please call (313) 971-7870.



When is a fashion classic
more than that?
when it's from Collegian.

Separates in a blend of Dacron®
Polyester and wool.

CAL'S TOG SHOP

DOWNTOWN TECUMSEH

BankAmericard-Master Charge or your Cal's Tog Shop Charge

Among many new items
and books to see this Fall in
our store are:

- Matching gloves, mittens and hats for children
- Our trimmed Christmas tree which holds imported decorations from Europe.
- Special books for Advent and Christmas
- Jon Eareckson's new book A Step Further
- A 10% Deposit and monthly payment will hold your selections until Christmas

Open Monday thru Saturday, 10 a.m. to 5:30 p.m.
110 East Main Street, Manchester, Michigan

THE Calico Cat

BOOK AND GIFT SHOPPE
Phone 428-7453

The Black Sheep Repertory Theatre

A Professional Non-Profit Company
A Special Family Entertainment!

AN
O'HENRY
HOLIDAY

November 9, 10, 11, 12
Shows 8:15 p.m. Thurs. Sat., 8:00 p.m. Sun.

For tickets
and information
call 428-9280
428-9287
Write: 104 E. Main
Manchester 48138

AGRICULTURE IN ACTION

MICHIGAN FARM BUREAU
EDITORIAL

RATS!

In a little publicized move, the New Hampshire Farm Bureau recently called on the federal government to conduct research into a new and untried area. The resolution urges the government to get busy and produce a "cancer-resistant rat." And a member of Congress made a similar move about a year ago during the saccharin scare—he suggested that every product containing the artificial sweetener carry this warning: "Caution! This product may be hazardous to your rat's health."

These expressions of exasperation ought to worry those scientists who are seriously

searching for causes of cancer. The filmy reports that are released periodically are like crying wolf. They lead you to think that quite possibly the authors have forgotten the rest of us also have inquiring minds. Indeed, some of those reports may actually have a positive effect on the general public. For example, during the saccharin furor, which is still unresolved, some scientists said rats, fed the equivalent of the saccharin contained in three cases of diet soda pop over a long period of time developed tumors. A majority of us are safe; not many could match that intake.

Farmers and ranchers don't grow saccharin—but the controversy about this additive is not unlike that leveled against other chemicals and ingredients which are essential to the production of food and fiber for this nation and much of the world. Farmers and ranchers are like everybody else—eager for complete evidence—and weary of allegations.

FOR SALE - KILN DRIED
MICHIGAN
HARDWOOD LUMBER
FURNITURE and PANEL GRADE,
FLOORING OAK, FIREPLACE
MANTELS, BUTCHER BLOCK
SLABS, MILLWORK, POSTS,
BOARDS, BEAMS, PLANING,
BARN SIDING, TIES TREATED
FAITHFULL FARMS
Route 3, Manchester, Michigan 48156 Phone 428-8726

Public Notice
To Black Sheep Patrons
For Reservations **Hours**
or Monday thru Thursday
11:30 a.m. to 12:00 p.m.
Banquet Friday and Saturday
Information 11:30 a.m. to 1:00 a.m.
Sunday 2:00 p.m. to 11:00 p.m.
Phone 428-7000

Black Sheep Tavern
Buffet
Friday and Saturday
6:00 p.m. to 10:00 p.m.
Sing Along
Friday and Saturday
8:30 p.m. to 1 a.m.

24 HOUR SERVICE
PHONE 428-8576
or 428-8923
FOR A NEW CAR
RIDE HAVE YOUR
TIRES ELECTRONICALLY BALANCED
FILLYAW'S SERVICE
327 WEST MAIN

IT'S BEVERAGE...IT'S DESSERT



Savor the good life with this delectable coffee-ice cream beverage. It's made with Irish Mocha Mint, the newest addition to the General Foods International Coffees family. A delicious blend of chocolatey flavor, coffee and mint, enjoy it as it is, it's a special treat when poured over scoops of ice cream.

COFFEE-ICE CREAM FINALE

1/4 cup Irish style instant coffee beverage
2 cups boiling water
Vanilla or chocolate chip ice cream

Place instant coffee beverage in coffee pot or carafe. Add boiling water and stir well. Pour over scoops of ice cream in coffee or demitasse cups and serve at once. Makes 2 cups or 3 regular servings or 6 demitasse servings.

CLINTON THEATRE

SHOWING: FRIDAY & SATURDAY 7:30 & 9:30
SUNDAY 7:30 ONLY



WHY A CULLIGAN® WATER SOFTENER WILL NEVER BE AN ORPHAN!

Because we will be here to take care of it if it needs care. You can trust our service... we've been in business for 30 years... you can depend on us.



A Culligan product is an extra-value because we service what we sell!

JUST CALL

Culligan ©

662-5665
2321 JACKSON AVE.
ANN ARBOR, MICH.

HOMETOWN PAPER

By: John Lair

We never realize how much the hometown paper means. Till we have wandered far away from old familiar scenes. And then it's just as welcome as a letter from a friend. We read it through from front to back, from beginning to end. We remember how the paper was a standby in our home. And how we all would grab for it as soon as it would come. Sis looked for all the personals; Dad read the livestock news; Grand dad liked editorials—if they sided with his views!

But mother never seemed to have one part that she preferred. She just sat down, when she had time and read it, every word. The editor, remember, was a friend to all mankind. Some folks would try to "use" him, but he didn't seem to mind. He always had a column any good thing to exalt. But he had no screaming headlines to proclaim a neighbor's fault. He welcomed new-born souls to earth and noted when they left. He joyed with those who had been blest,

and grieved for those bereft. He printed church announcements and the correspondent's jokes. He noticed all the little things that meant a lot to folks. When "Crippled Charlie" Hoskins' little dog got hurt and died. We wrote up such a pretty piece that everybody cried. So when your hometown paper comes, sit down and read it through. And give a kindly thought to him who got it out for you... It may not be impressive and it ain't no work of art. But every word you're reading there comes straight from someone's heart.

LAMBDA NU

We're growing! Eight new members took part in the Beta Sigma Phi Pledge Ritual Monday, November 6, at Debbie Alber's home. Enjoying the candlelight ceremony were Pat Buono, Donna Brasz, Sharon Day, Paula Dettling, Shirley Lowery, Betty Mann, Kathy Roberts and Karen Stautz. The girls each received pledge pins and a yellow rose, symbols of Beta Sigma Phi. Following the ceremony, the regular business meeting was held. We were pleased to welcome our guests, Jeanette Pfeffer and Janice Wojko, President and Vice-President of Bi-County City Council. Coming up this month, we have our

Chapter Exchange. Lambda Nu will be entertaining ten girls from Iota Epsilon of Tecumseh with a social evening featuring wine and a variety of crape dishes. Debbie Alber will hostess the evening on November 15.

Plans are being made for the Christmas Party at Martha Haeussler's on December 2.

Plans were made to help out Darlene Kuebler when possible as she recuperates from a broken leg. We hope she mends quickly and is able to join us again soon.

A turkey has been donated for the Thanksgiving Basket to be delivered to someone less fortunate than we. Our hope is it will be accepted as a gift of love and not charity.

Lambda Nu is furnishing Texas cakes and Lemon Pies for the Senior Citizens Dinners this month. Anyone interested in helping the dinners held twice a week at Emanuel Church contact Ethel Kerr.

Following the meeting, Mary Kallewaard gave us all a surprise with her program on Establishing Ourselves. She had us each make out a newspaper ad advertising ourselves - giving us an opportunity to think of some of our good qualities. The next meeting will be Nov. 15 at Debbie Albers.

DUTCH

stood 14-2 up at 3:53. When it rains it pours and we got penalized before fumbling at our 46. Three forward moves and halftime set upon us being down 14-0. As the Dutch entered for the third quarter they knew they had to get some points on the board and pronto. We took the kick setting up camp on our own 25 and started to march. We stuck to the ground for 9 plays to their 35 when on third and nine we passed with a Fambler snatching it. A little fortune came our way as on first they were penalized to the ten then they fumbled so we controlled at the 19. Their defense really rose to this occasion as in 3 cracks we totaled 5 yards so Jeff trotted out for a field goal try—well, it just fell short so again we threatened but came away with no points. The rest of the battle saw 7 punts

which were proceeded basically by 3 plays. This took it down to just a few minutes left when we tried one last time to tally. We started at our 27 and went to the 40 before bombing. Craig nailed Nick and he was knocked out on the 14 with 1:26 remaining. Unfortunately we moved back 3 and 13 before throwing a pass that they intercepted. On their first play the clock ticked its last. Stockbridge is play-off bound aided by this 14-0 win and the Dutch leave having had a super season.

AROUND THE LEAGUE—LAST FRIDAY

Stockbridge 14-Manchester 0, Clinton 33-Whiteford 0, Onsted 8-Petersburg Summerfield 8, Morenci 72-Camden-Frontier 0, Addison 8-Dundee 6, Hillsdale 12-Hudson 7, Saline 34-Blissfield 7.

FINAL L.C.A.A. STATS

Manchester concluded by winning the league crown with a 6-0 record although didn't fair to well against non-league squads dropping 2 with 1 win. Clinton closed their season by demolishing Whiteford and in so they had one loss, a tie and seven wins.

Blissfield kept above 500% as they had 4-2 in the league and 5-4 overall.

Addison came on strong as they went win-less in their first 3 but won their next 3 to finish in 4th place in the league. They downed a tough Dundee team to conclude 5-4.

Believe it—Hudson finished with a tragic losing season, 2-4 league and 3-6 overall.

Strange—Morenci showed little offense all season by being victorious just once over win-less Onsted, in their final they released everything in killing Camden by 72-0.

The cellar dwellers were the Wild-cats of Onsted as they posted a tame 0-6 although they did come up with a tie in their last game—well, it's better than a loss.

1978 REFRIGERATORS AT CLEARANCE PRICES

AUTUMN
APPLIANCE
SAVINGS

MANCHESTER ELECTRIC

112 ADRIAN STREET PHONE 428-8243

We Want To Be Helpful

Your Home Or Ours.
Leslie Knecht, Designer
Will Be Happy To
Work With You.

- *FINE FURNITURE
- *QUALITY CARPETS & RUGS
- *CUSTOM DRAPERIES
- *WALLPAPER & PAINTS
- *ACCESSORIES
- *FALL SPECIAL—
SAVE ON ALL DESKS!
AND VERY SPECIAL
SAVINGS ON THE
FAMOUS KEEPSAKES



FOSTER-DAVIES

"The Store With The Extra Touch - Since 1883"

201 E. MICHIGAN AVE. GRASS LAKE - 522-4181
OPEN MON-SAT 9 to 5:30 Mon & Wed Evenings to 8:30

What if my new car is a smash hit on the way out of the showroom?



With Auto-Owners, it's covered. An Auto-Owners policy automatically covers your new car. And, should you have an accident within 90 days and your car is a total loss, they'll pay the full cost of a new car.

Not all companies offer coverage this complete. But at Auto-Owners they try to think of everything. Stop by and see us for full details.

Auto-Owners Insurance

SUTTON AGENCY

PHONE 428-7217

136 EAST MAIN ST. MANCHESTER, MICHIGAN

WANT ADS

BEEF TO SELL BY SIDE: Custom slaughtering. Lockers to rent. Phone 428-7600. Manchester Locker Plant. th

ROOFING, SIDING, GUTTERS, STORM WINDOWS & DOORS. For a free estimate call 428-7104. Service Roofing Company, Manchester, Michigan th

CHELSEA GREENHOUSES, 7010 Lingane Road, Chelsea, Michigan 475-1353 - 54 or 475-9313. Flowers and plants for every occasion. We specialize in wedding flowers to fit your budget. We are as near as your phone and we welcome your business. th

CALL Elaine Rice, Realtor, for successful buying and selling, homes and farms. 10 years of honest and competent brokerage in Real Estate. By appointment, 665-8663 or 428-7272. Associated/Eidler & Assoc. Inc.

YOU'RE IN LUCK..... 20 acres of splendid colorful woods with some towering oak, black walnut, and hickory trees, plus tillable acreage, charming older home, large barn. Call Florence Cammet 1-428-7159 or ask for Florence 662-2571 Earl Kiem Realty. 11-23

BE SMART! Have your antiques appraised for an insurance rider and other reasons. 20 years experience. Mary Middlebrook 517-592-6031. 11-23

FALL BULBS—Now is the time to plant tulips, daffodils, crocuses, hyacinths and amaryllis. Manns Feed Mill. 11-30

CLOCKS REPAIRED—antiques, cuckoo clocks, grandfather clocks. Call Fred Petsch, Chelsea 475-8494. 11-30

YARD SALE, Saturday, November 11, 9 to 5, 609 Adrian Street.

LAND CONTRACTS PURCHASED—any amount, anywhere in Michigan, we also make Real Estate Loans. Call Dan Duncan, Ann Arbor Real Estate Company. 668-8595. th

ALUMINUM BAVESTROUGH—Seamless, white, black and brown, guaranteed, free estimates. Walkover Home Improvement Company, phone 313-428-8468. th

PAT'S CRAFT STUDIO—downtown Tecumseh, area headquarters for macrame, tote painting, miniatures, artists supplies and much more. Monday thru Saturday, 10 to 5:30. Classes available. 517-423-7447.

ROULO ELECTRIC—Licensed and Insured Contractor. Call Clinton 517-456-4796. th

HARTUNG'S CARPET WINTER STORE HOURS starting November 4, Wed. Thurs., Fri. and Sat. 10 A.M. to 5 P.M. Fri. evening till 8 p.m. Closed Sun. Mon. and Tues. 11-16

FOR SALE—73 1/2 ton pick up 67,000 mi., some rust \$950.00. Apartment size washer & dryer, like new \$250.00, 2 recliners \$25.00 each. 1 couch \$35.00. Call 428-7054 after 6 p.m. 11-9p

FOR SALE, Winter clothing, barely used, jackets, coats, pantsuits and dresses. 428-7485.

OUR shelves are full with exciting gift items and books for the entire family. A 10% deposit and monthly payment will hold your selections until Christmas. The Calico Cat Book and Gift Shoppe. 110 East Main Street, Manchester, Michigan.

FOR SALE. White York Bull, serviceable age. Call after 5 p.m. 428-7314.

HELP WANTED, Want a steady year round job? See Culligan, Maintenance, Delivery, Physical Work, Vacation, Pension, Uniforms, Hospital and other fringe benefits. 2321 Jackson Ave., Ann Arbor. 11-16

WANTED
JOURNEYMAN TOOL & DIE MAKERS AND
NON-JOURNEYMAN GENERAL MACHINIST WITH TOOL & DIE EXPERIENCE Apply between 7:30 A.M. and 4:30 P.M. at personnel office, ACCO-Cable Controls Group, American Chain and Cable Co. Inc., 1022 E. Michigan St., Adrian, Michigan, 49221. An equal opportunity employer M/F. 11-16

HELP WANTED: Part-time Food Servers and Truck Driver for Lunch Program in the Manchester Community Schools. For further information call; John McGuire at 428-7300. 11-16

FOR SALE: Antique white spindle single bed w/winter spring and mattress. 428-8234. p

FOR SALE—Buick Sky Hawk '75 V6, auto, power, air, new tires mounted mud & snows, under coated, \$2,350. Morning 663-3163, afternoon to 11:30, 428-7244. 11-16

FOR SALE: Violin with case, bow, and chin rests, in good condition. 13 inch wheel rims. Bowling ball and bag. Used sliding glass door. 428-7361

DUCKS FOR SALE—Call after 4:00, 428-7197.

FOR RENT, 1 bedroom apartment in Clinton. Call 517-456-4491 after 4 p.m. or 428-7266.

FOR SALE, excellent condition wood and coal burning range, 428-8173 days or 428-8510 after 6 p.m.

FOR SALE, electric 30 in. range, good condition, \$25, 428-7854. p

FOR SALE—one pair of team bridles for work horses, large. WANTED TO BUY—good used Riding Mower. Phone 428-9810 p

DANCE, Manchester Sportsman Club, Saturday, November 11, 9 to 1:30. Disk Gorlitz Band, \$8 per couple. BYOB.

CARD OF THANKS

Although financial results have not been finalized, the Fall Fun Festival was a big success using a measuring stick of happy faces.

We would like to take this opportunity to thank Mary Knapp, Matt Donnellon of the State Farm Insurance agency, the Sutton Insurance agency, the Knights of Columbus, Alber Orchards, the Manchester IGA, the Manchester Enterprise and the Athletic Boosters for their contributions.

We'd also like to thank Lois Vitale, Elaine Creech, and all the parents who contributed their time and talents for the success of the Fall Fun Festival.

I wish to express my sincere thanks for all the acts of kindness shown to me during my hospital stay.
Jim Krzyzanski

I wish to thank my relatives, neighbors and friends for flowers, plants, fruit, gifts and beautiful cards, received on my 99th Birthday.

It was all greatly appreciated.
Matilda Schumacher

We want to say thank you to all our many friends, neighbors and relatives who remembered us with beautiful cards, flowers and gifts on our 50th Anniversary.

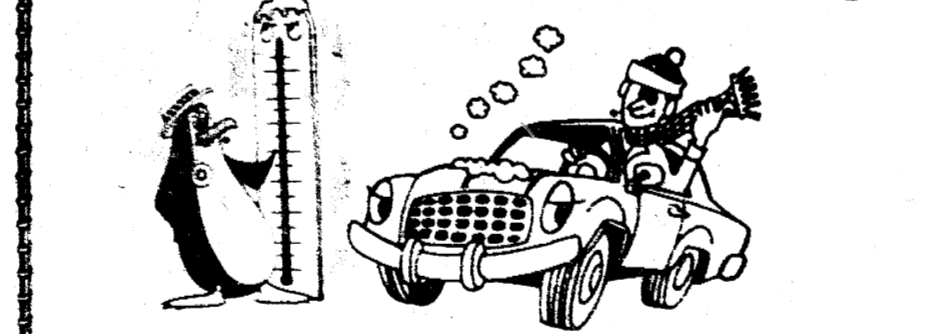
A special thanks to our children and grandchildren who did so much to make it a happy occasion. It will long be remembered.

Mr. and Mrs. Otto Kulenkamp

I would like to thank my relatives, neighbors and friends for the many acts of kindness shown me and my family during my stay at the hospital and since my return home and also Pastor Morris for his visits and prayers.
Elsie Blumenauer

BINGO
AMERICAN LEGION POST #117
203 ADRIAN STREET
WEDNESDAYS 7 PM

GET READY NOW!
WINTERS
WAXING



MR. SCRUB
cleans cars
BETTER for LESS

wax-wash

We Have a Fine Line of Gulf Tires All Sizes

Gulf

THE JOLLY DUTCHMEN

Phone 428-8960

GROSSMAN-HUBER SERVICE
100 EAST MAIN ST

VACUUM CLEANERS ELECTROLUX
Electrolux Sales & Service
call
James Cox
Manchester
428-8444 or 428-8686

WILLIAMSON
HEATING & COOLING SYSTEMS
John Steele jr
INSTALLATION & REPAIR
Phone 428-8692

ARE YOU SURE YOU'RE "PUNCHING THROUGH LOUD AND CLEAR"?
The typical CB'er can get an average of three miles farther to "punch through loud and clear" with a check and adjustment of his CB and antenna system for peak performance.
MANCHESTER CB SERVICE
Phone 428-8673 FCC LICENSED

ALBER ORCHARD AND CIDER MILL NOW OPEN
Sweet Cider - Apples
Barrels - Kegs
Open daily 9 a.m. to 6 p.m.
15011 Bebel Church Road
Phone 428-7758

AMISH MADE CABINETS
CABINETS BY CONTINENTAL
MERILLAT CABINETRY

Monday thru Friday 9 to 5
Saturday 9 to 2
or by appointment

Dutch Country Kitchens
146 EAST MAIN 428-7292 MANCHESTER

AMISH MADE CABINETS
CABINETS BY CONTINENTAL
MERILLAT CABINETRY

MANCHESTER TOWNSHIP LIBRARY P. O.

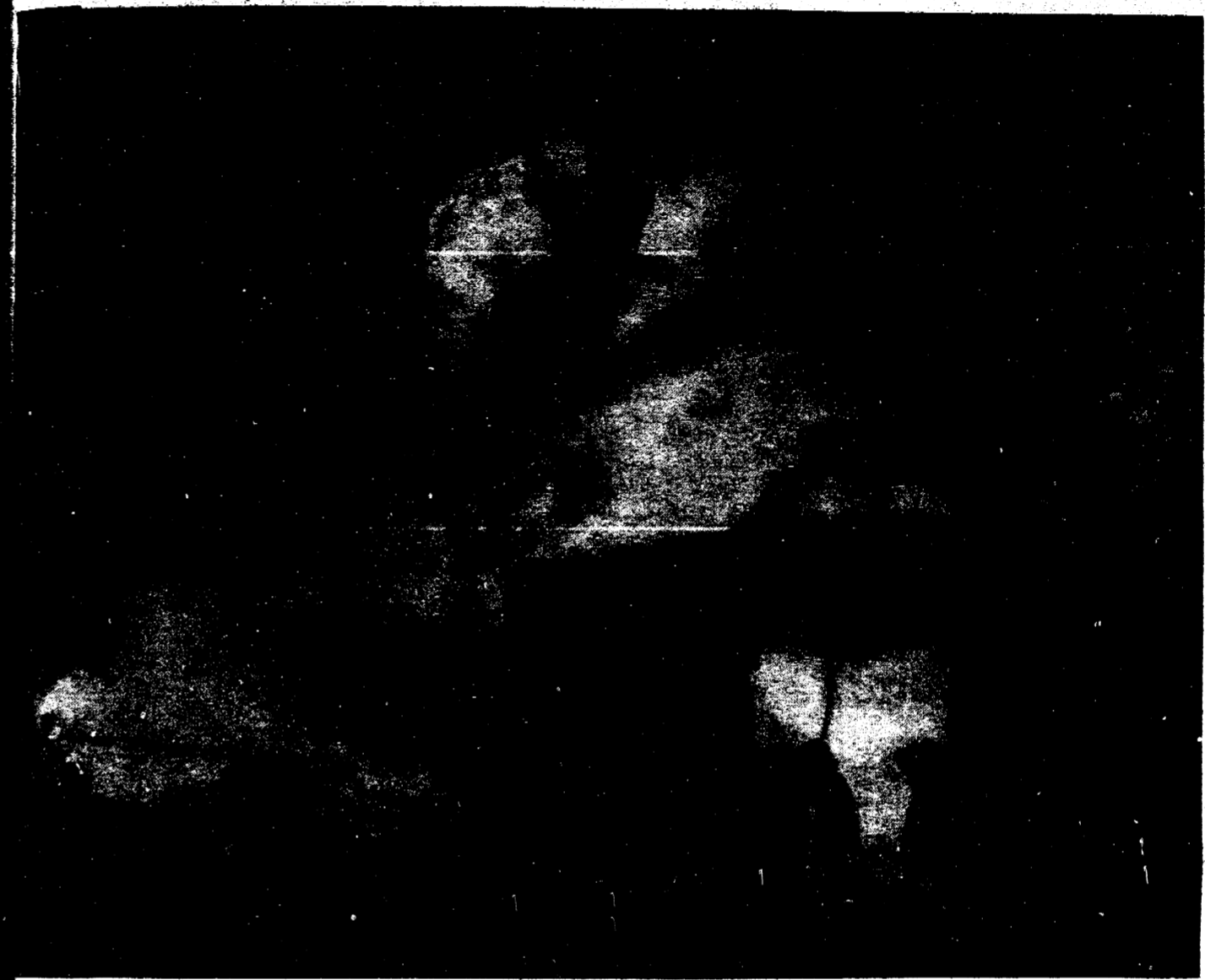
THE MANCHESTER ENTERPRISE

112TH YEAR VOLUME NO. 3

20¢ A COPY

THURSDAY, NOVEMBER 16, 1978

FIRE HITS BRIDGEWATER AGAIN IN RETROSPECT



A few weeks ago we asked for suggestions about incidents that occurred during the period from 1925 to 1945, and we have received several which will be used in future efforts. We also received a couple of inquiries also about places and incidents in the Manchester area not directly related to this time period but nevertheless we think, related to the general subject.

One such question asked was "Just where is 'Podunk' which is located near Manchester and how and why was it so named?" In past years we have been asked this question several times and have done some research regarding it, coming up with the following:

Podunk is that area on Wallace Road west of the Clinton-Manchester road which runs east and west on the north side of the pond formed many years ago when there was built a dam and a grist mill near the south side of the present pond which was near a station on the railroad called River Raisin. For quite some time after the railroad was built there was this mill located there, together with a store, a harness shop, a general store and several houses. Among the landowners nearby were George Merz, T. Smith, Mrs. C. Dresselhouse, William Dewey, H.E. Wiedman and Henry Palmer. The railroad station was located at the point where Hogan Road and Wallace Road joined west of the pond where Wallace Road was built under the railroad tracks. Some years later several houses were built on Wallace Road east of the railroad tracks, and recently several other houses have been built in the vicinity.

I have been unable to find out who is to blame for designating the area as Podunk, but I see nothing derogatory about it as some have inferred. It is a very distinctive name and in its way, as attractive as River Raisin by which name it still appears on many not so old maps of this area.

And while we are on the subject of railroads, we and many others who have lived in Manchester for some time, miss the two railroads which use to be such an important part of Manchester. It was fun too, on a summer morning, lean on the railing of the old bridge on Main Street and watch the morning train puffing its way across the bridge across the upper pond on its way to Saline and Bridgewater, and on a hot summer afternoon throw rocks at the carp who wallowed in the pond below. As we remember them they seemed as big as pigs and wallowed about in the mud in a similar fashion.

But the railroad bridges in Manchester are both gone and so are the railroad and the mill and other buildings at "River Raisin". But the last time we drove through there "Podunk" was alive and well, and its proximity to the pond and the natural beauty of the surrounding land made it a pleasant place to live.

Maybe the abandonment of these railroads was a sign of progress but the many things that have happened since then give support to the theory that the demise of this method of transportation was somewhat hastily accomplished and did not contribute to the possibilities of progress for Manchester.

By Jon Hardenbergh
About 2 years ago, a blaze destroyed parts of the Lumber Company and now near neighbor Braun Implement falls.

Optimist Club Outstanding Student



Mr. and Mrs. William Broucek, Brian receiving award from Mr. Clarence Fielder.

Brian Broucek, a sophomore at Manchester High School, has been awarded the Optimist Club Outstanding Citizen Award for November.

The son of Mr. and Mrs. William Broucek, 600 Adrian Street, Manchester, Brian was a member of the junior varsity football, junior varsity basketball and track teams as a freshman. This fall, he again was on the junior varsity football team.

Brian plans to attend college after graduation although he is undecided about a career choice at the present time. Congratulations Brian!!!!

EARLY DEADLINE!!
THERE WILL BE AN EARLY DEADLINE NEXT WEEK BECAUSE OF THE THANKSGIVING HOLIDAY.
DISPLAY ADVERTISING IS DUE SATURDAY NOON, NOVEMBER 18, MONDAY NOON IS THE DEADLINE FOR ALL NEWS AND CLASSIFIEDS.

Firemen raced to the scene, amidst fog, about 3 a.m., Saturday from Dexter, Saline, Pittsfield, Chelsea, Manchester, Grass Lake and Clinton so the flames were pretty much controlled by dawn.

Gene Braun, owner, estimated the damage at \$100,000 to \$150,000. The frame and cement block building, some 100 years old that housed the stored parts was leveled but fortunately the big farm equipment is kept down the street so was safe. The vacant apartment upstairs was destroyed and the fire inspector believes this is where it started.

School Closing Information

CANCELLATION OF SCHOOL
Weather conditions, usually excess snow or ice makes it necessary to cancel school on certain days during the winter months.

This decision is difficult as it has to be made during the early morning hours if parents and students are to be notified.

In case of questionable weather please listen to one or more of the following radio stations. In case of cancellations we endeavor to have this information broadcast no later than 6:30 A.M.

Sometimes it is advisable to listen to more than one station as busy telephone lines sometimes delay our contact with a particular station. WJR-760 on the AM dial, WPAG-1050 on the AM dial, WNRS-1290 on the AM dial, WAAM-1600 on the AM dial.

SCHOOL DISMISSAL
On occasion severe weather develops while school is in session. In some cases school will be dismissed early. In case of severe weather listen to one of the local stations listed above. It is difficult to get announcements on WJR during the

Continued on Page 10

TWINS!!

Mr. and Mrs. David Noggle are the proud parents of twins, born Monday, November 6, 1978 at Ann Arbor Womens Hospital. The twins, named Benjamin and Rachel weighed 4 lbs. 10 oz. and 4 lbs. 4 oz.

Grandparents are Mr. and Mrs. Emmett Noggle of Manchester.