

# WANT ADS

**WANTED** - Experienced ...  
**WANTED** - ...  
**WANTED** - ...  
**WANTED** - ...


**WANTED** - ...  
**WANTED** - ...

**WANTED** - ...  
**WANTED** - ...  
**WANTED** - ...  
**WANTED** - ...

**WILLIAMSON**  
 Heating & Cooling Systems  
**John Steele jr.**  
 INSTALLATION & REPAIR  
 Phone 428-8862

**The Black Sheep Repertory Theatre**  
 of Manchester, Michigan  
**A Funny Thing Happened On the Way To the Forum**  
 July 26, 27, 28, 29, 30  
 Wed. & Sun. — Senior Citizens — 1/2 Price  
 Thurs. — Students Night — 1/2 Price for Students  
 Children Under 12 — 1/2 Price all shows  
 Wed. & Thurs. — \$6.00 Fri. — \$6.50  
 Sat. — \$7.00 Sun. — \$5.50  
 Wed.-Sat. 8:15 p.m. Sun. 4:00 p.m.  
 GROUP DISCOUNTS SEASON TICKETS  
 Reservations 428-9280 or 428-9287

**THE NAPA SIGN. COUNT ON IT.**



**Ross Automotive**  
 Automotive Accessories and Equipment  
 120 East Main  
 428-8862  
 Quality parts, Professional service

MANCHESTER TOWNSHIP LIBRARY P. O.

# THE MANCHESTER ENTERPRISE

20¢ A COPY

11TH YEAR VOLUME NO. 40 THURSDAY, AUGUST 3, 1978

## WORK OPPORTUNITIES RESOURCE CORPS

**HOUSE FOR SALE** - Sunny Meade ...  
**YARD SALE**, July 26 & 28 ...  
**REMAN PASK MID-SEAVER** ...  
**FAMILY YARD SALE** - Tennis ...

## ANIMAL SHOW AND ANTIQUE FLEA MARKET AT FAIR

By now most people have seen a copy of the Manchester Community Fair Tabloid. If not, pick one up when you're in town. You will agree it has lots of information concerning the Fair. Just a reminder that Fair Board President, Elmen Kopka is in the office everyday 9 - 11 and 7 - 9 p.m. He can be reached by calling 428-7405. If exhibitors would like to pick up their forms for entering exhibits at the fair, they are available at the office. The next time you travel down Main Street stop in at the Union Savings Bank and take a look at the trophies that will be given away at the fair. This year's program will include Harold Tesch's Trained Animal Show, Wednesday afternoon at 4:00 will be the first show featuring unusual sized animals trained to do many tricks. The second and third performances will be Thursday afternoon at 3:00 and 7:00 Thursday evening. Friday and Saturday's extra feature will be an Antique Flea Market. Many booths will be set up with dealers coming from far and near. What special treasure have you been looking for? You might find it at the Manchester Community Fair.

## COMMUNITY CALENDAR

**WEDNESDAY, AUGUST 2**  
 Athletic Boosters meeting 8 p.m. at the High School.  
**THURSDAY, AUGUST 3**  
 Knights of Columbus meeting at K of C Hall.  
**MONDAY, AUGUST 7**  
 Manchester Township Library Board meets at 8 p.m. at the Library.  
**TUESDAY, AUGUST 8**  
 Manchester LaLeche League Meeting 7:30 p.m. 428-7125  
**SATURDAY, AUGUST 12**  
**MANCHESTER'S FIRST ANNUAL STREET FAIR!**

## ATTENTION: SENIORS AND PARENTS

The food tent work sheet is at Bakers Dozen for seniors and parents to sign up. Committee's still will need help for fair week, so please sign up this week. Any questions call Sandy 428-8676 or Joyce 428-7623.

## STORM DOWNS TREES, BLOCKS STREETS-M-52



Tree blocks West Main Street, power lines down.



Village crew plays "Good Samaritan," clears M-52

For the past two summers many young people have been employed by the Village of Manchester through a state grant program called the W.O.R.C. work program (Work Opportunities Resource Corps). Their work has consisted mainly of mowing, brush control, painting, drainage work and park maintenance. Some of their projects have been: painting picnic tables, restrooms, backstops and trash cans; putting in and painting the new posts around Carr Park; weeding potanias; clearing hazardous intersections; picking up trash weekly along village streets; and mowing all the park lawns. The majority of their time this summer has been spent at the site of the new Chibro Park located behind the water tower. This area, which was thickly wooded and overgrown with brush is now well cleared and mowed and represents the good work that has been accomplished through the W.O.R.C. Work Program.

**FAIR PARADE THEME "OUTER SPACE- SCIENCE FICTION"**

All organizations, businessmen, school classes, etc. are reminded to prepare floats and other entries for the fair parade, Tuesday, August 15. Boys and girls are urged to decorate bikes, etc. and ride in the big parade. The parade will originate on Duncan Street (north side of Athletic Field) at 6:30 p.m. Entries may call Clarence Fielder, 428-8506 or 428-7477 or Gene Bentschneider 428-8567 - 428-8171. The theme of the '78 parade will be "Outer Space-Science Fiction".

### The Manchester Enterprise

150 EAST MAIN STREET  
Manchester, Michigan 48158

Phone 428-8173

The Manchester Enterprise was established in 1867 and is published each Thursday at 150 East Main Street, Manchester, Michigan with second class postage paid at Manchester.

Edward E. Steele, Publisher  
Lenore Steele, Editor



#### LETTERS TO THE EDITOR



#### WHY WAS THERE A PROPOSITION 13

We noticed in a recent issue of the Manchester Enterprise that the Manchester Repertory Theatre donated \$250 toward the cost of the fireworks displays on July 4th. We have no objections to fireworks nor would we object for such donations. We do remember, however, that a few months ago we were contacted to make a donation to the Theater to keep it alive. Now we find that the Theater

has apparently spent a special performance and during the money by fireworks. The question in our mind is: "Did we donate money for the Theater, or did we donate money for the fireworks?" A clear indication, at least to us, that money was being used for purposes other than for which it was intended.

In the same issue we noticed that the Village Council was commended for its donation to the same fireworks. This amount was \$750 which we were informed was surplus in a Special Fund. Again money being used for other purposes than was originally intended. Money collected by the Council is for community services and fireworks is not such a service.

Practically all School Districts in the State and throughout the country are having trouble getting money to maintain programs which were started with funds left over in Special Accounts. The prime purpose for establishing schools was to have an organization which taught children reading, writing, and arithmetic, and money for this purpose came from taxes against property owners. But schools in the past decades have instituted ever increasingly larger special programs in athletics, bands, arts, and theater. Were property owners asked if they wanted such programs? NO - all they were asked was to pay for them. All of this dilemma came from using money for purposes other than for what it was intended.

Look at all forms of government, urban, county, state, and federal and you will find that all are asking for higher taxes because money is being used for purposes other than for what it was intended. Gasoline tax, social security tax, income tax, cigarette and liquor tax, even the lottery are not being used for the purpose for which they were proposed.

This after all is what Proposition 13 is all about. A result by the American taxpayer against the subtleties of spending tax dollars. In all our endeavors, public or otherwise, we must learn to go back and paddle our own boat. If the Theater wants to justify its existence it should stick to the Theater. If the Council wants responsible citizens to support its tax mileage it should render responsible public service. If the Jaycees want to have fireworks it should conduct a program with which to obtain the required monies.

Let us not suggest obtaining county, state or federal help as the first item. In fact let us not ask them at all. All they have is OUR MONEY. So lets quit asking for our money and believe we are receiving help.

President Gerald Ford said it so well when he stated: "Allow the government to give you everything that you want and eventually it will take everything away from you."

Signed, J.A.W.

Mrs. Steele,

Pursuant to our telephone conversation yesterday, I have enclosed several snapshots of the July 4th parade. I hope that you have success in identifying the participants and forwarding the pictures to them.

Many thanks for your help.  
Yours truly,  
Don Kenney  
For Washtenaw Probate Juvenile Judge

Interested in obtaining these prints? Stop in at the Enterprise Office during working hours and pick them up.)

### LEARNING EVALUATION CLINIC

The Learning Evaluation Clinic of the University of Michigan conducts evaluations of intelligence Tuesday and Thursday mornings from 8 - 12, September - April, by appointment only. This is available to parents with children and students of all ages. The clinic provides an individual assessment of intellectual ability, patterns of strength in cognitive areas, and suggestions for learning potential in school related activities, free of charge. The attempt is made to provide information helpful for a variety of purposes. Parents may have questions about high levels of exceptionality in their children or about special learning problems. Other parents want information about learning potential of their preschool children. Older students may wish to refer themselves for an assessment as part of their own desire for personal understanding and growth.

After the initial evaluation session an interview may be scheduled with the parents or with the student for a discussion of the results of the evaluation session. The results will be thoroughly discussed and the material is kept in strict confidence.

Personnel in the clinic are associated  
Continued on page 10

## RASPBERRIES

(12 ACRES)

## U-PICK

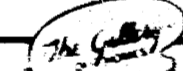
80¢ PER QUART

Makielski Berry Farm

6461 WHEATON ROAD, NAPOLEON

3 miles west of Napoleon on M-50 to Wheaton Road

8AM TO 7PM DAILY



**Spear & Associates, Mann, Realtors**  
122 West Main Phone 428-8388 Daily Manchester

New Listing - One story home, aluminum siding, new kitchen & bathroom, with new furnace, large lot with many trees & garden area, Manchester. \$37,900.

Income Property - Why pay rent when you can own a house that will half pay for itself, two family home, located in the Village of Manchester, call for more information. \$44,500.

Quality Plus - In this new home, 3 or 4 bedroom, possible library & study, 2 1/2 baths, living room with fireplace, dining room, 2 car garage, located one mile south of Manchester. \$69,500.

#### BUILDING SITES --

2 & 3 Acre Parcels - located south of Manchester, starting at \$19,000.

2 - 4 Acre Parcels - located southwest of Manchester, starting at \$11,000.

33 Acres - located 3 miles northeast of Manchester. \$49,500.

#### OFFICE HOURS

Mon. thru Fri. 9 a.m. to 5 p.m. Sat. 9 a.m. to 12 noon

OFFICE PHONE 428-8388

Evenings and Weekends:

Jim Mann  
428-8074

Ellis Pratt  
428-8562

### RE-ELECT

## GEORGE A. MERKEL

COUNTY COMMISSIONER  
DISTRICT 2  
REPUBLICAN

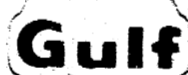
Vote August 8

Paid For By George Merkel for Commissioner



### GROSSMAN-HUBER SERVICE

THE JOLLY DUTCHMEN



We Have a Fine  
Line of Gulf Tires  
All Sizes

KINGSFORD  
CHARCOAL  
"THE BEST"

Phone 428-8960

Many Gulf Accessories



Visit the Jolly Dutchmen

100 EAST MAIN ST MANCHESTER



### Chelsea Babe Ruth League

Astros (Manchester)	13	1
Reds (Dexter)	10	4
Athletics (Chelsea)	9	5
Dodgers (Dexter)	7	7
Yankees (Dexter)	7	7
Pirates (Chelsea)	5	9
Royals (Chelsea)	3	11
Orioles (Chelsea)	2	12

The final week of Babe Ruth play found teams playing hard to better their records if at all possible. Perhaps the finest game of the season was played by the Astros and Pirates. The Astros were trying to finish the year undefeated while the Pirates were hoping for a seemingly impossible upset. The game picked up where the last Pirate-Astro contest ended with the Astros gaining the win. Dan Alber pitched for the Pirates while Tom Malcolm took the mound for the Astros. Malcolm threw extremely well and worked

the corners of the plate almost to perfection. Two unearned runs were all the Pirates could manage. Meanwhile Dan Alber continued to gaffe the usually strong Astro hitters with his sidearm pitching. The Astros scored one run in the fifth on a couple of hits. In the seventh inning the Astros led off with a walk by Catanese but what looked like a rally was nipped in the bud on a fine defensive effort by the Pirates. The game ended with the Pirates as 2-1 victors over the Astros and a 13 game win streak brought to a crushing end. Despite the loss the Astros finished with a fine 13-1 record and received the crown as the Chelsea Babe Ruth League Champions for 1978.

Elsewhere in the league the Reds finished four games to wrap up their season at 10-4 good for second place. Against the Royals, Jeff Hollister was the winning pitcher and had four RBIs with two hits. Rob Ianni was the winning pitcher as the Reds beat the Athletics to nose them out for a second place finish. Pat Haney and Ron Stoffer each contributed two hits.

In a battle for fourth place the Dodgers won two games while the Yankees split two games thus producing a tie for fourth as the Dodgers and Yankees each finished 7-7 on the season. Against the Orioles the Dodgers hit well with home runs by Sean Hemingway and Jeff Leighton, doubles by Leighton and John Conlin and two singles by Norm Martzoff. Jeff Leighton was the winning pitcher against the Pirates and Sean Hemingway provided the winning margin with a grand slam home run. A new face in the lineup, Kevin Robb, provided a single and double.

The Yankees lost to the Astros 14-4 and beat the Orioles 15-6. The Yankees spotted the Orioles six runs before they began to hit. Mark Hiser hit three doubles and drove in five RBIs. Randy Reason doubled and tripled for three RBIs and finished as his teams leading hitter.

### New Chief Of Staff At Saline Hospital



The thirty-nine members of Saline Community Hospital's active medical staff this week elected Michael F. Brooks, D.O., Chief of Staff for a two-year term beginning October 1, 1978. He succeeds Carl VanAppledorn, M.D. in this position.

Dr. Brooks is a general practitioner who maintains offices both in Ypsilanti and Ann Arbor. He is a graduate of the Kirksville College of Osteopathy, Kirksville, Missouri and served his internship in Warren, Ohio. He has practiced in this area since 1972 with R. David Brooks, D.O., his brother, and Charles R. Lyon, D.O.

Raymond J. Whiteman, M.D. was elevated to the position of Vice Chief of Staff and Richard J. Foster, D.O. to the position of secretary.

### BINGO

American Legion Post 117  
106 EAST MADISON-MANCHESTER  
WEDNESDAYS 7 PM

## VOTE FOR JOHN STANOWSKI 14th District Judge WE ENDORSE JOHN STANOWSKI:



THOMAS R. MINICK  
CURTIS F. ORSINGER  
CHARLES BRODERICK  
HOWARD ZECK  
JAMES LEVLEIT  
JAMES DOUGLAS  
WILLIAM ZSENYUK  
DANIEL K. HELIKER  
WILLIAM HOLFELD  
ELMER KLUMP  
BILL LAWSON  
DAVE GHOLSON  
JOHN HAYES

Sheriff, Washtenaw County  
Undersheriff, Washtenaw County  
former Democratic Candidate for Sheriff  
Major, Ann Arbor Police Dept. Retired  
City Adm., Chief of Police, Saline Police Dept.  
Deputy Chief of Police, Saline Police Dept.  
Chief of Police, Manchester Police Dept.  
Deputy Chief of Police, Ypsilanti Police Dept.  
Commanding Officer, Pittsfield Township  
Constable, Whitmore Lake  
Constable, Ypsilanti Township  
Constable, York Township  
Chief of Police, Eastern Mich. Univ.

Paid for by the Committee to elect John Stanowski District Judge  
Ed Reichbach, Chairman  
Martin Authier, Treasurer

## JERRY FARMER SPEAKS ON THE ISSUES..

1. The Court must treat serious offenses in a serious fashion providing reassurance to the community that the Court will act effectively.
2. The Court must create programs to assist offenders in changing their behavior which include visits to prisons, state mental hospitals, remedial education and restitutional programs.
3. The Court must teach accountability and responsibility to our young people.
4. The Court must exert leadership in working with youthful offenders, victims, parents, school officials and other interested members of the community in fashioning programs and solutions.

### WHAT PEOPLE SAY ABOUT JERRY FARMER:

Tom Minick, Sheriff, Washtenaw County: "I agree with Jerry that we have to take the problem of juvenile crime seriously. His ideas make him my choice for Probate Judge."

William F. Delhey, Prosecuting Atty., Washtenaw County: "Jerry Farmer is an experienced trial attorney and a specialist in the criminal justice field. We need a man with his background and concepts as Probate Judge."

Neil Mast, former County Commissioner: "Jerry Farmer is a hard-working and experienced public servant."

Bo Schembechler, U-M football coach: "Jerry Farmer believes young people must be taught respect for the rights of others and to respect themselves. He will make an excellent judge for Probate Court."

Elaine Moncur, Music Specialist, Handicapped Children: "Jerry Farmer has the desire and ability to initiate effective reform programs for juveniles. I believe in his methods. He is direct and flexible."

John Nordlinger, Director of Athletics, Huron High School: "Jerry has a genuine interest in the needs of young people."

VOTE FARMER AUGUST 8  
DYNAMIC LEADERSHIP - DEDICATED SERVICE

# FARMER

Paid for by the Farmer for Probate Judge Committee, 2173 Delaware Dr., Ann Arbor, Mich. 48103

### BOARD OF EDUCATION MINUTES

These are the proposed minutes of the July 27, 1978, Board meeting. They are not official until approved at the next regular meeting, along with any corrections made by the Board.

The regular meeting of the Manchester Board of Education was called to order at 8:00 P.M. in the Library by President Cortiss Mick. Board Members present: Bunney, Macomber, Mick, Wiley and Kensler. Absent: Horning and Walkowe. President Mick said that Mr. Walkowe was in another meeting, and would join the Board meeting as soon as possible.

President Mick asked if there were any comments from the audience on the agenda. Mrs. Bristle said she would like to speak on Title I later in the meeting. Board Member Horning entered at 8:05 P.M.

President Mick said she would like the Board to consider a different method of approving the minutes. President Mick said she would like the Board to consider any corrections, additions or comments, and if there weren't any, to let the minutes stand approved instead of taking roll call. Mrs. Wiley asked if this method was legal. President Mick said it was.

There were no objections, so this method would be used. President Mick asked if there were any corrections, additions or comments to the minutes of the regular meeting on June 19th. No discussion. Minutes stand approved.

President Mick asked for any corrections, additions or comments to the minutes of the Special Meeting on June 26th. No discussion. Minutes stand approved.

President Mick asked if there were any corrections, additions or comments

to the minutes of the Annual Reorganization Meeting of July 3rd. Mrs. Wiley had a question on her motion on the Internal Accounts. Mr. Macomber said it would be too difficult to differentiate between the accounts, it would be better to let stand as is.

Mr. Macomber questioned the accuracy of the election of school board treasurer in the proposed minutes. After a short discussion it was determined that this portion of the July 3rd minutes was not complete. Moved by Macomber that the minutes of the July 3rd meeting be corrected to indicate that Wiley nominated

Walkowe for Treasurer and Walkowe declined the nomination. Wiley nominated Horning for Treasurer and Horning declined the nomination. Walkowe nominated George Macomber for Treasurer. This nomination was supported by Kensler. The roll call vote: Wiley no, Kensler yes, Horning yes, Walkowe yes, Mick yes. Macomber abstained. Macomber was declared elected. This motion to correct the July 3rd minutes was supported by Bunney. All yeas. Motion carried.

Wiley moved to approve the July 1st meeting as amended, supported by Macomber. Bunney abstained, the rest yeas. Motion carried.

**FINANCIAL REPORT**  
Mr. McGuire gave the following Financial Report: Balance May 31, 1978—\$745,965.36, June Revenues—\$234,176.22, June Expenses—\$663,691.69, Balance June 30, 1978—\$316,258.89.

**BILLS PAYABLE**  
Moved by Wiley that expenditures in the amount of \$225,013.19 be approved for payment. Supported by Bunney. All yeas. Motion carried.

**PROGRESS OF MAINTENANCE PROJECTS**

Mr. Masten gave the following report on the progress of maintenance projects.

Pleasant Lake School roof has been completed. Middle School boiler has been replaced. Nellie Ackerson and Klager boilers are being welded. Contracts are being put out for repairs on the Middle School and High School roofs. Also, for the repair of the drive around the High School, and painting the High School Gym and Study Auditorium.

**NAMING OF BOARD COMMITTEES**

President Mick named the following Board Committees: Finance—Ch. Macomber, Wiley, Bunney. Transportation—Ch. Walkowe, Horning, Building and Grounds—Ch. Macomber, Horning, Kensler. Negotiations—Ch. Mick, Walkowe, Horning. Athletics—Ch. Kensler, Wiley. Student Attendance & Discipline—Ch. Bunney, Macomber, Walkowe. W.L.S.D. Representative—Mick, Alt. Kensler. Policy Committee—Ch. Mick, Wiley, Bunney.

President Mick asked if there were any objections to the committees. No objections. Committees stand as appointed.

Mrs. Wiley gave a summary of the Board's evaluation of the Superintendent. President Mick said it was difficult since the Board only had six months work to evaluate the Superintendent.

**SALE OF FOOTBALL JERSEYS**  
Mr. Masten reported on the sale of

the football jerseys. President Mick said in the future permission should be asked of the Board for the sale of such items, school services and internal accounts.

Mr. McGuire gave the Financial Report on the School Service Fund including Athletics, Milk and Food Service indicating a balance of \$1,053.04 in Athletics, \$673.76 in the Milk Account, and \$675.01 in Food Service.

The Balance of the Internal Account is \$24,678.11.

Board Member Walkowe entered at 8:30 P.M.

**TEACHER'S ASSOCIATION GRIEVANCE CONCERNING FULLY SALARY RAISES FOR ONE HALF TIME TEACHERS**

Moved by Wiley that the Board not go to arbitration with grievance pertaining to full pay increase to half time teachers and that the Board endeavor to remedy this situation at the next negotiating session. Supported by Kensler. All yeas. Motion carried.

**1978-79 TITLE I PROGRAM**

Mrs. Bristle stated her objections to changing the present Title I program.

It was reported that our present program does not comply with the State of Michigan guidelines. Mr. McGuire pre-

Continued on page 7

### I DO! I DO!

The Black Sheep Repertory Theatre is opening the musical I Do! I Do! on August fourth: It will run Aug. 4, 5, 6, 9, 10, 11, 12, and 13. I Do! I Do! is the story of marriage; two people growing up and

growing old together. Quarrelling, money, children and of course love are all a part of this sometimes brassy and bold, sometimes soft and touching, but always entertaining musical.

Show time is 8:15 p.m. Wednesday through Saturday and 4:00 p.m. on Sunday. Tickets are available by calling 428-9280.

\*\*\*\*  
No matter what you earn, you're always in trouble if you spend more than that.  
\*\*\*\*

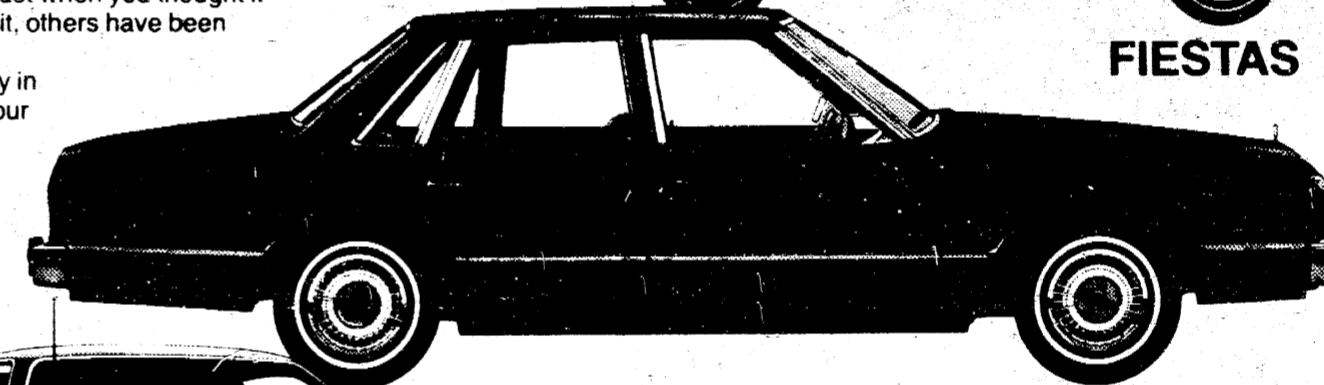
\*\*\*\*  
Our own experience is that time, when allowed to work, will solve many problems.  
\*\*\*\*

# 1978 CLEARANCE BUYS YOU CAN SINK YOUR TEETH INTO!

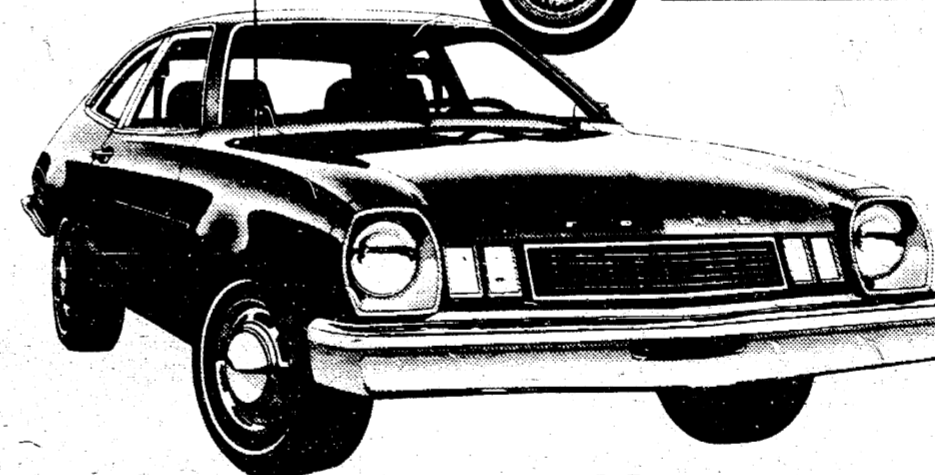
Bargain hunting? Our lots are filled with a sea of 1978 Fords priced to be gobbled up fast. Thunderbirds, LTD IIs, Mustangs and Granadas are going. And this may be your last chance to get our traditional full-size LTD. Just when you thought it was safe to wait, others have been getting your bargains. Hurry in and snap up your clearance buy.



FIESTAS



FAIRMONTS



PINTOS

IF YOU'VE GOT AN APPETITE FOR BARGAINS, DON'T MISS FORD DEALERS CLEARANCE

'78 FORD CLEARANCE



**WIDMAYER FORD CO.**

510 WEST MAIN STREET

MANCHESTER, MICH.

## GENERAL PRIMARY ELECTION

TO THE QUALIFIED ELECTORS:

Notice is Hereby Given, That a General Primary Election will be held in the

**TOWNSHIP OF FREEDOM**  
COUNTY OF WASHTENAW,  
STATE OF MICHIGAN

within said Township on

**TUESDAY, AUGUST 8, 1978**

At the place or places of holding the Election in said Township as indicated below, viz:

**FREEDOM TOWNSHIP HALL**  
11508 PLEASANT LAKE ROAD

FOR THE PURPOSE OF PLACING IN NOMINATION BY ALL POLITICAL PARTIES PARTICIPATING THEREIN, CANDIDATES FOR THE FOLLOWING OFFICES, VIZ:

**STATE** Governor, United States Senator, Representative in Congress  
**CONGRESSIONAL** State Senator, Representative  
**LEGISLATIVE** County Commissioner  
**COUNTY** Supervisor, Clerk, Treasurer, 1 Trustee, 2 Constables.  
**TOWNSHIP**

AND FOR THE PURPOSE OF PLACING IN NOMINATION, CANDIDATES PARTICIPATING IN A NON-PARTISAN PRIMARY ELECTION FOR THE FOLLOWING OFFICES, VIZ:  
JUDGE OF THE COURT OF APPEALS, CIRCUIT COURT JUDGE, PROBATE COURT JUDGE, DISTRICT COURT JUDGE.

AND FOR THE PURPOSE OF ELECTING:  
Delegates to the County Conventions of the Democratic and Republican Parties.

Also appearing on the Partisan Primary Ballot will be a separate row or column containing the names of those minor parties meeting the requirement to have the party name appear on the Primary Ballot. These parties appear on the ballot for the purpose of attempting to qualify for a position on the General Election Ballot.

ALSO ANY ADDITIONAL AMENDMENTS OR PROPOSITIONS THAT MAY BE SUBMITTED

THE POLLS of said election will be open at 7 o'clock a. m. and will remain open until 8 o'clock p. m. of said day of election.

RENA GIRBACH, Township Clerk

## GENERAL PRIMARY ELECTION

TO THE QUALIFIED ELECTORS:

Notice is Hereby Given, That a General Primary Election will be held in the

**TOWNSHIP OF MANCHESTER**  
(Precincts No. 1 and 2)  
COUNTY OF WASHTENAW,  
STATE OF MICHIGAN

within said Township on

**TUESDAY, AUGUST 8, 1978**

At the place or places of holding the Election in said Township as indicated below, viz:

**MANCHESTER TOWNSHIP HALL**  
218 SOUTH CLENTON STREET MANCHESTER, MICH.  
PRECINCT ONE—South side of building PRECINCT TWO—Northside of building

FOR THE PURPOSE OF PLACING IN NOMINATION BY ALL POLITICAL PARTIES PARTICIPATING THEREIN, CANDIDATES FOR THE FOLLOWING OFFICES, VIZ:

**STATE** Governor, United States Senator, Representative in Congress  
**CONGRESSIONAL** State Senator, Representative  
**LEGISLATIVE** County Commissioner  
**COUNTY** Supervisor, Clerk, Treasurer, 1 Trustee, 2 Constables, 2 Library Trustees.  
**TOWNSHIP**

AND FOR THE PURPOSE OF PLACING IN NOMINATION, CANDIDATES PARTICIPATING IN A NON-PARTISAN PRIMARY ELECTION FOR THE FOLLOWING OFFICES, VIZ:  
JUDGE OF THE COURT OF APPEALS, CIRCUIT COURT JUDGE, PROBATE COURT JUDGE, DISTRICT COURT JUDGE.

AND FOR THE PURPOSE OF ELECTING:  
Delegates to the County Conventions of the Democratic and Republican Parties.

Also appearing on the Partisan Primary Ballot will be a separate row or column containing the names of those minor parties meeting the requirement to have the party name appear on the Primary Ballot. These parties appear on the ballot for the purpose of attempting to qualify for a position on the General Election Ballot.

ALSO ANY ADDITIONAL AMENDMENTS OR PROPOSITIONS THAT MAY BE SUBMITTED

THE POLLS of said election will be open at 7 o'clock a. m. and will remain open until 8 o'clock p. m. of said day of election.

WILMA LENTZ, Township Clerk

# Your Church

**EMANUEL UNITED CHURCH OF CHRIST**  
Alex Carlson, Interim Pastor  
Church Service 10:00 a.m.  
Plan to worship God regularly.

**SHARON UNITED METHODIST**  
Corner Pleasant Lake Road - M-52.  
Rev. Wayne Ferrigan, Pastor  
Sunday School 10:00 a.m., Worship Service 11:00 a.m.

**ST. THOMAS LUTHERAN**  
Rev. Jerome Dykstra, Pastor  
Ellsworth Road  
Worship Service 10 a.m. No Sunday School.

**ST. JOHN'S UNITED CHURCH OF CHRIST**  
Carl Asher, Pastor  
Rogers Corners, Waters and Fletcher Rds.  
Sunday School 9:30 a.m. Church Services 10:30 a.m.

**BETHEL UNITED CHURCH OF CHRIST**  
Rev. Roman A. Reineck, Pastor  
Schneider and Bethel Church Roads  
Church Service 10:00 a.m., Sunday School 11:00 a.m.

**MANCHESTER UNITED METHODIST**  
Rev. Maurice D. Sharaf, Pastor  
Worship 9:30 a.m., Sunday School 9:30 a.m.  
**ST. MARY'S CATHOLIC CHURCH**  
Father Raymond Schlinkert  
West Main Street

Sunday Masses 8:30 a.m. and 10:30 a.m., Monday thru Friday 8:30 a.m., Saturday, 7:00 p.m.

**NORTH SHARON COMMUNITY BIBLE**  
Pastor: Rev. Ronald C. Purkey  
Sylvan and Washburn Road  
Sunday School 10:00 a.m., Worship Service 11:00 a.m. (Nursery will be available)  
Junior Church Classes 11:00 a.m., Youth Meeting Senior High 6:00 p.m., Youth Choir 6:00 p.m., Evening Worship Services 7:00 p.m. (Nursery available), Wednesday Bible Study and Prayer Meeting (Nursery available) 7:00 p.m. To your door Bus Transportation available 428-7222.

**FAITH COMMUNITY CHURCH**  
Timothy Miles, Pastor  
8400 Sharon Hollow Rd. off W. Austin Rd.  
Worship service 10:00 a.m., Sunday School 11:00 a.m., Sunday Young People 6:00 p.m., Sunday Evening Service 7:00 p.m., Wednesday evening 6:30 p.m., Junior Choir Practice, Prayer Meeting and Bible Study 7:00 p.m., Junior Prayer Meeting 7:30 p.m., Senior Choir Practice 8:00 p.m.

**IRON GREEN CHURCH**  
Rev. Ralph Janofski, Pastor  
Worship Service 10:00 a.m., Sunday School 11:15 a.m., Youth service 6:30 p.m., Evening Service 7:30 p.m., Wednesday Evening: Junior Choir 6:30 p.m., Bible Study and Prayer Meeting 7:30 p.m., Senior Choir 8:00 p.m.

**MAN LUTHERAN CHURCH**  
Rev. John A. Morris, Pastor  
6050 S. Fletcher Road  
Sunday School 9:00 a.m., Family Worship 10:15 a.m.

**ST. JOHN'S LUTHERAN CHURCH**  
Austin Road, Bridgewater, Michigan  
Rev. Dennis A. Falk, Pastor  
Sunday School, 9:15, worship 10:30 a.m.

**MANCHESTER BAPTIST CHURCH**  
Ronald Nelson, Pastor  
425 S. Macomb Street, Phone 428-7236.  
Sunday School 10:00 a.m., Morning worship 11:00 a.m., Evening Worship 8:00 p.m., Youth Meeting 7:00 p.m., Monday Visitation 7:00 p.m., Wednesday-Prayer Meeting 7:00 p.m.

**ST. BARNABAS EPISCOPAL CHURCH**  
Rev. Jerrold F. Beaumont, "Vicar"  
Old U.S. 12 - 1/4 mile west of M52 - Chelsea. 10:00 a.m. Holy Eucharist and Morning Prayer.

Church Services Courtesy of  
**BAUMGARTNERS**  
Florist and Gift Shop  
138 E Main Manchester  
Phone 428-9166

**BETHEL UNITED CHURCH OF CHRIST**  
Sunday, August 6, 10:00 a.m. Worship Service.  
Tuesday, August 8 to 22--Pastor will be tour host of British Heritage Tour.

**MANCHESTER UNITED METHODIST**  
Thursday, August 3, 6 p.m. Church School Teachers meeting, 7 p.m. Teacher Training with Vernie Hynes, District Education Consultant, 7 p.m. Important Finance Committee meeting.

**ZION LUTHERAN CHURCH**  
Saturday, August 5, Weddings: 1 p.m. K. Schmitke-D. Van Gorder. 4 p.m. S. Schiller-D. Sweet.  
Sunday, August 6, Sunday School 9 a.m. Worship 10:15 a.m.  
Wednesday, August 9, Church Council 8 p.m.

**ASH FOR ANNUALS**  
Now Is The Time To Build Your New-Home

**ALSO REMODELING AND ROOM ADDITIONS**  
Norm Walz Construction  
Ph. 428-7109

**ARE YOU SURE YOU'RE "PUNCHING THROUGH LOUD AND CLEAR"?**  
The typical CB'er can get an average of three miles further to "punch through loud and clear" with a check and adjustment of his CB and antenna system for peak performance.  
**MANCHESTER CB SERVICE**  
Phone 428-8073 FCC LICENSED

Phone Answering Property & Rental Management  
**Odds & Ends BUSINESS SERVICE**  
KATHLEEN A. AIUTO  
104 East Main St. Manchester  
PHONE 428-9202

**NOAH FOR JUDGE**  
"LYNWOOD NOAH HAS AN EXCELLENT KNOWLEDGE OF THE LAW."  
Ypsilanti Press Editorial 10-18-74  
"LYNWOOD NOAH IS A SUCCESSFUL PROSECUTING ATTORNEY. HE IS WELL QUALIFIED TO FILL THE 14th DISTRICT JUDGESHIP."  
Ann Arbor News Editorial 8-1-74  
MOST COURTROOM EXPERIENCE OF ANY CANDIDATE  
Paid for by Committee to Elect Noah 8501 Hankerd Road, Gregory, Mich. 48137

**FAITH COMMUNITY CHURCH**  
Friday evening, August 4th, The men have a Softball Game with Tecumseh Methodist Church at 6:00 p.m.  
Monday evening, August 7th, Visitation to the Herrick Nursing Home at 5:30 p.m.  
Wednesday evening, August 9th, The Board of Deacons will meet at the church at 6:30 p.m. Prayer Hour and Bible Study at 7:00 p.m.

**AREA OBITUARIES**  
Lambert J. Esch  
14011 Pleasant Lake Road  
Manchester

Age 74 years, died Friday at the Saline Community Hospital following an extended illness.  
He was born December 7, 1903 in Freedom Township, the son of Henry and Sarah Kuhl Esch.  
He was married to Wilda Gaige on August 8, 1934. She survives.  
He had been an employee of the Washtenaw County Road Commission for 43 years until his retirement in 1969.  
Mr. Esch was a member of Emanuel United Church of Christ.  
In addition to his wife he is survived by two daughters, Mrs. Lynn (Pauline) Brown of Horton, Mrs. Richard (Arlene) Paul of Manchester; five grandchildren; five great-grandchildren; and one brother, Sam of Napoleon.  
He was preceded in death by a sister

**Horse Shoeing and Trimming**  
BOB BEAUBIEN  
Phone (517) 467-2991  
11540 STEPHENSON RD.  
ONSTED, MICH.

Katherine in 1958.  
Funeral services were held Monday 1:30 p.m. at the Jenter Funeral Home. Rev. Maurice Sharaf officiated. Burial followed in Oak Grove Cemetery.  
Memorial contributions may be made to the Saline Evangelical Home.

Margaret M. Bessel  
2250 McKinley Road  
Chelsea, Michigan

Age 62 passed away July 30, 1978, at Chelsea Community Hospital. She was born March 17, 1916, in Cleveland, Ohio, the daughter of Henry and Margaret (Sullivan) Smith.

Mrs. Bessel was a resident of Chelsea for the past 19 years. She married Edward Bessel on June 6, 1959.  
She was a member of Saint Mary's Catholic Church.  
Mrs. Bessel was a former Manchester resident and was employed at Double A Products for 29 years.  
Survivors include her husband; two sisters, Mrs. Merle (Emily) Cummings and Mrs. Russell (Myrtle) Green, both of Manchester; seven nieces and nephews and two cousins.  
She was preceded in death by her parents and an infant sister.  
The Rosary was recited Tuesday evening at 8 P.M. at the Staffan Funeral Home. Funeral services were held Wednesday at 10 A.M. at Saint Mary's Church, Chelsea, with interment at Olivet Cemetery.

**VACUUM CLEANERS ELECTROLUX**  
Electrolux Sales & Service  
call James Cox  
Manchester  
428-8444 or 428-8686

**The Issues Are Clear . . . So Is Jack Hurula**  
TAXES — We must enact tax limitation to stop the spiral. A reduction in property taxes is mandatory.  
GOVERNMENT GROWTH — It is way out of proportion to the growth in personal income. We need to enact priority spending and stop giving in to every special interest group.  
**W. JACK HURULA**  
for  
**STATE SENATE**  
AUGUST 8th  
Republican  
Paid for by W. Jack Hurula for Senate Committee 2081 Horton Rd., Jackson, MI 47603

**NOAH FOR JUDGE**  
"LYNWOOD NOAH HAS AN EXCELLENT KNOWLEDGE OF THE LAW."  
Ypsilanti Press Editorial 10-18-74  
"LYNWOOD NOAH IS A SUCCESSFUL PROSECUTING ATTORNEY. HE IS WELL QUALIFIED TO FILL THE 14th DISTRICT JUDGESHIP."  
Ann Arbor News Editorial 8-1-74  
MOST COURTROOM EXPERIENCE OF ANY CANDIDATE  
Paid for by Committee to Elect Noah 8501 Hankerd Road, Gregory, Mich. 48137

## Board of Education

on the committee.  
**TEACHER'S ASSOCIATION GRIEVANCE CONCERNING STUDENT OVERLOADS**  
After a discussion it was moved by Wiley that Article VI Section A of the Master Agreement be applied as worded and that the grievance be denied. Supported by Kensler, Yeas: Wiley, Kensler, Walkowe, Macomber, Bunney, Mick. Horning abstained. Motion carried.  
**SECTION 27 OF THE STATE AID ACT**  
Moved by Wiley, supported by Walkowe, that the Manchester Community Schools not participate in Section 27 of the State Aid Act. All yeas. Motion carried.  
**CONSIDERATION OF NEW TEXTBOOK ADOPTIONS**  
Mr. Masten said a committee consisting of teachers and the High School Principal selected the new textbooks.  
Moved by Horning, supported by Walkowe, that the following texts be adopted for use in the Manchester Community Schools: Modern Biology-Holt, Rinehart & Winston, Modern Chemistry-Holt, Rine-

**MARKET VALUE**  
THE WAY YOU WANT IT!  
We're right here in Manchester. Call us at 428-7331.  
**FARM BUREAU INSURANCE GROUP**  
109 EAST MAIN STREET  
MANCHESTER, MICHIGAN

**GENERAL PRIMARY ELECTION**  
TO THE QUALIFIED ELECTORS:  
Notice is Hereby Given, That a General Primary Election will be held in the  
**TOWNSHIP OF BRIDGEWATER**  
COUNTY OF WASHTENAW,  
STATE OF MICHIGAN  
within said Township on  
**TUESDAY, AUGUST 8, 1978**  
At the place or places of holding the Election in said Township as indicated below, viz:  
**BRIDGEWATER TOWNSHIP HALL**  
10990 CLINTON ROAD  
FOR THE PURPOSE OF PLACING IN NOMINATION BY ALL POLITICAL PARTIES PARTICIPATING THEREIN, CANDIDATES FOR THE FOLLOWING OFFICES, VIZ:  
**STATE** Governor,  
**CONGRESSIONAL** United States Senator,  
Representative in Congress  
**LEGISLATIVE** State Senator  
Representative  
**COUNTY** County Commissioner  
**TOWNSHIP** Supervisor, Clerk, Treasurer,  
1 Trustee, 1 Constable.  
AND FOR THE PURPOSE OF PLACING IN NOMINATION, CANDIDATES PARTICIPATING IN A NON-PARTISAN PRIMARY ELECTION FOR THE FOLLOWING OFFICES, VIZ:  
**JUDGE OF THE COURT OF APPEALS, CIRCUIT COURT JUDGE, PROBATE COURT JUDGE, DISTRICT COURT JUDGE.**  
AND FOR THE PURPOSE OF ELECTING:  
Delegates to the County Convention of the Democratic and Republican Parties.  
Also appearing on the Partisan Primary Ballot will be a separate row or column containing the names of those minor parties meeting the requirement to have the party name appear on the Primary Ballot. These parties appear on the ballot for the purpose of attempting to qualify for a position on the General Election Ballot.  
ALSO ANY ADDITIONAL AMENDMENTS OR PROPOSITIONS THAT MAY BE SUBMITTED  
THE POLLS of said election will be open at 7 o'clock a. m. and will remain open until 8 o'clock p. m. of said day of election.  
E. LEWIS BLAISDELL, Township Clerk

THURSDAY, AUGUST 3, 1978 THE MANCHESTER ENTERPRISE PAGE 7  
hart & Winston. Using Algebra-Laidlaw Bros. Using Advanced Algebra-Laidlaw Bros. All yeas. Motion carried.  
Meeting adjourned at 10:00 P.M. Respectfully submitted,  
Helen J. Kensler, Secretary  
Board of Education

**GIRL SCOUT NEWS**  
Girl Scouts of all ages - Brownies thru Seniors - are invited to take part in the Manchester Community Fair.  
Plans are being made to build a float at the home of Diana Schroen, Junior Leader.  
The Manchester Area Girl Scouts will have a booth in the Merchant's Tent, sponsored by local businessmen. If any girls have articles they would like to display in the booth, please call Mrs. Schroen. The Junior Scouts will have raffle tickets available on a quilt the girls made this past year. All proceeds will be used for Junior troop activities.  
The Scout Booth will also have parent consent forms available for all girls interested in joining a Girl Scout troop this fall.  
Next week's Enterprise will have more information about building the float and marching in the parade.  
Education isn't complete if all that the student gets is a highly trained mind. \*\*\*\*

**HEAD START HOME BASED PROGRAM**  
Is now enrolling families for the 1978-79 school year. Families who are eligible:  
HAVE CHILDREN AGES 3 TO 5  
HAVE HANDICAPPED CHILDREN  
ARE LOW INCOME  
RECEIVE PUBLIC ASSISTANCE  
This program is free for those who qualify.  
For more information, call C.S.A. Day Care Center 482-1930

**RENT A PROFESSIONAL "WAX JOB" FOR YOUR CAR.**  
**TREWAX Auto Matic CAR WAXING SYSTEM.**  
We have it! The Auto-Matic Car Waxing System from Trewax. Rent a professional buffer-polisher from us. Apply Trewax Cleaners and Wax for a deep-down, long-lasting professional shine. The machine is light in weight and does the work for you! Just guide it across the car. Fast. Easy. Great for RV's and Vans, too. Now you can do-it-yourself and save!  
4 Hr. Professional Buffer-Polisher  
**only \$3.00**  
**CLIFF'S ACE HARDWARE**  
OPEN 7 DAYS  
103 East Main Phone 428-7322

# WANT ADS

**ALUMINUM EAVESTROUGH** - Seamless, white, black and brown, guaranteed, free estimates. Walkover Home Improvement Company, phone 313-428-8468. tfn

**PAT'S CRAFT STUDIO** - downtown Tecumseh, area headquarters for macrame, tole painting, miniatures, artists supplies and much more. Monday thru Saturday, 10 to 5:30. Classes available. 517-423-7447.

**ROOFING SPECIALIST** All types of roof repairs-homes, barns, commercial, insurance repairs, asphalt shingles, hot build-up roofing, cedar, slate, tile, asbestos, awnings and porch enclosures. Call Joe Hayes for free estimates. 428-8520. tfn

**ROULO ELECTRIC**-Licensed and Insured Contractor. Call Clinton 517-456-4796. tfn

**LAND CONTRACTS PURCHASED** - any amount, anywhere in Michigan, we also make Real Estate Loans. Call Dan Duncan, Ann Arbor Real Estate Company. 668-8585. tfn

**WANTED:** Person to deliver the Sunday Detroit News, in the City of Manchester. Age 12 or over. Telephone 587-2239, collect if interested! Pays \$5.00 per week. No Collections. tfn

**HELP WANTED, part time, must be .18,** apply in person at Patsy's Superette. 11515 Pleasant Lake Road or call 428-8684. tfn

'72 Ford LTD, 2 dr. - good mechanical condition. A.C. 8350, 428-8096. tfn

**CONCRETE WORK DONE** -driveways, sidewalks, aprons, patios and porches. Free estimates. Call Mike 428-9143. 8-17

**MC DONALD'S** now hiring our fall crew. People needed for all shifts. Lunch hour help starts at \$2.75 per hour, people over 18 to work till midnight \$3.00 per hour, all other part time positions \$2.65 per hour. Paid vacation, free meals, flexible hours, steady raises. Apply in person 878 North Zeeb Road, Exit 169 off I 94, 8-17

**WANTED-HOUSE IN THE VILLAGE---** Working couple desires to purchase a house in the Village NOW. 428-9150 after 5 p.m. 8-6

**MANCHESTER 2 FAMILY HOME,** excellent condition, large village lot. Completely insulated, ideal starter home. Phone for an appointment 428-7066. 8-6

**BLOWN insulation, vinyl siding and trim,** roofing, eavestroughs. Edwards Construction, 517-592-8488. tfn

**CHELSEA GREENHOUSES, 7010 Lingane** Road, Chelsea, Michigan 475-1353 - 54 or 475-9313. Flowers and plants for every occasion. We specialize in wedding flowers to fit your budget. We are as near as your phone and we welcome your business. tfn

**CALL Elaine Rice, Realtor,** for successful buying and selling, homes and farms. 10 years of honest and competent brokerage in Real Estate. By appointment, 665-8663 or 428-7272. Associated/Ebfler & Assoc. Inc.

**BEEF TO SELL BY SIDE:** Custom slaughtering. Lockers to rent. Phone 428-7600, Manchester Locker Plant. tfn

**ROOFING, SIDING, GUTTERS, STORM** WINDOWS & DOORS. For a free estimate call 428-7104. Service Roofing Company. Manchester, Michigan. tfn

**WOMAN WANTED to work in kitchen** Monday thru Friday from 10 til 3. Chelsea A & W. 475-2055. tfn

**TAKING applications for students to work** inside and out Chelsea A & W, 475-2055. tfn

**WANTED TO RENT, 3 bedroom house** by school teacher, Manchester area preferred. 428-7617. 8-3p

**U-PICK RASPBERRIES, 80c a quart, 12** acres. 6461 Wheaton Road, 3 miles west of Napoleon on M 50 to Wheaton Road, Makielski Berry Farm. 8 A.M. to 7 P.M. daily. 8-3

**CARPET REMNANTS up to 70% off.** Hartung's Carpet, 11353 Tecumseh-Clinton Rd., Clinton. Closed Sunday and Thursday. 8-3

**NOTICE CORRECTIONS** Manchester Fair Antique Flea Market & Craft Show Friday - Saturday, August 18 - 19, 9:30 a.m. til dark, 12 by 20 ft. \$25.00, 2 days, space limited. Write F.R. Walters, 2424-10 Ave., Port Huron, Michigan, 48060. Phone 313-982-4391. 8-10

**GARAGE & YARD SALE, August 9 - 12,** Electric organ, Therapy table, King Size headboard, Tools, Plants, Bud Beer Signs, Clothes, Paperbacks, Ping Pong table, much more misc. 13720 East Austin Road. 8-10p

**WANTED ANTIQUES** - dolls, trinkets, iron banks, crocks, furniture and misc. Appraisals and estate sales handled. Write Box 576, Brooklyn, Michigan or call collect 517-592-6031. 8-24

**ACT NOW - Join the OLDEST Toy & Gift** Party Plan in the Country - our 31st year! Commissions up to 30% PLUS EXPENSES. Fantastic Hostess Awards. Call Toll Free 1-800-243-7634, or write SANTA'S PARTIES, Avon, Conn. 06001

**ALSO BOOKING PARTIES 8-24**

**\$50 REWARD for information leading to** rental of house in country 429-7808. 8-17p

**NURSING STAFF** RNs - LPNs - Nurse Aides With the occupancy of our new addition we have an increased need for full and part time staff. We have immediate openings on all shifts for persons interested in providing quality geriatric care. Call or come see us at: Evangelical Home - Saline, 440 W. Russell, 429-9401 8-17

**FOR RENT-Nice 3 bedroom house in** Manchester with garage - responsible couple only. References, damage deposit with minimum of 1 yr. lease. \$295 per month. Reply P.O. Box 131, Brooklyn, Michigan, 49230. 8-10

**CLOSE OUT-Mattresses & box springs.** Twin \$119.95 per set, reg. \$129.95 per set. Queen \$169.95 per set. All sets are matching and firm. Hartung's Carpets, 11353 Tecumseh - Clinton Rd., Clinton. Closed Sunday & Thursday.

**FOR SALE, older refrigerator \$15.00,** electric stove \$15.00, gas space heater \$5.00. 611 City Rd. - evenings.

**AVON - TO BUY OR SELL.** Janis White Call early a.m. or after 6:00 p.m. 428-8493. p

**FOR SALE-'74 Dodge Monaco Brougham** P/S, P/B, air, cruise, 50,000 miles. Ted Stautz, 428-8126.

**The Grass Is Greener On This Side of** the Fence...All twenty ACRES of it. READY TO BUILD, HEALTH PERMIT ALL READY OBTAINED. Earl Kelm Realty, 662-2571 or 429-7159 ask for Florence. 8-10

**WANTED: good home for 6 month old** Border Collie. Good with children. 428-7821. 8-10

**NEEDED-injection mold press operators.** Apply in person at Manchester Plastics, 500 W. Madison St., Manchester, Mich. 8-10

**HELP WANTED - clerk/typist, and or** receptionist. Apply in person at Manchester Plastics, 500 W. Madison St., Manchester, Michigan. 8-10

**GARAGE SALE, August 4 & 5, 9 to** 219 N. Macomb. Couch, lamps, children and ladies clothing, large aquarium, trees, mens bowling ball & shoes, hooked rug kit, tools and fishing supplies, many other items.

**FREE 2 yr. old German Shorthair to good** home, 428-8712. p

**GERMAN SHEPHERD pups for sale, 428-** 8665.

**BIG YARD SALE-several families, August** 3 to 5, 9 to 5. Baby furniture and clothes, 400 Kawaski motorcycle. 7807 Sylvan Rd. p

**FOUR FAMILY GARAGE SALE -August** 3-6, 9 to 5. Children and Adult clothes, toys, old books, U.S. and foreign coins, and odds & ends. 210 Hibbard. p

**THREE FAMILY YARD SALE, August** 11 and 12, 10 a.m. to 5 p.m. 15340 Herman Rd., Manchester, Mich. p

**THREE FAMILY YARD SALE-400 pair** salt & pepper collection, 3 H.P. juicer, ice cream freezer, canning jars, couch and misc. Friday and Saturday, 9 to 5. 800 E. Main. p

## THE NAPA SIGN. COUNT ON IT.

Count your savings. Count your many additional maintenance-free miles. Count the peace of mind for you and your family. Count your blessings. Because the sign is the ultimate symbol of open vehicle care, that's because it is the symbol of NAPA. NAPA is over 50 years old and in that half century NAPA parts and NAPA people have earned a reputation for quality products, professional service, fast delivery and fair prices. Today that sign stands for over 110,000 top quality parts, many better than original equipment. So whenever you need professional general service, look for the blue and gold NAPA sign. You can count on it.



**Ross Automotive**  
Automotive Accessories and Equipment  
230 East Main Manchester  
Phone 428-8320 or 428-8328



**Quality parts, Professional service**

Wedding Bells and Beautiful Brides

Every bride dreams of the perfect wedding. Let us help you help with the plans for the happy day.

Wedding ANNOUNCEMENTS INVITATIONS

**THE MANCHESTER**

STATION AND SEE OUR FINE SELECTION

## GOLF LEAGUES

**CLARK LAKE 18 HOLER'S**

Reed-Hamilton	406
Mann-Steele	401
Bechtel-Spansley	389
Tirb-Fink	384
Carpenter-Tracy	353.5
Kouba-DuRussel	351
Dettinger-Wellwood	348.5
Burkhardt-Walter	338.5
Spansley-Spansley	319
Miller-Donnellon	297.5

Closest to pin #5, Burkhardt. Closest to pin #11, Donnellon. Team winning most points, Carpenter-Tracy.

## CLARK LAKE WIFFERS BALL WINNERS

The Clark Lake Wiffers Ball winners for the week of July 18 are: Sue Koskibe, Low w/handicap; Bettie Fink, Least Putts; Eleanor DuRussel, Closest to pin 2nd par 3; Beverly Szczyzalski, high putts even holes.

The winners for the week of July 25 are: Bettie Fink, Low Actual; Sue Bailey, Least Putts, Win Gains. Closest to pin 1st par 3; Olyan Kouba, High Putts odd no. holes.

## MARATHON BENEFIT SUNDAY, AUGUST 6

Pro Bowler Mike Totaki will be at the Chelsea Lanes to kick off a 12 game Marathon Benefit on August 6, 1978 at 3:00 p.m.

Get ready for the fall season with Mike's Bowling Clinic. Mike will be available for questions and assistance after his 3 game match with a LOCAL BOWLER, from 3:00-6:00 p.m.

Mike will also perform trick bowling.

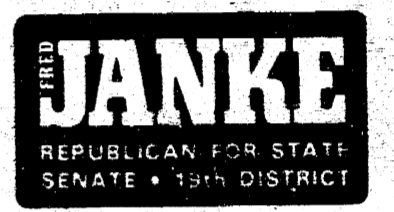
## SALINE OPEN TENNIS TOURNAMENT

The Saline Community School's Summer Recreation program is sponsoring a non-competitive Adult Tennis Tournament the week of August 7 - 12. Anyone, male or female, 18 or older is eligible to register. The following categories are being offered: Men's Singles and Doubles, Women's Singles and Doubles, and Mixed Doubles.

The cost of the tournament is \$3.00 per person/ per entry category (plus 1 new ball/match). The tournament will begin on August 7 at 6:30 p.m. with singles matches, but all entries are asked to be present for a brief meeting. Play will continue throughout the week starting at 6:30 p.m. with the finals to be held on Saturday, August 12. Location is the Saline Middle School Courts. All entries must be received by 4:00 p.m. Friday, August 4.

ENTRY FORM

Name \_\_\_\_\_  
Age \_\_\_\_\_  
City \_\_\_\_\_  
Singles \_\_\_\_\_ Doubles \_\_\_\_\_  
Mixed Doubles \_\_\_\_\_  
Doubles Partner(s) \_\_\_\_\_



VOTE AUG. 8 • Return to "Common Sense" Government

**CLINTON THEATRE**  
FRIDAY-SATURDAY 7:30 & 9:30  
SUNDAY 7:30 ONLY  
**MEL BROOKS**  
**HIGH ANXIETY**  
A Psycho-Comedy  
PG Color by DELUXE

**FREEDOM ELECTRIC**  
11207 Pleasant Lake Road  
Manchester, Michigan  
NEW CONSTRUCTION  
COMMERCIAL INDUSTRIAL  
GILBERT LUCKHARDT 428-8233  
GORDON HOUGH 428-7619

**MANCHESTER CARPET CLEANERS**  
"DEEP STEAM EXTRACTION"  
Very Reasonable Rates  
Free Estimates  
Special Rates to Churches  
Residential - Commercial  
DON STEELE  
PHONE 428-7319

**The Black Sheep Repertory Theatre**

PRESENTS

**JOHN HARTFORD**  
WITH SPECIAL GUEST: NEW GRASS REVIVAL  
MONDAY & TUESDAY, AUGUST 7 & 8, 7 P.M. & 9:30 P.M.

All Seats \$6.00. Tickets available at Recordland in Briarwood Mall, Schoolkids Records, in Manchester at ADA Offices, 104 E. Main Street from 9:12-11:30 a.m. Or by mail order to: ADA Ticket Office, P.O. Box 472, Manchester, MI 48158 (please enclose check or money order along with self-addressed envelope and state show time and date.) For more information phone 313-428-9287 or if no answer 428-9280. A division of the Association for the Performing Arts, Manchester, MI. From Ann Arbor take I-94 west to 52 south. Approx. 30 miles to the Theatre.

**BanClub**

Let your checks do the walking.

The wonderful thing about a Union Savings Bank BanClub checking account is convenience. Your checks can be sent here and there...just about anywhere, rather than you doing the walking. And, with Union Savings Bank your BanClub checking is free of all service charges, all the personalized checks you need, \$10,000 accidental death insurance, members have valuable national discounts on Hertz car rentals, participating Holiday, Rodeway, and other hotels and motels all this and more for a small monthly membership fee. It takes but a few minutes to open your Union Savings Bank BanClub checking account. Do it soon.

**THE ANSWER IS Yes**

**UNION SAVINGS BANK**

MEMBER F.D.I.C. MANCHESTER / BRIDGEWATER / PLEASANT LAKE

### NEW VOCATIONAL AGRICULTURE INSTRUCTOR

Mr. Richard Wright, of Lowell, Indiana, has been recently employed as Vocational Agriculture Instructor for the Manchester Community Schools. Mr. Wright has seventeen years of teaching experience at several schools in Indiana. He holds both a B.S. and M.S. from Purdue University.

In addition to his normal teaching duties, Mr. Wright has conducted an extensive F.F.A. and Young Farmers activities. He has also taught summer school and Adult classes.

"My first impression of the Manchester community is very favorable," Wright comments. "It looks as we have to sell the program to the students. With the interest in the Steer Club and Lamb Club, plus the unbelievable co-operation that was apparent in conducting the Annual Chicken Broil. I am sure that we can develop the type of Vocational Agriculture program that the community deserves."

Wright feels that in order to have a strong "No Ag" program, the community must be involved. Individuals and organ-

izations should feel free to use the services of the program.

In addition to teaching Vocational Agriculture, Mr. Wright will serve as coordinator of the local Co-operative Occupational Training Program.

Currently Mr. Wright is seeking housing for his family in the district. Mr. and Mrs. Wright and three children ask if anyone has any information about a house to rent or purchase on land contract to please get in touch by calling the High School office 428-7333 or the Superintendent's office 428-7300.

### CLINIC

with the graduate training program in School Psychology under the auspices of the Combined Program in Education and Psychology at the University of Michigan.

To obtain the service, parents or others should send a postcard with their name, address and phone number, age of child and brief reason for referral to: Dr. Calvin O. Dyer/ Learning Evaluation Clinic/Room 3210, School of Education/ University of Michigan/ Ann Arbor, Michigan 48109.

## Flavorful Punches for All Occasions

**WINSTON-SALEM, N.C.**  
Spring is here and summer is not far away. Cold, flavorful drinks served with light lunches, snacks or alone make excellent refreshers for both children and adults.

**ORANGE BLUSH REFRESHER**  
1 envelope Unsweetened Hawaiian Punch Orange Punch Drink Mix  
1/2 cup sugar  
1 quart cold water  
1/3 cup grenadine syrup  
1/3 cup lemon juice  
1 pint orange sherbet

In punch bowl, combine Drink Mix and sugar. Add water and stir until sugar is dissolved. Add grenadine syrup and lemon juice; mix well. Chill. Just before serving, add sherbet and stir until partially melted. Makes approximately twelve 4-ounce servings.

**RASPBERRY LEMON COOLER**  
1 envelope Unsweetened Hawaiian Punch Raspberry Punch Drink Mix  
1 cup sugar  
1 quart cold water  
1 can (6 oz.) frozen lemonade concentrate, partially thawed  
1 bottle (28-oz.) club soda, chilled  
Ice cubes  
Lemon slices (optional)

In large punch bowl, combine Drink Mix and sugar. Add water and stir until sugar is dissolved. Add lemonade; mix well. Chill. Just before serving, gradually stir in club soda. Add ice cubes and lemon slices for garnish, if desired. Makes approximately eight-teen 4-ounce servings.

### FLAG FOOTBALL

The Recreation Department will sponsor flag football for all middle school and high school boys. The number of teams will be determined by the size of the turn-out. The schedule will begin on August 1, 1978, at 7:00 p.m. at the High School. Contact Bart Bartels or Jim Fielder for details.

### SINGLES 25 and UP

If you enjoy dancing to good music, come and join the Tuesday Nite Singles at the American Legion Hall, Main Street, Ann Arbor, on August 8. Dance from Nine to Midnight to the music of The Merriman's. Refreshments are served.

### THE SINGLES PICNIC

Two area Singles Dance Groups (25-UP) of Ann Arbor are having their annual combined Super Picnic on August 6th at the Dexter American Legion Shelter in the afternoon.

## BIRTHS

Born to Mr. and Mrs. Dennis Herman a son, Matthew Dean. He arrived on July 24, weighing 7 pounds, 6 ounces. Maternal grandparents are Mr. and Mrs. Charles Hough, Sr. and paternal grandparents are Mr. and Mrs. Vernon Herman all of Manchester.

Mr. and Mrs. Richard Parent of Manchester are announcing the birth of a daughter, Jeannette Marie on July 13,

weighing 7 pounds, 6 1/2 ounces. Maternal grandparents are Mr. and Mrs. William Swords of Milford as Clarence Parent of Royal Oak. Jeannette Marie has two sisters Jessica 4 years and Jacquelyn 2 1/2 years.

### Arbeters Annual Picnic

The Arbeter Society will hold their annual picnic at Carr Park, Monday August 7 at 12 noon. This will be pot-luck, bring a dish to pass and table service.

**UNDERWOOD Motor Co.**  
FORD- LINCOLN AND MERCURY  
GOOD INVENTORY OF NEW & USED CARS IN STOCK  
TECUMSEH-CLINTON ROAD  
CLINTON, MICHIGAN  
PHONE 517-456-7414

REPUBLICAN CANDIDATE FOR 19TH SENATORIAL DISTRICT

CENTRALLY LOCATED I WANT TO BE YOUR FULL TIME SENATOR FIRM BELIEVER IN LOCAL GOVERNMENT

**AARON R. "Bud" WALDRON**

EXPERIENCE COUNTS CONCERNS

7 yrs School Board Member North Adams & Jerome Schools

9 yrs Supervisor-Accessor To Somerset Twp. Hillsdale County

17 yrs. Successful Businessman Bud's Market-Jerome 1955-1972

Co-Director District 17, Michigan Township Asso. (Ingham, Jackson, Hillsdale & Lenawee Counties)

I AM AS CLOSE AS YOUR PHONE

PHONE-HOME 517-688-3511 OFFICE-517-688-3323

Paid for by the Committee to Elect Aaron R. "Bud" Waldron 19th District Senator, Robert Hawke Chairman Box 220, Jerome, Michigan, 49249

The Black Sheep Repertory Theatre of Manchester, Michigan

A Funny Thing Happened On the Way To the Forum

Thursday, August 3

**I DO! I DO!**  
August 4, 5, 6

Opening Night — Buy Three, Fourth Free  
Wed. & Thurs. — \$6.00, Fri. \$6.50, Sat. \$7.00, Sun. \$5.50

Wed.-Sat. 8:15 p.m. GROUP DISCOUNTS Sun. 4:00 p.m. SEASON TICKETS

Reservations 428-9280 or 428-9287

**Ballantine**  
For Michigan State House, 23rd District  
Vote Republican August 8 Primary

Mary Keith Ballantine has a firm grip on the realities of public service and has worked for responsible government as a Jackson County Commissioner. She is intensely interested in helping taxpayers get good government—while cutting costs.

PLEASE VOTE FOR HER ON AUGUST 8TH

Armin and Irma Weidmayer

John and Nancy Bihlmeyer

Andrew and Ceclia Poet

George and Mabel Macomber

Dale and Mary Weidmayer

Stanley and Beverly Poet

Dennis and Alvina Engelbert

Paid for by Ballantine Election Committee, P. O. Box 1163 Jackson, Mich. 49204

DOUBLE YOUR MONEY IN LESS THAN 10 YEARS  
DOUBLE YOUR MONEY IN LESS THAN 10 YEARS  
DOUBLE YOUR MONEY IN LESS THAN 10 YEARS  
DOUBLE YOUR MONEY IN LESS THAN 10 YEARS  
DOUBLE YOUR MONEY IN LESS THAN 10 YEARS  
DOUBLE YOUR MONEY IN LESS THAN 10 YEARS  
DOUBLE YOUR MONEY IN LESS THAN 10 YEARS  
DOUBLE YOUR MONEY IN LESS THAN 10 YEARS  
DOUBLE YOUR MONEY IN LESS THAN 10 YEARS  
DOUBLE YOUR MONEY IN LESS THAN 10 YEARS  
DOUBLE YOUR MONEY IN LESS THAN 10 YEARS  
DOUBLE YOUR MONEY IN LESS THAN 10 YEARS  
DOUBLE YOUR MONEY IN LESS THAN 10 YEARS  
DOUBLE YOUR MONEY IN LESS THAN 10 YEARS  
DOUBLE YOUR MONEY IN LESS THAN 10 YEARS  
DOUBLE YOUR MONEY IN LESS THAN 10 YEARS  
DOUBLE YOUR MONEY IN LESS THAN 10 YEARS  
DOUBLE YOUR MONEY IN LESS THAN 10 YEARS  
DOUBLE YOUR MONEY IN LESS THAN 10 YEARS  
DOUBLE YOUR MONEY IN LESS THAN 10 YEARS

One of the most important, but overlooked, features of savings is the magical effect of compound interest. If money is deposited and the interest it earns left to earn interest, it grows at an amazing rate. Money in our 8% 7% and 7 1/2% savings certificates doubles in less than ten years.

Thus, if a person of 40 years with \$25,000 (in property, coins, cash value insurance, etc.) puts it into a savings certificate it will grow to over \$50,000 by age 50 and over \$100,000 by age 60 without adding a penny of his paycheck.

ten years, compounding has even greater significance. Say you have actual assets of \$100,000. If you convert these assets into cash and put it into one of our high interest paying certificates you will have over \$200,000 in ten years

and realize an interest income at current rate of 8.0% for life of \$16,000 a year. This is without adding to the original certificate investment. On the other hand if you continue to add to your original investment it is well within the realm of possibility to accumulate \$250,000, \$300,000 and more. Remember, too, your money is insured with an agency of the federal government and does not fluctuate with the vagaries of the market. Start your savings/investment program now. The sooner you start the more you will be able to accumulate.

HOW YOUR MONEY GROWS IN TEN YEARS

DEPOSIT	8.00% Per Annum Certificate Term 8 Years Compounded Monthly 8.30% Effective Annual Rate	7.75% Per Annum Certificate Term 6 Years Compounded Monthly 8.03% Effective Annual Rate	7.50% Per Annum Certificate Term 4 Years Compounded Quarterly 7.71% Effective Annual Rate
\$ 5,000	\$ 11,098.18	\$ 10,825.93	\$ 10,511.74
\$ 10,000	\$ 22,196.37	\$ 21,651.87	\$ 21,023.48
\$ 25,000	\$ 55,490.92	\$ 54,129.67	\$ 52,558.70
\$ 50,000	\$110,981.85	\$108,259.35	\$105,117.40
\$100,000	\$221,963.70	\$216,518.70	\$210,234.80

Federal regulations require a substantial interest penalty for early withdrawals from certificate accounts.



## GREAT LAKES FEDERAL SAVINGS

Formerly ANN ARBOR FEDERAL SAVINGS  
Offices in Ann Arbor, Battle Creek, Albion, Bellevue, Brighton, Chelsea, Coldwater, Dexter, Hastings, Manchester, Marshall, Richland, Saline, Urbandale, Ypsilanti • Member FS LIC

### Thomas L. Stringer For State Legislature

Thomas L. Stringer, candidate for the 3rd District State Representative Seat announced recently that certain issues have continuously been presented by concerned citizens during his travels throughout the 23rd District.

"The Tax Limitation Proposal is undoubtedly the most repeatedly asked question and I support the Proposal. I will ultimately force the Legislature to truly evaluate existing programs and to determine their viability. We must all work within a budget and the State Legislature should be no different and therefore I support such a Tax Limitation concept."

Stringer also opposes the Voucher System proposal because it would be chaotic and it's too broad in its concept. It would be chaotic because it will destroy school districts as we know them; and it is too broad because it totally eliminates the use of the property tax to finance education. But such a sweeping proposal should be

carefully evaluated before such a drastic move should be made.

Stringer also stated that "continued voter rejection of millage proposals throughout the State clearly indicates the need for continued study and further efforts on school financing and educational reform. Areas of reform should include continued efforts to maintain or reduce property tax limits for school purposes and increased use of the income tax as a major source of funds."

He is also terribly concerned about the misuse and abuses which have crept into the administration and benefits schedules of the Worker's Compensation Program and Unemployment Insurance. The abuses and misuse of these programs must be eliminated if we are going to create a business climate that is going to be favorable to Michigan Economy.

**BINGO**  
American Legion Post 117  
106 EAST MADISON-MANCHESTER  
WEDNESDAYS 7 PM



Are you like most of us, deploring the cost of a new car?

I don't suppose, compared to the way everything else has skyrocketed in price, a new car is any more expensive than the times call for.

There is one way, though, you can save a tidy sum on a new car. That's buying it now.

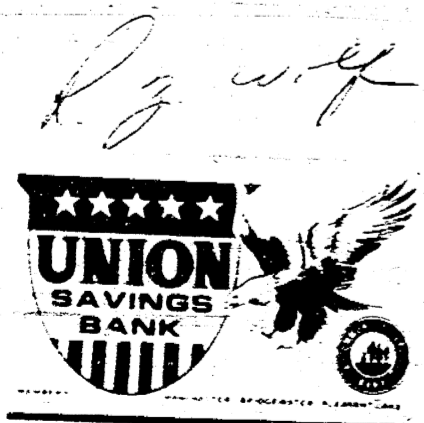
Right now dealers are clearing their showroom in preparation for the new cars to be announced shortly. It's end-of-season-selling-time.

Why not visit your favorite new car dealer soon and see what kind of deal he will make you on a new '78. You could be surprised, pleasantly, that is, on just how much money you can save by buying right now.

When you have found the car of your dreams, finance it the only sensible way to finance a new car, with us.

It's a lot better financing your new car with folks you know and trust than with some out-of-town concern who cares little about you or your circumstances.

Think about it...then go down and make a deal.



### BLUE LAKE FINE ARTS CAMP

Attending Blue Lake Fine Arts Camp in Twin Lake, Michigan for the fourth summer session is Kathy M. Wheeler, 421 Riverside Drive, Manchester, daughter of Mr. and Mrs. Donald Wheeler.

She will attend Blue Lake from August 8 to August 20.

Blue Lake, which each summer hosts more than 3,100 elementary through high school students, offers instruction in a wide variety of fine arts fields.

Located 15 miles north of Muskegon in the Manistee National Forest, the 13-year-old summer school of the arts has grown to be one of the largest facilities of its type in the United States.

Students attending Blue Lake's fourth two-week session have the option of majoring in art, band, jazz-rock ensemble,

orchestra and piano. The third session is primarily for high school students. Students who elect a band major at Blue Lake can expect to find their work challenging, no matter what their level of proficiency or experience might be. Band students are assigned to one of three different bands on the basis of ability. In addition to three hours of intensive daily rehearsals and sectionals, technique classes and a master class will be included as part of the regular fee.

### ART GUILD WORKSHOP

The Manchester Art Guild offers a special Silk Screen Workshop for adults August 14th through the 19th from 10:00 a.m. to 2:00 p.m. The cost is \$12.00 for Guild members, \$15.00 for non-members (materials included).

This workshop is a first come, first serve, so call Sue Gleason 428-7188.

### A VOTE FOR STANOWSKI IS A VOTE FOR JUSTICE

9449 Moon Road • Saline, Michigan 48176 • Telephone (313) 429-1062

## STANOWSKI FOR DISTRICT JUDGE

To the Citizens of Washtenaw County:

I am a candidate for the 14th District Court judgeship because I believe that the quality of the judiciary determines the quality of justice. Respect for the law is the cornerstone of a free and well ordered society. My record, diversified experience and knowledge of the law demonstrates that I can provide the necessary judicial leadership and the high standards of performance that are essential for the respect and cooperation of my fellow citizens within Washtenaw County.

The community asks much of the criminal court and the court is expected to meet their demands by controlling crime. Controlling crime is not solely the task of the police, the courts or correction agencies. Crime prevention and control requires total involvement and participation of the entire community. Without the interest and participation of the schools, businesses, social agencies, private groups and individual citizens, crime in our society will continue to be a multi-million dollar business. We can no longer tolerate public apathy, reluctance or an inability of the society to take effective action against the criminal element. I believe that we must lead the trend to reverse public accommodation of crime and violence.

It is my belief that the court has a vital function in balancing the rights of individuals and the needs of the community. The community is entitled to freedom from fear and should not permit the intolerable situation of one man preying upon another. The complex balancing process of protecting the rights of an individual and the interests of the community must be premised upon the principle that people are accountable for their actions and criminals are responsible for their crimes.

The principles of justice demand complex and time consuming procedures in which the court must separate the innocent from the guilty. However, the guilty, who are convicted, must be punished with reasonable certainty and promptness, so that the deterrence of crime will not be blunted. A society which does not insure its safety and nourishes lawlessness is governing itself by the absurd.

In choosing to seek the office of Judge, I have placed my confidence in the Voters of Washtenaw County, and I urge that you now generously respond to my candidacy by placing your confidence in me.

Respectfully,

*John W. Stanowski*

John W. Stanowski



### AGRICULTURE IN ACTION

MICHIGAN FARM BUREAU EDITORIAL

NO INTESTINAL FORTITUDE

Be glad that you are not living in Anchorage, Alaska. Living costs more there than in any of 40 other selected urban areas. It costs a bit over \$24,000 a year for what is called an "intermediate" budget in Anchorage.

Honolulu, Hawaii is next on the high-cost list at \$20,883 per year, followed by Boston, just a few dollars cheaper. New York, San Francisco, Buffalo and Milwaukee rate in that order as 4th, 5th, 6th and 7th highest cost places in which to live. Washington, D.C. is just a tad cheaper than Milwaukee, followed by Minneapolis, Hartford, Detroit, Chicago,

and a host of others.

In general, parts of the south and southwest are lower cost places, with cities in Kansas, parts of California, Texas, Tennessee, Louisiana and Florida, all on the cheaper side. Cheapest of all major urban areas checked is Austin, Texas, where one can live on an intermediate budget for less than \$15,000.

What makes the difference between the costs of goods and services. Taxes are part of it. This year, economists predict that labor's share of the food dollar will exceed by two-billion the farmer's share for producing it.

But then, that's what farmers have been saying all along...that labor is the biggest cause of inflation. They KNOW it is the biggest bite out of your food dollar. But no one is supposed to criticize the

## TAX LIMITATION FOR MICHIGAN ELECT JERRY KLEIN

YOUR EAR IN THE 18TH DISTRICT... YOUR VOICE IN LANSING MORE JOBS... MORE BUSINESS CONSTITUTIONAL LIMITATION ON TAXES

The lack of common sense in our government can be seen in our taxing and spending. They want to tax us 2 cents a gallon for gasoline to build a subway in Detroit. But they do not spend enough on our mental hospitals to insure patients are not abused. We are paying the highest taxes in our history and for what? Terrible streets and roads, sewage systems that are inadequate, a spiraling legal system, an exploding welfare burden. Our government isn't solving problems—it's causing problems.

We cannot hope to reduce the tax load overnight. We must move ahead on three fronts. First, we must establish a business climate that will attract new business to the state and which will encourage the growth of business here. Added business means more jobs, higher incomes for all and less of a tax burden. Secondly, we must reduce the cost of government and shift spending from unessential to essential activities. Lastly, we must impose limits on the amount of taxes that may be collected and the amount of borrowing by government. Only with limits on what can be collected will there be limits on spending.

## ELECT JERRY KLEIN



PD. POL. ADV. - KLEIN FOR SENATE CAMPAIGN HEADQUARTERS: 217 E. Washington St. Ann Arbor, MI 48108

There is something fundamentally wrong in the way our government and our society are being run. We are being eaten alive by rising taxes, rising prices, rising prices and rising prices. Government is growing faster than the rest of society and its overspending drives up taxes and causes inflation. Further, we the people are being forced to do the bidding of the bureaucrats and the politicians, instead of government serving the people.

We are being treated as if we are nothing or as numbers on some huge list. Politicians are trying to run our lives. Let one arm stick and head of being shoved and manipulated and this is why I am running for office. I intend to shove back for the people!

STATE SENATE  
REPUBLICAN PRIMARY  
AUGUST 8

??????  
DO THE OTHER CANDIDATES LEAVE YOU GUESSING ON THE TAX ISSUE?

## VOTE ED HOLDA

REPUBLICAN, 23rd DISTRICT, STATE REPRESENTATIVE

TAX REFORM: Property TAX CUT with the TISCH AMENDMENT

PAID FOR BY COMMITTEE TO ELECT ED HOLDA FOR REPRESENTATIVE

"sacred cow"—the labor unions. Not one Congressman or even the President has the intestinal fortitude to stand up to George Meany and say: "No more unrealistic raises for you people!" Farmers realize the courage it took for a steadfast minority in the U.S. Senate to resist the pressures of big labor and the administration and kill the so-called labor reform bill. This bill would have given labor unions even more opportunity to impose the inflationary wage

demands and costly work rules that have so damaged American industrial productivity.

Union officials have been watching their declining membership rolls and taking a look at agriculture as a place to expand. That look spells "danger" to farmers—as it should to consumers. Imagine what it would cost to live if unions gained a monopoly over the nation's farms!

### ALBER EXCAVATING & TRUCKING

DRIVEWAYS—DRAIN FIELDS—DRY WELLS  
SEPTIC TANK INSTALLATION—BASEMENTS DUG  
GRADING—GRAIN HAULING  
TOPSOIL—SAND—GRAVEL

LICENSED CONTRACTOR

PHONE (313) 428-8628

7601 HASHLEY Rd. MANCHESTER

### Interior Design Service

YOUR HOME OR OURS, LESLIE KNECHT, DESIGNER, WILL BE HAPPY TO WORK WITH YOU.

WE PROVIDE:

- \*Fine Furniture
- \*Quality Carpets & Rugs
- \*Custom Draperies
- \*Wallpaper & Paints
- \*Accessories

## FOSTER-DAVIES

"The Store With The Extra Touch - Since 1883"

201 E. MICHIGAN AVE. GRASS LAKE 522-4181  
OPEN MON. - SAT. 9 to 5:30 Mon. & Wed. Evenings to 8:30

### Jerry Jacob

AUCTIONEER SERVICE

PHONE 313-428-7975 or 428-7634

SALE DATES AVAILABLE

### WILLIAMSON

Heating & Cooling Systems

### John Steele jr.

INSTALLATION & REPAIR

Phone 428-8692

**STRINGER  
STRINGER  
STRINGER  
STRINGER  
STRINGER  
STRINGER  
STRINGER  
STRINGER  
STRINGER  
STRINGER  
STRINGER  
STRINGER  
STRINGER  
STRINGER  
STRINGER**

**REPUBLICAN**

**Candidate for Michigan State  
Legislature - 23rd District**

Paid for by the Stringer for State Representative Committee  
3249 Broad Street Dexter, Michigan 48130.

**GARDENING  
at a GLANCE**

**Water: The Missing  
Ingredient?**

The box of grass seed tells you the proper setting on the spreader for maximum results.

So does the bag of fertilizer. But even if you follow these instructions carefully, and use the finest materials available, you are doomed to failure if you have no understanding of the third essential to garden success.

**Water:**  
The largest manufacturer of garden hose says that almost everyone wastes water — some people waste enough to take care of the needs of the average lawn and garden.

According to Colorite, here are points to watch:

Most people regulate their garden watering by time, but actually the size of the hose is the most important factor in determining the amount of water applied. For example, to apply the equivalent of one inch of rainfall to 1,000 square feet of lawn requires one hour and

three minutes for a half inch hose, but takes only 24 minutes for a three-quarter inch hose. Here's a handy chart:

**To Apply One Inch Of  
Water To A 1000  
Square Foot Area**

Diam- eter of Hose	Gal- lons Per Min- ute*	Time to Water
1/2"	10 1/2	1 Hr. 3 min.
3/4"	17	37 min.
1"	31	24 min.

Your garden supply dealer can advise on the general soil and watering in your area.

Don't waste water with loose couplings or worn washers.

Don't waste water on driveways, patios, or similar areas. If you water small areas and move your sprinkler to avoid waste, remember to keep overlap at a minimum.

And most important: don't overwater. Learn the water requirements of the various elements of your lawn and garden, and you'll cut waste and get better results. Most people don't realize it, but too much water can be as bad as not enough.



- AMISH MADE CABINETS
- CABINETS BY CONTINENTAL
- MERILLAT CABINETS

Monday thru Thursday 9 to 5 Friday 9 to 7  
Saturday 9 to 2 or by appointment

**Dutch Country Kitchens**  
146 EAST MAIN 428-7292 MANCHESTER

**WHY A CULLIGAN®  
WATER SOFTENER  
WILL NEVER BE AN  
ORPHAN!**

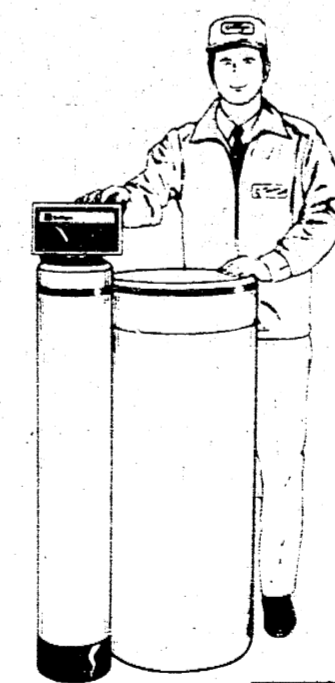
Because we will be here to take care of it if it needs care. You can trust our service . . . we've been in business for 30 years . . . you can depend on us.

A Culligan product is an extra-value because we service what we sell!

**JUST CALL**

**Culligan®**

**662-5665**  
2321 JACKSON AVE.  
ANN ARBOR, MICH.



**CARD OF THANKS**

We would like to thank Teresa Freed for her superb job on the children's summer art classes. She spent lots of time and tender loving care. Thanks Teresa! Good job well done.

The Manchester Art Guild

To all my friends, acquaintances, and well-wishers during my hospital stay. Reverend Shari, thank you for your prayers and words of encouragement to us. I appreciate the many get well and birthday cards from all of you.

Thank you, sincerely,  
Mabel Main

**LEGAL NOTICE**

Notice is hereby given that a public sale will be held at 10:00 A.M., August 5, 1978 at the Union Savings Bank of Manchester, 135 East Main St., Manchester, Michigan, to sell the following property to the highest cash bidder:

1977 Ford 4 x 4 pickup, 4 speed transmission & front hydraulic hook up.

The above may be inspected prior to the sale by contacting the seller. Seller reserves the right to bid. UNION Savings Bank of Manchester, G. Beeman, Collection Manager.

July 25, 1978 and August 3, 1978

**HAROLD J. (Red) OWINGS**

HAS SERVED YOU FOR 20 YEARS WITH  
THE SHERIFF DEPARTMENT

NOW LET HIM REPRESENT YOU AS

**County Commissioner**

**DISTRICT TWO  
AUGUST 8th**

Paid for by Committee to elect Owings.



Judge Francis O'Brien is retiring.

Don Kenney has the experience, the ability—and the human qualities to take his place as Probate Judge in our Juvenile Court. Please give him your vote!

- 21 years in general practice as a family lawyer.
- Graduate, University of Michigan B.A., 1954, Juris Doctor, 1957.
- Member: Washtenaw County Bar Association; State Bar of Michigan; American Bar Association; Association of Trial Lawyers of America; Michigan Trial Lawyers Association and the American Judicature Society. Member of many professional committees involving Probate and Trust Law, Family Law, Corporation and Business Law, Criminal Law and Judicial Administration. Associate member, National Council of Juvenile Judges Association. Fellow, American Arbitration Association.
- Appointed (63) Washtenaw County Public Administrator. (Probate of special estates and properties.)
- Married: 24 years to Carol Leybourn Kenney — 4 children, ages 6 through 18.
- Community participation: First Presbyterian Church of Ann Arbor, Ann Arbor People to People, Ann Arbor Society for Musical Arts, Washtenaw Council on Alcoholism, Ann Arbor Symphony Orchestra Board of Directors, charter president, Kiwanis Club of Ann Arbor Southeastern, Ann Arbor Amateur Hockey Association, Greenpeace, Ann Arbor Chamber of Commerce, Ann Arbor Tomorrow, and many others.

**Don Kenney.**

for WASHTENAW PROBATE JUDGE  
Pd. for by: Don Kenney for Probate Judge Comm.  
640 City Center Bldg., Ann Arbor, Mich. 48104



### JACKSON FAIR AND FACILITIES EXPAND

The Jackson County Fair and Petunia Festival will offer many new facilities and attractions this year.

Fairgoers Aug. 6-12 will find the Northwest corner of the fairgrounds—under towering shade trees—has been converted into a pleasant picnic area complete with tables and benches.

Free shows afternoons will be presented at the little bandstand there, with seating for an audience of about 200, according to Herman Gumper, fair manager. Acts throughout the afternoon and early evening will include a small seven-act circus for children, a marionette show, and a balloon-into-animal act. Sunday from 8 to 10:30 P.M. the Jackson County 4-H Style Show will take place. The rest of the fair week, Jackson's "Benny Foole and The System" will take over the gazebo with their mixture of "soul, jazz, and a little disco," according to Foole, 434 Jefferson. His group is composed of eight ex-Motown players, with Foole playing sax and flute.

New for open and class and 4-H livestock judging and sales is a 75 X 125 foot pole-constructed covered arena. Livestock judging starts Sunday, August 6, and continues through the week. 4-H International showmanship judging will start Saturday evening, Aug. 12, for all classes. In between will be open class judging of all large animals except draft horses. The 4-H livestock auction will be at 7 P.M.

Thursday, Aug. 10, and small animals at 2 P.M. Saturday, Aug. 12.

"In the past we have had all judging in the daytime and out of doors," Gumper said. "Crowds and livestock don't mix this way." With the covered area and evening hours, he expects the judging to go much smoother.

New parking area will more than double on-site parking available to fairgoers, Gumper said. Besides extra parking available on the north side of North Street by the fairgrounds, this year the Fair Commission has purchased land to the east of the fairgrounds along Ganson St. This property, formerly owned by the Grand Trunk Railroad, will be used for livestock exhibitors' parking.

Even more petunias will be on display at this year's fair, Gumper promised. About 70 varieties will be adding color and perfume to the fairgrounds. This year planters some 6 by 8 feet by 16 inches high, with wide edge boards for seats, will be scattered down the north midway.


The fair also has a new poultry and goat barn for 4-H exhibitors to handle the rapidly increasing interest in goat husbandry.

For the stage show, new dressing rooms with air conditioning have replaced trailers. "You have to, today, to attract class acts," Gumper said. This year his lineup includes "The Bob Hope Show" Friday, Aug. 11, "Styx" in concert Saturday,

Aug. 12, the "All American Rough Riders" on Sunday, Aug. 6, and "Lynn Anderson and Eddie Rabbit" on Thursday, Aug. 10. All shows are at 8 P.M. except The Bob Hope Show, which will have two performances — 7 and 9:30 P.M. In addition, a grandstand act—the "Nick Nixon Show," (at no charge) will be at 1:30 P.M. Wednesday, Aug. 9, which is Old Timer's Day. All persons 65 or over will be admitted free until 5:30 P.M. that day.

"We've raised some premiums, added new classes for judging of exhibits," Gumper said. "We've had more requests for midway space this year than ever before—possibly because Bob Hope is coming. We fully expect this year's fair to be our biggest and best!"

### Judge Qualifications



Choose **Campbell**

## JACKSON CO. FAIR


### And PETUNIA FESTIVAL

# AUGUST 6th-12th

IN CONCERT GUEST EMCEE—WJR'S J.P. MCCARTHY



**LYNN ANDERSON & EDDIE RABBIT**  
THURSDAY AUGUST 10  
8:00 PM  
GRANDSTAND SEATS \$4.00  
TRACK SEATS \$6.00



**BOB HOPE** THE KING OF COMEDY  
FRIDAY AUGUST 11, 7:00 PM.  
AND 9:30 PM.  
GRANDSTAND SEATS \$5.00

**ALL AMERICAN ROUGH RIDERS**  
PICK-UP TRUCK TRAILER SHOW  
SAT. AUG. 8, 8:00 PM.

**TRACTOR PULL**  
MON & TUES. AUG. 7-8, 6:30 PM.  
GUEST EMCEE—WJR'S J.P. MCCARTHY

### STYX LIVE IN CONCERT

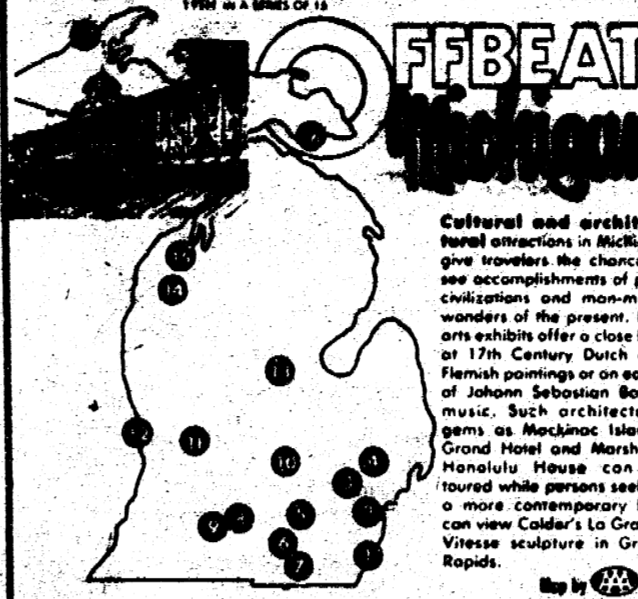
SATURDAY AUGUST 12  
8:00 PM.  
FESTIVAL SEATS \$8.00  
GRANDSTAND SEATS \$6.00

ADVANCE TICKETS FOR ALL SEATING ARE AVAILABLE THROUGH THE OFFICE OF THE JACKSON COUNTY FAIR, 100 W. GANSON, JACKSON, MICHIGAN 48462.

SEE US FOR MON. THROUGH FRIDAY, 10:00 AM - 5:00 PM.



## OFFBEAT MICHIGAN



Cultural and architectural attractions in Michigan give travelers the chance to see accomplishments of past civilizations and man-made wonders of the present. Fine arts exhibits offer a close look at 17th Century Dutch and Flemish paintings or an earful of Johann Sebastian Bach's music. Such architectural gems as Mackinac Island's Grand Hotel and Marshall's Honolulu House can be toured while persons seeking a more contemporary look can view Calder's La Grande Vitesse sculpture in Grand Rapids.

1. Gen. Custer statue, Monroe
2. Institute of Arts, Detroit
3. Cranbrook Academy of Arts, Bloomfield Hills
4. Meadow Brook Theatre, Rochester
5. Power Center for the Performing Arts, Ann Arbor
6. Civil War Monument, Tipton
7. Soldiers Civil War Monument, Adrian
8. The Molder sculpture, Albion
9. Honolulu House, Marshall
10. Kresge Art Center, East Lansing
11. Art Museum and La Grande Vitesse sculpture, Grand Rapids
12. Hackley Art Gallery, Muskegon
13. Center for the Arts, Midland
14. Interlochen Center for the Arts, Interlochen
15. Perry-Hannah House, Traverse City
16. Grand Hotel, Mackinac Island
17. Fire Station, Colomet

Editor's Note: To avoid disappointment, always phone ahead to check schedule.

**SAFETY TIP:** Recreational units on two-lane roads usually travel below maximum speeds. To prevent traffic jams behind, persons towing trailers should make occasional stops on the shoulder and allow faster-moving traffic to pass safely.

## GENERAL PRIMARY ELECTION

TO THE QUALIFIED ELECTORS:  
Notice is Hereby Given, That a General Primary Election will be held in the  
**TOWNSHIP OF SHARON**  
COUNTY OF WASHTENAW,  
STATE OF MICHIGAN  
within said Township on  
**TUESDAY, AUGUST 8, 1978**

At the place or places of holding the Election in said Township as indicated below, viz:  
**SHARON TOWNSHIP HALL**  
CORNER OF PLEASANT LAKE AND SYLVAN ROAD

FOR THE PURPOSE OF PLACING IN NOMINATION BY ALL POLITICAL PARTIES PARTICIPATING THEREIN, CANDIDATES FOR THE FOLLOWING OFFICES, VIZ:

- STATE** Governor, United States Senator, Representative in Congress  
**CONGRESSIONAL** State Senator Representative  
**LEGISLATIVE** County Commissioner  
**COUNTY** Supervisor, Clerk, Treasurer.  
**TOWNSHIP** 1 Trustee, 1 Constable.

AND FOR THE PURPOSE OF PLACING IN NOMINATION, CANDIDATES PARTICIPATING IN A NON-PARTISAN PRIMARY ELECTION FOR THE FOLLOWING OFFICES, VIZ:  
JUDGE OF THE COURT OF APPEALS, CIRCUIT COURT JUDGE, PROBATE COURT JUDGE, DISTRICT COURT JUDGE.

AND FOR THE PURPOSE OF ELECTING:  
Delegates to the County Convention of the Democratic and Republican Parties.

Also appearing on the Partisan Primary Ballot will be a separate row or column containing the names of those minor parties meeting the requirement to have the party name appear on the Primary Ballot. These parties appear on the ballot for the purpose of attempting to qualify for a position on the General Election Ballot.

ALSO ANY ADDITIONAL AMENDMENTS OR PROPOSITIONS THAT MAY BE SUBMITTED

THE POLLS of said election will be open at 7 o'clock a.m. and will remain open until 8 o'clock p.m. of said day of election.

DUANE HASELSCHWERDT, Township Clerk

A tour of Michigan's cultural and architectural attractions provides a unique look at the state's history from prehistoric times to the most modern paintings and sculptures, according to Automobile Club of Michigan.

The opportunity to hear the music of Maynard Ferguson, Helen Reddy or Johann Sebastian Bach, see a Shakespearean comedy or a high school musical or view a former governor's collection of African art all are part of such a tour.

A trip to Mackinac Island's stately Grand Hotel or a visit to the magnificent Honolulu House in Marshall offer a glimpse of 19th Century building feats.

Situated high on a bluff is one of the Great Lakes' outstanding landmarks, the Grand Hotel. Built of Michigan white pine, the Grand was only half its present size when opened in 1887. It is now the world's largest summer hotel with 350 guest rooms and an 880-foot front porch, longest in the world.

Honolulu House was built in 1960 by a former justice of the Michigan Supreme Court who also served as U.S. consul to Hawaii. The former residence, which is owned by the Marshall Historical Society, includes beautiful hand-painted 1889 wall murals and a collection of Victorian pieces.

Perry Hannah House was the residence of the founder of Traverse City. The 40-room structure has 10 fireplaces, copper-lined ceiling, two-foot-thick walls and is valued at \$3 million. While the residence is now a funeral home, tours are given when set up in advance.

The Calumet Fire Station in the Upper Peninsula architectural landmark, which was built in 1898. The structure, which is scheduled for restoration, houses a 1926 fire engine.

Michiganders seeking an earth of musical bliss rather than an eyeful of 19th Century architecture will find sounds ranging from the pop tunes of Helen Reddy (Aug. 25) to the classical renditions of the Detroit Symphony Orchestra (Aug. and 5) at Meadow Brook Theatre. Located in Wilson Hall on Rochester's Oakland University campus, Meadow Brook is one of the country's most successful resident theaters.

Interlochen Center for the Arts is part of the National Music Camp—a noted arts institute with 1,700 students enrolled in music, art, dance and drama. The 1,200-acre campus is open year-round, with both free student and professional entertainment. Interlochen is about 20 miles southwest of Traverse City.

Two Shakespeare plays are part of the entertainment at Power Center for the Performing Arts in Ann Arbor. Musicals, dramas, and symphonies are staged in three separate theatres at the Midland Center of the Arts.

Bloomfield Hills' Cranbrook Academy of Arts features changing monthly art exhibits in its six galleries plus shows from the school's art students. Art works dating from 3000 B.C. to the present are part of the collection at Kresge Art Center at Michigan State University, East

## ELECT OWINGS

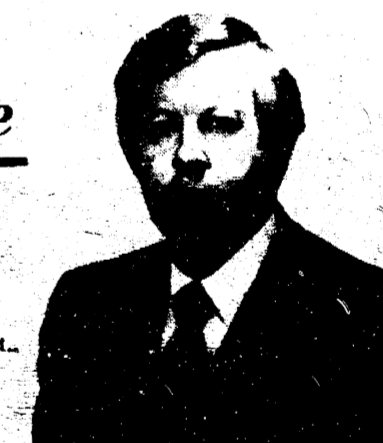
KNOWLEDGE  
EXPERIENCE  
ABILITY

**HAROLD J. OWINGS**  
COUNTY COMMISSIONER  
DISTRICT TWO

Paid For By Committee to Elect Owings, 43 Butternut Chelsea Michigan

## Mowat for State Senate

19th SENATE DISTRICT



Married: wife, Jean, Chairperson.  
Home Economics & Interior Design Dept., Adrian College.

Children: 3 sons; all attending college.  
Church: First United Methodist Church.  
Education: Lenawee Public Schools,  
B.S. from M.S.U., Kellogg Foundation -  
3-year Farmer Study Program.

**JOHN S. MOWAT, JR.**  
Asst. Republican Leader  
House of Representatives

Military Service: A.A.F.  
Owner of Mowat's Orchards & Market.

- A legislator of uncompromising integrity
- A legislator with proven leadership
- A legislator who listens
- A legislator who lives and believes in the strength of the American family
- A legislator with agri-business background who knows "there is no such thing as a free lunch"

Paid for by Mowat for State Senate Committee, PO Box 146, Adrian, Mich. 49221

**TOUR MICHIGAN**

**Lansing.**  
Former taverner G. Menon Williams' African art collection, wood Dutch and Flemish 17th Century paintings and exhibits tracing the arts from ancient to modern times highlight displays at the Detroit Institute of Arts.  
The Grand Rapids Art Museum features a permanent display of German expressionist paintings while Hackley Art Gallery in Muskegon has a fine collection of works from the Old Masters.  
A contemporary artist's view may be seen in Alexander Calder's La Grand Vitesse. This 48-ton, 34-foot-high sculpture is located in front of the Grand Rapids City Hall.  
The Motor commemorates the craftsmen who have helped sustain the furniture industry at Albion. It is at Michigan and Superior streets.  
Tribute's Cemetery is the site of the first Civil War Monument erected in the North after the Civil War. Adrian's Soldiers Civil War Monument consists of a pillar from the former First National Bank of Philadelphia. It is in Monument Park. A statue honoring General George Custer is in a small park at Monroe and Elm streets in Monroe.

**Black Sheep Theatre Holding Auditions**

The Black Sheep Repertory Theatre announces auditions for its 1978 Fall Season. Positions are available for actors and actresses in *The Last of the Red Hot Lovers* by Neil Simon, *The Subject Was Roses* by Frank Gilroy and *An Evening With Cole Porter*, a musical revue.  
The available roles are: Last of the Red Hot Lovers—1 Man and 2 Women in their middle thirties and a woman in her 30's. Subject Was Roses—Middle aged Man and Woman. An Evening With Cole Porter—Actress-Singer in her 20's.  
Persons auditioning will be requested to read sections taken from the plays. These sections will be given at the time of the auditions. Please be familiar with the play for which you are auditioning. The actress-singer for the Cole Porter Revue should have a prepared song (accompaniment provided). The audition is Sunday, August 6 at 8:30 a.m. at the Black Sheep Theatre in Manchester. The theatre is located at 158 E. Main in Manchester. Call 428-2867 for more information.

**Delicious Low-Calorie Appetizer**



It's no secret that vegetables are good for us. But until we eat them in their almost-natural state, we seldom realize how delicious they are, too!

One of the best ways to learn this happy lesson is to cook vegetables quickly, using a T-Fal non-stick skillet. When the pan's super-slick surface is coated with a little bit of oil, fresh and frozen vegetables can be cooked to just the right tender-crisp stage in a matter of minutes—with no sticking, and no messy clean-up later. It is, in short, the civilized way to cook!

Team these delicious hot morsels with a chilly cottage cheese-yogurt dip for a delicious and healthful party appetizer—or as a tempting first course for a family dinner. You may find that your vegetable eaters turn into vegetable-appetizer lovers.

**SAUTEED VEGETABLES WITH YOGURT DIP (Serves 6)**

- 3 green peppers, cut into 1-inch squares
- 24 small mushrooms caps
- 1 bag (16 ounces) frozen baby whole onions
- 2 zucchini, cut into 1-inch thick slices
- 2-4 tablespoons olive or vegetable oil
- 1 teaspoon oregano salt
- 1 cup cottage cheese
- 1 cup plain yogurt
- 1 teaspoon celery seed
- 3 scallions, sliced
- 1 small red bell pepper, chopped salt

Combine all vegetables and oil in a 12-inch T-Fal non-stick skillet. Sauté over medium heat until vegetables are tender. Sprinkle with oregano and salt to taste. Combine all dip ingredients in a bowl. Dip hot vegetables into cottage cheese mixture.

**FAHEY REALTY**

OFFICE 215 EAST MAIN PHONE 428-9298

100 West Hill in Village of Addison overlooking the MSU Road. Built around MSU. Show by appointment. Call Don Langert.

In Village of Manchester - 4 bedroom older home with one car garage. Nice landscaped lot. Within walking distance of business district and churches. Show by appointment.

2 1/2 x 1 1/2 in. in village with water, gas, sewer, and paved streets. \$18,000.00. Call Don Langert.

Large village home - industrial sites - all features available. Call Don Langert.

Other real estate for sale.

List of real estate for sale.

Don Langert	104 E. Main	428-7400
Don Langert	10004 Fahey Rd	428-8748
James Fahey	112 S. Washington	428-7979
Don Langert	10000 Helms Rd	428-8120
Don Langert	10000 Helms Rd	428-8628
Don Langert	28 Sycamore Street	428-2108

VOTE REPUBLICAN  
AUGUST 3 PRIMARY

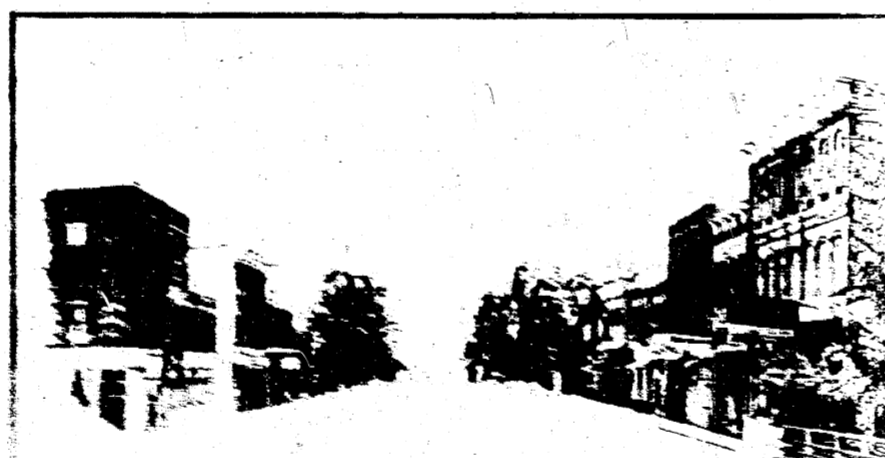
**Ballantine**  
For Michigan State House, 23rd District



**WE NEED**

- People who are interested in public affairs
- People who are interested in the community
- People who are interested in the state

Ballantine is a member of the Michigan Trial Lawyers Association and the Michigan Trial Lawyers Association of the 23rd District. He is also a member of the Michigan Trial Lawyers Association of the 23rd District.



**THE FIRST ANNUAL  
MANCHESTER  
STREET  
FAR**

SPONSORED BY THE MANCHESTER STREET FARMERS ASSOCIATION  
SATURDAY, AUGUST 12TH, 1978  
10:00 A.M. TO 2:00 P.M.  
MANCHESTER STREET FARMERS ASSOCIATION  
158 E. MAIN ST. MANCHESTER, MI 48110

MEET AND GREET WITH  
MICHIGAN'S SENIOR CENTER  
ENTERTAINMENT  
MUSIC  
COURTESY OF THE  
MICHIGAN TRIAL LAWYERS ASSOCIATION  
23RD DISTRICT

FOR TICKETS OR INFORMATION  
CALL 428-2867 OR 428-2868

SPONSORED BY  
THE MANCHESTER VILLAGE ASSOCIATION

**Invite Lemon Nut Bread to "Tea"**

Next time you invite the neighbors in to enjoy the custom of afternoon "tea," serve a homebaked treat. Lemon Nut Bread is a citrus-flavored, fine-textured bread that's a delicious alternative to sweet rolls or coffee cake. Vary the recipe by substituting orange juice and rind for the lemon.



**LEMON NUT BREAD**

- 3/4 cup Parkay margarine
- 1 1/4 cups sugar
- 3 eggs
- 2 1/2 cups flour
- 2 teaspoons baking powder
- 1 teaspoon salt
- 1/2 cup milk
- 1/2 cup lemon juice
- 1/4 cup chopped pecans
- 2 teaspoons grated lemon rind

Cream margarine and sugar until light and fluffy. Blend in eggs. Add combined dry ingredients to creamed mixture alternately with milk and juice, mixing well after each addition. Stir in nuts and rind. Pour into greased and floured 9 x 5-inch loaf pan. Bake at 350°, 1 hour and 20 minutes. Cool 5 minutes; remove from pan.  
Variation: Substitute orange juice and rind for lemon.

**HOW IT FEELS TO HAVE A HEART ATTACK**

The way a heart attack feels can vary. So how can you be sure that what you're feeling is really a heart attack?  
By remembering this:  
If you feel an uncomfortable pressure, fullness, squeezing or pain in the center of your chest (that may spread to the shoulders, neck or arms) and if it lasts for two minutes or more, you could be having a heart attack. Severe pain, dizziness, fainting, sweating, nausea or shortness of breath may also occur. Sharp, stabbing twinges of pain are usually not signals of a heart attack.  
Your survival may depend on getting medical attention as quickly as you can. Call the emergency medical service immediately. If you can get to a hospital faster in any other way, do so.  
Don't refuse to accept the possibility that you are having a heart attack. Many heart attack victims do just that. They say it's indigestion or tension. They worry about embarrassment. They often wait three hours or longer before getting help.  
But before those three hours are up, one out of two is dead. Remember what you've just read. The time might come when your life will depend on it.

Michigan Heart Association  
We're fighting for your life.



**"People first . . . then the system."**

THAT'S DON KENNEY talking. Don has been a family lawyer in Washtenaw County for 21 years. Don Kenney knows how people should be served by the law and the courts. Don Kenney also knows how the legal system can seem to confuse and frustrate the people it exists to help. Don Kenney wants to help. In the Probate Court of Washtenaw County. Candidates are always promising simplistic cure-alls before election day. Don won't do that. But Don Kenney does promise that he'll work for solid improvements. And he'll put people first.

**People First.  
Don Kenney.**  
for WASHTENAW PROBATE  
Juvenile Judge

Paid for by Don Kenney for Probate Judge Committee, 840 City Center Building, Ann Arbor, MI 48104. Terry Conlin, Treasurer.



**GEORGE W. PARKER  
FOR  
DISTRICT JUDGE**

*A judge should also be mindful of the needs and interests of the other people that come to court: witnesses, victims, jurors, plaintiffs and defendants all have rights that must be protected . . .*

- \*Chelsea resident & Kawanis member
- \*10 years as a Trial Attorney including Broad Civil Trial Experience
- \*Former Assistant Washtenaw County Prosecuting Attorney
- \*Michigan Trial Lawyers Association
- \*Association of Trial Lawyers of America

Paid for by the Committee to Elect George W. Parker 14th District Judge, Terrence J. O'Hagan chairperson 330 E. Liberty Ann Arbor MI 48104.



### Recipes for a Family Reunion Feast

At reunion time, when family is treated like "special company," it's fun to search through cookbooks and recipe files for a dish that's truly entertaining fare. Aside from treasured hand-me-down recipes that are command performances at family functions year-in, year-out, innovative dishes are the order of the day.

When a potluck dinner for the family gathering has you assigned to dessert-duty, here are two easy favorites to try. Both can be made the day before, so you can take a break from kitchen chores and spend the time mingling instead of mixing.

Frozen Party Salad, a recipe originated in 1934 by Kraft, is a fancy, molded fruit salad, with cream cheese and marshmallows, that you can whip up the day before and freeze. Come family reunion dinner time, unmold it and slice to serve as a salad or dessert.

Another luscious dessert is Banana Mallow Party Pie. A delicate-textured, rich pie made with pudding and miniature marshmallows, its good looks belie its easy to pull-together nature.

For more recipes for family reunions write to: Recipe Booklet Offer, Kraft, Inc., P.O. Box 4744, Dept. FP, Chicago, Illinois 60617.

#### FROZEN PARTY SALAD

- 1 cup Miracle Whip salad dressing
- 1 8-oz. pkg. Philadelphia Brand cream cheese
- 1 20-oz. can pineapple chunks, drained
- 1 16-oz. can apricot halves, drained, quartered
- 1/2 cup chopped maraschino cherries
- 2 tablespoons confectioners' sugar
- Few drops red food coloring
- 2 cups Kraft miniature marshmallows
- 1 cup heavy cream, whipped

Gradually add salad dressing to softened cream cheese, mixing until well blended. Stir in fruit, sugar and food coloring; fold in marshmallows and whipped cream. Pour into 9 x 5-inch loaf pan. Freeze. Unmold. 10 to 12 servings. Variation: Substitute one 16-oz. can peach slices, drained, for apricots.

#### BANANA MALLOW PARTY PIE

- 1 3 1/2-oz. pkg. vanilla pudding and pie filling mix
- 150 cups Kraft miniature marshmallows
- 1 cup heavy cream, whipped
- 2 bananas
- 1 9-inch baked vanilla wafer crust, chilled

Prepare mix as directed for pie filling on package, except using 1 3/4 cups milk. Cover surface of pie filling with waxed paper or transparent wrap; chill. Mix until well blended; fold in marshmallows and whipped cream. Slice bananas into crust. Pour filling over bananas. Chill several hours or overnight.

UPHOLSTERY FABRICS REPAIR SERVICE  
**MARGIF'S UPHOLSTERY**  
PICK-UP and DELIVERY AVAILABLE  
207 W DUNCAN  
PHONE 428-7146  
MANCHESTER

**MANCHESTER INSURANCE AGENCY**  
122 West Main Street  
Manchester, Michigan  
Phone 428-8215  
Home-Farm & General Insurance

**MANCHESTER Electric, Inc.**  
ELECTRICAL CONTRACTING  
APPLIANCE SALES & REPAIR  
ELECTRICAL & PLUMBING SUPPLIES  
112 ADRIAN STREET  
MANCHESTER  
PHONE 428-8243

**'You can no longer afford NOT to be concerned!'**

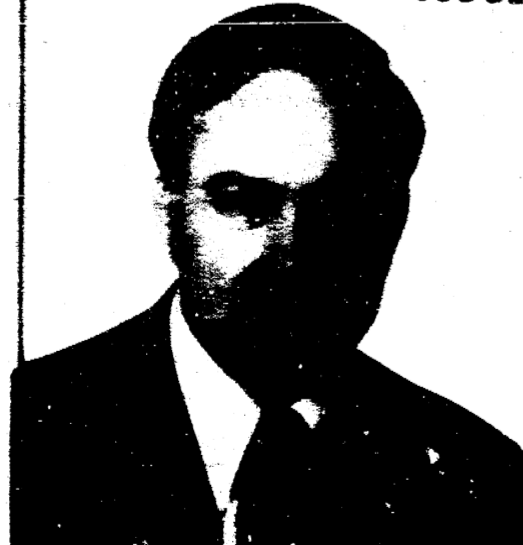
VOTE  
**ED HOLDA**

REPUBLICAN, 23rd DISTRICT, STATE REPRESENTATIVE  
**TAX REFORM: Property TAX CUT with the TISCH AMENDMENT**

**\*WELFARE REFORM \*LOBBY REFORM**

PAID FOR BY COMMITTEE TO ELECT ED HOLDA FOR REPRESENTATIVE

**ELECT KARL V. FINK**  
14 DISTRICT COURT JUDGE



**VOTE THE WASHTENAW COUNTY NON-PARTIAN BALLOT AUGUST 8**

Former U.S. Army officer  
Business and Law Degrees from University of Michigan  
Partner in Ypsilanti firm of Ulrich Pear & Fink,  
Former Washtenaw County Senior Assistant Prosecuting Attorney in charge of all appeals and all 14th District Court cases.  
Active in church and community affairs  
Lifetime Washtenaw County Resident  
Dexter Area Resident (Webster Township)  
Received highest rating of any Judicial Candidate from Washtenaw County Lawyers in every category: Judicial temperament, knowledge of the law, preparedness and efficiency, trial practice skills and ability and overall evaluation.

Paid for by Fink for District Judge Committee, 15 S. Washington Street, Ypsilanti, Michigan 48197 to which contributions may be made.

**DUE TO A FANTASTIC CUSTOMER RESPONSE**  
WE'RE EXTENDING OUR  
**RED TAG SALE**  
ONE WEEK ONLY!!  
BRONZE CLOCKS  
DINO FIGURES  
MAGNETS  
DISCOUNTS  
GOLD SELECTION OF NEW GAMES  
**WIDMAYER**  
517 WEST MAIN 512-628-6261

# THE MANCHESTER ENTERPRISE

THURSDAY, AUGUST 10, 1978

20¢ A COPY

111TH YEAR VOLUME NO. 41

## Fair Queen Candidates



Seniors - Diane Porter, Denise Forner and Daphne Nickles



Juniors - Lori Walz, Dianna Smith, and Nancy Egler



Sophomores - Megaira Quayle, Heidi Dresch and Hollie Carpenter



Freshmen - Lisa Wolf, Dawn Day and Amy Little

## Fair Book Rule Correction

Correction in the age of the Antique tractors that will be entered in the pull at the Manchester Community Fair. The rules should read all tractors 1940 or older. Not as printed in the rules of the contest in the fair tabloid. Thank you, Manchester Community Fair Board

## COMMUNITY FAIR TO FEATURE TRAINED ANIMAL SHOW

Harold Tesch and Company will put on Trained Animal Shows and will have a walk-thru trailer of UNUSUAL ANIMALS on display Wednesday and Thursday, August 16 and 17, at the Manchester Fair.

Animal stars will include one of the WORLD'S SMALLEST dwarf ponies, "Louie, the llama" (pictured above), a dwarf cow, "Peanutbutter", a 34 inch performing miniature pony, an earless goat, somersaulting birds, a mallard duck born wearing a hat, an owl or two, bunnies, a 25 pound skunk, a monkey that weighs less than a pound, a deer, and other feathered and furry creatures.



Harold Tesch and Company will put on Trained Animal Shows and will have a walk-thru trailer of UNUSUAL ANIMALS on display Wednesday and Thursday, August 16 and 17, at the Manchester Fair.

Wednesday's shows will be at 4:00 and 7:00 p.m. and Thursday's shows will be at 3:00 and 7:00 p.m. Each humorous, action-packed show will be unique.

Mr. Tesch's trick pig, "Porkey", will be appearing in "National Geographic" magazine in September of this year with one of his monkeys a-top the saddle.

Harold Tesch, a teacher of mentally handicapped students near Adrian, Michigan and a former juvenile home director, has been on the road with his unusual presentations for fourteen years. He is a member of the Fellowship of Christian Magicians and the Clowns of America.

The Kick-off Fair Parade is at 6:30 p.m. Tuesday. "Louie, the llama" and "Peanutbutter" will be pulling a cart in tandem in the parade.

The Manchester Fair (at Manchester, Michigan) runs August 15 thru 19. Many quality attractions, such as the Harold Tesch Shows, are being added this year to make it bigger and better than ever.

The first step toward converting the Athletic Field to the Fair Grounds will be taken Friday when the Fox Tent and Awning Co. erect the tents that provide shelter for the Community Fair. Fair Board members and committee people will begin their work on Sunday afternoon to set up display areas both in the Mid-

**Manchester Street Fair Saturday, August 12**

Saturday, August 12th, marks a new event for the Village of Manchester, THE FIRST ANNUAL MANCHESTER STREET FAIR. The activities will begin at 10:00 a.m. and last until 7:00 p.m. The day will be a gala one including the Merchant's Sidewalk Sales, a stage area featuring music and Children's theatre, arts and crafts exhibits (macrame, jewelry, pottery, paintings and more) and food and beverages highlighted by an outdoor cafe sponsored by the Manchester Jaycee's Auxiliary. It will be an event that young and old alike will enjoy. WPAG A.M. will be broadcasting live throughout the day from Main Street. The entire street will be blocked off and areas have been designated for special parking just for the Fair. The schedule for the stage area is as follows:

- 11:00 a.m. - Traveling Smiles/Children's Theatre
  - 12:00 noon - Midnight Rider Band
  - 1:00 p.m. - Connie Huber/folksinger
  - 2:00 p.m. - Traveling Smiles/Children's Theatre
  - 3:00 p.m. - Joel Mabus/Bluegrass & banjo
  - 4:00 p.m. - To Be Announced
  - 5:00 p.m. - Bob Johnson and the B.J.'s
  - 6:00 p.m. - Bob Johnson and the B.J.'s
- Make plans now to attend the First Annual Manchester Street Fair, sponsored by the Manchester Village Association.

## UNITED WAY SEEKS '78 CAMPAIGN SLOGAN

Could it be possible that you are a poet and don't know it? Why not enter the United Way 1978 Slogan Contest and find out?

Last year's prize winner was Edna Knauss with the entry of "Don't hedge - sign your pledge".

Begin thinking of something suitable and enter it at the United Way Booth at the Manchester Fair - August 15 thru the 19th.



## THEY'RE ENGAGED

Mr. and Mrs. Grant Smith of 16420 Herman Road, Manchester have announced the engagement of their daughter, Cathy Jo, to Alan Joseph Schwab, the son of Mr. and Mrs. Russell Schwab of 8610 Neal Road, Manchester.

Cathy is a 1974 graduate of Manchester High School and is now employed by Saline Community Hospital.

Alan graduated from Manchester High School in 1972 and Washtenaw Community College in 1974. He is employed by Saline Ford Motor Company.

An October 21 wedding is being planned.