

Your Church

THURSDAY, JANUARY 26, 1978

MANCHESTER METHODIST CHURCH
 10:00 a.m. - 11:00 a.m. - Church School
 11:00 a.m. - 12:00 p.m. - Morning Worship
 7:00 p.m. - Evening Worship

MANCHESTER LUTHERAN CHURCH
 10:00 a.m. - 11:00 a.m. - Church School
 11:00 a.m. - 12:00 p.m. - Morning Worship
 7:00 p.m. - Evening Worship

MANCHESTER BAPTIST CHURCH
 10:00 a.m. - 11:00 a.m. - Church School
 11:00 a.m. - 12:00 p.m. - Morning Worship
 7:00 p.m. - Evening Worship

MANCHESTER PRESBYTERIAN CHURCH
 10:00 a.m. - 11:00 a.m. - Church School
 11:00 a.m. - 12:00 p.m. - Morning Worship
 7:00 p.m. - Evening Worship

MANCHESTER UNITED METHODIST CHURCH
 10:00 a.m. - 11:00 a.m. - Church School
 11:00 a.m. - 12:00 p.m. - Morning Worship
 7:00 p.m. - Evening Worship

MANCHESTER EPISCOPAL CHURCH
 10:00 a.m. - 11:00 a.m. - Church School
 11:00 a.m. - 12:00 p.m. - Morning Worship
 7:00 p.m. - Evening Worship

MANCHESTER CATHOLIC CHURCH
 10:00 a.m. - 11:00 a.m. - Church School
 11:00 a.m. - 12:00 p.m. - Morning Worship
 7:00 p.m. - Evening Worship

MANCHESTER SEVENTH DAY ADVENTIST CHURCH
 10:00 a.m. - 11:00 a.m. - Church School
 11:00 a.m. - 12:00 p.m. - Morning Worship
 7:00 p.m. - Evening Worship

MANCHESTER QUAKER CHURCH
 10:00 a.m. - 11:00 a.m. - Church School
 11:00 a.m. - 12:00 p.m. - Morning Worship
 7:00 p.m. - Evening Worship

Senior Citizens

The Senior Citizen's next meeting will be held at St. Mary's Catholic Church on Wednesday, January 25 at 1:30 p.m. Come and bring a friend.

Manchester area Senior Citizens will have an opportunity to talk with a tax expert on this Thursday, January 19 following the noon lunch.

The menu for lunch Tuesday, January 23 is: Turkey and Dressing, Vegetable, Fruit, Bread and Butter, Dessert, Coffee, Tea and Milk.

The menu for Thursday, January 25 is: Roast Beef and Cheese with Ham, Vegetable, Fruit, Bread and Butter, Dessert, Coffee, Tea and Milk.

William Roberts will show his slides of the area and the 25-cent states of Michigan on Thursday, January 26 following the noon lunch.

These classes are given on Tuesday and Thursday now at 10:00 a.m. early for convenience.

Classes are held at the Senior Center, 200 E. Liberty, from 10:00 a.m. to 12:00 p.m.

Saturday Night Singles

The Manchester Singles Night will be held at the Senior Center, 200 E. Liberty, on Saturday, January 28, 8-11-15.

The Dutch could not get on the right track as they committed an excess amount

Girls Volleyball

MANCHESTER VS ONSTED

The Dutch faced Onsted, the opening game in league competition. When the Dutch squad took the floor complete domination occurred. On the opening play the game a poorly placed hit by Onsted was returned by Kim Dulle with a vicious spike. It was apparent that the Dutch are there not only to play, but to win. Special recognition must be given to back row players: Bernie Fielder, Allsa Clark and Michelle Kempf who teamed up to control the difficult services of the Wildcats. The match up of Kathy Rose and Kim Dulle proved too powerful. Kathy Rose dictated the sets with Kim Dulle putting away scoring spikes. Deanna Clark handled the service points category, she led all scorers with 10 straight service points, 3 of which were service aces. Kathy Rose tallied 8 points, Bernie Fielder and Kim Dulle 4 points, Allsa Clark with 2, and Michelle Kempf with 1 point. Also tallying service aces were Allsa Clark, Kathy Rose, and Kim Dulle.

MANCHESTER VS VANDERCOOK LAKE

The Dutch faced a veteran Vandercook Lake squad, falling short of their victory mark 6-15, 11-15.

The Dutch could not get on the right track as they committed an excess amount

Dutch Wrestlers Place Ninth In Tournament

The Dutch Wrestlers traveled to Clinton, Saturday and returned with a ninth place in the 14 team tournament.

Dan Jordan led the Dutch by pinning his way to the finals to meet and eventually defeat C.J. Oulch of Jonesville, 8-7 for the championship and kept a perfect 12-0 record for the season. Joe Roberts placed 3rd in the tournament defeating Louis Fisher of Ida in a very close 3-2 decision. Roberts trailed Fisher 2-1 throughout the whole match with six seconds left on the clock. Roberts revenged Fisher for 2 points and the win.

Steve Eversole and Darrel Clark lost in the consolation rounds earning a tie for fourth with Dennis Sindlinger, Jack Stein and Mike Lentz, also wrestling in the wrestling off to place in the Top Eight. The Dutch will host Blissfield Thursday, the nineteenth which will also be parents night.

WILLIAMSON
 Heating & Cooling
 Systems
John Steele jr.
 INSTALLATION
 & REPAIR
 Phone 428-8692

MANCHESTER INSURANCE AGENCY
 122 West Main Street
 Manchester, Michigan
 Phone 428-8215
 Home-Farm & General Insurance

TAX HELP AVAILABLE FROM IRS

The Internal Revenue Service announced today that area taxpayers can receive help with their federal tax questions through IRS's toll-free telephone assistance network, weekdays, 8:30 a.m. to 5:00 p.m. The IRS toll-free telephone center located in Detroit serves over 3 1/2 million taxpayers throughout Michigan. The phone number for Ann Arbor is 768-9850.

IRS suggests that you try to avoid the "heavy traffic periods" when you call. These are the midday hours and Monday and Tuesday. You will get the most prompt service by calling either early or late in the day, or after Tuesday, IRS says.

Persons with more complicated tax problems will be able to get free help at the local IRS office at the new Federal Building, 200 E. Liberty, from 8:00 a.m. until 4:30 p.m., Monday through Friday.

The IRS also reminds taxpayers whose 1977 income was less than \$8,000 that they may be entitled to a special benefit, in some cases as much as \$400. It's called the "earned income credit". It is available to certain qualifying persons, even some who may not otherwise be required to file a tax return, or perhaps even had no tax withheld in 1977, IRS says.

Anyone whose income last year was under \$8,000 should inquire about the details of the earned income credit by calling the toll-free tax assistance phone number. Qualifying persons must file a return to get the credit or refund.

quoting the service:
 Persons wishing the IRS to figure their tax should check their instructions to insure they qualify and then complete their return to the line which says "If you want IRS to figure your tax, stop here and sign below." Both spouses must sign a joint return, even if only one had income.

The IRS urges the use of the name and address label which was mailed to taxpayers to avoid mistakes and speed processing.

The IRS will also compute Earned Income Credit for eligible persons. To apply for this tax benefit, available to parents who earned less than \$8,000 in 1977 and provided a home all year for their child, individuals should complete Form 1040A to the line indicated.

Manchester Community Schools Close January 26-27

On Thursday and Friday, January 26 and 27, the Manchester Community Schools will be dismissed at the following times: High School 11:30, Middle School 11:35, Elementary 11:40 due to the end of semester, with exams in the morning in the High School and teacher record marking in the afternoon.

2nd Semester will begin on Monday, January 30.

SHAKESPEARE CLUB

The Shakespeare Reading Club will meet on Tuesday, January 24 at 2 P.M. at the home of Mrs. Aaron Nathan at 15490 Buss Rd.

A program of Music will be presented by Mrs. Nathan and Mrs. Mabel Billings.

IRS OFFERS FREE TAX COMPUTATION

The Internal Revenue Service again this year is offering free income tax computation to qualifying taxpayers re-

Spring IS Coming!!
 Our GARDEN SEEDS are coming in ---
 Burpees - Northrup-King - Vaughn's
 Punch & Gro - Seed Tapes - Peat Pots
 Planting Mix - Bulk Seeds

Plus more on the way ---
 Dahlias, Peonies, Glads, Strawberries
 Grapes, Rhubarb, Asparagus
 Seed Potatoes, Onion Sets

DON'T FORGET---
 FOR ALL YOUR GARDENING SUPPLIES

Mann's Feed Mill
 Lawn and Garden Supplies-Grain-Feed-Seeds
 201 East Main Street Phone 428-7077 Manchester

ROSS AUTOMOTIVE 

Automotive Accessories and Equipment

230 EAST MAIN STREET
 MANCHESTER, MICHIGAN
 PHONE 428-8320 or 428-8328

STORE HOURS:
 MONDAY thru FRIDAY 8:00am - 6:00pm
 SATURDAY 8:00am - 2:30pm

WE HAVE AGRICULTURE BELTS & SNOWMOBILE BELTS IN STOCK

WHY A CULLIGAN WATER SOFTENER WILL NEVER BE AN ORPHAN!

Because we will be here to take care of it if it needs care. You can trust our service... we've been in business for 30 years... you can depend on us.

A Culligan product is an extra-value because we service what we sell!

JUST CALL

Culligan 

662-5665
 2321 JACKSON AVE.
 ANN ARBOR, MICH.



Clearance

CHRISTMAS DECORATIONS 50% Off
 CHRISTMAS BOOKS 40% Off
 CHRISTMAS CARDS AND WRAPPING 50% Off
 CHRISTMAS TREES 50% Off

Calico Cat

Now we have space favorite
 accessories that have become
 truly in demand.

OF THE LAMP



PIQUANT PORK CHOPS
 Too often pork chops come to the table overcooked and dried out. The best way to avoid this problem is to cook them in a sauce. This will keep the meat moist and succulent, and if the sauce adds interesting flavor to the dish, so much the better.
 Pork and mustard is one of the most natural combinations in cooking. In this pork chop recipe, mustard is an important element in the sauce, and capers are added for extra tang.
 Serve this dish with potatoes and peas and a California chablis or chenin blanc.

Ingredients:
 8 pork chops, 1 inch thick (they will weigh about 1 1/2 pound each)
 Salt and pepper
 2 tablespoons cooking oil
 1/2 cup flour
 1/2 cup beef broth
 2 tablespoons tomato paste
 3 tablespoons parsley, finely chopped
 2 tablespoons butter
 2/3 cup onion, finely chopped
 2/3 cup carrot, finely chopped
 1 cup white wine (you can use the same wine you plan to serve with the dish)
 1 tablespoon Dijon style mustard
 2 tablespoons capers, drained
 2 tablespoons butter
 Put the chops dry with paper towels and season them lightly with salt and pepper. Gently press the seasoning into the sides of the chops.
 Put the flour into a plate or bowl and dredge the chops by coating them with flour and tapping off the excess.
 Heat the oil over moderate heat in a skillet or casserole with a cover. Brown the chops in the hot oil for about 5 minutes on each side.
 While the chops are browning, melt the butter in a sauce pan and saute the chopped onions and carrots until they are softened but not brown.
 Add the wine, beef broth, tomato paste, 2 tablespoons of the parsley, the mustard and the capers. Mix well.
 When the chops are sufficiently browned, pour off the fat from the skillet and then pour the entire mustard and caper sauce over and around the meat. Cover and simmer over low heat for 45 minutes.
 When ready to serve, place the chops on a warmed platter or put them, 1 or 2 to a portion, on plates.
 Give the sauce a stir. If it is too thin, boil vigorously for a minute or two to reduce it. Spoon some sauce on each chop and garnish with the remaining parsley. Serve immediately.
 A Consumer Service from the CYANAMID Agricultural Division.

Make Your Own Sundaes



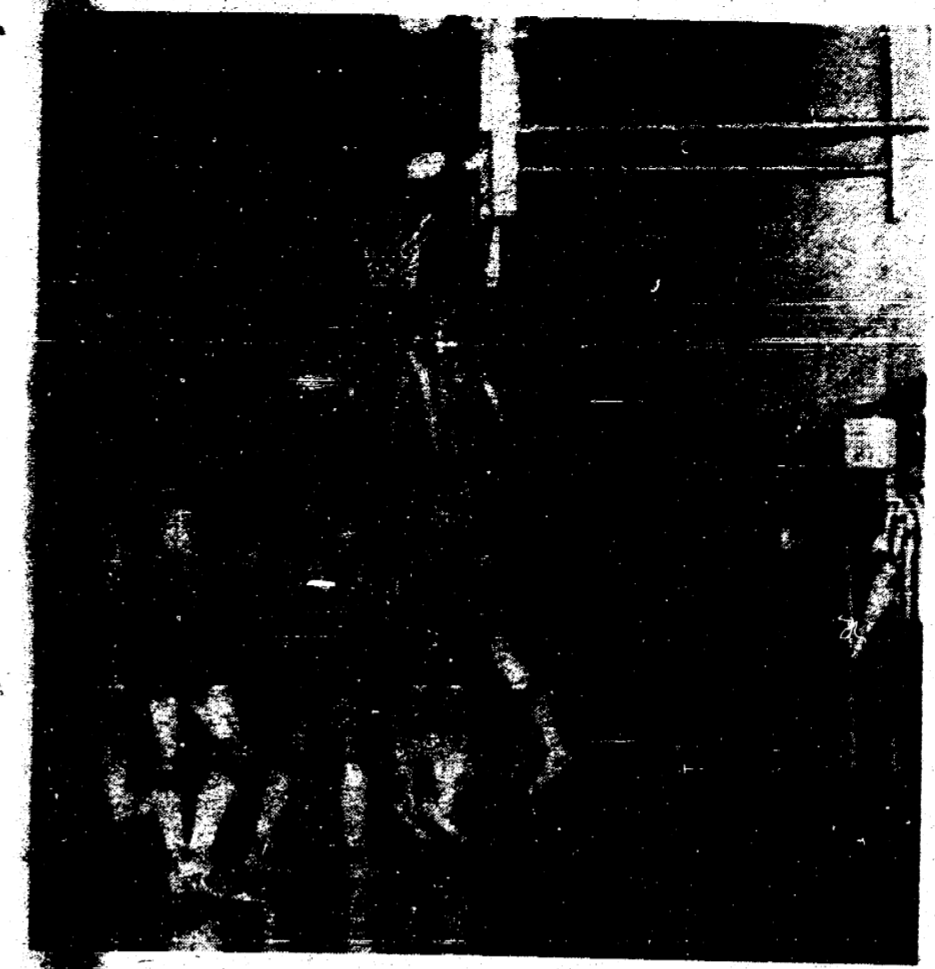
Turn your after dinner dessert into an impromptu theme by letting your guests be creative and make their own sundaes. Here are three delicious sauce ideas for making your own sundaes as developed in the Nestlé Test Kitchens.

CHOCOLATE-PEANUT SAUCE
 One 6-oz. pkg. (1 cup) Semi-Sweet Real Chocolate Morsels
 1/2 cup peanut butter
 1 cup milk
 Combine over hot (not boiling) water, Nestlé Semi-Sweet Real Chocolate Morsels and peanut butter. Heat until morsels melt and mixture is smooth. Blend in milk. Serve warm over ice cream or cake. Makes: 1 1/4 cups

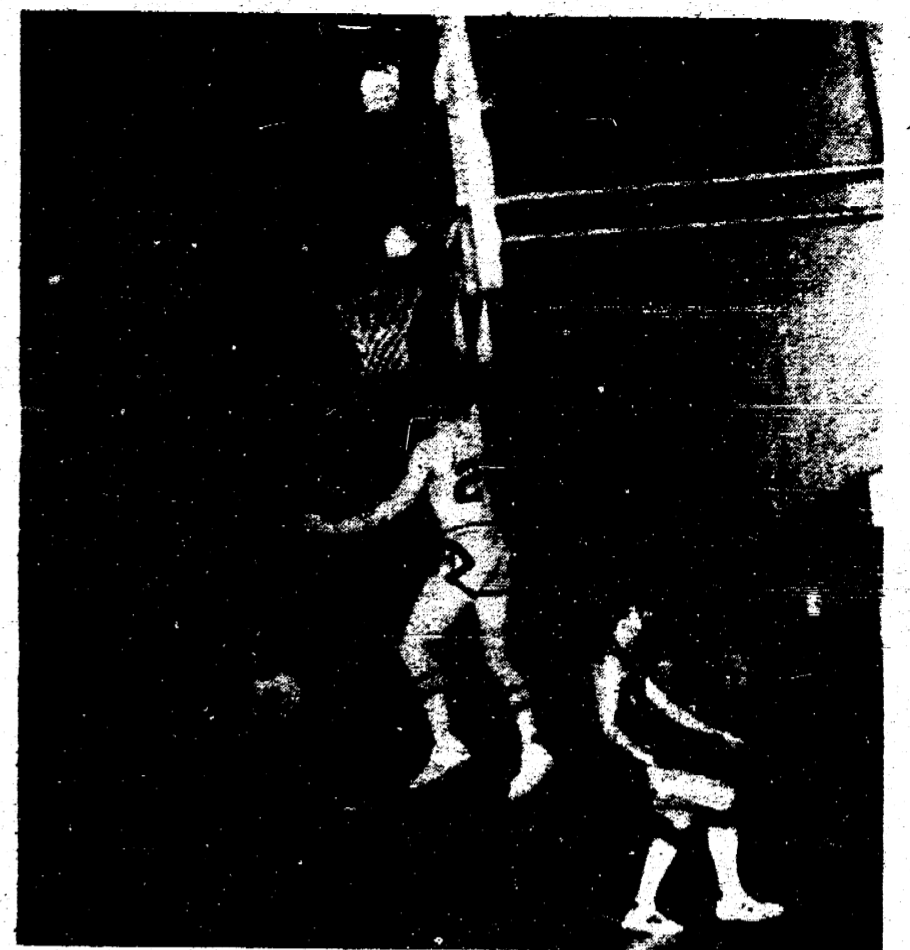
CHOCOLATE-MARSHMALLOW SAUCE
 1/2 cup milk
 1/4 cup butter
 1/4 teaspoon salt
 One 6-oz. pkg. (1 cup) Semi-Sweet Real Chocolate Morsels
 1 teaspoon vanilla extract
 One 7-7/8 oz. jar marshmallow cream
 In medium saucepan, combine milk, butter and salt. Bring to boil, over moderate heat. Remove from heat. Add Nestlé Semi-Sweet Real Chocolate Morsels, stir until melted; stir in vanilla extract. Gradually beat in marshmallow cream. Serve warm over ice cream or cake. Makes: 2 1/4 cups

BUTTERSCOTCH CRUNCH SAUCE
 1/4 cup butter
 1 cup coarsely chopped nuts
 One 6-oz. pkg. (1 cup) Butterscotch Morsels
 In large skillet, melt butter. Add nuts and cook until browned, stirring constantly to prevent scorching; remove from heat. Add Nestlé Butterscotch Morsels and stir until morsels are melted and mixture is blended. Serve warm over ice cream. Makes: 1 1/4 cups

DUTCH WIN THRILLER 64-62



Dan (44) underneath dropping in 2 of 13.



This is Curt's lay-up, after stealing at 32 odd seconds. Also game high scorer with 23.

Hardenbergh... minutes remaining we had rallied... point deficit to draw close... controlled the roundball at the... mark with the tally dead... at 60. A Tiger was dribbling up... out when out-of-nowhere Curt... came-stole the ball-proceeded... pouring laying it in (see picture)... us a 62-60 edge at 28 seconds... took the next 15 seconds for their... which knotted it at 62. We... time to regain some composure and... amid a packed house of screaming... put the leather into play-worked... clock ticking--3 - 2 - Curt went... 17 and bingo it hit nothing but... as one could use all the typical... as "nail biter" or "seat edger"... you weren't there--I just can't... words the true feeling--for this... context is rare but its worth waiting for. Hudson had defeated us earlier this season on their own floor but the Dutch had been downing opponents on their court. It was a nip-and-tuck first 8 minutes with Hudson coming out 2 points up, 18-16. We out-scored the Tiger's in the second stanza 16-13, so entered the locker room at halftime leading 32-31. Hudson entered somewhat fired up and we hit a cold spell so the Tigers stood atop 46-51. Entering the fourth period Hudson slowed the tempo down (it was a run-shoot offense that got them up 5) it seemed to protect their lead and take the high percentage shot. We kept digging and scratching and turned the momentum to our side. Coach Bartels remarked after the battle--it surprised him they didn't go inside to the big guy. At 4:14 the Tiger big man took it upon himself to play guard so Dan Turvey challenged him.

jump. Dan had lost the previous 4 jumps but got this one--we raced down, sent it home and tied the score. The rest is above except for a few items: Whenever a squad shoots over 50% in a game, that's pretty good and the same holds by period. Well, we hit 88% in the final 8 minutes and collected 18 points. It just so happens Curt popped for 10 of these by not missing from the field, 5 for 5-100%. Dan was second high for the Dutch as he canned 13 but it was Curt burning the net for 23 and high game honors. Remaining Dutch scorers: Brothers Rick & Nick Krzyzaniak totaled 16, 8 apiece with Tom Little and Craig Rogers contributing 6 each.

Last Friday's Results: Manchester 64-Hudson 62, Blissfield 92-Morenci 67, Clinton 62-Addison 46, Vanderhook Lake 58-Onsted 48.
 Current L.C.A.A. Standings-Blissfield 7-8, Clinton 4-2, Manchester 3-3, Addison 3-4, Hudson 2-3, Onsted 2-3, Morenci 0-6.
 On Friday, the Dutch travel to Onsted. Last Tuesday's contest with Clinton was cancelled due to weather but is rescheduled for February 24th.

HULLTOP
 PLUMBING-HEATING-ELECTRICAL CONTRACTORS
 SEPTIC TANKS - DRAINFIELDS
 -FREE ESTIMATES-
CALL 475-2949
 8316 WERKNER ROAD • CHELSEA

Doug's Party Store
 500 ANN ARBOR ST. MANCHESTER
 XDH-10W20-30
Gulf-Lube Oil QT. 75¢
\$17.50 PER CASE
 16 oz Returnable
Pepis Cola PLUS DEPOSIT \$4
 BEER-WINE TAKE-OUT GROCERIES
 OPEN MONDAY-SATURDAY 7 am-9:30
 SUNDAY 8 am-9:30

Henry W. Block
"Saving you money. That's Reason No. 1 why we should do your taxes."
 We are income tax specialists. We ask the right questions. We dig for every honest deduction and credit. We want to leave no stone unturned to make sure you pay the smallest legitimate tax.
H&R BLOCK
 THE INCOME TAX PEOPLE
 MONDAY THRU SATURDAY 9AM-5 PM
 MONDAY EVENING UNTIL 9 PM
 200 RIVERSIDE DRIVE
 MANCHESTER
 PHONE 428-7833

RACE TRACK INN
 West US-12
 CLINTON
 HOME COOKED
 Noon (\$1.95) & Evening (\$2.50) Specials
FRIDAY FISH FRY
 Ocean Perch 2⁴⁵ Haddock 2⁹⁵ Lake Perch 3⁹⁵
 KITCHEN HOURS
 MON.-THURS. 11 to 11 • FRI.-SAT. 8 to 9
 Dance to
"The Traveling Band"
 Friday, Sat. Nites - 9:30 to 1:30

DICK'S
 FARM EQUIPMENT REPAIR
 75 Hashley Rd. Powers Dr.
 Phone 428-7342
 MANCHESTER
NOW OPEN FULL TIME
 24 HOURS A WEEK EMERGENCY SERVICE
 Mobile Repair Service
 SHOP HOURS
 8:00-6:00 Monday - Saturday
 General Repair, Painting & Sand Blasting

REMODELING and POLE BARN
 NO JOB TOO SMALL
 TED BAKER AND JOE KRESS
 CALL EVENINGS 428-8613 2-16

Horse Shoeing and Trimming
 BOB BEAUBIEN
 Phone (517) 467-2991
 11540 STEPHENSON RD.
 ONSTED, MICH.

UPHOLSTERY FABRICS REPAIR SERVICE
MARGIE'S UPHOLSTERY
 PICK-UP and DELIVERY AVAILABLE
 207 W DUNCAN
 PHONE 428-7146
 MANCHESTER

HELFRICH MASONRY
 LICENSED CONTRACTOR
 FINISHES-BASEMENTS-VENEER
 STONE & BRICK-CEMENT WORK
 PHONE 428-8686
 767 CHELSEA-MANCHESTER ROAD
 MANCHESTER, MICHIGAN

ARE YOU SURE YOU'RE "PUNCHING THROUGH LOUD AND CLEAR"?
 The typical CB'er can get an average of three miles further to "punch through loud and clear" with a check and adjustment of his CB and antenna system for peak performance.
MANCHESTER CB SERVICE
 Phone 428-8073 FCC LICENSED

Now Is The Time To Build Your New Home
 ALSO REMODELING AND ROOM ADDITIONS
Norm Walz Construction
 Ph. 428-7109

VACUUM CLEANERS
ELECTROLUX
 Electrolux Sales & Service
 call
 James Cox
 Manchester
 428-8444 or 428-8686

SOLAR OBSTACLE SPECIALITIES
 Residential Heating
 Swimming Pool Heaters
 Insulation Grain Dryers
 For information or demonstration call:
 428-8696
 Walt Strasser - Dealer

ALBER ORCHARD AND CIDER MILL NOW OPEN
 Sweet Cider - Apples
 Barrels - Kegs
 Open daily 9 a.m. to 6 p.m.
 13011 Bethel Church Road
 Phone 428-7758

ALBER EXCAVATING & TRUCKING
 DRIVEWAYS-DRAIN FIELDS-DRY WELLS
 SEPTIC TANK INSTALLATION-BASEMENTS DUG
 GRADING-GRAIN HAULING
 TOPSOIL-SAND-GRAVEL
 LICENSED CONTRACTOR
PHONE (313) 428-8628
 7601 HASHLEY Rd. MANCHESTER

BIRTHS

Born to Mr. and Mrs. Ronald J. Walter, January 3, 1978, a son, Christian Matthew weighing 9 lbs. 1 oz. He has a sister Deanna, age 3.

Maternal grandparents are Mr. and Mrs. Richard E. Way of Merced, California. Paternal grandparents are Mr. and Mrs. Don Walter of Manchester.

UNITED WAY BOARD TO MEET

The Board of Directors of the Manchester United Way will meet on Wednesday, January 25 at 7:30 P.M. in

MANCHESTER AREA HISTORICAL SOCIETY

The Manchester Area Historical Society will meet at 8:00 p.m. on Monday, January 23, 1978 at the Methodist Church, Jim Fleming of the Association for the Performing Arts will be talking about the Manchester Township Theatre Workshops which begin January 30th and about the 'Black Sheep Repertory Theatre Benefit Performances to be held on February 24th and 25th.

Washtenaw County Council On Aging

The Washtenaw County Council on Aging is beginning a series of eight small group seminars to help recently widowed women over the age of 60 cope with the complex and trying issues of widowhood. The discussions will include topics such as financial planning, employment opportunities, legal issues, adjustment difficulties and other problems of individual concern.

The sessions will take place on Wednesday afternoons from 1:30 to 3:30 at St. Andrews Church in Ann Arbor beginning January 25 and continuing until March 15. There will be no cost to the participants. If you are interested or know someone who might benefit, please contact

Linda Buelow or Lisa Frisberg at 663-6900.

Golden Gleams

He that loveth his wife loveth himself.

-Ephesians 5:34.

Two things doth prolong thy life:

A quiet heart and a loving wife.

-Thomas Deloney.

All other goods by fortune's hand are given:

A wife is the peculiar gift of Heav'n.

-Alexander Pope.

7.75%

PER ANNUM

available to everybody

You can get a regular Passbook Certificate at Ann Arbor Federal Savings that pays you 7 3/4% interest annually. * You can also get an IRA or KEOGH Retirement Passbook Certificate that pays you 7 3/4% interest annually.

So?

So it pays you to have all of your accounts at Ann Arbor Federal Savings where all of your money can earn the top rate allowed by law and where you can maintain tighter control over your savings program. May we also point out that with monthly compounding your money earns an effective annual rate of 8.03% and your savings are insured to \$40,000 with an agency of the federal government.

* Federal regulations require a substantial penalty for early withdrawals from certificate accounts.

- 7 3/4% PASSBOOK CERTIFICATE ACCOUNT
Term 72 Months
Minimum deposit \$1000
- 7 3/4% RETIREMENT CERTIFICATE ACCOUNT
Term 36 Months or more
No minimum deposit

you can depend on us...

ANN ARBOR FEDERAL SAVINGS

11 OFFICES TO SERVE YOU IN: ANN ARBOR, BRIGHTON, CHELSEA, DEXTER, MANCHESTER, SALINE, YPSILANTI ● Member FSLIC

Wedding Bells and Beautiful Brides



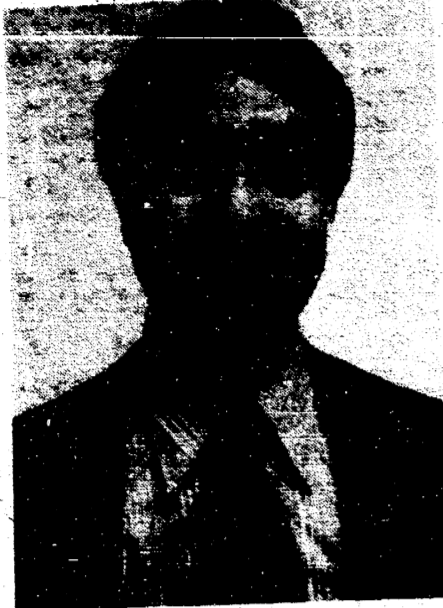
Every bride dreams of the perfect wedding... a day that she'll hold dear all through their lives together. Let us help with the plans for this happy day.

Wedding
ANNOUNCEMENTS
AND
INVITATIONS...

The
Manchester Enterprise

STOP IN AND SEE OUR FINE SELECTION

DON LIMPURT JOINS FAHEY REALTY



Fahey Realty is pleased to announce the addition of another Real Estate Salesman to our fine staff. Don Limpurt has transferred his Real Estate Salesman's license to Fahey Realty. Don has been active in various community affairs and is well known in the building and remodeling trade. Don is very knowledgeable in all areas of real estate and will be happy to help you with any of your real estate needs. Don can be reached at 428-7400 104 E. Main St. Manchester. We are pleased to have a man of Don's ability and knowledge associated with Fahey Realty.



Priced one of the new cars? Man oh man they aren't giving them away. Of course, the same could be said for postage stamps or a loaf of bread.

Everything is higher than it formerly was.

Take our loan interest rates, for example. Now there is an interesting example. Our prices haven't increased.

That's right for the past several years, bank interest rates haven't climbed in the same proportion as other prices. Non-banks basically have raised their interest rates, however.

Check the interest rate a department store charges or a credit card company charges.

At least these people have kept up with the times and have raised their rates in accordance with the increase in everything else.

We're rather happy to leave our interest rates where they are, at least for the foreseeable future.

So, when you seek a loan, check with us. It's about time you found something that hasn't increased in cost.

R. J. Wolf



AGRICULTURE IN ACTION

MICHIGAN FARM BUREAU EDITORIAL

THE ICE CREAM COMPROMISE

There has been a good bit of turbulence in the dairy industry the past few months over revised Food and Drug Administration standards for the manufacture of ice cream. Simply stated, the change will permit the use of dairy derivatives in place of the higher-priced nonfat dry milk. This has an impact, not only on the dairy farmer, but also on the consumers of real ice cream.

The reduction in standards creates the potential for the loss of sales for U.S. dairy producers of 380 million pounds of milk solids. There is no alternative market. To add insult to injury, in an already surplus aggravated dairy market, a great amount of the substitute ingredients will be imported from foreign dairy producers, some of who are directly subsidized by their government.

It would be most difficult to convey the difference in taste and texture of the substitute, but some study has been done concerning its nutritional integrity. One of the mixes that would meet the reduced standards was tested and compared

with real ice cream. It was found to be 25 percent lower in protein, 20 to 29 percent lower in calcium content, it dropped 70 percent in zinc, and was down considerably in riboflavin and vitamin B-12.

It seems ironic that the Food and Drug Administration whose mandate it is to "Promote honesty and fair dealing on behalf of the consumer" is the very same agency condoning the compromise. The FDA will require no special labeling on the reduced standard product.

There is nothing wrong with permitting this newly concocted frozen dessert to be sold and to compete with ice cream, but allowing it to be sold as real ice cream seems grossly inaccurate, if not downright deceptive.

MESCS NEEDS OLDER WORKERS

If you're 55 or older, like people and want to work, the Michigan Employment Security Commission (MESCS) Job Service may have just the job for you.

S. Martin Taylor, MESCS director, announced that his Job Service offices in Oakland, Macomb, Washtenaw, St. Clair and Monroe Counties need older workers to serve as older worker specialists (OWS) helping unemployed older workers,

including the handicapped, to find suitable employment.

To qualify as an OWS, Taylor said, a person must be at least 55 years old and physically able to do the job. In addition, his or her annual income must not exceed \$2,970 plus \$960 for each additional dependent, including social security.

OWS are paid \$2.75 an hour, and work 20 hours a week. The jobs are temporary and will end June 30, 1978.

Older worker specialists will identify and develop job opportunities for older persons, interview older persons who are looking for work and then try to place them in jobs. They will also try to increase public awareness of the needs of the elderly and to develop cooperative understanding between agencies and organizations involved with the elderly.

Taylor explained that these OWS positions are subsidized by the office of Services to the Aging using funds from the Older Americans Act.

Those who are interested in applying for OWS positions should visit the MESCS Job Service office in any of the following cities: Royal Oak, Pontiac, Ann Arbor, Ypsilanti, Mt. Clemens, Sterling Heights, Port Huron and Monroe.

Cash Rebates up to \$2000 and more

Order your New Wickes Building now and get a big Cash Rebate!

Now is a good time to buy a building. There's more time for reviewing needs and planning carefully so you can be sure your building is exactly what you want to meet your requirements. It's a good time, too, to take advantage of off-season savings, as well as protect yourself against higher prices sure to come along during the busy season.

Get extra cash for immediate needs. Depending on the building you buy, we'll send you a cash rebate of \$200.00 to \$2,000.00 or more, as soon as it's completed. No strings, no minimum or maximum purchase required. Handy extra cash for many things—a winter vacation, helping with year-end bills, or something else you've got in mind.

Pay later, no installments 'til late spring or summer. If you choose to finance your building through a Wickes Credit plan, your installment payments can be deferred up to three months following building completion. Enjoy your building right away, pay for it later.

Flexible construction scheduling
All buildings ordered under Cash Rebate offer subject to erection at convenience of Wickes Buildings, with construction under way by May 1, 1978 or sooner.

Wickes Buildings
A Division of The Wickes Corporation
Napoleon, Ohio, Box 62 • (419) 592-0966
STATE ROAD 424

Cash Rebate offer starts Jan. 3, ends Feb. 4, 1978.

Ask the man in the Red Car to come out and tell you how much your cash rebate will be.

STRIKES 'N SPARES

MANCHESTER BUSINESS MENS

WON	LOST
Asel Brothers	38
Manchester Tool & Die	34
Excavating	33
Pharmacy	31
Savings Bank	31
For Land Devel.	31
Hillage Tap	29
Orchard	27
Pallet	27
Marshall Ford	27
's Party Store	28
W Farm Equipment	28.5
A Products	26
McBil	25
bles Store	25
man Huber Gulf	24.5
Manchester Electric	25
arine Bar	24
TEAM SERIES	
arine Bar	3192
as Pharmacy	3174
A Products	3161
TEAM GAME	
Asel Brothers	1133
Marshall Ford	1128
Savings Bank	1117
INDIVIDUAL SERIES	
an Beeman	663
Wolf	636
letcher, G. Beeman	632
INDIVIDUAL GAME	
Fletcher	256
Schaible	245
y Lamb	244

JOLLY KIGLERS BOWLING LEAGUE

TEAM	WON	LOST
Grossman-Huber	21.5	44.5
Carol's Cut n Curl	74	52
Krauss Pharmacy	66	60
Black Sheep Tavern	63	63
Dutch Country Kitchens	56.5	69.5
LoSan Hairstyles	56	70
Double A Products	55	71
Manchester Enterprise	52	74
HIGH TEAM SERIES W/H		
Dutch Country Kitchens	2689	
Grossman-Huber	2657	
Carol's	2643	
HIGH TEAM GAME W/H		
Carol's	958	
Grossman-Huber	937	
Manchester Enterprise	925	
HIGH INDIVIDUAL GAME (ACTUAL)		
J. Withrow	205	
S. Walton	203	
L. Steele	202	
HIGH INDIVIDUAL SERIES (ACTUAL)		
S. Walton	555	
J. Withrow	538	
F. Green	534	
HIGH ACTUAL GAME OF WEEK		
R. Thelen	183	

MANCHESTER WOMEN

TEAM	WON	LOST
Gambles	343	197
Jackson Copy Prod.	325.5	214.5
Columbia P. & H.	300.5	239.5
Rene's Donuts	289.5	250.5

THURSDAY, JANUARY 20, 1978 THE MANCHESTER ENTERPRISE PAGE 11

Koebbe Welding 276.5 263.5
Chivas Prod. 259 281
Billmeyer Hdwe. 241 299
Doug's Party Store 233 307
Mowry's Gulf 228 312
Chapin Chev. 204 336

HIGH INDIVIDUAL GAME
Betty Gulliver 198
Nancy Hinton 191
Sharol Welsh 188
Jan Ronders 187

HIGH INDIVIDUAL SERIES
Jan Ronders 503
Nancy Hinton 487
Sharon Welsh 475
Sue Williams 462

LEGION AUXILIARY

The American Legion Auxiliary Unit 117 met on January 11 at the Legion Home. The meeting was called to order at 7:30 P.M. by President Mrs. Robert Popkey.

A very impressive memorial service was conducted by Chaplain Mrs. Harry Sutton and President Popkey for three members who have passed away during the past year. Candles were lit for Charter Members Mrs. Esther Kuhl and for Mrs. Lydia Wurster and Mrs. Elizabeth Campbell.

The secretary and treasurers reports were read and accepted.

The Community Service Chairman reported on the hospital equipment on hand for loan and will be checking on all outstanding equipment. Twelve plants were delivered to shut-in members at Christmas time and 32 area service men and women were remembered with Christmas cards and gifts.

Child Welfare Chairman, Mrs. Reck, thanked Mr. and Mrs. Harry Sutton for trimming and preparing 8000 cancelled stamps for mailing. This stamp program is a year around project and everyone is urged to save their cancelled postage stamps to be used for the Child Welfare Program. Canisters are provided in both local banks for depositing the stamps or they can be handed to any Auxiliary member.

The unit voted to order 2500 poppies for sale in May during the Poppy Drive. They also voted to send a local girl to Girls State in June and the reservation has been made. The selected girl will be named at a later date.

Two subscriptions of the National Legislative Bulletin will be forwarded to the Ann Arbor VA Hospital for the coming year and paid for by the Unit.

The following names were drawn for the monthly door prize: Virginia Sutton, Elaine Steele, Helen Brazee and Elizabeth Mester.

The Good Cheer Chairman for the coming month will be Mrs. Russell Hosmer.

The February serving committee will be Mrs. Lucinda Wurster, Mrs. Rita Huber and Ms. Marion Ahrens. The next meeting will be February 8.

The meeting was closed with a prayer and the flag was retired.

Refreshments were served by Mrs. Del Ludwick and Mrs. Richard Weir.

Singles 25 & Up

Come alone or come with a friend. Be our guest at the Tuesday Nite Singles at the American Legion Hall, Main Street, Ann Arbor, on January 24. Dance from Nine to Midnight to the music of Don Wilson. Good time by all.

Completes Nursing Program

Bess H. Bater, 11547 Sheridan Rd., Manchester is one of the thirty Washtenaw Community College recent graduates of the Practical Nursing Program who have passed the State Board of Nursing licensing examination, according to Norman Lederer, Dean of Occupational Studies.

"This is the third class to complete the practical nursing program at the College," Lederer reported. "We have had 100% pass who have taken the State examination," he said. "That is real success and is testimony to the excellent teaching staff in the nursing program."

KITCHEN CABINETS

CUSTOM DESIGNED and HANDCRAFTED by DUTCH COUNTRY KITCHENS

(313) 428-7292
18352 W. AUSTIN RD. MANCHESTER

HAVE YOUR CAR WINTERIZED BY THE JOLLY DUTCHMEN

MR. SCRUB

cleans 3rs BETTER for LESS

2 MIN.

wax-wash

\$1.50

Gulf

WE HAVE A FINE SELECTION OF GULF TIRES

GROSSMAN-HUBER SERVICE

Phone 428-8960

Many Gulf Accessories

Visit the Jolly Dutchmen

100 EAST MAIN ST MANCHESTER

Manchester Carpet Cleaners

"DEEP STEAM EXTRACTION"

New Approved Method of Carpet and Upholstery Cleaning

Very Reasonable Rates Free Estimates

Special Rates to Churches

Residential --- Commercial

PHONE 428-7075 KEN BEASLEY, Owner

Public Notice To Black Sheep Patrons

For Reservations or Banquet Information

Phone 428-7000 Sunday 2:00 p.m. to 11:00 p.m.

Black Sheep Tavern

Buffet Friday and Saturday 6:00 p.m. to 10:00 p.m. Sing Along Friday and Saturday 8:30 p.m. to 1 a.m.

