

# WANT ADS

ALL CLASSIFIEDS MUST BE PAID FOR IN ADVANCE

**FIREWOOD** \$35 a cord delivered and stacked. 428-7388. 1tn

**WILD BIRD FEED**, Sunflower seed at Mann's Feed Mill, Manchester. 1tn

**PIANO & ORGAN** tuning and repair (G17: 783-1773 or 428-8422. 1tn

## ROOFING SPECIALTST

All types of roof repairs-homes, barns, commercial, insurance repairs, asphalt shingles, hot build-up roofing, cedar, slate, tile, asbestos, awnings and porch enclosures. Call Joe Hayes for free estimates, 428-8530. 1tn

**BEEF TO SELL BY SIDE:** Custom slaughter, lockers to rent, Phone 428-7600, Manchester Locker Plant. 1tn

**STRAW** 60¢ a bale, 1st cutting hay \$1.25, 2nd cutting hay \$1.75. Call Joe Hayes evenings 688-6446, Saturday only 428-8520. 1tn

**CREDIT PROBLEM? NO PROBLEM.** Call Chris or Cal at Henderson Ford, 769-7900.

CALL Elaine Rice, Realtor, for successful buying and selling, homes and farms, 10 years of honest and competent brokerage in Real Estate. By appointment, 665-8663 or 428-7272. Associated/Ebber & Assoc. Inc.

**BUILDING FOR SALE**, 30 x 40. Terms: land contract, 428-7483 or 663-1120. 1tn

**FOR SALE:** Dining Room Set, 6 Needle Point Chairs, Large Table, China Cabinet. Phone 428-7032. 1tn

**FOR SALE:** '75 2 door Plymouth Duster hardtop, automatic, 27,000 miles, good condition. 428-7631 before 3. 1-5p

## HELFRICH MASONRY

LICENSED CONTRACTOR  
FIREPLACES-BASEMENTS-VENEER  
STONE & BRICK-CEMENT WORK  
PHONE 428-8686  
7679 CHELSEA-MANCHESTER ROAD  
MANCHESTER, MICHIGAN

## SOLAR OBSTACLE SPECIALITIES

Residential Heating  
Swimming Pool Heaters  
Insulation Grain Dryers  
For information or demonstration call:  
428-8696  
Walt Strasser - Dealer

## HILLTOP

PLUMBING-HEATING-ELECTRICAL CONTRACTORS

SEPTIC TANKS - FRANKFORD

-FREE ESTIMATES-

**CALL 475-2949**

8316 WERKNER ROAD • CHELSEA

**CHELSEA GREENHOUSES**, 7010 L'ingane Road, Chelsea, Michigan 478-1353 - 54 or 478-9313. Flowers and plants for every occasion. We specialize in wedding flowers to fit your budget. We are as near as your phone and we welcome your business. 1tn

**ALUMINUM EAVESTROUGH** - Seamless white, black and brown, guaranteed, free estimates. Walkover Home Improvement Company, phone 313-428-8488. 1tn

**ROULO ELECTRIC**-Licensed and Insured Contractor. Call Clinton 517-456-4796, 1tn

**PAT'S CRAFT STUDIO**-downtown Tecumseh, area headquarters for macrame, folk painting, miniatures, artists supplies and much more. Monday thru Saturday, 10 to 5:30. Classes available. 517-423-7447.

**BLOWN INSULATION**, vinyl siding and trim, roofing, eavestroughs. Edwards Construction, 517-592-8488. 1tn

**SNOW PLOWING SERVICE**-small or large jobs, reasonable rates. 428-7369. 1tn

**FOR SALE**, Panasonic Stereo System, AM-FM Stereo, 8 - Track Stereo Tape, Two 6 1/2" Separate Speakers, Turntable and Headphones, 428-8298. 1-26

**HOUSEKEEPER** - Live-in or preferably daily for elderly couple. No nursing care. No heavy housework. An interesting home. Attractive location overlooking lake in the Chelsea area. On a main paved road. Possible use of car. Hours and free time arranged. \$400.00 a month. Negotiable. Reply Box 37, Manchester, Mich. 1-19

**CREDIT PROBLEM? NO PROBLEM.** Call Chris or Cal at Henderson Ford, 769-7900.

## ARE YOU SURE YOU'RE "PUNCHING THROUGH LOUD AND CLEAR"?

The typical CB'er can get an average of three miles further to "punch through loud and clear" with a check and adjustment of his CB and antenna system for peak performance.

## MANCHESTER CB SERVICE

Phone 428-8073 FCC LICENSED

## ALBER ORCHARD AND CIDER MILL NOW OPEN

Sweet Cider - Apples  
Barrels - Kegs  
Open daily 8 a.m. to 6 p.m.  
15011 Rebel Church Road  
Phone 428-7758

**LIBERTY:** 2 Bedroom Air Conditioned Mobile Home. This 12 x 50 home is at Water Wheel Estates in Clinton, Michigan where it was purchased 7 years ago. Call after 2:30 P.M. Daily: 517-263-4324. \$2,900.

**MARLYNS HAIR STYLES** is featuring Men's and Boy's Hair Styling, shampoo and blow dry \$6.00. For women specializing in perms, hair styling, tinting, frosting. Open Monday thru Saturday, evenings by appointment. (Closed Wednesdays) Free and Easy Private Parking. Marilyn Randall, owner. Phone (517) 456-7258, 11500 Clinton Road, Clinton, Mich.

**LOVELY** 1 Bedroom Apartment Available February 1. Call 428-7082. 1-5

1967 Ford Pickup Truck, excellent condition, new engine, brakes, etc. Asking \$700.00, 428-7369.

**EARN EXTRA MONEY**, deliver papers by car Sunday only. Commission and car allowance, early morning hours. Dependable car necessary. Call 483-2051 or 222-6500, Detroit Free Press.

**LIKE NEW**-'76 F100 pick-up V8 automatic, power steering, radials, \$3,750. 428-7294.

**FOR SALE**-23" Magnavox black & white TV, like new. 428-7030.

**CASH FOR LAND CONTRACTS**

**BINGO**  
American Legion Post 117  
106 E. Madison, Manchester, Mich.  
WEDNESDAYS 7 P.M.

**FREEDOM ELECTRIC**  
11207 Pleasant Lake Road  
Manchester, Michigan  
NEW CONSTRUCTION  
COMMERCIAL  
INDUSTRIAL

**GILBERT LUCKHARDT**  
428-8233  
**GORDON HOUGH**  
428-7619



Best wishes for a year of health, prosperity and good fortune.

**MR. LYNN GREEN**  
COLUMBUS MUTUAL LIFE

**CREDIT PROBLEM? NO PROBLEM.** Call Chris or Cal at Henderson Ford, 769-7900.

**LOST**-orange and white cat, male, vicinity of Hillard. Reward, 428-8453. 1-12

**WANTED** - FULL TIME BOOKKEEPER Manchester Community Schools, must work with students, handle daily receipts of student activities. Contact: Manchester Community Schools. Call 428-7300.

## CARD OF THANKS

I wish to thank all of my friends for their kindness shown me during my illness. Many thanks for my gifted Christmas greetings and get well wishes. A big thank you to Baumgartner's Flower Shop for remembering me and to Rev. Sharal for his hospital visits.

An extra big thank you to Evelyn Seeger for being so kind to take me to the hospital.

I would like to thank all of the Manchester people and my family who sent me Christmas cards.

I would also like to thank the Methodist Church for the lovely box of fruit and the Ed Townsend family for doing all of my errands.

Mrs. Paul Ernst

Many thanks to all who remembered me at Christmas, with boxes of fruit and cookies, plants and cards.

A special thanks to the Methodist Circle, Women's Guild, Rev. Wise and the Carolers.

Matilda Schumacher

**WANTED TO BUY TOY TRACTORS AND FARM EQUIPMENT**

FARMALL, ALLIS CHALMERS, CASE, CO-OP, COCKSHUT, MASSEY HARRIS, OLIVER, FORD FERGUSON, MINNEAPOLIS MO-Line & JOHN DEERE

**GARY E. HILL**  
1949 Marlowe Rd. Toledo, Ohio  
419-474-0666

## DO YOU QUALIFY?

We Seek EXPERIENCED Acme Automatic Screw Machine OPERATORS at Rima Mfg. Co. 116 Main St. Hudson, Michigan 517-448-8921

People with one year's experience or more may apply for employment with:

- COMPETITIVE PAY;
- FULL HEALTH CARE;
- AND RETIREMENT;
- FRINGES, INCLUDING:
  - holidays
  - vacation
  - life ins.
  - disability
  - and more.

This is a good, clean place to work that will offer you opportunity with a future. It is a growing company with responsible, competent leaders.

APPLY NOW IF YOU QUALIFY!

# THE MANCHESTER ENTERPRISE

20¢ A COPY

YEAR VOLUME NO. 11

THURSDAY, JANUARY 13, 1978

## MANCHESTER GROUP RECEIVES GOVERNMENT GRANT



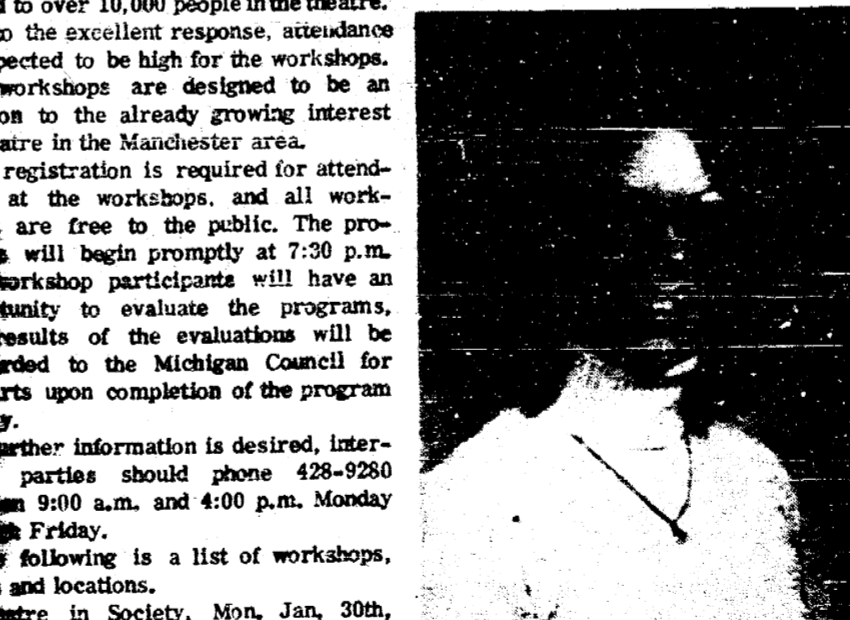
Mike Conlin, Director of Community Education and Jim Fleming of Repertory Theatre

The Association for the Performing Arts of Manchester, Michigan was recently awarded a \$2,500.00 grant from the Michigan Council for the Arts for a Manchester Township Theatre Workshop Program. The grant was awarded under the Arts Education program and is the result of efforts by APA, Manchester Community Education and the Manchester Area Repertory Theatre.

## Representative Conlin At Freedom Town Hall Monday, January 16

Monday, January 16 at 7:30 P.M. Representative Mike Conlin will be at the Freedom Township Hall to meet with any residents of this area who feel that they have been discriminated against by the Washtenaw County Health Department in regards to on site sewer systems.

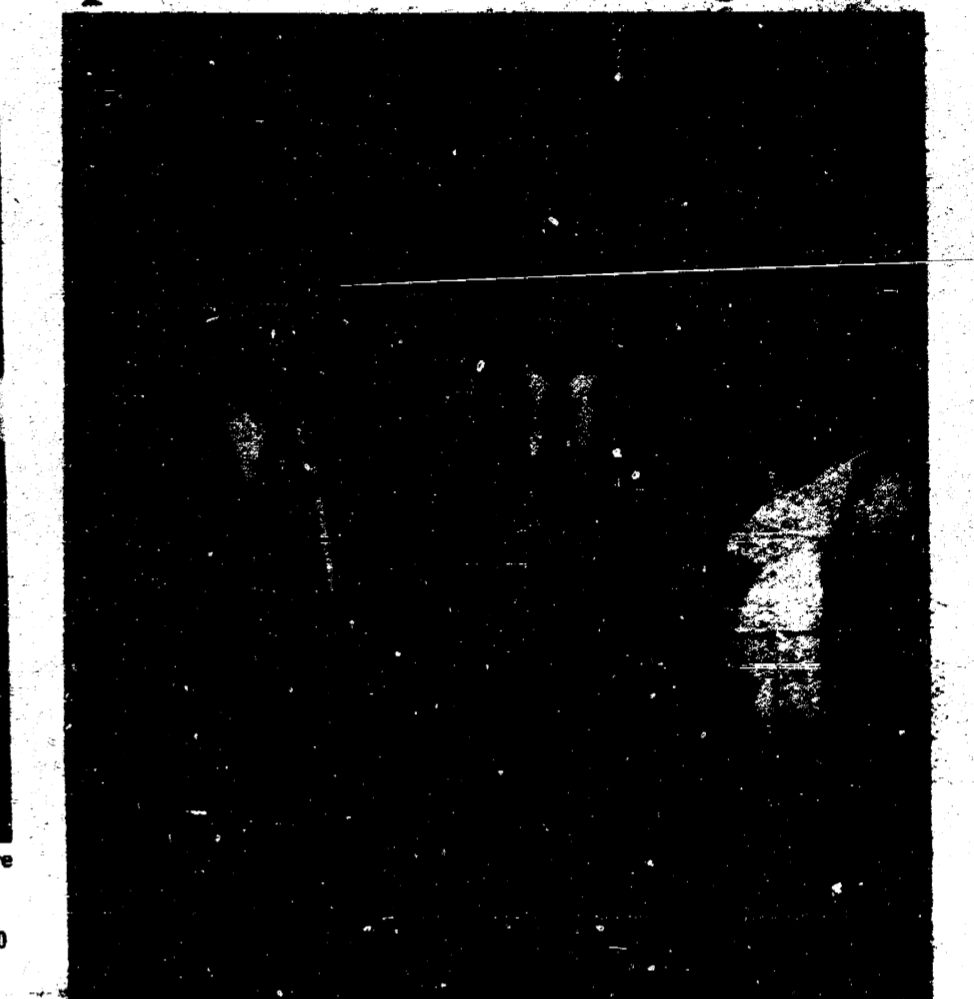
Dr. John B. Atwater of the Washtenaw County Health Department will be present. Any resident who has had or has a problem is urged to attend.



## ENGAGEMENT ANNOUNCED

Mr. and Mrs. Ray T. Eberzole are pleased to announce the engagement of their daughter Pamela Kay to Mr. Douglas E. Maitland, son of Mr. Jack Maitland and Mrs. Mary Leeth. The bride elect is a 1976 graduate of Manchester High School. Mr. Maitland is a 1976 graduate of Hanover-Horton High School and is employed by Manchester Products. A February wedding is planned.

## Optimist Club Outstanding Student



Senior Jim Duncan, son of Mr. and Mrs. James W. Duncan of 106 South Washington, has been chosen as the December "Outstanding Student of the Month" by the Manchester Optimist Club.

Jim is a very active person in and out of school and also maintains a very high scholastic average. Jim has also been active in athletics, playing Freshman basketball, J.V. basketball, and J.V. football. He was Treasurer of the Sophomore class and is the Senior class President. In 1977 Jim received his rank of Eagle Scout. His project being the local Civil Defense Shelter.

Jim's plans are college, getting a degree either in Business or Music. Congratulations Jim!

## SCHOOL BOARD AGENDA

The Manchester Community Schools Board of Education Meeting will be held January 16, 1978 at 8:00 P.M. in the Study Auditorium.

- The agenda will be:
1. Roll Call
  2. Communications
  3. Minutes of previous meeting
  4. Financial Report
  5. Bills Payable
  6. Reports
    - a. Background of bus drivers bonus system.
    - b. Progress with Fact Finding with Manchester Education Assoc.
    - c. Progress on Middle School Boiler.
    - d. State Centralized purchasing of school buses.
    - e. Summer tax collection.
    - f. Financial report - Athletics.
    - g. Financial report - Internal Accounts.
  7. Approval of Ed Tubaug as Assistant Principal at Pleasant Lake.
  8. Job description of Supervisor of Maintenance & Custodial Services.
  9. Appointment of Supervisor of Maintenance & Custodial Services.
  10. Salary range for school Maintenance person.
  11. Job description and salary range for Bookkeeper for Internal Accounts and School Service Accounts.
  12. Approval of Thru, Maatch & Nordberg for calendar year 1978.
  13. Consideration of publishing proposed Board minutes week after meeting.
  14. Audience Participation.

## Community Education Registration Extended

The registration period for Community Education Classes will be extended two days from the printed deadline in the Community Education brochure of Friday, January 13. The extended registration days are Monday, January 16 and Tuesday, January 17. You may register by calling Phillip Mains at the Community Education Office at 428-7804 between 10:00 a.m. and 5:00 p.m. Several classes only need one or two more people to start. If you registered for classes in the past that did not start, it is best to keep registering as most classes eventually have enough to begin during one of the three yearly sessions. The starting date for classes is the week of January 23 and Super Saturday classes start on the 28th.

Several people have asked about the "Do Something Different" series as to where the programs will be held. All listed programs will be held in Manchester High School. However, other series are held throughout the area that ticket holders may attend if they wish. Specific topics vary from school to school.

The Snowmobile Safety Program sponsored by the Snowmobile Safety Program sponsor. Continued on page 2

### The Manchester Enterprise

150 EAST MAIN STREET  
Manchester, Michigan 48105  
Phone 428-8173

The Manchester Enterprise was established in 1967 and is published each Thursday at 150 East Main Street, Manchester, Michigan with second class postage paid at Manchester.

Edward E. Steele, Publisher  
Lenore Steele, Editor



### TOWNSHIP REPORT

**December 12, 1977**  
The regular meeting of the Manchester Township Board was held Monday, December 12, 1977 at 8:00 p.m. at the Village Hall. Board members present were Macomber, Fielder, Burch and Lentz.  
The minutes of the regular meeting of November 14, 1977 were read and corrected and approved as corrected. There is \$5,814.96 in the General Fund. Enter Constable Moore \$285 p.m.  
The clerk presented the following bills to be paid:  
1. Sand Lake Fire Dept. - \$298.00.  
2. Manchester Enterprise - \$127.85.  
3. Dookley Bros. & Co. - \$25.85.  
4. Tom Marshall, Inc. - \$816.54.  
5. Roesch, Delhey & Schaberg - \$65.00.  
6. Grossman-Huber - \$22.75.  
7. Michigan Bell - \$126.67.

UPHOLSTERY FABRICS  
REPAIR SERVICE  
**MARGIE'S UPHOLSTERY**  
PICK-UP and DELIVERY AVAILABLE  
207 W DUNCAN  
PHONE 428-7146  
MANCHESTER

**Horse Shoeing and Trimming**  
BOB BEAUBIEN  
Phone (313) 467-2991  
11540 STEPHENSON RD.  
ONSTED, MICH.

**Spear & Associates, Mann, Realtors**  
122 West Main Phone 428-8388 Daily, Manchester

New Listing: 50 Acre farm south of Manchester with frontage on two roads and on the Raisin River. 4 bedroom home includes 1 bath, dining room, full basement and porch, plus an 18' x 36' barn and several outbuildings. Manchester Schools. \$76,000.

So first to own this beautiful 2 story home in Riverbend Estates situated on a 90' x 165' lot. Includes 3 bedrooms, 2 1/2 baths, study or 4th bedroom lovely fireplace in living room, bay windows, full basement and a 2 1/2 car garage. \$69,900. Manchester Schools.

Adorable 3 Bedroom Ranch on 3 1/2 acres with an exciting view. 1 1/2 baths dining area, finished recreation room with wet bar, heated garage with workshop plus much more. \$62,000.

**OFFICE HOURS**  
Mon. thru Fri. 9 a.m. to 5 p.m. Sat. 9 a.m. to 12 noon  
**OFFICE PHONE** 428-8388  
Evenings and Weekends:

Ellis Pratt  
428-8562

Joan Beal  
428-7082

Jim Mann  
428-8074

**Community Ed**  
been made at this time.  
A letter was read from the Dept. of Labor. Letter on file at office.  
The audits have been completed by Bond & Co.  
Moved by Burch and supported by Widmayer to be adjourned. All ayes, carried. Adjourned 8:46 p.m.  
Wilma E. Lentz, Clerk

**National Jaycee Week January 15-21**  
America salutes the Jaycees for their community service and youth involvement. Congratulations Manchester Jaycees. Jaycee Auxiliary

**Women & Money Discussion Group**  
Guest speaker for the Y Center's Women & Money discussion group for Friday, January 13, 1978 from 12:00 to 1:00 p.m. will be James Butterfield, investment broker. Mr. Butterfield will demonstrate personal investment planning on a portable computer, as well as talk about problem solving in money management.  
The public is welcome to join the Women & Money group. The only cost is a Y Center Basic Membership fee of \$8, good for one year. This self-directing group meets with brown bag lunch on Fridays. Call the Y Center, 782-0537 for more information.

**Saturday Night Singles**  
The Ann Arbor Saturday Night Singles Club Dance for Single Adults 25 years and over will be held at the Ann Arbor "Y", 350 S. Fifth Avenue, Ann Arbor on Saturday evening, 9:00 p.m. to 12:00 midnight, on January 14.  
Don Whison will provide the live dance music. There will be social mixers, and refreshments.  
For information, call 663-0068.

**SNOW FENCE HAS ARRIVED!**  
48" high, 1/2" pickets, 50' roll  
**\$24.95 (less 10% cash)**  
**BRIDGEWATER LUMBER CO.**  
8370 Boettner Rd., Bridgewater  
429-7062 or 428-8878

**BRRRRR** HAVE YOUR CAR WINTERIZED BY THE JOLLY DUTCHMEN

**Gulf**

WE HAVE A FINE SELECTION OF GULF TIRES

**GROSSMAN-HUBER SERVICE**  
Phone 428-8960

Many Gulf Accessories  
**Visit the Jolly Dutchmen**  
100 EAST MAIN ST MANCHESTER

MR. SCRUB  
cleans cars  
BETTER for LESS

2 MIN.  
**wax-wash**  
\$1.50

**Roundballers Getting Tough**

**THURSDAY, JANUARY 12, 1978 THE MANCHESTER ENTERPRISE PAGE 3**

apart at home then lost the hoop in Addition to be downed by them. We then rose at home and bombed a good Onsted squad but treaked to East Jackson and lost. On Friday we traveled to Blissfield to meet the undefeated and league leading Royals, here's what happened.

Dan Turvey slapped the ball to Curt Fielder and he put it in for two. We connected our next 3 shots while Blissfield had 1 for 3 and 2 turnovers. This left the tally 8-2 at 6:18. The Royals kept whittling away and at 1:23 they tied it and 16 seconds later went ahead 12-14. In the remaining 55 seconds we hit 3 free tosses but they drove in 3 buckets. This put them up 5 after one period, 15-20. We again captured the tip and in 15 seconds Dan laid it in and was fouled. Upon his good free throw we trailed by 2, 18-20. By the 6:15 mark we found ourselves down 5 again, 23-28 but we hit 2 buckets making it 27-28. Blissfield came alive to take a 3 point lead at 4:31 then it happened. Someone or thing stopped the leather from dropping--the following 2:31 saw 7 shots miss, 6 turnovers and several blocks and steals. In 40 seconds they hit 2 baskets and in the final 1:20 Craig Rogers sank a free toss and Curt canned 2 and tied the line for 2. So, one half of the battle was history and Blissfield stood up 2, 34-36. This half we'd dropped in 12 of 29 F.G., collected 10 of 14 F.T. and suffered 12 turnovers. The Royals shot no free tosses but had 18-35 field goals and turned over 11 times.

The second half opened with us getting the tip and 50 seconds later Dan put in 2 to tie it 36-36. Tom Little put us up 40-38 at 5:55 and Dan canned 2 with Rick Krzyzaniak hitting 2 for a 44-38 lead. Blissfield called time to regroup and proceeded to rattle off 8 unanswered points for the lead. We went up again but at 2:30 (3rd period) a Royal went to the charity line for the first time to sink 2 and tie it 48-48. We went ahead 2 with less than 1 minute but they hit a free one at 36 seconds and drove in a lay-up at the buzzer for a 53-52 edge. The final period was a disaster--the Royals had shot only 4 free throws to this point and were now toing the line everytime I looked. At

Brian Broucek's style. He led the J.V.'s with 12 at Blissfield.

By gdenbergh  
I know how you felt but I thought going to be tough in basketball. Now don't get me wrong, we're tough but I guess I thought it would scare and lie down-- haven't. For this assumption. Our team is strong and starting to play as a unit. Coach Bartels told me last Friday's game was the best he's seen us this season, I totally agree. Coach Bartels has had some mysterious things happen in we've been blowing good teams apart when on home ground but a completely different turn away. After losing in Hudson we torn Chelsea

Your checking account... the "inflation beater".

For a small monthly membership fee, your Ban Club checking account not only aids in keeping track of expenditures but also offers no service charge checking, all the personalized checks you need without issue charge, \$10,000 in accidental death insurance, money orders, cashiers checks and travelers checks without issue charge and more...much more. Talk about an inflation beater...that's a BanClub account at Union Savings Bank. Yes, you can join BanClub today.

**UNION SAVINGS BANK**  
MEMBER F.D.I.C. MANCHESTER / BRIDGEWATER / PLEASANT LAKE

# Your Church

**EMANUEL UNITED CHURCH OF CHRIST**  
Rev. Joseph W. Wise, Pastor  
Sunday School 9:15, Church 10:30 a.m.  
Plan to worship God regularly.

**SHARON UNITED METHODIST**  
Corner Pleasant Lake Road - M-52  
Rev. Wayne Ferrigan, Pastor  
Sunday School 10:00 a.m., Worship Service 11:00 a.m.

**ST. THOMAS LUTHERAN**  
Rev. Jerome Dykstra, Pastor  
Ellsworth Road  
Sunday School 9:30 a.m. Worship Service 10:45 p.m.

**ST. JOHN'S UNITED CHURCH OF CHRIST**  
Carl Ashar, Pastor  
Rogers Corners, Waters and Fletcher Rds.  
Sunday School 9:30 a.m. Church Services 10:30 a.m.

**BETHEL UNITED CHURCH OF CHRIST**  
Rev. Roman A. Rebeck, Pastor  
Schneider and Bethel Church Roads  
Church Service 10:00 a.m., Sunday School 11:00 a.m.

**MANCHESTER UNITED METHODIST**  
Rev. Maurice D. Sharal, Pastor  
Church School 9:15 a.m. to 10:15 a.m.  
Worship Service 10:30 a.m. to 11:30 a.m.

**ST. MARY'S CATHOLIC CHURCH**  
Father Raymond Schilkeart  
West Main Street  
Sunday Masses 8:30 a.m. and 10:30 a.m.  
Monday thru Friday 8:30 a.m., Saturday 7:00 p.m.

**NORTH SHARON COMMUNITY BIBLE**  
Pastor: Rev. Ronald C. Putney  
Sylvan and Washburn Road  
Sunday School 10:00 a.m., Worship Service 11:00 a.m. (Nursery will be available)  
Junior Church Classes 11:00 a.m., Youth Meeting Senior High 6:00 p.m., Youth Choir 6:00 p.m., Evening Worship Services 7:00 p.m. (Nursery available), Wednesday Bible Study and Prayer Meeting (Nursery available) 7:00 p.m. To your door Bus Transportation available 428-7222.

**FAITH COMMUNITY CHURCH**  
Timothy Miles, Pastor  
8480 Sharon Hollow Rd. off W. Austin Rd.  
Worship service 10:00 a.m., Sunday School 11:00 a.m., Sunday Young People 6:00 p.m., Sunday Evening Service 7:00 p.m., Wednesday evening 6:30 p.m., Junior Choir Practice, Prayer Meeting and Bible Study 7:00 p.m., Junior Prayer Meeting 7:30 p.m., Senior Choir Practice 8:00 p.m.

**BRON CREEK CHURCH**  
Rev. Ralph Janofski, Pastor  
Worship Service 10:00 a.m., Sunday School 11:15 a.m., Youth Service 6:30 p.m., Evening Service 7:30 p.m., Wednesday Evening; Junior Choir 6:30 p.m., Bible Study and Prayer Meeting 7:30 p.m., Senior Choir 9:30 p.m.

**ZION LUTHERAN CHURCH**  
Rev. John R. Morris, Pastor  
3050 S. Fletcher Road  
Sunday School 9:00 a.m., Family Worship 10:15 a.m.

**ST. JOHN'S LUTHERAN CHURCH**  
Austin Road, Bridgewater, Michigan  
Rev. Dennis A. Falk, Pastor  
Sunday School, 9:15, Worship 10:30 a.m.  
MANCHESTER BAPTIST CHURCH  
Ronald Nelson, Pastor  
423 S. Macomb Street, Phone 428-7236,  
Sunday School 10:00 a.m., Morning Worship 11:00 a.m., Evening Worship 6:00 p.m., Youth Meeting 7:00 p.m. Monday Visitation 7:00 p.m., Wednesday-Prayer Meeting 7:00 p.m.

**ST. BARNABAS EPISCOPAL CHURCH**  
Rev. Jerrald F. Beaumont, "Vicar"  
Old U.S. 12 - 1/4 mile west of M52 - Chelsea, 10:00 a.m. Holy Eucharist and Morning Prayer.

Church Services Courtesy of

**Jenter Funeral Home**  
373 E. Main St.  
Manchester, Michigan

**BETHEL UNITED CHURCH OF CHRIST**  
Thursday, January 12, 7:30 p.m. Outreach Group meets.  
Sunday, January 15, 10:00 a.m. Worship Service, 11:00 a.m. Church School-Bible Study-Youth Discussion, 2:00 p.m. In-Betweeners Winter Outing and families, 6:00 p.m. Senior Youth Fellowship.  
Monday, January 16, 8 p.m. Annual All Church Conference.  
Wednesday, January 18, 11:30 a.m. Senior Citizens of Bethel.

**WEEKLY MEETINGS**  
Tuesdays-7:30 p.m. Bible Study-Prayer Group, 7:15 p.m. Youth Choir rehearsal.  
Wednesdays-4:15 p.m. Children's Choir rehearsal, 7:45 p.m. Senior Choir rehearsal.  
Saturday-9:00 a.m. Confirmation class.

**ST. THOMAS LUTHERAN CHURCH**  
Thursday, January 12, Worship Committee 7:30 p.m.  
Sunday, January 15, Sunday School and Bible Class and Confirmation Class 9:30 a.m. Worship with Holy Communion 10:45 a.m.  
Monday, January 16, Elder's Meeting 7:30 p.m.  
Wednesday, January 18, Choir Rehearsal 8:00 p.m.

**ST. JOHN'S LUTHERAN CHURCH**  
Saturday, January 14, Catechism, 9-11.  
Sunday, January 15, Sunday School, 9:15 a.m. Worship 10:30 a.m. Congregational Dinner 12 noon, Congregational Annual Meeting 1 p.m. Youth Group 7 p.m.  
Tuesday, January 17, Prayer, Praise & Study, Education Committee 8 p.m.  
Wednesday, January 18, Jr. Choir 7:30 p.m. Midweek Dev. Sr. Choir 8:45 p.m.

**MANCHESTER UNITED METHODIST**  
Thursday, January 12, 4 p.m. Wesley and Cherub Choir rehearsal, 7:30 p.m. U.M.W. are invited to Emanuel Church by their women.  
Sunday, January 15, 7 p.m. United Methodist Youth Fellowship.  
Monday, January 16, 8 p.m. Annual All Church Conference.  
Wednesday, January 18, 10 a.m. U.M.W. Coffee at Mary Walton's.

**WASHTENAW COUNTY COUNCIL ON AGING**  
The Washtenaw County Council on Aging annual membership meeting will be held Thursday, January 19, 1978 at 12:00 noon. (Bring your own lunch) at Zion Lutheran Church, 1501 West Liberty, Ann Arbor for all interested persons.  
The agenda will be preview of new programs for 1978 - Nutrition and Consumer Education, Problems of Widowhood, Guide to Prescription Drugs, Amendments to By-Laws to regulate absenteeism among board members and election of officers and board members.

**Attention**  
The Freshmen class will be having a bake sale on Saturday, January 14 at the Union Savings Bank from 9:00-11:30. Please Come!

**ST. JOHN'S LUTHERAN CHURCH**  
Saturday, January 14, Catechism, 9-11.  
Sunday, January 15, Sunday School, 9:15 a.m. Worship 10:30 a.m. Congregational Dinner 12 noon, Congregational Annual Meeting 1 p.m. Youth Group 7 p.m.  
Tuesday, January 17, Prayer, Praise & Study, Education Committee 8 p.m.  
Wednesday, January 18, Jr. Choir 7:30 p.m. Midweek Dev. Sr. Choir 8:45 p.m.

**There is an old adage. "You don't get something for nothing."**  
How true it is.  
Take interest rates, for example. Some non-banks advertise savings interest rates that are a quarter of a point higher than ours.  
What does that mean to you? Not all that much, really.  
It is how that savings interest is computed that really counts. Even if that non-bank computes their interest the same as we do, the quarter of a point means very little in dollars and sense.  
What it does mean is that you are making a financial connection at an institution that offers only a partial list of services.  
Which is the most valuable to you? A one stop banking center that offers all services or a few extra bucks in savings interest from a non-bank that offers few services you or your family needs?  
Only you can answer that question.  
If you desire a full service banking connection, stop in. We're here to serve you.

**UNION SAVINGS BANK**

**MANCHESTER UNITED METHODIST**  
Thursday, January 12, 4 p.m. Wesley and Cherub Choir rehearsal, 7:30 p.m. U.M.W. are invited to Emanuel Church by their women.  
Sunday, January 15, 7 p.m. United Methodist Youth Fellowship.  
Monday, January 16, 8 p.m. Annual All Church Conference.  
Wednesday, January 18, 10 a.m. U.M.W. Coffee at Mary Walton's.

**Attention**  
The Freshmen class will be having a bake sale on Saturday, January 14 at the Union Savings Bank from 9:00-11:30. Please Come!

**MANCHESTER Electric, Inc.**  
ELECTRICAL CONTRACTING APPLIANCE SALES & REPAIR ELECTRICAL & PLUMBING SUPPLIES  
112 ADRIAN STREET MANCHESTER PHONE 428 8243

**NEW LISTINGS**  
Remodeled home 1 block from business district, new gas furnace, completely new kitchen and bathroom, new carpeting & decorating throughout. Very sharp, possession no problem. 475-2036, 428-7979.  
Lake Front 2 1/2 acre cottage, Port Huron area, \$9,000.  
Wolf Lake Channel Lot.  
Acreage Wanted 2- 5, 10 acre parcels.  
Apartment Building, East Main.  
If you are interested in a home apartment building site or property to be developed in Village.  
36 Acres with several acres of woods frontage on 2 roads.  
For good lots in Village.

**SEE FAHEY REALTY**  
John Fahey  
15554 Fahey Rd. 428-8748  
Jim Fahey  
112 Washington 428-7979  
Please note change of telephone number.  
Ted Curley  
725 City Rd. 428-8526  
Dick Fahey, Chelsea  
28 Sycamore 475-2036

**TRAVELING SMILES**  
Touring Childrens Theatre  
Presents  
The Classic Fairy Tale  
**THE BEAUTY AND THE BEAST**  
SATURDAY JANUARY 14  
138 E. MAIN ST. MANCHESTER, MICH.  
From Ann Arbor, take I-94 west to 52 south, 15 minutes to Manchester.  
MATINEES AT: 11:00am and 2:00pm  
ALL SEATS: \$1.50  
On Sale day of show  
Groups of ten or more: \$1.00 each  
For more information call 428-9280  
9:00am to 4:00pm  
Monday thru Friday, or 8:30 - 8:30pm Wed - Sun. or day of show.

**TRAVELING SMILES**  
will be presenting classic fairytales on the following upcoming Saturdays:  
Jan. 28 & Feb. 11  
A division of The Association for the Performing Arts, Manchester, Michigan.

**AREA OBITUARIES**  
Mrs. Esther F. Kuhl  
10430 Noggie Rd.  
Manchester  
Age 83 years died Sunday, January 8, 1978 at Herrick Memorial Hospital in Farmington Hills, Michigan.  
She was born August 13, 1894 in Manchester, the daughter of William and Elizabeth Wolpert Trolz.  
She was married to Irving Kuhl, preceded her in death on August 1, 1968.  
Mrs. Kuhl was a member of the First Creek Community Church.  
She is survived by one son, Stanley of Adrian; one daughter, Mrs. Thomas (Geraldine) Cushman of Lake Columbia; six Grandchildren; three Great-Grandchildren; three brothers, Elmer and Stanley of Jackson and Ray of Manchester; one sister, Mrs. Florence Shonshek of Bradenton, Florida and several nieces and nephews.  
She was preceded in death by two brothers.  
Funeral services were held Wednesday, January 11, 1978 at 1:30 P.M. at the Jenter Funeral Home, Rev. Ralph Janofski officiated. Burial followed in Howe Corner Cemetery.

**Singles 25 & Up**  
If you enjoy dancing to good music come and join the Tuesday Nite Single at the American Legion Hall, Main Street Ann Arbor, on January 17. Dance from Nine to Midnight to the music of Frank Venice. Refreshments are served.

**MANCHESTER Electric, Inc.**  
ELECTRICAL CONTRACTING APPLIANCE SALES & REPAIR ELECTRICAL & PLUMBING SUPPLIES  
112 ADRIAN STREET MANCHESTER PHONE 428 8243

**NEW LISTINGS**  
Remodeled home 1 block from business district, new gas furnace, completely new kitchen and bathroom, new carpeting & decorating throughout. Very sharp, possession no problem. 475-2036, 428-7979.  
Lake Front 2 1/2 acre cottage, Port Huron area, \$9,000.  
Wolf Lake Channel Lot.  
Acreage Wanted 2- 5, 10 acre parcels.  
Apartment Building, East Main.  
If you are interested in a home apartment building site or property to be developed in Village.  
36 Acres with several acres of woods frontage on 2 roads.  
For good lots in Village.

**SEE FAHEY REALTY**  
John Fahey  
15554 Fahey Rd. 428-8748  
Jim Fahey  
112 Washington 428-7979  
Please note change of telephone number.  
Ted Curley  
725 City Rd. 428-8526  
Dick Fahey, Chelsea  
28 Sycamore 475-2036

**TRAVELING SMILES**  
will be presenting classic fairytales on the following upcoming Saturdays:  
Jan. 28 & Feb. 11  
A division of The Association for the Performing Arts, Manchester, Michigan.

**TRAVELING SMILES**  
will be presenting classic fairytales on the following upcoming Saturdays:  
Jan. 28 & Feb. 11  
A division of The Association for the Performing Arts, Manchester, Michigan.

## STRIKES 'N SPARES

**MANCHESTER BUSINESS MENS**

WON	LOST
Brothers	35
Manchester Tool & Die	31
Excavating	31
Pharmacy	30
Orchard	27
Village Tap	28
rior Land Devel.	28
Pallet	27
Savings Bank	28
Mobil	25
Store	25
A Products	25
Party Store	26
Electric	25
Marshall Ford	24
Farm Equip.	25.5
Huber Gulf	22.5
Bar	23

**TEAM SERIES**

WON	LOST
Bar	3192
Pharmacy	3174
A Products	3161

**INDIVIDUAL SERIES**

WON	LOST
Brothers	1133
Marshall Ford	1128
Savings Bank	1117

**LY KEGLERS BOWLING LEAGUE**

WON	LOST
man-Huber	78.5
's Cut n Curl	70
Pharmacy	61
Sheep Tavern	56
Hairstyles	56
A Products	55
Country Kitchens	54.5
Manchester Enterprise	45

**BINGO**  
American Legion Post 117  
106 E. Madison, Manchester, Mich.  
WEDNESDAYS - 7 P.M.

**ROSS AUTOMOTIVE**  
Automotive Accessories and Equipment  
230 EAST MAIN STREET  
MANCHESTER, MICHIGAN  
PHONE 428-8320 or 428-8328  
STORE HOURS:  
MONDAY thru FRIDAY 8:00am - 6:00pm  
SATURDAY 8:00am - 2:30pm  
WE HAVE AGRICULTURE BELTS & SNOWMOBILE BELTS IN STOCK

hair designs from Sandra Alexander The Beauty Shop 428-7200

**OPEN TUESDAY THRU FRIDAY 9 AM TO 9 PM SATURDAY 8 AM TO 3PM**  
SANDRA ALEXANDER  
VICKI ERESTEN - JUDY VAN LOON

**Viva la crepe!**  
Betty Crocker

Viva la versatility of the crepe—the thin little pizzelle that rolls, folds and converts with easy elegance to dessert or main dish. You can prepare crepes ahead of time and refrigerate or freeze them. Or prepare them just before serving. For main-dish crepes, try chicken or tuna a la king filling. For a very posh dessert crepe, fill with sweetened whipped cream and fresh fruit. Or for a quick, showy dessert, impress your guests with Cherry Crepes.

**CHEERY CREPES**  
Crepes (below)  
1 can (21 ounces) cherry pie filling  
Heat oven to 400°. Prepare Crepes. Spoon heaping tablespoonful pie filling onto half of each crepe; roll up. Place crepes with filling down on ovenproof platter; brush with butter. Bake until filling is hot, about 10 minutes. Top with sweetened whipped cream. 12 crepes.

**CREPES**  
1 cup Bisquick® baking mix  
2 eggs  
1/4 cup milk  
Lightly grease 6- or 7-inch skillet; heat until hot. Beat all ingredients with hand beater until smooth. For each crepe, pour 2 tablespoons batter into skillet; rotate skillet until batter covers bottom. Cook until golden brown. Gently loosen edge with metal spatula; turn and cook other side until golden brown. Stack crepes, placing paper towel between each. Keep crepes covered to prevent them from drying out. About 12 crepes.  
To Refrigerate: Stack 6 cooled crepes between paper towels or waxed paper. Wrap in aluminum foil and refrigerate no longer than 2 days. Heat wrapped stacks of crepes in 350° oven until hot, about 10 minutes.  
To Freeze: Stack 6 cooled crepes between waxed paper. Wrap in aluminum foil, label and freeze no longer than 3 months. Thaw wrapped crepes at room temperature about 2 hours. Heat thawed wrapped crepes in 350° oven until hot, about 10 minutes.  
High Altitude Directions (3500 to 6500): No adjustments are necessary.  
®Reg. T.M. of General Mills, Inc.

**Manchester Township Property Owners**  
Due to a study made by the Washtenaw County Equalization Department last summer. The assessments will raise 11% on Commercial property. 19% on Residential and 46% on Agricultural property.  
Clarence L. Fielder  
Manchester Township Supervisor

**BUSINESS STATIONERY**  
That Gets You The Business  
Rightly Thermographed! Yet Costs So Little!  
You'll like the look of success that low-cost Coronet Thermographed Stationery gives your company. Feel the raised print! So elegant it says you are not only a successful company, but also says you have good taste!  
Business cards and stationery at very moderate cost. Ask us for layout samples.  
**Manchester Enterprise**  
150 East Main Street

# Wedding Bells and Beautiful Brides



Every bride dreams of the perfect wedding... a day that she'll hold dear all through their lives together. Let us help with the plans for this happy day.

**Wedding**  
ANNOUNCEMENTS  
AND  
INVITATIONS...

The  
Manchester Enterprise

STOP IN AND SEE OUR FINE SELECTION

## MANCHESTER WRESTLERS IMPROVING



Dan Jordan 5-0

Hardenberg Dutch grappling squad is young but learning. In the space of 2 weeks have gone from inexperienced to improved. Also, the chalked up best win of the season by downing Richard, 51-36. Although our shows 5 losses and the single have faced some pretty tough opponents: lost to defending L.C.A.A. Hudson - lost to Addison (runner-up L.C.A.A.) - lost to last years class champions Adrian Madison. We just nipped by Vandercook Lake as took 7 matches and lost 3, but had left 3 which lost the meet, 33-36.

As our younger members come we have some veterans that teach. I like Coach Torres very much and his co-captains this season are Dan Jordan (5-0) with Joe Roberts (3-1). These 2 are seniors but junior Steve Eversole is right behind supporting a 5-3 record.

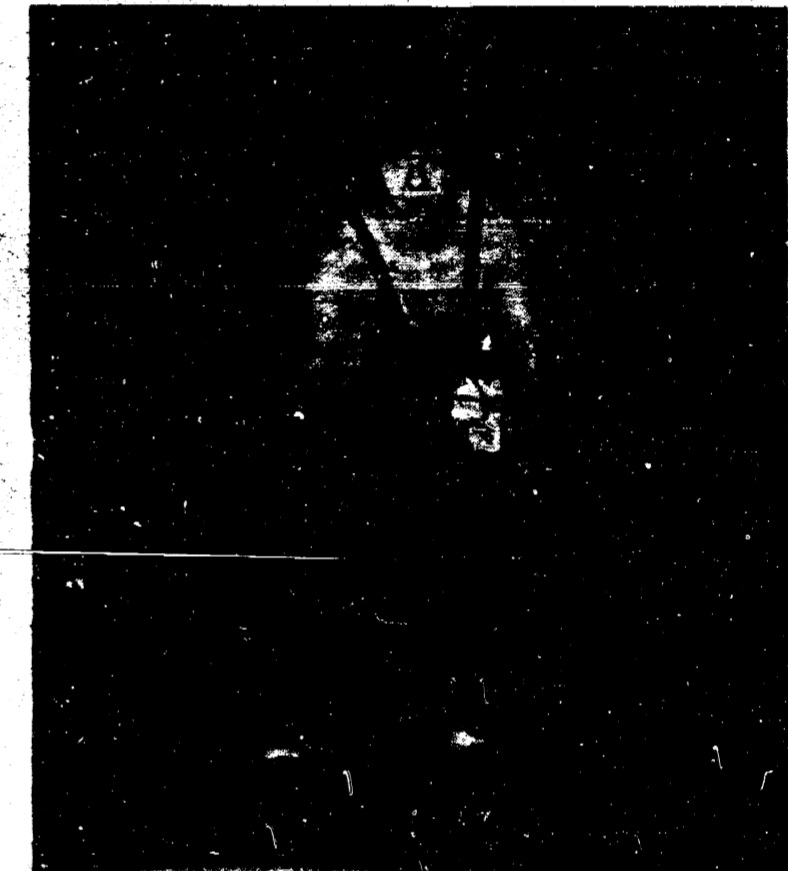
It's my belief somebody is going to get surprised by us before long!!!!

### NOTICE

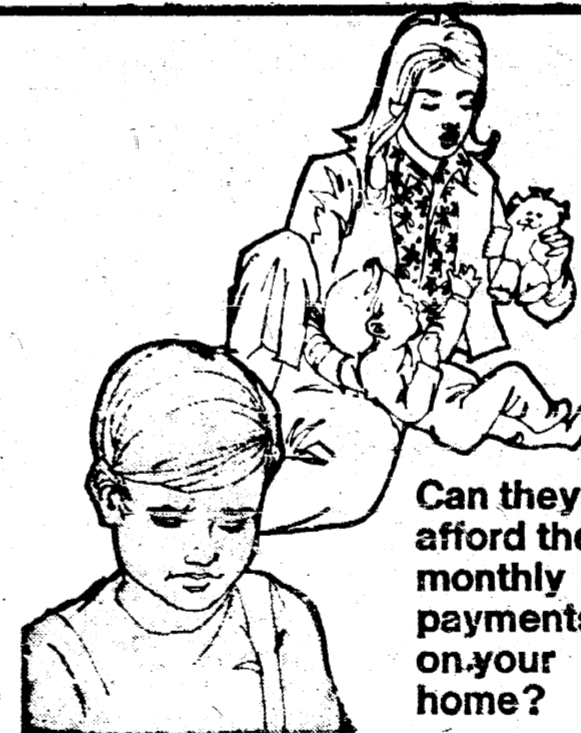
The regular meeting of the Manchester Village Council of January 9, 1978 was cancelled because of weather. The next regular meeting will be held on January 23, 1978.



Steve Eversole 5-3



Joe Roberts 3-1



Can they afford the monthly payments on your home?

Suppose your wife had to do it on her own. Chances are she couldn't afford those monthly payments and preserve your estate as well. Unless, of course, you plan for it now — with our "altogether" mortgage insurance. Because it has a fixed term and covers only the amount of your mortgage, it won't cost as much as you might think. Give us a call now. You don't have to buy a new house to be eligible. You're eligible anytime. Altogether insurance — to help the family stay all together.

it's better  
**altogether**

**SUTTON AGENCY**

136 East Main Manchester, Mich.  
Phone 428-2891

**Auto-Owners Insurance**  
Life Home Car Business

### FREEDOM ELECTRIC

11207 Pleasant Lake Road  
Manchester, Michigan  
NEW CONSTRUCTION  
COMMERCIAL  
INDUSTRIAL

GILBERT LUCKHARDT  
428-8233  
GORDON HOUGH  
428-7619

### BINGO

American Legion Post 117  
106 E. Madison, Manchester, Mich.  
WEDNESDAYS - 7 P.M.

### WILLIAMSON

Heating & Cooling  
Systems

**John Steele jr.**  
INSTALLATION  
& REPAIR  
Phone 428-8692

### ALBER EXCAVATING & TRUCKING

DRIVEWAYS—DRAIN FIELDS—DRY WELLS  
SEPTIC TANK INSTALLATION—BASEMENTS DUG  
GRADING—GRAIN HAULING  
TOPSOIL—SAND—GRAVEL



LICENSED  
CONTRACTOR

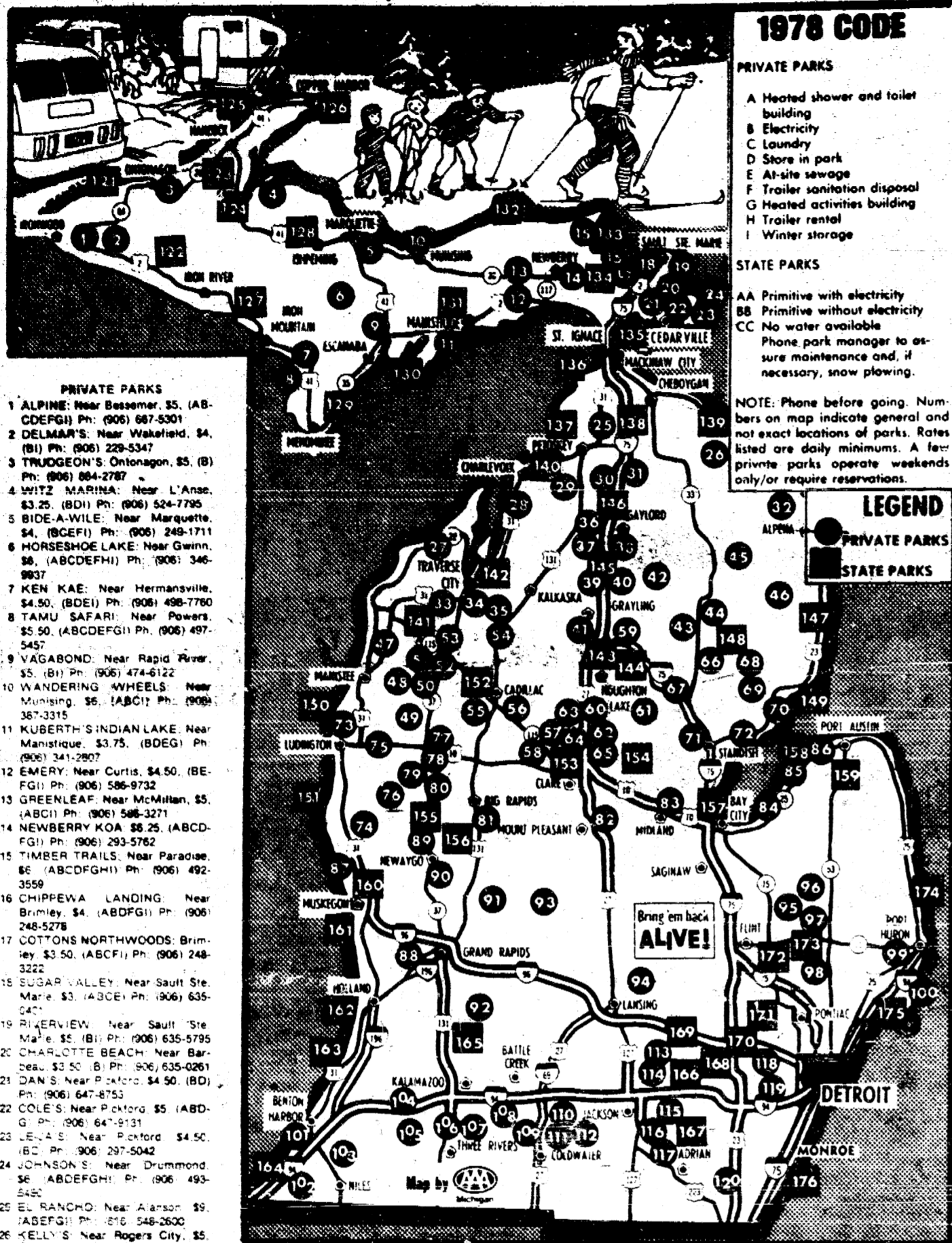
PHONE (313) 428-8628

7601 HASKLEY Rd.



MANCHESTER

# 176 MICHIGAN CAMPGROUNDS WELCOME WINTER GUESTS



- PRIVATE PARKS**
- ALPINE: Near Bessemer, \$5. (AB-CDEFGI) Ph: (906) 687-5301
  - DELMAR'S: Near Washtenaw, \$4. (B) Ph: (906) 228-5347
  - TRUDGEON'S: Ontonagon, \$5. (B) Ph: (906) 684-2787
  - WITZ: Near L'Anse, \$3.75. (BD) Ph: (906) 524-7795
  - BIDE-A-WILE: Near Marquette, \$4. (BCEFI) Ph: (906) 249-1711
  - HORSESHOE LAKE: Near Gwinn, \$8. (ABCEFGHI) Ph: (906) 346-9837
  - KEN KAE: Near Hermansville, \$4.50. (BDEI) Ph: (906) 498-7780
  - FAUO SAFARI: Near Powers, \$4.50. (ABCEFGHI) Ph: (906) 497-5457
  - VAGABOND: Near Rapid River, \$5. (B) Ph: (906) 474-6122
  - VANDERING: Near Munising, \$6. (ABCI) Ph: (906) 387-3315
  - KUBERTH'S INDIAN LAKE: Near Manistowic, \$3.75. (BDEGI) Ph: (906) 341-2807
  - EMERY: Near Curtis, \$4.50. (BE-FGI) Ph: (906) 586-9732
  - GREENLEAF: Near McMillan, \$5. (ABCI) Ph: (906) 548-3271
  - NEWBERRY KOA: \$6.25. (ABCD-FGI) Ph: (906) 293-5782
  - TIMBER TRAILS: Near Paradise, \$6. (ABCEFGHI) Ph: (906) 492-3558
  - CHIPPEVA LANDING: Near Brimley, \$4. (ABDFI) Ph: (906) 248-5278
  - GOTTONS NORTHWOODS: Brimley, \$3.50. (ABCFI) Ph: (906) 248-3222
  - SUGAR VALLEY: Near Sault Ste. Marie, \$3. (ABCE) Ph: (906) 635-0471
  - PIERVIEW: Near Sault Ste. Marie, \$5. (B) Ph: (906) 635-5795
  - CHARLOTTE BEACH: Near Barbeau, \$2.50. (B) Ph: (906) 635-0281
  - DAN'S: Near Pigeon, \$4.50. (BD) Ph: (906) 647-8753
  - COLE'S: Near Port St. Joseph, \$5. (ABD-G) Ph: (906) 647-9131
  - LEVA: Near Port St. Joseph, \$4.50. (BC) Ph: (906) 297-5042
  - JOHNSON'S: Near Drummond, \$6. (ABCEFGHI) Ph: (906) 493-5242
  - EL RANCHO: Near Anson, \$9. (ABEFGI) Ph: (916) 548-2600
  - KELLY'S: Near Rogers City, \$5. (AEFG) Ph: (917) 734-2865
  - LITTLE FINGER: Near Lake Leelanau, \$5. (BEFI) Ph: (916) 256-7236
  - SKY'S MARINA: Near Eastport, \$5. (B) Ph: (916) 299-2815
  - JENKINS: Near Bear River, \$5. (ABFI) Ph: (916) 549-2998
  - CAMPERS INN: Near Woodville, \$4.75. (ABCI) Ph: (916) 526-8212
  - RAYWOOD: Near Woodville, \$4. (B) Ph: (916) 526-8222
  - WOODY'S: Near Azzeta, \$5. (BDE-FGI) Ph: (917) 594-7277
  - MOCKINGBIRD: Near Traverse City, \$5.50. (ABDFI) Ph: (916) 947-8201
  - JELLYSTONE PARK: Near Traverse City, \$5.50. (ABCEFGHI) Ph: (916) 947-2770
  - RANCH RUDOLF: Near Traverse City, \$6. (ABCEFG) Ph: (916) 948-5410
  - DAYLORD KOA: \$5.50. (ABDGI) Ph: (917) 732-4126
  - SAFARI: Gaylord, \$7. (ABFI) Ph: (917) 732-3672
  - MICHAYNE: Near Gaylord, \$6.50. (ABCEFGHI) Ph: (917) 859-8723
  - SAN SHERI: Near Grayling, \$5. (ABDGI) Ph: (917) 346-9632
  - RIVER PARK: Near Grayling, \$5. (ABCFI) Ph: (917) 348-9032
  - PINE KNOLL: Near Grayling, seasonal price only. (ABEFGI) Ph: (917) 349-1184
  - GRAYLING RAMADA CAMP INN: Near Lovell, \$5. (ABCEGI) Ph: (917) 348-9494
  - PINE ACRES: Near Mio, \$4.50. (ABCFI) Ph: (917) 826-5590
  - WHISPERING PINES: Near Mio, \$3. (ABFI) Ph: (917) 826-3231
  - LYONS LANDING: Near Hillman, \$5. (AB) Ph: (917) 742-4758
  - SOUTH BAY MARINA: Near Hubbard Lake, \$3.50. (B) Ph: (917) 736-8815
  - CRYSTAL FOREST: Near Bear Lake, \$4.50. (ABDFI) Ph: (916) 864-2323
  - HEART OF THE FOREST: Near Vleeton, \$5. (ABCI) Ph: (916) 848-3622

## 1978 CODE

- PRIVATE PARKS**
- A Heated shower and toilet building
  - B Electricity
  - C Laundry
  - D Store in park
  - E At-site sewage
  - F Trailer sanitation disposal
  - G Heated activities building
  - H Trailer rental
  - I Winter storage
- STATE PARKS**
- AA Primitive with electricity
  - BB Primitive without electricity
  - CC No water available
- NOTE: Phone before going. Numbers on map indicate general and not exact locations of parks. Rates listed are daily minimums. A few private parks operate weekends only or require reservations.

## LEGEND

- PRIVATE PARKS
- STATE PARKS

- FLINTSTONE: Near Inley City, \$7. (BFI) Ph: (313) 724-1823
- WOODLAND WATERS: Near Alpena, \$4. (ABDGI) Ph: (313) 780-9900
- CRANE HORSE: Near Port Huron, \$5.75. (ABCEGI) Ph: (810) 887-4070
- ST CLAIR WILDERNESS: Near Sibley, \$4. (ABCEGI) Ph: (810) 329-8748
- HOUSE OF DAVID: Near Barton Harbor, \$4. (ABEFI) Ph: (810) 827-3302
- ROB-A-RON: Three Oaks, (BEFI) Ph: (810) 488-3864
- ORONOKO LAKES: Near Barren Springs, \$4.50. (ABDGI) Ph: (810) 471-7389
- THREE MILE LAKE: Near Paw Paw, \$5. (ABCEI) Ph: (810) 887-4072
- CRANBERRY LAKE: Near Marquette, \$5. (B) Ph: (810) 848-9880
- TWIN LAKES: Near Schoolcraft, \$4. (ABC) Ph: (810) 278-2818
- KLINES: Near Vicksburg, \$5. (AB-CDGI) Ph: (810) 648-2514
- TIMBER LAKE: Near Soss, \$5. (ABEHI) Ph: (810) 748-4290
- RUSTIC POTAWATOMIE: Girard, \$5. (ABFGI) Ph: (817) 278-4289
- WHIPPOORWILL HILLS: Near Howell, \$11. (B) Ph: (817) 568-3787
- FOUR SEASONS: Near Jonesville, \$4. (BFI) Ph: (817) 849-8533
- WILDWOOD: Near Mosherville, \$5. (ADDFI) Ph: (817) 524-7149
- FITCHBURG WILDERNESS: Near Stockbridge, \$5. (ABDGI) Ph: (817) 565-3200
- THE OAKS: Near Murrh, \$5. (B-DEGI) Ph: (817) 890-2747
- FOUR SEASONS: Near Grass Lake, \$5.50. (ABDFI) Ph: (817) 522-8584
- JUNIPER HILLS: Near Brooklyn, \$5. (ABCI) Ph: (817) 592-8803
- CLEMENTS DEVILS LAKE: Near Manitou Beach, \$5.50. (ABFI) Ph: (817) 547-5465
- HAS LAKE: Near New Hudson, \$5.50. (ABFI) Ph: (813) 437-0900
- DETROIT-GREENFIELD: KOA Near Ypsilanti, \$7. (ABCEFGI) Ph: (313) 482-7722
- LULL ROAD: Near Paterburg, \$5. (ABFI) Ph: (313) 275-2510

## STATE PARKS

- PORCUPINE MTS: Near Ontonagon, \$4. (AA) Ph: (906) 635-0471
- LAKE GOGEBIC: Near Marquette, \$4. (AA) Ph: (906) 635-0471
- TWIN LAKES: Near Winona, \$4. (AA) Ph: (906) 635-0471
- BARAGA: (AA) Ph: (906) 635-0471
- MCLAIN: Near Calumet, \$4. (AA) Ph: (906) 635-0471
- FORT WILKINS: Near Copper Harbor, \$4. (AA) Ph: (906) 635-0471
- BEVING: Near Crystal Falls, \$4. (AA) Ph: (906) 635-0471
- VAN RIPER: Near Ishpeming, \$4. (AA) Ph: (906) 635-0471
- WELLS: Near Cedar River, \$4. (AA) Ph: (906) 635-0471
- FAYETTE: Near Garden, \$4. (AA) Ph: (906) 635-0471
- INDIAN CAKE: Near Marquette, \$4. (AA) Ph: (906) 635-0471
- MUSKALLONGE: Near Deer Park, \$4. (AA) Ph: (906) 635-0471
- TAHOQUAMENON FALLS: Near Paradise, \$4. (AA) Ph: (906) 635-0471
- BERAHO: (AA) Ph: (906) 635-0471
- STRAITS: Near St Ignace, \$4. (AA) Ph: (906) 635-0471
- WILDERNESS: Near Mackinac City, \$4. (AA) Ph: (906) 635-0471
- PETOSKY: (AA) Ph: (906) 635-0471
- BURT LAKE: Near Indian River, \$4. (AA) Ph: (906) 635-0471
- HOEFT: Near Rogers City, \$4. (AA) Ph: (906) 635-0471
- YOUNG: Near Boyne City, \$4. (AA) Ph: (906) 635-0471
- INTERLOCHEN: Near Traverse City, \$4. (AA) Ph: (906) 635-0471
- TRAVERSE CITY: (AA) Ph: (906) 635-0471
- NORTH-HIGGINS LAKE: Near Roscommon, \$4. (AA) Ph: (906) 635-0471
- SOUTH-HIGGINS LAKE: Near Roscommon, \$4. (AA) Ph: (906) 635-0471
- HARSHWICK PINES: Near Grayling, \$4. (AA) Ph: (906) 635-0471
- OTSEGO LAKE: Near Gaylord, \$4. (AA) Ph: (906) 635-0471
- HARRISVILLE: (AA) Ph: (906) 635-0471
- RIPLE RIVER: Near Rose City, \$4. (AA) Ph: (906) 635-0471
- TAWAS POINT: Near East Tawas, \$4. (AA) Ph: (906) 635-0471
- LUDINGTON: Near Ludington, \$4. (AA) Ph: (906) 635-0471
- MEARS: Near Pentwater, \$4. (AA) Ph: (906) 635-0471
- MITCHELL: Near Cadillac, \$4. (AA) Ph: (906) 635-0471
- WILSON: Near Harrison, \$4. (AA) Ph: (906) 635-0471
- GLADWIN: (AA) Ph: (906) 635-0471
- WHITE CLOUD: (AA) Ph: (906) 635-0471
- NEWAYGO: (BB) Ph: (906) 635-0471
- BAY CITY: (AA) Ph: (906) 635-0471
- SLEEPER: Near Cassville, \$4. (AA) Ph: (906) 635-0471
- PORT CRESCENT: Near Port Austin, \$4. (AA) Ph: (906) 635-0471
- MUSKOGON: (AA) Ph: (906) 635-0471
- HOFFMASTER: Near Muskegon, \$4. (AA) Ph: (906) 635-0471
- HOLLAND: (AA) Ph: (906) 635-0471
- VAN BUREN: Near South Haven, \$4. (AA) Ph: (906) 635-0471
- WARREN DUNES: Near St Joseph, \$4. (AA) Ph: (906) 635-0471
- YANKEE SPRINGS: Near Middleville, \$4. (AA) Ph: (906) 635-0471
- WATERLOO: Near Chelsea, \$4. (AA) Ph: (906) 635-0471
- HAYES: Near Clinton, \$4. (AA) Ph: (906) 635-0471
- PINCKNEY: Near Gregory, \$4. (AA) Ph: (906) 635-0471
- BRIGHTON: (AA) Ph: (906) 635-0471
- ISLAND LAKE: Near Brighton, \$4. (AA) Ph: (906) 635-0471
- PRUD LAKE: Near Mtford, \$4. (AA) Ph: (906) 635-0471
- ORTONVILLE: (BB) Ph: (906) 635-0471
- METAMORA-HADLEY: Near Metamora, \$4. (AA) Ph: (906) 635-0471
- LAKEPORT: Near Port Huron, \$4. (AA) Ph: (906) 635-0471
- ALGONAC: (AA) Ph: (906) 635-0471
- STERLING: Near Monroe, \$4. (AA) Ph: (906) 635-0471

## JOLLY FARMERETTES

The January meeting of the Jolly Farmerettes 4-H Club was called to order January 9, 1978. The Junior Officers elected the club meeting which has 23 members and 5 leaders in attendance. Flag pledges were led by Margie Jarve. Alls and communications were presented and read by Dawn England, Junior Secretary.

was reported that our club distributed eleven boxes of good cheer to area shut-ins.

Joyce Schwab gave a report on the upcoming March of Dimes Sale to be held Saturday, January 21st. The girls were given their work schedules, advised how to dress for the weather and reminded that if they can not work to call one of the chairpersons listed on their work sheet. The girls are asked to meet promptly for their work shift at the Grossman-Huberservice station.

Under the Leader's Report, Elaine Feld-

camp informed us of an upcoming Demonstration Clinic to be held January 21. Those girls planning to do demonstrations for their club projects are asked to attend this clinic. We were also informed about the formation of a new Dairy Goat Club in the Chelsea-Dexter area if we are interested in joining. Tel-Award forms are to be completed by January 20 for those girls 14 years and older and returned to the 4-H office.

Club members were asked to think of some type of fund-raising activity for the spring months to help replenish our club treasury.

A brief check of projects was made by the leaders. We were reminded that Spring Achievement is only two months away and therefore we must keep up the good work and keep this deadline in mind. Demonstrations were given by Teresa Ames, Margie Jarve and Becky Blumenauer. Games were led by Michelle Lamb and songs by Mary Koebbe. Refreshments were served by Becky Blumenauer and Jean Ann Wahl.

The next meeting will be February 7, 1978. Demonstrations to be given by Julie England and Lynda Knisak; refreshments to be served by Dawn and Julie England and Theresa Ames.

The meeting was adjourned.

# the BIG clearance

## at CAL'S TOG SHOP

# 25% to 50% off

### Dresses

- by Kay Windsor
- by Melissa Lane
- by Butte Knit
- by Jody Jr.
- by Young Edwardian

### Handbags

Select Group

- by Mr. Leather
- by Kadin
- by Stone Mountain

### Sportswear

- by Alex Coleman
- by JH Collectibles
- by Graff of Calif.
- by Act III
- by Tami
- by White Stag

### Coats

- by Mitty Harbor
- by Forecaster of Boston
- by Sportowne
- by Weatherbee

Wool, Cloth & Leathers

### Blouses & Knit Tops

Big Selection at Great Savings

### Slacks

- by Loubella
- by Alex Coleman
- by Tami
- by Act III
- by Graff of Calif.

## CAL'S TOG SHOP

Bank Americard Master Charge or Your Cal's Tog Shop Charge



### THE NITRITE CONTROVERSY

Apparently everything we eat or wear is a potential cancer causer. At least one could come to that conclusion since every few months another government report comes out saying one more item is cancer causing. The latest is lipstick dye, with the nitrite issue in cured meats still in limbo from a few months back. We haven't seen reports on how much lipstick would have to be worn daily for the dyes to cause cancer, but, according to the American Meat Institute, you'd have

### NATIONAL SECRETARIES ASSOCIATION

The National Secretaries Association (International) Huron Valley Chapter, Ann Arbor will meet Thursday, January 12, 6:00 for cocktails, 6:30 for dinner at Weber's Inn, Ann Arbor.

The program will be our annual Secretary of the Year (SOTY) contest. Competitors will be judged on their impromptu answers to questions submitted by a panel of judges consisting of a business educator, an executive, and a non-NSA secretary.

For further information, call Debra Harding, Membership Chairman at 764-9272 or 971-7659.

## Wamplers Lake Tip-Up Town & Ice Carnival



SATURDAY AND SUNDAY  
JANUARY 14th & 15th



Drag Races  
Snowmobile  
Relay Races

all day both days

Races for Everyone

you don't need a fast machine

TREASURE HUNT CAMPFIRE  
FISHING CONTEST TROPHIES & PRIZE MONEY

OFF M-124 ON WAMPLERS LAKE  
BROOKLYN MICHIGAN  
PHONE 517-592-2082

### Village Planning Commission

December 7, 1977

The regular meeting of the Manchester Village Planning Commission was held at the Village Hall, with Members present: Broucek, Whittington, Leeson, Althouse, Krauss, Daniels, and Tracy.

The meeting was called to order at 7:40 P.M. by Chairman Broucek.

Minutes of the last meeting were read, and on the motion by Krauss, seconded by Whittington, were unanimously approved.

Mr. Don Limpert was present. He reviewed the D.E. Limpert Company plans for the "Mill Pond Village Apartments" from inception, including the units existing at the present time. The D.E. Limpert Co. now wishes to proceed with construction of Building No. 2, for 8 residential units, located between the former railroad right-of-way and the abandoned cemetery, now a park.

It was moved by Krauss that we recommend approval of the site plan for Building No. 2 only, and also the requested variance in depth of "back yard" set-back. Motion was seconded by Tracy, and the voice vote indicated unanimous approval.

It was suggested by Whittington that a more detailed site plan be provided for record files.

There have been questions raised as to the status of extensions of North Macomb, North Washington, and North Clinton Streets, with reference to the Second Plat of the Village of Manchester, which

indicates dedicated continuance beyond their existing extremities.

It was moved by Whittington that North Macomb Street remain as platted, but petitions will be entertained to vacate the platted but non-existence of portions of North Washington and North Clinton Streets beyond the former railroad right-of-way. The motion was seconded by Althouse, and poll of Members present indicated all "aye" except Daniels "nay", and Tracy "abstain". Motion declared passed.

Doctor C. S. Hwang and Mr. Jim Mann were present to request a Conditional Use Permit to establish Dr. Hwang's medical offices in the existing house at 515 West Main Street. They showed a preliminary sketch of the site plan, and explained that external changes in appearance would be minimal: principally only improved entrance and a ramp for physically handicapped persons. Adequate parking space is available in the rear, and separate entrance drives from Main Street and exit onto Territorial Street can be provided. However, under the Zoning Ordinance there is no provision for such a conditional use.

It was moved by Daniels to recommend that the Zoning Ordinance of Manchester Village, Article 21.0 as it applies to zoning R-1B (Single-Family Urban Residential District) be amended, under Section 21.03 (Conditional Uses), to include as sub-item "G", provision for the establishment of Medical Offices. The motion was seconded by Althouse, and the voice vote indicated unanimous approval.

It is noted that prior to the present Zoning Ordinance this condition has been

condoned in several instances.)

It was moved by Althouse, that if the preceding amendment to the Zoning Ordinance is adopted, it is recommended to apply forthwith to the property known as 515 West Main Street, as per Dr. Hwang's request afore noted. The motion was seconded by Daniels, and passed unanimously.

Mr. William Cannon was in attendance to acquaint the Commission with property which he has acquired on the North side of East Main Street. He exhibited a preliminary site plan for five proposed building lots and dedicated right-of-way, and explanation of potential uses for remaining areas of the property. Mr. Cannon will present additional information and/or plot plans at another time.

With reference to Mr. Limpert's offer to donate the old Blacksmith Shop on East Main Street, as noted in the Village Council Proceedings of November 7, 1977, the Council's representative on the Planning Commission, Mr. Duncan, was absent because of illness. It was moved by Krauss that the matter be referred back to Council to explore with Mr. Limpert the possibility of giving the establishment to the Manchester Historical Society. The motion was seconded by Whittington, and passed unanimously.

The meeting was declared adjourned at 10:00 P.M.

Laurin F. Leeson, Secretary

### Ypsi State Becomes Ypsilanti Regional Psychiatric Hospital

Reflecting its role as a regional treatment center for persons with mental health problems, Ypsilanti State Hospital has a new name. As of January 1 it has become Ypsilanti Regional Psychiatric Hospital.

"Asylum" was the first description of such centers, offering a place of refuge and shelter. Later treatment became a goal, and the asylums became hospitals. "Today mental health care forms a regional network of services and agencies," said Walter Kenzie, Director of the Hospital. "Community Mental Health Centers, Regional Centers for Developmental Disabilities (for mental retardation), and Regional Psychiatric Hospitals (for mental illness) work together with private agencies to provide a wide range of specialized services."

Ypsilanti Regional Psychiatric Hospital serves residents of Genesee, Hillsdale, Jackson, Lenawee, Livingston, Monroe, Shiawassee and Washtenaw counties. In addition the children's division, York Woods Center, serves part of Wayne County. The Hospital has 1071 beds.

### Volleyball Begins On Winning Note



Miss Clark scored 18 service points against Stockbridge, 15 straight points without error.

The 1978 Volleyball season got under way January 3, matching up with Stockbridge. The Panthers were sent home on a short end as they fell victim to the match 15-7, 15-0. The Dutch displayed total team effort toward victory. Junior Lisa Clark led her team-mates to victory as she served 18 service points, while serving 15 straight points without error a game that did not allow Stockbridge a point. Team efforts in service points behind Miss Clark were: Michelle Kempf, Lisa Jeffers, Kathy Rose with 3 points, Bernie Fielder with 2 and Kim Dulle with point.

Co-captains Kathy Rose and Kim Dulle teamed up to push Stockbridge against the wall. Kathy Rose tallied 7 sets that enabled Kim Dulle to get them away for a solid spike points.

### Manchester vs Madison Extension Program Assirstant

The Dutch continued their fine play as they downed Madison 15-5, 15-0. Madison jumped off to 5 quick points before the Dutch became accustomed to the gym at which time the Dutch did not allow their opponents another point. Junior Bernie Fielder led all scorers with 11 service points, followed by Alisa Clark and Kathy Rose with 6, Daphne Nickels 4 points, and Kim Dulle with 3 points.

### Plumber and Pipefitter Apprentice Program

Applications will be accepted for the Plumber/Pipefitter Apprentice Program at 5300 West Michigan Avenue, Ypsilanti, Michigan, beginning February 6 through February 17, 1978.

All applicants must personally call for and within one week, return the necessary forms to the office. It is open weekdays from 9:00 A.M. until noon.

Applications will be available to all who are interested without discrimination because of race, color, religion, sex or national origin. Applicants must be at least 18 years of age and possess a high school diploma or a G.E.D. Certificate.

### Scout Troop 430

On Tuesday, January 2, Boy Scout Troop 430 held a meeting. They talked about the ten mile hike they were going on January 7, and had a session for boys to work on skill awards.

Also please save your papers for our paper drive on January 14.

### Medical Care Auxiliary

Start the New Year by joining us for our next meeting on Wednesday, January 18, 1978 at Zion Lutheran Church, 1501 W. Liberty, Ann Arbor at 9:30 a.m.

**ALBER ORCHARD AND CIDER MILL NOW OPEN**  
Sweet Cider - Apples  
Barrels - Kegs  
Open daily 8 a.m. to 6 p.m.  
15011 Bethel Church Road  
Phone 428-7758

**SOLAR OBSTACLE SPECIALITIES**  
Residential Heating  
Swimming Pool Heaters  
Insulation Grain Dryers  
For information or demonstration call:  
428-8696  
Walt Strasser - Dealer

**Now Is The Time To Build Your New Home**  
ALSO REMODELING AND ROOM ADDITIONS  
Norm Walz Construction  
Ph. 428-7109

**DICK'S FARM EQUIPMENT REPAIR**  
7575 Haskley Rd. Powers Dr.  
Phone 428-7342  
MANCHESTER  
NOW OPEN FULL TIME  
24 HOURS A WEEK EMERGENCY SERVICE  
Mobile Repair Service  
SHOP HOURS  
8:00-6:00 Monday - Saturday  
General Repair, Painting & Sand Blasting

**HILLTOP**  
PLUMBING-HEATING-ELECTRICAL CONTRACTORS  
SEPTIC TANKS DRAIN FIELDS  
-FREE ESTIMATES-  
**CALL 475-2949**  
8316 WEAVER ROAD • CHELSEA

**Spring CLEARANCE**  
Christmas Candles 30% Off  
Christmas Books 40% Off  
All Christmas Cards and Wrapping 50% Off  
Jewelry Sale 50% Off  
Close-Out On Many On Selected Items  
Gift Items 50% Off  
HOURS: 10:00 A.M. to 5:30 P.M.  
Monday-Saturday  
**Calico Cat**  
BOOK AND GIFT SHOPPE  
1000 N. ZEEB RD. MANCHESTER, MI 48150  
Phone 428-7432

**SALE!** NEW 1978 SNOWMOBILES IN STOCK

2/ John Deere Spitfires EA. \$1,395.00  
1/ John Deere 340 Cyclone \$1,850.00  
1/ John Deere 440 Cyclone \$2,050.00  
1/ John Deere 340 Liquifire \$2,250.00  
ABOVE PRICES INCLUDE SALES TAX & COVER

**USED SNOWMOBILES**

1/JD 1977 440 Liquifire TAX & COVER \$2,000.00  
1/JD 1977 440 Liquifire TAX & COVER \$1,900.00  
1/JD 1976 440 Cyclone TAX & COVER \$1,300.00  
1/JD 1974 JDX-8 TAX & COVER \$900.00  
1/JD 1974 295s TAX & COVER \$800.00  
1/JD 1973 JDX-8 TAX & COVER \$750.00

**CLOTHING SALE 20% OFF On all Snowmobile Suits, Helmets, Boots, and Gloves**

**YOUR JOHN DEERE WINTER WEATHER HEADQUARTERS**  
**GROSS FARM EQUIPMENT**  
9685 W. Michigan Ave Phone 429-2516

**double your money**  
with compound interest

the one sure way to build a fortune

and the interest it earns never withdraws. The money grows at an amazing rate. Money in most Ann Arbor Federal Savings certificates doubles every 10 years.

Thus, if a person 40 years old with \$25,000 in savings, coins, cash value insurance, etc. puts it into a certificate account at Ann Arbor Federal Savings, it will grow to \$50,000 by age 50. By age 60 it will have grown to \$100,000 without adding a penny of his paycheck.

For the person in his mid-fifties, with retirement coming and never adds another penny, the money will grow to \$50,000 by age 65.

On the other hand, if one continues to add to his savings account regularly, it will, with the help of compounding, accumulate \$200,000 or \$400,000 or more.

But what about the person starting out, the twenty-five year old? By putting \$50 a month in a 5 1/2% passbook savings account each month and leaving the interest to accumulate and compound, he will have \$21,150 by age 45. Then, if he transfers the money to a certificate account

the magic of compounding

Deposit	at 10 years	at 20 years	at 30 years
\$1,000	\$1,771.81	\$3,214.46	\$5,026.67
\$5,000	\$8,859.05	\$16,072.28	\$25,133.35
\$10,000	\$17,718.10	\$32,144.56	\$50,266.70
\$50,000	\$88,590.50	\$160,722.80	\$251,333.50

**ANN ARBOR FEDERAL SAVINGS**  
11 OFFICES TO SERVE YOU IN: ANN ARBOR, BRIGHTON, CHELSEA, DEXTER, MANCHESTER, SALINE, YPSILANTI

*Founded 1890*  
MEMBER FSIC  
Savings Insured To \$40,000

### Senior Citizens

The menu for the Senior Meal on Tuesday, January 17, is: Baked Ham, Vegetable, Fruit, Bread & Butter, Dessert, Coffee, Tea and Milk.

For Thursday, January 17, they will serve: Chop Suet, Vegetable, Fruit, Bread & Butter, Dessert, Coffee, Tea and Milk.

### BOY SCOUT PAPER DRIVE

Boy Scout Troop 430 will be having a Paper Drive, January 14 at Freedom Township Hall at Pleasant Lake. If you have papers, please bring them to the Town Hall. If you have papers and cannot bring them call Bob Richards, 475-8815. We will be going around Pleasant Lake and in Manchester.

**Clinton Family Theatre**  
Fri. Sat. Sun. 7:30 & 9:30  
He fought wars and won them. He defied Presidents - and might have been one.

**RESEARCH**  
A BURNETT PETER-FORUMER PRODUCTION

**VACUUM CLEANERS ELECTROLUX**  
Electrolux Sales & Service  
call  
James Cox  
Manchester  
428-8444 or 428-8686

**REMODELING and POLE BARN**  
NO JOB TOO SMALL  
TED BAKER AND JOE KRESS  
CALL EVENINGS  
428-8613 2-16

# WANT ADS

ALL CLASSIFIEDS MUST BE PAID FOR IN ADVANCE

**FIREWOOD** \$35 a cord delivered and stacked. 428-7958. tfn

**WILD BIRD FEED**, Sunflower seed at Mam's Feed Mill, Manchester. tfn

**PIANO & ORGAN** tuning and repair (517) 782-1273 or 428-8422. tfn

## ROOFING SPECIALIST

All types of roof repairs-homes, barns, commercial, insurance repairs, asphalt shingles, hot build-up roofing, cedar, slate, tile, asbestos, awnings and porch enclosures. Call Joe Hayes for free estimates, 428-8520. tfn

**BEEF TO SELL BY SIDE**: Custom slaughtering, Lockers to rent. Phone 428-7600, Manchester Locker Plant. tfn

**CREDIT PROBLEM? NO PROBLEM.** Call Chris or Cal at Henderson Ford, 769-7900.

**CALL Elaine Rice**, Realtor, for successful buying and selling, homes and farms. 10 years of honest and competent brokerage in Real Estate. By appointment, 665-8683 or 428-7272. Associated/Eibler & Assoc. Inc.

**BUILDING FOR SALE**, 30 x 40. Terms: land contract, 428-7483 or 663-1120. tfn

**FOR SALE**: Dining Room Set, 6 Needle Point Chairs, Large Table, China Cabinet. Phone 428-7032. tfn

**FAMOUS Pheasant Run Farm** pure bred German shorthaired pups available again, liver and white, reasonable. 428-7238. 1-19

**FOR SALE**, couch and 2 chairs, kitchen table, chairs, dresser, bureau with mirror, shower stall. 428-8950 after 4. p

**FOR SALE**, Sears compact dryer, G. E. 3 cycle washer 428-8466. p

**MANCHESTER INSURANCE AGENCY**  
122 West Main Street  
Manchester, Michigan  
Phone 428-8215  
Home-Farm & General Insurance

**O.E.S. CARD PARTY**  
Masonic Temple  
Saturday, January 14  
8:00 P.M.  
\$1.00 Donation  
Door prizes & refreshments

**WANTED TO BUY TOY TRACTORS AND FARM EQUIPMENT**  
FARMALL, ALLIS CHALMERS, CASE, CO-OP, COCKSHUT, MASSEY HARRIS, OLIVER, FORD FERGUSON, MINNEAPOLIS MO-Line & JOHN DEERE  
**GARY E. HILL**  
1949 Marlowe Rd. Toledo, Ohio  
415-474-0666

**A BARGAIN IS ONLY A DEAL WHEN IT'S A STIHL**



Stihl chainsaws are longer and hold up better than any other saws made, and that's what makes them a bargain. For right now, we're dealing out over \$54 worth of free extras to anyone who buys a Stihl chainsaw. The World's Largest Selling Chain Saw.

**K & W EQUIPMENT, INC.**  
PHONE 428-7666  
11100 Chelsea - Manchester Rd. Manchester

**HELFRICH MASONRY**  
LICENSED CONTRACTOR  
FIREPLACES-BASEMENTS-VENEER  
STONE & BRICK-CEMENT WORK  
PHONE 428-8680  
7879 CHELSEA-MANCHESTER ROAD  
MANCHESTER, MICHIGAN

**ARE YOU SURE YOU'RE "PUNCHING THROUGH LOUD AND CLEAR"?**  
The typical CB'er can get an average of three miles further to "punch through loud and clear" with a check and adjustment of his CB and antenna system for peak performance.  
**MANCHESTER CB SERVICE**  
Phone 428-8073 FCC LICENSED

**CREDIT PROBLEM? NO PROBLEM.** Call Chris or Cal at Henderson Ford, 769-7900.

**CARPET** those cold floors with carpet from Hartung's. Rubber back shag on sale at \$3.95, \$4.95 and \$6.95 a/y. Do it yourself and save. Hartung Carpet, 11353 Clinton Tecumseh Rd., Clinton, Michigan.

## CARD OF THANKS

I wish to thank all those who extended courtesies at the time of the death of my husband, Ernest Moore.  
I wish to thank especially the neighbors, friends, pallbearers, Rev. Sharai, and the Jenters.  
Opal Moore

Many thanks to all who remembered me at Christmas, with greeting cards and boxes of fruit, cookies, candles and plants.  
Special thanks to Emanuel's Womens Guild, United Methodist Women, Jolly Farmerettes, Senior Citizens and the Carolers.  
Amelia Kemner,

## LEGAL NOTICE

NOTICE OF PUBLIC HEARING

TAKE NOTICE that Manchester Township Planning Commission will hold a public hearing on the application of Agnes Rafalski for a conditional use permit to construct a single-family home on premises presently zoned R-C Recreation-Conservation described as:

The East 1/2 of the Southeast 1/4 of Section 4, T4S, R3E, situate between the North line of the Jackson Branch of the Lake Shore and Michigan Southern Railroad and the North line of the Hillsdale Branch of the Lake Shore and Michigan Southern Railroad except the West 660 feet thereof.

On January 23, 1978 at 8:00 p.m. EST, at the Manchester Village Hall 120 South Clinton Street, Manchester, Michigan. MANCHESTER TOWNSHIP PLANNING COMMISSION

**CASH FOR LAND CONTRACTS**  
Any type of real estate throughout Michigan. No commissions or costs. First National Accept. Call Free 1-800-232-1550

**DO YOU QUALIFY?**  
We Seek EXPERIENCED Acme Automatic Screw Machine OPERATORS at Rima Mfg. Co. 116 Main St. Hudson, Michigan 517-448-8921  
People with one year's experience or more may apply for employment with:  
COMPETITIVE PAY; FULL HEALTH CARE; AND RETIREMENT; FRINGES, INCLUDING:  
-holidays  
-vacation  
-life ins.  
-disability  
-and more.  
This is a good, clean place to work that will offer you opportunity with a future. It is a growing company with responsible, competent leaders.  
APPLY NOW IF YOU QUALIFY! 1-19

MANCHESTER TOWNSHIP LIBRARY P. O.

# THE MANCHESTER ENTERPRISE

111TH YEAR VOLUME NO. 12 THURSDAY, JANUARY 20, 1978

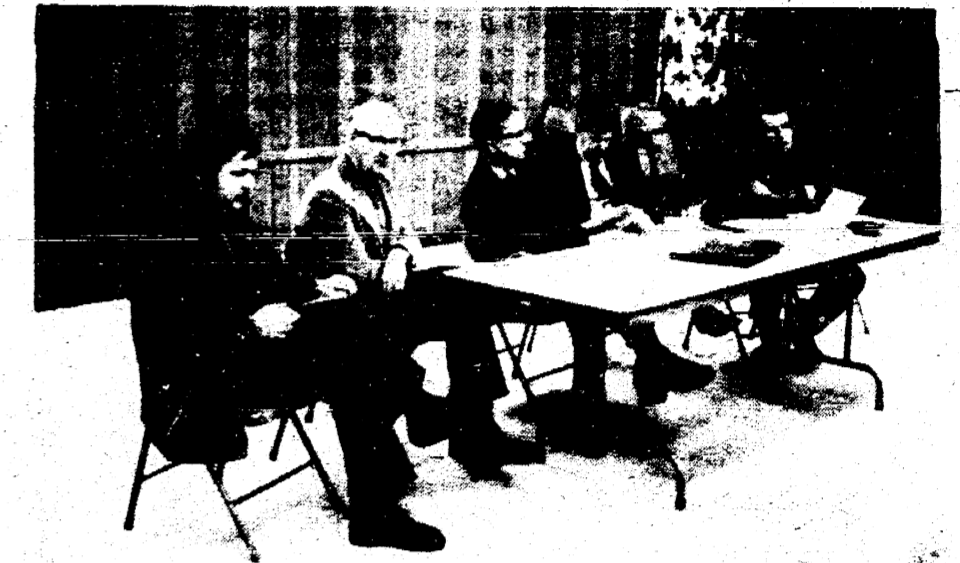
20¢ A COPY

## Girls Volleyball Team Co-Captains Town Hall Meeting, What Next?



Volleyball Co-captains: Kim Dulle and Kathy Rose

Co-captains Kathy Rose and Kim Dulle exhibit leadership and determination for success. Both Kathy and Kim have gained respect from fellow teammates by being selected as co-captains for the '78 Volleyball season.  
Senior Kathy Rose is a veteran volleyball player. She was a varsity player her junior year, as well as being on the starting line-up the entire season. Kathy was awarded for her fine play, by receiving all-league honorable mention. Miss Rose is the floor director of action and main setter on the squad. Kathy is the daughter of Mr. and Mrs. Grover Rose.  
Senior co-captain Kim Dulle is likewise a returning letter winner. Miss Dulle has developed a high level of skills which enabled her to be a member of the "1977 All-State Volleyball Team". This was the first athlete (male or female) from Manchester High School to be awarded this honor. Other honors included: 1st Team L.C.A.A. by a unanimous decision. Kim is considered the main spiker on the squad as she averages 7 to 8 scored spikes per game. Kim is the daughter of Mr. and Mrs. Bernard Dulle.



Pictured above at the meeting Monday evening held at Freedom Township Hall was Larry D. Minich, Washtenaw County Commissioner, Bert F. Neilsen, Washtenaw County Commissioner, also member of the Washtenaw County Board of Health, Dr. Atwater, Director of Washtenaw County Board of Health, William Rademacher, member of Washtenaw County Board of Health and Barry Johnson, Washtenaw County Board of Health.

Lenore Steele, Editor  
On Monday evening an open meeting for area residents was held at the Freedom Township Hall in regards to on site septic systems and drain field inspections by the Washtenaw County Health Department. This meeting was a follow-up by our State Representative Mike Conlin, who had heard many complaints by residents at a prior Town Hall meeting held last fall.  
Now alot of effort was made by Mr. Conlin and his staff to set up this meeting with the Health Department officials. Object, to air some of the problems that exist and to try to smooth the way for more effective and efficient inspections. The first statement made by Dr. Atwater, Director of the Washtenaw County Health Department, was that they could not deal with individual problems at this meeting, but would answer any questions posed by the audience on technical data.  
Sitting in the meeting as a spectator, I felt that these people who came with legitimate gripes were not given a fair hearing. They came not to find out about the terrain of Washtenaw County and its effects on drain fields but to find a solution to the harassment being encountered by area residents.  
Listening to the disgruntled citizens speak, one gets the feeling that they are not questioning the health standards set by the department, they are asking only to be given considerate, logical, and equal treatment. They do not need abrasive words nor do they need to be at the mercy of a person who acts on a whim, with one answer today and another tomorrow.  
While we would like to thank Dr. Atwater, his staff, members of the Board of Health and Rep. Conlin for their interest, we certainly hope that some action will be taken to rectify the situation.

## Pickets Halt Michigan Livestock Exchange Auction



A score of farmers halted livestock trading Monday, January 16 with their picket lines at the Michigan Livestock Exchange yards here and at a private auction house in nearby Napoleon.  
The pickets also talked of holding their own cattle off the market for at least 60 days as part of the American Agriculture movement protest of low prices offered for farm products.  
Monday's demonstration was the second day of protest at the Manchester auction pens, which had escaped the picket lines erected at many other livestock markets around the state in recent weeks.  
Prior picket threats, however, have caused many farmers to stay away from the usual Monday beef auctions, sharply curtailing sales volume.  
The Manchester facility usually auctions off between 800 and 1,000 head of beef cattle on Mondays, according to MLX general manager Harold Lein.  
Although MLX is losing commissions of \$3.90 a head, Lein himself provided coffee and donuts for the chilly strikers.  
"We're sympathetic with these farmers," said Lein. "We want higher prices for these animals too. But we don't agree with the method they've chosen (of picketing to shut down the auction)."  
Such strike tactics drew criticism last week also from Elton R. Smith, president of the Michigan Farm Bureau, who blamed labor unions for grabbing the lion's share of food costs that ought to rightfully go to growers.  
However, the withholding of beef from market may have something to do with the recent upswing in finished cattle prices, Lein says.  
Current sales are for around 45 cents a pound of live meat, a price at which Lein feels farmers can realize some of their first real profits in several years.  
There are other factors involved too, including the normal cyclical trends in cattle raising, Lein notes.  
There will be a meeting for ALL Pleasant Lake Property owners on Monday, January 16th at 7:30 p.m. at Pleasant Lake School. Following a short business meeting, Freedom Township Supervisor Dave Melhardt will speak on criteria for assessing property, specifically lake front property. Plan to attend this meeting and remember: it is at Pleasant Lake School this time, not the Town Hall.  
An Emergency Police Service telephone number has been set up for all Manchester citizens if they are unable to reach the police department. The Police Emergency Service number is 971-3911.  
**MRS HERB HONER AREA GIRL SCOUT COOKIE CHAIRMAN**  
Mrs. Herb Honer, 107 S. Union, will serve as Area Chairman for the 1978 annual Girl Scout Cookie Sale which begins January 30.  
As Area Chairman, she is responsible for coordinating the sale for the two selling troops or approximately 30 Girl Scouts in Manchester.  
When asked why she accepted the position, Mrs. Honer, who has served as Area Chairman for four years, said, "I enjoy doing it; it's fun."  
She was also a Brownie Girl Scout Troop Leader last year.