

SPORTS CORNER

EAST JACKSON, DOWNS THE DUTCH

By Jon Hardenbergh

In what turned out to be a rather sloppy, poor shooting contest the Trojans of East Jackson happened to win, 66-54. We started out slow but Bob Smith hit at 5:06 to give us the lead at 5-4. Tom Little took a brief 1 point edge at 2:23 but Tom Little bounced in a 2 pointer to give the lead back 9-8. At 20 seconds they sank 1 of 2 free throws to tie the score 11 all. Both squads ended the period with buckets so the tally remained tied 15-13. In the second period we couldn't locate the hoop as we shot 19 times and made a mere 4. While the Trojans shot 57% in making 8 of 14, they held us in free throws as they missed all 4. This gave East Jackson a 29-25 advantage at intermission.

Again we began sluggishly as the Trojans went up 8 at 4:28, 37-29. But we caught on fire and in 2 minutes we out-scored East Jackson 10-5 to trail by 1, 40-39. But in the last 2:06 they tallied 4 to our 0 so they entered the final 8 minutes up 5, 44-39.

In this period the Trojans were aided by the Dutch turning the ball over 9 times. The closest we pulled was 6 at 2:55, 54-48. The Trojans then hit 5 unanswered points in 26 seconds to take a 60-48 lead. Then both sides added 6 to end the game 66-54.

Tom and Jeff Clark posted 14 points each. Statistically we shot 67 made 23 for 34% sank 8 of 11 free tosses and had 34 turnovers. East Jackson shot 58 made

29 for 50%, hit 8 of 20 free throws and posted 25 turnovers.

MORENCI NARROWLY ESCAPES DUTCH GAME PLAN

By Jon Hardenbergh

Earlier this season Morenci had come to town and simply blown us out of our own gym. This time however the current league leaders found a much improved offense and solid defense and this prevailed until 1:36 was left when Morenci took the lead and held it to win 38-34.

In the opening 8 minutes of play we controlled the lead entirely and with Curt Fielder popping an 11 footer at the 2 second mark we lead by 4 going into the 2nd period. We stuck to our plan and held until there were 44 seconds left when a Bulldog's 2 pointer gave them a 1 point lead. But 23 seconds later Mark Lawson went to the line shooting 1 & 1 and made both to put us back in front. Unfortunately their shot at the buzzer hit pay dirt-so at the half Morenci led by 1 point.

The entire third period was well played with the score changing hands many times. But we entered the final period with the advantage to us. We had a spurt and found ourselves up 7 with only 3 minutes to go. We then slowed our offense going for the good shot. At 1:49 Morenci was down 4 and at 1:38 it happened. "It" being a 3 point play-they toed the line, shooting 1 & 1 and made the first but missed the second only to capture the rebound and put it in for 2. Also he was fouled so went to the charity stripe-missed-but again grabbed the rebound and shot for 2 more. Add them up 5 points!!! This gave them the lead 53-52 and the momentum.

In the closing minute they sank their free tosses while we failed on the front of 3 1 & 1's. This is how they won 58-54. Two Dutchmen scored in double figures-

Curt hit for 19 and Bob Smith tallied 10. There is no contest Friday but Saturday the Irish of St. Thomas come to town. We're still seeking our first win over the Irish since we started playing them several years ago.

LITTLE DUTCH POST FIRST SEASON WIN

By Jon Hardenbergh

The J.V.'s opened the new year the right way by dominating the Trojans from East Jackson, 66-56. Rick Krzyzaniak banged home 22 points as Steve Melcher and Bob Feldkamp also hit in double figures with 16 and 12 respectively. Rick was high rebounder grabbing 18.

The close of the first period saw the tally even at 8-8 but we took a 1 point edge at half, 26-25. It was the third period that seemed to bury the Trojans as the Little Dutch put 23 points on the board to East Jackson's 10. I felt it was pretty much over but in 2 minutes the Trojans stood only 6 points down, 31-45 and by 3:05 they'd rallied within 4, 38-54. But we got our fast break going for 8 points as our defense quieted the Trojans to win 66-56.

Unfortunately this victory was followed by a loss as Friday Morenci buried us 75-45.

DUTCH WRESTLING UP-DATE

By Jon Hardenbergh

Manchester had two meets last week and in the Thursday contest-Addison came to town and left victorious, 54-18. Saturday our grapplers took 6 men to Leslie for the Leslie Invitational and left with 59 points good for 6th place in this 9 school event.

Details on the trek to Leslie: The six young men to make the trip were Kevin Starr (112 lbs.), Darryl Clark (155 lbs.), Joe Roberts (119 lbs.), Tom Fitzgerald (145 lbs.), Lester Janish (178 lbs.) and

Dan Jordan (117T). Of these 6 the last 4 brought home medals while the first 2 went un-placed. Joe won a 9-4 decision over Addison to advance where he lost 0-7 in overtime to Michigan Center and was pinned in the championship by Springport. Therefore Joe was awarded 3rd place.

Tom won his first 2 matches with a 13-0 decision and a pin at 3:22 over Dansville to move him into the final round undefeated, but lost 4-1 to win the silver 2nd place.

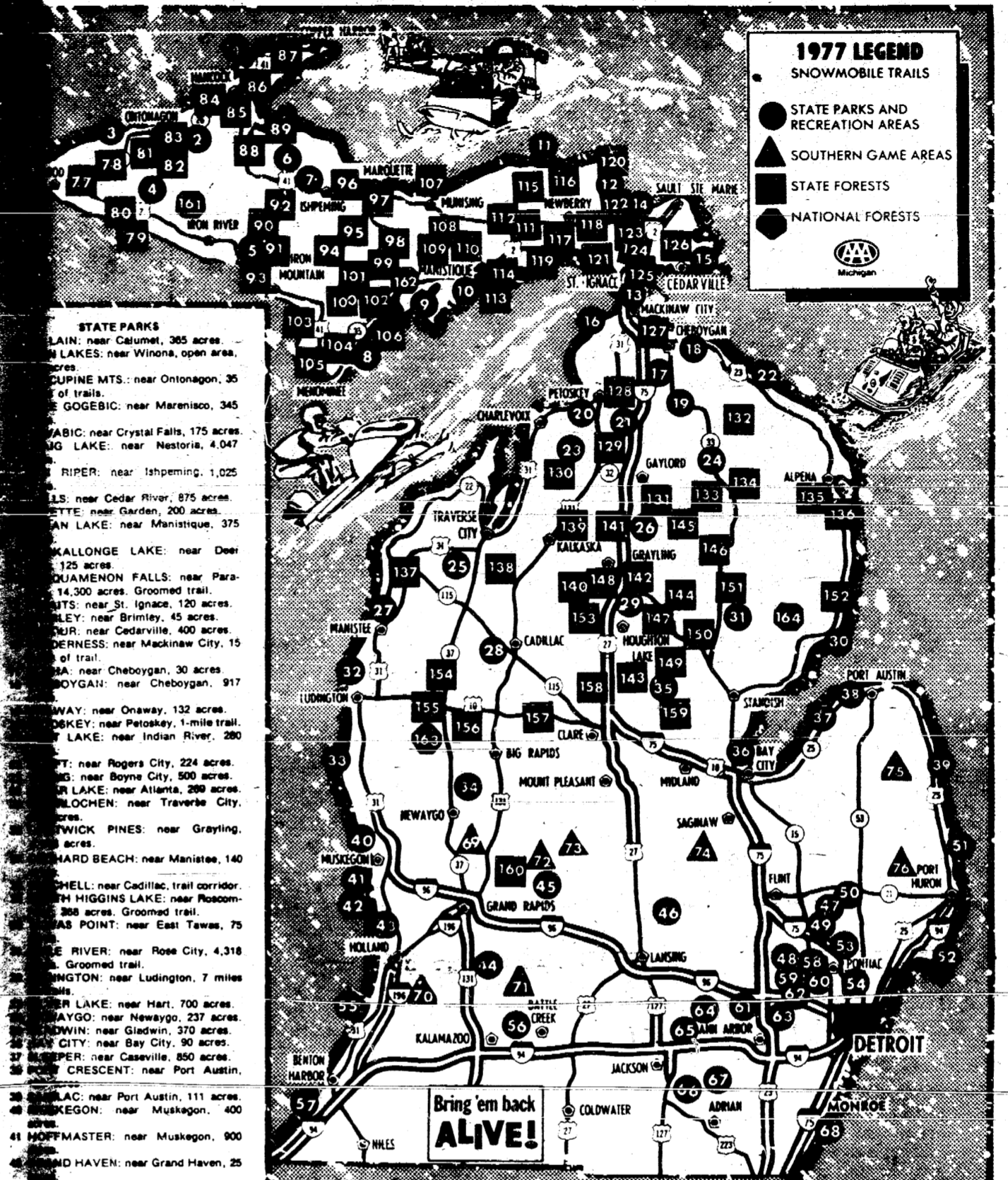
Lester was awarded the silver medal as he beat last years state champ 5-2, but was downed 1-5 in the final match.

Dan was our gold medalist as he pinned both his opponents to leave undefeated. Dan shouldered Springport at 4:46 and Jonesville in 3:32.

Up-coming: Manchester hosts arch-rival Clinton on Thursday then travels to Clinton Saturday for the Clinton Invitational. Then on Tuesday we welcome Dundee.

MANCHESTER ELECTRIC
ELECTRICAL CONTRACTING
APPLIANCE SALES & REPAIR
ELECTRICAL & PLUMBING SUPPLIES
112 ADRIAN STREET
MANCHESTER
PHONE 428-8243

Our Guide to 164 Marked Michigan Snowmobile Trails



- 1977 LEGEND**
SNOWMOBILE TRAILS
STATE PARKS AND RECREATION AREAS
SOUTHERN GAME AREAS
STATE FORESTS
NATIONAL FORESTS
- 1** KALKASKA, Walton J., Traverse City 250 or Pine Lake, Trail: 81 mi.
- 130** BLUE BEAR, Kalkaska State Forest: 11 mi. E. of Kalkaska on M-72. Trail: 45 mi.
- 140** MISS-KAL LINE, Muskegon State Forest: 19 mi. E. of Muskegon, 1 mi. NE. Trail: 25 mi.
- 141** GRAYLING-LOVELLS, Au Sable State Forest: 2 mi. N. of Grayling on Old US-27. Trail: 45 mi.
- 142** SKYLINE, Au Sable State Forest: 6 1/2 mi. S. of Grayling, 1 mi. E. Trail: 25 mi.
- 143** GLADWIN REFUGEE, Tittabawassee River State Forest: 1 1/2 mi. N. of Meredith. Trail: 13 mi.
- 144** ROSCOMMON-ST. HELEN, Houghton Lake State Forest: 1/2 mi. SE of Roscommon on M-76, or in St. Helen 1/2 mi. E. of M-76 on Beaver Lake Rd. Trail: 25 mi.
- 145** RED OAK - LEVISTON - LOVELLS, Thunder Bay River State Forest: 4 1/2 mi. E. of Lovells on Lovells Rd. Trail: 40 mi.
- 146** MUSKOGEE LAKE, Osoda State Forest: 5 mi. N. of Mio on M-33 to Co. Rd. 506, 4 1/2 mi. W. 1 mi. N. Trail: 25 mi.
- 147** NORTH HIGGINS LAKE, Au Sable State Forest: 1 mi. E. of N. Higgins Lake-175 exit. Trail: 8 mi.
- 148** WEST HIGGINS LAKE, Houghton Lake and Au Sable State Forest: 4 1/2 mi. W. of Interchange US-27 and Co. Rd. 104. Trail: 18 mi.
- 149** PROUDENVILLE, Houghton Lake State Forest: 2 mi. W. of Proudenville on M-55, 1/2 mi. S. Trail: 25 mi.
- 150** OGEMAW HILLS, Ogemaw State Forest: 3 mi. E. of St. Helen on Beaver Lake Rd. Trail: 13 mi.
- 151** ROSE CITY-CLEAR LAKE, Ogemaw State Forest: 3 1/2 mi. W. of Rose City. Trail: 50 mi.
- 152** SEVEN MILE HILL, Osoda State Forest: 5 1/2 mi. W. of Osoda on River Rd., 2 mi. N. to Blossomette Rd. 1 mi. W. Trail: 20 mi.
- 153** STRATFORD-GRASS LAKE, Muskegon and Kalkaska State Forests: 1 1/2 mi. E. of Moorstown, 1 mi. NE. Trail: 13 mi.
- 154** LINCOLN HILLS, Pere Marquette State and Manistee National Forests: 15 1/2 mi. N. of Baldwin on M-37, E. of Kaderabek's gas station. Trail: 24 mi.
- 155** LITTLE MANISTEE, Pere Marquette State Forest: 4 1/2 mi. N. of Baldwin on M-37, 1/2 mi. E. Trail: 45 mi.
- 156** TIN CUP, Pere Marquette State Forest: 5 mi. W. of Nevada. Trail: 19 mi.
- 157** OLD SHEEP RANCH, Chippewa River State Forest: 1 mi. N., 3 mi. W. of Evert on Twin Creek Rd. Trail: 25 mi.
- 158** FUR FARM, Chippewa River and Muskegon State Forests: at Harrison airport. Trail: 50 mi.
- 159** MOLASSES RIVER, Tittabawassee River State Forest: 7 mi. E. of Gladwin on M-81. Trail: 35 mi.
- 160** WEST MICHIGAN, at Deer Run Golf Course on Cascade Rd. S. of Lowell, or Yankee Springs Rec. Area. Trail: 50 mi.
- NATIONAL FORESTS**
161 OTTAWA, marked trail near Watersmeet, 25-mile loop between Watersmeet and Land-O-Lakes, Wis. Also numerous unmarked trails. Obtain additional information on groomed and un-groomed trails at supervisor's office in Ironwood or these Ranger District offices: Bessemer, Bargmann, Iron River, Ontonagon and Watersmeet.
- 162** HIAWATHA, Rapid River District (near Rapid River), one trail: 20 miles; Manistee District (at Manistee), two trails: 20-mile-long network and a 20-mile-long trail; Munising District (at Munising), 50-mile-long network. (Portions of Munising trail extend into Wisconsin.)
- 163** MANISTEE, at Baldwin, 9 trails which vary in length from 22 to 50 miles. At Caberfee State Area near Cadillac, 1 trail, 34 miles; Udet Hill, 4 miles west of Wellston off M-55, 1 trail, 15 miles.
- 164** HURON, Silver Valley (near Tawas), 3 trails which vary in length from 1 to 6 miles; Harrisville, 3 trails varying from 10 to 20 miles; Osoda, 20-mile-long trail; Huron, connects Osoda, Hales, Sand Branch, Sand Lake and East Tawas, 82 miles (maps at Osoda-Au Sable or Tawas chambers of commerce).

EAMES VETERINARY CLINIC
18600 W. Austin Road
Manchester, Michigan
HOURS
Monday, Wednesday & Friday
1:00 - 2:00 PM 7:00 - 8:00 PM
Saturday 1:00 - 2:00 PM
Other hours by appointment
Telephone 428-7100

Horse Shoeing and Trimming
BOB BEAUBIEN
Phone (517) 467-2991
11540 STEPHENSON RD.
ONSTED, MICH.

50 Acres vacant land with 20 ft. wide stream & hardwood trees, perfect for subdividing. Chelsea School's land contract available.
Commercial lot with sewer available.
Two bedroom in 1 1/2 Adrian street. Excellent on 3 1/2 land contract.
Two family - excellent condition well landscaped. Main St. 3 bedroom down & 2 up.
Two bedroom trailer on 3 acres with dump. All fenced for horses. More land available.
A family apartment house. Land contract available. \$49,900.
Listings Wanted:
HUGH S. SUTTON, BROKER
403-7017
117 W. Main St., East Troy, MI
426-8100

FREE Strike-it Rich booklet... tells you how to double your money!
You can learn how to double your money, cut income taxes, and discover many other money saving earning methods in this FREE 28 page booklet. You don't need to be rich to Strike-it-Rich at AAFS. You can deposit \$5,000 in our 7 1/2% Certificate of Deposit and in 10 years you'll have \$10,772.81, in 20 years \$23,210.86 and in 30 years \$50,008.87. Mail coupon for free copy of Strike-it-Rich or pick up a copy at any of our convenient offices.

ANN ARBOR FEDERAL SAVINGS
the magic of compounding

Deposit	10 years	20 years	30 years
\$ 5,000	\$ 10,772.81	\$ 23,210.86	\$ 50,008.87
\$ 10,000	\$ 21,545.62	\$ 46,421.72	\$ 100,017.73
\$ 20,000	\$ 43,091.24	\$ 92,843.44	\$ 200,035.46
\$ 30,000	\$ 64,636.86	\$ 139,265.16	\$ 300,053.19
\$ 40,000	\$ 86,182.48	\$ 185,686.88	\$ 400,070.92
\$ 50,000	\$ 107,728.10	\$ 232,108.60	\$ 500,088.65
\$ 100,000	\$ 215,456.20	\$ 464,217.20	\$ 1,000,177.30

ANN ARBOR FEDERAL SAVINGS
you can depend on us!

ANN ARBOR FEDERAL SAVINGS

ENJOYING ELECTRONICS
Tips To Help You

The Electronic Industries Association recommends that you unplug your TV set and disconnect the antenna if you plan on going off and leaving it for any length of time.

Before you buy a calculator for yourself or as a gift, consider what it will be used for. You won't need logarithms in the supermarket. Also, see if the read-out and push buttons are the right size for your fingers and eyes.

Make certain that outdoor TV antennas and lead-in wires are kept well away from power lines. The antenna mast should be permanently grounded and a lightning arrester installed in the lead-in circuit.

STRIKES 'N SPARES

MANCHESTER BUSINESSMENS

TEAM	WON	LOST
Spikes Mobil	34.5	16.5
Krauss Pharmacy	34	17
Wolverine Bar	32	19
Smith Pallet	32	19
DuRussel Brothers	29	22
Grossman-Huber Gulf	28.5	22.5
Albers Excavating	28	23
Manchester Tool & Die	28	23
Superior Land Developers	27	24
The Village Tap	24	27
K & W Farm Equipment	22	29
Double A Products	22	29
Tom Marshall Ford	22	29
Albers Orchard	22	29
Gambles Store	20	31
G.E. Wacker, Inc.	19	32
Doug's Party Store	19	32
Union Savings Bank	16	35
HIGH TEAM SERIES		
Smith Pallet	3120	
Wolverine Bar	3119	
Wolverine Bar	3115	
HIGH TEAM GAME		
Manchester Tool & Die	1113	
Tom Marshall Ford	1095	
Superior Land Developers	1088	
HIGH INDIVIDUAL SERIES		
Andy Fletcher	645	
Micky White	621	
Dick Kurtz	617	
HIGH INDIVIDUAL GAME		
Andy Fletcher	289	
M. White, D. Ganzhorn	254	
John Schabite	242	

JOLLY KEGGLERS

TEAM	WON	LOST
Black Sheep Tavern	9	35
LoSan Hairstyles	78	48
Krauss Pharmacy	73	53
Carol's Cut & Curl	67	59
Grossman Huber	53	73
Manchester Enterprise	53	73
Ann Arbor Federal	52	74
Double A Products	37	89
HIGH TEAM SERIES W/H		
Krauss	2602	
Black Sheep	2561	
Carol's	2552	
HIGH TEAM GAME W/H		
Krauss	936	
Grossman Huber	912	
Black Sheep	909	
HIGH INDIVIDUAL SERIES		
G. Knickerbocker	576	
P. Schmidt	567	
J. Withrow	560	
HIGH INDIVIDUAL GAME		
N. Flint	227	
J. Withrow	225	
L. McGeer	215	

MANCHESTER WOMENS

TEAM	WON	LOST
Koebbe Welding	325.5	154.5
Maple City Meats	278	204
Gambles	268.5	213.5
Columbia Foods	262	218
Billmeyer Hardware	242	238
Weatherwax Drugs	235	247
Doug's Party Store	231.5	248.5
Columbia P & H	231	249
Chivas Products	188.5	281.5
HIGH TEAM SERIES		
Gambles	3047	
Maple City Meats	3017	
Doug's Party Store	2960	
HIGH TEAM GAME		
Maple City Meats	1097	
Gambles	1078	
Columbia Foods	1058	
HIGH INDIVIDUAL SERIES		
Brenda Walz	556	
Joyce Gohlghtly	556	
Nancy Althouse	555	
HIGH INDIVIDUAL GAME		
Jan Blackburn	243	
Jan Gohlghtly	218	
Dee Sharpe	212	
Shirley Roler	212	

TUESDAY NITE SINGLES CLUB

The Tuesday Nite Singles Club have dates every Tuesday night from 9 p.m. to 12 p.m. Dancing to live music by Frank Venise on January 18 and refreshments are served. The dances are at Tom's Hall, 2186 West Stadium (West Stadium and Liberty St.) in Ann Arbor. All singles 25 and over are invited to come.

HELFRICH MASONRY
LICENSED CONTRACTOR
FIREPLACES-BASEMENTS-VENEER
STONE & BRICK-CEMENT WORK
PHONE 428-5686
2679 CHELSEA-MANCHESTER ROAD
MANCHESTER, MICHIGAN

GENERAL REVENUE SHARING

ACTUAL USE REPORT

GENERAL REVENUE SHARING PROVIDES FEDERAL FUNDS DIRECTLY TO LOCAL AND STATE GOVERNMENTS. YOUR GOVERNMENT MUST PUBLISH THIS REPORT ADVISING YOU HOW THESE FUNDS HAVE BEEN USED OR OBLIGATED DURING THE YEAR FROM JULY 1, 1976, THRU DECEMBER 31, 1976. THIS IS TO INFORM YOU OF YOUR GOVERNMENT'S PRIORITIES AND TO ENCOURAGE YOUR PARTICIPATION IN DECISIONS ON HOW FUTURE REVENUE SHARING, WASHINGTON, D.C. 20228.

ACTUAL EXPENDITURES (Include Obligations)		THE GOVERNMENT OF BRIDGEWATER TOWNSHIP	
A. CATEGORIES	B. CAPITAL	C. OPERATING MAINTENANCE	D. BALANCE
1. PUBLIC SAFETY	\$	\$	
2. ENVIRONMENTAL PROTECTION	\$	\$	
3. PUBLIC TRANSPORTATION	\$	\$	
4. HEALTH	\$	\$	
5. RECREATION	\$	\$	
6. LIBRARIES	\$	\$	
7. CULTURAL, ARTS AND RECREATION	\$	\$	
8. EDUCATION	\$	\$	
9. PUBLIC UTILITIES	\$	\$	
10. GENERAL GOVT	\$	\$	
11. OTHER	\$	\$	
TOTAL	\$	\$	
TOTAL RECEIPTS		TOTAL RECEIPTS	
\$		\$	
TOTAL BALANCE		TOTAL BALANCE	
\$		\$	
TOTAL AMOUNT EXPENDING		TOTAL AMOUNT EXPENDING	
\$		\$	
TOTAL RECEIPTS		TOTAL RECEIPTS	
\$		\$	
TOTAL BALANCE		TOTAL BALANCE	
\$		\$	

HILLTOP PLUMBING
8312 WERKNER ROAD
CHELSEA, MICHIGAN
PHONE 415-2949

H-eating!
I-nformation and advise!
L-labor guaranteed!
L-labor cost reasonable!
T-tanks and drainfields!
O-o-h, Electrical too!
P-plumbing!

P-professionals in our field!
L-ook a do-it-yourself-shop!
U-can depend on us.
M-ay call us - 24 hrs. a day!
B-bids and estimates free!
I-interested in your problems!
N-ew, remodel, or repair work!
G-go and call us today.

Something Special



For that next special occasion, try Spaghetti Stroganoff, a favorite from the cookbook Mueller's Classic Recipes.

SPAGHETTI STROGANOFF
1 cup chopped onion
1 cup butter or margarine
2 to 3 cups sliced mushrooms
2 tablespoons flour
1 cup beef bouillon
2 cups cubed cooked beef
1 1/2 teaspoons finely chopped dill (or 1 teaspoon dill weed)
1 teaspoon salt
1/2 teaspoon pepper
1 cup sour cream
8 ounces spaghetti
Paprika

In skillet, cook onion in butter a few minutes; add mushrooms and cook a few minutes longer. Blend in flour; gradually add bouillon. Bring to a boil, stirring constantly; boil 1 minute. Add beef, dill, salt, and pepper. Cook over low heat 5 minutes. Slowly add sour cream, stirring constantly. Meanwhile, cook spaghetti as directed on package; drain in colander. Serve Stroganoff over spaghetti. Garnish with paprika. 4 to 6 servings.

AGRICULTURE IN ACTION

MICHIGAN FARM BUREAU EDITORIAL

REMOVE THE CHESTNUTS AND SHOOT THE SQUIRRELS

Back in 1937, before the Environmental Protection Agency was born, Franklin D. Roosevelt sent a memo to Secretary of Agriculture Henry Wallace regarding a friend's report that Florida's Okefenokee Swamp was not being kept in its natural state. FDR wrote:

"He tells me that Japanese chestnuts have been planted to replace the native chestnuts, but that it is well-known that no native chestnuts ever grow in the swamp. Further, he tells me that aquatic plants, not native to the swamp, have been introduced as duck food. Further, he says that some kind of Japanese squirrels have been turned loose, apparently to go with the Japanese chestnuts. Please let me have a definite report on these rumors. If they are true, the chestnuts should be removed, the squirrels should be shot and the duck food eliminated."

The squirrels were probably very happy in the swamp with their chestnuts, but with a directive from the President, the Secretary of Agriculture no doubt made certain they were promptly removed. That's just the way it is...As one Secretary of Agriculture once said, "I serve at the pleasure of the President--and don't you forget it!"

Farmers are well aware of this fact of life and they will be watching with interest and concern the actions of Minnesota Congressman Bob Bergland when he takes over the most controversial of all cabinet seats--Secretary of Agriculture. They fear a return to the old, discredited program of controls, government-held reserves and dependency on government payments for a large share of their income. They hope the new Secretary will consider the success of the market-oriented farm program of recent years before any drastic changes are made.

Bergland came to Michigan to speak at the Farm Bureau annual meeting just before he was selected by President-elect Carter to be the Secretary of Agriculture. At a press conference in Grand Rapids, he expressed opposition to government-held grain reserves. Yet, after he was named Secretary, his answer to a question on the same topic was that he would have to consult with President-elect Carter.

Farmers aren't passing judgement yet on the new Secretary of Agriculture. In fact, they've pledged their cooperation to him. But they know that if the President tells the Secretary of Agriculture to "remove the chestnuts and shoot the squirrels," he will likely do just that....

the BIG clearance

at **CAL'S TOG SHOP**

1/3 to 1/2

- ★ White Stag
- ★ JH Collectibles
- ★ Butte Knit
- ★ Melissa Lane
- ★ Alex Coleman
- ★ Misty Harbor
- ★ Parade
- ★ Tami
- ★ Graff of Calif
- ★ Weatherbee
- ★ Jody Jr's

Off On Selected Fall & Holiday Merchandise

All Sales Cash & Final

CAL'S TOG SHOP

Bank Americard - Master Charge or your Cal's Tog Shop Charge

Now Is The Time To Build Your New Home
ALSO REMODELING AND ROOM ADDITIONS
Norm Walz Construction
Ph. 428-7109

TOM MARSHALL FORD SALES INC
RENT-A-CAR LEASING
SALES • SERVICE
FORD • TORINO • MAVERICK
THUNDERBIRD • MUSTANGS • PINTO
TRUCKS
ALL MAKES OF USED CARS
COMPLETE SERVICE & PARTS DEPT.
428-8343
512 W. MAIN MANCHESTER

Plaster & Drywall Repairs
currently doing work at 117 Macomb
789 Hagan Road in Manchester.
New or alteration work. Texture,
Stucco & Architectural spray special-
ties. Also ornamental.
Chuck Heath
482-4111 YPSILANTI, MICHIGAN

FREEDOM ELECTRIC
11207 Pleasant Lake Road
Manchester, Michigan
INDUSTRIAL
RESIDENTIAL
COMMERCIAL
REMODELING REPAIR
NEW CONSTRUCTION
Ph 428-8233
GILBERT LUCKHARDT

ORIGINAL COPY - SEND TO OFFICE OF R

Wedding Bells and Beautiful Brides

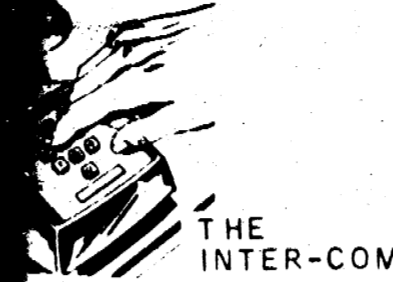


Every bride dreams of the perfect wedding... a day that she'll hold dear all through their lives together. Let us help with the plans for this happy day.

Wedding
ANNOUNCEMENTS
AND
INVITATIONS...

The
Manchester Enterprise

STOP IN AND SEE OUR FINE SELECTION



Education means a lot of different things to a lot of different people. We often, quite erroneously, come to think of identifying Special Education as those persons who are severely and physically handicapped. Unfortunately, the old fashioned terms were applied to the severely handicapped are no longer used and most are aware of only those children severely handicapped as being

worked with by professionals highly trained to work with a particular problem area.

The Manchester Community Schools is a part of a triumvirate of schools which includes Chelsea and Whitmore Lake in what is known as Region Five. In our district, careful diagnosis is accomplished through the keen and watchful eye of the regular classroom teacher who through observation and testing initiates the movement of an entire team of education specialists whose expertise is brought to bear on the identification, prognosis, and programming for a child with special needs through careful and complete coordination with parents, Intermediate School District personnel, and other social agencies.

Each school in the Manchester District has a referral team which carefully determines the needs of all children in the schools. We prefer to keep those youngsters who have been placed for varying times in the normal school setting when-

ever and wherever possible, however, in the cases of children who are more educable mentally impaired, trainable mentally impaired, or severely mentally handicapped, we utilize special facilities in Chelsea, WISD High Point, or Rackham. Services are also offered for children of pre-school age through our arrangements with Region Five.

Your next question may be, "What specific services are offered children right here in Manchester?" We are fortunate to be able to offer a full-range of services to children in the areas of emotional impairment, learning disabled students, speech and hearing therapy, psychological services, and the full-time services of a school social worker.

A very important thing for us to remember is that most of us never know unless we are told by his parents that that particular student is receiving special help since there are probably no outward signs that can identify those students as needing special services. We work very hard to keep students with special needs in as normal a setting as possible and work very closely with parents, our other professional colleagues, the special education staff and anyone else who can help a child improve his or her over-all potential.

Not too many years ago, these were children to whom we never addressed ourselves in terms of their special needs. Today, through highly trained professionals, classroom teachers sensitized to special needs, and the special funding provided for by the electorate, we can give each student the equal opportunity for an active and productive life in our society.

Special Education is deserving of the support of everyone. Have a good week.

Thinking CARPET? Think SCHNEIDER'S

Visit the wonderful world of carpeting at Schneider's, one of the area's finest, full-service carpet stores, conveniently located in West Ann Arbor on Wagner Road between Jackson and Liberty.

Schneider's carries a broad selection of quality, name-brand carpets at prices consistently among the lowest in the entire area. Try us.

662-9332

OPEN MON & FRI NIGHTS TIL 8:00 PM

SCHNEIDER CARPET CO. INC.

745 S. WAGNER RD. ANN ARBOR

LEGAL NOTICE

MANCHESTER TOWNSHIP PLANNING COMMISSION

NOTICE OF PUBLIC HEARING

TAKE NOTICE that Manchester Township Planning Commission will hold a public hearing on the application of Mr. and Mrs. Stuart A. Wykes for a conditional use permit to construct a single-family home on premises presently zoned R-C Recreation-Conservation, described as: Beginning at the East one-quarter corner of said Section 24; thence S 01 degree 57'01" E, along the East line of said Section 24, also being known as the centerline of Sherridan Road, being 66.0 feet wide, a distance of 367.00 feet (111.862 meters); thence S 86 degree 48'33" W, parallel with the East-West one-quarter line of said Section 24, a distance of 1192.04 feet (363.335 meters), to the East right-of-way line of State Highway M-52; thence N 00 degree 57'08" W (taken from the Michigan State Highway Department strip map for project number 81-87, sheet 3), along the East right-of-way line of said State Highway M-52, a distance of 367.19 feet (111.920 meters), to the East-West one-quarter line of said Section 24; thence N 86 degree 48'33" E, along the East-West one-quarter line of said Section 24, a distance of 1185.64 feet (361.384 meters), to the East one-quarter corner of said Section 24, the Point of Beginning.

Subject to the right-of-way for Sherridan Road along the East 33.0 feet of the above described parcel; ALSO subject to restrictions, conditions and easements of record; containing 10.01 acres (4.052 Hectares) of land.

on January 24, 1977 at 8:00 p.m., EST at the Manchester Village Hall, 120 South Clinton Street, Manchester, Michigan. MANCHESTER TOWNSHIP PLANNING COMMISSION

Christmas isn't over until the bills are paid.

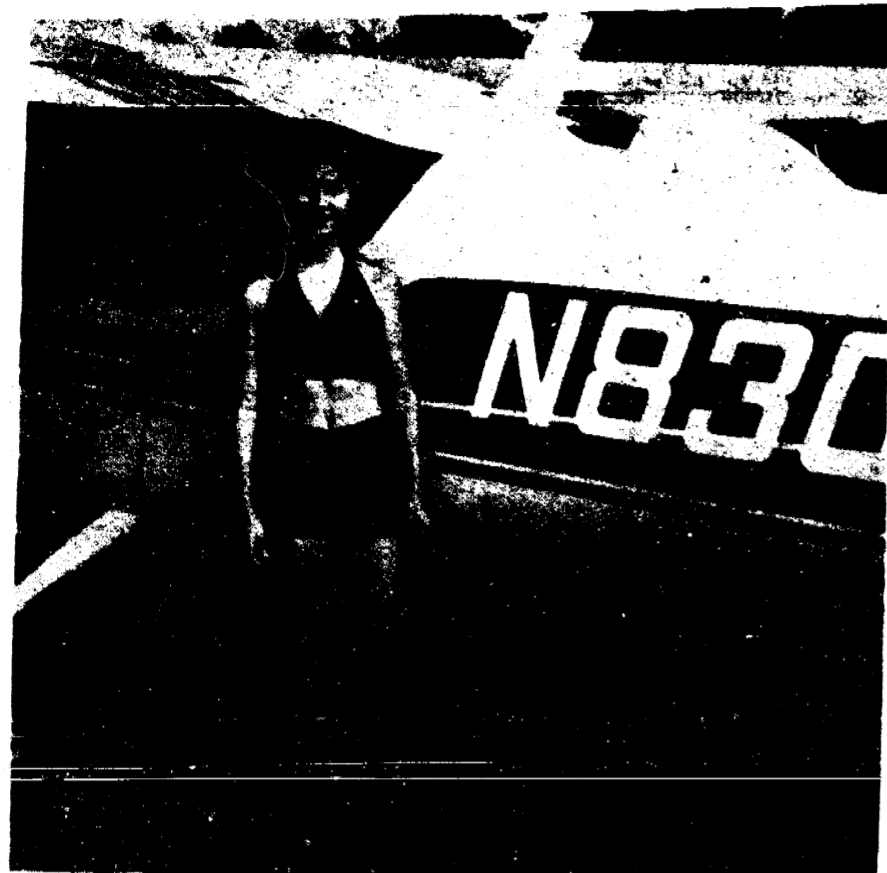
yes... you can

see an INTERESTED banker for the funds you need



Christmas bills, year-end taxes, high fuel bills, rising utility bills. You may well need relief in the form of a cash loan program from the INTERESTED bankers.

Yes, you can stop in. If it's funds you need....it's the INTERESTED bankers you should see.



Anne Estes, 20 year old daughter of Howard Estes, the Chelsea Ground School Instructor, after her first solo flight in a Cessna 172.

January 18, 1977 at 7:00 p.m. in the Chelsea High School, an Aviation Ground School will be offered for prospective pilots. This 30 hour course is designed to provide the necessary knowledge and skills to pass the Private Pilot written examination given by the Federal Aviation Administration.

This Ground School is a start toward enjoying a flying hobby or a career in aviation. To keep the cost to a reasonable amount, a minimum of five students is required. The class is limited to a maximum of fifteen because some individual attention is required.

The Ground School presents 17 major topics including aerodynamics, navigation, aviation weather and Federal Aviation Rules.

The price of the course per student will depend on the number enrolled. The cost includes the instruction and all books, aeronautical charts and navigation equipment.

For 15 students, the cost is \$85.00 per student. For 10 students, the cost is \$75.00 per student. For 5 students, the cost is \$102.00 per student.

The instructor is an experienced pilot and Ground School teacher living in Chelsea, Michigan. For additional information and to reserve a place in the class, please pre-register by calling Parter Howard Estes at 428-9412.

LEGAL NOTICE

MANCHESTER TOWNSHIP PLANNING COMMISSION

NOTICE OF PUBLIC HEARING

TAKE NOTICE that Manchester Township Planning Commission will hold a public hearing on the application of Alexander M. Love and Nancy L. Love for a conditional use permit to construct a single-family home on premises presently zoned R-C Recreation-Conservation, described as:

Commencing at the center of Section 29, T4S, R3E, Manchester Township, Washtenaw County, Michigan; thence S 88 degree 04' 45" W 250 ft., along the East and West 1/4 line of said section and the center line of Wolf Road for a place of beginning of this description; thence North 01 degree 50' 00" West 580.87 feet; thence South 84 degree 16' 00" West 124.59 feet; thence Southerly and Westerly to a point 175 feet south 88 degree 04' 45" West of the place of beginning; thence North 88 degree 04' 45" East 175 feet to the place of beginning of this description; said parcels northerly & S'ly line extending to the water's edge of Iron Lake. Being a part of the SE 1/4 of the NW 1/4 of Section 29, T4S, R3E, Manchester Township, Washtenaw County, Michigan, being subject to easements and restrictions of record, if any. Also having and granting the rights of ingress and egress over a 30 foot wide strip of land, described as follows: Commencing at the center of said Section 29; thence S 88 degree 04'

45" W 1332.57 feet along the East and West 1/4 line of said section and the centerline of Wolf Road; thence N 01 degree 46' 15" W 33.00 feet along the West line of the Southeast 1/4 of the Northwest 1/4 of said section; thence N 88 degree 04' 45" E 446.31 feet along the Northerly right of way line of Wolf Road to the POINT OF BEGINNING; thence N 01 degree 14' 30" W 70.21 feet thence N 27 degree 17' 00" W 144.40 feet thence S 86 degree 23' 00" W 369.9 feet; thence N 01 degree 46' 15" W 1109.8 feet along the West line of the Southeast 1/4 of the Northwest 1/4 of said section; thence N 88 degree 10' 30" E 30.00 feet along the Northline of the Southeast 1/4 of the Northwest 1/4 of said section; thence S 01 degree 46' 15" E 1038.8 feet; thence S 47 degree 41' 30" E 55.6 feet; thence N 86 degree 23' 00" E 318.56 feet; thence S 27 degree 17' 00" E 170.94 feet; thence S 01 degree 14' 30" E 76.75 feet; thence S 88 degree 04' 45" W 30.00 feet along the Northerly right of way line of Wolf Road to the Point of Beginning, on January 24, 1977 at 8:00 p.m. EST at the Manchester Village Hall, 120 South Clinton Street, Manchester, Michigan. MANCHESTER TOWNSHIP PLANNING COMMISSION

BUY, SELL, RENT

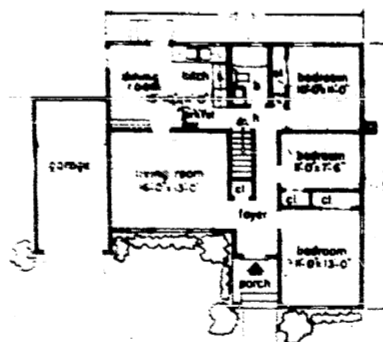
OR TRADE THE

CLASSIFIED WAY!

**VACUUM CLEANERS
ELECTROLUX**
Electrolux Sales & Service
call
James Cox
Manchester
428-8444 or 428-8686

WILLIAMSON
Heating & Cooling
Systems
John Steele jr.
INSTALLATION
& REPAIR
Phone 428-8692

**BUILDING A
NEW HOME?**



We have everything you need to do the job right.

Buy your building materials at:

BRIDGEWATER LUMBER CO.

3370 BOETTNER RD. PHONE 428-3375

SHIP REPORT

Regular meeting of the Manchester Board was held Monday, December 19, 1976 at 8:06 p.m. at the Village Hall. Members present were: Fielder, Lantz and Macomber. Absent:

Fielder read the minutes of the last meeting of November 8, 1976. Approved as read by a motion supported by Macomber. All ayes.

Fielder presented the following bills:

Huber, gas for Fire Dept., \$25.24.
Manchester Enterprise, printing minutes, tax cards--\$62.10.
Flower Agency, Inc., Re-Insurer Fire Policy #SR0068010687 12-1-77--\$564.10.
Delhey & Schaberg, Manchester vs. Bunn 5-13-76 to 11-4-76--

Agency, Public Official Bond for Burch, Treas.--\$166.00.
A, postage for the tax bills--

Delhey, & Schaberg (Trolz Permit)--\$1,450.00.
Washtenaw Co. Rd. Comm.--\$11,630.00.
\$4,069.42.

Fielder made the motion, supported by Lantz to pay all the bills except the Washtenaw Co. Rd. Comm. and the one to Delhey & Schaberg for \$1,450.00, carried.

Fielder reported he has written permits for one million, four hundred and forty eight thousand dollars up to Dec. 1, 1976. This includes

Fielder read the resignation from John Smith, who tied with John Constance by write-in votes

52 CARD PARTY
SATURDAY
JANUARY 15TH
8:00 P.M.

MASONIC HALL
PUBLIC WELCOME
Prizes and Refreshments

in the November 2, 1976 election and won the election by a draw at the Co. Bd. Resignation attached to minutes. Lantz made the motion not to fill the vacancy for Constable. Burch supported it. All ayes, carried.

The clerk read the Resolution RC 76-480 that Wash. Co. Rd. Comm. passed on Nov. 23, 1976. "Moved-that upon the recommendation of Highway Engineer, the approval of our managing Director and the concurrence of the Wash. Co. Sheriffs Dept.-we designate the following as a STOP Rd. in Manchester Township: Kirk Rd, eastbound STOP at Tracey Rd., Kirk Rd, westbound STOP at Tracey Rd. Carried

Fielder was read by the clerk from the Township Attorney Roesch regarding Bunn. Letter attached to minutes.

The clerk reported that the old minute books of the Township are in the Historical Room in the Manchester Township Library.

A letter was read from Township Attorney Roesch regarding National Naval Guard of Lithuania in Exile vs. Manchester Township. Letter filed in minutes. Letters were read from Township At. Roesch RE: Eames, et al vs. Manchester Township et al. Letters attached to minutes.

Burch made the motion to approve the resolution regarding Township permission to the Village of Manchester to install a water main within the boundaries of ML State Highway M-52 from the East Village limits of the Village of Manchester, Wash, Co. Mich. Eastern and Southernly as shown in drawing attached to Resolution. Macomber supported the motion. All ayes, carried. Resolution attached to minutes.

Letters were read RE: Annexation to Village of Manchester of Unloy. Discussion followed. Co. Bd. of Comm. will

Margies Upholstery
Pick-Up and Delivery Available
Phone 428-7146
207 West Duncan Manchester

**HAVE YOUR CAR WINTERIZED
NOW BY THE JOLLY DUTCHMEN
GROSSMAN-HUBER SERVICE**

Gulf
We Have a Fine Line of Gulf Tires All Sizes **KINGSFORD CHARCOAL** THE BEST \$-10 & 20 lb Bags **Phone 428-8960** Many Gulf Accessories **Visit the Jolly Dutchmen**
100 EAST MAIN ST MANCHESTER

MR. SCRUB
cleans cars **BETTER for LESS**
2 MIN. **wax-wash** \$1.50

Store owners:

Larry Becktel
FARM BUREAU INSURANCE GROUP
Farm Bureau Mutual • Farm Bureau Life • Community Service Insurance

THE BEAUTY SHOP
We have noticed an uptick in younger people getting hair cuts and the changing styles today. There are a lot of people who don't want to sleep on curlers. Well now you can wash your hair and within minutes you can have a fashionable style in a fraction of the time. It's natural, pretty and it may be for you. We're going to give some pointers on a variety of hair care, from shampooing to the blow-dryers and curling irons. Make your hair look like it should. We'll be here to help you. Wednesday, January 26 at 7 p.m.

451 E. MAIN 428-7200
FOR INFORMATION 428-7200

hold a hearing on the petition of the Village of Manchester for annexation of the Hoover property on Jan. 19, 1977 at 7:00 p.m. in Courtroom #4. Letter attached to minutes.

A letter and notice of a public hearing was read regarding a Manchester Area Facility Plan. Notice attached to minutes.

Burch made the motion, supported by Lantz to appoint Carl Macomber to the Bd. of Appeals to replace Clarence Fielder who resigned. All ayes, carried.

The Board appointed Jeannette Kirk as member of the Planning Comm. to replace Geo. Macomber, Sr. who resigned.

The Board reappointed Willard Mann and Loren Trolz to the Board of Review for a two-year term and also appointed Harold Trolz to the Board of Review for a two year term to replace LeRoy Marx who chose not to continue in that capacity.

Fielder, Lantz, and Macomber will attend the Michigan Townships Association convention in Grand Rapids from January 11, 1977 to January 14.

Being no further business, Burch made the motion, seconded by Macomber to be adjourned. All ayes, carried. Meeting adjourned 9:36 p.m.

Wilma E. Lantz, Clerk

WASHTENAW COUNTY COMMUNITY MENTAL HEALTH CENTER

The Washtenaw County Community Mental Health Center will be accepting and training new volunteers, beginning February 12.

The Center's newest service, The Assault Crisis Center (for victims of rape and domestic violence), will accept volunteers. Other openings are in crisis counseling centers in Ypsilanti and Ann Arbor, work with mentally retarded adults, emotionally disturbed children, and with adults returning to the community after hospitalization. Volunteers also work in the Client Follow-Up survey.

According to John Schwarz, CMHC Volunteer Director, "Today volunteers from young graduates to senior citizens really get into the action. For many it proves to be one of the most important experiences of a lifetime." Age 21 is the minimum.

The Center usually asks a pledge of one year, one day per week. Babysitting reimbursement is usually available.

Interested persons should contact John Schwarz or Linda Vasek, 761-9830, 8:30 to 5 p.m. daily.

**CLINTON FASHIONS
AFTER INVENTORY SALE**
SAVINGS IN ALL DEPARTMENTS
10-30% DISCOUNTS
Katz - Winter-Robes & Gowns 20% off
Childrens-Winter-Health-Tex 20% off
Mens-Winter Bomber Caps 2.99
ALL OUTER WEAR SALE PRICED
BARGAIN TABLES
January Hours Mon to Sat 9-5
CLINTON FASHIONS
115 W. Michigan Clinton, Michigan

201 Morgan St. Manchester
The Gary Dresch Home
Available for Possession
3 Bedrooms, Gas Heat Tenant Occupied
CHAPIN, Broker
or See Your Broker
PHONE 428-8961 or 428-7418

