

Bill Green, Superintendent  
Manchester Public Schools

As you read in last week's issue of the Enterprise, the Board of Education is returning to the voters of the district in an attempt to procure millage to enable us to open the schools in September and provide a trimmed, but relatively sound educational program for our children. The only millage we presently have is our 12.78 charter millage. This millage generates approximately \$880,000 which is all we presently have with which to operate the schools for next year. With a projected budget of around \$2,000,000 even with the \$157,000 that we have already cut, plus the loan the Board of Education received in the amount of \$ 600,000 in anticipated state aid for next year to cover the teachers salaries that are owed them from work they did this past school year and to meet current operating expenses for the next 90-99 days, we cannot even

open the doors come September. Please understand that these statements are not intended to be a threat to anyone in the community. It is just a fact that we must face. In order to maintain the school program as it was last year, we would have had to go to you, the voter and request, in addition to the 12.78 renewal, another 9 mills. Obviously, the Board of Education nor the administration would not consider requesting this amount of money during these times of heavy taxation and inflationary factors that have depleted each of our spendable incomes.

In next week's Manchester Enterprise, there will be a complete report of the deficits incurred in last year's budget, the projected budget for 1976-77, an explanation of each of the four (4) ballots that you will be voting on in the upcoming millage election, and the trimming that has been done to bring the budget into a realistic amount for the current financial situation around the State and in our own homes.

There is an element of danger in proliferating the millage into 4 ballots in that people may choose to "vote in" the lesser millage amounts. The most important ballot is the 12.78 renewal. Even with the successful passage of the 12.78 millage, we are faced with the possibility of half-day sessions in grades 7-12 and the closing of the Pleasant Lake School and transporting those children into class-

rooms in the present middle school.

The passage of the 2 mills for operational purposes and the 2 mills for restoration of extra-curricular activities to include athletics and music as well as the 1 mill for maintenance will give us the flexibility we need to keep each building open and operating with reduced academic program. All of these cuts, trims and consolidations will be spelled out in the next issue of the Enterprise. IT IS IMPORTANT TO NOTE AT THIS POINT THAT THE MILLAGE VOTED IN CAN BE USED ONLY IN THE AREA THAT IT HAS BEEN LISTED ON THE BALLOT AND APPROVED. For example, the 1 mill for maintenance cannot be used for anything other than maintenance, the same being true for the other two ballots asking for 2 additional mills each.

The gravity of the situation in Manchester as it relates to our schools, children, and community cannot be minimized. PLEASE STUDY CAREFULLY THE FULL EXPLANATION THAT WILL BE GIVEN NEXT WEEK IN THE ENTERPRISE AND ADDRESS ANY QUESTIONS TO MEMBERS OF YOUR BOARD OF EDUCATION OR TO MYSELF. I am in my office nightly and welcome your stopping in to question any areas of the school program.

Routinely, it has always been that physical examinations were given during this time period for preparation for athletic programs in the fall. In order to avoid unnecessary expense and until we see if the millage for restoration of athletics is passed, parents should not incur any expense in getting a physical nor will

Continued on page 11

## General Primary Election

TO THE QUALIFIED ELECTORS:

Notice is Hereby Given, That a General Primary Election will be held in the

TOWNSHIP OF BRIDGEWATER  
COUNTY OF WASHTENAW,  
STATE OF MICHIGAN

within said Township on

TUESDAY, AUGUST 3, 1976

At the place or places of holding the Election in said Township as indicated below, viz:

BRIDGEWATER TOWNSHIP HALL  
10990 CLINTON ROAD

FOR THE PURPOSE OF PLACING IN NOMINATION CANDIDATES OF THE DEMOCRATIC AND REPUBLICAN PARTIES OR TO QUALIFY THE SOCIALIST WORKERS PARTY, SOCIALIST LABOR PARTY, COMMUNIST LABOR PARTY, UNITED STATES LABOR PARTY, LIBERTARIAN PARTY TO HAVE ITS NAME, PARTY VIGNETTE, AND CANDIDATES ON THE NEXT GENERAL ELECTION BALLOT.

CONGRESSIONAL United States Senator,  
Representative in Congress.

LEGISLATIVE Representative

COUNTY Prosecuting Attorney, Sheriff, County Clerk, County Treasurer, Register of Deeds, Drain Commissioner, County Commissioner and such other Officers as are elected at that time.

TOWNSHIP Supervisor, Clerk, Treasurer,  
1 Trustee, 1 Constable.

And for the Purpose of Placing in Nomination, Candidates Participating in a Non-Partisan Primary Election for the following offices, viz:

Judge of the Court of Appeals, Circuit Court Judge, Probate Court Judge, District Court Judge.

and for the Purpose of Electing

Delegates to the County Convention of the Democratic Party

And also to Vote on the Following County Proposition:

PROPOSITION TO INCREASE TAX LIMITATION FOR PARK AND RECREATION PURPOSES

"Shall the tax limitation on the total amount of general ad valorem taxes which may be imposed each year for all purposes upon real and tangible personal property in Washtenaw County, Michigan, be increased as provided in Section 6, Article IX of the Constitution of Michigan for a period of ten (10) years from 1976 to 1985, both inclusive by one-quarter (1/4) mill, twenty-five (25c) per One Thousand Dollars of the assessed valuation as finally equalized for the purpose of planning, acquiring, developing, operating and maintaining parks and recreation places and facilities in Washtenaw County, Michigan?"

Notice Relative to Opening and Closing of the Polls  
ELECTION LAW, ACT 116, P. A. 1954

SECTION 720. On the day of any election, the polls shall be opened at 7 o'clock in the forenoon, and shall be continuously open until 8 o'clock in the afternoon and no longer. Every qualified elector present and in line at the polls at the hour prescribed for the closing thereof shall be allowed to vote.

THE POLLS of said election will be open at 7 o'clock a.m. and will remain open until 8 o'clock p.m. of said day of election.

E. Lewis Blaisdell, Township Clerk

Thinking CARPET?  
Think SCHNEIDER'S



Visit the wonderful world of carpeting at Schneider's, one of the area's finest, full-service carpet stores, conveniently located in West Ann Arbor on Wagner Road between Jackson and Liberty.

Schneider's carries a broad selection of quality, name-brand carpets at prices consistently among the lowest in the entire area. Try us.

662-9332

OPEN MON & FRI NIGHTS TIL 8:00 PM

SCHNEIDER CARPET CO. INC.

745 S. WAGNER RD. ANN ARBOR

CLINTON THEATRE

Wed., Thurs., 7:30 only, Fri., Sat., Sun., 7:30 & 9:00  
Closed Monday and Tuesday

Gene Wilder Madeline Kahn Marty Feldman

SHERLOCK HOLMES  
SMARTER BROTHER



A ROMANTIC & REVELATION PRODUCTION  
Dom DeLuise—Leo McKern



MICHIGAN SCHOOL VOCAL ASSOCIATION FIRST TOURING CHOIR

By O.B. Cathay

On June 26, we began a week of 12 hour intensive rehearsals under the capable hands of Alfred "Giff" Richards of the Battle Creek High Schools Music Department. There were about 70 or 75 of us then and when we all departed at Detroit International Airport on July 4 there were 84 in all in our accompanying group. After flying all night we finally arrived at Schiphol, Amsterdam International Airport at 6 a.m.

We then toured Holland for most of the day and points of interest included

the largest flower auction in the world at Aalsmeer. There were two busses to carry us and baggage and we arrived at the little town of Hoek, Holland for our overnight trip across the English Channel to England and North Wales our first major stop. We were to be in Llangollen by 5 p.m. that afternoon and we made it about on schedule. After looking over the festival grounds we got back on the bus to travel 10 miles southeast to our home stay at Corwen. There we met our home mothers and families and we proceeded immediately to our homes.

There were 6 fellows in our home and we stayed in a big 3 story home with Eric Wheelers, a local butcher. They

fed us well each day on return home from the festival which lasted the 6 days we were there. Our turn to sing was on Friday afternoon and we sang the two

required numbers plus one native song from America. In all we sang 3 times while in Wales, twice at the festival Friday afternoon and we sang the two

Continued on page 14

## ANDY FLETCHER CARPENTRY

LICENSED CONTRACTOR

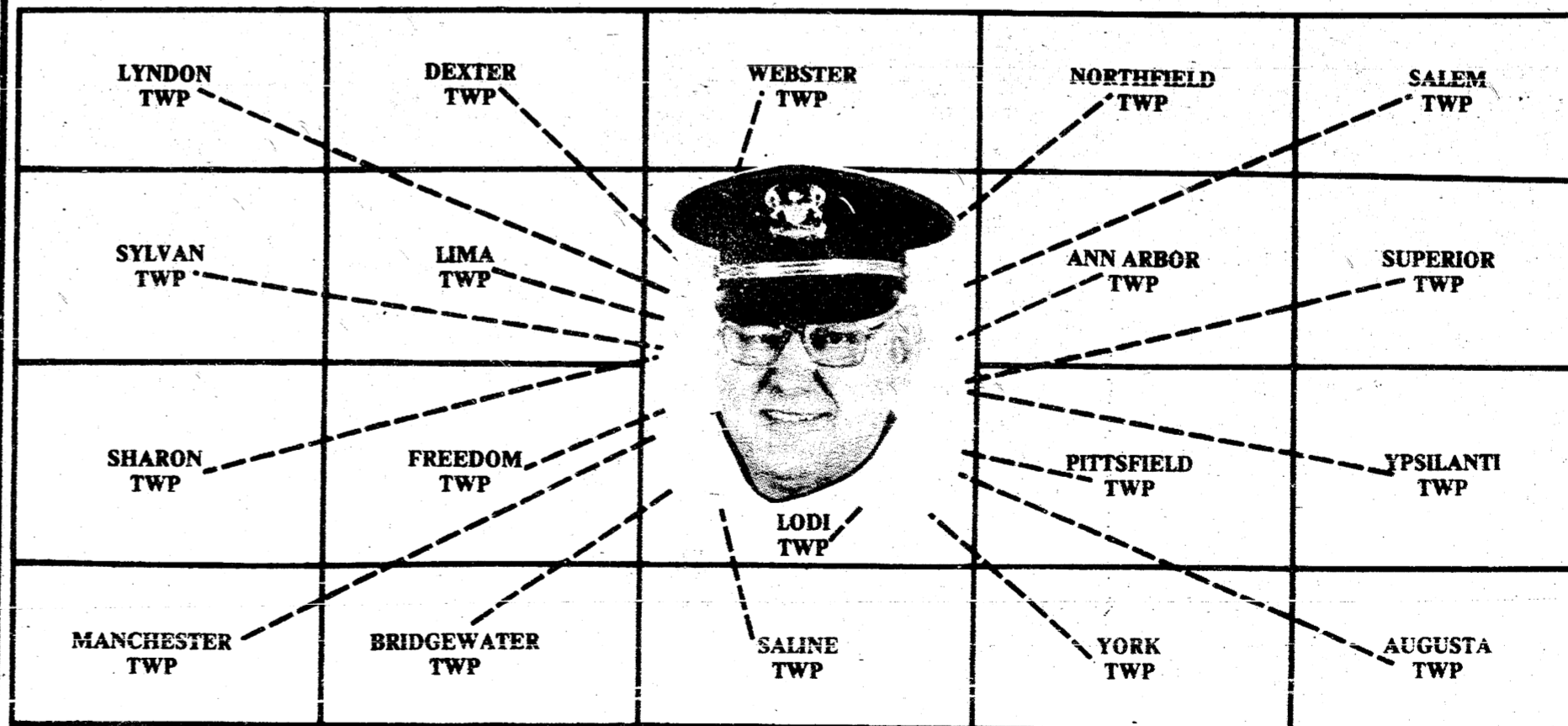
516 West Main Phone 428-8569 Manchester

REMODELING—NEW HOMES—ROOFING

ALUMINUM SIDING—RYCENGA HOMES

KITCHENS A SPECIALTY — FREE ESTIMATES

Vote for  
**FAY JOHNSON for Sheriff**  
on August 3



Your Vote for **FAY JOHNSON for Sheriff** is a vote for  
**Effective, Experienced Law Enforcement for our Entire County**

Campaign Managers: Howard Wikel, Bill Conlin

769-2303

662-3191

Paid political advertisement.

995-0777

434-3731



NOTICE

There is a meeting for the... The meeting will be held... at 7:00 p.m. on August 3, 1976.

MICHAEL BARRA, TOWNSHIP CLERK

There is a meeting for the... The meeting will be held... at 7:00 p.m. on August 3, 1976.

professionals... The meeting will be held... at 7:00 p.m. on August 3, 1976.

WANTED STANDING

Let us look at your wood lot we can give you a price on selective cutting of mature trees.

SPECIAL MEETING

There will be a special meeting at Sharon Township Hall, Monday, August 2, at 8:30 p.m.

TUESDAY NITE SINGLES

The Tuesday Nite Singles will sponsor dance this Tuesday, August 3 at the Roma Hall, corner of Liberty and Stadium, Ann Arbor.

ATTENDS CONVENTION

Betty E. Cummings, CPS; Martha Watson; and Nancy Bayer of the Jackson/Albion Chapter of the National Secretaries Association (International) attended the 31st Annual International Convention

in Houston, Texas, last week. The members of the Michigan Division were especially pleased that Lillian E. Billmeier, CPS, of Lansing was elected International President of the 37,000 member organization.

FOUR TOWNSHIPS NAME CANDIDATES FOR PRIMARY

Those running for office in the various Townships are: Manchester: Supervisor, Clarence Fialler; Clerk, Wilma Lentz; Treasurer, Dorothy Burch; Trustees, Carl Macomber and Emmet Noggle; and Constables, Lyle Moore and Earl Alber.

General Primary Election TO THE QUALIFIED ELECTORS: Notice is Hereby Given, That a General Primary Election will be held in the TOWNSHIP OF FREEDOM COUNTY OF WASHTENAW, STATE OF MICHIGAN within said Township on TUESDAY, AUGUST 3, 1976

WANTED STANDING TIMBER and WALNUT Let us look at your wood lot we can give you a price on selective cutting of mature trees. Tri-County Logging, Inc. P.O. BOX 487 CLINTON, MICHIGAN 42936 Phone 517-448-7060 or 456-7133

Brown's TV & Radio ZENITH Color and Black-White TV 134 East Main Street Manchester, Michigan Phone 428-7640

ELECT CARL E. MACOMBER Trustee Manchester Township Board REPUBLICAN August 3 Primary

Notice regarding a meeting or event, possibly related to the township or community.

Notice regarding a meeting or event, possibly related to the township or community.

Advertisement for a business or service, possibly related to the township or community.

Advertisement for a business or service, possibly related to the township or community.

Advertisement for Ed Holda, a candidate for the 13th District State Representative. Includes a photo and text: 'You Can No Longer Afford Not To Be Concerned. VOTE ED HOLDA'.

Advertisement for Freedom Township Hall, 11508 Pleasant Lake Road. Includes text: 'FOR THE PURPOSE OF PLACING IN NOMINATION CANDIDATES OF THE DEMOCRATIC AND REPUBLICAN PARTIES OR TO QUALIFY THE SOCIALIST WORKERS PARTY, SOCIALIST LABOR PARTY, COMMUNIST LABOR PARTY, UNITED STATES LABOR PARTY, LIBERTARIAN PARTY TO HAVE ITS NAME, PARTY VIGNETTE, AND CANDIDATES ON THE NEXT GENERAL ELECTION BALLOT.'

Advertisement for A-1 Used Cars, featuring a large 'A-1' logo and text: 'USED CARS THE CLOSER YOU LOOK, THE BETTER WE LOOK. TOM MARSHALL FORD 512 W. Main Manchester'.

Advertisement for County Commissioner 2nd District, featuring a ballot box graphic and text: 'ELECT THOMAS S. ROBERTS. TOM ROBERTS is committed to YOUR concerns.'

Notice regarding a meeting or event, possibly related to the township or community.

Notice regarding a meeting or event, possibly related to the township or community.

Notice regarding a meeting or event, possibly related to the township or community.

Notice regarding a meeting or event, possibly related to the township or community.

Notice regarding a meeting or event, possibly related to the township or community.

Notice regarding a meeting or event, possibly related to the township or community.

Advertisement for Congressional Legislative County, featuring text: 'CONGRESSIONAL LEGISLATIVE COUNTY TOWNSHIP Supervisor, Clerk, Treasurer. 1 Trustee, 2 Constables.'

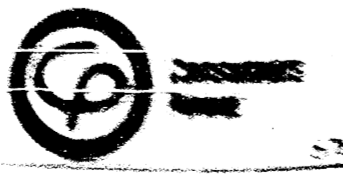
Advertisement for the Court of Appeals, Circuit Court Judge, Probate Court Judge, District Court Judge. Includes text: 'Delegates to the County Convention of the Democratic Party'.

Advertisement for Proposition to Increase Tax Limitation for Park and Recreation Purposes. Includes text: 'Notice Relative to Opening and Closing of the Polls ELECTION LAW, ACT 116, P. A. 1954'.

Advertisement for the Polls, featuring text: 'THE POLLS of said election will be open at 7 o'clock a.m. and will remain open until 8 o'clock p.m. of said day of election. Rena Girbach, Township Clerk'.

Advertisement for Fillyaw's Service, featuring text: 'FILLYAW'S SERVICE 327 WEST MAIN MANCHESTER 24 HOUR ROAD SERVICE PHONE DAYS 428-8576 PHONE NIGHTS 428-8053'.

Advertisement for Alexander and Company Builders, featuring a circular logo and text: 'ALEXANDER and COMPANY BUILDERS MANCHESTER ESTABLISHED 1906'.





**RUSHMORE HONORS MICHIGAN**

Larry Rushmore (left), a native of Howard City, Michigan, receives the Michigan flag in ceremonies at Mt. Rushmore National Memorial in South Dakota's Black Hills, July 14, in the National Park Service's 1976 "Days of Honor" commemora-

tion. Rushmore was designated by Gov. William Milliken to represent Michigan in Michigan days at the national memorial July 13-14. Also taking part in the ceremony were Rushmore's wife Connie, daughter Wendy and son Jeffrey. Making the presentation was Rushmore Supt. Harvey Wickware (right).

**NOTICE**

Due to my residence not having a Manchester telephone, the fair office will be open to anyone seeking fair information starting on Monday, July 26, 1976 at these hours only please. Monday thru Saturday 8:00 A.M. to 11:00 A.M. - 7:00 P.M. to 9:00 P.M. The telephone number is 427-8654.

Elmer Kopka  
President Manchester Community Fair

**MICHIGAN BANDS, TWIRLERS: STATE FAIR WANTS YOU**

Time is running out for marching bands, baton twirlers and beauty queens to enter the special entertainment events at the 1976 Michigan State Fair.

Entry deadline for all these special competitions is August 1, according to Lester M. Lund, General Manager of the Michigan State Fair. Applications must be postmarked by that date.

The Fair is looking for state-wide entries in three special events — the Grand Opening Parade, the Queen of Queens Pageant and the Baton Twirling Competition.

The Grand Opening Parade, Thursday, August 26, is taking applications from groups wishing to enter floats or marching bands. The Fair is offering trophies and prizes of \$300, \$200, and \$100 for the best three entries in both categories. The Queen of Queens Pageant will hold

preliminary competition August 31 and finals September 1 to choose the Queen of the Michigan State Fair. Young women who have been named queen in another beauty pageant are eligible to enter.

The Baton Twirling Competition is August 27 and 28 and is open to both teams and individuals.

Information on entering any of these special events may be obtained by writing Harold Arnold, Director of Special Events, Michigan State Fairgrounds, Detroit 48203, or by calling (313) 68-1000.

**WAHR REUNION**

The Wahr Reunion was held Sunday, July 25 at the home of Mr. and Mrs. Alvin Wahr of Helm Road with 57 present. After a potluck dinner the afternoon was spent visiting, playing baseball and riding in a doon buggy.

Officers elected for 1977 are President Robert Wahr Jr., Vice President Gary Wahr, both of Brooklyn, Secretary and Treasurer Mrs. Allen Clark of Manchester, and Historian Patricia Wakefield of Brooklyn.

Members attending were from Brooklyn, Grass Lake, Bridgewater, Sharon, Jefferson City, Mo., Jackson and Manchester. The 1977 Reunion will be held at the home of Mr. and Mrs. Dale Crouch of Grass Lake the last Sunday of July.

**SPECIAL MEETING**

There will be a special meeting at Sharon Township Hall, Monday, August 2, at 8:30 p.m. Mr. William Green, Superintendent of Schools, will be present to review the schools financial picture. All Sharon Township and other area citizens are invited to attend.

**TUESDAY NITE SINGLES**

The Tuesday Nite Singles will sponsor a dance this Tuesday, August 3 at the Roma Hall, corner of Liberty and Stadium, Ann Arbor. This is a non-profit organization which meets each Tuesday from 9 p.m. to 12 midnight for dancing

and refreshments. All singles 25 and over are cordially invited. A new dance series will start August 17th in the Roma Hall at 7:00 - instructor Don May. This will be for beginning and intermediate dancers. The Archie Beyer Band will be the band for this Tuesday's dance.

Special Event hosted by the Tuesday Nite and Saturday Singles will be a picnic and dance beginning at 3:00 p.m. August 1 - Island Park. Mike Stehute will furnish music. All singles invited.

**ATTENDS CONVENTION**

Betty E. Cummings, CPS; Martha Watson; and Nancy Bayer of the Jackson/Albion Chapter of the National Secretaries Association (International) attended the 31st Annual International Convention

in Houston, Texas, last week. The members of the Michigan Division were especially pleased that Lillian E. Billmeyer, CPS, of Lansing was elected International President of the 37,000 member organization. She received congratulatory telegrams from President Gerald R. Ford and Governor William G. Milliken which were read to the assembly.

**WANTED STANDING TIMBER and WALNUT**

Let us look at your wood lot we can give you a price on selective cutting of mature trees.

Tri-County Logging, Inc.  
P.O. BOX 467  
CLINTON, MICHIGAN 42936  
Phone 517-448-7060 or 456-7133

**Brown's TV & Radio**

ZENITH  
Color and Black-White TV  
134 East Main Street  
Manchester, Michigan  
Phone 428-7640

**FOUR TOWNSHIPS NAME CANDIDATES FOR PRIMARY**

Those running for office in the various Townships are:  
Manchester: Supervisor, Clarence Fielder; Clerk, Wilma Lentz; Treasurer, Dorothy Burch; Trustees, Carl Macomber and Emmet Noggley; and Constables, Lyle Moore and Earl Alber.

Sharon: Supervisor, Allen Alber; Clerk Duane Haselschwerdt and Martha Evtlizer; Treasurer, Don Irwin; Constable, Tom Harris and Ira Johnson.

Bridgewater: Supervisor, Douglas Farr; Clerk E. Lewis Haisdell; Treasurer, Harold Bersuder; Trustee, Andrew E. Post, and Constable, Victor J. Mann.  
Freedom: Supervisor, David Melnhart; Clerk, Rena Girbach; Treasurer, Walter Heiber; Trustee, Dale Weidmayer, and Constables, Luther Nagel and Steve Carson.

All candidates are Republicans.

**ELECT CARL E. MACOMBER**  
Trustee Manchester Township Board  
REPUBLICAN  
August 3 Primary

**Elect**

**COUNTY COMMISSIONER 2nd DISTRICT**  
VOTE FOR NOT MORE THAN ONE

Thomas S. Roberts

TOM ROBERTS is committed to YOUR concerns.

**General Primary Election**

TO THE QUALIFIED ELECTORS:

Notice is Hereby Given, That a General Primary Election will be held in the

**TOWNSHIP OF FREEDOM COUNTY OF WASHTENAW, STATE OF MICHIGAN**

within said Township on

**TUESDAY, AUGUST 3, 1976**

At the place or places of holding the Election in said Township as indicated below, viz:

**FREEDOM TOWNSHIP HALL 11508 PLEASANT LAKE ROAD**

FOR THE PURPOSE OF PLACING IN NOMINATION CANDIDATES OF THE DEMOCRATIC AND REPUBLICAN PARTIES OR TO QUALIFY THE SOCIALIST WORKERS PARTY, SOCIALIST LABOR PARTY, COMMUNIST LABOR PARTY, UNITED STATES LABOR PARTY, LIBERTARIAN PARTY TO HAVE ITS NAME, PARTY VIGNETTE, AND CANDIDATES ON THE NEXT GENERAL ELECTION BALLOT.

**CONGRESSIONAL** United States Senator, Representative in Congress.

**LEGISLATIVE** Representative

**COUNTY** Prosecuting Attorney, Sheriff, County Clerk, County Treasurer, Register of Deeds, Drain Commissioner, County Commissioner and such other Officers as are elected at that time.

**TOWNSHIP** Supervisor, Clerk, Treasurer. 1 Trustee, 2 Constables.

And for the Purpose of Placing in Nomination, Candidates Participating in a Non-Partisan Primary Election for the following offices, viz:

Judge of the Court of Appeals, Circuit Court Judge, Probate Court Judge, District Court Judge.

and for the Purpose of Electing

Delegates to the County Convention of the Democratic Party

And also to Vote on the Following County Proposition:  
**PROPOSITION TO INCREASE TAX LIMITATION FOR PARK AND RECREATION PURPOSES**

"Shall the tax limitation on the total amount of general ad valorem taxes which may be imposed each year for all purposes upon real and tangible personal property in Washtenaw County, Michigan, be increased as provided in Section 6, Article IX of the Constitution of Michigan for a period of ten (10) years from 1976 to 1985, both inclusive by one-quarter (1/4) mill, twenty-five (25) per One Thousand Dollars of the assessed valuation as finally equalized for the purpose of planning, acquiring, developing, operating and maintaining parks and recreation places and facilities in Washtenaw County, Michigan?"

Notice Relative to Opening and Closing of the Polls ELECTION LAW, ACT 116, P. A. 1954


SECTION 726. On the day of any election, the polls shall be opened at 7 o'clock in the forenoon, and shall be continuously open until 8 o'clock in the afternoon and no longer. Every qualified elector present and in line at the polls at the hour prescribed for the closing thereof shall be allowed to vote.

THE POLLS of said election will be open at 7 o'clock a.m. and will remain open until 8 o'clock p.m. of said day of election.

Rena Girbach, Township Clerk

Paid Political Advertisement

**You Can No Longer Afford Not To Be Concerned.**



**VOTE ED HOLDA**  
Republican  
23rd District  
State Representative  
Primary — Aug. 3

Concerned  
Capable  
Visible  
Available  
Approachable

Paid for by Ed Holda for State Representative

**Elect**

**COUNTY COMMISSIONER 2nd DISTRICT**  
VOTE FOR NOT MORE THAN ONE

Thomas S. Roberts

TOM ROBERTS is committed to YOUR concerns.

**AND OTHER MAJOR APPLIANCE REPAIR**  
Electrical Contracting  
**L. V. Kirk**  
Phone (313) 428-8243  
Manchester

Paid Political Advertisement  
**TO SHARON TOWNSHIP RESIDENTS**  
I wish to express my sincere thanks for your support in the past years. I would appreciate your continued support in the Primary Election on Tuesday, August 3. Thank you.  
Duane R. Haselschwerdt

Five acres and Mobile Home south-west of Manchester. \$17,500.00.  
Two family dwelling on Macomb St. Price reduced.

Two bedroom home well kept, loaded with extras, land contract, located in Manchester, \$35,000.

3 bedroom ranch, one year old with over 1500 square feet living area, 114 by 40 pole barn on 7.5 acres on paved road.

80 vacant acres on Trinkle Road with large stream, wooded, 800 plus foot road frontage, one mile to I-94, 3 miles from Chelsea.

Listings Wanted,  
**HUGH R. SUTTON**  
BROKER  
428-7217  
Jim Walkowe, Salesman  
428-8120

**CASE #U-4840, #U-4621 TO THE ELECTRIC CUSTOMERS OF CONSUMERS POWER COMPANY**

THE FOLLOWING NOTICE OF HEARING IS GIVEN PURSUANT TO THE MICHIGAN PUBLIC SERVICE COMMISSION'S ORDER IN CASES NO. U-4840 AND U-4621 DATED APRIL 12, 1976.

Monthly hearings will be held before the Michigan Public Service Commission for the purpose of considering authorization to permit Consumers Power Company to reflect in monthly billings to its customers charges or credits for changes in appropriate items of expense associated with purchased and net interchange power from a base cost included in previously approved rate levels.

A hearing will be held on August 12, 1976 at 9:30 AM in the offices of the Commission, Law Building, Lansing, Michigan to consider inclusion of a proposed purchased and net interchange power adjustment charge of 1.42 mills per kilowatt-hour to be applied to bills rendered to Consumers Power Company customers in the September 1976 billing period.

The hearing shall be for the purpose of determining the amount of purchased and interchange power expense incurred during the calendar month of June 1976 and the reasons therefor. Details of the calculation of the proposed adjustment will be presented along with a summary of net system kilowatt-hour requirements including details of the various types of purchased and interchange power transactions and circumstances necessitating any outages of installed capacity for a period exceeding ninety (90) days. This information will be available on

and after August 2, 1976 for examination and inspection at the offices of the Commission Secretary, Law Building, Lansing, Michigan 48913 and at the offices of the Executive Director of Rates, Research and Data Control of Consumers Power Company, 212 W. Michigan Avenue, Jackson, Michigan 49201.

The Michigan Public Service Commission may either grant or deny the requested adjustment, in whole or in part, and may grant a lesser or greater adjustment than that requested. Interested parties may intervene by placing an appearance on the record at the hearing.

Jurisdiction in this matter is pursuant to Sections 1, 2, 6, 7 and 8 of 1909 PA 106, as amended, MCLA 460.551; et seq; 1909 PA 300, as amended, MCLA 462.2; et seq; Sections 3 and 4 of 1919 PA 419, as amended, MCLA 460.51; et seq; Sections 4, 6 and 6a of 1939 PA 3, as amended, MCLA 460.1; et seq; 1969 PA 306, as amended, MCLA 24.201; et seq; and the Commission's Rules of Practice and Procedure, 1954 Administrative Code, Supplement No. 54, R460.11, et seq.



# Bicentennial "Big Parade"



**Jim Taylor is:**

- A man with 15 years of police experience
- A criminal investigator for Detroit Edison
- A graduate of the United States Military Police Academy
- College educated with a Certificate in Law Enforcement


**Jim Taylor believes in:**

- Police Professionalism
- In-Service Training Programs
- Reinvigoration of W.A.N.T. Washtenaw Area Narcotics Team
- Close working relations with all Police Agencies

**I believe in Jim Taylor, won't you?**

Vote Jim Taylor Sheriff  
Republican Primary Tuesday, August 3rd.

*Paid Political Ad.*



**ELECT H.L. BEACH**

REPUBLICAN  
County Commissioner, District 3

*"I Will Be  
An Active Commissioner"*


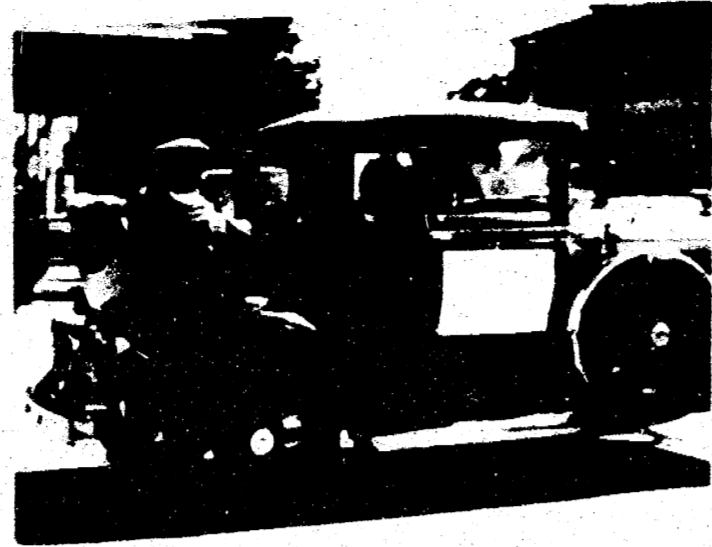
**"Your Government is Not Out Of Reach Vote For Beach"**

H.L. Beach Believes In:

- Local Control of Local Problems
- An Audit of the County Funds
- "Let's Find Out Where We Stand"
- An Elected County Administrator

Vote for H. L. Beach

REPUBLICAN  
County Commissioner, District 3  
Bridgewater, Lodi, Saline,  
Scio Townships  
Dexter Village and Saline City

## General Primary Election

TO THE QUALIFIED ELECTORS:  
Notice is Hereby Given, That a General Primary Election will be held in the  
**TOWNSHIP OF SHARON**  
COUNTY OF WASHTENAW,  
STATE OF MICHIGAN  
within said Township on  
**TUESDAY, AUGUST 3, 1976**

At the place or places of holding the Election in said Township as indicated below, viz:  
**SHARON TOWNSHIP HALL**  
CORNER OF PLEASANT LAKE AND SYLVAN ROAD

FOR THE PURPOSE OF PLACING IN NOMINATION CANDIDATES OF THE DEMOCRATIC AND REPUBLICAN PARTIES OR TO QUALIFY THE SOCIALIST WORKERS PARTY, SOCIALIST LABOR PARTY, COMMUNIST LABOR PARTY, UNITED STATES LABOR PARTY, LIBERTARIAN PARTY TO HAVE ITS NAME, PARTY VIGNETTE, AND CANDIDATES ON THE NEXT GENERAL ELECTION BALLOT.

**CONGRESSIONAL** United States Senator, Representative in Congress.  
**LEGISLATIVE** Representative  
**COUNTY** Prosecuting Attorney, Sheriff, County Clerk, County Treasurer, Register of Deeds, Drain Commissioner, County Commissioner and such other Officers as are elected at that time.  
**TOWNSHIP** Supervisor, Clerk, Treasurer, 1 Trustee, 2 Constables.

And for the Purpose of Placing in Nomination, Candidates Participating in a Non-Partisan Primary Election for the following offices, viz:  
**Judge of the Court of Appeals, Circuit Court Judge, Probate Court Judge, District Court Judge.**

and for the Purpose of Electing  
**Delegates to the County Convention of the Democratic Party**

And also to Vote on the Following County Proposition:  
**PROPOSITION TO INCREASE TAX LIMITATION FOR PARK AND RECREATION PURPOSES**

"Shall the tax limitation on the total amount of general ad valorem taxes which may be imposed each year for all purposes upon real and tangible personal property in Washtenaw County, Michigan, be increased as provided in Sect'ion 6, Article IX of the Constitution of Michigan for a period of ten (10) years from 1976 to 1985, both inclusive by one-quarter (1/4) mill, twenty-five (25c) per One Thousand Dollars of the assessed valuation as finally equalized for the purpose of planning, acquiring, developing, operating and maintaining parks and recreation places and facilities in Washtenaw County, Michigan?"

**Notice Relative to Opening and Closing of the Polls**  
ELECTION LAW, ACT 215, P. A. 1954  
SECTION 724. On the day of any election, the polls shall be opened at 7 o'clock in the forenoon, and shall be continuously open until 8 o'clock in the afternoon and no longer. Every qualified elector present and in line at the polls at the hour prescribed for the closing thereof shall be allowed to vote.

**THE POLLS** of said election will be open at 7 o'clock a.m. and will remain open until 8 o'clock p.m. of said day of election.  
**Duane Haselschwerdt, Township Clerk**



## Elect

**VACUUM CLEANERS ELECTROLUX**  
Electrolux Sales & Service  
call  
**James Cox**  
Manchester  
428-8444

**COUNTY COMMISSIONER**  
2nd DISTRICT  
VOTE FOR NOT MORE THAN ONE

Thomas S. Roberts

TOM ROBERTS is committed to YOUR concerns.

**Spear & Associates, INCORPORATED. REALTORS**  
122 West Main Phone 428-8046 Daily Manchester

New Listing: Lovely restored 4 bedroom brick farmhouse on 40 acres with a small pond, 2 baths, dining room, study, full basement, 2 fireplaces and a 1 car garage. Manchester Schools. \$89,000.

CLINTON SCHOOL AREA. Nice home on 2 1/2 acres 8 miles east of M-52 on Michigan Avenue. Three bedrooms, 1 bath, dining area, basement plus a brand new roof, new wiring, and plumbing. Make an offer today!

THIS HOME can be for 1 or 2 families, 2 or 4 bedrooms, 2 baths, family room, full basement and 1 car garage. 89' x 260' lot with large shade trees and a lovely garden. Chelsea Schools. \$39,500.


LANDSCAPING PLUS surrounds this beautifully

LANDSCAPING PLUS surrounds this beautifully restored 80 acre farm on Austin Road. Four bedrooms, 2 baths, dining area, basement, 30' x 60' pole barn and storage sheds. The Raisin River flows out back with 20 acres of woods. \$115,000.

LAKE PROPERTY! 40 acres in the Clinton School area with a 5 acre lake. Scenic area with lots of large pine trees, barn and flowing well for \$60,000.

**OFFICE HOURS**  
Mon. thru Fri.  
9 a.m. to 5 p.m.  
Sat. 9 a.m. to 12 noon

Office: 428-8388  
Eves. & Weekends:  
Ellis Pratt: 428-8562  
James Mann: 428-8074  
Anette Lawson: (517) 456-4014



**CLARK LAKE LATE LEAGUE**

Hamilton-Reed	214
Rogers-Fisher	205.5
Popkey-Stockwell	197.5
Tapping-Marrison	191.5
Koebbe-Lamb	190.5
Kirk-Korican	190.5
Blossom-Hughes	187.5
Wolf-Weaver	182
Kouba-DuRussel	176
Day-Day	172.5
Carpenter-Ray	170
Mann-Gilbert	169
Tirb-Swartz	168.5
Simmons-Scully	166.5
Alber-Becktel	162
Way-Swartz	134.5

Close to pin #5 Lamb  
Close to pin #7 Kirk  
Best Poker Hand - Korican

Low gross - P. Fielder, J. Uphouse,  
E. Bendict - 38  
Low net - P. Fielder 31  
Closest to pin No. 3 J. Riley

**CLARK LAKE EARLY GOLF**

Carpenter-Stockwell	204.5
Gilbert-Mann	200.5
Reed-Becktel	192
Tracy-Millar	191
Hamilton-Hughes	182
Swartz-Tirb	178.5
Oltersdorf-L. Steele	178
Edwards-Boutell	175
Kouba-DuRussel	171.5
D. Steele-Fisher	170.5
Burkhardt-Walter	160.5
Rogers-Fink	156

Closest to #2 Gilbert  
Closest to #9 Hamilton  
One putt greens Fink

**MANCHESTER BOGEY BUSTERS**

D. Benedict-P. Fielder	216
J. Riley-L. Benedict	195.5
J. Uphouse-J. Gould	189.5
C. Knorpp-D. Sparks	178.5
B. Little-D. Little	175.5
E. Benedict-D. Blakeman	173.5
G. Smith-M. Rutherford	165.5
R. Daniels-W. Zesnyk	138.5

\*\*\*  
*I got a real lemon when I bought my last car, the carpet was worn out in the trunk.*

INGHAM COUNTY



**CONLIN**  
Representative • 23rd District

**MANCHESTER Sporting Goods & Clothing**  
104 E. Main  
313-428-8391

**ALL TYPES OF SPORTING EQUIPMENT**

**MAVERICK JEANS**  
**MAVERICK JACKETS**

**CATALINA SPORTSWEAR**  
KING LOUIE BOWLING SHIRTS  
**WOMENS TENNIS SHOES**  
DUDLEY SOFTBALLS  
ALL PURPOSE SHOES ANY SIZE YOUTH - ADULT

**CLASS B DISTRICT 16 CHAMPIONS**  
Manchester Sporting Goods



Back Row, left to right: I. Roberts, R. Wurstar, R. Sutton, D. Harman, T. Kocesk, D. Roberts, T. Abrams, M. Roberts, C. King.  
Front Row, left to right: J. Curley, R. Curley, R. Roberts, S. Hamilton, S. Chapman, T. Huber, R. Steala.

**BOURBON CREAM PIE**

- 3/4 cup sugar
  - 1/4 cup cornstarch
  - 1/2 teaspoon salt
  - 1/4 cup Bourbon whiskey
  - 2-1/4 cups milk
  - 3 egg yolks, slightly beaten
  - 1 tablespoon butter
  - 1 teaspoon vanilla extract
  - 9-inch baked pie shell, cooled
  - 1 (1 oz.) square semi-sweet chocolate, at room temperature
  - 1 cup heavy cream, whipped
- Combine sugar, cornstarch and salt in saucepan. Gradually stir in Bourbon and milk, mixing until smooth. Bring to

boil over medium heat, stirring. Boil 1 minute, stirring constantly. Remove from heat.

Stir half of hot mixture into egg yolks, mixing well; pour back into saucepan. Bring back to boiling, stirring. Boil 1 minute longer and remove from heat. Stir in butter and vanilla and pour immediately into pie shell. Chill. Shave chocolate curls off semi-sweet chocolate square, using a vegetable peeler. Chill. Garnish pie with whipped cream and chocolate curls.

A dessert that can look exceptionally elegant can also be easy to make. Give it a few whirls and add a couple of chocolate curls and you have a cream pie with class.

**General Primary Election**

TO THE QUALIFIED ELECTORS:

Notice is Hereby Given, That a General Primary Election will be held in the

**TOWNSHIP OF MANCHESTER**  
(Precincts No. 1 and 2)  
COUNTY OF WASHTENAW,  
STATE OF MICHIGAN

within said Township on

**TUESDAY, AUGUST 3, 1976**

At the place or places of holding the Election in said Township as indicated below, viz:

**MANCHESTER TOWNSHIP HALL**  
120 SOUTH CLINTON STREET

FOR THE PURPOSE OF PLACING IN NOMINATION CANDIDATES OF THE DEMOCRATIC AND REPUBLICAN PARTIES OR TO QUALIFY THE SOCIALIST WORKERS PARTY, SOCIALIST LABOR PARTY, COMMUNIST LABOR PARTY, UNITED STATES LABOR PARTY, LIBERTARIAN PARTY TO HAVE ITS NAME, PARTY VIGNETTE, AND CANDIDATES ON THE NEXT GENERAL ELECTION BALLOT.

**CONGRESSIONAL** United States Senator, Representative in Congress.  
**LEGISLATIVE** Representative

**COUNTY** Prosecuting Attorney, Sheriff, County Clerk, County Treasurer, Register of Deeds, Drain Commissioner, County Commissioner and such other Officers as are elected at that time.  
**TOWNSHIP** Supervisor, Clerk, Treasurer.  
2 Library Trustees, - 6 Year Term, 1 Library Trustee - 2 Year Term to fill vacancy

And for the Purpose of Placing in Nomination, Candidates Participating in a Non-Partisan Primary Election for the following offices, viz:  
Judge of the Court of Appeals, Circuit Court Judge, Probate Court Judge, District Court Judge.

and for the Purpose of Electing  
Delegates to the County Convention of the Democratic Party

And also to Vote on the Following County Proposition:  
**PROPOSITION TO INCREASE TAX LIMITATION FOR PARK AND RECREATION PURPOSES**

"Shall the tax limitation on the total amount of general ad valorem taxes which may be imposed each year for all purposes upon real and tangible personal property in Washtenaw County, Michigan, be increased as provided in Section 6, Article IX of the Constitution of Michigan for a period of ten (10) years from 1976 to 1985, both inclusive by one-quarter (1/4) mill, twenty-five (25c) per One Thousand Dollars of the assessed valuation as finally equalized for the purpose of planning, acquiring, developing, operating and maintaining parks and recreation places and facilities in Washtenaw County, Michigan?"

Notice Relative to Opening and Closing of the Polls  
**ELECTION LAW, ACT 116, P. A. 1954**  
**SECTION 728.** On the day of any election, the polls shall be opened at 7 o'clock in the forenoon, and shall be continuously open until 8 o'clock in the afternoon and no longer. Every qualified elector present and in line at the polls at the hour prescribed for the closing thereof shall be allowed to vote.

THE POLLS of said election will be open at 7 o'clock a.m. and will remain open until 8 o'clock p.m. of said day of election.

Waldo C. Marx, Township Clerk

**"THE INTER-COM"**

are to be scheduled by the school. The tentative calendar set for this coming year starts school on September 1st. With the millage election only six days prior to that date and with all teaching personnel pink-slipped, it will be impossible to start school on September 1st. The earliest I could project at this point would be the week of the 13th of September. Adjustments will have

**Elect**

**COUNTY COMMISSIONER**

2nd DISTRICT

VOTE FOR NOT MORE THAN ONE

Thomas S. Roberts

TOM ROBERTS is committed to YOUR concerns.

- H-eating!
- I-nformation and advise!
- L-abor guaranteed!
- L-abor cost reasonable!
- T-anks and drainfields!
- O-h. Electrical too!
- P-Lumbing!

- P-professionals in our field!
- L-ook a do-it-yourselfer-shop!
- U-can depend on us.
- M-ay call us - 24 hrs. a day!
- B-ids and estimates free!
- I-nterested in your problems!
- N-ew, remodel, or repair work!
- G-o and call us today.

**HILLTOP PLUMBING**  
8312 WERKER ROAD  
CHELSEA, MICHIGAN  
PHONE 475-2949

**elect CONLIN**



"Washtenaw County has been good to me and now I would like the opportunity to give something in return. I am looking forward to new and exciting challenges on the bench. I am offering my years of legal experience and knowledge of the community because I feel I can make a real and substantial contribution as a Circuit Judge for Washtenaw County."

• He has been a life long resident of Washtenaw County, having graduated from St. Thomas High School, The University of Michigan, and Detroit College of Law. He was admitted to the practice of Law by the late George W. Sample, Circuit Judge in 1940.

• He is a member of the Washtenaw County Bar Association, the State of Michigan Bar Association, the American Bar Association, and a member of the American Judicature Society. He has practiced before the Michigan Supreme Court and the Federal Courts; he has served as a member of various State Bar committees and has continued to participate in the continuing legal education offered by the Practising Law Institute.

• He was three times elected to the Ann Arbor City Council, and was elected to serve on the Charter Commission which wrote the present Ann Arbor City Charter. He has served in various capacities with the Community Chest and was appointed to the Zoning Board of Appeals.

• He has been an active practicing attorney involved in numerous trials before all of the Courts of the County. He has had wide experience in trials involving criminal, civil and domestic relation matters.

• He was married to Dorothy Marie Love in August 1942; and they have eight children. He is a member of St. Francis Parish in Ann Arbor; The American Legion; and the Veterans of Foreign Wars.

**Circuit Judge NON PARTISAN**

Area Chairpersons  
Clarence L. Faldler Dave Little

Conlin for Circuit Court Committee  
L. Ray Bishop  
280 City Center Bldg., Ann Arbor, Michigan 48106

**STATE HISTORICAL SOCIETY OFFERS CENTENNIAL BUSINESS CERTIFICATES**

In Honor of the Bicentennial era, the Historical Society of Michigan is offering centennial business certificates to all businesses in the state that were founded at least 100 years ago.

According to Frank C. Wilhelm, director of the state historical society, the centennial business program is being conducted to encourage Michigan communities to become more aware of their business and industrial history.

"We hope that this program will also increase the interest in preserving important commercial and industrial buildings throughout the state," Wilhelm said. "These structures serve as significant visual links with our past."

To launch the centennial business certificate program, the Historical Society of Michigan is holding a contest to find the oldest business in the state. The Oldest Business in Michigan Contest will locate the oldest ongoing businesses that still pursue their original business or one that is closely related.

Contest winners will be named in three categories: (1) oldest continuously operating business in original building, (2) oldest continuously operating business on original site but not in original building, and (3) oldest continuously operating business relocated from original building and site.

Winners in each category will receive framed certificates from the Historical Society of Michigan and honorary corporate memberships in the society. In addition, the business with the oldest overall founding date will be presented with a framed pen and ink drawing of its first business office.

To apply for a centennial business certificate and to enter the contest, businesses should send a letter to the Society with the following information: (1) name of business, address, and zip code, (2) date business was founded, (3) Xerox copy or description of documentation to verify founding date, (4) contest category, (5) name and address of person submitting entry and (6) name of president or chief executive officer of the business.

All letters should be postmarked no later than August 15. They should be mailed to the Historical Society of Michigan, 2117 Washtenaw Avenue, Ann Arbor, Mich. 48104.

The centennial business certificates will be presented this fall in cooperation with local historical organizations. Contest winners will be announced as soon as the results are tabulated.

The State Library, the State Archives, and the State Historic Preservation Office will receive a list of all centennial businesses and their founding dates. This information will be used by researchers studying Michigan's early commercial and industrial history.

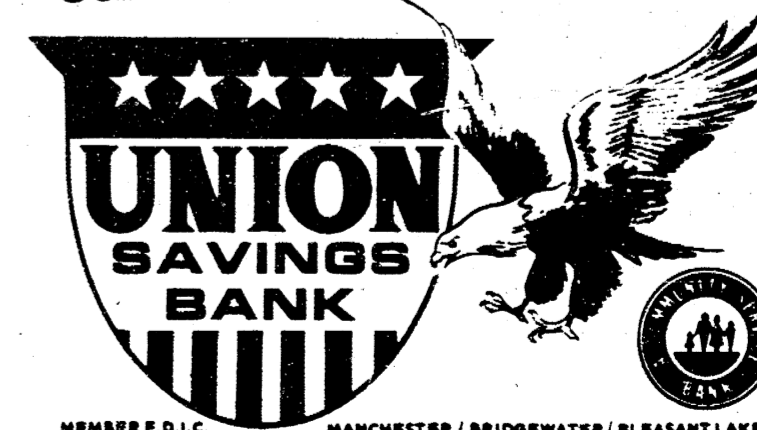
A nonprofit organization, the Historical Society of Michigan promotes the preservation of state and local history throughout Michigan. It is supported by more than 5,000 individual and corporate members.

Your favorite pen  
Our checking program  
**GO AHEAD PAY YOUR BILLS**

What could be easier? What could be more enjoyable? With a Union Savings Bank Checking Account, you never need worry about paying high interest charges because you were late with a payment. And you have a record of

payment for ready reference. Best of all, your checking is free of service charges when you maintain a Happy Balance in your account. Of course, our senior friends enjoy free Union Savings Bank checking always. Why not take a moment to open your helpful, convenient checking account? You'll be glad you did.

yes... you can



MEMBER F.D.I.C. MANCHESTER / BRIDGEWATER / PLEASANT LAKE



Wendell Rehnart with his team at Hughes' Threshing.

Threshing machine at Hughes farm.

Lloyd Hughes begging grain.



Clayton Parr and Allen Schaffer pitching bundles at Threshing Bee at Carr Park.



John Buss and Allen Schaffer work at Threshing Bee. In 1929, Allen Schaffer, with his Dad's team of horses, went threshing with John Buss and Clayton Parr.

**HELFRICH MASONRY**  
 LICENSED CONTRACTOR  
 FIREPLACES-BASEMENTS-VENEER  
 STONE & BRICK-CEMENT WORK  
 PHONE 428-8686  
 7679 CHELSEA-MANCHESTER ROAD  
 MANCHESTER, MICHIGAN

**Before you buy your car, boat, or recreational vehicle, see how much you might save.**

See me about low-cost financing through a cooperating bank and economical car insurance from State Farm Mutual.

**MATT DONNELLON**  
 146 E. Main  
 Manchester  
 Phone 428-8364

Another service of your State Farm Agent.  
 State Farm Insurance Companies  
 Home Office: Bloomington, Illinois

**UNCLE SAM WANTS YOU TO RETIRE COMFORTABLY**

If he didn't, he wouldn't have invented IRA (Individual Retirement Account). IRA is the retirement plan approved by the U. S. Pension Reform Act for those individuals whose retirement plan has been terminated and those not covered by any other qualified private or government plan.

If your present plan is terminated by your company, you can "roll over" all of your accumulated retirement dollars into an IRA account at Ann Arbor Federal Savings. All participants in the IRA plan can deposit \$1500 per year or 15% of compensation, whichever is less, in a retirement account at Ann Arbor Federal Savings. Deposits and interest are tax deferred until retirement at which time you will probably be in a lower tax bracket.

Take a look at the chart and see how much faster your retirement dollars accumulate with IRA. Then run to your nearest AAFS office where your IRA account earns higher interest. Uncle Sam approves.

401 E. Liberty  
 Ann Arbor, MI 48106

PLEASE SEND MORE INFORMATION  
 Name \_\_\_\_\_  
 Address \_\_\_\_\_  
 City \_\_\_\_\_ Zip \_\_\_\_\_  
 Telephone \_\_\_\_\_

**ANN ARBOR FEDERAL SAVINGS**  
 11 OFFICES TO SERVE YOU IN ANN ARBOR, BRIGHTON, CHELSEA, DEKATER, MANCHESTER, SALINE, YPSILANTI

MEMBER FDIC

AT THE END OF	WITH TAX SHELTER	WITHOUT TAX SHELTER	DIFFERENCE WITH TAX SHELTER
10 Years	\$ 21,707.35	\$ 16,828.62	\$ 4,878.73
15 Years	\$ 40,659.13	\$ 28,842.79	\$ 11,816.34
20 Years	\$ 62,028.64	\$ 48,720.23	\$ 13,308.39
25 Years	\$ 99,844.55	\$ 71,488.06	\$ 28,356.49
30 Years	\$ 155,352.48	\$ 101,933.05	\$ 53,419.43

The figures in the above chart assume that the total contribution of \$1500 is made on the final business day of each year, and that the tax payer is in the 25% tax bracket. Based on 7 1/2% 72 months certificate, effective annual rate 8.02% with monthly compounding. Federal regulations require substantial penalty for early withdrawals.

# OLD WORLD SALE

Up to 40% off

on most items at the  
**Old World Village Mall**  
 July 29, 30, 31 and Aug. 1

- 40% OFF SELECTED PURSES - The Leather Shed
- 40% OFF LIBERTY BELL COMMEMORATIVE - Century Etchings
- 40% OFF "ARRANGE" NON-AEROSOL HAIR SPRAY - Organic Live-In
- 40% OFF ASSORTED OIL PAINTINGS - Europa Arts
- BUY 1 MOSAIC PLANT POT - GET 2ND AT 1/2 OFF - Giordano
- BUY 1 CANDLE, GET 2ND AT 1/2 OFF - The Wax Managerie
- 40% OFF 4' TRESTLE TABLE & BENCHES - The Rustic Shop
- 25% OFF ALL PLANTS - Simple Pleasures
- 40% OFF CANDLES - The Craft Gallery
- 25% OFF MISCELLANEOUS TEACHING AIDS - Teachers Pet
- PORTABLE TYPEWRITER SALE - A & D Business Machines
- 40% OFF PLATE BLOCKS OF STAMPS - The Stamp & Coin Box
- 15% OFF ANY PLANTER - Innisfree Pottery
- 40% OFF MENS AND WOMENS I.D. BRACELETS - Rings Galore & Watch World
- 1/2 OFF JEWELRY - Gazebo
- 30% OFF CRYSTAL WATER GOBLET - The Golden Garret
- 40% OFF IMPORTED NEEDLEPOINT TAPESTRIES - Maly's Creative Corner
- 40% OFF ASSORTED DECORATED STATIONARY - R.S.V.P. Stationary
- 40% OFF HOLOGRAPHIC JEWELRY - The Magic Shoppe
- 20% OFF SELECTED SPICES - Good Things to Eat
- 10% OFF EVERYTHING - The Country Gate
- 40% OFF SILVER CAKE SERVER SET - Little Horse Antiques
- 20% OFF SELECTED BOOKS - The Book Nook
- 2 FOR 1 SAND SALE - O' Grey Barn
- 40% OFF SELECTED CANDY & GIFTS - Fudge & Taffy
- 1 ITEM FREE WITH PIZZA HAVING ONE OR MORE ITEMS - D.J.'s Pizza & Subs
- 2ND ORDER HOMEMADE FRENCH FRIES - 1c - The Duck
- 40% OFF STRAWBERRIES 'n CREAM CREPE - Creperie de la Chaumiere
- 40% OFF PYRAMID ENERGY KIT - The Lighthouse
- 40% OFF SELECTED TABLES - Palmer Sales
- 40% OFF CANE POLES - Sportsman's Landing
- 40% OFF PICTURES - Graphic Art Wholesalers
- 30% OFF ALL BIBLES - The Word
- UP TO 38% OFF SELECTED ITEMS - Needle Beedle Yarn Craft
- 42% OFF HOBBY LAMP - C.I.F. Furniture
- 40% OFF UNFINISHED DOLL HOUSE - The Doll House
- 40% OFF COSTUME JEWELRY - Hair Cut 'n Streak
- 10% - 50% OFF ON ALL PURCHASES - Tice's Mens Shop
- 40% OFF SELECTED ITEMS - Sew On & Sew Forth and Boutique Plus
- OLD TYME PRICES ON POPCORN, COTTON CANDY, ETC. - Al's Corn Crib
- 40% OFF ALL KITCHEN ACCESSORIES - The Cork Tree
- 40% OFF SELECTED ITEMS - House of Handicrafts
- 40% OFF ANY PET PORTRAIT - United Arts
- PATARNAYAN YARN - \$1.22 PER OZ. - Maxine's Custom Needlepoint
- 40% OFF - 10 POSE PORTRAIT SITTING WITH \$25.00 PURCHASE - Klinger Photographic Specialties
- 40% OFF ON VINTAGE PIANO - The Piano Company
- 20% OFF VEHICLE SNACK TRAYS - Urban Van
- 20% OFF SELECTED ANTIQUE CLOCKS - Clockworks
- FREE SHIMMEY DIDDLE WITH ANY PURCHASE - Toys 'n Things
- 40% OFF ALL PANTS - Village Jean Loft
- FREE STROLLER RIDES - Old World Village Mall Service Center
- CHILDRENS T-SHIRTS WITH TRANSFER - \$1.75 - Mike's Shirt Shop
- 20% OFF ALL WINES - The Wine Connection
- 20% OFF SELECTED TERRARIUMS - Flower Pantry
- 25% OFF ALL PIPES - Baren's Tobacco
- 40% OFF JADE PLANTS - Beautiful Indoor Gardens
- FREE SOFT DRINK WITH ANY HOT DOG - Nico's All American Coney Island
- 10% OFF ALL DINNERS - The Jade Bamboo
- FREE POTATO SALAD OR COLE SLAW WITH GIANT SAND WICH - The New Yorker Deli
- BUY 1 GET 2ND WOOD & ROPE HANGER AT 1/2 PRICE - Wood & Rope
- 40% OFF MASON JAR SALT & PEPPER SHAKERS - Gourmet Gadgets
- FREE AQUARIUM WITH \$10 PURCHASE OF FISH - Tropic Isle II
- 40% OFF STUFFED POODLE - Toy World
- 10% OFF ALL WICKER GOODS - Country Gate
- BUY 1 PLANT - GET COMPARABLE PRICED PLANT FREE - Branching Out

Hours:  
 Wed-Fri. 6 p.m. - 10 p.m.  
 Saturday, 10 a.m. - 10 p.m.  
 Sunday, noon - 6 p.m.

**OLD WORLD**

...a land of intimate variety

Westgate Plaza Corner of Jackson and Maple Roads



## AGRICULTURE IN ACTION

CHICAGO FARM BUREAU  
EDITORIAL

### VICTIMS OF REGULATORY OVERKILL

Farmers aren't against safety and health and a clean environment. Why, then, do they seem to be in a running battle with government agencies such as OSHA and EPA, which — supposedly — have the "protection" of citizens as their reason for being?

To understand that paradox, consider what made the American farmer the envy of the world — how it is possible for a small 4% of our population to be so efficient and productive that it provides food and fiber for the other 96% with enough left over to sell overseas and still help feed the hungry in other countries. It was hard work, inventiveness, the right to manage his own business, and that great motivator — profit — not government edicts!

What farmers object to — what kills their incentive to produce and, sometimes actually kills their businesses... is that more and more of the decisions affecting their farms are being made by non-farmers, and more control over their businesses is held by people who do not even understand today's agriculture. They have people sitting in an office in Washington dreaming up compulsory, rigid unrealistic regulations for the farm, ranging all the way from privies to power takeoffs. They have a federal agency with the authority, if it should decide to use it, to require a farmer to get a permit to even plow a furrow on his own farm.

Closer to home, they have consumers who are demanding a major say in agricultural decisions, over-zealous environmentalists who want pesticides banned, and recreational enthusiasts who want public access to farm lands for hiking, bird watching, picnicking, skiing, and snowmobiling.

Farmers have traditionally been involved in good safety and health practices and they have always worked hard to protect the environment. They did so because it made sense!

Farmers have become victims of reg-

ulatory overkill and it is strangling agriculture. And when agriculture's productivity capacity is strangled, everyone suffers. OSHA, EPA, and all the other many regulatory agencies would accomplish much more if they developed commonsense programs with the accent on education rather than compulsion.

Regulatory overkill strangles agriculture—no doubt about it. It will also kill our private enterprise system — something every citizen whose personal rights are encroached upon by big government ought to be concerned about.

### MICHIGAN SCHOOL VOCAL ASSOCIATION

Elitified and once in the auditorium at Corwen for the towns folk.

On Sunday we left Corwen for Coventry attired in our tuxedos of white coats, black trousers and laced shirts with black bow ties. When we arrived there about 1:30 we immediately sang our concert in the old rebuilt cathedral (bombed out during the war). Then we again boarded the busses for London and we stayed in two modern hotels in South Kensington. We had quite an experience learning how to board the subways for downtown and found them very fast and efficient. We were pretty much on our own there and found it fascinating to shop in the big down town centers. On the 14th we again boarded the busses for the return trip to Harwich, England, the channel boat overnight crossing. We had a fine trip back and the next morning proceeded to our next stop at Bremen, Germany, where we sang in the open air court yard market place and also in the big twin-spired cathedral.

We stayed 2 nights there and then on again to Copenhagen, Denmark. When we got there after one ferry ride, we were introduced to our fine home-stay family and 2 fellows in private large rooms made us feel just like home. We sang a 2 hour cathedral-church service in the town of Koje (pronounced Koor).

and had the next day to shop in down town Copenhagen a town of over 600,000.

While there many had time to relax and swim in the shallow bay (salt water) between Denmark and Sweden. Then with sad faces we headed back to Germany the next day and again crossed an hour boat ride back over the island waterway. We stopped finally about 5 p.m. at a big cathedral at Schlesweig, Germany and got ready for an immediate concert. The program was taped and when back aboard the bus heading for our hotel at Neumunster listened intently. Everyone was much impressed and strengthened from the tape.

We got into the hotel at Neumunster late and had a late supper consisting of the most delicious mushroom soup. The next morning we had to depart at 6 for the 12 hour journey to the coast of Holland again. We spent the night at Katwyck and had a good supper there too. The

next day we went sight seeing through the Amsterdam canal trip and other points such as the Rembrandt museum and the Queens palace, and others did some last minute shopping in the loop. That night we came back to Katwyck and gave our final farewell concert in the local band stand. The next morning we departed early and got into Amsterdam-Schiphol Airport for our 11:00 departure for the states.

After 8 hours 35 minutes our big DC 8 (over 200 passengers) sighted Detroit and the wheels finally touched good old USA soil once again — all tired, but glad to be home.

### ATTENTION CLASS OF '81

There will be a meeting held at Laurie Fitzgerald's house about the float on August 2 at 3:00. If you have any questions, please call Laurie at 428-7471.

ELECT  
GEORGE A.  
MERKEL  
County  
Commissioner  
District 2  
REPUBLICAN



**Williamson**  
Heating & Cooling Systems  
INSTALLATION & REPAIR  
Phone 428-8692  
John Steele jr.  
Manchester

## SUMMER HEALTH-TEX SALE

SHORT SETS — SHORTS  
ONE GROUP SHIRTS  
GROUP INFANT — HEALTH TEX  
ALL 20% OFF OUR REGULAR LOW PRICE  
ALL SWIM WEAR 20% OFF  
GROUP LADIES SLACKS & SHORTS 20% OFF  
NEW SHIPMENT BOYS & MENS CONVERSE  
TENNIS SHOES  
NOW — MENS MAVERICK JEANS

Bank Americard Master Charge

## Clinton Fashions

115 W. MICHIGAN CLINTON, MICHIGAN

Rent or lease from  
your Ford dealer  
**RENT-A-CAR  
LEASING**  
LONG & SHORT TERM LEASING  
FLEET & INDIVIDUAL LEASES  
TAILORED TO YOUR NEEDS  
**TOM MARSHALL**  
FORD SALES inc.  
428-8343  
512 W. MAIN • MANCHESTER

Shirley Burgoyne lost the election for Circuit Judge in 1972 by only 68 votes.

HELP HER WIN THIS TIME!

## SHIRLEY BURGOPYNE for Circuit Judge

(New judgeship - Washtenaw County)

Your vote is VITAL to nominate the candidate with the experience, decisiveness, and moral courage to run, to win, and to be the kind of judge we need.

BE SURE TO VOTE ON AUGUST 3.



The State Farm  
**MATCHMAKER**  
can find you  
a match  
for life.

State Farm Matchmaker Service is free. And so simple. You tell us a little about yourself, your family, your goals. We feed this information to our computer and in a matter of seconds it prints out a State Farm life insurance program that matches your needs. One you can live with.

See or call:



MATT  
DONNELLON

146 E. Main  
Manchester

Phone  
428-8364

Like a good  
neighbor,  
State Farm  
is there.

STATE FARM FIRE  
AND CASUALTY COMPANY  
Home Office: Bloomington, Illinois

# Tom Minick is an experienced command law officer with integrity.

### Lt. Tom Minick is qualified:

- a lifetime resident of Washtenaw County
- a U.S. Marine Corps Veteran
- a professional law enforcement officer with 15 years experience (11 years at the command level) with the Ann Arbor Police Department
- experienced in all areas of police work — youth, patrol, investigator, traffic, recruit training, management and command
- college trained in police management and police science
- a family man, active in community affairs

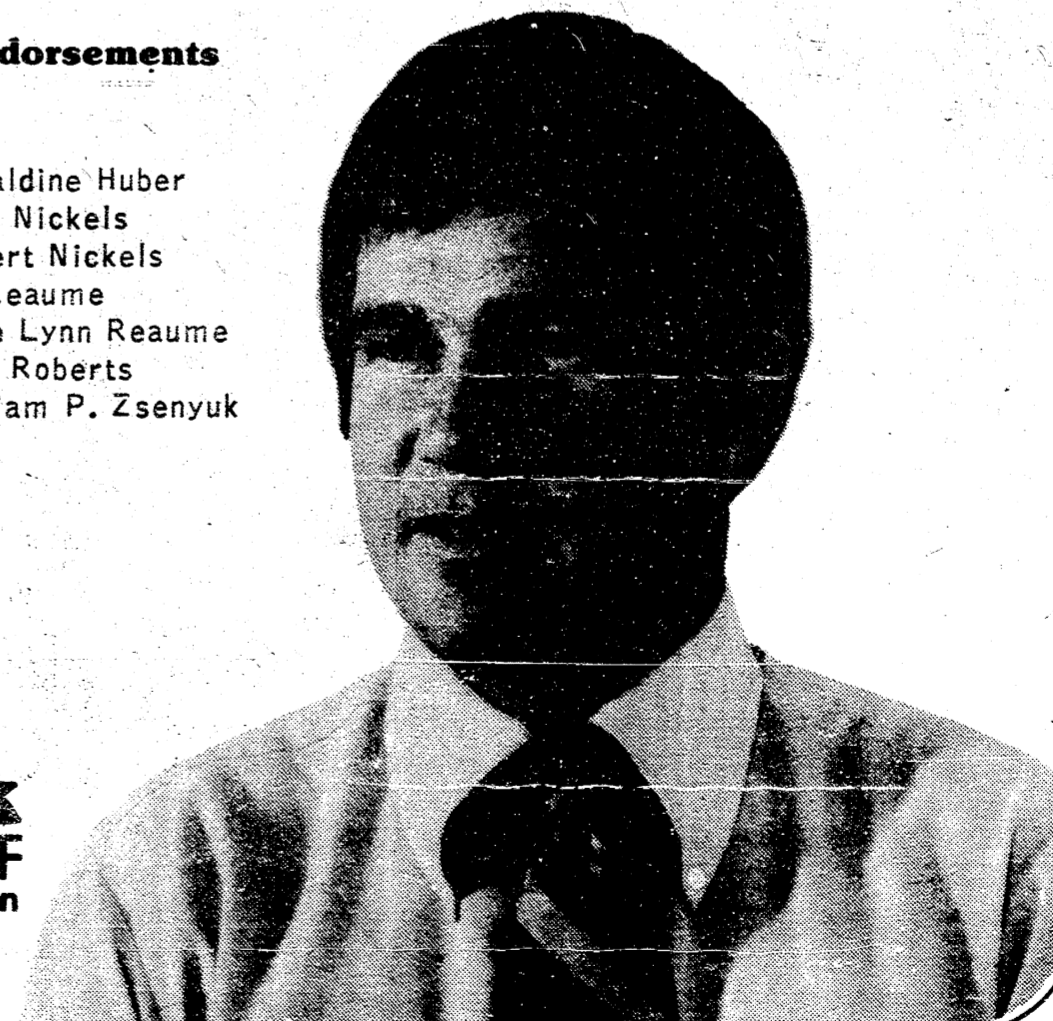
### Tom Minick believes:

- that the suppression of crime must be our top priority
- that the time has come to lock up the career criminal
- that we must re-establish the principle that criminals are accountable for their crimes.
- that we need a well-managed, effective and diversified program of crime control without taxing ourselves into bankruptcy
- that we must restore road patrols and restructure rehabilitation programs
- that the highest professional standards, including ethical and moral judgement, must be expected and required of all persons who work in law enforcement. To begin, quality leadership must be restored to the Sheriff's Department.

## Let's elect him Sheriff!

### Manchester Area Endorsements

Carolyn Ahrens  
Leonard Ahrens  
Bill Bondy  
Shaley Bondy  
Merrick Burch  
Donna England  
James England  
Erwin Huber  
David Minick  
Marilyn Minick  
Geraldine Huber  
Olga Nickels  
Robert Nickels  
Ed Reaume  
Faye Lynn Reaume  
Tom Roberts  
William P. Zsenyuk



VOTE FOR  
**Tom  
Minick**  
FOR SHERIFF  
Tuesday, August 3rd • Republican

Paid for by the Tom Minick for Sheriff Committee  
Brian Connelly, Chairman • Gerry Alcock, Treasurer

# WANT ADS

ALL CLASSIFIEDS MUST BE PAID FOR IN ADVANCE

**PAT'S CRAFT STUDIO**, downtown Tecumseh, area headquarters for macramé, tape painting, miniatures, artists supplies and much more. Monday thru Saturday, 10 to 5:30. Classes available. 517-423-7447. *th*

**CHELSEA GREENHOUSES**, 7010 Lingane Road, Chelsea, Michigan 475-1353 - 54 or 475-9313. Flowers and plants for every occasion. We specialize in wedding flowers to fit your budget. We are as near as your phone and we welcome your business. *th*

**ALUMINUM EAVESTROUGH** - Seamless, white, black and brown, guaranteed, free estimates, Walkover Home Improvement Company, phone 313-428-8468 or 517-522-2234. *th*

**HORSE SHOING** - Experienced Horse shoer now shoeing in area. Bob Smither, 517-851-8479. *th*

**COMPLETE BUILDING MAINTENANCE SERVICE**. Call Pledger Chapman, 428-8961. *th*

## ROOFING SPECIALIST

All types of roof repairs-homes, barns, commercial, insurance repairs, asphalt shingles, hot build-up roofing, cedar, slate, tile, asbestos, awnings & porch enclosures. Call Joe Hayes for free estimates, 428-8520. *th*

**WANTED** - Part time janitorial help in the evenings. Call between 10 a.m. and 5 p.m. 971-6263. *th*

**G.S. SERVICE & REPAIR**, plumbing, cooling, remodeling with 24 hour service. Call day or night 428-7138. *th*

**ANTENNA & TOWER**, if it is out of reach, Call Beach, Beach Contracting, Saline, 428-5994. 7-7-77 p.

**HORSESHOEING AND TRIMMING**, Corrective Shoeing, Bob Buono, 428-7293, 19223 Sharon Valley Road, 8-5p.

**GERMAN POINTERS AKC**, 662-5744 or 769-4887, 7-29 p.

**LARRY'S BACKHOE WORK**, Septic systems, basements, fence rows cleaned, 428-8061. 7-29 p.

**FOR SALE** - 9 foot garage door - call 428-8583 after 4 p.m.

**RABBITS FOR SALE** - 428-7492.

**FARM HELP NEEDED** - 14 years and older, 428-8645 after 8 a.m.

**KNISEL'S TREE SERVICE**-cutting, trimming, stump removal, aerial bucket rental. Call (517) 443-5306 or 486-2819. *th*

**SEAMLESS aluminum eavestroughs**, roofing, siding, and carpentry work of all kinds. Experienced installers, all work guaranteed. Call R.D. Kleinschmidt Co. 428-8836. *th*

**EAR PIERCING** - Fast and painless, Gaston's Jewelry, Tecumseh, Michigan 428-3280. *th*

**ELECTRICAL** wiring, new & remodeling. Licensed, fully insured electrician. Paul Kemmer, phone 428-8462. *th*

**BEEF TO SELL BY SIDE**: Custom slaughtering. Lockers to rent. Phone 428-7600. Manchester Frozen Food Locker. *th*

**PIANO & ORGAN** tuning and repair (517) 782-1273 or 428-8422. *th*

**WANTED LAND TO PLANT** for wheat, will consider any amount small or large, Joe Hayes, 428-8520. *th*

**HELP WANTED** - "ACT NOW" - Turn spare time into \$\$\$! Be a SANTA's Demonstrator, earn commissions up to 30% - OR - have a Toy & Gift Party in your home and earn FREE Gifts! Our 29th Year! Call or write SANTA's Parties, Avon, Conn. 06001. Phone 1 (203) 673-9455. ALSO BOOKING PARTIES." 9-30

**ATTENTION! CITY OF MANCHESTER** Within the last 12 months, four young people from your community are discovering a good place to invest their time, the Army. Young people are joining the Army for good reasons for jobs, travel, education, for pay and benefits. Individual's such as 1. Keith Campbell, Artillery Missile, 2. Jack Sizemore, Area Communications, 3. Rick Smith, Wire Communications, 4. Craig Strong, Military Policeman. All have joined the Army family, joined the people who have joined the Army. For more information call your Army Representative, 665-3731, located at 212 S. Fourth Avenue, Ann Arbor, 8-5

## BY OWNER

30 acres - beautiful private lake for swimming and fishing, mile east of Manchester. 8% land contract possible, \$42,000

16 acres - pond site \$17,500 Call 428-8201. 8-5 p.

**FOR SALE** - 302 Ford Engine, low miles, \$100, 428-7943. p.

## Public Notice

### To Black Sheep Patrons

**HOURS:**  
Monday thru Thursday 11 a.m. to 12 p.m.  
Friday and Saturday 11 a.m. to 1 a.m.  
Sunday 12 noon to 11 p.m.

**BUFFET:**  
Thursday, Friday & Saturday 6 p.m. to 10 p.m.  
Sunday 3 p.m. to 9 p.m.

FOR RESERVATIONS  
OR BANQUET  
INFORMATION  
PHONE 428-7000



**Black Sheep Tavern**

**GERMAN PARK, ANN ARBOR** Mid-Season picnic this Saturday, July 31, Fine dance band. Park open at 5 p.m. Dinner served at 5:30. Due to limited accommodations, attendance will be limited to 2000 people. No admittance after 11 p.m. Must be 18 or over to enter. Bring ID card. Admission \$1.00.

**FOR SALE** - 8 foot Pool Table - 106 new, 428-7690. p

**GIRLS BIKE** - Like new \$30, 428-8056 after 6 p.m.

**WILL THE PERSON** or persons who picked up 2 folding lawn chairs at Carr Park, July 24, please call 428-7720, no questions asked.

**AKC Miniature Schnauzer** puppies, four males ready for home August 1, Call Dexter 426-4235. Great pets, no shedding. 8-12

**WANTED** - 3 room ground floor apartment near church and grocery store. 428-7221. 8-5p.

## Legal Notice

**MANCHESTER TOWNSHIP PLANNING COMMISSION NOTICE OF PUBLIC HEARING**

TAKE NOTICE that Manchester Township Planning Commission will hold a public hearing on the application of Barry Neil Lee to construct a single-family home on the premises presently zoned R-C Recreation-Conservation described as: The south half of the East half of the Southeast quarter of the Northeast quarter of Section 19, Town four South, Range three East, Township of Manchester, County of Washtenaw, State of Michigan.

Subject to the rights of the public in existing highway, on August 9, 1976 at 8:00 p.m., EDST at the Manchester Village Hall, 120 South Clinton Street, Manchester, Michigan. MANCHESTER TOWNSHIP PLANNING COMMISSION

BUY, SELL, RENT

OR TRADE THE

CLASSIFIED WAY!

**Happy 30th  
Birthday  
Jim Schook**

## FREEDOM ELECTRIC

11207 Pleasant Lake Road  
Manchester, Michigan  
RESIDENTIAL  
COMMERCIAL  
INDUSTRIAL  
NEW CONSTRUCTION  
REMODELING REPAIR

GILBERT LUCKHARDT  
Phone 428-8233

## Horse Shoeing and Trimming

**BOB BEAUBIEN**  
Phone (517) 467-2991

11540 STEPHENSON RD  
ONSTED, MICHIGAN

## MANCHESTER AREA BICENTENNIAL DANCE

Co-Sponsored by "The Puritans Chapter"  
Saturday, August 7 - 9 p.m. to 1 a.m.  
K of C Hall

Music by  
"THE WACKENHUT ROAMERS"  
LIMITED TICKETS

TICKETS AVAILABLE AT GAMBLER'S  
OR MANNS FEED MILL

B.Y.O.B. \$4.00 per person

## Manchester Carpet Cleaners

"DEEP STEAM EXTRACTION"

new approved method of carpet and upholstery cleaning

Very Reasonable Rates Free Estimates

Special Rates To Churches

Residential-----Commercial

PHONE 428-7075 KEN BEASLEY, Owner

# THE MANCHESTER ENTERPRISE

97TH. YEAR VOLUME NO. 49

MANCHESTER TOWNSHIP LIBRARY  
P. O.

15 CENTS PER COPY

THURSDAY, AUGUST 5, 1976

## Bicentennial Calendar



Mother-Daughter - Carol and Sara Samonek



Little Miss Belle - Melissa Steele

This Saturday, August 7, there will be a Bicentennial dance at the K of C Hall in Manchester. "The Puritans" are sponsoring this one, which will take place from 9:00 p.m. to 1:00 a.m. Music will be provided by "Lorenz Wackenhut's Roamers." Cost is \$4.00 per person. The Caravan to Chelsea has been changed to Friday, August 13. The Caravan will gather about 6:30 p.m. We are scheduled to arrive in Chelsea at about 7:30 p.m. I hear Chelsea has a heck of a party planned, so we'll look for you there!

It has been called to my attention that I forgot to thank the band that supplied music for our parades. I assure you, it was an oversight, and we do sincerely thank you. You were terrific.



Belle - Sharon Stetler

If you are a gentleman still sporting a beard, and wish to be in the judging, to take place at the Manchester Fair, please contact Guy Gilbert as soon as possible.

## Fair Parade

Just a reminder! The Fair Parade is coming up. Start thinking about your floats and entries. The theme will be "Spirit of America" and the date is August 17, 6:30 p.m.

## New Entry Forms For Manchester Fair Exhibitors

Last week we promised you information about a new entry form which the exhibitors of the Manchester Community Fair will be required to use this year.

Deborah Richardson, Fair Board Secretary, and her assistants will be set up in the exhibit tent both Monday evening, August 16th and Tuesday morning, August 17th to welcome and assist all exhibitors. Here is what will happen. No matter where your exhibit is entered, in the school or the exhibit tent, you must see Deborah first. She will type your exhibitor number on the Entry Form-Premium Statement. Other personal information will also be typed on the form. The next part is up to the exhibitor, but is you need help Birdella Flood and her helpers will be available to help you fill out your form. Each fair entry must be listed on the form, as well as Department, Division, Section, Class No. and and class name. For example: Dept. 5, Div. 1, Sec. 3, Class No. 721, Class, Pressed, Patted or sliced cookies. Dept. 6, Div. 2, Sec. 2, Class No. 1097, Class, Crocheted Adult Garment.

This information must be correct for the State to reimburse its portion of the Premium money. Once the form is filled out, check it with each Department chairman to have your entries tagged and displayed. The exhibit tent committee feel this process could be expedited much faster if each exhibitor would check their book in advance and make a list of all articles and entry information. If there are exhibitors in the community who already know what many of their exhibits will be, the Fair office will be open from 1:00 to 4:30 in the afternoon on August 9th, 10th and 11th. The secretary will be on hand to help anyone fill out their forms. More items could be added to the form if needed at entry time.

As in previous years the Manchester Community Fair is sponsoring the Champion Homemaker Award. We know there are many outstanding homemakers in the area. Here are the rules for the contest.

A Michigan State Fair Award will be given to the outstanding homemaker, who is a Manchester Community Fair Exhibitor.

To be eligible for consideration, the contestant must comply with the following: A. The exhibitor must be 18 years or older. B. The exhibitor must be a resident of the Manchester school district. C. The exhibitor must register for this award in the exhibit tent, before 1:00 p.m. Tuesday, August 17, and must submit a list of the classes she has entered. D. All exhibits must be made by the exhibitor and comply with the rule for exhibiting. E. The contestant must enter at least FOUR of the following divisions: 1. Baked Goods, 2. Canned Goods, 3. Handicrafts, 4. Sewing, 5. Crafts, 6. Photography, 7. Painting, 8. Flowers and Plants, 9. Wood work.

The winner will be determined by total points accumulated. Four points will be awarded for each blue ribbon, three points for each red ribbon, two points for each white ribbon, and two points for each State Fair gold ribbon. The winner is eligible to attend the MICHIGAN STATE FAIR in 1977, and compete for the Grand Champion Homemaker Award with other county winners.

The MANCHESTER COMMUNITY FAIR will award a Plaque to the Champion Homemaker, A Reserve Champion Home-

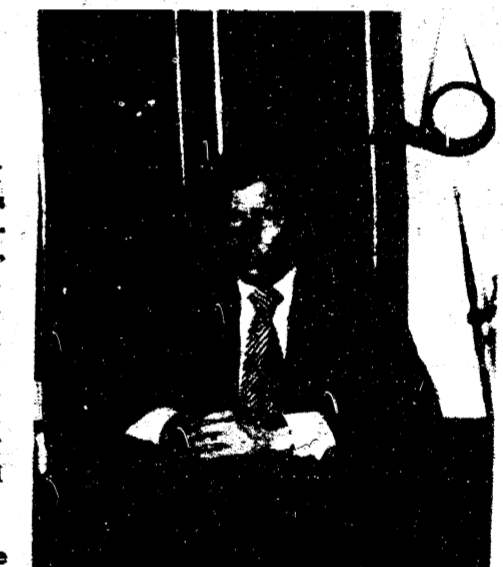
maker ribbon, a Junior Champion Homemaker ribbon and a Junior Reserve Champion Homemaker ribbon.

These four awards will be given under the same rules as above except the Junior award will be given to exhibitors under 18 years of age.

The winners will be announced at the Queen's Contest. In case of a tie the winner will be determined by the judges.

Don't forget the Fair Office is open Monday thru Saturday from 8:00 a.m. to 11:00 a.m. and 7:00 p.m. to 9:00 p.m. The telephone number is 428-8688. Call or drop in if you need information or just want to talk about the Fair.

## R. G. Lawson Heads United Way



Robert G. Lawson, 16801 Schleweis Rd., will serve as General Chairman of the Manchester United Way 1976 Campaign which will begin on October 6.

Mr. Lawson served as 1975 Campaign Chairman and is a Past President of the local Optimist Club. He is employed with the Engineering staff of Ford Motor Company in Dearborn. He is a graduate of Wyandotte High School and has attended Michigan State University, served two years in the Korean War and two years with Kaiser Engineers in Brazil.

Mr. and Mrs. Lawson (Annette) have resided in Manchester for the past ten years and have one son, Eric.

## Contestants For Baby Contest

The Manchester Jaycee Auxiliary Baby Contest is in full swing. This year there are 10 babies entered. They are:

Jason Gary Wiedmayer, Brooke Moore, Diane Randall, Jason Michael Rogers, Steven Haessler, Damon Du Russel, Laura Kay Lotwin, Jason Michael Cousino, Matthew James Blossom, and Marty Kaldan.

The pictures of the babies are on canisters in the lobby of the Union Savings Bank where you may vote for the baby of your choice.

The winner will receive a \$25 Savings Bond and a ride in the fair parade.

The second place winner will receive \$5 in cash. The proceeds will be used for community service projects.