

WANT ADS

ALL CLASSIFIED ADS ARE PAYABLE IN ADVANCE

CHELSEA GREENHOUSES, 7010 Lingens Road, Chelsea, Michigan, 475-1353 - 54 or 475-3013. Flowers and plants for every occasion. We specialize in wedding flowers to fit your budget. Wear as near as your phone and we welcome your business. **tn**

HOUSE and barn roofing, all types of roof repairs, aluminum storm windows and doors, awnings and porch enclosures, hot build-up roofing - residential and commercial, aluminum siding and now offering seamless aluminum gutters. Call Joe Hayes for free estimates. 428-8520. **tn**

SEAMLESS aluminum eavestroughs, roofing, siding, and carpentry work of all kinds. Experienced installers, all work guaranteed. Call R.D. Kleinschmidt Co. 428-8836. **tn**

GARDEN SEEDS - Now in stock, packaged and bulk. Also fertilizer. Mann's Feed Mill. **tn**

DON'T THROW IT AWAY, sell it to A & K Lawn Mower Service of Chelsea. We buy, sell and repair all types of lawn mowers. Also repair all types of gas motors, rotor tillers, chain saws and riding lawn mowers. "We Call We'll Call". Free pick up and delivery. 475-2922. **tn**

PAT'S CRAFT STUDIO, downtown Tecumseh, area headquarters for macramé, tape painting, miniatures, artists supplies and much more. Monday thru Saturday, 10 to 5:30. Classes available. 517-425-7447. **tn**

"ARE YOU BUILDING YOUR OWN HOME?" Construction money available for residential homes. Marflex Corporation, Ann Arbor, 665-8000. 6-3

HEATING AND PLUMBING REPAIRS. Call night or day. 428-7138. 5-13-76.

FOR SALE - Over 200 shares of Union Savings Bank of Manchester stock. Contact Richard R. Erb, Executive Financier, 517-425-4773 after 7 p.m. 4-22

AVAILABLE MAY 1st, lovely one bedroom apartment. Call Sam Beal 428-7082. 4-15

FREE LANCE TYPIST - Barbara Burda 428-9286, Saline. 4-22

WANTED TO BUY: Golf Course, 18 or 9 holes with land. Bob Wideman, Realtor, P.O. Box 33, Gladwin, Michigan 46624. 4-15

PIANO & ORGAN tuning and repair (517) 782-1273 or 428-8422 **tn**

ELECTRICAL wiring, new & remodeling. Licensed, fully insured electrician. Paul Kammer, phone 428-8462.

KINSEL'S TREE SERVICE-cutting, trimming, stump removal, aerial bucket/retail. Call (517) 443-5586 or 486-2819. **tn**

EAR PIERCING - Fast and painless. Gaston's Jewelry, Tecumseh, Michigan 428-3280. **tn**

BEEF TO SPILL BY SIDE: Custom slaughtering. Lockers to rent. Phone 428-7600. Manchester Frozen Food Locker. **tn**

FOOTBALL, Basketball and other sports pictures available. For prints call Jon 428-8690. **tn**

POLE BUILDINGS BY HUSKEE - BILT STRUCTURES, Farm, Urban, Commercial, call or write Jan Warren for information. 916 W. Michigan, Ypsilanti, Michigan 48197 482-3934. 4-28 p.

WANTED - Standing Hay, phone 475-2771 6-24

FURNITURE - Antiques, stripped, reglued repaired and refinished. Old Brick Quality Refinishing. Phone 769-8669 or 428-8675. 4-29 p.

THE CALICO CAT BOOK AND GIFT SHOPPE, 110 East Main Street, Easter cards, fur bunnies and Gift items for Easter. Spring assortment of Children's coloring and activity books. New shipment of green plants. 4-15

HELP WANTED FEMALE - GET OUT OF THAT RUT! Enjoy life with money you'll earn, showing latest styles and an exclusive fragrance collection from Fashion exclusive fragrance collection from Fashion Wagon of Minnesota Woolen at home style shows. We'll help you start and furnish a demo wardrobe. Also, great Manager opening now. If you can work 2 evenings a week and have transportation, call toll free at 1-800-346-0981 and ask for BEV HUGHES. 4-15 p.

WANTED hostess - earn free authentic Indian jewelry - have a party. Call 978-8072 or 763-6345. 5-6 p.

GARDENS PLOWED, very reasonable. Call after 5 p.m. 428-8665. 4-29

MARLYNS HAIR STYLES is featuring Men's and Boys Hair Styling, shampoo and blow dry \$6.00. For women specializing in perms, hair styling, tinting, frosting. Open Monday - Saturday, evenings by appointment. Free and Easy Private Parking, Marilyn Randall, owner. Phone (517) 456-7258, 11500 Clinton Road, Clinton Michigan.

FOR SALE OR SWAP - 2 L60.15 with 20 to 30 thousand miles left for 2 H 75.15 at same tread wear. 428-8905 after 6. 4-22 p.

FOR RENT - One bedroom apartment utilities furnished, private entrance, 428-8638. 4-22

WANTED - Part time baby sitter for day shift for 2 year old, my home or yours. 428-8808. 4-22 p.

MOVING SALE - Books, Haviland China pieces, collectables, clothes, dishes, etc. 518 E. Duncan, Friday, April 23 from 9 to 5. 4-22 p.

FOR SALE - Colonial Maple loveseat and platform rocker, 2 cushion davenport, new shallow well pump, 138 W. Main Street, 428-7937. 4-22 p.

FOR RENT - One bedroom apartment - available about May 1. Marie Kemner Gaff - 108 West Main Street, 428-7937. 4-22 p.

72 OLDS DELTA \$8 Royale, 2 door, hard top, 350 engine, air condition, P.R., P.S., \$1,000. 428-8051 p.

1972 SUZUKI TM-125, Moto-Cross, 1972 Suzuki 50 cc, 1973 Kawasaki 90 cc, road bike - low mileage. 428-8051 p.

AKC IRISH SETTER pups, 6 weeks old, 428-8816.

GERMAN HERITAGE TOUR - August 19th thru September 3rd. Escorted, Holland, East and West Germany, Austria, Czechoslovakia, Contact Rev. Roman Reineck, 10425 Bethel Church Road, Phone 428-8000, Manchester, also including British Heritage Tour on same dates. Visiting many Historical Sites of the Reformation.

1974 HONDA 750 K4, excellent condition, 6400 miles firm \$1500 after 6 p.m. 428-7763.

ALUMINUM EAVESTROUGH - Seamless, white, black and brown, guaranteed, free estimates, Walkow Home Improvement Company, phone 315-428-8468 or 517-592-2234. **tn**

WANTED STANDING TIMBER and WALNUT

Let us look at your wood lot we can give you a price on selective cutting of mature trees.

Tri-County Logging, Inc.

P.O. BOX 487 CLINTON, MICHIGAN 42936 Phone 517-448-7060 or 456-4731

NEW BEAUTY SCHOOL Classes start May 4th, part time, full time, day or evening, Apollo University of Hair Design, 146 N. Main, Adrian 256-6491. 4-29

LOST DOBERMAN & German Shepherd & Mix, 6 years old, answers to Quigley, scar over eye, bobbed tail, \$50.00 reward, I love my dog. Contact Jan Gross 971-4800. 4-22 p.

MANCHESTER - Delightfully pleasant home - 3 bedrooms, excellent condition. Walking distance to shopping - immediate occupancy. \$ 32,900. Call Joe O'Connor 994-1223.

FRIGIDAIRE AUTOMATIC Washing Machine, call 428-8873. 4-22 p.

EASTER BUNNIES FOR SALE - Phone 428-7197.

LOST - English Setter, white with black specs, medium long haired male, between Manchester & Bridgewater, answers to Whitey, 428-7142.

FOR RENT: One bedroom apartment 428-8151 p.

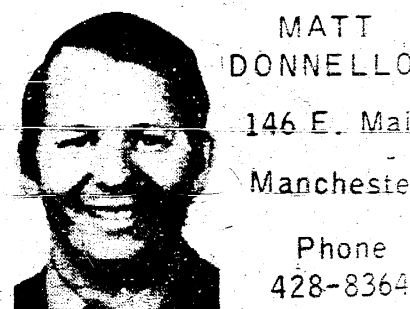
FOR SALE: Formals (in todays style) size 7, 8, 10 and 12. Also two slotted mags, 14 inch. Call 428-7821.

LARGE Antique oak side board, copper applique kettle, butternut commode and youth bed. 428-7386. p.

FOR SALE: Bicycle - Girls 10 speed, very good condition \$50.00. Call 428-8434. p.

MOBILE HOME PROTECTION

State Farm has economical coverage for your mobile home and contents liability protection for you. Many optional extras to meet your special needs. And of course you can receive the best service. Call for details.



MATT DONNELLON
146 E. Main
Manchester
Phone 428-8364
Like a good neighbor, State Farm is there.

STATE FARM MUTUAL AUTOMOBILE INSURANCE COMPANY Home Office Bloomington, Illinois

A Bicentennial Happening

MANCHESTER HIGH SCHOOL

SATURDAY, APRIL 24 5:00 p.m. - 9:00 p.m. SUNDAY, APRIL 25 2:00 p.m. - 6:00 p.m.

Admission: \$1.25 - Adults, \$.50 Children under 12 (Advance tickets)
\$2.00 - Adults, \$1.00 Children under 12 (At the door)
Preschoolers Free

Advance tickets may be purchased from First Lady Sponsors. See Feature articles for details of the "Happening".

Public Notice To Black Sheep Patrons

HOURS:
Monday thru Thursday 11 a.m. to 11 p.m.
Friday and Saturday 11 a.m. to 1 a.m.
Sunday 12 noon to 10 p.m.

BUFFET:
Thursday, Friday & Saturday 6 p.m. to 10 p.m.
Sunday 2 p.m. to 6 p.m.

FOR RESERVATIONS OR BANQUET INFORMATION PHONE 428-7000

MANCHESTER TOWNSHIP LIBRARY F. O.

THE MANCHESTER ENTERPRISE

109TH YEAR VOLUME NO. 25

15 CENTS PER COPY

THURSDAY, APRIL 22, 1976

Jaycees Easter Egg Hunt Winners A Bicentennial Happening Saturday and Sunday, April 24-25



Pictured from left to right are Jeff Horning, Tracy Beckel, Cathy Burch, Jill Alber, Heather Walkow and Kirk Rodriguez.



Pictured from left to right are Mary Kay Crist, Heather Cyers, Deanna Gilbert



Pictured from left to right are Chad Randall, Wendy Waldron, Stephen Alber and Nancy Groves.

On Saturday, April 24 and Sunday, April 25, the Manchester Bicentennial Committee will present, "A Bicentennial Happening". The best way to describe this event is to say that it resembles a miniature Henry Ford Museum. Following is a partial list of planned features: A photo booth, Demonstration in making Applehead dolls, Police Display, Mich-

School Millage Defeated 404-323

The voters of the Manchester Public School District went to the polls Monday, and soundly defeated the millage proposal by a vote of 404 to 323. A total of 734 ballots were cast with 7 being spoiled.

As a result of the operational millage defeat Monday, April 19, 1976, the Board of Education will hold a meeting Monday evening, April 26, 1976 to make plans for the annual election June 14, 1976. At this meeting a decision on the June millage request will be made. The public is invited to attend.

Two board seats will also be filled at the June election. The terms of Andrew Luckhardt and Harold J. Walkow are expiring June 30 of this year. Persons in the district who are interested in running for the Board of Education may pick up nominating petitions in the Superintendent's Office. The last day for filing nominating petitions is 4:00 p.m. May 17, 1976.

Career and College Day April 27th

This years county high school "Career and College Day" program will be held on Tuesday, April 27 at Washtenaw Community College. Sophomores, Juniors, and Seniors from Manchester will be able to meet with representatives from three careers or colleges of their choice during the morning sessions. The first session begins at 10 to 10:30; second session 10:45 to 11:15 and third from 11:30 to 12:00. Career representatives will be available from the following areas during the sessions:

Apprenticeships: Electrical, Carpentry, Trowel Trades, Plumbing, Automotive Repair, Drafting & Engineering, Food Service, Health Occupations, Real Estate, Industrial Jobs, Law Enforcement, Graphic Arts, Sales & Marketing, Government Employment, Cosmetology, Airline Careers.

Service Academies: Army - Navy - Air Force - Coast Guard.
R.O.T.C.: Air Force - Navy - Army
Military Recruiting: Air Force - Navy - Army - Marines.

College Representatives: Adrian, Albion, Alma, Cleary, Central Michigan, Eastern Michigan, Lake Superior State, Michigan State, Michigan Technological University, Ferris State, Northern Michigan, Grand Valley State, Western Michigan, Northwood Institute, Hope, Kalamazoo, Hillsdale, Oakland University, Olivet, Siena Heights, Kendall School of Art & Design, Lawrence Institute of Technology, General Motors Institute, Michigan State University Institute of Agricultural Technology, Washtenaw Community and Financial Aids Representative.

At a luncheon meeting recently, I interviewed Mary Frances Fielder and Pam Riley concerning Lambda Nu's bicentennial endeavor, "Hemlines in History". I was particularly interested in how the style show came to be.

Mary Frances told me she had represented Lambda Nu at a Bicentennial commission organizational meeting last October. At that meeting local organizations were told what events were available and Mary F. brought back several suggestions to our meeting. When the Lambda Nus voted, it was unanimous that we do the style show.

Mary F. was made chairperson of the Lambda Nu committee, assisted by Pam Riley and Carol Walter.

As for the financing of this project, money will be coming from the cooperative Bicentennial Commission made up of Saline, Dexter, Chelsea and Manchester.

The Rogers Company, who will be coordinating this summer's events, has provided many costumes, script material, musical suggestions, suggestions for casting of models as well as accessory requirements and suggestions for props and stage design.

In addition to the Rogers Company reproductions, the show will be augmented by many local patrons who will be lending authentic costumes. Some of these people are Don Limpert, Clare Reck, Mary Kalleward, Sue Way, Mary Lou Rigg, Kathy Roberts and others who will be mentioned later.

In the July 11 program Lambda Nus and their husbands will be doing most of the modeling, however some of the additional models will be Sue Way, Jo Walter, Sandy Hamilton, Kathy Gould, Cecilia Niehaus, Marilyn Minick, Kathy Roberts, Kristin Hawk and the Ron Fielder family.

Dick and Lois Kuntz will be the fashion commentators for the show. Mary Lou

Continued on Page 10

The Manchester Enterprise
 305 Beaufort Street
 Manchester, Michigan 48158
 Phone 428-8173

The Manchester Enterprise was established in 1867 and is published each Thursday at 305 Beaufort St., Manchester, Michigan with second class postage paid at Manchester.

THE STAFF
 Edward E. Steele, Publisher
 Lenore Steele, Editor
 Cecelia Chapin, Feature Editor
 Jon Roger Hardenbergh, Sports Editor

EIGHT WOMEN NAMED TO HOME ECON HONORARY

Eight Albion College Women will be initiated into Alpha Omicron, home economics honorary, on April 21st. To be eligible for the honorary, women must be juniors with a 2.5 overall grade point average plus a 3.0 or over average in home economics courses.

The new Alpha Omicron member from Manchester is Sue Vogel, daughter of Mr. and Mrs. Louis D. Vogel, 11437 Pleasant Lake Road.

HISTORICAL SOCIETY

It's all aboard for the Washtenaw County Historical Society special April meeting. The April meeting of the Washtenaw County Historical Society will be at the Gandy Dancer Restaurant, formerly the Michigan Central Depot. Sam Breck, local railroad historian, will present a look at early railroad depots of Michigan. The meeting will be at 1:30 p.m., Sunday, April 25.

They're Engaged



The engagement of Donna Marie Breilish to Edward Duane Braun has been announced by the future bride's parents, Mr. and Mrs. John Breilish of Clinton. Miss Breilish and her fiancé, the son of Mr. and Mrs. Duane Braun of Manchester plan a spring 1977 wedding. The bride-elect is a graduate of Clinton High School and is employed by the National Bank and Trust Company of Ann Arbor. Mr. Braun was graduated from Manchester High School and attended Washtenaw Community College. He is employed by the Ford Motor Company Rawsonville Plant.

JAYCEE LAMB CLUB

Lamb Club applications will be available at school from April 19 thru April 23. Any student entering the 6th grade, thru the 10th grade, may participate. An application must be filled out and returned if you wish to join the Lamb Club. If you have any questions, please call John Ball 428-8559 or Glen Mann 428-7079.

Bicycle Safety Check

The Manchester Optimist Club will conduct its annual Bike Safety Clinic on Saturday, April 24, at 1:30 p.m. at the Senior Citizen's Guild, 502 W. Huron St., Ann Arbor, corner of Huron and Chapin. The speaker will be Arlen Helwarth, Dean Emeritus, U of M with the topic Let Freedom Ring.

MICHIGAN'S GOVERNOR PROCLAIMS NATIONAL BETA SIGMA PHI WEEK

Governor Milliken has proclaimed Beta Sigma Phi Week in Michigan to be April 25 - May 1. The local chapter of Beta Sigma Phi, Lambda Nu, wishes to extend an invitation to you all to visit our display which will be in Gamble's window all week. This display, prepared by Mary Kallewaard, will describe some of the traditions of Beta Sigma Phi and will show what our local chapter does in the community.

Lambda Nu wishes to thank Irv and Donna Gill for their generous cooperation.

MEETING NOTICE

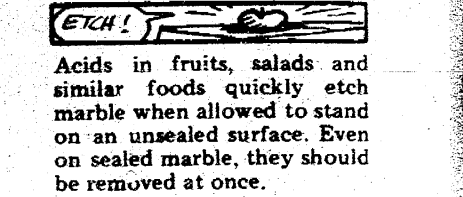
A meeting of the RRP (American Association of Retired People) will be held on Friday, April 23, at 1:30 p.m. at the Senior Citizen's Guild, 502 W. Huron St., Ann Arbor, corner of Huron and Chapin. The speaker will be Arlen Helwarth, Dean Emeritus, U of M with the topic Let Freedom Ring.

Twentieth Century Club Meeting

The Annual Meeting of the Twentieth Century Club was held on April 13 at the home of Mrs. James Pratt.

Year end reports were given by officers and committees - Elections were held with the following elected: President, Mrs. Dan Boutell, Vice-President - Mrs. Harry Krauss, Secretary - Mrs. Willard Mann, Treasurer - Mrs. Lyle Widmayer.

The evening concluded with a social hour, as refreshments were served by the hostess and Mrs. Alvin Kappler.



Etch-A-Sketch in fruits, salads and similar foods quickly etch marble when allowed to stand on an unsealed surface. Even on sealed marble, they should be removed at once.

Mom says this is the efficient way to pay bills.



How right Mom is! With a checking account at Union Savings Bank, bill paying becomes a breeze. Write a check, stamp the envelope and the bill is paid. Of course, it helps when you have someone to mail it for you. It helps, too, when your bank offers Happy Balance checking so you can enjoy free checking just by maintaining the minimum balance! Our senior friends, naturally, receive free checking service always.

UNION SAVINGS BANK

MEMBER F.D.I.C. MANCHESTER / BRIDGEWATER / PLEASANT LAKE

AMERICA'S GREATEST STRENGTH IS STILL US HOMESTEADERS

1976 SQ. FT. at a 1776 SQ. FT. PRICE

Imagine all this house on your lot.

COMPLETE FOR ONLY \$41,776

All you do is paint inside and move in, that's just over \$20 per square foot. COMPLETE.

OR, if you wish, save even more with our CO-OP PROGRAM ONLY \$31,976, INCLUDING Excavation and back fill, full basement, basic home and garage erected under lock and key and all plumbing, heating, wiring, insulation, drywall and even interior trim packages.

WE HANDLE EVERYTHING FOR YOU

• PLANS • PERMITS • BUILDING • AND FINANCING TOO!

WE'RE PROUD OF OUR PRICES
 PROUD OF OUR REPUTATION
 PROUD OF OUR HOMES

Call us, we'll show you we're not first by choice.

FIRST CONSTRUCTION CORE
 Custom Home Builders

CALL 994-4230
 1-94 & State St.
 Suite 701, Wolverine Tower
 Ann Arbor.

COMMUNITY

Thursday, April 22, Calling Night meet the church at 8:45 p.m.
 Friday, April 23, at 1:30 p.m. at the Senior Citizen's Guild, 502 W. Huron St., Ann Arbor, corner of Huron and Chapin. The speaker will be Arlen Helwarth, Dean Emeritus, U of M with the topic Let Freedom Ring.

ON LUTHERAN

Saturday, April 24, 7 a.m. Men's Prayer breakfast. No YI classes. No Jr. choir.
 Sunday, April 25, 8 p.m. Senior Prayer Conf. "New Resources Clin-7 p.m. Em. Ypsl.
 Tuesday, April 27, Huron River Conf. Spring ALCW Convention at Zion Ann Arbor begins 9 a.m. thru 2:30 p.m.

MANCHESTER METHODIST

Thursday, April 22, 6:30 p.m. Youth Club meeting.
 Sunday, April 25, 11:30 a.m. Chancel choir rehearsal.
 Monday, April 26, 7:30 p.m. Nominating Committee meeting.
 Wednesday, April 28, 7:00 p.m. Cherub choir rehearsal. 7:30 p.m. Wesley choir rehearsal.

THOMAS LUTHERAN

Thursday, April 22, Confirmation class 15 p.m.
 Tuesday, April 27, Choir rehearsal 8:00 p.m.

ARON UNITED METHODIST

Friday, April 23, 3:30 p.m. Catechism.
 Saturday, April 24, 9 a.m. to 4 p.m. Spring Rummage Sale (plus handicraft items and pretzels).
 Sunday, April 25, 11 a.m. Boys and Girls Fellowship.
 Monday, April 26, 7:30 p.m. Becomers.
 Tuesday, April 27, 3:30 p.m. Jr. choir practice.
 Wednesday, April 28, 8 p.m. Chancel choir practice.
 Thursday, April 29, 8 p.m. High schoolers.

BETHEL UNITED

Sunday, April 25, 10 a.m. Worship Service - Confirmation class presented. 2:15 p.m. Sr. Youth meet to go to Evangelical Home for service.
 Tuesday, April 27, 7:30 p.m. Church school teachers meeting.

EMANUEL UNITED

Wednesday, April 21, 6:30 p.m. Confirmation Class.
 Thursday, April 22, Choir as usual.
 Saturday, April 24, 6:30 p.m. Young Adult potluck at the Joneses', if it rains we will meet at 7:30 with no meal.
 Sunday, April 25, 6:30 p.m. Adult Fellowship Bicentennial program. Refreshments will be served first.
 Tuesday, April 27, 1 - 4 Senior Center.
 Wednesday, April 28, 1:30 p.m. Senior Citizens, 6:30 p.m. Confirmation.

MANCHESTER BAPTIST

Friday, April 23, 8 p.m. Adult Choir practice.
 Saturday, April 24, 6 p.m. Young People meeting.
 Be ye doers of the word, and not hearers only, deceiving your own selves. James 1 - 22.

Area Obituaries

Mrs. Oscar (Mattie) Bahnmiller
 163 East Duncan Street
 Manchester, Michigan

Age 81 years a life long Washtenaw County resident died Saturday night at the Saline Community Hospital.

She was born April 20, 1894 in Lima Township, the daughter of Martin and Mary Wacker Seltz.

She was married to Oscar Bahnmiller on November 14, 1916. He survives.

She was a member of the Emanuel United Church of Christ, the Womens Guild of the Church and the Manchester Senior Citizens.

In addition to her husband, she is survived by one son, Gerald of Saline; two daughters, Mrs. Cady (Marjorie) Hall of Laguna Beach, California and Mrs. Lloyd (Elaine) Kimbrell of Leslie and three grandchildren.

She was preceded in death by two brothers, three sisters, three half-brothers and one half-sister.

Funeral services were held Wednesday at the Jenter Funeral Home. Rev. Joseph Wise officiated. Burial followed in Oak Grove Cemetery in Chelsea.

Memorial contributions may be made to the Emanuel Church or the Saline Community Hospital.

YOUR CHURCH

EMANUEL UNITED CHURCH OF CHRIST
 Rev. Joseph W. Wise, Pastor, Steven Jones, Assistant Pastor.
 Quest 9:15 a.m. Worship 10:30 A.M. Plan to worship God regularly.
SHARON UNITED METHODIST
 Corner Pleasant Lake Rd. - M-52.
 Rev. Michael Peterlin, Pastor
 Sunday School 10:00 a.m., Worship Service 11:00 a.m.

ST. THOMAS LUTHERAN
 Rev. Jerome Dykstra, Pastor
 Ellsworth Rd.
 Sunday School & Bible Class 9:30 a.m.
 Worship Services 10:45 a.m.

ST. JOHN'S UNITED CHURCH OF CHRIST
 Carl Asher, Pastor
 Rogers Corners, Waters and Fletcher Rds.
 Sunday School 9:30 a.m., Church Services 10:30 a.m.

BETHEL UNITED CHURCH OF CHRIST
 Rev. Roman A. Reineck, Pastor
 Schneider and Bethel Church Roads
 Church Service 10:00 a.m., Sunday School 11:00 a.m.

MANCHESTER UNITED METHODIST
 Rev. Walter R. Dumberg, Pastor
 Church School 9:15 a.m. to 10:15 a.m.
 Worship Service 10:30 a.m. to 11:30 a.m.

ST. MARY'S CATHOLIC CHURCH
 Father Raymond Schlinkert
 West Main Street
 Sunday Masses 8:30 a.m. and 10:30 a.m.
 Monday thru Friday 8:30 a.m., Saturday, 7:00 p.m.

NORTH SHARON COMMUNITY BIBLE
 William Enslin, Pastor
 Sylvan and Washburn Road
 Sunday School 10:00 a.m., Worship Service 11:00 a.m. (Nursery will be available)
 Junior Church Classes 11:00 a.m., Youth Meeting Senior High 6:00 p.m., Youth Choir 6:00 p.m., Evening Worship Services 7:00 p.m. (Nursery available), Wednesday Bible Study and Prayer Meeting (Nursery available) 7:00 p.m. To your door Bus Transportation available 428-7222.

FAITH COMMUNITY CHURCH
 Timothy Miles, Pastor
 8400 Sharon Hollow Rd. off W. Austin Rd.
 Worship Service 10:00 a.m., Sunday School 11:00 a.m., Sunday Young People 9:00 p.m., Sunday Evening Service 7:00 p.m.
 Wednesday evening 6:30 p.m. Junior Choir Practice, Prayer Meeting and Bible Study 7:00 p.m., Junior Prayer Meeting 7:30 p.m., Senior Choir Practice 8:00 p.m.

IRON CREEK CHURCH
 Rev. Ralph Janofski, Pastor
 Worship Service 10:00 a.m., Sunday School 11:15 a.m., Youth Service 6:30 p.m.
 Evening Service 7:30 p.m. Wednesday Evening: Junior Choir 6:30 p.m., Bible Study and Prayer Meeting 7:30 p.m., Senior Choir 8:30 p.m.

ZION LUTHERAN CHURCH
 Rev. John R. Morris, Pastor
 3050 S. Fletcher Road
 Sunday School 9:00 a.m., Family Worship 10:15 a.m.

ST. JOHN'S EVANGELICAL LUTHERAN
 Dennis Falk, Pastor
 Sunday School 9:30 a.m., Church Service 10:30 a.m.

MANCHESTER BAPTIST CHURCH
 Alan W. Morris, Pastor
 122 W. Main St., Phone 428-7236
 Sunday School 10 A.M. Morning worship 11 A.M., Adult Bible Study 6 P.M., Youth and Childrens Bible Study 6 P.M., Evening Service 7 P.M., Prayer Meeting Wednesday 7 P.M., Saturday afternoon, Sunday School and Bus Visitation. Bus transportation 428-7582 or 428-7206. We Teach Salvation of Souls Through Jesus Christ our Lord.

ST. BARNABAS EPISCOPAL CHURCH
 Rev. Jerrold F. Beaumont, "Vicar"
 Old U.S. 12-1/4 mile west of M52-Chelsea
 10:00 a.m. Holy Eucharist and Morning Prayer.

Manchester Carpet Cleaners

"DEEP STEAM EXTRACTION"

New approved method of carpet and upholstery cleaning

Very Reasonable Rates Free Estimates

Special Rates To Churches

Residential-----Commercial

PHONE 428-7075 KEN BEASLEY, Owner

VACUUM CLEANERS ELECTROLUX

Electrolux Sales & Service

call

James Cox
 Manchester
 428-8444

Williamson

Heating & Cooling Systems

INSTALLATION & REPAIR

Phone 428-8692

John Steele jr.
 Manchester

U.M.W.S.

Salad Smorgasbord

MANCHESTER UNITED METHODIST CHURCH
 501 Ann Arbor St. Manchester, Michigan

Wednesday, May 5

1 ST SERVING 11:30 to 1:00 P.M. 2 ND SERVING 1:00 to 2:00 P.M.

Reservations Necessary **\$2.50** Reservations Not Necessary
 Children \$1.00

Reservations for 11:30 to 1 p.m. Serving May Be Made By Calling
 Marion Lowery 428-8651
 Ethei Kerr 428-7420 Laura Gauss 428-8340

A-1

USED CARS THE CLOSER YOU LOOK, THE BETTER WE LOOK

TOM MARSHALL FORD
 512 W. Main Manchester

Church Services Courtesy of

Jenter Funeral Home
 302 E. Main St.
 Manchester, Michigan

PAGE 4 THE MANCHESTER ENTERPRISE
SPUR OF THE MOMENT
SADDLE CLUB

The Spur of the Moment Saddle Club will be holding the final and the most exciting Clinic on Sunday, the 25th of April. We will be working with our horses, and it is what we have been waiting all winter for.

We will meet at 6181 Ernst Road, and work the horses in the work area at the Bernard Davis farm. The meeting will start about four in the afternoon so everyone should be able to get all the work done around home before they have to come and have fun.

We will stay as long as anyone wants to work and as long as we can see to do things. It will be the last meeting before the horse show season starts at White Arena on May 2nd. As with all the rest of our clinics this is open to the public and it is FREE.

THURSDAY, APRIL 23, 1976

Thank you for your interest and we have had a real good time during these past winter months, just talking "Summer". I know that a lot of us have picked up a few pointers.

Be looking forward to a good Summer show season and hope a lot of you people with horses will come to the shows this year. This was started primarily for the kids and we would love to have more of them come along with their parents.

MANCHESTER JAYCEES
ELECTIONS

A special membership meeting of the Manchester Jaycees will be held at 8 p.m. on Monday night, April 26, 1976, at the American Legion Hall for the purpose of electing officers and directors for 1976-77. The future of the chapter depends on your attendance.

TREE AND SHRUB
DISTRIBUTION

The Washtenaw County Soil Conservation District will distribute tree and shrub seedlings on Saturday, April 24, at the Road Commission office at 555 North Zeeb Road in Ann Arbor. It will be held between 8 a.m. and 4 p.m.

All who have made advance seedling reservations will be able to pick up their orders on that day. In addition, non-reserved seedlings will be available for purchase on that day on a first come, first serve basis. These seedlings are nominally priced and can be purchased in lots of 50 plants.

Seedlings which will be available include Blue Spruce, White Spruce, Scotch Pine, Red Pine and fast-growing hardwood, Green Ash. Tall, flowering shrubs such as Autumn Olive and Multiflora Rose which produce berries for birds and wildlife

will also be available. In addition, a ground cover for erosion control on steep banks will be available for purchase.

All those interested in obtaining tree and shrub seedlings are urged to attend.

WASHTENAW GENEALOGICAL SOCIETY

The next meeting of the Washtenaw Genealogical Society will be April 25 at 2:30 p.m. at the Senior Citizens Guild, 502 W. Huron St., Ann Arbor. The subject is Tracing Your Revolutionary War Ancestors, with the speaker being Mrs. Arthur Smith.

If you have questions or problems come early at 1:00 p.m. We'll try to help.

The May meeting will be at the Hatcher Library, Main Campus, University of Michigan, Sunday, May 23, at 2:30 p.m. We will have an opportunity to learn what kinds of maps are available and how they may be used to trace family history.



**FREE
WITH
HOME
IMPROVEMENT
LOANS**

LAWN GROOM
WEED PULLER

PULLS WEEDS
OUT BY
THE ROOTS!

ANN ARBOR FEDERAL SAVINGS

AAFS

11 OFFICE TO SERVE YOU IN ANN ARBOR, CHELSEA, DEXTER, PLYMOUTH, MANCHESTER, BRIGHTON, SALINE
MANCHESTER FIELD

Chapin-Magadan Wedding



St. Mary's Catholic Church was the setting for the April 3 ceremony uniting Wendy Alyce Magadan and Mark Chapin in marriage.

The Rev. Raymond Schlinkert officiated for the daughter of Mr. and Mrs. Irwin Magadan of Detroit and the son of Mr. and Mrs. Robert H. Chapin of Manchester.

Approaching the altar on the arm of her father, the bride was attired in a floor length gown of powder blue with a matching picture hat. She carried a bridal bouquet of white roses.

Carol Ann Magadan, serving as her sister's maid of honor, wore a peach floor length gown with matching picture

hat and carried white roses. Daniel Roberts was best man. A reception followed in the church hall.

The newly weds are residing in Madison, Wisconsin where the groom is attending Edgewood College.

**DEXTER-CHELSEA
LA LECHE LEAGUE**

The Dexter-Chelsea La Leche League will meet Monday, April 26, at 8 p.m. at the home of Mrs. Laurie Seagraves, 13453 Riker Road, Chelsea. The topic of the meeting is "Nutrition and Weaning."

Member of Ann Arbor Board of Realtors Multiple Listing Service

Spear & Associates,
INCORPORATED REALTORS

122 West Main Phone 428-8388 Daily Manchester

THE GALLERY HOMES

BRAND NEW LISTING: The number 2, brand new, well built 3 bedroom home located East of Manchester in the High School area. 1 1/2 baths, full basement, with lots of room plus truly wonderful carpeting throughout. A very low maintenance home at a reasonable price.

Located 3 blocks from Downtown Manchester is this excellent Ranch Style home on a pretty 85' X 132' lot on Vernon Street. 3 bedrooms, all with lovely hardwood floors too nice to cover with carpeting, 1 1/2 baths, recreation room, full basement, central air and a 1 car garage with a concrete drive plus many other items. You won't be satisfied until you've seen it for yourself!

A REALLY NICE HOME IS HERE in this spacious 4 bedroom home located half way between Manchester & Chelsea. 1 bath, with more possible, dining room, full basement, fireplace, recreation room and a 2 1/2 car garage. Manchester Schools. A lovely home in a quiet area on 3.3 acres.

CHARMING home in the Clinton School area. 3 bedrooms, 1 bath, dining area, basement, and a 2 car garage on 2 1/2 acres. Also many new sensational items have been added to make this home it's very best. Amazing price in the thirties.

EVERYTHING you've always looked for in a home is found in this spacious 5 bedroom home on 11 acres. 3 1/2 baths, full walkout basement, enjoyable recreation room, new unattached 3-car garage and beautiful new carpeting throughout. Also some lake possibilities. No exaggeration. See it for yourself now!

VACANT LAND
AVAILABLE a half a mile East of Manchester on Austin Road in one 14 and one 21 acre lot of lots of Road frontage and nice rolling countryside. Very good prices.

HERE'S A LITTLE LAND TO BUILD THAT LITTLE HOUSE you've always wanted. It's 2 acres one mile West of Manchester on a black top road. Some small trees plus natural gas near the property.

Here's the Best Bargain you've had all day. A 10 acre lot located 2 miles West of M-32 on Pleasant Lake Road for the low price of \$13,500. Perk tests are no problem and a building can be put anywhere it's desired!

FARMS
What's a glamorous farm? This lovely large 7 bedroom farmhouse is just that! 1 bath, full basement, dining room and 2 breezy screen porches plus more. 40' X 80' barn, cement silo, and several outbuildings. An additional 80 acres is also available across the road. Located one mile West of M-52 on Pleasant Lake Road.

240 acre beef farm available now! The home has 5 bedrooms, 2 baths, family and dining room, cozy fireplace, plus a nice breezy screen porch for those hot summer evenings. A sparkling stream and a small pond is located on this easy to farm flat land. Large barn and an outbuilding plus lots more land available. A truly amazing value.

We have buyers -- call us to sell your property
REAL ESTATE ADVICE

No Obligation - Residential Properties - Farms
Commercial Properties - Vacant Lands



OFFICE HOURS
Mon. thru Fri.
9 a.m. to 5 p.m.
Sat. 9 a.m. to 12 noon
Office: 428-8388
Eves. & Weekends:
Ellis Pratt: 428-8562
James Mann: 428-8074
Anette Lawson: (517) 456-4014

**Doug's Party
Store**

500 ANN ARBOR STREET MANCHESTER

OPEN MONDAY THRU SATURDAY 7 AM TO 9:30 PM
SUNDAY 8 AM TO 9:30 PM

Beer-Wine Take-Out
GROCERIES
UNION **76** GAS

H-eating!
I-nformation and advise!
L-abor guaranteed!
L-abor cost reasonable!
T-anks and drainfields!
O-h. Electrical too!
P-Lumbing!

P-rofessionals in our field!
L-ook a do-it-yourselfer-shop!
U-can depend on us.
M-ay call us - 24 hrs. a day!
B-ids and estimates free!
I-nterested in your problems!
N-ew, remodel, or repair work!
G-o and call us today.

HILLTOP PLUMBING
8312 WERNER ROAD
CHELSEA, MICHIGAN
PHONE 475-2949

Wedding Bells and Beautiful Brides



... ..

MANCHESTER
ENTERPRISE
WEDNESDAY

The
Manchester Enterprise

STEP 11 AND 22 FOR THE COLLECTOR

STRIKES 'N SPARES

MANCHESTER WOMEN'S

FINAL STANDINGS

Sambles	529.5	370.5
Aple City Meats	502	398
Bonanza	491.5	408.5
Joebe Welding	477.5	422.5
Weatherwax Drugs	450	450
Columbia Plumbing	450	450
Brothy Mae	416.5	483.5
Lowrys Arco	412.5	487.5
Milmeier	404	496
Whvas Products	366.5	533.5
HIGH TEAM SERIES		
Sambles	3149	
Joebe	3024	
Bonanza	3008	
HIGH TEAM GAME		
Sambles	1124	
Joebe	1119	
Columbia	1071	
HIGH INDIVIDUAL SERIES		
L. Richardson	599	
D. Sharpe	596	
V. Tirb	592	
HIGH INDIVIDUAL GAME		
V. Tirb	240	
Weatherwax	240	
Golightly	238	
Arnold	236	
Flelder	236	

JOLLY KEGLERS

FINAL STANDINGS

Ron's Tree Service	130	80
Grossman-Huber	114	96
Krauss Pharmacy	113	97
Carol's Cut & Curl	98	112
Manchester Enterprise	88	11
Manchester Enterprise	88	122
J. F. Seltz & Sons	87	123
HIGH TEAM SERIES		
Grossman-Huber	2552	
Carol's Cut & Curl	2515	
Krauss Pharmacy	2505	
HIGH TEAM GAME		
Krauss Pharmacy	915	
J.F. Seltz & Sons	914	
Carol's Cut & Curl	894	
HIGH INDIVIDUAL SERIES		
N. Flint	555	
I. McGee	549	
E. Weir	529	
HIGH INDIVIDUAL GAME		
N. Flint	236	
J. Withrow	232	
I. McGee	223	
500 SERIES OF THE WEEK		
I. McGee	502	
P. Schmidt	502	

EARLY GOLF LEAGUE

Swartz-Tirb	19.5
Gilbert-Mann	18.5
Reed-Beckel	16.5
Carpenter-Stockwell	16.5
Tracy-Miller	16.5
Hamilton-Hughes	16
Rogers-Fink	14
D. Steele-Fisher	13.5
Edwards-Boutell	13.5
Ottendorf-L. Steele	13.5
Kouba-DuRussel	11.5
Burkhardt-Walter	10.5
Closest to #3 - Tracy	
Closest to #6 - Boutell	
Long Drive on #1 - Reed	

CLARK LAKE LATE LEAGUE

Reed-Hamilton	21
Tagging-Marrison	19.5
L.Amb-Koebbe	18.5
Popkey-Stockwell	17.5
Fisher-Rogers	17.5
Gilbert-Mann	17.5
Beckel-Alber	17
Hughes-Blossom	17
Korican-Kirk	13
Carpenter-Ray	13
Kouba-DuRussel	12.5
Day-Day	12.5
Wolf-Weaver	12.5
Way-Swartz	11.5
Tirb-Swartz	10.5
Simmons-Scully	9
Closest to pin #5 - Reed	
Closest to pin #9 - Lamb	
Low Actual - Hamilton	

"The busiest men have the most leisure." - English Proverb

BROTHERLY LOVE...

is that cement which binds us all together under the FATHERHOOD OF GOD!



A Masonic Thought for Daily Living from:
 THE GRAND LODGE OF FREE &
 ACCEPTED MASONS OF THE STATE OF MICHIGAN

If you can say
 "Scrumpdillyishus"
 you get a
BANANA SPLIT
 for only **59¢**

Scrumpdillyishus



Apr.
 22-23
 Thurs. and Fri.

You'll go bananas for this appealing offer on the famous DAIRY QUEEN® Banana Split. Two fresh-cut banana slices and America's favorite treat, topped with chocolate, strawberry, pineapple, and whipped topping. Come on in. Say "Scrumpdillyishus" and get a DAIRY QUEEN Banana Split at a very special price. At all participating DAIRY QUEEN stores.



213 MAIN STREET, MANCHESTER

*Reg. U.S. Pat. Off., Am. D.Q. Corp. (C) Copyright 1976, Am. D.Q. Corp.

Now Is The Time
 To Build Your
 New Home

ALSO REMODELING AND ROOM ADDITIONS

Phone 428-7109

Norm Walz Construction
 212 TORRY STREET MANCHESTER, MICH.

HELFRICH MASONRY

LICENSED CONTRACTOR
 FIREPLACES-BASEMENTS-VENEER
 STONE & BRICK-CEMENT WORK

PHONE 428-6868
 7679 CHELSEA-MANCHESTER ROAD
 MANCHESTER, MICHIGAN

We Cover the Waterfront

As far as we know, State Farm insures more pleasure boats than any other company. And for good reasons. We offer complete coverage, fast claim service, low rates and a wide range of premium discounts. For all the details call or come in.

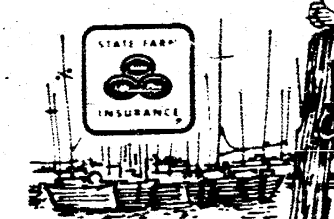


MATT DONNELLON

Phone 428-8364

146 E. Main
 Manchester

Like a good neighbor, State Farm is there.



STATE FARM FIRE AND CASUALTY COMPANY
 Bloomington, Illinois

Gambles Womens League Champs



Winners of the Manchester Womens Bowling League are: Helen Arnold, Lucy Roberts, Donna Gill, Virginia Fielder,

Shirley Roller and Wanda Tirk, members of the team sponsored by GIP's Gamble Store.

CARD OF THANKS

Last week the eighth grade class from our Manchester Middle School took a two day eight seater trip to Chicago via Amtrak. We saw the Museum of Science and Industry, the Odyssey Theatre, Sears Tower and Shedd Aquarium. The children not only had the experience of riding in a train and seeing Union Station in Chicago, they also got to stay in the La Salle Hotel with their classmates.

We, as the chaperones who accompanied the group, wish to thank Mrs. Joan Bogard and Mr. Donald (Clancy) Kirk. These two teachers, with the support of Ted Tapping planned and directed the entire trip. It's experiences such as this that our children will remember all their lives. And it's dedicated leaders like the three above that give our children these opportunities. We also wish to thank the following teachers who accompanied us as chaperones: Mrs. Virginia Kirk and Mr. and Mrs. Roger Boyce.

People like these should not be taken for granted. They used their vacation time and spent their own money to take our children on this trip. We all thank you!

Mrs. Evelyn Seagart
Mrs. Diane Schwab
Mr. and Mrs. Walt Horodocexy
Mr. Tom Burch
Mrs. Joyce Watson
Mrs. Judy Hazen
Mr. Joe Alexander
Mr. and Mrs. Jim Bauer
Miss Michelle Mooneyham
Mr. and Mrs. Dennis Helfrich

Dr. Clifford Beak wishes to express his deep appreciation to everyone who remembered him so kindly during his recent illness.

I would like to thank all of the many people for making my stay in Manchester so enjoyable this winter. Your friendliness to me has made my 5 months visit a very beautiful one. June White

I would like to thank my family and friends for their cards, flowers and many visits during my stay in the hospital. A special thanks to Rev. Danburg and the Methodist Church for all their prayers. Mrs. Glenn (Edith) Snyder

The eighth grade students who went to Chicago would like to thank the people who made our trip possible.

We especially want to thank Mrs. Joan Bogard, Mr. Clancy Kirk, Mrs. Jenny Kirk, Mr. and Mrs. Tapping and Mr. and Mrs. Boyce also all our chaperones. We had a wonderful time!

MARATHON DANCE CANCELLED

STOP! No Marathon Dance due to technical problems. It will be replaced by a 50's Sock Hop April 24th, 5 - 10 p.m. in the Manchester High School Gym.

COUNCIL PROCEEDINGS

April 5, 1976

Council met in regular session with the meeting called to order by Pres. Little at 7:05 p.m. Present were Daniels, Denhoff, Fitzgerald, Schaffer, Scully and Zsenyuk; absent Mann and Padley. Minutes from the March 15, 1976 regular meeting and annual meeting were read and approved in a motion by Scully, supported by Denhoff. All years, carried. Cecil Arnold was present in connection with two complaints issued for metal dumped behind the Party Store. Zsenyuk cited the property owner and gave him notice to remove the junk within 30 days. There were three violations on which he was cited. The property owner, Mr. Stindinger, then requested Mr. Arnold to whom the junk belonged, to remove it. Mr. Arnold asked Council where he could carry on his business. Little suggested that he negotiate for the use of some property at Verhine's since junking is permitted there, but not within the Village.

Enter Mann at 7:42 p.m. Zsenyuk passed out the Police Report for the month of March. Enter Padley at 7:45 p.m.

Police runs: 51, Vehicles Investigated: 132, People Investigated: 226, Warnings: 93, Complaints: 18, Complaints Investi-

gated: 18, Larc. fr. bldg. 1, Larc. fr. auto 2, M.D.O.P. 4, Injured person 1, Narcotics 1, Open intoxicant 1, suicide 1, prowler 1, Assist citizen, minor in possession 1, recovered property 1, enter w/o permission 1, misc. accident 1 civil dispute 1, Arrest 7, Minor in poss. 3, D.U.L.I. 1, Firearm w/o malice 1, Control substance del. marijuana 1, controlled sub. poss. 1, Violations: 15, Sale & Poss. of fireworks 1, Speeding 3, Def. Equip 2, expired license 2, open intoxicant 2, careless driving 2, disregard stop sign 2, no oper. lic. on person 1, Parking: 5, Accidents: 4, County Assists: 4, Manchester Township.

Zsenyuk reported that the Optimist had contributed \$50 and the Jaycees \$80 toward the Explorer's representative being sent to Washington. The Village agreed to pay the remaining \$110.00 to the Manchester Auxiliary Police Association in reimbursement, since that group had already sent in the total needed.

Little reported meeting with some of the Manchester Township officials, and at that time talking of the calls the Village Police Department is still handling in the township because they have either been B & E's in progress or personal injury. The township officials suggested that they just be billed for the calls. The possibility of a joint Fire and Police Dis-

patch was discussed and at present will be put aside. An arrangement is being made with Michigan Bell Telephone by the Manchester Township Fire Department for fire phone service on ten phones a key fire personnel on a 30-day trial basis. The Village was asked about contributing the costs they now pay toward this new system. It was generally felt that such monies should be applied toward a dispatch system of the future.

Fitzgerald asked about the status of letters to the Manchester Development Corp. and the Hansen brothers lease renewal. Little had taken care of both matters. Parks will be opened up April 14. In the previous two weeks a new 6" fire hydrant was installed at City Road and Elverside Drive to replace one broken off by a vehicle. Posts were installed at Carr Park to deter individuals from driving cars on the grass. Dead trees at Wurster and Carr Park have been removed and replaced with trees donated by Robert Trent. The clerk was requested to send a letter of appreciation to Mr. Trent. Water meters have been read and the billing is done. Some local streets have been patched with asphalt. Wurster Park has been raked, seeded and rolled. The ball parks have been graded. In a meeting with the State Highway Department representative Daniels was advised that parking would have to be eliminated on the Main Street bridge and that a committee should be formed and a resolution offered on the institution of a parking study for Main Street. Sidewalk replacement has begun.

Resolved by Fitzgerald, supported by Denhoff that a committee be formed to study parking in the Main Street business district. All years, carried. Moved by Scully, supported by Schaffer that Daniels, Fitzgerald, Zsenyuk and Little be appointed to that committee. All years, carried.

Moved by Padley, supported by Schaffer to purchase the Model 412 paver from Katie Equipment as agreed upon after review by committee members. The particular paver cited is a piece of equipment used approximately 40 hours but with a new machine guarantee. The

price is \$13,700. All years, carried. Schaffer listed permits: 3 electrical; Rickelman, Grossman, Freedom Elec., Minor, Husky Elec., Gould; 2 building; Walz, Wisnanz; 2 plumbing; R Lehr, Inc. Gould. A need for an ordinance governing excavation in streets, alleys and other public places was expressed. Schaffer outlined a proposed ordinance for the outlined a proposed ordinance as gleaned from several sources.

Padley expressed appreciation for the Public Works tour, as did other new council people. It was suggested that the possibility of an Open House be considered as was conducted several years ago, to acquaint townspeople with the facilities operated by the Village. Padley voiced a complaint he had received about horses being ridden in the parks. He also asked about the restroom facilities at Kirk Park, suggesting that a deadline be set, and if not met, that the Village should undertake the completion. There was general agreement on the matter.

Denhoff advised Council that he had met with Mahony regarding Finance and would be doing so again. Invoices for April payment were reviewed, with some additions. Moved by Denhoff, supported by Padley to approve payment of the following listed invoices. All years, carried.

Aello, Robert	\$ 8.00
Ann Arbor Welding	6.45
Bankers Life	672.56
Blue Cross	593.05
Browns T.V.	7.00
City Nat. Bank	1,681.50
Community Serv.	2,474.51
Consumers	2,345.99
Cunningham-Good	218.58
Daniels, Mrs. B.	50.00
Double A Products	45.00
Emmons & Horn	770.00
Farm Bureau	3,779.36
Gallup-Silkworth	124.74
Gilberts	124.82
Gulf Oil	855.85
Knauss, Claran Sr.	106.70
Knauss Pharmacy	4.48
Lesawee Disposal	840.00
Manchester Enterprise	208.20
Manchester Tool	80.00
Mann, Gerald	3.65
Mich. Hydrant	252.92
Permwalt	360.00
Roesch, Delhey	210.00
Schafble, Vera	26.40

Continued on page 11.

Sarah Coventry

FREE KIT
FREE TRAINING
FREE FUN

Three ladies needed in this area. Excellent pay. Car and telephone necessary. 429-5325

Lots For Sale

Choice sites fronting on East Main & Dunbar Street

Inquire
JAMES C. HENDLEY
PHONE 428-8333

Rent or lease from your Ford dealer

RENT-A-CAR LEASING

LONG & SHORT TERM LEASING
TIRES & INSURANCE, TAXES
ADDED TO YOUR NEEDS

TOM MARSHALL
FORD SALES INC.

428-8343

512 W. MAIN • MANCHESTER

GIBBONS & SON EXCAVATING

FOOTINGS-BULLDOZING
SEPTIC TANKS
TRUCKING
POURED BASEMENTS
SAND & GRAVEL
DRIVEWAYS
POLYNESIAN POOLS

PHONE 428-8611

2 Winners from Manchester IGA

IGA Introduces
The 1976

Jet Journey TO THE STARS

Your Favorite Boy or Girl Can
WIN A 4 DAY TRIP TO CALIFORNIA!
EXPENSE PAID

Disneyland
UNIVERSAL STUDIOS
Marineland
Knots Betty Farm
HOLLYWOOD MUSEUM
AND LOTS OF OTHER ATTRACTIONS

Jet Journey REGISTRATION FORM

REGISTRATION IS WORTH 100 BONUS VOTES!

NAME _____ AGE _____
ADDRESS _____
CITY _____ STATE _____ ZIP _____
PARENT'S SIGNATURE _____ DATE _____



OFFICIAL RULES

A. Election is open to any boy or girl who is at least 10 years of age before April 5, 1976 and not older than 14 years of age on May 29, 1976. Boys and girls who receive the highest number of votes in each store will win.

B. Vote for your favorite boy or girl by winning 100 or more votes on the back of each gold cash register tape you receive at all participating stores.

C. The number of votes on each tape is determined by the total purchases shown on it. That number will receive one vote for each \$1.00 purchase. For example, a \$1.00 purchase shown on your gold cash register tape would be worth 100 votes for your favorite boy or girl. Be sure the amount is not obscured by erasure or purchases.

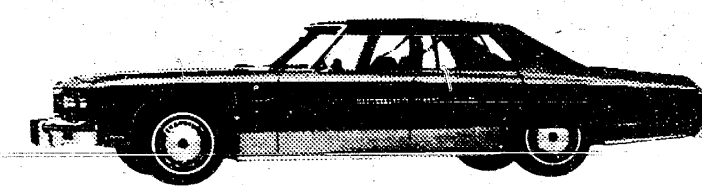
D. Votes tapes must be placed in the official ballot box in each store in order to be counted. Each store will post the number of winners it is sponsoring in the store.

E. Participating elections will start the week of April 5, 1976 and close Sunday night, May 29, 1976. Election is not open to children of immediate relatives of the following: participating wholesale headquarters and supply dealer personnel; participating store owners and employees; not personnel of any agency or supplier which services or sells to the above; immediate relatives of the above; wives, brothers, daughters, sons, granddaughters and grandsons.

F. The decisions of sponsoring stores in judging the winners are final. Sponsoring store management is solely responsible for the breaking procedures and any prizes other than the posted election tapes.

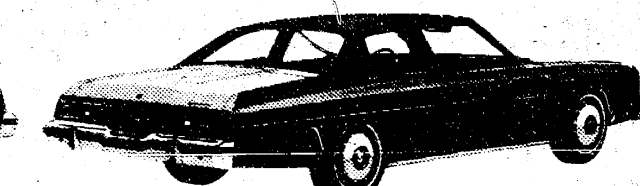
G. Soliciting votes on store property is grounds for disqualification.

PARENTS! REGISTER YOUR FAVORITE BOY OR GIRL CANDIDATE NOW. THEN CAST YOUR VOTES WITH YOUR TAPE EACH TIME YOU SHOP OUR STORE!



Caprice Classic 4-Door Sedan

All the car anybody needs. Caprice combines all the room and comfort of a traditional size car with all the luxury you'd expect from our top-of-the-line Chevrolet.

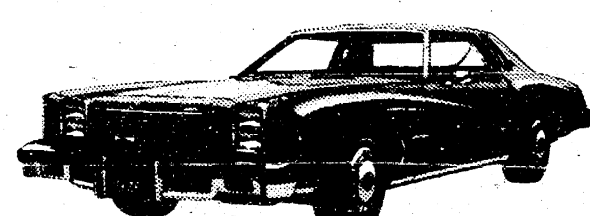


Impala Custom Coupe

Impala compares leg room for leg room with some of America's most expensive cars, but at a sensible price. It's our value-size Chevrolet.

Try one on for size.

Chevrolet



Monte Carlo

Built to take a lot of driving while it gives you a lot of comfort. Come on in and see if you fit our Monte Carlo size.



Chevelle Malibu 4-Door Sedan

The 1976 Chevelle is designed for people who no longer need or want a large car but wouldn't be really comfortable with a small one. It's a size whose time has come.

Try one on for value at
TIRB CHEVROLET CO.

131 ADRIAN STREET

MANCHESTER, MICHIGAN

SHARON UNITED METHODIST CHURCH
SPRING RUMMAGE, HANDICRAFT AND PRETZEL SALE
SATURDAY, APRIL 24
9 a.m. to 4 p.m.
Corner of M-52 and Pleasant Lake Rd.

MANCHESTER

3 bedroom full basement with small barn on 10 acres with Creek, June 1, 1976 possession.
5 room frame house with large garage, big back yard.
7 room older home with 2 car garage near Main Street.
Good lot on East Main.
3 acres of land on pavement.

CHELSEA

Three bedroom, full basement - part recreation, 2 car garage on on E. Waterloo Road, four years old - job transfer.

FAHEY REALTY

15554 Fabey Road 428-8748
112 S. Washington 428-8348

Hemlines In History

Rigg and Sharon Steiler will be our director/choreographers and Catherine Roberts will be in charge of set design. All members of Lambda Nu are actively involved in the production, and several will be attending other Michigan Style shows to gather ideas.

The members of Lambda Nu hope you will attend "Hemlines in History" for an enjoyable and informative afternoon on Sunday, July 11.

50'S SOCK HOP FOR ALL AGES

Comb back your duck tails, pull up your hobble socks and cruise to the 50's dance at the Bicentennial Happening April 24th from 5 - 10 p.m. The best dressed "Kats" will be awarded prizes. There will be surprise DJ's every hour spinning the platens.

"Notice Dudes," The Fox says, "Be prepared to win prizes for various 50's dances." No problem, we will have the oldest but goodies there to show you how.

VISUAL FITNESS



Gymnastics, like any other physical fitness activity, takes discipline and concentration. Part of being physically fit is being visually fit. "Contact lenses offer greater peripheral vision than glasses," says Dr. Richard D. Hazlett, nationally known optometrist and lecturer on contact lenses. "And no matter how strenuous the exercise, soft contact lenses generally stay in place, allowing you to concentrate on your act."

Flower Garden Fresh!



Those first flowers of spring seem to plant new mealtime ideas in everyone's minds. Suddenly family cooks find themselves choosing light refreshing desserts. Easy Springtime Pie even comes in flower garden colors — a nice yellow lemon pudding base and a pink whipped gelatin top, which is studded with strawberries. You'll appreciate how easy it is to make the flaky and delicious homemade-tasting pie crust. You add only cold water to a pie crust mix for pastry that turns a delicate brown. It makes Easy Springtime Pie easy on you!

EASY SPRINGTIME PIE

Makes 9-inch pie

Crust:
One 10-oz. pkg. Flako Pie Crust Mix
Filling:
One 3-1/2-oz. pkg. lemon pudding and pie filling

cup sugar
cups water
2 egg yolks
One 3-oz. pkg. strawberry flavored gelatin
1 cup boiling water
1/2 cup cold water
1 cup fresh strawberry slices

For crust, prepare mix according to package directions for single 9-inch pie crust. Bake according to package directions.
For filling, combine pudding mix, sugar and 1/2 cup water in saucepan. Stir in egg yolks. Add remaining 2 cups of water; mix well. Cook over medium heat, stirring constantly, until mixture thickens and comes to a full boil. Remove from heat. Cool 10 minutes, stirring occasionally. Pour into cooled pie shell; chill. Dissolve gelatin in boiling water; stir in cold water. Chill until thickened; beat at high speed on electric mixer 2 minutes or until mixture about doubles in volume. Fold in strawberries; spoon over pudding layer. Chill until firm.

ALBER EXCAVATING

Drain Fields—Septic Tanks—Drive Ways—Limestone

Fill Dirt—Drain Field Stone—Mason Sand

Basements

PHONE 428-8628

7601 Hashley Road

Manchester, Michigan

MANCHESTER Sporting Goods & Clothing

Clothing

104 E. Main

313-428-8391

NOW OPEN

OPEN DAILY 10 A.M. TO 5 P.M.

ALL SCHOOL COLORS

TECUMSEH, CLINTON, BRITTON, ADRIAN AND MANY OTHERS

All types SPORTING equipment
— BASEBALL — SOFTBALL — GOLF —
— FOOTBALL — BASKETBALL —
— HOCKEY —

--MEN and WOMENS CLOTHING--

All purpose shoes any size YOUTH - ADULT



COUNCIL PROCEEDINGS

Share Corp.	35.00
Southern Meter	329.42
A & L Parts	26.82
Artz Tool Service	86.00
Ben Franklin Store	9.77
Bridgewater Lumber	222.66
Burch, Harold	30.00
Colwell Equip.	58.02
Community Acceptance	388.93
Cuda Uniform	53.00
D & C Plumbing	67.43
Detroit Ball Bearing	8.46
Paul W. Elsie Weld.	20.55
Ernst, Mrs. Hilda	100.00
Fillyaws	19.40
Gambles	286.30
Grossman	34.50
Kirk, L.V.	73.53
Koebe Welding	57.50
Kurtz, Richard A.	275.00
Macaulays	12.73
Manchester Police Aux.	110.00
E. G. Mann & Sons, Inc.	57.00
Michigan Bell	319.79
Mc Gowan Elec.	51.98
Precision Graphics	7.00
Roesch, Katherine	26.40
Schwab, Wm. J.	15.00
State Boundary Comm.	48.00
Tapping, Margaret	26.40
Taylor Rental	40.00
Turb Chevrolet	316.05
Union Savings	8.00
Wash. City Clerk	26.77
Wells Fargo	102.07
Widmayer, Maxine	26.40
Smith, Mary M.	104.00
Tecumseh Equip.	23.70
Tom Marshall, Inc.	7.50
Verhines	20.00
Wash. Cty. Road	20.00
Wheeler, Mary H.	265.00
Williams Gun Sight	135.30

periodically check the other hydrants. Daniels agreed to check with Kenstar about continuing the practice. Mann reported that the Planning Commission is still working on the Subdivision Ordinance and will be meeting with Sang Nam of the Washtenaw County Planning Commission.

A resolution was offered by Denhoff and supported by Scully to approve establishment of a tax revolving fund for payment of delinquent taxes in Washtenaw County. All yeas, carried.

Council was advised that Manchester is to exchange with Hudson for Mayor's Exchange Day. Council would prefer to make the exchange on one day as has been done in the past.

Moved by Scully, supported by Fitzgerald to adjourn at 9:47 p.m. All yeas, carried.

Mary H. Wheeler, Clerk

HEAVEN AND LIGHT

The star is a symbol of the heavens and the divine goal to which man has aspired from time immemorial: the stripe is symbolic of the rays of light emanating from the sun, according to the U.S. Marine Corps Reserve. Both themes have long been represented on the standards of nations, from the banners of the astral worshippers of ancient Egypt and Babylon to the 12-starred flag of the Spanish Conquistadors under Cortez. Continuing in favor, they spread to the striped standards of Holland and the West India Company in the 17th century and to the present patterns of stars and stripes on the flags of several nations of Europe, Asia, and the Americas.

Mann asked how often hydrants were flushed and was advised that it was done every Friday for those on the ends of lines. In the past the Fire Dept. would

Tasty Tips

from Checkerboard Kitchens

THE COOKIE JAR THAT WON'T STAY FULL



That's what will happen at your house when the cookies are delicious Sesame Crisps. Made with bite-size crispy rice squares, the cereal helps add a crisp, crunchy taste. Their good buttery flavor goes well with cold or hot beverages and makes them the perfect snack for cookie lovers of all ages.

Bake a batch, fill the jar and see for yourself how quickly these tasty cookies disappear.

SESAME CRISPS

2 cups sifted all-purpose flour
1/2 teaspoon baking soda
1/4 teaspoon salt
3 cups Rice Chex cereal (bite-size crispy rice squares) crushed to 1 1/4 cups (use as 1/2 and 3/4 cups)
1 cup butter or margarine
1 cup sugar
1 teaspoon vanilla
1 egg
2 1/2 tablespoons sesame seeds

Preheat oven to 375°. Sift together flour, baking soda and salt. Stir in 1/2 cup cereal crumbs. Set aside. Cream butter and sugar. Add vanilla and egg. Beat well. Add flour mixture. Mix well.

Combine remaining 3/4 cup cereal crumbs and sesame seeds. Drop dough by tablespoons onto crumbs. Shape into ball as dough is rolled in crumbs. Bake 8-10 minutes or until lightly browned. Let stand one minute before removing from baking sheet. Makes about 4 dozen 2 1/2" cookies.

REVIVAL MEETING

Manchester Baptist Church

122 WEST MAIN STREET

April 25 thru 30 - 7 pm Nightly



STALEY SORRELL

Staley M. Sorrell

PASTOR VAN DYKE BAPTIST CHURCH

WARREN, MICHIGAN

- ★ "Old Fashion" Gospel Preaching
- ★ Inspiring Special Music
- ★ Warm-Hearted Services

NURSERY FACILITIES AVAILABLE

ALAN MORRIS, PASTOR

LEGAL NOTICE

MANCHESTER TOWNSHIP PLANNING COMMISSION
NOTICE OF PUBLIC HEARING

TAKE NOTICE that Manchester Township Planning Commission will hold public hearing on the application of Edwin J. Lambarth and Susan K. Lambarth to construct a single-family home on premises presently zoned R-C Recreation-Conservation described as:

All that part of the Northeast 1/4 of Section 32, T4S, R3E, described as commencing on the North and South 1/4 line of Section 32, addressed, at a point located 825.00 feet S 0 degree 02' 34" E from the North 1/4 corner of said Section 32, and running thence S 89 degrees 12' 44" E 520.83 feet; thence S 0 degree 03' 54" E 535.23 feet; thence N 89 degrees 23' 06" W 521.25 feet to the North and South 1/4 line of Section 32; thence N 0 degree 02' 4" W along said line 837.10 feet to the place of beginning. Containing 10.0011 acres, more or less, and subject to easements.

on April 27, 1976 at 8:00 p.m., EDST at the Manchester Village Hall, 120 South Clinton Street, Manchester, Michigan. MANCHESTER TOWNSHIP PLANNING COMMISSION

WHAT'S COOKING IN MICHIGAN

Michigan hothouse rhubarb is a refreshing sight at produce counters this time of year. It's the state's first crop of the year and a prelude to good foods to come. The bright rosy stems can be used to prepare a variety of piquant dishes from main course to dessert.

Michigan is a leader in hothouse rhubarb production. Marketing officials of the Michigan Department of Agriculture say nearly 2.5 million pounds were grown in 1975 and the only other major area of production is Washington.

Macomb county is the production center for most of the state's hothouse rhubarb. The tart, acidic fruit once flourished through much of the area in low windowless houses covered over the top with straw for warmth. In the last 20 years the number of growers has dwindled from about 300 families to 50 or less, many of German and Belgian descent.

Rhubarb plants are grown outdoors for two years, then the crowns (mature roots) are transferred inside the houses and placed in just enough dirt to keep them moist. Under controlled temperatures of about 50 degrees and high humidity, the crowns sprout and grow.

Harvesting takes place when rhubarb reaches a height of 24 inches by carefully pulling the stems from the base. It's checked for quality based on color, size and length, then packaged and shipped to various parts of the country.

Hothouse rhubarb is one of the easiest foods to prepare. Simply trim off and

discard the toxic green leaves and stem end. Wash and cut the stems into pieces. Rhubarb is about 95 percent water so it requires very little liquid to cook.

Here's a Bicentennial consumer tip: Early American cooks prepared "Rhubarb Delight," a spicy sweet bread crumb mixture flavored with grated lemon peel, layered alternately with diced rhubarb, and baked until the fruit was tender.

Michigan's floriculture industry is busy preparing for the largest flower holiday of the year, Mother's Day. In greatest demand for cut flowers are hybrid tea roses and Michigan is a leader in rose production.

Of the 22 major flower producing states, Michigan ranks eighth nationally in total rose production. Marketing officials of the Michigan Department of Agriculture say Michigan's 34 commercial growers produced 565,000 rose plants in 1975 for nearly 11 million blooms, valued at \$2.85 million. Macomb county is the rose production center of the state.

The saying, a rose is a rose, just isn't so. Michigan growers say top quality roses are determined by length of stem, foliage and bloom. Stem length is a primary factor in determining cost of

roses at wholesale and retail levels.

The red rose is an all-time favorite and the most popular red variety grown in Michigan is "Forever Yours." Hybrid tea roses are grown primarily under controlled temperatures and atmospheric conditions in greenhouses. Pinching for blooms for Mother's Day starts each year about mid-March.

Roses are generally cut in early morning and hand-inspected for color, quality of stem, foliage and bloom. Many growers are using an automated machine which separates roses according to stem lengths. Flowers are hand-wrapped and refrigerated until ready for shipment.

Michigan-grown roses are shipped to flower shops and nurseries throughout the state. Very few, if any, are shipped out of state. Top quality roses are wrapped in florist paper, other grades in plastic, and transported in refrigerated trucks.

SENIOR CITIZENS NOTICE

Happiness is coming to the Emanuel Church Hall on Wednesday, April 28, at 1:30 p.m. for a fun filled afternoon with your friends.

Manchester High Class of '77' PRESENTS ITS SECOND ANNUAL SPAGHETTI DINNER

SATURDAY, MAY 1

AT THE EMANUEL CHURCH HALL FROM 5:00 to 7:30 P.M.

ADULTS \$2.75 CHILDREN \$1.50 (five thru 12 years of age)



THE Calico Cat

PHONE 313-428-7453

OPEN MONDAY THROUGH FRIDAY 10 a.m. to 5:30 p.m. SATURDAY 9 a.m. to 5:30 p.m.

BOOK AND GIFT SHOPPE 110 East Main Street Manchester Michigan

Free Chick Day Friday, April 30

Buy 50 lb. Startina, get 25 free chicks.

Bring own containers.

Turkey, Ducks, Geese at Heavy Breeds sold on premises.

Pet exchange same day. Trade - Sell - or give away any animal.

Set up booth outside on premises.

Also carry pool supplies, lawn and garden fertilizer, pet supplies and poultry equipment.

Atlas Feed and Grain

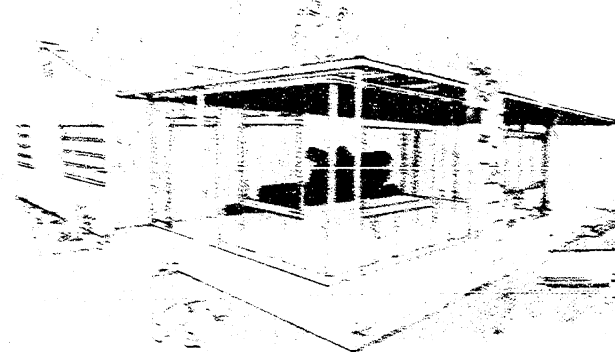
Clinton, Michigan 517-456-4455

Krauss Pharmacy
Manchester, Michigan
Pick-Up Station
For
Welch's Cleaners
DAILY PICK UP

FREEDOM ELECTRIC
11207 Pleasant Lake Road
Manchester, Michigan
RESIDENTIAL
COMMERCIAL
INDUSTRIAL
NEW CONSTRUCTION
REMODELING REPAIR
GILBERT LUCKHARDT
Phone 428-8233

Lumber and Building Supplies WE'VE GOT THE PRICED RIGHT!

Building a NEW HOME



OR fixing up your old home?

WE CAN HELP!



Bridgewater Lumber Co.
8370 Beettner Rd PHONE 428-3039



Dave Guenther

Dan Schaible

Randy Bennett

TRI-CAPTAINS AIM TO GO OUT WINNERS

The 1976 Model of the Manchester High track squad looks to improve over last season's 3-7 record, and Senior tri-captain Dave Guenther, Dan Schaible and Randy Bennett hope the improvement will be enough to propel the Dutchmen to their first winning track season ever.

The pre-season workouts and scrimmages indicate that the Dutch Thineclads probably possess more depth than last season especially in the long jump, hurdles and sprint events. These 3 events did not live up to expectations last year, but several newcomers have provided the push to get these events moving this spring.

The Dutchmen will be able to hold their own in the field events as several key veteran return. In the shot put, school record holder Dan Clark returns as the top putter in the L.C.A.A. and one of the best in the state. Dan's Senior brother, Dave seems to have improved markedly from last season and also should be one of the areas better putters, Junior Greg

Daniels and Freshman Tim Turvey add depth to the event with Greg a solid 40 foot-plus prospect.

The two Clark brothers, Greg and Tim will also compete in the Discus throw, a new event this spring, as will Seniors Dan Schaible and Matt Little with others possible being Juniors Lester Janish and Mark Lawson and Sophomore Scott Barber.

The pole vault returns only Junior Mike Forner, a threat to the school record of 12'2", and sophomore Terry Brown who scored in this event last season.

The high jump will be solid as returnees Juniors Pete Tassie and Dan Hassett as well as Randy Bennett who are all solid performers. Other candidates include sophomores Tom Little and Dan Turvey, Juniors Bob Padley and Lester Janish, and Freshman Terry Rowe.

The key to the long jump this spring will be improvement. If Veterans Dave Guenther, Mark Daniels, Dan Coval and Dave Hoover improve significantly and first year jumpers Tom Little and Terry Rowe show consistency then the Dutch

should be solid in all 5 field events.

The sprint events (100, 220, 440, and sprint relays, 440, 880 and mile relay) last season, were the downfall in each of the Dutchmen's losses. Hopefully the returns will improve and the 1st-year men will add the needed speed. The returning veterans include tri-captains Bennett, Guenther and Schaible, who all run the 440 and mile relay. Other sprint veterans include Matt Little, Dave Hoover, Dan Coval and Pete Tassie. New comers include Senior Exchange student Dag Omre and sophomore Scott Barber as well as

Freshmen Jerry Galinis, Kurt Sauter, Steve Eversole and Terry Rowe.

The hurdles look to be very much improved as Pete Tassie may well be one of the area's very best and Junior Dan Hassett has shown great improvement this far in practice. Mike Forner and Tom Little also appear point winners in both the high and low hurdles.

The distance events (1/2 mile, mile, 2 mile) should be the backbone of the team this season as the Dutchmen returning several strong veterans and this past fall had another strong cross-country campaign. Returning veterans including the Dutchmen's versatile trio of captains, Dan Schaible, Dave Guenther and Randy Bennett. All three will be solid 1/2 mile point winners. Other strong veterans include, Bob Smith (mile, 2 mile), Mark Daniels (mile, 2 mile), Tom Opel (mile, 2 mile), Jerry Miller (2 mile, mile), Terry Brown (2 mile), and Greg Daniels (mile). New comers or non-point winning 2nd yearmen who will add the needed depth include cross-country standouts Dan Hespil, Bob Padley, Keith Moore, and Kurt Norgaard as well as Steve Eversole, Darrell Clark, Kurt Sauter, Randy Bondy and Tom Smith. Two first year runners also have impressed Coach Larry Staeb, as Junior Mark Lawson and sophomore Dan Turvey have shown great potential so far in practice.

Coach Staeb and his Assistant Dan Tassie have been pleased with the depth of this year's squad, the largest in the school's history, and are cautiously predicting a winner.

FILLYAW'S SERVICE

327 WEST MAIN MANCHESTER

24 HOUR ROAD SERVICE

PHONE DAYS PHONE NIGHTS

428-8576 428-8053

We Carry A Complete Line Of Tires And Batteries, Alternators and Regulators, Starters and Solenoids

WE TURN BRAKE DRUMS AND ROTORS

Coming to Jackson Sunday May 2nd.

Big Band Dancing!

and club style entertainment

featuring THE JIMMY DORSEY ORCHESTRA

MANDRAKE THE MAGICIAN

THE LITTLE HOOFER

SHILHABE

THE WHIRLING DERSVISH

AND THE STAR & DIRECTOR MR. LEE CASTLE

ENJOY FOR ONE NIGHT THE DANCING TO MUSIC OF A GREAT BAND. CRYSTAL BALL, COVERED TABLES, CANDLE LIGHT, COLORED SPOTS, DRINKS & SETUPS WILL BE AVAILABLE... SNACKS FREE! COUPLE \$15.00 SINGLES \$9.00

plus... The public is cordially invited to attend... Free of charge... at 2 P.M. the Parade of Queens Pageant & the Jimmy Dorsey Talent Search as Guests thru the courtesy of the below listed 'Action Sponsors'!

NOW! Register for 'Free' couples tickets..
Reserve your tickets and tables..

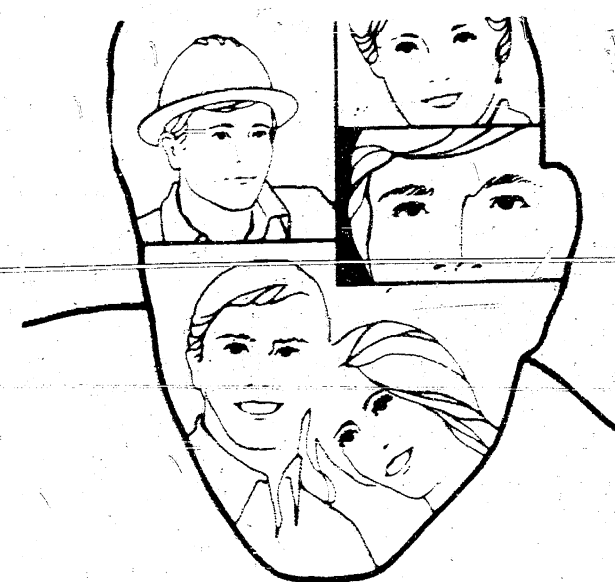
at any of the following DORSEY SHOW 'ACTION SPONSORS'...

(NO PURCHASE REQUIRED)

- Grinnell's - Westwood Mall
- Dawn Donuts - 906 N. West Ave.
- Jackson Magic Shop - 115 Ridge
- Ray Lantz Music - 182 W. Michigan
- All 6 Polly's Food Stores
- A-Z Rentals - 2299 W. Michigan
- Susan Vaughn's - 2009 W. Michigan
- Wine Cellar - 1028 Paka Plaza
- Colonial Inn - 6027 Ann Arbor Rd.

Jackson Sports Arena 783-2664

BY SPECIAL ARRANGEMENTS OF THE JACKSON FIRE FIGHTERS — TICKETS & RESERVATIONS ARE AVAILABLE AT ALL JACKSON FIRE STATIONS OR THRU ANY FIREMAN... RESERVE EARLY!
One BIG Favor we ask: Those planning on attending the pageant & talent search... bring a TOY for the Marines TOYS FOR TOYS



As an independent agent we answer to one boss — our hometown people

We represent several firms, but we work for only one boss — you. That way we can always place you with a company which we think is best for each line of insurance you need. Naturally, we prefer companies like Auto-Owners who look at a loss and take care of it right away, without haggling or delays. That's one of the reasons we're part of the Altogether Family. Like us, they're always there when you need them.

its better **altogether**
SUTTON AGENCY

136 East Main Manchester, Mich. Phone 428-2891

Auto-Owners Insurance?
Life Home Car Business

AGRICULTURE IN ACTION

MICHIGAN FARM BUREAU EDITORIAL

A STEER IS NOT ALL T-BONE

"Farm-retail price spreads" may sound like gobbledegook to you, but they do exist and your grocery bill reflects them.

For example, if you bought a T-bone steak at \$2.00 a pound, a large part of what you paid falls between the farmer and your shopping bag. The farmer received only about 40 cents a pound for that steer from whence your T-bone came. Why the gap? That's where farm-retail price spreads come into the picture. There are a lot of costs involved in transforming the animal on the hoof into steaks and other cuts in your supermarket.

Your T-bone starts out as part of a live animal - usually about a 1,000 lb. steer. When the farmer sells the steer, let's say he gets 40¢ a pound or \$400. Then the animal goes to the packer and is dressed out to a 620 lb. carcass. Not including any value added by the packer's services, the carcass is now worth 64.5¢ a pound. The carcass must be cut and packaged for retailing, however. By the time some bone and fat are removed and some moisture and meat are lost during the process, only about 440 pounds of salable meat are left. This meat now has a value of about 91¢ a pound.

Processing, transportation and marketing costs also have to be figured. Add to that 91¢ per pound about 8¢ for slaughtering; 4¢ for transportation from slaughter house to retail store; another 21¢ for labor to cut the carcass into retail cuts and package it for sale; about 5¢

for packaging material, and about 2¢ for advertising. Add on a little profit for each of the firms along the line and you come up with a figure of about \$1.40 a pound for the 440 pounds of usable meat.

But how did that T-bone get up to \$2.00 a pound? Well, that steer we started with produced a mere 16 pounds of T-bone steak in the first place. The other 424 pounds of meat were mostly cuts that sell at lower prices than T-bone. Chuck steaks and roasts, ground beef, shanks,

short ribs, and stew meat are good examples. If you average out all the hamburger at let's say 84¢ a pound, the T-bone at \$2.00 a pound, and all other cuts at various prices, you come out with \$1.40 per pound. That's why the price the farmer receives per pound of live animal is so far from the price the consumer pays for meat at the supermarket. But then, the conveniently-packaged, ready to cook cuts of meat you buy in the supermarket are a far cry from that 1,000 pound live animal.

KIDS FOR CLEANER CARS

On Saturday, April 24 and May 1, the fourth grade classes from Klager and Pleasant Lake Elementary Schools will be having two car washes. They will be at the Klager School from 9:30 - 1:00 and the cost will be \$1.50 for cars and \$2.00 for pick up trucks. The purpose of this activity is to raise money for the annual fourth grade trip to Holland, Michigan.



BAND-AID Pack Plastic Bandages

BAND-AID 60's \$1.25 Value
 plastic strips All One Size 60
66¢

AYDS Reducing Plan Candy
 All Flavors 24 oz. \$2.79
 \$4.50 Value

ALKA-SELTZER Tablets
 36's \$1.09
 \$1.50 Value

BAN Basic Non-Aerosol Anti-Perspirant
 Regular & Neutral 3 oz. \$1.27
 \$2.19 Value

CRUEX Medicated Spray Powder
 4 oz. \$1.39
 \$2.39 Value

DATRIL Non-Aspirin Pain Reliever
 100's \$1.14
 \$1.85 Value

DESENEX For Athlete's Foot
 Aerosol Spray 6 oz. \$1.35
 Or Powder 3 oz. \$2.29 Value

SUCARYL No Calorie Liquid Sweetener
 12 oz. \$1.29
 \$2.29 Value

CEPACOL Mouthwash
 7 oz. \$1.02 Value
53¢

GILLETTE FOAMY Shave Cream
 Regular, Lemon-Lime & Menthol 11 oz. \$1.49 Value
88¢

PRO Toothbrush
 Hard, Medium & Soft Adult Size 79¢ Value
29¢

KOTEX LIGHTDAYS Oval Pads
 12's 73¢ Value
49¢

SYLVANIA BLUE DOT
 Soft White Light Bulbs 60W, 75W, 100W 2 for
55¢

JOHNSON'S BABY POWDER
 14 oz. \$1.19
 \$1.89 Value

LONG & SILKY Conditioning Lotion
 Regular & Extra Body 8 oz. \$1.39
 \$2.35 Value

NORELCO Flame Fighter Fire Extinguisher
 \$9.76
 \$14.95 Value

HIGGS BLOOD PRESSURE MEASUREMENT Set
 #910500 \$26.95
 \$39.95 Value

A FAMILY OF INDEPENDENT PHARMACIES...ALWAYS READY TO SERVE YOU
MANCHESTER KRAUSS REXALL PHARMACY
BROOKLYN Weatherwax Rexall Drug

REAL ESTATE

Two family dwelling on Macomb Street. Priced reduced.

Five acres and mobile home, southwest of Manchester.

Mobile Home - 12' X 60' near Clinton \$4,500. Lot rent \$50.00 per month.

Have buyer for Country Estate, 3 - 4 bedroom, large kitchen.

Listings Wanted

Two bedroom home, south of Manchester on Sharon Hollow.

HUGH R. SUTTON

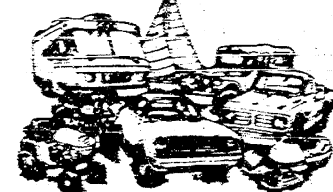
BROKER

428-7217

Jim Walkowe, Salesman

428-8120

Before you buy your car, boat, or recreational vehicle, see how much you might save.



See me about low-cost financing through a cooperating bank and economical car insurance from State Farm Mutual.



MATT DONNELLON

146 E. Main

Manchester

Phone

428-8364

Another service of your State Farm Agent. State Farm Insurance Companies. Home Office: Bloomington, Illinois.

COUNCIL PROCEEDINGS

March 15, 1976

Council met in annual session with the meeting called to order by Pres. Little at 7:07 p.m. Present were Beal, Curley, Fitzgerald and Scully; absent trustees Mahony and Mann. Results of the election held March 8, 1976 as received from the Board of Canvassers for Washtenaw County were read. It was determined that David L. Little was elected Village President, Mary H. Wheeler, Village Clerk, Mary M. Smith, Village Treasurer, Russell H. Widmayer, Village Assessor, Donald Denhoff, Village Trustee for a Two Year Term, Merrill Korth, Village Trustee for a Two Year Term and Robert Padley, Village Trustee for a Two Year Term. Moved by Scully and supported by Beal to accept the results of the annual election. All yeas, carried. Village officials were then sworn in. A letter of resignation was read from Merrill Korth, who could not accept the office due to a conflict of interest under the Hatch Act. Moved by Fitzgerald, supported by Scully to accept Merrill Korth's resignation with regret. All yeas, carried.

Little suggested Jeff Schaffer to be appointed to serve in Merrill Korth's place for one year. Moved by Scully,

supported by Fitzgerald to accept Little's suggestion. All yeas, carried.

Moved by Denhoff, supported by Padley to adjourn and convene in regular session. All yeas, carried.

Mary H. Wheeler, Clerk

Council met in regular session with the meeting called to order by Pres. Little at 7:18 p.m. Present were Daniels, Denhoff, Fitzgerald, Padley, Schaffer and Scully; absent Mann and Zsenyuk. Minutes from the March 1, 1976 regular meeting were read and approved in a motion by Scully, supported by Schaffer. All yeas, carried.

Little passed out a list of committee appointments for the fiscal year 1976. Public Works Ch. Fitzgerald; Finance-Denhoff, Ch.; Health and Safety-Scully ch.; Planning - Mann, ch.; Ordinance - Schaffer, ch.; Youth, Recreation and Parks - Padley, ch. were the major appointments. Moved by Denhoff, supported by Schaffer to accept the appointments. All yeas, carried. Moved by Schaffer, supported by Fitzgerald to appoint Broucek, Whittington and Chapin for 3-year terms expiring in March 1979, for the Village Planning Commission. All yeas, carried.

The clerk was requested to obtain copies

Women Working For Women

applications now being accepted
 Washtenaw County Advisory Committee
 on the Status of Women

994-2400 Room 116
 County Building, Ann Arbor

WANTED

500 Cars - Wrecks or Junkers

Free Pick-up To \$125.00

"Help Keep Your Community Beautiful"

Phone 428-8080 or 517-787-7044

Verhines Auto Salvage

17547 AUSTIN RD. MANCHESTER

Thinking CARPET? Think SCHNEIDER'S

Visit the wonderful world of carpeting at Schneider's, one of the area's finest, full-service carpet stores, conveniently located in West Ann Arbor on Wagner Road between Jackson and Liberty.

Schneider's carries a broad selection of quality, name-brand carpets at prices consistently among the lowest in the entire area. Try us.

662-9332

OPEN MON & FRI NIGHTS TIL 8:00 PM

SCHNEIDER CARPET CO. INC.

745 S. WAGNER RD. ANN ARBOR

of the State Publication entitled "Incorporation and General Powers of Cities and Villages".

Fitzgerald asked about the letter Little was requested to write to the Manchester Development Corporation, as well as the letter of renewal on the Hnassen lease which expires March 31, 1978.

Public Works activities have included patching asphalt, installing a water and sewer service on East Main St., cutting trees, cleaning catchbasins, equipment repair, rodding out a sewer on Farr Road, and building storage sheds.

Bids on a paving machine were received from the following: Lay Mor Mfg. Co., \$18,500.00, Katie Equip. Co., \$8,795.00; Katie Equip. Co., \$12,500.00; Colwell Equip. \$14,785.00; and Colwell Equipment. \$13,781.00.

Moved by Scully, supported Schaffer to accept the bids and turn them over to the Public Works Committee for evaluation and determination on Council's behalf with a recommendation due at the next meeting. All yeas, carried.

Enter Mann at 8:15 p.m. A resolution was proposed in conjunction with the Chi-Bro Park application. Resolved by Fitzgerald and supported by Mann that the Village Council of the Village of Manchester never intended to discontinue the application for a Land and Water Conservation Fund Grant, Project No., FA-258. All yeas, carried. Moved by Scully, supported by Padley to approve payment of a preliminary premium of \$126.45 to John Hancock Co. for the dental program being purchased for full-time village employees.

Manchester was matched with Emmett for Mayor's Exchange Day. Because of the great difference in size the clerk was asked to see if a match with a community closer in size could be accomplished. The financial report for February 1976 was reviewed.

Scully advised Council that the Kof C group would be holding a Tootsie Roll Drive for the mentally retarded on April 8, 9, 10. He was told to advise the group to obtain the necessary permit from the Police Department.

Moved by Fitzgerald, supported by Scully to adjourn at 9:02 p.m. All yeas, carried. Mary H. Wheeler, Clerk

VILLAGE OF MANCHESTER COMMITTEES AND APPOINTMENTS FOR 1976

Public Works, Sewer, Water and Streets, Joseph Fitzgerald, ch., Donald Denhoff, Jeff Schaffer, Robert Padley. Finance and Budgets - Donald Denhoff, ch., Joseph Fitzgerald, James Mann, James Scully.

Health and Safety - James Scully, ch., Joseph Fitzgerald, Robert Padley, Donald Denhoff.

Planning - James Mann, ch., Jeff Schaffer, Donald Denhoff, James Scully.

Ordinance - Jeff Schaffer, ch., James Mann, James Scully, Robert Padley.

Youth, Recreation, and Parks - Robert Padley, ch., Joseph Fitzgerald, Jeff Schaffer, James Mann.

Special Assessors - Harold Burch, L.V. Kirk, Herman Kuebler.

President Pro Tem. - Donald Denhoff
 Village Attorney - Stanton Rosch
 Supt. of Public Works - Bruce Daniels
 Chief of Police - William Zsenyuk
 Health Officer - Glen Lehr D.D.S.
 Fire Inspector - James Knauss, Sr.
 Bldg. Inspector - Claran Knauss, Sr.
 Elect. Inspector - George Both
 Plumbing & Heat Inspector - Arthur Wilham
 Zoning & Sewer Inspector - Bruce Daniels
 Civil Defense Director - William Zsenyuk
 Grants Coordinator - Bruce Daniels & William Zsenyuk

Brown's TV & Radio

ZENITH
 Color and Black-White TV
 134 East Main Street
 Manchester, Michigan
 Phone 428-7640

Horse Shoeing

and Trimming
 BOB BEAUBIEN
 Phone 428-8985
 Manchester, Michigan

Gulf Visit the Jolly Dutchmen

100 EAST MAIN ST MANCHESTER

Let Us Change Your Mud and Snow Tires This Spring

KINGSFORD

CHARCOAL

THE BEST



We Have a Fine Line of Gulf Tires All Sizes

Phone 428-8960
 Many Gulf Accessories

GROSSMAN-HUBER SERVICE

MR. SCRUB
 cleans cars
 BETTER for LESS
 2 MIN.
 wax-wash
 \$1.50

WANT ADS

ALL CLASSIFIED ADS ARE PAYABLE IN ADVANCE

CHELSEA GREENHOUSES, 7010 Lingane Road, Chelsea, Michigan, 475-1353 - 54 or 475-9313. Flowers and plants for every occasion. We specialize in wedding flowers to fit your budget. Wear as near as your phone and we welcome your business. **tn**

HOUSE and barn roofing, all types of roof repairs, aluminum storm windows and doors, awnings and porch enclosures, hot build-up roofing - residential and commercial, aluminum siding and now offering seamless aluminum gutters. Call Joe Hayes for free estimates. 428-8520. **tn**

SEAMLESS aluminum eavestroughs, roofing, siding, and carpentry work of all kinds. Experienced installers, all work guaranteed. Call R.D. Kleinschmidt Co. 428-8836. **tn**

GARDEN SEEDS - Now in stock, packaged and bulk. Also fertilizer. Mann's Feed Mill. **tn**

DON'T THROW IT AWAY, sell it to A & K Lawn Mower Service of Chelsea. We buy, sell and repair all types of lawn mowers. Also repair all types of gas motors, rotor fillers, chain saws and riding lawn mowers. "We Call We Haul". Free pick up and delivery. 475-2923. **tn**

PAT'S CRAFT STUDIO, downtown Tecumseh, area headquarters for macrame tote painting, miniatures, artists supplies and much more. Monday thru Saturday, 10 to 5:30. Classes available. 517-423-7447. **tn**

"ARE YOU BUILDING YOUR OWN HOME?" Construction money available for residential homes. Marfax Corporation, Ann Arbor, 665-8000. 6-3

HEATING AND PLUMBING REPAIRS, Call night or day. 428-7138. 5-13-76.

HORSESHOEING AND TRIMMING - Corrective Shoeing, Bob Buono, 428-7293, 19223 Sharon Valley Road. 5-13 p.

POLE BUILDINGS BY HUSKEE - BILT STRUCTURES, Farm, Urban, Commercial, call or write Jan Warren for information. 916 W. Michigan, Ypsilanti, Michigan 48197 482-3934. 4-23 p.

HAY - ALFALFA For Sale - Phone 517-451-2559. 4-29p.

NEED YOUR YARD Done? Will do general yard work. Call Tammy 428-7949 or Julie 428-8528. 4-29 p.

PIANO & ORGAN tuning and repair (517) 782-1273 or 428-8422 **tn**

ELECTRICAL wiring, new & remodeling. Licensed, fully insured electrician. Paul Kemner, phone 428-8462.

KNEEL'S TREE SERVICE-cutting, trimming, stump removal, aerial bucket rental. Call (517) 443-5506 or 486-2819. **tn**

EAR PIERCING - Fast and painless. Gaston's Jewelry, Tecumseh, Michigan 423-3260. **tn**

BEEF TO SELL BY SIDE: Custom slaughtering. Lockers to rent. Phone 428-7600. Manchester Frozen Food Locker. **tn**

FOOTBALL, Basketball and other sports pictures available. For prints call Jon 428-8690. **tn**

ALUMINUM EAVESTROUGH - Seamless, white, black and brown, guaranteed, free estimates, Walkwe Home Improvement Company, phone 313-428-8468 or 517-592-2234. **tn**

HORSE SHOEING - Experienced Horse shoer now shoeing in area. Bob Smith, 517-851-8479. **tn**

LOSE WEIGHT with Grapefruit diet plan with Diadax-Reduce excess fluids with Fluidax. Krauss Drugs 6-10 p

WANTED - Standing Hay, phone 475-2771. 6-24

FURNITURE - Antiques, stripped, re-glued repaired and refinished. Old Brick Quality Refinishing. Phone 763-8669 or 428-8873. 4-29 p.

WANTED - hostess - earn free authentic Indian Jewelry - have a party. Call 978-8072 or 763-6345. 5-6 p.

GARDENS PLOWED, very reasonable. Call after 5 p.m. 428-8665. 4-29

FREE LANCE TYPIST - Barbara Burda 429-9286, Saline. 4-22

FOR SALE - Over 200 shares of Union Savings Bank of Manchester stock. Contact Richard R. Erb, Executive Financier, 517-423-4773 after 7 p.m. 4-22

27 FOOT POOL For Sale, everything included, 4 years old, top and red wood deck, can have immediately, 428-8182 or 428-8277.

NEW BEAUTY SCHOOL Classes start May 4th, part time, full time, day or evening, Apollo University of Hair Design, 146 N. Main, Adrian 256-6491. 4-29

FOR SALE OR SWAP - 2 L60.15 with 20 to 30 thousand miles left for 2 H 78.15 at same tread wear. 428-8905 after 6. 4-22 p.

FOR RENT - One bedroom apartment utilities furnished, private entrance, 428-8638. 4-22

WANTED - Part time baby sitter for day shift for 2 year old, my home or yours. 428-8808. 4-22 p.

MOVING SALE - Books, Haviland China pieces, collectables, clothes, dishes, etc. 518 E. Duncan, Friday, April 23 from 9 to 5. 4-22 p.

FOR SALE - Colonial Maple loveseat and platform rocker, 2 cushion davenport, new shallow well pump, 108 W. Main Street, 428-7937. 4-22 p.

FOR RENT - One bedroom apartment - available about May 1. Marie Kemner Gaff - 108 West Main Street, 428-7937. 4-22 p.

EVERYONE INVITED to dance to the music of the Rhythmaires Saturday, April 24 at the K of C Hall, \$7.00 per couple, 9 p.m. to 1 a.m. BYOB.

MOVING SALE - Saturday, April 24, 12-4:00. 501 Territorial Street.

SHARON UNITED METHODIST Church, Spring Rummage, Handicraft and Pretzel Sale, Saturday, April 24, 9 a.m. to 4 p.m.

FOR SALE - Baby crib complete, matching dresser, dressing table, jumper seat, phone 428-7291.

FOR SALE - Above ground swimming pool 18' X 4', ladder, filter, sweeper and cover included, good condition. 428-8431

LOST DOBERMAN & German Shepherd & Mix, 6 years old, answers to Quigley, scar over eye, bobbed tail, \$50.00 reward, I love my dog. Contact Jan Cross 971-4800. 4-22 p.

FRIGIDAIRE AUTOMATIC Washing Machine, call 428-8873. 4-22 p.

FOR RENT: One bedroom apartment 428-8181. p.

FOR SALE - White dresser and night stand, call 428-7463 after 4:30 p.m. p.

FOR SALE - 1974 Ranchero pick up 428-8129. p.

LAWN MOWED - Call 428-8153. p.

RUMMAGE SALE - Saturday, April 24, 9 a.m. till everything is gone, 13250 Sharon Hollow Road, dishes, clothing, cleaning jars, depression glass, furniture, Springfield 30.06 rifle with scope, misc. items. p.

FOR RENT - 1 bedroom apartment, utilities included. Available May 1, 428-7061. p.

FOR SALE - two slotted mags, 14 inch. Call 428-7821.

WANTED STANDING
TIMBER and WALNUT

Let us look at your wood lot we can give you a price on selective cutting of mature trees.

Tri-County Logging, Inc.
P.O. BOX 467
CLINTON, MICHIGAN 42936
Phone 517-448-7060 or 456-4731

Auctioneers
MANCHESTER
JERRY JACOB
(313) 428-7975

CLIFF TRACY
(313) 428-7263

LARGE OR SMALL SALES
FARM-HOUSE-BUSINESS
COMPLETE MANAGEMENT
Sale Dates Available

AND OTHER MAJOR
APPLIANCE REPAIR
Electrical Contracting
L. V. Kirk
Phone: (313) 428-3701
MANCHESTER

The most important
part-time job in Michigan

That's the job of the new minuteman!
Like America's first minuteman, they protect your country and your community. Now you can be one of them!

For details... Call: (313) 662-0490 or (313) 483-0595

NATIONAL GUARD
The Guard belongs.

Men and women 17-35 can learn valuable skills. Prior service to age 45. Earn pay and college credits... in today's Guard.

A Bicentennial
Happening

MANCHESTER HIGH SCHOOL

Sponsored by Bicentennial Committee

SATURDAY, APRIL 24 5:00 p.m. - 9:00 p.m.
SUNDAY, APRIL 25 2:00 p.m. - 6:00 p.m.

\$2.00 - Adults, \$1.00 Children under 12
Preschoolers Free

Public Notice
To Black Sheep Patrons

HOURS:
Monday thru Thursday 11 a.m. to 11 p.m.
Friday and Saturday 11 a.m. to 1 a.m.
Sunday 12 noon to 10 p.m.

BUFFET:
Thursday, Friday & Saturday 6 p.m. to 10 p.m.
Sunday 2 p.m. to 6 p.m.

FOR RESERVATIONS
OR BANQUET
INFORMATION
PHONE 428-7000

Black Sheep
Tavern

THE MANCHESTER ENTERPRISE

109TH YEAR VOLUME NO. 26 15 CENTS PER COPY THURSDAY, APRIL 29, 1976

Manchester Area Families Host Youth For Understanding Students

By C. Chapin

Seems to have been a long, long winter. The Spring has fooled us neatly and turns around every few days to confuse and delight us. An election year provides a bleak and boring period so for your pleasure we wish to share with you our experience of a few young people who have been visiting our community for these many months past.

Youth for Understanding and International Culture Exchange are two of the programs which have contributed to the exchange of students during the past few years, the former having arranged the visits of more than 50,000 young people in the last twenty five years.

Wilfried Soelster, of Hamburg, Germany, living presently with the Rowe family of 957 Kies Road, Rachel Hurst of Bolivia, a part of the family of Rev. Janofski, English Road, Christina Gustafsson, from Sweden, a new sister for the Denhoff family of Main Street, Marcello Libanio, of Brazil happy with the Glen Lehr family of Sanborn Road, Dag Omre, of Norway another son for the Bob Little family of Ernest Road and Bo Ericsson of Sweden with the Roger Morrison family of Bootger Road.

It has been our pleasure to have had an opportunity to talk at some length with these young people and surely it was a treat. The thought of going to a strange country and living for a year or even half that time with a strange family, language and customs, to say little of the enormous differences in food, is a daunting one and perhaps young is the only proper time for such adventures. Certainly it was a shock to find that the bright, smiling intelligent kids each and everyone felt that we, that is you and me, were considered aloof and reserved and not very forthcoming at first approach. With perseverance and good will and a little work at friendship, however, we could be made approachable.

Wholly kind and good to strangers are the host families considered to be and in some cases better than that. Asked what if anything they would like to transplant home with them the answers were varied and stimulating. Wilfried, from Germany, covets a customized Van, Bo Ericsson of Norway intelligently comments on the improvement our free commercial television would be over the state controlled TV programming at home, Cissy Gustafsson, from Sweden however speaks from the heart and says she would like to take her little sister Meg Denhoff home with her.

During the past year these youngsters have become not only a part of the host families, but a very real part of the school groups as well as the community. The opportunity to travel has been afforded a few, for when the discussion took the turn toward the countryside and whether there was beauty here, suddenly the group became animated, one had been to Arizona one to Florida and the great space we have and take so far granted seemed to be specially prized.

The parents and brother of Bo Ericsson from Sweden came recently for a visit to this country and were able to spend a few days in the village. Eric, Barbro and son Lasse, had made a wide tour, sweeping round Chicago, St. Louis, Niagara Falls and New York and were utterly charming, a language barrier nonexistent because of the facility of the Ericssons

Mrs. Claire Reck Bicentennial First Lady

The Bicentennial Happening which took place this past Saturday and Sunday, was a tremendous success. This event, which was sponsored by the Manchester Bicentennial Commission, featured items of interest to all age groups. The Manchester High School was filled with people who ranged in age from babes in arms to great-grandparents. People who I have never seen in attendance at other functions were present and enjoying themselves.

Many hours of hard work and many frayed nerves were necessary to get this event set up, but it was well worth it. Thank-yous must go to all of the people who exhibited and worked, to those who helped set up and to those who helped clean up the mess afterward. This again involved all age groups.

A very special thank you must go to the Manchester Middle School 5th graders. For those of you who were not there, these great kids raffled off a quilt they had recently made. They then donated the \$45.00 they made on the raffle, back to the Bicentennial Commission. This was greatly appreciated and shows the spirit that exists in the youth of today. The winner of the quilt was Linda Rose of Manchester.

Manchester's Bicentennial First Lady was crowned, and her court announced on Sunday evening. Our First Lady is Mrs. Claire Reck. Her court consists of Mrs. Ruth Kuebler, Mrs. Cecelia Post, Mrs. Mabel Main, and Mrs. Rena Girbach. Mrs. Reck was given a silver tiara, a dozen red roses and an inscribed silver tray. The ladies on the court were each given an orchid corsage and a Manchester Bicentennial Bronze coin in a set. Let's not forget these ladies now. We intend to honor them in many ways over the summer. If you are having a social function, of any size, ask these ladies, one or all of them to act as hostess, or to be guest of honor. After the ladies were announced they were escorted among the crowd on the arms of Jim Mann and four very elegant young men in period costumes.

Most of the people who attended seemed to stay for several hours, therefore, we believe they enjoyed themselves. Once again we would like to thank all of the people who helped make our Bicentennial Happening a success. We will have pictures and more details in next week's Enterprise.

Bicentennial Happening

On behalf of the Manchester Area Bicentennial Commission, we would like to thank everyone who participated in the success of the Bicentennial Happening, and express a special thanks to Fete and Rosemary Hughes and Dick and Lois Kuntz. Mrs. Hughes is the Commission Student Activities Coordinator and with her committee, spent months planning this project which involved over 350 people working before, during and after the event.

At this time also, we want to thank Mrs. Elizabeth Bourie, Commission Ticket Chairman and her co-worker Mrs. Barbara Bertie for planning the First Lady Contest, as well as Mrs. Debbie Gilbert for her work as Commission Publicity Chairman. Our congratulations to Mrs. Claire Reck, Manchester Area Bicentennial First Lady and her court and to all the 22 ladies who were First Lady nominees.

We have many exciting and unusual events planned for the coming summer and fall, and hope everyone will get involved. If you would like to help please call one of the nineteen member commission. Remember, the proceeds from the celebration activities are to be donated toward the development of the new park located between Klager and Manchester High School.

Thank you,
Carolyn Ahrens and Jim Mann
Manchester Area Bicentennial Com.

Little League Baseball Tryout

If you will be 8 years old before August 1, 1976, but not 13 before August 1, 1976 and are not already on a Little League team then you are invited to tryout for the Little League and Farm League programs on the following Saturdays: May 8 and May 15 at 9:00 a.m. at the athletic field. All participants will be placed on either a Little League or Farm League team. Usually all 7, 8 and 9 year olds will participate in the Farm League program while 10, 11 and 12 year olds participate in the Little League program.

If for some reason you cannot make it to the tryouts, but you still wish to play baseball this summer, then contact Mr. Brian Schick at the Middle School on any school day between 11:15 a.m. and 12:00 noon.

LITTLE LEAGUE APPLICATION

Name _____
Address _____
City _____
Present Age _____
Birthday: Month _____ Day _____ Year _____
Telephone _____
Parents Signature _____

Bring this application to the tryouts on May 8 or May 15. We prefer that you bring it with you on May 8.

NOTE: There are openings for both LITTLE LEAGUE and FARM LEAGUE MANAGERS. These openings must be filled by May 15 in order to get the program off to a fine start. If there is anybody interested in serving our community by giving a helping hand to our youth, please contact Mr. Brian Schick at the middle school. Don't just be a spectator, be a participant!

Family In Need

The fire on April 13 which destroyed the Joanne Withrow home on Hogan Road has left the family in need of a few specific things. Clothing and many household furnishings were donated by generous Manchester and Clinton people and the Red Cross.

Chests of drawers are always a major item and if anyone has one to donate, please call Mrs. Franklin Reck 428-8852 or Mrs. Wm. Schwab 428-8976. Since there are 9 children in the family, large cooking utensils would also be most welcome. Bedding and clothes hangers are also needed.

Manchester Family Service will be able to use more clothing in May. If you have good wearable things to give away, please contact one of the above numbers.

Bicycle Safety

The Manchester Optimist Club Bicycle Safety Committee of John Sauter, Emory Gaskick, Wendell Reinhardt and Don Walter report one of the most successful bike safety campaigns ever. Forty-three bicycles were inspected and registered Saturday morning.

The committee wants to thank Emmanuel United Church of Christ for the use of their parking lot, the Manchester Police Department Explorers for assisting in registering the bicycles, and the Manchester Enterprise for publicity. The Optimists and the children especially want to thank Mr. and Mrs. Robert Niehaus of the Dairy Queen for the treat to all who registered.

BIRTHS

Mr. and Mrs. Dennis Keezer of Clinton are the proud parents of a baby girl born April 20 at 11:04 p.m. at St. Joseph Hospital. Angie Marie Weigbed 7 pounds and 2 ounces. She has a 3 1/2 year old sister, Stephanie. The grandparents are Mr. and Mrs. John Kastanis of Bethel Church Road and Mr. and Mrs. Marvin Keezer of Manchester. Angie was born on her Grandfather Keezer's birthday.

Born to Mr. and Mrs. James F. Fielder, twin boys on April 20 at St. Joseph Hospital, Ann Arbor. Matthew Clarence Gerard and Thomas Edward Gerard. The maternal grandparents are Mr. and Mrs. Edward Barlage of Willis and the paternal grandparents are Mr. and Mrs. Clarence Fielder of Manchester.

The Fielders have one daughter, Laure Anne, three years old.