

# WANT ADS

ALL CLASSIFIED ADS ARE PAYABLE IN ADVANCE

DON'T get cold this winter, have your furnaces serviced now to prevent problems and furnace failure later in this cold season. Also plumbing and electrical work now and repairs. Call Hilltop Plumbing, 8316 Werkner Road, Chelsea, 475-2949.

HOUSE and barn roofing, all types of roof repairs, aluminum storm windows and doors, awnings and porch enclosures, hot build-up roofing - residential and commercial, aluminum siding and now offering seamless aluminum gutters. Call Joe Hayes for free estimates. 428-8520.

SEAMLESS aluminum eavestroughs, roofing, siding, and carpentry work of all kinds. Experienced installers, all work guaranteed. Call R.D. Kleinschmidt Co. 428-8836.

SEASONED FIREWOOD - \$25 a level pick up load, delivered local, split and stacked. 428-7377 or 428-7252.

GARDEN SEEDS - Now in stock, packaged and bulk. Also fertilizer. Mann's Feed Mill. th

DON'T THROW IT AWAY, sell it to A & K Lawn Mower Service of Chelsea. We buy, sell and repair all types of lawn mowers. Also repair all types of gas motors, rotor tillers, chain saws and riding lawn mowers. "We Call Wehaul". Free pick up and delivery. 475-2923. th

PAT'S CRAFT STUDIO, downtown Tecumseh, area headquarters for macramé, tape painting, miniatures, artists supplies and much more. Monday thru Saturday, 10 to 5:30. Classes available. 517-423-7447. th

"ARE YOU BUILDING YOUR OWN HOME?" Construction money available for residential homes. Marflex Corporation, Ann Arbor, 665-8000. 6-3

HEATING AND PLUMBING REPAIRS. Call night or day. 428-7138. 5-13-76.

DRY WALL, PLASTERING AND STUCCO new and repair. Free estimates. 663-6550. 4-8-76 p.

## FREEDOM ELECTRIC

11297 Pleasant Lake Road  
Manchester, Michigan  
RESIDENTIAL  
COMMERCIAL  
INDUSTRIAL  
NEW CONSTRUCTION  
REMODELING REPAIR  
GILBERT LUCKHARDT  
Phone 428-8233

## Auctioneers MANCHESTER.

**JERRY JACOB**  
(313) 428-7975

**CLIFF TRACY**  
(313) 428-7263

LARGE OR SMALL SALES  
FARM-HOUSE-BUSINESS  
COMPLETE MANAGEMENT  
Sale Dates Available

## ALBER EXCAVATING

Drain Fields-Septic Tanks-Drive Ways-Limestone  
Fill Dirt-Drain Field Stone-Mason Sand  
Basements  
PHONE 428-8628

7601 Hashley Road Manchester, Michigan

CHELSEA GREENHOUSES, 7010 Lingane Road, Chelsea, Michigan, 475-1353 - 54 or 475-9313. Flowers and plants for every occasion. We specialize in wedding flowers to fit your budget. Wear as near as your phone and we welcome your business. th

FOR SALE - Over 200 shares of Union Savings Bank of Manchester stock. Contact Richard R. Erb, Executive Financier, 517-423-4773 after 7 p.m. 4-22

FOR SALE - Corn Silage in upright silo with unloader, 428-8466. 3-8p.

NOW TAKING RESERVATIONS for Snowmobile storage, \$10 will store yours inside all summer, May 1 to November 1, 1976. Phone 428-8522, Tony Schlosser, 8130 Grossman Road, Manchester. 4-8.

STORAGE SHEDS, Pole Barns and garages, 8 ft. X 8 ft. thru 30 X 60 prefab kits or installed, all wood construction, very reasonable. Phone 449-2403. 4-1

SALINE PRESBYTERIAN Church's Basement Boutique (Huge rummage sale), 143 Michigan Avenue. April 1st and 2nd, 9 to 6. April 3rd 9 to noon. 4-1 p.

FOR SALE - 75 Pinto Hatchback, automatic, 15,000 miles, Call Sam Beal, 428-7082. 4-1

PART TIME JOBS - The most important part time job in America. Be part of a sophisticated communication network. Be paid while you train in the communication field. Other jobs available are generator and vehicular mechanics, radio repair, teletype, switch board operators, etc., no experience necessary. Special consideration for Vet's. Call 662-0490, Ann Arbor, Michigan National Guard.

### NOTICE!

All grave blankets and Christmas decorations must be removed by April 10th.

Oak Grove Cemetery Assn

### WANTED STANDING - TIMBER and WALNUT

Let us look at your wood lot we can give you a price on selective cutting of mature trees.

Tri-County Logging, Inc.

P.O. BOX 467  
CLINTON, MICHIGAN 42936  
Phone 517-448-7090 or 456-4731

SMALL DODGE WAGON - 1967 V8, Excellent body, engine, trans, tires, and exhaust. Clean \$395. Call 428-7380 p.

HOUSEHOLD SALE - Matching sofa and chair and ottoman, kitchen table with chairs, coffee table, antique console radio, 428-7512 or 428-8607.

FOR SALE - Sausage Shuffer, 60 pound capacity, manual 2 speed, complete \$75, 428-7082. p.

FREE KITTENS - Also boys chrome sting ray bike for sale \$25. 428-8912.

ALUMINUM EAVESTROUGH - Seamless, white, black and brown, guaranteed, free estimates, Walkover Home Improvement Company, phone 313-428-8468 or 517-592-2234.

JUST RECEIVED New shipment upholstery material from Lazy Boy Chair Co. priced at \$2.50 and \$3.50 a yard. Hartung's, Clinton, Michigan. Open Wednesday, Thursday and Saturday 10 a.m. to 5 p.m., Friday 10 a.m. - 9 p.m.

20% OFF on Bridge supplies, new jewelry from "Annie's Woodshed". New: Fenton Bicentennial collector's items. New: Selection of coffee mugs. Callin' Cat, hours: 10 a.m. to 5:30 p.m. Monday thru Friday, 9:00 a.m. to 5:30 p.m. Saturday.

FOR SALE - Registered Suffolk Ram, 5 years old, 1-753-9007. 4-1 p.

OUTFIT YOUR VAN for camping. Table and benches (seats 4), bed (sleeps 2), refrigerator (large upright), cabinet with three drawers, 2 doors and 2 burner gas stove on top. Chemical toilet, all like new. First \$200 takes all, phone 428-7145 evenings.

### Why you should let H&R Block worry about your income taxes.

If you received the Short Form for filing your taxes, our preparers are specially trained to determine if it's best for you. If it is, we'll complete it at a very low price...and our charge always includes your resident state return.

Get a little peace of mind.

### H&R BLOCK THE INCOME TAX PEOPLE

200 Riverside Drive  
Manchester, Michigan  
PHONE 428-7833

## BLACK SHEEP TAVERN

115-119 E. MAIN STREET MANCHESTER MICH  
PHONE 428-7000  
Open Tuesday thru Sunday Closed Mondays

FRIDAY SATURDAY **BEEF BUFFET** 6 PM TO 10 PM  
\$5.25 Per Person

DINNERS SERVED TUESDAY THRU THURSDAY 5 PM TO 9 PM  
FRIDAY AND SATURDAY 5 PM TO 11 PM SUNDAY 12 TO 9 PM

BANQUET AND PRIVATE PARTIES FACILITIES  
PHONE 428-7000 FOR INFORMATION

# THE MANCHESTER ENTERPRISE

109TH YEAR VOLUME NO. 22

15 CENTS PER COPY

THURSDAY, APRIL 1, 1976

## Bicentennial First Ladies 25th Anniversary of Bloodmobile



Pictured from left to right, front row: Ethel Kerr, Mary M. Smith, Claire Reck, Emma Marx. Back row: Mabel Main, Hulda Martin, Elvira Vogel, Kay Roesch.



Pictured from left to right, front row: Irene Kemmer, Ella Kern, Florence Kirk, Edna Knauss. Back row: Evangeline Ludwick, Celestia C. Ingraham, Jeanette Kirk, Ruth Kuebler.

These are some of our Bicentennial First Lady Candidates. The rest of our ladies will follow in next weeks Enterprise. If you wish to vote for one of these ladies, please see the March 18, 1976 edition of the Manchester Enterprise for a complete list of the ladies and their sponsors. There was one lady omitted in that list however. She is Mrs. Ella Beuerle, sponsored by Rowe's Corners Study Group. I apologize for this omission, I'm really not sure how it happened.

## Millage Vital To School District

On Monday, April 19, 1976 the Manchester School District will hold an election with one issue on the ballot. This issue is a request for an additional 4 mills plus the 12.78 mills voted last year for a period of one year to maintain present programs and services for the students of the Manchester School District.

This request for additional millage is necessitated by the following reasons:  
1. Expenditures have increased to a point where they have overcome revenues.  
2. Teacher's salaries have had to be improved to remain competitive. (On the 1974-75 school year Manchester ranked 426 among the 530 Michigan School Districts.)  
3. Increments for non-certificated personnel must be maintained.  
4. Utilities costs have increased dra-

matically.  
5. Fuel oil and gasoline prices have almost tripled in the last three years.  
6. School supplies and materials have increased in cost.  
7. By executive order Governor Milliken has cut \$33,000 from state aid due to the school in the 1975-76 school year which creates a deficit for this current year. This deficit must be eliminated.  
8. State aid has continually decreased - From 51% of total operating funds in 1966-67 to 28% in 1974-75.  
9. The Single Business Tax will cost the district almost \$4,000,000 in state equalized valuation.  
10. Mandated programs such as special education and career education have necessitated increased expenditures in person-

Continued on Page 5.



Pictured are Mrs. and Mrs. Stanton Roesch and Mrs. Franklin Reck.

Twenty-five years ago, Stanton Roesch, who was a member of the Washtenaw County Red Cross Executive Board and commander of the Emil Jacob Post of the American Legion, scheduled the first Bloodmobile which included blood replacement for local people as well as for the Korean War effort. Mrs. Rolland Grossman was chairman of the day, Mrs. Robert Huber was in charge of registration, Canten chairman was Mrs. Harry Sutton and Mrs. Roesch was chairman of recruitment. That was in the days when the American Legion Auxiliary called everyone in the Manchester telephone book to explain the meaning of a Blood Club and to sign up donors. The Enterprise reports that the total number of pints received at that clinic was 127.

Two weeks ago at the record Bloodmobile, Mr. Donald Peak, Executive Director of the Washtenaw County Chapter of the American Red Cross surprised the clinic workers with a cake to celebrate the anniversary of the Manchester Red Cross Blood Club's beginning. Historically, Bloodmobiles in Manchester started in October 1942 when the Michigan Department of Health and the Red Cross held the first one to meet World War II needs. Mrs. Raynor Haeussler, who can tell vividly of the experience, was the chairman of this event. It is publicized during the month of October in the 1942 Manchester Enterprise and the summary on November 9th reports 160 attended and 130 pints of blood were received. In 1953 Ann Arbor nurses and aides were replaced with local people and only the Bloodmobile professional unit was from out of town. In that year the local Ford Motor Company combined with the Manchester Club and the Industrial connection was started. In 1954 Mr. Roesch resigned from the County Board and Mr. Franklin Reck became chairman for the next six years.

During the 60's, the Club continued with at least one Bloodmobile a year and Double A Products and Manchester Tool & Die and Manchester Stamping became regular Club members. Mrs. Reck was elected to the County Board and was in on the local Blood Club committee.

Other members of the releasing committee are Mrs. Rolland Grossman and Mrs. Mabel Main. Continued on Page 7.

## Double A Products Contract Ratified

The Double A Products Co. of Manchester, Michigan and Lodge 2190 of District No. 117 of the International Association of Machinists and Aerospace Workers are pleased to announce the ratification of a three year contract by the Union membership on Thursday, March 25. The completed contract calls for a substantial wage increase in each of the three years and improvements in fringe benefits.

In addition to the economic package, changes were made in the contract language initiated by both parties with the objective of improving the daily working relationship and the overall efficiency of the Company.

The negotiation process went smoothly, and both parties are pleased with the resulting agreement. This successful conclusion of the previous two year contract is positive evidence of the efforts put in by the Company and the Union to improve the labor relations atmosphere at Double A following the three week strike in 1974.

In the face of a significant economic downturn during the last two years, Double A has attempted to stabilize employment to the maximum degree, building inventory to maintain as many job opportunities as possible. During this period, the Union has cooperated fully and the employees have maintained a high degree of productivity unusual under these circumstances.

We feel the efforts of both parties are recognized and appreciated by the other and that this spirit of cooperation is in the best interest of all parties as evidenced in the settlement of this week. Don Wolf, Union President  
Clyde Nixon, President  
Double A Products Co.



**The Manchester Enterprise**  
305 Beaufort Street  
Manchester, Michigan 48158  
Phone 428-8173

The Manchester Enterprise was established in 1867 and is published each Thursday at 305 Beaufort St., Manchester, Michigan with second class postage paid at Manchester.

**THE STAFF**

Edward E. Steele, Publisher  
Lenore Steele, Editor  
Cecilia Chapin, Feature Editor  
Jon Roger Hardsburg, Sports Editor

**Area Obituaries**

**Louis H. Tirb**  
Ann Arbor

Age 85 years, formerly of St. Paul, Minnesota died Wednesday at the Whitehill Convalescent Center in Ann Arbor.

He was born May 13, 1890 in Sharon Township, the son of Bernard and Caroline Klinge Tirb.

Mr. Tirb was a retired Chef. He is survived by one brother, Theodore of Dexter; four sisters, Miss Lizzie Tirb of Chelsea, Mrs. Martha Schill of Manchester, Mrs. Ida Flakbeiner of Ann Arbor and Mrs. Olga Schafle of Stockbridge; several nieces and nephews. He was preceded in death by one

brother, August, and one sister, Mrs. Clara Beuerle.

Funeral services were held Friday at the Jenter Funeral Home. Rev. Steven Jones officiated. Burial followed in Mt. Hope Cemetery in Freedom Township.

**Webster Lasell Bowler**

Born October 18, 1910 in Manchester, raised there with brother, George. He graduated from Michigan State University in 1933 in electrical engineering.

He was married to Christine Connor and with three sons, Lauren, Roger, and Alan, lived in Grosse Pointe for 30 years. He spent 6 years in the Army during World War II as an officer in the artillery, earning the rank of colonel and spending a total of 30 years in the Army. He worked for General Motors in the United Delco Division and retired in 1972 after 25 years.

After the death of Christine in 1968, Webster married Sarah Grace Ludwig and has lived most recently in Sun City, Arizona.

He died March 11, 1976 in Sun City. A memorial service was held at Grosse Pointe Memorial Church. In addition to his three sons and brother, George (now of Tucson), he is survived by a grandson, Mark. Memorial contributions may be directed to the Michigan Cancer Foundation.



LETTERS TO THE EDITOR

To the Members of the Manchester School District  
As most all of our patrons are aware, Supt. Robert Swartz has tendered his

resignation to us. Mr. Swartz and his wife plan to move to Florida late in the summer, and, as per an article in the Ann Arbor News interview with Mr. Swartz, he plans to write and illustrate children's books, and concentrate on his oil painting hobby.

The members of the Manchester Board of Education are very much aware of your concern and interest in the Board's progress in seeking a new superintendent, and I would like to submit this progress report.

We have been hard at work at this task since early January when we invited you to submit your input to us in writing. A brochure about our system and the requirements for the position was prepared to distribute to interested persons through the placement bureaus of most of the Michigan Colleges and some of the surrounding states. These bureaus published news of the vacancy and applications were received until March 1st -- the announced deadline.

The 109 applications have been carefully scrutinized, and from this group eight "top choices" were selected for personal interviews with members of our Board. We are in process of these interviews now and should be making a final selection in the near future. Announcement of the name of the new superintendent will be made just as soon as possible.

Any further questions regarding the school or the meeting contact Elaine Cox - 428-8055.

Member of Ann Arbor Board of Real Estate Brokers

**Spear & Associates**  
INCORPORATED REALTORS

122 West Main Phone 428-8388 Daily Manchester

**IDEAL SPOT** for the person looking for a home in the country. This lovely home, situated on a 2 1/2 acre lot with three bedrooms, full basement, and a 2 1/2 car garage is a fantastic buy!

**GLAMOROUS LARGE HOME** located in the Village of Manchester. This home has been beautifully remodeled, four bedrooms, 2 new baths, new kitchen, and a 2 car garage all situated on a 66 ft. x 165 ft. lot. Ideal Opportunity.

**HERE'S A REAL honest bargain!** A BRAND NEW home located East of Manchester in the High School area. Three bedrooms, 1 1/2 baths, full basement, and carpeting. Take advantage of this buy now.

**DREAM** by your own fire in this lovely brick home with it's 2 cozy fireplaces, 3 bedrooms, 2 1/2 baths, full basement, fruit cellar, recreation room and many other fantastic extras. This is one of the finest homes in Manchester all on 4 acres of nice green land.

**RAISING A FAMILY?** Will this spacious four bedroom home fulfill your needs? Maybe the full basement, fireplace, dining area, family room or convenient 2 1/2 car garage can. This home, situated on three acres is located in a quiet and peaceful area half way between Manchester and Chelsea. Call now to find out more.

**A LITTLE MANSION** that's just been listed. A three story home with 4 bedrooms, 1 1/2 baths, full basement, located in Bridgewater. Saline Schools, priced to sell at \$42,500.00

**LAKE BREEZES** and a nice 2 bedroom home located on Iron Lake. One bath, basement, and a 200 ft. lake frontage with a sandy beach. Includes a 2 story building with many possibilities. Perfect for you.

**A MOST TEMPTING BUY.** This little house has 2 bedrooms, one bath, and carpeting. Located one mile South of Manchester, this could be the Starter Home you've been looking for. Priced to sell at only \$17,500.00

**AVAILABLE NOW!** 30 acres of beautiful countryside on the East Side of Manchester. Trees and lake good for fishing and swimming. Call now and see it.

**We have buyers -- call us to sell your property**  
**REAL ESTATE ADVICE**  
No Obligation - Residential Properties - Farms  
Commercial Properties - Vacant Lands

**OFFICE HOURS:**  
Mon. thru Fri.  
9 a.m. to 5 p.m.  
Sat. 9 am to 12 noon

Eves & Weekends call:  
Ellis Pratt 428-8562  
Jim Mann 428-8074  
Annette Lawson 456-4014

**EMANUEL UNITED**  
Wednesday, March 31, 6:30 Confirmation.  
Thursday, April 1, 4:30 Childrens Choir, 7:30 Adult Choir.

**MANCHESTER CO-OP NURSERY FUND RAISER**  
There will be a presentation of Photo by the Bill Beard's life size Marionettes at the Power Center in Ann Arbor. Performances are on April 16, 17, and 18. Tickets are \$3 for adults and \$2 for children. For each ticket sold \$1 goes toward the Co-op. Phone Chris Jacobs 428-7172 for more information by April 8.

**SALAD POTLUCK**  
The Manchester Co-Op Nursery School is having a Salad Potluck Meeting at Emanuel Church on April 6 at 7 p.m. Anyone interested in joining the Co-Op for the 1976-77 school year is welcome to come to the meeting and get acquainted with us and the school. Bring a salad to pass and your own table service.

**ST. JOHN'S LUTHERAN**  
Thursday, April 1, EMC 7:30 p.m. Friday, April 2, Fast & Prayer Day. Saturday, April 3, Catechism 9 - 11. Sunday, April 4, Quarterly meeting, Fellowship Circle, 12 noon. EMC 7:30 p.m.

**ST. THOMAS LUTHERAN**  
Thursday, April 1, Confirmation Class 4:15 p.m. Sunday, April 4, Worship with Holy Communion 10:45 a.m. Young People meet at 2:30 p.m. Monday, April 5, Council Meeting 8 p.m. Tuesday, April 6, Choir Rehearsal 8 p.m. Thursday, April 8, Confirmation Class 4:15 p.m.

**FAITH COMMUNITY**  
Sunday, April 4, Worship Hour at 10 a.m. Missionary Sunday observed during 11:00 a.m. Sunday School hour. Orchestra Practice at 5:00 p.m. Youth Groups at 5:45 p.m. Evening Service at 7:00 p.m. Afterglow at 8:00 p.m. Monday, April 5, Visitation to Herrick Nursing Home at 6:00 p.m. Faith Circle to meet with Mrs. James Brown at 7:30 p.m. Tuesday, April 6, Board of Trustees will meet at the church at 7:30 p.m. Wednesday, April 7, Junior Choir at

**PARISH CHAIRPERSON NAMED FOR FUND DRIVE**  
Mr. Clifford Tracy has been appointed chairperson of the Catholic Diocese of Lansing's annual fund drive for St. Mary's parish in Manchester. The Diocese Services Appeal (DSA) finances 28 projects and services in the 10 county area including social services,

**MANCHESTER UNITED METHODIST**  
Thursday, April 1, 8 p.m. Finance Committee meeting. Saturday, April 3, 8 a.m. Men's Lenten Breakfast, 10 a.m. Confirmation Class, 5 p.m. Roast Beef Dinner. Sunday, April 4, 11:30 a.m. Chancel Choir rehearsal. Wednesday, April 7, 7 p.m. Cherub choir rehearsal, 7:30 p.m. Wesley choir rehearsal, 8 p.m. Lenten Service at Manchester. Thursday, April 8, 8 p.m. Administration Board meeting. Friday, April 9, 9 a.m. Lydia Circle Pretzel Sale at the Union Savings Bank orders may be given to Dorothy Mahrie 428-8413, or Grace Bummy 428-7384, sometime before Friday, April 9, orders not necessary.

**CRISP HEAD LETTUCE** 24 size 29c  
**McDonalds Low Fat Milk** GAL 1.09

**Larry's Roadside Market**  
Half-Way Between Chelsea and Manchester on M-52  
1-4 Mile South of Grass Lake Road.

**ROAST BEEF DINNER**  
—BUFFET STYLE—  
**MANCHESTER UNITED METHODIST CHURCH**  
501 ANN ARBOR STREET MANCHESTER, MICHIGAN  
Saturday, April 3, 1976  
5:00 P.M. - 7:30 P.M.  
ADULTS \$4.00 CHILDREN 5 to 12 \$2.00

**YOUR CHURCH**

**EMANUEL UNITED CHURCH OF CHRIST**  
Rev. Joseph W. Wise, Pastor, Steven Jones, Assistant Pastor.  
Quest 9:15 a.m. Worship 10:30 A.M. Plan to worship God regularly.

**SHARON UNITED METHODIST**  
Corner Pleasant Lake Rd. - M-52.  
Rev. Michael Petrylin, Pastor  
Sunday School 10:00 a.m., Worship Service 11:00 a.m.

**ST. THOMAS LUTHERAN**  
Rev. Jerome Dystra, Pastor  
Ellsworth Rd.  
Sunday School & Bible Class 9:30 a.m. Worship Services 10:45 a.m.

**ST. JOHN'S UNITED CHURCH OF CHRIST**  
Carl Asher, Pastor  
Rogers Corners, Walters and Fletcher Rds.  
Sunday School 9:30 a.m., Church Services 10:30 a.m.

**BETHEL UNITED CHURCH OF CHRIST**  
Rev. Roman A. Resneck, Pastor  
Schneider and Bethel Church Roads  
Church Services 10:00 a.m., Sunday School 11:00 a.m.

**MANCHESTER UNITED METHODIST**  
Rev. Walter R. Demberg, Pastor  
Church School 9:15 a.m. to 10:15 a.m. Worship Service 10:30 a.m. to 11:30 a.m.

**ST. MARY'S CATHOLIC CHURCH**  
Father Raymond Schilbert  
West Main Street  
Sunday Masses 8:30 a.m. and 10:30 a.m. Monday thru Friday 8:30 a.m., Saturday, 7:00 p.m.

**NORTH SHARON COMMUNITY BIBLE**  
William Easton, Pastor  
Sylvan and Washburn Road  
Sunday School 10:00 a.m., Worship Services 11:00 a.m. (Nursery will be available) Junior Church Classes 11:00 a.m., Youth Meeting Senior High 6:00 p.m., Youth Choir 6:00 p.m., Evening Worship Services 7:00 p.m. (Nursery available), Wednesday Bible Study and Prayer Meeting (Nursery available) 7:00 p.m. To your door: Bus Transportation available 428-7222.

**FAITH COMMUNITY CHURCH**  
Timothy Miles, Pastor  
2400 Sharon Hollow Rd. off W. Austin Rd.  
Worship Service 10:00 a.m., Sunday School 11:00 a.m., Sunday Young People 6:00 p.m., Sunday Evening Service 7:00 p.m. Wednesday evening 6:30 p.m., Junior Choir Practice, Prayer Meeting and Bible Study 7:00 p.m., Junior Prayer Meeting 7:30 p.m., Senior Choir Practice 8:00 p.m.

**IRON CREEK CHURCH**  
Rev. Ralph Janofski, Pastor  
Worship Service 10:00 a.m., Sunday School 11:15 a.m., Youth Service 6:30 p.m. Evening Service 7:30 p.m. Wednesday Evening: Junior Choir 6:30 p.m., Bible Study and Prayer Meeting 7:30 p.m., Senior Choir 8:30 p.m.

**ZEON LUTHERAN CHURCH**  
Rev. John R. Morris, Pastor  
3050 S. Fletcher Road  
Sunday School 9:00 a.m., Family Worship 10:15 a.m.

**ST. JOHN'S EVANGELICAL LUTHERAN**  
Thomas Falk, Pastor  
Sunday School 9:30 a.m., Church Service 10:30 a.m.

**MANCHESTER BAPTIST CHURCH**  
Alan W. Morris, Pastor  
122 W. Main St., Phone 428-7236  
Sunday School 10 AM. Morning Worship 11 AM., Adult Bible Study 6 PM., Youth and Childrens Bible Study 6 PM., Evening Service 7 PM., Prayer Meeting Wednesday 7 PM., Saturday afternoon, Sunday School and Bus Visitation, Bus transportation 428-7682 or 428-7206. We Teach Salvation of Souls Through Jesus Christ our Lord.

**ST. BARNABAS EPISCOPAL CHURCH**  
Rev. Jerrold F. Beaumont, "Vicar"  
Old U.S. 12-1/4 mile west of M52-Chelsea  
10:00 a.m. Holy Eucharist and Morning Prayer.

**STATE FARM - The World's Number One Homeowners Insurer**  
If you're looking for the best value in homeowners insurance - you'll find it at State Farm. Give me a call today. You'll discover what's made State Farm the number one homeowners insurer in the world.

**MATT DONNELLON**  
146 E. Main  
Manchester  
Phone 428-8364  
Like a good neighbor, State Farm is there.

**Jenter Funeral Home**  
302 E. Main St.  
Manchester, Michigan

Church Services Courtesy of  
**Jenter Funeral Home**  
302 E. Main St.  
Manchester, Michigan



## Manchester United Fund Meeting

The Manchester Community Chest held their 1976 Annual meeting on Wednesday, March 24 at the F.M. Beck Library of the High School. There was an excellent representation of interested citizens and Chest Agency representatives present.

The meeting was called to order by President Fleider. The minutes of the 1975 annual meeting were read and approved and the Treasurer's report for the year ending 1975 was read, approved and placed on file.

President Fleider presented Mr. Robert G. Lawson, 1975 Campaign Chairman with a gift from the Board of Directors for his excellent leadership in the 1975 Drive. Mr. Wm. H. A. Herbst, Field Representative of United Way of Michigan also presented Mr. Lawson with a plaque for the participation in the 75 campaign. This was the 15th consecutive year that Manchester has reached their drive goal.

The following local industries were presented with 1975 Year Awards, for their 100% participation in the 75 Campaign: Double A Products Co., Chrysler Proving Grounds, Manchester Stamping Corp., Manchester Tool & Die, Inc., Michigan Gas Storage Co. and Manchester Public Schools.

Eleven of the thirteen Chest agencies had representatives present. Each Agency gave interesting and informative reports of their activities in the area and thanked the Board for their continued financial support.

Election of five Board members was held. Mrs. Art Blanchard, Nominating Chairman submitted a list of candidates for nomination. There was no nomination from the floor.

The following citizens were nominated to the Board of Directors: Mrs. Phyllis Baker for a two year term. Three year terms were filled by Robert Armentrout, Robert Lawson, Victor Mann and Mrs. Ethel Wheeler.

Discussion was held concerning the changing of the name of the group from Manchester Community Chest to Manchester United Way. This change would allow our Chest name to coincide with the State and National Agency. A vote was taken and the name will be changed to Manchester United Way.

Refreshments were served by Mrs. Norman Fleider and Mrs. Del Ludwig. A motion was made that the meeting be adjourned at 9:30 p.m.

Immediately following the Annual Meeting members of the Board of Directors met to re-organize for the coming year. The following officers were elected: President, Clarence Fleider; Vice-President, Robert Armentrout; Secretary, Mrs. Del Ludwig and Treasurer, Louis Vogel.

Mr. Robert Ross and Mrs. Claire Rock will represent the local Chest at United Way of Michigan's Budget meeting in Lansing in late April.

Mr. Robert G. Lawson was named as 1976 Campaign Chairman.

## Bicentennial Calendar

On Saturday, April 24 and Sunday, April 25, the Manchester Bicentennial Committee is sponsoring a spectacular two day

show. The show is titled "A Bicentennial Happening". Showtime on Saturday will be 5:00 p.m. to 9:00 p.m., Sunday it will be 2:00 p.m. to 6:00 p.m. Plans for this show have been underway since early November of last year and we feel it will be well worth your time to go.

Entertainment will include the singing Boyd sisters. The Boyd family has resided in the Manchester area for the past year. They moved to our town from Lathrop Village, which is near Detroit. They have five talented daughters, but we will be entertained by only three.

They are Susan 20, who attends the University of Michigan and is a member of the Amazin' Blues; Patty 17, who is a student at Manchester High School; and Beverly 15, who is also a student at Manchester High. Susan, as a member of the Amazin' Blues, recently performed at a Congressional dinner in Washington, at which President Ford was in attendance. After the performance, the President further honored the group by going on

stage and personally greeting each of them. The girls will be strolling among the exhibits, accompanying themselves on guitars. They will also be inviting the public to sing-along.

The Pleasant Lake Division of the Manchester Public School System, will be sponsoring an Old Time General Store. The Klager School will be demonstrating and Early School Room. And the Middle School 5th grade will be demonstrating some of the crafts displayed at their recent Pioneer Days exhibition.

The Ladies from the Emanuel Church will demonstrate quilting, something I am sure we would all like to learn after seeing the beautiful quilts they have raffled in the past.

There are many more displays and we will tell about them in coming weeks. In the meantime, remember, Saturday, April 24, 5:00 p.m. to 9:00 p.m.; and Sunday, April 25, 2:00 p.m. to 6:00 p.m. We'll see you at the High School.

## FILLYAW'S SERVICE

327 WEST MAIN MANCHESTER

24 HOUR ROAD SERVICE

PHONE DAYS PHONE NIGHTS

428-8576 428-8053

We Carry A Complete Line Of Tires And Batteries, Alternators and Regulators, Starters and Solenoids

BUY YOUR MUD AND SNOW TIRES AT FILLYAW'S SERVICE AND SAVE

WE TURN BRAKE DRUMS AND ROTORS

# Your 1976 Tax Break

Save up to \$7500 each year, defer the taxes until you retire.

If you defer all or part of your income from employment, you can start saving for your retirement and at the same time reduce your yearly income taxes.

All members to your plan up to 10% of your annual income (maximum of \$7500 annually) are fully deductible for income tax purposes. Interest earned is also tax deferred. You do not have to pay income tax on your fund until retirement at which time your tax rate will be lower. Your account is 100% vested and individual accounts are insured to \$40,000 with an agency of the Federal Government.

Make a lump sum deposit or as many as you like - up to \$7500 annually.

You can start your account with a small amount, make additional deposits as often as you like throughout the year and earn 5 1/2% per annum even on your money if you deposit. When your savings reach \$1000 or more you can convert them to a 5 year certificate earning an annual interest rate of 7 1/2% which is an effective annual rate of 8.08%. Or if you make an annual lump sum deposit of \$1000 or more you

can immediately earn our 7 1/2% annual rate and accumulate even more in your tax sheltered retirement account.

The tax shelter can increase your retirement fund substantially.

Funds in a tax sheltered account grow much faster than funds in a non-sheltered savings account. The chart below provides an example of this difference assuming that you deposit \$7500 on the last day of each year. The second column shows how your interest accumulates with the help of our tax sheltered plan. The third shows how your interest accumulates without the help of a tax sheltered plan and the fourth shows the difference.

AT THE END OF	WITH TAX SHELTER	WITHOUT TAX SHELTER	YOUR GAIN WITH TAX SHELTER
12 Years	\$11,128	\$7,885	\$3,243
20 Years	\$28,722	\$20,200	\$8,522
30 Years	\$60,746	\$42,277	\$18,469

The figures in the above chart assume that the 100% contribution of \$7500 is made on the first business day of each year and that the taxpayer is in the 25% tax bracket. The current annual interest rate used is 7 1/2%.

You can start making withdrawals at age 59 1/2. Earlier withdrawals, unless you are permanently disabled, are subject to penalties. Withdrawals must begin before you reach age 70 1/2. Deposits in excess of \$7500 are also subject to penalty. You can open your retirement account at any Ann Arbor Federal Savings office.

Send for FREE literature

Please send free brochure giving full details on the tax sheltered retirement plan.

Name \_\_\_\_\_  
 Street \_\_\_\_\_  
 City \_\_\_\_\_  
 State \_\_\_\_\_  
 Zip \_\_\_\_\_

ANN ARBOR FEDERAL SAVINGS, 407 East Liberty, Ann Arbor, Michigan 48106 768-5300

ANN ARBOR FEDERAL SAVINGS

Get ahead in '76

## Celebrate 25th Anniversary



Mr. and Mrs. Ray C. Tirb celebrated their 25th Wedding Anniversary on March 24th. They were honored at a surprise party on Saturday, March 27th at the home of Mr. and Mrs. Ted Roberts by the Spirit of '76 bowling league. The Tirbs received many lovely gifts. Congratulations!

## RESOLUTION RE: BICENTENNIAL CORP

WHEREAS the year 1976 marks the 200th year of the founding of the United States of America, and

WHEREAS this important milestone provides an opportunity to focus our attention on the growth and progress of our country, and

WHEREAS there has been formed a Manchester Bicentennial corporation to carry out plans for commemorating this memorable event, and

WHEREAS it is the desire of us all that this event be a self-sustaining one financially.

BE IT HEREBY KNOWN that the Manchester Bicentennial corporation anticipates revenue from such projects as admissions to an Historical Spectacle and historical advertising booklet, a carnival and the sale of such novelties and souvenirs as Booster Badges, Membership Certificates, Commemorative Coins, Hats, Bonnets, Old Fashioned Wearing Apparel, plus Ties, Plates and similar items.

BE IT HEREBY REQUESTED that no individual, company or organization will sell, trade, or give away anything that has a Celebration reference or connotation without first obtaining written permission from the Manchester Bicentennial, Inc. and that no permits, franchises, or privileges pertaining to Celebration activities will be granted to anyone by the Village of Manchester unless such written permission is granted by the aforementioned Manchester Bicentennial corporation.

## Millage Vital

1. transportation and materials.

6. Manchester's enrollment is increasing, and contrary to the overall student enrollment decline statewide. It is expected to increase even more in future years due to the growth occurring in the district.

7. The older buildings in the district are in need of certain maintenance repairs—primarily roofing which cannot be put off any longer.

It is important to note that the requested 18.78 mills of operational monies will only maintain the present educational program. In fact, the projected 1976-77 school budget is a strict economy budget providing only for those programs and services and certainly no frills. Even with the requested increase of four (4) mills the total millage including debt retirement will be among the lowest levied by any school district in the county if all the amount of millage requested approximates \$755,000 in operational funds or approximately 45% of our total operational funds. Without these funds only about 55% of our present educational program could be operated.

The urgent need for extra operational millage is not unique to the Manchester School District. The great majority of Michigan's school districts will have to either ask voters for increased millage to maintain present programs or lay off employees and reduce programs under the Governor's recommendations for state school aid in 1976-77, according to a recently completed survey by the Michigan Association of School Administrators.

M.A.S.A. President Leonard VanHoven, Superintendent of the Breitung Township Schools, said, "The survey shows that of the 431 school districts reporting, 296 indicate they will have to increase millage under the Governor's recommendations." In addition, he said, "The survey projects teacher, administrator, and non-certified staff layoffs at almost 1,000 employees laid off because of state aid reductions this fiscal year."

"The general comments from the school districts all show that quality education in Michigan is in deep trouble, and the situation will grow even worse if the Governor's recommendations are adopted," concluded VanHoven.

Extra millage requests above the renewals in Washtenaw County are ranging up to 7.25 mills for the 1976-77 school year.

Walt Disney Productions Presents

## "The Barefoot Executive"

STARRING: Kurt Russell, Joe Flynn, Harry Morgan, Wally Cox

Sunday, April 4th

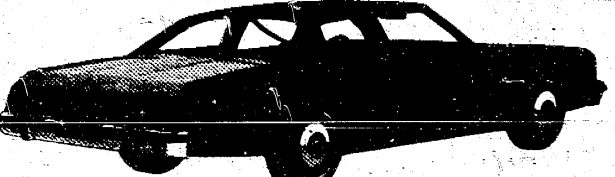
EMANUEL CHURCH HALL AT 2:00 p.m.  
 EMANUEL CHURCH GYM AT 7:30 p.m.

COST 50¢ FOR ALL AGES  
 (Refreshments and popcorn available.)

**Williamson**  
 Heating & Cooling Systems  
 INSTALLATION & REPAIR  
 Phone 428-8692  
**John Steele jr.**  
 Manchester

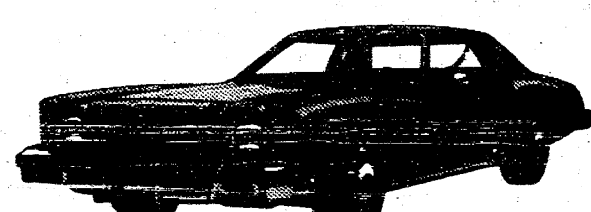


Caprice Classic 4-Door Sedan  
 All the car anybody needs. Caprice combines all the room and comfort of a traditional size car with all the luxury you'd expect from our top-of-the-line Chevrolet.

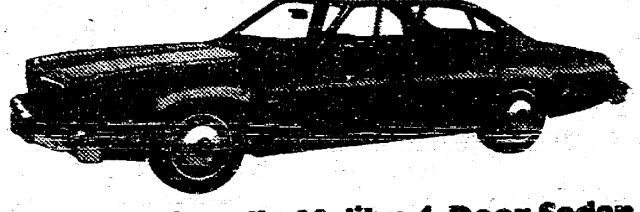


Impala Custom Coupe  
 Impala compares leg room for leg room with some of America's most expensive cars, but at a sensible price. It's our value-size Chevrolet.

# Try one on for size.



Monte Carlo  
 Built to take a lot of driving while it gives you a lot of comfort. Come on in and see if you fit our Monte Carlo size.



Chevelle Malibu 4-Door Sedan  
 The 1976 Chevelle is designed for people who no longer need or want a large car but wouldn't be really comfortable with a small one. It's a size whose time has come.

Try one on for value at

## TIRB CHEVROLET CO.

MANCHESTER, MICHIGAN

**HELFRICH MASONRY**  
 FIRE PLACES-BASEMENTS-VENEER STONE & BRICK  
 Phone 428-8686  
 7676 Chelsea-Manchester Rd. Manchester, Michigan 48158

**REAL ESTATE**

Two family dwelling on Macomb Street. Price reduced.

Five acres and mobile home, southwest of Manchester.

Two bedroom home, south of Manchester on Sharon Hollow.

Mobile Home - 12' X 60', near Clinton \$4,500. Lot rent \$50.00 per month.

Commercial Investments

**HUGH R. SUTTON**  
 BROKER  
 428-7271

Jim Walkowe, Salesman  
 428-8021



# Wedding Bells and Beautiful Brides



Every bride dreams of the perfect wedding . . . a day that she'll hold dear all through their lives together. Let us help with the plans for this happy day.

**Wedding**  
ANNOUNCEMENTS  
AND  
INVITATIONS...

The  
**Manchester Enterprise**

STOP IN AND SEE OUR FINE SELECTION

## STRIKES 'N SPARES

### MANCHESTER BUSINESS MENS

Volverine Bar	59	25
Alstar Const.	52	32
Krauss Pharmacy	50	34
Superior Land Developers	49	35
Tom Marshall Ford	47	37
Pol & Die	43.5	40.5
Town's T.V.	42.5	41.5
Smith Pallet	42	41
Russel Brothers	42	42
Bers Excavating	40.5	43.5
Union Savings Bank	38.5	45.5
Public A Products	40	44
Gambles	37	47
Bers Orchard	37.5	46.5
American Legion	38	46
& W Farm Supply	32	52
Grossman-Huber	23	60
E. Wacker, Inc.		
HIGH TEAM SERIES		
Volverine Bar	3283	
Volverine Bar	3233	
Volverine Bar	3166	
HIGH TEAM GAME		
Volverine Bar	1167	
Volverine Bar	1126	
Brown's T.V.	1123	

### HIGH INDIVIDUAL SERIES

Andy Fletcher	679
Gary Dreesch	658
Gordie Beeman	657
HIGH INDIVIDUAL GAME	
Ted Roberts	258
Chuck Steele	237
Doc Knauss	255

### MANCHESTER WOMENS

Maple City Meats	471	339
Gambles	467.5	342.5
Bonanza	442.5	367.5
Koebbe Welding	430.5	379.5
Weatherwax Drugs	403.5	406.5
Columbia Plumbing	383	427
Dorothy Mae	370	440
Billmeyer Hardware	366.5	443.5
Chivas Products	339.5	470.5
HIGH TEAM SERIES		
Gambles	3149	
Bonanza	3008	
Columbia	3007	
HIGH TEAM GAME		
Gambles	1124	
Koebbe	1119	
Columbia	1071	

H-eating!  
I-nformation and advise!  
L-abor guaranteed!  
L-abor cost reson  
L-abor cost reasonable!  
T-anks and drainfields!  
O-h. Electrical too!  
P-lumbing!

P-professionals in our field!  
L-ook a do-it-yourselfer-shop!  
U-can depend on u  
U-can depend on us.  
M-ay call us - 24 hrs. a day!  
B-ids and estimates free!  
I-nterested in your problems!  
N-ew, remodel, or repair work!  
G-o and call us today.

**HILLTOP PLUMBING**  
8312 WERKNER ROAD  
CHELSEA, MICHIGAN  
PHONE 475-2949

## Bloodmobile

Mrs. Millard Uphaus.  
In 1970 the churches in the area be- came 20% participants in the blood pro- gram and each church has a recruitment chairman to carry on the education of the Red Cross Blood services to the community.

Now the Bloodmobile comes to Man- chester twice a year on a regular basis. The next visit will be on Monday, Octo- ber 18. Veterans in the group will note that this is two days before the opening of the hunting season. Our most famous "dad" was October 30, 1972, when every- one went hunting and we received only 69 pints of blood!

## Opening Announced

Announcing the opening of Walkowe's Home Improvement Company, equipped to give you seamless aluminum gutters and roofing.

The new company is owned and operated by William (Bill) Walkowe and Frank Walkowe Jr., who are both experienced in carpentry and aluminum gutters. The company was formerly the Wilson Metal Shop.

Call us for free estimates, we guar- antee our work. 428-8468 or 517-592-2234.



THE  
**Calico Cat**

PHONE  
313-428-7453

OPEN MONDAY THRU FRIDAY  
10 am to 5 pm

SATURDAY 9 am to 5:30 pm

BOOK AND GIFT SHOPPE

110 East Main Street Manchester Michigan

## NOTICE

### ANNUAL TOWNSHIP MEETING

NOTICE IS HEREBY GIVEN,  
That the next Annual Township Meeting  
of the Electors of the

### Township of Manchester

County of Washtenaw, State of Michigan

will be held at

### Manchester Village Hall

MANCHESTER, MICHIGAN

Beginning at 1:00 O'clock Eastern Standard Time

on  
**Saturday, April 3, 1976**

At such time in addition to other regular business and in accordance with the law, a budget covering proposed expenditures and estimated revenues of the Township shall be submitted for consideration.

SIGNED WALDO C. MARX  
Township Clerk

## NOTICE

### ANNUAL TOWNSHIP MEETING

NOTICE IS HEREBY GIVEN,  
That the next Annual Township Meeting  
of the Electors of the

### BRIDGEWATER TOWNSHIP

County of Washtenaw, State of Michigan

will be held at

### Bridgewater Township Hall

Beginning at 1:00 O'clock Eastern Standard Time

on  
**Saturday, April 3, 1976**

At such time in addition to other regular business and in accordance with the law, a budget covering proposed expenditures and estimated revenues of the Township shall be submitted for consideration.

SIGNED LEWIS BLAISDELL  
Township Clerk





jects entitled Pioneers On The March. Under the guidance of the Fifth Grade teachers, Mrs. Nondus Buss, Miss Mary Ann Dettling, Mrs. Betty Hess and Mr. Ed Tubach, the students participated in a variety of projects. They studied many aspects of the early pioneers' life. These included knitting, cross stitched samplers, foods, herbs and dyes, candles, a braided rug, murals, diagrams of a cabin, and several different Indian groups, hand woven baskets, lye soap, woven wall hangings, corn husk dolls, colonial costume dolls and many more. We all were particularly proud of the quilt handmade, sewn and tied by the



Pioneer Days

The Fifth Graders of Manchester Middle School have a better understanding of our country's Bicentennial celebration after completing three weeks of pro-



**Krauss Pharmacy**  
Manchester, Michigan  
**Pick-Up Station**  
For  
**Welch's Cleaners**

DAILY PICK UP

## AUCTION

**JERRY JACOB - Auctioneers - CLIFF TRACY**  
(313) 428-7975 MANCHESTER (313) 428-7263

LOCATION: 7 miles west of Clinton on US-12 to Sharon Hollow Rd., 1 mile north, 8 miles east of Michigan International Speedway track on US-12 to Sharon Hollow Rd., 1 mile north.

**SATURDAY, APRIL 3**

Commencing at 12 Noon

The following items will be sold at public auction.

### MACHINERY

Ford tractor, rated at 3 bottom.	Miscellaneous tools.
Ford mower. Ford baler.	Sleigh. Cattle feeder.
Combine. Hay elevator.	Hog feeder. Chicken cage.
Grain elevator. Hay wagon.	Chicken feeder and waterer.
Wagon running gear.	Butler 5-ton tanks.
Wagon with hydraulic lift.	Electric fence shocker (2).
Case spreader (good shape).	
Hay rake, Ford. Cultivator.	
Hay fork. Cultivator.	
Mounted cement mixer.	
Springtooth drag.	
Silo filler (mower).	
2-bottom plow, Ford-Permaton.	
Grain drill, 11-hole.	
Corn planter (old).	
Hay-bine conditioner, Ford.	

TERMS: Cash day of sale. Not responsible for accidents.

**MRS. H. BECK**

## Doug's Party Store

500 ANN ARBOR STREET MANCHESTER

OPEN MONDAY THRU SATURDAY 7 AM TO 9:30 PM  
SUNDAY 8 AM TO 9:30 PM

Beer-Wine Take-Out  
GROCERIES  
UNION GAS

Seamless Aluminum  
Gutters

Roofing--Siding

Installed and Guaranteed  
At Pre-Season Prices

**R. D. Kleinschmidt, Inc.**

PHONE 428-8836

200 RIVERSIDE DRIVE MANCHESTER

students. We are going to raffle off the quilt at the Bicentennial Happening in April and donate the money to Manchester as our part in the celebration.

The Open House held March 26th was a great success due to the marvelous support of all who attended. We had nearly 300 happy and well satisfied parents, students and friends.

One of the special features of the Open House was the Spelling Bee. All who watched, listened and spelled along with the ten finalists were as nervous and tense as the students. All the finalists were well prepared and tried their very best. The Spelling Bee winner was Teresa Kniabynsky. We are all very proud of her.

We would like to say many thanks to all the mothers and the one grandmother

who gave us the extra hands we needed for without these wonderful people, the Open House wouldn't have been such a success.

The Fifth Grade teachers and students would also like to say thank you to all who attended the Open House. We are happy we could share it all with you.

### DELTA PSI KAPPA

A sophomore at Eastern Michigan University, Debbie Knickerbocker is majoring in physical education and minoring in health education and military science. She is pledging Delta Psi Kappa, an Honors fraternity for women in physical education. Debbie is the daughter of Mr. and Mrs. Clare Knickerbocker of 319 Ann Arbor in Manchester.

### MANAGER'S MEETING

There will be a Manager's Meeting of the Manchester Softball League on Monday, April 5, at the Legion Hall at 7:30 p.m. The purpose of the meeting will be to discuss rules and rule changes.

### FINAL TWO WEEKS

Little League Wrestling is winding down to the final two weeks.

All wrestlers will compete in the Spring Tournament at Manchester High School at 4:00 on Thursday, April 8.

Wrestling will last into the evening concluding around 8:00. A small admission will be charged. Refreshments will be sold by the Athletic Boosters.

## FREEDOM ELECTRIC

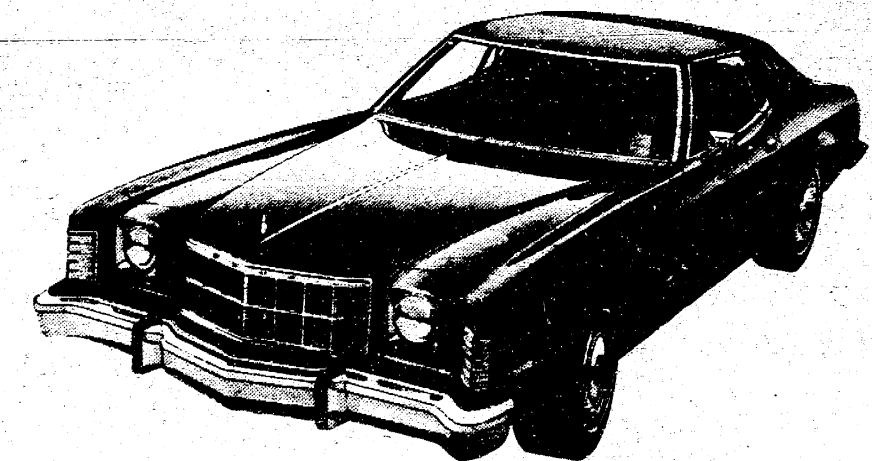
11207 Pleasant Lake Road  
Manchester, Michigan

RESIDENTIAL  
COMMERCIAL  
INDUSTRIAL  
NEW CONSTRUCTION  
REMODELING REPAIR

GILBERT LUCKHARDT  
Phone 428-8233

# Limited Edition Sale

**2 Limited Edition Ford Elite \$200 off\***



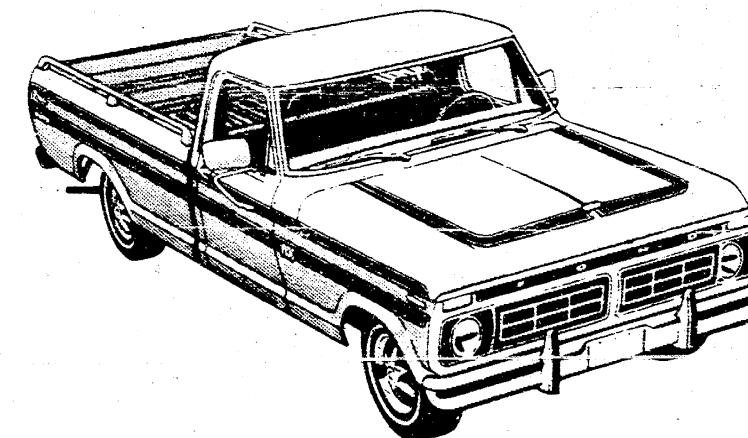
Includes: Elite standard equipment such as vinyl roof, twin opera windows, automatic transmission, power steering and brakes, etc. Plus unique wheel covers, special bench seat and trim, special door trim panels, selected matching cloth and vinyl interiors, but

excluding wheel lip moldings, door carpet and deluxe steering wheel. Quantities are limited. \*The standard Elite sticker price. (Car shown with white sidewalls \$39 extra.)

Ford Dealers give prices the old...

**1 Explorer Special Pickups**

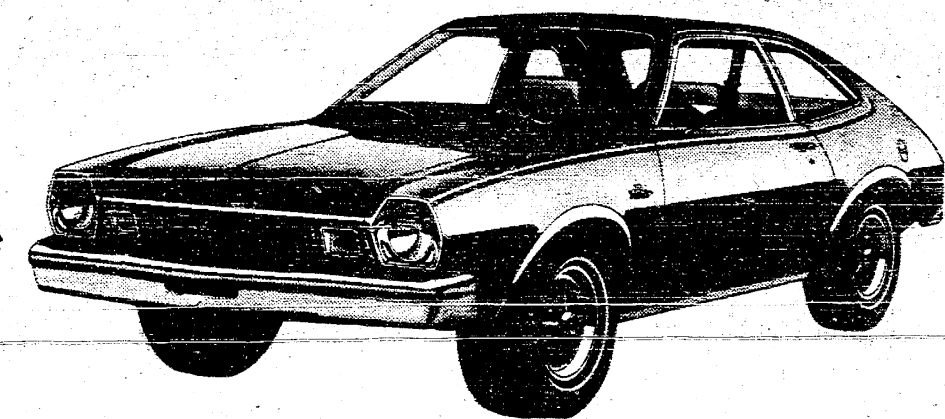
up to **\$201 off\***



Major discounts on Limited Edition Explorer Pickups with special metallic paints, mag-type wheel covers, unique color-keyed interiors and your choice of equipment such as power steering, automatic transmission, air conditioning.

Quantities are limited. \*Based on suggested retail prices of separate options compared to special package prices. (Truck shown with white sidewalls \$40 extra, and rear bumper \$60 extra.)

**3 New Limited Edition Ford Pinto \$165 off\***



Includes: all Pinto standard equipment such as 4-speed manual transmission, front disc brakes, and rack and pinion steering. Plus dual two-tone bodyside tape stripes, bright window frame moldings and center pillar caps, bright white wheel lip moldings, bright rocker panel moldings, and styled steel

wheels and trim rings. Available on 2-Door and 3-Door Runabout models (except Pony MPG). Order now, quantities are limited. \*The total retail value of items added to base Pinto, based on traditional suggested retail pricing. (Car shown with white sidewalls \$33 extra.)

See your Ford Dealer to buy or lease a new Limited Edition car or Explorer truck.





NOTE: Not responsible for errors made in Printing. QUANTITY RIGHTS RESERVED.

PRICES GOOD WED., MARCH 31 thru SAT., APRIL 3, 1976

# IGA Star Spangled Grand Opening

THE ALL NEW **MANCHESTER IGA**  
455 West Main Street

<b>MAR. 31</b> <b>WEDNESDAY</b>	<b>FREE!</b> Pounds of <b>100 COTTAGE CHEESE</b> TO BE GIVEN AWAY TO THE DAY'S FIRST 100 CUSTOMERS	<b>APRIL 2</b> <b>FRIDAY</b>	<b>FREE!</b> Pints of <b>100 ICE CREAM</b> TO BE GIVEN AWAY TO THE DAY'S FIRST 100 CUSTOMERS
------------------------------------	--	---------------------------------	--

<b>APRIL 1</b> <b>THURSDAY</b>	<b>FREE!</b> Pounds of <b>100 COTTAGE CHEESE</b> TO BE GIVEN AWAY TO THE DAY'S FIRST 100 CUSTOMERS	<b>APRIL 3</b> <b>SATURDAY</b>	<b>FREE!</b> Pounds of <b>100 HOT DOGS</b> TO BE GIVEN AWAY TO THE DAY'S FIRST 100 CUSTOMERS
-----------------------------------	--	-----------------------------------	--

FRESH GROUND <b>HAMBURGER</b> Any Size Pkg. <b>69¢</b> lb.	IGA TABLETREAT <b>BREAD</b> <b>4 \$1.00</b>	FAME • VANILLA <b>ICE CREAM</b> Gal. Ctn. <b>\$1.49</b>
---	---	--

DELICIOUS <b>FUDGE BARS</b> 59¢	NON-RETURNABLE <b>COCA-COLA</b> 16-oz. Btls. 8-ct. Carton <b>\$1.19</b>	GOLDEN RISE <b>BANANAS</b> 15¢
REPEATER <b>BACON</b> 99¢	<b>MILK</b> 59¢	

**WE'VE COME A LONG WAY**

"We've Come a Long Way" and that they did as 34 members of the Jolly Farmerettes 4-H Club participated this past weekend in the 1976 4-H Spring Achievement held at Willow Run. Seventeen Young Miss (10-12 years old) girls were judged Friday for garment construction and were awarded ribbons of excellence. Ribbons of white, red, blue and purple were awarded with purple being the highest award given only to garments of superb quality construction. The following members received blue ribbons for their sewing projects: Dawn England, Sally Evans, Jenny Feldkamp, Margie Jarve, Danell Steele, Amy Little, Pam Martin, Kathy Kessler, Beth Verrilli, Jeannie Gonyer, Kathy Wheeler, Jill Golding, Karen McCalla, Melissa Bunnay. Robin Settle received a red ribbon for her crocheted ear warmer and Mary Koebbe received a red ribbon for her knitted purse while Michelle Lamb received a blue ribbon for her knitted hat. Those members receiving purple ribbons in the sewing category were Dawn England, Beth Verrilli and Danell Steele. Michelle Lamb received a purple ribbon in knitting and then proceeded to win the 1st Faber Knitting Award in the Young Miss Division, giving her the honor of top young knitter at this year's Spring Achievement. Following the construction evaluation, the Young Miss took their places on the stage and were judged in a style show

format. This part of the judging determined the way in which the entrant was expected to display her poise and personality as well as the comfort of her garment. Outstanding Young Misses were asked by the judges to return Saturday for the 7:30 p.m. Style Show finale. Girls asked to return were: Jenny Feldkamp, Jeannie Gonyer and Jill Golding. On Saturday, another 17 members of the Jolly Farmerettes were judged for garment construction, those being our Junior (12-14 years old) and Senior (14-18 years old) Miss girls. Ribbons were awarded and the results were gratifying. The following Junior Miss girls received blue ribbons for their sewing projects: Theresa Ames, Heidi Dresch, Lisa Huber, Lori Voegeding, Colleen Scully, Jean Ann Wahl, Theresa Scully, and Laurie Walz. Red ribbon winners were: Lisa Barker, Karen Evans and Laurie Fitzgerald. Junior Miss girls enrolled in crocheting were Laurie Fitzgerald and Carol Buss and they both received blue ribbons for their sweaters. Purple honor ribbon winners in sewing were: Theresa Ames, Lori Voegeding, Jean Ann Wahl and Laurie Walz. Carol Buss and Laurie Fitzgerald received honor ribbons in crocheting with Carol Buss receiving the 1st Faber Crocheting Award in the Junior Miss Division. Senior Miss blue ribbon winners in sewing construction were: Julie England, Joanne Kastl, Joyce Schwab, Lori England, and Sharon Voegeding. Purple honor ribbons were awarded in Senior construction to Julie England, Joanne Kastl, Lori England and Sharon Vo-

geding. Following the construction evaluation, our Grand finale Style Show was held, giving our Junior and Senior Miss girls an opportunity to model their garments. Top Style Show winners were Jenny Feldkamp who placed in the Top 10 Young Miss, Laurie Walz and Carol Buss in the Top 10 Junior Miss and Julie England in the Top 10 Senior Miss. Congratulations to all of the girls for a job well done!

## BIRTHS

Born to Mr. and Mrs. Steven Popkey, a son, Kameron Steven, on March 27. Kameron weighed six pounds and eleven ounces. His paternal grandparents are Mr. and Mrs. Robert Popkey and maternal grandparents are Mr. and Mrs. Pledger Chapman.

Mr. and Mrs. Phillip Nickerson are the proud parents of a daughter, Sunshine Lynette. She was born March 26 and weighed five pounds and 13 1/2 ounces. Her paternal grandparents are Mr. and Mrs. Wm. Nickerson and her maternal grandparents are Mr. and Mrs. Allen Benedict.

**NOTICE**

Ladies and Gentlemen, who have noticed all of the hirsute faces starting to appear in this area and wondering why. It is my sad duty to inform you, that our loyal friend, Mr. Ra-Zor is seriously ill. We are hoping for a speedy recovery, but presently things look bleak. Since I am aware of the grave seriousness of this matter, I will keep you informed of his condition.

Guy Gilbert

To the sponsors of Bicentennial First Lady Candidates. The second turn-in date for tickets is Tuesday, April 6. Mrs. Boucherle and Mrs. Berke will be at the Headquarters-Store from 11:30 a.m. to 5:00 p.m. and from 6:30 p.m. to 8:00 p.m. Remember, for every complete book of stubs you turn in at this time, your candidate will receive 500 bonus votes.

**CARD OF THANKS**

I am deeply grateful for your expressions of love and concern during my recent hospitalization. What a blessing it is to know that I can rely on your prayerful support!

Margaret Hankes

I would like to thank all of my former customers for their patronage over the past years. As you probably know I am going into another business in the area, but Ed Zelony of Grass Lake will be at Riverview Barber Shop to take care of all patrons.

Again I thank you.  
Bill Walkow

The Emanuel Church would like to thank all of those who patronized our Friday Night Fish Fry. See you in the Fall.

To all our good friends, the incredibly generous and warmhearted Manchester people. The wedding was a delight, and the memories are sweet. Thank you for everything.

Bob and Cecelia Chapin

Wendy and I wish to thank the many friends and relatives who helped make our wedding day such a success. Special thanks to the Altar Society ladies who saved the day and kept the food and coffee coming.

Mark and Wendy Chapin

### Manchester Carpet Cleaners

"DEEP STEAM EXTRACTION"

new approved method of carpet and upholstery cleaning

Very Reasonable Rates Free Estimates

Special Rates To Churches

Residential-----Commercial

PHONE 428-7075 KEN BEASLY, Owner

### DRISCOLL BROS. MOTOR SALES

116 WEST MAIN STREET CLINTON, MICH

Come In and See  
**HUGH R. SUTTON**

FOR A GREAT DEAL ON THE CAR OF THE YEAR

## 1976 Plymouth Volare

ALSO SEE THE NEW

## 1976 Cordoba

OPEN EVERY EVENING TILL 8 PM  
EXCEPT TUESDAY SATURDAY 9 TILL 3 PM

WE ALSO HAVE A GOOD SELECTION OF LATE MODEL USED CARS

CAR RENTAL SERVICE

Phone 517-456-4191

## SHOES! SHOES!

Little League All Purpose Shoes

sizes 1 to 7 men's sizes 8 to 12

### Manchester Sportings Goods and Clothing, Inc.

104 EAST MAIN STREET MANCHESTER, MICH

WHATEVER THE SITUATION

We Solve the Family's Complete Dress Problems.

For unrivaled style, beauty and price... We can't be duplicated, anywhere!

ONE OF AMERICA'S GREAT RESALE SHOPS

### MID-MONTH SALE

APRIL 12th thru 17th

50% OFF ON ALL 30 DAY ITEMS (except Men's Suits and Sport Coats)

**The Tree**

419 Detroit St.  
663-2008  
Ann Arbor





### WESTERN AUTO ASSOCIATE STORE

**BILL MYERS — OWNER**

The WESTERN AUTO ASSOCIATE STORE at 1178 South Main in Chelsea, phone 475-1721, features a complete array of auto parts, tools, accessories and lubricants, as well as a full line of household needs and sporting goods.

Major items for your car, such as tires, batteries and shocks are just a few of the things carried in stock here. The do-it-yourself mechanic will find a full line of hand tools in both standard and metric. For the lady of the house, WESTERN AUTO has a complete selection of household appliances from washers and dryers to all the small appliances which make life so much easier. The kids will enjoy the great looking bikes, and there is a model for any size youngster. WESTERN AUTO is truly a family store.

For quality goods and lower prices, shop your friendly WESTERN AUTO ASSOCIATE STORE. The writers of this 1976 Review think you'll be pleased with their service and their products!

### RED'S STANDARD SERVICE

**EARL (RED) PRATT**

In the Chelsea area, which service station STILL gives the kind of service that keeps customers coming in again and again? The RED'S STANDARD SERVICE, located at 889 South Main Street, phone 475-2804, has been a "full service" station for years and their customers know it! They feature Triple A (A.A.A.) towing 24 hours a day - their courteous mechanics and attendants invite you to stop in at RED'S where Kevin, Doc, John, Brian, Ken, and Jay will be there to serve you.

Featuring only quality Standard products, this is one firm which refuses to be in the gasoline business just for the profit if it means sacrificing customer service. You can be assured of a friendly greeting, a clean windshield, under-the-hood service, and the lowest possible price at the pump that the wholesale demands will allow.

Drive on in to the RED'S STANDARD SERVICE STATION and have your tank filled. We can't promise that the gas will be less expensive than anywhere else... nobody can do that anymore. We DO think you'll notice a big difference in service, though, and as the authors of this 1976 Review, we urge all of our readers to give this station a chance to show you what the word "service" really means!

### CHELSEA GREEN HOUSES

**WALT AND SANDY ZEEB — OWNERS**

The CHELSEA GREEN HOUSES are located at 7010 Lingane Road in Chelsea. Phone 475-1353 to have flowers sent by wire, and you will be happy with their splendid service.

Always remember that flowers make a perfect gift for congratulations, anniversaries, birthdays, and sick room and many other occasions.

Flowers are among nature's most beautiful gifts to man. For any occasion it is always proper to "Say It With Flowers."

They specialize in funeral and wedding flowers, and their designs are praised by many. For a floral service that is noted throughout this section as the best, see this firm. They can supply wedding flowers to fit any budget.

In this 1976 Review, we the organizers, take pleasure in recommending the CHELSEA GREEN HOUSES to all our readers. See them the next time you need flowers for any occasion. Walt and Sandy Zeeb remind our many readers that CHELSEA GREEN HOUSES also feature a complete stock of garden delights and vegetables for your growing enjoyment. We know you'll be glad you did.

### HAROLD TRINKLE & SONS HAY & STRAW

**HAROLD, STEVE, DOUG & DENNIS SERVING YOU**

Farmers and horse owners in this area rely on the HAROLD TRINKLE & SONS HAY & STRAW, located at 9970 Trinkle Road in Chelsea, phone 475-8992 for their supply of baled hay. They wholesale, and buy and sell all types.

People who have had experience dealing with this concern have found that they can always be assured of getting hay that is the best grade, hay that is not soured. They also feature world famous FUNK'S hybrid seed corn, and baler twine. ]

Regardless of whether you own just one animal or a thousand, these people will be more than happy to do business with you.

It is possible for you to have them deliver the hay to your farm or ranch at low carriage rates, and they even offer better prices if you pick it up yourself. For over 23 years they've been here to serve your needs.

It is satisfying to know that these people always offer the best hay at the lowest price, and the editors of this 1976 Review, again suggest to anyone who has the need for hay, they see HAROLD TRINKLE & SONS. We know you'll be glad you did business with them!

### JIFFY MARKET

**FAST, FRIENDLY SERVICE**

The place to go to pick up something for the late night snack or for something to eat... breakfast is the JIFFY MARKET conveniently located at the corner of Werker Road and Sibley in Chelsea, phone 475-1701.

The idea behind their business is to serve the people of this area with a wide variety of name brand merchandise, and fast and friendly service.

They have stocked their shelves with items often forgotten at the supermarket, and items we all need at usual hours of the morning and evening.

They offer complete free parking space and fast checkout service and gasoline; which adds to the reason why so many people drop in morning, noon, and night when they're in a hurry.

The writers of this 1976 Review compliment the management of this minimarket for their efforts to offer what is needed, when it is needed. Remember the name, the JIFFY MARKET, you'll find their stock complete and their service extra fast.

### Norm's Body Shop, Inc.

**NORM BAUER — OWNER**

Many people have looked far and wide for someone who does good body work. The automobiles of today require a specialist to repair or replace body panels and to refinish them to their original beauty by matching the new paint perfectly with the original paint.

The professional body men in this area to see are at NORM'S BODY SHOP, INC., located at 19917 Waterloo Road (2 miles northwest of Chelsea), phone 475-8384.

The personnel at this firm fully understand body and fender work as well as auto painting. These men work the metal so as to require the least amount of lead or plastic and air sand the surface until it's as smooth as glass before laying on the paint. They have gained a reputation to do none throughout this entire area. So whether your job is a small crease or a roll-over, we know you will be entirely satisfied with their work.

And, please remember that most insurance companies now permit you to choose the body shop you like best to repair your car, so choose them to do all your insurance work.

We the editors of this 1976 Review, advise you to see NORM'S BODY SHOP, INC. for all your bent fenders or repair work.

### Klink Excavating

**JOHN A. KLINK — OWNER**

If you are planning on having any excavating work done, call on this reliable firm, located at 15810 Gorton Road in Waterloo Village, phone 475-7631. The KLINK EXCAVATING has the latest modern equipment to turn out an excellent job, and no job is too large or too small.

This capable concern is noted for giving a "Square Deal" to all. Their prices are right and their fast efficient service is guaranteed to please. Phone for estimates on your excavating problems.

This service is important to the city as well as the farmers in the rural areas. They have had years of experience in this line. Call them today for service.

We, the editors of this 1976 Review, wish to take this opportunity to compliment the services of the KLINK EXCAVATING and recommend them to all our readers who are contemplating having any excavating work done.

### Dairy Queen-Brazier

**BOB NIEHAUS — OWNER**

You have really missed something if you haven't tried this delicious frozen dessert made by the DAIRY QUEEN-BRAZIER, located at 901 South Main in Chelsea, phone 475-2577, and at the DAIRY QUEEN at 213 East Main in Manchester, phone 428-7141.

DAIRY QUEENS throughout the country have established a reputation for a delicious healthful treat that everyone will love from the first bite.

They feature delicious char broiled Brazier foods such as hamburgers, tenderloins, fish and hot dogs with french fries and onion rings. Delicious chicken by the dinner or by the bucket is a specialty of the house.

This modern establishment maintains the highest standard of cleanliness at all times. Only the purest of ingredients are used in their products.

For a delightful treat the whole family will enjoy, any time of the year, take them to the DAIRY QUEEN where you can enjoy so much for so little. You can also select anything for take out. For extra orders, just phone ahead.

The editing staff of this 1976 Review issue again recommends that you stop by today and prove to yourself just how delicious their frozen dessert and Brazier cooked foods really are.

### Klumpp Bros. Gravel Co.

**EXCELLENT RED-MIX CONCRETE**

The KLUMPP BROS. GRAVEL CO., located at 4950 Loveland Road in Chelsea, phone 475-2530, is the place from which to order your ready mixed concrete. By ordering here you can be assured that the proper mix has been used in order to make the concrete strong and durable.

They scientifically mix all their concrete in order that you may build strong, lasting construction and give you rapid delivery service.

For 26 years their rapid ready-mixed concrete delivery service has been a great help to heavy building schedules all contractors have undertaken. Homeowners appreciate the fact that they can have a load of ready-mixed concrete for use without the effort it would take to mix it themselves. It saves time and energy and in the long run is much more economical.

The KLUMPP BROS. GRAVEL CO. has the experience and equipment to make the very best concrete available. Investigate the advantages this firm can offer you the very next time you need concrete. The editors of this 1976 Review recommend that you do.

### Home And Heritage

**Decorating With Wooden Accessories**  
By Ben Helms  
MaLeck Woodcraft

You can bring back the charm of early America without setting back your budget or revolutionizing your whole home with faithful reproductions of Colonial accessories.



**BRIGHTEN THE CORNER—Candle brackets were used in many Colonial homes.**

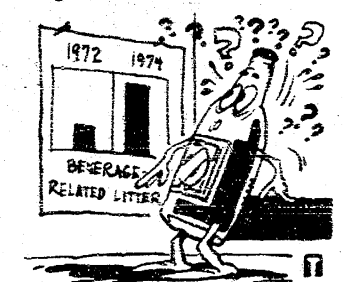
For a light touch, for instance, try a corner candle bracket. Being dependent upon the candle for lighting, Colonial Americans crafted many ingenious means of placing candles throughout their homes.

The harshness of a corner can be changed with a subtle touch such as a distinctive bracket, like one from the Country Collection of faithfully crafted wooden Colonial reproductions by MaLeck. In addition to holding candles, it is attractive holding a small potted plant. It really has a knack for displaying knickknacks, too, with its two tiny side mirrors reflecting your good taste.

For a free booklet on attractive wooden furniture and accessories, write to MaLeck Woodcraft, Dept. H-2, Wingate, N.C. 28174.

### FACTS & FIGURES

A Bottle Bill passed in Oregon required retailers to charge consumers a deposit on all containers. Beverage-related litter (30 percent of total litter) was down in Oregon the first year (1972), but by 1974 littering with beverage containers increased 52 percent!



Some costs of the Oregon experiment: Beer and beverage pre-tax earnings slipped by more than \$7 million; sales of private label and warehouse soft drinks dropped 40 percent; between 165 and 227 persons lost jobs; 8 out of 29 independent franchise bottlers sold out.

Not only did Oregon workers take it on the chin, but consumers had to pay an average of 26 cents more per case for soft drinks. For a free brochure about the Oregon Bottle Bill write to: Aluminum Company of America, 450-B Aloa Building, Pittsburgh, Pa. 15219.

If you are a heavy user of cold cuts, it pays to slice your own. It's cheaper that way.

### REPORT TO TAXPAYERS OF MANCHESTER SCHOOL DISTRICT

One of the large expenses in schools today is vandalism. We are experiencing it in our schools, too. This report concerns itself with some of the problems at the Middle School and how they are being handled.

The first item of this report is window shades for the gymnasium. Special black-out shades are needed for the gym in order to show films, conduct some assemblies, etc. New shades were purchased when the Middle School was remodeled in 1971. Since that time they were torn up, written on and vandalized by students. Because it is the belief of the Student Council that the school board shouldn't replace, in only five years, shades that were ruined by students intentional abuse, the Council decided to purchase new shades this year for the gym. The money comes out of their Project Fund which comes from the sale of school calendars. The shades are being installed this week -- at a cost to the Student Council of \$482.60.

The next item of concern is the vandalism on a daily basis. All year, school property has been broken, stolen and abused. It is the administrations and the Student Council's belief that the community's tax dollars should not be used for replacement of these things. With pressure applied from the principal and the Student Council Advisor, the Student Council is footing the bill for repair and replacement. "Student Council will be using their operating monies which come from the sale of Coke and candy, to replace stolen and broken articles, equipment and reimburse the school board for

the custodian's time in making repairs and replacements," stated Principal Ted Tapping. Mr. Tapping also stated that "When I can pinpoint a particular abuse with particular students, then we get reimbursement directly from them."

With money going this way to replace items the Student Council budget just can't manage to subsidize dances (the Spring Dance had to be cancelled), ribbons to be awarded for field day are in question, and of course, operating monies for next year will be extremely low.

On March 11, 1976, \$109.00 was transferred from the Student Council Account to a School Destruction and Repair Account. An itemized report was announced to the students and posted on the bulletin board. Here is a copy of that report:

- 2 - Soap Dispensers @ \$10.00 each - \$20
- 2 - Toilet Paper dispensers @ \$3 - \$6.00
- Repair sink - new lines and parts \$5.00
- Repair bench - gym seats \$10.00
- 6 - Ceiling tiles (locker rooms and hallways) @ \$2.00 each - \$12.00
- 1 - Window - pounded out \$10.00
- 10 - Latches on windows @ \$1.00-\$10.00
- 6 - pencil sharpeners @ \$5.00 each - \$30
- Repair swing sets - \$6.00
- Total \$109.00

In addition, \$20.00 was transferred because of a toilet seat that was taken from the boy's bathroom and the damage done to the locker panel in the main hallway.

As of March 24, added damage was done to the milk cooler, there is a hole in the wall of Room 7, and several attendance clips, outside of doors in hallways, have been destroyed.

Mr. Tapping has continuously urged the students to take steps to control their peers that are responsible for the damage. His estimate is that the vandals only

THURSDAY, APRIL 1, 1976 THE MANCHESTER ENTERPRISE PAGE 13

**Before you buy your car, boat, or recreational vehicle, see how much you might save.**

See me about low-cost financing through a cooperating bank and economical car insurance from State Farm Mutual.

**MATT DONNELLON**  
146 E. Main  
Manchester  
Phone 428-8364

Another service of your State Farm Agent - State Farm Insurance Companies Home Office: Bloomington, Illinois

### Brown's TV & Radio

**ZENITH**  
Color and Black-White TV

134 East Main Street  
Manchester, Michigan  
Phone 428-7640

**A-1**

**USED CARS** THE CLOSER YOU LOOK, THE BETTER WE LOOK

**TOM MARSHALL FORD**  
512 W. Main Manchester

**MANCHESTER**

3 bedroom full basement with small barn on 10 acres with Creek. June 1, 1976 possession.

5 room frame house with large garage, big back yard.

7 room older home with 2 car garage near Main Street.

Good lot on East Main.

3 acres of land on pavement.

**CHELSEA**

Three bedroom, full basement - part recreation shed two car garage on one 1/2, Waterloo Road, four years old - job transfer.

**FAHEY REALTY**  
15554 Fahey Road 428-8748  
112 S. Washington 428-8348

### Township of Manchester

#### Financial Statement

March 31, 1976

<b>GENERAL FUND</b>		<b>LIQUOR LAW ENFORCEMENT FUND</b>	
Balance on March 31, 1975	\$ 2,742.11	Balance on March 31, 1975	\$ 307.30
Revenue:		Check Cancelled	50.00
One Mill	25,074.81	Liquor Commission	467.50
State of Michigan	24,779.54	License Rebate	25.50
Fire Contracts	11,632.98		\$ 850.30
Delinquent from County	2,407.45	Disbursements:	
Building Permits	2,905.25	Constables	594.69
Zoning Hearings	300.00	Balance on March 31, 1976	255.61
Roads (Subsides)	500.00		\$ 850.30
Conditional Use Permits	400.00	<b>TRUST AND AGENCY FUND</b>	
Miscellaneous	528.75	Balance on March 31, 1975	\$ 1,370.82
	\$71,269.79	Employee Taxes Withheld	3,204.76
Disbursements:		Personal Property tax in Escrow	349.57
Salaries	\$10,415.93	Returnable Bonds	200.00
Withholding to T&A Fund	1,742.50	Dog Licenses	1,212.00
Fire Department	17,670.69		\$ 6,337.15
Cert. of Deposit Housing	4,000.00	Disbursements:	
Cert. of Deposit Equipment	3,500.00	Federal Income Tax	\$ 1,120.99
Library	6,300.00	FICA	2,203.16
Road Commission	6,000.00	Michigan Income Tax	545.58
Tax Roll	790.25	Personal Property Delinquent	175.66
Transfer Site	3,033.27	Returnable Bond	100.00
Legal Fees	2,470.00	Dog Licenses	1,212.00
Building Inspectors	1,278.84	Balance on March 31, 1976	975.76
Printing	849.15		\$ 6,337.15
Fire Standby	600.00	<b>CURRENT TAX COLLECTION FUND</b>	
Clerical	1,432.00	Levy:	\$941,490.82
To County	994.87	Collected:	
Insurance	784.00	County	148,055.21
Planning Commission	682.50	Township	25,074.81
Board of Review	295.65	Community College	57,793.26
Zoning Inspector	230.70	Manchester Schools	528,079.53
Education	462.70	Clinton Schools	53,669.68
Election	66.82	Columbia School Dist.	37,106.57
Dues	473.50	Delinquent	31,711.76
Flags for Cemetery	169.80		\$941,490.82
Cemetery Fund	525.00	<b>CEMETERY FUND</b>	
Postage	338.84	Balance on April 1, 1975	100.40
Miscellaneous	1,182.46	From General Fund	525.00
(See Breakdown)			\$625.40
Balance on March 31, 1976	317,524	Labor	609.00
	\$71,269.79	Balance on April 1, 1976	15.40
CERTIFICATES OF DEPOSIT	\$32,459.58		\$625.40
Building Fund	\$20,866.68		
Equipment Fund	11,592.90		
	\$32,459.58		

### You and Your BUSINESS

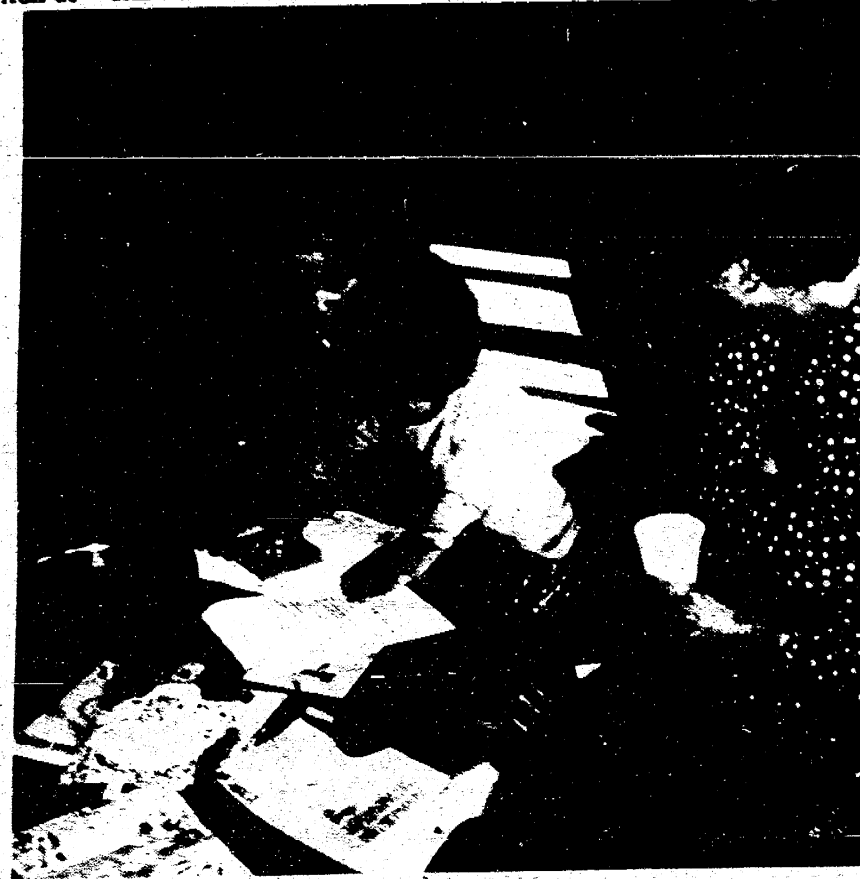
... one of the reasons we're in business... with the "know how" to combine all your policies into a convenient, monthly payment package at a fair price. Check the facts with Charlie Foster or...

**"Larry" Becketl**  
AGENT

109 E. MAIN STREET  
MANCHESTER PHONE 428-7331  
Home phone 428-8006

**FARM BUREAU INSURANCE GROUP**





PREP RECEIVES \$10,065

The Parent Readiness Education Project (PREP), the new preschool program in the Chelsea and Manchester Public Schools, has received a grant from the Michigan State Department of Education and the federal Elementary and Second-

ary Education Act. The \$10,065 grant is channeled through the PREP program in Bedford Union, where this outstanding project concept originated.

These monies will be added to the generous contributions which have been made by community groups in Manchester and will ensure the full implementa-

tion of the PREP design.

The grant must be used to defray the initial costs of the program in both Chelsea and Manchester and for the first-year purchases. A major expenditure is special equipment for an observation booth, from which parents and a teacher will observe children in the classroom. Special one-way vision glass must be purchased, which will appear as mirrors to the children outside the booth, but allows parents sitting inside the booth to see the children. A sound system to allow parents to hear the classroom activities will also be installed.

The grant will also reimburse the Districts for purchases of some of the special preschool equipment and materials needed for young children. Picture books, records, building toys, art materials, language development kits, and educational items are covered by the grant, as well as small-sized tables and chairs and classroom accessories. Special notebooks and information for parents are also being prepared.

The PREP classroom will be located at Pleasant Lake School. The office is at Chelsea North Elementary School. Questions about the program should be directed to the teachers, Mrs. Linda Hiatt and Mrs. Lindy Buch at 475-9131, ext. 60.



Dan Schable, son of Mr. and Mrs. Luther Schable, 4685 Fletcher Road, Manchester, received the State FFA Degree at the 48th Annual convention of the Michigan Association of FFA. Dan received the degree for his outstanding work in livestock and crop production on the home farm in addition to his leadership activities in the local FFA Chapter where he is serving as president this year. The State FFA Degree is awarded annually to two percent of the State FFA Membership.

## WANTED

500 Cars - Wrecks or Junkers

Free Pick-up To \$125.00

"Help Keep Your Community Beautiful"

Phone 428-8080 or 517-787-7044

Verhines Auto Salvage

17547 AUSTIN RD. MANCHESTER

## Visit the Jolly Dutchmen

100 EAST MAIN ST MANCHESTER

Let Us Change Your Mud and Snow Tires This Spring



KINGSFORD  
CHARCOAL  
THE BEST



We Have a Fine Line of Gulf Tires All Sizes

Phone 428-8960

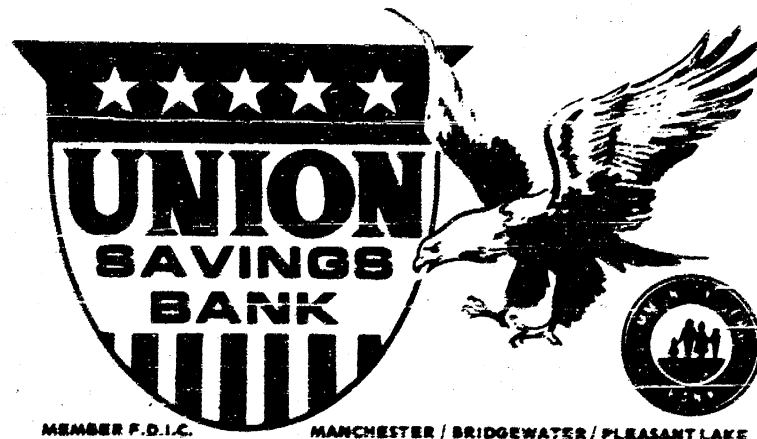
Many Gulf Accessories

GROSSMAN-HUBER SERVICE

Gee, Dad, I'm gonna need about \$25,000.



Costs. Out of sight. It takes a mighty big bundle to educate children today. Instead of worrying about the future, do some thing about it by opening a savings account at Union Savings Bank. Involve the INTERESTED bankers in your plans and your friends at Union Savings will assist you in planning the best possible savings program. At Union Savings your savings earn the highest rate of annual interest return allowed by law, 5% compounded daily to produce an effective annual yield of 5.13%!



MEMBER F.D.I.C. MANCHESTER / BRIDGEWATER / PLEASANT LAKE

## Jaycee Auxiliary Scholarship

APPLICANT'S NAME \_\_\_\_\_

ADDRESS \_\_\_\_\_

AGE \_\_\_\_\_

FUNDS NEEDED FOR WHICH SCHOOL OR COLLEGE? \_\_\_\_\_

COURSES BEING TAKEN \_\_\_\_\_

WHAT YEAR IN COLLEGE \_\_\_\_\_

HOW MANY YEARS YOU MUST ATTEND \_\_\_\_\_

LONG RANGE PLANS \_\_\_\_\_

AMOUNT NEEDED FOR SCHOOL OR COLLEGE? \_\_\_\_\_

FINANCIAL HELP YOU HAVE AVAILABLE (SCHOLARSHIPS, PARENTS, PAST EMPLOYMENT) \_\_\_\_\_

REASON FOR NEEDING SCHOLARSHIP \_\_\_\_\_

SIGNATURE \_\_\_\_\_

Again this year the Manchester Jaycee Auxiliary is offering a scholarship to a high school graduate or any adult age 18 and over who needs financial aid to further his or her education. Applications are available at the high school or fill out the form printed in the Enter-

prise. Completed applications may be left at the high school or mailed to P.O. Box 314, Manchester. Please be sure to mark envelopes "Attention-Scholarship". Deadline for all applications is May 19th. All information will be kept confidential.

## AGRICULTURE IN ACTION

MICHIGAN FARM BUREAU EDITORIAL

MY BANKER ISN'T FAIR

I can't figure out what's wrong with my banker. I should not like to have it said that I think he's stupid, but we certainly aren't getting along very well these days. He says I'm unreasonable and I say he's an ornery old fool.

A couple of weeks ago, I went to see him about listing up some more credit. He looked at my record and took note of the fact I've operated on a deficit for quite a few years and he implied that I haven't been doing as well as he thinks I ought to.

I reminded him that my account last year was only \$76,000 short. I hated to bring my Uncle into the picture, but I said to my banker, "Look, Uncle Sam is running short by \$76 billion. You know how much that is?" Obviously,

he didn't know until I told him. That's a million times more than I lost last year." My banker didn't believe it. He thought I was just using the word billion because everybody else does. I told him to figure it up for himself, but his adding machine didn't have that many zeros on it. So I put it down on paper for him. I put down \$76,000 and multiplied it by 1,000,000. You've got to count the zeros carefully, but if you do, it'll come out to \$76,000,000,000.

I went on to explain that I've always tried to pattern my life after my uncle's. He's had a lot of respect in our town and even though he's a million times bigger than I am, I like to throw my weight around, too, such as it is.

I've always figured that if I could keep within six digits of my Uncle, I'd get along alright. My business runs right at \$400,000 and Uncle gets up to about \$400 billion. It seems fair enough to me, but not to my banker.

He asked about my projections for next year and I offered him a deal. "Look," I said, "last year I lost \$76,000. This year, if you insist, I'll only lose half that much...make it an even \$38,000. Next year I'll cut it in two again, down to \$19,000." I offered to keep on cutting for the next 20 years, at which time I'll only be 84 years old. By that time, I should, if everything goes along as I'd like it to, be almost at the break-even point. Maybe by the time I'm 85 I can begin paying some of the principle.

Like I said, I can't figure out what's wrong with my banker. When I told him I'd take by business of the bank across the street, it didn't even phase him...

## VACUUM CLEANERS ELECTROLUX

Electrolux Sales & Service

call

James Cox

Manchester

428-8444

Rent or lease from your Ford dealer

RENT-A-CAR LEASING

LONG & SHORT TERM LEASING FLEET & INDIVIDUAL LEASES TAILORED TO YOUR NEEDS

TOM MARSHALL FORD SALES INC.

428-8343

512 W. MAIN • MANCHESTER

Auctioneers MANCHESTER

JERRY JACOB (313) 428-7975

CLIFF TRACY (313) 428-7263

LARGE OR SMALL SALES FARM-HOUSE-BUSINESS COMPLETE MANAGEMENT Sale Dates Available

## ALBER EXCAVATING

Drain Fields-Septic Tanks-Drive Ways-Limestone

Fill Dirt-Drain Field Stone-Mason Sand

Basements

PHONE 428-8628

7601 Hashley Road Manchester, Michigan

## NOTICE

### ANNUAL TOWNSHIP MEETING

NOTICE IS HEREBY GIVEN, That the next Annual Township Meeting of the Electors of the

Township of Freedom

County of Washtenaw, State of Michigan

will be held at

Freedom Townhall

Beginning at 1:00 O'clock Eastern Standard Time

Saturday, April 3, 1976

At such time in addition to other regular business and in accordance with the law, a budget covering proposed expenditures and estimated revenues of the Township shall be submitted for consideration.

SIGNED RENA GIRBACH Township Clerk

## NOTICE

### ANNUAL TOWNSHIP MEETING

NOTICE IS HEREBY GIVEN, That the next Annual Township Meeting of the Electors of the

SHARON TOWNSHIP

County of Washtenaw, State of Michigan

will be held at

Sharon Township Hall

Beginning at 1:00 O'clock Eastern Standard Time

Saturday, April 3, 1976

At such time in addition to other regular business and in accordance with the law, a budget covering proposed expenditures and estimated revenues of the Township shall be submitted for consideration.

SIGNED DUANE HASELSCHWERT Township Clerk



# WANT ADS

ALL CLASSIFIED ADS ARE PAYABLE IN ADVANCE

**CHELSEA GREENHOUSES**, 7810 Lingens Road, Chelsea, Michigan, 475-1353 - 54 or 475-8313. Flowers and plants for every occasion. We specialize in wedding flowers to fit your budget. Wear as near as your phone and we welcome your business. - th

**HOUSE and barn roofing**, all types of roof repairs, aluminum storm windows and doors, awnings and porch enclosures, hot build-up roofing - residential and commercial, aluminum siding and now offering seamless aluminum gutters. Call Joe Hayes for free estimates. 428-8520. th

**SEAMLESS aluminum** eavestrights, roofing, siding, and carpentry work of all kinds. Experienced installers, all work guaranteed. Call R.D. Kleinschmidt Co. 428-8536. th

**GARDEN SEEDS** - Now in stock, packaged and bulk. Also fertilizer. Mann's Feed Mill. th

**DON'T THROW IT AWAY**, sell it to A & K Lawn Mower Service of Chelsea. We buy, sell and repair all types of lawn mowers. Also repair all types of gas motors, rotary tillers, chain saws and riding lawn mowers. "We Call We'll Sell". Free pick up and delivery. 475-2923. th

**PAT'S CRAFT STUDIO**, downtown Tecumseh, area headquarters for macramé tape painting, miniatures, artists supplies and much more. Monday thru Saturday, 10 to 5:30. Classes available. 517-423-7447. th

**"ARE YOU BUILDING YOUR OWN HOME?"** Construction money available for residential homes. Marfax Corporation, Ann Arbor, 855-8000. 6-3

**HEATING AND PLUMBING REPAIRS**, Call night or day. 428-7185. 5-13-76.

**DRY WALL, PLASTERING AND STUCCO** men and repair. Free estimates. 653-6584. 4-8-76 p.

**FOR SALE** - Over 200 shares of Union Savings Bank of Manchester stock. Contact Richard R. Erb, Executive Financier, 517-423-4777 after 5 p.m. 4-22

### NOTICE!

All grave blankets and Christmas decorations must be removed by April 10th.

Oak Grove Cemetery Assn

**PIANO & ORGAN** tuning and repair (517) 752-1273 or 428-8422 th

**ELECTRICAL** wiring, new & remodeling. Licensed, fully insured electrician. Paul Kanner, phone 428-8462.

**KNEEL'S TREE SERVICE**-cutting, trimming, stump removal, aerial bucket work. Call (517) 463-5506 or 486-3813. th

**EAR PIERCING** - Fast and painless. Gator's Jewelry, Tecumseh, Michigan 428-3284. th

**BEEF TO SELL BY SIDE**: Calfsteak slaughterer. Lockers to rest. Phone 428-7600. Manchester Frozen Food Lockers. th

**FOOTBALL, Basketball** and other sports pictures available. For prints call Jon 428-8690. th

**POLE BUILDINGS BY HUSKIE** - BILT STRUCTURES, Farm, Urban, Commercial, call or write Jim Warren for information, 916 W. Michigan, Ypsilanti, Michigan 48197. 482-3594. 4-28 p.

**HORSESHOEING AND TRIMMING** - Corrective Shoeing, Bob Bunn, 428-7293, 18223 Sharon Valley Road. 4-1p.

**FOR SALE** - Registered Suffolk Ram, 5 years old, 1-753-9007. 4-1 p.

**STORAGE SHEDS**, Pole Barns and garages, 8 ft. X 8 ft. thru 30 X 60 prefab kits or installed, all wood construction, very reasonable. Phone 449-3403. 4-1

**SALINE PRESBYTERIAN Church's** Basement Boutique (huge rummage sale), 143 Michigan Avenue, April 1st and 2nd, 9 to 6. April 3rd 9 to noon. 4-1 p.

**FOR SALE** - '75 Pinto Hatchback, automatic, 15,000 miles, Call Sam Beal, 428-7082. 4-1

**\$100 REWARD** - Yellow Labrador retriever, male - lost in fields between Pleasant Lake and Bethel Church Roads, very gentle, answers to Luke, please call 475-1181. 4-8

### WANTED STANDING TIMBER and WALNUT

Let us look at your wood lot we can give you a price on selective cutting of mature trees.

Tri-County Logging, Inc.

P.O. BOX 467 CLINTON, MICHIGAN 42936 Phone 527-448-7000 or 456-4731

**FOR SALE** - Corn Silage in upright silo with unloader, 428-8466. 3-8p.

**NOW TAKING RESERVATIONS** for Snowmobile storage, \$10 will store yours inside all summer, May 1 to November 1, 1976. Phone 428-8522, Tony Schloesser, 8130 Grossman Road, Manchester. 4-8.

**MARILYN'S HAIR STYLES** is featuring Men's and Boys Hair Styling, shampoo and blow dry \$6.00. For women specializing in perms, hair styling, tinting, frosting. Open Monday - Saturday, evenings by appointment. Free and Easy Private Parking, Marilyn Randall, owner. Phone (517) 456-7238, 11500 Clinton Road, Clinton Michigan.

**HELP WANTED** - Cleaning woman, one day a week, private home outside Village. Call 428-7601. th

**NEW BEAUTY SCHOOL** Classes start May 4th, part time, full time, day or evening, Apollo University of Hair Design, 146 N. Main, Adrian 256-6491. 4-29

**FREE LANCE TYPIST** - Barbara Burda 429-9286, Saline. 4-22

**WANTED TO BUY:** Golf Course, 18 or 9 holes with land. Bob Wideman, Realtor, P.O. Box 33, Gladwin, Michigan 48624. 4-15

**HELP WANTED FEMALE** - GET OUT OF THAT RUT! Enjoy life with money you'll earn, showing latest styles and an exclusive fragrance collection from Frag-exclusive fragrance collection from Fashion Wagon of Minnesota Woolen at home style shows. We'll help you start and furnish a demo wardrobe. Also, great Manager opening now. If you can work 2 evenings a week and have transportation, call toll free at 1-800-346-0081 and ask for BEV HUGHES. 4-15 p.

**AMERICAN LEGION BAR** - New hours, starting April 12, 1976, Monday, Tuesday, Thursday, Friday 3 p.m. to 8 p.m. Wednesday 3 p.m. to 11 p.m. Saturday 11 a.m. to 6 p.m. - Members and guests only. 4-8

**GIBBONS & SON EXCAVATING**  
FOOTINGS-BULLDOZING  
SEPTIC TANKS  
TRUCKING  
POURED BASEMENTS  
SAND & GRAVEL  
DRIVEWAYS  
POLYNESIAN POOLS  
PHONE 428-8611

**WANTED TO RENT** in Manchester School District, three bedroom house, in country, with four or more acres. Call 428-7360 from 10 a.m. to 5 p.m. 4-8 p.

**WANTED** - Ear corn, 428-8505. p.

**PUBLIC CARD PARTY** - Saturday, April 3, 8 p.m. at the Manchester Sportsmans Club.

**MUSCOVY DUCK EGGS** for sale, 428-8356.

**FOR SALE** - 42" round maple, drop leaf table, formica top - excellent condition, \$40. 428-8626.

**FOR SALE** - Girls 3 speed purple banana seat bicycle, hand brakes, mint condition, call 428-8104.

**GENERAL WORK** - \$4.68 Per Hour - Electrical appliance company enlarging work force. Needs full or part time help. No experience necessary. Mr. Jones 769-0082. p.

**FOR SALE** - Baseball Shoes, size 8 1/2, \$6.00. 428-7693. p.

**BACK HOE WORK** - Septic tanks, drain fields, basements and fence rows. 428-8981. p.

**FOR RENT** - 2 bedroom apartment, \$175 month. Call 428-8564.

'68 LINCOLN CONTINENTAL - 4 door, new paint, exhaust, shocks, beautiful condition \$945. Call 428-8182 or 428-8277.

1972 - 250 SUZUKI, 2800 miles, Excellent condition, \$425, 29 gallon fish aquarium complete with fish, phone 428-7093.

Why you should let H&R Block worry about your income taxes.

If the IRS should call you in for an audit, H&R Block will go with you; at no additional cost. Not as a legal representative... but we can answer all questions about how your taxes were prepared.

Get a little peace of mind. **H&R BLOCK** THE INCOME TAX PEOPLE

200 Riverside Drive Manchester, Michigan PHONE 428-7833

**BLACK SHEEP TAVERN**  
115-119 E. MAIN STREET MANCHESTER MICH  
PHONE 428-7000  
Open Tuesday thru Sunday Closed Mondays

FRIDAY SATURDAY **BEEF BUFFET** 6 PM TO 10 PM  
\$5.25 Per Person

DINNERS SERVED TUESDAY THRU THURSDAY 5 PM TO 9 PM  
FRIDAY AND SATURDAY 5 PM TO 11 PM SUNDAY 12 TO 9 PM

BANQUET AND PRIVATE PARTIES FACILITIES  
PHONE 428-7000 FOR INFORMATION

**CLINTON THEATRE**  
CLINTON, MICHIGAN

Fri., Sat., Sun., Mon., Tues., 7:30,  
Sat. and Sun. Matinee 2:00

Free wheeling... fun loving...  
**WALT DISNEY**  
**BLACKBEARDS GHOST**  
LUSTINOV JONES PLESCHETTE

# THE MANCHESTER ENTERPRISE

109TH YEAR VOLUME NO. 23 15 CENTS PER COPY THURSDAY, APRIL 8, 1976

## Jeffery Frey Memorial Scholarship Bicentennial First Ladies



Pictured Tom Little, Mr. and Mrs. Frey and Greg Dorr

In memory of their son, Jeffery Frey, Mr. and Mrs. William Frey are sending two boys to the Michigan State University Golf Camp this summer as recipients of memorial scholarships. In addition, a

### Bicentennial Calendar

The "Bicentennial Happening" that is taking place at the High School on Saturday, April 24 and Sunday, April 25, will feature an exhibit from Michigan Bell Telephone. Included in this exhibit is one of the very first telephones in existence. It is called a "liquid phone" and there is only one of it's kind in this area. They will also be showing other old phones, as well as some new models. Among other events scheduled are demonstrations in pottery, ceramics and rug making.

The Cub Scouts and Boy Scouts will each be demonstrating skills that have been taught them for many years. For your enjoyment, we will be entertained by the Manchester Varsity Choir, the Manchester Pep Club and there will even be a clown for the children. If you attend this event, you will be able to cool your feet in our "Olive Tyme Saloon," run by the Manchester Ecology Club. We will be offering "soft" drinks and entertainment.

All children love candy, and on these two days, they will have an opportunity to assist in the making of their own, at a Taffy Pull, run by the Manchester Middle School Task Force. The Manchester Girl Scouts will be having an exhibit as well as selling food. Sno Cones will be provided by the Athletic Boosters. Ice cream will come from the Klager School and soft drink from MacDonald's.

The Manchester JayCees are setting up an old Barber Shop and a park fashioned after an old Village Square. Gentlemen with foliage will be able to get a free trim. The Manchester JayCees are setting up an old Barber Shop and a park fashioned after an old Village Square. Gentlemen with foliage will be able to get a free trim. The Manchester JayCees are setting up an old Barber Shop and a park fashioned after an old Village Square. Gentlemen with foliage will be able to get a free trim.

All in all, it should prove to be two of the most interesting days Manchester has had in a long time. For those of you who missed last week's paper, the "Happening" takes place Saturday, April 24, 5:00 p.m. to 9:00 p.m., and Sunday, April 25, 2:00 p.m. to 6:00 p.m. The list of scheduled events will be concluded next week.



Pictured from left to right, front row: Leona Braun, Nellie Detling, Birdie Buss, Esther Grossman. Back row: Rena Girsch, Elizabeth Grossman, Jacqueline Armentrout, Ethel Brown.



Pictured left to right: Ella Beuerie, Cecelia Poet, and Mary Wallace.

In this week's edition of the Manchester Enterprise, we have included pictures of the remaining First Lady Candidates. We have now shown you all of our Candidates and leave the voting up to you. There is a poster in the Headquarters Store showing turn-in dates and times.

The Headquarters-Store is now open on Fridays from 9:30 to 5:00. Our commemorative coins are in. They are really beautiful. I suggest that you stop and see them even if you are not interested in purchasing one. We are having a "Mr. Legs" contest. The purpose is to pick the Gentleman with the nicest legs. Names of the Entrants will be kept confidential, only your legs will be public. Photos will be posted in the Headquarters-Store and voting will take place by secret ballot. If you would like to enter, please contact Mrs. Carolyn Ahrens or Miss Debbie Gilbert.

The Western Washtenaw Bicentennial Commission is raffling off a 1923 Model "T" Touring Car. The drawing is August 28 at the Chelsea Fair. Tickets are \$1.00 each and are available from Committee members. We regret to inform all interested parties of the demise of our friend and aide Mr. Ray-Zor. Although he was rather harsh at times, he was a devoted servant, always there when needed. There are those among us who will miss him in the worst way. All Gentlemen who will feel the loss, are reminded that burial will take place this Saturday, April 10, at 5:00 at the Bicentennial Store.

### They're Engaged

Mr. and Mrs. Lorenz Wackenhut of 11730 Waters Road, Chelsea, would like to announce the engagement to their daughter, Sharman Ruth to William Edward Pfau, son of Mrs. Edna Pfau of 12545 Bethel Church Road, Manchester. Miss Wackenhut is a 1975 Chelsea High School graduate and currently employed at Eastern Michigan University. Mr. Pfau is a 1972 Manchester High School graduate and employed by Double A Products and A & G Weidmayer Farms, Manchester. A September 24 wedding is being planned.

### Proclamation

WHEREAS, our nation is preparing to celebrate its 200th birthday; and WHEREAS, the Michigan Army National Guard has played an important and vital part in winning and sustaining our nation's independence and making this celebration possible; and WHEREAS, today's National Guard provides 16 percent of our nation's armed forces for less than three percent of the national defense budget as the first line backup force for the active Army and Air Force; and WHEREAS, Guardsmen and Guardswomen of Company "D" 156th Signal Battalion with members from the Manchester area, have voluntarily served this community, the State of Michigan and the nation in meeting challenges in each generation of our nation's history; and WHEREAS, Guardsmen and Guardswomen of Company "D" 156th Signal Battalion continue their readiness to defend the nation in times of national emergency and to serve the citizens of Ann Arbor

Continued on Page 11.