

# WANT ADS

ALL CLASSIFIED ADS ARE PAYABLE IN ADVANCE

DON'T get cold this winter, have your furnaces serviced now to prevent problems and furnace failure later in this cold season. Also plumbing and electrical work new and repairs. Call Hilltop Plumbing, 8315 Werkner Road, Chelsea, 475-2949.

HOUSE and barn roofing, all types of roof repairs, aluminum storm windows and doors, awnings and porch enclosures, hot build-up roofing - residential and commercial, aluminum siding and now offering seamless aluminum gutters. Call Joe Hayes for free estimates. 428-8520.

WILD BIRD Feed, scratch feed, sunflower seeds, at E.G. Mann & Sons, Manchester, tn

SEAMLESS aluminum eavestroughs, roofing, siding, and carpentry work of all kinds. Experienced installers, all work guaranteed. Call R.D. Kleinschmidt Co, 428-8836.

SEASONED FIREWOOD—\$25 a level pick up load, delivered local, split and stacked. 428-7377 or 428-7252.

HEATING AND PLUMBING REPAIRS. Call night or day, 428-7138. 5-13-76.

FOR RENT - 1 bedroom apartment - upstairs, private entrance, utilities furnished. \$175 month, 428-8638.

COUNSELING SERVICE 994-3451. 2-26p.

PIANO & ORGAN tuning and repair (517) 782-1273. tn

ELECTRICAL wiring, new & remodeling. Licensed, fully insured electrician. Paul Kemmer, phone 428-8462.

KNISEL'S TREE SERVICE—cutting, trimming, stump removal, serial bucket rental. Call (517) 443-5506 or 486-2619. tn

EAR PIERCING - Fast and painless. Gas-tour's Jewelry, Tecumseh, Michigan 423-3260. tn

BEEF TO SELL BY SIDE: Custom slaughtering. Lockers to rent. Phone 428-7699. Manchester Frozen Food Locker. tn

LIKE HORSES? This solid 4 bedroom home is situated on paved M-52, 1 mile North of Manchester. Total property is 7.5 acres with a 3 stall horse barn w/running water and electricity. Over 50 White Oaks w/ circle drive. Please call Fletcher & Klein, Realtors at 769-0062 and ask for Larry Bane, evenings 485-7866. tn

FOOTBALL, Basketball and other sports pictures available. For prints call Jon 428-8690. tn

ALBER FARMS - Orchard & Cider Mill 13011 Bethel Church Road, Open daily 9 to 6 all winter. Apples, sweet cider, whiskey barrels, new kegs, potatoes, misc. items. 428-7758. tn

FURNITURE UPHOLSTERER—Full or part time, experienced only, 482-1409, Ypsilanti. 3-4

FOR SALE - Mixed hay, alfalfa, timothy 1st and 2nd cutting, also wheat straw, call after 6, 517-456-4420. Can deliver. 2-5

REMEMBER YOUR VALENTINE with a gift from the Calico Cat Gift and Book Shoppe. 110 East Main Street - Valentine Cards from Red Farm Studio and Paw Prints. 2-12.

DRY WALL, PLASTERING AND STUCCO new and repair. Free estimates. 663-6550. 4-8-76 p.

LEG-CRAMPS? Try Supplicol 3 tablets contain minimum daily requirement of calcium. Krauss Drugs. 2-19p.

GINSENG! Chinese herb once prized more than gold, in convenient capsule. Try "Asianroot" Krauss Drugs. 2-12p.

"GRAPEFRUIT PILL" with Diadax plan more convenient than grapefruit - Eat satisfying meals and lose weight. Krauss Drugs. 2-12p.

FOR RENT - Upstairs apartment, stove, refrigerator, carpet and drapes, heat furnished, call evenings 428-8710, no pets. 2-12

"HEATED GARAGE SALE", furniture, tools, clothing and miscellaneous. February 21 and 22, 9 a.m. to 6 p.m., 453 Railroad Street, Chelsea. 2-12

FOR SALE - Chevy pickup, 1/2 ton, 1975, Silverado "Cameo Super", low mileage, fully equipped, 428-7485.

HELP! I left 2 pairs of blue jeans in the laundromat last Friday morning. Whoever has them, please phone 428-7145. I need them.

CAT LOST - All white, neutered male from Chelsea area, large reward, 475-7509. p.

FOR SALE - G.E.'s track recorder - 1973 125 MX Yamaha - needs fly wheel. 1973 Ski Boule 440, 538 miles. 1973 Moto Ski 295 low mileage. 428-8466. p.

NEW - The Weekend Fashions, 1645 West Michigan Avenue (US 12), Clinton, Michigan. Open Friday and Saturday, 10 a.m. to 5 p.m. Sundays noon to 5 p.m. Janitta Gass, manager.

FOUND on Kiss Road, female Beagle pup, phone 428-7231.

EXPERIENCED church organist, seeks position call 995-4350. p.

A PUBLIC SALE of a 1972 Lincoln Mark IV will be held on Tuesday, February 10, 1976 at 10:00 a.m. at the Union Savings Bank of Manchester.

FOR RENT - Two bedroom apartment, \$150 per month, 428-7030.

MARILYN'S HAIR STYLES is featuring Men's and Boys Hair Styling, shampoo and blow dry \$6.00. For women specializing in perms, hair styling, tinting, frosting. Open Monday - Saturday, evenings by appointment. Free and Easy Private Parking, Marilyn Randall, owner. Phone (517) 456-7258, 11500 Clinton Road, Clinton Michigan.

FREE one year old Bassett, 428-8070.

FOR SALE, 1975 433 GPX Yamaha snowmobile, low mileage, fast, make offer. 428-8909. p.

SNOWMOBILE REPAIR work done, all models, reasonable, 428-8909. p.

## CARD OF THANKS

Special thanks to the Police Department for being clue #2!  
With love,  
All us kids

The tasty banana is second cousin to the gorgeous orchid.

If fabric isn't too delicate, ordinary rubbing alcohol may be used to remove ink stains.

# THE MANCHESTER ENTERPRISE

99TH YEAR VOLUME NO. 15

15 CENTS PER COPY

THURSDAY, FEBRUARY 12, 1976

## Peter A. Kensler Manchester Attorney Slain



The long winter, with deep snow, little sunshine, slowly moves along. We wait patiently for Spring and new life. Our community has been scarred. Damaged by ugliness. Such hatred, causing heart-breaking tragedy, is difficult to understand. We sit stunned, uncomprehending, questioning. How could this, our peaceful portion of the world be shattered by such senseless brutality.

We have a sense of loss, our friend, our neighbor, one of our people, has ceased to live. Young, bright, civic minded, hardworking, but most of all a part of us because we knew him.

Peter Kensler, 17750 Sharon Valley Road, Manchester, born May 21, 1939, in Manchester, the son of Erwin and Louise Craig Kensler, was found dead at his home Wednesday.

He attended Manchester Schools, graduated in 1957, received his BS Degree from the University of Michigan and Law Degree from the University of Detroit Law School in 1966.

He was a member of Emanuel United Church of Christ; Board of Directors, Manchester Community Chest; Board of Directors, Union Savings Bank of Manchester; a member of the Washtenaw County Bar Association; the American Bar Association; the Michigan Association of Professions; and a member of the Washtenaw County Red Cross Board.

He is survived by his Mother, five brothers, Robert, James and Richard of Manchester, George of Marion, Michigan, and Erwin Jr. of Rochester, New York; two sisters, Mrs. Joseph (Patricia) Fitzgerald and Mrs. Harry (Mary) Johnson both of Manchester.

Funeral services were held Saturday at 1:30 p.m. at the Emanuel Church. Rev. Joseph Wise and Rev. Steven Jones officiated. Burial followed in Oak Grove Cemetery.

A small community is, in some ways like a family, close, having squabbles, knowing each others faults and idiosyncrasies, but even in disagreements we would wish each other no harm. Now suddenly, a part of our unit has been mortally wounded and we each feel the pain.

The days move slowly, the season begins to turn and soon the sun begins to shine and the greening begins. New growth,

## Michigan Youth Symphony To Perform At Manchester High

The Band and Orchestra Boosters have invited the Michigan Youth Symphony to perform in Manchester on Sunday, February 22, 1976. The concert will be held at 8:00 p.m. in the High School Gym. Admission is \$1.50 for adults and \$.75 for students and senior citizens with a \$5.00 limit per family.

The program includes Symphony No. 5 by Hanson, a Cello Concerto by Lalo with Katy Everson, soloist, a Viola Concerto by Telemann with Scott Woolweaver, soloist, Aleast by Lawhead, American Salute by Gould and Lincoln Portrait by Copland. This final number will be narrated by Manchester's Mr. Clinton Fisk.

This is the 27th season of the Michigan Youth Symphony, founded in 1949 by Orlan Dalley and its first conductor. Other conductors of the MYS have been Norval Withrow and Charles Gabriel. Dr. Robert Pettara, the present conductor, is an Assistant Professor of Conducting and Music Education at the University of Michigan School of Music, and Conductor of the University Campus Orchestra.

Purpose of the Michigan Youth Symphony are to provide an opportunity for interested and qualified performers in junior and senior high schools to perform symphonic repertoires, and to present concerts in communities around the lower peninsula of Michigan.

The approximately 100-member orchestra is made up of young people who come from as far away as Cadillac, although the majority come from the Ann Arbor-Ypsilanti area, the Detroit Metropolitan area, Jackson and Flint.

Proceeds from concerts are added to the MYS scholarship fund. These funds are used to assist MYS members to attend Interlochen 11 - State sessions. MYS members may also audition for Na-

tional Music Camp scholarships. Seniors in the orchestra are eligible to audition for University of Michigan School of Music scholarships (as entering freshmen) and for the opportunity to perform a concerto with the orchestra.

Manchester students who are members of the MYS are Lohi Gonyer, Belinda Grantham and Cathy Tobias.

The Band and Orchestra Boosters extend an invitation to the people of Manchester to attend this concert and enjoy an afternoon of fine musical entertainment.

## Family Service To Hold Meeting

Manchester Family Service annual meeting will be Thursday, February 26, at the Manchester Township Library at 8:00 p.m. The reports for the year and for the Christmas Project 1975 will be given at this time and all who are interested are urged to attend.

Three board members 3-year terms expire at this time—Mrs. Merle (Laverne) Armstrong, Mrs. Ruth Sott and Mrs. Paul (Genevieve) Lemon. The term for the late Luther Kieger was filled by the appointment of Mr. Merrill Korth. Mr. Korth's remaining 2-year term is open for affirmation.

Mrs. William Schwab, chairman of the nominating committee and Mr. Clarence Fielder will be happy to receive names for suggested board member so that they may be contacted before the meeting to determine their willingness to serve if elected.

There are nine board members for this incorporated local volunteer Community Fund Agency. Those not already listed are Mr. LeRoy Marx, Mrs. Hobart John and Mrs. Franklin M. Reck.

## Bicentennial Calendar

In the February 5 edition of the Manchester Enterprise, we printed a copy of the letter and entry blank, mailed to all the clubs and organizations in the Manchester area, concerning the Bicentennial First Lady Contest. There were two mistakes made and we would like to apologize. First of all, the contest is also open to ladies in Bridgewater Township. Secondly, Barbara Berke's telephone number is 428-8516 not 428-8515.

We are hoping to form a hometown band. If you play an instrument and are interested in joining, please contact Richard Rigg. There is no age limit, we would like to have youngsters and oldersters alike making up this group. We are sorry, but because of some of the circumstances under which the band will be playing, we cannot accept electrical instruments.

Nominations for a Bicentennial First Lady are coming in with tremendous enthusiasm. This may prove to be a very exciting contest. Remember, you have until February 29 to make your nominations.

If anyone has an idea for a project or wishes to help on one of the projects we have planned, please contact one of the Committee members. For your convenience, we will reprint the Committee members and their duties in one of the upcoming issues of the Manchester Enterprise.

Plans are coming along well for activities during the spring, summer and fall months. Some of the things we have planned are; community picnics, promenades, caravans, dances of all kinds, a fashion show featuring clothing through the years, a fashion show featuring hats

Continued on Page 5.

## Girl Scout Cookie Sale Underway



The Manchester Girl Scouts are now taking orders for their annual Girl Scout Cookie Sale. The sale will be held February 6 through the 15th. If you are not contacted and would like to order cookies, please call 428-8098. Pictured are Laura Honer, 186 Caddettes; Tammie Honer, 653 Jr.; and Natalie Walkowe, 653 Jr. Support your local Girl Scouts and order your cookies today.

Now is The Time To Build Your New Home

ALSO REMODELING AND ROOM ADDITIONS  
Phone 428-7109

Norm Walz Construction  
112 TORRY STREET MANCHESTER, MICH.

50% COUPON SAVE 50% COUPON  
Ice Skates Sharpened 50c  
WITH COUPON  
ACE HARDWARE  
103 E. Main St. Manchester

CLINTON THEATRE  
456-4315, Clinton  
Fri. - Sun., Feb. 6-8  
3 Days Only  
7:00 and 9:00 p.m.  
**Challenge to be Free**  
HE BECAME A LEGEND YOU'LL NEVER FORGET...

**SIEGLER**  
GAS AND OIL SPACE HEATERS AND FURNACES  
**L. V. KIRK**  
GE Dealer  
Electrical Contractor  
PHONE 428-8243  
112 Adrian Manchester

Why you should let H&R Block worry about your income taxes.  
There are major changes in the tax laws that could affect your return. Our people are specially trained to help you take advantage of these new laws. We'll do our best to make sure you pay the right amount of tax. No more, no less.  
Get a little peace of mind.  
**H&R BLOCK**  
THE INCOME TAX PEOPLE  
200 Riverside Drive  
Manchester, Michigan  
PHONE 428-7833

**INCOME TAX PREPARATION**  
Returns Prepared At Your Home cost little more  
FOR APPOINTMENT CALL 429-5954 IN SALINE (14 Years Experience)  
**H.L. Beach Tax Service**

**BLACK SHEEP TAVERN**  
115-119 E. MAIN STREET MANCHESTER MICH  
PHONE 428-7000  
Open Tuesday thru Sunday Closed Mondays  
FRIDAY SATURDAY **BEEF BUFFET** 6 PM TO 10 PM  
\$5.25 Per Person  
DINNERS SERVED TUESDAY THRU THURSDAY 5 PM TO 9 PM  
FRIDAY AND SATURDAY 5 PM TO 11 PM SUNDAY 12 TO 9 PM  
BANQUET AND PRIVATE PARTIES FACILITIES  
PHONE 428-7000 FOR INFORMATION

**The Manchester Enterprise**  
305 Beaufort Street  
Manchester, Michigan 48158  
Phone 428-3173

The Manchester Enterprise was established in 1867 and is published each Thursday at 305 Beaufort St., Manchester, Michigan with second class postage paid at Manchester.

**THE STAFF**

Edward E. Steele, Publisher  
Lenore Steele, Editor  
Cecelia Chapin, Feature Editor  
Jon Roger Cardenbergh, Sports Editor



**CARR ANNOUNCES NEW MINI-OFFICE SCHEDULE**

Congressman Bob Carr (D-Michigan) today announced the "mini-office" van schedule for February. The mobile van travels throughout the Sixth District to provide residents with a more direct channel to Washington for expressing opinions, getting answers to questions or unraveling red tape they have encountered in working with a federal agency.

The Carr "mini-office" is on the road three days each week, making stops at manufacturing plants, shopping centers and post offices. The "mini-office" is staffed from 8:30-7:30 a.m. at the respective plant gates. The shopping center stops are from 9:45-11:45 a.m. and 12:00-2:00 p.m. The van then returns to the plant gate from 2:30-4:00 p.m. All village stops on Saturday are from 11:00 a.m.-1:00 p.m.

On Saturday, February 21, the "mini-office" will be in the Village of Brooklyn.

On Saturday, February 28, the "mini-office" will be in the Village of Manchester.

**WASHTENAW COUNTY HISTORIC DISTRICT COMMISSION**

Persons interested in learning how to record the history of their own area through the means of tape-recorded interviews will be welcomed at the Oral History Conference to be held from 10 a.m. to 3:30 p.m. at the Bentley Library on North Campus in Ann Arbor on February 19.

Lydia Muncy, co-ordinator of the conference, has arranged for experts in various phases of tape-recorded local history to speak to those attending. The conference is in response to public interest in the technique which has become the local historians' best tool.

Personal interviews with those having knowledge of the historic past of a town or rural area, or even a single farm, are of great value when recorded on modern, easy-to-operate equipment such as is now relatively plentiful and inexpensive, according to Mrs. Muncy.

David Olson, Michigan State Archivist, will speak on the background of the use of oral history; Richard Dooleen, History Division of the Department of State, will lead a discussion concerning its application to Washtenaw County; Jan Frank of Saline, will explain the program carried out in that city; Lydia Muncy will detail the historic perspective and Mary Jo Pugh, Archivist at the Michigan Historical Collections, will talk about the use of the final product.

Jointly sponsored by the Washtenaw County Historic District Commission, the History Division of the Department of State and the Bentley Historical Library, the conference is open to the public. A registration fee of two dollars will be charged for the cost of materials. Advance registrations may be made to Oral History Conference

Lydia Muncy  
1015 Martin Place,  
Ann Arbor, Michigan 48104

**MOTHERS OF TWINS CLUB**

The Huron Valley Mothers of Twins Club will meet on Monday, February 16, at 7:30 p.m. at the Michigan Consolidated Gas Co., 211 East Huron St., Ann Arbor, for a demonstration.

Mothers and their guests are welcome. Please advise Jan Miller at 662-8794 if attending.

**Run-Walk-Jogathon At Emanuel Church Saturday, February 21**

Sharon Methodist Church, Manchester Methodist Church, and Emanuel Church youth groups will be sponsoring a jog-walk-runathon in the Emanuel Church gym on Saturday, February 21st from 9 a.m. to 9 p.m. This event is for the youth of Manchester between the ages of 12 and 18 years. The cash is being raised to benefit the cause of our Native American Indians in Michigan. We hope to aid them in meeting their needs for decent housing, education, food, and civil rights. This project grows out of a concern for aiding those who have less than we, those unable to get out from beneath the cycle of poverty and oppression. Part of Jesus' ministry was reaching out to those oppressed by social systems and those forgotten by the large society; those who were rejected and outcast by their fellowmen. Our conviction is that we follow in his footsteps (see Mathew 25:35 ff and Luke 6:46).

Participating youth will run, walk, or jog as many laps around our gym as possible in one hour and get sponsors to pledge certain amount per lap (we suggest under 10¢ per lap). Refreshments and music will be available to cut the routine. People will be counting laps and recording times. Youth may get as many sponsors as they wish. We hope to have about 15 youth on the floor each hour. Interested youth should begin contacting interested sponsors now and call the Emanuel church office to reserve a one hour period during the day.

Native Americans in Michigan are concerned about decent health care for their children, decent housing, equal educational opportunities, the honoring of historic treaties, a self-determining school system, preserving their dying culture, lobbying in the state legislature for civil rights, removing offensive history from our public schools, and providing for the continued existence of the people. Surely we can pick up on one of these issues. This is a chance for the youth of Manchester to be involved. We need runners to spread the word, and people to help with refreshments. If you can help, call the Emanuel Church office and ask for Steve Jones.

**WASHTENAW COUNTY MEDICAL CARE AUXILIARY**

Washtenaw County Medical Care Auxiliary Board meeting will be held Wednesday, February 18th, at 9:30 a.m. at Sunnyside Convalescent Home, 1045 Ware Court, Ypsilanti.

**Horse Shoeing and Trimming**  
BOB BEAUBIEN  
Phone 428-8985  
Manchester, Michigan

**VACUUM CLEANERS ELECTROLUX**  
Electrolux Sales & Service  
call  
James Cox  
Manchester  
428-8444

Member of Ann Arbor Board of Realtors Multiple Listing Service

**Spear & Associates, INCORPORATED, REALTORS**

122 West Main Phone 428-8358 Daily Manchester

THREE BEDROOM home situated on an acre of land overlooking Manchester. Modern kitchen with eating area, living room with fireplace, family room, nice basement and 2 1/2 car garage, large covered patio and beautiful landscaping. Priced in the forties.

CAPECOD ON 11 ACRES, 5 bedrooms, 3 1/2 baths, Huge fireplace, 14 x 36 family room, walkout basement, and a 3 1/2 car garage. This home should fit your every need.

2,100 sq. ft. RANCH on 10 acres. Large family room and living room, 2 baths, 3 nice bedrooms, large utility room and attached garage. This home is one of the best buys in the area. Priced in the fifties.

GREAT FOR HORSES this 3 bedroom ranch on 6 acres has a 24 x 24 barn plus a 3 car garage, also a 18 x 36 in ground pool, a perfect place to raise your children. On M-52 in Chelsea, low fifties.

WE have a wide selection of building sites, from 2 to 80 acres. Now is the time to buy to build this spring. Winter is a buyers market and prices will never be better.

We have buyers -- call us to sell your property  
**REAL ESTATE ADVICE**  
No Obligation - Residential Properties - Farms  
Commercial Properties - Vacant Lands

OFFICE HOURS:  
Mon. thru Fri.  
9 a.m. to 5 p.m.  
Sat. 9 am to 12 noon  
Eves & Weekends call:  
Jim Mann 428-8074  
Ellis Pratt 428-8562  
Anette Lawson 456-4014

**YOUR CHURCH**

**EMANUEL UNITED CHURCH OF CHRIST**  
Rev. Joseph W. Wise, Pastor, Steven Jones, Assistant Pastor.  
Worship 9:15 a.m. Worship 10:30 A.M. Plan to worship God regularly.

**SHARON UNITED METHODIST**  
Corner Pleasant Lake Rd. - M-52.  
Rev. Michael Peterlin, Pastor  
Sunday School 10:00 a.m., Worship Service 11:00 a.m.

**ST. THOMAS LUTHERAN**  
Rev. Jerome Drykstra, Pastor  
Sunday School & Bible Class 9:30 a.m. Worship Services 10:45 a.m.

**ST. JOHN'S UNITED CHURCH OF CHRIST**  
Carl Asher, Pastor  
Jogers Corners, Waters and Fletcher Rds.  
Sunday School 9:30 a.m., Church Services 10:30 a.m.

**BETHEL UNITED CHURCH OF CHRIST**  
Rev. Roman A. Reineck, Pastor  
Schneider and Bethel Church Roads  
Church Service 10:00 a.m., Sunday School 11:00 a.m.

**MANCHESTER UNITED METHODIST**  
Rev. Walter R. Damberg, Pastor  
Church School 9:15 a.m. to 10:15 a.m. Worship Service 10:30 a.m. to 11:30 a.m.

**ST. MARY'S CATHOLIC CHURCH**  
Father Raymond Schlinkert  
West Main Street  
Sunday Masses 8:30 a.m. and 10:30 a.m. Monday thru Friday 8:30 a.m., Saturday 9:00 p.m.

**NORTH SHARON COMMUNITY BIBLE**  
William Enslin, Pastor  
Sylvan and Washburn Road  
Sunday School 10:00 a.m., Worship Service 11:00 a.m. (Nursery will be available)

**UNITED CHURCH CLASSES 11:00 a.m., Youth Meeting Senior High 6:00 p.m., Youth Choir 8:00 p.m., Evening Worship Services 7:00 p.m. (Nursery available), Wednesday Bible Study and Prayer Meeting (Nursery available) 7:00 p.m. To your door Bus transportation available 428-7222.**

**Faith Community Church**  
Timothy Miles, Pastor  
1400 Sharon Hollow Rd. off W. Austin Rd.  
Worship Service 10:00 a.m., Sunday School 11:00 a.m., Sunday Young People 5:00 p.m., Sunday Evening Service 7:00 p.m. Wednesday evening 6:30 p.m. Junior Choir Practice, Prayer Meeting and Bible Study 7:00 p.m., Junior Prayer Meeting 7:30 p.m., Senior Choir Practice 8:00 p.m.

**IRON CREEK CHURCH**  
Rev. Ralph Janofski, Pastor  
Worship Service 10:00 a.m., Sunday School 11:15 a.m., Youth Service 6:30 p.m., Evening Service 7:30 p.m. Wednesday Evening: Junior Choir 6:30 p.m., Bible Study and Prayer Meeting 7:30 p.m., Senior Choir 8:30 p.m.

**ZION LUTHERAN CHURCH**  
Rev. John R. Morris, Pastor  
3050 S. Fletcher Road  
Sunday School 9:00 a.m., Family Worship 10:15 a.m.

**ST. JOHN'S EVANGELICAL LUTHERAN**  
Dennis Falk, Pastor  
Sunday School 9:30 a.m., Church Service 10:30 a.m.

**MANCHESTER BAPTIST CHURCH**  
Alan W. Morris, Pastor  
122 W. Main St., Phone 428-7236  
Sunday School 10 AM, Morning Worship 11 AM, Adult Bible Study 6 PM, Youth and Childrens Bible Study 6 PM, Evening Service 7 PM, Prayer Meeting Wednesday 7 PM, Saturday afternoon, Sunday School and Bus Visitation. Bus transportation 428-7682 or 428-7206. We Teach Salvation of Souls Through Jesus Christ our Lord.

**ST. BARNABAS EPISCOPAL CHURCH**  
Rev. Jerrald F. Beaumont, "Vicar"  
Old U.S. 12-1/4 mile west of M52-Chelsea  
10:00 a.m. Holy Eucharist and Morning Prayer.

**Church Services Courtesy of**

**Jenter Funeral Home**  
302 E. Main St.  
Manchester, Michigan

Another service of your State Farm Agent.  
State Farm Insurance Companies  
Home Offices: Bloomington, Illinois

**MANCHESTER METHODIST CHURCH**

Thursday, February 12, 7:00 p.m. Council on Ministries meeting. \*8:00 p.m. administrative board meeting.  
Sunday, February 15, 11:30 a.m. Chancel Choir rehearsal.  
Wednesday, February 18, 1:00 p.m. United Methodist Womens meeting.  
Thursday, February 19, 6:00 p.m. Youth Club meeting.

**ZION LUTHERAN CHURCH**  
Wednesday, February 11, Church Council at 8:00 p.m.  
Thursday, February 12, 7:30 p.m. Holy Communion Instruction.  
Saturday, February 14, YI 9:15 a.m. 7th and 8th. 10:45 a.m. Jr. Choir. 1:00 p.m. Sr. Citizens.  
Sunday, February 15, S.S. 9:00 a.m. 7:00 p.m. Luther League.  
Monday, February 16, 8:00 p.m. Sr. Choir.

**NORTH SHARON BIBLE CHURCH**  
Tuesday, February 17, sewing activity day 10:00 a.m. Noon, pot-luck.  
Wednesday, February 18, Huron River Conference of Pastors at 9:30 p.m.  
Thursday, February 19, Holy Communion Instruction at 7:30 p.m.

**ST. THOMAS LUTHERAN CHURCH**  
Thursday, February 12, Confirmation Class, 4:15 p.m. Choir rehearsal, 8:00 p.m.  
Sunday, February 15, Sunday School and Bible Class, 9:30 a.m.  
Tuesday, February 17, Bible Study at 10:00 p.m.  
Thursday, February 19, Confirmation Class at 4:15 p.m.

**BETHEL UNITED CHURCH OF CHRIST**  
Sunday, February 15, 10:00 a.m. Service of Worship. Rev. and Mrs. Coleman will be our guest. American Indian offering received. 7:00-9:00 p.m., Church Schoolteachers workshop at Emanuel. 7:30 p.m., Come Doubles meeting.

**EMANUEL CHURCH**  
Thursday, February 12, no childrens choir, adult choir will meet as usual. 9:30 a.m. Exercise group. 8:00 p.m. Womens Fellowship.  
Friday, February 13, 5:00-8:00 p.m. Fish Fry.  
Sunday, February 15, 3:00 p.m. Sr.

**FREEDOM ELECTRIC**  
11207 Pleasant Lake Road  
Manchester, Michigan  
RESIDENTIAL  
COMMERCIAL  
INDUSTRIAL  
NEW CONSTRUCTION  
REMODELING REPAIR  
GILBERT LUCKHARDT  
Phone 428-8233

**Before you buy your car, boat, or recreational vehicle, see how much you might save.**

See me about low-cost financing through a cooperating bank and economical car insurance from State Farm Mutual.

**MATT DONNELLON**  
146 E. Main  
Manchester  
Phone 428-8364

**CHIROPRACTIC FOR LIFE CHIROPRACTIC CENTER**  
Phone 475-7633  
7970 Clark Lake Rd Chelsea

**Tecumseh Chiropractic Life Center**  
PHONE (517) 423-7360  
101 South Pearl Tecumseh

Young couples invited. 7:30 p.m. Study Fellowship of area churches at Bethel. Tuesday, February 17, 7:30 p.m. Study Fellowship of area churches at Bethel.

**SHARON UNITED METHODIST CHURCH**  
Friday, February 13, 3:30 p.m. Catechism Class.  
Saturday, February 14, Sumya will go bowling.  
Sunday, February 15, Jr. Y.F., Sledding and Valentine Party.  
Monday, February 16, 7:30 p.m. Beccomera.  
Thursday, February 19, 1:30 p.m. The willing Workers will meet at the church; devotional leader, Mrs. Michael Peterlin; hostess, Mrs. Robert Pratt. The Starlight Circle will meet at the home of Mrs. Eldon Lamb at 8:00 p.m.; devotional leader, Les Huber.

**NORTH SHARON BIBLE CHURCH**  
Sunday, February 15, Ruth Circle, 2:00 p.m. Jr. Choir, 7:30 p.m. Midweek Dev. Sr. Choir, 8:45 P.M.  
Saturday, February 14, Catechism, 9-11 a.m.  
Sunday, February 15, Sunday School, 9:30 a.m. Worship, 10:30 a.m. Mtg. of canoe Trippers. Father-Daughter Banquet, 7:00 p.m.  
Tuesday, February 17, Education Committee, 8:00 p.m.  
Wednesday, February 18, Jr. Choir, 7:30 p.m. Midweek Dev. Sr. Choir, 8:45 P.M.  
Thursday, February 19, Sarah Circle, 10:00 a.m. Mary-Martha Circle, 8:00 p.m. Men's Bible Study.

**SMOKING CLINIC AT EMANUEL**  
A clinic for smokers who desire to stop smoking will be held at Emanuel United Church of Christ, 324 W. Main Street, February 16 thru February 19. The clinic will be held in the Fellowship Hall from 7:30 to 9:00 p.m. each of the four evenings. Rev. Roy E. Lennon, pastor of the Seventh Day Advent Church in Ann Arbor, and Dr. O.S. Erhard, a physician from Eaton Rapids, will conduct the clinic. There will be no charge for those who attend but a donation will be accepted. For additional information call the Emanuel Church office, 428-8359, or Rev. Joseph Wise, 428-7407.

**EMANUEL CHURCH**  
Thursday, February 12, no childrens choir, adult choir will meet as usual. 9:30 a.m. Exercise group. 8:00 p.m. Womens Fellowship.  
Friday, February 13, 5:00-8:00 p.m. Fish Fry.  
Sunday, February 15, 3:00 p.m. Sr.

**ST. JOHN'S LUTHERAN**  
Wednesday, February 11, Ruth Circle, 2:00 p.m. Jr. Choir, 7:30 p.m. Midweek Dev. Sr. Choir, 8:45 P.M.  
Saturday, February 14, Catechism, 9-11 a.m.  
Sunday, February 15, Sunday School, 9:30 a.m. Worship, 10:30 a.m. Mtg. of canoe Trippers. Father-Daughter Banquet, 7:00 p.m.  
Tuesday, February 17, Education Committee, 8:00 p.m.  
Wednesday, February 18, Jr. Choir, 7:30 p.m. Midweek Dev. Sr. Choir, 8:45 P.M.  
Thursday, February 19, Sarah Circle, 10:00 a.m. Mary-Martha Circle, 8:00 p.m. Men's Bible Study.

**SMOKING CLINIC AT EMANUEL**  
A clinic for smokers who desire to stop smoking will be held at Emanuel United Church of Christ, 324 W. Main Street, February 16 thru February 19. The clinic will be held in the Fellowship Hall from 7:30 to 9:00 p.m. each of the four evenings. Rev. Roy E. Lennon, pastor of the Seventh Day Advent Church in Ann Arbor, and Dr. O.S. Erhard, a physician from Eaton Rapids, will conduct the clinic. There will be no charge for those who attend but a donation will be accepted. For additional information call the Emanuel Church office, 428-8359, or Rev. Joseph Wise, 428-7407.

**EMANUEL CHURCH**  
Thursday, February 12, no childrens choir, adult choir will meet as usual. 9:30 a.m. Exercise group. 8:00 p.m. Womens Fellowship.  
Friday, February 13, 5:00-8:00 p.m. Fish Fry.  
Sunday, February 15, 3:00 p.m. Sr.

**EMANUEL CHURCH**  
Thursday, February 12, no childrens choir, adult choir will meet as usual. 9:30 a.m. Exercise group. 8:00 p.m. Womens Fellowship.  
Friday, February 13, 5:00-8:00 p.m. Fish Fry.  
Sunday, February 15, 3:00 p.m. Sr.

**EMANUEL CHURCH**  
Thursday, February 12, no childrens choir, adult choir will meet as usual. 9:30 a.m. Exercise group. 8:00 p.m. Womens Fellowship.  
Friday, February 13, 5:00-8:00 p.m. Fish Fry.  
Sunday, February 15, 3:00 p.m. Sr.

**EMANUEL CHURCH**  
Thursday, February 12, no childrens choir, adult choir will meet as usual. 9:30 a.m. Exercise group. 8:00 p.m. Womens Fellowship.  
Friday, February 13, 5:00-8:00 p.m. Fish Fry.  
Sunday, February 15, 3:00 p.m. Sr.

**EMANUEL CHURCH**  
Thursday, February 12, no childrens choir, adult choir will meet as usual. 9:30 a.m. Exercise group. 8:00 p.m. Womens Fellowship.  
Friday, February 13, 5:00-8:00 p.m. Fish Fry.  
Sunday, February 15, 3:00 p.m. Sr.

**EMANUEL CHURCH**  
Thursday, February 12, no childrens choir, adult choir will meet as usual. 9:30 a.m. Exercise group. 8:00 p.m. Womens Fellowship.  
Friday, February 13, 5:00-8:00 p.m. Fish Fry.  
Sunday, February 15, 3:00 p.m. Sr.

**EMANUEL CHURCH**  
Thursday, February 12, no childrens choir, adult choir will meet as usual. 9:30 a.m. Exercise group. 8:00 p.m. Womens Fellowship.  
Friday, February 13, 5:00-8:00 p.m. Fish Fry.  
Sunday, February 15, 3:00 p.m. Sr.

**EMANUEL CHURCH**  
Thursday, February 12, no childrens choir, adult choir will meet as usual. 9:30 a.m. Exercise group. 8:00 p.m. Womens Fellowship.  
Friday, February 13, 5:00-8:00 p.m. Fish Fry.  
Sunday, February 15, 3:00 p.m. Sr.

**EMANUEL CHURCH**  
Thursday, February 12, no childrens choir, adult choir will meet as usual. 9:30 a.m. Exercise group. 8:00 p.m. Womens Fellowship.  
Friday, February 13, 5:00-8:00 p.m. Fish Fry.  
Sunday, February 15, 3:00 p.m. Sr.

**EMANUEL CHURCH**  
Thursday, February 12, no childrens choir, adult choir will meet as usual. 9:30 a.m. Exercise group. 8:00 p.m. Womens Fellowship.  
Friday, February 13, 5:00-8:00 p.m. Fish Fry.  
Sunday, February 15, 3:00 p.m. Sr.

**EMANUEL CHURCH**  
Thursday, February 12, no childrens choir, adult choir will meet as usual. 9:30 a.m. Exercise group. 8:00 p.m. Womens Fellowship.  
Friday, February 13, 5:00-8:00 p.m. Fish Fry.  
Sunday, February 15, 3:00 p.m. Sr.

**EMANUEL CHURCH**  
Thursday, February 12, no childrens choir, adult choir will meet as usual. 9:30 a.m. Exercise group. 8:00 p.m. Womens Fellowship.  
Friday, February 13, 5:00-8:00 p.m. Fish Fry.  
Sunday, February 15, 3:00 p.m. Sr.

**EMANUEL CHURCH**  
Thursday, February 12, no childrens choir, adult choir will meet as usual. 9:30 a.m. Exercise group. 8:00 p.m. Womens Fellowship.  
Friday, February 13, 5:00-8:00 p.m. Fish Fry.  
Sunday, February 15, 3:00 p.m. Sr.

**EMANUEL CHURCH**  
Thursday, February 12, no childrens choir, adult choir will meet as usual. 9:30 a.m. Exercise group. 8:00 p.m. Womens Fellowship.  
Friday, February 13, 5:00-8:00 p.m. Fish Fry.  
Sunday, February 15, 3:00 p.m. Sr.

**EMANUEL CHURCH**  
Thursday, February 12, no childrens choir, adult choir will meet as usual. 9:30 a.m. Exercise group. 8:00 p.m. Womens Fellowship.  
Friday, February 13, 5:00-8:00 p.m. Fish Fry.  
Sunday, February 15, 3:00 p.m. Sr.

Young couples invited. 7:30 p.m. Study Fellowship of area churches at Bethel. Tuesday, February 17, 7:30 p.m. Study Fellowship of area churches at Bethel.

**SHARON UNITED METHODIST CHURCH**  
Friday, February 13, 3:30 p.m. Catechism Class.  
Saturday, February 14, Sumya will go bowling.  
Sunday, February 15, Jr. Y.F., Sledding and Valentine Party.  
Monday, February 16, 7:30 p.m. Beccomera.  
Thursday, February 19, 1:30 p.m. The willing Workers will meet at the church; devotional leader, Mrs. Michael Peterlin; hostess, Mrs. Robert Pratt. The Starlight Circle will meet at the home of Mrs. Eldon Lamb at 8:00 p.m.; devotional leader, Les Huber.

**NORTH SHARON BIBLE CHURCH**  
Tuesday, February 17, sewing activity day 10:00 a.m. Noon, pot-luck.  
Wednesday, February 18, Huron River Conference of Pastors at 9:30 p.m.  
Thursday, February 19, Holy Communion Instruction at 7:30 p.m.

**ST. THOMAS LUTHERAN CHURCH**  
Thursday, February 12, Confirmation Class, 4:15 p.m. Choir rehearsal, 8:00 p.m.  
Sunday, February 15, Sunday School and Bible Class, 9:30 a.m.  
Tuesday, February 17, Bible Study at 10:00 p.m.  
Thursday, February 19, Confirmation Class at 4:15 p.m.

**BETHEL UNITED CHURCH OF CHRIST**  
Sunday, February 15, 10:00 a.m. Service of Worship. Rev. and Mrs. Coleman will be our guest. American Indian offering received. 7:00-9:00 p.m., Church Schoolteachers workshop at Emanuel. 7:30 p.m., Come Doubles meeting.

**EMANUEL CHURCH**  
Thursday, February 12, no childrens choir, adult choir will meet as usual. 9:30 a.m. Exercise group. 8:00 p.m. Womens Fellowship.  
Friday, February 13, 5:00-8:00 p.m. Fish Fry.  
Sunday, February 15, 3:00 p.m. Sr.

**FREEDOM ELECTRIC**  
11207 Pleasant Lake Road  
Manchester, Michigan  
RESIDENTIAL  
COMMERCIAL  
INDUSTRIAL  
NEW CONSTRUCTION  
REMODELING REPAIR  
GILBERT LUCKHARDT  
Phone 428-8233

**Before you buy your car, boat, or recreational vehicle, see how much you might save.**

See me about low-cost financing through a cooperating bank and economical car insurance from State Farm Mutual.

**MATT DONNELLON**  
146 E. Main  
Manchester  
Phone 428-8364

**CHIROPRACTIC FOR LIFE CHIROPRACTIC CENTER**  
Phone 475-7633  
7970 Clark Lake Rd Chelsea

**Tecumseh Chiropractic Life Center**  
PHONE (517) 423-7360  
101 South Pearl Tecumseh

**EMANUEL CHURCH**  
Thursday, February 12, no childrens choir, adult choir will meet as usual. 9:30 a.m. Exercise group. 8:00 p.m. Womens Fellowship.  
Friday, February 13, 5:00-8:00 p.m. Fish Fry.  
Sunday, February 15, 3:00 p.m. Sr.

**EMANUEL CHURCH**  
Thursday, February 12, no childrens choir, adult choir will meet as usual. 9:30 a.m. Exercise group. 8:00 p.m. Womens Fellowship.  
Friday, February 13, 5:00-8:00 p.m. Fish Fry.  
Sunday, February 15, 3:00 p.m. Sr.

**EMANUEL CHURCH**  
Thursday, February 12, no childrens choir, adult choir will meet as usual. 9:30 a.m. Exercise group. 8:00 p.m. Womens Fellowship.  
Friday, February 13, 5:00-8:00 p.m. Fish Fry.  
Sunday, February 15, 3:00 p.m. Sr.

**EMANUEL CHURCH**  
Thursday, February 12, no childrens choir, adult choir will meet as usual. 9:30 a.m. Exercise group. 8:00 p.m. Womens Fellowship.  
Friday, February 13, 5:00-8:00 p.m. Fish Fry.  
Sunday, February 15, 3:00 p.m. Sr.

**EMANUEL CHURCH**  
Thursday, February 12, no childrens choir, adult choir will meet as usual. 9:30 a.m. Exercise group. 8:00 p.m. Womens Fellowship.  
Friday, February 13, 5:00-8:00 p.m. Fish Fry.  
Sunday, February 15, 3:00 p.m. Sr.

**EMANUEL CHURCH**  
Thursday, February 12, no childrens choir, adult choir will meet as usual. 9:30 a.m. Exercise group. 8:00 p.m. Womens Fellowship.  
Friday, February 13, 5:00-8:00 p.m. Fish Fry.  
Sunday, February 15, 3:00 p.m. Sr.

**EMANUEL CHURCH**  
Thursday, February 12, no childrens choir, adult choir will meet as usual. 9:30 a.m. Exercise group. 8:00 p.m. Womens Fellowship.  
Friday, February 13, 5:00-8:00 p.m. Fish Fry.  
Sunday, February 15, 3:00 p.m. Sr.

**EMANUEL CHURCH**  
Thursday, February 12, no childrens choir, adult choir will meet as usual. 9:30 a.m. Exercise group. 8:00 p.m. Womens Fellowship.  
Friday, February 13, 5:00-8:00 p.m. Fish Fry.  
Sunday, February 15, 3:00 p.m. Sr.

### Area Obituaries

Mrs. Lee (Cinda) Cox  
216 S. Washington  
Manchester, Michigan

Age 95 years died Monday night at the Saline Evangelical Home.

She was born March 17, 1880 in Grafton, West Virginia. She was married to Oscar Lee Cox on July 4, 1915.

She was survived by, a husband, Oscar, two sons, James of Manchester, and Jacob of Hillsdale, two daughters, Jaunita Cox of Ann Arbor, and Nora Cox of Ipsland, seven grandchildren, and thirteen great-grandchildren. She was preceded in death by a daughter, Ruth Logan, three sisters and one brother.

Funeral services will be held Thursday, 1:00 p.m. at the Jester Funeral Home, Rev. Walter Damberg will officiate. Burial will follow in Oak Grove Cemetery.

Scott William Bator  
7175 Bishop Road  
Brighton, Michigan

Age 22, passed away early Monday morning, February 2, 1976, at his home following an extended illness.

He was born July 27, 1953 in Ann Arbor, the son of Harry and Geraldine Bator. Mr. Bator was a former salesman at Nate's Boat Shop in Ann Arbor. He was a member of the Independent Order of the Foresters.

On December 19, 1975 he married Bess Hatch of Sheridan Road. She survives. Also surviving are his parents, Mr. and Mrs. Harry Bator of Brighton, two sisters, three brothers, his maternal grandparents, Mr. and Mrs. Gerald Voice of Ann Arbor, his paternal grandparents, Mr. and Mrs. Claude Bator of Allen, Michigan, several aunts, uncles and cousins.

Funeral services were held on Wednesday, February 4, 1976, from the Keehn Funeral Home in Brighton. Burial followed at Lakeside Cemetery in Whitmore Lake.

### Change of Regular Meeting

THE REGULAR MEETING OF THE BRIDGEWATER

TOWNSHIP BOARD BEGINNING FEBRUARY 16, 1976

WILL BE HELD ON THE THIRD (3) MONDAY OF EACH MONTH

E. LEWIS-Township Clerk

### CLINTON THEATRE CLINTON, MICHIGAN

Fri., Sat., Sun., Mon., Tues., 7:30 p.m.  
Saturday and Sunday, Matinee 2:00 p.m.



Walt Disney's  
**Snow White**  
and the Seven Dwarfs



SPECIAL AMBIG ATTRACTION  
WALT DISNEY  
**FANTASY**  
ON SKIS

### BIRTHS

Sgt. and Mrs. Richard Walter of Seoul, Korea are the parents of a son, born February 4.

Gregory William weighed 9 pounds 10 ounces and has one sister, Kristine, 4 years old. Paternal grandparents are Mr. and Mrs. Max Walter of Manchester.

### Shakespeare Club Meeting

The February 3rd meeting of the Shakespeare Club was held at the home of Mrs. Leroy Marx.

Plans were made for the annual Husband's Night to be held on February 17th at 6:30 p.m. at St. Mary's Church Hall. Each member is to bring their own table service and assigned dish to pass. Meat and potatoes to be prepared by the committee.

It was unanimously voted that the Club sponsor Mrs. Leroy (Emma) Marx as its nomination for Manchester's Bicentennial First Lady.

For the topic of the day Mrs. Marx gave a very interesting review of the book, "Upstairs at the White House," (My Life with the First Ladies), by J. R. West. In it he relates his experiences as usher in the White House from the time of Mrs. Eleanor Roosevelt thru the Nixon first term.

### Twentieth Century Club Meeting

The Twentieth Century Club met at the home of Mr. A. Kappler with Mrs. Beck as co-hostess.

An interesting and humorous "skit" on Health and Food was given by Mrs. M. Blossom and Mrs. S. Hoesch.

Our next meeting will be a musical to be held at the Nellie Ackerson in the "All Purpose Room".

### FARM BUREAU MEETING

The Roger's Corner Farm Bureau meets Friday, February 13, at the home of Mr. and Mrs. Elvin Meyer at 8:30 p.m.

### RENT GARDEN PLOTS

Some farmers are turning a tidy profit by renting garden plots to city folks who want to grow their own vegetables, according to B. Dale Ball, director of the MDA.

For more information on the practice and profit, send stamped, self-addressed business - size envelope to "Garden plots," Michigan Department of Agriculture, Lewis Cass Building, Lansing, Michigan 48913.

Ball said requests will be answered with a leaflet telling how landowners have developed this sideline business that furnishes fun and food to many city dwellers.



Thanks to our customers.

Too often we fail to acknowledge our thanks to our customers as often, perhaps, as we should. We do appreciate your choosing us as your banking center. We appreciate your business, seeing your smiling face, sharing with us your good fortune as well as your misfortune. We thank you for permitting us to be a part of your life.



### LAMBDA NU

Seventeen members of Lambda Nu chapter of Beta Sigma Phi met Thursday evening, February 5, at the home of Lou Rigg, co-hostess for the evening as Sharon Stetler.

Before the business meeting, members prepared a gift of household items for Beta Sigma Phi member in a nearby city whose home was completely destroyed in a recent fire.

President Kay Martin opened the meeting. Details of the 1976 state convention are announced, and it was decided to make tentative reservations at the next meeting of the chapter. Confidential nominating letters for the Girl of the Year award were submitted.

Vicky Wurster reported on plans for the 1976 Beta Ball, which will be held on Saturday, February 14 in the parish hall of the St. Joseph Shrine. The entire chapter will meet to decorate the hall at noon.

After the business meeting, Mary Kalleward presented a program on sensitivity training, with games involving visual perception, the sense of smell, and bodily relaxation.

The next meeting of Lambda Nu will be Tuesday, February 17, at the home of Kathy Groves.

FOR YOUR

Valentine

A GIFT FROM



CAL'S TOG SHOP  
DOWNTOWN TECUMSEH

# The Saline Bank Helps People!

That's our job — helping people. And we do it in a surprising number of ways.

First, we provide all the usual services you expect from a full-service bank. We offer a good variety of checking and savings plans to fit every need. And we make all types of loans for all types of purposes to both individuals and businesses. We also provide safe deposit facilities, money orders, travelers checks and many other services.

Then we provide personal financial consultation for our customers. Thousands of people have come to us over the years seeking advice for their financial problems. We've always been happy to oblige. Sometimes we can't help. Most of the time we can.

And finally we provide something that's intangible and difficult to define. It's a special attitude toward people. We are friendly, but not syrupy. We are concerned with our customers' problems, but not pushy with possible solutions. We are sincere, but not solicitous. When you've been in the banking profession for over two generations, you know from experience how people want to be treated.

It's really quite simple. The Saline Bank likes to help people.

Now, park FREE in our new parking lot!



### Bicentennial Calendar

through the years, a rocking chair marathon, our Bicentennial Store, an antique flea market, parades and of course our Week of Festivities, July 17 through July 24.

Remember, at the end of the year, any profits we have made on Bicentennial projects will go toward the development of ChiBro Park. A group, made up of people representing all the townships involved, felt this would best benefit all residents of the area.

As you can see, we have quite a summer planned. We hope to make America's Bicentennial a pleasurable and a memorable one for Manchester residents.

### Jaycees Bosses' Night February 20

The Annual Manchester Jaycees "Bosses' Night" will be held on Friday Night, February 20th at the K of C Hall. Social hour will begin at 6 p.m. and tickets will be sold at the door. Admission will be \$6.00 per person.

The program will feature presentation of the Distinguished Service Award and remarks by a guest speaker. Ameal and a free social hour included.

### TOM MARSHALL JR. INJURED

Tom Marshall Jr., was injured Monday, February 9, while riding on a fire truck enroute to a call at 527 Liberty Street. Tom fell off the truck as it was making a left hand turn on to Liberty Street off M-52. He fell on his shoulders and head, and received a deep laceration to the back of the head, several bruises and a slight concussion. He is still a patient at the Saline Hospital for observation. Tom expects to be released within a day or two.

BUY, TRADE, SELL OR RENT WITH A WANT AD

### HELFRICH MASONRY

FIRE PLACES—BASEMENTS—VENEER STONE & BRICK

Phone 428-8686

7679 Chelsea-Manchester Rd. Manchester, Michigan 48158

### Dorothy Mae Beauty Shop

EXPERT BEAUTY CARE

### February Special

WILLA CONCEPT PERMANENT \$17.00 REGULAR \$20.00

20-50% OFF ON JEWELRY

LET US STYLE CONDITION AND BLOW-COMB FOR YOU

Operators: Jean Moull, Cindy Kenner Vicky Wurster, Dorothy Moore

OPEN TUESDAY THRU SATURDAY 8:30 AM TO 5:30 PM also WEDNESDAY EVENING

PHONE 428-7616

# STRIKES 'N SPARES

## JOLLY KEGLERS

Ror's Tree Service	95	45
Krauss Pharmacy	78	62
Grossman-Huber	76	64
Manchester Enterprise	63	77
Carol's Cut & Curl	59	81
J.F. Seltz & Sons	49	91

## HIGH TEAM SERIES

Grossman-Huber	2552
Carol's Cut & Curl	2515
Krauss Pharmacy	2491

## HIGH TEAM GAME

Krauss Pharmacy	901
Carol's Cut & Curl	894
Grossman-Huber	888

## HIGH INDIVIDUAL SERIES

N. Flint	555
I. McGee	549
E. Weir	529

## HIGH INDIVIDUAL GAME

N. Flint	236
J. Withrow	232
I. McGee	223

## MANCHESTER TOWN CLUB

Tool & Die	89	58
Donut Time U.S.A.	54	63
C & J Driveaway	54	63

## HIGH TEAM SERIES

Wolverine Bar, Allstar Const.	72	75
Brown's T.V.	72	75
Krauss Pharmacy	71	76

## HIGH TEAM GAME

Wolverine Bar, Allstar Const.	69	78
Brown's T.V.	64	83
Superior Land Developers	59	88

## HIGH INDIVIDUAL SERIES

ACT, Tool & Die	2551
W/H C & J Driveaway	2533

## HIGH INDIVIDUAL GAME

ACT, Tool & Die	981
W/H Tom Marshall	898

## HIGH INDIVIDUAL SERIES

Joan Day	568
Marilyn Preston	566
JoAnn Clark	566
Polly Borkaw	561

## HIGH INDIVIDUAL GAME

JoAnn Clark	225
Phyllis Baker	223
Mary Korican	223
Ruth Dayss	222

## 500 SERIES FOR THE WEEK

Stephanie Hendricks	531
Joan Day	503
Marilyn Preston	502

## 200 GAME FOR THE WEEK

Stephanie Hendricks	213
---------------------	-----

## MANCHESTER BUSINESS MENS

Wolverine Bar, Allstar Construction	42	21
Tool & Die	37	26
Krauss Pharmacy	37	26

## HIGH TEAM SERIES

Superior Land Developers	35	28
Tom Marshall Ford	35	28
Albers Excavating	35	28

## HIGH TEAM GAME

DuBussel Brothers	34.5	28.5
Brown's T.V.	33.5	29.5
Union Savings Bank	33	30

## HIGH INDIVIDUAL SERIES

Double A Products	31	32
Smith Pallet	30.5	32.5
K & W Farm Supply	30.5	32.5

## HIGH INDIVIDUAL GAME

Gambles Store	31	32
Grossman-Huber Golf	29	34
American Legion	28.5	33.5

## HIGH INDIVIDUAL SERIES

Spike Mobil	24.5	38.5
Albers Orchard	25	38
G.E. Wacker, Inc.	14	19

## HIGH INDIVIDUAL GAME

Wolverine Bar, Allstar Const.	3166
Brown's T.V.	3141
Krauss Pharmacy	3112

## HIGH INDIVIDUAL SERIES

Wolverine Bar, Allstar Const.	1126
Brown's T.V.	1123
Superior Land Developers	1116

## HIGH INDIVIDUAL GAME

Gary Dresch	658
Gary Dresch	632
Don Stockwell	629

## HIGH INDIVIDUAL SERIES

Chuck Steele	257
Gary Dresch (2)	245
Gary Hamilton	243

## DUTCH REMAIN WINLESS

By Jon Roger Hardenbergh

One thing you can say about this year's Varsity Squad and that is—they are consistent. Tuesday, Manchester dropped their 13th straight, and Friday they went down the 14th out of 14 games.

In the first contest last week Grass Lake bombed the Dutchmen, 91-62. The first half's offense for Manchester supplied no punch. It took the Dutch nearly 5 minutes of the opening 8 minutes to score, totaling a mere 6 points to Grass Lake's 16. The Dutch added 64 points in the second period as the Warriors hit for 25 points. This gave Grass Lake a commanding lead at intermission, 41-20. The second half saw the Warriors up their count by 50 points to close victorious, 91-62. Jeff Clark popped for 18 points to lead the Dutch as teammates Curt Fielder and Mike Smith contributed 10 points each.

On Friday Morenci handed Manchester their 9th L.C.A.A. loss, 75-63. The Little Dutch lost both also.

## FRIDAY'S L.C.A.A. HAPPENINGS

Morenci 75, Manchester 73  
Addison 92, Clinton 42  
Hudson edged Grass Lake 61-60 to take sole possession in the League.

## CURRENT STANDINGS

Hudson	9	1
Grass Lake	7	2
Morenci	7	2
Onsted	4	5
Addison	3	5
Clinton	1	8
Manchester	0	9

## SATURDAY NIGHT SINGLES

The Saturday Night Singles Club will have a Valentines dance this Saturday, February 14, at the Ann Arbor "Y", 350 S. Fifth Avenue, Ann Arbor. There will be live dance music, social mixers, and refreshments. For information, call 663-6068.

# ALBER EXCAVATING

## SNOW REMOVAL

Drain Fields—Septic Tanks—Drive Ways—Limestone

Fill Dirt—Drain Field Stone—Mason Sand

Basements

PHONE 428-8628

7601 Hashley Road Manchester, Michigan

# Ford Dealer Limited Edition Sale

New sporty Limited Edition Mustang II with \$137



Includes: all Mustang II standard equipment. Plus two-tone lower body, bodyside stripe, unique seat inserts, styled steel wheels, trim rings, brushed aluminum panel applique. \*Based on manufacturer's suggested retail price. (Car shown with white sidewalls \$33 extra.)

Limited Edition Mustang II 2-Door (Also available on Mustang II 2+2)

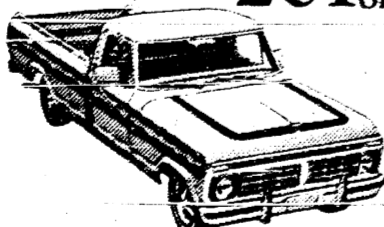


Beautiful new Limited Edition Ford Torino \$159

Includes: all Torino standard equipment. Plus half-vinyl roof, opera windows, accent paint stripe, bodyside molding, dual racing mirrors, sport wheel covers, and specially-selected interior.

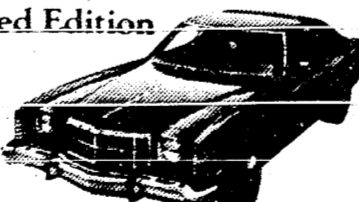
off total retail value based on traditional suggested retail pricing of base Torino plus additional items.

Explorer Special Pickups up to \$201 off\*



Major discounts on Limited Edition Explorer Pickups with special metallic paints, mag-type wheel covers, unique color-keyed interiors and your choice of equipment such as power steering, automatic transmission, air conditioning.

New Limited Edition Ford Elite \$200



off standard Elite sticker price.

Includes: Elite standard equipment. Plus unique wheel covers, special bench seat and trim, special door trim panels, selected matching cloth and vinyl interiors, but excluding wheel lip moldings, door carpet and deluxe steering wheel.

(Car shown with white sidewalls \$30 extra.)



Buy now for extra value at your Ford Dealer Limited Edition Sale. Hurry! Quantities are limited.

See Your Local Ford Dealer

## Brown's TV & Radio

### ZENITH

Color and Black-White TV

134 East Main Street  
Manchester, Michigan

Phone 428-7640

## MANCHESTER

7 room 3 bedroom with attached 24 x 32 garage on 1 acre. Real Sharp. Terms possible.

3 bedroom full basement with small barn on 10 acres with Creek, June 1, 1976 possession.

6 room frame house with large garage, big back yard. Spring delivery.

Good lot on East Main.

3 acres of land on pavement.

## CHELSEA

Three bedroom, full basement - part recreation, attached two car garage on one acre, Waterloo Road, four years old - job transfer.

# FAHEY REALTY

15554 Fahey Road 428-8748  
112 S. Washington 428-8348

# Wedding Bells and Beautiful Brides



Every bride dreams of the perfect wedding... a day that she'll hold dear all through their lives together. Let us help with the plans for this happy day.

Wedding ANNOUNCEMENTS AND INVITATIONS...

The Manchester Enterprise

STOP IN AND SEE OUR FINE SELECTION

## Bicentennial First Lady Contest

### FIRST LADY ENTRY BLANK

We would respectfully and enthusiastically like to place in nomination:

As Manchester Area's Bicentennial First Lady:

Her Address \_\_\_\_\_ Street \_\_\_\_\_ City \_\_\_\_\_ Zip \_\_\_\_\_

Her Phone \_\_\_\_\_ Age \_\_\_\_\_

Name of Organization Sponsoring \_\_\_\_\_

Your Name \_\_\_\_\_

Fill out this form and return by February 23, 1976 to: Mrs. Elizabeth Bourke, 110 Auburn, Manchester, Michigan 48156 or Mrs. Barbara Berke, 124 Auburn, Manchester, Michigan, 48156.

If there are any questions what to ever about sponsoring a First Lady, please contact either Elizabeth Bourke at 428-8490 or Barbara Berke at 428-8525.

Pictured below - Everyone dancing to one of Luke's square dances.



Pictured at left - George Daubner, Dave Little and Simon Steele receive Certificates of Appreciation.

Pictured below - Jim Mann awards Certificate to Luke Schaible.



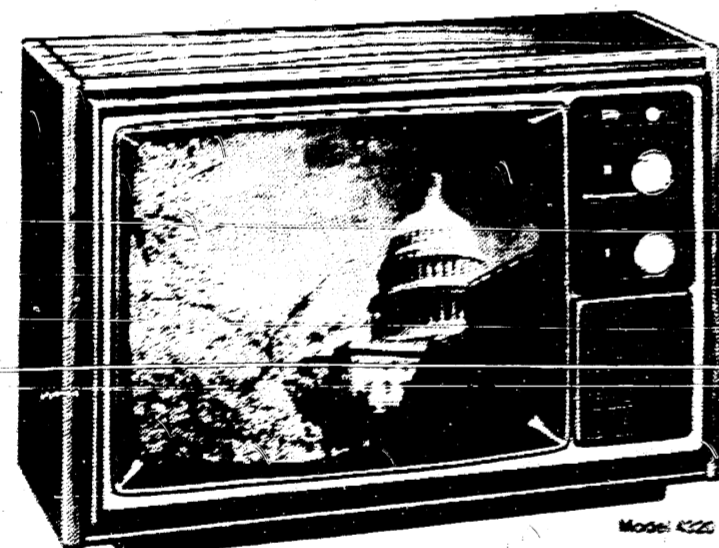
## A Bicentennial Ball

**SAVE UP TO \$100**

**21<sup>ST</sup> Magnavox ANNUAL SALE**

LIMITED TIME ONLY!

ENDS FEB. 23rd



**SAVE \$60**

**19" Solid-State Color Portable with AFT**

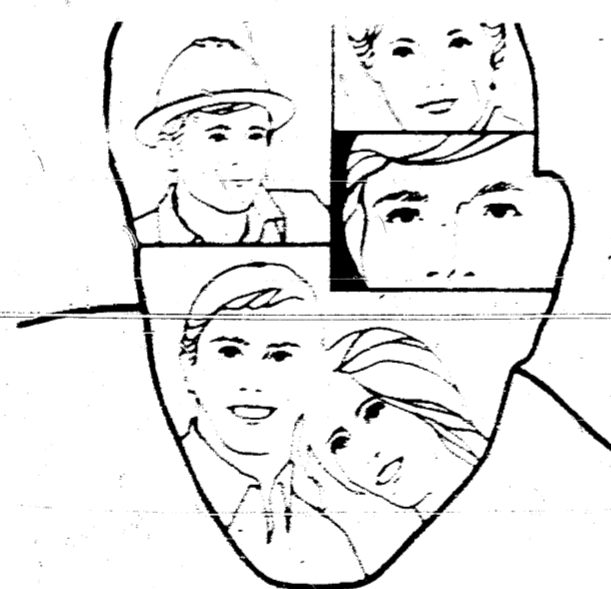
This outstanding Magnavox Annual Sale is a perfect second set for any room in your home - an optional set of 3 tape recorders offers the convenience of automatic fine tuning to receive station signals for an accurate, tuned picture on any channel - JFR or JFR And real green viewing - with a highly reliable and energy saving picture tube system - and the exceptionally bright sharp pictures of its Precision Line Tube System. There's no better time than now to purchase exciting color into your life - and save too!

**\$419<sup>95</sup>**

**Magnavox**  
Quality in every detail!

**HEYDLAUFF'S**

113 N MAIN STREET CHELSEA MICH  
PHONE 475-1221



**As an independent agent we answer to one boss - our hometown people**

We represent several firms, but we work for only one boss - you. That way we can always place you with a company which we think is best for each line of insurance you need. Naturally, we prefer companies like Auto-Owners who look at a loss and take care of it right away, without hassling or delays. That's one of the reasons we're part of the Altogether Family. Like us, they're always there when you need them.

it's better  
**altogether**

**SUTTON AGENCY**

106 East Main Manchester, Mich.

Phone 428-2891

**Auto-Owners Insurance?**  
Life Home Car Business

**UNUSUAL OFFERING**

Water and Sewer on Property

**\$35,000**

**FOR SALE**

201 FEET

NOT TO SCALE

208 FEET

MACOMB STREET

WASHINGTON STREET

52 FEET

FORMER LUMBER YARD

TERRITORIAL STREET

**CHAPIN, BROKER**

PHONE 428-8961

MANCHESTER, MICHIGAN

## Special Education Program

All of our students are special with special needs. Special education is one way we can provide services and meet many students' needs. Often when Special Education is mentioned, we think of people who look or talk differently. These are our first impressions of students who are in special education programs. Let's take a closer look.

Special Education, in a public school, services many different types of students, with many different problems. Among these are vision impairments, hearing handicaps, speech problems, physical disabilities, learning disabilities, mental and emotional impairments. Some of the areas within special education, such as educable mental impairment, learning disabilities and emotional impairment are often confused. The Special Education teachers wish to clarify some of these misconceptions. While these areas cannot be completely separated, it is helpful to look at the differences.

The educable mentally impaired student is often called retarded and considered unable to function in our society. However, his intelligence is only slightly below normal. This student can learn to read, but at a slower pace. He can learn mathematics, but with more practice. He can learn to take care of himself and his family. He can hold a job and live a productive life.

Learning disabled students may be confused with those who are educable mentally impaired because they also learn at a slow pace. However, these students have normal and sometimes high intelligence. Most people learn primarily by seeing, hearing, and remembering. Those who are learning disabled sometimes see things backwards; for example, they might confuse "b" and "d". They may understand what they hear easily. There are those who cannot tell the difference between sounds they hear, such as "m" and "n", yet may learn very quickly through what they see. Focusing upon what these students "can" do, they are

taught academic skills as well as self confidence.

Emotionally impaired students may have any range of intelligence. They are easily distracted by their environment. Often life's circumstances have made it difficult for them to express their feelings and respond with appropriate behavior. These emotional problems sometimes interfere with their ability to do schoolwork. Those who are emotionally impaired may be loud and disruptive; or as is often the case, very quiet and withdrawn, and may experience problems in relating with people. They may view themselves as being unimportant and worthless. Students with these problems need to find alternative, acceptable behavior to express their feelings. They need to learn to feel good about themselves. With support, they can overcome their problems and learn to be asset to society.

To give all of these special students the extra attention they need in school, two types of programs exist in Manchester: the teacher consultant program and the contained classroom. The teacher consultant program creates a situation where a student, placed in a regular classroom, according to his grade level, goes to the resource room for special help. In the contained classroom students are grouped spending most of their day together. This is similar to a regular classroom.

What's so special about special education? The students. Public special education programs are one way in which these special needs can be met. Another way is for us all to accept "special" people as people.

A Successful System Threatened. To many of our citizens, farming is considered a "way of life" rather than a profession. Some go so far as to believe farmers shouldn't even make any money at all, as evidenced by the ridiculous slogan, "Food for people—not for profit." The farmer is a hard-working, effi-

cient businessman who believes in the old-fashioned philosophy of a "day's work for a day's pay." One of the ways he uses to save money on production costs and help alleviate the cost-price squeeze is to band together with his neighbors through cooperatives. Now, that method is being questioned by some Washington bureaucrats who accuse farm cooperatives of being monopolistic in their dealings.

The hundreds of thousands of farmers who belong to cooperatives are glad that not everyone believes the traditional system of marketing through farm cooperatives should be torn down. One of the nation's leading agricultural economists, Dr. Truman Graf of the University of Wisconsin, has said that the bureaucrats' charges won't hold water.

"The four largest corporations had total annual sales of approximately \$88 billion in 1973 compared to \$2.4 billion in the four largest cooperatives. In 1973, General Motors alone had more dollar sales than all 7,000 cooperatives combined. In 1974, the largest private dairy corporation had more dollar sales than all dairy cooperatives combined," the economist said.

The cooperative concept has been around

since early man found that two could roll a stone better than one. Farmer cooperation dates back to colonial days when pioneers held barn-raising bees and exchanged labor during planting and harvesting. And through the years, it has played a vital role in making the American farmer the most productive and efficient in the world. Agriculture's remarkable progress has been due, in large part, to farmers working together to find better ways of meeting the demands of consumers for better food and fibre.

For consumers' sakes as well as farmers', let's hope the cooperative system survives. Meeting the ever-increasing worldwide demand for food would be a pretty heavy stone to roll alone.

**SCHOOL RECEIVES STATE AID**  
Local school districts will be receiving their February 1 state aid payments soon, Representative Mike Conlin (R-23rd District) reported. He explained that payments are made to districts for state aid, Title I, Title III and vocational education. They are mailed by the state six times a year. Manchester Public School District will be receiving \$61,280 in state aid.

## LOT OWNERS TAKE ADVANTAGE OF LOW OFF-SEASON PRICES AND LOWER INTEREST RATES.



The Venus Contemporary—1804 Sq. Ft. of Living Space  
2150 Miller Ave. Ann Arbor  
Call For An Appointment To See It NOW!  
ONLY \$37,900  
On Your Lot

WE'RE BUILDING RIGHT THROUGH THE WINTER AT OFF-SEASON RATES  
**FIRST CONSTRUCTION CORP.**  
Custom Home Builders  
Suite 701 Wolverine Tower  
Ann Arbor, Michigan 48104  
CALL 994-4230

## RIVERVIEW MEATS

NOW SPECIALIZING IN  
**CUSTOM PROCESSING**



BUTCHERING: \$10 per Hd.  
[Beef or Pork]  
PROCESSING: 10c per Lb.  
[Cut, Wrapped & Frozen]

### AND FREEZER ORDERS

Beef	Per lb.	Est. Cost After Cutting Per lb.	Ave. Weight
SIDES	\$.79	.99	250-300 Lbs
HINDS	.89	1.15	110-140 Lbs
FRONTS	.73	.92	120-140 Lbs
CHUCKS	.79	.89	70-90 Lbs
ROUNDS	.99	1.19	60-80 Lbs
LOINS	1.19	1.49	40-50 Lbs
RIBS	1.19	1.29	25-35 Lbs

[All Prices are for hanging weights and include processing]

11730 Austin Road  
FOR MORE INFORMATION:  
**CALL 536-4060**  
Or If No Answer: 536-8201  
[Harold & Marv Jester - Owners]

8 Miles West of Manchester

## Discriminating Brides-To-Be Choose



- Wedding Invitations and Announcements
- Luncheon Invitations
- Gift Acknowledgements
- Calling Cards
- Personalized Stationery
- Informal Notes
- Monogrammed Napkins and Matchbooks

For your wedding you will want everything perfect, done correctly, in good taste. We will be pleased to advise the proper way, the inexpensive way to make the right impression. Your Wedding Stationery Trousseau shall be by Coronet... at your pleasure, elegantly Traditional or smartly Modern.

The  
**Manchester Enterprise**

## Township Meeting

Regular meeting of the Manchester Township Board was held at the Village Hall, Monday, January 12, 1976 at 8:00 p.m. Board members present were: Fielder, Burch, Widmayer, Lentz and Marx. Minutes of regular meeting of Dec. 8, 1975 were read by the clerk. Burch moved they be accepted as read, seconded by Lentz. All ayes, carried.

The following bills were presented by the clerk: 1. Manchester Township legal fees to M.T.A. and Chapter dues—\$85.00. 2. Doubleday Bros. Inc., election supplies—\$66.82. 3. Manchester Enterprise for minutes, permits, etc.—\$135.95. 4. Grossman Huber-Invoice, Nov.-Dec.—\$33.30. 5. Equalization & Property Description Dept.—Bal. due and binders—\$248.75. 6. Bridgewater Lumber Co. for Fire Dept.—\$9.15. 7. Home Safety Equipment Co.—Rescue markers—\$10.37.

8. Manchester Township Planning Commission, Oct., Nov. & Dec.—\$157.50. 9. 9 Quarter Section maps @.50 ea. & 36 section maps @ \$1.00 ea.—\$40.50. 10. Claran Knauas-Bldg. Ins. Mileage and Inspection, Oct.-Nov.-Dec.—\$135.94. 11. Geo. Roth—Electrical Inspector-Inspections 10-29-75 to 1-4-76—\$123.30. Total—\$1,016.58. Lentz made the motion, seconded by Widmayer to pay the bills as read. All ayes, carried.

Motion made by Widmayer, supported by Lentz to pay \$7,000.00 to Washenaw Co. Rd. Comm. for application of chloride and road work done on Sharon Hollow Road, \$3,500.00 from general fund and \$3,500.00 from Revenue Sharing. All ayes, carried.

Motion made by Burch, supported by Marx to send letter to the Wash. Co. Rd. Comm. to order one coat of chloride to be applied around Memorial Day and one coat of brine to be applied when we advise them to do so. All ayes, motion carried.

Burch made a report of the taxes he had collected thus far. Being no further business, Lentz made the motion, seconded by Burch to be adjourned. All ayes, carried. Meeting adjourned 9:02 p.m.

Waldo C. Marx  
Township Clerk

DUTCH LOSE BY 2

The Manchester Middle School eighth grade basketball team lost a close contest to Hudson in the Addison tournament last Saturday, 43-41.

The hard fought battle showed Jeff Geiger and Gary Daniels with 12 points each, with Rick Stetler scoring 10, Doug Drawner, 4, Harry Wishan with 2 and John Mooneyham scored 1.

Jeff Geiger also led the rebounding with 10 rebounds and played an excellent game to lead the Dutch in their narrow defeat.

The Hudson Tigers shot 48 0/0 from the floor and were led by Johnson and Nelson scoring 23 and 10 respectively.

The Dutch will be in action against Grass Lake, Thursday, 6:00 p.m. and again Saturday in the consolation game of the tournament against Hillsdale.



**F.I.P. Brand Baby Shampoo**  
16 oz.  
\$1.49 Value  
**89¢**

**ALPHA KERI Bath Oil**  
With Soap  
8 oz.  
\$4.04 Value  
**\$2.49**

**ARRID EXTRA DRY Anti-Perspirant**  
All Types  
8 oz.  
\$1.98 Value  
**\$1.18**

**BEN-GAY Pain Relieving Ointment**  
All Types  
3 oz.  
\$2.39 Value  
**\$1.59**

**BUFFERIN Analgesic Tablets**  
100's  
\$1.95 Value  
**\$1.35**

**DISMISS Disposable Douche**  
3 Pack  
\$1.89 Value  
**\$1.09**

**GERITOL Liquid 12 oz. Or Tablets 40's**  
\$3.74 Value  
**\$2.30**

**GILLETTE TRAC II Razor**  
\$3.50 Value  
**\$2.29**

**BAND-AID Adhesive Bandages**  
All Wide, Sheer or Plastic  
30's  
\$1.29 Value  
**75¢**

**CHLORASEPTIC Antiseptic Lozenges**  
Regular and Cherry  
18's  
\$1.08 Value  
**66¢**

**DAISY "2 Twin Blade" Disposable Shaver**  
By Gillette  
\$1.19 Value  
**77¢**

**OLD SPICE Stick Deodorant**  
Regular, Lime, Herbal  
2.5 oz.  
\$1.49 Value  
**92¢**

**PLAYTEX Non-Deodorant Tampons**  
Regular and Super  
16's  
\$1.17 Value  
**77¢**

**CLAIROL NICE 'n EASY Hair Color**  
All Shades  
\$2.65 Value  
**\$1.65**

**LISTERINE Antiseptic**  
32 oz.  
\$2.79 Value  
**\$1.79**

**SELSUN BLUE Lotion Shampoo**  
9 oz.  
\$3.89 Value  
**\$2.39**

**SUPERIOR Economy Humidifier**  
Model #312  
\$14.50 Value  
**\$7.59**

**TRIAMINIC Expectorant**  
4 oz.  
\$2.52 Value  
**\$1.39**

**TRIND Syrup**  
4 oz.  
\$2.01 Value  
**\$1.21**

MANCHESTER  
**KRAUSS REXALL PHARMACY**

BROOKLYN  
Weatherwax Rexall Drug

## OES CARD PARTY

SATURDAY  
FEBRUARY 14th  
8:00 P.M.

MASONIC HALL  
PUBLIC WELCOME  
Prizes and Refreshments

## You and Your RETIREMENT

... one of the reasons we're in business. Regular or tax-deferred life insurance and annuity plans and Keogh self-employed retirement programs can put your future together today. Check the facts with Charlie Foster or...



"Larry" Becketl  
AGENT

11100 M-52 Manchester  
Phone 428-8006 or 994-9075

FARM BUREAU INSURANCE GROUP

# GRAND OPENING

Thursday, Friday, Saturday, Feb. 12-13-14

STORE HOURS: 8 a.m. to 8:00 p.m. all 3 days.

## FREE-VALUABLE DOOR PRIZES

Registration Starts Feb. 12 for drawing on Feb. 14 at 7:30 p.m. Stop and register. - No purchase necessary. Must be 16 or older. One registration per person. Winner need not be present.

- 1st - PORTABLE TV, B/W
- 2nd - 1 SET GABRIEL HI-JACKER SHOCKS
- 3rd - I.R. 1/4" ELECTRIC DRILL
- 4th - MARAMONT LINED JACKET
- 5th - MARAMONT LINED JACKET
- 6th - GILLETTE HOT SHAVE

- 7th - TURNER TORCH KIT
- 8th - ARPEGE LANVIN SET
- 9th - ARPEGE LANVIN SET
- 10th - TIMEX DAY-DATE WATCH
- 11th - CHANEL NO. 5

## Grand Opening Specials

WONCH BATTERY	HEIN WARMER FLOOR JACK 2500 lbs reg 119.95 SPECIAL \$94.50	ACE HANSEN 13 pc DRILL SET reg 17.95 \$10.95	QUAKER STATE OIL 10x30 68. PENNZOIL 10x40 16.00
Quality at an affordable price	GENERAL DROP LIGHT 25 ft \$3.25	K-K TOOLS 10% OFF ON ALL SETE	VALVOLINE CASE 16.00
SNOWMOBILE BATTERY \$21.95	DRIVE ON CAR RAMPS reg 35.95 SPECIAL \$27.95	A-C FILTERS Air-Oil-Gas all 1/2 Price	OIL 79c qt.
GM & CHRYSLER 2 year warr \$24.95	WOLVERINE SNOWMOBILE GAS MIXING CAN 6 1/2 gal \$4.50	WINDSHIELD WASHER SOLVENT 65c	KLOTZ SNOWMOBILE OIL 1 qt 1.75 1pt 1.20
SNOWMOBILE BATTERY \$21.95	KAR CHECK INDUCTIVE POWER TIMING LIGHT SPECIAL \$29.95	WINDSHIELD SCRAPER & BRUSH 90c	ROCKWELL GRINDER 1/3 HP reg 119.95 SPECIAL \$95.95
GM & CHRYSLER 2 yr. warr \$24.95	COMPRESSION TESTER \$3.99	BORG WARNER ELECTRONIC IGNITION reg 75.15 SPECIAL \$47.95	HUFFY OIL SPOUTS \$1.59
FORD 3 Yr Warr \$25.95	TACH-DWELL TESTER \$15.99	6 pc COMB WRENCH SET 3/8 thru 11/16 \$4.99	DUPONTRALLY CAR WAX reg 3.57 SPECIAL @ \$2.35
V.W. 12 Volt \$25.95	DRY GAS 49c	RAY-O-VAC BATTERIES C AND D CELLS 32c	RAIN DANCE CAR WAX reg 5.36 SPECIAL \$3.49
R & N BATTERY CHARGERS	GUMOUT	BATTERY CABLES AA 21c 12 ft \$5.40	
Model 126st 60amp boostt 442.50	Carburetor Cleaner Liquid 1.45		
Model 126ac fully auto \$31.89	Carburetor Cleaner Spray 1.59		
Model 126 12 amp \$25.10	Ckoke Cleaner Spray 1.25		
Model 66 6 amp \$19.90			
IRWIN SCREWDRIVER SET 7 pc \$4.95	REM-LINE TOOL BOX 20x8 3/4 x 9 3/4 high \$12.95	TUNG-SOL HEADLAMP 4000 \$2.25 5000 \$2.25 6014 \$2.50	SNOWMOBILE BELTS GATES SPORTLINE 25% OFF
AVIEX QUICK START SPRAY 88c			

5 SILVER DOLLARS WILL BE GIVEN AWAY

EACH DAY OF THE GRAND OPENING

RAIN CHECK ON ALL ITEMS SOLD OUT

RAIN CHECK ITEMS MUST BE PAID FOR IN ADVANCE

## CHELSEA AUTOMOTIVE

Honoring BankAmericard and Master Charge

1414 SOUTH MAIN, CHELSEA

PHONE 475-9106

### The Melting Pot

Recipes from the Best Foods Kitchens



Sauerbraten—A German Contribution

In the three centuries since the first German immigrants arrived in America, several other waves have followed. Germans settled first in Pennsylvania, then in North Carolina, Virginia, Ohio, Illinois, Iowa, Wisconsin, Minnesota, the Dakotas, Kansas and Texas. They brought with them their culture and cuisine. High on the list of favorite German foods which have been added to the American melting pot is the sweet-sour pot roast known as Sauerbraten. In the version here, the gravy is thickened with Argo corn starch, a readily available ingredient which replaces potato flour or cookie crumbs.

#### Sauerbraten

- 1 cup red wine vinegar
- 2 cups water
- 1/2 cup dark corn syrup
- 2 cups chopped celery
- 1 cup chopped carrot
- 1 medium onion, sliced
- 12 peppercorns
- 4 bay leaves
- 1 teaspoon salt
- 5 pounds beef rump roast
- 2 cups beef stock or bouillon

Bring to boil vinegar, water, corn syrup, celery, carrot, onion, peppercorns, bay leaves and salt; cool. Place meat in large deep crock, or enamel or stainless steel pot. Add marinade; cover. Marinate in refrigerator 5 to 7 days, turning occasionally. Remove meat; reserve marinade. Dry meat thoroughly. Beginning with fatty side, brown meat slowly. Drain off excess fat. Add 1 cup of the beef stock and the marinade. Cover tightly. Cook over low heat 2 hours or until tender, adding remaining beef stock as needed. Remove meat to hot platter. Prepare gravy. Makes 10 to 12 servings.

Sauerbraten Gravy: Strain stock and vegetables through food mill or sieve. Return to skillet. Add 1/2 cup dark corn syrup, 1 teaspoon ground ginger and 1/4 teaspoon ground cloves. Stir together 6 tablespoons Argo corn starch and 6 tablespoons water. Stir into stock mixture. Stirring constantly, bring to full boil and boil 1 minute. Makes about 5 cups gravy.

#### Pralines Are New Orleans' Historic Treat

New Orleans is famous for its many culinary delights, and pralines are probably the most well-known candy of the city. The candy was the creation of a French marshal's chef, who in an effort to satisfy the marshal's sweet tooth, coated almonds with sugar and named the confection after the marshal, Cesar du Plessis Prasline (pronounced praline).

In the early days of this country, news traveled slowly from Paris to New Orleans, but, eventually travelers returning from France brought back the idea for the candy that Marshal Prasline's chef had developed. American cooks took it one step further, preparing a confection of pecans and brown sugar, using several nuts in each patty.

#### New Orleans Pralines

- 1 cup firmly packed light brown sugar
- 1/2 cup sugar
- 1/2 cup evaporated milk (undiluted)
- 1/4 cup Karo light corn syrup
- 1 tablespoon margarine
- 1 teaspoon vanilla
- 1 1/2 cups coarsely broken pecans or walnuts

In heavy 3-quart saucepan stir together brown sugar, sugar, milk and corn syrup. Cook over very low heat (about 1 hour), stirring frequently, until temperature reaches 238°F on candy thermometer or until small amount of mixture dropped into very cold water forms a soft ball which flattens on removal from water. Remove from heat. Add margarine and vanilla. Beat about 1 minute or until well blended. Add nuts; stir until coated. Quickly drop by tablespoonfuls onto waxed paper placed on cookie sheets. When cool and set, remove from paper. Makes about 24 (3-inch) pralines.

Note: Mixture will curdle if cooked too rapidly.

## NOTICE

A PUBLIC HEARING IS SCHEDULED TO CONSIDER THE PROPOSED BUDGET FOR THE VILLAGE OF MANCHESTER FISCAL YEAR MARCH 1, 1976 THROUGH FEBRUARY 28, 1977 AT 8:00 P.M. ON MONDAY FEBRUARY 16, 1976

IN THE VILLAGE HALL

MARY WHEELER Village Clerk

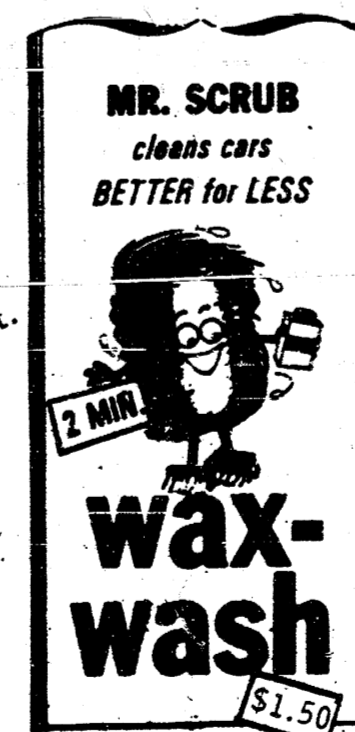
**Gulf** Visit the Jolly Dutchmen  
100 EAST MAIN ST MANCHESTER



Permanent Anti-Freeze

Washer Solvent Concentrate 1 qt. Special - .98

Gulf Mud & Snow Tires



Limited amount Anti-Freeze (alcohol)

1 gal. washer Solvent pre-Mix \$2.85

Ice & Snow scrapers (long & short handles)

Phone 428-8960

Many Gulf Accessories

GROSSMAN-HUBER SERVICE

## WANTED

500 Cars - Wrecks or Junkers

Free Pick-up To \$125.00

Help Keep Your Community Beautiful

Phone 428-8080 or 517-787-7044

## Verhines Auto Salvage

17547 AUSTIN RD. MANCHESTER

## Doug's Party Store

500 ANN ARBOR STREET MANCHESTER

OPEN MONDAY THRU SATURDAY 7 AM TO 9:30 PM SUNDAY 8 AM TO 9:30 PM

UNION 76 GAS

## SNOW DIARY

BY RON

SNOW ALWAYS APPEARS AS TINY SIX-SIDED CRYSTALS, AND NO TWO CRYSTALS ARE EXACTLY ALIKE.

SURE GLAD THIS ISN'T SNOW!

IT TAKES A SIX-INCH LAYER OF MOIST SNOW OR A 30-INCH LAYER OF DRY SNOW TO EQUAL THE WATER IN A ONE-INCH RAINFALL.

RED SNOW - WHAT ELSE!

MICROSCOPIC PLANTS AND DUST PARTICLES IN THE AIR CAN CHANGE THE COLOR OF SNOW. GREENLAND AND OTHER PLACES IN THE ARCTIC SOMETIMES HAVE RED AND GREEN SNOW ON THE GROUND.

IT'S A NEW RECORD! SO WHO CARED?

IN 1921 AT SILVER LAKE, COLORADO, A 76-INCH SNOWFALL SET A RECORD FOR THE LARGEST SNOWFALL DURING A 24-HOUR PERIOD.

SURPRISINGLY, BLIZZARDS OCCUR MOST OFTEN AFTER A PERIOD OF UNUSUALLY WARM WINTER WEATHER.

A SPRINKLING OF CALCIUM CHLORIDE MIXED WITH SALT MELTS ICE AND SNOW FAST. THE COMBINATION IS USED TO KEEP MANY ROADS AND HIGHWAYS OPEN IN WINTER.

### MANCHESTER SPORTSMEN ELECT OFFICERS

The Manchester Sportsman Club election of officers was held on January 29, 1976. Officers for 1976 are: Robert Padley - President, Charles Steele - V. President, Lauren Huber - Financial Secretary, Rita Huber - Recording Secretary, Sue Achtenberg - Treasurer.

The Board of Directors are: Helen Burkhardt, Duane Braun, Max Heckaman, Bud Taylor, Carl Heckaman, Paul Schwab, George Goodell, Robert Achtenberg.

The February meeting will be a pot luck dinner honoring any member 65 years old and a member for 10 years. At this time they will be presented with a life membership in the club.

The members to be honored are: Lawrence "Speck" Kappler, Alwin "Ike" Kappler, Albert Haller, George Laurence, Carl Heckaman, Claran Knauss, Erwin Dasher, Vera Dasher, Norman Bulcholtz.

We cordially invite all members to be present to honor these members. Charles Steele will be in charge of hall rental for the coming year.

### LETTERS TO THE EDITOR



We the Pep Band of Manchester High School wish to express our opinion concerning the lack of support for the Pep Band. You complained when we didn't play or our spirit was lacking; but how can we have any spirit if we aren't supported or appreciated! You don't clap when we play our selections, and you don't cheer when we play, "Let's go Dutch". If you don't appreciate what we do, why should we waste our time practicing and coming to the games?

Everything we have done this year has been done completely on our own, with no adult director. We think we are as good or better than any Pep Band around!

Sincerely, The Manchester Pep Band: Julie England, Vanessa Ames, Lynn Gonyer, Karla Taurialner, Joanne Kastie, Lori Gonyer, Lori England, Julie Johnson, John Olsen, Tammy Rhoades, Carl Townsend, Stacey Ames, Mike Fisk, Kurt Sauter, Mark Gonyer, Jim Duncan, Cathy Moore.

## Fish Fry

EMANUEL CHURCH HALL

FRIDAY NIGHT

5 PM TO 8 PM

### LEGAL NOTICE

#### MANCHESTER TOWNSHIP PLANNING COMMISSION NOTICE OF PUBLIC HEARING

TAKE NOTICE that Manchester Township Planning Commission will hold a public hearing on the application of Dennis L. Eubanks for a conditional use permit to place and use a mobile home as a temporary dwelling and to construct a single-family home on premises presently zoned RC-Recreation-Conservation described as: The west 1/2 of the South 1/2 of the Northwest 1/4 of Section 23, Also the South 1/4 of the East 1/4 of the South 1/2 of the Northwest 1/4 of Section 23, T3S, R3E, Manchester Township, Wahstenaw County, Michigan on February 23, 1976 at 8:00 p.m. EST, at the Manchester Village Hall, 120 South Clinton Street, Manchester, Michigan.

PLANNING COMMISSION, DECEMBER 4, 1975

The regular meeting of the Manchester Village Planning Commission was held at the Village Hall, with members present: Daniels, Leeson, Althouse, Krauss, Tracy, and Mann.

The meeting was called to order at 7:40 p.m. by chairman pro-tem Daniels. Minutes of the last meeting were re-

viewed, and on the motion by Tracy, seconded by Krauss, were approved.

As a candidate for appointment to replace former member Charles Cresswill, it was moved that Mr. William Broucek be recommended to Council. The motion was made by Daniels, seconded by Krauss, and unanimously approved.

Tom Marshall, for Tom Marshall Ford Co., has formally requested that a certain triangular parcel at the corner of Main Street and Elton Street be rezoned.

It was moved by Mann to recommend to Council that proper action be taken for rezoning from R-1B (Single Family Urban Residential District), to C-2 (General Commercial District), of the property in question, described as follows: "Beg at the NE corner of Lot 1, th SW 1/4 80.70 ft in N line of lots 1 & 2 to the E line of W 1/2 of SW 1/4, Sec 2, th S 79.50 ft in E line of W 1/2 of SW 1/4 Sec 2, the SE 1/4 165 ft in N line of Railroad to a point in E line of Lot 1, th NW 1/4 183.15 ft in E line of Lot 1 & 2 BLK 25 original Plat."

The motion was seconded by Daniels, and unanimously approved. Adjournment was moved by Tracy, seconded by Daniels.

The meeting was declared adjourned at 9:40 p.m.

Laurin F. Leeson, Sec'y

### FILLYAW'S SERVICE

327 WEST MAIN MANCHESTER

24 HOUR ROAD SERVICE  
PHONE DAYS 428-8576 PHONE NIGHTS 428-8053

We Carry A Complete Line Of Tires And Batteries, Alternators and Regulators, Starters and Solenoids

BUY YOUR MUD AND SNOW TIRES AT FILLYAW'S SERVICE AND SAVE

WE TURN BRAKE DRUMS AND ROTORS.

### PLANNING COMMISSION MEETING MICHIGAN DEPARTMENT OF STATE HIGHWAYS AND TRANSPORTATION

Thursday, January 8, 1976 the meeting was called to order at 7:45 p.m. Members present were William Broucek, Jim Mann, Cliff Tracey, John Althouse, Cecelia Chapin, and Ron Whittington.

The meeting was called to order by chairman, Bill Broucek. Three guests were present from the University of Michigan, Scott Jacobs, Mark Sebald, and Gerard Olving. Also two visitors were present, Robert Lawson and Ray Tirth.

A series of slides were presented concerning the architectural assets of Manchester. The downtown business district was reviewed and discussed for future architectural considerations. A lengthy discussion was held concerning the slide presentation, and possible areas to be reviewed by the Board. A short discussion was held concerning the meeting date of the Planning Commission. It was decided to continue to meet the first Thursday of each month at 7:30 p.m.

No minutes were read from previous meetings due to the absence of Secretary Laurin Leeson.

Chairman, Bill Broucek, requested that pages one through twenty of the proposed village subdivision ordinance be reviewed by all members for discussion at the next meeting.

No further business coming before the Board the meeting was adjourned at 9:50 p.m.

Ron Whittington

LANSING --- Fuel tax revenues continued a slow decline but popularity of Michigan's new license plates pushed up weight tax collections in the fourth quarter of 1975, the State Highway Commission reported today.

Revenue from gasoline, diesel fuel and liquid petroleum gas taxes in the October-through-December period totaled \$99,846,986, a drop of \$149,762, or two-tenths of one per cent, from the same three months of 1974.

Gross receipts in the Motor Vehicle Highway Fund, including \$2,973,815 in miscellaneous revenue, totaled \$136,323,697, up 6.4 per cent from the fourth quarter of 1974. Proceeds are used for construction and maintenance on Michigan's 116,000 miles of state highways, county roads and municipal streets after deductions for grants and costs. These include the General Transportation Fund's 1/18th share of gas taxes, the State Waterways Commission's 1/4 per cent share of gas taxes, and collection costs totaling \$6,041,181.

Net proceeds totaling \$122,188,523 leave \$54,329,393 for distribution to the Department of State Highways and Transportation as its 44.5 per cent share; \$43,585,603 for distribution on the 83 county road commissions as their 35.7 per cent share and \$24,173,537 to 531 incorporated cities and villages as their 19.1 per cent share.

FOURTH QUARTER DISTRIBUTION AMOUNTS TO MANCHESTER COMPARED TO THE SAME PERIOD OF 1974 ARE 4TH QUARTER 1974 \$2,671, 4TH QUARTER 1975, \$6,855.

### LOCAL GIRLS STRANDED AT PAJAMA PARTY

Ten local girls were stranded at a pajama party at the home of Brian and Debbie Alber on Smythe Road. Danell Steele had the party Saturday night and by Sunday none of the girls could get home. One of the girls told her mother, "I don't think they have a road out here." The girls were rescued Sunday evening by snowmobilers.

**Williamson**  
Heating & Cooling Systems  
INSTALLATION & REPAIR  
Phone 428-8692  
**John Steele jr.**  
Manchester

AND OTHER MAJOR  
APPLIANCE REPAIR  
Electrical Contracting  
**L. V. Kirk**  
PHONE: (313) 428-3701  
MANCHESTER

Why you should let H&R Block worry about your income taxes.

There are major changes in the tax laws that could affect your return. Our people are specially trained to help you take advantage of these new laws. We'll do our best to make sure you pay the right amount of tax. No more, no less.

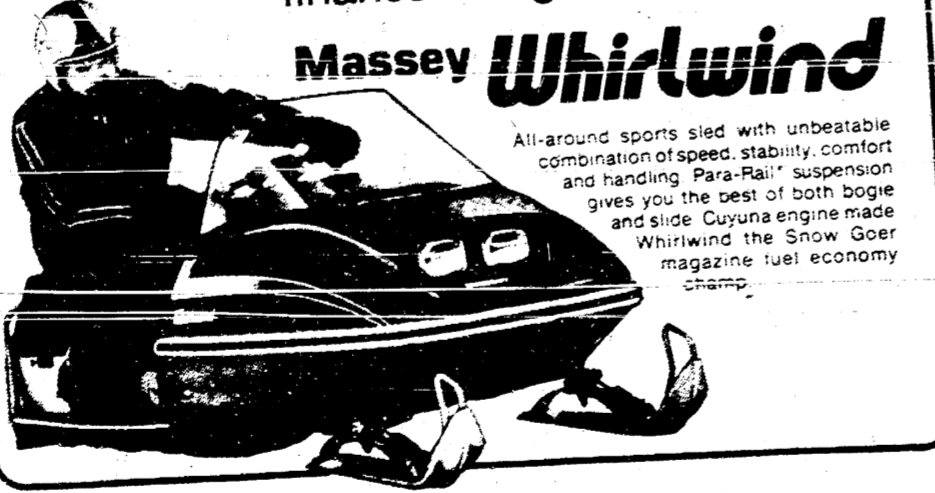
Get a little peace of mind.

**H&R BLOCK**  
THE INCOME TAX PEOPLE

200 Riverside Drive  
Manchester, Michigan  
PHONE 428-7833

## There's SNOW TIME like the present!

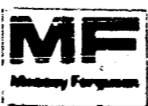
Buy your new Massey snowmobile, get special MF financing, and pay no finance charges until October!



Get your new Massey snowmobile now — there's plenty of snow time to enjoy it! Hurry — quantities and models are limited!

One ride is worth 1,000 words. Get your demonstration ride today.

**Braun Implement**  
8304 Boettner Rd., Bridgewater  
429-7015



## Looking for a MORTGAGE?

Mortgage Rates Are DOWN

\$214,000 Available Daily for Home Loans

**Act Now**

Phone: 769-8300

**ANN ARBOR FEDERAL SAVINGS**

10 OFFICES TO SERVE YOU IN: ANN ARBOR, CHELSEA, DEXTER, MANCHESTER, YPSILANTI, BRIGHTON, SALINE  
Member FSLIC

### Even off the beaten path, State Farm is there.

Insure the good times, too. If you've taken to off the road travel for excitement and recreation, you're likely to need the extra protection of our Recreational Vehicle Policy. Call or visit for all the details.

**MATT DONNELLON**  
146 E. Main  
Manchester  
Phone 428-8364

Like a good neighbor, State Farm is there.

STATE FARM MUTUAL NATIONAL INSURANCE COMPANY Home Office Bloomington, Illinois



# WANT ADS

ALL CLASSIFIED ADS ARE PAYABLE IN ADVANCE

**DON'T** get cold this winter, have your furnaces serviced now to prevent problems and furnace failure later in this cold season. Also plumbing and electrical work new and repairs. Call Hilltop Plumbing, 8316 Werkner Road, Chelsea. 475-2949.

**HOUSE** and barn roofing, all types of roof repairs, aluminum storm windows and doors, awnings and porch enclosures, hot build-up roofing - residential and commercial, aluminum siding and now offering seamless aluminum gutters. Call Joe Hayes for free estimates. 428-8520.

**WILD BIRD** Feed, scratch feed, sunflower seeds, at E.G. Mann & Sons, Manchester. ttn

**SEAMLESS** aluminum eavestroughs, roofing, siding, and carpentry work of all kinds. Experienced installers, all work guaranteed. Call R.D. Kleinschmidt Co. 428-8836. ttn

**SEASONED FIREWOOD** - \$25 a level pick-up load, delivered local, split and stacked. 428-7377 or 428-7252. ttn

**HEATING AND PLUMBING REPAIRS**, Call night or day. 428-7138, 5-13-76.

**FURNITURE UPHOLSTERER** - Full or part time, experienced only, 482-1409, Ypsilanti. 3-4

**COUNSELING SERVICE** 994-3451. 2-26p.

**LEG CRAMPS?** Try Supplacil 3 tablets contain minimum daily requirement of calcium. Krauss Drugs. 2-19p.

**GENSENG**: Chinese herb once prized more than gold, in convenient capsule. Try "Asiarnicot" Krauss Drugs. 2-12p.

**"GRAPEFRUIT PILL"** with Diadax plan more convenient than grapefruits - Eat satisfying meals and lose weight. Krauss Drugs. 2-12p.

**PIANO & ORGAN** tuning and repair (517) 782-1273 or 428-8422 ttn

**ELECTRICAL** wiring, new & remodeling. Licensed, fully insured electrician. Paul Kemner, phone 428-8462.

**KNESEL'S TREE SERVICE** - cutting, trimming, stump removal, aerial bucket rental. Call (517) 443-5506 or 486-2818. ttn

**EAR PIERCING** - Fast and painless, Gas-ton's Jewelry, Tecumseh, Michigan 423-3280. ttn

**BEEF TO SELL BY SIDE**: Custom slaughtering. Lockers to rent. Phone 428-7600. Manchester Frozen Food Locker. ttn

**LIKE HORSES!** This solid 4 bedroom home is situated on paved M-52, 1 mile North of Manchester. Total property is 7.5 acres with a 3 stall horse barn w/running water and electricity. Over 50 White Oaks w/ circle drive. Please call Fletcher & Klein, Realtors at 759-0082 and ask for Larry Bane, evenings 485-7885. ttn

**FOOTBALL, Basketball** and other sports pictures available. For prints call Jon 428-8690. ttn

**ALBER FARMS** - Orchard & Cider Mill 13011 Bethel Church Road, Open daily 9 to 6 all winter. Apples, sweet cider, whiskey barrels, new kegs, potatoes, misc. items. 428-7755. ttn

**DRY WALL, PLASTERING AND STUCCO** new and repair. Free estimates. 663-6550. 4-6-76 p.

**FOR RENT** - Upstairs apartment, stove, refrigerator, carpet and drapes, heat furnished, call evenings 428-8710, no pets. 2-12

**"HEATED GARAGE SALE"**, furniture, tools, clothing and miscellaneous. February 21 and 22, 9 a.m. to 6 p.m., 453 Railroad Street, Chelsea. 2-12

**REMEMBER YOUR VALENTINE** with a gift from the Calico Cat Gift and Book Shoppe. 110 East Main Street - Valentine Cards from Red Farm Studio and Paw Prints. 2-12.

**POLE BUILDINGS BY HUSKEE** - BILT STRUCTURES, Farm, Urban, Commercial, call or write Jan Warren for information. 916 W. Michigan, Ypsilanti, Michigan 48197 482-3934. 4-28 p.

**HELP WANTED** - Extra money through Sarah Coventry Jewelry, only two part-time positions now open in area, free kit, free training, no obligation. Phone 429-4294, Saline 2/26

### IT'S A FACT

Everybody wants the glamour jobs like medical technicians, photography, meteorology, computer training, etc. The best way to make sure the job you want is available is to reserve the job you want through the Army's Delayed Entry program. Join now...and go after graduation into the job you really want. Sgt McNeil 665-3733 212 South 4th Ave. Ann Arbor 2-19

**WILL DO BABYSITTING** in my home. Phone 428-7926 2-19

**FOR RENT** - Large 1 bedroom apartment with heat, water for \$160.00 per month. Located at 116 S. Macomb. Call 665-7445 2-19

**FOR SALE** - Pole or Post Buildings all sizes for all purposes, framed garages, also light wrecking. Call 517-782-8704 or 517-522-8669 219

**FOR RENT** - Townhouse style with 2 bedrooms, large kitchen, living room, bath and basement. Washer-dryer included. Woodburning fireplace, room for garden in the spring. Security deposit required. \$250.00 per month. Call 428-8182 or 428-8277

**VALENTINE SPECIAL** - Mixed bouquet of fresh flowers - \$6.00, cash and carry. We also have a nice selection of dried arrangements, blooming plants, green plants, terrariums, planters and corsages. Order Early! D'Agostino's Florist and Gift - 428-7620

### CARD OF THANKS

Words can never express our deep appreciation to the many acts of kindness shown during our recent loss of my son and our brother. Special thanks to Rev. Wise, Rev. Jones, Ron Jenter, and to the friends who worked at church. Louise Kensler and Family

I would like to thank the neighbors and friends for their cards, gifts and visits while I was in the hospital, also for the many acts of kindness I received and am still receiving. Thanks to Rev. Damberg for his visits. Donald Mackintosh

We want to thank our neighbors and many friends for their acts of kindness and concern for us last week. Your love and understanding are helping us through a difficult time. Virginia & Jim Hendley

I would like to thank all of my neighbors, friends and relatives for their kindness and help during my stay in Saline Hospital.

A special thank you to Mrs. Hattie Carson, Mr. Doris Carson and to the Den Mothers of Pack 433, and Mrs. Ann Wright for their gifts. Peggy Schmidt

### WANTED STANDING TIMBER and WALNUT

Let us look at your wood lot we can give you a price on selective cutting of mature trees.

Tri-County Logging, Inc. P.O. BOX 467 CLINTON, MICHIGAN 42936 Phone 517-448-7060 or 456-4731



**USED CARS** THE CLOSER YOU LOOK, THE BETTER WE LOOK  
TOM MARSHALL FORD  
512 W. Main Manchester

**Krauss Pharmacy**  
Manchester, Michigan  
**Pick-Up Station**  
For  
**Welchs Cleaners**  
DAILY PICK UP

**BLACK SHEEP TAVERN**  
115-119 E. MAIN STREET MANCHESTER MICH  
PHONE 428-7000  
Open Tuesday thru Sunday Closed Mondays

FRIDAY SATURDAY **BEEF BUFFET** 6 PM TO 10 PM  
\$5.25 Per Person

DINNERS SERVED TUESDAY THRU THURSDAY 5 PM TO 9 PM  
FRIDAY AND SATURDAY 5 PM TO 11 PM SUNDAY 12 TO 9 PM

BANQUET AND PRIVATE PARTIES FACILITIES  
PHONE 428-7000 FOR INFORMATION

**H.L. Beach Tax Service**  
INCOME TAX PREPARATION  
Returns Prepared At Your Home cost little more  
FOR APPOINTMENT CALL 429-5994 IN SALINE (14 Years Experience)

Now Is The Time To Build Your New Home  
ALSO REMODELING AND ROOM ADDITIONS  
Phone 428-7109  
Norm Walz Construction  
222 TOPY STREET MANCHESTER, MICH.

50% COUPON SAVE 50% 50% COUPON  
Ice Skates Sharpened 50c  
WITH COUPON ACE HARDWARE  
103 E Main St. Manchester

**ISI SIEGLER**  
GAS AND OIL SPACE HEATERS AND FURNACES  
L. V. KIRK  
GE Dealer Electrical Contractor  
PHONE 428-8243  
112 Adrian Manchester

MANCHESTER TOWNSHIP LIBRARY P. O.

# THE MANCHESTER ENTERPRISE

109TH YEAR VOLUME NO. 16 THURSDAY, FEBRUARY 19, 1976 15 CENTS PER COPY

## Members of Youth Symphony



Left to right: Leri Gonyer, Cathy Tobias, and Belinda Grantham

Manchester Orchestra students Lori Gonyer, Belinda Grantham and Cathy Tobias are members of the Michigan Youth Symphony which will be performing here this Sunday. The concert is scheduled for 3:00 p.m. February 22nd in the High School gym.

Several Band and Orchestra students have tickets to sell in advance and tickets are also being sold at the Calico Cat in Manchester. Admission prices are \$ 1.50 for adults and \$.75 for students and senior citizens with a \$.50 limit per family. The public is invited.

## Rev. Gus Kuether Helps Quake Damaged Guatemala

The Rev. Ralph L. Kuether, pastor of the Osseo United Church of Christ, formerly pastor of Emanuel U.C.C., Manchester, was contacted Sunday evening via ham radio by his son, The Rev. Gustav H. Kuether, United Church missionary serving in San Pedro Sula, Honduras, with news from the earthquake stricken area of Guatemala and Honduras.

The elder Kuethers had returned Friday afternoon from a trip visiting the work of the Central American Mission in Costa Rica, before spending ten days in Honduras meeting with the United Church mission churches, schools, and clinic as well as touring the area of Honduras, devastated by Hurricane Fifi in September of 1974. Their son, Gus, was an able guide since he had served as representative of Church World Service and as area director of C.E.D.E.N. (the emergency relief and rehabilitation agency of the Honduran churches and the government).

Gus, who is a ham radio operator, has been on the air more or less con-

## Bicentennial Headquarters Opens Saturday, March 6

On Saturday, March 6, the Bicentennial Headquarters-Store will open. The store is located at 122 West Main. For those of you who are life-long residents of Manchester, that is the old Widmayer Furniture Store. Mr. Bob Lawson, the new owner, has kindly allowed us to use the premises for the duration of Our Celebration.

The store will be managed by Mrs. Gail Drake, who has generously donated a tremendous amount of time and energy to prepare the store for its opening.

Store hours, through the months of March, April and May will be (9:30 a.m. to 5:00 p.m. Tuesday and Thursday; and 9:30 a.m. to 12:00 p.m. Saturday. We need workers during these hours. If any person is interested in working please contact Mrs. Doris Reuster at 428-7647.

We will be selling aprons, bonnets, vests, parasols, and mop caps. Bicentennial buttons, coins and plates will also be available. For those of you who will be making your own outfits, we will also have material and patterns available.

An old-fashioned conversation center, complete with coffee pot, will invite people to come in, browse around, and stay and visit for awhile.

Clubs and organizations are invited to use the store for bake sales and similar activities. If anyone is interested, please call Mrs. Jean Little at 428-8585 to confirm dates.

We will have a calendar in the front of the store with all summer activities posted on it for public convenience.

For those of you who have been intrigued by the fantastic window designs over the last months, you will be interested to know that Donna Blossom is responsible for them. We all thank Donna for generously donating the time and energy, as well as the materials necessary to make the window so interesting. We all look forward to Donna's future displays. The old opera cloth you see hanging in the window will be on display in the store.

A note to the Committee members, there will be a table in the rear of the store to be used for meetings. To schedule a meeting please contact Gail Drake.

Well, that about brings you up to date on the Bicentennial Headquarters-Store. Be sure to mark March 6 on your calendar and plan on attending the Grand Opening Celebration of our Store. Stop in, enjoy a cup of coffee, talk with old and new friends and see if you can possibly resist getting caught up in Manchester's Bicentennial Celebration. We would hate to see anyone miss out on the fun!

## Benefit Dance For Kenneth Kothe February 21

The Manchester Jaycee Auxiliary is sponsoring a benefit dance for Kenneth Kothe. Ken is a kidney patient. He has recently had a transplant and has rejected the new kidney. Ken is forty years old. He and his wife Marilyn have four children. Ken works at Edward Brothers in Ann Arbor.

The Dance will be held on February 21st, at the Sportsman Club, on Grossman Road, Manchester. Music furnished by Luke Schafle. The dance begins at 9:00 p.m., and ends around 1:00 a.m.

The Auxiliary and friends will furnish snacks. Mix and sandwiches will be available for a reasonable amount. B.Y.O.B. Donation for the Benefit is \$7.00 a couple.

## Open House At Middle School

Thursday, February 19th, the Middle School will be having a "drop-in" evening from 7:00 p.m. until 8:30 p.m.

Plans are to make it a relaxing, browsing time. This is not intended to be used as a conference time but a social evening.

Refreshments will be served. Drop in

**RECENTENNIAL HAPPENING**  
Help! Our Bicentennial Happening is well under way. However-we need materials for building booths. Most of the materials, we will be able to return unharmed. Some of the things we need are: wood, cardboard, nails, artificial green Christmas trees, and a rinky-tink piano. Also, we are looking for a gazebo. If you have any of these materials, and would be willing to loan them, please contact Mrs. Rosemary Hughes at 428-8802. I can't tell you how pleased we are