

# WANT ADS

ALL CLASSIFIED ADS ARE PAYABLE IN ADVANCE

**SHEEP DIPPING**—call George Merriman 428-8875. *tn*

**PIANO & ORGAN** tuning and repair (517) 782-1273. *tn*

**BEEF TO SELL BY SIDE:** Custom slaughtering. Lockers to rent. Phone 428-7600. Manchester Frozen Food Locker. *tn*

**HOUSE and barn** roofing, all types of roof repairs, aluminum storm windows and doors, awnings and porch enclosures, hot built-up roofing—residential and commercial, aluminum siding and gutters. Call Joe Hayes for free estimates. 428-8820. *tn*

**SEAMLESS aluminum eaves,** roofing, siding, and carpentry work of all kinds. Experienced installers, all work guaranteed. Call R.D. Kleinschmidt Co. 428-8886. *tn*

**BECAUSE OF THE INCREASING RATE OF SEVERE BURNS AND DEATHS, WHILE YOU SLEEP, THE STATE OF MICHIGAN HAS REQUIRED AUTOMATIC SMOKE AND FIRE ALARMS IN ALL NEW HOMES. WE HAVE THEM AVAILABLE TO BE INSTALLED IN NEW OR OLD HOMES\* \$49.95 PLUS INSTALLATION.**

L.V. KIRK  
**ELECTRICAL CONTRACTOR**  
APPLIANCES AND SIEGLER HEATERS

**POLE BUILDINGS BY HUSKIE**—BILT STRUCTURES, Farm, Urban, Commercial, call or write Jan Warren for information. 916 W. Michigan, Ypsilanti, Michigan 48197 - 482-3394. 10-9 p.

**RUDY EXCAVATING**—bulldozing and gravel. phone 428-7156 9-25

**TRUCK DRIVER**—No experience necessary, we train. Excellent salary and benefits. Guaranteed job training for only 3 year enlistment with U.S. Army. Call 685-3731 for appointment today. 9-4

**ELECTRICAL** wiring, new & remodeling. Licensed, fully insured electrician. Paul Kemmer, phone 428-8462.

**KNISEL'S TREE SERVICE**—cutting, trimming, stump removal, aerial bucket rental. Call (517) 443-5506 or 486-2819. *tn*

**ANTENNAS & TOWERS**  
"If it is out of reach—  
Call Beach"  
Saline 428-5994 1-8-76p

**EAR PIERCING**—Fast and painless, Gaston's Jewelry, Tecumseh, Michigan 428-3250. *tn*

**35 by 55 hiproof barn** for sale 428-8857. *tn*

**TENDER LOVING DAY CARE**, near Schools, phone 428-7375. 8-28

**DOING YOUR OWN BRAKE JOB?** Brake drums or disc rotor reground, Fillywax Service. 8-28

**GERMAN SHEPHERD PUPPIES**, black & tan, large boned \$50. 483-3181. 8-28

**GOING FISHING?** Gray crickets for sale, available all summer. 121 Beaufort Street. 428-7864. 9-19

**NICE ONE BEDROOM** apartment available September 1. References required. 428-7862. 9-4

**RN'S & LPN'S** (with medication course) Evangelical Home, Saline, 1 full time position available for the evening shift. Betty Kemmer, RN, Director of Nursing, 428-9401. 9-4

**OPEN HOUSE**

524 Adrian Street Manchester  
Open for viewing 3 p.m. to 5 p.m. Friday, August 29, Saturday, August 30, 10 a.m. to 12:30 p.m. Elaine Rice, Edler-St. Amour, Realtors. 428-7272, or 655-8553.

**WANTED**  
**HAY OF ALL KINDS**

Especially needed, large quantity of clover and timothy mixed or alfalfa mixed.

Wilbert Trinkle & Sons  
Charles Trinkle  
475-7798 *tn*

**FOR RENT** - upstairs apartment, 428-8676, call from 12 to 6 p.m.

**APARTMENT FOR RENT** - no pets, call Bob Huber, 428-3561.

**FOR SALE 1971 Ford Galaxie** Station wagon 428-8022. *p*

**FOR SALE 1968 Ford Custom** - new battery, new gas tank, 2 snow tires (like new) new hose connections, good running condition. 429-4793. *p*

**FOR SALE** - Used Blessing Coronet, \$35. 428-8776.

**GARAGE SALE** - Saturday, August 30, 119 S. Washington, 10 a.m. to 5 p.m., Clothing and misc. *p*

**GARAGE SALE** - Furniture, Tools, Dune Buggy, Antiques, Misc. Saturday, August 30, 9 to 4, 20477 Solo Church Road, Chelsea 1/2 mile off M-52. *p*

**1974 SUZUKI GT 750** - 5,000 miles Adult owned saddle bags - road pegs, sissy bar, and carrier, immaculate - leaving town. \$1,550 Call 428-7363 *p*

**FOR SALE** - Aquariums - 20 gal. \$25 10 gal. - \$15, complete with filter, heater and stones. Also 1 wrought iron stand, call 428-7396. Also 3 year old beagle-female.

**YARD SALE** - AUGUST 28-29, 10 - 5, Children clothing, misc. 9165 Neal Rd.

**PORCH SALE** - Clothes and misc., Friday, August 29, 3 - 4, 9555 Grossman Road. *p*

**FREE NICE GENTLE** free kitten 428-8204.

**FOR SALE** - one owner 1969 4 door, Ford LTD, 361 V8 - \$460, Phone 475-2036.

**SCOTTISH HIGHLAND CATTLE** for sale. Registered cows with calves. Call John Carr 428-7318. 8-28

**Brown's TV & Radio**  
428-7840

**ZENITH**

Color and Black & White TV  
131 East Main Street  
Manchester, Michigan

**AUCTIONEER**  
**JERRY JACOB**

LARGE OR SMALL SALES  
FARM-HOUSE-BUSINESS  
COMPLETE MANAGEMENT  
Sale Dates Available  
PHONE 428-7975

**GIBBONS & SON**  
**EXCAVATING**

ENJOY SUMMER MORE  
THIS YEAR WITH A  
FABULOUS POLYNESIAN  
POOL IN THE PRIVACY  
OF  
YOUR OWN BACK YARD.

428-8611

Discount for demonstration  
pools in this area.

- PAINTING**
- COLOR MATCHING
  - CUSTOM INTERIOR
  - CUSTOM EXTERIOR
  - SENSIBLE PRICES
  - DRYWALL PATCHING

- DECORATING**
- WALLPAPER HANGING
  - WOOD STAINING
  - ANTIQUING
  - ALL WORK GUARANTEED
  - PLASTER PATCHING



**SCOTT**  
RESIDENTIAL - COMMERCIAL

RICHARD SCOTT, OWNER  
13 YEARS EXPERIENCE  
MANCHESTER  
CALL 428-8425

# WE RENT

Power Post Digger 6" to 8" - Floor Sander Edgers - Lawn Mowers - Shredder Mulcher - Airless Paint Spray - Rototiller - Floor Shampooers - Appliance Dollys - Pipe Threaders - Sanders - Saws - Porta-Hoist - and many more items.

# ACE HARDWARE

8 a.m. to 6 p.m. DAILY 10 a.m. to 3 p.m. SUNDAY  
PHONE 428-3011

103 EAST MAIN MANCHESTER

**Discriminating Brides-To-Be**  
**Choose**



- Wedding Invitations and Announcements
- Luncheon Invitations
- Gift Acknowledgements
- Calling Cards
- Personalized Stationery
- Informal Notes
- Monogrammed Napkins and Matchbooks

For your wedding you will want everything perfect, done correctly, in good taste. We will be pleased to advise the proper way, the inexpensive way to make the right impression. Your Wedding Stationery Trousseau shall be by Coronet... at your pleasure, elegantly Traditional or smartly Modern.

# The Manchester Enterprise

# THE MANCHESTER ENTERPRISE

5TH YEAR VOLUME NO. 44

15 CENTS PER COPY

THURSDAY, SEPTEMBER 4, 1975

## South Dakota Visitors



By C. Chapin

Jim and Joan Lyons of Glad Valley South Dakota, formerly of Manchester, have come home for a few days to say hello and renew old friendships. Born here in Manchester Joan (Koebe) Lyons, met Jim while both were in the Army and after the years in the Armed Forces they came to Manchester to live. Nine years later the decision was made to go West - Jim was born in Meadow South Dakota, and had a hankering for the wide places.

Packing up the three children Kristy 12, Jimmy 9, and Mike 6, early in 1972 they bought a 2500 acre ranch and traveled. Jim farms 500 acres of grain, 200 head of cattle, 500 sheep and depending on the market, some years raises hogs.

Joan keeps house and while they have all such modern conveniences as electricity and plumbing, the shopping is done 50 miles away in the nearest town of any size - Meadow, S.D. which is a town of approximately 2500 people and lies on the border of North and South Dakota. Shopping by the pickup load, Joan then does all her own baking and depends on the freezer heavily. Getting the children to school is a matter of driving them five miles to the bus, which then carries them another eighteen miles to a country school. Not exactly a one room school, it's just a little larger than that, but which does have all grades within a few rooms. Doctoring is not too difficult unless one needs a specialist, in which case one is referred to Denver or Minneapolis.

School can be a problem under bad weather and last winter when heavy snow moved in, the children were taken to visit the grandparents for easier access to the bus and just as well because the three week period during which they were snowed in was a busy time. Jim and Joan were kept busy taking care of the stock and

with only a telephone, the long blizzard caused a lot of work and resulted in everyone losing weight.

The family flew home, and have, as planned, bought a truck from Tom Marshall, which they will drive back. Staying with friends Janice and David Little, Joan especially has been busy trying to get around to say hello to everyone. Welcome home and come back soon Jim and Joan.

**AMERICAN DIABETES ASSOCIATION**  
**MICHIGAN AFFILIATE**

The Washtenaw County Unit of the American Diabetes Association-Michigan Affiliate will meet at 9:15 a.m. Wednesday, September 10, 1975 at the home of Mrs. John Wescott, 903 Pearl, Ypsilanti, Michigan. This organization welcomes all people interested in Diabetes.

For further information phone 428-7543.

**APPLICATIONS NOW**  
**BEING TAKEN**

The post office at Manchester, through the United States Postal Services in Ann Arbor, is offering to the public an opportunity for application of several positions to be filled both now and in the future.

Application are being taken for all positions available at this office. This is to update a list of persons wishing to be on call for jobs in the future. The positions on this list are clerk, carrier, substitute carriers, and part time help both seasonal and permanent. A contractual job, that of janitor, is also open for bids.

Two positions for sub-carriers are open now and should be applied for immediately. It is necessary to fill these positions now, but we need future names on our list. The pay scale is between thirty (30) and sixty (60) dollars a day. This job includes use of your own, well maintained vehicle and a on call obligation. The applicant must sub for vacations, all sick days and heavy duty seasons as assistant.

If you have questions or wish to apply either now or in the future, please, contact the post office at 108 E. Madison in Manchester or phone at 428-3482. Hurry closing date for jobs is September 5, 1975.

## Three Named To Board of Directors



### Engagement Announced

Mr. and Mrs. Ray Uphaus announce the engagement of their daughter, DeAnn Carol to Alan Lee Hanewald, son of Mr. and Mrs. Arthur Hanewald, all of Manchester. Both are graduates of Manchester High School. The wedding date has been set for May 1, 1976.

### Bi-Centennial Commission Meets

The Western Washtenaw County Bi-Centennial Commission met last week at Klagger School with Saline, Chelsea, Dexter and Manchester areas well-represented by both commission members and interested residents.

A vote by seven representatives from each of the four communities resulted in the decision to work with the Rogers Co. of Fostoria, Ohio in a joint, but yet individual community effort, for the coming year. The next meeting is scheduled for Monday, September 15 at 8:00 p.m. at the Klagger School. It will be an organizational meeting with residents from all four areas of western Washtenaw County and the Rogers Co. to further detail the years activities.

Clubs, organizations, churches, schools and individuals will find activities and projects covering the three general ideas of the bi-centennial theme—Heritage, our past; Festivals, U.S.A., which will cover our present activities; and Horizons, which will be a community project upon which all Manchester area residents will decide where any profit from the years activities will be designated. Several ideas have already been expressed but an open meeting for the Manchester area will be scheduled soon and the decision will be made then.

But as the Rogers Co. and the WWCBC have repeatedly pointed out, the object of the bi-centennial year is not solely for the monetary profit. Our achievements have been monumental over the past 200 years along with pride and problems in the process. The national goal of the bi-centennial year, is to grow stronger and closer, to learn and enjoy the year ahead. The September 15 meeting is where you can start. We can only be successful in this endeavor if we all join in the fun.

If you have any questions or suggestions, please attend the meeting or call Carolyn Ahrens, Cecil Chapin, Rosemary Hughes, Rita Burkhardt, Jean Little, Harold "Duke" Bersuder or Clarence Fielder.

## BIRTHS

Mr. and Mrs. Gerald Ahrens are the proud parents of a baby boy, Shayne Matthew. He weighed seven pounds and eleven ounces. Shayne has one sister Jacqueline, 2 1/2 years.



**The Manchester Enterprise**  
305 Beaufort Street  
Manchester, Michigan 48158  
Phone 428-8173

The Manchester Enterprise was established in 1867 and is published each Thursday at 305 Beaufort St., Manchester, Michigan with second class postage paid at Manchester.

**THE STAFF**

Edward E. Steele, Publisher  
Leanne Steele, Editor  
Darlene Minor, Assistant Editor  
Cecelia Chapin, Feature Editor  
Joan Roger Hardenbergh, Sports Editor



**WALKER TAVERN HISTORIC COMPLEX**

Secretary of State Richard R. Austin today announced new fall hours for the Walker Tavern Historic Complex in Cambridge State Historic Park. Beginning September 14, 1975, the museum will be open by appointment each Wednesday, Thursday, and Friday between 10 a.m. and 4 p.m. The public is also invited to stop during those hours on the chance that the site historian will be available to conduct tours. Each Saturday and Sunday, beginning on September 13, the museum will be staffed and open from 12 to 4 p.m. This schedule will continue until Thanksgiving.

Anyone wishing to make an appointment to tour the historic complex should contact the site historian, James Schmitz, at the park office. He can be reached by mail at Cambridge State Historic Park, Brooklyn, Michigan 49230 or by phone 517-467-7801.

The park hours will remain the same 8 a.m. - 5 p.m. seven days a week. Cambridge State Historic Park is located in Lenawee County at the junction of U.S. 12 and M 50. The entrance is on M 50.

**BICENTENNIAL SENIORS**

"Bicentennial Seniors" a nationwide \$250,000 scholarship program for high school seniors who will graduate with the Class of 1976, is being launched this month by the National Association of Secondary School Principals.

One national winner will receive a \$10,000 scholarship and 102 state winners will receive \$1000 grants under the program.

Winners will be selected first locally, then on a statewide level. Two graduating seniors will be chosen in each state and the District of Columbia. Each of the 102 winners will also receive an all-expense-paid trip to Williamsburg, Virginia, from January 16 through 19 to attend seminars and hear noted speakers discuss educational and social issues facing this country today. The national winner will be selected during the Williamsburg conference.

Students taking part in the "Bicentennial Seniors" competition must demonstrate an understanding of America's past and possible directions for the future and an involvement in the social and community issues faced by America Today.

Competition will include the preparation of a minute-long television script to be performed after the CBS television network's 290 years ago today "Bicentennial Minutes" a commentary discussing the significance of the "minute" for today and the lessons it contains for the future; and a current events examination emphasizing issues and events from the past year.

High school seniors should see their principal for details on how to participate in this scholarship program. Applications must be filed no later than October 6, 1975.

The program is administered by NASSP and is funded by the Shell Oil Company. "Bicentennial Seniors" is endorsed by the American Revolution Bicentennial Administration.



Demolition of Mobil Gas Station at the corner of M52 and Main Street in the Village of Manchester, commenced Tuesday, September 2. Owned by McPherson Oil Company of Howell, Michigan, the building had deteriorated past repair.

**Only Scotti gives you two guarantees.**

1. Scotti lifetime muffler guarantee.
2. Scotti lifetime tailpipe guarantee.

What's more Scotti backs their double guarantee on any car, including most foreign cars with Scotti centers coast to coast. Call the muffler experts . . .

\*FREE muffler/tailpipe. Small service charge.

**Why pay more?**

Tom Marshall Ford  
428-3021

510-12 W. MAIN ST MANCHESTER



**Discriminating Brides-To-Be Choose**



- Wedding Invitations and Announcements
- Luncheon Invitations
- Gift Acknowledgements
- Calling Cards
- Personalized Stationery
- Informal Notes
- Monogrammed Napkins and Matchbooks

For your wedding you will want everything perfect, done correctly, in good taste. We will be pleased to advise the proper way, the inexpensive way to make the right impression. Your Wedding Stationery Trousseau shall be by Coronet . . . at your pleasure, elegantly Traditional or smartly Modern.

**The Manchester Enterprise**

**Gulf THE JOLLY DUTCHMEN Gulf**  
VISIT THE JOLLY DUTCHMEN

**Gulf Spray**

- Insect Repellent
- Ant & Roach Killer
- Flying Insect Killer
- House & Garden Pest Killer
- 2 gal Gasoline Cans
- E-Z Load Grease Cartridges

20 lb Bag Kingsford "THE BEST" Charcoal Briquets

Phone 428-8960  
Many Gulf Accessories  
**GROSSMAN-HUBER SERVICE**

**YOUR CHURCH**

**MANUEL UNITED CHURCH OF CHRIST**  
Rev. Joseph W. Wise, Pastor, Steven Ross, Assistant Pastor.  
Worship Service 9:30 a.m.  
Plan to worship God regularly.

**HARON UNITED METHODIST**  
Rev. Michael Peterlin, Pastor  
Worship Service 10:00 a.m., Sunday School 10:00 a.m.

**T. THOMAS LUTHERAN**  
Rev. Jerome Dykstra, Pastor  
Worship Service 10:00 a.m., Sunday School 9:30 a.m.

**T. JOHN'S UNITED CHURCH OF CHRIST**  
Rev. Carl Asher, Pastor  
Worship Service 10:00 a.m., Sunday School 9:30 a.m.

**BETHEL UNITED CHURCH OF CHRIST**  
Rev. Roman A. Reineck, Pastor  
Worship Service 10:00 a.m., Sunday School 9:30 a.m.

**MANCHESTER UNITED METHODIST**  
Rev. Walter R. Damberg, Pastor  
Worship Service 10:00 a.m., Sunday School 9:15 a.m.

**T. MARY'S CATHOLIC CHURCH**  
Rev. Raymond Schlinkert  
Worship Service 8:30 a.m. and 10:30 a.m.

**ORTH SHARON COMMUNITY BIBLE**  
Rev. William Enslin, Pastor  
Worship Service 10:00 a.m., Sunday School 11:00 a.m.

**FAITH COMMUNITY**  
Rev. Timothy Miles, Pastor  
Worship Service 10:00 a.m., Sunday School 11:00 a.m.

**ST. THOMAS LUTHERAN**  
Worship Service 7:30 p.m., Ladies Aid 8:15 p.m. at Dorothy Egeler's.

**ST. THOMAS LUTHERAN**  
Wednesday, September 3, Altar Guild 7:30 p.m., Ladies Aid 8:15 p.m. at Dorothy Egeler's.  
Thursday, September 4, Choir Rehearsal 8:00 p.m.  
Saturday, September 6, Pre-communion Class 5th graders and over 9:00 a.m.  
Tuesday, September 9, Confirmation Class after school 4:15 p.m.  
Wednesday, September 10, Ladies Bible Study 10 a.m.

**EMANUEL UNITED**  
We will worship at Carr Park this Sunday at 10:30 a.m. Following will be a potluck. Bring a dish to pass and your own table service. Bread and beverage provided. In case of rain we will worship in the Fellowship Hall.  
Wednesday, September 10, Church Council meets at 7:30 p.m.  
Thursday, September 11, the Woman's Fellowship will meet at 8:00 p.m.  
Thursday, September 11, the choir will resume meeting: 3:30 - 4:15 - 1st - 3rd grades, 4:15 - 5:00 - 4th - 8th grades, 7:30 - Adult choir.  
The Senior Center will be open from 1 - 4 on Tuesday, September 9.

**FAITH COMMUNITY**  
Sunday, September 7, "The Masters Men" a singing group from Lenawee County will have charge of the 10:00 a.m. Worship Hour. Missionary Sunday and Rally Day will be during the 11:00 a.m. Sunday School hour.  
Wednesday, September 10, Prayer Meeting and Bible Study at 7:00 p.m.

**MANCHESTER UNITED METHODIST**  
Sunday, September 7, 9:15 a.m. Sunday School Rally Day.  
Monday, September 8, 8 p.m. Finance Committee meeting.  
Thursday, September 11, 7 p.m. Council of Ministries meeting, 8 p.m. Administrative Board Meeting.

**Horse Shoeing and Trimming**  
BOB BEAUBIEN  
Phone 428-8985  
After 5 P.M.  
Manchester, Michigan

**Church Services Courtesy of Jenter Funeral Home**  
302 E. Main St. Manchester, Michigan

COURSE NUMBER	COURSE TITLE	PREREQUISITE	CREDIT HRS.	SEC. NO.	DAYS	HOURS
ACC 091	FUND. OF ACCOUNTING	NON-MAJORS	3	055	THURS.	7-10 PM
AET 101	DWG. & PAINTING		3	055	WED.	7-10 PM
BPR 101	BLUEPRINT READING		3	055	TUES.	7-10 PM
EC 211	PRIN. OF ECONOMICS		3	055	WED.	7-10 PM
ENG 111	ENGLISH COMP.		3	055	TUES.	7-10 PM
ENG 160	INTRO. TO LITERATURE		3	055	THURS.	7-10 PM
ENG 270	CREATIVE WRITING		3	055	MON.	7-10 PM
GE 111	BUSINESS LAW		3	055	THURS.	7-10 PM
HST 101	WESTERN CIV. TO 1600		3	055	WED.	7-10 PM
MTH 039	BASIC MATH	MTH 039	3	055	WED.	7-10 PM
MTH 090	FUND. OCCUPATIONAL MATH	MTH 039	3	055	WED.	7-10 PM
MTH 097A	INTRODUCTORY ALGEBRA	MTH 097A	3	055	WED.	7-10 PM
MTH 097B	INTRODUCTORY ALGEBRA	MTH 097A	3	055	WED.	7-10 PM
MTH 169A	INTERMED. ALGEBRA	MTH 097	3	055	WED.	7-10 PM
MTH 169B	INTERMED. ALGEBRA	MTH 169A	3	055	WED.	7-10 PM
MTH 177	TRIGONOMETRY	MTH 097	4	055	WED.	6-10 PM
MTH 179	PRECALCULUS	MTH 169	3	055	THURS.	7-10 PM
MUS 140	MUSIC APPRECIATION		3	055	THURS.	7-10 PM
PEY 100	INTRO. PSYCHOLOGY		3	055	WED.	7-10 PM
PEY 150	INDUSTRIAL PSYCHOLOGY		2	055	MON.	7-9 PM
SCI 105	MEDICAL TECHNOLOGY		2	055	TUES.	6-9 PM
S-O 308	MACHINE SHORTHAND		2	055	TUES.	6-9 PM
SPH 100	FUND. OF SPEAKING		3	055	MON.	7-10 PM

**WASHTENAW COMMUNITY COLLEGE AND CHELSEA PUBLIC SCHOOLS**

Offers classes at Chelsea High School  
FALL SEMESTER 1975 — CLASSES BEGIN MONDAY - SEPTEMBER 8, 1975  
REGISTRATION 6:30-7 P.M. PRECEDING FIRST CLASS TIME ON SCHEDULED DAY  
REGISTRATION ALSO ACCEPTED AT HURON RIVER CAMPUS, ANN ARBOR  
FOR FURTHER INFORMATION CALL 971-6300 — EXT. 423 or 453

COURSE NUMBER	COURSE TITLE	PREREQUISITE	CREDIT HRS.	SEC. NO.	DAYS	HOURS
ACC 091	FUND. OF ACCOUNTING	NON-MAJORS	3	055	THURS.	7-10 PM
AET 101	DWG. & PAINTING		3	055	WED.	7-10 PM
BPR 101	BLUEPRINT READING		3	055	TUES.	7-10 PM
EC 211	PRIN. OF ECONOMICS		3	055	WED.	7-10 PM
ENG 111	ENGLISH COMP.		3	055	TUES.	7-10 PM
ENG 160	INTRO. TO LITERATURE		3	055	THURS.	7-10 PM
ENG 270	CREATIVE WRITING		3	055	MON.	7-10 PM
GE 111	BUSINESS LAW		3	055	THURS.	7-10 PM
HST 101	WESTERN CIV. TO 1600		3	055	WED.	7-10 PM
MTH 039	BASIC MATH	MTH 039	3	055	WED.	7-10 PM
MTH 090	FUND. OCCUPATIONAL MATH	MTH 039	3	055	WED.	7-10 PM
MTH 097A	INTRODUCTORY ALGEBRA	MTH 097A	3	055	WED.	7-10 PM
MTH 097B	INTRODUCTORY ALGEBRA	MTH 097A	3	055	WED.	7-10 PM
MTH 169A	INTERMED. ALGEBRA	MTH 097	3	055	WED.	7-10 PM
MTH 169B	INTERMED. ALGEBRA	MTH 169A	3	055	WED.	7-10 PM
MTH 177	TRIGONOMETRY	MTH 097	4	055	WED.	6-10 PM
MTH 179	PRECALCULUS	MTH 169	3	055	THURS.	7-10 PM
MUS 140	MUSIC APPRECIATION		3	055	THURS.	7-10 PM
PEY 100	INTRO. PSYCHOLOGY		3	055	WED.	7-10 PM
PEY 150	INDUSTRIAL PSYCHOLOGY		2	055	MON.	7-9 PM
SCI 105	MEDICAL TECHNOLOGY		2	055	TUES.	6-9 PM
S-O 308	MACHINE SHORTHAND		2	055	TUES.	6-9 PM
SPH 100	FUND. OF SPEAKING		3	055	MON.	7-10 PM

\*TEN WEEK COURSE/MACHINE DEPOSIT REQUIRED \$12.50 PER CREDIT HOUR

**MANCHESTER SENIOR CITIZENS**  
Manchester Senior Citizen Men's on Wheels beginning again this fall. The menu is meat, choice of potato or vegetable, salad and roll (Dessert extra). The meals are prepared at Manchester's Country Kitchen (Good food at a reasonable price).  
For further information, if you want (or know someone who needs) this service, call Mrs. Millard Upham, Chairman of Meals-on-wheels committee 428-7461 or fill out the blank below and mail to Mrs. Millard Upham, Box 242, Manchester, Michigan 48158.

NAME \_\_\_\_\_  
ADDRESS \_\_\_\_\_  
PHONE NUMBER \_\_\_\_\_

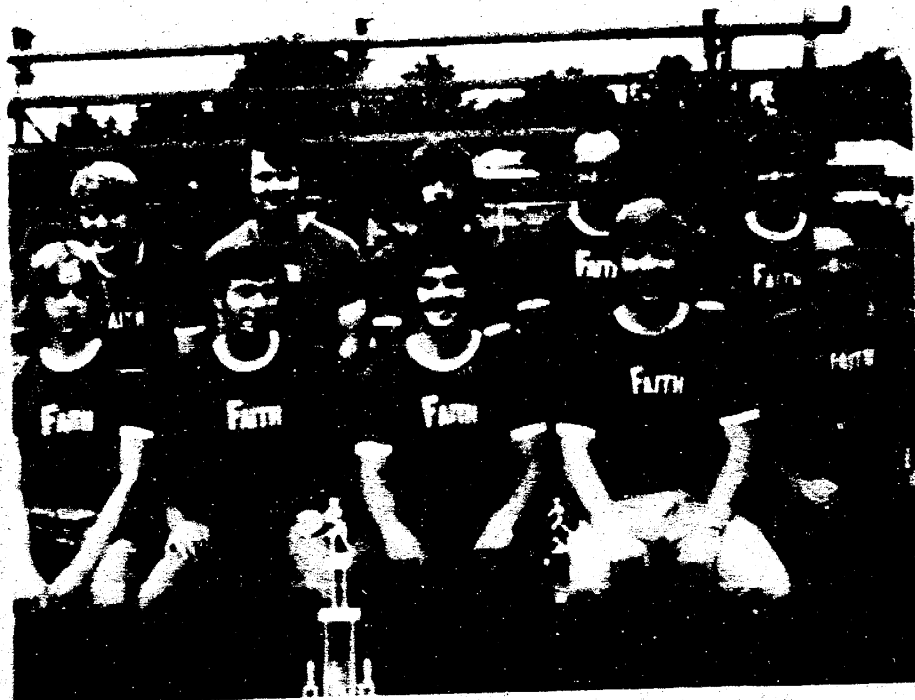
**FIRST AID VOLUNTEERS AT THE FAIR**  
Red Cross volunteers who worked at the First Aid Trailer during the Manchester Community Fair were: Paul Leman who put in over 16 hours; Mrs. Robert Rodriguez; Sharon Sautter (Ann Arbor); Mrs. Harold Sedles; Marilyn Pratt; Mrs. Stanton Hoesch; Mrs. Robert L. Hamilton; Mrs. Milton Wedemeyer; Mrs. Ronald Gentry; Ann Steiner (Ann Arbor); Mrs. Willard Mann; Mr. and Mrs. Larry Wright and Charles and Chuck Molner of Dexter.  
The First Aid Trailer was open from 12 noon to 10 p.m. Tuesday through Saturday. We were fortunate to have no serious accidents among the 16 cases treated. A Fontana-Taylor Ambulance crew was also located on the grounds many hours during the Fair as a public service.

Rent or lease from your Ford dealer  
**RENT-A-CAR LEASING**  
LONG & SHORT TERM LEASING FLEET & INDIVIDUAL LEASES TAILORED TO YOUR NEEDS  
**TOM MARSHALL FORD SALES INC.**  
428-8343  
512 W. MAIN • MANCHESTER

**FREEDOM ELECTRIC**  
11207 Pleasant Lake Road  
Manchester, Michigan  
RESIDENTIAL COMMERCIAL INDUSTRIAL  
NEW CONSTRUCTION REMODELING REPAIR  
GILBERT LUCKHARDT  
Phone 428-8233



# Church League Champs



Winners of the Southeastern Church League Championship and Tournament Championship. Front, left to right - John Wilkinson, Neil Carpenter, Dayle Keasal, Tim Miles, Jim Stanton. Back, left to right - Dan Hyatt, Butch Gilbert, Ken Keasal, Harold Keasal, Dan Hassett.

## Area Obituaries

**Corra Kuhl Morschheuser**  
Ann Arbor

Age 88, died Tuesday. She was born March 8, 1887, in Manchester, the daughter of George and Sophia Huestman Kuhl. Survivors include her husband and several nieces and nephews including Mrs. John A. (Marjorie) Kress Wilson of Austin, Texas. Funeral services will be held Thursday at 1 p.m. from the Muehlig Funeral Chapel in Ann Arbor. Private interment will be at the White Chapel Cemetery, Troy, Michigan.

### ABOUT YOUR SOCIAL SECURITY

People who live in Michigan can have social security and supplemental security income checks deposited directly in checking or savings account. People who live in Michigan and 11 other States in the South and Middle West are getting a special opportunity to have their monthly social security and supplemental security income checks deposited directly in their checking or savings accounts, according to Robert A. Kehoe, social security district manager in Ann Arbor. "The direct deposit program is entirely voluntary," Kehoe said. "People who want their social security and supplemental security income checks to continue coming to their homes shouldn't do anything. Their checks will keep on coming as in the past.

"But people who want their checks mailed to a bank, savings bank, savings and loan association or similar institution or a Federal or State chartered credit union can arrange for it with a direct deposit authorization form," he said.

Direct deposit information is being mailed with checks that will be delivered in September to people who get monthly social security or supplemental security income payments. The direct deposit authorization form - SF-1199 - is available at savings and loan associations, banks, credit unions, and similar organizations.

"Completion of the form does not permit withdrawals from your account by anyone other than people you authorize," Kehoe said.

People whose checks are already being mailed to a financial organization should also make direct deposit arrangements with the SF-1199 form. The direct deposit program will help prevent loss and theft of social security and supplemental security income checks and will eliminate standing in line to cash or deposit them, according to Kehoe.

The direct deposit option is also being offered to people getting social security and supplemental security income checks in Alabama, Illinois, Indiana, Kentucky, Minnesota, Mississippi, North Carolina, Ohio, South Carolina, Tennessee, and Wisconsin.

The option has already been offered in Georgia, Florida, and 23 states west of the Mississippi River. "The program will be extended to the other States later this year," Kehoe said.

## Dutch Cross-Country Captains



Tom Opal

Dan Schable

Four year Lettermen in High School sports are as rare as snow in July. But, during an unforeseen accident, Manchester's Senior Cross Country Co-captains, Dan Schable and Tom Opal, will accomplish the feat this fall.

The Dutchmen Cross-Country teams have had 7-3, 8-1 and 8-1 dual meet records the past 3 seasons, due in no small part to the fine performances turned in by Schable and Opal.

Both Dan and Tom are hoping to gain League Honors this fall and Dutch

coach Larry Steeb feels that both should attain their goal.

Dan and Tom are both already members of the elite 1,000 mile club, whose members achievement is running more than 1,000 miles in practice and competition in one year, and coach Steeb feels that if both Tom and Dan continue to lead the cross-country team by their fine example, then the Dutch may find themselves taking part in their third successive state finals this November first.

Good luck this fall Dan and Tom.

### GOOD BY SLOWPITCH TILL NEXT SUMMER

By Jon Hardenbergh

Basically Slowpitch is over for this summer except for a tournament the weekend of September 12th involving two teams from our upper league. The tournament will take place somewhere near Detroit. More details next week.

In the lower league I have a "Lower league all-league pick". There was talk of having an all-star game like the one the upper league had earlier, but time got away from me. What I ended up doing was drawing up a ballot listing all players and their positions and having the Managers vote for whom they liked best. Following are the results: First team - pitcher, Brian Eisenhower (Pioneer); catcher, Rich Hoamer (Foxy's); 1st base, Bruce Hendricks (Spuds); 2nd base, Mark Feldkamp (Pioneer); 3rd base, Dean Decker (Pioneer); Shortstop, Phil Nickerson (Village Tap); left field, Terry Ahrens (Pioneer); Left center, Don Walter (Pioneer); Right center, Tim Underwood (Pioneer); Right, Kirk Randall (Pioneer).

Second team - Pitcher, Charlie Robinson (Foxy's); Catcher, Bruce Fielder (Bank); First, Gary Voegeding (Pioneer); Second, Dan Beach (Foxy's); Third, Homer Walter (Foxy's); Shortstop, Eric Sparks (Spuds); Left, George Olsen (Foxy's); Left center, Tom Popkey (Tap); Right center, Bruce Fielder (Bank); right, Dave Petsch (Bank).

Honorable mention: Pitcher, C. Heslip (Tap); Kappler (Bank), Ron Walter (Bank); Catcher, B. Pratt (Spuds), Mann (Pioneer), Marshall (DQ); First, McCulla (Foxy's), Creech (Tap), Kammen (Bank); Second, Strong (Tap), Weidmayer (Bank), Ganzhorn (Spuds), Dan Roberts (DQ), Snyder (DQ); Third, Carson (Bank), Spliss (Tap); Short-

stop, Waldridge (Foxy's), A. Marshall (DQ); Left, Kuhl (Spuds), B. Rigg (Bank), Petsch (Bank); Left center, J. Molnar (Foxy's), M. Leutz (DQ), Jim Walter (Bank); right center, Hall (Foxy's), Gormley (Tap); right, Johnson (Tap), Roberts (DQ), Frey (Pioneer), LaGrange (Spuds).

### MENS LATE GOLF LEAGUE

Roller-Fielder	38
Brokaw-Eversole	38
Popkey-Stockwell	38
Bailey-Bentschneider	37
Weaver-Wolfe	35.5
Day-Day	33
Koebbe-Koebbe	31.5
Evilizer-Randall	30
Bilimeyer-Steiner	30
Brow-Wurster	30
Pratt-Marshall	28.5
Fielder-Widmayer	27.5
Blom-Taylor	27.5
Holly-Jose	27
Lamb-Scully	26
Best-Eversole	24.5
Steele-Wurster	23
Blom-Jacobs	21
Rutherford-Green	20
Ahrens-Alber	16.5
Helfrich-Mann	16
Bunney-Petsch	15.5
Padley-Achtenberg	15
Reynolds-O'Toole	11

Handicap 0 - 9 E. Bailey 28  
Handicap 10 - 18 J. Scully 25  
Closest to pin #5 H. Holly  
Closest to SS Actual B. Bunney 56

Never underestimate your own ability; others will do it for you.

## ALBER EXCAVATING

Drain Fields-Septic Tanks-Drive Ways-Limestone  
Fill-Dirt-Drain Field Stone-Mason Sand  
Basements  
PHONE 428-8628

7601 Hashley Road Manchester, Michigan

## CLINTON THEATRE

Showing

Wed., Thurs., & Sun. 7:30 p.m. Fri. & Sat. 7:30 and 9:15

HELD OVER

"Benji is the most entertaining family picture of our time. Maybe of all time."

LE SMITH OF COSMOPOLITAN



A family film by Joe Camp

Critics and audiences alike are saying you'll fall in love with this floppy-eared dog (and his movie) no matter how old you are... no matter how young.

CHARLIE RICH FEATURED IN ORIGINAL SOUNDTRACK AVAILABLE ON EPIC RECORDS AND TAPES

## Checked the value

of your home lately? Inflation could leave you dangerously under-insured. Get the protection you need to cover current value. Call me.

TOM BURCH

Agent  
Sears, Roebuck and Co. Bldg.  
900 Briarwood Circle, Ann Arbor, Michigan 48104  
Bus. 963-3392 or 768-9900 - Res. 428-7117  
Allstate Insurance Company

**Allstate**  
You're in good hands.

# FOR SALE

Excellent Golf and Country Site

220 Acres of Rolling Land  
With Iron Creek Running Through,

Good Road Frontage

Manchester Township

Zoned RC

\$850 PER ACRE

CHAPIN, Broker

Phone 428-8961

Manchester, Mich.

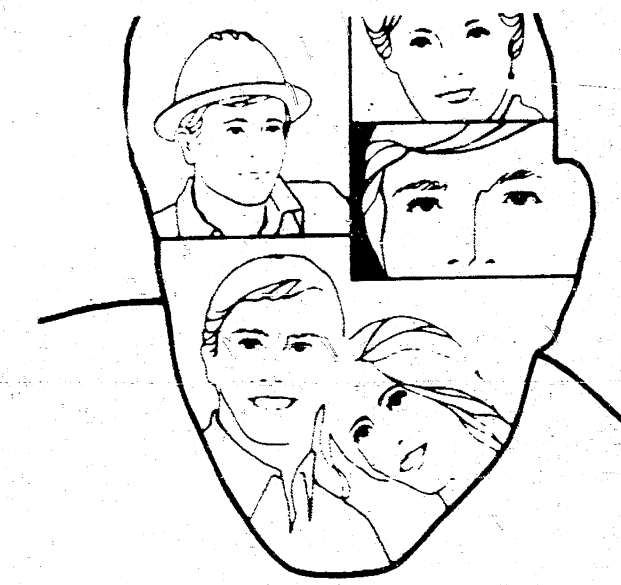


AND OTHER MAJOR APPLIANCE REPAIR  
Electrical Contracting

L. V. Kirk  
Phone: (313) 428-3701  
MANCHESTER

## Williamson

Heating & Cooling Systems  
INSTALLATION & REPAIR  
Phone 428-8692  
John Steele jr.  
Manchester



As an independent agent we answer to one boss - our hometown people

We represent several firms, but we work for only one boss - you. That way we can always place you with a company which we think is best for each line of insurance you need. Naturally, we prefer companies like Auto-Owners who look at a loss and take care of it right away, without haggling or delays. That's one of the reasons we're part of the Altogether Family. Like us, they're always there when you need them.

it's better  
**altogether**

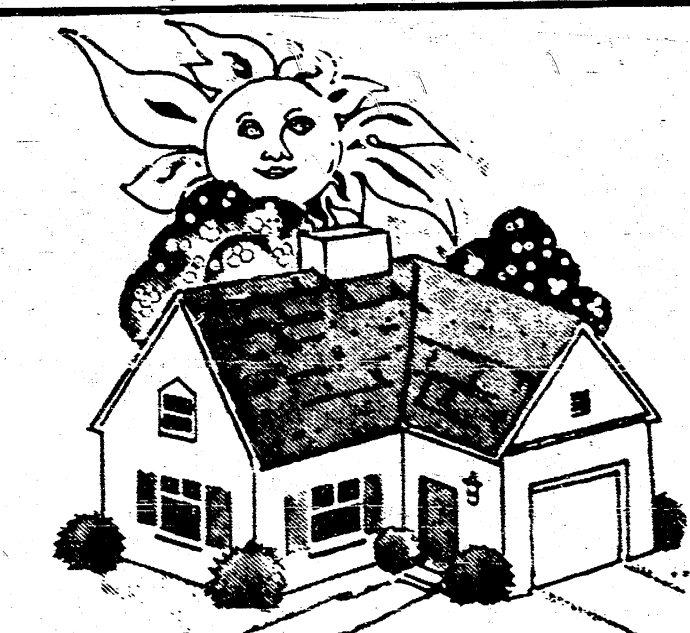
**SUTTON AGENCY**

136 East Main Manchester, Mich.

Phone 428-2891

Auto-Owners Insurance?  
LifeHomeCarBusiness

Monday thru Friday 9:30 - 5:00  
Saturday 9:30 - 3:00  
MEMBER BANKAMERICA  
D'Agostino's Florist & Greenhouse  
601 E. VERNON, MANCHESTER, MICHIGAN 48158  
PHONE 428-7620 HOME PHONE 1-517-456-7548 COLLECT



It's your home.  
Up its value with a home improvement this summer.

We'll provide the lumber & other building supplies and almost any color of paint. Plus clean-up, fix-up ideas you'll be surprised to find with a lumber company!

all at  
**Bridgewater Lumber Co.**  
8370 Boettner Rd. PHONE 428-3039



# Wedding Bells and Beautiful Brides



Every bride dreams of the perfect wedding... a day that she'll hold dear all through their lives together. Let us help with the plans for this happy day.

**Wedding**  
ANNOUNCEMENTS  
AND  
INVITATIONS...

The  
Manchester Enterprise

STOP IN AND SEE OUR FINE SELECTION

## CROSSWORD

ACROSS	DOWN	ACROSS	DOWN
1. Chew with force	2. Run	34. At home	35. For
6. Pass, as a hill	3. Palm cocktail	36. Her-	
11. Hourly	4. Eskimo dog and fire	37. Exist	
12. Rasoul	5. Ireland's	38. Ameri-	
13. NATO member	6. Not any	39. Indian (lit.)	
14. Harden fever	7. Chills and	40. Turf	
15. Marquette, explorer	8. Kind of jelly	41. Biological	
16. Sweet	9. Pipe joint	42. State of	
17. Bang	10. Paulo, Brazil	43. Bonn	
18. Like	11. Tunic ruler	44. Republic	
19. Sals notes	12. Music note	45. Adventure	
20. Shrub (Jap.)	13. Something frothy, as	46. Strong wind	
21. Mathemati-	14. rapid talk	47. Bounder	
22. Greek philosopher		48. Wing	
23. Friz-			
24. covered			
25. Capital of			
26. Sun			
27. Siberian			
28. Depart			
29. Fasten with rope			
30. Goaded			
31. Not working			
32. Unrolled			
33. "Irish Rose"			
34. Passage-way			
35. Crescent-shaped figures			
36. Social engagements			
37. Subside			
38. DOWN			
39. Fragments			

## Ask Senator GRIFFIN

By cutting through red tape, members of Congress can often lead a hand to those with problems involving the federal government. Through the columns of this newspaper, Senator Griffin answers questions of general interest. He will respond personally to all communications addressed to Senator Robert P. Griffin, Senate Office Building, Washington, D.C. 20510.

I was told by a friend that there was a time when BOTH stars and stripes were added to the official U.S. flag to represent each new State admitted to the Union. Can this be true?  
—T. B. Ferndale

Yes, it is true. For nearly 23 years, between 1795 and 1818, the official flag of the United States contained 15 stars AND 15 stripes for each State of the Union. That's how the flag looked that flew over Fort McHenry, Maryland in 1814—the flag that inspired Francis Scott Key to compose "The Star Spangled Banner."

Realizing that the addition of a new stripe for each new State would not be practical, in 1819 Congress determined that the stripe pattern on the flag should revert to the original 13, and "on the admission of every new State into the Union, one star be added to the union of the flag."

I am a working mother with a problem that must be commonplace. The office in which I work is 20 miles from my home. The area has no public transportation and I HAVE to drive to work. Although my job pays well, unfortunately my salary is not rising with the price of gas. I must drive to work but I would like to know some way to economize on fuel while I drive. Who can give me some suggestions?  
—E. J. Pontic

The Federal Energy Administration has put together 30 gas-saving tips in a pamphlet entitled "Don't be Fuelish." The pamphlet is free and can be obtained by writing: Office of Energy Conservation and Environment, Room 6439, Federal Energy Administration, Washington, D.C. 20461.

The solution to our energy problem lies to a great extent in the personal efforts of every American to save fuel. Tips like those in this pamphlet will save you money. They will also help save the Nation's fuel reserves and keep America moving.

### Announcing NEW Country Pal Dog Food and a Special Introductory Offer



In taste tests at Master Mix Research, new Master Mix COUNTRY PAL Dog Food rated more than 3-to-1 as the favorite over four leading brands

On the purchase of Master Mix COUNTRY PAL Dog Food, this ad is worth 50 cents on a 25 lb. bag, \$1.00 on a 50 lb. bag when redeemed at your local Master Mix Dealer.

MR. MASTER MIX DEALER: Central Soya Company, Inc. will redeem this coupon for 50 cents or \$1.00 based on size bag of COUNTRY PAL purchased. Please fill in the following:

Name of Purchaser: \_\_\_\_\_

Address of Purchaser: \_\_\_\_\_

Date of Purchase: \_\_\_\_\_

Amount of Country Pal Purchased: \_\_\_\_\_ 25 lb. \_\_\_\_\_ 50 lb.

Dealer Name and Address: \_\_\_\_\_

This offer expires September 30, 1975. Offer limited to participating dealers. Void where taxed or prohibited by law.

Master Mix **E. G. MANN & SONS**  
MANCHESTER AND BRIDGEWATER

## PUBLIC AUCTION

Located 5 miles east of Concord, Michigan on Sears Rd., or north of Horton, Michigan to Sears Rd., 1 1/2 miles west.

Friday, September 12, 1975 11 am

GOOD FARM MACHINERY  
J.D. 4020 D tractor, w/wide front, PS; Int. M tractor; J.D. BB 4x16 mtd. plow; J.D. 17 run grain drill, like new; Int. 58 4-row corn planter w/disc open; New Idea 324 - 325 2-row pull type picker; J.D. KRA12 ft. wheel disc; J.D. 12 ft. drag; J.D. 4 bar parallel rake; J.D. 12 ft. cultipacker; J.D. 44 PTO spreader (gear needs repair); J.D. rotary 2 row field chopper; J.D. 32 B 6 row field sprayer w/berglass bbl.; Int. 7 ft. trail mower; T55 PTO baler; Gehl Chopper w/corn and hay heads; Kewanee 32 ft. double chain elevator; N.H. 60 - 8 ft. PTO sugar feed combine; 2 running gears, JD 6 ton, N.I. 8 ton; 2 gravity boxes; 2 flat beds; crowfoot 4 bottom packer; 7 ft. adj. rear blade; PTO 10 in. post digger.

TRUCK - CADET TRACTOR  
1964 2 ton Chev. truck with air over hydraulic, 16 ft. Knaphide grain stock rack.  
1972 Cub Cadet 106 riding mower with PTO; good rototiller.

FEED - MISC.  
200 bales 1st alfalfa; 200 bales 2nd alfalfa; 2 round wire corn cribs; 5 bu. DeKalb Sudax seed; Berg barn cleaner.  
Milking equipment inc. stainless steel wash vat, 2 pr. electric clippers; w/ cow and sheep head; swine feeders; wagon of useful misc.

HOUSEHOLD SELLS FIRST  
Colored console TV; air conditioner; humidifier; Spartan console radio; oak comb. bookcase, writing desk; wardrobe; chairs inc. cane back; bed with springs and mattress; doll cradle; reed fernery; water pitcher and bowl; wall telephone (damaged); lard press; crocks; canning jars; old books; Underwood typewriter; child's swing set; other clean misc.

TERMS No purchases removed until settled for. Lunch on grounds. Not responsible for accidents.

**PHELHAM FARMS**  
AUCTIONEERS:  
Martin "Barney" Barabart  
Phil Habess





**Weekends Good Time for Baking**

For active families or slow-to-get moving folk, the weekend is a great time for baking a moist, warm peanut butter brunch cake. The delicate flavor of the peanut butter used and the unusual moist topping result in a satisfying late breakfast bread.

**PEANUT BUTTER BRUNCH CAKE**

- |                              |                                   |
|------------------------------|-----------------------------------|
| 3/4 cup sugar                | 1/2 teaspoon salt                 |
| 1/3 cup margarine            | 2/3 cup milk                      |
| 1 egg                        | 1/2 cup chopped nuts              |
| 1/3 cup creamy peanut butter | 1/2 cup dairy sour cream          |
| 1-1/2 cups unsifted flour    | 1/4 cup firmly packed brown sugar |
| 2 teaspoons baking powder    |                                   |

Grease a 10x8x1 3/4-inch baking dish. In large mixing bowl stir sugar and margarine until blended. Stir in egg and peanut butter. Stir together flour, baking powder and salt. Add to peanut butter mixture alternately with milk, beginning and ending with flour mixture and mixing well after each addition. Mix in nuts. Turn into prepared dish. Stir together sour cream and brown sugar; spread over batter. Bake in 325° F oven 1 hour or until cake springs back when touched. Serve hot or warm. Makes 9 pieces.

Note: If desired bake in 9x9x2-inch baking pan in 350° F oven 35 to 40 minutes or until cake springs back when touched.

**Festive Chicken**

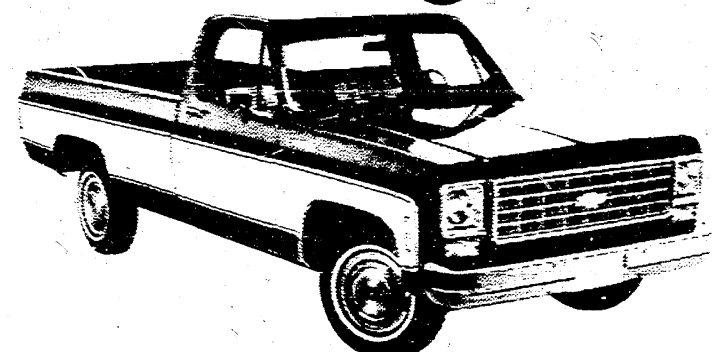


How to entertain and still keep the budget in line? Your guests will love this luscious chicken with wine and herbs, a sure-fire hit from the cookbook, "Muelier's Classic Recipes."

**CHICKEN WITH WINE AND HERBS**

- |                                          |                                    |
|------------------------------------------|------------------------------------|
| 1/2 cup olive oil                        | 1/2 teaspoon pepper                |
| 2 1/2 pounds chicken parts               | 1 tablespoon chopped parsley       |
| 1/4 pound salt pork, cut in strips       | 1/2 teaspoon basil leaves, crushed |
| 1/2 cup chopped onion                    | 1 tablespoon salt                  |
| 1 teaspoon chopped garlic                | 3 quarts boiling water             |
| 1/2 cup Marsala wine                     | 8 ounces (1 cup) klops egg noodles |
| 2 tablespoons butter or margarine        | Grated Parmesan cheese             |
| 1 can (15 ounces) Italian-style tomatoes |                                    |

Heat oil in a Dutch oven or large pan; brown chicken on all sides. Add salt pork, onion, and garlic; cook until lightly browned. Add Marsala and butter. When wine is completely reduced, add tomatoes, pepper, parsley, and basil. Simmer uncovered about 25 minutes, stirring occasionally, until sauce begins to thicken. Meanwhile, add salt to rapidly boiling water. Gradually add noodles so that water continues to boil. Cook uncovered, stirring occasionally, 7 to 9 minutes until desired tenderness. Drain in colander. Return noodles to pot; pour in sauce from chicken. Mix well; turn into serving dish and top with chicken parts. Sprinkle with Parmesan cheese. Yield: 4 to 6 servings.



**AVAILABLE POPULAR OPTION PACKAGES ARE PRICED LESS ON CHEVY BONANZA PICKUPS.\***

Like to fit your next Chevy pickup out with all the available options you've always wanted? Things like power steering and air conditioning? We can show you how to do it and pay less than you would if you purchased the same options individually. Ask about the savings on Chevy Bonanza Specials.

\*Based on comparison of manufacturer's suggested retail price for the items available as separate options.



**Tirb Chevrolet Company**  
131 ADRIAN STREET MANCHESTER, MICH

**AUCTIONEER**  
**JERRY JACOB**  
LARGE OR SMALL SALES  
FARM-HOUSE-BUSINESS  
COMPLETE MANAGEMENT  
Sale Dates Available  
PHONE 428-7975

**Brown's TV & Radio**  
428-7640  
**ZENITH**  
Color and Black & White TV  
151 East Main Street  
Manchester, Michigan

**Late---But Not Too Late**  
TO REGISTER FOR THE FALL SEMESTER  
at  
**WASHTENAW COMMUNITY COLLEGE**  
LATE REGISTRATION FROM WEDNESDAY  
SEPTEMBER 3--TUESDAY, SEPTEMBER 9  
DAILY HOURS: 8:30-11:30 AM  
1:00- 4:00 PM  
EVENING HOURS: 6:30-8:30 PM ON  
WEDNESDAY and THURSDAY, SEPTEMBER 3 and 4 ONLY  
**Late Fee: \$5.00**  
DON'T DELAY---REGISTER TODAY  
For further information,  
call 971-6300,  
Ext. 402

**4-H Horse Show Champion**



Several Washtenaw County 4-H members participated in the 1975 Michigan 4-H Horse Show, held August 19 on the Michigan State University campus. The event, directed by Dr. Richard J. Dunn, Cooperative Extension specialist in animal husbandry, involved over 400 Michigan members. Competition was divided into 10 divisions with 156 classes using nine show rings. Craig Rhoades of 10200 Grossman, Manchester, was named Reserve Champion in Fitting and Showmanship, Grade Horses - Shown Primarily Under Western Equipment (12-14 years of age). He also won four awards in other classes.

**MEETING NOTICE**

The American Legion Auxiliary, Unit 117 of Manchester, will hold their regular meeting and installation of Officers on Wednesday, September 10 at 7:30 p.m. at the home of Mrs. William Richardson at 128 Riverside Drive in Manchester. New officers to be installed will be as follows: President - Mrs. Mary Smith, First Vice-President - Mrs. Linda Jacob, Second Vice-President - Mrs. Robert Popkey, Secretary - Mrs. Max Walter, Treasurer - Mrs. Phyllis Baker, Sgt. of Arms - Mrs. Vearyl Widmayer, Chaplain - Mrs. Clar-an Knass, Sr., Historian - Mrs. Phillip Kern.  
Reminder: All newly installed officers must have their dues paid for 1976 prior to September 10 meeting date. Dues for 1976 are now being accepted by the Treasurers.

**WASHTENAW COUNTY UNEMPLOYED COUNCIL**

The newly formed Washtenaw County Unemployed Council has just published its "Booklet of Facts and Information". The Booklet will be distributed free.

The Council was formed primarily by and for the unemployed to deal with the worsening problems of unemployment in the county. The Council works within the general guideline that the right to a decent job at a living wage, doing meaningful work is a right of all people --- regardless of sex, race, or age. Within this guideline the Council has made a number of demands of the Michigan Employment Security Council (MES) including that MES require of employers that they reduce profits and dividends rather than jobs.

The council is also pushing for changes in MES procedures such that there be no waiting period for benefits regardless of whether an employee quit or was fired. Also MES is urged to allow the unemployed the option to receive benefits by mail.

The Unemployed Council is planning programs to share and exchange skills. It will also provide information on and referrals to resources for the unemployed. Working with the Council is a Legal Aid lawyer and the Ann Arbor Tenants' Union.

Meetings are every Tuesday at 7:30 p.m. at 218 N. Fourth Avenue, and are open to anyone concerned about unemployment. Unemployed Council has just published

**ATTENTION HUNTERS**

Two pamphlets are published by the Department of Natural Resources that Representative Michael Conlin (R-Jackson) feels will be helpful to all hunters in Michigan.

The Michigan Big Game - Small Game Hunting Guide explains all of the state regulations regarding large and small game hunting. It also contains a schedule of license fees and a schedule of season dates and locations where hunting is permitted.

Another pamphlet explains the antlerless deer permits and the rules governing the hunting of doe in Michigan. This booklet also provides detailed maps of the antlerless deer hunting regions and the season dates for each region.

"These two booklets provide an easy to understand, detailed guide to hunting in Michigan. I would urge all hunters, whether they be first timers or experienced, to obtain and read these pamphlets," Conlin said.

Representative Conlin added that they may be obtained by writing him in care of the State Capitol, Lansing, 48901.



Sign outside a New York corner shop: "If you're 20 and want to look like 40, that's your business. But if you're 40 and want to look 20, that's our business."

**10% Off On All Case Compact Tractors In Stock**

If you mow 1/2 acre or more...

**YOU'RE A BIG TRACTOR MAN!**  
Why compromise with an underpowered make-do? Mow 34 to 48 inches at a pass—sail through long grass at over an acre-an-hour clip! Case compacts are built like the big ones — with the same engineering, performance, dependability and service as big Case farm and construction tractors.

TEST DRIVE ONE TODAY — Just for the FUN of it!  
8 hp thru 16 hp models

**case**  
**K & W Equipment, Inc.**  
AGRICULTURAL AND CONSTRUCTION EQUIPMENT  
105 M-52 Phone 428-7666 Manchester

**FILLYAW'S SERVICE**  
327 WEST MAIN MANCHESTER  
**24 HOUR ROAD SERVICE**  
PHONE DAYS 428-8576 PHONE NIGHTS 428-8053

**Special This Week**

- 4 Only F-78x15 General Radials (Blims) Mounted and Balanced **\$150**
- 4 Only G-78x15 B F Goodrich Radials (Blims) Mounted and Balanced **\$200**
- 4 Only H-78x15 Goodyear Take Off Tire & Wheel Dodge Van, Chrysler, Plymouth and Dodge Cars **\$45**
- 2 Only H-78x15 Firestone 8 Ply Take Off Tire & Wheels Fits Ford Pick Up **\$45 ea.**
- 775x15 Goodyear Snow Tires New **\$19.95 ea.**

**Service Department Special**  
**FREE CASE OF POP**

WITH A BRAKE JOB WITH A WHEEL ALIGNMENT  
WITH A OIL-LUB AND FILTER WITH A ENGINE TUNE-UP

We Carry A Complete Line Of Tires And Batteries, Alternators and Regulators, Starters and Solenoids

50 month Batteries \$29.95 and up

**WE TURN BRAKE DRUMS AND ROTORS.**



# Agriculture in ction

Michigan Farm Bureau

## A LONG SHOT WORTH BETTING ON

There's no doubt about it — AFL-CIO President George Meany is a powerful man. He's become accustomed to the victor's role, whether it's in the political, legal, business or public opinion arenas where he meets his awe-stricken opponents. From his lofty position, he even dictates that the nation's administrators "will have to come to us" to negotiate an end to the longshoremen's refusal to load ships with grain bound for Russia.

In this latest skirmish, however, he may have more than he bargained for. The people who produced that grain, who poured their resources, their time, their labor into its production, will not stand meekly on the sidelines when they are told they cannot sell it.

As odds go, it's not what you'd call an even match: 5 to 35 is a long shot, with farmers the 5% of our population who produce the food and fiber for the other 85%.

There's another factor: Mr. Meany doesn't play by the same set of rules that farmers do. His facade of concern for consumers gains him points of public support, while farmers wield only the weapon of Truth — not always heard or accepted. Then there's the timing...with elections coming up, politicians like to keep the majority happy.

In their anger and frustration of responding to government's request for all-out production, only to have their markets curtailed, they've thought of playing the game by Mr. Meany's rules. In addition to being producers, farmers are also the largest consumer group in the state. Can you imagine what it would do to this state's economy if they decided to buy out all steel products, for example? But this is against farmers' basic philosophy; they really do care about the welfare of others. So they'll find another way.

One of those ways is through the courts. By filing charges against the International Longshoremen's Association to stop union interference of grain shipments to Russia, another is telling consumers the unappealing alternatives to agricultural exports.

government storage and costly farm programs paid for with taxpayer dollars, cutbacks in production creating shorter supplies and higher prices here at home. And simple, honest truths such as: even if farmers gave their wheat away, a 36¢ loaf of bread would still cost 32¢. If they can just get consumers to listen, they're sure they can even up those 5-35 odds.

## WHAT'S COOKING IN MICHIGAN

Join in the celebration of National Better Breakfast month and get your family off to a smashing good start every day. Serve nourishing, enjoyable foods, taking advantage of those that are seasonally plentiful and economical.

Marketing officials of the Michigan Department of Agriculture say plentiful foods include tasty fruits like juicy sweet cantaloupes, apples, pears and prune-plums, wheat products, and milk and milk products. All provide the makings of a good breakfast.

Fruits are important sources of minerals, vitamins and fiber. They're great eaten alone and they go well with most other foods. An easy-to-fix breakfast for those on-the-go could include a cottage cheese and fruit combination toast and milk.

For superb nutrition serve fruits with hot cereals. Cooked rolled oats and wheat cereals are good sources of protein. They cost less per serving than most other cereals and supply is plentiful.

USDA has a record wheat crop forecast for 1975 at 1.785 billion bushels. So, in addition to cereals, breads are plentiful, and sandwiches make quick nourishing morning treats, too. Use leftover meats like cold ham or meat loaf, cheeses and sandwich spreads with a variety of enriched breads.

You may want to substitute a hard-boiled egg for the sandwich on occasion. Cook it the night before or, better, yet, cook several and store them in the refrigerator to have on hand for snack foods. An egg is a complete protein food in itself and a real bargain cents-wise.

Nutritionists recommend you form good breakfast habits. For lasting energy and excellent health. If irregular schedules prevent everyone from sitting down to the table together, build breakfast around serve — yourself in anytime convenience foods.

**The Calico Cat**  
BOOK & GIFT SHOPPE  
110 E. Main St.  
PHONE 428-7453  
HOURS: Mon-Fri, 9:30-5:30  
Sat. 9-5:30  
Books For The Entire Family  
Special Gift Items

**WANTED**  
500 Cars - Wrecks or Junkers  
Free Pick-up To \$125.00  
"Help Keep Your Community Beautiful"  
Phone 428-8080 or 517-787-7044  
**Verhines Auto Salvage**  
1584 KESTIN RD. MANCHESTER

## ATTENTION

Annual Manchester Ford Plant Employee Picnic Sunday, September 14th, at 1:00 p.m. at the Saline Union Hall, Monroe Street in Saline, Michigan. Bring a dish to pass and table service. All former employees of the Manchester Plant and their families are cordially

## TUESDAY NIGHT SINGLES

On September 9, 1975, the Merrimen Band will be playing for the Tuesday Night Singles club at the Briarwood Community Room from 9 p.m. to 12 midnight. These dances are held every Tuesday night and single, widowed, or divorced adults are welcomed to attend.

Member of Ann Arbor Board of Realtors Multiple Listing Service  
**Spear & Associates,**  
INCORPORATED REALTORS  
122 West Main Phone 428-8388 Daily Manchester

Three bedroom home completely remodeled has been reduced in price, owner anxious to sell. Aluminum siding, new kitchen, new bath, new family room, convenient location low thirties.

**GREAT FOR HORSES** this three bedroom home has a 30 x 40 barn and five acres of land, and only one mile North of Manchester, one of the nicest views in the area. **BRING OFFERS!**

**YOUR OWN PRIVATE LAKE** this 2,000 sq. ft. ranch home has a private lake on 9 acres, 2 fireplaces, 2 1/2 baths, rec. room, family room, and many more extras.

**BRICK FARM HOUSE** on five acres with **EIGHT** bedrooms, and 2,900 sq. ft. also has 2 older barns. low forty's.

**MINI-FARM** a four bedroom home on six or ten acres with a complete set of barns in good condition, home has been remodeled and is priced at \$48,500. This could be your country estate.

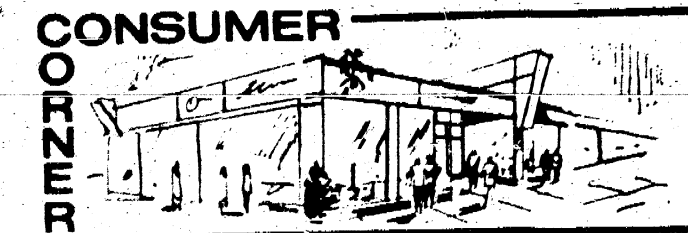
Elegant four bedroom home, this turn of the century charmer has all of the modern conveniences of today with the grandeur of days gone by, Fireplace, Patio, Formal Dining Room, Breakfast Nook, and a two car garage. One of the nicest homes in Manchester.

**Live At The Lake!** This 2 bedroom ranch is neat as a pin and is on a half acre lot. It has a nice breezeway, and screen in porch. A large 2 1/2 car garage. This home has lake access to Pleasant Lake and is only a stones throw from the Lake. Low Thirties.

**LARGE CAPE COD** on 2 1/2 acres has three large bedrooms, quality built, 2,000 sq. ft. a beautiful setting only two years old. You must see this one to appreciate the extras that make this home one of the best buys in the area.

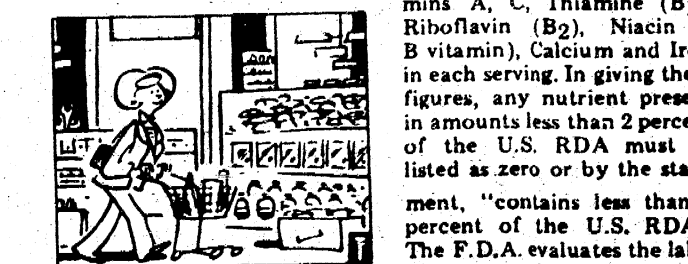
**BUILDING LOTS** stop in and see us now for your building needs. We have over 15 parcels ranging from 1 acre on up in size. This is the time to buy your lot!!!!

We have buyers -- call us to sell your property  
**REAL ESTATE ADVICE**  
No Obligation - Residential Properties - Farms  
Commercial Properties - Vacant Lands  
OFFICE HOURS:  
Mon. thru Fri.  
9 a.m. to 5 p.m.  
Sat. 9 am to 12 noon  
Eves & Weekends call:  
Jim Mann 428-8074  
Bill Pratt 428-8862  
Anette Lawson 428-4014



## READING THE LABEL

The road to good nutrition lies down the grocery aisle if you read the food labels. Current Food and Drug Administration regulations will require food manufacturers who promote the nutritional value of their products to provide nutritional



information on their packages. These new labeling regulations are designed to help you select nutritious foods by providing extensive nutrition information. increase your knowledge of nutrition and improve the nutritional quality of the U.S. food supply. Manufacturers who provide nutrition information must show the quantity of calories, protein, carbohydrates and fat per

servings. In addition, the protein, vitamins and minerals must be expressed as a percent of the U.S. Recommended Daily Allowance (U.S. RDA). Although manufacturers may voluntarily list 14 vitamins and minerals, they must list the percent of the U.S. RDA of protein, vitamins A, C, Thiamine (B1), Riboflavin (B2), Niacin (A B vitamin), Calcium and Iron in each serving. In giving these figures, any nutrient present in amounts less than 2 percent of the U.S. RDA must be listed as zero or by the statement, "contains less than 2 percent of the U.S. RDA." The F.D.A. evaluates the label statements for accuracy, so you can be confident that what a food manufacturer lists on the label is in the product.

With the hectic schedules most Americans keep, grabbing snacks or even skipping meals is important—more than ever before—that as a food shopper you make sure that the foods you select and serve provide good nutrition. So, take the few extra moments to exam-

NUTRITION INFORMATION	
Per 1 Cup Serving Contains 1 Cup Serving	
Calories	150
Protein	8 grams
Carbohydrate	14 grams
Fat	6 grams
PERCENT OF U.S. RECOMMENDED DAILY ALLOWANCE (U.S. RDA)	
Protein	15
Vitamin A	20
Vitamin C	10
Thiamine (Vitamin B1)	6
Riboflavin (Vitamin B2)	8
Niacin	4
Calcium	2
Iron	2

\*Contains less than 2% of U.S. RDA for the nutrient

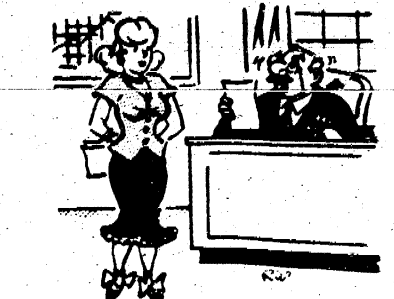
INGREDIENTS: WHEAT, SUGAR, CORN SYRUP, SOYBEAN OIL, SOY LECITHIN, BARTER'S OIL, SALT, ASCORBIC ACID, MEGACHEM, TITANIUM DIOXIDE, VITAMIN A PALMATE, RIBOFLAVIN, NATURAL FLAVOR AND COLOR.

Food Company Name  
Address

ine food labels and compare nutritional values.

**Sample Food Label**

For a free booklet, "Food Labels: The Guide To Better Nutrition," aimed at making you a good label reader, send your name and address to: John W. Gage, Department M, Hoffmann-La Roche, Inc., Nutley, New Jersey 07110.



"Gladys," said the boss, "who told you that you could neglect your office duties because I gave you an occasional kiss and pat?"



A speed-fiend we know bought a new car painted red on one side and blue on the other. "What's the idea of doing your car up like that?" we asked. "It's for when I get hauled up before the judges for speeding," said our young-man-in-a-hurry. "You ought to hear the witnesses contradicting one another."

**Gasoline Home Fuel** **Custom Diesel Fuel Oil Lubrication Oil**  
**Oil Burner Service**  
(BUDGET PLANS AVAILABLE)  
**Washtenaw Farmers Oil Co.**  
KEITH BRADBURY - TANKWAGON SALESMAN  
PHONE: 971-7230  
5005 CARPENTER ROAD, YPSILANTI, MICH.

**THE MANCHESTER ENTERPRISE OFFERS**  
WEDDING INVITATIONS  
PAPER TABLE ROLLS  
LETTERHEADS AND BUSINESS ENVELOPES  
BUSINESS CARDS STATEMENTS  
LET US SUPPLY YOUR BUSINESS NEEDS  
305 BEAUFORT ST. MANCHESTER, MICH.

**WANTED STANDING TIMBER and WALNUT**  
Let us look at your wood lot we can give you a price on selective cutting of mature trees.  
Tri-County Logging, Inc.  
P.O. BOX 467  
CLINTON, MICHIGAN 42936  
Phone 517-448-7060 or 456-4731

**David L. Hoover**  
LANDSCAPE DESIGN AND CONSTRUCTION  
Complete Landscape Planning and Installation service  
PATIOS-DECKS-FENCING-WALLS  
SEEDING-SODDING-PLANTING  
CLINTON, MICHIGAN  
PHONE 517-456-7829

"People always ask if I can save them money on car insurance. It's amazing how often my answer is, 'yes.'"  
Maybe I can save money for you, too. Call or come in and see me.  
MATT DONNELLON  
200 Riverside Drive  
Phone 428-8364  
Like a good neighbor, State Farm is there.

*You need more than a bank... you need a banker.*

A banker is someone to turn to for advice and counsel when you need it, before you need it. Skilled, thorough, efficient, trust-worthy, knowledgeable. Try the desk side manner of an INTERESTED banker. It only makes good sense. And, only a banker has the experience and training to impart the best of counseling in all matters financial.

**UNION SAVINGS BANK**





WANT ADS

ALL CLASSIFIED AD ONE COLUMN IN ADVANCE

WANTED - Hay of all kinds. Especially needed, large quantity of clover and timothy mixed or alfalfa mixed.

FOR SALE - Goat kids, 1 billie, 1 nannie, also Suffolk yearling Ram 428-7349.

EXPERIENCED day care in my home. Call 428-7884.

FREE - beautiful five month old puppy - part Husky, good with children. 428-7821.

Wanted - No experience necessary, we train. Excellent salary and benefits. Guaranteed job training for only 5 year enlistment with U.S. Army.

Card of Thanks - We would like to thank everyone who donated to the Jerry Lewis Muscular Dystrophy Fund on Labor Day.

Buy, Sell, Rent with a Want Ad

HELFRICH MASONRY - FREE ESTIMATES - BRICK, CONCRETE, STONE & MORE.

FOR SALE - Goat kids, 1 billie, 1 nannie, also Suffolk yearling Ram 428-7349.

EXPERIENCED day care in my home. Call 428-7884.

FREE - beautiful five month old puppy - part Husky, good with children. 428-7821.

Wanted - No experience necessary, we train. Excellent salary and benefits.

Card of Thanks - We would like to thank everyone who donated to the Jerry Lewis Muscular Dystrophy Fund on Labor Day.

Buy, Sell, Rent with a Want Ad

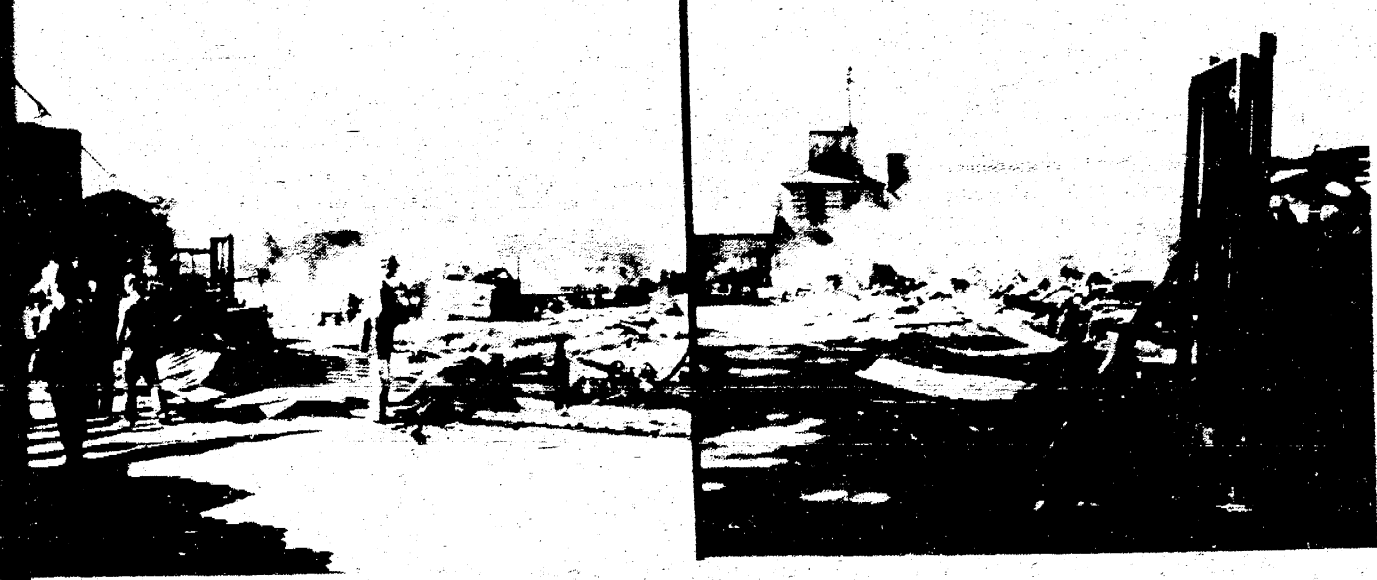
HELFRICH MASONRY - FREE ESTIMATES - BRICK, CONCRETE, STONE & MORE.

FOR SALE - Goat kids, 1 billie, 1 nannie, also Suffolk yearling Ram 428-7349.

THE MANCHESTER ENTERPRISE

YEAR VOLUME NO. 45 15 CENTS PER COPY THURSDAY, SEPTEMBER 26, 1975

BRIDGEWATER LUMBER SUFFERS HUGE LOSSES



Four departments battled a roaring pre-m fire today at Bridgewater Lumber company. Firemen from Manchester, Pine, Clinton and Pittsfield were at the scene for nearly 5 hours.

Varsity Football Schedule - Sept. 13-St. Alphonsus-Away 2:30, Sept. 19-Addison\*-Home 8:00, Sept. 26-Onsted\*-Homecoming-Home 8:00.

Summary of Minutes - The meeting was called to order by Herb Mahoney, President. Minutes were approved.

William Brown Named Principal - A new principal for the Miller Elementary School has been appointed by the Brighton Board of Education.



SUB COMMITTEE ON HUMAN GROWTH AND DEVELOPMENT. NEXT MEETING THURSDAY, SEPTEMBER 18TH, 8 P.M.

PROGRAM RECOMMENDATIONS - The committee on Human Growth and Development, composed of Lois Kuntz, Barbara Lund, Fred Munson, Mary Munson, Don Tassie, and Sally Taurialmenmet four times during the late spring and early summer and has the following initial report to present to the Citizens Advisory Committee.

1. Identification of Needs: There is in fact, a serious weakness in our current educational teaching program. This has become apparent in discussions with parents, school staff, and with students.

2. Recommendations: A. On the basis of the needs as we have identified them, we recommend that the school board charge the school system with the responsibility for developing an appropriate program.

Bloodmobile Clinic at Chrysler - Mrs. Millard Uphaus was the Chairman-of-the-Day for the Chrysler Proving Ground Bloodmobile Clinic on September 3.

William Brown Named Principal - A new principal for the Miller Elementary School has been appointed by the Brighton Board of Education.

Summary of Minutes - The meeting was called to order by Herb Mahoney, President. Minutes were approved.