



Manchester's first taste of competition will be Wednesday night at 7:30 p.m. when they meet Sand Creek in a scrimmage. The Dutchettes first opposition in game form will take place Monday, January 20 at 7 p.m. when they host the Clinton squad. There will be no charge to witness this event so come support Manchester's new competitive sport.

VOLLEYBALL SCHEDULE

Jan. 20 Clinton at home 7 p.m.
Jan. 22 Saline away at 4:30 p.m.
Jan. 27 Onsted at home 7 p.m.
Feb. 3 Clinton away 7 p.m.
Feb. 5 Addison home 7 p.m.
Feb. 10 Onsted away 7 p.m.
Feb. 15 Morenci Tournament 9 a.m.
Feb. 17 Addison away 7 p.m.
Feb. 24 Dundee home 7 p.m.
Feb. 27 Blissfield away 5 p.m.

DUTCH MATTERS BEHEADED

By Jon Hardenbergh
On Thursday, January 9 the Clinton Redskins visited Dutch Country. Manchester overpowered 3 of the first 5 weights then Clinton got going and won the next 5 of 7 meetings to post a 24-36 victory. Manchester started slow in the 98 pound class as Gary Bondy held on until the second period but was pinned. Pin time was 2:54 giving Clinton a 0-6 lead. Joe Roberts at 105 pounds began slowly but as the match progressed he got better. In the first period Joe fell to a take

Continued on page 7

Dutch squad hollered 'defense'. This was because Manchester's undefeated league mates, Addison, held Clinton to 38 points earlier this season and they wanted to do likewise. Statistically speaking-Manchester is 6-0 in the L.C.A.A. and posted 29 turnovers to Clintons 33. Dutchmen shot 46% from the field but lost 9 of 4 jumps. All Dutchmen played and all scored. Coach's offensive pick is Paul Tassie for his assists while hitting for 13. Defensive pick is Dean Decker for his 19 rebounds, 5 steals, 2 blocks while popping for 15 points.

Statistically speaking-Manchester is 6-0 in the L.C.A.A. and posted 29 turnovers to Clintons 33. Dutchmen shot 46% from the field but lost 9 of 4 jumps. All Dutchmen played and all scored. Coach's offensive pick is Paul Tassie for his assists while hitting for 13. Defensive pick is Dean Decker for his 19 rebounds, 5 steals, 2 blocks while popping for 15 points.

BOXSCORE table with columns for player names and statistics (points, rebounds, assists, steals, blocks).

L.C.A.A. doing this past Friday-Manchester 79-Clinton 39, Addison 82, Grass Lake 65, Hudson 75, Sand Creek 64, Onsted 63-Morenci 59.

On Friday, January 17, Manchester opens up the second half of the season by traveling to Onsted to meet the Wildcats.

VOLLEYBALL AT MANCHESTER?

By Jon Hardenbergh
Yes, that white, leather-covered ball inflated to 8 pounds pressure has come to the high school to be battered back and forth over a high net by the girl's varsity and junior varsity teams. Members of the varsity are: Co-captains Chris Kniahnycky and Penny Smith with Nicki Lentz, Brenda Sutton, Sue Korth, Sunday Taylor, Jayna Ahrens, Lee Ann Rogers and Pavi Tainen. The squad of J.V.'s are: Co-captains Sally Hamminger and Carol Kensler with Jill Curley, Janel Kirk, Theresa Benedict, Theresa Brokaw, Michelle Kempf, Beth Feldkamp, Ann Johnson and Rose McEwen. Volleyball coach is Mrs. P. Seeback.

1975 SCORPION SNOWMOBILES ON DISPLAY AT

K & W Equipment, Inc. AGRICULTURAL AND CONSTRUCTION EQUIPMENT 105 M-52 Phone 428-7666 Manchester

FOR YOUR WEDDING RENT the LATEST in Men's FORMAL FASHIONS Special Wedding Rates RUSSELL'S TUXEDO RENTAL 1230 Packard Rd. 665-4549 Ann Arbor

REPORT OF CONDITION OF UNION SAVINGS BANK OF MANCHESTER, WASHTENAW COUNTY, MICHIGAN

And Foreign and Domestic Subsidiaries, at the close of business December 31, 1974, a state banking institution organized and operating under the banking laws of this State and a member of the Federal Reserve System. Published in accordance with a call made by the State Banking Authorities and by the Federal Reserve Bank of this District.

ASSETS table listing Cash and due from banks, U.S. Treasury securities, Obligations of other U.S. Government agencies and corporations, etc.

LIABILITIES table listing Demand deposits of individuals, partnerships, and corporations, Time and savings deposits of individuals, partnerships, and corporations, etc.

RESERVES ON LOANS AND SECURITIES table listing Reserve for bad debt losses on loans, Other reserves on loans, Reserves on securities, etc.

CAPITAL ACCOUNTS table listing Capital notes and debentures, EQUITY CAPITAL TOTAL, Preferred stock-total par value, etc.

MEMORANDA table listing Average of total deposits for the 15 calendar days ending with call date, Average of total loans for the 15 calendar days ending with call date, etc.

I, Richard Z. Wolf, Cashier, of the above-named bank do hereby declare that this report of condition is true to the best of my knowledge and belief. Richard Z. Wolf

We, the undersigned directors, attest the correctness of this report of condition and declare that it has been examined by us and to the best of our knowledge and belief is true and correct.

James C. Hendley, Director; Ira E. Johnson, Director; Willard Mann, Director; Margaret A. Johnson, Notary Public

Area Obituaries

Mrs. Alta L. Jefferies 122 Division St. Manchester

Age 63 years, died Thursday at St. Joseph Mercy Hospital. She was born November 23, 1911. She was married to Lloyd Jefferies in 1949. She is survived by her husband; one son, James Jefferies of Osceola Air Force Base; one step-son, Edward Jefferies of Germany; two step-daughters, Mrs. Doris Snyder of Rochester, New York, Mrs. Jaunita Gibean of Rochester, New York; one brother, Russell Yeager of Lapeer; and one sister, Mrs. Ida Hutton of Osceola Mills, Pa.

Mrs. John (Chrisoula B. Hofhaneasian 333 North Lake Street Grass Lake

Age 51, passed away January 11, 1975 in University Hospital. Born July 22, 1923 in Lansing, Michigan, she was the daughter of Mike and Pauline Welton Misalides. On September 15, 1951 she was married to John Hofhaneasian; he survives. Mrs. Hofhaneasian was a member of Emmanuel United Church of Christ of Manchester and was a past president of the Women's Fellowship of the church. Survivors besides her husband include: one son, Dorian Hofhaneasian at home; one daughter, Melanie at home; two brothers, Sam Misalides and Malatvos Misalides of Ann Arbor. Funeral services were held Tuesday, January 14 at 2 p.m. at Emmanuel United Church of Christ in Manchester with Pastor Joseph W. Wise officiating. Burial followed in Oak Grove Cemetery. Memorial contributions may be made to the Kidney Foundation.

SOCIAL SECURITY NEWS

Robert A. Kehoe, Manager of the Social Security Office in Ann Arbor, is reminding all persons over 65 that they have the months of January, February and March to sign up for Part B, or the doctor bill portion, of Medicare if they missed their initial enrollment period at age 65. This opportunity is also extended to those new Medicare eligibles who have been on the Social Security Disability rolls for at least 2 years.

Whereas, Part A, or Hospitalization, is essentially automatic for all persons 65 and over who receive or would be eligible for Social Security checks, as well as all Disability beneficiaries in their 25th month, Part B is strictly voluntary, costs a monthly premium of \$6.70 and you can sign up for it only at certain designated times. Until recently a person who failed to enroll for Part B at his first opportunity had only three "open seasons" or General Enrollment Periods after that in which to enroll. Thus, if he didn't enroll by the time he was about 68, he was forever excluded. Under a change in the law late in 1972, however, a senior citizen-NO MATTER HOW FAR BEYOND AGE 65 HE IS NOW-can sign up for Part B in the first three months of 1975. Moreover, anyone who had previously asked to have his Part B terminated may now re-enroll, regardless of age. This is an important provision of the law and may affect many people who were previously told they were too late to sign up! Disabled persons, who first became eligible for Medicare in July 1973, can also sign up for Part B if they declined it initially. Kehoe speculated that many disabled individuals who said "No" to Medicare previously will now, on the advice of social workers and private insurance representatives, want to change their minds and sign up. After an annual deductible of \$60.00, Part B pays 80% of the allowed charges for doctor bills, out-patient, X-ray and laboratory work, emergency ambulance service, and nearly all medical expenses

outside of in-patient hospitalization. To enroll, or for any information about Medicare or any other aspect of Social Security or Supplemental Security Income, contact the Social Security Office at 2929 Plymouth Road, Ann Arbor. Telephone 994-3310.

ROGERS CORNERS EXTENSION GROUP

The Rogers Corners Extension Group will meet January 22 at 8 p.m. at the home of Mrs. Warren Hoover. Please note change of date.

KINGS DAUGHTERS

The Kings Daughters will meet at the Methodist Church Thursday, January 23 at 1:00 p.m.

BIRTHS

Master Sergeant and Mrs. Ray F. Kemmer of Lakeside, England welcome a son Mark Eugene 7 pounds and 9 ounces on January 9, 1975. Maternal grandparents are Mr. and Mrs. Eugene Hageman of Chelsea. Paternal grandparents are Mr. and Mrs. Ernest Kemmer of Manchester. Mark Eugene is the 39th great-grandchild of Amelia Kemmer, also of Manchester.

Mr. and Mrs. Edward Tubaguh of Madison Street, Manchester welcomed a daughter on January 12. Her name is Amanda Kay, she weighed 7 pounds, 14 ounces and she is their first child.

Wamplers Lake Resort Located on m-24 just down from Hayes State Park Wamplers Lake WEDNESDAY NIGHT Spaghetti \$2.00 ALL YOU CAN EAT THURSDAY NIGHT Liver & Onions \$2.25 FRIDAY NIGHT Fish Fry \$2.25 SMORGASBORD SUNDAY Chicken Dinner \$2.26 SERVING DAILY LUNCHEONS SUPPER SPECIALS BEER-WINE-LIQUOR PHONE 517-592-2082 SNOWMOBILE BELTS AND PLUGS FOR MOST MACHINES FISHING TACKLE AND BAIT

As an independent agent we answer to one boss - our hometown people. We represent several firms, but we work for only one boss - you. That way we can always place you with a company which we think is best for each line of insurance you need. Naturally, we prefer companies like Auto-Owners who look at a loss and take care of it right away, without haggling or delays. That's one of the reasons we're part of the Altogether Family. Like us, they're always there when you need them. its better altogether SUTTON AGENCY 136 East Main Manchester, Mich. Phone 428-2891 Auto-Owners Insurance? LifeHomeCarBusiness

Building a home or making home improvements doesn't have to cause pain! (At least not every phase) Let us make the first step quick and easy. Buy all your building materials at Bridgewater Lumber Co. 8370 Boettner Rd.

SUPER SHOPPER SAVINGS FROM THE VALUE LEADER



PRICES EFFECTIVE THRU SAT. JAN. 18, 1975. WE RESERVE THE RIGHT TO LIMIT QUANTITIES.

 First Cuts Whole Slices BEEF ROUND STEAK <small>SELECT CHOICE</small>	LB. 1.18	 Many Flavors PILLSBURY CAKE MIXES <small>White *Chocolate *Yellow *Double Dutch *German Chocolate *Butter Flavor *Banana</small>	18 1/2 OZ. BOX 39¢
 Lean-Diced Cubes BONELESS BEEF STEW	3 LBS. OR MORE LB. 99¢	 Creamy-Crunchy JIF PEANUT BUTTER	18 OZ. JAR 68¢
 For Soup, Baking, Braising or Broiling BEEF PLATE MEAT	LB. 39¢	 Many Delicious Flavors SUGAR-FREE HOFFMANS POP <small>*Creme *Black Cherry *Cola *Ginger Ale *Orange *Root Beer *Strawberry</small>	12 OZ. CAN 10¢
 Fresh-Lean GROUND BEEF CHUCK	10 LBS. OR MORE LB. 79¢	 U.S. BRAND Powdered or Brown SUGAR	2 LB. BAG 98¢
 Medium Sizes MEATY-TENDER SPARE RIBS	LB. 79¢	 Birds Eye Frozen VALENCIA ORANGE JUICE <small>THE CONTINUOUS ACTION AIR FRESHENER. FRESH, LIGHT NATURAL SCENTS. *Early Spring *Sunny Lemon *Cool Lime *Sweet Garden *Fresh Herbal</small>	4 1/2 OZ. CANS 4.91
 Easy to Slice and Serve BONELESS BEEF CHUCK ROASTS	LB. 98¢	 Air-Freshener GLADE SOLID	3 1/2 OZ. CANS 3.91
 Excellent for Baking BEEF SHORT RIBS	LB. 59¢	 Our Favorite CUT GREEN BEANS <small>Regular Grind or Electric Perk</small>	15 1/2 OZ. CAN 19¢
 Quick to Fix! BONELESS BEEF CUBE STEAKS	LB. 1.38	 Quality Chok'd Skim or Chocolate MILK <small>GRADE A FORTIFIED FLAVORED</small>	1 LB. BAG 79¢
 Young-Tender SHOULDER LAMB ROAST	LB. 69¢	 First of the Season FRESH FLAVORFUL FLORIDA Temple Oranges <small>U.S. NO. 1 125's</small>	EACH 5¢

FRESH QUARTERED FRYER U.S. Gov't Inspected Legs, Breasts or Thighs ... LB. 69¢	HERRUD "NEW" DELICIOUS STYLE (Limit One Pkg.) Smoked Rope Sausage ... LB. 1.19	FRESH SNOW-WHITE Mushrooms ... LB. 79¢
TENDER-MILK FED (Rump, Sirloin, Leg or Shoulder) Veal Roasts ... LB. 98¢	OLD FASHION-SKINS ON Herrud German Wieners ... LB. 1.19	FRESH CALIFORNIA BUTTERY U.S. NO. 1 30's Avocados ... 3 FOR 89¢
HERRUD SLICED MANY VARIETIES Luncheon Meat ... 12 OZ. PKG. 79¢	WHOLE OR CRACKED WHEAT-HONEY GLO Oven-Fresh Bread ... 1 LB. LOAF 49¢	FRESH NUTTY FLAVORED For a New England Boiled Dinner Parsnips ... LB. 33¢
HERRUD SMOKED JUMBO Polish Sausage ... LB. 99¢	OVENGLO FRESH BAKED Hamburg Buns ... 12 CT. PKG. 49¢	PRIME INGREDIENT FOR A TOSSED SALAD FRESH Endive-Escarole-Romaine Lettuce ... LB. 29¢
SLICED IN OUR STORES Thick Sliced Bacon ... LB. 99¢	OVENGLO FRESH BAKED Hot Dog Buns ... 12 CT. PKG. 49¢	IDAHO SUPREME BRAND Instant Potatoes ... 24-4 oz. servings 16 OZ. BAG 89¢
ALL BEEF SKINLESS Herrud Franks ... 1 LB. PKG. 79¢	MOZZARELLA, BRICK, MÜNSTER Casino Cheese ... 8 OZ. PKG. 39¢	



YOUR CHURCH



I see fellow-preachers doing so many things of the world such as even smoking and drinking and recommending that others do it to.

Oh yes, I know that we all make mistakes and we all "sin and come short of the glory of God" but it certainly is not necessary for us to make the obvious errors and do so over and over again.

For myself, I love to tell the story, the old, old story of Jesus and His love. I love to tell the story of John 14:6: "Jesus said unto him, I am the WAY, the truth, and the life: no man cometh unto the Father but by me."

And of II Timothy 1:12 which reads: "For the which cause I also suffer these things: nevertheless I am not ashamed; for I know whom I have believed, and am persuaded that He is able to keep that which I have committed unto Him against that day."

I don't know if you have space enough left in your newspaper publication for another column but if you do and you would be willing to have another meditational-type column, I am now offering to supply you with one. If you do have the space, perhaps your readers would like to voice their opinion about the matter.

Thank you for your kindness, dear Editor, in considering this letter and may God bless you, yours, and your work.

Sincerely yours,
Ralph Moden
P.O. Box 811
Eagle Pass, Texas, 78852

Dear Sir:

On behalf of the whole staff of the Enterprise, I would like to thank you for your very kind letter.

Our policy for the past four years has been to give priority to local news and local events.

Because of limited space I will have to turn down your offer to write a column for us, but thank you for taking the time to write this letter and for your thoughts of us.

Very truly yours,
Lenore Steele, Editor

Emanuel United Church of Christ

324 WEST MAIN ST. MANCHESTER, MICHIGAN

ANNOUNCES

An Opportunity To Worship On Saturday Evening At 6:00 PM

BE WITH US THIS SATURDAY EVENING IN THE CHURCH LOUNGE THIS SERVICE WILL BE INFORMAL AND EXPERIMENTAL EVERY ONE WELCOME

CLEARANCE SALE

ALL FAMOUS MAKERS - STOREWIDE SALE

- DRESSES
- SLACKS
- BLOUSES
- SWEATERS
- SLIPS
- PANT SUITS
- KNITS
- CAR COATS
- FEW FUR COATS
- ALL-WEATHER COATS

25% to 50% OFF

ALL SALES FINAL - NO EXCHANGES OR REFUNDS

CAI'S TCG SHOP

Downtown Tecumseh

SPORTS

down but got 1 point back to close the first period down 1, 1-2. Joe tied the tally at 2-2 then the Redskin was awarded 1 point late in the second period to still lead 2-3 going into the final period. Joe came alive in this period as he out-scored his opponent 3-0 to win a 5-3 decision. Team score 3-6.

At 112 pounds was Chris Ventimiglia, who came out with win written all over him. Chris immediately captured 2 for a take down then almost pinned his man twice to receive 6 more points to enter the second period up 9-1. Again Chris overpowered the Redskin but he couldn't get the Redskins shoulders to the mat. Going into the third period Chris had a commanding lead of 14-2. Chris' opponent was worn down as he finally pinned the Redskin with 1:24 remaining. Manchester went on top for the first time, 9-6.

Clinton recaptured the team lead at 9-12 as Barry Seltontight at 119 pounds fell in 58 seconds.

The next grappler for the Dutch was co-captain Joel Tobias at 126 pounds. Joel was determined to retake the lead for the home team as he pinned his opponent in 1:25. Team tally, 15-12.

Unfortunately for Manchester, Clinton came on strong winning the next 4 matches building the lead to 15-30.

The 132 weight class was easiest for the Redskins as Manchester was unable to fill this weight so Clinton got 6 for a forfeit.

Dave Bauer (138) was clearly the inexperienced one of the two as after 2 periods the Redskin lead 0-11. Dave did frustrate the Redskin 3 times as he fought out of 3 near pins. The fourth near pin turned out to be a pin a 5:41.

Marty Merriman (145) was the next Dutch to get defeated as his opponent took leads of 2-3, 2-8 finally winning by decision 2-11.


Lester Janish at 155 pounds fought a close battle but lost by 1, 3-4. Lester fell behind in the first period 0-2 but he came back in the second period by exposing the Redskins shoulders to the mat for 3 points. In the final period the Redskin was awarded 2 for a reversal then

Continued on page 11

CLINTON, MICHIGAN

Showing: Wednesday, Thursday, Friday, Saturday, Sunday-7:30 p.m.

for a perfect vacation take... the ultimate trip



STANLEY KUBRICK'S 2001: A SPACE ODYSSEY

Released thru United Artists

Next Week-Gone With the Wind

Agriculture in Action

Michigan Farm Bureau

THE FOUR C'S

The secret of America's strength lies not in her sprawling cities or bee-hived industrial complexes and corporations, but in her agriculture—an agriculture whose working force represents around four percent of the national population. From this small minority flows the food that adequately feeds millions of Americans and others in countries around the world.

In India, for example, it takes over three-fourths of the total population to feed the hungry masses, and the diet is minimal at best. Russia, more advanced than her less fortunate hungry neighbor, still requires half of the total population to meet the demand for food.

From a modest beginning a few hundred years ago, American agriculture has grown and expanded, nurtured by the free enterprise system and honest com-

petition. Those with foresight planned ahead and succeeded; those who didn't failed. Capitalism is a harsh taskmaster if you disobey its rules, but the rewards are more than ample when you play the game correctly. The majority of American farmers have never complained about the rules, and have taken the bitter with the sweet as they worked and prospered.

That they want to keep it that way came out loud and clear recently when the 2.3 million member family American Farm Bureau Federation met in New Orleans for its 56th annual meeting. Farmers there expressed concern regarding recommendations by some Congressional leaders for bringing back ceilings on food prices, and what such government interference would do to both farmers and consumers. They made it plain that farmers don't want government subsidies to compensate them for lower market prices, and they warned that the imposition of price and wage controls could trigger cutbacks in food outputs.

The message from New Orleans to Washington was that farmers have the right to seek a fair return in the market place and a right NOT to be dependent on the federal treasury for hand-outs. This independence and determination to preserve our private enterprise system was reflected in the patriotic theme of their annual meeting—a statue of the Minuteman holding his trusty musket, silhouetted against a background of stars and stripes, with four key words at the

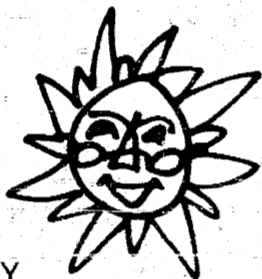
GOOD FOOD AT A REASONABLE PRICE
SERVED IN A PLEASANT ATMOSPHERE

MANCHESTER'S COUNTRY KITCHEN

OPEN MONDAY THRU SATURDAY
6 AM TO 8 PM

SUNDAY 8 AM TO 4 PM

233 EAST MAIN ST. MANCHESTER



PASSBOOK CERTIFICATE WITH MONTHLY COMPOUNDING YIELDS AN EFFECTIVE ANNUAL RATE OF

7

3/4%
PER ANNUM

8

.03%
PER ANNUM

all savings accounts insured to \$40,000

This is truly a fine savings/investment... an effective annual return on your savings dollars of 8.03%...insured to \$40,000. AND it is available to small as well as large investors... \$1000 minimum...term 72 months. You can open the new 7 3/4% Passbook Certificate Accounts at any AAFS office in Washtenaw and Livingston Counties. Federal regulations require a substantial penalty for early withdrawals from certificate accounts.

ANN ARBOR FEDERAL SAVINGS

3 OFFICES TO SERVE YOU IN ANN ARBOR, CHELSEA, DEXTER, YPSILANTI, MANCHESTER, BRIGHTON
Member FSLIC

base: Christianity, Courage, Conviction and Cooperation.

In the challenging days ahead, we'll see our food producers using those four C's to protect what they believe is right for agriculture...and for the nation.

ANN ARBOR SATURDAY NITE SINGLES

The Ann Arbor Saturday Nite Singles Dance will be held at the Ann Arbor Y.M.C.A., 350 South Fifth Avenue this Saturday, January 18 from 9 to 12. The Orchestra is Mike Stellute. All single people 25 and over are invited.

OSTOMY GROUP

The Ostomy Group of Washtenaw County will meet at 7:30 p.m. at the Senior Citizen Guild, 502 West Huron, Ann Arbor on January 16th.

\$5.00 AWARD FOR WINNING ESSAY

The Manchester American Legion Auxiliary will award \$5.00 each, for the winning essay in both the 7th and 8th grades and High School groups of Manchester schools.

The title "America - Our Greatest Heritage Essays shall be no more than 500 words in length. Full information on rules and the scoring points system will be explained by your English teachers, please contact them. Contest closes March 10, 1975.

Come on, Manchester's young Americans show our State of Michigan—you can write the best essays—the State 1st prize is \$50.00 in each group.

The winning local essays will be published in the Manchester Enterprise. The State winners will be announced in May, 1975, the local winners in March. American Legion Auxiliary Americanism Chairman, Edna H. Knauss

Only Scotti gives you two guarantees.

- 1. Scotti lifetime muffler guarantee.*
- 2. Scotti lifetime tailpipe guarantee.*

What's more Scotti backs their double guarantee on any car, including most foreign cars with Scotti centers coast to coast. Call the muffler experts...

*FREE muffler/tailpipe. Small service charge.

Why pay more?

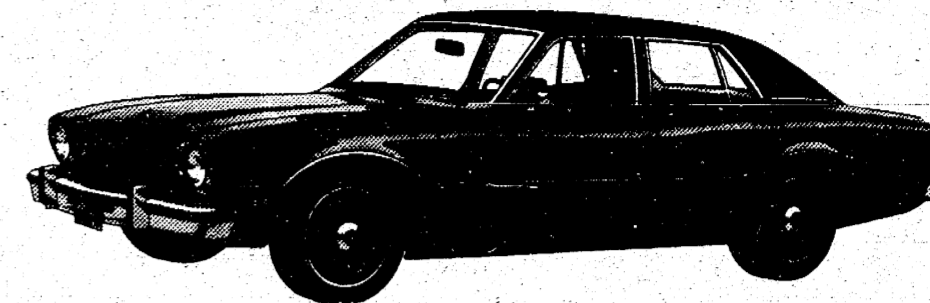
Tom Marshall Ford
428-3021

510-12 W. MAIN ST. MANCHESTER

© 1974 SCOTTI MUFFLER CENTERS, INC.



Tom Marshall Ford



Inventory Reduction All 1974 Models At Cost or Below

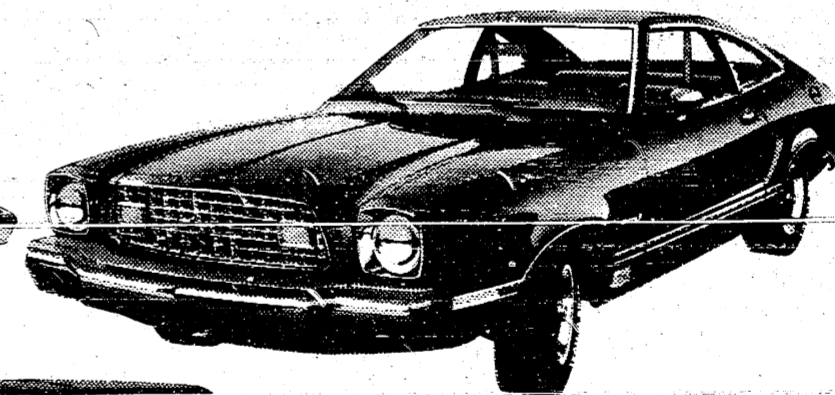
MUSTANGS - PINTOS - MAVERICKS - TORINOS

BIG SAVINGS

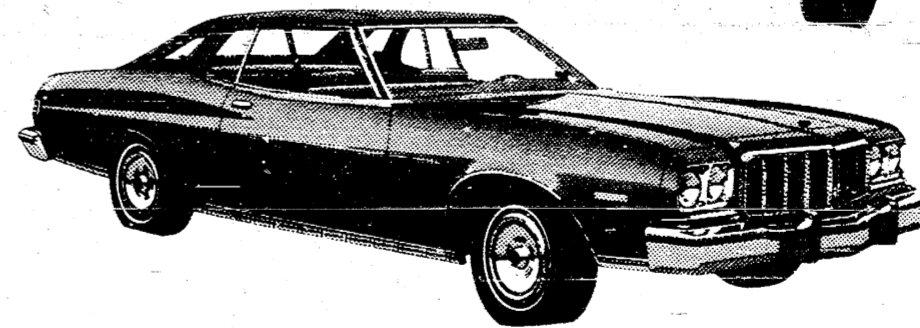
Why Buy A Used Car When You Can Buy New

SAVE UP TO \$800

SAVE UP TO \$800

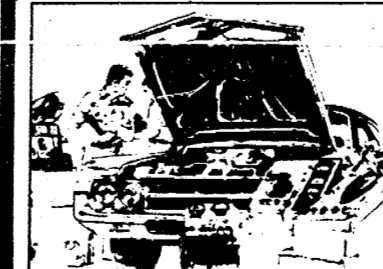


THE CLOSER YOU LOOK, THE BETTER WE LOOK



FANTASTIC SAVINGS ON 1975s

COMPARE OUR SERVICE, TOO! OUR GOAL: NO UNHAPPY OWNERS!



Tom Marshall Ford

PHONE 428-8343
512 WEST MAIN
MANCHESTER MICHIGAN



