

# WANT ADS

ALL CLASSIFIED ADS ARE PAYABLE IN ADVANCE

PIANO TUNING: Repair and regulation  
Ross C. Honsinger, Phone (517) 782-  
1273 or Manchester 428-8351.

FOR FULLER BRUSH needs call 428-  
8886.

DeRossett Construction Company - Saline  
428-9661. Aluminum, vinyl and steel  
siding specialist. Additions and garages.  
Financing available. Free estimates.

SEAMLESS aluminum eavestroughs in-  
stalled and guaranteed, white and colors  
available. For free estimates call Rick  
Kleinschmidt - R.D. Kleinschmidt Co.  
428-8836.

CARPETS, Walls, Upholstery, and Com-  
mercial Window Cleaning. Retail Com-  
mercial Cleaning supplies. Static proof-  
ing. Insurance claims welcome. Free  
Estimates. For further information call  
Clinton Window and Floor Cleaning Ser-  
vice. 456-7282.

BEEF TO SELL BYSIDE: Custom slaugh-  
tering. Lockers to rent. Phone 428-7600.  
Manchester Frozen Food Locker.

PICKUP CAPS & COVERS: For all makes  
and models. Standard and custom-  
designed. From \$147.00. Free brochure.  
PIONEER COACH MANUFACTURING  
CO., 3496 Pontiac Trail, Ann Arbor  
668-6785.

ALCOA Aluminum Insulated Siding Spe-  
cialist, since 1938 in Michigan. All wood  
overhang covered, also sills, porch ceil-  
ings, etc. Gutters, Storm Windows, Shut-  
ters in colors. William Davis - Phone  
616-663-6635.

EXPERT GUN SMITHING: Why wait till  
fall get that gun ready now! Beal's Ace  
Hardware.

HOUSE and barn roofing, all types of  
roof repairs, aluminum storm windows  
and doors, awnings and porch enclosures,  
cement work, room additions, aluminum  
siding and gutters. Call Joe Hayes for  
free estimates. 428-8520.

ARE you building your own home? Con-  
struction money available for residential  
homes. Marflax Corporation. 665-6166.  
4-18

FOR SALE: Feeder steers and heifers,  
all weights. Call 428-8340.

TERRY'S SERVICE  
170 Whitlock St., Saline  
Home Improvement - Garages, Drop  
Ceilings - Aluminum Siding, Doors, Win-  
dows and Gutters - Wall Paneling, Free  
Est. -- Phone after 4 p.m.  
H.G. Keene, 429-5325

AUCTIONEER: S. Halchishak, all types  
complete management. 428-2641. L.L.N.

NEW & USED: Mobile homes for rent  
with option to buy. Ypsilanti area. Coun-  
try Mobile Homes 2489 E. Michigan Ave.  
485-7101.

WILL pay cash for your equity in land,  
homes, or income property - Call Phil  
Spear, Spear & Associates, Inc.  
Realtors 769-5750.

HAVE DeKalb Hybrids of several  
maturities on hand noted for yield.  
Stand ability disease resistant. Wm.  
Haeussler, Phone 428-8774.

WILL do Custom Hatching for chickens,  
ducks, geese, guineas. Call 428-8607.  
4-25p

CIRCLE STAR TRAILER SALES  
Enjoy your vacation, come see us.  
We have auxiliary gas tanks in stock  
for trucks. We also have fold-downs,  
trailers, pick-up campers, truck tops,  
5th wheels and accessories. 5338  
Shepherd Road, 1/2 mile West of  
Tipton Highway, Adrian. We are  
campers too. 5-23

GARDENS FLOWED, call 428-8815  
for appointment. 5-9p

MANCHESTER, 5 bedroom home in  
Village on large lot. 368 sq. ft. frontage  
full basement, city water, natural  
gas heat. Reduced to \$29,900.  
Edwards Real Estate - 429-2575.  
5-2

HORSES FOR SALE: Geldings  
American Saddle Breed 7 years old,  
Quarterhorse 3 years old. Phone  
428-8813 for information. 4-25

WANTED: Spinning Wheel, good  
condition needed for spinning. Call  
971-5146. 4-25

DOES your bicycle need to be repaired?  
Phone 428-8462 or 428-7280. 4-25

WELL kept carpets show the results  
of regular Blue Lustre spot cleaning.  
Rent electric shampooer \$1. Beal's  
Ace Hardware.

SPRING SALE: Wallpaper 10% off our  
40 books to choose from. Hartung's  
Clinton-Tecumseh Rd., Clinton,  
Michigan. Closed - Sunday, Monday  
and Tuesday. Open Wednesday -  
Thursday, Saturday 10AM - 5 PM,  
Friday 10 AM - 9 PM.

FOR SALE: Solid Maple Dining Room  
Table 32" wide, opens to 72". 4  
matching chairs. Call 428-8732 p

FOR SALE: 2 size 10 formal. 456-  
4796. p

Bob Beaubien-Horse Shoeing & Trim-  
ming. 428-8985 after 5 p.m. tn

JUST LISTED! 6, 10 acre parcels  
between Dexter & Chelsea. Ideal for  
privacy, a pond, a walkout basement,  
horses, kids, & even a home. Priced  
to sell. Land Contract terms, 15% down.  
Real Estate One of Washtenaw, Realtors  
at 475-5693 or Ed Coy at 426-5235.

GOOD SELECTION Upholstery material  
from Lazy Boy Chair Co. - priced at  
\$2.50 and \$3.50 yd. Hartung's  
Clinton-Tecumseh Rd., Clinton,  
Michigan. Closed - Sunday, Monday  
& Tuesday. Open Wednesday - Thurs-  
day, Saturday 10 AM - 5 PM, Friday  
10 AM - 9 PM.

FOR RENT: 3 bedroom ranch home  
with recreation room. Must have  
qualified references. Call 428-2641  
after 4 PM.

WOMENS EXERCISE CLASS: Held at  
Emanuel Church. Starts April 23 and  
every Tuesday and Thursday thru May  
30-7:30 p.m. to 8:30 p.m. Donation  
\$5.00. Joan Beal-Instructor. 4-18

HOUSE WANTED - RURAL: Location  
within 20 miles of Ann Arbor. Phone  
663-2070 or 665-0469.

CAMPER FOR SALE: Starcraft upright  
trailer. Comet just like new, 1 year  
old, carrying case in excellent condition.  
Call 428-7402 after 3. 4-18p

HELP WANTED: Part time days.  
Call 428-8352 before 4 and 428-3067  
after 5. Stockyard Inn.

HOUSE FOR SALE: Large Country  
Home on 1 1/2 acres. Surrounded  
by mature maple trees. Only 200  
yards from Manchester Village limits  
12639 Schleweis Rd. Call 428-8434  
for appointment.

WOULD like to buy white King Pigeons  
and Banty Chickens. Please call 428-  
7106.

7 BEDROOM COUNTRY HOME on 11 3/4  
acres with 849 foot road frontage. Home  
has unlimited potentials. 1 mile west  
of Pleasant Lake, Manchester schools.  
Phone Ellen Koyle-429-4286 for Justin  
McCaslin - Realtor, 482-2207, Ypsilanti.  
4-18

WANTED: Quality Hay & Straw-will pay  
cash. Call after 6. 313-751-1071. 4-25

Buy, Sell, Rent  
with a Want Ad

## SPEAR and Associates, Inc. REALTORS

122 West Main Phone 428-8388 Daily Manchester

TOWN AND COUNTRY LIVING

On this 9 acres with stream and trees, and a nice view  
from any window of this 3 bedroom home. Two baths,  
nice family room with fireplace in the walkout base-  
ment. Located at the edge of Manchester.

Conveniently located is this well kept 3 bedroom home,  
featuring natural wood throughout. Close to the schools.  
Reasonably priced. Call for an appointment today. Has  
to be seen.

FOR FURTHER INFORMATION CALL

SPEAR and Associates, Inc. Realtors

We have buyers -- call us to sell your property

Member of Ann Arbor Board of Realtors Multiple Listing Service

## REAL ESTATE ADVICE

No Obligation - Residential Properties - Farms

Commercial Properties - Vacant Lands

OFFICE HOURS:

Mon. thru Fri.

9am to 5pm

Sat. 9 am to 12

Marge Rowe, Sec.

Evenings phone:

Ellis Pratt; 428-8562

Maria Lehr; 428-8182

Tina Cotton; 428-7143

DR. GARRY M. DEO  
OPTOMETRIST

ANNOUNCES THE OPENING OF HIS OFFICE FOR  
THE PRACTICE OF OPTOMETRY

AT

131 EAST MICHIGAN AVENUE  
SALINE, MICHIGAN 48176

EYE EXAMINATIONS  
CONTACT LENSES

TELEPHONE  
429-9454

## Carpenter Bros. Chef Restaurant

EAST MAIN STREET MANCHESTER, MICHIGAN

Tuesday Night

Rib Eye Steak \$2.98

Thursday All Day

Spaghetti Dinner \$1.40

OPEN DAILY MONDAY THRU FRIDAY

5 AM TO 9 PM

FRIDAY AND SATURDAY 5 AM TO 10:30 PM

# THE MANCHESTER ENTERPRISE

107TH YEAR NO. 26

TEN CENTS PER COPY

THURSDAY, APRIL 25, 1974

## 20th Century Club Leads The Way

Exchanging notes on club projects is  
always a highlight of the Washtenaw  
County Federation meeting. Leaders  
from this section of the county told  
of interesting fund-raising approaches and  
the projects they benefitted when they  
met for Spring session in Manchester.

Delegates were intrigued by the 20th  
Century Club of Manchester's rolling  
fund-raising program that delights new-  
comers to the town. It's an ongoing  
bridge marathon for all the people of  
the community who donate \$1.00 an  
evening.

With this pleasant approach, they are  
continuing their project for providing  
hanging baskets along Main Street in  
May, and are hoping to provide old-  
fashioned lamps to adorn the downtown  
bridge.

In addition to Community Chest, March  
of Dimes, Varsity High School Choir,  
and Washtenaw Medical Care Facility,  
the women also provide 2 1/2 scholar-  
ships for a band member and a violin  
player to attend Blue Lake Band Camp  
and a violin camp.

A style show and quartet were the  
money-making ways of the Milan Wo-  
man's Club, Milan reported to the meet-  
ing. For good works in the community  
which include a scholarship for a Milan  
student, Christmas boxes for the needy,  
and work and aid for Loch Rio Girlstown.

Working with the city "to develop a  
beautiful and much-needed nature park"  
is the favorite new interest of the Milan  
Women's Club, which has members on  
the school board and city planning com-  
mission and features information on  
regional, community, and school develop-  
ment.

Well noted was a unique and engaging  
club project initiated by the Saline Wo-  
men's Club...a Christmas recipe ex-  
change "with samples."

Their community activities, including  
a flower show at Saline Community Fair,  
Christmas gifts sent to Ypsilanti State  
Hospital, working at the Red Cross  
blood clinic in Saline, and sponsoring  
a junior Girl Scout troop.

Leaders of women's clubs throughout  
Washtenaw County were guests this week  
of the 20th Century Club of Manchester.

Morning session of the annual Spring  
meeting of the Washtenaw County Fed-  
eration of Women's Clubs was highlighted  
by a spirited discussion of public elec-  
torate woes and possible remedies.

The fracturing of voting schedules,  
means and purposes was complained  
with revealing solidarity.

This intensified mutuality of concerns  
evinced by these leading women, high-  
lights the need for responsive action  
cooperatively undertaken.

This need stresses the importance of  
more active participation in recognized  
and firmly established group forms such  
as local clubs and their strengthening  
agents for influencing public events the  
General, State, and County Federations,  
notes Washtenaw Federation President  
Mrs. Stanton G. Roesch of Manchester.

Mrs. Stanton G. Roesch commented  
that solutions to these problems can be  
undertaken by concerted action and cited  
the Washtenaw Federation as a vehicle.

She reminds members of innovations  
this year...open-forum format of meet-  
ings and the real exchange of ideas which  
has resulted...the new service of factual  
information via the "Leader In-  
formation Letter."

Then Mrs. Roesch challenged the mem-  
bers to spark matching vigor among

their membership with lagging club rolls  
throughout the country. She said of the  
Federation "That future...lies solely with  
you, the membership, and I so challenge  
you..."

Afternoon speaker, Mrs. Mary Mc-  
Gregor, director of Girls' Town.

Hostess club members were compli-  
mented by the lively purchase by guests  
of colorful "birds" in straw nests art-  
fully arranged on twigs and branches as  
favors and centerpieces.

## Youth County Day Wednesday, May 1

Since 1953, the Washtenaw County  
American Legion, in co-operation with  
members of county government and  
school officials, has sponsored the  
Washtenaw County Youth Government  
Program in an effort to acquaint young  
people with the operation of county  
government according to County Com-  
mander, Clare LaFrier.

This year the program will culminate  
in "Youth County Day" to be held at  
the county seat in Ann Arbor coinciding  
with Law Day on Wednesday, May 1,  
1974. Over two hundred students from  
twelve of the county's high and junior  
high schools will participate.

Prior to May 1st the twelve partici-  
pating schools will each select twenty  
students to represent ten elected and  
eleven appointed county government posi-  
tions, such as County Clerk, Commis-  
sioner, Circuit Judge, etc.

On Youth County Day the festivities  
will begin at 9:00 a.m. at the County  
Building when the twelve student officers  
from the various schools meet with their  
"real-life" counterparts for a short pre-  
sentation discussing the responsibilities  
of that position in county government.  
During the remainder of the morning  
these groups of twelve students accom-  
panied by a teacher, a Legion member,  
and a member of the Washtenaw County  
Bar Association will visit with the re-  
maining nineteen county officers for  
similar presentations.

At 11:20 a.m. the buses will leave  
the County Building and head for the  
American Legion Home where a luncheon  
will be served by the American  
Legion Auxiliary. The luncheon is spon-  
sored by American Legion Posts of  
Washtenaw County. The Honorable Ross  
W. Campbell, Circuit Judge, will deliver  
a speech. After lunch, the students will  
move on to Pioneer High School where  
a simulated jury trial, presided over by  
the Honorable Edward D. Deake, Circuit  
Judge, will be held. The day's activities  
will be over at 3:00 p.m.

## Petitions For School Board Due May 13

Two seats on the Board of Education  
will be filled at the annual school election  
held June 10, 1974. The terms of Eugene  
Bentschneider and Reno Feldkamp are  
expiring this year. Nominating petitions  
may be picked up in the Superintendent's  
Office or from the Board Secretary,  
Mr. Andrew Luckhardt. Petitions must  
be in by 4:00 p.m. on Monday, May 13,  
1974.

MANCHESTER TOWNSHIP LIBRARY  
P. O.

## Operation Identification

One of the biggest businesses in Amer-  
ica today is burglary. It's happening  
every 13 seconds; 2,368,400 times a  
year. Whether it involves a home or  
an office, the losses inflicted on the  
public reached a staggering \$739,000,  
000 in 1971.

Now there is an effective way to cut  
this loss. It is called "Operation Identi-  
fication", a crime prevention program  
sponsored by the Jaycees and Manchester  
Police Dept. to make burglary a less  
popular occupation.

"Operation Identification" simply in-  
volves etching your driver's license or  
social security number on your valuables  
and enabling the police to locate you so  
you can identify and recover stolen prop-  
erty. With these factors working against  
them, burglars are, according to the  
record, reluctant to break into an  
"Operation Identification" house. This  
was proven in Monterey Park, Califor-  
nia, where the program started, and in  
many other towns that have adopted the  
program.

The procedure for having your prop-  
erty marked will be to bring your  
smaller valuables into the Manchester  
Police Station at 214 N. Macomb St.  
where your property will be marked  
and recorded by a police official. The  
hours will be from 4:00 p.m. to 8:00  
p.m. Monday through Saturday. If you  
wish to have your larger valuables  
marked, a Police Official or a member  
of the Jaycees will come to your house  
and mark this property. For further  
information call the Manchester Police  
Department at 428-8505 or Dave Ahrens  
at 428-7728.

Don't wait until your property has  
been stolen and you wished you had  
it marked. Have it marked now.

## Board of Education Holds Special Work Session

A special work session of the Man-  
chester School Board was held in the  
library on April 15, 1974. All members  
were present including Superintendent  
Swartz.

A discussion was held on problems  
concerning the band program. Su-  
perintendent Swartz apprised the board  
of some parent contacts that he had had  
and the recommended procedures which  
were being followed relative to these  
problems.

Superintendent Swartz reported that  
the maintenance people had indicated to  
him that the furnace and the roof at the  
Pleasant Lake Elementary School  
had been repaired and no problem with  
the roof was evident since the application  
of twenty-five gallons of roof cement.

A discussion relative to the baseball  
field at Pleasant Lake was held and it  
was suggested that Superintendent Swartz  
contact someone to take the sod off the  
infield and have some sand brought in  
to improve the playing surface.

Superintendent Swartz presented to the  
board a projected budget of revenues and  
Continued on page 6

## Bloodmobile Donor Cards Returned

Donor cards from the March 29 Blood-  
mobile were returned to the Manchester  
Blood Club this week from the South-  
eastern Michigan Red Cross Blood  
Center. The results for the groups work-  
ing on the 20% Plan are as follows:

Manchester Tool and Die and Stamping  
Corporation 100%; North Sharon Bible  
Community Church 80%; Double A Prod-  
ucts 65%; Manchester Methodist Church  
46%; St. Mary's Catholic Church 42 1/2%;  
Emanuel Church of Christ 33%; Iron  
Creek Church 20% and Jaycees 5%.  
Bethel Church of Christ made 15% at  
this clinic but their record is combined  
with the Saline two day clinic held early  
in April and their total report is not in.

There will be another Bloodmobile in  
Manchester Monday, October 28 at which  
time quotas can be raised to the necessary  
100%. Remember, if you live in Man-  
chester School District, you are covered  
by the Manchester Red Cross Blood Club  
no matter where you may need blood in  
the United States and most of Canada--  
any hospital that accepts Red Cross blood.  
To have blood released for you to a  
hospital contact Mrs. Franklin Reek,  
Mrs. Roland Grossman or Mrs. Millard  
Uphaus. The 20% Plan is for additional  
coverage for members and employees  
who live outside the Manchester School  
District. One does not have to have  
given blood to receive it for himself  
or family.

## Career & College Nite May 1

On Wednesday, May 1 Washtenaw  
Community College will host all area  
and county high schools in a "Career  
& College Nite" program. The purpose  
of this program is to acquaint high  
school juniors and below with decisions  
about a career or college before their  
senior year. With emphasis now placed  
on taking admissions and scholarship  
tests during the junior year, Manchester  
High School and other area schools will  
not hold College & Career programs in  
the fall. However, individual colleges  
and universities will continue to visit  
with students during the school year.

According to Washtenaw Community  
College representatives there will be  
twenty-nine colleges and universities  
attending the program along with twenty-  
two occupational careers represented.  
The program will begin on the Washtenaw  
Community College campus at 7:30  
P.M. Each person attending will be able  
to meet with three careers of their  
choice for thirty minutes at designated  
rooms around the campus. Guides will  
be stationed around the campus to direct  
students and parents, with fifteen min-  
utes given between sessions. In addition  
to the three scheduled sessions there  
will be a wrap up meeting from 9:30 to  
10:00 for those who wish to visit a  
fourth representative or return to a pre-  
vious station for additional information.  
All students and parents are urged to  
attend this program on Wednesday, May  
1 at Washtenaw Community College.  
A bus will be provided for students  
leaving at 6:45.

## Community Chest

The Manchester Community Chest  
Board Meeting will be held Monday,  
April 29 at 7:30 p.m. at the home of  
Mrs. Edward Steele.

**The Manchester Enterprise**

305 Beaufort Street  
Manchester, Michigan 48158  
Phone 428-8173

The Manchester Enterprise was established in 1867 and is published each Thursday at 305 Beaufort St., Manchester, Michigan with second class postage paid at Manchester.

**THE STAFF**

Edward E. Steele, Publisher  
Lenore Steele, Editor  
Darlene Minor, Assistant Editor  
Cecelia Chapin, Feature Editor



**LETTERS TO THE EDITOR**



Dear Residents of Manchester,

Late Monday night, 4/15/74, I was a stranded motorist in your fair city. During my short experience I encountered three very thoughtful and helpful residents. I regret that I do not know the names of the lady and gentleman that aided me but Ken Beasley, of your Police Department was like a guardian angel from above. The assistance he gave me shall never be forgotten.

The town of Manchester is very fortunate to have such considerate and concerned citizens living in their midst. I was told by Officer Beasley that the city has a chicken broil annually. I sincerely plan to return to Manchester and hopefully have an opportunity to join the town people in their festivities. Again, I thank each of you for your kindness and helpfulness.

Sincerely,  
Jean Gamell, Director  
Ackley-Shilling Halls  
Western Michigan University  
Kalamazoo, Michigan 49001

**DIABETIC NEWS**

Gail Danek, R.N., Clinician and Staff Nurse of Mott Children's Hospital, University of Michigan Medical Center will speak on "Very Young Diabetics." The Morning Coffee Meeting of the Washtenaw County Unit of the Michigan Diabetes Association will be held at the home of Mrs. Donald Magoon 1401 West Cross, Ypsilanti at 9:15 a.m. Wednesday May 1, 1974. For further information phone 428-7543.

Coming Events: The Annual Meeting of the Michigan Diabetes Association will be held on Wednesday, May 15, at Oakland Community College, Orchard Lake Road at 196. Dinner will be served at 6:30 p.m. Guest speaker will be Richard A. Guthrie, M.D., a pediatrician from University of Kansas who is known for his research in juvenile diabetes.

Camp Midcha 1974: First session - July 14-29, second session - July 29-August 10. Further information about Camp Midcha will be available at the Unit meetings or from Michigan Diabetes Association, 6131 West Outer Drive, Detroit, Michigan 48235.

**Twentieth Century**

The program for the April 16 meeting of the Twentieth Century Club was a travelogue by Mr. Merrill Korth, Chief, Procedures Development at the Ann Arbor office of the Environmental Protective Agency. Mr. Korth was one of three U.S. environmentalists to attend a conference in Tokyo and Hiroshima in May 1973 to establish cooperative air pollution studies between Japan and the U.S. His keen sense of pictorial topic and the quality of the slides combined with his description of the "red carpet" tour made a delightful entertainment.

Mrs. T.H. Tapping, Jr., president, presented an Award that the local club received for highest attendance at Washtenaw County Federation Women's Clubs meetings. Mrs. Stanton Roesch, president of the Federation thanked the Club for hosting the annual meeting on April 15 at the Manchester Methodist Church.

Annual reports were received from the secretary, treasurer, and president. The Spring Luncheon which will be held in Ann Arbor at 12:30 Saturday, April 27 at the Campus Inn, will be followed by a trip through the Matthaei Botanical Gardens of the University of Michigan near Dixboro. Mrs. Dan Boutell, Mrs. Leo Scully and Mrs. Frank Tirb are in charge of this final event of the club year.

Officers for the coming year were elected: Mrs. Paul Alber, president, Mrs. Dan Boutell, vice-president, Mrs.

Harry Krauss, secretary and Mrs. Robert Swartz, treasurer.  
Mrs. Maynard Blossom is chairman of the Program Committee for 1974-75. She is assisted by Mrs. Charles Cresswell and Mrs. Leo Scully.

**Congratulations**

Eastern Michigan University conferred degrees on 1,490 seniors and graduate students at its 121st Spring Commencement today (April 20). A crowd of more than 5,000 attended the ceremonies in Boyan Field House.

The College of Education led in baccalaureate degrees with 475. The College of Arts and Sciences had 397, the College of Business 185 and Applied Sciences 78. Master's and specialist's degrees totaled 355.

Elliot Richardson, former U.S. Attorney General, was the Commencement speaker and recipient of the honorary degree of Doctor of Laws. The citation emphasized his "outstanding service, particularly in behalf of law, social services and public policy".

Also receiving the Doctor of Laws degree was Detroit's Mayor Coleman Young for "your eminent personal contribution to humanitarian services and role as a champion of individual rights".

Two students from Manchester received their Bachelor of Science degrees. They are John Mooneyham, 622 Sunset and Charlene Versham, 10870 Burmeister Rd.

**Marshall Trucking Co.**

Sand - Gravel - Top Soil  
Drive Ways - Fill Dirt - Mason Sand  
Drain Field Stone - Crushed Stone

Prompt Service Free Estimates

Phone 428-8123 428-3021  
Manchester Michigan



IT'S SHOCKING!!!

We need a new roof, fence, and the kitchen needs remodeling...

Every room must be painted and some new paneling..

HARRY, PLEASE GET GOING TO -

**Bridgewater Lumber Co.**

8370 Boatman Rd., Bridgewater Garden 8-3039

**HELFRICH MASONRY**

FIRE PLACES-BASEMENTS-VEENER  
STONE & BRICK

PHONE 428-8686

7679 Chelsea-Manchester Rd. Manchester, Mich. 48158

What happens when you're offered \$20,000 for your \$27,000 pile of ashes?

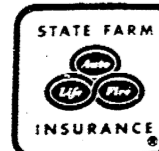
You take it if you haven't increased your home insurance to keep pace with inflation.

This is the kind of problem you could face if you bought and insured your home for \$26,000 in 1968. See me to find out if your home is insured for its full value. I'll tell you about a low-cost State Farm Homeowners Policy that will insure your home for all its worth... and keep it that way with automatic Inflation Coverage.



**BOB EVANS**

200 Riverside Drive  
Manchester  
Office Phone 428-8364  
Residence Phone 428-7453



STATE FARM FIRE and CASUALTY COMPANY  
Home Office: Bloomington, Illinois

**ST. JOHN'S LUTHERAN CHURCH**

Thursday, April 25, Seminar: THE CHILD - IN HOME & CHURCH, 8 p.m. at Sharon Methodist.  
Saturday, April 27, Confirmation, 9 a.m.  
Sunday, April 28, Sunday School 9:30, Worship 10:30 a.m. St. Hospital 2 p.m. Worship Comm. 8.  
Tuesday, April 30, ALCW Convention-National Day of Humiliation, Fasting, and Prayer.

**ZION LUTHERAN CHURCH**

Thursday, April 25, Seminar I-The Child: In Home & Church 8 p.m. Sharon United Methodist Church.  
Sunday, April 28, Sunday School 9:00 a.m., Worship 10:15 a.m.  
Monday, April 29, Jr. Choir 7:00 p.m. Sr. Choir 8:00 p.m.  
Tuesday, April 30, H.R. Conference ALCW Convention St. John - Dundee.  
Wednesday, May 1, WOZ General Mtg.

**SHARON UNITED METHODIST CHURCH**

Thursday, April 25, Series on "The Child in Home & Church" begins (more information will be sent to you).  
Saturday, April 27, Old-Tiques & handicraft sale (ad & article will be sent to you later).  
Sunday, April 28, 11:00 a.m. Boys and Girls Fellowship.

**FAITH COMMUNITY CHURCH**

Sunday, April 28, the Greer Family from Detroit will present a musical during the 10:00 a.m. Worship hour. All the family are musical, Mr. Greer is organist at Tiger Stadium.  
Sunday evening, Singespriation for area churches will be at Iron Creek at 8:30 p.m.  
Wednesday evening, May 1, Missionary Board meeting at 6:30 p.m. Junior choir at 8:00 p.m. Prayer Meeting and Bible Study at 7:00 p.m. Senior choir at 8:00 p.m.

**MANCHESTER UNITED METHODIST**

Thursday, April 25, 7:30 p.m. Chancel choir rehearsal.  
Friday, April 26, 9 a.m. to 5 p.m. Yard Sale.  
Saturday, April 27, 1 p.m. to 6 p.m. Lent A Hand Day for Seniors Citizens. Call Mrs. Timmerman 428-3931 or Mrs. Kerr 428-7420.  
Sunday, April 28, 9:15 a.m. Parents Sunday at church school, 10:30 a.m. Innovation Service, 11:30 a.m. Jr. choir rehearsal.  
Wednesday, May 1, Salad Smorgasbord serving at 11:30 a.m. & 1 p.m. Price \$2.50. Reservations needed for 11:30 serving only. Call Mrs. Kerr 428-7420, Mrs. Treat 428-8191 or Mrs. Manor 428-8254 not later than April 29. Cherub Choir rehearsal 7:30 p.m.

**ST. THOMAS LUTHERAN CHURCH**

Thursday, April 25, L.W.M.L. Rally at St. Thomas 9:30 a.m.  
Sunday, April 28, Sunday School & Bible Class 9:45 a.m. Worship Service 11:00 a.m.

**EMANUEL UNITED CHURCH OF CHRIST**

Confirmation Class will meet Monday at 3:45 p.m.  
Women's Guild will meet Wednesday, May 1, at 2:00 p.m.  
Elmhurst College Choir will give a concert at the church on Saturday, May 4, at 8:00 p.m.  
Senior Citizens Work Day 1:00-6:00 on Saturday, April 27. Workers are to meet at Emanuel Church at 12:30.

**IRON CREEK COMMUNITY CHURCH**

The special guest of the Iron Creek Church this Sunday will be M.V. Joseph, a foreign student from India. Mr. Joseph is presently enrolled at Spring Arbor College. He is the son of a National

**WANTED**

500 Cars - Wrecks or Junkers

\$15 and up For Complete Cars  
"Help Keep Your Community Beautiful"

Phone 428-8080 or 517-787-7044

**Verhines Auto Salvage**

17547 AUSTIN RD. MANCHESTER

**U.M.W.S.**

**Salad Smorgasbord**

MANCHESTER UNITED METHODIST CHURCH  
501 Ann Arbor St. Manchester, Michigan

Wednesday, May 1

1st Serving 11:30 to 1 pm 2nd Serving 1 pm to 2 pm

Reservations Necessary \$2.50 Reservations Not Necessary

Children \$1.00

Reservations For 11:30 to 1pm Serving May Be Made By Calling

Ethel Kerr 428-7420 Christie Manor 428-8254  
Helen Treat 428-8191

pastor in India and will relate some of the experiences of his father's ministry in that country as well as bring a gospel message. This will be at the Morning Worship service at 10 a.m. Other services for the day are at 11:15, 6:30, 7:30 and closing the day with the monthly Singspiration at 8:30 p.m. with many from other churches joining. If you like to sing, come join in with us for this hour of Christian fellowship. A Family Night is being planned for May 10th at which time the Mothers will be honored. All families of the area will be welcome.

**BILLY SUNDAY**

The documentary film on the life of evangelist Billy Sunday will be shown in this area at Manchester Baptist Church on Sunday evening, April 28 at 6 o'clock. The film traces the life and rise to popularity of the famous evangelist and present events of the past 100 years through photographs, tintypes of Sunday's youth, and modern scenes in color and sound.

Pictured are Billy Sunday's major-league baseball career, the story of his conversion and his tabernacles and tremendous crowds, his war against liquor, his friendships with the great men of his time, and present day results of his colorful ministry.

In making this film, the producers uncovered voluminous material about the life of Billy Sunday. Motion picture scenes of Mr. Sunday in action were gathered from many sources. Movies did not exist when he began his career, and many of the first films of him have deteriorated beyond use. Those included in the film are remarkably clear and some of the later ones taken just after sound was added to movies present good glimpses of the evangelist's famous rapid-fire delivery which won the attention of millions.

Billy Sunday spoke face to face with millions of people. One million people came down the "sawdust trail" to shake his hand as an act of public confession of their acceptance of Christ as Saviour. Also featured in the film is Homer Rodeheaver, Billy Sunday's trombone playing songleader for twenty years. In an interview filmed shortly before his death, he gives candid reminiscences of Mr. Sunday.

The Billy Sunday Story is released by Gospel Films, Inc. of Muskegon, Michigan.

**Scholarship Fund**

Again this year the Manchester Jaycee Auxiliary is offering a scholarship to a high school graduate or any adult age 18 and over who needs financial aid to further his or her education. Applications are available at the high school or contact any Jaycee Auxiliary member. Completed applications may be left at the high school or mailed to P.O. Box 314, Manchester. Please be sure to mark envelopes "Attention-Scholarship." Deadline for all applications is May 15. All information will be kept confidential.

**MANCHESTER**

Building sites in or out of Village.

Store Building "Mikes" has apartment up with ground floor rented (Beauty Salon)

Beauty Salon equipment.

3 bedroom frame home.

Income - 3 apartment 1 block from Main. Terms - good return.

Acres - Up to 90 acres. Some suitable for winter sports.

**FAHEY REALTY**

15554 Fahey Road 428-8748  
112 S. Washington 428-8348

**Your Church**

**EMANUEL UNITED CHURCH OF CHRIST**

Rev. Joseph W. Wise, Pastor  
Worship Services:  
Quest 9:00 a.m., Church Services 10:30 a.m. Plan to worship God regularly.

**SHARON UNITED METHODIST**

Corner Pleasant Lake Rd. - M-52.  
Rev. Michael Peterlin, Pastor  
Sunday School 10:00 a.m.; Worship Service 11:00 a.m.

**ST. THOMAS LUTHERAN**

Rev. Daniel Mattson, Pastor  
Ellsworth, Rd.  
Sunday School & Bible Class 9:45 a.m.,  
Worship Services 11:00 a.m.

**ST. JOHN'S UNITED CHURCH OF CHRIST**

Rev. Richard Campbell, Pastor  
Rogers Corners, Waters and Fletcher Rds.  
Sunday School 9:30 a.m.; Church Services 10:30 a.m.

**BETHEL UNITED CHURCH OF CHRIST**

Rev. Roman A. Reineck, Pastor  
Schneider and Bethel Church Roads  
Church Service 10:00 a.m.; Sunday School 11:00 a.m.

**MANCHESTER UNITED METHODIST**

Rev. Walter R. Damberg, Pastor  
Church School 9:15 a.m. to 10:15 a.m.;  
Worship Service 10:30 a.m. to 11:30 a.m.

**ST. MARY'S CATHOLIC CHURCH**

Father Raymond Schlinkert  
West Main Street  
Sunday Masses 8:30 a.m. and 10:30 a.m.  
Monday thru Friday 8:30 a.m.  
Saturday 7:00 p.m.

**NORTH SHARON COMMUNITY BIBLE CHURCH**

William Euslen, Pastor  
Sylvan and Washburn Road  
Sunday School 10:00 a.m.; Worship Service 11:00 a.m. (Nursery will be available);  
Junior Church Classes 11:00 a.m.; Youth Meeting Senior High 6:00 p.m.; Youth Choir 6:00 p.m.; Evening Worship Services 7:00 p.m. (Nursery available);  
Wednesday Bible Study and Prayer Meeting (nursery available) 7:00 p.m. To your door Bus Transportation available 428-7222.

**FAITH COMMUNITY CHURCH**

Pastor - Timothy Miles  
8400 Sharon Hollow Rd. off W. Austin Rd.  
Worship Service 10:00 a.m.; Sunday School 11:00 a.m.; Sunday Young People 6:00 p.m.; Sunday Evening Service 7:00 p.m. Wednesday evening 6:30 p.m. Junior Choir Practice: Prayer Meeting and Bible Study 7:00 p.m.; Junior Prayer Meeting 7:30 p.m.; Senior Choir Practice 8:00 p.m.

**IRON CREEK CHURCH**

Rev. Ralph Janofski, Pastor  
Worship Service 10:00 a.m.; Sunday School 11:15 a.m.; Youth Service 6:30 p.m.;  
Evening Service 7:30 p.m. Wednesday Evening: Junior Choir 6:30 p.m.; Bible Study and Prayer Meeting 7:30 p.m.; Senior Choir 8:30 p.m.

**ZION LUTHERAN CHURCH**

Rev. John R. Morris, Pastor  
3050 S. Fletcher Road  
Sunday School 9:00 a.m.; Family Worship 10:15 a.m.

**ST. JOHN'S EVANGELICAL LUTHERAN**

Dennis Falk, Pastor  
Sunday School 9:30 a.m.; Church Service 10:30 a.m.

**MANCHESTER BAPTIST CHURCH**

Pastor, Alan W. Morris 122 E. Main St.  
Sunday School 10:00 a.m.; Worship Service 11:00 a.m.; Youth and Children's Hour 6:00 p.m.; Adult Bible Study 6:00 p.m.;  
Evening Worship 7:00 p.m.; Choir Practice Wednesday 6:00 p.m.; Prayer Meeting Wednesday 7:00 p.m.; Calling Supper Thursday 5:45 p.m., followed by Calling and Canvassing; Program Thursday 6:30 p.m.

Church Services Courtesy of

**Jenter Funeral Home**

303 E. Main St.  
Manchester, Michigan



L to R: Glen Blythe, Henry Luckhardt, Morgan Kern, Merrick Burch, G.W. Kramer, Post Master-Frank Koebe, Mail Carriers in 1920. Picture compliments of Mrs. Paul Feldkamp.

WINNERS OF ANNUAL EASTER EGG HUNT

The winners of the annual Manchester Jaycee Easter Egg Hunt are: Pre-school children-Tracy, Nickerson, Christopher Martin, Brian Ball and Cheryl Bross. Kindergarten through third grade- Mary Cleland, Teresa Rose, Mark Walsh, Erik Lawson, Erik Poet, Craig Scully, Barbara Kennedy, Dawn Bunn, Jeff Daubner, Jeff Anderson.

**JEAN'S PET SALON**  
PROFESSIONAL GROOMING  
Grooming All Breeds - Specializing in Poodles

- BATHING
- FLUFF DRYING
- STYLING
- MAIL CLIPPING

PHONE 422-7112  
6924 CLOSE DR. TECUMSEH, MICH.  
WHERE DOG GROOMING IS OUR ONLY BUSINESS

**HAMILTON**  
Refrigeration & Air Conditioning  
Commercial System  
Installation and Repair

Call GARY HAMILTON  
Days 428-7600 Nights 428-8232

CROSSWORD

**ACROSS**

1. Abel's father
5. Vehicle
8. Girl's name
9. Lion's pride
10. Projecting ends of churches
11. Dispatch boat
13. Spiked war clubs
14. Plates (var.)
15. A combat pilot
16. Lubricant
17. Pronoun
18. Give's head (var.)
21. Coal size
22. Unwhole-some
24. Siberian gulf (poes.)
28. Ship's carrying capacity
29. Pronoun
30. Sea eagle
31. Place
32. Temerity
34. Mrs. Eisenhower
36. Vapor
37. Sign of zodiac
38. Dip out, as water
39. Spar
40. Before
41. Bohemian-like

**DOWN**

1. Liama of Peru
2. Perceives
3. Toward
4. Bulk
5. Carp
6. Cuckoos
7. Save
9. Capital of Wisconsin
10. Oriental nurse
12. Bones (anat.)
20. Radical side
21. Writer of sacred songs
23. United Nations
24. Has
25. Bug
27. Merry-making
28. Organs of sight
30. Shun
33. Back
34. Mother
35. Sandrac tree

Operation Petunia

The Manchester Chamber of Commerce will again this year launch "Operation Petunia", with the chamber planting the petunias in the park along Main Street.

Lend-A-Hand

On April 27, from 1:00-6:00 P.M., the Manchester Senior Council in co-operation with the JayCees, church groups, and other community groups will sponsor a Lend-A-Hand Day for senior citizens.

STRIKES 'N SPARES

MANCHESTER WOMEN'S

TEAM	WON	LOST
Bonanza Sirloln Tip	505.5	394.5
Gambles	495	405
Onsted Red & White	470.5	429.5
Black Sheep Tavern	462.5	437.5
Weatherwax Drugs	459	441
Mowry's Arco	454.5	445.5
Billmeyer Hardware	432.5	467.5
Hodge Vending	431.5	468.5
Margaret's Beauty	394.5	505.5
Dorothy Mae Beauty	394.5	505.5
HIGH TEAM GAME		
Gambles	1097	
Bonanza	1082	
Weatherwax	1048	
Black Sheep	1036	
HIGH TEAM SERIES		
Bonanza	3118	
Black Sheep	3013	
Gambles	2978	
Weatherwax	2967	
HIGH INDIVIDUAL GAME		
H. Arnold	234	
N. Althouse	229	
M. Reed	222	
HIGH INDIVIDUAL SERIES		
J. Schaffer	559	
N. Acre	556	
D. Gill	551	

JOLLY KEGLERS

TEAM	WON	LOST
Krauss Pharmacy	120	90
Carol's Cut & Curl	108	102
Ron's Tree Service	108	102
Village Tap	106	104
Grossman-Huber	97	113
Ben Franklin	91	119
HIGH TEAM SERIES		
Ron's Tree Service	3020	
Village Tap	2963	
Krauss Pharmacy	2936	
HIGH TEAM GAME		
Village Tap	1042	
Ron's Tree Service	1037	
Krauss Pharmacy	1033	
HIGH INDIVIDUAL SERIES		
P. Schmidt	557	
C. Britten	538	
J. Whittington	533	
HIGH INDIVIDUAL GAME		
J. Withrow	225	
P. Schmidt	204	
C. Wurster	203	

MANCHESTER-BUSINESSMENS

TEAM	WON	LOST
Manchester Tool & Die	52	38
Double A Products	52	38
American Legion	51	39
Krauss Pharmacy	51	39
Superior Land Devel.	50	40
AP's Plumbing	49 1/2	40 1/2
Smith Pallett	49	41
Browns TV	46	44
Marshall Trucking	46	44
Albers Trucking	45 1/2	44 1/2
Union Savings Bank	44 1/2	45 1/2
Food Locker	41 1/2	48 1/2
Spikes Mobil Ser.	42	48
Grossman Huber Ser.	42	48
Micks	40	50
The Glass Slipper	40 1/2	49 1/2
K & W Farm Supply	38 1/2	51 1/2
Gambles Store	29	61
HIGH TEAM SERIES		
Micks	3187	
Superior Land Devel.	3134 & 3134	
HIGH TEAM GAME		
Superior Land Devel.	1155	
Krauss Pharmacy	1113	
Superior Land Devel.	1102	
HIGH INDIVIDUAL SERIES		
Andy Fletcher	665	
Frank Randall	649	
Duane Roller	634	
HIGH INDIVIDUAL GAME		
Fritz Wurster	266	
Keith Alber	265	
Dave Walton	258	

ROCKCRETE PRODUCTS

TRANSIT-MIXED CONCRETE  
WASHED SAND & STONE  
ROAD GRAVEL & LIMESTONE  
RITE-WAY MIXERS

475-2848  
6991 CHELSEA - MANCHESTER ROAD  
MANCHESTER, MICHIGAN

Discriminating Brides-To-Be Choose

**WEDDING STATIONERY**  
By Coronet

THERMOGRAVED OR GENUINE COPPER PLATE ENGRAVED

- Wedding Invitations and Announcements
- Luncheon Invitations
- Gift Acknowledgements
- Calling Cards
- Personalized Stationery
- Informal Notes
- Monogrammed Napkins and Matchbooks

For your wedding you will want everything perfect, done correctly, in good taste. We will be pleased to advise the proper way, the inexpensive way to make the right impression. Your Wedding Stationery Trousseau shall be by Coronet... at your pleasure, elegantly Traditional or smartly Modern.

AND OTHER MAJOR APPLIANCE REPAIR  
Electrical Contracting  
L. V. Kirk  
Phone: (313) 428-3701  
MANCHESTER

Rent or lease from your Ford dealer  
RENT-A-CAR LEASING  
LONG & SHORT TERM LEASING  
FLEET & INDIVIDUAL LEASES  
TAILORRED TO YOUR NEEDS  
TOM MARSHALL  
FORD SALES inc.  
428-8343  
512 W. MAIN • MANCHESTER

Mr. Very Friendly

Miss Have A Smile

We insist on nameplates for all our people. We want you to know who we are. We're your friends, your neighbors, part of the family down the street. We have the same hopes, dreams and aspirations as you do. We're more than just a financial institution; we're people serving people. If you bank with us, you know this. If you don't bank with us, stop by. We'd like to get to know you, too!

**UNION SAVINGS BANK**

MEMBER F.D.I.C. MANCHESTER / BRIDGEWATER / PLEASANT LAKE

**Budget Billing**  
can help you with 12 equalized payments

Would you like to pay about the same amount every month for your Consumers Power Bill? You can, with our Equal Monthly Payment Plan. Under this Plan, we divide your yearly bill into 12 equalized payments. You enjoy the convenience and leave the arithmetic to us.

You may sign up for Budget Billing at any time. But, if you start the Plan in June, your monthly payments will be lower because they will be spread over a full 12-month period. If you enroll in the Plan any month later than June, your equal monthly payment will be determined by estimating the total cost of service for the remainder of the "Equal Payment Year."

Heating customers can enroll in the Plan simply by checking the box for Budget Billing on the first bill received after April 15.

Pick up your free copy of "The Advantages of Budget Billing" today, at any Consumers Power office.

JOIN OUR EQUAL MONTHLY PAYMENT PLAN

Consumers Power

For SINUS Discomfort TAKE sinarest



SPECIFICALLY FORMULATED FOR SINUS HEADACHE AND CONGESTION

PHARMACRAFT  
Rochester, New York 14503

### Beta Sigma Phi

Beta Sigma Phi, a social, cultural and service organization for women, plans the celebration of FOUNDER'S DAY. The organization has 250,000 members in 10,500 Chapters organized in 24 countries of the free world. The organization is not connected with any school or college. It is non-political and non-sectarian. The keynote of Beta Sigma Phi is friendship.

Chapters of five different degrees meet the growing needs of various age groups. Members are active in small Chapter groups and each Chapter adapts the plans for social, civic, and service and cultural activities to fit the interests of its own members.

When Beta Sigma Phi events or civic endeavors are larger than one Chapter can plan alone, all Chapters in a city or area may combine their strength. There are State Conventions each year which any member may attend.

Internationally the Chapters have created three special funds: The International Loan Fund, through which members help one another; the International Endowment Fund, through which vast sums have been donated to Cancer Research, cystic fibrosis, homes for underprivileged children, and many other causes; and the Exemplar Fund, which helps to support Literacy Village in India. The Founder's Day celebration on April

24, 1974 at St. Elizabeth's Parish marks the 43rd Anniversary of the founding. The organization was founded in Abilene, Kansas, by Mr. Walter W. Ross. The Anniversary will be observed by 7 Chapters including the towns of Adrian, Tecumseh, Hudson, and Manchester; as well as by all other Chapters around the World.

Mrs. Bonnie Greene is serving as Chairman of the Founder's Day activities. The toastmistress for the evening is Mrs. Judy Dennis. Other members taking part in the program are: Mrs. Judy Mann, Mrs. Lucretia Rutan, Mrs. Jan Ruhl, Mrs. Sandra Good, Mrs. Pat Cook, Mrs. Sandy Dorr, Mrs. Elsie Nearhood, and Mrs. Violet Lamb, and Mrs. Judy Spagnoli.

Mrs. Elsie Nearhood has been selected for the honor of presenting a special message from the sorority's President. She has received the message from the World Headquarters in Kansas City, Missouri. Awards will be presented to local members and outstanding members will be recognized. The theme for the new year, "STAIRWAY TO HAPPINESS," will be officially launched.

#### SINGLES 25 AND UP

For an evening of fun, come and dance with the Tuesday Nite Singles at the Ann Arbor YM-YWCA on April 30. Dance to the lively music of the Archie Beyer Orchestra from 9 to midnight.

### IOTA Epsilon

The Iota Epsilon Chapter of Beta Sigma Phi held its regular meeting April 9, at the home of Mrs. Jack Creech. Co-hostess for the evening was Mrs. Ronald Mann.

Mrs. Carolyn Patterson, Speech Therapist for the Manchester School District, presented a very interesting and informative program on Speech-focusing on development of speech and problems involved with Speech.

Plans were finalized for Founders Day, which will be held April 24, at St. Elizabeth's Parish in Tecumseh-6:30-7 Social, 7 p.m. - Dinner.

The Friendly Venture into Manchester is near completion. Officers have been elected. Pledge Ritual and Installation of Officers will be held April 30 at 7:30 p.m. at the home of Mrs. Phil Mains.

April 16 a craft night was held at the home of Mrs. Ronald Mann. Flower centerpieces were made for Founders Day. Programs were also presented. A very busy evening.

The next meeting will be held at the home of Mrs. Gil Purse, May 14, at 8 p.m. The Yardstick will be done. Also, a Bake Sale within the Chapter will be carried out that evening. A very important meeting-let's not miss it!

### BOARD OF EDUCATION HOLDS SPECIAL WORK SESSION

Expenditures for the coming year. He also presented figures which showed the anticipated decrease in state aid the school district would be penalized because of the new increased SEV. In view of this information a discussion was held on operational millage needs for the coming year. A letter was read from the Department of Education indicating that the overpayment of state aid of nearly \$68,000 in 1972-73 will be withheld from the school district in the 1974-75 school year. Because of this penalty which will severely affect the school district and the extra monies needed to meet salary needs and new personnel it is felt that the request for operational millage will have to be increased for the 1974-75 school year. The millage requests will be set after final figures of the SEV are received from the township supervisors and refinement of the tentative budget is completed.

A discussion on the need for a school business manager was held and a motion was made by Reno Feldkamp, supported by Jim Walkow, that the school district hire a business manager. Superintendent Swartz was given authorization to contact placement offices and interview candidates for this position. Motion passed unanimously.

Respectfully submitted, Andrew Luckhardt, Secretary

### Agriculture in Action

Michigan Farm Bureau

reserve of wheat to make sure I have enough bread to last me and at a price I can afford to pay; he'd like to roll back the price of gasoline, too.

Mr. Nixon and Senator Kennedy both have come up with a plan for the government to help me pay my doctor and hospital bills. They are trying to out-do each other with their offers to help me if I get sick, but neither of them is doing anything to keep me healthy. The more I hear and read about their plans, the worse I feel. When I paid my income tax last month, it again occurred to me that I already have more government help than I can stomach, but they keep telling me I need more. That's like trying to tell me that if I get the scots from eating too many green apples, I ought to eat more of them.

It isn't the price of bread—even the threat of a dollar a loaf—that suffers me. The \$1 a loaf bread is nonsense, but even if it did go to that, it would cost only about 20 times as much as it did 41 years ago when I paid my first tax and those were depression days.

(Guest Column by C.M. Wilson)

A lot of people are trying to convince me that I need more help from the government to make me feel better during the rest of my life.

President Nixon has proposed a federal budget of more than \$304 billion, which he says will do a lot to spruce things up for me. There are a lot of people who want to nationalize the railroads and a fellow in Pennsylvania wants to set up a government-run fuel corporation. Senator Jackson wants to establish a strategic

milk at \$1.50 a gallon is only three times as much as it was in 1931, and the very best steak is only about four times as much as it was then. Gasoline, even at a dollar a gallon, would only be about five times what it was during the depression.

My taxes this year are right close to 2,000 times as high as they were 41 years ago, but my gross salary has increased only about 70 times. I don't believe anyone can provide me with enough government help to cure that much of an ache. If the people on my government payroll would quit telling me how sick I am and how much they can do toward improving my health, I think I'd feel better...but as it is, I feel poorly.

The public ought to be concerned about the way I feel, because what ails me is contagious.

#### TREE DISTRIBUTION DAY SET

The Washtenaw County Soil Conservation District has announced that their Annual Tree Distribution Day is set for Saturday, April 27, 1974. It will be held from 8 a.m. to 4 p.m. at the Farm Council Grounds on Ann Arbor-Saline Road.

All persons who have ordered seedlings from the Soil Conservation District may pick them up at that time. In addition, a few species of unreserved seedlings will also be available on a first-come, first-serve basis to anyone who wishes to purchase them.

### Shakespeare Club

The Shakespeare Club traveled to Jonesville, Tuesday April 16 and after luncheon toured the Wm Gamble home. It is one of the beautiful old homes of Michigan. It was acquired by Wm. Gamble twelve years ago and since that time, he and his mother have restored it, both being very interested in antiques.

The home was built from 1870 to 1874 by Ebenezer O. Grovner, one time page boy for President Lincoln and later Lieutenant Governor of Michigan.

The home has thirty-four rooms and cost \$70,000 at that time, the finishing carpenters received eight cents an hour.

The home contains eight Italian Marble Fireplaces in different colors. The windows are from floor to ceiling. The rooms are all done in different imported woods. The living room is in white mahogany with twelve foot ceilings. A beautiful winding stairway is in the large hall. Two bookcases from Lincoln's collection are built in. There are beautiful "Gone with the Wind Lamp's" all over the house-one room having eight.

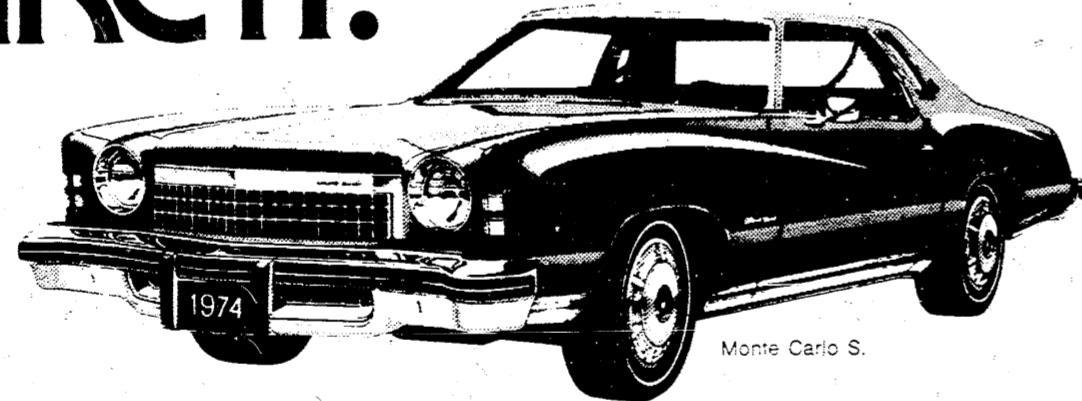
The whole house is used, also the silver and dishes.

Two collections they have, one of grunts and one of toothpick holders are valued at \$10,000 each.

It was a trip very much enjoyed by the club.

The club will convene in the fall—the first meeting being October 1st.

# THERE IS NOTHING QUITE LIKE IT.



## MONTE CARLO.

There is nothing quite like Monte Carlo's appeal of a distinctively styled, well-engineered automobile. We're confident you'll like its clean, tasteful character and good looks. We believe you'll find it to be an expression of all the things you've always wanted a car to be. You can make it personally your own, too, with available options like power-operated sky roof and contoured swivel bucket seats. Here's something else: There is nothing quite like the buys we're giving on new '74 Monte Carlos now. Hurry in and save.



CHEVROLET MAKES SENSE FOR AMERICA

### Tirb Chevrolet Company

131 ADRIAN STREET MANCHESTER, MICH

Manchester United Methodist Church

### YARD SALE

Ann Arbor Street

FRIDAY APRIL 26

9AM TO 5 PM

Clothing-Antiques  
Dishes-Miscellaneous

## You and Your BUSINESS

... one of the reasons we're in business... with the "know how" to combine all your policies into a convenient, monthly payment package at a fair price. Check the facts with Charlie Foster or...



"Larry" Becktel  
AGENT

11160 M-52 Manchester  
Phone 428-8006 or 663-3141

FARM BUREAU INSURANCE GROUP



# Your Home.



## There's no place like it for Shaklee.

We never thought it made sense for you to leave home. Not when it comes to buying things for it. That's why Shaklee still comes to you with a quality line of products—offered directly to you—right at home. Not ordinary products, but items for your entire family and home—made carefully, many organically, to work with nature instead of against it: Household Cleaners; Food Supplements; Cosmetics; Men's Toiletries; Baby Products.

Start living better with Shaklee. A call to your Shaklee Distributor is all it takes to bring these fine products to your home.



At Home Products by

## Shaklee Corporation

All you need to keep everything beautiful, naturally.

DAVE & CHERYL BUNN PHONE 428-7473  
VERN & ANNABELLE EVERSOLE PHONE 456-4684  
JIM & JOAN RANDALL PHONE 428-8905  
BILL & JAN RHOADES PHONE 428-2167  
JEAN SPIKE PHONE 428-7179  
DON & ARLENE WOLF PHONE 428-3547

## Friday Night Fish Fry

Manchester American Legion Hall  
SALAD TABLE

Serving: Combination Plate-Scallops Shrimp  
Perch-Clams  
APRIL 26 WILL BE THE LAST FISH FRY  
SERVING FROM 5:30 PM till 8 PM



THE JOLLY DUTCHMEN



VISIT THE JOLLY DUTCHMEN

SPRING IS HERE  
Let Us Change Your  
Mud and Snow Tires



20 lb Bag  
Kingsford  
"THE BEST"  
Charcoal  
Briquets

Phone 428-8960  
Many Gulf Accessories  
**GROSSMAN-HUBER SERVICE**



Ask Senator GRIFFIN by cutting through red tape, members of Congress can often lend a hand to those with problems involving the federal government.

I'm looking for a summer job for the first time this year. My problem is that I've applied for a social security card but haven't received one yet.

Go to your local Social Security Administration office and ask for a temporary card which can be shown to prospective employers.

When I was visiting a friend in New England, he dared me to eat something he called a "ratfish."

The National Oceanic and Atmospheric Administration is a step ahead of you. They are working toward new names for such fish as "ratfish," "cancer crabs," and "believe it or not!" "saucer-eyed porgy!"

As you probably know, some fish have different names in different parts of the country.

CANOEOING COURSES

Both a basic canoeing course and a training course for those wishing to become instructors are being offered in May through the cooperation of the Washtenaw County Chapter of the American Red Cross, the Ann Arbor Parks Department and the Huron Valley Girl Scout Council.

The Red Cross instructors' course is open to canoeists 17 years and older who meet swimming qualifications.

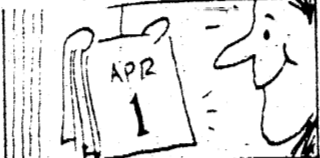
The basic course is open to anyone who can demonstrate sufficient swimming ability for canoeing.

session from 1 to 5 p.m. at Ypsilanti High School on Sunday May 5, and the other sessions from 5 to 8 p.m. at the Argo Park Canoe Livery at the foot of Longshore Drive.

There is no charge for the course, but the textbook, Red Cross Basic Canoeing is 50 cents.

Enrollment is limited by the canoes available. To register for either course, call the Red Cross at 971-5300 Monday through Friday from 9:30 a.m. until 5:00 p.m.

Mrs. John Dice, Canoeing Instructor-Trainer for the Red Cross is coordinator.



Germans and Norwegians don't miss a trick. They celebrate April Fool's day on the first and the last days of April!

COUPON GOOD FOR ONE WEEK Fox Photo Silk-Finish MAXI-VUE™ BORDERLESS Color Reprints

Krauss Pharmacy 128 EAST MAIN MANCHESTER, MICH.

COMPARE! WE PAY THE HIGHEST INTEREST RATE ON PASSBOOK SAVINGS. ANN ARBOR FEDERAL SAVINGS. 5 1/4% PER ANNUM, 7% PER ANNUM, 6 3/4% PER ANNUM, 6 1/2% PER ANNUM.

VEGGIO SUPERMARKETS GREAT PRICES on Name Brand Products add up to GREAT VALUE for YOU! PORK STEAKS 79¢, BROILER TURKEYS 39¢, CHICKEN BREASTS 98¢, etc.

VEGGIO SUPERMARKETS Everyday LOW PRICES Mean Everyday SAVINGS for YOU! BANQUET PIE 33¢, APPLE or CHERRY 33¢, etc.



North Sharon Librarians display some of the items available at their Superlibrary. L to R—front row—Lorella Rousier, Richard Howard, Carol Sundaerg; back row—Gladys Johnson, Mildred Fish, Ruth Fletcher, Helene Marshall.

The librarians at North Sharon Bible Church will be busy expanding their services for the next few months. The Superlibrary, as it is called, will begin to unfold April 28 in honor of National Library Week. The expanded services will include a visual center, audio center, tract center, puppet center, and church history center, as well as books and magazines. It will also house reference and other books for the school which will open at North Sharon in September. The library celebrated its first Grand Opening last October with 400 books. In six months it has grown to 1,000 books, many magazines, records and cassette recordings.

The proposed visual department will chiefly serve teachers and youth workers,

supplying them with a selection of over 200 teaching pictures, maps, flannel-graph, and puppets. In the audio section, record players and cassette players will be available for loan, as well as the entire New Testament on recording. The church history center will display scrap-books of pictures, clippings, records and objects recalling North Sharon's history.

The Superlibrary staff is: Carol Sundberg, Head Librarian, Lorella Rousier, Assistant, Richard Howard, Mildred Fish, Ruth Fletcher, Gladys Johnson and Helene Marshall. The library also thanks Mr. Yadley for his excellent carpentry work.

The library is open to all 30 minutes before and after each regular service. It is open to anyone in the community by special arrangement.

"OLDTIQUES AND HANDICRAFTS SALE"

The Sharon United Methodist Church will be having an "Oldtiques and Handicrafts Sale" on Saturday, April 27, starting at 9 o'clock.

"Oldtiques" are what most of us who can't afford antiques collect, they are just old. They are items such as old picture frames, old pottery and glassware, old furniture begging to be refinished, and other items people like to collect. There will also be a white-elephant table and used clothing.

Also for sale will be some of the handiworks of the ladies of the congregation—these will range from pretzels and other baked goods to knitted and crocheted items, and all sorts of what-nots that help to personalize your home.

In connection with the sale there will be a pretzel-bake sponsored by the young adults. If you would like to order ahead of time, please call Mrs. Nelson Kothe at 428-7296 or Mrs. Michael Peterlin at 428-8430.

BRIDAL SHOWER

Amy Ann Creason was honored at a bridal shower given for her by Mrs. Michael Coppemoll, at her home, in Grass Lake on Sunday.

There were 30 guests, present from Manchester, Brooklyn, Norvell, Grass Lake, Jackson and Battle Creek.

The guest of honor received many lovely gifts.

NOTICE!!

The Manchester High School Ecology Club has issued the use of a new and larger paper bin. This bin will be at the transversal station the first week in every month. Please tie up your papers and magazines before coming. Also bring along your glass for the community glass bin.

Come and use these facilities—they are here for you!!

ALBER EXCAVATING

Drain Fields—Septic Tanks—Drive Ways—Limestone

Fill Dirt—Drain Field Stone—Mason Sand

PHONE 428-8628

7601 Hashley Road Manchester, Michigan

'74 Pinto \$79 down \$79 a month



See your Ford Dealer for this great Pinto Deal.

The price is just \$79 down and \$79 a month. Actual payment is \$78.89 for 36 months. Payment plan is based on the sticker price of \$2,485 including freight, total deferred payment of \$2,919 on approved credit. Finance charge is \$433. The ANNUAL PERCENTAGE RATE is 11.08%. Taxes, dealer prep, if any, extra.



And for this free Ford car puppet. And just for stopping in, your Ford Dealer will give you this cute blue Ford car puppet free. Puppet free at participating Ford Dealers. Limit one per licensed driver as long as supply lasts. Offer ends May 4.



Not just a car dealer. A Ford Dealer.

TOM MARSHALL, INC. 512 W. MAIN ST. MANCHESTER, MICHIGAN

Old-Tiques and Handicraft Sale

Saturday, April 27 starting at 9 am

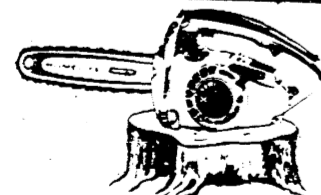
Sharon United Methodist Church

Corner of Pleasant Lake Road and Chelsea Manchester Road

EMBARRASSING, BURNING Itching?

ZEMO relieves itching fast because its special 'anti-itch' medication soothes inflamed surface tissues. Get relief with the first application of soothing, medicated ZEMO—Ointment or Liquid.

FIREWOOD !! SAVE FUEL SAVE MONEY CUT YOUR OWN.



HOMELITE XL-2 CHAIN SAW TWO TRIGGERS

ONE for big cutting jobs

ONE for little pruning jobs

LIGHTWEIGHT • POWERFUL • RUGGED

Only \$119.95

Look for your local Homelite dealer in the YELLOW PAGES.

MANCHESTER TOWNSHIP PLANNING COMMISSION NOTICE OF PUBLIC HEARING

The Manchester Township Planning Commission will hold a public hearing at 7:00 p.m., o'clock ESOT on May 20, 1974 at Manchester Village Hall, 120 South Clinton Street, Manchester, Michigan on the application of Emory W. Garlick to rezone RC-Recreation Conservation District to LR-Low Density Residential District for subdivision purposes, premises situate at 644 West Main, Manchester, Michigan and more particularly described as:

Situate in Manchester Township, Washtenaw County, Michigan to-wit: Beginning at the SE corner of Fractional Section 3, T4S, R3E, Manchester Township, Washtenaw County, Michigan; thence N 89 degree 15' W 101.97 feet along the south line of said Section 10; thence S 0 degree 53' E 321.47 feet; thence S 71 degree 44' W 69.16 feet along the centerline of Austin Road; thence N 0 degree 53' W 344.03 feet; thence N 89 degree 15' W 1332 feet more or less

along the south line of said fractional Section 3 to the west line of the E 1/2 of the SE 1/4 of said fractional Section 3; thence northerly 1247 feet more or less along the west line of the E 1/2 of the SE 1/4 of said fractional Section 3 to the north line of the former L.S. & M.S. Railroad Right-of-Way formerly conveyed to Donaldson E. Flory in Liber 1247, Page 599 of Washtenaw County Records; thence Easterly 1345 feet more or less along the northerly line of said L.S. & M.S. Railroad Right-of-Way to the east line of said fractional Section 3; thence southerly 1319 feet more or less along the east line of said fractional Section 3 to the place of beginning, being a part of the E 1/2 of the SE 1/4 of said fractional Section 3 and a part of the E 1/2 of the NE 1/4 of Section 10, T4S, R3E, Manchester Township, Washtenaw County, Michigan, containing 39.9 acres of land more or less being subject to the rights of the public over the most southerly 33.0 feet thereof as occupied by Austin Road, and being subject to easements and restrictions of record, if any.

MANCHESTER TOWNSHIP PLANNING COMMISSION April 25, 1974 & May 15, 1974



Savor Asparagus in Cream Soup

Bunches of fresh asparagus in the market are always a signal for rejoicing for all lovers of this very special vegetable. Serve it often while it is in season. Before cooking, wash in cold water to remove any sand that may be clinging to the stalks or hidden under the scales. Then cook just until tender, 10 to 15 minutes, preferably in a covered tall pot with about 2 inches of salted water. Dress it with Hollandaise or Cheese Sauce—or make Cream of Asparagus Soup. Making your soup from the fresh vegetable is very simple and it will have real gourmet flavor. Thicken it delicately with Argo corn starch and add just enough nutmeg for seasoning.

Cream of Asparagus Soup

- 2 tablespoons margarine 2 cups milk
2 tablespoons corn starch 1/2 cup asparagus broth
1 teaspoon salt 1 1/2 cups cooked, chopped asparagus
1/2 teaspoon pepper 1/2 teaspoon ground nutmeg

Melt margarine in 2-quart heavy saucepan. Add corn starch, salt and pepper and mix well. Remove from heat, gradually add milk and 1/2 cup of the broth left from cooking asparagus, mixing until smooth. Cook over medium heat, stirring constantly, until mixture thickens, comes to boil and boils 1 minute. Stir in asparagus and nutmeg. Makes about 1 quart.

The Stockyard Inn

Hungry Man's Breakfast \$2.00

Rib Eye Steak-2 Eggs-Hash Browns-Toast

Open Monday thru Friday

6 am to 4 pm

If you know all there is to know about points, deposits, down payments, mortgages, financing, appraisals, title transfer, title search, title insurance, purchase agreements, warranty deeds, closing, land surveys, current market values, bank charges, prepaid taxes and a hundred other complicated matters, go ahead and sell your own home.

But if you're like most people and you don't understand all the complications and legal ramifications of buying or selling a home, see a Realtor.

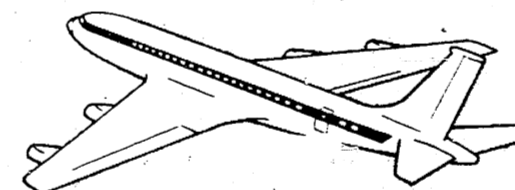
Spear & Associates, INCORPORATED, REALTORS

122 West Main Phone 428-8388 Manchester

LET OUR REALTORS DO THE DETAIL WORK



Jet Journey TO THE STARS



Two From

Manchester IGA

WILL WIN All-Expense PAID

TRIPS TO CALIFORNIA

OFFICIAL RULES... Jet Journey TO THE STARS

- 1. Election is open to any boy or girl, age 10 through 14 years. Boys or girls who receive the highest number of votes in each store will win.
2. Vote for your favorite boy or girl by writing his or her name on the back of each gold cash register tape you receive at all participating Food Stores.
3. The total value of each gold tape will be determined by the total purchases shown on each gold tape you receive. You will receive one vote for each 10¢ purchase. For example, a \$10 purchase shown on your gold cash register tape would be worth 100 votes for you.
4. Boys or girls (their wine or cigarettes are not included in eligible purchases).



HURRY and REGISTER TODAY!

### OBITUARIES

Mrs. Ethel F. James  
612 Vernon Street  
Manchester

Age 73 years died suddenly Saturday morning at Herrick Memorial Hospital in Tecumseh.

She was born December 1, 1900 in Kenton, Ohio, the daughter of Marion and Emma Smith Lamb.

She was married to William James. He preceded her in death in 1971. She had been an employee of the Ford Motor Co. for 23 years until her retirement in 1964.

Mrs. James attended the Manchester United Methodist Church.

Survivors are two sons; Forrest James of Willis, Robert James of El Paso, Texas, one daughter; Mrs. Dennis (Wava) Hedstrom of Denver, Colorado, twelve grandchildren, six step-grandchildren, ten great-grandchildren, brother; Walter Lamb of Bellefontaine, Ohio, sister; Mrs. Edith Carothers of DeGraff, Ohio and several nieces and nephews.

Funeral services were held Tuesday 11:00 a.m. at the Jenter Funeral Home. Rev. Walter Damberg officiated. Burial followed in Fairview Cemetery, Jumbo, Ohio.

Mrs. Julia Steinway  
6740 Each Road  
Manchester

Age 60 years died suddenly at her home Tuesday night.

She was born April 24, 1913 in Manchester the daughter of William and Anna Huber Ahrens.

She was married to Harold Steinway on December 16, 1934. He preceded her in death on July 10, 1971.

Mrs. Steinway was a member of Sharon United Methodist Church, the W.S.W.S. of the church and Lady Arbeller Society.

Survivors are three daughters; Miss Carole Steinway of Santa Monica, Calif., Mrs. Norris (Janice) Crismore of Manchester, Mrs. Douglas (Diana) Parr of Manchester, one son; Gale at home, four grandchildren, two brothers; Lorenz and Harold Ahrens both of Manchester, two sisters; Mrs. Alma Knauf of Huntington Beach, Calif., and Mrs. Helen Mast of Ann Arbor.

She was preceded in death by four brothers.

Funeral services were held Friday 1:30 p.m. at the Jenter Funeral Home. Rev. Michael Peterlin officiated. Burial followed in Rowes Corner Cemetery.

### Card of Thanks

We, the family of Otto Trinkle would like to express our sincere thanks to our relatives, neighbors and friends for their flowers, memorials, food and cards which we received during our recent bereavement.

A special thanks to Rev. Wise and Eugene Nelson for their comforting words, to the Masons for their beautiful memorial service, to the Eastern Stars for preparing food and serving the lunch and to Ronald Jenter for all his kindness.

Again with all our thanks,  
The Robert Dfenderfer family  
and  
The Elmen Kopka family

I would like to express my thanks to my family, relatives and friends for the cards, gifts, flowers and telephone calls during my stay in the hospital and since my return home. Also, to all the people who came to my assistance at the time of my auto accident. I didn't realize who they all were, but I sincerely appreciate and wish to thank them for their help and kindness.  
Evelyn Dethloff

The family of Mrs. Mary Krzyzaniak would like to express our thanks to all our friends, neighbors, and relatives for their expression of sympathy, flowers and mass intentions. Rev. Father Schlinkert for his comforting words, also Fr. Lee. The ladies of St. Mary's Altar society for the dinner they prepared and the kindness of Ron Jenter. Thank you all.  
The Leonard, John and Richard Krzyzaniak families and  
The Robt. Randall family

Nature is a great teacher,  
if you care to take lessons.  
\*\*\*\*

### Brown's TV & Radio

#### ZENITH

Color and Black & White TV

134 East Main Street  
Manchester, Michigan

## ESTATE AUCTION

Selling Fred Witherspoon Estate and Consignments at Tecumseh Grange Hall, across from the Tecumseh Country Club. Burt-Milwaukee Road. Tecumseh, Mich.

### Saturday, April 27, 1974

STARTING AT 10:30 A.M.

**Antiques-Furniture-Clocks  
Old Phonographs-Cut Glass  
Lamps-Etc 100's Other Items**

(Indoor Auction-Heated Building) also Outdoor Sale

Weather Permitting

Lunch Available

J.D. Helman Auctioneer Phone 313-423-5321

### Call the muffler experts!



Why pay more?

- Installed While-U-Wait
- Mufflers Guaranteed\* Coast to Coast
- Quality Shocks
- Tail Pipes Guaranteed\* Coast to Coast
- Custom Pipe Bending
- Custom Duals

\*Scotti mufflers and tail pipes are guaranteed for as long as you own your car. Replacement of a new guaranteed Scotti muffler or tail pipe will be made for a service charge only upon presentation of certificate at any Scotti Muffler Center.

Tom Marshall Ford  
428-3021

510-12 W. MAIN ST  
MANCHESTER

# FOR SALE



115-117 E. Main

111 E. Main

109 E. Main



110 E. Main

118-120 E. Main

130 E. Main

This Complete Package Includes All Leases

REDUCED

~~\$270,000.00~~  
**\$335,000.00**

Exclusive Sales Agent

## CHAPIN, Broker

Broker's Protected

109 E. MAIN ST.

MANCHESTER

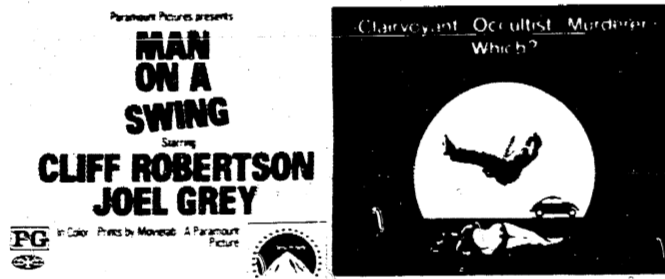
428-8961

PHONE

428-8107

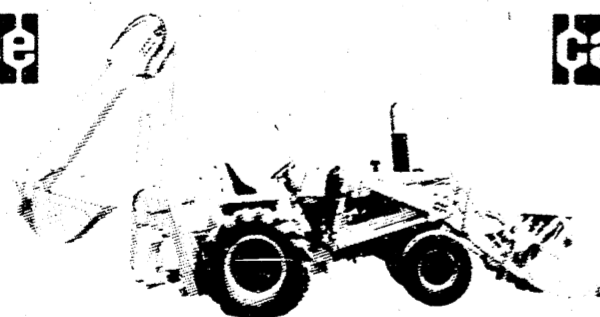
### CLINTON THEATRE

SHOWING: WED., THURS., FRI., SAT., & SUN. 7:30 pm



NEXT WEEK  
THE WAY WE WERE  
MAY 8  
THE POSITION ADVENTURE

If You Need A  
Bulldozer or Backhoe



## RENT IT



FROM



K&W Equipment, Inc.  
Agricultural and Construction Equipment  
105 M-52 Manchester Phone 428-5081

# WANT ADS

ALL CLASSIFIED ADS ARE PAYABLE IN ADVANCE

**PIANO TUNING:** Repair and regulation Ross C. Honsinger, Phone (517) 782-1273 or Manchester 428-8351. tln

**FOR FULLER BRUSH** needs call 428-8886. tln

**DeRossett Construction Company**-Saline 428-9661. Aluminum, vinyl and steel siding specialist. Additions and garages. Financing available. Free estimates. t.l.n

**SEAMLESS aluminum eavestroughs** installed and guaranteed, white and colors available. For free estimates call Rick Kleinschmidt - R.D. Kleinschmidt Co. 428-8836. tln

**CARPETS, Walls, Upholstery, and Commercial Window Cleaning.** Retail Commercial Cleaning supplies. Static proofing. Insurance claims welcome. Free Estimates. For further information call Clinton Window and Floor Cleaning Service. 456-7282. tln

**BEEF TO SELL BY SIDE:** Custom slaughtering. Lockers to rent. Phone 428-7600. Manchester Frozen Food Locker. tln

**PICKUP CAPS & COVERS:** For all makes and models. Standard and custom-designed. From \$147.00. Free brochure. pioneer coach manufacturing co. 3496 Pontiac Trail, Ann Arbor 665-6785. tln

**HOUSE FOR SALE:** Large Country Home on 1 1/2 acres. Surrounded by mature maple trees. Only 200 yards from Manchester Village Limits, 12639 Schleweis Rd. Call 428-8434 for appointment. tln

**WILL pay cash for your equity** in land, homes, or income property-Call Phil Spear. Spear & Associates, Inc. Realtors 769-5750. tln

**EXPERT GUN SMITHING:** Why wait till fall get that gun ready now! Beal's Ace Hardware. tln

**HOUSE and barn roofing,** all types of roof repairs, aluminum storm windows and doors, awnings and porch enclosures, cement work, room additions, aluminum siding and gutters. Call Joe Hayes for free estimates. 428-8520. tln

**Are you building your own home?** Construction money available for residential homes. Marfax Corporation, 665-6166. tln

**FOR SALE:** Feeder steers and heifers, all weights. Call 428-8340. tln

**TERRY'S SERVICE**  
170 Whitlock St., Saline  
Home Improvement - Garages, Drop Ceilings - Aluminum Siding, Doors, Windows and Gutters - Wall Paneling. Free Est. - Phone after 4 p.m.  
H.G. Keene, 428-5325

**AUCTIONEER:** S. Halchishak, all types complete management. 428-2641. t.l.n.  
**NEW & USED:** Mobile homes for rent with option to buy. Ypsilanti area. Country Mobile Homes 2499 E. Michigan Ave. 485-7101. tln

**Bob Beaubien-Horse Shoeing & Trimming.** 428-8985 after 5 p.m. tln

**CIRCLE STAR TRAILER SALES:** Enjoy your vacation, come see us. We have auxiliary gas tanks in stock for trucks. We also have fold-downs, trailers, pickup campers, truck tops, 5th wheels and accessories. 5338 Shepherd Road, 1/2 mile West of Tipton Highway, Adrian. We are campers too. 5-23

**HAVE DeKalb Hybrids** of several maturities on hand noted for yield. Standability disease resistant. Wm. Haeussler Phone 428-8774. 5-9

**WILL do Custom Hatching** for chickens, ducks, geese, guineas. Call 428-8607. 4-25p

**WANTED: Quality Hay & Straw**-will pay cash. Call after 6. 313-751-1071. 4-25

**GARDENS PLOWED:** call 428-3815 for appointment. 5-8p

**MANCHESTER, 5 bedroom home** in Village on large lot. 368 ft. frontage, full basement, city water, natural gas heat. Reduced to \$29,900. Edwards Real Estate-429-2575. 5-2

**HORSES FOR SALE:** Geldings American Saddle Breed 7 years old, Quarter-horse 3 years old. Phone 428-8813 for information. 4-25

**WANTED: Spinning Wheel,** good condition needed for spinning. Call 971-5146. 4-25

**DOES your bicycle need to be repaired?** Phone 428-8462 or 428-7280. 4-25

**ALCOA Aluminum Insulated Siding Specialist,** since 1938 in Michigan. All wood overhang covered, also sills, porch ceilings, etc. Gutters, Storm Windows, Shutters in colors. William Davis - Phone 616-663-6655. 8-29p

**HOME TYPING** - 428-2631. 5-2

**FOR SALE:** Ruger 22 automatic pistol standard model, ammunition and cleaning kit. Call 482-5800 ask for Gary Salyer weekends phone 428-7207. 5-2

**CLEAN expensive carpets** with the best. Blue Lustre is America's favorite. Rent shampooer \$1. Beal's Ace Hardware.

**OFFICE SPACE FOR RENT:** Call Bob Evans 428-8364.

**Very sharp ranch** in Grass Lake, 3 bedroom, family room, rec. room done in barn siding with wet bar. 2 fireplaces, central air conditioning, \$38,500. Real Estate One of Washtenaw. Realtor at 475-8693 or evenings Gwen Whitaker at 498-2004.

**PART TIME truck driver**-must be familiar with Manchester area. G.E. Wacker 428-8366.

**HELP WANTED:** Female part time general work for Rockcrete Products Co. 475-2848.

**FREE KITTENS:** 428-8522. tln

**HELP WANTED:** The Evangelical Home of Saline is accepting employment applications for RN's LPN's, Nurses Aides, Housekeepers, Cooks and Dietary persons. Applications may be made at the home office-440 W. Russell St., Saline. Phone 429-9401.

**APARTMENT FOR RENT:** Inquire at Beal's Ace Hardware, Manchester, Mich. tln

**WALLPAPER, Paints, Paint Accessories** Consult Lucy or Joan on Decorating at Beal's Ace Hardware. tln

**WANTED:** good used piano. Phone 428-7223.

**HELP WANTED:** Part time days. Call 428-8352 before 4 and 428-3067 after 5. Stockyard Inn.

**Agonizing Pain From Ingrown Toenail? Get Outgro For Fast Relief**  
Outgro gives you fast temporary relief from ingrown toenail pain. Outgro toughens irritated skin, eases inflammation, reduces swelling without affecting the shape, growth, or position of the nail. Stop ingrown nail pain fast with Outgro.

**Pick-up Station for Welchs Cleaners Daily Pick-up Trickeys, Inc. Manchester**

**DR. GARRY M. DEO**  
OPTOMETRIST

ANNOUNCES THE OPENING OF HIS OFFICE FOR THE PRACTICE OF OPTOMETRY AT

131 EAST MICHIGAN AVENUE  
SALINE, MICHIGAN 48176

EYE EXAMINATIONS  
CONTACT LENSES

TELEPHONE  
429-9454

**Carpenter Bros. Chef Restaurant**

EAST MAIN STREET MANCHESTER, MICHIGAN

**Tuesday Night**

**Rib Eye Steak \$2.98**

**Thursday All Day**

**Spaghetti Dinner \$1.40**

OPEN DAILY MONDAY THRU FRIDAY

5 AM TO 9 PM

FRIDAY AND SATURDAY 5 AM TO 10:30 PM

# THE MANCHESTER ENTERPRISE

107TH YEAR NO. 27

TEN CENTS PER COPY

THURSDAY, MAY 2, 1974

## MHS Honor Students



Thomas T. Guenther, son of Mr. & Mrs. Theodore Guenther 7551 Schneider Road, Manchester has been named the Valedictorian of the 1974 senior class. Academically, Thomas has a 3.842 average on a 4.00 scale. Presently he is a National Merit Finalist and listed in "Whose Who" in American High Schools. Tom has been awarded a State of Michigan Competitive Scholarship and a Kalamazoo College Scholarship. While in high school Tom was active in Track, Cross Country, Science Club and Youth Fellowship. Tom plans to attend Kalamazoo College and major in biological science.



Dorian Leigh Tassie, daughter of Mr. & Mrs. Donald Tassie, 416 Vernon Street, Manchester has been named the Salutatorian of the 1974 senior class. Dorian has earned a 3.789 academic average on a 4.00 scale. Dorian has been awarded a Michigan Competitive Scholarship and a Michigan State University Scholarship. While in high school she participated in German Club, Ecology Club, Varsity Basketball-Girls, school plays and was a Wrestling and Varsity Cheerleader. Dorian plans to enter Michigan State University in the pre-law program.

## Kindergarten "Round-Up"

Kindergarten "Round Up" for the Manchester Public Schools will be held from 9:30 to 11:00 A.M. on Thursday, May 9 in the Klager School gym. The purpose of the "Round Up" will be: (1) to help the school district determine how many kindergarten children will enter school in the fall (2) to see that the parents of next year's kindergarten children receive all of the correct forms and (3) to give parents some idea of what kindergarten will be like. Since the formal part of the program will not be long, parents may bring their kindergarten child if they wish. School Superintendent, Mr. Swartz, the elementary school principals, the county health nurse and the kindergarten teachers will be on hand to answer any questions that parents may have.

If any parents are unable to attend the "Round Up", they are urged to contact the Klager School office at 428-8010 or the Pleasant Lake Elementary office at 428-7440 and notify the school that they have a child who will be entering school in the fall. This is extremely important to help the schools plan for next year.



Richard Z. Wolf

## Jaycees Elect New Officers

On Thursday evening, April 18, 1974 the Manchester Jaycees elected their leaders for the coming Jaycee year. Mr. Richard Z. Wolf, was elected President, Robert Bunney, Internal Vice-President, John Schaible, External Vice-President, Richard Rigg, Secretary, and Arnie Weaver, Treasurer.

Mr. Wolf has been active in Jaycee activities here in Manchester for the past two years and served as secretary on the outgoing board. The head of the Manchester Jaycees for the coming year, Dick Wolf is Cashier and Operations Officer for the Union Savings Bank of Manchester and resides at 9626 Kies Road with his wife Nancy and son Von. In addition to serving on the outgoing board, Dick chaired the Child is Waiting program which supported a Philippine child. He is also active in his church and civic affairs.

The above officers will be installed at the Manchester Jaycees Inaugural Ball on Saturday evening, June 1, 1974 at the Tecumseh Country Club. All Jaycees and their wives are encouraged to attend this function and to contact this year's chairmen, Gale Koebe at 428-8291 or Jeff Schaffer at 428-7271.

## Jack Kennedy State Jaycee Vice President

On Monday evening, April 15th, the Michigan State Jaycees from District #28, elected a successor to outgoing Vice-President, Jim Curley of Manchester. This year's district Vice-President elected for the State of Michigan, District #28, is Jack Kennedy who resides at 530 W. Main Street in Manchester. Mr. Kennedy is employed as the Assistant Vice-President of the Union Savings Bank of Manchester. He is a Manchester Jaycee active in both the state and local Jaycee politics in both New York and Manchester, Michigan.

During the 1973-1974 year, Jack acted as editor for the Manchester Jaycee newsletter and public relations director for the local chapter. In addition, Jack is a past local president from the Grand Island New York chapter, past chairman of the board for the local Jaycee chapter, and district speak-up candidate, State of Michigan.

Mr. Kennedy is a graduate of the University of Buffalo, School of Business Administration and currently resides here in Manchester with his wife Barbara and their three children.

Mr. Kennedy will be installed into office at the inaugural ball at the Tecumseh Country Club on June 1, 1974.

## Board To Ask For Operational Millage Increase

The Manchester School District will request an increase in operational millage on June 10, 1974. The exact amount has not yet been determined, but it is felt that the total overall increase will approximate 1.8 mills. At the present time the extra voted operational millage is 11.5 mills. With the county allocated millage at 11.22 mills this is a total of 22.72 mills. In order to qualify for full state aid under the present formula the school district should levy 25 mills for operational purposes.

The present extra voted millage of 11.5 mills has not been increased in three years. With operational costs rising sharply, it is necessary to increase the millage request to maintain existing programs. Examples of increased costs are as follows:  
Gasoline-1972-73-14.7¢ gal., 1973-74-32.4¢ gal.  
Fuel Oil-1972-73-12.83¢ gal., 1973-74-33.5¢ gal.  
Ditto & mimeo paper-1972-73-78¢ ream-1973-74-\$1.55 ream.

The extra cost to the district for just the three items indicated above approximated \$7,000.00. Add to this the increasing costs for textbooks, school supplies, utilities, maintenance and salaries and it is easy to see that extra money is necessary for the operation of the school system.

The Board of Education will determine the exact amount needed at its next meeting.

## Varsity Choir Concert May 10

The Varsity Choir Concert will be held May 10, 8 p.m. at the Manchester High School study auditorium. Adults \$1.00 and 50¢ for students.

## 8th Annual Boat Race Sunday, May 19, 1974



By C. Chapin

Big or little Boaters! Binary events beginning with boys and including belldames, inceptive at the helm by Fellows Bridge, will bring forth bulkhead by-play as well as backhand strokes. The batrachian battalion is a bagatelle, not worth a blurb. Contestants will flex biceps, bail bilge, and all bragging will be measured by Beaufort scale. Erarries with the rules may be picked up at Beal's Ace Hardware, 103 East Main St., Manchester. Entry fee shall be \$1.50 per person.

Class B-3 Ladies Boat Open Partner 1:30 p.m.

Class C-2 Man and Woman Canoe 1:30 p.m.

Class C-1 Ladies Canoe Open Partner 1:30 p.m.

Class B-4 Father and Son Boat-2:00 p.m.

Class C-5 Father and Son Canoe-2:00 p.m.

Class B-6 Open Boat Choose Partner-2:30 p.m.

Class C-7 Open Canoe Choose Partner-2:30 p.m.

\* See Glossary of Definitions on page 15

**Spear & Associates**  
INCORPORATED REALTORS

122 West Main Phone 428-8388 Daily Manchester

"WANT TO BUILD?"

We have 3 parcels of 2 1/2 acres Sandy, rolling w/trees, 1 mile west of Manchester. Call today.

6 1/4 acres, wooded with low spot near the road. Located on M52.

7 parcels of 10 acres each. Located just outside the Village Limits. Sandy, rolling, some with woods and scattered trees.

FOR FURTHER INFORMATION CALL  
**SPEAR and Associates, Inc. Realtors**

We have buyers -- call us to sell your property

Member of Ann Arbor Board of Realtors Multiple Listing Service

## REAL ESTATE ADVICE

No Obligation - Residential Properties - Farms  
Commercial Properties - Vacant Lands

OFFICE HOURS:

Mon. thru Fri.

9am to 5pm

Sat. 9 am to 12

Marge Rowe, Sec.

Evenings phone:

Ellis Pratt: 428-8562

Maria Lehr: 428-8182

Tina Cotton: 428-7143