

Wrestlers Lose To Hudson

by Jon Roger Hardenbergh

The Dutchmen wrestling team met their first league foe of the 1973-74 season, January 10, The Hudson Tigers proved to be a bit much as they defeated our Dutch, 24-16. The Dutchmen, as the defending Lenawee Conference Champions of the 2 last consecutive years, fought a valiant match but lost in the end. Co-captains John Roberts and Steve Gross led the Dutch wrestlers out to face the Tigers of Hudson. Manchester lost some key players from graduation and also lost their coach. The new coach, Wayne Jackson, will have to rebuild to continue as league champs.

The match started out with Manchester's Chris Ventimiglia (98 lbs.) and Brian Merriman (105 lbs.) both going down to defeat by decision so the score was Hudson-6, Manchester-0. The next two Dutch wrestlers pulled the team up by winning, both by decision. These were John Roberts (112 lbs.) and Joel Tobias (119 lbs.). The score was then tied 6-6 until Tobias's opponent, frustrated because he lost, threw his headgear. The referee docked the Hudson team 1 point for this so the score stood Dutch-6, Tigers-5. The lead changed after almost every player, with neither team holding a marginal lead. John Young (126 lbs.) lost a decision so Hudson's advantage was 2 points, 8-6. Steve Gross (132 lbs.) won by decision giving the lead back, Dutch-10, Tigers-8. Gross won his decision 15-0. When you win by 11 or more your team scores 4 points. Phil Krzyzaniak (138 lbs.) lost by decision giving the lead back to Hudson, 12-10. Greg Bertke (145 lbs.) fought back and fourth with the score 8-8 at the end of the second period. In the final period Bertke proved he was boss as he nearly pinned his man several times but settled for a 17-8 decision. Score was Manchester-13, Hudson-12. Mark Eversole (155 lbs.) and Dave Rieneck (167 lbs.) both lost to decisions so the score was 18-13 Hudson. Ross

Haeussler (185 lbs.) ended his first period with a take down at the buzzer. The second and third periods were dominated by Haeussler, as he won by decision 7-0. This brought the score closer Hudson-18, Manchester-16, with only the heavy-weights left. Unfortunately Gary Eversole was pinned in 55 seconds, giving Hudson a 24-16 victory.

DUTCH FALL IN NON-LEAGUE CONTEST

by Jon Roger Hardenbergh

Saturday, January 12, saw the Dutch challenge the Irish from Ann Arbor St. Thomas. The Irish are a high ranked class D school in the state (1 or 2). The Irish have seen 7 opponents get crushed by their team so far this year. The Irish have run over all foes easily but Manchester was determined to change that.

Manchester lost the jump in the first period and the lead by 4 points, so the score was St. Thomas-18, Manchester-14. The Dutch fought back in the second period with John Savage scoring 8 points and Bruce Cray adding 6 points. Cray and Rich Kennedy each had point producing steals with Savage blocking 2 shots. The Dutch left the court at half time 2 points down, 38-36. The third period saw the Dutch fight harder with Dean Decker scoring 6 points and Kennedy adding 4 points. As the Manchester team stepped on the court to start the fourth period, the capacity crowd gave them a well deserved standing ovation. After 2 minutes had elapsed the Irish's big man, Len Lillard, fouled out having scored 18 points. I thought this might be the break the Dutch needed. St. Thomas was able to hold a slight lead regardless. Manchester had 2 excellent opportunities to go ahead but Savage and Scott Gormley failed to capitalize on one and one situations from the free throw line. With 2 minutes left and the Irish up by four, the St. Thomas team went into a stall, with Manchester having to foul to get the ball. The Irish free thrower sank 2, putting them up by 6 points. I thought it was over because there was 33 seconds left. The Dutch didn't

agree as in these 33 seconds they scored 4 points, scoring the still undefeated St. Thomas team and fans.

The luck of the Irish was flying to high for the Flying Dutchmen who fell 62-60. It was Decker playing hi-scoring with 16 points. Savage and Cray played an excellent game each pumping in 12 points. Savage had Len Lillard as his counterpart which he handled well, obtaining no fouls and grabbing 7 rebounds. Cray had some important assists and 7 rebounds. Kennedy and Gormley added 10 points apiece. The Dutch had less turnovers 16-18 scoring on 3 Irish turnovers.

The Junior Varsity lost, 59-53. After seeing the capacity crowd and the valiant try the Dutch made, I am proud of the team and fans.

7TH GRADE BASKETBALLERS OPEN SEASON WITH VICTORY OVER CLINTON

Fine shooting and good rebounding for shorter Dutchmen team spelled doom for Clinton's 7th grade basketball team last Tuesday.

Coach Larry Steeb's team took alot less shots than Clintons taller team, but they also made alot more as they crushed Clinton 46-26 in each team opener.

Brian Evans led the Manchester team with 20 points while Bob Weirich and Rick Krzyzaniak both contributed 4 points and 10 rebounds apiece.

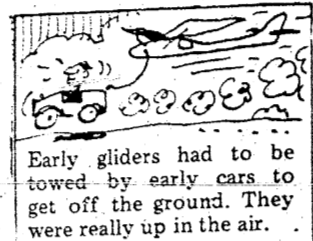
Also scoring for the Dutchmen team were Mike Lentz (4 points), Doug Strong (4 points), Craig Rogers (4 points), Tom Tassie (2 points), Bob King (2 points) and Mike Lehr (2 points).

8TH GRADE BASKETBALL TEAM NIPPED BY 2

Curt Fielder's 32 points weren't quite enough as Coach Bill Symon's 8th grade team fell to a balanced Clinton team 48-46.

The Dutchmen team experienced foul trouble early and most of the 4th period played without 3 starters who fouled out.

Tom Little clipped in 9 points for the Dutchmen while Dan Turvey and Mark Guenther had 2 points apiece. Scott Barber added 1 point to the cause.



Early gliders had to be towed by early cars to get off the ground. They were really up in the air.

Henry P. Eames D.V.M.
VETERINARIAN

18600 W. Austin Road
Manchester, Michigan 48158

OFFICE HOURS:
1:00-2:00 PM & 7:00-8:00 PM
Mon., Wed. and Fri.
Sat. 1:00-2:00 PM

Phone (313) 428-2245

LEHMAN WAHL
LAND APPRAISAL
RESIDENTIAL AND FARM

17037 West Austin Rd
Manchester, Mich.

Area Code 313
428-5886

ALBER'S
EXCAVATING

SAND, GRAVEL, DRIVEWAYS
DRAIN FIELDS INSTALLED

7601 HASHLEY RD. PHONE
MANCHESTER, MICH. 428-9628

If you are interested in doing something about the gas shortage... do something. Pay bills by mail.

Union Savings Bank provides an easy, economical means of cutting back on your gas consumption: a checking account. A checking account will allow you to pay bills by mail, yet still receive perfect legal receipts, automatically. And at Union Savings Bank, your personal checking is FREE, when you maintain the Happy Balance in your account! Senior friends, your personal checking is always free at Union Savings!

UNION SAVINGS BANK

MEMBER F.D.I.C. MANCHESTER / BRIDGEWATER / PLEASANT LAKE

STRIKES 'N SPARES

MANCHESTER TOWN CLUB

TEAM	WON	LOST
Tool & Die	80	39
Town Laundry	67	52
Jenters	66	53
S & W Builders	66	53
Stocycard Inn	61	58
Crossman Huber	56	63
All's Plumbing	55	64
Union Savings Bank	51	68
Tom Marshall	42	77
HIGH TEAM SERIES		
Tool & Die	2420	
S & W Builders w/h	2336	
HIGH TEAM GAME		
Tool & Die	849	
S & W Builders w/h	818	
HIGH INDIVIDUAL SERIES		
Mary Korican	590	
Irene Wurster	545	
Joan Day	538	
HIGH INDIVIDUAL GAME		
Mary Korican	220	
Joan Day	211	
Irene Wurster	205	
500 SERIES OF WEEK		
Joan Day	517	
200 GAMES OF WEEK		
Joan Day	211	
Sue Tracy	201	
Marilyn Korican	200	

MANCHESTER WOMEN'S

TEAM	WON	LOST
Bonanza Sirloin Tip	307	173
Black Sheep Tavern	284.5	195.5
Gambles	274	206
Billmeyer Hardware	248.5	231.5
Margaret's Beauty Salon	221.5	258.5
Mowry's Arco	221	259
Weatherwax Drugs	220	260
Dorothy Mae Beauty Shop	217	263
Onsted Red & White Store	207	273
Hodge Vending	199.5	280.5
HIGH TEAM GAME		
Bonanza	1064	
Weatherwax	1048	
Black Sheep	1036	
Gambles	1027	
HIGH TEAM SERIES		
Bonanza	3118	
Black Sheep	3013	
Onsted R & W	2955	
Weatherwax	2936	
HIGH INDIVIDUAL GAME		
M. Reed	222	
J. Schaffer	220	
J. Luck	212	
HIGH INDIVIDUAL SERIES		
N. Acre	556	
J. Schaffer	555	
L. Richardson	549	

JOLLY KEGLERS

TEAM	WON	LOST
Ron's Tree Service	67	52
Village Tap	66	53
Carol's Cut & Curl	66	53
Ben Franklin	59	60
Kraus Pharmacy	55	64
Grossman-Huber	44	75
HIGH TEAM GAME		
Village Tap	1016 & 1028	
Ron's Tree Service	1023	
Carol's Cut & Curl	999	
HIGH TEAM SERIES		
Village Tap	2963	
Ron's Tree Service	2885	
Grossman-Huber	2874	
HIGH INDIVIDUAL GAME		
P. Schmidt	204	
I. McGee	198	
C. Wurster	196	
HIGH INDIVIDUAL SERIES		
P. Schmidt	557	
V. Schwab	517	
J. Rhees	502	

MANCHESTER BUSINESSMENS

TEAM	WON	LOST
American Legion	32	16
Manchester Tool & Die	29	19
Kraus Pharmacy	29	19
Food Locker	28 1/2	19 1/2
Union Savings Bank	27	21
Double A Products	26	22
Smith Pallet	25	23
All's Plumbing	24	24
Spikes Mobil Service	23	25
Superior Land Developers	24	24
Marshall Trucking	24	24
Browns TV	23	25
Micks	22	26
K & W Farm Supply	21	27
The Glass Slipper	21	27
Grossman Huber Service	21	27
Albers Trucking	18 1/2	29 1/2
Gambles Store	14	34
HIGH TEAM SERIES		
Micks	3187	
Kraus Pharmacy	3101	
Food Locker	3089	
HIGH TEAM GAME		
Kraus Pharmacy	1113	

215 BUSINESS COLLEGE SCHOLARSHIPS AVAILABLE

The Michigan Business Schools Association is sponsoring its annual scholarship program for the fourteenth consecutive year. Applications are now available to 1974 seniors of Michigan public and parochial high schools for 215 business school tuition scholarships.

MBSA member schools make these scholarships available to high school graduates seeking careers in the field of business. Applications may be obtained from the Michigan Business Schools Association Executive Offices at 200 North Capital Avenue, Lansing, or from high school principals, counselors, and business instructors.

Applicants will be judged on the basis of scholastic ability, extra-curricular activities, and a principal's or counselor's recommendation. The deadline date for filing completed applications is Friday, March 15, 1974.



In 19th century Sicily, the challenge to a knife fight was a formal bite on the ear!

PRIMARY ELECTION

To the Qualified Electors:

NOTICE IS HEREBY GIVEN, That a Primary Election will be held in the

Village of Manchester, (Precinct No. 1)
State of Michigan

AT
VILLAGE HALL
within said Village on
Monday, February 18, 1974

FOR THE PURPOSE OF PLACING IN NOMINATION BY ALL POLITICAL PARTIES PARTICIPATING THEREIN, CANDIDATES FOR THE FOLLOWING OFFICES, VIZ:

- One Village President
- One Village Clerk
- One Village Treasurer
- Three Trustees for 2 Years
- One Assessor

Notice Relative to Opening and Closing of the Polls
ELECTION LAW, ACT 116, P. A. 1954

SECTION 720. On the day of any election, the polls shall be opened at 7 o'clock in the forenoon, and shall be continuously open until 8 o'clock in the afternoon and no longer. Every qualified elector present and in line at the polls at the hour prescribed for the closing thereof shall be allowed to vote.

THE POLLS of said election will be open at 7 o'clock a. m. and will remain open until 8 o'clock p. m. of said day of election.

Mary H. Wheeler, Village Clerk

Gulf THE JOLLY DUTCHMEN Gulf

VISIT THE JOLLY DUTCHMEN

FOR Plastic Trash Bags 10 for 99c

Mud & Snow Tires

Permanent Anti-Freeze

Ice and Snow Scrapers

Windshield Washer Solvent

Starting Ether Batteries

MR. SCRUB cleans cars BETTER for LESS

2 MIN wax-wash

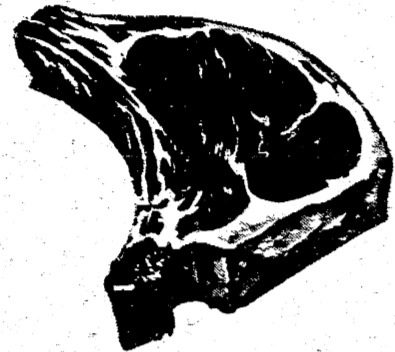
Phone 428-8960
Many Gulf Accessories
GROSSMAN-HUBER SERVICE



VESCIO IS THE VALUE LEADER



VALUE IS WHAT YOU WANT FROM YOUR FOOD DOLLAR - AND VESCIO GIVES YOU VALUE: THE FINEST QUALITY BRAND NAME MERCHANDISE AT VESCIO'S TRADITIONALLY LOW PRICES! WHEN IT COMES TO YOUR FOOD BUDGET - VESCIO MEANS VALUE!



CENTER Rib PORK CHOPS 98¢ LB.

WILSON'S-TABLE TRIMMED

NATURALLY TENDER BONELESS CHUCK ROAST 1.28 LB.

FRESH SPARE RIBS 79¢ LB.

SMALL-SERVE WITH KRAUT

STUFFED WITH PEPPERIDGE FARMS DRESSING	THICK SLICED
PORK CHOPS	SLAB BACON
LB. 79¢	LB. 99¢
FRESH BEEF GROUND CHUCK	BEEF CUBE STEAK
3 LBS. OR MORE LB. 1.18	LB. 1.38

RATH-BLACKHAWK-A BREAKFAST TREAT	1 LB. CELLO ROLL	69¢
FARMER PEET'S OR HERRUDS-PURE PORK-LEAN		1.29
HERRUD-CRA-O-VAC POLISH OR		
Smoked Sausage		1.39
FARMER PEET'S-OLD FASHIONED-TASTY		
Ring Bologna		.99¢
FARMER PEET'S-YOUR CHOICE SLICED		
Luncheon Meats	12 OZ. PKG.	.99¢
FRESH-U.S. GOVT. INSPECTED-TENDER & PLUMP		
Fryer LEGS or BREAST Quarters		69¢

LEAN N' MEATY		1.09
Pork Steaks	LB.	
A REAL BUDGET VALUE-TURKEY		
Drumsticks	LB.	.39¢
FARMER PEET'S-IN THE PIECE		
Braunschweiger	LB.	.79¢

CHECKERBOARD CORNISH HENS 79¢ LB.

GRADE A

West Virginia SLICED BACON 1.29 LB. PKG. 1.89 1 1/2 LB. THICK SLICED

REGULAR OR UNSCENTED ROLL-ON ANTIPERSPIRANT DEODORANT	GENERAL MILLS CEREAL	MAXWELL HOUSE INSTANT
BAN	WHEATIES	COFFEE
REGULAR \$1.19		
79¢	48¢	1.18

REGULAR OR UNSCENTED ROLL-ON ANTIPERSPIRANT DEODORANT	GENERAL MILLS CEREAL	MAXWELL HOUSE INSTANT
BAN	WHEATIES	COFFEE
REG. 1.19		
79¢	48¢	1.18

BAKERY SPECIALS

40th Anniversary Special

OVEN-FRESH FRESH BAKED BREAD	1 1/2 LB.	40¢
GOLDEN LOAF		
OVEN-FRESH FRESH BAKED	14 OZ. PKG.	40¢
CINNAMON ROLLS		
OVEN-GLD FRESH BAKED	24 PACK	69¢
DONUTS		

WITH FLUORIDE DENTAL CREAM	TWICE AS FAST AS ASPIRIN	REGULAR OR UNSCENTED VERY DRY ANTI-PERSPIRANT
COLGATE	BUFFERIN	DIAL
REG. 89¢	REG. \$1.33	REG. \$1.79
66¢	84¢	99¢



THE VALUE LEADER

THE VALUE LEADER WHERE YOUR DOLLAR BUYS MORE



McDONALD'S COTTAGE CHEESE 39¢ 1 LB. CTN.

Large or Small Curd

SPECIAL!

BORDEN'S Glacier Club ICE CREAM 69¢ 1/2 GAL. CTN.

*VANILLA *CHOCOLATE *NEAPOLITAN *VANILLA CHOCOLATE

HOFFMAN'S Diet POP 9¢ 16 OZ. BTL.

*COLA *LEMON *STRAWBERRY *ROOT BEER *CHOCOLATE *HALF & HALF *BLACK CHERRY

No Deposit

VALUES IN PRODUCE

MICHIGAN FLAVORBEST. FRESH RED. U.S. NO. 1

Delicious APPLES 68¢ 3 LB. BAG

TEXAS GRAPEFRUIT	18.19
FRESH RUBY RED	LB. BAG
MEXICAN PINEAPPLE	59¢
FRESH TASTY 10 SIZE	EA.
DANJOU PEARS	3.51
FRESH LUSCIOUS WASHINGTON	U.S. NO. 1
	3 LB.

Nestle's Everready Cocoa Mix 68¢ 14 OZ. PKG.

Dow Dowflake 25.19 5 LB. BAG

Meadowdale FLOUR	CAMELOT SALAD OIL
5 LB. BAG	25 OZ. BTL.
69¢	67¢
CAMELOT FUDGE BROWNIE MIX	Meadowdale CORN MUFFIN MIX
2 1/2 OZ. PKG.	8 OZ. PKG.
49¢	13¢

McDonald's Orange Juice 59¢ 1/2 GAL. PLAS. JUG

Meadowdale Strawberry Preserves 2.79 16 OZ. JAR

Pillsbury Oven Dinners 3.51 5 7/8 OZ. PKGS.

TEXSUN Orange Juice 38¢ 46 OZ. CAN

Meadowdale Peanut Butter 2.89 16 OZ. JAR

Vanity Fair Toilet Tissue 79¢ 6-500 SHEET ROLL PKG.

Listerol Spray Disinfectant 79¢ 7 OZ. AERO. CAN

CAMPBELL'S Vegetable Soup 15¢ 10 1/2 OZ. CAN

DEL MONTE Sweet Peas 19¢ 17 OZ. CAN

HILLS BROTHERS COFFEE 2.33 3 LB. CAN

THESE PRICES EFFECTIVE THRU SAT. JAN. 19, 1974. QUANTITY RIGHTS RESERVED.

VALUABLE COUPON VESCIO COUPON

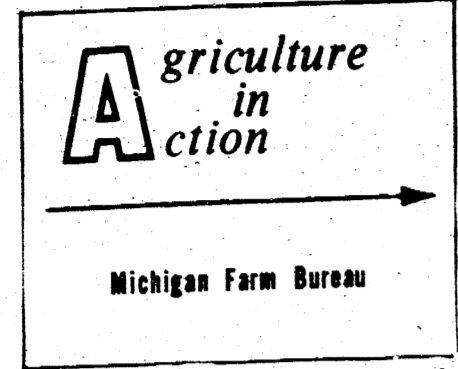
HILLS BROTHERS COFFEE 3 2.33 LB. CAN

Limit 1 per family. Expires 1/19/74 (without this coupon regular price).

LAUNDRY DETERGENT TIDE 83¢ 49 OZ. PKG.

LIQUID DISH DETERGENT IVORY 59¢ QT. PLAS. BTL.





Last year, Americans brought a real boom to the home freezer market when they purchased every one in sight to store beef. This was before the price freeze on beef was lifted and there was fear that prices would sky-rocket. They didn't, however, which proves again that you can't mess with the law of supply and demand.

You and Your FARM advertisement featuring Larry Becktel and Farm Bureau Insurance Group logo.

thing is to recognize the inter-relationship and interdependence of the agricultural economies of our two countries and to develop them in mutual cooperation.

NOTICE!!

The Department of Public Works would like to remind the public of the over-night parking ban due to snow removal works, and ask for the public cooperation on this.

NOTICE!!

The Village of Manchester would like to remind owners and occupants that ordinance #18 requires snow to be removed from sidewalk with in the corporate limits.

TO THE ELECTRIC CUSTOMERS OF CONSUMERS POWER COMPANY NOTICE OF HEARING ON AMENDMENTS TO RULE 13 and RULE 14 (D) OF CONSUMERS POWER COMPANY'S STANDARD RULES AND REGULATIONS

On August 2, 1973, Consumers Power Company (the "Company") filed an application with the Michigan Public Service Commission in Case No. U-4399 which requests authority to amend Rules 13 and 14(D) of its presently effective Standard Rules and Regulations (MPSC No. 7 - Electric, Consumers Power Company).

As set forth in proposed Rule 13, the Company proposes to amend the conditions under which applications for electric service which require the construction of overhead distribution line extensions would be granted.

Under proposed Rule 13, the Company would construct single phase electric overhead distribution line extensions for permanent year-round dwellings at its own cost for a distance of 1,000 feet, of which no more than 250 feet is a lateral extension from the main line distribution feeder.

Under present Rule 13, the Company would construct single phase electric overhead distribution line extensions for permanent seasonal dwellings a distance of 200 feet, of which no more than 100 feet is a lateral extension from the main line distribution feeder.

Under present Rule 13, the Company would construct single phase overhead electric distribution line extensions for commercial and industrial customers at the Company's own cost where the length of such an extension does not exceed five lineal feet of distribution line for each dollar of estimated annual revenue to be received from the customer or customers to be served.

The Company proposes no change in the present treatment of overhead electric three phase extensions and primary extensions.

The Company also proposes to amend Rule 14(D), relating to its electric underground distribution extension policy.

Under proposed Rule 14(D), the Company would construct all electric underground distribution line extensions at its own cost when such cost (excluding transformers, services and meters) does not exceed three times the estimated annual revenue to be received from the customer or customers to be served when the extension is complete.

amount by which the estimated construction costs exceed the free allowance, less a payment in respect of the difference in cost between overhead and underground extension construction.

Under present Rule 14(D), the Company will construct single phase electric underground distribution, line extensions for permanent year-round dwellings at its own cost for a distance of 2,400 feet and will construct such extensions for permanent seasonal dwellings at its own cost for a distance of 300 feet.

Under present Rule 14(D), the Company would construct single phase underground electric distribution line extensions for commercial and industrial customers line extensions for commercial and industrial customers line extensions for commercial and industrial customers line extensions for commercial and industrial customers.

The Company proposes no change in the present treatment of underground electric three phase extensions and primary extensions.

Under both proposed Rules 13 and 14(D) the Company proposes to change the manner in which refunds of deposits made with respect to extensions other than three phase and primary extensions are determined.

In addition to the foregoing, other changes to Rules 13 and 14(D) were also proposed by the Company. The application of the Company in Case No. U-4399, together with copies of existing and proposed Rules 13 and 14(D) are available for public inspection at the offices of the Michigan Public Service Commission, Law Building, Lansing, Michigan 48913 and at each local office of Consumers Power Company.

The Commission has scheduled hearings on the application in Case No. U-4399 and has ordered that notice be given that:

A. A public hearing will be held at 9:30 a.m. on January 31, 1974 in the offices of the Commission in the Law Building, Lansing, Michigan 48913, for the purpose of determining whether, or in what form, Rule 13 and Rule 14(D) of Consumers Power Company's Standard Rules and Regulations should be approved by the Commission.

B. Any party seeking to intervene in this proceeding, in accordance with Rule 11 of the Commission's Rules of Practice and Procedure, shall file with the Commission, at least five (5) days prior to January 31, 1974, an original and six (6) conformed copies of the petition to intervene, together with proof of service upon Consumers Power Company.

C. PROPOSED RULES 13 AND 14(D) DESCRIBED IN THIS NOTICE ARE IN THE FORM REQUESTED BY CONSUMERS POWER COMPANY. THE MICHIGAN PUBLIC SERVICE COMMISSION MAY EITHER AUTHORIZE THEIR ADOPTION IN THE FORM REQUESTED, DENY THEIR ADOPTION OR MAY ORDER THE ADOPTION OF NEW RULES 13 AND 14(D) IN A FORM DIFFERING FROM THAT DESCRIBED HEREIN.

Jurisdiction of the Commission in this matter is pursuant to Act 106, PA 1909, as amended, MCLA 460.551; Act 419, PA 1919, as amended, MCLA 460.51; Act 3, PA 1939, as amended, MCLA 460.1; Act 306, PA 1969, as amended, MCLA 24.201; and the Commission's Rules of Practice and Procedure, 1954 Administrative Code, Supplement No. 54, R 460.11.



LETTER TO WATER CUSTOMER

The Division of the Michigan State Health Water Supply, Bureau of Environmental Health, requires each Public Water Department to make inspections for cross connections to the public water supply.

A cross connection is where water can return to the public supply after leaving the public system and being exposed unknown health hazard.

Inspections at all properties shall be made and the order shall be based on potential health hazards established by the Public Works Department of the Village of Manchester and Michigan Department of Health.

The owner of the property inspected shall take all precautionary measures necessary and furnish all devices needed to eliminate any danger to the public water system.

Frequency of reinspection shall be based on potential health hazards.

Bruce T. Daniels Supt. of Public Works

The effort to make money often prevents the making of a man.

NOTICE!!!

A reminder for snowmobilers riding in the Village limits is prohibited unless on private property.

We have had complaints about continued riding on property that is posted.

We ask all snowmobilers to make sure they are welcome guests when riding on vacant land.

JOLLEY FARMERETTES

The January meeting of the Jolley Farmerettes 4-H Club was called to order by Junior President Teresa Schlicht. Flag pledges were led by Jodi Huber. Roll call was your favorite car. 34 members and 3 leaders were present.

Under committee reports Beth Feldkamp and Elaine Buss reported on the Polo Balloon Sale that will be held January 26. All the members received their assigned work schedule.

Julie England gave a report on the Christmas gifts taken to the children in St. Joseph's Hospital.

Thank-you notes for the Sunshine Boxes we distributed were read. Under leaders report the members were reminded of a Share-the-Fun Clinic to be held February 16 in Ann Arbor.

Also we were told that all winter projects must be completed for the Club Dress Revue to be held March 26.

Demonstrations were given by Julie England, Jean Ann Wahl, and Jodi Huber.

Refreshments were served and the meeting adjourned. The next meeting is February 5.

Jean Ann Wahl, Reporter

GIRL SCOUTS VISIT FIRE HALL

Girl Scout Troop 654 went to the Fire Hall Wednesday, January 9, 1974. Mr. Brokaw explained all about the fire engines and which engines usually go out to different kinds of fires. He showed us where they have their meetings, and the Council Room. He also explained which phones were for what. Mr. Brokaw told us who was the Chief, Captain, and the two Lieutenants. It was all very interesting.

Kathy Kensler, Secretary

CLINTON THEATRE EXPANDS SCHEDULE

The Clinton Theatre is expanding its schedule to include Wednesday and Thursday added to its regular Friday, Saturday, Saturday Matinee and Sunday showings.

Now that we have a gasoline shortage, the theatre feels we should not have to drive to Ann Arbor or Adrian to see a movie during the week. We hope this new program meets with your approval.

Clinton Theatre Management

KINGS DAUGHTERS

The Manchester Circle of Kings Daughters will meet on Thursday, January 24th for a one o'clock dessert luncheon.

Mrs. Merrill Korth will be hostess. The business meeting and social hour will follow.

DUTCH PINNERS AT TOURNAY

The Manchester matmen went to Leslie last Saturday to compete in the seventh annual tournament. The teams at this tomy were: Addison, Danville, Detroit County Day, East Jackson, East Rapids, Hudson, Leslie, Manchester, Mason, Michigan Center, and Parma Western.

Manchester took 6th place out of the eleven teams with 3 men taking top spots, John Roberts, Steve Cross and Ross Haeusler. 1st place for Roberts, 2nd place for Cross and 2nd place for Haeusler. The Dutch are now 4-3 on the year and have a 5th place and a 7th in tournaments.

80W ATRAZINE \$2.08 lb. cash price William Haeusler 6420 Lima Center Rd. Phone 428-8774

Brown's TV & Radio ZENITH Color and Black & White TV 134 East Main Street Manchester, Michigan

Cake Decorating classes begin next week The Cake Shoppe 116 West Chicago Tecumseh Call 423-7733

SPECIAL SCHOOL ELECTION

NOTICE IS HEREBY GIVEN TO THE QUALIFIED ELECTORS OF MANCHESTER PUBLIC SCHOOL DISTRICT WASHTENAW and JACKSON COUNTIES STATE OF MICHIGAN

That a Special Election will be held on Tuesday, January 22, 1974

The polls for said election will be open from 7:00 o'clock A.M., and remaining open until 8:00 o'clock P.M. of the same Election day.

The place of Election Room 110 Manchester High School The following Questions will be voted upon: Area Vocational-Technical Center

"Shall the Intermediate School District of Washtenaw, State of Michigan, adopt the provisions of Section 33d to 33ou of the School Code of 1955, which are designed to encourage the establishment and contracting for the operation of Area Vocational-Technical Education Programs and if the annual property tax levied for these programs, except taxes levied for payment of Debt Service, shall not exceed (1.00) mill?"

"Shall the Washtenaw Intermediate School District, State of Michigan, borrow the principal sum of not to exceed \$7,600,000 and issue its general obligation, unlimited tax bonds therefor, for the purpose of defraying all or any part of the cost of erecting, furnishing, and equipping an area vocational-technical building and preparing, developing and improving the site thereof?"

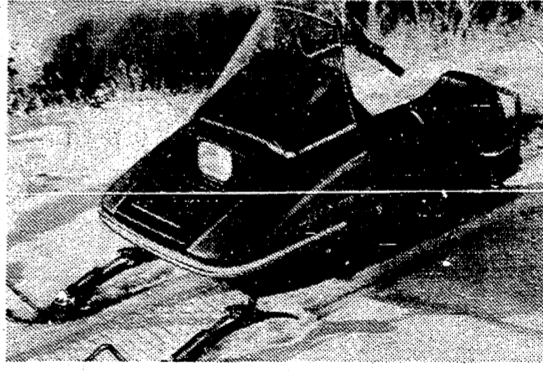
All school electors who are registered with the city or township clerk of the city or township in which they reside are eligible to vote at this election.

I, Hilary E. L. Goddard, County Treasurer of the Count of Washtenaw, State of Michigan, do hereby certify that, according to the records of this office, as of December 1, 1973, the total of all voted increases over and above the tax rate limitation established by the constitution of Michigan, in local units of government, affecting the taxable property in Washtenaw, State of Michigan, in said County, is as follows:

Table with 2 columns: Location and Tax Rate. Locations include Wastanaw county, Manchester Township, Bridgewater Township, Sharon Township, Freedom Township, School District.

Hilary E. L. Goddard, Treasurer Washtenaw County, Michigan. This notice is given by order of the Board of Education. Andrew Luckhardt Secretary Board of Education

THIS IS THE ONE WITH para-rail ride!



The 1974 Scorpion Super Stinger 400 The law says a snowmobile has to run quiet. Scorpion agrees. Scorpion agrees, too, that you don't have to give up power when you reduce the noise. Scorpion's muffling system lets you run quiet - yet still allows you the most engine power possible.

SCORPION STINGER '74 See - test ride - the 74 Stingers at

K & W Equipment, Inc. AGRICULTURAL and CONSTRUCTION EQUIPMENT 105 M-52 PHONE 428-5081 MANCHESTER

AMERICAN LEGION AUXILIARY NEWS

The American Legion Auxiliary Unit 117 met on January 9 at the Legion Hall.

Standing Committee reports were read by the various chairmen. The Community Service Chairman gave the following report: Two local hospitalized veterans were remembered with gifts at Christmas. Twenty Shut-In Boxes were delivered to local citizens and twenty service men were remembered with Christmas cards and gifts.

Three Auxiliary members worked at the VA Hospital Gift Shop helping with the gift program in December.

The Unit voted to send one girl to Girls State June 16-23. The program will be held at Olivet College and registration is due February 1. The Unit also voted a donation to the March of Dimes and will send two subscription copies of the National Legislative News Bulletin to the VA Hospital in Ann Arbor.

Mrs. Robert Popkey will head the January Jaycee Dinner Committee. Mrs. Philip Kern will serve as Good Cheer Chairman for the coming month.

The next regular meeting will be held on Wednesday, February 13 and Mrs. Ronald Whittington and Mrs. Harry Sutton will serve as the lunch committee for this meeting.

Mrs. Donald Sutton's name was drawn for the door prize.

Following the meeting Mrs. Max

Walter served dessert.

REMEMBER - Hospital equipment; crutches, walkers etc. are available for loan to the Community by the Auxiliary. Anyone needing such equipment is asked to contact Mrs. William Hainstock phone: 428-8701.

The Auxiliary also has note paper, place mats and two year panning calendars available. For information contact Mrs. Hainstock.

GOLDEN TOUCH OF HOSPITALITY



from Best Foods Kitchens

Make Your Own Sandwich Cookies

Delicately light Lemon Sandwich Cookies are right at any time of year. They're an especially nice addition to the holiday cookie tray.

Lemon Sandwich Cookies

- 3/4 cup sifted flour
3/4 cup corn starch
2 teaspoons baking powder
2 eggs
1 teaspoon almond extract
1/2 cup sugar
1/2 cup margarine
Lemon Filling, below
Confectioners sugar

REGISTRATION NOTICE

FOR Primary Village Election Monday, February 18, 1974

To the qualified Electors of the Village Manchester County of Washtenaw, State of Michigan

Notice is hereby given that in conformity with the "Michigan Election Law", the undersigned Clerk, will open every day, except Sunday and a legal holiday, the day of any registration or primary election, books for registration...

NOTICE IS HEREBY GIVEN THAT I WILL BE AT THE FOLLOWING PLACE ON Friday, January 18, 1974

421 Riverside Drive Manchester, Michigan 8 AM TO 8 PM

As provided by Section 498, Act No. 116, Public Acts of 1954 As Amended.

ELECTOR UNABLE TO MAKE PERSONAL APPLICATION, PROCEDURE SEC. 504. Any elector who is unable to make personal application for registration because of physical disability...

UNREGISTERED PERSONS NOT ENTITLED TO VOTE SEC. 491. The Inspector of election of any election or primary election in this State, or in any District, County, Township, City or Village thereof, shall not receive the vote of any person whose name is not registered in the registration book...

TRANSFER OF REGISTRATION, APPLICATION, TIME SEC. 506. Any registered elector may upon change of residence within the Township, City or Village cause his registration to be transferred to his new address by sending to the Clerk a signed request...

TRANSFER OF REGISTRATION ON ELECTION DAY SEC. 507. Any registered elector who has removed from one election precinct of a Township, City or Village to another election precinct of the same Township, City or Village and has not recorded such removal with the local Clerk...

Mary H. Wheeler, clerk

Marshall Trucking Co. Snow Removal Prompt Service Free Estimates Phone 428-8123 428-3021 Manchester Michigan

"NO FAULT" auto insurance For the coverage and the answers you need, see your nearby State Farm agent.

See one of these agents today: BOB EVANS 200 Riverside Drive Manchester Office Phone 428-8364 Like a good neighbor, State Farm is there. STATE FARM Insurance Companies

Township Report

The regular meeting of the Manchester Township Board was held at 8 pm Dec. 11 at the Township Hall.

The members present were Clarence Fielder, Waldo Marx, Dorothy Burch and Ambrose Lentz.

The minutes of the last regular meeting held Nov. 13th were read by the Township Clerk Waldo Marx. It was moved by Ambrose Lentz and seconded by Dorothy Burch that the minutes be accepted as read. Motion Carried.

The following bills were then presented by the township clerk for the township board to approve. To the Washtenaw County Board of Road Commissioners through Nov. 28, 1973 -- total due \$9,357.35. It was moved by Waldo Marx to take from the Rcv. Sharing fund \$3,500.00 and pay toward the road bills. Motion carried.

2, Dec. 4 - Notice of Public Hearing in Enterpriser \$15.00.

- 3, Dec. 3 - Manchester Enterprise 500 complaint forms \$20.75, 1M 4 part Liquor inspection from Liquor fund \$62.50, 250 - 3 part citation forms \$21.75, 500 - 3 part Treasurer Vouchers \$45.50, 3M - Tax equalization Cards \$32.50, 16 - pages new Township Zoning Ordinance \$1,325.00, 4, 11-26-73 Tom Marshall Inc. Fire Dept. \$88.22, 5, Gambles - by Jim Kensler for Fire Dept. batteries, etc. \$40.80, 6, Manatron Inv. #6206 - 11-19 Equalization and Property Distributing Dept. \$25.44, 7, Manatron Inv. #6206 - 11-19-73 Equalization & Property Discriptions Dept. Wash. Co. \$189.31, 8, Dorothy Burch Milage to Jackson - 4 sets keys file dividers \$63.43, 9, Expense Truck #4 Spears Fire & Safety Service \$22.23

The new township litter ordinance

was to be voted on at this meeting and was read by Dorothy Burch. It was moved by Ambrose Lentz and seconded by Dorothy Burch that this ordinance be adopted. It should be published in the Enterprise Dec. 20, 1973 and a copy sealed in the township minutes book.

The following township board members voted for the adoption of the ordinance. Ambrose Lentz, Dorothy Burch and Waldo Marx. Lyle Widmayer was absent. Adoption of the Litter Ordinance was passed by a vote of 3 votes for and 1 absent.

It was moved by Ambrose Lentz and seconded by Dorothy Burch to have the Manchester Township Board give the Manchester Planning Commission authority to work with Washtenaw County to draw up a Specific Subdivision Ordinance for Manchester Township. Motion was carried.

At the regular meeting of the Organization of Townships held on Nov. 29, 1973 the following action was taken.

Moved by Supervisor Brandon and supported by Supervisor Hayes that each member township contribute an initial lump sum of \$300.00 to be used as a legal fund for the continuation of the appeal of the S.T.C. decision by the townships of Washtenaw Co. and further that the officers of the organization be

instructed to encourage similar initial contributions from the three cities and the County Board of Commissioners who have joined in the appeal. Motion was approved unanimously.

The motion was made by Ambrose Lentz and seconded by Dorothy Burch that the Township of Manchester send a check for \$300.00 payable to the Organization of Townships of Washtenaw County - "legal fund" and mail it to The Organization of Townships of Washtenaw County c/o Robert A. Lillie, 701 W. Ellsworth Road, Ann Arbor, Michigan 48104. Motion Carried.

The 21st Annual Convention of the M.T.A. will be held on Jan. 9-10-11-1974. It was moved by Ambrose Lentz and seconded by Waldo Marx that we pay the \$30.00 registration fee necessary to send Supervisor Clarence Fielder as a representative to the Michigan Township Association Convention at Kalamazoo. Motion carried.

There being no further business the meeting was adjourned. Waldo C. Marx, Township Clerk

Timely Advice The best thing that parents can spend on their children is time-not money. -Times, Marshalltown, Ia.

Winter Preserve YOUR HOME NOW! In a "JAM"? NEED Storm Windows Insulation Roofing Fencing LET US HELP! Bridgewater Lumber Co. 8370 Boettner Rd., Bridgewater Garden 8-3039

January Clearance Sale Up to 50% OFF SALE NOW UNDER WAY FAMOUS NAMED BRANDS Vivo - HIS - White Stag - Butte Knit Kay Winsor - Jonathan Logan Junior House of Milwaukee CAL'S TOG SHOP DOWNTOWN TECUMSEH

*Helen Jones has a NEW KITCHEN Helen Jones has a new kitchen. New cabinets, stove, refrigerator, stainless steel sink, disposal, dishwasher, wallpaper, carpeting. Ann Arbor Federal Savings provided the Home Improvement Loan and Helen is paying just \$78.75 per month. Ann Arbor Federal Savings will, in fact, provide the funds for any worthwhile improvement. You too can have a new garage, bathroom, family room, heating system, decorating, remodeling, wiring... you name it. Ann Arbor Federal Savings will talk to you about it. You can borrow up to \$5000. Take up to five years to repay. Your home need not be paid for, and you don't need a down payment. Now is an especially good time to home improve because Home Improvement Loan rates at Ann Arbor Federal Savings have dropped. *APPROX. COST \$78.75/MONTH FOR 60 MONTHS Based on a loan of \$3,500.00 for carpeting, new cabinets, double stainless steel sink, disposal, range, refrigerator and dish washer. Total payments equal \$4,725.00 (annual percentage rate 12.88%). ANN ARBOR FEDERAL SAVINGS ANN ARBOR OFFICES: Downtown, Liberty at Division; Westside, Pauline at Stadium; Eastside, Huron Parkway at Platt; Northside, Plymouth at Nixon; CHELSEA - Main Street near Old U.S. 12; DEXTER - 8081 Main Street. Member: Federal Home Loan Bank System & Federal Savings and Loan Insurance Corporation

