

# WANT ADS

ALL CLASSIFIED ADS ARE PAYABLE IN ADVANCE

PIANO TUNING: Repair and regulation  
Ross C. Honsinger, Phone (517) 782-1273. tfn

FOR FULLER BRUSH needs call 428-5886. tfn

AUCTIONEER: S. Halchisbak, Dairy, General Farm, Antiques, Liquidation; Household and Estates or buy outright. Call (313) 456-7207. tfn

SEAMLESS aluminum eavestroughs installed and guaranteed, white and colors available. For free estimates call Rick Kleinschmidt - R.D., Kleinschmidt Co. 428-5836. tfn

WINDOWS, floors, and carpets cleaned, eavestroughs, walls, basements or garages cleaned. Carpet cleaning special \$22.95 for 320 sq. of carpet. You must move your own furniture. No job to large or to small - call for a free estimate. Insurance claims welcome. Clinton Window & Floor Cleaning Service. 456-7282. tfn

PAT'S CRAFT STUDIO, 122 North Evans, Tecumseh has a complete line of craft supplies, a selection of gift items and straw flowers, and all of your Christmas craft needs. Classes also available. 423-7447. 12-20

GROUND FLOOR OPPORTUNITY: With established company that has doubled its business the last three years. \$250 per week guarantee, rapid advancement. We know no such thing as seniority. If you have ability you will advance quickly. Will pay moving expenses. Experience not necessary. Three days free training, transportation provided. Expansion forces us to train new people to fill recently created positions. Also neat appearance helpful. For more information call 757-1536, 9 to 5. 12-6

MANAGEMENT TRAINEE: Need several men at once to work in reorganized factory outlet as management trainees. Qualifications: neat, clean cut, age 19 to 46, have automobile. Former route men, station attendants or related fields preferred. Must be able to start on once if accepted. \$1000 per month guarantee. Call 757-1535. 12-20

LOST: keys on ring with American Flag between Walter Body Shop and Vernon St. 428-7182. p

LAND FOR SALE: Nature lovers delight. 10.6 acres, heavily rolling, Bridgewater area. Abundant with deer, pheasants and quail. \$15,900, terms. Real Estate One of Washtenaw, Realtors. 473-8693.

SELL LOCAL STOCKMEN Top quality feed products. Good income, potential attractive employee benefits. Territory in your home community. Contact John Baichik, 715 North East Avenue, Jackson, Phone 517-784-8954. p

SHOE repair pick-up and delivery every Monday at Gamble Store in Manchester. tfn

HOUSE and barn roofing, all types of roof repairs, aluminum storm windows and doors, awnings and porch enclosures, cement work, room additions, aluminum siding and gutters. Call Joe Hayes for free estimates 428-8520. tfn

WANTED: Old Wide Gauge Electric Trains and Trolleys. One piece or entire collection. Will pay fair price. Evenings and weekends 1-261-6243. tfn

SOCIAL GAMES: Every Wednesday night. Starting at 8 PM sponsored by Manchester American Legion, 138 E. Main St., Manchester, Michigan.

TERRY'S SERVICE  
170 Whitlock St., Saline  
Home Improvement - Garages, Drop Ceilings - Aluminum Siding, Doors, Windows and Gutters - Wall Paneling. Free Est. - Phone after 4 p.m.  
H.G. Keene, 429-5325

BEEF TO SELL BY SIDE: Custom slaughtering. Lockers to rent. Phone 428-7600. Manchester Frozen Food Locker. tfn

FOR SALE: 12 1/2' X 25' beige carpet - good condition \$100. Window 6' X 9' with storm. Byron Moore, 428-8225. tfn

MEAT rabbits for sale: Also some good breeding stock. Phone 428-3353. 12-27p

CHRISTMAS TREES, cut or cut your own. Free wagon ride. Scotch, White and Austrian Pine; Norway, White & Blue Spruce; Douglas and White Fir. All sizes \$3 to \$12. Week-ends (opening new field). Fordor's Tree Farm, 3738 Burch Rd., 3 1/2 miles south of Grass Lake traffic light. Austin Road to Wolf Lake Road and follow signs. 12-20

FOR SALE: Electric NCR Cash Register 2 years old, excellent condition. Phone 428-8790 after 5 PM or 456-4082 after 6 PM. 12-20

SEASONED FIREWOOD: split, stacked, delivered, \$25 a cord. 428-7187 or 428-7416. 12-13

UNUSUAL CHRISTMAS GIFT: Pair of donkeys with harness. Phone 475-2988 after 5 PM.

CHRISTMAS GIFT SALE: Handcrafted Gift Items. Saturday, December 8, 10 am to 4 pm. Bus & Schwab, 14161 Schwab Rd. p

FOR SALE: Live ducks and chickens. Call 428-7411. p

CARPETS, floors, walls cleaned. Retail Cleaning Supply. No job to large or to small - call for a free estimate. Insurance claims welcome. Clinton Window & Floor Cleaning Service. 456-7282. 12-28

REGISTERED Irish Setter pups for sale. Will be 6 weeks old December 21. Call 428-7459.

LOST: Between Manchester & US 12 2 beagles, female patch, male slick, reward. Phone 1-313-477-2457.

FOR SALE: Columbia Rams, Fahey Brothers. 428-8348 or 428-8748.

FOR SALE: 1965 Ford Galaxie - good transportation. \$175. 428-8173 before 5 p.m.

MANCHESTER SPORTSMAN CLUB DANCE. SATURDAY, DECEMBER 8 LUKE SCHABLE BAND. 9 - 1:30am.

WILL do full time baby sitting in my home in town, days. 428-7638.

CASH for Antique and old furniture, stained glass windows, jewelry, hand-made quilts. 761-5686 days.

MAKE beaten down carpet nap at doorways bright and fluffy again with Blue Lustre. Beal's Ace Hardware.

HELP WANTED: Cooks, Helpers, Waiters, Waitresses. Kitchen under new management. Mr. Sina, Black Sheep Tavern. 428-7303.

GERRY CHAIR AND HIP STRAP: almost new \$14.00, also free TV for taking away. Phone 428-7317.

## Jims Taxidermy

Game Heads-Small Game-Birds  
Fish-Fur Rugs with Head Mountings  
Flat Rugs-Novelties  
SPECIALIZING IN PHEASANTS  
17700 Old US-12 Chelsea, Mich.  
Phone 475-2805

## SPEAR and Associates, Inc. REALTORS

122 West Main Phone 428-8388 Daily Manchester

WORTH EVERY PENNY OF IT!

3 Bedrooms, full basement, sharp new family room, attached 2 1/2 car garage. See this now!

NEW LISTING

60 Acres vacant land. Beautiful building site including a pond.

FOR MORE INFORMATION CALL

## SPEAR and Associates, Inc. Realtors

We have buyers -- call us to sell your property

Member of Ann Arbor Board of Realtors Multiple Listing Service

### REAL ESTATE ADVICE

No Obligation  
Residential Properties  
Commercial Properties  
Farms-Vacant Lands  
Office Hours: Monday thru Friday  
9 am to 5 pm

Saturday 9 am to 12  
Phone 428-8388 Daily.

Marge Rowe, Secretary

Tina Cotton 428-7143  
evenings



MARIA LEHR  
Phone 428-5152 Evenings



ELLIS PRATT  
Phone 428-8562 Evenings

## Featuring A DINNER BUFFET

Every Friday Evening -- 6 to 10 pm

Entertainment Friday & Saturday Evening  
STARTING AT 9 PM

## BLACK SHEEP TAVERN and RESTAURANT

119 EAST MAIN MANCHESTER, MICH.

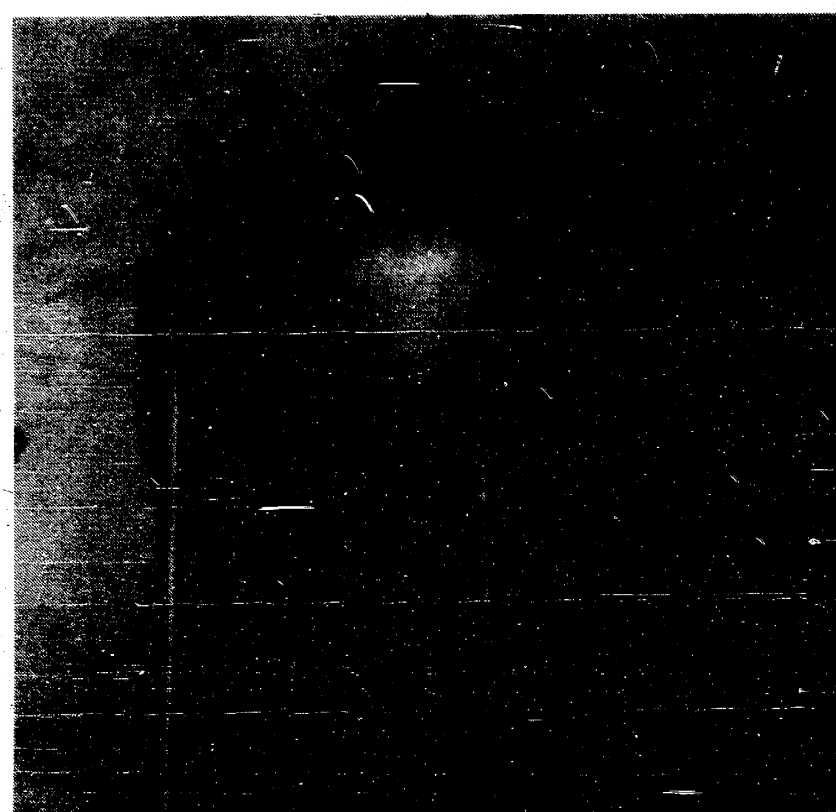
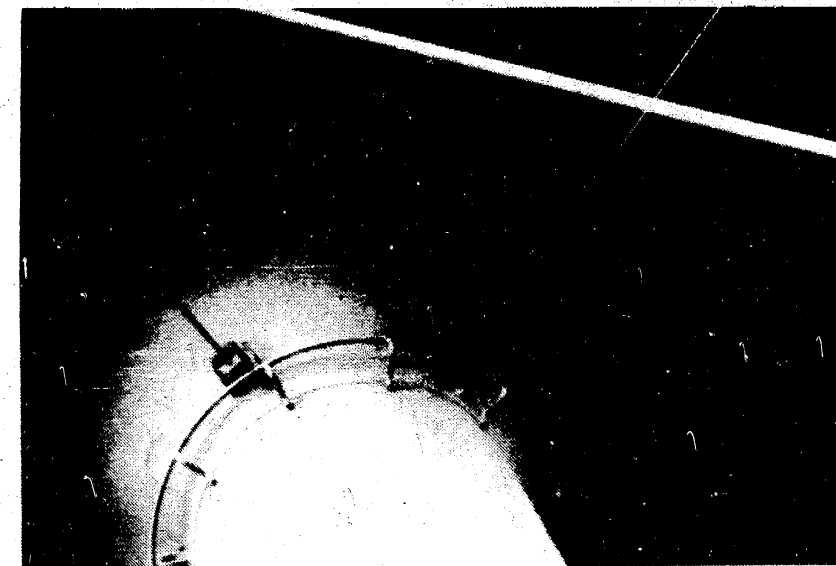
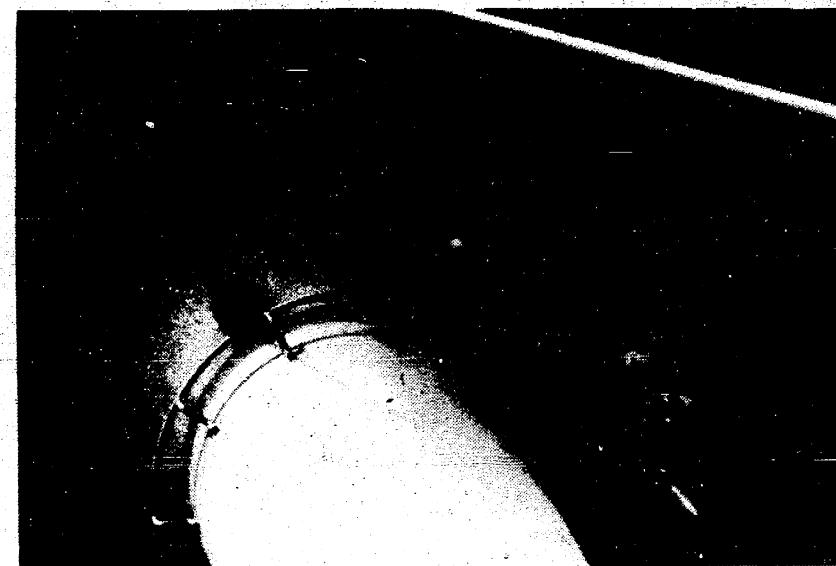
# THE MANCHESTER ENTERPRISE

107TH YEAR NO. 7

10 CENTS PER COPY

THURSDAY, DECEMBER 13, 1973

## High Flying Water Tower Tree Toppers



Special to the Manchester Enterprise by C. Champin.

After serious investigation and perusal of noteworthy incidents, your reporter proudly presents the solution of a Manchester Mystery!

Our personal failure to uncover the identity of the Easter Bunny and our equally disastrous attempt to unmask the Wee Goblins on Halloween had us worried that perhaps the work of "High Flying" Water Tower Tree Toppers" would remain undisclosed.

Fearing we would leave 1973 with the important news undisclosed, we were able with the help of Cameraman Jim Morton, to bring you the step by step movements of these intrepid individuals.

With a talent worthy of a scandal sheet reporter, one shot was taken from the center of Main street, one from the top of the hill where the old stand-pipe stood.

Ascending the center of the tube to the hatchway, the tree is hoisted up by rope, pulled into the hatch, to the center tube which continues to the top of the tank. Pulled out at the top of the tank, the tree is secured and decorated.

These brave Santas helpers, and I think for future reference purposes and easy identification we should give them a properly dignified title -- perhaps, "The Tanked Tree Toppers", then are free to descend, sit quietly, and contemplate the happy season.

An unhappy side effect attends this performance. Similar to the "bends", an affliction of underwater divers, these High Flyers must contend with shaking knees, fluttering butterflies in the stomach and deep sighs of relief which closely resemble a convulsive shudder.

After a few moments of calm reflection upon the beauties of nature, including the delight of firm ground and unmoving objects, the good life resumes.

HAPPY HOLIDAYS!!

## Optimist Club Outstanding Citizen



Jeff Wallace, son of Mr. & Mrs. John Wallace of 108 South Macomb, and a senior at Manchester High School is the Manchester Optimist Club's Outstanding Citizen for December.

On the junior high level, Jeff was a good student and participated in basketball, football, and track and was a member of the student council.

Throughout his years in high school Jeff played basketball, golf, and was a member of the student council. As a junior Jeff distinguished himself by winning the Most Valuable Golfer Award. This year Jeff was elected to the vice presidency of the student council. Jeff

has been very actively involved in many class projects. He is a member of St. Mary's Church and will continue as an altar boy while still in school.

Jeff likes all sports and collects coins as a hobby.

Academically, Jeff stands in the first quarter of his class and plans on taking general studies at Washtenaw Community College. Technically Jeff will venture into plumbing or electricity or continue his education in a four year school.

Bob Spensley, President of the Club made the presentation.  
Congratulations Jeff!!

### LIBRARY NEWS

Thirty two children attended the story hour in November, which included one delightful performance by the Eastern Michigan University Players, who acted out several stories and dances for the children.

Thirty six brand new books at the Library for your pleasure. They include fiction and non-fiction and we promise to find something to enjoy. Take a book home for the quiet hour on the day after Christmas.

Burr - Gore Vidal.  
The Best and the Brightest - David Halberstam.  
Strawberries in the Sea - Ogilvie.  
I never danced at the White House - Art Buchwald.  
In one era and out the other - Sam Levenson.  
The fifth estate - Robin Moore.  
The heart listens - Slyke.  
Have a lovely Christmas!!!

MANCHESTER TOWNSHIP LIBRARY  
P. O.



**The Manchester Enterprise**  
305 Beaufort Street  
Manchester, Michigan 48158  
Phone 428-8173

The Manchester Enterprise was established in 1867 and is published each Thursday at 305 Beaufort St., Manchester, Michigan with second class postage paid at Manchester.

**THE STAFF**

Edward E. Steele, Publisher  
Lenore Steele, Editor  
Dariené, Minor, Assistant Editor  
Cecelia Chapin, Feature Editor



"RANCHER GLEN" TO VISIT KLAGER SCHOOL

For thousands of Michigan elementary and junior high school students who have seen and heard "Rancher Glen" Albright's health programs, the idea of a guitar-playing cowboy turned health educator is not at all surprising.

Rancher Glen presents a typical cowboy's day, and stresses the importance of health in a cowboy's life. The healthful habits of a cowboy or anyone who lives and works close to nature, such as plenty of sleep, exercise, fresh air and clean water are main elements stressed in the program.

Because of the increasing number of young Americans who smoke cigarettes, Rancher Glen uses a western theme to stress the need to be aware, while still young, that smoking is harmful to an individual's health and the decision to smoke, or not, is important.

He uses smoking information from the Surgeon General's report, the National Interagency Council on Smoking and Health and other official agencies when discussing effects and costs of smoking.

Rancher Glen will present his student-oriented health programs at the following schools in Washtenaw County during the week of December 17-20: Thurston, Bader, Dixboro -

choose  
**JEWELRY**  
for your dear

FROM  
**ROLLER JEWELRY**

East Main Street

Manchester, Michigan

men ladies electric  
TIMEX WATCHES  
\$17.95 & up

order early  
MOTHER'S RING  
\$40.00 & up

IDENTIFICATION  
BRACLETS

14 karat pierced  
EAR RINGS

-- Gifts For The Entire Family --

Watch Repair and Engraving

Ann Arbor; Klager and Manchester - Manchester; Ford and L.C. Perry - Ypsilanti. His programs are sponsored by the Huron Valley Region of the Michigan Lung Association.

Rancher Glen visited 284 Michigan schools in the 1972-73 school year, and spoke to 104,050 students and adults in the 490 programs he presented.

Rancher Glen's health programs are provided by the Michigan Lung Association and financed by donations to the traditional double-barred cross Christmas Seal campaign.

**SMV EMBLEMS CAN BE LIFE-SAVERS**

"Slow moving vehicle emblems can be real life-savers," according to Mrs. Richard Wieland, chairman of the Michigan Farm Bureau Women, "and we have the statistics to prove it."

The Antrim County farm wife indicated that during the first three years after the SMV law went into effect, the number of accidents involving slow moving vehicles and high speed vehicles on Michigan's highways and roads were cut in half. The women of the state's largest farm organization were instrumental in getting the legislation passed in 1967 and followed through by selling thousands of the emblems to their farmer-members.

The bright orange, reflective, triangular emblem was designed to alert drivers well in advance that they were approaching vehicles which were traveling at 25 miles per hour or less. Mrs. Wieland wants that the SMV emblems can only be effective if properly displayed on all slow-moving vehicles.

"All farmers, and others who use slow moving vehicles, should make sure that the reflective materials of the SMV emblems are bright enough to be protective. If they have had them for a number of years, it may be time to replace the centers," she said.

She also urged farmers and others not to mount the emblems on vehicles which travel more than 25 miles per hour. If a trailer is being hauled by a pick-up rather than a tractor, for example, the SMV emblem should be removed. If motorists become accustomed to seeing the SMV emblems on vehicles traveling at normal speed, she said, the emblem will lose its purpose and value.

**SOCIAL SECURITY NEWS**

Medicare beneficiaries are urged to file all medical insurance claims for reimbursement for services received from October 1, 1971 through September 30, 1972, before the deadline of December 31, 1973, Robert A. Kehoe, District Social Security Manager at Ann Arbor, announced today. He suggested that filing such claims now is preferable to avoid the first-of-the-year "bunching". Under the Medicare law, claims for services provided within the October 71 - September 72 period cannot be reimbursed when received after December 31, 1973.

Mr. Kehoe also explained that a carry-over rule applicable to the medical insurance part of Medicare also allows many claims for services performed in the final three months of each calendar year to count toward the \$60 annual deductible for that year as well as the following year.

Even though a Medicare patient hasn't met his deductible near the end of a year he should send in all of his bills, especially those for the final three months. Thus his record is updated so that prompt service can be rendered on subsequent claims.

Mr. Kehoe invited Medicare beneficiaries to call or visit the Social Security Office at 2929 Plymouth Rd., Ann Arbor if they need assistance in completing claims. This especially applies to those people receiving Social Security Disability Payments who became covered under Medicare beginning in July 1973.

The salesman who knows when to sit and when to get is a good salesman.

**Dutch Defeat Morenci 65-57**

The Dutchmen won number two for two by defeating the Morenci bulldogs Friday by a score of 65-57. The first half was close all the way, with only a point or two difference and at the end of two periods the score stood Bulldogs - 33, Dutchmen - 30. The Dutchmen came out ahead in the third period as John Savage got hot - 49 to 45. With the score about 6 points to our favor and 2 minutes left, the ball handling of Rich Kennedy, Tom Popkey, Savage, Scott Gormley and Steve Beach were unstoppable without fouling. After Beach fouled out, Dean Decker came in to help ice the Dutch victory. Savage fired in 24 points for the Dutch while Gormley scored 12 and Decker 10. Before Beach fouled out he scored 8 points and played a very important part in rebounding. The Junior Varsity lost 60 to 40.

Friday the Dutch play Hudson here in Manchester.

**Wamplers Lake Resort**

Located on M-24 Just Down From Hayes Park on Wamplers Lake

Live Music By  
THE MILESTONES

Friday Night  
Fish Fry \$2.25  
includes soup-fries-slaw

Dancing for all ages

Friday & Saturday  
9 pm - 1:30  
No cover charge

Spaghetti 1.75  
ALL YOU CAN EAT

Tocos & Pizza  
Homemade SOUPS and CHILI

New Years Eve Reservations

\$5.00 per person

Includes Favors-Food-Live Music

Meals 7 Days

Phone 517-592-2082

COOKS AND WAITRESSES WANTED

**Fall** is in the Air...

... Time to Winterize your Home or Farm!

- ROOFING
- FENCING
- INSULATION
- STORM WINDOWS



**Bridgewater Lumber Co.**

8576 Beetham Rd., Bridgewater Garden 8-3039



1 BLOCK WEST OF M-52

*Steaks & Seafoods* *Special Salad Bar*

FAMILY BUFFET ON FRIDAY EVENINGS  
BANQUET ROOMS FOR PRIVATE PARTIES  
482-8921 FOR RESERVATIONS

*Imported*  
*Bier & Wines*  
*from around the world*

KITCHEN UNDER NEW MANAGEMENT

# JCS Preforming Annual Project



On Sunday, December 2nd, the Christmas decorations on Main Street were put up by the hard working Jaycees. There is a possibility that the lights will be turned on December 19 thru 25. The Jaycees would like to take this opportunity to thank Allen Schaffer of Union Construction for the use of his equipment.

## ORIGINS OF SOME CHRISTMAS CUSTOMS

The jolly gent we know as St. Nick is based on the real-life St. Nicholas, Bishop of Myra in Asia Minor in the fourth century. A legend in his own time for his generosity and love of children, he is said to have gone on many a mysterious journey carrying secret gifts to the poor. Once, so the story goes, he dropped a bag of gold down a chimney. It fell by accident into a stocking hung up to dry by the fire -- and prompted generations of hopeful children to hang up their hosiery, too.

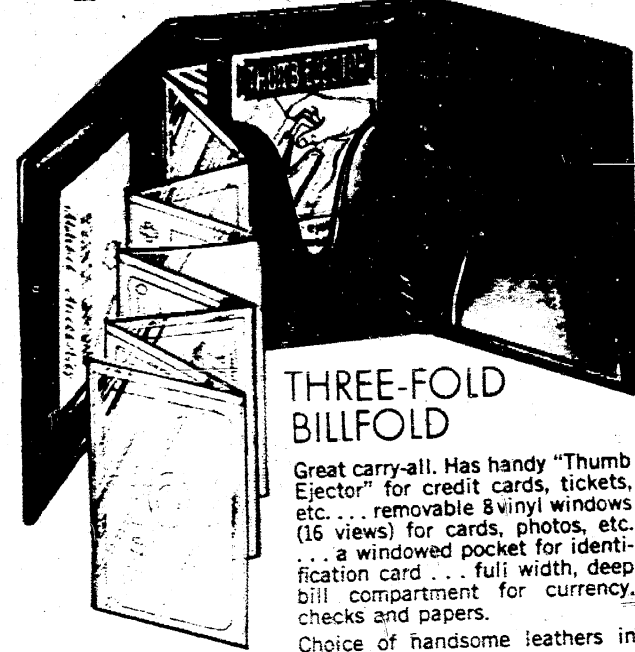
Giving to the poor remains a vital part of Christmas celebrations. In England, on the day after Christmas, clergy men used to open the church almsboxes and distribute the money to the needy. Later, it became customary to give

boxes of money on that day to people who had served you during the year. December 26 is still known as Boxing Day in Britain.

According to Gift America, a leading gift-giving authority, giving at this time of year goes back just about as far as the ancient Roman mid-winter celebrations. Even then, December was a time for merriment and opening presents.

Some countries enjoy Christmas giving so much that they do it twice: the French exchange gifts on New Year's Day, but the children are visited by Pere Noel on Christmas Eve. And Icelanders must hurry if they want to unwrap their presents Christmas morning. Almost the entire holiday must be spent in church services--for in Iceland there are only four hours of light on Christmas Day!

## PRINCE GARDNER

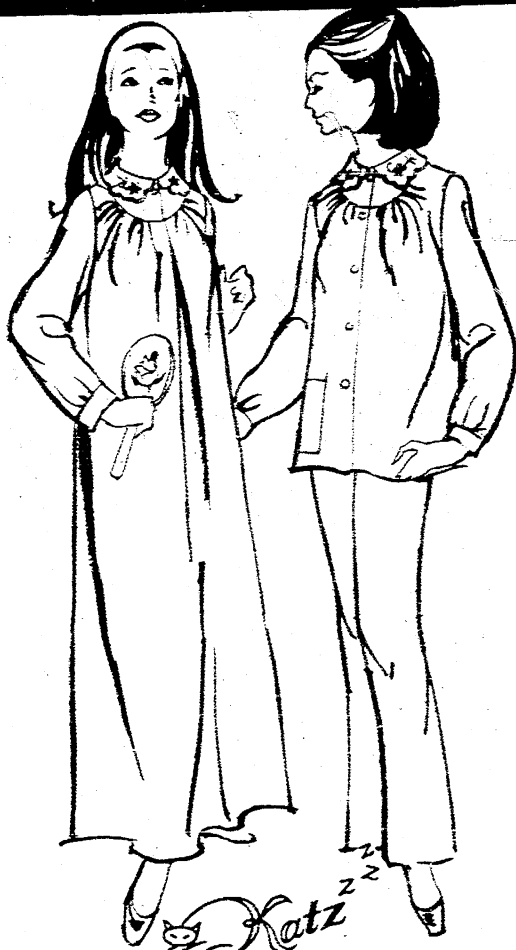


### THREE-FOLD BILLFOLD

Great carry-all. Has handy "Thumb Ejector" for credit cards, tickets, etc. . . . removable 8 vinyl windows (16 views) for cards, photos, etc. . . . a windowed pocket for identification card . . . full width, deep bill compartment for currency, checks and papers. Choice of handsome leathers in popular colors.

\$4 up

Trickey's, Inc.

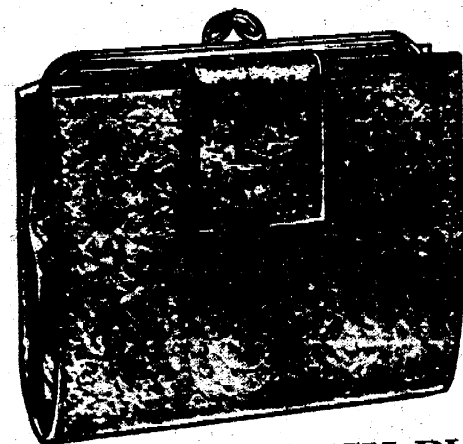


Feathery light but Oh! so warm -- that's Katz brushed Acetate and Nylon. A scalloped collar trimmed in contrasting color and flowers embroidered on collar give it that feminine look. In Pink, Blue, Maize and Mint. Gowns, sizes 32-48 -- PJ's, sizes 32-48

## Trickey's, Inc.

Open December 17 thru 22 9 am to 8 pm  
Sunday December 16 & 23 - 12 to 5 pm

## PRINCESS GARDNER



### "Continental" FRENCH PURSE

Our worldly little French Purse travels absolutely everywhere with you! You'll love its slim European construction . . . deep coin purse . . . removable photo-card windows and spacious bill compartment. It's the perfect companion for all your jaunts. In styles and colors that are very savoir-faire.

Priced from \$4 up

Trickey's, Inc.

## AMERICA'S UP FOR GRUBBS! THE "GRUBB" GROOVE" SLEEVELESS SWEATER AND POLO

Trend-setters have a "vested" interest in Robert Bruce's new "Grubb Groove" sleeveless pullover. It's light and lively "Orion" acrylic, completely machine-washable, with a vertical panel stitch, U-neck and extra long ribbed bottom. Solid colors. Sizes: Young men's S, M, L, X.  
Robert Bruce designs polos with a plus. The great "Grubb" shirt is long-sleeved with long-point tailored collar and extra long placket in durable press cotton interlock for no-iron ease. Exciting frost shades add a colorful highlight. Sizes: Young men's S, M, L, X.

\*Du Pont registered trademark.



## Trickey's, Inc.

Open December 17 thru 22 9 am to 8 pm  
Sunday December 16 & 23 - 12 to 5 pm

# FOR SALE



115-117 E. Main

111 E. Main

109 E. Main



110 E. Main

118-120 E. Main

130 E. Main

This Complete Package Includes All Leases

# \$370,000.00

Exclusive Sales Agent

## CHAPIN, Broker

Broker's Protected

109 E. MAIN ST.

MANCHESTER

428-8961

PHONE

428-8107



# Engelbert-Ganzhorn Vows



On December 1, 1973, St. Thomas Lutheran Church was the setting for the wedding of Nancy Ann Ganzhorn, daughter of Mr. and Mrs. Vincent Ganzhorn, to Douglas Engelbert, son of Mr. and Mrs. Dennis Engelbert. The service was officiated by the Rev. Daniel Mattson.

Approaching the altar, Nancy wore a silk organza over taffeta gown with long lace sleeves and a high necked lace bodice, lace also trimmed the edge of her train and shoulder length veil. She carried a bouquet of red carnations and holly.

Serving as honor attendants were Miss Anita Kirk, of Manchester, and

Mr. John Engelbert, brother of the groom, of Okemos, Michigan.

Miss Sally Samonek and Miss Marlene Engelbert, sister of the groom, both of Manchester, served as bridesmaids, while Miss Kim Bristle was junior bridesmaid.

Flowergirls were Miss Kelly and Kerri Bristle.

The Bristle girls are the daughters of Mr. and Mrs. Steven Bristle, of Manchester.

All the girls wore identical long gowns of dark red velvet trimmed with white velvet. The bridesmaids carried baskets of holly.

The bride's four brothers, Daniel,

Dale, John, and Richard Ganzhorn served as the ushers.

Mrs. Luann Preston, soloist, sang "You've Got A Friend" and the "Lord's Prayer." The organist was Mrs. Diane Haab.

After a reception at the Freedom Town Hall the newlyweds left for a honeymoon in California and Arizona.

When Doug and Nancy return home they will reside at 8970 Feldkamp Rd., Saline.

## Sing-a-long Wed. December 19

Manchester Jaycee chairman, Ray Wurster, has scheduled this year song festival for December 19th at the Mill for the Christmas holiday season. The Manchester Jaycees will feature an Old Fashioned Sing-a-long.

This Christmas program will be led by Roger Morrison and members of the High School Band and Choir. The Manchester Jaycees are appealing to every Church, Scouting group, and organization in the community to lend their support to an United Manchester Christmas fun-filled evening. The time of the program will be 7:00 p.m., and all interested groups or individuals should contact their local Jaycee representative or Ron Mann at 428-8473, Jim Curley at 428-2671, or Dave Bunn at 428-8673.

Let us all join forces and have a happy and joyous holiday season. The refreshments for this event will be provided courtesy of the Manchester Chamber of Commerce.

We, the Jaycees, wish each and every member of the community a Very Merry Christmas and a Happy New Year.

## Receive Degrees

Eastern Michigan University conferred degrees on some 1,150 students today (Dec. 9) at its Twenty-fifth Winter Commencement. An estimated crowd of 5,000 jammed Bowen Field House for the ceremonies.

More than 890 graduating seniors received bachelor's degrees while 250 advanced degrees went to graduate students. New Bachelors of Science numbered 644. The degree of Master of Arts was awarded to 171.

Alice Verrelli, 8000 Smythe Rd., Manchester was awarded the Elementary Provisional Certificate.

### WASHTENAW COUNTY DEPARTMENT OF SOCIAL SERVICES MEETING

Citizens of Washtenaw County are invited to meet a candidate for the position of Director of the Washtenaw County Department of Social Services. The meeting will be held Thursday, December 13, at 7:30 P.M. in Courtroom #4 on the second floor of the County Building (corners of Huron and Main Streets in Ann Arbor). It will be necessary to enter the building from the parking lot behind it.

The candidate's name is Kenneth Oettle. He is currently Director of the Division of Services to the Aging, State Department of Social Services. During the meeting Mr. Oettle will respond to questions from the audience. Afterwards, the audience will be given an opportunity to express their opinions of Mr. Oettle to the Social Services Board.

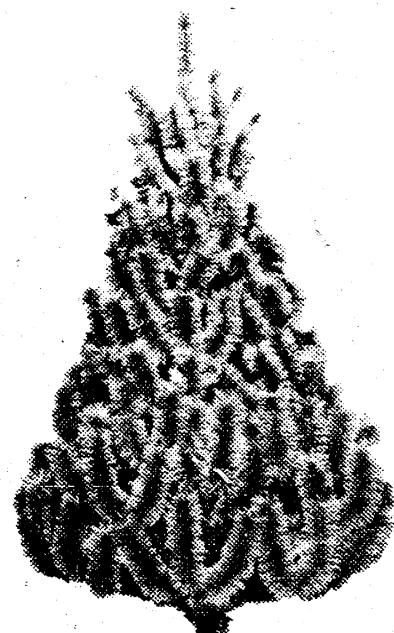
If you have any questions, please call 769-3393.

# ANNUAL JAYCEES CHRISTMAS TREE SALE

Starting December 12

Lot Between E. G. Mann and Tirb Chevrolet

ALL PROCEEDS GO TO COMMUNITY PROJECTS



# WANTED

500 Cars - Wrecks or Junkers

Free Pick-up To \$125.00

"Help Keep Your Community Beautiful!"

Phone 428-8080 or 517-787-7044

## Verhines Auto Salvage

17547 AUSTIN RD. MANCHESTER

# Your Church

### EMANUEL UNITED CHURCH OF CHRIST

Rev. Joseph W. Wise, Pastor  
Worship Services:  
Quest 9:00 a.m.; Church Services 10:30 a.m. Plan to worship God regularly.

### SHARON UNITED METHODIST

Corner Pleasant Lake Rd. - M-52  
Rev. Michael Peterlin, Pastor  
Sunday School 10:00 a.m.; Worship Service 11:00 a.m.

### ST. THOMAS LUTHERAN

Rev. Daniel Mattson, Pastor  
Ellsworth Rd.  
Church Service 10:00 a.m.; Sunday School 11:00 a.m.

### ST. JOHN'S UNITED CHURCH OF CHRIST

Rev. Richard Campbell, Pastor  
Rogers Corners. Waters and Fletcher Rds.  
Sunday School 9:30 a.m.; Church Services 10:30 a.m.

### BETHEL UNITED CHURCH OF CHRIST

Rev. Roman A. Reineck, Pastor  
Schneider and Bethel Church Roads  
Church Service 10:00 a.m.; Sunday School 11:00 a.m.

### MANCHESTER UNITED METHODIST

Rev. Walter R. Damberg, Pastor  
Church School 9:15 a.m. to 10:15 a.m.;  
Worship Service 10:30 a.m. to 11:30 a.m.

### ST. MARY'S CATHOLIC CHURCH

Father Raymond Schlinkert  
West Main Street  
Sunday Masses 8:30 a.m. and 10:30 a.m.  
Monday thru Friday 8:30 a.m.  
Saturday 7:00 p.m.

### NORTH SHARON COMMUNITY BIBLE CHURCH

William Enslin, Pastor  
Sylvan and Washburn Road  
Sunday School 10:00 a.m.; Worship Service 11:00 a.m. (Nursery will be available);  
Junior Church Classes 11:00 a.m.; Youth Meeting Senior High 6:00 p.m.; Youth Choir 6:00 p.m.; Evening Worship Services 7:00 p.m. (Nursery available);  
Wednesday Bible Study and Prayer Meeting (nursery available) 7:00 p.m. To your door  
Bus Transportation available 428-7222.

### FAITH COMMUNITY CHURCH

Pastor - Timothy Miles  
8400 Sharon Hollow Rd. off W. Austin Rd.  
Worship Service 10:00 a.m.; Sunday School 11:00 a.m.; Sunday Young People 6:00 p.m.; Sunday Evening Service 7:00 p.m.; Wednesday evening 6:30 p.m. Junior Choir Practice; Prayer Meeting and Bible Study 7:00 p.m.; Junior Prayer Meeting 7:30 p.m.; Senior Choir Practice 8:00 p.m.

### IRON CREEK CHURCH

Rev. Ralph Janofski, Pastor  
Worship Service 10:00 a.m.; Sunday School 11:15 a.m.; Youth Service 6:30 p.m.;  
Evening Service 7:30 p.m. Wednesday Evening: Junior Choir 6:30 p.m.; Bible Study and Prayer Meeting 7:30 p.m.;  
Senior Choir 8:30 p.m.

### ZION LUTHERAN CHURCH

Rev. John R. Morris, Pastor  
3050 S. Fletcher Road  
Sunday School 9:00 a.m.; Family Worship 10:15 a.m.

### ST. JOHN'S EVANGELICAL LUTHERAN

Dennis Falk, Pastor  
Sunday School 9:30 a.m.; Church Service 10:30 a.m.

### MANCHESTER BAPTIST CHURCH

Pastor, Alan W. Morris 122 E. Main St.  
Sunday School 10:00 a.m.; Worship Service 11:00 a.m.; Youth and Children's Hour 6:00 p.m.; Adult Bible Study 6:00 p.m.;  
Evening Worship 7:00 p.m.; Choir Practice Wednesday 6:00 p.m.; Prayer Meeting Wednesday 7:00 p.m.; Calling Supper Thursday 5:45 p.m., followed by Calling and Canvassing; Program Thursday 6:30 p.m.

Church Services Courtesy of  
**Jenter Funeral Home**  
302 E. Main St.  
Manchester, Michigan

## "A STORY OF LOVE"

The Senior Choir of St. John's Lutheran Church, Bridgewater, will present the Christmas Cantata, "A STORY OF LOVE," on Sunday, December 16th at 8 p.m. A free will offering will be taken. A social hour will follow in the church basement. We invite everyone to come and hear the Wonderful Christmas Story in song.

### ST. JOHN'S LUTHERAN CHURCH

Friday, December 14, Set up Christmas tree.  
Saturday, December 15, Confirmation, 9-11. Decorate Christmas tree, 1 p.m.

Sunday, December 16, 8S-9:15 a.m. Worship - 10:30 a.m. State Hospital 2:00 pm. Christmas Cantata, 8 p.m.

Tuesday, December 18, Senior Choir, 8:45 pm.  
Wednesday, December 19, Midweek Advent Service at St. Thomas, 8 pm.

### FAITH COMMUNITY CHURCH

Friday evening December 14, Annual meeting with Pot-Luck Supper at 7:00 p.m. Business meeting at 8:00 p.m.

Saturday evening December 15, Holiday Banquet for seventh through twelfth grades at 8:00 p.m. at the Chef Restaurant. Any others who wish tickets can get them at the Chef Restaurant by Thursday night.

Sunday evening December 16, at 7:00 p.m., Christmas Cantata "Love Transcending" by John W. Peterson, given by the Senior Choir. The Junior Choir will also offer special Christmas numbers.

Sunday evening December 23, Sunday School Christmas program at 7:00 p.m.

Thursday, December 20, the Charity Circle will have their Christmas Luncheon at 1:00 p.m. at the home of Mrs. Martin Keasal.

### ZION LUTHERAN CHURCH

Saturday, December 15, Youth Christmas Party - Roller skate at Adrian and evening dinner at Schoenberg, meet at 2:30 pm.

Sunday, December 16, S.S. 9 a.m. Worship 10:15 a.m., Special Election & Voting Meeting after worship.

Monday, December 17, Choir Nite: Jr. Choir - 7PM., Sr. Choir - 8PM.

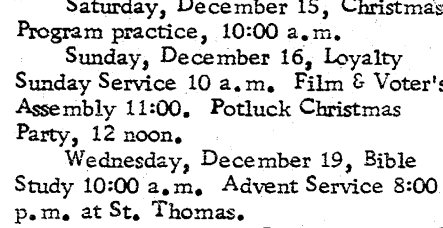
### ST. THOMAS LUTHERAN CHURCH

Thursday, December 13, Choir rehearsal 8:30 p.m., Sunday School Teachers 7:00 p.m.

Saturday, December 15, Christmas Program practice, 10:00 a.m.  
Sunday, December 16, Loyalty Sunday Service 10 a.m. Film & Voter's Assembly 11:00. Potluck Christmas Party, 12 noon.

Wednesday, December 19, Bible Study 10:00 a.m., Advent Service 8:00 p.m. at St. Thomas.

### Service Toons by GERRY



Make trading here a habit!

## Gerald R. Mann

101 W Main St. Manchester  
Phone 428-9831  
Service The Best

## BETHEL UNITED CHURCH OF CHRIST

Sunday, December 16, 10:00 AM 3rd Sunday in Advent - Worship service. 7:30 PM Church School Christmas program

Tuesday, December 18, 8:00 PM Adult membership class.

Wednesday, December 19, 11:30 AM Senior Citizens of Bethel Christmas Potluck Luncheon.

## SHARON UNITED METHODIST

The Sharon United Methodist Women will have a Christmas potluck dinner at 6:30 p.m. on Thursday, Dec. 13. All the ladies of the church are invited. Please bring your own table service and a dish to pass.

Friday, December 14, 3:45 pm. Catechism.

Saturday, December 15, Children's practice.

The annual Christmas program presented by the Sunday School will be given Sunday evening, December 16th at 7 p.m. The entire Sunday School will be taking part, including the Y.F.F.'s who are working on special presentations.

After the program and distribution of gifts, everyone is invited to have birthday cake in the fellowship rooms in honor of Jesus' birthday.

Wednesday, December 19, 8:00 pm. Chancel Choir practice.

## MANCHESTER UNITED METHODIST

Thursday, December 13, 7:00 pm. Finance Committee meeting. 8:00 pm. Administrative Board meeting.

Sunday, December 16, 11:30 am. Jr. choir rehearsal. 7:00 pm. Sunday School Christmas program.

Tuesday, December 18, 9:30 am. Lydia Circle meeting at church. Bring \$1.00 gift for exchange.

Wednesday, December 19, 6:30 pm. Cherub choir rehearsal, 7:30 pm. Chancel choir rehearsal, 7:30 pm. Bible Study.

## EMANUEL UNITED CHURCH OF CHRIST

Thursday, December 13, 6:30 pm Women's Fellowship Christmas pot-luck. Cherub Choir - 3:30pm., Junior Choir - 4:15 pm., Adult Choir - 7:30 pm.

Sunday, December 16, Quest 9:00 am., Worship 10:30 am. Children's Christmas Program with Christmas Store 2:00 pm. Adult Fellowship and Young Adult Christmas caroling at 6:30 pm.

Wednesday, December 19, Senior Citizens will meet.

## JOLLY FARMERETTES

The December meeting of the Jolly Farmerettes 4-H club was called to order by President, Beth Feldkamp. The flag pledges were led by Virginia Bowers.

Roll call was your favorite animal. There were 33 members, 4 leaders, and 1 guest present.

A song was led by Rita Kemmer. It was decided that we would take Christmas gifts to St. Joseph's Hospital in Ann Arbor. Our Pollo Balloon Sale will be January 26. Articles were brought by the members to fill 6 Sunshine Boxes for the shut-ins. Christmas gifts were given to the leaders and members.

Demonstrations were given by Sharon Vogeding, Virginia Bowers, and Teresa Ames.

The meeting was adjourned and refreshments were served.

The next meeting will be in January. Reporter, Jean Ann Wahl

## SINGLES 25 AND UP

Join the Tuesday Nite Singles of Ann Arbor for their annual Christmas dance on December 18 at the Ann Arbor YM-YWCA and dance to the merry tunes of the Merrimen from 9 to midnight. Bring some Christmas cookies. Refreshments will be served. Dancing instruction from 7:10 and 8:10. NO DANCE DECEMBER 25.

MANCHESTER  
Large Building site in Village.  
Nice lot to build on.  
Income Property.  
Acreage without buildings.  
14 1/2 acres with springs.  
Large Tract - Hills - Partly wooded - with springs.  
**FAHEY REALTY**  
15554 Fahey Road 428-8748  
112 S. Washington 428-8348

**Gulf** THE JOLLY DUTCHMEN **Gulf**  
VISIT THE JOLLY DUTCHMEN  
FOR Plastic Trash Bags 10 for 99c  
Mud & Snow Tires  
Permanant Anti-Freeze  
Ice and Snow Scrapers  
Windshield Washer Solvent  
Starting Ether  
Batteries  
MR. SCRUB cleans cars BETTER for LESS  
2 MIN wax-wash 1/2 in  
Phone 428-8960  
Many Gulf Accessories  
**GROSSMAN-HUBER SERVICE**

Starting December 12  
Lot Between E. G. Mann and Tirb Chevrolet  
ALL PROCEEDS GO TO COMMUNITY PROJECTS  
**WANTED**  
500 Cars - Wrecks or Junkers  
Free Pick-up To \$125.00  
"Help Keep Your Community Beautiful!"  
Phone 428-8080 or 517-787-7044  
**Verhines Auto Salvage**  
17547 AUSTIN RD. MANCHESTER

Church Services Courtesy of  
**Jenter Funeral Home**  
302 E. Main St.  
Manchester, Michigan

**Service Toons by GERRY**

**Gerald R. Mann**  
101 W Main St. Manchester  
Phone 428-9831  
Service The Best

**Marshall Trucking Co.**  
Sand - Gravel - Top Soil  
Drive Ways - Fill Dirt - Mason Sand  
Drain Field Stone - Crushed Stone

Prompt Service Free Estimates  
Phone 428-8123 Manchester Michigan  
428-3021

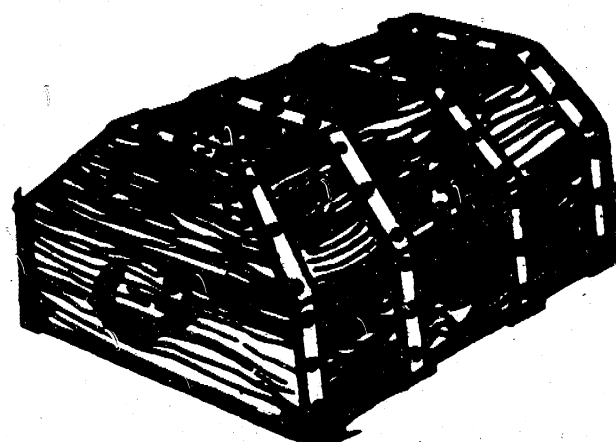
**ASK THE CHIROPRACTOR**  
**WHO DISCOVERED CHIROPRACTIC?**  
Q. I am 11 years old and my 6th grade class has to write an essay on a profession. My dad goes to you whenever he is sick so I thought you could help me answer my question about when chiropractic was discovered.  
A. The greatest, the most significant discovery, perhaps of all time, was made by Dr. Daniel David Palmer on September 18, 1895, in Davenport, Iowa.  
Up to the time of Palmer's discovery, doctors had proceeded on the assumption that disease was an "entity" invading the body. But Palmer proved conclusively that disease is an alteration of body condition caused by impinged nerves, chiefly in the spinal column.  
Palmer said, "One question was always uppermost in my mind in my search for the cause of disease. I desired to know why one person was ailing and his associate, working in the same shop, at the same bench, was not. WHY? What difference was there in the two persons that caused one to have pneumonia, catarrh, typhoid, or rheumatism, while his partner, similarly situated, escaped? WHY? This question had worried thousands for centuries and was answered in September, 1895."  
DR. GLENN MILLER  
101 N. WASHINGTON ST  
MANCHESTER, MICH  
PHONE 428-8629 or 769-2324

# Grand Opening

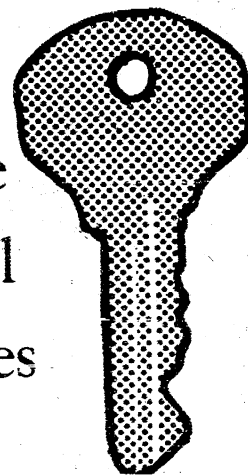


NEW  
BRIDGEWATER  
OFFICE

Try To Open  
The Treasure  
Chest In The  
Lobby At  
Bridgewater

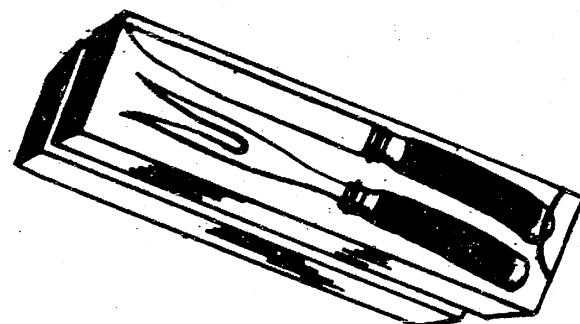


Win One  
of Several  
Free Prizes

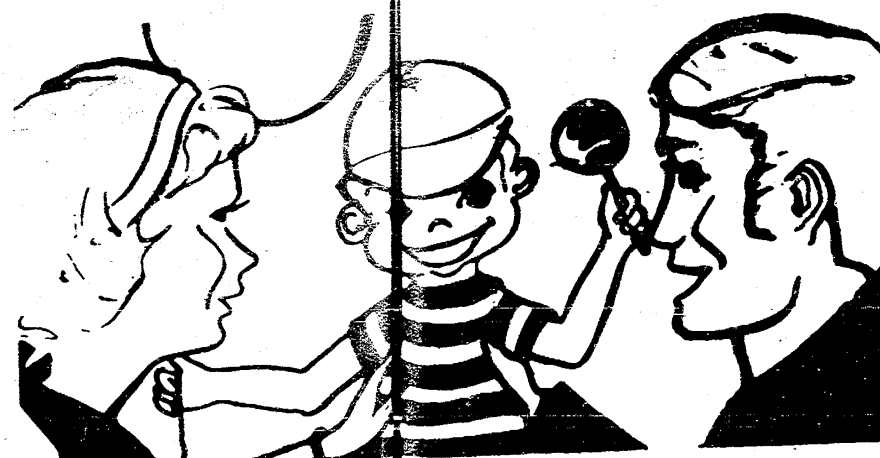


TRY YOUR KEY IN THE TREASURE CHEST  
LOCATED IN THE LOBBY OF OUR NEWLY  
OPENED BRIDGEWATER OFFICE. HAVEN'T  
A KEY? WE'LL GIVE YOU ONE TO TRY!  
FIFTY LUCKY WINNERS.

Free Carving Set to  
the first 25 visitors  
daily at Bridgewater



REFRESHMENTS  
FOR ALL!



Bring the family to Bridgewater  
and have fun at the area's newest  
complete financial center!



100 Acrylic  
72 x 90 Full Size Blankets  
and Plaid Stadium Blankets

A lovely blanket will be given to you for opening a new savings  
account for \$100 or more or by adding \$100 or more to an existing  
savings account. The purchase of a certificate of deposit, too, qual-  
ifies you for a free blanket. Limit one per account.

Blanket Offer Good At All 3 Offices!  
Manchester-Pleasant Lake-Bridgewater



# Agriculture in Action

Michigan Farm Bureau

Well-intentioned but misguided church and university student groups are trying valiantly to fill the credibility gaps in Cesar Chavez's ideological crusade to "protect" farm workers. Because of their instinctive response to the "poor and downtrodden," some clergymen and students have committed themselves to support of Chavez's table grapes and lettuce boycotts.

While their sentiments have been swayed by the crusader's professional sympathy-arousing tactics, another

segment of society has done some objective thinking on the issue of using boycotts to force farm workers into a particular union. That segment of society is the American consumer—never to be underestimated for his determination to protect his own freedoms as well as those of his fellow-man.

During Chavez's long battle to bring workers under the United Farm Workers banner, consumers have become suspect of his endorsement of non-violence and history of coercion and harassment. They have learned that food boycotts cause interrupted production, which brings higher prices. They have learned that farm workers—caught up in a dispute between two unions, without the opportunity for free elections—have had their incomes and job opportunities reduced as boycotted growers changed crops or mechanized their operations.

They've learned that the "little guy" pays the big price for the Chavez campaign—small farmers who employ no outside labor but are boycotted along with the large farms, and the small "mom and pop" produce merchants

whose trade is chased away by UFW pickets. Food industry workers, who are not even party to any dispute, are also threatened by boycott tactics.

Most of all, with the consumer, it's a question of freedom. He wants to decide himself, based on his own convictions, whether or not to eat non-UFW grapes or lettuce. He believes he should have more freedom than students at the University of Colorado whose referendum to get lettuce back on dorm menus was overruled. He definitely believes he should have more freedom than the animals in the Madison City, Wisconsin, zoo. There, the city council, under pressures from university groups, voted to require that only UFW-label lettuce be fed to the zoo animals!

ROGERS CORNER FARM BUREAU

The Rogers Corner Farm Bureau Christmas pot-luck dinner will be held December 14 at 6:30 p.m. at the Freedom Township Hall.

## WINNERS OF BAZAAR DRAWING

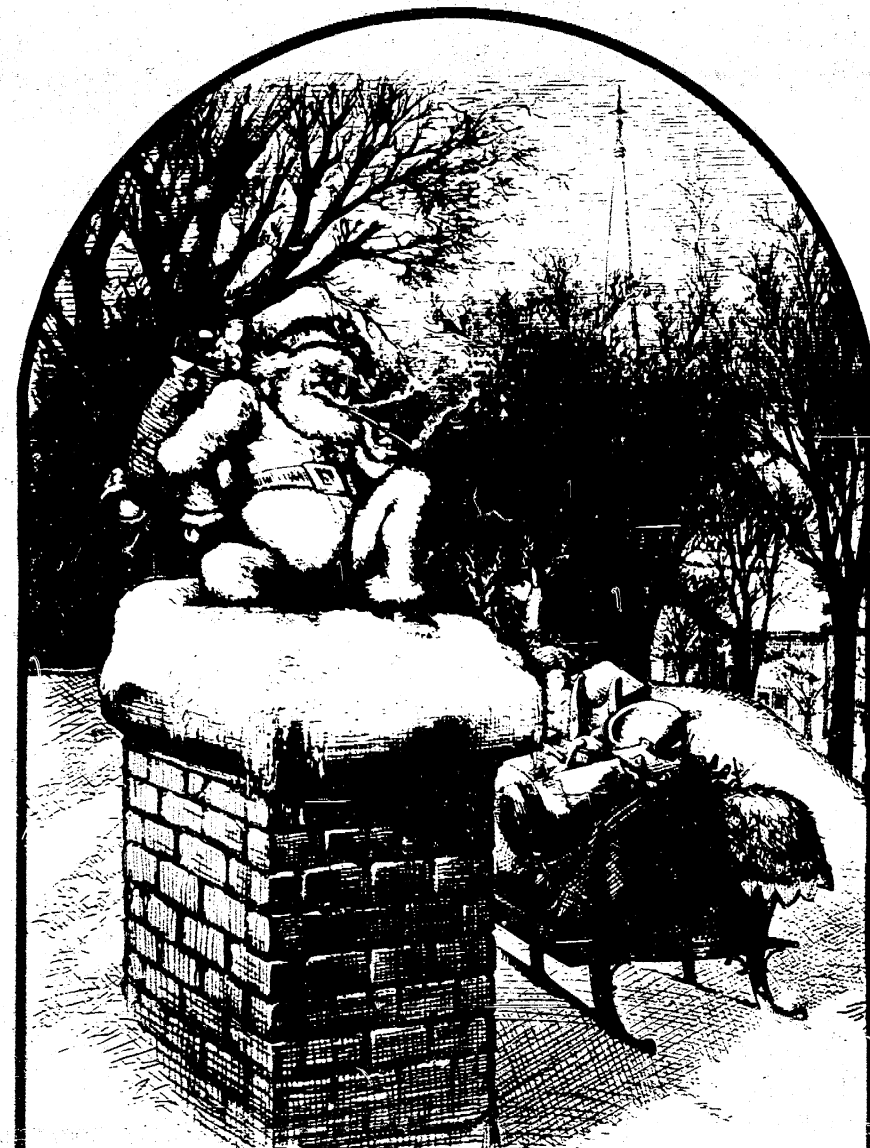
The winners of the combined Christmas Bazaar drawing held November 30 at the Emanuel United Church of Christ are Annetta Breitenwischer, afghan, Lois Kuntz, quilt, Charlotte Timmerman, dall.

### Pick-up Station for Welch Cleaners

Daily Pick-up

## Trickeys, Inc.

Manchester



you can earn 5¼% daily interest on 1974 Christmas Club

Christmas and Hanukkah Clubs are the answer to after-holiday bills hangover. You save from 50 cents to \$20 bi-weekly...by mail if you like...receive from \$12.50 to \$500 November 1974, PLUS 5¼% daily interest. You have the money to pay as you shop. No left-over bills to spoil the memories of the happy holiday season. Get the most at Ann Arbor Federal Savings.

\*5¼% daily interest from day of deposit to November 1, 1974.

DEPOSIT	RECEIVE NOVEMBER, 1974
\$ 50 every 2 weeks	\$ 12.50 plus Daily Interest*
1.00 every 2 weeks	25.00 plus Daily Interest*
2.00 every 2 weeks	50.00 plus Daily Interest*
4.00 every 2 weeks	100.00 plus Daily Interest*
6.00 every 2 weeks	150.00 plus Daily Interest*
10.00 every 2 weeks	250.00 plus Daily Interest*
20.00 every 2 weeks	500.00 plus Daily Interest*



the savings specialists

ANN ARBOR OFFICES: Downtown, Liberty at Division; Westside, Pauline at Stadium; Eastside, Huron Parkway at Platt; Northside, Plymouth at Nixon; CHELSEA—Main Street near Old U. S. 12; DEXTER—806½ Main Street

ANN ARBOR FEDERAL SAVINGS

Member: Federal Home Loan Bank System • Federal Savings and Loan Insurance Corporation

## CORPORATION ESTIMATED TAX DUE, SAYS IRS

Corporations who operate on a calendar year basis must make their fourth quarterly payment of their 1973 estimated tax by Monday, December 17, 1973, Thomas A. Cardoza, District Director of Internal Revenue for Michigan said today.

Such payment should be deposited in authorized commercial banks or Federal Reserve banks, along with a Federal Tax Deposit Form 503.

For more information on corporation estimated tax payments, write your IRS district office and ask for a free copy of IRS Publication 542, "Corporations and the Federal Income Tax."

## WASHTENAW TUBERCULOSIS AND HEALTH ASSOCIATION

The Christmas Seals which were mailed to area residents from the Washtenaw Tuberculosis and Health Association seeks funds for use in Washtenaw County, and is not related to a national drive which is conducted out of New York each year.

The board of directors of the Washtenaw Tuberculosis and Health Association voted to withdraw from the National TB association in 1972. The local board felt that too much money was being spent in non-productive overhead and administrative cost, and too little was used to aid victims of lung-related diseases in the County.

Among the services to which the Christmas Seal contributions are utilized

are these: a bank of breathing machines for Emphysema patients, participation in public health programs including the Model Cities Health Fair, co-sponsorship of TB clinics at St. Joseph's Mercy Hospital, education in schools—including anti-smoking education at secondary and high school levels, public anti-smoking classes, breathing and oxygen efficiency classes at Beyer Memorial Hospital for lung patients.

The Christmas Seals for 1973 are modern in design and multi-colored. More than 70 seals on a gummed and perforated sheet contain graphic representations of the organization's "dove and wreath" symbol, along with Christmas bells, ornaments, candles, bells and other holiday decorations.

An additional "Gift of Breath" bond is included in the Christmas Seals mailing. The bond notes, "I want my Christmas Seals to work right here at home... my money is to be used to provide diagnostic services... to provide care for those already afflicted... to educate... and to help teach our children the dangers of smoking." All donations are tax deductible.

The group also sponsors DIAL-A-PUFF, a support effort for smokers who are trying to quit. Encouragement is obtained by dialing 971-PUFF.

## SENIOR CITIZENS

The Senior Citizens will meet Wednesday, December 19 at 12:30 for a pot-luck dinner and gift exchange at the Emanuel Church Hall.



## Irresistible Appetizer Cookie

Entertaining family and friends is fun no matter what the season or reason. For your next party, Kay Kellogg suggests you welcome your guests with warm-from-the-oven Crunchy Cheese Rounds. A hint of cayenne pepper gives these appetizer cookies a unique flavor spark. Fortified high protein cereal and tangy Cheddar cheese make Crunchy Cheese Rounds irresistible. Just team them up with favorite beverages and watch them disappear.

### CRUNCHY CHEESE ROUNDS

- 1 cup regular margarine or butter, softened
- 2 cups shredded sharp Cheddar cheese
- 2 cups regular sifted all-purpose flour
- Dash cayenne pepper
- 2 cups fortified high protein cereal

- Place margarine and cheese in large mixing bowl; mix until thoroughly combined. Add flour and pepper; mix well. Stir in cereal. Drop by rounded measuring-teaspoon onto ungreased baking sheets. Flatten to ¼-inch thickness with bottom of glass which has been greased and dipped in flour.
- Bake in slow oven (325° F.) about 20 minutes or until lightly browned. Remove from baking sheets. Serve warm.

Yield: 6 dozen Crunchy Cheese Rounds, 1½ inches in diameter

## THIS WEEKS SPECIALS

- Low Fat Milk gal 1.09
- Head Lettuce 19c
- Fire Wood cord \$25

## CHRISTMAS TREES

Beer & Wine Take-out Open 7 Days

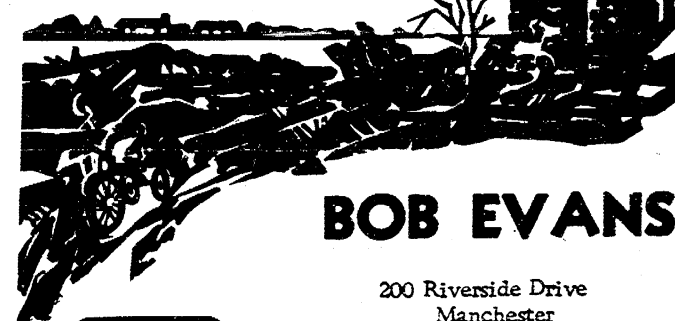
## Larry's Roadside Market

Half-Way Between Chelsea and Manchester on M-52  
1-4 Mile South of Grass Lake Road

What happens when you're offered \$20,000 for your \$27,000 pile of ashes?

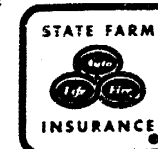
You take it if you haven't increased your home insurance to keep pace with inflation.

This is the kind of problem you could face if you bought and insured your home for \$20,000 in 1968. See me to find out if your home is insured for its full value. I'll tell you about a low-cost State Farm Homeowners Policy that will insure your home for all it's worth... and keep it that way with automatic Inflation Coverage.



BOB EVANS

200 Riverside Drive  
Manchester  
Office Phone 428-8364  
Residence Phone 971-5518



STATE FARM FIRE and CASUALTY COMPANY  
Home Office: Bloomington, Illinois

## Friday Night Fry Fish

Manchester American Legion Hall

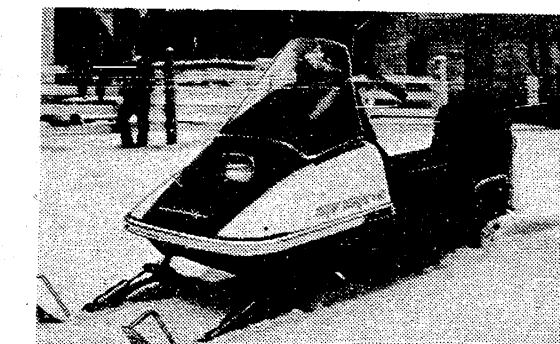
Starting Friday, December 14th

Serving: Combination Plate-Scallops Shrimp Perch-Clams

SERVING FROM 5:30 PM till 8 PM

THIS IS THE ONE FOR

# family fun!



The 1974 Scorpion Super Stinger 440

Snowmobiling! It's one of the great winter sports because every member of the family can participate.

Before you buy, however, you should check out several of the leading makes. Check for: Acceleration—Climbing ability—Speed.

But check also for other things: Stability—Smooth ride—Big brakes—engine-off switch—Easy handling.

These are the factors Scorpion has built in—to safeguard your family's fun.

## SCORPION STINGER '74

See—test ride—the '74 Stingers at

## K & W Equipment, Inc.

AGRICULTURAL and CONSTRUCTION EQUIPMENT  
105 M-52 PHONE 428-5081 MANCHESTER



# GREAT MEALS BEGIN IN VESCIO'S MEAT DEPARTMENT WHERE YOU FIND OUTSTANDING VALUES EVERY WEEK.



## CENTER CUT Rib PORK CHOPS **99¢** LB.

STUFFED WITH PEPPERIDGE FARMS DRESSING  
**Stuffed PORK CHOPS **78¢** LB.**

**Farmer Peet's PEOPLE PLEASIN MEATS**

FARMER PEET'S ANY SIZE PIECE <b>SMOKED Liverwurst</b> LB. <b>79¢</b>	SEWER WITH BOILED POTATOES <b>RING BOLOGNA</b> LB. <b>99¢</b>
FAMOUS any size piece <b>Hickory Stick</b> LB. <b>179¢</b>	ALL BEEF <b>Franks</b> LB. <b>119¢</b>
FARMER PEET'S <b>REPEETER BACON</b> SLICED LB. <b>119¢</b>	FARMER PEET'S <b>SMOKED PICNICS</b> SLICED LB. <b>77¢</b>
THICK SLICED BACON <b>Ranch Style</b> 1 1/2 LB. <b>188¢</b>	Whole LB. <b>77¢</b>

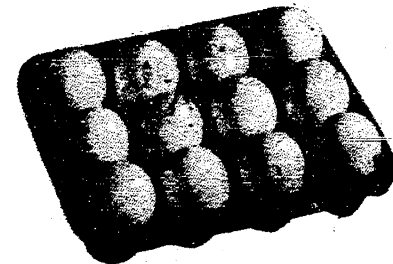
- FRESH LEAN **Pork Steaks** ..... **108**
- PRACTICALLY BONELESS **Pork Butt Roast** ..... **98¢**
- RATH **Pork Sausage** ..... **79¢** 1 LB. CELLO ROLL
- ECKRICH **Smoky Links** ..... **98¢** 10 OZ. PKG.
- FARMER PEET'S **Bonanza Ham** ..... **179** BONELESS-SWEET CURED WATER ADDED LB.

## BONELESS BEEF CHUCK ROAST **88¢** LB.

- RATH **Canned Ham** ..... **899** WATER ADDED 5 LB. CAN
- ARMOUR STAR-ZIP TOP **Canned Ham** ..... **549** WATER ADDED 3 LB. CAN
- ARMOUR STAR-ZIP TOP **Canned Ham** ..... **799** WATER ADDED 5 LB. CAN

## BEEF CUBE STEAK **138** LB. QUICK TO FIX

### GRADE A LARGE FRESH EGGS



## **79¢** DOZ.

See Them Christmas with  
**POINSETTIAS**  
THE MOST POPULAR & CHARACTERISTIC CHRISTMAS PLANT.  
FRESH BEAUTIFUL

**4" POT** **188** EA

**6" POT** **358** EA

FRESH MICHIGAN  
**POTATOES** **201<sup>68</sup>** LB. BAG

NEW CROP. THE GOOD OLD STAND BY  
**CABBAGE** **12¢** LB. FRESH CRISPY TEXAS

FRESH LUSCIOUS D'ANJOU  
**PEARS** ..... **3 \$1** 3 LB.

MADE IN U.S.A.  
**QUIKUT Frozen FOOD KNIFE** EACH **79¢**

WITH FAMOUS QUIKUT STAINLESS STEEL



ALL VOLUMES AVAILABLE. COMPLETE YOUR SET BY CHRISTMAS AND USE AS A SPECIAL CHRISTMAS GIFT.

<b>SECRET deodorant</b> REGULAR REG. \$1.59 3.75 OZ. AERO <b>118</b>	<b>PRELL SHAMPOO</b> EXTRA RICH LIQUID REG. \$1.25 11 OZ. BTL. <b>66¢</b>	<b>LILT PUSH BUTTON</b> FOAM OR STYLE KIT REG. \$2.60 <b>128</b>	<b>PRELL Concentrate Shampoo</b> FOR GREAT LOOKING HAIR REG. \$1.34 5 OZ. TUBE <b>79¢</b>
--	---	--	---

What are the Seven Deadly Sins?  
Is Sleepy Eye a lazy watchdog, a tired child, or a town?  
Where is the Spanish Main?

Find out in Volume of the illustrated **Columbia Encyclopedia** **19,20** On Sale this week. **199** VOLUME 1 Only 25¢

Does every sundial have a gnomon?  
What was the "Stockholm Bloodbath"?  
Who was both President of the United States and Chief Justice of the Supreme Court?

# SAVE ON NATIONAL BRAND MERCHANDISE AT VESCIO'S-- THE NAME BRAND VALUE LEADER.



PRICES EFFECTIVE THRU SAT. DEC. 15, 1973. QUANTITY RIGHTS RESERVED.

**BORDEN'S Old Fashioned ICE CREAM** **79¢** 1/2 GAL. CTN.

CHOOSE FROM "STRAWBERRY", "ENGLISH TOFFEE", "BI", "SPUMONI", "CHERRY", "DUTCH CHOCOLATE", "ALMOND", "GOLDEN VANILLA", "BUTTER PECAN"



## REGULAR OR DIET PEPSI-COLA **888¢** NO DEPOSIT 3 PINT BTL.

**SMUCKER'S TOPPING** **3 \$1** 12 OZ. JARS

\*Chocolate Fudge  
\*Caramel \*Butterscotch

**Strawberry Kraft Preserves** **59¢** 1 LB. 2 OZ. JAR

**Frozen SMUCKER'S APPLE PIE** **99¢** 2 LB. 5 OZ. PIE

**CAMELOT POP** **3 \$1** \*COLA \*RED POP \*ROOT BEER \*ORANGE \*GRAPE Plastic Shield No Dep. Btl. 48 OZ. BTL.

**EMPRESS WHOLE OYSTERS** **49¢** 8 OZ. CAN

**CRISCO SHORTENING** **399¢** LB. CAN

"IT'S DIGESTIBLE"

LIMIT ONE (1) WITH COUPON BELOW

**Pillsbury Frosting** **3 \$1** 14.3 OZ. PKGS.

\*Vanilla \*Milk Chocolate \*Caramel \*Lemon \*Fudge \*Double Dutch

**Red Karo Syrup** **29¢** PINT BTL.

**Gold Medal Flour** **79¢** 5 LB. BAG

**Wishbone Italian Dressing** **58¢** PINT BTL.

**Stokely Drinks** **29¢** 1 QT. 14 OZ. CAN

\*GRAPE \*ORANGE \*PUNCH

**Royal Scot Margarine** **3 \$1** QUARTERED 14 OZ. CTNS.

**WHITE CLOUD Toilet Tissue** **25¢** 2-1000 Sheet Roll Pkg.

WHITE OR ASSORTED

LIMIT ONE (1) WITH COUPON BELOW

**DUNCAN HINES CAKE MIXES** **78¢** 3 1 1/2 OZ. PKGS.

MANY ASSORTED FLAVORS

LIMIT THREE (3) WITH COUPON BELOW

**JIF Peanut Butter** **58¢** 1 LB. 2 OZ. JAR

\*Creamy \*Crunchy

**FRANCO AMERICAN Spaghetti's** **15¢** 15 OZ. CAN

**DOLE Pineapple Juice** **29¢** 1 QT. 14 OZ. CAN

**COUPONS FOR SAVINGS**

PICK OUT THE ITEMS YOU NEED AND ENJOY EXTRA SAVINGS. EACH WEEK WE WILL OFFER YOU EXTRA SAVINGS ON A NUMBER OF SPECIAL COUPON ITEMS. CHECK THE ITEMS AND SEE WHAT ONE'S YOU NEED. IT'S A GOOD WAY TO MAKE YOUR GROCERY SHOPPING OFFER FOR FRESH, WHOLESALE WAY WE'RE TRYING TO OFFER YOU A LITTLE MORE EVERY WEEK.

**ANACIN** FAST PAIN RELIEF ECONOMY SIZE REG. 4.19 300 ct. **296**

**CREST TOOTH PASTE** REGULAR OR MINT FLAVOR REG. 1.13 8.75 OZ. TUBE **78¢**

**BRACH'S CHOCOLATES** HOLIDAY GREETING

**3 lb. box 289**

**5 lb. box 459**

BRACH FANCY Cream & Jellies 14 OZ. PKG. **39¢**

<b>White Cloud</b> 25¢	<b>CHIP'S</b> 38¢	<b>Pepsi-Cola</b> 88¢
<b>SOAP</b> 22¢	<b>CRISCO</b> 39¢	<b>Duncan Hines Cake Mixes</b> 78¢





# STRIKES 'N SPARES

### MANCHESTER WOMEN'S

TEAM	WON	LOST
Bonanza Sirlain Tip	242.5	147.5
Black Sheep Tavern	241.5	148.5
Gambles	224	166
Margaret's Beauty Salon	189.5	200.5
Onsted Red & White Store	188	202
Billmeyer Hardware	183.5	206.5
Weatherwax Drugs	179.5	210.5
Dorothy Mae Beauty Shop	177	213
Mowry's Aceo	176.5	213.5
Hodge Vending	145	245
HIGH TEAM GAME		
Bonanza	1064	
Weatherwax	1048	
Black Sheep	1036	
Gambles	1027	
HIGH TEAM SERIES		
Bonanza	3118	
Black Sheep	3013	
Onsted R & W	2955	
Weatherwax	2936	
HIGH INDIVIDUAL GAME		
M. Reed	222	
J. Schaffer	214	
J. Luck	212	
HIGH INDIVIDUAL SERIES		
N. Ace	556	
J. Schaffer	555	
L. Richardson	536	

### JOLLY KEGLERS BOWLING LEAGUE

TEAM	WON	LOST
Carol's Cut & Curl	58	40
Ben Franklin	54	44
Village Tap	51	47
Ron's Tree Service	50	48
Krauss Pharmacy	49	49
Grossman - Huber	32	66
HIGH TEAM SERIES W/H		
Ron's Tree Service	2855	
Grossman-Huber	2874	2869
Carol's Cut & Curl	2863	
HIGH TEAM GAME W/H		
Ron's Tree Service	1023	
Village Tap	999	
Carol's Cut & Curl	999	
HIGH INDIVIDUAL GAME		
P. Schmidt	201	
L. McGee	198	
C. Wurster	196	
HIGH INDIVIDUAL SERIES		
P. Schmidt	557	
V. Schwab	517	
J. Withrow	497	

\*\*\*\*  
A bullet may be deadly,  
but rapid-fire tongues often  
claim many victims.  
\*\*\*\*

### MANCHESTER BUSINESSMENS

TEAM	WON	LOST
American Legion	27	12
Manchester Tool & Die	24	15
Al's Plumbing	23	16
Krauss Pharmacy	22	17
Double A Products	22	17
Food Locker	20 1/2	18 1/2
Marshall Trucking	21	18
Browns TV	20	19
Union Savings Bank	21	18
Smith Pallet	20	19
K & W Farm Supply	19	20
Superior Land Developers	18	21
Micks	17	22
Grossman-Huber Ser.	17	23
Spikes Mobil Ser.	16	23
The Glass Slipper	17	22
Albers Trucking	15 1/2	23 1/2
Gambles Store	11	28
HIGH TEAM SERIES		
Micks	3187	
Krauss Pharmacy	3101	
Food Locker	3089	
HIGH TEAM GAME		
Krauss Pharmacy	1113	
Food Locker	1097	
Micks	1095	
HIGH INDIVIDUAL SERIES		
Don Wolf	627	
Mike Kern	622	
Andy Fletcher	605	
HIGH INDIVIDUAL GAME		
Fritz Wurster	266	
Dave Walton	258	
Vic Wurster	251	
HIGH GAMES OF WEEK		
D. Steele	236	
B. Bunney	213	
John Schaible	212	

### AMERICAN LEGION MIXED LEAGUE

TEAM	WON	LOST
Joe & Randall	18	6
Steele & Wurster	16	8
Sutton & Schaible	15	9
Merriman & Whittington	15	9
Steele & Bailey	13	11
Steele & Gaige	10	14
Miller & Walter	10	14
Popkey & Steele	9	15
Beal & Weir	8	16
Kuebler & Kuebler	6	18
HIGH TEAM SERIES		
Merriman & Whittington	2448	
Joe & Randall	2416	
Steele & Gaige	2382	
HIGH TEAM GAME		
Merriman & Whittington	867	
Steele & Wurster	856	
Joe & Randall	844	
HIGH SERIES FOR MEN		
Frank Randall	608	
Al Gaige	599	
Chuck Steele	547	
HIGH GAME FOR MEN		
Chuck Steele	214	
Al Gaige	213	
Frank Randall	210	
HIGH SERIES FOR WOMEN		
Ginny Sutton	524	
Cindy Wurster	516	
Jan Whittington	489	
HIGH GAME FOR WOMEN		
Cindy Wurster	210	
Judy Miller	202	
Ginny Sutton	199	

Never speak of the beautiful snow to a man who has just shovelled clear the drive.

# WANT ADS

ALL CLASSIFIED ADS ARE PAYABLE IN ADVANCE

PIANO TUNING: Repair and regulation every Monday at Gamble Store in Manchester. tfn

FOR FULLER BRUSH needs call 428-8886. tfn

AUCTIONEER: S. Halchishak, Dairy, General Farm, Antiques, Liquidation; Household and Estates or buy outright. Call (313) 456-7207. tfn

SEAMLESS aluminum eavestroughs installed and guaranteed, white and colors available. For free estimates call Rick Kleinschmidt - R.D. Kleinschmidt Co. 428-8836. tfn

WINDOWS, floors, and carpets cleaned, eavestroughs, walls, basements or garages cleaned. Carpet cleaning special \$22.95 for 320 sq. of carpet. You must move your own furniture. No job to large or to small - call for a free estimate. Insurance claims welcome. Clinton Window & Floor Cleaning Service. 456-7282. tfn

PAT'S CRAFT STUDIO, 122 North Evans, Tecumseh has a complete line of craft supplies, a selection of gift items and straw flowers, and all of your Christmas craft needs. Classes also available. 423-7447. 12-20

FOR SALE: Roven ducks, live or dressed. Raymond Cousino - 428-7593 12-20p

FOR SALE: Platform rocker and ottoman, red nylon upholstery, good condition. \$50.00. 301 E. Duncan, Egbert Treat. 12-20p

FOR SALE: Kitchen prints \$7.95 value, sale \$4.95 sq. yd. Thick short rubber backed shag, values to \$9.95, sale \$4.95 to \$6.50 sq. yd. Hartung's Clinton Tecumseh Rd. - Clinton. Closed Sunday, Monday & Tuesday. Open Fridays to 9 PM. 12-20

CLEAN RUGS, LIKE NEW, so easy to do with Blue Lustre. Rent electric shampoer \$1. Beal's Ace Hardware. 12-20

INTRODUCTION - Wallpaper, now carrying many books to choose from. Hartung's, Clinton Tecumseh Rd. - Clinton. Closed Sunday, Monday & Tuesday. Open Fridays to 9 PM. 12-20

FANTASTIC SETTING! 9 acres near Chrysler Proving Grounds. Rolling. Survey and title insurance furnished. \$13,500, good terms. Call Real Estate One of Washtenaw, Realtors. 475-8693. 12-20

NEED GOOD TRANSPORTATION? '65 Galaxie. 428-8173. 12-20

FOR SALE: electric wheel chair, Ziegler space oil heater, book-case head board bed, like new. 428-8357. 12-20

SHOE repair pick-up and delivery every Monday at Gamble Store in Manchester. tfn

HOUSE and barn roofing, all types of roof repairs, aluminum storm windows and doors, awnings and porch enclosures, cement work, room additions, aluminum siding and gutters. Call Joe Hayes for free estimates 428-8520. tfn

WANTED: Old Wide Gauge Electric Trains and Trolleys. One piece or entire collection. Will pay fair price. Evenings and weekends 1-261-6243. tfn

SOCIAL GAMES: Every Wednesday night. Starting at 8 PM sponsored by Manchester American Legion, 138 E. Main St., Manchester, Michigan. tfn

TERRY'S SERVICE 170 Whitlock St., Saline Home Improvement - Garages, Drop Ceilings - Aluminum Siding, Doors, Windows and Gutters - Wall Paneling. Free Est. -- Phone after 4 p.m. H.G. Keene, 429-5325

BEEF TO SELL BY SIDE: Custom slaughtering. Lockers to rent. Phone 428-7600. Manchester Frozen Food Locker. tfn

FOR SALE: 12 1/2' X 25' beige carpet - good condition \$100. Window 6' X 9' with storm. Byron Moore, 428-8225. tfn

MEAT rabbits for sale: Also some good breeding stock. Phone 428-3353. 12-27p

CHRISTMAS TREES, cut or cut your own. Free wagon ride. Scotch, White and Austrian Pine; Norway, White & Blue Spruce; Douglas and White Fir. All sizes \$3 to \$12. Week-ends (opening new field). Fordor's Tree Farm, 3735 Burtch Rd., 3 1/2 miles south of Grass Lake traffic light. Austin Road to Wolf Lake Road and follow signs. 12-20

FOR SALE: Electric NCR Cash Register 2 years old, excellent condition. Phone 428-8790 after 5 PM or 456-4082 after 6 PM. 12-20

SEASONED FIREWOOD: split, stacked, delivered, \$25 a cord. 428-7187 or 428-7416. 12-20

CHRISTMAS SALE: Maple and Walnut rockers. Four styles to choose from. Hartung's, Clinton Tecumseh Rd. - Clinton. Closed Sunday, Monday & Tuesday. Open Fridays to 9 PM. 12-20

FIREPLACE WOOD: \$20.00 per face cord 4 ft. X 8 ft. X 18". Call 428-8434 or 428-8543. 12-20

FOR SALE: Cone wreaths. 428-7624. 12-20

CARPETS, floors, walls cleaned. Retail Cleaning Supply. No job to large or to small - call for a free estimate. Insurance claims welcome. Clinton Window & Floor Cleaning Service. 456-7282. 12-28

HOMEMAKERS HOME - Health Care Services, a subsidiary of the Upjohn Company, needs licensed nurses, nurses aides and live in companions to work part time in homes in your area. For further information call Ann Arbor 761-2285 between 9 AM & 3 PM. 1-3

NEW SHIPMENT: recliner chairs in nylon and naugahyde. Good selection of colors, all at sale prices. Hartung's, Clinton Tecumseh Rd. - Clinton. Closed Sunday, Monday & Tuesday. Open Fridays to 9 PM. 12-20

BABYSITTING: night or day. 428-8098. tfn

BEAUTIFUL tri-level 2 bedroom apartment on river in Manchester. Available immediately. Month to month lease \$235 per month. For appointment call 663-2800. p

FOR SALE: Cab-high Pick-up cover - \$175.00. Call 428-8625 after 4:30. p

## Card of Thanks

I wish to thank all my neighbors, friends and relatives who sent me cards and gifts and phone calls while at the hospital in Chelsea.

Special thanks to Rev. Gene Nelson and to Rev. Wise for their prayers and calls, to the Baptist Church and also to Mr. Robert Kuhl who took care of my home while I was gone.

I would like to take this time to wish everyone a Very Merry Christmas. Hilda Ernst

I wish to thank everyone for the cards and flowers I received during my recent stay in the hospital.

Fred Buss

## LEHMAN WAHL

LAND APPRAISAL RESIDENTIAL and FARM  
17037 West Austin Rd  
Manchester, Mich.  
Area Code 313  
428-8886

## SPEAR and Associates, Inc. REALTORS

122 West Main Phone 428-8388 Daily. Manchester  
WORTH EVERY PENNY OF IT!  
3 Bedrooms, full basement, sharp new family room, attached 2 1/2 car garage. See this now!

NEW LISTING  
60 Acres vacant land. Beautiful building site including a pond.  
FOR MORE INFORMATION CALL  
**SPEAR and Associates, Inc. Realtors**  
We have buyers -- call us to sell your property  
Member of Ann Arbor Board of Realtors Multiple Listing Service  
**REAL ESTATE ADVICE**  
No Obligation  
Residential Properties  
Commercial Properties  
Farms-Vacant Lands

Office Hours: Monday thru Friday 9 am to 5 pm  
Saturday 9 am to 12  
Marge Rowe, Secretary  
Phone 428-8388 Daily  
EVENINGS PHONE:  
ELLIS PRATT: 428-8562  
MARIA LEHR: 428-8182  
TINA COTTON: 428-7143

## Manchester American Legion NEW YEARS EVE PARTY



A tip of the hat to all our friends as the new year approaches.

Monday  
December 31  
10 pm to 4 am  
\$25 couple  
\$15 single

Band - Drinks  
Breakfast - Favors

RESERVATIONS IN ADVANCE, PLEASE

Members & Guests Invited

## CLINTON THEATRE

CLINTON, MICHIGAN

Fri, Sat, Sun., Dec. 14, 15, 16 - 7:00 pm. | Sat. Matinee 2:00 pm.

(Please note: show time change)



A MOTION PICTURE THAT CELEBRATES THE TIMELESS JOY OF ORIGINAL INNOCENCE.

PARAMOUNT PICTURES PRESENTS A FILM BY FRANCO ZEFFRELLI HIS FIRST FILM SINCE "ROMEO & JULIET"

"BROTHER SUN SISTER MOON"

A PARAMOUNT PICTURE

TECHNICOLOR PANAVISION

## REGISTER NOW FOR THE WINTER SEMESTER

at

## Washtenaw Community College

Classes Start Tuesday, January 8, 1974

Some classes are already filled so

DON'T DELAY -- REGISTER TODAY

Daily hours: 8:30-11:30 a.m. 1:00-4:00 p.m.

Evening registration: 6:30-8:30 p.m.

on

Wednesday, Dec. 12 Thursday, Dec. 27  
Tuesday, Dec. 18 Thursday, Jan. 3, 1974

NOW -- for the first time -- you can REGISTER BY TELEPHONE.

For further information, call 971-6300, Ext. 402\*

Washtenaw Community College -- THE LEARNING CENTER

\*Ask about our GENERAL STUDIES COURSES -- The Reading Lab - The Math Lab - Our New Course in Cinematography

## ADD TO THE FRAGRANCE OF Christmas with FLOWERS



POINSETTIA the traditional Christmas Flower

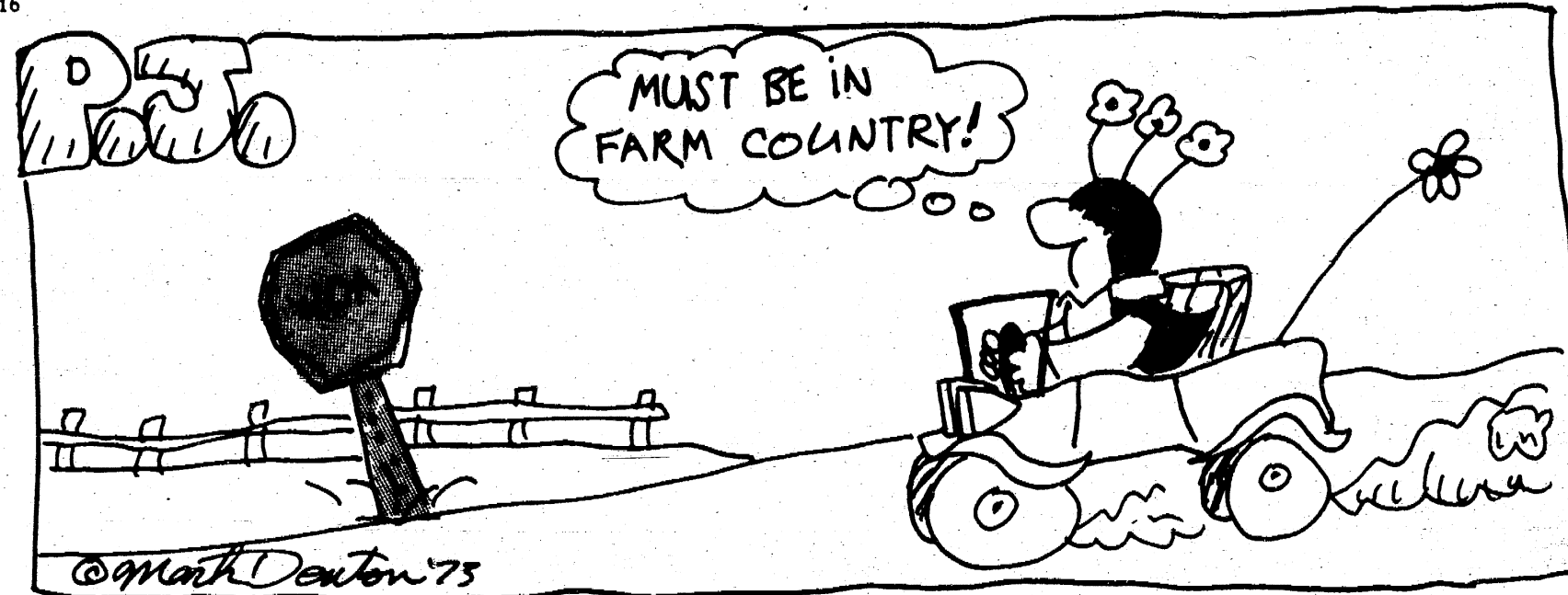
Hundreds of beautiful plants, cut flowers, table and mantle decorations, wreaths to choose from. WHITE PINE & CEDAR ROPING --

Member of Flora Fax Place Your Wire Orders Early

## Wurster's Greenhouse

601 VERNON PHONE 428-7620 MANCHESTER





**Your Every Day Sign of Savings**



...and we accept most third party prescription payment plans, too.

- |   |   |  |
|---|---|--|
| <b>ARRID EXTRA DRY</b><br>Anti-Perspirant<br>Spray<br>6 oz. 1.29 Value..... <b>.77</b>  | <b>DIAL</b><br>Anti-Perspirant<br>Spray<br>Regular & Dry Powder<br>6 oz. 1.29 Value..... <b>.75</b>   | <b>NUPERCAINAL</b><br>OINTMENT<br>1 oz. 1.45 Value..... <b>.95</b>                                   |
| <b>AQUA-BAN</b><br>Mild Diuretic<br>80 Tablets 2.98 Value..... <b>1.88</b>  | <b>DI-GEL</b><br>Anti-gas, Antacid<br>100 Tablets or 12 fluid oz.<br>2.10 Value..... <b>1.19</b>      | <b>PUREPAC VITAMIN-C</b><br>Orange Flavored<br>Chewable Vitamins<br>100's 1.89 Value..... <b>.79</b> |
| <b>BEN-GAY</b> Ointment<br>1-1/4 oz. 1.09 Value..... <b>.75</b>   | <b>4-WAY</b><br>NASAL SPRAY<br>1/2 oz. .98 Value..... <b>.60</b>                                      | <b>SCOPE</b><br>Mouthwash & Gargle<br>24 oz. 2.05 Value..... <b>1.29</b>                             |
| <b>B-D Fever</b><br>Thermometer<br>2.00 Value..... <b>.99</b>   | <b>GET SET</b><br>"Swinging Body"<br>Hair Spray<br>12 oz. 1.39 Value..... <b>.44</b>                  | <b>SOMINEX</b> Tablets<br>32's 2.09 Value..... <b>1.29</b>   |
| <b>BREACOL</b><br>Decongestant<br>Cough Medication<br>3 oz. 1.29 Value..... <b>.77</b><br>or<br>6 oz. 1.98 Value..... <b>1.19</b>             | <b>NEO-SYNEPHRINE</b><br>1/2% DECONGESTANT<br>Nasal Spray<br>2/3 Fluid oz. 1.57 Value..... <b>.98</b> | <b>ST. JOSEPH</b><br>Aspirin for Children<br>36 Tablets .43 Value..... <b>.25</b>                    |
| <b>BUFFERIN</b> Tablets<br>225's 3.46 Value..... <b>2.29</b>  | <b>NEO-SYNEPHRINE</b><br>1/4% DECONGESTANT<br>Nose Drops<br>1 fluid oz. 1.06 Value..... <b>.66</b>    | <b>TAMPAX</b> TAMPONS<br>Regular 40's 1.93 Value..... <b>1.36</b>                                    |
| <b>CLAIROL FINAL NET</b><br>Hair Spray<br>8 oz. 2.25 Value..... <b>1.29</b>   | <b>NOXZEMA</b><br>Medicated Skin Cream<br>6 oz. 1.29 Value..... <b>.87</b>                            | <b>TRIND</b><br>Cold Symptom Syrup<br>4 oz. 1.79 Value..... <b>.99</b>                               |
| <b>DEEP STRENGTH</b><br>Fingernail<br>Strengtheners<br>For chipping, peeling,<br>splitting fingernails<br>1/4 oz. 3.00 Value..... <b>1.49</b> | <b>POLY-VI-SOL</b><br>Chewable Vitamins<br>w/Iron 100's 3.99 Value..... <b>2.49</b>                   | <b>TRIND-DM</b><br>Cough & Cold Syrup<br>4 oz. 1.99 Value..... <b>1.19</b>                           |
| <b>DESITIN DABAWAYS</b><br>Pre-Moistened<br>Washcloths<br>36's .89 Value..... <b>.55</b>  | <b>PEPSODENT</b><br>Toothpaste<br>5 oz. .89 Value..... <b>.59</b>                                     | <b>VASELINE</b><br>CONSTANT CARE<br>Lip Balm<br>.02 oz. .49 Value..... <b>.25</b>                    |
| <b>DESITIN OINTMENT</b><br>2-1/4 oz. 1.19 Value..... <b>.73</b>   | <b>PHISODERM</b><br>Skin Cleanser<br>5 oz. 1.59 Value..... <b>.88</b>                                 | <b>VISINE</b><br>EYE DROPS<br>1/2 oz. 1.65 Value..... <b>.99</b>                                     |
|   |   | <b>VO-5</b><br>Super Concentrated<br>Hair Spray<br>8 oz. 2.25 Value..... <b>1.33</b>                 |

**Krauss Pharmacy**

Brooklyn  
Weatherwax Rexall Drug Store

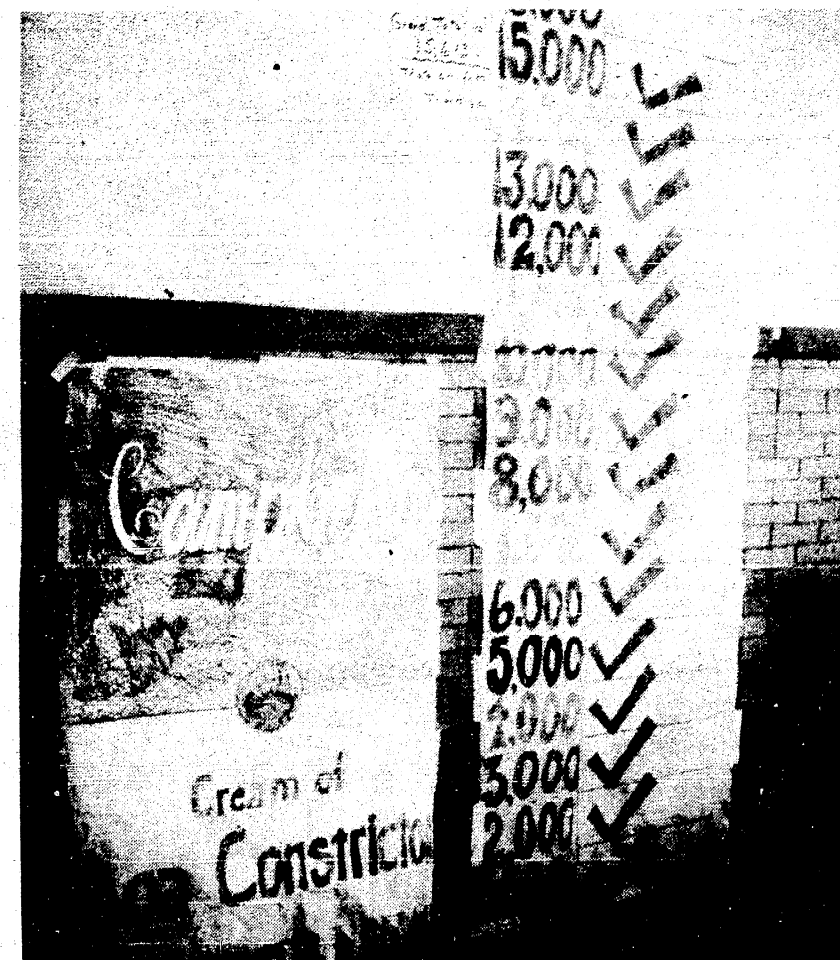
**THE MANCHESTER ENTERPRISE**

107TH YEAR NO. 8

10 CENTS PER COPY

THURSDAY, DECEMBER 20, 1973

**15,613 Soup Labels Collected**



The Middle School soup label drive ended this week with a grand total of 15,613 labels being collected. These labels have been sent to the Campbell Soup Company for redemption for three portable Panasonic Cassette Tape Recorders and a portable student listening center. This listening center equips ten students with head sets so that they can listen to a tape without disturbing others in the room. These are often used in remedial work and enrichment instruction in science, math, or other projects.

Mr. Ted Tapping, Middle School Principal, stated, "The cooperation of students, parents, teachers, and other friends of the school was just great. Fifteen thousand plus soup labels is a lot, and everyone at the Middle School wishes to thank everyone who helped the campaign."

**Non Lighted Outdoor Decoration Contest**

The Village of Manchester is sponsoring a non-lighted Outdoor Decoration Contest, to be judged on Sunday, December 23.

The prizes will be \$25, \$15 and \$10. The non-lighted decorations will be judged by the Clinton Jaycees.

**OF CHRISTMAS**

*Through customs vary from country to country, all peoples share the feeling of joy, thanksgiving and the hope that only Christmas provides. The spirit of the holiday season is the same everywhere.*

**Girl Scouts Visit Nursing Home**

Girl Scout Troop #654 went to Cedar Knoll Nursing Home Saturday, December 15. The girls made felt Christmas trees decorated with beads, buttons and sequins to give to the patients. The Scouts also enjoyed singing Christmas carols and greeting some of the patients.

Members of the troop include Teresa Seegert, Jayne Walkow and Linda Rose as Patrol leaders. Carolyn Schwab is troop treasurer and Kathy Kensler is troop scribe. Kathy Jackman, Beth Viece, Kathy Mahony, Amy Koceski, Teri May, Lisa Rodriguez, Sandy Knickerbocker, Wendy Lavender, Sue Smith, Barbara Cooper, Colleen Burch, Doranna Jhanke and Ellen Owens compete the troop roster.

**Big Dutch Machine Strikes Again, Down Hudson**

By Jon Roger Hardenbergh

The Manchester Dutchmen had an easy time doing away with the Hudson Tigers Friday night. At the end of the first period the score favored the Dutch 17-13. The Dutch enlarged their lead as Rich Kennedy scored 10 points and Kurt Kensler came off the bench to score 4 points. This left the half time score 38-28. In the third period the Dutch kept up their scoring with Kennedy scoring 10 more points, Kensler adding 6, and Dean Decker 5. The score then stood 64-48. The Hudson Tigers just couldn't stop Kennedy as he scored 10 more points in the final period shooting at an amazing 70% from the field for the game and ended up the evening with 35 points. The whole team hit on 60% of their shots. Besides Kennedy's 35 points, Scott Gormley had 11, Kensler ended up with 10, Tom Popkey 9 and

John Savage 8. Needless to say the Dutch crushed Hudson 84-69 to win their third league contest, encountering no defeats. The Manchester Junior Varsity also won by a score of 64-51.

Friday the Dutch play their fourth straight league opponent, Sand Creek, here. There is an unbelievable lack of people at the basketball games this year. The Manchester Dutchmen represent not only the school but the town. For those of you who don't come because of the country's energy crisis, form a car pool and you can drive 50 mph. Just think, for the money you save on gas you can see a good Manchester team. It is quite distressing to me to go to the games and find the visiting team with more spectators making an overwhelming amount of noise. The easiest way to show the team we are behind them is to go to the games. See you Friday?

**Engagement Announced**



**Graduates From College of Veterinary**

Marvin H. Meyer, son of Mr. and Mrs. Elvin F. Meyer of 4320 Lima Center Road, Ann Arbor, Michigan graduated from the College of Veterinary Medicine at Michigan State University on Nov. 30, 1973. Forty six students graduated from the College of Veterinary Medicine, while Michigan State University conferred some 1,600 degrees on Dec. 1, 1973.

Dr. Meyer will be engaged in active practice with Dunvegan Animal Clinic, Warren Road, Ann Arbor. He will be primarily responsible for the horse and small animal practice.

Dr. Meyer was a 1968 graduate from Manchester High School.

