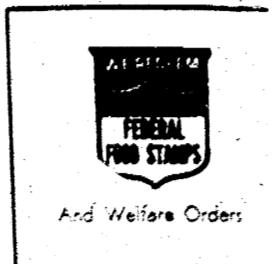




Manchester Michigan

FIRST with OLD FASHIONED PRICES



Cook-out Season Is Here! ENJOY THESE DELICIOUS COOK-OUT SPECIALS!



Split Broilers 28c

Mixed Pork Chops 55c

Hamburger 58c

Cornish Hens 79c

Boneless Steaks

Charbroil Steaks \$1.49
Patio Steaks \$1.39
London Broil Steaks \$1.49
Chuck Steaks99c

- Boneless Ham 69c
Meat Loaf Mix 69c
Sliced Beef Liver 69c
Spareribs 69c
Ring Bologna 77c
Pork Cutlets 79c
Polish or Roasted Sausage 89c
Skinless Franks 79c
Breakfast Ham Slices 99c
Breakfast Sausage 48c
Sliced Bacon 55c

- Bathroom Tissue 22c
Fruit Drink 22c
Hot Dog Buns 22c
Chase and Sanborn Coffee \$1.19
Ajax Powder Detergent 49c
Charcoal Briquets 49c

- Sweet Corn 8c
Cucumbers 8c
Radishes 8c
Green Onions 8c

- Early Garden Peas 19c
Miracle Whip 49c
Gold Medal Flour 49c
Yellow Cling Peaches 28c
Red Salmon 88c
Lipton Tea Bags 88c
Saltine Crackers 22c

- Golden Corn 17c
Cut Green Beans 18c
Prem Luncheon Meat 46c
Fruit Cocktail 23c
Sego Diet Drink 27c
Tang Orange Drink 83c
Kosher Dill Pickles 56c
Pink Appiesauce 13c
Tomatoes 21c
Tomato Soup 10c
Facial Tissue 19c
Roman Bleach 30c
Tuna for cats 15c
Purina Dog Chow 73c
Macaroni Dinner 18c
Coffee Creamer 53c

- Ice Milk Bars 4c
Appie Pie 99c
Honey Buns 33c
Soft Keyko Margarine 29c
Oven Ready Biscuits 9c
Yogurt 16c

Manchester

Enterprise

DAN FOUTELL P.O. MANCHESTER MICH.

YEAR NO. 29

10 CENTS PER COPY

May 20, 1971

Dedication Saturday, May 22 Freedom Township Hall



The Freedom Town Hall on Saturday the 22nd of May will be the scene of an open house dedication and square dance beginning at 7:30 p.m. The present Township Board invites the public to participate. The new building, on the corner of Pleasant Lake Road and Lima Center Road, has recently been completed, and we thought it might be interesting to glance back nearly one hundred years to the construction of the first Freedom Town Hall and see what occurred at that time. On April 8, 1878, the Township Board held a ballot on which was to be written plainly "For the Hall" or "Against the Hall" -- the margin was only 79 for and 50 against, 129 people having voted. The building was to be 34 feet wide and 44 feet long with benches along the outside walls and a pot belly stove for heat. Two weeks later on April 22 the board had to decide for a location on the North side of the road, on the Jacob Lutz property or on the south side on the Vogel property, both in section

Mayor Little's Proclamation

Mayor David L. Little has designated May 28th and May 29th as Poppy Days 1971 in the City of Manchester according to an announcement made today. The proclamation reads as follows: WHEREAS, The American Legion and the American Legion Auxiliary adopted the Memorial Poppy as its memorial flower in 1919; and WHEREAS, by wearing the Poppy, Americans everywhere and especially in the city of Manchester both pay tribute to these war dead and aid the living by assistance to Veterans and their families in time of need; and WHEREAS, the Poppy Day Program contributions are used solely for the programs of Child Welfare and Rehabilitation in our community and state; NOW THEREFORE, I, David L. Little, Mayor of the City of Manchester do hereby proclaim the month of May 1971 as Poppy Month and May 28th and May 29th as Poppy Days in our City and I urge all citizens of our town to join with me in the wearing of this memorial flower as together we remember the sacrifices of so many in defense of our freedom.



Miss Poppy

Pictured is Miss Roxanne Steele, the 11 year old daughter of Mr. and Mrs. Charles Steele, presenting a veteran-made American Legion poppy to Mayor David Little. She lives with her parents and three brothers, Don, Ron, and Jon at 216 Beaufort Street, Manchester.

Local Dealer Receives Award



Thomas Marshall of Manchester has been selected as one of the nation's outstanding Ford dealerships and will receive Ford Motor Company's Distinguished Achievement Award. The Distinguished Achievement Award is presented "in recognition of progressive management . . . modern sales and service facilities . . . sound merchandising practices . . . high quality standards . . . and continuing interest in rendering superior service to Ford owners." Tom Marshall has been a Ford dealer in Manchester since July of 1960. In 1969 Tom received the highest award Ford gives which is the Customer Relation Citation.

ALUMNI SETS BANQUET DATE

The officers of the Manchester High School Alumni Association, under the direction of President Melvin Stockwell, Class of '36, are making plans for the 94th anniversary which will be held on Saturday, June 19 at the High School at 7 p.m. This is the 100th anniversary of the High School's first graduating class of 1871. The Alumni Association was organized in 1877 and has shown active and efficient interest in the schools welfare, manifested by its members. Mr. Stockwell is urging the 1971 graduating class to set a new attendance record at the Alumni banquet. Invitational letters will be mailed to each member of the alumni in the very near future.

CHARLES GAUSS RETIRES

Charles Gauss of 429 South Macomb Street, Manchester, will retire from the Washtenaw County Road Commission on May 29, 1971 after 44 years of service with the commission. Mr. Gauss began his affiliation with the Washtenaw County Road Commission on May 29, 1927, when he was 21 years old. In his retirement Mr. Gauss will spend much of his time fishing at his cottage in Northern Michigan and also expects to have extra time to read many books that he has not had time to read in the past.

BICYCLE SAFETY CHECK

The Optimist Club will sponsor a bicycle safety check this Saturday, May 22. It will take place at the Athletic Field from 10:00 a.m. to 12:00 noon.

Manchester Middle School To Hold Open House Sunday

The Manchester Board of Education will hold an Open House on Sunday, May 23, 1971 between the hours of 1:00 p.m. and 5:00 p.m. at the newly remodeled Middle School on City Road. The former high school building was built in the late 1930s and accommodated both elementary students and high school students until the first wing of the Nellie Ackerson Elementary School was built in 1949 and the new high school was built in 1954. In May of 1970 a bonding election was held for the purpose of remodeling and refurbishing the Intermediate Building. The construction was completed in March of 1971. Among the improvements made in the building were the following: New aluminum window sash and windows, new acoustical tile ceilings throughout the building, a new roof, new lighting fixtures throughout the building, carpeting in the classrooms and corridors, new shower and locker rooms, painting of the entire interior, and new corridor lockers. The Middle School students who were housed in the Nellie Ackerson Elementary School during construction moved into the newly remodeled facilities upon April 19, 1971. The Manchester Parent Teacher Organization will serve coffee and cookies during the afternoon open house. No formal program has been planned.

THE STAFF

Edward L. Swack, Publisher
 Lenore Swack, Editor
 Douglas Schaefer, Asst. Editor
 Cecelia Clayton, Features Editor
 428-8307

The Manchester Enterprise was established in 1867 and is published each Thursday at 111 E. Main St. Manchester, Michigan with second class postage paid at Manchester.



MANCHESTER TOWNSHIP PLANNING COMMISSION

The recently created Manchester Township Planning Commission formally took over the duties of the Manchester Township Zoning Board. The old Zoning Board existed since 1960 when the zoning ordinance was adopted by the Township. John Fabey, John Buss, Loren Troiz and Lowell Parr have served on the Zoning Board since the "adoption" of the zoning ordinance in 1960 and D. E. Lippert was appointed in 1967.

The zoning board duties are being taken over by 7 men appointed by Clarence Fielder, Manchester Township Supervisor and confirmed at the last regular Township Board Meeting held May 10, 1971. John Fabey, Loren Troiz and D. E. Lippert, Ambrose Lentz, Ronald Mann, Bill Merriman and Lyle Widmayer now make up the new Planning Commission.

Ronald Mann and D. E. Lippert were appointed to serve 3 years; John Fabey and Ambrose Lentz were appointed to serve 2 years; Bill Merriman and Loren Troiz were appointed to serve for 1 year. Lyle Widmayer was appointed for 1 year as a representative from the Township Board.

Mayors Exchange Day Dinner

After a day of touring Manchester, seeing the schools, industries and other points of interest, Mayor and Mrs. Brigham and Councilman and Mrs. Ledyard were guests at a dinner given in their honor. After a delicious meal, prepared by the Knights of Columbus, Bob Swartz, acting as hostmaster, welcomed the visiting mayor and his party.

Openings were then extended from the several organizations of Manchester. Harry Kraus representing the Chamber of Commerce, Max Skinsberry the Jaycees, Al Gage the Optimist Club, and Jim Scully the Village Council.

Bob Mahony presented a film on Manchester's famous "Chicken Broil". The Concord mayor and his wife were then given a bar-b-que grill and lawn chairs as a remembrance of the occasion. Three beautiful centerpieces, which decorated the table, were presented to Mrs. Brigham, Mrs. Ledyard and to Mrs. Gill.

At the first meeting held May 12, the first order of business was to elect a Chairman, Vice-Chairman and Secretary. By unanimous approval, D. E. Lippert was elected Chairman, Ronald Mann was elected Vice-Chairman and Loren Troiz was elected Secretary.

The next order of business was to set a regular meeting place and schedule. The regular meetings will be held at 8:00 p.m. at the Village Hall on the fourth Monday of January, March, May, July, September and November. Special meetings will be held as the need arises on the fourth Monday of February, April, June, August and October. No meeting will be scheduled in December. All regular meetings are open to the public and it is hoped that people living in Manchester Township will become interested in the work of the Planning Commission.

The most important function of the Manchester Planning Commission is to objectively plan for the orderly growth of the population and its effect on the use of our land in this community.



LATE GOLF LEAGUE

	POINTS
Brown	7
Hall-Knaus	6,5
er-Widmayer	6,5
S-Scully	5,5
Escobab	5,5
erford-Green	5,5
ood-Funches	5
in-Hughes	5
ink-Korican	5
Swartz	4,5
ck-Gulliver	4,5
ey-Stockwell	4
er-Wurster	4
enberg-Kouba	4
le-Olterdorf	4
illi-Helfrich	4
ington-Steele	3,5
niels-Simmons	3,5
aw-Eversole	2
Chiskah-White	0
with Handicap 0-8 MacLeod 29	
with Handicap 9-18 Helfrich 28	
best to Pin on #5 Stockwell	
best Actual Score MacLeod 34	
best Drive #2 Eacobar	
one putt greens Kouba	

WOLF GOLF LEAGUE

	WON	LOST
d-Becktel	9,5	2,5
us-Lehr	9,5	2,5
n-Grossman	8,5	3,5
er-Walter	7,5	4,5
om-Harlow	7,5	4,5
yer-Gilbert	7	5
abery-Medouch	6,5	5,5
S-Swartz	3	9
ge-Boutell	1	11
le-Burkhardt	0	12
Actual, Reed 40		
With Handicap, Kraus and Gross-32		

GOLFING SCORES SPONSORED BY

AL'S CUSTOM PLUMBING & HEATING
 PHONE 428-2043 MANCHESTER

Looking for a summer project? Why not hook your-self a latched hooked rug. A GREAT IDEA!!

Tail Feather Boutique
 25 North Main St Chelsea, Michigan

ELECTROLUX VACUUM CLEANERS
 call James Cox
 Electrolux Sales & Service Manchester
 Phone 428-2831 or 428-8221

BROWN'S TV & RADIO
 ZENITH
 Color and Black & White TV
 134 E. Main St. Manchester, Michigan

MICHIGAN STATE POLICE

Funeral services for State Police Tpr. Rodger M. Adams, 26, of the Clinton post, who was killed in an on-duty patrol car accident May 14, was held at 10 p.m., Monday, May 17, in the Proctor Funeral Home at Tecumseh.

Also killed in the accident was Edward J. Szlachcic, 44, of Onsted, driver of the other vehicle in the early morning two-car collision on US 12 in Lenawee County.

Tpr. John R. Kopacz Jr., 25, of Clinton, who was the passenger in the patrol car, was taken to University Hospital at Ann Arbor for treatment of arm, head, back and abdominal injuries. The two officers were en route to police another accident.

Adams joined the State Police in 1968 and was serving at his first post. He was born March 6, 1945 at Flint where he graduated from high school. Beginning in 1963 he was in the Army for 34 months, including a year in South Viet Nam.

Surviving are his wife, Barbara, his parents, Mr. and Mrs. Wilbur Adams, of Clare, and a sister, Mrs. Lynda Leps, Farwell.

Kopacz enlisted in 1967 and served first at Mt. Pleasant before going to Clinton in 1969. He was born November 27, 1945 at South Haven and graduated from high school at Fennville. He is not married.

FACT OR RUMOR?

Yes, it's true. The Michigan Livestock Commission has purchased 40 acres on M-52 and within two weeks construction will begin on Executive offices, barns, and pens for the Southeastern Michigan headquarters of the Commission.

Mr. Ike Walton, General Manager of the Producers Cooperative states that the contracts will be let within a week.

Nearing its 50th Anniversary of operation, the Farmers Cooperative was formerly based in Detroit.

Wednesday, May 19, will bring an official ground breaking ceremony.

CHEERLEADING WORKSHOPS

The 6th Annual Cheerleading Workshops under the direction of the International Cheerleading Foundation are being offered at Eastern Michigan University this summer.

The workshops will be in two sessions -- the first scheduled for July 4 through July 9, and the second for July 11 through July 16.

Uniform fashion designing, cheerleading technique, acrobatics and tumbling, crowd control, and voice control will be among the techniques taught.

Any junior high or high school cheerleader or prospective cheerleader is eligible to attend. Enrollment is limited to 200 students each session. The students will live in Eastern's residence halls where all meals will be cafeteria style.

A fee of \$57 will cover tuition, recreation, and room and board.

Applications and information may be obtained by writing Conference Coordinator, Division of Field Services, Eastern Michigan, Ypsilanti, Michigan 48197.

PHONE YOUR NEWS ITEMS TO 428-8173 OR DROP THEM OFF AT 305 BEAUFORT STREET.

Kukini Travel
 Clinton, Michigan
 Phone 456-4544 or 456-7100
 Home 4288723
Waikiki Hawaii Tour
 escorted by Kukini
\$430.00
 includes: tax, hotel, air and sightseeing
 Leaves August 21, 1971



SUMMER BRIDE

Mrs. Ruth E. Donko of 13322 Sharon Hollow Road, Manchester and the Mr. Steven Donko of 117 Washington Street, Clinton, announce the engagement of their daughter Carlin Lynn to Steven Alan Foster of 611 City Road, Manchester. Miss Donko is a 1969 graduate of Clinton High School and is employed at Manchester Plastics. Mr. Foster is a 1969 graduate of Manchester High School and is employed as a police officer at Ann Arbor Police Dept. Mr. Foster is the son of Mr. and Mrs. William Foster. A June 26 wedding is planned.

REAL ESTATE Listings Wanted
 Residential - Commercial - Farms

Frisinger Realty
 Serving Washtenaw County
 Phone 475-8681
 South Main St. Chelsea, Mich.
 Member Ann Arbor Board of Realtors Multiple Listing System

Crop Hail Insurance
\$14⁰⁰ Per Thousand
Save \$6 A Thousand

James Pratt
 Agent and Adjustor
 Phone 428-8215
 Manchester, Michigan

We can't guarantee to solve ALL your problems...

But... We can guarantee to solve your "Spring" problems.

Now in Stock:

- ROOFING
- FENCING
- PAINT
- FERTILIZER
- LAWN SUPPLIES
- KITTY KURTIS STEEL GATES

BRIDGEWATER LUMBER
 8370 Boettner Rd.
 PHONE 428-3039 BRIDGEWATER, MICHIGAN

America's No. 1 pickup.

\$2695⁰⁰ 1-2 ton 6 cyl

UNDERWOOD CHEVROLET - PONTIAC, Inc.
 CORNER OF US-12 and M-52 CLINTON, MICHIGAN

CHAMBER OF COMMERCE COMMUNITY CALENDAR

Tuesday, May 20th
Joyce Meeting
Saturday, May 22nd
Spring and Winter Sports Banquet
7:00 p.m.
Sunday, May 23rd
Attend Church of Your choice.
Consult Community Church Calendar.
Monday, May 24th
Optimist Meeting
Wednesday, May 26th
Manchester PTO Meeting 8:00 p.m.
Thursday, May 27th
Sportsman Club Meeting 8:00 p.m.
Phone the items for the Community Calendar to Donna Gill at 428-8422.

Lawn Seeds
Lawn & Garden Fertilizers
Weed Sprays
E. G. MANN and Sons, Inc.

MIDDLE SCHOOL HONOR ROLL

4th Grade
Lisa Creswell
Gary Evesole
Lynn Gonyer
David Guenther
Malinda Hudkins
Philip Jasoikid
Karon Mumford
Catherine Moore
Cathy Niehaus
Dan Schaible
Kenneth Schwab
Susan Spawis
Danya Tyssidewicz
Terry Walter

5th Grade
Lorraine Aalto
David Hoover
Jody Inckhardt
Jan Savage
Krisi Kuntz
Sharon Voegeding
Jane Schaeble
Margaret Socolowski

6th Grade
Carol Blumensater
Renee Gonyer
Lana Schwab
Kay DeClaire
Joanne Kasl
Jon Mazon
Joyce Schwab
Cheryl Spawis
Beala Cudley
Mark Larkhardt
Sue Jolin
Patty Kidd
Lori Mason
Mike Walter
Steve Wellman
Michael Rizer
Linda Bragwell

7th Grade
Kurt Koceski
Susan Krzyaniak
Brenda Merz
Shelley Miller
Gary Voegeding

8th Grade
Linda Boeltner
Bryan Eisenhamer
Beth Feldkamp
Nancy Fielder
John Kensler

TRACK TEAM TAKES SECOND

In their final try this season the high school track team came up with a victory. The victory was a second place finish in a triangular meet which Adrian Madison won, and Deerfield finished third. The scores were Adrian Madison 77, Manchester 45, and Deerfield 26. Scott Limpert, voted M.V.P. by his teammates, took three firsts with wins in the 100 and 200 yard dashes and in the shot put. Scott Gormley tied for first in the pole vault at 10 feet.

For several reasons, the track team has had limited success in the won-lost column, but with improvement in every meet in individual efforts, the overall program has been successful. The team doesn't have a track to run on, and had to rely on inexperienced coaches this season. But with only two seniors on the team and a good group of eighth graders coming, things look brighter for next season. The team ended up with a total of 18 boys participating.

ANN ARBOR WOMEN'S CITY CLUB ANTIQUE Show & Sale

MAY 20, 21 & 22, 1971
Luncheon & Dinner
Show Hours: Noon until 6 p.m.
Free Parking: \$2.00
Set. noon until six. Pre-sale-\$1.50
1830 Washtenaw Avenue
Ann Arbor, Michigan

JUNIOR HIGH TRACK TEAM LOSES TO MORENCI

On Wednesday, May 12, the Jr. High Track team ran against Morenci, and came up on the short end of a 70-39 score. However, several Jr. high records were broken in the loss. Manchester had one double winner in Kurt Kensler. Kurt tied the school record in winning the high jump at 4' 10", and he also broke the 100 yard dash record with a clocking of 11.7 seconds.

Steve Beach set a school record in winning the shot put with a toss of 45' 1". Steve also broke the school record in the 60 yard high hurdles, finishing second with a 10.1 clocking. He also placed third in the low hurdles (15.0). The other Manchester winner was Mark Evesole in the pole vault with a lap of 7' 11" (a school record).

Other second place finishers for Manchester: Kurt Koceski 60 yard dash (7.8), a new school record; Nick Meta in the 75 yard dash (9.9), and also the 200 yard dash (29.0, a new school record). Third place finishers were: Scott Evislser in the shotput (34' 1/2"), Kurt Koceski in the long jump (15' 2 1/2"), and Kurt Randall in the 75 yard dash (10.3).

AMERICAN LEGION AUXILIARY

The American Legion Auxiliary met May 12 with 14 senior members and 7 junior members present. Ruth Hainstock introduced Roxanne Steele, daughter of Mr. and Mrs. Charles Steele, as Miss Poppy for 1971. Plans are being made for our poppy sales on May 27 and 28 by both junior and senior members.

Four of our members visited the Veterans Hospital in Ann Arbor last Saturday, May 9, with coffee and cookies for their coffee hour. The patients all seem to enjoy this. The Legion and Auxiliary have purchased flags for the Pleasant Lake and Junior High Schools.

Pres. Leota Schwab, Girl State chairman, Mary Smith, this year's girl state representative, Connie Whittington, and last year's girl state representative, Julie Smith attended a get acquainted tea in Morenci on Sunday, May 2. The Legion and Auxiliary plan to attend Church services at United Church of Christ Sunday, May 23. Clare Reck, Child Welfare chairman, reported that the Brown Family have purchased a home in Belleville but still need furniture for their home. This family were the victims of a house fire this past winter as well as losing their mother through death.

ARNOLD LAKE FARM BUREAU

The Arnold Lake Farm Bureau Goup met at the home of Mr. and Mrs. Alfred Dieterle on Thursday, May 14. The change of time and place was necessary due to the illness of Mrs. Edwin Feldkamp (Hermine). We had a lively discussion on the damage done to tractor tires by thrown away bottles, and the need for good education and tax reform. The discussion topic of "What is a Farm Bureau Member", was talked over and we all decided to try to be more active in our groups and at county and state level.

The next meeting will be at the Armin Haeussler or E. Feldkamp on Friday, June 11 at 8:30 sharp! FIRST HOLY COMMUNION

Michael Ball, son of Mr. and Mrs. Leon Ball of 18750 Pleasant Lake Road received his First Holy Communion on May 16, 1971 at St. Mary's Catholic Church. Immediately following a reception was given in his honor at his parents home. Guests included Michaels Grandparents, Mr. and Mrs. Duffield Ball and Mr. and Mrs. Harold Townsend; his Aunts and Uncles, Mr. and Mrs. John Ball and family, Mr. and Mrs. James Curley and family, Mr. and Mrs. Leroy Townsend and family, and Mr. and Mrs. Thomas Burch and family. Other guests included Mr. and Mrs. Sigmund Nerman of Detroit, Mrs. Mary LaDuke of Detroit, Mr. and Mrs. Thomas Ivanicki and family, and Mr. and Mrs. Ted Kavos and family of Clinton, Mr. and Mrs. Clyde Gieski, and Mr. and Mrs. Robert Huber and Tom of Manchester.

MOTHER - DAUGHTER BANQUET

Amid bright blossoms on trees and in baskets, 109 mothers and daughters gathered at the Sharon United Methodist Church for the annual Mother and Daughter Banquet, May 6. The program was based on T.V. Commercial advertising mothers, grandmothers, and daughters were presented by Mrs. Diana Parr, Karen Kennedy, and Mrs. Carol Spike. Group sing-a-long was led by Mrs. Marjorie Lutzer, and daughters entertained with songs. Teenage daughters presented a soap opera, "And the Lamp Went Out!"

The oldest mother present was Mrs. Edith Kennedy, and the youngest daughter present was Heidi Keezer. The mother with the most daughters present was Mrs. Verna Bowers. Two lucky program holders also received plants -- Diane Sode and Mrs. Joan Goodman. SOIL STEWARDSHIP WEEK

Soil Stewardship Week, a nationwide observance which places emphasis on man's obligation to God as stewards of the soil, water, and related resources, will be observed locally, May 16-23, according to Stephen Bristle, Chairman of the Washtenaw County Soil Conservation District. "The World and They That Dwell Therein", the theme of this year's observance, underscores the responsibility which each citizen has in fulfilling his or her role as caretaker of the realm. The Washtenaw County Soil Conservation District and over 3,000 companion Districts throughout the nation are sponsoring the event for the 17th, consecutive year. The Washtenaw County Soil Conservation District has distributed Soil Stewardship Week materials to 125 churches in the county to help them in observing Soil Stewardship Week in their local services.

SALAD BAR
Wednesday's and Fridays
5 TO 8 P.M.
Daily Hours 5:30 a.m. to 7 p.m. Monday, Tuesday, Thursday, and Saturday
5:30 a.m. to 8 p.m. Wednesday and Friday

Kopper Kettle
130 E. Main St.
Manchester, Michigan
Arch & Bea Burlingame
Catering small Parties,
Take Outs

Gulf
Quality dinnerware as fresh as spring
Exceptional Savings on completer pieces, too!
3-pc. Companion Set \$.99
(Soup/Cereal, Salad, Bread & Butter)
Sugar & Creamer \$2.49
Vegetable Bowl \$1.99
2 Large Soup Plates \$.99
13" Platter \$1.99
Covered Casserole \$3.99
Butter Dish, Salt & Pepper \$2.99
Gravy Boat & Stand/Relish \$2.79
Coffee/Tea Server \$3.99
2 Dessert Dishes \$.99
Golden Meadow Dinnerware
3 Pc. PLACE SETTING \$79c
Reg. \$2.49 only
with purchase of 8 gallons or more

GULF STARTER LITE CHAR COAL BAG
38¢ 20lb. \$1.65
THE JOLLY DUTCHMEN
GROSSMAN-HUBER SERVICE
Phone 428-8960 Manchester, Michigan

PUBLIC NURSERY AUCTION!
Sunday May 23
EVERGREENS, SHRUBS, AND TREES, ALL KINDS AND SIZES. BLUE SPRUCE, JAPANESE YEW, MOUNTAIN ASH, HOLLY, SUNBURST LOCUST, RED MAPLE, RHODODENDRONS, RED BARBERRY, FLOWERING TREES, ETC. ALL PLANTS FRESHLY DUG AND READY TO GO! BUY AT YOUR PRICE - WHY PAY MORE? LEAVE ANYTIME - INSPECTION INVITED.
WE GUARANTEE 50-50 AND WILL DELIVER.
Masons Nursery
8794 MACON ROAD, SALINE, MICHIGAN
1/4 MILE SOUTH OF CEMETERY

"FOR THE WOMAN WHO CARES"
CALL 428-5621
Hours: 8:30 a.m. - 5:30 p.m.
Wednesday till 8:00 p.m.
3 Operators To Serve You
DOROTHY MAE BEAUTY SHOP
218 E. Main Manchester, Mich.

GRAND OPENING of Riverview Barber Shop
BILL WALKOWE
Saturday, May 22
OPEN 8 - 1
Come In and Have a Cup Coffee and Roll With Us
WEEKDAYS 8:30 to 5:30 CLOSED MONDAY
OPEN WEDNESDAY 8:30 to 9 P.M.

The Little Flower Shop
3451 Waltrous Road
Chelsea, Michigan
475 - 8508
FLOWERS WEDDINGS PLANTS FUNERALS
CORSAGES

ADMIRAL
Complete line Solar Color and black and white TV. On display now. Compare quality and prices. 3-year warranty on picture tube. One year free service on all color TV. Service on all brands TV, radios and stereos.
Porter's TV
212 Buchanan St.
Chelsea. Phone 475-8880

TREMENDOUS "CONVOY" SAVINGS!
HUNDREDS OF GE APPLIANCES HAVE JUST ARRIVED! ON SALE AT OUR STORE!

GE FILTER-FLO® WASHER
with exclusive MINI-BASKET®
NOW ONLY \$218
Mini-Wash® System
Mini-Quick® Cycle
2 Wash/Spin Speeds
4 Wash Cycles
Variable Water Level Selections
Up to 18 Pound Capacity
Filter-Flo® Washing System
2 Wash/2 Rinse Temperatures
Cold Water Wash and Rinse
Permanent Press Cycle with Cool-down
Heavy Duty 1/2 Hp. Motor
Porcelain Enamel Top, Tub and Basket
Unbalanced Load Control

AUTOMATIC DISHWASHER
NOW ONLY \$218
Two Wash Cycles... Normal & Rinse and Hold
Built-In Soft-Food Disposer (Just tip off large or hard scraps)
Portable Model has Maple cutting board top
Sale Days Special

SALE NATIONAL DAYS
13.5 cu. ft. TWO-DOOR REFRIGERATOR
Double convenience... two appliances in one. Zero-degree freezer holds up to 132 pounds. Automatic defrosting in refrigeration section. Only 30 1/2" wide. 64" high. Twin vegetable bin holds 3/4 bushel. White or Copper-tone.

Self-Cleaning Oven
P7 RANGE
NOW ONLY \$328
Oven cleans itself: Oven air circulates inner door & window, surface unit reflector pans
Walnut Vinyl-Trimmed custom Control "Dash"
Rally Clock Automatic Timer-Minute Timer (Racing Stripes for Display Only)

GE
WASHER WWA 8400L
GGSC430N

L. V. KIRK
Phone 428-3701 or 428-8331 Manchester, Mich.

BOAT RACE NO SUCCESS

The 5th Annual Amateur Boat Race was again a big success. A total of 56 teams entered in the seven classes and everyone enjoyed the race despite the low water. ...

- Winners in each class are as follows: Class 21 - Ladies Boat - Open Partner ... Class 22 - Canoe - Husband & Wife ...



JULIE SMITH and DONNA FAULHABER



GALE KROSS and JIM LYON



RON STEELE and CHUCK STEELE



CAROLYN RICE and JANICE WOLF



JAMES KROSS and JOE KROSS



DOUG FLINT and GARY FOSTER

Whiteman's Marina JOHNSON MOTORS LIVE BAIT FISHING TACKLE OPEN 7 DAYS at IRON CREEK MILL POND 428-5825

I would like to take this opportunity to thank everyone who entered the race and all those people who helped with it. The starting judges - Ted Stantz, Ray Tirt, James Hendley, ...



FATHER-SON WIN CANOE RACE AT TECUMSEH

Allan Whiteman and Allen Jr. won the canoe race held at Tecumseh Sunday May 9, the Whitemans had never been over the canoe course until the Sunday of the race. ...

RECIPE CLUB continued

by Kristi Kempher Take a pizza pan - put dough, tomato sauce, chopped onions, cheese, pepperoni and mushrooms. Bake 15 minutes. Cut and eat.

Asparagus by Jean Ann Wahl Wash the asparagus then cut it up. Where it is hard stop cutting and throw the hard part away. ...

Mashed Potatoes by John Reed Take 8 potatoes, cook and mash them and put in milk. Put in cooked carrot, some roast beef and butter and gravy and salt and pepper.

PROBATE JUDGE TO SPEAK AT PTO

The Manchester PTO meeting will be held on Wednesday, May 26 at 8:00 p.m. in the High School Study Auditorium.

The speaker for the evening is Judge Rodney Hutchinson from Probate Court of Washtenaw County. His topic is "You and the Law". ...

NOTICE

The Manchester High School Ecology Club's regular monthly glass pick-up will be held on Saturday, May 22 instead of Saturday, May 29, due to the Memorial Day weekend.

The Club is compiling a permanent list of area residents who wish to have their glass picked up every month. To add your name to that list or to order a pick-up for this month only - please call 428-9424 on Saturday morning May 22nd, after 9:30 a.m.

CHURCHES AID ROUND UP OF BLOOD DONORS

Did you pick up Blood Bank registration cards at church on Sunday? Then be sure and have at least one member of your family sign one and return it to your pastor or the chairman of your church Blood Bank Committee as soon as possible, ...

Along with all of the industries in Manchester, six of the churches are assisting the campaign to bring more donors to the Manchester Blood Bank and assure their members of wider coverage. ...

The clinic on June 7 was announced from the pulpit and donor pledge cards were given out or are available in the six local churches.

The Manchester Red Cross Blood Club automatically provides needed blood without charge to any resident of the school district. Under the current "20 per cent plan" (also called "one-in-five plan") relatives who live elsewhere can also be covered for any church, industry or unit in which 20 per cent of the church member-families, or 20 per cent of the employees successfully donate to their Blood Club with in the year. ...

Mrs. Erwin Paul is recruiting chairman for the campaign and the following people are assisting her and will be the chairmen of their church groups: Gerald Randall, Manchester United Methodist Church; Don Gibson, Emanuel United Church of Christ; Mrs. William Schwab, St. Mary's Catholic; Mrs. Ralph Janofski, Iron Creek; Mrs. ...

MANCHESTER SPEEDWAY RESULTS

Louie Jay Stemen came out on a cool, breezy night here and cleaned up in everything possible! Driving in the Sportsman Modified class, he was fastest qualifier, won the first heat, pursuit and Feature races.

In the first heat Louie and Harold Reynolds came quickly from the back of the pack and ran side-by-side for several laps and with the crowd on their feet, Louie inched ahead at the finish line to take the win. Reynolds finished second over, Ray Johnston and Bill Kopka. ...

The cars in the pursuit were very evenly matched and bunched up. Louie Jay really flew and passed them all in seven laps. Second place went to Johnston, third and fourth to Make Shaw and Reynold.

Bud Elting took the lead on the second lap of the Semi, and pushed the blue No. 112 across the finish line first, ahead of Cattell, Jerry Lippert, Whitaker, and Johnny Lightning (?).

The caution flag was out on the second lap of the 25 lap feature, when Jim Martin and Denny Donaldson spun in the first turn. Jim Stevens had a good lead until lap no. 12 when Louie Jay zipped past, and was in a hurry to get home, as he picked up his second feature in as many weeks. Moull finished second place followed by Reynolds, Stevens and Gary.

In the Super Stock class Dutch Taylor was fastest, and also picked-up the feature win, by a car length ahead of Dale Brenner, Harold Heister, and Floyd Dillion.

The heat race saw Brenner work his way through the pack and stay ahead for the win over Taylor, Ed LaRoe and Heister.

Remember the Memorial Day Trophy Races coming up soon, and warmer weather, we hope! By Nancy Martin

JENKINS REAL ESTATE Stanley Jenkins, Broker 11200 Wampplers Lake Road Brooklyn, Mich. LYrie 2-2015 JAMES A. HECKAMAN 403 Commercial Norvell, Mich. 517-536-4608 LISTINGS WANTED



Expert Pet Grooming (most breeds) Jean's Poodle Salon 418 5th Street Michigan Center 764-6799

Open 9 - 5 Tues, Thurs, Fri. Mon. Eve. & Sat. til noon

Wampplers Lake Resort Bar and Marina

FOOD - LIQUOR - COCKTAILS PHONE 517-592-2082 OPEN 7 DAYS 10:00 a.m. to 2:00 a.m. "FORMERLY ALLIES"

Friday Nite Fish Fry

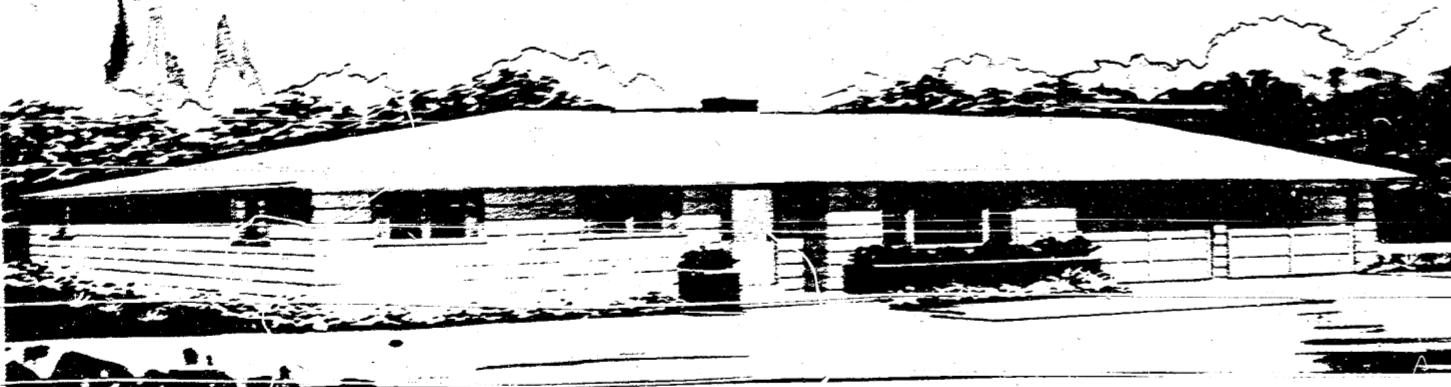
\$1.25 SMELT-PERCH-HADDOCK

DANCING

Friday and Sat. 9 to 1:30 Sundays From 1 to 4:00 and 8:30 to 1:00

String Sticks and Things FORMERLY THE REASONS FIVE

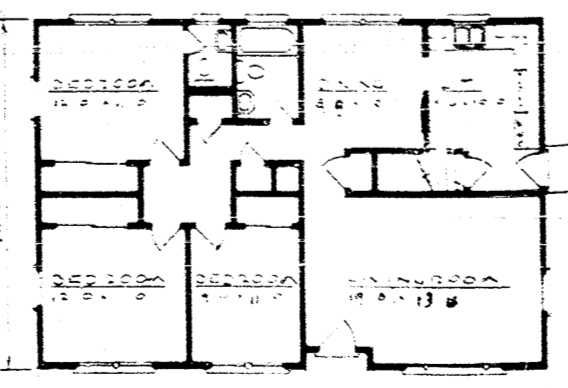
LET S & W BUILD YOU MANUFACTURED HOMES INC MEADOWWOOD



BUILT ON YOUR LOT, WITH FULL BASEMENT, AND OUTSIDE FULLY COMPLETED WITH VINYL BOND SIDING AND INSULATED WINDOWS. ON THE INSIDE, UNDERLAYMENT INSTALLED AND INTERIOR PARTITIONS SET. COMPLETE WITH 20' 2-CAR GARAGE FOR THE LOW PRICE OF

Hip roof 3 big bedrooms Sheltered entrance 1 1/2 baths Loads of storage closets

\$12,900.00 S & W BUILDERS



GARAGES, ADDITIONS, AND REMODELING WORK MANCHESTER, MICHIGAN

PHONE: OFFICE 428-8160 OR NORM WALZ AT 428-9601

M34228 1,164 SQ. FT.



RACING Every Friday

MANCHESTER SPEEDWAY

Time Trials 7:00 p. m. Racing 8:30 p. m.

Just off M-52, north of US 12 turn west on Bowen rd.

KINGS DAUGHTERS

The Kings Daughters will meet at Fellowship Hall of the Manchester United Methodist Church on Thursday, May 27 for a one o'clock dessert luncheon. Mrs. Robert Novak and Mrs. Vera Fry will be hostesses. The business meeting will follow.

DANCE FOR SINGLES

Dance for Singles 25 and up. Come to the YM-YWCA in Ann Arbor. The fun evening will be held Saturday, May 22 from 9:00 to 12:00. There will be live music and a white elephant sale. Refreshments will be served. There will be no dance Saturday, May 29, 1971.

TROOP 651 HOSTS MOTHERS

The Brownies of Troop 651 entertained their Mothers on Thursday, May 6. The girls served ice cream sundaes, cookies and punch. All of the Mothers and one Grandmother attended and all were presented with a gift and a yarn flower corsage that the girls had made themselves.

THANK YOU

The Emanuel Youth Fellowship wishes to thank those who have already purchased packages of lightbulbs from its "sales personnel." They also wish to announce that members will be going from door to door during the next week or so to try to sell off those packages that are left over from before. When a member stops by the door, why not support him in his Church project?

YOUR CHURCH

ST. MARY'S CATHOLIC CHURCH

Father Raymond Schlunkert, West Main Street. Sunday Masses 8:30 and 10:30 Monday thru Friday 8:30 a.m. Saturday 7:00 p.m. mass.

FAITH COMMUNITY CHURCH

Rev. Thomas Hicks, Pastor, 8400 Sharon Hollow Rd. off W. Austin Road. 10:00 a.m. Worship Service; 11:00 a.m. Sunday School; 6:00 p.m. Sunday Young People; 7:00 p.m. Sunday Evening Service. Thursday evening, 6:30 p.m. Junior Choir Practice, 7:00 p.m. Prayer Meeting and Bible Study; 8:00 p.m. Senior Choir Practice. 7:30 p.m., Jr. Prayer Meeting

NORTH SHARON COMMUNITY BIBLE CHURCH

William Enslin, pastor. Sylvan and Washburn Road. 10:00 a.m. Sunday School, 11:00 a.m. Worship Service, 6:30 p.m. Young People, 7:00 p.m. Evening Service. Wednesday evening at 7:30 p.m. Prayer Meeting.

IRON CREEK CHURCH

Rev. Ralph Janofski, Pastor. 10:00 a.m. Worship Service, 11:00 a.m. Sunday School, 7:30 p.m. Youth Service, 8:00 p.m. Evening Service. Thursday evening 6:30 p.m. Junior Choir, 7:30 p.m. Bible Study and Prayer Meeting, 8:30 p.m. Senior Choir.

SHARON UNITED METHODIST

Corner Pleasant Lake Rd. - M-52. Rev. Michael Peterlin, Pastor. Sunday School 10 a.m. Worship Service 11 a.m.

ST. THOMAS LUTHERAN

Rev. Daniel Mattson, Pastor, Ellsworth Rd. 10:00 a.m. Church Service. 11:00 a.m. Sunday School

ST. JOHN'S EVANGELICAL LUTHERAN

Rev. Hubert Kaste, Pastor, Bridgewater. 9:30 a.m. Sunday School. 10:30 a.m. Church Services

BETHEL UNITED CHURCH OF CHRIST

Rev. Roman A. Reineck, Pastor. 10:00 a.m. Church Service. 11:00 a.m. Sunday School. Schneider and Bethel Church Roads

MANCHESTER UNITED METHODIST

Rev. Walter R. Damberg, Pastor. Church School, 8:45 a.m. Worship Service, 10:00 a.m.

EMANUEL UNITED CHURCH OF CHRIST

Rev. Ralph Kuether, pastor. Don Gibson, Associate Pastor. Worship Services: Sunday School - 9:15 a.m. Church Services - 10:30 a.m. Plan to worship God regularly.

ZION LUTHERAN CHURCH

Rev. John R. Morris, Pastor. 3050 S. Fletcher Road. 9:00 a.m. Sunday School. 10:15 a.m. Family Worship

ST. JOHN'S UNITED CHURCH OF CHRIST

Rev. David Klies, Pastor. 9:30 a.m. Sunday School. 10:30 a.m. Church Services. Rogers Corners, Waters & Fletcher Rds.

MANCHESTER BAPTIST CHURCH

S. Macomb St. - Philip Mathias, pastor. Sunday School, 10:00 a.m.; Worship Service 11:00 a.m.; Youth Fellowship, 6:00 p.m.; Evening Worship, 7:00 p.m.; Wednesday evening Prayer Meeting at 7:00 p.m.

Church Services Courtesy of Jenter Funeral Home 302 E. Main St. Manchester, Michigan

MANCHESTER UNITED METHODIST

Fri., May 21, 3:30 p.m. Jr. Choir Rehearsal. Tues., May 25, 9:30 a.m. Lydia Circle at Mrs. Clayton Parr's. 1:00 p.m. Esther Circle at Church. 8:00 p.m. Martha Mary Circle at Church House. Thurs., May 27, 9:00 a.m. Bible Study on Psalms. 7:00 p.m. Sr. Choir rehearsal.

FAITH COMMUNITY

Fri., May 21, Sr. Graduation Banquet 8:00 p.m. Sat., May 22, Work-see at church 9:00 a.m. Softball practice at 5:00 p.m. Sunday School teachers and officers meeting at 7:30 p.m. Sun., May 23, Dr. John Miles Pres. of Grand Rapids School of Bible and Music will bring Message during 10:00 worship hour. Miss Brenda Streeter from Flint will be soloist. 7:00 p.m. Dr. Miles will be speaker, and services Mon., Tues., and Wed. evenings at 7:30 p.m.

ZION LUTHERAN CHURCH

Sat., May 22, Youth Classes Mon., May 24, Choir nite Jr. 7:15 and Sr. 8:00 Thurs., May 27, ALCW District Convention at Epiphany Lu. Toledo, O.

UNITED CHURCH OF CHRIST

Thurs., May 20, 7:30 Chancel Choir Rehearsal, Ascension Day. Fri., May 21, 3:45 Choristers Rehear. Sat., May 22, 10:00 Last Confirmation class session. Wed., May 26, 2:00 Sr. Citizens Hidden Lakes Garden tour. Thurs., May 27, 7:30 Chancel Choir Rehearsal, 8:00 Church School Teachers and Officers Meeting

SHORT HILLS GRAVEL CO.

Fill Sand - Road Gravel. Fill Dirt - Washed Sand and 8-A Stone also Pea. Ready Mixed Concrete. Call 475-2848

AMERICAN CANCER SOCIETY

The Washtenaw County Unit of the American Cancer Society has announced the launching of a county-wide program for detection of uterine cancer in cooperation with Ann Arbor's St. Joseph Mercy Hospital. Funds to pay for the "pap" examinations, a major weapon in helping prevent uterine cancer deaths which exceed 13,000 per year, will come from the annual Cancer Crusade fund drive which is now in progress in the county.

St. Joseph Mercy Hospital will carry out the testing in its Obstetrics and Gynecology Clinic, providing resident physicians to perform the examinations. Open to any resident of the county, persons may make arrangements for the tests by calling the Ann Arbor Cancer Office at 215 N. Ashley between 9:30 a.m. and 12:30 p.m. on weekdays, phone 668-8857.

Mrs. David Anderson has been named chairman of the new project which will come under the unit's service program which is chaired by Mrs. Francis Wessinger.

The "pap" smear clinics will be held from 12:30 to 4:30 p.m. on Mondays, Wednesdays and Fridays at the local hospital, however arrangements must be made through the cancer office. Mrs. Anderson said the project

was launched to reduce the death toll from cancer of the cervix and uterus by early detection when treatment is effective. It is estimated that more than 44,000 women in the country will get uterine cancer this year.

If detected at the earliest stages cancer of the uterus can nearly always be cured. The "pap" test which was developed by the late Dr. George N. Papanicolaou with the aid of funds from the American Cancer Society is simple, painless, and quick.

According to Mrs. Robert E. Druery of the local unit, the new program is the first set up by a unit of the Am. Cancer Society in Michigan. It is a follow-up to Reach to Recovery program to provide aid to women who have surgery for breast cancer, both prior to and after such operations. Chaired by Mrs. Jim Hunt, the year old program is available to patients in all hospitals in Washtenaw County. It too is funded through the local cancer drive.

The service program of the county unit also provides a loan closet of beds, wheel-chairs, walkers and other such items for use by resident cancer patients in their homes. Chaired by Mrs. Michael Lenio, it also provides dressings when needed.

The Washtenaw unit provides these services for persons in financial need.

DEAL NOW! See The Mighty Muscle Machines Get More For Your Money From MASSEY-FERGUSON!

COMPLETE FINANCING! BIG TRADE-IN ALLOWANCES!

NEW! JUST ARRIVED MASSEY-FERGUSON RIDING MOWER BUILT TRACTOR-TOUGH. BUT AT A RIDING MOWER PRICE! MF 5... 5 H.P.

Safety features include low center of gravity, step plate, fenders, and automatic engine cut-off. Rocking front axle helps prevent mower from scalping. Differential rear axle keeps driving wheels from digging lawn on turns. 26" mower.

MF 6... 6 hp.

Massey-Ferguson Built Riding Mower with 32 inch cut. Rear mounted engine for traction. Many safety-features including automatic engine stop when driver gets off seat with mower engaged.

COME IN NOW! SEE WHY YOU GET MORE FOR YOUR MONEY WITH MASSEY-FERGUSON!

- 3 REASONS WHY MASSEY-FERGUSON IS YOUR BEST BUY! 1. Massey-Ferguson is the world's largest manufacturer of tractors. That means the most experienced manufacturer. 2. All Massey-Ferguson equipment is backed by a national network of parts depots and factory-trained service experts. 3. Advanced engineering for durability. Modern styling for long-term trade-in value.

See Them All During Massey-Ferguson's SPRING "SHOW OF POWER"

EVEN OUR LOWEST PRICED LAWN TRACTOR COMES WITH A 34" GEAR DRIVE, TWIN BLADE MOWER AT NO EXTRA COST!

Enjoy a trouble-free summer, a more beautiful lawn. Plenty of power (7 hp) for cart, snow blower, sweeper - a year-round investment. Optional electric start and no-shift Hydra Speed Drive. MF 10 (10 hp) with mower and electric start MF 12 (12 hp) with mower and electric start

NEW MF 10 MASSEY-FERGUSON LAWN TRACTOR MASSEY-FERGUSON MF 12 LAWN TRACTOR

New Variable Speed Drive gives you 5 forward speeds in each gear. 42-inch mower and optional attachments for snow, leaf sweeping, tilling - a year-round investment. See us now about trades and terms. Single lever automatic speed control for the ultimate in convenience. Electric start is standard. Stop, start, speed up, slow down or reverse just by moving the control lever up or down. With 42-inch mower. Save some summer for yourself. See us now for trades, terms and a trial drive.

Braun Implement and Hardware 8204 Boettner Rd. Phone 429-7015 Bridgewater, Mich.

we have \$100,000 a day available for mortgage loans. It's spring and Ann Arbor Federal Savings is blossoming out with mortgage money. About \$100,000 a day for home financing. The mortgage specialists at the "FED" believe that this is a good time to buy or build. Terms are the best in years and with increasing construction costs you'll save money by buying now.



WASHTENAW COUNTY METROPOLITAN PLANNING COMMISSION

economic structure, as noted in the following sections. Employment projections have been made for Washtenaw County by the Washtenaw County Metropolitan Planning Commission (see Table 5). It is anticipated that the County will have its biggest increase in employment between 1960 and 1980 in the Non-Manufacturing category, with 36,100 additional employees. However there will also be extensive growth in Government (28,900 employees) and Manufacturing (20,300 employees).

* Source: 1-Washtenaw County Metropolitan Planning Commission
2-U. S. Bureau of Census
3-1990 Comprehensive Development Plan for the City of Saline by Parkins, Rogers & Associates, Inc.

**TABLE 5
EMPLOYMENT PROJECTIONS
WASHTENAW COUNTY, 1960-1980****

Employment Category	1960 Employment	1970 Employment (Average of 3 proj.)	1980 Employment (Average of 3 proj.)
Manufacturing	26,100	37,200	46,400
Non-Manufacturing (Private)	21,300	39,700	57,400
Government	24,200	37,900	53,100
Agriculture	9,800	1,900	1,400
Total	81,500	116,700	158,300

**Washtenaw County Metropolitan Planning Commission, March 1970.
Occupation - A comparison of occupational groups between the County and State also reflects the university influence in the County. (see Table 6). The County, in 1960, had a much greater proportion of its people in white collar occupations, particularly the Professional group (eg., teachers), than the State. On the other hand, the State had a much greater proportion of blue collar workers than the County. By noting the employment projections of Table 5, it may be assumed that, in Washtenaw County, the white collar occupations will grow considerably in proportion to total occupations. The Government and

-9-

**TABLE 6
OCCUPATION COMPOSITION
WASHTENAW COUNTY AND STATE OF MICHIGAN, 1960***

Occupation	Washtenaw County		State of Michigan
	Number of Employees	Per Cent of Total	
White Collar			
Professional, Technical, Kindred	15,311	23.4	12
Managers, Officers, Proprietors	5,934	9.1	10
Clerical, Kindred	9,626	14.7	15
Sales Workers	3,759	5.7	8
Blue Collar			
Craftsmen, Foremen, Kindred	7,301	11.1	16
Operatives, Kindred	9,373	14.3	22
Laborers	2,343	3.5	5
Service			
Private Household Workers	1,629	2.5	2
Service Workers (except Private Household)	7,909	12.1	8
Not Reported	2,347	3.6	2
Total	65,532	100.0	100.0

U.S. Bureau of the Census, Census of Population: 1960, General Social and Economic Characteristics, Michigan

-10-

Non-Manufacturing categories, which contain essentially white collar workers will gain increasing shares of the total occupation composition.

Income - The effects of varying employment and occupation structures are most evident when comparing income figures. In 1960, the State's median family income was \$6,256; for the County the figure was \$6,890. The state universities greatly influenced the higher County figure. Generally speaking, white collar wages exceed those for blue collar workers. With a projected increase in the proportion of white collar workers in the County, with long range inflation trends, and with proposed population growth, it is evident that income in the County will continue to increase substantially. The County's median income should continue to be considerably above the State average.

Local Trends

Population

As indicated in the population section, Manchester's population has increased during the last decade at a very slow rate, from 1568 people in 1960 to 1650 by April 1970. It is projected that the Village's population will be about 1790 inhabitants by 1980 and 1950 by 1990.

Employment and Occupation

As mentioned previously the Washtenaw County employment by industry groupings are characterized by an unusually heavy emphasis on education and professional services, owing to the presence of large universities. Manufacturing employment is also high. However, the County's employment characteristics are not evident in Manchester Village where manufacturing has been the more important of the two industry groups.

It was revealed through a questionnaire by a consultant, Parkins, Rogers & Associates, that employment opportunity is one of the major reasons for living in the Village. However, immediate rapid growth of new employment resources is not expected because of the natural isolation of the Village

-11-

from the major urbanized areas in Washtenaw County. Presently Double-A-Products is a major employment source. Employment figures by different industry groups and occupation composition will be provided when the new 1970 census figures are available. (see table 7 attached).

Income

A comparison of median family income for Manchester and surrounding communities is shown in Table 8. The Village's median family income was \$6,219 in 1960. This median family income is lower than the county median in part because of the many retired senior citizens residing in the Village. Furthermore, much of the County's area outside of Ann Arbor-Ypsilanti-Saline subregion is more rural in nature.

D. Existing Land Use

Land Use studies are designed to provide basic data on land characteristics and the various activities that occupy land in the planning area. This data is used in analyzing the current pattern of land use and serves as the framework for formulating the long range land use plan.

1. Land Use Classification

Land uses are generally categorized into six classes - Residential, Commercial, Industrial, Community Facilities, Transportation and Undeveloped Land. For planning purposes a greater degree of refinement and categorization is necessary; therefore, the following categories were used to classify the land within Manchester Village:

- Residential** land uses include five sub-categories: Farmstead, Single family Attached, Attached Duplex, Multiple-family and Mobile-home residences.
- Commercial** uses include all office, local and general commercial facilities.
- Industrial** uses include both light and heavy industries.
- Community Facilities** include four sub-categories, schools, churches, recreation and public and quasi-public.

-12-

CONTINUED NEXT WEEK

CLASSIFIED ADS

PIANOS TUNED, players, reed organs re-tuned. D. Harvey, 1201 Shady Lane, Telemseh. 423-8045 after 4:00. ttn

FOR SALE! If you would like a 2-, 3-, or 4-bedroom home or a good building site in the village or farm or acreage see James I. Fabey, 112 S. Washington St. call 428-8348, a full time representative of Fabey Realty. Or stop at our farm and see John B. Fabey, Broker, 15554 Fabey Road or call 428-8748. Listings needed due to recent sales.

INTERIOR AND EXTERIOR PAINTING, barns and metal roofs with boom truck, free estimates. Phone 483-6815 Or 483-6546. 5-20-27-6-3

AIR-conditioning and refrigeration service - residential and commercial. Call 668-9253. 6-24

PAINTING, exterior, or interior. Local references, experienced, by job. Free estimates - no job too small. Call 428-2871 anytime. John Walling.

PART TIME female help wanted for small grocery store at Pleasant Lake. Must be over 18 years old. Call 428-8684.

LOST German Shepherd dog, answers to the name of Toby. 7 months old, hind left leg injured. Call 428-8974.

NEEDED 2 man & wife teams who would like to earn \$2000 to \$3000 per month. For appointment call collect 1-517-764-1261 after 6:00 p.m. 5-6, 13, 20, 27

STUD SERVICE! American Saddle Breed, Standing at Stud Registered, Excellent Breeding and disposition. Phone 428-8813. 5-13, 20, 27, 6-3

LOST all white male cat - named Snowball. Reward. Phone 475-7509. 5-13, 20

FOR SALE a home on 10 acres, 1 mile from town - living room, dining room, kitchen, family room, bath, 2 bedrooms, 3 car garage. Phone 428-8721. 5-13, 20

FOR RENT - Large 2 bedroom trailer, not to exceed 4 persons. Located on farm near Manchester. Inquire 428-8333. 5-13-20-27

FREE - Hotel, Motel, and Air reservations. Kukini Travel. Phone 456-7100 evenings 428-8723. t.f.n.

FOR SALE Pheasant eggs. Call 428-8437. * 5-20, 27, 6-3

WANTED lawns to mow. Craig Fielder, Phone 428-8506.

WANTED - Alfalfa or clover hay to cut on shares or will buy. Phone. 428-5571. 5-13, 20

JUNK HAULING DONE, basements and garages cleaned. Call Mike Gouyer 428-3742. 5-13-20

FREE - puppies to a good home. Phone 428-3451.

FOR SALE giant size mini-bike, with 5 horse engine. Big Tires - Call 428-2511.

MARRIED couple desire ground level, 2 bedroom apartment or house on a permanent basis. References. Phone 428-8989.

MANCHESTER RESIDENT SEEKING temporary rent in this area. Prefer house or apartment with two to three bedrooms to end of September. Please call 428-3241. 5-20, 27

THANK YOU

Many, Many thanks to the Pleasant Lake P. T. O., the Manchester School Board, and the many friends for the lovely party given in honor of my retirement May 16th. It was greatly appreciated and will be long remembered by myself and my children.
Minnie Cerwinka

We wish to extend our heartfelt thanks to all our friends, neighbors, and relatives for all the cards, letters of sympathy, flowers, and memorials. Also for all the food sent in and help. Thanks to Manchester Plastics and Ford Motor Co. for their assistance during the illness and death of our husband, father, and step-father. Special thanks to Rev. Ralph Kuether and Don Gibson for their visits and prayers. Also Jenter Funeral Home for their services and help.
The Family of William Terwo

The Village Council of Manchester would like to thank all of the students, large and small, who helped on the "Rock Festival" at Kirk Park last week. The work they did on cleaning up is greatly appreciated.
Manchester Village Council

I do not have the literary talent to adequately express my gratitude to everyone who sent cards and letters to me while I was hospitalized and on my return home. To say that all the expressions of concern for my well being were a boost to my morale would be the understatement of the year. I do know that living in Manchester where there are so many thoughtful people is a real privilege and treat.

A special thanks goes to the many, many students of our Middle School who sent cards, letters, etc., and to Father Schlinkert, Rev. Kuether, and Rev. Damberg for their visits.
Ted Tapping

ALCOA SIDING with REMODELING. Since 1938 - prompt service, professional workmanship. William Davis Contractor. Ann Arbor, Mich. estimate no obligation. Phone 313-663-6635. Completed work near you. 6-24

PIANO TUNING AT SAVINGS! New man in area offering introductory rates to build clientele. 769-0130.

BEEF TO SELL BY SIDE: Custom slaughtering. Lockers to rent. Phone 428-5031 Manchester Frozen Food Lockers.

FOR SALE Registered charolais cattle. Yearling bulls, heifers, and breed cows. Call 313-697-8327 after 6:00 p.m.

Real Estate
CHAPIN, Broker
IN THE SUTTON BUILDING
428-8107 - 428-2891
MANCHESTER

COMING SOON: MEMORIAL DAY FLAG DAY, INDEPENDENCE DAY, WITH YOUR MANY NEIGHBORS FLY "OLD GLORY" ON THESE PATRIOTIC HOLIDAYS

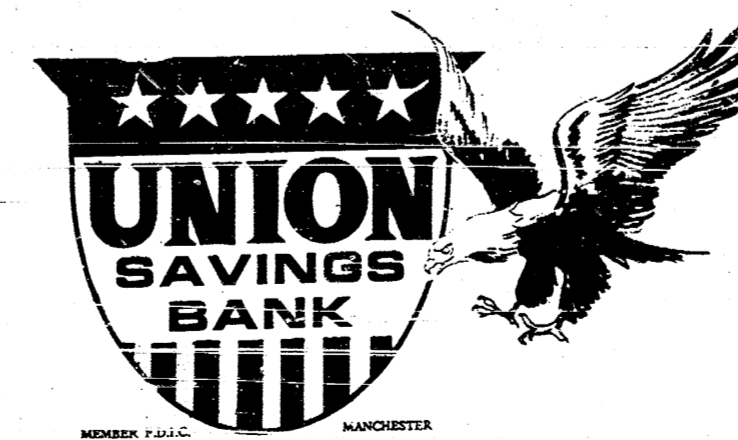
FLAG SET
with aluminum pole, gold Eagle and holder for attaching to wall, window sill, etc.
\$5.00
CONTACT
MANCHESTER AMERICAN LEGION

Carpet Cleaning & Upholstry
NO HARSH SCRUBBING
NO SHRINKING
DURA-CLEAN BY WURSTER
FREE ESTIMATES
PHONE 428-8485
Fritz Wurster
310 S. MACOMB STREET
MANCHESTER, MICHIGAN

JAYCEES INAUGURAL BALL
SATURDAY, MAY 29th
Cocktail Hour 6:30
Dinner 7:30
\$16.00 Per Couple
TICKETS AVAILABLE AT RYMACK PRINTING CO.

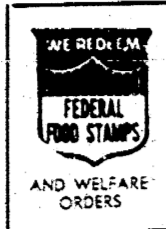


How can we make you Happy? Union Savings's Installment Loan Department is eager to make you happy by providing the cash to make possible that car, that travel trailer or camper or boat you so eagerly would like. Your loan is at bank rates. Re-payment plans to your satisfaction. Drop in, we will make you happy!





A & B IGA Manchester Michigan



Smart Homemakers Agree

...IGA IS FIRST with Low Prices!

- Boneless Pork Cutlets . . . 79c
Rotisserie Roast . . . 79c
Spareribs . . . 79c
Ham Slices . . . 99c
Pork Hocks . . . 39c
Sliced Beef Liver . . . 69c
Skinless Franks . . . \$1.39
Smorgas Pak . . . 99c
Baby Link Sausage . . . 79c
Sliced Bacon . . . 66c
Pork Neck Bones . . . 22c



IGA TableRite Choice Beef BLADE CUT Chuck Steak lb. 58c



IGA TableRite Choice Beef Boneless Rump or Rotisserie Roast . . . lb. 99c

Ground Beef . . . 78c Turkey Hind Quarters . . . 29c Smoked Hams . . . 39c

Boneless Patio Steaks . . . \$1.39 Boneless Top Round Steaks . . . \$1.39 Char-Broil Steaks . . . \$1.39 Luncheon Meat . . . 69c

Table Napkins . . . 15c
Jet Puffed Marshmallows . . . 15c
Tomato Catsup . . . 15c

Prem Luncheon Meat . . . 46c
9-Inch Paper Plates . . . 59c
Vienna Sausage . . . 22c

French Dressing . . . 39c
Lemon Juice . . . 48c
Reynolds Wrap . . . 24c

Wesson Oil . . . 44c
Gravy Train Dog Food . . . 55c
Instant Coffee . . . \$1.09

Hot House Tomatoes . . . 38c
Mushrooms . . . 69c
Pascal Celery . . . 29c
Fresh Strawberries . . . 66c

Party Pizza . . . \$1.49
Main Course Meals . . . 99c
Cottage Cheese . . . 25c
Cheese Spreads . . . 29c
Maxwell House Instant Coffee . . . \$1.09

manchester Enterprise

104 YEAR NO. 29

10 CENTS PER COPY

May 27, 1971



By C. Chapin

The Emil Jacob Post #117, in cooperation with the Ladies Auxiliary of the American Legion, has sponsored for several years a flag program within the Village of Manchester.

Begun in 1967, the program provides that at least 12 times a year on such occasions as Mayors Day, Chicken Broil Day and all Holidays, the Main Street in the business district will be decorated with the American flag.

Initiated originally when Al Gaige was Commander of the Post, he and Charles Steele, Ed Steele, Don Stockwell and Robert Popkey formed a committee and worked out the idea.

For a fee of One dollar per month the 48 flags are set out in the morning and removed in the evening for the merchants.

The Ladies Auxiliary has worked cooperatively with the American Legion to provide flags for 60 classrooms in the Manchester school system and also maintains the outside flags at the schools. This summer the Middle school will have a new flag pole and the pole at the Athletic field will be repaired.

According to Morgan Kern, present commander of the Manchester Post, this program is a great success, and he states that the principle of participating in fewer programs and doing them well, has been a successful idea here.

Apparently unique, the idea has spread to an area in New York where a similar program has been initiated.

The present committee for flags, composed of Jim Kensler and his family, Jerry (Buck) Kirk also take care of another interesting dimension of the flag program. Great care is taken of the veterans graves with the townships furnishing the material and the committee placing markers and replacing flags each year.

In the four townships serviced by this Legion Post, there are 230 flags. The division of these and the record of service involved is truly extraordinary. Gillet, Sharon Center, Rowes corner and Herman R. Cemeteries total 34 gravesites in Sharon township.

St. Thomas and 2 Bethel Church sites, include 6 in Freedom, Bridgewater Village has 8 servicemen's graves while Reynolds corner, Manchester Catholic, and the large Manchester cemetery have 182.

These graves have been taken care of for several generations since Mr. and Mrs. Daniel Burch worked together taking care of Civil War graves, passing the job on to the Merrick Burch's,

then in 1957 Harold Burch and Walt Vogt, until now the committee continues this memorial.

The Village flag in Wurster Park is also purchased from the Veterans, although maintained by the Village.

The Emil Jacob Post #117 of the Am. Legion of Manchester was originally formed in 1919 at the close of World War 1 with 22 charter members, and named for Emil Jacob who was killed during that war. The oldest living Post commander is Harry Sutton of 206 W. Duncan Street, Manchester.

The Legion members met for many years above what is now the Black Sheep tavern before they purchased the present building on Main Street.

Present membership totals 117 members and officers in addition to Commander Kern are Veryl Widmayer, 1st Vice Cmdr., Vic Mann 2nd Vice Cmdr., Alger Clark Jr., Chaplain, and Charles Steele, Sergeant at Arms.

Cmdr. Kern wishes to express his thanks to the merchants for their cooperation in this program and to extend an invitation to anyone wishing to participate, either merchants or individuals wishing to honor the war heroes. "We have at least two new flags to be installed on the new bridge and room for a few more on Main Street, and this would be a fine memorial". If anyone is interested, Mr. Kern can be reached at 428-8616.

PATRIOTIC SERVICE AT THE IRON CREEK CHURCH

In the Morning Worship service at 10 this Sunday, the Junior Choir and Youth of the church will present a special Memorial service including patriotic songs and instrumental selections and a reading. Twenty children of the choir will do honor to both the American and Christian flags, remembering that our country was founded with a deep desire for religious freedom and that we must honor God to be good citizens. The wisest man said "Righteousness exalteth a nation, but sin is a reproach to any people." Proverbs 14:34.

Notice

The Memorial Day Parade Monday, May 31, will form at Beaufort and Main at 9:00 a. m. Parade begins at 9:30 a. m.

ANNUAL MEETING

The annual meeting of The Freedom Evangelical Memorial Cemetery Association will be held at the cemetery May 30 at 3:00 p. m.

BOARD OF EDUCATION INCUMBENTS RUNNING UNCONTESTED

Only the four petitions of the present members of the Board of Education were filed by the May 17 deadline.

Filing for the two four year terms are Luther C. Klager and Don Walter. Submitting petitions for the two three year terms were Eugene Bentschneider and Reno Feldkamp.

The annual school board election will be held on June 14, 1971 in Room 110 of the Manchester High School, in addition to electing four members to the Board of Education the registered voters of the district will also vote on the continuation of the extra voted operational millage. The millage in the amount of 11.5 mills is absolutely essential to the continuation of the school program. The 11.5 mills is existing millage and is not an increase.

The polls will be open from 7:00 a. m. to 8:00 p. m.

Millage Request To Be Same

Despite the fact that the Manchester School System lost revenue from textbook rentals, sales and fees during the current fiscal year plus a reduction in State Aid, the Board of Education is requesting only the continuation of existing operational millage for the 1971-72 school year at its annual election on June 14, 1971.

If the existing millage is approved, the net gain to the school district from the increase in State Equalized Valuation will amount to \$47,293.64. This amount will partially defray the loss of revenue incurred during the current fiscal year. It will also allow the school system to employ the two additional teachers needed to accommodate the growing enrollment.

If the school district had not realized an increase in the State Equalized Valuation, the Board of Education would have had to ask for a two to three mill increase in the extra voted operational levy.

The total millage levied by the Manchester School District is shown below: Permanently allocated by county 11.22m. (School's share of the 18 mills) Extra Voted (annually) 1970-71 11.50m. Debt Retirement (1970-71) 4.52m. (Buildings) 27.24m.

Total School Levy Due to the increase in the State Equalized Valuation of the district the debt retirement levy will be reduced by .75 of a mill; therefore, the total school levy for the 1971-72 school year (if approved June 14, 1971) would total 26.49 mills.

The 26.49 mills of school tax amounts to \$26.49 per thousand dollars (\$1,000.00) of assessed valuation. To find your school tax amount, multiply your assessed valuation by the 26.49 mills, or use the table below for an approximation. Assessed Val. \$1,000 X 26.49 m. = 26.49 Assessed Val. 5,000 X 26.49m. = 132.45 Assessed Val. 7,500 X 26.49m. = 198.68 Assessed Val. 10,000 X 26.49m. = 264.90 Assessed Val. 15,000 X 26.49m. = 397.35 Assessed Val. 20,000 X 26.49m. = 529.80

If the average assessed valuation in the Manchester School District is \$12,000 and the school tax is \$317.88 per year, it costs the taxpayer: with one child - \$317.88 per year to educate that child two children - \$158.94 per child three children - \$105.96 per child four children - \$79.47 per child

The General Fund expenditure per pupil in the Manchester Public School District is \$679.88.

Open House Sunday, June 6th

OPEN HOUSE FOR MRS. FLOOD

On Sunday, June 6, 1971, an open house will be held at the Luther C. Klager Elementary School to honor Mrs. Birdella Flood, Manchester Elementary Principal, who is retiring after forty three years in the teaching profession. Mrs. Flood has lived all her life in the Manchester area and graduated from Manchester High School.

Mrs. Flood taught twenty one years in the rural schools of Washtenaw County and twenty two years in the Manchester Public Schools as a first and third grade teacher and elementary principal. She received her Bachelor of Arts Degree from Eastern Michigan University in 1954 and her Masters of Arts Degree from the University of Michigan in 1961. All of the credits for these two degrees were earned in Summer School sessions, Saturday sessions and evening classes.

Active in the Emanuel Church of Christ, Mrs. Flood is presently serving as Secretary of the Church Council, has taught Sunday School and directed several years to the National Education Association and was a delegate for several years to the National Education Association's Representative Assembly. Mrs. Flood has served on the Manchester Library Board, and is serving her 10th year on the State Executive Board of Alpha Delta Kappa, an Honorary Sorority for Women Educators.

Her hobbies include bowling, golfing, painting, reading and traveling. The open house will be held from 2:00 p. m. to 5:00 p. m. on Sunday, June 6, 1971.



God and Country Awarded To Scout

A Manchester High School sophomore received the Boy Scout's God and Country Award during morning worship service at the Emanuel United Church of Christ.

Mark Diefenderfer 15, was presented the highest religious award in scouting by the Rev. Ralph L. Kuehner, who was Marks counselor, Mr. Ronald Jenter church representative and Mr. Robert Armentrout Boy Scout representative.

The Youth presently is a member of Explorer Post No. 404, is a former member of Scout Troop No. 436. He has been in scouting for four years, is a Life Scout working on the Eagle Requirements. He also is a member of the Order of the Arrow.

Mark is the son of Mr. and Mrs. Robert C. Diefenderfer of 716 Granger Street, Manchester.