

ATTENTION CAMPERS

There will be a camp-out on September 12, 13 and 14 at Walter Hayes State Park at Wampler's Lake. For further information call 428-4761 or 428-8218.

MANCHESTER SPEEDWAY RACING RESULTS

by Nancy Martin Aug. 29 The races here tonight were almost as bad as the highways on the Labor Day weekend. Much safer though, as no one was hurt, shows what good safety equipment does!

THE JOLLY DUTCHMEN GA 8-4211 SEE THE JOLLY DUTCHMEN FOR INFORMATION ON INSURED MONTHLY BUDGET FUEL OIL SERVICE FOR THE COMING HEATING SEASON Cedar Point Tickets - \$4.50 Charcoal & Charcoal Starter Lite Gulf Spray & A Flying Insect Killer (Pleasantly scented & non-staining) MANY GULF ACCESSORIES GROSSMAN - HUBER SERVICE

With 55 cars qualifying, Jack Sharp was fastest at 19:10. The first heat saw Don Taylor start in fourth position and finish in first. Dennis Carrier 2nd, Bill Kopka 3rd, and Fred Salter 4th. The leader of the second heat was black-flagged, opening the way for Larry Liedel to take the win over Howard Woodman, Jerry Evisizer, and Jim Drumhiller.

Paul Whitaker took the checker in the third heat, followed closely by Butch Moull, Dick Slade, and Gary Rhoades. In the fourth heat, Farmer Budwitt was disqualified because his hood was hanging and could have been dangerous. Jim Shook came through for the win over Jack Wirth, Mel Sroufe, and Dave Marcum.

On the last lap of the pursuit, Kopka and Louie J. were side by side, fighting for the lead, when they hooked tires and both went off the back stretch. Jack Sharp, therefore, passed all the cars for the win, with Kopka second, Louie third, and Carrier fourth.

25 cars started the Semi, but on the first lap, someone slipped coming out of the fourth turn and eight cars spun, completely blocking the track. After several more spins, only 7 cars finished. Budwitt was the winner by a car length over Moull, followed by Slade, Dick Lucas, and Allen Teubert.

The Feature was as wild as you can get, with four caution flags and two red flags. Sam Henson did a good job on his car, as it took two wreckers to get it off the track, one on the front and one on the back. Taylor took the lead on the sixth lap and held on for the checker, over Louie J., Sharp, Dick Crup and Woodman.

Our special "Mechanics over 40" race was won by Bill Younkin, Sr., with Robert Taylor second, and Whitney Green third. All three received trophies.

September 5 is our last Friday night race and our big Season Championship is on Sunday afternoon September 14.



Mrs. Susan Elaine Booth Clark, a native of Allegan, Michigan and a recent graduate of the University of Michigan, will teach a 6th grade position in the Manchester Middle School. Mrs. Clark holds a Bachelor of Science Degree and a Secondary Provisional Certificate from the University of Michigan. She majored in Biology and minored in Physical Science.

Miss Patricia Lou MacEachron, a graduate of Hope College, will teach second grade in the Luther C. Klager Elementary School. Miss MacEachron is a graduate of the Grandville, Michigan High School and received her B.A. degree and elementary certificate from Hope College in Holland, Michigan. She has taught first grade for the past two years in Los Angeles, California. Miss MacEachron has traveled extensively in the United States, Europe, Mexico, Canada and Hawaii.



Airman John D. Hall, son of Mr. and Mrs. George W. Hall of 1073 Bethal Church Rd., Manchester, has completed basic training at Lackland AFB, Tex. He has been assigned to Lowry AFB, Colo., for training in the supply field. Airman Hall, a 1964 graduate of Ann Arbor High School, received his B.B.A. degree in 1969 from Eastern Michigan University.

WINS TRIP

Vicki Lynn Eisele, 17, of 211 Beaufort St., Manchester, won the clothing construction demonstration at 4-H - Youth State Show which was held on the Michigan State University campus, Aug. 19-22. Vicki will receive an educational trip to Chicago Aug. 24-28.

SUMMER SALE!

Growers Clearance of Evergreens and shade trees. Michigan Hardy - Highest Quality. We dig or you dig and save more.

MASON'S NURSERY

8794 Monroe St. - Macon Road 1/4 mile south of cemetery Saline HA-9-5034

STOREWIDE SUMMER CLEARANCE

Sunday, Sept. 7 thru Sunday, Sept. 14 Antiques, gifts 'n things

Don't miss the last two Sunday Flea Markets.

Sept. 7 and Sept. 14 at

WELLER'S SAUK TRAIL INN 555 W. Michigan Ave. Saline, Michigan 429-2115 (Just west of dam)

Table listing various school districts and their assessed values for 1969-1970. Includes districts like Washtenaw County Community College, Oakland Community College, and various public schools.

ROBERT M. HARRISON Washtenaw County Clerk

Notice Relative to Opening and Closing of the Polls

SECTION 220. On the day of any election, the polls shall be opened at 7 o'clock in the forenoon, and shall be continuously open until 8 o'clock in the afternoon and no longer. Every qualified elector present and in line at the polls at the hour prescribed for the closing thereof shall be allowed to vote.

THE POLLS of said election will be open at 7 o'clock a. m. and will remain open until 8 o'clock p. m. of said day of election.

Walter S. Thayer, Township Clerk

SPECIAL ELECTION

To the Qualified Electors:

NOTICE IS HEREBY GIVEN, That a special Election will be held in the TOWNSHIP OF MANCHESTER All Precincts in Washtenaw County, Michigan

TUESDAY, SEPTEMBER 9, 1969

TO VOTE ON THE FOLLOWING SEPARATE TAX LIMITATION PROPOSALS

- ADMINISTRATION OF JUSTICE PROPOSITION: Shall the tax limitation on the total assessed general and valorem taxes which may be imposed each year for all purposes upon real and tangible personal property in Washtenaw County, Michigan, be increased as provided in Section 4, Article IX of the Constitution of Michigan, 1963, for a period of three years from election to the next general election (1970-1972), with limitation, by one (1) mill (one dollar per thousand of State Equalized Valuation) with the revenues to be allocated to and expended by Washtenaw County Board of Supervisors for all County expenses carrying out the administration of justice?
PARK AND RECREATIONAL PROPOSITION: Shall the tax limitation on the total assessed general and valorem taxes which may be imposed each year for all purposes upon real and tangible personal property in Washtenaw County, Michigan, be increased as provided in Section 4, Article IX of the Constitution of Michigan, 1963, for a period of three years from election to the next general election (1970-1972), with limitation, by one-quarter (1/4) mill (twenty-five cents per thousand of State Equalized Valuation) with the revenues to be allocated to and expended by Washtenaw County Board of Supervisors for development of park and recreational facilities?

COUNTY TREASURER'S STATEMENT AS REQUIRED BY ACT 293 OF THE PUBLIC ACTS OF 1947 AS AMENDED BY ACT 278, PUBLIC ACTS OF 1964

Table showing LOCAL UNIT, VOTED INCREASE, and YEARS INCREASE EFFECTIVE for various townships in Washtenaw County.

manchester Enterprise

101st Year No. 47

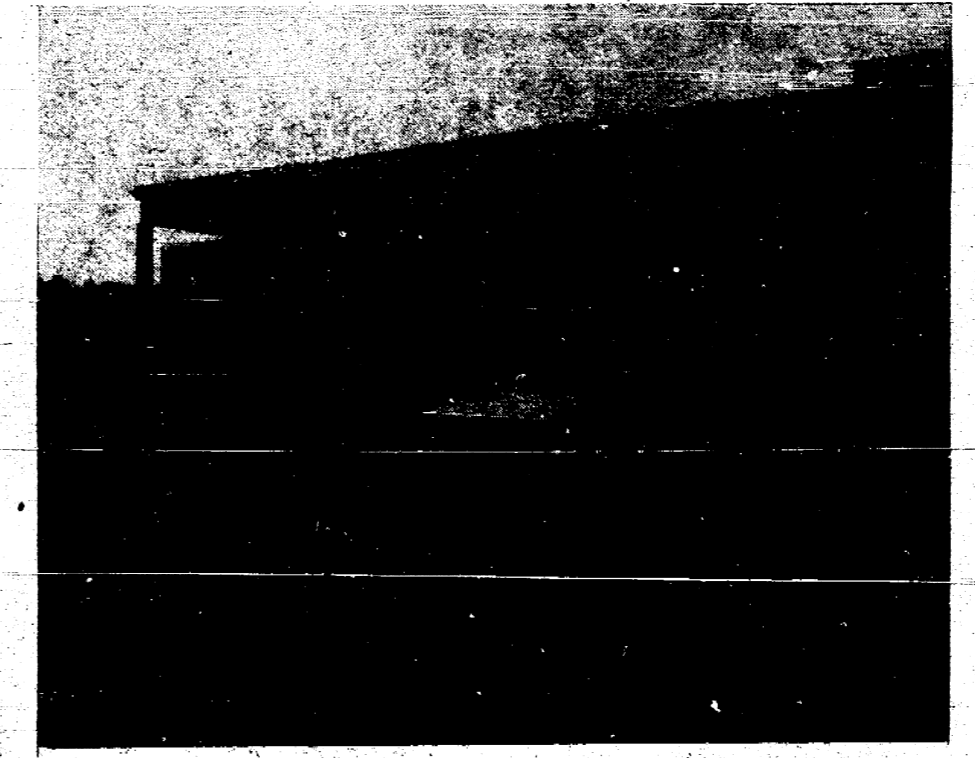
September 11, 1969



PARLIAMENTARIANS - This Washtenaw County 4-H group took top honors in a contest pitting the state's best 4-H parliamentarians against each other during activities at 4-H Youth State Show, August 19-22, on the Michigan State University campus. The contest tested the young people's knowledge of parliamentary procedure and proper methods of conducting a meeting. The Washtenaw County 4-H members were: (seated, left to right) Virginia Vogel, Margaret Kemner, Vicki Eisele; (standing, left to right) Joyce Bowers, Sue Vogel, Becky Feldkamp, Kathy Feldkamp, Valerie Vogel, Jean Feldkamp, Mrs. Kemner (advisor) and Beth Merriman.

Stamping Adds On

Manchester Stamping Corporation has recently completed a new 30' x 60' addition to the original building located at 17951 Austin Road. Mr. Stautz pointed out that the additional space will provide storage and relieve the crowded conditions of the present manufacturing area. The present corporation originated in Brooklyn and was owned by the Brannock Building Co. In 1963 Ted Stautz, Clarence Fielder and Eugene Bentschneider purchased the small stamping business and when the original building was constructed in 1965, moved the entire enterprise to Manchester. Employing 10 full-time and 2 to 3 part-time men, Manchester Stamping handles the production of metal stamping of various kinds. Included are automotive parts, household items, refrigerator parts and cabinet parts for refrigerator units to be used for commercial cooling. The stamping plant supplies parts to a number of companies located in Saline, Milan, Ann Arbor, Jackson and some as far as Wisconsin and Florida.



Virginia Vogel of Manchester has just completed a European study tour with World Academy Schools for Foreign Study, a Cincinnati-based organization that offers accredited study/travel courses to American students each summer. The picture was taken in Rome on a recent field trip to the colosseum.

BLOODMOBILE THIS FRIDAY

This Friday is the day you may donate locally a pint of blood for your Red Cross Blood Bank (hoping you'll never have to use it yourself, "bankin' it for an emergency!) It is an Open Clinic, meaning one can give for a hospital account or for another Red Cross Blood Club.

Emanuel Church of Christ is the host and the hours are 12 to 6 p.m. You don't have to have an appointment. Just don't forget the day. You may donate if you are between the ages of 18 and 66 - five years has been added to the top limit.

The next scheduled Bloodmobile is July 12, 1970 and we have only 30 pints on hand. This past twelve months we've used 154 units.

Your Manchester Blood Club is a Community Fund agency.

POLICE REPORT August 4 to August 31, 1969

Car No. 38 was driven a total of 40,870 miles for the period of August 4 to August 31.

There were thirty traffic violations issued: 2 operator's license violations - 15 speeding violations - 2 disobeyed stop signs - 5 excessive noise (tires) - 1 failure to yield right of way - 2 defective equipment, exhaust - 1 improper "U" turn - 2 reckless driving.

Two arrests were made. One for reckless driving and one juvenile arrest for shoplifting.

Six accidents were policed - 5 property damage and one personal injury.

A total of 47 complaints were investigated. There were 3 animal complaints; two dogs and one goat.







JUNIOR SHOW RESERVE GRAND CHAMPION YEARLING BULL. "Whippoorwill Marquis King," is shown by his owner, Carl Macomber of Whippoorwill Farms in Manchester at the 120th Michigan State Fair.

**THE LANSING REPORT**  
Senator Gilbert Bursley

How many of you have driven by and glanced curiously at the cluster of buildings on the Clinton-Macon Road known as "Boysville."

and with their dynamic and friendly high school principal, Brother Edward. This school which accepts boys from all over the state and gives them careful schooling up through the 10th grade is doing a great job. Founded in 1948 it has grown steadily and some of the original wooden buildings have already been replaced with brick structures of a more



DAIRY WINNERS - Nancy Kennedy of Manchester exhibited the champion and reserve grand champion Milking Shorthorn at 4-H Youth State Show, held the week of August 19-22 on the Michigan State University campus.

permanent nature.

The school belongs to the Archdiocese of Detroit and is operated by the Brothers of the Holy Cross. Only too many of us have lost sight of the tremendous contribution which these men make working around the clock for a fraction of what the public school teacher is paid.

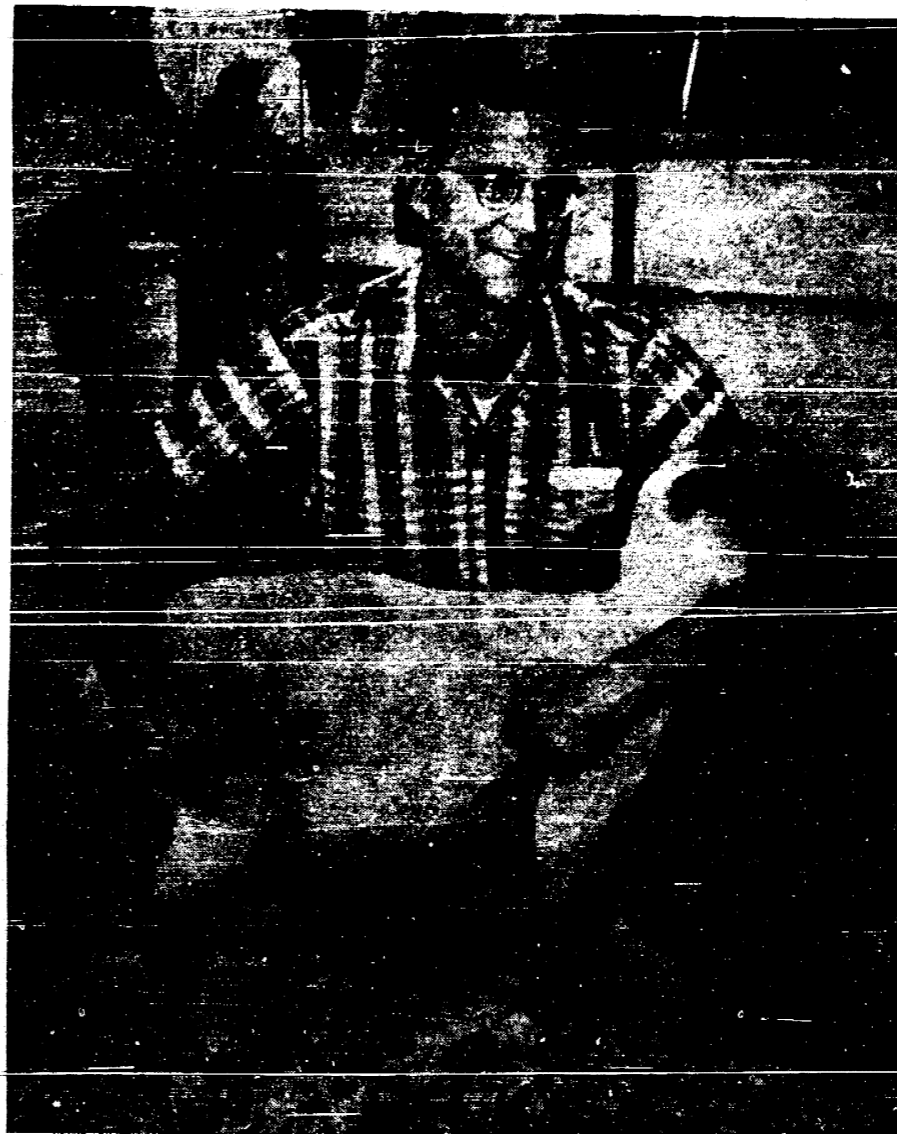
Their life is relatively austere. There is no bargaining for better pay or fringe benefits. They are doing what they have freely chosen to do and their satisfaction comes, at least in part, in seeing the progress made by their students many of whom need special attention.

Money will never come easily to Boysville. The Church supports it but the

Church also has many other commitments. There are no wealthy alumni from Boysville to donate buildings, equipment, library materials or scholarship assistance.

The Michigan Legislature will be considering education reform at its October session. But no one knows yet what, if anything, will be enacted into law. And it is quite possible -- if not probable -- that assistance will pass by or have little impact upon a Church-supported school such as Boysville.

I think citizens of this area who are looking for a worthy cause to support should take the time to stop off at Boysville and visit with Brother Edward and his dedicated associates.



FAST AND CLEAN. Dale Weidmayer of Manchester holds the shears as he shows the clean, quick job he did on this sheep to win the senior championship at the 120th annual Michigan State Fair. Dale's time was the fastest of all his competitors.

**CASE DEALER ATTENDS MILWAUKEE CONGRESS**

A completely new line of farm tractors for the '70s and a new corporate symbol were unveiled recently in Milwaukee by J. I. Case Company during a mammoth North American Dealer Congress August 18-21 attended by more than 1,700 Case dealers.

Participating in the event from Manchester was Kenny Kouba and Larry Kouba of K & W Farm Supply.

During the four-day Congress, Case displayed and exhibited more than \$3 million in farm and construction machinery on a 950 acre site at the former Borg Air Force Base in Southeastern Wisconsin. The exhibit included 22 all-new products -- four models of the new Agri King 70 tractors and 18 other new Case products.

**ATTENTION CAMPERS**

There will be a camp-out on September 12, 13 and 14 at Walter Hayes State Park at Wampler's Lake.

For further information call 428-4761 or 428-8218.

**SUMMER SALE!**

Growers Clearance of Evergreens and shade trees. Michigan Hardy - Highest Quality. We dig or you dig and save more.

MASON'S NURSERY  
8794 Monroe St. - Macon Road  
1/4 mile south of cemetery  
Saline HA-9-5034

**STOREWIDE SUMMER CLEARANCE**

Sunday, Sept. 7 thru  
Sunday, Sept. 14  
Antiques, gifts 'n things  
\*\*\*\*\*

Don't miss the last two Sunday  
Flea Markets.  
Sept. 7 and Sept. 14  
at

WELLER'S SAUK TRAIL INN  
555 W. Michigan Ave.  
Saline, Michigan 429-2115  
(Just west of dam)

They who are most weary of life, and yet are most unwilling to die, are such who have lived to no purpose, who have rather breathed than lived.

**1970 COMMUNITY COMMITTEE MEN ELECTIONS TO BE HELD SEPTEMBER 16**

The election for the 1970 Community Committeemen will be held by township meetings on September 16, 1969. These meetings will be conducted by the present Chairman, Vice-Chairman and Member of each community. The list of voting places and time was mailed to all farmers on September 5, 1969.

The purpose of this election is to elect three members and two alternates who will assist in administering the ASC programs in their communities during 1970. The elected Chairman, Vice-Chairman and Member will serve as delegates to the County Convention.

Voting places for surrounding townships are listed below. Plan to attend and help elect your 1970 community committeemen.  
Sharon Township - 8:00 p.m. - 17569 Washburn Rd., Grass Lake.  
Freedom Township - 8:00 p.m. - 8750 Pleasant Lake Road, Ann Arbor.  
Manchester Township - 8:00 p.m. - Manchester Township Hall  
Bridgewater Township - 8:00 p.m. - Bridgewater Township Hall

**BONANZA LOT**

Southern Gate to Manchester

Sells Pontiacs  
Sells Chevrolets  
Sells Trucks  
Sells OK Used Cars  
Stop and Shop

PEACHES  
APPLES  
PLUMS  
TOMATOES  
CUMMINGS TEXACO  
815 City Rd., Manchester

**DANCE**

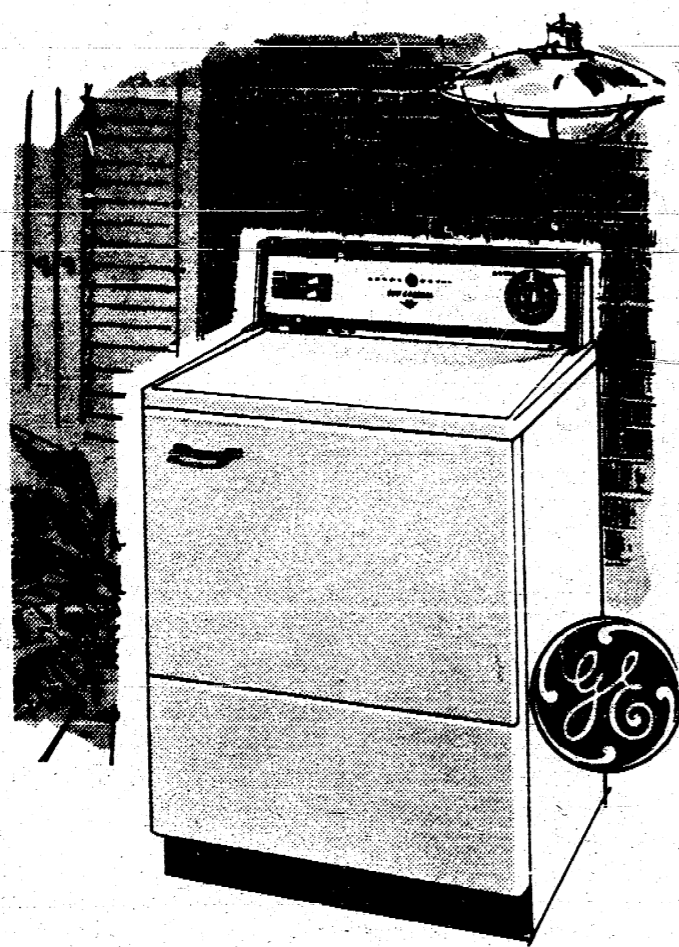
SATURDAY NIGHT, SEPTEMBER 13  
9:30 - 1:00 a.m. Free Admission

LIVE MUSIC

AMERICAN LEGION

Open to the Public

Let your Dryer  
do your ironing



SCHOOL APPLIANCES  
used 8 months 30% off

**LV KIRK**

ELECTRICAL CONTRACTOR  
PHONE  
GA 8-3701 or GA 8-8331  
MANCHESTER, MICHIGAN

**Cleary College is accepting applications from those who want to specialize in business**

Cleary College offers one, two and four-year programs leading to a diploma, associate degree or bachelor's degree. At Cleary you learn more so you can earn more upon graduation. And the prestige of a Cleary business education assures you of a more rewarding future. Because Cleary College specializes in training you for a successful management, accounting or secretarial career, more jobs are available than Cleary can supply graduates to fill.

Register Now for Fall Term  
September 22, 1969

Day and Evening Classes—8 a.m. through 3 p.m. daily; evening class hours available Monday through Friday for one, two or three nights a week.

If you think you can cut it...  
**CUT IT.**

Please send me your free catalog.  
I am interested in the \_\_\_\_\_ term.  
Name \_\_\_\_\_  
Address \_\_\_\_\_  
City \_\_\_\_\_ State \_\_\_\_\_  
Zip Code \_\_\_\_\_ Phone \_\_\_\_\_

**CLEARY COLLEGE**  
SPECIALISTS IN BUSINESS EDUCATION SINCE 1893  
2185 Washtenaw, Ypsilanti, Michigan 48197 Phone HU 3-4400

- 100 tablets DECA-VI-SOL Children's Vitamins 3.99 VALUE 2.29
- 1/2 FL. OZ. VISINE EYE Drops 1.50 VALUE 98c
- NET WT. 8 OZ. DIPPITY-DO Setting Gel 1.25 VALUE 79c
- NET WT. 7 OZ. LYSOL Spray Disinfectant 1.19 VALUE 78c
- NET WT. 4 OZ. LASTING BEAUTY Makeup Finish 2.25 VALUE 1.59
- NET WT. 1 1/2 LBS. AYDS Reducing Plan Candy 3.25 VALUE 2.09
- 12 Flashes SYLVANIA Blue Dot Flash Cubes 2.25 VALUE 1.09
- WESTMORE Frosted Lipstick 33c OR 4 FOR 1.00
- 30 tablets SINUTAB Sinus & Cold Tablets 2.50 VALUE 1.53
- NET WT. 3.3 OZ. GILLETTE Soft & Dry Anti-Perspirant Deodorant 1.00 VALUE 62c

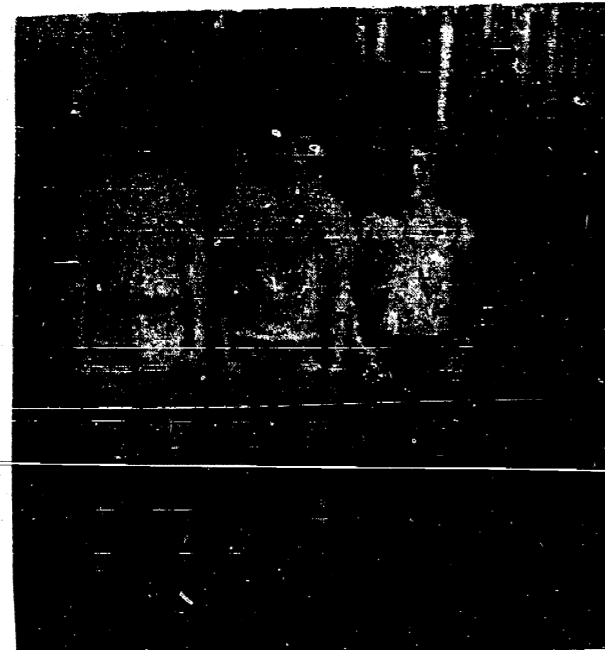
**Krauss Rexall Pharmacy**

"Courtesy and Service"  
COMPLETE PRESCRIPTION SERVICE  
PHONE GAB-4801





Junior High Student Council officers for 1969-1970 are left to right - Marilyn Uphaus, President; Scott Garmley, Vice President; Jean Kress, Secretary and Terry Gonyer, Treasurer.



Junior High School Field and Stream Club officers for 1969-1970 are left to right - Richard Kennedy, President; Keith Alber, Secretary and Joe Kress, Treasurer.

# AUCTION

## Saturday, Sept. 13

at 1:00 p.m.

Go 1/2 mile west of Manchester on Austin Road to Grossman Road. Then south 1/2 mile to Manchester Sportsman Club.

HOUSEHOLD GOODS

TOYS BOOKS

HUNTING CLOTHES

LAWN MOWERS

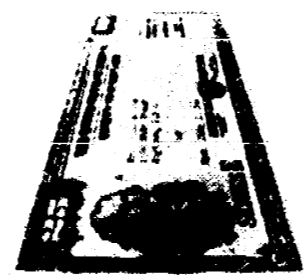
8 mm HAND PROJECTOR

PLUMBING EQUIP.

MANY MISC. ITEMS

Will be held inside in case of rain.

Whatever you would have your children become, strive to exhibit in your own lives and conversation.



Buy U.S. Savings Bonds & Freedom Shares

RECAP TIRES REG. TREADS  
15 and 16 inches

\$10.00

EARL ALBER  
STANDARD SERVICE

## ROY BIANDIS & SON

13580 SHARON HOLLOW

428-3967

LICENSED GENERAL CONTRACTOR  
REMODELING — NEW — MODERNIZATION  
— ALUMINUM and VINYL SIDING —  
ADDITIONS — ROOFING — GARAGES

DAIRY QUEEN CLOSING SEPTEMBER 17  
STOCK UP YOUR FREEZER

SPECIAL

1/2 gallons - only 89 cents      Dilly Bars in assorted flavors  
11 for \$1.00

THANK YOU FOR YOUR PATRONAGE THIS SEASON.  
FLAVORS: Cherry  
Banana  
Chocolate  
Butterscotch

BYRON AND DOROTHY MOORE

## COLLEGE CLASSES IN MANCHESTER

WASHTENAW COMMUNITY COLLEGE

will offer this Fall semester the following classes at Manchester High School:

STARTING SEPTEMBER 17 and 18  
ANYONE OVER 18 YEARS ADMITTED

ENGLISH COMPOSITION 111, 3 credit hours, Wednesday, 6:30 - 9:30 p.m.

English composition 111 and 122 constitute a sequence designed for students who intend to transfer to senior colleges or universities. The student will write both in-class and outside themes frequently. Reading materials will serve as the basis for these themes and for classroom discussions.

INTRODUCTORY PSYCHOLOGY 100, 3 credit hours, Thursday, 7 - 10 p.m.

An introduction to the scientific study and interpretation of human behavior, surveying such topics as psychological development, learning, thinking, motivation, emotions, perception, intelligence, aptitude, and personality. Basic principles and their practical application are discussed.

REGISTRATION AND TUITION: Register at Manchester High School on the first night of class. Tuition is \$10 per credit hour for district residents. LATE REGISTRATION - you may register as late as the second class meeting, Sept. 24-25. If sufficient registrations are not received the class may be changed to another location or cancelled.

OTHER CLASSES IN THE AREA:

CHELSEA - Starting September 15 - 17 (High School)

Introduction to Literature 160, 3 credit hours, Monday, 6:30 - 9:30 p.m.  
Blueprint Reading 101, sec. 4, 3 credit hours, Monday, 7 - 10 p.m.  
Child Psychology 200, 3 credit hours, Wednesday 7 - 10 p.m.

DEXTER - Starting September 15 - 16 (High School)

Introductory Psychology 100, 3 credit hours, Monday 7 - 10 p.m.  
English Composition 111, 3 credit hours, Tuesday, 6:30 - 9:30 p.m.

FOR INFORMATION CALL

# Washtenaw Community College

Call Dean John Wooden      483-5152

# Manchester Enterprise

Manchester Library  
P.O. Manchester  
Complimentary

It is one of the most beautiful compensations of this life, that no man can sincerely try to help another without helping himself.

101st Year No. 48

September 18, 1969

## A Plea For Help

"Just 5 Minutes of Your Time"  
by Carolyn Ahrens

"The mentally retarded or brain damaged are children and adults who, as a result of inadequately developed intelligence, are significantly impaired in their ability to adapt to the demands of society."

The degree of brain damage varies from the Educable which are the mildly retarded, the Trainable or moderately retarded and the Dependent or severely retarded. Over 100,000 children born in the United States each year are brain damaged to some degree. At one time a physically or mentally handicapped child was termed "hopeless." Today, however, there is new hope. After years of research and study much has been learned about brain damage. Therapy and treatment has enabled thousands of handicapped children and adults toward a better, more satisfying and often independent life. Brain injury and physical disability may strike any family, any time, at birth or as a young child or adult involved in an accident.

Dawn Ray, 7 year old daughter of Mary and Carter Ray, Manchester, is one such victim of brain damage at birth. She was described by doctors in Philadelphia as Mildly Brain Injured child. Another child, Kathy Bowers, 8 year old daughter of LaDonna and Warren Bowers of Norvell, was born with a cleft palate, club-foot, brain injury and a Cerebral Palsy victim. Two operations were performed to correct Kathy's cleft palate but love and understanding were all that seemed possible for the two blue-eyed, blond-haired little girls. But the parents of these little girls were determined to help them.

Dawn could talk although she often lapsed into baby-talk and loud unexpected noises or confusion often sent her into temper tantrums. As pointed out by her mother, sounds are amplified as much as 5 times in some brain injured children. Dawn made some progress however and attended the Sullivan School in Ann Arbor for a short time.



Pictured left to right standing are Mrs. Warren Bowers, Mrs. Harold Eisenman of Chelsea and Mrs. Deoras Buss of Manchester and Kathy Bowers, age 8.

Then one day her grandmother, Mrs. Crystle Jedele, heard about an institute in Philadelphia for brain injured children on the Mike Douglas Show. Mary Ray wrote asking for more information. A reply, waiting list and eventually a trip to the Institute for the Achievement of Human Potential, founded in 1955 by Glenn Doman, a physiotherapist and Carl Delacato, a reading therapist, brought new hope for Dawn Ray.

Dawn's home treatments and exercise began last August 14. Just a short while under this program, her improvement is evident already. "She's more relaxed, growing up emotionally," her great-grandmother Mrs. Edna Lair said. And her mother, "For some reason, we don't know why, since she's been on this therapy program she hasn't had any temper outbursts. She's more calm now."

Before the program Dawn could walk although her coordination was poor. As an infant she had never crawled or could she creep, a vitally important period of growth for the proper development of all youngsters. According to the Doman-Delacato Theory, "A newborn baby's movements are governed by the spinal cord

and medulla; with development of the next higher center, the pons, the infant begins to crawl on his stomach. When the mid-brain matures, he begins to creep on all fours. Finally with the maturation of the cerebral cortex, the child walks and develops speech, perception and intellect." According to this theory, if there is brain injury at any of these levels it will impair performance at a higher brain level. The Doman-Delacato method treats a severely brain injured or physically handicapped child by movement of the arms, legs, and head in patterns appropriate to various levels of brain development. 1

Dawn's patterning program under the Doman-Delacato method is a 5-minute, 4 times daily Cross Pattern exercise. Similar to basic crawling, it's a rhythmic exercise designated to stimulate the underdeveloped part of the brain. Included in her 12-hour-a-day program are eye exercises, bar exercises, creeping and crawling, somersaults, still very difficult for her, and a special face mask she wears 1 minute each hour according to the Doman-Delacato theory, will allow the rebreathing of expired air which will stimulate blood flow to the brain. The entire procedure is designed to help "depressed" brain cells take over the function of those cells that are irrevocably damaged. 1

Dawn is also learning to recognize words. Told not to teach her the alphabet but rather complete words, Mary Ray has accomplished within a month, the task of teaching her daughter 50 words such as refrigerator, ice cream and bicycle. "We hope she will soon be able to attend a school for further help," Mrs. Ray added.

School has never been possible for Kathy Bowers but according to Mrs. Hardy in Midland, when she is through with this program she may be able to attend some school. To eventually talk and possibly walk after an operation on her clubfoot last Thursday, is a goal once considered impossible for Kathy to attain. "Perhaps still a long way off but to Kathy's mother, "It's a goal we're going to reach."

The Bowers first heard about the Philadelphia Institute when their daughter Karen brought home a pamphlet from school. A newspaper article created further interest, then a letter and eventually a call to the Midland Satellite of the Philadelphia Institute.

Kathy's program is much more rigorous than Dawn's partly because of her disabilities and also because she's been on the Doman-Delacato program almost a year. For her, the Homolateral Pattern twice daily, 10 minutes each time. Kathy must also wear the mask 18 to 24 times daily, 1 minute each time. Finger work has given her more hand and finger control and a special tongue exercise practiced before a mirror has helped Kathy control her tongue and "maybe someday talk clearly." Kathy has also learned approximately 40 words and can count to 20. Doctors have found Kathy very capable of learning and although she is unable to express herself clearly she depends on sign language and with a keen sense of hearing, has opened a larger, less frightening world.

"The first two months of treatment showed a great improvement but since then it has been more gradual," Mrs. Bowers commented. "Now she can crawl and creep as well as pull herself up on a chair." As with Dawn Ray, Kathy Bowers is allowed 24 oz. of liquid daily.

It appears that only time and research will prove or disprove the Doman-Delacato theory however. With 2,000 children now under treatment at the Institute, thousands of parents are hopeful and can see the beginning results of their efforts through this patterning method. While the Institute claims 35% of the brain injured children "make it all the way into normality," a large part of the medical world is skeptical and the Doman-Delacato method is the object of widespread controversy. Dr. Roger D. Freeman of Temple University Medical School said, "No generally accepted proof exists that either any conventional method of treatment or the patterning or other techniques used by the Institute gives superior results in management of brain damage." 2 Glenn Doman said their goal is "The reproduction of normal activities which would have been the product of the injured brain level had it not been injured." 2

The parents of Kathy Bowers and Dawn Ray are hopeful. Also, they have found the need for more help. "My real backbone has been my daily helpers," Mrs. Ray said. It requires four people to propel Dawn in her Cross Pattern exercise, a relatively simple movement of arms,

contd. page 8



Assisting Dawn Ray, age 7, with her exercises are left to right: Mrs. Deoras Buss, Mrs. Edna Lair, great-grandmother, Mary Ray and grandmother, Mrs. Crystle Jedele.