

CHURCH CALENDAR

UNITED CHURCH OF CHRIST
Emanuel United Church of Christ

Rev. Ralph L. Kuether, pastor
9:15 A. M., Church Sunday School
10:30 A. M., Sunday Worship

Bethel United Church of Christ

Rev. Theophil W. Menzel, pastor

10 A. M. Church Service
11 A. M. Sunday School

St. John's United Church of Christ

Rogers Corners
Waters & Fletcher Road
Rev. Stephen Peterson, pastor

9:30 A. M., Worship Service
10:30 A. M., Sunday School

St. John's Evangelical and Reformed Church

(United Church of Christ)
Francisco
Rev. Stephen Peterson, Pastor

St. Mary's Catholic Church

West Main Street
Fr. Raymond R. Schlinkert
Sunday Masses
8 A. M., 9:30 A. M., 11:15 A. M.,
7:30 A. M., Daily 8 A. M., Sat.

Manchester Methodist Church

Rev. Oscar W. Cooper
West Main Street
8:30 A. M., Worship Service
9:45 A. M., Church School
11:00 A. M., Worship Service

Baptist Church

Rev. E. P. Cranston
South Macomb Street
10 A. M. Bible School
11 A. M. Worship Service
7 P. M. Youth Groups
7:45 P. M. Evening Worship
7:45 P. M. Thurs. Prayer Service
and Bible Study

Iron Creek Church

10 A. M. Sunday Worship
11 A. M. Sunday School
8 P. M. Evening Service
7:30 P. M. Thursday Prayer & Bible Study
6:30 P. M. Thursday Jr. Choir & Bible Study
8:30 P. M. Thursday Sr. Choir

Sharon Evangelical United Brethren Church

Rev. Charles Fox, pastor
10 A. M. Sunday School
11 A. M. Worship Service
Roy Clemons, Supt. of Sunday School

Faith Community Church

Rev. Thomas Hicks, pastor
8400 Sharon Hollow Road
(off W. Austin Rd.)
10 A. M. Worship
11 A. M. Sunday School
7 P. M. Sunday Young People
8 P. M. Sunday Service

St. Thomas Evangelical Lutheran

Freedom Township
Rev. John W. Ribar, Pastor
10:00 Worship service
11:00 Sunday School

FAITH COMMUNITY CHURCH

The Faith Community Church First Family Night in their new church will be a planned potluck supper, Saturday evening, November 11 at 7:00 p. m. In appreciation for their work in the building of the church, guests will be the contractor, his co-workers and their families.

Monday evening, November 13 at 8:00 p. m., the Faith Circle will meet at the home of Marjorie Flisk. Mrs. Berlin Spencer will be the Devotional Leader. Boxes will be packed for the men in service.

EMANUEL CHURCH NOTES

Friday, November 10 the choristers will meet.

Saturday, Nov. 11 at 9 and 10 a. m. the St. confirmation class will meet followed by the Jr. confirmation class.

Sunday, Nov. 12 at 9:15 a. m. the church school class will meet followed by the Inquirers' Class.

The Sunday morning worship will be at 10:30 a. m. with Thanksgiving Ingathering.

THANKS OFFERING SERVICE

A Thanks Offering service will be held at 8 p. m. Sunday, November 19th, at the Sharon EUB church.

The annual congregational meeting will be held at 8 p. m. Wednesday, November 15 and several interesting items will be presented. There will be a question and answer session relating to the local church program. The election of officers will follow the important meeting.

PRINCIPAL SPEAKER AT DEMOCRAT DINNER

Former U. S. Representative Weston E. Vivian has announced that Senator Eugene McCarthy (D-Minn.) has agreed to serve as the principal speaker at this year's Second Congressional District Dinner. The dinner, an annual tradition for many years in the Democratic party of the Second Michigan Congressional District, will be held at the Michigan Union in Ann Arbor, on Friday, November 10. A reception is scheduled for 6:45 p. m., with dinner to follow at 7:30 p. m.

A number of local Democrats are planning to attend. Anyone wishing to purchase tickets may do so through Mrs. Marvin Kirk (428-2168), local ticket chairman.

High School Honor Roll

9th GRADE

Cheryl Erwin
David Buckholz
Phillip Heimerdinger
Jan Huber
Margaret Kemmer
Karen Kopka
Harry Kraus
John Kress
Mark Lentz
Akel Marshall
David Noggle
Susan Osburn
Robin Roller
Vallorie Vogel
David Pratt
Michael Randall
Tad Rybak
Richard Schaible
Marcia Steele
Gayle TroldDavid Westfall

10th GRADE

Kristin Creason
Nancy Davis
Vicki Elsiele
Beverly Feldkamp
Cecilia Fielder
Steve Hamilton
Richard Hlavaka
Marilyn Kessal
Roberta Kensler
Gaylord Knauss
Karen Knickerbocker
Debra LaRock
Cheryl Lemon
Linda Luckhardt
Linda Macomber
Daryl Plasters

Pat Livermore

Richard Lowrey
Lana Lutz
Janet Rinehart
Linda Spless
Marjorie Spike
Lydon Uphaus
Virginia Vogel
Sandra Walter
Rosalyn Wolff

12th GRADE

Tod Armentrout
Joyce Blumenauer
Glenn Bus
Frances Eckles
Betty Gross

Emily Heimerdinger

Douglas Kessal
Barbara Kemmer
Kathryn Krumm
Karen Luckhardt
Ray Meyer
Sandra Morris
Linda Osborne
John Pratt
William Panches
Roger Samonek
Katherine Schneider
Judith Simmons
Diana Stethway
Susan Swartz
Constance Uhr
Sharon Walter
Marilyn Wurster

11th GRADE

Sue Blanchard
Christiane Diehl
Paul Heinrich
Sheryl Kemeter
Cidy Kensler
John Kirk

He hath showed thee, O man, what is good, and what doth the Lord require of thee, but to do justly, and to love mercy, and to walk humbly with thy God?

IT'S CHRISTMAS CLUB TIME

Join over 13 million others who have found this easy, sure way to have money for Christmas

JOIN OUR CHRISTMAS CLUB NOW!

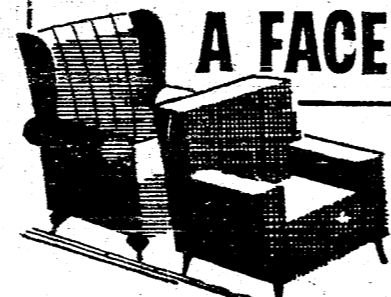
Union Savings Bank of Manchester

MANCHESTER, MICHIGAN

OPEN WEDNESDAY EVENINGS 7:00 to 8:30 o'clock

MEMBER FEDERAL DEPOSIT INSURANCE CORPORATION

Give Your FURNITURE A FACE LIFTING



2500 UPHOLSTERY SAMPLES... Let us show them to you in your home. Just phone us today!

We're offering SPECIALS FOR CHRISTMAS DELIVERY on all upholstery!

Clinton Upholstering and Furniture Co.

124 W. Michigan Ave. Clinton, Mich.
Phone 456-4850 **FREE PICKUP AND DELIVERY**

INSTAMATIC CAMERAS AND FILM
Instamatic Movie Camera **DIAMONDS**
Watches and Watch-Repairing
ROLLER JEWELRY



of the many smartly styled cards from which to choose the one that says

MERRY CHRISTMAS

in just the way you want to say it. Show you care... select your cards early and make them truly personal by having your name printed.

Come in soon and see The National Line

Lymack Printing Co.

111 E. MAIN
MANCHESTER, MICHIGAN 48158

CENSUS BUREAU ANNOUNCES HELPERS

Hubert A. Yerkey, director of the Census Bureau Regional Office in Detroit, announced that the following persons have been selected and trained as interviewers to call on homeowners and renters in Washtenaw county. They are in a group of 1,580 Michigan residents employed by the U. S. Bureau of the Census for the Home Fallout Protection survey which the bureau is conducting throughout the state for the Michigan Office of Civil Defense.

Those in Washtenaw county working on the survey include: Violet Morrison, Betty Hines, Therese Bott, Donna Bradbury, Ida Nixon, Hazel Smith, Vera Bassett, Florence Armbruster, Lauretta Stein, Helen Gilbert, Irene Davidson, Kate Leach, Rosemary Mathes, Fairy Uphaus, Irene Brand, Edna Carr and Cecelia Ference.

The Home Fallout Protection Survey includes only single family homes and two and three unit dwellings. It is being taken by mail in cities of 10,000 or more population, where questionnaires have been mailed to homeowners to be filled out and mailed back. Most interviewers wear red, blue and white identification badges. It bears her signature and certifies that she is authorized to perform the duties of a census interviewer, and as such she is sworn to keep confidential all census information given to her.

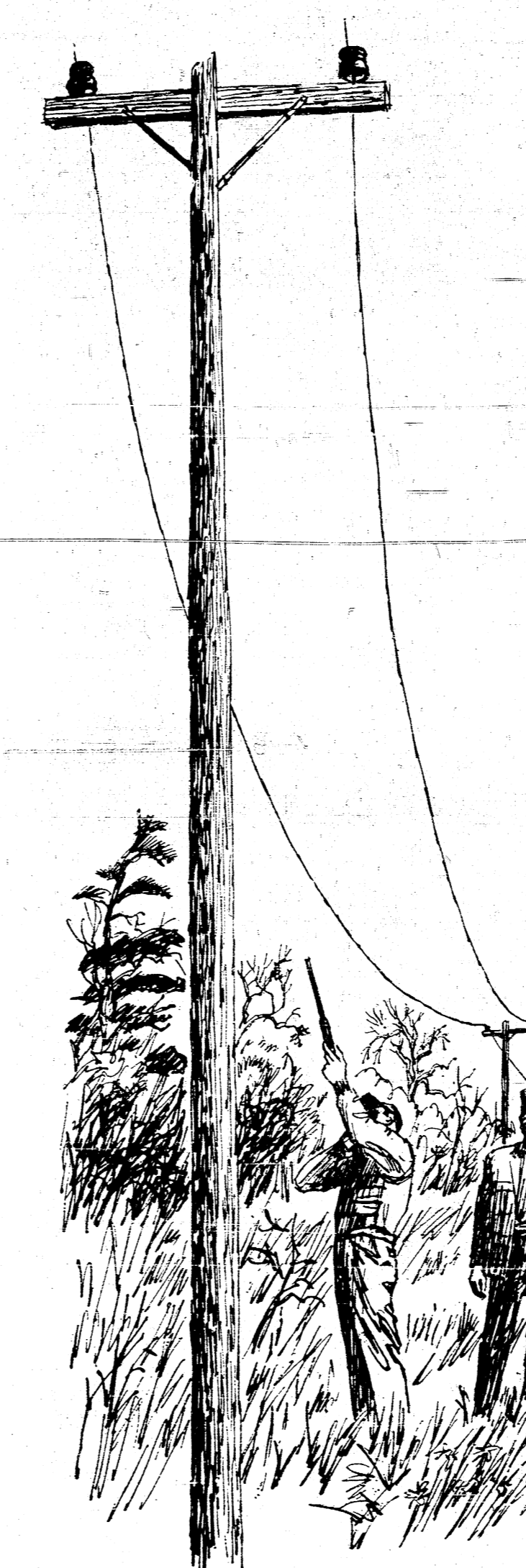
Householders, both renters and home owners are asked a few easy questions: "How many persons usually live in your household? How many floors does your house have? Do you have a basement or cellar under your house? If so, what are the walls made of? What is the height of each outside basement wall above the outside ground level?"

READ THE WANT ADS

THREE DEER HIT BY AREA RESIDENTS

Patricia Smith, 28, of Manchester hit a deer last week Friday on M-52, east of S. Kirk Road. Saturday Robert Coon, 42, of Toledo, Ohio hit a deer on the Clinton-Manchester road. Leon Strahle, 44, of 8771 Pentecost Highway, Onsted hit a deer on M-50, east of Tipton hwy. Friday evening.

\$100 Reward

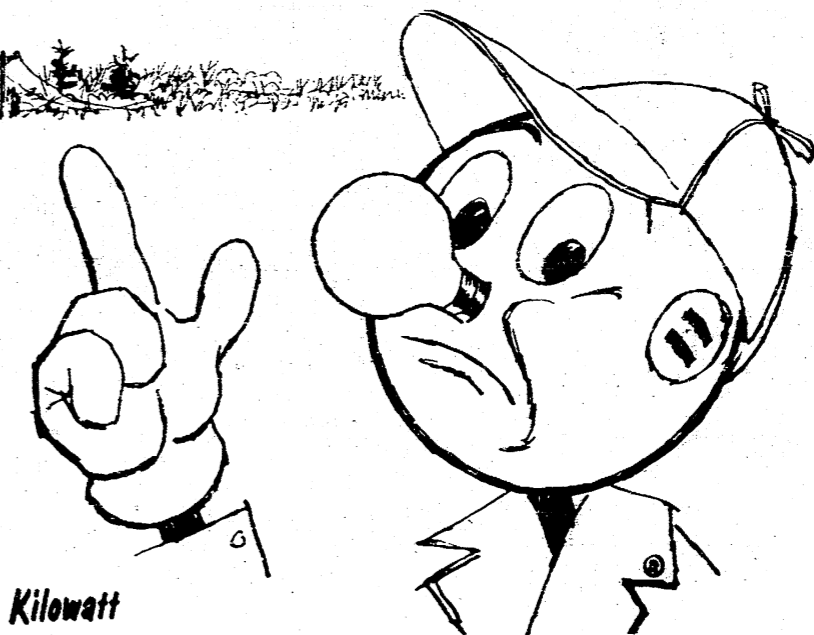


Consumers Power Company is forced to adopt the policy of offering this reward for information leading to the prosecution of any person who willfully or carelessly shoots or otherwise damages our Electric Lines

Our first concern is not the cost and labor involved in replacing the insulators (which is considerable) but the serious consequences that can result with needless interruption of electric service to hospitals, homes and industry

THIS WARNING IS PARTICULARLY DIRECTED TO HUNTERS WHO THOUGHTLESSLY USE POWERLINES OR INSULATORS FOR TARGET PRACTICE

WE URGE YOUR COOPERATION IN THIS MATTER OF PUBLIC CONCERN



Reddy Kilowatt
YOUR ELECTRIC SERVANT

LANSING REPORT FROM SENATOR GIL BURSLEY

Here's the status of major legislation in the special session of the 1967 Legislature in Lansing.

1. Gas and weight tax increase - money to be spent for roads at state, county and municipal level. Bills have passed both Houses. Senate presently not concurring in House amendments. Agreement will probably be reached. I voted against this \$60,000,000 tax increase.

2. Local government corporations - including council of governments. Two of three bills have passed both Houses and are enroute to the Governor for signature. These bills permit cities, villages, counties, school districts, etc. to enter into contracts with one another relative to furnishing services as well as to transfer functions and responsibilities between units of government. This is permissive legislation strengthening local government and implementing provisions of the new Constitution. Importantly, under this legislation, it would be possible to form a council of governments such as is presently underway in Southeastern Michigan. The third bill in this package has been amended to place killing restrictions upon a council of governments. I am working to remove these amendments or else to stop the bill.

3. Lower court reorganization. The House Judiciary Committee has reported out a 40-page bill on this subject. It will receive serious consideration but may be much amended. This issue was the principal reason for convoking the special session. The bill provides for district courts at county level to replace judges of the peace and municipal courts. District judges would be paid \$20,000 salaries by the State. Counties may add to this. Judges must be lawyers. They are to be elected on a non-partisan judicial ballot. Under this bill, Washtenaw County would be District 10 with five judges. Consideration is being given amendments that would create two or three divisions within the district with, for example, two judges in Ann Arbor, two in Ypsilanti and one in the western part of the county. Lenawee County would be District Two with two judges. This bill is presently being considered on the floor of the House. If and when it reaches the Senate, there may be other suggested amendments. Positive action is necessary on the subject because Michigan's new Constitution calls for abolition of the justices of the peace by the end of 1968.

4. Open occupancy or housing. A revised bill on this controversial subject has been introduced in the House. The original bill recommended by the New Detroit Committee found no sponsors in either Senate or House. This will probably be the last item to be acted upon in the special session.

CHURCH GROUP TO MEET

The WSWs of the Sharon EUB church will hold a Study Class at 10 a.m. Thursday, Nov. 16 at the home of Mrs. Alton Gehring. Those planning to attend are asked to bring a sack lunch. Dessert will be served by Mrs. Anton Feldkamp and Mrs. Mark Harris. The regular business session will be conducted by Mrs. Charles Fox at 1:30 p.m.

MANCHESTER PUBLIC SCHOOL DISTRICT

ANNUAL REPORT, 1966-67

EXHIBIT I

STATEMENT OF ASSETS AND LIABILITIES

Table with 2 columns: Description and Amount. Rows include Petty Cash Fund, CASH IN BANK, ACCOUNTS RECEIVABLE, TAXES RECEIVABLE, INVENTORIES, PREPAID INSURANCE, LIABILITIES AND FUND EQUITY.

LIABILITIES AND FUND EQUITY

Table with 2 columns: Description and Amount. Rows include LIABILITIES: Accounts Payable, Salaries Payable, Reserve for obligations - Federal, Total Liabilities (Note 1).

FUND EQUITY

Table with 2 columns: Description and Amount. Rows include General Fund Balance, Net Increase (decrease) in fund equity, Exhibit B, Total.

EXHIBIT II

GENERAL FUND REVENUES AND EXPENDITURES FOR THE PERIOD FROM JULY 1, 1966 TO JUNE 30, 1967

Table with 2 columns: Description and Amount. Rows include REVENUES: Revenue from local sources, Interest and penalties on delinquent tax, Taxes other than property tax; EXPENDITURES - Schedule 1: Instruction, Administration, Health Services, Transportation Services, Operation of plant, Maintenance of plant, Fixed charges, Total current operating expenditures; Capital Outlay; Student Services; Outgoing Transfers; Total general fund expenditures; EXCESS OF EXPENDITURES OVER REVENUE RESULTING IN A NET INCREASE (DECREASE) IN FUND EQUITY - Exhibit A.

DETAIL OF GENERAL FUND EXPENDITURES FOR THE PERIOD FROM JULY 1, 1966 TO JUNE 30, 1967

Table with 7 columns: Instruction, Elementary Grades, Secondary Grades, Special Education, Summer School, Adult Education, Total. Rows include Salaries (Principals, Consultants and supervisors, Teachers, Substitute Teachers, Librarians, Guidance personnel, Secretarial and clerical, Other), Supplies (Textbooks, Teaching supplies, Library books, Audio-visual materials, Office Supplies), Total supplies, Other Expense, Total expenditures for instruction.

Table with 2 columns: Description and Amount. Rows include Tuition from patrons - Adult education, Interest on current deposits and investments, Miscellaneous revenues: Proceeds from sale of school property, Rent from school facilities, Rent from other property-Books, Miscellaneous, Total miscellaneous revenues, Total revenue from local sources.

Table with 2 columns: Description and Amount. Rows include Revenue from state sources: Direct appropriations from state, State school aid - Current, Driver education, Miscellaneous, Total, Appropriations from the state representing redistribution of federal funds: Vocational education, ESEA PL 89-10 - Title I, Total revenue from state sources.

Table with 2 columns: Description and Amount. Rows include Revenue from federal sources - National Defense Education Act, Total general fund revenues - Forward.

Table with 2 columns: Description and Amount. Rows include Incoming transfer accounts from other school districts in the state: Tuition - Other districts, Transportation - Special Education, County special education tax, Total incoming transfer accounts, Total general fund revenues plus incoming transfers from other school districts.

Table with 2 columns: Description and Amount. Rows include EXPENDITURES - Schedule 1: Instruction, Administration, Health Services, Transportation Services, Operation of plant, Maintenance of plant, Fixed charges, Total current operating expenditures.

Table with 2 columns: Description and Amount. Rows include Capital Outlay, Student Services, Outgoing Transfers, Total general fund expenditures.

Table with 2 columns: Description and Amount. Rows include EXCESS OF EXPENDITURES OVER REVENUE RESULTING IN A NET INCREASE (DECREASE) IN FUND EQUITY - Exhibit A.

Administration:

Table with 2 columns: Description and Amount. Rows include Salaries: Board of Education, Superintendent and assistants, Secretarial and clerical, Other salaries, Total Salaries, Contracted services, Supplies - Office.

Table with 2 columns: Description and Amount. Rows include Other expense: Travel expense and mileage allowance, Rental of Equipment, Printing and publishing reports, Miscellaneous, Total other expense, Total expenditures for administration.

Table with 2 columns: Description and Amount. Rows include Health Services, Transportation Services: Salaries: Supervisors, Bus drivers, Secretarial and clerical, Total salaries, Contracted services - Pupil transportation, Supplies: Gasoline, oil and grease, Tires, tubes and batteries, Miscellaneous, Total supplies, Total expenditures for transportation.

Table with 2 columns: Description and Amount. Rows include Operation of plant: Salaries: Plant engineers, Custodial service, Other, Total salaries, Contracted services, Supplies and other expense: Heating fuel, Utilities, Custodial supplies, Total supplies and other expenses, Total expenditures for operation of plant.

Table with 2 columns: Description and Amount. Rows include Maintenance of plant: Salaries - General maintenance, Supplies, Replacement of equipment, Total expenditures for maintenance of plant, Fixed charges: Insurance and judgments, Rental of land and buildings, Interest on bus contracts, Other - Retirement board fee, Total expenditures for fixed charges.

Table with 2 columns: Description and Amount. Rows include Capital outlay: Site acquisition and improvement, Remodeling and improvement of buildings, Furniture and equipment, Total expenditures for capital outlay.

Table with 2 columns: Description and Amount. Rows include Student services: Food, Student Body activities, Total expenditures for student services, Outgoing transfers - Tuition.

Table with 2 columns: Description and Amount. Rows include Total expenditures for operation of plant, Total expenditures for maintenance of plant, Total expenditures for fixed charges, Total expenditures for capital outlay.

Table with 2 columns: Description and Amount. Rows include Total expenditures for operation of plant, Total expenditures for maintenance of plant, Total expenditures for fixed charges, Total expenditures for capital outlay.

Table with 2 columns: Description and Amount. Rows include Total expenditures for operation of plant, Total expenditures for maintenance of plant, Total expenditures for fixed charges, Total expenditures for capital outlay.

Table with 2 columns: Description and Amount. Rows include Total expenditures for operation of plant, Total expenditures for maintenance of plant, Total expenditures for fixed charges, Total expenditures for capital outlay.

Table with 2 columns: Description and Amount. Rows include Total expenditures for operation of plant, Total expenditures for maintenance of plant, Total expenditures for fixed charges, Total expenditures for capital outlay.

Table with 2 columns: Description and Amount. Rows include Total expenditures for operation of plant, Total expenditures for maintenance of plant, Total expenditures for fixed charges, Total expenditures for capital outlay.

Table with 2 columns: Description and Amount. Rows include Total expenditures for operation of plant, Total expenditures for maintenance of plant, Total expenditures for fixed charges, Total expenditures for capital outlay.

Table with 2 columns: Description and Amount. Rows include Total expenditures for operation of plant, Total expenditures for maintenance of plant, Total expenditures for fixed charges, Total expenditures for capital outlay.

EXHIBIT III

DEBT RETIREMENT FUND BALANCE SHEET, JUNE 30, 1967

Table with 6 columns: Debt Retirement, 1952, 1954, 1958, 1966, Total. Rows include ASSETS: CASH IN BANK: Union Savings Bank of Manchester, Commercial account, Certificate of deposit #468, Bond and coupon trust accounts.

Table with 6 columns: Debt Retirement, 1952, 1954, 1958, 1966, Total. Rows include TAXES RECEIVABLE - Exhibit G: 1964-65, 1965-66, 1966-67, Total.

Table with 6 columns: Debt Retirement, 1952, 1954, 1958, 1966, Total. Rows include LIABILITIES AND FUND EQUITY: LIABILITIES - Due on matured bonds and coupons, FUND EQUITY: Debt Retirement Fund equity, June 30, 1966, Net increase (decrease) in fund equity - Exhibit D, Debt Retirement Fund equity, June 30, 1967, Total.

Table with 6 columns: Debt Retirement, 1952, 1954, 1958, 1966, Total. Rows include NOTE: Reserve requirement - Schedule 3, DEBT RETIREMENT FUND REVENUES AND EXPENDITURES FOR THE PERIOD FROM JULY 1, 1966 TO JUNE 30, 1967.

Table with 6 columns: Debt Retirement, 1952, 1954, 1958, 1966, Total. Rows include REVENUES: Debt retirement fund property tax - Exhibit G, Interest and penalties on delinquent taxes, Interest on investments, Total revenues.

Table with 6 columns: Debt Retirement, 1952, 1954, 1958, 1966, Total. Rows include INCOMING TRANSFER - Capitalized interest from building and site fund, Total revenues and incoming transfer.

Table with 6 columns: Debt Retirement, 1952, 1954, 1958, 1966, Total. Rows include EXPENDITURES: Redemption of serial bonds at maturity, Redemption of serial bonds prior to maturity, Interest on bonded debt, Premium on retirement of bonds, Other debt retirement expenses, Total expenditures.

Table with 6 columns: Debt Retirement, 1952, 1954, 1958, 1966, Total. Rows include EXCESS OF REVENUES OVER EXPENDITURES RESULTING IN A NET INCREASE (DECREASE) IN FUND EQUITY - Exhibit C.

Table with 6 columns: Debt Retirement, 1952, 1954, 1958, 1966, Total. Rows include BUILDING AND SITE FUND REVENUES AND EXPENDITURES FOR THE PERIOD FROM JULY 1, 1966 TO JUNE 30, 1967.

Table with 6 columns: Debt Retirement, 1952, 1954, 1958, 1966, Total. Rows include REVENUES - Interest on current deposits and investment securities, INCOMING TRANSFERS - Proceeds from sale of bonds, Total revenues and incoming transfers.

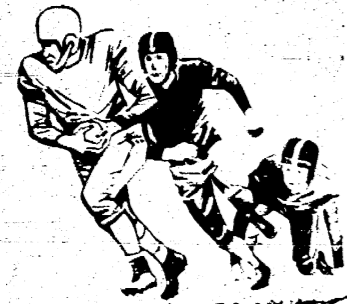
Table with 6 columns: Debt Retirement, 1952, 1954, 1958, 1966, Total. Rows include EXPENDITURES: Site acquisition and improvement, New buildings and additions, Furniture and equipment, Other, Total expenditures.

Table with 6 columns: Debt Retirement, 1952, 1954, 1958, 1966, Total. Rows include OUTGOING TRANSFERS - Transfer to 1966 Debt Retirement Fund of capitalized interest, Total expenditures and outgoing transfers.

Table with 6 columns: Debt Retirement, 1952, 1954, 1958, 1966, Total. Rows include EXCESS OF REVENUES OVER EXPENDITURES RESULTING IN A NET INCREASE IN FUND EQUITY - Exhibit E.

Table with 6 columns: Debt Retirement, 1952, 1954, 1958, 1966, Total. Rows include BUILDING AND SITE FUND BALANCE SHEET, JUNE 30, 1967.

Table with 6 columns: Debt Retirement, 1952, 1954, 1958, 1966, Total. Rows include ASSETS: CASH IN BANK: Union Savings Bank of Manchester, Commercial account, Manufacturers National Bank of Detroit, Certificate of deposit SO6922, ACCRUED INTEREST RECEIVABLE, Total.



Lefty's Sports Corner

CONGRATULATIONS TO CLINTON

The Redskins are champs again and sure deserve the title. They showed the Dutchmen some fine offensive running and defensive work.

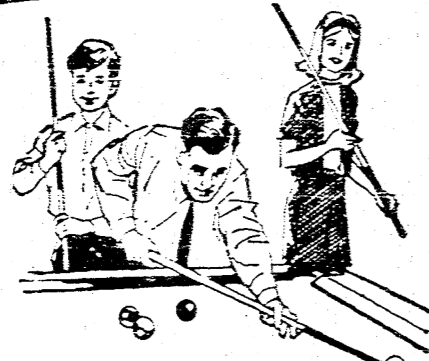
Butch Hoelzer is one of the Redskins that the Dutchmen could not stop. This young man is something to see. He does everything that is possible and I do mean everything.



Refreshing the Nation's Economy

What is the brewing industry worth to the American economy? Reckon it in billions. Here are some of our annual outlays, in round numbers:

Billiards THE FAMILY GAME



New Fun Game, Easy To Play... All Can Learn!

Try billiards for an evening's fun. It's new... exciting... easy to learn... the whole family can play together... great fun, and so inexpensive!

CHELSEA LANES 1180 M-52 Phone GR 5-8141

They have made me proud of the Dutch's only touchdown. I am happy to say, "I am from Manchester, the home of the Flying Dutchmen!"

JR. HIGH BEATS NOVI 19-13

The Jr. High played some good ball Monday night at Manchester. In beating Novi, Scott Limpert scored two touchdowns and Lenny Minor scored one.

J.V.'S LOSE TOUGH ONE 12-8

The Dutch J.V.s played their last game at Onstead on Nov. 1. It was one of those nights of rain, mud and fog, but the boys did play some fine ball.

MANCHESTER WOMEN'S NOVEMBER 7, 1967

Table with columns: Team, Won, Lost. Lists various teams and their records.

John Weidmayer scored the Dutch's only touchdown. So, as they say in the big league, "Wait 'till next year." Some of these boys will be in the big league next year so don't forget to go out and see them.

Manchester Business Men October 31, 1967

Table with columns: Team, Won, Lost. Lists various teams and their records.

Manchester Business Men October 31, 1967

Table with columns: Team, Won, Lost. Lists various teams and their records.

Manchester Business Men October 31, 1967

Table with columns: Team, Won, Lost. Lists various teams and their records.

WANTED Listings of all kinds. Let us take care of your Real Estate needs. James I. Fahey, representing John B. Fahey, Broker GA 8-8348 GA 8-4342

Ski-Doo '68 The lively one... out-races, out-performs out-funs any other. Snowmobile! AVAILABLE AT DEATRICK'S SALES & SERVICE 5 MILES NORTH OF CHELSEA AT 18100 M-52 PHONE 479-4871

MANCHESTER JAYCEE'S TURKEY SHOOT SUNDAY NOVEMBER 12 1 P.M. TO 5 P.M. SCHAFER AIRPORT 3 Shots Donation \$1.00

MANCHESTER BUSINESS MEN

Table with columns: Team, Won, Lost. Lists various teams and their records.

Table with columns: Team, Won, Lost. Lists various teams and their records.

Table with columns: Team, Won, Lost. Lists various teams and their records.

F.H.A. Euchre Party Saturday, NOVEMBER 11 High School Auditorium 8:00 p.m. 50c Door Prize

LEGAL NOTICE ORDER OF PUBLICATION General. STATE OF MICHIGAN. File No. 52344. Probate Court for the County of Washtenaw.

Publication and service shall be made as provided by Statute and Court Rule. Dated: October 25, 1967. ROSS W. CAMPBELL Judge of Probate.

Publication and service shall be made as provided by Statute and Court Rule. Dated: October 25, 1967. ROSS W. CAMPBELL Judge of Probate.

Publication and service shall be made as provided by Statute and Court Rule. Dated: October 25, 1967. ROSS W. CAMPBELL Judge of Probate.

BREATHALYZER TO BE ADMINISTERED TO DRUNK DRIVERS

If you're arrested for driving under the influence of alcohol in the Clinton Post area of the Michigan State Police, there's a good chance you will find out that the Breathalyzer is all about.

Refusal to take a chemical test could result in the automatic suspension or revocation of the driver's license.

The three most common chemical tests for alcohol now given analyze the driver's breath, or urine. However, a new law states that a driver has the option to demand that only a breath test be given.

The new law also brings Michigan into substantial conformity with the Federal highway safety standard regarding alcohol and highway safety.

YES WE ARE MAKING LONG-TERM FARM REAL ESTATE LOANS SEE US Federal Land Bank Association 665-6139 2221 Jackson Ave. Ann Arbor, Mich. 48106 P. O. Box 1006

CHRISTMAS CLUB CHECKS MAILED

The Union Savings Bank of Manchester announces that Christmas Club checks totaling \$55,000.00 are being mailed this week to the 455 members of the Christmas Club at the Bank.

Christmastime is here and the organization that originated this plan in 1910 reports that this year nearly two billion dollars will be distributed throughout the nation and will average \$129.00 per member.

The 1968 Christmas Club officially opens November 13 and an invitation is extended to all to join this popular savings plan, that makes it easier to cope with Christmas expenses and other year-end bills.

The Manchester Optimists are planning a Youth Appreciation Dance to be held at the High School from 8:30 until 11:30 on Friday, November 10.

BROWN'S TELEVISION & RADIO Sales & Service Zenith T.V. Emerson T.V. & Radio Black & White. Color Voice of Music

Fancy Jonathon and McIntosh APPLES Bring Containers, Pick Your Own \$2.00 bu. or 3 bu. \$5.00 Pick up your Cider Apples - 50c a bushel BEISIEGEL ORCHARDS Telephone NO 8-7563 2645 Peters Road Dexter, Mich. (Across from King-Seely Factory)

TWO GIRLS MAY WIN SCHOLARSHIPS

The records of two area girls, one from Manchester, who were top winners at the State 4-H Show, are now being submitted for consideration for national scholarships, according to Mrs. Carolyn Little Washenaw.

Miss Kemmer placed first in the dairy foods division. She received a wrist watch for her efforts.

Miss McCalla took first place in the swine competition. She will receive an all-expense paid trip to the National 4-H Club Congress to be held in Chicago, Ill., Nov. 24-30.

The girls competed at the state show held on the Michigan State University Campus in East Lansing last August.

WHAT'S THE PF IN YOUR BASEMENT Did you know your basement has a "best corner" that is, a corner that provides the best protection against radioactive fallout?

MANCHESTER OPTIMISTS TO HOLD DANCE The Manchester Optimists are planning a Youth Appreciation Dance to be held at the High School from 8:30 until 11:30 on Friday, November 10.

JAY L. (BOB) HILL

Funeral services were held Saturday for Jay L. Hill, age 64 years. He died Wednesday, Nov. 1 at his winter residence in Pine-llas Park, Florida.

He was born January 16, 1903 in Reading, Michigan, the son of Alice Hill. He was married to Madge Troop on Nov. 13, 1926. She survives.

He had been an employee of the Ford Motor Company until his retirement in 1962 because of poor health.

He was a member of the Manchester Methodist Church. Other survivors include one son Roger of Phoenix, Arizona and three daughters, Mrs. Ted (Janet) Wilkinson of Norvell, Mrs. Vernon

MASTER MIX FEED & GRAIN CUSTOM GRINDING E. G. MANN & SONS Manchester I N C. Bridgewater GA 8-3411 GA 8-3032

NICE Selection of Used Cars & TRUCKS See Lyle Widmayer or Tom Marshall TOM MARSHALL, INC. 512 W. MAIN ST. MANCHESTER, MICHIGAN

WEST BRIDGEWATER EXTENSION WILL MEET

The west Bridgewater Extension group will meet Wednesday, November 15 at the home of Edna Buss with Elsie Manor as co-hostess.

Lesson is on windows. The group will make favors for the State Hospital.

Billiards THE FAMILY GAME

MANCHESTER JAYCEE'S TURKEY SHOOT SUNDAY NOVEMBER 12 1 P.M. TO 5 P.M. SCHAFER AIRPORT 3 Shots Donation \$1.00

NEW Fun Game, Easy To Play... All Can Learn!

Grossman Huber SERVICE DEALERS IN GULF PRODUCTS MINOR ENGINE TUNE-UPS TIRES BATTERIES MANCHESTER GARDEN 8-4211

Male Help Wanted
For General Office Work
Manchester Stamping Corp.
17951 West Austin Road, Phone
428-8594 11/2-9

MOTHERS
School-home coordinating work.
10 to 30 hours a week. School,
church or 4-H work helpful. Ex-
cellent earnings if accepted. Call
Mary Mickelson NO2-7900 tm
WANTED: Baby sitter in my
home 6 a.m. to 4 p.m. Phone
428-8572 11/2 tm

HOUSE FOR SALE: 8 rooms in-
cluding 3 bedrooms, 2 baths,
family room, full basement, one
and one-half car garage on a half
acre. Owner selling, 18879 W.
Austin Road. Phone 428-8170
11/9

FOR SALE: Home grown potatoes,
\$2 bushel. Phone GA8-8296 11/9
**MICHIGAN ARTIFICIAL
BREEDERS**
13 breeds, \$7.00 a service.
Second and third services free.
Phone Ann Arbor 665-6869 or
Manchester 428-2644.

GARAGE SALE: Nov. 10 & 11
9 to 12 a.m. New and used cloth-
ing and furniture. Betty Hough,
625 Duncan St. near Double A.
LOST: BOY'S GLASSES in Man-
chester Halloween night. Reward
call GA8-8244 Ambrose Lentz

FOR SALE: Brown studio couch,
Good condition. Four bedsprad,
twin size. 428-8663 11-9
READ THE NEWS and know! I
on sale at the IGA, Paul's Dairy
and Fred & Ellen's Restaurant
Sundays and Dailies. 11/16

FOR SALE - 1951 Chevy 1/2
ton pickup. Runs good 428-3091
FOR SALE: Holstein bulls -
serviceable age, dehorned and
blood tested. Ready to go. LeRoy
Ehms, 10440 Case Road, Brooklyn,
Phone 592-6393. 12/14

WANT

TO BUY TO SELL TO RENT

ADS

TO HIRE HELP WANTED LOST & FOUND

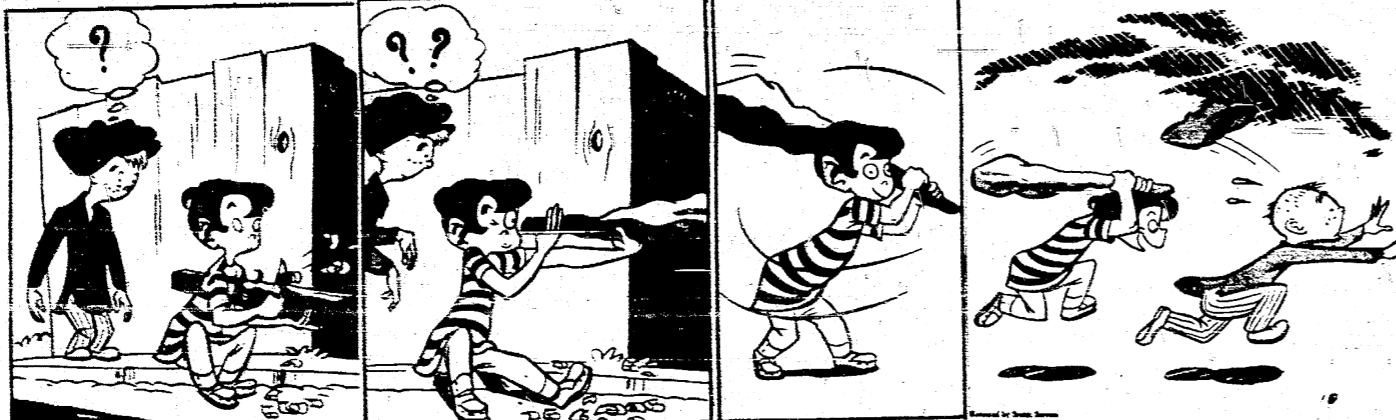
Rural Delivery



Grubby



DEEMS



SONNY SOUTH



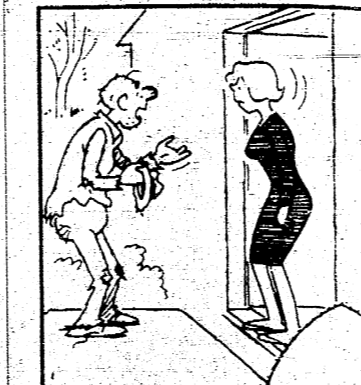
Grandpa's Boy



THOSE WERE THE DAYS



POPS



LOOKING AROUND

Thieves in Harrington, Eng-
land, have three times strip-
ped the lead roofing off the
Parish Church.

A well known manufacturer
of farm machinery has put
out a tractor that is air
conditioned, upholstered and car-
peted. It has a stereo-tape
player, radio and closed-cir-
cuit television trained on the
implement the tractor pulls.

Justino Costa is beginning
to think that somebody
doesn't want him in the
neighborhood. Twice he has
tried to build a house in Viana
do Castelo, Portugal, and
twice someone has torn it
down. Then he found a coffin
in his yard, with his name on
it. But Mr. Costa simply used
the lumber in the coffin to
start on his house for the
third time.

NOTICE
Dear Marvin - I wonder if you
could mind very much owing
me the shirts sparkling with red,
green and gold glitter? I waited
for you in Ben Franklin - Men's
Department - and before I
could get the kids had pulled out
lots of the shirts and were
decorating them with glue and
sequins. You see, I'd promised
you and Jimmy we'd get some
sequins and glitter and make up
Christmas decorations. I guess
you couldn't wait! Please meet
me Saturday. I'm sure you'll
get some Hanway socks Ben
Franklin has on sale - three pairs
for \$1.00. Love, Pauline.

CARD OF THANKS
Many thanks to all who re-
membered me during my recent
stay in the hospital. My eye
surgery seems to be a real success
so with thanks to the Lord, I'll be
seeing you.
Mrs. Elmer (Nellie) Dettling

FOR SALE: 24 hog feeders.
Excellent condition. Size 3 ft.
dia. Priced to sell. Take one or
more. 428-8668

ACCOUNTANT
Must have Bachelor degree from
accredited college with not
less than twelve semester hours
Accounting or completion of a
3-year Accounting course in a
recognized Business College. In-
Michigan must have one year of
accounting or auditing experience.
Salary range \$6911-\$8727, de-
pending on qualifications. Liberal
Civil Service fringe benefits. Call
writer: S. J. Gilman, Supt.
Directions Camps, 6000 Mauts-
sall, Grass Lake, Michigan,
Area code 313-475-3561

Praclean
"flower fresh"
carpet and upholstery cleaning
in your home the safe, sure way
dyeing from process revives
fibers, brings colors to life
without messy staining
without harsh scrubbing
call for free estimate
after 3:30 p.m.
428-8485
Frederick Wurster Mgr.

**Manchester
Coin Dry
Cleaning
& Laundromat**
JUST AS GOOD
AND MUCH CHEAPER!

**WILLIS
REAL ESTATE**
LAKE, TOWN & COUNTRY
MULTIPLE LISTING
SERVICE
Gross Lake 522-8121
or dial 473-8424
Mark McKernan

Tom Marshall Ford Used Cars
67 Chev. Impala, 2 dr. Hd. Tp.
V-8 P. Steer. like new.
65 Ford Gal. 500; 4 dr. sedan
V-8; Auto. Pwr. Steer. locally
owned.
64 Comet Caliente; 4 dr. sedan
V-8; Auto. Pwr. Steer. New.
65 Mustang 2 dr. Hd. Top
V-8; Auto. Pwr. Steer.
perfect condition.
65 F-100 1/2 ton pickup
6 cyl. 8 ft. box. low mileage

**WANTED: Compressor
Station Maintenance
Employee**
Michigan Gas Storage has a
full-time job opening for
qualified applicant to perform
operation and maintenance work
at a Natural Gas Compressor
Station. Must be high school
graduate and in good health.
Excellent employee benefits. Apply
at:
Freedom Compressor
Station
12201 Pleasant Lake
Manchester, Mich.
Equal opportunity employer

Sutton Agency, Inc.
For
Complete Insurance Service
136 East Main Street
Manchester, Michigan
Phone 428-2881
Ag. and Branch Mgr.
Res. OA 8-2881

JULE EDER
AGRICULTURAL LIMING
MATERIALS
AND FERTILIZER SPREADING
7745 FOREST
DEXTER, MICHIGAN
TELEPHONE HA 6-8212

**SHOE
REPAIRS**
DON'T THROW AWAY OLD SHOES
You can have them remade at such
a small cost that it would be silly to buy
new ones. Bring them to us now!
**RAPID SHOE REPAIR
PICK-UP SERVICE
AT GAMBLES
IN MANCHESTER
(ONE WEEK DELIVERY)**
In Ann Arbor
RAPID SHOE REPAIR
216 E. Washington
Ph: 665-2724

Brooklyn Commercial Office Service
124 MAIN ST., BROOKLYN, MICHIGAN
ACCOUNTING - BOOKKEEPING - INCOME TAX SERVICE
OFFICE SUPPLIES, SALES & SERVICE
TELEPHONE ANSWERING SERVICE
COPYING MACHINE SERVICE
TELEPHONES - BROOKLYN
592-6631 592-6632 592-6633

going up?
You can with us. Because of Edwards Brothers' tremendous growth
(we expect to double our size in the next five years), our employees
have a unique chance for career growth. Combine your abilities with
the opportunities at Edwards Brothers. Current openings:
BOOK MANUFACTURING REPRESENTATIVE
SALES TRAINEE
OFFICE SUPERVISOR
COMPOSITION-ESTIMATOR
COPY TYPISTS
MARK-UP MAN
PRODUCTION CONTROL ASSISTANT
Excellent starting salary plus profit-sharing (commission and ex-
pense accounts for salesmen), pleasant modern surroundings, Blue
Cross and Blue Shield included in liberal benefit program.
Contact Mr. Harlan Ross, Personnel Manager
Evening and Saturday appointments may be arranged
**EB EDWARDS BROTHERS
INCORPORATED**
2500 SOUTH STATE STREET, ANN ARBOR, MICHIGAN 48104
Telephone 313 769-1000
Equal Opportunity Employer MICHIGAN'S LARGEST BOOK MANUFACTURER

"They'd rather switch to a
Gas Incinerator
than fight my smoke!"

"I can't believe it - replaced by a young upstart who doesn't
even smoke! This incinerator fellow must not have any pride
- he even consumes garbage! No self-respecting trash burner
would attempt that! And who's going to keep the neighbors
in their place by blowing smoke and soot in their yard?
You'll see... replacing me with an automatic Gas Incinerator
will make a big difference in their life!"

You, too, can end trash and garbage
problems by switching to a new,
smokeless, odorless Gas Incinerator

**Save \$20
ON INSTALLATION**

See your
Gas Appliance
Dealer NOW
during this
**SPECIAL
SALE**

L.V. KIRK
ELECTRIC WIRING & SUPPLIES
Phone Manchester 428-3701 or 428-9331
We can arrange with Detroit Edison
**FREE Wiring on Water
Heater Dryer & Range**

