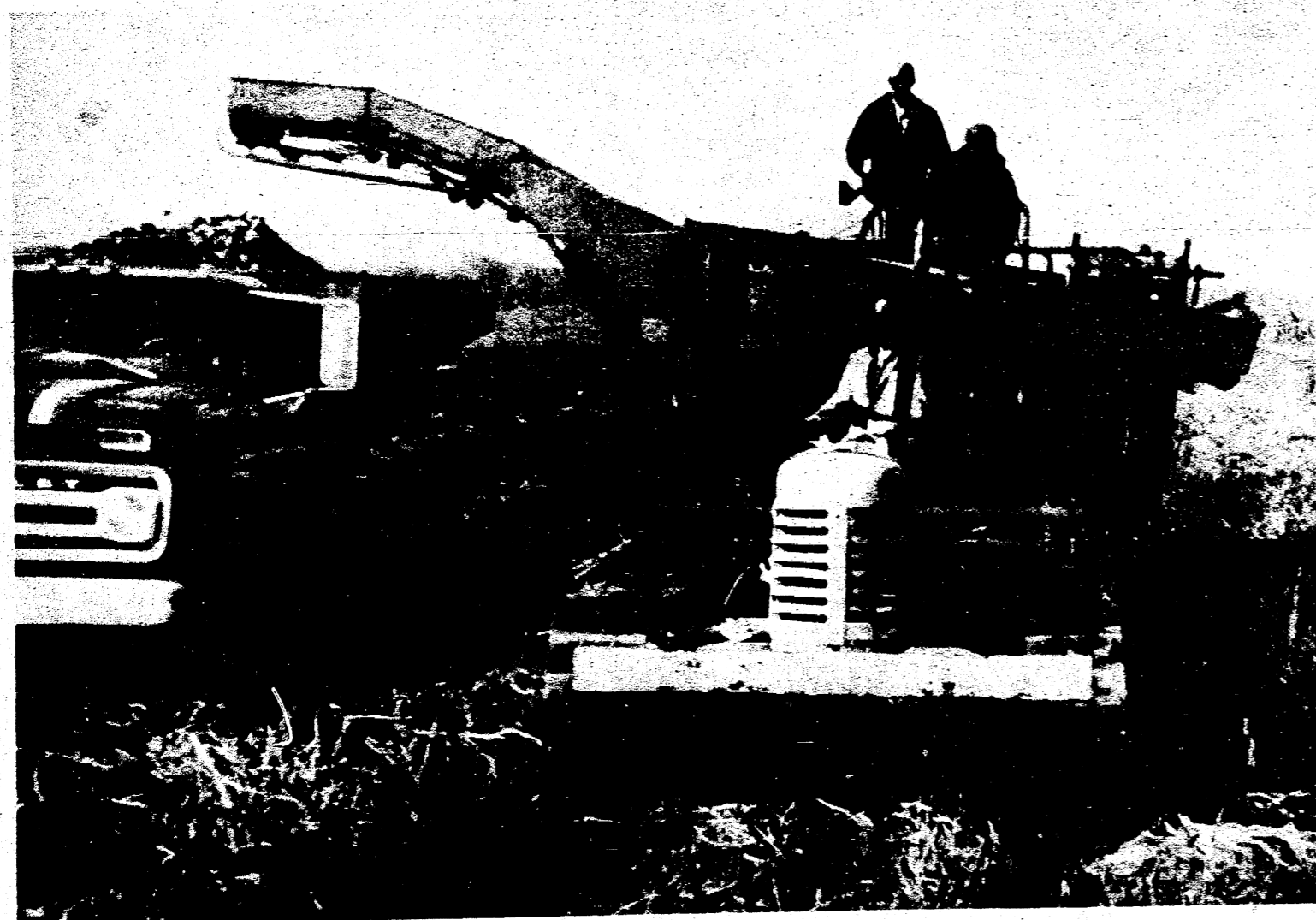


RAISING POTATOES ON ONE OF THE AREAS LARGEST FARMS



Automation takes the place of many farm hands as the huge potato harvester lumbers along the rows of potatoes at the Manchester Farms and piles them on trucks to be taken to the graders about a mile away. It takes three men on the harvester.

—by Marie Schneider

Did you ever give any thought as to where the potato chips you eat might have been grown? It might well be that they were raised on the Manchester Farms on Esch Road northeast of here under the watchful eye of Tom Walton.

Tom, who has been in the potato business for some 25 years, is assisted by his son David in managing the big operation. And it is a big operation! The Manchester Farms include some 1800 acres of which some 500 acres are planted to potatoes each year. The close of the harvest time is fast approaching for the brown skinned spuds. The muck soil is best fitted for the Merrimac, Sebagoes and Katadin varieties. Muck produces a very white colored potato.

The yield is about 300 to 500 bushels per acre—depending on the weather and a number of conditions which contribute to the final output of the fields.

It is an interesting experience to watch the huge diggers, potato harvesters as they are called. They plow their way along the rows searching out the potatoes and automatically lifting them onto the trucks.

It takes two men to operate the equipment and from 10 to 15 acres can be harvested in a day. The Manchester Farms have three such harvesters. Sometimes during the harvest, when problems arise, this production can drop to as little as three acres.

At the peak of production some 30 men are employed where ten years ago they hired 50 or 60 men. That was before the automation.

When the harvester is filled it chugs off down the road to the automatic grader where the potatoes are carefully unloaded onto belts. There inspectors quickly snatch out the sun burned ones and the potatoes which are too small or too large. Yes, potatoes can be too big to go on the automatic slicers for chips.

Most of the crop is loaded directly onto the huge semi-trucks which line the roadway at the farm operation at this time of year. Five to ten trucks are loaded during the day. Each carries close to 40,000 pounds of these "high gravity potatoes."

The Manchester Farms and the Godfredson farms near Grass Lake are the two largest potato farms in this area. But the potatoes are different. At Godfredson the potatoes are raised on clay loam soil which produces a mineral type potato. Both are excellent potatoes but the uses vary.

About 90 per cent of the crop is shipped directly from the field at the Manchester Farm operation. Most are shipped south. The rest are put in storage.

This amounts to about 10 per cent of the crop and these will be distributed during the winter months. The crates used for storage are no ordinary sized ones. These are huge crates and hold a ton or about 30 bushels each. Potatoes are also dumped into bulk storage where a 55 degree temperature is maintained. Bottled gas provides the heat.

A small percentage of migrant workers assist at the peak of the harvest. Labor has been cut to a minimum by the use of the automatic equipment from planting time through the months of cultivation.

Chelsea has been named as one of eight Michigan points of origin which is putting in a new rail rate reduction on the shipment of potatoes to southern destinations.

The rate reduction will amount to as much as 46 cents a hundred weight and estimates are that the rates could save Michigan potato shippers up to a quarter of a million dollars a year.

The new rail rate reduction will affect shipment from Chelsea to Atlanta, Ga., Jacksonville, Knoxville and Nashville, Tenn.

The reason that Chelsea is named as one of the eight points is because of the Manchester Farms, located between Manchester and Chelsea. Manchester no longer has a railroad track so the shipping point nearest the farm would be Chelsea.

In the past, potatoes have not been shipped from Chelsea but

Farms and piles them on trucks to be taken to the graders about a mile away. It takes three men on the harvester.



Dave Walton oversees the conveyer as the tons of potatoes are transported to the semi to be taken to southern potato chip factories.

Robert DeVine, New York Central agent expects that about 10 carloads will be shipped from the Manchester Farms.

The rail rate reduction averages about 38.5 cents per hundred weight, according to Director B. Dale Ball of the Michigan Department of Agriculture, whose transportation specialist worked eight months to achieve the lower rate.

The average savings in transportation costs over the previous rate is \$192.44 a car. This is based on the usual car loading of 50,000 pounds of potatoes. The quantity would amount to at least 1,200 cars of potatoes from Michigan moving south every year. Last year Michigan produced about 9.5 million hundred-weight of potatoes.

Points of origin shown in the new tariff for potatoes are Ann Arbor, Bay City, Chelsea, Greenville, Kalamazoo, McBride, Martin and Pearl.

Last year C. B. Todd, secretary of the Michigan Potato Industry Council pointed out that potato shippers in Maine, Wisconsin and Idaho enjoy lower rail rates on carlot potato shipments to the south than does the Michigan shipper.

Because of the high rail rates on potatoes many shippers transported their potatoes by unregulated truck to the southern points where Michigan potatoes are much in demand and on the increase by the potato chip manufacturers.

District Wool Contest Saturday At Emanuel

About 60 girls from the Second District will compete in the "Make It Yourself With Wool" contest at 1:30 p. m. Saturday, November 26 at the Emanuel Church hall. The public is invited.

District 2 includes Jackson, Hillsdale, Lenawee and Washtenaw counties. Mrs. Lawrence of

Bridgewater is the director. Winners in the district contests in Michigan will model their garments at the state style show, Saturday, Dec. 10 at Michigan State. The program is sponsored by the Women's Auxiliary of the National Wool Growers Association.

Consumer Power Again Offers Award

Hunting season could be a time of woe for thoughtless hunters who shoot at electric insulators.

Consumers Power Company this week renewed a \$100 reward for information leading to conviction of anyone whose careless gunfire causes a power interruption.

Besides interrupting electric services to hundreds of people the hunter also is taking a big chance, often his own life.

A recent incident near Midland resulted in a power line falling almost to the ground. In its path it left fire and molten metal as the line passed through other lines.

The careless shooter was endangered by the flashing electric arc and, if standing nearby, could have been electrocuted.

Other persons passing through the same woods could have touched the still-live lines as it swung at eye level, until Consumers Power employees located the damaged section.

Often, reports Harry R. Wall, vice president—electric operations, the power interruptions are just "outright vandalism."

"Consumers Power is prepared to prosecute vandals who cause electric blackouts. It's not just a matter of homes being without electricity. Often it involves hospitals, police, fire departments and other essential services," Mr. Wall said.

TWO NEW TEACHERS ADDED TO MANCHESTER STAFF

Starting the second semester the Manchester School System will have two new teachers added to its staff.

Last week Monday the Board of Education approved the hiring of Miss Sally Ann Home of Owosso and Miss Martha Shierson of Adrian.

Miss Home is a graduate of the Owosso High School and the University of Michigan. She will teach high school mathematics in the local school.

Miss Shierson is from Adrian. She received her BA Degree from the University of Michigan in 1965 and will be receiving her MA Degree from the same institution in December of 1966.

Miss Shierson will be teaching remedial and corrective reading in the local school system and will be in charge of developing a remedial reading program designed to help pupils in all grade levels.

To Meet

The Iron Creek Study Group will meet on Friday, December 2 at 7 p. m. with a potluck supper at the Iron Creek Church.

Jolly Farmerettes Meet in November

The November meeting of the Jolly Farmerettes was called by vice president Vicki Eisele at the Sharon town hall.

Major business of the evening dealt with the club's participation in the community service project. These included the balloon sale, March of Dimes, sunshine boxes and Christmas gifts for the children in the hospital.

Preliminary plans were made for the club's Valentine party and the annual Club Achievement night.

Count Achievement awards were presented: Bread Award, Joan Price; Vegetables, Susan Jacob; Clothing, Vicki Eisele; Home Economics, Kathy Feldkamp and Vicki Eisele; Knitting, Margaret Kemmer and Valorie Vogel; Food Nutrition, Becky Feldkamp and Margaret Kemmer; Child care, Joyce Bowers.

Games and refreshments followed the meeting. The club report is Valorie Vogel.

THE MANCHESTER ENTERPRISE

Manchester Library
P.O. Manchester
Complimentary

99th YEAR No. 10

Independent in all things. Devoted to County and Home News.

DECEMBER 1, 1966

10 Cents

Hunter Shot To Death In Sharon Township

A 22-year-old Manchester man was killed Friday morning while deer hunting in Sharon Township.

Clifton McGee was pronounced dead on arrival at St. Joseph Mercy Hospital, Ann Arbor where he was taken in the Jenter ambulance.

According to a report from the Washtenaw County Sheriff's Department McGee was killed while hunting in open country near Easdes and Jacob Road in Sharon Township.

He was hunting with his brother Larry McGee, and a friend, Lucas Gaus, both of Manchester.

This is believed to be the first fatal deer hunting accident in the county in recent years, although there have been squirrel and small-game fatalities within the last few years.

The shooting occurred about 7 a. m. Officers said McGee was shot through the right shoulder. Sheriff's deputies said it was dark at the time of the fatal shooting.

McGee's brother and Gaus told officers they saw a deer and shot at it. Right after that they heard another shot and McGee yelled. Officers said neither of McGee's hunting companions was involved in the shooting, believed to be accidental.

Capt. Irving H. Hollis said that the companions said that McGee had gone down another side of the hill and was not with them when the shooting occurred.

An autopsy was performed to determine the exact cause of death and the calibre of the bullet which went into his chest.

Deputies said McGee was killed by a single shotgun slug of about six-tenths ounces.

McGee had been a resident of Manchester his entire life and was married and the father of two children. He was employed at Double A Products in Manchester.

Couple Celebrates 75th Birthday

Mr. and Mrs. Clayton Parr celebrated their 75th birthdays last Saturday, Nov. 26 at the Parr 111 Ranch west of the village.

Mr. Parr's birthday was on Sat. Nov. 26 and his wife's birthday was Sunday, Nov. 27. Both are 75 years.

Their four children and their families, numbering 14 grandchildren were at the buffet dinner.

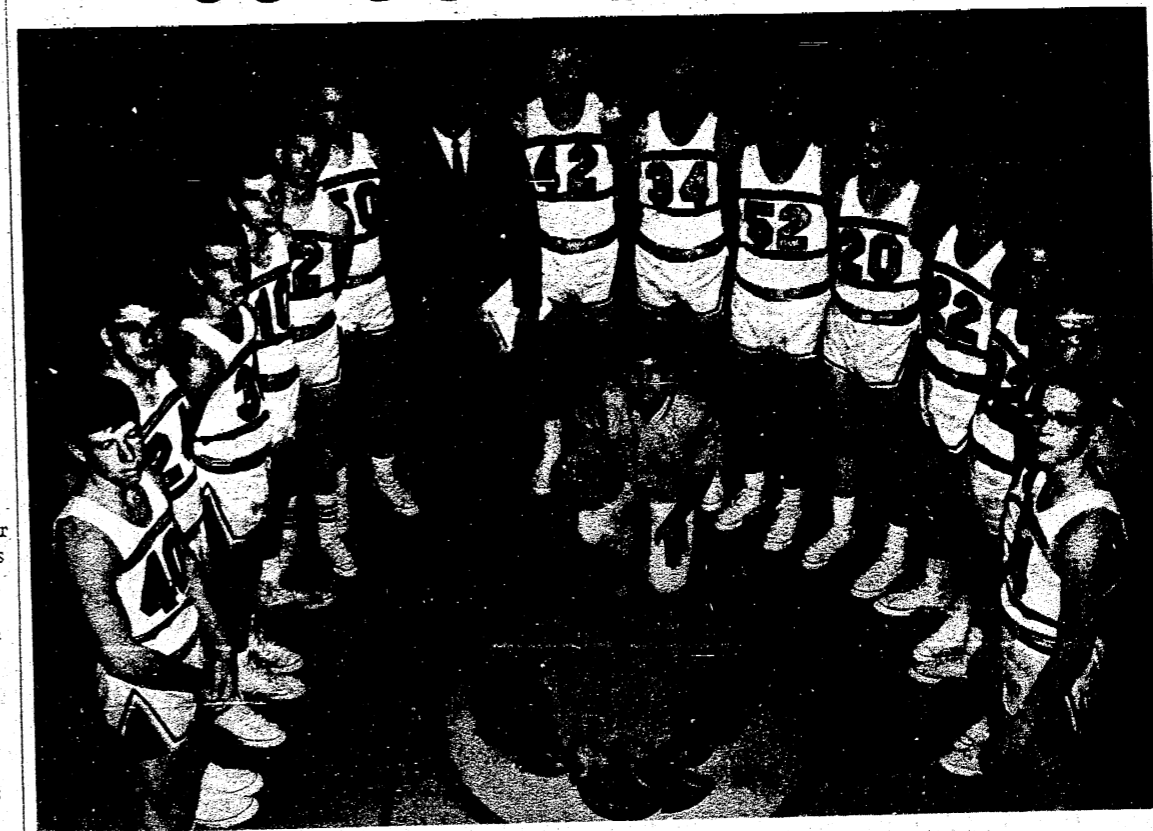
Three of their grandchildren, Susan and Nancy Walker of Manchester and Elizabeth Parr of Redford, students at Michigan State University were also present. The party was arranged by their children, the Jesse Walkers and Floyd Parrs of Manchester, Howard Parrs of Redford and Leslie Parrs of Birmingham.

Games and refreshments followed the meeting. The club report is Valorie Vogel.

Visits in Rhode Island

Mr. and Mrs. Allan Whiteman and daughter Terry spent the Thanksgiving holidays at Providence, Rhode Island where they visited Michael McGee, a former resident, now attending the University of Rhode Island.

GO - DUTCHMEN - GO



MANCHESTER DUTCHMEN'S VARSITY BASKETBALL TEAM 1966-67

Left to right: Jay Scott, Danny Smith, Homer Glen Buss, Bill Panches, Pat Wallace, Scot Arnold, Walter, Gary Wilde, Larry Fielder, Dave Schiller, Dick Fielder, Rick Lowery and kneeling, Randy Gary Schick, Coach, Art Feldkamp, Doug Parr, Fielder, Manager.

SNOW AND WIND MAKE HAZARDOUS ROADS

Monday night's freezing drizzle which later turned into a real blizzard caused treacherous roads in all of the county causing schools to close on Tuesday.

High winds drifted the snow into banks. And under the snow was a coating of ice.

By Tuesday morning the snow had totaled four inches at the Willow Run U.S. Weather Station.

Street crews worked all day in Manchester clearing streets before the predicted new snow slated for Wednesday night.

Emanuel church bazaar which was held Tuesday despite the snow was reported a success although there are still two tables of handwork, including lovely aprons and many novelty Christmas ornaments. It was reported that these articles

will be left in the church hall dining room through Sunday for anyone to purchase. It was believed that many people were kept from patronizing the bazaar because of the weather and this will give them an opportunity to see some of the hand made articles.

With over 1150 students out of school on Tuesday it was not difficult to find someone to shovel snow.

Traffic was nearly paralyzed late Monday night and early Tuesday.

But this area was at the edge of the real storm which crippled northern Michigan and stranded hundreds of motorists in the Upper Peninsula. Hardest hit was Marquette which reported its worst storm in recent years.

For those who want snow to help them get in the Christmas spirit—this is for them.

Most of the stores here are gayly trimmed and many are offering a fine selection of gifts. Check the Enterprise ads for more details.

GREETINGS FROM HOME

The American Red Cross is preparing recordings of greetings from families to service men in order to make the holidays more pleasant for the servicemen who won't be home for Christmas.

The "Voices From Home" program is conducted through the Washtenaw Chapter of the Red Cross on Packard Rd.

Families of the GI's can make a record and send greetings to their sons, fathers, brothers, and the Red Cross will send the recording to be played back for the GI. This record will go wherever American soldiers are stationed. The service is free.

Communications with servicemen who are prisoners are more difficult. To date the International Red Cross has not received an answer to inspect prisoner of war camps as provided for in the 1949 Geneva Conventions.

The Red Cross committee continues to press for camp inspection and for assurances that mail from next-of-kin is reaching captured Americans. The Red Cross believes that part of the mail is distributed.

Washtenaw county servicemen's families can be sure that the recordings "Voices From Home" recordings will be getting through to bases and ships involved in the Viet Nam conflict.

To Meet

The Iron Creek Study Group will meet on Friday, December 2 at 7 p. m. with a potluck supper at the Iron Creek Church.

Manchester Dutchmen will open the 1966-67 Basketball season when they meet their arch rival the Clinton Redskins Friday, Dec. 2nd. The game will be played at the Manchester High School Gym at 8 p.m.

Under new coach Gary Schick the Dutchmen will be featuring a more control style of ball, combination man to man and zone defenses. Coach Schick feels the team lacks height but their quickness should carry the Dutchmen through a successful season. The starting five for the Dutchmen will have Larry Fielder, Senior, and Danny Smith, Junior as the Forwards. Gary Wallace, Senior, and Rick Lowery, Sophomore, as Guards. Controlling the center will be 6'4" Art Feldkamp. Returning lettermen Dick Fielder, Larry Fielder, Pat Wallace, Art Feldkamp, Gary Wilde and Scot Arnold. Danny Smith and Rick Lowery are both carry-overs from the J.V.'s. Coach Gary Schick thinks that they have shown tremendous improvement, ability, and a great desire to win.

MOMS NEED COOKIES TO FILL BOXES

Local MOM's Club needs home made cookies and candies if they are to fill boxes—some 130 of them for veterans at the VA hospital in Battle Creek and also for shut-ins in Manchester.

Ever since World War 11 this group has worked to give others a "Merry Christmas". Some 85 boxes for the hospital will be filled Monday, December 12 at the Emanuel Church hall.

Mrs. Louise Huber and Mrs. Lo Ren Trolz are chairmen of the hospital committee and cookies and candy can be left with them or Mrs. LeRoy Marx. Then too, they can be taken directly to the church hall on December 12.

MOMS plan to deliver to the hospital on December 14.

During the year the club has a Tag Day and other fund raising projects to enable them to carry on their hospital work.

NAME COURT AID FOR JUVENILE UNIT

George E. Foltz, 44, of St. Louis, Mo. will assume his duties as director of the Juvenile Division of the Washtenaw Probate Court on January 2.

Foltz' appointment as director was announced jointly by Probate Judge John W. Conlin and Judge Francis L. O'Brien, probate judge-elect, after they conferred with the St. Louis court official.

The new director has been an assistant Juvenile Court since Aug. 1, 1958. In this position he was the actual administrator of a court with a budget of more than a million dollars and a staff of 75.

Expenditures related to the Washtenaw Court are expected to total \$740,000 in 1967, and the court has 40 full-time staff members.

His appointment came as a result of a nationwide search by Judge Conlin's Citizens Advisory Council to replace Mrs. Saranne Bolhuis, who resigned Aug. 12. She is now with the County Intermediate School District.

Merry Christmas

Oh...my,
wondering what to buy?

Well, don't fret it; the Enterprise Christmas Shopping Guide will save the day.

For Mom, Dad, Sis, baby Brother and even the family pooch...we've the perfect answer—just turn to our Christmas Shopping Guide running every week from now until Christmas.

Page 4

MRS. FRED MUNSON GUEST SPEAKER AT METHODIST CHURCH

—by Marie Schneider

Women of the Methodist church and guests listened to Mrs. Fred Munson as she explained and told about some of her observations while she and her family were spending a year in India. She highlighted the talk by showing slides of the trip.

"India is grateful to the United States for the help we have given but sometimes I think we have the idea that we should tell India just what direction to take," said Mrs. Munson.

She was referring in particular to the help of the United States during the Chinese invasion in 1962.

The Munsons, who live at 9981 Bethel Church Road, Manchester are back home after a year in India where her husband was doing research work for the Ford Foundation.

When the Munsons first decided to go and take their four children with them, some of their friends thought it was a big undertaking.

Their oldest, Marguerite (Meg) is 11, Cal is 9, Jonathan, 6, and Nathan, 4.

But India is no stranger to the Munsons. Fred Munson was working for the New York State Oil Co. in the early 1950's in Calcutta, when Mary flew from Oklahoma City to marry him. They lived there for three years and Meg was born there.

Although they are happy to be home, they hope to return to India. Munson is now at the University of Michigan working in industrial relations.

"We are lucky. We all had good health while we were there," Mrs. Munson said. "Some of the most essential things to remember are to boil water for drinking and be sure the cooking is clean."

The Munsons found that India is changing rapidly. New buildings are rising and there are many more middle class people now than there were 10 years ago. However, there is still disease, poverty and filth.

"The country is still 80 per cent rural and industry is sadly lacking," Mrs. Munson observed. "There is a scarcity of farm equipment and the buffalo remains the beast of burden. There are many problems. But if we can contribute something, then our efforts are not in vain."

"There is a saying 'As goes Asia, so goes the world.' If this is true then we should do what we can to help."

Dictating to these people and trying to lead them is not the answer; they have their own opinions, according to Mrs. Munson, who stressed that what this country does for India should be done with no strings attached.

Many, many people lack enough food, she added, and some of the living conditions are deplorable. The sweltering heat of summer is hard on both men and beast. But the Ford Foundation provides lovely homes for employees—complete with air conditioning.

One day while going for a drive the Munson car developed engine trouble. While waiting for the garage to send out help she raised the hood. In a matter of minutes a crowd of natives gathered to take a look—not that they could help—but they were curious.

She told about trimming a silver Christmas tree and the Indians enjoyed it. They love garish colors. Mrs. Munson has some Christmas pictures she snapped with Santa riding a camel.

Few people of the middle class have cars, which are far too expensive.

Cow riots are not uncommon. Although the cow is considered sacred and is not to be killed it seemed to be all right for people to starve to death, Mrs. Munson said. It was pitiful to see how little some people had to eat, sometimes only a little grain.

Among India's other problems are the poorly paid teachers who teach in the evening to supplement their pay. The Munson children started to go to school in the public institution but it did not work out and they were placed in the American international school.

WINNERS NAMED IN DISTRICT WOOL CONTEST

The District Two "Make It Yourself With Wool" contest was held on Saturday, November 26 at the Emanuel Church hall with 24 contestants from Jackson, Lenawee, Hillsdale, Monroe and Washtenaw Counties.

Jennifer Jane Walker, daughter of Mr. and Mrs. Max Walker of 490 Herring Rd., Litchfield will represent the senior division and Jill Case of 514 Park Rd., Jackson daughter of Mr. and Mrs. Leland Case will represent the junior division at the state finals on Saturday, December 10 at the Union Building, Michigan State University, East Lansing.

Alternate junior is Bonnie Lee Stemen, Saline and alternate senior is Martha J. Wooden, Litchfield. Both alternates received a traveling sewing kit by Coats & Clark Company.

Percilla D. Boris, junior contestant of Jackson received a gift certificate from Folschek's, Jackson for excellent coordination to the girl in line, color and fabric.

Elizabeth Anne Bower, senior contestant in Chelsea received a gift certificate from the Clinton Wool-

an Mills Retail Store, for excellent coordination to the girl in line, color and fabric.

Judy Borchardt, junior contestant and Sally Ann Glas, senior contestant of Ann Arbor received wool skirt lengths from Pendleton Woolen Mills for Outstanding presentation of wool that has an atmosphere of freshness, smartness and simplicity with a spark of imagination.

Carol Lynn Shoonover, junior contestant of Stockbridge and Janet Vorn, senior contestant, Adrian received one year subscription of the Vogue-Butterick School Catalogue for choice of fabric and construction methods as being appropriate to reasonable durability.

Linda Mary Hewitt, junior contestant from Jackson and Sharon Norma Prindle, senior contestant from Ann Arbor received durable sewing aids and sewing baskets for current fashion awareness interpreted in wool.

Local area contestant was Martha Hieber, daughter of Mr. and Mrs. Elton Hieber of Bethel Church Road, Manchester.

Alternate junior is Bonnie Lee Stemen, Saline and alternate senior is Martha J. Wooden, Litchfield. Both alternates received a traveling sewing kit by Coats & Clark Company.

Percilla D. Boris, junior contestant of Jackson received a gift certificate from Folschek's, Jackson for excellent coordination to the girl in line, color and fabric.

Elizabeth Anne Bower, senior contestant in Chelsea received a gift certificate from the Clinton Wool-

Spends Holiday Here

Mr. and Mrs. John Wakefield and Amy of Greenbelt, Md. spent the Thanksgiving holiday vacation with her mother, Mrs. F. M. Reck.

CHRISTMAS PARTY

The Abieter Society will hold their potluck supper and Christmas party Monday, Dec. 5 at the Knights of Columbus hall beginning at 6:30 p.m.

Calendar of Events

Village Council meeting will be held Monday, Dec. 5 at the village hall.

Band Boosters will be holding their meeting at 8 p.m. Dec. 6.

Christmas Workshop at Emanuel will be held Sunday starting at 4 p.m. for families and a potluck supper will follow. Those attending are asked to bring dishes to pass and table service.

The Friendship class will meet at 7 p.m. at the Sharon EUB Church on December 6.

METHODIST CHURCH Coming Events

On December 15th, at 7:30 p.m., the Church School will present their Christmas Play.

The W.S.C.S. will pack Christmas boxes on December 15, at 1:00 p.m.

Rev. & Mrs. J. Epps, after enjoying the summer in Michigan, have returned to their home in Florida, and would be pleased to hear from their friends in Manchester. Their address is: Rev. & Mrs. Epps, 1415 Regal Road, Clearwater, Florida, 33516

IRON CREEK CHURCH Coming Events

Missionary Sunday will be observed during the 11 a.m. Sunday School hour.

The choir of the Iron Creek Church will present their Christmas musical program at 8 p.m. Sunday, December 4.

The annual Iron Creek Church meeting will be held Friday, Dec. 9 with a potluck supper at 7 p.m. This will include the election of officers for the church Sunday School.

The Christmas program will be held Thursday, Dec. 22 at 8 p.m.

The Women's Missionary Society annual Christmas potluck luncheon will be held Thursday, Dec. 15 at 12:30 p.m.

HAS SURGERY

M. H. Wolfe is recovering satisfactorily at St. Joseph Mercy where he underwent surgery on Monday.

Shakespeare Club Luncheon

The annual Shakespeare Club Christmas luncheon will be held at the home of Mrs. William Palmer on Tuesday, December 6 at 1 p.m. Members are asked to bring international dishes to round out the menu.

THE MANCHESTER ENTERPRISE

Established in 1867

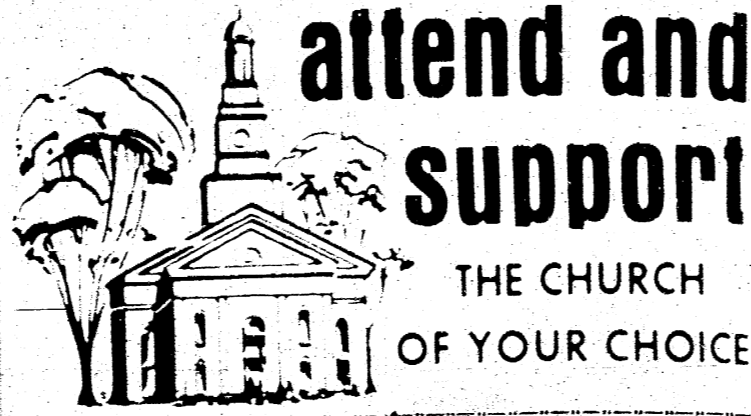
George and Lois Koca Editor and Publisher

Published on Thursday at Manchester, Mich. and entered as second class matter at the post office at Manchester, Michigan, under the Act of March 3, 1879.

Subscriptions Rates

In Michigan	
One Year	\$3.00
Six Months	\$1.75
Single Copies	10¢
Outside Michigan	
One Year	\$3.50
Six Months	\$2.25
Single Copies	10¢

Service men or Women, anywhere One Year...\$3.00



- BAPTIST CHURCH**
Rev. E. P. Cranston
Bible School . . . 10 A.M.
Worship Service . . . 11 A.M.
Youth Groups . . . 7 P.M.
Evening Worship 7:45 P.M.
Thurs. Evening Prayer & Bible Study . . . 7:45 P.M.
- ST. MARYS CHURCH of Manchester**
Fr. Raymond Schlunkert
Sunday Masses 8 A.M., 9:30 A.M., 11:15 A.M.
Daily 7:30 A.M. Sat. 8 A.M.
First Friday . . . 5 A.M.
- ST. JOHN'S E & R CHURCH**
Freedom Township
Rev. Stephen Peterson
Worship Service . . . 9:30 A.M.
Sunday School . . . 10:30 A.M.
- ST. THOMAS LUTHERAN CHURCH**
MISSOURI SYNOD
on Elsworth Road
Rev. John Rehr
Sunday Worship . . . 10 A.M.
Sunday School . . . 11 A.M.
- Sharon Evangelical United Brethren Church**
Rev. John F. Price
Sunday School . . . 10 A.M.
Worship Service . . . 11 A.M.
- EMANUEL EVANGELICAL**
Rev. Ralph Kuehler
Sunday School . . . 9:15 A.M.
Worship Service 10:30 A.M.
- ZION LUTHERAN CHURCH** Rogers Corner
Rev. C. J. Renner
Sunday School . . . 9:00 a.m.
Church Service . . . 10:15 a.m.

Miss Brenda Eames will show her pictures from the Chonale trip last Summer at the W.S.C.S. luncheon on December 21, at 12:30.

Manchester Band & Vocal Concert will be held at Manchester High School, December 13th, at 8 p.m.

Are Now Available For

Tenants
Home Owners
Farm Owners
Office Buildings
Apartment Buildings

At a substantial savings in rates. Ask about these new package policies that are easy on your pocketbook.

SUTTON AGENCY, INC.
COMPLETE INSURANCE SERVICE

186 N. MAIN STREET MANCHESTER, MICHIGAN
Phone: GARDen 8-2891

Junior High Honor Roll

ENDING NOV. 4

"A" HONOR ROLL 8th Grade

David Bucholtz
Peggy Gilmore
Margaret Kemmer
Gary Schwab
Valorie Vogel

"B" HONOR ROLL 8th Grade

Michael Alber
Charles Benedict
Carol Boehler
Joyce Bowers
Eddie Braun
Douglas Brown
Cheryl Ervin
Donna Faulhaber
Nancy Grothe
Billy Haussler
Wendy Hainstock
Nancy Hanewald
Phillip Heimerding
Dennis Herman
Carol Home
Richard Hosmer
Jan Huber
Mary Keeser
Gene Kemeter
Karen Kopka
John Kress
Debbie Kulenkamp
Mark Lentz
Gary Luckhardt
Akai Marshall
Phillip Mickerson
David Noggle
Teresa Nortley
Susan Osborne
Jean Pfau
Joan Price
Cheryl Randall
Robin Roller
Charlene Sames
Karen Stutz
Candy Stevens
Kenneth Tindall
Dennis Tykiewicz
Frank Walkow
Kay Walter

HONORABLE MENTION

Susan Bower
Sandra Braun
Russell Carson
Rosanna Creech
Shirley Egeler
Sheryl Hieber
Dorian Hofhansien
Gerald Holzhofer
Gordon Hough
Jerry Krumm
Suzanne Mester
Anita Miller
Randy Patrick
Mark Roberts
Robert Schaffer
Sheila Schill
David Tapping
James Underwood
Gary Walter
John Weidmayer
Jane Widmayer

"B" HONOR ROLL 7th Grade

Debra Boelter
Lawrence Bowers
Sandra Brown
Marianne Cashin
Curtis Dettling
Jim Hamilton
Martha Heinrich
Charles Heslip
Anita Kirk
Monica Kirk
Gretchen Knaus
Jana Kress
Christopher Lentz
Joyce McAtee
Kathleen Murray
Marilyn Pratt
Robert Preston
Esther Prieis
Cindy Panches
Toni Roesch
Sally Samonek

Carl Schneider
Tim Spiess
Donald Tapping
Wayne Tervo
Ricky Vickery
David Walter
Connie Whittington

HONORABLE MENTION

Amy Althouse
Michael Prady
James Buku
Barry Dettling
LaVonne Dixon
Bobby Doelker
Louis Frey
Nancy Ganzhorn
Aletha Haab
Hugh Haessler
Lou Ann Helber
Denise Houghton
Susan Jacob
Betty Kelllogg
Mary Knickerbocker
Earl Meyer
Leonard Minor
Marcia Mosher
Billy Pfau
James Roberts
Carol Ross
Leslie Smith
Leon Sokolowski
Gary Stoll
Jackie Van Sickle
Daniel Wampler
Karen Watne

SHOP EARLY... MAIL EARLY

MANCHESTER ZIP CODE 48518

USE ZIP CODE

M. FAULHABER
General Excavating
Ditching, Basements, Tiling, Bulldozing
Artificial Lakes

Phone 428-8518
Call anytime day or night - Recorder takes messages
6060 ESCH ROAD MANCHESTER

4-H CLUB NEWS

Sharon Valley Hosts Families

On Saturday evening a family potluck supper was held in the Sharon townhall. Members of the Sharon Leathercrafters and the Sharon Valley Saddle Club were hosts to their families.

Mr. and Mrs. Russell Fuller were special guests of the club. Robert Karoub of the Ypsi Flyers 4-Hers of Ypsilanti and Miss Lu Ann Pratt of Manchester were also guests.

After a ham supper, the presentation of awards was made by Clinton Fisk who leads both clubs.

First year certificates went to Toni Roesch, Mary Ann McCalla, Jane Spangler and Larry Bowers and also to Diane Santure of Saline.

Fayette Finrock, Anna Tobias, Denise Stowe and Jeff Bruetle all received second year certificates.

A third year certificate went to Jim Bruetle with Sandra Finrock receiving her fourth year certificate with a gold seal. Sandra also received a special gift from the 4-H leaders. Those members not present to receive their awards were: John Cole, a first year certificate; Bill Haessler and Rodney Hoeff, second year certificates and Bruce Pratt, seventh year.

Miss Joyce Bowers was given a round of applause for winning the 1966 County Award for Child Care.

Showing of three colored movies completed the program. One was on the Detro t 200 a Walt Disney film "Secrets of the Underwater World" and the third "The Monte Carlo Rallye" which was a thrilling film of the 9:3 road race through the Alps.

Debbie Finrock won the door prize.



What'd you expect us to put our Overhead Cam Six in?

An ordinary car?

Our revolutionary 165-hp OHC 6 is so revolutionary we had to do something special with it. So we made it standard in all Tempests and Le Mans.

You see, it was inspired by those famous overhead cam engines in expensive European sports cars. With a few Pontiac refinements, of course.

That's why it'll keep running and running until somebody turns it off. And with a power reserve for expressway passing you'd normally expect from a V-8.

We even offer a 215-hp version that makes a lot of big V-8s seem awfully extravagant. Which is why we say, with a 6 like this who needs an 8?

Incidentally, a four-way hazard warning flasher, backup lights, and GM's energy absorbing steering column are some of the safety features also standard in all Tempests and Le Mans. So how can you possibly resist seeing your Pontiac dealer right now?

Pontiac 67/ Ride the Wide-Track Winning Streak

UNDERWOOD CHEVROLET-PONTIAC, INC.
105 BROWN CLINTON, MICH.

Christmas Cheer Starts HERE IN MANCHESTER

HEY KIDS!
IT'S THE TALK OF THE TOWN!
100 FREE GIFTS
WORTH \$1 to \$5
See Santa
DECEMBER 17

SEE SANTA SATURDAY, DEC. 17th IN MANCHESTER. ONE HUNDRED CANDY BOXES WILL CONTAIN GIFT CERTIFICATES FROM MANCHESTER MERCHANTS WORTH \$1 to \$5

MANCHESTER CHAMBER OF COMMERCE IN COOPERATION WITH THE MANCHESTER OPTIMIST CLUB

MENS TOP COATS
Special For December
Our Entire Stock

\$50.00 COATS NOW \$38.50
\$69.50 COATS NOW \$49.50

These are pure All WOOL J & F
Worambo Crossland Coats
Walt Schaible

We Now Have All Sizes
Mens & Boys
Western Style
BLUE JEANS
13 3/4 oz. weight
\$2.98 to \$3.98
Walt Schaible

Stocking Filler TOYS

See our big selection of toys, coloring books and games delightful surprises to tuck in their Christmas stockings!

Your Choice **10c**

BEN FRANKLIN
5th and 10th **LANNOM'S** \$1.00 UP

We're proud of our part in community progress!

THE MANCHESTER **ENTERPRISE**

ELECTRIC SLICING & CARVING KNIFE
\$14.95
WIDMAYER'S HARDWARE

We have about EVERY "BLOOMING" THING You Can Think of for Christmas this year give a LIVING GIFT

POINSETTIA
the traditional Christmas Flower

HUNDREDS of beautiful plants, cut flowers, table and mantel decorations, wreaths to choose from:

- RED RUSCUS
- WHITE PINE & CEDAR ROPING

WURSTER GREENHOUSE
FLORA FAX: PLACE YOUR WIRE ORDERS EARLY !!!

BROWN'S TELEVISION & RADIO
All new **VEST POCKET RADIO**

\$19.95

The ROYAL 20-G

ITS CHRISTMAS TIME IN OUR STORE
Hundreds of Beautiful Gifts for Women, Children & the Home

Robes - Dresses - Sweaters
Purses - Gloves - Hosiery - Slacks
Blouses - Scarfs - Handkerchiefs
Hangers - Pajamas - Gowns - Slips
Bed Spreads - Blankets - Rugs
Table Cloths
Hundreds of Other Items

MARX & MARX

We Salute

Pvt. First Class Stephen J. Brown, 20, son of Mrs. Homer Dennis, 527 Liberty St., Manchester completed an electronic technician course at the Army Signal School, Ft. Monmouth, N. J., Nov. 25.

He was trained in the operation and repair of systems in various Army radios, radar sets and electronic computers.

His father, Harold Brown, lives at 382 Columbus Ave. W. Belleville.

B P W Plans Christmas Dinner
On Monday, December 12 at 6:30 p.m. there will be a Christmas dinner at the Country Kitchen in Tecumseh for members of the Business and Professional Women's Club. Members are asked to meet at the Bank in Manchester at 6:30 p.m. Further information can be obtained by calling Mrs. Paul Kappeler. There will be a dollar gift exchange and guests are welcome.

LEGAL NOTICE

ORDER OF PUBLICATION
General
No. 51827

Probate Court for the County of Washtenaw.
Estate of MARY BLANCHE Palmer, Deceased.
It is Ordered that on December 14, 1966, at 9:30 A.M., in the Probate Courtroom at Ann Arbor, Michigan a hearing be held on the petition of Maurine Wood Copen for probate of a purported will, for granting of administration to the executor named, or some other suitable person, and for a determination of heirs.
Publication and service shall be made as provided by Statute and Court Rule.
Dated: October 31, 1966.
JOHN W. CONLIN
Judge of Probate

James C. Hendley
Attorney for Estate
Union Savings Bank Building
Manchester, Michigan N/17/24/1

ORDER OF PUBLICATION
General
File No. 50040

STATE OF MICHIGAN

Probate Court for the County of Washtenaw.
Estate of VERA M. HANNEMAN, Deceased.
It is Ordered that on December 14, 1966, at 9:30 A.M., in the Probate Courtroom in the City of Ann Arbor, Michigan a hearing be held on the petition of James C. Hendley, administrator, for the allowance of his first and final account in said estate. Publication and service shall be made as provided by Statute and Court Rule.
Dated: November 17, 1966
John W. Conlin,
Judge of Probate

James C. Hendley
Attorney for Estate
Manchester, Michigan M 3-24-1-8

ORDER OF PUBLICATION
General
No. 51492

STATE OF MICHIGAN

Probate Court for the County of Washtenaw.
Estate of CLARENCE J. SCHAIBLE, Deceased.
It is Ordered that on January 25, 1967, at 9:30 A.M., in the Probate Courtroom Ann Arbor, Michigan a hearing be held at which all creditors of said deceased are required to prove their claims, and heirs of said deceased shall be determined, creditors shall file said claims with the court and serve a copy on Bettie L. Schaible, of 208 North Washington Street, Manchester, Michigan, prior to said hearing.
Publication and service shall be made as provided by Statute and Court Rule.
Dated: November 17, 1966
John W. Conlin,
Judge of Probate.

Roesch & Delhey
Attorney for Estate
Manchester, Michigan 3-24-1-8

STRIKES 'N SPARES

MENS LADIES

MANCHESTER BUSINESS
Standings as of November 30th.

TEAMS	Won	Lost	Tp	Pts
Chelsea Lanes	28	11	10	66
Tool & Die	28	11	10	66
Walt Schaible	24 1/2	14 1/2	9	58
Enterprise	22	17	5	49
Browns TV & Rad	21	18	5	47
Spike's Mobil Ser.	18	21	8	44
Double A Products	18 1/2	21 1/2	6	43
Grossman-Huber	17 1/2	21 1/2	6	41
K & W Farm Sup'ly	16 1/2	22 1/2	6	39
Suton Agency Inc.	16	23	5	37
K Lager	15	24	6	36
Hoover Ball & Bear	9	30	2	20

High Team Game	Tool & Die	1106
Walt Schaible	1098	
Chelsea Lanes	1093	
High Team 3 Games	Chelsea Lanes	3124
Tool & Die	3108	
Chelsea Lanes	3094	
High Ind. Game	A. Hoef	278
R. Wurster	277	
B. Brady	275	
High Ind. 3 Games	R. Wurster	679
A. Hoef	641	
R. Walter	627	

Town Club

Team	Won	Lost	
Sportsman Club	28.5	11.5	
Tom Marshall	23.5	16.5	
Ready Mix	23	17	
S & W Builders	21	19	
Double A	20	20	
Speedway	19.5	20.5	
Laundromat	18	22	
A & B Grocery	17	23	
Uphaus Drug	15	25	
Grossman-Huber	14.5	25.5	
High Team 3 Games	Sportsman	act	2203
Speedway	w/h	2260	
High Team Single Game	S & W	act	813
Speedway	w/h	765	
High Ind. 3 Games	Polly Brokaw	546	
Susan Sizemore	511		
Phyllis Baker	494		
High Ind. Single Game	Marlene Schill	211	
Susan Sizemore	203		
Elaine Steele	200		

Masonic Lodge Lists Events

Monday, Dec. 5 at 8 p.m. regular communication and election of officers for the ensuing year.

Monday, Dec. 12 at 8 p.m. there will be public installation of officers by Past Grand Master Rex P. Sackett and staff of Ann Arbor. Refreshments will follow.

Thursday, Dec. 8 at 7:30 p.m. there will be stated convocation and public installation of officers for next year by DDI, Earl Quackenbush and staff of Ann Arbor. Refreshments will follow.

VA ANNUAL INCOME QUESTIONNAIRES DIES

It's that time of the year again when the Veterans Administration will be mailing annual income questionnaire cards to all recipients of non-service connected pension benefits from the VA.

The income-questionnaire cards will be included with the next pension check arriving about Dec. 1st.

This year the questionnaire cards are designated to be returned to various VA locations, namely Atlanta, Boston, Chicago, Los Angeles, Philadelphia, St. Paul, Seattle and Washington, D. C.

The questionnaires must be returned to the VA location designated on the card, no later than January 31, 1967.

It is very important that the instructions on the reverse side of the questionnaire card be very carefully read before attempting to complete the information on the questionnaire side.

If you are in need of assistance in the completion of your income questionnaire card, the Veterans Affairs Office will be pleased to assist.

The Veterans Administration this year is also sending out questionnaire cards to parents who are receiving death compensation benefits, or dependency indemnity compensation benefits.

Veterans who are receiving dependency benefits will also receive a special questionnaire this year.

Those having questions are urged to contact the Veterans Affairs Office at 304 Washtenaw County Building in Ann Arbor, or call for an appointment at N03-7511, ext. 271.

1966 TOWNSHIP REAL and PERSONAL TAXES

Payable To
Township Treasurer

TAXES WILL CARRY A 4% PENALTY IF PAID ON OR AFTER FEBRUARY 14, 1967

Bring unexpired Rabies Certificate for Dog License,
Mole & Unsexed \$3.00
Female \$5.00
Unexpired Rabies slips and proper amount of money may be mailed with taxes or alone to:
M. H. Wolfe, Twp. Treas.
Manchester, Mich.
Hours: 9 A.M. to 12 Noon
--- 1:30 P.M. to 5 P.M. ---

- Obituaries -

Clifton E. McGee, age 22, a life long Manchester resident, was killed Friday morning while deer hunting in Sharon Township. He was born Oct. 16, 1944 in Tecumseh, the son of Arthur and Geraldine Smith McGee.

On February 6, 1963 he was married to Janet Lowell. She survives.

Mr. McGee was employed at the Double A Products Co. of Manchester. He was a member of the Manchester Methodist Church. Other survivors besides his wife include: two sons, Clifton Jr. and David, his parents; one brother, Larry of Manchester and two sisters, Debora of Manchester and Mrs. Marjorie Miller of Springfield, Ohio. Maternal grandmother, Mrs. Mildred Smith of Manchester; several aunts, uncles and cousins.

Funeral services were held Monday at 1:30 p.m. at the Jenter Funeral Home. Rev. Oscar W. Cooper officiated. Burial was in Oak Grove Cemetery.

Edwin A. Knapp, age 60, of 15543 English Road, Manchester Township died Thursday, Nov. 24 in Herrick Memorial Hospital, Tecumseh.

He was born February 25, 1906 in Freedom Township the son of Adam and Nellie Westphal Knapp. He married Irene Koch on June 1, 1935 in Chelsea.

He was a member of the Bethel United Church of Christ in Freedom Township.

Surviving are his wife, three daughters: Barbara and Mary, both at home; Mrs. William (Kathryn) Martin of Ann Arbor; a son John of Chelsea, one grandson; his mother, Mrs. Nellie Knapp of Ann Arbor; two sisters, Mrs. Elmer (Mabel) Armbruster of Ann Arbor; Mrs. Edwin (Esther) Rauschenberger also of Ann Arbor; several nieces and nephews.

Funeral services were held at 2 p.m. Sunday from the Balm-miller Funeral Home with the Rev. T. W. Menzel officiating and burial was in the Bethel Cemetery.

BOWL for the fun of it...

Having Fun Lately? Bowling Is a Ball!

Put some fun in your life... Bowl for laughter and health at our modern, well-equipped lanes with rarely a wait. Bring the gang down!

CHELSEA LANES
1180 M-52 Phone GR 5-8141

Rent A Frozen Food Locker

Locker Rental
\$18.00 PER YEAR - DRAWER
\$16.00 PER YEAR - DOOR
OR \$3.00 PER MON.

Custom Slaughtering
EXPERT CUTTING - CORRECT WRAPPING
SHARP FREEZING - ZERO STORAGE

BEEF TO SELL BY SIDE OR QUARTER

Hunters
Bring Us Your Deer For Processing

MANCHESTER FROZEN FOOD LOCKERS
319 Morgan St. • Phone 428-5031

Hunting Is Not A Right

(taken from the official publication of the Michigan United Conservation Clubs.)

One of the major fallacies handed down by sportsmen from one generation to another is the belief that hunting (or fishing) is a right rather than a privilege. The origin of this misconception is not altogether clear but more than likely it stems from the fact that fish and wildlife are the property of the state and therefore available to the public for harvesting.

The latter premise is indisputable, but it does not automatically grant a hunter or a fisherman the right to enter upon another man's land without the permission of the owner. The game may be public property but he land is private.

The land-owner sportsman problem did not present itself in major proportions until after World War II when the land suddenly became a highly profitable item for speculation or investment and an increased interest in hunting swelled the ranks of sportsmen to record numbers.

Some of the landowners added only this increase in hunting pressure as an excuse or reason to post their properties. Others, reluctant to follow suit because they either fished or hunted themselves, waited with tolerance. They did not have a long wait.

With the new breed of sportsman came a peculiar brand of behavior. It embraced the belief that a hunter or fisherman had the unquestionable right to venture upon another man's property, whether that property was posted or not.

It also included fringe benefits. If a fence blocked access, it could be cut. It also included such examples as a pheasant breaking too close to the landowners' house the harvest of that bird was more important than the safety of inhabitants within or the property damage that might result.

If posters were present prohibiting trespassing without permission, they could be peppered with bird shot or tom down. If a farmer's barn was the only convenient place for parking a car, the car could be parked and the farmer left with the problem of getting his cattle out.

signs that might rim his property. He needs only to know that you hold some respect for him.

Sportsmen cannot afford to ignore this problem much longer, or to fight it with hostility or acts of vandalism. Land is being swallowed up too rapidly by commercial developers. That which is still suitable for hunting need not remain idle and wasted behind "No Trespassing" signs.

The man who trespasses upon another's property without permission or abuses it in anyway, would be the first to post his land if the situation was reversed.

With hunting seasons open throughout the country, let every sportsman pay attention to this most urgent problem. Visit the man on whose property you plan to hunt, ask for permission where it is necessary, and let him know you appreciate the privilege.

You'll find he's a regular guy. He may even show you where the best bird cover or deer stand is. And you'll enjoy the privilege made possible only through his generosity, that you have no right there unless he says so.

Remember that hunting or fishing another man's land is a privilege, not a right. The future of our outdoor sports depends on it.

Selling Christmas cards to raise funds is under way by three Washtenaw County non-profit organizations in their fight to wipe out emotional and physical afflictions.

The Washtenaw Association for Retarded Children has cards which were designed by Miss Ellen Rose, a student at Eastern Michigan University. The artist is majoring in art. Those wishing these cards can obtain them by contacting Mrs. Ted Chapek at 662-9177; Mrs. Robert Lyjack at 662-8654; or Mrs. Bert Beer at 482-0094.

The Washtenaw County Chapter of Muscular Dystrophy Association of America, Inc. has three varieties of cards. Designs include: "The Madonna," "Santa Claus" and an illustration of "The Dove of Peace." These cards can be obtained from the county clerk's office in Ann Arbor, the Treasurer, 529 Detroit St., or at the association's office at 622 S. Seventh Street, Ann Arbor.

Two designs of cards are being offered by the Washtenaw County Chapter of Michigan Association For Emotionally Disturbed Children. "A Partridge In A Pear Tree" was drawn by a 17-year-old girl under treatment and the reproduced drawing of "Sculpture" was donated to the organization by the Dow Coming Co. These cards can be obtained by contacting Mrs. Ralph Kraker at 662-2826; Mrs. John Power at 665-2412; and Mrs. Dale Rice at 482-8700.

Sale of Christmas Cards to Benefit Organizations

Selling Christmas cards to raise funds is under way by three Washtenaw County non-profit organizations in their fight to wipe out emotional and physical afflictions.

The Washtenaw Association for Retarded Children has cards which were designed by Miss Ellen Rose, a student at Eastern Michigan University. The artist is majoring in art. Those wishing these cards can obtain them by contacting Mrs. Ted Chapek at 662-9177; Mrs. Robert Lyjack at 662-8654; or Mrs. Bert Beer at 482-0094.

The Washtenaw County Chapter of Muscular Dystrophy Association of America, Inc. has three varieties of cards. Designs include: "The Madonna," "Santa Claus" and an illustration of "The Dove of Peace." These cards can be obtained from the county clerk's office in Ann Arbor, the Treasurer, 529 Detroit St., or at the association's office at 622 S. Seventh Street, Ann Arbor.

Two designs of cards are being offered by the Washtenaw County Chapter of Michigan Association For Emotionally Disturbed Children. "A Partridge In A Pear Tree" was drawn by a 17-year-old girl under treatment and the reproduced drawing of "Sculpture" was donated to the organization by the Dow Coming Co. These cards can be obtained by contacting Mrs. Ralph Kraker at 662-2826; Mrs. John Power at 665-2412; and Mrs. Dale Rice at 482-8700.

Classes Offered at Chelsea

A "foreman development program" dealing with the functions of management will get underway Nov. 30 at the Chelsea High School. This is a part of the Adult Education program now in progress in Manchester, Chelsea and Dexter schools.

The two-hour-long class sessions will be held each Wednesday beginning at 8 p. m. for a 12-week period. Cost per individual will be \$40 plus classroom costs.

DeWayne Peihl, who is working on his doctorate at the University of Michigan, is the instructor. The program is open to any persons aspiring to become foremen in plants in industry and also for those who are foremen in an effort to make their jobs easier.

Some of the fields to be studied include the function of management and the need for policies and procedures and how to solve problem techniques. Also to be studied are the needs for planning and organization and the foreman's responsibility in organizing for efficiency.

The program deals with human relations—how to give favorable orders and how to be a good listener, and communication up and down the chain of command.

The need for cooperation in the organization and planning control will be outlined. There will be a study on what people expect from their jobs and the foreman's responsibility toward his subordinates.

Management-Labor relations will be another category. Then, too, gripes and grievances and the need for good morale and how to create it will wind up this phase of the adult education program.

Post Office Accepting Applications

The Ann Arbor Post Office is now accepting applications for full-time employment in the carrier section. Applicants must have a good driving record and neat appearance.

If interested, please call the Personnel Office located in the Main Post Office, 2075 West Stadium Blvd., Ann Arbor.

LOW COST CLASSIFIED ADS GET RESULTS

HIRE • BUY • SELL • RENT • SWAP • HIRE • BUY • SELL • RENT • SWAP • HIRE • BUY • SELL • RENT

FOR SALE

FOR SALE: Corriedale Rams - pure bred lambs. W. E. Dieterle, 7285 Textile Road, Saline, 429-7874 tfn 9/29

CHRISTMAS TREES - 3 kinds, same fine quality - same low price Cummings Texaco, 815 City Rd. 12/1/8/15

FOR SALE

Generators for most cars. Used \$5.00 and up. Rebuilt ones \$9.00 and up

Batteries

Used \$4.00 Rebuilt \$6.00

New Springs

For most cars - also used

Pumps

Fuel pumps and water pumps used rebuilt late model

Mufflers

New \$6.95 Used \$3.00 We buy junk-wrecked cars We also stock I Beams, channels, angles, PLATES.

MANCHESTER AUTO PARTS

West Austin Rd., Manchester Phone GA8-5171

FOR SALE: CHRISTMAS TREES! cut your own, Scotch and Austrian pine to 8 feet. Any tree \$3. At Kendall Road between Jacob Rd. and Prospect Hill Rd. Open week ends. Phone GA8-4737 12/15

ADVERTISING GA 8-8388

HELP WANTED

HELP WANTED-MALE ENERGETIC MAN to work in growing organization. All fringe benefits plus pension plan. Apply Culligan Water Conditioning, 2321 Jackson Ave. Ann Arbor 11/3 tfn

HELP WANTED !!

ARLAN'S DEPARTMENT STORE Westgate Shopping Center Ann Arbor, Michigan

has immediate openings for Full or Part Time Help contact Store Manager 11/17 tfn

WANTED: Woman to clean five mornings per week. Preferred references. Write Box 336 % Enterprise Office. 11/24-12/1

ENTERPRISE DEADLINE



DISPLAY ADS & COPY
Monday 12 Noon

CARD OF THANKS

CARD OF THANKS We wish to thank those who contributed to the clothing sale to benefit Dollars for Scholars Fund. There will be another sale in the spring.

Manchester BPW (Business and Professional Women).
CARD OF THANKS

We'd like to thank our many friends, neighbors and relatives for the cards, gifts and flowers on the occasion of our golden wedding anniversary. We appreciated your thoughtfulness.

A special thanks to our children who made it all possible. -Mr. and Mrs. Oscar Bahnmiller
CARD OF THANKS

I wish to express my deep gratitude to all my many friends, neighbors and especially the women's Guild and the county nurse for the many kindnesses extended during my recent bereavement in the loss of my brother. Carl Walter

LOST & FOUND

REWARD OFFERED -for return of one red and white coon dog lost near Lamb and Pierce Road-name plate on collar. Phone VI 1-6851 William Payne, 41 E. Pleasant St. River Rouge, Mich.

FOR SALE: Electric "Detroit Jewel" range-used only 5 days-copper-tone-30". Paid \$250. will sell at \$150. Call GA8-2735

BE SURE TO SHOP THE ADS ON PAGE 4 - ENTERPRISE

KUKINI FLOWERS

125 W. Michigan Clinton, Michigan PHONE

456-4544 or GA-8-4181

TELEFLORA SERVICE

Serving Manchester, Saline, Tecumseh, Clinton

Sell Tomorrow - with a Want Ad Today!

ADVERTISING

To order ads, phone **GA 8-8388**

EAVETROUGHING



MONCRIEF FURNACE

WILSON METAL SHOP

154 E. MAIN PHONE 428-8468 MANCHESTER MICH.

Fresh Cut SELECT Christmas Trees NOW

Scotch Pine

Spruce 4'-5'-6' & up

Call

or Stop at

428-8149 DAY
428-4442 OR
428-9621 NIGHT

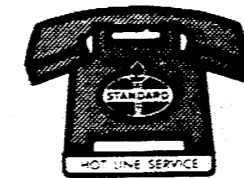
Riverview Barber Shop and Get Your Tree

Before you spend your good money, ask yourself this.

Which costs more—oil heat or gas?

Gas does, if you now have oil heat equipment. Consider these things. You can pay hundreds of dollars to have a new gas heating system installed. Your pilot light can cost about \$10 a year. You can be penalized for late payment of monthly gas bills. You have none of these with oil. Besides, you get 4% less usable heat with gas per BTU purchased as compared with oil. Before you spend needlessly, compare. Call new Standard Oil Hot Line—the modern service that has revolutionized oil heating. Now as always—You expect more from Standard and you get it!*

Don't buy the "gas line" until you call Hot Line.



In Manchester Dial **428-8366**



STANDARD OIL DIVISION AMERICAN OIL COMPANY
© 1966 THE AMERICAN OIL COMPANY, CHICAGO, ILL. *Trademark

THIS BURNS ME UP!
After giving them the best years of our life...
A GAS INCINERATOR!!

"Imagine... replacing us after we've sat out here in the snow and rain for all these years. We were good enough until they heard about that young upstart that consumes rubbish and refuse indoors. Since then we've had nothing but complaints about flies, smoke and odor, and the unpleasant chore of endless trips with trash and garbage. You'll see... replacing us with an automatic Gas Incinerator will make a big difference in their life!"

You, too, can end trash and garbage problems by switching to a new smokeless, odorless Gas Incinerator!

Save \$20 on installation
See your Gas Appliance Dealer NOW during this SPECIAL SALE!

Published by Consumers Power Company PG-D-925-32-5

L V KIRK Electric Wiring & Supplies

Manchester, Michigan

REGULAR COUNCIL MEETING

November 21, 1966

Council met in regular session. Called to order by president...

Table with financial entries: General Fund, Sewer & Water Fund, etc.

Moved by Lowery and supported by Gaige to furnish equipment...

It was reported that sewer work on Division Street would be completed...

Moved by Lowery and supported by Gaige to furnish equipment...

Moved by Gaige and supported by Bauer to approve Harry Sutton's application...

Read letter from Mrs. Thomas Marshall, Project Committee Chairman...

Moved by Gaige supported by Bauer to approve building permit for S. W. Builders on Sooton Road...

Discussion held on the progress of the new dump. Test borings have been approved...

The village clerk was directed to send a letter to the Township Supervisor regarding the danger cited by Village resident of open sewage pits at the Hoover plant.

Moved by Gaige and supported by McGuire, we adjourn.

H. F. Mabony, Acting Clerk

PAINTINGS TO BE SHOWN

A History of Michigan in Paintings... original oil paintings completed by artist Robert A. Thelen...

Selects Officers

The Washtenaw Association for Retarded Children held their annual election last Monday.

Norman Quackenbush of Milan is the newly elected president. Other officers are Dean Dorn...

Elected to the Board of Directors are Charles Billow, Jay J. Delany, Mrs. Irving Gordon, Charles LaPerriere, Dr. Robert A. Meyer...

MYI Reunion, Concert To Be Held In Ypsilanti

The alumni of Musical Youth International, an international musical performing group, will hold their annual Christmas Reunion and Benefit Concert on December 17 in Peace Auditorium, Ypsilanti.

The concert is sponsored by the Roosevelt High School Choir of Ypsilanti, Jean Sundquist is the director.

MYI includes a band and a chorus whose members are carefully selected from outstanding high school musicians between the ages of 16 and 19.

Legislation also requires that all candidates for office must be nominated by a primary election whenever there is more than one candidate running.

Supervisors Stymied On Bond Proposal

County Administration Theodore P. Smuck read several pages of a proposal to authorize the issuance and sale of \$1,490,000 in bonds for a Juvenile Court Center...

The Board of supervisors is still working and won't have their work completed until next Wednesday.

When the bonding resolution is passed there will be a 15-year retirement schedule with outstanding bonds callable after the first 10 years.

HOLD OPEN HOUSE

Mr. and Mrs. Wesley Proctor of 209 Jackson Road in Clinton, will observe their Silver Wedding Anniversary with an Open House at their home on Sunday December 11, 1966, from 2 to 8 P.M.

The County has decided that the Income Tax Office of Probate Court must move out of the County Building to make room for the third circuit court.

THE MANCHESTER ENTERPRISE

99th YEAR NO. 11 Independent in all things. Devoted to County and Home News. DECEMBER 8, 1966 10 Cents

Open Letter To The People Of Manchester

My Dear Friends, I would like to take this opportunity to thank everyone from my home town for their kindness and deep interest in me and for sending me so many cards, letters and presents this wonderful Christmas season.

My best wishes I extend to each and every citizen of Manchester this holiday season and once again thank you all for your generosity and support.

May God Bless and Guide You. Sincerely, Gordon L. Moore U.S.M.C.

HEADS MASONIC LODGE



Earl Alber

Installation of officers of the Blue Lodge 148 F & AM was slated for Monday, December 12 at 8 P.M. with public installation.

Officers are: Worshipful Master Earl Alber; Senior Warden David J. Meinhardt; Secretary, Max Walter; Treasurer, Paul Eisele; Sr. Deacon, Glen DeClaire; Junior Deacon, Clarence Knause Jr.; Marshal, Clayton Parr; Chaplain, Coo Trinkle; Organist, Roger Harrison; Tyler, William Richardson.

New stewards are Gerry Aiken, Irvin Roberts, Rev. John Price and Floyd Parr.

ITS TWINS!!

Twins were born to Mr. and Mrs. Wm. Walkow on Saturday, November 19 at St. Joseph Mercy Hospital, Ann Arbor. Mark Lee weighed five pounds 4 ounces and Michelle weighed four pounds 14 ounces.

The Walkowes have another child, Catherine Ann who is one year old.

PETITIONS MUST BE FILED FOR VILLAGE OFFICIALS

Manchester village clerk, Lyle Widmayer will be sending out notices of Suspension of Registration to about 75 electors of the village who have failed to vote in any village election in the past two years.

Upon receipt by the elector, the card must be signed and returned. Failure to do so will result in removal of the voter's credentials from the Village files.

Legislation also requires that all candidates for office must be nominated by a primary election whenever there is more than one candidate running.

The new law requires that candidates for village office are nominated by petition and must be filed with the village clerk no later than 4 p.m. Tuesday, Jan. 3, 1967.

The petition moreover must bear signatures of at least one percent and not more than four percent of the registered village voters--which in Manchester is 528. This means that the petition should be signed by at least 6 and not more than 24 voters.

If necessary, the primary election will be held on Monday, Feb. 20th. The general village election will be Monday, March 13.

Anyone wishing petitions can obtain them from village clerk, Lyle Widmayer, after December 15th.

VISITS HERE

General Dwight E. Beach, Commander-in-chief of the US Army in the Pacific, with headquarters in Honolulu, and his wife, stopped in to see Mr. and Mrs. J. C. Hendley Sunday.

Another guest at the Hendley home Sunday was Major Forrest F. Cathey. He was spending the week here with his mother, Mrs. Gaita Cathey and visiting friends.

Major Cathey has just completed a three year assignment at Rhine Main Air Base in Frankfurt, Germany.

His new assignment is at the Norton Air Base at San Bernardino, California with two month's special pilot jet schooling at Tinker Air Base, Oklahoma City, Oklahoma.

Needs Funds For Children

Whether or not some 200 children in Washtenaw have a Christmas gift will depend on the generosity of the people of the county, according to Probate Judge John W. Conlin.

He has been receiving numerous requests for shoes, sweaters and other articles in "letters to Santa" received by Juvenile Court workers as Christmas nears.

Contributions can be made by sending money to Judge Conlin at the Washtenaw County Building, Ann Arbor.

Assisting with the gift wrapping will be Junior Girl Scout Troops No. 258 of Pottengill School and 80 of St. Francis School.

Women's Auxiliary of the Washtenaw County Bar Association will buy the gifts and assist with the wrapping. They will deliver the gifts to the children with Mrs. Joseph C. Hooper Jr. directing the project for the Auxiliary.

Children will get gifts in both the dependent and neglected and delinquent categories of court wards and include those in age from infants to 17-year-olds. He is asking that people give money rather than gifts because of the varied age groups and the need for definite articles by each.

The gifts have to be selected with a definite child in mind. So the court needs cash for the gifts.

Band Concert

The high school band concert will be held at 8 p.m. Tuesday, December 13 at the high school gym. According to R. C. Sator, director, everything is in readiness for the concert--everything but the candy.

At this time there isn't any candy for the usual candy sale. This is one of the big money making projects of the Band Boosters Club. The profits from the sale are used to buy band uniforms, pay for scholarships to Interlochen and add to the Band Boosters' treasury.

Maybe it was because we had such a heavy snow fall early in November that made the committee pay little heed to making the candy when it was cold. But someone made a mistake and now the weather isn't cooperating.

At this time there is no candy for the concert. But the membership is hopeful that come next Monday, Dec. 12 they will have a good cold, crisp day and they will be able to make enough candy for the concert sale on Tuesday.

Sheriff to Crack Down on School Bus Passers

Sheriff Douglas J. Harvey of Washtenaw County has "stepped up a get tough policy against motorists who pass school buses which have stopped on county roads to pick up or discharge passengers.

"We have issued violations citations to drivers in the past few months but some we have let go with warnings. But now there are no more warnings to violators--only tickets," Harvey said.

Want To Be A Santa's Helper?

Acting Postmaster, Marvin Kirk wants to speed delivery of mail on the rural routes.

"It will be of great help to our carriers during the winter months if patrons along the routes will clear the snow from around the mail boxes after each snow storm.

Everyone wants to help Santa deliver his pack--and much of it comes in the mails. With the snow all cleared away it will be easy to approach every mail box and people will not be disappointed when the postman fails to stop.

Kirk also pointed out that several people have sent in zip lists but failed to have their own name attached. It is impossible for the post office to return these lists to the proper owners. If you happen to be one of those who sent in a list and have not yet had it returned to you it would be well to check with the post office.

LAMB TO BENEFIT FROM BLOODMOBILE

A recent Red Cross Bloodmobile in East Lansing received 19 pints of blood for the Manchester Blood Club for the "Red" Lamb account.

Douglas Spike and his brothers at the Farm House Fraternity are responsible for this wonderful gift. The Washtenaw County Chapter of the American Red Cross informed the Manchester Club this week.

Christmas is the time for remembering and giving--and Farm House has done so in a big way. "Red" will receive the news of his gift at his Cleveland address.

Fund Gives Final Report

The final report for the Manchester United Community Fund and Red Cross Drive was given at the Community Chest Board meeting last week Tuesday as follows:

Table with financial data: Public School Div. \$ 703.00, Outside Business 217.00, Businessmen's Div 2175.00, Village House-to-House 970.60, Rural House-to-House 1191.50, Industry Division 9960.07, Organizations 205.00. Total \$15,422.17

Out of this amount \$1,707.95 is earmarked for neighboring chests and will be paid to them when the pledges are collected.

A similar amount of money is expected to be received from sources which have not yet reported. This leaves a final total for the area of 120 per cent of quota.

The next meeting of the board will be early in 1967, the date to be announced later.

Just arrived in Ford Country! A late model used Ford warranty that makes history! Now you can get a 2-yr. or 50,000-mile power train warranty when you buy a 1, 2, or 3-year-old used Ford car!

FORD MOTOR COMPANY. Used Car 24/50 Power Train Warranty. Eliminate the possibility of high-cost repair bills... TOM MARSHALL, INC. 5107 MAIN ST. MANCHESTER, MICHIGAN

Oh...my, what to buy? Well, don't fret it; the Enterprise Christmas Shopping Guide will save the day. Page 4 & 5