

Eight  
CONTINUED FROM PAGE ONE  
SEE EUROPE ON \$5 A DAY

They had to remember that their clothing had to be the warmest and wear for the most part. Last year shirts were a real hit. Comfortable shoes were a must. They had to travel light because they couldn't afford a porter.

They started in traveling about 1,200 miles plus went to trans-Atlantic flights (available to college students for some \$200.00) for a total of 21,000 miles of first class transportation for \$400. This would be the price for a round trip flight in California. How about that?

But that's nothing but words of praise for the various student exchange programs. Believing these must have a helpful effect on the future of our country, visitors are saying that the more people learn about other parts of the world, the more they will love to become citizens of the United States.

"I realize that the basis of nations make the difference not by the name which the name people know about their foreign countries. The more they realize that people everywhere are pretty good and the better it will be for political peace to increase these people through a foreign nation is all right. Government is not in people." Bill said.

CONTINUED FROM PAGE ONE

### BISHOPS' CLOTHING DRIVE TOPS ALL

The drive will close the middle of next week in order to give everyone an opportunity to check and bring in articles to the church hall. There are no categories as to what will be donated. Light clothing, heavy clothing, blankets and bedding, remnants, shoes, shoes are to be tied together in their own bags.

CONTINUED FROM PAGE ONE

### EMANUEL CHURCH BAZAAR

Money from the project is used at Christmas time to help in the church work at the two hospitals, old people's home and college which are supported by United Church of Christ. Contributors are asked to have their money at the church hall the afternoon before the bazaar opens next Wednesday.

December 9, 1965

They had heard that Times might not receive their very good copy but this was not true. They knew a little about the Times and were glad to give it. The largest beer garden in the world is in Munich, Germany. A restaurant patron in the town floor were all there in 500 a year.

On the 10th of March they walked to the top of the mountain in a narrow difficult road and across the entire station. This they said was breathtaking.

The trip from Salzburg to Innsbruck across the Alps was "breathtaking" and in Munich they had the time to see the world's largest beer garden in Munich, Germany.

Bill liked Rome best, where history is a reality. He loved to "dicker" with the Italians for their wares. This was the only country where the merchant in the market place seemed to enjoy being haggled. There were two high. They made a game of it.

"We walked miles and miles in Rome, not wanting to miss a thing. We had to send a couple of letters through all major cities of Central Europe to Salzburg, Germany at \$90 miles an hour.

Bill liked Rome best, where history is a reality. He loved to "dicker" with the Italians for their wares. This was the only country where the merchant in the market place seemed to enjoy being haggled.

**VOTE VOTE**

VOTING IS A PRIVILEGE BY WHICH YOU MAY EXPRESS YOUR PLEASURE ABOUT PEOPLE OR SUBJECTS.

WHEN THERE IS AN ELECTION - NATIONAL, STATE OR LOCAL - REGARDLESS OF YOUR CONVICTION, EXERCISE YOUR PRIVILEGE AND...

**VOTE**

(Paid Political Ad.)

## SPECIAL SCHOOL ELECTION

**NOTICE OF SPECIAL ELECTION OF THE QUALIFIED ELECTORS OF MANCHESTER PUBLIC SCHOOL DISTRICT WASHTENAW AND JACKSON COUNTIES, MICHIGAN TO BE HELD DECEMBER 16, 1965**

**TO THE QUALIFIED ELECTORS OF SAID SCHOOL DISTRICT:**

Please Take Notice that a special election of the qualified electors of said School District will be held in the High School Music Room 710 East Main Street, in the Village of Manchester, on Thursday, December 16, 1965.

**THE POLLS OF ELECTION WILL OPEN AT 7:00 O'CLOCK AND CLOSE AT 8:00 O'CLOCK, P.M., EASTERN STANDARD TIME.**

The following proposition will be submitted to the vote of the electors qualified to vote thereon at said special election:

Shall Manchester Public School District, Washtenaw and Jackson Counties, Michigan, borrow the sum of not to exceed Five Hundred Twenty Thousand Dollars (\$520,000) and issue its bonds therefor, for the purpose of remodeling and erecting, furnishing and equipping an addition to the high school building; and developing and improving sites?

Each person voting on the proposition of borrowing and issuing the bonds of said School District must be a citizen of the United States; have attained the age of 21 years, have resided in the State of Michigan six months and in the School District 30 days next preceding the election, and have property assessed for ad valorem taxes within the School District or be the lawful husband or wife of a qualified voter of the District having property so assessed.

Only persons registered as electors in the township in which they reside are eligible to vote.

Take Notice that the Board of Education has estimated the total expense of remodeling and erecting, furnishing and equipping an addition to the high school building; and developing and improving sites to be Five Hundred Twenty Thousand Dollars (\$520,000), all of which it is necessary to raise by borrowing and issuing the bonds of the District.

This Notice is given by order of the Board of Education of Manchester Public School District, Washtenaw and Jackson Counties Michigan.

Laurin F. Leeson, Secretary  
Board of Education

## SCHOOL BOARD URGING SUPPORT

### Time Is Short, To Comply With New Voting Law

The new state laws governing village elections will alter the way in which candidates for these village posts are selected. Manchester Village clerk, Lyle Widmayer says that, "There is a real switch this year and the village caucus is nothing of the past. Petitions will be circulated this year and my prime concern is that people know that there are deadlines to meet."

Manchester voters will go to the polls to elect a president, clerk, treasurer, and assessors for two year terms and three councilmen for two year terms. Terms of councilmen: Donald Dorff, Robert Clark and Basil McGuire expire at that time.

Clerk Widmayer says he has petition forms available now. Petitions must be filed with the village clerk by 4:00 p. m. Jan. 31. These petitions must be signed by a minimum of one per cent of the registered voters or a maximum of 25 per cent of those registered at the last village election. There were 513 registered voters at that time in Manchester.

The clerk points out that this does not give anyone very much time before the January 31 deadline.

"Unless you are a registered voter, do not sign the petitions. A registered voter is allowed to sign a petition for only one person running for anyone office. But in the case of councilmen the voter can sign for three because he can vote for three. The last day to sign for the primary is Monday January 24 at 6:00 p. m.

Another thing to remember is that if there is only one person running for each office on each ticket (three in the race for council seats) then they will be to primary election.

"If there is no primary election then I will continue to register people for the annual village election until 30 days before the election date. One important thing to remember is that Monday, January 24 could be the last day to register for the spring election.

Manchester has two tickets: Citizens and Progressives. Last year Carl Wuertner was chairman of the Progressives and the committee to fill vacancies included Clarence Kuebler, Herman Kuebler and Basil McGuire.

Allen Schaffer was chairman of the Citizens' caucus and the committee to fill vacancies included Joe Fitzgerald, Wendell Schneider and Luther Klager.

St. Mary's parish Christmas party and potluck supper will be held Sunday, Dec. 12 at 6:30 p. m. Those attending are asked to give a dollar donation to be sent to a needy family in the parish. The Boyville Choir will be on hand to entertain.

St. Mary's parish Christmas party and potluck supper will be held Sunday, Dec. 12 at 6:30 p. m. Those attending are asked to give a dollar donation to be sent to a needy family in the parish. The Boyville Choir will be on hand to entertain.

St. Mary's parish Christmas party and potluck supper will be held Sunday, Dec. 12 at 6:30 p. m. Those attending are asked to give a dollar donation to be sent to a needy family in the parish. The Boyville Choir will be on hand to entertain.

St. Mary's parish Christmas party and potluck supper will be held Sunday, Dec. 12 at 6:30 p. m. Those attending are asked to give a dollar donation to be sent to a needy family in the parish. The Boyville Choir will be on hand to entertain.

Next Thursday, Dec. 16 Manchester School District voters will go to the polls to cast their ballot on a \$520,000 bond issue which will provide an addition to the senior high school. This addition will include a new library, a band room, 10 classrooms, corridor space for 600 wall lockers and added locker and shower facilities plus all fixed and movable equipment. These facilities were recommended by a Citizens' Committee that spent over a year studying the needs of the district. An earlier issue was rejected by the voters last June.

The Board of Education is presenting a three phase program to keep abreast of enrollment and curriculum demands. Phase one is the addition to the senior high school and will be voted on December 16. Phase two will be elementary facilities when needed in two or three years and phase three will be the implementation of the middle school concept making use of the Intermediate Building and the Nellie Aclerson School.

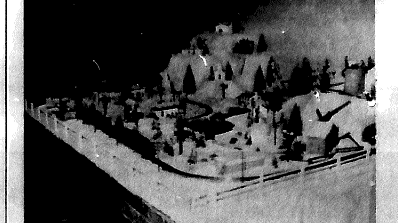
The current issue being voted upon will require 1.85 mills on the equalized valuation and will be spread over a period of 29 years. Several inquiries have been made relative to those items or areas that are being eliminated in the current issue as opposed to the first issue. The difference between the current issue of \$520,000 and the \$750,000 issue of last June 14 is indicated below in the items eliminated by the Board of Education.

ITEMS ELIMINATED:	
Addition to Pleasant Lake	\$81,000
Addition to Gymnasium	50,000
Square footage reduction	15,000
Remodeling to Intermediate Bldg.	25,000
Reduction in architect's fees	13,800
Reduction in Equipment Cost	45,200
	\$230,000

The Board of Education is urging all voters to support this proposal. The election will be held in the high school music room on Thursday, December 16 from 7:00 a. m. to 8:00 p. m.

- To be eligible a voter must be:
1. U. S. Citizen 21 years of age or over.
  2. Resident of Michigan for at least six months
  3. Resident of school district for at least 30 days.
  4. Be registered in township in which he lives.
  5. Own property assessed for taxes within the school district, or be the lawful husband or wife of such a person.

### Young & Old Visit Christmas Village



Christmas Village is ready for all the small fry - and those who are not so small. The tiny village may be seen at the Bert Gardner home on Hieber Road, Pleasant Lake. - by Marie Schneider

Christmas Village is once again ready for children - young and old! For more than ten years, after the late Albert Gardner moved to the Manchester area from Detroit, he put up the Christmas Village.

Everyone in the area, and many others drove for miles to see it at his Pleasant Lake home. Each year there were changes. Things were added and rearranged. But a couple of years before he passed away in 1964 he had to discontinue the practice. The setting up operation took weeks and to much energy for the aged man.

He built the village first in 1910 for his own children. Every year he added to it and every building was constructed by him. There was the electric train which ran through the town. After his death Christmas Village was given to his granddaughters. It was too much of a job for them and last summer they offered all of it back to their uncle, Bert Gardner. He surveyed the stacks of boxes and decided if he had to store it, he was going to put it up again.

Many of the buildings had to be repaired or replaced. The original scene was 15 x 22 feet. The present one is 8 x 10. The original water wheel still starts the grist mill and the water tumbles down to the lake with its boat. There is the old windmill and the townhall. Other buildings have been replaced to scale and the same train for the last 25 years whistles as it winds through tunnels, bridges and around the mountains.

There are street lights on poles and lights in some of the buildings. A lighted Christmas tree twinkles in the park. A farm, complete with animals, is in a corner and there are cars parked in front of the motel. The original oil well bubbles in the distance. A dog sleigh completes the mountain scene with its covered bridge and there are skaters in the park.

cont. page (7)

cont. page (7)

## Church Services

### BAPTIST CHURCH

Rev. E. P. Cronston  
Bible School . . . . . 10 A.M.  
Worship Service . . . . . 11 A.M.  
Youth Groups . . . . . 7 P.M.  
Evening Worship . . . . . 7:45 P.M.  
Wednesday Evening Prayer & Bible Study . . . . . 7:45 P.M.

### ST. THOMAS LUTHERAN CHURCH

MISSOURI SYNOD  
1110 S. Main St.  
Rev. John Ribar  
Sunday Worship . . . 10 A.M.  
Sunday School . . . 11 A.M.

### EMANUEL EVANGELICAL

Rev. Ralph Kuecher  
Sunday School . . . . . 9:15 A.M.  
Worship Service . . . 10:30 A.M.

### Evangelical & Reformed BETHEL CHURCH

Rev. T. V. Mezzell  
Sunday Worship . . . 10 A.M.  
Sunday School . . . 11 A.M.

### IRON CREEK CHURCH

Rev. Thomas E. Hicks  
Sunday Worship . . . 10 A.M.  
Sunday School . . . 11 A.M.  
Young Peoples  
Evening Service . . . 8 P.M.  
Thurs. Evening . . . 7:30 P.M.

### METHODIST CHURCH

Rev. Oscar W. Cooper  
Sunday School . . . . . 9:45 A.M.  
Worship Service . . . 10:15 A.M.  
St. M. Y. F. . . . . 7 P.M.  
St. M. Y. F. . . . . 8 P.M.  
Bible Study and Prayer Meeting (Thurs. Eve.) . . . . . 7 P.M.

### ST. MARY'S CHURCH of Manchester

Fr. Raymond Schlinkert  
Sunday Masses:  
8 A.M. 9:30 A.M. 11:15 A.M.  
Daily 7:30 A.M. Sat. 8 A.M.  
First Friday . . . . . 8 A.M.

### ST. JOHN'S E & R CHURCH

Freedom Township  
Rev. Stephen Peterson  
Worship Service . . . 9:30 A.M.  
Sunday School . . . 10:30 A.M.

### SHaron Evangelical United Brethren Church

Rev. John F. Price  
Sunday School . . . 10 A.M.  
Worship Service . . . 11 A.M.

### ZION LUTHERAN CHURCH Rogers Corner

Rev. C.J. Renner  
Sunday School . . . 10 A.M.  
Church Service . . . 11 A.M.

### THE MANCHESTER ENTERPRISE

ESTABLISHED IN 1867  
George and Lois Koss  
Publisher and Editor  
Published Every Thursday.  
Entered as Second Class Matter at the Post Office at Manchester, Michigan.  
SUBSCRIPTION RATES:  
\$2.00 year in Washtenaw County; \$3.50 elsewhere.  
For Advertising Rates Call Garden 8-8388

## Bowling News 'Dutch' Romp In



### WOMEN'S BOWLING LEAGUE

Team	W	L	Ties
Double A Products	56	16	
Schaffner Lumber	55	17	
Union Construction	50	22	
GM's TV	30	32	
Governor-Huber	11	31	
Lechner's	10	32	
A. T. E. Market	10	32	
Bakery	10	32	

### MANCHESTER TOWN CLUB

Team	W	L	Ties
Average Club	57	17	
Greenway	41	33	
W. L. Builders	36	38	
Lechner's	35	39	
Double A	33	41	
Gov-Huber	14	32	

### MANCHESTER BUSINESSMEN

December 7, 1965  
TEAM STANDINGS

Team	W	L	Ties
Web Sizable	25	17	7 57
Governor-Huber	24	18	8 56
Chelsea Lanes	23	17	13 55
Midway Supp.	21	19	8 53
Double A Prod.	21	20	8 50
Tool & Die	21	21	8 51
Enterprise	21	21	8 48
Spice's Mobil	20	22	7 47
Sutton's Ins.	19	23	8 46
Bowling TV	20	23	8 45
Klieger	18	24	8 41
Hoover B & B	15	26	4 34

## 'Fielder Night'

### FIVE PLAYERS

Manchester High School's basketball team had a "Fielder night" in rolling up a 76-63 win at Clinton as Lakeside C Conference play began Friday night.

With brothers Jim and Dick and cousin Larry Fielder contributing 51 of its points, Manchester overcame a slow start to win going away.

The Flying Dutchmen mustered only nine points in the first quarter as Clinton made 18, but they stormed back with 27 in the second period to take a 36-29 halftime advantage. As 28-point third frame put the game out of Clinton's reach.

Manchester is now 10 for the season.

Saline won the junior varsity contest, 67-57.

Jim Fielder paced the scorers with 21 points and 15 rebounds, while Larry hit 26 points, and Dick made 11. Jerry Bohmer

### MANCHESTER vs CLINTON

Man	Clint
J. Fielder	16
L. Fielder	26
D. Fielder	10
J. Bohmer	11
L. Bohmer	5
J. Bohmer	1
T. Bohmer	5
J. Bohmer	1
J. Bohmer	1
J. Bohmer	1

### VISITS HERE

Mr. and Mrs. Robert Cummings and daughter Stephanie of Okla spent about a week with his parents and sister. Mr. and Mrs. Merle O. Cummings and Betty.



### CHUCK STEELE sets high game for league and Chelsea Lanes Bowling Alley, with a 266, but also the Enterprise still lost the game.

Chuck's 266 is all time high for him.

### SPECIAL

1 lb. FRESH HOLLY  
Regular 79¢  
Cash & Carry 59¢

Complete delivery service

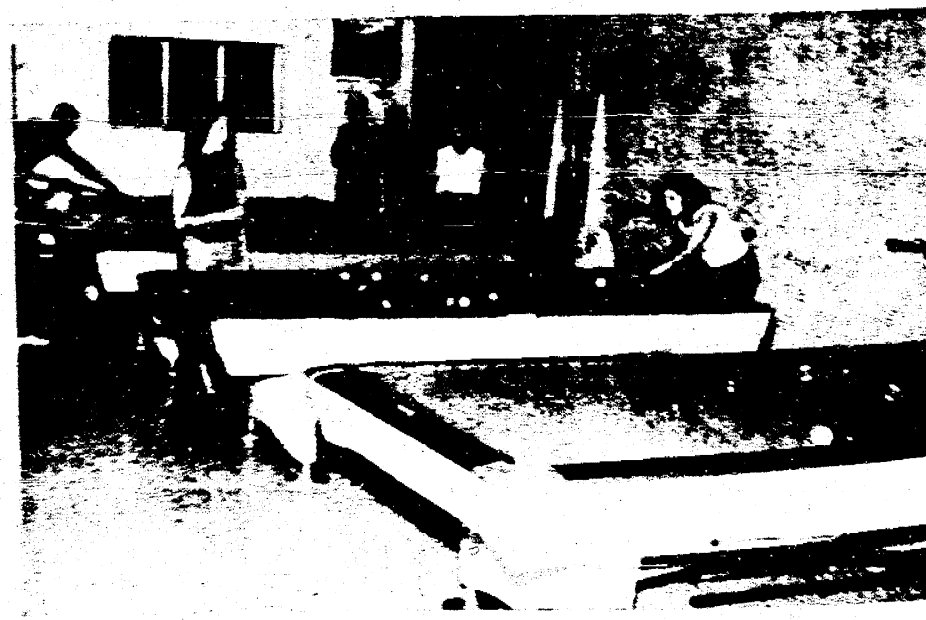
### TELEFLORA WORLD-WIDE

wire service

### KUKINI FLOWERS

125 W. Michigan  
Clinton, Michigan  
Phone 456-4344

## Looking for Recreation?



## Try Our Billiard Room CHELSEA LANES

"A Good Place To Make Friends"

Phone 475-8111 1180 M-52, Chelsea

## Boysville Glee To Sing Christmas



The Boysville Glee Club, under the direction of Brother Phillip Armstrong, C.S.C. will present a program Sunday evening at St. Mary's Hall during the annual parish Christmas party scheduled for 8 p.m.

The Glee Club has been in continuous operation since its start in 1947 and all arrangements for the acappella singers are done by the director. The number of members vary from 12 to 35 depending on scheduling of classes, interest and talent.

Boysville at Macon is sponsored by the Knights of Columbus for the area who need homes. Many are orphans or are from broken homes. The Boysville operation is copied from the famed boys' Town in Nebraska on a smaller scale.

During this Christmas season the Boysville Glee Club has sung in line at the Washtenaw Deansery Quarterly meeting. They are scheduled for two tape television shows with a Christmas theme with Raymond Schlinkert, pastor of St. Mary's on Channel 2 at 9:30 p.m. on Sunday, Dec. 19 and on Sunday, Dec. 26 and on the same time following the late-late show at night.

In addition the club will sing at a K of C party in Wayne next week Monday and at a Tecumseh Products party Saturday in Tecumseh.

### VILLAGE OF MANCHESTER, WASHTENAW COUNTY, MICHIGAN

## COUNCIL RESOLUTION TO VACATE STREET

WHEREAS, Arthur Williams and Lucile Williams, husband and wife, of the Village of Manchester, Washtenaw County, Michigan have filed a petition requesting that a resolution be entered by this Council vacating, discontinuing, and abolishing that part of Water Lane north of Auburn Street and that part of Cowens Avenue from the southeasterly line of Lafayette Street southerly to the terminus thereof in J. W. Cowen's First Addition and Second Addition respectively.

WHEREAS, said Street have never been used by the public and have been claimed by Arthur Williams and Lucile Williams, and their predecessors in title adversely to any other person or persons whomsoever, and

WHEREAS, Arthur Williams and Lucile Williams are the owners of all land adjacent to said streets requested to be vacated.

NOW, THEREFORE, BE IT RESOLVED, that the Village of Manchester Council deem it advisable to vacate, discontinue and abolish that part of Water Lane north of Auburn Street in J. W. Cowen's First Addition to the Village of Manchester according to the recorded Plat and that part of Cowens Avenue southerly of the southwesterly line of Lafayette Street in J. W. Cowen's Second Addition to the Village of Manchester,

And the Village Council does hereby declare its intention to vacate, discontinue and abolish said streets on December 20, 1965 and any objections to the same shall be filed in writing with Lyle A. Widmayer, Clerk of said Village on or before 8 p.m. of said day.

This resolution shall be published for four consecutive weeks prior to said date in the Manchester Enterprise a newspaper published and circulated in said Village.

Unanimously adopted at a regular meeting of the Village Council of Manchester, Michigan, on November 15, 1965.

Eugene Bentschneider, President  
Lyle A. Widmayer, Clerk

November 18 - 25 • December 2 - 9

### ATTENDS MEETING

Mrs. Louis Vogel was in Ft. Wayne Monday to attend the meeting of the Board of Trustees of the Children's Home which is sponsored by the United Church of Christ.

## VOTE

VOTING IS A PRIVILEGE BY WHICH YOU MAY EXPRESS YOUR PLEASURE ABOUT PEOPLE OR SUBJECTS.

WHEN THERE IS AN ELECTION - NATIONAL, STATE OR LOCAL - REGARDLESS OF YOUR CONVICTION, EXERCISE YOUR PRIVILEGE AND . . .

## VOTE

(Paid Political Adv.)

# SPECIAL SCHOOL ELECTION

### NOTICE OF SPECIAL ELECTION OF THE QUALIFIED ELECTORS OF MANCHESTER PUBLIC SCHOOL DISTRICT WASHTENAW AND JACKSON COUNTIES, MICHIGAN TO BE HELD DECEMBER 16, 1965

#### TO THE QUALIFIED ELECTORS OF SAID SCHOOL DISTRICT:

Please Take Notice that a special election of the qualified electors of said School District will be held in the High School Music Room, 710 East Main Street, in the Village of Manchester, on Thursday, December 16, 1965.

THE POLLS OF ELECTION WILL OPEN AT 7:00 O'CLOCK, AND CLOSE AT 8:00 O'CLOCK, P.M., EASTERN STANDARD TIME.

The following proposition will be submitted to the vote of the electors qualified to vote thereon at said special election:

Shall Manchester Public School District, Washtenaw and Jackson Counties, Michigan, borrow the sum of not to exceed Five Hundred Twenty Thousand Dollars (\$520,000) and issue its bonds therefor, for the purpose of remodeling and erecting, furnishing and equipping an addition to the high school building; and developing and improving sites?

Each person voting on the proposition of borrowing and issuing the bonds of said School District must be a citizen of the United States, have attained the age of 21 years, have resided in the State of Michigan six months and in the School District 30 days next preceding the election, and have property assessed for ad valorem taxes within the School District or be the lawful husband or wife of a qualified voter of the District having property so assessed.

Only persons registered as electors in the township in which they reside are eligible to vote.

Take Notice that the Board of Education has estimated the total expense of remodeling and erecting, furnishing and equipping an addition to the high school building; and developing and improving sites to be Five Hundred Twenty Thousand Dollars (\$520,000), all of which it is necessary to raise by borrowing and issuing the bonds of the District.

This Notice is given by order of the Board of Education of Manchester Public School District, Washtenaw and Jackson Counties, Michigan.

Laurin F. Leeson, Secretary  
Board of Education

**MRS. BENTSCHEIDER RESIGNS FROM BOARD**

At the December meeting of the Manchester Family Service Board, the resignation of the secretary, Mrs. Eugene Bentschneider, was accepted with deep regret. Mr. Burrell Hansen was elected secretary for the remainder of the year and Mrs. M. C. Brisbin was appointed to the board to fill Mrs.

Bentschneider's term.

The service group is in readiness for the holiday work to be done as soon as the needy families' names are released to them from the County Christmas Bureau. Mrs. Arthur Trevithick of the Salvation Army at No. 8-8353 is in charge of the Bureau again this year. All Christmas relief is cleared through her office and then given to the local agencies to be handled.

**MRS. ROLLAND GROSSMAN OUT-COUNTY DEPUTY NAMES CANCER CHAIRMEN**

Washtenaw County Cancer Society with Mrs. Rolland Grossman of Manchester as the out-county deputy has named the following chairmen: Mrs. Willard Mann, Manchester; Mrs. Henry Karner, Chelsea; Mrs. John Phoss, Saline; Mrs. Burton Bucy, Dexter; Mrs. George Goldsmith, Milan and Mrs. Robert Lupi, Whitmore Lake.

Mrs. Grossman explained that the volunteer workers meet at the Unit headquarters at 215 Ashley Street, Ann Arbor from 10 a. m. to 3 p. m. Monday through Friday. 52 weeks a year to make cancer

dressings. The volunteer workers cut, package and distribute, free of charge, approximately 25,000 dressings per year.

Equipment such as beds, wheel chairs and other sick room equipment are loaned to any cancer patient, regardless of income bracket, providing a doctor or visiting nurse verifies the diagnosis. In some cases where cancer patients' illness becomes too great a financial burden to their families, the Washtenaw unit assists by paying certain expenses up to \$25.00 per month per patient.

Also upon the request of the doctor, a visiting nurse is sent out to assist in the home care of semi-indigent patients. The cost of these visits is \$6.00 each. Some-

times the patient pays part of the fee, but if he is unable to do so the entire cost is assumed by the Cancer Society. Medication and visiting nurse expenses average \$500 per month. The average patient load is thirty to forty a month, Mrs. Grossman said.

The Society also underwrites Pap Smear Tests for those who otherwise would not have them because of the cost. During the past year 4% of those tested were positive and early detection means the difference between life and death, she pointed out. Due to lack of funds the entire hospitalization policies cannot be covered. Washtenaw Cancer Unit has also provided the University of Michigan Speech Rehabilitation Center, directed by Dr. Harlan Bloomer with thorax boxes. This is a simple machine which assists people who have lost their ability to speak in a normal way to learn to speak again.

Cancer education literature is also distributed from the office. The principle aim of most of the literature is to keep the community informed of early danger signals. Currently the distribution of anti-smoking pamphlets, film strips and related material aimed at teenage population in particular is being emphasized, the local chairman said. The Washtenaw Unit also distributes cancer education films to interested groups upon request and free of charge.

The entire board is a working board, each member has a definite job to fill and there are no honorary members. Mrs. H. Marvin Pollard of Ann Arbor is the county president. Mrs. F. E. Wessinger of Ann Arbor is the service chairman and may be reached by calling 668-6632 for further information. All of the out-county chairmen are anxious to assist anyone needing information or help. Or, Mrs. Grossman says people can call the American Cancer Society directly at 668-8857 for further information.

We have about EVERY "BLOOMING" THING You Can Think of for Christmas

this year give a LIVING GIFT



POINSETTIA the traditional Christmas Flower

Hundreds of beautiful plants, cut flowers, table and mantle decorations, wreaths to choose from. WHITE PINE & CEDAR ROPING FLORA FAX RED RUSCUS PLACE YOUR WIRE ORDERS EARLY !!

**WURSTER'S GREENHOUSE** MANCHESTER, MICHIGAN.



**HOLIDAY SPECIAL**  
**Hot Beef Sandwich**  
MASHED POTATOS & GRAVY SLAW & COFFEE \$1.20

**PAUL'S DAIRY BAR & RESTAURANT**

**Shop this Gift Guide for all the family!**

**GLASS LINE WATER HEATER**

**Here's your big chance to make huge savings on GENERAL ELECTRIC**

Radios, Transistors & Consoles, Knives, Mixers, Waffle Irons, Dry & Steam Irons, Tooth Brushes, Toasters, Corn Poppers, Hair dryers, right before Christmas! Yes - - -

L.V. KIRK brings you bargains in this great sale that will make your Christmas shopping dollar go much farther! Come in now and make your selections.

**REMODELING? BUILDING? Get a BUILT-IN OVEN Cleans itself... ELECTRICALLY**

**LV KIRK** Your GENERAL ELECTRIC Dealer

Phone Manchester 428-3701 or 428-8331

**Christmas Cheer Starts HERE IN MANCHESTER**

**Pretty HOLIDAY BLOUSES \$1.99**

**LANNOM'S \$1.00 UP**

**HEY KIDS!**

**100 FREE GIFTS WORTH \$1 to \$5**

**See Santa**

**DECEMBER 18**

**MUD & SNOW TIRES All Sizes**

**complete WASH \$2**

**SEE US FOR ALL YOUR CAR NEEDS**

**Grossman Huber SERVICE GA 8-4211**

**FREE "MAGIC GIFT WRAP" Booklet with purchase of "TIE-TIE" Ribbon if you request**

**HALLMARK Gift Wraps "When You Care"**

**BURCH'S DRUG**

**SEE SANTA SATURDAY, DEC. 18th IN MANCHESTER. ONE HUNDRED CANDY BOXES WILL CONTAIN GIFT CERTIFICATES FROM MANCHESTER MERCHANTS WORTH \$1 to \$5**

**MANCHESTER CHAMBER OF COMMERCE IN COOPERATION WITH THE MANCHESTER OPTIMIST CLUB**

**BROWN'S TELEVISION & RADIO**

Sales & Service

**ZENITH and EMERSON TV** color; black & white

**TRANSISTOR RADIOS** AC Radios

**Stereo Voice of Music** Record Players

**SPORT SHIRTS**

You won't believe it until you see it. We have the largest selection of mens sport shirts in this area and the prices are from \$2.98 to \$5.00.

Van Heusen, Campus and Shapely brands in a beautiful assortment of colors and styles.

Come in and look them over. You will be glad you did.

**Walt Schaible**

**17 JEWEL WATCHES only \$11.95**

**CHARMS** From \$1.00 & up

**LADIES DIAMOND WATCHES DIAMOND RINGS WATCH REPAIRING**

**ROLLER JEWELRY**

Gifts Galore in our store for Women - Children and the home.

Slips - Pajamas - Night Gowns Hosiery - Sportswear Dresses - Gloves - Slippers Boots - Sweaters - Purses Blouses - Bill Folds - Robes Handkerchiefs

**MARX & MARX**

**SPECIALS Gifts for Him**

**SHAVING SETS**  
\*New Currier & Ives \*Old Spice \*Royal Stas \*007

**SHAVING LOTIONS** Limited Amounts  
\*Jade East \*English Leather

**TOBACCOS** All Brands  
\*Pipes \*Pouches

**TIMEX WATCHES & BILLFOLDS**  
\*Films \*Bulbs all kinds 24 Hour Film Service

**UPHAUS** Rexall Drug Store PACKAGE LIQUOR DEALER

**GILL'S TV**

**Sylvania Port. Stereos**

reg. \$98.70 now \$79.95 2 only

reg. \$79.95 now \$69.95 1 only

reg. \$49.95 now \$39.95 1 only

**CONSOL STEREO**  
Reg. \$388.80 Now \$298.00 22 watts 1 only

**SPECIALS Gifts for Her**

**COLOGNES & PERFUME**  
\*Arpege \*Ambush \*Tabu \*Chanel No. 5 \*Eveing In Paris Sets

**FOR THE LADIES**  
\*Billfolds \*Timex Watches \*Cutex Nail Polish Sets Full Line

**SANDERS CHOCOLATES**

**UPHAUS** Rexall Drug Store PACKAGE LIQUOR DEALER

10

CO-OP NURSERY NEWS

The children attending the Manchester Co-op Nursery visited the Schlusser chicken farm and enjoyed seeing the 30,000 chickens all ages, at the farm.

Clifford Elliott, Mrs. Edwin Walt, Mrs. John Raffaele and Mrs. Dallas Albers.

RECOGNITION IS GIVEN TO 4-H LEADERS

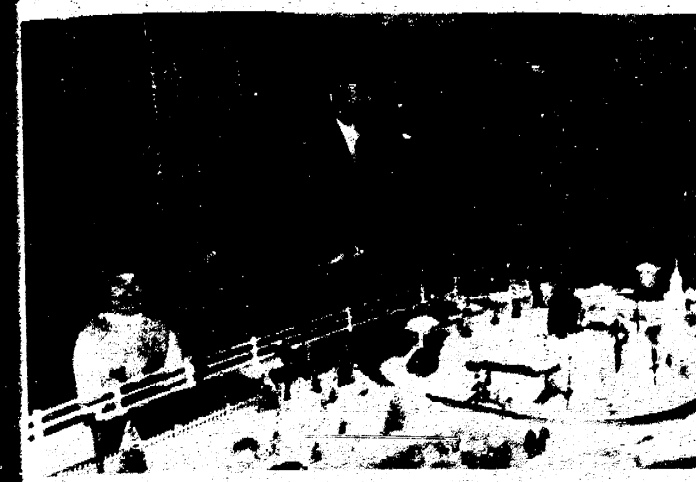
Recognition is given to 4-H volunteer leaders who achieve 5, 10, and 20 years of service as a 4-H Club leader.

PROJECT 74 STUDIED FOR WASHTENAW

Mrs. Franklin M. Reck and Mrs. D. D. Ludwick attended a luncheon meeting at the Ann Arbor Women's City Club as the guests of Mrs. William Reifel on Friday, December 3rd.

with services provided that were planned for the nineteenth century with its much smaller population.

YOUNG & OLD VISIT CHRISTMAS VILLAGE



Among the first visitors last Saturday to see 'Christmas Village' were: (1 to r) Priscilla Ann Westphal, Saline, Linda Macomber, Ann Arbor, Mrs. Harry Macomber, Manchester and Herbert Westphal of Saline.

LIBRARY NOTES

Best sellers new at the library this week are: INTERN by Doctor X. This is the week by week diary of a young doctor.

HOME FROM HOSPITAL

George Merriman returned home Sunday from Herrick Memorial Hospital at Tecumseh.

Advertisement for Hallmark Cards Gift Wraps and Burch's Manchester Drug. It features a decorative border and text promoting gift wrapping services and drug prescriptions.

Advertisement for Jersey Guernsey Milk. It features the text 'JERSEY GUERNEY MILK STILL AVAILABLE WE CARRY A COMPLETE LINE OF DAIRY PRODUCTS Hirth Bros. Dairy' and contact information for 164 West Washington, Ann Arbor.

Advertisement for Village of Manchester Ordinance No. 72. It details an ordinance to amend Ordinance #33 regarding water mains and connection permits.

Advertisement for M. Faulhaber, located at 6060 East Road, Manchester. It lists services such as 'Ditching, Basements, Tiling, Bulldozing' and provides the phone number 428-8518.

Ford Dealers sell more Used Cars than anybody else in these parts.



There must be a reason. (Like this 3-Way Guarantee, for instance!)

- 1 Serviceability Guarantee... Your Ford Dealer has inspected, road-tested and, when necessary, reconditioned every A-1 Used Car or Truck and guarantees that it is in serviceable condition.
- 2 First-Month Guarantee... Under this guarantee your Ford Dealer, for the first 30 days (or 1,000 miles), will give a 50% cash discount from his regular retail price on any repairs he makes that are necessary to keep your car or truck in serviceable condition.
- 3 Two-Year Guarantee... Under this guarantee your Ford Dealer, for an additional period of two years, will give a 15% cash discount from his regular retail price on any repairs he makes that are necessary to keep your car or truck in serviceable condition.

TOM MARSHALL, INC. 512 W. MAIN ST. MANCHESTER, MICHIGAN

WOOL CONTEST DRAWS CROWD

There were 65 contestants in the "Do It Yourself With Wool" contest held at the Emanuel Church hall last Saturday.

In the Senior division the first place winner was Ann Jarvis of Ann Arbor and Becky Curtis of Charlotte was the runner-up.

SALINE CLUB WINS CLUB TROPHY CONTEST

The Townline Workers of 4-H Club of Saline has been awarded the Club Trophy for excellence in the club's summer 4-H participation.

Second place in the Club Trophy contest was the Lincoln Pioneers Club, Mrs. Sam Striz administrative leader.

ATTEND DEANERY

The Washtenaw Deanery met at St. Andrew's in Saline Sunday afternoon. The Boysville choir sang several selections and plans were made to attend the National ADF at Cobo Hall in Detroit next March.

DR. GRETCHEN HOLSTEIN WILL BE WEDDING BELLS

Dr. and Mrs. Arthur Holstein Grosse Pointe Woods have announced the engagement of their daughter Gretchen Ann Terry Elwyn Hull.

SHARON EUB CHURCH SCHEDULES EVENTS

The Sharon Evangelical United Method Church will have their choir practice at 8 p.m. Wednesday, December 15.

The Youth Fellowship of the church will meet at 8 p.m. on Dec. 12. Joyce Bowers and Joan Lee are the program leaders.

Advertisement for Armstrong ceiling. It features a drawing of a room with an Armstrong ceiling and text: 'Here's a Christmas gift idea your entire family will enjoy. a beautiful new Armstrong ceiling that soaks up noise. DRESS UP YOUR HOME FOR THE HOLIDAYS. BRIDGEWATER LUMBER COMPANY - BRIDGEWATER, MICHIGAN'

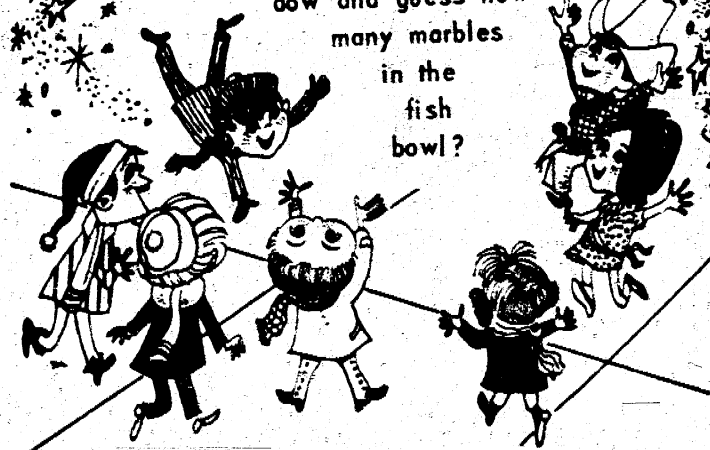
Advertisement for Grossman-Huber Service. It features a drawing of a car with a 'GET COMPLETE PROTECTION FOR YOUR CAR' sign and text: 'Grossman-Huber Service DEALERS IN GULF PRODUCTS MINOR ENGINE TUNE-UPS TIRES BATTERIES Manchester Garden 8-4211'

**DECEMBER 22**

Five foot  
**Santa**  
FREE



Come Wednesday, Dec. 22 some lucky boy or girl will win a five foot Santa. Pick up your entry blanks at any Manchester Merchant, go to the Union Savings Bank win-



**MANCHESTER MERCHANTS**

STORES OPEN TO 9 P.M.  
DECEMBER 15 thru 23

More people buy Chevrolets? **Yes!**  
 Than any other make car? **Yes!**  
 Any other? **Yes!**  
 There must be reasons. **Sure!**  
 Name ten. **OK:**

- All these comforts are available: steering wheels that tilt or flip and telescope; AM/FM. Multiplex Stereo radio, first ever offered in cars; and Stratobucket seats (to give you just a sampling).
- Comforton automatic heating and cooling you can order—just dial the temperature and turn it on; Comforton automatically keeps you comfortable no matter what the weather outside.
- More engine choices—the widest horsepower range available: the 425-hp Turbo-Jet V8 in Chevrolet and Corvette to a 90-hp Four in Chevy II.
- Body by Fisher—Craftsmanship by the world's best known coachmakers with everything from luxurious interiors to the long luster Magic-Mirror acrylic lacquer finish.
- Self-cleaning rocker panels flush out salt and other corrosives with rainwater, dry themselves with outside air—another way Chevrolet takes extra care so you needn't bother.
- A hushed and gentled ride with body mounts designed to isolate vibration better and shock absorbers matched to body style—coupe, sedan, convertible, wagon.
- America's only rear-engine car, Corvair, with more weight over the driving wheels where you need it and less on the steering wheels where you don't.
- America's only true sports car, Corvette, with fully independent suspension, four-wheel disc brakes and engines you can order up to 427 cubic inches.
- Higher resale value—Chevrolets traditionally are worth more at trade-in time because more people want Chevrolets... new or used.
- All these safety features standard now: seat belts, front and rear; padded dash and sun visors; outside mirror (use it always before passing); shatter-resistant inside mirror; 2-speed electric windshield wipers for better visibility in a downpour; windshield washers; back-up lights.

CHEVROLET Leadership... the Chevrolet Way.

**TIRB CHEVROLET CO.**  
MANCHESTER, MICHIGAN

**MISS VIRGINIA ARMSTRONG**

Miss Virginia Armstrong, 18, died Tuesday at the University of Michigan Medical Center in Ann Arbor as a result of injuries received in an automobile accident on November 11 on Austin Road in Jackson County. Her home was at 10350 Sharon Hollow Road, Manchester Township. She was born June 28, 1947 in Clare, Michigan, the daughter of Merrill and LuVerne Fox Armstrong. Her parents and one brother, Samuel, at home survive.

Other survivors include her maternal grandmother, Mrs. Emily Fox of Dexter and her paternal grandfather, John Armstrong of Ft. Dodge, Iowa. She was graduated from Manchester High School in June of this year. At the time of her accident she was a student at Jackson Community College. Miss Armstrong was a member of the Iron Creek Community Church. Funeral services will be held Friday at 1:30 p.m. at the Jenter Funeral Home in Manchester with the Rev. Thomas Hicks officiating. Burial will be made in Forestlawn Cemetery in Dexter.

**MRS. ALFRED KUHL BREAKS SECOND HIP**

Mrs. Alfred Kuhl is reported to be resting comfortably at St. Joseph Mercy Hospital, Ann Arbor where she was taken Thanksgiving Day after she fell in the kitchen in her home, and broke her left hip. In February 1962 she had the misfortune to fall and break her right hip. The breaks are reported to be identical.

**BAND - VOCAL CONCERT SET FOR TUESDAY**

The annual High School Band and Vocal Chorus concert will be held at 8:00 p.m. Tuesday, Dec. 14 in the High School gym. Chats are available for seating. Included in the choir will be the varsity, mixed, girls' and junior high choirs totaling 146 voices, directed by Roger Marrison. The last number will be a combination of the choir and the band. R. C. Sorter is the band director.

On Sale before and after the concert will be the more than one hundred batches of "marble slab" hard candy which has been made by the members of the Band Boosters' Club. Orders can be given in advance to Mrs. Wallace Hughes at GA8-2097. Profits from the sale help pay for scholarships to Interlochen and other music camps, buy uniforms for band members, etc.

**HOME EC CALENDAR**

On December 11 the Kinder Küche Study Group will meet at the home of Mrs. Titus Schneider at her home at 11577 Pleasant Shore Drive, Manchester.

The Beacon Light Study Group annual Christmas dinner will be at the Sharon Township on December 11th.

On December 15 the Free-Lo's Study Group will meet at the home of Mrs. Louis Vogel at her home at 11437 Pleasant Lake Road.

Last Thursday the Iron Creek Study group met with Mrs. Lawrence Bloom with 9 members and one guest present for the noon potluck dinner. This was the Christmas party.

The next meeting will be on January 6th with Mrs. Charles Carlton.

**HILLS & VALLEY 4-H NEWS**

The Hills and Valley 4-H Club met at the home of Patricia Jenter for the November meeting. Anita Kirk was elected as the new secretary. A discussion was held on the new projects in the cultural arts. Several members have elected these projects. The membership voted to give a dedication to the Franklin Road Library Memorial because of Mr. Rocky's interest in the 4-H program. Announcement was made that Renee Kirk won the Entomology County Award. The next meeting will be the Christmas party and will be held at the home of the Brady boys on December 14th.

**MANCHESTER MAN NAMED TO COMMITTEE**

A special reapportionment committee has been named to work with the legislative committee of the Board of Supervisors by Russell Hughes, Chairman of the Board of Supervisors.

He named Clayton Parr, Manchester Township Supervisor to work with Roy Smith of Ypsilanti Township and Maurice Hoffman of Sylvan Township on the reapportionment study of the Board of Supervisors.

**COPYING MACHINE FOR LIBRARY**

The Washtenaw County Library has recently purchased a Verifax for the Manchester library.

The Verifax can be used for copying magazine articles, documents, newspaper clippings, pencil drawings and numerous other items. Copies can be made of your favorite recipe, a well liked poem and so forth. A small charge of 10 cents must be made for the first copy and 5 cents for any additional. Colors cannot be reproduced. The library opens at 1:00 p.m. every day except Saturday.

**48th WEDDING ANNIVERSARY CELEBRATED BY TRINKLE**

Mr. and Mrs. Otto Trinkle were guests of honor at a family dinner at the home of their daughter and husband, Mr. and Mrs. Robert Diefenderfer on Sunday. Their wedding anniversary date is December 4 which is also the birthday of their grandson, Leslie Kopka. He was 14 years. Others at the dinner were Leslie's parents, Mr. and Mrs. Elmen Kopka and Karen of Manchester and Mr. Trinkle's brother and wife, Mr. and Mrs. Wilbert Trinkle of Dexter.

**MRS. RONALD JENTER JOINS TWENTIETH CENTURY**

Twenty-one members of the Twentieth Century Club met at the home of Mrs. James Pratt with president, Mrs. Stanton Roesch welcoming Mrs. Ronald Jenter as a new member.

An interesting program on famous gardens was presented by Mrs. Donald Uphaus and Mrs. Chester Kocsi.

The club's Christmas dinner will be held at 6:30 p.m. Tuesday, December 14 at the home of Mrs. Stanton Roesch.

**COMING EVENT**

The Rogers Corners Farm Bureau potluck supper will be held at 7 p.m. Friday, December 10 at the Pleasant Lake School with an adult fifty cent gift exchange.

**BACK FROM FLORIDA**

Mr. and Mrs. Wilbur Shadley have returned home after a ten-day trip to Florida where they visited her aunt and uncle, Mr. and Mrs. Ben Sutton at Naples and also spent some time in Miami.

**HELP WANTED:** Call 665-1095 or apply in person at 2309 West Stadium Blvd. Dominos. Ann Arbor. 12/23

**FOR SALE:** 1965 2 + 2 automatic transmission-fast back Mustang at 200 Grossman Road, Phone 428-2212/2-9

**WARD OF THANKS**  
I wish to thank neighbors, relatives and friends for the many kindnesses extended to my brother, who since his illness and time of his death. Your helpfulness will always be remembered with deep gratitude.  
Walter Hoenes

**WARD OF THANKS**  
We want to thank our relatives, neighbors and friends for the many acts of kindness extended to us during our recent bereavement. Special thanks to Rev. Kuehler for his comforting words.  
The Family of Gottlieb Jacob

**LEGAL NOTICE**

**ORDER OF PUBLICATION**  
GENERAL  
STATE OF MICHIGAN  
42754  
Probate Court for the County of Washtenaw  
State of Orville M. Way, Deceased.  
is Ordered that on January 12, 1966, at 9:30 A.M., in the Probate Courtroom Ann Arbor, Michigan a hearing be held on the petition of an Arbor Trust Company, Trustee, for allowance of its eighth annual account.

Publication and service shall be made as provided by Statute and Court Rules.  
Dated: December 6, 1965  
JOHN W. CONLIN  
Judge of Probate

**IRON CREEK CHURCH LATES COMING EVENTS**  
The annual meeting of the Iron Creek United Church will be held Friday, Dec. 10th with a potluck supper at 7:30 p.m. preceding the meeting.  
\*  
The Women's Missionary Society of the Iron Creek United Church will have their annual Christmas potluck dinner at the church Thursday, Dec. 16 at 2:30 p.m.  
\*  
At 8:00 p.m. Sunday, Dec. 19 the teen, junior and cherub choirs of the Iron Creek Church will present their Christmas Concert.  
\*  
The Iron Creek United Church Christmas program will be held Tuesday evening, Dec. 21 at 8:00 p.m. There will be a white gift offering.  
\*  
**METHODIST CHURCH NEWS**  
Saturday, December 11 the senior Methodist Youth Fellowship will hold a Hard Times Party at 8:30 p.m.  
\*  
Wednesday, December 15 the YSCS meeting will feature a Luncheon at 12:30. On the program will be Mrs. Ben Creason and Mrs. Robert Armentrout. Hostesses will be Mrs. Thomas Walton, Mrs. Ray Kerr and Mrs. Theo. Mester.  
\*  
Wednesday, December 15 is the Official Board Council in the Church House at 8:00 p.m.

**EMANUEL PLANS BUSY HOLIDAY SEASON**  
Sunday the Emanuel Fellowship will go Christmas carolling at 6:30 p.m.  
\*  
Friday, December 17 the Youth Fellowship of Emanuel will go carolling.  
\*  
The big project of trimming the big Christmas tree in the church will start Friday, December 17 at 7:00 p.m.  
\*  
Christmas dinner for the women of Emanuel will be held at the church at 6:30 p.m. December 22.

**FOR SALE**  
Generators for most cars. Used \$5.00 and up. Rebuilt ones \$9.00 and up  
Batteries  
Used \$4.00 Rebuilt \$6.00

**New Springs**  
For most cars - also used

**Pumps**  
Fuel pumps and water pumps used rebuilt late model

**Mufflers**  
New \$6.95 Used \$3.00  
We buy junk-wrecked cars We also stock I Beams, channels, angles, PLATES.

**MANCHESTER AUTO PARTS**  
West Austin Rd., Manchester Phone GA8-5171

NEED 2 bedroom home in or near Manchester by March 1 with garden and garage. Phone 428-8178. 12/9-16

**BAKE SALE AND BAZAAR** WILL BE HELD Saturday, December 11 in the Freedom Township hall from 11:30 a.m. to 5:00 p.m. in the township hall at Pleasant Lake. This is sponsored by the St. Thomas Lutheran Church Ladies Aid. There will be pretzels, lebkuchen etc. sold. Coffee and barbecue will be available at the bake sale.

**HELP WANTED:** Male or Female Christmas selling. We have openings for World Book representatives in the Manchester area. Guaranteed income for all those who qualify. For appointment send resume to Mrs. Mary Nickelson at 235 Westover Avenue, Ann Arbor. 12/9-16

TRULY  
a  
CHRISTMAS PRESENT WITH A FUTURE!  
THE

WORLD BOOK ENCYCLOPEDIA

Still time for Christmas Delivery! Phone NO2-7900

**EAVETROUGHING and Lightning Rod SERVICE**  
MONCRIEF FURNACE  
**WILSON METAL SHOP**  
13250 Sharon Hollow Road  
PHONE 428-8468 MANCHESTER MICH.

**WHEEL ALIGNMENT**  
BALANCING-FRAMES-AXLES  
STEERING-BRAKE SERVICE  
DIAL  
Harrison 3-3830  
3349 RUSSEL ROAD  
TECUMSEH  
**JOHNNIES SERVICE**

**1965 TOWNSHIP REAL and PERSONAL TAXES**  
Payable to Township Treasurer  
**Taxes Will Carry A 4% Penalty IF PAID ON OR AFTER February 14, 1966**

Bring unexpired Rabies Certificate for Dog License,  
Male & Unsexed \$3.00  
Female \$5.00  
Unexpired Rabies slips and proper amount of money may be mailed with taxes or alone to:  
M. H. Wolfe, Twp. Treas. Manchester, Mich.  
Hours: 9 A.M. to 12 Noon  
--- 1:30 P.M. to 5 P.M. ---

**CLASSIFIED**

**CHRISTMAS TREES!** CUT YOUR OWN. Austrian and Scotch Pine sizes to 7 feet. Any tree \$3. Evergreen Hills Tree Farm, Kendall Road off Jacob Road, Sharon Township. Open weekends. For information call GA8-4737. 12/9/16

**FOR SALE:** AKC Registered beagle puppies. Phone GA8-4431, Rose Norton, 15999 Easdale Road, Grass Lake. 12/9/16

**DON'S BEEF BUFFET**  
Downtown Tecumseh  
U. S. PRIME ROAST ROUND OF BEEF OUR SPECIALTY  
**SATURDAY IS FAMILY NIGHT**  
Delicious Roast Round of Beef, Potatoes, Roll and Butter, Salad, Coffee or Tea.  
**\$1.49**  
CHILDREN UNDER 12 — 85c  
OPEN  
Daily 11 a.m. to 8 p.m.  
Sunday 11 a.m. to 7 p.m.  
Closed Mondays  
Your hosts: Edna & Don Smith  
PHONE TECUMSEH 423-4338

Division Office  
714 W. Michigan Ave.  
Jackson, Michigan  
Local Sales Representative  
DOUGLAS LA PEDES  
510 E. MAIN  
Manchester, Michigan  
Phone 428-8186  
representing  
**Investors**  
DIVERSIFIED SERVICES, INC.

**CALL YOUR Investors MAN**

For facts on five Exclusively Distributed

**MUTUAL FUNDS**

- Investors MUTUAL, INC.
- Investors STOCK FUND, INC.
- Investors SELECTIVE FUND, INC.
- Investors INTER-CONTINENTAL FUND, INC.
- Investors VARIABLE PAYMENT FUND, INC.

ASK FOR A FREE BOOKLET-PROSPECTUS

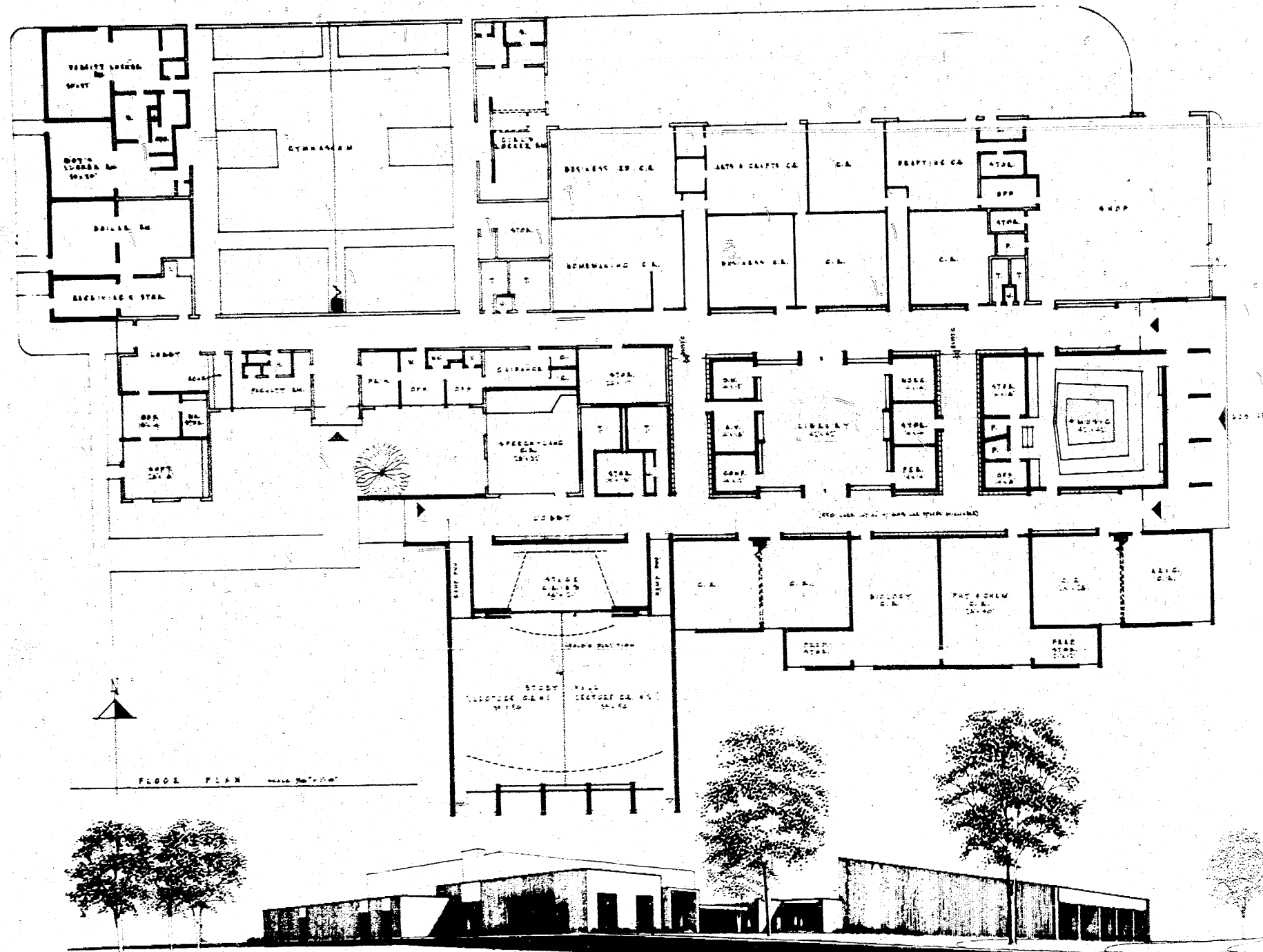
**What a wonderful thing the telephone is! And how little it costs!**  
Michigan Bell  
Part of the Nationwide Bell System

WE, THE FOLLOWING NAMED ORGANIZATIONS, DO HEREBY PUBLICLY ENDORSE AND PLEDGE OUR SUPPORT TO THE BOARD OF EDUCATION'S PROPOSAL FOR ADDITIONAL FACILITIES TO THE MANCHESTER SENIOR HIGH SCHOOL.

MANCHESTER CHAMBER OF COMMERCE  
 MANCHESTER OPTIMIST CLUB  
 SHORT HILLS FARM BUREAU  
 MANCHESTER PARENT TEACHERS ASSOCIATION  
 MANCHESTER TEACHERS' ASSOCIATION

WE FEEL THAT SUCH AN EXPANSION WILL FURTHER THE CAUSE OF EDUCATION IN OUR SCHOOL DISTRICT, AND THE ENTIRE COMMUNITY WILL BENEFIT FROM SUCH AN IMPROVEMENT.

WE EARNESTLY URGE YOU TO CONSIDER THIS PROPOSAL FAVOURABLY AND CAST A POSITIVE BALLOT ON DECEMBER 16, 1965



**VOTE YES**  
**THURSDAY, DECEMBER 16, 1965**

(Paid Political Adv.)

THE MANCHESTER ENTERPRISE

Manchester Library  
 P.O. Manchester  
 Complimentary

Year No. 50

Independent in all things. Devoted to County and Home News.

December 16, 1965

10 Cents

**BOND ISSUE APPROVED**

**380 YES + 245 NO**

629 property owners went to the polls Thursday, 380 voted yes, 245 voted no and 4 votes were void. This made the vote 41 more than last June's election of 588.

This election showed almost a complete reversal of the June election where the bond issue was defeated by 347 no as to 241 in favor.

The bond issue that was approved called for \$520,000, for the purpose of remodeling and erecting, furnishing and equipping an addition to the high school building and developing sites?



GERMAN TRADITION 'TANNENBAUM'

-by Marie Schneider

The meaning of Christmas hasn't changed but the ways in which it is celebrated has. And yet here in this country, the melting pot of the world, we seem to have an exciting mixture of the choicest and loveliest customs of them all.

A retired school teacher, Miss Linda Knorpp, still trims her Christmas tree with cookies. This, she remembers, as the main decoration on the big Christmas tree at their home when she was a little girl. The trees were always tall - reached to the ceiling and in those days there were few "store" decorations. There were six children in the Knorpp family. Both Mr. and Mrs. Charles Knorpp came to this country when they were young. With them they brought some of the habits of their families back home.

"Greatest contribution of the Germans to our way of celebrating this greatest of all holidays is the 'Tannenbaum'. This is the German word for Christmas tree. This tradition, to me, seems to be one of the nicest. It was decorated in the utmost secrecy and was lit on Christmas Eve. That is the way it was done when I was a little girl. Because it was a direct carryover from Germany," Miss Knorpp explained.

"Children placed more emphasis on the Christmas tree than on the gifts," she said, "and to see it lit on Christmas Eve was a never failing source of enchantment and excitement. We children would help string the snowy pop corn and sometimes cranberries. We also made paper chains. Just imagine children doing these things today - for their only tree trimming."

The climax came when they could get their mother started to bake the Christmas cookies. Sometimes there would be 15 or 17 kinds. A few of each were used as tree trimming! The cookies were threaded with white thread and carefully hung on the tree. She doesn't remember exactly how that was handled when she was small - whether Santa brought the cookies or if they were baked and prepared for him. This she knows, when she would see the tree on Christmas Eve the cookies would be decorating it.

The springerle, with its intricate picture, was a very favorite. It looked so pretty on the dark branches. Then the lebkuchen, quince drops and nut and coconut drops each had a place.

Her mother bought the first springerle mold, which was a German import. It was made of lead with a wooden back and came from the Schoettle store in Manchester, and has been carefully treasured through the years. Her mother bought the mold before the turn of the century and it has been brought out each year since to be used to mold the annis flavored dough into intricate patterns of birds, scenery and flowers.

In the early 1930's Mrs. Knorpp decided to save a few of the picturesque cookies from year to year. They were dated on the back along with some of her homemade pretzels and packed in tissue paper, to be brought out each year to use on the tree.

It is some of these same cookies and pretzels which Miss Knorpp used to trim her tree the other night. It used to take about three days

cont. page (8)



Max Walter

Max Walter was installed as shipful master of the Manchester of the Manchester Lodge 148 F & M in ceremonies at 9 p. m. Monday at the lodge.

Other officers installed were: Alber as senior warden; Ed E. Steele Jr. warden; Paul E. treasurer; Evan Leddy as secretary; David Meinhart, senior con; Duane Trolz, junior deacon; Byron Parr, marshal; Otto Kilde, chaplain; Royal Davidster, artist; William Richardson, tyler; Akin, James Lyon, Clarans Jr. and Glen DeClaire, wards.

The installing officers were Grand Master, Rex Sackett of King; Past Grand Master, Glen of Ann Arbor and Les Frisk. Installing them was Wm. Schaffer of Manchester.

**COUNCIL MINUTES**

Dec. 7, 1965

Council met in regular session. Meeting was called to order by President Bensmeider. Trust-present were, Dorff, Koebbe, Guss, and Lowery. Absent were Clark and McGuire. Minutes of the previous meeting were read and approved. Bills were presented and approved. Their proper funds.

Moved by Dorff and supported by Lowery that bills be paid as holding check No. 3096 for \$100.00. All yeas, carried. Moved by Dorff and supported by Lowery that alteration be granted: Mrs. Phillip Ray Maumder, Douglas Guss, and St. Mary's Church - subject to the approval of the building inspector. All yeas, carried.

Moved by Lowery and supported by Dorff that New Building be granted Theodore H. King Jr. All yeas, carried. Moved by Dorff and supported by Lowery Water and Sewer hook-up granted to Theo. H. Tapping. Water replacement hook-up granted to L. V. Kirk. All yeas, carried.

Chip Duckham Jr. of Depend-Carriage Service was present. Request permission to raise garbage pickup rates in Manchester. At rates are \$1.30 per 10 gal. and \$1.50 per 20 gal. can.

Cont. on page (2)

**BOYSVILLE GLEE CLUB, TV DEBUT SUN., DEC. 19th** -by Marie Schneider

The Boysville Glee Club, which is well known in this area, will make its first television appearance Sunday, Dec. 19 when the singers will be featured on a special Christmas program over Channel 2 at 9:30 a. m. and will be repeated again on the same station following the late, late movie. They will be guests on the regular weekly television program conducted by Rev. Fr. Raymond Schlinkert of Manchester entitled, "With This Ring".

This year's Glee Club has been unusually busy during the holiday season as they fill numerous engagements to sing Christmas carols and other selections in many of the communities in the area. They are directed by Brother Philip Armstrong, C. S. C.

Boysville is located near Macon on property which was once the Henry Ford Trade School. There are 180 boys enrolled in nine through twelve and are taught by 17 brothers and two lay teachers. The Glee Club started in 1957 and the acapella singers vary from a dozen to sometimes 35 boys.

The singers will appear a second time with Fr. Schlinkert on his December 26th shows and they seem very enthused for the chance on television. Three of the group make up "The Deserters" with Arden Valentine playing the guitar and George Daly and Richard Currie the vocalists.

This home for teenage boys, mostly from the Detroit metropolitan area, is sponsored by the Knights of Columbus of Michigan who bought the 150 acre parcel of Ford property. It was designed after Boys Town of Nebraska and Fr. Gilgait Home in Indiana. It was the idea of Edward J. Barrett, State Secretary of the Knights of Columbus in 1940-41.

Brother Barrett first voiced his plan in 1943 to Fr. Fitzpatrick, pastor at Saginaw. He contacted Bishop William F. Murphy and he told the plan to Edward Cardinal Mooney, Archbishop of Detroit. At that time the Archdiocese of Detroit already had two boys homes of this type at Burroughs Avenue St. Joseph's Home and the C. Y. O. Leland Avenue Home. Then there was a third home and farm at Brighton, in the Archdiocese, not under Archdiocesan control.

In 1944 when Brother Barrett had become State Deputy, he told his plan for a Boysville to Msgr. Carroll F. Deady who had hoped for such a place for years - a manual training or "trades" school. Offers of land and buildings had been made to the Diocese of Detroit. But there was one drawback. There were no continuing funds for operation. To start a thing and not know how to finance it's continued operation was something which had to be studied.

Finally there were three possibilities:

(1)The National Youth Administration technical training program had been discontinued in 1944 and Msgr. Deady had acquired the local N. Y. A. equipment and facilities.

(2)The Knights of Columbus of Michigan wanted to help under-privileged boys.

(3)The Smith-Hughes (Federal) Act offered a plan of aid in subsidizing technical teachers for youth training.

Msgr. Deady had no trouble selling his plans for Boysville to Archbishop Mooney and Boysville became a reality. By 1954 the Boysville high school was accredited by the University of Michigan.

During the past year there has been no new construction of buildings because of lack of funds but a new dormitory and recreation hall are badly needed. Other improvements have not been neglected. The gym and administration building have been repainted on the exterior. There is a new electric mimeograph machine and bulletin boards have been installed in each cubicle of the wings in Cardinal Mooney Hall, the dorm housing the upper classmen.

There is an increased program of social activities at the school, through the Student Council and the boys join other youths in neighboring towns. Brother Philip said. They had sock-hops on campus after basketball games. The boys have been allowed to go to their homes more often for weekends.

To date there have been 212 boys graduated from Boysville. Brother Philip points out that the students are helped to make plans for the time when they leave the school and are on their own. They are urged to make their future plans during the senior year and have something lined up to do when they graduate.

"If we fail in doing this, then the whole effort of the Boysville operation has been useless and we have missed our goal. We hope that by training these young men whose home life is sometimes unhappy, for many come from broken homes, we can make them citizens we'll all be proud of. It is such things as the glee club and the fact that these boys are asked to sing at different functions - that gives them a lift. They know that others enjoy and appreciate their singing and it gives them an opportunity to be with other people," Brother Philip explained. "At this time of year, especially, they feel that they can contribute a small part to the Merry Christmas of their audiences."

**SCHOOL DISTRICTS TO GET FUNDS**

School districts in Washtenaw county will be getting state aid totaling \$1,295,180. In checks sent out by County Treasurer, Sylvester Leonard.

Manchester schools will receive \$42,100; Milan area schools, \$101,140; Saline area schools, \$63,180; Whitmore Lake, \$36,000; Willow Run schools, \$140,620; Chelsea schools, \$63,490; Dexter \$53,560; and Lincoln consolidated, \$64,190.

Also included is the Washtenaw County Intermediate special education of \$16,960 and the Washtenaw County Intermediate School District \$3,600.